

Parts List

In this chapter...

- Serial Number Format
- Using the Parts List
- Print Engine Parts
- Options
- Xerox Supplies and Accessories
- Service Kits

Chapter 9

Serial Number Format

Changes to Xerox products are made to accommodate improved components as they become available. It is important when ordering parts to include the following information:

- Component's part number
- Product type or model number
- Serial Number of the printer

The serial number is found on a label located on the frame of the printer. Front Cover must be opened to locate the Serial Number.

The nine-digit serial number has the following format:

- **PPPRSSSSS**
- **PPP** = Three digit alphanumeric product code
- **R** = Single digit numeric revision digit, 0-4. To be rolled when a major product change occurs and initiated with a change request.

Product	Product Code
6280, 110V Engine	NKA
6280V, 220V Engine	NKB

Pre-Production Units (PP Build)

PPP0SSSSS

SSSSS = Five digit numeric serial number based on the following table:

Product	Starting Serial Number	Ending Serial Number
6280_N, 110V Engine	00501	00600
6280_DN, 110V Engine	00601	00700
6280_YN, 110V Engine (GSA)	00701	00800
6280V_N, 220V Engine	00501	00600
6280V_DN, 220V Engine	00601	00700

Note

Not all of the serial number will be used. This is a buffer in case additional units are built by Fuji Xerox for each model of printer during pre-production.

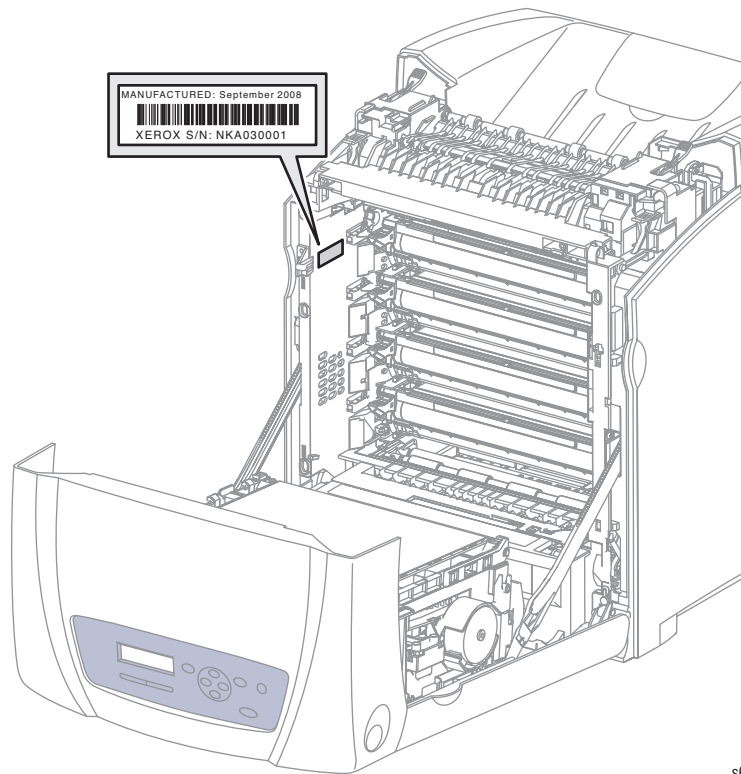
Production Units (MP Build)**PPP1SSSSS****SSSSS** = Five digit numeric serial number based on the following table:

Product	Starting Serial Number	Ending Serial Number
6280_N, 110V Engine	10001	60000
6280_DN, 110V Engine	60001	90000
6280_YN, 110V Engine (GSA)	90001	99999
6280V_N, 220V Engine	10001	60000
6280V_DN, 220V Engine	60001	99999

Note

The serial numbers are only reset to the starting serial number when the ending serial number is reached. At that time the revision digit will be rolled. Serial numbers below 10001 are reserved for XOG Final Integration Center (FIC) sites if reserialization is needed.

Serial Number Location



s6280-266

Serial Number Format Examples

NKA03001: Xerox Serial Number
NKA = Product Code for 110V printer
0 = Revision Level
30001 = Serial Number for 6280_N



s6280-294

NKB299999: Xerox Serial Number, next printer serial number **NKB360001**
NKB = Product Code for 220V printer
2 = Revision Level, next Revision Level 3
99999 = Serial Number for 6280V_DN, next Serial Number **60001**

Using the Parts List

- **ID No.:** The callout number from the exploded part diagram.
- **Name/Description:** The name of the part to be ordered and the number of parts supplied per order.
- **Part Number:** The material part number used to order that specific part.
- Parts identified throughout this manual are referenced **PL#.#. #**; For example, PL3.1.10 means the part is item 10 of Parts List 3.1.
- A black triangle preceding a number followed by a parenthetical statement in an illustrated parts list means the item is a parent assembly, made up of the individual parts called out in parentheses.
- The notation “**with X~Y**” following a part name indicates an assembly that is made up of components X through Y. For example, “1 (with 2~4)” means part 1 consists of part 2, part 3, and part 4.
- An asterisk (*) following a part name indicates the page contains a note about this part.
- The notation (NS) next to a part indicates that particular part is not spared, but contained in a kit or major assembly.
- The notation “**J1<>J2 and P2**” is attached to a wire harness. It indicates that connector Jack 1 is attached to one end of the wire harness and connector J2 is attached to the other end that is plugged into P2.

Note

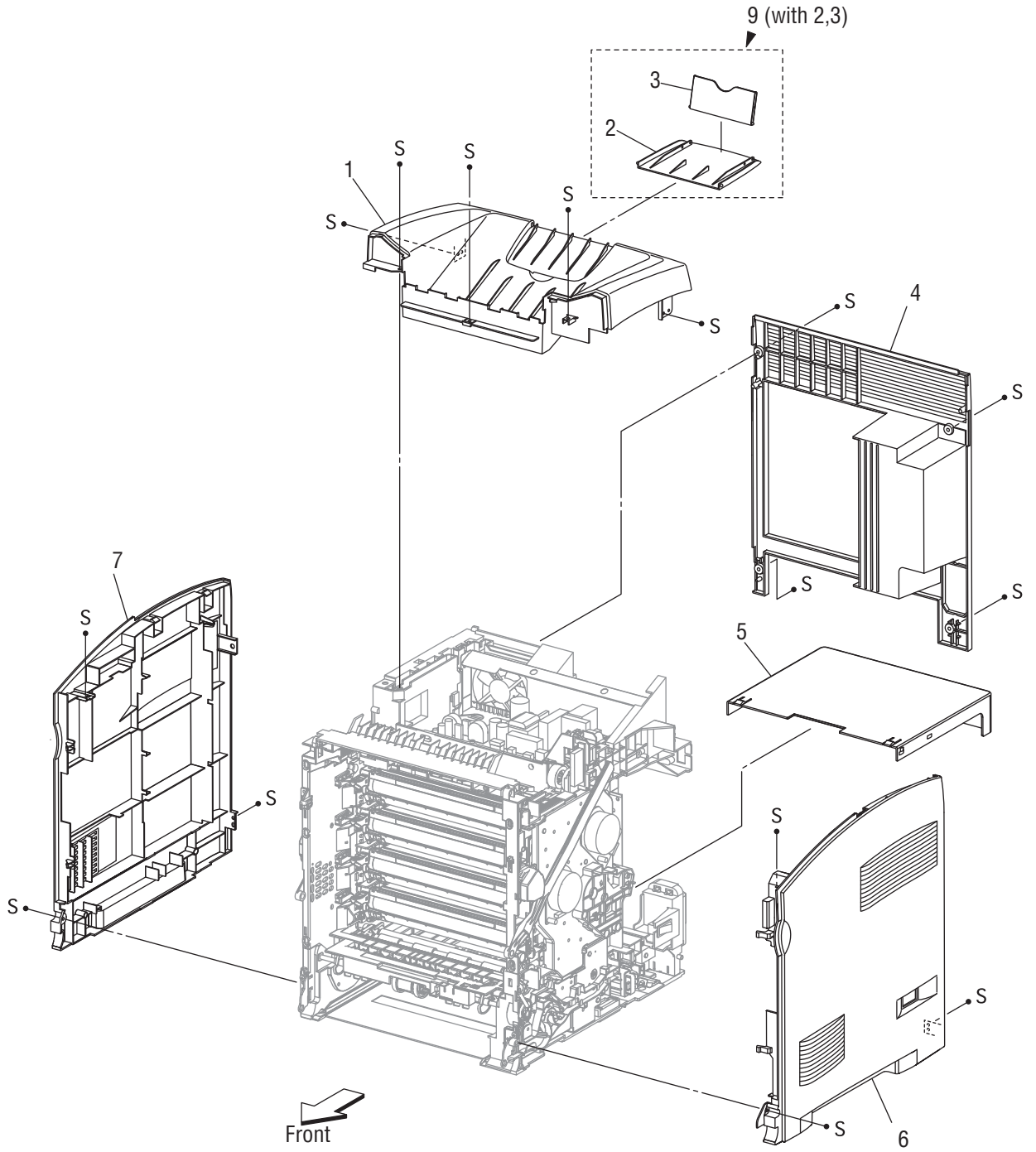
Only parts showing part numbers are available for ordering by support. Parts not showing part numbers are available on the parent assembly.

Abbreviations

Abbreviation	Meaning
C	C-ring
E	E-ring
KL	K-clip
S	Screw

Print Engine Parts

Parts List 1.1 Covers (1 of 2)

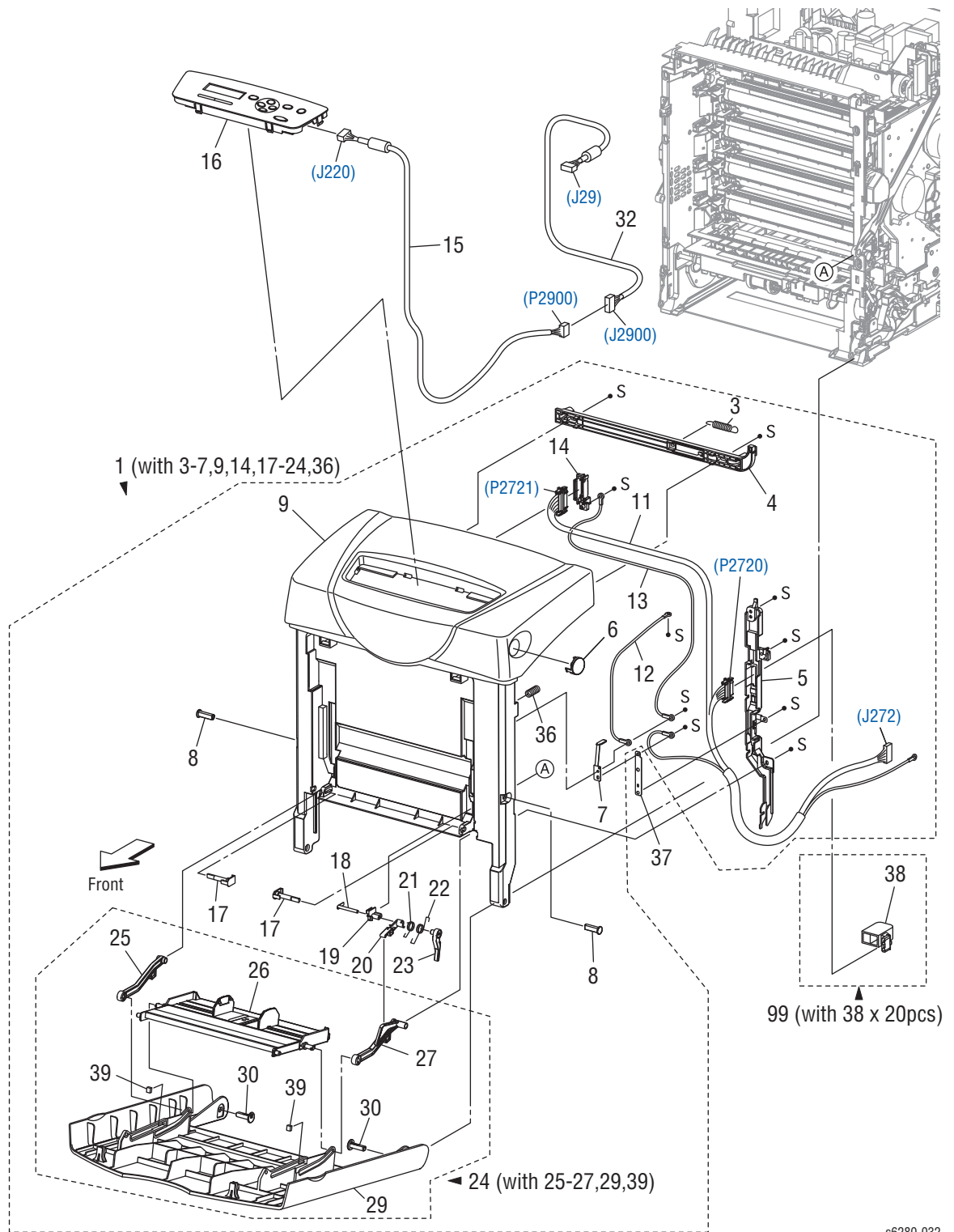


s6280-013

Parts List 1.1 Covers (1 of 2)

ID No.	Name/Description	Part Number
1.	Cover Assy Top	848K19861
2.	Cover Extension 1	
3.	Cover Extension 2	
4.	Cover Rear	848E26092
5.	Cover CST (Tray Cover)	848E26171
6.	Cover Side Right	848E26071
7.	Cover Side Left	848E26041
8.	-----	
9.	Cover Assy Extender (with 2, 3)	848K15480

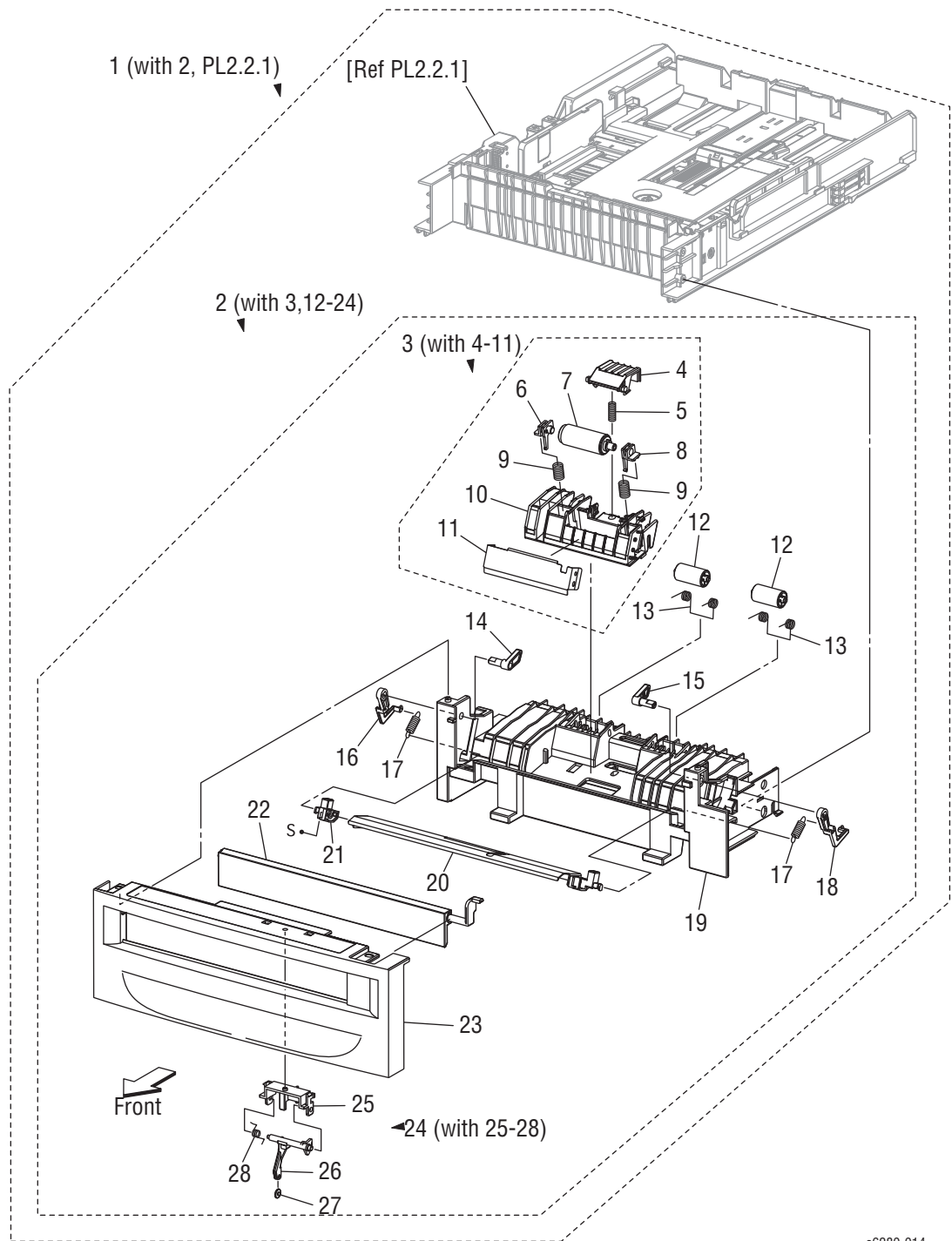
Parts List 1.2 Covers (2 of 2)



Parts List 1.2 Covers (2 of 2)

ID No.	Name/Description	Part Number
1.	Cover Assy Front (with 3-7, 9, 14, 17-24, 36)	848K15397
2.	-----	
3.	Spring Latch	
4.	Latch Front	
5.	Cover Harness	
6.	Button Top	
7.	Contact Front	
8.	Shaft Pivot (Pin Kit)	675K74260
9.	Cover Front Assy	
10.	-----	
11.	Harness Assy Front Cover (J272-P2720, P2721, T4322-T43221) - (Harness Kit)	675K74250
12.	Harness Assy Front Cover Earth 1 (T4321-T43210)	
13.	Harness Assy Drawer Earth	
14.	Holder Drawer	
15.	Harness Assy Z-X Operation Panel (J220-P2900) - (Harness Kit)	675K74250
16.	Console Panel ZNN (Control Panel)	848K19391
17.	Pin Pivot MPT (Pin Kit)	675K74260
18.	Shaft Lever	
19.	Plate Pivot	
20.	Lever MPT 1	
21.	Spring Lever MPT	
22.	Spring Lever Link	
23.	Lever MPT 2	
24.	Cover Assy MPT (with 25-27, 29, 39)	848K20482
25.	Link MPT Left	
26.	Tray Assy MPT Base	
27.	Link MPT Right	
28.	-----	
29.	Cover MPT (Tray 1 Cover/Door A)	
30.	Shaft Pivot MPT (Pin Kit)	675K74260
31.	-----	
32.	Harness Assy ESS (J29-J2900) - (Harness Kit)	675K74250
33.	-----	
34.	-----	
35.	-----	
36.	Spring	
37.	Plate Earth FC	
38.	CAP Connector Drawer	
39.	Pad Cover MPT	
98.	Pin Kit (with 8, 17, 30)	675K74260
99.	Kit Cap Connector Drawer (with 38 x 20 pcs)	

Parts List 2.1 Tray 2 (1 of 2)



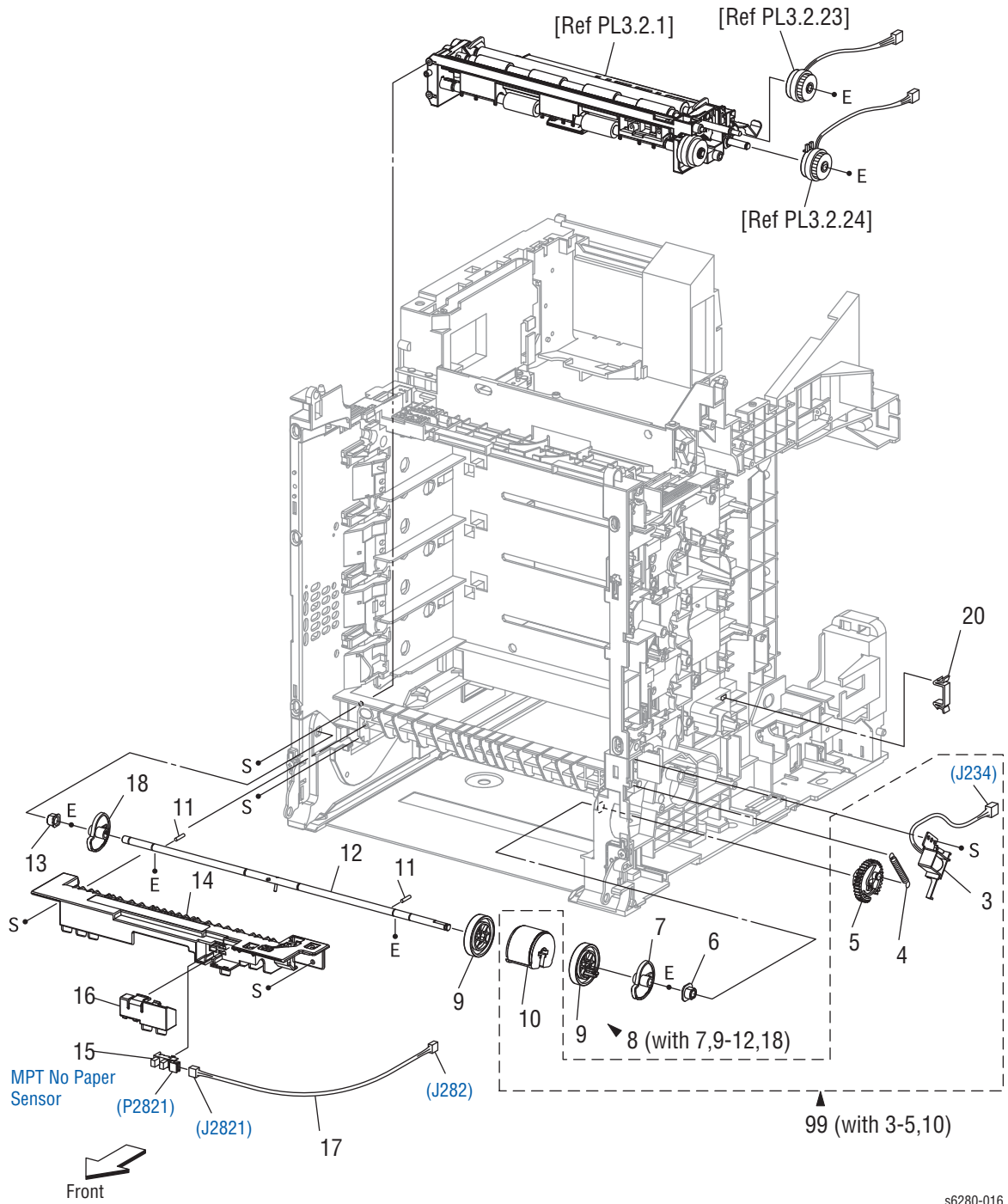
Parts List 2.1 Tray 2 (1 of 2)

ID No.	Name/Description	Part Number
1.	Cassette Assy 250 (with 2, PL2.2.1) (Tray 2)	050K58032
2.	Cassette Assy Front (with 3, 12-24) (Tray 2 Front Assy)	
3.	Separator (Retard) Roller Assembly (with 4-11)	675K74930
4.	Chute Separator	
5.	Spring Chute	
6.	Bearing Separator Left	
7.	Separator (Retard) Roller MPT	
8.	Bearing Separator Right	
9.	Spring Separator 200	
10.	Holder Separator MPT	
11.	Plate Separator	
12.	Roll Pinch Turn	
13.	Spring Pinch Turn	
14.	Follower Left	
15.	Follower Right	
16.	Arm Left	
17.	Spring NF MPT	
18.	Arm Right	
19.	Housing Base FR 250	
20.	Plate Assy Bottom	
21.	Holder Assy MPT Left	
22.	Cover Front MPT	
23.	Handle CST (Tray Handle)	
24.	Actuator Assy MPT (with 25-28)	120K92391
25.	Holder Actuator	
26.	Actuator No Paper MPT	
27.	Roll Actuator No Paper	
28.	Spring No Paper	

Parts List 2.2 Tray 2 (2 of 2)

ID No.	Name/Description	Part Number
1.	Cassette Assy Rear 250 (with 2-13, 18, 19, 21-33)	
2.	Plate Assy BTM A4	
3.	Stopper PB	
4.	Gear BTM Lock Oneway	
5.	Shaft PB A4	
6.	Gear BTM DMP Oneway	
7.	Gear PB Left	
8.	Spring BTM Up 250 A4	
9.	Guide Assy Side Right 250	
10.	Guide Assy Side Left 250	
11.	Gear Pinion	
12.	Holder Assy Separator (with 14-17)	019K09941
13.	Cover Retard CST (Tray Retard Cover)	
14.	Holder Separator	
15.	Shaft Separator	
16.	Clutch Friction Separator (Retard)	
17.	Roll Assy Retard (Separator) (Periodic Replacement Part - per 100K prints) (consists of 3 pcs and tech sheet)	604K55370
18.	Spring Separator	
19.	Switch Size Set	
20.	-----	
21.	Plate Gear Lock 250	
22.	Guide Assy Tray End 250	
23.	Actuator Size	
24.	Housing Base RE 250	
25.	Actuator Release PB	
26.	Spring Stopper Gear	
27.	Gear PB Right	
28.	Cover BTM Up 250	
29.	Rack BTM Lock 250	
30.	Spring BTM Lock	
31.	Gear BTM Lock Pinion	
32.	Gear Lever BTM Lock	
33.	Lever BTM Lock	

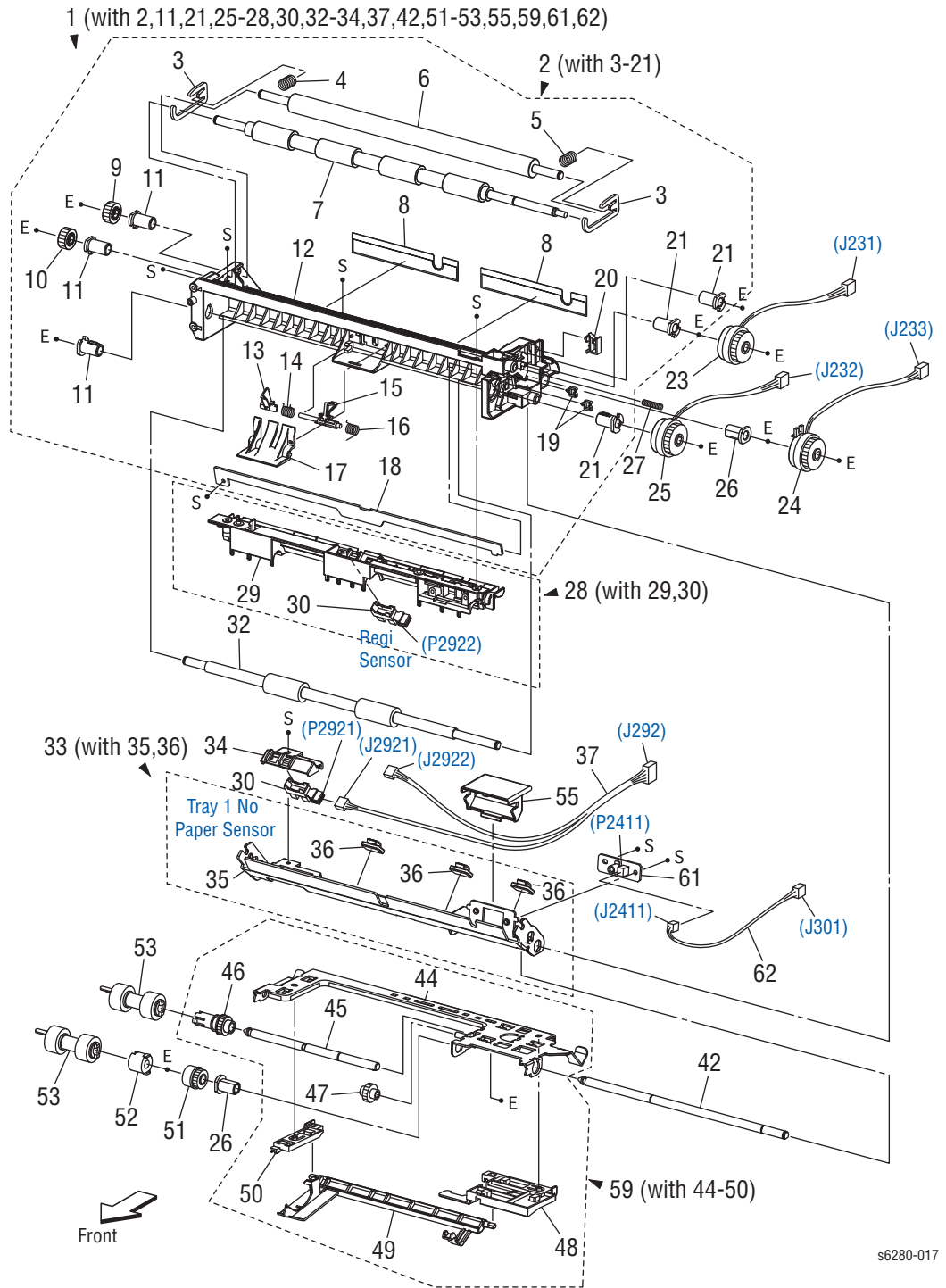
Parts List 3.1 Paper Feeder (1 of 2)



Parts List 3.1 Paper Feeder (1 of 2)

ID No.	Name/Description	Part Number
1.	-----	
2.	-----	
3.	Solenoid Feed MPT (with 4-5)	675K35590
4.	Spring Feed MPT	
5.	Gear MPT	
6.	Bearing Earth	
7.	CAM MPT Right	
8.	Roll Assy MPT (with 7, 9-12, 18)	059K56521
9.	Roll Core MPT	
10.	Roll Assy Feed MPT	
11.	Pin Dowel	
12.	Shaft MPT	
13.	Bearing	
14.	Chute MPT	
15.	Sensor Photo (Tray 1 No Paper Sensor)	930W00113
16.	Cover Sensor	
17.	Harness Assy MPT NPP (J282-J2821) - (Harness Kit)	675K74380
18.	CAM MPT Left	
19.	-----	
20.	Clamp RFC-11V0	
99.	Kit Roll and Solenoid Feed MPT (with 3-5, 10)	675K68991

Parts List 3.2 Paper Feeder (2 of 2)



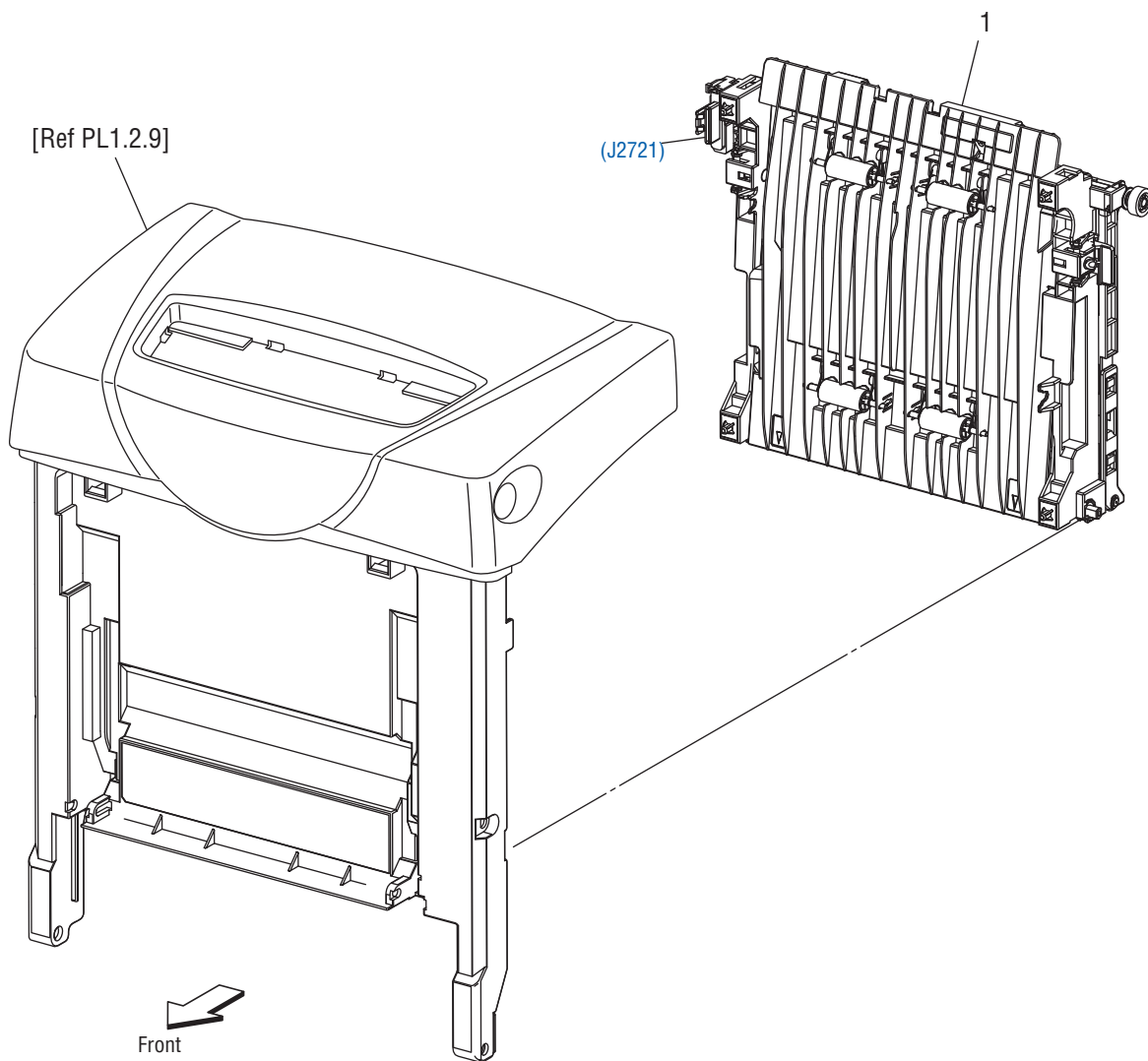
Parts List 3.2 Paper Feeder (2 of 2)

ID No.	Name/Description	Part Number
1.	Feeder Assy (with 2, 11, 21, 25-28, 30, 32-34, 37, 42, 51-53, 55, 59, 61, 62)	675K74270
2.	Chute Assy Regi (with 3-21)	
3.	Bracket NIP	
4.	Spring Regi Left	
5.	Spring Regi Right	
6.	Roll Regi Metal	
7.	Roll Regi Rubber	
8.	Film Inlet Left	
9.	Gear Regi Metal	
10.	Gear Regi Rubber	
11.	Bearing Regi	
12.	Chute Regi	
13.	Actuator A	
14.	Spring Regi Sensor A	
15.	Actuator B	
16.	Spring Regi Sensor B	
17.	Cover Actuator	
18.	Chute Separator BTM	
19.	Clamp Mini-Saddle	
20.	Clamp	
21.	Bearing Regi E	
22.	-----	
23.	Clutch Assy PH	121K37151
24.	Clutch Assy PH Feed	121K37151
25.	Clutch Assy PH Turn	121K37151
26.	Bearing Nudger	
27.	Spring Earth	
28.	Chute Assy Regi Upper (with 29, 30)	
29.	Chute Regi Upper	
30.	Sensor Photo (Regi Sensor, Tray No Paper Sensor)	930W00113
31.	-----	
32.	Roll Assy Turn	
33.	Chute Assy Top (with 35, 36)	
34.	Holder No Sensor	
35.	Chute Assy Separator	
36.	Clamp	
37.	Harness Assy Regi Sensor (J292-J2921, J2922) - (Harness Kit)	675K74380
38.	-----	
39.	-----	
40.	-----	

Parts List 3.2 Paper Feeder (2 of 2) (continued)

ID No.	Name/Description	Part Number
41.	-----	
42.	Shaft Feed	
43.	-----	
44.	Support Nudger Assy	
45.	Shaft Nudger	
46.	Gear Nudger A4	
47.	Gear Idler Nudger	
48.	Holder No Paper Left A4	
49.	Actuator No Paper A4	
50.	Holder No Paper Right A4	
51.	Clutch Oneway Nudger	
52.	Clutch Oneway Feed	
53.	Roll Assy Feed (Periodic Replacement Part - per 100K prints) (consist of 3 pcs and tech sheet)	PL2.2.17
54.	-----	
55.	Cover OHP Sensor	
56.	-----	
57.	-----	
58.	-----	
59.	Nudge Assy (with 44-50)	068K61240
60.	-----	
61.	PWBA TEM Sensor	
62.	Harness Assy TEM Sensor (J301-J2411)	
99.	Kit Feeder Assy (with 3.2.1, 23, 24)	675K74270

Parts List 4.1 Transfer Unit



s6280-018

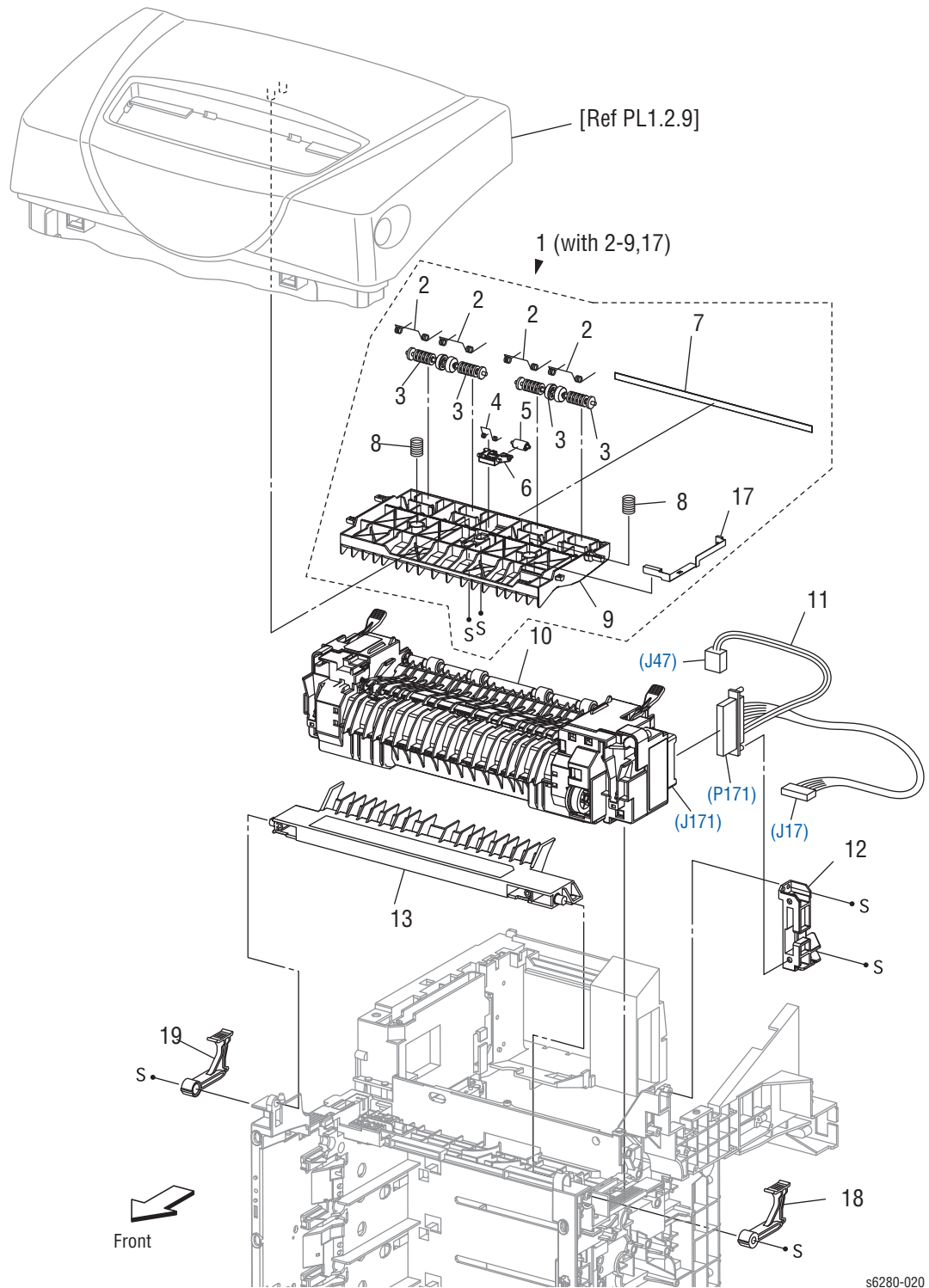
Parts List 4.1 Transfer

ID No.	Name/Description	Part Number
1.	Kit Belt CRU (Transfer Assy) (Periodic Replacement Part - per 100K prints)	675K70582

Parts List 5.1 Xerographics

ID No.	Name/Description	Part Number
1.	Spring ROS (Laser Unit Spring)	
2.	ROS Assy (with 1x2) (Laser Unit)	062K19530
3.	Connector CRUM	
4.	Sensor Assy CRU (with 5-8)	130K72260
5.	Actuator CRU	
6.	Spring CRU	
7.	Bracket Actuator	
8.	Sensor Photo (Print Cartridge Sensor)	930W00113
9.	-----	
10.	Spring CRU Right	
11.	Spring CRU Left	
12.	Dispenser Assy	094K92450
13.	Bias Assy	
14.	Spring ESA Roll	
15.	LED Assy	122K94230
16.	Duct Harness Motor	
17.	HVPS	105K23260
18.	Cartridge Assy (Print Cartridge) (K) (Periodic Replacement Part - per 8K prints)	106R01395
	Cartridge Assy (Print Cartridge) (K) (Periodic Replacement Part - per 3K prints)	106R01391
	Cartridge Assy (Print Cartridge) (K) (Periodic Replacement Part - per 8K prints - DMO)	106R01403
	Cartridge Assy (Print Cartridge) (K) (Periodic Replacement Part - per 3K prints - DMO)	106R01399
	Cartridge Assy (Print Cartridge) (K) (Periodic Replacement Part - per 11K prints - Metered prints)	106R01407
19.	Cartridge Assy (Print Cartridge) (C) (Periodic Replacement Part - per 6K prints)	106R01392
	Cartridge Assy (Print Cartridge) (C) (Periodic Replacement Part - per 2K prints)	106R01388
	Cartridge Assy (Print Cartridge) (C) (Periodic Replacement Part - per 6K prints - DMO)	106R01400
	Cartridge Assy (Print Cartridge) (C) (Periodic Replacement Part - per 2K prints - DMO)	106R01396
	Cartridge Assy (Print Cartridge) (C) (Periodic Replacement Part - per 11K prints - Metered prints)	106R01404
20.	Cartridge Assy (Print Cartridge) (M) (Periodic Replacement Part - per 6K prints)	106R01393
	Cartridge Assy (Print Cartridge) (M) (Periodic Replacement Part - per 2K prints)	106R01389
	Cartridge Assy (Print Cartridge) (M) (Periodic Replacement Part - per 6K prints - DMO)	106R01401
	Cartridge Assy (Print Cartridge) (M) (Periodic Replacement Part - per 2K prints - DMO)	106R01397
	Cartridge Assy (Print Cartridge) (M) (Periodic Replacement Part - per 11K prints 0 Metered prints)	106R01405
21.	Cartridge Assy (Print Cartridge) (Y) (Periodic Replacement Part - per 6K prints)	106R01394
	Cartridge Assy (Print Cartridge) (Y) (Periodic Replacement Part - per 2K prints)	106R01390
	Cartridge Assy (Print Cartridge) (Y) (Periodic Replacement Part - per 6K prints - DMO)	106R01402
	Cartridge Assy (Print Cartridge) (Y) (Periodic Replacement Part - per 2K prints - DMO)	106R01398
	Cartridge Assy (Print Cartridge) (Y) (Periodic Replacement Part - per 11K - Metered prints)	106R01406
22.	Core (Ferrite Core)	

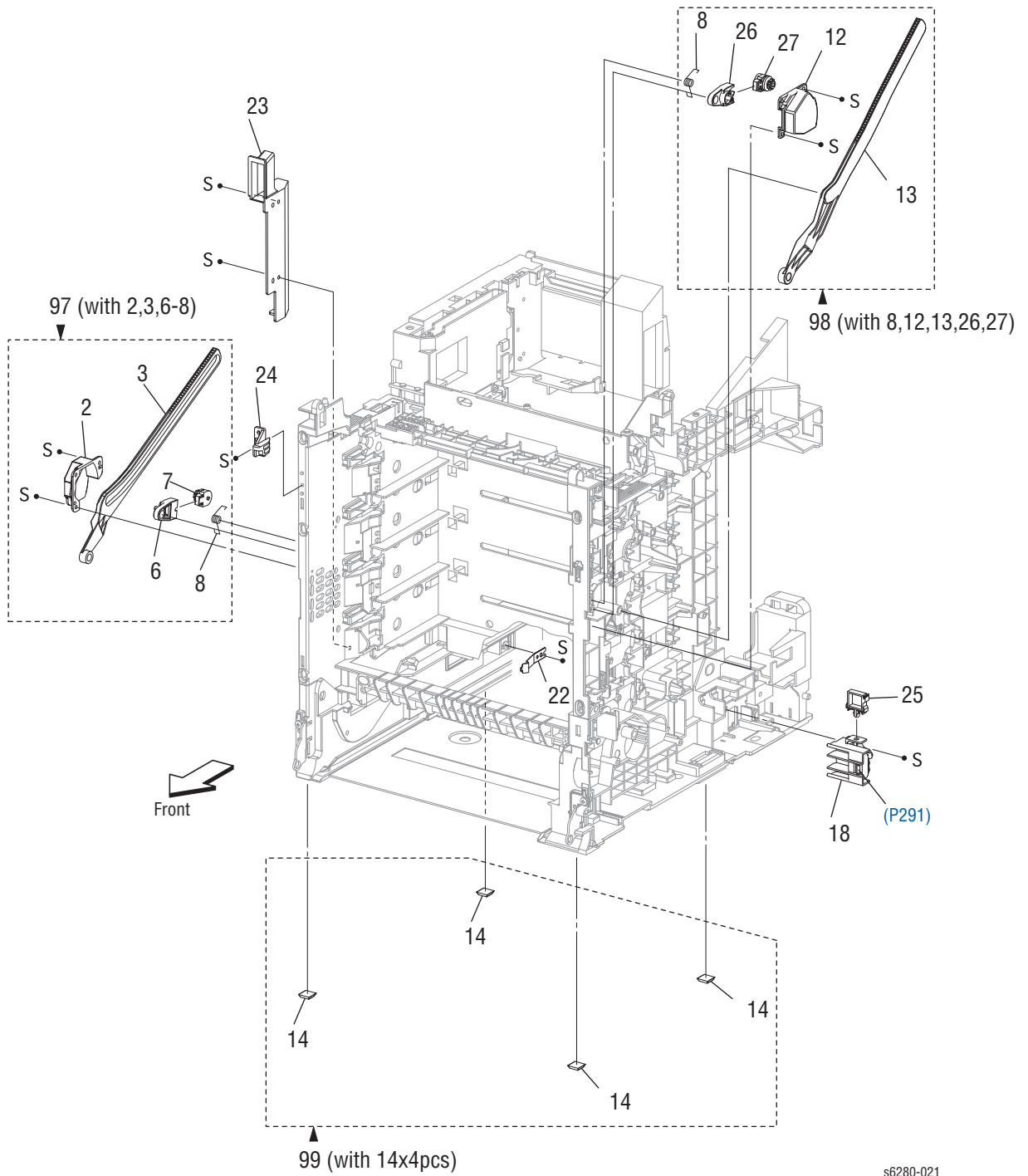
Parts List 6.1 Fuser & Exit



Parts List 6.1 Fuser & Exit

ID No.	Name/Description	Part Number
1.	Chute Assy Exit Out (with 2-9, 17) (attached on PL 01.02.09)	054K35574
2.	Spring Pinch Exit Out	
3.	Roll Pinch Exit	
4.	Spring Corrugate	
5.	Roll Corrugate	
6.	Holder Corrugate	
7.	Eliminator Exit	
8.	Spring Chute Out	
9.	Chute Exit Out	
10.	Fuser Assy KMY 115V (Periodic Replacement Part - per 100K prints)	675K70591
	Fuser Assy KMY 230V (Periodic Replacement Part - per 100K prints)	675K70601
11.	Harness Assy Fuser (P171-J17, J47) - 100V/115V - (Harness Kit, Black & White)	675K74380
	Harness Assy Fuser (P171-J17, J47) - 200V - (Harness Kit, Blue & Brown)	675K74380
12.	Bracket Fuser	
13.	Chute Dup Gate	054K40310
14.	-----	
15.	-----	
16.	-----	
17.	Plate Earth Exit	
18.	Lever Fuser D	
19.	Lever Fuser AD	

Parts List 7.1 Frame

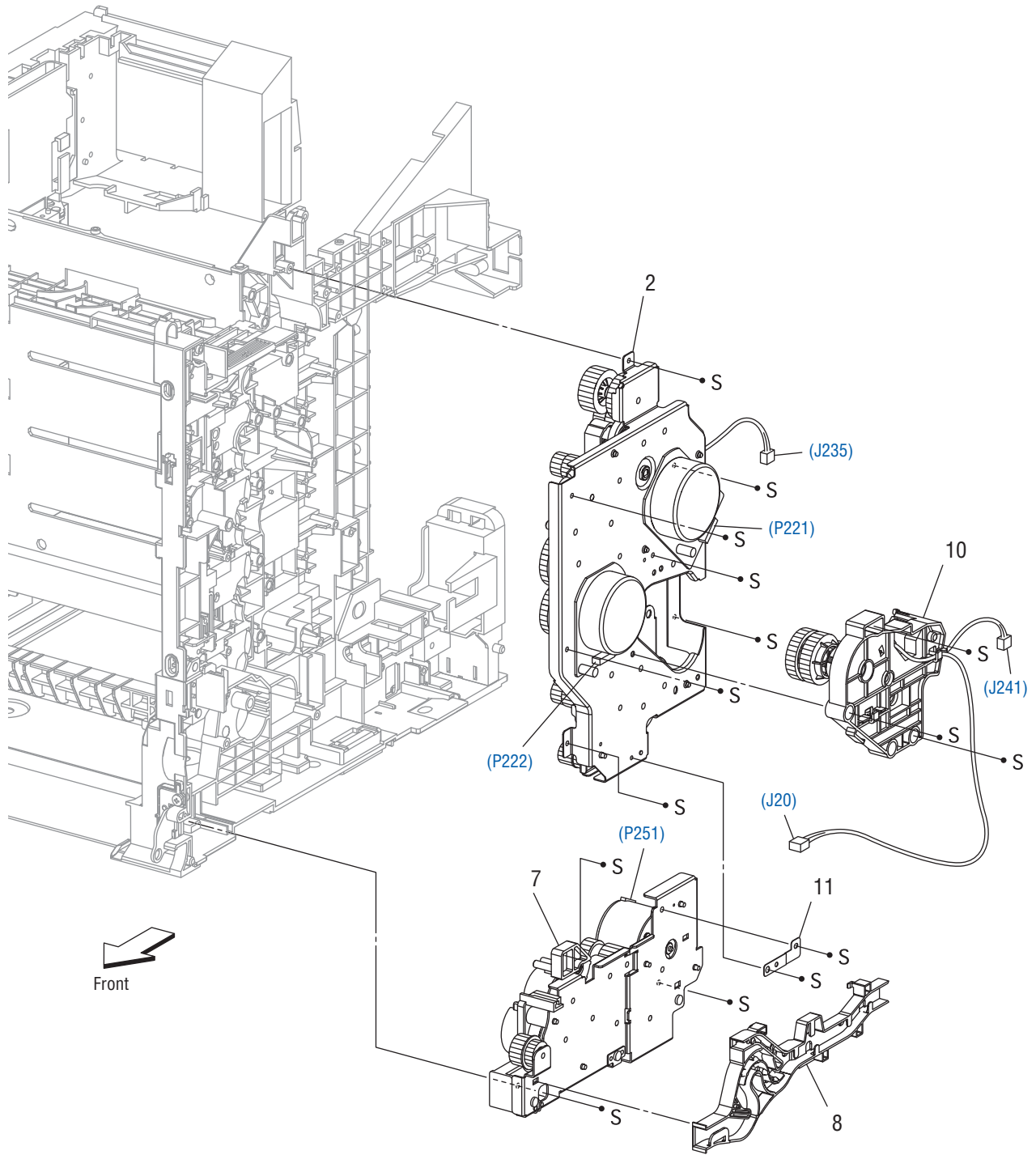


s6280-021

Parts List 7.1 Frame

ID No.	Name/Description	Part Number
1.	-----	
2.	Support Link Left (Kit)	
3.	Link Left (Kit)	
4.	-----	
5.	-----	
6.	Holder Damper (Kit)	
7.	Damper Oil (Kit)	
8.	Spring Support (Kit)	
9.	-----	
10.	-----	
11.	-----	
12.	Support Link Right (Kit)	
13.	Link Right (Kit)	
14.	Foot (with 14 x 4 pcs)	
15.	-----	
16.	-----	
17.	-----	
18.	Switch Assy Size	110K15270
19.	-----	
20.	-----	
21.	-----	
22.	Spring Tray Lock	
23.	Duct Side Left	
24.	Stopper Frame Left	
25.	Clamp Locking	
26.	Holder Damper H	
27.	Damper Oil H	
97.	Kit Link Left (with 2, 3, 6-8)	675K74280
98.	Kit Link Assy Right (with 8, 12-13, 26-27)	675K74290
99.	Kit Foot Assy (with 14 x 4 pcs)	675K69770

Parts List 8.1 Drive

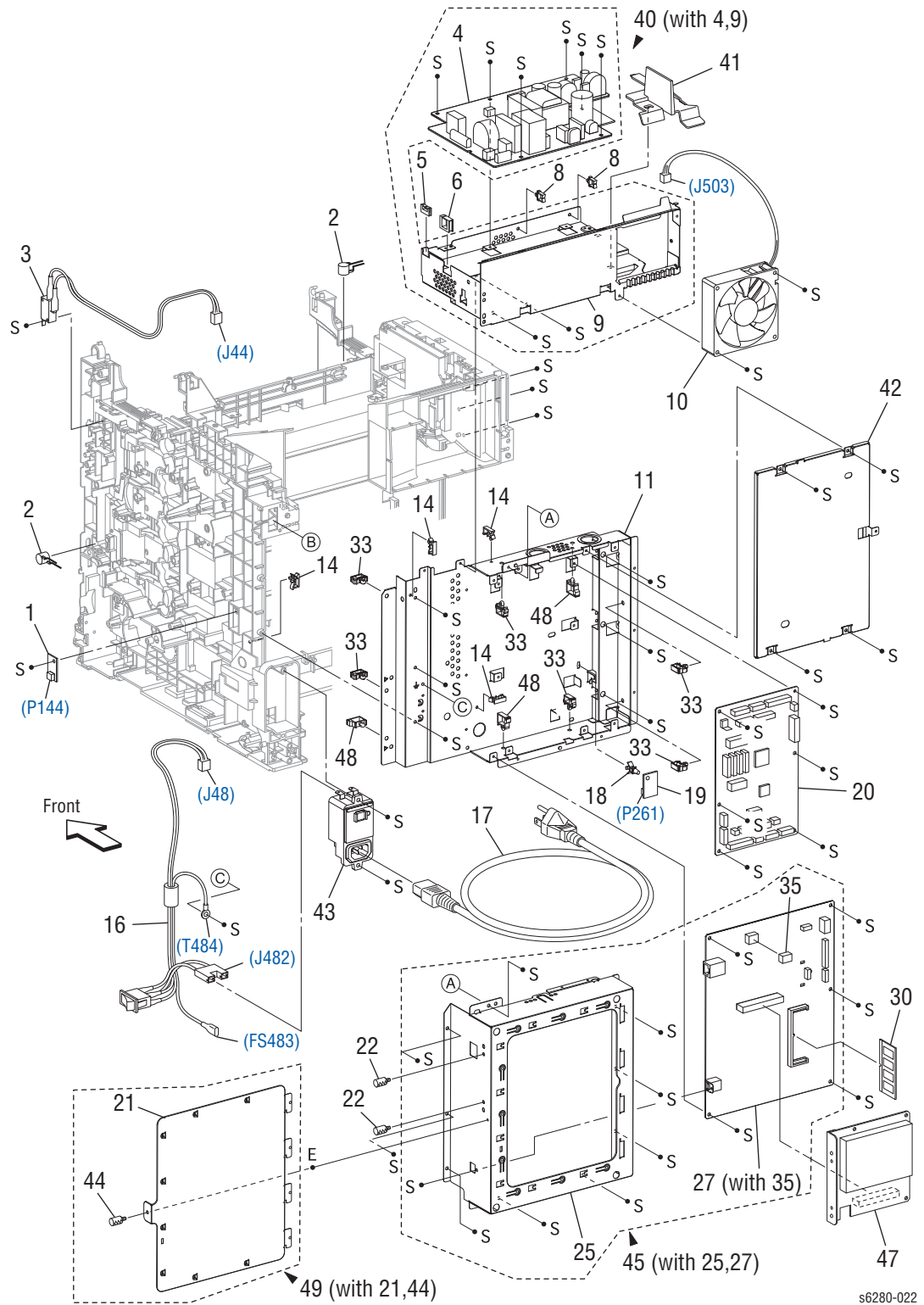


s6280-027

Parts List 8.1 Drive

ID No.	Name/Description	Part Number
1.	-----	
2.	Drive Assy Main	675K74300
3.	-----	
4.	-----	
5.	-----	
6.	-----	
7.	Drive Assy PH	675K74311
8.	Duct Assy Drive PH	
9.	-----	
10.	Drive Assy K	675K74320
11.	Plate Earth DRV MP	

Parts List 9.1 Electrical



s6280-022

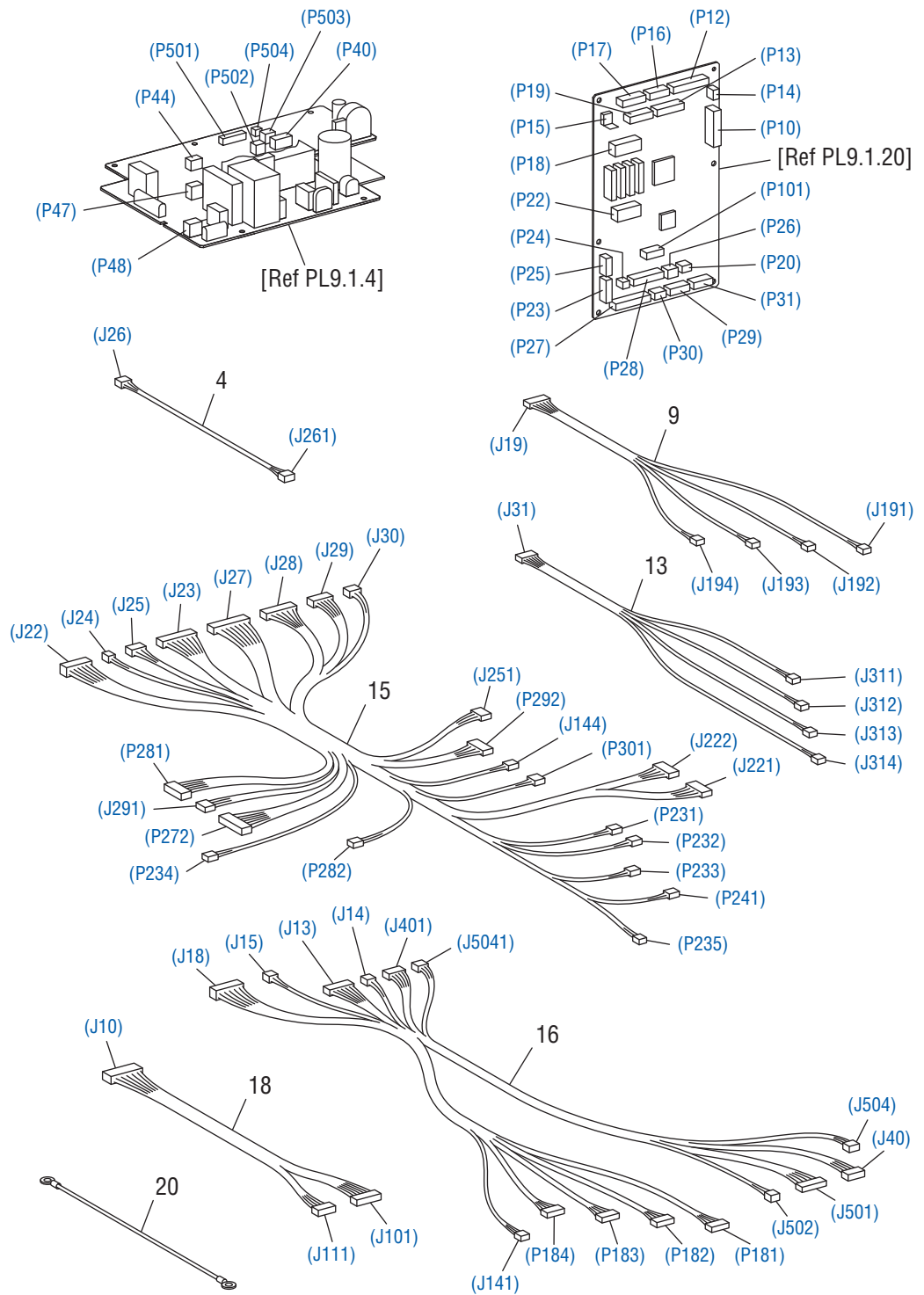
Parts List 9.1 Electrical

ID No.	Name/Description	Part Number
1.	PWBA EEPROM (XPRO)	
2.	Varistor	
3.	Harness Assy Interlock (Interlock Switch-J44) (Harness Kit)	675K74380
4.	LVPS KMY 100/115V	105K23641
	LVPS KMY 230V	105K23651
5.	Edge Saddle ES-0510	
6.	Edge Saddle LENS-1010	
7.	-----	
8.	Clamp RMS-3V0	
9.	Shield LVPS	
10.	Fan Main	127E84800
11.	Shield Rear	
12.	-----	
13.	-----	
14.	Clamp MST-10V0	
15.	-----	
16.	Harness Assy AC IN 110V (Switch Power - J48, J482, FS483,-T484) - (Harness Kit)	675K74370
	Harness Assy AC IN 240V (Switch Power - J48, J481) - (Harness Kit)	675K74370
17.	Power Cord	See Power Cord Accessories
18.	Spacer RCBT-11S	
19.	Sensor Humidity	130E87990
20.	PWBA MCU	960K39343
21.	Shield Window	
22.	Screw Knurling	
23.	-----	
24.	-----	
25.	Shield ESS (I/P Board Shield)	
26.	-----	
27.	PWBA ESS (Image Processor Board) (with 35) (with Tech Sheet)	960K39185
28.	-----	
29.	-----	
30.	512 MB DDR2 Memory (1x 512 MB) (Option)	604K48400
31.	-----	
32.	-----	
33.	Clamp RLWC-1SV0	
34.	-----	
35.	NVM ROM	
36.	-----	
37.	-----	

Parts List 9.1 Electrical (continued)

ID No.	Name/Description	Part Number
38.	-----	
39.	-----	
40.	LVPS Assy (with 4, 9)	
41.	Duct Air Flow	
42.	Shield MCU	
43.	Breaker GFI Inlet	
44.	Screw Knurling	
45.	Shield Assy ESS (with 25, 27) (I/P Board Shield Assy)	
46.	-----	
47.	HDD Assy (Option)	121K50720
48.	Clamp	
49.	Shield Assy Window (with 21, 44)	

Parts List 10.1 Wiring Harness



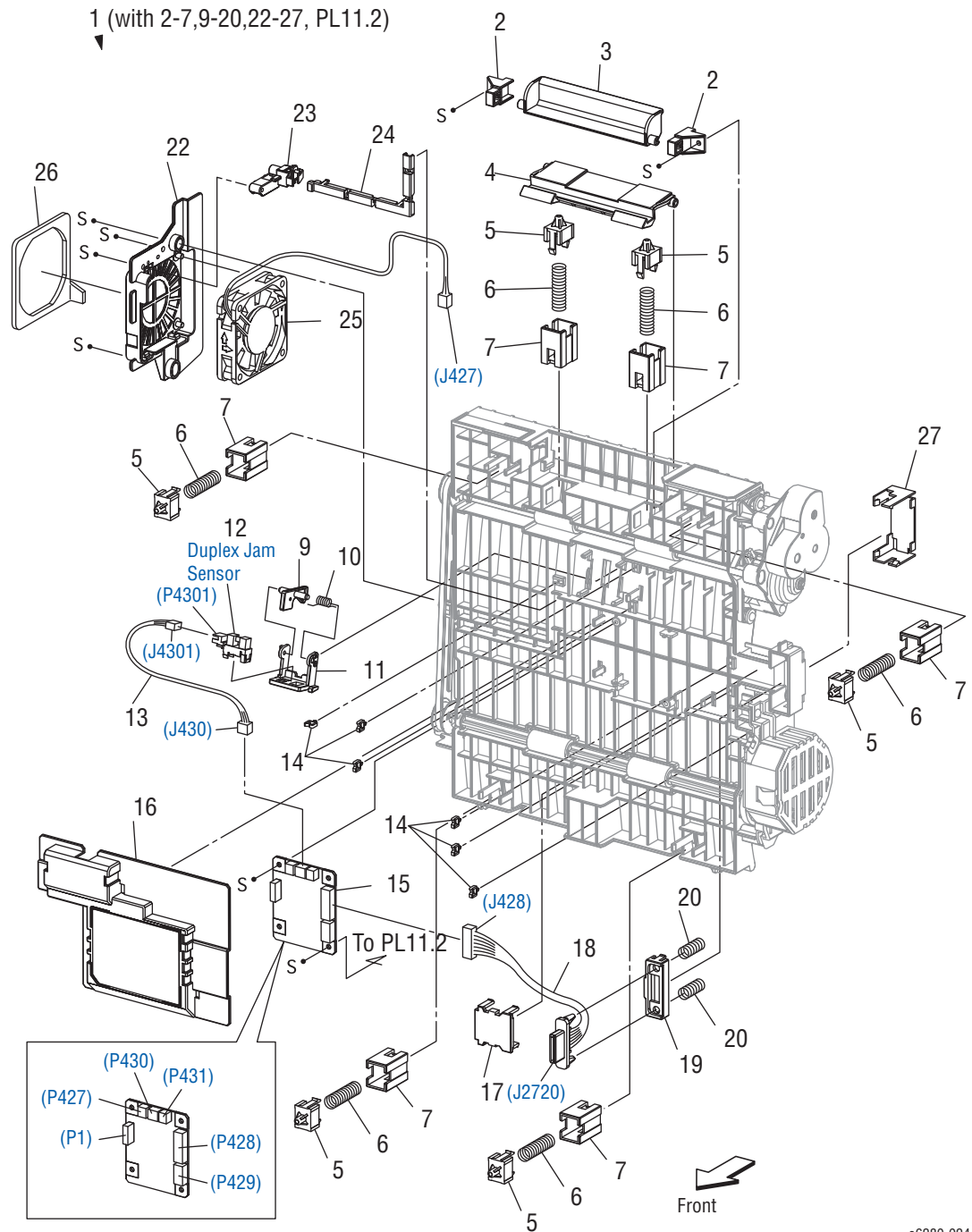
s6280-023

Parts List 10.1 Wiring Harness

ID No.	Name/Description	Part Number
1.	-----	
2.	-----	
3.	-----	
4.	Harness Assy Humidity (J26-J261) - (Harness Kit)	675K74370
5.	-----	
6.	-----	
7.	-----	
8.	-----	
9.	Harness Assy CRU SNR (J19-J191, J192, J193, J194) - (Harness Kit)	675K74370
10.	-----	
11.	-----	
12.	-----	
13.	Harness Assy CRUM (J31-J311, J312, J313, J314) - (Harness Kit)	675K74370
14.	-----	
15.	Harness Assy Right Side (J22, J23, J24, J25, J27, J28, J29, J30-J144, J221, J222, P231, P232, P233, P234, P235, P241, J251, P272, J281, P282, J291, P292, P301) - (Harness Kit)	675K74370
16.	Harness Assy LV Top (J13, J14, J15, J18, J401, J5041-J141, P181, P182, P183, P184, J40, J501, J502, J504) - (Harness Kit)	675K74370
17.	-----	
18.	Harness Assy IF (J10-J101, J111) - (Harness Kit)	675K74370
19.	-----	
20.	Harness Assy BTM Earth	

Options

Parts List 11.1 Duplex

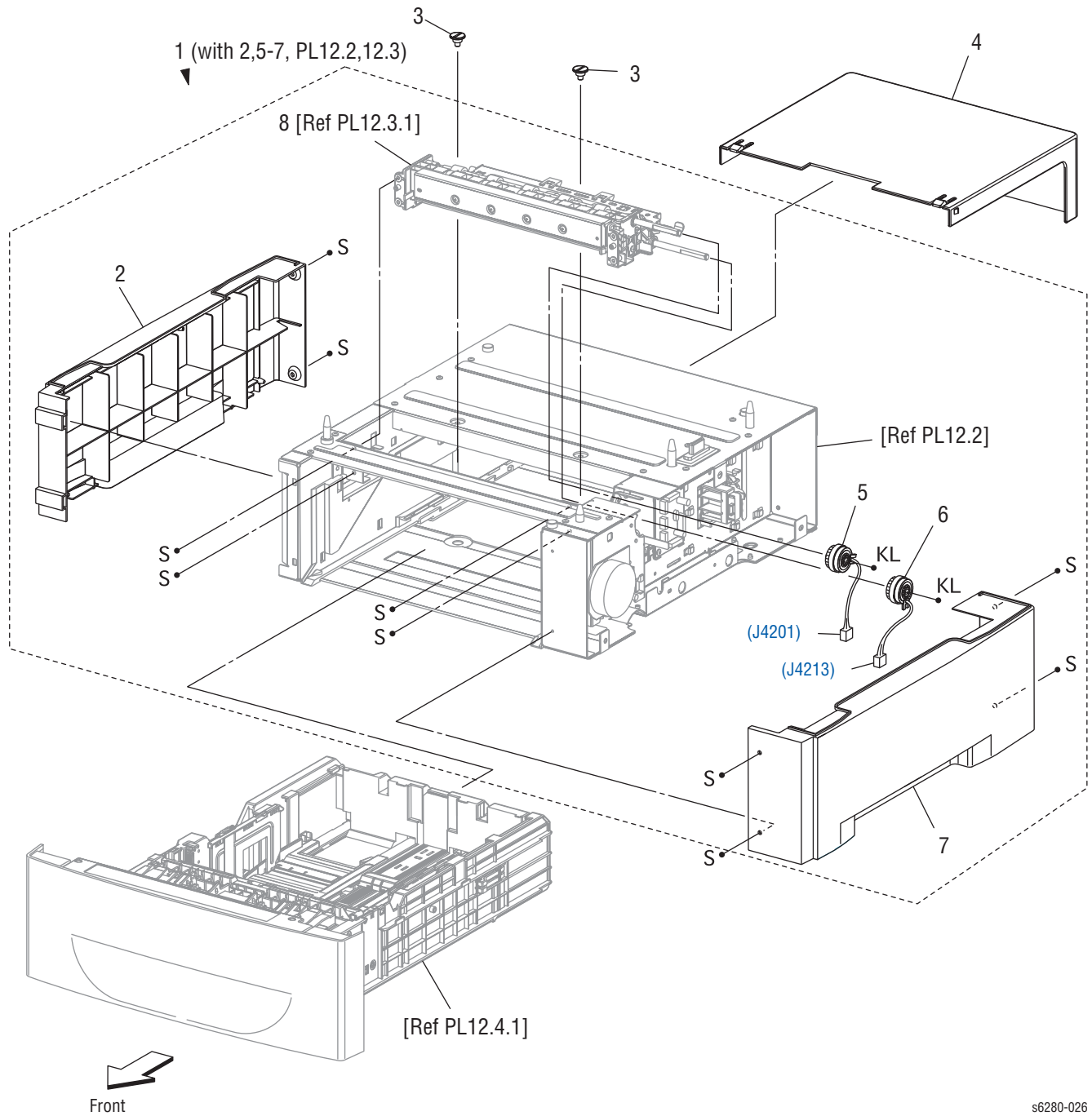


s6280-024

Parts List 11.1 Duplex

ID No.	Name/Description	Part Number
1.	Duplex Module (with 2-7, 9-20, 22-27)	675K47078
2.	Stopper Latch Duplex	
3.	Handle Latch Duplex	
4.	Latch Duplex	
5.	Holder Main	
6.	Spring Chute Duplex	
7.	Bracket Holder Duplex	
8.	-----	
9.	Actuator Duplex	
10.	Spring Sensor Duplex	
11.	Holder Sensor Duplex	
12.	Sensor Photo (Duplex Jam Sensor)	
13.	Harness Assy Duplex Sensor (J430-J4301)	
14.	Clamp Mini	
15.	PWBA Duplex-H	
16.	Cover PWBA Duplex	
17.	Cover Connect Duplex	
18.	Harness Assy Duplex Unit (J428-J2720)	
19.	Holder Connect Duplex	
20.	Spring Connect Duplex	
21.	-----	
22.	Bracket Fan Duplex	
23.	Cover Harness Fan	
24.	Cover Harness Chute	
25.	Fan Duplex	
26.	Seal Duplex	
27.	Cover Chute Duplex	

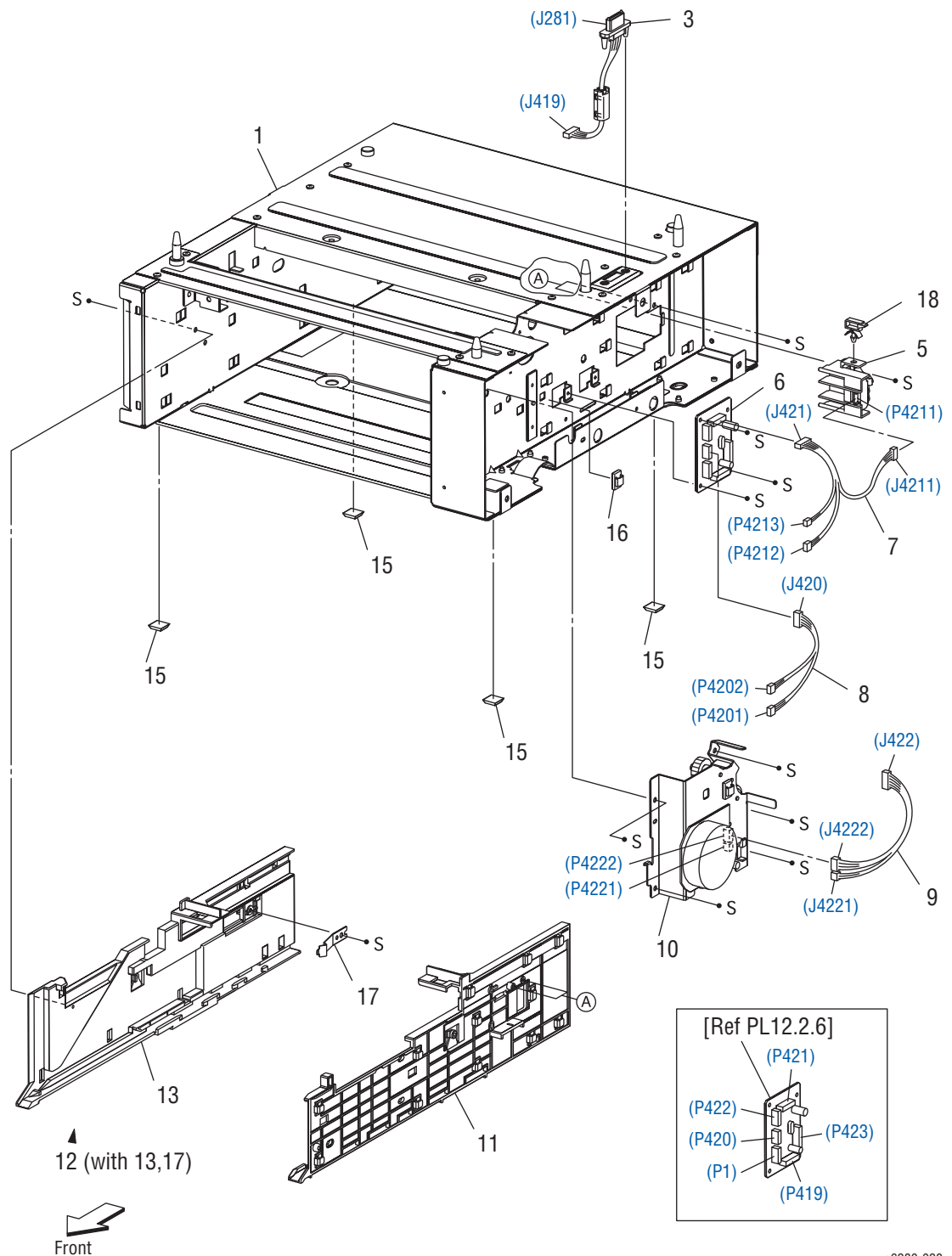
Parts List 12.1 Optional-550 Sheet Feeder - Tray 3 (1 of 5)



Parts List 12.1 Optional 550-Sheet Feeder - Tray 3 (1 of 5)

ID No.	Name/Description	Part Number
1.	550 Option Feeder (with 2, 5-7, PL12.2-12.3)	675K47066
2.	Cover Left	
3.	Screw Joint	
4.	Cover Tray 550	
5.	Clutch Assy PH Turn	
6.	Clutch Assy PH Feed	
7.	Cover Right	
8.	Feed Assy Option	05948273

Parts List 12.2 Optional 550-Sheet Feeder - Tray 3 (2 of 5)



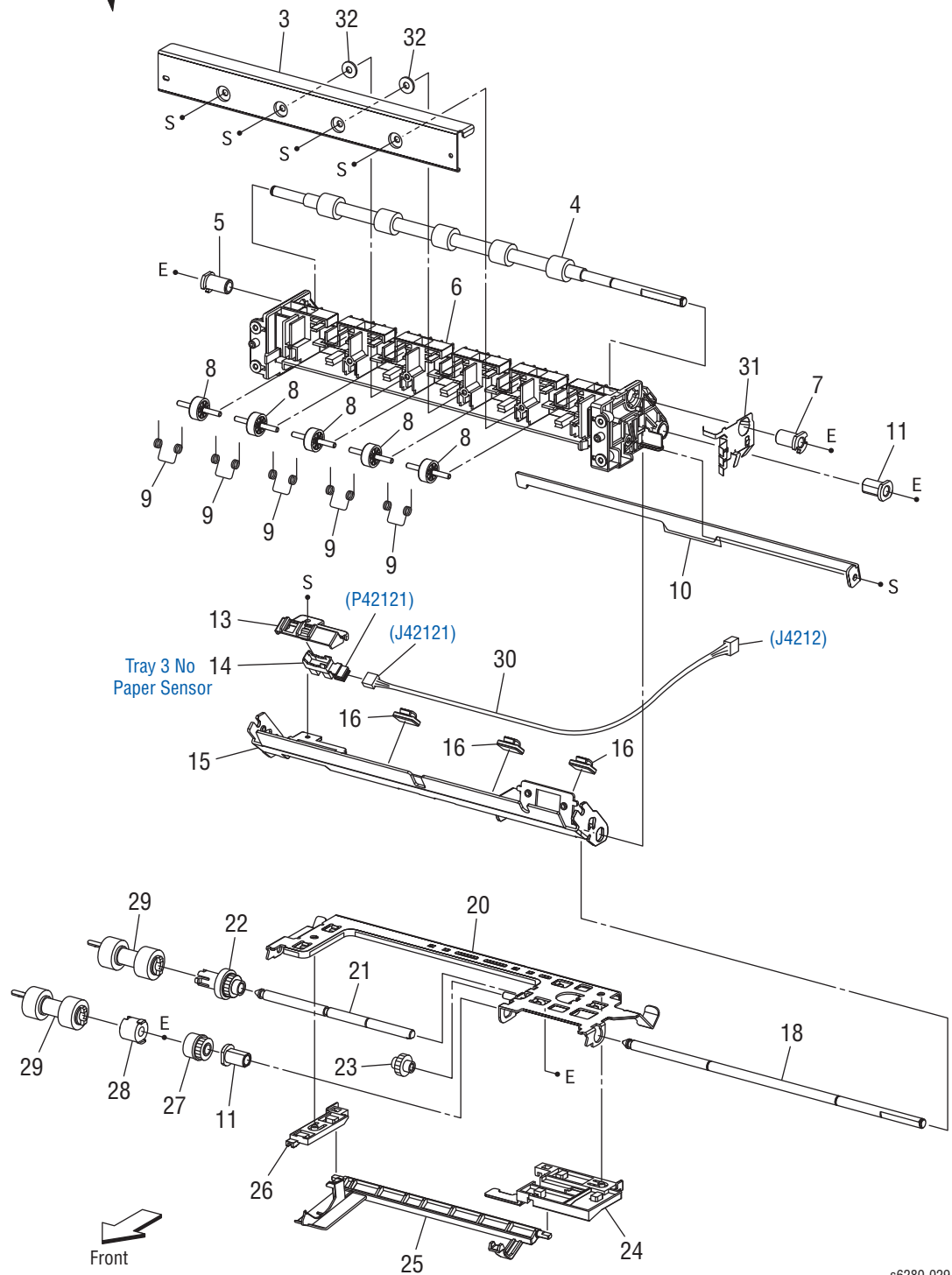
s6280-028

Parts List 12.2 Optional 550-Sheet Feeder - Tray 3 (2 of 5)

ID No.	Name/Description	Part Number
1.	Frame Assy Option	
2.	-----	
3.	Harness Assy Feeder Unit (J273-J419)	
4.	-----	
5.	Switch Assy Size Option	110K15270
6.	PWBA Option Feeder (Tray 3 Feeder Board)	
7.	Harness Assy C2 Chute (J421-J4211, P4212, P4213)	
8.	Harness Assy C2 Turn (J420-P4201, P4202)	
9.	Harness Assy C2 Motor (J422-J4221, J4222)	
10.	Drive Assy Option Feeder	
11.	Guide Tray Right 550	
12.	Guide Tray Assy 550 Left (with 13, 17)	
13.	Guide Tray Left 550	
14.	-----	
15.	Foot	PL7.1.99
16.	Clamp Mini	
17.	Spring Tray Lock	
18.	Clamp Locking	

Parts List 12.3 Optional 550-Sheet Feeder - Tray 3 (3 of 5)

1 (with 3-11,13-16,18,20-29,31,32)

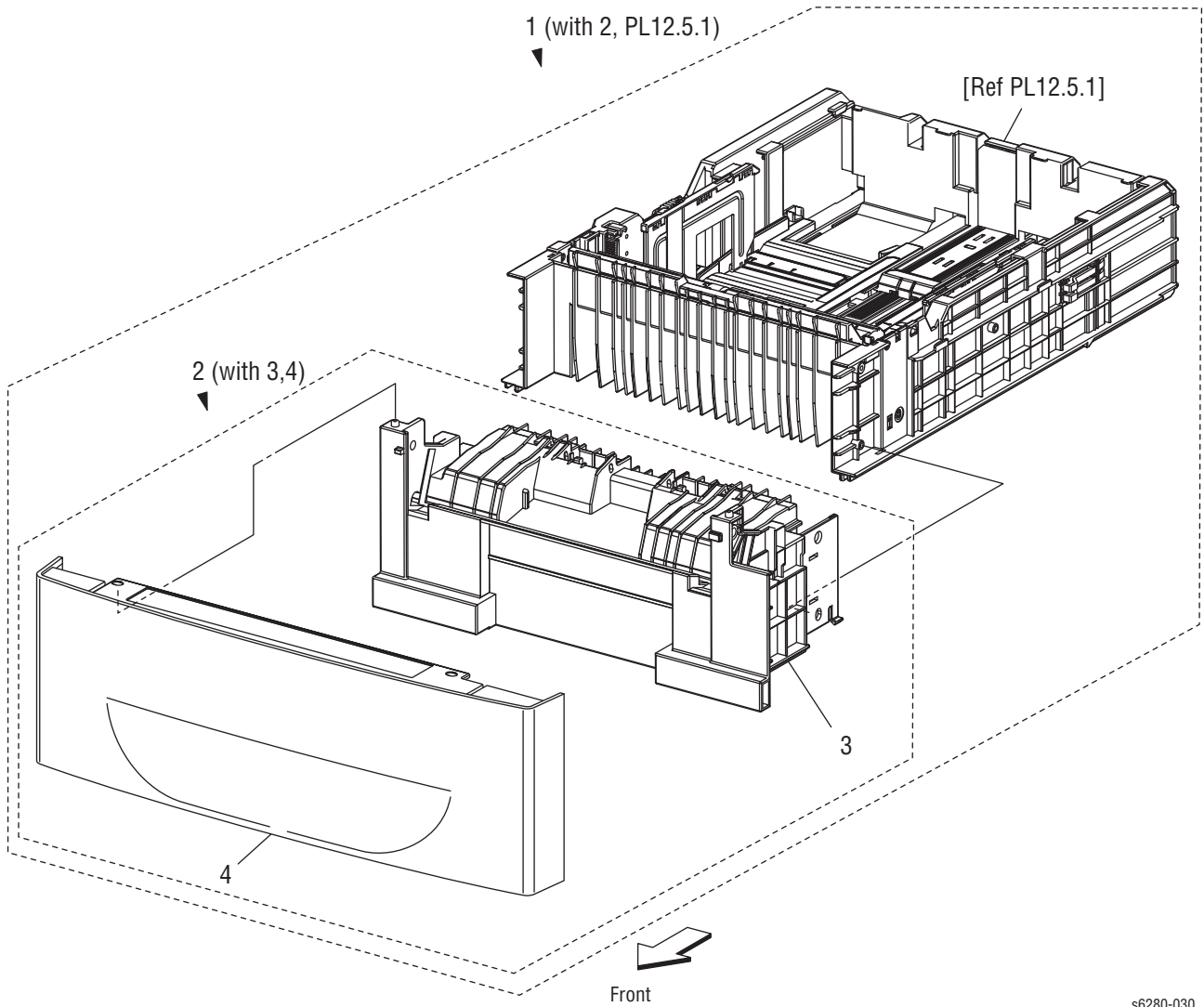


s6280-029

Parts List 12.3 550-Sheet Feeder - Tray 3 (3 of 5)

ID No.	Name/Description	Part Number
1.	Feeder Assy Opt (with 3-11, 13-16, 18, 20-29, 31, 32)	05948273
2.	-----	
3.	Cover Chute	
4.	Roll Assy Turn	
5.	Bearing Regi	
6.	Chute FDR Optional	
7.	Bearing Regi E	
8.	Roll Pinch Turn	
9.	Spring Pinch Turn	
10.	Chute Assy Bottom	
11.	Bearing Nudger	
12.	-----	
13.	Holder No Sensor	
14.	Sensor Photo (Tray No Paper Sensor)	930W00113
15.	Chute Assy Separator	
16.	Clamp	
17.	-----	
18.	Shaft Feed Optional	
19.	-----	
20.	Support Nudger Assy	
21.	Shaft Nudger	
22.	Roll Assy Gear Nudger	
23.	Gear Idler Nudger	
24.	Holder No Paper Left A4	
25.	Actuator No Paper A4	
26.	Holder No Paper Right A4	
27.	Clutch Oneway Feed	
28.	Clutch Oneway Nudger	
29.	Roll Assy Feed (Periodic Replacement Part - per 100K prints)	PL2.2.17
30.	Harness Assy C2 No Paper (J4212-J42121)	
31.	Plate Earth Optional	
32.	Washer	

Parts List 12.4 Optional 550-Sheet Feeder - Tray 3 (4 of 5)



Parts List 12.4 550-Sheet Feeder - Tray 3 (4 of 5)

ID No.	Name/Description	Part Number
1.	Tray Assy 500 Opt (with 2, PL12.5.1)	675K47066
2.	Tray Assy Front 550 Opt (with 3, 4)	
3.	Housing Base FR 550	
4.	Handle Tray 550 Opt	

Parts List 12.5 550-Sheet Feeder - Tray 3 (5 of 5)

ID No.	Name/Description	Part Number
1.	Tray Assy Rear 550 (with 2-13, 18, 19, 21-34)	
2.	Plate Assy Bottom A4	
3.	Stopper PB	
4.	Gear Bottom Lock Oneway	
5.	Shaft PB A4	
6.	Gear Bottom DMP Oneway	
7.	Gear PB Left	
8.	Spring Bottom up 550 A4	
9.	Guide Assy Side Right 550 A4	
10.	Guide Assy Side Left 550 A4	
11.	Gear Pinion	
12.	Holder Assy Separator (with 14-17)	PL2.2.12
13.	Cover Separator Tray	
14.	Holder Separator	
15.	Shaft Separator	
16.	Clutch Friction Separator	
17.	Separator (Retard) Roller (Periodic Replacement Part - per 100k prints)	PL2.2.17
18.	Spring Separator	
19.	Switch Size Set	
20.	-----	
21.	Plate Gear Lock 550	
22.	Guide Assy Tray End 550	
23.	Actuator Size	
24.	Housing Base RE 550	
25.	Actuator RLS PB	
26.	Spring Stopper Gear	
27.	Gear PB Right	
28.	Cover Bottom Up 550	
29.	Rack Bottom Lock 550	
30.	Spring Bottom Lock	
31.	Gear Bottom Lock Pinion	
32.	Gear Lever Bottom Lock	
33.	Lever Bottom Lock	
34.	Gear 40 Bottom Lock	

Xerox Supplies and Accessories

World Kit/Documentation

Description	Part Number
World Kit	650K30170

Consumables and Maintenance Items

Parts List Reference	Description	Part Number
PL2.2.17 PL3.2.53 PL12.3.17	Kit, Roll Assy Feed (100K)	604K55370
PL4.1.1	Kit Belt CRU (Transfer Unit) (100K)	675K70582
PL6.1.10	Fuser Assy - 115V (100K)	675K70591
	Fuser Assy - 230V (100K)	675K70601
PL5.1.18	Print Cartridge (K), High Capacity (8K)	106R01395
	Print Cartridge (K), Standard Capacity (3K)	106R01391
	Print Cartridge (K) (High Capacity (8K) - DMO)	106R01403
	Print Cartridge (K) (Standard Capacity (3K) - DMO)	106R01399
	Print Cartridge) (K) (Metered prints) (11K)*	106R01407
PL5.1.19	Print Cartridge (C), High Capacity (6K)	106R01392
	Print Cartridge (C), Standard Capacity (2K)	106R01388
	Print Cartridge (C) (High Capacity (6K) - DMO)	106R01400
	Print Cartridge (C) (Standard Capacity (2K) - DMO)	106R01396
	Print Cartridge (C) (Metered prints) (11K)*	106R01404
PL5.1.20	Print Cartridge (M), High Capacity (6K)	106R01393
	Print Cartridge (M), Standard Capacity (2K)	106R01389
	Print Cartridge (M) (High Capacity (6K) - DMO)	106R01401
	Print Cartridge) (M) (Standard Capacity (2K) - DMO)	106R01397
	Print Cartridge (M) (Metered prints) (11K)*	106R01405
PL5.1.21	Print Cartridge (Y), High Capacity (6K)	106R01394
	Print Cartridge (Y), Standard Capacity (2K)	106R01390
	Print Cartridge) (Y) (High Capacity (6K) - DMO)	106R01402
	Print Cartridge) (Y) (Standard Capacity (2K) - DMO)	106R01398
	Print Cartridge) (Y) (Metered prints) (11K)*	106R01406

(*) Metered prints Cartridges cannot be used in Standard configuration printer. Be sure the printer is configured for PagePack usage.

Options

Parts List Reference	Description	Part Number
PL9.1.30	512 MB DDR2 Memory (1x 512 MB)	604K48400
PL11.1.1	Kit Duplex Unit	675K47078
PL12.1.1	550-Sheet Feeder	675K47066, PL12.2-12.5

Power Cords

Description	Part Number
Power Cord, North America (NEMA 5-15), 125 V, 13A	117E35170
Power Cord, Argentina, 250 V	117K52030
Power Cord, Australia, 230 V	117E29490
Power Cord, Chile, 250 V	117K52020
Power Cord, China, 220 V	117E35030
Power Cord, Denmark, 230 V	117E29460
Power Cord, Euro, 230 V	117E29500
Power Cord, India/South Africa, 230 V	117E29470
Power Cord, Israel, 230 V	117E29480
Power Cord, Italy, 230 V	117E29450
Power Cord, UK, 240 V	117E29510
Power Cord, Peru, 125 V	117K52040
Power Cord, Switzerland, 230 V	117E35050

Service Kits

Service Kits are developed to provide an easy means to obtain spare parts normally associated with larger assemblies. A number of Service Kits have been developed for the Phaser 6280. The following tables list the contents for each kit.

Kits

Pin Kit

Parts List Reference	Description	Part Number
1.2.98	Pin Kit (with 1.2.8, 1.2.17, 1.2.30)	675K74260
<i>PL1.2.8</i>	<i>Shaft Pivot</i>	
<i>PL1.2.17</i>	<i>Pin Pivot MPT</i>	
<i>PL1.2.30</i>	<i>Shaft Pivot MPT</i>	

Hardware Kit

Parts List Reference	Description	Part Number
99.99.90	Hardware Kit	604K34030
	<i>Screw, Bind Head Del (1)</i>	
	<i>Screw, 8 mm Plastic (1)</i>	
	<i>Screw, Tap Bind Head (1)</i>	
	<i>Screw, M3x6 B (1)</i>	
	<i>Screw, DT3x8 B (1)</i>	
	<i>E-Ring, 3 mm (1)</i>	
	<i>E-Ring, 4 mm (1)</i>	

Packaging Kit

Parts List Reference	Description	Part Number
	Re-Packaging Kit	604K55460

Harness Kits

Parts List Reference	Description	Part Number
99.99.91	Kit Harness Front Cover STD	675K74250
PL1.2.11	<i>Harness Assy Front Cover (J272-P2720, P2721, T4322-T43221)</i>	
PL1.2.15	<i>Harness Assy Z-X Operation Panel (J220-P2900)</i>	
PL1.2.32	<i>Harness Assy ESS (J29-J2900)</i>	
99.99.92	Kit Harness Feeder/Fuser/Interlock STD	675K74380
PL3.1.17	<i>Harness Assy MPT NPP (J282-J2821)</i>	
PL3.2.37	<i>Harness Assy Regi Sensor (J292-J2921, J2922)</i>	
PL6.1.11	<i>Harness Assy Fuser (P171-J17, J47), 100V/115V</i>	
PL6.1.11	<i>Harness Assy Fuser (P171-J17, J47) - 200V</i>	
PL9.1.3	<i>Harness Assy Interlock (Interlock Switch-J44)</i>	
99.99.93	Kit Harness Power Switch STD	675K74370
PL9.1.16	<i>Harness Assy AC IN 110V (Switch Power - J48, J482, FS483,-T484)</i>	
PL9.1.16	<i>Harness Assy AC IN 240V (Switch Power - J48, J481)</i>	
PL10.1.4	<i>Harness Assy Humidity (J26-J261)</i>	
PL10.1.9	<i>Harness Assy CRU SNR (J19-J191, J192, J193, J194)</i>	
PL10.1.13	<i>Harness Assy CRUM (J31, J311, J312, J313, J314)</i>	
PL10.1.15	<i>Harness Assy Right Side (J22, J23, J24, J25, J27, J28, J29, J30-J144, J221, J222, P231, P232, P233, P234, P235, P241, J251, P272, J281, P282, J291, P292, P301)</i>	
PL10.1.16	<i>Harness Assy LV Top (J13, J14, J15, J18, J401, J5041-J141, P181, P182, P183, P184, J40, J501, J502, J504)</i>	
PL10.1.18	<i>Harness Assy IF (J10-J101, J111)</i>	