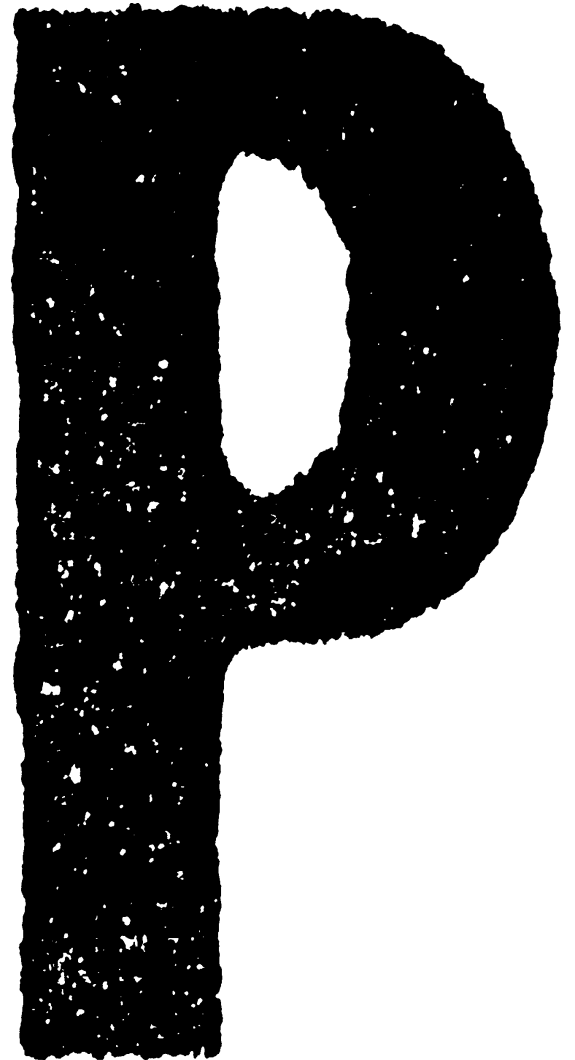


TOSHIBA

SERVICE PARTS LIST

PLAIN PAPER FACSIMILE

e-STUDIO050F



© 2003 TOSHIBA TEC CORPORATION

All rights reserved

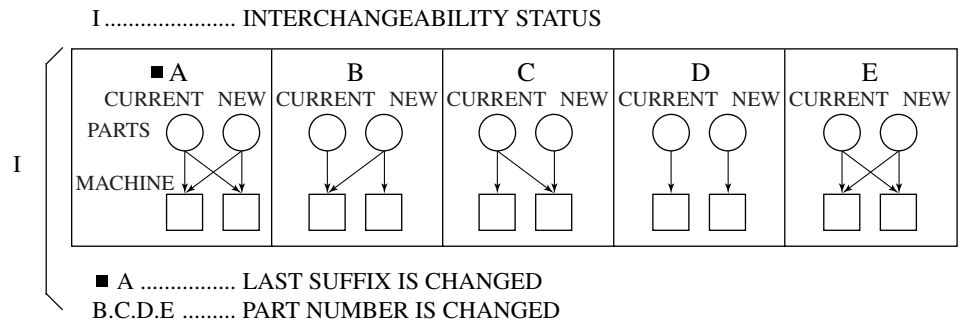
EXPLANATION OF SERVICE-PARTS LIST

1. HOW TO READ THE PARTS LIST

- (1) Number of pieces
The number of pieces in the list denotes total pieces used per unit. But the numbers in the list for PACKING MATERIAL and ACCESSORY denote total pieces used per machine.
- (2) One pack of screws in the list includes 50 pieces.
- (3) ABBREVIATED CODES

QTY/PAC	{	QTY	one piece
		PAC	one pack
		1/P	one piece packed in polyethylene bag
		1/S	one piece packed in special pack
		1/C	one piece packed in carton box
		1/PP	one piece packed in paper and polyethylene bag
		1/KP	one piece packed in polyethylene bag with cardboard
		1/D	one piece packed in polyethylene-cushion bag
1/SB	one piece packed in shielding bag		
N/A	not available		

P	{	P	PURPOSE
		A	ADD
		B	DELETE
		C	CHANGE
		D	QTY, CHANGE
		E	MISENTRY
		F	OMISSION



2. HOW TO PLACE ORDER FOR PARTS

- (1) The parts handled as service parts are only those with their "QTY/PACK" column listed with a quantity other than "N/A***" or "SUPPLY".
Those parts with "N/A***" are listed only for the purpose of showing the mechanical construction, those listed with "SUPPLY" are handled only as a sales item, and therefore both types of parts are not supplied as service parts.
- (2) Orders for any parts which form a component of a semi-assembled unit are not acceptable.
Note: All the screws and nuts used are ISO standard.

3. REGION

NAD	115V/60Hz, UL & CSA
TWD	110V/60Hz, TAIWAN
SAD	127V/60Hz, SAUDI ARABIA
ASD	220V
	50/60Hz, ASIA, etc.
AUD	240V/50Hz, AUSTRALIA
MJD	230-240V
	50/60Hz, EUROPE
UKD	230-240V
	50/60Hz, UNITED KINGDOM

NOTICE EXPLICATIVE DE LA LISTE DES PIECES DE RECHANGE

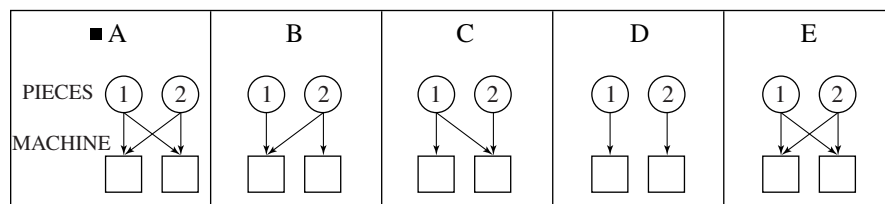
1. COMMENT UTILISER LA LISTE DES PIECES DE RECHANGE

- (1) Nombre de pièces
Le nombre de pièces indiqué sur la liste est le nombre total de pièces utilisées pour chaque unité.
Toutefois, le nombre indiqué sur la liste EMBALLAGE ACCESSOIRES est le nombre total de pièces utilisées pour chaque machine.
- (2) Un paquet de vis indiqué sur la liste contient 50 vis.
- (3) ABREVIATIONS

Q'TY/PAC	{	QTY une pièce
		PAC un paquet
		1/P une pièce emballée dans un sac en polyéthylène
		1/S une pièce emballée dans un sac spécial
		1/C une pièce emballée dans une boîte en carton
		1/PP une pièce emballée dans un sac en papier et en polyéthylène
		1/KP une pièce emballée dans un sac en polyéthylène avec carton
		1/D une pièce emballée dans un sac rembourré en polyéthylène
1/SB une pièce emballée dans		
N/A*** non disponible		

P	{	P BUT
		A AJOUTER
		B SUPPRIMER
		C MODIFIER
		D CHANGEMENT DE QUANTITE
		E INSCRIPTION ERRONEE
		F OMISSION

I INTERCHANGEABILITE



- ① ACTUELLE ② NOUVELLE
 ■ A LE DERNIER SUFFIXE EST CHANGE
 B.C.D.E LE NOMBRE DE PIECES EST CHANGE

2. COMMENT COMMANDER LES PIECES

- (1) Les pièces de rechange sont uniquement celles qui sont mentionnées dans la colonne "Q'TY/PACK" avec une quantité autre que "N/A***" ou "SUPPLY".
Le pièces dans la colonne "N/A***" sont mentionnées uniquement dans le but d'indiquer la construction mécanique. Les pièces dans la colonne "SUPPLY" sont destinées uniquement à la vente. Par conséquent, ces deux types de pièces ne sont pas fournies en tant que pièces de rechange.
- (2) Les commandes de toute pièce formant un élément ou une unité semi-assemblée ne seront pas acceptées.
Nota: Toutes les vis et tours le écrous seront conformes au code ISO.

3. PAYS

NAD	115V/60Hz, UL & CSA
TWD	110V/60Hz, TAIWAN
SAD	127V/60Hz, ARABIE SAOUDITE
ASD	220V
	50/60Hz, ASIE, etc.
AUD	240V/50Hz, AUSTRALIE
MJD	230-240V
	50/60Hz, EUROPE
UKD	230-240V
	50/60Hz, ROYAUME-UNI

ERKLÄRUNG DES ERSATZTEIL-KATALOGES

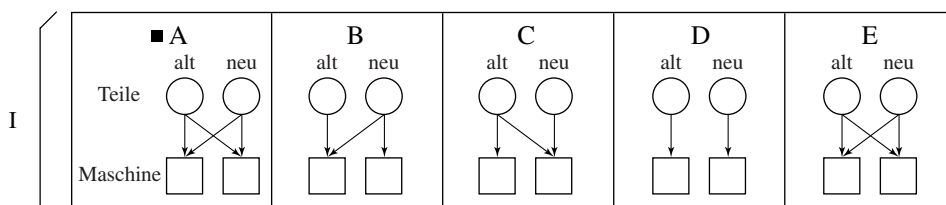
1. WIE LIEST MAN DIE TEILELISTE?

- (1) Die Teileanzahl
Die Anzahl der Teile in der Liste, drücken die gesamten Teile pro Verpackungseinheit aus. Aber die Zahl in der Liste "Packing" (Verpackung) und "Accessory" (Zubehör) beschreibt die gesamte Teileanzahl pro Maschine.
- (2) Eine Verpackungseinheit SCHRAUBEN enthält 50 Stück.
- (3) Abkürzungscode

QTY/PAC	QTY	Stück
	PAC	Packung
	1/P	ein Stück in einem Plastikbeutel
	1/S	ein Stück in einer Spezialverpackung
	1/C	ein Stück in einem Karton
	1/PP	ein Stück in Papier und einem Plastikbeutel
	1/KP	ein Stück in einem Plastikbeutel mit Pappdeckel
	1/D	ein Stück in einem gepolsterten Plastikbeutel
N/A	nicht lieferbar	
1/SB	ein Stück in einer Schutzhülle	

P	P	Zweck
	A	Zusätzlich
	B	Entfernen
	C	Ändern
	D	Menge geändert
	E	Fehlangabe
F	Weglassen	

I Austauschbar untereinander



- A letzte Ziffer ist geändert
- B.C.D.E Teilenummer ist geändert

2. WIE WERDEN ERSATZTEILE BESTELLT?

- (1) Die Ersatzteile für den Service haben in der Spalte "QTY/PACK" eine Nummer.
Die Teile mit der Angabe "N/A****" sind nur aufgeführt, um die technische Konstruktion zu zeigen und sind einzeln nicht lieferbar.
Die Bezeichnung "SUPPLY" weist darauf hin, daß dieses Teil als Zubehör gehandelt wird und beim Verkauf bestellt werden muß.
- (2) Bestellungen für Einzelteile, die einer Baueinheit angehören können nicht akzeptiert werden.
Hinweis: Alle Schrauben und Muttern werden nach dem ISO-Standard hergestellt.

3. REGION

NAD	115V/60Hz, UL & CSA
TWD	110V/60Hz, TAIWAN
SAD	127V/60Hz, SAUDI-ARABIEN
ASD	220V
	50/60Hz, ASIEN, usw.
AUD	240V/50Hz, AUSTRALIEN
MJD	230-240V
	50/60Hz, EUROPA
UKD	230-240V
	50/60Hz, GROSSBRITANNIEN

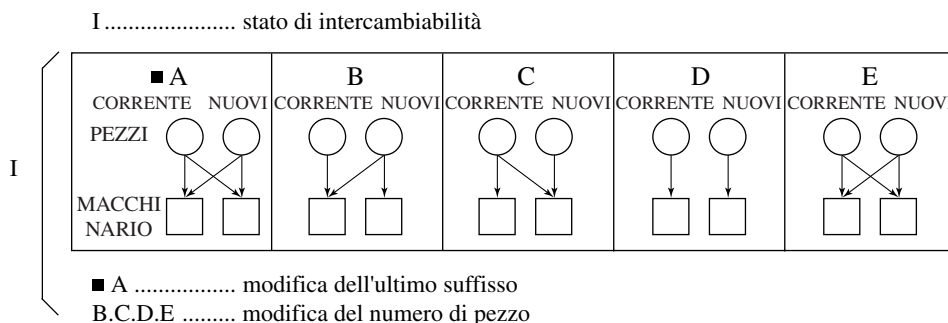
SPIEGAZIONE DELLA LISTA DEI PEZZI DI RICAMBIO

1. COME LEGGERE LA LISTA DEI PEZZI DI RICAMBIO

- (1) Numero dei pezzi
Il numero dei pezzi indica il totale dei pezzi per elemento. I numeri nella lista del materiale d'imballaggio e accessori indicano il totale dei pezzi per macchina.
- (2) Nella lista, un pacco di viti contiene 50 viti.
- (3) ABBREVIAZIONI

QTY/PAC	QTY un pezzo PAC un pacco I/P un pezzo imballato in sacco di polietilene I/S un pezzo imballato in pacco speciale I/C un pezzo imballato in scatola di cartone I/PP un pezzo imballato in sacco di polietilene e carta I/KP un pezzo imballato in sacco di polietilene con cartone I/D un pezzo imballato in sacco morbido di polietilene I/SB un pezzo imballato in sacco di protezione N/A non disponibile
---------	-----------------------------------------------------------------------------------------------------------------------------------------------------------------------------------------------------------------------------------------------------------------------------------------------------------------------------------------------------------------------------------------------------------------------------------------------------------------------------------------------------

P	P scopo A aggiunta B annullamento C modifica D modifica QTY E ingresso errato F omissione
---	-------------------------------------------------------------------------------------------------------------------------------------------------------



2. ORDINAZIONE DEI PEZZI

- (1) I pezzi usati come pezzi di ricambio sono elencati nella colonna "QTY/PACK" con una quantità differente da "N/A***" o "SUPPLY".
I pezzi con "N/A***" sono elencati solamente per mostrare la costruzione meccanica e quelli con "SUPPLY" sono elencati solamente come articoli di vendita: ciò significa che questi due tipi di pezzi non sono forniti come pezzi di ricambio.
- (2) L'ordinazione dei pezzi non viene accettata quando questi pezzi formano un componente di un messo elemento.
Nota: Tuttle le viti e i dadi sono standard ISO.

3. NAZIONE

NAD	115V/60Hz, UL & CSA
TWD	110V/60Hz, TAIWAN
SAD	127V/60Hz, ARABIA SAUDITA
ASD	220V 50/60Hz, ASIA, ecc.
AUD	240V/50Hz, AUSTRALIA
MJD	230-240V 50/60Hz, EUROPA
UKD	230-240V 50/60Hz, GRAN BRETAGNA

EXPLICACION DE LA LISTA DE PIEZAS DE SERVICIO

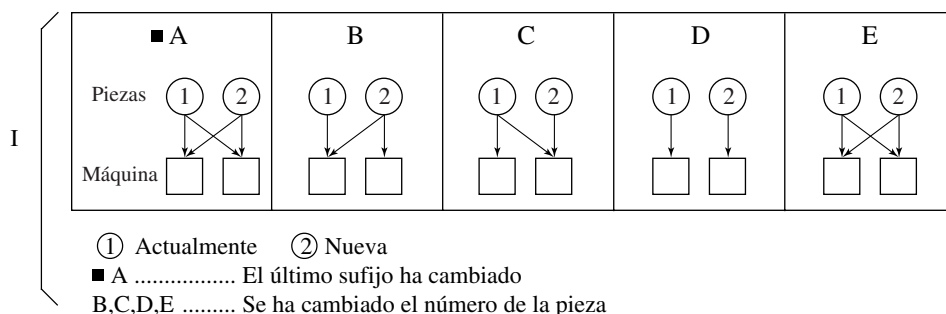
1. Cómo se lee la lista de piezas

- (1) El número de piezas
El número de piezas en la lista especifica las piezas totales usada pou unidad, mientras que el número en la lista para MATERIAL DE EMBALAJE y ACCESORIOS especifica las piezas totales usadas por máquina.
- (2) En el paquete de tornillos se incluyen 50 unidades.
- (3) Códigos abreviados

QTY/PAC	QTY	una pieza
	PAC	una paquete
	1/P	una pieza empaquetada en la bolsa de politileno
	1/S	una pieza empaquetada en paquete especial
	1/C	una pieza empaquetada en caja de cartón
	1/PP	una pieza empaquetada en papel y bolsa de politileno
	1/KP	una pieza empaquetada en bolsa de politileno con cartón
	1/D	una pieza empaquetada en bolsa almohadillada de politileno
1/SB	una pieza empaquetada en una	
N/A	bolsa protegida	

P	PROPOSITO
A	AÑADIR
B	BORRAR
C	CAMBIO
D	CANTIDAD, CAMBIO
E	ENTRADA ERRONEA
F	OMISION

I SITUACION DE INTERCAMBIABILIDAD



2. Cómo realizar un pedido de piezas

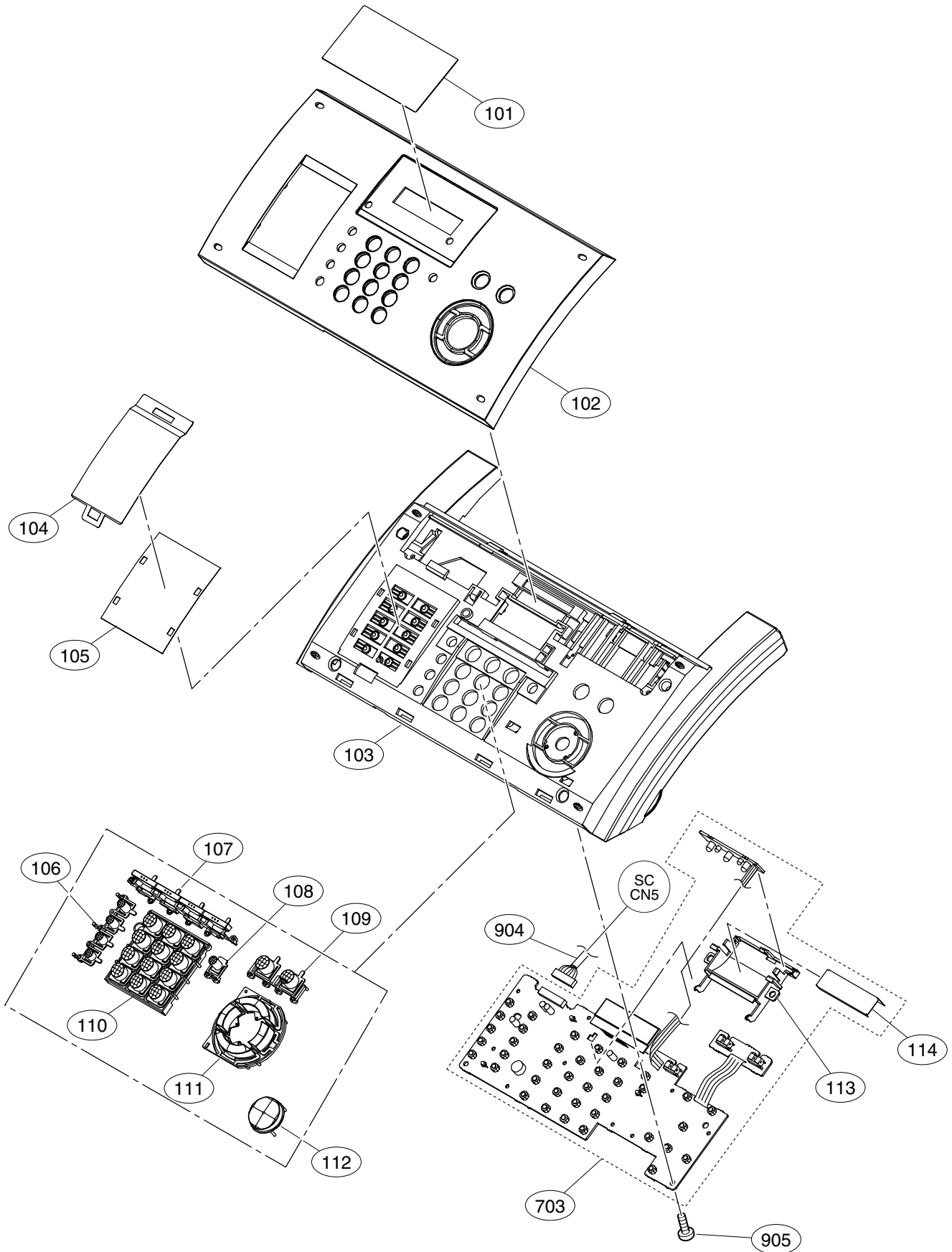
- (1) Las piezas consideradas como piezas de servicio son sólo aquellas designadas con Q'TY/PACK y no las designadas con N/A ... o SUPPLY.
Aquellas piezas con N/A ... se ponen en lista sólo con el propósito de mostrar la construcción mecánlca. Aquéllas piezas designadas bajo SUPPLY se consideran sólo como un artículo para ventas y por lo tanto ambos tipos de piezas no se consideran como piezas de servicio.
- (2) Los pedidos para cualquier pieza que forme un componente de la unidad semiensamblada no será aceptados.
NOTA: todos los tornillos y tuercas son del estandar ISO.

3. PAISES

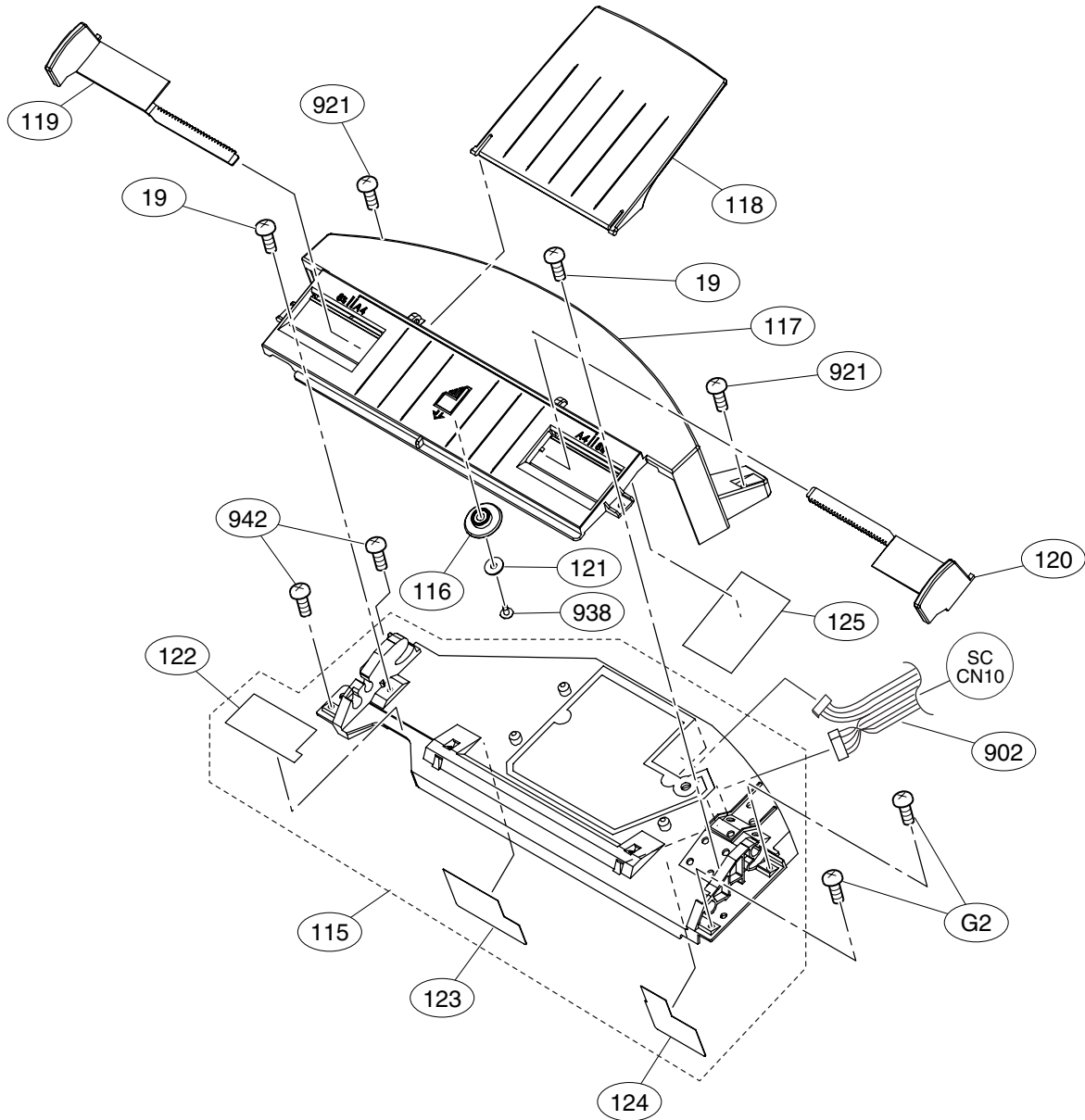
NAD	115V/60Hz, UL & CSA
TWD	110V/60Hz, TAIWAN
SAD	127V/60Hz, SAUDI ARABIA
ASD	220V 50/60Hz, ASIA, etc.
AUD	240V/50Hz, AUSTRALIA
MJD	230-240V 50/60Hz, EUROPA
UKD	230-240V 50/60Hz, GRAN BRETAÑA

Contents

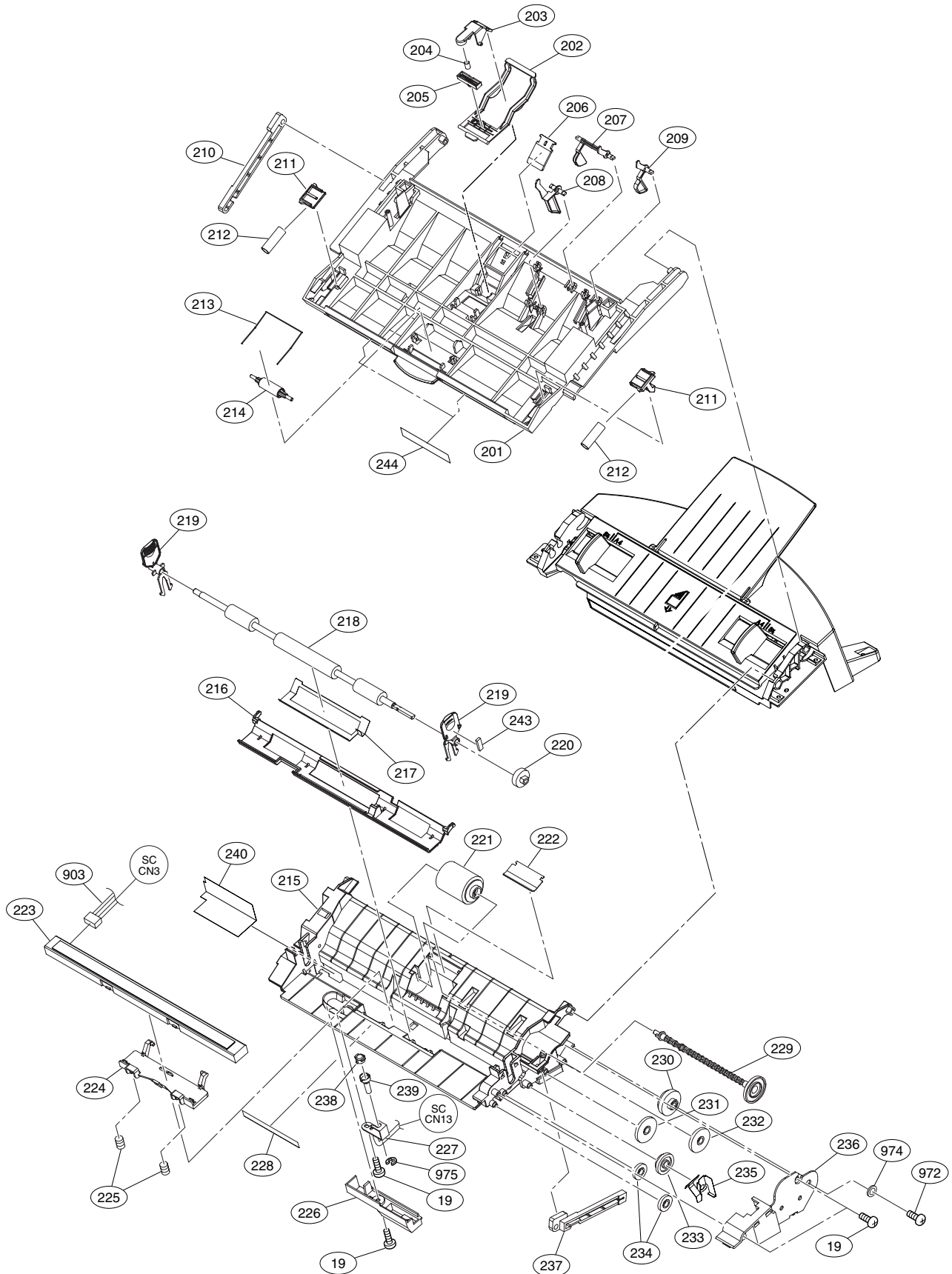
- Control Panel Unit 1 1**
- Control Panel Unit 2 2**
- ADF Unit 3**
- Fuser Unit 4**
- ASF Unit 5**
- Drive Unit 6**
- Base Unit 7**
- PC Board Harness 8**
- Packing and Accessories 9**



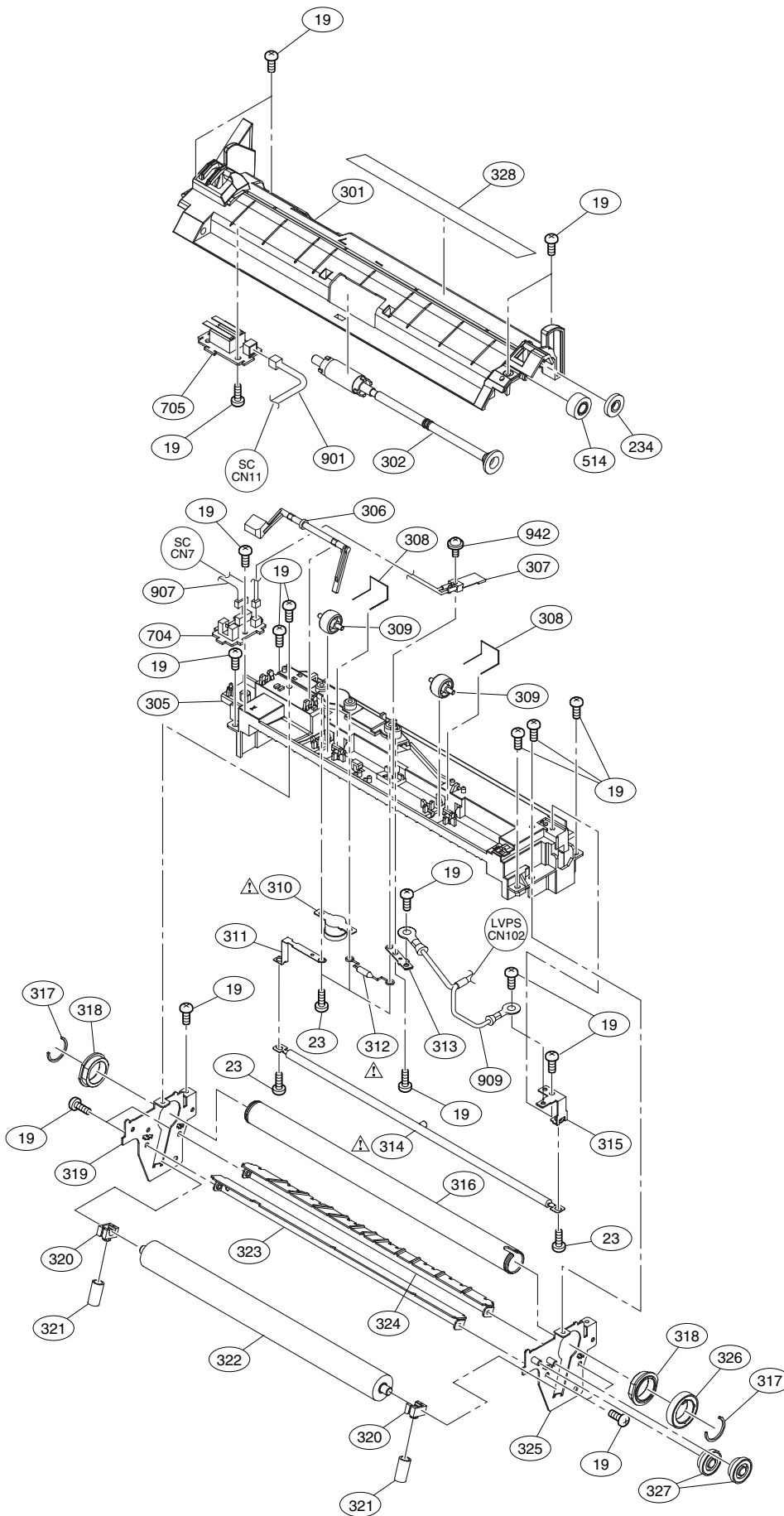
ITEM NO.	PARTS NO.	PARTS NAME	QTY / PAGE	QTY / PACK	P	I	R	BSI NO.	TO	T	FROM	SERIAL NO.	REMARKS	C
101	DZNA001023	Plate, LCD	1											
102A	DZJM001299	Plate, Face	1										ASIA, South America USA/Canada	
102B	DZJM001298	Plate, Face	1											
103	DZJM000623	Cover, Panel	1											
104	DZNA001024	Sheet, Directory	1											
105	DZNA001022	Sheet, Character	1											
106	DZKB000912	Key, D	1											
107	DZKB000911	Key, E	1											
108	DZKB000740	Key, C	1											
109	DZKB000909	Key, B	1											
110	DZKB000910	Ten Key	1											
111	DZKB000908	Key, A	1											
112	DZKB000907	Key, Start	1											
113	DZJM000617	Holder, LCD	1											
114	DZJM000625	Sheet, Diffusion	1											
703	DZEC102400	PC Board, PNL (A4)	1											
904	DZFP001015	Harness, PNL												
907	XTB26+6J	Screw												



ITEM NO.	PARTS NO.	PARTS NAME	Q'TY / PAGE	Q'TY / PACK	P	I	R	BSI NO.	TO	FROM	SERIAL NO.	REMARKS	C
19	XTB3+8J	Screw	1										
115	DZTQ000038	Laser Unit (LSU)	1										
116	DZLF000077	F GEAR, D14	1										
117	DZML000400	Cover, Top	1										
118	DZML000472	Tray, Document Sub	1										
119	DZML000473	L Document Guide	1										
120	DZML000474	R Document Guide	1										
121	DZJP000035	Friction, Doc Guide	1										
122	DZUJ000012	Sponge, Shade1	1										
123	DZHC000145	Sheet, Shade1	1										
124	DZHC000146	Sheet, Shade2	1										
125	DZJM000859	Film, Guard C	1										
902	DZFP001013	Harness, LSU											
921	DZPB000007	Screw											
942	XTB3+12JZ	Screw											



ITEM NO.	PARTS NO.	PARTS NAME	QTY / PAGE	QTY / PACK	P	I	R	BSI NO.	TO	FROM	SERIAL NO.	REMARKS	C
19	XTB3+8J	Screw											
201	DZJM000570	Chassis, Upper TX	1										
202	DZJM000607	Guide, Sub ADF	1										
203	DZJM000608	Plate, Pressure	1										
204	DZKN000249	Spring, Pressure Plate	1										
205	DZJM000144	Lever, Adjustment	1										
206	DZJN000001	Rubber, Separator	1										
207	DZHC000135	Actuator, A	1										
208	DZHC000136	Actuator, B	1										
210	DZJM000609	Latch, Stopper	1										
211	DZJM000577	Latch	1										
212	DZKN000248	Spring, Main Latch	1										
213	DZKR000027	Spring, Eject Roller	1										
214	DZLA000176	Roller, Eject	1										
215A	DZJM000572	Chassis, Lower TX	1										
215B	DZJM000573	Chassis, Lower TX	1										
216	DZJM000575	Guide, White	1										
217	DZKP000236	Plate, Discharge	1										
218	DZHP0006208	Roller, Scanning	1										
219	DZJM000614	Bush, P5	1										
220	DZLF000421	D Gear, D21	1										
221	DZLA000246	Roller, ADF	1										
222	DZJM000615	Film, ADF	1										
223	DZAL000167	CIS Assembly (A4)	1										
224	DZJC000292	Holder, CIS (A4)	1										
225	DZKN000250	Spring, CIS	1										
226A	DZJM000611	Cover, Stamp	1									ASIA, South America USA/Canada	
227B	DZHP000303	Solenoid, Stamp	1										
228	DZNK003620	Label, Laser	1										
229	DZJM001138	Shaft, Gear	1										
230	DZLF000420	F Gear, B51C16	1										
231	DZLF000414	F Gear, C18C43	1										
232	DZLF000424	F Gear, C41	1										
233	DZLF000422	F Gear, C34D19	1										
234	DZLF000423	F Gear, D19	1										
235	DZKP000235	Plate, Ground	1										
236	DZJM000621	Cover, Gear	1										
237	DZJM000610	Latch, Stopper 2	1										
238A	DZHT000004	Stamp Head	1									ASIA, South America	
239B	DZJC000072	Holder, Stamp	1									ASIA, South America	
240	DZJM000793	Film, CIS Protect	1										
243	DZGT000036	Plate, Discharge 3	1										
244	DZGT000034	Brush, Electric	1										
903	DZFP001014	Harness, CIS											
972	XTB26+6J	Screw											
974	DZPK000023	Washer											
975	XUC3	E-Ring											

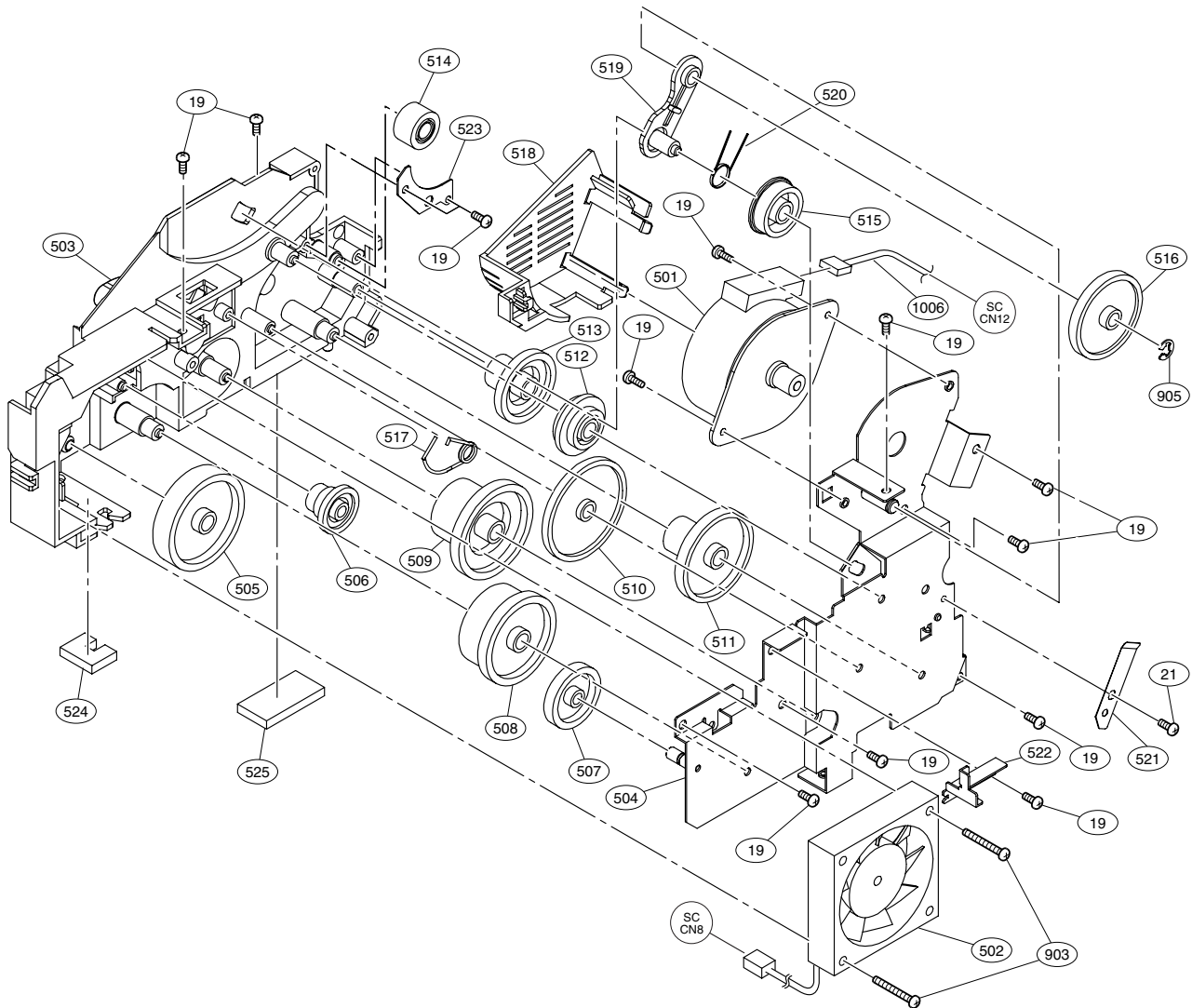


ITEM NO.	PARTS NO.	PARTS NAME	QTY / PAGE	QTY / PACK	P	I	R	BSI NO.	TO	FROM	SERIAL NO.	REMARKS	C
19	XTB3+8J	Screw											
23	XYN3+F8	Screw											
301	DZJE000888	Cover, Fuser2	1										
302	DZLA000247	Roller, Eject	1										
304	DZLA000250	Roller, Exit	1										
305	DZJE000887	Cover, Fuser1	1										
306	DZHC000137	Actuator, D	1										
307	DZGT000029	Thermistor Assembly	1										
308	DZKR000005	Spring, Pinch Roller	1										
309	DZLA000083	Roller, Idle	1										
310	DZGT000031	Thermostat	1										
311	DZJL000140	Harness, Lamp B	1										
312	DZGT000030	Fuse	1										
313	DZJL000142	Harness, Lamp A	1										
314A	DZGN000026	Lamp, Fuser	1									ASIA, South America	
314B	DZGN000025	Lamp, Fuser	1									USA/Canada	
315	DZJL000141	Harness, Lamp C	1										
316	DZLA000248	Roller, Fuser	1										
317	DZPJ000002	C-Ring	1										
318	DZLM000047	Bushing, P17L6.8	1										
319	DZJL000139	Frame, L Fuser	1										
320	DZLM000130	Bushing, P6L8.4	1										
321	DZKN000251	Spring, Pressure	1										
322	DZLA000249	Roller, Pressure	1										
323	DZJL000137	Guide, Front Paper	1										
324	DZJL000136	Guide, Rear Paper	1										
325	DZJL000138	Frame, R Fuser	1										
326	DZLF000147	Gear, E24 Drive	1										
327	DZLF000426	F Gear, D16E17	1										
328	DZKN003616	Label, High Temperature	1										
901	DZFP001012	Harness, ILS											
907	DZFP001018	Harness, SNSE											
909	DZFP001045	Harness, HEAT1											
942	XYN3+J10	Screw											

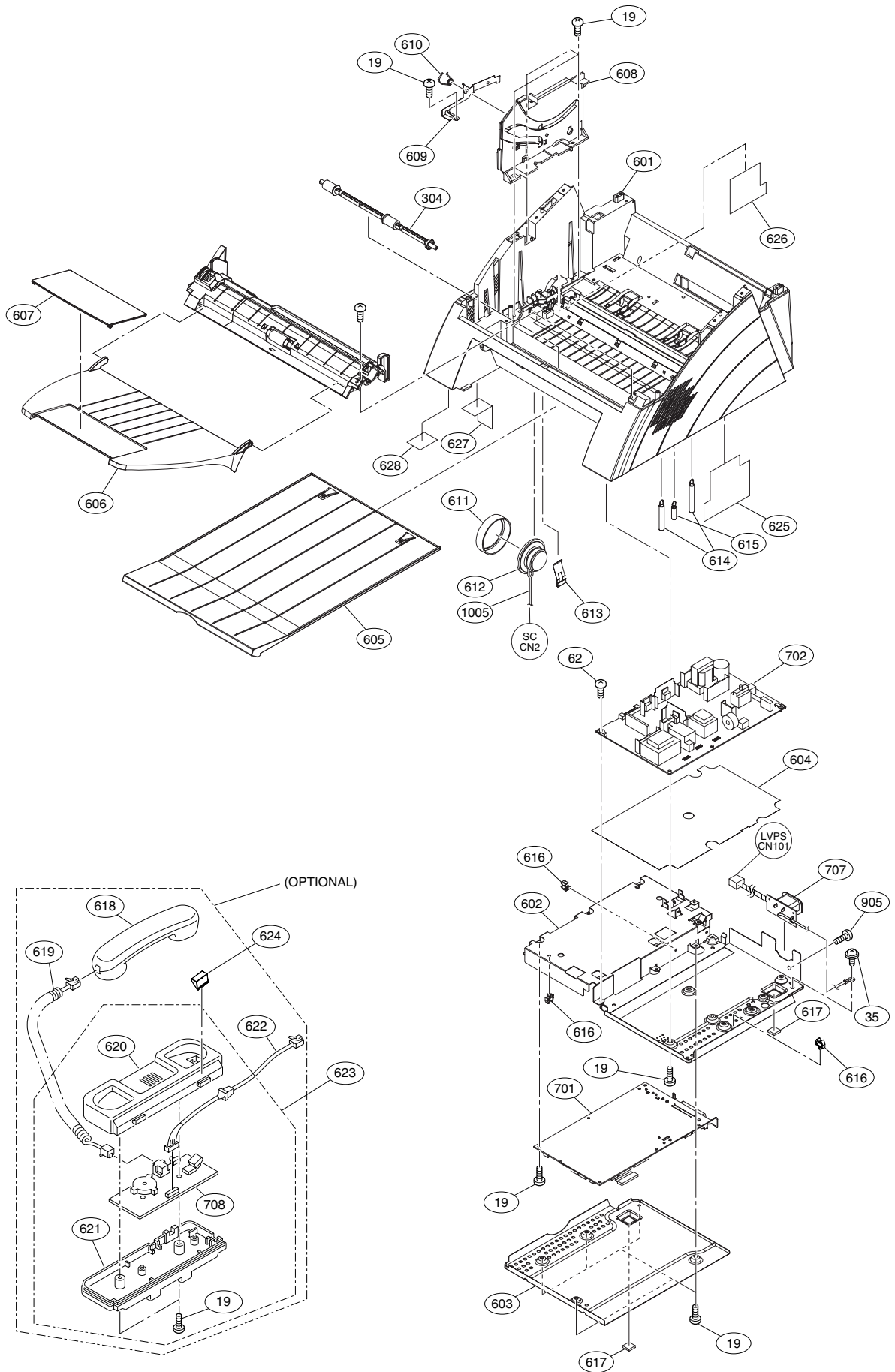
ITEM NO.	PARTS NO.	PARTS NAME	QTY / PAGE	QTY / PACK	P	I	R	BSI NO.	TO	FROM	SERIAL NO.	REMARKS	C
19	XTB3+8J	Screw											
401	DZJM001296	Cover, Paper Tray	1										
402	DZJM000620	Guide, Paper Length	1										
403	DZJF000478	Paper Tray	1										
404	DZJL000133	Plate, Pressure	1										
405	DZJF000477	Base Frame, Paper Tray	1										
406	DZKM000031	Pad, Paper	1										
407	DZJM000559	Lever, R Release (Black)	1										
408	DZJM000566	Lever, L Release	1										
409	DZJM001297	Guide, Paper Width	1										
410	DZKN000245	Spring, Pressure	1										
412	DZJM000556	Lever, Pad Holder	1										
413	DZJM000557	Lever, R Stopper	1										
414	DZJM000558	Lever, L Stopper	1										
415	DZKQ000056	Spring, R Stopper Lever	1										
416	DZKQ000057	Spring, L Stopper Lever	1										
418	DZJM000562	Frame, ASF	1										
419	DZJM000564	Actuator, NP Sensor	1										
420	DZJM000567	Cam, L	1										
421	DZJM000560	Cam, R (Black)	1										
422	FFPMQ03961	Bushing	1										
424	DZJM000300	Drum, Clutch	1										
425	DZKQ000058	Coil Spring, Clutch	1										
426	DZJM000561	Case, Clutch	1										
427	DZLF000401	F Gear D34	1										
428	DZLF000400	Gear, Cam	1										
429	DZLM000052	Bushing, P6L5 Conductor	1										
430	DZJL000134	Plate, Solenoid	1										
431	DZGB000032	Solenoid	1										
432	DZKP000240	Spring, Toner Sensor	1										
433	DZJM000563	Bracket, Pick	1										
434	FFPMF1014	Gear, Pick	1										
435	DZLA000352	Roller, ASF	1										
436	DZLA000243	Roller, Pick	1										
437	DZKG000140	Shaft, ASF	1										
439	DZLA000240	Roller, Feed	1										
440	DZLA000239	Roller, Pinch	1										
441	DZLM000006	Bushing, P6L5	1										
442	DZLF000399	Gear, Feed	1										
443	DZKR000026	Spring, Wire	1										
444	DZKG000139	Shaft, Pinch	1										
445	DZJB000202	Guide, BTR	1										
446	DZLA000241	Roller, Bias Transfer	1										
447	DZLM000124	Bushing, Right BTR (Black)	1										
448	DZLM000125	Bushing, Left BTR	1										
449	DZLF000398	Gear, BTR	1										
450	DZKR000025	Spring, BTR	1										
451	DZKP000232	Spring, Ground Transfer	1										
452	DZJL000131	Plate, Discharge	1										
453	DZJC000296	Holder, Plate	1										
454	DZFP000747	Resistor, 200M	1										
455	DZHC000133	Actuator, Timing	1										
456	DZJA000815	Holder, Actuator	1										
457	DZKQ000055	Spring, Timing	1										
458	DZKN000244	Spring, Pad	1										
459	DZHA000114	Sheet, Myler	1										
460	DZLD000015	Drum, Clutch 2	1										
461	DZNK005147	Label, Function	1										
462	DZJM000795	Guide, Sheet	1										
463	DZNK003734	Label, Paper Capacity	1										
464	DZJL000250	Ring, Support	1										
467	DZKQ000091	Spring, Pick Up	1										
468	DZJM000917	Sheet, Pick Up	1										
469	DZJP000047	Sheet, Side Friction	1										
470	DZJM000911	Clip, Paper Width	1										
471	DZKN000340	Spring, Paper Width	1										
472	DZJH000091	Spacer, Sheet 1	1										
473	DZJH000092	Spacer, Sheet 2	1										
474	DZJP000048	Spacer, Pad Holder	1										
476	DZJL000336	Plate 1, Silent	1										

ITEM NO.	PARTS NO.	PARTS NAME	QTY / PAGE	QTY / PACK	P	I	R	BSI NO.	TO	T	FROM	SERIAL NO.	REMARKS	C
477	DZJL000337	Plate 2, Silent	1											
478	DZTQ000039	Assembly, Separation Pad	1											
479	DZJM000928	Sheet, Slide	1											
873	FFPFJ0041	Snap Ring	1											
929	DZJM000171	Snap Ring	1											
952	XUC4	E-Ring	1											

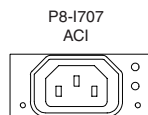
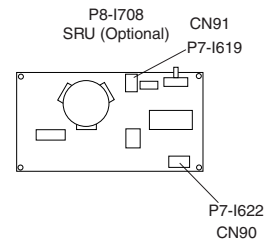
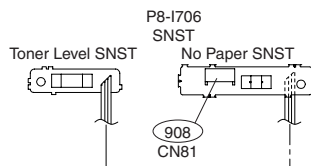
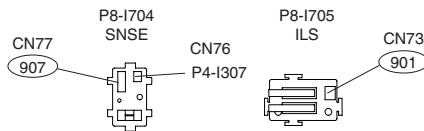
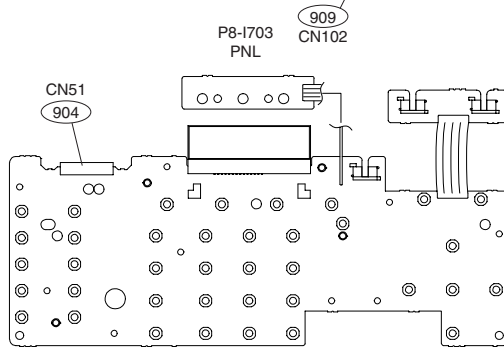
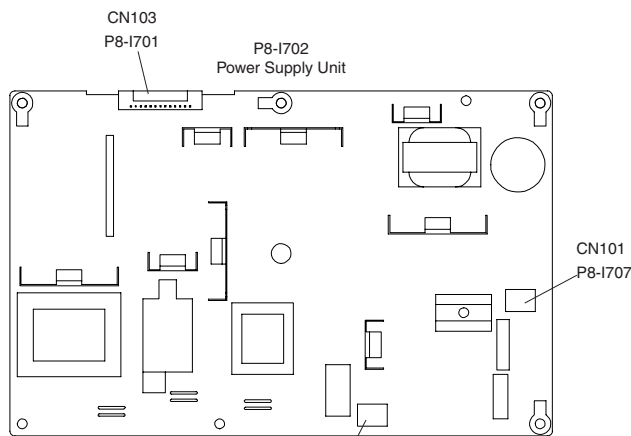
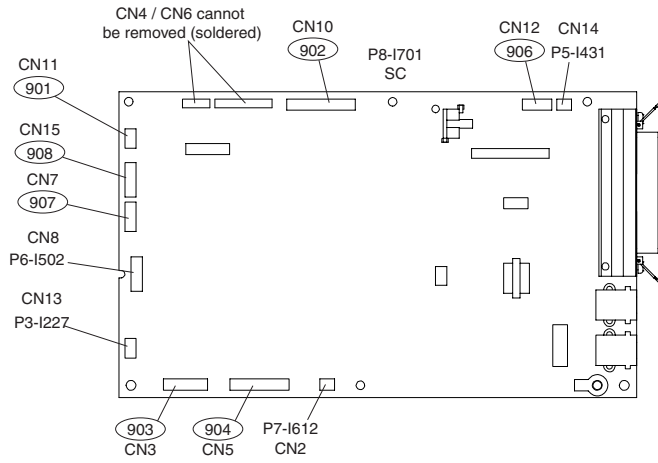
ITEM NO.	PARTS NO.	PARTS NAME	QTY / PAGE	QTY / PACK	P	I	R	BSI NO.	TO	T	FROM	SERIAL NO.	REMARKS	C
			1											
			1											
			1											
			1											
			1											



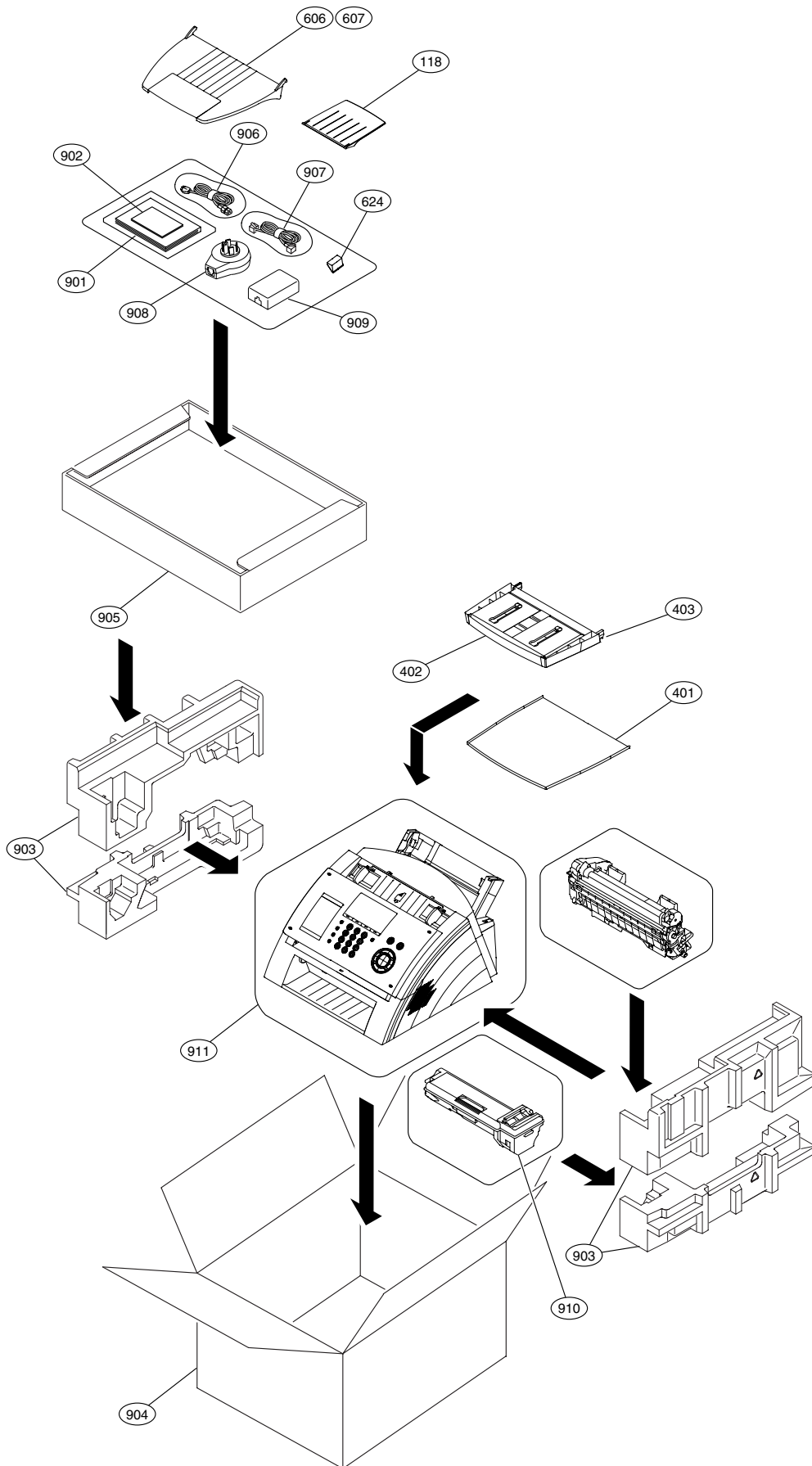
ITEM NO.	PARTS NO.	PARTS NAME	QTY / PAGE	QTY / PACK	P	I	R	BSI NO.	TO	FROM	SERIAL NO.	REMARKS	C
19	XTB3+8J	Screw	1										
501	55SPM25D7ND	Motor	1										
502	FBA06T24LSE	Fan	1										
503	DZJM000568	Gear, Box	1										
504	DZJA000817	Bracket, Motor	1										
505	DZLF000406	F Gear, E42	1										
506	DZLF000413	F Gear, C33D13	1										
507	DZLF000409	F Gear, C43C27	1										
508	DZLF000405	F Gear, C63E33	1										
509	DZLF000689	F Gear, C67D35	1										
510	DZLF000402	F Gear, B89C17	1										
511	DZLF000404	F Gear, B79C23	1										
512	DZLF000412	F Gear, B51B34	1										
513	DZLF000407	F Gear, C49D16	1										
514	DZLF000425	F Gear, D19	1										
515	DZLF000411	F Gear, B43	1										
516	DZLF000410	F Gear, B74	1										
517	DZKQ000060	Spring, Right Toner Cartric	1										
518	DZJE000892	Cover, Motor	1										
519	DZJM000569	Arm, Gear	1										
520	DZKQ000059	Spring, Arm	1										
521	DZKP000239	Plate, Ground	1										
522	DZJC000308	Plate, Ground 2	1										
523	DZJA000975	Plate, Gear	1										
524	DZJM000796	Sponge, F	1										
525	DZJM000797	Sponge, R	1										
903	XTB3+20J	Screw											
905	XUC4	E-Ring											



ITEM NO.	PARTS NO.	PARTS NAME	QTY / PAGE	QTY / PACK	P	I	R	BSI NO.	TO	FROM	SERIAL NO.	REMARKS	C
19	XTB3+8J	Screw											
35	XYN4+F6	Screw											
601	DZMA003183	Frame, Main	1										
602	DZMC000731	Plate, Base	1										
603	DZJA000821	Plate, SC	1										
604	DZHA000161	Sheet, PSU	1										
605	DZML000409	Tray, Recording Paper	1										
606	DZML000475	Tray, Document Return	1										
607	DZML000476	Tray, Document Return Sub	1										
608	DZJF000479	Rail, Left Toner Cartridge	1										
609	DZKP000238	Plate, Ground	1										
610	DZKQ000063	Spring, Left Toner Cartridge	1										
611	DZJA000820	Bracket, Speaker	1										
612	DZDR000021	Speaker	1										
613	DZKP000237	Spring, Speaker	1										
614	DZKN000252	Spring, A Coil	1										
615	DZKN000253	Spring, B Coil	1										
616	DZJK000005	Holder, Cable	1										
617	DZMM000016	Leg, Rubber	1										
618	DZDU000025	Handset	1										
619	DZFN000066	Cord, Handset	1										
620	DZJE000165	Cradle, Upper	1										
621	DZJE000166	Cradle, Lower	1										
622	DZFN000061	Cord, Cradle	1										
623A	DZML000134	Cradle Assembly	1									ASIA, South America USA/Canada	
623B	DZML000132	Cradle Assembly	1										
624	DZJM000783	Stopper, HS	1										
625	DZMC000747	Plate, R Silent	1										
626	DZMC000748	Plate, L Silent	1										
627	DZJM000841	Film, Guard A	1										
628	DZJM000842	Film, Guard B	1										
905	XSB4+10BN	Screw	1										



ITEM NO.	PARTS NO.	PARTS NAME	QTY / PAGE	QTY / PACK	P	I	R	BSI NO.	TO	FROM	SERIAL NO.	REMARKS	C
701A	DZEC103045	PC Board, SC	1									ASIA	
701B	DZEC103044	PC Board, SC	1									South America	
701C	DZEC103043	PC Board, SC	1									USA/Canada	
702A	ETXDN342E2E	Power Supply Unit (200V)	1									ASIA, South America	
702B	ETXDN342A2E	Power Supply Unit (100V)	1									USA/Canada	
703	DZEC102400	PC Board, PNL (A4)	1										
704	DZEC102013	PC Board, SNSE	1										
705	DZEC101997	PC Board, ILS	1										
706	DZEC102012	PC Board, SNST	1										
707	DZEC102014	PC Board, ACI	1										
708A	DZEC100492	PC Board, SRU	1									ASIA, South America	
708B	DZEC100422	PC Board, SRU	1									USA/Canada	
901	DZFP001012	Harness, ILS											
902	DZFP001013	Harness, LSU											
904	DZFP001015	Harness, PNL											
906	DZFP001017	Harness, MOT											
907	DZFP001018	Harness, SNSE											
908	DZFP001019	Harness, SNST											
909	DZFP001045	Harness, HEAT1											



ITEM NO.	PARTS NO.	PARTS NAME	QTY / PAGE	QTY / PACK	P	I	R	BSI NO.	TO	FROM	SERIAL NO.	REMARKS	C
118	DZML000472	Tray, Document Sub	1										
401	DZJM001296	Cover, Paper Tray	1										
402	DZJM000620	Guide, Paper Length	1										
403	DZJF000478	Paper Tray	1										
606	DZML000475	Tray, Document Return	1										
607	DZML000476	Tray, Document Return Sub	1										
624	DZJM000783	Stopper, HS	1										
901A	DZSD002076	Operator's Manual	1									ASIA, South America USA/Canada	
901B	DZSD002075	Operator's Manual	1										
902	DZRQ000282	CD-R	1										
903	DZRH000419	Cushion Assembly Set	1										
904	DZRB000980	Carton Box	1										
905	DZRD000008	Box, Accessories	1										
906A	DZFM000028	PS CORD 200V	1									ASIA, South America USA/Canada	
906B	DZFM000027	PS CORD 100V	1										
907	DZFN000050	Line Cord	1										
911	DZRJ000011	Bag, Polyethylene	1										

TOSHIBA

TOSHIBA TEC CORPORATION

1-1, KANDA NISHIKI-CHO, CHIYODA-KU, TOKYO, 101-8442 JAPAN