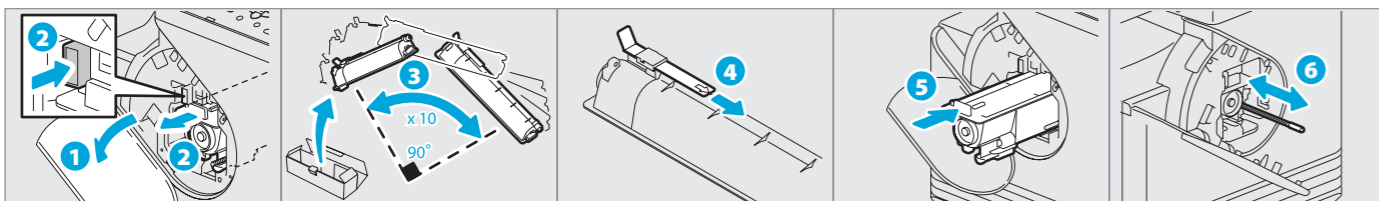


Troubleshooting

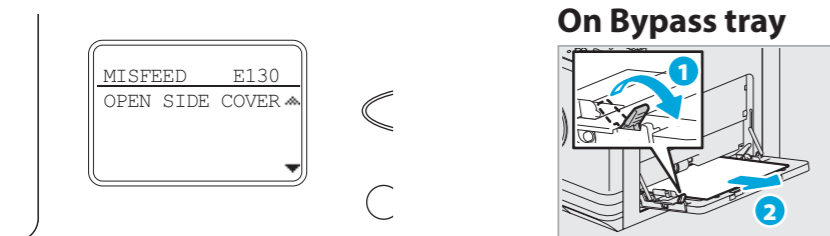
Toner empty

User's Guide: Chapter 7

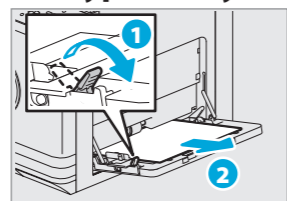


Paper misfeed

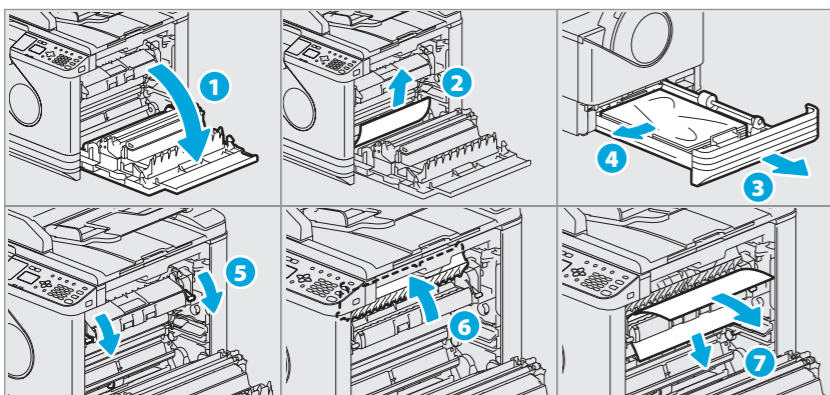
User's Guide: Chapter 7



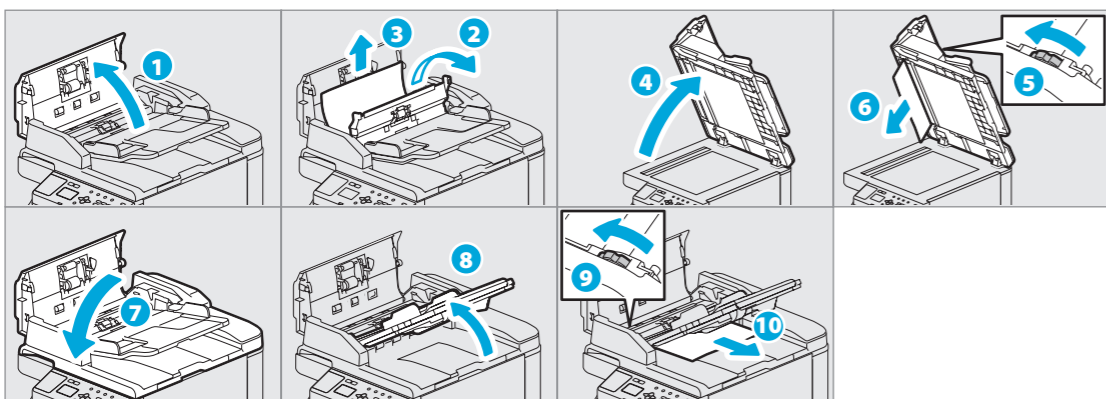
On Bypass tray



In Side cover

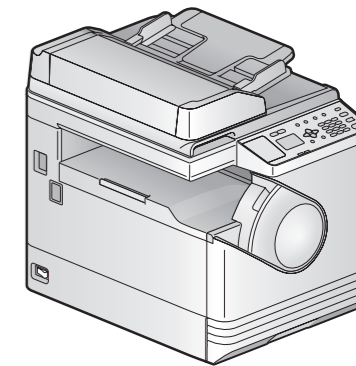


In RADF



TOSHIBA
Leading Innovation >>>

MULTIFUNCTIONAL DIGITAL SYSTEMS
e-STUDIO2802A/2802AM



Quick Guide

This manual describes the components, preparations, basic operations, and troubleshooting for the equipment. **Before using the equipment, read the Safety Information (Printouts).** The DVD bundled with the equipment contains the manuals (PDF file).

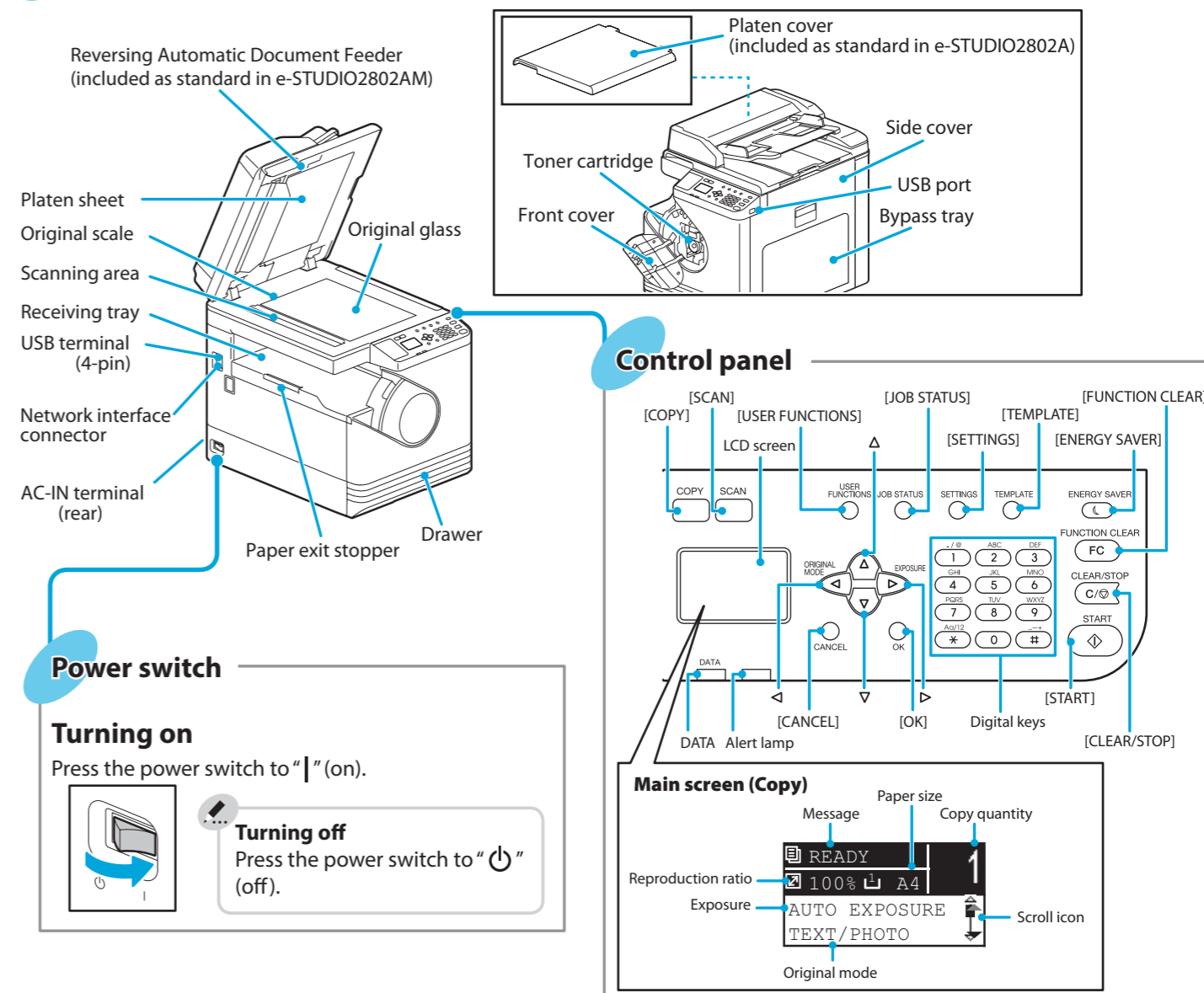
Trademarks

Company names and product names in this manual are the trademarks of their respective companies.

Component Description

Equipment

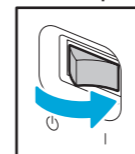
User's Guide: Chapter 1



Power switch

Turning on

Press the power switch to "I" (on).

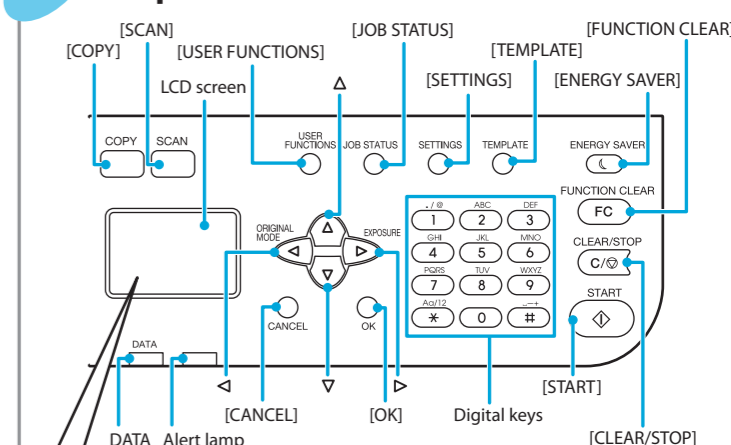


Turning off

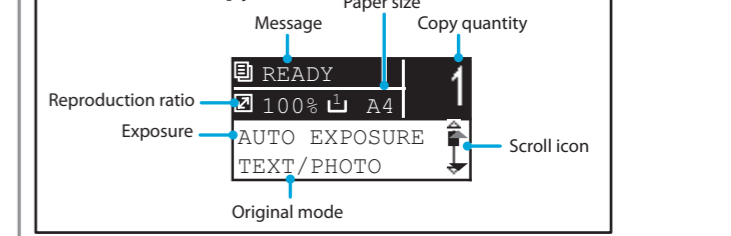
Press the power switch to "O" (off).



Control panel



Main screen (Copy)

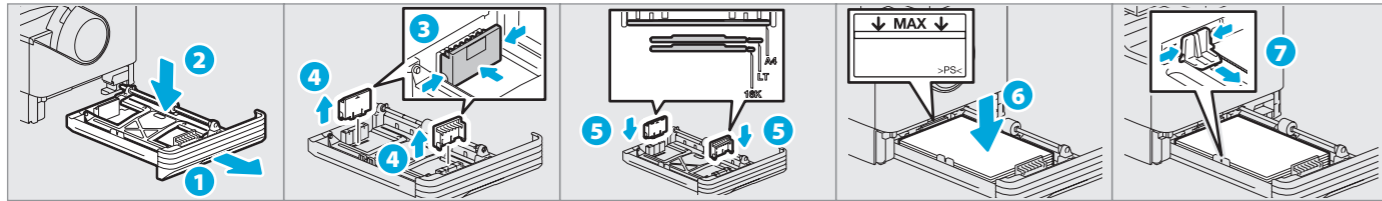


Before Use

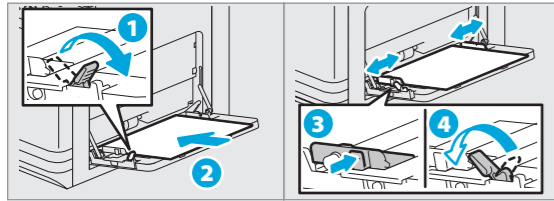
Loading paper

[User's Guide: Chapter 1](#)

Drawer



Bypass tray



To set paper size of Drawer

When you load paper in the drawer, a pop-up window appears. Follow the instructions and set the paper size. (When the "POP UP" function is set to "ENABLE".)

To print on an A3 (LD) page

Load paper in the bypass tray, and follow the pop-up instructions to set the paper size and paper type.

Driver installation

[Software Installation Guide: Chapter 2](#)

Installing the driver requires the administrator authority. For Windows 7, Windows 8, Windows Server 2008 R2, or Windows Server 2012, use the installer.

Note when installing from installer

- Close all running applications.
- If the installer does not automatically start, double-click "Setup.exe" in the DVD.

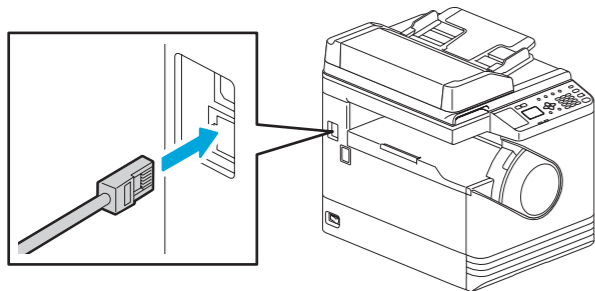
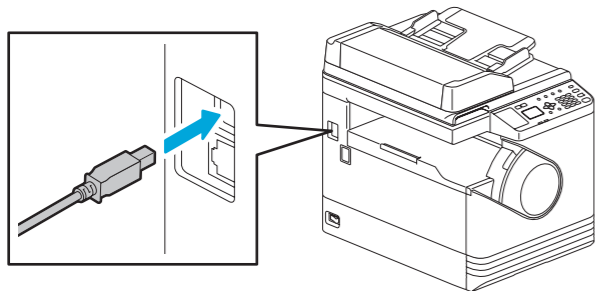
Using installer

1. Close all running applications.
2. Make sure that the equipment is turned on.
3. Insert the DVD into the computer.
4. Double-click "Setup.exe".
5. Follow the on-screen instructions.

Printer and scanner functions are available.

Connecting computer

Before installing the drivers, connect the equipment and the computer with a USB cable or Network interface cable.



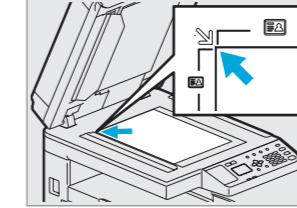
Basic Operations

Copier

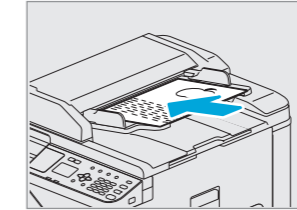
[User's Guide: Chapter 2](#)

1. Place the original(s).

Original glass



RADF



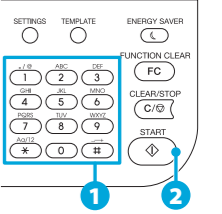
Note when placing originals on RADF

When placing long originals (A3, B4, A4-R, LD, LG, COMP, or 8K), open the original holder so that the size of the original can be detected correctly.

2. Press [COPY] and make the copy settings.



3. Enter the number of copies with the digital keys **1**, and then press [START] **2** to copy.



To stop copying

Press [CLEAR/STOP]

To reset settings and LCD screen after copying

Press [FUNCTION CLEAR]

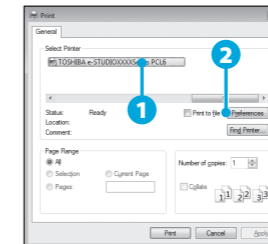
Shortcut keys

Press **<**: "ORIGINAL MODE"
Press **>**: Europe and the Americas "EXPOSURE",
Except Europe and the Americas "ID CARD"

Printer

[User's Guide: Chapter 3](#)

1. Select [Print] from the application's [File] menu.
2. Select your printer **1**, and then click [Preferences] **2**.



3. Make print option settings, and then click [OK].
4. Click [Print] ([OK]).

Scanner

[User's Guide: Chapter 5](#)

Scan to USB Memory

1. Place the original(s).
2. Press [SCAN].
3. Connect the USB storage device to the equipment and wait a few seconds.
4. Press **>** or **<** to select "USB", and then press [OK].
5. Press **>** to make the scan settings as required.
6. Press [START] to scan your documents.

TWAIN Scan

1. Place the original(s).
2. Launch a TWAIN-compliant application.
3. Select the device from the application's [File] menu.
4. Select the menu to scan from the application's [File] menu.
5. Make the scan settings, and then click [Scan].

Templates

[User's Guide: Chapter 2, 5](#)

Registering a template

1. Press [COPY] or [SCAN].
2. Make settings for the functions to register as a template.
3. Press [TEMPLATE].
4. Press **>** or **<** to select "REGISTRATION", and then press **>**.
5. Press **>** or **<** to select a template, and then press [OK].

Recalling a template

1. Press [COPY] or [SCAN].
2. Press [TEMPLATE].
3. Press **>** or **<** to select "RECALL", and then press **>**.
4. Press **>** or **<** to select the template, and then press [OK].