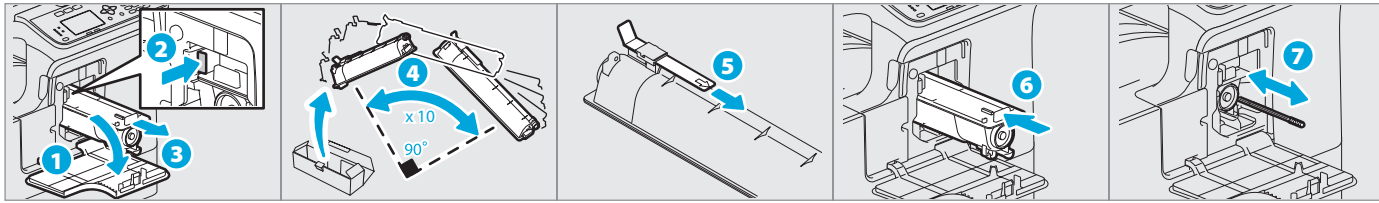


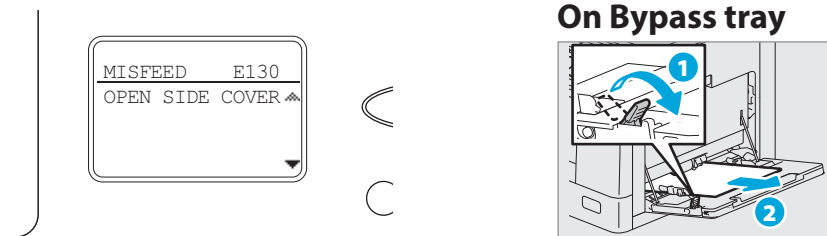
## Toner empty

User's Guide: Chapter 7

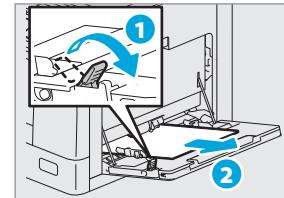


## Paper misfeed

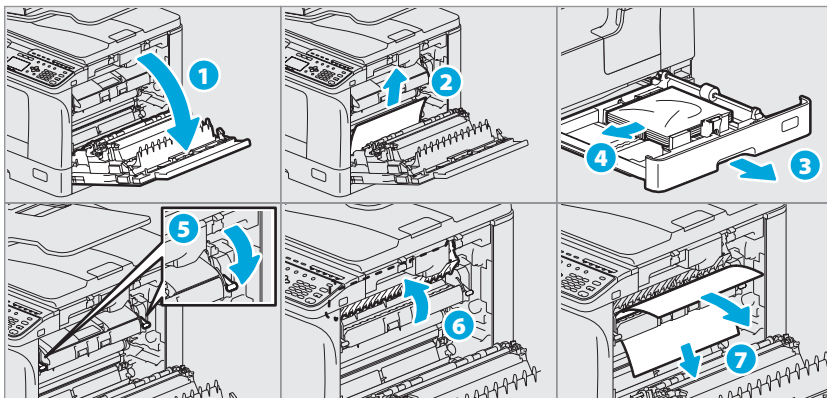
User's Guide: Chapter 7



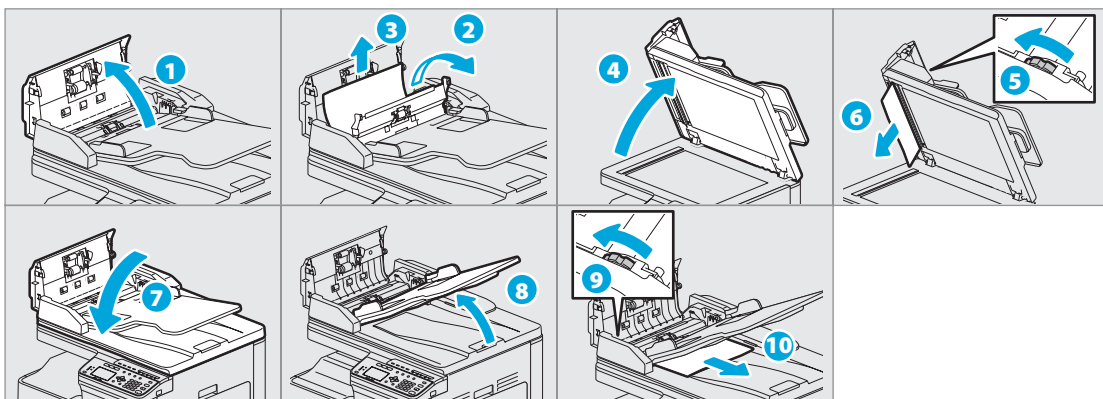
### On Bypass tray



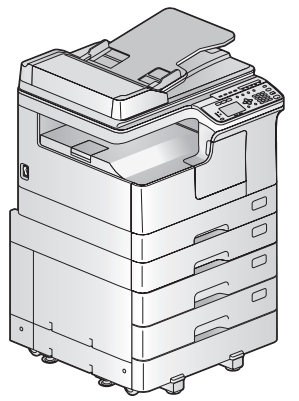
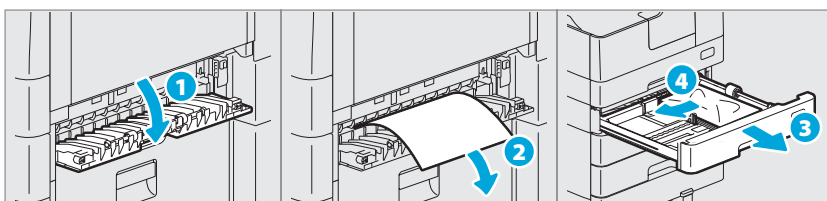
### In Side cover



### In RADF



### In PFU



# Quick Guide

This manual describes the components, preparations, basic operations, and troubleshooting for the equipment. **Before using the equipment, read the Safety Information (Printouts).** The DVD bundled with the equipment contains the manuals (PDF file).

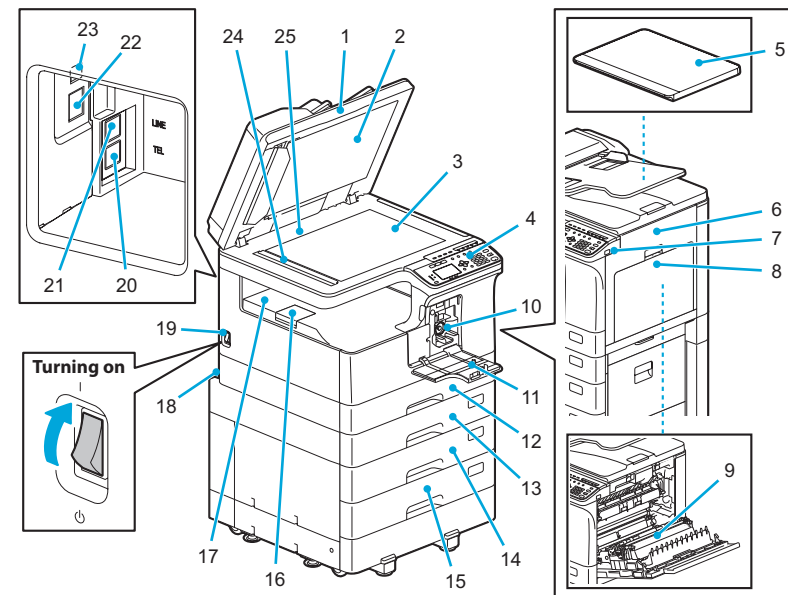
### Trademarks

Company names and product names in this manual are the trademarks of their respective companies.

## Component Description

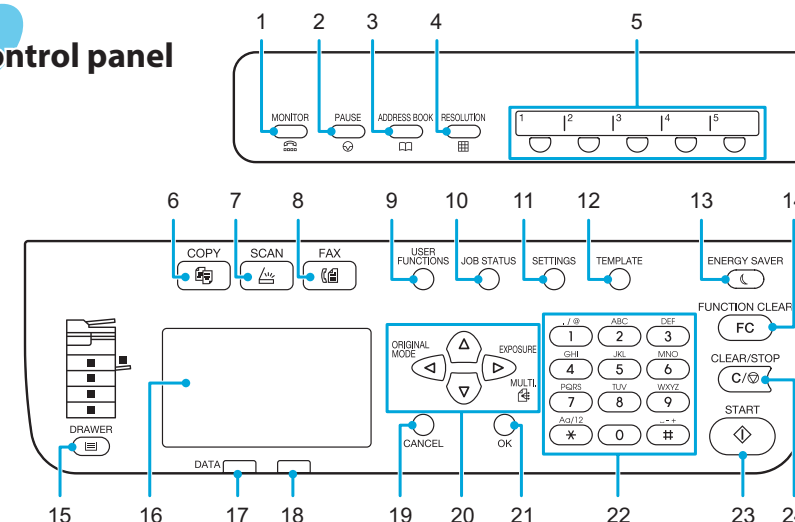
### Equipment

User's Guide: Chapter 1



1. Reversing Automatic Document Feeder (RADF)\*
2. Platen sheet
3. Original glass
4. Control panel
5. Platen Cover\*
6. Side cover
7. USB port
8. Bypass tray
9. Automatic Duplexing Unit
10. Toner cartridge
11. Front cover
12. Drawer
13. Paper Feed Unit (PFU)\*
14. Paper Feed Pedestal\*
15. Drawer Module\*
16. Paper exit stopper
17. Receiving tray
18. AC-IN terminal (rear)
19. Power switch
20. TEL\*
21. LINE\*
22. Network interface connector
23. USB terminal (4-pin)
24. Scanning area
25. Original scale

### Control panel



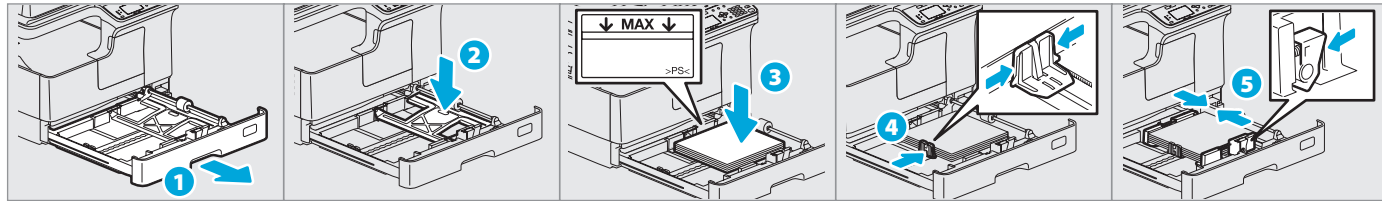
1. MONITOR\*
  2. PAUSE\*
  3. ADDRESS BOOK\*
  4. RESOLUTION\*
  5. One Touch\*
  6. COPY
  7. SCAN
  8. FAX
  9. USER FUNCTIONS
  10. JOB STATUS
  11. SETTINGS
  12. TEMPLATE
  13. ENERGY SAVER
  14. FUNCTION CLEAR
  15. DRAWER
  16. LCD screen
  17. DATA
  18. Alert lamp
  19. CANCEL
  20. Δ▽◀▶
  21. OK
  22. Digital keys
  23. START
  24. CLEAR/STOP
- \* optional

# Before Use

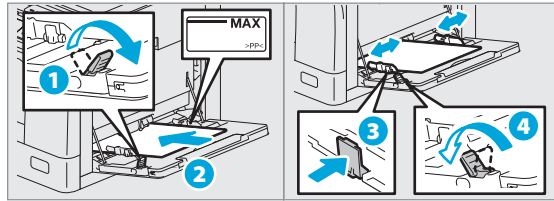
## Loading paper

[User's Guide: Chapter 1](#)

### Drawer



### Bypass tray



**To set paper size of Drawer**  
When you load paper in the drawer, a pop-up window appears. Follow the instructions and set the paper size. (When the "POP UP" function is set to "ENABLE".)

## Driver installation

[Software Installation Guide: Chapter 2](#)

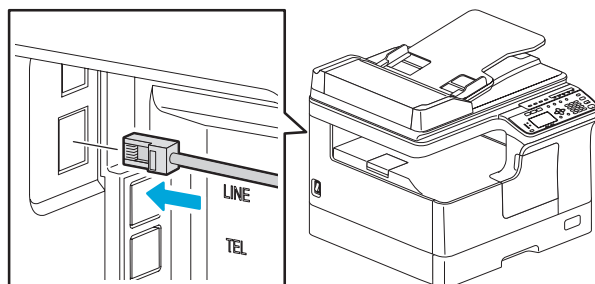
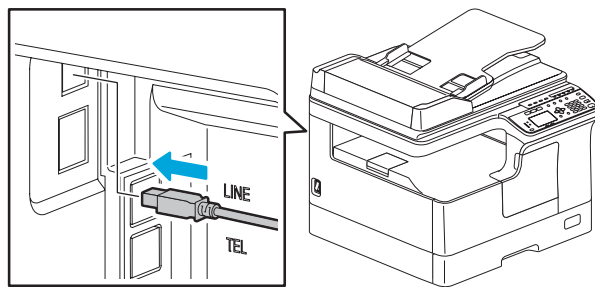
Installing the driver requires the administrator authority. For Windows 7, Windows 8.1, Windows Server 2008 R2, Windows Server 2012, or Windows Server 2016, use the installer.

**Note when installing from installer**

- Close all running applications.
- If the installer does not automatically start, double-click "Setup.exe" in the DVD.

### Connecting computer

Before installing the drivers, connect the equipment and the computer with a USB cable or Network interface cable.



### Using installer

1. Close all running applications.
2. Make sure that the equipment is turned on.
3. Insert the DVD into the computer.
4. Double-click "Setup.exe".
5. Follow the on-screen instructions.

Printer and scanner functions are available.

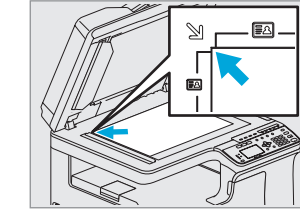
# Basic Operations

## Copier

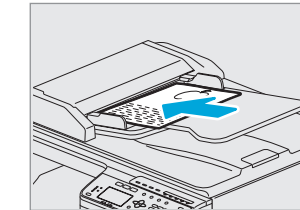
[User's Guide: Chapter 2](#)

1. Place the original(s).

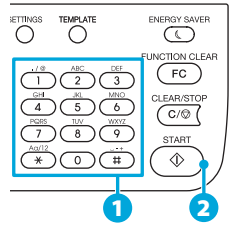
### Original glass



### RADF



3. Enter the number of copies with the digital keys **1**, and then press [START] **2** to copy.



**To stop copying**  
Press [CLEAR/STOP]

**To reset settings and LCD screen after copying**  
Press [FUNCTION CLEAR]

**Shortcut keys**  
Press <: "ORIGINAL MODE"  
Press >: Europe and Americas "EXPOSURE", Except Europe and Americas "ID CARD"

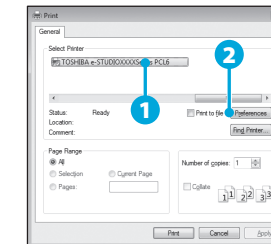
2. Press [COPY] and make the copy settings.



## Printer

[User's Guide: Chapter 3](#)

1. Select [Print] from the application's [File] menu.
2. Select your printer **1**, and then click [Preferences] **2**.



3. Make print option settings, and then click [OK].
4. Click [Print] ([OK]).

## Scanner

[User's Guide: Chapter 5](#)

### Scan to USB Memory

1. Place the original(s).
2. Press [SCAN].
3. Connect the USB storage device to the equipment and wait a few seconds.
4. Press ∇ or ▲ to select "USB", and then press [OK].
5. Press > to make the scan settings as required.
6. Press [START] to scan your documents.

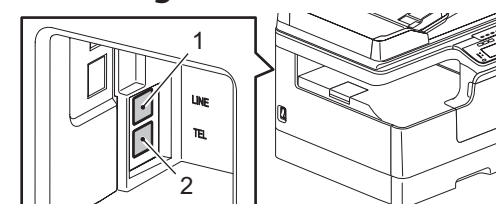
### TWAIN Scan

1. Place the original(s).
2. Launch a TWAIN-compliant application.
3. Select the device from the application's [File] menu.
4. Select the menu to scan from the application's [File] menu.
5. Make the scan settings, and then click [Scan].

## Fax

[Fax Guide](#)

### Connecting Cables



1. LINE Connect a telephone line.
2. TEL Connect an external telephone.

### Sending a Fax

1. Place the original(s).
2. Press [FAX].
3. Make settings for transmission conditions.
4. Specify the destination.
5. Press [START].

### Registering an Address Book

1. Press [USER FUNCTIONS].
2. Select "ADDRESS BOOK" → "PHONE BOOK".
3. Make settings for "SPEED DIAL", "GROUP DIAL", and "ONE TOUCH", and then press [OK].