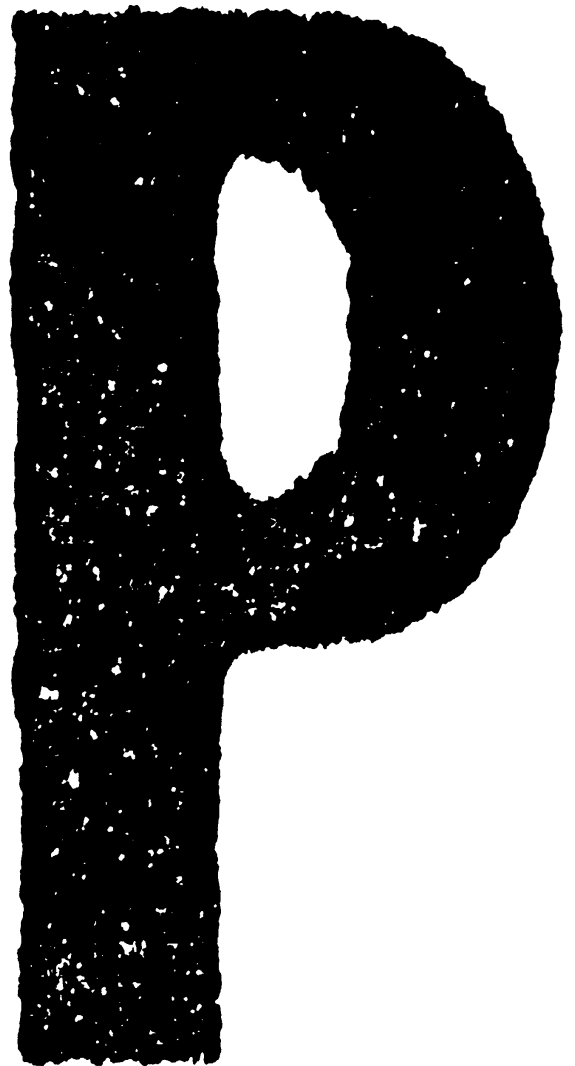


# **SERVICE PARTS LIST**

## **MULTIFUNCTIONAL DIGITAL SYSTEMS**

**e-STUDIO203s/203SD**



© 2008 TOSHIBA TEC CORPORATION All rights reserved

Under the copyright laws, this manual cannot be reproduced in any form without prior written permission of TOSHIBA TEC CORPORATION. No patent liability is assumed, however, with respect to the use of the information contained herein.

# EXPLANATION OF SERVICE-PARTS LIST

## 1. HOW TO READ THE PARTS LIST

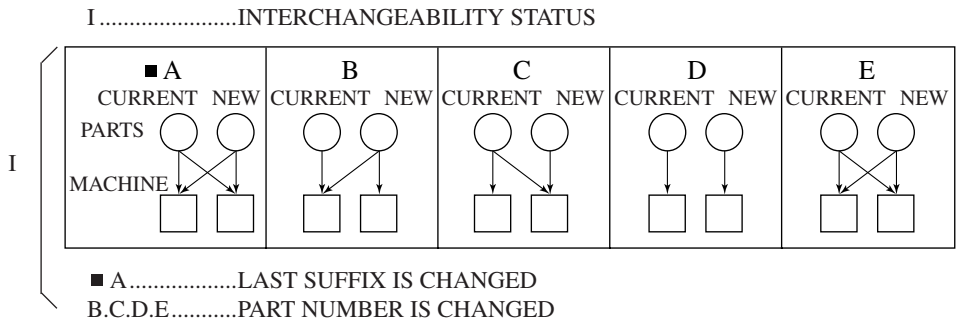
- (1) Number of pieces  
The number of pieces in the list denotes total pieces used per unit. But the numbers in the list for PACKING MATERIAL and ACCESSORY denote total pieces used per machine.
- (2) One pack of screws in the list includes 50 pieces.
- (3) ABBREVIATED CODES

QTY/PAC

- QTY.....one piece
- PAC.....one pack
- 1/P.....one piece packed in polyethylene bag
- 1/S.....one piece packed in special pack
- 1/C.....one piece packed in carton box
- 1/PP.....one piece packed in paper and polyethylene bag
- 1/KP.....one piece packed in polyethylene bag with cardboard
- 1/D.....one piece packed in polyethylene-cushion bag
- 1/SB.....one piece packed in shielding bag
- N/A.....not available

P

- P.....PURPOSE
- A.....ADD
- B.....DELETE
- C.....CHANGE
- D.....QTY, CHANGE
- E.....MISENTRY
- F.....OMISSION



## 2. HOW TO PLACE ORDER FOR PARTS

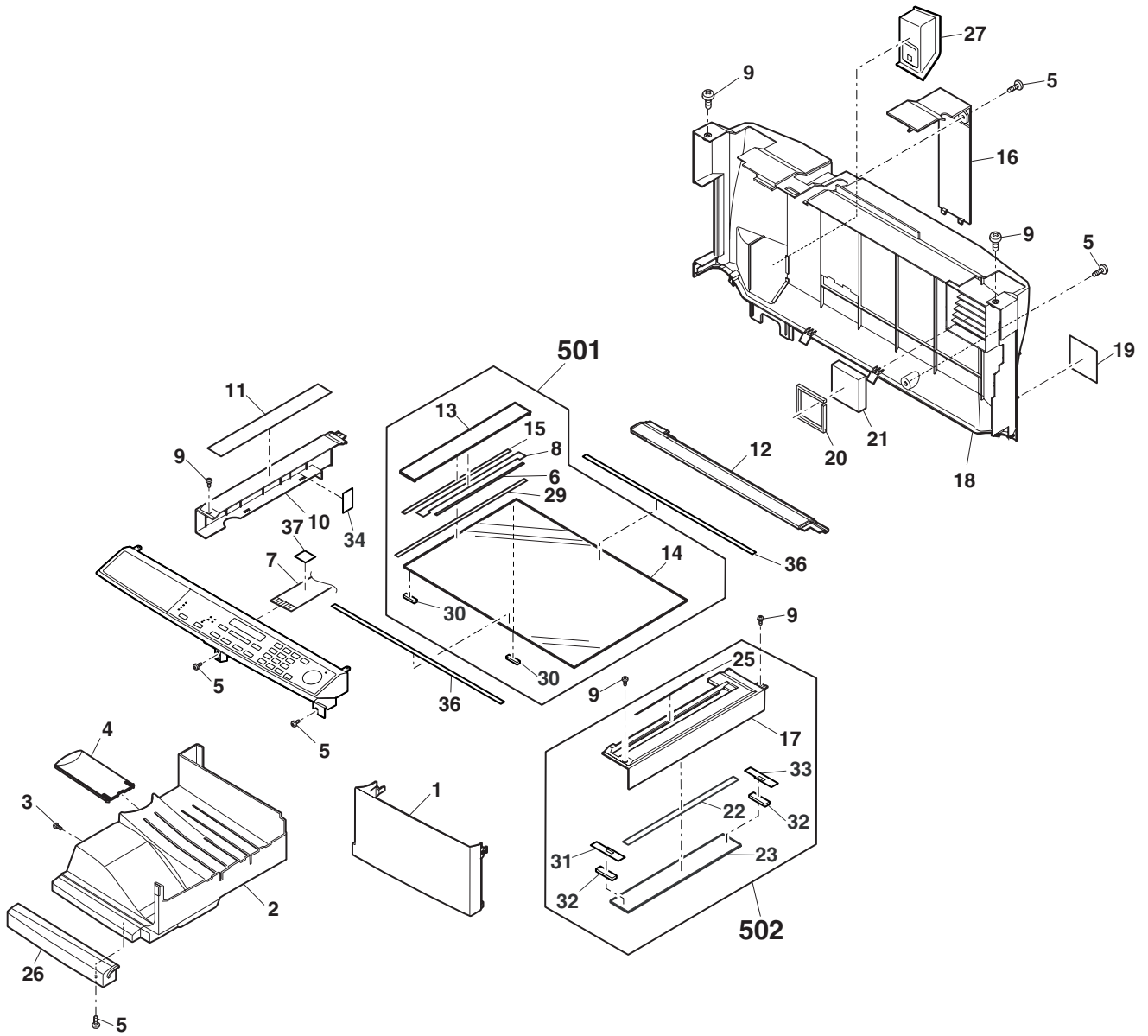
- (1) The parts handled as service parts are only those with their "QTY/PACK" column listed with a quantity other than "N/A\*\*\*" or "SUPPLY".  
Those parts with "N/A\*\*\*" are listed only for the purpose of showing the mechanical construction, those listed with "SUPPLY" are handled only as a sales item, and therefore both types of parts are not supplied as service parts.
- (2) Orders for any parts which form a component of a semi-assembled unit are not acceptable.  
Note: All the screws and nuts used are ISO standard.

## 3. REGION

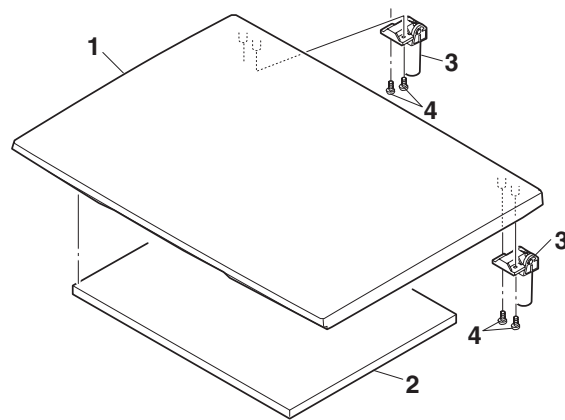
- NAD.....115V  
50/60Hz, NORTH AMERICA, SOUTH AMERICA
- TWD.....110/220V  
50/60Hz, TAIWAN
- SAD.....127V/60Hz, SAUDI ARABIA
- ASD.....220-240V  
50/60Hz, ASIA, SOUTH AMERICA, etc.
- ASU.....220-240V  
50/60Hz, ASIA, etc.
- AUD.....220-240V  
50/60Hz, AUSTRALIA
- MJD.....220-240V  
50/60Hz, EUROPE
- CND.....220-240V  
50/60Hz, CHINA
- KRD.....220-240V  
50/60Hz, KOREA

# CONTENTS

EXTERIORS .....	1
ORIGINAL COVER UNIT .....	2
OPERATION PANEL.....	3
SIDE DOOR UNIT.....	4
OPTICAL FRAME .....	5
SHIFTER UNIT.....	6
MIDDLE FRAME .....	7
BASE PLATE UNIT 1 .....	8
BASE PLATE UNIT 2 .....	9
FUSING UNIT .....	10
DRIVE UNIT.....	11
MULTI MANUAL PAPER FEED COVER UNIT .....	12
MULTI MANUAL PAPER FEED UNIT .....	13
SOCKET HOLDER UNIT .....	14
TC CASE UNIT .....	15
250 SHEETS TRAY.....	16
HARNESS.....	17
PROCESS UNIT .....	18
DV CARTRIDGE UNIT.....	19
PACKING MATERIAL & ACCESSORIES.....	20

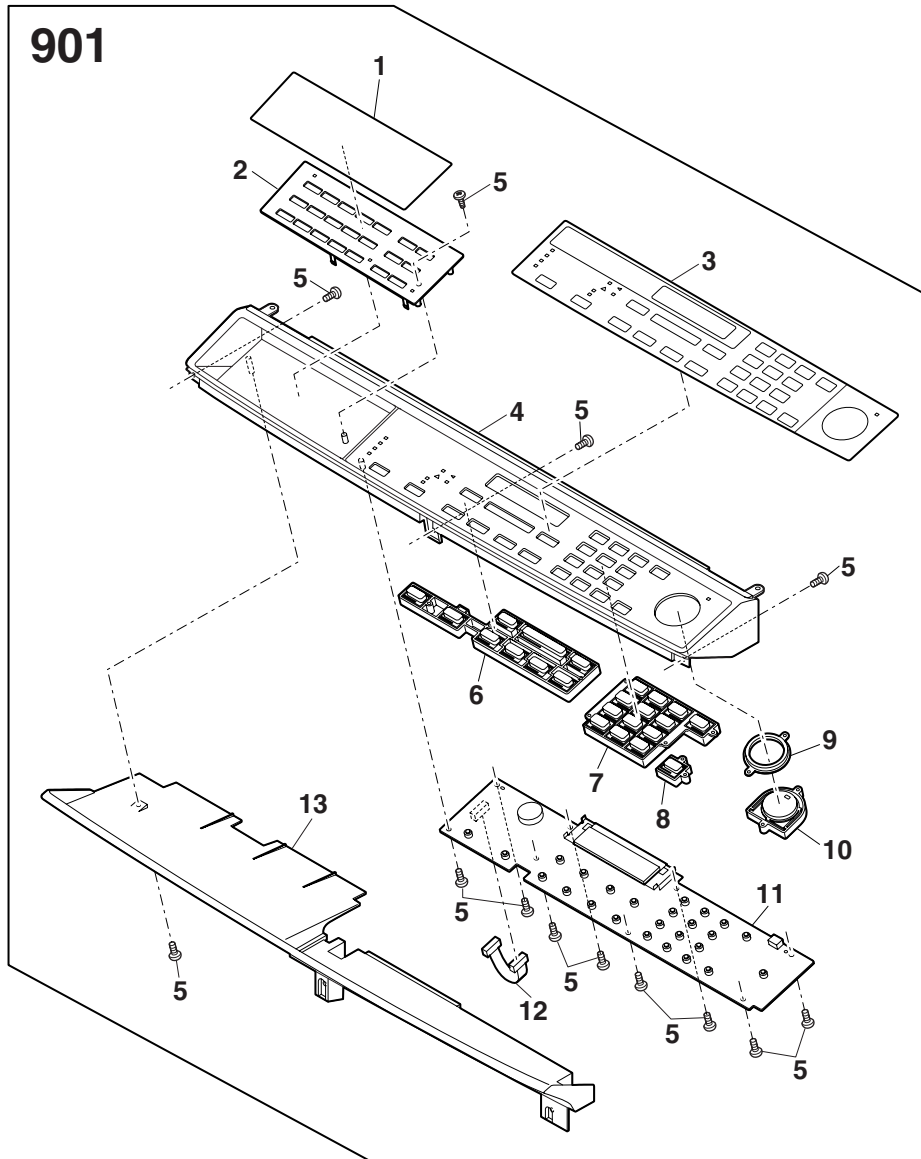




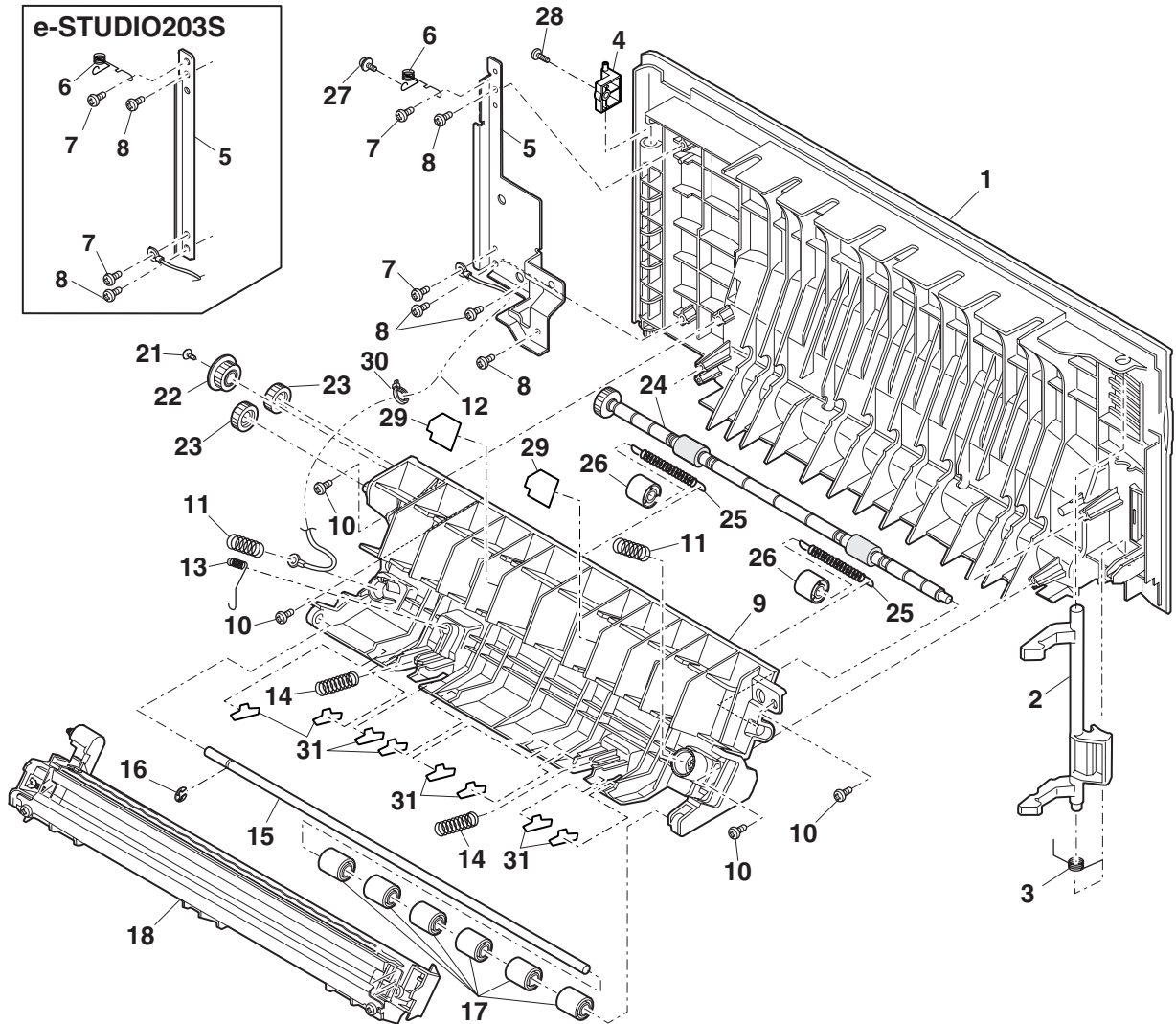




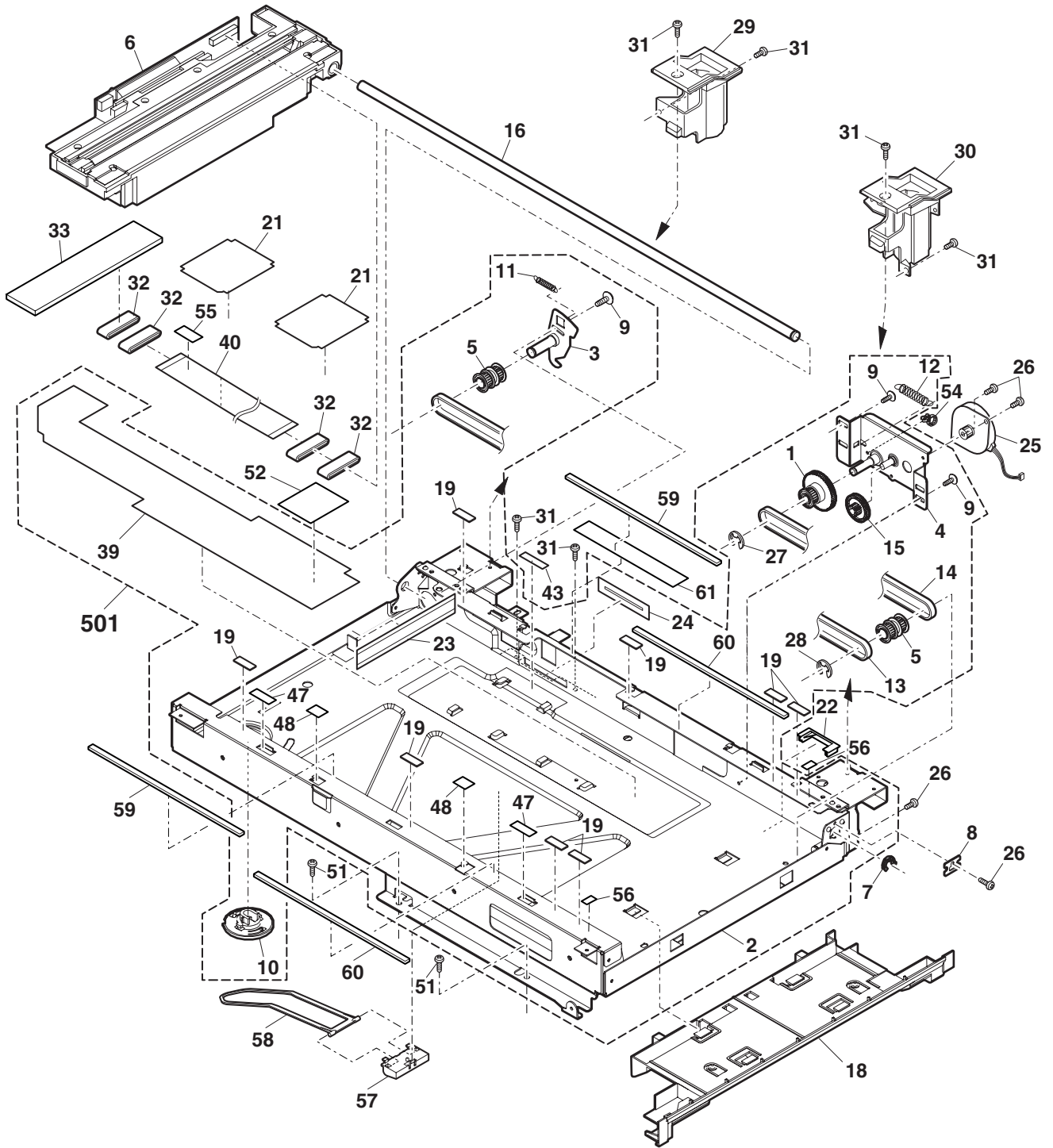




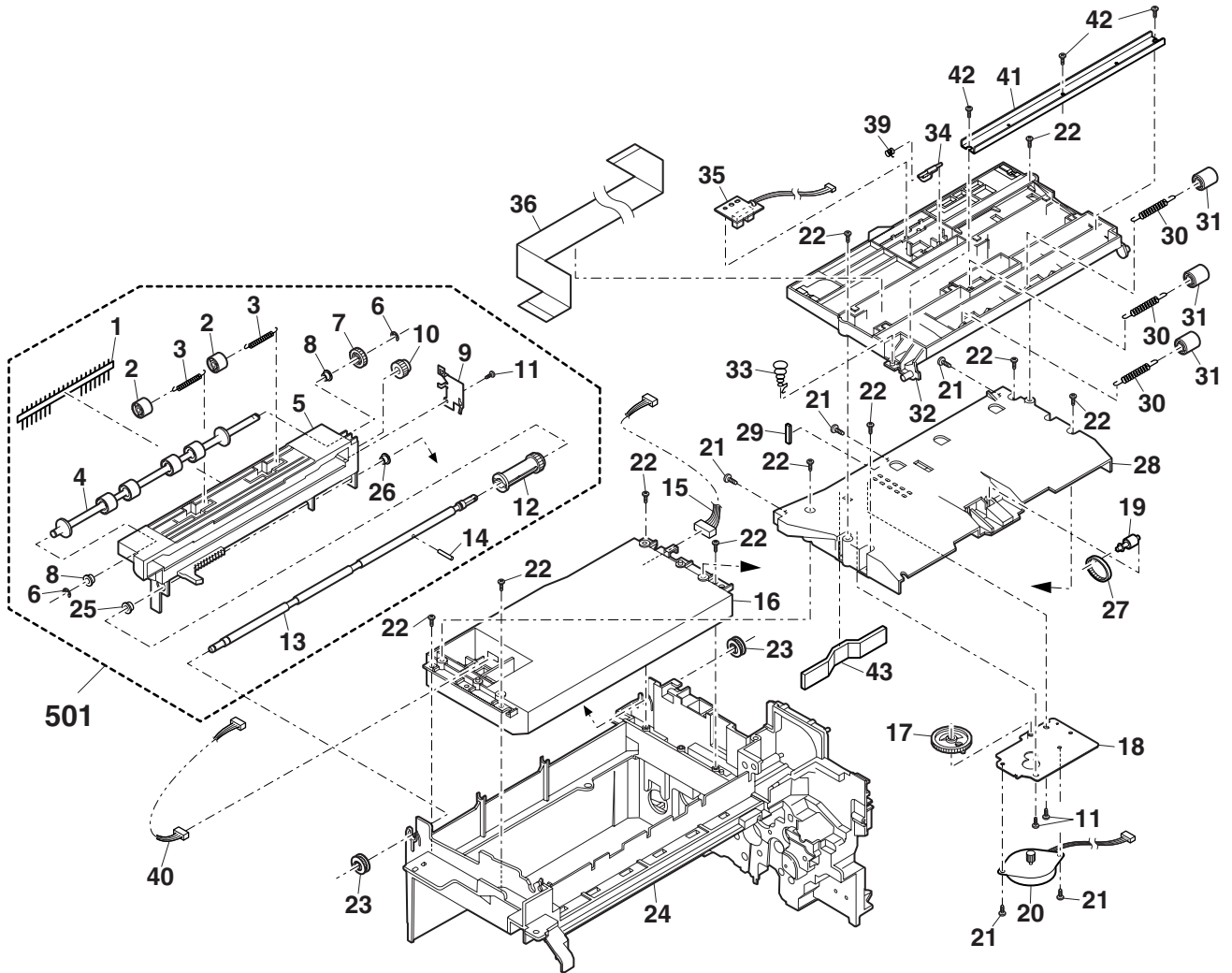






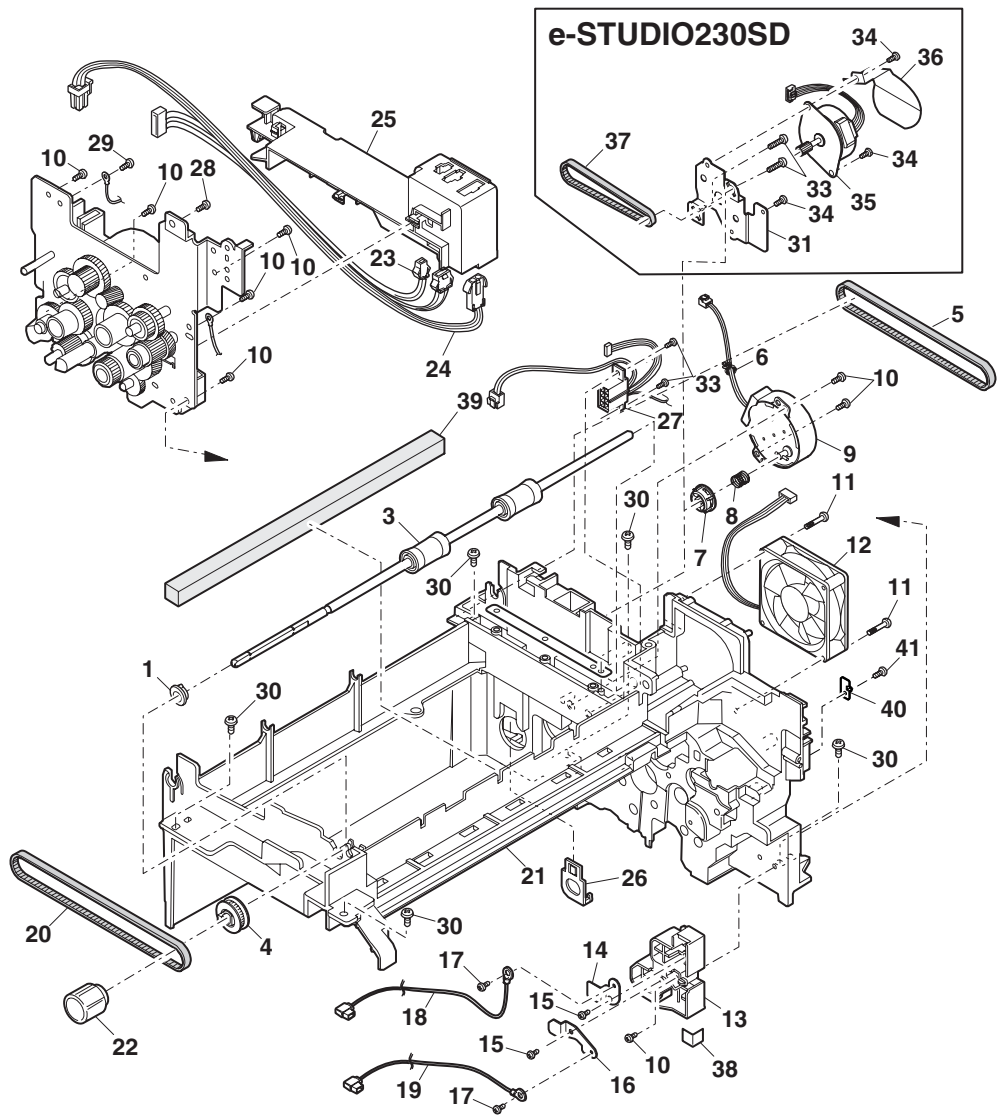


ITEM No.	PART No.	PART NAME	Q'TY / PAGE	Q'TY / PACK	P	I	R	BSI No.	TO	FROM	REMARKS
1	6LA58617900	PULLEY GEAR									
2	6LS10043000	SCANNER PLATE									
3	6LA58618400	TENSION PLATE									
4	6LS10046000	MOTOR FIXING PLATE									
5	6LA58618700	IDLE PULLEY									
6	6LS10109000	CARRIAGE UNIT									
7	6LA58625000	ROD HOLDER									
8	6LA58626000	ROD STOPPER									
9	6LA58799700	Screw									
10	6LS10208000	CARRIAGE LOCK									
11	6LA58627900	TENSION SPRING									
12	6LS10233000	MOTOR SPRING									
13	6LA58736000	BELT									
14	6LA58736100	BELT									
15	6LA58628700	IDLE GEAR									
16	6LA58802300	Slide shaft									
18	6LS10300000	PAPER GUIDE									
19	41330549300	GLASS CUSHION									
21	6LA58757800	CABLE FIX SHEET									
22	6LS10289000	FAN DUCT									
23	6LA58631800	CCD INSURATE ST									
24	6LA58631900	PROTECT SHEET									
25	6LS10357000	SCANNER MOTOR									
26	6LA58794400	Screw M3X6									
27	6LA58926000	E-ring									
28	6LA58928000	E-ring									
29	6LS10298000	HINGE GUIDE L									
30	6LS10299000	HINGE GUIDE R									
31	6LA58794500	Screw M3X8									
32	6LA58635500	FFC CORE									
33	6LS10315000	SCANNER CUSHION									
39	6LS10320000	SCANNER SHEET									
40	6LA58936900	CCD-MCU harness									
43	6LA58633800	CCD WH TAPE									
47 A	6LS10327000	DUST SHEET A									North America/Latin America
48 A	6LS10328000	DUST SHEET B									North America/Latin America
51	6LA58793800	Screw M4X12									
52	6LS10331000	FFC HOLD SHEET									
54	6LS10149000	SCANNER MOTOR HARNESS FIX									
55	6LS10314000	FFC CORE CUSHION									
56	6LS10311000	OC GASKET									
57	6LA58748100	P FIXING HOLDER									
58	6LA58750800	PAPER FIX ARM									
59 A	6LS10312000	DUST CUSHION									North America/Latin America
60 A	6LS10313000	DUST CUSHION									North America/Latin America
61 A	6LS10323000	DUST SHEET									North America/Latin America
501	6LS10044000	SCANNER PLATE UNIT									

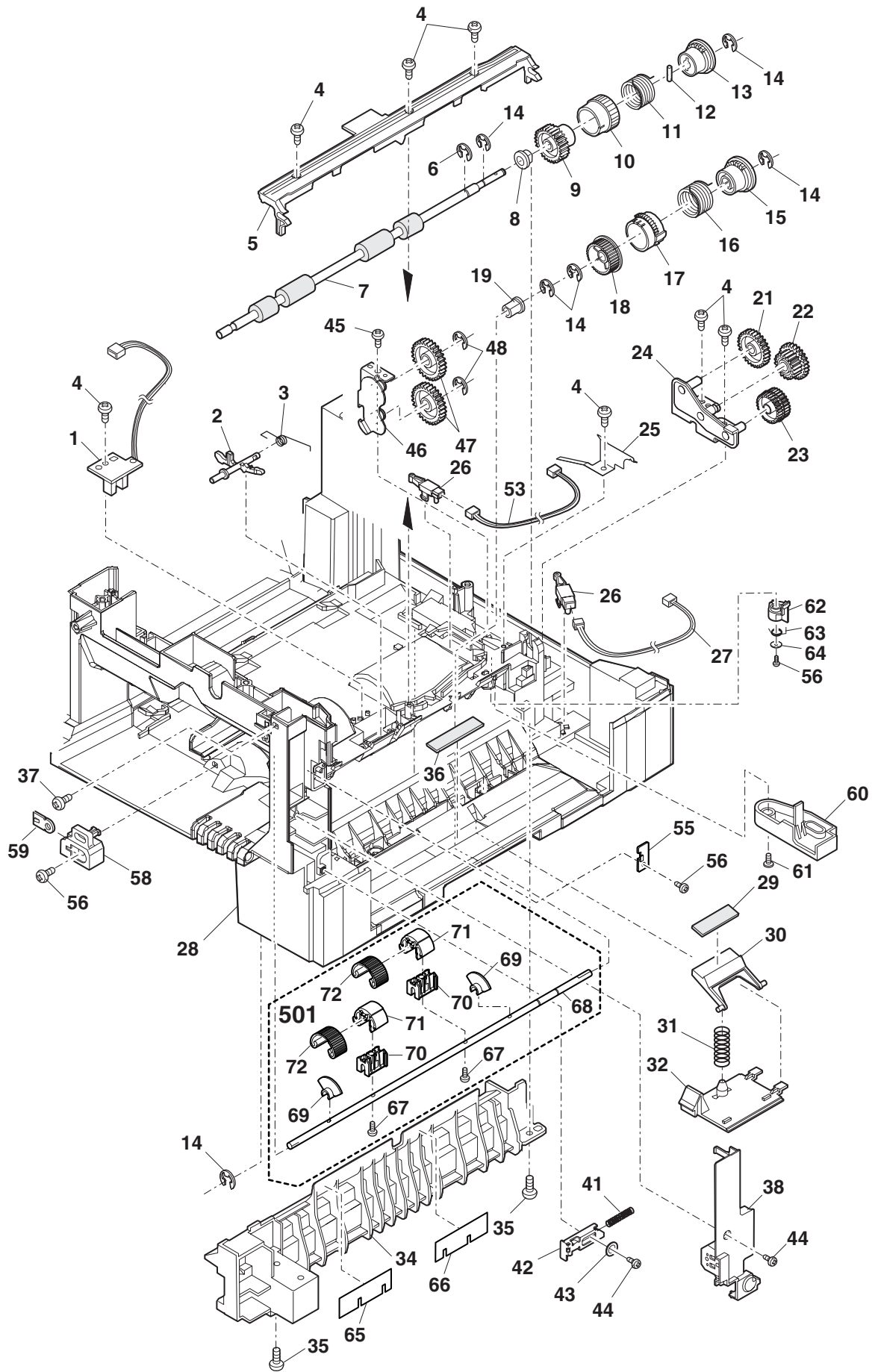


ITEM No.	PART No.	PART NAME	Q'TY / PAGE	Q'TY / PACK	P	I	R	BSI No.	TO	FROM	REMARKS
1	6LA58737500	DISCHARGE BRUSH									
2	6LA58752700	SUB ROLLER									
3	6LA58751800	SHIFTIER SPRING									
4	6LA58801500	SHIFTIER ROLLER									
5	6LS10209000	SLIDER N									
6	6LA58923000	E-ring									
7	6LA58752500	SHIFTIER GEAR									
8	6LS10385000	ROLLER BEARING									
9	6LA58748800	EARTH SPRING									
10	6LA58752300	SHIFTIER GEAR									
11	6LA58793100	Screw M3X6									
12	6LA58752400	SHIFTIER GEAR									
13	6LA58802500	Shifter shaft									
14	6LA58748200	SPRING PIN									
15	6LS10095000	LASER HARNESS									
16	6LS10112000	LSU									
17	6LS10243000	SHIFTER GEAR									
18	6LA58745500	ATTACHMENT UNIT									
19	6LA58737100	DELIVERY ROLLER									
20	6LA58738800	SHIFTIER MOTOR									
21	6LA58794400	Screw M3X6									
22	6LA58793300	Screw M3X10									
23	41330538100	PULLEY 22T									
24	6LS10152000	MIDDLE FRAME									
25	6LA58752000	PAWL BEARING									
26	6LA58751900	PF BEARING									
27	6LA58735800	DELIVERY BELT									
28	6LA58934500	L PAPER GUIDE									
29	6LA58756700	SILENCE CUSHION									
30	6LA58735700	TRANS ROLLER SP									
31	41330540400	PS UPPER ROLLER									
32	6LA58790000	U PAPER GUIDE									
33	6LS10228000	DELIVERY EARTH SPRING									
34	6LA58726300	ACTUATOR									
35	6LS10069000	POD SENSOR PWB									
36	6LS10092000	OP-MCU HARNESS									
39	6LA58751700	ACTUATOR SPRING									
40	6LS10094000	POLYGON HARNESS									
41	6LS10291000	UPPER PAPER GUIDE REINFOR									
42	6LA58793200	Screw M3X8									
43	6LS10293000	LOWER PAPER GUIDE REINFOR									
501	6LS10083000	SLIDER UNIT									

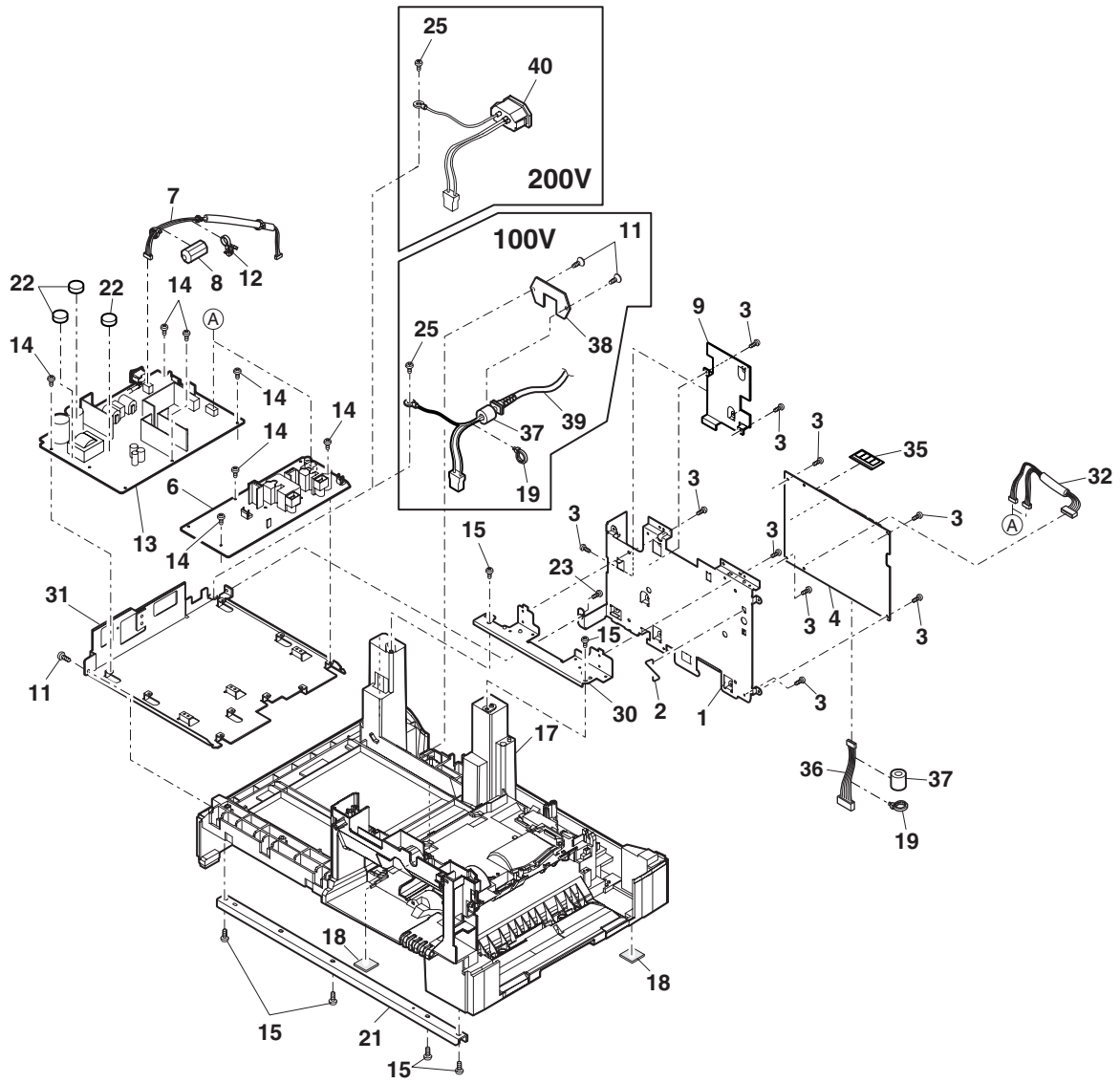




ITEM No.	PART No.	PART NAME	Q'TY / PAGE	Q'TY / PACK	P	I	R	BSI No.	TO	FROM	REMARKS
1	6LS10385000	ROLLER BEARING									
3	6LA58801100	Trans. Roller L									
4	41330538100	PULLEY 22T									
5 A	6LA58736600	DRIVE BELT									e-STUDIO203S
6	6LS10148000	SNAP BAND									
7	6LS10238000	HOPPER COUPLING S									
8	6LA58751400	HOPPER SPRING									
9	6LA58788000	Toner motor									
10 A	6LA58793300	Screw M3X10									e-STUDIO203SD
11	6LA58793600	Screw M3X30									
12	6LS10241000	EXHAUST FAN									
13	41330516900	TC HV HOLDER									
14	41330562400	BC HV ELECT PLT									
15	6LA58793100	Screw M3X6									
16	41330562300	TC HV ELECT PLT									
17	41330605400	SCREW M3X6									
18	6LS10086000	BC HARNESS									
19	6LA58622000	TC HARNESS									
20	6LA58736200	BELT 308									
21	6LS10152000	MIDDLE FRAME									
22	41330512900	ROTATION KNOB									
23	6LA58621500	PPD2 IF HARNESS									
24 A	6LS10088000	HEATER LAMP HARNESS 1 100									North America
24 B	6LS10098000	HEATER LAMP HARNESS 1 200									Europe
25	6LA58754400	HARNESS GUIDE									
26	6LS10161000	DV GUIDE PIN									
27	6LS10388000	DVS HARNESS									
28	6LA58934900	SCREW									
29	6LA58792200	Screw M3X8									
30	6LA58793800	Screw M4X12									
31 A	6LS10167000	DUP MOTOR HEAT SINK									e-STUDIO203SD
33 A	6LA58793300	Screw M3X10									e-STUDIO203SD
34 A	6LA58794400	Screw M3X6									e-STUDIO203SD
35 A	6LS10354000	DUP MOTOR									e-STUDIO203SD
36 A	6LS10330000	HARNESS PROTECTION SHEET									e-STUDIO203SD
37 A	6LA58736300	BELT									e-STUDIO203SD
38 A	6LA58757500	SHEET									e-STUDIO203SD
39	6LA58756800	CUSHION									
40	6LS10162000	FU FIXING PLATE R									
41	6LA58793200	Screw M3X8									

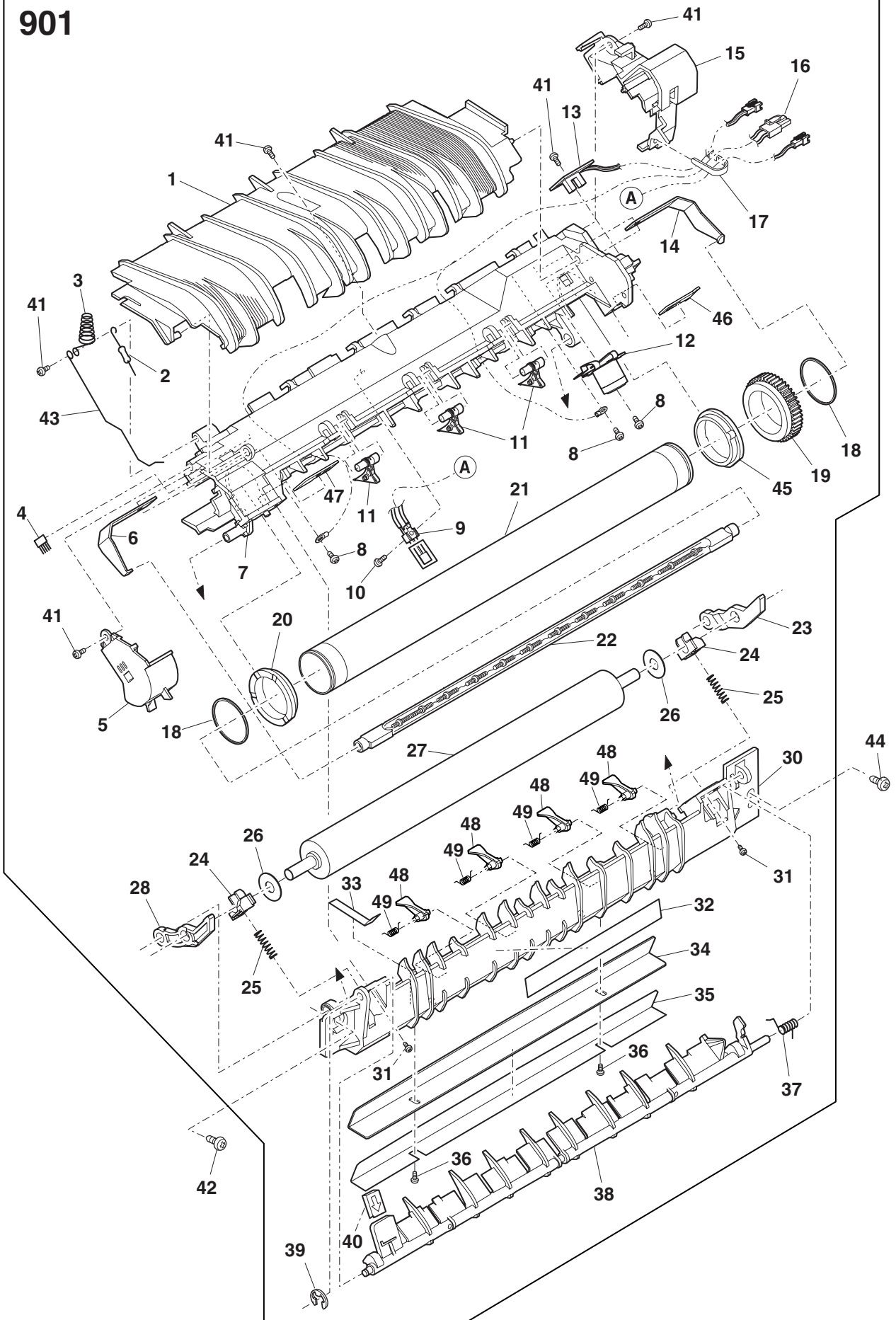


ITEM No.	PART No.	PART NAME	Q'TY / PAGE	Q'TY / PACK	P	I	R	BSI No.	TO	FROM	REMARKS
1	6LS10068000	PPD1 SENSOR PWB									
2	41330525000	PS ACTUATOR									
3	6LA58626900	PS ACTUATOR SP									
4	6LA58793300	Screw M3X10									
5	41330547200	TC F GUIDE U									
6	6LA58926000	E-ring									
7	6LS10266000	PS LOWER ROLLER									
8	41330533000	BEARING 6									
9	41330535500	CLUTH GEAR 26T									
10	41330550700	PIPE A									
11	41330529000	MF CLUTCH SP B									
12	6LA58922000	Spring pin 2X7									
13	41330514200	CLUTCH BOSS									
14	6LA58925000	E-ring									
15	6LA58933200	CLUTCH BOSS									
16	41330528700	CLUTCH SPRING									
17	41330550300	CLUTCH SLEEVE									
18	41330537700	CLUTCH GEAR 29T									
19	41330533700	BEARING 5									
21	41330535700	GEAR 33T									
22	41330535900	GEAR 21/29T									
23	41330535800	W GEAR 30T									
24	41330503100	PF PLATE 2									
25	41330518400	PS EARTH PLATE									
26	6LA58710700	TRAY DETECT SW									
27	6LA58620500	CED1 HARNESS									
28	6LS10142000	BASE PLATE									
29	41330556200	SHEET M1									
30	41330516800	PRESS. PLT HLD									
31	41330527400	PRESSURE PLT SP									
32	41330543200	MALTI COVER									
34	6LA58728400	BASE PLT RAIL R									
35	6LA58793800	Screw M4X12									
36	41330556300	PF SHEET									
37	6LA58792800	Screw M3X8									
38	6LA58753100	SENSOR COVER									
41	6LA58627300	F EXT. LV SP									
42	41330517500	F EXT LV PLT									
43	6LA58800300	Washer									
44	6LA58793300	Screw M3X10									
45	6LA58793800	Screw M4X12									
46	41330503500	JOINT GEAR PLT									
47	41330537800	2ND JOINT GEAR									
48	6LA58928000	E-ring									
53	6LA58746100	PD1 HARNESS									
55	6LS10163000	FU FIXING PLATE F									
56	6LA58793200	Screw M3X8									
58	41330517200	DV FIXING BLOCK									
59	6LA58673000	M4 PLATE									
60	41330544800	OP GEAR COVER									
61	6LA58799900	Screw									
62	41330525700	WIDTH ACTUATOR									
63	41330530000	W ACTUATOR SP									
64	6LA58800500	WASHER									
65	6LA58758400	RAIL R SHEET F									
66	6LA58758500	RAIL R SHEET R									
67	6LA58793400	Screw M3X12									
68	6LA58802400	PF roller shaft									
69	6LA58935500	ROLLER COLOR									
70	6LA58934700	ROLLER HOLDER									
71	6LA58934600	ROLLER BRACKET									
72	6LA58756500	ROLLER RUBBER									
501	6LA58746000	PF SHAFT UNIT									



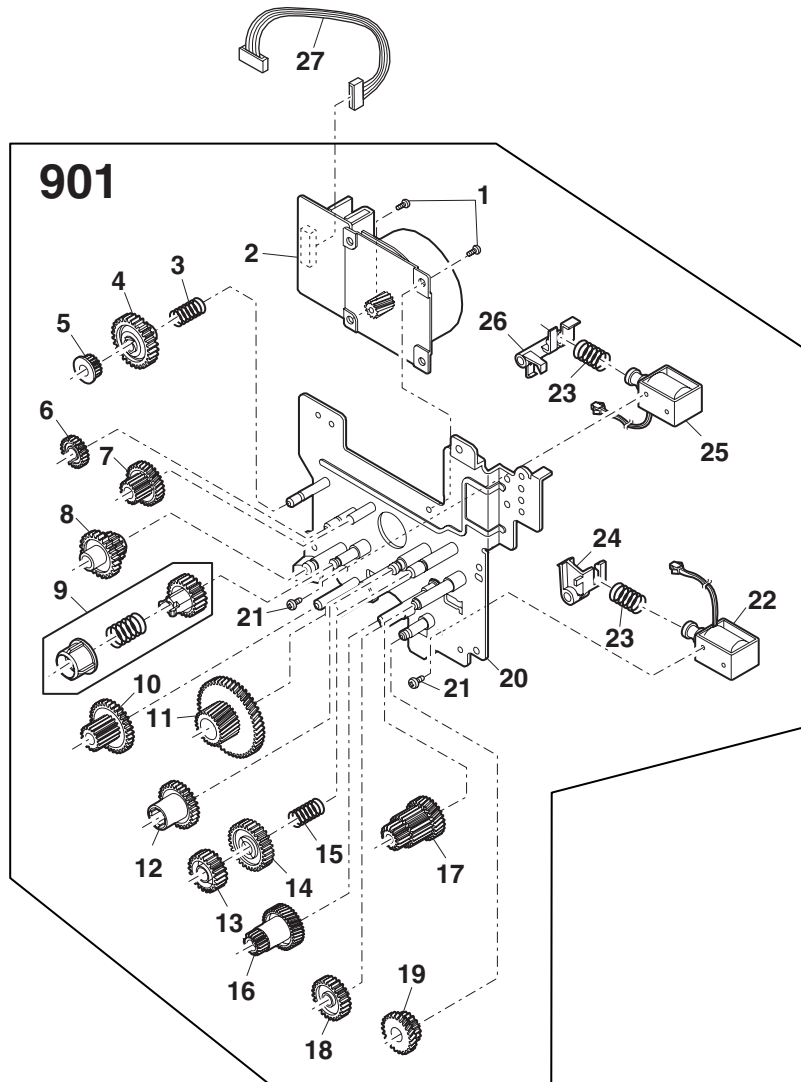


901

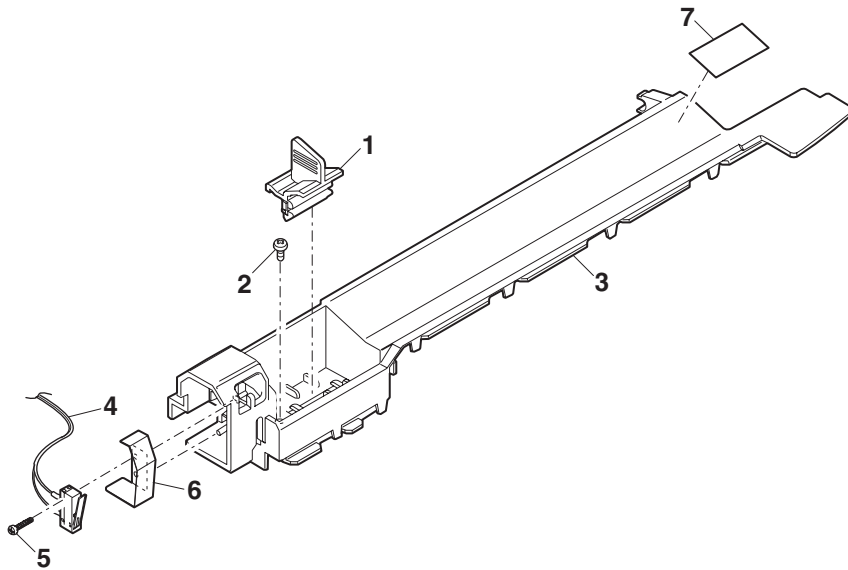


ITEM No.	PART No.	PART NAME	Q'TY / PAGE	Q'TY / PACK	P	I	R	BSI No.	TO	FROM	REMARKS
1	6LS10301000	U-TURN GUIDE LOWER									
2	6LS10380000	RESISTOR									
3	6LS10229000	FUSING UPPER EARTH SPRING									
4	6LA58629700	DISCHARGE BRUSH									
5	6LS10286000	FUSING COVER F									
6	41330530400	COPY LAMP SP F									
7	6LS10154000	FUSING UPPER FRAME									
8	6LA58799300	Screw									
9	6LS10353000	THERMISTOR									
10	6LA58792900	Screw M3X10									
11	6LA58791100	SEPARATOR PAWL									
12	6LS10085000	FU THERMOSTAT UNIT									
13	6LS10070000	PPD2 SENSOR PWB									
14	41330530500	COPY LAMP SP R									
15	6LA58753300	FUSING COVER R									
16 A	6LS10089000	HEATER LAMP HARNESS 2 100									North America
16 B	6LS10099000	HEATER LAMP HARNESS 2 200									Europe
17	41330513400	WIRE BAND									
18	41330521600	ROLLER STOPPER									
19	41330537200	FUSHING GER 45T									
20	6LS10237000	FUSING BEARING									
21	6LS10264000	HEART ROLLER									
22 A	6LA58637300	HEATER LAMP									100V
22 B	41330566600	HEATER LAMP									200V
23	6LS10202000	PRESSURE RELEASE LEVER R									
24	6LS10236000	PRESSURE BEARING N									
25	6LS10211000	PRESSURE SPRING									
26	6LA58800400	Washer									
27	6LS10267000	PRESSURE ROLLER									
28	6LS10201000	PRESSURE RELEASE LEVER F									
30	6LS10155000	FUSING LOWER FRAME									
31	6LA58894000	Screw									
32	6LS10368000	HIGH TEMPERATURE CAUTION									
33	6LS10321000	PG EARTH SHEET CN									
34	41330546600	FUSING F PA GUD									
35	41330552000	FRONT PG SHEET									
36	6LA58800000	Screw									
37	6LA58627800	GATE SPRING									
38	6LS10174000	REVERSAL GATE									
39	41330609200	E TYPE RING									
40	41330552500	HANDLE LABEL									
41	6LA58793200	Screw M3X8									
42	6LA58792800	Screw M3X8									
43	6LA58726200	FU EARTH WIRE L									
44	6LS10381000	SCREW									
45	41330533800	FUSING BEARING									
46	6LS10166000	FIXING PLATE R									
47	6LS10165000	FIXING PLATE F									
48	6LS10344000	LOWER PAWL									
49	6LS10223000	LOWER PAWL SPRING									
901 A	6LS10114000	FUSING UNIT									100V
901 B	6LS10113000	FUSING UNIT									200V

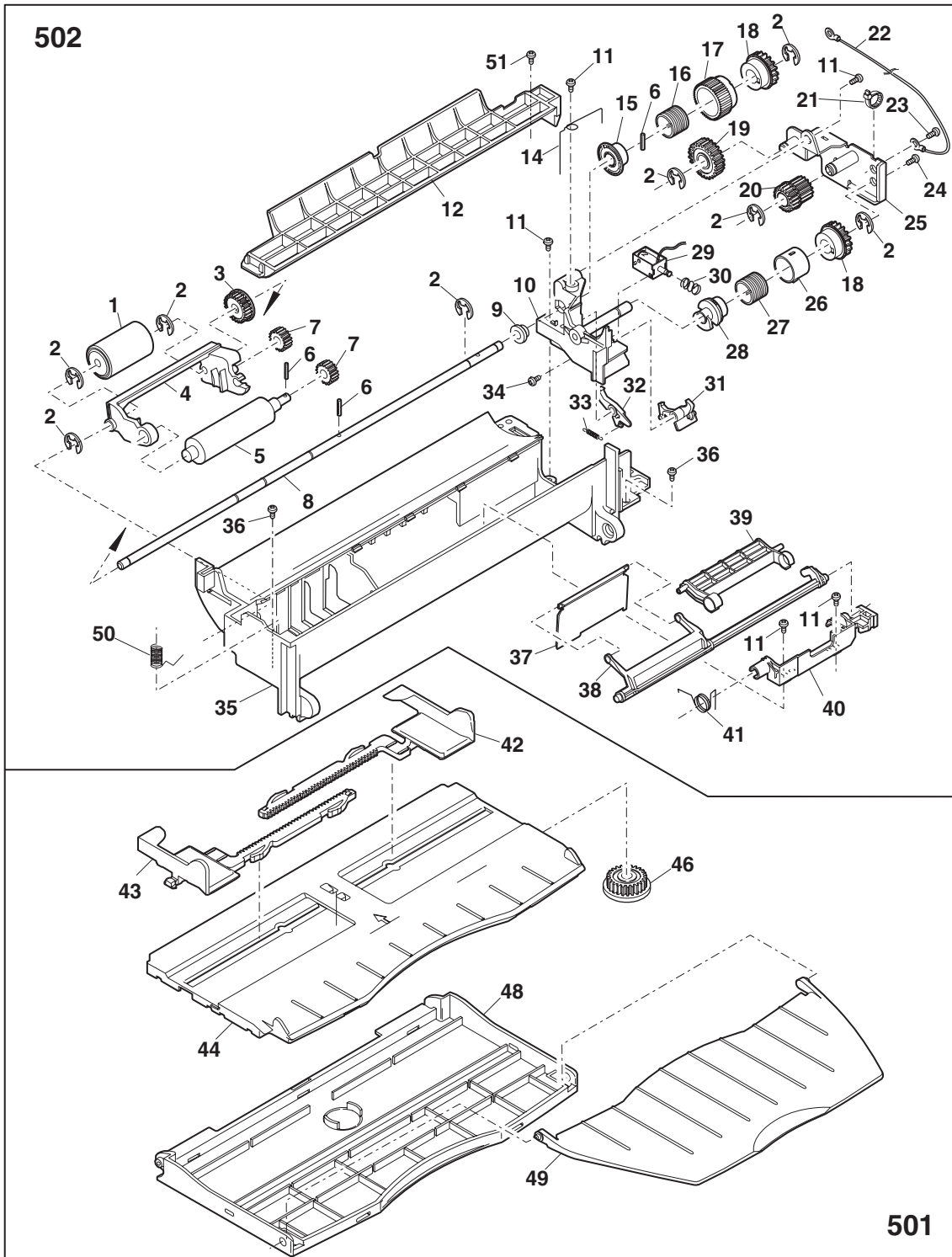




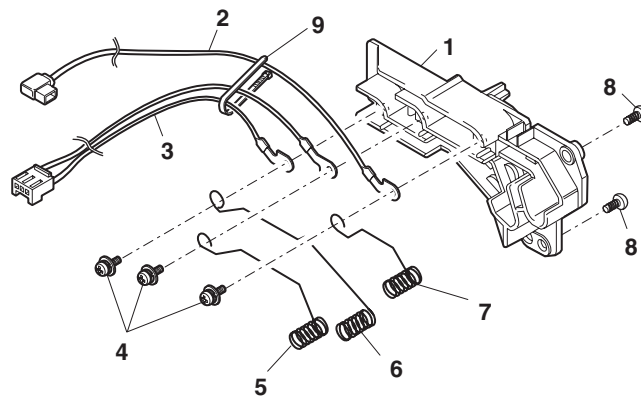






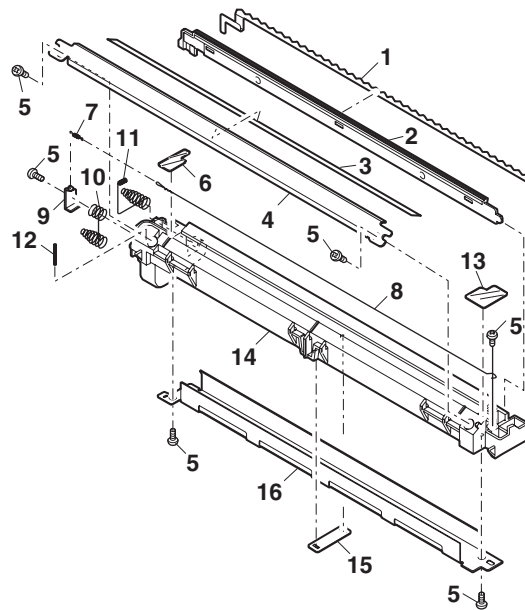


ITEM No.	PART No.	PART NAME	Q'TY / PAGE	Q'TY / PACK	P	I	R	BSI No.	TO	FROM	REMARKS
1	6LA58692600	MPF ROLLER									
2	6LA58925000	E-ring									
3	41330537600	GEAR 20T									
4	6LA58726700	ARM C									
5	6LA58801400	PICK-UP ROLLER									
6	6LA58922000	Spring pin 2X7									
7	41330537400	GEAR 16T									
8	6LA58802600	Cam boss A shaf									
9	41330514600	M BUSHING C									
10	41330514300	MULTI F BRACKET									
11	6LA58793200	Screw M3X8									
12	6LA58754500	DUP UPPER GUIDE									
14	41330527600	M FEED GND SP									
15	41330514200	CLUTCH BOSS									
16	41330528900	CLUTCH SPRING A									
17	41330550700	PIPE A									
18	6LA58624400	CAM BOSS A1R									
19	41330537300	GEAR 27T									
20	41330537500	GEAR 20.20MXL									
21	41330513400	WIRE BAND									
22	6LA58622300	M FEED GND WH									
23	6LA58794400	Screw M3X6									
24	6LA58792700	Screw M3X6									
25	41330503000	PAPER PLATE 1									
26	6LA58700800	CAM CLH SLEEVE									
27	41330529000	MF CLUTCH SP B									
28	41330514000	CAM BOSS B									
29	6LA58805700	MF solenoid									
30	41330529100	SPRING B									
31	41330557700	MPF PAWL B									
32	41330557600	MPF PAWL A									
33	41330529300	PAWL A SPRING									
34	6LA58792200	Screw M3X8									
35	6LS10153000	MULTI FRAME									
36	6LA58793800	Screw M4X12									
37	41330521800	STOPPER PLATE									
38	41330524400	ARM B									
39	41330524300	ARM A									
40	6LA58750900	ARM HINGE									
41	41330527500	ARM C SPRING									
42	6LS10297000	MB SIDE GUIDE R									
43	6LS10296000	MB SIDE GUIDE L									
44	6LS10284000	MULTI TRAY FRONT COVER									
46	41330535600	M FEED GEAR									
48	6LS10177000	MULTI TRAY 1									
49	6LS10178000	MULTI TRAY 2									
50	41330528400	SPRING									
51	6LA58793300	Screw M3X10									
501	6LS10084000	MULTI MANUAL PAPER FEED T									
502	6LS10031000	MULTI MANUAL PAPER FEED U									

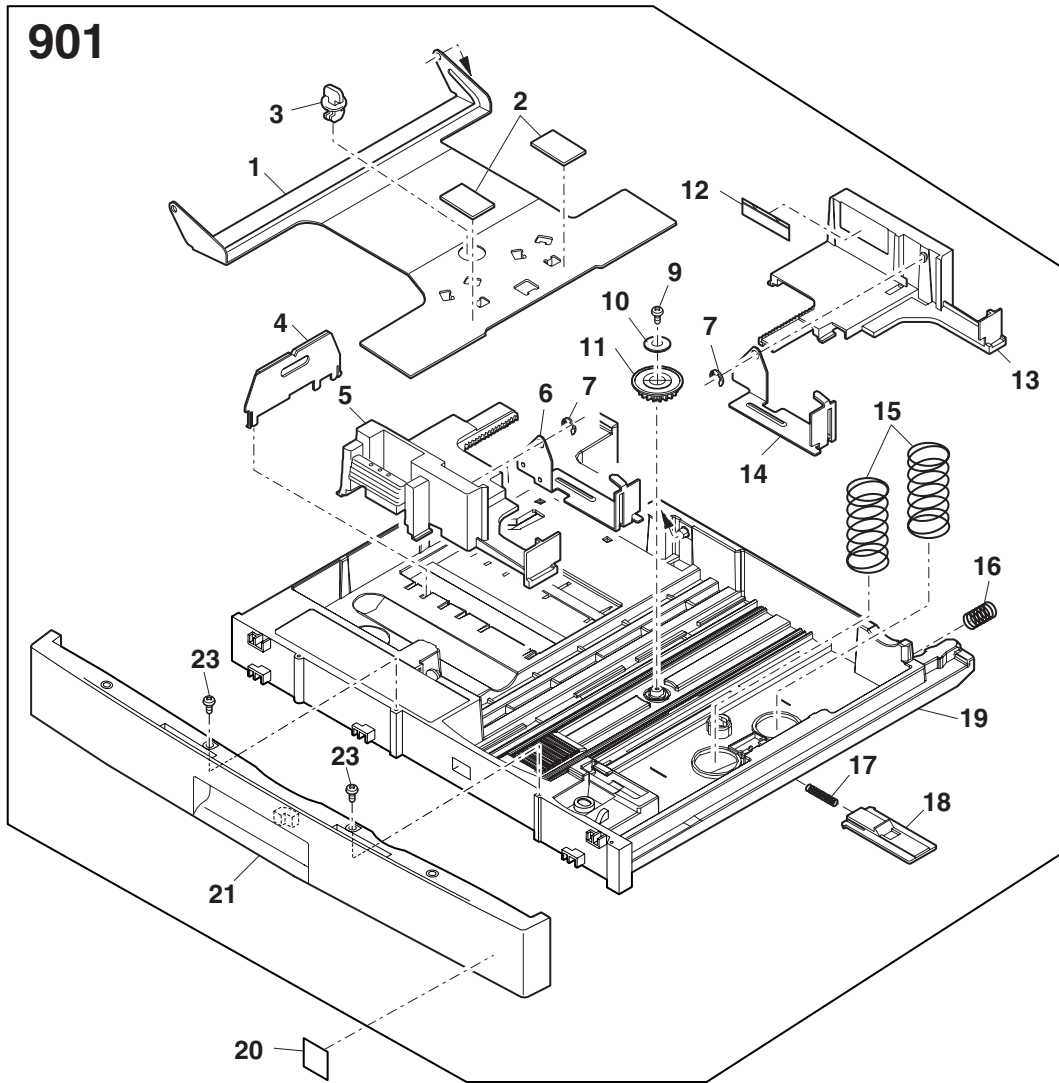




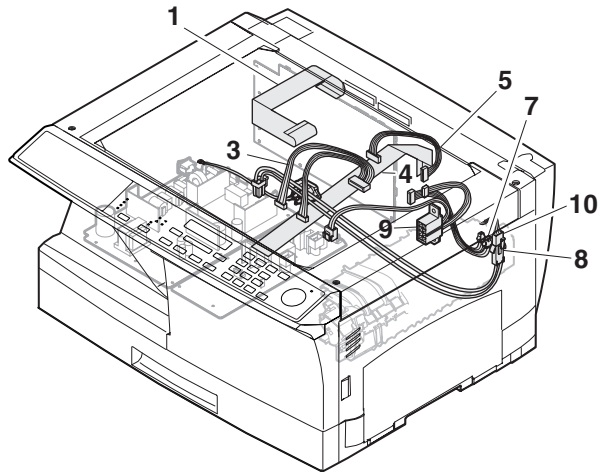




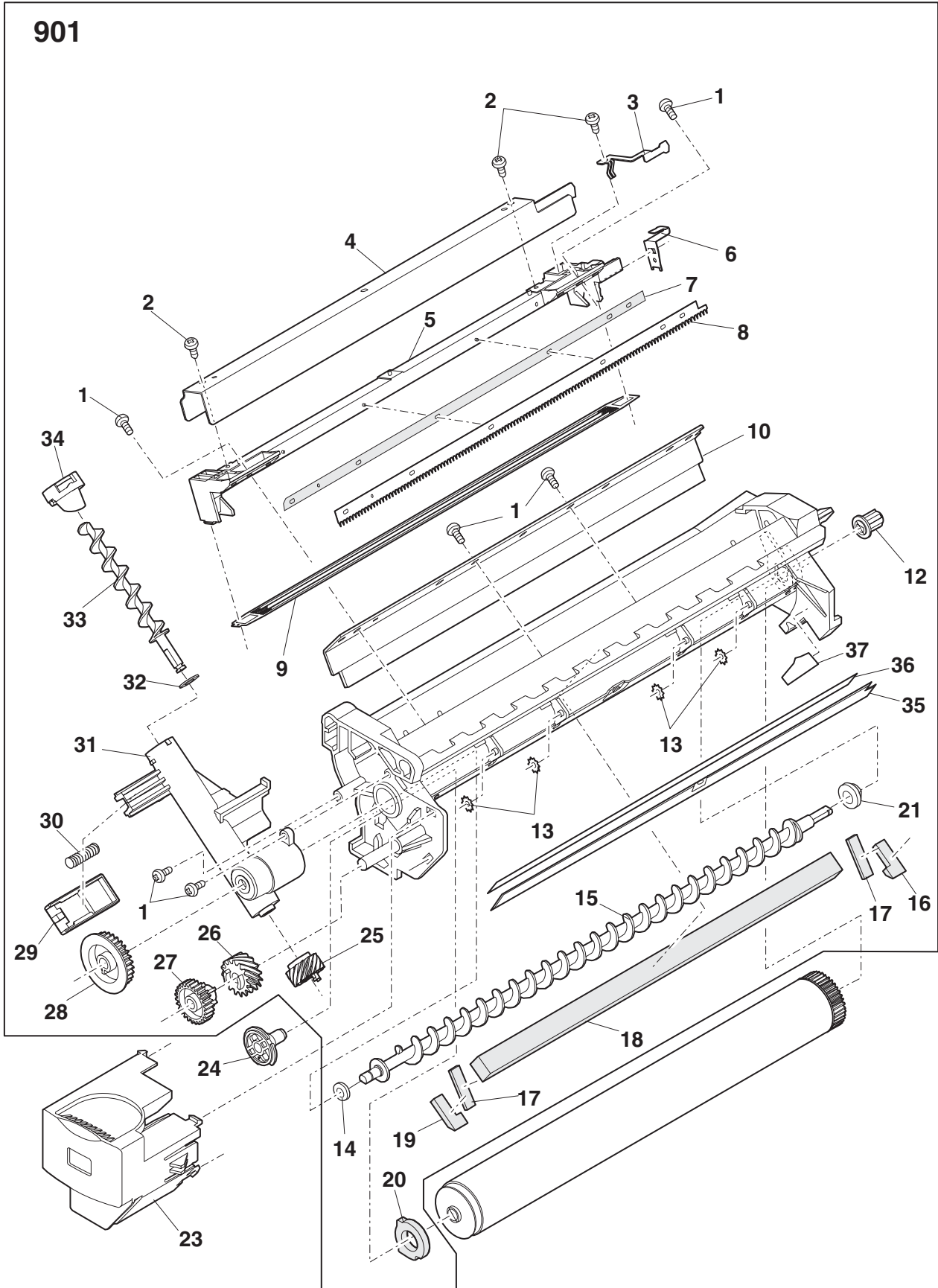






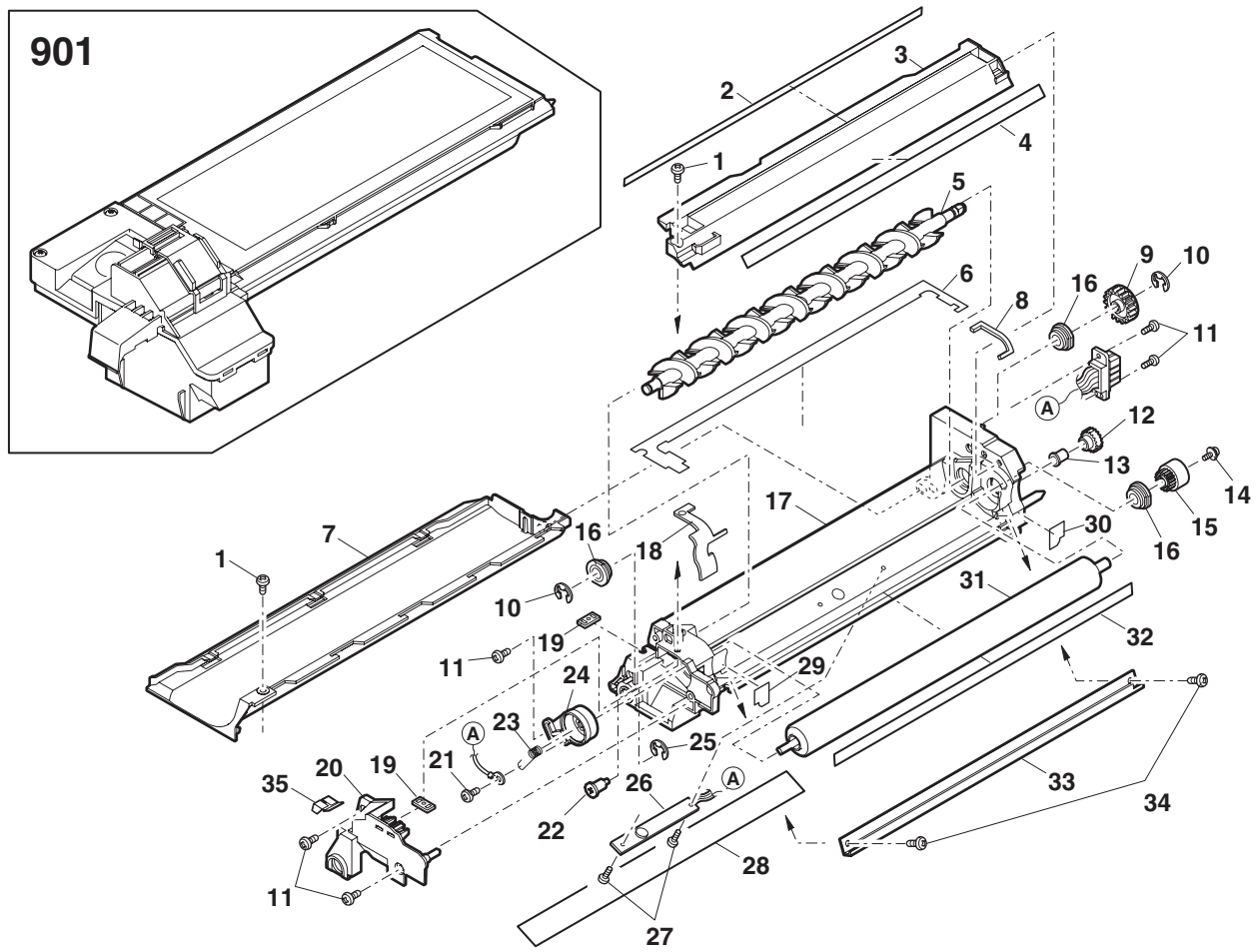




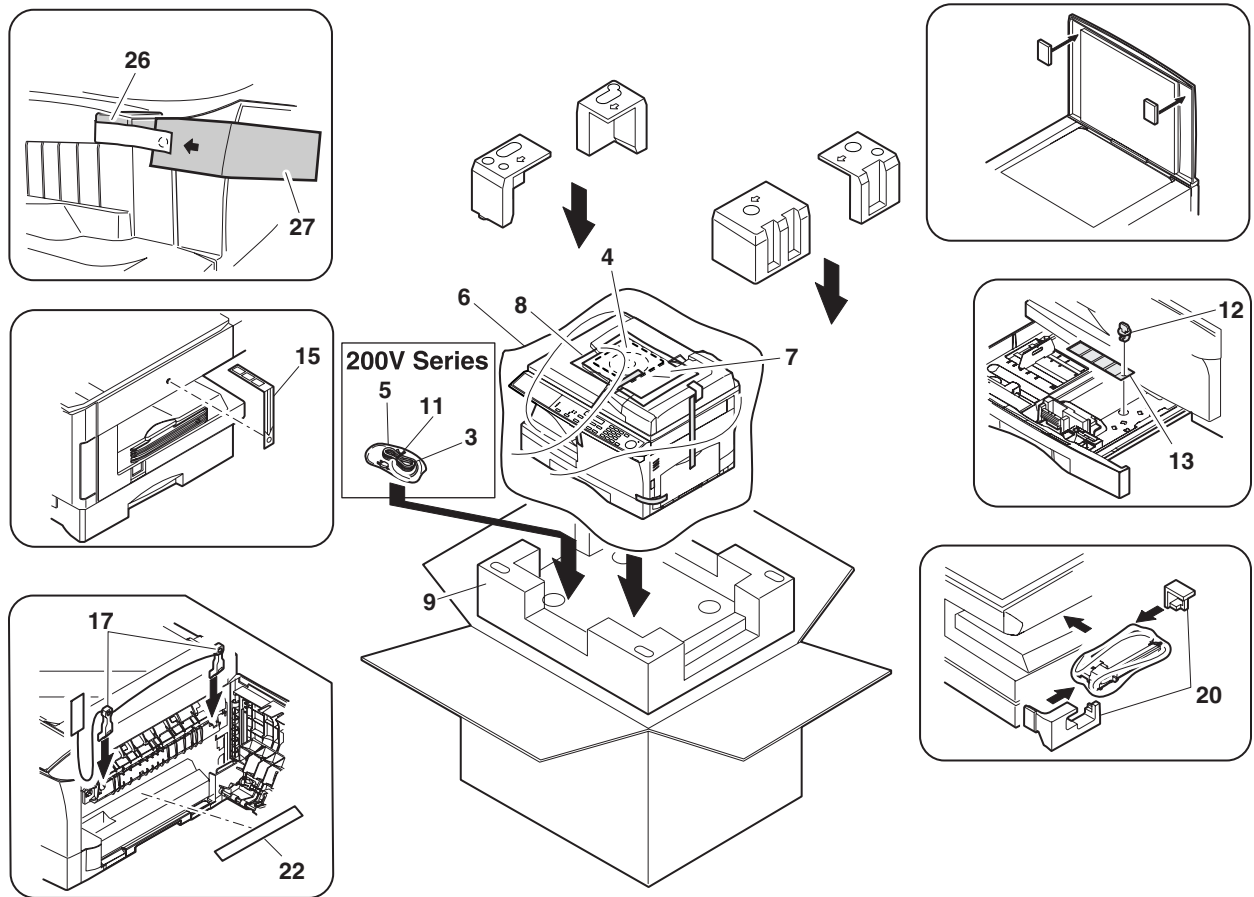














**TOSHIBA**

**TOSHIBA TEC CORPORATION**

2-17-2, HIGASHIGOTANDA, SHINAGAWA-KU, TOKYO, 141-8664, JAPAN