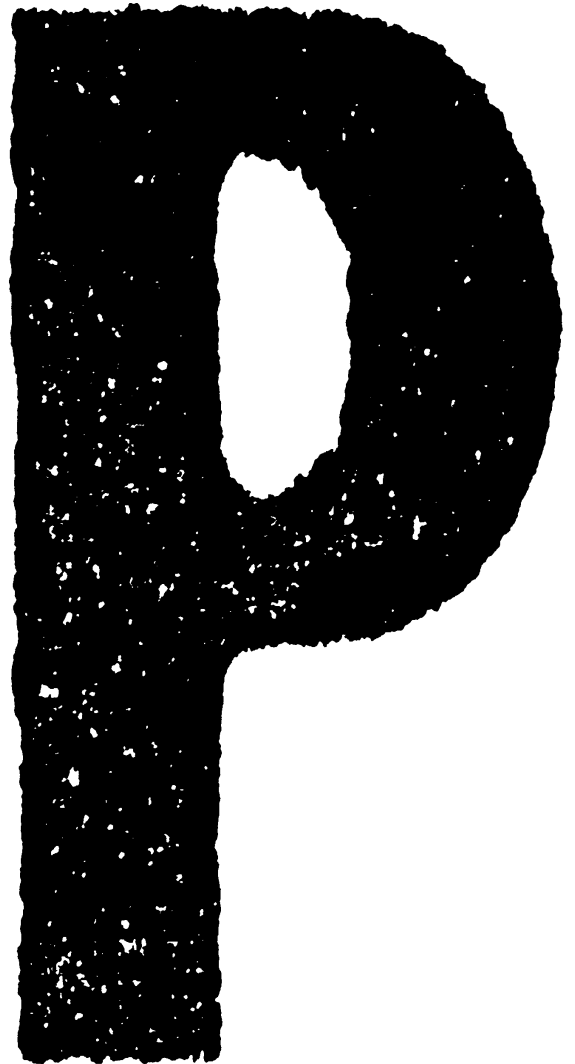


SERVICE PARTS LIST

MULTIFUNCTIONAL DIGITAL SYSTEMS

e-STUDIO202s



© 2008 TOSHIBA TEC CORPORATION All rights reserved

Under the copyright laws, this manual cannot be reproduced in any form without prior written permission of TOSHIBA TEC CORPORATION. No patent liability is assumed, however, with respect to the use of the information contained herein.

EXPLANATION OF SERVICE-PARTS LIST

1. HOW TO READ THE PARTS LIST

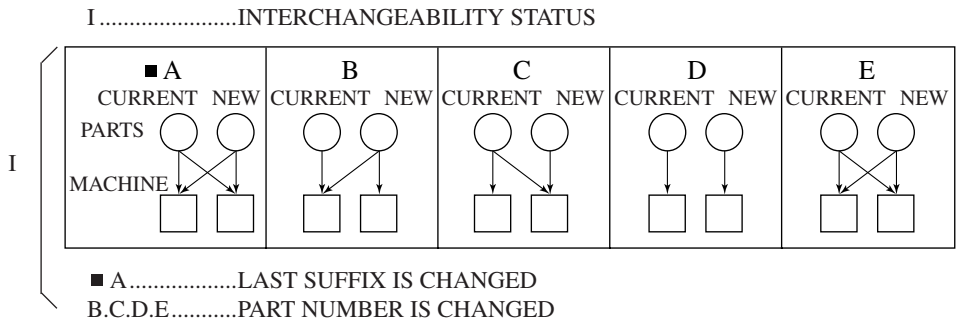
- (1) Number of pieces
The number of pieces in the list denotes total pieces used per unit. But the numbers in the list for PACKING MATERIAL and ACCESSORY denote total pieces used per machine.
- (2) One pack of screws in the list includes 50 pieces.
- (3) ABBREVIATED CODES

QTY/PAC

- QTY.....one piece
- PAC.....one pack
- 1/P.....one piece packed in polyethylene bag
- 1/S.....one piece packed in special pack
- 1/C.....one piece packed in carton box
- 1/PP.....one piece packed in paper and polyethylene bag
- 1/KP.....one piece packed in polyethylene bag with cardboard
- 1/D.....one piece packed in polyethylene-cushion bag
- 1/SB.....one piece packed in shielding bag
- N/A.....not available

P

- P.....PURPOSE
- A.....ADD
- B.....DELETE
- C.....CHANGE
- D.....QTY, CHANGE
- E.....MISENTRY
- F.....OMISSION



2. HOW TO PLACE ORDER FOR PARTS

- (1) The parts handled as service parts are only those with their "QTY/PACK" column listed with a quantity other than "N/A***" or "SUPPLY".
Those parts with "N/A***" are listed only for the purpose of showing the mechanical construction, those listed with "SUPPLY" are handled only as a sales item, and therefore both types of parts are not supplied as service parts.
- (2) Orders for any parts which form a component of a semi-assembled unit are not acceptable.
Note: All the screws and nuts used are ISO standard.

3. REGION

NAD.....115V
50/60Hz, NORTH AMERICA, SOUTH AMERICA

TWD.....110/220V
50/60Hz, TAIWAN

SAD.....127V/60Hz, SAUDI ARABIA

ASD.....220-240V
50/60Hz, ASIA, SOUTH AMERICA, etc.

ASU.....220-240V
50/60Hz, ASIA, etc.

AUD.....220-240V
50/60Hz, AUSTRALIA

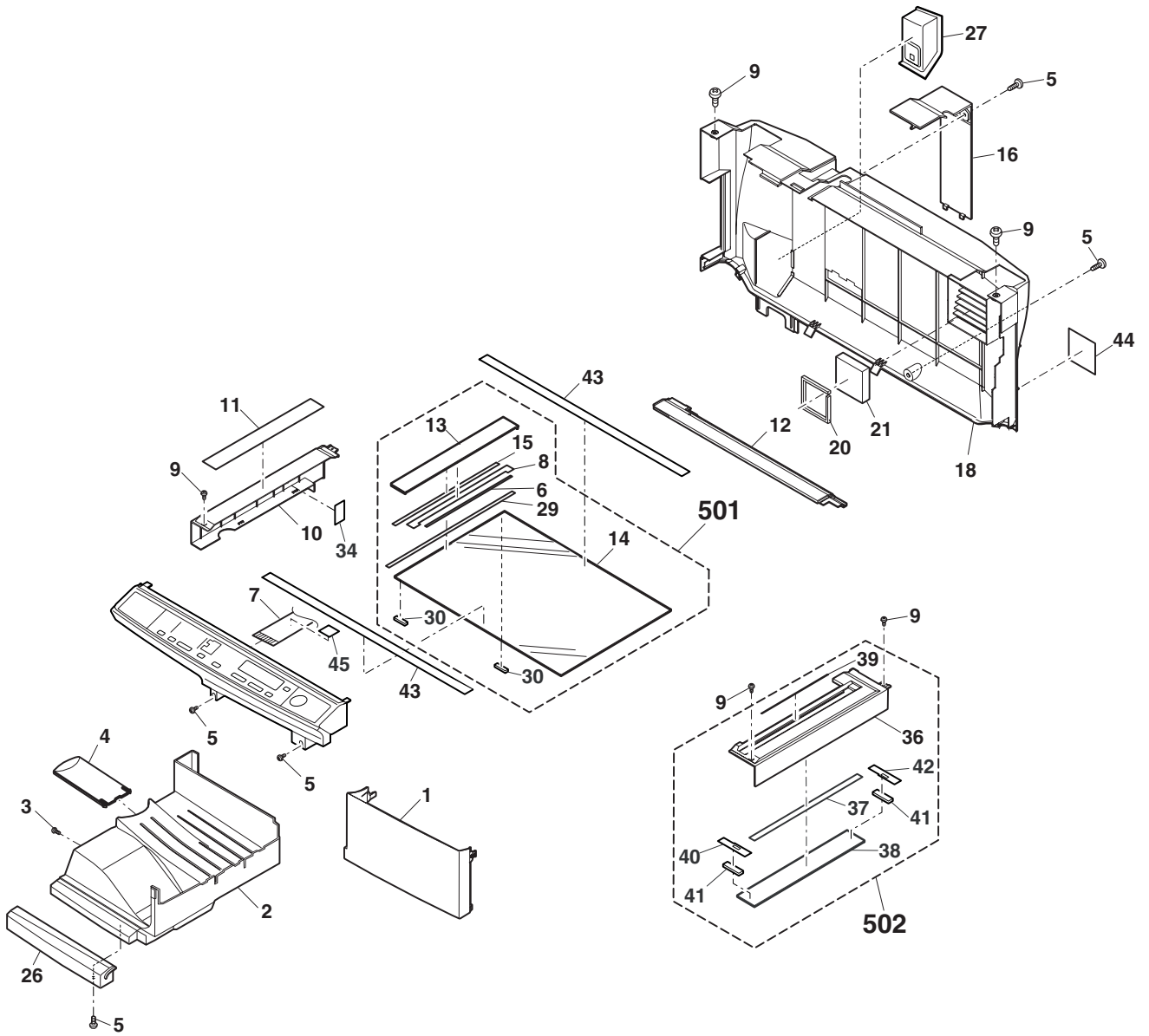
MJD.....220-240V
50/60Hz, EUROPE

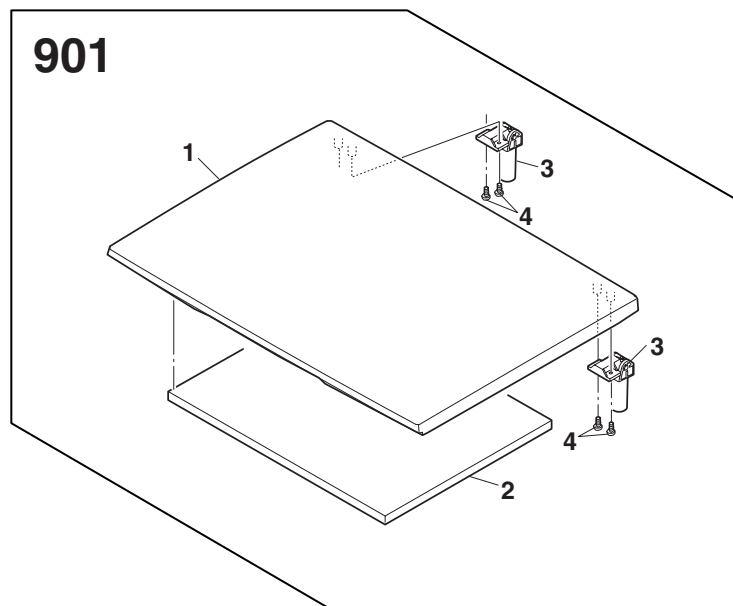
CND.....220-240V
50/60Hz, CHINA

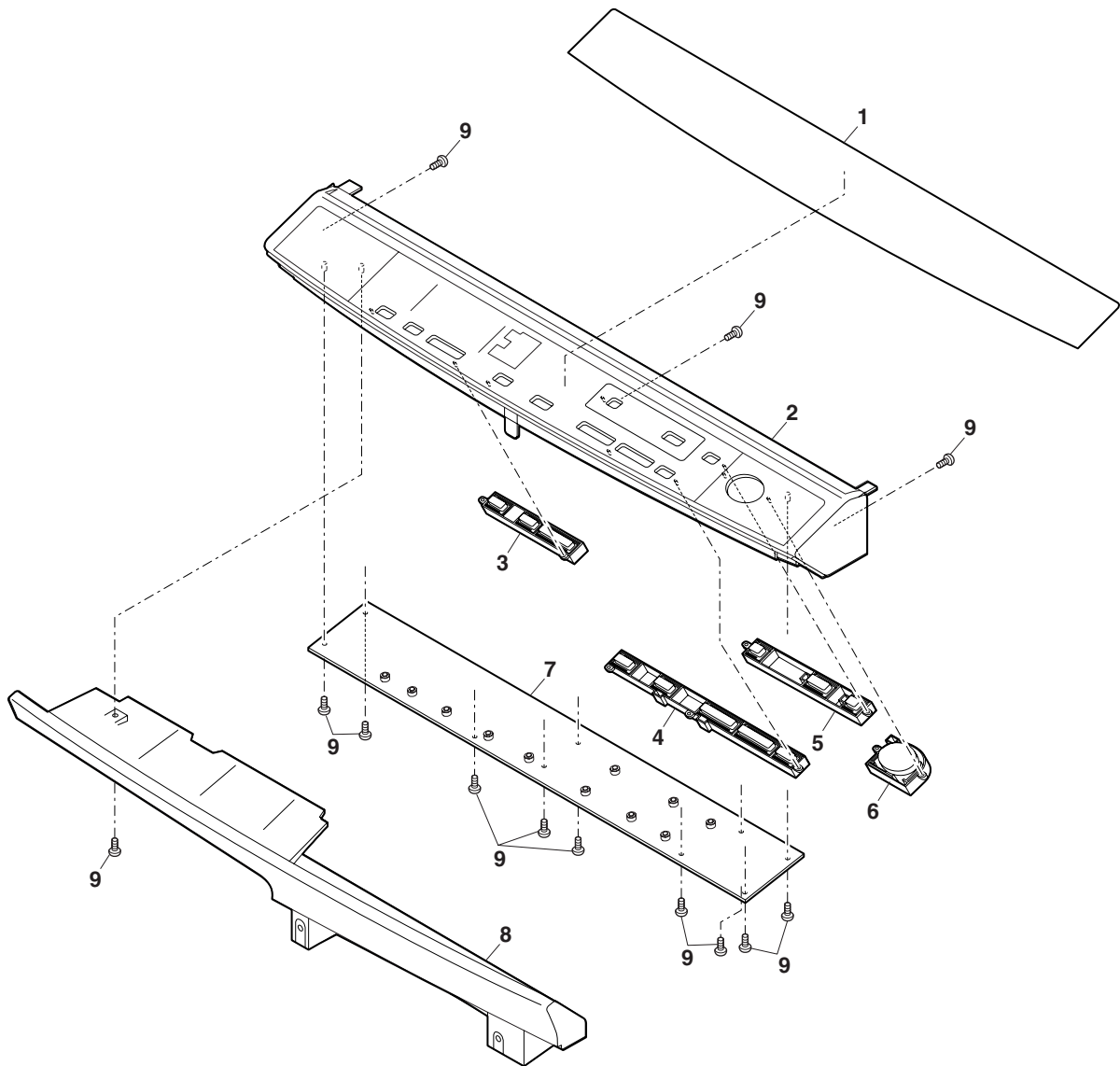
KRD.....220-240V
50/60Hz, KOREA

CONTENTS

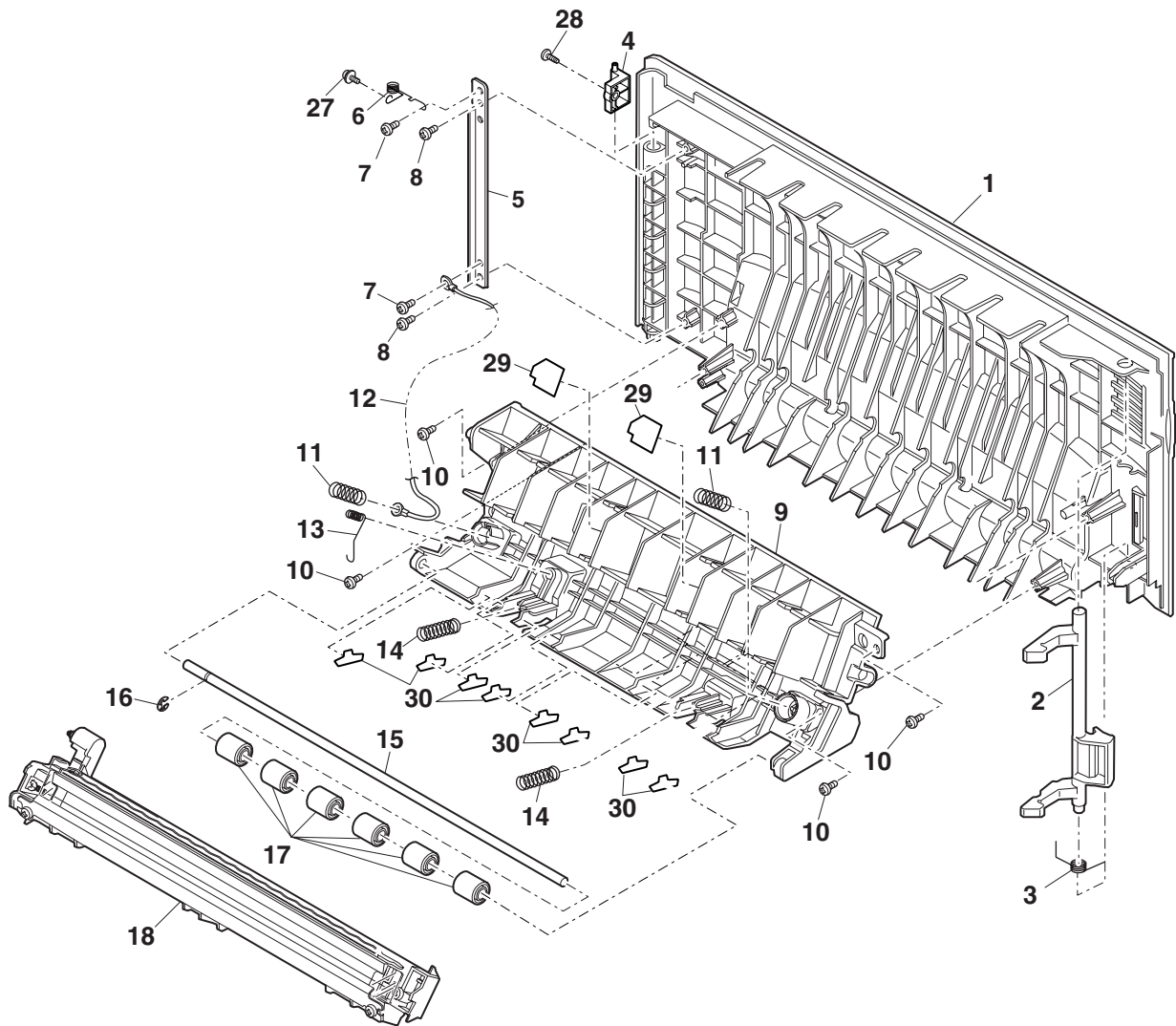
EXTERIORS	1
ORIGINAL COVER UNIT	2
OPERATION PANEL.....	3
SIDE DOOR UNIT.....	4
OPTICAL FRAME	5
LSU SECTION	6
MIDDLE FRAME	7
BASE PLATE UNIT 1	8
BASE PLATE UNIT 2	9
FUSING UNIT	10
DRIVE UNIT.....	11
MULTI MANUAL PAPER FEED COVER UNIT	12
MULTI MANUAL PAPER FEED UNIT	13
SOCKET HOLDER UNIT	14
TC CASE UNIT	15
250 SHEETS TRAY.....	16
HARNESS.....	17
PROCESS UNIT	18
DV CARTRIDGE UNIT.....	19
PACKING MATERIAL & ACCESSORIES.....	20

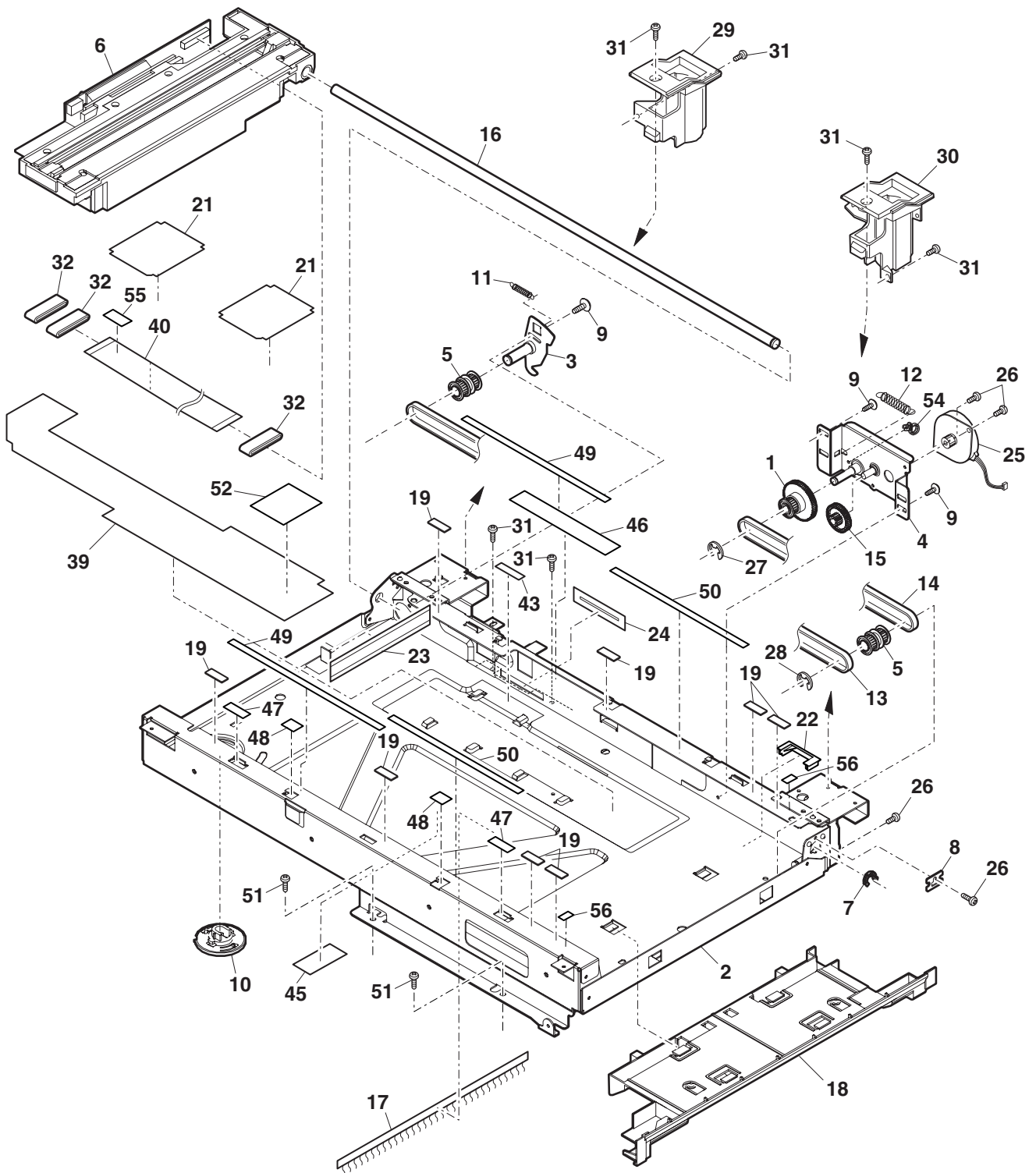




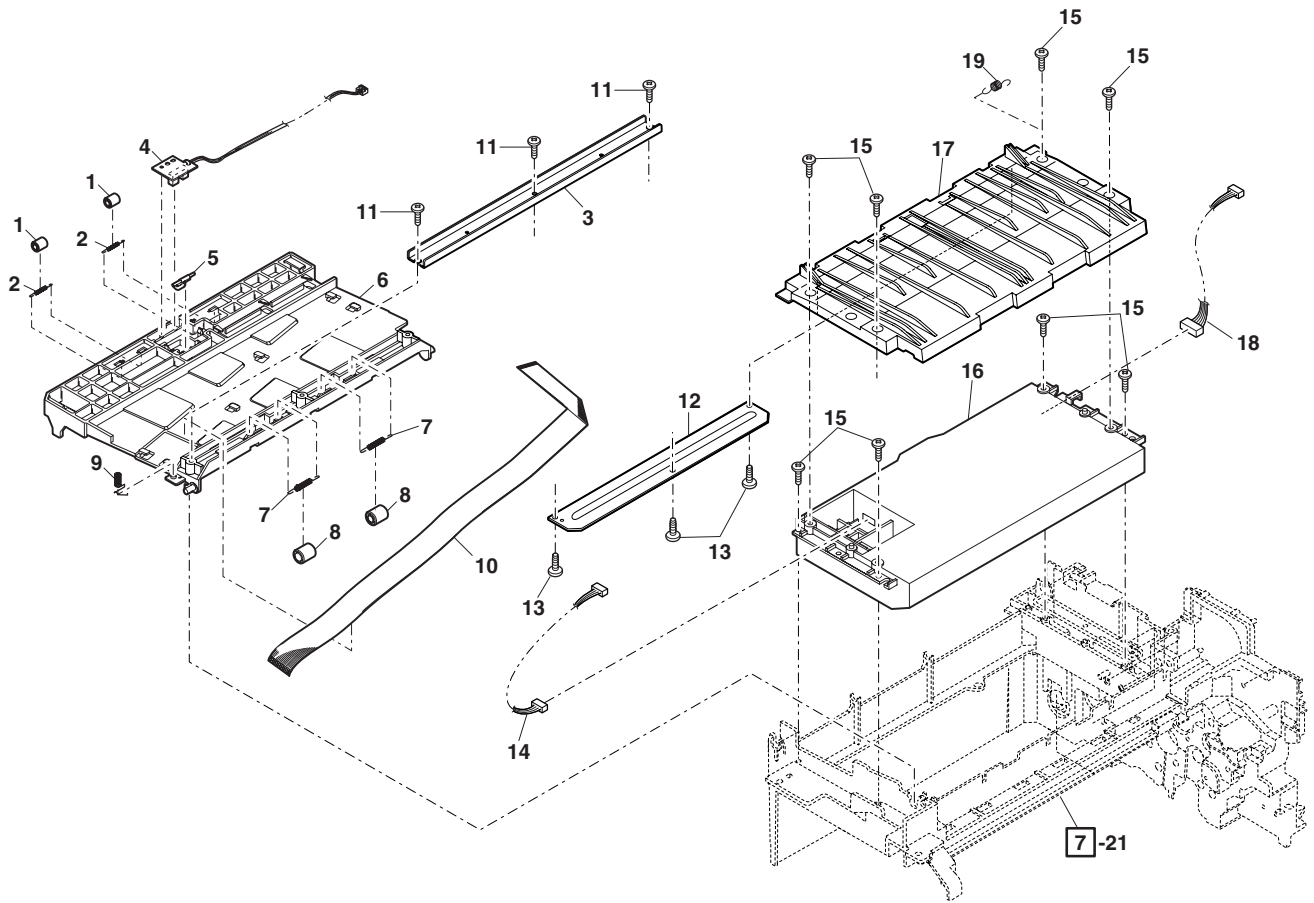


ITEM No.	PART No.	PART NAME	Q'TY / PAGE	Q'TY / PACK	P	I	R	BSI No.	TO	FROM	REMARKS
1 A	6LS10387000	KEY SHEET									North America,Brazil Other Countries
1 B	6LS10396000	KEY SHEET									
2	6LS10117000	OPERATION PANEL CAB									
3	6LS10391000	OPERATION KEY C									
4	6LS10390000	OPERATION KEY B									
5	6LS10389000	OPERATION KEY A									
6	6LS10000000	START KEY AS									
7	6LS10071000	OPERATION PWB									
8	6LS10116000	OPERATION CABINET									
9	6LA58793200	Screw M3X8									

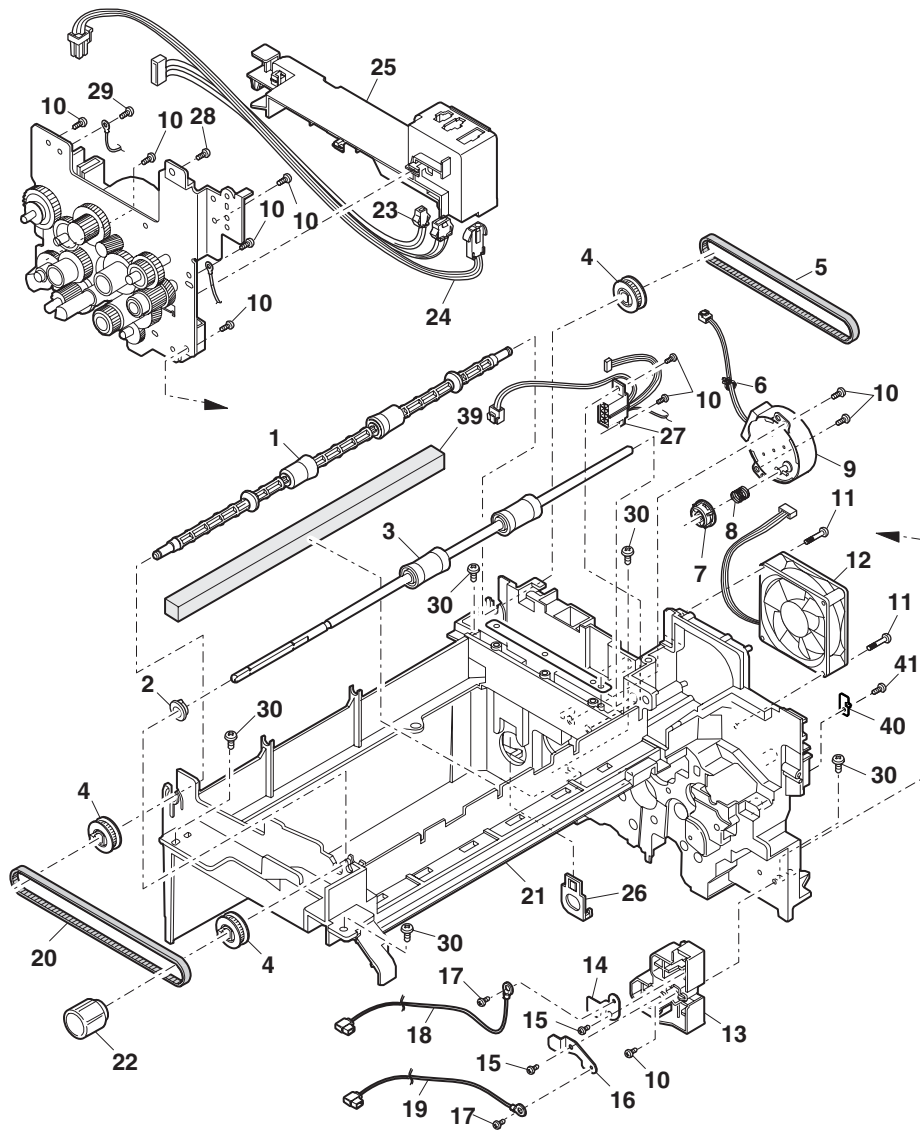




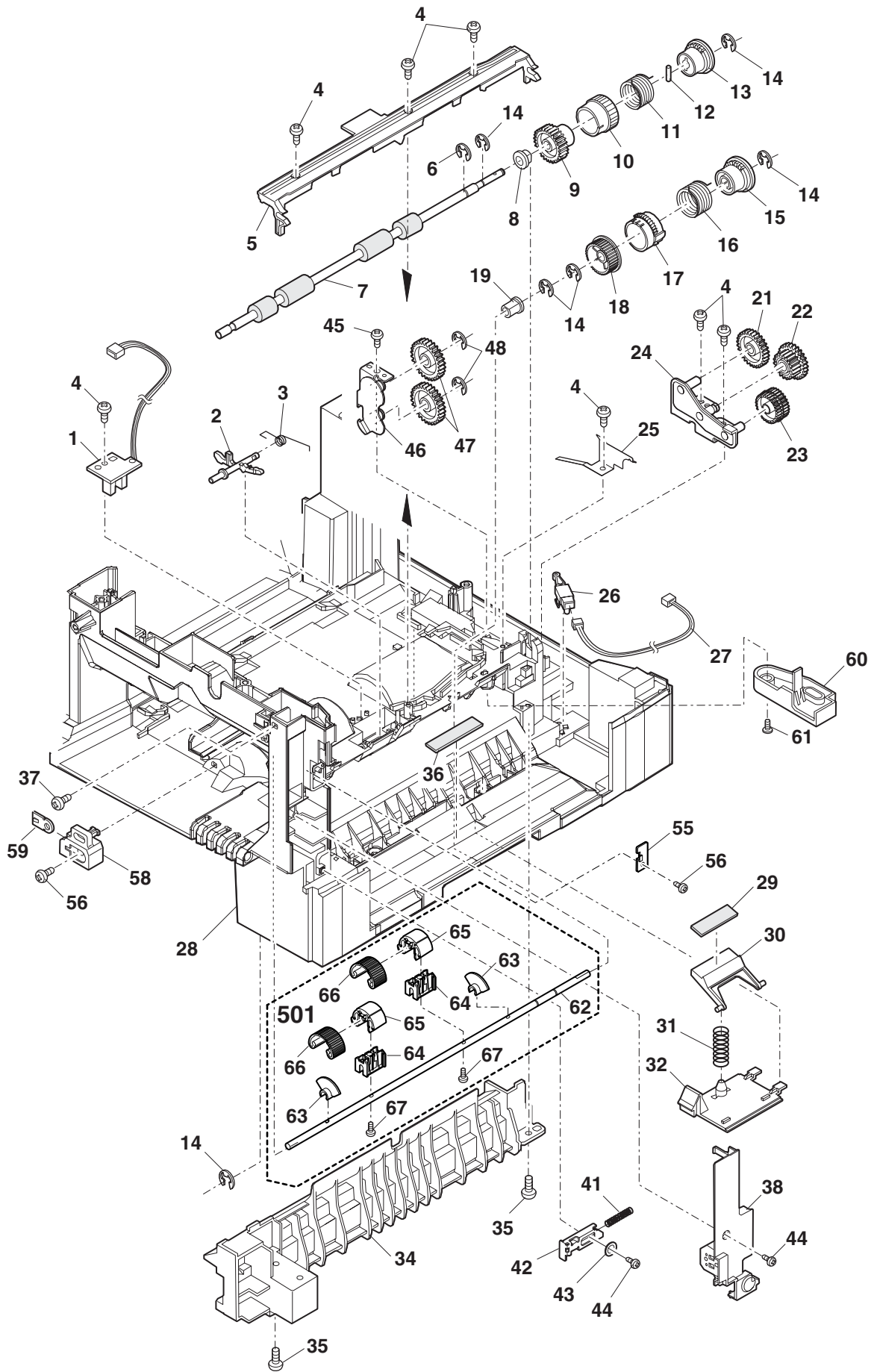
ITEM No.	PART No.	PART NAME	Q'TY / PAGE	Q'TY / PACK	P	I	R	BSI No.	TO	FROM	REMARKS
1	6LA58617900	PULLEY GEAR									
2	6LS10042000	SCANNER PLATE									
3	6LA58618400	TENSION PLATE									
4	6LS10046000	MOTOR FIXING PLATE									
5	6LA58618700	IDLE PULLEY									
6	6LS10109000	CARRIAGE UNIT									
7	6LA58625000	ROD HOLDER									
8	6LA58626000	ROD STOPPER									
9	6LA58799700	Screw									
10	6LS10208000	CARRIAGE LOCK									
11	6LA58627900	TENSION SPRING									
12	6LS10233000	MOTOR SPRING									
13	6LA58736000	BELT									
14	6LA58736100	BELT									
15	6LA58628700	IDLE GEAR									
16	6LA58802300	Slide shaft									
17	6LS10282000	DISCHARGER BRUSH									
18	6LS10300000	PAPER GUIDE									
19	41330549300	GLASS CUSHION									
21	6LA58757800	CABLE FIX SHEET									
22	6LS10289000	FAN DUCT									
23	6LA58631800	CCD INSURATE ST									
24	6LA58631900	PROTECT SHEET									
25	6LS10357000	SCANNER MOTOR									
26	6LA58794400	Screw M3X6									
27	6LA58926000	E-ring									
28	6LA58928000	E-ring									
29	6LS10298000	HINGE GUIDE L									
30	6LS10299000	HINGE GUIDE R									
31	6LA58794500	Screw M3X8									
32	6LA58635500	FFC CORE									
39	6LS10320000	SCANNER SHEET									
40	6LA58936900	CCD-MCU harness									
43	6LA58633800	CCD WH TAPE									
45	6LA58930900	INSURATE SHEET									
46	6LS10323000	DUST SHEET									
47	6LS10327000	DUST SHEET A									
48	6LS10328000	DUST SHEET B									
49	6LS10312000	DUST CUSHION									
50	6LS10313000	DUST CUSHION									
51	6LA58793800	Screw M4X12									
52	6LS10331000	FFC HOLD SHEET									
54	6LS10149000	SCANNER MOTOR HARNESS FIX									
55	6LS10314000	FFC CORE CUSHION									
56	6LS10311000	OC GASKET									



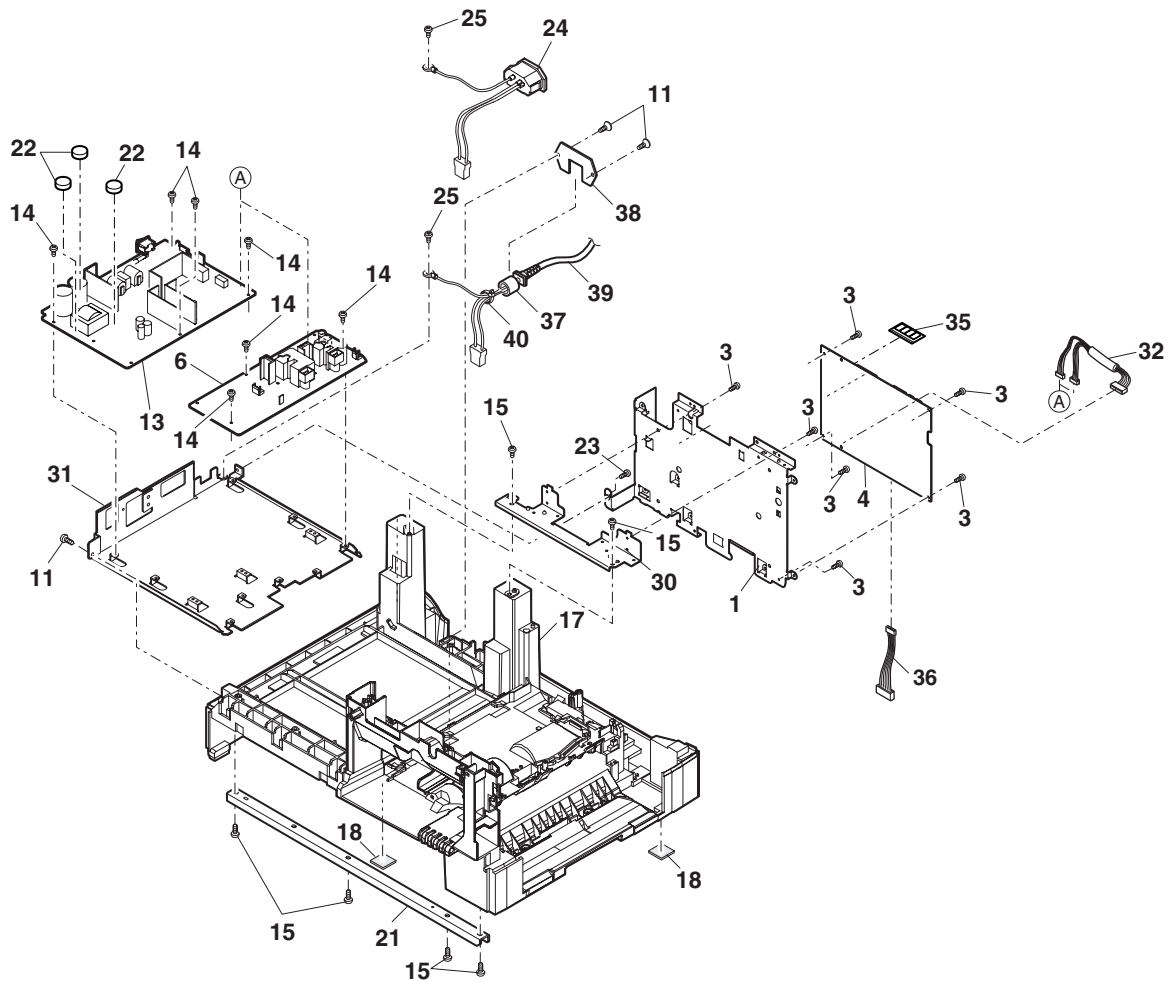
ITEM No.	PART No.	PART NAME	QTY / PAGE	QTY / PACK	P	I	R	BSI No.	TO	FROM	REMARKS
1	4133054000	ROLLER UPPER									
2	6LA58627700	ROLLER SP									
3	6LS10291000	UPPER PAPER GUIDE REINFOR									
4	6LS10069000	POD SENSOR PWB									
5	6LA58726300	ACTUATOR									
6	6LS10295000	DELIVERY PAPER GUIDE									
7	41330526200	TRANS ROLLER SP									
8	41330540400	PS UPPER ROLLER									
9	6LA58627400	EARTH SP									
10	6LS10090000	OP-MCU HARNESS									
11	6LA58793200	Screw M3X8									
12	6LS10292000	LSU PAPER GUIDE REINFORCE									
13	6LA58793100	Screw M3X6									
14	6LS10094000	POLYGON HARNESS									
15	6LA58793300	Screw M3X10									
16	6LS10112000	LSU									
17	6LS10302000	LSU PAPER GUIDE									
18	6LS10095000	LASER HARNESS									
19	6LA58627600	PAPER GUIDE SP									



ITEM No.	PART No.	PART NAME	Q'TY / PAGE	Q'TY / PACK	P	I	R	BSI No.	TO	FROM	REMARKS
1	41330539400	ROLLER LOWER									
2	6LS10385000	ROLLER BEARING									
3	6LA58801100	Trans. Roller L									
4	41330538100	PULLEY 22T									
5	6LA58736600	DRIVE BELT									
6	6LS10148000	SNAP BAND									
7	6LS10238000	HOPPER COUPLING S									
8	6LA58751400	HOPPER SPRING									
9	6LA58788000	Toner motor									
10	6LA58793300	Screw M3X10									
11	6LA58793600	Screw M3X30									
12	6LS10241000	EXHAUST FAN									
13	41330516900	TC HV HOLDER									
14	41330562400	BC HV ELECT PLT									
15	6LA58793100	Screw M3X6									
16	41330562300	TC HV ELECT PLT									
17	41330605400	SCREW M3X6									
18	6LS10086000	BC HARNESS									
19	6LA58622000	TC HARNESS									
20	6LA58736200	BELT 308									
21	6LS10152000	MIDDLE FRAME									
22	41330512900	ROTATION KNOB									
23	6LA58621500	PPD2 IF HARNESS									
24 A	6LS10088000	HEATER LAMP HARNESS 1 100									North America,Brazil Other Countries
24 B	6LS10098000	HEATER LAMP HARNESS 1 200									
25	6LA58754400	HARNESS GUIDE									
26	6LS10161000	DV GUIDE PIN									
27	6LS10388000	DVS HARNESS									
28	6LA58934900	SCREW									
29	6LA58792200	Screw M3X8									
30	6LA58793800	Screw M4X12									
39	6LA58756800	CUSHION									
40	6LS10162000	FU FIXING PLATE R									
41	6LA58793200	Screw M3X8									

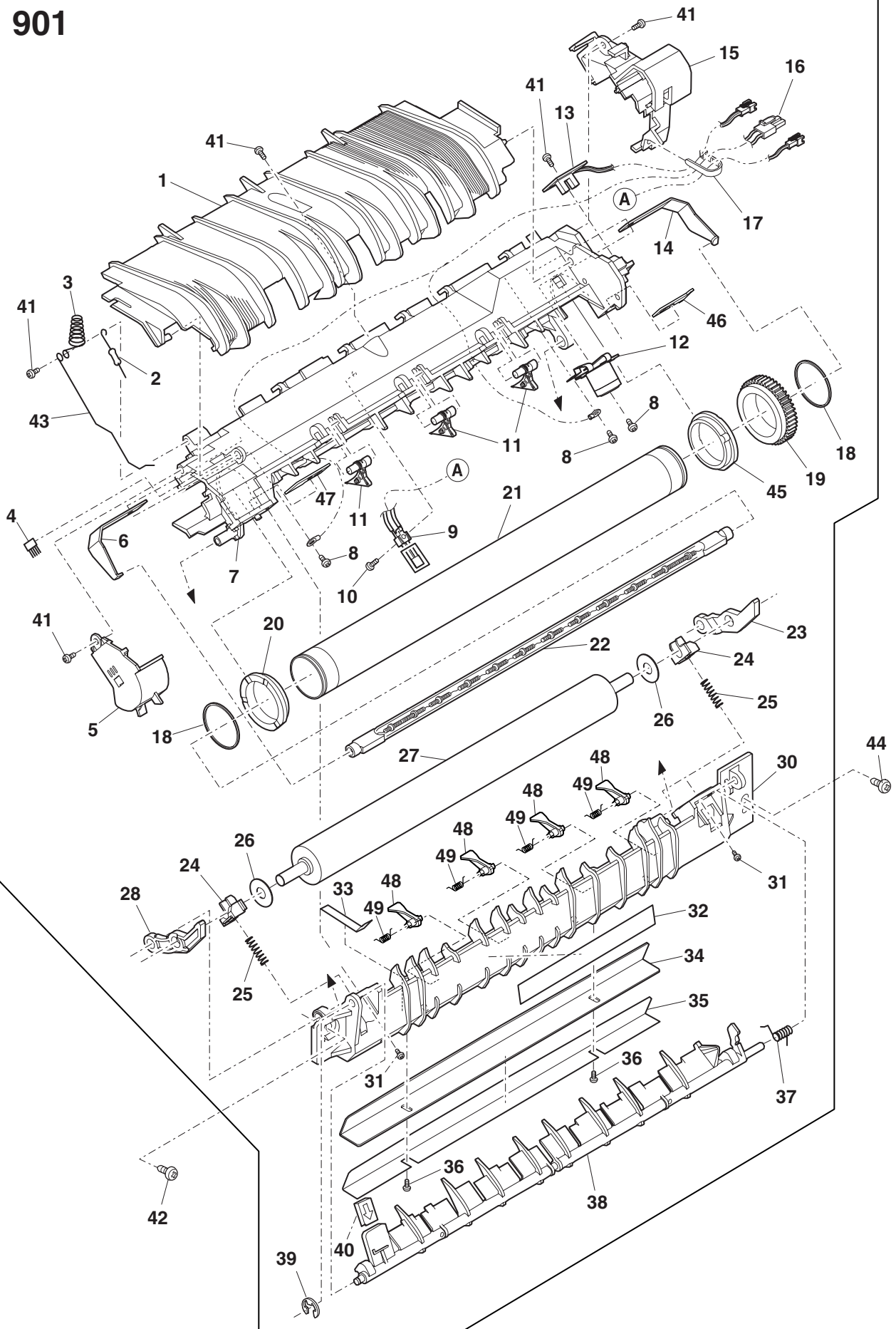


ITEM No.	PART No.	PART NAME	Q'TY / PAGE	Q'TY / PACK	P	I	R	BSI No.	TO	FROM	REMARKS
1	6LS10068000	PPD1 SENSOR PWB									
2	41330525000	PS ACTUATOR									
3	6LA58626900	PS ACTUATOR SP									
4	6LA58793300	Screw M3X10									
5	41330547200	TC F GUIDE U									
6	6LA58926000	E-ring									
7	6LS10266000	PS LOWER ROLLER									
8	41330533000	BEARING 6									
9	41330535500	CLUTH GEAR 26T									
10	41330550700	PIPE A									
11	41330529000	MF CLUTCH SP B									
12	6LA58922000	Spring pin 2X7									
13	41330514200	CLUTCH BOSS									
14	6LA58925000	E-ring									
15	6LA58933200	CLUTCH BOSS									
16	41330528700	CLUTCH SPRING									
17	41330550300	CLUTCH SLEEVE									
18	41330537700	CLUTCH GEAR 29T									
19	41330533700	BEARING 5									
21	41330535700	GEAR 33T									
22	41330535900	GEAR 21/29T									
23	41330535800	W GEAR 30T									
24	41330503100	PF PLATE 2									
25	41330518400	PS EARTH PLATE									
26	6LA58710700	TRAY DETECT SW									
27	6LA58620500	CED1 HARNESS									
28	6LS10142000	BASE PLATE									
29	41330556200	SHEET M1									
30	41330516800	PRESS. PLT HLD									
31	41330527400	TRANS. PRESS SP									
32	41330543200	MALTI COVER									
34	6LA58728400	BASE PLT RAIL R									
35	6LA58793800	Screw M4X12									
36	41330556300	PF SHEET									
37	6LA58792800	Screw M3X8									
38	6LA58753100	SENSOR COVER									
41	6LA58627300	F EXT. LV SP									
42	41330517500	F EXT LV PLT									
43	6LA58800300	Washer									
44	6LA58793300	Screw M3X10									
45	6LA58793800	Screw M4X12									
46	41330503500	JOINT GEAR PLT									
47	41330537800	2ND JOINT GEAR									
48	6LA58928000	E-ring									
55	6LS10163000	FU FIXING PLATE F									
56	6LA58793200	Screw M3X8									
58	41330517200	DV FIXING BLOCK									
59	6LA58673000	M4 PLATE									
60	41330544800	OP GEAR COVER									
61	6LA58799900	Screw									
62	6LA58802400	PF roller shaft									
63	6LA58935500	ROLLER COLOR									
64	6LA58934700	ROLLER HOLDER									
65	6LA58934600	ROLLER BRACKET									
66	6LA58756500	ROLLER RUBBER									
67	6LA58793400	Screw M3X12									
501	6LA58746000	PF SHAFT UNIT									

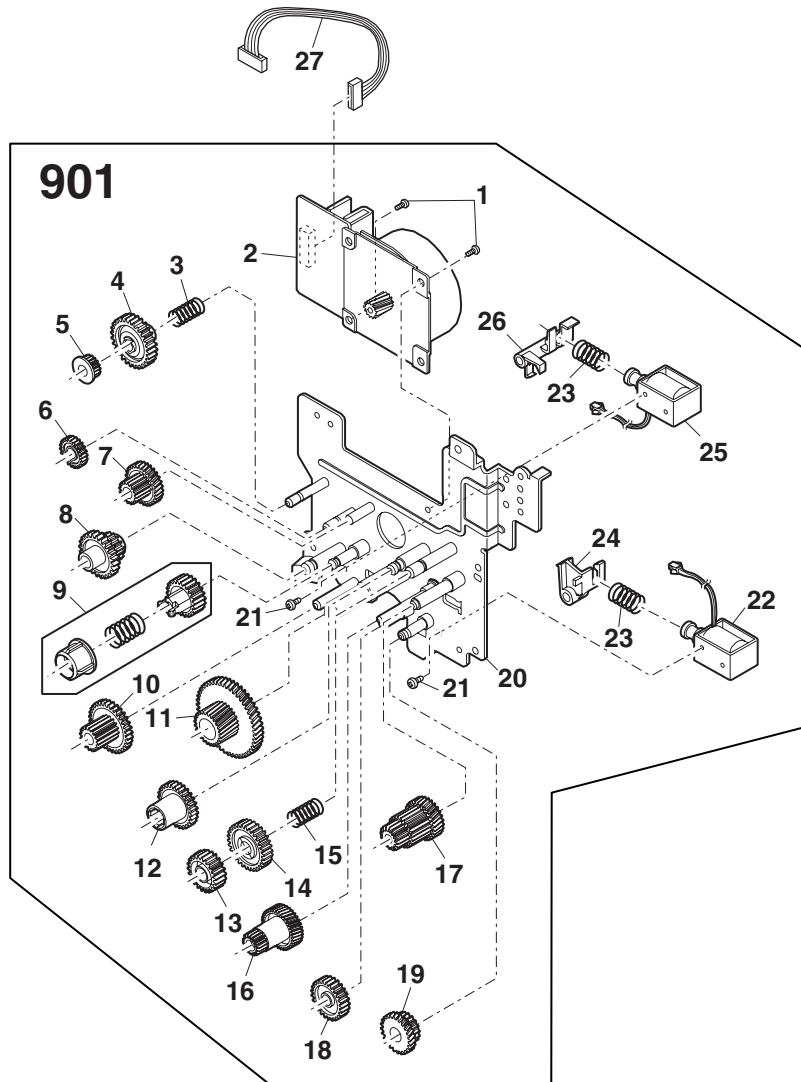


ITEM No.	PART No.	PART NAME	Q'TY / PAGE	Q'TY / PACK	P	I	R	BSI No.	TO	FROM	REMARKS
1	6LS10157000	PWB HOLDER									
3	6LA58794400	Screw M3X6									
4	6LS10080000	MCU PWB									
6	6LA58933900	HV PWB									
11	6LA58793300	Screw M3X10									
13 A	6LS10351000	DC POWER SUPPLY PWB									North America,Brazil Other Countries
13 B	6LS10352000	DC POWER SUPPLY PWB									
14	6LA58792100	Screw									
15	6LA58793800	Screw M4X12									
17	6LS10142000	BASE PLATE									
18	41330512200	RUBBER FOOT									
21	41330517800	REINFORCE PLT F									
22	6LS10189000	SUPPORTER									
23	6LA58792800	Screw M3X8									
24 B	6LA58791200	AC INLET HARNES									Except North America
25	6LA58921000	Screw									
30	6LS10164000	CONNECTOR PLATE									
31	6LA58934000	HOLD PLATE									
32	6LS10093000	PS HARNESS									
35	6LS11600000	FLASH ROM									
36	6LA58732700	2NDCS I/F HRNS									
37 A	6LA58635700	CORE									North America
38 A	6LA58625100	AC INLET HOLDER									North America
39 A	6LA58634200	AC CORD									North America
40 A	41330513400	WIRE BAND									North America

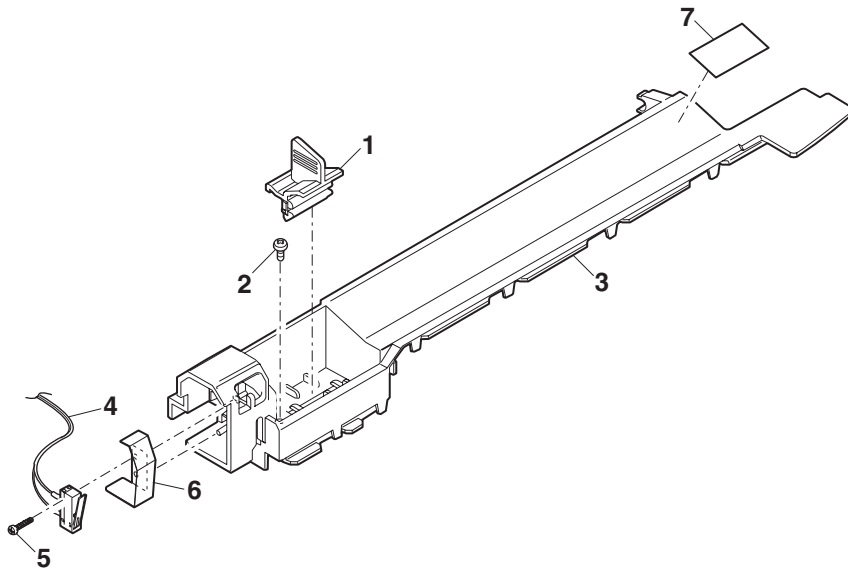
901



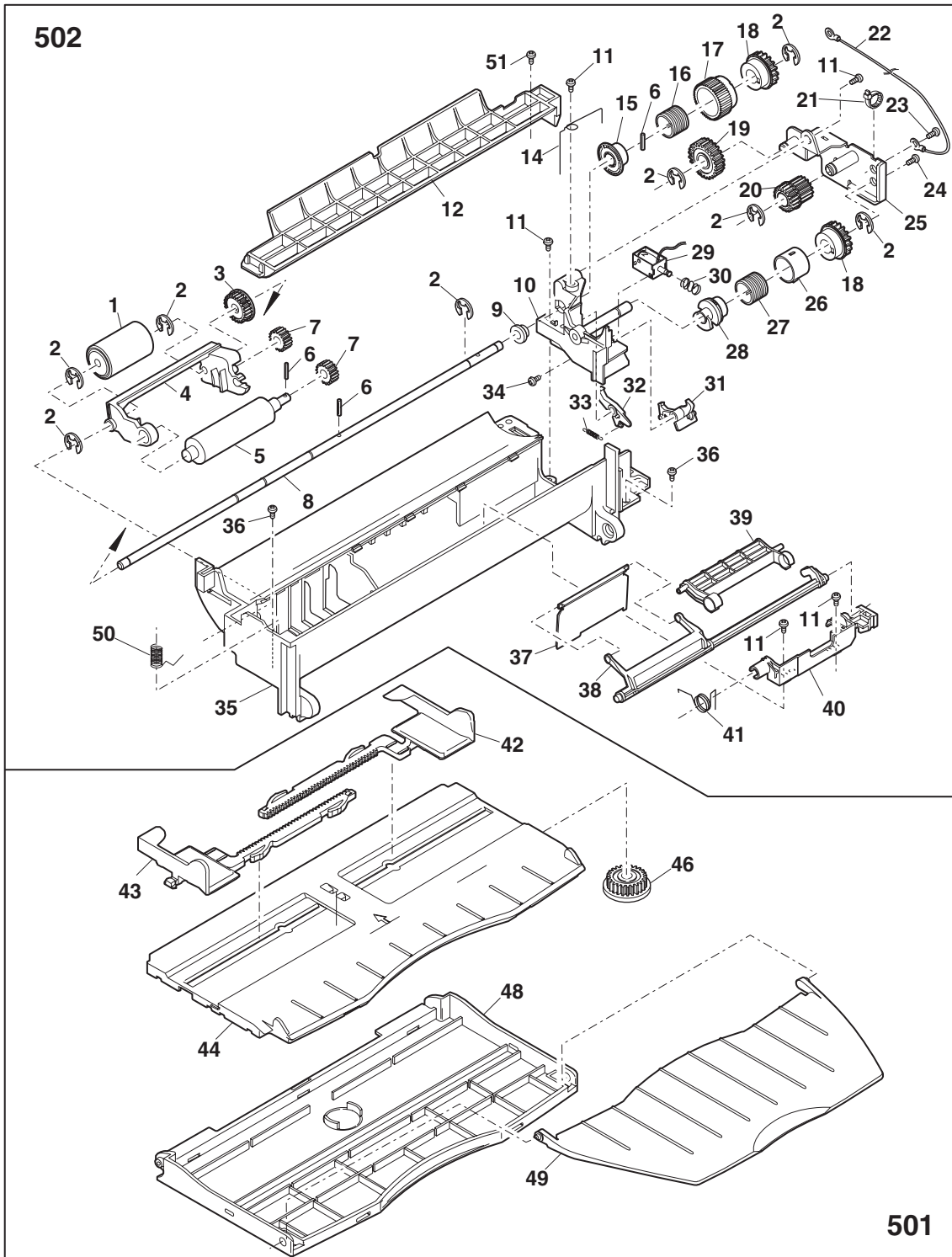
ITEM No.	PART No.	PART NAME	Q'TY / PAGE	Q'TY / PACK	P	I	R	BSI No.	TO	FROM	REMARKS
1	6LS10301000	U-TURN GUIDE LOWER									
2	6LS10380000	RESISTOR									
3	6LS10229000	FUSING UPPER EARTH SPRING									
4	6LA58629700	DISCHARGE BRUSH									
5	6LS10286000	FUSING COVER F									
6	41330530400	COPY LAMP SP F									
7	6LS10154000	FUSING UPPER FRAME									
8	6LA58799300	Screw									
9	6LS10353000	THERMISTOR									
10	6LA58792900	Screw M3X10									
11	6LA58791100	SEPARATOR PAWL									
12	6LS10085000	FU THERMOSTAT UNIT									
13	6LS10070000	PPD2 SENSOR PWB									
14	41330530500	COPY LAMP SP R									
15	6LA58753300	FUSING COVER R									
16 A	6LS10089000	HEATER LAMP HARNESS 2 100									North America,Brazil Other Countries
16 B	6LS10099000	HEATER LAMP HARNESS 2 200									
17	41330513400	WIRE BAND									
18	41330521600	ROLLER STOPPER									
19	41330537200	FUSHING GER 45T									
20	6LS10237000	FUSING BEARING									
21	6LS10264000	HEART ROLLER									
22 A	6LA58637300	HEATER LAMP									North America,Brazil Other Countries
22 B	41330566600	HEATER LAMP									
23	6LS10202000	PRESSURE RELEASE LEVER R									
24	6LS10236000	PRESSURE BEARING N									
25	6LS10211000	PRESSURE SPRING									
26	6LA58800400	Washer									
27	6LS10267000	PRESSURE ROLLER									
28	6LS10201000	PRESSURE RELEASE LEVER F									
30	6LS10155000	FUSING LOWER FRAME									
31	6LA58894000	Screw									
32	6LS10368000	HIGH TEMPERATURE CAUTION									
33	6LS10321000	PG EARTH SHEET CN									
34	41330546600	FUSING F PA GUD									
35	41330552000	FRONT PG SHEET									
36	6LA58800000	Screw									
37	6LA58627800	GATE SPRING									
38	6LS10174000	REVERSAL GATE									
39	41330609200	E TYPE RING									
40	41330552500	HANDLE LABEL									
41	6LA58793200	Screw M3X8									
42	6LA58792800	Screw M3X8									
43	6LA58726200	FU EARTH WIRE L									
44	6LS10381000	SCREW									
45	41330533800	FUSING BEARING									
46	6LS10166000	FIXING PLATE R									
47	6LS10165000	FIXING PLATE F									
48	6LS10344000	LOWER PAWL									
49	6LS10223000	LOWER PAWL SPRING									
901 A	6LS10114000	FUSING UNIT									North America,Brazil Other Countries
901 B	6LS10113000	FUSING UNIT									



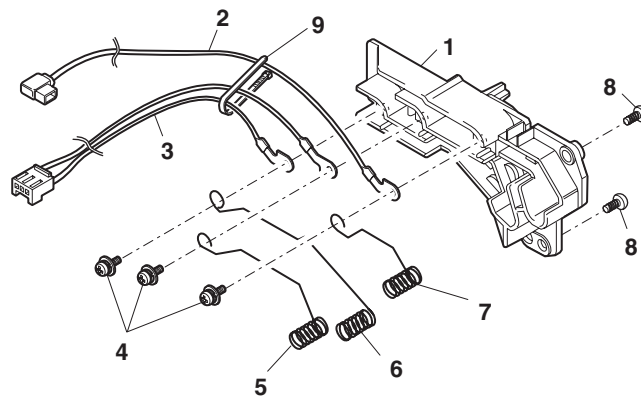
ITEM No.	PART No.	PART NAME	Q'TY / PAGE	Q'TY / PACK	P	I	R	BSI No.	TO	FROM	REMARKS
1	6LA58792300	Screw M4X6									
2	6LS10355000	MAIN MOTOR									
3	6LA58627200	PULLEY SPRING									
4	41330536700	RATCHET GER 33T									
5	41330538200	PULLEY 17T									
6	41330534600	GEAR 28T									
7	41330534500	GEAR 46/16T									
8	41330534900	GEAR 30/15T									
9	41330502400	MG GEAR UNIT									
10	41330535000	GEAR 37/15T									
11	41330534300	GEAR 68/26T									
12	6LS10242000	COUPLING GEAR									
13	6LA58934200	RATCHET GER 21T									
14	41330535300	RATCHET GER 28T									
15	6LA58626700	RATCHET SPRING									
16	6LS10251000	GEAR									
17	6LS10386000	GEAR									
18	41330534700	GEAR 20T									
19	41330534800	GEAR 31/17T									
20	6LS10037000	MAIN DRIVE PLATE									
21	6LA58792000	Screw M3X4									
22	6LA58806200	Solenoid									
23	41330529100	SPRING B									
24	6LS10343000	PS ROLLER PAWL									
25	6LA58805600	Solenoid									
26	6LA58933300	ROLLER PAWL									
27	6LS10091000	MAIN MOTOR HARNESS									
901	6LS10039000	MAIN DRIVE UNIT									



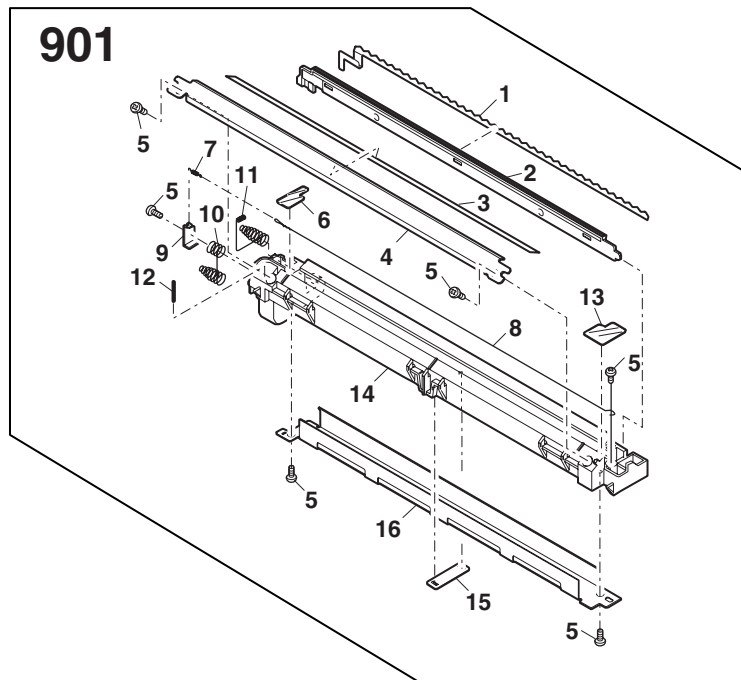
ITEM No.	PART No.	PART NAME	Q'TY / PAGE	Q'TY / PACK	P	I	R	BSI No.	TO	FROM	REMARKS
1	41330501100	CH CLEANER UNIT									
2	6LA58793200	Screw M3X8									
3	6LA58629800	M UPPER COVER									
4	6LA58620000	S DOOR SW UNIT									
5	6LA58794200	Screw									
6	6LS10230000	DOOR SWITCH SPRING									
7	41330554000	MB U GUD SHEET									



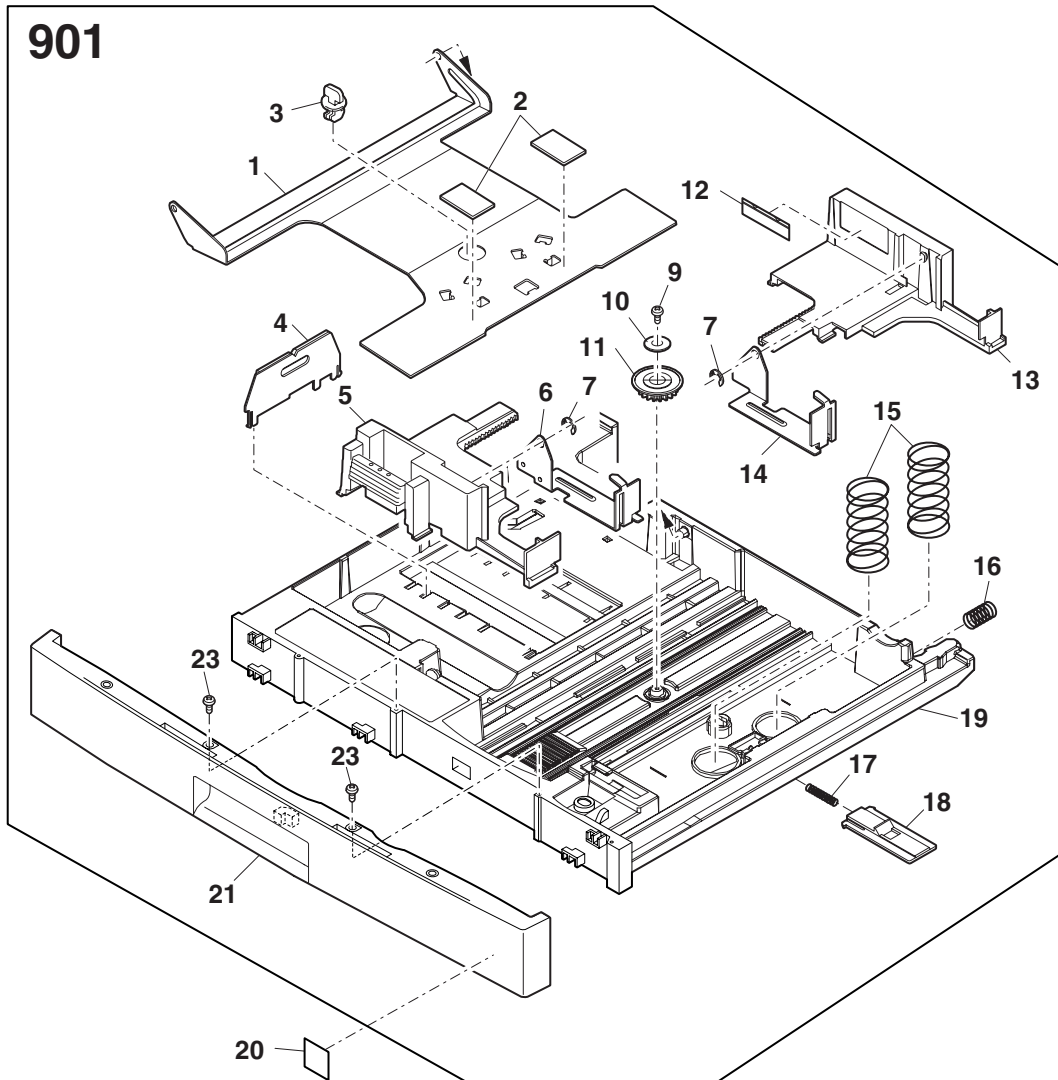
ITEM No.	PART No.	PART NAME	Q'TY / PAGE	Q'TY / PACK	P	I	R	BSI No.	TO	FROM	REMARKS
1	6LA58692600	MPF ROLLER									
2	6LA58925000	E-ring									
3	41330537600	GEAR 20T									
4	6LA58726700	ARM C									
5	6LA58801400	PICK-UP ROLLER									
6	6LA58922000	Spring pin 2X7									
7	41330537400	GEAR 16T									
8	6LA58802600	Cam boss A shaf									
9	41330514600	M BUSHING C									
10	41330514300	MULTI F BRACKET									
11	6LA58793200	Screw M3X8									
12	6LA58754500	DUP UPPER GUIDE									
14	41330527600	ARM C SPRING									
15	41330514200	CLUTCH BOSS									
16	41330528900	CLUTCH SPRING A									
17	41330550700	PIPE A									
18	6LA58624400	CAM BOSS A1R									
19	41330537300	GEAR 27T									
20	41330537500	GEAR 20.20MXL									
21	41330513400	WIRE BAND									
22	6LA58622300	M FEED GND WH									
23	6LA58794400	Screw M3X6									
24	6LA58792700	Screw M3X6									
25	41330503000	PAPER PLATE 1									
26	6LA58700800	CAM CLH SLEEVE									
27	41330529000	MF CLUTCH SP B									
28	41330514000	CAM BOSS B									
29	6LA58805700	MF solenoid									
30	41330529100	SPRING B									
31	41330557700	MPF PAWL B									
32	41330557600	MPF PAWL A									
33	41330529300	PAWL A SPRING									
34	6LA58792200	Screw M3X8									
35	6LS10153000	MULTI FRAME									
36	6LA58793800	Screw M4X12									
37	41330521800	STOPPER PLATE									
38	41330524400	ARM B									
39	41330524300	ARM A									
40	6LA58750900	ARM HINGE									
41	41330527500	ARM C SPRING									
42	6LS10297000	MB SIDE GUIDE R									
43	6LS10296000	MB SIDE GUIDE L									
44	6LS10284000	MULTI TRAY FRONT COVER									
46	41330535600	M FEED GEAR									
48	6LS10177000	MULTI TRAY 1									
49	6LS10178000	MULTI TRAY 2									
50	41330528400	SPRING									
51	6LA58793300	Screw M3X10									
501	6LS10084000	MULTI MANUAL PAPER FEED T									
502	6LS10031000	MULTI MANUAL PAPER FEED U									



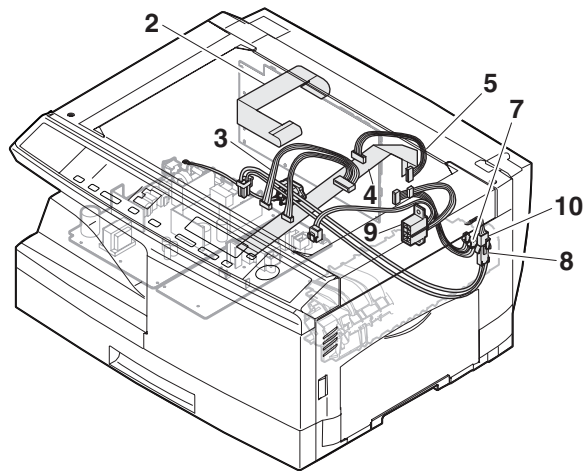
ITEM No.	PART No.	PART NAME	Q'TY / PAGE	Q'TY / PACK	P	I	R	BSI No.	TO	FROM	REMARKS
1	41330516300	HV IF HOLDER									
2	6LS10034000	MC HARNESS UNIT									
3	6LA58618000	GB-MCFB WH UNIT									
4	6LA58934300	SCREW M3X6									
5	6LS10213000	HIGH VOLTAG TERMINAL SPRI									
6	6LS10214000	HIGH VOLTAG TERMINAL SPRI									
7	6LS10212000	HIGH VOLTAG TERMINAL SPRI									
8	6LA58793200	Screw M3X8									
9	41330513400	WIRE BAND									



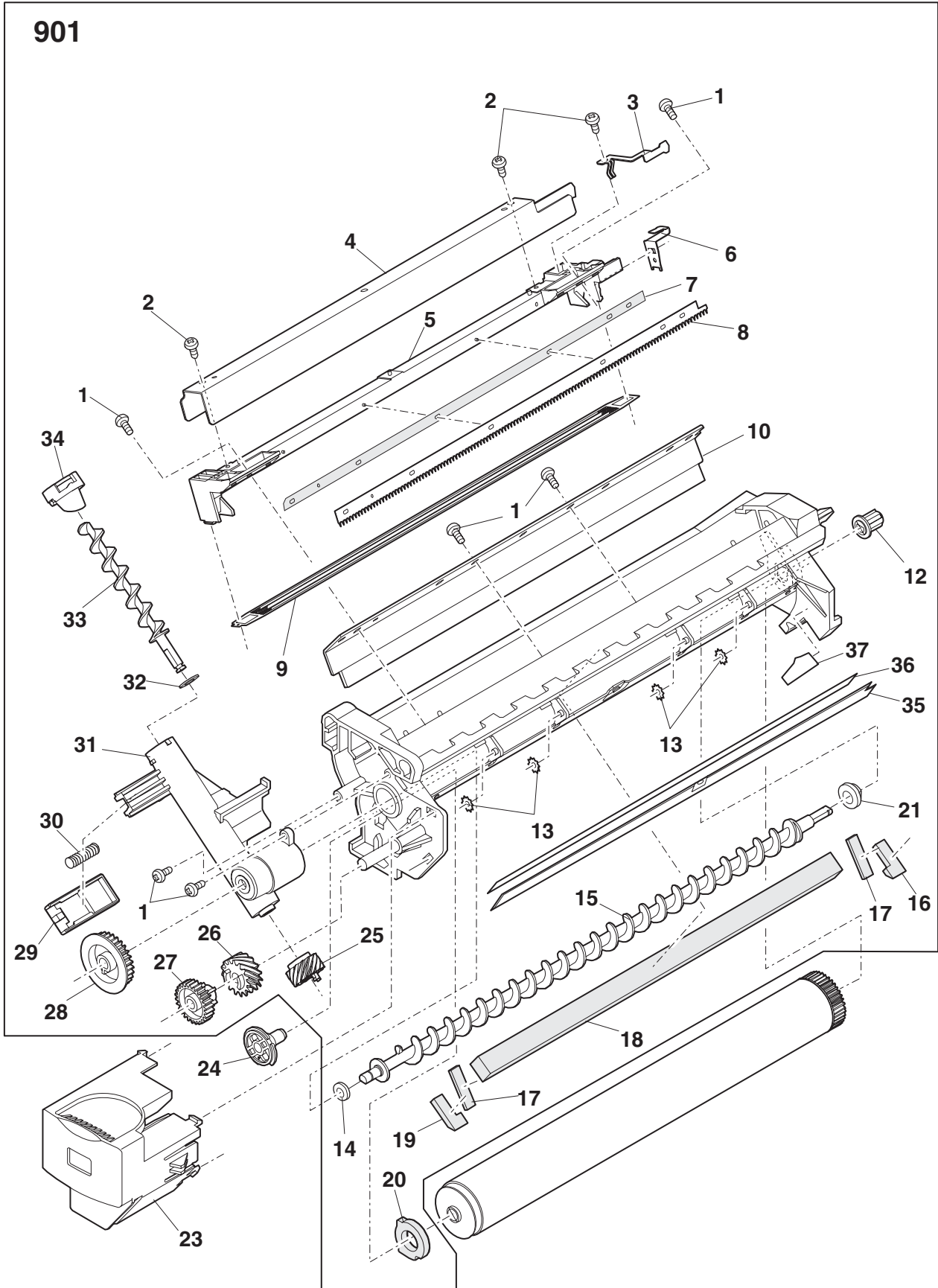
ITEM No.	PART No.	PART NAME	Q'TY / PAGE	Q'TY / PACK	P	I	R	BSI No.	TO	FROM	REMARKS
1	41330552900	DISCHARGE SHEET									
2	41330547300	SEPARATOR GUIGE									
3	41330551700	TC SHEET									
4	41330546500	TC FRONT GUIDE									
5	6LA58793100	Screw M3X6									
6	41330551900	TC COV SHEET R									
7	41330532000	MC TENSION SP									
8	41330510600	CHARGER WIRE									
9	41330562500	TC ELECT. PLATE									
10	41330526700	TRANS ROLLER SP									
11	41330526800	BC ELECTRODE SP									
12	6LA58627100	F GUIDE GND SP									
13	41330551800	TC COV SHEET F									
14	6LA58935700	TC HOLDER									
15	41330514700	HOLER FIX PLT									
16	41330542400	TC CASE									
901	41330502700	TRANS. HLD UNIT									



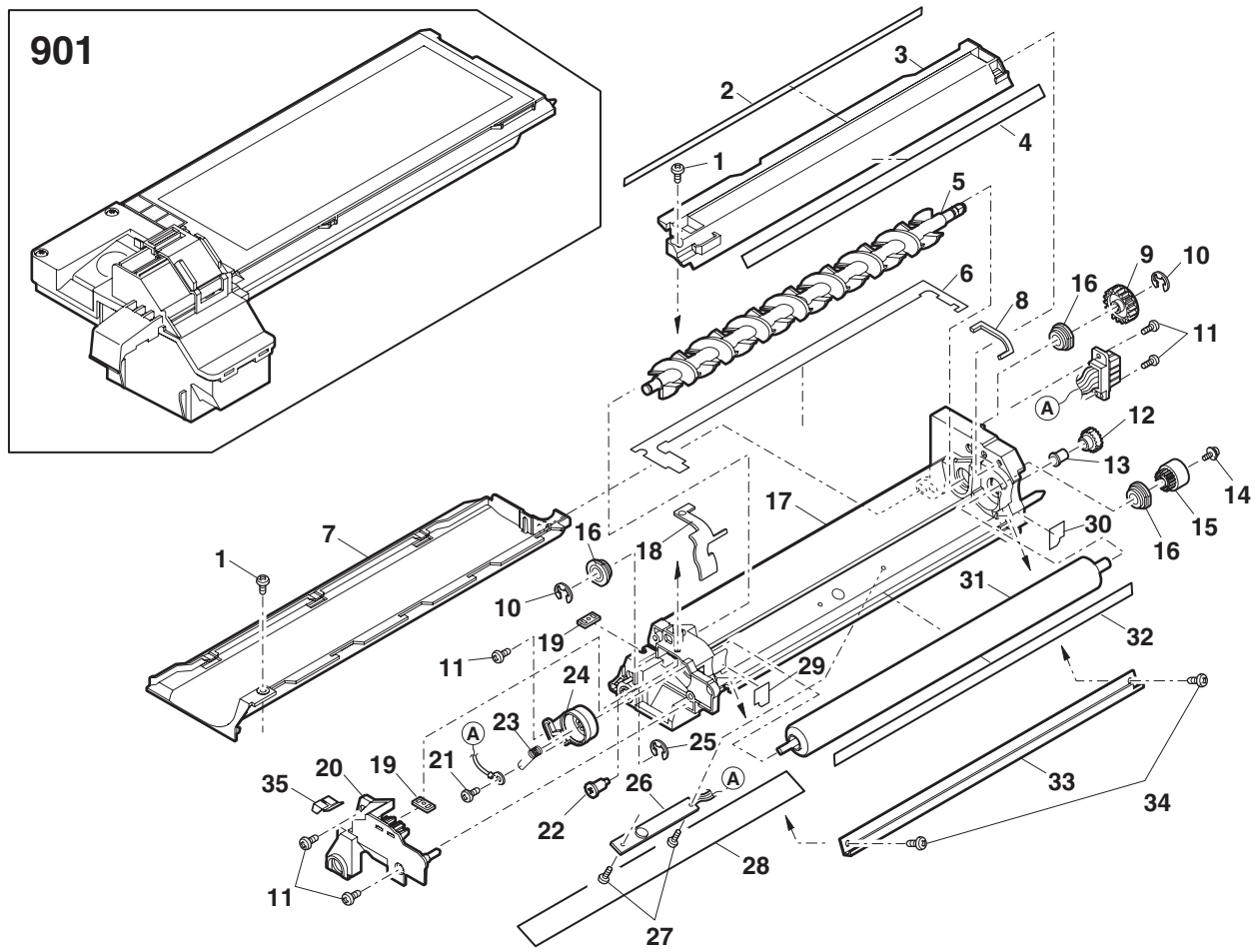
ITEM No.	PART No.	PART NAME	QTY / PAGE	QTY / PACK	P	I	R	BSI No.	TO	FROM	REMARKS
1	6LA58749400	TURNING PLT 250									
2	41330556400	ROTATION SHEET									
3	41330516000	TURN FASNER									
4	6LA58672900	TRAY REAR PLATE									
5	6LA58796000	TRAY SIDE PLT F									
6	6LS10345000	250 TRAY PAWL F									
7	6LA58925000	E-ring									
9	6LA58793200	Screw M3X8									
10	6LA58800500	WASHER									
11	41330537100	M FEED GEAR									
12	6LA58768200	INDICATION LBL									
13	6LA58796100	TR SIDE PLATE R									
14	6LS10346000	250 TRAY PAWL R									
15	41330528300	250 TRAY SPRING									
16	41330529200	SPRING B									
17	41330528800	STOPPER SPRING									
18	6LA58750600	PLATE STOPPER									
19	6LS10131000	250 TRAY CASE									
20 A	6LS10374000	ENERGY STAR LABEL									North America
21	6LS10145000	TRAY COVER									
23	6LA58793800	Screw M4X12									
901	6LS10009000	250 SHEETS TRAY UNIT(EXCE									



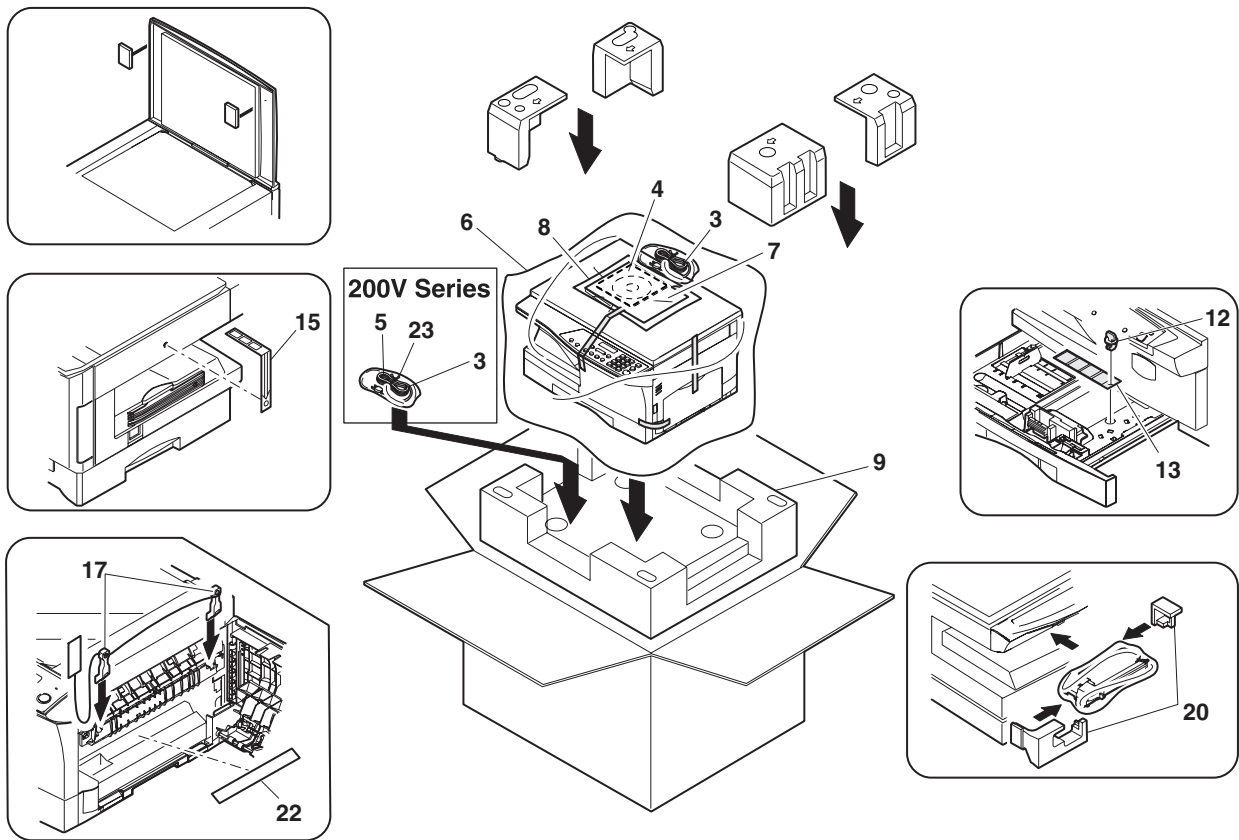
ITEM No.	PART No.	PART NAME	QTY / PAGE	QTY / PACK	P	I	R	BSI No.	TO	FROM	REMARKS
2	6LA58936900	CCD-MCU harness									
3	6LS10093000	PS HARNESS									
4	6LS10090000	OP-MCU HARNESS									
5	6LS10091000	MAIN MOTOR HARNESS									
7	6LA58621500	PPD2 IF HARNESS									
8 A	6LS10088000	HEATER LAMP HARNESS 1 100									North America,Brazil Other Countries
8 B	6LS10098000	HEATER LAMP HARNESS 1 200									
9	6LS10388000	DVS HARNESS									
10 A	6LS10089000	HEATER LAMP HARNESS 2 100									North America,Brazil Other Countries
10 B	6LS10099000	HEATER LAMP HARNESS 2 200									



ITEM No.	PART No.	PART NAME	Q'TY / PAGE	Q'TY / PACK	P	I	R	BSI No.	TO	FROM	REMARKS
1	6LA58793300	Screw M3X10									
2	6LA58793000	Screw									
3	41330563500	SAW TERMINAL									
4	41330542600	MC CASE									
5	41330516700	MC HOLDER UNIT									
6	41330563600	GRID TERMINAL									
7	41330558000	SAW TAPE									
8	6LA58625400	SAW									
9	41330518100	GRID									
10	6LA58936000	CLEANING BLADE									
12	6LA58723300	SCREW COUPLING									
13	6LA58854000	Washer									
14	41330549900	SCREW CUSHION									
15	41330540900	SCREW									
16	6LA58936700	SEAL R									
17	6LA58756600	SHIELD CUSHION									
18	6LA58630900	BLADE CUSHION									
19	6LA58936600	SEAL F									
20	41330549800	FLANGE CUSHION									
21	6LA58791300	DV bearing									
23	41330543300	DRUM COVER									
24	41330519500	DRUM HLD PLT									
25	41330536400	TRANS PIPE GEAR									
26	41330536300	TRANS PIPE GEAR									
27	41330536200	IDLE GEAR									
28	41330536100	TRANS SCW GEAR									
29	41330556500	TC PIPP SHUTER									
30	6LA58627000	TONER PIPE SP									
31	41330550400	TONER PIPE									
32	41330556700	P CAP SPACER									
33	41330540800	TRANS PIPE SCW									
34	41330542200	TONER PIPE CAP									
35	6LA58639700	SUB BLADE									
36	6LA58633400	SUB BLADE TAPE									
37	6LA58631000	SHIELD CUSHION									
901	6LA58936800	PROCESS UNIT									



ITEM No.	PART No.	PART NAME	Q'TY / PAGE	Q'TY / PACK	P	I	R	BSI No.	TO	FROM	REMARKS
1	6LA58792200	Screw M3X8									
2	41330551600	DV-COVSHEET									
3	41330544900	DV-COVER-U									
4	6LS10375000	DV BLADE									
5	6LA58801300	DMX ROLLER									
6	41330551300	DV SEAL CN									
7	41330548700	TN GUIDE D									
8	6LA58757200	DV SEAL RN									
9	41330536900	DMX GEAR 28T									
10	6LA58925000	E-ring									
11	6LA58793200	Screw M3X8									
12	41330534200	DV IDLE GER 20T									
13	41330532900	DID BEARING									
14	6LA58792700	Screw M3X6									
15	6LA58628600	DV GEAR									
16	41330532800	DMX BEARING									
17	41330541700	DV-BOX									
18	41330551200	DV SEAL FN									
19	41330518900	DV FIXING PLATE									
20	41330545000	DV-COVER-F									
21	6LA58793100	Screw M3X6									
22	6LA58799800	Screw									
23	41330530200	PAWL A SPRING									
24	41330515900	MG HOLDER									
25	6LA58926000	E-ring									
26	6LA58636600	ATC SENSOR									
27	41330609800	SCREW									
28	6LS10316000	DV SEAL A									
29	41330553200	SIDE SHEET FN									
30	41330551500	DV SIDE SEAL RN									
31	6LA58786500	MG ROLLER									
32	41330549500	DVC CUSHION									
33	41330517400	DV DOCTOR N									
34	6LA58929000	Screw									
35	6LA58795700	BRUSH									
901	6LA58786600	DEVELOPER UNIT									



ITEM No.	PART No.	PART NAME	Q'TY / PAGE	Q'TY / PACK	P	I	R	BSI No.	TO	FROM	REMARKS
3 A	6LA58634200	AC CORD									North America Brazil Latin America Brazil Latin America
3 B	6LS10397000	AC CORD									
3 C	6LA58791800	AC CORD									
3 D	6LS10399000	CAUTION TAG									
3 E	6LA58715800	CAUTION LABEL									
3 F	6LA58634300	AC CORD									Asia and Hong Kong Saudi Arabia(200V)
3 G	6LS11604000	AC CORD									
4 A	6LS10014000	CD-ROM									
4 B	6LS10015000	CD-ROM									
5	41330573100	BAG									
6	6LS10362000	BODY VINYL BAG									Other Countries Saudi Arabia(200V)
7 A	6LS10371000	OPERATION MANUAL									
7 B	6LS11603000	OPERATION MANUAL									
8	41330572900	BAG 240X300MM									
9	6LS10360000	BOTTOM PACKING ADD									
12	41330516000	TURN FASNER									
13	41330575600	ROTATION TAG									
15	6LA58639500	SCANNER FIXING									
17	6LS10036000	PRESSURE RELEASE BLOCK LE									
20	6LA58638000	ACCESSORIES A									
22	6LS10369000	LASER CAUTION LABEL									Latin America Brazil,Asia and Hong Kong, Saudi Arabia(200V)
23 A	41330575900	AC CABLE BAND									
23 B	6LA58929900	AC CABLE BAND									

TOSHIBA

TOSHIBA TEC CORPORATION

2-17-2, HIGASHIGOTANDA, SHINAGAWA-KU, TOKYO, 141-8664, JAPAN