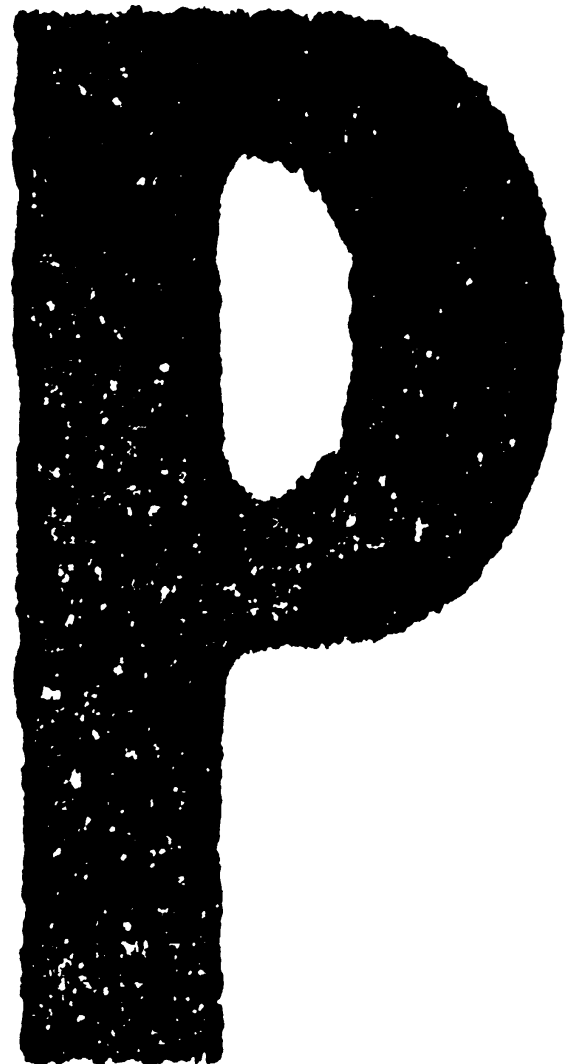


TOSHIBA

SERVICE PARTS LIST

A3/11"x17" Tray Unit

TK5000



© 2006 TOSHIBA TEC CORPORATION All rights reserved

Under the copyright laws, this manual cannot be reproduced in any form without prior written permission of TOSHIBA TEC CORPORATION. No patent liability is assumed, however, with respect to the use of the information contained herein.

EXPLANATION OF SERVICE-PARTS LIST

1. HOW TO READ THE PARTS LIST

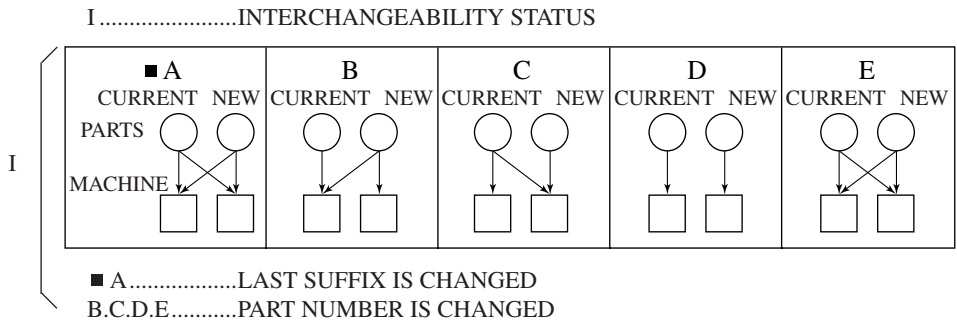
- (1) Number of pieces
The number of pieces in the list denotes total pieces used per unit. But the numbers in the list for PACKING MATERIAL and ACCESSORY denote total pieces used per machine.
- (2) One pack of screws in the list includes 50 pieces.
- (3) ABBREVIATED CODES

QTY/PAC

- QTY.....one piece
- PAC.....one pack
- 1/P.....one piece packed in polyethylene bag
- 1/S.....one piece packed in special pack
- 1/C.....one piece packed in carton box
- 1/PP.....one piece packed in paper and polyethylene bag
- 1/KP.....one piece packed in polyethylene bag with cardboard
- 1/D.....one piece packed in polyethylene-cushion bag
- 1/SB.....one piece packed in shielding bag
- N/A.....not available

P

- P.....PURPOSE
- A.....ADD
- B.....DELETE
- C.....CHANGE
- D.....QTY, CHANGE
- E.....MISENTRY
- F.....OMISSION



2. HOW TO PLACE ORDER FOR PARTS

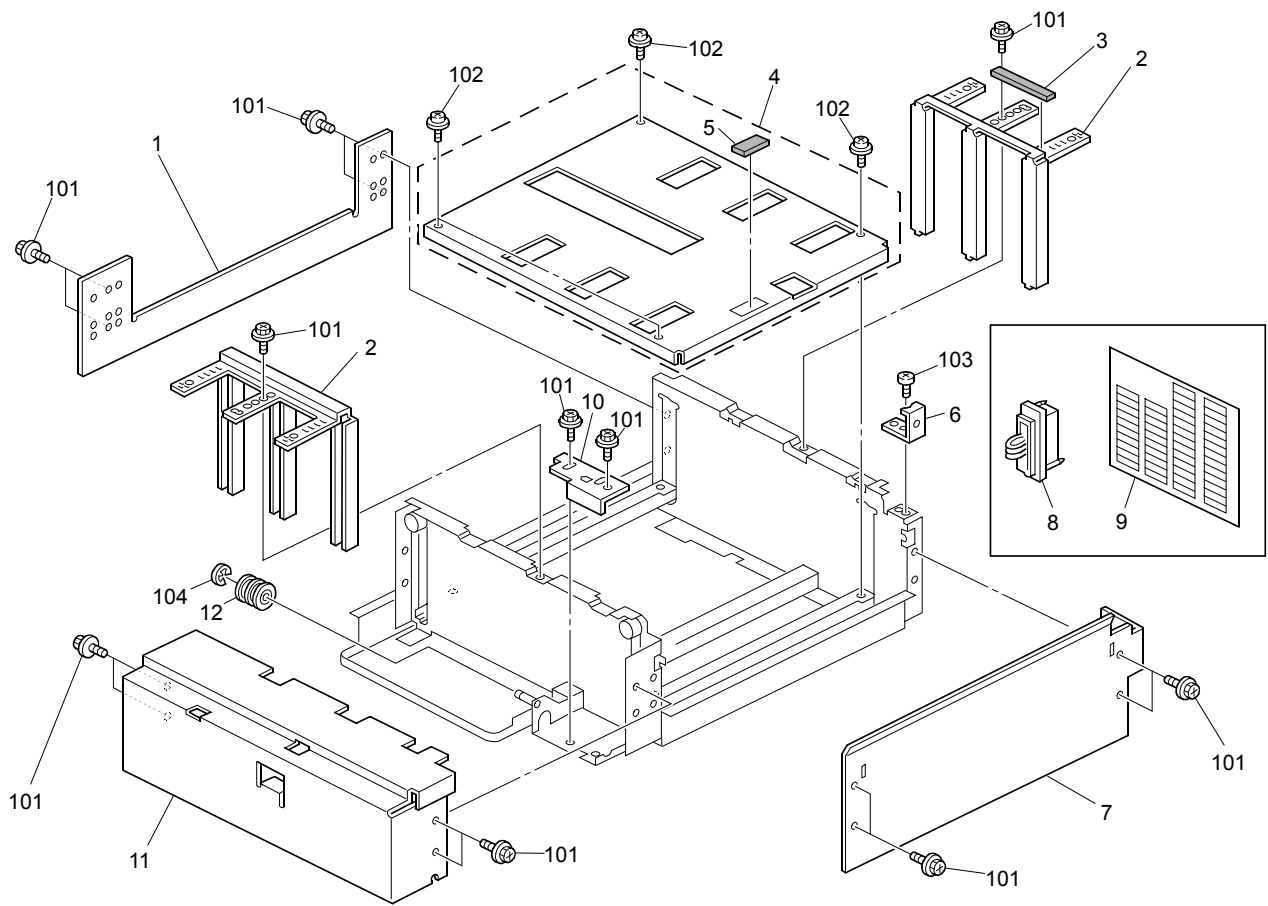
- (1) The parts handled as service parts are only those with their "QTY/PACK" column listed with a quantity other than "N/A***" or "SUPPLY".
Those parts with "N/A***" are listed only for the purpose of showing the mechanical construction, those listed with "SUPPLY" are handled only as a sales item, and therefore both types of parts are not supplied as service parts.
- (2) Orders for any parts which form a component of a semi-assembled unit are not acceptable.
Note: All the screws and nuts used are ISO standard.

3. REGION

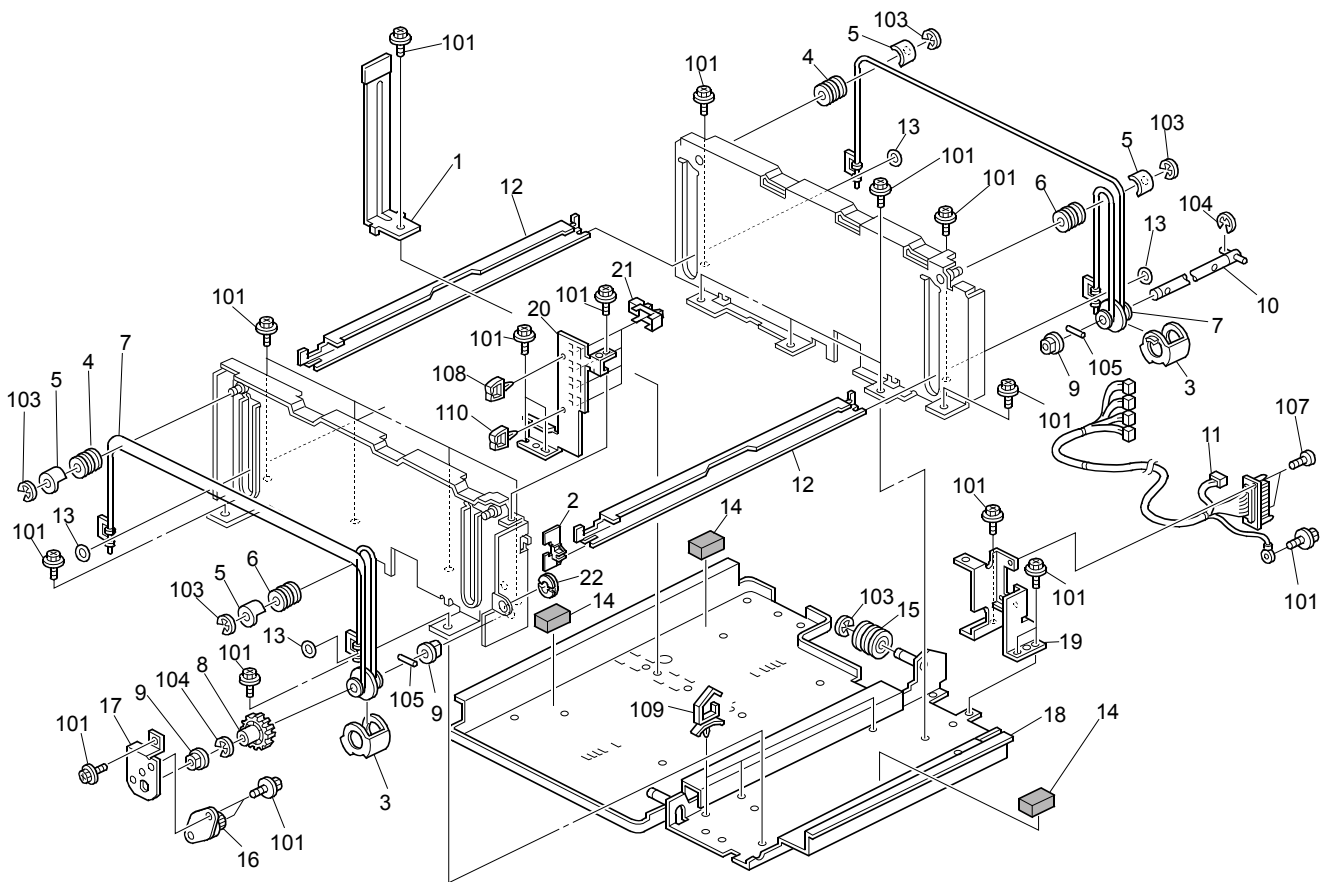
- NAD.....115V
50/60Hz, NORTH AMERICA, SOUTH AMERICA
- TWD.....110/220V
50/60Hz, TAIWAN
- SAD.....127V/60Hz, SAUDI ARABIA
- ASD.....220-240V
50/60Hz, ASIA, SOUTH AMERICA, etc.
- ASU.....220-240V
50/60Hz, ASIA, etc.
- AUD.....220-240V
50/60Hz, AUSTRALIA
- MJD.....220-240V
50/60Hz, EUROPE
- CND.....220-240V
50/60Hz, CHINA
- KRD.....220-240V
50/60Hz, KOREA

CONTENTS

PAPER TRAY 1.....	1
PAPER TRAY 2.....	2



ITEM NO.	PARTS NO.	PARTS NAME	Q'TY / PAGE	Q'TY / PACK	P	I	R	B S I NO.	T O	T	F R O M	S E R I A L NO.	R E M A R K S	C
1	A2946645	Left Side Plate	1											
2	B3316852	Side Fence	2											
3	AA153063	Seal - 4x10x70	1											
4	B3316844	Bottom Plate	1											
5	52012858	Friction Pad	1											
6	A1766695	Misfeed Removal Guide	1											
7	B2346667	Side Plate - Side	1											
8	B4756873	Paper Tray Harness	1											
9	B2348510	Decal:Size Indication:Mul	1											
10	B0656859	Right Stopper	1											
11	B3316728	Cover - Front	1											
12	AF022105	Roller - Slide Rail	1											
101	0451006N	Tapping Screw - 3x6												
102	0951006N	Screw - M3X6												
103	0453008N	Binding Self Tapping Scre												
104	0720040E	Retaining Ring - M4												



ITEM NO.	PARTS NO.	PARTS NAME	Q'TY / PAGE	Q'TY / PACK	P	I	R	B S I NO.	T O	T	F R O M	S E R I A L NO.	R E M A R K S	C
1	B3316862	End Fence	1											
2	A2946690	Feeler - Paper Height Sen	1											
3	A2486696	Pulley Cover	2											
4	AB032058	Wire Pulley - M10	2											
5	A2486695	Guide - Pulley	4											
6	AB032719	Pulley - M10	2											
7	B3316836	Drive Wire With Pulley	2											
8	AB013781	Gear - 30Z	1											
9	50530223	Bushing - 8mm	3											
10	A2486687	Right Drive Shaft	1											
11	B3315000	Harness:Paper Tray:A3:Set	1											
12	B0656870	Stay -rightbase	2											
13	A2486694	Wire Ring	4											
14	B3316811	Cushion - 20x30	3											
15	AF022105	Roller - Slide Rail	1											
16	A2486701	Oil Damper	1											
17	B0656872	Oil Damper Bracket	1											
18	B3316812	Base Plate	1											
19	B1327575	Bracket:Connector:Tandem	1											
20	B3316736	Sensor Bracket	1											
21	AW020145	Photointerruptor:Flat	4											
22	B2346141	Positioning Sleeve - Inne	1											
101	0451006N	Tapping Screw - 3x6												
103	0720040E	Retaining Ring - M4												
104	0720060E	Retaining Ring - M6												
105	0633200G	Pin - M3x20												
107	0313080N	Pan Head Screw:M3x8												
108	11050199	Clamp												
109	11050488	Harness Clamp												
110	11050230	Clamp												

TOSHIBA

TOSHIBA TEC CORPORATION

2-17-2, HIGASHIGOTANDA, SHINAGAWA-KU, TOKYO, 141-8664, JAPAN