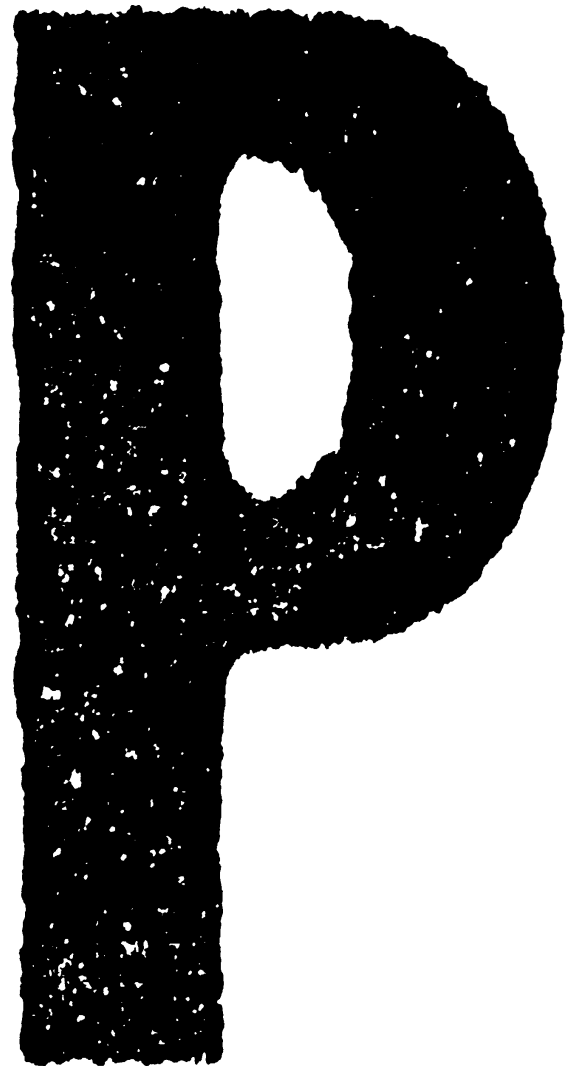


**TOSHIBA**

# **SERVICE PARTS LIST**

Punch Unit

# **PU5000NA**



© 2006 TOSHIBA TEC CORPORATION All rights reserved

Under the copyright laws, this manual cannot be reproduced in any form without prior written permission of TOSHIBA TEC CORPORATION. No patent liability is assumed, however, with respect to the use of the information contained herein.

# EXPLANATION OF SERVICE-PARTS LIST

## 1. HOW TO READ THE PARTS LIST

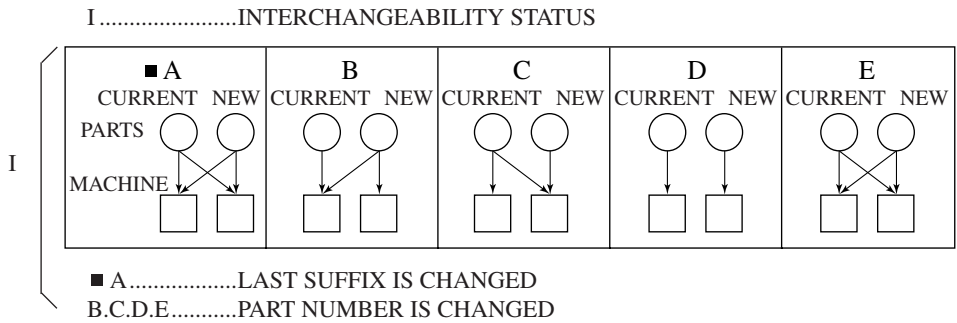
- (1) Number of pieces  
The number of pieces in the list denotes total pieces used per unit. But the numbers in the list for PACKING MATERIAL and ACCESSORY denote total pieces used per machine.
- (2) One pack of screws in the list includes 50 pieces.
- (3) ABBREVIATED CODES

QTY/PAC

- QTY.....one piece
- PAC.....one pack
- 1/P.....one piece packed in polyethylene bag
- 1/S.....one piece packed in special pack
- 1/C.....one piece packed in carton box
- 1/PP.....one piece packed in paper and polyethylene bag
- 1/KP.....one piece packed in polyethylene bag with cardboard
- 1/D.....one piece packed in polyethylene-cushion bag
- 1/SB.....one piece packed in shielding bag
- N/A.....not available

P

- P.....PURPOSE
- A.....ADD
- B.....DELETE
- C.....CHANGE
- D.....QTY, CHANGE
- E.....MISENTRY
- F.....OMISSION



## 2. HOW TO PLACE ORDER FOR PARTS

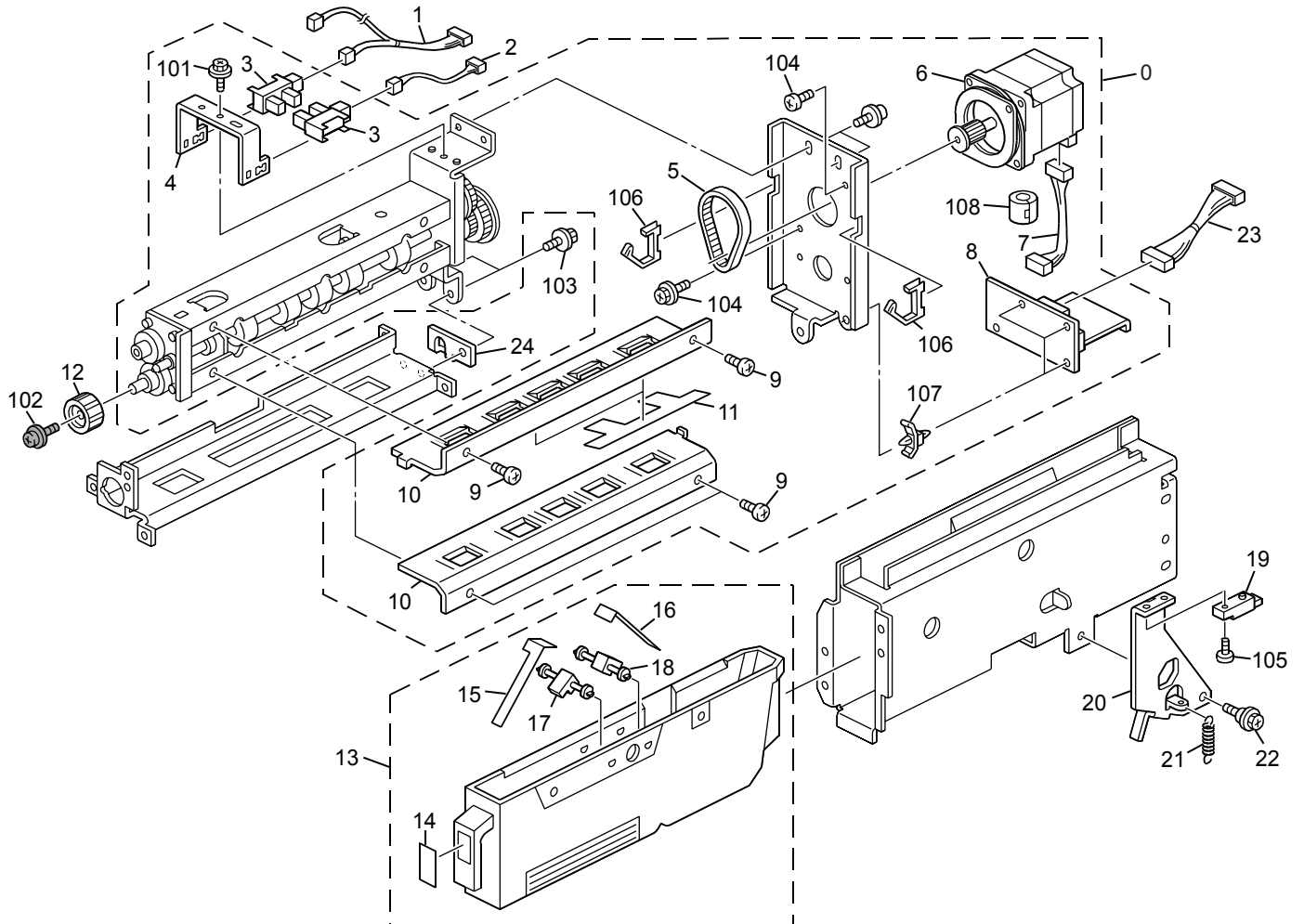
- (1) The parts handled as service parts are only those with their "QTY/PACK" column listed with a quantity other than "N/A\*\*\*" or "SUPPLY".  
Those parts with "N/A\*\*\*" are listed only for the purpose of showing the mechanical construction, those listed with "SUPPLY" are handled only as a sales item, and therefore both types of parts are not supplied as service parts.
- (2) Orders for any parts which form a component of a semi-assembled unit are not acceptable.  
Note: All the screws and nuts used are ISO standard.

## 3. REGION

- NAD.....115V  
50/60Hz, NORTH AMERICA, SOUTH AMERICA
- TWD.....110/220V  
50/60Hz, TAIWAN
- SAD.....127V/60Hz, SAUDI ARABIA
- ASD.....220-240V  
50/60Hz, ASIA, SOUTH AMERICA, etc.
- ASU.....220-240V  
50/60Hz, ASIA, etc.
- AUD.....220-240V  
50/60Hz, AUSTRALIA
- MJD.....220-240V  
50/60Hz, EUROPE
- CND.....220-240V  
50/60Hz, CHINA
- KRD.....220-240V  
50/60Hz, KOREA

# CONTENTS

PUNCH UNIT.....	1
-----------------	---



ITEM NO.	PARTS NO.	PARTS NAME	Q'TY / PAGE	Q'TY / PACK	P I R	B S I NO.	T O	T	F R O M	S E R I A L NO.	R E M A R K S	C
0A	B8313000	Punch Unit (2-3hole NA)	1									
0B	B8314000	Punch Unit (2-4hole EU)	1									
0C	B8315000	Punch Unit (punch-4 NE)	1									
1	B5315240	Harness:Sensor:Punch	1									
2	B5315220	Harness:Sensor:Punch:Home	1									
3	AW020156	PHOTOINTERRUPTOR:EE-SX423	2									
4	B8311211	Sensor:Punch Bracket	1									
5	AA043226	Timing Belt - 180S2M	1									
6	B8311110	Stepper Motor DC1.76V 7.3	1									
7	B5315230	Harness:Motor:Punch	1									
8	B8315510	PCB Punch	1									
9	58752088	Shoulder Screw - M4	4									
10	B8313211	Guide Plate (-01)	2									
11A	B5313215	Film:Guide:Punch:2-3Hole:	1									
11B	A8127145	Film:Guide:Punch (2-4 Hol	1									
11C	A8127141	Guide Mylar (-03)	1									
12	A3777161	Punch Knob	1									
13A	A8127200	Dust Hopper (2-4 Hole)	1									
13B	A8127240	Dust Hopper (2-3 Hole)	1									
14	A6061885	Decal - Hopper	1									
15A	A8127214	Film - Front	1									
15B	A8127245	Film - Front	1									
16A	A8127215	Film - Rear	1									
16B	A8127246	Film - Rear	1									
17	A8127212	Pin - Front	1									
18	A8127213	Pin - Rear	1									
19	AW010123	Photo Refiection Sensor:P	1									
20	A8127323	Dust Hopper Stopper	1									
21	A8127331	Lock Spring	1									
22	AA143790	Screw:Contact Point	1									
23	B5315200	Harness:PCB:Punch	1									
24	B5457411	Spacer:2mm	1									
25	B5457412	Spacer:1mm	1									
101	0451006N	Tapping Screw - 3x6										
102	0951006P	Screw:Polished Round:M4x6										
103	0451010N	Tapping Screw:4x10										
104	0451008N	Tapping Screw:4x8										
105	0313100N	Pan Head Screw:M3x10										
106	11050522	Edge Saddle - Les0510										
107	11050192	Locking Support										
108	16070623	Ferrite Core - TFC-16-8-1										



**TOSHIBA**

**TOSHIBA TEC CORPORATION**

2-17-2, HIGASHIGOTANDA, SHINAGAWA-KU, TOKYO, 141-8664, JAPAN