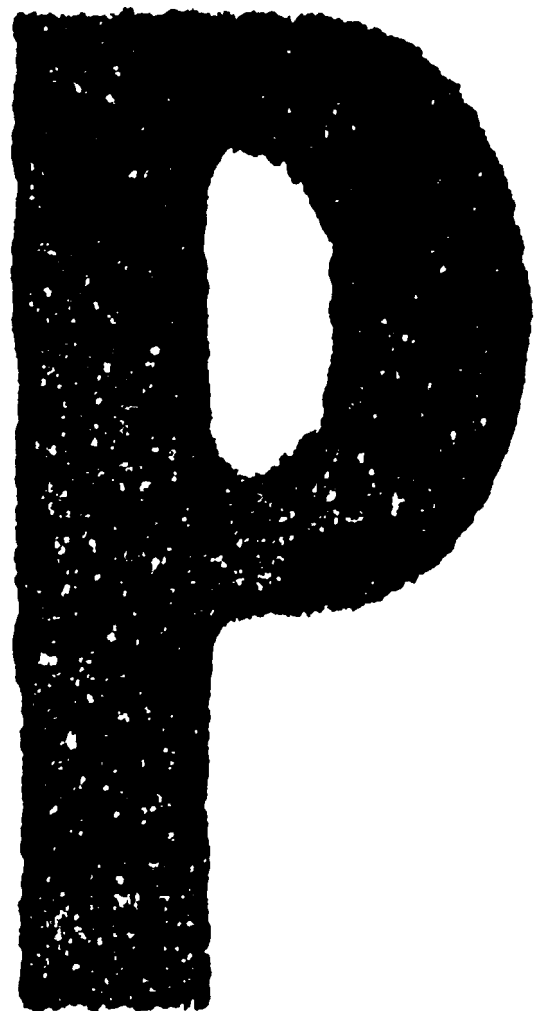


TOSHIBA

SERVICE PARTS LIST
INSERTER
MJ-7001



Copyright 2002

TOSHIBA TEC CORPORATION

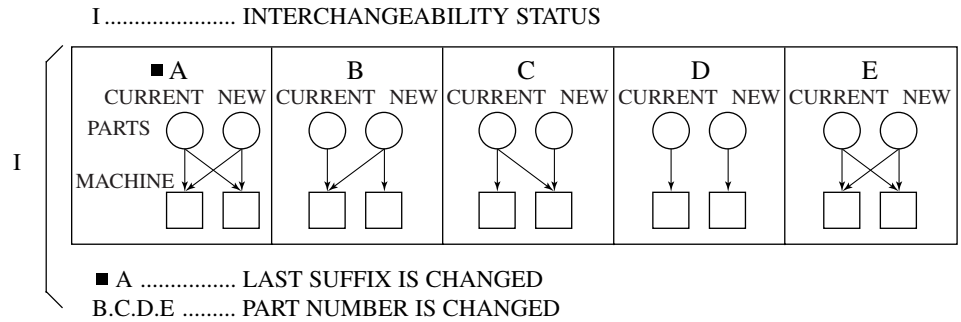
EXPLANATION OF SERVICE-PARTS LIST

1. HOW TO READ THE PARTS LIST

- (1) Number of pieces
The number of pieces in the list denotes total pieces used per unit. But the numbers in the list for PACKING MATERIAL and ACCESSORY denote total pieces used per machine.
- (2) One pack of screws in the list includes 50 pieces.
- (3) ABBREVIATED CODES

QTY/PAC	{	QTY	one piece
		PAC	one pack
		1/P	one piece packed in polyethylene bag
		1/S	one piece packed in special pack
		1/C	one piece packed in carton box
		1/PP	one piece packed in paper and polyethylene bag
		1/KP	one piece packed in polyethylene bag with cardboard
		1/D	one piece packed in polyethylene-cushion bag
N/A	not available		

P	{	P	PURPOSE
		A	ADD
		B	DELETE
		C	CHANGE
		D	QTY, CHANGE
		E	MISENTRY
		F	OMISSION



2. HOW TO PLACE ORDER FOR PARTS

- (1) The parts handled as service parts are only those with their "QTY/PACK" column listed with a quantity other than "N/A***" or "SUPPLY".
Those parts with "N/A***" are listed only for the purpose of showing the mechanical construction, those listed with "SUPPLY" are handled only as a sales item, and therefore both types of parts are not supplied as service parts.
- (2) Orders for any parts which form a component of a semi-assembled unit are not acceptable.
Note: All the screws and nuts used are ISO standard.

3. REGION

NAD	115V/60Hz, UL & CSA
TWD	110V/60Hz, TAIWAN
SAD	127V/60Hz, SAUDI ARABIA
ASD	220V 50/60Hz, ASIA, etc.
AUD	240V/50Hz, AUSTRALIA
MJD	230-240V 50/60Hz, EUROPE
UKD	230-240V 50/60Hz, UNITED KINGDOM

NOTICE EXPLICATIVE DE LA LISTE DES PIECES DE RECHANGE

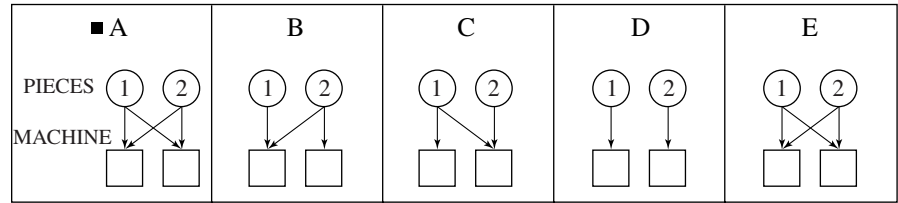
1. COMMENT UTILISER LA LISTE DES PIECES DE RECHANGE

- (1) Nombre de pièces
Le nombre de pièces indiqué sur la liste est le nombre total de pièces utilisées pour chaque unité.
Toutefois, le nombre indiqué sur la liste EMBALLAGE ACCESSOIRES est le nombre total de pièces utilisées pour chaque machine.
- (2) Un paquet de vis indiqué sur la liste contient 50 vis.
- (3) ABREVIATIONS

Q'TY/PAC	{	QTY une pièce
		PAC un paquet
		1/P une pièce emballée dans un sac en polyéthylène
		1/S une pièce emballée dans un sac spécial
		1/C une pièce emballée dans une boîte en carton
		1/PP une pièce emballée dans un sac en papier et en polyéthylène
		1/KP une pièce emballée dans un sac en polyéthylène avec carton
		1/D une pièce emballée dans un sac rembourré en polyéthylène
1/SB une pièce emballée dans		
N/A*** non disponible		

P	{	P BUT
		A AJOUTER
		B SUPPRIMER
		C MODIFIER
		D CHANGEMENT DE QUANTITE
		E INSCRIPTION ERRONEE
		F OMISSION

I INTERCHANGEABILITE



- ① ACTUELLE ② NOUVELLE
- A LE DERNIER SUFFIXE EST CHANGE
B.C.D.E LE NOMBRE DE PIECES EST CHANGE

2. COMMENT COMMANDER LES PIECES

- (1) Les pièces de rechange sont uniquement celles qui sont mentionnées dans la colonne "Q'TY/PACK" avec une quantité autre que "N/A***" ou "SUPPLY".
Les pièces dans la colonne "N/A***" sont mentionnées uniquement dans le but d'indiquer la construction mécanique. Les pièces dans la colonne "SUPPLY" sont destinées uniquement à la vente. Par conséquent, ces deux types de pièces ne sont pas fournies en tant que pièces de rechange.
- (2) Les commandes de toute pièce formant un élément ou une unité semi-assemblée ne seront pas acceptées.
Nota: Toutes les vis et tours le écrous seront conformes au code ISO.

3. PAYS

NAD	115V/60Hz, UL & CSA
TWD	110V/60Hz, TAIWAN
SAD	127V/60Hz, ARABIE SAOUDITE
ASD	220V
		50/60Hz, ASIE, etc.
AUD	240V/50Hz, AUSTRALIE
MJD	230-240V
		50/60Hz, EUROPE
UKD	230-240V
		50/60Hz, ROYAUME-UNI

ERKLÄRUNG DES ERSATZTEIL-KATALOGES

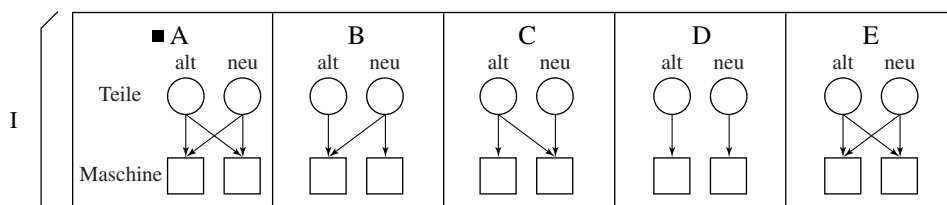
1. WIE LIEST MAN DIE TEILELISTE?

- (1) Die Teileanzahl
Die Anzahl der Teile in der Liste, drücken die gesamten Teile pro Verpackungseinheit aus. Aber die Zahl in der Liste "Packing" (Verpackung) und "Accessory" (Zubehör) beschreibt die gesamte Teileanzahl pro Maschine.
- (2) Eine Verpackungseinheit SCHRAUBEN enthält 50 Stück.
- (3) Abkürzungscode

QTY/PAC	QTY	Stück
	PAC	Packung
	1/P	ein Stück in einem Plastikbeutel
	1/S	ein Stück in einer Spezialverpackung
	1/C	ein Stück in einem Karton
	1/PP	ein Stück in Papier und einem Plastikbeutel
	1/KP	ein Stück in einem Plastikbeutel mit Pappdeckel
	1/D	ein Stück in einem gepolsterten Plastikbeutel
N/A	nicht lieferbar	
1/SB	ein Stück in einer Schutzhülle	

P	P	Zweck
	A	Zusätzlich
	B	Entfernen
	C	Ändern
	D	Menge geändert
	E	Fehlangabe
F	Weglassen	

I Austauschbar untereinander



- A letzte Ziffer ist geändert
- B.C.D.E Teilenummer ist geändert

2. WIE WERDEN ERSATZTEILE BESTELLT?

- (1) Die Ersatzteile für den Service haben in der Spalte "QTY/PACK" eine Nummer.
Die Teile mit der Angabe "N/A****" sind nur aufgeführt, um die technische Konstruktion zu zeigen und sind einzeln nicht lieferbar.
Die Bezeichnung "SUPPLY" weist darauf hin, daß dieses Teil als Zubehör gehandelt wird und beim Verkauf bestellt werden muß.
- (2) Bestellungen für Einzelteile, die einer Baueinheit angehören können nicht akzeptiert werden.
Hinweis: Alle Schrauben und Muttern werden nach dem ISO-Standard hergestellt.

3. REGION

NAD	115V/60Hz, UL & CSA
TWD	110V/60Hz, TAIWAN
SAD	127V/60Hz, SAUDI-ARABIEN
ASD	220V
	50/60Hz, ASIEN, usw.
AUD	240V/50Hz, AUSTRALIEN
MJD	230-240V
	50/60Hz, EUROPA
UKD	230-240V
	50/60Hz, GROSSBRITANNIEN

SPIEGAZIONE DELLA LISTA DEI PEZZI DI RICAMBIO

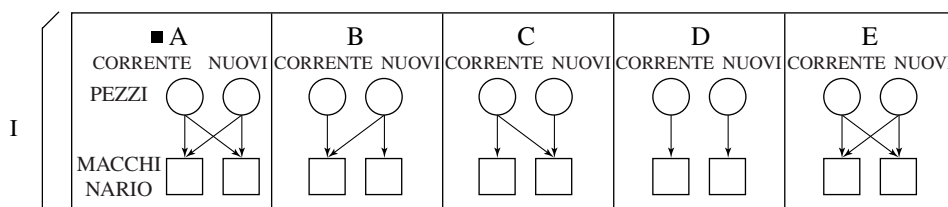
1. COME LEGGERE LA LISTA DEI PEZZI DI RICAMBIO

- (1) Numero dei pezzi
Il numero dei pezzi indica il totale dei pezzi per elemento. I numeri nella lista del materiale d'imballaggio e accessori indicano il totale dei pezzi per macchina.
- (2) Nella lista, un pacco di viti contiene 50 viti.
- (3) ABBREVIAZIONI

QTY/PAC	{	QTY	un pezzo
		PAC	un pacco
		1/P	un pezzo imballato in sacco di polietilene
		1/S	un pezzo imballato in pacco speciale
		1/C	un pezzo imballato in scatola di cartone
		1/PP	un pezzo imballato in sacco di polietilene e carta
		1/KP	un pezzo imballato in sacco di polietilene con cartone
		1/D	un pezzo imballato in sacco morbido di polietilene
	1/SB	un pezzo imballato in sacco di protezione	
	N/A	non disponibile	

P	{	P	scopo
		A	aggiunta
		B	annullamento
		C	modifica
		D	modifica QTY
		E	ingresso errato
		F	omissione

I stato di intercambiabilità



- A modifica dell'ultimo suffisso
- B.C.D.E modifica del numero di pezzo

2. ORDINAZIONE DEI PEZZI

- (1) I pezzi usati come pezzi di ricambio sono elencati nella colonna "QTY/PACK" con una quantità differente da "N/A***" o "SUPPLY".
I pezzi con "N/A***" sono elencati solamente per mostrare la costruzione meccanica e quelli con "SUPPLY" sono elencati solamente come articoli di vendita: ciò significa che questi due tipi di pezzi non sono forniti come pezzi di ricambio.
- (2) L'ordinazione dei pezzi non viene accettata quando questi pezzi formano un componente di un messo elemento.
Nota: Tuttle le viti e i dadi sono standard ISO.

3. NAZIONE

NAD	115V/60Hz, UL & CSA
TWD	110V/60Hz, TAIWAN
SAD	127V/60Hz, ARABIA SAUDITA
ASD	220V
	50/60Hz, ASIA, ecc.
AUD	240V/50Hz, AUSTRALIA
MJD	230-240V
	50/60Hz, EUROPA
UKD	230-240V
	50/60Hz, GRAN BRETAGNA

EXPLICACION DE LA LISTA DE PIEZAS DE SERVICIO

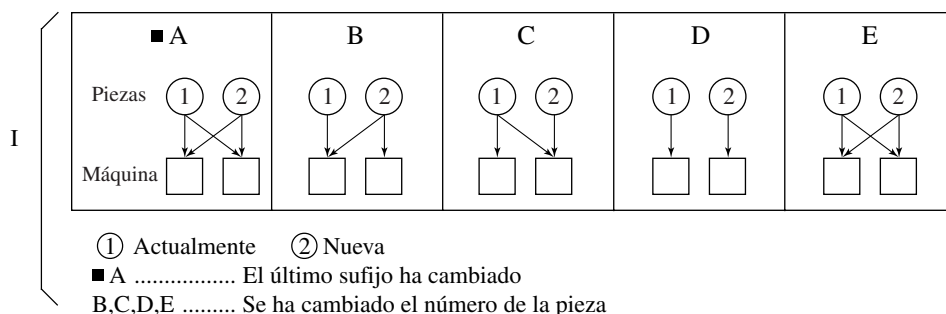
1. Cómo se lee la lista de piezas

- (1) El número de piezas
El número de piezas en la lista especifica las piezas totales usada pou unidad, mientras que el número en la lista para METERIAL DE EMBALAJE y ACCESORIOS especifica las piezas totales usadas por máquina.
- (2) En el paquete de tornillos se incluyen 50 unidades.
- (3) Códigos abreviados

QTY/PAC	QTY	una pieza
	PAC	una paquete
	1/P	una pieza empaquetada en la bolsa de politileno
	1/S	una pieza empaquetada en paquete especial
	1/C	una pieza empaquetada en caja de cartón
	1/PP	una pieza empaquetada en papel y bolsa de politileno
	1/KP	una pieza empaquetada en bolsa de politileno con cartón
	1/D	una pieza empaquetada en bolsa almohadillada de politileno
	1/SB	una pieza empaquetada en una
	N/A	bolsa protegida

P	PROPOSITO
A	AÑADIR
B	BORRAR
C	CAMBIO
D	CANTIDAD, CAMBIO
E	ENTRADA ERRONEA
F	OMISION

I SITUACION DE INTERCAMBIABILIDAD



2. Cómo realizar un pedido de piezas

- (1) Las piezas consideradas como piezas de servicio son sólo aquellas designadas con Q'TY/PACK y no las designadas con N/A ... o SUPPLY.
Aquellas piezas con N/A ... se ponen en lista sólo con el propósito de mostrar la construcción mecánlca. Aquéllas piezas designadas bajo SUPPLY se consideran sólo como un artículo para ventas y por lo tanto ambos tipos de piezas no se consideran como piezas de servicio.
- (2) Los pedidos para cualquier pieza que forme un componente de la unidad semiensamblada no será aceptados.
NOTA: todos los tornillos y tuercas son del estandar ISO.

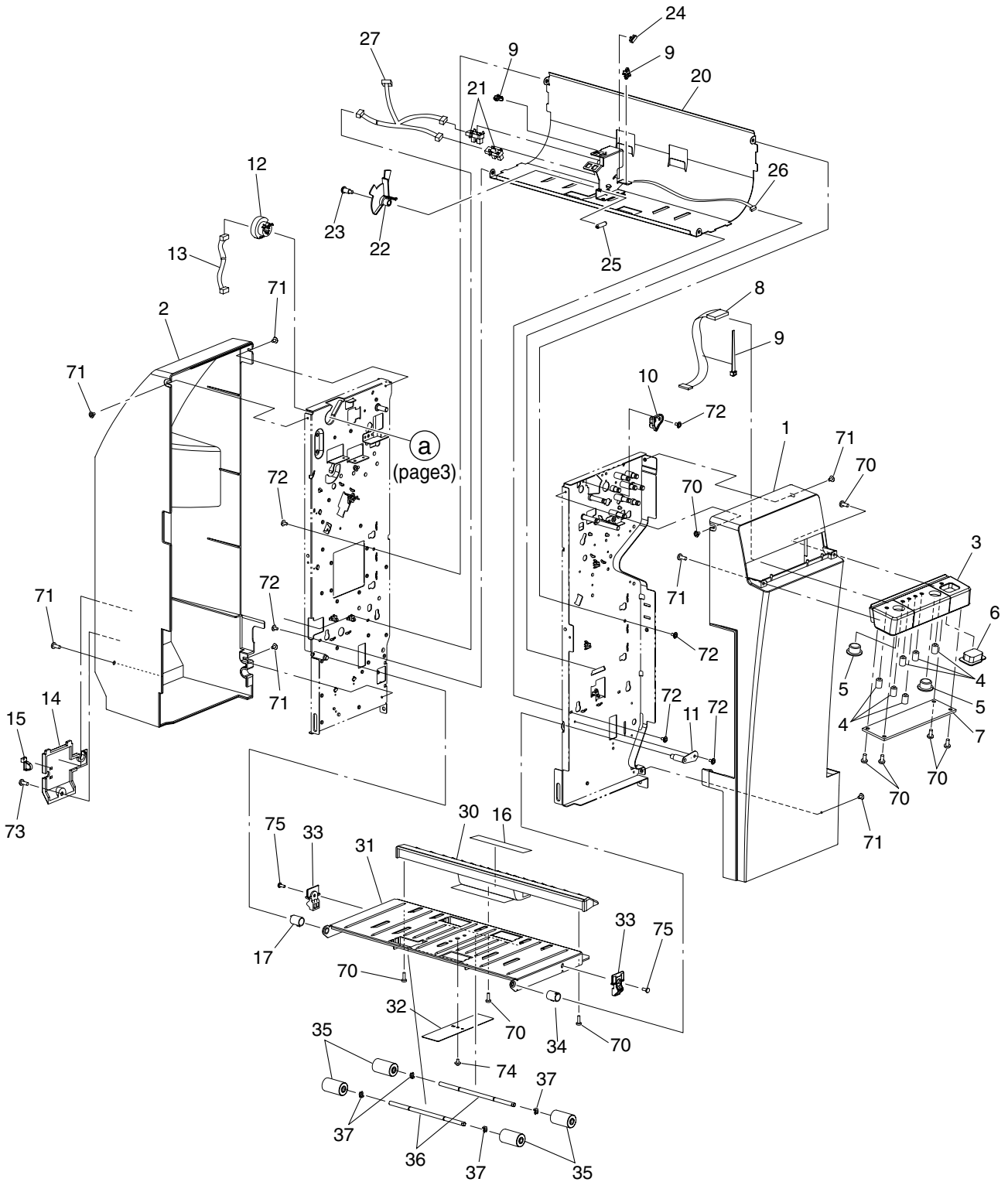
3. PAISES

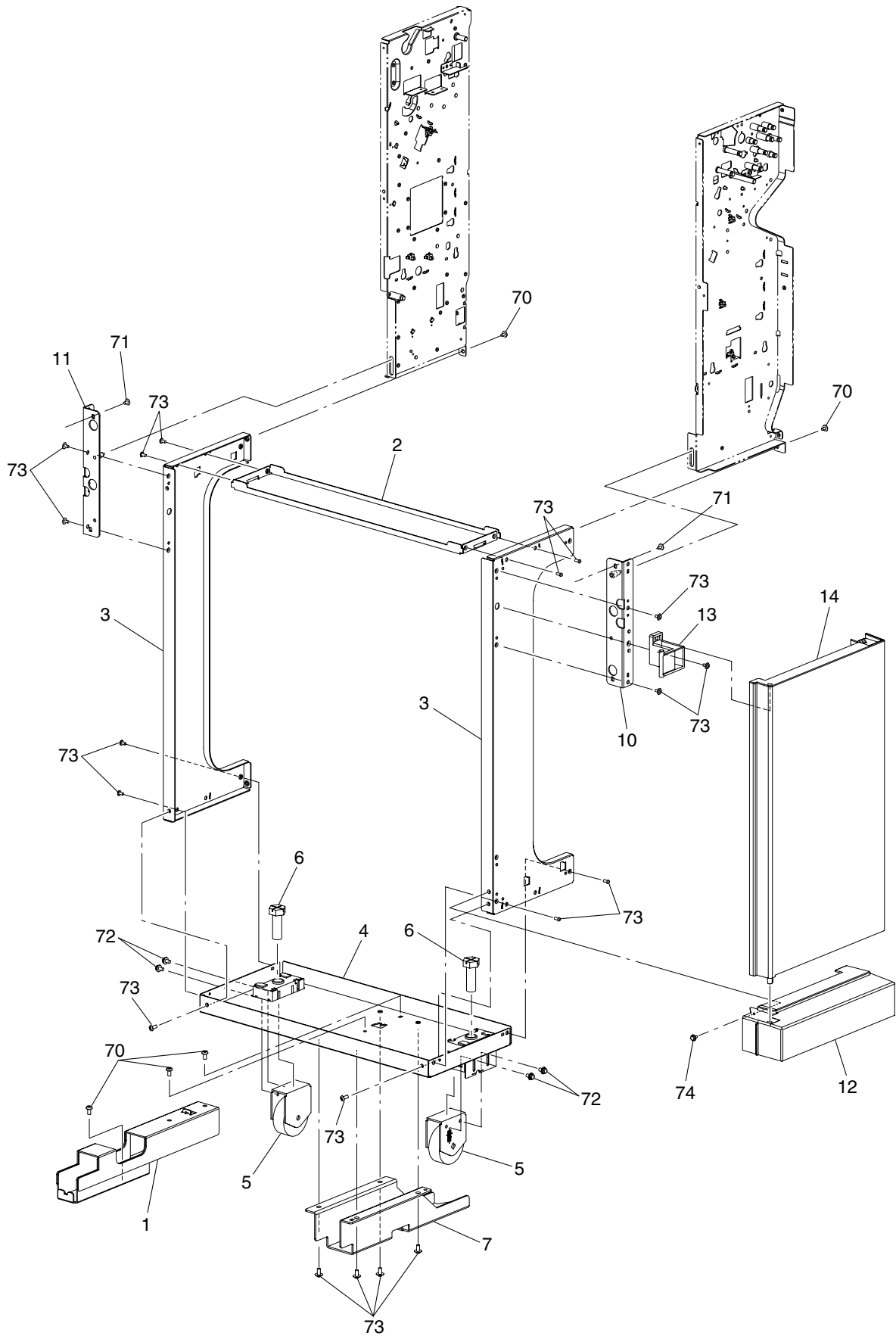
NAD	115V/60Hz, UL & CSA
TWD	110V/60Hz, TAIWAN
SAD	127V/60Hz, SAUDI ARABIA
ASD	220V
	50/60Hz, ASIA, etc.
AUD	240V/50Hz, AUSTRALIA
MJD	230-240V
	50/60Hz, EUROPA
UKD	230-240V
	50/60Hz, GRAN BRETAÑA

CONTENTS (MJ-7001)

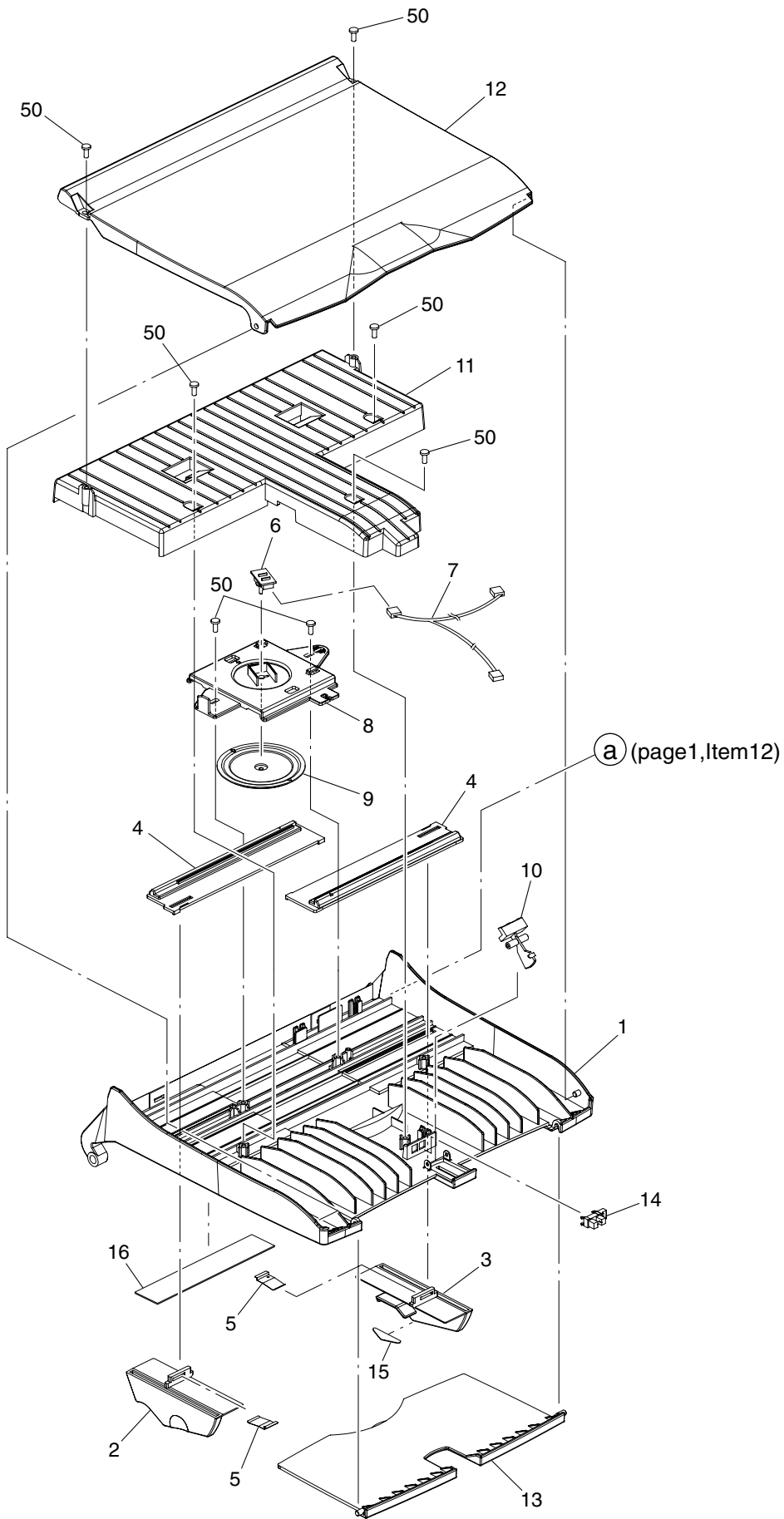
1. ASM-COVER/CONTROL PANEL	1
2. ASM-BASE	2
3. ASM-TRAY	3
4. ASM-FRAME-FRONT	4
5. ASM-FRAME-REAR	5
6. ASM-GUIDE-OUT	6
7. ASM-GUIDE-IN	7
8. ASM-FEEDER	8
9. ASM-ROLLER	9
10. ASM-DRIVE-FRONT	10
11. ASM-DRIVE-REAR	11

PARTS NUMBER INDEX

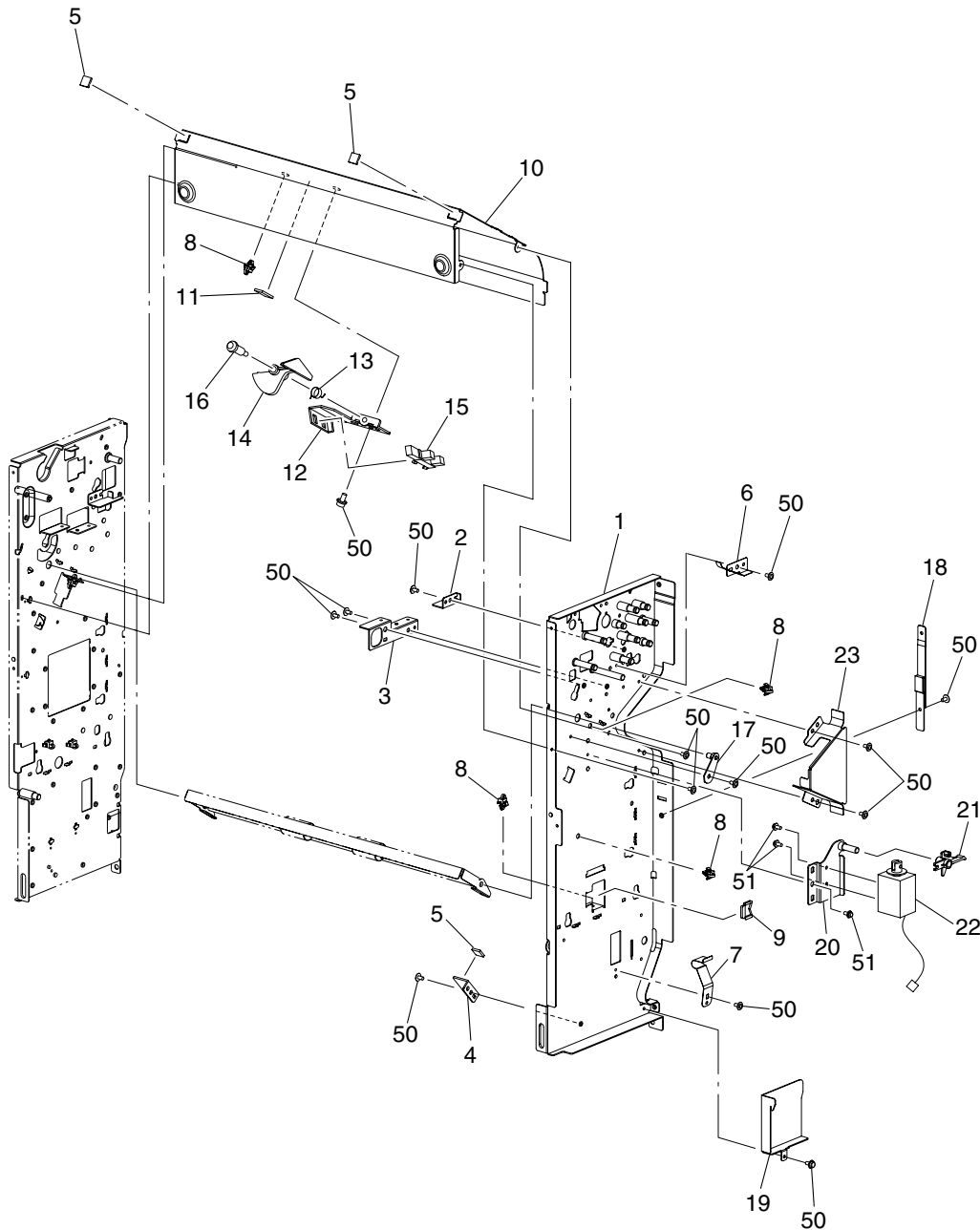




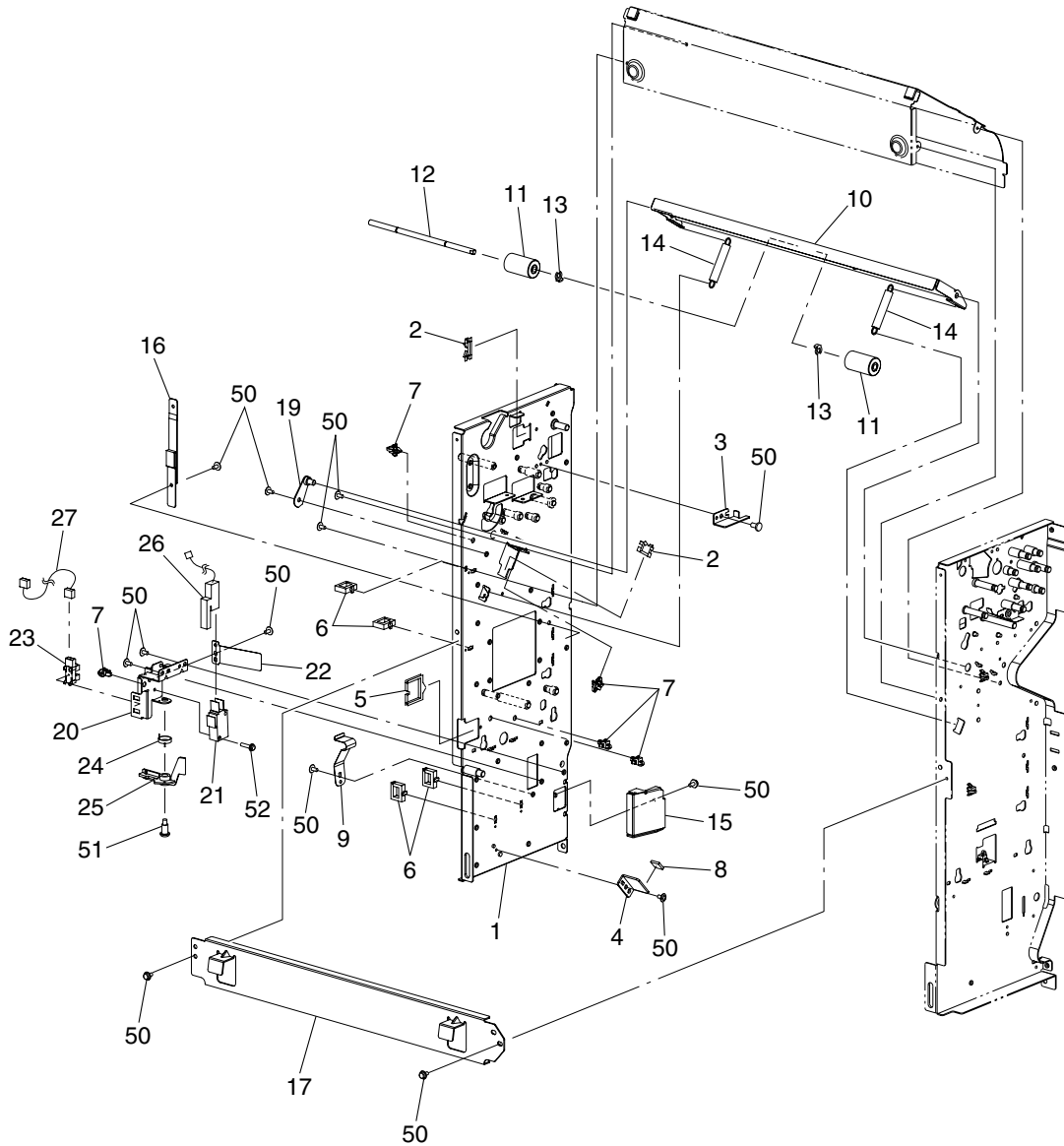
ITEM NO.	PARTS NO.	PARTS NAME	QTY / PAGE	QTY / PACK	PI	R	BSI NO.	TO	FROM	SERIAL NO.	REMARKS	C
1	6LA10258000	BKT-BASE-RAIL-2	1	1/P								
2	6LA10238000	FRM-BASE-UP	1	1/P								
3	6LA10239000	FRM-BASE-SIDE	2	1/P								
4	6LA10241000	ASY-BASE-CSTR	1	1/P								
5	6LA10242000	CSTR-BASE	2	1/P								
6	6LA10244000	BOT-120-350	2	1/P								
7	6LA10245000	BKT-BASE-RAIL-1	1	1/P								
10	6LA10248000	K-BASE-JNT-F	1	1/P								
11	6LA10250000	K-BASE-JNT-R	1	1/P								
12	6LA10252000	CVR-BASE-DOWN	1	1/PP								
13	6LA10254000	HLDR-BASE-DOR	1	1/P								
14	6LA10257000	CVR-BASE-DOR	1	1/PP								
70	6LA10261000	SCR-M4X8	5	10/P								
71	6LA10262000	SCR-M4X8	2	10/P								
72	6LA54612000	SCR-M4X1.5	4	10/P								
73	6LA10246000	SCR-M4X8 I TSR-NI	19	10/P								
74	6LA09852000	SCR-M3X6 I TSR-NI	1	10/P								



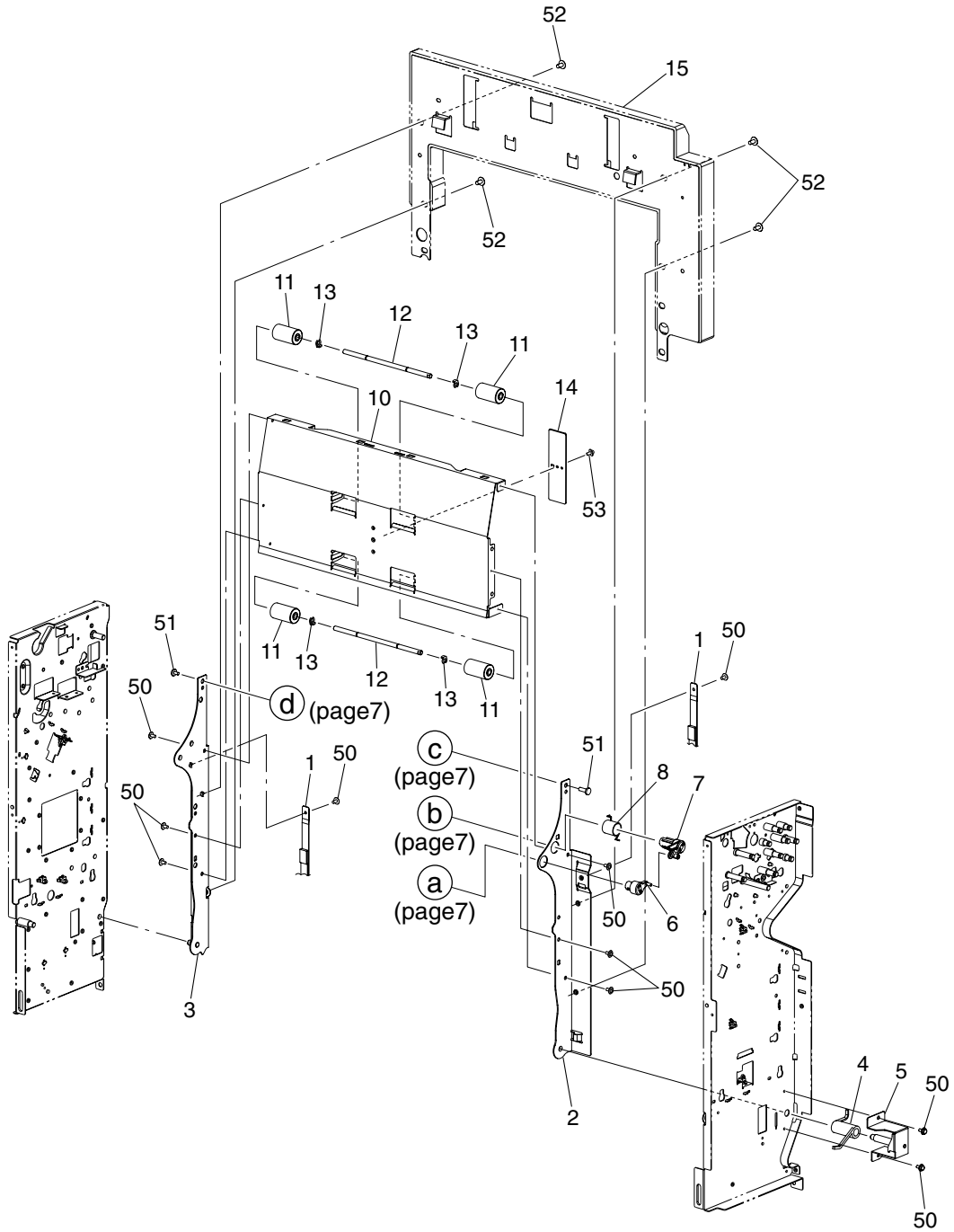
ITEM NO.	PARTS NO.	PARTS NAME	Q'TY / PAGE	Q'TY / PACK	P	I	R	BSI NO.	TO	FROM	SERIAL NO.	REMARKS	C
1	6LA10161000	BASE-TRY	1	1/PP									
2	6LA10162000	GID-TRY-F	1	1/PP									
3	6LA10163000	GID-TRY-R	1	1/PP									
4	6LA10164000	RCK-TRY	2	1/P									
5	6LA10165000	SP-PLT-T	2	5/P									
6	6LA10167000	PBA-VR	1	1/C									
7	6LA10168000	ASM-TR-IN	1	1/P									
8	6LA10169000	HLDR-TRY-VOL	1	1/C									
9	6LA10170000	GER-T-76	1	1/P									
10	6LA10173000	LVR-TRY-SNS	1	1/P									
11	6LA10174000	CVR-TRY-UNDER	1	1/PP									
12	6LA10176000	GID-TRY-UNDER	1	1/PP									
13	6LA10178000	GID-TRY-SUB	1	1/PP									
14	6LA09868000	TLP1241	1	1/C									
15	6LA54614000	LABEL-TRY-MAX	1	5/P									
16	6LA54613000	LABEL-TRY-SIZE	1	5/P									
50	6LA10175000	SCR-4X12W	7	10/P									



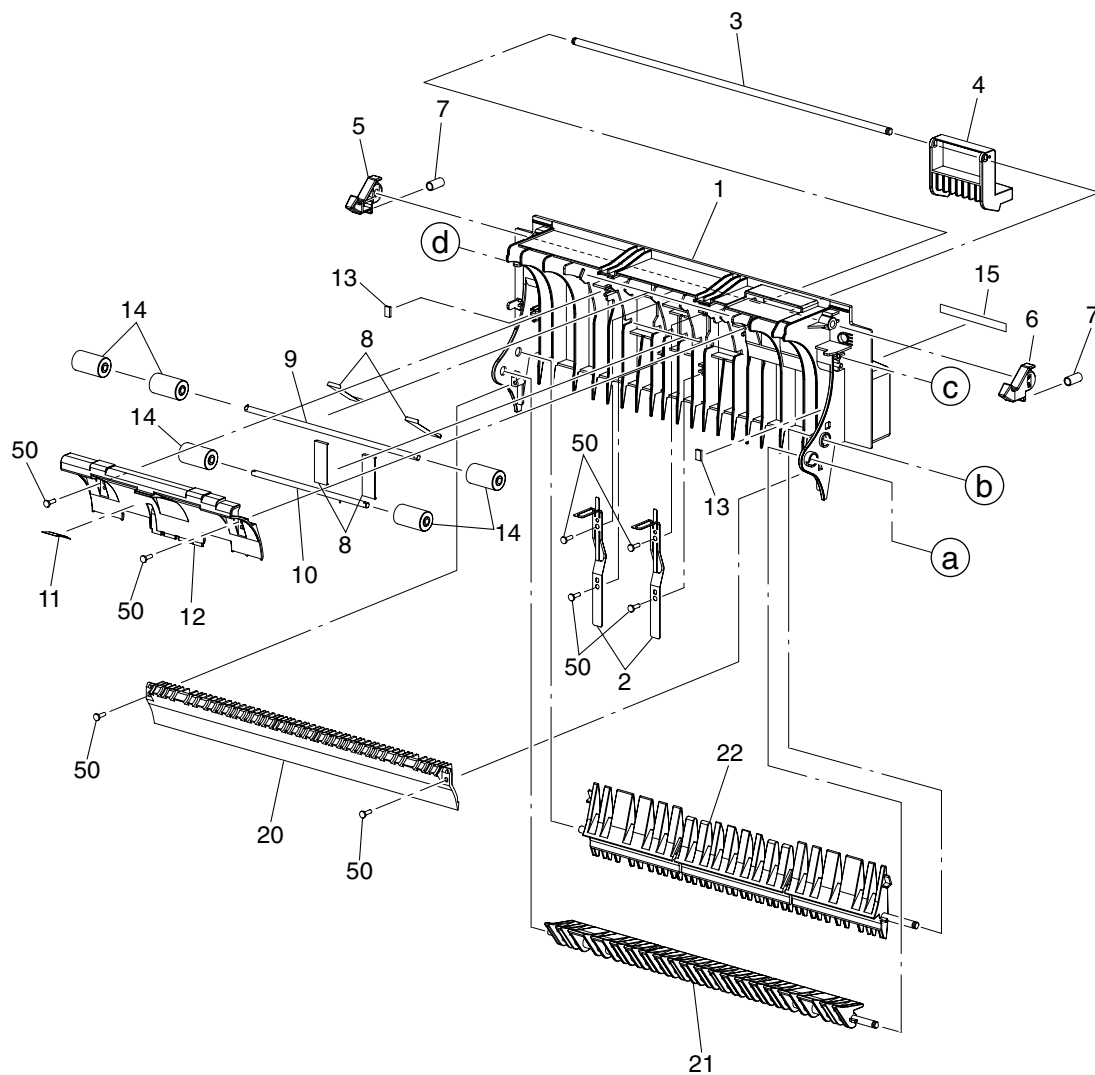
ITEM NO.	PARTS NO.	PARTS NAME	QTY / PAGE	QTY / PACK	P	I	R	BSI NO.	TO	FROM	SERIAL NO.	REMARKS	C
1	6LA09850000	K-FM-F	1	1/P									
2	6LA09851000	BKT-FM-F-BUN	1	1/P									
3	6LA09853000	BKT-FM-F-REV	1	1/P									
4	6LA09854000	BKT-FM-SF-STOP	1	1/P									
5	6LA09855000	CUSH-TRY	3	5/P									
6	6LA09856000	BKT-UF-CAMSP	1	1/P									
7	6LA09857000	SP-FM-SF-LOCK	1	1/P									
8	6LA09858000	RSG-100	4	5/P									
9	6LA09859000	EDS-1	1	5/P									
10	6LA09874000	GID-FM-HNT	1	1/PP									
11	6LA09875000	DMPR-LF-FLP	1	5/P									
12	6LA09877000	BKT-FM-SEN-HNT	1	1/P									
13	6LA09878000	SP-FM-HNT	1	5/P									
14	6LA09879000	LVR-FM-HNT	1	1/P									
15	6LA09868000	TLP1241	1	1/C									
16	6LA09870000	SCR-M4X9. 1	1	10/P									
17	6LA09898000	K-FM-RF-SITEN	1	1/P									
18	6LA10102000	BND-LF-SUPPORT	1	5/P									
19	6LA10150000	CVR-FM-SITEN-LF	1	1/P									
20	6LA10153000	K-FM-SOL-FLP	1	1/P									
21	6LA10154000	LNK-FM-SOL	1	1/P									
22	6LA10155000	SOL-SP	1	1/D									
23	6LA10158000	CVR-FM-IN	1	1/P									
50	6LA09852000	SCR-M3X6 ITSR-NI	14	10/P									
51	6LA10156000	SCR-WM3X6	3	10/P									



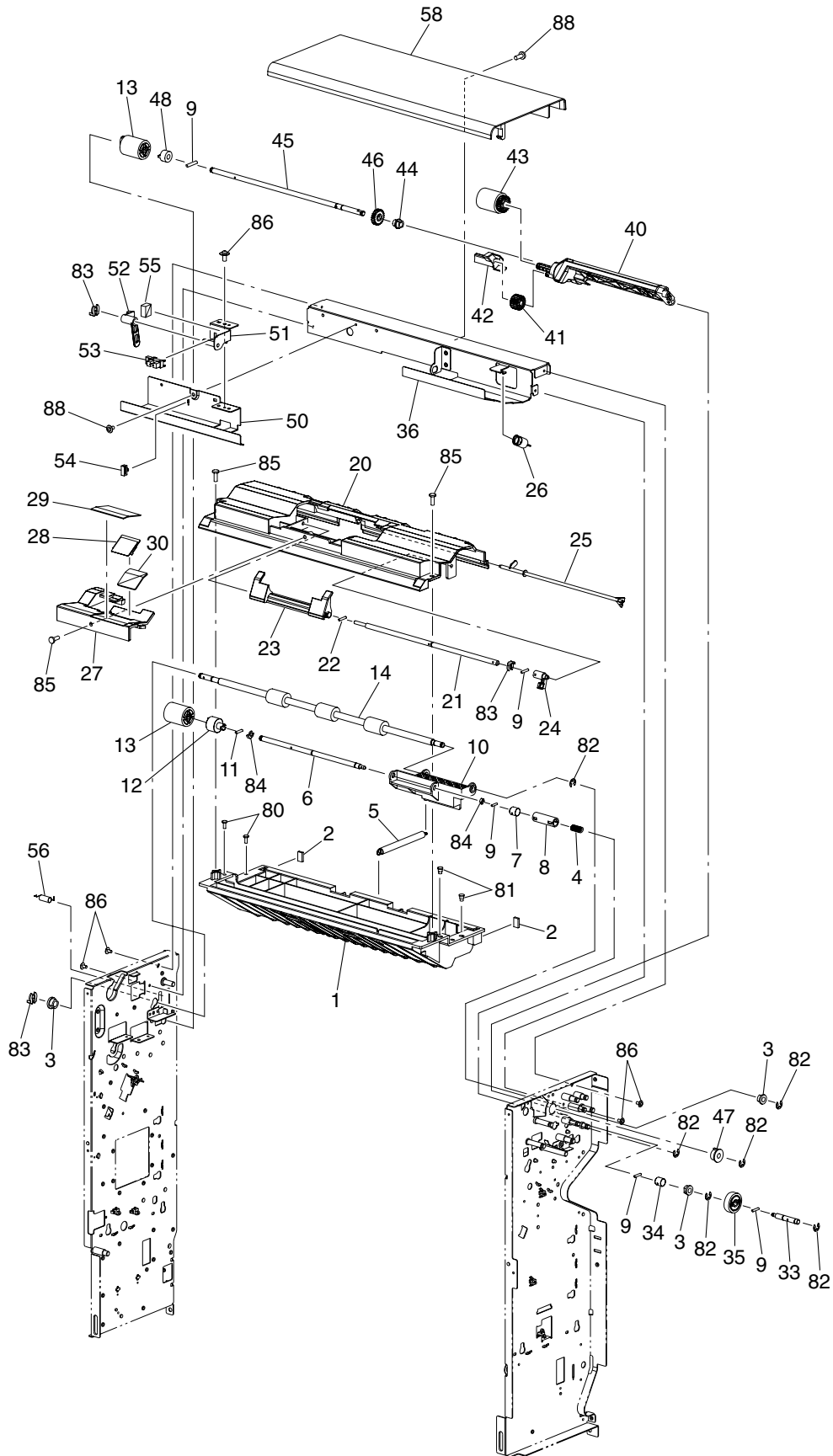
ITEM NO.	PARTS NO.	PARTS NAME	QTY / PAGE	QTY / PACK	PI	R	BSI NO.	TO	FROM	SERIAL NO.	REMARKS	C
1	6LA09861000	K-FM-R	1	1/P								
2	6LA09859000	EDS-1	2	5/P								
3	6LA09862000	BKT-FM-R-BUN	1	1/P								
4	6LA09854000	BKT-FM-SF-STOP	1	1/P								
5	6LA09864000	EDS-1717U	1	5/P								
6	6LA09865000	RLWS-1TV0	4	1/P								
7	6LA09858000	RSG-100	5	5/P								
8	6LA09855000	CUSH-TRY	1	5/P								
9	6LA09857000	SP-FM-SF-LOCK	1	1/P								
10	6LA09894000	HLD-FM-HNT	1	1/P								
11	6LA09895000	ROL-SF	2	1/P								
12	6LA09896000	SFT-SF-ROL	1	1/P								
13	6LA09897000	CLIP-4	2	5/P								
14	6LA09899000	SP-RF-HANTEN	2	1/P								
15	6LA10148000	BKT-FM-ICHIGIME	1	1/P								
16	6LA10102000	BND-LF-SUPPORT	1	5/P								
17	6LA10217000	STY-FM-HOOK	1	1/P								
19	6LA09898000	K-FM-RF-SITEN	1	1/P								
20	6LA09984000	BKT-FM-SEN-DOCK	1	1/P								
21	6LA09985000	V-5F910DN	1	1/D								
22	6LA09987000	SP-FM-DOCK	1	5/P								
23	6LA09868000	TLP1241	1	1/C								
24	6LA09990000	SP-FM-SEN-DOCK	1	5/P								
25	6LA09991000	LVR-FM-DOCK	1	1/P								
26	6LA09994000	ASM-SW	1	1/D								
27	6LA09995000	ASM-J-SEN	1	1/P								
50	6LA09852000	SCR-M3X6ITSR-NI	13	10/P								
51	6LA09870000	SCR-M4X9.1	1	10/P								
52	6LA10211000	SCR-WM3X14	1	10/P								



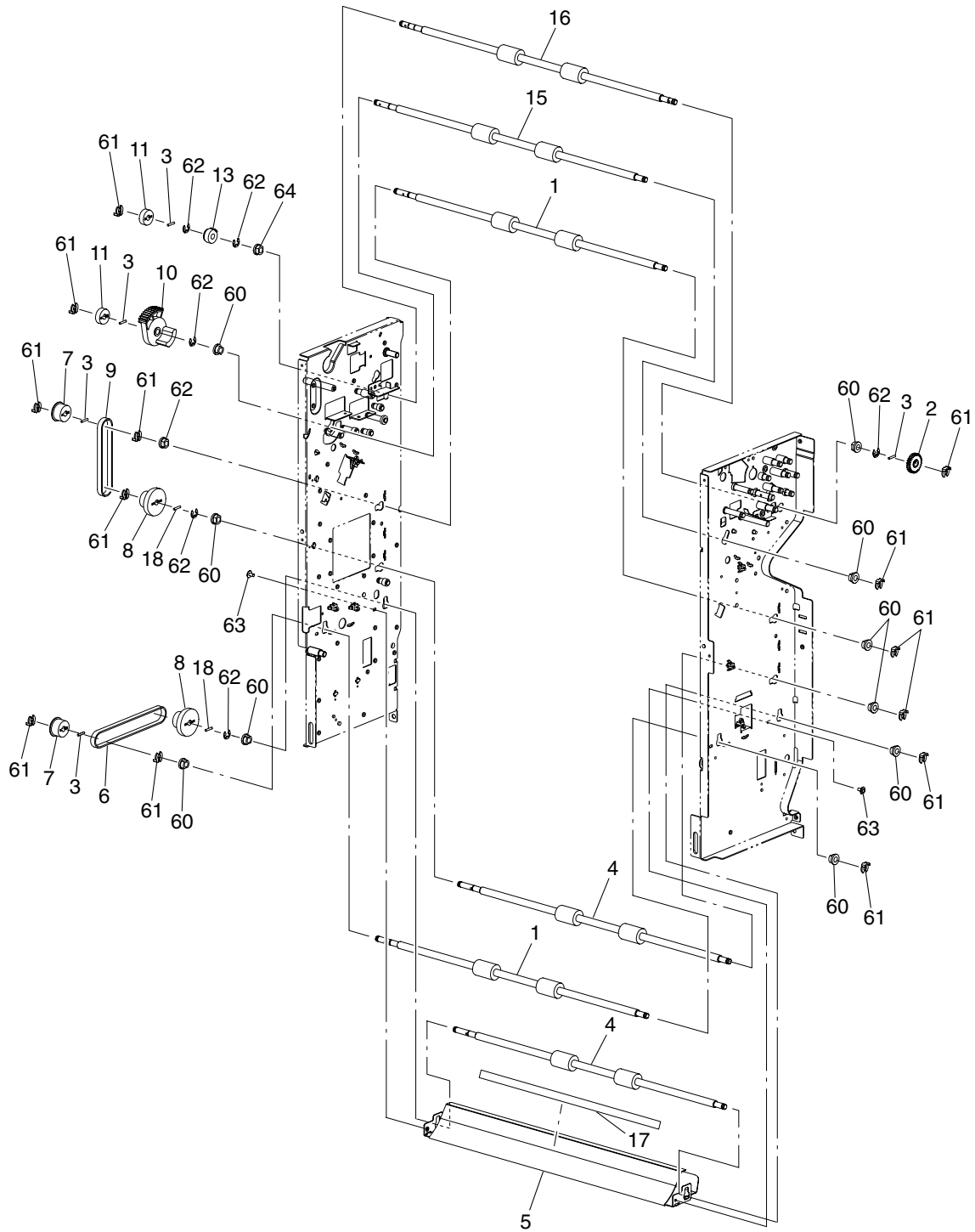
ITEM NO.	PARTS NO.	PARTS NAME	Q'TY / PAGE	Q'TY / PACK	P	I	R	BSI NO.	TO	FROM	SERIAL NO.	REMARKS	C
1	6LA10102000	BND-LF-SUPPORT	2	5/P									
2	6LA10135000	FRM-LF-F	1	1/P									
3	6LA10132000	K-FRM-LF-R	1	1/P									
4	6LA10145000	SP-FM-SITEN-LF	1	1/P									
5	6LA10146000	K-FM-SITEN-LF	1	1/P									
6	6LA10141000	LNK-LF-FLP-OUT	1	1/P									
7	6LA10143000	LNK-LF-FLP-IN	1	1/P									
8	6LA10144000	SP-LF-FLP	1	1/P									
10	6LA10126000	GID-LF-OUT	1	1/P									
11	6LA09895000	ROL-SF	4	1/P									
12	6LA09896000	SFT-SF-ROL	2	1/P									
13	6LA09897000	CLIP-4	4	5/P									
14	6LA10130000	SP-LF-ROL-OUT	1	1/P									
15	6LA54501000	ASY-LATCH-552	1	1/PP								MJ-1017/18	
50	6LA09852000	SCR-M3X6ITSR-NI	10	10/P									
51	6LA10175000	SCR-4X12W	2	10/P									
52	6LA10246000	SCR-M4X8ITSR-NI	4	10/P									
53	6LA09977000	SCR-M3X4IT	1	10/P									

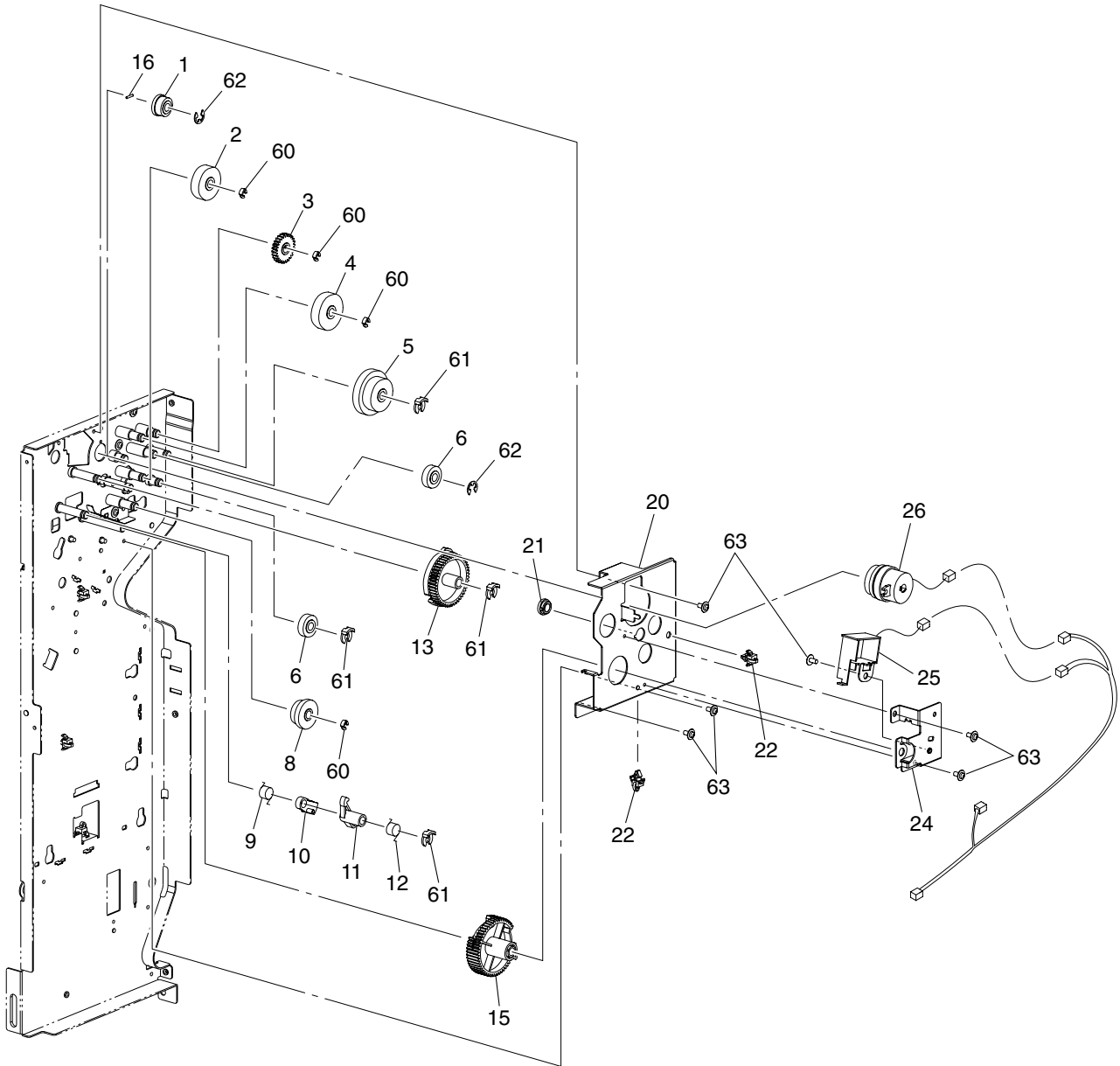


ITEM NO.	PARTS NO.	PARTS NAME	QTY/PAGE	QTY/PACK	PI	R	BSI NO.	TO	FROM	SERIAL NO.	REMARKS	C
1	6LA10106000	GID-LF-IN	1	1/PP								
2	6LA10108000	SP-LF-ARSE	2	1/P								
3	6LA10110000	SFT-LF-RACH	1	1/P								
4	6LA10111000	KNB-LF-RACH	1	1/P								
5	6LA10112000	HOK-LF-R	1	1/P								
6	6LA10113000	HOK-LF-F	1	1/P								
7	6LA10114000	SP-LF-RACH	2	5/P								
8	6LA10115000	SP-LF-ROL-IN	4	5/P								
9	6LA10116000	SFT-LF-ROL-1	1	1/P								
10	6LA10118000	SFT-LF-ROL-2	1	1/P								
11	6LA10121000	MLR-LF-NIP	1	5/P								
12	6LA10122000	GID-LF-TURN	1	1/PP								
13	6LA09875000	DMPR-LF-FLP	2	5/P								
14	6LA09895000	ROL-SF	5	1/P								
15	6LA54615000	LBL-LF-RACH	1	5/P								
20	6LA10138000	GID-LF-FLP	1	1/P								
21	6LA10140000	FLP-LF-OUT	1	1/P								
22	6LA10142000	FLP-LF-IN	1	1/PP								
50	41320327000	SCREW-M3-10WAVE	8	50/P								

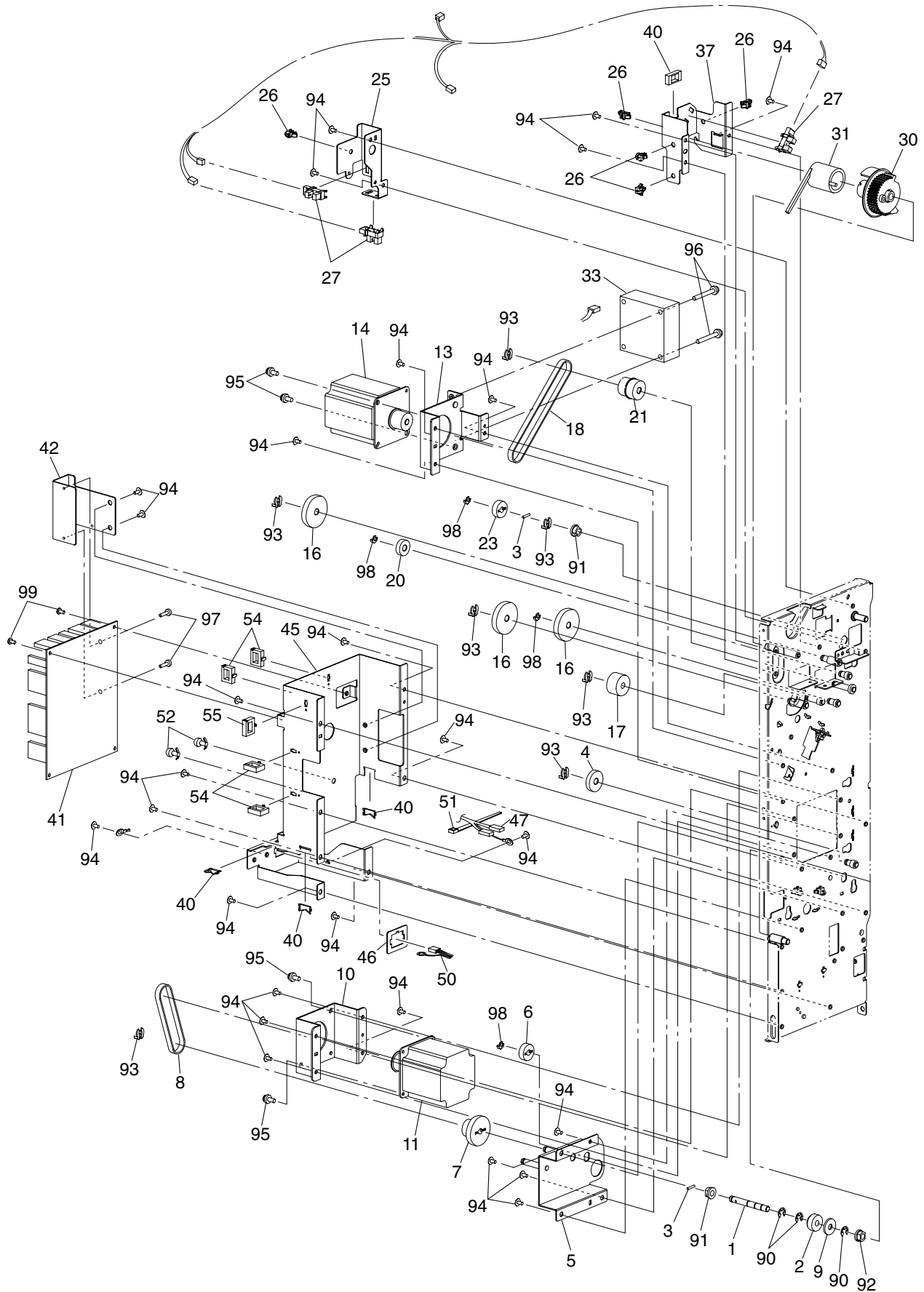


ITEM NO.	PARTS NO.	PARTS NAME	Q'TY / PAGE	Q'TY / PACK	P	I	R	BSI NO.	TO	FROM	SERIAL NO.	REMARKS	C
1	6LA09902000	GID-RF-UP	1	1/PP									
2	6LA09875000	DMPR-LF-FLP	2	5/P									
3	6LA09907000	BUSH-6P	3	5/P									
4	6LA09926000	SP-UF-E	1	5/P									
5	6LA09925000	SP-UF-RET	1	5/P									
6	6LA09913000	SFT-UF-RT-L	1	1/P									
7	6LA09914000	CVR-UF-SFT	2	1/P									
8	6LA09915000	JOINT-UF	1	1/P									
9	6LA09916000	PIN-SPR2X12	5	5/P									
10	6LA09917000	HLDR-UF-ARM-RET	1	1/P									
11	6LA09918000	PIN-SPR	1	5/P									
12	6LA09919000	TQL-UF	1	1/P									
13	6LA09920000	ROL-UF-FR	2	1/P									
14	6LA09921000	ROL-UF-1	1	1/P									
20	6LA09934000	GID-UF-DOWN	1	1/PP									
21	6LA09935000	SFT-UF-SHTR	1	1/P									
22	6LA09936000	PIN-SPR2X8	1	5/P									
23	6LA09937000	SHTR-UF	1	1/P									
24	6LA09938000	LVR-UF-SHTR	1	1/P									
25	6LA09939000	LVR-UF-SUS-BUN	1	1/P									
26	6LA09968000	SP-UF-PICK	1	1/P									
27	6LA09942000	GID-UF-SEP	1	1/P									
28	41320817000	PLT-SPT-PRE	1	1/P									
29	6LA09943000	SHT-UF-SEP	1	1/P									
30	6LA10271000	MLR-UF-SEP	1	5/P									
33	6LA09928000	SFT-UF-RET-S	1	1/P									
35	6LA09930000	GER-080-30	1	1/P									
36	6LA09945000	GID-UF-UP	1	1/P									
40	6LA09947000	ARM-UF-PICK	1	1/P									
41	6LA09948000	GER-UF-PICK	1	1/P									
42	6LA09949000	CVR-UF-PICK	1	1/P									
43	6LA09950000	ROL-UF-PICK	1	1/P									
44	6LA09951000	BUSH-UF-FEED	1	5/P									
45	6LA09953000	SFT-UF-KYUS	1	1/P									
46	6LA09955000	GER-UF-FEED	1	1/P									
47	6LA09956000	OW-UF-FEED	1	5/P									
48	6LA09958000	OW-UF-FEED	1	5/P									
50	6LA09961000	GID-UF-UP-R	1	1/P									
51	6LA09963000	K-UF-SNS-ENP	1	1/D									
52	6LA09964000	LVR-UF-SNS-ENP	1	1/P									
53	6LA09868000	TLP1241	1	1/C									
54	6LA09871000	RLMC-01TVO	1	5/P									
55	6LA54608000	CUSH-UF-EMP	1	5/P									
56	6LA10061000	SP-UF-SNS-BUN	1	5/P									
58	6LA10215000	CVR-UP	1	1/PP									
80	6LA09904000	SCR-SB1D	2	10/P									
81	6LA09905000	SCR-M3X3.2	2	10/P									
82	6LA09908000	RRG-5	6	5/P									
83	6LA09909000	CLIP-5	3	5/P									
84	6LA09897000	CLIP-4	2	5/P									
85	6LA10175000	SCR-4X12W	3	10/P									
86	6LA09852000	SCR-M3X6ITSR-NI	5	10/P									
88	6LA09967000	SCR-M3X8	2	10/P									





ITEM NO.	PARTS NO.	PARTS NAME	QTY / PAGE	QTY / PACK	P	I	R	BSI NO.	TO	FROM	SERIAL NO.	REMARKS	C
1	6LA10071000	GER-080-16	1	1/P									
2	6LA09930000	GER-080-30	1	1/P									
3	6LA10068000	GER-UF-RET	1	1/P									
4	6LA10076000	GER-080-33	1	1/P									
5	6LA10075000	GER-080-30-41	1	1/P									
6	6LA10049000	GER-080-19	2	1/P									
8	6LA09931000	GER-080-26	1	1/P									
9	6LA10083000	SP-UF-SHTR	1	5/P									
10	6LA10084000	LVR-UF-SHTR-ST	1	1/P									
11	6LA10085000	RACH-UF-CAM	1	1/P									
12	6LA10086000	SP-UF-RACH	1	5/P									
13	6LA10088000	GER-080-48-CAM	1	1/P									
15	6LA10090000	GER-UF-CL	1	1/P									
16	7432201211	HPIN20/12MSZN3A	1	50/P									
20	6LA10092000	BKT-UF-CL	1	1/P									
21	6LA10093000	BUSH-UF-POM	1	5/P									
22	6LA09858000	RSG-100	2	5/P									
24	6LA10097000	BKT-UF-SOL	1	1/P									
25	6LA10098000	SOL-TDS-F12C-08	1	1/D									
26	6LA10101000	CLU-BJ-2. 6-184	1	1/D									
60	6LA09897000	CLIP-4	4	5/P									
61	6LA09909000	CLIP-5	4	5/P									
62	6LA09908000	RRG-5	2	5/P									
63	6LA09852000	SCR-M3X6ITSR-NI	6	10/P									



ITEM NO.	PARTS NO.	PARTS NAME	Q'TY / PAGE	Q'TY / PACK	P	I	R	BSI NO.	TO	FROM	SERIAL NO.	REMARKS	C
1	6LA10016000	SFT-FM-OW-SL	1	1/P									
2	6LA10017000	H-GER-080-20-OW	1	1/P									
3	7432201211	HPIN20/12MSZN3A	2	50/P									
4	6LA10010000	H-GER-080-26	1	1/P									
5	6LA10020000	K-BKT-FM-R-SLF	1	1/P									
6	6LA10023000	H-GER-080-20	1	1/P									
7	6LA10005000	PLY-S3M-20-G38	1	1/P									
8	6LA10032000	BELT-S3M064060	1	1/P									
9	6LA54609000	WASHER	1	10/P									
10	6LA10028000	BKT-FM-MOT-FEED	1	1/P									
11	6LA10029000	MOT-KH56KM2U046	1	1/C									
13	6LA10056000	BKT-FM-MOT-KYUS	1	1/P									
14	6LA10057000	MOT-KH56LM2U002	1	1/P									
16	6LA10038000	GER-080-41	3	1/P									
17	4402824370	GEAR-RGT	1	1/P									
18	6LA10013000	BELT-S3M091060	1	1/P									
20	6LA10049000	GER-080-19	1	1/P									
21	6LA10053000	PLY-S3M-20-G24	1	1/P									
23	6LA10035000	GER-080-20	1	1/P									
25	6LA10063000	BKT-UF-SNS-BUN	1	1/P									
26	6LA09858000	RSG-100	5	5/P									
27	6LA09868000	TLP1241	3	1/C									
30	6LA10182000	GER-1-40	1	1/P									
31	6LA10183000	SP-RF-TRAY	1	1/P									
33	6LA10207000	ASM-FAN	1	1/D									
37	6LA09880000	BKT-FM-SP-TRAY	1	1/P									
40	6LA09859000	EDS-1	4	5/P									
41	6LA10210000	PCB-CONT	1	1/SB									
42	6LA10212000	HS-FM	1	1/P									
45	6LA10195000	BKT-FM-R-CON	1	1/P									
46	6LA10196000	PLT-FM-R-IF	1	1/P									
47	6LA10197000	ASM-I/F-HON	1	1/C									
50	6LA10199000	ASM-I/F-FIN	1	1/C									
51	6LA10200000	SKB-2M	1	5/P									
52	4843391476	PWB/Z-KGLS-8RF	2	5/P									
54	6LA09865000	RLWS-1TV0	4	1/P									
55	6LA54611000	RLWS-3T-V0	1	1/P									
90	6LA09908000	IRRG-5	3	5/P									
91	6LA09907000	BUSH-6P	2	5/P									
92	6LA09911000	BUSH-6	1	5/P									
93	6LA09909000	CLIP-5	6	5/P									
94	6LA09852000	SCR-M3X6ITSR-NI	2	710/P									
95	6LA10058000	SCR-WM4X8	4	10/P									
96	6LA10208000	SCR-WN	2	10/P									
97	6LA10211000	SCR-WM3X14	2	10/P									
98	6LA09897000	CLIP-4	4	5/P									
99	6LA10156000	SCR-WM3X6	2	10/P									

TOSHIBA

TOSHIBA TEC CORPORATION

1-1, KANDA NISHIKI-CHO, CHIYODA-KU, TOKYO, 101-8442, JAPAN