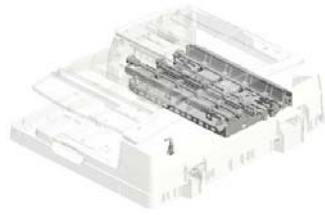


SPDF DF3080
(D683-17)
Parts Catalog

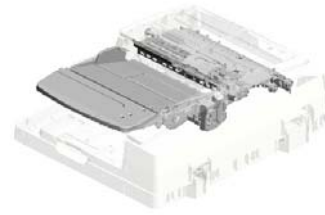
Unit All



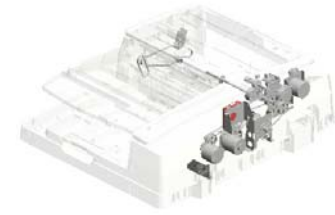
U001
EXTERIOR



U002
OPTICAL READING SECTION



U003
PAPER FEED



U004
MECHANICAL DRIVE SECTION



U005
FRAME SECTION



U006
ELECTRICAL COMPONENTS SECTION

U001.EXTERIOR

U001_S002
D6834350
DRIVEN ROLLER:PULL OUT

U001_S001
D6834320
COVER:PAPER FEED:ASS'Y

U001_S004
D6834420
ROLLER:EXIT:DRIVEN:ASS'Y

U001_S003
D6834420
ROLLER:EXIT:DRIVEN:ASS'Y

U001_S005
D6834510
COVER:LOWER RIGHT:ASS'
Y

U001_S006
D6834720
PRESSURE PLATE:ASS'Y

U001	U002	U003	U004	U005	U006
------	------	------	------	------	------

U001 EXTERIOR



- 11.B0434645 (x4) SPRING - 2N
- 17.D5433314 (x4) SHEET:SCANNING: ENTRANCE:MIDDLE
- 2.04543006Q (x7) TAPPING SCREW - M3X6
- 18.D5434382 (x2) COMPRESSION SPRING:PULL OUT
- 4.08050089 (x2) RETAINING RING - M4

20.D6833645 (x2) ROLLER:MIDDLE:DRIVEN

25.D6834312 GUIDE:PAPER FEED:UPPER

12.B4772622 (x3) DISCHARGE BRUSH:L11

27.D6834323 SHAFT:CONTACT POINT:GUIDE:PAPER FEED

8.AA143788 PIN:GUIDE PLATE:PAPER FEED

1.04543006N (x6) TAPPING SCREW: ROUND POINT:3X6

21.D6834111 COVER:FRONT

22.D6834112 COVER:FRONT RIGHT

10.AW010151 (x2) PHOTO REFLECTIVE SENSOR:PS122T L1-A

19.D5434393 CUSHION:GUIDE PLATE:ENTRANCE: PAPER FEED:INNER BACK

3.04583008N (x8) HEXAGON HEAD TAPPING SCREW:3 X8

7.AA080346 (x2) BUSHING:FLANGE TYPE:DIA6

24.D6834212 COVER:UPPER REAR

23.D6834211 COVER:REAR

16.B8301135 SCREW

U001 EXTERIOR

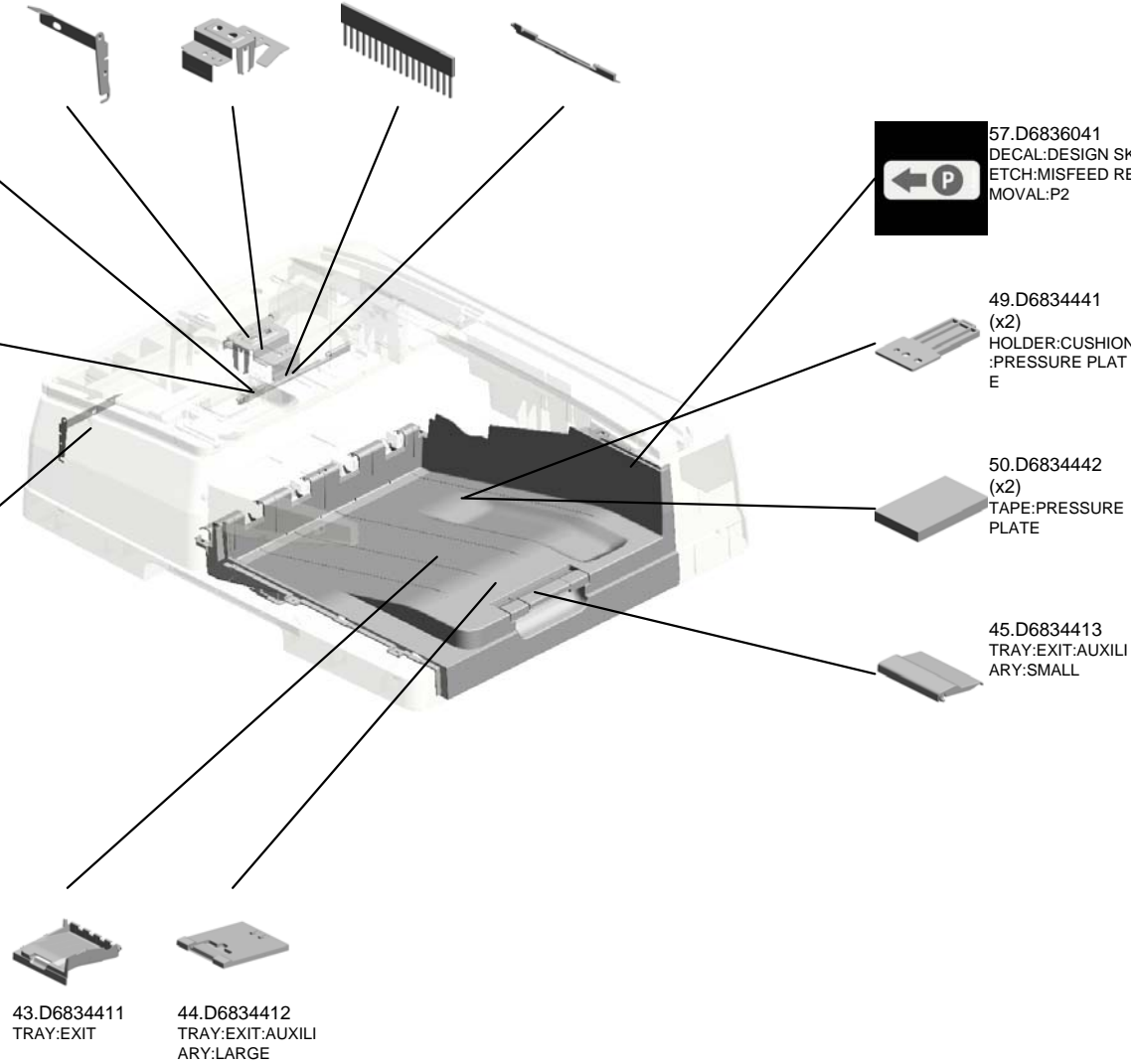
29.D6834328 BRACKET:GUIDE:P
APER FEED:INNER
BACK
31.D6834341 BRACKET:PULL O
UT:DRIVEN
32.D6834345 DISCHARGE BRUS
H:EXIT:L37
40.D6834394 GUIDE PLATE:ENT
RANCE:PAPER FE
ED:UPPER



42.D6834396 CUSHION:GUIDE P
LATE:ENTRANCE:
PAPER FEED:STO
PPER

41.D6834395 CUSHION:GUIDE P
LATE:ENTRANCE:
PAPER FEED:FRO
NT

28.D6834325 BRACKET:GUIDE:P
APER FEED:FRON
T



57.D6836041 DECAL:DESIGN SK
ETCH:MISFEED RE
MOVAL:P2

49.D6834441
(x2)
HOLDER:CUSHION
:PRESSURE PLAT
E

50.D6834442
(x2)
TAPE:PRESSURE
PLATE

45.D6834413
TRAY:EXIT:AUXILI
ARY:SMALL

43.D6834411
TRAY:EXIT

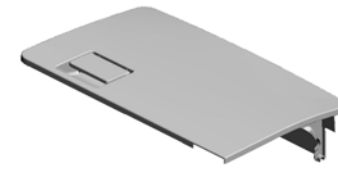
44.D6834412
TRAY:EXIT:AUXILI
ARY:LARGE

U001_S001
COVER:PAPER FEED:ASS'Y

38.D6834372
HOOK:CONTACT P
OINT:FRONT:GRIP

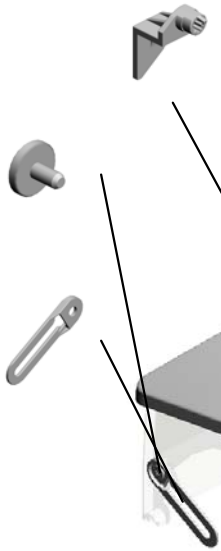
13.B4774117
SPRING

30.D6834338
COVER:PAPER FE
ED:UPPER

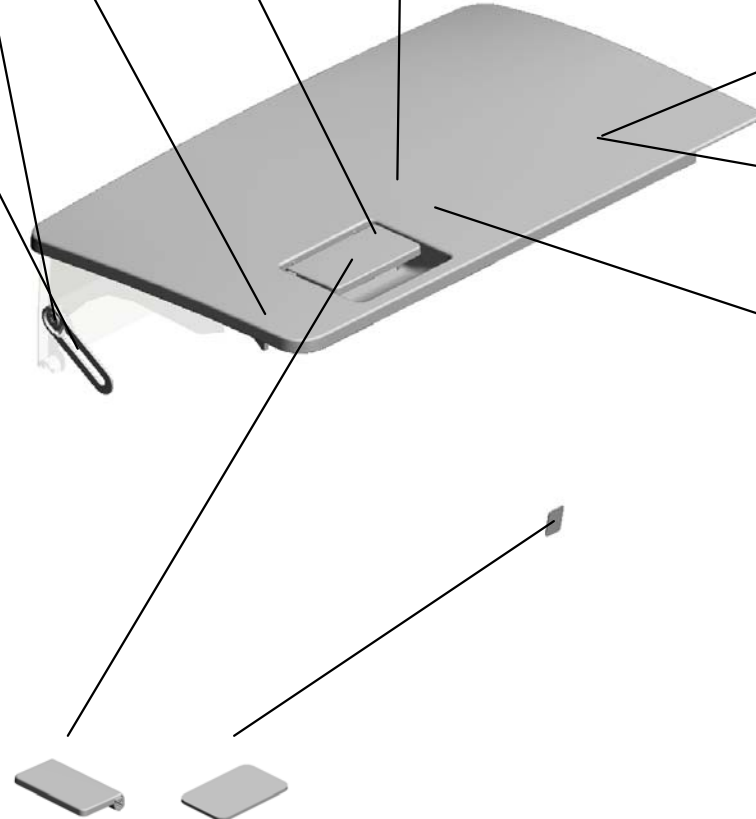


26.D6834320
COVER:PAPER FE
ED:ASS'Y

9.AA143846
TAPPING SCREW:
M3X6



34.D6834351
LINK:STOPPER:CO
VER:PAPER FEED



36.D6834367
GROUND PLATE:H
OOK:INNER BACK



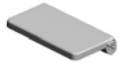
39.D6834374
HOOK:CONTACT P
OINT:INNER BACK:
GRIP



35.D6834361
SHAFT:CONTACT
POINT:GRIP



37.D6834371
GRIP:COVER:PAP
ER FEED

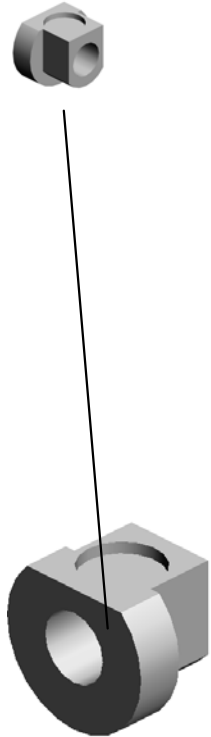


5.A4221063
SEAL - 0.7X13X20



U001_S002
DRIVEN ROLLER:PULL OUT

6.AA080288
(x2)
BUSHING:DIA6

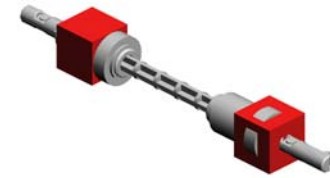


33.D6834350
DRIVEN ROLLER:P
ULL OUT

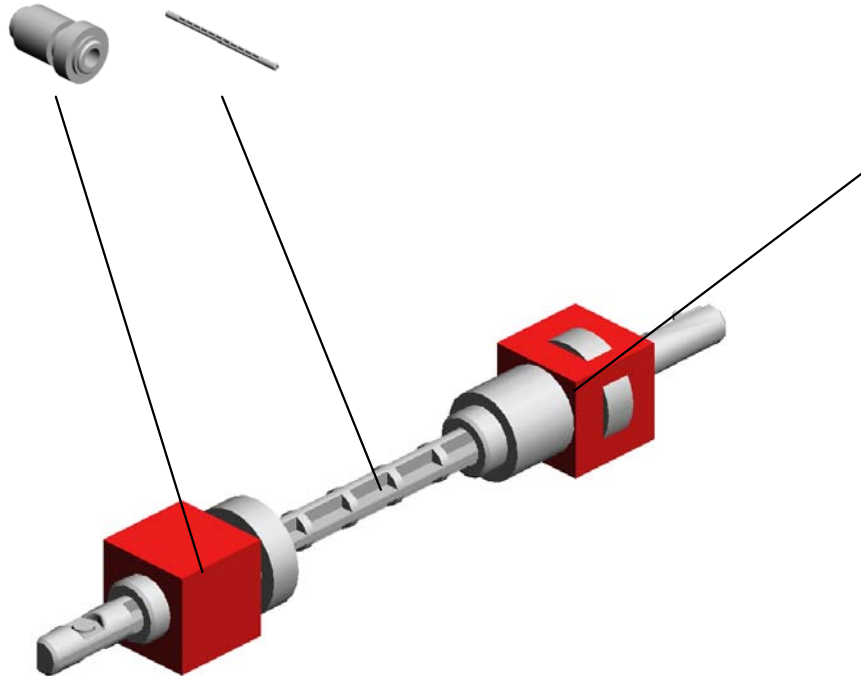
U001_S003
ROLLER:EXIT:DRIVEN:ASS'Y

48.D6834430 (x2)
ROLLER:EXIT:DRIVEN

47.D6834421
SHAFT:EXIT:DRIVEN



46.D6834420
ROLLER:EXIT:DRIVEN:ASS'Y

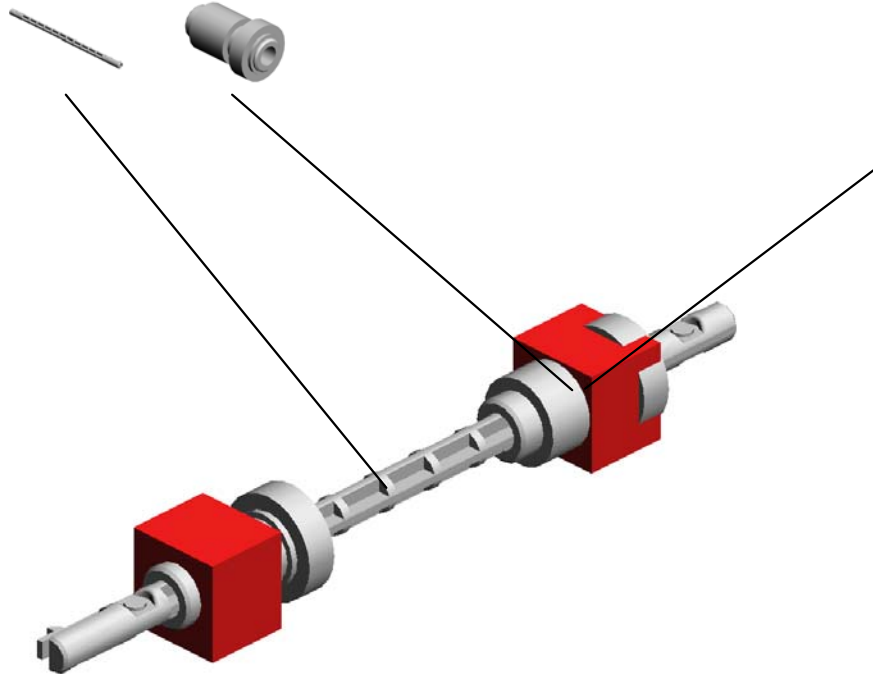


14.B4774131
(x2)
SPRING

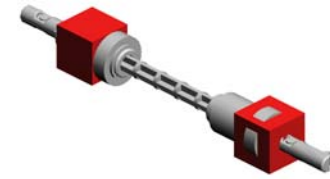
U001_S004
ROLLER:EXIT:DRIVEN:ASS'Y

47.D6834421
SHAFT:EXIT:DRIVE
N

48.D6834430
(x2)
ROLLER:EXIT:DRIV
EN



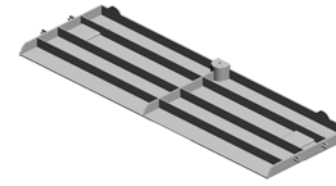
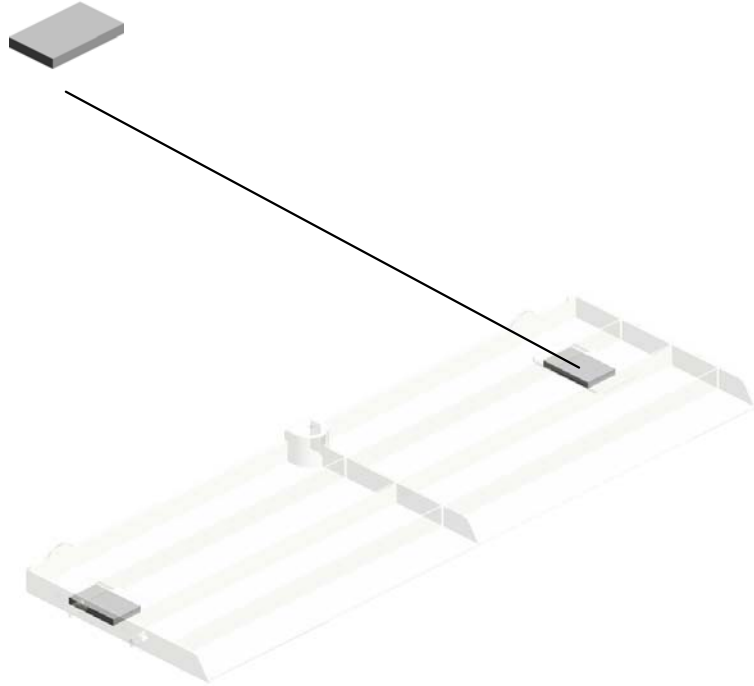
14.B4774131
(x2)
SPRING



46.D6834420
ROLLER:EXIT:DRIV
EN:ASS'Y

U001_S005
COVER:LOWER RIGHT:ASS'Y

50.D6834442
(x2)
TAPE:PRESSURE
PLATE

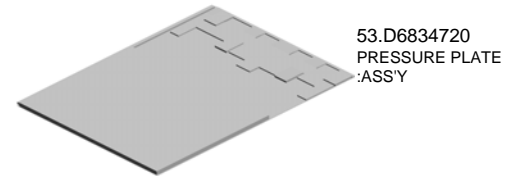


51.D6834510
COVER:LOWER RI
GHT:ASS'Y

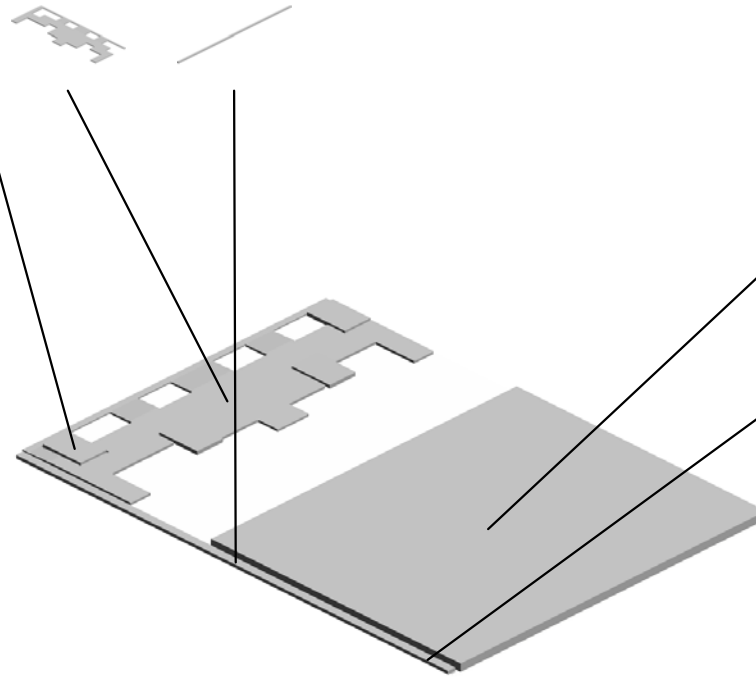
U001_S006
PRESSURE PLATE:ASS'Y

52.D6834711
GUIDE PLATE:PRE
SSURE PLATE:LEF
T

56.D6834725
CUSHION:PRESSU
RE PLATE:SMALL



54.D6834722
(x4)
CUSHION:TAPE:S
MALL



55.D6834724
CUSHION:PRESSU
RE PLATE:LARGE

15.B6524743
SHEET:PRESSURE
PLATE:SMALL

U002.OPTICAL READING SECTION

U002_S001
D6833150
ROLLER:SCANNING:EXIT:DR
IVE:ASS'Y

U002_S004
D5433631
ROLLER:SCANNING:BEHIND
:ASS'Y

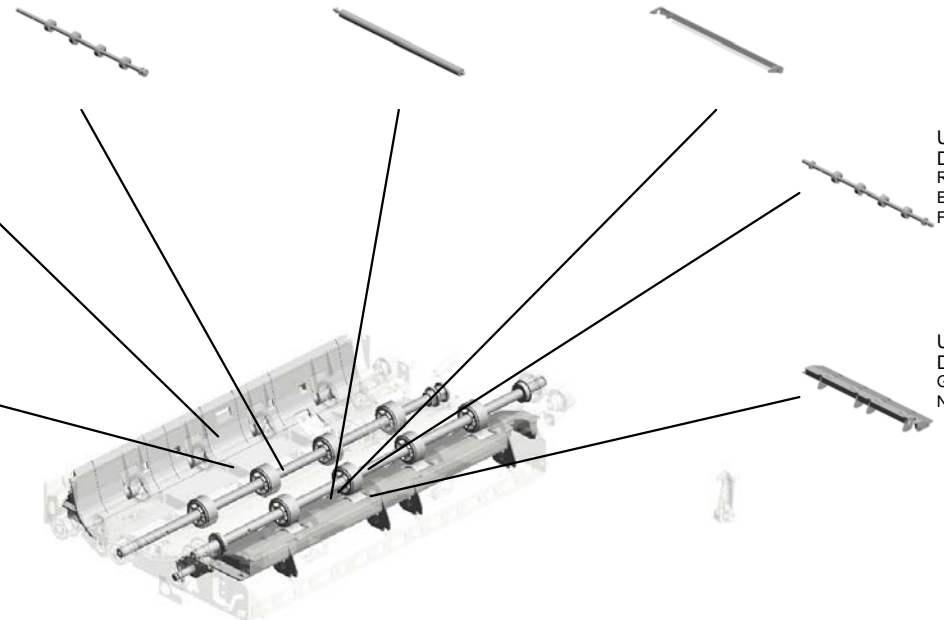
U002_S006
D6833661
GUIDE PLATE:CONTACT IMA
GE SENSOR:ENTRANCE:AS
S'Y

U002_S003
D6833461
GUIDE:SCANNING:ENTRANC
E:NON-CONTACT:SUB-ASS'Y

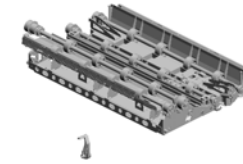
U002_S007
D6833710
ROLLER:CONTACT IMAGE S
ENSOR:EXIT:DRIVE:PRESS
FIT

U002_S002
D6834615
SHIELDING PLATE:LEFT LO
WER:ASS'Y

U002_S005
D6833641
GUIDE:CONTACT IMAGE SE
NSOR:EXIT:LOWER:ASS'Y



U002 OPTICAL READING SECTION



- 10.08050092 (x2) RETAINING RING - 3M
- 18.B8041180 (x8) DISCHARGE BRUSH: PUNCH UNIT
- 2.04543006N (x2) TAPPING SCREW: ROUND POINT: 3X6
- 15.AA082144 BUSHING - 8X12X7
- 8.08050088 (x2) RETAINING RING - M6

17.AW010151 (x2) PHOTO REFLECTIVE SENSOR: PS122T L1-A

12.A4221063 (x2) SEAL - 0.7X13X20

27.D6833111 ROLLER: SCANNING: ENTRANCE: DRIVE

7.07433808 (x2) RADIAL BALL BEARING: DIA8XDIA16X5

3.04543006Q (x19) TAPPING SCREW - M3X6

9.08050089 (x2) RETAINING RING - M4

26.D5433635 GEAR: ROLLER: SCANNING: BEHIND

16.AA143788 (x2) PIN: GUIDE PLATE: PAPER FEED

4.04583008N (x6) HEXAGON HEAD TAPPING SCREW: 3X8

11.11050758 (x4) CLAMP: LWSM-0306A

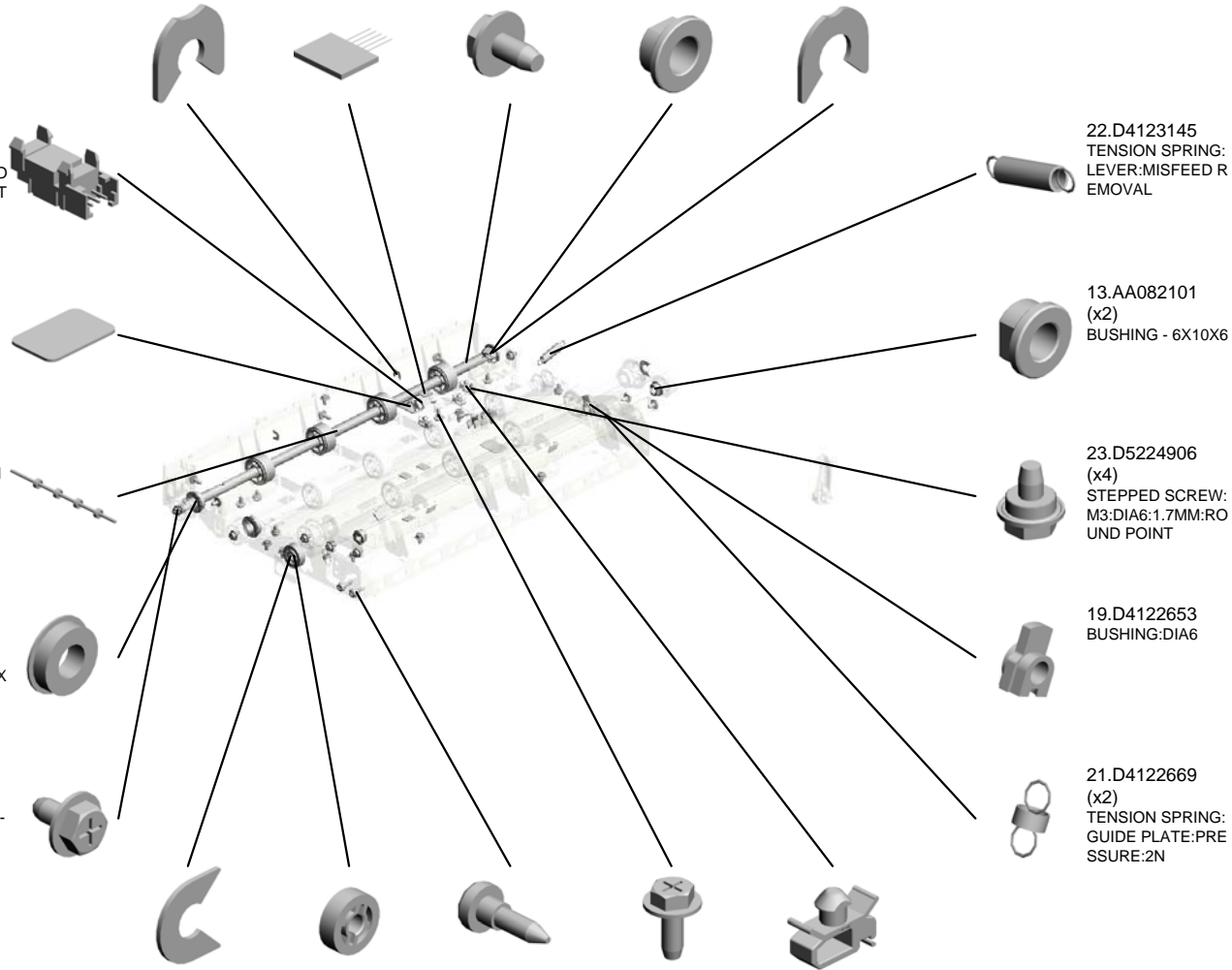
22.D4123145 TENSION SPRING: LEVER: MISFEED REMOVAL

13.AA082101 (x2) BUSHING - 6X10X6

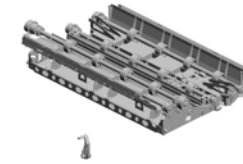
23.D5224906 (x4) STEPPED SCREW: M3: DIA6: 1.7MM: ROUND POINT

19.D4122653 BUSHING: DIA6

21.D4122669 (x2) TENSION SPRING: GUIDE PLATE: PRESSURE: 2N



U002 OPTICAL READING SECTION



- 35.D6833370 GUIDE PLATE:SCANNING:NON-CONTACT
- 30.D6833221 GUIDE:SCANNING:UPPER
- 37.D6833422 (x2) LEVER:PRESSURE RELEASE
- 31.D6833251 GROUND PLATE:ROLLER
- 33.D6833311 (x2) BRACKET:GUIDE:SCANNING:UPPER

- 36.D6833421 BASE:SCANNING:ENTRANCE:LOWER

- 29.D6833155 (x2) TIMING PULLEY:ROLLER:SCANNING:EXIT:DRIVE

- 34.D6833361 (x2) SPRING PLATE:GUIDE PLATE:SCANNING

- 53.D6833715 TIMING PULLEY:ROLLER:CIS:EXIT:FRONT

- 47.D6833651 COVER:SCANNING:EXIT

- 42.D6833621 GUIDE:EXIT:LOWER:SUB-ASSY
- 32.D6833260 SHEET:SCANNING:EXIT:UPPER:ASSY
- 54.D6833811 GUIDE PLATE:EXIT:UPPER
- 55.D6833812 DISCHARGE BRUSH:EXIT
- 56.D6833911 ROLLER:EXIT:DRIVE

- 52.D6833714 TIMING PULLEY:ROLLER:CIS:EXIT:DRIVE

- 57.D6833915 TIMING PULLEY:ROLLER:EXIT:DRIVE

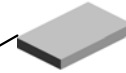
- 41.D6833616 (x2) BRACKET:DISCHARGE BRUSH

- 40.D6833511 HOOK:OPTICAL READING UNIT:FRONT

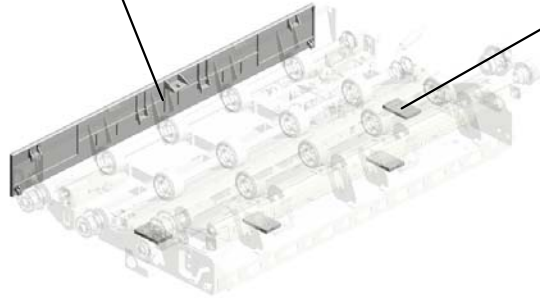
- 39.D6833510 SHAFT:LEVER:MISFEED REMOVAL:ASSY

U002
OPTICAL READING SECTION

59.D6834611
COVER:LEFT LOW
ER



58.D6834442
(x4)
TAPE:PRESSURE
PLATE

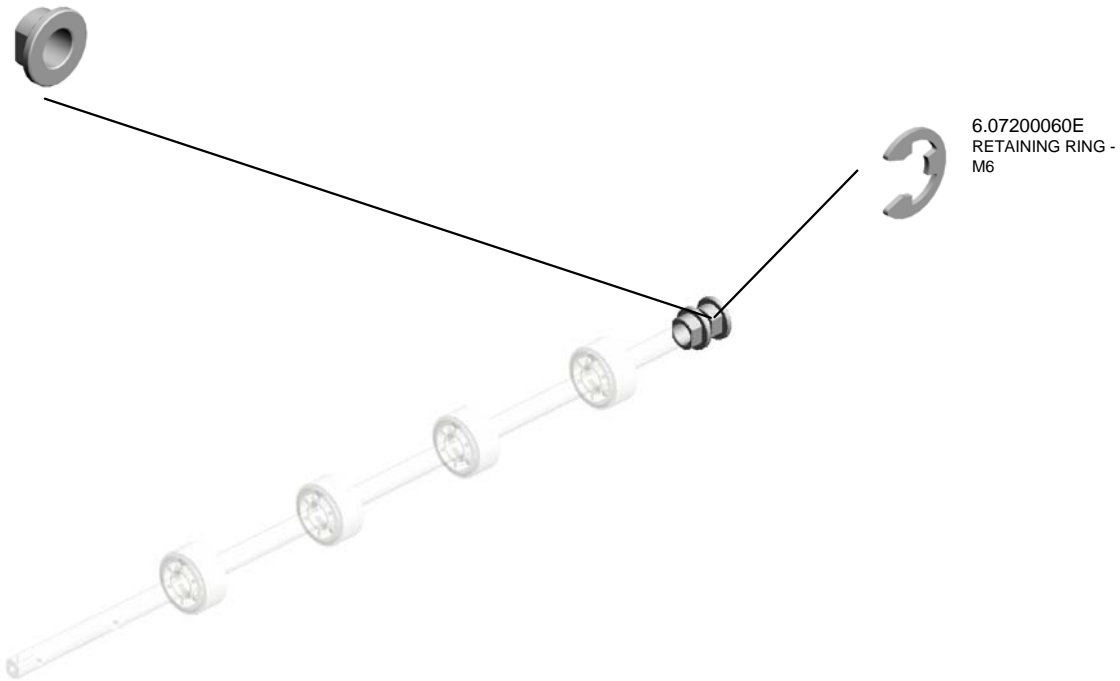


U002_S001
ROLLER:SCANNING:EXIT:DRIVE:ASS'Y

14.AA082104
(x2)
BUSHING - 8X12X7



28.D6833150
ROLLER:SCANNIN
G:EXIT:DRIVE:ASS'
Y

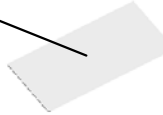
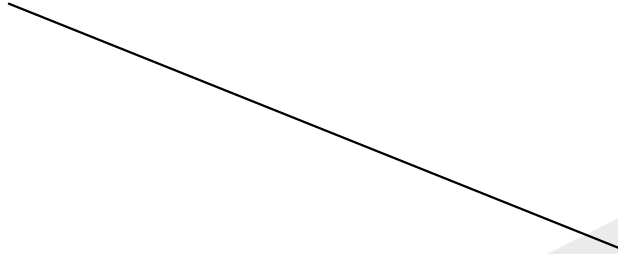


6.07200060E
RETAINING RING -
M6

U002_S002
SHIELDING PLATE:LEFT LOWER:ASS'Y

61.D6834617
SEAL:LEFT LOWE
R

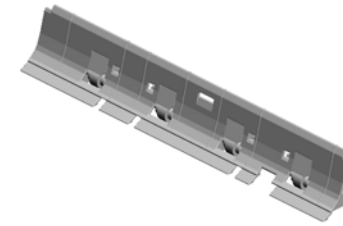
60.D6834615
SHIELDING PLATE:
LEFT LOWER:ASS'
Y



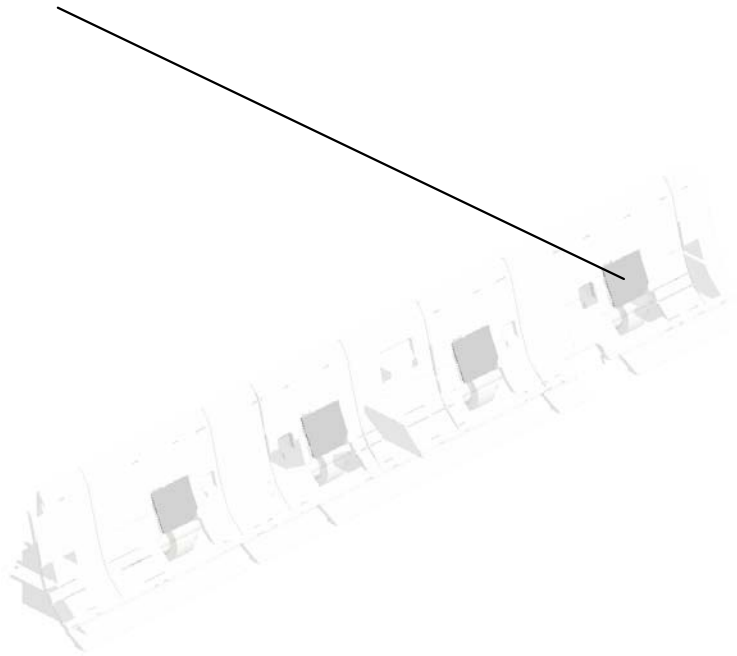
U002_S003

GUIDE:SCANNING:ENTRANCE:NON-CONTACT:SUB-ASS'Y

24.D5433314
(x4)
SHEET:SCANNING:
ENTRANCE:MIDDL
E



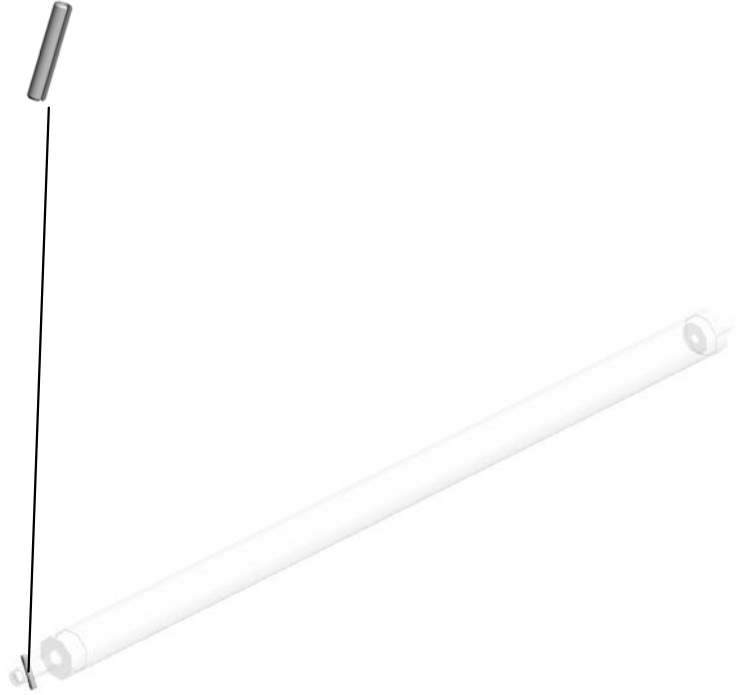
38.D6833461
GUIDE:SCANNING:
ENTRANCE:NON-C
ONTACT:SUB-ASS'
Y



U001	U002	U003	U004	U005	U006
------	------	------	------	------	------

U002_S004
ROLLER:SCANNING:BEHIND:ASS'Y

5.06220120E
SPRING PIN - 2X12
MM



25.D5433631
ROLLER:SCANNIN
G:BEHIND:ASS'Y

U002_S005

GUIDE:CONTACT IMAGE SENSOR:EXIT:LOWER:ASS'Y

62.G0602652
(x4)
BUSHING - M4

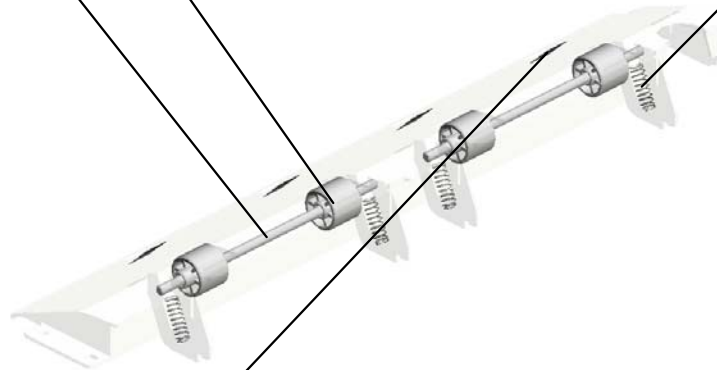


43.D6833641
GUIDE:CONTACT I
MAGE SENSOR:EX
IT:LOWER:ASS'Y

46.D6833645
(x2)
ROLLER:MIDDLE:D
RIVEN



44.D6833643
(x4)
COMPRESSION SP
RING:CONTACT IM
AGE SENSOR:EXIT



45.D6833644
(x4)
SHEET:GUIDE:CO
NTACT IMAGE SEN
SOR:EXIT:LOWER

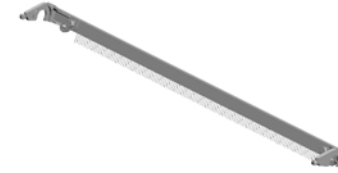
U001	U002	U003	U004	U005	U006
------	------	------	------	------	------

U002_S006

GUIDE PLATE:CONTACT IMAGE SENSOR:ENTRANCE:ASS'Y

55.D6833812
DISCHARGE BRUSH:
H:EXIT

20.D4122662
(x2)
SPACER:GUIDE PL
ATE:CONTACT IMA
GE SENSOR:ENTR
ANCE



48.D6833661
GUIDE PLATE:CON
TACT IMAGE SENS
OR:ENTRANCE:AS
SY

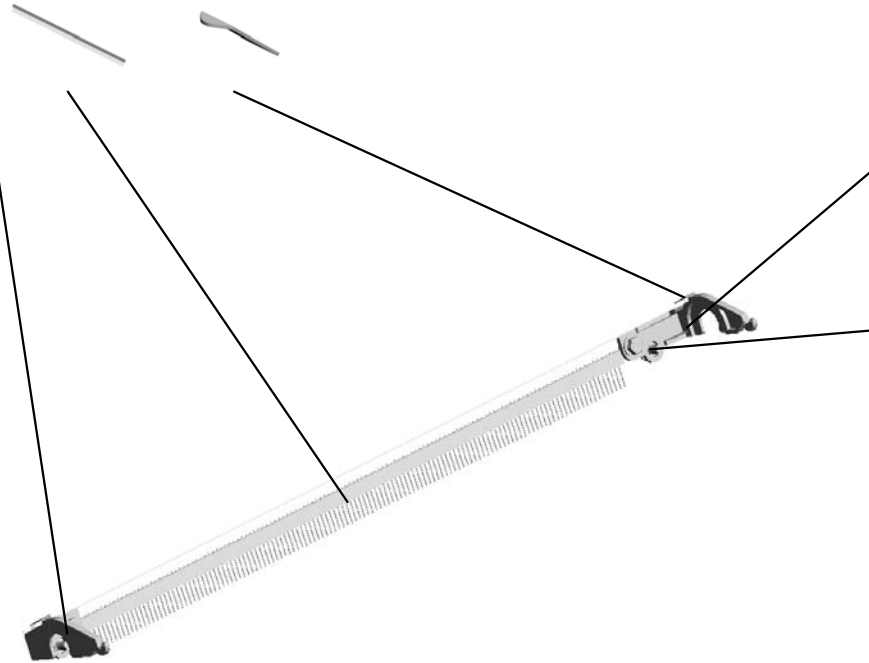
49.D6833666
LEVER:GUIDE PLA
TE:CONTACT IMA
GE SENSOR:FRON
T



50.D6833667
LEVER:GUIDE PLA
TE:CONTACT IMA
GE SENSOR:REAR



1.03603006N
(x4)
SCREW - M3X6



U002_S007

ROLLER:CONTACT IMAGE SENSOR:EXIT:DRIVE:PRESS FIT

7.07433808
(x2)
RADIAL BALL BEA
RING:DIA8XDIA16X
5



5.06220120E
SPRING PIN - 2X12
MM



51.D6833710
ROLLER:CONTACT
IMAGE SENSOR:E
XIT:DRIVE:PRESS
FIT

U001	U002	U003	U004	U005	U006
------	------	------	------	------	------

U003.PAPER FEED

U003_S001
D6832110
ROLLER:PULL OUT:DRIVE

U003_S002
D6832210
ROLLER:MIDDLE:DRIVE

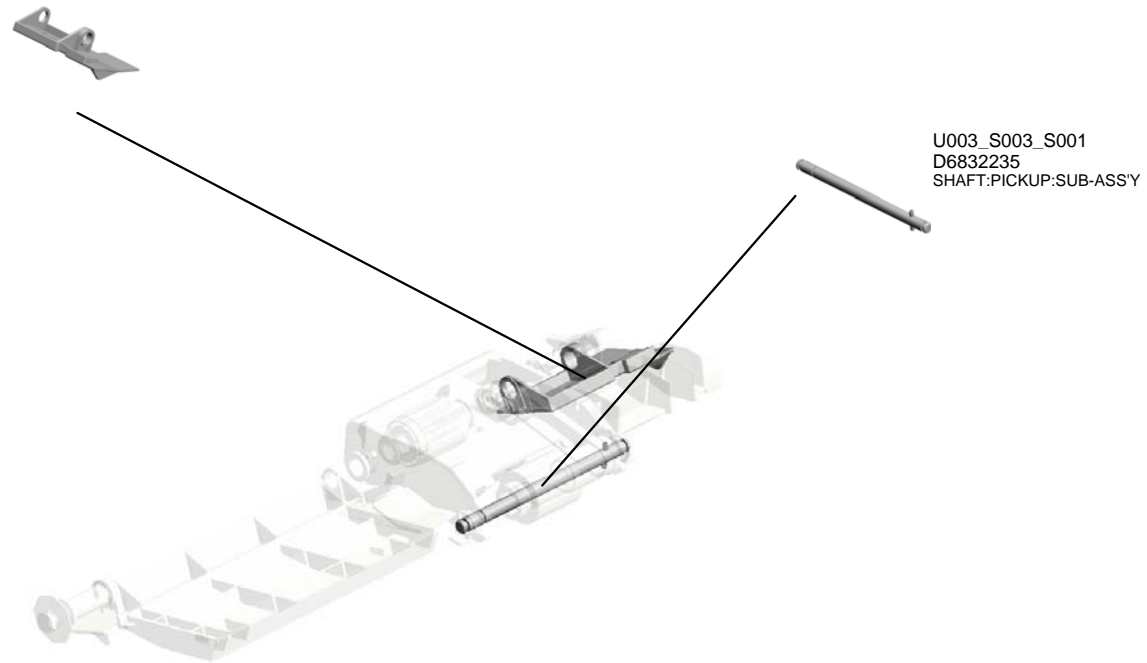
U003_S004
AX040254
DC MOTOR:RISING TRAY:AS
S'Y:1.007W:BRUSH

U003_S003
D6832200
SHAFT:SEPARATION:ASS'Y

U001	U002	U003	U004	U005	U006
------	------	------	------	------	------

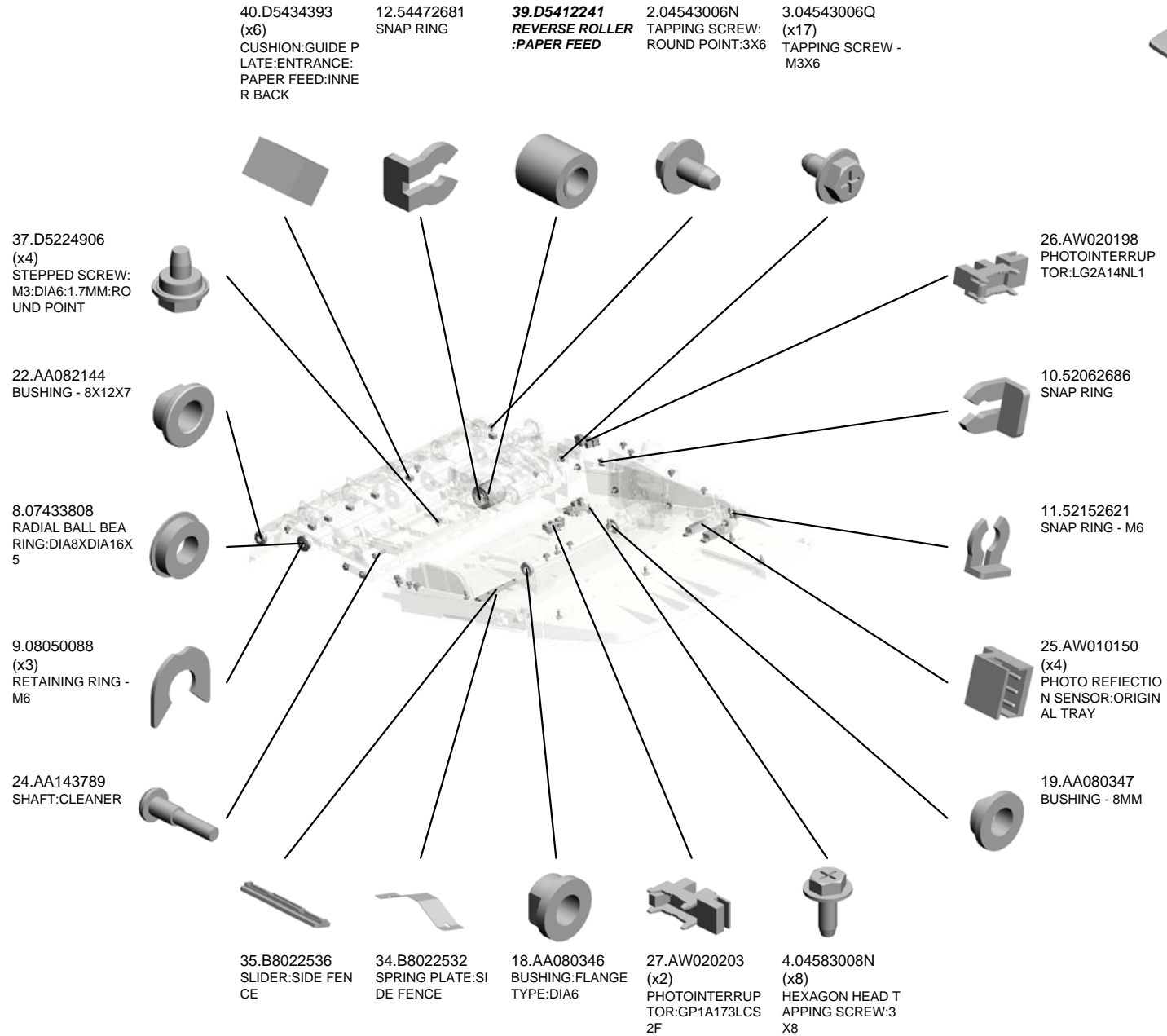
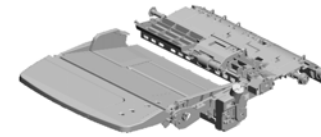
U003_S003.SHAFT:SEPARATION:ASS'Y

U003_S003_S002
D6832240
GUIDE:PAPER FEED:ENTRA
NCE:INNER BACK:ASS'Y



U001	U002	U003	U004	U005	U006
------	------	------	------	------	------

U003 PAPER FEED



U003 PAPER FEED

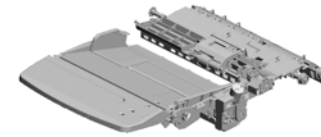
47.D6832222
STOPPER:SHAFT:
SEPARATION:DRIV
E

60.D6832417
SHEET:ENTRANCE
:SEPARATION PAD

58.D6832311
TORQUE LIMITER
MECHANICAL CLU
TCH:SEPARATOR

66.D6832752
LEVER:RISE:BASE

42.D6832112
(x2)
TIMING PULLEY:R
OLLER:PULL OUT:
DRIVE



72.D6832912
(x6)
FEELER:PAPER SI
ZE SENSOR

71.D6832911
GUIDE PLATE:PUL
L OUT:LOWER

61.D6832510
GUIDE PLATE:PAP
ER FEED:LOWER:
ASS'Y

64.D6832742
(x2)
CUSHION:STOPPE
R PAWL

65.D6832746
SIDE FENCE:ORIGI
NAL TABLE

62.D6832724
COVER:LOWER:BA
SE

68.D6832756
RAIL:SIDE FENCE

73.D6836011
DECAL:SIZE:ORIGI
NAL

63.D6832741
BASE:ORIGINAL T
ABLE

59.D6832393
HOLDER:ORIGINA
L TABLE

74.D6836051
DECAL:BASE:ORIG
INAL

67.D6832755
SHAFT:RISE:BASE:
SUB-ASS'Y

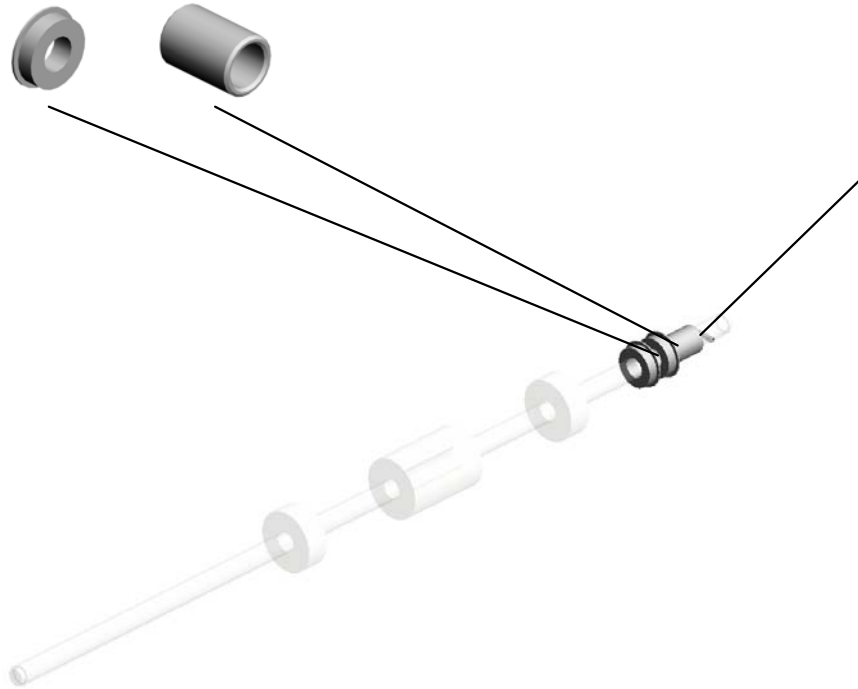
69.D6832771
ORIGINAL TABLE

70.D6832781
ORIGINAL TABLE:B
EHIND

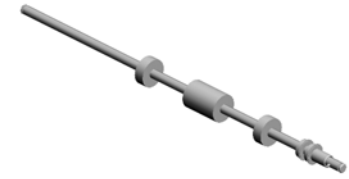
U003_S001
ROLLER:PULL OUT:DRIVE

8.07433808
(x2)
RADIAL BALL BEA
RING: DIA8XDIA16X
5

43.D6832113
SPACER:ROLLER:
PULL OUT:DRIVE



5.06220120E
SPRING PIN - 2X12
MM



41.D6832110
ROLLER:PULL OUT
:DRIVE

U003_S002
ROLLER:MIDDLE:DRIVE

21.AA082104
BUSHING - 8X12X7

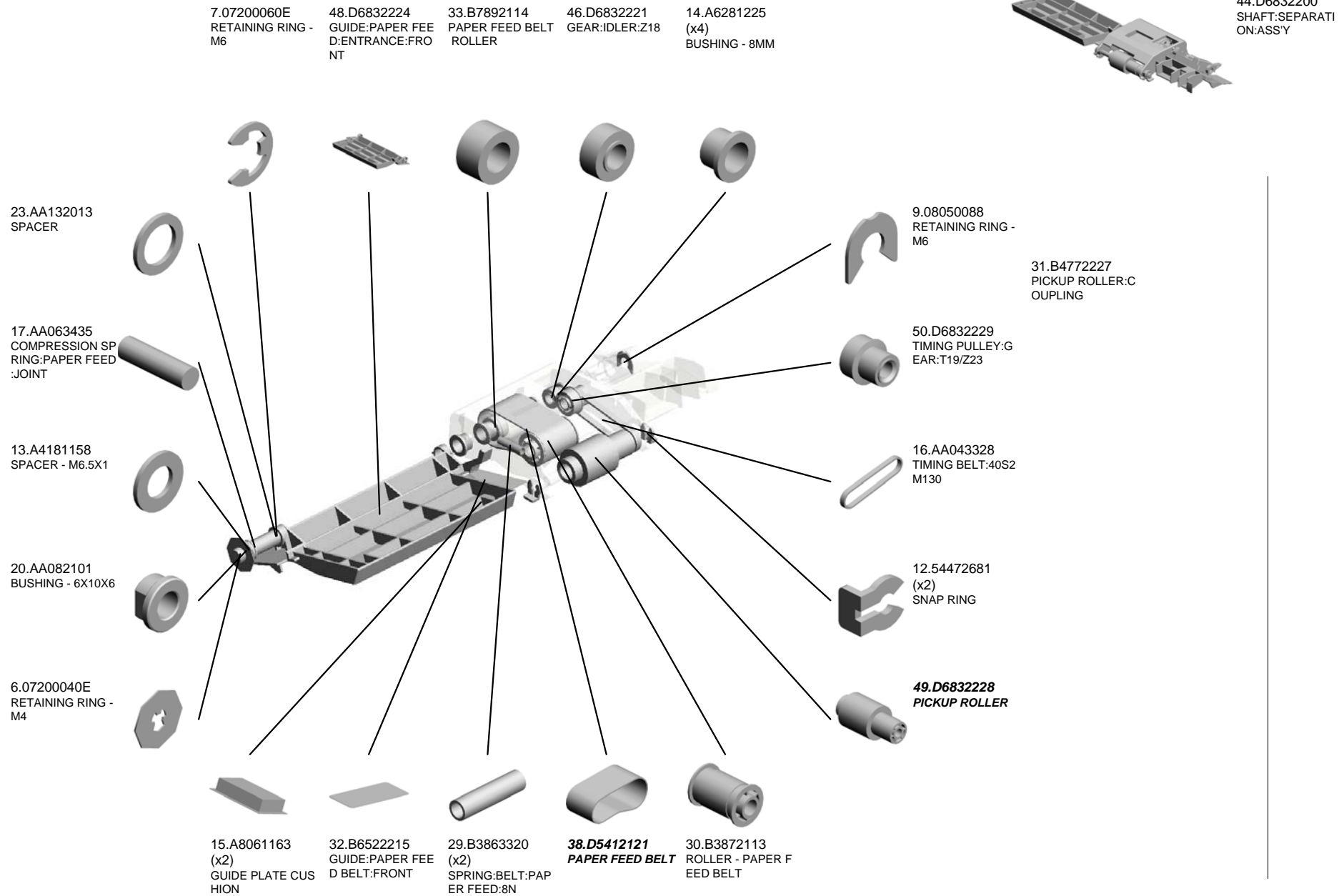


5.06220120E
SPRING PIN - 2X12
MM



45.D6832210
ROLLER:MIDDLE:D
RIVE

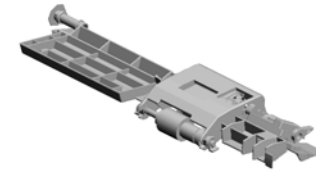
U003_S003
SHAFT:SEPARATION:ASS'Y



U003_S003
SHAFT:SEPARATION:ASS'Y

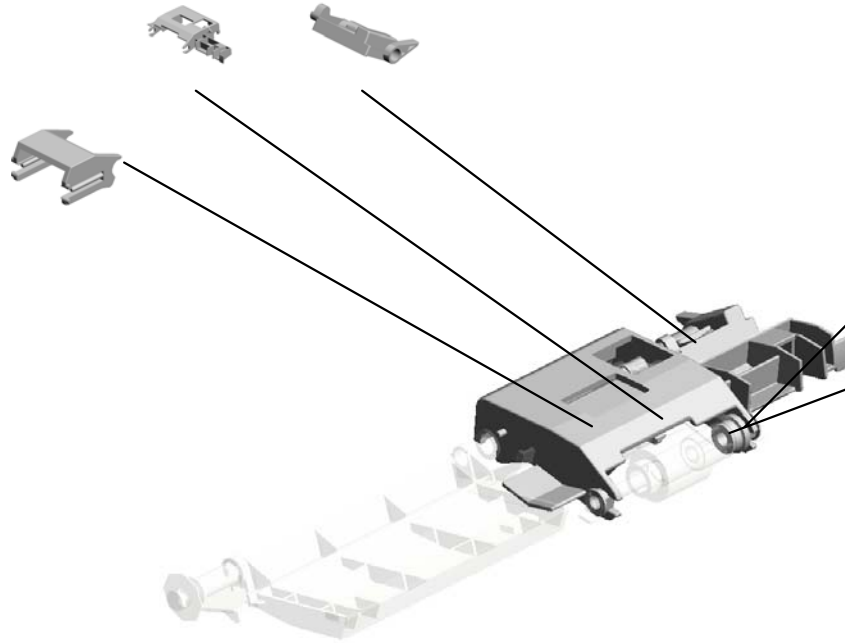
51.D6832231
BRACKET:PICKUP

57.D6832272
LEVER:PICKUP RO
LLER:RISE



44.D6832200
SHAFT:SEPARATI
ON:ASSY

53.D6832233
BRACKET:PAPER
FEED BELT

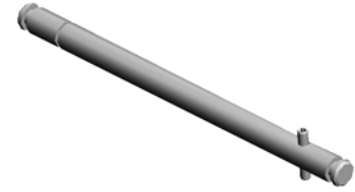
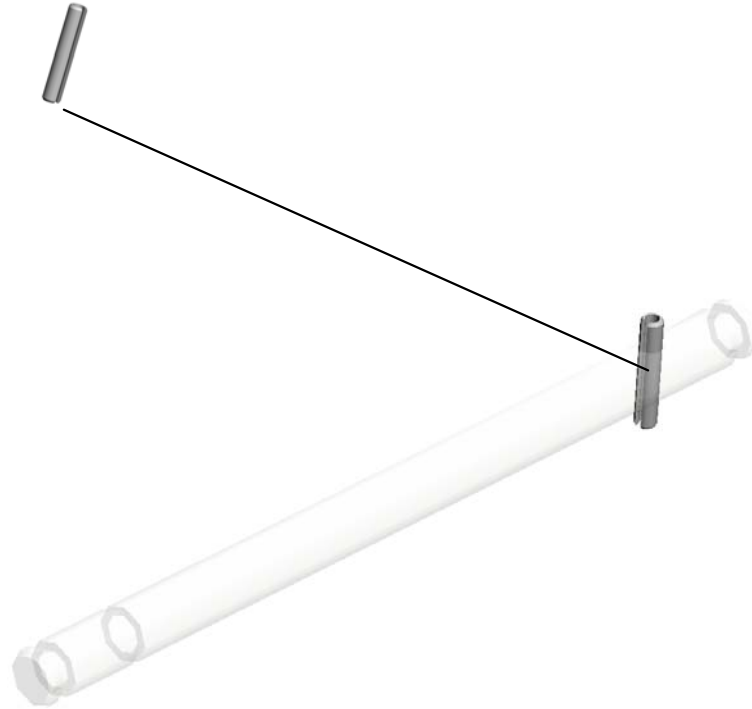


75.H0602126
(x2)
BUSHING - M6X7

52.D6832232
TIMING PULLEY:PI
CKUP:T21

U003_S003_S001
SHAFT:PICKUP:SUB-ASS'Y

5.06220120E
SPRING PIN - 2X12
MM



54.D6832235
SHAFT:PICKUP:SU
B-ASS'Y

U003_S003_S002

GUIDE:PAPER FEED:ENTRANCE:INNER BACK:ASS'Y

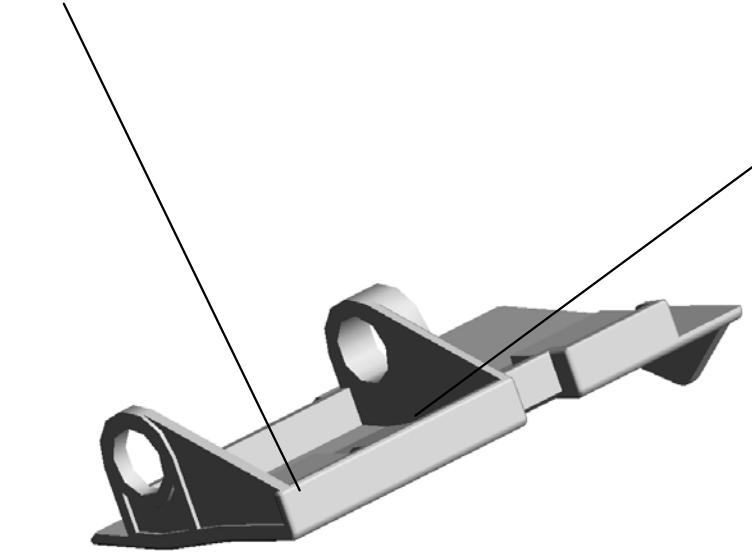
15.A8061163
(x2)
GUIDE PLATE CUS
HION



55.D6832240
GUIDE:PAPER FEE
D:ENTRANCE:INNE
R BACK:ASS'Y



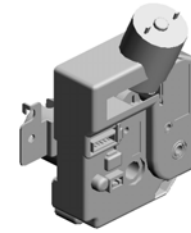
56.D6832241
GUIDE:PAPER FEE
D:ENTRANCE:INNE
R BACK



U001	U002	U003	U004	U005	U006
------	------	------	------	------	------

U003_S004
DC MOTOR:RISING TRAY:ASS'Y:1.007W:BRUSH

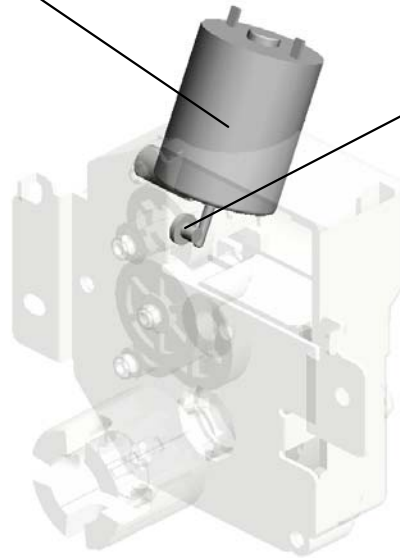
36.D0812966
DC MOTOR:ASS'Y:
1.007W:BRUSH



28.AX040254
DC MOTOR:RISING
TRAY:ASS'Y:1.007
W:BRUSH



1.03530030N
(x2)
SCREW:M3X3



U004.MECHANICAL DRIVE SECTION

U004_S002
D6831632
SHAFT:REVERSE ROLLER:S
UB-ASS'Y

U004_S004
D6831680
CAM:PICKUP

U004_S001
D6831620
SHAFT:SEPARATION:DRIVE:
INPUT:SUB-ASS'Y

U004_S007
D6831855
TIMING PULLEY:TENSIONER
:SCANNING:FRONT

U004_S003
D6831640
SHAFT:INPUT:PAPER FEED:
SUB-ASS'Y

U004_S005
D6831715
DC MOTOR:PULL OUT:ASS'Y

U004_S006
D6831845
PULLEY:IDLER:DIA14

U001	U002	U003	U004	U005	U006
------	------	------	------	------	------

U004 MECHANICAL DRIVE SECTION



- 12.A5482139 PULLEY
- 11.11050758 CLAMP:LWSM-030 6A
- 1.03530060N (x2) BIND SCREW - M3 X6
- 23.AA082101 (x4) BUSHING - 6X10X6
- 5.07200040E (x3) RETAINING RING - M4

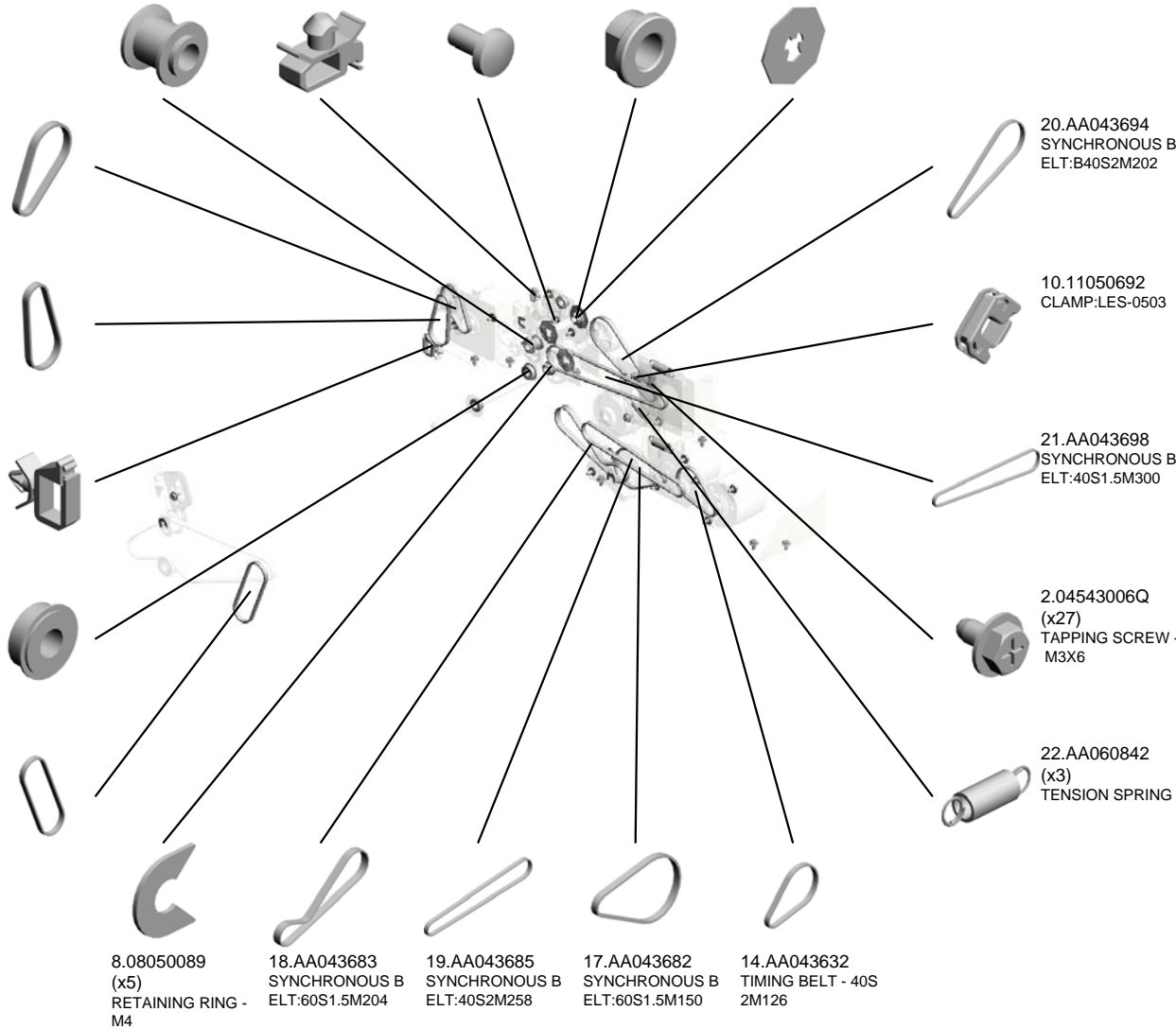
16.AA043681
SYNCHRONOUS B
ELT:40S2M108

13.AA043339
TIMING BELT:PAP
ER EXIT:40S2M122

9.11050508
HARNES CLAMP -
LWS-0711

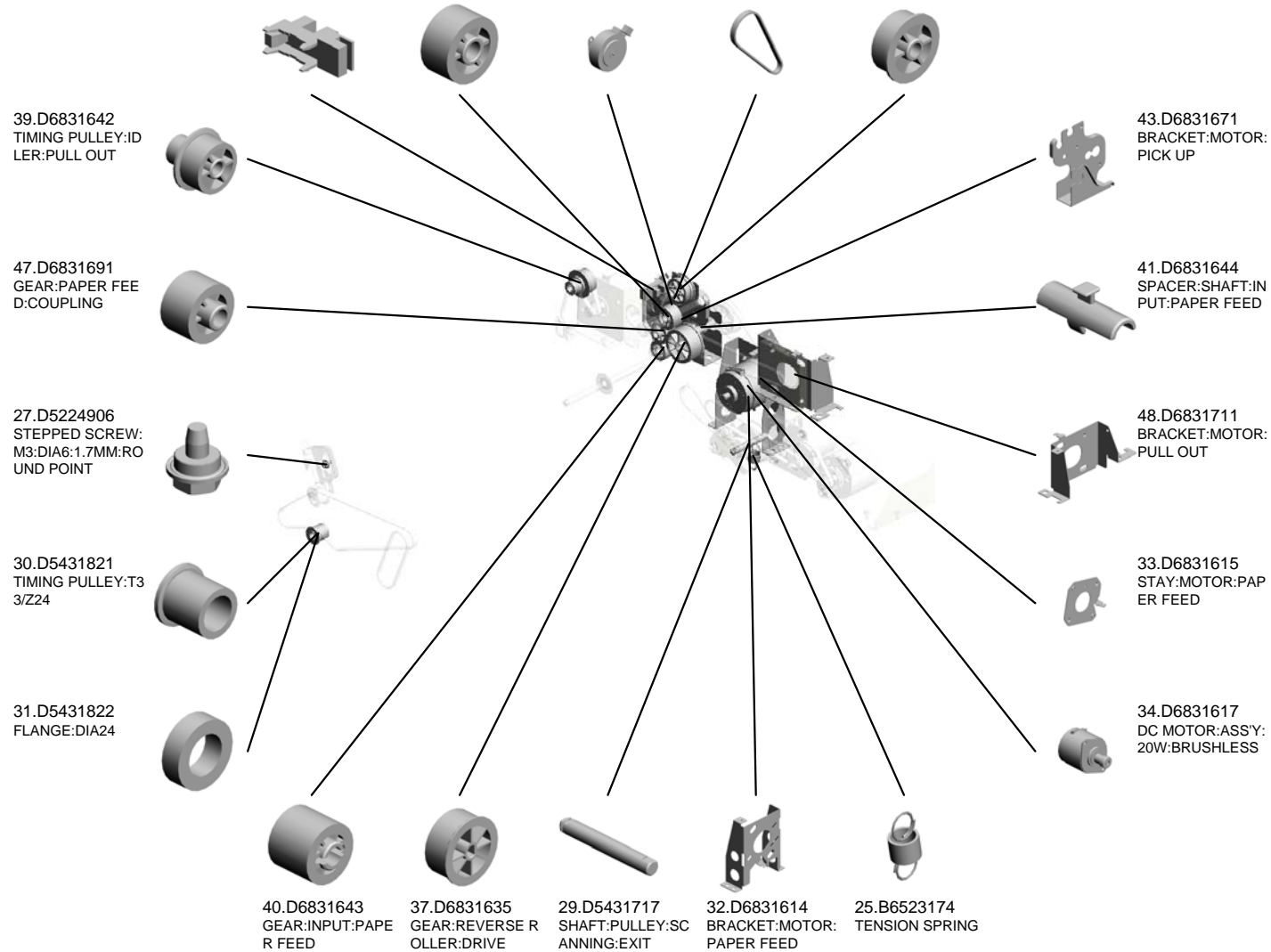
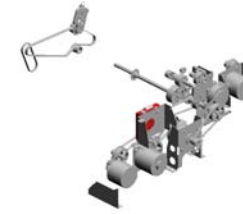
7.07433806
RADIAL BALL BEA
RING:DIA6XDIA13X
5

15.AA043669
TIMING BELT:40S2
M158

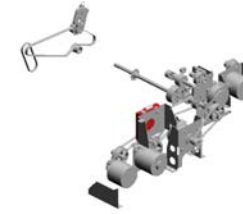


U004 MECHANICAL DRIVE SECTION

24.AW020203 PHOTOINTERRUPTOR:GP1A173LCS2F
 28.D5431625 GEAR:Z24:SEPARATION
 44.D6831675 DC STEPPER MOTOR:DIA42:T15:S2M:ASSY
 26.B7003305 TIMING BELT:B40S2M152
 46.D6831682 TIMING PULLEY:PICKUP:DRIVE



U004 MECHANICAL DRIVE SECTION

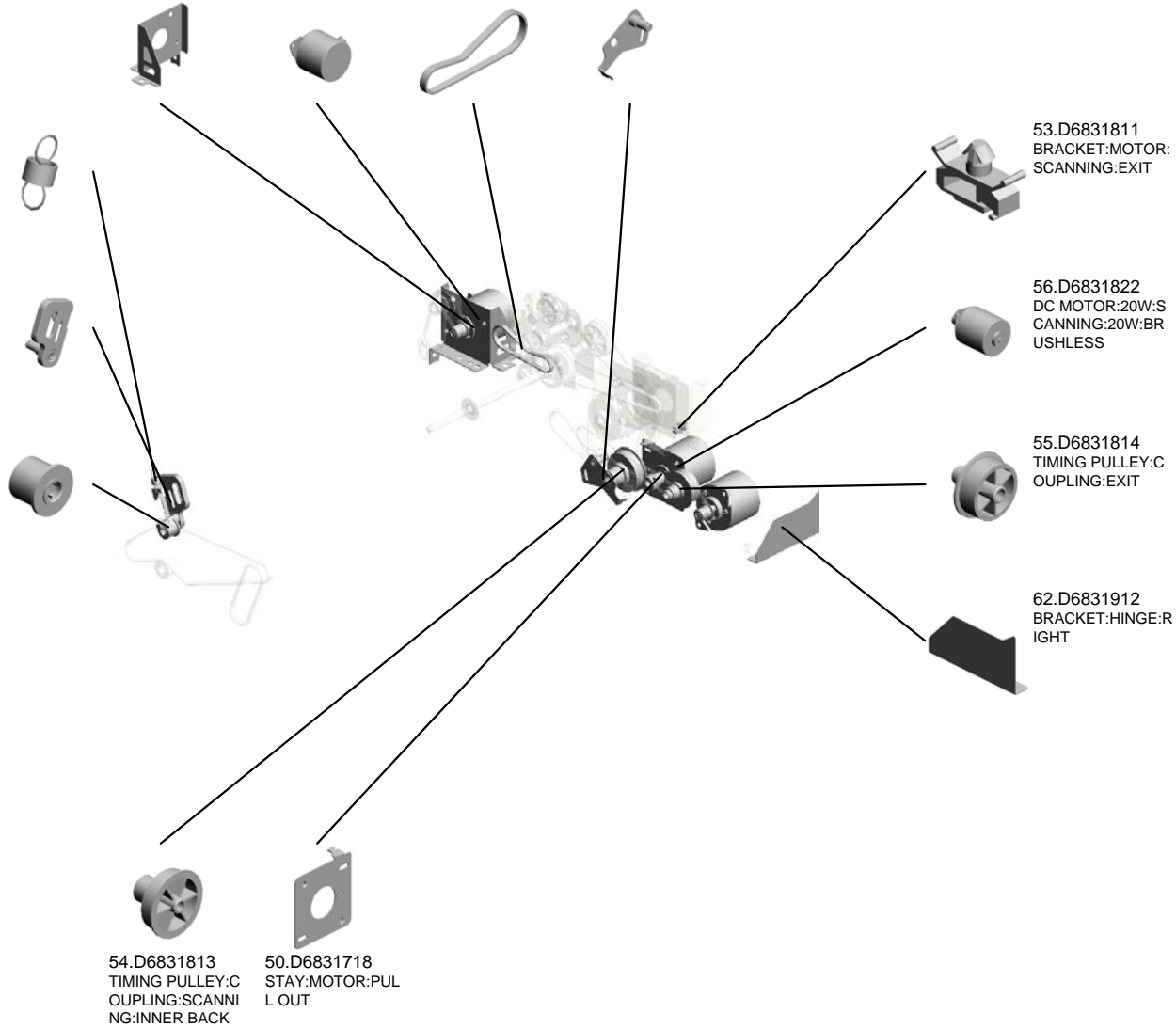


- 51.D6831762 BRACKET:MOTOR: MIDDLE
- 52.D6831766 (x2) DC MOTOR:10W:BRUSHLESS
- 63.M3644131 TIMING BELT:B40S 2M160
- 57.D6831841 BRACKET:TENSIO NER:SCANNING:INNER BACK

61.D6831856 TENSION SPRING: TENSION:SCANNING:FRONT

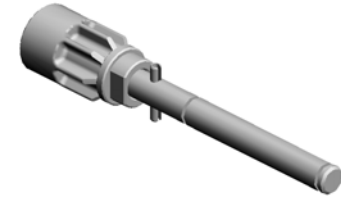
59.D6831851 BRACKET:TENSIO NER:SCANNING:FRONT

58.D6831845 PULLEY:IDLER:DIAMETER 14

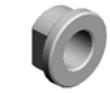


U004_S001
SHAFT:SEPARATION:DRIVE:INPUT:SUB-ASS'Y

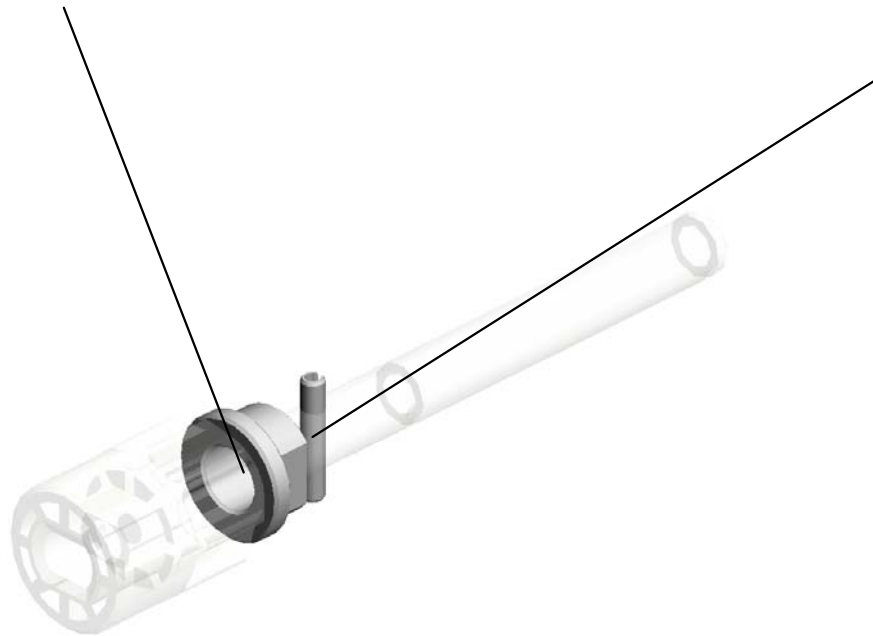
23.AA082101
BUSHING - 6X10X6



35.D6831620
SHAFT:SEPARATI
ON:DRIVE:INPUT:S
UB-ASSY



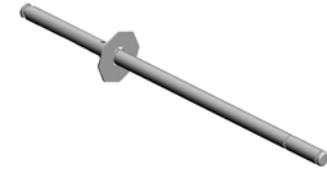
4.06220120E
SPRING PIN - 2X12
MM



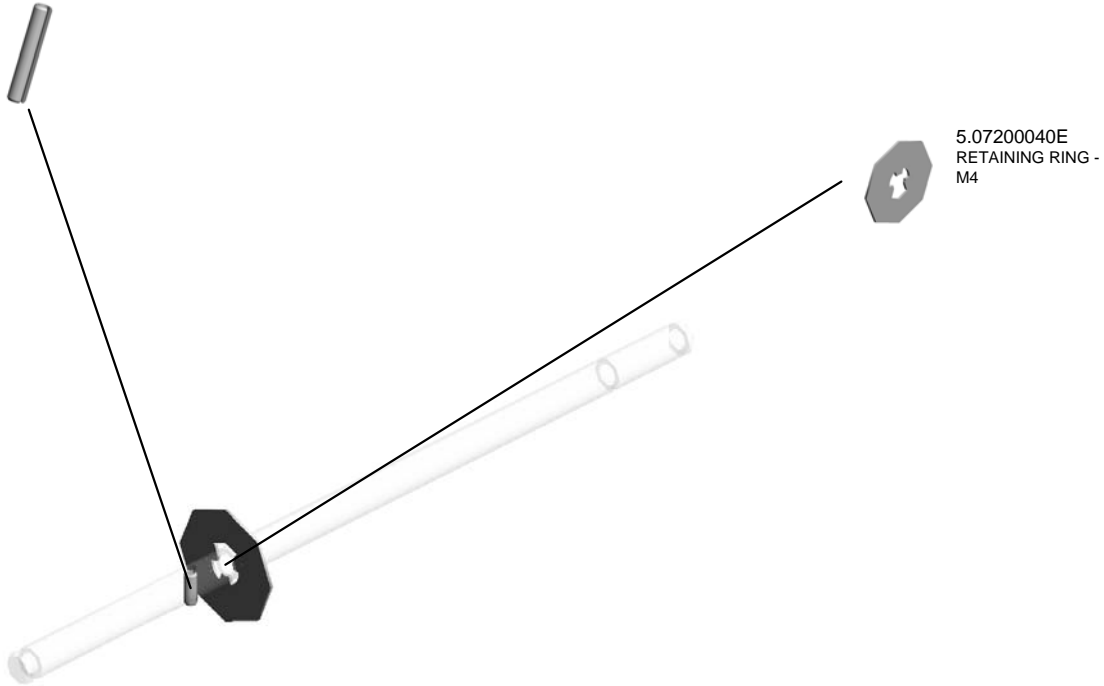
U001	U002	U003	U004	U005	U006
------	------	------	------	------	------

U004_S002
SHAFT:REVERSE ROLLER:SUB-ASS'Y

4.06220120E
SPRING PIN - 2X12
MM



36.D6831632
SHAFT:REVERSE
ROLLER:SUB-ASS'
Y



5.07200040E
RETAINING RING -
M4

U001	U002	U003	U004	U005	U006
------	------	------	------	------	------

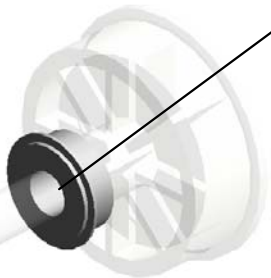
U004_S003
SHAFT:INPUT:PAPER FEED:SUB-ASS'Y

5.07200040E
RETAINING RING -
M4

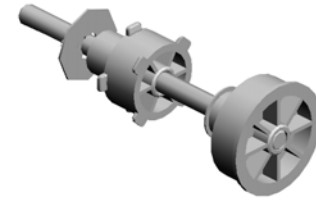
3.06220100E
SPRING PIN - 2X10
MM



42.D6831645
TIMING PULLEY:C
OUPLING:PULL OU
T



7.07433806
RADIAL BALL BEA
RING: DIA6XDIA13X
5

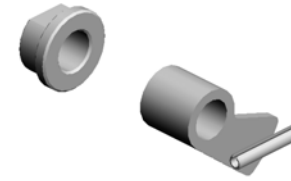
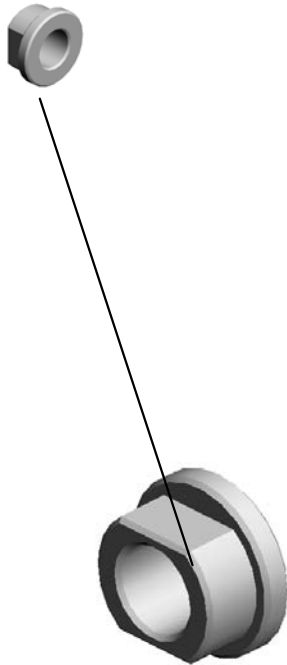


38.D6831640
SHAFT:INPUT:PAP
ER FEED:SUB-ASS'
Y

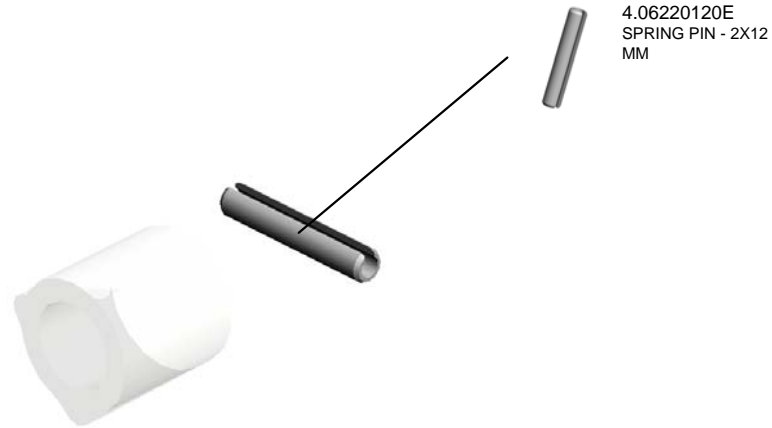
U001	U002	U003	U004	U005	U006
------	------	------	------	------	------

U004_S004
CAM:PICKUP

23.AA082101
BUSHING - 6X10X6



45.D6831680
CAM:PICKUP

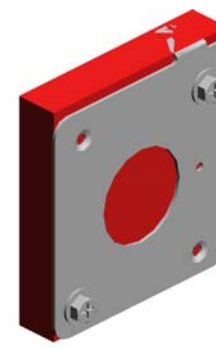
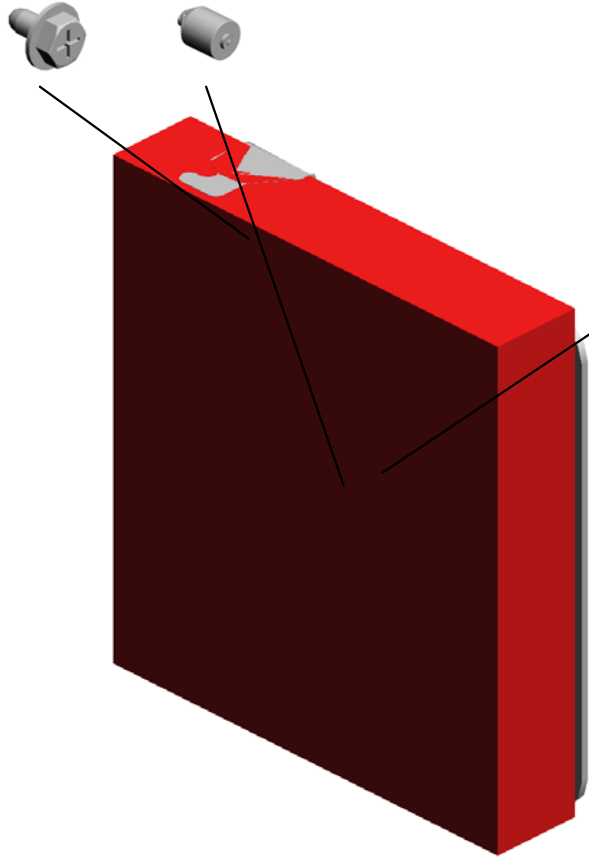


4.06220120E
SPRING PIN - 2X12
MM

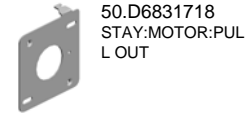
U004_S005
DC MOTOR:PULL OUT:ASS'Y

2.04543006Q
(x2)
TAPPING SCREW -
M3X6

56.D6831822
DC MOTOR:20W:S
CANNING:20W:BR
USHLESS



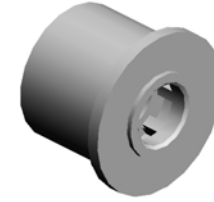
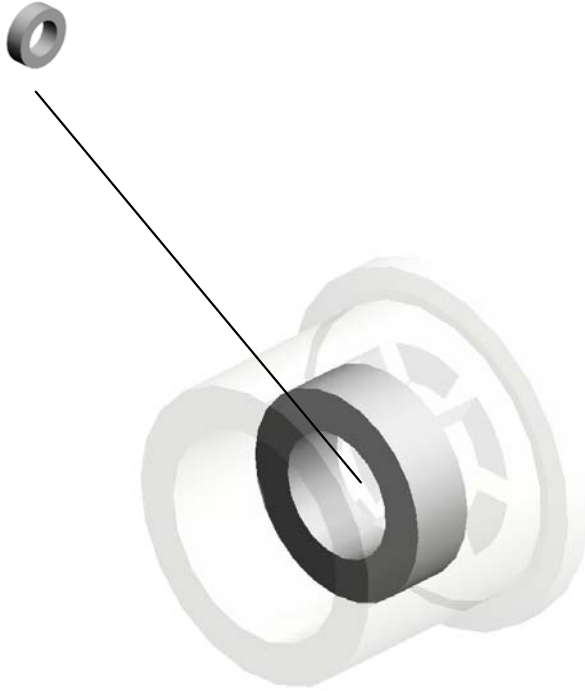
49.D6831715
DC MOTOR:PULL
OUT:ASS'Y



50.D6831718
STAY:MOTOR:PUL
L OUT

U004_S006
PULLEY:IDLER:DIA14

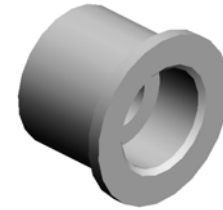
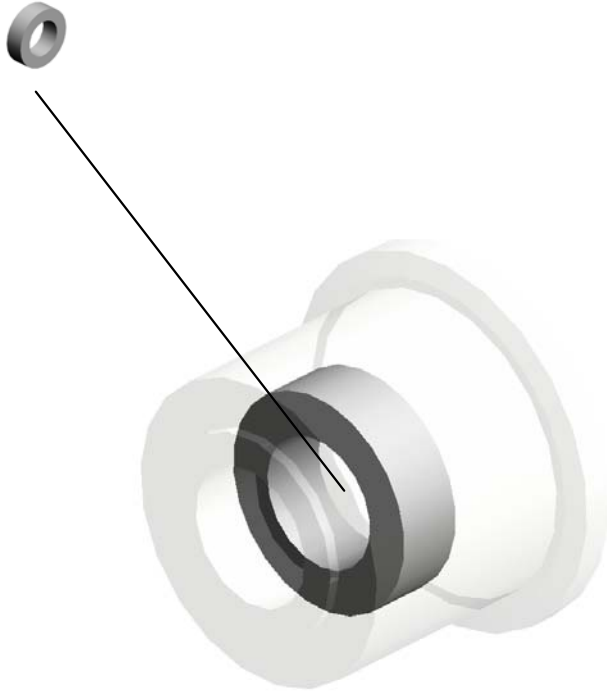
6.07403706
BALL BEARING - M
6X10X3



58.D6831845
PULLEY:IDLER:DIA
14

U004_S007
TIMING PULLEY:TENSIONER:SCANNING:FRONT

6.07403706
BALL BEARING - M
6X10X3

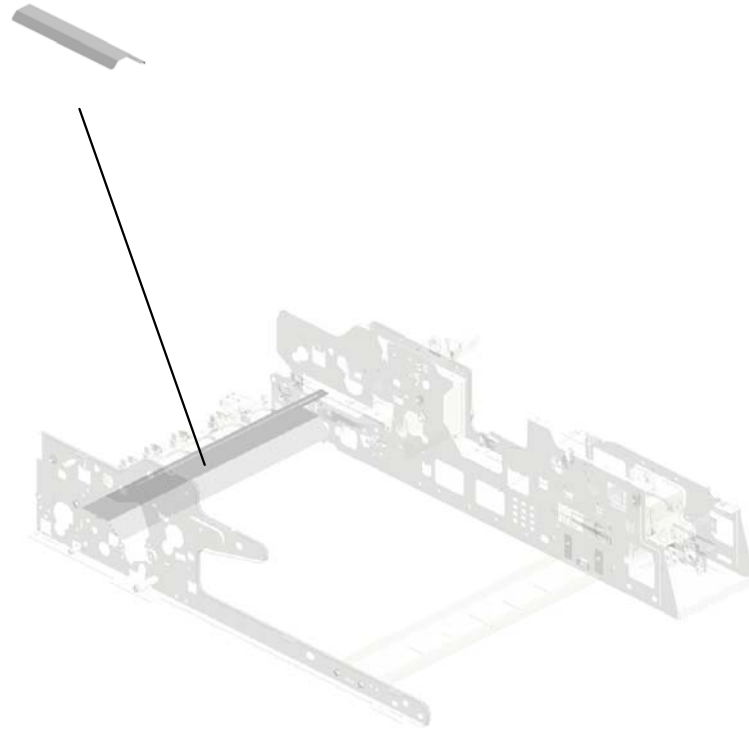


60.D6831855
TIMING PULLEY:TE
NSIONER:SCANNI
NG:FRONT

U001	U002	U003	U004	U005	U006
------	------	------	------	------	------

U005.FRAME SECTION

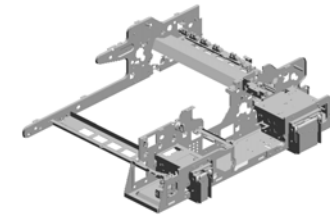
U005_S001
D6831480
BRACKET:SHEET:CONTACT
IMAGE SENSOR:ASS'Y



U001	U002	U003	U004	U005	U006
------	------	------	------	------	------

U005 FRAME SECTION

- 3.06220120E SPRING PIN - 2X12 MM
- 1.04543006Q (x32) TAPPING SCREW - M3X6
- 13.52062686 SNAP RING
- 12.12042612 (x2) MICRO SWITCH:D3 V-16506-3C25
- 2.04543014Q (x4) TAPPING SCREW: 3X14



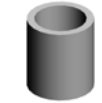
15.AW010151
PHOTO REFLECTIO
N SENSOR:PS122T
L1-A



5.07200030E
(x2)
RETAINING RING -
M3



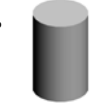
4.07074060N
BUSHING:DIA4X6



18.B6521133
SHAFT:SLIDER



19.B6521134
COMPRESSION SP
RING



6.11050487
(x2)
HARNESS CLAMP



11.11050760
CLAMP:LWSM-051
1A



10.11050758
(x11)
CLAMP:LWSM-030
6A



8.11050692
(x4)
CLAMP:LES-0503



17.B3871951
SPRING - PAPER S
IZE SENSOR



7.11050508
HARNESS CLAMP -
LWS-0711



14.AA143842
SCREW:DIA6:14.5:
M4



20.B7061859
SCREW:SLIDER:L
OCK



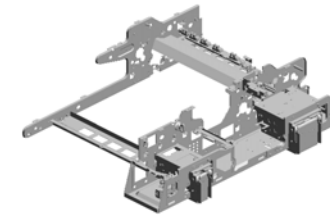
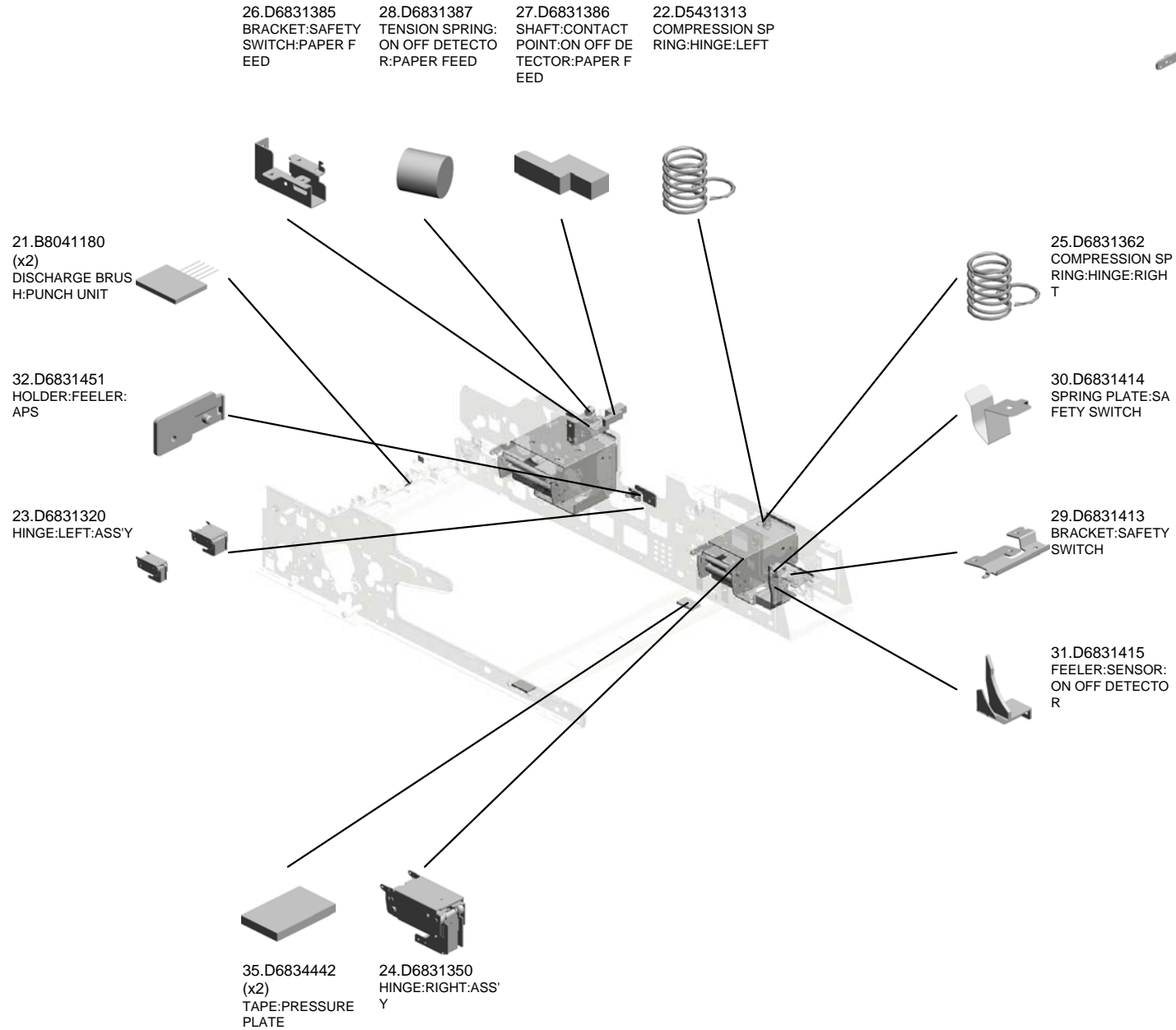
9.11050724
CLAMPS:WES-121
0



16.AW020203
(x6)
PHOTOINTERRUP
TOR:GP1A173LCS
2F

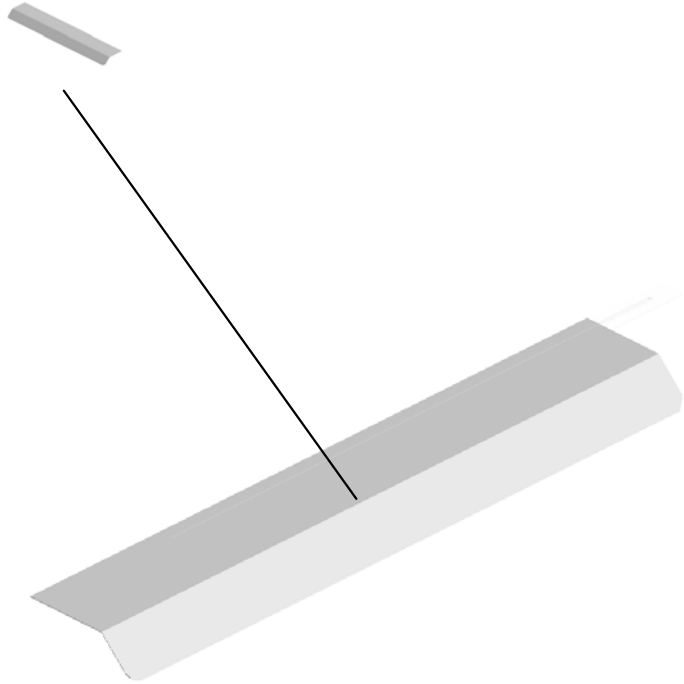


U005 FRAME SECTION



U005_S001
BRACKET:SHEET:CONTACT IMAGE SENSOR:ASS'Y

34.D6831482
SHEET:CONTACT I
MAGE SENSOR



33.D6831480
BRACKET:SHEET:
CONTACT IMAGE
SENSOR:ASS'Y

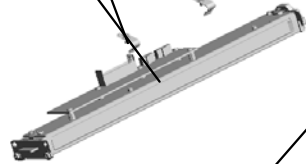
U001	U002	U003	U004	U005	U006
------	------	------	------	------	------

U006 ELECTRICAL COMPONENTS SECTION

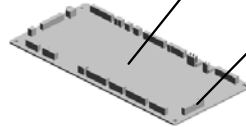
2.D5435125
(x2)
SPRING PLATE:CA
BLE:CONTACT IMA
GE SENSOR

3.D6835111
GUIDE:HARNESS:
MAIN

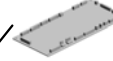
6.D6835860
CONTACT IMAGE
SENSOR:ASSY



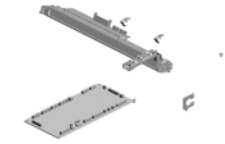
4.D6835121
GUIDE:HARNESS:
SUB



5.D6835501
PCB:MAIN CONTR
OL BOARD:DOCU
MENT FEEDER:AS
SY



1.04543006Q
(x10)
TAPPING SCREW -
M3X6



Exclusive Parts

Number	Part Name	Group	ID
52062686	SNAP RING	U003	10
		U005	13
52152621	SNAP RING - M6	U003	11
54472681	SNAP RING	U003	12
		U003_S003	12
A4181158	SPACER - M6.5X1	U003_S003	13
A4221063	SEAL - 0.7X13X20	U001_S001	5
		U002	12
A5482139	PULLEY	U004	12
A6281225	BUSHING - 8MM	U003_S003	14
A8061163	GUIDE PLATE CUSHION	U003_S003	15
		U003_S003_S002	15
AA043328	TIMING BELT:40S2M130	U003_S003	16
AA043339	TIMING BELT:PAPER EXIT:40S2M122	U004	13
AA043632	TIMING BELT - 40S2M126	U004	14
AA043669	TIMING BELT:40S2M158	U004	15
AA043681	SYNCHRONOUS BELT:40S2M108	U004	16
AA043682	SYNCHRONOUS BELT:60S1.5M150	U004	17
AA043683	SYNCHRONOUS BELT:60S1.5M204	U004	18
AA043685	SYNCHRONOUS BELT:40S2M258	U004	19
AA043694	SYNCHRONOUS BELT:B40S2M202	U004	20
AA043698	SYNCHRONOUS BELT:40S1.5M300	U004	21
AA060842	TENSION SPRING	U004	22
AA063435	COMPRESSION SPRING:PAPER FEED:JOINT	U003_S003	17
AA080288	BUSHING:DIA6	U001_S002	6
AA080346	BUSHING:FLANGE TYPE:DIA6	U001	7
		U003	18
AA080347	BUSHING - 8MM	U003	19
AA082101	BUSHING - 6X10X6	U002	13
		U003_S003	20
		U004	23
		U004_S001	23
		U004_S004	23

Number	Part Name	Group	ID
AA082104	BUSHING - 8X12X7	U002_S001	14
		U003_S002	21
AA082144	BUSHING - 8X12X7	U002	15
		U003	22
AA132013	SPACER	U003_S003	23
AA143788	PIN:GUIDE PLATE:PAPER FEED	U001	8
		U002	16
AA143789	SHAFT:CLEANER	U003	24
AA143842	SCREW:DIA6:14.5:M4	U005	14
AA143846	TAPPING SCREW:M3X6	U001_S001	9
AW010150	PHOTO REFLECTION SENSOR:ORIGINAL TRAY	U003	25
AW010151	PHOTO REFLECTION SENSOR:PS122TL1-A	U001	10
		U002	17
		U005	15
AW020198	PHOTOINTERRUPTOR:LG2A14NL1	U003	26
AW020203	PHOTOINTERRUPTOR:GP1A173LCS2F	U003	27
		U004	24
		U005	16
AX040254	DC MOTOR:RISING TRAY:ASS'Y:1.007W:BURUSH	U003_S004	28
B0434645	SPRING - 2N	U001	11
B3863320	SPRING:BELT:PAPER FEED:8N	U003_S003	29
B3871951	SPRING - PAPER SIZE SENSOR	U005	17
B3872113	ROLLER - PAPER FEED BELT	U003_S003	30
B4772227	PICKUP ROLLER:COUPLING	U003_S003	31
B4772622	DISCHARGE BRUSH:L11	U001	12
B4774117	SPRING	U001_S001	13
B4774131	SPRING	U001_S003	14
		U001_S004	14
B6521133	SHAFT:SLIDER	U005	18
B6521134	COMPRESSION SPRING	U005	19
B6522215	GUIDE:PAPER FEED BELT:FRONT	U003_S003	32
B6523174	TENSION SPRING	U004	25
B6524743	SHEET:PRESSURE PLATE:SMALL	U001_S006	15
B7003305	TIMING BELT:B40S2M152	U004	26
B7061859	SCREW:SLIDER:LOCK	U005	20

Exclusive Parts

Number	Part Name	Group	ID
B7892114	PAPER FEED BELT ROLLER	U003_S003	33
B8022532	SPRING PLATE:SIDE FENCE	U003	34
B8022536	SLIDER:SIDE FENCE	U003	35
B8041180	DISCHARGE BRUSH:PUNCH UNIT	U002	18
		U005	21
B8301135	SCREW	U001	16
D0812966	DC MOTOR:ASS'Y:1.007W:BRUSH	U003_S004	36
D4122653	BUSHING:DIA6	U002	19
D4122662	SPACER:GUIDE PLATE:CONTACT IMAGE SENSOR:ENTRANCE	U002_S006	20
D4122669	TENSION SPRING:GUIDE PLATE:PRESSURE:2N	U002	21
D4123145	TENSION SPRING:LEVER:MISFEED REMOVAL	U002	22
D5224906	STEPPED SCREW:M3:DIA6:1.7MM:ROUND POINT	U002	23
		U003	37
		U004	27
D5412121	PAPER FEED BELT	U003_S003	38
D5412241	REVERSE ROLLER:PAPER FEED	U003	39
D5431313	COMPRESSION SPRING:HINGE:LEFT	U005	22
D5431625	GEAR:Z24:SEPARATION	U004	28
D5431717	SHAFT:PULLEY:SCANNING:EXIT	U004	29
D5431821	TIMING PULLEY:T33/Z24	U004	30
D5431822	FLANGE:DIA24	U004	31
D5433314	SHEET:SCANNING:ENTRANCE:MIDDLE	U001	17
		U002_S003	24
D5433631	ROLLER:SCANNING:BEHIND:ASS'Y	U002_S004	25
D5433635	GEAR:ROLLER:SCANNING:BEHIND	U002	26
D5434382	COMPRESSION SPRING:PULL OUT	U001	18
D5434393	CUSHION:GUIDE PLATE:ENTRANCE:PAPER FEED:INNER BACK	U001	19
		U003	40
D5435125	SPRING PLATE:CABLE:CONTACT IMAGE SENSOR	U006	2
D6831320	HINGE:LEFT:ASS'Y	U005	23

Number	Part Name	Group	ID
D6831350	HINGE:RIGHT:ASS'Y	U005	24
D6831362	COMPRESSION SPRING:HINGE:RIGHT	U005	25
D6831385	BRACKET:SAFETY SWITCH:PAPER FEED	U005	26
D6831386	SHAFT:CONTACT POINT:ON OFF DETECTOR:PAPER FEED	U005	27
D6831387	TENSION SPRING:ON OFF DETECTOR:PAPER FEED	U005	28
D6831413	BRACKET:SAFETY SWITCH	U005	29
D6831414	SPRING PLATE:SAFETY SWITCH	U005	30
D6831415	FEELER:SENSOR:ON OFF DETECTOR	U005	31
D6831451	HOLDER:FEELER:APS	U005	32
D6831480	BRACKET:SHEET:CONTACT IMAGE SENSOR:ASS'Y	U005_S001	33
D6831482	SHEET:CONTACT IMAGE SENSOR	U005_S001	34
D6831614	BRACKET:MOTOR:PAPER FEED	U004	32
D6831615	STAY:MOTOR:PAPER FEED	U004	33
D6831617	DC MOTOR:ASS'Y:20W:BRUSHLESS	U004	34
D6831620	SHAFT:SEPARATION:DRIVE:INPUT:SUB-ASS'Y	U004_S001	35
D6831632	SHAFT:REVERSE ROLLER:SUB-ASS'Y	U004_S002	36
D6831635	GEAR:REVERSE ROLLER:DRIVE	U004	37
D6831640	SHAFT:INPUT:PAPER FEED:SUB-ASS'Y	U004_S003	38
D6831642	TIMING PULLEY:IDLER:PULL OUT	U004	39
D6831643	GEAR:INPUT:PAPER FEED	U004	40
D6831644	SPACER:SHAFT:INPUT:PAPER FEED	U004	41
D6831645	TIMING PULLEY:COUPLING:PULL OUT	U004_S003	42
D6831671	BRACKET:MOTOR:PICK UP	U004	43
D6831675	DC STEPPER MOTOR:DIA42:T15:52M:ASS'Y	U004	44
D6831680	CAM:PICKUP	U004_S004	45

Exclusive Parts

Number	Part Name	Group	ID
D6831682	TIMING PULLEY:PICKUP:DRIVE	U004	46
D6831691	GEAR:PAPER FEED:COUPLING	U004	47
D6831711	BRACKET:MOTOR:PULL OUT	U004	48
D6831715	DC MOTOR:PULL OUT:ASS'Y	U004_S005	49
D6831718	STAY:MOTOR:PULL OUT	U004	50
		U004_S005	50
D6831762	BRACKET:MOTOR:MIDDLE	U004	51
D6831766	DC MOTOR:10W:BRUSHLESS	U004	52
D6831811	BRACKET:MOTOR:SCANNING:EXIT	U004	53
D6831813	TIMING PULLEY:COUPLING:SCANNING:INNER BACK	U004	54
D6831814	TIMING PULLEY:COUPLING:EXIT	U004	55
D6831822	DC MOTOR:20W:SCANNING:20W:BRUSHLESS	U004	56
		U004_S005	56
D6831841	BRACKET:TENSIONER:SCANNING:INNER BACK	U004	57
D6831845	PULLEY:IDLER:DIA14	U004	58
		U004_S006	58
D6831851	BRACKET:TENSIONER:SCANNING:FRONT	U004	59
D6831855	TIMING PULLEY:TENSIONER:SCANNING:FRONT	U004_S007	60
D6831856	TENSION SPRING:TENSION:SCANNING:FRONT	U004	61
D6831912	BRACKET:HINGE:RIGHT	U004	62
D6832110	ROLLER:PULL OUT:DRIVE	U003_S001	41
D6832112	TIMING PULLEY:ROLLER:PULL OUT:DRIVE	U003	42
D6832113	SPACER:ROLLER:PULL OUT:DRIVE	U003_S001	43
D6832200	SHAFT:SEPARATION:ASS'Y	U003_S003	44
D6832210	ROLLER:MIDDLE:DRIVE	U003_S002	45
D6832221	GEAR:IDLER:Z18	U003_S003	46
D6832222	STOPPER:SHAFT:SEPARATION:DRIVE	U003	47
D6832224	GUIDE:PAPER FEED:ENTRANCE:FRONT	U003_S003	48

Number	Part Name	Group	ID
D6832228	PICKUP ROLLER	U003_S003	49
D6832229	TIMING PULLEY:GEAR:T19/Z23	U003_S003	50
D6832231	BRACKET:PICKUP	U003_S003	51
D6832232	TIMING PULLEY:PICKUP:T21	U003_S003	52
D6832233	BRACKET:PAPER FEED BELT	U003_S003	53
D6832235	SHAFT:PICKUP:SUB-ASS'Y	U003_S003_S001	54
D6832240	GUIDE:PAPER FEED:ENTRANCE:INNER BACK:ASS'Y	U003_S003_S002	55
D6832241	GUIDE:PAPER FEED:ENTRANCE:INNER BACK	U003_S003_S002	56
D6832272	LEVER:PICKUP ROLLER:RISE	U003_S003	57
D6832311	TORQUE LIMITER MECHANICAL CLUTCH:SEPARATOR	U003	58
D6832393	HOLDER:ORIGINAL TABLE	U003	59
D6832417	SHEET:ENTRANCE:SEPARATION PAD	U003	60
D6832510	GUIDE PLATE:PAPER FEED:LOWER:ASS'Y	U003	61
D6832724	COVER:LOWER:BASE	U003	62
D6832741	BASE:ORIGINAL TABLE	U003	63
D6832742	CUSHION:STOPPER PAWL	U003	64
D6832746	SIDE FENCE:ORIGINAL TABLE	U003	65
D6832752	LEVER:RISE:BASE	U003	66
D6832755	SHAFT:RISE:BASE:SUB-ASS'Y	U003	67
D6832756	RAIL:SIDE FENCE	U003	68
D6832771	ORIGINAL TABLE	U003	69
D6832781	ORIGINAL TABLE:BEHIND	U003	70
D6832911	GUIDE PLATE:PULL OUT:LOWER	U003	71
D6832912	FEELER:PAPER SIZE SENSOR	U003	72
D6833111	ROLLER:SCANNING:ENTRANCE:DRIVE	U002	27
D6833150	ROLLER:SCANNING:EXIT:DRIVE:ASS'Y	U002_S001	28
D6833155	TIMING PULLEY:ROLLER:SCANNING:EXIT:DRIVE	U002	29
D6833221	GUIDE:SCANNING:UPPER	U002	30
D6833251	GROUND PLATE:ROLLER	U002	31
D6833260	SHEET:SCANNING:EXIT:UPPER:ASS'Y	U002	32

Exclusive Parts

Number	Part Name	Group	ID
	SS'Y		
D6833311	BRACKET:GUIDE:SCANNING:UPPER	U002	33
D6833361	SPRING PLATE:GUIDE PLATE:SCANNING	U002	34
D6833370	GUIDE PLATE:SCANNING:NON-CONTACT	U002	35
D6833421	BASE:SCANNING:ENTRANCE:LOWER	U002	36
D6833422	LEVER:PRESSURE RELEASE	U002	37
D6833461	GUIDE:SCANNING:ENTRANCE:NON-CONTACT:SUB-ASS'Y	U002_S003	38
D6833510	SHAFT:LEVER:MISFEED REMOVAL:ASS'Y	U002	39
D6833511	HOOK:OPTICAL READING UNIT:FRONT	U002	40
D6833616	BRACKET:DISCHARGE BRUSH	U002	41
D6833621	GUIDE:EXIT:LOWER:SUB-ASS'Y	U002	42
D6833641	GUIDE:CONTACT IMAGE SENSOR:EXIT:LOWER:ASS'Y	U002_S005	43
D6833643	COMPRESSION SPRING:CONTACT IMAGE SENSOR:EXIT	U002_S005	44
D6833644	SHEET:GUIDE:CONTACT IMAGE SENSOR:EXIT:LOWER	U002_S005	45
D6833645	ROLLER:MIDDLE:DRIVEN	U001	20
		U002_S005	46
D6833651	COVER:SCANNING:EXIT	U002	47
D6833661	GUIDE PLATE:CONTACT IMAGE SENSOR:ENTRANCE:ASS'Y	U002_S006	48
D6833666	LEVER:GUIDE PLATE:CONTACT IMAGE SENSOR:FRONT	U002_S006	49
D6833667	LEVER:GUIDE PLATE:CONTACT IMAGE SENSOR:REAR	U002_S006	50
D6833710	ROLLER:CONTACT IMAGE SENSOR:EXIT:DRIVE:PRESS FIT	U002_S007	51
D6833714	TIMING PULLEY:ROLLER:CIS:EXIT:DRIVE	U002	52
D6833715	TIMING PULLEY:ROLLER:CIS:EXIT	U002	53

Number	Part Name	Group	ID
	:FRONT		
D6833811	GUIDE PLATE:EXIT:UPPER	U002	54
D6833812	DISCHARGE BRUSH:EXIT	U002	55
		U002_S006	55
D6833911	ROLLER:EXIT:DRIVE	U002	56
D6833915	TIMING PULLEY:ROLLER:EXIT:DRIVE	U002	57
D6834111	COVER:FRONT	U001	21
D6834112	COVER:FRONT RIGHT	U001	22
D6834211	COVER:REAR	U001	23
D6834212	COVER:UPPER REAR	U001	24
D6834312	GUIDE:PAPER FEED:UPPER	U001	25
D6834320	COVER:PAPER FEED:ASS'Y	U001_S001	26
D6834323	SHAFT:CONTACT POINT:GUIDE:PAPER FEED	U001	27
D6834325	BRACKET:GUIDE:PAPER FEED:FRONT	U001	28
D6834328	BRACKET:GUIDE:PAPER FEED:INNER BACK	U001	29
D6834338	COVER:PAPER FEED:UPPER	U001_S001	30
D6834341	BRACKET:PULL OUT:DRIVEN	U001	31
D6834345	DISCHARGE BRUSH:EXIT:L37	U001	32
D6834350	DRIVEN ROLLER:PULL OUT	U001_S002	33
D6834351	LINK:STOPPER:COVER:PAPER FEED	U001_S001	34
D6834361	SHAFT:CONTACT POINT:GRIP	U001_S001	35
D6834367	GROUND PLATE:HOOK:INNER BACK	U001_S001	36
D6834371	GRIP:COVER:PAPER FEED	U001_S001	37
D6834372	HOOK:CONTACT POINT:FRONT:GRIP	U001_S001	38
D6834374	HOOK:CONTACT POINT:INNER BACK:GRIP	U001_S001	39
D6834394	GUIDE PLATE:ENTRANCE:PAPER FEED:UPPER	U001	40
D6834395	CUSHION:GUIDE PLATE:ENTRANCE:PAPER FEED:FRONT	U001	41
D6834396	CUSHION:GUIDE PLATE:ENTRANCE	U001	42

Exclusive Parts

Number	Part Name	Group	ID
	CE:PAPER FEED:STOPPER		
D6834411	TRAY:EXIT	U001	43
D6834412	TRAY:EXIT:AUXILIARY:LARGE	U001	44
D6834413	TRAY:EXIT:AUXILIARY:SMALL	U001	45
D6834420	ROLLER:EXIT:DRIVEN:ASS'Y	U001_S003	46
		U001_S004	46
D6834421	SHAFT:EXIT:DRIVEN	U001_S003	47
		U001_S004	47
D6834430	ROLLER:EXIT:DRIVEN	U001_S003	48
		U001_S004	48
D6834441	HOLDER:CUSHION:PRESSURE PLATE	U001	49
D6834442	TAPE:PRESSURE PLATE	U001	50
		U001_S005	50
		U002	58
		U005	35
D6834510	COVER:LOWER RIGHT:ASS'Y	U001_S005	51
D6834611	COVER:LEFT LOWER	U002	59
D6834615	SHIELDING PLATE:LEFT LOWER:ASS'Y	U002_S002	60
D6834617	SEAL:LEFT LOWER	U002_S002	61
D6834711	GUIDE PLATE:PRESSURE PLATE:LEFT	U001_S006	52
D6834720	PRESSURE PLATE:ASS'Y	U001_S006	53
D6834722	CUSHION:TAPE:SMALL	U001_S006	54
D6834724	CUSHION:PRESSURE PLATE:LARGE	U001_S006	55
D6834725	CUSHION:PRESSURE PLATE:SMALL	U001_S006	56
D6835111	GUIDE:HARNESS:MAIN	U006	3
D6835121	GUIDE:HARNESS:SUB	U006	4
D6835501	PCB:MAIN CONTROL BOARD:DOCUMENT FEEDER:ASS'Y	U006	5
D6835860	CONTACT IMAGE SENSOR:ASS'Y	U006	6
D6836011	DECAL:SIZE:ORIGINAL	U003	73
D6836041	DECAL:DESIGN SKETCH:MISFEED REMOVAL:P2	U001	57
D6836051	DECAL:BASE:ORIGINAL	U003	74

Number	Part Name	Group	ID
G0602652	BUSHING - M4	U002_S005	62
H0602126	BUSHING - M6X7	U003_S003	75
M3644131	TIMING BELT:B40S2M160	U004	63

Standard Parts



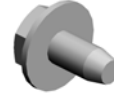
03530030N
SCREW:M3X3



03530060N
BIND SCREW - M3X6



03603006N
SCREW - M3X6



04543006N
TAPPING SCREW:ROUND P
OINT:3X6



04543006Q
TAPPING SCREW - M3X6



04543014Q
TAPPING SCREW:3X14



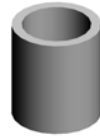
04583008N
HEXAGON HEAD TAPPING S
CREW:3X8



06220100E
SPRING PIN - 2X10MM



06220120E
SPRING PIN - 2X12MM



07074060N
BUSHING:DIA4X6



07200030E
RETAINING RING - M3



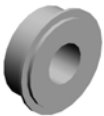
07200040E
RETAINING RING - M4



07200060E
RETAINING RING - M6



07403706
BALL BEARING - M6X10X3



07433806
RADIAL BALL BEARING:DIA6
XDIA13X5



07433808
RADIAL BALL BEARING:DIA8
XDIA16X5



08050088
RETAINING RING - M6



08050089
RETAINING RING - M4



08050092
RETAINING RING - 3M



11050487
HARNESS CLAMP



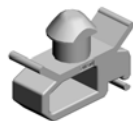
11050508
HARNESS CLAMP - LWS-071
1



11050692
CLAMP:LES-0503



11050724
CLAMPS:WES-1210



11050758
CLAMP:LWSM-0306A



11050760
CLAMP:LWSM-0511A



12042612
MICRO SWITCH:D3V-16506-3
C25

PM Part List

Number	Part Name	Num	Group	ID
D5412121	PAPER FEED BELT	1	U003_S003	38
D5412241	REVERSE ROLLER:PAPER FEED	1	U003	39
D6832228	PICKUP ROLLER	1	U003_S003	49

