

Product Support Guide G180

LANIER RICOH SAVIN®

Introduction

Product Type

B/W Wide Format Printer

Launch Date

10/05/2007

S/N Configuration

S29YXXXXX

Product Code

G180

Brand/Model Name:

Product Code	Lanier	Ricoh	Savin
G180	LW 124W	SP W2470	2404 WDP

Product Concept:

Hardware:

- High productivity: 4.5ppm
- 15M Paper Support

Connectivity:

- Embedded GW Controller



Product Support Guide G180

Order Number

Main Frame

Item	Model Name	EDP Code	Lanier ID	Notes
G180	LW124W SP W2470 2404 WD	413856	479-1825	

Options

Item	Description	EDP Code	Lanier ID	Product Code	Common / Unique
Roll Feeder 2 Roll*	Roll Feeder Type B	412705	481-0793	B852	C (B125)
Paper Cassette	Paper Cassette Type 240	412708	481-0794	B853	C (B125)
Roll Holder	Roll Holder Unit Type A	410844	481-0630	B394	C (B188)
Rear Stacker	Rear Stacker	413718	481-7316	D312	U
Data Overwrite Security Kit	Data Overwrite Security Kit Type D	412152	216-7093	B735	C (B178,B180,B202)
GIGABIT Ethernet Board	Ethernet Board Type A	402547	481-7029	G874	C (G161)
IEEE 802.11b Interface Unit	IEEE802.11b Interface Unit Type I	402631	481-7106	G874	C (G161)

***2 Roll Feeder is mandatory for this unit..**

Product Support Guide

G180

Main Frame Specifications

G180

Technology

Configuration		Desk top
Printing Process		Electro-photographic printing
Photo-conductor		OPC drum 970mm x ϕ 80mm
Drum yield		40K copies (A1/D size LEF), or 24km
Charge system		Scorotron (corona charge)
Imaging lens		SELFOC lens
Development system		Magnetic brush Dual component dry toner system
Fusing	Method	Heat and pressure
	Roller materials	Heat roller: Teflon Pressure roller: Silicone rubber
	Fuse oil	Use little
Cleaning system		Counter blade
PM cycle		5.6km

Basic Specification

Resolution		600 dpi
Gray Scale	Writing	2 levels
Time	Warm up time	Less than 120 seconds (23 degrees Celsius, US: 120v, EU/Asia/China: 220v-230v)
Paper feeding capacity	2 Roll Feeder (Standard)	2 roll papers Width: 210mm – 914mm Max length: 150,000mm / Max diameter: ϕ 175mm
	Paper cassette (option)	250 sheets (64 – 81g/m ²)
Paper output capacity	Top	50 sheets @ A1/D LEF (plain paper) (Larger than A1/D size cannot be stacked.) 1 sheet @ A1/D LEF (application paper) No film stacking
	Bottom	40 sheets @ A0/E SEF (plain paper) (Smaller than A2/C size cannot be stacked) 10 sheets @ A0/E SEF (application paper) No film stacking
Paper cut method		Preset size cut / Synchronized cut / Variable cut
Memory Capacity		512Mb
HDD		80G byte
Power Source	NA	120V 15A 60Hz
	EU/CHN/AP	220V-240V/8A 50/60Hz
Max. Power Consumption		1440W
Dimensions		1080mm x 637mm x 530mm (W x L x H)
Weight		96kg

Product Support Guide

G180

Printer Specifications

Printer Controller Specification

Controller Board		Embedded				
Controller CPU		RM7935-835k				
Print Speed		3ppm @ A0/E SEF, 4.5ppm @ A1/D SEF				
Print Resolution		200, 300, 400, 600 dpi				
RAM		512MB				
HDD		80GB				
IC card slot		No				
Interface slot		<table border="1" style="width: 100%;"> <thead> <tr> <th style="width: 50%;">Slot</th> <th style="width: 50%;">Interface</th> </tr> </thead> <tbody> <tr> <td>Option Slot</td> <td>IEEE802.11b / 100base-T / Cumin-M</td> </tr> </tbody> </table>	Slot	Interface	Option Slot	IEEE802.11b / 100base-T / Cumin-M
Slot	Interface					
Option Slot	IEEE802.11b / 100base-T / Cumin-M					
Supported printer language		PostScript Level3 (PDF), RPCS, Emulation: HP-GL, HP-GL/2(HP-RTL), TIFF (CALs),				
Fonts	PS	European 136 fonts				
	RPCS	European 45 fonts				
Interface	Standard	100/10base-TX, USB2.0				
	Option	IEEE802.11b (wireless), 1000base-T (Gigabit Ethernet)				
Network Protocol		TCP/IP (IPv4, IPv6), IPX/SPX, Apple Talk Auto switching available				
MIB	Standard MIB	MIB-II (RFC1213), HostResource (RFC1514), PrinterMib (RFC1759) SNMPv3 (RFC2574)				
	Private MIB	Ricoh private MIB				
Supported Operating Systems		PS driver Windows95/98/Me/2000/XP/2003server Mac OS (later than Mac OS8.6) Mac OS X (later than Mac OS X10.1)				
		RPCS driver Windows95/98/Me/2000/XP/2003server				
Supported CAD version		HDI driver AutoCAD2000, 2000i, 2002, 2004, 2005, 2006, 2007				
Supported Languages		English, French, German, Italian, Dutch, Spanish, Portuguese, Russian, Simplified Chinese				

Mac OS

	PostScript3	Printer Utility for MAC
Mac OS 8.6 or later, Mac OS X classic	Yes	Yes
Mac OS X Native : v. 10.1 or later *1	Yes	Yes*2

*1: Mac OS X v.10.0.X is not supported.

*2: Mac OS X v.10.2.0 is not supported.

Product Support Guide G180

Supplies/Yields

Item	Name	Order Code	Target Yield
Ricoh SP W2470			
Ricoh Toner Type 1160W Black	Toner Black	888029	Average 2.2K Copies @A1/D LEF, Ricoh 6% chart/cartridge
Ricoh Developer Type 30W Black	Developer	B1259640	Average 50K Copies @A1/D LEF Ricoh 6% chart/1.0kgx2bags (2.0kg)
Lanier LW 124W			
Black Toner for LW324	Toner Black	480-0161	Average 2.2K Copies @A1/D LEF, Ricoh 6% chart/cartridge
Black Developer for LW324	Developer	B1259640	Average 50K Copies @A1/D LEF Ricoh 6% chart/1.0kgx2bags (2.0kg)
Savin 2404 WDP			
Savin Toner Type 4700W Black	Toner Black	9890	Average 2.2K Copies @A1/D LEF, Ricoh 6% chart/cartridge
Savin Developer 2400WD	Developer	B1259640	Average 50K Copies @A1/D LEF Ricoh 6% chart/1.0kgx2bags (2.0kg)

Supply Yield Condition:
ISO/IEC19752 is used to measure the above toner yield.
The condition is standard temperature and humidity.
This yield number may change depending on the circumstances and printing conditions.

Product Support Guide G180

Option Compatibility

	Roll Feeder B	Paper Cassette	Rear Stacker																				
Roll Feeder B																							
Paper Cassette																							
Rear Stacker																							
1000 base-T																							
Wireless LAN										N													
DATA overwrite Security Unit																							

Y: Must install together
N: Cannot install together

Product Support Guide

G180

Comparison between B286/B289 and G180

	B286/B289	G180
Scanner Feature	Yes	No
Copier Feature	Yes	No
Operation Panel	Large Touch Screen	LCD
Controller	RICOH Embedded CTL	RICOH Embedded CTL Only
	Ratio External CTL	

Branding Info

Branding is required as the machines are shipped as a generic version.

Ricoh version machines: You must attach the model label (provided) to the front cover.

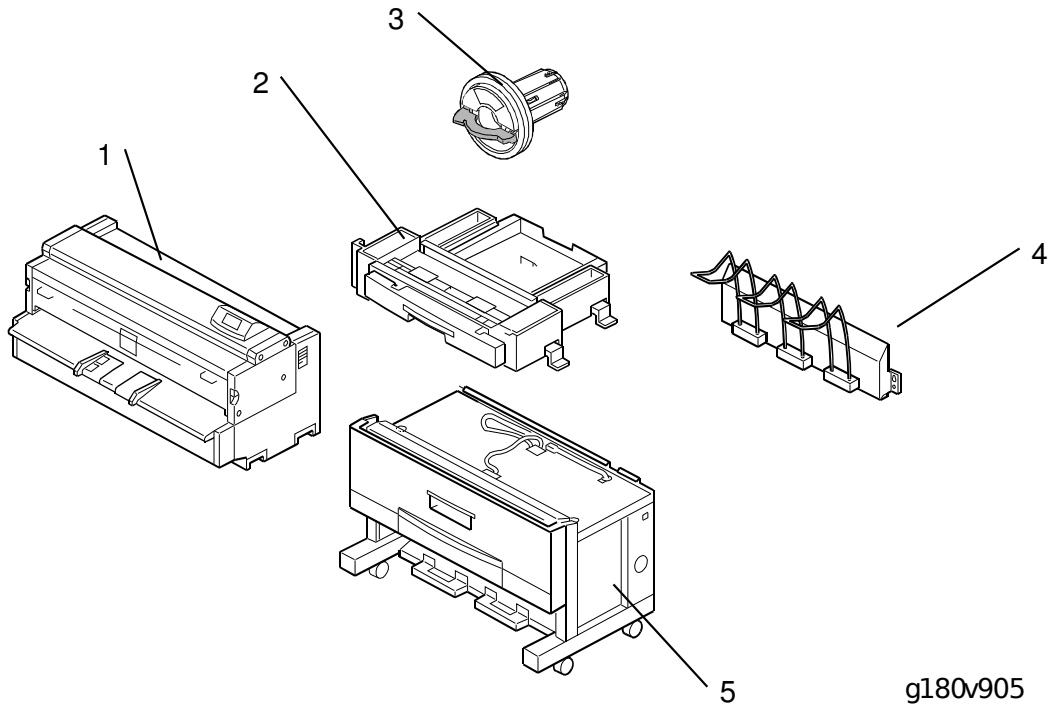
Savin/Lanier: You must attach the model label (provided) to the front cover and set the Plug and Play name with SP 5-907.

Product Support Guide

G180

Configuration

Main Frame Configuration

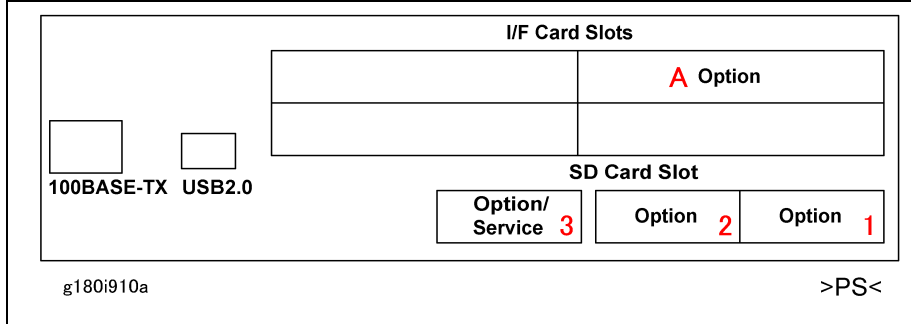


Number	Item	Product Code
1	Main Machine	G180
2	Paper Cassette Type 240	B853
3	Roll Holder Type A	B394
4	Rear Stacker (Option for copies)	D312
5	Roll Feeder Type 240B (Required)	B852

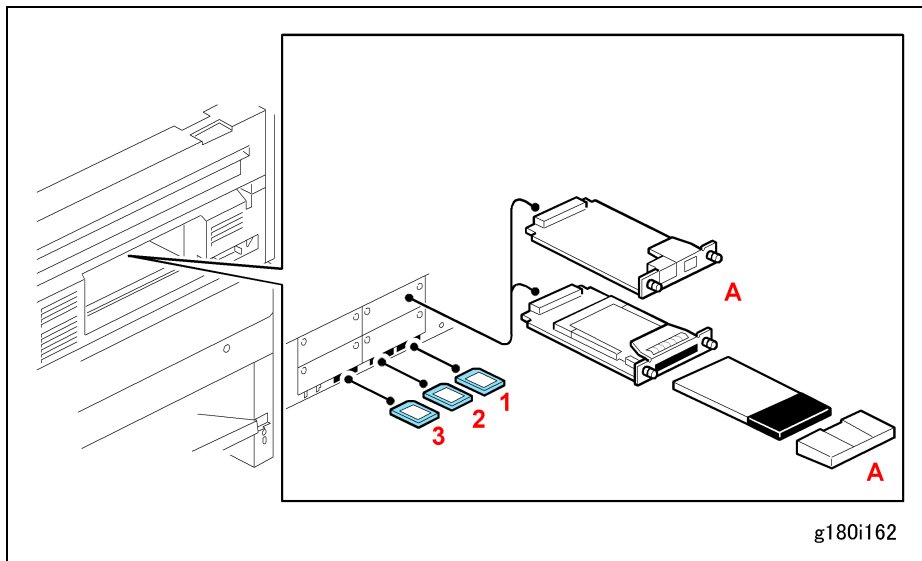
Product Support Guide

G180

MFP Options



Note: Only slot "A" is used for the G180. The remaining slots shown above are not used for this machine.



MFP Option Board Slot/SD Card Assignments

Slot	Option Name
A	Gigabit Ethernet Board Type A (G874-01)
	IEEE 802.11b Interface Type H (G813-45)/Type I (G874-39)
1	Data Overwrite Security Unit Type D (B735-18)
3	Service <ul style="list-style-type: none"> ▪ Firmware Update ▪ NVRAM Data Download/Upload ▪ Application Move/Undo

Product Support Guide

G180

Installation

Installation Requirements

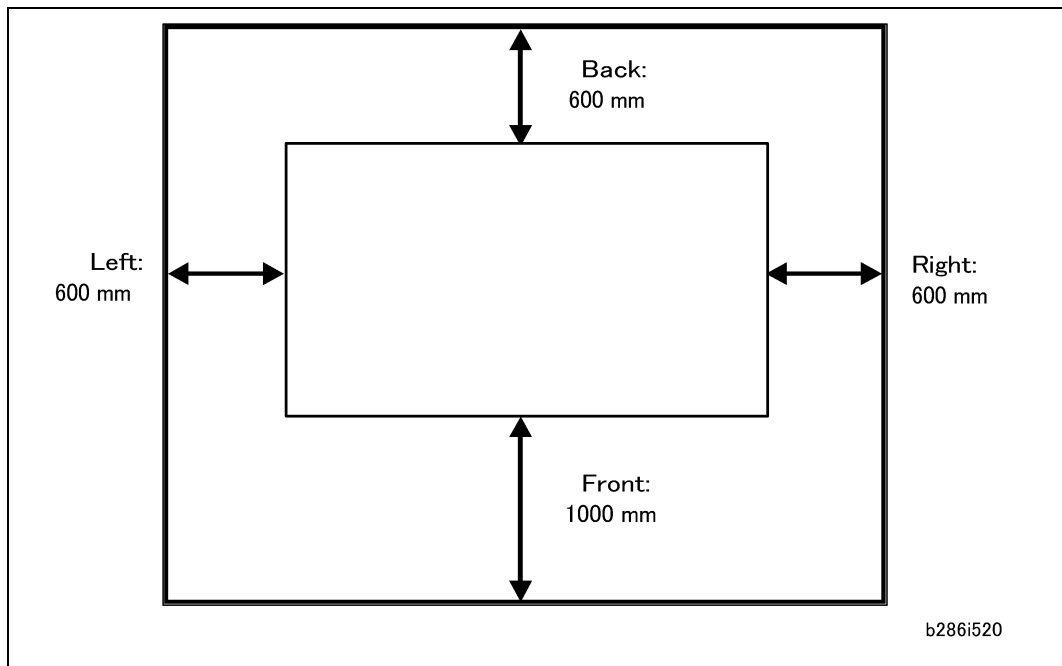
Power / Space:

This machine is provided with a circuit breaker that cuts the power supply to the main machine in case of a current overload or short circuit. The machine must be installed in a building where circuit breakers (and equivalent devices) can operate properly.

1. Input Voltage Level:
 - 120V, 60 Hz, 15 A or more
 - 220-240V, 50/60 Hz, 10A or more
2. Permissible Voltage Fluctuation: $\pm 10\%$
3. Do not set objects on the power cord.



- Make sure the plug is firmly inserted in the outlet.
- Do not connect the machine to a power source that is shared with other equipment.

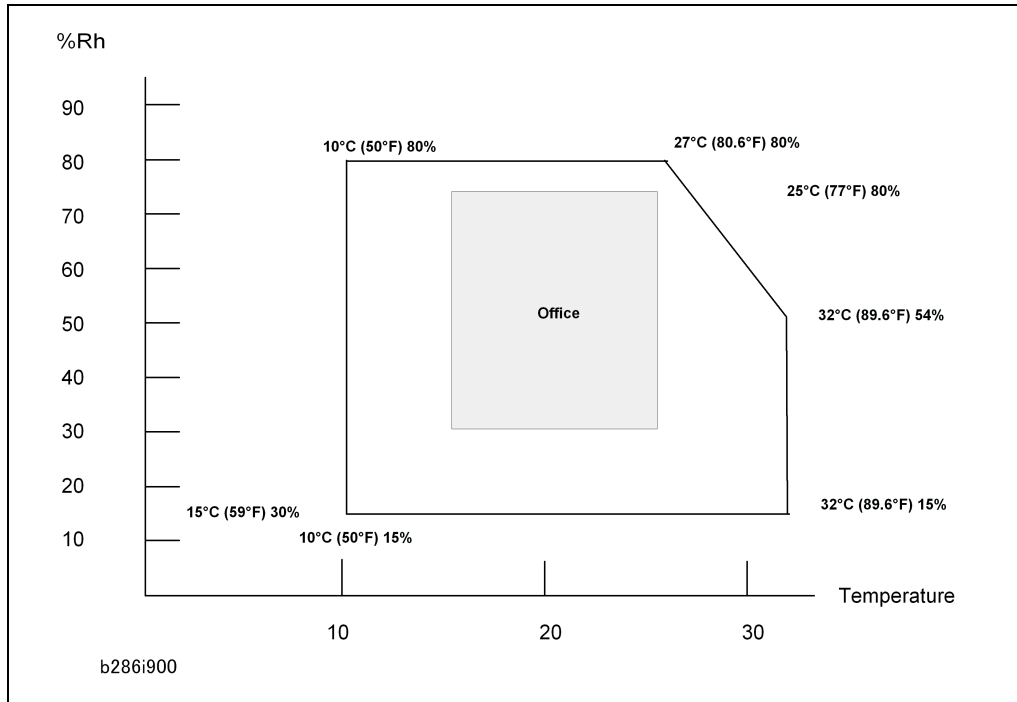


1. Front: 1000 mm (40")
2. Back: 600 mm (23")
3. Right: 600 mm (23")
4. Left: 600 mm (23")

Product Support Guide

G180

Environmental:



- 1 Temperature Range: 10 °C to 30 °C (50 °F to 86 °F).
- 2 Humidity Range: 15% to 90% RH.
- 3 Ambient Illumination: Less than 1,500 Lux (do not expose the machine directly to light from the sun).
- 4 Ventilation: More than 30 m³/hr/person in the work area.
- 5 Ambient Dust: Less than 0.10 mg/m.³
- 6 If the installation area has air-conditioners or heaters, put the machine in a location where:
 - There are no sudden temperature changes from low to high, or high to low.
 - The machine will not be directly exposed to cool air from an air conditioner in the summer.
 - The machine will not be directly exposed to reflected heat from a space heater in the winter.
- 7 Do not install the machine in an area filled with gases that can cause corrosion.
- 8 Do not install the machine in areas higher than 2,000 m (6,600 ft) above sea level.
- 9 Put the machine on a strong and level surface.

Important

 - The floor must be able to support a load of more than 2.94 kPa (300 kgf/m²).
- 10 Do not install the machine in an area where there are frequent strong vibrations.

Product Support Guide

G180

Power Consumption / Noise Emission

Power

Mode	Model	Full System
Printing	G180	1.5 KW
Stand-by	G180	45 Watts

Noise

Mode	Model	Full System
Printing	G180	Less than 68db
Stand-by	G180	Less than 43db

Installation Times

Mainframe: 20 Minutes, 2 people required.

Peripherals:

Roll Feeder B852	20 Minutes 2 people required
Paper Cassette B853	15 Minutes
Data Overwrite Security Unit	5 minutes
Rear Stacker	5 minutes
IEEE 802.11b Interface Unit	3 minutes

Storage / Transportation

	Storage	Transportation
Temperature	-30 ~ 50 degrees Celsius	-30 ~ 40 degrees Celsius
Humidity	Less than 80%	Less than 90%
Stacking	Max of 4 cartons stacking	Max of 3 cartons stacking
Maximum Storage Period 1 Month	No more than 1 month at 35~40° Celsius	

Product Support Guide

G180

Parts / Tools / Maintenance

PM Parts / Yields

Main Frame G180

Listed PM parts and part numbers are based on the machines produced at the time this document was issued. Please refer to the Field Service Manual and Technical Service Bulletins (TSBs) for the most updated information.

Unique/Common

U: Unique for this model

C: Common with listed model

Part Number	Description	Q'ty/ Unit	PM Interval : Km (feet)	Unique or Common
Around the drum				
AD020089	Charge Corona Wire	1	5.5 (18,000)	C (B125)
AD020059	Corona Wire - Main (Transfer)	1	11.0 (36,000)	C (B125)
AD020072	Corona Wire - Separation	1	11.0 (36,000)	C (B125)
B1252061	Cleaner: Charge Corona	1	5.5 (18,000)	C (B125)
Development Unit				
B1259640	Developer (1000g)	2	27.5 (90,000)	C (B125)
Cleaning Unit				
A1653581	Cleaning Blade	1	11.0 (36,000)	C (B125)
Fusing Unit				
AE011085	Hot Roller – MM50	1	27.5 (90,000)	C (B125)
AE031056	Bushing - Fusing (Hot Roller)	2	27.5 (90,000)	C (B125)
AE020148	Pressure Roller: MM55	1	33.0 (108,000)	C (B125)
AE042047	Fusing Cleaning Roller	1	27.5 (90,000)	C (B125)
Other				
AA010119	Exhaust Ozone Filter	1	5.5 (18,000)	C (B125)

Options

Paper Cassette: B853

Part Number	Description	Q'ty /Unit	PM Interval : Km (feet)	Unique or Common
G8003011	Paper Feed Roller	1	40 (130,000)	C (B125)
B8532575	Friction Pad Ass'y	1	40 (130,000)	C (B125)

Controller: D344, No PM Parts

Product Support Guide G180

Special Tools

Please have the following tools on hand to most effectively service the new model in the field.

Unique or Common

U: Unique for this model

C: Common with listed model

Item	Part Number	Description	Q'ty	Unique or Common
1	N8036701	Flash Memory Card – 4MB	1	C (B125)
2	A2579300	Grease Barrierta – S552R	1	C (B125)
3	52039502	Silicon Grease G-501	1	C (B125)
4	B6455010	SD Card	1	C (B070)
5	B6456700	PCMCIA Card Adapter	1	C (B070)
6	B6456800	USB Card Reader/Writer	1	C (B070)

Reliability Info

Model	G180
Average Monthly Volume	1180 Feet (360m)
Max. Monthly Volume	9480 Feet (3000m)
Target MCBC	6124 Feet (1867m)
PM Interval	18,000 Feet (5,500m)

Product Support Guide

G180

Printer Modules

The embedded controller has “GL2&TIFF filter”, “PS driver”, and “RPCS driver” as standard printing modules. The table shows the summary of these modules.

	GL2/TIFF filter	PS	RPCS
PDL	---	PostScript level 3, (PDF)	PRCS
Support file format	HPGL, HPGL2(HP-RTL), TIFF(CALS) *Uses emulation to interpret these file formats.	PS (PDF)	*application software
Driver	HDI driver	PS driver	RPCS driver
Utility software for printing	Web Printing Tool	---	---

GL2&TIFF filter

“GL2&TIFF filter” is prepared to provide users a printing capability of HP-GL file, HP-GL2 (HP-RTL) file, TIFF file, and CALS file. Users will operate on two different type of printing modules on their client PCs for printing the supported files.

1. HDI driver

HDI driver is a driver for AutoCAD (later than AutoCAD 2000).

2. Web Printing Tool (Web Browser based Utility Software)

The Web Printing Tool offers user the direct-print of HP-GL, HP-GL2 (HP-RTL), and TIFF (CALS) files format through web browser. And it also provides a default setting availability either through the Web Printing Tool or through the main frame operation panel.

Web Printing Tool Main Function	Description of the function
Web Print	Enter the multiple files as a job and Direct-Print through the Web browser. Users can set the setting of a print job, and can set each file individually.
Web Setting	Default Setting of Printing through Web Printing Tool. (The default setting of printing is also available through the mainframe operation panel.)

PC Environment for GL2&TIFF filter module, Operation panel module, and Web server module.

CPU	MIPS architecture
OS	NetBSD kernel based RICOH OS
Memory	32MB for GL2&TIFF filter
Common Memory	8KB for GL2&TIFF filter
HDD	Maximum 5000MB (5GB) for GL2&TIFF filter

Language support

9 languages	English, French, German, Italian, Dutch, Spanish, Portuguese, Russian, Simplified Chinese
-------------	---

Product Support Guide

G180

Options:

Roll Feeder (Common with B125)

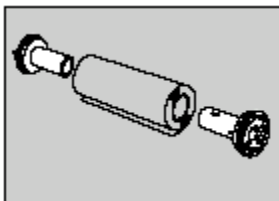
2 Roll Feeder (<i>mandatory</i>)	2 rolls
Roll Paper Size	Maximum Metric: 914mm x 15,000mm Inch: 36" x 49.2" Minimum Metric: 210mm x 210mm Inch: 8.3" x 8.3"
Roll Paper Diameter	175mm
Dimensions (W x H x D)	1080mm x 720mm x 700mm
Weight	70 kg (1 Roll), 72 kg (2 Roll)

Paper Cassette (Common with B125)

Paper Size	Maximum Metric: A3 (297mm x 420mm) Inch: 12" x 18" Minimum Metric: A4 (210mm x 297mm) Inch: 8.5" x 11"
Paper Weight	Metric: 64 – 105g/m ² , (55 –99kg) Inch: 17 – 28lbs
Paper Capacity	250 sheets (with the paper spec of 64 – 81g/m ² , or 17 – 20lbs.)
Dimensions (W x H x D)	620mm x 130mm x 570mm
Weight	Less than 60kg

Roll Holder Unit type A (common with B125, B010, B188)

This is an extra option (which comes with 2 pieces/set) to be put on the both sides of the roll paper. This is called flange. When users change the roll paper, they only need to move the roll paper with the roll holders. This makes for very easy operation.

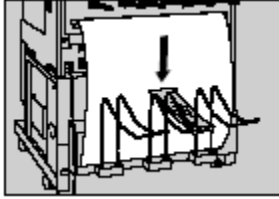


Product Support Guide

G180

Rear Stacker

Users can select either this rear stacker (option) as a lower tray. It holds maximum of 20 sheets of A1/D LEF.



[Important]

When the rear stacker option is installed, the standard lower stacker will not be available.

IEEE 802.11b wireless LAN board

Allows you to install a wireless LAN interface

Transmission spec	Based on IEEE 802.11b (wireless LAN)
Protocol	TCP/IP, IPX/SPX, AppleTalk
Data transfer speed	Auto select from the following speed 1 Mbps, 2 Mbps, 5.5 Mbps, 11 Mbps
Frequency range	Inch version: 2412 – 2462 MHz(1-11 channels) Metric version: 2412 – 2472 MHz(1-13 channels)
Transmittable distance	1 Mbps: 400m 2 Mbps: 270m 5.5 Mbps: 200m 11 Mbps: 140m
Transmission mode	Ad hoc, and infrastructure mode

Gigabit Ethernet (1000BASE-TX)

Allows you to communicate with 1000BASE-TX.

Interface Connector	Ethernet (10Base-T, 100Base-TX, 1000Base-T) USB 2.0(It requires a USB computer port and cable that support USB 2.0.)
Data Transmission Speed	Ethernet: 1000 Mbps, 100 Mbps, 10 Mbps USB: 480 Mbps (High speed: USB 2.0), 12 Mbps (Full speed)
Protocol	TCP/IP, IPX/SPX, AppleTalk
Distance Between Devices	Ethernet: 100m USB: 5m

DataOverWriteSecurity Unit

Allows you to erase data on the hard disk.

Product Support Guide G180

Utilities

Web Image Monitor

The screenshot shows the Web Image Monitor interface for a Ricoh imagio MP W2400 printer. The browser window title is "RNPA62F0 - Web Image Monitor - Microsoft Internet Explorer". The address bar shows the URL: "http://133.139.49.217/web/guest/en/websys/webArch/mainFrame.cgi".

The interface includes a navigation menu on the left with options: Home, Document Server, Printer: Print Jobs, Job, and Configuration. The main content area is titled "Home" and features a "Status" tab selected among "Status", "Device Info", "Counter", and "Inquiry".

Device information is displayed as follows:

- Device Name : RICOH imagio MP W2400
- Location :
- Comment : testtest123ABDC
- Host Name : RNPA62F0

A NetRICOH logo and a printer image are also present. The "Status" section shows:

- Printer: Alert (with a right arrow icon)
- Copier: Alert (with a right arrow icon)
- Scanner: Ready (with a right arrow icon)

Printer status details are shown in a scrollable area:

Printer:
No Paper: Tray 1(Paper Roll 1)
No Paper: Tray 2(Paper Roll 2)

The "Toner" section shows Black toner status as OK.

The "Input Tray" section lists:

- Tray 1(Paper Roll 1): A0 Width (841 mm)
- Tray 2(Paper Roll 2): Eng. 34 inch Width
- Cut Paper Tray: A4
- Paper Bypass: 11 x 17

The "Output Tray" section shows:

- Upper Paper Exit
- Lower Paper Exit

The bottom of the browser window shows a "Local intranet" icon.

Product Support Guide G180

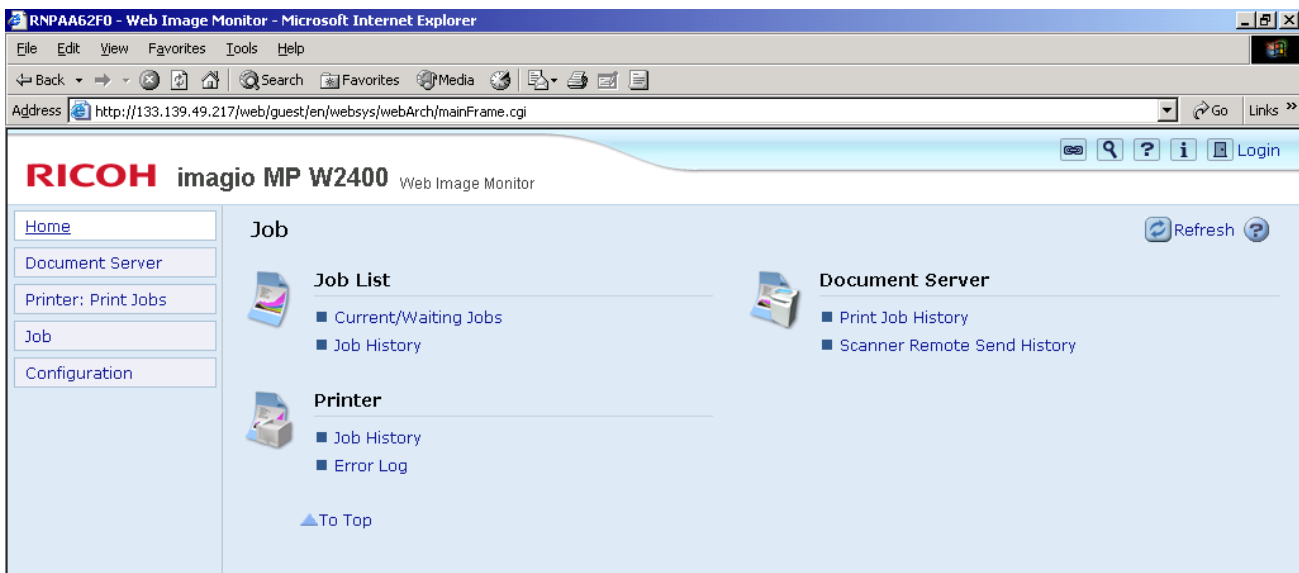
In the G180, the following operations will be available through Job List function.

- view details of jobs.
- delete / suspend jobs.
- change order of waiting jobs.

Note:

- Applicable jobs are printing jobs.
- When suspending a job, all the subsequent jobs will be suspended as well.






User interface for Job List operation



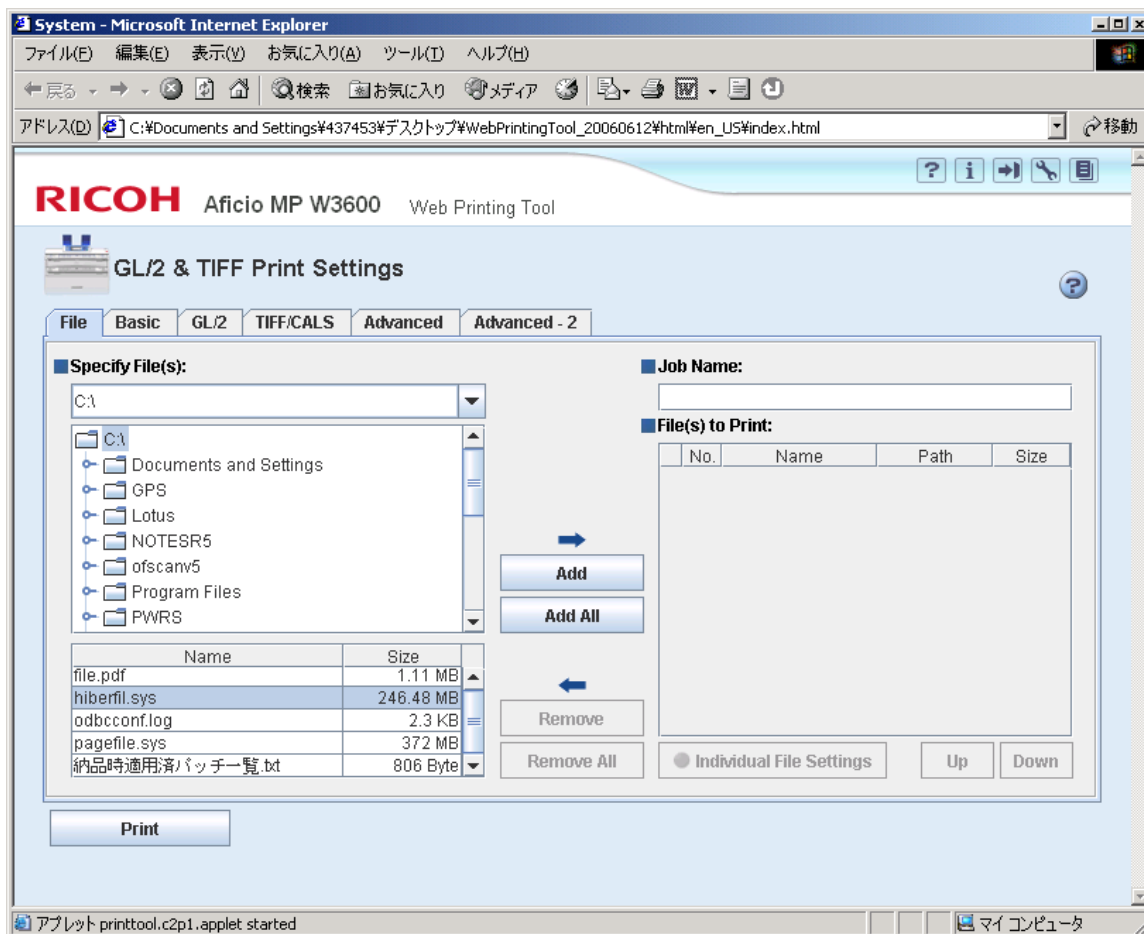
Product Support Guide

G180

Web Printing User Interface

 Help	The Web Print Tool Help
 Version Information	Provides the version of the software.
 GL2/Tiff print Settings	Print settings for users.
 Initial Configuration	Specifies the Initial Configuration when the first time this application is launched. These values must be defined preliminarily and can be changed whenever needed.
 System Log	Downloads system log, which contains information about job processing and control panel operations, and is very useful for troubleshooting. When problems arise, collect this log data from this screen and send it to service staff in order to save problem solving time.

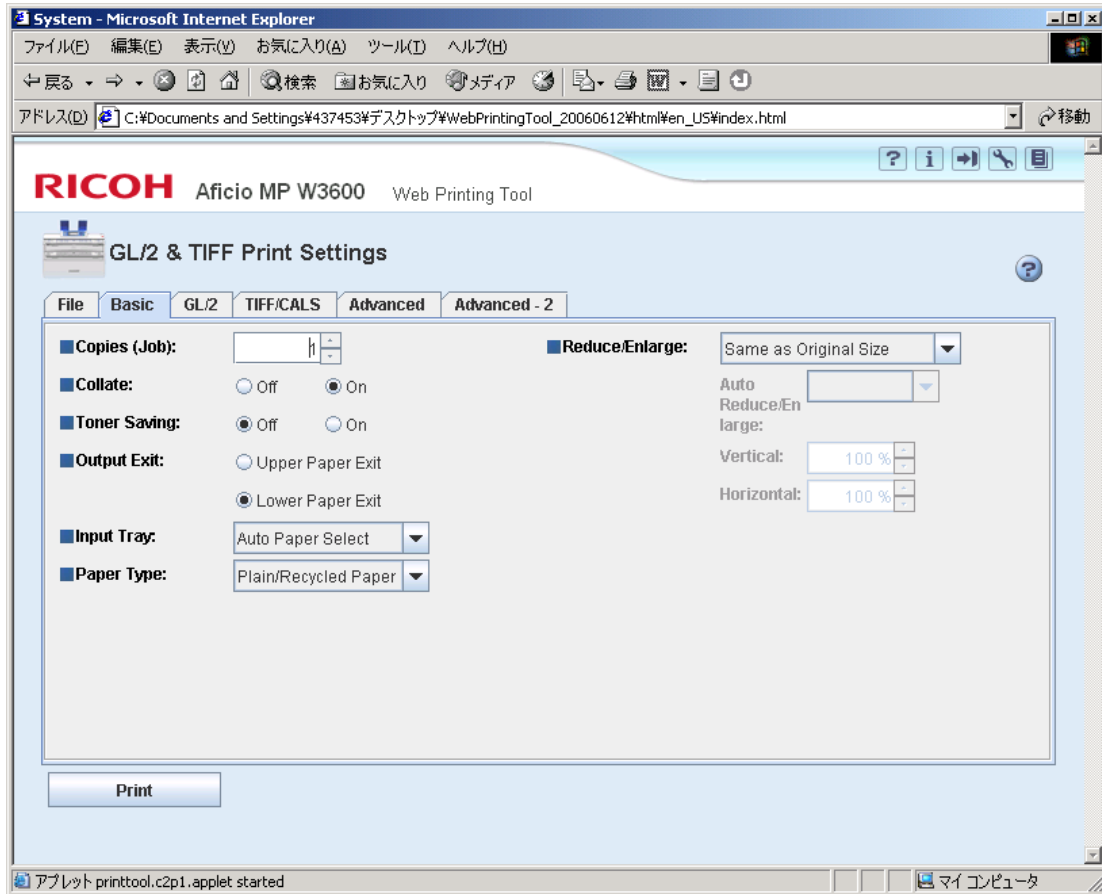
[File Tab] Specify files and print them. The file format which can be printed with this Web tool is HP-GL, HP-GL/2, HP-RTL and CALS.



You can select the files through the “Specify Files” on the left side, and then enter the files into the “File(s) to Print” area as a job by pushing “Add” button.

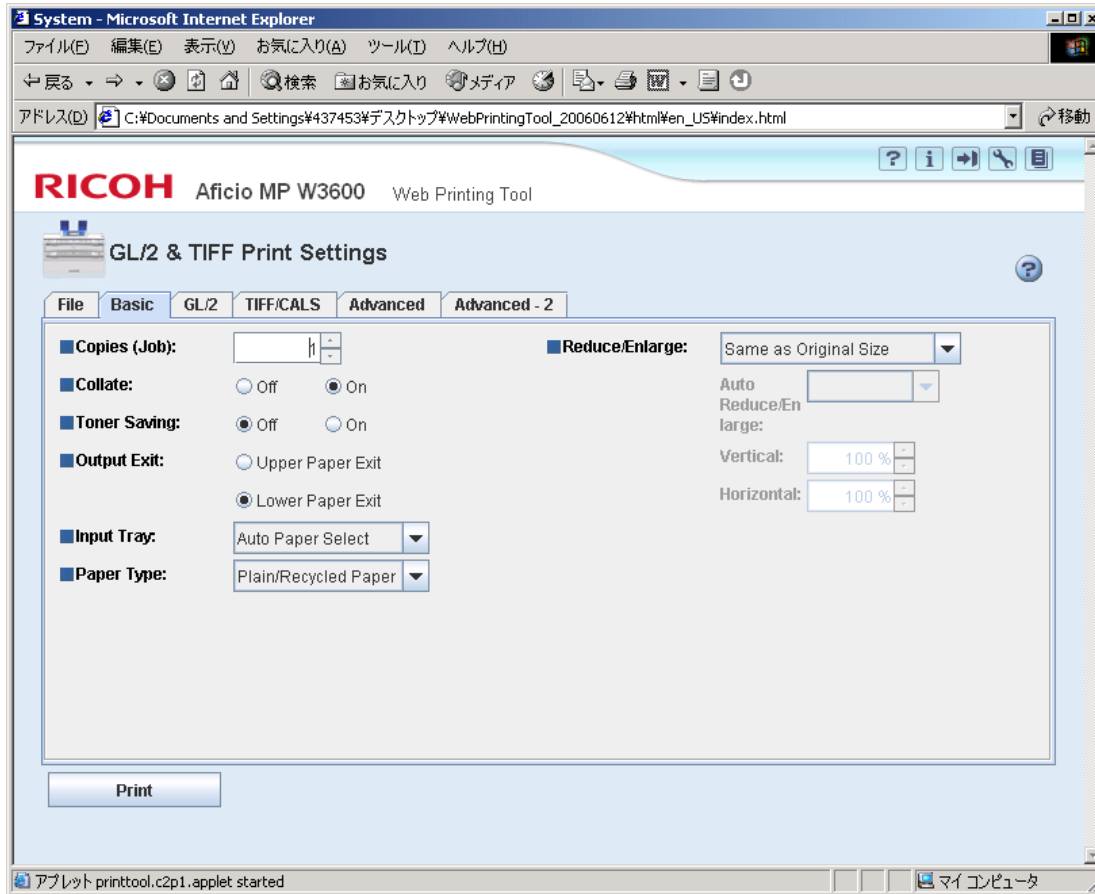
[Basic Tab] Specify the basic print settings.

Product Support Guide G180



Product Support Guide

G180

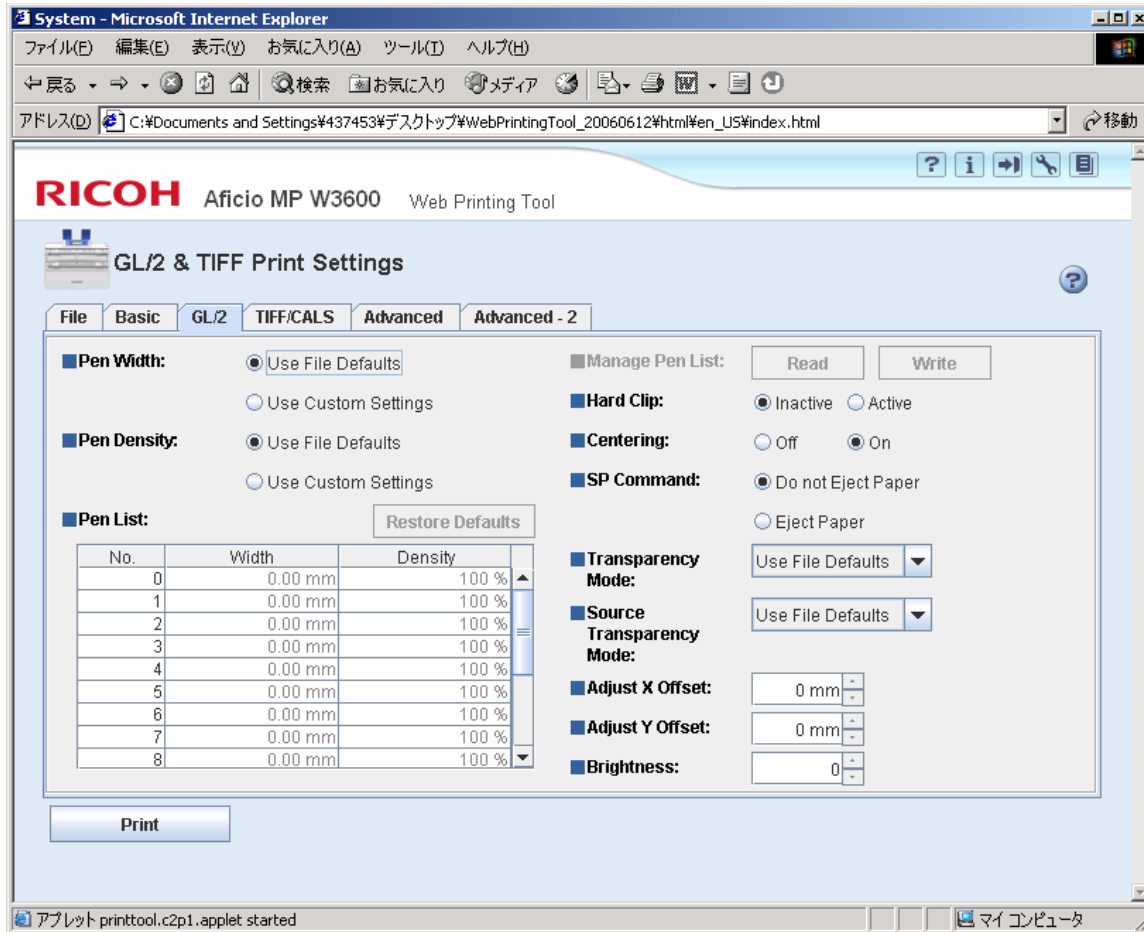


Copies (Job):	Specify the number of copies for this job in the range of 1 to 999.
Collate:	Prints out multiple sets of copies in individual and separate sets.
Toner Saving:	Prints with less toner. This mode would probably produce white stripes or faint images, and is appropriate for sample print.
Output Exit:	Specify the output tray for printed paper.
Input Tray:	Select which input tray to use for printing from drop-down menu. "Auto Paper Select" option automatically selects input tray based on the size and type of paper.
Paper Type:	Select the type of paper from drop-down menu.
Reduce/Enlarge:	Specify the scaling mode to reduce/enlarge the print size of documents.
Auto Reduce/Enlarge	Select the paper size when "Auto Reduce/Enlarge (mm/inch)" is selected by "Reduce/Enlarge" menu. Enlarges or reduces the document size depending on the paper size.
Vertical: and Horizontal:	Specify directional magnification when "Directional Magnification %" is selected in "Reduce/Enlarge" menu. The valid range of input is 10-400% in 1% increments.

Product Support Guide

G180

[GL/2 Tab] Specify print settings of HP-GL and HP-GL/2 data.



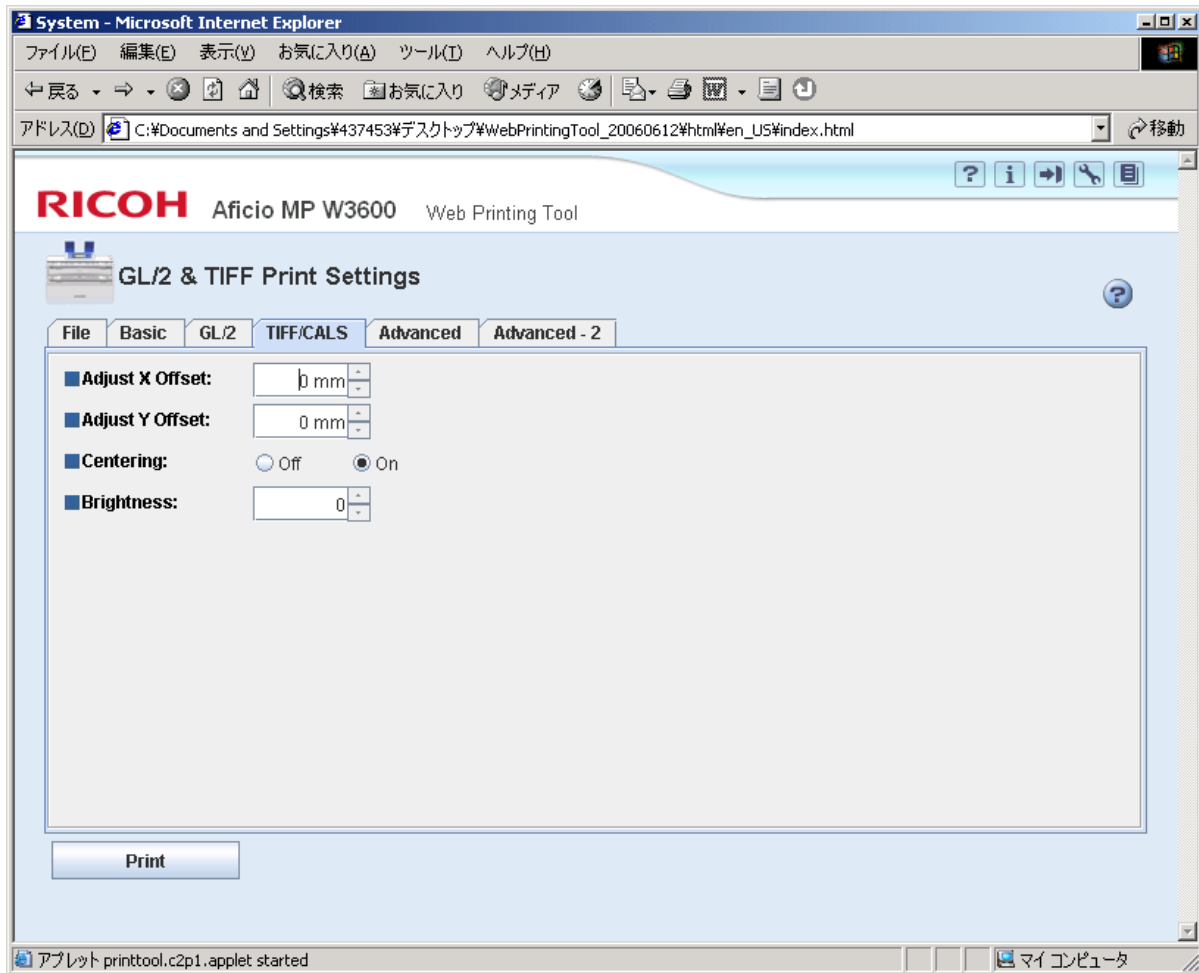
Pen Width:	Select whether to use file defaults settings, or to specify width for each pen.
Pen Density:	Select whether to use file defaults settings, or to specify density for each pen.
Pen List:	Specify width and/or density for each pen when the "Use File Defaults" option is selected. Pen width can be selected from the list of 0.00-12.00mm in 0.01mm increments, however actual width of printed image could be slightly different from the specified width because lines are printed in dots. Pen density can be specified in 10% increments within the range between 0 and 100%.
Manage Pen List:	Click the "Read" button to apply saved data from files, or click the "Write" button to save the "Pen List:" data to files.
Hard Clip:	Enables and disables output hard clip limits given by PS commands. If "Inactive" is selected, the actual drawing area will be the printed area.
Centering:	Print images at the center of the hard clip area.
SP Command	Specify whether to eject paper at receipt of "SP;" and "SP0;" command.
Transparency Mode	Specify the transparent processing mode by MC command and TR command.
Always Active	Always activates MC/TR commands in HP-GL2 data come into effect.
Use File Defaults	Follows MC/TR commands in HP-GL2 data.
Always Inactive	Ignores MC/TR commands in HP-GL2 data forcibly.
Source Transparency Mode:	Specify the transparent processing method by "Source Transparency Mode (ESC*v#N)". * Always Active: Always activates ESC*v#N commands in RTL data come into effect.

Product Support Guide

G180

	<p>*Use File Defaults: Follows ESC*v#N commands in RTL data.</p> <p>*Always Inactive: Ignores ESC*v#N commands in RTL data forcibly</p>
Adjust X Offset:	Specify X-axis offset for origin of the drawing area in 1mm increments within the range between -199 and 199mm.
Adjust Y Offset:	Specify Y-axis offset for origin of the drawing area in 1mm increments within the range between -199 and 199mm.
Brightness:	Adjust brightness for RGB-color and grayscale image data. Higher brightness value lightens the entire image while lower brightness value darkens the image.

[TIFF/CALS Tab] Specify print settings of TIFF and CALS data.

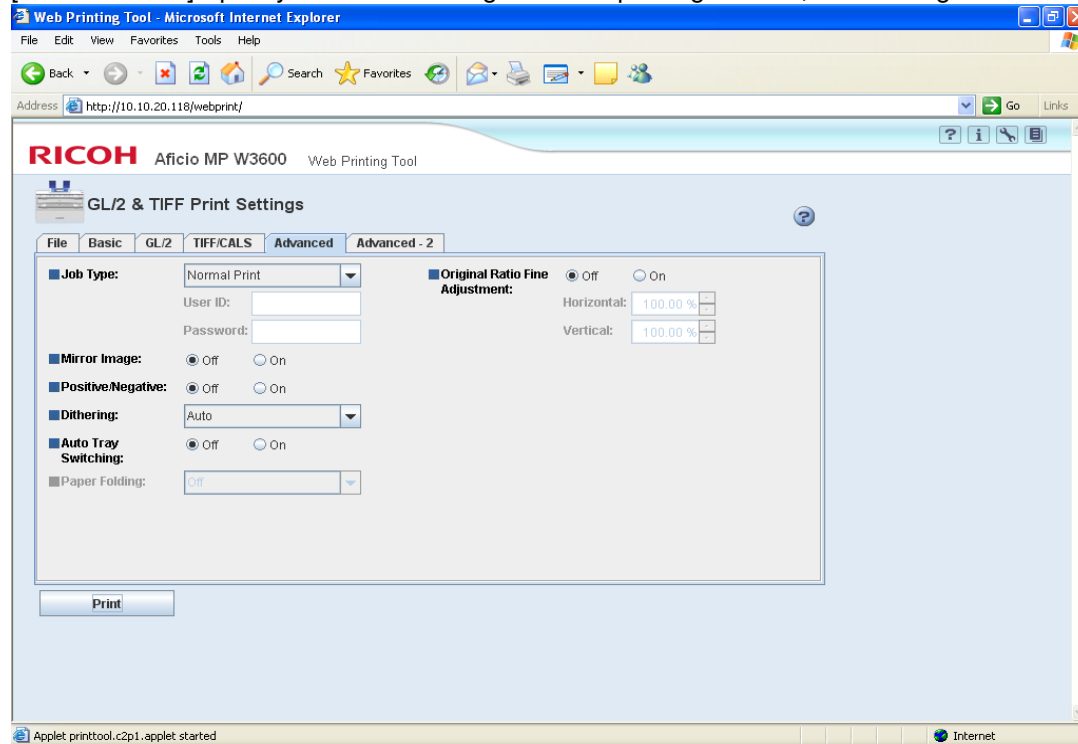


Adjust X Offset:	Specifies X-axis offset for origin of the drawing area in 1mm increments within the range between -199 and 199mm.
Adjust Y Offset:	Specifies Y-axis offset for origin of the drawing area in 1mm increments within the range between -199 and 199mm.
Centering:	Print drawing area at the center of the paper.
Brightness:	Adjust brightness for RGB-color and grayscale image data. Higher brightness value lightens the entire image while lower brightness value darkens the image.

Product Support Guide

G180

[Advanced Tab] Specify advanced settings such as printing method, mirror image and others.

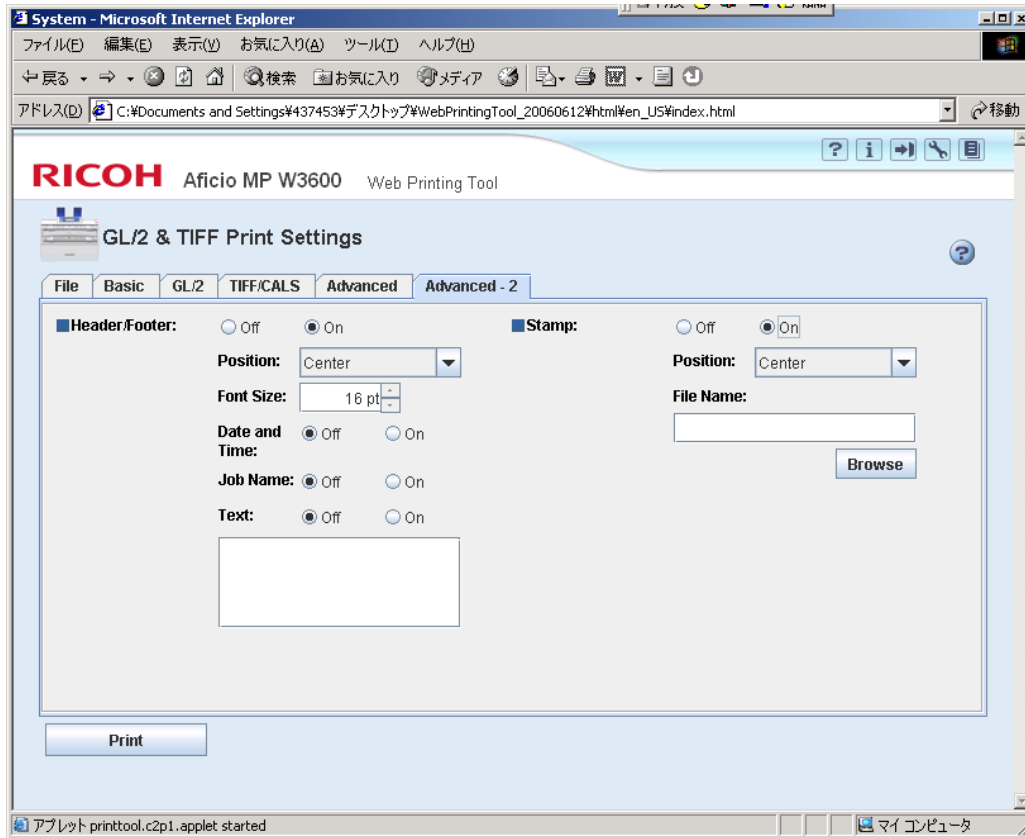


Job Type:	<p>Select a job type from the drop-down menu.</p> <p>*Normal Print: With this selected printing begins as soon as you send the job to the printer.</p> <p>*Sample Print: Allows the first copy of a multiple copy print job to be printed so user can check the appearance before printing the remaining copies. The remaining copies are saved on the printer and can be printed or cancelled from the printer's operation panel.</p> <p>*Locked Print: This function provides a secure method of printing for confidential documents and drawings. Locked print job is not printed immediately but stored on the hard disk until the user access the copier directly through the control panel and enter the associated user ID and the password of 4 to 8 alphanumeric</p> <p>*Send to Document Server: Electronically stores originals for on-demand reprinting. Allows users to merge, edit, and print stored files, scanned images and output documents as desired. To use the document box, specify user ID (required) and password (arbitrary) in 4 to 8 alphanumeric for each.</p>
Mirror Image:	Prints images with left and right reversed.
Positive/Negative:	Prints images with black and white inverted.
Dithering:	Select dither pattern appropriate for the print image from the drop-down menu.
Auto Tray Switching:	Enables copier to automatically switch from a depleted paper tray to another tray holding the same size, orientation, and type of paper in the midst of a job.
Paper Folding:	Select paper folding method from the drop-down menu when paper-folding unit is attached to copier.
Original Ratio Fine Adjustment:	Adjusts the size difference between original data and printed image for scaled drawings, which must be accurately printed. The range of ratio is 99.0-101.0% in

Product Support Guide G180

0.01% increments.

[Advanced-2 Tab] Specify Header/Footer and Stamp settings.



Header/Footer:	<p>Specifies whether to print header/footer.</p> <p>Position: Selects the position of the header/footer from the drop-down menu.</p> <p>Font Size: Specify the header/footer font size in points.</p> <p>Date and Time: Specify whether to print the date and time stamp of transmission of the job.</p> <p>Job Name: Specify whether to print job name.</p> <p>Text: Specify whether to print user definable text of up to 256 1-byte alphanumeric characters.</p>
Stamp:	<p>Specify whether to print stamp image of BMP format.</p> <p>Position: Select the position of the stamp image from the drop-down menu.</p> <p>File Name: Specify stamp image file. Enter the directory and name of the file, or click the "Browse" button to find it on your computer.</p>

Product Support Guide

G180

Utility Software

DeskTopBinder Lite Ver.5 / Professional Ver.5

DeskTopBinder Lite Ver.5/ Professional Ver.5 is a client software that enables users to easily distribute, manage, and retrieve documents from Ricoh's MFPs, LPs, scanners, faxes, digital cameras, and document management servers. Furthermore, users can combine documents created by different applications and print them out as a single document. SmartDeviceMonitor for Client, an independent software up until the previous version, will become one function of DeskTopBinder from this version. Thus, functions such as monitoring the status of devices, parallel printing, and print notification can all be performed with DeskTopBinder.

The Lite version is bundled with some of Ricoh's devices, while the Professional version is separately available.

Functions such as converting documents into PDF or converting scanned documents into searchable text files are available only with the Professional version.

<Combine documents from different applications and print as one>

PS driver

PS driver is installed in client PCs, and it is the software (driver) that sends print data with PostScript command/printing language to a printer device.

RPCS driver

RPCS driver is installed in client PCs, and it is the software (driver) that sends print data with RPCS command/printing language to a printer device.

RPCS stands for Ricoh Printing Command Stream, and is Ricoh's unique printer language for Windows environment.

Main Features:

Various Printing Features -ID Folder, Front Cover print, Back Cover print, Chaptering Function and User Defined Pages, PDF Direct Print, Bonjour, Windows Active Directory Support, DDNS, Versatile network connectivity.

Product Support Guide

G180

Counters

Total Counter Access

- Menu-Counter-OK-Print

Counter Information

- Total counter Display is determined by SP 5045

Counter Specifications

Maximum 7 digits

Paper

Recommended Paper sizes and types

Metric version

Tray Type	Recommended paper type	Recommended paper size	Remarks
Paper Roll	Plain paper 51 – 110g/m2 (13.9 – 29.3 lb)	Max. Roll paper diameter: 175 mm Max. Core diameter: 76.4+-0.25 mm Width: 210,297,420, 594, 841,914, 707, 625, 620mm(with spacers on 625mm) Roll length: Less than 150 m	
	Translucent paper 76-110g/m2		
	Vellum 61-110g/m2		
Bypass Tray	Plain paper 51– 110g/m2 (13.9 – 29.3 lb)	A0 (SEF), A1/A2/A3 (SEF/LEF), A4 (SEF) Paper width: 257-914mm Paper length: 210- 2000mm	1 sheet can be set from bypass.
	Translucent paper 76-110g/m		
	Vellum 61-110g/m2		

Product Support Guide G180

Inch version

Tray Type	Recommended paper type	Recommended paper size	Remarks
Paper Roll	Plain paper 51 – 110g/m2 (13.9 – 29.3 lb)	Max. Roll paper diameter: 6.9" Max. Core diameter: 3"+-0.0098" Width: 8-1/2",11",17",22",30",34" or 9", 12",18",24",30",36" 9",12",18",24",30",36 Roll length: 49.2ft	
	Translucent paper 76-110g/m2		
	Velum 61-110g/m2		
Bypass Tray	Plain paper 51 – 110g/m2 (13.9 – 29.3 lb)	Engineering E(34"x44"):SEF D(22"x34"):SEF/LEF C(17"x22") :SEF/LEF B(11"x17") :SEF/LEF A(8 1/2"x 11") :SEF Architecture E(36"x48"):SEF D(24"x36"):SEF/LEF C(18"x24") :SEF/LEF B(12"x18") :SEF/LEF A(9"x 12") :SEF Paper width : 11"x36" Paper length: 8 1/2 x 78"	1 sheet can be set from bypass.
	Translucent paper 76-110g/m2		
	Vellum 61-110g/m2		

Special Paper

Not Applicable.

Product Support Guide

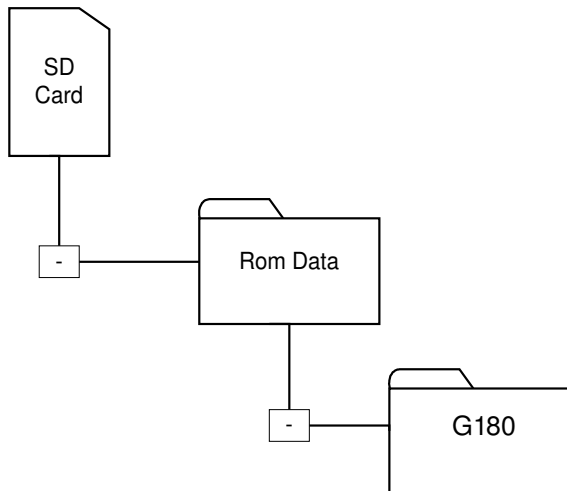
G180

Firmware Information

Firmware

Firmware SD Card	Firmware Type
Engine	Engine
Network Support	NIB
System/Copy	Sys/Copy
Printer	Printer
Prt_Font	Printer Font
GL2/Tiff	GL2/Tiff
Web Support	Web Support
Web Uapl	Web Uapl

SD Card Arrangement



** .fwu files only are used on the SD card. Do not load RFU files on the SD card.*

Documentation

Description	MIU Code	RFG E-Source Number
Service Manual	003234	Rfg 028982
Part Catalog	003166	Rfg 028358
Point-to-Point	003235	Rfg 028984

Product Support Guide G180

B286/B289/G180 Service Documentation Update Package	003164	Rfg 028364
---	--------	------------

Contact Information

Name	Contact
Technical Services Call Center (Hotline)	Ricoh: (800) 537-4264 Savin: (800) 291-6044 Lanier: (800) 333-3147
Application Help Desk (Software Issues)	Ricoh Phone Card: 2 Call - 000781MIU, 5 Call - 000900MIU Savin Phone Card: 2 Call - 12992, 5 Call - 12993 Gestetner Phone Card: 2 Call - 12994, 5 Call - 12995
National Reclamation Center	(800) 557-4264 http://www.nrc-usa.com
Technology Solutions Center Web Site	http://www.tscweb.net
Configurator	http://www.connectivity-cafe.com
Ricoh Web Site	http://www.ricoh-usa.com/
Savin iLINC Web Site	http://w3.savin.com
Headquarter Web Sites	Ricoh Corporation: http://www.ricoh-usa.com Savin Corporation: http://www.savin.com Lanier Corporation: http://www.lanier.com
Material Safety Data Sheets	(800) 336-MSDS (6737)
Eastern Training Center	(973) 808-7646 http://www.ricohuniversity.com
Western Training Center	(714) 566-3692 http://www.ricohuniversity.com
Lanier Education Center	(678)-824-3000

Product Support Guide

G180

Training Information

Ricoh is pleased to announce the release of the G180 Wide Format Printer.

The model names for G180 are as follows:

Product Code	Lanier	Ricoh	Savin
G180	LW124W	SPW2470	2404WDP

The G180 Digital Wide Format Product is an easy to use, low-volume digital wide format printer that offers superb images.

The G180 is the first B/W printer offered in a wide format configuration.

In order to ensure service professionals are proficient on all service aspects of the new G180, a self-pace update training program will be available to purchase for all B125 or B188 certified service professionals, who wish to become certified on the G180. A 25 question on-line final exam will be administered after the completion of the self-pace training program. A minimum passing grade of 75% will be required to achieve certification.

If you have questions about this or any other training program, please visit the Ricoh University home page at <http://www.ricohuniversity.com>, or contact the Service Education & Development Division at 973-882-2200.

Product Support Guide G180

Revisions:

1.0 Original