

**Color Printers  
(M109-EU/AA)  
Parts Catalog**

Model	Product Code	PC Style
Color Printers	M109	3D
Paper Feed Unit TK2000	M406	3D
Controller Option	M109	Traditional

# Unit All



U001  
EXTERIOR



U002  
OPERATION



U003  
LED UNIT



U004  
PAPER FEED



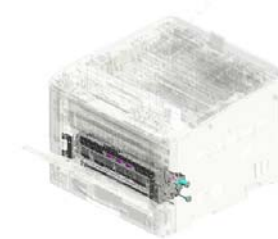
U005  
PCU



U006  
ITB UNIT



U007  
WASTE TONER



U008  
PAPER TRANSPORT



U009  
FUSING



U010  
PAPER EXIT

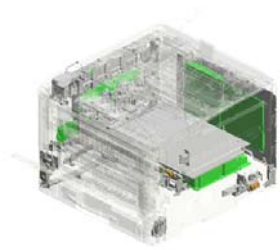


U011  
DUPLEX SECTION

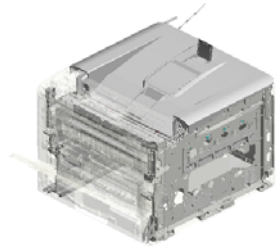


U012  
MAIN DRIVE

# Unit All



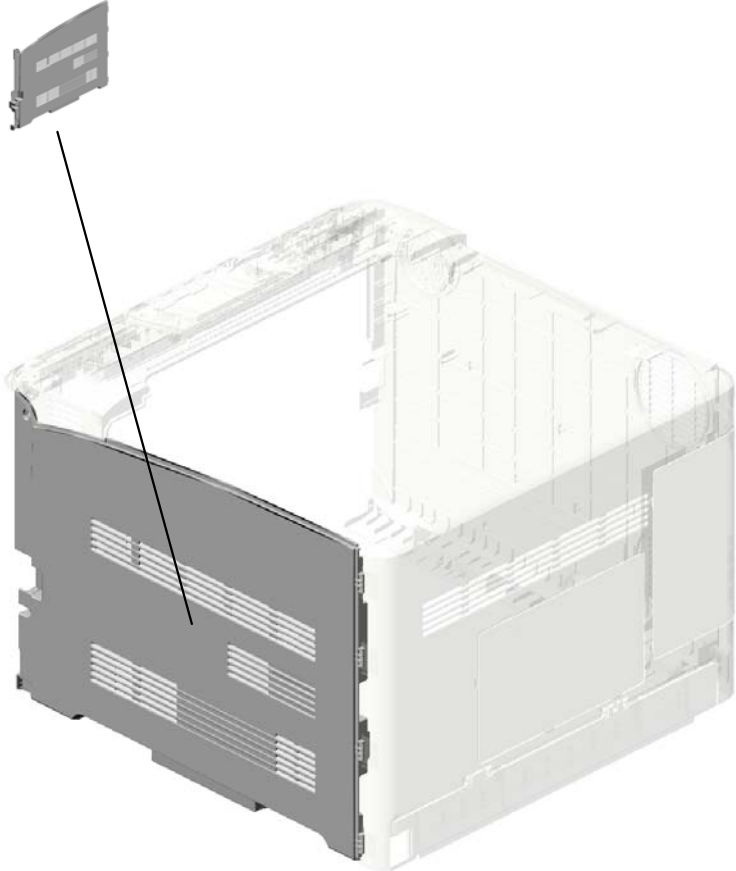
U013  
ELECTRICAL



U014  
MAIN FRAME

# U001.EXTERIOR

U001\_S001  
M1091211  
COVER:RIGHT:ASS'Y



U001	U002	U003	U004	U005	U006	U007	U008	U009	U010	U011	U012	U013	U014
------	------	------	------	------	------	------	------	------	------	------	------	------	------

# U001 EXTERIOR

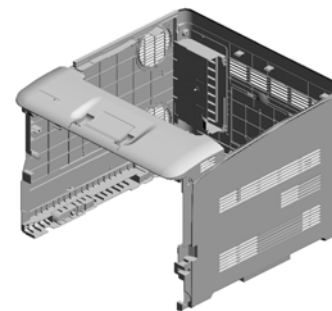
19.M1091278  
HOLDER:CONNECTING:PAPER EXIT  
SUB-UNIT:A

5.11033657  
CONNECTOR:5548  
2-1319

16.M1091272  
INNER COVER:EXI  
T

1.04513008N  
TAPPING SCREW -  
M3X8

14.M1091269  
GROUND PLATE:C  
OVER:PAPER EXIT  
SUB-UNIT



4.04583010N  
(x15)  
HEXAGON HEAD T  
APPING SCREW:3  
X10

18.M1091274  
GUIDE:HARNES  
S:PAPER EXIT SUB-  
UNIT

17.M1091273  
COVER:LOWER:EX  
IT

15.M1091270  
COVER:PAPER EXI  
T SUB-UNIT

3.04543008Q  
(x10)  
TAPPING SCREW:  
3X8

2.04524010N  
(x6)  
BINDING SELF-TA  
PPING SCREW:4X  
10

10.M1091260  
COVER:LEFT

20.M1091280  
COVER:REAR:M10  
9

21.M1091281  
COVER:REAR:CAS  
SETTE:M109

12.M1091263  
(x2)  
SEAL:COVER:GRIP

7.M1091224  
LOUVER:MM60:OU  
TER

9.M1091226  
FILTER:TVOC

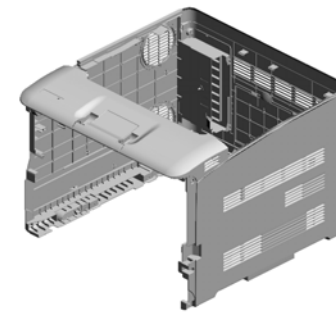
8.M1091225  
LOUVER:MM60:INN  
ER

13.M1091264  
SEAL:COVER:LEFT

11.M1091261  
(x2)  
LOUVER:MM80

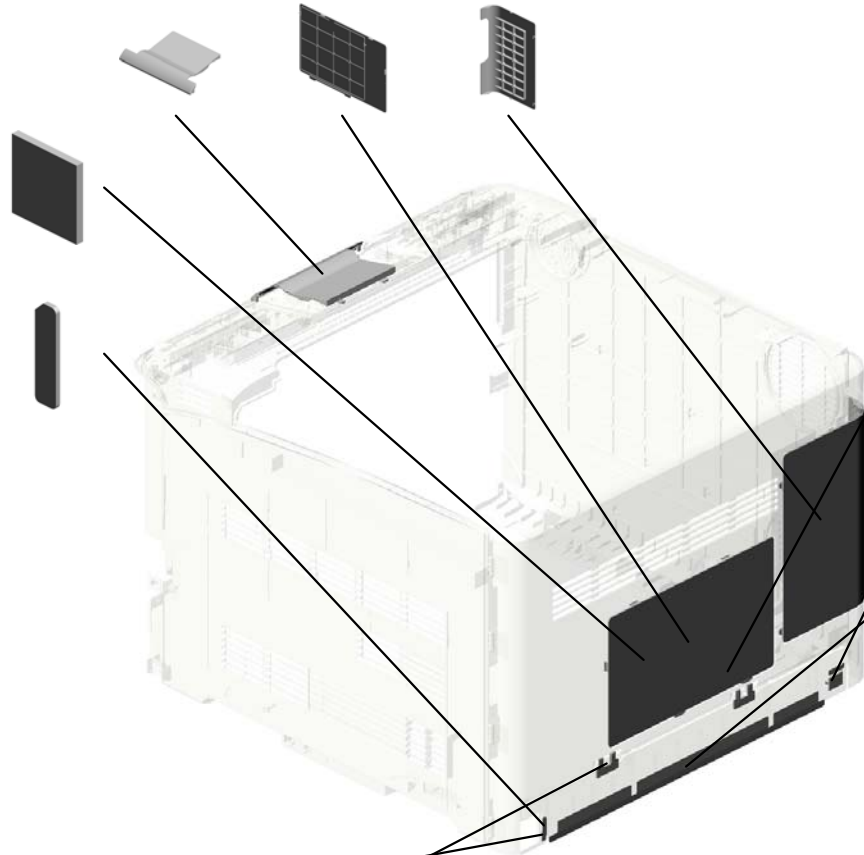
# U001 EXTERIOR

31.M1091397 COVER: PANEL:LOWER:M109  
 22.M1091282 COVER:MEMORY  
 23.M1091283 COVER:INTERFACE:M109



29.M1091298 SEAL:COVER:MEMORY

28.M1091297 (x2) SPACER:COVER:REAR:CASSETTE



30.M1091299 (x2) SEAL:COVER:MEMORY:MIDDLE

24.M1091287 COVER:REAR:CONNECTOR

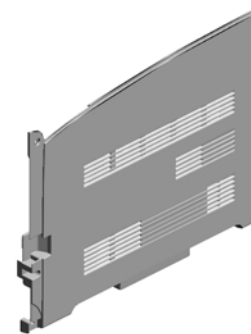
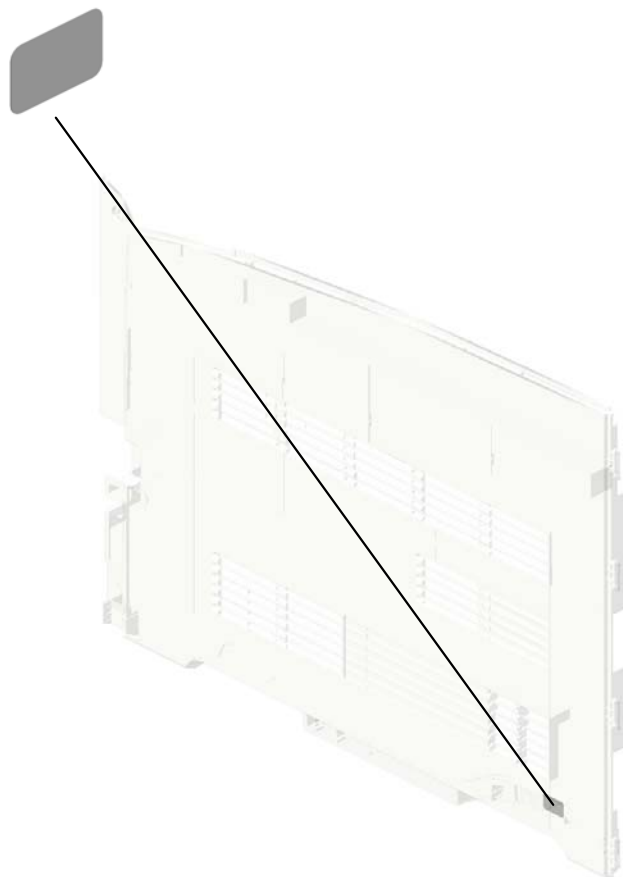
25.M1091294 SHEET:COVER:REAR:CASSETTE

27.M1091296 (x2) MAGNETIC:COVER:REAR

26.M1091295 (x2) SEAL:COVER:REAR:CASSETTE

U001\_S001  
COVER:RIGHT:ASS'Y

12.M1091263  
SEAL:COVER:GRIP



6.M1091211  
COVER:RIGHT:AS  
SY

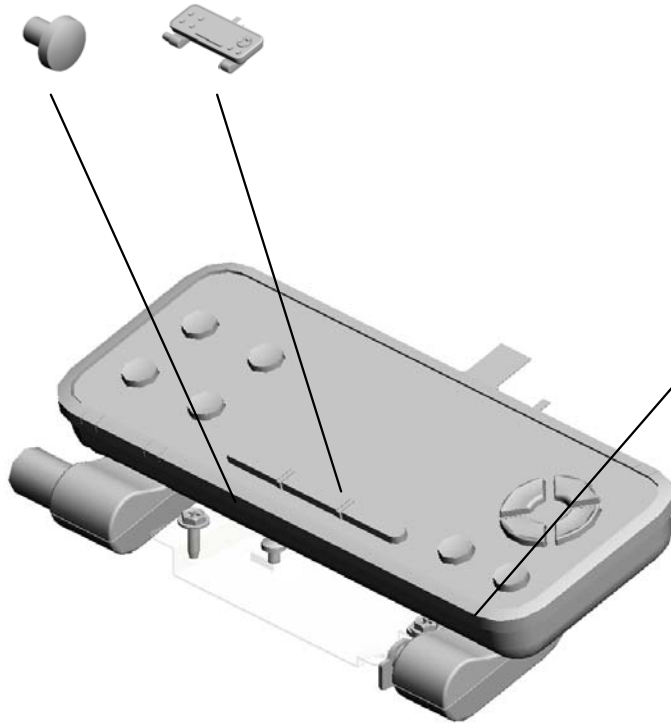
U001	U002	U003	U004	U005	U006	U007	U008	U009	U010	U011	U012	U013	U014
------	------	------	------	------	------	------	------	------	------	------	------	------	------



# U002 OPERATION

1.03530040N  
(x2)  
SCREW - M3X4

3.M1091401  
OPERATION PANE  
L:EXP:ASS'Y



2.04583010N  
(x3)  
HEXAGON HEAD T  
APPING SCREW:3  
X10

# U003 LED UNIT

12.M1091911 (x4) LED HEAD:1200DPI :292.6MM  
 11.M1091910 (x4) HOLDER:LED HEAD  
 5.M1091902 (x3) TORSION SPRING: RIGHT:LED HEAD  
 17.M1091920 (x4) HOLDER:SENSOR: TONER END SENSOR  
 1.04583010N (x4) HEXAGON HEAD TAPPING SCREW:3 X10



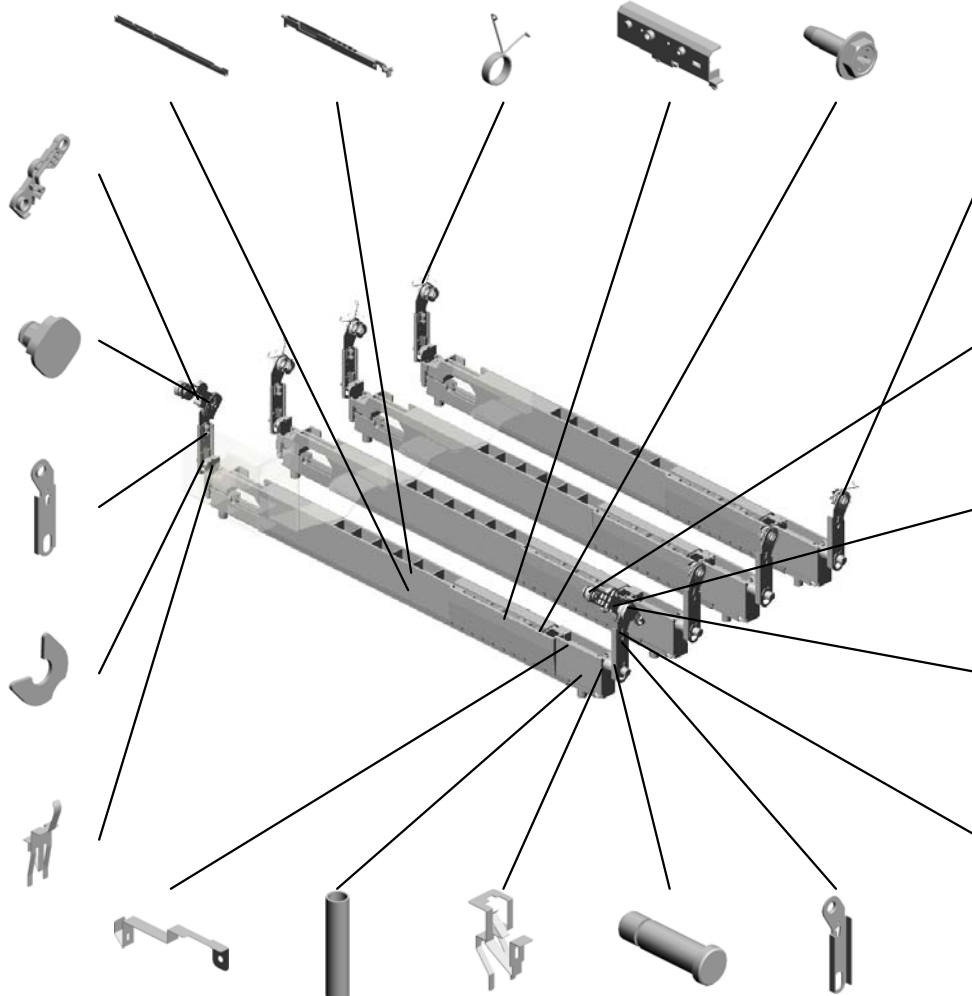
7.M1091904 (x2) LINK:RIGHT:LED HEAD

9.M1091908 (x2) PIN:FIX:LINK:LED HEAD:1

19.M1091930 (x4) HINGE:RIGHT:LED HEAD

2.08050089 (x18) RETAINING RING - M4

14.M1091913 (x4) GROUND PLATE:RIGHT:LED HEAD



4.M1091901 (x3) TORSION SPRING: LEFT:LED HEAD

10.M1091909 PIN:FIX:LINK:LED HEAD:2

6.M1091903 LINK:LEFT:LED HEAD

20.M1091931 TORSION SPRING: LEFT:LED HEAD:K

8.M1091907 (x8) BOSS:HINGE:RIGHT:LED HEAD

18.M1091921 (x4) GROUND PLATE:SENSOR: TONER END SENSOR

15.M1091914 (x8) COMPRESSION SPRING:LED HEAD

13.M1091912 (x4) GROUND PLATE:LEFT:LED HEAD

16.M1091916 (x4) PIN:EARTH:LED HEAD

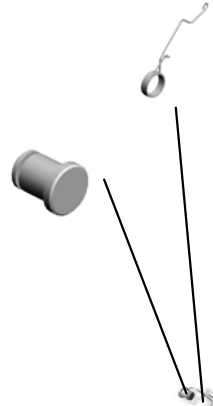
3.M1091900 (x4) HINGE:LEFT:LED HEAD

# U003 LED UNIT

22.M1091933  
TORSION SPRING:  
RIGHT:LED HEAD:  
K

24.M1091941  
(x3)  
STOPPER:TORSIO  
N SPRING:LED HE  
AD

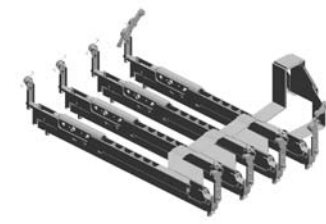
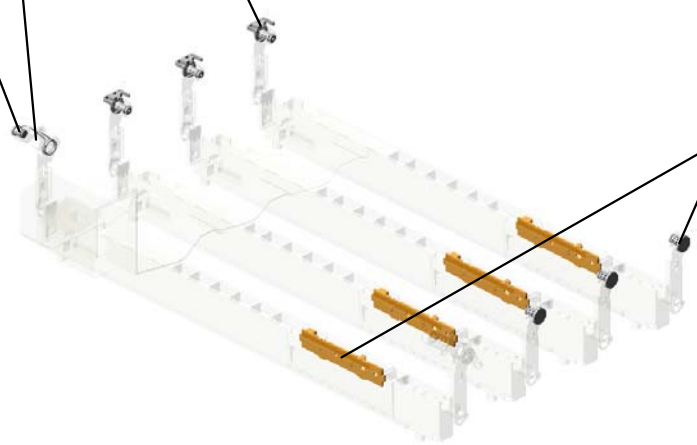
21.M1091932  
PIN:EARTH:LED H  
EAD:K



23.M1091940  
(x6)  
PIN:FIX:HINGE:LED  
HEAD

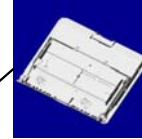
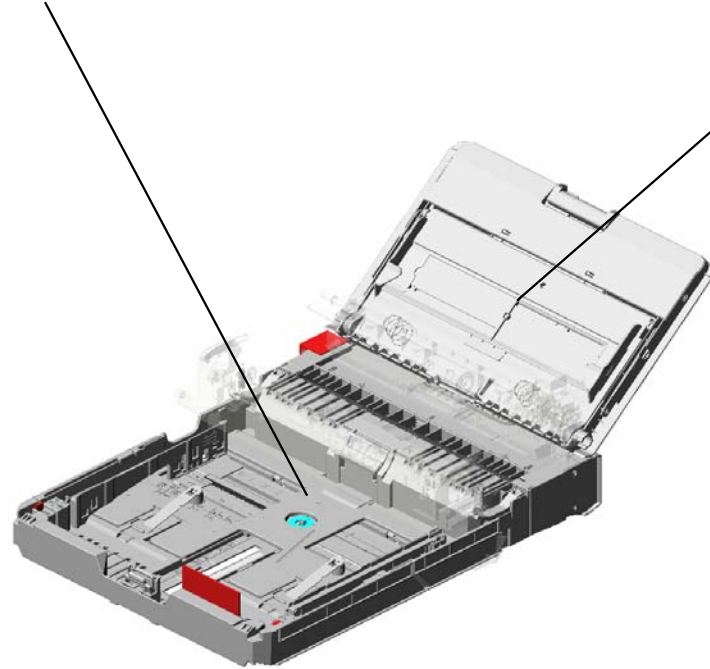


25.M1095331  
(x4)  
PCB:SENSOR:TON  
ER END SENSOR



# U004.PAPER FEED

U004\_S001  
M1092552  
PAPER FEED:PAPER TRAY:2  
50TYPE:EXP:ASS'Y

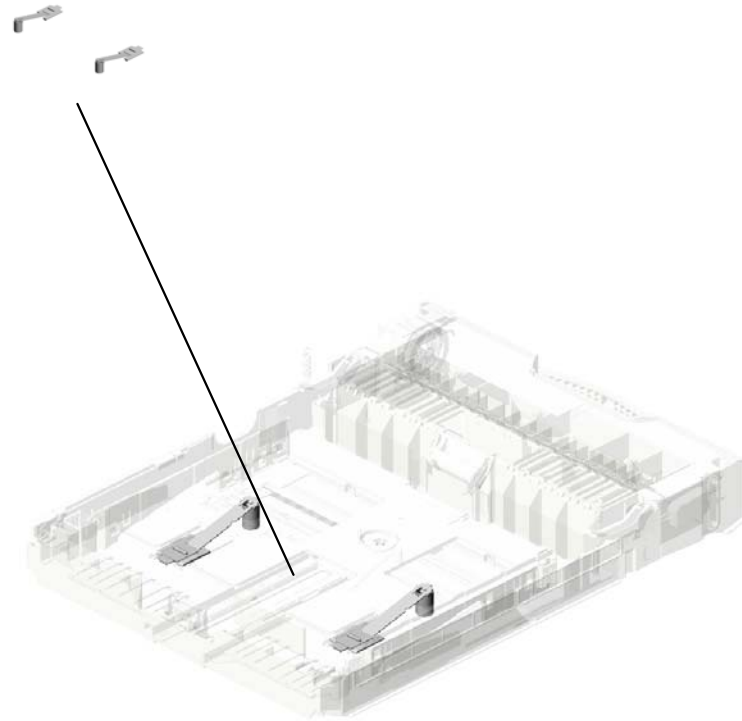


U004\_S002  
M1092801  
MANUAL FEED TABLE:ASS'Y

U001	U002	U003	U004	U005	U006	U007	U008	U009	U010	U011	U012	U013	U014
------	------	------	------	------	------	------	------	------	------	------	------	------	------

# U004\_S001.PAPER FEED:PAPER TRAY:250TYPE:EXP:ASS'Y

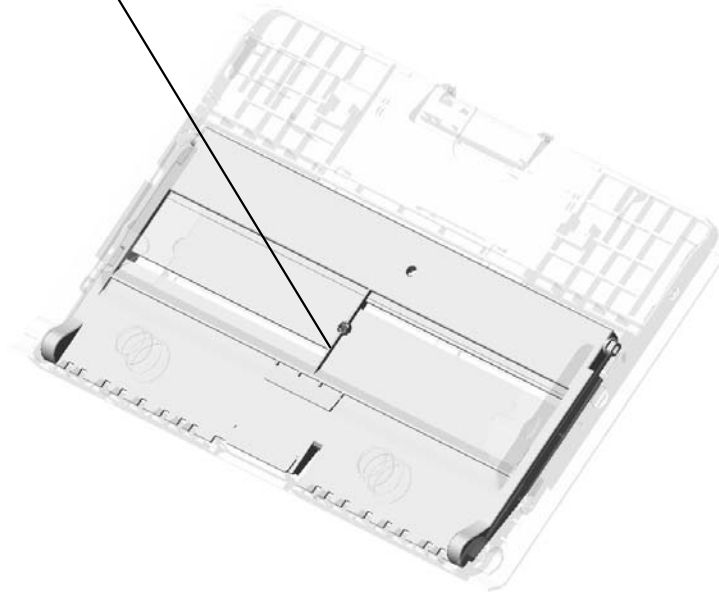
U004\_S001\_S001  
M1092586  
SERVICE PARTS:PRESSURE  
PLATE:AUXILIARY:BASE:AS  
SY



U001	U002	U003	<b>U004</b>	U005	U006	U007	U008	U009	U010	U011	U012	U013	U014
------	------	------	-------------	------	------	------	------	------	------	------	------	------	------

# U004\_S002.MANUAL FEED TABLE:ASS'Y

U004\_S002\_S001  
M1092850  
BASE:MANUAL FEED TABLE:  
ADHESION



U001	U002	U003	U004	U005	U006	U007	U008	U009	U010	U011	U012	U013	U014
------	------	------	------	------	------	------	------	------	------	------	------	------	------

# U004 PAPER FEED

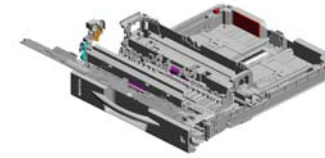
43.M1092628  
PUSH SWITCH:CA  
SSETTE

25.M1092559  
PLAIN SHAFT BEA  
RING:ASSY

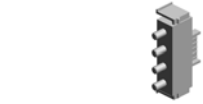
23.M1092556  
STAY:PAPER FEE  
D

3.07200040E  
(x2)  
RETAINING RING -  
M4

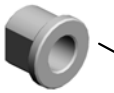
6.AA082101  
(x4)  
BUSHING - 6X10X6



2.04583010N  
(x14)  
HEXAGON HEAD T  
APPING SCREW:3  
X10



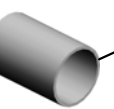
17.GA082010  
BUSHING:DIA6:DIA  
10:9



26.M1092562  
SHAFT:PAPER FEE  
D



13.G0292657  
COMPRESSION SP  
RING



28.M1092566  
(x2)  
SPRING PLATE:PA  
PER TRAY:ASSY



24.M1092557  
STAY:COVER



14.G0523103  
PAPER FEED RO  
LLER



27.M1092564  
FEELER:PAPER E  
ND SENSOR



9.AW020198  
(x3)  
PHOTOINTERRUP  
TOR:LG2A14NL1



1.04513008N  
(x2)  
TAPPING SCREW -  
M3X8



4.08050089  
(x6)  
RETAINING RING -  
M4



7.AF031060  
BY-PASS FEED RO  
LLER



18.GB011149  
GEAR:TRANSPOR  
T:IDLER:BASE:1



12.D0392799  
RETAINING RINGS  
-C:DIA4

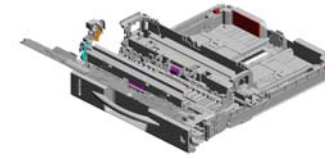


19.GB017145  
GEAR:FEELER:HO  
ME POSITION SEN  
SOR



# U004 PAPER FEED

83.M1092858 GROUND WIRE:MANUAL FEED  
 62.M1092810 SHAFT:DRIVE:MANUAL FEED  
 63.M1092812 SHAFT:CAM:BASE:MANUAL FEED  
 86.M1092865 COMPRESSION SPRING:SEPARATION:MANUAL FEED  
 60.M1092804 COVER:PAPER FEED ROLLER:MANUAL FEED



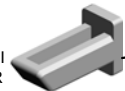
81.M1092855 CAM:BASE:MANUAL FEED:RIGHT



52.M1092641 SUPPORTER:INTERMEDIATE TRANSFER:RIGHT



47.M1092635 (x2) SPACER:PAPER SIZE SENSOR BOARD:OUTER



49.M1092637 SENSOR COVER:PAPER SIZE SENSOR BOARD



48.M1092636 (x2) SPACER:PAPER SIZE SENSOR BOARD:INNER



65.M1092822 SUPPORTING PLATE:MANUAL FEED:LOWER

64.M1092820 GUIDE PLATE:MANUAL FEED:LOWER

53.M1092642 SUPPORTER:INTERMEDIATE TRANSFER:LEFT

66.M1092825 FEELER:PAPER END SENSOR:MANUAL FEED

84.M1092859 SPRING PLATE:BRAKE:CAM

79.M1092852 COVER:HOME POSITION SENSOR



80.M1092853 FEELER:HOME POSITION SENSOR



87.M1092866 ARM:SHAFT:CAM



82.M1092857 SHAFT:BRAKE:CAM



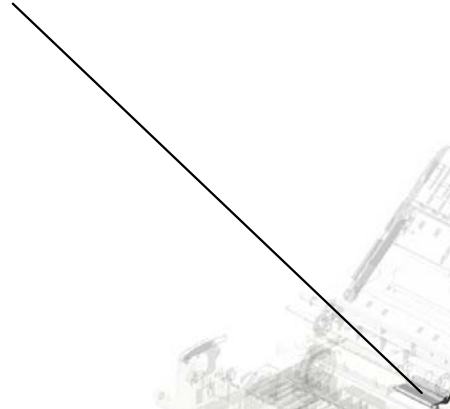
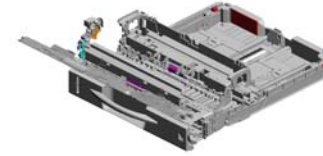
61.M1092807 CAM:BASE:MANUAL FEED:LEFT



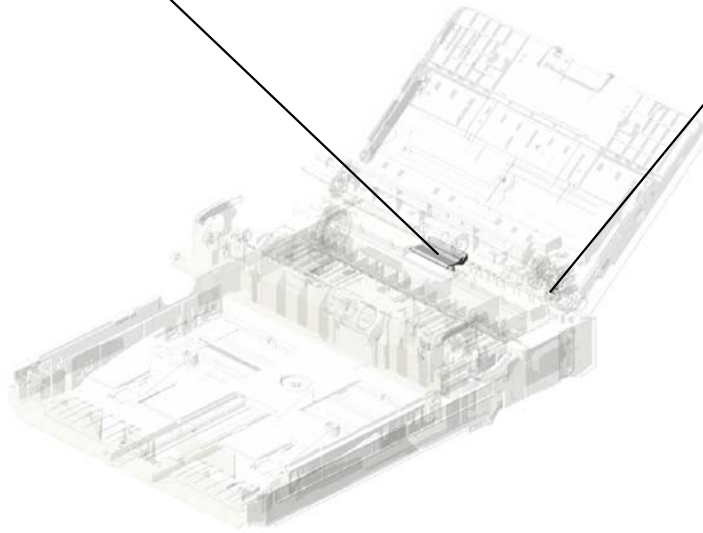
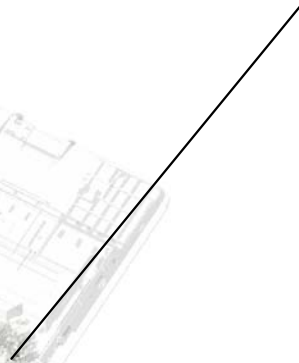


U004  
PAPER FEED

89.M1092868  
HOLDER: FRICTION  
PAD: MANUAL FEE  
D: ADHESION



88.M1092867  
TORSION SPRING:  
FEELER: HOME PO  
SITION SENSOR



U001	U002	U003	<b>U004</b>	U005	U006	U007	U008	U009	U010	U011	U012	U013	U014
------	------	------	-------------	------	------	------	------	------	------	------	------	------	------

U004\_S001

PAPER FEED:PAPER TRAY:250TYPE:EXP:ASS'Y

41.M1092626  
LEVER:PAPER SIZE SENSOR BOARD

36.M1092604  
DIAL:PAPER SIZE SENSOR

29.M1092574  
SHEET:HOLDER:PAPER TRAY

2.04583010N (x12)  
HEXAGON HEAD TAPPING SCREW:3X10

38.M1092612  
DECAL:PAPER SELECTION DIRECTION



22.M1092552  
PAPER FEED:PAPER TRAY:250TYPE:EXP:ASS'Y

33.M1092587  
SIDE FENCE:RIGHT:ASS'Y

20.GF013001  
BOTTOM PLATE PAPER TRAY

5.A2672869  
GEAR - 16Z

30.M1092577  
TRAY BOTTOM PLATE:250TYPE

40.M1092616  
END FENCE:ASS'Y

31.M1092579  
SIDE FENCE:LEFT:ASS'Y

50.M1092639  
PAPER TRAY:250TYPE:FRONT:GUIDE

44.M1092629  
GUIDE:PAPER TRAY:FRONT

15.G0523114 (x2)  
SHEET CASSETTE

42.M1092627 (x2)  
TENSION SPRING:TRAY BOTTOM PLATE

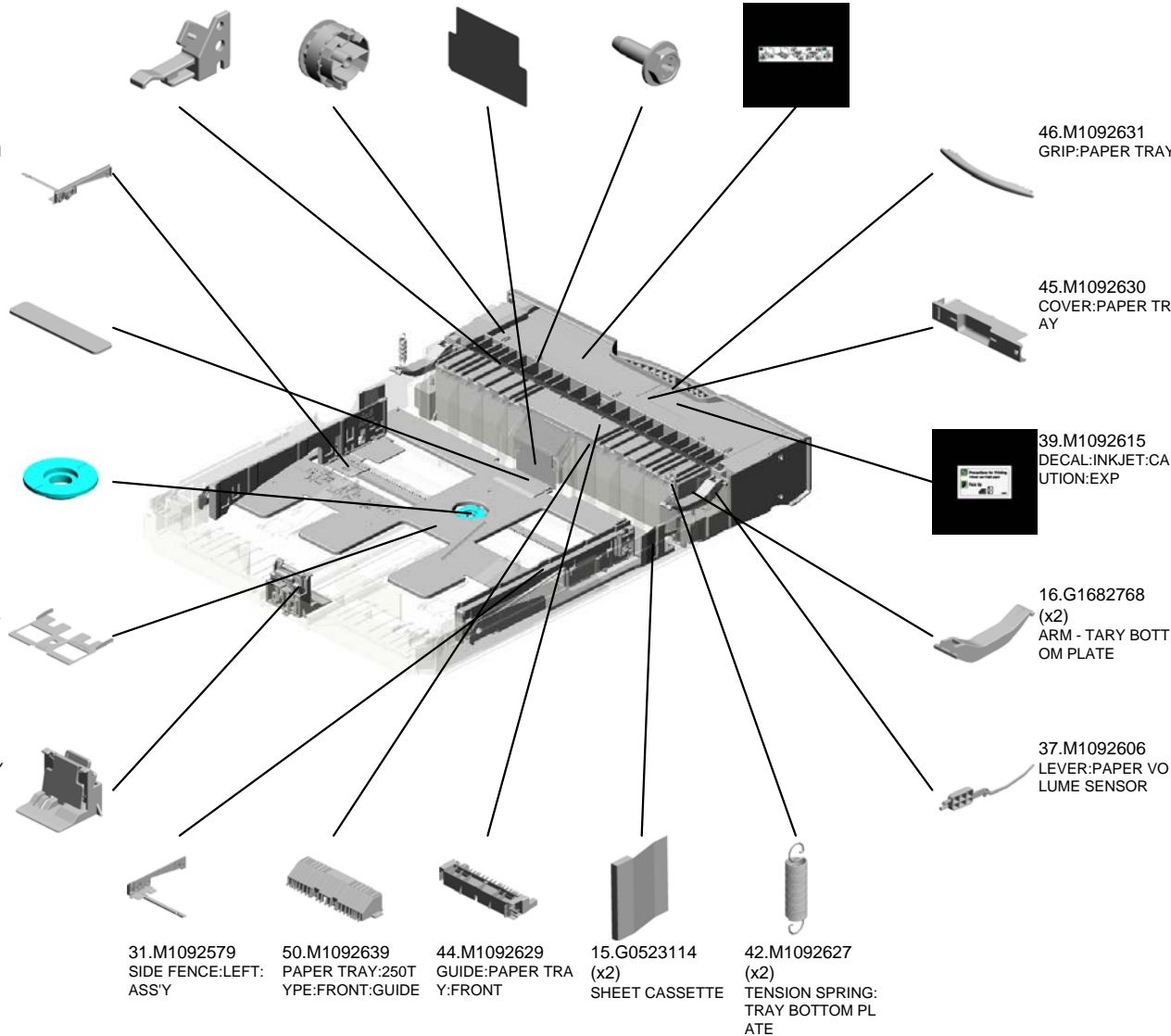
46.M1092631  
GRIP:PAPER TRAY

45.M1092630  
COVER:PAPER TRAY

39.M1092615  
DECAL:INKJET:CAUTION:EXP

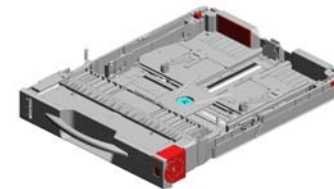
16.G1682768 (x2)  
ARM - TARY BOTTOM PLATE

37.M1092606  
LEVER:PAPER VOLUME SENSOR



U004\_S001  
 PAPER FEED:PAPER TRAY:250TYPE:EXP:ASS'Y

55.M1092647 58.M1092654  
 DECAL:DIAL:PAPE FRICION PAD:AD  
 R SIZE SENSOR:E HESION  
 XP



22.M1092552  
 PAPER FEED:PAP  
 ER TRAY:250TYPE:  
 EXP:ASSY

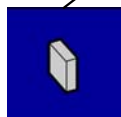
54.M1092643  
 DECAL:EXTENSIO  
 N TRAY



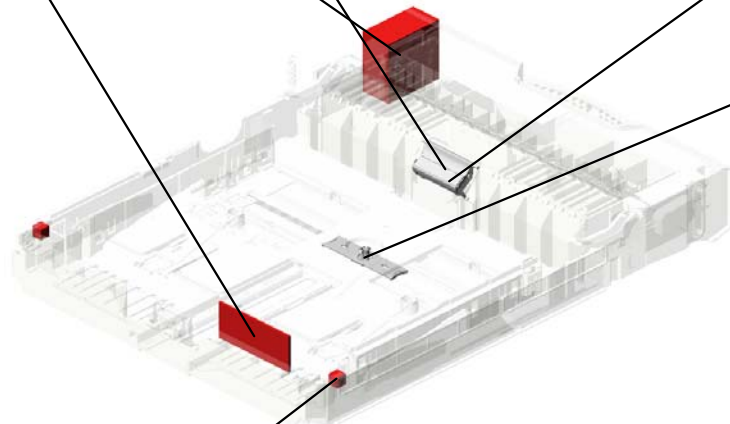
57.M1092652  
 COMPRESSION SP  
 RING:SEPARATIO  
 N



51.M1092640  
 HOLDER:PINION

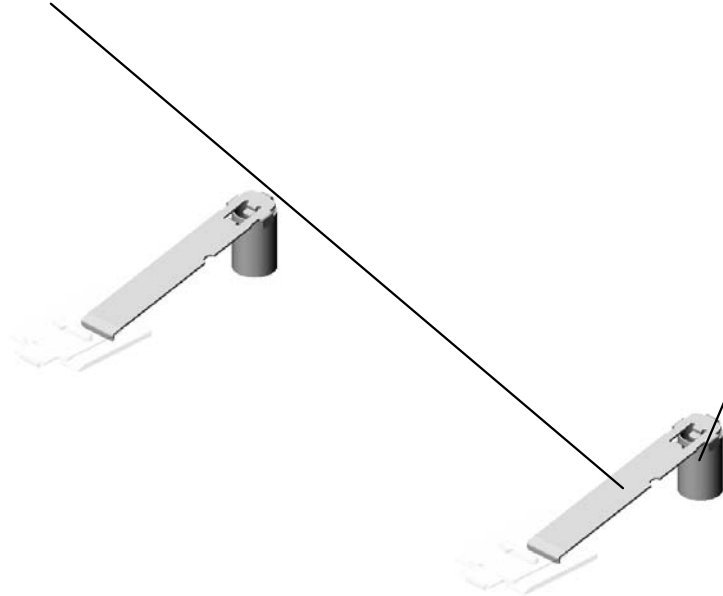


56.M1092648  
 (x2)  
 PROTECTION:PAP  
 ER TRAY



U004\_S001\_S001  
SERVICE PARTS:PRESSURE PLATE:AUXILIARY:BASE:ASS'Y

35.M1092598  
(x2)  
HOLDER:COIL SPR  
ING:BASE



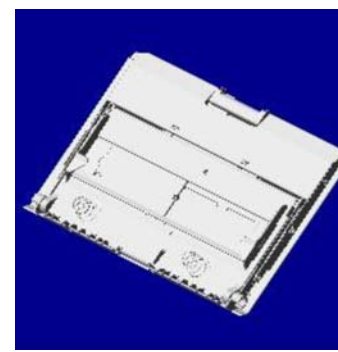
34.M1092597  
(x2)  
COMPRESSION SP  
RING:TRAY BOTTO  
M PLATE:AUXILIAR  
Y



32.M1092586  
SERVICE PARTS:P  
RESSURE PLATE:  
AUXILIARY:BASE:A  
SS'Y

U001	U002	U003	U004	U005	U006	U007	U008	U009	U010	U011	U012	U013	U014
------	------	------	------	------	------	------	------	------	------	------	------	------	------

U004\_S002  
MANUAL FEED TABLE:ASS'Y



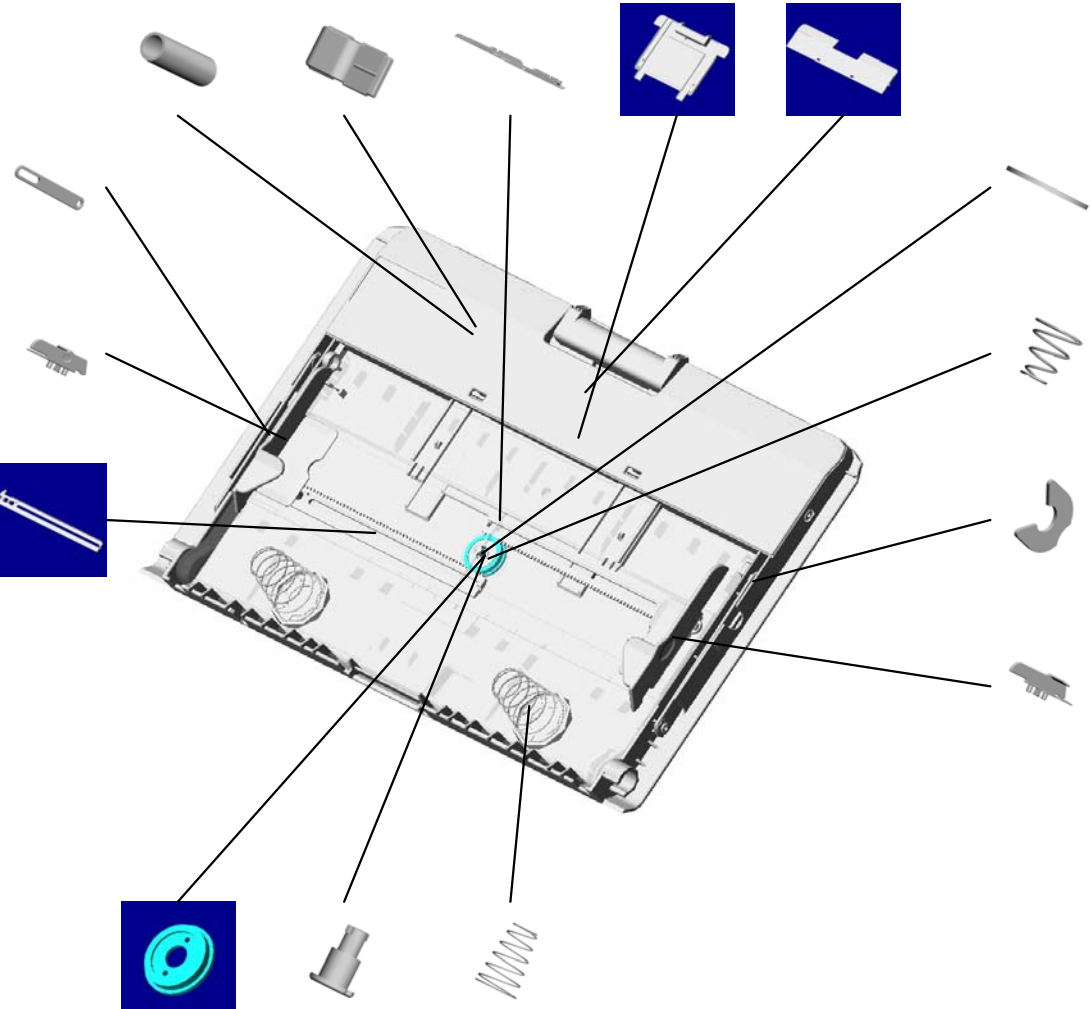
59.M1092801  
MANUAL FEED TABLE:ASS'Y

- 85.M1092864 (x2) COMPRESSION SPRING:EXTENSION TRAY
- 75.M1092846 (x2) HOLDER:COMPRESSION SPRING:EXTENSION TRAY
- 67.M1092834 COVER:MANUAL FEED TABLE
- 69.M1092836 EXTENSION TRAY:MANUAL FEED
- 68.M1092835 COVER:EXTENSION TRAY:MANUAL FEED

77.M1092848 (x2) LINK:MANUAL FEED TABLE

71.M1092840 SIDE FENCE:MANUAL FEED:RIGHT

72.M1092842 (x2) RACK:SIDE FENCE:MANUAL FEED



10.D0392752 DISC:SIDE FENCE

11.D0392754 SPRING:SIDE FENCE

4.08050089 (x4) RETAINING RING - M4

70.M1092839 SIDE FENCE:MANUAL FEED:LEFT

73.M1092843 GEAR:SIDE FENCE

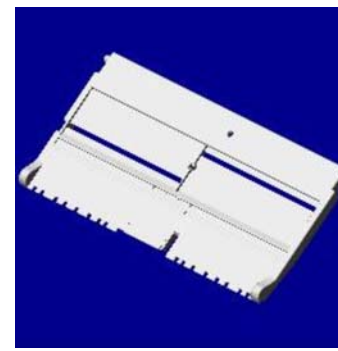
74.M1092844 PIN:SIDE FENCE

76.M1092847 (x2) COMPRESSION SPRING:BASE:MANUAL FEED

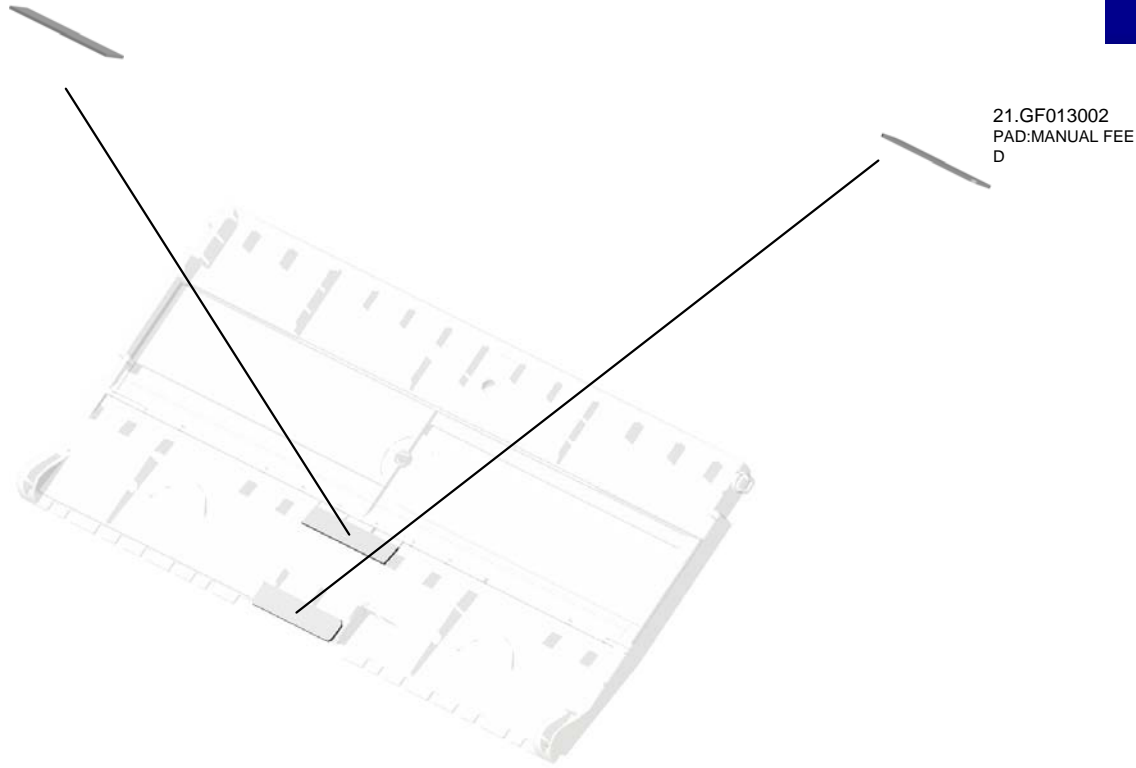
U004\_S002\_S001

BASE:MANUAL FEED TABLE:ADHESION

8.AF033008  
FRICTION PAD:10X  
50



78.M1092850  
BASE:MANUAL FE  
ED TABLE:ADHESI  
ON



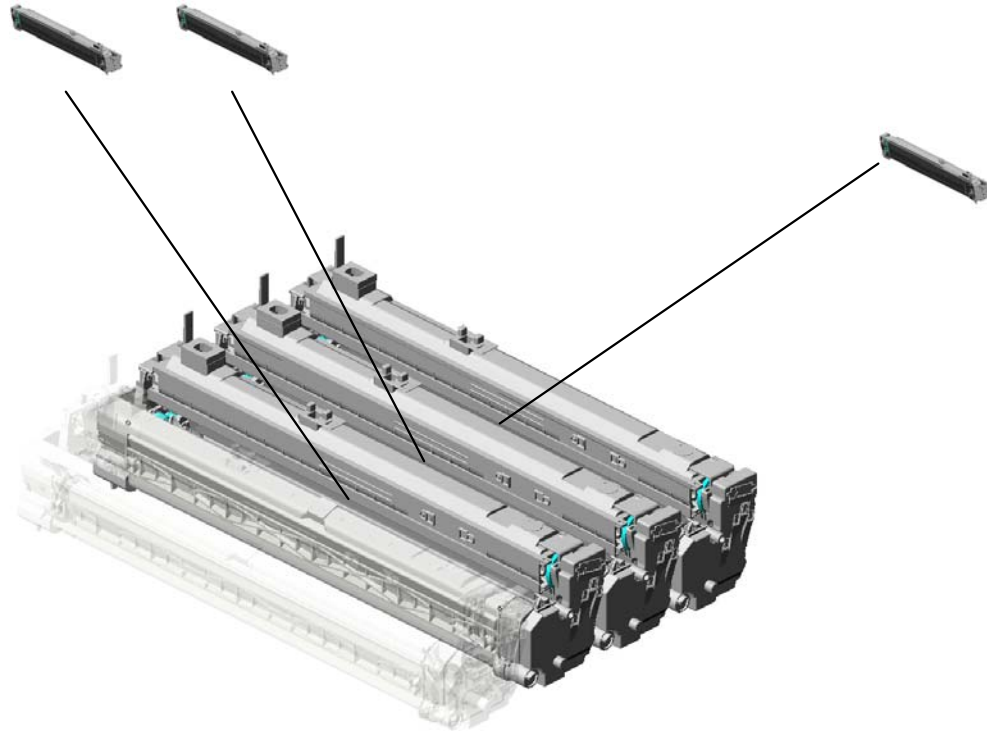
21.GF013002  
PAD:MANUAL FEE  
D

U001	U002	U003	U004	U005	U006	U007	U008	U009	U010	U011	U012	U013	U014
------	------	------	------	------	------	------	------	------	------	------	------	------	------

U005  
PCU

1.M8920122  
PCU:C\_EXP:ASS'Y

2.M8920123  
PCU:M\_EXP:ASS'Y

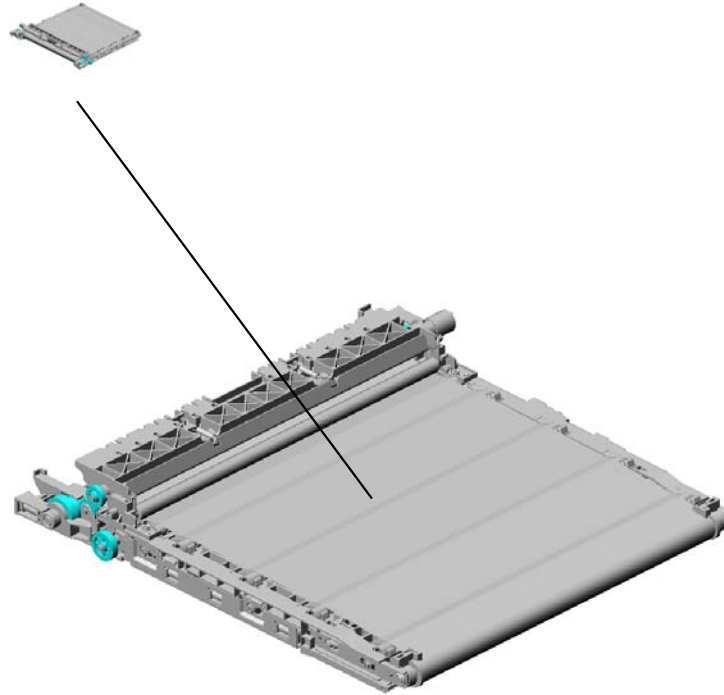


3.M8920124  
PCU:Y\_EXP:ASS'Y

U001	U002	U003	U004	U005	U006	U007	U008	U009	U010	U011	U012	U013	U014
------	------	------	------	------	------	------	------	------	------	------	------	------	------

# U006.ITB UNIT

U006\_S001  
M8910600  
INTERMEDIATE TRANSFER  
SECTION:MAINTENANCE:AS  
SY



U001	U002	U003	U004	U005	<b>U006</b>	U007	U008	U009	U010	U011	U012	U013	U014
------	------	------	------	------	-------------	------	------	------	------	------	------	------	------



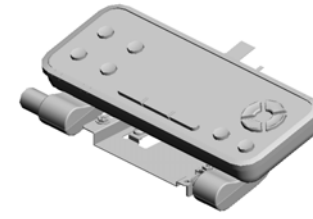
# U006\_S001.INTERMEDIATE TRANSFER SECTION:MAINTENANCE:ASS'Y

U006\_S001\_S001  
M1096010  
CLEANING UNIT:INTERMEDI  
ATE TRANSFER:ASS'Y



U001	U002	U003	U004	U005	<b>U006</b>	U007	U008	U009	U010	U011	U012	U013	U014
------	------	------	------	------	-------------	------	------	------	------	------	------	------	------

U006  
ITB UNIT



U001	U002	U003	U004	U005	U006	U007	U008	U009	U010	U011	U012	U013	U014
------	------	------	------	------	------	------	------	------	------	------	------	------	------

U006\_S001  
INTERMEDIATE TRANSFER SECTION:MAINTENANCE:ASS'Y

1.04583010N  
(x2)  
HEXAGON HEAD TAPPING SCREW:3  
X10



**6.M8910600**  
**INTERMEDIATE TR**  
**ANSFER SECTION:**  
**MAINTENANCE:AS**  
**S'Y**



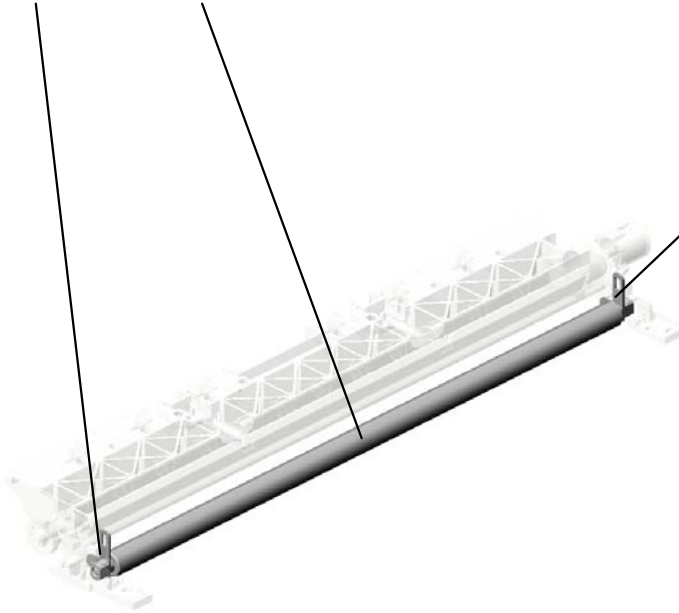
U001	U002	U003	U004	U005	<b>U006</b>	U007	U008	U009	U010	U011	U012	U013	U014
------	------	------	------	------	-------------	------	------	------	------	------	------	------	------

U006\_S001\_S001

CLEANING UNIT:INTERMEDIATE TRANSFER:ASS'Y

4.M1096164  
PLAIN SHAFT BEA  
RING:ROLLER:FLA  
T BELT-TRANSFER  
:FACE FRONT:R

3.M1096162  
ROLLER:FLAT BEL  
T-TRANSFER:FAC  
E FRONT



5.M1096165  
PLAIN SHAFT BEA  
RING:ROLLER:FLA  
T BELT-TRANSFER  
:FACE FRONT:L

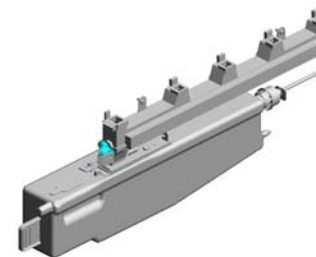


2.M1096010  
CLEANING UNIT:IN  
TERMEDIATE TRA  
NSFER:ASSY

U001	U002	U003	U004	U005	<b>U006</b>	U007	U008	U009	U010	U011	U012	U013	U014
------	------	------	------	------	-------------	------	------	------	------	------	------	------	------

# U007 WASTE TONER

- 14.M1096424 PLAIN SHAFT BEARING:DUCT:TONER RECYCLING SECTION
- 4.GA151061 SEAL:DUCT:TONER RECYCLING SECTION:INTERMEDIATE TRANSFER
- 7.GD039004 AGITATOR:DUCT:TONER RECYCLING SECTION
- 16.M1096434 SHUTTER:DUCT:TONER RECYCLING SECTION
- 2.GA060098 TENSION SPRING: SHUTTER:DUCT:TONER RECYCLING SECTION



- 15.M1096428 GEAR:TRANSPORT SCREW:DUCT:TONER RECYCLING SECTION



- 11.M1096417 GEAR:DRIVE SUB-UNIT:DUCT:TONER RECYCLING SECTION



- 10.M1096413 HOLDER:DRIVE SUB-UNIT:DUCT:TONER RECYCLING SECTION



- 6.GA151063 SEAL:SHUTTER:DUCT:TONER RECYCLING SECTION



- 1.04513008N (x3) TAPPING SCREW - M3X8



- 18.M1096437 STOPPER:SHUTTER:DUCT:TONER RECYCLING SECTION

- 12.M1096422 DUCT:TONER RECYCLING SECTION: LOWER

- 8.GD043013 TRANSPORT SCREW:DUCT:TONER RECYCLING SECTION

- 13.M1096423 DUCT:TONER RECYCLING SECTION: UPPER

- 9.M1095845 SPACER:USED TO NER

- 5.GA151062 (x4) SEAL:DUCT:TONER RECYCLING SECTION:PCU



- 17.M1096436 JOINT:TRANSPORT SCREW:DUCT:TONER RECYCLING SECTION



- 3.GA151060 (x2) SEAL:TRANSPORT SCREW:DUCT:TONER RECYCLING SECTION



- 20.M1096446 PLAIN SHAFT BEARING:DRIVE SUB-UNIT:COLLECTION BOTTLE

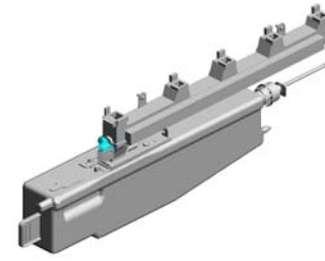
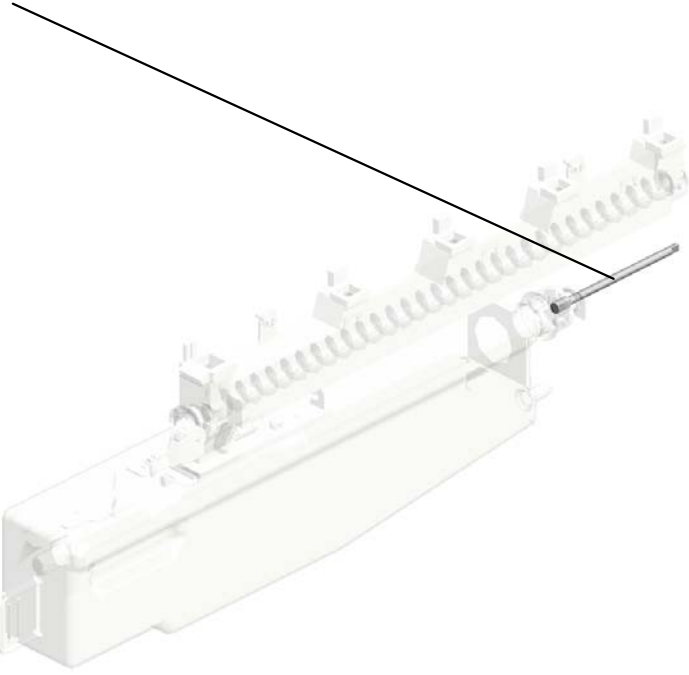


- 19.M1096444 JOINT:DRIVE SUB-UNIT:COLLECTION BOTTLE:USED TO NER



U007  
WASTE TONER

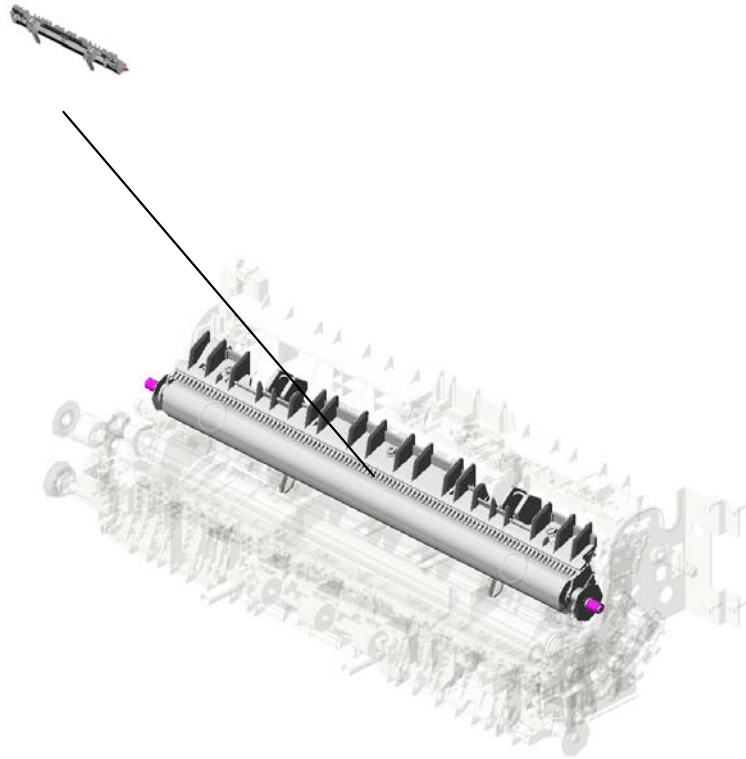
21.M1096447  
SHAFT:DRIVE SUB  
-UNIT:COLLECTIO  
N BOTTLE:USED T  
ONER:2



U001	U002	U003	U004	U005	U006	U007	U008	U009	U010	U011	U012	U013	U014
------	------	------	------	------	------	------	------	------	------	------	------	------	------

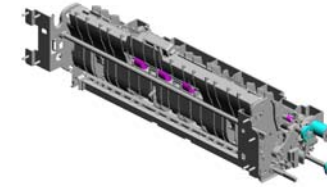
# U008.PAPER TRANSPORT

U008\_S001  
M8910620  
TRANSFER/SEPARATION UN  
IT:SECOND:MAINTENANCE:  
ASS'Y



U001	U002	U003	U004	U005	U006	U007	<b>U008</b>	U009	U010	U011	U012	U013	U014
------	------	------	------	------	------	------	-------------	------	------	------	------	------	------

# U008 PAPER TRANSPORT



18.GA066035  
TORSION SPRING:  
RIGHT:GUIDE PLATE:  
TRANSFER/SEPARATION

9.AA080254  
(x4)  
BUSHING - M4

3.07200030E  
(x8)  
RETAINING RING - M3

7.09573012N  
SCREW - M3X12

12.AW010143  
PHOTO REFLECTIVE  
SENSOR:PSR11  
TL1R-C

20.GA080042  
(x2)  
PLAIN SHAFT BEARING:  
REGISTRATION ROLLER

5.08050088  
RETAINING RING - M6

16.GA060089  
(x2)  
TENSION SPRING:  
REGISTRATION ROLLER

1.04543006Q  
(x3)  
TAPPING SCREW - M3X6

14.D0094485  
(x2)  
BUSHING - GATE

13.AW020198  
PHOTO INTERRUPTOR:  
TOR:LG2A14NL1

8.11050758  
CLAMP:LWSM-030  
6A

19.GA066036  
TORSION SPRING:  
LEFT:GUIDE PLATE:  
TRANSFER/SEPARATION

4.07200040E  
(x4)  
RETAINING RING - M4

10.AA080346  
(x2)  
BUSHING:FLANGE  
TYPE:DIA6

2.04583010N  
(x32)  
HEXAGON HEAD TAPPING  
SCREW:3 X10

15.GA001086  
(x2)  
DECAL:INSERT SUB-UNIT:  
TRANSFER/SEPARATION UNIT

6.08050089  
(x4)  
RETAINING RING - M4

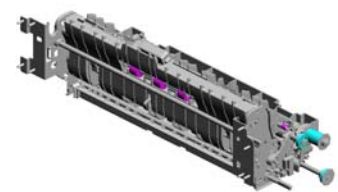
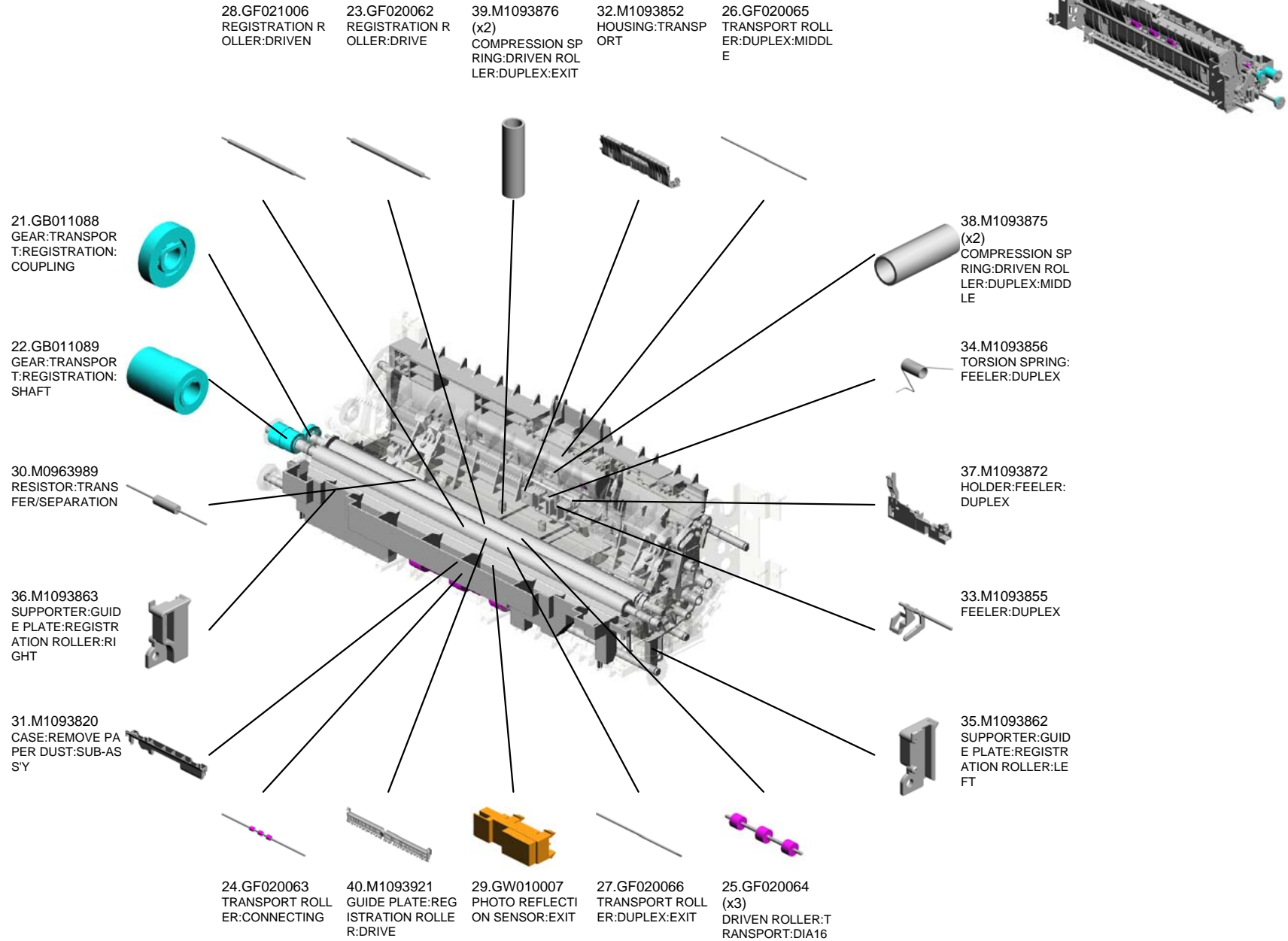
11.AA082101  
(x6)  
BUSHING - 6X10X6

17.GA063093  
(x2)  
COMPRESSION SPRING:  
PRESSURE:TRANSFER  
ROLLER:SECOND



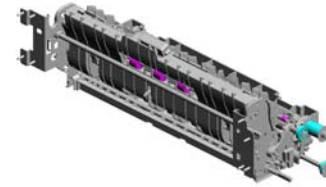


# U008 PAPER TRANSPORT



U001	U002	U003	U004	U005	U006	U007	U008	U009	U010	U011	U012	U013	U014
------	------	------	------	------	------	------	------	------	------	------	------	------	------

# U008 PAPER TRANSPORT



42.M1093926  
(x2)  
LINK:REGISTRATION ROLLER:DRIVE

49.M1093935  
GROUND WIRE:REGISTRATION ROLLER:GUIDE PLATE

44.M1093930  
SHEET:REGISTRATION:LONG

45.M1093931  
GROUND PLATE:REGISTRATION ROLLER:HOUSING:TRANSPORT

48.M1093934  
GROUND PLATE:GUIDE PLATE:REGISTRATION ROLLER:DRIVE

51.M1093953  
PLAIN SHAFT BEARING:POSITIONING:REGISTRATION ROLLER:RIGHT

43.M1093927  
PRESSURE PLATE:REGISTRATION ROLLER:DRIVE:RIGHT

58.M1093984  
GEAR:TRANSPORT:CONNECTING:SHAFT

60.M1093986  
GUIDE PLATE:AUXILIARY:TRANSPORT ROLLER:CONNECTING:RIGHT

57.M1093983  
(x2)  
ROLLER:GUIDE:DIAMETER A5

54.M1093967  
(x2)  
COMPRESSION SPRING:DRIVEN ROLLER:CONNECTING

53.M1093961  
GUIDE PLATE:REGISTRATION ROLLER:DRIVEN

56.M1093981  
GUIDE PLATE:TRANSPORT ROLLER:CONNECTING

47.M1093933  
(x2)  
ROLLER:GUIDE:DIAMETER A10

59.M1093985  
GUIDE PLATE:AUXILIARY:TRANSPORT ROLLER:CONNECTING:LEFT

50.M1093937  
COVER:HARNESSES:DUPLEX

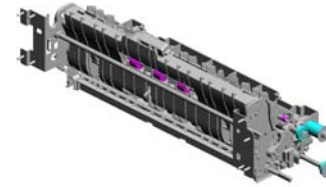
41.M1093922  
SHEET:REGISTRATION

52.M1093954  
PLAIN SHAFT BEARING:POSITIONING:REGISTRATION ROLLER:LEFT

46.M1093932  
PRESSURE PLATE:REGISTRATION ROLLER:DRIVE:LEFT

55.M1093969  
GROUND WIRE:REGISTRATION SENSOR

# U008 PAPER TRANSPORT



62.M1096320 (x2)  
COVER:COIL SPRING:PRESSURE:TRANSFER ROLLER:SECOND

72.M1096361  
ELECTRODE PLATE:DISCHARGE:3

63.M1096322  
GUIDE:FRONT:TRANSFER ROLLER:SECOND

66.M1096343  
COVER:PAPER FEED SENSOR:FUSING:ENTRANCE

74.M1096363  
ELECTRODE:DISCHARGE:4

79.M1096370  
SPACER:GUIDE PLATE:TRANSFER/SEPARATION:RIGHT



65.M1096329  
ELECTRODE PLATE:DISCHARGE:2



76.M1096367  
ELECTRODE:EARLH:HOUSING:TRANSPORT:2



78.M1096369  
GUIDE PLATE:TRANSFER/SEPARATION:CONTACT POINT:RIGHT LOWER



80.M1096374  
HOUSING:TORSION SPRING:RIGHT



61.M1096259  
ELECTRODE PLATE:ROLLER:SECOND:2



64.M1096324  
SPACER:GUIDE PLATE:TRANSFER/SEPARATION:LEFT



77.M1096368  
GUIDE PLATE:TRANSFER/SEPARATION:CONTACT POINT:LEFT LOWER



70.M1096353  
ELECTRODE PLATE:ROLLER:SECOND:3



68.M1096351  
TERMINAL:ELECTRODE PLATE:ROLLER:SECOND



75.M1096366  
ELECTRODE:EARLH:PAPER FEED SENSOR:FUSING:ENTRANCE



73.M1096362  
ELECTRODE PLATE:DISCHARGE:5



69.M1096352  
TERMINAL:ELECTRODE PLATE:DISCHARGE



67.M1096350  
TERMINAL:BIAS:TRANSFER/SEPARATION SECTION



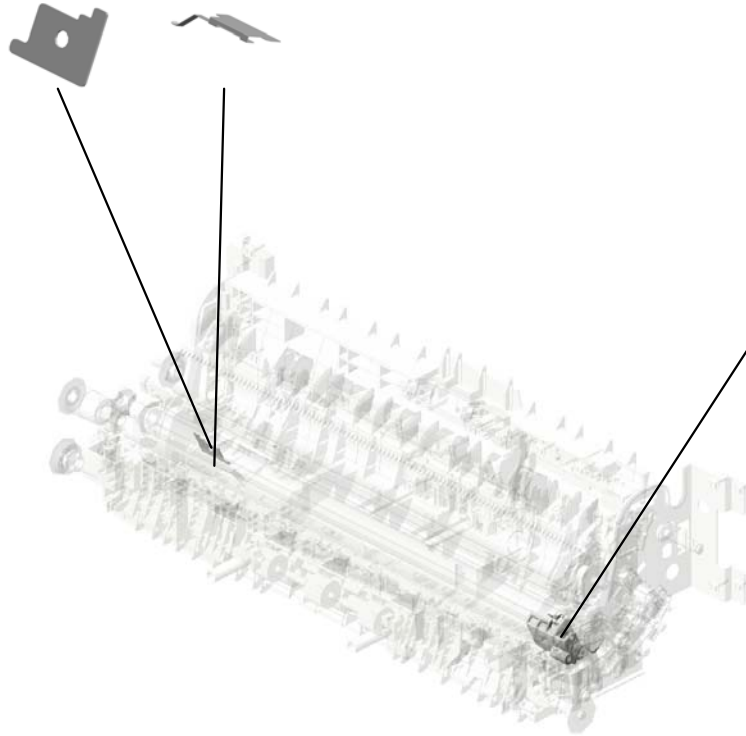
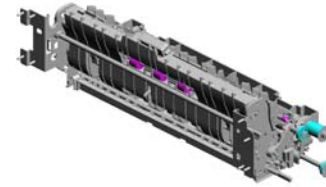
71.M1096354 (x2)  
ELECTRODE:ROLLER:SECOND:4



# U008 PAPER TRANSPORT

83.M1096380 (x2)  
PLATE:TORSION SPRING/SEPARATION

81.M1096375  
ELECTRODE PLATE: EARTH/GUIDE/TRANSFER/SEPARATION



82.M1096379  
HOUSING:TORSION SPRING:LEFT

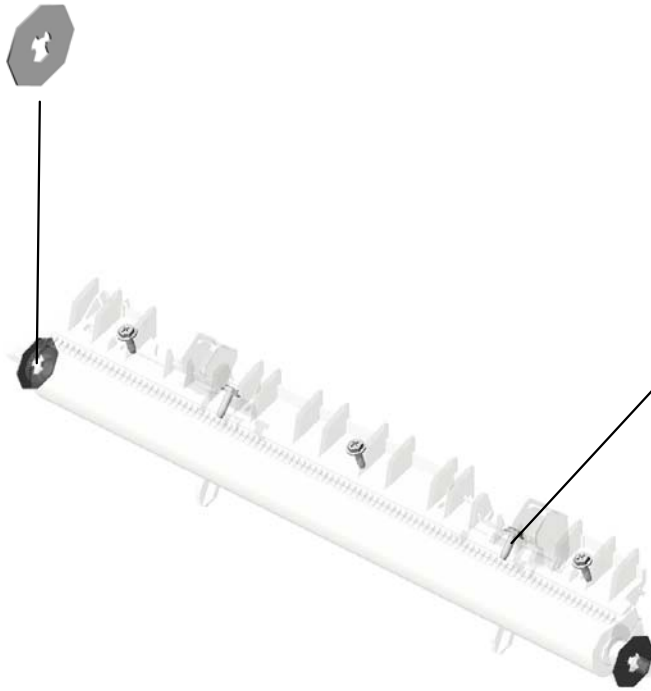
U001	U002	U003	U004	U005	U006	U007	<b>U008</b>	U009	U010	U011	U012	U013	U014
------	------	------	------	------	------	------	-------------	------	------	------	------	------	------

U008\_S001  
TRANSFER/SEPARATION UNIT:SECOND:MAINTENANCE:ASS'Y

4.07200040E  
(x2)  
RETAINING RING -  
M4



84.M8910620  
TRANSFER/SEPARATION UNIT:SECOND:MAINTENANCE:ASS'Y

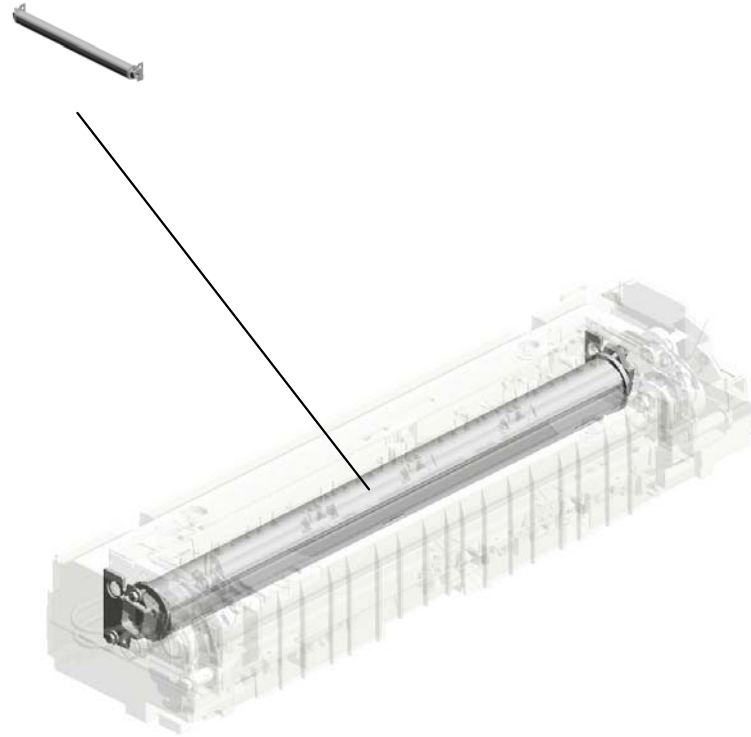


2.04583010N  
(x5)  
HEXAGON HEAD TAPPING SCREW:3  
X10

U001	U002	U003	U004	U005	U006	U007	U008	U009	U010	U011	U012	U013	U014
------	------	------	------	------	------	------	------	------	------	------	------	------	------

# U009.FUSING

U009\_S001  
M1094050  
BELT UNIT:ASS'Y



U001	U002	U003	U004	U005	U006	U007	U008	U009	U010	U011	U012	U013	U014
------	------	------	------	------	------	------	------	------	------	------	------	------	------

# U009 FUSING

- 7.07330406 (x2) BUSHING - 4X6
- 3.07200030E (x4) RETAINING RING - M3
- 13.AW110101 (x2) THERMOSTAT:LOWER
- 14.AW110102 (x3) THERMOSTAT:MIDDLE:UPPER
- 9.09544008N (x3) SCREW - M4X8



19.G1664289  
LEFT COLLAR- ST  
RIPPER PLATE

15.D1054168  
(x2)  
LEVER:LOCK:PRE  
SSURE

17.G1634364  
SPRING:LEVER:LO  
CK:LEFT

6.07250170E  
(x2)  
RETAINING RING  
C - M17

5.07200060E  
RETAINING RING -  
M6

2.04583010N  
(x4)  
HEXAGON HEAD T  
APPING SCREW:3  
X10

1.03603006N  
(x17)  
SCREW - M3X6

20.G1664310  
DECAL:WARNING ( HIGH TEMPERATU  
RE):1:CUD

8.08046123  
(x16)  
HEXAGONAL BOLT  
:WASHER:M3X8

10.09573010N  
(x3)  
SCREW:SMALL RO  
UND:SPRING:M3X1  
0



4.07200040E  
RETAINING RING -  
M4

16.G1634360  
SPRING:LEVER:LO  
CK:RIGHT

18.G1664288  
RIGHT COLLAR- S  
TRIPPER PLATE

12.AE030074  
(x2)  
BALL BEARING:DIA  
17XDIA26X5

11.AA143520  
(x8)  
SHOULDER SCRE  
W - M3

# U009 FUSING

35.M1094115 LEVER:PRESSURE RELEASE:LEFT:ASSY  
 33.GX450022 HEATER:223V:507W:593W:INFRARED  
 40.M1094180 GUIDE PLATE:EXIT:FUSING  
 32.GW100023 THERMISTOR:FLAT BELT-FUSING  
 25.GA066053 TORSION SPRING:STRIPPER PLATE:RIGHT



24.GA066052 TORSION SPRING:STRIPPER PLATE:LEFT

21.GA060088 (x2) COIL SPRING:PRESSURE

22.GA066050 TORSION SPRING:FUSING EXIT:LEFT

39.M1094149 TERMINAL:HEATER

36.M1094116 LEVER:PRESSURE:LEFT

30.GE020013 PRESSURE ROLLER:DIA35.2

31.GW100022 THERMISTOR:PRESSURE

23.GA066051 TORSION SPRING:FUSING EXIT:RIGHT

27.GB013119 GEAR:DRIVE:Z21

28.GB013120 GEAR:IDLER:PRESSURE:Z20

29.GB013121 GEAR:IDLER:EXIT:Z23

41.M1094181 (x2) DECAL:OPERATION SUB-UNIT:GUIDE PLATE

37.M1094124 LEVER:PRESSURE RELEASE:RIGHT:ASSY

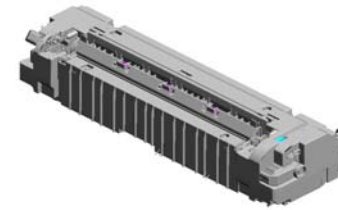
26.GB013118 GEAR:PRESSURE ROLLER:Z31

38.M1094125 LEVER:PRESSURE:RIGHT



# U009 FUSING

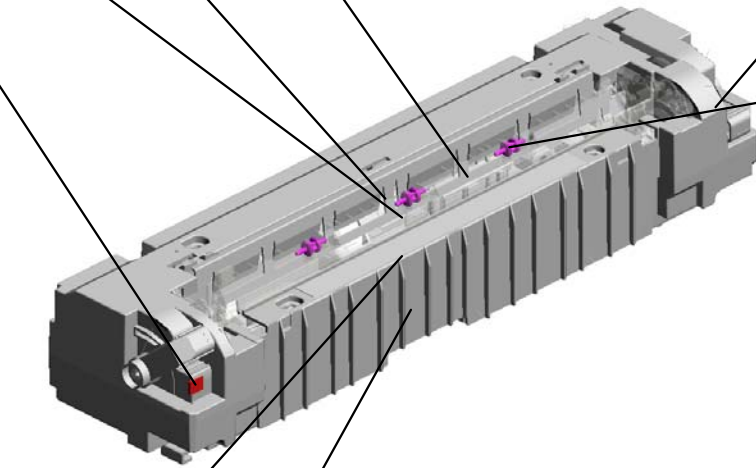
43.M1094192 STRIPPER PLATE:  
COAT 49.M1094219 BLOCK:FUSING UN  
IT



46.M1094214 FUSING COVER:U  
PPER



47.M1094216  
(x2)  
DECAL:OPERATIO  
N:LEVER



48.M1094217  
(x2)  
LEVER:LOCK



42.M1094184  
(x3)  
ROLLER:MIDDLE:F  
USING



45.M1094207 FUSING COVER:L  
OWER

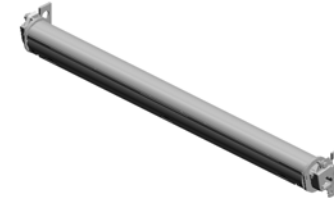


44.M1094203 GUIDE PLATE:ENT  
RANCE:FUSING



U009\_S001  
BELT UNIT:ASS'Y

8.08046123  
(x4)  
HEXAGONAL BOLT  
:W/WASHER:M3X8

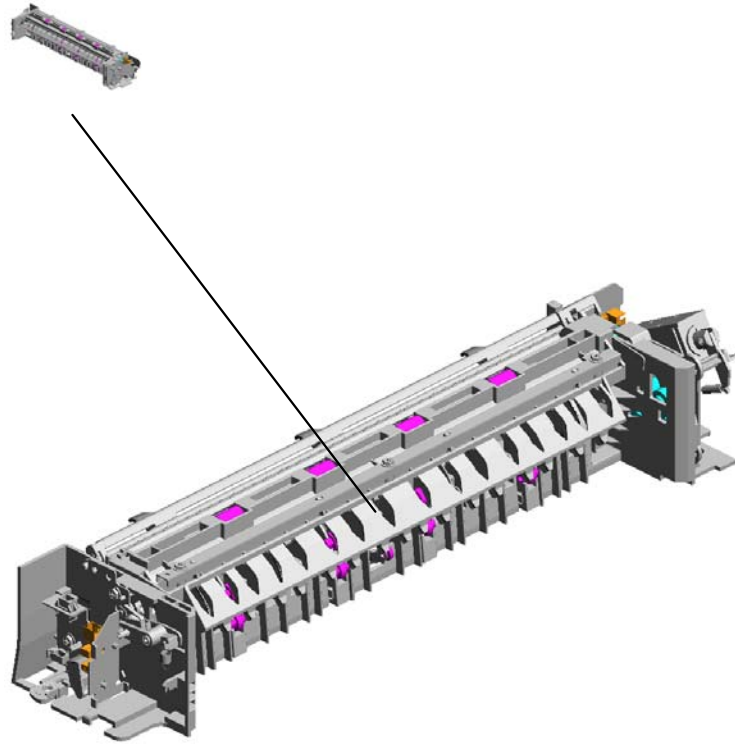


34.M1094050  
BELT UNIT:ASS'Y

U001	U002	U003	U004	U005	U006	U007	U008	U009	U010	U011	U012	U013	U014
------	------	------	------	------	------	------	------	------	------	------	------	------	------

# U010.PAPER EXIT

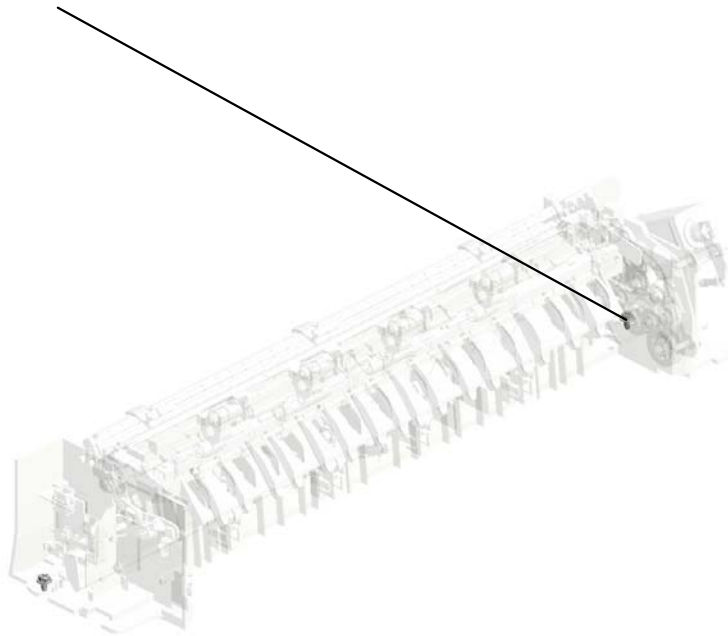
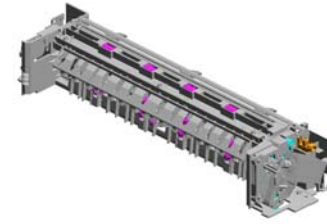
U010\_S001  
M1094400  
PAPER EXIT UNIT



U001	U002	U003	U004	U005	U006	U007	U008	U009	U010	U011	U012	U013	U014
------	------	------	------	------	------	------	------	------	------	------	------	------	------

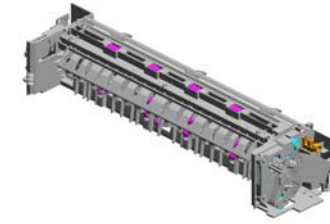
U010  
PAPER EXIT

4.08046123  
(x2)  
HEXAGONAL BOLT  
:W/WASHER:M3X8



U001	U002	U003	U004	U005	U006	U007	U008	U009	U010	U011	U012	U013	U014
------	------	------	------	------	------	------	------	------	------	------	------	------	------

# U010\_S001 PAPER EXIT UNIT



18.M1094400  
PAPER EXIT UNIT

- 21.M1094452 GROUND WIRE:EXIT:UPPER
- 2.04583010N (x8) HEXAGON HEAD TAPPING SCREW:3X10
- 19.M1094450 GUIDE:EXIT:LOWER
- 20.M1094451 (x2) COIL SPRING:PRESSURE:EXIT:INNER
- 12.G1634467 (x4) ROLLER:DRIVEN:DUPLEX

9.AA082150 (x2) PLAIN SHAFT BEARING:M6

5.08050089 (x2) RETAINING RING - M4

6.08050092 RETAINING RING - 3M

16.M0963994 RESISTOR:EARTH:EXIT:DISCHARGE SECTION

8.11050758 CLAMP:LWSM-030 6A

11.G1634460 (x2) ROLLER:DRIVEN:EXIT

17.M1093933 (x8) ROLLER:GUIDE:DIAMETER 10

3.07200025E (x2) RETAINING RING - M2.5

7.11024473 (x2) CT CONNECTOR - 2P

13.G1634479 (x7) GEAR:IDLER:EXIT

10.AW020198 (x2) PHOTOINTERRUPTOR:LG2A14NL1

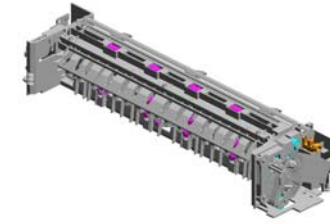
14.G1634489 GEAR:EXIT

15.G1634492 DC SOLENOID:PRESSURE FIT

1.03530040N (x4) SCREW - M3X4

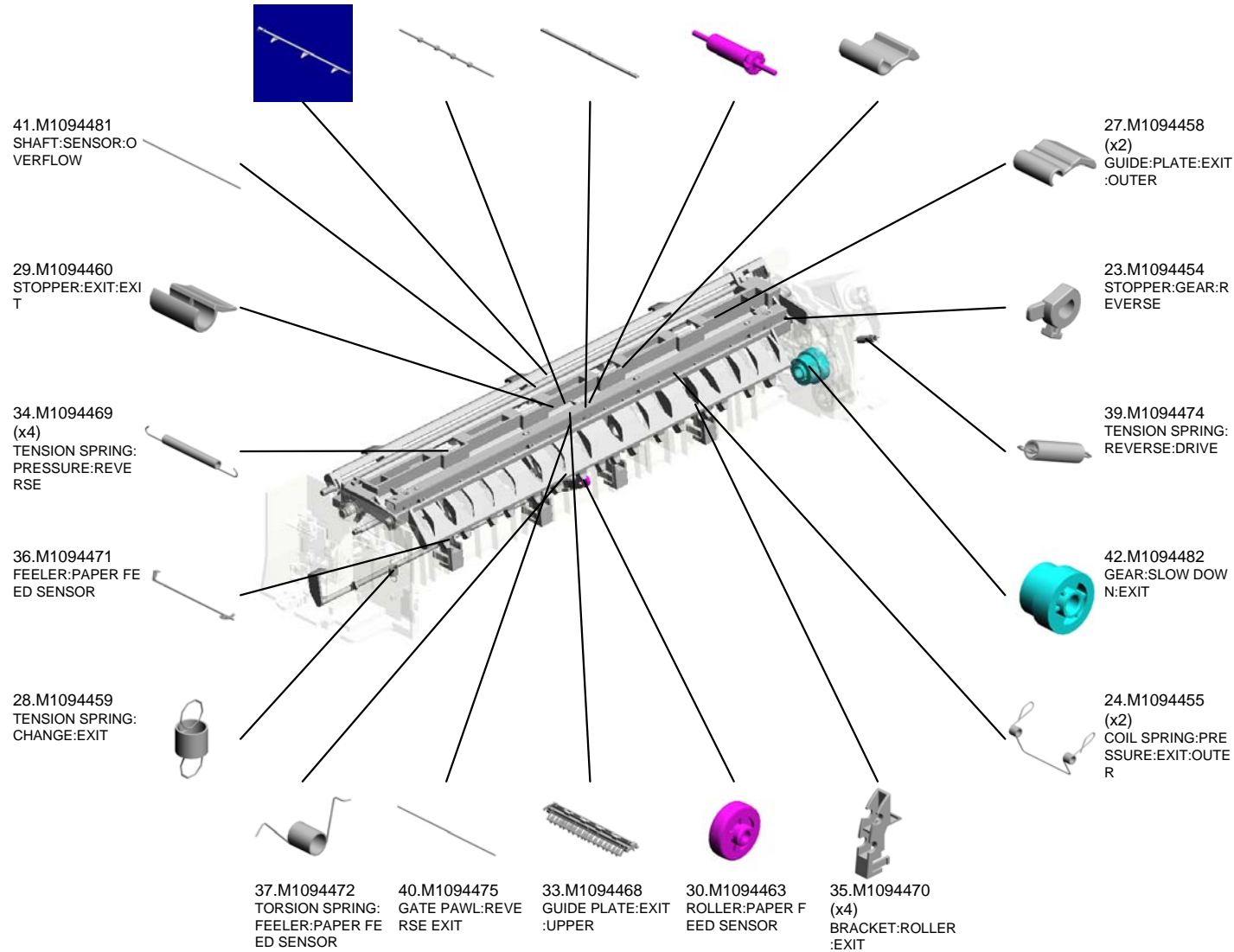
22.M1094453 GEAR:REVERSE:EXIT

# U010\_S001 PAPER EXIT UNIT



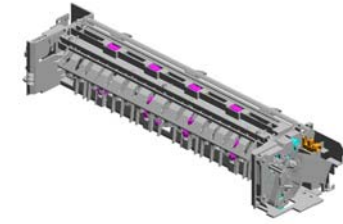
18.M1094400  
PAPER EXIT UNIT

- 38.M1094473 FEELER:SENSOR:OVERFLOW
- 31.M1094465 EXIT ROLLER
- 26.M1094457 SUPPORTING PLATE:EXIT:UPPER
- 32.M1094466 (x2) EXIT ROLLER:DRIVEN
- 25.M1094456 (x2) GUIDE:PLATE:EXIT



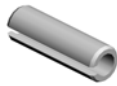
# U010\_S001 PAPER EXIT UNIT

44.M1094484 LINK:CHANGE:GATE PAWL:EXIT  
 51.M1094493 LEVER:CHANGE:GATE PAWL  
 47.M1094487 DISCHARGE BRUSH:EXIT



18.M1094400  
PAPER EXIT UNIT

49.M1094490  
DC SOLENOID:PRESS FIT



50.M1094492  
HOLDER:SENSOR:EXIT



48.M1094488  
COVER:SOLENOID:EXIT



52.M1094499  
GEAR:ENTRANCE:EXIT



46.M1094486  
LINK:CHANGE:DRIVE:EXIT



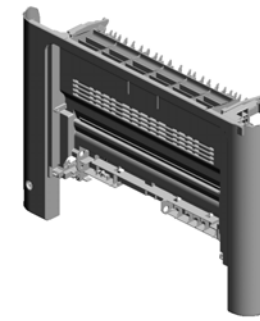
45.M1094485  
LEVER:CHANGE:DRIVE:EXIT



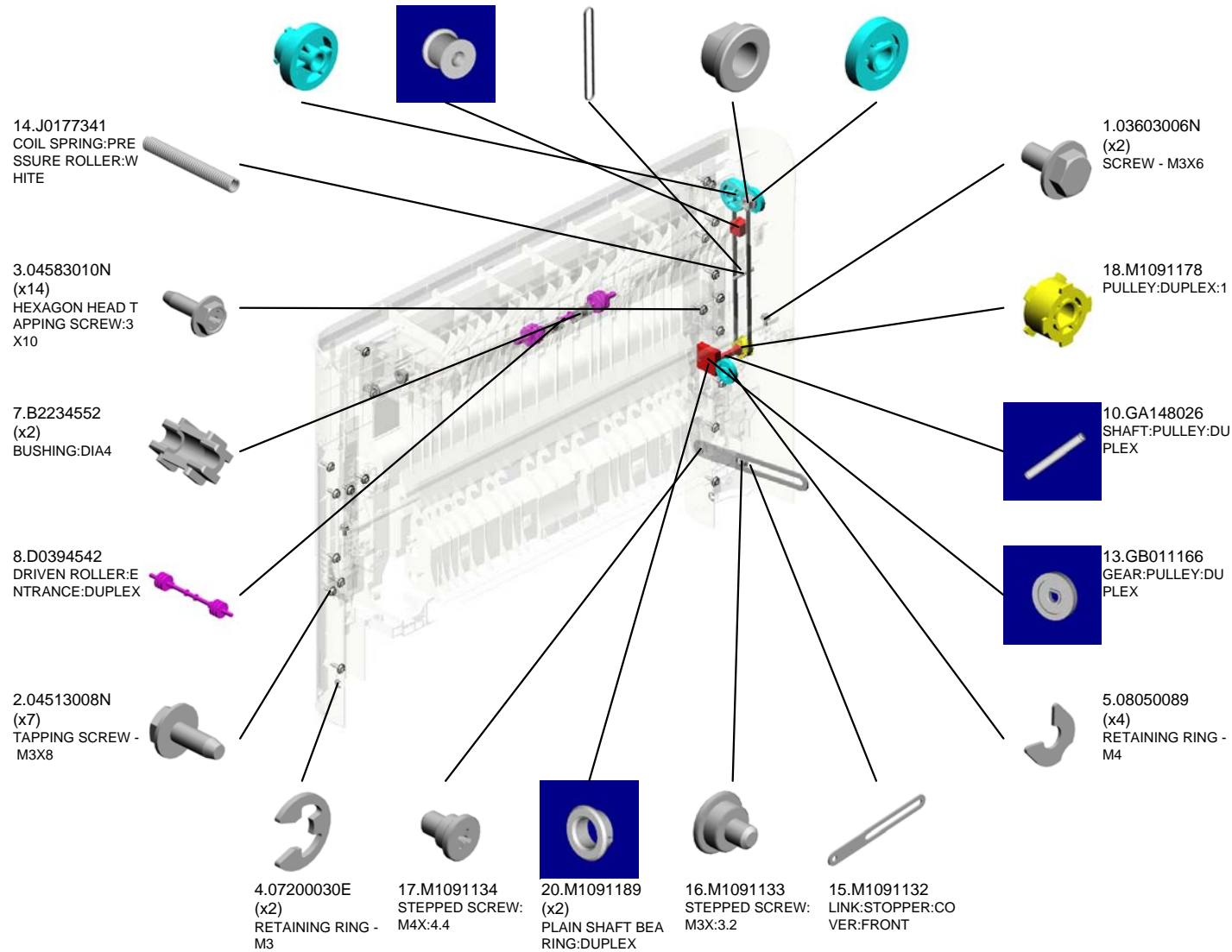
43.M1094483  
BRACKET:GEAR:EXIT



# U011 DUPLEX SECTION



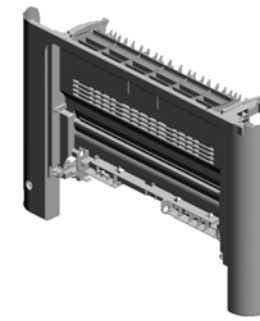
- 12.GB011151 GEAR:PULLEY:DU  
PLEX:2
- 19.M1091179 TIGHTENER:DUPL  
EX:COIL SPRING
- 9.GA043031 SYNCHRONOUS B  
ELT:S2M:4X316
- 6.AA082101 (x2)  
BUSHING - 6X10X6
- 11.GB011149 (x2)  
GEAR:TRANSPOR  
T:IDLER:BASE:1





# U011 DUPLEX SECTION

- 21.M1094184 (x2)  
ROLLER:MIDDLE:FRONT USING
- 24.M1094604  
TRANSPORT ROLLER:DUPLEX:ENTRANCE
- 23.M1094603  
GUIDE PLATE:REVERSE
- 30.M1094618 (x2)  
TENSION SPRING:DRIVEN ROLLER:DUPLEX:ENTRANCE
- 28.M1094609 (x2)  
COMPRESSION SPRING:GUIDE PLATE:REVERSE



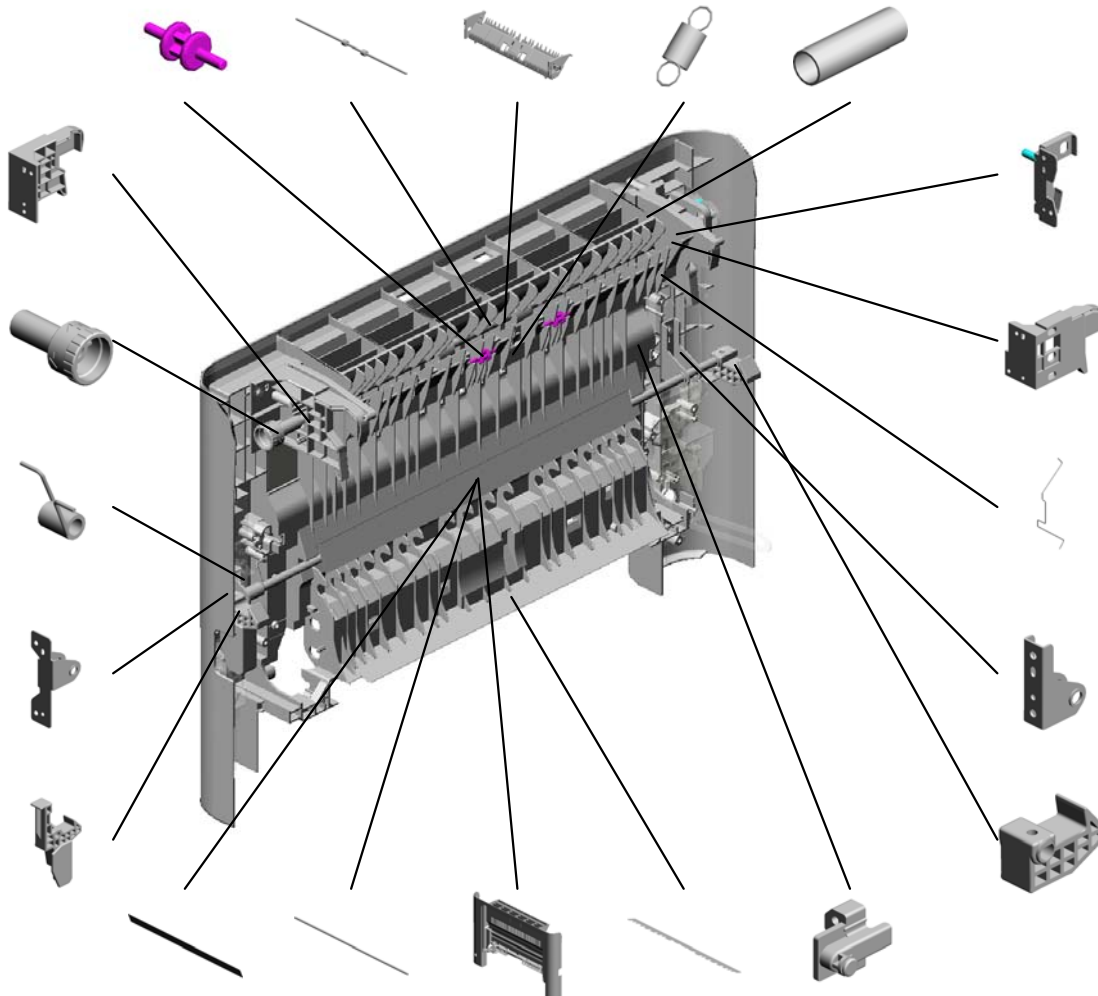
27.M1094608  
HOLDER:GUIDE PLATE:REVERSE:RIGHT

29.M1094613  
KNOB:TRANSPORT ROLLER:DUPLEX

38.M1094631  
TORSION SPRING:LOCK:COVER:FRONT

39.M1094636  
HINGE:LOCK:COVER:FRONT

35.M1094628  
HANDLE:COVER:FRONT



32.M1094620  
HOLDER:GEAR:DUPLEX UNIT:ASSY

26.M1094607  
HOLDER:GUIDE PLATE:REVERSE:LEFT

25.M1094606  
GROUND WIRE:DUPLEX

40.M1094640  
HINGE:LOCK:COVER:FRONT:LEFT

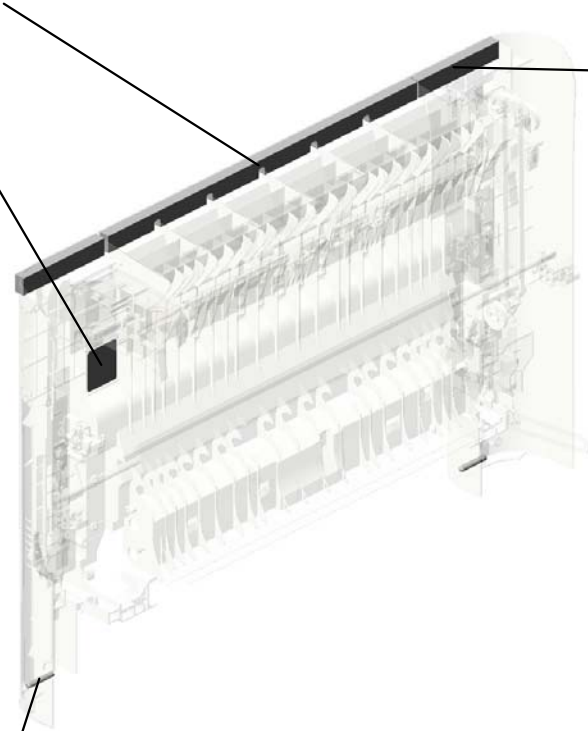
37.M1094630  
PAWL:LEFT

- 33.M1094623  
SHEET:DUPLEX:MIDDLE
- 36.M1094629  
SHAFT:LOCK:COVER:FRONT
- 22.M1094601  
COVER:FRONT
- 34.M1094624  
SHEET:DUPLEX:EXIT
- 31.M1094619 (x2)  
SHAFT:LINK:MANUAL FEED TABLE

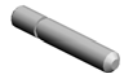
# U011 DUPLEX SECTION

43.M1094644  
SOUND PROOFING MATERIAL:COVER:FRONT:MIDDLE

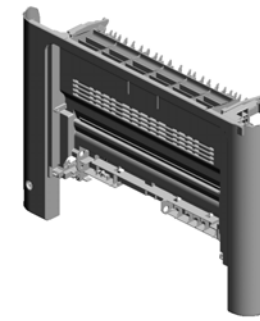
42.M1094643  
DECAL:PICK-UP PAPER JAM:DUPLIX



44.M1094645  
(x2)  
SOUND PROOFING MATERIAL:COVER:FRONT:LEFT AND RIGHT



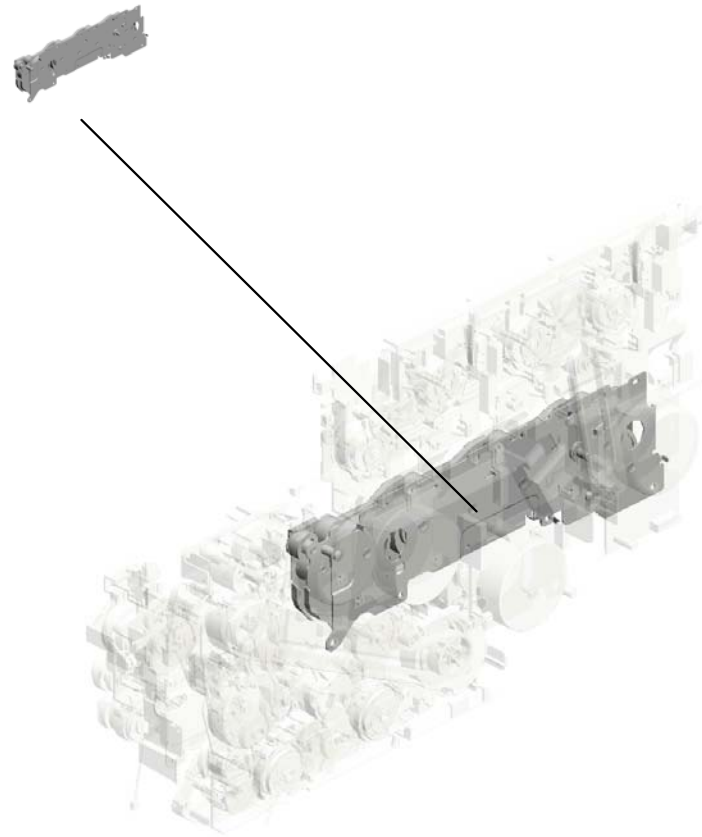
41.M1094642  
(x2)  
SHAFT:HINGE:COVER:FRONT



U001	U002	U003	U004	U005	U006	U007	U008	U009	U010	U011	U012	U013	U014
------	------	------	------	------	------	------	------	------	------	------	------	------	------

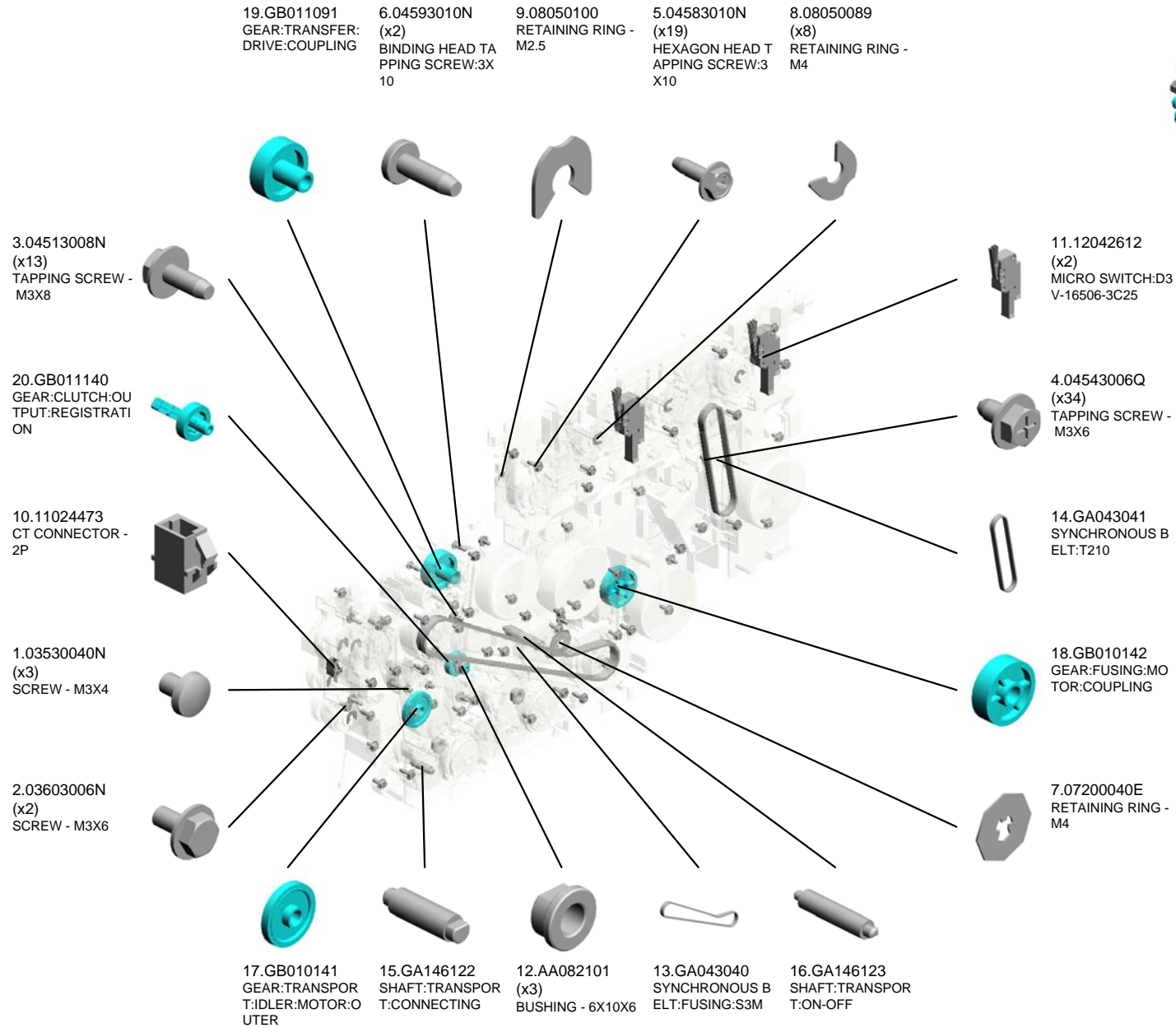
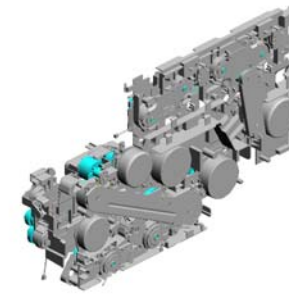
# U012.MAIN DRIVE

U012\_S001  
M1091136  
DRIVE UNIT:PHOTOCONDU  
CTOR:ASS'Y



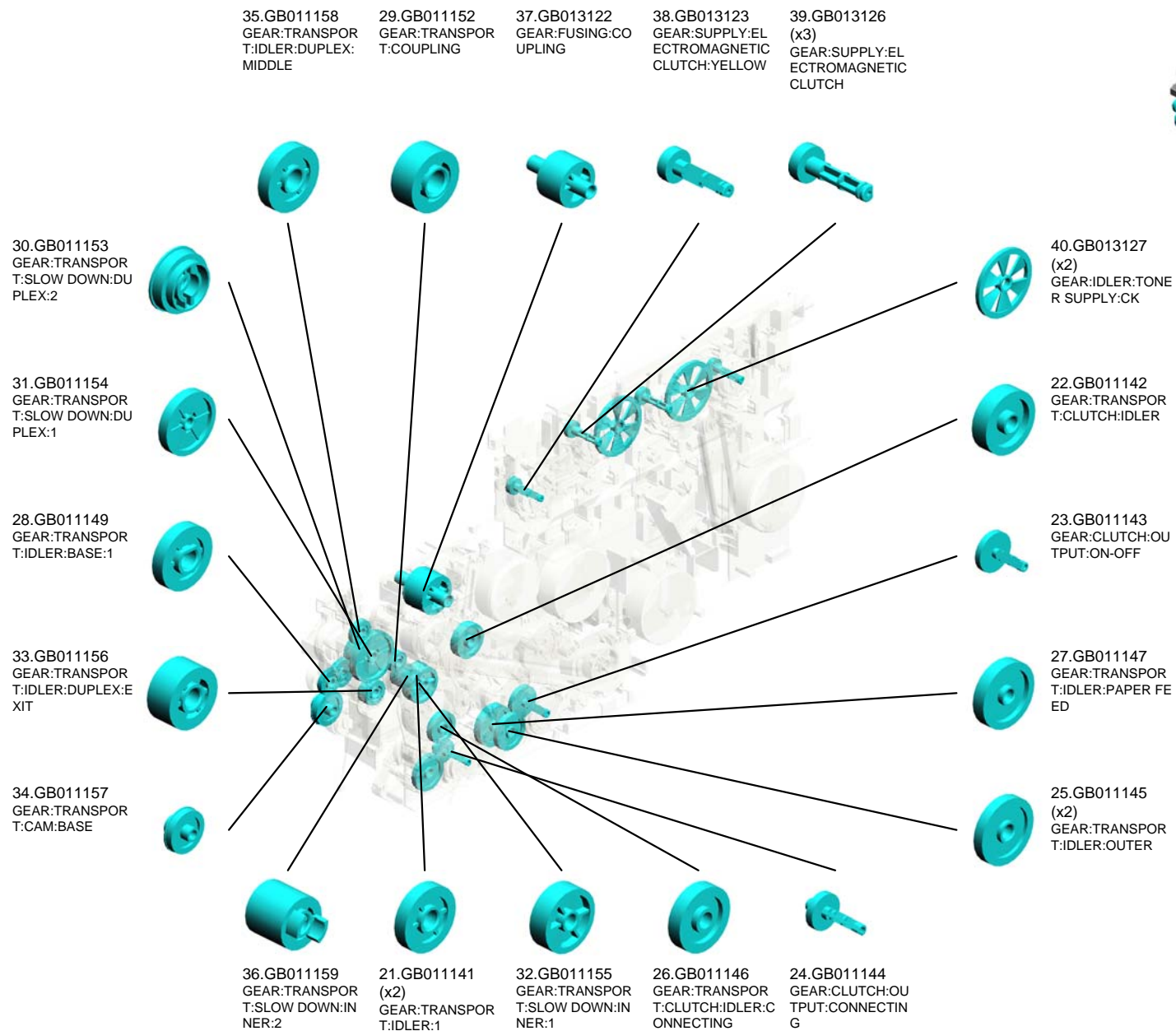
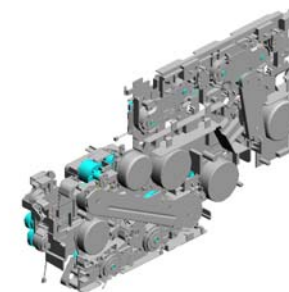
U001	U002	U003	U004	U005	U006	U007	U008	U009	U010	U011	U012	U013	U014
------	------	------	------	------	------	------	------	------	------	------	------	------	------

# U012 MAIN DRIVE

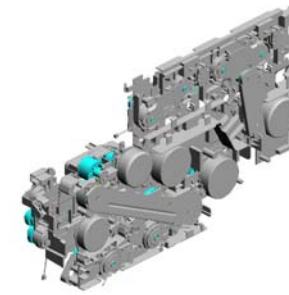


U001	U002	U003	U004	U005	U006	U007	U008	U009	U010	U011	U012	U013	U014
------	------	------	------	------	------	------	------	------	------	------	------	------	------

# U012 MAIN DRIVE



# U012 MAIN DRIVE



- 43.GB013132 GEAR:COUPLING:Y:SUPPLY
- 44.GB013133 GEAR:IDLER:Y:SUPPLY
- 41.GB013128 GEAR:TONER SUPPLY:IDLER:YM
- 59.GX202123 (x4) ELECTROMAGNETIC CLUTCH:SUPPLY:0.25NM
- 46.GB017135 GEAR:SUPPLY:PULLEY:2

45.GB017119  
GEAR:TRANSFER:DRIVE

54.GX062148  
DC BRUSHLESS MOTOR:TRANSFER:15W

42.GB013131  
GEAR:FUSING:COUPLING:2

60.GX202124 (x3)  
ELECTROMAGNETIC CLUTCH:0.35NM

51.GB017142  
GEAR:TRANSPORT:IDLER:MANUAL FEED

47.GB017138  
GEAR:TRANSPORT:SLOW DOWN:OUTER

57.GX062151  
DC BRUSHLESS MOTOR:TRANSPORT:10W

50.GB017141  
GEAR:TRANSPORT:SLOW DOWN:PAUSE FEED

49.GB017140  
GEAR:ON-OFF:SLOW DOWN:1

48.GB017139  
GEAR:ON-OFF:SLOW DOWN:2

55.GX062149  
DC BRUSHLESS MOTOR:PHOTOCONDUCTOR:BLACK:25W

56.GX062150  
DC BRUSHLESS MOTOR:PHOTOCONDUCTOR:COLLAR:43W

58.GX062152  
DC BRUSHLESS MOTOR:FUSING:25W

52.GB017144  
GEAR:FUSING:DRIVE:1

53.GB017146  
GEAR:FUSING:PULLEY:1

U001	U002	U003	U004	U005	U006	U007	U008	U009	U010	U011	U012	U013	U014
------	------	------	------	------	------	------	------	------	------	------	------	------	------

# U012 MAIN DRIVE

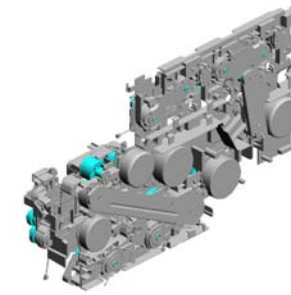
65.M1091112 BRACKET:TRANSP  
ORT:INNER:FRONT

72.M1091124 BRACKET:FUSING:  
DRIVE:COUPLING

71.M1091121 BRACKET:TRANSF  
ER:DRIVE:ASS'Y

78.M1091160 (x2)  
SPACER:FUSING:SY  
NCHRONOUS BELT

73.M1091135 BRACKET:DRIVE:T  
ONER SUPPLY:AS  
S'Y



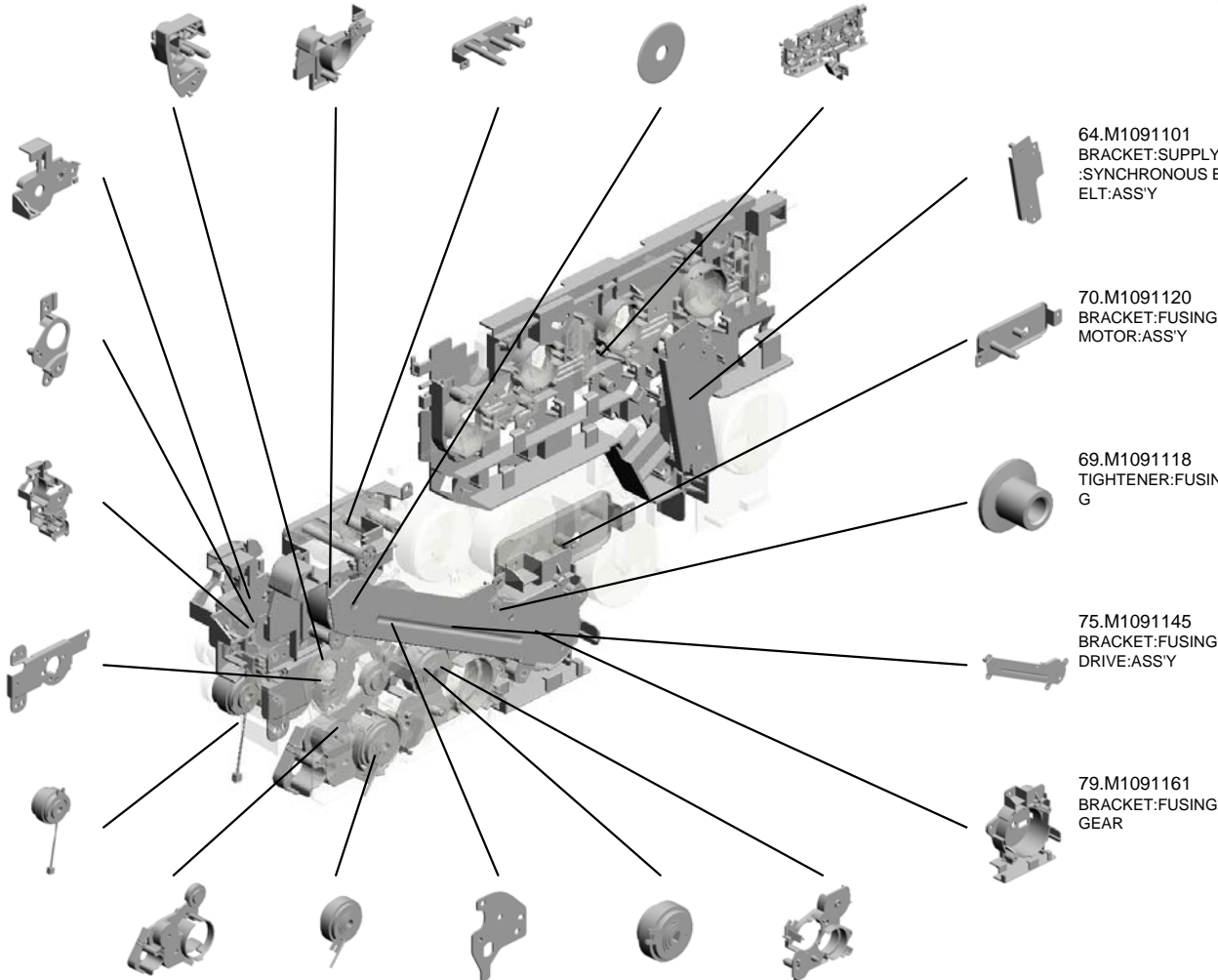
80.M1091174  
BRACKET:DUPLEX  
:2

77.M1091157  
BRACKET:DUPLEX  
:GUIDE PLATE

76.M1091150  
BRACKET:DUPLEX

68.M1091117  
BRACKET:TRANSP  
ORT:MOTOR:ASS'  
Y

63.GX202127  
ELECTROMAGNET  
IC CLUTCH:MANU  
AL FEED:0.25NM



64.M1091101  
BRACKET:SUPPLY  
:SYNCHRONOUS B  
ELT:ASS'Y

70.M1091120  
BRACKET:FUSING:  
MOTOR:ASS'Y

69.M1091118  
TIGHTENER:FUSIN  
G

75.M1091145  
BRACKET:FUSING:  
DRIVE:ASS'Y

79.M1091161  
BRACKET:FUSING:  
GEAR

81.M1091176  
BRACKET:TRANSP  
ORT:2

61.GX202125 (x2)  
ELECTROMAGNET  
IC CLUTCH:0.45NM

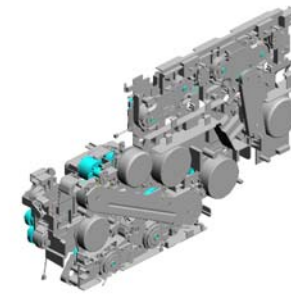
66.M1091113  
BRACKET:GUIDE P  
LATE:REGISTRATI  
ON:CLUTCH

62.GX202126  
ELECTROMAGNET  
IC CLUTCH:PAPER  
FEED:0.45NM

67.M1091116  
BRACKET:TRANSP  
ORT

U001	U002	U003	U004	U005	U006	U007	U008	U009	U010	U011	U012	U013	U014
------	------	------	------	------	------	------	------	------	------	------	------	------	------

# U012 MAIN DRIVE



- 92.M1095840 SHIELDING PLATE: DRIVE UNIT:TRANSFER
- 93.M1095841 SHIELDING PLATE: CLEANER:DRIVE
- 94.M1095857 (x2) HEXAGON HEAD TAPPING SCREW:3 X10:DIA10
- 90.M1095818 SLIDER:MICRO SWITCH

83.M1091188  
BRACKET:DUPLEX  
:SWIVEL:ARM:2

87.M1091196  
BRACKET:TRANSPORT:ARM:ASSY

85.M1091193  
GEAR:MECHANICAL  
ROLLER CLUTCH

86.M1091195  
BRACKET:SWIVEL:  
MAIN:GUIDE PLATE

88.M1091198  
PULLEY:FUSING:COUPLING

91.M1095819  
COMPRESSION SPRING:LINK:SLIDE

89.M1095061  
(x2)  
CAM:MICRO SWITCH

84.M1091192  
PULLEY:TONER SUPPLY:DRIVE

82.M1091181  
SPACER:DIA12:0.13MM

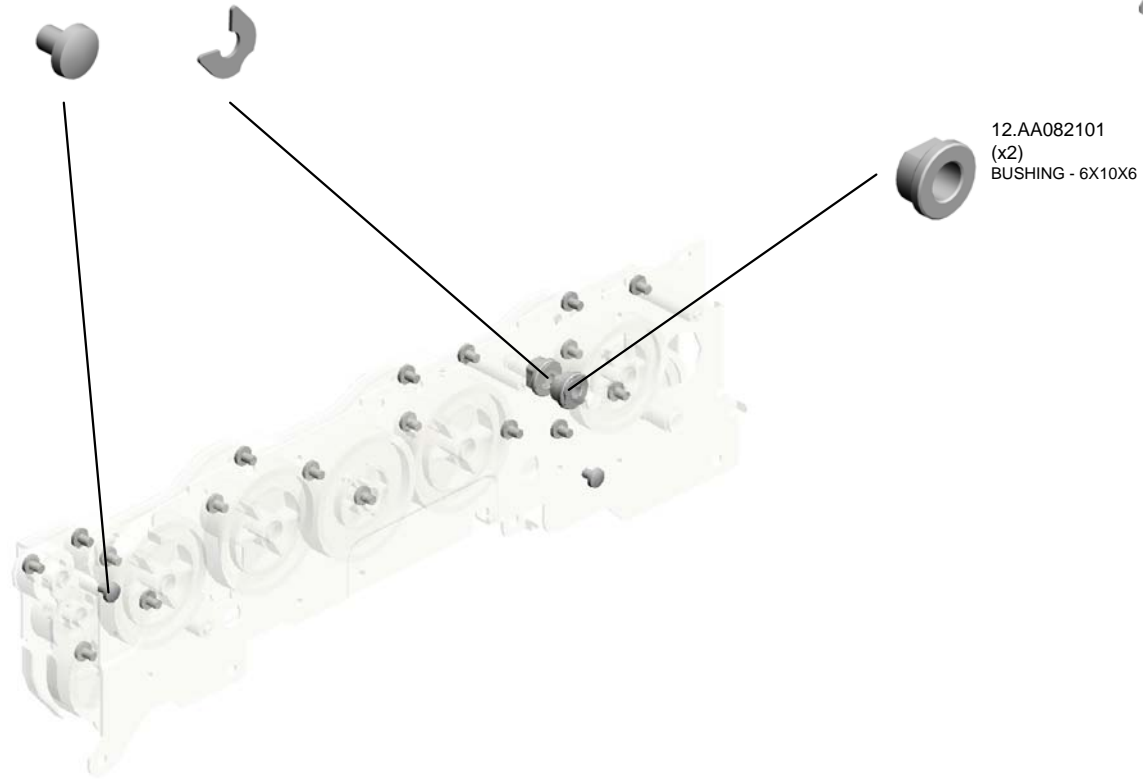
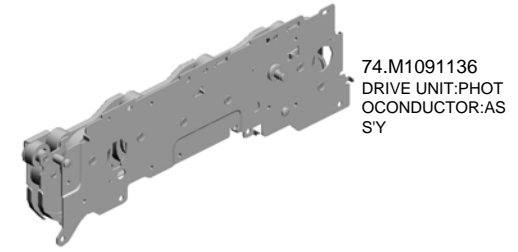
U001	U002	U003	U004	U005	U006	U007	U008	U009	U010	U011	U012	U013	U014
------	------	------	------	------	------	------	------	------	------	------	------	------	------



U012\_S001  
DRIVE UNIT:PHOTOCONDUCTOR:ASS'Y

1.03530040N  
(x20)  
SCREW - M3X4

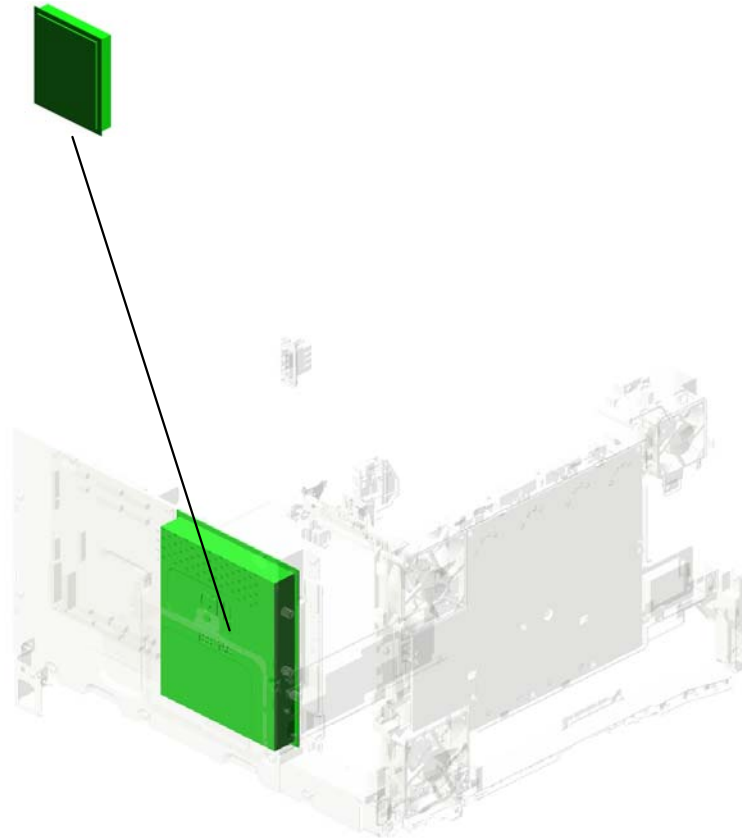
8.08050089  
(x2)  
RETAINING RING -  
M4



U001	U002	U003	U004	U005	U006	U007	U008	U009	U010	U011	U012	U013	U014
------	------	------	------	------	------	------	------	------	------	------	------	------	------

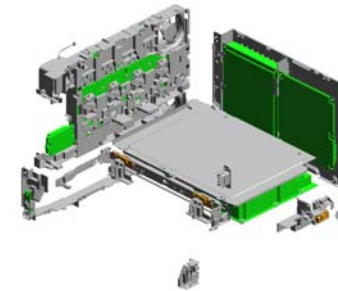
# U013.ELECTRICAL

U013\_S001  
M1095225  
PCB:CTL:EXP:ASSY



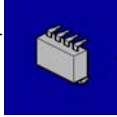
U001	U002	U003	U004	U005	U006	U007	U008	U009	U010	U011	U012	U013	U014
------	------	------	------	------	------	------	------	------	------	------	------	------	------

# U013 ELECTRICAL



- 4.04543006Q (x28) TAPPING SCREW - M3X6
- 22.GZ230068 POWER SUPPLY UNIT:EU/AA/CHN:227W
- 2.03603006N (x4) SCREW - M3X6
- 20.GW010009 (x2) DENSITY SENSOR
- 7.08046123 (x10) HEXAGONAL BOLT :W/WASHER:M3X8

9.14077812  
EEPROM:BR24T32-  
W



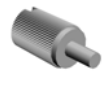
12.AW140016  
TEMPERATURE &  
HUMIDITY SENS  
R



10.AA143592  
SCREW - M4X6



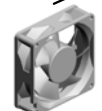
17.G1045141  
(x3)  
KNOB SCREW:M3



1.03530040N  
SCREW - M3X4



13.AX640199  
(x2)  
FAN:MM80:25MM:D  
C 2.16W



16.G1022789  
STOPPER:PHOTOI  
NTERRUPTOR



11.AW020198  
PHOTOINTERRUP  
TOR:LG2A14NL1



15.G0205626  
PUSH SWITCH



5.04583010N  
(x23)  
HEXAGON HEAD T  
APPING SCREW:3  
X10



21.GX640025  
DC FAN MOTOR:M  
M60:25MM:24V



8.11024559  
(x3)  
CONNECTOR - 3P



3.04513008N  
(x16)  
TAPPING SCREW -  
M3X8



14.AZ300060  
POWER PACK:D:A  
T/AP-C2

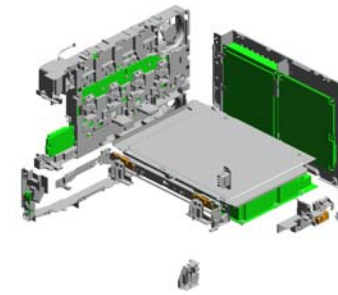


6.07200030E  
RETAINING RING -  
M3



U001	U002	U003	U004	U005	U006	U007	U008	U009	U010	U011	U012	U013	U014
------	------	------	------	------	------	------	------	------	------	------	------	------	------

# U013 ELECTRICAL



- 38.M1095758 CAM:DENSITY SENSOR:RIGHT
- 32.M1095750 TENSION SPRING:DENSITY SENSOR
- 36.M1095756 SHAFT:DENSITY SENSOR
- 35.M1095754 BRACKET:DENSITY SENSOR
- 41.M1095761 GUIDE:HARNES:DENSITY SENSOR

25.M0963989  
RESISTOR:TRANSFER/SEPARATION

40.M1095760  
(x2)  
COMPRESSION SPRING:DENSITY SENSOR

27.M1095102  
PCB:EGB:ASSY

24.M0185754  
SCREW

34.M1095753  
SEPARATION PLATE:CTL:EGB

42.M1095770  
(x32)  
TERMINAL:HIG VOLTAGE

43.M1095771  
(x16)  
COMPRESSION SPRING:PCU:POWER PACK

44.M1095772  
(x4)  
HOLDER:TERMINAL:POWER PACK

26.M1095052  
FEELER:OVERFLOW:SENSOR:COLLECTION BOTTLE

39.M1095759  
(x2)  
HOLDER:DENSITY SENSOR

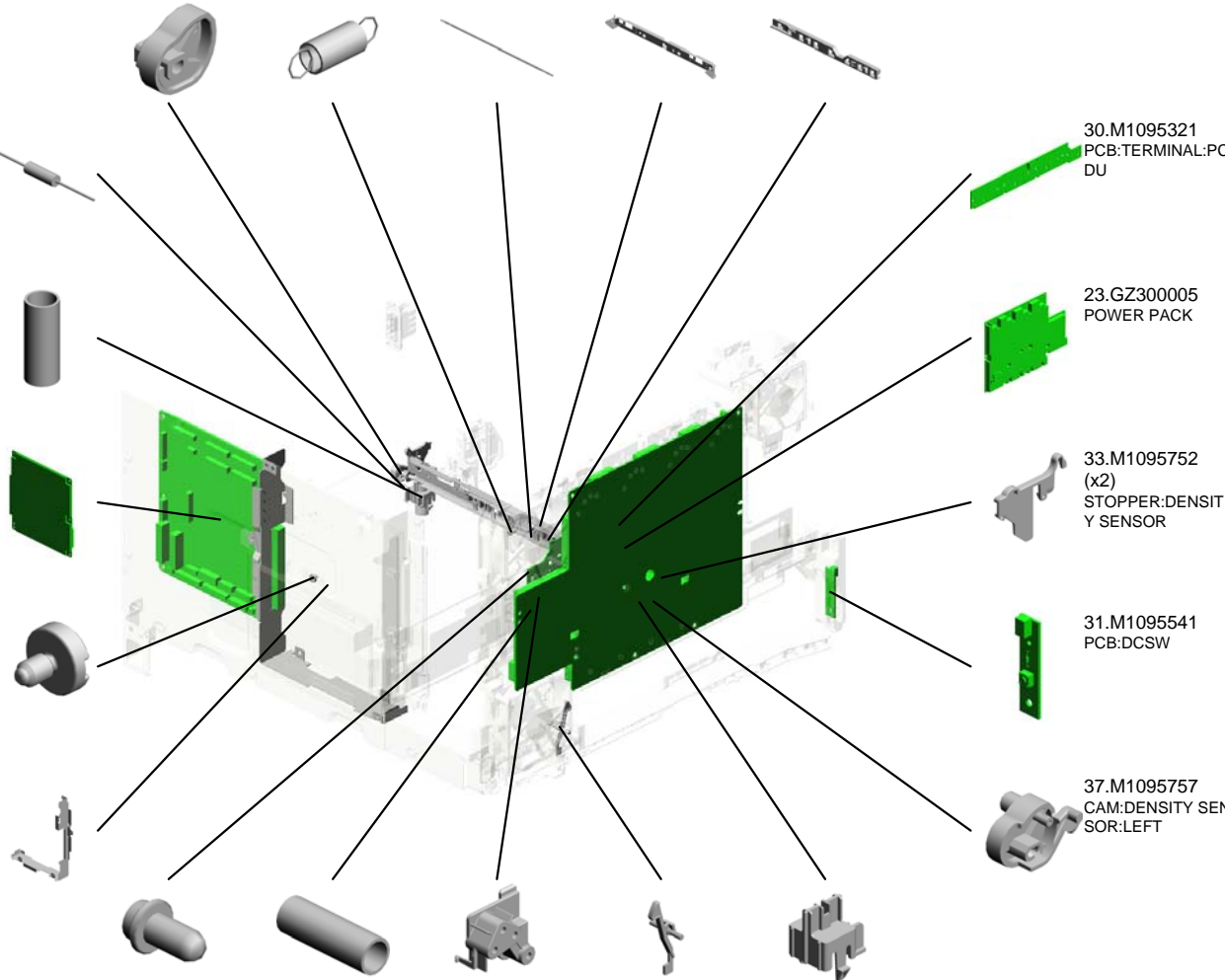
30.M1095321  
PCB:TERMINAL:PCDU

23.GZ300005  
POWER PACK

33.M1095752  
(x2)  
STOPPER:DENSITY SENSOR

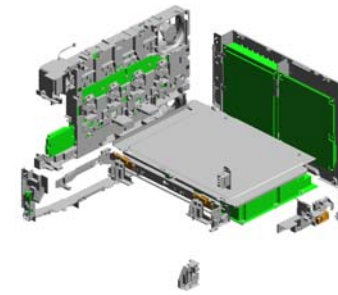
31.M1095541  
PCB:DCSW

37.M1095757  
CAM:DENSITY SENSOR:LEFT



# U013 ELECTRICAL

- 48.M1095784 (x2) HOLDER:CLEANER DENSITY SENSOR
- 49.M1095785 (x2) CLEANER:DENSITY SENSOR
- 58.M1095800 (x12) COMPRESSION SPRING:NEW ARTICLE SENSOR
- 57.M1095799 (x4) HOLDER:TERMINAL:NEW ARTICLE SENSOR
- 63.M1095807 DUCT:FAN:FUSING



51.M1095791  
COVER:POWER SUPPLY UNIT

59.M1095801  
GUIDE:HARNESS: RIGHT LOWER

60.M1095802  
SHADING PLATE: HARNESS

46.M1095776  
GROUND PLATE:POWER PACK

47.M1095781  
BRACKET:INLET

64.M1095810  
DUCT:FAN:POWER SUPPLY UNIT

45.M1095774 (x2)  
HOLDER:TERMINAL:POWER PACK:TRANSFER

54.M1095795  
COVER:HIGHT VOLTAGE:LOWER

50.M1095786  
GUIDE:HARNESS:LEFT LOWER

52.M1095793  
LEVER:DENSITY SENSOR

61.M1095804  
GUIDE PIN:DENSITY SENSOR:LEADING EDGE

62.M1095805  
COIL SPRING:GUIDE PIN

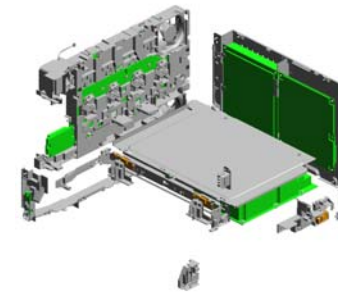
56.M1095797  
COVER:MAIN SWITCH

53.M1095794  
STOPPER:LEVER: DENSITY SENSOR

55.M1095796  
KEYTOP:MAIN SWITCH

# U013 ELECTRICAL

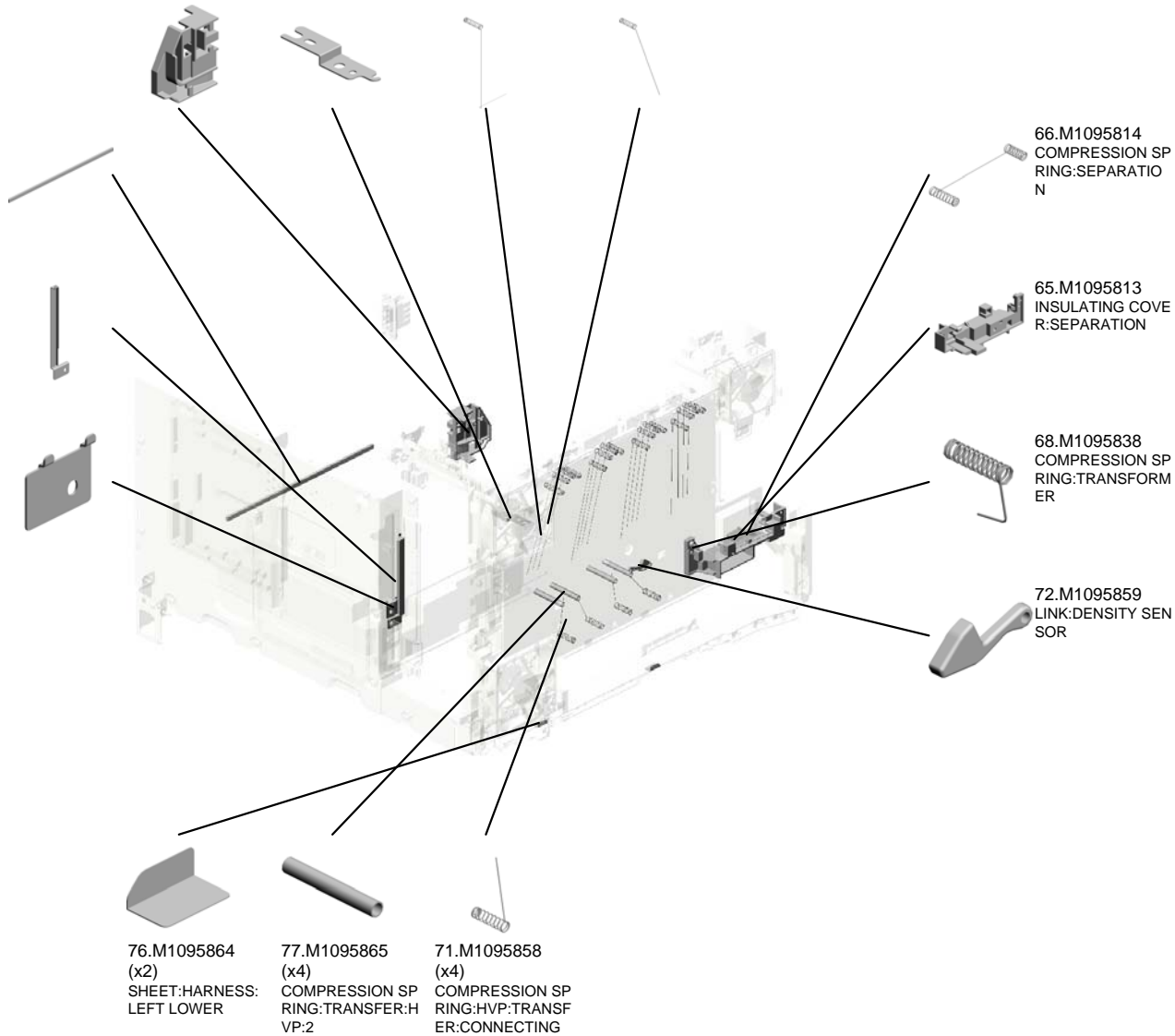
67.M1095815 GUIDE:HARNESS:FRONT:RIGHT  
 69.M1095842 GROUND PLATE:DENSITY SENSOR  
 73.M1095860 COMPRESSION SPRING:HVP:CONNECTING  
 70.M1095854 (x15) COMPRESSION SPRING:BASE:POWER PACK:2



78.M1095867 SPONGE:POWER SUPPLY UNIT:RIGHT

75.M1095863 COVER:SD-CARD

74.M1095862 COVER:USB



66.M1095814 COMPRESSION SPRING:SEPARATION

65.M1095813 INSULATING COVER:SEPARATION

68.M1095838 COMPRESSION SPRING:TRANSFORMER

72.M1095859 LINK:DENSITY SENSOR

76.M1095864 (x2) SHEET:HARNESS:LEFT LOWER

77.M1095865 (x4) COMPRESSION SPRING:TRANSFER:HP:2

71.M1095858 (x4) COMPRESSION SPRING:HVP:TRANSFER:CONNECTING

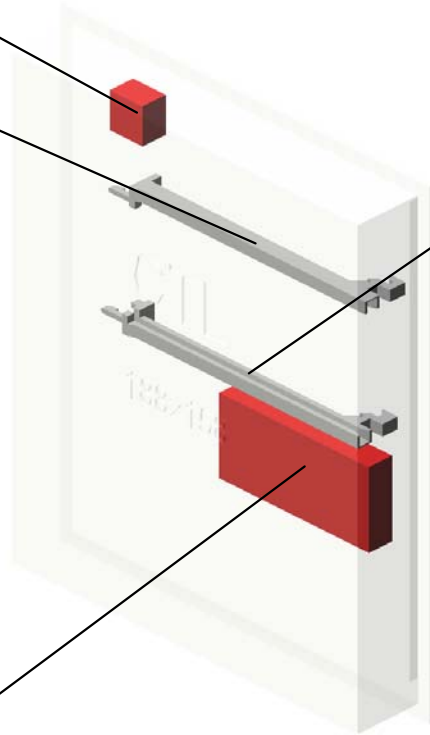
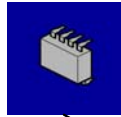
U013\_S001  
PCB:CTL:EXP:ASS'Y

79.M1099590  
NVRAM:TOTAL CO  
UNTER



28.M1095225  
PCB:CTL:EXP:ASS'  
Y

19.G1085108  
RIGHT GUIDE 1



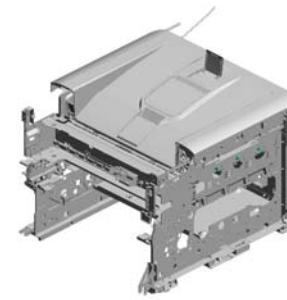
18.G1085107  
LEFT GUIDE 1



29.M1095245  
PCB:DDR3-DIMM:5  
12MB(32BIT):ASS'Y

U001	U002	U003	U004	U005	U006	U007	U008	U009	U010	U011	U012	U013	U014
------	------	------	------	------	------	------	------	------	------	------	------	------	------

# U014 MAIN FRAME



- 4.04513008N (x52) TAPPING SCREW - M3X8
- 16.AA043601 TIMING BELT - B40 S2M118
- 9.08050088 (x6) RETAINING RING - M6
- 7.04583010N (x43) HEXAGON HEAD TAPPING SCREW:3 X10
- 11.08050092 RETAINING RING - 3M

- 2.03530060N (x2) BIND SCREW - M3 X6

- 17.AW100138 THERMOPILE

- 10.08050089 (x2) RETAINING RING - M4

- 20.G1661048 (x4) RUBBER FOOT

- 19.G1661047 (x2) SPACER- RUBBER FOOT

- 3.03603006N (x5) SCREW - M3X6

- 5.04543006Q (x23) TAPPING SCREW - M3X6

- 8.08046123 (x17) HEXAGONAL BOLT :W/WASHER:M3X8

- 6.04583008N (x2) HEXAGON HEAD TAPPING SCREW:3 X8

- 13.11050761 CLAMP:LWS-0511A

- 12.11050760 (x2) CLAMP:LWSM-051 1A

- 18.G1634492 DC SOLENOID:PRESS FIT

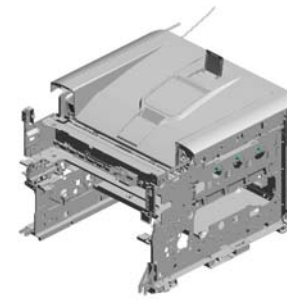
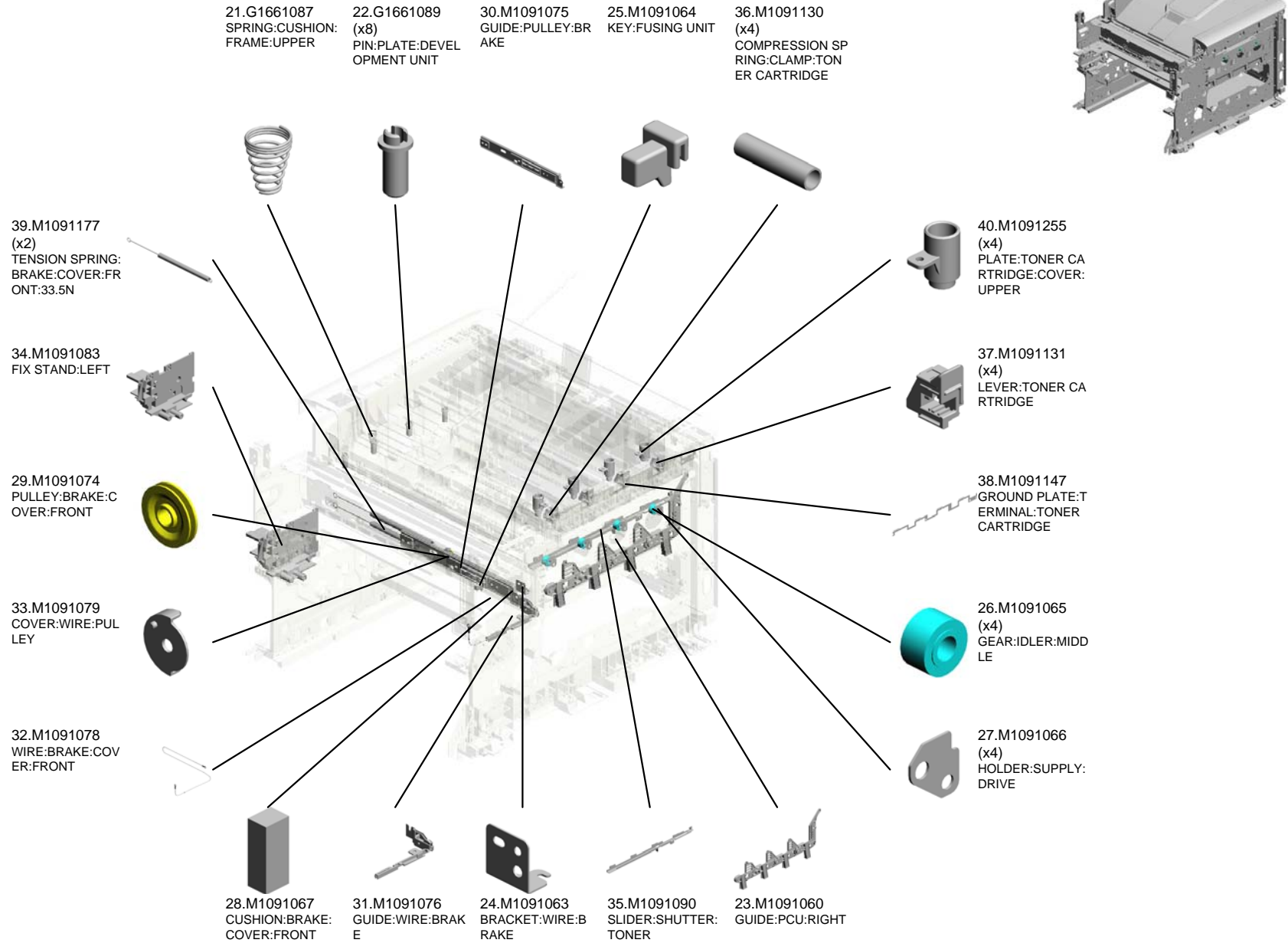
- 14.11050762 (x2) CLAMP:LWS-0711A

- 1.03530040N (x3) SCREW - M3X4

- 15.11050763 (x3) CLAMP:LWS-1211A



# U014 MAIN FRAME



# U014 MAIN FRAME

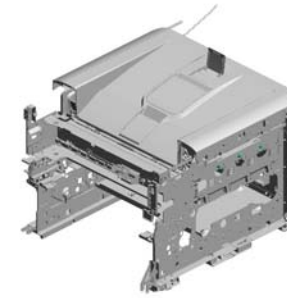
41.M1091256  
BAND:COVER:UPPER

51.M1091310  
TORSION SPRING:  
MIDDLE:LEFT

45.M1091302  
PIN:BRAKE

46.M1091303  
HINGE:BRAKE

50.M1091308  
(x2)  
TORSION SPRING:  
UPPER



56.M1091318  
HOLDER:SHAFT:P  
AWL:MIDDLE

47.M1091305  
(x2)  
PAWL:LOCK:COVE  
R:UPPER

49.M1091307  
LEVER:COVER:UP  
PER

42.M1091257  
SUPPORTING PLA  
TE:COVER:UPPER

57.M1091319  
SHAFT:LOCK:UPP  
ER

44.M1091301  
COVER:WIRE:BRA  
KE

52.M1091311  
PLATE:SAFETY S  
WITCH:COVER:UP  
PER

48.M1091306  
(x4)  
KEY:TONER CART  
RIDGE:NO.1

58.M1091322  
PLATE:SHUTTER:T  
ONER

55.M1091315  
COIL SPRING:PLA  
TE

60.M1091325  
SHAFT:COVER:MI  
DDLE

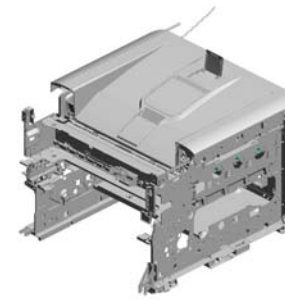
43.M1091259  
(x4)  
COIL SPRING:TON  
ER CARTRIDGE

53.M1091313  
WIRE:LOCK:COVE  
R:UPPER

59.M1091323  
COIL SPRING:SHU  
TTER:LOCK

54.M1091314  
SHAFT:SHUTTER:  
PULLEY

# U014 MAIN FRAME



- 68.M1091338 (x4) PLATE:COIL SPRING:PCDU
- 66.M1091334 (x4) BRACKET:TONER BOTTLE:CLAMP
- 79.M1091361 DECAL:PLATE:COVER:RIGHT
- 65.M1091332 DECAL:TONER CARTRIDGE:Y
- 75.M1091356 DECAL:TONER CARTRIDGE:M

80.M1091363  
DECAL:PLATE:COVER:LEFT



74.M1091355  
HOLDER:INTERMEDIATE TRANSFER:LEFT REAR



76.M1091358 (x2)  
PAWL:LOCK:MIDDLE



72.M1091348 (x2)  
PROTECTION:SUPPORTER



71.M1091346  
SUPPORTER:INTERMEDIATE TRANSFER:LEFT FRONT



70.M1091342  
SUPPORTER:INTERMEDIATE TRANSFER:RIGHT FRONT



69.M1091341  
HOLDER:INTERMEDIATE TRANSFER:RIGHT FRONT



64.M1091331  
BRACKET:DRAWER:FUSING



77.M1091359  
DECAL:TONER CARTRIDGE:C



73.M1091351  
HOLDER:INTERMEDIATE TRANSFER:RIGHT REAR



62.M1091327  
BRACKET:SHUTTER:WIRE



67.M1091335  
COVER:FLAT CABLE:LED



78.M1091360  
DECAL:TONER CARTRIDGE:BK



63.M1091330  
BRACKET:SOLENOID:SHUTTER

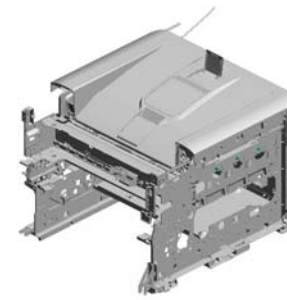


61.M1091326  
HINGE:COVER:MIDDLE



# U014 MAIN FRAME

90.M1091382 HINGE:COVER:LEFT UPPER  
 92.M1091395 COVER:UPPER  
 98.M1094496 SLOPE:COVER:UPPER  
 83.M1091366 (x2) HINGE:COVER:UPPER  
 100.M1094498 END FENCE:EXIT



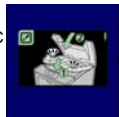
81.M1091364 DECAL:OPERATE:COVER



89.M1091379 LEVER:COVER:MIDDLE



82.M1091365 DECAL:CAUTION:COVER



86.M1091369 (x2) TORSION SPRING:PAWL:UPPER



84.M1091367 SHAFT:PAWL:MIDDLE



85.M1091368 (x2) TORSION SPRING:PAWL:MIDDLE



95.M1091593 COVER:MIDDLE



99.M1094497 BASE:END FENCE:EXIT



93.M1091540 SOUND PROOFING MATERIAL:COVER:UPPER:1



96.M1091949 GROUND WIRE:LEAD HEAD



97.M1094491 HOLDER:BASE:END FENCE:EXIT



87.M1091376 GROUND PLATE:LEAD:RIGHT REAR



94.M1091541 SOUND PROOFING MATERIAL:COVER:UPPER:2



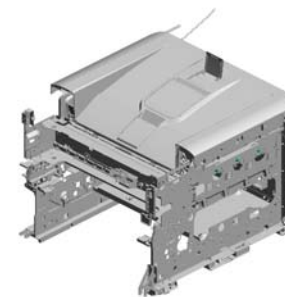
91.M1091393 PROTECTION:SLIDER:LATCH



88.M1091377 (x2) GUIDE:PCDU:BK



# U014 MAIN FRAME



- 114.M1095844 HEAT INSULATION :FUSING SUB-UNIT :LEFT REAR
- 105.M1095820 DUCT:FUSING SUB-UNIT
- 115.M1095846 HEAT INSULATION :COVER:UPPER
- 116.M1095847 HEAT INSULATION :COVER:MIDDLE
- 117.M1095850 HEAT INSULATION :FUSING SUB-UNIT :PCDU

119.M1095852  
HEAT INSULATION  
:FUSING SUB-UNIT  
:LOWER LEFT

120.M1095853  
HEAT INSULATION  
:FUSING SUB-UNIT  
:USED TONER

108.M1095826  
CONNECTING SPRING:TRANSFER:SE  
COND

109.M1095827  
(x2)  
COMPRESSION SPRING:TRANSFER:SE  
COND

104.M1095770  
(x2)  
TERMINAL:HIGH VOLTAGE

118.M1095851  
(x2)  
HEAT INSULATION  
:FUSING SUB-UNIT  
:LOWER

113.M1095843  
HEAT INSULATION  
:FUSING SUB-UNIT  
:RIGHT REAR

110.M1095830  
HOLDER:LINK:COVER:FRONT

101.M1095056  
LINK:COVER:FRONT

112.M1095839  
SIDE PLATE:LINK:UPPER

106.M1095824  
(x2)  
TERMINAL:SPRING  
PLATE:ON-OFF:A

107.M1095825  
(x2)  
TERMINAL:SPRING  
PLATE:ON-OFF:B

103.M1095317  
PCB:TERMINAL:ID  
CHIP

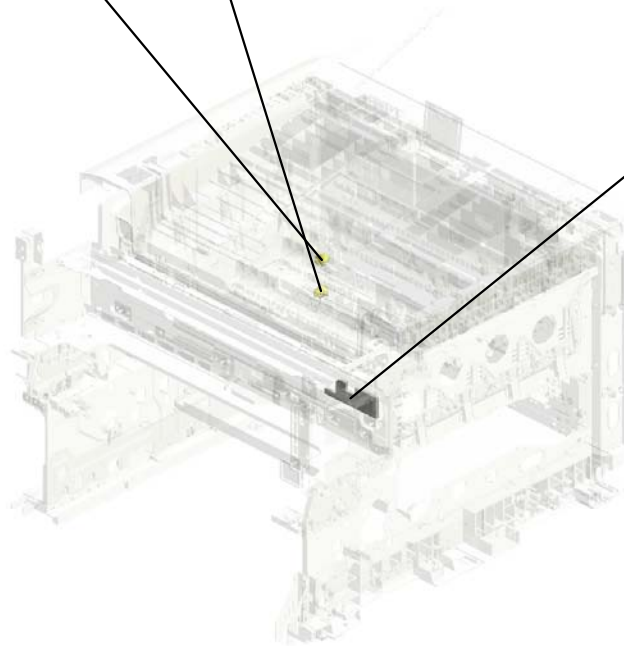
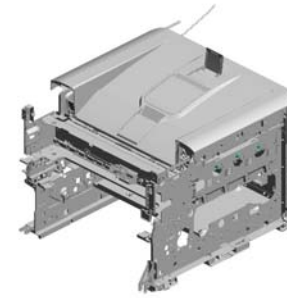
111.M1095833  
HOLDER:PCB:TONER CARTRIDGE

102.M1095057  
LINK:COVER:UPPER

U014  
MAIN FRAME

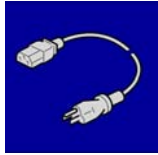
122.M1096429  
PULLEY:TRANSPO  
RT SCREW:DUCT:  
TONER RECYCLIN  
G SECTION

123.M1096445  
PULLEY:DRIVE SU  
B-UNIT:COLLECTI  
ON BOTTLE:USED  
TONER



121.M1095855  
HEAT INSULATION  
:FUSING SUB-UNIT  
:RIGHT REAR:2

## ACCESSORIES



1.G1665430  
POWER SUPPLY CORD -250V 10A E  
U



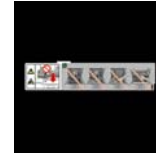
2.M1011301  
PLATE:LOGO:RIC



3.M1091284  
COVER:REAR:PREVENTFENCE:M10  
9



4.M1091552  
DECAL:NAME PLATE:M109:EXP



5.M1091571  
DECAL:CAUTION:TRANSFER BELT



6.M1092832  
DECAL:CAUTION:INKJET:MANUAL F  
EED:EXP

## SPECIAL TOOLS



1.B6455010  
SD-CARD:ASS'Y



2.B6455020  
SD-CARD:SERVICE:1GB:ASS'Y

## Exclusive Parts

Number	Part Name	Group	ID
A2672869	GEAR - 16Z	U004_S001	5
AA043601	TIMING BELT - B40S2M118	U014	16
AA080254	BUSHING - M4	U008	9
AA080346	BUSHING:FLANGE TYPE:DIA6	U008	10
AA082101	BUSHING - 6X10X6	U004	6
		U008	11
		U011	6
		U012	12
		U012_S001	12
AA082150	PLAIN SHAFT BEARING:M6	U010_S001	9
AA143520	SHOULDER SCREW - M3	U009	11
AA143592	SCREW- M4X6	U013	10
AE030074	BALL BEARING:DIA17XDIA26X5	U009	12
AF031060	BY-PASS FEED ROLLER	U004	7
AF033008	FRICTION PAD:10X50	U004_S002_S001	8
AW010143	PHOTO REFLECTION SENSOR:PS R11TL1R-C	U008	12
AW020198	PHOTOINTERRUPTOR:LG2A14NL 1	U004	9
		U008	13
		U010_S001	10
		U013	11
AW100138	THERMOPILE	U014	17
AW110101	THERMOSTAT:LOWER	U009	13
AW110102	THERMOSTAT:MIDDLE:UPPER	U009	14
AW140016	TEMPERATURE & HUMIDITY SENSOR	U013	12
AX640199	FAN:MM80:25MM:DC 2.16W	U013	13
AZ300060	POWER PACK:D:AT/AP-C2	U013	14
B2234552	BUSHING:DIA4	U011	7
B6455010	SD-CARD:ASS'Y	SPECIAL TOOLS	1
B6455020	SD-CARD:SERVICE:1GB:ASS'Y	SPECIAL TOOLS	2
D0094485	BUSHING - GATE	U008	14
D0392752	DISC:SIDE FENCE	U004_S002	10
D0392754	SPRING:SIDE FENCE	U004_S002	11
D0392799	RETAINING RINGS-C:DIA4	U004	12
D0394542	DRIVEN ROLLER:ENTRANCE:DUPLEX	U011	8
D1054168	LEVER:LOCK:PRESSURE	U009	15

Number	Part Name	Group	ID
G0205626	PUSH SWITCH	U013	15
G0292657	COMPRESSION SPRING	U004	13
G0523103	PAPER FEED ROLLER	U004	14
G0523114	SHEET CASSETTE	U004_S001	15
G1022789	STOPPER:PHOTOINTERRUPTOR	U013	16
G1045141	KNOB SCREW:M3	U013	17
G1085107	LEFT GUIDE 1	U013_S001	18
G1085108	RIGHT GUIDE 1	U013_S001	19
G1634360	SPRING:LEVER:LOCK:RIGHT	U009	16
G1634364	SPRING:LEVER:LOCK:LEFT	U009	17
G1634460	ROLLER:DRIVEN:EXIT	U010_S001	11
G1634467	ROLLER:DRIVEN:DUPLEX	U010_S001	12
G1634479	GEAR:IDLER:EXIT	U010_S001	13
G1634489	GEAR:EXIT	U010_S001	14
G1634492	DC SOLENOID:PRESS FIT	U010_S001	15
		U014	18
G1661047	SPACER- RUBBER FOOT	U014	19
G1661048	RUBBER FOOT	U014	20
G1661087	SPRING:CUSHION:FRAME:UPPER	U014	21
G1661089	PIN:PLATE:DEVELOPMENT UNIT	U014	22
G1664288	RIGHT COLLAR- STRIPPER PLATE	U009	18
G1664289	LEFT COLLAR- STRIPPER PLATE	U009	19
G1664310	DECAL:WARNING (HIGH TEMPERATURE):1:CUD	U009	20
G1665430	POWER SUPPLY CORD -250V 10A EU	ACCESSORIES	1
G1682768	ARM - TARY BOTTOM PLATE	U004_S001	16
GA001086	DECAL:INSERT SUB-UNIT:TRANSFER/SEPARATION UNIT	U008	15
GA043031	SYNCHRONOUS BELT:S2M:4X316	U011	9
GA043040	SYNCHRONOUS BELT:FUSING:S3M	U012	13
GA043041	SYNCHRONOUS BELT:T210	U012	14
GA060088	COIL SPRING:PRESSURE	U009	21
GA060089	TENSION SPRING:REGISTRATION ROLLER	U008	16
GA060098	TENSION SPRING:SHUTTER:DUC T:TONER RECYCLING SECTION	U007	2



## Exclusive Parts

Number	Part Name	Group	ID
GA063093	COMPRESSION SPRING:PRESSURE:TRANSFER ROLLER:SECOND	U008	17
GA066035	TORSION SPRING:RIGHT:GUIDE PLATE:TRANSFER/SEPARATION	U008	18
GA066036	TORSION SPRING:LEFT:GUIDE PLATE:TRANSFER/SEPARATION	U008	19
GA066050	TORSION SPRING:FUSING EXIT:LEFT	U009	22
GA066051	TORSION SPRING:FUSING EXIT:RIGHT	U009	23
GA066052	TORSION SPRING:STRIPPER PLATE:LEFT	U009	24
GA066053	TORSION SPRING:STRIPPER PLATE:RIGHT	U009	25
GA080042	PLAIN SHAFT BEARING:REGISTRATION ROLLER	U008	20
GA082010	BUSHING:DIA6:DIA10:9	U004	17
GA146122	SHAFT:TRANSPORT:CONNECTING	U012	15
GA146123	SHAFT:TRANSPORT:ON-OFF	U012	16
GA148026	SHAFT:PULLEY:DUPLEX	U011	10
GA151060	SEAL:TRANSPORT SCREW:DUCT:TONER RECYCLING SECTION	U007	3
GA151061	SEAL:DUCT:TONER RECYCLING SECTION:INTERMEDIATE TRANSFER	U007	4
GA151062	SEAL:DUCT:TONER RECYCLING SECTION:PCU	U007	5
GA151063	SEAL:SHUTTER:DUCT:TONER RECYCLING SECTION	U007	6
GB010141	GEAR:TRANSPORT:IDLER:MOTOR:OUTER	U012	17
GB010142	GEAR:FUSING:MOTOR:COUPLING	U012	18
GB011088	GEAR:TRANSPORT:REGISTRATION:COUPLING	U008	21
GB011089	GEAR:TRANSPORT:REGISTRATION:SHAFT	U008	22
GB011091	GEAR:TRANSFER:DRIVE:COUPLING	U012	19

Number	Part Name	Group	ID
	G		
GB011140	GEAR:CLUTCH:OUTPUT:REGISTRATION	U012	20
GB011141	GEAR:TRANSPORT:IDLER:1	U012	21
GB011142	GEAR:TRANSPORT:CLUTCH:IDLER	U012	22
GB011143	GEAR:CLUTCH:OUTPUT:ON-OFF	U012	23
GB011144	GEAR:CLUTCH:OUTPUT:CONNECTING	U012	24
GB011145	GEAR:TRANSPORT:IDLER:OUTER	U012	25
GB011146	GEAR:TRANSPORT:CLUTCH:IDLER:CONNECTING	U012	26
GB011147	GEAR:TRANSPORT:IDLER:PAPER FEED	U012	27
GB011149	GEAR:TRANSPORT:IDLER:BASE:1	U004	18
		U011	11
		U012	28
GB011151	GEAR:PULLEY:DUPLEX:2	U011	12
GB011152	GEAR:TRANSPORT:COUPLING	U012	29
GB011153	GEAR:TRANSPORT:SLOW DOWN:DUPLEX:2	U012	30
GB011154	GEAR:TRANSPORT:SLOW DOWN:DUPLEX:1	U012	31
GB011155	GEAR:TRANSPORT:SLOW DOWN:INNER:1	U012	32
GB011156	GEAR:TRANSPORT:IDLER:DUPLICX:EXIT	U012	33
GB011157	GEAR:TRANSPORT:CAM:BASE	U012	34
GB011158	GEAR:TRANSPORT:IDLER:DUPLICX:MIDDLE	U012	35
GB011159	GEAR:TRANSPORT:SLOW DOWN:INNER:2	U012	36
GB011166	GEAR:PULLEY:DUPLEX	U011	13
GB013118	GEAR:PRESSURE ROLLER:Z31	U009	26
GB013119	GEAR:DRIVE:Z21	U009	27
GB013120	GEAR:IDLER:PRESSURE:Z20	U009	28
GB013121	GEAR:IDLER:EXIT:Z23	U009	29
GB013122	GEAR:FUSING:COUPLING	U012	37

## Exclusive Parts

Number	Part Name	Group	ID
GB013123	GEAR:SUPPLY:ELECTROMAGNET IC CLUTCH:YELLOW	U012	38
GB013126	GEAR:SUPPLY:ELECTROMAGNET IC CLUTCH	U012	39
GB013127	GEAR:IDLER:TONER SUPPLY:CK	U012	40
GB013128	GEAR:TONER SUPPLY:IDLER:YM	U012	41
GB013131	GEAR:FUSING:COUPLING:2	U012	42
GB013132	GEAR:COUPLING:Y:SUPPLY	U012	43
GB013133	GEAR:IDLER:Y:SUPPLY	U012	44
GB017119	GEAR:TRANSFER:DRIVE	U012	45
GB017135	GEAR:SUPPLY:PULLEY:2	U012	46
GB017138	GEAR:TRANSPORT:SLOW DOWN: OUTER	U012	47
GB017139	GEAR:ON-OFF:SLOW DOWN:2	U012	48
GB017140	GEAR:ON-OFF:SLOW DOWN:1	U012	49
GB017141	GEAR:TRANSPORT:SLOW DOWN: PAPER FEED	U012	50
GB017142	GEAR:TRANSPORT:IDLER:MANUAL FEED	U012	51
GB017144	GEAR:FUSING:DRIVE:1	U012	52
GB017145	GEAR:FEELER:HOME POSITION SENSOR	U004	19
GB017146	GEAR:FUSING:PULLEY:1	U012	53
GD039004	AGITATOR:DUCT:TONER RECYCLING SECTION	U007	7
GD043013	TRANSPORT SCREW:DUCT:TONER RECYCLING SECTION	U007	8
GE020013	PRESSURE ROLLER:DIA35.2	U009	30
GF013001	BOTTOM PLATE PAD	U004_S001	20
GF013002	PAD:MANUAL FEED	U004_S002_S001	21
GF020062	REGISTRATION ROLLER:DRIVE	U008	23
GF020063	TRANSPORT ROLLER:CONNECTING	U008	24
GF020064	DRIVEN ROLLER:TRANSPORT:DIA16	U008	25
GF020065	TRANSPORT ROLLER:DUPLEX:MI DDLE	U008	26
GF020066	TRANSPORT ROLLER:DUPLEX:EX	U008	27

Number	Part Name	Group	ID
	IT		
GF021006	REGISTRATION ROLLER:DRIVEN	U008	28
GW010007	PHOTO REFLECTION SENSOR:EXIT	U008	29
GW010009	DENSITY SENSOR	U013	20
GW100022	THERMISTOR:PRESSURE	U009	31
GW100023	THERMISTOR:FLAT BELT-FUSING	U009	32
GX062148	DC BRUSHLESS MOTOR:TRANSFER:15W	U012	54
GX062149	DC BRUSHLESS MOTOR:PHOTOCONDUCTOR:BLACK:25W	U012	55
GX062150	DC BRUSHLESS MOTOR:PHOTOCONDUCTOR:COLLAR:43W	U012	56
GX062151	DC BRUSHLESS MOTOR:TRANSPORT:10W	U012	57
GX062152	DC BRUSHLESS MOTOR:FUSING:25W	U012	58
GX202123	ELECTROMAGNETIC CLUTCH:SUPPLY:0.25NM	U012	59
GX202124	ELECTROMAGNETIC CLUTCH:0.35NM	U012	60
GX202125	ELECTROMAGNETIC CLUTCH:0.45NM	U012	61
GX202126	ELECTROMAGNETIC CLUTCH:PAPER FEED:0.45NM	U012	62
GX202127	ELECTROMAGNETIC CLUTCH:MANUAL FEED:0.25NM	U012	63
GX450022	HEATER:223V:507W:593W:INFRARED	U009	33
GX640025	DC FAN MOTOR:MM60:25MM:24V	U013	21
GZ230068	POWER SUPPLY UNIT:EU/AA/CHN:227W	U013	22
GZ300005	POWER PACK	U013	23
J0177341	COIL SPRING:PRESSURE ROLLER:WHITE	U011	14
M0185754	SCREW	U013	24
M0963989	RESISTOR:TRANSFER/SEPARATION	U008	30
		U013	25

## Exclusive Parts

Number	Part Name	Group	ID
M0963994	RESISTOR:EARTH:EXIT:DISCHARGE SECTION	U010_S001	16
M1011301	PLATE:LOGO:RIC	ACCESSORIES	2
M1091060	GUIDE:PCU:RIGHT	U014	23
M1091063	BRACKET:WIRE:BRAKE	U014	24
M1091064	KEY:FUSING UNIT	U014	25
M1091065	GEAR:IDLER:MIDDLE	U014	26
M1091066	HOLDER:SUPPLY:DRIVE	U014	27
M1091067	CUSHION:BRAKE:COVER:FRONT	U014	28
M1091074	PULLEY:BRAKE:COVER:FRONT	U014	29
M1091075	GUIDE:PULLEY:BRAKE	U014	30
M1091076	GUIDE:WIRE:BRAKE	U014	31
M1091078	WIRE:BRAKE:COVER:FRONT	U014	32
M1091079	COVER:WIRE:PULLEY	U014	33
M1091083	FIX STAND:LEFT	U014	34
M1091090	SLIDER:SHUTTER:TONER	U014	35
M1091101	BRACKET:SUPPLY:SYNCHRONOUS BELT:ASS'Y	U012	64
M1091112	BRACKET:TRANSPORT:INNER:FRONT	U012	65
M1091113	BRACKET:GUIDE PLATE:REGISTRATION:CLUTCH	U012	66
M1091116	BRACKET:TRANSPORT	U012	67
M1091117	BRACKET:TRANSPORT:MOTOR:ASS'Y	U012	68
M1091118	TIGHTENER:FUSING	U012	69
M1091120	BRACKET:FUSING:MOTOR:ASS'Y	U012	70
M1091121	BRACKET:TRANSFER:DRIVE:ASS'Y	U012	71
M1091124	BRACKET:FUSING:DRIVE:COUPLING	U012	72
M1091130	COMPRESSION SPRING:CLAMP:TONER CARTRIDGE	U014	36
M1091131	LEVER:TONER CARTRIDGE	U014	37
M1091132	LINK:STOPPER:COVER:FRONT	U011	15
M1091133	STEPPED SCREW:M3X:3.2	U011	16
M1091134	STEPPED SCREW:M4X:4.4	U011	17
M1091135	BRACKET:DRIVE:TONER SUPPLY:	U012	73

Number	Part Name	Group	ID
	ASS'Y		
M1091136	DRIVE UNIT:PHOTOCONDUCTOR:ASS'Y	U012_S001	74
M1091145	BRACKET:FUSING:DRIVE:ASS'Y	U012	75
M1091147	GROUND PLATE:TERMINAL:TONE R CARTRIDGE	U014	38
M1091150	BRACKET:DUPLEX	U012	76
M1091157	BRACKET:DUPLEX:GUIDE PLATE	U012	77
M1091160	SPACER:FUSING:SYNCHRONOUS BELT	U012	78
M1091161	BRACKET:FUSING:GEAR	U012	79
M1091174	BRACKET:DUPLEX:2	U012	80
M1091176	BRACKET:TRANSPORT:2	U012	81
M1091177	TENSION SPRING:BRAKE:COVER:FRONT:33.5N	U014	39
M1091178	PULLEY:DUPLEX:1	U011	18
M1091179	TIGHTENER:DUPLEX:COIL SPRING	U011	19
M1091181	SPACER:DIA12:0.13MM	U012	82
M1091188	BRACKET:DUPLEX:SWIVEL:ARM:2	U012	83
M1091189	PLAIN SHAFT BEARING:DUPLEX	U011	20
M1091192	PULLEY:TONER SUPPLY:DRIVE	U012	84
M1091193	GEAR:MECHANICAL ROLLER CLUTCH	U012	85
M1091195	BRACKET:SWIVEL:MAIN:GUIDE PLATE	U012	86
M1091196	BRACKET:TRANSPORT:ARM:ASS'Y	U012	87
M1091198	PULLEY:FUSING:COUPLING	U012	88
M1091211	COVER:RIGHT:ASS'Y	U001_S001	6
M1091224	LOUVER:MM60:OUTER	U001	7
M1091225	LOUVER:MM60:INNER	U001	8
M1091226	FILTER:TVOC	U001	9
M1091255	PLATE:TONER CARTRIDGE:COVER:UPPER	U014	40
M1091256	BAND:COVER:UPPER	U014	41
M1091257	SUPPORTING PLATE:COVER:UPPER	U014	42

## Exclusive Parts

Number	Part Name	Group	ID
M1091259	COIL SPRING:TONER CARTRIDGE	U014	43
M1091260	COVER:LEFT	U001	10
M1091261	LOUVER:MM80	U001	11
M1091263	SEAL:COVER:GRIP	U001	12
		U001_S001	12
M1091264	SEAL:COVER:LEFT	U001	13
M1091269	GROUND PLATE:COVER:PAPER EXIT SUB-UNIT	U001	14
M1091270	COVER:PAPER EXIT SUB-UNIT	U001	15
M1091272	INNER COVER:EXIT	U001	16
M1091273	COVER:LOWER:EXIT	U001	17
M1091274	GUIDE:HARNESS:PAPER EXIT SUB-UNIT	U001	18
M1091278	HOLDER:CONNECTING:PAPER EXIT SUB-UNIT:A	U001	19
M1091280	COVER:REAR:M109	U001	20
M1091281	COVER:REAR:CASSETTE:M109	U001	21
M1091282	COVER:MEMORY	U001	22
M1091283	COVER:INTERFACE:M109	U001	23
M1091284	COVER:REAR:PREVENTFENCE:M109	ACCESSORIES	3
M1091287	COVER:REAR:CONNECTOR	U001	24
M1091294	SHEET:COVER:REAR:CASSETTE	U001	25
M1091295	SEAL:COVER:REAR:CASSETTE	U001	26
M1091296	MAGNETIC:COVER:REAR	U001	27
M1091297	SPACER:COVER:REAR:CASSETTE	U001	28
M1091298	SEAL:COVER:MEMORY	U001	29
M1091299	SEAL:COVER:MEMORY:MIDDLE	U001	30
M1091301	COVER:WIRE:BRAKE	U014	44
M1091302	PIN:BRAKE	U014	45
M1091303	HINGE:BRAKE	U014	46
M1091305	PAWL:LOCK:COVER:UPPER	U014	47
M1091306	KEY:TONER CARTRIDGE:NO.1	U014	48
M1091307	LEVER:COVER:UPPER	U014	49
M1091308	TORSION SPRING:UPPER	U014	50
M1091310	TORSION SPRING:MIDDLE:LEFT	U014	51
M1091311	PLATE:SAFETY SWITCH:COVER:UPPER	U014	52

Number	Part Name	Group	ID
M1091313	WIRE:LOCK:COVER:UPPER	U014	53
M1091314	SHAFT:SHUTTER:PULLEY	U014	54
M1091315	COIL SPRING:PLATE	U014	55
M1091318	HOLDER:SHAFT:PAWL:MIDDLE	U014	56
M1091319	SHAFT:LOCK:UPPER	U014	57
M1091322	PLATE:SHUTTER:TONER	U014	58
M1091323	COIL SPRING:SHUTTER:LOCK	U014	59
M1091325	SHAFT:COVER:MIDDLE	U014	60
M1091326	HINGE:COVER:MIDDLE	U014	61
M1091327	BRACKET:SHUTTER:WIRE	U014	62
M1091330	BRACKET:SOLENOID:SHUTTER	U014	63
M1091331	BRACKET:DRAWER:FUSING	U014	64
M1091332	DECAL:TONER CARTRIDGE:Y	U014	65
M1091334	BRACKET:TONER BOTTLE:CLAMP	U014	66
M1091335	COVER:FLAT CABLE:LED	U014	67
M1091338	PLATE:COIL SPRING:PCDU	U014	68
M1091341	HOLDER:INTERMEDIATE TRANSFER:RIGHT FRONT	U014	69
M1091342	SUPPORTER:INTERMEDIATE TRANSFER:RIGHT FRONT	U014	70
M1091346	SUPPORTER:INTERMEDIATE TRANSFER:LEFT FRONT	U014	71
M1091348	PROTECTION:SUPPORTER	U014	72
M1091351	HOLDER:INTERMEDIATE TRANSFER:RIGHT REAR	U014	73
M1091355	HOLDER:INTERMEDIATE TRANSFER:LEFT REAR	U014	74
M1091356	DECAL:TONER CARTRIDGE:M	U014	75
M1091358	PAWL:LOCK:MIDDLE	U014	76
M1091359	DECAL:TONER CARTRIDGE:C	U014	77
M1091360	DECAL:TONER CARTRIDGE:BK	U014	78
M1091361	DECAL:PLATE:COVER:RIGHT	U014	79
M1091363	DECAL:PLATE:COVER:LEFT	U014	80
M1091364	DECAL:OPERATE:COVER	U014	81
M1091365	DECAL:CAUTION:COVER	U014	82
M1091366	HINGE:COVER:UPPER	U014	83
M1091367	SHAFT:PAWL:MIDDLE	U014	84
M1091368	TORSION SPRING:PAWL:MIDDLE	U014	85

## Exclusive Parts

Number	Part Name	Group	ID
M1091369	TORSION SPRING:PAWL:UPPER	U014	86
M1091376	GROUND PLATE:LED:RIGHT REAR	U014	87
M1091377	GUIDE:PCDU:BK	U014	88
M1091379	LEVER:COVER:MIDDLE	U014	89
M1091382	HINGE:COVER:LEFT UPPER	U014	90
M1091393	PROTECTION:SLIDER:LATCH	U014	91
M1091395	COVER:UPPER	U014	92
M1091397	COVER:PANEL:LOWER:M109	U001	31
M1091401	OPERATION PANEL:EXP:ASS'Y	U002	3
M1091540	SOUND PROOFING MATERIAL:COVER:UPPER:1	U014	93
M1091541	SOUND PROOFING MATERIAL:COVER:UPPER:2	U014	94
M1091552	DECAL:NAME PLATE:M109:EXP	ACCESSORIES	4
M1091571	DECAL:CAUTION:TRANSFER BELT	ACCESSORIES	5
M1091593	COVER:MIDDLE	U014	95
M1091900	HINGE:LEFT:LED HEAD	U003	3
M1091901	TORSION SPRING:LEFT:LED HEAD	U003	4
M1091902	TORSION SPRING:RIGHT:LED HEAD	U003	5
M1091903	LINK:LEFT:LED HEAD	U003	6
M1091904	LINK:RIGHT:LED HEAD	U003	7
M1091907	BOSS:HINGE:RIGHT:LED HEAD	U003	8
M1091908	PIN:FIX:LINK:LED HEAD:1	U003	9
M1091909	PIN:FIX:LINK:LED HEAD:2	U003	10
M1091910	HOLDER:LED HEAD	U003	11
M1091911	LED HEAD:1200DPI:292.6MM	U003	12
M1091912	GROUND PLATE:LEFT:LED HEAD	U003	13
M1091913	GROUND PLATE:RIGHT:LED HEAD	U003	14
M1091914	COMPRESSION SPRING:LED HEAD	U003	15
M1091916	PIN:EARTH:LED HEAD	U003	16
M1091920	HOLDER:SENSOR:TONER END SENSOR	U003	17
M1091921	GROUND PLATE:SENSOR:TONER END SENSOR	U003	18
M1091930	HINGE:RIGHT:LED HEAD	U003	19

Number	Part Name	Group	ID
M1091931	TORSION SPRING:LEFT:LED HEAD:K	U003	20
M1091932	PIN:EARTH:LED HEAD:K	U003	21
M1091933	TORSION SPRING:RIGHT:LED HEAD:K	U003	22
M1091940	PIN:FIX:HINGE:LED HEAD	U003	23
M1091941	STOPPER:TORSION SPRING:LED HEAD	U003	24
M1091949	GROUND WIRE:LED HEAD	U014	96
M1092552	PAPER FEED:PAPER TRAY:250TYPE:EXP:ASS'Y	U004_S001	22
M1092556	STAY:PAPER FEED	U004	23
M1092557	STAY:COVER	U004	24
M1092559	PLAIN SHAFT BEARING:ASS'Y	U004	25
M1092562	SHAFT:PAPER FEED	U004	26
M1092564	FEELER:PAPER END SENSOR	U004	27
M1092566	SPRING PLATE:PAPER TRAY:ASS'Y	U004	28
M1092574	SHEET:HOLDER:PAPER TRAY	U004_S001	29
M1092577	TRAY BOTTOM PLATE:250TYPE	U004_S001	30
M1092579	SIDE FENCE:LEFT:ASS'Y	U004_S001	31
M1092586	SERVICE PARTS:PRESSURE PLATE:AUXILIARY:BASE:ASS'Y	U004_S001_S001	32
M1092587	SIDE FENCE:RIGHT:ASS'Y	U004_S001	33
M1092597	COMPRESSION SPRING:TRAY BOTTOM PLATE:AUXILIARY	U004_S001_S001	34
M1092598	HOLDER:COIL SPRING:BASE	U004_S001_S001	35
M1092604	DIAL:PAPER SIZE SENSOR	U004_S001	36
M1092606	LEVER:PAPER VOLUME SENSOR	U004_S001	37
M1092612	DECAL:PAPER SET DIRECTION	U004_S001	38
M1092615	DECAL:INKJET:CAUTION:EXP	U004_S001	39
M1092616	END FENCE:ASS'Y	U004_S001	40
M1092626	LEVER:PAPER SIZE SENSOR BOARD	U004_S001	41
M1092627	TENSION SPRING:TRAY BOTTOM PLATE	U004_S001	42
M1092628	PUSH SWITCH:CASSETTE	U004	43
M1092629	GUIDE:PAPER TRAY:FRONT	U004_S001	44

## Exclusive Parts

Number	Part Name	Group	ID
M1092630	COVER:PAPER TRAY	U004_S001	45
M1092631	GRIP:PAPER TRAY	U004_S001	46
M1092635	SPACER:PAPER SIZE SENSOR BOARD:OUTER	U004	47
M1092636	SPACER:PAPER SIZE SENSOR BOARD:INNER	U004	48
M1092637	SENSOR COVER:PAPER SIZE SENSOR BOARD	U004	49
M1092639	PAPER TRAY:250TYPE:FRONT:GUIDE	U004_S001	50
M1092640	HOLDER:PINION	U004_S001	51
M1092641	SUPPORTER:INTERMEDIATE TRANSFER:RIGHT	U004	52
M1092642	SUPPORTER:INTERMEDIATE TRANSFER:LEFT	U004	53
M1092643	DECAL:EXTENSION TRAY	U004_S001	54
M1092647	DECAL:DIAL:PAPER SIZE SENSOR:EXP	U004_S001	55
M1092648	PROTECTION:PAPER TRAY	U004_S001	56
M1092652	COMPRESSION SPRING:SEPARATION	U004_S001	57
M1092654	FRICTION PAD:ADHESION	U004_S001	58
M1092801	MANUAL FEED TABLE:ASS'Y	U004_S002	59
M1092804	COVER:PAPER FEED ROLLER:MANUAL FEED	U004	60
M1092807	CAM:BASE:MANUAL FEED:LEFT	U004	61
M1092810	SHAFT:DRIVE:MANUAL FEED	U004	62
M1092812	SHAFT:CAM:BASE:MANUAL FEED	U004	63
M1092820	GUIDE PLATE:MANUAL FEED:LOWER	U004	64
M1092822	SUPPORTING PLATE:MANUAL FEED:LOWER	U004	65
M1092825	FEELER:PAPER END SENSOR:MANUAL FEED	U004	66
M1092832	DECAL:CAUTION:INKJET:MANUAL FEED:EXP	ACCESSORIES	6
M1092834	COVER:MANUAL FEED TABLE	U004_S002	67
M1092835	COVER:EXTENSION TRAY:MANUAL FEED	U004_S002	68

Number	Part Name	Group	ID
	L FEED		
M1092836	EXTENSION TRAY:MANUAL FEED	U004_S002	69
M1092839	SIDE FENCE:MANUAL FEED:LEFT	U004_S002	70
M1092840	SIDE FENCE:MANUAL FEED:RIGHT	U004_S002	71
M1092842	RACK:SIDE FENCE:MANUAL FEED	U004_S002	72
M1092843	GEAR:SIDE FENCE	U004_S002	73
M1092844	PIN:SIDE FENCE	U004_S002	74
M1092846	HOLDER:COMPRESSION SPRING:EXTENSION TRAY	U004_S002	75
M1092847	COMPRESSION SPRING:BASE:MANUAL FEED	U004_S002	76
M1092848	LINK:MANUAL FEED TABLE	U004_S002	77
M1092850	BASE:MANUAL FEED TABLE:ADHESION	U004_S002_S001	78
M1092852	COVER:HOME POSITION SENSOR	U004	79
M1092853	FEELER:HOME POSITION SENSOR	U004	80
M1092855	CAM:BASE:MANUAL FEED:RIGHT	U004	81
M1092857	SHAFT:BRAKE:CAM	U004	82
M1092858	GROUND WIRE:MANUAL FEED	U004	83
M1092859	SPRING PLATE:BRAKE:CAM	U004	84
M1092864	COMPRESSION SPRING:EXTENSION TRAY	U004_S002	85
M1092865	COMPRESSION SPRING:SEPARATION:MANUAL FEED	U004	86
M1092866	ARM:SHAFT:CAM	U004	87
M1092867	TORSION SPRING:FEELER:HOME POSITION SENSOR	U004	88
M1092868	HOLDER:FRICTION PAD:MANUAL FEED:ADHESION	U004	89
M1093820	CASE:REMOVE PAPER DUST:SUB-ASS'Y	U008	31
M1093852	HOUSING:TRANSPORT	U008	32
M1093855	FEELER:DUPLEX	U008	33
M1093856	TORSION SPRING:FEELER:DUPLEX	U008	34
M1093862	SUPPORTER:GUIDE PLATE:REGISTRATION	U008	35

## Exclusive Parts

Number	Part Name	Group	ID
	TRATION ROLLER:LEFT		
M1093863	SUPPORTER:GUIDE PLATE:REGISTRATION ROLLER:RIGHT	U008	36
M1093872	HOLDER:FEELER:DUPLEX	U008	37
M1093875	COMPRESSION SPRING:DRIVEN ROLLER:DUPLEX:MIDDLE	U008	38
M1093876	COMPRESSION SPRING:DRIVEN ROLLER:DUPLEX:EXIT	U008	39
M1093921	GUIDE PLATE:REGISTRATION ROLLER:DRIVE	U008	40
M1093922	SHEET:REGISTRATION	U008	41
M1093926	LINK:REGISTRATION ROLLER:DRIVE	U008	42
M1093927	PRESSURE PLATE:REGISTRATION ROLLER:DRIVE:RIGHT	U008	43
M1093930	SHEET:REGISTRATION:LONG	U008	44
M1093931	GROUND PLATE:REGISTRATION ROLLER:HOUSING:TRANSPORT	U008	45
M1093932	PRESSURE PLATE:REGISTRATION ROLLER:DRIVE:LEFT	U008	46
M1093933	ROLLER:GUIDE:DIA10	U008	47
		U010_S001	17
M1093934	GROUND PLATE:GUIDE PLATE:REGISTRATION ROLLER:DRIVE	U008	48
M1093935	GROUND WIRE:REGISTRATION ROLLER:GUIDE PLATE	U008	49
M1093937	COVER:HARNESS:DUPLEX	U008	50
M1093953	PLAIN SHAFT BEARING:POSITIONING:REGISTRATION ROLLER:RIGHT	U008	51
M1093954	PLAIN SHAFT BEARING:POSITIONING:REGISTRATION ROLLER:LEFT	U008	52
M1093961	GUIDE PLATE:REGISTRATION ROLLER:DRIVEN	U008	53
M1093967	COMPRESSION SPRING:DRIVEN ROLLER:CONNECTING	U008	54
M1093969	GROUND WIRE:REGISTRATION SENSOR	U008	55

Number	Part Name	Group	ID
M1093981	GUIDE PLATE:TRANSPORT ROLLER:CONNECTING	U008	56
M1093983	ROLLER:GUIDE:DIA5	U008	57
M1093984	GEAR:TRANSPORT:CONNECTING:SHAFT	U008	58
M1093985	GUIDE PLATE:AUXILIARY:TRANSPORT ROLLER:CONNECTING:LEFT	U008	59
M1093986	GUIDE PLATE:AUXILIARY:TRANSPORT ROLLER:CONNECTING:RIGHT	U008	60
M1094050	BELT UNIT:ASS'Y	U009_S001	34
M1094115	LEVER:PRESSURE RELEASE:LEFT:ASS'Y	U009	35
M1094116	LEVER:PRESSURE:LEFT	U009	36
M1094124	LEVER:PRESSURE RELEASE:RIGHT:ASS'Y	U009	37
M1094125	LEVER:PRESSURE:RIGHT	U009	38
M1094149	TERMINAL:HEATER	U009	39
M1094180	GUIDE PLATE:EXIT:FUSING	U009	40
M1094181	DECAL:OPERATION SUB-UNIT:GUIDE PLATE	U009	41
M1094184	ROLLER:MIDDLE:FUSING	U009	42
		U011	21
M1094192	STRIPPER PLATE:COAT	U009	43
M1094203	GUIDE PLATE:ENTRANCE:FUSING	U009	44
M1094207	FUSING COVER:LOWER	U009	45
M1094214	FUSING COVER:UPPER	U009	46
M1094216	DECAL:OPERATION:LEVER	U009	47
M1094217	LEVER:LOCK	U009	48
M1094219	BLOCK:FUSING UNIT	U009	49
M1094400	PAPER EXIT UNIT	U010_S001	18
M1094450	GUIDE:EXIT:LOWER	U010_S001	19
M1094451	COIL SPRING:PRESSURE:EXIT:INNER	U010_S001	20
M1094452	GROUND WIRE:EXIT:UPPER	U010_S001	21
M1094453	GEAR:REVERSE:EXIT	U010_S001	22
M1094454	STOPPER:GEAR:REVERSE	U010_S001	23
M1094455	COIL SPRING:PRESSURE:EXIT:OUTER	U010_S001	24

## Exclusive Parts

Number	Part Name	Group	ID
	TER		
M1094456	GUIDE:PLATE:EXIT	U010_S001	25
M1094457	SUPPORTING PLATE:EXIT:UPPER	U010_S001	26
M1094458	GUIDE:PLATE:EXIT:OUTER	U010_S001	27
M1094459	TENSION SPRING:CHANGE:EXIT	U010_S001	28
M1094460	STOPPER:EXIT:EXIT	U010_S001	29
M1094463	ROLLER:PAPER FEED SENSOR	U010_S001	30
M1094465	EXIT ROLLER	U010_S001	31
M1094466	EXIT ROLLER:DRIVEN	U010_S001	32
M1094468	GUIDE PLATE:EXIT:UPPER	U010_S001	33
M1094469	TENSION SPRING:PRESSURE:REVERSE	U010_S001	34
M1094470	BRACKET:ROLLER:EXIT	U010_S001	35
M1094471	FEELER:PAPER FEED SENSOR	U010_S001	36
M1094472	TORSION SPRING:FEELER:PAPER FEED SENSOR	U010_S001	37
M1094473	FEELER:SENSOR:OVERFLOW	U010_S001	38
M1094474	TENSION SPRING:REVERSE:DRIVE	U010_S001	39
M1094475	GATE PAWL:REVERSE EXIT	U010_S001	40
M1094481	SHAFT:SENSOR:OVERFLOW	U010_S001	41
M1094482	GEAR:SLOW DOWN:EXIT	U010_S001	42
M1094483	BRACKET:GEAR:EXIT	U010_S001	43
M1094484	LINK:CHANGE:GATE PAWL:EXIT	U010_S001	44
M1094485	LEVER:CHANGE:DRIVE:EXIT	U010_S001	45
M1094486	LINK:CHANGE:DRIVE:EXIT	U010_S001	46
M1094487	DISCHARGE BRUSH:EXIT	U010_S001	47
M1094488	COVER:SOLENOID:EXIT	U010_S001	48
M1094490	DC SOLENOID:PRESS FIT	U010_S001	49
M1094491	HOLDER:BASE:END FENCE:EXIT	U014	97
M1094492	HOLDER:SENSOR:EXIT	U010_S001	50
M1094493	LEVER:CHANGE:GATE PAWL	U010_S001	51
M1094496	SLOPE:COVER:UPPER	U014	98
M1094497	BASE:END FENCE:EXIT	U014	99
M1094498	END FENCE:EXIT	U014	100
M1094499	GEAR:ENTRANCE:EXIT	U010_S001	52
M1094601	COVER:FRONT	U011	22
M1094603	GUIDE PLATE:REVERSE	U011	23

Number	Part Name	Group	ID
M1094604	TRANSPORT ROLLER:DUPLEX:ENTRANCE	U011	24
M1094606	GROUND WIRE:DUPLEX	U011	25
M1094607	HOLDER:GUIDE PLATE:REVERSE:LEFT	U011	26
M1094608	HOLDER:GUIDE PLATE:REVERSE:RIGHT	U011	27
M1094609	COMPRESSION SPRING:GUIDE PLATE:REVERSE	U011	28
M1094613	KNOB:TRANSPORT ROLLER:DUPLEX	U011	29
M1094618	TENSION SPRING:DRIVEN ROLLER:DUPLEX:ENTRANCE	U011	30
M1094619	SHAFT:LINK:MANUAL FEED TABLE	U011	31
M1094620	HOLDER:GEAR:DUPLEX UNIT:ASSY	U011	32
M1094623	SHEET:DUPLEX:MIDDLE	U011	33
M1094624	SHEET:DUPLEX:EXIT	U011	34
M1094628	HANDLE:COVER:FRONT	U011	35
M1094629	SHAFT:LOCK:COVER:FRONT	U011	36
M1094630	PAWL:LEFT	U011	37
M1094631	TORSION SPRING:LOCK:COVER:FRONT	U011	38
M1094636	HINGE:LOCK:COVER:FRONT	U011	39
M1094640	HINGE:LOCK:COVER:FRONT:LEFT	U011	40
M1094642	SHAFT:HINGE:COVER:FRONT	U011	41
M1094643	DECAL:PICK-UP PAPER JAM:DUPLEX	U011	42
M1094644	SOUND PROOFING MATERIAL:COVER:FRONT:MIDDLE	U011	43
M1094645	SOUND PROOFING MATERIAL:COVER:FRONT:LEFT AND RIGHT	U011	44
M1095052	FEELER:OVERFLOW:SENSOR:COLLECTION BOTTLE	U013	26
M1095056	LINK:COVER:FRONT	U014	101
M1095057	LINK:COVER:UPPER	U014	102
M1095061	CAM:MICRO SWITCH	U012	89



## Exclusive Parts

Number	Part Name	Group	ID
M1095102	PCB:EGB:ASS'Y	U013	27
M1095225	PCB:CTL:EXP:ASS'Y	U013_S001	28
M1095245	PCB:DDR3-DIMM:512MB(32BIT):ASS'Y	U013_S001	29
M1095317	PCB:TERMINAL:IDCHIP	U014	103
M1095321	PCB:TERMINAL:PCDU	U013	30
M1095331	PCB:SENSOR:TONER END SENSOR	U003	25
M1095541	PCB:DCSW	U013	31
M1095750	TENSION SPRING:DENSITY SENSOR	U013	32
M1095752	STOPPER:DENSITY SENSOR	U013	33
M1095753	SEPARATION PLATE:CTL:EGB	U013	34
M1095754	BRACKET:DENSITY SENSOR	U013	35
M1095756	SHAFT:DENSITY SENSOR	U013	36
M1095757	CAM:DENSITY SENSOR:LEFT	U013	37
M1095758	CAM:DENSITY SENSOR:RIGHT	U013	38
M1095759	HOLDER:DENSITY SENSOR	U013	39
M1095760	COMPRESSION SPRING:DENSITY SENSOR	U013	40
M1095761	GUIDE:HARNESS:DENSITY SENSOR	U013	41
M1095770	TERMINAL:HIGH VOLTAGE	U013 U014	42 104
M1095771	COMPRESSION SPRING:PCU:POWER PACK	U013	43
M1095772	HOLDER:TERMINAL:POWER PACK	U013	44
M1095774	HOLDER:TERMINAL:POWER PACK:TRANSFER	U013	45
M1095776	GROUND PLATE:POWER PACK	U013	46
M1095781	BRACKET:INLET	U013	47
M1095784	HOLDER:CLEANER:DENSITY SENSOR	U013	48
M1095785	CLEANER:DENSITY SENSOR	U013	49
M1095786	GUIDE:HARNESS:LEFT LOWER	U013	50
M1095791	COVER:POWER SUPPLY UNIT	U013	51
M1095793	LEVER:DENSITY SENSOR	U013	52
M1095794	STOPPER:LEVER:DENSITY SENSOR	U013	53

Number	Part Name	Group	ID
	OR		
M1095795	COVER:HIGH VOLTAGE:LOWER	U013	54
M1095796	KEYTOP:MAIN SWITCH	U013	55
M1095797	COVER:MAIN SWITCH	U013	56
M1095799	HOLDER:TERMINAL:NEW ARTICLE SENSOR	U013	57
M1095800	COMPRESSION SPRING:NEW ARTICLE SENSOR	U013	58
M1095801	GUIDE:HARNESS:RIGHT LOWER	U013	59
M1095802	SHADEING PLATE:HARNESS	U013	60
M1095804	GUIDE PIN:DENSITY SENSOR:LEADING EDGE	U013	61
M1095805	COIL SPRING:GUIDE PIN	U013	62
M1095807	DUCT:FAN:FUSING	U013	63
M1095810	DUCT:FAN:POWER SUPPLY UNIT	U013	64
M1095813	INSULATING COVER:SEPARATION	U013	65
M1095814	COMPRESSION SPRING:SEPARATION	U013	66
M1095815	GUIDE:HARNESS:FRONT:RIGHT	U013	67
M1095818	SLIDER:MICRO SWITCH	U012	90
M1095819	COMPRESSION SPRING:LINK:SLIDE	U012	91
M1095820	DUCT:FUSING SUB-UNIT	U014	105
M1095824	TERMINAL:SPRING PLATE:ON-OFF:A	U014	106
M1095825	TERMINAL:SPRING PLATE:ON-OFF:B	U014	107
M1095826	CONNECTING SPRING:TRANSFER:SECOND	U014	108
M1095827	COMPRESSION SPRING:TRANSFER:SECOND	U014	109
M1095830	HOLDER:LINK:COVER:FRONT	U014	110
M1095833	HOLDER:PCB:TONER CARTRIDGE	U014	111
M1095838	COMPRESSION SPRING:TRANSFER	U013	68
M1095839	SIDE PLATE:LINK:UPPER	U014	112
M1095840	SHIELDING PLATE:DRIVE UNIT:TRANSFER	U012	92

## Exclusive Parts

Number	Part Name	Group	ID
M1095841	SHIELDING PLATE:CLEANER:DRIVE	U012	93
M1095842	GROUND PLATE:DENSITY SENSOR	U013	69
M1095843	HEAT INSULATION:FUSING SUB-UNIT:RIGHT REAR	U014	113
M1095844	HEAT INSULATION:FUSING SUB-UNIT:LEFT REAR	U014	114
M1095845	SPACER:USED TONER	U007	9
M1095846	HEAT INSULATION:COVER:UPPER	U014	115
M1095847	HEAT INSULATION:COVER:MIDDLE	U014	116
M1095850	HEAT INSULATION:FUSING SUB-UNIT:PCDU	U014	117
M1095851	HEAT INSULATION:FUSING SUB-UNIT:LOWER	U014	118
M1095852	HEAT INSULATION:FUSING SUB-UNIT:LOWER LEFT	U014	119
M1095853	HEAT INSULATION:FUSING SUB-UNIT:USED TONER	U014	120
M1095854	COMPRESSION SPRING:BASE:POWER PACK:2	U013	70
M1095855	HEAT INSULATION:FUSING SUB-UNIT:RIGHT REAR:2	U014	121
M1095857	HEXAGON HEAD TAPPING SCREW:3X10:DIA10	U012	94
M1095858	COMPRESSION SPRING:HVP:TRANSFER:CONNECTING	U013	71
M1095859	LINK:DENSITY SENSOR	U013	72
M1095860	COMPRESSION SPRING:HVP:PCU:CONNECTING	U013	73
M1095862	COVER:USB	U013	74
M1095863	COVER:SD-CARD	U013	75
M1095864	SHEET:HARNESS:LEFT LOWER	U013	76
M1095865	COMPRESSION SPRING:TRANSFER:HVP:2	U013	77
M1095867	SPONGE:POWER SUPPLY UNIT:RIGHT	U013	78

Number	Part Name	Group	ID
M1096010	CLEANING UNIT:INTERMEDIATE TRANSFER:ASS'Y	U006_S001_S001	2
M1096162	ROLLER:FLAT BELT-TRANSFER:FACE FRONT	U006_S001_S001	3
M1096164	PLAIN SHAFT BEARING:ROLLER:FLAT BELT-TRANSFER:FACE FRONT:R	U006_S001_S001	4
M1096165	PLAIN SHAFT BEARING:ROLLER:FLAT BELT-TRANSFER:FACE FRONT:L	U006_S001_S001	5
M1096259	ELECTRODE PLATE:ROLLER:SECOND:2	U008	61
M1096320	COVER:COIL SPRING:PRESSURE:TRANSFER ROLLER:SECOND	U008	62
M1096322	GUIDE:FRONT:TRANSFER ROLLER:SECOND	U008	63
M1096324	SPACER:GUIDE PLATE:TRANSFER/SEPARATION:LEFT	U008	64
M1096329	ELECTRODE PLATE:DISCHARGE:2	U008	65
M1096343	COVER:PAPER FEED SENSOR:FUSING:ENTRANCE	U008	66
M1096350	TERMINAL:BIAS:TRANSFER/SEPARATION SECTION	U008	67
M1096351	TERMINAL:ELECTRODE PLATE:ROLLER:SECOND	U008	68
M1096352	TERMINAL:ELECTRODE PLATE:DISCHARGE	U008	69
M1096353	ELECTRODE PLATE:ROLLER:SECOND:3	U008	70
M1096354	ELECTRODE:ROLLER:SECOND:4	U008	71
M1096361	ELECTRODE PLATE:DISCHARGE:3	U008	72
M1096362	ELECTRODE PLATE:DISCHARGE:5	U008	73
M1096363	ELECTRODE:DISCHARGE:4	U008	74
M1096366	ELECTRODE:EARTH:PAPER FEED SENSOR:FUSING:ENTRANCE	U008	75

## Exclusive Parts

Number	Part Name	Group	ID
M1096367	ELECTRODE:EARTH:HOUSING:TRANSPORT:2	U008	76
M1096368	GUIDE PLATE:TRANSFER/SEPARATION:CONTACT POINT:LEFT LOWER	U008	77
M1096369	GUIDE PLATE:TRANSFER/SEPARATION:CONTACT POINT:RIGHT LOWER	U008	78
M1096370	SPACER:GUIDE PLATE:TRANSFER/SEPARATION:RIGHT	U008	79
M1096374	HOUSING:TORSION SPRING:RIGHT	U008	80
M1096375	ELECTRODE PLATE:EARTH:GUIDE:TRANSFER/SEPARATION	U008	81
M1096379	HOUSING:TORSION SPRING:LEFT	U008	82
M1096380	PLATE:TORSION SPRING:TRANSFER/SEPARATION	U008	83
M1096413	HOLDER:DRIVE SUB-UNIT:DUCT:TONER RECYCLING SECTION	U007	10
M1096417	GEAR:DRIVE SUB-UNIT:DUCT:TONER RECYCLING SECTION	U007	11
M1096422	DUCT:TONER RECYCLING SECTION:LOWER	U007	12
M1096423	DUCT:TONER RECYCLING SECTION:UPPER	U007	13
M1096424	PLAIN SHAFT BEARING:DUCT:TONER RECYCLING SECTION	U007	14
M1096428	GEAR:TRANSPORT SCREW:DUCT:TONER RECYCLING SECTION	U007	15
M1096429	PULLEY:TRANSPORT SCREW:DUCT:TONER RECYCLING SECTION	U014	122
M1096434	SHUTTER:DUCT:TONER RECYCLING SECTION	U007	16
M1096436	JOINT:TRANSPORT SCREW:DUCT:TONER RECYCLING SECTION	U007	17
M1096437	STOPPER:SHUTTER:DUCT:TONER RECYCLING SECTION	U007	18
M1096444	JOINT:DRIVE SUB-UNIT:COLLECTION	U007	19

Number	Part Name	Group	ID
	ON BOTTLE:USED TONER		
M1096445	PULLEY:DRIVE SUB-UNIT:COLLECTION BOTTLE:USED TONER	U014	123
M1096446	PLAIN SHAFT BEARING:DRIVE SUB-UNIT:COLLECTION BOTTLE	U007	20
M1096447	SHAFT:DRIVE SUB-UNIT:COLLECTION BOTTLE:USED TONER:2	U007	21
M1099590	NVRAM:TOTAL COUNTER	U013_S001	79
M8910600	INTERMEDIATE TRANSFER SECTION:MAINTENANCE:ASS'Y	U006_S001	6
M8910620	TRANSFER/SEPARATION UNIT:SECTION:MAINTENANCE:ASS'Y	U008_S001	84
M8920122	PCU:C_EXP:ASS'Y	U005	1
M8920123	PCU:M_EXP:ASS'Y	U005	2
M8920124	PCU:Y_EXP:ASS'Y	U005	3

## Standard Parts



03530040N  
SCREW - M3X4



03530060N  
BIND SCREW - M3X6



03603006N  
SCREW - M3X6



04513008N  
TAPPING SCREW - M3X8



04524010N  
BINDING SELF-TAPPING SCREW:4X10



04543006Q  
TAPPING SCREW - M3X6



04543008Q  
TAPPING SCREW:3X8



04583008N  
HEXAGON HEAD TAPPING SCREW:3X8



04583010N  
HEXAGON HEAD TAPPING SCREW:3X10



04593010N  
BINDING HEAD TAPPING SCREW:3X10



07200025E  
RETAINING RING - M2.5



07200030E  
RETAINING RING - M3



07200040E  
RETAINING RING - M4



07200060E  
RETAINING RING - M6



07250170E  
RETAINING RING C - M17



07330406  
BUSHING - 4X6



08046123  
HEXAGONAL BOLT:W/WASHER:M3X8



08050088  
RETAINING RING - M6



08050089  
RETAINING RING - M4



08050092  
RETAINING RING - 3M



08050100  
RETAINING RING - M2.5



09544008N  
SCREW - M4X8



09573010N  
SCREW:SMALL ROUND/SPRING:3X10



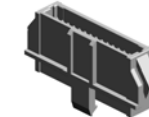
09573012N  
SCREW - M3X12



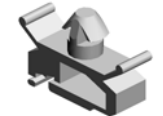
11024473  
CT CONNECTOR - 2P



11024559  
CONNECTOR - 3P



11033657  
CONNECTOR:55482-1319



11050758  
CLAMP:LWSM-0306A

## Standard Parts



11050760  
CLAMP:LWSM-0511A



11050761  
CLAMP:LWS-0511A



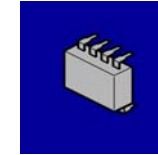
11050762  
CLAMP:LWS-0711A



11050763  
CLAMP:LWS-1211A



12042612  
MICRO SWITCH:D3V-16506-3  
C25



14077812  
EEPROM:BR24T32-W

## PM Part List

Number	Part Name	Num	Group	ID
M1091226	FILTER:TVOC	1	U001	9
M8910600	INTERMEDIATE TRANSFER SECTION:MAINTENANCE:ASS'Y	1	U006_S001	6
M8910620	TRANSFER/SEPARATION UNIT:SECOND:MAINTENANCE:ASS'Y	1	U008_S001	84
M8920122	PCU:C_EXP:ASS'Y	1	U005	1
M8920123	PCU:M_EXP:ASS'Y	1	U005	2
M8920124	PCU:Y_EXP:ASS'Y	1	U005	3

