

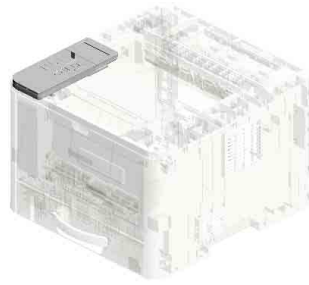
SP 330DN/3710DN
(M0C3/M0C6-NA)
Parts Catalog

Model	Product Code	PC Style
SP 330SN	M0C4	3D
SP 330SFN	M0C5	
SP 3710SF	M0C7	
SP 330DN	M0C3	3D
SP 3710DN	M0C6	
Paper Feed Unit PB1130	M534	3D
ARDF	M2891601	Traditional

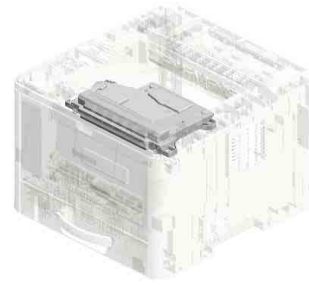
Unit All



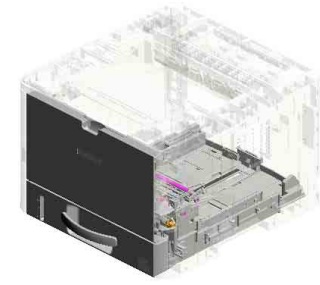
U001
EXTERIOR



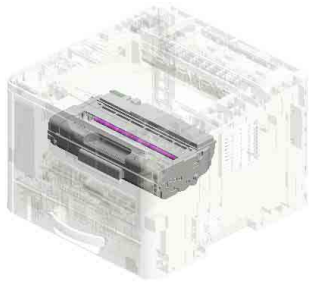
U002
OPERATION



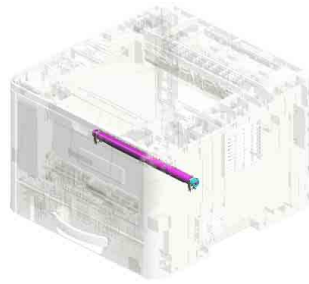
U003
LASER UNIT



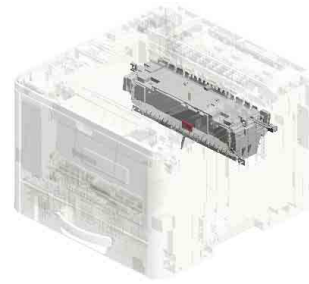
U004
PAPER FEED



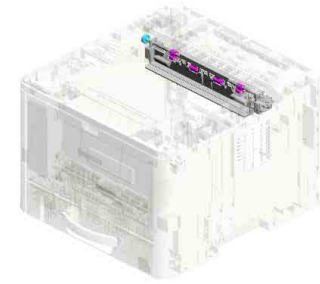
U005
PCU



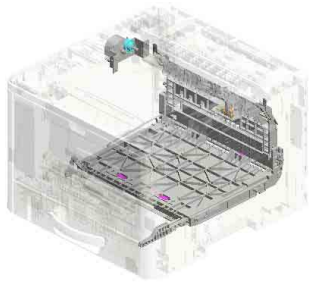
U006
TRANSFER/SEPARATION



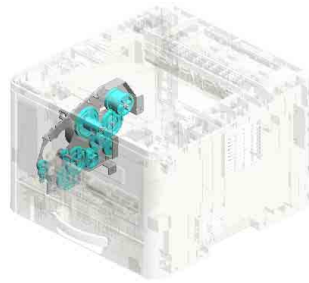
U007
FUSING



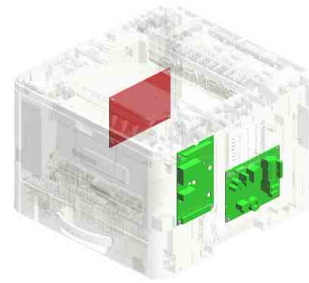
U008
PAPER EXIT



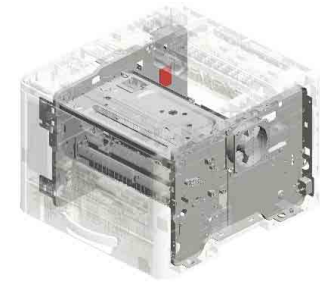
U009
DUPLEX



U010
MAIN DRIVE

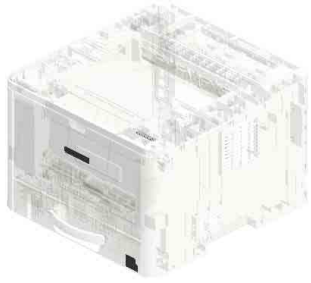


U011
ELECTRICAL



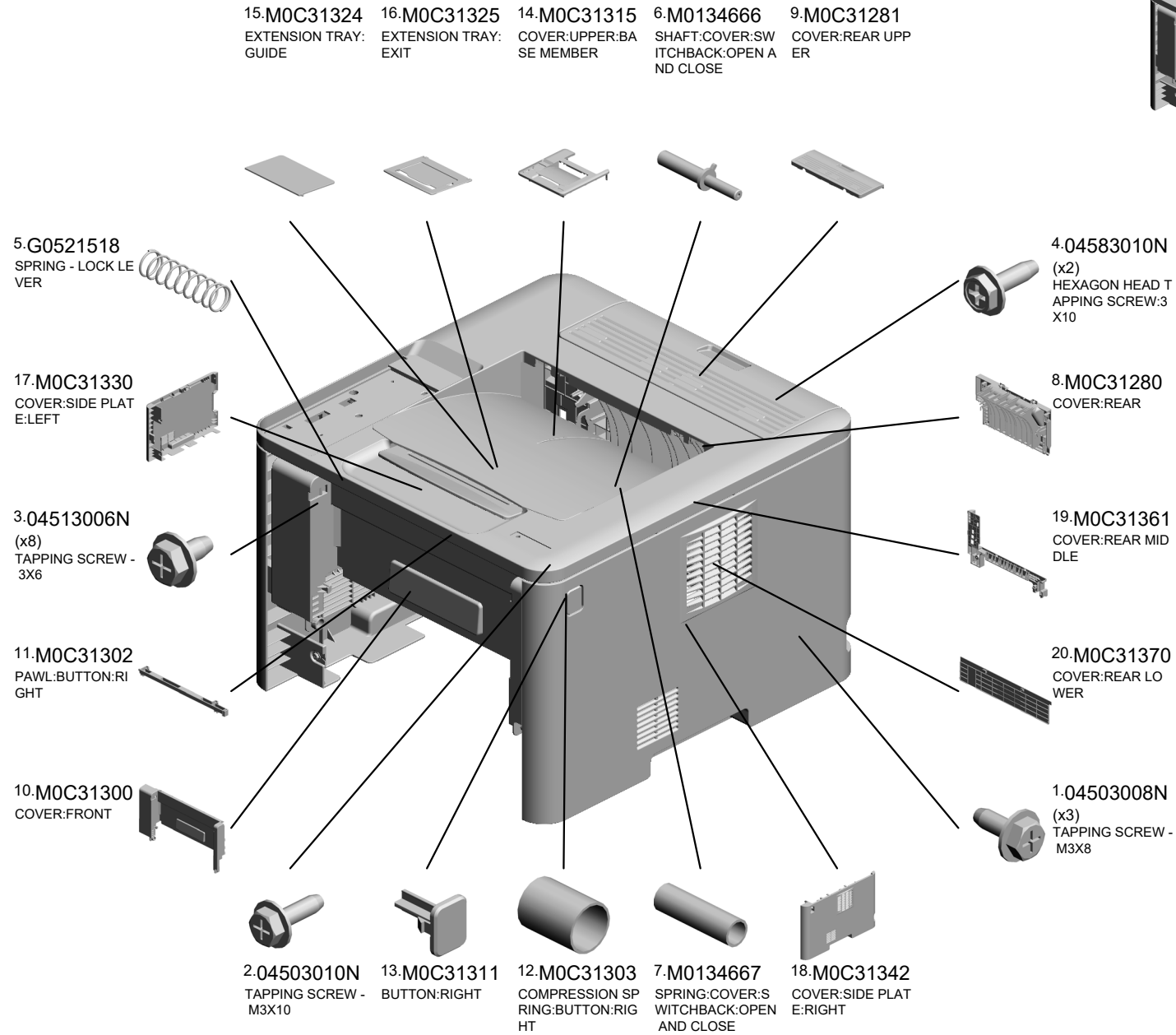
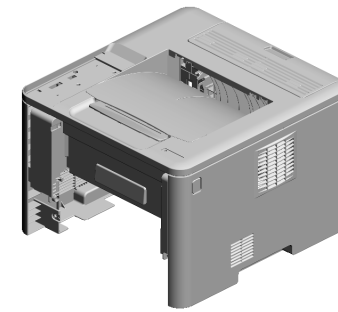
U012
MAIN FRAME

Unit All



U013
ACCESSORIES

U001 EXTERIOR

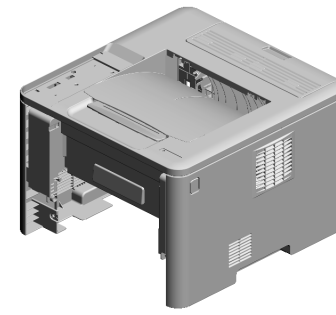


U001	U002	U003	U004	U005	U006	U007	U008	U009	U010	U011	U012	U013
------	------	------	------	------	------	------	------	------	------	------	------	------

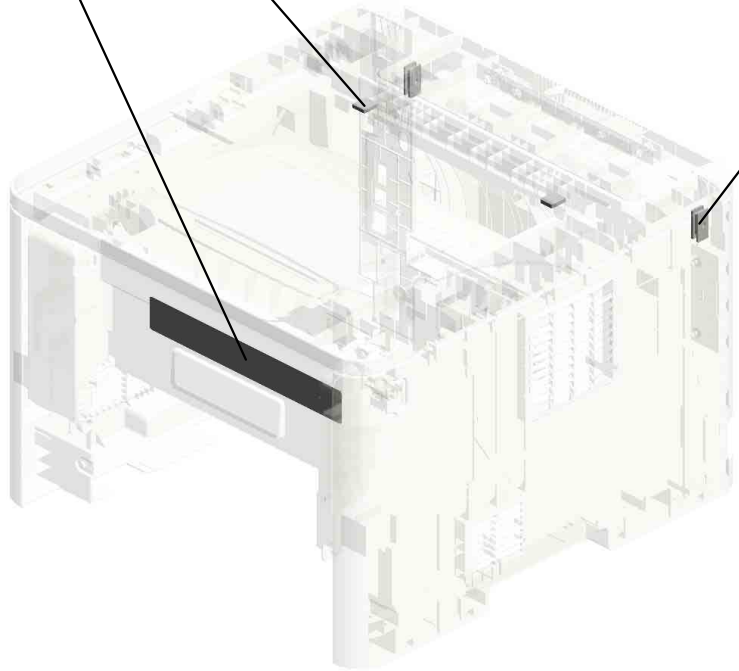
U001
EXTERIOR

22.M0C32633
DECAL:PICK-UP P
APER JAM

23.M0C34792
(x2)
RUBBER WASHER:
EXTERIOR:COVER
:RIGHT

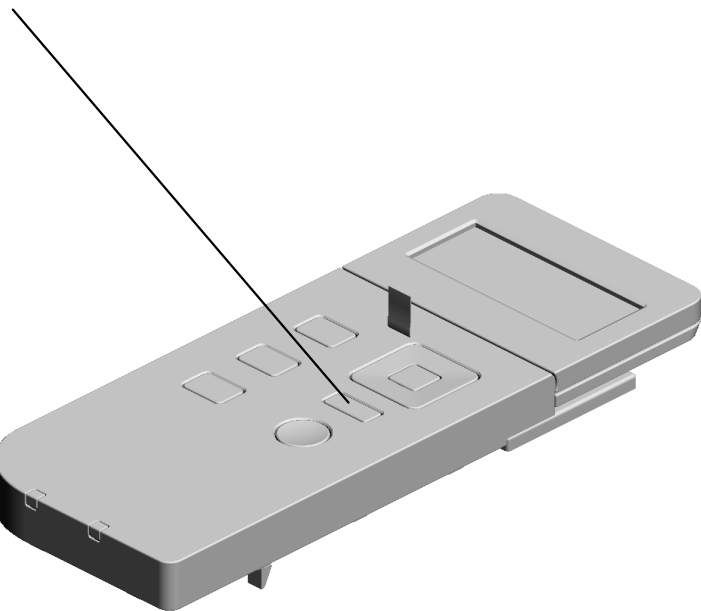


21.M0C31388
(x2)
MAGNET CATCH:R
EAR:COVER:ASS'Y



U002 OPERATION

2.M0C31450
(NA/EU/AA):OPERA
TION SECTION:AS
S'Y

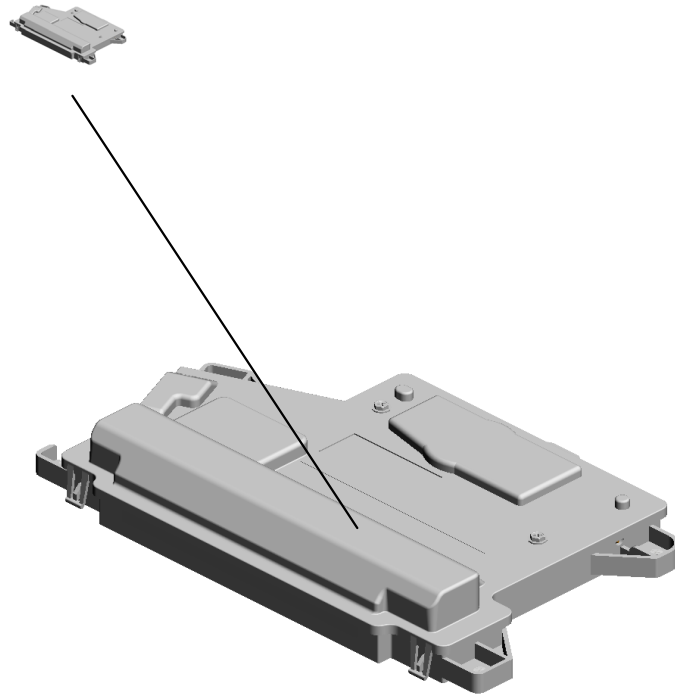


1.04503010P (x 2)
TAPPING SCREW:3X10

U001	U002	U003	U004	U005	U006	U007	U008	U009	U010	U011	U012	U013
------	-------------	------	------	------	------	------	------	------	------	------	------	------

U003.LASER UNIT

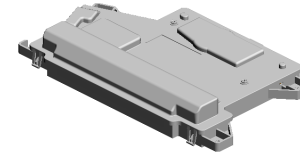
U003 S001
MOC31850
OPTICAL WRITING UNIT:ASS
Y



U001	U002	U003	U004	U005	U006	U007	U008	U009	U010	U011	U012	U013
------	------	------	------	------	------	------	------	------	------	------	------	------

U003
LASER UNIT

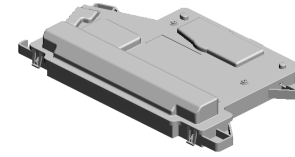
2.04543008Q
(x4)
TAPPING SCREW:
3X8



U001	U002	U003	U004	U005	U006	U007	U008	U009	U010	U011	U012	U013
------	------	------	------	------	------	------	------	------	------	------	------	------

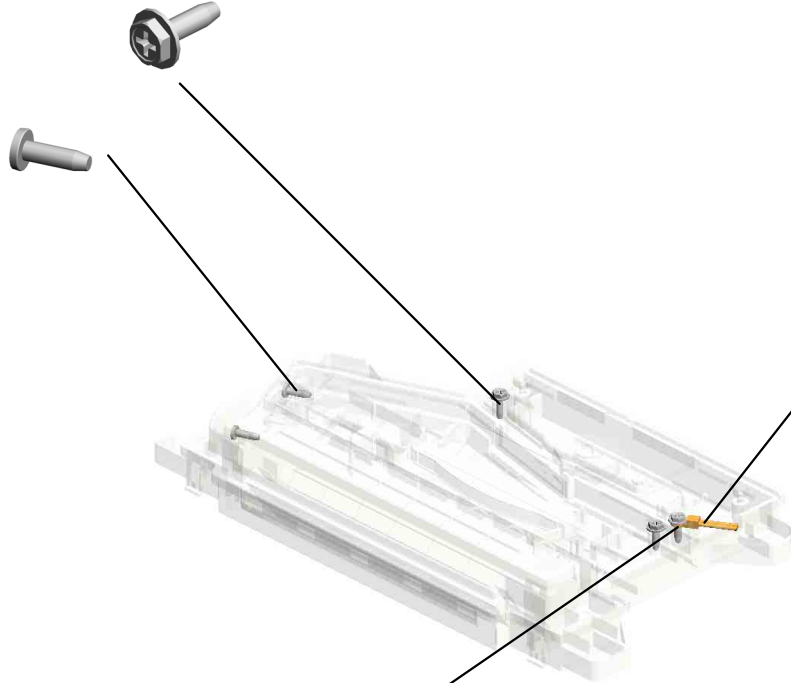
U003_S001
OPTICAL WRITING UNIT:ASS'Y

3.04583010N
(x2)
HEXAGON HEAD TAPPING SCREW:3X10



6.M0C31850
OPTICAL WRITING UNIT:ASS'Y

4.04593010N
(x2)
BINDING HEAD TAPPING SCREW:3X10



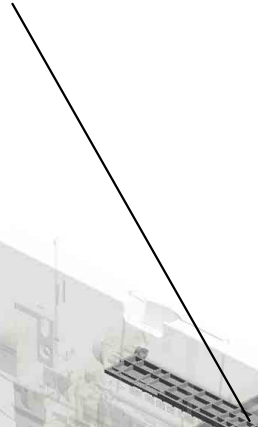
5.G1271088
THERMISTOR

1.04523010N
BINDING SELF-TAPPING SCREW:3X10

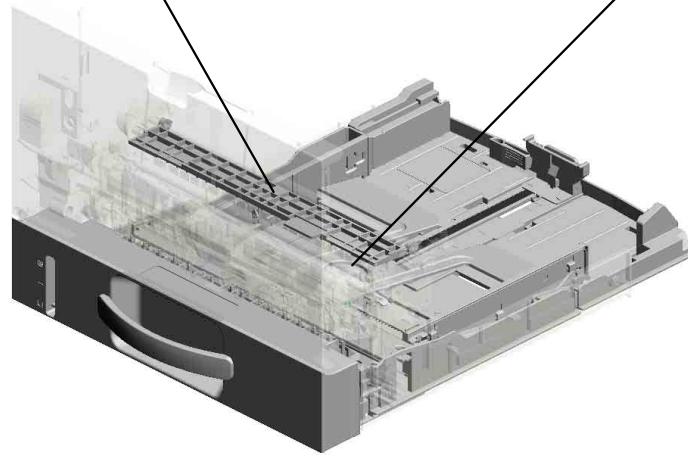
U001	U002	U003	U004	U005	U006	U007	U008	U009	U010	U011	U012	U013
------	------	------	------	------	------	------	------	------	------	------	------	------

U004.PAPER FEED

U004_S002
M0122740
GUIDE PLATE:TRANSPORT:
ASSY



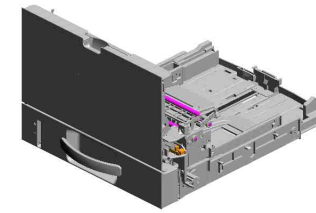
U004_S001
M0C32505
PAPER TRAY:ASS'Y



U001	U002	U003	U004	U005	U006	U007	U008	U009	U010	U011	U012	U013
------	------	------	------	------	------	------	------	------	------	------	------	------

U004 PAPER FEED

- 4.04523010N (x2) BINDING SELF-TAPPING SCREW:3X10
- 17.G1022717 COVER:DC SOLENOID
- 7.08050104 (x6) RETAINING RINGS -E:SILENCER:DIA4
- 29.M0122631 CLOTH:EARTH:PA PER FEED
- 8.A1532117 ROLLER TERMINAL



19.G1271088
THERMISTOR



12.D3ER1068 (x2) ROLLER:DETENT: PAPER TRAY



13.D3ER1069 (x2) ROLLER:DETENT: PAPER TRAY:NO.2



6.08050103 (x2) RETAINING RINGS -E:SILENCER:DIA3



10.D1272514 (x3) ELECTROMAGNETIC CLUTCH:3.5T:MANUAL FEED



23.GW020022 (x3) PHOTOINTERRUPTOR:LG2A24BL1



22.GF013001 BOTTOM PLATE PAD



16.G0292767 BY-PASS FEED COVER



20.G1272627 PAPER FEED ROLLER - MM32



3.04513006N (x8) TAPPING SCREW - 3X6



14.G0123050 SIDE FENCE GEAR



7.08050104 RETAINING RINGS -E:SILENCER:DIA4



11.D1441085 STEPPED SCREW: M3



15.G0201160 (x2) SNAP RING



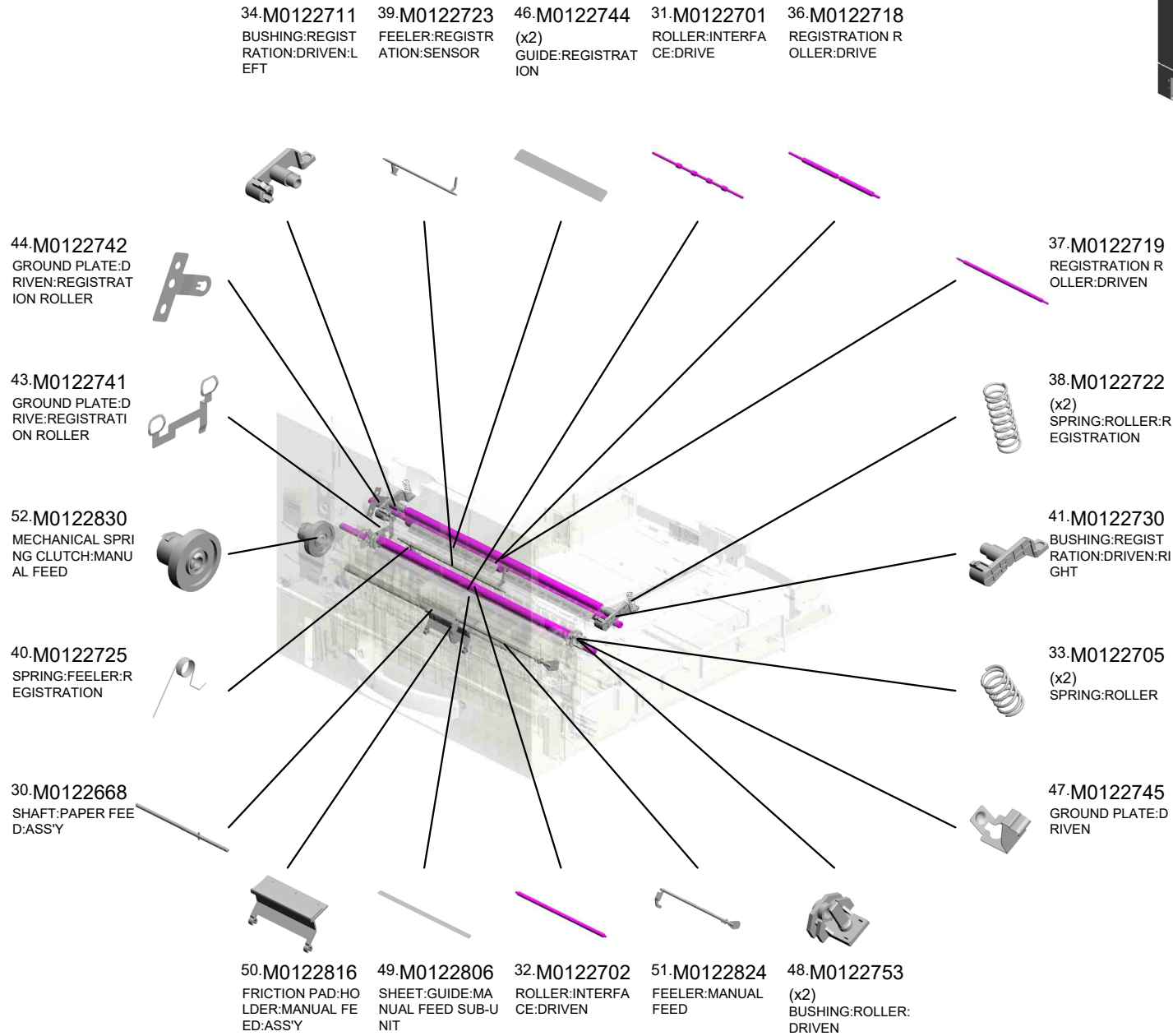
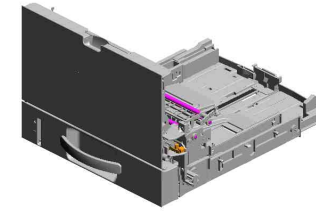
1.04503008N (x2) TAPPING SCREW - M3X8



18.G1022789 STOPPER:PHOTO INTERRUPTOR

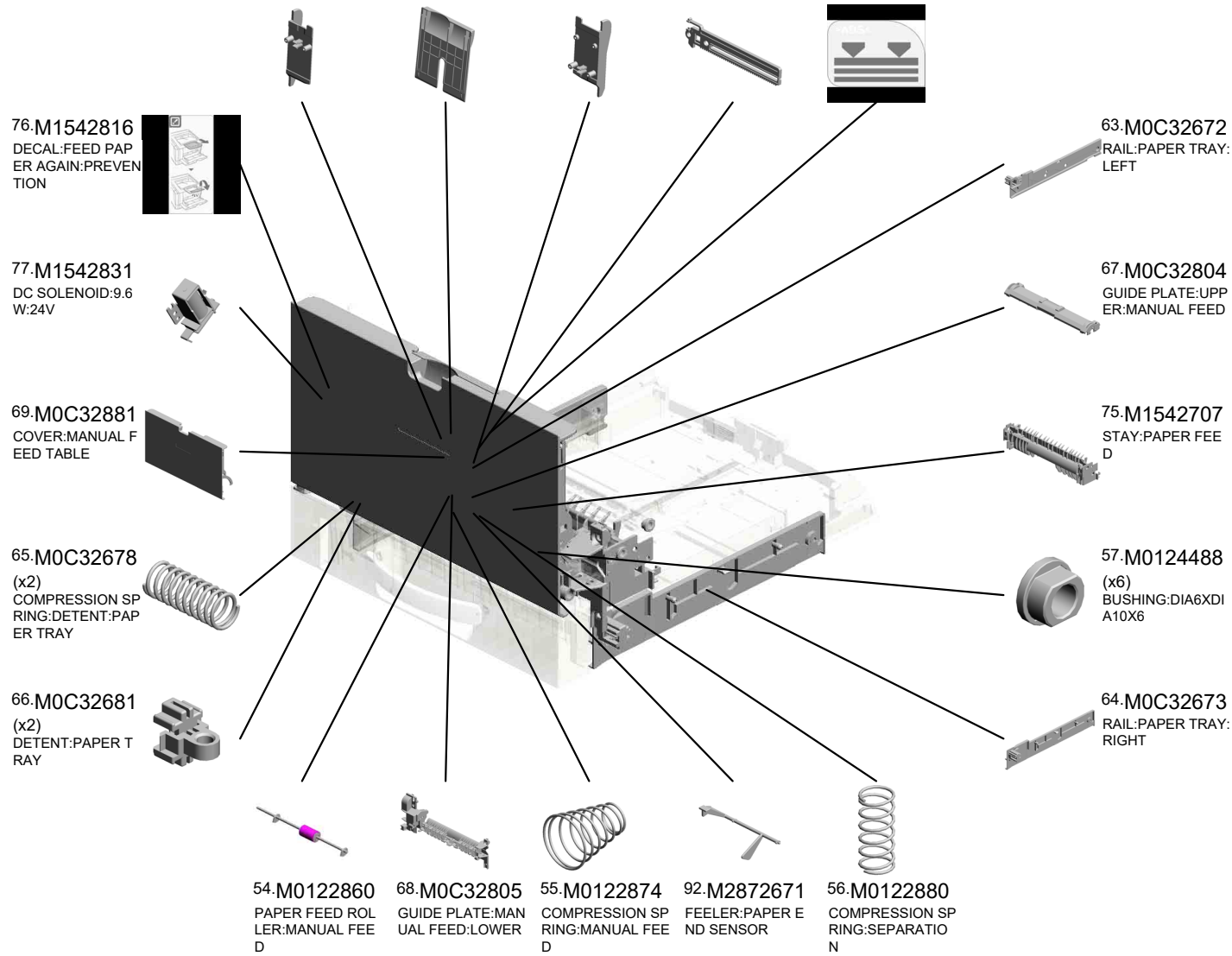
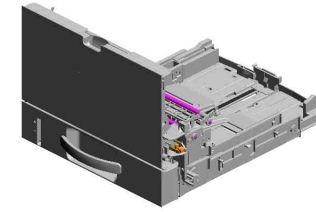


U004 PAPER FEED



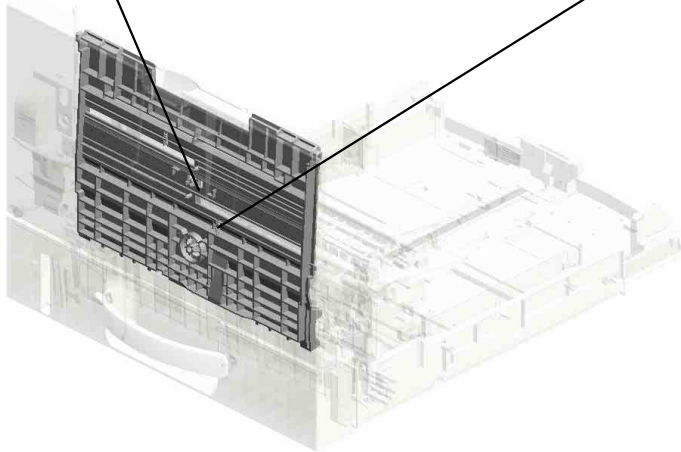
U004 PAPER FEED

- 94.M2872876 SIDE FENCE:MANUAL FEED:LEFT
- 78.M1542879 EXTENSION TRAY:MANUAL FEED
- 93.M2872875 SIDE FENCE:MANUAL FEED:RIGHT
- 95.M2872878 (x2) RACK:MANUAL FEED
- 53.M0122833 DECAL:SIDE FENCE:MANUAL FEED

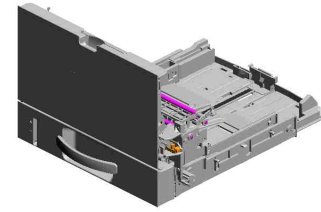


U004 PAPER FEED

97.M2872881
BASE:MANUAL FE
ED TABLE



96.M2872879
(x2)
COMPRESSION SP
RING:SIDE FENCE:
MANUAL FEED



U004_S001
PAPER TRAY:ASS'Y

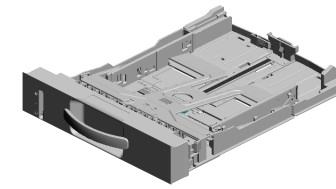
58.M0752610
(x4)
COMPRESSION SP
RING:LOCK:SIDE F
ENCE

71.M1092589
LEVER:LOCK:SIDE
FENCE

72.M1092592
PAWL:LOCK:SIDE
FENCE

28.M0122613
COMPRESSION SP
RING:SEPARATIO
N

24.M0122590
COIL SPRING:EAR
TH



59.M0C32505
PAPER TRAY:ASS'
Y

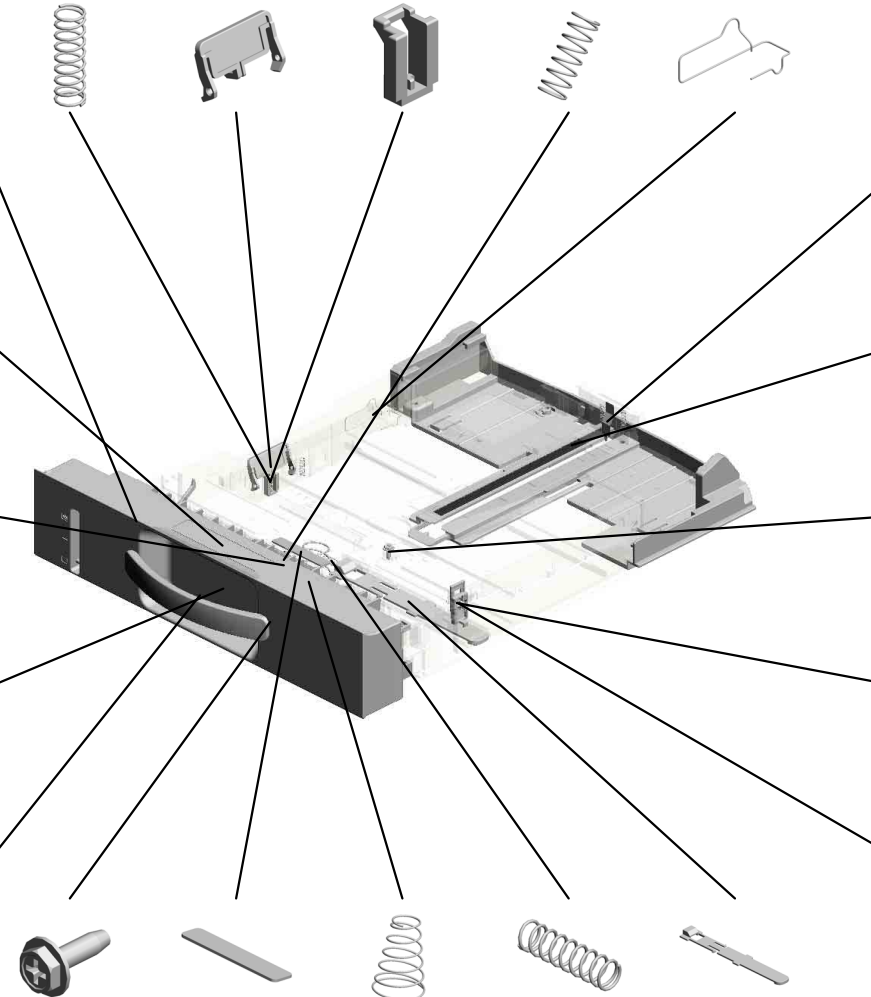
61.M0C32616
LEVER:PAPER VO
LUME SENSOR

74.M1542618
DECAL:PAPER TR
AY:FRONT

26.M0122605
FRICTION PAD:AD
HESION

62.M0C32629
COVER:PAPER TR
AY

9.D0A42695
GRIP:PAPER TRAY



60.M0C32614
SPONGE:END FEN
CE

79.M2872589
PAPER TRAY:REA
R

2.04504008N
TAPPING SCREW -
M4X8

21.GA063084
COMPRESSION SP
RING:AUXILIARY:S
IDE FENCE

70.M1092584
PRESSURE PLATE
:SIDE FENCE:LEFT

5.04583010N
(x2)
HEXAGON HEAD T
APPING SCREW:3
X10

22.GF013001
BOTTOM PLATE P
AD

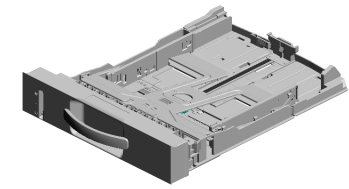
27.M0122612
COMPRESSION SP
RING:TRAY BOTTO
M PLATE

73.M1332710
SPRING:RELEASE:
TRAY BOTTOM PL
ATE

25.M0122603
STOPPER:BASE P
LATE

U004_S001
PAPER TRAY:ASS'Y

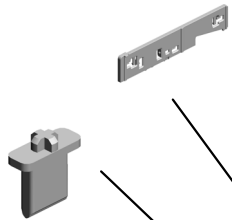
83.M2872618 COVER:SIDE FENCE:LEFT
 80.M2872611 TRAY:BASE
 89.M2872626 DECAL:EXTENSION TRAY



59.M0C32505
PAPER TRAY:ASS'Y



87.M2872624
(x2)
CLICK:SIDE FENCE



82.M2872615
SIDE FENCE:LEFT



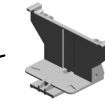
91.M2872636
GEAR:16Z



90.M2872627
LEVER:LOCK:END FENCE



81.M2872612
END FENCE



86.M2872623
PAWL:LOCK:END FENCE



84.M2872620 SIDE FENCE:RIGHT
 88.M2872625 LEVER:LOCK:EXTENSION TRAY
 85.M2872622 COVER:SIDE FENCE:RIGHT

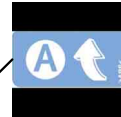
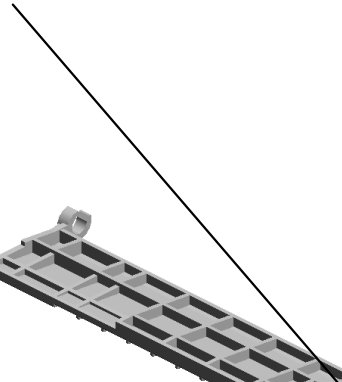


U004_S002
GUIDE PLATE:TRANSPORT:ASS'Y

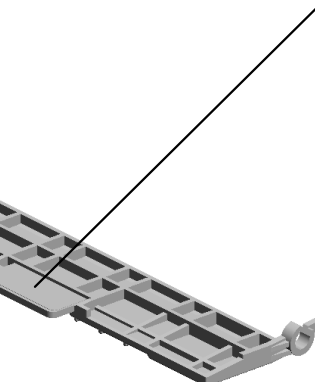
35.M0122715
GUIDE PLATE:TRA
NSPORT:UPPER



42.M0122740
GUIDE PLATE:TRA
NSPORT:ASS'Y



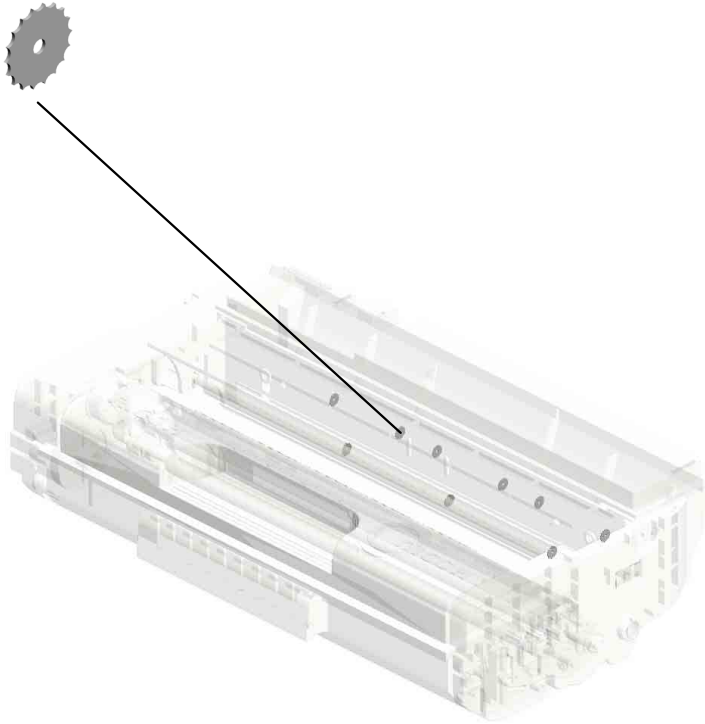
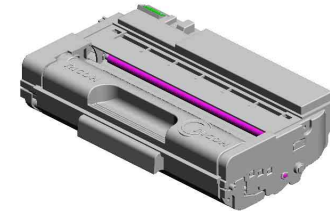
45.M0122743
DECAL:GUIDE PLA
TE:TRANSPORT:U
PPER



U001	U002	U003	U004	U005	U006	U007	U008	U009	U010	U011	U012	U013
------	------	------	------	------	------	------	------	------	------	------	------	------

U005
PCU

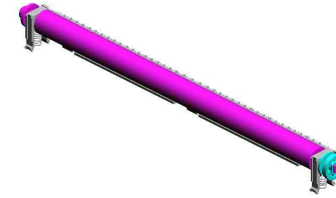
1·M0121089
(x18)
GUIDE:PAPER:LEA
DING EDGE



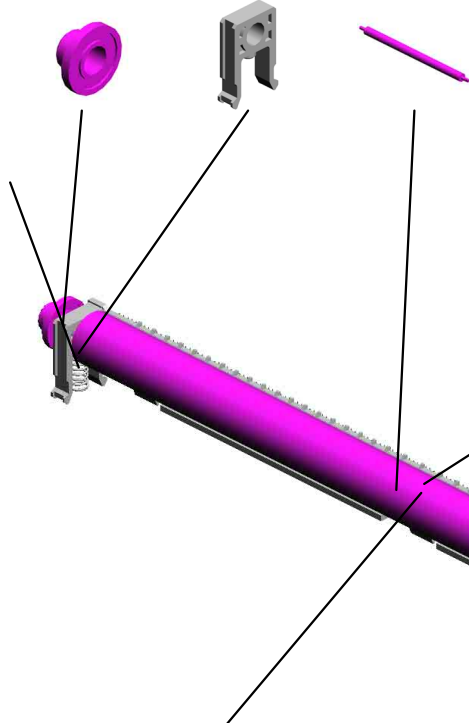
U001	U002	U003	U004	U005	U006	U007	U008	U009	U010	U011	U012	U013
------	------	------	------	-------------	------	------	------	------	------	------	------	------

U006 TRANSFER/SEPARATION

4.M0126256 ROLLER:POSITIONING:TRANSFER ROLLER
1.M0126252 (x2) BUSHING:TRANSFER ROLLER:RIGHT
6.M1016250 TRANSFER ROLLER



2.M0126254 (x2) SPRING:TRANSFER ROLLER



7.M1016259 ELECTRODE PLATE:SEPARATION

3.M0126255 GEAR:TRANSFER ROLLER



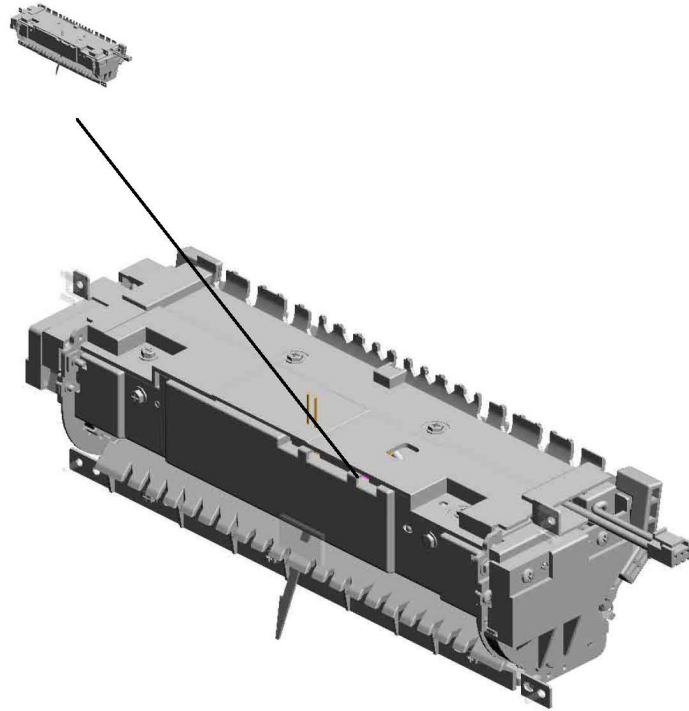
5.M0126260 COVER:ELECTRODE PLATE



U001	U002	U003	U004	U005	U006	U007	U008	U009	U010	U011	U012	U013
------	------	------	------	------	-------------	------	------	------	------	------	------	------

U007.FUSING

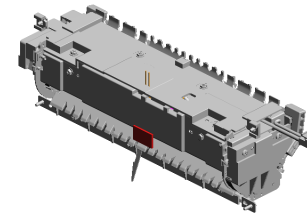
U007_S001
M0C34004
(NA):FUSING UNIT:ASSY



U001	U002	U003	U004	U005	U006	U007	U008	U009	U010	U011	U012	U013
------	------	------	------	------	------	------	------	------	------	------	------	------

U007 FUSING

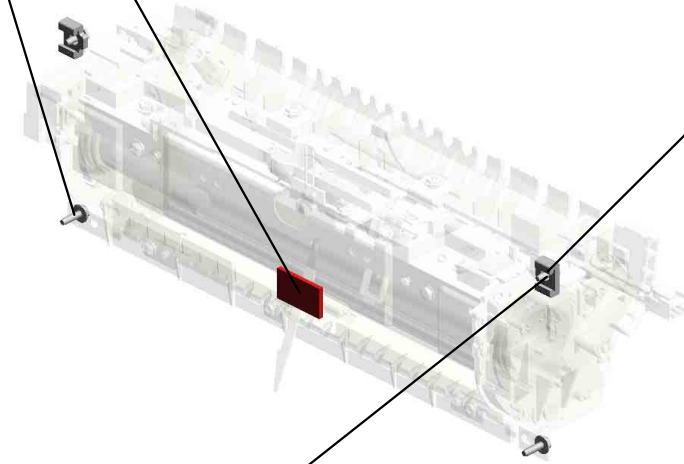
37.M0124699
DECAL:WARNING (HIGH TEMPERATURE):FRONT



2.04503010N
(x2)
TAPPING SCREW - M3X10



4.04513008N
(x2)
TAPPING SCREW - M3X8

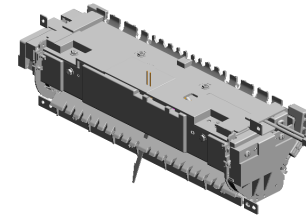


29.M0124270
(x2)
THERMAL INSULATING BUSHING:FUSING UNIT



U001	U002	U003	U004	U005	U006	U007	U008	U009	U010	U011	U012	U013
------	------	------	------	------	------	------	------	------	------	------	------	------

U007_S001
(NA):FUSING UNIT:ASS'Y



38.M0C34004
(NA):FUSING UNIT:
ASS'Y

17.M0124186 COVER:LEFT UPPER:ASS'Y
7.07200040E (x2) RETAINING RING - M4
3.04513006N (x2) TAPPING SCREW - 3X6
21.M0124208 (x3) BRACKET:GATE PAWL
15.M0124120 (x3) TENSION SPRING: PICKOFF PAWL

6.04593010N (x4) BINDING HEAD TAPPING SCREW:3X10

8.08046127 (x4) HEXAGONAL BOLT:DOUBLE SCREW:M3X8

19.M0124204 LEVER:LEFT:FRAME:FUSING

18.M0124202 (x2) LEVER:PRESSURE

4.04513008N (x4) TAPPING SCREW - M3X8

1.03603006N (x10) SCREW - M3X6

10.AW110116 THERMOSTAT

9.09543010N SCREW:POLISHED ROUND/SPRING:M3X10

11.D1441085 (x7) STEPPED SCREW: M3

5.04533006N (x6) TAPPING SCREW - M3X6

1.03603006N(x 1) SCREW - M3X6

14.M0124109 SPRING:FEELER:EXIT

16.M0124135 FEELER:PAPER FEED SENSOR

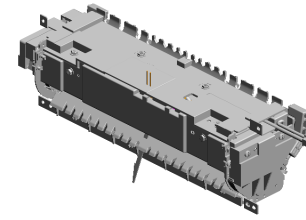
13.GW020022 PHOTOINTERRUPTOR:LG2A24BL1

12.G1274328 DECAL - HIGH TEMPERATURE

20.M0124205 LEVER:RIGHT:FRAME:FUSING



U007_S001
(NA):FUSING UNIT:ASS'Y



38.M0C34004
(NA):FUSING UNIT:
ASS'Y

33.M0124285 LEVER:PRESSURE :RIGHT
27.M0124229 (x2) TENSION SPRING: FUSING:PRESSUR E
39.M0C34212 (NA):HEATER:800 W:120V
35.M0124293 (x4) EXIT ROLLER:EXIT :FUSING
43.M0C34292 FUSING COVER:U PPER

41.M0C34240 HARNESS:THERM OSTAT

30.M0124276 COVER:LEFT:LOW ER:FUSING

44.M2874206 (x3) STRIPPER PAWLS

25.M0124216 (x2) TENSION SPRING: FUSING:GUIDE PL ATE

23.M0124212 FUSING ENTRANC E GUIDE PLATE:U PPER

26.M0124217 FUSING ENTRANC E GUIDE PLATE:LO WER
31.M0124279 CLEANING ROLLE R:ASSY
24.M0124215 GUIDE PLATE:EXIT
40.M0C34225 DISCHARGE BRUS H:HOT ROLLER
28.M0124266 COVER:RIGHT LO WER:FUSING

36.M0124603 DECAL:GUIDE PLA TE:B

42.M0C34243 (NA):HARNESS:FU SING

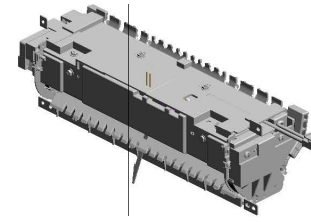
32.M0124284 LEVER:PRESSURE :LEFT

34.M0124287 COVER:RIGHT UP PER:FUSING

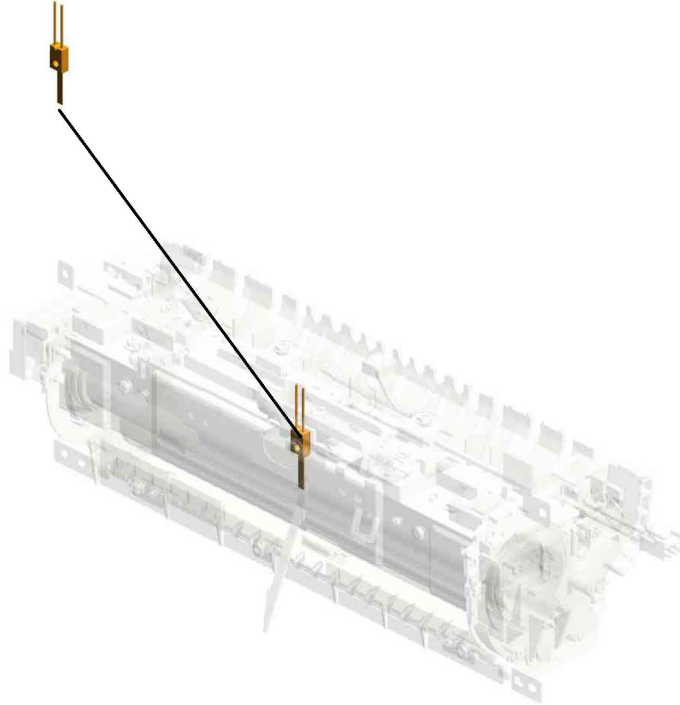
22.M0124211 PLATE NUT:HEATE R

U007_S001
(NA):FUSING UNIT:ASS'Y

45.M2874263
THERMISTOR



38.M0C34004
(NA):FUSING UNIT:
ASS'Y



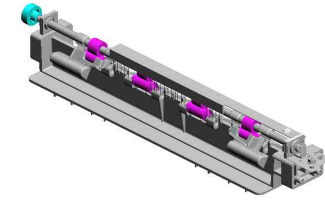
U001	U002	U003	U004	U005	U006	U007	U008	U009	U010	U011	U012	U013
------	------	------	------	------	------	------	------	------	------	------	------	------

U008 PAPER EXIT

4.GA082014 (x2)
PLAIN SHAFT BEARING
RING:DIA6:DIA10:9

10.M0C34481
PLATE:LEFT:EXIT

9.M0C34470
EXIT ROLLER:DUPLICATE
LEX:ASSY



7.M0134455
GEAR:DRIVE:EXIT
ROLLER



3.07200040E (x2)
RETAINING RING - M4



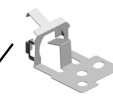
1.04503008N (x2)
TAPPING SCREW - M3X8



6.M0124458
DISCHARGE BRUSH
H:EXIT:ASSY DRAWING



12.M0C34498
GROUND PLATE:EXIT
ROLLER



2.04543006Q
TAPPING SCREW - M3X6



5.M0124454 (x4)
SPRING:EXIT ROLLER:EXIT



8.M0C34454 (x4)
EXIT ROLLER



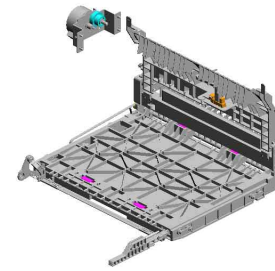
11.M0C34482
PLATE:RIGHT:EXIT



U001	U002	U003	U004	U005	U006	U007	U008	U009	U010	U011	U012	U013
------	------	------	------	------	------	------	------	------	------	------	------	------

U009 DUPLEX

- 10.M0134610 GEAR:DRIVE:DUPL EX
- 3.04533006N (x2) TAPPING SCREW - M3X6
- 6.08050104 (x7) RETAINING RINGS -E:SILENCER:DIA4
- 4.04543006Q (x4) TAPPING SCREW - M3X6
- 16.M0134661 STOPPER:TRANSP ORT SUB-UNIT:DU PLEX



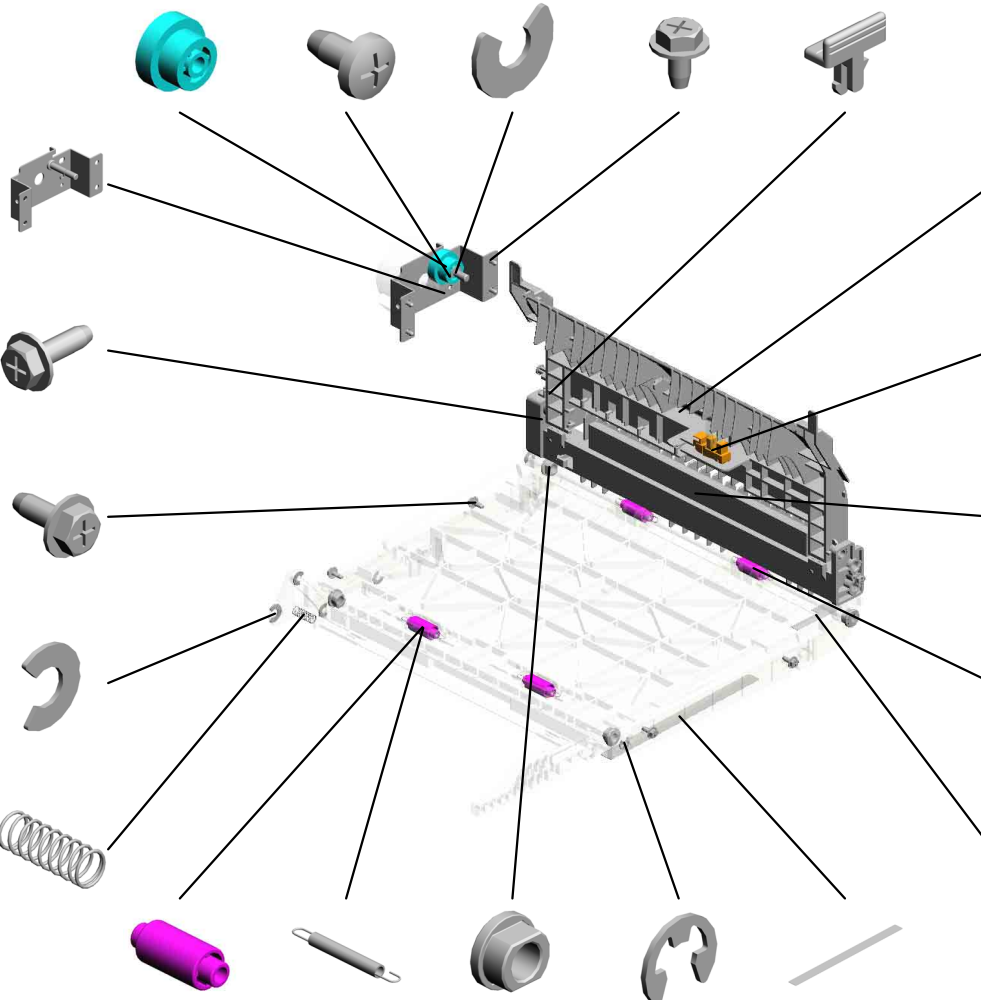
- 11.M0134611 BRACKET:DRIVE:D UPLEX:ASSY

- 2.04503010N (x2) TAPPING SCREW - M3X10

- 1.04503008N (x4) TAPPING SCREW - M3X8

- 7.08050106 RETAINING RINGS -E:SILENCER:DIA6

- 15.M0134635 SPRING:OPEN AN D CLOSE:RIGHT



- 18.M0134664 GUIDE PLATE:VER TICAL TRANSPOR T:UPPER

- 8.GW020022 PHOTOINTERRUP TOR:LG2A24BL1

- 17.M0134663 GUIDE PLATE:VER TICAL TRANSPOR T:LOWER

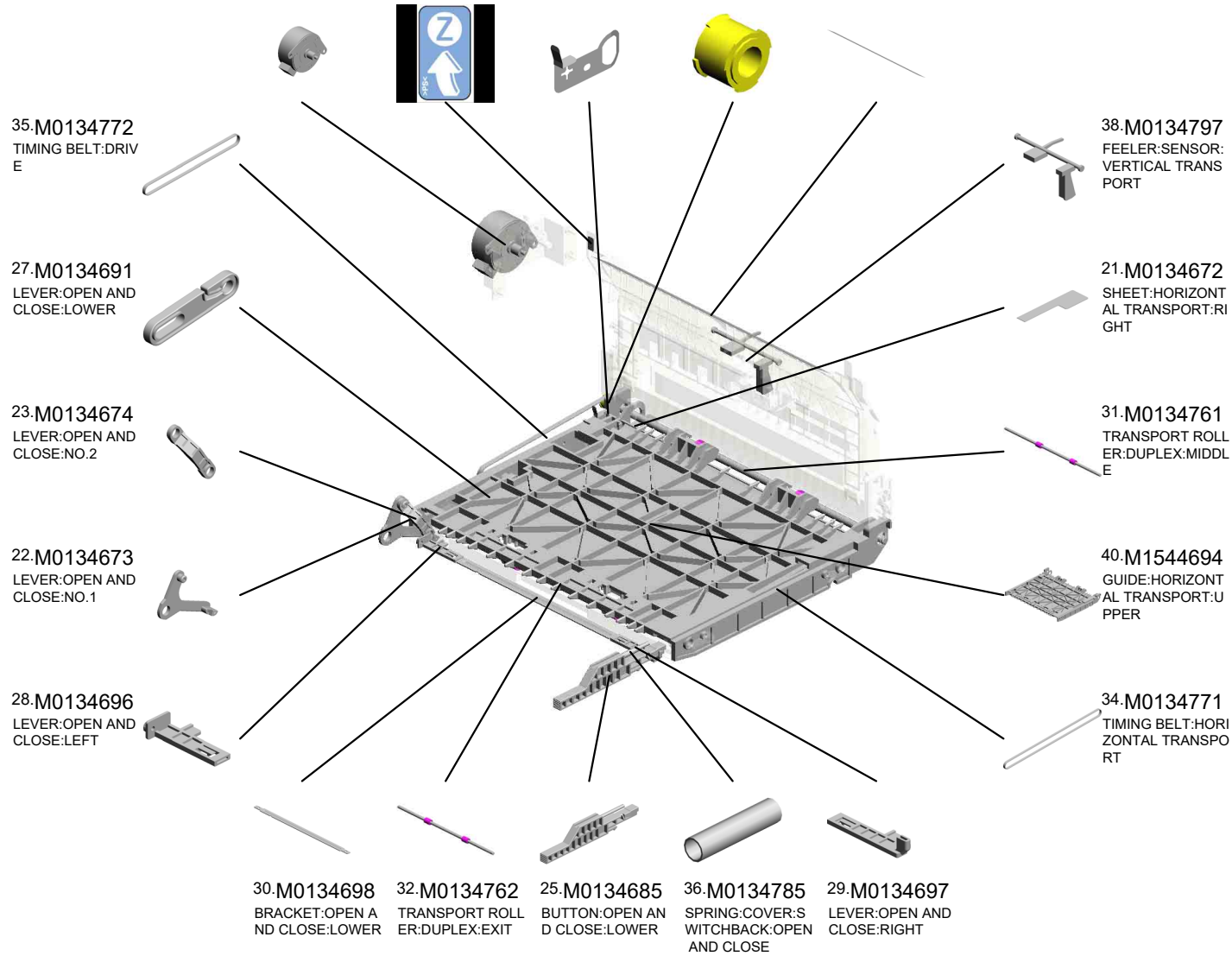
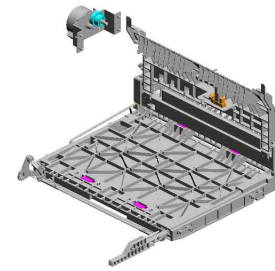
- 13.M0134623 (x2) SPRING:EXIT

- 20.M0134671 SHEET:HORIZONT AL TRANSPORT:LE FT

- 12.M0134622 (x4) EXIT ROLLER:DUP LEX
- 14.M0134624 (x2) SPRING:EXIT:NO.2
- 9.M0124488 (x4) BUSHING:DIA6XDI A10X6
- 5.07200040E (x2) RETAINING RING - M4
- 19.M0134668 SHEET:GUIDE:HO RIZONTAL TRAN SPOR:LOWER

U009 DUPLEX

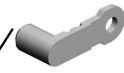
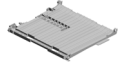
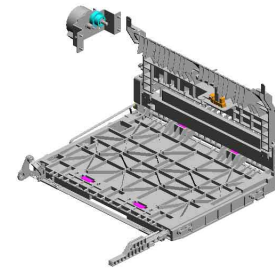
- 39.M1540265 STEPPER MOTOR
- 37.M0134794 DECAL:GUIDE PLATE:VERTICAL TRANSPORT:UPPER
- 26.M0134688 GROUND PLATE:HORIZONTAL TRANSPORT:REAR
- 33.M0134765 (x3) PULLEY:TRANSPORT
- 24.M0134684 SHEET:DUPLEX



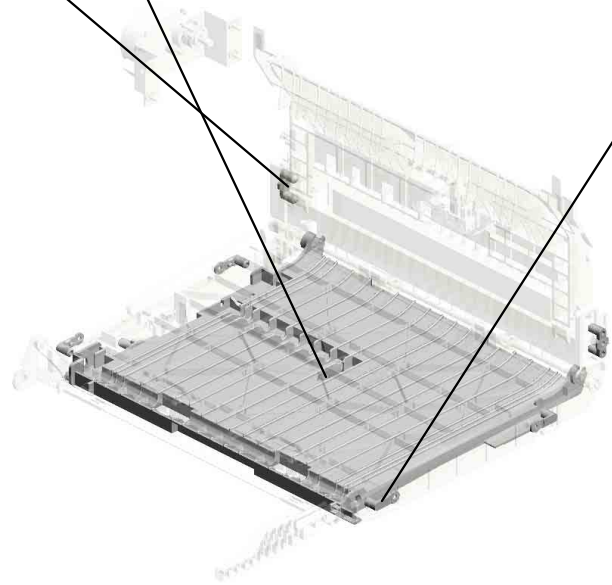
U009
DUPLEX

42.M2874719 (x2)
PIN:GUIDE:TRANS
PORT

41.M1544695
GUIDE:HORIZONT
AL TRANSPORT:L
OWER



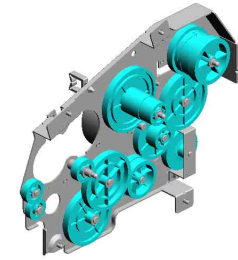
43.M2874895
(x4)
PIN:GUIDE:UPPER



U001	U002	U003	U004	U005	U006	U007	U008	U009	U010	U011	U012	U013
------	------	------	------	------	------	------	------	------	------	------	------	------

U010 MAIN DRIVE

10.M0121117 GEAR:DRIVE:DRUM
 3.04543006Q TAPPING SCREW - M3X6
 8.11050758 CLAMP:LWSM-030 6A
 9.G0521120 SPRING - PAPER EXIT RELEASE
 12.M0121120 GEAR:DRIVE:FUSION:NG:NO.3



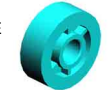
6.11050197
WIRE SADDLE



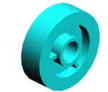
2.04513006N
(x4)
TAPPING SCREW - 3X6



13.M0121123
GEAR:DRIVE:PAPER FEED:NO.3



15.M0121172
GEAR:DRIVE:MANUAL FEED SECTION:NO.2



14.M0121171
GEAR:DRIVE:MANUAL FEED SECTION:NO.1



7.11050568
CLAMP:LWSS-0504



18.M0C31150
DC BRUSHLESS MOTOR:31.1W



19.M0C31177
CASE:DRIVE:ASSY



20.M1161118
GEAR:DRIVE:FUSION:NG:NO.1



1.03603006N
(x6)
SCREW - M3X6



17.M0C31128
GEAR:DRIVE:FUSION:NG:NO.4



4.07200040E
RETAINING RING - M4



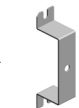
11.M0121119
GEAR:DRIVE:FUSION:NG:NO.2



5.08050104
(x6)
RETAINING RINGS - E.SILENCER:DIA4



16.M0131178
BRACKET:DRIVE:DUPLICATION



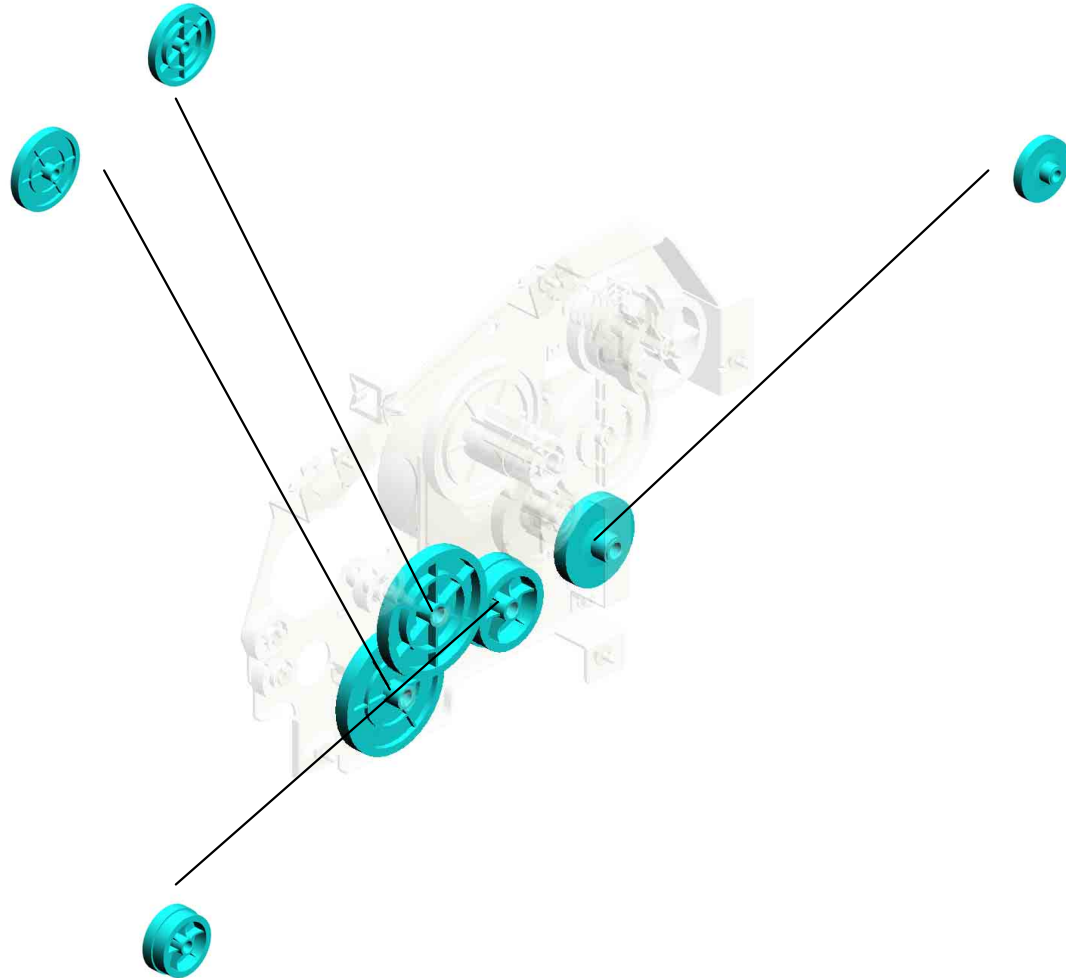
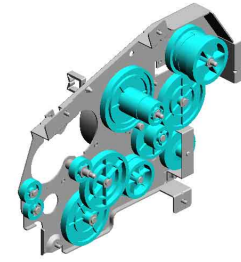
U010 MAIN DRIVE

22.M1161122
GEAR:DRIVE:PAPE
R FEED:NO.2

23.M1161124
GEAR:DRIVE:PAPE
R FEED:NO.4

24.M1171136
GEAR:DRIVE:DUPL
EX SECTION

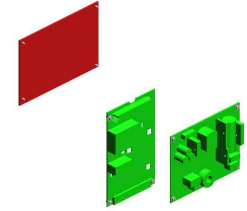
21.M1161121
GEAR:DRIVE:PAPE
R FEED:NO.1



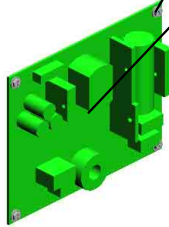
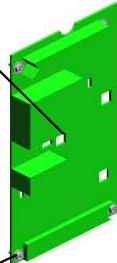
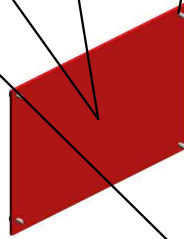
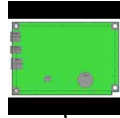
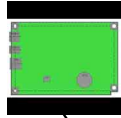
U001	U002	U003	U004	U005	U006	U007	U008	U009	U010	U011	U012	U013
------	------	------	------	------	------	------	------	------	-------------	------	------	------

U011 ELECTRICAL

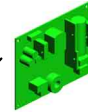
6.M0C35525 (M0C3):PCB:SERVIC
CE:MAIN:SP330DN
7.M0C35526 (M0C6):PCB:SERVIC
CE:MAIN:SP3710DN
2.04513006N (x4)
TAPPING SCREW -
3X6



5.M0C35402
POWER PACK:ASSY



3.D2051082 (x4)
HEXAGON HEAD SCREW:ROUND POINT:M3X6:BK



4.M0C35313 (NA/TWN):POWER SUPPLY UNIT:72W:ASSY

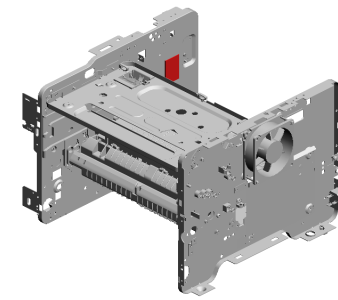


1.03603006N (x4)
SCREW - M3X6

U001	U002	U003	U004	U005	U006	U007	U008	U009	U010	U011	U012	U013
------	------	------	------	------	------	------	------	------	------	------	------	------

U012 MAIN FRAME

- 3.04513006N (x22) TAPPING SCREW - 3X6
- 9.11050758 (x4) CLAMP:LWSM-030 6A
- 17.M0121037 (x2) TONER BOTTLE:C ASE
- 7.04543014Q (x2) TAPPING SCREW: 3X14
- 12.12042612 (x4) MICRO SWITCH:D3 V-16506-3C25



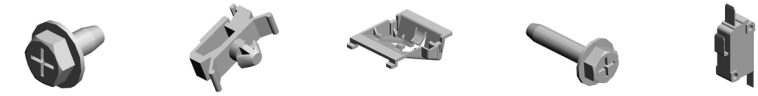
- 16.GW010007 (x2) PHOTO REFLECTI ON SENSOR:EXIT

- 4.04513014N (x2) TAPPING SCREW: 3X14

- 8.11050568 (x4) CLAMP:LWSS-0504

- 2.04503008N (x12) TAPPING SCREW - M3X8

- 1.03603006N (x10) SCREW - M3X6



- 10.11050760 (x6) CLAMP:LWSM-051 1A

- 9.11050758 (x16) CLAMP:LWSM-030 6A
- 10.11050760 (x4) CLAMP:LWSM-051 1A

- 6.04543006Q (x12) TAPPING SCREW - M3X6

- 14.AX640199 (x2) FAN:MM80:25MM:D C 2.16W

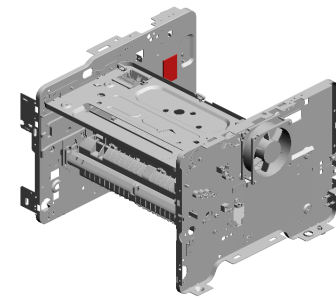
- 11.11050762 (x4) CLAMP:LWS-0711A

- 13.AA143592 (x2) SCREW- M4X6

- 5.04513030N (x4) TAPPING SCREW: 3X30

- 18.M0121040 (x2) CASE:DISCHARGE LAMP
- 15.G0271180 (x4) RUBBER FOOT - G F
- 21.M0121088 (x2) COIL SPRING:RAIL :RIGHT
- 19.M0121063 (x8) TERMINAL:CHARG E
- 20.M0121064 (x2) GROUND PLATE:O PC

U012 MAIN FRAME



23.M0121097 (x6) SUPPORTER:PAPE R:TRANSPORT
 24.M0124120 (x6) TENSION SPRING: PICKOFF PAWL
 28.M0C34601 (x2) DECAL:LEVER:EN VELOPE:LEFT

22.M0121089 (x6) GUIDE:PAPER:LEA DING EDGE

32.M1542056 (x2) DISCHARGE LAMP

25.M0C31069 (x2) SHEET:CASE:HAR NESS

29.M0C34602 (x2) DECAL:LEVER:EN VELOPE:RIGHT

27.M0C31086 (x2) SHEET:POWER SU PPLY UNIT

30.M0C35702 (x2) HARNESS:INLET

33.M2871043 (x2) COVER:U CONVEY ER BELT:DUPLIX
 26.M0C31085 (x2) SEAL:REGISTRATI ON ROLLER:RIGHT
 31.M1011066 (x10) COIL SPRING:TER MINAL

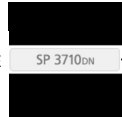
U001	U002	U003	U004	U005	U006	U007	U008	U009	U010	U011	U012	U013
------	------	------	------	------	------	------	------	------	------	------	------	------

U013
ACCESSORIES

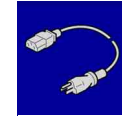
3.M0C30430
(SP 330DN);MODE
L NAME PLATE:NO
RMAL



4.M0C60431
(SP 3710DN);MOD
EL NAME PLATE:EX
TRAL



2.M0C30406
(x2)
PLATE:LOGO:INTE
LIGENTDRAKGRA
Y



5.M1545697
(x2)
(NA);POWER SUPP
LY CORD:125V:10A



1.AA001577
(x2)
(NA/EU/AA/TWN);D
ECAL:ENERGY-ST
AR



Exclusive Parts

Number	Part Name	Group	ID
A1532117	ROLLER TERMINAL	U004	8
AA001577	(NA/EU/AA/TWN):DECAL:ENERGY-STAR	U013	1
AA143592	SCREW- M4X6	U012	13
AW110116	THERMOSTAT	U007_S001	10
AX640199	FAN:MM80:25MM:DC 2.16W	U012	14
D0A42695	GRIP:PAPER TRAY	U004_S001	9
D1272514	ELECTROMAGNETIC CLUTCH:3.5 T:MANUAL FEED	U004	10
D1441085	STEPPED SCREW:M3	U004	11
		U007_S001	11
D2051082	HEXAGON HEAD SCREW:ROUND POINT:M3X6:BK	U011	3
D3ER1068	ROLLER:DETENT:PAPER TRAY	U004	12
D3ER1069	ROLLER:DETENT:PAPER TRAY:NO.2	U004	13
G0123050	SIDE FENCE GEAR	U004	14
G0201160	SNAP RING	U004	15
G0271180	RUBBER FOOT - GF	U012	15
G0292767	BY-PASS FEED COVER	U004	16
G0521120	SPRING - PAPER EXIT RELEASE	U010	9
G0521518	SPRING - LOCK LEVER	U001	5
G1022717	COVER:DC SOLENOID	U004	17
G1022789	STOPPER:PHOTOINTERRUPTOR	U004	18
G1271088	THERMISTOR	U003_S001	5
		U004	19
G1272627	PAPER FEED ROLLER - MM32	U004	20
G1274328	DECAL - HIGH TEMPERATURE	U007_S001	12
GA063084	COMPRESSION SPRING:AUXILIARY:SIDE FENCE	U004_S001	21
GA082014	PLAIN SHAFT BEARING:DIA6:DIA10:9	U008	4
GF013001	BOTTOM PLATE PAD	U004	22
		U004_S001	22
GW010007	PHOTO REFLECTION SENSOR:EXIT	U012	16
GW020022	PHOTOINTERRUPTOR:LG2A24BL1	U004	23
		U007_S001	13

Number	Part Name	Group	ID
		U009	8
M0121037	TONER BOTTLE:CASE	U012	17
M0121040	CASE:DISCHARGE LAMP	U012	18
M0121063	TERMINAL:CHARGE	U012	19
M0121064	GROUND PLATE:OPC	U012	20
M0121088	COIL SPRING:RAIL:RIGHT	U012	21
M0121089	GUIDE:PAPER:LEADING EDGE	U005	1
		U012	22
M0121097	SUPPORTER:PAPER:TRANSPORT	U012	23
M0121117	GEAR:DRIVE:DRUM	U010	10
M0121119	GEAR:DRIVE:FUSING:NO.2	U010	11
M0121120	GEAR:DRIVE:FUSING:NO.3	U010	12
M0121123	GEAR:DRIVE:PAPER FEED:NO.3	U010	13
M0121171	GEAR:DRIVE:MANUAL FEED SECTION:NO.1	U010	14
M0121172	GEAR:DRIVE:MANUAL FEED SECTION:NO.2	U010	15
M0122590	COIL SPRING:EARTH	U004_S001	24
M0122603	STOPPER:BASE PLATE	U004_S001	25
M0122605	FRICTION PAD:ADHESION	U004_S001	26
M0122612	COMPRESSION SPRING:TRAY BOTTOM PLATE	U004_S001	27
M0122613	COMPRESSION SPRING:SEPARATION	U004_S001	28
M0122631	CLOTH:EARTH:PAPER FEED	U004	29
M0122668	SHAFT:PAPER FEED:ASS'Y	U004	30
M0122701	ROLLER:INTERFACE:DRIVE	U004	31
M0122702	ROLLER:INTERFACE:DRIVEN	U004	32
M0122705	SPRING:ROLLER	U004	33
M0122711	BUSHING:REGISTRATION:DRIVEN:LEFT	U004	34
M0122715	GUIDE PLATE:TRANSPORT:UPPER	U004_S002	35
M0122718	REGISTRATION ROLLER:DRIVE	U004	36
M0122719	REGISTRATION ROLLER:DRIVEN	U004	37
M0122722	SPRING:ROLLER:REGISTRATION	U004	38
M0122723	FEELER:REGISTRATION:SENSOR	U004	39
M0122725	SPRING:FEELER:REGISTRATION	U004	40

Exclusive Parts

Number	Part Name	Group	ID
M0122730	BUSHING:REGISTRATION:DRIVEN:RIGHT	U004	41
M0122740	GUIDE PLATE:TRANSPORT:ASS'Y	U004_S002	42
M0122741	GROUND PLATE:DRIVE:REGISTRATION ROLLER	U004	43
M0122742	GROUND PLATE:DRIVEN:REGISTRATION ROLLER	U004	44
M0122743	DECAL:GUIDE PLATE:TRANSPORT:UPPER	U004_S002	45
M0122744	GUIDE:REGISTRATION	U004	46
M0122745	GROUND PLATE:DRIVEN	U004	47
M0122753	BUSHING:ROLLER:DRIVEN	U004	48
M0122806	SHEET:GUIDE:MANUAL FEED SUB-UNIT	U004	49
M0122816	FRICTION PAD:HOLDER:MANUAL FEED:ASS'Y	U004	50
M0122824	FEELER:MANUAL FEED	U004	51
M0122830	MECHANICAL SPRING CLUTCH:MANUAL FEED	U004	52
M0122833	DECAL:SIDE FENCE:MANUAL FEED	U004	53
M0122860	PAPER FEED ROLLER:MANUAL FEED	U004	54
M0122874	COMPRESSION SPRING:MANUAL FEED	U004	55
M0122880	COMPRESSION SPRING:SEPARATION	U004	56
M0124109	SPRING:FEELER:EXIT	U007_S001	14
M0124120	TENSION SPRING:PICKOFF PAWL	U007_S001	15
		U012	24
M0124135	FEELER:PAPER FEED SENSOR	U007_S001	16
M0124186	COVER:LEFT UPPER:ASS'Y	U007_S001	17
M0124202	LEVER:PRESSURE	U007_S001	18
M0124204	LEVER:LEFT:FRAME:FUSING	U007_S001	19
M0124205	LEVER:RIGHT:FRAME:FUSING	U007_S001	20
M0124208	BRACKET:GATE PAWL	U007_S001	21
M0124211	PLATE NUT:HEATER	U007_S001	22
M0124212	FUSING ENTRANCE GUIDE PLATE	U007_S001	23

Number	Part Name	Group	ID
	:UPPER		
M0124215	GUIDE PLATE:EXIT	U007_S001	24
M0124216	TENSION SPRING:FUSING:GUIDE PLATE	U007_S001	25
M0124217	FUSING ENTRANCE GUIDE PLATE:LOWER	U007_S001	26
M0124229	TENSION SPRING:FUSING:PRESSURE	U007_S001	27
M0124266	COVER:RIGHT LOWER:FUSING	U007_S001	28
M0124270	THERMAL INSULATING BUSHING:FUSING UNIT	U007	29
M0124276	COVER:LEFT:LOWER:FUSING	U007_S001	30
M0124279	CLEANING ROLLER:ASS'Y	U007_S001	31
M0124284	LEVER:PRESSURE:LEFT	U007_S001	32
M0124285	LEVER:PRESSURE:RIGHT	U007_S001	33
M0124287	COVER:RIGHT UPPER:FUSING	U007_S001	34
M0124293	EXIT ROLLER:EXIT:FUSING	U007_S001	35
M0124454	SPRING:EXIT ROLLER:EXIT	U008	5
M0124458	DISCHARGE BRUSH:EXIT:ASS'Y DRAWING	U008	6
M0124488	BUSHING:DIA6XDIA10X6	U004	57
		U009	9
M0124603	DECAL:GUIDE PLATE:B	U007_S001	36
M0124699	DECAL:WARNING (HIGH TEMPERATURE):FRONT	U007	37
M0126252	BUSHING:TRANSFER ROLLER:RIGHT	U006	1
M0126254	SPRING:TRANSFER ROLLER	U006	2
M0126255	GEAR:TRANSFER ROLLER	U006	3
M0126256	ROLLER:POSITIONING:TRANSFER ROLLER	U006	4
M0126260	COVER:ELECTRODE PLATE	U006	5
M0131178	BRACKET:DRIVE:DUPLEX	U010	16
M0134455	GEAR:DRIVE:EXIT ROLLER	U008	7
M0134610	GEAR:DRIVE:DUPLEX	U009	10
M0134611	BRACKET:DRIVE:DUPLEX:ASS'Y	U009	11
M0134622	EXIT ROLLER:DUPLEX	U009	12
M0134623	SPRING:EXIT	U009	13

Exclusive Parts

Number	Part Name	Group	ID
M0134624	SPRING:EXIT:NO.2	U009	14
M0134635	SPRING:OPEN AND CLOSE:RIGHT	U009	15
M0134661	STOPPER:TRANSPORT SUB-UNIT: DUPLEX	U009	16
M0134663	GUIDE PLATE:VERTICAL TRANSP ORT:LOWER	U009	17
M0134664	GUIDE PLATE:VERTICAL TRANSP ORT:UPPER	U009	18
M0134666	SHAFT:COVER:SWITCHBACK:OPE N AND CLOSE	U001	6
M0134667	SPRING:COVER:SWITCHBACK:OP EN AND CLOSE	U001	7
M0134668	SHEET:GUIDE:HORIZONTAL TRAN SPORT:LOWER	U009	19
M0134671	SHEET:HORIZONTAL TRANSPORT :LEFT	U009	20
M0134672	SHEET:HORIZONTAL TRANSPORT :RIGHT	U009	21
M0134673	LEVER:OPEN AND CLOSE:NO.1	U009	22
M0134674	LEVER:OPEN AND CLOSE:NO.2	U009	23
M0134684	SHEET:DUPLEX	U009	24
M0134685	BUTTON:OPEN AND CLOSE:LOWE R	U009	25
M0134688	GROUND PLATE:HORIZONTAL TR ANSPORT:REAR	U009	26
M0134691	LEVER:OPEN AND CLOSE:LOWER	U009	27
M0134696	LEVER:OPEN AND CLOSE:LEFT	U009	28
M0134697	LEVER:OPEN AND CLOSE:RIGHT	U009	29
M0134698	BRACKET:OPEN AND CLOSE:LOW ER	U009	30
M0134761	TRANSPORT ROLLER:DUPLEX:MI DDLE	U009	31
M0134762	TRANSPORT ROLLER:DUPLEX:EX IT	U009	32
M0134765	PULLEY:TRANSPORT	U009	33
M0134771	TIMING BELT:HORIZONTAL TRAN SPORT	U009	34
M0134772	TIMING BELT:DRIVE	U009	35

Number	Part Name	Group	ID
M0134785	SPRING:COVER:SWITCHBACK:OP EN AND CLOSE	U009	36
M0134794	DECAL:GUIDE PLATE:VERTICAL T RANSPORT:UPPER	U009	37
M0134797	FEELER:SENSOR:VERTICAL TRAN SPORT	U009	38
M0752610	COMPRESSION SPRING:LOCK:SID E FENCE	U004_S001	58
M0C30406	PLATE:LOGO:INTELIGENTDRAKG RAY	U013	2
M0C30430	(SP 330DN):MODEL NAME PLATE: NORMAL	U013	3
M0C31069	SHEET:CASE:HARNESS	U012	25
M0C31085	SEAL:REGISTRATION ROLLER:RI GHT	U012	26
M0C31086	SHEET:POWER SUPPLY UNIT	U012	27
M0C31128	GEAR:DRIVE:FUSING:NO.4	U010	17
M0C31150	DC BRUSHLESS MOTOR:31.1W	U010	18
M0C31177	CASE:DRIVE:ASS'Y	U010	19
M0C31280	COVER:REAR	U001	8
M0C31281	COVER:REAR UPPER	U001	9
M0C31300	COVER:FRONT	U001	10
M0C31302	PAWL:BUTTON:RIGHT	U001	11
M0C31303	COMPRESSION SPRING:BUTTON: RIGHT	U001	12
M0C31311	BUTTON:RIGHT	U001	13
M0C31315	COVER:UPPER:BASE MEMBER	U001	14
M0C31324	EXTENSION TRAY:GUIDE	U001	15
M0C31325	EXTENSION TRAY:EXIT	U001	16
M0C31330	COVER:SIDE PLATE:LEFT	U001	17
M0C31342	COVER:SIDE PLATE:RIGHT	U001	18
M0C31361	COVER:REAR MIDDLE	U001	19
M0C31370	COVER:REAR LOWER	U001	20
M0C31388	MAGNET CATCH:REAR:COVER:AS S'Y	U001	21
M0C31450	(NA/EU/AA):OPERATION SECTION: ASS'Y	U002	2
M0C31850	OPTICAL WRITING UNIT:ASS'Y	U003_S001	6

Exclusive Parts

Number	Part Name	Group	ID
M0C32505	PAPER TRAY:ASS'Y	U004_S001	59
M0C32614	SPONGE:END FENCE	U004_S001	60
M0C32616	LEVER:PAPER VOLUME SENSOR	U004_S001	61
M0C32629	COVER:PAPER TRAY	U004_S001	62
M0C32633	DECAL:PICK-UP PAPER JAM	U001	22
M0C32672	RAIL:PAPER TRAY:LEFT	U004	63
M0C32673	RAIL:PAPER TRAY:RIGHT	U004	64
M0C32678	COMPRESSION SPRING:DETENT: PAPER TRAY	U004	65
M0C32681	DETENT:PAPER TRAY	U004	66
M0C32804	GUIDE PLATE:UPPER:MANUAL FE ED	U004	67
M0C32805	GUIDE PLATE:MANUAL FEED:LOW ER	U004	68
M0C32881	COVER:MANUAL FEED TABLE	U004	69
M0C34004	(NA):FUSING UNIT:ASS'Y	U007_S001	38
M0C34212	(NA):HEATER:800W:120V	U007_S001	39
M0C34225	DISCHARGE BRUSH:HOT ROLLER	U007_S001	40
M0C34240	HARNESS:THERMOSTAT	U007_S001	41
M0C34243	(NA):HARNESS:FUSING	U007_S001	42
M0C34292	FUSING COVER:UPPER	U007_S001	43
M0C34454	EXIT ROLLER	U008	8
M0C34470	EXIT ROLLER:DUPLEX:ASS'Y	U008	9
M0C34481	PLATE:LEFT:EXIT	U008	10
M0C34482	PLATE:RIGHT:EXIT	U008	11
M0C34498	GROUND PLATE:EXIT ROLLER	U008	12
M0C34601	DECAL:LEVER:ENVELOPE:LEFT	U012	28
M0C34602	DECAL:LEVER:ENVELOPE:RIGHT	U012	29
M0C34792	RUBBER WASHER:EXTERIOR:CO VER:RIGHT	U001	23
M0C35313	(NA/TWN):POWER SUPPLY UNIT:7 2W:ASS'Y	U011	4
M0C35402	POWER PACK:ASS'Y	U011	5
M0C35525	(M0C3):PCB:SERVICE:MAIN:SP330 DN	U011	6
M0C35526	(M0C6):PCB:SERVICE:MAIN:SP371 0DN	U011	7
M0C35702	HARNESS:INLET	U012	30

Number	Part Name	Group	ID
M0C60431	(SP 3710DN):MODEL NAME PLATE :EXTRAL	U013	4
M1011066	COIL SPRING:TERMINAL	U012	31
M1016250	TRANSFER ROLLER	U006	6
M1016259	ELECTRODE PLATE:SEPARATION	U006	7
M1092584	PRESSURE PLATE:SIDE FENCE:L EFT	U004_S001	70
M1092589	LEVER:LOCK:SIDE FENCE	U004_S001	71
M1092592	PAWL:LOCK:SIDE FENCE	U004_S001	72
M1161118	GEAR:DRIVE:FUSING:NO.1	U010	20
M1161121	GEAR:DRIVE:PAPER FEED:NO.1	U010	21
M1161122	GEAR:DRIVE:PAPER FEED:NO.2	U010	22
M1161124	GEAR:DRIVE:PAPER FEED:NO.4	U010	23
M1171136	GEAR:DRIVE:DUPLEX SECTION	U010	24
M1332710	SPRING:RELEASE:TRAY BOTTOM PLATE	U004_S001	73
M1540265	STEPPER MOTOR	U009	39
M1542056	DISCHARGE LAMP	U012	32
M1542618	DECAL:PAPER TRAY:FRONT	U004_S001	74
M1542707	STAY:PAPER FEED	U004	75
M1542816	DECAL:FEED PAPER AGAIN:PREV ENTION	U004	76
M1542831	DC SOLENOID:9.6W:24V	U004	77
M1542879	EXTENSION TRAY:MANUAL FEED	U004	78
M1544694	GUIDE:HORIZONTAL TRANSPORT :UPPER	U009	40
M1544695	GUIDE:HORIZONTAL TRANSPORT :LOWER	U009	41
M1545697	(NA):POWER SUPPLY CORD:125V: 10A	U013	5
M2871043	COVER:U CONVEYER BELT:DUPL EX	U012	33
M2872589	PAPER TRAY:REAR	U004_S001	79
M2872611	TRAY:BASE	U004_S001	80
M2872612	END FENCE	U004_S001	81
M2872615	SIDE FENCE:LEFT	U004_S001	82
M2872618	COVER:SIDE FENCE:LEFT	U004_S001	83
M2872620	SIDE FENCE:RIGHT	U004_S001	84

Exclusive Parts

Number	Part Name	Group	ID
M2872622	COVER:SIDE FENCE:RIGHT	U004_S001	85
M2872623	PAWL:LOCK:END FENCE	U004_S001	86
M2872624	CLICK:SIDE FENCE	U004_S001	87
M2872625	LEVER:LOCK:EXTENSION TRAY	U004_S001	88
M2872626	DECAL:EXTENSION TRAY	U004_S001	89
M2872627	LEVER:LOCK:END FENCE	U004_S001	90
M2872636	GEAR:16Z	U004_S001	91
M2872671	FEELER:PAPER END SENSOR	U004	92
M2872875	SIDE FENCE:MANUAL FEED:RIGHT	U004	93
M2872876	SIDE FENCE:MANUAL FEED:LEFT	U004	94
M2872878	RACK:MANUAL FEED	U004	95
M2872879	COMPRESSION SPRING:SIDE FENCE:MANUAL FEED	U004	96
M2872881	BASE:MANUAL FEED TABLE	U004	97
M2874206	STRIPPER PAWLS	U007_S001	44
M2874263	THERMISTOR	U007_S001	45
M2874719	PIN:GUIDE:TRANSPORT	U009	42
M2874895	PIN:GUIDE:UPPER	U009	43

Standard Parts



03603006N
SCREW - M3X6



04503008N
TAPPING SCREW - M3X8



04503010N
TAPPING SCREW - M3X10



04503010P
TAPPING SCREW:3X10



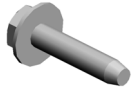
04504008N
TAPPING SCREW - M4X8



04513006N
TAPPING SCREW - 3X6



04513008N
TAPPING SCREW - M3X8



04513014N
TAPPING SCREW:3X14



04513030N
TAPPING SCREW:3X30



04523010N
BINDING SELF-TAPPING SCREW:3X10



04533006N
TAPPING SCREW - M3X6



04543006Q
TAPPING SCREW - M3X6



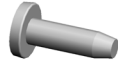
04543008Q
TAPPING SCREW:3X8



04543014Q
TAPPING SCREW:3X14



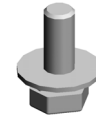
04583010N
HEXAGON HEAD TAPPING SCREW:3X10



04593010N
BINDING HEAD TAPPING SCREW:3X10



07200040E
RETAINING RING - M4



08046127
HEXAGONAL BOLT:DOUBLE SCREW:M3X8



08050103
RETAINING RINGS-E:SILENCER:DIA3



08050104
RETAINING RINGS-E:SILENCER:DIA4



08050106
RETAINING RINGS-E:SILENCER:DIA6



09543010N
SCREW:POLISHED ROUND/SPRING:M3X10



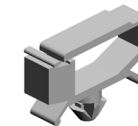
11050197
WIRE SADDLE



11050568
CLAMP:LWSS-0504



11050758
CLAMP:LWSM-0306A



11050760
CLAMP:LWSM-0511A



11050762
CLAMP:LWS-0711A



12042612
MICRO SWITCH:D3V-16506-3C25

