

SP 320DN/325DNw/377DNwX
(M0A7/M287/M0BB)
Parts Catalog

Parts change information sample

 **Add**

 **Update**

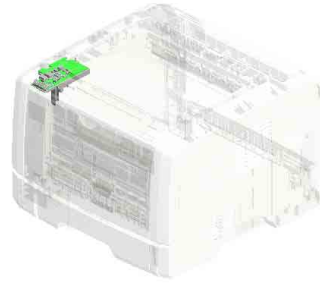
 **Delete**

Model	Product Code	PC Style
SP 320DN	M0A7	3D
SP 325DNw	M287	3D
SP 377DNwX	M0BB	3D
SP 320SN	M0A8	3D
SP 325SNw	M288	3D
SP 377SNwX	M0BC	3D
SP 320SFN	M0A9	3D
SP 325SFNw	M289	3D
SP 377SFNwX	M0BD	3D
ARDF	M2891601	Traditional

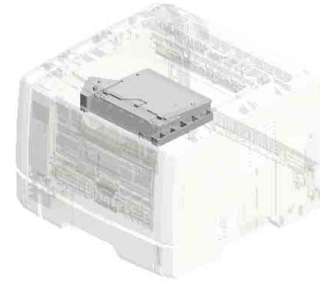
Unit All



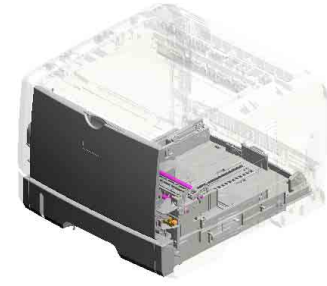
U001
EXTERIOR



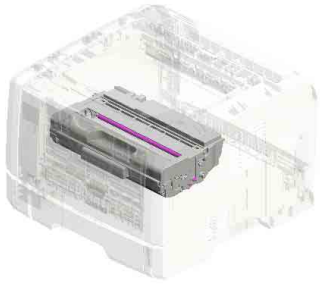
U002
OPERATION



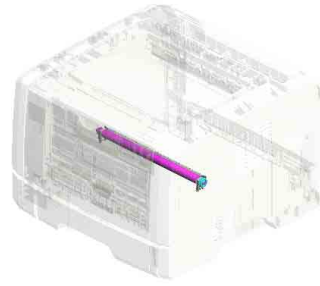
U003
LASER UNIT



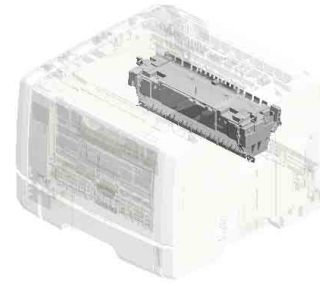
U004
PAPER FEED



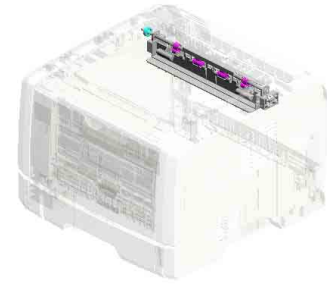
U005
PCU



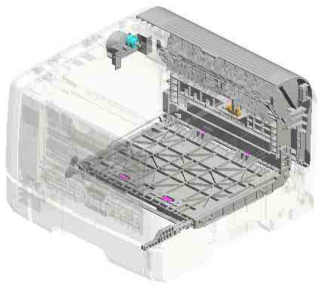
U006
TRANSFER/SEPARATION



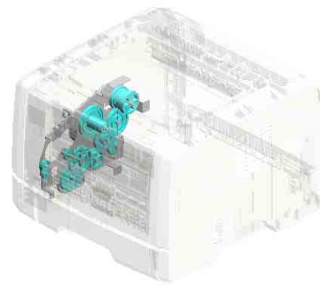
U007
FUSING



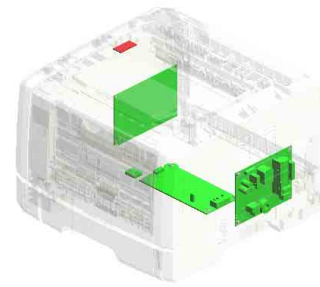
U008
PAPER EXIT



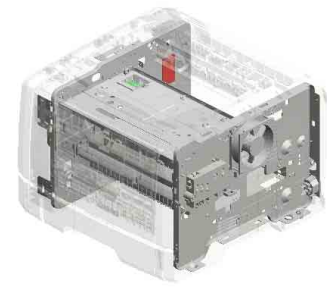
U009
DUPLEX



U010
MAIN DRIVE

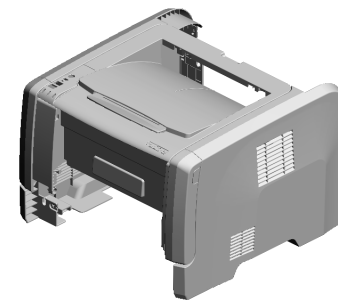


U011
ELECTRICAL

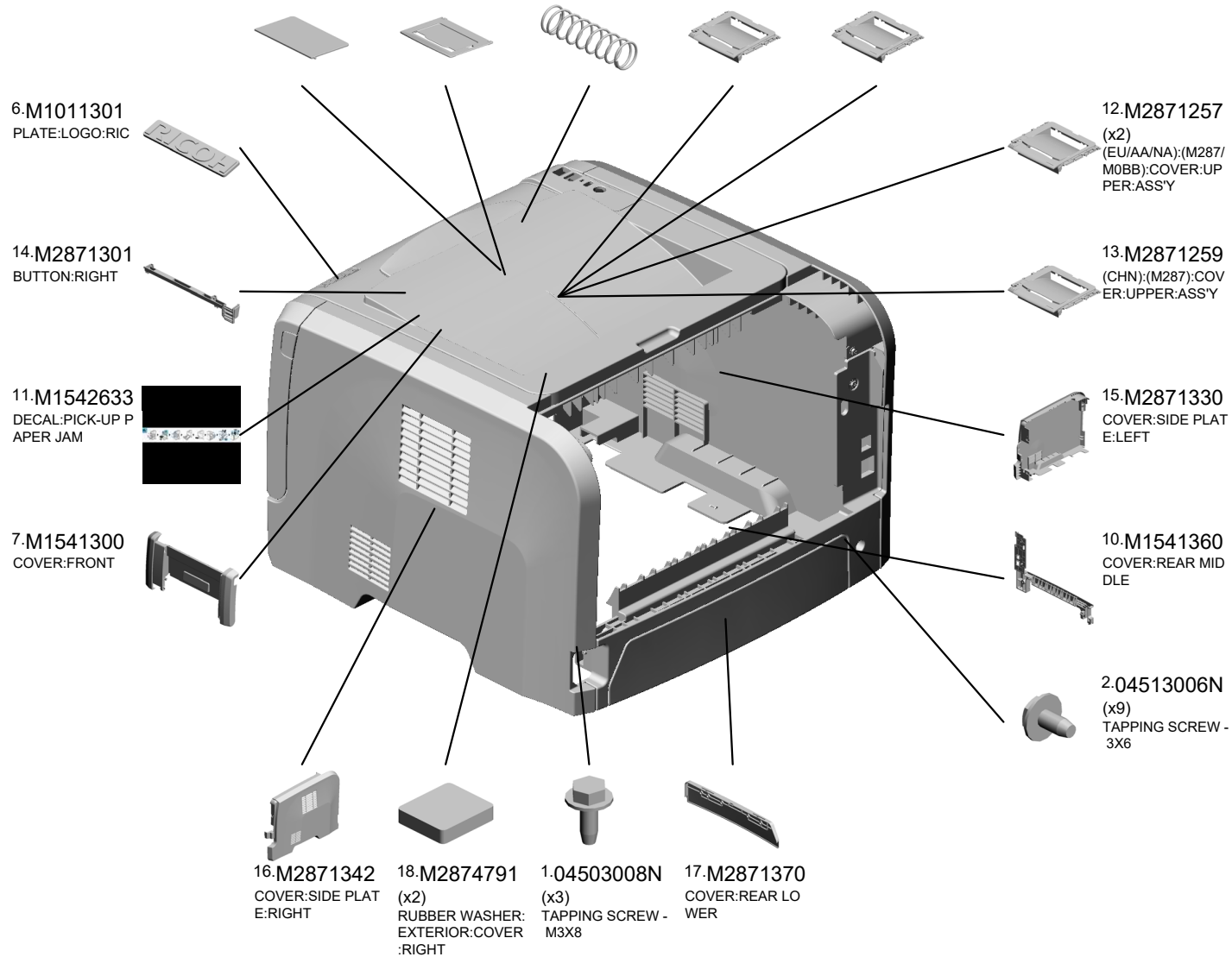


U012
MAIN FRAME

U001 EXTERIOR



- 8.M1541324 EXTENSION TRAY: GUIDE
- 9.M1541325 EXTENSION TRAY: EXIT
- 3.G0521518 SPRING - LOCK LEVER
- 4.M0A71257 (EU/AA):(M0A7):COVER:UPPER:ASSY
- 5.M0A71259 (CHN):(M0A7):COVER:UPPER:ASSY

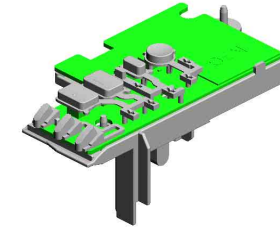


U002 OPERATION

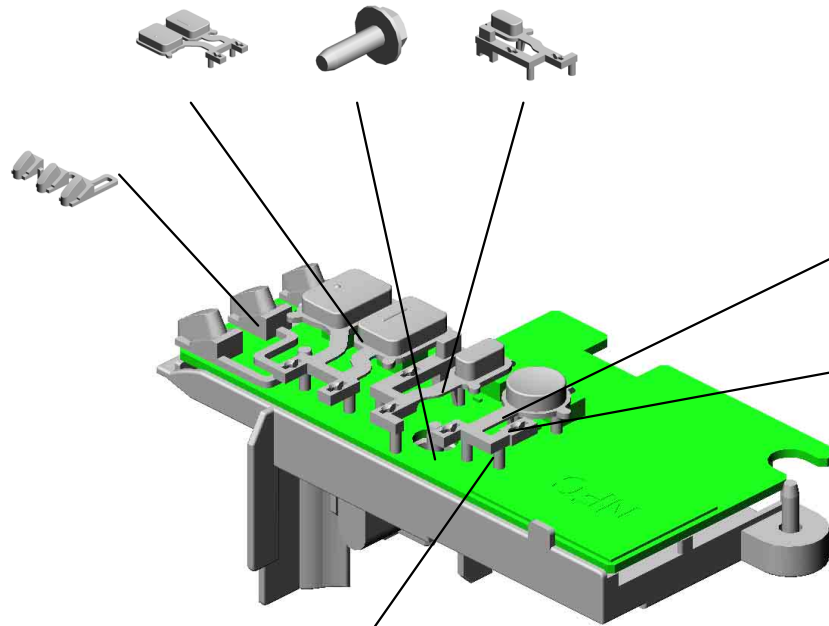
5.M2871467
KEYTOP:START/ST
OP

1.04503010N
(x3)
TAPPING SCREW -
M3X10

6.M2871468
(M287/M0BB):KEYT
OP:WIFI



3.M2871464
LENS



7.M2871469
KEYTOP:POWER S
OURCE

2.M2871460
PCB:OPU

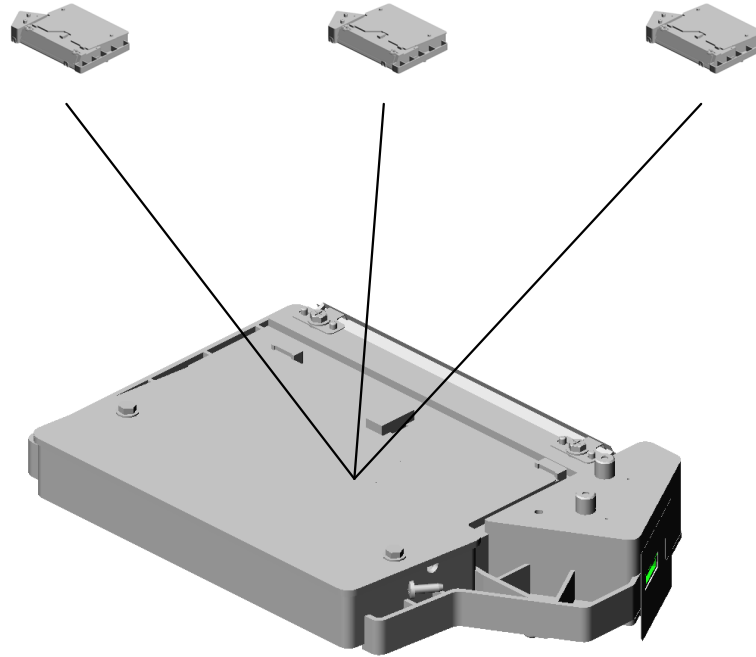
4.M2871465
CASE:OPERATION
SUB-UNIT

U003.LASER UNIT

U003 S001
M2871851
(M287/M0BB):OPTICAL WRITING UNIT:ASSY

U003 S002
M0A71851
(EU/AA/CHN):(M0A7):OPTICAL WRITING UNIT:ASSY

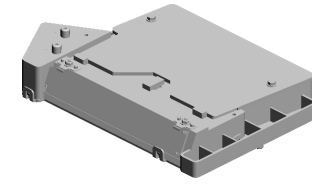
U003 S003
M0A71851
(EU/AA/CHN):(M0A7):OPTICAL WRITING UNIT:ASSY



U001	U002	U003	U004	U005	U006	U007	U008	U009	U010	U011	U012
------	------	------	------	------	------	------	------	------	------	------	------

U003
LASER UNIT

5.04543008Q
(x3)
TAPPING SCREW:
3X8

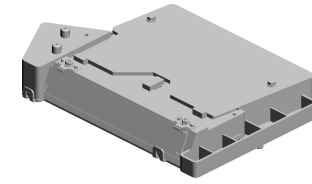


U001	U002	U003	U004	U005	U006	U007	U008	U009	U010	U011	U012
------	------	------	------	------	------	------	------	------	------	------	------

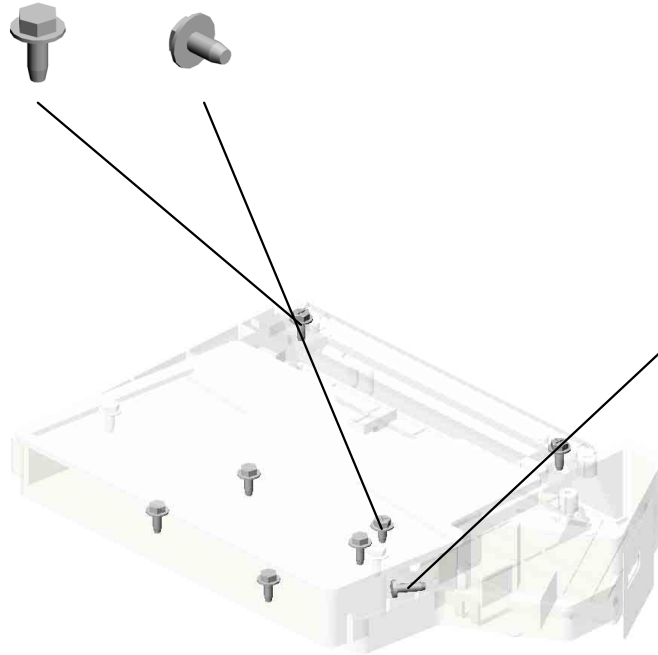
U003_S001
(M287/M0BB):OPTICAL WRITING UNIT:ASS'Y

1.04503008N (x6)
TAPPING SCREW - M3X8

2.04513006N
TAPPING SCREW - 3X6



7.M2871851
(M287/M0BB):OPTI
CAL WRITING UNI
T:ASSY



3.04523010N
BINDING SELF-TA
PPING SCREW:3X
10

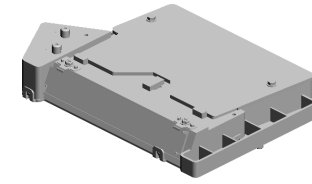
4.04543006Q(x 2)
TAPPING SCREW - M3X6

U001	U002	U003	U004	U005	U006	U007	U008	U009	U010	U011	U012
------	------	------	------	------	------	------	------	------	------	------	------

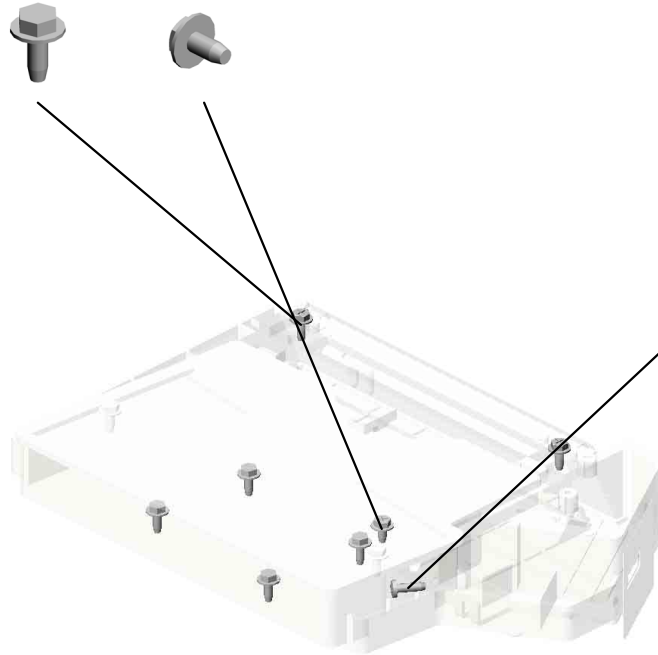
U003_S002
(EU/AA/CHN):(M0A7):OPTICAL WRITING UNIT:ASS'Y

1.04503008N (x6)
TAPPING SCREW - M3X8

2.04513006N
TAPPING SCREW - 3X6



6.M0A71851
(EU/AA/CHN):(M0A7):OPTICAL WRITING UNIT:ASS'Y



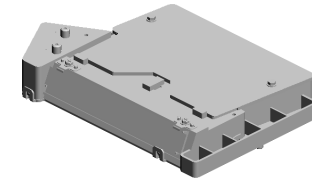
3.04523010N
BINDING SELF-TAPPING SCREW:3X10

4.04543006Q(x 2)
TAPPING SCREW - M3X6

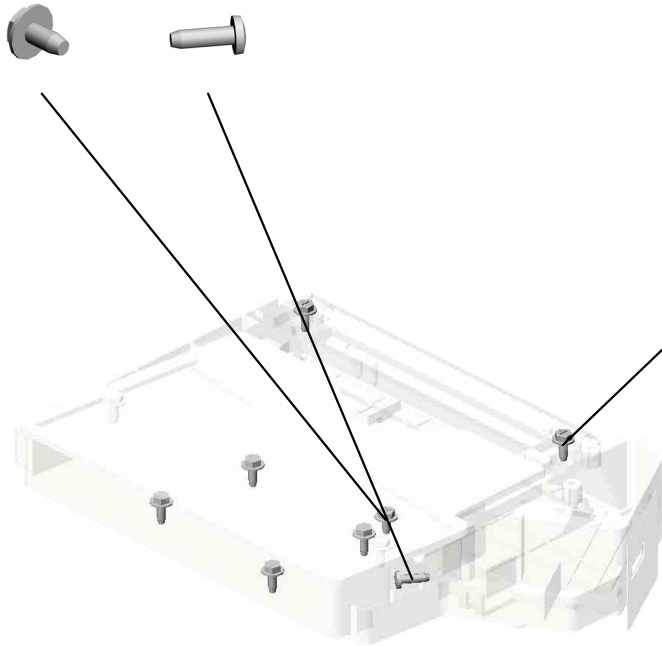
U001	U002	U003	U004	U005	U006	U007	U008	U009	U010	U011	U012
------	------	------	------	------	------	------	------	------	------	------	------

U003_S003
(EU/AA/CHN):(M0A7):OPTICAL WRITING UNIT:ASS'Y

2.04513006N 3.04523010N
TAPPING SCREW - BINDING SELF-TA
3X6 PPING SCREW:3X
10



6.M0A71851
(EU/AA/CHN):(M0A
7):OPTICAL WRITI
NG UNIT:ASS'Y



1.04503008N
(x6)
TAPPING SCREW -
M3X8

4.04543006Q(x 2)
TAPPING SCREW - M3X6

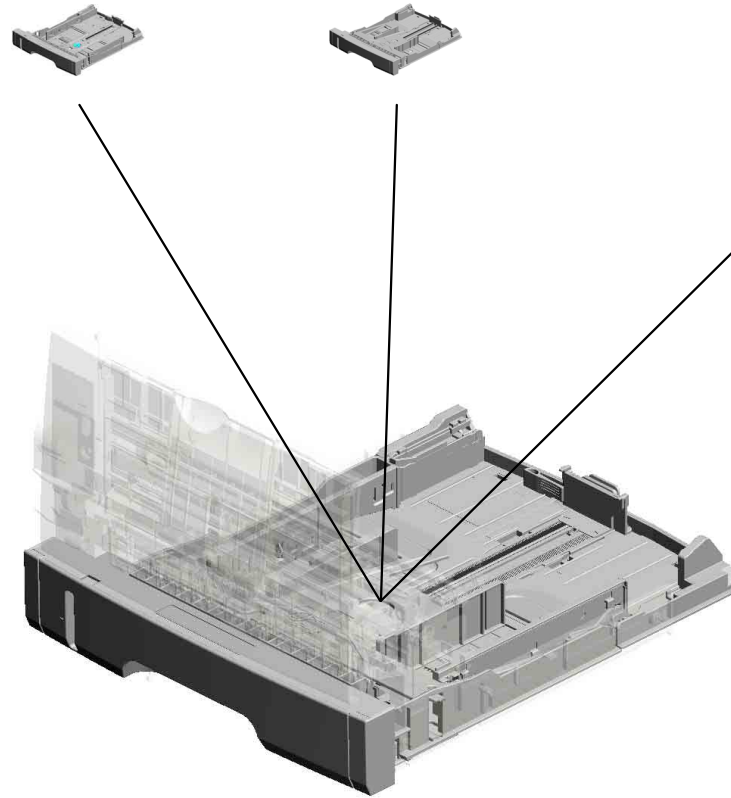
U001	U002	U003	U004	U005	U006	U007	U008	U009	U010	U011	U012
------	------	------	------	------	------	------	------	------	------	------	------

U004.PAPER FEED

U004 S001
M2872505
(M287/M0BB);PAPER TRAY:A
SSY

U004 S002
M1542505
(EU/AA/CHN);(M0A7);PAPER
TRAY:ASSY

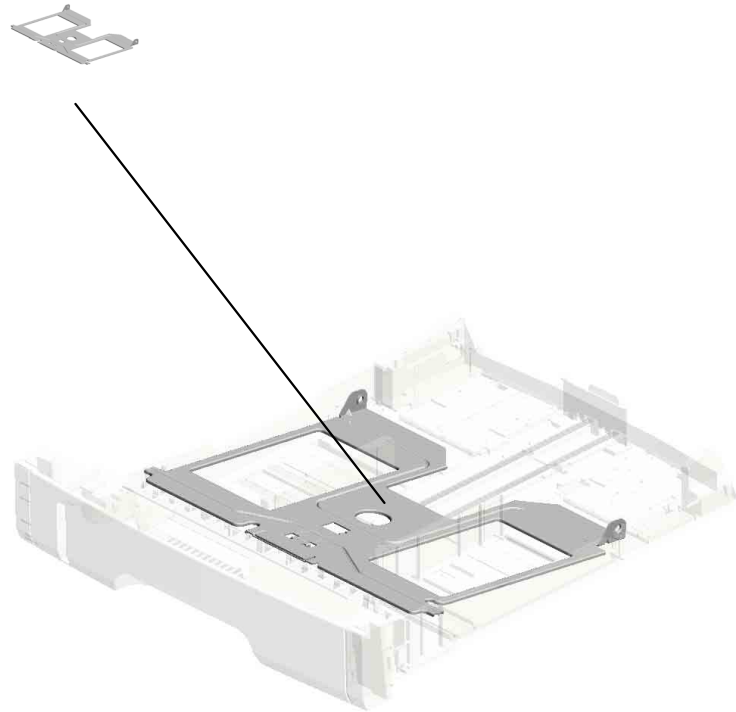
U004 S003
M1542505
(EU/AA/CHN);(M0A7);PAPER
TRAY:ASSY



U001	U002	U003	U004	U005	U006	U007	U008	U009	U010	U011	U012
------	------	------	-------------	------	------	------	------	------	------	------	------

U004_S002.(EU/AA/CHN):(M0A7):PAPER TRAY:ASS'Y

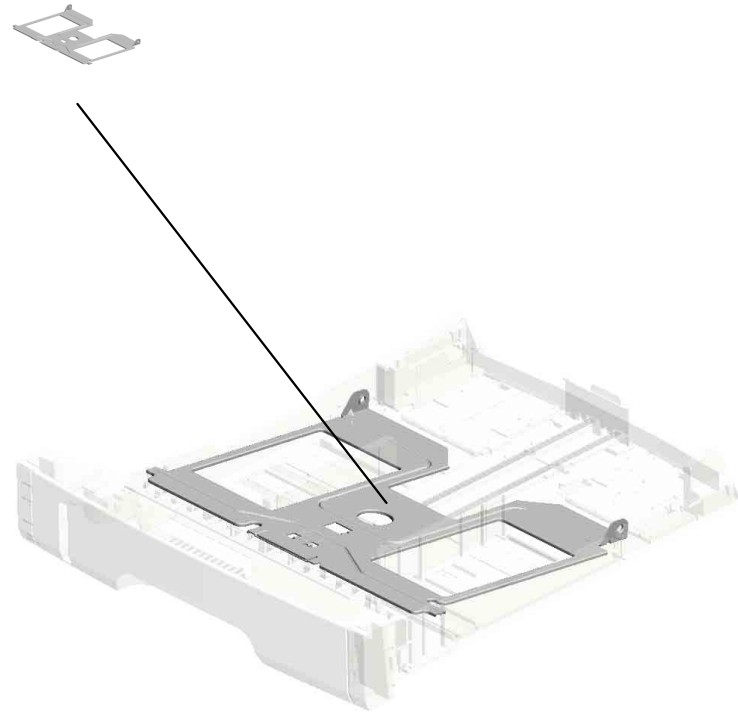
U004 S002 S001
M0122610
(EU/AA/CHN):(M0A7):TRAY B
OTTOM PLATE



U001	U002	U003	U004	U005	U006	U007	U008	U009	U010	U011	U012
------	------	------	------	------	------	------	------	------	------	------	------

U004_S003.(EU/AA/CHN):(M0A7):PAPER TRAY:ASS'Y

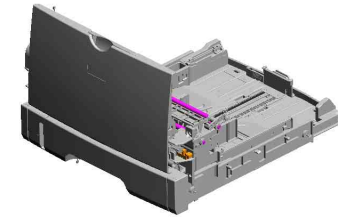
U004 S003 S001
M0122610
(EU/AA/CHN):(M0A7):TRAY B
OTTOM PLATE



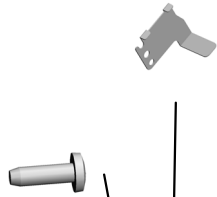
U001	U002	U003	U004	U005	U006	U007	U008	U009	U010	U011	U012
------	------	------	------	------	------	------	------	------	------	------	------

U004 PAPER FEED

13.G1022717 COVER:DC SOLENOID
 6.A1532117 ROLLER TERMINAL
 30.M0122668 SHAFT:PAPER FEED:ASSY
 10.G0123050 SIDE FENCE GEAR
 12.G0292767 BY-PASS FEED COVER



4.04523010N
 BINDING SELF-TAPPING SCREW:3X10



5.08050104
 (x7)
 RETAINING RINGS -E:SILENCER:DIA4



29.M0122631
 CLOTH:EARTH:PAPER FEED



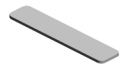
9.D1272514
 (x3)
 ELECTROMAGNETIC CLUTCH:3.5T:MANUAL FEED



3.04513006N
 (x5)
 TAPPING SCREW - 3X6



18.GF013001
 BOTTOM PLATE PAD



31.M0122671
 (x2)
 (EU/AA/CHN):(M0A7):FEELER:PAPER END SENSOR



33.M0122701
 ROLLER:INTERFACE:DRIVE



15.G1272627
 PAPER FEED ROLLER - MM32



11.G0201160
 (x2)
 SNAP RING



34.M0122702
 ROLLER:INTERFACE:DRIVEN



7.AA143520
 SHOULDER SCREW - M3



1.04503008N
 (x2)
 TAPPING SCREW - M3X8



3.04513006N (x 3)
 TAPPING SCREW - 3X6

8.AW020198
 (x3)
 PHOTOINTERRUPTOR:LG2A14NL1



14.G1022789
 STOPPER:PHOTOINTERRUPTOR



32.M0122673
 RAIL:PAPER TRAY:RIGHT



U004 PAPER FEED

- 36.M0122711 BUSHING:REGISTRATION:DRIVEN:LEFT
- 47.M0122744 (x2) GUIDE:REGISTRATION
- 54.M0122833 DECAL:SIDE FENCE:MANUAL FEED
- 37.M0122715 GUIDE PLATE:TRANSPORT:UPPER
- 38.M0122718 REGISTRATION ROLLER:DRIVE



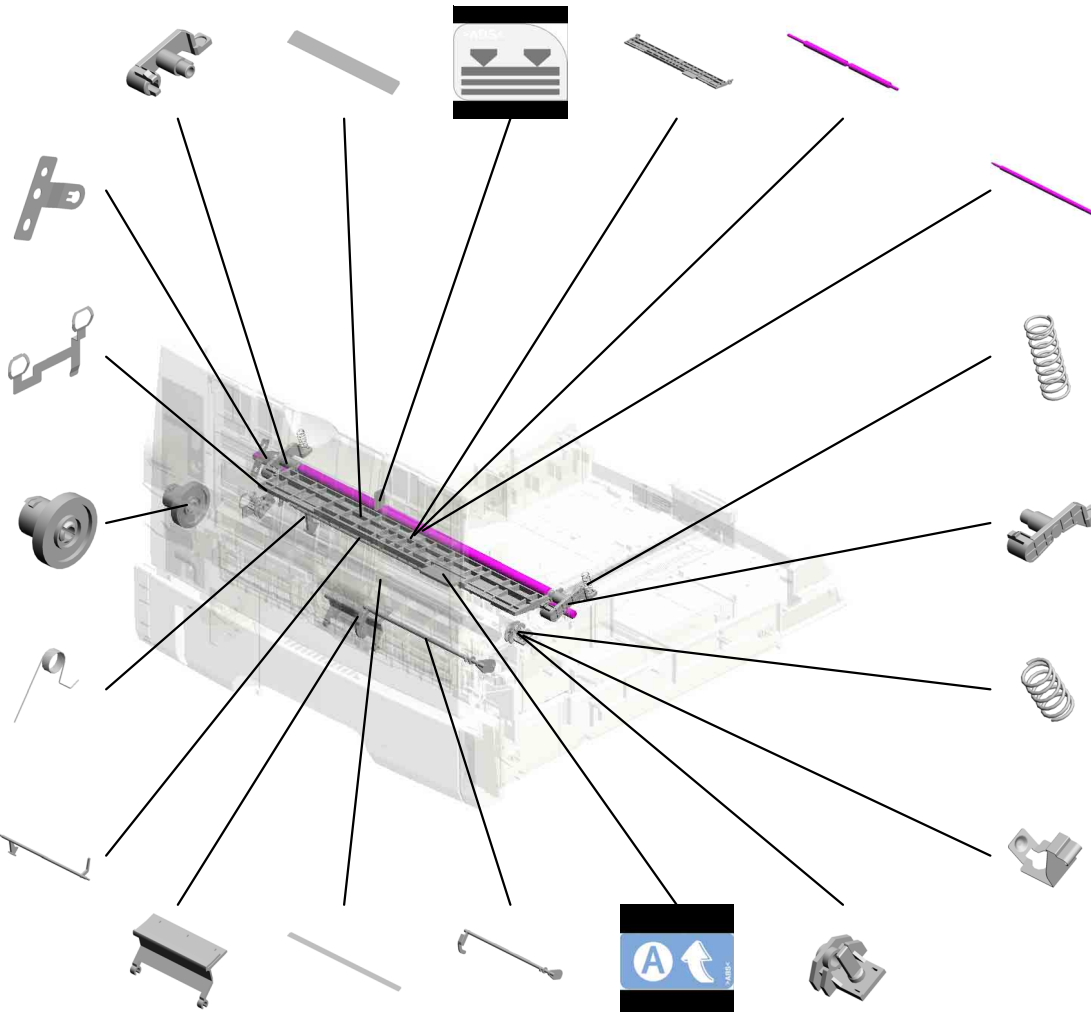
- 45.M0122742 GROUND PLATE:DRIVEN:REGISTRATION ROLLER

- 44.M0122741 GROUND PLATE:DRIVE:REGISTRATION ROLLER

- 53.M0122830 MECHANICAL SPRING CLUTCH:MANUAL FEED

- 42.M0122725 SPRING:FEELER:REGISTRATION

- 41.M0122723 FEELER:REGISTRATION:SENSOR



- 39.M0122719 REGISTRATION ROLLER:DRIVEN

- 40.M0122722 (x2) SPRING:ROLLER:REGISTRATION

- 43.M0122730 BUSHING:REGISTRATION:DRIVEN:RIGHT

- 35.M0122705 (x2) SPRING:ROLLER

- 48.M0122745 GROUND PLATE:DRIVEN

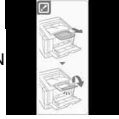
- 51.M0122816 FRICTION PAD:HOLDER:MANUAL FEED:ASSY
- 50.M0122806 SHEET:GUIDE:MANUAL FEED SUB-UNIT
- 52.M0122824 FEELER:MANUAL FEED
- 46.M0122743 DECAL:GUIDE PLATE:TRANSPORT:UPPER
- 49.M0122753 (x2) BUSHING:ROLLER:DRIVEN

U004 PAPER FEED

- 93.M2872876 SIDE FENCE:MANUAL FEED:LEFT
- 75.M1542879 EXTENSION TRAY:MANUAL FEED
- 92.M2872875 SIDE FENCE:MANUAL FEED:RIGHT
- 64.M1162672 RAIL:PAPER TRAY:LEFT
- 94.M2872878 (x2) RACK:MANUAL FEED



73.M1542816
DECAL:FEED PAPER AGAIN:PREVENTION



74.M1542831
DC SOLENOID:9.6W:24V



91.M2872871
COVER:MANUAL FEED TABLE



96.M2872881
BASE:MANUAL FEED TABLE



56.M0122860
PAPER FEED ROLLER:MANUAL FEED

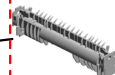


95.M2872879
(x2) COMPRESSION SPRING:SIDE FENCE:MANUAL FEED

55.M0122859
GUIDE PLATE:UPPER:MANUAL FEED



97.M1542707
STAY:PAPER FEED
202006-01

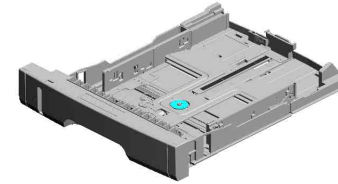


59.M0124488
(x6) BUSHING:DIA6XDI A10X6



- 57.M0122874 COMPRESSION SPRING:MANUAL FEED
- 72.M1542805 GUIDE PLATE:MANUAL FEED:LOWER
- 90.M0C32691 FEELER:PAPER FEED SENSOR
202001-01 O/O
- 58.M0122880 COMPRESSION SPRING:SEPARATION

U004_S001
(M287/M0BB):PAPER TRAY:ASS'Y



76.M2872505
(M287/M0BB):PAPER TRAY:ASS'Y

- 60.M0752610 (x4)
(M287/M0BB):COMPRESSION SPRING:LOCK:SIDE FENCE
- 62.M1092589
(M287/M0BB):LEVER:LOCK:SIDE FENCE
- 63.M1092592
(M287/M0BB):PAWL:LOCK:SIDE FENCE
- 27.M0122613
COMPRESSION SPRING:SEPARATION
- 20.M0122590
COIL SPRING:EAR TH

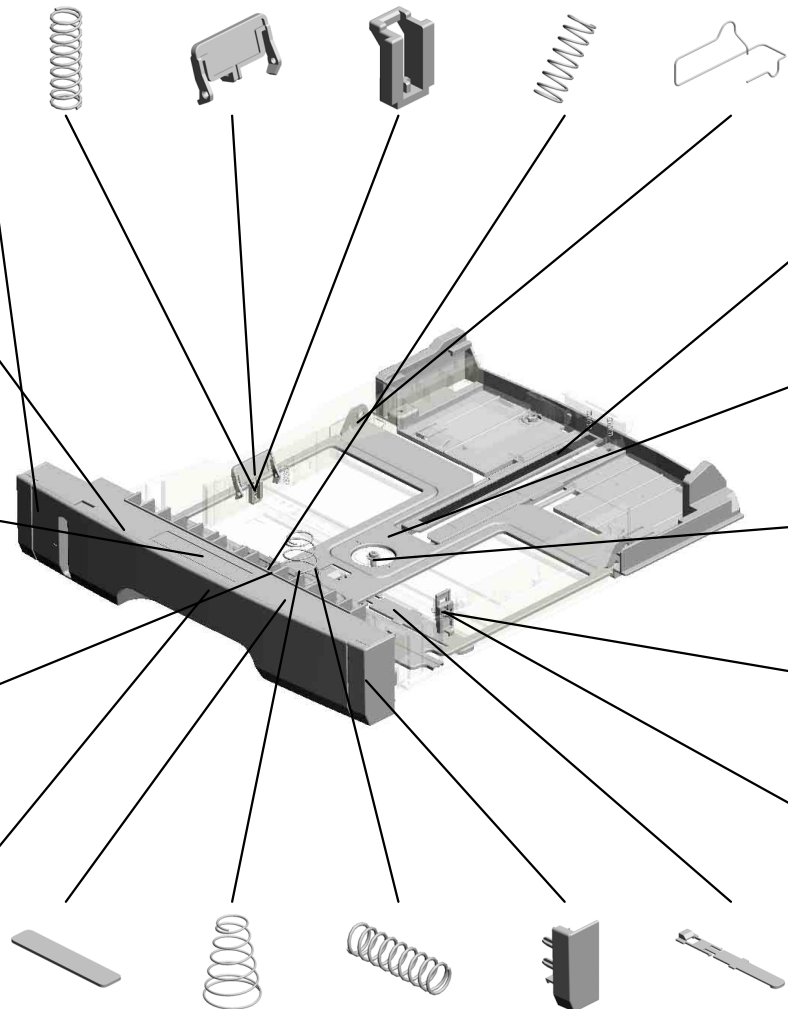
70.M1542640
COVER:PAPER TRAY:LEFT

67.M1542616
LEVER:PAPER VOLUME SENSOR

68.M1542618
DECAL:PAPER TRAY:FRONT

23.M0122605
FRICTION PAD:ADHESION

69.M1542629
COVER:PAPER TRAY:MIDDLE



77.M2872589
(M287/M0BB):PAPER TRAY:REAR

78.M2872611
(M287/M0BB):TRAY:BASE

2.04504008N
(M287/M0BB):TAPPING SCREW - M4X8

17.GA063084
(M287/M0BB):COMPRESSION SPRING:AUXILIARY:SIDE FENCE

61.M1092584
(M287/M0BB):PRESSURE PLATE:SIDE FENCE:LEFT

18.GF013001
BOTTOM PLATE PAD

26.M0122612
COMPRESSION SPRING:TRAY BOTTOM PLATE

22.M0122604
SPRING:RELEASE:TRAY BOTTOM PLATE

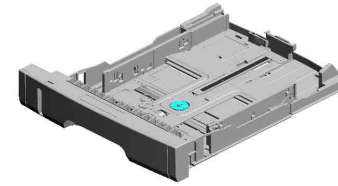
71.M1542641
COVER:PAPER TRAY:RIGHT

21.M0122603
STOPPER:BASE PLATE

U001	U002	U003	U004	U005	U006	U007	U008	U009	U010	U011	U012
------	------	------	------	------	------	------	------	------	------	------	------

U004_S001
(M287/M0BB):PAPER TRAY:ASS'Y

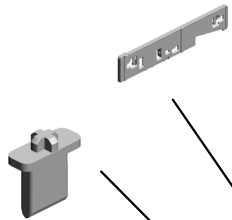
- 81.M2872618 (M287/M0BB)COVER:SIDE FENCE:LEFT
- 80.M2872615 (M287/M0BB)COVER:SIDE FENCE:LEFT
- 87.M2872626 (M287/M0BB)DECORAL:EXTENSION TRAY
- 86.M2872625 (M287/M0BB)LEVER:LOCK:EXTENSION TRAY



76.M2872505
(M287/M0BB):PAPER TRAY:ASS'Y



85.M2872624
(x2)
(M287/M0BB):CLICK:SIDE FENCE



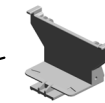
89.M2872636
(M287/M0BB):GEAR:16Z



88.M2872627
(M287/M0BB)LEVER:LOCK:END FENCE



79.M2872612
(M287/M0BB)END FENCE



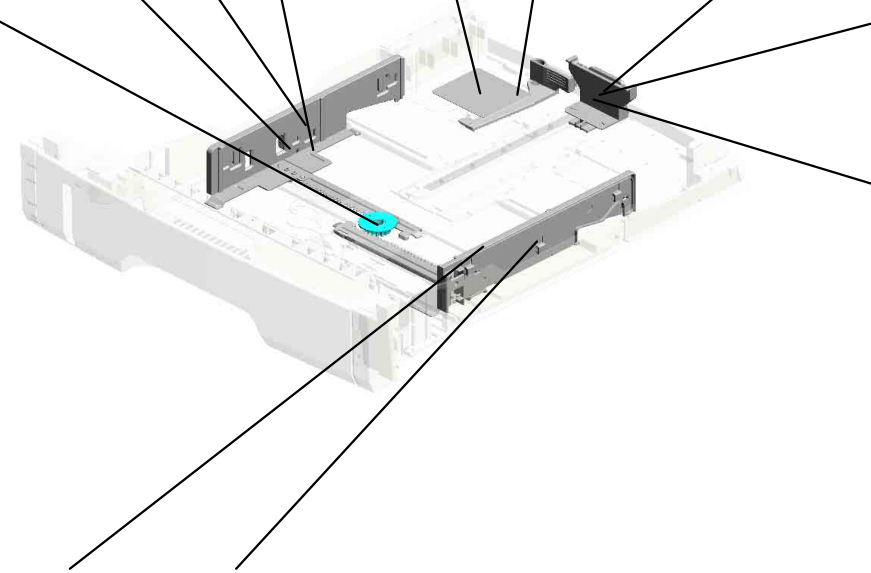
84.M2872623
(M287/M0BB)PAWL:LOCK:END FENCE



82.M2872620
(M287/M0BB)COVER:SIDE FENCE:RIGHT

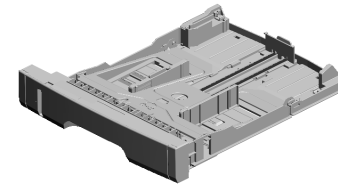


83.M2872622
(M287/M0BB)COVER:SIDE FENCE:RIGHT

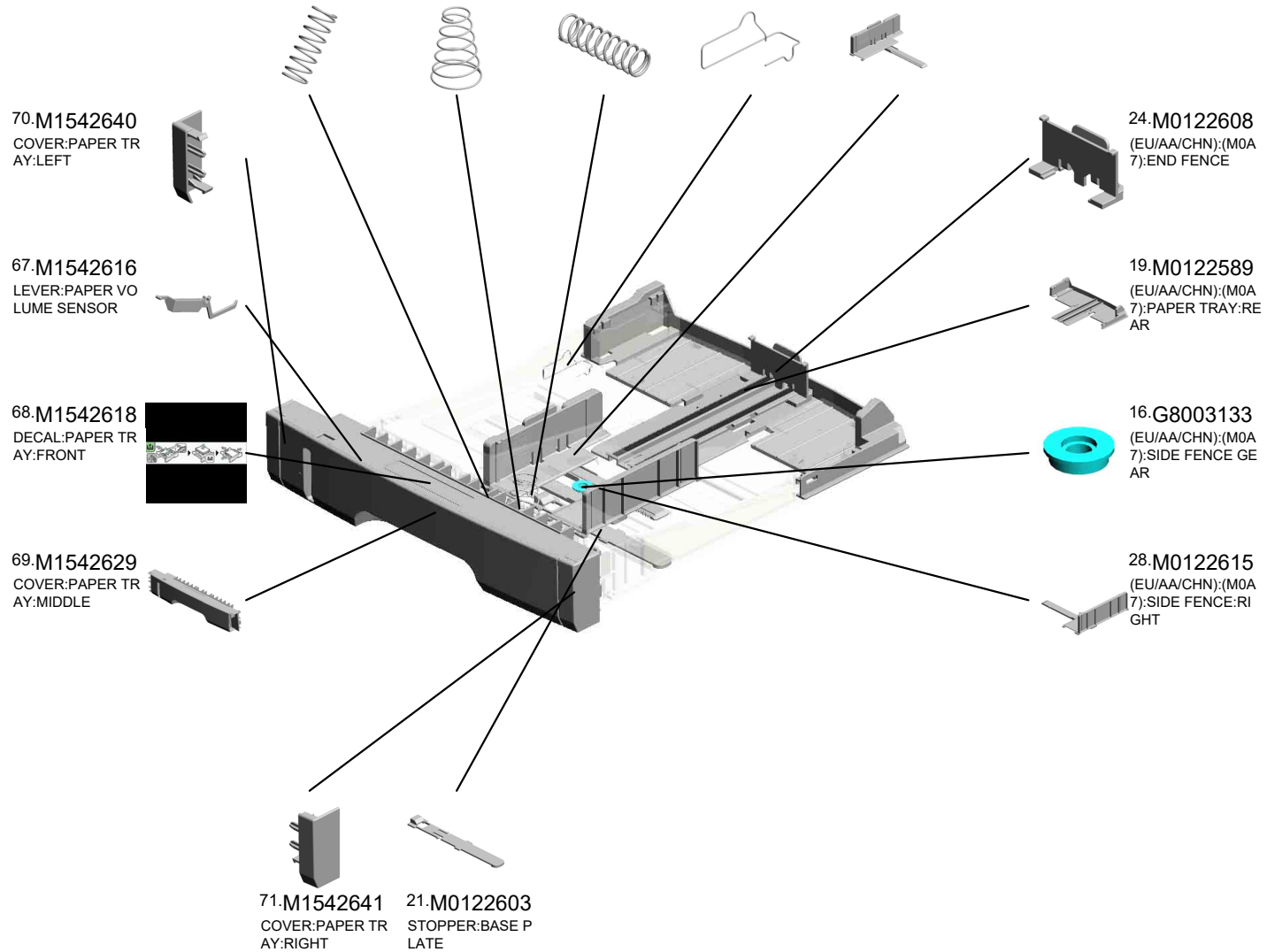


U004_S002
 (EU/AA/CHN):(M0A7):PAPER TRAY:ASS'Y

- 27.M0122613 COMPRESSION SPRING:SEPARATION
- 26.M0122612 COMPRESSION SPRING:TRAY BOTTOM PLATE
- 22.M0122604 SPRING:RELEASE:TRAY BOTTOM PLATE
- 20.M0122590 COIL SPRING:EAR TH
- 66.M1542614 (EU/AA/CHN):(M0A7):SIDE FENCE:LEFT

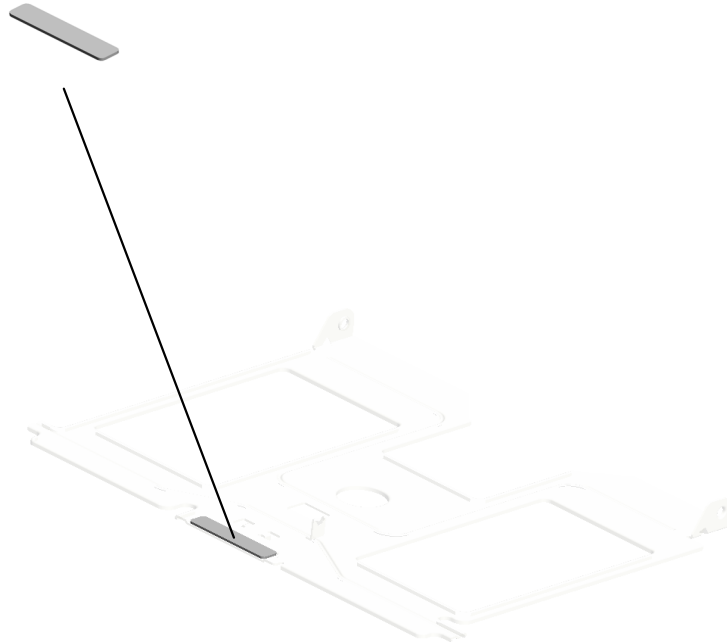


- 65.M1542505 (EU/AA/CHN):(M0A7):PAPER TRAY:ASS'Y



U004_S002_S001
(EU/AA/CHN):(M0A7):TRAY BOTTOM PLATE

18.GF013001
BOTTOM PLATE P
AD

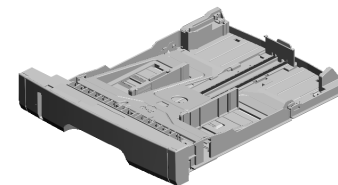


25.M0122610
(EU/AA/CHN):(M0A
7):TRAY BOTTOM
PLATE

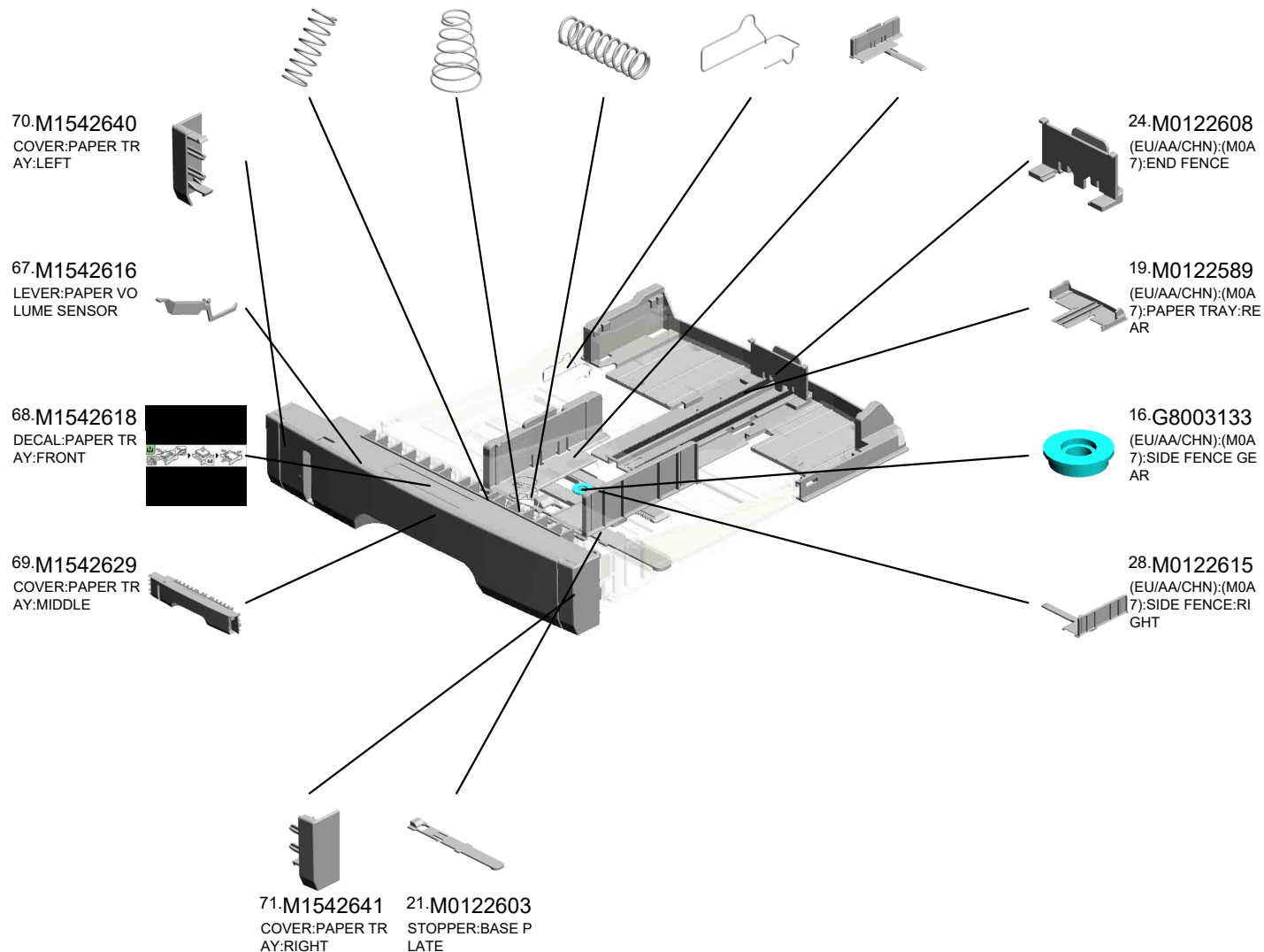
U001	U002	U003	U004	U005	U006	U007	U008	U009	U010	U011	U012
------	------	------	------	------	------	------	------	------	------	------	------

U004_S003
 (EU/AA/CHN):(M0A7):PAPER TRAY:ASS'Y

- 27.M0122613 COMPRESSION SPRING:SEPARATION
- 26.M0122612 COMPRESSION SPRING:TRAY BOTTOM PLATE
- 22.M0122604 SPRING:RELEASE:TRAY BOTTOM PLATE
- 20.M0122590 COIL SPRING:EAR TH
- 66.M1542614 (EU/AA/CHN):(M0A7):SIDE FENCE:LEFT

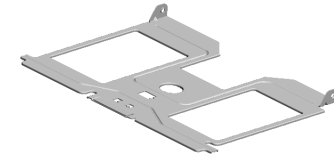
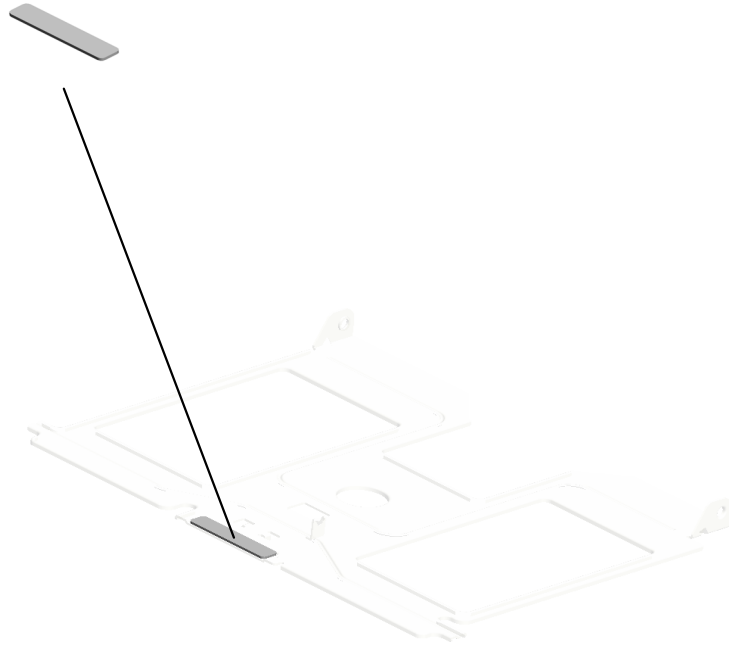


- 65.M1542505 (EU/AA/CHN):(M0A7):PAPER TRAY:ASS'Y



U004_S003_S001
(EU/AA/CHN):(M0A7):TRAY BOTTOM PLATE

18.GF013001
BOTTOM PLATE P
AD

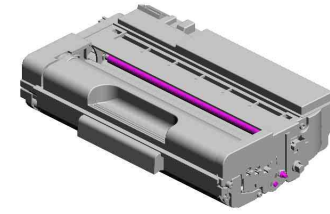
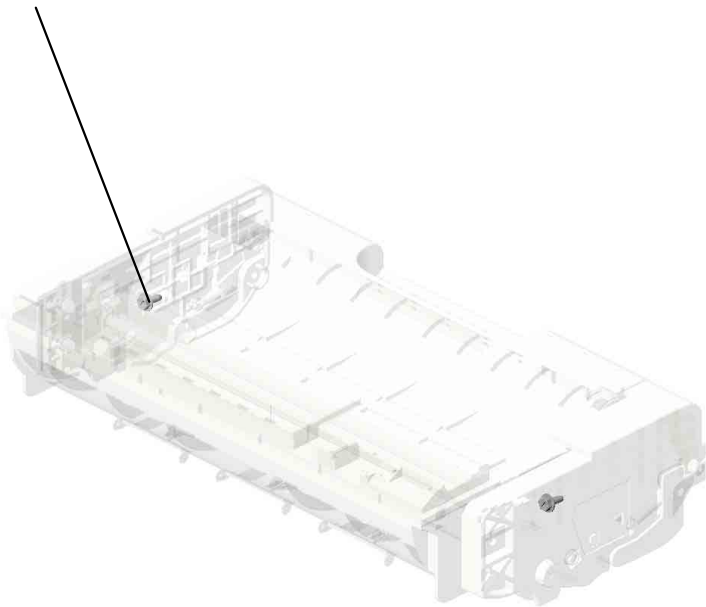


25.M0122610
(EU/AA/CHN):(M0A
7):TRAY BOTTOM
PLATE

U001	U002	U003	U004	U005	U006	U007	U008	U009	U010	U011	U012
------	------	------	------	------	------	------	------	------	------	------	------

U005
PCU

1.04503008N
(x2)
TAPPING SCREW -
M3X8

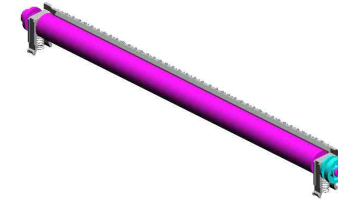


1.04503008N(x 4)
TAPPING SCREW - M3X8
2.04523010N(x 2)
BINDING SELF-TAPPING SCREW:3X10

U001	U002	U003	U004	U005	U006	U007	U008	U009	U010	U011	U012
------	------	------	------	------	------	------	------	------	------	------	------

U006
TRANSFER/SEPARATION

7.M1016259 ELECTRODE PLATE:SEPARATION
 5.M0126260 COVER:ELECTRODE PLATE
 6.M1016250 TRANSFER ROLLER



4.M0126256
ROLLER:POSITIONING:TRANSFER ROLLER



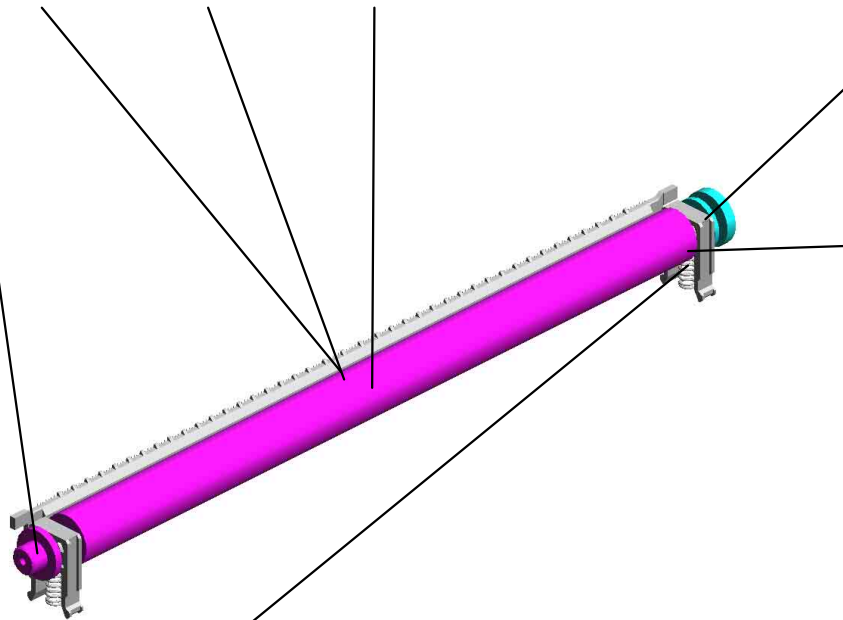
3.M0126255
GEAR:TRANSFER ROLLER



1.M0126252
(x2)
BUSHING:TRANSFER ROLLER:RIGHT



2.M0126254
(x2)
SPRING:TRANSFER ROLLER



U001	U002	U003	U004	U005	U006	U007	U008	U009	U010	U011	U012
------	------	------	------	------	------	------	------	------	------	------	------

U007.FUSING

U007 S001
M2874031
(EU/AA):FUSING UNIT:ASS'Y

U007 S002
M2874033
(CHN):FUSING UNIT:ASS'Y

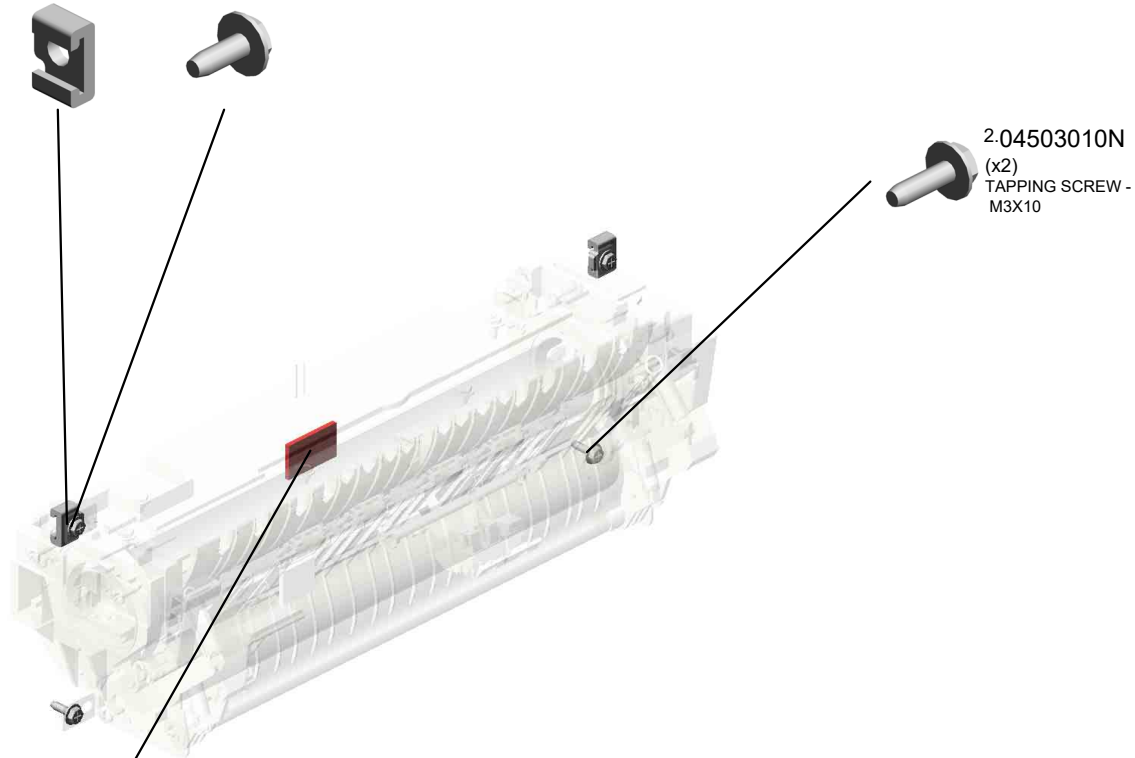
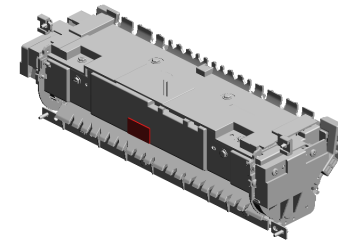
U007 S003
M2874030
(NA):FUSING UNIT:ASS'Y

U007 S004
M2874049
(TWN):FUSING UNIT:ASS'Y

U001	U002	U003	U004	U005	U006	U007	U008	U009	U010	U011	U012
------	------	------	------	------	------	------	------	------	------	------	------

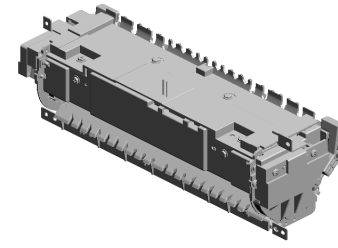
U007 FUSING

36.M0124270 4.04513008N
(x2) (x2)
THERMAL INSULATING BUSHING: FUSING UNIT TAPPING SCREW - M3X8



47.M0124699
DECAL:WARNING (HIGH TEMPERATURE):FRONT

U007_S001
(EU/AA):FUSING UNIT:ASS'Y



49.M2874031
(EU/AA):FUSING UNIT:ASSY

13.AW110116 THERMOSTAT
 22.M0124204 LEVER.LEFT:FRAME:FUSING
 18.M0124120 (x3) TENSION SPRING: PICKOFF PAWL
 8.08025318 (x4) (EU/AA/NA/CHN):BINDING HEAD TAPPING SCREW:ES:3X10
 20.M0124186 COVER:LEFT UPPER:ASSY

9.08046127 (x4) HEXAGONAL BOLT:DOUBLE SCREW:M3X8



10.09543010N SCREW:POLISHED ROUND/SPRING:M3X10



11.AA143520 (x7) SHOULDER SCREW - M3



1.03603006N (x11) SCREW - M3X6



14.G1274328 DECAL - HIGH TEMPERATURE



19.M0124135 FEELER:PAPER FEELER SENSOR



17.M0124109 SPRING:FEELER:EXIT



12.AW020198 PHOT INTERRUPTOR:LG2A14NL1



4.04513008N (x4) TAPPING SCREW - M3X8



21.M0124202 (x2) LEVER:PRESSURE



3.04513006N (x2) TAPPING SCREW - 3X6



15.M0124053 GEAR:HOT ROLLER



16.M0124055 (x2) RADIAL BALL BEARING:35X47X7



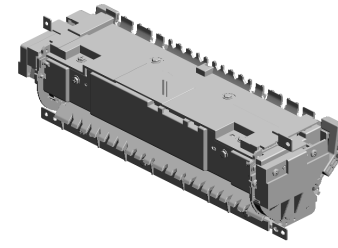
5.04533006N (x6) TAPPING SCREW - M3X6



7.07200040E (x2) RETAINING RING - M4



U007_S001
(EU/AA):FUSING UNIT:ASS'Y



49.M2874031
(EU/AA):FUSING U
NIT:ASSY

42.M0124287 COVER:RIGHT UP
PER:FUSING
39.M0124281 (x2)
RETAINING RINGS
-C:HOT ROLLER
40.M0124284 LEVER:PRESSURE
:LEFT
26.M0124212 FUSING ENTRANC
E GUIDE PLATE:U
PPER
43.M0124292 FUSING COVER:U
PPER

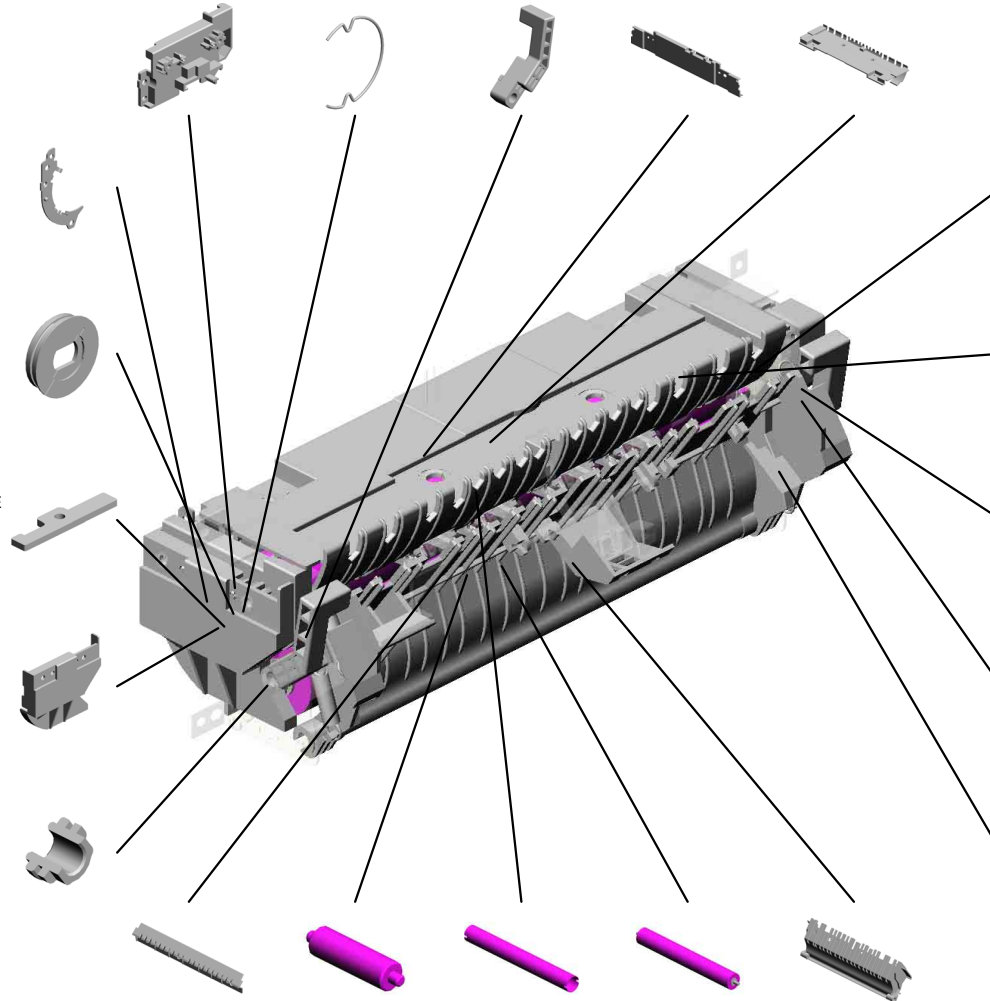
23.M0124205
LEVER:RIGHT:FRA
ME:FUSING

32.M0124223
THERMAL INSULA
TING BUSHING:HO
T ROLLER

25.M0124211
PLATE NUT:HEATE
R

35.M0124266
COVER:RIGHT LO
WER:FUSING

27.M0124213
(x2)
BUSHING:PRESSU
RE ROLLER



37.M0124276
COVER:LEFT:LOW
ER:FUSING

24.M0124208
(x3)
BRACKET:GATE P
AWL

41.M0124285
LEVER:PRESSURE
:RIGHT

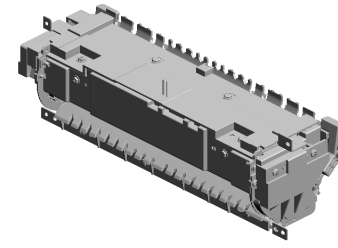
33.M0124229
(x2)
TENSION SPRING:
FUSING:PRESSUR
E

29.M0124216
(x2)
TENSION SPRING:
FUSING:GUIDE PL
ATE

30.M0124217 FUSING ENTRANC
E GUIDE PLATE:LO
WER
38.M0124279 CLEANING ROLLE
R:ASSY
31.M0124220 HOT ROLLER
34.MOC34204 PRESSURE ROLLE
R:DIA30
201910-01 O/O
28.M0124215 GUIDE PLATE:EXIT

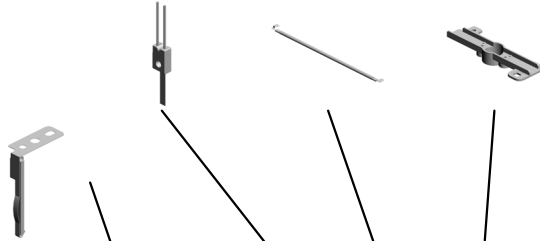
U007_S001
(EU/AA):FUSING UNIT:ASS'Y

57.M2874263 THERMISTOR
 54.M2874221 (EU/AA/CHN):HEATER:700W:220V:INFRARED
 56.M2874234 HOUSING:THERMOSTAT:ASS'Y



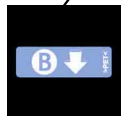
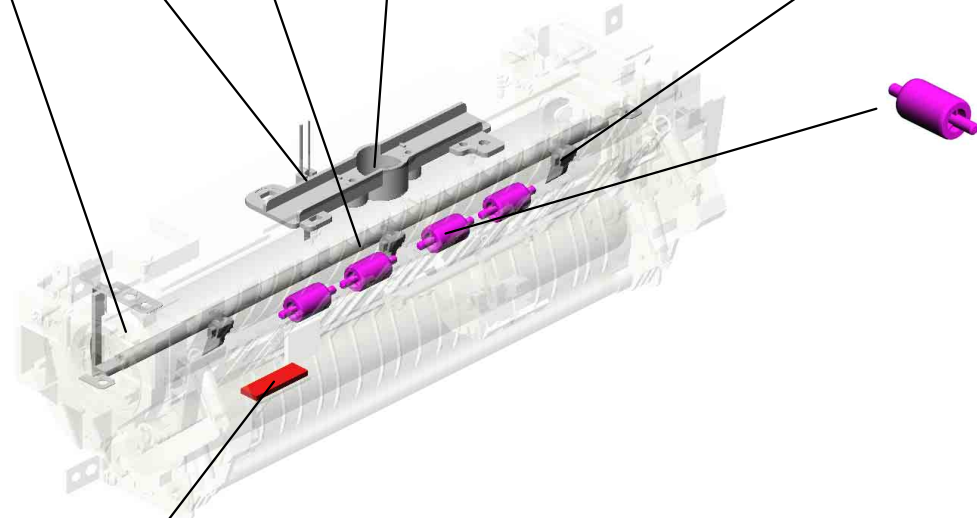
49.M2874031 (EU/AA):FUSING UNIT:ASS'Y

45.M0124295 GROUND PLATE:ASS'Y



52.M2874206 (x3) STRIPPER PAWLS

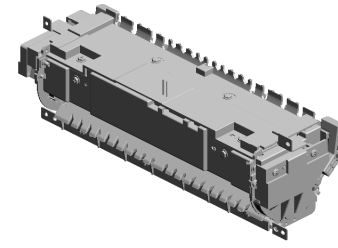
44.M0124293 (x4) EXIT ROLLER:EXIT FUSING



46.M0124603 DECAL:GUIDE PLATE:B

U001	U002	U003	U004	U005	U006	U007	U008	U009	U010	U011	U012
------	------	------	------	------	------	------	------	------	------	------	------

U007_S002
(CHN):FUSING UNIT:ASS'Y



50.M2874033
(CHN):FUSING UNIT:ASS'Y

- 13.AW110116 THERMOSTAT
- 22.M0124204 LEVER.LEFT:FRAME:FUSING
- 18.M0124120 (x3) TENSION SPRING: PICKOFF PAWL
- 8.08025318 (x4) (EU/AA/NA/CHN):BINDING HEAD TAPPING SCREW:ES:3X10
- 20.M0124186 COVER:LEFT UPPER:ASS'Y

9.08046127
(x4)
HEXAGONAL BOLT
:DOUBLE SCREW:
M3X8



10.09543010N
SCREW:POLISHED
ROUND/SPRING:M
3X10



11.AA143520
(x7)
SHOULDER SCREW - M3



1.03603006N
(x11)
SCREW - M3X6



14.G1274328
DECAL - HIGH TEMPERATURE



19.M0124135
FEELER:PAPER FEELER SENSOR



17.M0124109
SPRING:FEELER:EXIT



12.AW020198
PHOTOINTERRUPTOR:LG2A14NL1



4.04513008N
(x4)
TAPPING SCREW - M3X8



21.M0124202
(x2)
LEVER:PRESSURE



3.04513006N
(x2)
TAPPING SCREW - 3X6



15.M0124053
GEAR:HOT ROLLER



16.M0124055
(x2)
RADIAL BALL BEARING:35X47X7



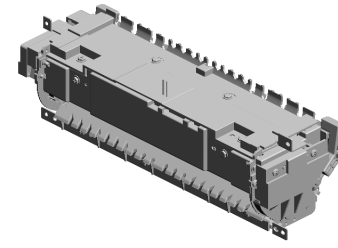
5.04533006N
(x6)
TAPPING SCREW - M3X6



7.07200040E
(x2)
RETAINING RING - M4



U007_S002
(CHN):FUSING UNIT:ASS'Y



50.M2874033
(CHN):FUSING UNIT:ASS'Y

42.M0124287 COVER:RIGHT UPPER:FUSING
39.M0124281 (x2) RETAINING RINGS -C:HOT ROLLER
40.M0124284 LEVER:PRESSURE :LEFT
26.M0124212 FUSING ENTRANCE GUIDE PLATE:UPPER
43.M0124292 FUSING COVER:UPPER

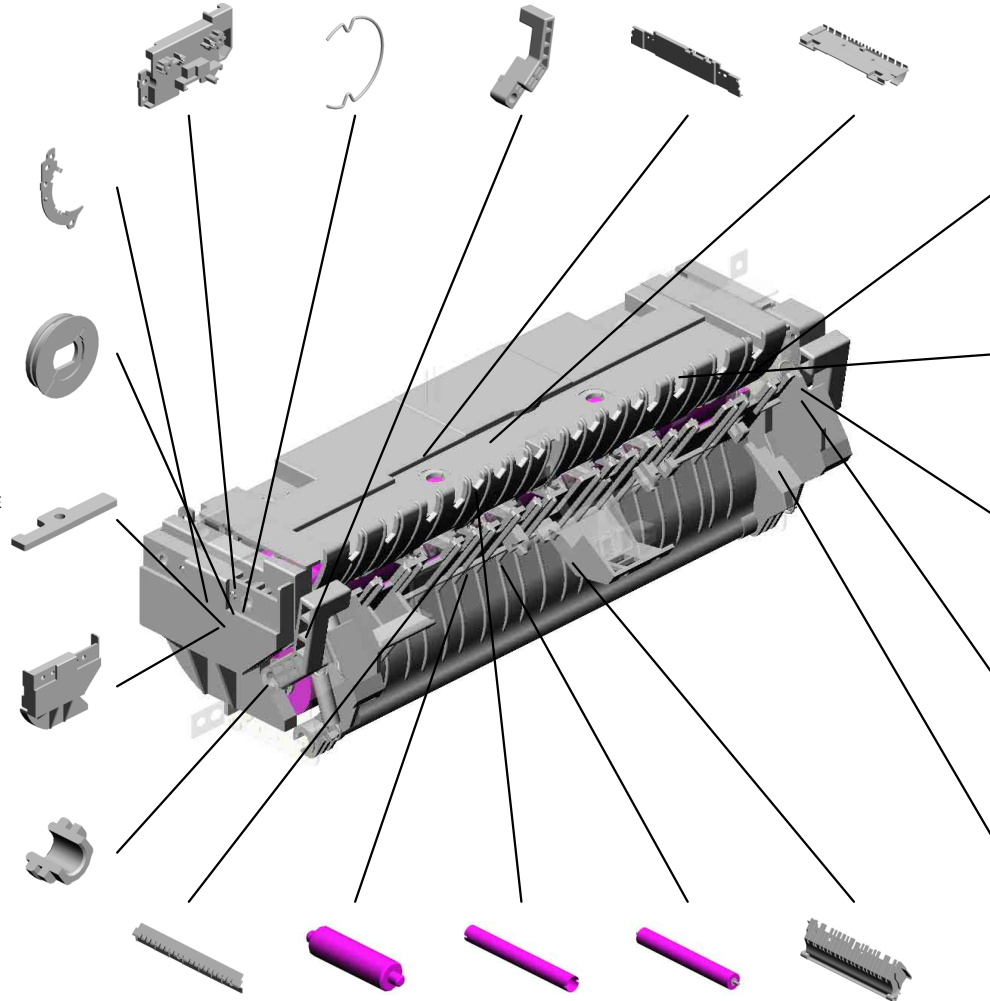
23.M0124205 LEVER:RIGHT:FRAME:FUSING

32.M0124223 THERMAL INSULATING BUSHING:HOT ROLLER

25.M0124211 PLATE NUT:HEATER

35.M0124266 COVER:RIGHT LOWER:FUSING

27.M0124213 (x2) BUSHING:PRESSURE ROLLER



37.M0124276 COVER:LEFT:LOWER:FUSING

24.M0124208 (x3) BRACKET:GATE PLATE

41.M0124285 LEVER:PRESSURE :RIGHT

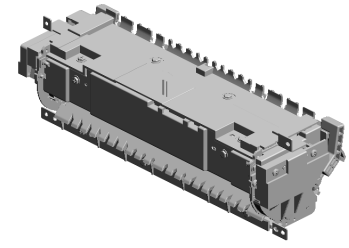
33.M0124229 (x2) TENSION SPRING:FUSING:PRESSURE

29.M0124216 (x2) TENSION SPRING:FUSING:GUIDE PLATE

30.M0124217 FUSING ENTRANCE GUIDE PLATE:LOWER
38.M0124279 CLEANING ROLLER:ASS'Y
31.M0124220 HOT ROLLER
34.MOC34204 PRESSURE ROLLER:DIA30 201910-01 O/O
28.M0124215 GUIDE PLATE:EXIT

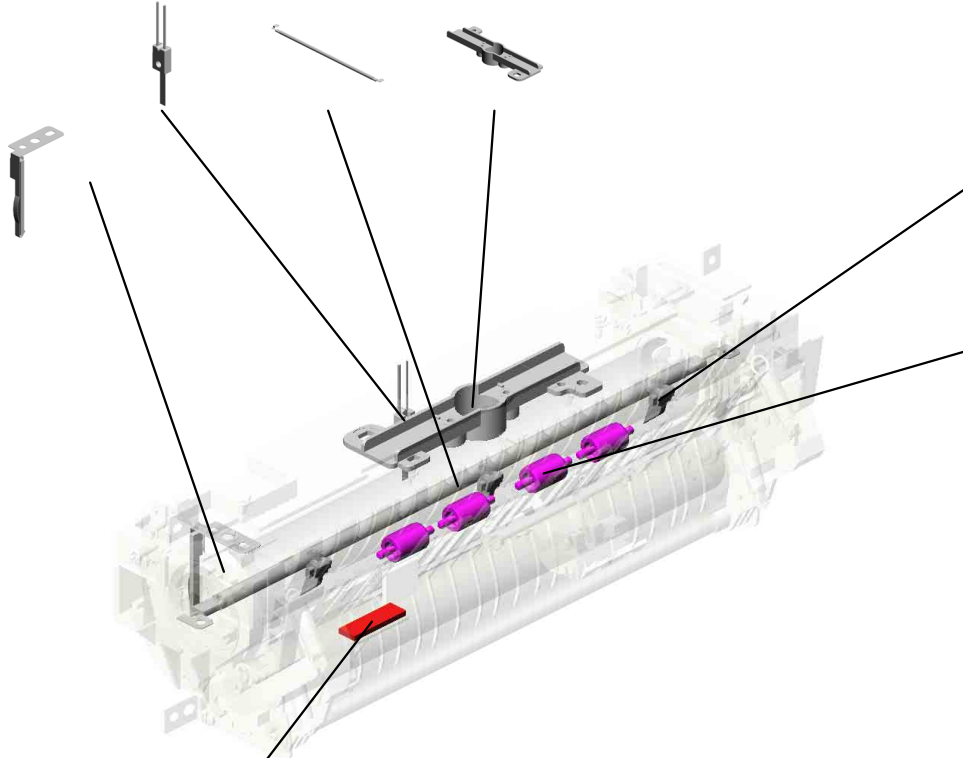
U007_S002
(CHN):FUSING UNIT:ASS'Y

57.M2874263 THERMISTOR
 54.M2874221 (EU/AA/CHN):HEATER:700W:220V:INFRARED
 56.M2874234 HOUSING:THERMOSTAT:ASS'Y



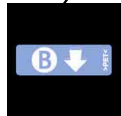
50.M2874033 (CHN):FUSING UNIT:ASS'Y

45.M0124295 GROUND PLATE:ASS'Y



52.M2874206 (x3) STRIPPER PAWLS

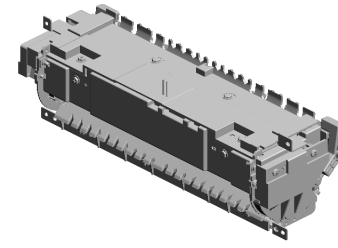
44.M0124293 (x4) EXIT ROLLER:EXIT:FUSING



46.M0124603 DECAL:GUIDE PLATE:B

U001	U002	U003	U004	U005	U006	U007	U008	U009	U010	U011	U012
------	------	------	------	------	------	------	------	------	------	------	------

U007_S003
(NA):FUSING UNIT:ASS'Y



48.M2874030
(NA):FUSING UNIT:
ASS'Y

- 9.08046127 (x4) HEXAGONAL BOLT :DOUBLE SCREW: M3X8
- 22.M0124204 LEVER:LEFT:FRAM E:FUSING
- 18.M0124120 (x3) TENSION SPRING: PICKOFF PAWL
- 8.08025318 (x4) (EU/AA/NA/CHN):BI NDING HEAD TAPP ING SCREW:ES:3X 10
- 20.M0124186 COVER:LEFT UPPE R:ASS'Y

13.AW110116
THERMOSTAT



10.09543010N
SCREW:POLISHED ROUND/SPRING:M 3X10



11.AA143520 (x7) SHOULDER SCREW - M3



1.03603006N (x11) SCREW - M3X6



14.G1274328
DECAL - HIGH TEM PERATURE



19.M0124135
FEELER:PAPER FE ELED SENSOR



17.M0124109
SPRING:FEELER:E XIT



12.AW020198
PHOTOINTERRUP TOR:LG2A14NL1



4.04513008N (x4) TAPPING SCREW - M3X8



21.M0124202 (x2) LEVER:PRESSURE



3.04513006N (x2) TAPPING SCREW - 3X6



15.M0124053
GEAR:HOT ROLLE R



16.M0124055 (x2) RADIAL BALL BEA RING:35X47X7



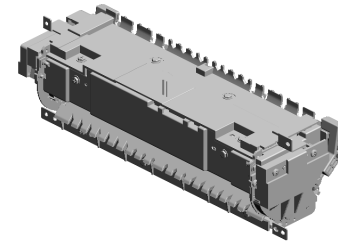
5.04533006N (x6) TAPPING SCREW - M3X6



7.07200040E (x2) RETAINING RING - M4



U007_S003
(NA):FUSING UNIT:ASS'Y



48.M2874030
(NA):FUSING UNIT:
ASS'Y

42.M0124287 COVER:RIGHT UP
PER:FUSING
39.M0124281 (x2)
RETAINING RINGS
-C:HOT ROLLER
40.M0124284 LEVER:PRESSURE
:LEFT
26.M0124212 FUSING ENTRANC
E GUIDE PLATE:U
PPER
43.M0124292 FUSING COVER:U
PPER

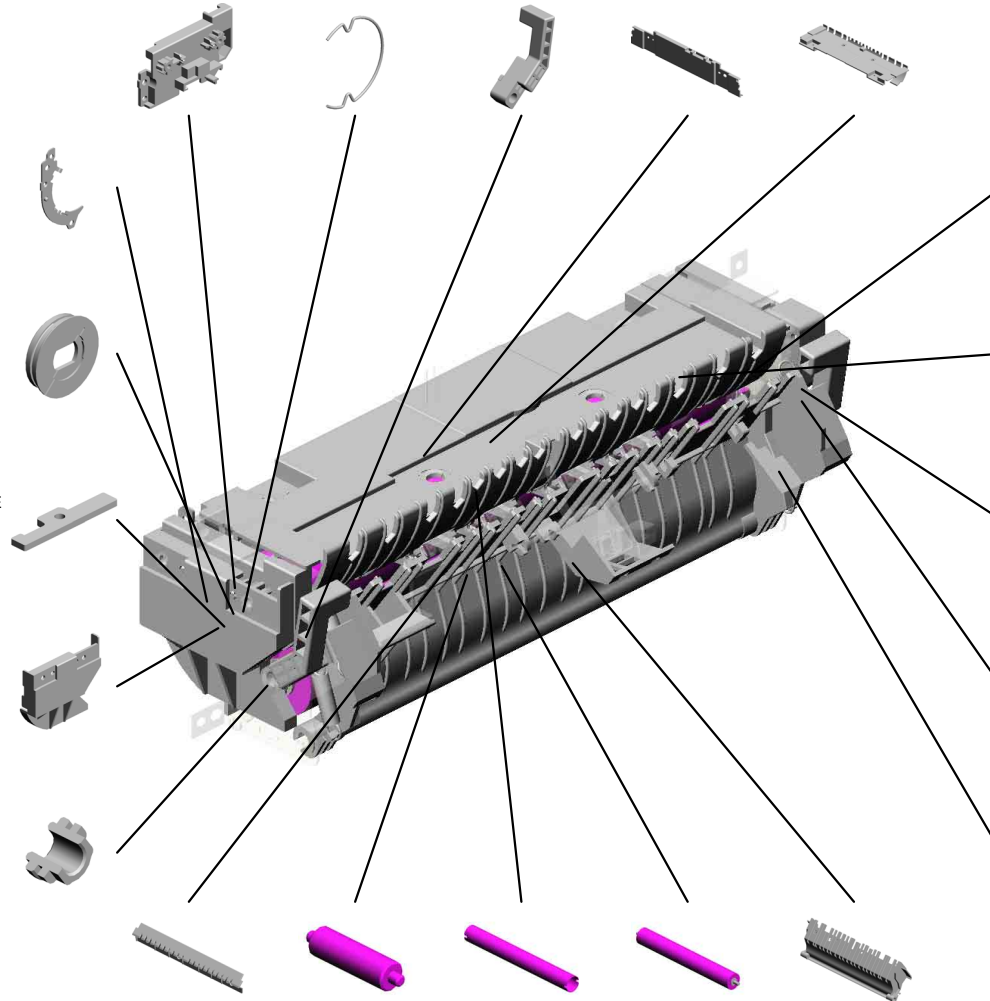
23.M0124205
LEVER:RIGHT:FRA
ME:FUSING

32.M0124223
THERMAL INSULA
TING BUSHING:HO
T ROLLER

25.M0124211
PLATE NUT:HEATE
R

35.M0124266
COVER:RIGHT LO
WER:FUSING

27.M0124213
(x2)
BUSHING:PRESSU
RE ROLLER



37.M0124276
COVER:LEFT:LOW
ER:FUSING

24.M0124208
(x3)
BRACKET:GATE P
AWL

41.M0124285
LEVER:PRESSURE
:RIGHT

33.M0124229
(x2)
TENSION SPRING:
FUSING:PRESSUR
E

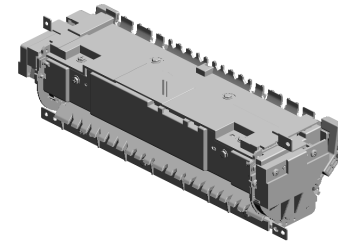
29.M0124216
(x2)
TENSION SPRING:
FUSING:GUIDE PL
ATE

30.M0124217 FUSING ENTRANC
E GUIDE PLATE:LO
WER
38.M0124279 CLEANING ROLLE
R:ASS'Y
31.M0124220 HOT ROLLER
34.MOC34204 PRESSURE ROLLE
R:DIA30
201910-01 O/O
28.M0124215 GUIDE PLATE:EXIT

U001	U002	U003	U004	U005	U006	U007	U008	U009	U010	U011	U012
------	------	------	------	------	------	------	------	------	------	------	------

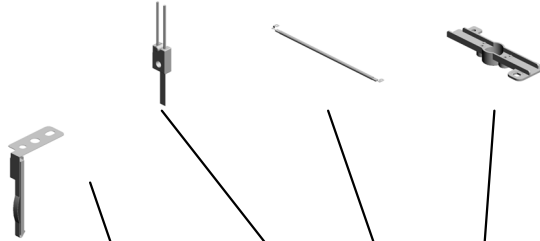
U007_S003
 (NA):FUSING UNIT:ASS'Y

57.M2874263 THERMISTOR
 53.M2874220 (NA):HEATER:700 W:120V:INFRARED
 56.M2874234 HOUSING:THERM OSTAT:ASS'Y



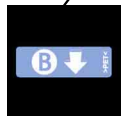
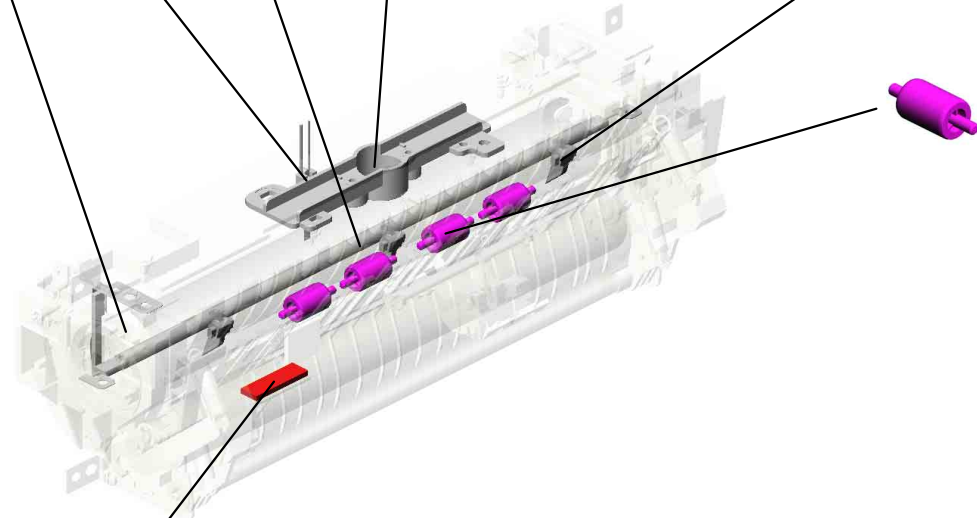
48.M2874030 (NA):FUSING UNIT: ASS'Y

45.M0124295 GROUND PLATE:ASS'Y



52.M2874206 (x3) STRIPPER PAWLS

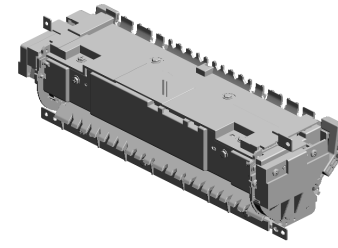
44.M0124293 (x4) EXIT ROLLER:EXIT :FUSING



46.M0124603 DECAL:GUIDE PLATE:B

U001	U002	U003	U004	U005	U006	U007	U008	U009	U010	U011	U012
------	------	------	------	------	------	------	------	------	------	------	------

U007_S004
(TWN):FUSING UNIT:ASS'Y



51.M2874049
(TWN):FUSING UNIT:ASS'Y

- 9.08046127 (x4) HEXAGONAL BOLT :DOUBLE SCREW: M3X8
- 22.M0124204 LEVER:LEFT:FRAM E:FUSING
- 18.M0124120 (x3) TENSION SPRING: PICKOFF PAWL
- 6.04593010N (x4) (TWN):BINDING HEAD TAPPING SCREW W:3X10
- 20.M0124186 COVER:LEFT UPPER:ASS'Y

13.AW110116
THERMOSTAT



10.09543010N
SCREW:POLISHED ROUND/SPRING:M 3X10



11.AA143520 (x7) SHOULDER SCREW - M3



1.03603006N (x11) SCREW - M3X6



14.G1274328
DECAL - HIGH TEMPERATURE



19.M0124135
FEELER:PAPER FEELER SENSOR



17.M0124109
SPRING:FEELER:EXIT



12.AW020198
PHOTOINTERRUPTOR:LG2A14NL1



4.04513008N (x4) TAPPING SCREW - M3X8



21.M0124202 (x2) LEVER:PRESSURE



3.04513006N (x2) TAPPING SCREW - 3X6



15.M0124053
GEAR:HOT ROLLER



16.M0124055 (x2) RADIAL BALL BEARING:35X47X7



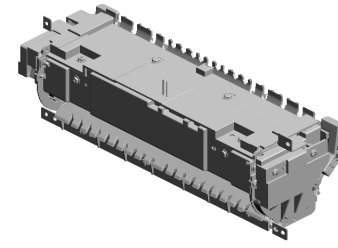
5.04533006N (x6) TAPPING SCREW - M3X6



7.07200040E (x2) RETAINING RING - M4



U007_S004
(TWN):FUSING UNIT:ASS'Y



51.M2874049
(TWN):FUSING UNIT:ASS'Y

- 42.M0124287 COVER:RIGHT UPPER:FUSING
- 39.M0124281 (x2) RETAINING RINGS -C:HOT ROLLER
- 40.M0124284 LEVER:PRESSURE :LEFT
- 26.M0124212 FUSING ENTRANCE GUIDE PLATE:UPPER
- 43.M0124292 FUSING COVER:UPPER

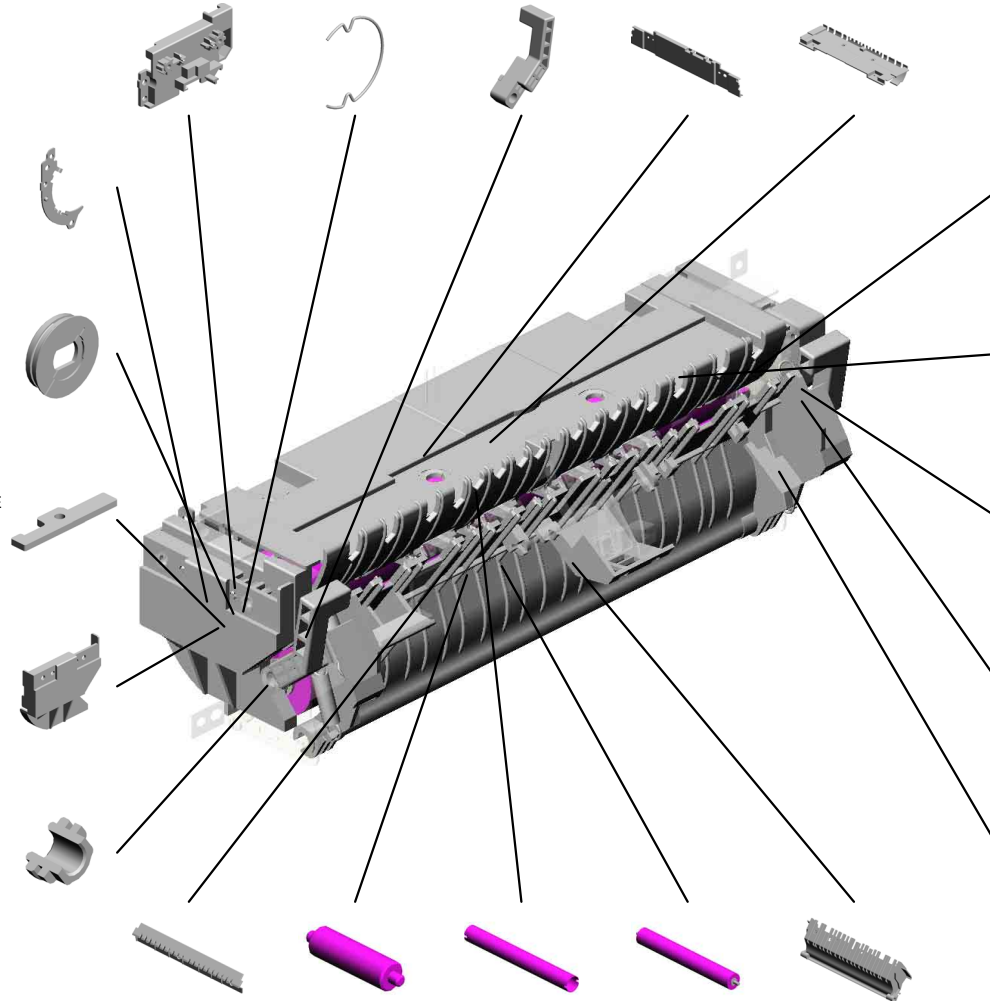
23.M0124205 LEVER:RIGHT:FRAME:FUSING

32.M0124223 THERMAL INSULATING BUSHING:HOT ROLLER

25.M0124211 PLATE NUT:HEATER

35.M0124266 COVER:RIGHT LOWER:FUSING

27.M0124213 (x2) BUSHING:PRESSURE ROLLER



37.M0124276 COVER:LEFT:LOWER:FUSING

24.M0124208 (x3) BRACKET:GATE PLATE

41.M0124285 LEVER:PRESSURE :RIGHT

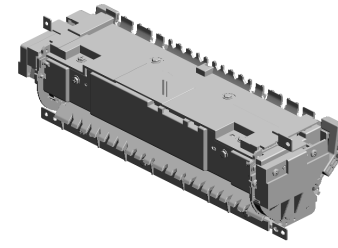
33.M0124229 (x2) TENSION SPRING:FUSING:PRESSURE

29.M0124216 (x2) TENSION SPRING:FUSING:GUIDE PLATE

- 30.M0124217 FUSING ENTRANCE GUIDE PLATE:LOWER
- 38.M0124279 CLEANING ROLLER:ASS'Y
- 31.M0124220 HOT ROLLER
- 34.MOC34204 PRESSURE ROLLER:DIA30 201910-01 O/O
- 28.M0124215 GUIDE PLATE:EXIT

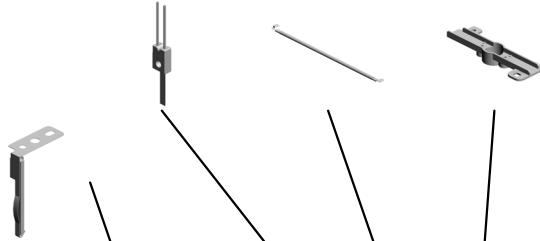
U007_S004
(TWN):FUSING UNIT:ASS'Y

57.M2874263 THERMISTOR
 55.M2874229 (TWN):HEATER:700W:110V
 56.M2874234 HOUSING:THERM OSTAT:ASS'Y



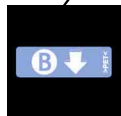
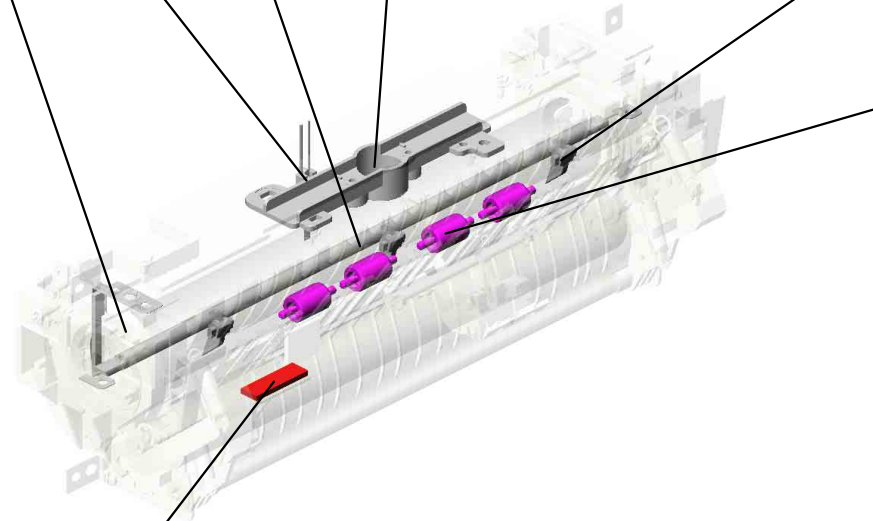
51.M2874049 (TWN):FUSING UNIT:ASS'Y

45.M0124295 GROUND PLATE:ASS'Y



52.M2874206 (x3) STRIPPER PAWLS

44.M0124293 (x4) EXIT ROLLER:EXIT :FUSING



46.M0124603 DECAL:GUIDE PLATE:B

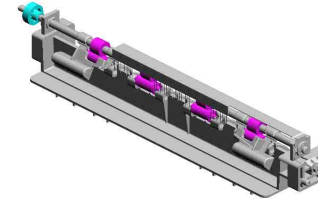
U001	U002	U003	U004	U005	U006	U007	U008	U009	U010	U011	U012
------	------	------	------	------	------	------	------	------	------	------	------

U008 PAPER EXIT

2.07200040E (x2)
RETAINING RING - M4

6.M0124488 (x2)
BUSHING:DIA6XDI A10X6

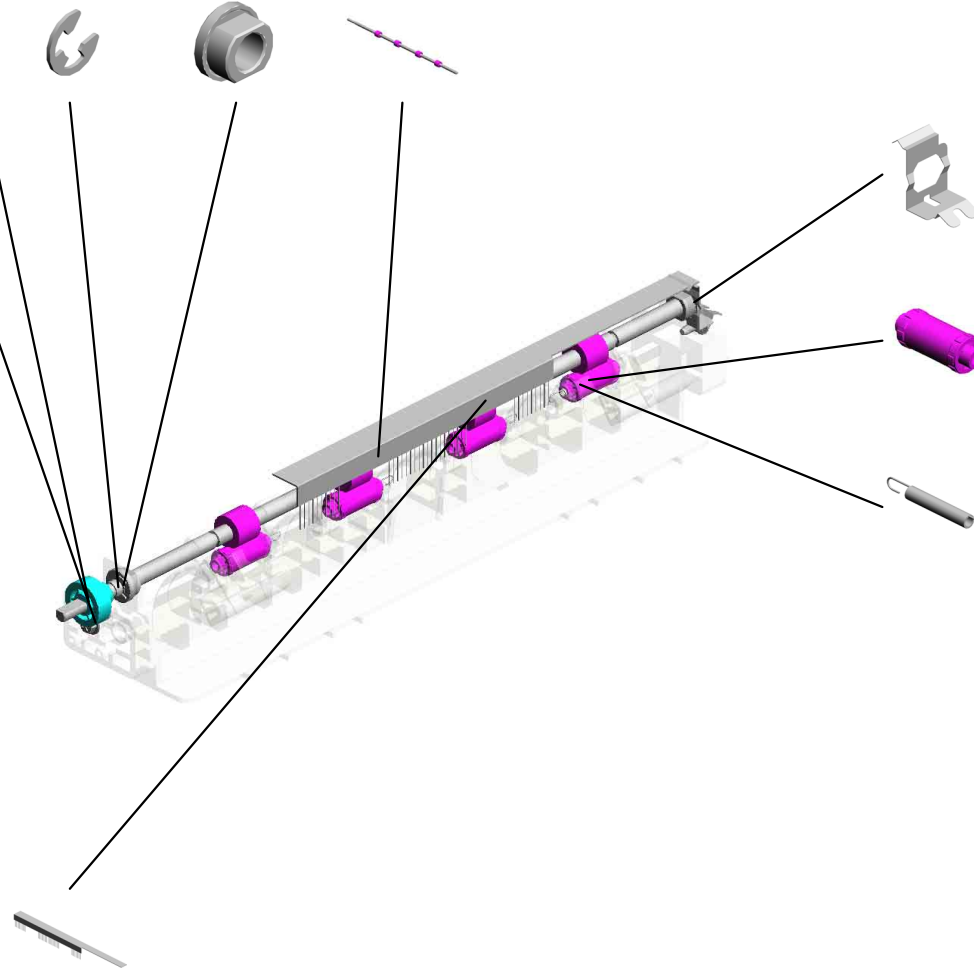
8.M0134470
EXIT ROLLER:DUPLEX



7.M0134455
GEAR:DRIVE:EXIT ROLLER



1.04503008N (x2)
TAPPING SCREW - M3X8



9.M1544499
GROUND PLATE:EXIT ROLLER



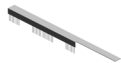
3.M0124453 (x4)
EXIT ROLLER



4.M0124454 (x4)
SPRING:EXIT ROLLER:EXIT

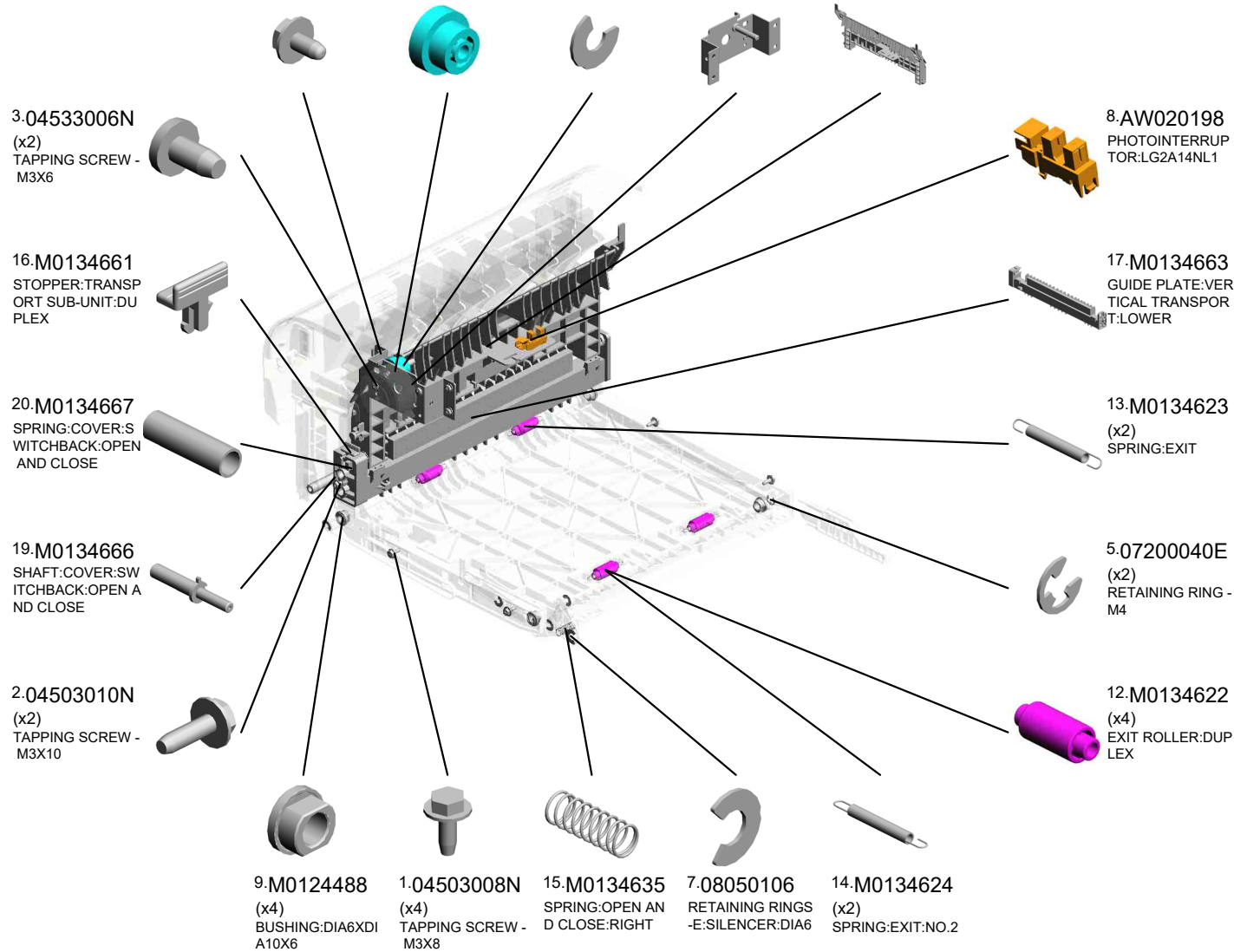
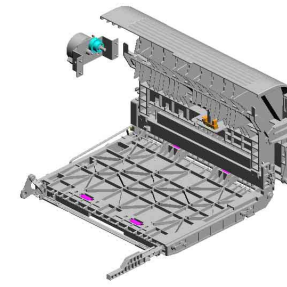


5.M0124458
DISCHARGE BRUSH:EXIT:ASS'Y DRAWING



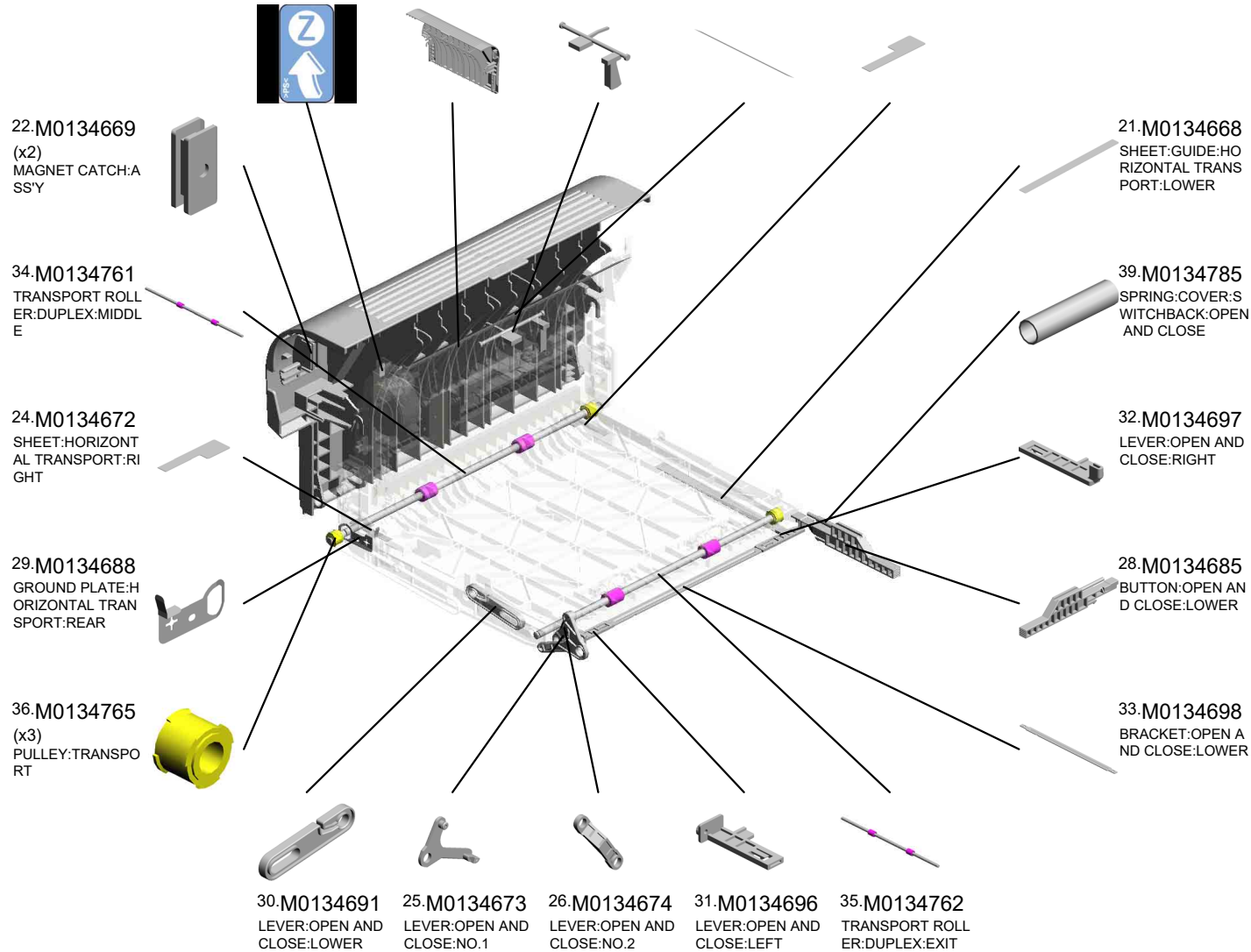
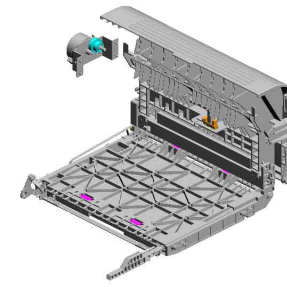
U009 DUPLEX

- 4.04543006Q (x4) TAPPING SCREW - M3X6
- 10.M0134610 GEAR:DRIVE:DUPLEX
- 6.08050104 (x7) RETAINING RINGS -E:SILENCER:DIA4
- 11.M0134611 BRACKET:DRIVE:DUPLEX:ASSY
- 18.M0134664 GUIDE PLATE:VERTICAL TRANSPORT:UPPER



U009 DUPLEX

- 40.M0134794 DECAL:GUIDE PLATE:VERTICAL TRANSPORT:UPPER
- 42.M1174662 COVER:SWITCHBACK:OPEN AND CLOSE
- 41.M0134797 FEELER:SENSOR:VERTICAL TRANSPORT
- 27.M0134684 SHEET:DUPLEX
- 23.M0134671 SHEET:HORIZONTAL TRANSPORT:LEFT

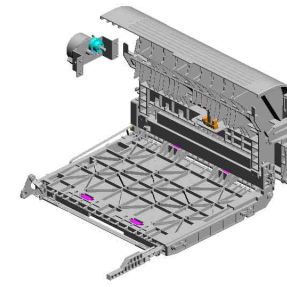


U009
DUPLEX

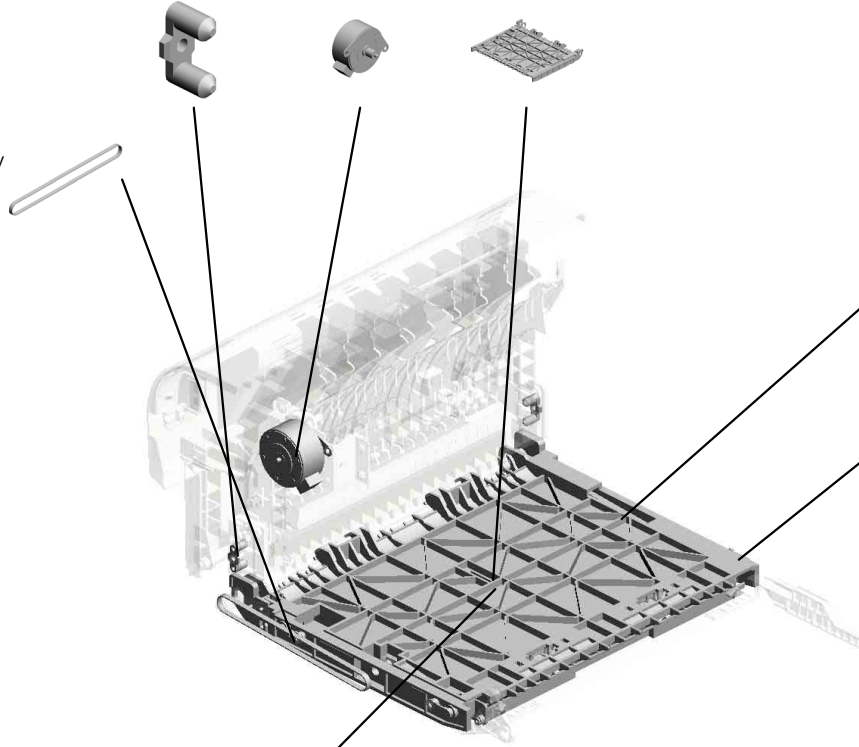
46.M2874719
(x2)
PIN:GUIDE:TRANS
PORT

43.M1540265
STEPPER MOTOR

44.M1544694
GUIDE:HORIZONT
AL TRANSPORT:U
PPER



48.M0134774
TIMING BELT:DRIV
E
201905-02 O/O



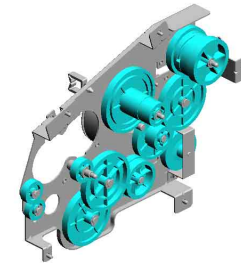
49.M0134776
TIMING BELT:HORI
ZONTAL TRANSPOR
T
201905-01 O/O

47.M2874895
(x4)
PIN:GUIDE:UPPER

45.M1544695
GUIDE:HORIZONT
AL TRANSPORT:L
OWER

U010 MAIN DRIVE

7.11050758 CLAMP:LWSM-030 6A
 11.M0121120 GEAR:DRIVE:FUSI NG:NO.3
 13.M0121128 GEAR:DRIVE:FUSI NG:NO.4
 3.07200040E RETAINING RING - M4
 2.04543006Q TAPPING SCREW - M3X6



8.G0521120
SPRING - PAPER E
XIT RELEASE



4.08050104
(x6)
RETAINING RINGS
-E:SILENCER:DIA4



10.M0121119
GEAR:DRIVE:FUSI
NG:NO.2



9.M0121117
GEAR:DRIVE:DRU
M



17.M0131178
BRACKET:DRIVE:D
UPLEX



14.M0121150
BRUSHLESS MOT
OR:DC 36.7W



18.M1161118
GEAR:DRIVE:FUSI
NG:NO.1



19.M1161121
GEAR:DRIVE:PAPE
R FEED:NO.1



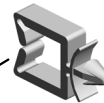
20.M1161122
GEAR:DRIVE:PAPE
R FEED:NO.2



6.11050568
CLAMP:LWSS-0504



5.11050197
WIRE SADDLE



1.04513006N
(x10)
TAPPING SCREW -
3X6



12.M0121123
GEAR:DRIVE:PAPE
R FEED:NO.3



16.M0121172
GEAR:DRIVE:MAN
UAL FEED SECTIO
N:NO.2

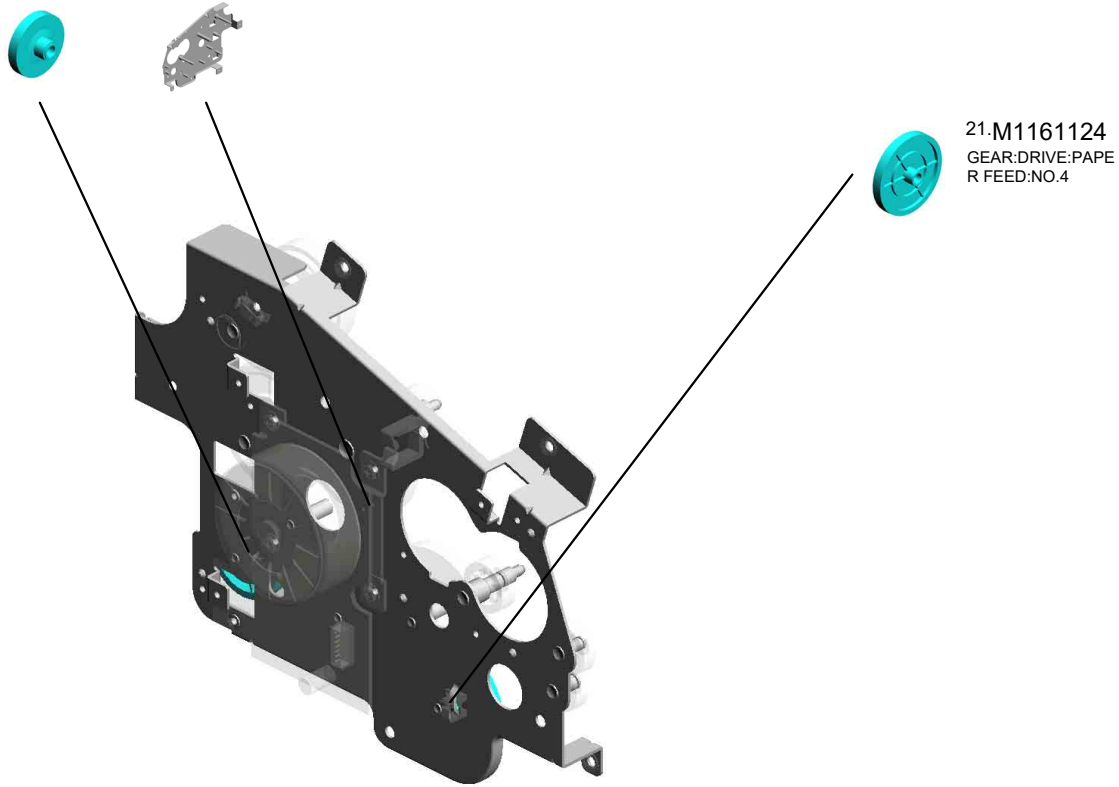
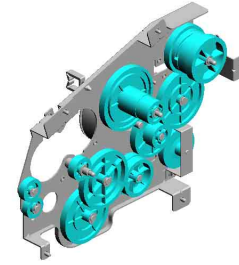


15.M0121171
GEAR:DRIVE:MAN
UAL FEED SECTIO
N:NO.1



U010 MAIN DRIVE

22.M1171136 23.M1541177
GEAR:DRIVE:DUPL CASE:DRIVE:ASS'Y
EX SECTION

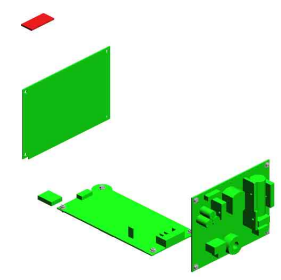


21.M1161124
GEAR:DRIVE:PAPE
R FEED:NO.4

U001	U002	U003	U004	U005	U006	U007	U008	U009	U010	U011	U012
------	------	------	------	------	------	------	------	------	------	------	------

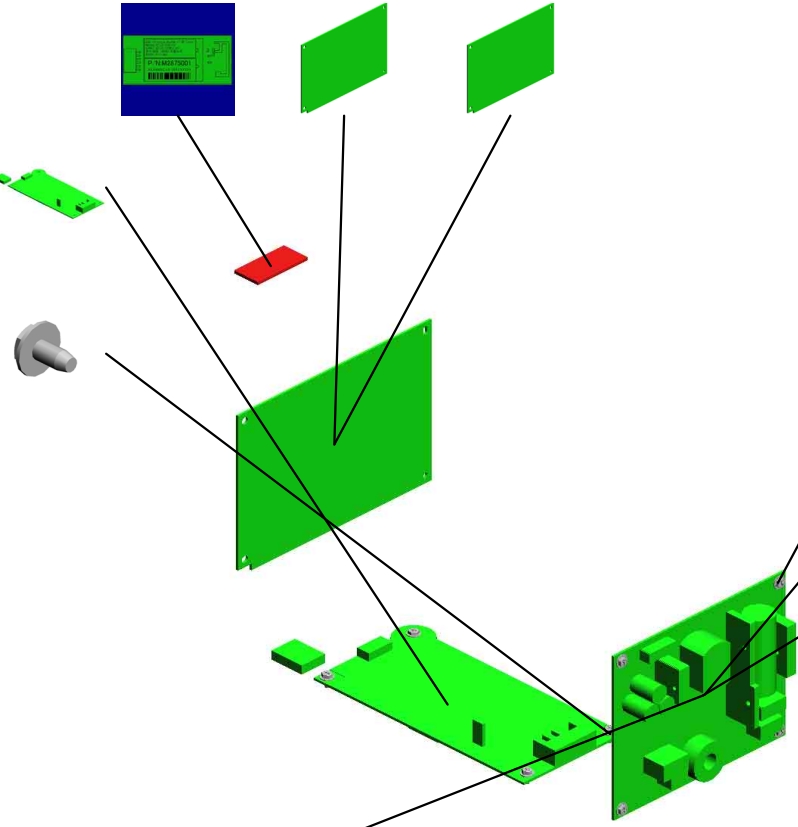
U011 ELECTRICAL

10.M2875003 (M287/M0BB):PCB:WIFI 201806-01 O/O
 3.M0A75052 (x2) (EU/AA/CHN):(M0A7):PCB:ECBCTL:ASS'Y
 6.M2875052 (M287/M0BB):PCB:ECBCTL:ASS'Y



4.M1545402
POWER PACK:ASS'Y

1.04513006N
(x4)
TAPPING SCREW - M3X6



2.04543006Q
(x4)
TAPPING SCREW - M3X6

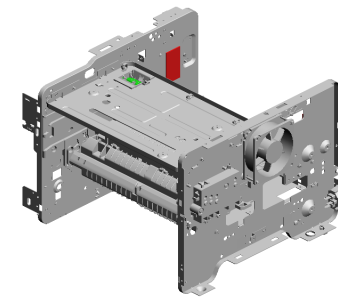
8.M2875312
(EU/AA):POWER SUPPLY UNIT:ASS'Y

7.M2875311
(CHN):POWER SUPPLY UNIT:ASS'Y

9.M2875313
(x2)
(NA/TWN):POWER SUPPLY UNIT:ASS'Y

U001	U002	U003	U004	U005	U006	U007	U008	U009	U010	U011	U012
------	------	------	------	------	------	------	------	------	------	------	------

U012 MAIN FRAME



- 2.04513006N (x16) TAPPING SCREW - 3X6
- 17.M0121037 TONER BOTTLE:C ASE
- 18.M0121040 CASE:DISCHARGE LAMP
- 13.12042612 (x2) MICRO SWITCH:D3 V-16506-3C25
- 6.04543014Q TAPPING SCREW: 3X14

16.GW010007
PHOTO REFLECTI
ON SENSOR:EXIT

3.04513014N
TAPPING SCREW:
3X14

8.11050568
CLAMP:LWSS-0504

1.04503008N
(x12)
TAPPING SCREW -
M3X8

10.11050758
(x8)
CLAMP:LWSM-030
6A

12.11050762
(x2)
CLAMP:LWS-0711A

15.G0271180
(x2)
RUBBER FOOT - G
F

20.M0121065
CASE:TERMINAL

19.M0121063
(x4)
TERMINAL:CHARG
E

9.11050598
CLAMP:LWSS-1N

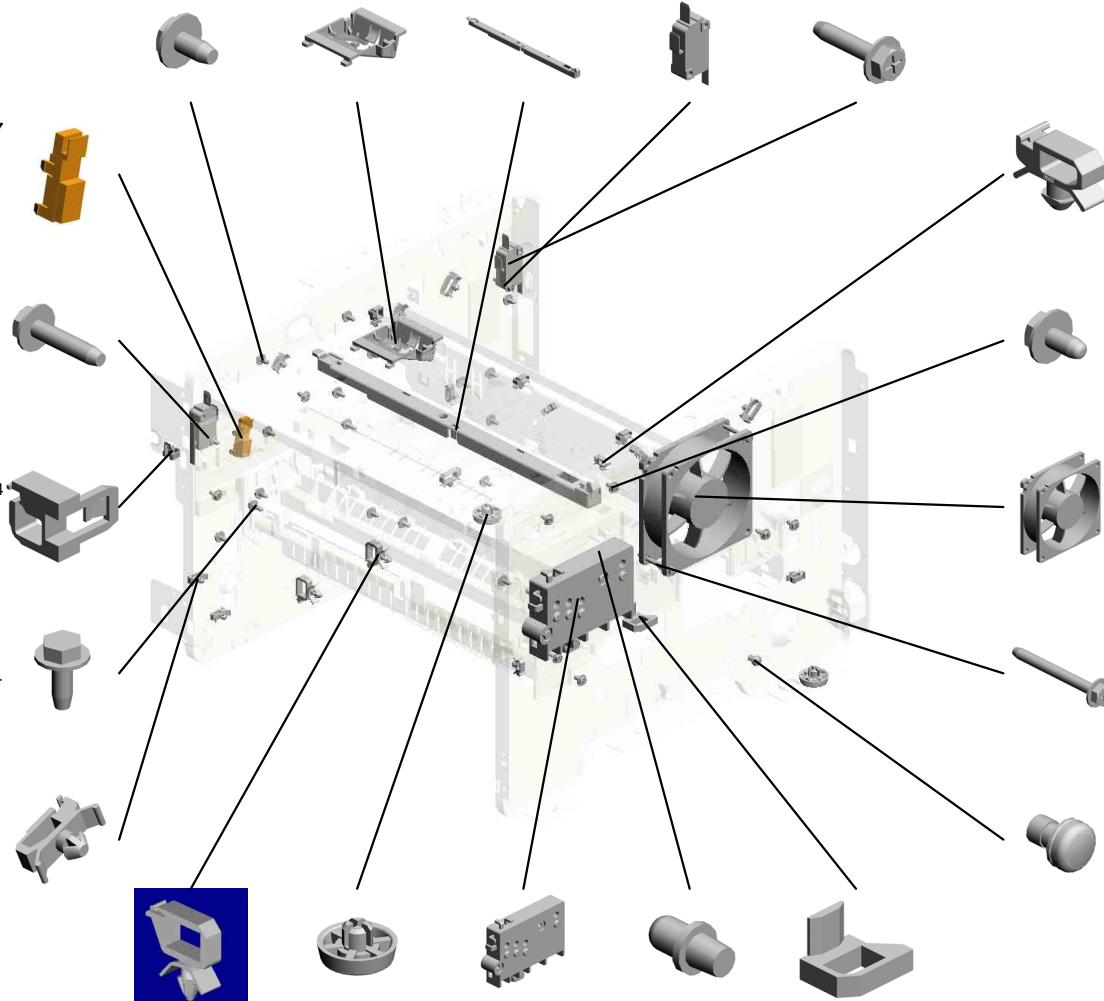
11.11050760
(x8)
CLAMP:LWSM-051
1A

5.04543006Q
(x6)
TAPPING SCREW -
M3X6

14.AX640199
FAN:MM80:25MM:D
C 2.16W

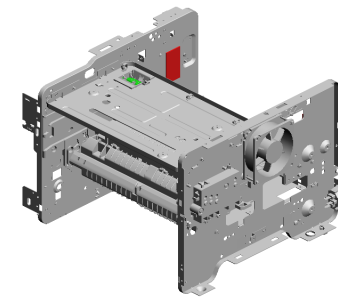
4.04513030N
(x2)
TAPPING SCREW:
3X30

7.09504006N
SCREW - M4X6



U012 MAIN FRAME

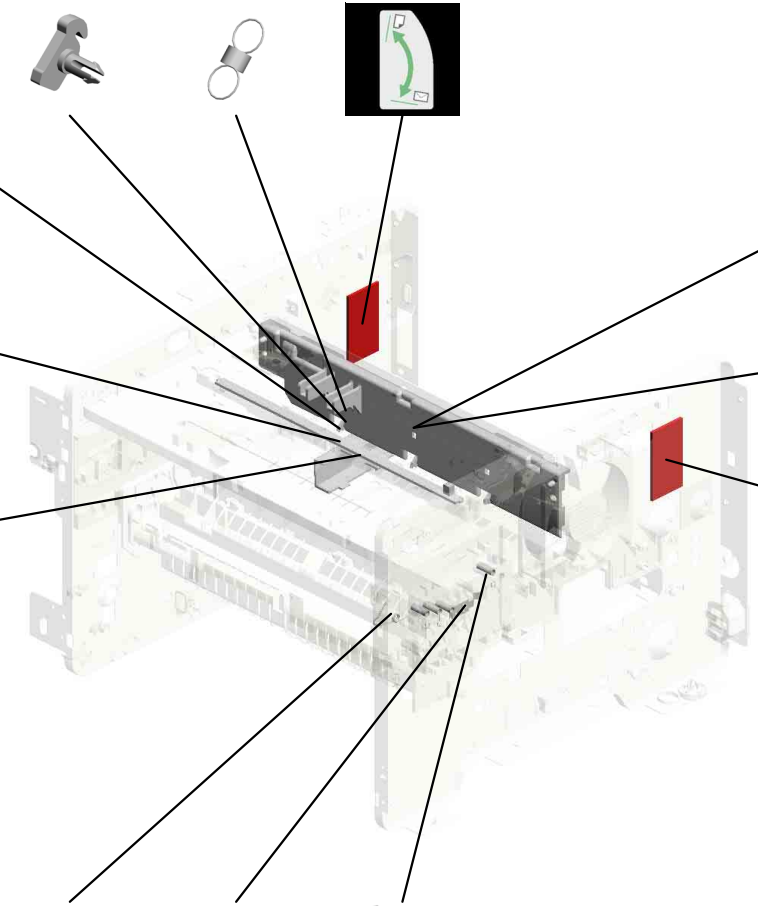
- 24.M0121097 (x3) SUPPORTER:PAPE R:TRANSPORT
- 25.M0124120 (x3) TENSION SPRING: PICKOFF PAWL
- 26.M0124601 DECAL:LEVER:EN VELOPE:LEFT



- 23.M0121089 (x3) GUIDE:PAPER:LEA DING EDGE

- 30.M1542056 DISCHARGE LAMP

- 31.M2871043 COVER:U CONVEY ER BELT:DUPLIX



- 28.M0BB1100 (x2) (EU/NA):(M0BB):HE AT INSULATING PL ATE:FUSING:FRON T:TYPE A

- 29.M1541099 (M0A7(EU/AA/CHN)):(M287(EU/AA/TW N/NA/CHN)):HEAT I NSULATING PLATE :FUSING:FRONT:T YPE A

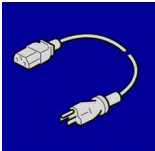
- 27.M0124602 DECAL:LEVER:EN VELOPE:RIGHT

- 22.M0121088 COIL SPRING:RAIL :RIGHT

- 32.M0121064 GROUND PLATE:O PC

- 21.M0121066 (x4) SPRING:TERMINAL :CHARGE

ACCESSORIES



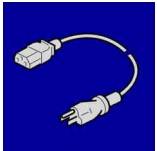
1.11500478
(TWN);POWER SUPPLY CORD:125V:15A



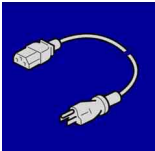
2.M0A70431
(x2)
(EU/AA/CHN):(M0A7):MODEL NAME PLATE:SP320DN



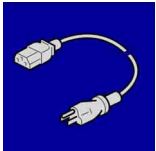
3.M0BB0431
(x2)
(EU/AA/NA):(M0BB):MODEL NAME PLATE:SP325DNW



4.M1015799
(CHN);POWER SUPPLY CORD



5.M1545697
(NA);POWER SUPPLY CORD:125V:10A



6.M1545699
(EU/AA);POWER SUPPLY CORD:250V:10A



7.M2870431
(M287);MODEL NAME PLATE:SP325DNW

Exclusive Parts

Number	Part Name	Group	ID
A1532117	ROLLER TERMINAL	U004	6
AA143520	SHOULDER SCREW - M3	U004	7
		U007_S001	11
		U007_S002	11
		U007_S003	11
		U007_S004	11
AW020198	PHOTOINTERRUPTOR:LG2A14NL 1	U004	8
		U007_S001	12
		U007_S002	12
		U007_S003	12
		U007_S004	12
		U009	8
AW110116	THERMOSTAT	U007_S001	13
		U007_S002	13
		U007_S003	13
		U007_S004	13
AX640199	FAN:MM80:25MM:DC 2.16W	U012	14
D1272514	ELECTROMAGNETIC CLUTCH:3.5 T:MANUAL FEED	U004	9
G0123050	SIDE FENCE GEAR	U004	10
G0201160	SNAP RING	U004	11
G0271180	RUBBER FOOT - GF	U012	15
G0292767	BY-PASS FEED COVER	U004	12
G0521120	SPRING - PAPER EXIT RELEASE	U010	8
G0521518	SPRING - LOCK LEVER	U001	3
G1022717	COVER:DC SOLENOID	U004	13
G1022789	STOPPER:PHOTOINTERRUPTOR	U004	14
G1272627	PAPER FEED ROLLER - MM32	U004	15
G1274328	DECAL - HIGH TEMPERATURE	U007_S001	14
		U007_S002	14
		U007_S003	14
		U007_S004	14
G8003133	(EU/AA/CHN):(M0A7):SIDE FENCE GEAR	U004_S002	16
		U004_S003	16
GA063084	(M287/M0BB):COMPRESSION SPRING: AUXILIARY:SIDE FENCE	U004_S001	17
GF013001	BOTTOM PLATE PAD	U004	18
		U004_S001	18

Number	Part Name	Group	ID
		U004_S002_S001	18
		U004_S003_S001	18
GW010007	PHOTO REFLECTION SENSOR:EXI T	U012	16
M0121037	TONER BOTTLE:CASE	U012	17
M0121040	CASE:DISCHARGE LAMP	U012	18
M0121063	TERMINAL:CHARGE	U012	19
M0121064	GROUND PLATE:OPC	U012	32
M0121065	CASE:TERMINAL	U012	20
M0121066	SPRING:TERMINAL:CHARGE	U012	21
M0121088	COIL SPRING:RAIL:RIGHT	U012	22
M0121089	GUIDE:PAPER:LEADING EDGE	U012	23
M0121097	SUPPORTER:PAPER:TRANSPORT	U012	24
M0121117	GEAR:DRIVE:DRUM	U010	9
M0121119	GEAR:DRIVE:FUSING:NO.2	U010	10
M0121120	GEAR:DRIVE:FUSING:NO.3	U010	11
M0121123	GEAR:DRIVE:PAPER FEED:NO.3	U010	12
M0121128	GEAR:DRIVE:FUSING:NO.4	U010	13
M0121150	BRUSHLESS MOTOR:DC 36.7W	U010	14
M0121171	GEAR:DRIVE:MANUAL FEED SECT ION:NO.1	U010	15
M0121172	GEAR:DRIVE:MANUAL FEED SECT ION:NO.2	U010	16
M0122589	(EU/AA/CHN):(M0A7):PAPER TRAY: REAR	U004_S002	19
		U004_S003	19
M0122590	COIL SPRING:EARTH	U004_S001	20
		U004_S002	20
		U004_S003	20
M0122603	STOPPER:BASE PLATE	U004_S001	21
		U004_S002	21
		U004_S003	21
M0122604	SPRING:RELEASE:TRAY BOTTOM PLATE	U004_S001	22
		U004_S002	22
		U004_S003	22
M0122605	FRICTION PAD:ADHESION	U004_S001	23
M0122608	(EU/AA/CHN):(M0A7):END FENCE	U004_S002	24
		U004_S003	24
M0122610	(EU/AA/CHN):(M0A7):TRAY BOTTO	U004_S002_S001	25

Exclusive Parts

Number	Part Name	Group	ID
	M PLATE	U004_S003_S001	25
M0122612	COMPRESSION SPRING:TRAY BOT TOM PLATE	U004_S001	26
		U004_S002	26
		U004_S003	26
M0122613	COMPRESSION SPRING:SEPARAT ION	U004_S001	27
		U004_S002	27
		U004_S003	27
M0122615	(EU/AA/CHN):(M0A7):SIDE FENCE: RIGHT	U004_S002	28
		U004_S003	28
M0122631	CLOTH:EARTH:PAPER FEED	U004	29
M0122668	SHAFT:PAPER FEED:ASS'Y	U004	30
M0122671	(EU/AA/CHN):(M0A7):FEELER:PAP ER END SENSOR	U004	31
M0122673	RAIL:PAPER TRAY:RIGHT	U004	32
M0122701	ROLLER:INTERFACE:DRIVE	U004	33
M0122702	ROLLER:INTERFACE:DRIVEN	U004	34
M0122705	SPRING:ROLLER	U004	35
M0122711	BUSHING:REGISTRATION:DRIVEN :LEFT	U004	36
M0122715	GUIDE PLATE:TRANSPORT:UPPE R	U004	37
M0122718	REGISTRATION ROLLER:DRIVE	U004	38
M0122719	REGISTRATION ROLLER:DRIVEN	U004	39
M0122722	SPRING:ROLLER:REGISTRATION	U004	40
M0122723	FEELER:REGISTRATION:SENSOR	U004	41
M0122725	SPRING:FEELER:REGISTRATION	U004	42
M0122730	BUSHING:REGISTRATION:DRIVEN :RIGHT	U004	43
M0122741	GROUND PLATE:DRIVE:REGISTR ATION ROLLER	U004	44
M0122742	GROUND PLATE:DRIVEN:REGIST RATION ROLLER	U004	45
M0122743	DECAL:GUIDE PLATE:TRANSPOR T:UPPER	U004	46
M0122744	GUIDE:REGISTRATION	U004	47
M0122745	GROUND PLATE:DRIVEN	U004	48
M0122753	BUSHING:ROLLER:DRIVEN	U004	49
M0122806	SHEET:GUIDE:MANUAL FEED SUB	U004	50

Number	Part Name	Group	ID
	-UNIT		
M0122816	FRICTION PAD:HOLDER:MANUAL FEED:ASS'Y	U004	51
M0122824	FEELER:MANUAL FEED	U004	52
M0122830	MECHANICAL SPRING CLUTCH:M ANUAL FEED	U004	53
M0122833	DECAL:SIDE FENCE:MANUAL FEE D	U004	54
M0122859	GUIDE PLATE:UPPER:MANUAL FE ED	U004	55
M0122860	PAPER FEED ROLLER:MANUAL F EED	U004	56
M0122874	COMPRESSION SPRING:MANUAL FEED	U004	57
M0122880	COMPRESSION SPRING:SEPARAT ION	U004	58
M0124053	GEAR:HOT ROLLER	U007_S001	15
		U007_S002	15
		U007_S003	15
		U007_S004	15
M0124055	RADIAL BALL BEARING:35X47X7	U007_S001	16
		U007_S002	16
		U007_S003	16
		U007_S004	16
M0124109	SPRING:FEELER:EXIT	U007_S001	17
		U007_S002	17
		U007_S003	17
		U007_S004	17
M0124120	TENSION SPRING:PICKOFF PAWL	U007_S001	18
		U007_S002	18
		U007_S003	18
		U007_S004	18
		U012	25
M0124135	FEELER:PAPER FEED SENSOR	U007_S001	19
		U007_S002	19
		U007_S003	19
		U007_S004	19
M0124186	COVER:LEFT UPPER:ASS'Y	U007_S001	20

Exclusive Parts

Number	Part Name	Group	ID
		U007_S002	20
		U007_S003	20
		U007_S004	20
M0124202	LEVER:PRESSURE	U007_S001	21
		U007_S002	21
		U007_S003	21
		U007_S004	21
M0124204	LEVER:LEFT:FRAME:FUSING	U007_S001	22
		U007_S002	22
		U007_S003	22
		U007_S004	22
M0124205	LEVER:RIGHT:FRAME:FUSING	U007_S001	23
		U007_S002	23
		U007_S003	23
		U007_S004	23
M0124208	BRACKET:GATE PAWL	U007_S001	24
		U007_S002	24
		U007_S003	24
		U007_S004	24
M0124211	PLATE NUT:HEATER	U007_S001	25
		U007_S002	25
		U007_S003	25
		U007_S004	25
M0124212	FUSING ENTRANCE GUIDE PLATE:UPPER	U007_S001	26
		U007_S002	26
		U007_S003	26
		U007_S004	26
M0124213	BUSHING:PRESSURE ROLLER	U007_S001	27
		U007_S002	27
		U007_S003	27
		U007_S004	27
M0124215	GUIDE PLATE:EXIT	U007_S001	28
		U007_S002	28
		U007_S003	28
		U007_S004	28
M0124216	TENSION SPRING:FUSING:GUIDE PLATE	U007_S001	29
		U007_S002	29
		U007_S003	29

Number	Part Name	Group	ID
		U007_S004	29
M0124217	FUSING ENTRANCE GUIDE PLATE:LOWER	U007_S001	30
		U007_S002	30
		U007_S003	30
		U007_S004	30
M0124220	HOT ROLLER	U007_S001	31
		U007_S002	31
		U007_S003	31
		U007_S004	31
M0124223	THERMAL INSULATING BUSHING:HOT ROLLER	U007_S001	32
		U007_S002	32
		U007_S003	32
		U007_S004	32
M0124229	TENSION SPRING:FUSING:PRESSURE	U007_S001	33
		U007_S002	33
		U007_S003	33
		U007_S004	33
M0124266	COVER:RIGHT LOWER:FUSING	U007_S001	35
		U007_S002	35
		U007_S003	35
		U007_S004	35
M0124270	THERMAL INSULATING BUSHING:FUSING UNIT	U007	36
M0124276	COVER:LEFT:LOWER:FUSING	U007_S001	37
		U007_S002	37
		U007_S003	37
		U007_S004	37
M0124279	CLEANING ROLLER:ASS'Y	U007_S001	38
		U007_S002	38
		U007_S003	38
		U007_S004	38
M0124281	RETAINING RINGS-C:HOT ROLLER	U007_S001	39
		U007_S002	39
		U007_S003	39
		U007_S004	39
M0124284	LEVER:PRESSURE:LEFT	U007_S001	40
		U007_S002	40
		U007_S003	40

Exclusive Parts

Number	Part Name	Group	ID
		U007_S004	40
M0124285	LEVER:PRESSURE:RIGHT	U007_S001	41
		U007_S002	41
		U007_S003	41
		U007_S004	41
M0124287	COVER:RIGHT UPPER:FUSING	U007_S001	42
		U007_S002	42
		U007_S003	42
		U007_S004	42
M0124292	FUSING COVER:UPPER	U007_S001	43
		U007_S002	43
		U007_S003	43
		U007_S004	43
M0124293	EXIT ROLLER:EXIT:FUSING	U007_S001	44
		U007_S002	44
		U007_S003	44
		U007_S004	44
M0124295	GROUND PLATE:ASS'Y	U007_S001	45
		U007_S002	45
		U007_S003	45
		U007_S004	45
M0124453	EXIT ROLLER	U008	3
M0124454	SPRING:EXIT ROLLER:EXIT	U008	4
M0124458	DISCHARGE BRUSH:EXIT:ASS'Y DRAWING	U008	5
M0124488	BUSHING:DIA6XDIA10X6	U004	59
		U008	6
		U009	9
M0124601	DECAL:LEVER:ENVELOPE:LEFT	U012	26
M0124602	DECAL:LEVER:ENVELOPE:RIGHT	U012	27
M0124603	DECAL:GUIDE PLATE:B	U007_S001	46
		U007_S002	46
		U007_S003	46
		U007_S004	46
M0124699	DECAL:WARNING (HIGH TEMPERATURE):FRONT	U007	47
M0126252	BUSHING:TRANSFER ROLLER:RIGHT	U006	1

Number	Part Name	Group	ID
M0126254	SPRING:TRANSFER ROLLER	U006	2
M0126255	GEAR:TRANSFER ROLLER	U006	3
M0126256	ROLLER:POSITIONING:TRANSFER ROLLER	U006	4
M0126260	COVER:ELECTRODE PLATE	U006	5
M0131178	BRACKET:DRIVE:DUPLEX	U010	17
M0134455	GEAR:DRIVE:EXIT ROLLER	U008	7
M0134470	EXIT ROLLER:DUPLEX	U008	8
M0134610	GEAR:DRIVE:DUPLEX	U009	10
M0134611	BRACKET:DRIVE:DUPLEX:ASS'Y	U009	11
M0134622	EXIT ROLLER:DUPLEX	U009	12
M0134623	SPRING:EXIT	U009	13
M0134624	SPRING:EXIT:NO.2	U009	14
M0134635	SPRING:OPEN AND CLOSE:RIGHT	U009	15
M0134661	STOPPER:TRANSPORT SUB-UNIT: DUPLEX	U009	16
M0134663	GUIDE PLATE:VERTICAL TRANSPORT:LOWER	U009	17
M0134664	GUIDE PLATE:VERTICAL TRANSPORT:UPPER	U009	18
M0134666	SHAFT:COVER:SWITCHBACK:OPEN AND CLOSE	U009	19
M0134667	SPRING:COVER:SWITCHBACK:OPEN AND CLOSE	U009	20
M0134668	SHEET:GUIDE:HORIZONTAL TRANSPORT:LOWER	U009	21
M0134669	MAGNET CATCH:ASS'Y	U009	22
M0134671	SHEET:HORIZONTAL TRANSPORT:LEFT	U009	23
M0134672	SHEET:HORIZONTAL TRANSPORT:RIGHT	U009	24
M0134673	LEVER:OPEN AND CLOSE:NO.1	U009	25
M0134674	LEVER:OPEN AND CLOSE:NO.2	U009	26
M0134684	SHEET:DUPLEX	U009	27
M0134685	BUTTON:OPEN AND CLOSE:LOWER	U009	28
M0134688	GROUND PLATE:HORIZONTAL TRANSPORT:REAR	U009	29

Exclusive Parts

Number	Part Name	Group	ID
M0134691	LEVER:OPEN AND CLOSE:LOWER	U009	30
M0134696	LEVER:OPEN AND CLOSE:LEFT	U009	31
M0134697	LEVER:OPEN AND CLOSE:RIGHT	U009	32
M0134698	BRACKET:OPEN AND CLOSE:LOWER	U009	33
M0134761	TRANSPORT ROLLER:DUPLEX:MI DDLE	U009	34
M0134762	TRANSPORT ROLLER:DUPLEX:EX IT	U009	35
M0134765	PULLEY:TRANSPORT	U009	36
M0134774	TIMING BELT:DRIVE	U009	48
M0134776	TIMING BELT:HORIZONTAL TRAN SPORT	U009	49
M0134785	SPRING:COVER:SWITCHBACK:OP EN AND CLOSE	U009	39
M0134794	DECAL:GUIDE PLATE:VERTICAL T RANSPORT:UPPER	U009	40
M0134797	FEELER:SENSOR:VERTICAL TRAN SPORT	U009	41
M0752610	(M287/M0BB):COMPRESSION SPRI NG:LOCK:SIDE FENCE	U004_S001	60
M0A70431	(EU/AA/CHN):(M0A7):MODEL NAM E PLATE:SP320DN	ACCESSORIES	2
M0A71257	(EU/AA):(M0A7):COVER:UPPER:AS S'Y	U001	4
M0A71259	(CHN):(M0A7):COVER:UPPER:ASS' Y	U001	5
M0A71851	(EU/AA/CHN):(M0A7):OPTICAL WRI TING UNIT:ASS'Y	U003_S002 U003_S003	6 6
M0A75052	(EU/AA/CHN):(M0A7):PCB:ECBCTL: ASS'Y	U011	3
M0BB0431	(EU/AA/NA):(M0BB):MODEL NAME PLATE:SP325DNW	ACCESSORIES	3
M0BB1100	(EU/NA):(M0BB):HEAT INSULATIN G PLATE:FUSING:FRONT:TYPE A	U012	28
M0C32691	FEELER:PAPER END SENSOR	U004	90
M0C34204	PRESSURE ROLLER:DIA30	U007_S001 U007_S002	34 34

Number	Part Name	Group	ID
		U007_S003	34
		U007_S004	34
M1011301	PLATE:LOGO:RIC	U001	6
M1015799	(CHN):POWER SUPPLY CORD	ACCESSORIES	4
M1016250	TRANSFER ROLLER	U006	6
M1016259	ELECTRODE PLATE:SEPARATION	U006	7
M1092584	(M287/M0BB):PRESSURE PLATE:S IDE FENCE:LEFT	U004_S001	61
M1092589	(M287/M0BB):LEVER:LOCK:SIDE F ENCE	U004_S001	62
M1092592	(M287/M0BB):PAWL:LOCK:SIDE FE NCE	U004_S001	63
M1161118	GEAR:DRIVE:FUSING:NO.1	U010	18
M1161121	GEAR:DRIVE:PAPER FEED:NO.1	U010	19
M1161122	GEAR:DRIVE:PAPER FEED:NO.2	U010	20
M1161124	GEAR:DRIVE:PAPER FEED:NO.4	U010	21
M1162672	RAIL:PAPER TRAY:LEFT	U004	64
M1171136	GEAR:DRIVE:DUPLEX SECTION	U010	22
M1174662	COVER:SWITCHBACK:OPEN AND CLOSE	U009	42
M1540265	STEPPER MOTOR	U009	43
M1541099	(M0A7(EU/AA/CHN)):(M287(EU/AA/ TWN/NA/CHN)):HEAT INSULATING PLATE:FUSING:FRONT:TYPE A	U012	29
M1541177	CASE:DRIVE:ASS'Y	U010	23
M1541300	COVER:FRONT	U001	7
M1541324	EXTENSION TRAY:GUIDE	U001	8
M1541325	EXTENSION TRAY:EXIT	U001	9
M1541360	COVER:REAR MIDDLE	U001	10
M1542056	DISCHARGE LAMP	U012	30
M1542505	(EU/AA/CHN):(M0A7):PAPER TRAY: ASS'Y	U004_S002 U004_S003	65 65
M1542614	(EU/AA/CHN):(M0A7):SIDE FENCE: LEFT	U004_S002 U004_S003	66 66
M1542616	LEVER:PAPER VOLUME SENSOR	U004_S001 U004_S002 U004_S003	67 67 67
M1542618	DECAL:PAPER TRAY:FRONT	U004_S001	68

Exclusive Parts

Number	Part Name	Group	ID
		U004_S002	68
		U004_S003	68
M1542629	COVER:PAPER TRAY:MIDDLE	U004_S001	69
		U004_S002	69
		U004_S003	69
M1542633	DECAL:PICK-UP PAPER JAM	U001	11
M1542640	COVER:PAPER TRAY:LEFT	U004_S001	70
		U004_S002	70
		U004_S003	70
M1542641	COVER:PAPER TRAY:RIGHT	U004_S001	71
		U004_S002	71
		U004_S003	71
M1542707	STAY:PAPER FEED	U004	97
M1542805	GUIDE PLATE:MANUAL FEED:LOWER	U004	72
M1542816	DECAL:FEED PAPER AGAIN:PREVENTION	U004	73
M1542831	DC SOLENOID:9.6W:24V	U004	74
M1542879	EXTENSION TRAY:MANUAL FEED	U004	75
M1544499	GROUND PLATE:EXIT ROLLER	U008	9
M1544694	GUIDE:HORIZONTAL TRANSPORT:UPPER	U009	44
M1544695	GUIDE:HORIZONTAL TRANSPORT:LOWER	U009	45
M1545402	POWER PACK:ASS'Y	U011	4
M1545697	(NA):POWER SUPPLY CORD:125V:10A	ACCESSORIES	5
M1545699	(EU/AA):POWER SUPPLY CORD:250V:10A	ACCESSORIES	6
M2870431	(M287):MODEL NAME PLATE:SP325DNW	ACCESSORIES	7
M2871043	COVER:U CONVEYER BELT:DUPLICATE	U012	31
M2871257	(EU/AA/NA):(M287/M0BB):COVER:UPPER:ASS'Y	U001	12
M2871259	(CHN):(M287):COVER:UPPER:ASS'Y	U001	13
M2871301	BUTTON:RIGHT	U001	14

Number	Part Name	Group	ID
M2871330	COVER:SIDE PLATE:LEFT	U001	15
M2871342	COVER:SIDE PLATE:RIGHT	U001	16
M2871370	COVER:REAR LOWER	U001	17
M2871460	PCB:OPU	U002	2
M2871464	LENS	U002	3
M2871465	CASE:OPERATION SUB-UNIT	U002	4
M2871467	KEYTOP:START/STOP	U002	5
M2871468	(M287/M0BB):KEYTOP:WIFI	U002	6
M2871469	KEYTOP:POWER SOURCE	U002	7
M2871851	(M287/M0BB):OPTICAL WRITING UNIT:ASS'Y	U003_S001	7
M2872505	(M287/M0BB):PAPER TRAY:ASS'Y	U004_S001	76
M2872589	(M287/M0BB):PAPER TRAY:REAR	U004_S001	77
M2872611	(M287/M0BB):TRAY:BASE	U004_S001	78
M2872612	(M287/M0BB):END FENCE	U004_S001	79
M2872615	(M287/M0BB):SIDE FENCE:LEFT	U004_S001	80
M2872618	(M287/M0BB)COVER:SIDE FENCE:LEFT	U004_S001	81
M2872620	(M287/M0BB):SIDE FENCE:RIGHT	U004_S001	82
M2872622	(M287/M0BB):COVER:SIDE FENCE:RIGHT	U004_S001	83
M2872623	(M287/M0BB):PAWL:LOCK:END FENCE	U004_S001	84
M2872624	(M287/M0BB):CLICK:SIDE FENCE	U004_S001	85
M2872625	(M287/M0BB):LEVER:LOCK:EXTENSION TRAY	U004_S001	86
M2872626	(M287/M0BB):DECAL:EXTENSION TRAY	U004_S001	87
M2872627	(M287/M0BB):LEVER:LOCK:END FENCE	U004_S001	88
M2872636	(M287/M0BB):GEAR:16Z	U004_S001	89
M2872871	COVER:MANUAL FEED TABLE	U004	91
M2872875	SIDE FENCE:MANUAL FEED:RIGHT	U004	92
M2872876	SIDE FENCE:MANUAL FEED:LEFT	U004	93
M2872878	RACK:MANUAL FEED	U004	94
M2872879	COMPRESSION SPRING:SIDE FENCE:MANUAL FEED	U004	95

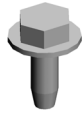
Exclusive Parts

Number	Part Name	Group	ID
M2872881	BASE:MANUAL FEED TABLE	U004	96
M2874030	(NA):FUSING UNIT:ASS'Y	U007_S003	48
M2874031	(EU/AA):FUSING UNIT:ASS'Y	U007_S001	49
M2874033	(CHN):FUSING UNIT:ASS'Y	U007_S002	50
M2874049	(TWN):FUSING UNIT:ASS'Y	U007_S004	51
M2874206	STRIPPER PAWLS	U007_S001	52
		U007_S002	52
		U007_S003	52
		U007_S004	52
M2874220	(NA):HEATER:700W:120V:INFRARED	U007_S003	53
M2874221	(EU/AA/CHN):HEATER:700W:220V:INFRARED	U007_S001	54
		U007_S002	54
M2874229	(TWN):HEATER:700W:110V	U007_S004	55
M2874234	HOUSING:THERMOSTAT:ASS'Y	U007_S001	56
		U007_S002	56
		U007_S003	56
		U007_S004	56
M2874263	THERMISTOR	U007_S001	57
		U007_S002	57
		U007_S003	57
		U007_S004	57
M2874719	PIN:GUIDE:TRANSPORT	U009	46
M2874791	RUBBER WASHER:EXTERIOR:COVER:RIGHT	U001	18
M2874895	PIN:GUIDE:UPPER	U009	47
M2875003	(M287/M0BB):PCB:WIFI	U011	10
M2875052	(M287/M0BB):PCB:ECBCTL:ASS'Y	U011	6
M2875311	(CHN):POWER SUPPLY UNIT:ASS'Y	U011	7
M2875312	(EU/AA):POWER SUPPLY UNIT:ASS'Y	U011	8
M2875313	(NA/TWN):POWER SUPPLY UNIT:ASS'Y	U011	9

Standard Parts



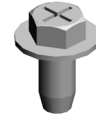
03603006N
SCREW - M3X6



04503008N
TAPPING SCREW - M3X8



04503010N
TAPPING SCREW - M3X10



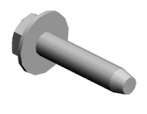
04504008N
(M287/M0BB):TAPPING SCREW - M4X8



04513006N
TAPPING SCREW - 3X6



04513008N
TAPPING SCREW - M3X8



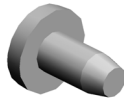
04513014N
TAPPING SCREW:3X14



04513030N
TAPPING SCREW:3X30



04523010N
BINDING SELF-TAPPING SCREW:3X10



04533006N
TAPPING SCREW - M3X6



04543006Q
TAPPING SCREW - M3X6



04543008Q
TAPPING SCREW:3X8



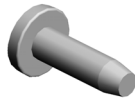
04543014Q
TAPPING SCREW:3X14



04593010N
(TWN):BINDING HEAD TAPPING SCREW:3X10



07200040E
RETAINING RING - M4



08025318
(EU/AA/NA/CHN):BINDING HEAD TAPPING SCREW:ES:3X10



08046127
HEXAGONAL BOLT:DOUBLE SCREW:M3X8



08050104
RETAINING RINGS-E:SILENCER:DIA4



08050106
RETAINING RINGS-E:SILENCER:DIA6



09504006N
SCREW - M4X6



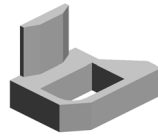
09543010N
SCREW:POLISHED ROUND/SPRING:M3X10



11050197
WIRE SADDLE



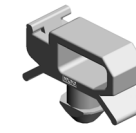
11050568
CLAMP:LWSS-0504



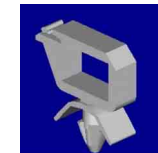
11050598
CLAMP:LWSS-1N



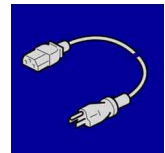
11050758
CLAMP:LWSM-0306A



11050760
CLAMP:LWSM-0511A



11050762
CLAMP:LWS-0711A



11500478
(TWN):POWER SUPPLY CORD:125V:15A

Standard Parts



12042612
MICRO SWITCH:D3V-16506-3
C25

Design Change List

Number	Title	Set	Old Part		New Part		Index No.		Q'ty	Interchg		Reason	Cut-in S/N
			P/N	Name	P/N	Name	Group	ID		Indiv.	Set		
202006-01	2006 Modification	-			M1542707	STAY:PAPER FEED	U004	97	1				
202001-01	2001 Modification	-	M2872671	(M287/M0BB):FEELER:PAPER END SENSOR	M0C32691	FEELER:PAPER END SENSOR	U004	90	1	O/O			
201910-01	1910 Modification	-	M0124253	PRESSURE ROLLER:DIA30	M0C34204	PRESSURE ROLLER:DIA30	U007_S001	34	1	O/O			
			M0124253	PRESSURE ROLLER:DIA30	M0C34204	PRESSURE ROLLER:DIA30	U007_S002	34	1	O/O			
			M0124253	PRESSURE ROLLER:DIA30	M0C34204	PRESSURE ROLLER:DIA30	U007_S003	34	1	O/O			
			M0124253	PRESSURE ROLLER:DIA30	M0C34204	PRESSURE ROLLER:DIA30	U007_S004	34	1	O/O			
201905-01	1905 Modification	-	M0134771	TIMING BELT:HORIZONTAL TRANSPORT	M0134776	TIMING BELT:HORIZONTAL TRANSPORT	U009	49	1	O/O			
201905-02	1905 Modification	-	M0134772	TIMING BELT:DRIVE	M0134774	TIMING BELT:DRIVE	U009	48	1	O/O			
201806-01	1806 Modification	-	M2875001	(M287/M0BB):PCB:WIFI	M2875003	(M287/M0BB):PCB:WIFI	U011	10	1	O/O			
201805-01	1805 Modification	-			M0121064	GROUND PLATE:OPC	U012	32	1				

