



RICOH UNIVERSITY

Learning ♦ Knowledge ♦ Performance



D124 PARTS CATALOG

LANIER RICOH SAVIN®

It is the reader's responsibility when discussing the information contained within this document to maintain a level of confidentiality that is in the best interest of Ricoh Americas Corporation and its member companies.

**NO PART OF THIS DOCUMENT MAY BE REPRODUCED IN ANY
*FASHION AND DISTRIBUTED WITHOUT THE PRIOR
PERMISSION OF RICOH AMERICAS CORPORATION.***

All product names, domain names or product illustrations, including desktop images, used in this document are trademarks, registered trademarks or the property of their respective companies.

They are used throughout this book in an informational or editorial fashion only and for the benefit of such companies. No such use, or the use of any trade name, or web site is intended to convey endorsement or other affiliation with Ricoh products.

LEGEND

| PRODUCT CODE | COMPANY | | |
|--------------|--------------------|--------------|-----------|
| | LANIER | RICOH | SAVIN |
| D124 | MP CW2200 | MP CW2200 SP | MP CW2200 |
| D124-99 | Controller Options | | |

DOCUMENTATION HISTORY

| REV. NO. | DATE | COMMENTS |
|----------|---------|-------------------|
| * | 01/2013 | Original Printing |
| | | |

Digital Color Copiers
(D124-NA)
Parts Catalog

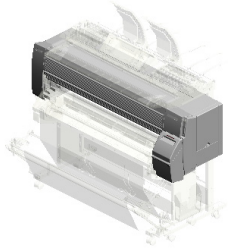
Parts change information sample

 **Add**

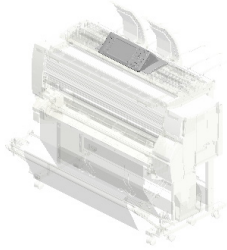
 **Update**

 **Delete**

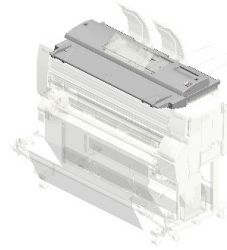
Unit All



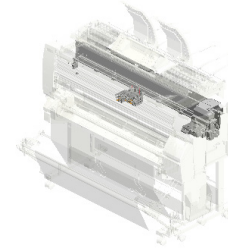
U001
EXTERIOR



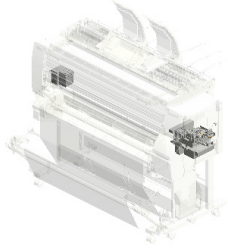
U002
OPERATION



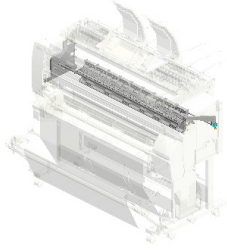
U003
SCANNER



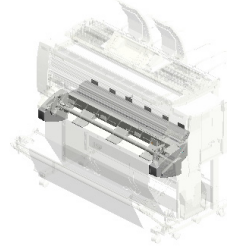
U004
CARRIAGE



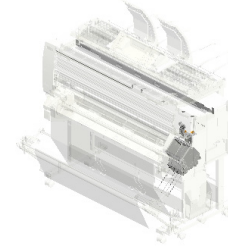
U005
MAINTENANCE RECOVERY SECTION



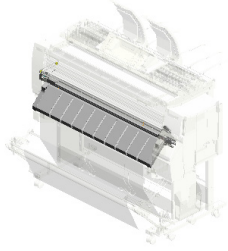
U006
PAPER REGISTRATION



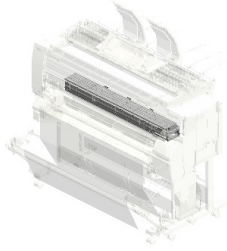
U007
PAPER FEED



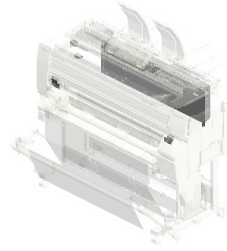
U008
INK SUPPLY SECTION



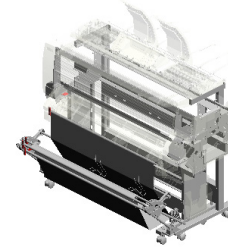
U009
PAPER EXIT



U010
ABSORB SECTION

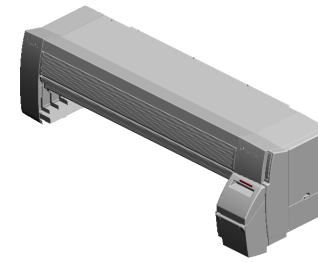


U011
ELECTRICAL



U012
MAIN FRAME

U001 EXTERIOR



- 6.11050488 (x2) HARNESS CLAMP
- 9.D1241254 SEAL:COVER:UPPER RIGHT
- 10.D1241261 COVER:FRONT:UPPER
- 7.D1241251 COVER:UPPER
- 8.D1241252 (x2) SEAL:COVER:UPPER

12.D1241263
COVER:SIDE:LEFT
UPPER

20.D1241290
COVER:LEFT

16.D1241273
COVER:SIDE:LEFT
LOWER

13.D1241264
(x3)
ROD:COVER:FRONT

14.D1241271
COVER:FRONT:LOWER

3.04523010N
(x10)
BINDING SELF-TAPPING SCREW:3X10

11.D1241262
COVER:SIDE:RIGHT
UPPER

15.D1241272
COVER:SIDE:RIGHT
LOWER

5.09543006N
(x2)
SCREW - M3X6

4.04543008Q
TAPPING SCREW:
3X8

1.04513006N
(x18)
TAPPING SCREW -
3X6

2.04513008N
(x9)
TAPPING SCREW -
M3X8

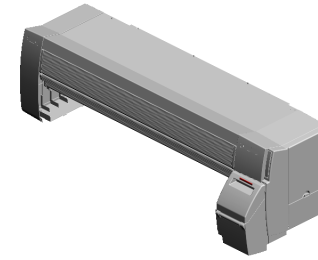
17.D1241280
COVER:RIGHT:UP
PER

18.D1241285
COVER:RIGHT

19.D1241286
COVER:USELESS
FLUID NOZZLE

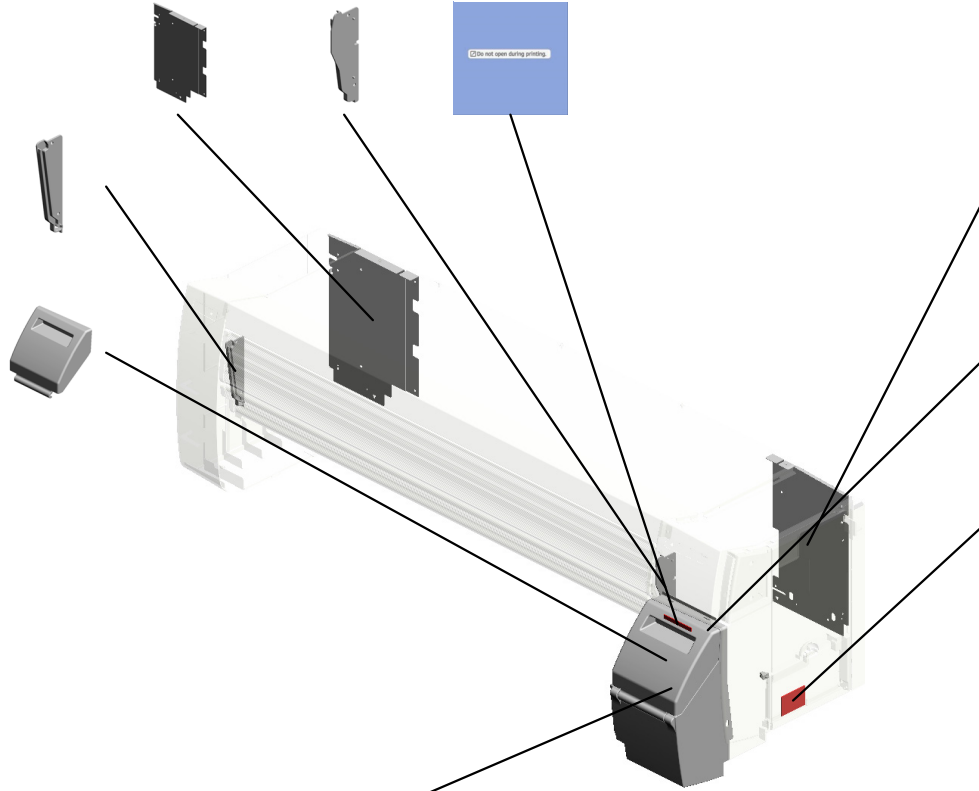
U001 EXTERIOR

24.D1241305 COVER:LEFT:REAR
 25.D1241310 SUPPORTER:RIGHT
 27.D1241334 DECAL:INK:COVER:EXP



26.D1241315 SUPPORTER:LEFT

22.D1241296 COVER:INK CART RIDGE:OPEN AND CLOSE



23.D1241300 COVER:RIGHT:REAR

29.G0205626 (x2) PUSH SWITCH

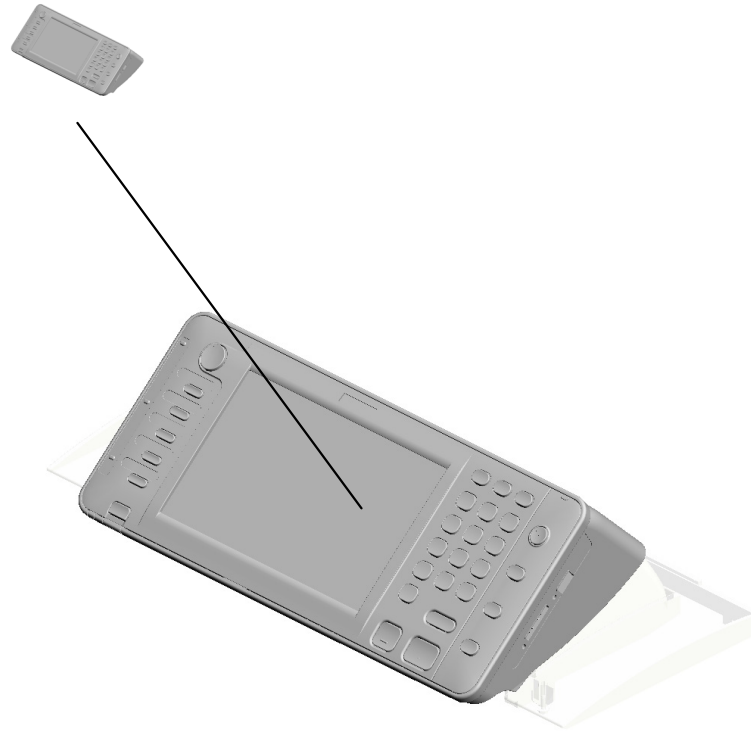
28.D1246580 DECAL:USED INK

21.D1241295 COVER:INK CART RIDGE

| | | | | | | | | | | | |
|------|------|------|------|------|------|------|------|------|------|------|------|
| U001 | U002 | U003 | U004 | U005 | U006 | U007 | U008 | U009 | U010 | U011 | U012 |
|------|------|------|------|------|------|------|------|------|------|------|------|

U002.OPERATION

U002 S001
D1241422
OPERATION PANEL:EU:ASS'
Y



| | | | | | | | | | | | |
|------|-------------|------|------|------|------|------|------|------|------|------|------|
| U001 | U002 | U003 | U004 | U005 | U006 | U007 | U008 | U009 | U010 | U011 | U012 |
|------|-------------|------|------|------|------|------|------|------|------|------|------|

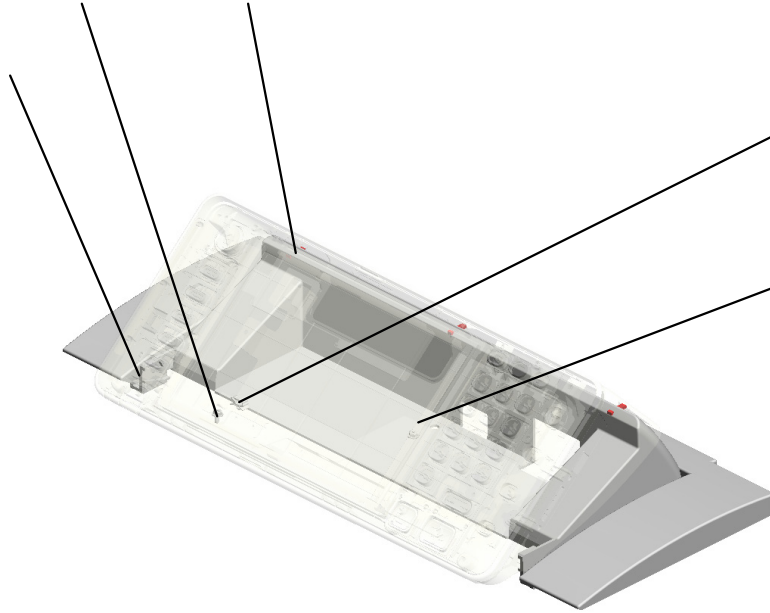
U002 OPERATION

2.04513006N
TAPPING SCREW -
3X6

5.B1251474
(x3)
RIVET:MM5



1.04503010N
(x3)
TAPPING SCREW -
M3X10



3.11050511
HARNESS CLAMP -
LWS-0306ZC

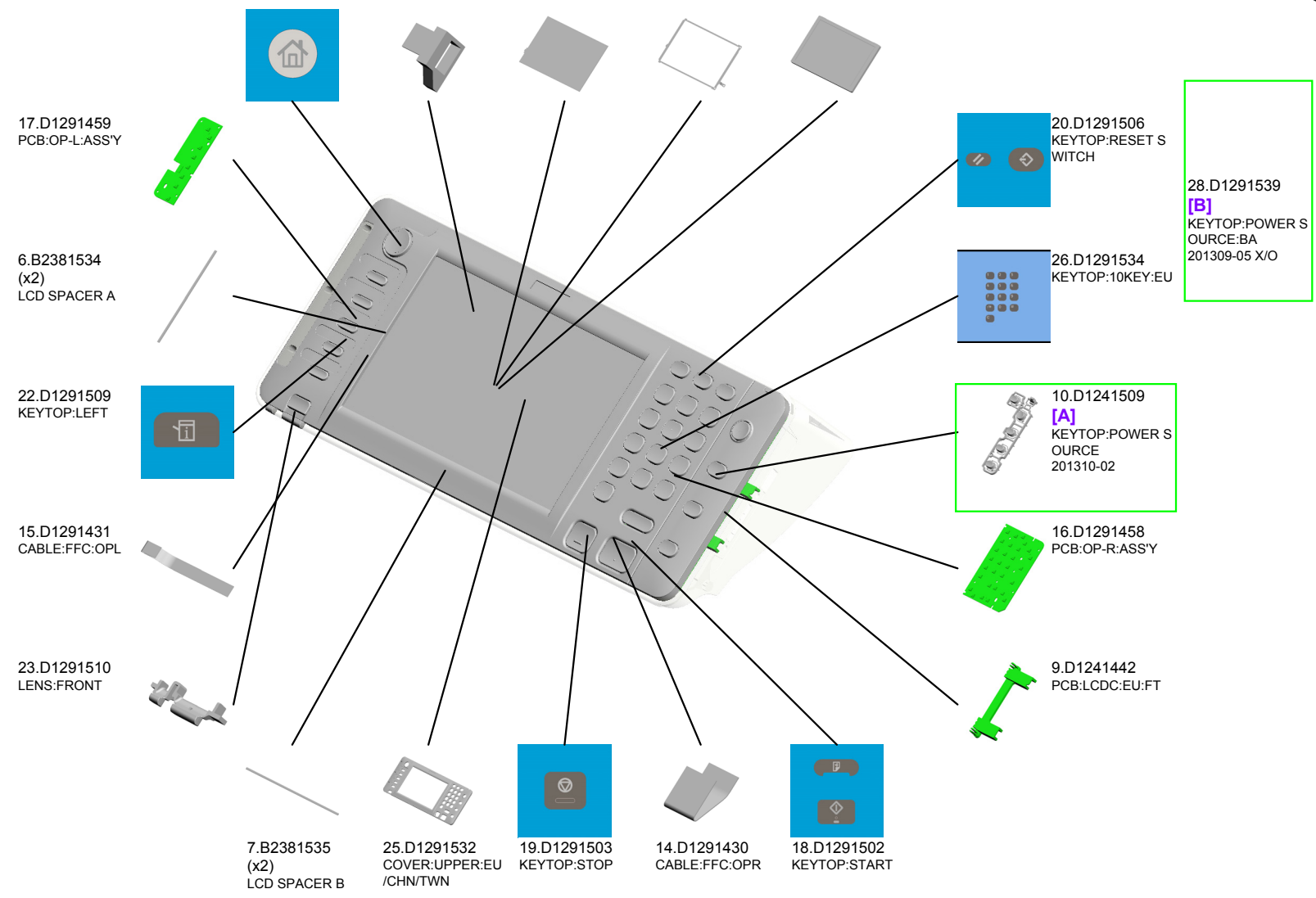
11.D1241510
COVER:OPERATIO
N SUB-UNIT:INNER

U002_S001 OPERATION PANEL:EU:ASS'Y



8.D1241422
OPERATION PANE
L:EU:ASS'Y

- 21.D1291508 KEYTOP:HOME
- 4.11050598 CLAMP:LWSS-1N
- 13.D1291421 TOUCH PANEL:WV GA:MV
- 24.D1291513 SHADEING PLATE: TOUCH PANEL
- 12.D1291420 LCD:TFT:WVGA:LE D:MV



| | | | | | | | | | | | |
|------|------|------|------|------|------|------|------|------|------|------|------|
| U001 | U002 | U003 | U004 | U005 | U006 | U007 | U008 | U009 | U010 | U011 | U012 |
|------|------|------|------|------|------|------|------|------|------|------|------|

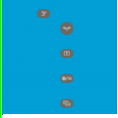
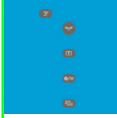
U002_S001
OPERATION PANEL:EU:ASS'Y

27.D1291547
SHEET:JOURNAL:
BLANK



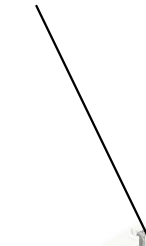
8.D1241422
OPERATION PANE
L:EU:ASS'Y



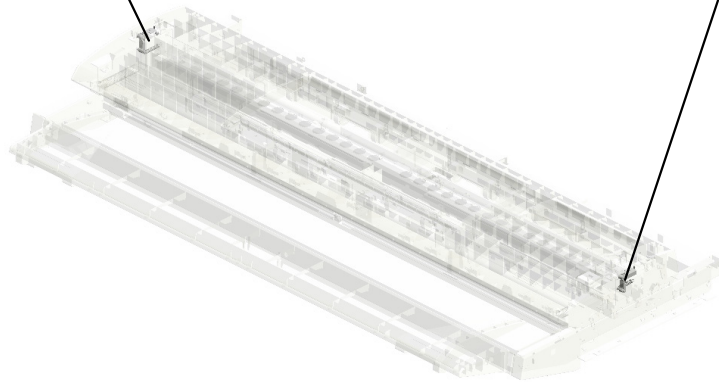
| | |
|---|---|
|  |  |
| D1241507 | D1291507 |
| [A] | [B] |
| KEYTOP:POWER S | KEYTOP:POWER S |
| OURCE | OURCE |
| 201310-02 | 201309-05 X/O |

U003.SCANNER

U003 S001
B1254901
STOPPER:OPEN AND CLOS
E:LEFT:UNIT



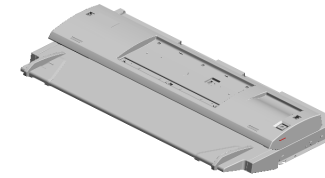
U003 S002
B1254906
STOPPER:OPEN AND CLOS
E:RIGHT:UNIT



| | | | | | | | | | | | |
|------|------|------|------|------|------|------|------|------|------|------|------|
| U001 | U002 | U003 | U004 | U005 | U006 | U007 | U008 | U009 | U010 | U011 | U012 |
|------|------|------|------|------|------|------|------|------|------|------|------|

U003 SCANNER

- 2.04504008N (x4) TAPPING SCREW - M4X8
- 20.11050723 (x7) CLAMPS:WES-050
- 18.11050490 (x3) HARNESS CLAMP - IWS-2218
- 19.11050516 (x19) CLAMP
- 15.11050192 (x3) LOCKING SUPPORT



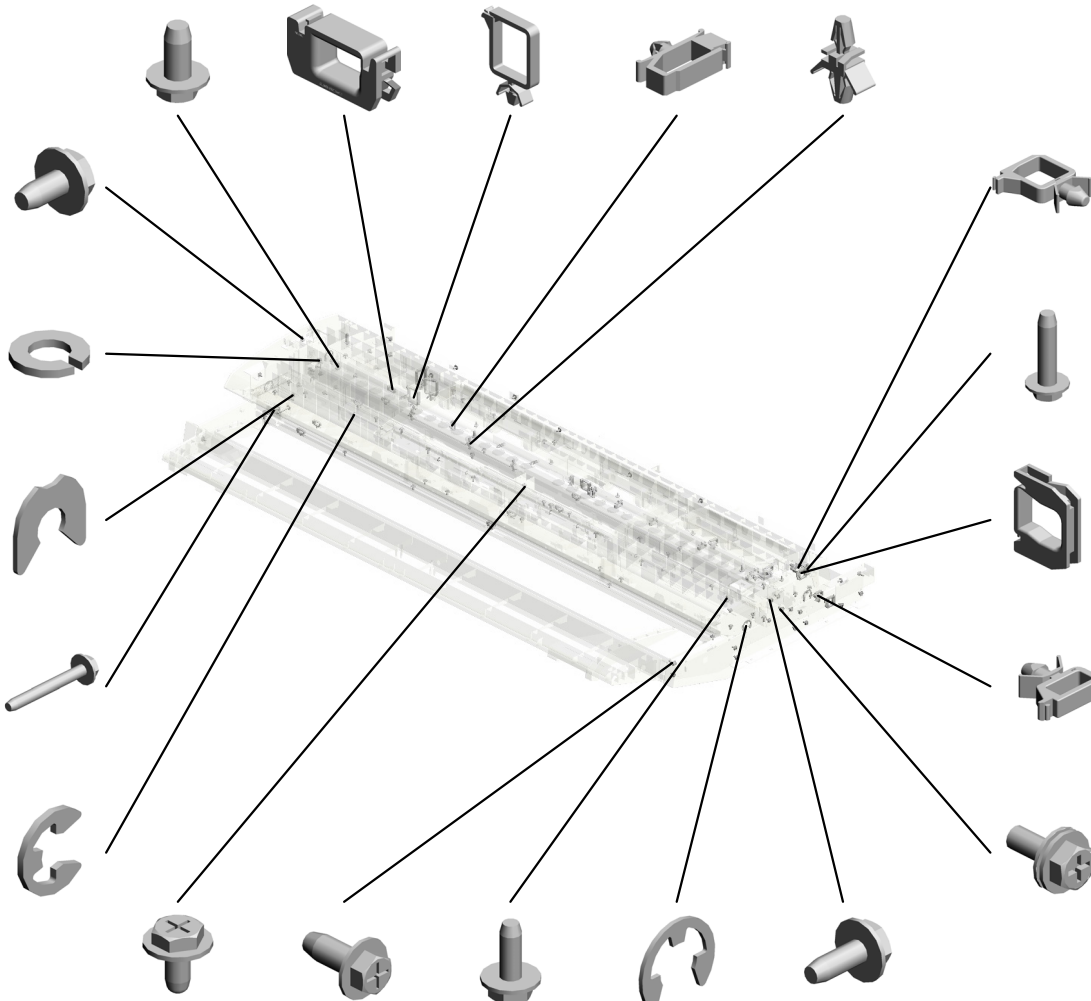
- 3.04513006N (x2) TAPPING SCREW - 3X6

- 9.07030030N (x2) SPRING WASHER: DIA3

- 14.08050089 (x2) RETAINING RING - M4

- 5.04513025N (x2) TAPPING SCREW: M3X25

- 11.07200030E (x8) RETAINING RING - M3



- 17.11050488 HARNESS CLAMP

- 7.04514016N (x2) TAPPING SCREW: 4X16

- 21.11050724 (x4) CLAMPS:WES-1210

- 16.11050487 (x3) HARNESS CLAMP

- 13.08025296 (x3) TAPPING SCREW - M3X8

- 8.04543006Q (x82) TAPPING SCREW - M3X6
- 6.04504010N (x4) TAPPING SCREW: M4X10 201305-03 X/O
- 1.04503008N (x3) TAPPING SCREW - M3X8
- 12.07200100E (x4) RETAINING RING - M10
- 4.04513008N (x6) TAPPING SCREW - M3X8

U003 SCANNER

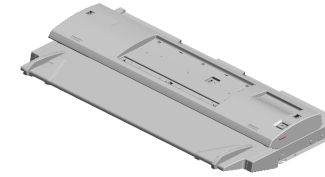
25.A4221356
(x2)
PIN - 3X26MM

34.AA143859
(x3)
POSITIONING PIN

27.A8594141
(x2)
PULLEY IDLER

39.B1251728
SPRING PLATE:EX
POSURE GLASS:L
EFT

31.AA082135
(x16)
BUSHING - DIA4



33.AA143823
(x2)
TAPPING SCREW

30.AA063444
(x2)
SPRING:STOPPER:
ORIGINAL

40.B1254732
(x2)
STOPPER:ORIGIN
AL:UPPER

22.12042466
(x2)
MICRO SWITCH - V
-16506-1C25

32.AA143788
PIN:GUIDE PLATE:
PAPER FEED

35.AW010107
(x10)
PAPER FEED SEN
SOR

28.AA063416
(x8)
SPRING - 3.4N

26.A5663850
(x2)
SENSOR SCREW

36.AW010109
(x2)
PHOTO REFLECTIO
N SENSOR:PS117E
D1

41.B1254742
SUPPORTING PLA
TE:COVER:ORIGIN
AL

24.A1636052
(x2)
ORIGINAL TABLE B
USHING

29.AA063419
(x2)
SPRING - 10N

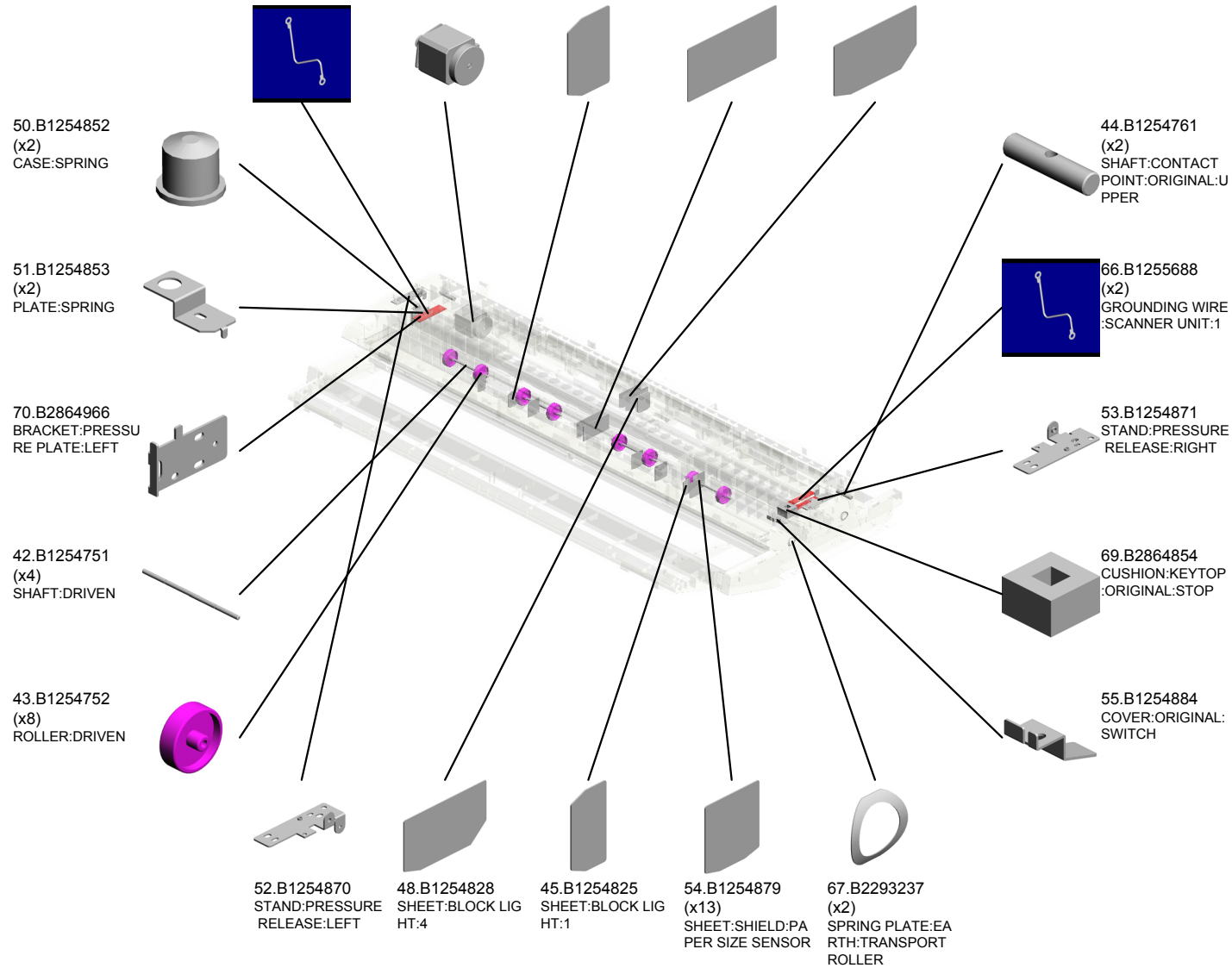
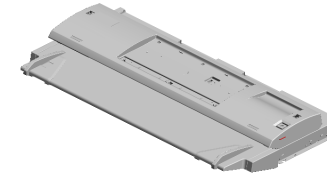
37.AW500022
PUSH SWITCH

38.B1251727
SPRING PLATE:EX
POSURE GLASS:RI
GHT

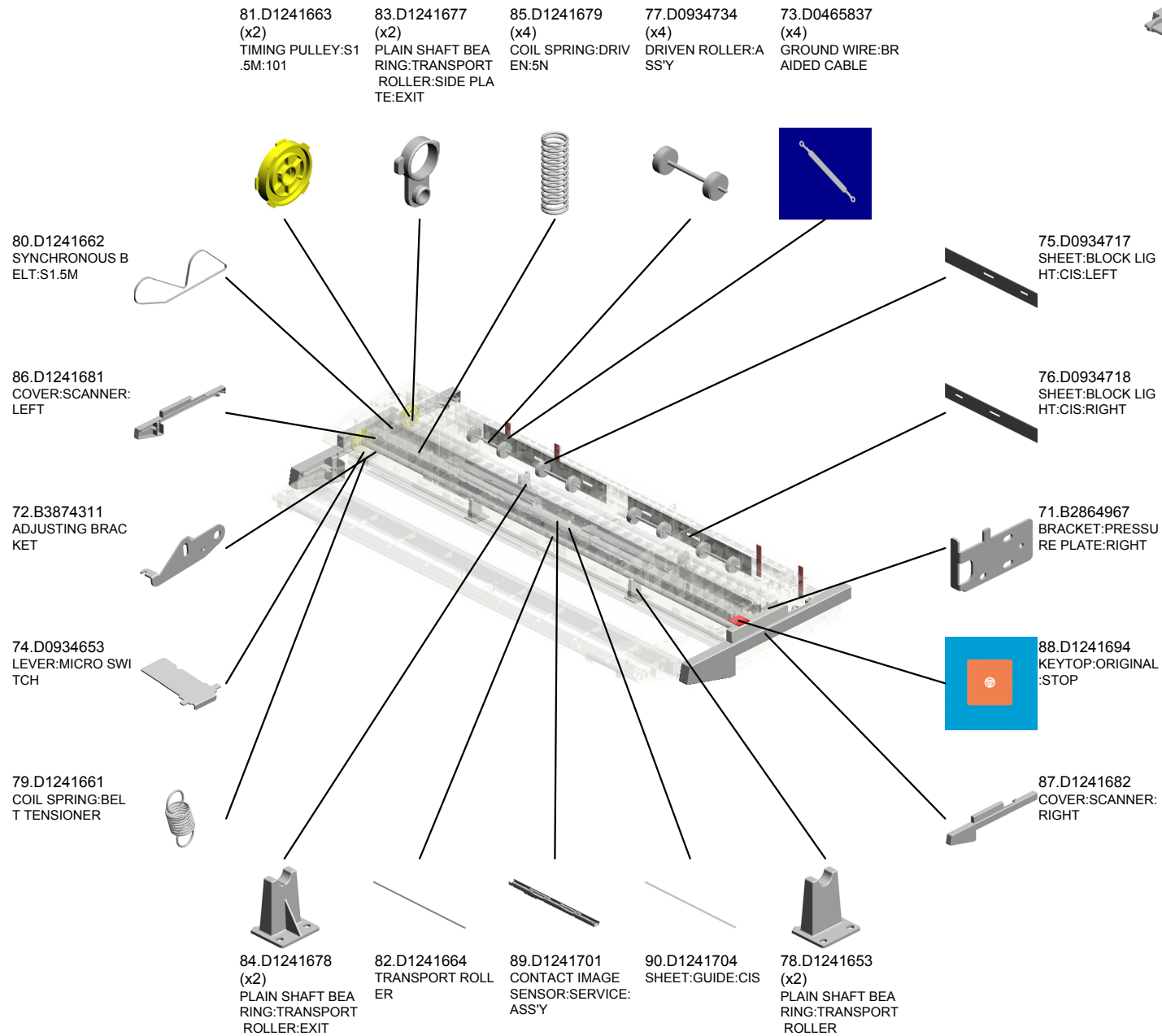
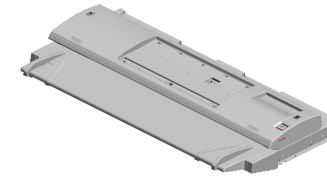
23.53531803
(x2)
WAVE WASHER

U003 SCANNER

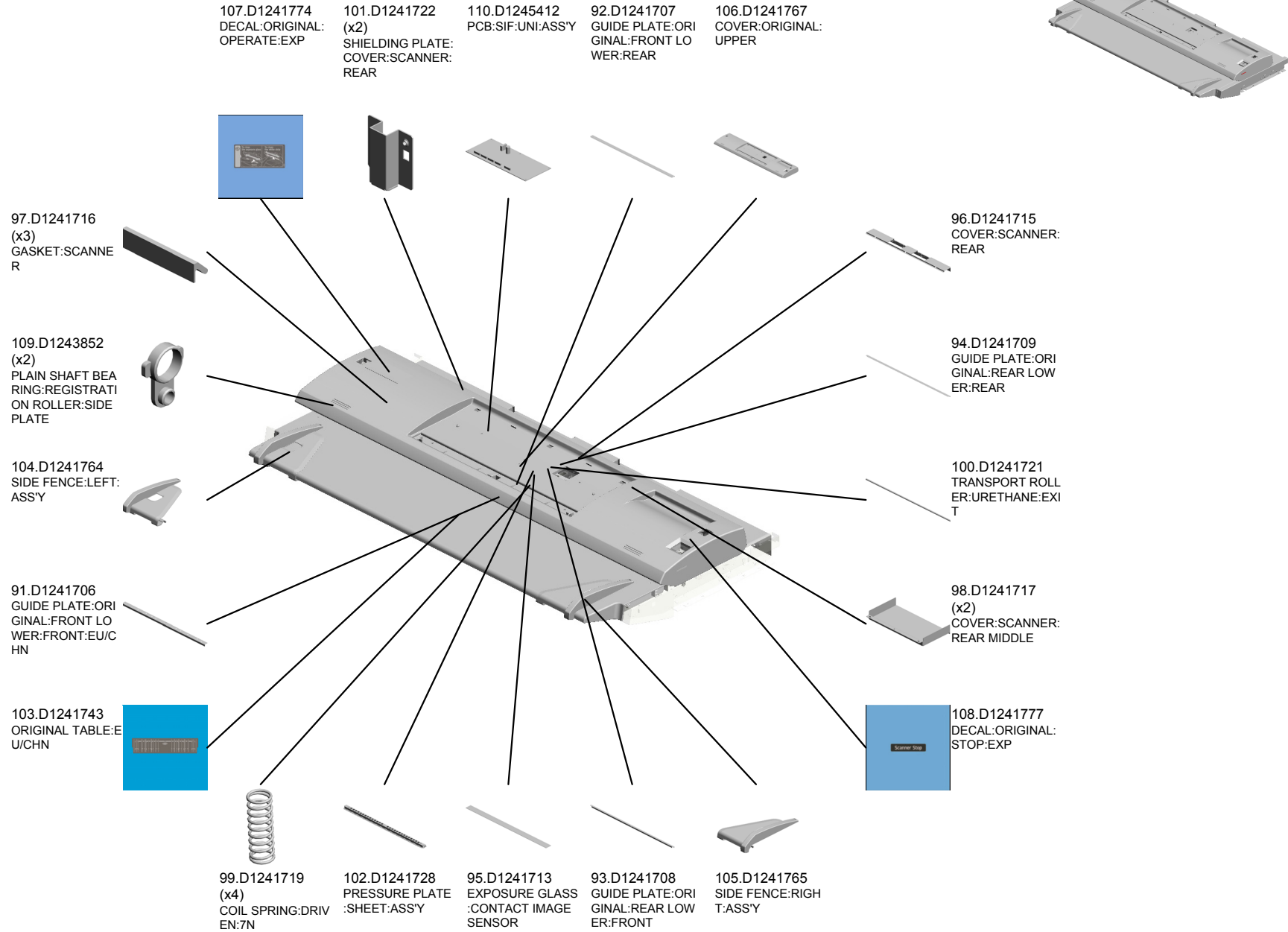
65.B1255683 (x2) GROUND WIRE:PRESSURE PLATE
 68.B2381715 STEPPER MOTOR DC3.9V
 46.B1254826 (x2) SHEET:BLOCK LIG HT:2
 49.B1254829 (x2) SHEET:BLOCK LIG HT:5
 47.B1254827 SHEET:BLOCK LIG HT:3



U003 SCANNER

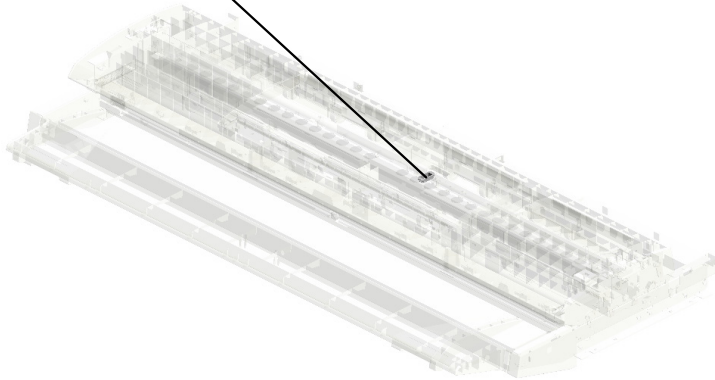
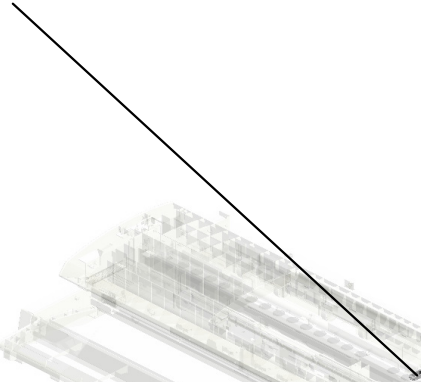
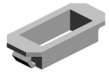
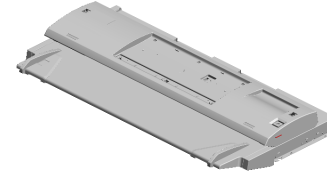


U003 SCANNER



U003 SCANNER

111.H0043755
SQUARE BUSHING



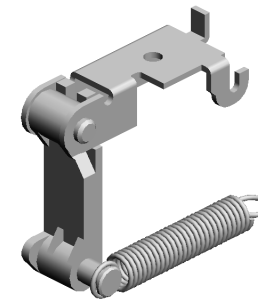
| | | | | | | | | | | | |
|------|------|------|------|------|------|------|------|------|------|------|------|
| U001 | U002 | U003 | U004 | U005 | U006 | U007 | U008 | U009 | U010 | U011 | U012 |
|------|------|------|------|------|------|------|------|------|------|------|------|

U003_S001

STOPPER:OPEN AND CLOSE:LEFT:UNIT

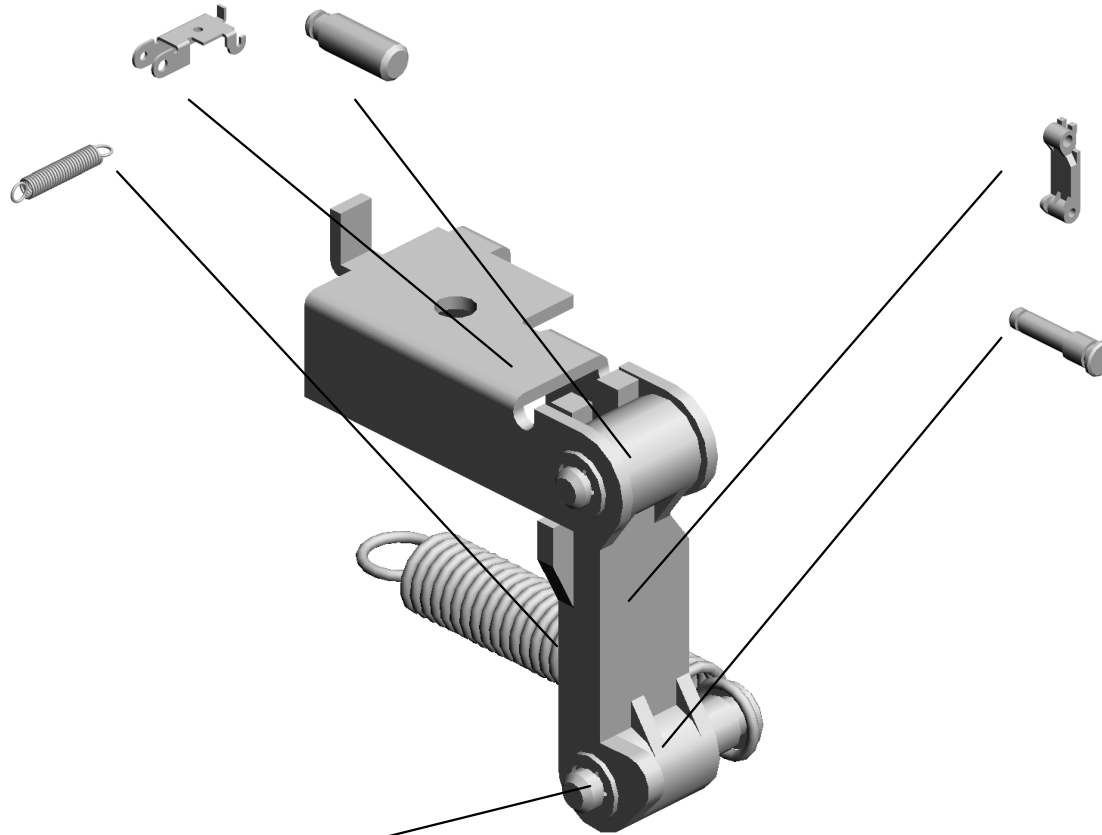
57.B1254902
BRACKET:OPEN AND
CLOSE:STOPPER:
LEFT

63.B1254912
SHAFT:CONTACT
POINT:STOPPER



56.B1254901
STOPPER:OPEN AND
CLOSE:LEFT:UNIT

62.B1254910
TENSION SPRING:
STOPPER



58.B1254904
STOPPER:OPEN AND
CLOSE:LEFT

64.B1254913
SHAFT:SPRING:STOPPER

10.07200020E
(x2)
RETAINING RING -
M2

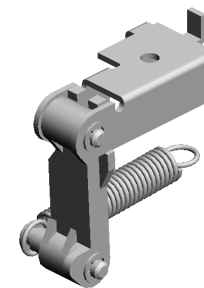
| | | | | | | | | | | | |
|------|------|------|------|------|------|------|------|------|------|------|------|
| U001 | U002 | U003 | U004 | U005 | U006 | U007 | U008 | U009 | U010 | U011 | U012 |
|------|------|------|------|------|------|------|------|------|------|------|------|

U003_S002

STOPPER:OPEN AND CLOSE:RIGHT:UNIT

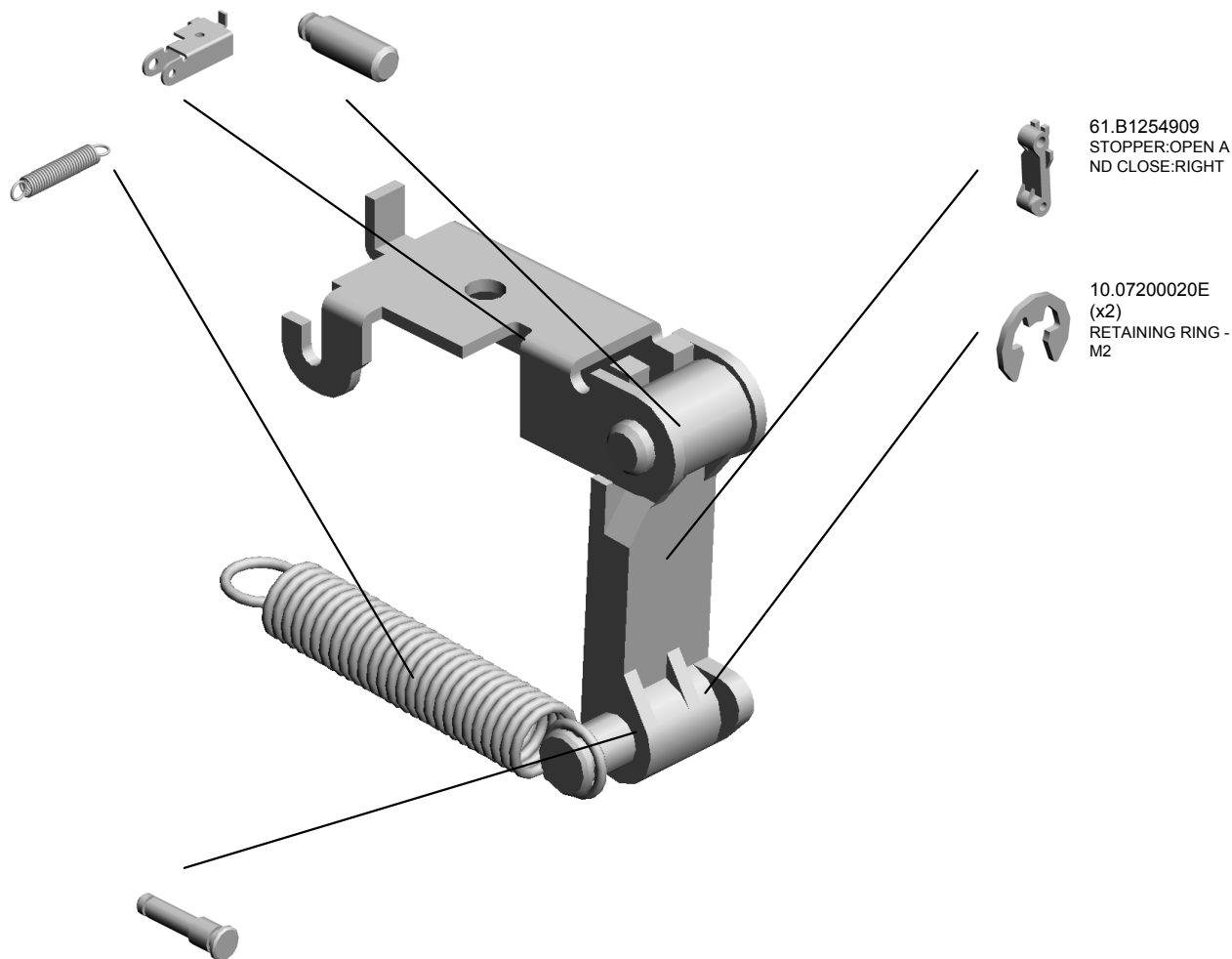
60.B1254907
BRACKET:OPEN AND
CLOSE:STOPPER:
RIGHT

63.B1254912
SHAFT:CONTACT
POINT:STOPPER



59.B1254906
STOPPER:OPEN AND
CLOSE:RIGHT:
UNIT

62.B1254910
TENSION SPRING:
STOPPER



61.B1254909
STOPPER:OPEN AND
CLOSE:RIGHT

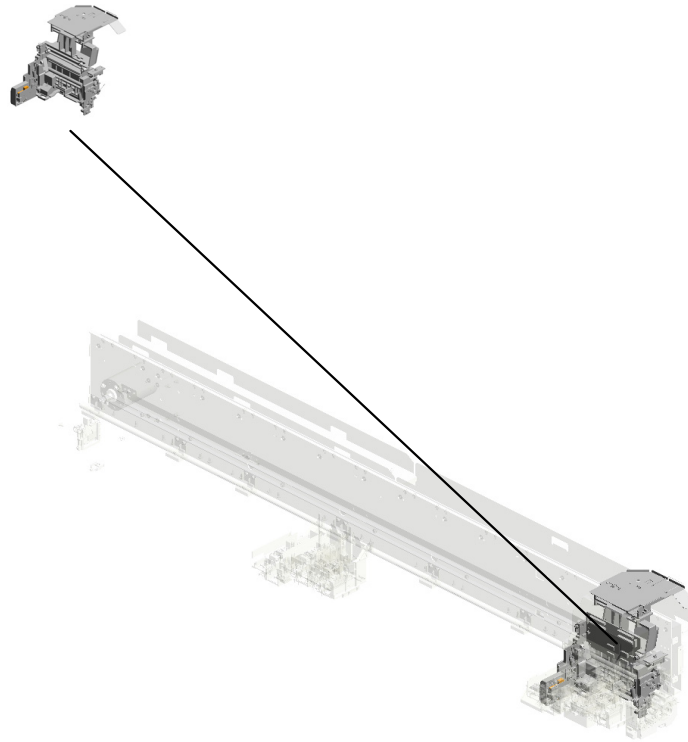
10.07200020E
(x2)
RETAINING RING -
M2

64.B1254913
SHAFT:SPRING:ST
OPPER

| | | | | | | | | | | | |
|------|------|------|------|------|------|------|------|------|------|------|------|
| U001 | U002 | U003 | U004 | U005 | U006 | U007 | U008 | U009 | U010 | U011 | U012 |
|------|------|------|------|------|------|------|------|------|------|------|------|

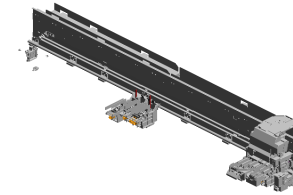
U004.CARRIAGE

U004 S001
D1242016
CARRIAGE:REAR:ASS'Y

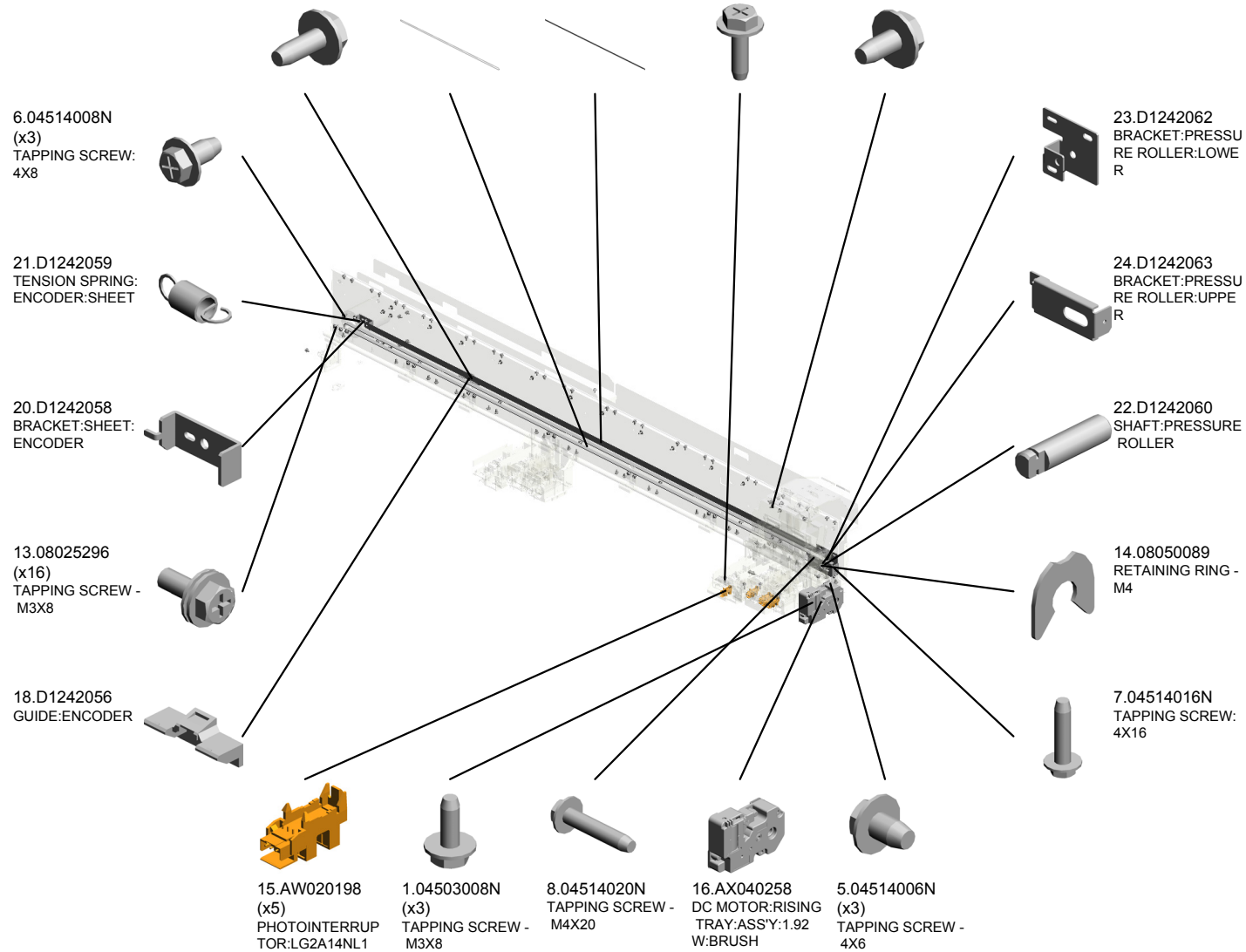


| | | | | | | | | | | | |
|------|------|------|------|------|------|------|------|------|------|------|------|
| U001 | U002 | U003 | U004 | U005 | U006 | U007 | U008 | U009 | U010 | U011 | U012 |
|------|------|------|------|------|------|------|------|------|------|------|------|

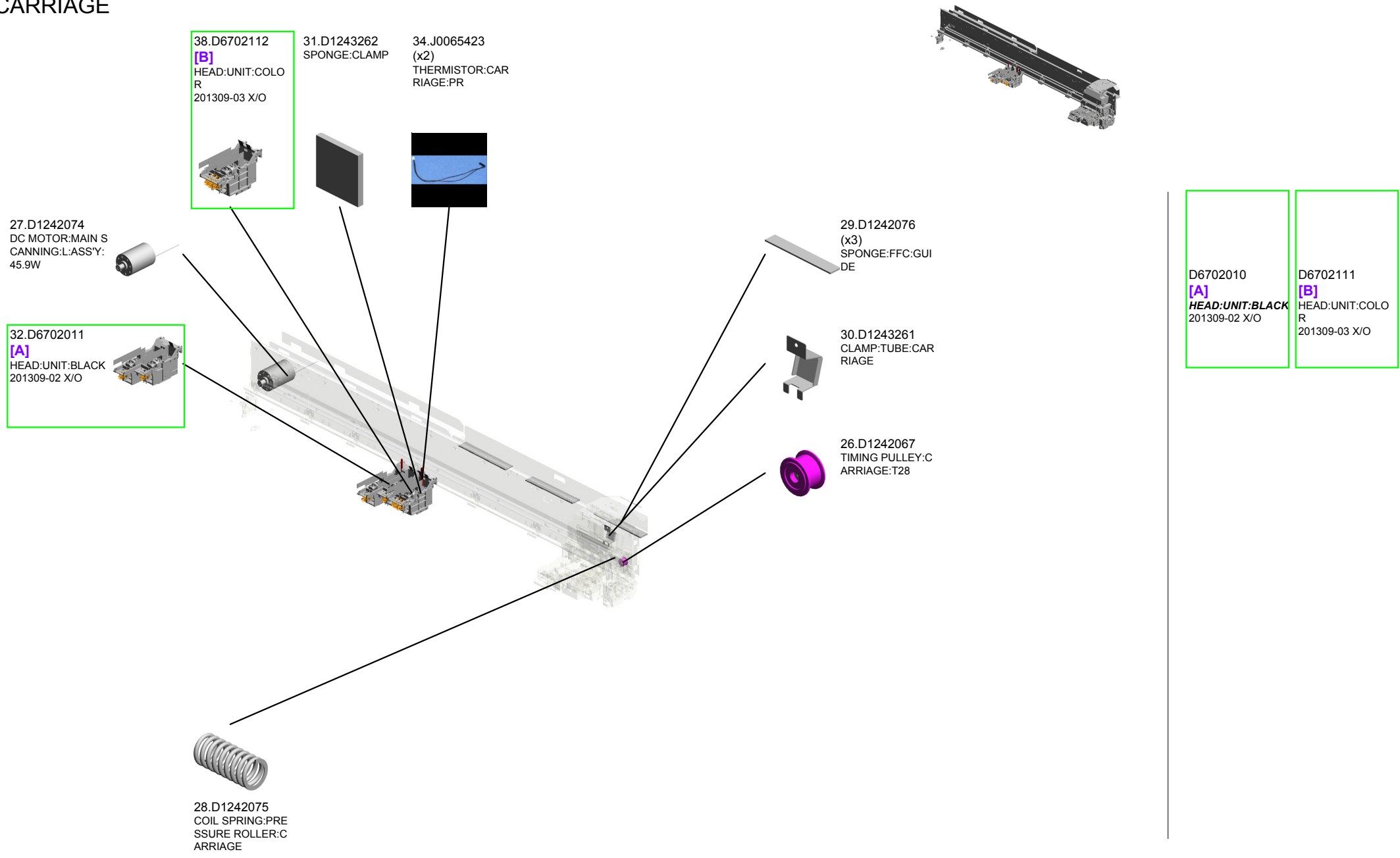
U004 CARRIAGE



- 4.04513008N (x2) TAPPING SCREW - M3X8
- 25.D1242064 SYNCHRONOUS BELT:UL
- 19.D1242057 SHEET:ENCODER
- 2.04503010N (x5) TAPPING SCREW - M3X10
- 3.04513006N (x102) TAPPING SCREW - 3X6



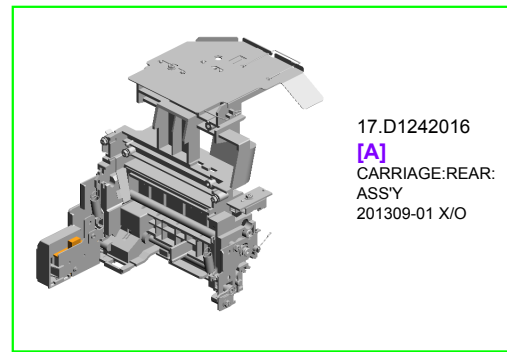
U004 CARRIAGE



| | | | | | | | | | | | |
|------|------|------|------|------|------|------|------|------|------|------|------|
| U001 | U002 | U003 | U004 | U005 | U006 | U007 | U008 | U009 | U010 | U011 | U012 |
|------|------|------|------|------|------|------|------|------|------|------|------|

U004_S001
CARRIAGE:REAR:ASS'Y

2.04503010N (x9) TAPPING SCREW - M3X10
 9.04523008N (x2) TAPPING SCREW - M3X8
 10.07200030E (x2) RETAINING RING - M3

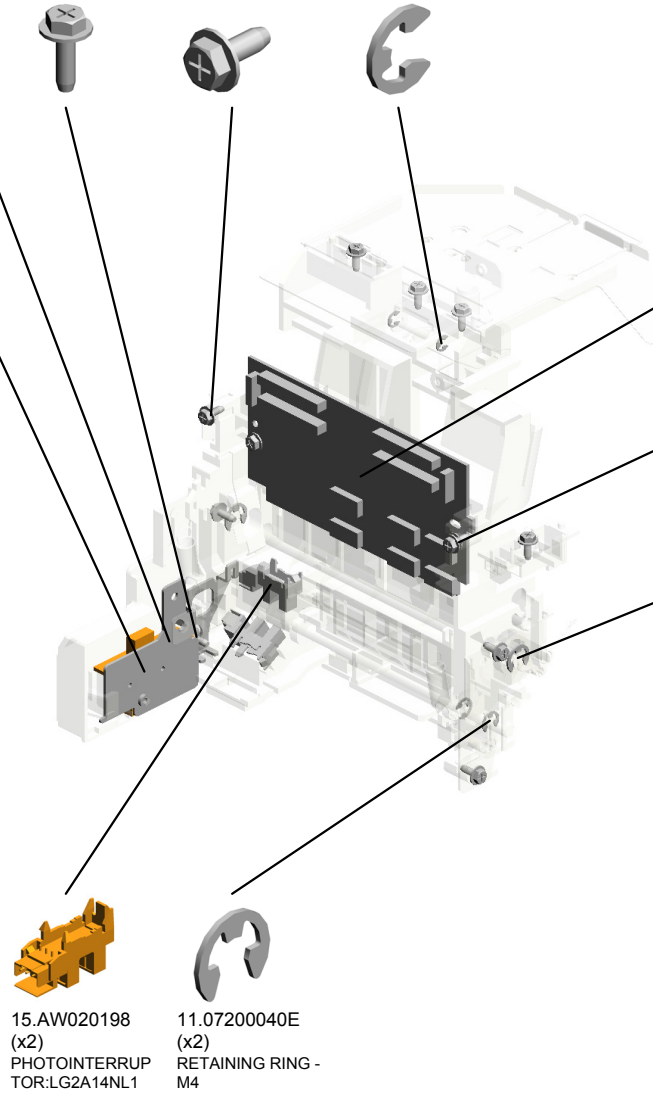
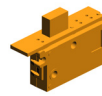


17.D1242016
[A]
 CARRIAGE:REAR:ASS'Y
 201309-01 X/O

35.D1242196
 BRACKET:POSITIONING SENSOR
 201301-07 X/O



36.D1242276
[B]
 POSITIONING SENSOR
 201310-01



37.D1245462
 PCB:HRB:ASS'Y



1.04503008N
 TAPPING SCREW - M3X8



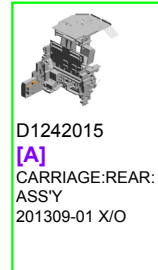
12.07200060E (x2)
 RETAINING RING - M6



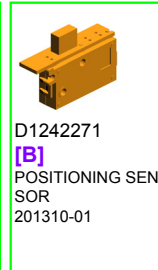
15.AW020198 (x2)
 PHOTO INTERRUPTOR:LG2A14NL1



11.07200040E (x2)
 RETAINING RING - M4



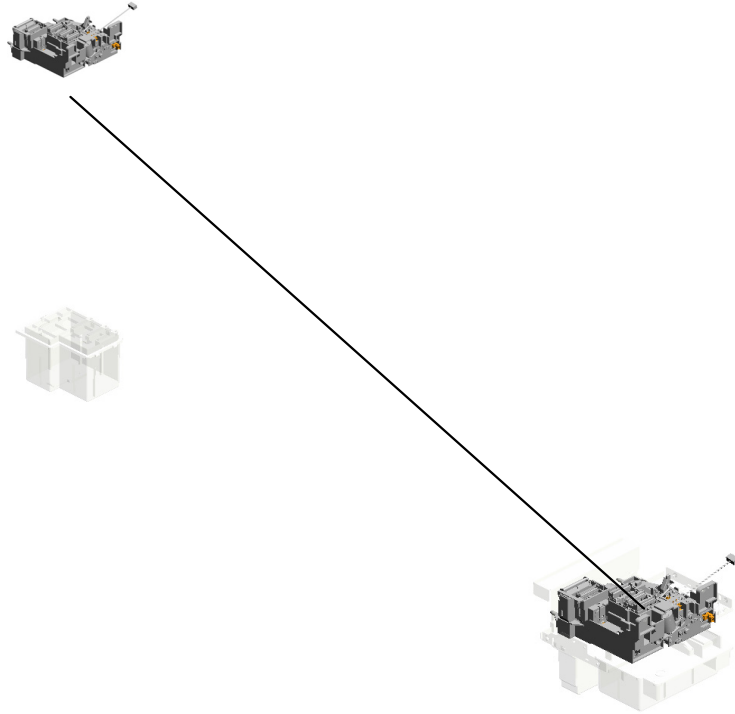
D1242015
[A]
 CARRIAGE:REAR:ASS'Y
 201309-01 X/O



D1242271
[B]
 POSITIONING SENSOR
 201310-01

U005.MAINTENANCE RECOVERY SECTION

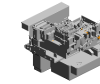
U005 S001
D1243505
MAINTENANCE RECOVERY:
ASS'Y



| | | | | | | | | | | | |
|------|------|------|------|------|------|------|------|------|------|------|------|
| U001 | U002 | U003 | U004 | U005 | U006 | U007 | U008 | U009 | U010 | U011 | U012 |
|------|------|------|------|------|------|------|------|------|------|------|------|

U005 MAINTENANCE RECOVERY SECTION

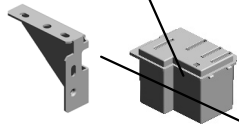
18.D1246486 GUARD:GEAR:MAINTENANCE
 14.D1246482 JOINT:USELESS FLUID NOZZLE
 16.D1246484 CAP:JOINT:USELESS FLUID NOZZLE
 15.D1246483 SEAL:JOINT:MAINTENANCE
 17.D1246485 TUBE:JOINT:MAINTENANCE



20.D6708301
 FLUSHING LIQUID
 RECIEVER:SERVICE
 PARTS:ASS'Y



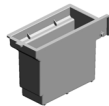
13.D1246481
 BRACKET:FIX:USED
 DEVELOPER



5.09513006N
 (x4)
 SCREW - M3X6



21.D6708401
 TANK:FIX:WASTE
 FLUID:SERVICE
 PARTS:ASS'Y



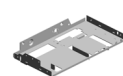
2.04513006N
 (x3)
 TAPPING SCREW -
 3X6



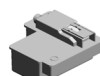
23.J0174621
 (x2)
 END RING:TUBE:
 PUMP



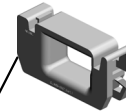
12.D1246480
 BRACKET:MAINTENANCE



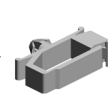
22.D6708501
 TANK:WASTE FLUID:
 SERVICE PARTS



8.11050723
 (x2)
 CLAMPS:WES-0507



7.11050516
 (x3)
 CLAMP



19.D1246491
 PIPE:MAINTENANCE:
 USED DEVELOPER



3.04513008N
 (x2)
 TAPPING SCREW -
 M3X8

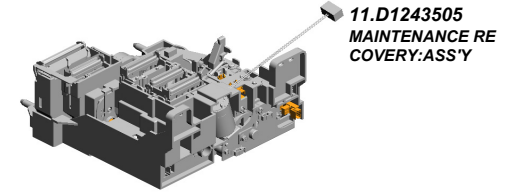


U005_S001
 MAINTENANCE RECOVERY:ASS'Y

1.04503010N
 (x9)
 TAPPING SCREW -
 M3X10

23.J0174621
 END RING:TUBE:P
 UMP

4.04523010N
 (x2)
 BINDING SELF-TA
 PPING SCREW:3X
 10



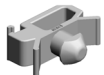
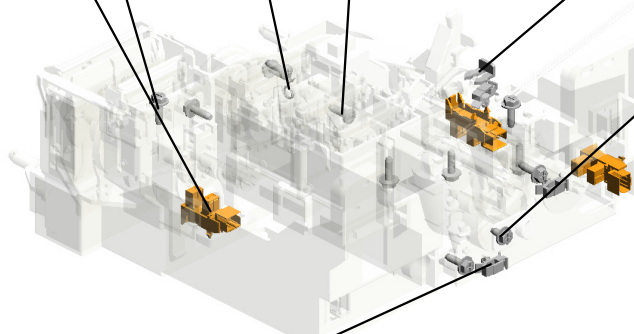
10.AW020198
 (x3)
 PHOTOINTERRUP
 TOR:LG2A14NL1



9.54472681
 SNAP RING



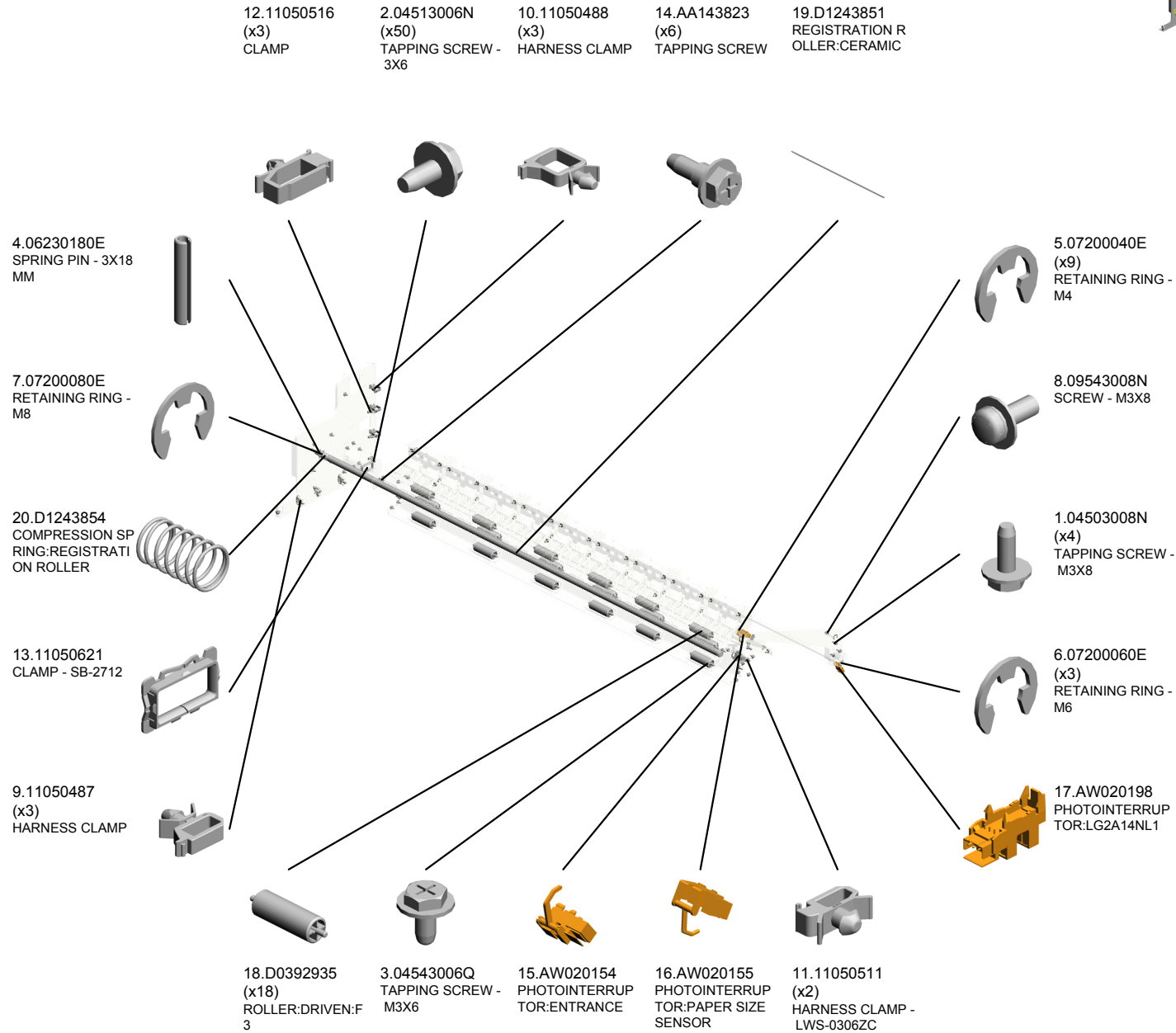
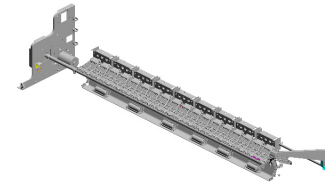
2.04513006N
 TAPPING SCREW -
 3X6



6.11050511
 (x3)
 HARNESS CLAMP -
 LWS-0306ZC

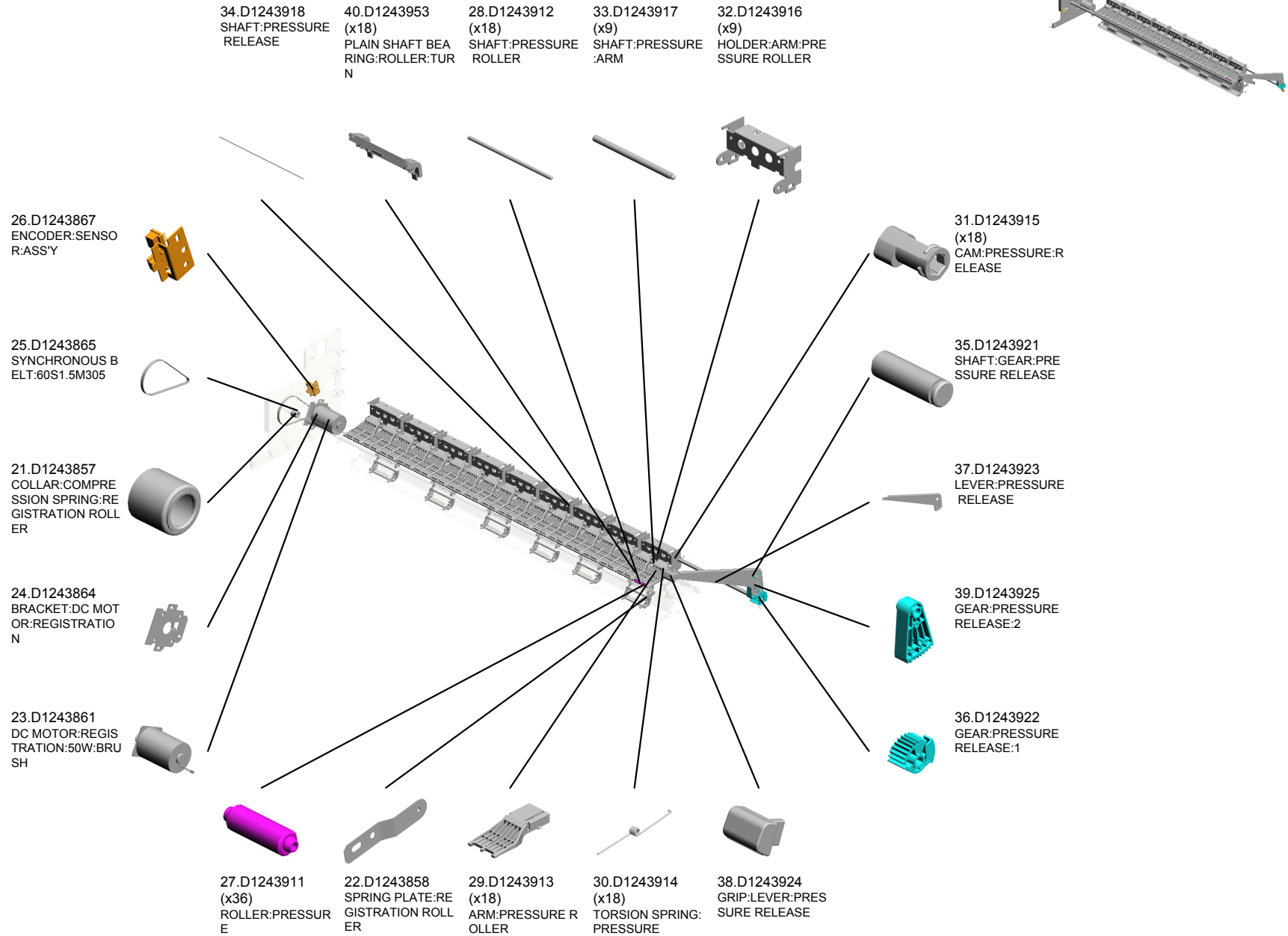
| | | | | | | | | | | | |
|------|------|------|------|------|------|------|------|------|------|------|------|
| U001 | U002 | U003 | U004 | U005 | U006 | U007 | U008 | U009 | U010 | U011 | U012 |
|------|------|------|------|------|------|------|------|------|------|------|------|

U006 PAPER REGISTRATION



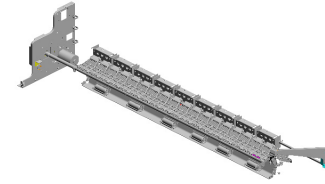
| | | | | | | | | | | | |
|------|------|------|------|------|------|------|------|------|------|------|------|
| U001 | U002 | U003 | U004 | U005 | U006 | U007 | U008 | U009 | U010 | U011 | U012 |
|------|------|------|------|------|------|------|------|------|------|------|------|

U006 PAPER REGISTRATION



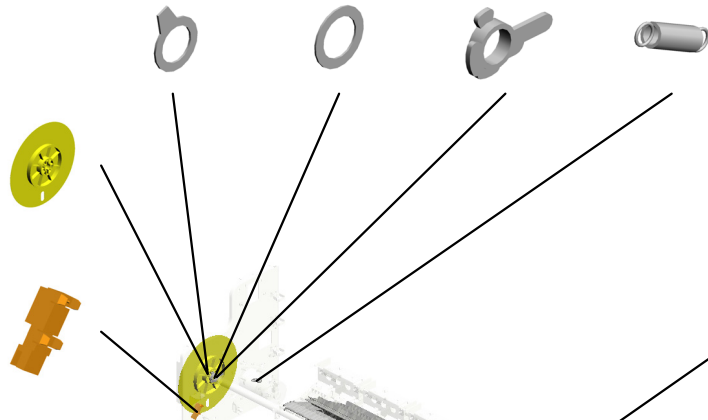
U006 PAPER REGISTRATION

- 48.J0011168 SLIDER:TRANSPORT ROLLER
- 49.J0012850 SLIDER:GEAR:PRESSURE
- 50.J0012876 PLAIN SHAFT BEARING:TRANSPORT ROLLER
- 46.D4474315 TENSION SPRING:TENSIONER



51.J0171161
TIMING PULLEY:TRANSPORT ROLLER:ASSY

47.GW010007
PHOTO REFLECTION SENSOR:EXIT



45.D1243965
SHEET:TRANSPORT SUB-UNIT

43.D1243957
GUIDE PLATE:MANUAL FEED:UPPER

42.D1243956
GUIDE PLATE:MANUAL FEED:LOWER

44.D1243964
GUIDE PLATE:TURN:INNER

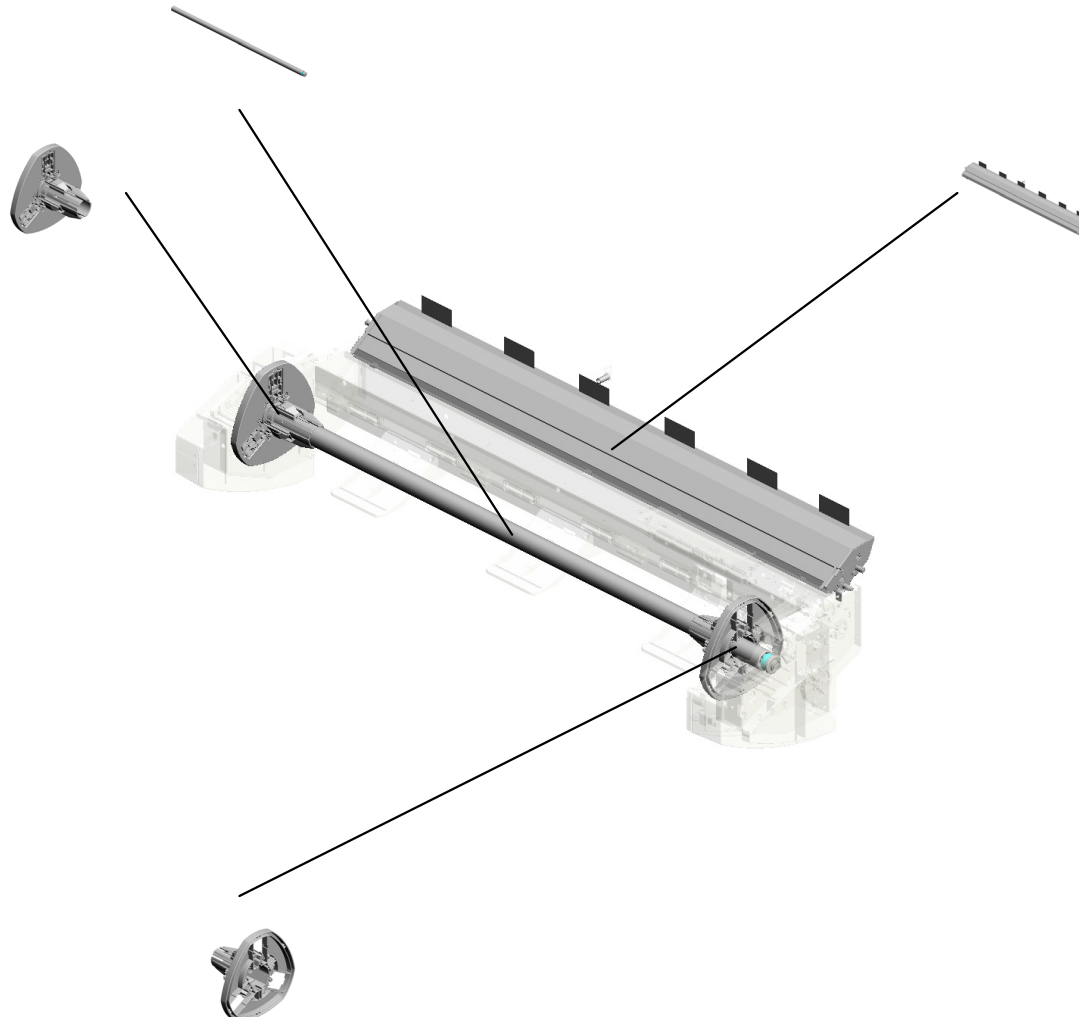
41.D1243954
GUIDE PLATE:TURN:OUTER

U007.PAPER FEED

U007 S001
D1242800
PAPER SPOOL:ASS'Y

U007 S003
D1242802
FLANGE:LEFT:ASS'Y

U007 S004
D1242601
GUIDE PLATE:REAR:ASS'Y

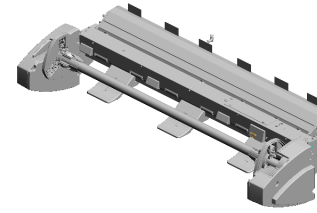


U007 S002
D1242801
FLANGE:RIGHT:ASS'Y

| | | | | | | | | | | | |
|------|------|------|------|------|------|------|------|------|------|------|------|
| U001 | U002 | U003 | U004 | U005 | U006 | U007 | U008 | U009 | U010 | U011 | U012 |
|------|------|------|------|------|------|------|------|------|------|------|------|

U007 PAPER FEED

23.AF031090 PAPER FEED ROLLER:FEED
 17.54472681 (x4) SNAP RING
 18.AA080037 (x2) BUSHING - 6MM
 16.11050723 (x9) CLAMPS:WES-050
 2.04503008N (x4) TAPPING SCREW - M3X8



11.08050089 (x18) RETAINING RING - M4



22.AF022155 (x5) MIDDLE PAPER FEED ROLLER



1.03603006N (x2) SCREW - M3X6



10.07403808 (x2) BALL BEARING - 8 X16X5MM



8.07200040E (x4) RETAINING RING - M4



12.09513006N (x7) SCREW - M3X6



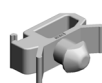
21.AB012006 GEAR - 23Z



5.06320080G PARALLEL KEY - 2 X8MM



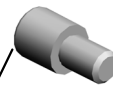
14.11050511 (x6) HARNESS CLAMP - LWS-0306ZC



6.06320140G PARALLEL PIN



19.AA143859 (x4) POSITIONING PIN



20.AB011490 GEAR - 38Z



3.04513006N (x55) TAPPING SCREW - 3X6



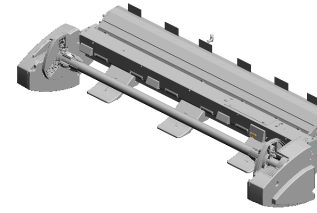
13.09543008N (x2) SCREW - M3X8



15.11050516 (x2) CLAMP



U007 PAPER FEED



- 40.D1242654 SHAFT:DRIVEN ROLLER
- 41.D1242655 SHAFT:CAM:DRIVE N ROLLER
- 43.D1242657 (x2) COMPRESSION SPRING:FEED ROLLER
- 44.D1242667 (x6) BUSHING:IDLER
- 42.D1242656 (x2) CAM:DRIVEN ROLLER

39.D1242653
GUIDE PLATE:LOWER FRONT

25.AW020172
PHOTOINTERRUPTOR:OVERFLOW:COVER

37.D1242647
(x3)
TORSION SPRING:GUIDE:MANUAL FEED:LOWER

36.D1242646
(x3)
GUIDE PLATE:GUIDE PLATE:MANUAL FEED:LOWER

35.D1242645
(x3)
GUIDE:MANUAL FEED:LOWER

29.B0102979
SWITCH PLATE

27.AW500012
PUSH SWITCH

32.D0394948
GEAR:REVERSE ROLLER

30.B2343418
GEAR - 24Z

33.D0746665
GEAR:JOINT:COLLECTION BOTTLE:Z65

26.AW020198
(x3)
PHOTOINTERRUPTOR:LG2A14NL1

38.D1242648
COVER:SENSOR:PAPER FEED UNIT

24.AW020154
(x2)
PHOTOINTERRUPTOR:ENTRANCE

31.D0392935
(x6)
ROLLER:DRIVEN:FEED

28.AX200320
ELECTROMAGNETIC CLUTCH

U007 PAPER FEED

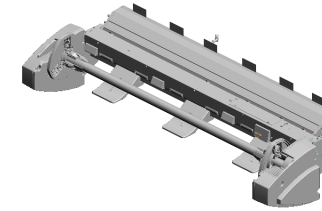
46.D1242672
(x2)
BUSHING:FEED R
OLLER

49.D1242675
COVER:FEED ROL
LER

53.D1242687
COVER:SENSOR:P
APER END SENSO
R

45.D1242671
SHAFT:FEED ROLL
ER

48.D1242674
(x4)
GUIDE:MANUAL FE
ED:UPPER



47.D1242673
GUIDE PLATE:UPP
ER FRONT

62.D1242721
GEAR:REWINDING
:1

65.D1242724
GEAR:REWINDING
:3

50.D1242680
BRACKET:PUSH S
WITCH:REWINDIN
G

51.D1242681
KEYTOP

54.D1242688
SHEET:PAPER EN
D SENSOR

64.D1242723
(x2)
GEAR:REWINDING
:2

66.D1242725
GEAR:LOCK:DRIVE

63.D1242722
SHAFT:DRIVE:3

57.D1242710
DC MOTOR:9.8W:A
SSY:BRUSH

60.D1242715
SHAFT:DRIVE:2

52.D1242684
BRACKET:STOPPE
R:MECHANICAL SP
RING CLUTCH

59.D1242714
(x2)
ENCODER:PAPER
VOLUME SENSOR

58.D1242713
SHAFT:DRIVE:1

61.D1242720
TORQUE LIMITER
MECHANICAL CLU
TCH

| | | | | | | | | | | | |
|------|------|------|------|------|------|------|------|------|------|------|------|
| U001 | U002 | U003 | U004 | U005 | U006 | U007 | U008 | U009 | U010 | U011 | U012 |
|------|------|------|------|------|------|------|------|------|------|------|------|

U007 PAPER FEED

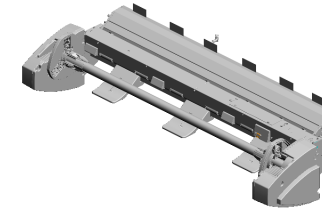
69.D1242731
SPACER:PAPER FEED

70.D1242732
COMPRESSION SPRING:PAPER FEED

83.D1242833
PARALLEL PIN:DIA 4X46

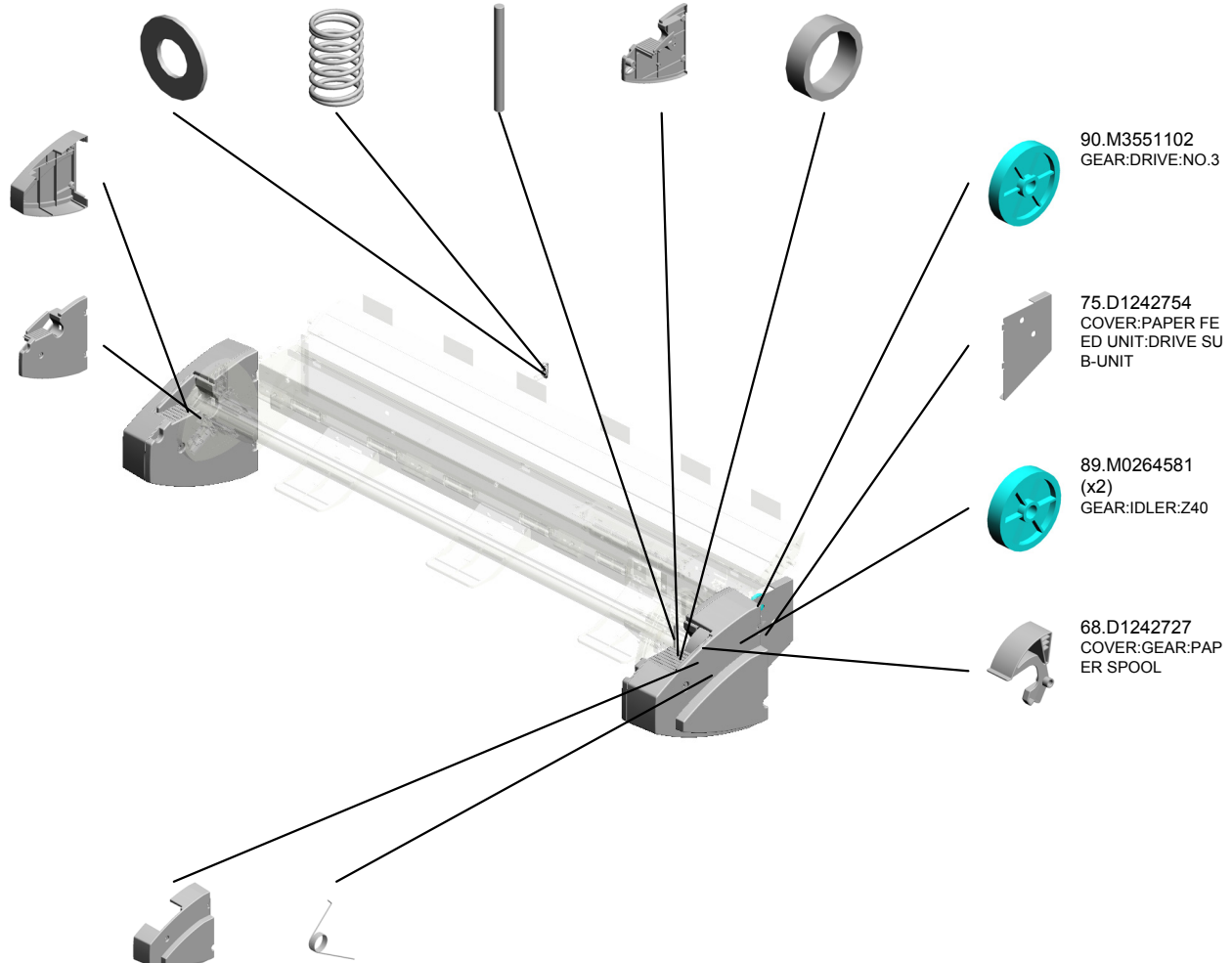
71.D1242750
COVER:PAPER FEED UNIT:PAPER SPOOL:RIGHT

87.G0703088
(x2)
SPACER:DEVELOPMENT ROLLER



74.D1242753
COVER:PAPER FEED UNIT:LEFT

73.D1242752
COVER:PAPER FEED UNIT:PAPER SPOOL:LEFT



90.M3551102
GEAR:DRIVE:NO.3

75.D1242754
COVER:PAPER FEED UNIT:DRIVE SUB-UNIT

89.M0264581
(x2)
GEAR:IDLER:Z40

68.D1242727
COVER:GEAR:PAPER SPOOL

72.D1242751
COVER:PAPER FEED UNIT:RIGHT

67.D1242726
TORSION SPRING:COVER

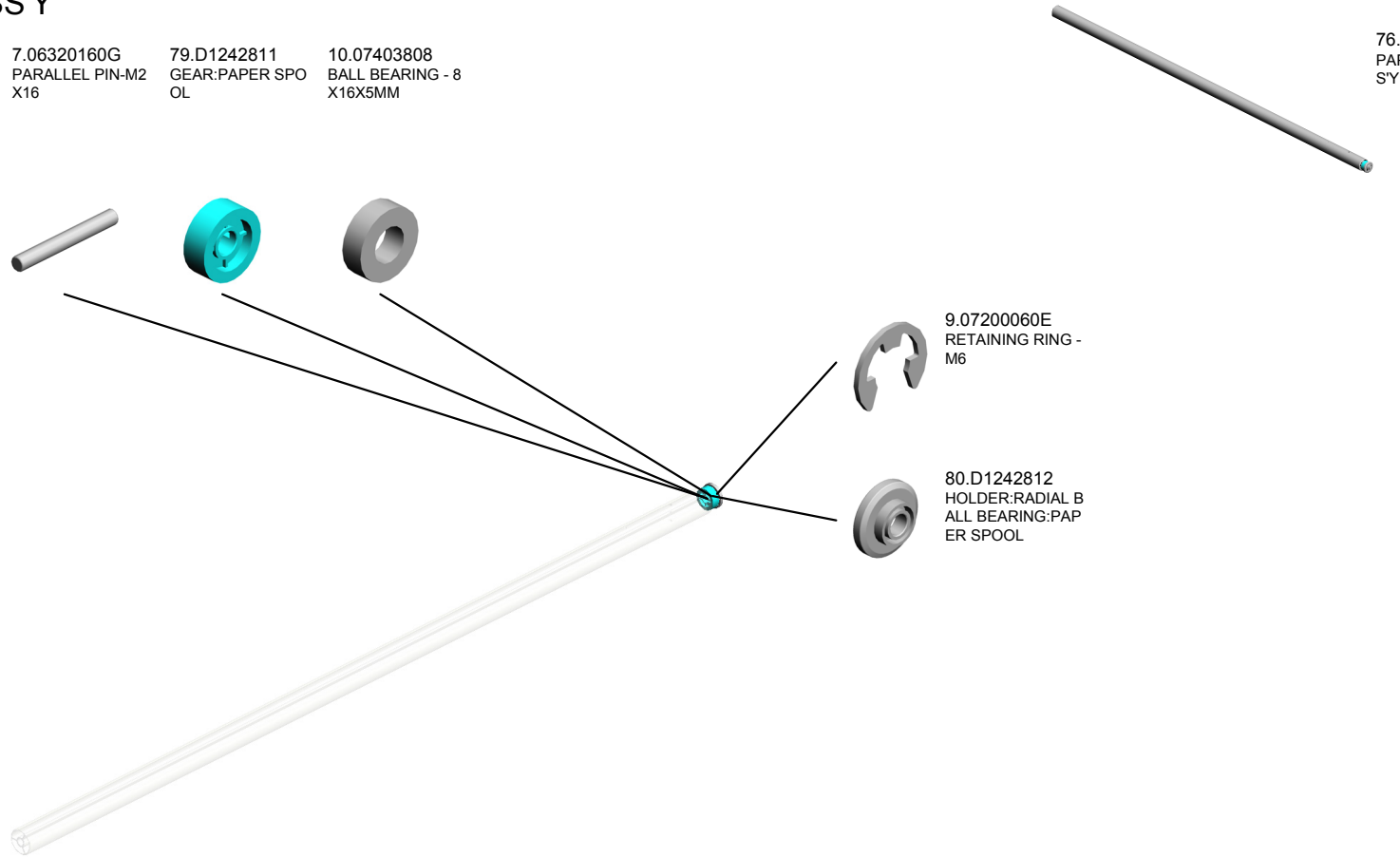
U007_S001
PAPER SPOOL:ASS'Y

7.06320160G
PARALLEL PIN-M2
X16

79.D1242811
GEAR:PAPER SPO
OL

10.07403808
BALL BEARING - 8
X16X5MM

76.D1242800
PAPER SPOOL:AS
SY



9.07200060E
RETAINING RING -
M6

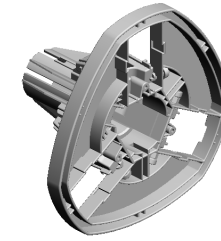
80.D1242812
HOLDER:RADIAL B
ALL BEARING:PAP
ER SPOOL

| | | | | | | | | | | | |
|------|------|------|------|------|------|------|------|------|------|------|------|
| U001 | U002 | U003 | U004 | U005 | U006 | U007 | U008 | U009 | U010 | U011 | U012 |
|------|------|------|------|------|------|------|------|------|------|------|------|

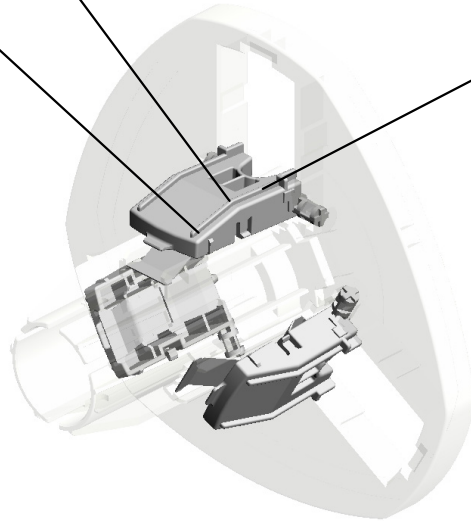
U007_S002
FLANGE:RIGHT:ASS'Y

82.D1242832
(x3)
SPRING PLATE:FL
ANGE

81.D1242831
(x3)
EXCHANGE PLATE
:FLANGE



77.D1242801
FLANGE:RIGHT:AS
SY



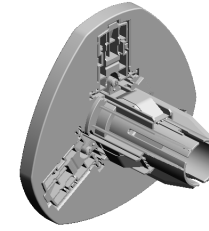
4.04523008N
(x3)
TAPPING SCREW -
M3X8

| | | | | | | | | | | | |
|------|------|------|------|------|------|------|------|------|------|------|------|
| U001 | U002 | U003 | U004 | U005 | U006 | U007 | U008 | U009 | U010 | U011 | U012 |
|------|------|------|------|------|------|------|------|------|------|------|------|

U007_S003
FLANGE:LEFT:ASS'Y

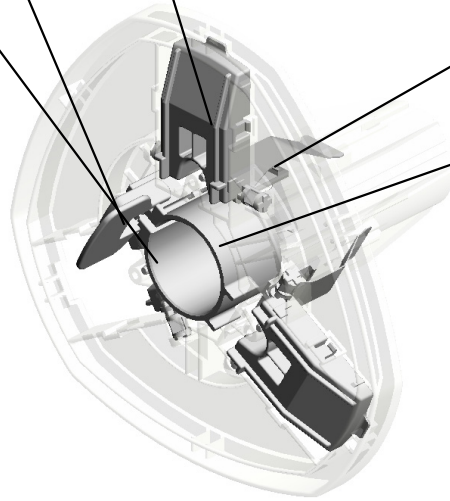
85.D1242836
LEVER:LOCK:FLAN
GE

81.D1242831
(x3)
EXCHANGE PLATE
:FLANGE

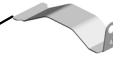


78.D1242802
FLANGE:LEFT:ASS'
Y

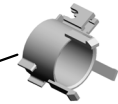
4.04523008N
(x3)
TAPPING SCREW -
M3X8



82.D1242832
(x3)
SPRING PLATE:FL
ANGE



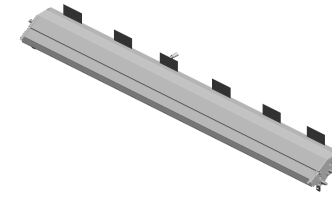
84.D1242834
COLLAR:LOCK:FLA
NGE



| | | | | | | | | | | | |
|------|------|------|------|------|------|------|------|------|------|------|------|
| U001 | U002 | U003 | U004 | U005 | U006 | U007 | U008 | U009 | U010 | U011 | U012 |
|------|------|------|------|------|------|------|------|------|------|------|------|

U007_S004
GUIDE PLATE:REAR:ASS'Y

86.D1243963 (x6) GUIDE:GATE:OPTI
ON
56.D1242698 (x2) SPACER:PAPER F
EED
8.07200040E (x2) RETAINING RING -
M4



34.D1242601
GUIDE PLATE:REA
R:ASS'Y

88.G1783678
SPACER:BRUSH R
OLLER



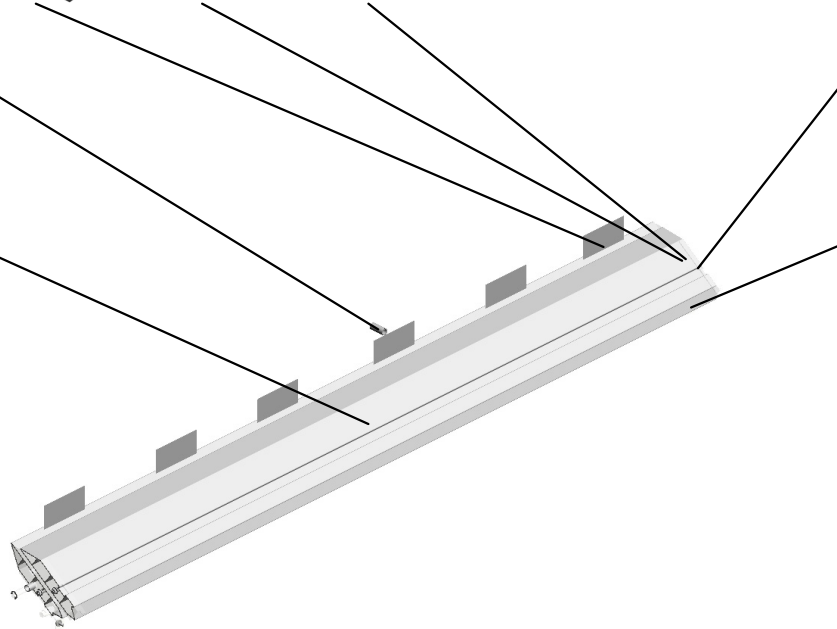
55.D1242690
(x2)
GUIDE PLATE:REA
R:UPPER LOWER



2.04503008N
(x4)
TAPPING SCREW -
M3X8



3.04513006N
(x2)
TAPPING SCREW -
3X6



| | | | | | | | | | | | |
|------|------|------|------|------|------|------|------|------|------|------|------|
| U001 | U002 | U003 | U004 | U005 | U006 | U007 | U008 | U009 | U010 | U011 | U012 |
|------|------|------|------|------|------|------|------|------|------|------|------|

U008 INK SUPPLY SECTION

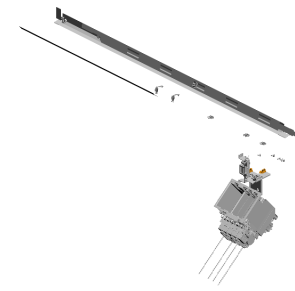
7.11050488
(x4)
HARNESS CLAMP

14.GX120004
DC SOLENOID:VAL
VE

15.J0174050
LEVER:ACTUATOR
UNIT:SUB-ASSY

1.03530040N
(x2)
SCREW - M3X4

8.11050511
HARNESS CLAMP -
LWS-0306ZC

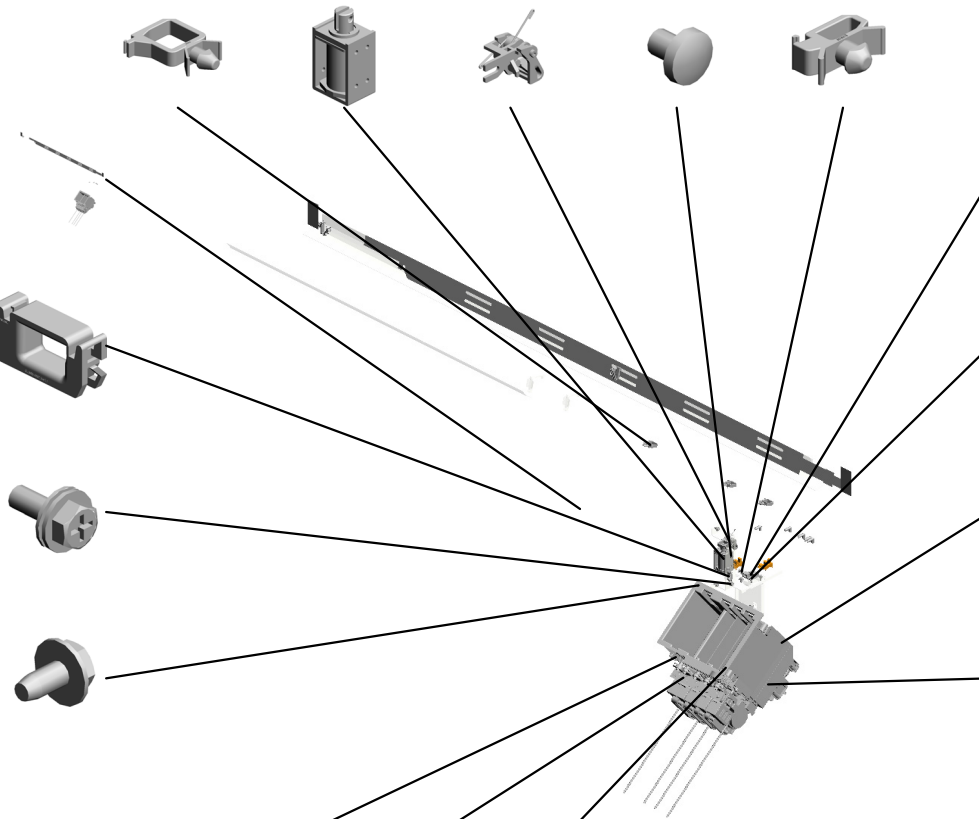


13.D6703200
DEVELOPER SUPP
LY SECTION:SERV
ICE PARTS:ASSY

10.11050723
CLAMPS:WES-050
7

6.08025296
TAPPING SCREW -
M3X8

4.04513006N
(x8)
TAPPING SCREW -
3X6



12.AW140015
TEMPERATURE &
HUMIDITY SENSO
R

2.04503008N
TAPPING SCREW -
M3X8

5.04523010N
(x33)
BINDING SELF-TA
PPING SCREW:3X
10

9.11050516
(x4)
CLAMP

3.04503010N
(x12)
TAPPING SCREW -
M3X10

16.J0174621
(x10)
END RING:TUBE:P
UMP

11.AW020198
(x6)
PHOTOINTERRUP
TOR:LG2A14NL1

U009.PAPER EXIT

U009 S001
D1244500
CUTTER UNIT



| | | | | | | | | | | | |
|------|------|------|------|------|------|------|------|------|------|------|------|
| U001 | U002 | U003 | U004 | U005 | U006 | U007 | U008 | U009 | U010 | U011 | U012 |
|------|------|------|------|------|------|------|------|------|------|------|------|

U009_S001.CUTTER UNIT

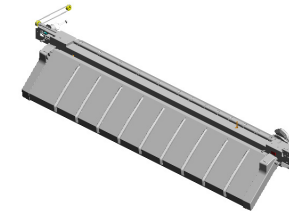
U009 S001 S001
D1244588
SHUTTLE:CUTTER



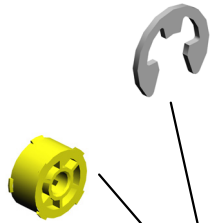
| | | | | | | | | | | | |
|------|------|------|------|------|------|------|------|------|------|------|------|
| U001 | U002 | U003 | U004 | U005 | U006 | U007 | U008 | U009 | U010 | U011 | U012 |
|------|------|------|------|------|------|------|------|------|------|------|------|

U009 PAPER EXIT

8.07200040E (x3) RETAINING RING - M4
 14.AA082101 (x2) BUSHING - 6X10X6
 20.AW020172 PHOTOINTERRUP TOR:OVERFLOW:C
 28.D1244461 EXIT ROLLER
 25.D1244453 GUIDE:EXIT



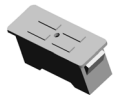
17.AB030763 (x2) PULLEY - 30Z



10.09544008N (x2) SCREW - M4X8



18.AG070513 (x2) MAGNET CATCH



4.04543006Q TAPPING SCREW - M3X6



1.04503008N (x6) TAPPING SCREW - M3X8



24.D1244451 GUIDE PLATE:LOWER:EXIT

23.D1244450 BRACKET:TORQUE LIMITER MECHANICAL CLUTCH:PERN

21.D1244446 SPRING:ROLLER CLUTCH:BRAKE

27.D1244459 COIL SPRING:TORQUE LIMITER MECHANICAL CLUTCH:PERN

22.D1244447 CASE:CLUTCH/BRAKE



19.AW010147 PHOTO REFLECTOR ON SENSOR



12.54472681 (x2) SNAP RING



5.06220120E SPRING PIN - 2X12 MM



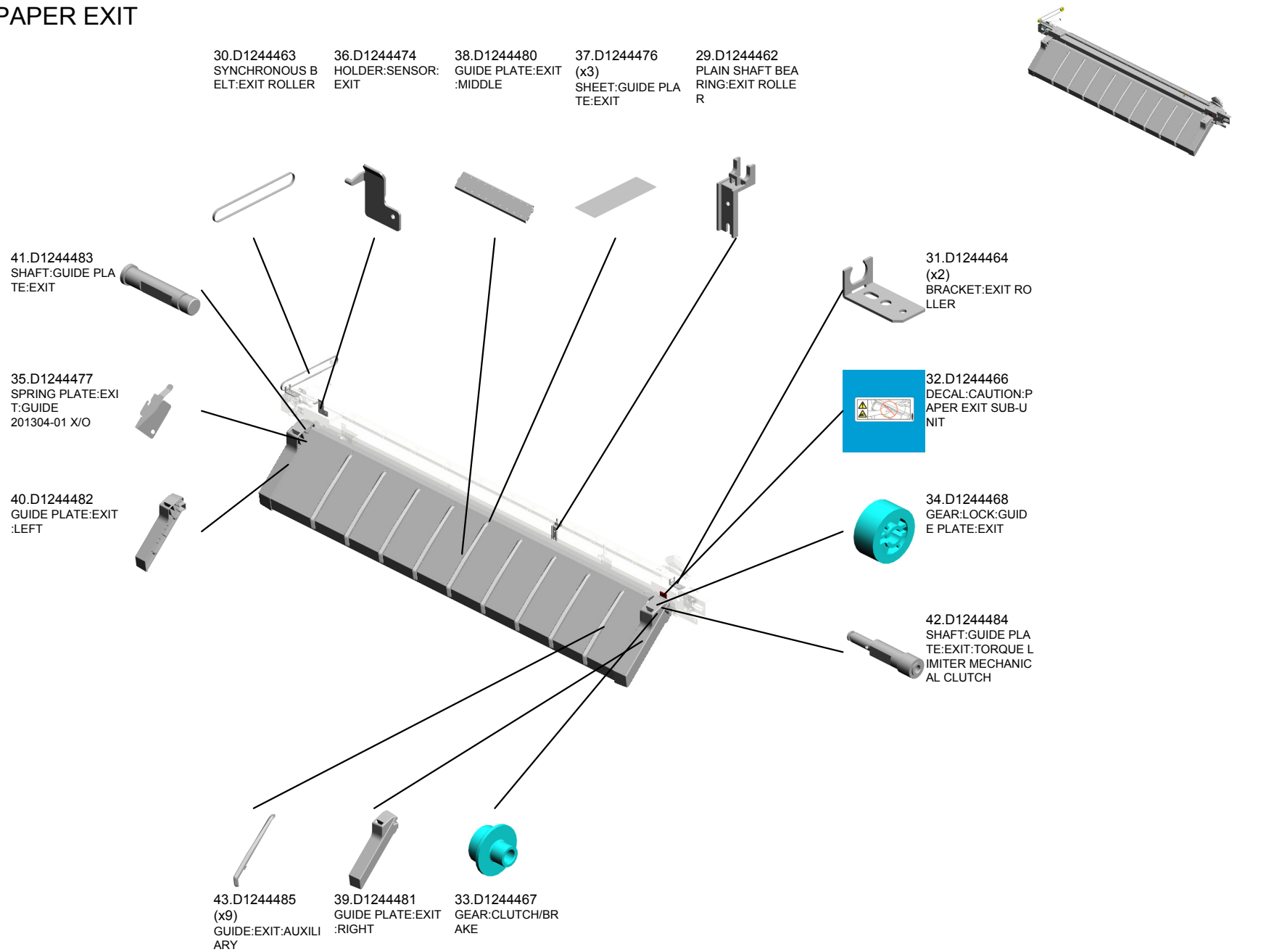
26.D1244457 COVER:TORQUE LIMITER MECHANICAL CLUTCH



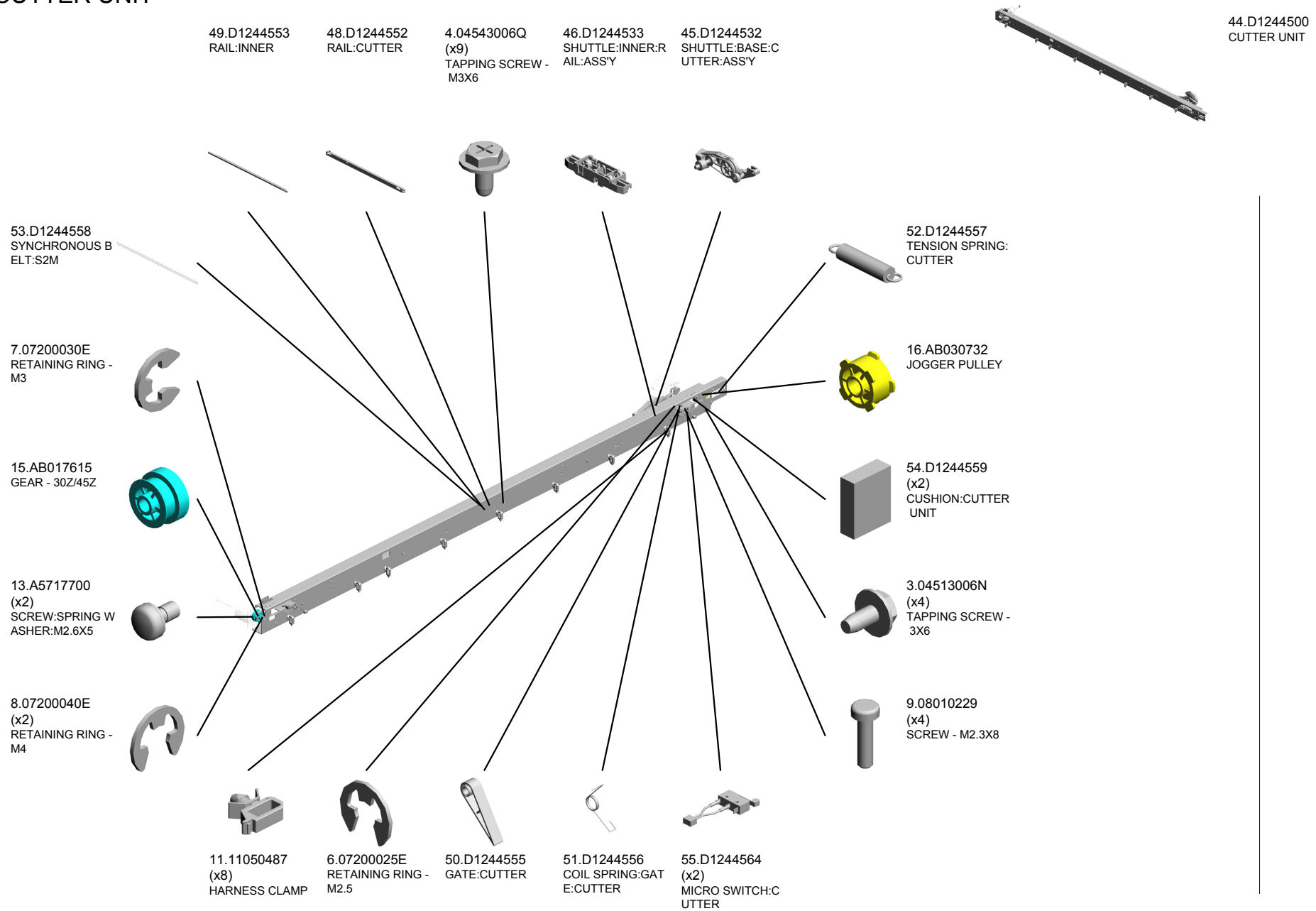
3.04513006N (x13) TAPPING SCREW - 3X6



U009 PAPER EXIT



U009_S001 CUTTER UNIT



| | | | | | | | | | | | |
|------|------|------|------|------|------|------|------|------|------|------|------|
| U001 | U002 | U003 | U004 | U005 | U006 | U007 | U008 | U009 | U010 | U011 | U012 |
|------|------|------|------|------|------|------|------|------|------|------|------|

U009_S001 CUTTER UNIT

56.D1244567
GEAR:Z37-17

59.D1244592
BRACKET:DC MOT
OR



44.D1244500
CUTTER UNIT

58.D1244591
DC MOTOR:CUTTE
R UNIT:ASSY:6.78
W:BRUSH

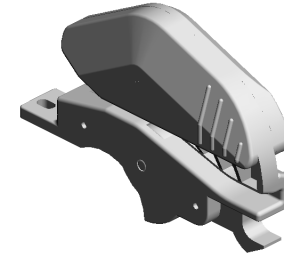


60.D1244597
BRACKET:PULLEY:
DRIVEN

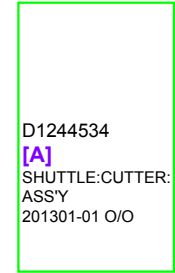
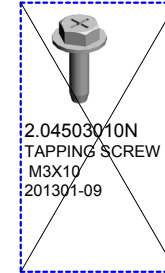


| | | | | | | | | | | | |
|------|------|------|------|------|------|------|------|------|------|------|------|
| U001 | U002 | U003 | U004 | U005 | U006 | U007 | U008 | U009 | U010 | U011 | U012 |
|------|------|------|------|------|------|------|------|------|------|------|------|

U009_S001_S001
SHUTTLE:CUTTER

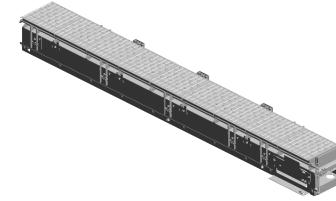


47.D1244588
[A]
SHUTTLE:CUTTER
201301-01 O/O



| | | | | | | | | | | | |
|------|------|------|------|------|------|------|------|------|------|------|------|
| U001 | U002 | U003 | U004 | U005 | U006 | U007 | U008 | U009 | U010 | U011 | U012 |
|------|------|------|------|------|------|------|------|------|------|------|------|

U010 ABSORB SECTION



3.09513006N
(x27)
SCREW - M3X6

6.AX660012
FAN: BLOWER: DC2
4V: 38.9W

7.D1244092
COVER: FAN: LOWE
R

1.03540400N
(x2)
SCREW: M4X40

8.D1244151
BRACKET: FAN: VA
CUUM

2.04513006N
(x25)
TAPPING SCREW -
3X6

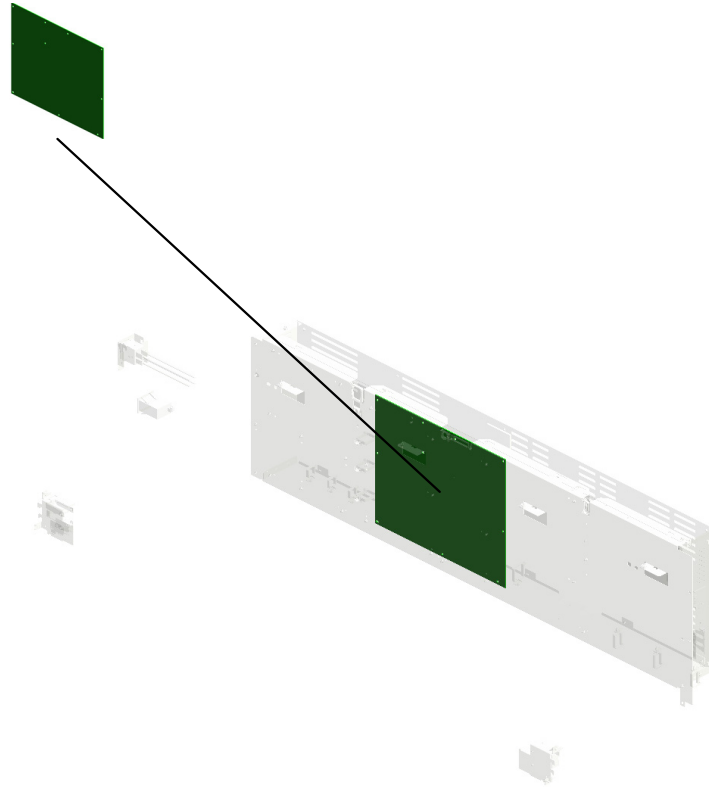
4.11050511
(x3)
HARNESS CLAMP -
LWS-0306ZC

5.11050723
CLAMPS: WES-050
7

| | | | | | | | | | | | |
|------|------|------|------|------|------|------|------|------|------|------|------|
| U001 | U002 | U003 | U004 | U005 | U006 | U007 | U008 | U009 | U010 | U011 | U012 |
|------|------|------|------|------|------|------|------|------|------|------|------|

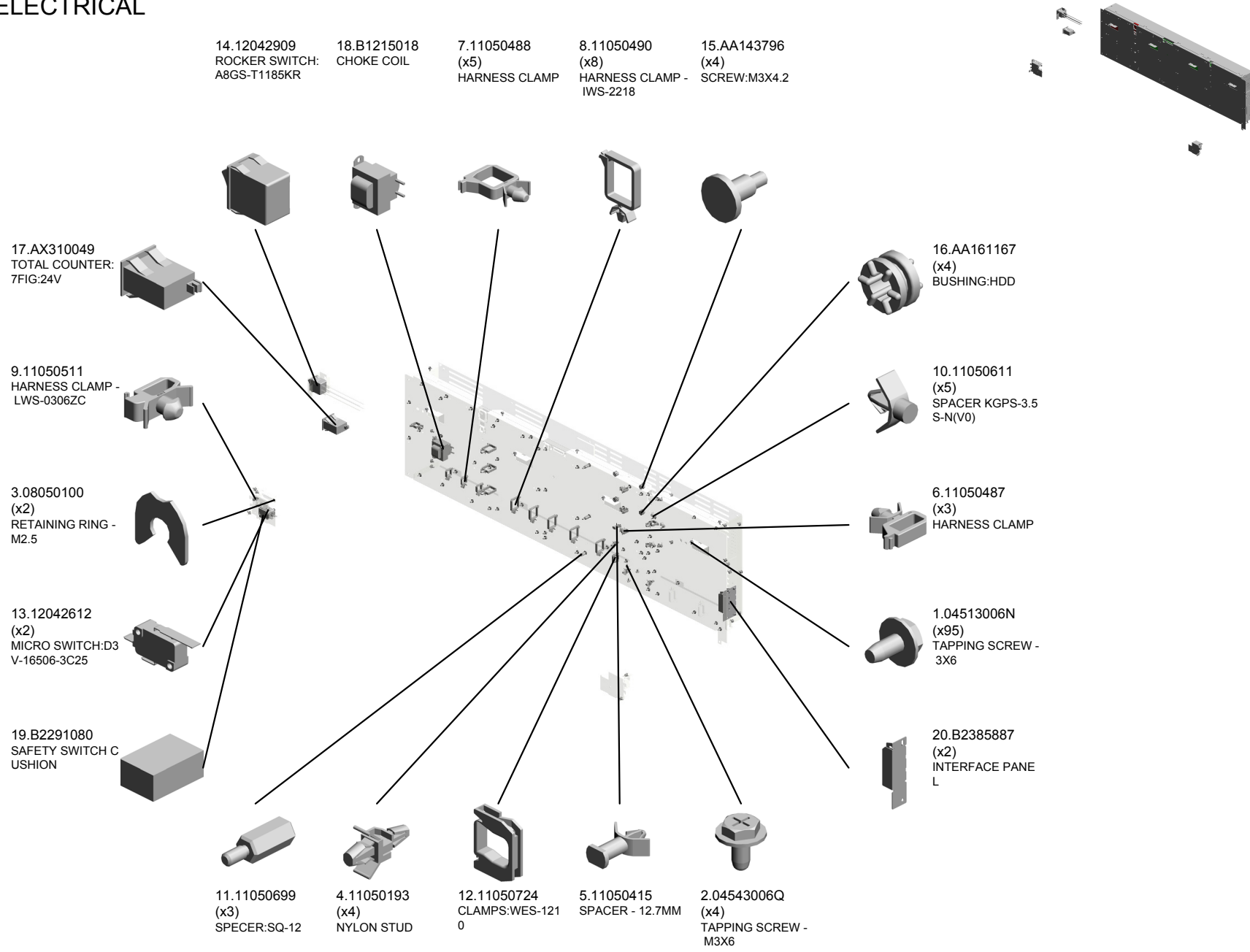
U011.ELECTRICAL

U011 S001
D1245403
PCB:MCU



| | | | | | | | | | | | |
|------|------|------|------|------|------|------|------|------|------|------|------|
| U001 | U002 | U003 | U004 | U005 | U006 | U007 | U008 | U009 | U010 | U011 | U012 |
|------|------|------|------|------|------|------|------|------|------|------|------|

U011 ELECTRICAL



U011 ELECTRICAL

25.D1242076 (x2) SPONGE:FFC:GUIDE
 31.D1245428 PCB:IMAGE PROCESSING UNIT:ASSY
 36.D1245667 BRACKET:HDD:LA RGE
 29.D1245297 HDD:SERVICE
 32.D1245484 PCB:MB:ASSY



33.D1245607 (x20) HOLDER:BASE:SHORT:ELECTRICAL COMPONENTS SECTION

40.D1245701 BRACKET:MAIN SWITCH

26.D1245141 POWER SUPPLY UNIT:236W:220-240V

35.D1245627 BRACKET:CHOKE COIL

39.D1245693 BRACKET:SAFETY SWITCH:LEFT

37.D1245683 BRACKET:SAFETY SWITCH:RIGHT

38.D1245685 (x2) LEVER:SAFETY SWITCH

28.D1245280 SD-CARD:EXP:ASSY

23.D0465336 COVER:SD-CARD

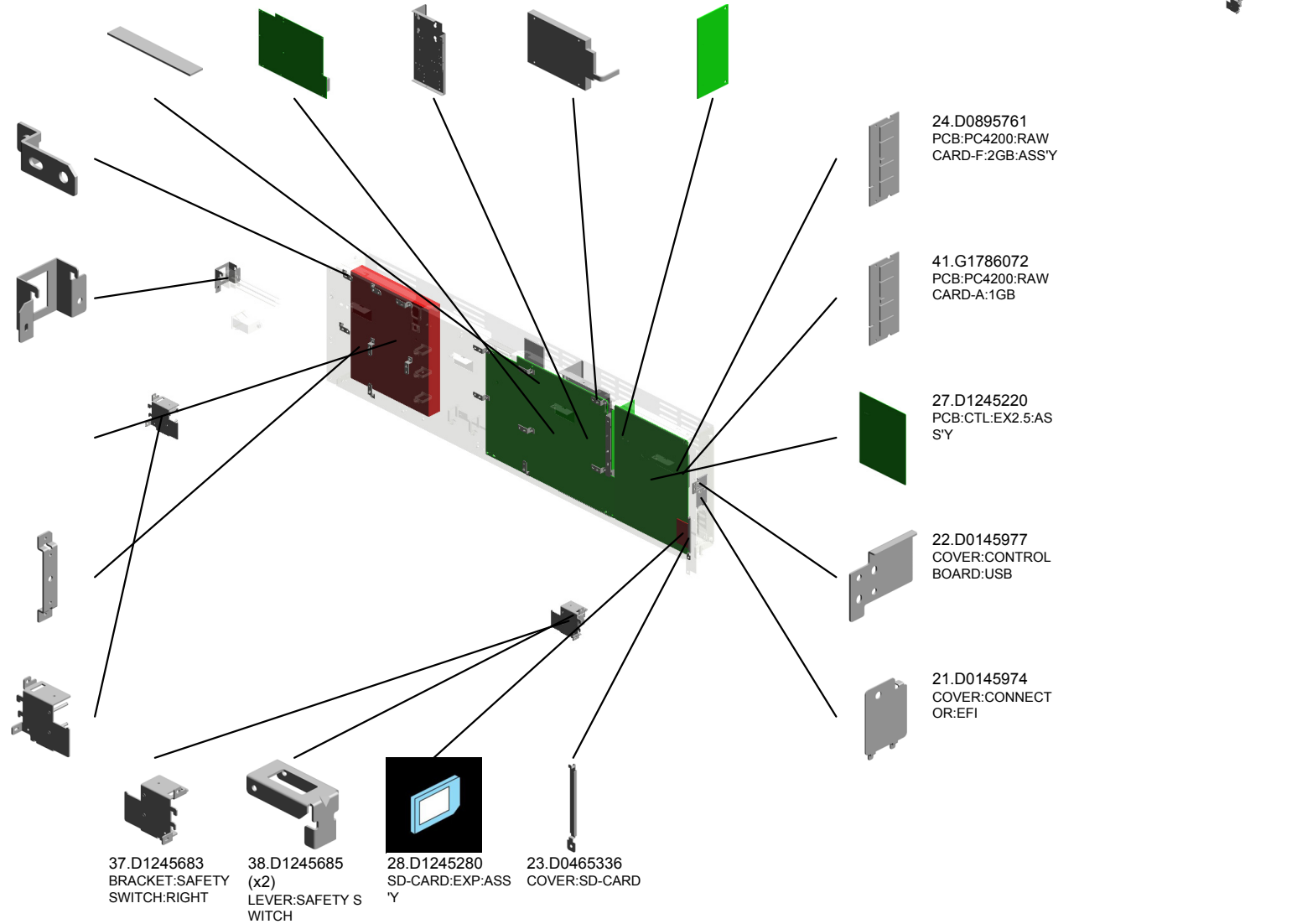
24.D0895761 PCB:PC4200:RAW CARD-F:2GB:ASSY

41.G1786072 PCB:PC4200:RAW CARD-A:1GB

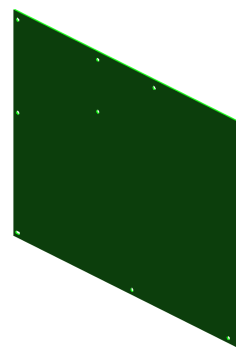
27.D1245220 PCB:CTL:EX2.5:ASSY

22.D0145977 COVER:CONTROL BOARD:USB

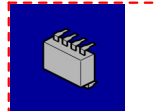
21.D0145974 COVER:CONNECTOR:EFI



U011_S001
PCB:MCU



43.D1245403
[A]
PCB:MCU
201306-01



44.14077667
EEPROM:BR24T12
8-W
201310-03



D1245402
[A]
PCB:MCU
201306-01

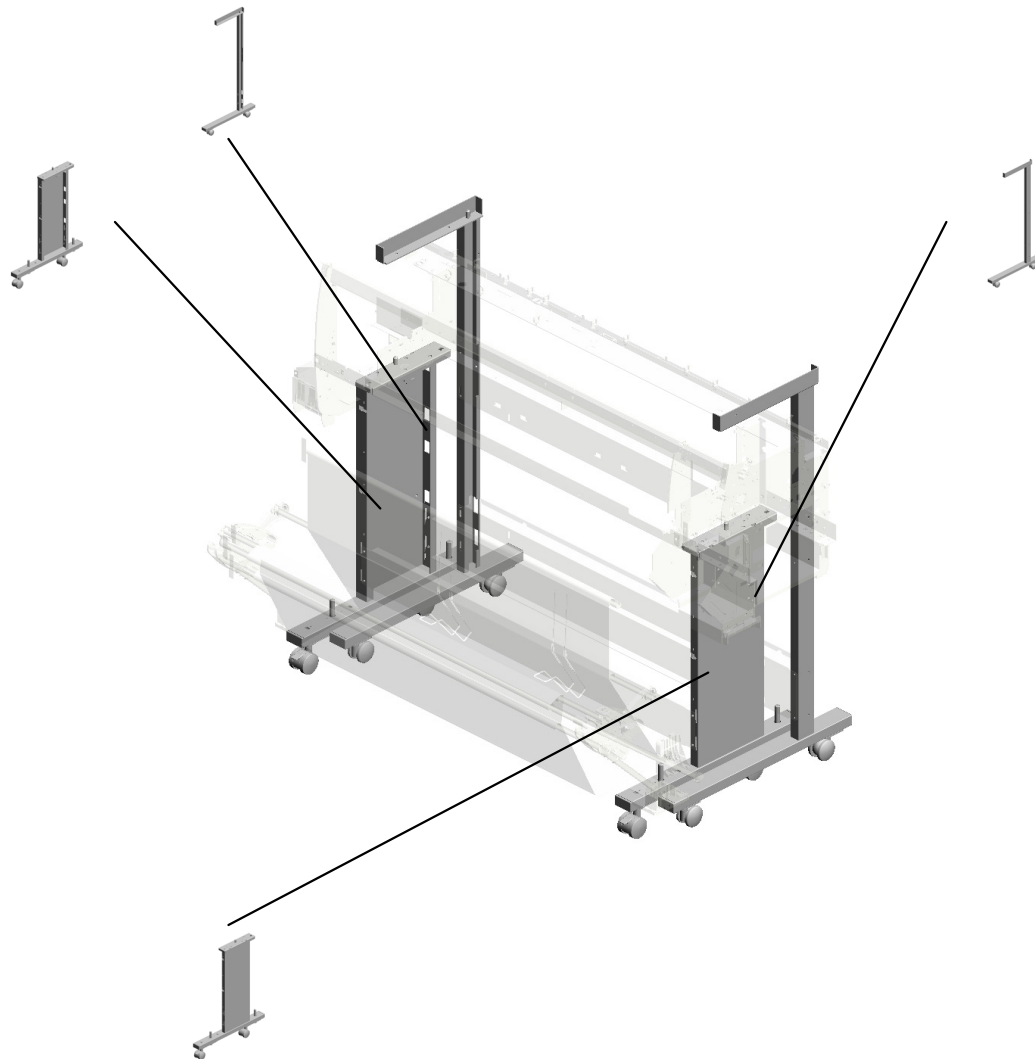
| | | | | | | | | | | | |
|------|------|------|------|------|------|------|------|------|------|------|------|
| U001 | U002 | U003 | U004 | U005 | U006 | U007 | U008 | U009 | U010 | U011 | U012 |
|------|------|------|------|------|------|------|------|------|------|------|------|

U012.MAIN FRAME

U012 S004
D1241902
RACK:LEFT:ASSY

U012 S002
D1241171
FRAME:STAND:LEFT:ASSY

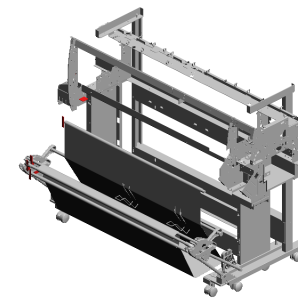
U012 S003
D1241901
RACK:RIGHT:ASSY



U012 S001
D1241151
FRAME:STAND:RIGHT:ASSY

| | | | | | | | | | | | |
|------|------|------|------|------|------|------|------|------|------|------|------|
| U001 | U002 | U003 | U004 | U005 | U006 | U007 | U008 | U009 | U010 | U011 | U012 |
|------|------|------|------|------|------|------|------|------|------|------|------|

U012 MAIN FRAME



- 15.11050724 (x6) CLAMPS:WES-1210
- 23.D1241055 (x4) COVER:SIDE PLATE:LOWER
- 22.D0747070 SEAL:FAN:DUCT:EXHAUST:OPTICAL WRITING UNIT
- 14.11050723 (x7) CLAMPS:WES-050
- 8.08050100 (x2) RETAINING RING - M2.5

2.04503010N (x6) TAPPING SCREW - M3X10

25.D1241141 (x3) GRIP:PLOTTER:LOWER

1.04503008N (x10) TAPPING SCREW - M3X8

3.04503020N (x4) TAPPING SCREW: M3X20

29.D1241181 (x2) STAY:FRONT REAR:STAND

16.12042612 MICRO SWITCH:D3 V-16506-3C25

21.B2291080 SAFETY SWITCH CUSHION

6.04543006Q (x26) TAPPING SCREW - M3X6

9.09655016N TAPPING SCREW W/WASHER - M5X16

24.D1241085 STAND:DOM

10.11050487 (x5) HARNESS CLAMP

13.11050516 CLAMP

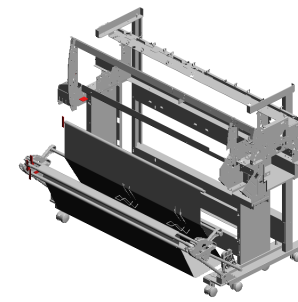
4.04513006N (x36) TAPPING SCREW - 3X6

11.11050488 (x14) HARNESS CLAMP

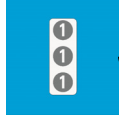
12.11050511 (x3) HARNESS CLAMP - LWS-0306ZC

U012 MAIN FRAME

- 41.D1244612 (x3) ROD:STACK:MIDDLE
- 33.D1244601 (x2) STACK:EXIT
- 38.D1244607 (x2) LINK:ROD
- 39.D1244608 (x2) CAP:ROD
- 32.D1241967 (x2) STAY:MIDDLE:RACK



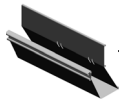
51.D1244631
DECAL:STACK:ROD:1



47.D1244618
BRACKET:SIDE:ROD:LEFT



34.D1244602
SHEET:STACK:EXIT



35.D1244603
ROD:STACK:FRONT



36.D1244604 (x2)
ROD:STACK:UPPER



44.D1244615 (x2)
GUIDE:SIDE:ROD:LEFT



43.D1244614 (x2)
GUIDE:SIDE:ROD:RIGHT



40.D1244609 (x2)
ROD:SIDE:PRESS FIT



46.D1244617 (x2)
BRACKET:SIDE:ROD:RIGHT



37.D1244606 (x2)
BRACKET:ROD:TURNTURN



45.D1244616 (x8)
CAP:ROD:LARGE



48.D1244619 (x2)
BRACKET:STACK:ROD:MIDDLE



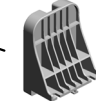
49.D1244622 (x2)
BRACKET:POSITIONING:ROD



42.D1244613 (x2)
ROD:STACK:SIDE:FRONT

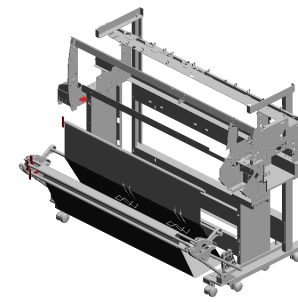


50.D1244623 (x2)
GUIDE:ROD:LOWER



U012 MAIN FRAME

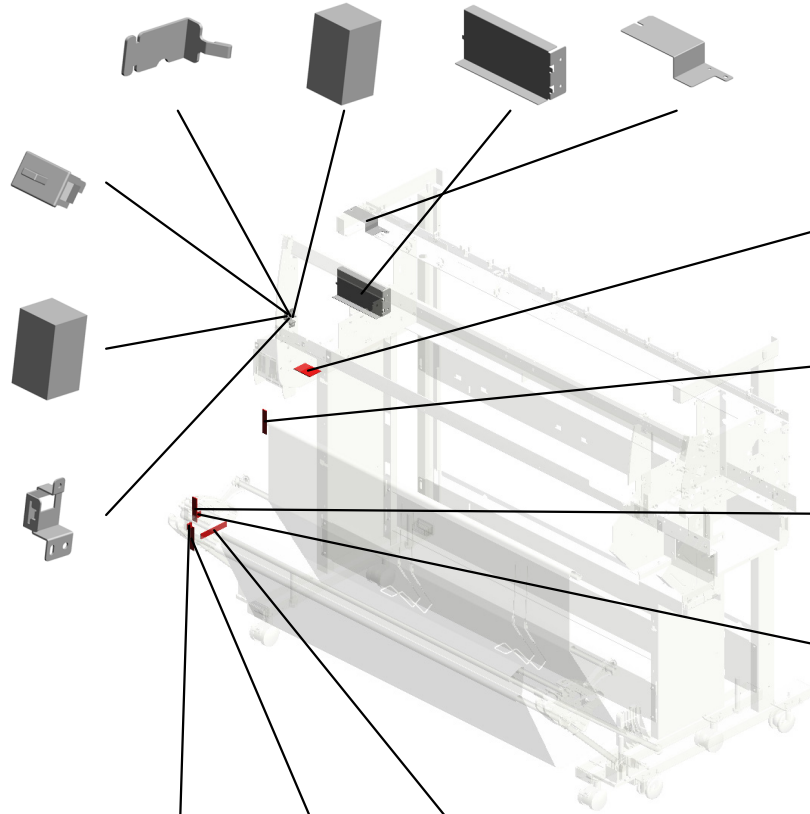
61.D1245713 LEVER:PRE:SENS OR:COVER
 63.D1245718 CUSHION:LEVER:P RE:SENSOR
 59.D1245635 COVER:MOTOR:R EGISTRATION
 64.D1245721 COVER:HARNES: MAIN SWITCH



65.G0205626
PUSH SWITCH

62.D1245714
CUSHION:PRE:SE NSOR

60.D1245712
BRACKET:PRE:SE NSOR:COVER

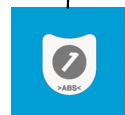


58.D1244638
DECAL:STACK:SET :CAUTION

57.D1244637
DECAL:STACK:RO D:CAUTION

52.D1244632
DECAL:STACK:RO D:2

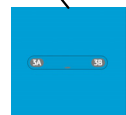
55.D1244635
DECAL:STACK:GUI DE:2



54.D1244634
DECAL:STACK:GUI DE:1



53.D1244633
DECAL:STACK:RO D:3



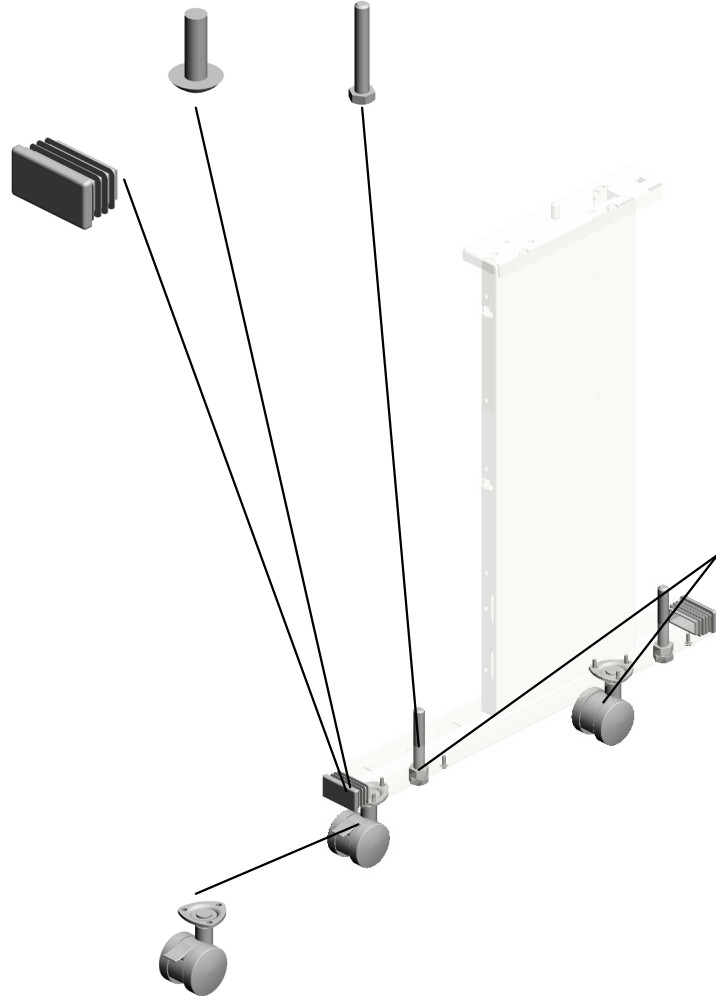
56.D1244636
DECAL:STACK:GUI DE:3

U012_S001
 FRAME:STAND:RIGHT:ASS'Y

66.G5221152 (x10)
 FLANGED HEXAGONAL HEAD BOLT: FIX:BRACKET
 17.AA143547 (x2)
 HEXAGONAL BOLT: :M12X80

26.D1241151
 FRAME:STAND:RIGHT:ASS'Y

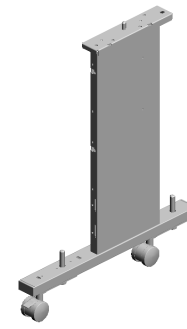
27.D1241160 (x2)
 CAP:STAND



19.AH012038
 CASTER:980N:DIA50

7.07100120N (x2)
 HEXAGONAL NUT: M12

20.AH012039
 CASTER:STOPPER :980N:DIA50



| | | | | | | | | | | | |
|------|------|------|------|------|------|------|------|------|------|------|------|
| U001 | U002 | U003 | U004 | U005 | U006 | U007 | U008 | U009 | U010 | U011 | U012 |
|------|------|------|------|------|------|------|------|------|------|------|------|

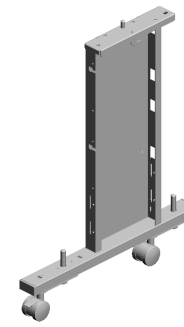
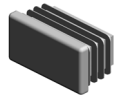
U012_S002
FRAME:STAND:LEFT:ASS'Y

27.D1241160
(x2)
CAP:STAND

66.G5221152
(x10)
FLANGED HEXAG
ONAL HEAD BOLT:
FIX:BRACKET

28.D1241171
FRAME:STAND:LE
FT:ASS'Y

20.AH012039
CASTER:STOPPER
:980N:DIA50



17.AA143547
(x2)
HEXAGONAL BOLT
:M12X80



19.AH012038
CASTER:980N:DIA
50



7.07100120N
(x2)
HEXAGONAL NUT:
M12



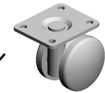
| | | | | | | | | | | | |
|------|------|------|------|------|------|------|------|------|------|------|------|
| U001 | U002 | U003 | U004 | U005 | U006 | U007 | U008 | U009 | U010 | U011 | U012 |
|------|------|------|------|------|------|------|------|------|------|------|------|

U012_S003
RACK:RIGHT:ASS'Y

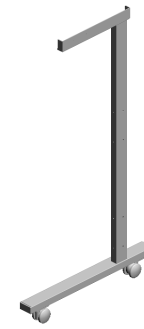
67.G8221034
(x2)
CAP:PIPE:50X26

5.04514008N
(x8)
TAPPING SCREW:
4X8

30.D1241901
RACK:RIGHT:ASS'
Y



18.AH012014
(x2)
CASTER - 60KGF

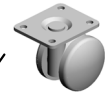
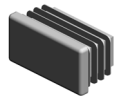


| | | | | | | | | | | | |
|------|------|------|------|------|------|------|------|------|------|------|------|
| U001 | U002 | U003 | U004 | U005 | U006 | U007 | U008 | U009 | U010 | U011 | U012 |
|------|------|------|------|------|------|------|------|------|------|------|------|

U012_S004
RACK:LEFT:ASS'Y

67.G8221034
(x2)
CAP:PIPE:50X26

5.04514008N
(x8)
TAPPING SCREW:
4X8



18.AH012014
(x2)
CASTER - 60KGF



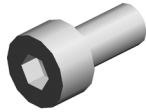
31.D1241902
RACK:LEFT:ASS'Y

| | | | | | | | | | | | |
|------|------|------|------|------|------|------|------|------|------|------|------|
| U001 | U002 | U003 | U004 | U005 | U006 | U007 | U008 | U009 | U010 | U011 | U012 |
|------|------|------|------|------|------|------|------|------|------|------|------|

ACCESSORIES



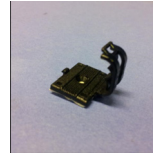
1.04544008Q
(x8)
TAPPING SCREW - M4X8



2.05940080N
(x42)
HEXAGONAL SET SCREW - M4X8



3.07030040N
(x3)
SPRING WASHER:DIA4



4.11050774
(x2)
CLAMP:KS-15 BK



5.11500432
POWER SUPPLY CODE:250V:10A:EU PLATE:LOGOTYPE:RIC



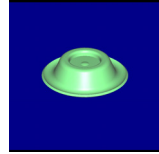
6.AA001564
PLATE:LOGOTYPE:RIC



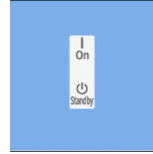
7.AA066681
(x4)
SPRING:ORIGINAL TRAY



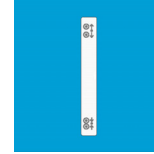
8.B0651374
CLOTH - DF EXPOSURE GLASS



9.B1321226
(x4)
HOLDER:STAND



10.D1208867
DECAL:MAIN SWITCH:ON-STANDBY: EU



11.D1241332
DECAL:LEVER:PRESSURE RELEASE



12.D1241731
(x4)
GUIDE:ORIGINAL



13.D1241733
(x4)
GUIDE PLATE:GUIDE:ORIGINAL



14.D1241737
(x2)
COPY TRAY:UPPER



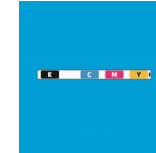
15.D1241739
(x2)
ORIGINAL TRAY



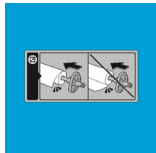
16.D1241741
HOLDER:ORIGINAL TRAY



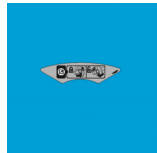
17.D1241972
(x2)
BRACKET:COUPLING



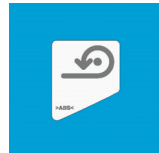
18.D1243130
DECAL:CARTRIDGE:COLORED DISP LAY



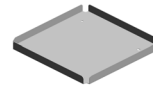
19.D1243959
DECAL:PAPER SPOOL



20.D1243960
DECAL:FLANGE



21.D1243962
DECAL:REWINDING:SWITCH



22.D1246590
HOLDER:TANK:USED DEVELOPER

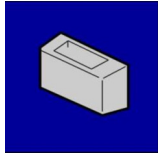


23.D1246821
DECAL:MODEL NAME PLATE:RIC:EX P



24.D1291287
HOLDER:OPERATING INSTRUCTION S:BIOMASS:IG

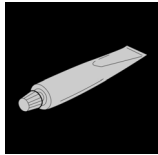
ACCESSORIES



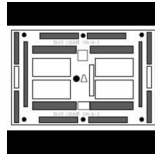
25.D1441396
HOLDER:EXPOSURE GLASS:IG:ASS'
Y



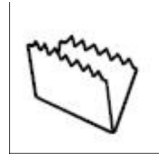
26.GA003264
DECAL:PS3:I-GRAY



1.52039502
Silicon Grease G-501



2.A0239504
Test Chart OS-A1 (2 sheets/set)



3.B2299311
SPECIAL CLOTH 10PCS/BAG
201301-08

Special Tools



4..J0187520
(x10)
PIN:PREVENTFENCE:HEAD
201301-04



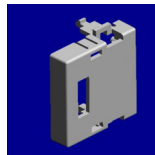
5.J0254685
(x5)
TUBE:COUPLING
201301-10



6.D1242251
PROOFING MATERIAL:CARRIAGE:C
OLOR
201304-02 X/O



7.D1242250
PROOFING MATERIAL:CARRIAGE:BL
ACK
201305-01



8.D1249590
COUNTER:PCB:NOVITA-S5K
201305-04

Exclusive Parts

| Number | Part Name | Group | ID |
|----------|---------------------------------|---------------|----|
| 52039502 | Silicon Grease G-501 | Special Tools | 1 |
| 53531803 | WAVE WASHER | U003 | 23 |
| 54472681 | SNAP RING | U005_S001 | 9 |
| | | U007 | 17 |
| | | U009 | 12 |
| A0239504 | Test Chart OS-A1 (2 sheets/set) | Special Tools | 2 |
| A1636052 | ORIGINAL TABLE BUSHING | U003 | 24 |
| A4221356 | PIN - 3X26MM | U003 | 25 |
| A5663850 | SENSOR SCREW | U003 | 26 |
| A5717700 | SCREW:SPRING WASHER:M2.6X5 | U009_S001 | 13 |
| A8594141 | PULLEY IDLER | U003 | 27 |
| AA001564 | PLATE:LOGOTYPE:RIC | ACCESSORIES | 6 |
| AA063416 | SPRING - 3.4N | U003 | 28 |
| AA063419 | SPRING - 10N | U003 | 29 |
| AA063444 | SPRING:STOPPER:ORIGINAL | U003 | 30 |
| AA066681 | SPRING:ORIGINAL TRAY | ACCESSORIES | 7 |
| AA080037 | BUSHING - 6MM | U007 | 18 |
| AA082101 | BUSHING - 6X10X6 | U009 | 14 |
| AA082135 | BUSHING - DIA4 | U003 | 31 |
| AA143547 | HEXAGONAL BOLT:M12X80 | U012_S001 | 17 |
| | | U012_S002 | 17 |
| AA143788 | PIN:GUIDE PLATE:PAPER FEED | U003 | 32 |
| AA143796 | SCREW:M3X4.2 | U011 | 15 |
| AA143823 | TAPPING SCREW | U003 | 33 |
| | | U006 | 14 |
| AA143859 | POSITIONING PIN | U003 | 34 |
| | | U007 | 19 |
| AA161167 | BUSHING:HDD | U011 | 16 |
| AB011490 | GEAR - 38Z | U007 | 20 |
| AB012006 | GEAR - 23Z | U007 | 21 |
| AB017615 | GEAR - 30Z/45Z | U009_S001 | 15 |
| AB030732 | JOGGER PULLEY | U009_S001 | 16 |
| AB030763 | PULLEY - 30Z | U009 | 17 |
| AF022155 | MIDDLE PAPER FEED ROLLER | U007 | 22 |
| AF031090 | PAPER FEED ROLLER:FEED | U007 | 23 |
| AG070513 | MAGNET CATCH | U009 | 18 |
| AH012014 | CASTER - 60KGF | U012_S003 | 18 |
| | | U012_S004 | 18 |

| Number | Part Name | Group | ID |
|----------|--|-------------|----|
| AH012038 | CASTER:980N:DIA50 | U012_S001 | 19 |
| | | U012_S002 | 19 |
| AH012039 | CASTER:STOPPER:980N:DIA50 | U012_S001 | 20 |
| | | U012_S002 | 20 |
| AW010107 | PAPER FEED SENSOR | U003 | 35 |
| AW010109 | PHOTO REFLECTION SENSOR:PS1 17ED1 | U003 | 36 |
| AW010147 | PHOTO REFLECTION SENSOR | U009 | 19 |
| AW020154 | PHOTOINTERRUPTOR:ENTRANCE | U006 | 15 |
| | | U007 | 24 |
| AW020155 | PHOTOINTERRUPTOR:PAPER SIZE E SENSOR | U006 | 16 |
| AW020172 | PHOTOINTERRUPTOR:OVERFLOW: CT | U007 | 25 |
| | | U009 | 20 |
| AW020198 | PHOTOINTERRUPTOR:LG2A14NL 1 | U004 | 15 |
| | | U004_S001 | 15 |
| | | U005_S001 | 10 |
| | | U006 | 17 |
| AW020198 | PHOTOINTERRUPTOR:LG2A14NL 1 | U007 | 26 |
| | | U008 | 11 |
| AW140015 | TEMPERATURE & HUMIDITY SENSOR | U008 | 12 |
| AW500012 | PUSH SWITCH | U007 | 27 |
| AW500022 | PUSH SWITCH | U003 | 37 |
| AX040258 | DC MOTOR:RISING TRAY:ASS'Y:1. 92W:BRUSH | U004 | 16 |
| AX200320 | ELECTROMAGNETIC CLUTCH | U007 | 28 |
| AX310049 | TOTAL COUNTER:7FIG:24V | U011 | 17 |
| AX660012 | FAN:BLOWER:DC24V:38.9W | U010 | 6 |
| B0102979 | SWITCH PLATE | U007 | 29 |
| B0651374 | CLOTH - DF EXPOSURE GLASS | ACCESSORIES | 8 |
| B1215018 | CHOKE COIL | U011 | 18 |
| B1251474 | RIVET:MM5 | U002 | 5 |
| B1251727 | SPRING PLATE:EXPOSURE GLASS: S:RIGHT | U003 | 38 |
| B1251728 | SPRING PLATE:EXPOSURE GLASS: S:LEFT | U003 | 39 |
| B1254732 | STOPPER:ORIGINAL:UPPER | U003 | 40 |

Exclusive Parts

| Number | Part Name | Group | ID |
|----------|--------------------------------------|-----------|----|
| B1254742 | SUPPORTING PLATE:COVER:ORIGINAL | U003 | 41 |
| B1254751 | SHAFT:DRIVEN | U003 | 42 |
| B1254752 | ROLLER:DRIVEN | U003 | 43 |
| B1254761 | SHAFT:CONTACT POINT:ORIGINAL:UPPER | U003 | 44 |
| B1254825 | SHEET:BLOCK LIGHT:1 | U003 | 45 |
| B1254826 | SHEET:BLOCK LIGHT:2 | U003 | 46 |
| B1254827 | SHEET:BLOCK LIGHT:3 | U003 | 47 |
| B1254828 | SHEET:BLOCK LIGHT:4 | U003 | 48 |
| B1254829 | SHEET:BLOCK LIGHT:5 | U003 | 49 |
| B1254852 | CASE:SPRING | U003 | 50 |
| B1254853 | PLATE:SPRING | U003 | 51 |
| B1254870 | STAND:PRESSURE RELEASE:LEFT | U003 | 52 |
| B1254871 | STAND:PRESSURE RELEASE:RIGHT | U003 | 53 |
| B1254879 | SHEET:SHIELD:PAPER SIZE SENSOR | U003 | 54 |
| B1254884 | COVER:ORIGINAL:SWITCH | U003 | 55 |
| B1254901 | STOPPER:OPEN AND CLOSE:LEFT:UNIT | U003_S001 | 56 |
| B1254902 | BRACKET:OPEN AND CLOSE:STOPPER:LEFT | U003_S001 | 57 |
| B1254904 | STOPPER:OPEN AND CLOSE:LEFT | U003_S001 | 58 |
| B1254906 | STOPPER:OPEN AND CLOSE:RIGHT:UNIT | U003_S002 | 59 |
| B1254907 | BRACKET:OPEN AND CLOSE:STOPPER:RIGHT | U003_S002 | 60 |
| B1254909 | STOPPER:OPEN AND CLOSE:RIGHT | U003_S002 | 61 |
| B1254910 | TENSION SPRING:STOPPER | U003_S001 | 62 |
| | | U003_S002 | 62 |
| B1254912 | SHAFT:CONTACT POINT:STOPPER | U003_S001 | 63 |
| | | U003_S002 | 63 |
| B1254913 | SHAFT:SPRING:STOPPER | U003_S001 | 64 |
| | | U003_S002 | 64 |

| Number | Part Name | Group | ID |
|----------|--|---------------|----|
| B1255683 | GROUND WIRE:PRESSURE PLATE | U003 | 65 |
| B1255688 | GROUNDING WIRE:SCANNER UNIT:1 | U003 | 66 |
| B1321226 | HOLDER:STAND | ACCESSORIES | 9 |
| B2291080 | SAFETY SWITCH CUSHION | U011 | 19 |
| | | U012 | 21 |
| B2293237 | SPRING PLATE:EARTH:TRANSPORT ROLLER | U003 | 67 |
| B2299311 | SPECIAL CLOTH 10PCS/BAG | Special Tools | 3 |
| B2343418 | GEAR - 24Z | U007 | 30 |
| B2381534 | LCD SPACER A | U002_S001 | 6 |
| B2381535 | LCD SPACER B | U002_S001 | 7 |
| B2381715 | STEPPER MOTOR DC3.9V | U003 | 68 |
| B2385887 | INTERFACE PANEL | U011 | 20 |
| B2864854 | CUSHION:KEYTOP:ORIGINAL:STOPPER | U003 | 69 |
| B2864966 | BRACKET:PRESSURE PLATE:LEFT | U003 | 70 |
| B2864967 | BRACKET:PRESSURE PLATE:RIGHT | U003 | 71 |
| B3874311 | ADJUSTING BRACKET | U003 | 72 |
| D0145974 | COVER:CONNECTOR:EFI | U011 | 21 |
| D0145977 | COVER:CONTROL BOARD:USB | U011 | 22 |
| D0392935 | ROLLER:DRIVEN:F3 | U006 | 18 |
| | | U007 | 31 |
| D0394948 | GEAR:REVERSE ROLLER | U007 | 32 |
| D0465336 | COVER:SD-CARD | U011 | 23 |
| D0465837 | GROUND WIRE:BRAIDED CABLE | U003 | 73 |
| D0746665 | GEAR:JOINT:COLLECTION BOTTLE:Z65 | U007 | 33 |
| D0747070 | SEAL:FAN:DUCT:EXHAUST:OPTICAL WRITING UNIT | U012 | 22 |
| D0895761 | PCB:PC4200:RAWCARD-F:2GB:ASSY | U011 | 24 |
| D0934653 | LEVER:MICRO SWITCH | U003 | 74 |
| D0934717 | SHEET:BLOCK LIGHT:CIS:LEFT | U003 | 75 |
| D0934718 | SHEET:BLOCK LIGHT:CIS:RIGHT | U003 | 76 |
| D0934734 | DRIVEN ROLLER:ASSY | U003 | 77 |

Exclusive Parts

| Number | Part Name | Group | ID |
|-----------------|------------------------------------|------------------|-----------|
| D1208867 | DECAL:MAIN SWITCH:ON-STANDBY:EU | ACCESSORIES | 10 |
| D1241055 | COVER:SIDE PLATE:LOWER | U012 | 23 |
| D1241085 | STAND:DOM | U012 | 24 |
| D1241141 | GRIP:PLOTTER:LOWER | U012 | 25 |
| D1241151 | FRAME:STAND:RIGHT:ASS'Y | U012_S001 | 26 |
| D1241160 | CAP:STAND | U012_S001 | 27 |
| | | U012_S002 | 27 |
| D1241171 | FRAME:STAND:LEFT:ASS'Y | U012_S002 | 28 |
| D1241181 | STAY:FRONT REAR:STAND | U012 | 29 |
| D1241251 | COVER:UPPER | U001 | 7 |
| D1241252 | SEAL:COVER:UPPER | U001 | 8 |
| D1241254 | SEAL:COVER:UPPER RIGHT | U001 | 9 |
| D1241261 | COVER:FRONT:UPPER | U001 | 10 |
| D1241262 | COVER:SIDE:RIGHT UPPER | U001 | 11 |
| D1241263 | COVER:SIDE:LEFT UPPER | U001 | 12 |
| D1241264 | ROD:COVER:FRONT | U001 | 13 |
| D1241271 | COVER:FRONT:LOWER | U001 | 14 |
| D1241272 | COVER:SIDE:RIGHT LOWER | U001 | 15 |
| D1241273 | COVER:SIDE:LEFT LOWER | U001 | 16 |
| D1241280 | COVER:RIGHT:UPPER | U001 | 17 |
| D1241285 | COVER:RIGHT | U001 | 18 |
| D1241286 | COVER:USELESS FLUID NOZZLE | U001 | 19 |
| D1241290 | COVER:LEFT | U001 | 20 |
| D1241295 | COVER:INK CARTRIDGE | U001 | 21 |
| D1241296 | COVER:INK CARTRIDGE:OPEN AND CLOSE | U001 | 22 |
| D1241300 | COVER:RIGHT:REAR | U001 | 23 |
| D1241305 | COVER:LEFT:REAR | U001 | 24 |
| D1241310 | SUPPORTER:RIGHT | U001 | 25 |
| D1241315 | SUPPORTER:LEFT | U001 | 26 |
| D1241332 | DECAL:LEVER:PRESSURE RELEASE | ACCESSORIES | 11 |
| D1241334 | DECAL:INK:COVER:EXP | U001 | 27 |
| D1241422 | OPERATION PANEL:EU:ASS'Y | U002_S001 | 8 |
| D1241442 | PCB:LCDC:EU:FT | U002_S001 | 9 |
| D1241509 | KEYTOP:POWER SOURCE | U002_S001 | 10 |
| D1241510 | COVER:OPERATION SUB-UNIT:IN | U002 | 11 |

| Number | Part Name | Group | ID |
|----------|--|-------------|-----|
| | NER | | |
| D1241653 | PLAIN SHAFT BEARING:TRANSPORT ROLLER | U003 | 78 |
| D1241661 | COIL SPRING:BELT TENSIONER | U003 | 79 |
| D1241662 | SYNCHRONOUS BELT:S1.5M | U003 | 80 |
| D1241663 | TIMING PULLEY:S1.5M:101 | U003 | 81 |
| D1241664 | TRANSPORT ROLLER | U003 | 82 |
| D1241677 | PLAIN SHAFT BEARING:TRANSPORT ROLLER:SIDE PLATE:EXIT | U003 | 83 |
| D1241678 | PLAIN SHAFT BEARING:TRANSPORT ROLLER:EXIT | U003 | 84 |
| D1241679 | COIL SPRING:DRIVEN:5N | U003 | 85 |
| D1241681 | COVER:SCANNER:LEFT | U003 | 86 |
| D1241682 | COVER:SCANNER:RIGHT | U003 | 87 |
| D1241694 | KEYTOP:ORIGINAL:STOP | U003 | 88 |
| D1241701 | CONTACT IMAGE SENSOR:SERVICE:ASS'Y | U003 | 89 |
| D1241704 | SHEET:GUIDE:CIS | U003 | 90 |
| D1241706 | GUIDE PLATE:ORIGINAL:FRONT LOWER:FRONT:EU/CHN | U003 | 91 |
| D1241707 | GUIDE PLATE:ORIGINAL:FRONT LOWER:REAR | U003 | 92 |
| D1241708 | GUIDE PLATE:ORIGINAL:REAR LOWER:FRONT | U003 | 93 |
| D1241709 | GUIDE PLATE:ORIGINAL:REAR LOWER:REAR | U003 | 94 |
| D1241713 | EXPOSURE GLASS:CONTACT IMAGE SENSOR | U003 | 95 |
| D1241715 | COVER:SCANNER:REAR | U003 | 96 |
| D1241716 | GASKET:SCANNER | U003 | 97 |
| D1241717 | COVER:SCANNER:REAR MIDDLE | U003 | 98 |
| D1241719 | COIL SPRING:DRIVEN:7N | U003 | 99 |
| D1241721 | TRANSPORT ROLLER:URETHANE:EXIT | U003 | 100 |
| D1241722 | SHIELDING PLATE:COVER:SCANNER:REAR | U003 | 101 |
| D1241728 | PRESSURE PLATE:SHEET:ASS'Y | U003 | 102 |
| D1241731 | GUIDE:ORIGINAL | ACCESSORIES | 12 |

Exclusive Parts

| Number | Part Name | Group | ID |
|-----------------|--------------------------------------|------------------|-----------|
| D1241733 | GUIDE PLATE:GUIDE:ORIGINAL | ACCESSORIES | 13 |
| D1241737 | COPY TRAY:UPPER | ACCESSORIES | 14 |
| D1241739 | ORIGINAL TRAY | ACCESSORIES | 15 |
| D1241741 | HOLDER:ORIGINAL TRAY | ACCESSORIES | 16 |
| D1241743 | ORIGINAL TABLE:EU/CHN | U003 | 103 |
| D1241764 | SIDE FENCE:LEFT:ASS'Y | U003 | 104 |
| D1241765 | SIDE FENCE:RIGHT:ASS'Y | U003 | 105 |
| D1241767 | COVER:ORIGINAL:UPPER | U003 | 106 |
| D1241774 | DECAL:ORIGINAL:OPERATE:EXP | U003 | 107 |
| D1241777 | DECAL:ORIGINAL:STOP:EXP | U003 | 108 |
| D1241901 | RACK:RIGHT:ASS'Y | U012_S003 | 30 |
| D1241902 | RACK:LEFT:ASS'Y | U012_S004 | 31 |
| D1241967 | STAY:MIDDLE:RACK | U012 | 32 |
| D1241972 | BRACKET:COUPLING | ACCESSORIES | 17 |
| D1242016 | CARRIAGE:REAR:ASS'Y | U004_S001 | 17 |
| D1242056 | GUIDE:ENCODER | U004 | 18 |
| D1242057 | SHEET:ENCODER | U004 | 19 |
| D1242058 | BRACKET:SHEET:ENCODER | U004 | 20 |
| D1242059 | TENSION SPRING:ENCODER:SHEET | U004 | 21 |
| D1242060 | SHAFT:PRESSURE ROLLER | U004 | 22 |
| D1242062 | BRACKET:PRESSURE ROLLER:LOWER | U004 | 23 |
| D1242063 | BRACKET:PRESSURE ROLLER:UPPER | U004 | 24 |
| D1242064 | SYNCHRONOUS BELT:UL | U004 | 25 |
| D1242067 | TIMING PULLEY:CARRIAGE:T28 | U004 | 26 |
| D1242074 | DC MOTOR:MAIN SCANNING:L:ASS'Y:45.9W | U004 | 27 |
| D1242075 | COIL SPRING:PRESSURE ROLLER:CARRIAGE | U004 | 28 |
| D1242076 | SPONGE:FFC:GUIDE | U004 U011 | 29 25 |
| D1242196 | BRACKET:POSITIONING SENSOR | U004_S001 | 35 |
| D1242250 | PROOFING MATERIAL:CARRIAGE:BLACK | Special Tools | 7 |
| D1242251 | PROOFING MATERIAL:CARRIAGE:COLOR | Special Tools | 6 |

| Number | Part Name | Group | ID |
|-----------------|---|------------------|-----------|
| D1242276 | POSITIONING SENSOR | U004_S001 | 36 |
| D1242601 | GUIDE PLATE:REAR:ASS'Y | U007_S004 | 34 |
| D1242645 | GUIDE:MANUAL FEED:LOWER | U007 | 35 |
| D1242646 | GUIDE PLATE:GUIDE PLATE:MANUAL FEED:LOWER | U007 | 36 |
| D1242647 | TORSION SPRING:GUIDE:MANUAL FEED:LOWER | U007 | 37 |
| D1242648 | COVER:SENSOR:PAPER FEED UNIT | U007 | 38 |
| D1242653 | GUIDE PLATE:LOWER FRONT | U007 | 39 |
| D1242654 | SHAFT:DRIVEN ROLLER | U007 | 40 |
| D1242655 | SHAFT:CAM:DRIVEN ROLLER | U007 | 41 |
| D1242656 | CAM:DRIVEN ROLLER | U007 | 42 |
| D1242657 | COMPRESSION SPRING:FEED ROLLER | U007 | 43 |
| D1242667 | BUSHING:IDLER | U007 | 44 |
| D1242671 | SHAFT:FEED ROLLER | U007 | 45 |
| D1242672 | BUSHING:FEED ROLLER | U007 | 46 |
| D1242673 | GUIDE PLATE:UPPER FRONT | U007 | 47 |
| D1242674 | GUIDE:MANUAL FEED:UPPER | U007 | 48 |
| D1242675 | COVER:FEED ROLLER | U007 | 49 |
| D1242680 | BRACKET:PUSH SWITCH:REWINDING | U007 | 50 |
| D1242681 | KEYTOP | U007 | 51 |
| D1242684 | BRACKET:STOPPER:MECHANICAL SPRING CLUTCH | U007 | 52 |
| D1242687 | COVER:SENSOR:PAPER END SENSOR | U007 | 53 |
| D1242688 | SHEET:PAPER END SENSOR | U007 | 54 |
| D1242690 | GUIDE PLATE:REAR:UPPER LOWER | U007_S004 | 55 |
| D1242698 | SPACER:PAPER FEED | U007_S004 | 56 |
| D1242710 | DC MOTOR:9.8W:ASS'Y:BRUSH | U007 | 57 |
| D1242713 | SHAFT:DRIVE:1 | U007 | 58 |
| D1242714 | ENCODER:PAPER VOLUME SENSOR | U007 | 59 |
| D1242715 | SHAFT:DRIVE:2 | U007 | 60 |
| D1242720 | TORQUE LIMITER MECHANICAL C | U007 | 61 |

Exclusive Parts

| Number | Part Name | Group | ID |
|----------|---|-------------|----|
| | LUTCH | | |
| D1242721 | GEAR:REWINDING:1 | U007 | 62 |
| D1242722 | SHAFT:DRIVE:3 | U007 | 63 |
| D1242723 | GEAR:REWINDING:2 | U007 | 64 |
| D1242724 | GEAR:REWINDING:3 | U007 | 65 |
| D1242725 | GEAR:LOCK:DRIVE | U007 | 66 |
| D1242726 | TORSION SPRING:COVER | U007 | 67 |
| D1242727 | COVER:GEAR:PAPER SPOOL | U007 | 68 |
| D1242731 | SPACER:PAPER FEED | U007 | 69 |
| D1242732 | COMPRESSION SPRING:PAPER FEED | U007 | 70 |
| D1242750 | COVER:PAPER FEED UNIT:PAPER SPOOL:RIGHT | U007 | 71 |
| D1242751 | COVER:PAPER FEED UNIT:RIGHT | U007 | 72 |
| D1242752 | COVER:PAPER FEED UNIT:PAPER SPOOL:LEFT | U007 | 73 |
| D1242753 | COVER:PAPER FEED UNIT:LEFT | U007 | 74 |
| D1242754 | COVER:PAPER FEED UNIT:DRIVE SUB-UNIT | U007 | 75 |
| D1242800 | PAPER SPOOL:ASS'Y | U007_S001 | 76 |
| D1242801 | FLANGE:RIGHT:ASS'Y | U007_S002 | 77 |
| D1242802 | FLANGE:LEFT:ASS'Y | U007_S003 | 78 |
| D1242811 | GEAR:PAPER SPOOL | U007_S001 | 79 |
| D1242812 | HOLDER:RADIAL BALL BEARING:PAPER SPOOL | U007_S001 | 80 |
| D1242831 | EXCHANGE PLATE:FLANGE | U007_S002 | 81 |
| | | U007_S003 | 81 |
| D1242832 | SPRING PLATE:FLANGE | U007_S002 | 82 |
| | | U007_S003 | 82 |
| D1242833 | PARALLEL PIN:DIA4X46 | U007 | 83 |
| D1242834 | COLLAR:LOCK:FLANGE | U007_S003 | 84 |
| D1242836 | LEVER:LOCK:FLANGE | U007_S003 | 85 |
| D1243130 | DECAL:CARTRIDGE:COLORED DISPLAY | ACCESSORIES | 18 |
| D1243261 | CLAMP:TUBE:CARRIAGE | U004 | 30 |
| D1243262 | SPONGE:CLAMP | U004 | 31 |
| D1243505 | MAINTENANCE RECOVERY:ASS'Y | U005_S001 | 11 |
| D1243851 | REGISTRATION ROLLER:CERAMI | U006 | 19 |

| Number | Part Name | Group | ID |
|----------|--|-------|-----|
| | C | | |
| D1243852 | PLAIN SHAFT BEARING:REGISTRATION ROLLER:SIDE PLATE | U003 | 109 |
| D1243854 | COMPRESSION SPRING:REGISTRATION ROLLER | U006 | 20 |
| D1243857 | COLLAR:COMPRESSION SPRING:REGISTRATION ROLLER | U006 | 21 |
| D1243858 | SPRING PLATE:REGISTRATION ROLLER | U006 | 22 |
| D1243861 | DC MOTOR:REGISTRATION:50W:BUSH | U006 | 23 |
| D1243864 | BRACKET:DC MOTOR:REGISTRATION | U006 | 24 |
| D1243865 | SYNCHRONOUS BELT:60S1.5M305 | U006 | 25 |
| D1243867 | ENCODER:SENSOR:ASS'Y | U006 | 26 |
| D1243911 | ROLLER:PRESSURE | U006 | 27 |
| D1243912 | SHAFT:PRESSURE ROLLER | U006 | 28 |
| D1243913 | ARM:PRESSURE ROLLER | U006 | 29 |
| D1243914 | TORSION SPRING:PRESSURE | U006 | 30 |
| D1243915 | CAM:PRESSURE:RELEASE | U006 | 31 |
| D1243916 | HOLDER:ARM:PRESSURE ROLLER | U006 | 32 |
| D1243917 | SHAFT:PRESSURE:ARM | U006 | 33 |
| D1243918 | SHAFT:PRESSURE RELEASE | U006 | 34 |
| D1243921 | SHAFT:GEAR:PRESSURE RELEASE | U006 | 35 |
| D1243922 | GEAR:PRESSURE RELEASE:1 | U006 | 36 |
| D1243923 | LEVER:PRESSURE RELEASE | U006 | 37 |
| D1243924 | GRIP:LEVER:PRESSURE RELEASE | U006 | 38 |
| D1243925 | GEAR:PRESSURE RELEASE:2 | U006 | 39 |
| D1243953 | PLAIN SHAFT BEARING:ROLLER:TURN | U006 | 40 |
| D1243954 | GUIDE PLATE:TURN:OUTER | U006 | 41 |
| D1243956 | GUIDE PLATE:MANUAL FEED:LOWER | U006 | 42 |
| D1243957 | GUIDE PLATE:MANUAL FEED:UPPER | U006 | 43 |

Exclusive Parts

| Number | Part Name | Group | ID |
|----------|---|-------------|----|
| | ER | | |
| D1243959 | DECAL:PAPER SPOOL | ACCESSORIES | 19 |
| D1243960 | DECAL:FLANGE | ACCESSORIES | 20 |
| D1243962 | DECAL:REWINDING:SWITCH | ACCESSORIES | 21 |
| D1243963 | GUIDE:GATE:OPTION | U007_S004 | 86 |
| D1243964 | GUIDE PLATE:TURN:INNER | U006 | 44 |
| D1243965 | SHEET:TRANSPORT SUB-UNIT | U006 | 45 |
| D1244092 | COVER:FAN:LOWER | U010 | 7 |
| D1244151 | BRACKET:FAN:VACUUM | U010 | 8 |
| D1244446 | SPRING:ROLLER CLUTCH:BRAKE | U009 | 21 |
| D1244447 | CASE:CLUTCH/BRAKE | U009 | 22 |
| D1244450 | BRACKET:TORQUE LIMITER MECHANICAL CLUTCH:PEEN | U009 | 23 |
| D1244451 | GUIDE PLATE:LOWER:EXIT | U009 | 24 |
| D1244453 | GUIDE:EXIT | U009 | 25 |
| D1244457 | COVER:TORQUE LIMITER MECHANICAL CLUTCH | U009 | 26 |
| D1244459 | COIL SPRING:TORQUE LIMITER MECHANICAL CLUTCH:DIA1.5 | U009 | 27 |
| D1244461 | EXIT ROLLER | U009 | 28 |
| D1244462 | PLAIN SHAFT BEARING:EXIT ROLLER | U009 | 29 |
| D1244463 | SYNCHRONOUS BELT:EXIT ROLLER | U009 | 30 |
| D1244464 | BRACKET:EXIT ROLLER | U009 | 31 |
| D1244466 | DECAL:CAUTION:PAPER EXIT SUB-UNIT | U009 | 32 |
| D1244467 | GEAR:CLUTCH/BRAKE | U009 | 33 |
| D1244468 | GEAR:LOCK:GUIDE PLATE:EXIT | U009 | 34 |
| D1244474 | HOLDER:SENSOR:EXIT | U009 | 36 |
| D1244476 | SHEET:GUIDE PLATE:EXIT | U009 | 37 |
| D1244477 | SPRING PLATE:EXIT:GUIDE | U009 | 35 |
| D1244480 | GUIDE PLATE:EXIT:MIDDLE | U009 | 38 |
| D1244481 | GUIDE PLATE:EXIT:RIGHT | U009 | 39 |
| D1244482 | GUIDE PLATE:EXIT:LEFT | U009 | 40 |
| D1244483 | SHAFT:GUIDE PLATE:EXIT | U009 | 41 |
| D1244484 | SHAFT:GUIDE PLATE:EXIT:TORQUE LIMITER MECHANICAL CLUTCH | U009 | 42 |

| Number | Part Name | Group | ID |
|----------|--|----------------|----|
| D1244485 | GUIDE:EXIT:AUXILIARY | U009 | 43 |
| D1244500 | CUTTER UNIT | U009_S001 | 44 |
| D1244532 | SHUTTLE:BASE:CUTTER:ASS'Y | U009_S001 | 45 |
| D1244533 | SHUTTLE:INNER:RAIL:ASS'Y | U009_S001 | 46 |
| D1244552 | RAIL:CUTTER | U009_S001 | 48 |
| D1244553 | RAIL:INNER | U009_S001 | 49 |
| D1244555 | GATE:CUTTER | U009_S001 | 50 |
| D1244556 | COIL SPRING:GATE:CUTTER | U009_S001 | 51 |
| D1244557 | TENSION SPRING:CUTTER | U009_S001 | 52 |
| D1244558 | SYNCHRONOUS BELT:S2M | U009_S001 | 53 |
| D1244559 | CUSHION:CUTTER UNIT | U009_S001 | 54 |
| D1244564 | MICRO SWITCH:CUTTER | U009_S001 | 55 |
| D1244567 | GEAR:Z37-17 | U009_S001 | 56 |
| D1244588 | SHUTTLE:CUTTER | U009_S001_S001 | 47 |
| D1244591 | DC MOTOR:CUTTER UNIT:ASS'Y:6.78W:BRUSH | U009_S001 | 58 |
| D1244592 | BRACKET:DC MOTOR | U009_S001 | 59 |
| D1244597 | BRACKET:PULLEY:DRIVEN | U009_S001 | 60 |
| D1244601 | STACK:EXIT | U012 | 33 |
| D1244602 | SHEET:STACK:EXIT | U012 | 34 |
| D1244603 | ROD:STACK:FRONT | U012 | 35 |
| D1244604 | ROD:STACK:UPPER | U012 | 36 |
| D1244606 | BRACKET:ROD:TURN | U012 | 37 |
| D1244607 | LINK:ROD | U012 | 38 |
| D1244608 | CAP:ROD | U012 | 39 |
| D1244609 | ROD:SIDE:PRESS FIT | U012 | 40 |
| D1244612 | ROD:STACK:MIDDLE | U012 | 41 |
| D1244613 | ROD:STACK:SIDE:FRONT | U012 | 42 |
| D1244614 | GUIDE:SIDE:ROD:RIGHT | U012 | 43 |
| D1244615 | GUIDE:SIDE:ROD:LEFT | U012 | 44 |
| D1244616 | CAP:ROD:LARGE | U012 | 45 |
| D1244617 | BRACKET:SIDE:ROD:RIGHT | U012 | 46 |
| D1244618 | BRACKET:SIDE:ROD:LEFT | U012 | 47 |
| D1244619 | BRACKET:STACK:ROD:MIDDLE | U012 | 48 |
| D1244622 | BRACKET:POSITIONING:ROD | U012 | 49 |
| D1244623 | GUIDE:ROD:LOWER | U012 | 50 |
| D1244631 | DECAL:STACK:ROD:1 | U012 | 51 |
| D1244632 | DECAL:STACK:ROD:2 | U012 | 52 |

Exclusive Parts

| Number | Part Name | Group | ID |
|----------|---|-----------|-----|
| D1244633 | DECAL:STACK:ROD:3 | U012 | 53 |
| D1244634 | DECAL:STACK:GUIDE:1 | U012 | 54 |
| D1244635 | DECAL:STACK:GUIDE:2 | U012 | 55 |
| D1244636 | DECAL:STACK:GUIDE:3 | U012 | 56 |
| D1244637 | DECAL:STACK:ROD:CAUTION | U012 | 57 |
| D1244638 | DECAL:STACK:SET:CAUTION | U012 | 58 |
| D1245141 | POWER SUPPLY UNIT:236W:220-240V | U011 | 26 |
| D1245220 | PCB:CTL:EX2.5:ASS'Y | U011 | 27 |
| D1245280 | SD-CARD:EXP:ASS'Y | U011 | 28 |
| D1245297 | HDD:SERVICE | U011 | 29 |
| D1245403 | PCB:MCU | U011_S001 | 43 |
| D1245412 | PCB:SIF:UNI:ASS'Y | U003 | 110 |
| D1245428 | PCB:IMAGE PROCESSING UNIT:ASS'Y | U011 | 31 |
| D1245462 | PCB:HRB:ASS'Y | U004_S001 | 37 |
| D1245484 | PCB:MB:ASS'Y | U011 | 32 |
| D1245607 | HOLDER:BASE:SHORT:ELECTRICAL COMPONENTS SECTION | U011 | 33 |
| D1245627 | BRACKET:CHOKE COIL | U011 | 35 |
| D1245635 | COVER:MOTOR:REGISTRATION | U012 | 59 |
| D1245667 | BRACKET:HDD:LARGE | U011 | 36 |
| D1245683 | BRACKET:SAFETY SWITCH:RIGHT | U011 | 37 |
| D1245685 | LEVER:SAFETY SWITCH | U011 | 38 |
| D1245693 | BRACKET:SAFETY SWITCH:LEFT | U011 | 39 |
| D1245701 | BRACKET:MAIN SWITCH | U011 | 40 |
| D1245712 | BRACKET:PRE:SENSOR:COVER | U012 | 60 |
| D1245713 | LEVER:PRE:SENSOR:COVER | U012 | 61 |
| D1245714 | CUSHION:PRE:SENSOR | U012 | 62 |
| D1245718 | CUSHION:LEVER:PRE:SENSOR | U012 | 63 |
| D1245721 | COVER:HARNESS:MAIN SWITCH | U012 | 64 |
| D1246480 | BRACKET:MAINTENANCE | U005 | 12 |
| D1246481 | BRACKET:FIX:USED DEVELOPER | U005 | 13 |
| D1246482 | JOINT:USELESS FLUID NOZZLE | U005 | 14 |
| D1246483 | SEAL:JOINT:MAINTENANCE | U005 | 15 |
| D1246484 | CAP:JOINT:USELESS FLUID NOZZLE | U005 | 16 |
| D1246485 | TUBE:JOINT:MAINTENANCE | U005 | 17 |

| Number | Part Name | Group | ID |
|-----------------|--|------------------|-----------|
| D1246486 | GUARD:GEAR:MAINTENANCE | U005 | 18 |
| D1246491 | PIPE:MAINTENANCE:USED DEVELOPER | U005 | 19 |
| D1246580 | DECAL:USED INK | U001 | 28 |
| D1246590 | HOLDER:TANK:USED DEVELOPER | ACCESSORIES | 22 |
| D1246821 | DECAL:MODEL NAME PLATE:RIC:EXP | ACCESSORIES | 23 |
| D1249590 | COUNTER:PCB:NOVITA-S5K | Special Tools | 8 |
| D1291287 | HOLDER:OPERATING INSTRUCTIONS:BIOMASS:IG | ACCESSORIES | 24 |
| D1291420 | LCD:TFT:WVGA:LED:MV | U002_S001 | 12 |
| D1291421 | TOUCH PANEL:WVGA:MV | U002_S001 | 13 |
| D1291430 | CABLE:FFC:OPR | U002_S001 | 14 |
| D1291431 | CABLE:FFC:OPL | U002_S001 | 15 |
| D1291458 | PCB:OP-R:ASS'Y | U002_S001 | 16 |
| D1291459 | PCB:OP-L:ASS'Y | U002_S001 | 17 |
| D1291502 | KEYTOP:START | U002_S001 | 18 |
| D1291503 | KEYTOP:STOP | U002_S001 | 19 |
| D1291506 | KEYTOP:RESET SWITCH | U002_S001 | 20 |
| D1291508 | KEYTOP:HOME | U002_S001 | 21 |
| D1291509 | KEYTOP:LEFT | U002_S001 | 22 |
| D1291510 | LENS:FRONT | U002_S001 | 23 |
| D1291513 | SHADING PLATE:TOUCH PANEL | U002_S001 | 24 |
| D1291532 | COVER:UPPER:EU/CHN/TWN | U002_S001 | 25 |
| D1291534 | KEYTOP:10KEY:EU | U002_S001 | 26 |
| D1291539 | KEYTOP:POWER SOURCE:BA | U002_S001 | 28 |
| D1291547 | SHEET:JOURNAL:BLANK | U002_S001 | 27 |
| D1441396 | HOLDER:EXPOSURE GLASS:IG:ASS'Y | ACCESSORIES | 25 |
| D4474315 | TENSION SPRING:TENSIONER | U006 | 46 |
| D6702011 | HEAD:UNIT:BLACK | U004 | 32 |
| D6702112 | HEAD:UNIT:COLOR | U004 | 38 |
| D6703200 | DEVELOPER SUPPLY SECTION:SERVICE PARTS:ASS'Y | U008 | 13 |
| D6708301 | FLUSHING LIQUID RECIEVER:SERVICE PARTS:ASS'Y | U005 | 20 |
| D6708401 | TANK:FIX:WASTE FLUID:SERVICE PARTS:ASS'Y | U005 | 21 |

Exclusive Parts

| Number | Part Name | Group | ID |
|----------|---|---------------|-----|
| D6708501 | TANK:WASTE FLUID:SERVICE PARTS | U005 | 22 |
| G0205626 | PUSH SWITCH | U001 | 29 |
| | | U012 | 65 |
| G0703088 | SPACER:DEVELOPMENT ROLLER | U007 | 87 |
| G1783678 | SPACER:BRUSH ROLLER | U007_S004 | 88 |
| G1786072 | PCB:PC4200:RAWCARD-A:1GB | U011 | 41 |
| G5221152 | FLANGED HEXAGONAL HEAD BOLT:FIX:BRACKET | U012_S001 | 66 |
| | | U012_S002 | 66 |
| G8221034 | CAP:PIPE:50X26 | U012_S003 | 67 |
| | | U012_S004 | 67 |
| GA003264 | DECAL:PS3:I-GRAY | ACCESSORIES | 26 |
| GW010007 | PHOTO REFLECTION SENSOR:EXIT | U006 | 47 |
| GX120004 | DC SOLENOID:VALVE | U008 | 14 |
| H0043755 | SQUARE BUSHING | U003 | 111 |
| J0011168 | SLIDER:TRANSPORT ROLLER | U006 | 48 |
| J0012850 | SLIDER:GEAR:PRESSURE | U006 | 49 |
| J0012876 | PLAIN SHAFT BEARING:TRANSPORT ROLLER | U006 | 50 |
| J0065423 | THERMISTOR:CARRIAGE:PRINT | U004 | 34 |
| J0171161 | TIMING PULLEY:TRANSPORT ROLLER:ASS'Y | U006 | 51 |
| J0174050 | LEVER:ACTUATOR UNIT:SUB-ASS'Y | U008 | 15 |
| J0174621 | END RING:TUBE:PUMP | U005 | 23 |
| | | U005_S001 | 23 |
| | | U008 | 16 |
| J0187520 | PIN:PREVENTFENCE:HEAD | Special Tools | 4 |
| J0254685 | TUBE:COUPLING | Special Tools | 5 |
| M0264581 | GEAR:IDLER:Z40 | U007 | 89 |
| M3551102 | GEAR:DRIVE:NO.3 | U007 | 90 |

Standard Parts



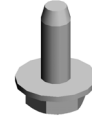
03530040N
SCREW - M3X4



03540400N
SCREW:M4X40



03603006N
SCREW - M3X6



04503008N
TAPPING SCREW - M3X8



04503010N
TAPPING SCREW - M3X10



04503020N
TAPPING SCREW:M3X20



04504008N
TAPPING SCREW - M4X8



04504010N
TAPPING SCREW:M4X10



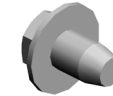
04513006N
TAPPING SCREW - 3X6



04513008N
TAPPING SCREW - M3X8



04513025N
TAPPING SCREW:M3X25



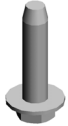
04514006N
TAPPING SCREW - 4X6



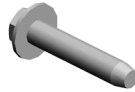
04514008N
TAPPING SCREW:4X8



04514010N
TAPPING SCREW:4X10



04514016N
TAPPING SCREW:4X16



04514020N
TAPPING SCREW - M4X20



04523008N
TAPPING SCREW - M3X8



04523010N
BINDING SELF-TAPPING SCREW:3X10



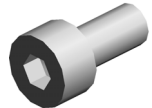
04543006Q
TAPPING SCREW - M3X6



04543008Q
TAPPING SCREW:3X8



04544008Q
TAPPING SCREW - M4X8



05940080N
HEXAGONAL SET SCREW - M4X8



06220120E
SPRING PIN - 2X12MM



06230180E
SPRING PIN - 3X18MM



06320080G
PARALLEL KEY - 2X8MM



06320140G
PARALLEL PIN



06320160G
PARALLEL PIN-M2X16

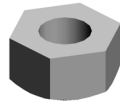


07030030N
SPRING WASHER: DIA3

Standard Parts



07030040N
SPRING WASHER: DIA4



07100120N
HEXAGONAL NUT: M12



07200020E
RETAINING RING - M2



07200025E
RETAINING RING - M2.5



07200030E
RETAINING RING - M3



07200040E
RETAINING RING - M4



07200060E
RETAINING RING - M6



07200080E
RETAINING RING - M8



07200100E
RETAINING RING - M10



07403808
BALL BEARING - 8X16X5MM



08010229
SCREW - M2.3X8



08025296
TAPPING SCREW - M3X8



08050089
RETAINING RING - M4



08050100
RETAINING RING - M2.5



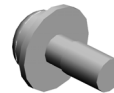
09513006N
SCREW - M3X6



09543006N
SCREW - M3X6



09543008N
SCREW - M3X8



09544008N
SCREW - M4X8



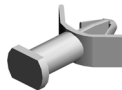
09655016N
TAPPING SCREW W/WASHER - M5X16



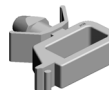
11050192
LOCKING SUPPORT



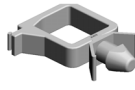
11050193
NYLON STUD



11050415
SPACER - 12.7MM



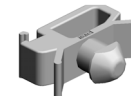
11050487
HARNESS CLAMP



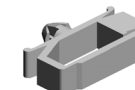
11050488
HARNESS CLAMP



11050490
HARNESS CLAMP - IWS-2218



11050511
HARNESS CLAMP - LWS-0306ZC



11050516
CLAMP



11050598
CLAMP: LWS-1N

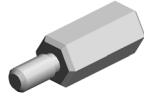
Standard Parts



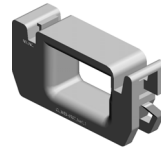
11050611
SPACER KGPS-3.5S-N(V0)



11050621
CLAMP - SB-2712



11050699
SPECER:SQ-12



11050723
CLAMPS:WES-0507



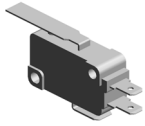
11050724
CLAMPS:WES-1210



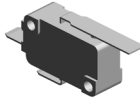
11050774
CLAMP:KS-15 BK



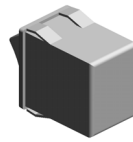
11500432
POWER SUPPLY CODE:250V
:10A:EU



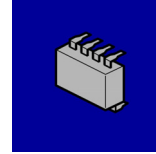
12042466
MICRO SWITCH - V-16506-1C
25



12042612
MICRO SWITCH:D3V-16506-3
C25



12042909
ROCKER SWITCH:A8GS-T11
85KR



14077667
EEPROM:BR24T128-W

PM Part List

| Number | Part Name | Num | Group | ID |
|----------|--|-----|-----------|----|
| D1243505 | MAINTENANCE RECOVERY: ASS'Y | 1 | U005_S001 | 11 |
| D6708301 | FLUSHING LIQUID RECIEVE R:SERVICE PARTS:ASS'Y | 1 | U005 | 20 |
| D6708501 | TANK:WASTE FLUID:SERVIC E PARTS | 1 | U005 | 22 |

Design Change List

| Number | Title | Set | Old Part | | New Part | | Index No. | | Q'ty | Interchg | | Reason | Cut-in S/N |
|-----------|-------------------|-----|-----------|-------------------------|-----------|----------------------------------|---------------|----|------|----------|-----|--------|------------|
| | | | P/N | Name | P/N | Name | Group | ID | | Indiv. | Set | | |
| 201309-01 | 1309 Modification | - | D1242015 | CARRIAGE:REAR:ASS'Y | D1242016 | CARRIAGE:REAR:ASS'Y | U004_S001 | 17 | 1 | X/O | | | D12427: |
| 201309-02 | 1309 Modification | - | D6702010 | HEAD:UNIT:BLACK | D6702011 | HEAD:UNIT:BLACK | U004 | 32 | 1 | X/O | | | D12427: |
| 201309-03 | 1309 Modification | - | D6702111 | HEAD:UNIT:COLOR | D6702112 | HEAD:UNIT:COLOR | U004 | 38 | 1 | X/O | | | D12427: |
| 201309-04 | 1309 Modification | - | | | D1291507 | KEYTOP:POWER SOURCE | | | | | | | D12427: |
| 201309-05 | 1309 Modification | - | D1291507 | KEYTOP:POWER SOURCE | D1291539 | KEYTOP:POWER SOURCE:BA | U002_S001 | 28 | 1 | X/O | | | D12427: |
| 201310-01 | 1310 Modification | - | D1242271 | POSITIONING SENSOR | D1242276 | POSITIONING SENSOR | U004_S001 | 36 | 1 | | | | D12427: |
| 201310-02 | 1310 Modification | - | D1241507 | KEYTOP:POWER SOURCE | D1241509 | KEYTOP:POWER SOURCE | U002_S001 | 10 | 1 | | | | D12427: |
| 201310-03 | 1310 Modification | - | | | 14077667 | EEPROM:BR24T128-W | U011_S001 | 44 | 1 | | | | D12427: |
| 201307-01 | 1307 Modification | - | | | D1245462 | PCB:HRB:ASS'Y | U004_S001 | 37 | 1 | | | | D12427: |
| 201306-01 | 1306 Modification | - | D1245402 | PCB:MCU | D1245403 | PCB:MCU | U011_S001 | 43 | 1 | | | | D12427: |
| 201305-01 | 1305 Modification | - | | | D1242250 | PROOFING MATERIAL:CARRIAGE:BLACK | Special Tools | 7 | 1 | | | | D12427: |
| 201305-02 | 1305 Modification | - | D6702101 | HEAD UNIT:COLOR | D6702111 | HEAD:UNIT:COLOR | U004 | 33 | 1 | | | | D12427: |
| 201305-03 | 1305 Modification | - | 04514010N | TAPPING SCREW:4X10 | 04504010N | TAPPING SCREW:M4X10 | U003 | 6 | 1 | X/O | | | D12427: |
| 201305-04 | 1305 Modification | - | | | D1249590 | COUNTER:PCB:NOVITA-S5K | Special Tools | 8 | 1 | | | | D12427: |
| 201304-01 | 1304 Modification | - | D1244473 | SPRING PLATE:EXIT:GUIDE | D1244477 | SPRING PLATE:EXIT:GUIDE | U009 | 35 | 1 | X/O | | | D12427: |
| 201304-02 | 1304 Modification | - | | | D1242251 | PROOFING MAT | Special Tools | 6 | 1 | X/O | | | D12427: |

Design Change List

| Number | Title | Set | Old Part | | New Part | | Index No. | | Q'ty | Interchg | | Reason | Cut-in S/N |
|-----------|-------------------|-----|----------|----------------------------|----------|----------------------------|----------------|----|------|----------|-----|--------|------------|
| | | | P/N | Name | P/N | Name | Group | ID | | Indiv. | Set | | |
| | | - | | | | ERIAL:CARRIAGE:COLOR | Is | | | | | | |
| 201303-01 | 1303 Modification | - | D1245401 | PCB:MCU:ASS'Y | D1245402 | PCB:MCU | U011 | 42 | 1 | X/O | | | D12427: |
| 201301-01 | 1301 Modification | - | D1244534 | SHUTTLE:CUTTER:ASS'Y | D1244588 | SHUTTLE:CUTTER | U009_S001_S001 | 47 | 1 | O/O | | | D12427: |
| 201301-02 | 1301 Modification | - | D1245400 | PCB:MCU:ASS'Y | D1245401 | PCB:MCU:ASS'Y | U011 | 30 | 1 | X/O | | | D12427: |
| 201301-03 | 1301 Modification | - | | | D1242271 | POSITIONING SENSOR | U004_S001 | 36 | 1 | | | | D12427: |
| 201301-04 | 1301 Modification | - | | | J0187520 | PIN:PREVENTFENCE:HEAD | Special Tools | 4 | 1 | | | | D12427: |
| | | | | | J0187520 | PIN:PREVENTFENCE:HEAD | Special Tools | 4 | 1 | | | | |
| | | | | | J0187520 | PIN:PREVENTFENCE:HEAD | Special Tools | 4 | 1 | | | | |
| | | | | | J0187520 | PIN:PREVENTFENCE:HEAD | Special Tools | 4 | 1 | | | | |
| | | | | | J0187520 | PIN:PREVENTFENCE:HEAD | Special Tools | 4 | 1 | | | | |
| | | | | | J0187520 | PIN:PREVENTFENCE:HEAD | Special Tools | 4 | 1 | | | | |
| | | | | | J0187520 | PIN:PREVENTFENCE:HEAD | Special Tools | 4 | 1 | | | | |
| | | | | | J0187520 | PIN:PREVENTFENCE:HEAD | Special Tools | 4 | 1 | | | | |
| | | | | | J0187520 | PIN:PREVENTFENCE:HEAD | Special Tools | 4 | 1 | | | | |
| | | | | | J0187520 | PIN:PREVENTFENCE:HEAD | Special Tools | 4 | 1 | | | | |
| 201301-05 | 1301 Modification | - | D1245381 | HARNESS:FFC:MCU-HRB4:ASS'Y | D1245382 | HARNESS:FFC:MCU-HRB4:ASS'Y | 1/1 D-5 | | 1 | X/O | | | D12427: |

Design Change List

| Number | Title | Set | Old Part | | New Part | | Index No. | | Q'ty | Interchg | | Reason | Cut-in S/N |
|-----------|-------------------|-----|-----------|--------------------------------|----------|--------------------------------|--------------------|----|------|----------|-----|--------|------------|
| | | | P/N | Name | P/N | Name | Group | ID | | Indiv. | Set | | |
| 201301-06 | 1301 Modification | - | | | D1242272 | BRACKET:POSIT IONING SENSOR | | | | | | | D12427: |
| 201301-07 | 1301 Modification | - | D1242272 | BRACKET:POSIT IONING SENSOR | D1242196 | BRACKET:POSIT IONING SENSOR | U004_S001 | 35 | 1 | X/O | | | D12427: |
| 201301-08 | 1301 Modification | - | | | B2299311 | SPECIAL CLOTH 10PCS/BAG | Special Too ls | 3 | 1 | | | | D12427: |
| 201301-09 | 1301 Modification | - | 04503010N | TAPPING SCRE W - M3X10 | | | U009_S001 _S001 | 2 | 1 | | | | D12427: |
| 201301-10 | 1301 Modification | - | | | J0254685 | TUBE:COUPLING | Special Too ls | 5 | 1 | | | | D12427: |
| | | | | | J0254685 | TUBE:COUPLING | Special Too ls | 5 | 1 | | | | |
| | | | | | J0254685 | TUBE:COUPLING | Special Too ls | 5 | 1 | | | | |
| | | | | | J0254685 | TUBE:COUPLING | Special Too ls | 5 | 1 | | | | |
| | | | | | J0254685 | TUBE:COUPLING | Special Too ls | 5 | 1 | | | | |

