

Chapter 5 Parts List CONTENTS

1. Parts List.....	5 - 1
1.1 Caution for use of spare parts illustration	5 - 1
1.2 Caution for use of engineering parts list	5 - 1
Customer Replaceable Parts Illustration.....	5 - 2
Engineering parts list	5 - 8
PL1.1 Cover (1/2) [Illustration]	5 - 8
PL1.1 Cover (1/2) [List].....	5 - 9
PL1.2 Cover (2/2) [Illustration]	5 - 10
PL1.2 Cover (2/2) [List].....	5 - 11
PL2.1 Paper Cassette (1/2) [Illustration].....	5 - 12
PL2.1 Paper Cassette (1/2) [List].....	5 - 13
PL2.2 Paper Cassette (2/2) [Illustration].....	5 - 14
PL2.2 Paper Cassette (2/2) [List].....	5 - 15
PL3.1 Paper Feeder (1/2) [Illustration].....	5 - 16
PL3.1 Paper Feeder (1/2) [List].....	5 - 17
PL3.2 Paper Feeder (2/2) [Illustration].....	5 - 18
PL3.2 Paper Feeder (2/2) [List].....	5 - 19
PL4.1 Transfer [Illustration].....	5 - 20
PL4.1 Transfer [List].....	5 - 21
PL5.1 Xerographics [Illustration]	5 - 22
PL5.1 Xerographics [List].....	5 - 23
PL6.1 Fuser & Exit [Illustration].....	5 - 24
PL6.1 Fuser & Exit [List]	5 - 25
PL7.1 Frame [Illustration].....	5 - 26
PL7.1 Frame [List].....	5 - 27
PL8.1 Drive [Illustration].....	5 - 28
PL8.1 Drive [List].....	5 - 29
PL9.1 Electrical [Illustration].....	5 - 30
PL9.1 Electrical [List]	5 - 31
PL10.1 Harness [Illustration].....	5 - 32
PL10.1 Harness [List].....	5 - 33
PL11.1 Duplex (Option) (1/2) [Illustration].....	5 - 34
PL11.1 Duplex (Option) (1/2) [List]	5 - 35
PL11.2 Duplex (Option) (2/2) [Illustration].....	5 - 36
PL11.2 Duplex (Option) (2/2) [List]	5 - 37
PL12.1 550 Feeder (Option) (1/5) [Illustration]	5 - 38
PL12.1 550 Feeder (Option) (1/5) [List]	5 - 39
PL12.2 550 Feeder (Option) (2/5) [Illustration]	5 - 40
PL12.2 550 Feeder (Option) (2/5) [List]	5 - 41
PL12.3 550 Feeder (Option) (3/5) [Illustration]	5 - 42
PL12.3 550 Feeder (Option) (3/5) [List]	5 - 43
PL12.4 550 Feeder (Option) (4/5) [Illustration]	5 - 44
PL12.4 550 Feeder (Option) (4/5) [List]	5 - 45
PL12.5 550 Feeder (Option) (5/5) [Illustration]	5 - 46
PL12.5 550 Feeder (Option) (5/5) [List]	5 - 47

Chapter 5 Parts List CONTENTS

Blank Page

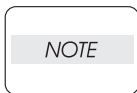
1. Parts List

1.1 Caution for use of spare parts illustration

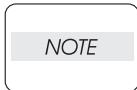
- Available spare parts are shown in the illustration by name.
- [Ref PL X.Y.Z] shown below the part name denotes the item is "Z" in the plate "PL X.Y" of the engineering part list.
- For the detailed composition of the KIT parts, check with the engineering part list.

1.2 Caution for use of engineering parts list

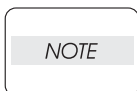
- The figures indicating the illustrations are the item No. in the list and present correspondence between the illustrations and parts.
- The notation of PL "X.Y.Z" is composed of the plate (PL), item "X.Y", and parts "Z".
- The alphabet characters in the illustrations represent screws and clips as follows:
"S": screw, "E": E-ring, "KL": KL clip, "C": C-ring, and "N": nut
- "▼" mark in the illustrations are attached to items indicating assembly parts in the illustrations.
- Encircled alphabetical figures in the illustrations indicate interrupted leader lines. Same characters in the illustrations represent lines to be connected.
- The mark "(with 2-5)" attached to assembly parts on the illustrations and lists represents that the items "2, 3, 4, and 5" of that plate are contained and the mark "(with 2-5, PL6.1.1)" represent that the item "2, 3, 4, and 5" of that plate and the item "1" of the plate "6.1" are contained.
- The mark "[Ref PLX.Y.Z]" attached to parts in the illustrations and lists represents that the parts is the same as the parts of the item "Z" of the plate "X.Y".
- The mark "*" attached to parts in the list represents "Note" or "Reference" about that parts is contained in the same page.



For spare parts, refer to the "Spare parts list" which is issued separately.

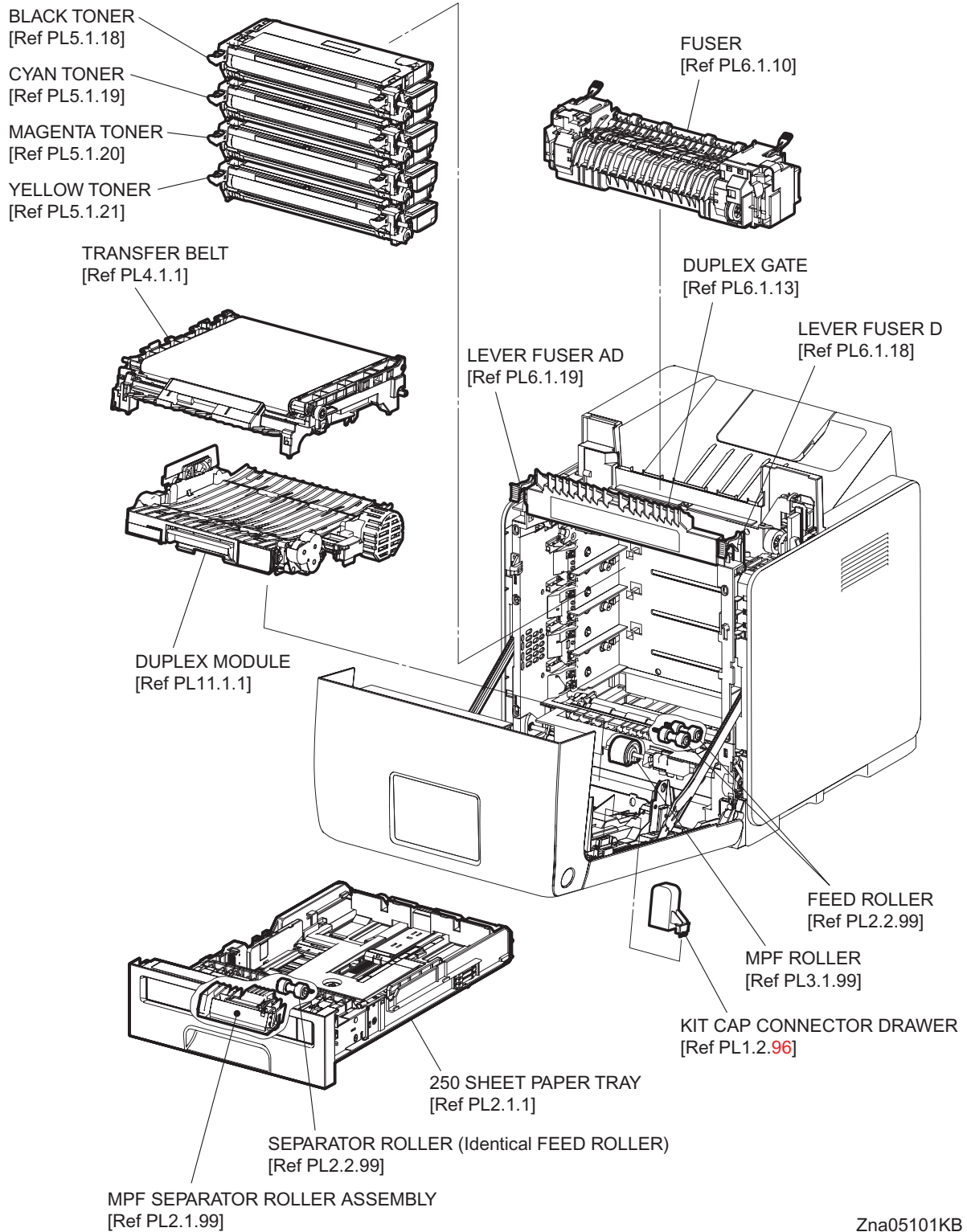


For the connector (P/J), parts such as harness, wire, etc. in the list, refer to "Chapter 7, Electric wiring"

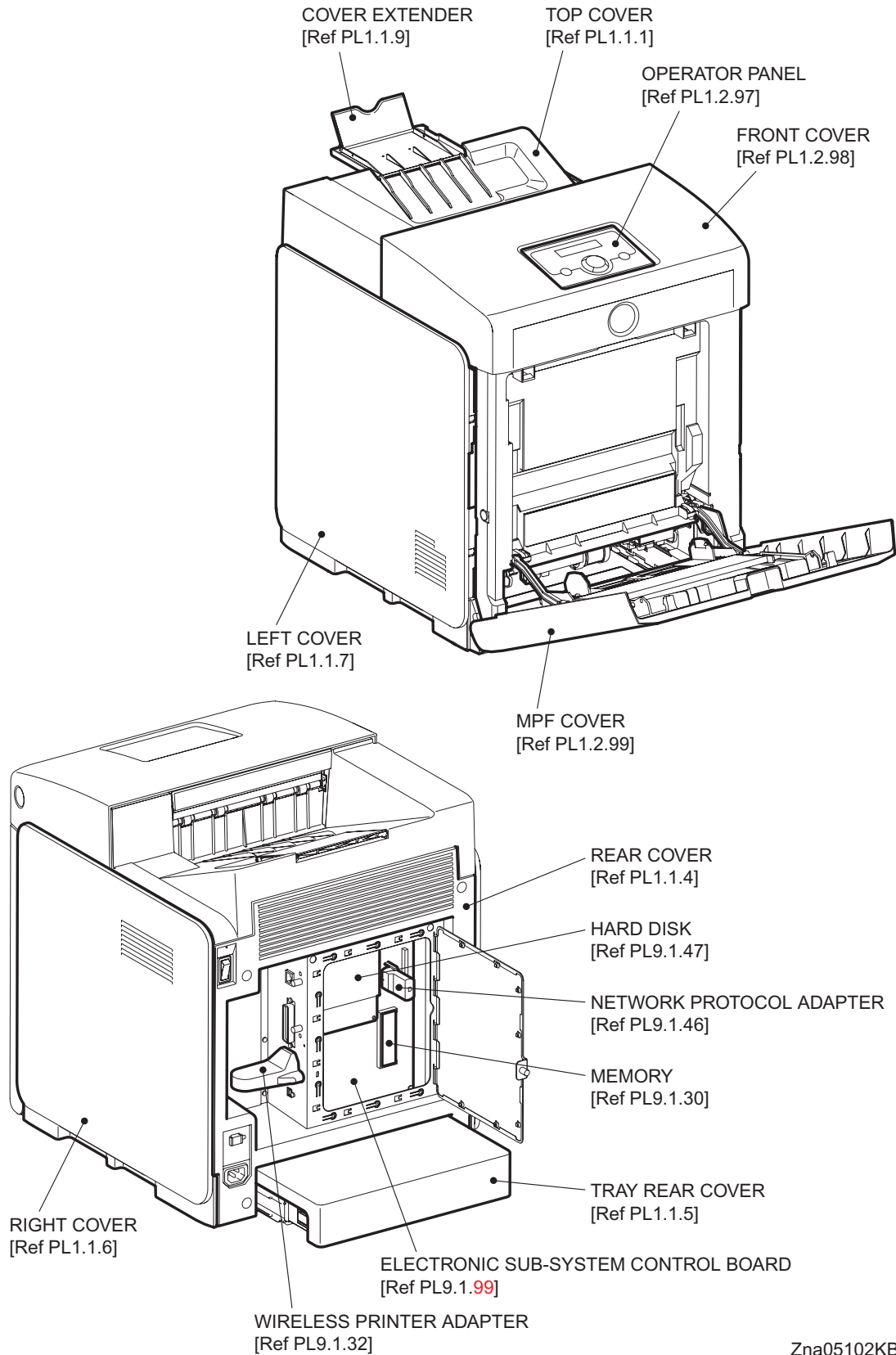


It should be noted that configuration of parts may be different or some parts are not used depending on specifications of OEM.

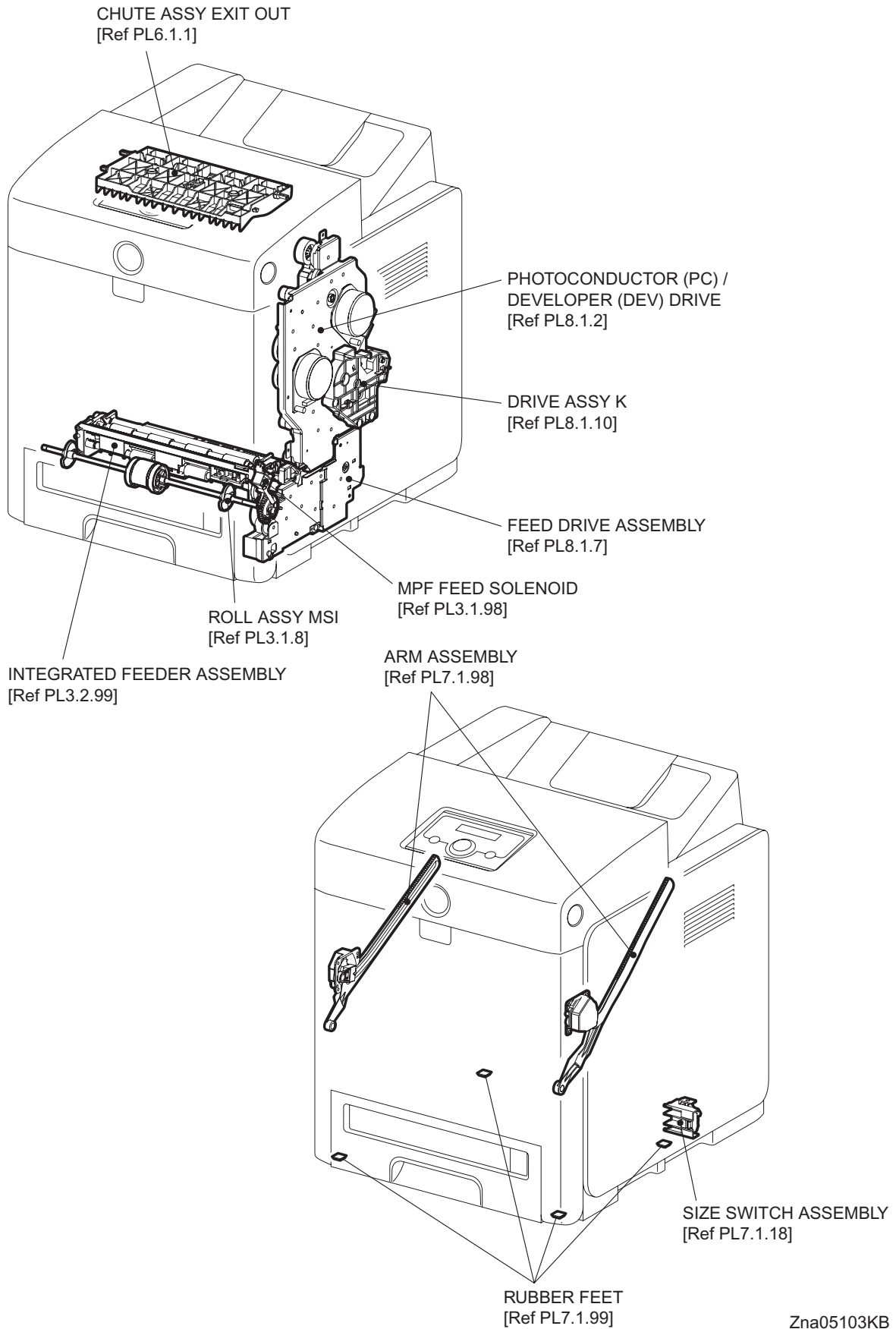
Customer Replaceable Parts Illustration



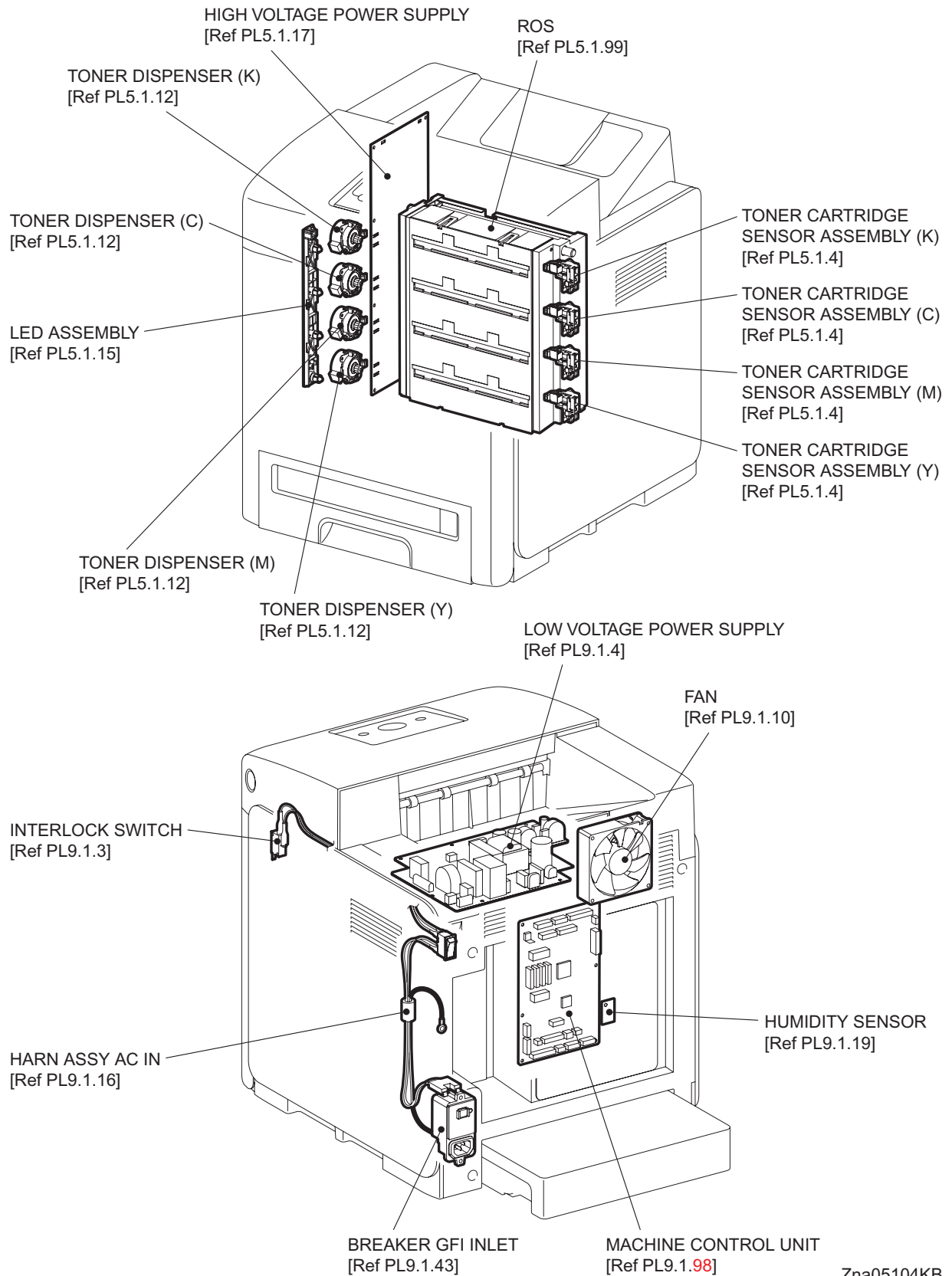
Zna05101KB



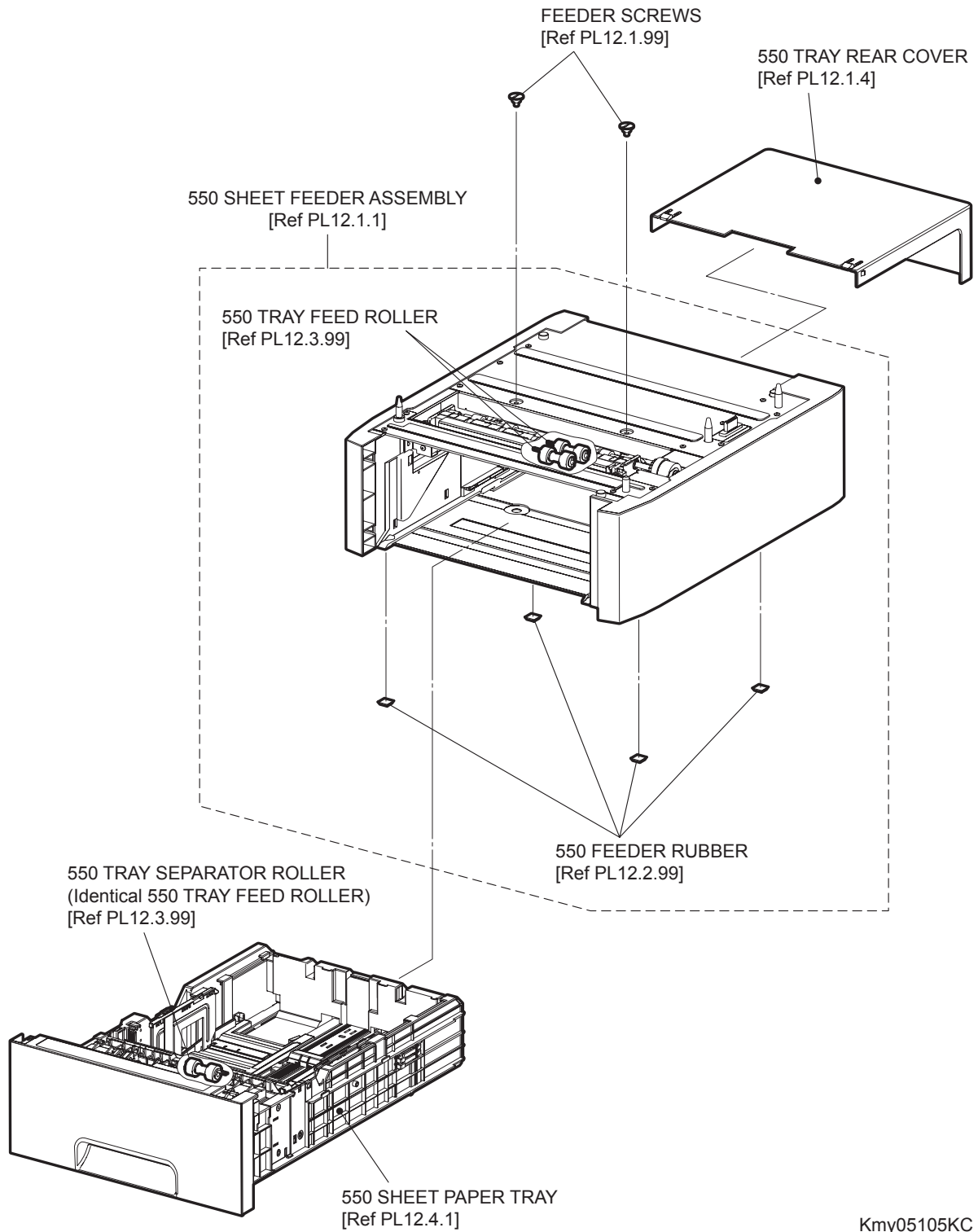
Zna05102KB



Zna05103KB



Zna05104KB

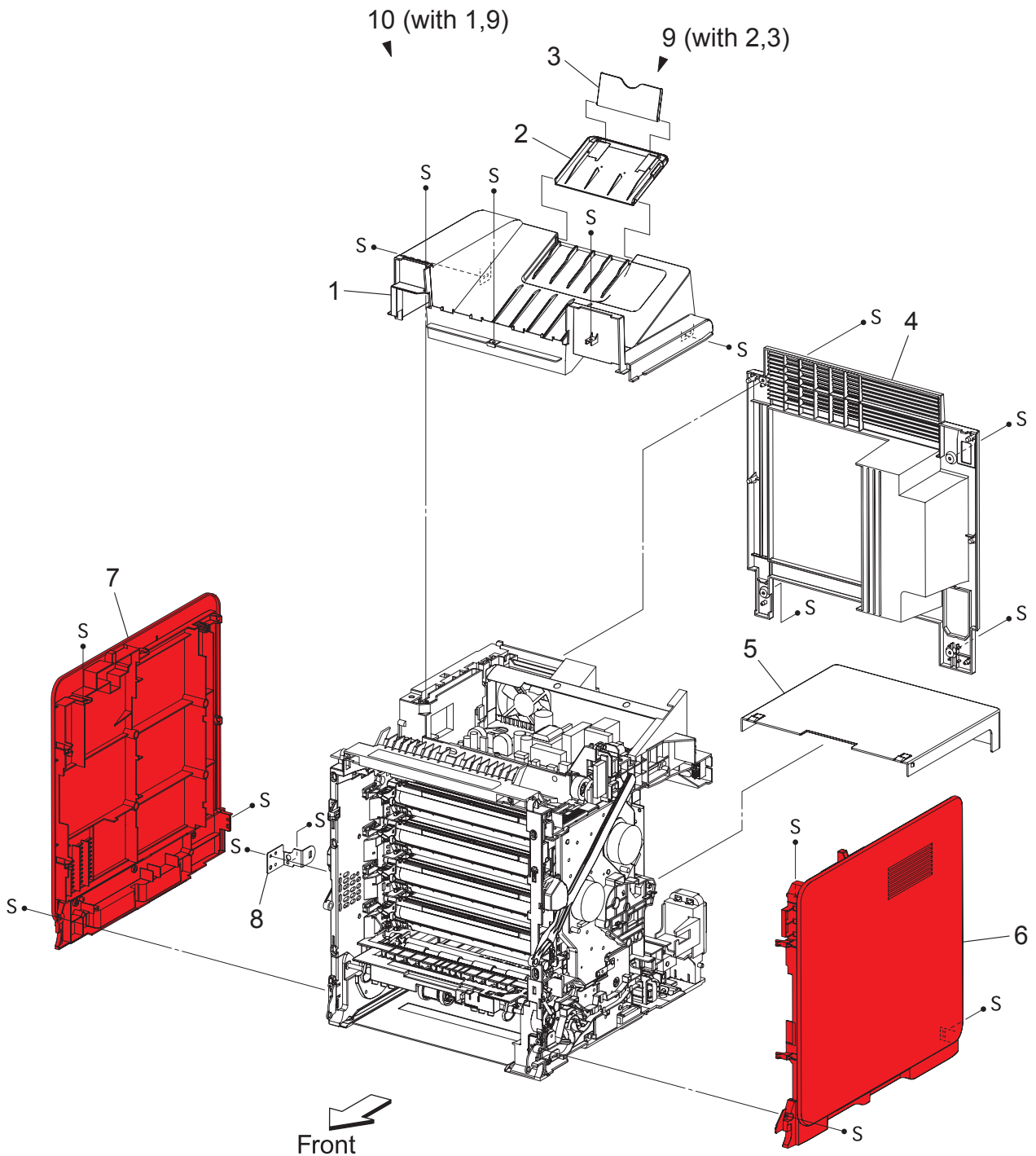


Kmy05105KC

Blank Page

Engineering parts list

PL1.1 Cover (1/2) [Illustration]

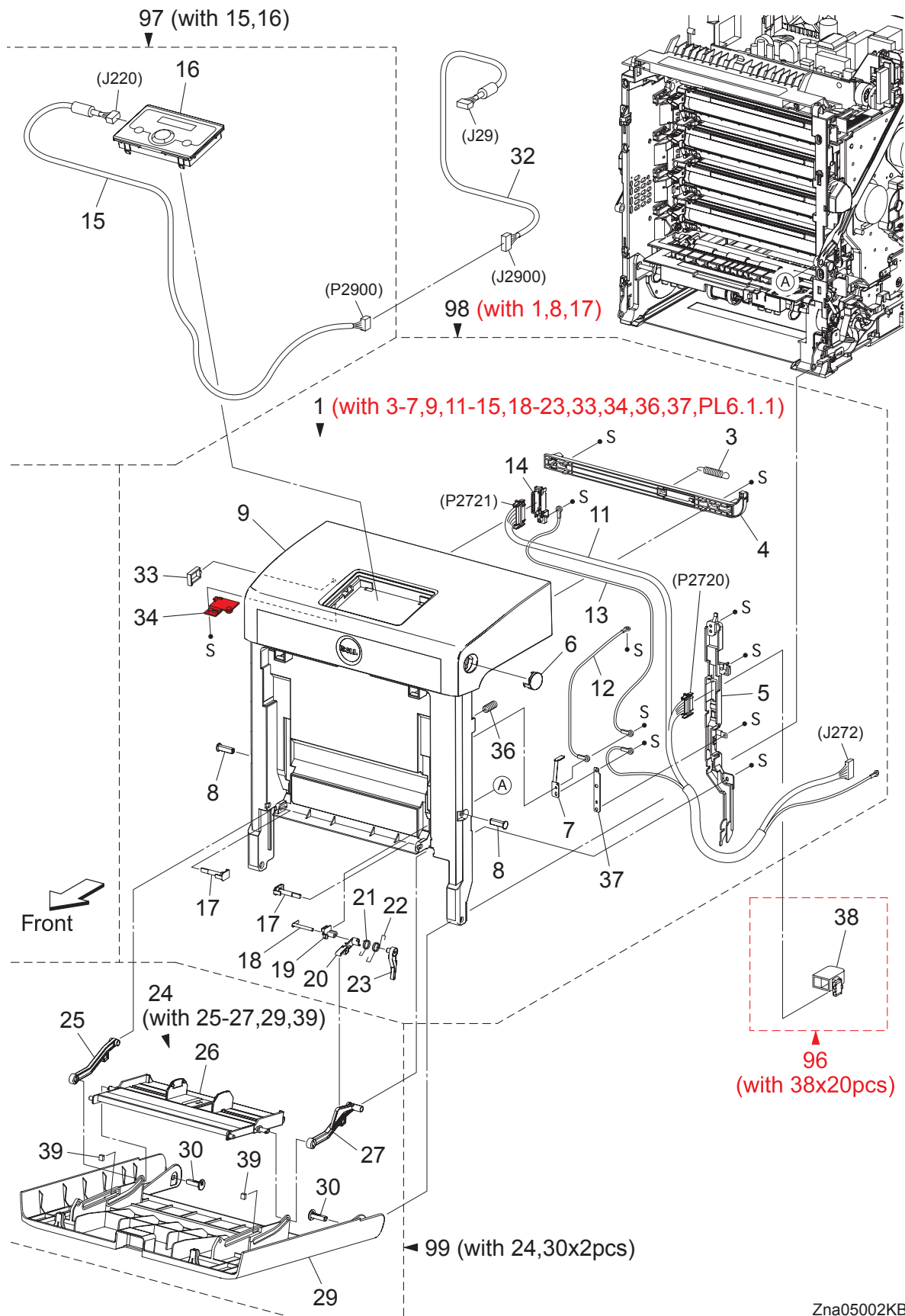


Zna05001KB

PL1.1 Cover (1/2) [List]

Item	Parts name
1	COVER TOP
2	COVER EXTENSION 1
3	COVER EXTENSION 2
4	COVER REAR
5	COVER CST
6	COVER SIDE R ASSY
7	COVER SIDE L ASSY
8	BRACKET RCB
9	COVER ASSY EXTENDER (with 2,3)
10	COVER ASSY TOP (with 1,9)

PL1.2 Cover (2/2) [Illustration]

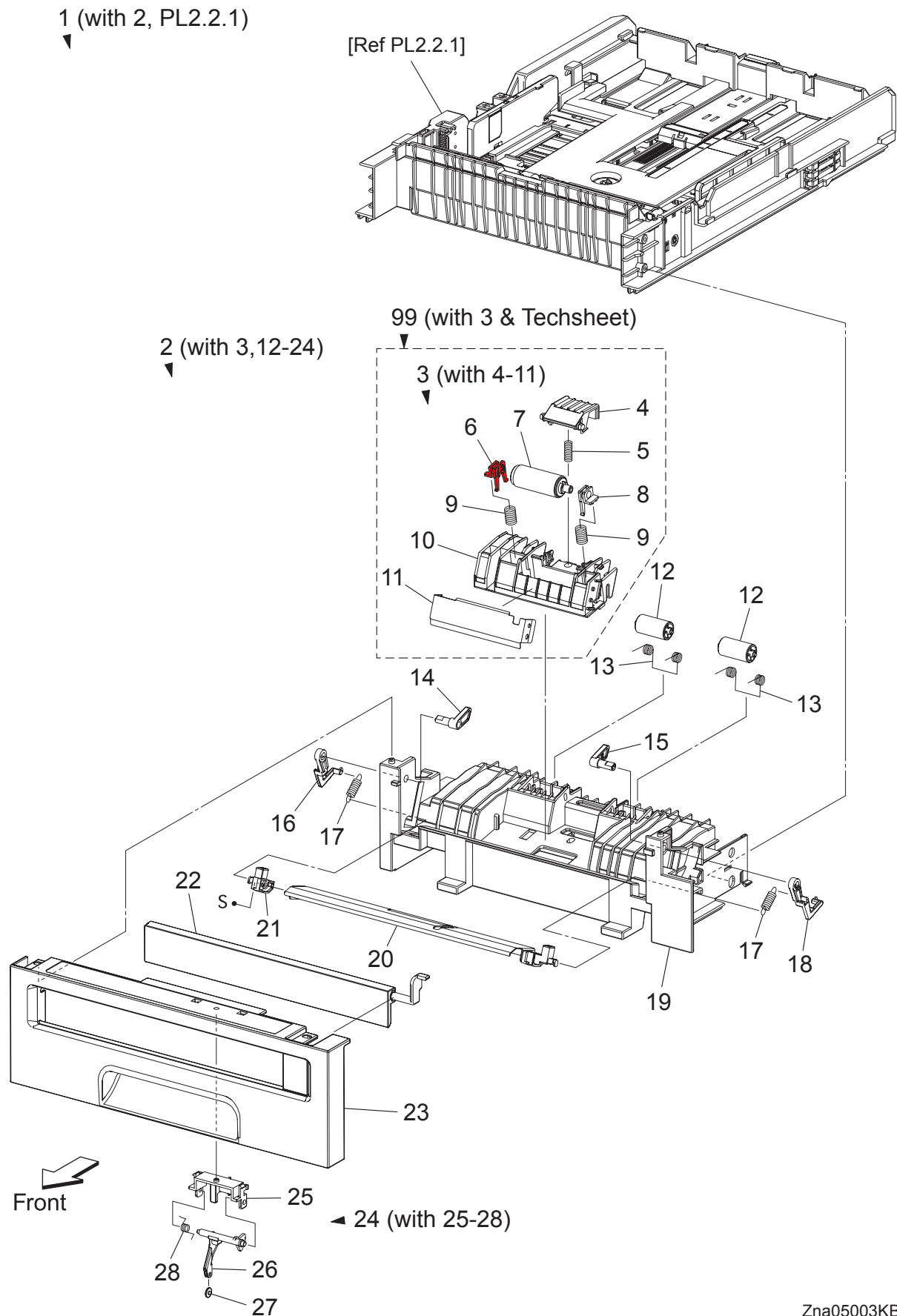


Zna05002KB

PL1.2 Cover (2/2) [List]

Item	Parts name
1	COVER ASSY FRONT (with 3-7,9,11-15,18-23,33,34,36,37,PL6.1.1)
2	--
3	SPRING LATCH
4	LATCH FRONT
5	COVER HARNESS
6	BUTTON TOP
7	CONTACT FRONT
8	SHAFT PIVOT
9	COVER FRONT ASSY
10	--
11	HARNESS ASSY FRONT COVER (J272-P2720,P2721,T4322-T43221)
12	HARNESS ASSY FRONT COVER EARTH 1 (T4321-T43210)
13	HARNESS ASSY DRAWER EARTH
14	HOLDER DRAWER
15	HARNESS ASSY OPEPANE (J220-P2900)
16	CONSOLE PANEL
17	PIN PIVOT MSI
18	SHAFT LEVER
19	PLATE PIVOT
20	LEVER MSI 1
21	SPRING LEVER MSI
22	SPRING LEVER LINK
23	LEVER MSI 2
24	COVER ASSY MSI (with 25-27,29,39)
25	LINK MSI L
26	TRAY ASSY MSI BASE
27	LINK MSI R
28	--
29	COVER MSI
30	SHAFT PIVOT MSI
31	--
32	HARNESS ASSY ESS (J29-J2900)
33	CLAMP RLWT-4V0
34	BRACKET HARNESS
35	--
36	SPRING
37	PLATE EARTH FC
38	CAP CONNECTOR DRAWER (Remove the connector when installing the Duplex Unit.)
39	PAD COVER MSI
96	KIT CAP CONNECTOR DRAWER (with 38x20pcs)
97	KIT OPERATOR PANEL (with 15,16)
98	KIT COVER ASSY FRONT (with 1,8,17)
99	KIT COVER ASSY MSI (with 24,30x2pcs)

PL2.1 Paper Cassette (1/2) [Illustration]



Zna05003KB

PL2.1 Paper Cassette (1/2) [List]

Item	Parts name
1	CASSETTE ASSY 250 (with 2, PL2.2.1)
2	CASSETTE ASSY FRONT (with 3,12-24)
3	SEPARATOR ROLLER ASSY MSI (with 4-11)
4	CHUTE SEPARATOR
5	SPRING CHUTE
6	BEARING SEPARATOR L
7	SEPARATOR ROLLER MSI
8	BEARING SEPARATOR R
9	SPRING SEPARATOR 200
10	HOLDER SEPARATOR MSI
11	PLATE SEPARATOR
12	ROLL PINCH TURN
13	SPRING PINCH TURN
14	FOLLOWER L
15	FOLLOWER R
16	ARM L
17	SPRING NF MSI
18	ARM R
19	HOUSING BASE FR 250
20	PLATE ASSY BOTTOM
21	HOLDER ASSY MSI L
22	COVER FRONT MSI
23	HANDLE CST 250
24	ACTUATOR ASSY MSI (with 25-28)
25	HOLDER ACTUATOR
26	ACTUATOR NO PAPER MSI
27	ROLL ACTUATOR NO PAPER
28	SPRING NO PAPER
99	KIT SEPARATOR ROLLER ASSY MSI (with 3 & Techsheet)

PL2.2 Paper Cassette (2/2) [List]

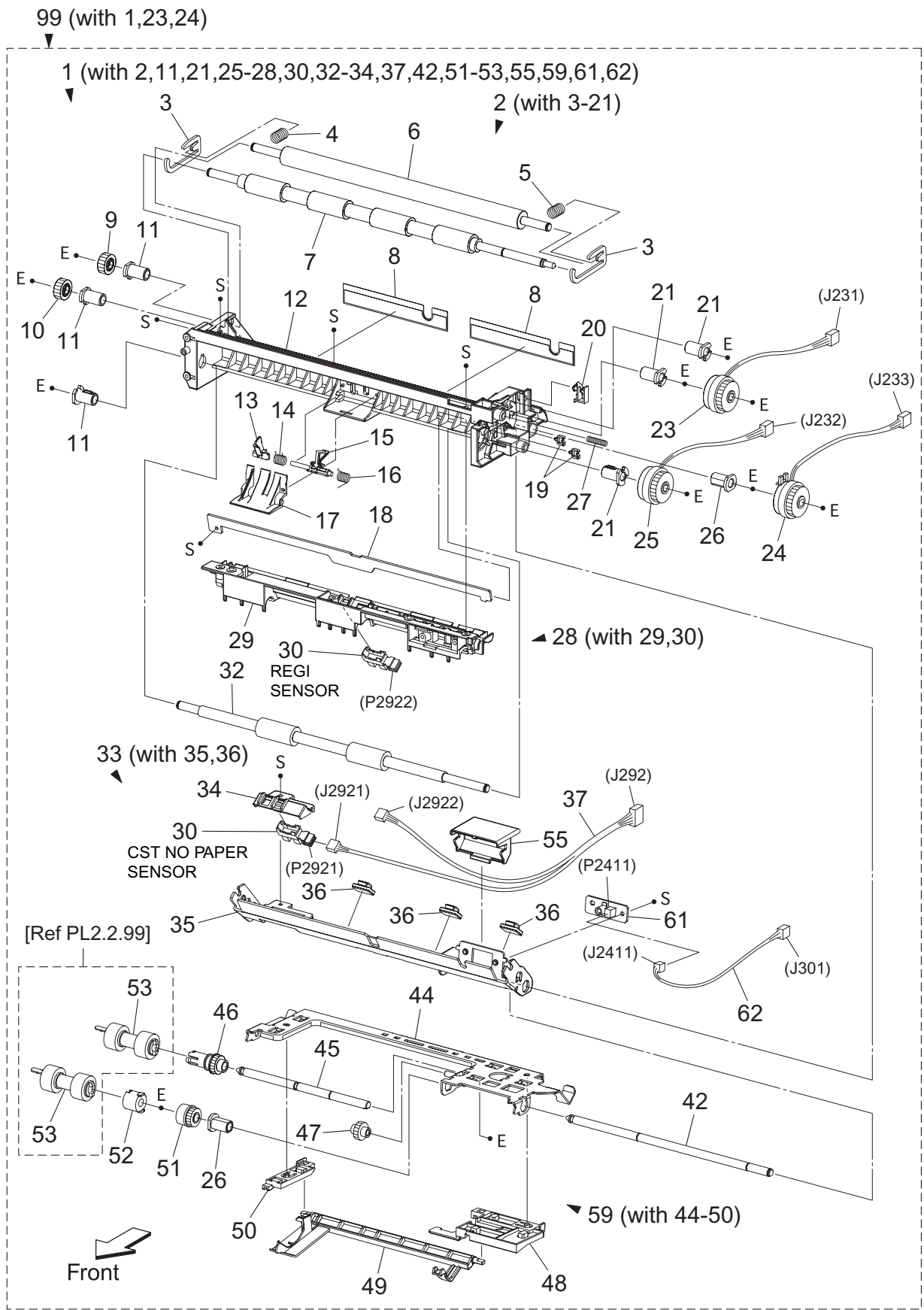
Item	Parts name
1	CASSETTE ASSY REAR 250 (with 2-13,18-33)
2	PLATE ASSY BTM A4
3	STOPPER PB
4	GEAR BTM LOCK ONEWAY
5	SHAFT PB A4
6	GEAR BTM DMP ONEWAY
7	GEAR PB L
8	SPRING BTM UP 250 A4
9	GUIDE ASSY SIDE R 250
10	GUIDE SIDE L 250
11	GEAR PINION
12	HOLDER ASSY SEPARATOR (with 14-17)
13	CVR SPRTR CST
14	HOLDER SEPARATOR
15	SHAFT SEPARATOR
16	CLUTCH FRICTION SPRTR
17	SEPARATOR ROLLER
18	SPRING SEPARATOR
19	SWITCH SIZE SET
20	PLATE LOCK CST
21	PLATE GEAR LOCK 250
22	GUIDE ASSY CST END 250
23	ACTUATOR SIZE
24	HSG BASE RE 250
25	ACTUATOR RLS PB
26	SPRING STOPPER GEAR
27	GEAR PB R
28	COVER BTM UP 250
29	RACK BTM LOCK 250
30	SPRING BTM LOCK
31	GEAR BTM LOCK PINION
32	GEAR LEVER BTM LOCK
33	LEVER BTM LOCK
99	KIT SEPARATOR and FEED ROLLER (with 17, PL3.2.53x2 total 3pcs & Techsheet) *1

*1 : Periodic Replacing Parts (100KPV)

PL3.1 Paper Feeder (1/2) [List]

Item	Parts name
1	--
2	--
3	SOLENOID FEED MSI
4	SPRING FEED MSI
5	GEAR MSI
6	BEARING EARTH
7	CAM MSI R
8	ROLL ASSY MSI (with 7,9-12,18)
9	ROLL CORE MSI
10	ROLL ASSY FEED MSI
11	PIN DOWEL
12	SHAFT MSI
13	BEARING
14	CHUTE MSI
15	SENSOR PHOTO (MSI NO PAPER SENSOR)
16	COVER SNR
17	HARN ASSY MSI NPP (J282-J2821)
18	CAM MSI L
19	--
20	CLAMP RFC-11V0
98	KIT ROLL & SOLENOID FEED MSI (with 3-5,10)
99	KIT ROLL ASSY FEED MSI (with 10 & Techsheet)

PL3.2 Paper Feeder (2/2) [Illustration]

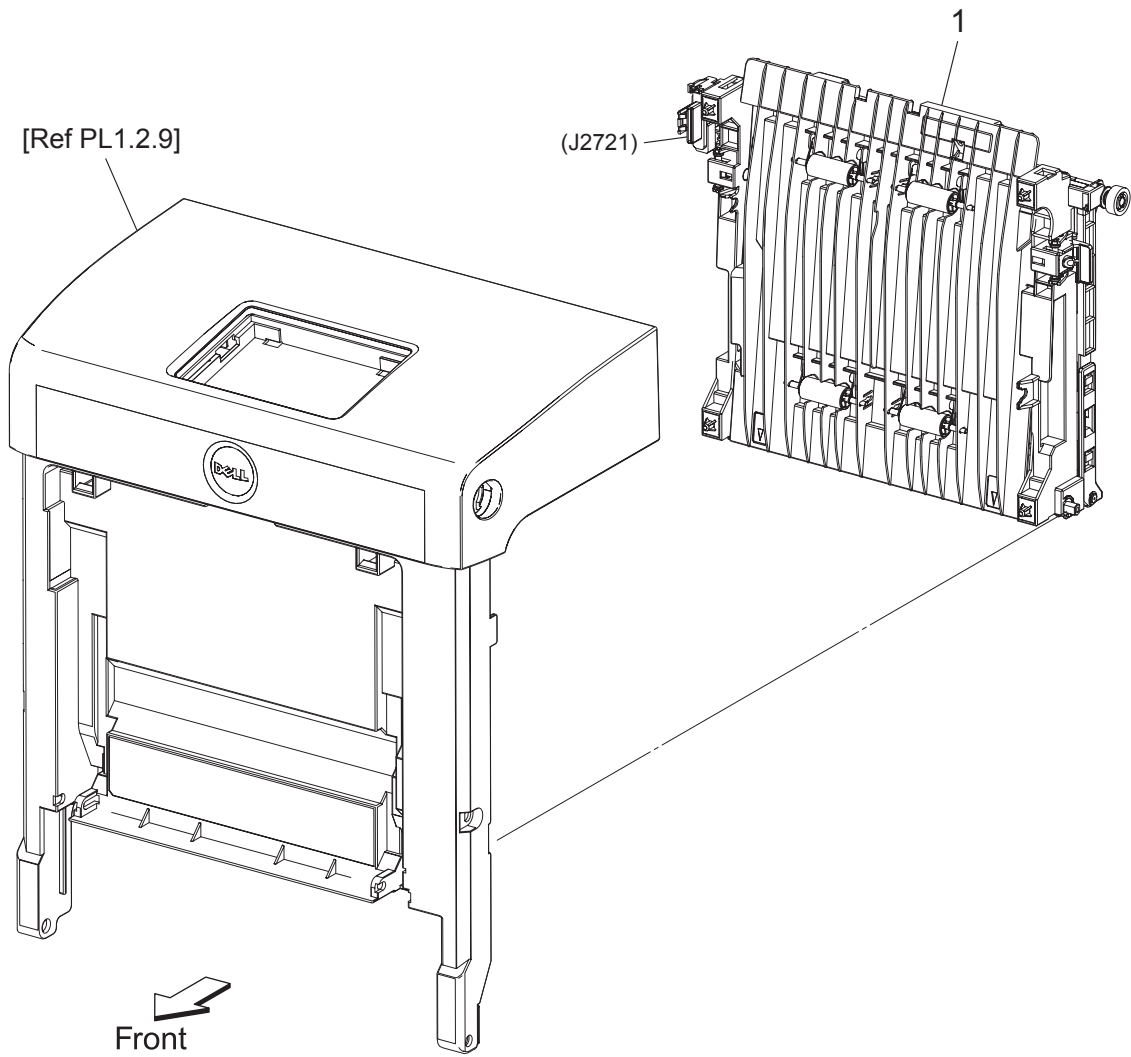


Zna05006KB

PL3.2 Paper Feeder (2/2) [List]

Item	Parts name
1	FEEDER ASSY (with 2,11,21,25-28,30,32-34,37,42,51-53,55,59,61,62)
2	CHUTE ASSY REGI (with 3-21)
3	BRACKET NIP
4	SPRING REGI L
5	SPRING REGI R
6	ROLL REGI METAL
7	ROLL REGI RUBBER
8	FILM INLET L
9	GEAR REGI METAL
10	GEAR REGI RUBBER
11	BEARING REGI
12	CHUTE REGI
13	ACTUATOR A
14	SPRING REGI SNSR A
15	ACTUATOR B
16	SPRING REGI SNSR B
17	COVER ACTUATOR
18	CHUTE SEPARATOR BTM
19	CLAMP MINI-SADDLE
20	CLAMP
21	BEARING REGI E
22	--
23	CLUTCH ASSY PH REGI
24	CLUTCH ASSY PH FEED
25	CLUTCH ASSY PH TURN
26	BEARING NUDGER
27	SPRING EARTH
28	CHUTE ASSY REGI UPPER (with 29,30)
29	CHUTE REGI UPPER
30	SENSOR PHOTO (REGI SENSOR, CST NO PAPER SENSOR)
31	--
32	ROLL ASSY TURN
33	CHUTE ASSY TOP (with 35,36)
34	HOLDER NOSNSR
35	CHUTE ASSY SEPARATOR
36	CLAMP
37	HARN ASSY REGI SNR (J292-J2921,J2922)
38	--
39	--
40	--
41	--
42	SHAFT FEED
43	--
44	SUPPORT NUDGER ASSY
45	SHAFT NUDGER
46	GEAR NUDGER A4
47	GEAR IDLER NUDGER
48	HOLDER NO PAPER L A4
49	ACTUATOR NO PAPER A4
50	HOLDER NO PAPER R A4
51	CLUTCH ONEWAY NUDGER
52	CLUTCH ONEWAY FEED
53	ROLL ASSY FEED
54	--
55	COVER OHP SNR
56	--
57	--
58	--
59	NUDGER ASSY (with 44-50)
60	--
61	PWBA TEM SNR
62	HARN ASSY TEM SNR (J301-J2411)
99	KIT FEEDER ASSY (with 1,23,24)

PL4.1 Transfer [Illustration]



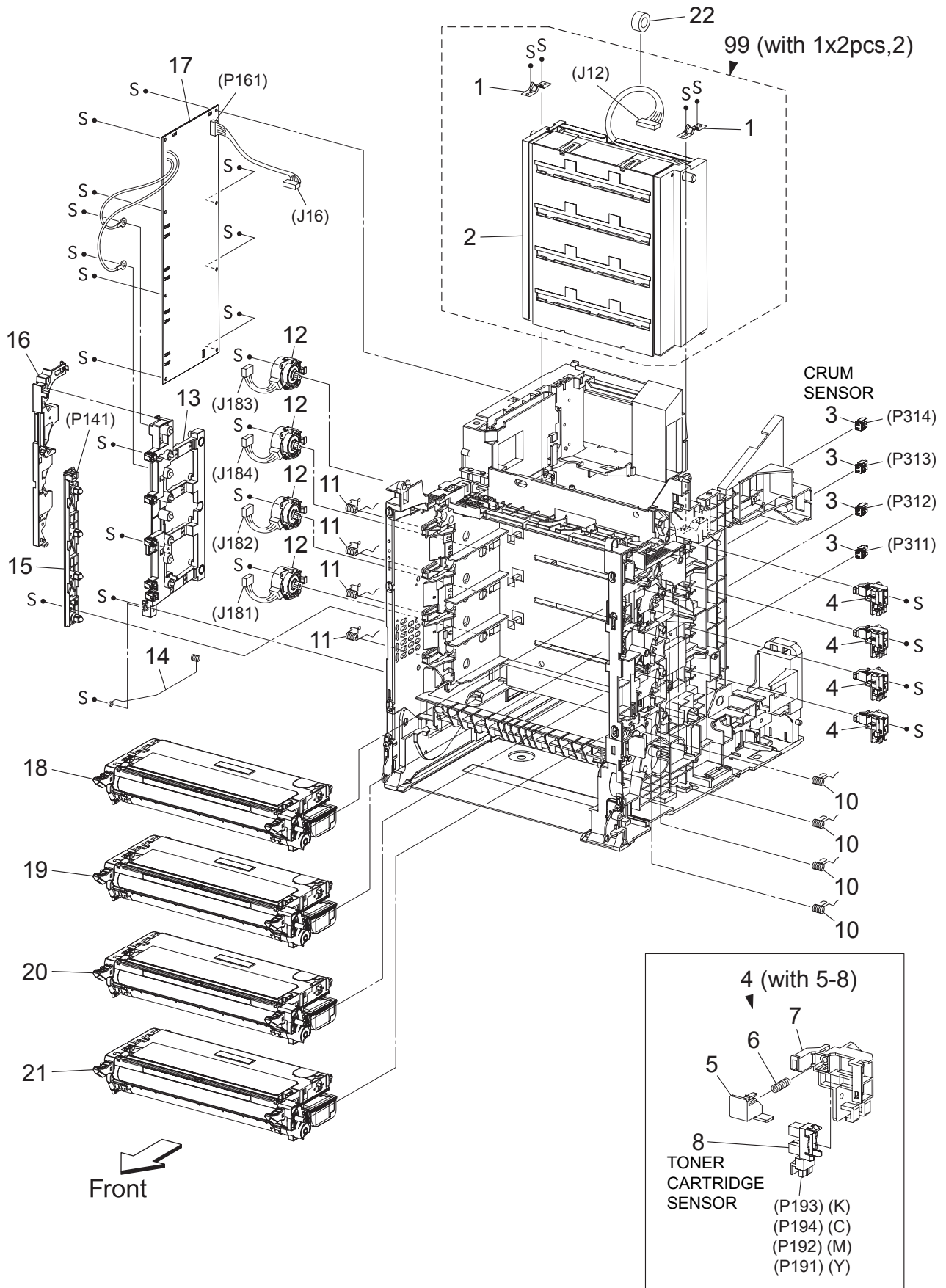
Zna05007KA

PL4.1 Transfer [List]

Item	Parts name
1	TRANSFER ASSY (KIT BELT CRU) *1
2	--
3	--
4	--
5	--
6	--
7	--

*1 : Periodic Replacing Parts (100KPV)

PL5.1 Xerographics [Illustration]



Zna05010KB

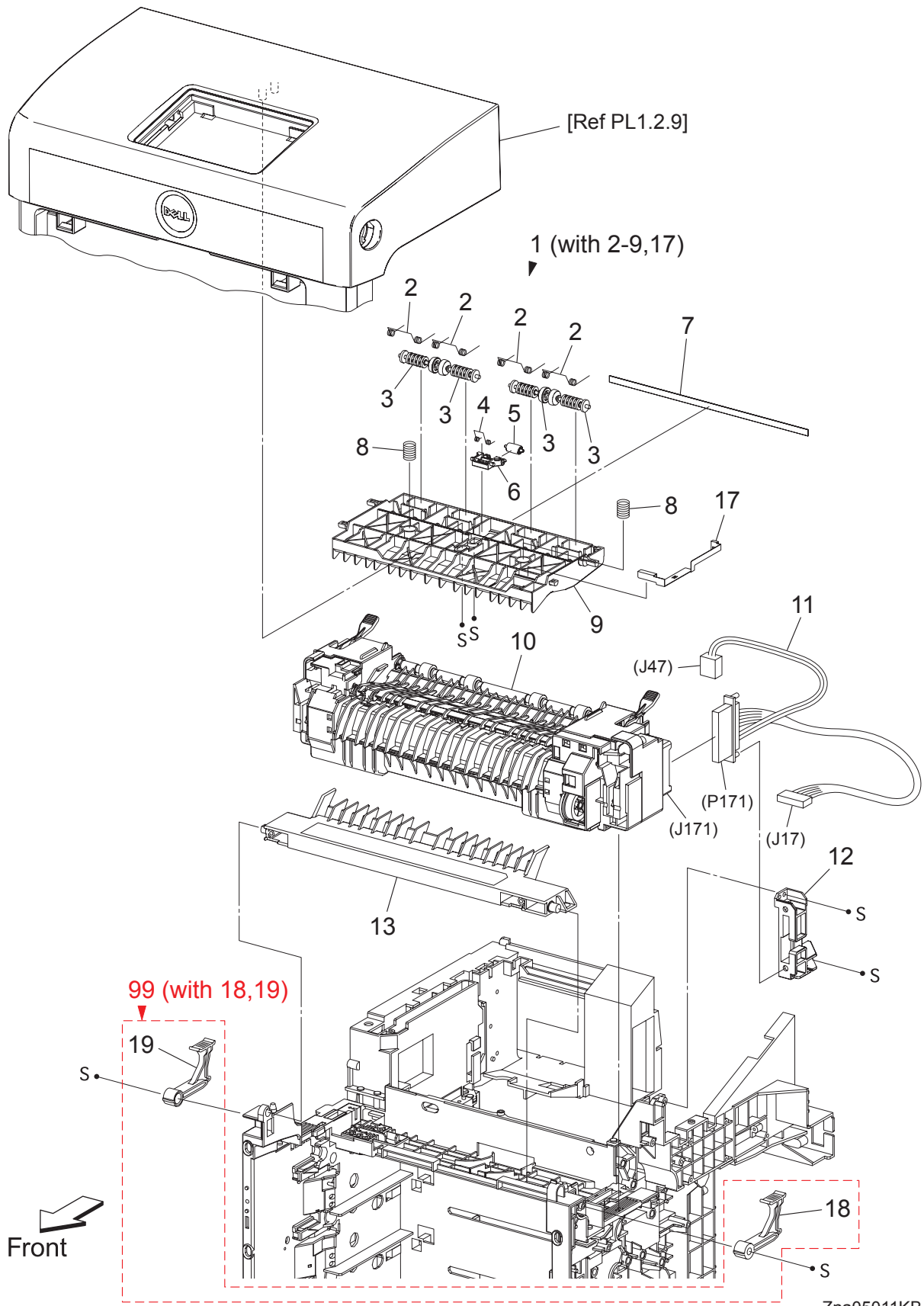
PL5.1 Xerographics [List]

Item	Parts name
1	SPRING ROS
2	ROS ASSY
3	CONNECTOR CRUM
4	SENSOR ASSY CRU (with 5-8)
5	ACTUATOR CRU
6	SPRING CRU
7	BRACKET ACTUATOR
8	SENSOR PHOTO (TONER CARTRIDGE SENSOR)
9	--
10	SPRING CRU R
11	SPRING CRU L
12	DISPENSER ASSY
13	BIAS ASSY
14	SPRING ESA ROLL
15	LED ASSY
16	DUCT HARNESS MOT
17	HVPS
18	CARTRIDGE ASSY (K) (with Techsheet) *1
19	CARTRIDGE ASSY (C) (with Techsheet) *2
20	CARTRIDGE ASSY (M) (with Techsheet) *2
21	CARTRIDGE ASSY (Y) (with Techsheet) *2
22	CORE
23	--
99	KIT ROS ASSY (with 1x2pcs, 2)

*1 : Periodic Replacing Parts (4KPV/9KPV)

*2 : Periodic Replacing Parts (3KPV/9KPV)

PL6.1 Fuser & Exit [Illustration]



Zna05011KB

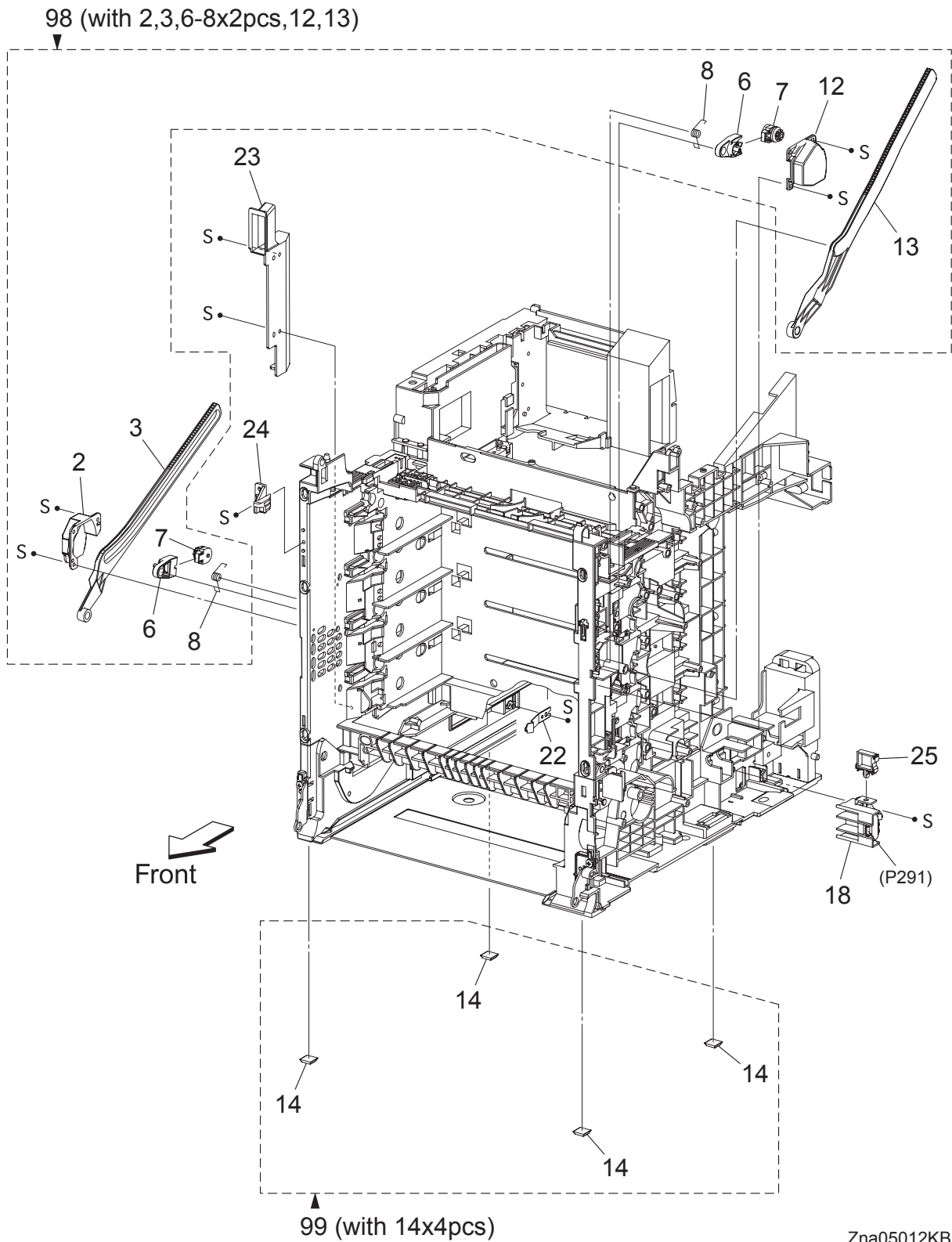
PL6.1 Fuser & Exit [List]

Item	Parts name
1	CHUTE ASSY EXIT OUT (with 2-9,17)
2	SPRING PINCH EXIT OUT
3	ROLL PINCH EXIT
4	SPRING CORRUGATE
5	ROLL CORRUGATE
6	HOLDER CORRUGATE
7	ELIMINATOR EXIT
8	SPRING CHUTE OUT
9	CHUTE EXIT OUT
10	FUSER ASSY (with Techsheet) *1
11	HARN ASSY FUSER (P171-J17,J47)
12	BRACKET FUSER
13	CHUTE DUP GATE
14	--
15	--
16	--
17	PLATE EARTH EXIT
18	LEVER FUSER D
19	LEVER FUSER AD

99 **KIT LEVER FUSER (with 18,19)**

*1 : Periodic Replacing Parts (100KPV)

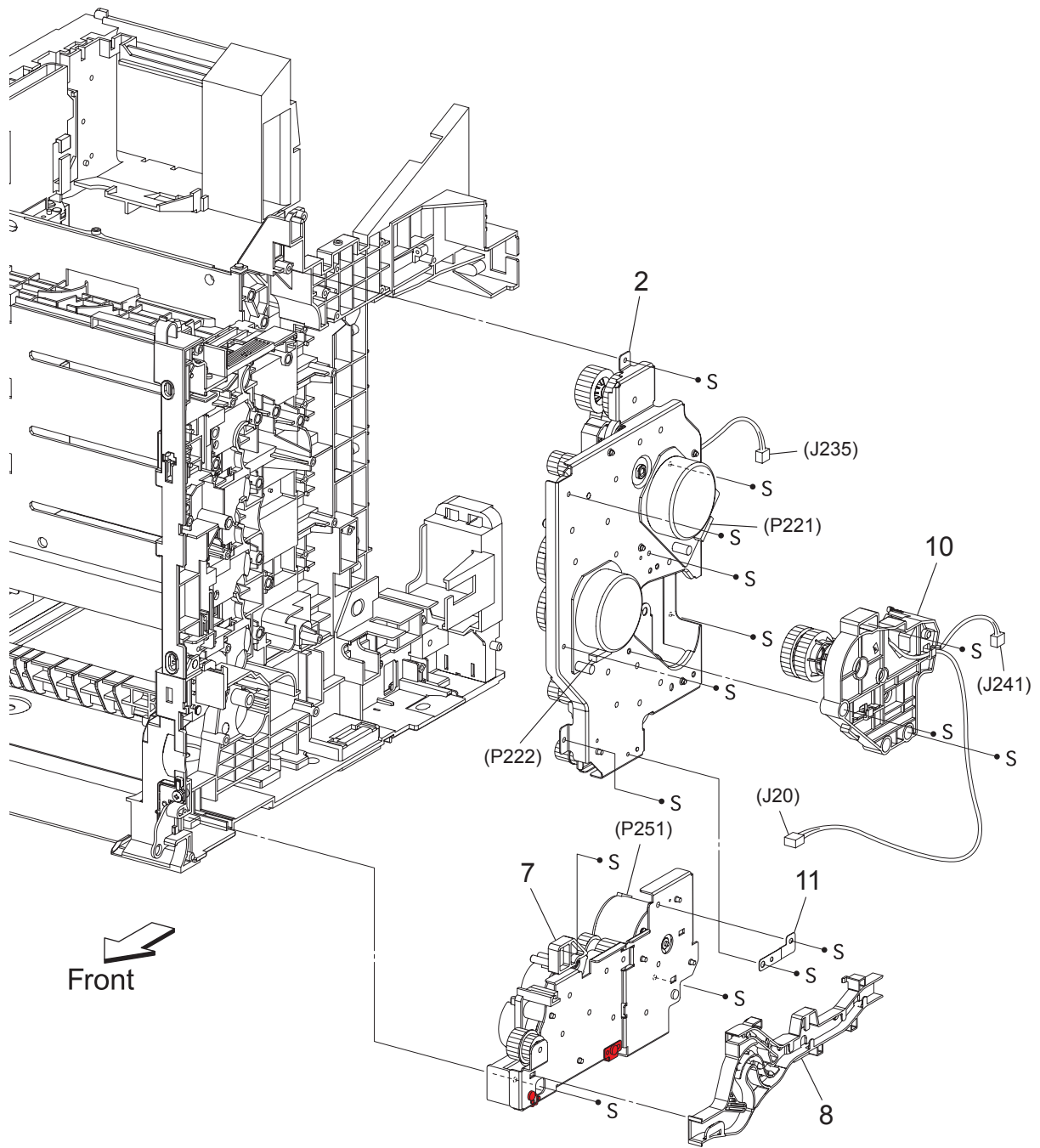
PL7.1 Frame [Illustration]



PL7.1 Frame [List]

Item	Parts name
1	--
2	SUPPORT LINK L
3	LINK L
4	--
5	--
6	HOLDER DAMPER
7	DAMPER OIL
8	SPRING SUPPORT
9	--
10	--
11	--
12	SUPPORT LINK R
13	LINK R
14	FOOT
15	--
16	--
17	--
18	SWITCH ASSY SIZE
19	--
20	--
21	--
22	SPRING CST LOCK
23	DUCT SIDE L
24	STOPPER FRAME L
25	CLAMP LOCKING
97	--
98	KIT LINK ASSY R & L (with 2,3,6-8x2pcs,12,13)
99	KIT FOOT ASSY (with 14x4pcs)

PL8.1 Drive [Illustration]



Zna05013KB

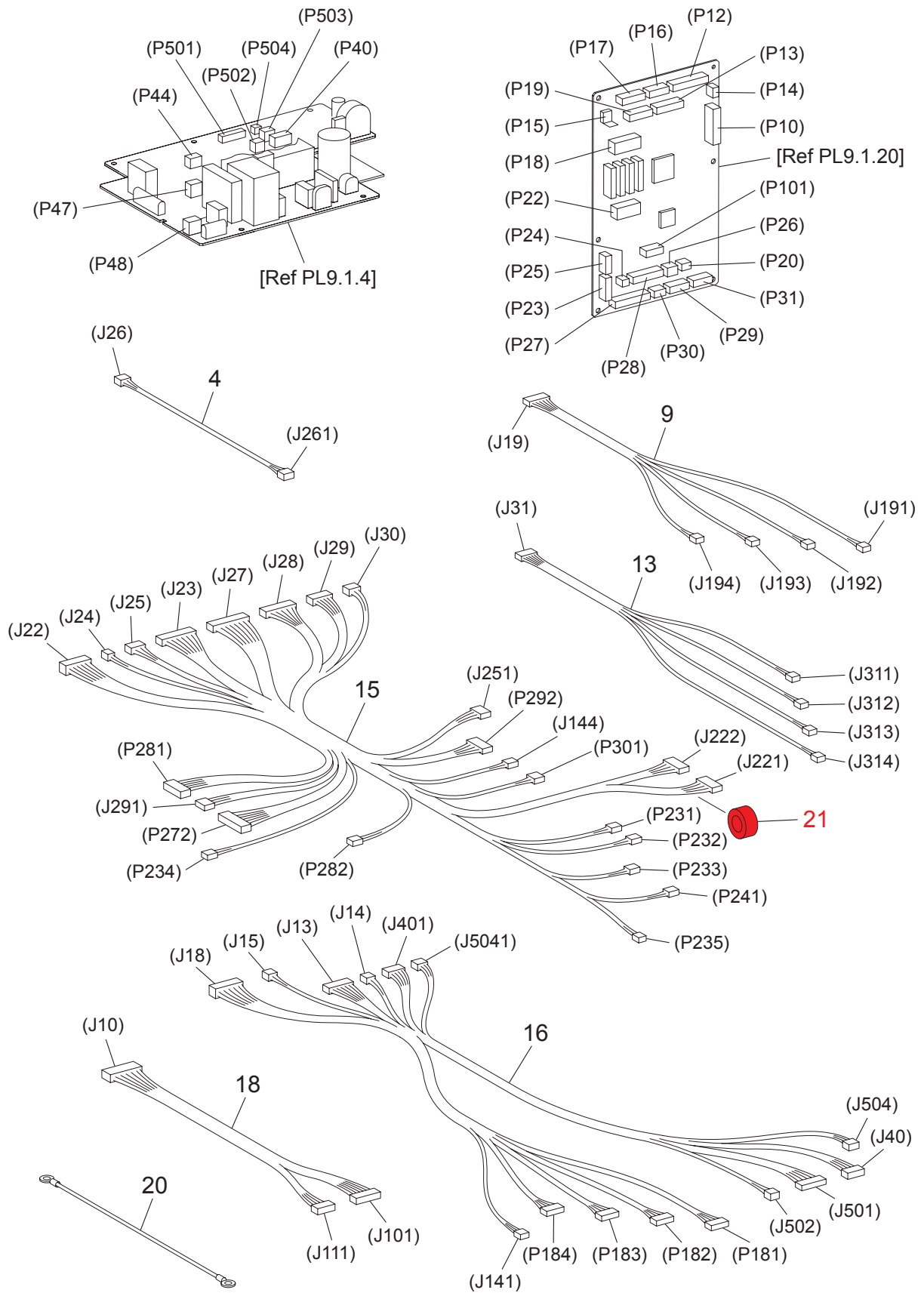
PL8.1 Drive [List]

Item	Parts name
1	--
2	DRIVE ASSY MAIN
3	--
4	--
5	--
6	--
7	DRIVE ASSY PH
8	DUCT ASSY DRV PH
9	--
10	DRIVE ASSY K
11	PLATE EARTH DRV MP

PL9.1 Electrical [List]

Item	Parts name
1	PWBA EEPROM(XPRO)
2	VARISTOR
3	HARN ASSY INTERLOCK (INTERLOCK SWITCH-J44)
4	LVPS
5	EDGE SADDLE ES-0510
6	EDGE SADDLE LENS-1010
7	--
8	CLAMP RMS-3V0
9	SHIELD LVPS
10	FAN MAIN
11	SHIELD REAR
12	--
13	--
14	CLAMP MST-10V0
15	--
16	HARN ASSY AC IN (SWITCH POWER-J48,J482,FS483-T484)
17	POWER CORD
18	SPACER RCBT-11S
19	SENSOR HUM
20	PWBA MCU
21	SHIELD WINDOW
22	SCREW KNURLING (OPTION HDD KIT)
23	--
24	--
25	SHIELD ESS
26	--
27	PWBA ESS (with 35)
28	--
29	--
30	MEMORY CARD (OPTION)
31	--
32	WIRELESS PRINTER ADAPTER (OPTION)
33	CLAMP RLWC-1SV0
34	--
35	NVM ROM
36	--
37	--
38	--
39	--
40	LVPS ASSY (with 4,9)
41	DUCT AIRFLOW
42	SHIELD MCU
43	BREAKER GFI INLET
44	SCREW KNURLING
45	SHIELD ASSY ESS (with 25,27)
46	NETWORK PROTOCOL ADAPTER (OPTION)
47	HDD ASSY (OPTION)
48	CLAMP LOCKING
49	SHIELD ASSY WINDOW (with 21,44)
50	CLAMP LOCKING
51	CAP USB
98	KIT PWBA MCU (with 20 & Techsheet)
99	KIT PWBA ESS (with 27 & Techsheet)

PL10.1 Harness [Illustration]



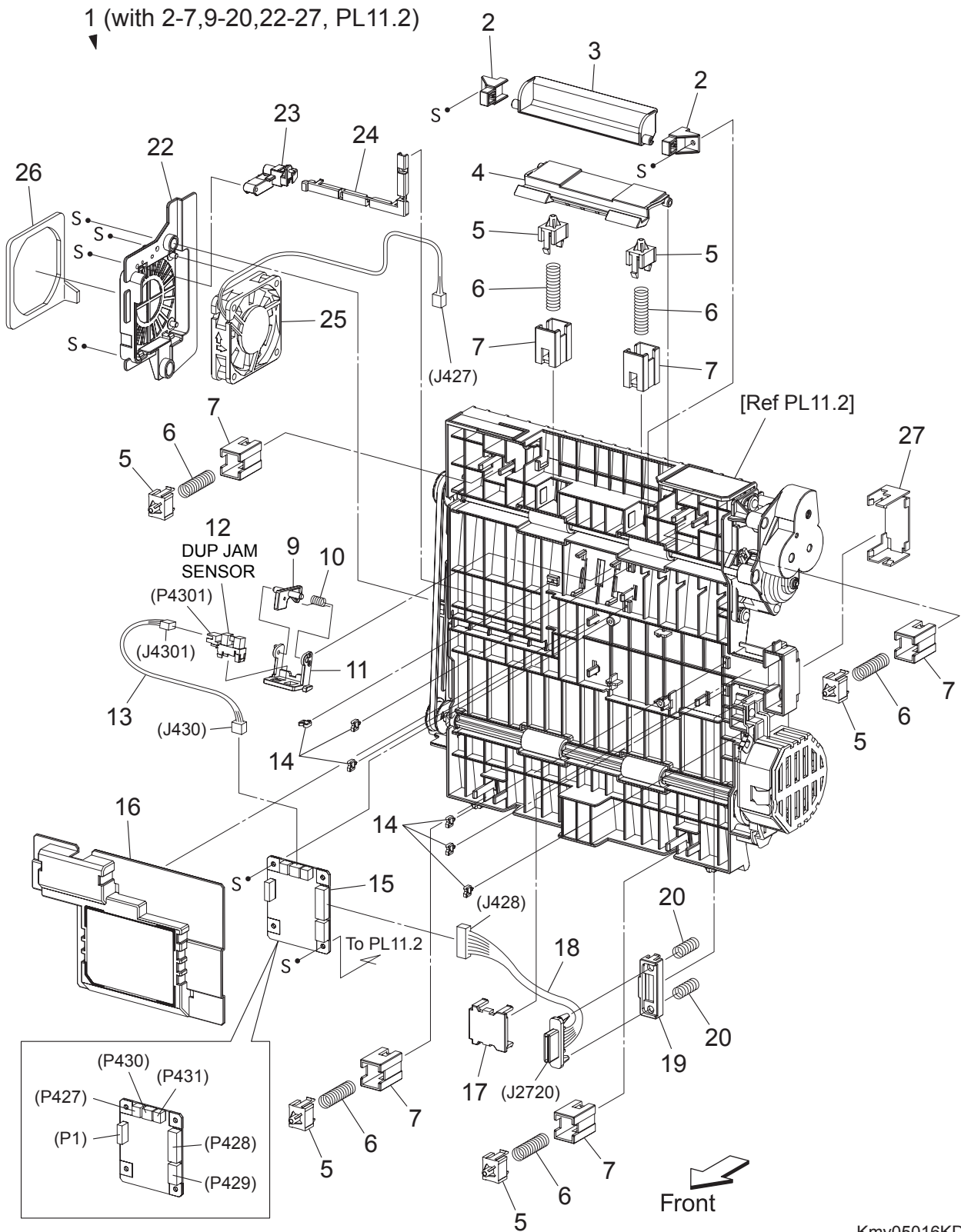
Zna05015KB

PL10.1 Harness [List]

Item	Parts name
1	--
2	--
3	--
4	HARN ASSY HUM (J26-J261)
5	--
6	--
7	--
8	--
9	HARN ASSY CRU SNR (J19-J191,J192,J193,J194)
10	--
11	--
12	--
13	HARN ASSY CRUM (J31-J311,J312,J313,J314)
14	--
15	HARN ASSY R SIDE (J22,J23,J24,J25,J27,J28,J29,J30-J144,J221,J222,P231,P232, P233,P234,P235,P241,J251,P272,P281,P282,J291,P292,P301)
16	HARN ASSY LV TOP (J13,J14,J15,J18,J401,J5041-J141,P181,P182,P183,P184,J40, J501,J502,J504)
17	--
18	HARN ASSY IF (J10-J101,J111)
19	--
20	HARN ASSY BTM EARTH
21	CORE

I

PL11.1 Duplex (Option) (1/2) [Illustration]

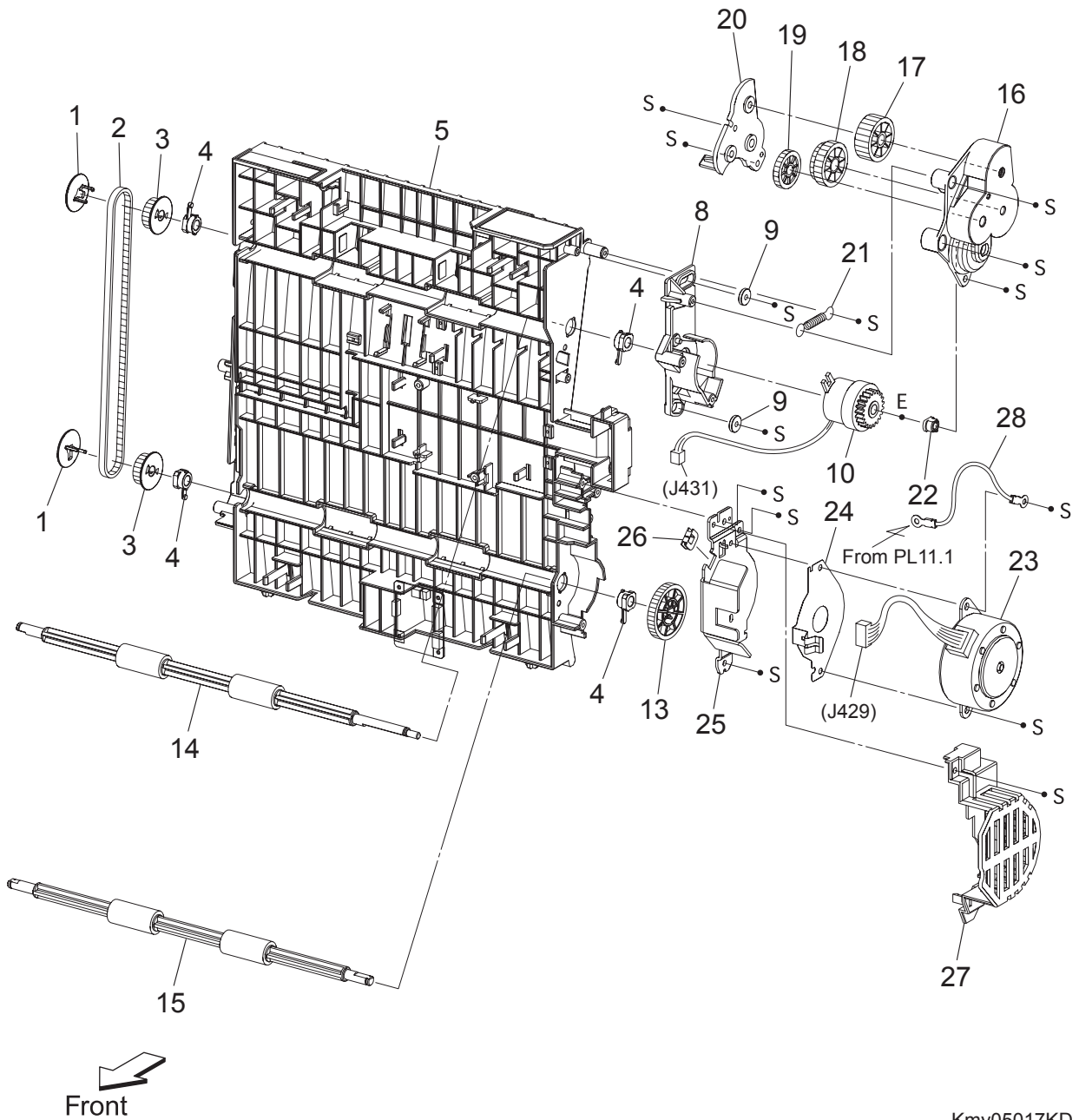


Kmy05016KD

PL11.1 Duplex (Option) (1/2) [List]

Item	Parts name
1	FEEDER ASSY DUP (KIT DUPLEX MODULE) (with 2-7,9-20,22-27, PL11.2)
2	STOPPER LATCH DUP
3	HANDLE LATCH DUP
4	LATCH DUP
5	HOLDER MAIN
6	SPRING CHUTE DUP
7	BRACKET HOLDER DUP
8	--
9	ACTUATOR DUP
10	SPRING SENSOR DUP
11	HOLDER SENSOR DUP
12	SENSOR PHOTO (DUP JAM SENSOR)
13	HARN ASSY DUP SNR (J430-J4301)
14	CLAMP MINI
15	PWBA DUP-H
16	COVER PWBA DUP
17	COVER CONNECT DUP
18	HARN ASSY DUP UNIT (J428-J2720)
19	HOLDER CONNECT DUP
20	SPRING CONNECT DUP
21	--
22	BRACKET FAN DUP
23	COVER HARNESS FAN
24	COVER HARNESS CHUTE
25	FAN DUP
26	SEAL DUP
27	COVER CHUTE DUP

PL11.2 Duplex (Option) (2/2) [Illustration]

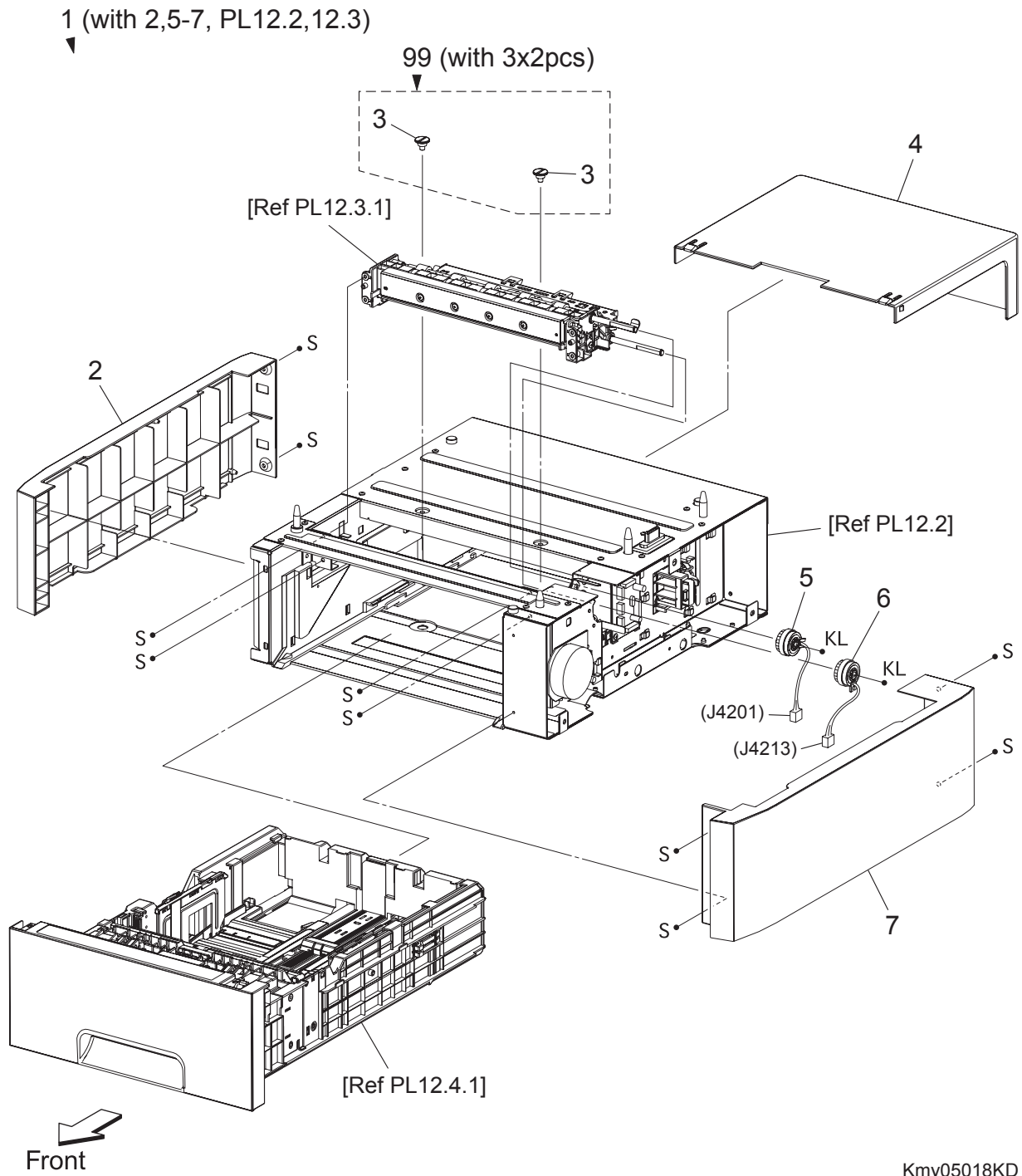


Kmy05017KD

PL11.2 Duplex (Option) (2/2) [List]

Item	Parts name
1	FLANGE PULLEY UP
2	BELT DUP 3M-128Z
3	PULLEY DUP 3M-20T
4	BEARING DUP
5	CHUTE DUP
6	--
7	--
8	BRACKET CLUTCH DUP
9	WASHER DUP CLUTCH
10	CLUTCH DUP
11	--
12	--
13	GEAR DUP 40Z-M0.8
14	ROLL ASSY DUP-1
15	ROLL ASSY DUP-2
16	COVER GEAR DUP
17	GEAR DUP 25Z FUSER
18	GEAR DUP 21Z-25Z
19	GEAR DUP 21Z
20	PLATE GEAR
21	SPRING DUP
22	BEARING
23	MOTOR ASSY DUP
24	PLATE EARTH DUP
25	BRACKET MOTOR DUP
26	BUSH SADDLE
27	COVER DRIVE DUP
28	HARN ASSY DUP EARTH (T432-T4320)

PL12.1 550 Feeder (Option) (1/5) [Illustration]



PL12.1 550 Feeder (Option) (1/5) [List]

Item	Parts name
1	550 OPTION FEEDER (with 2,5-7, PL12.2, 12.3)
2	COVER LEFT
3	SCREW JOINT
4	COVER CST 550
5	CLUTCH ASSY TURN OPT
6	CLUTCH ASSY FEED OPT
7	COVER RIGHT
99	KIT SCREW JOINT (with 3x2pcs)

PL12.2 550 Feeder (Option) (2/5) [List]

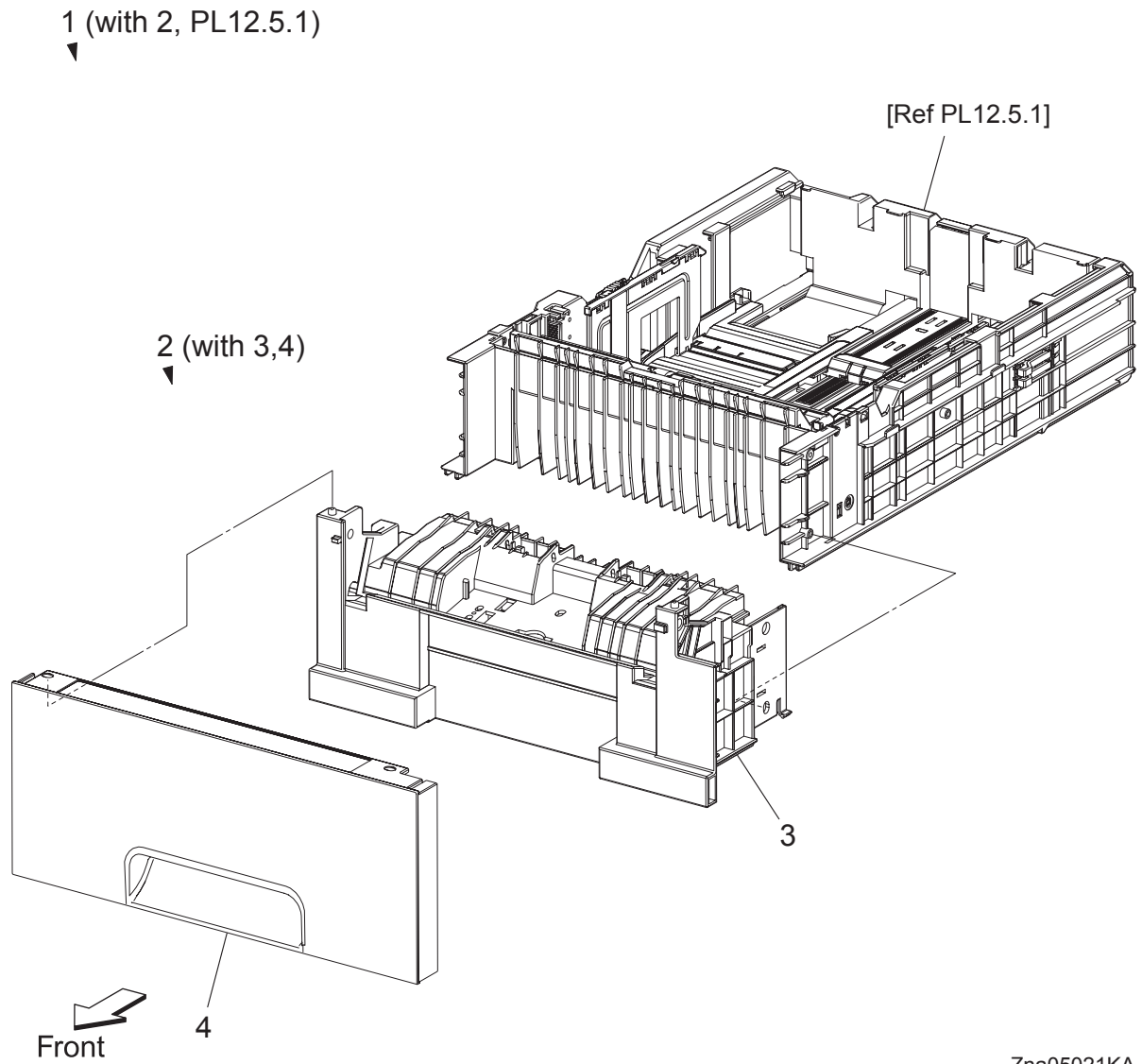
Item	Parts name
1	FRAME ASSY OPT
2	--
3	HARN ASSY FDR UNIT (J281-J419)
4	BRACKET LOCK
5	SWITCH ASSY SIZE OPT
6	PWBA OPT FDR
7	HARN ASSY C2 CHUTE (J421-J4211,P4212,P4213)
8	HARN ASSY C2 TURN (J420-P4201,P4202)
9	HARN ASSY C2 MOT (J422-J4221,J4222)
10	DRIVE ASSY OPT FDR
11	GUIDE TRAY R 550
12	GUIDE ASSY 550 L (with 13,17)
13	GUIDE TRAY L 550
14	--
15	FOOT
16	CLAMP MINI
17	SPRING CST LOCK
18	CLAMP LOCKING
99	KIT FOOT ASSY (with 15x4pcs)

PL12.3 550 Feeder (Option) (3/5) [List]

Item	Parts name
1	FDR ASSY OPT (with 3-11,13-16,18,20-29,31,32)
2	--
3	COVER CHUTE
4	ROLL ASSY TURN
5	BEARING REGI
6	CHUTE FDR OPT
7	BEARING REGI E
8	ROLL PINCH TURN
9	SPRING PINCH TURN
10	CHUTE ASSY BTM
11	BEARING NUDGER
12	--
13	HOLDER NO SNSR
14	SENSOR PHOTO (CST NO PAPER SENSOR)
15	CHUTE ASSY SEPARATOR
16	CLAMP
17	--
18	SHAFT FEED OPT
19	--
20	SUPPORT NUDGER ASSY
21	SHAFT NUDGER
22	ROLL ASSY GEAR NUDGER
23	GEAR IDLER NUDGER
24	HOLDER NO PAPER L A4
25	ACTUATOR NO PAPER A4
26	HOLDER NO PAPER R A4
27	CLUTCH ONEWAY NUDGER
28	CLUTCH ONEWAY FEED
29	ROLL ASSY FEED
30	HARN ASSY C2 NO PAPER (J4212-J42121)
31	PLATE EARTH OPT
32	WASHER
99	KIT SEPARATOR and FEED ROLLER (with 29x2, PL12.5.17 total 3pcs & Techsheet) *1

*1 : Periodic Replacing Parts (100KPV)

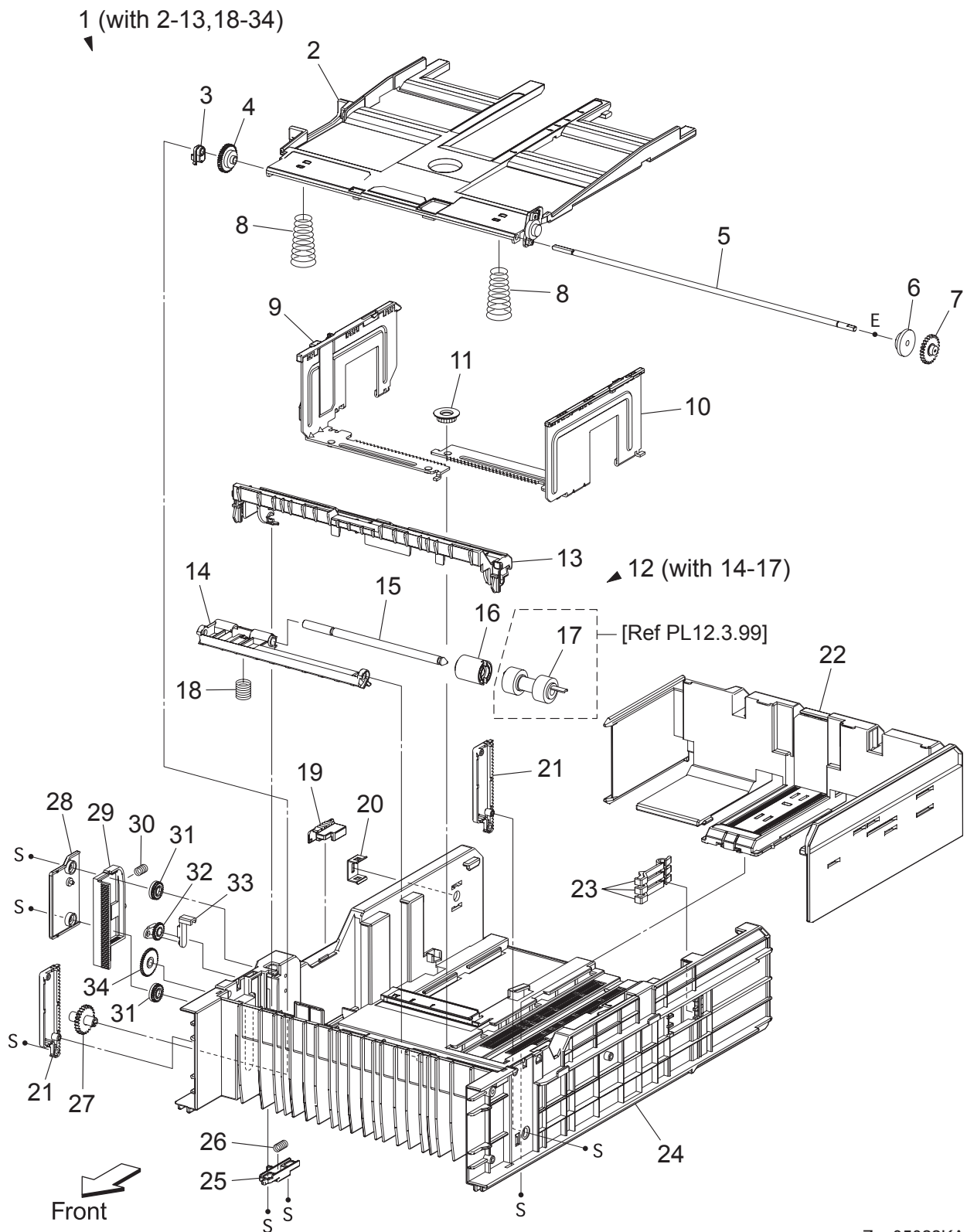
PL12.4 550 Feeder (Option) (4/5) [Illustration]



PL12.4 550 Feeder (Option) (4/5) [List]

Item	Parts name
1	CASSETTE ASSY 550 OPT (with 2, PL12.5.1)
2	CASSETTE ASSY FRONT 550 OPT (with 3,4)
3	HOUSING BASE FR 550
4	HANDLE CST 550 OPT

PL12.5 550 Feeder (Option) (5/5) [Illustration]



Zna05022KA

PL12.5 550 Feeder (Option) (5/5) [List]

Item	Parts name
1	CASSETTE ASSY REAR 550 (with 2-13,18-34)
2	PLATE ASSY BTM A4
3	STOPPER PB
4	GEAR BTM LOCK ONEWAY
5	SHAFT PB A4
6	GEAR BTM DMP ONEWAY
7	GEAR PB L
8	SPRING BTM UP 550 A4
9	GUIDE ASSY SIDE R 550 A4
10	GUIDE ASSY SIDE L 550 A4
11	GEAR PINION
12	HOLDER ASSY SEPARATOR (with 14-17)
13	CVR SPRTR CST
14	HOLDER SEPARATOR
15	SHAFT SEPARATOR
16	CLUTCH FRICTION SPRTR
17	SEPARATOR ROLLER
18	SPRING SEPARATOR
19	SWITCH SIZE SET
20	PLATE LOCK CST
21	PLATE GEAR LOCK 550
22	GUIDE ASSY CST END 550
23	ACTUATOR SIZE
24	HSG BASE RE 550
25	ACTUATOR RLS PB
26	SPRING STOPPER GEAR
27	GEAR PB R
28	COVER BTM UP 550
29	RACK BTM LOCK 550
30	SPRING BTM LOCK
31	GEAR BTM LOCK PINION
32	GEAR LEVER BTM LOCK
33	LEVER BTM LOCK
34	GEAR 40 BTM LOCK