



Dell 2150cn **Service Manual**

**Information in this document is subject to change without notice.
2010 Dell Inc. All rights reserved.**

Tgr tqf wekq'lp'cp{ 'o cpgt'y j cwqgxt'y kj qw'y g'y tkwgp'r gto kuukp'qh'F gm'kpe0"utlevl' hqtdkf f gp0
Vtcf go ctmu'wugf 'lp'y ku'vzv'F gm'cpf 'y g'F GNN'iqi q'ctg'v'cf go ctmu'qh'F gm'kpe0

Qj gt'v'cf go ctmu'cpf 'v'cf g'pco gu'o c{ 'dg'wugf 'lp'y ku'f qewo gpv'q'tghg't'q'y g'g'p'k'gu'enc'ko lpi 'y g'o ctmu'cpf
pco gu'qh'y gk'r tqf weu'F gm'kpe0'f ku'enc'ko u'cp{ 'r tqr tlgvct{ 'lp'vgt'gu'lp'v'cf go ctmu'cpf 'v'cf g'pco gu'q'y gt'y cp
ku'qy p0

Version record

Refer to the portion indicated by change bar in each section.

Also refer to the reasons in table below.

Version	Issue date	Note
1 st	March 19, 2010	1 st issued
1.1st	April 30, 2010	<p>1.1st version issued</p> <p>Introduction - The content was reviewed.</p> <p>Chapter 1:Troubleshooting - The content was reviewed.</p> <p>Chapter 2:Operation of Diagnostic - The content was reviewed.</p> <p>Chapter 3:RRP - The content was reviewed.</p> <p>Chapter 4:Plug/Jack Connector Locations - The illustration was changed.</p> <p>Chapter 6:Principles of Operation - The content was reviewed.</p> <p>Chapter 8:Printer Specifications - The content was reviewed.</p>
1.2st	May 19, 2010	<p>1.2st version issued</p> <p>Introduction - The content of "4.5.2 Caution label for toner cartridges" was updated.</p> <p>Chapter 5 : Parts List - Correction according to change of spare parts.</p>
2nd	June 16, 2010	<p>2nd version issued</p> <p>Chapter 1:Troubleshooting - The check result of development was reflected.</p> <p>Chapter 3:RRP - The error in writing was corrected.</p> <p>Chapter 4: Plug/Jack Connector Locations - The error in writing was corrected.</p> <p>Chapter 5: Parts List - The error in writing was corrected.</p> <p>Chapter 6:Principles of Operation - The content was reviewed.</p> <p>Chapter 7: Wiring Diagrams and Signal Information CONTENTS - The content was reviewed.</p> <p>Chapter 8: Printer Specifications - The content was reviewed.</p>

Cautions

Operation contents of this document may be subject to modification without notice.

Dell Inc. will not assume responsibility for accidental or incidental damages resulting from technical or editorial errors or omissions in this manual, the issue of this manual, the execution of descriptions in this manual, or the use of this manual.

This document is protected by copyright. Do not photocopy or duplicate any part of this document in any form without written permission from Dell Inc.

1. About this manual

This manual is a standard service manual of Dell Inc. containing information required for maintenance of this laser printer (standard specifications).

2. Marks giving caution

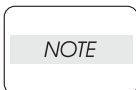
Maintenance operations requiring special cautions or additional information regarding descriptions in this manual are presented as "Warning," "Caution," or "Note," depending on their nature.



If instructions are not observed, death or serious injury may result.



If instructions are not observed, injuries to workers or physical damage to assets (including this laser printer) may result.



Essentials for procedures, steps, rules, and others.

Reference *Incidental information to descriptions.*

3. Related documents

- Instruction manuals (standard manuals)

Describe the operation and handling of this laser printer.

- Performance specifications

Describe in detail various specifications of this laser printer.

(In the event of a discrepancy between this manual and the performance specifications, the performance specifications take precedence.)

- Spare parts list

Information on maintenance parts (spare parts) for this laser printer.

4. Safety

To prevent possible accidents during maintenance operation, you should observe strictly the "Warning" and "Caution" information in this manual.

Avoid dangerous operations and operations out of the scope of this manual.

Various processes not covered by this manual may be required in actual operations, and should be performed carefully, always giving attention to safety.

4.1 Power source

Keep the power plug disconnected during the maintenance operation to prevent electric shock, burns and other damages.

If the power supply should be kept connected to measure voltage or for other similar reasons, take sufficient care to prevent electric shock, by following the procedures in this manual.



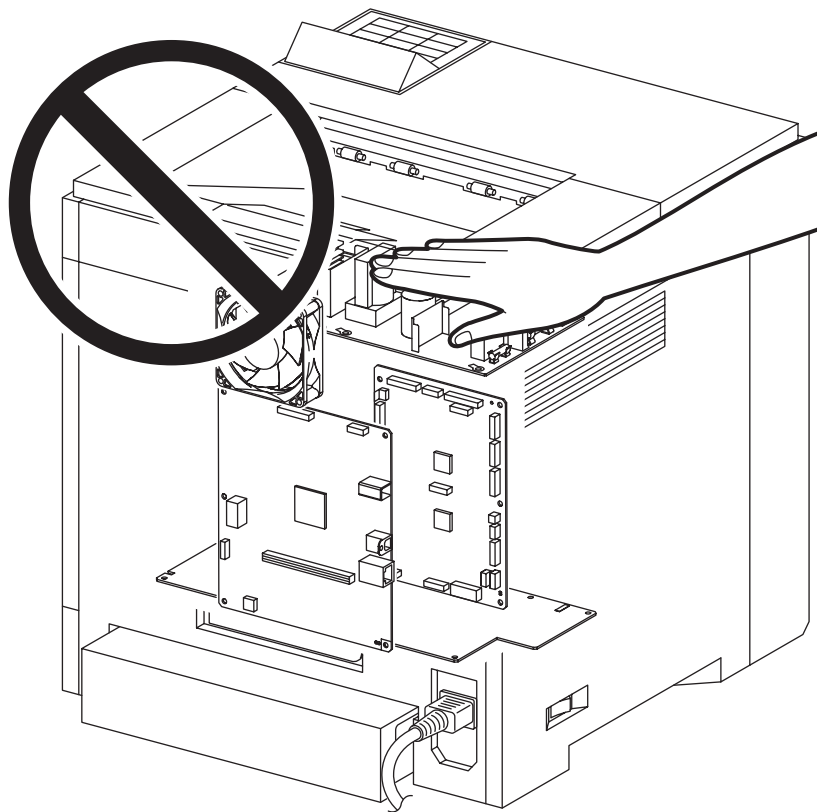
While the printer is on, never touch live parts if not required.



Power is supplied to the power switch / inlet even while the printer is off. Never touch its live components.



Do not touch live parts unless otherwise specified.



MiS00002KA

4.2 Driving units

When servicing gears or other driving units, be sure to turn off the power switch and unplug the power cord. Drive them manually when required.



Do not do the print work removing the cover of the printer to confirm the operation of driving part.

4.3 High-temperature units

When servicing high-temperature units (securing unit, etc.), be sure to turn them off to prevent burns, injuries and other troubles. Remove the power plug and start service processes after they have cooled down sufficiently.

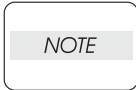


Because high-temperature units are still hot after they complete an operation, wait at least 40 minutes before starting maintenance service.

4.4 Laser beams



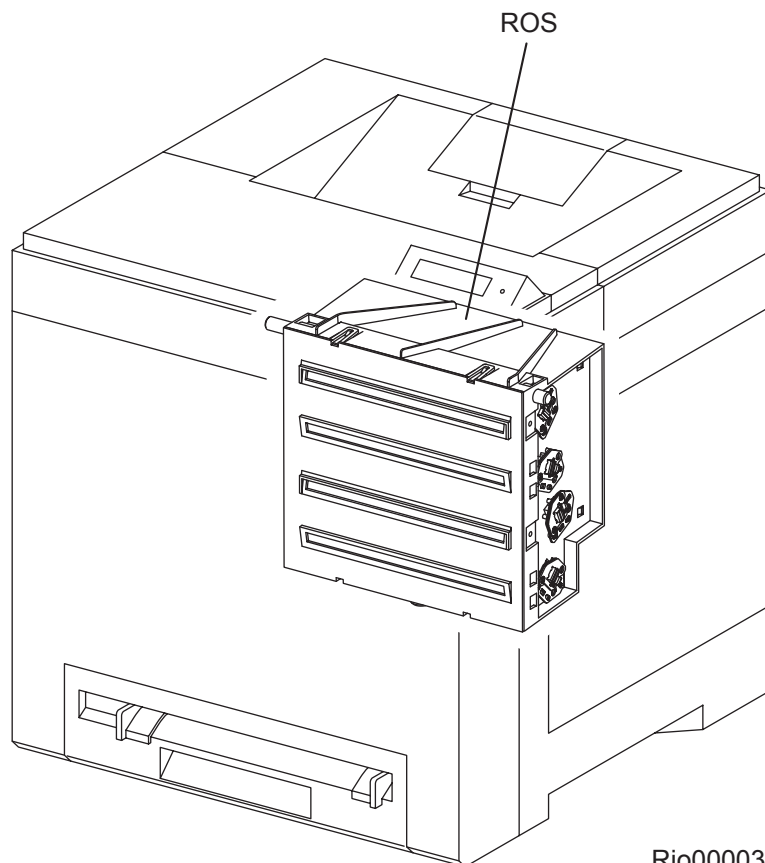
- *If your eyes are exposed to laser beams, you may lose your eyesight.*
- *Never open the cover if the warning label for laser beams is attached there.*
- *Before disassembling and reassembling this laser printer, be sure to turn it OFF.*
- *When servicing this laser printer while it is running, be sure to follow the procedures specified in this manual.*
- *You should be well aware that the laser beams are capable of injuring you and other people near the printer.*



Laser beams have features as follows:

- Frequencies are smaller in width than other beams (sun and electric bulbs) and phases are uniform so that high monochromatic and convergence performance can be obtained and thin beams of light can reach places at a long distance.
- Being highly converged, the laser beams exert a heating action that may be harmful to human body.

Reference: *The laser beams of this laser printer are invisible rays.*

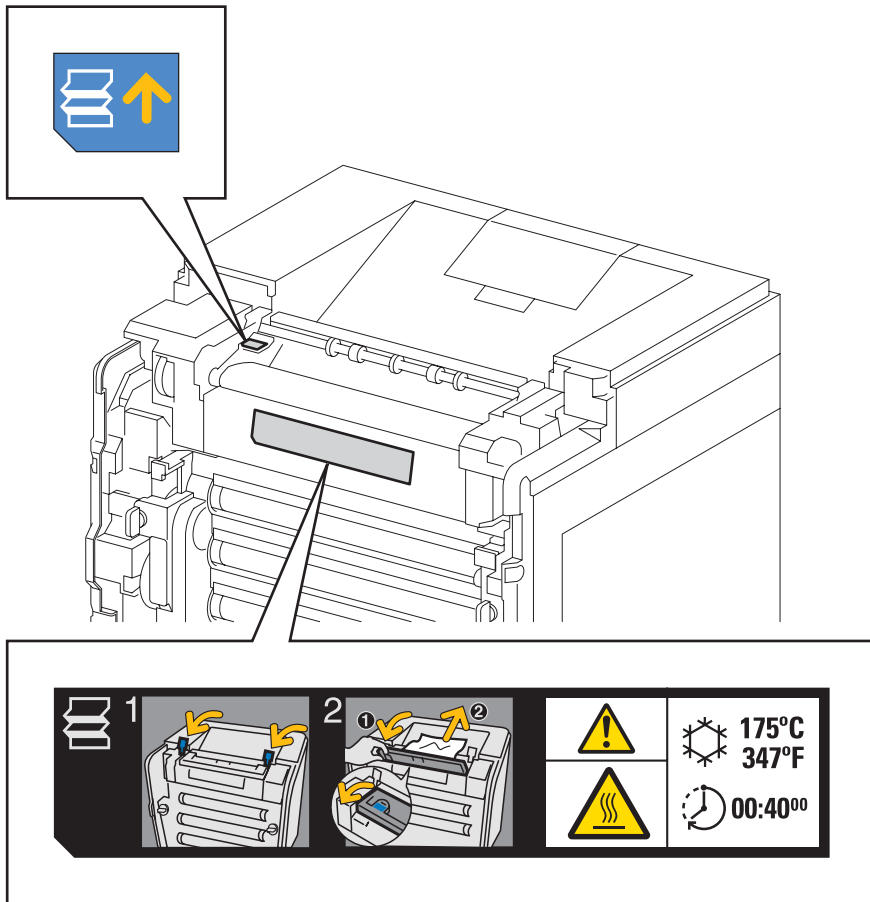


Rio00003KA

4.5 Warning/caution labels

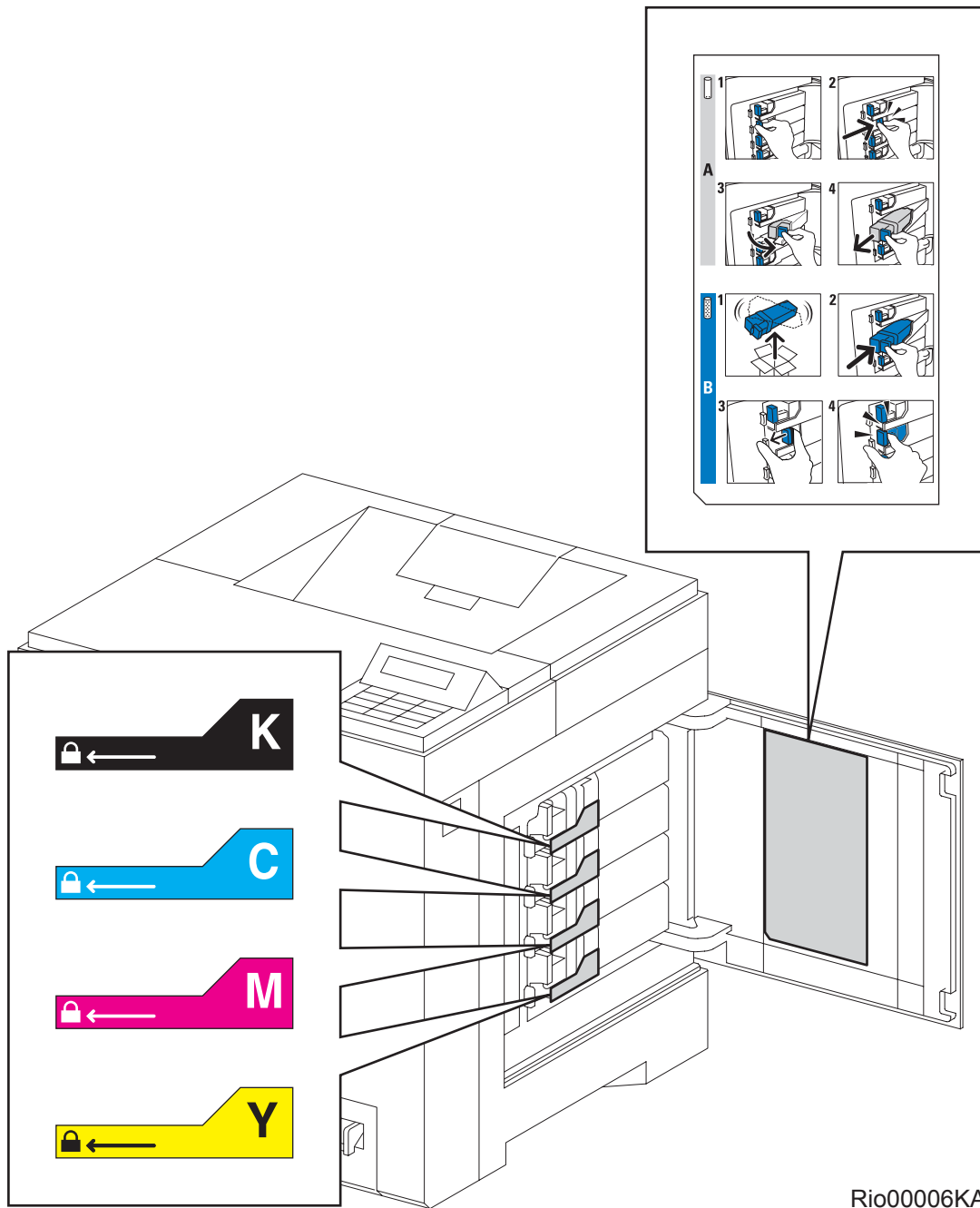
Warning labels and caution labels are attached to this laser printer to prevent accidents. Check those labels for peeling or stains when servicing the printer.

4.5.1 Caution label for high-temperature units



Rio00004KA

4.5.2 Caution label for toner cartridges



Rio00006KA

K

Dell™ 2150 Series/ 2155 Series Standard Capacity Black Toner Cartridge 2FV35 →

Cartouche de Toner Noir / Tonerkartusche Schwarz / Cartuccia Toner Nero
/ Cartucho de Toner Negro / Zwarte Toner cartridge

Order Supplies at : www.dell.com/supplies

Dell is a trademark of Dell Inc.
For warranty questions, see the limited warranty statements included with your printer documentation.

* 1 5 2 3 *

C

Dell™ 2150 Series/ 2155 Series Standard Capacity Cyan Toner Cartridge WHPFG →

Cartouche de Toner Cyan / Tonerkartusche Zyan / Cartuccia Toner Ciano
/ Cartucho de Toner Cian / Cyaan Toner cartridge

Order Supplies at : www.dell.com/supplies

Dell is a trademark of Dell Inc.
For warranty questions, see the limited warranty statements included with your printer documentation.

* 1 5 2 4 *

M

Dell™ 2150 Series/ 2155 Series Standard Capacity Magenta Toner Cartridge 9M2WC →

Cartouche de Toner Magenta / Tonerkartusche Magenta / Cartuccia Toner Magenta
/ Cartucho de Toner Magenta / Magenta Toner cartridge

Order Supplies at : www.dell.com/supplies

Dell is a trademark of Dell Inc.
For warranty questions, see the limited warranty statements included with your printer documentation.

* 1 5 2 5 *

Y

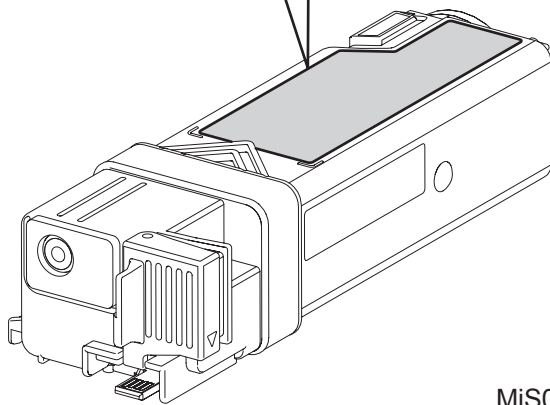
Dell™ 2150 Series/ 2155 Series Standard Capacity Yellow Toner Cartridge NT6X2 →

Cartouche de Toner Jaune / Tonerkartusche Gelb / Cartuccia Toner Giallo
/ Cartucho de Toner Amarillo / Gelo Toner cartridge

Order Supplies at : www.dell.com/supplies

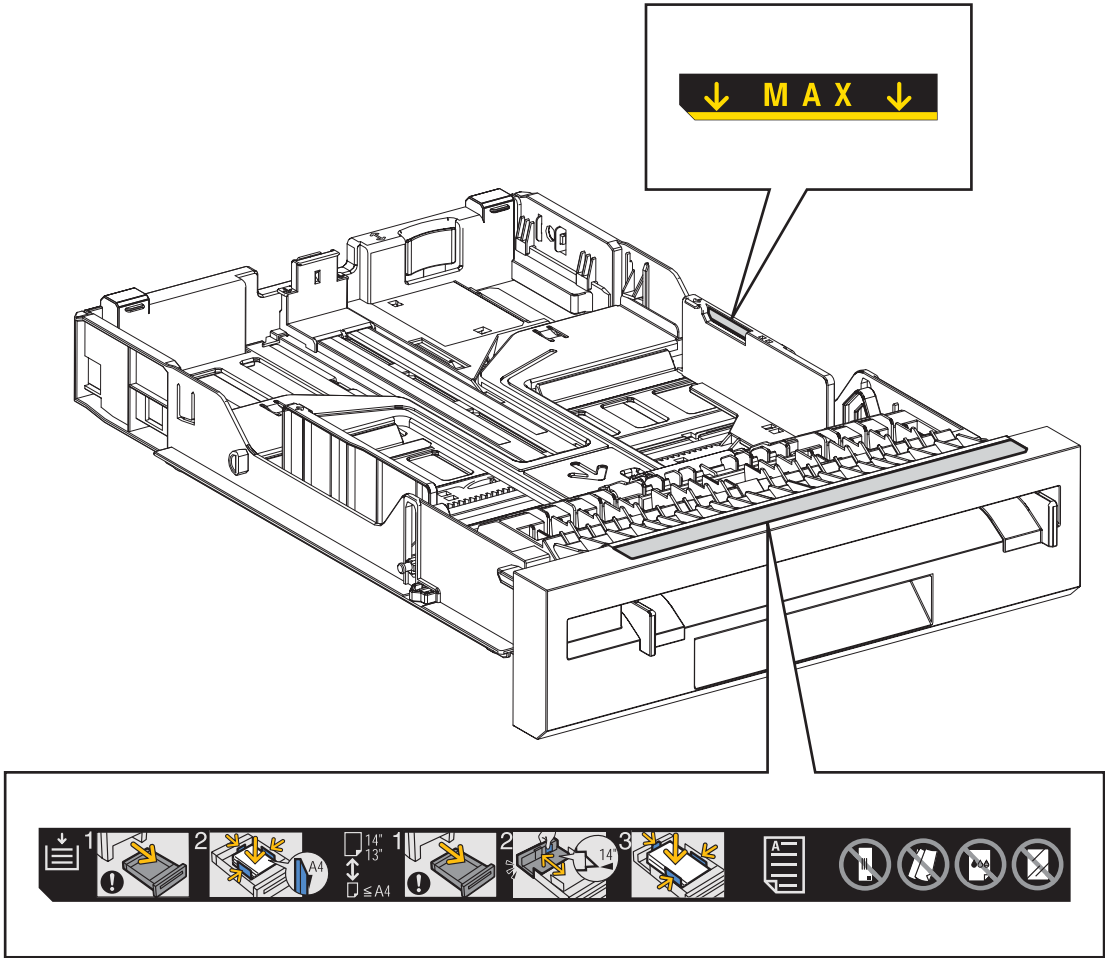
Dell is a trademark of Dell Inc.
For warranty questions, see the limited warranty statements included with your printer documentation.

* 1 5 2 6 *



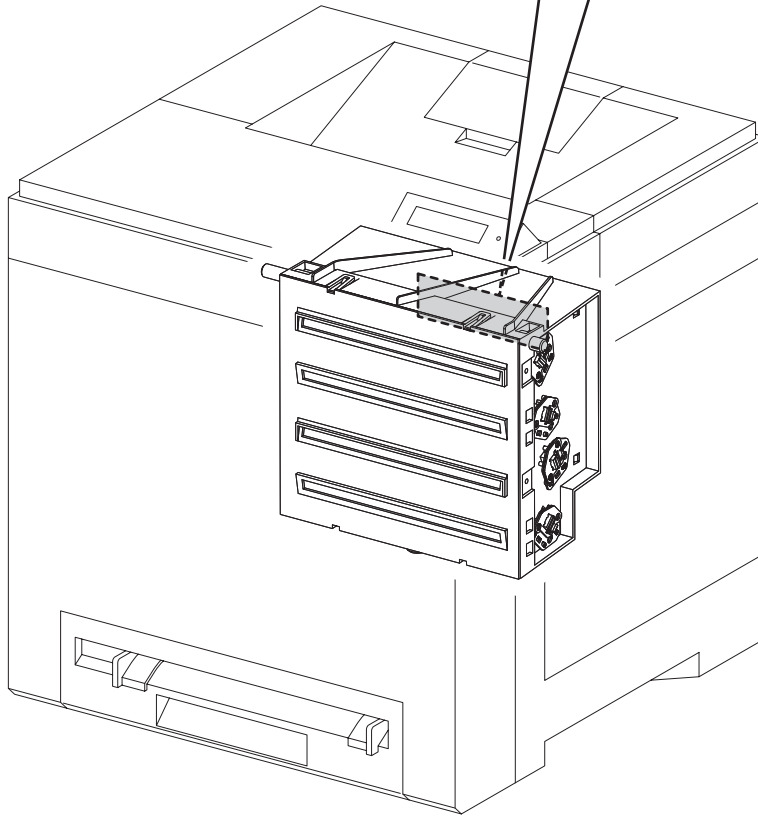
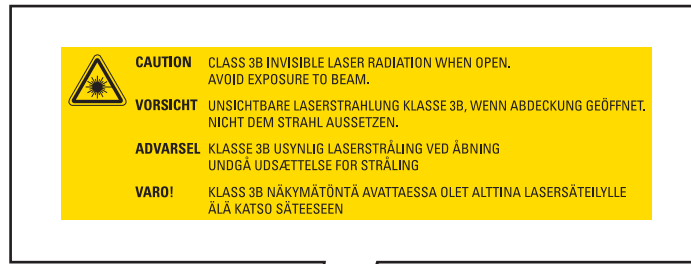
MiS00007KA

4.5.3 Caution label for SSI and tray



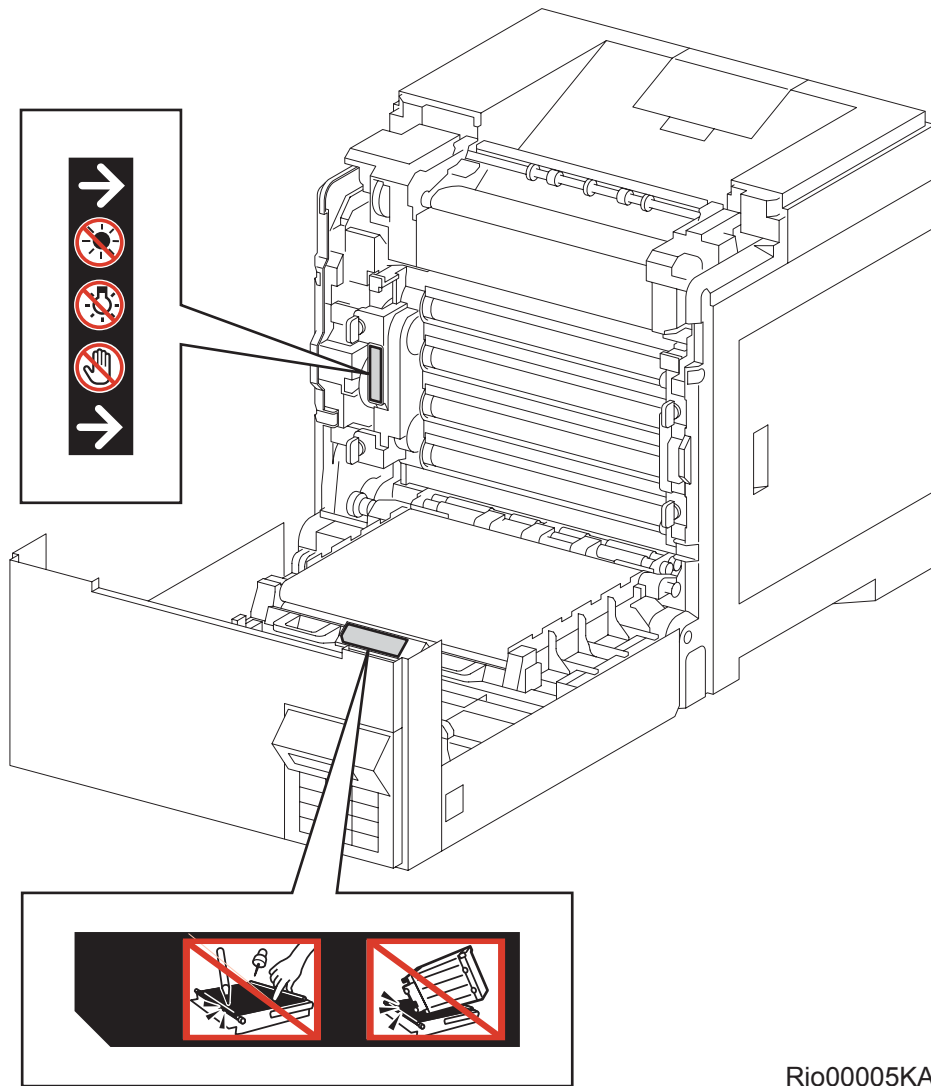
Rio00008KA

4.5.4 Caution label for ROS

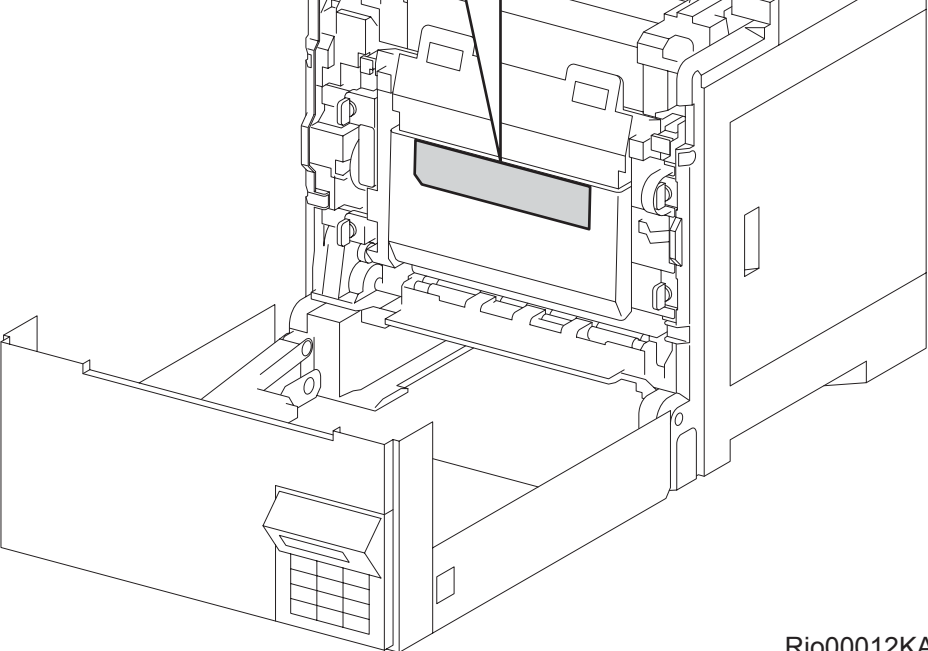
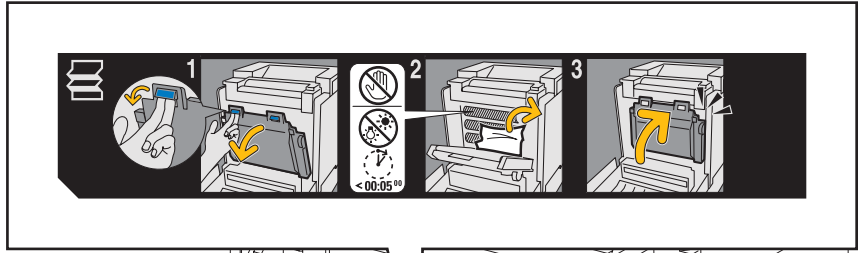


Rio00009KA

4.5.5 Caution label for transfer belt and PHD unit

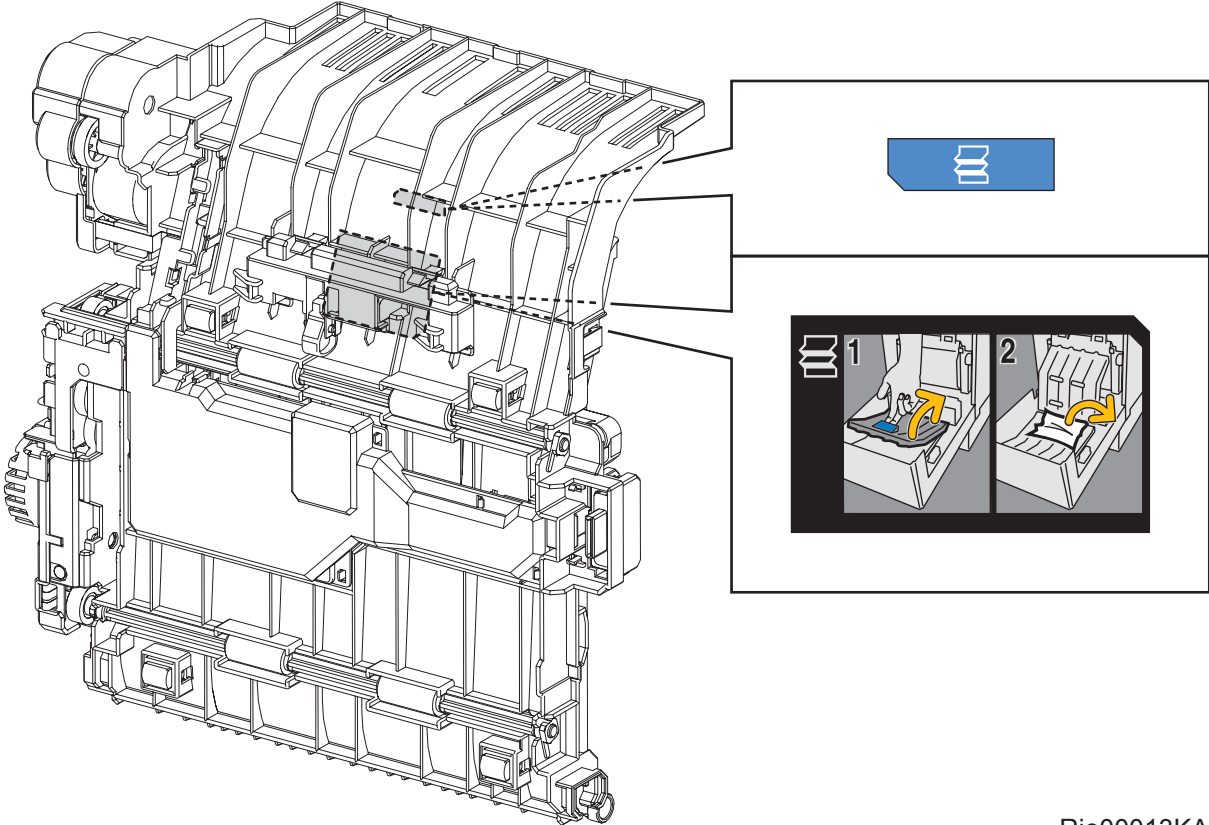


Rio00005KA



Rio00012KA

4.5.6 Caution label for duplex



Rio00013KA

Blank Page

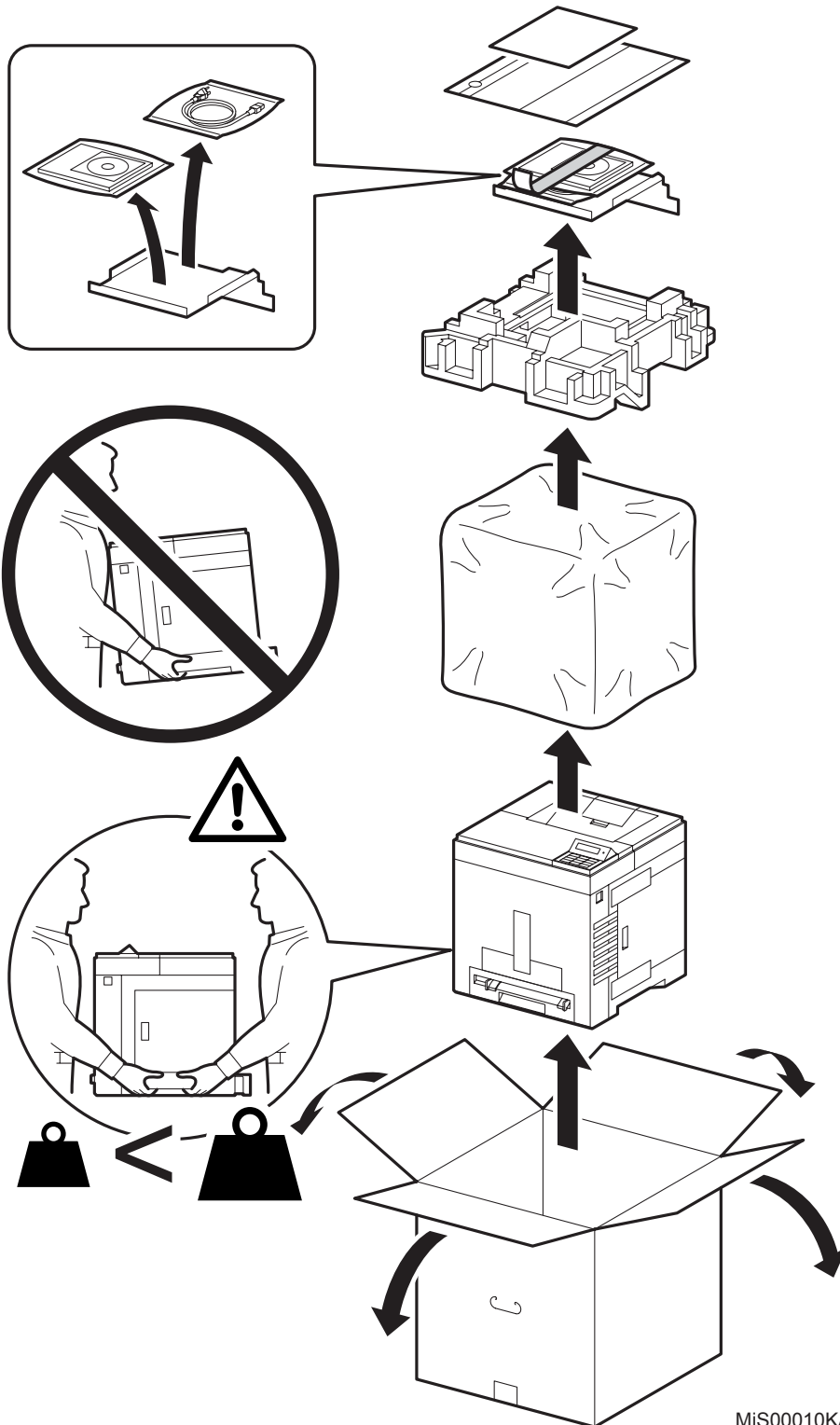
Unpacking the Printer



Take extreme care to avoid personal injuries.

Check the printer for evidence of any damages.

Peel all tapes off the printer.



MiS00010KA

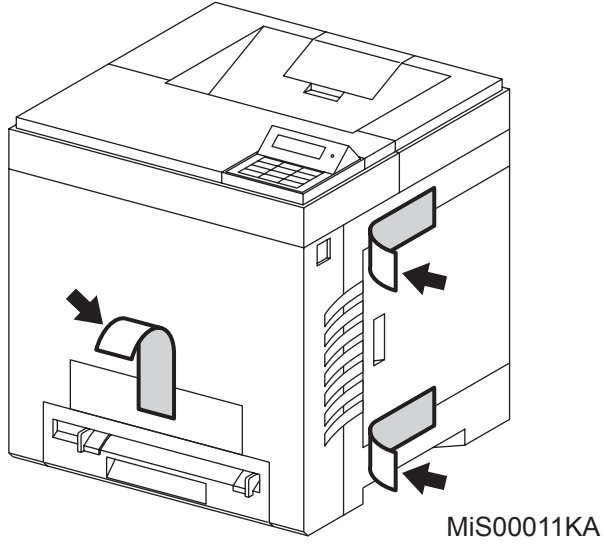


TABLE OF CONTENTS

1. About this manual.....	ii
2. Marks giving caution.....	ii
3. Related documents.....	ii
4. Safety	iii
4.1 Power source	iii
4.2 Driving units	iv
4.3 High-temperature units	iv
4.4 Laser beams	v
4.5 Warning/caution labels.....	vi
4.5.1 Caution label for high-temperature units.....	vi
4.5.2 Caution label for toner cartridges.....	vii
4.5.3 Caution label for SSI and tray	ix
4.5.4 Caution label for ROS	x
4.5.5 Caution label for transfer belt and PHD unit	xi
4.5.6 Caution label for duplex	xiii
Unpacking the Printer.....	xv
Chapter 1 Troubleshooting.....	1 - 1
Chapter 2 Operation of Diagnostic	2 - 1
Chapter 3 Removal and Replacement Procedures	3 - 1
Chapter 4 Plug/Jack(P/J) Connector Locations.....	4 - 1
Chapter 5 Parts List.....	5 - 1
Chapter 6 Principles of Operation	6 - 1
Chapter 7 Wiring Diagrams and Signal Information	7 - 1
Chapter 8 Printer Specifications	8 - 1