

# **PARTS CATALOG**

**imageRUNNER                      1133iF/  
1133A/1133**



**May 20 2014**



## **PREFACE**

This Parts Catalog contains listings of parts used

Diagrams are provided with the listings to aid the service technician in identifying clearly, the item to be ordered.

Whenever ordering parts, consult this Parts Catalog for all of the information pertaining to each item. Be sure to include, in the Parts Request, the full item description, the item part number, and the quantity.

***COPYRIGHT (C) 1999 CANON INC.***

Use of this manual should be strictly supervised to avoid disclosure of confidential information.



# Contents

## NUMERICAL INDEX

imageRUNNER 1133iF/1133A/1133(Numerical Index)..... 1-1

## imageRUNNER 1133iF/1133A/1133(Parts Catalog)

A1	ASSEMBLY LOCATION DIAGRAM .....	2-1
A2	OPTION PARTS CATALOG LIST .....	2-2
001	ACCESSORIES .....	2-3
100	EXTERNAL COVERS, PANELS, ETC. ....	2-5
101	INTERNAL COMPONENTS 1 .....	2-9
102	INTERNAL COMPONENTS 2 .....	2-11
103	INTERNAL COMPONENTS 3 .....	2-13
104	INTERNAL COMPONENTS 4 .....	2-15
105	INTERNAL COMPONENTS 5 .....	2-17
106	INTERNAL COMPONENTS 6 .....	2-19
160	READER/ADF ASSEMBLY (ADF MODEL) .....	2-21
160A	READER/COPYBOARD ASSEMBLY (COPYBOARD MODEL)	2-23
162	PAPER FEEDER ASSEMBLY (ADF MODEL) .....	2-24
400	READER ASSEMBLY .....	2-27
ZZA	MECHANICAL STANDARD PARTS (HOW TO USE) .....	2-29
ZZB	MECHANICAL STANDARD PARTS (SCREWS) .....	2-30
ZZC	MECHANICAL STANDARD PARTS (BOLTS) .....	2-37
ZZD	MECHANICAL STANDARD PARTS (NUTS) .....	2-38
ZZE	MECHANICAL STANDARD PARTS (RETAINING RINGS)	2-39



# NUMERICAL INDEX

## imageRUNNER 1133iF/1133A/1133(Numerical Index)

PARTS NUMBER	FIGURE & KEY NO.	PARTS NUMBER	FIGURE & KEY NO.	PARTS NUMBER	FIGURE & KEY NO
FC0-3107-000	100 - 27	FC9-7574-000	400 - 3	FM4-8952-000	105 - 6
FC0-3108-000	100 - 27	FC9-8934-000	100 - 14	FM4-8953-000	105 - 6
FC0-3132-000	100 - 5	FC9-8942-000	104 - 15	FM4-8964-000	105 - 7
FC0-3133-000	100 - 7	FC9-8943-000	100 - 15	FM4-8965-000	105 - 7
FC0-3135-000	100 - 8	FC9-8944-000	100 - 11	FM4-8968-000	105 - 5
FC0-3162-000	100 - 7	FE2-1950-000	100 - 8	FM4-9013-010	104 - 5
FC0-3173-000	160A - 2	FH2-7080-000	001 - 10	FM4-9063-000	160 - 27
FC0-3182-000	105 - 1	FH2-7082-000	001 - 11	FM4-9071-000	400 - 6
FC0-3196-000	100 - 16	FK2-2064-000	104 - 2	FM4-9072-000	400 - 5
FC0-4168-000	100 - 2	FK3-0730-000	103 - 6	FM4-9073-000	400 - 5
FC0-4169-000	100 - 10	FK3-0732-000	104 - 3	FM4-9074-000	400 -
FC0-4170-000	100 - 4	FK3-1626-000	105 - 4	FM4-9768-010	100 - 25
FC0-4177-000	400 - 10	FK3-1820-000	105 - 8	FM4-9769-000	100 - 25
FC7-0509-000	100 - 1	FK3-1826-000	105 - 3	FM4-9783-000	100 - 23
FC7-6052-010	162 - 1	FK3-1904-000	400 - 4	FM4-9790-000	100 - 25
FC7-6182-000	162 - 2	FK3-1908-000	400 - 9	FM4-9823-000	160A - 1
FC7-6189-000	160 - 1	FK3-2799-000	001 - 1	FU2-0591-000	160 - 14
FC7-6278-000	162 - 3	FK4-1441-000	001 - 1	FU5-6992-000	162 - 19
FC7-6281-000	162 - 4	FL2-6637-000	160 - 17	FU6-2998-000	162 - 20
FC7-6297-000	162 - 5	FL3-1430-000	160 - 19	FU6-2999-000	162 - 21
FC7-6299-000	162 - 7	FL3-1431-000	162 - 10	FU7-0667-000	162 - 22
FC7-6300-000	162 - 8	FL3-1437-000	162 - 11	FU7-0668-000	162 - 23
FC7-6320-000	160 - 2	FL3-1439-000	160 - 20	FU7-0669-000	162 - 24
FC7-6321-000	160 - 3	FL3-2458-000	162 - 18	FU7-0671-000	162 - 25
FC9-1494-000	160 - 8	FL3-2459-000	162 - 34	FU7-0672-000	160 - 24
FC9-1494-000	160A - 3	FL3-3540-000	160 - 18	FU7-0676-000	162 - 26
FC9-1496-000	160 - 5	FL3-5849-000	400 - 2	FU7-0678-000	162 - 27
FC9-1497-000	160 - 6	FL3-5852-000	100 - 6	FU7-2016-000	162 - 28
FC9-1499-000	160 - 9	FM0-3291-000	102 - 12	FU7-2018-000	160 - 25
FC9-1499-000	160A - 4	FM0-3313-000	102 - 10	FU7-2021-000	162 - 29
FC9-1504-000	160 - 13	FM1-D112-000	101 - 2	FU7-8989-000	160 - 14
FC9-1512-000	162 - 9	FM1-D779-000	100 - 21	FU8-2483-000	162 - 30
FC9-2007-000	100 - 3	FM1-F900-000	104 - 5	FU8-2484-000	162 - 36
FC9-2016-000	100 - 24	FM3-9534-000	160 - 21	HB1-5537-000	100 - 17
FC9-2056-000	100 - 9	FM3-9538-000	160 - 23	HC1-0586-000	160 - 22
FC9-2068-000	106 - 1	FM3-9541-000	162 - 13	HC1-0586-000	162 - 31
FC9-2069-000	106 - 2	FM3-9542-000	162 - 14	HH2-2824-000	001 - 3
FC9-2071-000	106 - 3	FM3-9543-000	162 - 15	HU1-1022-000	160 - 11
FC9-2142-000	104 - 1	FM3-9793-000	100 - 22	HU1-1022-000	162 - 32
FC9-2166-000	100 - 12	FM3-9797-000	101 - 1	NPN	001 -
FC9-2190-000	001 - 2	FM3-9798-000	106 - 6	NPN	100 -
FC9-4891-000	106 - 4	FM3-9816-000	100 - 26	NPN	101 -
FC9-4897-000	100 - 18	FM4-1605-000	104 - 16	NPN	102 -
FC9-5109-000	160 - 7	FM4-1659-000	103 - 2	NPN	103 -
FC9-5109-000	160A - 5	FM4-1873-000	162 - 17	NPN	104 -
FC9-5110-000	160 - 7	FM4-1883-000	160 - 26	NPN	105 -
FC9-5111-000	160 - 8	FM4-1885-000	162 - 12	NPN	106 -
FC9-5654-000	162 - 6	FM4-3989-000	104 - 4	NPN	160 -
FC9-5660-000	160 - 15	FM4-5367-000	102 - 10	NPN	160A -
FC9-5661-000	160 - 16	FM4-5386-000	102 - 11	NPN	162 -
FC9-5672-000	162 - 35	FM4-8841-000	400 -	QK1-6441-000	001 - 4
FC9-7005-000	100 - 20	FM4-8853-000	162 - 16	QK1-6443-000	001 - 5

# NUMERICAL INDEX

## imageRUNNER 1133iF/1133A/1133(Numerical Index)

PARTS NUMBER	FIGURE & KEY NO.	PARTS NUMBER	FIGURE & KEY NO.	PARTS NUMBER	FIGURE & KEY NO
QK1-6446-000	001 - 6	XA9-1671-000	104 - 14		
QK1-6449-000	001 - 7	XA9-1671-000	105 - 2		
QK1-6450-000	001 - 8	XA9-1671-000	106 - 5		
QK1-6455-000	001 - 9	XD1-3100-407	102 - 501		
RC2-6130-000	102 - 1	XD3-2300-322	101 - 501		
RC2-6136-000	104 - 18	XD9-0219-000	160 - 501		
RC2-6237-000	101 - 10				
RC2-6273-000	100 - 28				
RC2-8291-000	100 - 29				
RK2-2729-000	104 - 6				
RK2-2731-000	104 - 7				
RK2-2733-000	104 - 8				
RL1-2111-000	101 - 8				
RL1-2112-000	101 - 9				
RL1-2115-000	102 - 4				
RL1-2120-000	104 - 9				
RM1-1301-000	102 - 5				
RM1-4275-020	104 - 10				
RM1-6350-000	102 - 6				
RM1-6378-000	102 - 7				
RM1-6402-000	103 - 1				
RM1-6406-000	101 - 2				
RM1-6414-000	102 - 8				
RM1-6423-000	104 - 11				
RM1-6424-000	103 - 3				
RM1-6427-000	100 - 30				
RM1-6441-000	100 - 13				
RM1-6445-000	101 - 4				
RM1-6450-000	103 - 7				
RM1-6454-000	106 - 7				
RM1-7691-000	101 - 3				
RU5-2895-000	100 - 31				
RU5-2898-000	102 - 3				
RU6-2610-000	101 - 7				
VS1-7177-002	160 - 4				
VS1-7177-003	104 - 12				
VS1-7177-004	400 - 1				
VS1-7207-004	160 - 10				
VS1-7258-007	102 - 13				
WC4-5171-000	104 - 13				
WG8-5696-000	162 - 33				
WG8-5696-000	400 - 7				
XA9-0476-000	400 - 8				
XA9-0831-000	160 - 12				
XA9-0994-000	102 - 2				
XA9-1420-000	103 - 4				
XA9-1503-000	101 - 5				
XA9-1503-000	104 - 17				
XA9-1671-000	100 - 19				
XA9-1671-000	101 - 6				
XA9-1671-000	102 - 9				
XA9-1671-000	103 - 5				



# imageRUNNER 1133(Parts Catalog)

## 1133iF/1133A/

### imageRUNNER 1133iF

<b>230V AU</b>	<b>F16-1641-000</b>	<b>QDA</b>	ADF/FAX model
<b>230V EUR</b>	<b>F16-1692-000</b>	<b>HTC</b>	ADF/FAX model
<b>230V EUR</b>	<b>F16-7493-000</b>	<b>QXQ</b>	ADF/FAX model

### imageRUNNER 1133A

<b>230V EUR</b>	<b>F16-1691-000</b>	<b>HTB</b>	ADF model
<b>230V EUR</b>	<b>F16-4691-000</b>	<b>NZS</b>	ADF model
<b>230V EUR</b>	<b>F16-7492-000</b>	<b>QXP</b>	ADF model

### imageRUNNER 1133

<b>230V EUR</b>	<b>F16-1690-000</b>	<b>HTA</b>	COPYBOARD model
<b>230V EUR</b>	<b>F16-4690-000</b>	<b>NZR</b>	COPYBOARD model
<b>230V EUR</b>	<b>F16-7491-000</b>	<b>QXN</b>	COPYBOARD model



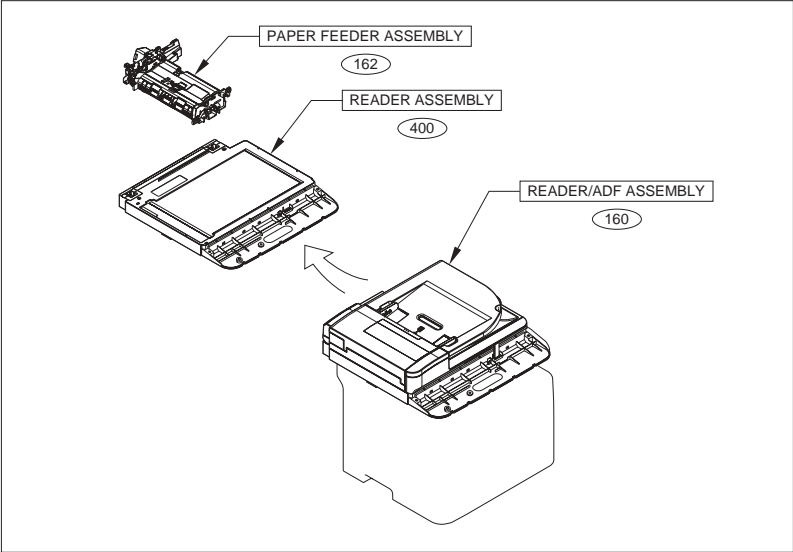
# Contents

A1	ASSEMBLY LOCATION DIAGRAM .....	2-1
A2	OPTION PARTS CATALOG LIST .....	2-2
001	ACCESSORIES .....	2-3
100	EXTERNAL COVERS, PANELS, ETC. ....	2-5
101	INTERNAL COMPONENTS 1 .....	2-9
102	INTERNAL COMPONENTS 2 .....	2-11
103	INTERNAL COMPONENTS 3 .....	2-13
104	INTERNAL COMPONENTS 4 .....	2-15
105	INTERNAL COMPONENTS 5 .....	2-17
106	INTERNAL COMPONENTS 6 .....	2-19
160	READER/ADF ASSEMBLY (ADF MODEL) .....	2-21
160A	READER/COPYBOARD ASSEMBLY (COPYBOARD MODEL).....	2-23
162	PAPER FEEDER ASSEMBLY (ADF MODEL).....	2-24
400	READER ASSEMBLY .....	2-27
ZZA	MECHANICAL STANDARD PARTS (HOW TO USE) .....	2-29
ZZB	MECHANICAL STANDARD PARTS (SCREWS).....	2-30
ZZC	MECHANICAL STANDARD PARTS (BOLTS).....	2-37
ZZD	MECHANICAL STANDARD PARTS (NUTS).....	2-38
ZZE	MECHANICAL STANDARD PARTS (RETAINING RINGS) .....	2-39

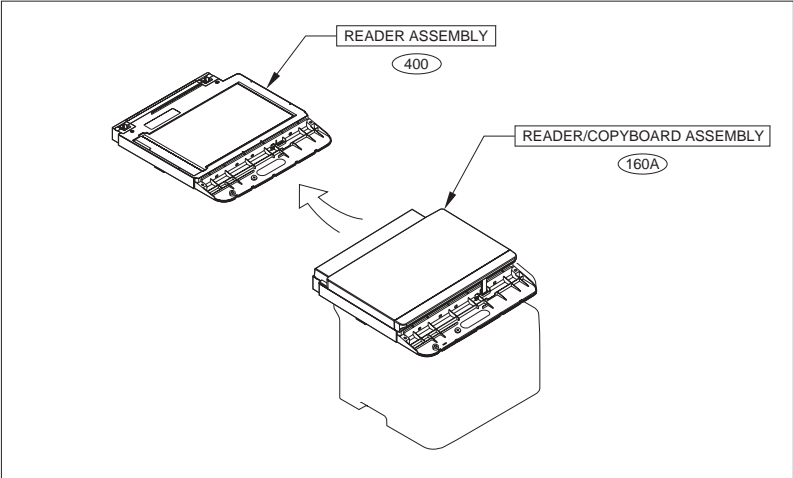


# FIGURE A1 ASSEMBLY LOCATION DIAGRAM

ADF MODEL



COPYBOARD MODEL



## FIGURE A2 OPTION PARTS CATALOG LIST

This is the table of the machine's options whose parts catalog is issued.  
本機のオプションで、パーツカタログが発行されている機種の一覧である。

No.	Model Name(English)	Model Name(Japanese)
1	Cassette Feeding Module-Z1	(日本仕向けなし)
2	Copy Card Reader Attachment-G1	(日本仕向けなし)
3	Copy Control Interface Kit-C1	(日本仕向けなし)
4	MiCARD Attachment Kit-A1	(日本仕向けなし)
5	Wireless LAN Board-C1	(日本仕向けなし)

# FIGURE 001 ACCESSORIES

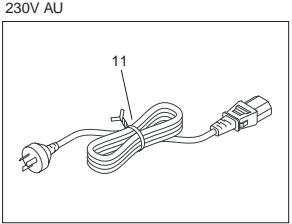
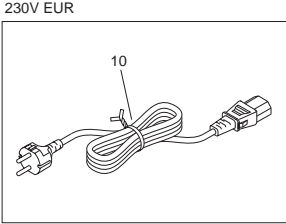
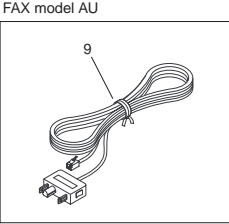
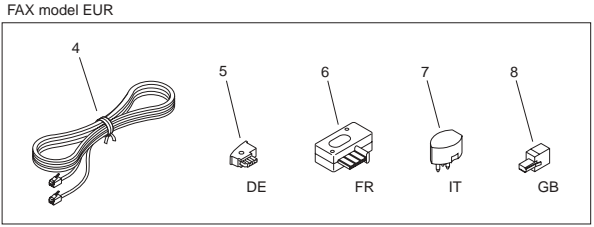
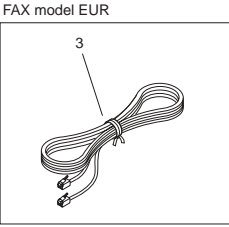
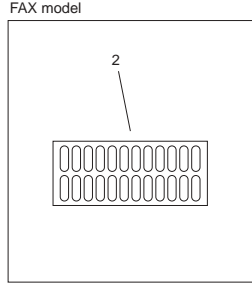
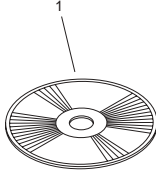
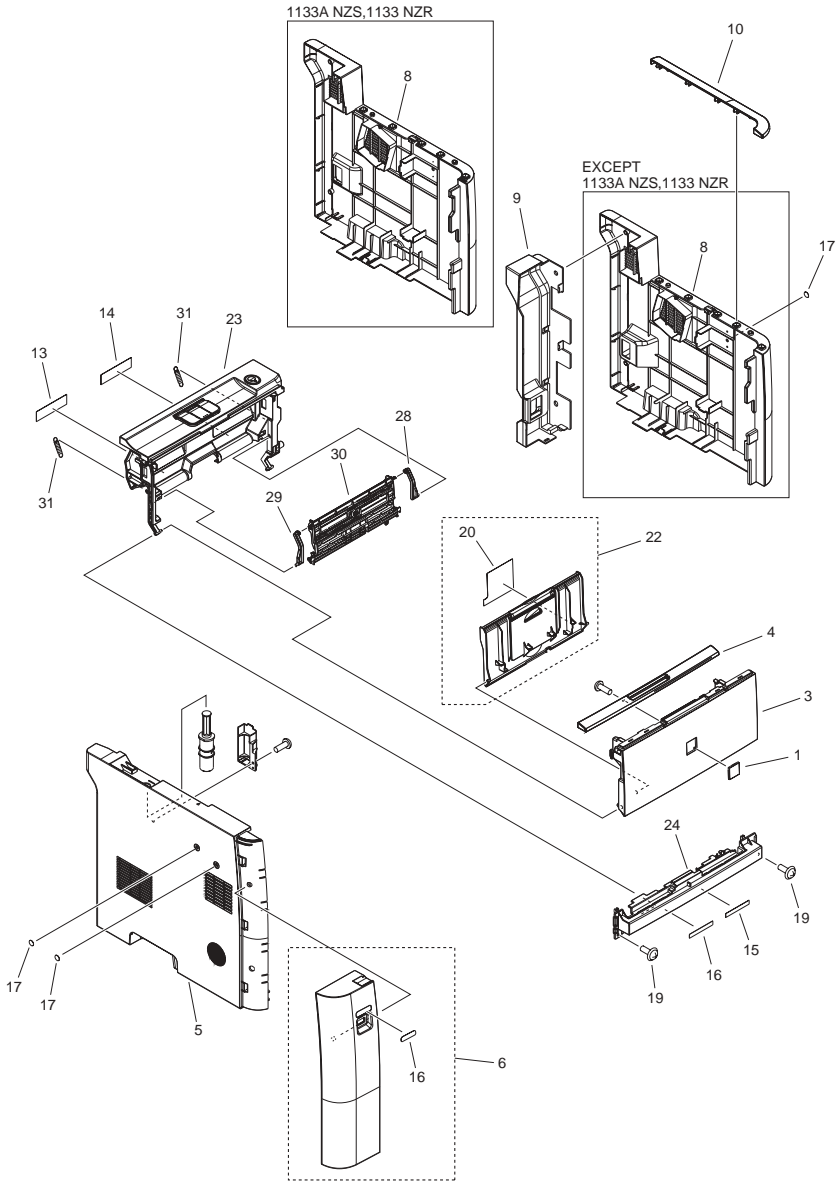


FIGURE & KEY NO.	PARTS NUMBER	R A N K	Q'TY	DESCRIPTION	SERIAL NUMBER/ REMARKS	S V C
Fig.001	NPN		RF	ACCESSORIES		
1	FK3-2799-000		1	CD-ROM, USER SOFTWARE	HTA,HTB,HTC,NZR,NZS, QDA	
1	FK4-1441-000		1	CD-ROM, USER SOFTWARE	QXN,QXP,QXQ	
2	FC9-2190-000		1	LABEL, DESTINATION	FAX model	
3	HH2-2824-000		1	MODULAR CORD, 2P	FAX model EUR	
4	QK1-6441-000		1	CORD, MODULAR	FAX model EUR	
5	QK1-6443-000		1	PLUG	FAX model DE	
6	QK1-6446-000		1	PLUG	FAX model FR	
7	QK1-6449-000		1	PLUG	FAX model IT	
8	QK1-6450-000		1	PLUG	FAX model GB	
9	QK1-6455-000		1	CORD, MODULER	FAX model AU	
10	FH2-7080-000		1	CORD, POWER	230V EUR	
11	FH2-7082-000		1	CORD, POWER	230V AU	



# FIGURE 100 EXTERNAL COVERS, PANELS, ETC.



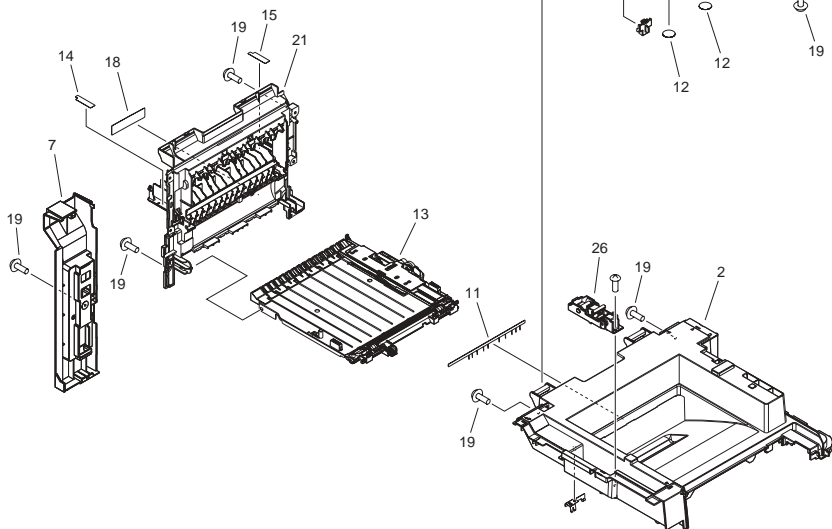
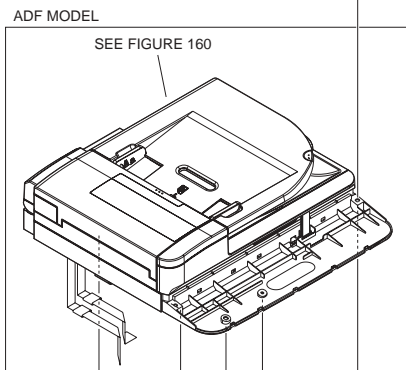
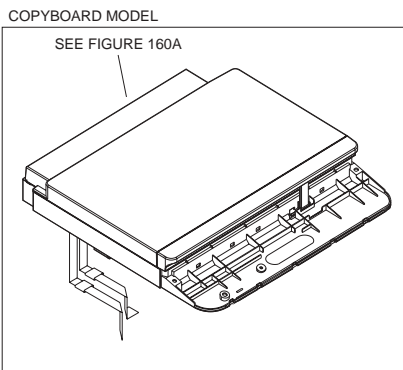
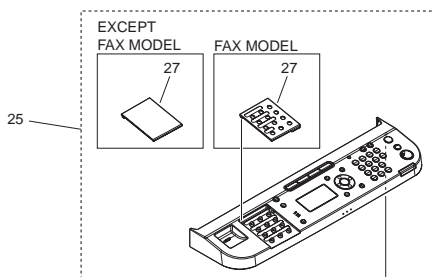


FIGURE & KEY NO.	PARTS NUMBER	R A N K	Q'TY	DESCRIPTION	SERIAL NUMBER/ REMARKS	S V C
Fig.100	NPN		RF	EXTERNAL COVERS, PANELS, ETC.		
1	FC7-0509-000		1	EMBLEM		
2	FC0-4168-000		1	COVER, UPPER		
3	FC9-2007-000		1	COVER, MULTI FEED		
4	FC0-4170-000		1	COVER, MULTI FEED UPPER		
5	FC0-3132-000		1	COVER, LEFT		
6	FL3-5852-000		1	COVER, FRONT, LEFT		
7	FC0-3133-000		1	COVER, LEFT, REAR	FAX model	
7	FC0-3162-000		1	COVER, LEFT, REAR	EXCEPT FAX model	
8	FC0-3135-000		1	COVER, RIGHT	EXCEPT 1133A NZS,QXP,1133 NZR,QXN	
8	FE2-1950-000		1	COVER, RIGHT, L6	1133A NZS,QXP,1133 NZR,QXN	
9	FC9-2056-000		1	COVER, REAR RIGHT		
10	FC0-4169-000		1	COVER, RIGHT, UPPER		
11	FC9-8944-000		1	ELIMINATOR, STATIC CHARGE		
12	FC9-2166-000		2	SHEET, ELES. PREVENTION		
13	RM1-6441-000		1	DUPLEXING PAPER FEED ASS'Y		
14	FC9-8934-000		1	LABEL, HIGH TMP. CAUTION		
15	FC9-8943-000		1	LABEL, HIGH TMP. CAUTION		
16	FC0-3196-000		1	LABEL, USB		
17	HB1-5537-000		3	SHEET,BLANKING		
18	FC9-4897-000		1	LABEL, SIZE EXCHANGE		
19	XA9-1671-000		AR	SCREW, D, M3X8		
20	FC9-7005-000		1	LABEL, SIZE, MANUAL FEED		
21	FM1-D779-000		1	REAR COVER ASSEMBLY		
22	FM3-9793-000		1	EXPANSION TRAY ASSEMBLY		
23	FM4-9783-000		1	INNER COVER ASSEMBLY		
24	FC9-2016-000		1	COVER, FRONT, LOWER		
25	FM4-9768-010		1	CONTROL PANEL ASSEMBLY	1133IF	
25	FM4-9790-000		1	CONTROL PANEL ASSEMBLY	1133A	
25	FM4-9769-000		1	CONTROL PANEL ASSEMBLY	1133	
26	FM3-9816-000		1	HINGE ASSEMBLY		

FIGURE & KEY NO.	PARTS NUMBER	RANK	Q'TY	DESCRIPTION	SERIAL NUMBER/REMARKS	SVC
27	FC0-3107-000		1	COVER, ONE-TOUCH	FAX model	
27	FC0-3108-000		1	COVER, ONE-TOUCH	EXCEPT FAX model	
28	RC2-6273-000		1	HINGE, MULTI-PURPOSE, RIGHT		
29	RC2-8291-000		1	HINGE, MULTI-PURPOSE, LEFT		
30	RM1-6427-000		1	MP LIFTING PLATE ASSEMBLY		
31	RU5-2895-000		2	SPRING, TENSION		

# FIGURE 101 INTERNAL COMPONENTS 1

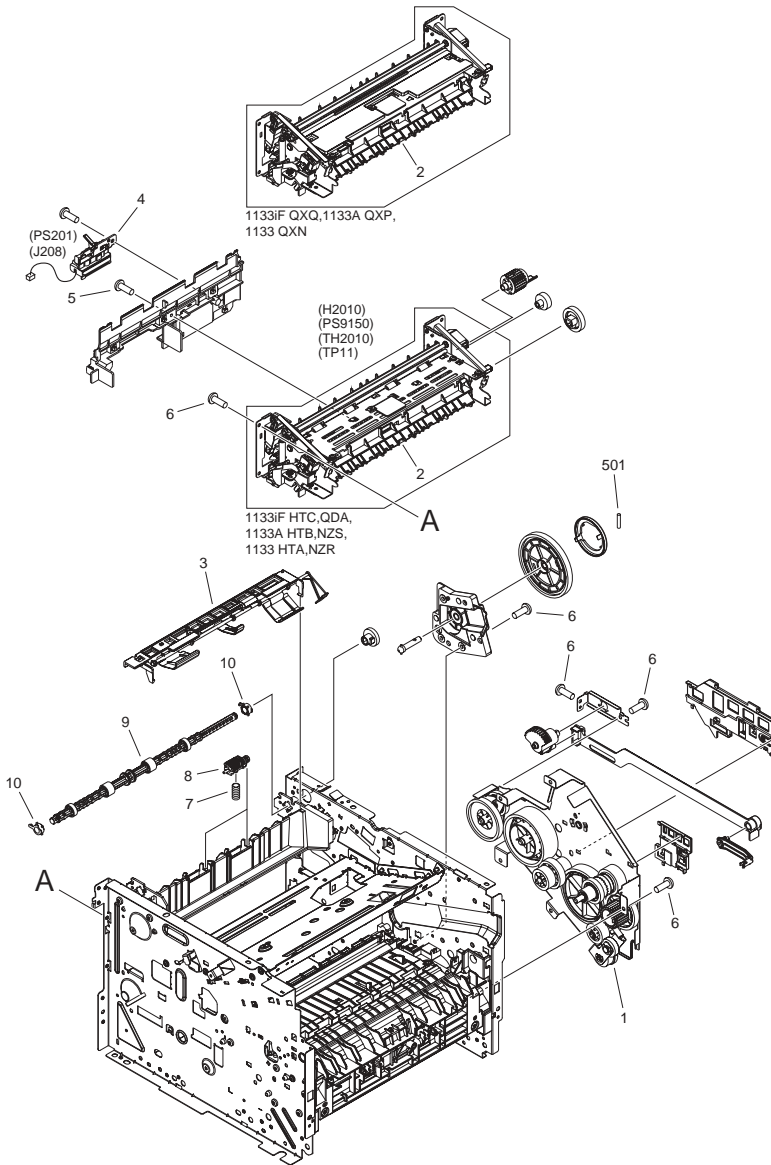


FIGURE & KEY NO.	PARTS NUMBER	R A N K	Q'TY	DESCRIPTION	SERIAL NUMBER/ REMARKS	S V C
Fig.101	NPN		RF	INTERNAL COMPONENTS 1		
1	FM3-9797-000		1	MAIN DRIVE ASSEMBLY		
2	RM1-6406-000		1	FIXING ASS'Y	1133iF HTC,QDA,1133A HTB,NZS,1133 HTA,NZR H2010,PS9150,TH2010,T P11	
2	FM1-D112-000		1	FIXING ASS'Y	1133iF QXQ,1133A QXP,1133 QXN H2010,PS9150,TH2010,T P11	
3	RM1-7691-000		1	PAPER RETAINING DELIVERY ASS'Y		
4	RM1-6445-000		1	REVERSE SENSOR ASS'Y	PS201	
5	XA9-1503-000		AR	SCREW, TAP, M3X6		
6	XA9-1671-000		AR	SCREW, D, M3X8		
7	RU6-2610-000		2	SPRING, COMPRESSION		
8	RL1-2111-000		2	FACE-DOWN ROLLER UNIT		
9	RL1-2112-000		1	ROLLER, FACE-DOWN		
10	RC2-6237-000		2	BUSHING		
501	XD3-2300-322		1	PIN		



FIGURE & KEY NO.	PARTS NUMBER	RANK	Q'TY	DESCRIPTION	SERIAL NUMBER/REMARKS	SVC
Fig.102	NPN		RF	INTERNAL COMPONENTS 2		
1	RC2-6130-000		2	ROLLER, CASSETTE PAPER PICK-UP		
2	XA9-0994-000		1	SCREW, TP, M4X6		
3	RU5-2898-000		1	SPRING, TENSION		
4	RL1-2115-000		1	PAD, MULTI-PURPOSE SEPARATION		
5	RM1-1301-000		1	PAPER PICK-UP GEAR ASS'Y		
6	RM1-6350-000		1	MULTI-PURPOSE SENSOR PCB ASS'Y	PS202	
7	RM1-6378-000		1	MAIN MOTOR ASS'Y	M201	
8	RM1-6414-000		1	PAPER PICK-UP ROLLER ASS'Y		
9	XA9-1671-000		AR	SCREW, D, M3X8		
10	FM0-3313-000		1	MAIN SWITCH UNIT, L6	1133A NZS,QXP,1133 NZR,QXN SW1	
10	FM4-5367-000		1	MAIN SWITCH UNIT	EXCEPT 1133A NZS,QXP,1133 NZR,QXN SW1	
11	FM4-5386-000		1	INLET CABLE ASSEMBLY	P1	
12	FM0-3291-000		1	CABLE, REMOTE, L6	1133A NZS,QXP,1133 NZR,QXN	
13	VS1-7258-007		1	CONNECTOR, DRAWER		
501	XD1-3100-407		1	LOCK-WASHER, SPRING		



# FIGURE 103 INTERNAL COMPONENTS 3

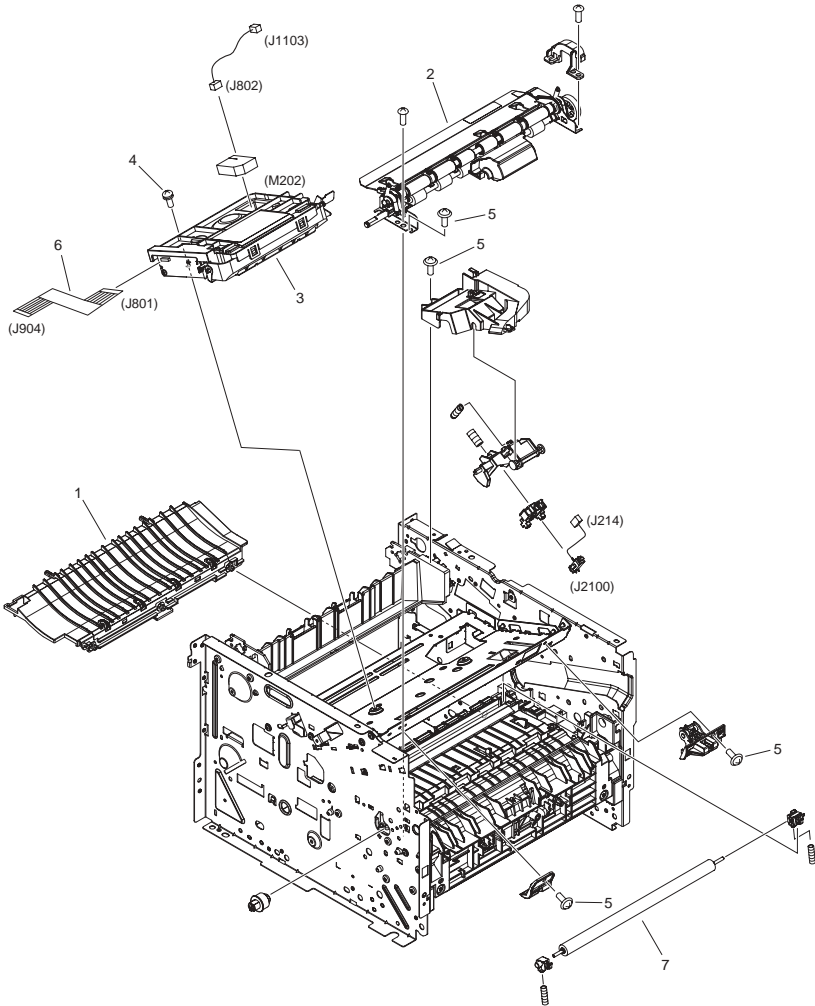


FIGURE & KEY NO.	PARTS NUMBER	RANK	Q'TY	DESCRIPTION	SERIAL NUMBER/REMARKS	SVC
Fig.103	NPN		RF	INTERNAL COMPONENTS 3		
1	RM1-6402-000		1	PAPER FEED GUIDE ASS'Y		
2	FM4-1659-000		1	REGISTRATION ASS'Y		
3	RM1-6424-000		1	SCANNER ASS'Y	M202	
4	XA9-1420-000		AR	SCREW, WWASHER, M3X8		
5	XA9-1671-000		AR	SCREW, D, M3X8		
6	FK3-0730-000		1	CABLE, FLAT		
7	RM1-6450-000		1	TRANSFER ROLLER ASS'Y		

# FIGURE 104 INTERNAL COMPONENTS 4

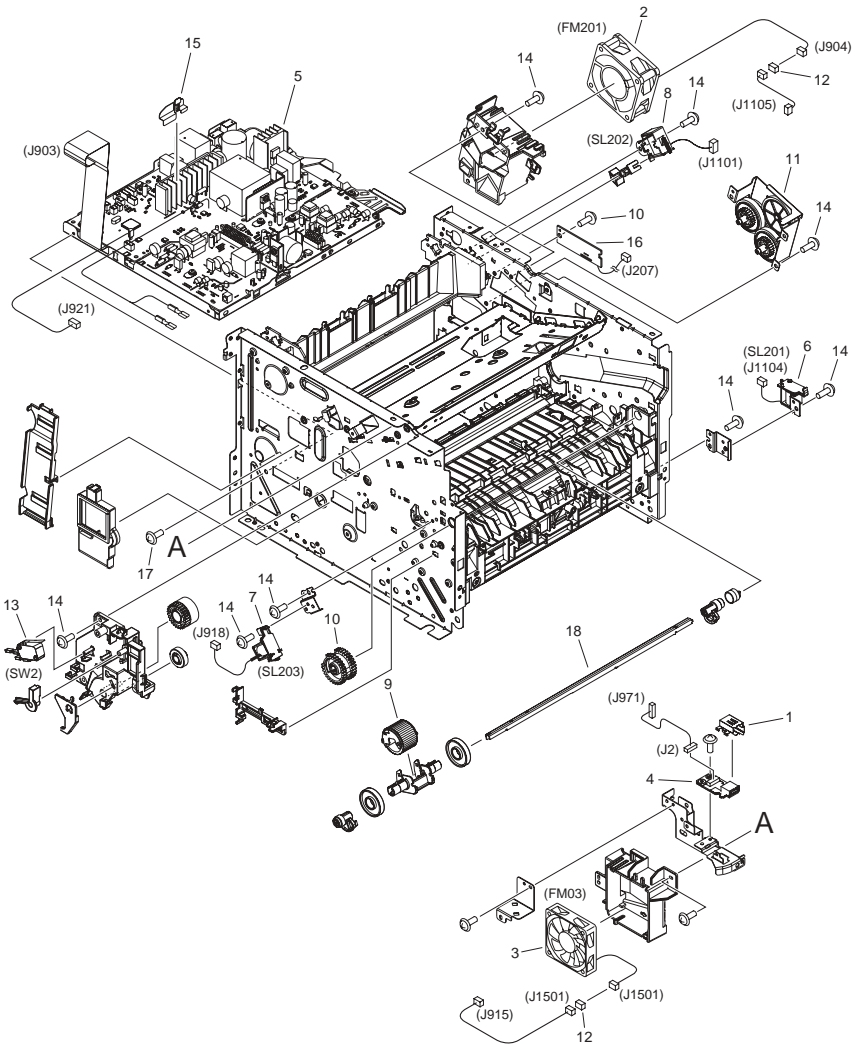


FIGURE & KEY NO.	PARTS NUMBER	R A N K	Q'TY	DESCRIPTION	SERIAL NUMBER/ REMARKS	S V C
Fig.104	NPN		RF	INTERNAL COMPONENTS 4		
1	FC9-2142-000		1	PLATE, USB GROUNDING		
2	FK2-2064-000		1	FAN	FM201	
3	FK3-0732-000		1	FAN	FM03	
4	FM4-3989-000		1	USB PCB ASSEMBLY		
5	FM4-9013-010		1	ENGINE CONTROLLER PCB ASS'Y	1133IF HTC,QDA,1133A HTB,NZS,1133 HTA,NZR	
5	FM1-F900-000		1	ENGINE CONTROLLER PCB ASS'Y	1133IF QXQ,1133A QXP,1133 QXN	
6	RK2-2729-000		1	SOLENOID	SL201	
7	RK2-2731-000		1	SOLENOID	SL203	
8	RK2-2733-000		1	SOLENOID	SL202	
9	RL1-2120-000		1	ROLLER,MULTI-PURPOSE PICK-UP		
10	RM1-4275-020		1	PAPER PICK-UP GEAR ASS'Y		
11	RM1-6423-000		1	REVERSE DRIVE ASS'Y		
12	VS1-7177-003		1	CONNECTOR, SNAP TIGHT, BK		
13	WC4-5171-000		1	MICROSWITCH	SW2	
14	XA9-1671-000		AR	SCREW, D, M3X8		
15	FC9-8942-000		1	SHEET, PROTECTIVE		
16	FM4-1605-000		1	CONNECTING PCB ASS'Y		
17	XA9-1503-000		AR	SCREW, TAP, M3X6		
18	RC2-6136-000		1	SHAFT, PAPER PICK-UP		

# FIGURE 105 INTERNAL COMPONENTS 5

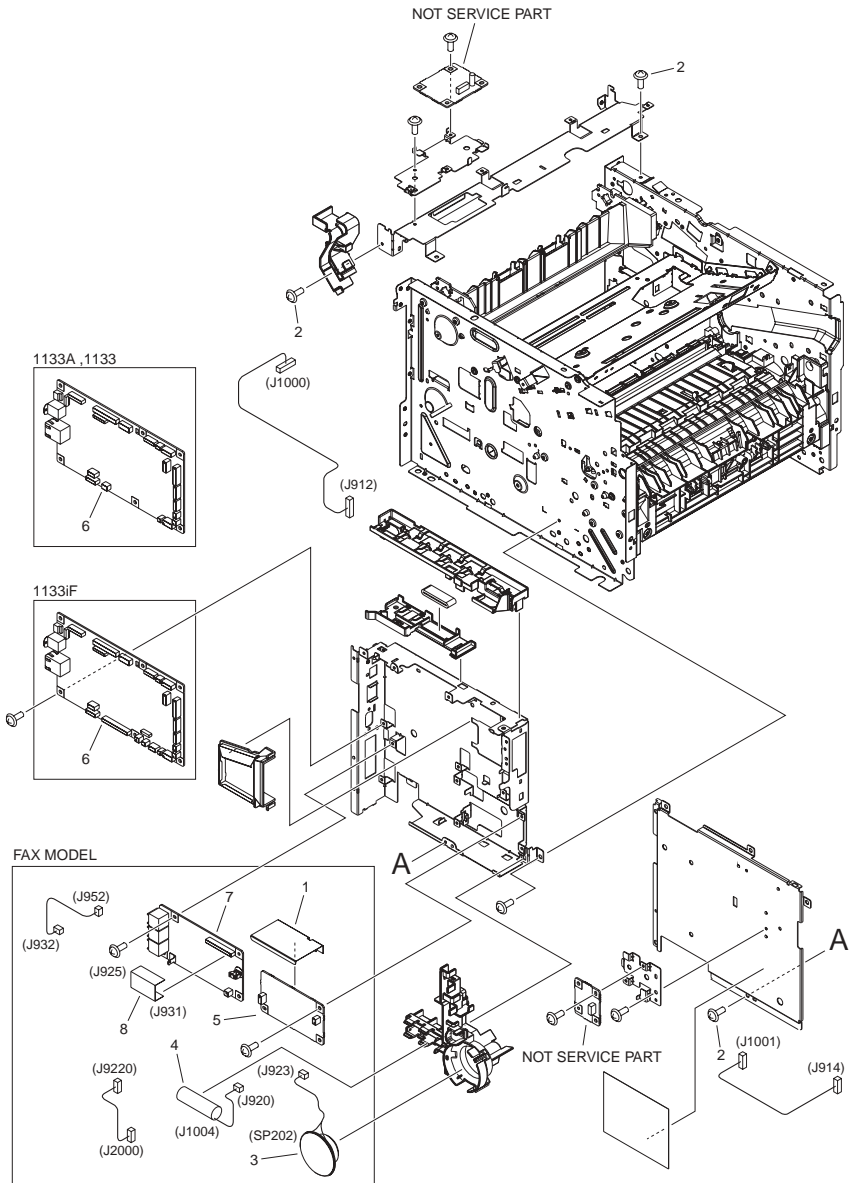


FIGURE & KEY NO.	PARTS NUMBER	RANK	Q'TY	DESCRIPTION	SERIAL NUMBER/REMARKS	SVC
Fig.105	NPN		RF	INTERNAL COMPONENTS 5		
1	FC0-3182-000		1	SHEET, CABLE PROTECTION	FAX model	
2	XA9-1671-000		AR	SCREW, D, M3X8		
3	FK3-1826-000		1	SPEAKER	FAX model SP202	
4	FK3-1626-000		1	BATTERY, NI-MH	FAX model	
5	FM4-8968-000		1	OFFHOOK PCB ASSEMBLY	FAX model	
6	FM4-8952-000		1	MAIN CONTROLLER PCB ASSEMBLY	1133iF	
6	FM4-8953-000		1	MAIN CONTROLLER PCB ASSEMBLY	1133A,1133	
7	FM4-8965-000		1	NCU PCB ASSEMBLY	FAX model EUR	
7	FM4-8964-000		1	NCU PCB ASSEMBLY	FAX model AU	
8	FK3-1820-000		1	CABLE, FLAT	FAX model	

FIGURE 106  
INTERNAL COMPONENTS 6

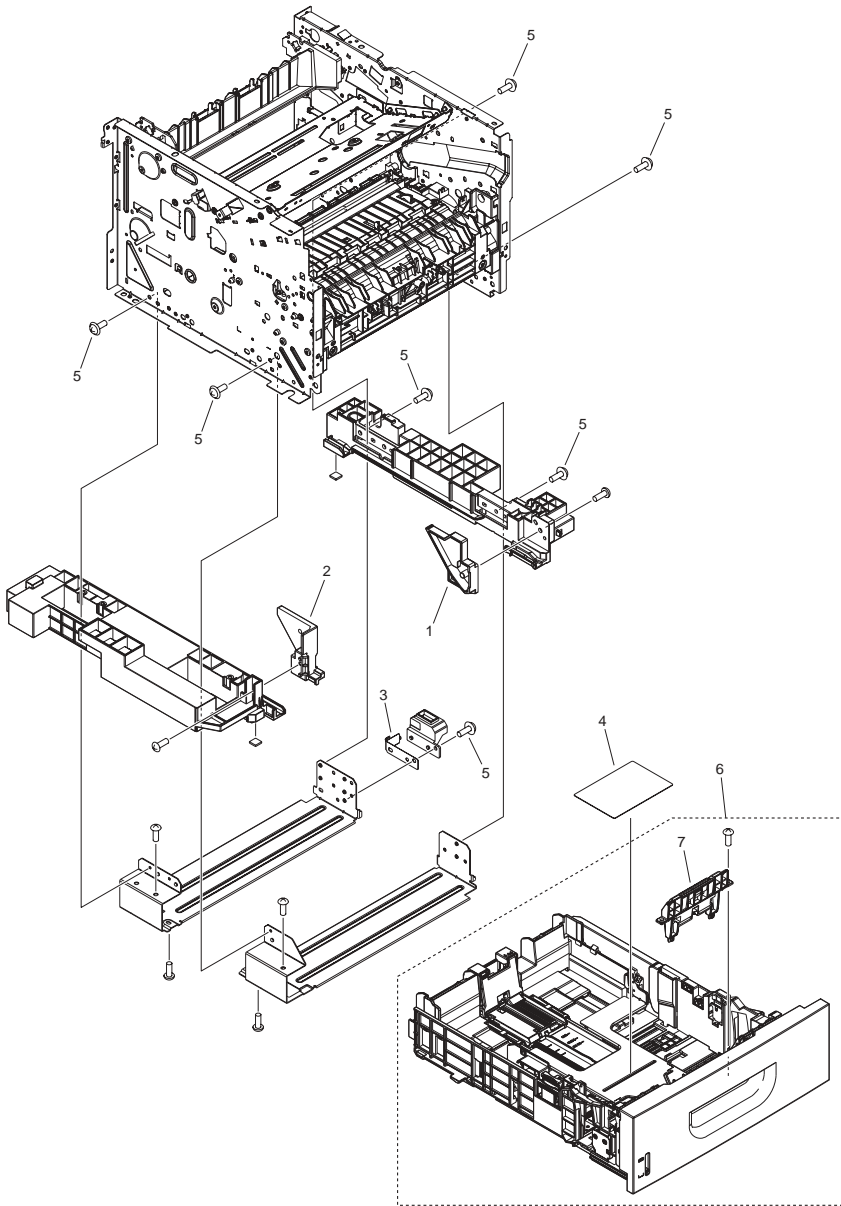


FIGURE & KEY NO.	PARTS NUMBER	RANK	Q'TY	DESCRIPTION	SERIAL NUMBER/REMARKS	SVC
Fig.106	NPN		RF	INTERNAL COMPONENTS 6		
1	FC9-2068-000		1	GUIDE, CASSETTE, RIGHT		
2	FC9-2069-000		1	GUIDE, CASSETTE, LEFT		
3	FC9-2071-000		1	SPRING, LEAF		
4	FC9-4891-000		1	LABEL, EXCHANGE CONTROL PANEL		
5	XA9-1671-000		AR	SCREW, D, M3X8		
6	FM3-9798-000		1	CASSETTE ASSEMBLY		
7	RM1-6454-000		1	SEPARATION PAD ASS'Y		



FIGURE 160  
READER/ADF ASSEMBLY (ADF MODEL)

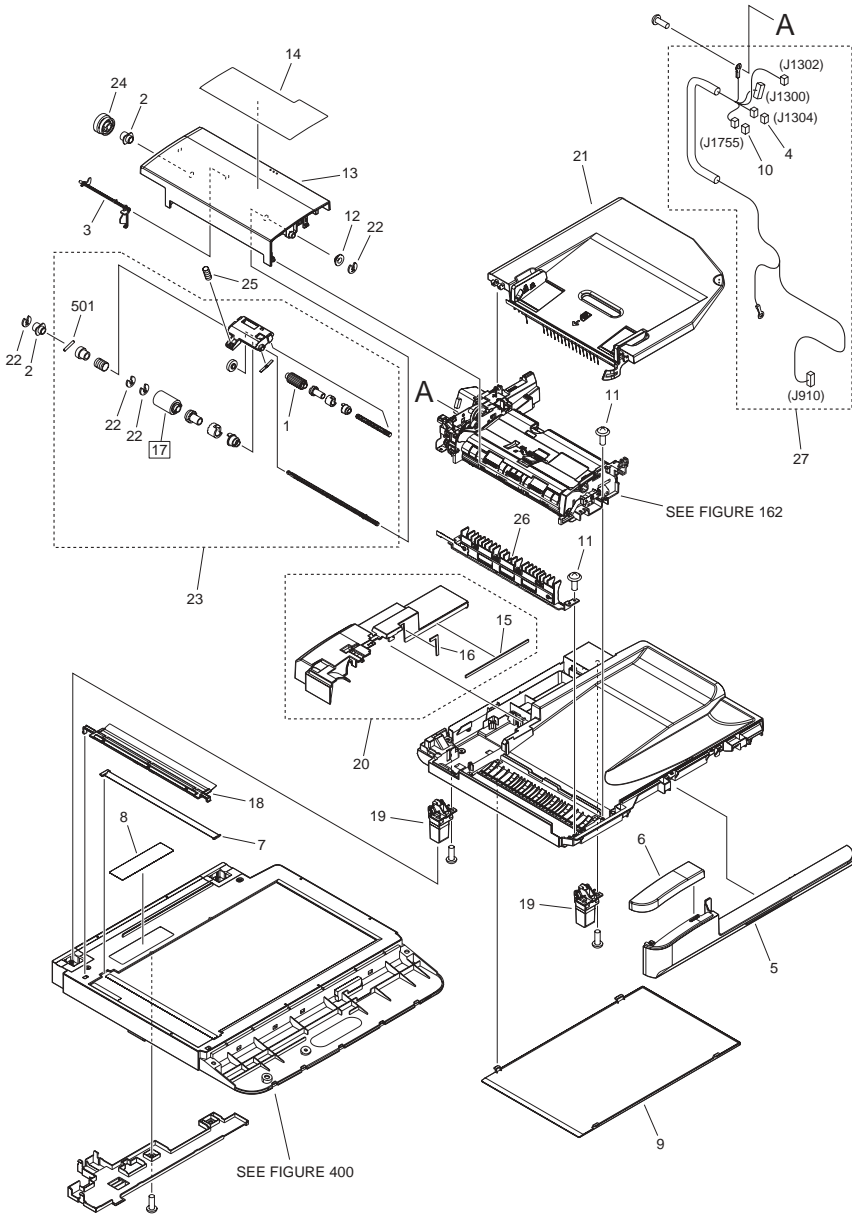


FIGURE & KEY NO.	PARTS NUMBER	R A N K	Q'TY	DESCRIPTION	SERIAL NUMBER/ REMARKS	S V C
Fig.160	NPN		RF	READER/ADF ASSEMBLY	ADF model	
1	FC7-6189-000		1	ROLLER, PICK-UP		
2	FC7-6320-000		2	BUSHING		
3	FC7-6321-000		1	FLAG, DOCUMENT SCANNER		
4	VS1-7177-002		1	CONNECTOR, SNAP TIGHT, BK		
5	FC9-1496-000		1	COVER, ADF, FRONT LOWER		
6	FC9-1497-000		1	COVER, ADF, FRONT UPPER		
7	FC9-5109-000		1	PLATE, PAPER SIZE	A SIZE	
7	FC9-5110-000		1	PLATE, PAPER SIZE	AB/INCH SIZE	
8	FC9-5111-000		1	LABEL, COPY PROHIBITION	AU	
8	FC9-1494-000		1	LABEL, COPY PROHIBITION	EUR	
9	FC9-1499-000		1	SHEET, WHITE		
10	VS1-7207-004		1	CONNECTOR, SNAP TIGHT, BK		
11	HU1-1022-000		1	BUSHING		
12	XA9-0831-000		7	SCREW,M3X10		
13	FC9-1504-000		1	PANEL, OPEN/CLOSE		
14	FU7-8989-000		1	LABEL, GLASS CLEANING	A SIZE	
14	FU2-0591-000		1	LABEL, GLASS CLEANING	AB/INCH SIZE	
15	FC9-5660-000		1	CUSHION		
16	FC9-5661-000		1	CUSHION		
17	FL2-6637-000		1	ROLLER, SEPARATION	[DP]	
18	FL3-3540-000		1	HOLDER, DOCUMENT,RELEASE SHEET		
19	FL3-1430-000		2	HINGE, ADF		
20	FL3-1439-000		1	ADF REAR COVER ASSY		
21	FM3-9534-000		1	DOCUMENT TRAY ASSEMBLY		
22	HC1-0586-000		4	RETAINING RING		
23	FM3-9538-000		1	SEPARATION ROLLER ASSEMBLY		
24	FU7-0672-000		1	GEAR, 24T		
25	FU7-2018-000		1	SPRING, COMPRESSION		
26	FM4-1883-000		1	PAPER FEED GUIDE ASSEMBLY		
27	FM4-9063-000		1	CABLE,ADF		
501	XD9-0219-000		1	PIN, DOWEL		

# FIGURE 160A READER/COPYBOARD ASSEMBLY (COPYBOARD MODEL)

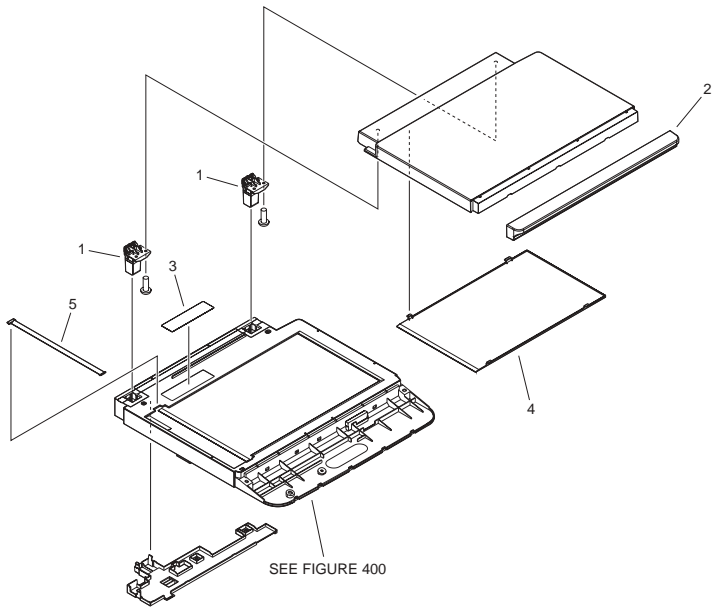


FIGURE & KEY NO.	PARTS NUMBER	RANK	QTY	DESCRIPTION	SERIAL NUMBER/REMARKS	SVC
Fig.160A	NPN		RF	READER/COPYBOARD ASSEMBLY	COPYBOARD model	
1	FM4-9823-000		2	HINGE UNIT		
2	FC0-3173-000		1	COVER, COPYBOARD, FRONT		
3	FC9-1494-000		1	LABEL, COPY PROHIBITION		
4	FC9-1499-000		1	SHEET, WHITE		
5	FC9-5109-000		1	PLATE, PAPER SIZE		

FIGURE 162  
PAPER FEEDER ASSEMBLY (ADF MODEL)

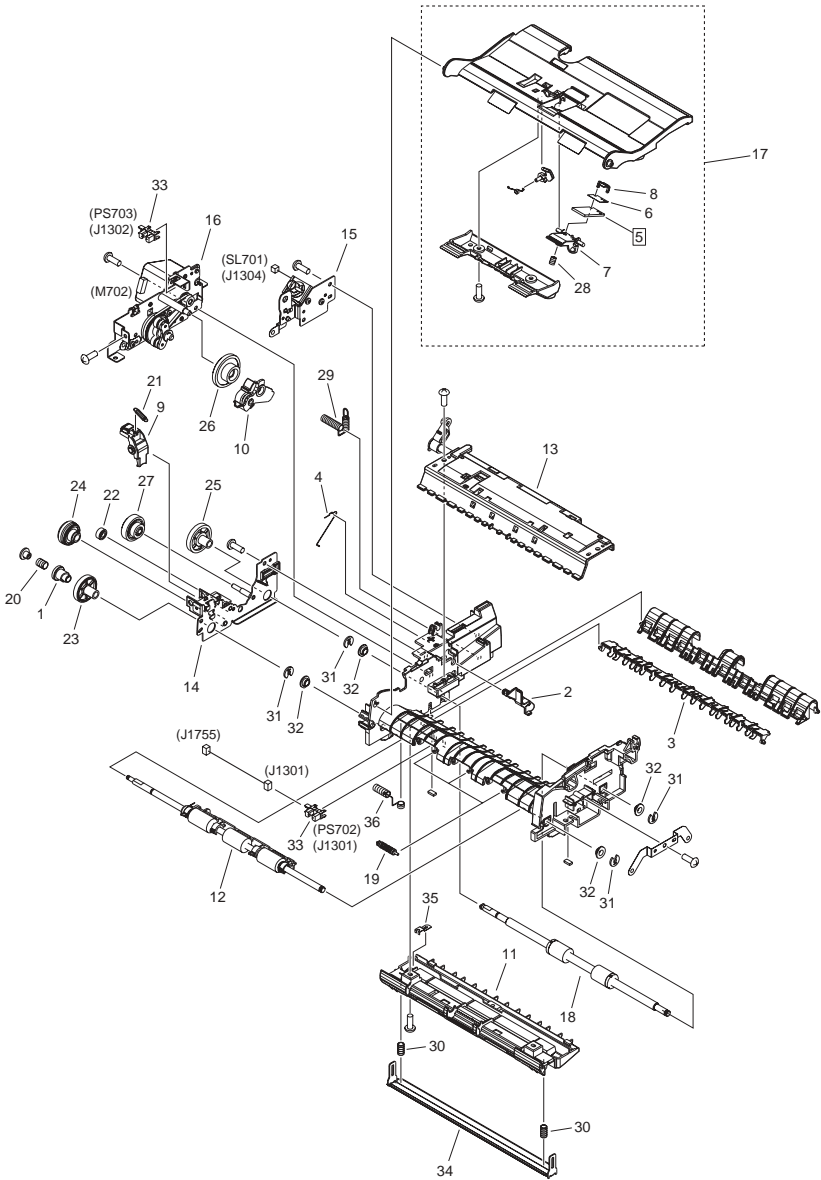
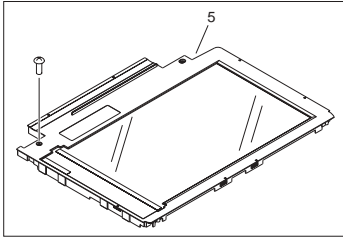


FIGURE & KEY NO.	PARTS NUMBER	R A N K	Q'TY	DESCRIPTION	SERIAL NUMBER/ REMARKS	S V C
Fig.162	NPN		RF	PAPER FEEDER ASSEMBLY	ADF model	
1	FC7-6052-010		1	RATCHET, PAPER FEED ROLLER		
2	FC7-6182-000		1	LEVER, ROLLER RELEASE		
3	FC7-6278-000		1	FLAPPER, PAPER DELIVERY		
4	FC7-6281-000		1	SPRING, ARM		
5	FC7-6297-000		1	PAD, SEPARATION	[DP]	
6	FC9-5654-000		1	SHEET, SEPARATION PAD		
7	FC7-6299-000		1	HOLDER, SEPARATION PAD		
8	FC7-6300-000		1	CLAMP, SEPARATION PAD		
9	FC9-1512-000		1	LEVER, RELEASE		
10	FL3-1431-000		1	ARM, SEPARATION SWING		
11	FL3-1437-000		1	GUIDE LOWER ASSEMBLY		
12	FM4-1885-000		1	PAPER FEED ROLLER ASSEMBLY		
13	FM3-9541-000		1	PAPER DELIVERY ASSEMBLY		
14	FM3-9542-000		1	DRIVE PLATE ASSEMBLY		
15	FM3-9543-000		1	SOLENOID ASSEMBLY	SL701	
16	FM4-8853-000		1	MOTOR DRIVE ASSEMBLY	M702	
17	FM4-1873-000		1	GUIDE ASSEMBLY, UPPER		
18	FL3-2458-000		1	PAPER DELIVERY ROLLER ASSY		
19	FU5-6992-000		3	ROLLER, AUXILIARY		
20	FU6-2998-000		1	SPRING, COMPRESSION		
21	FU6-2999-000		1	SPRING, TENSION		
22	FU7-0667-000		1	GEAR, 20T		
23	FU7-0668-000		1	GEAR, 54T		
24	FU7-0669-000		1	GEAR, 46T/23T		
25	FU7-0671-000		1	GEAR, 36T		
26	FU7-0676-000		1	GEAR, 21T/42T		
27	FU7-0678-000		1	GEAR, 51T/17T		
28	FU7-2016-000		1	SPRING, COMPRESSION		
29	FU7-2021-000		1	SPRING, COMPRESSION		
30	FU8-2483-000		2	SPRING, COMPRESSION		
31	HC1-0586-000		5	RETAINING RING		

FIGURE & KEY NO.	PARTS NUMBER	R A N K	Q'TY	DESCRIPTION	SERIAL NUMBER/ REMARKS	S V C
32	HU1-1022-000		4	BUSHING		
33	WG8-5696-000		2	PHOTO INTERRUPTER, TLP1243	PS702,PS703	
34	FL3-2459-000		1	PLATE, WHITE SHEET		
35	FC9-5672-000		1	PLATE, GROUNDING		
36	FU8-2484-000		1	SPRING, COMPRESSION		

# FIGURE 400 READER ASSEMBLY

COPYBOARD MODEL



ADF MODEL

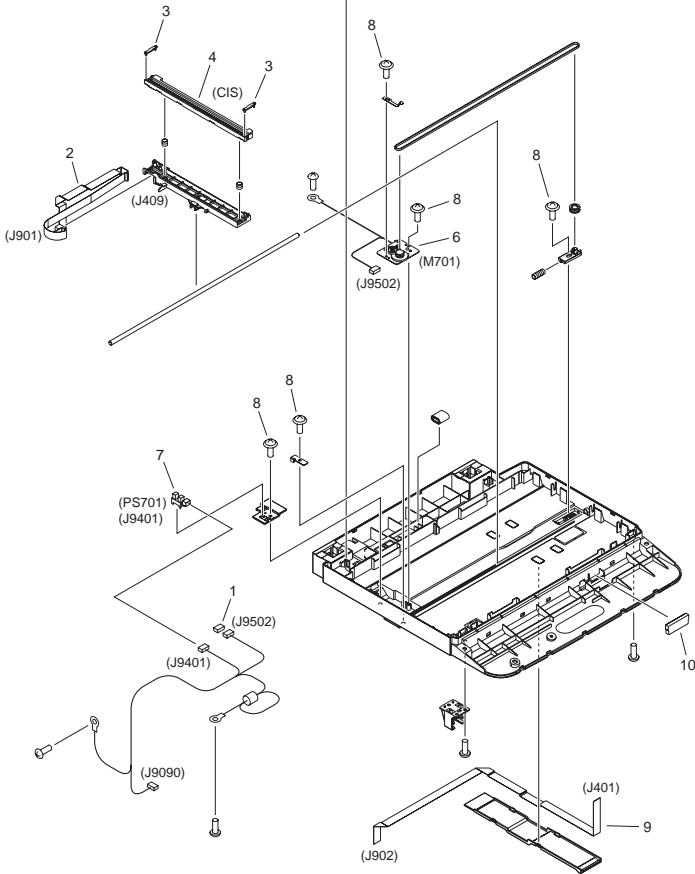
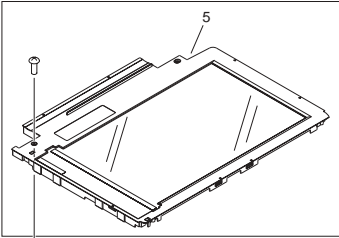


FIGURE & KEY NO.	PARTS NUMBER	R A N K	Q'TY	DESCRIPTION	SERIAL NUMBER/ REMARKS	S V C
Fig.400	FM4-8841-000		1	READER ASSEMBLY	ADF model	
Fig.400	FM4-9074-000		1	READER ASSEMBLY	COPYBOARD model	
1	VS1-7177-004		1	CONNECTOR, SNAP TIGHT, BK		
2	FL3-5849-000		1	CABLE, FLAT		
3	FC9-7574-000		2	SPACER, CIS		
4	FK3-1904-000		1	CONTACT IMAGE SENSOR	CIS	
5	FM4-9072-000		1	READER COVER UNIT	ADF model	
5	FM4-9073-000		1	READER COVER UNIT	COPYBOARD model	
6	FM4-9071-000		1	DC MOTOR ASSEMBLY	M701	
7	WG8-5696-000		1	PHOTO INTERRUPTER, TLP1243	PS701	
8	XA9-0476-000		AR	SCREW,TP M3X8		
9	FK3-1908-000		1	CABLE, FLAT		
10	FC0-4177-000		1	SHEET, CABLE PROTECTION		



# FIGURE ZZA

## MECHANICAL STANDARD PARTS (HOW TO USE)

### Mechanical standard parts

#### 機械標準部品

#### About a mechanical standard parts

A Mechanical standard parts is a mechanical part which not parts peculiar to a product. They are parts which are common to a Canon product and are used, such as a screw and a washer. The Fig No. and parts number of the mechanical standard parts are not listed in the product parts catalog. Refer to the parts catalog of mechanical standard parts when checking the parts number for screw or washer etc. and identify them by part shape or size.

#### 機械標準部品とは

機械標準部品とは、製品特有の部品ではなく、ねじやワッシャなどキヤノン製品共通で使用されている機械部品（メカ部品）のことです。  
製品のパーツカタログには、機械標準部品のFig No.や部品番号は記載しておりません。  
ねじや、ワッシャ等の部品番号を調べるときは、機械標準部品のパーツカタログを参照し、部品の形状や大きさから判断し、使用している部品を調べてください。

#### Material and surface treatment of a mechanical standard parts

Material and surface treatment of mechanical standard parts are assigned commonly for each part. Refer to the Table 1 for the parts which material and surface treatment are assigned as numbers.

#### 機械標準部品の材料および表面処理

機械標準部品の材料および表面処理については、各種部品共通で決められています。  
材料および表面処理が番号で決められている部品については、表1を参照してください。

Table 1 Material and Surface treatment  
表1 材料および表面処理

No. 番号	Material 材料	Surface treatment 表面処理	Color 色
1	Stainless steel ステンレス	Stainless steel black coloring (BC4) ステンレス黒着色(BC4)	Black 黒
2		not to be given なし	White 白
3	Brass 黄銅	Regular nickel plating (NL) 普通ニッケルメッキ(NL)	White 白
4		Black nickel plating (BN) 黒色ニッケルメッキ(BN)	Black 黒
5	Steel 鋼	White zinc trivalent chromate treating (ZC3) 白色亜鉛3価クロメート(ZC3)	White 白
6		Regular nickel chromium plating (NC) 普通ニッケルクロムメッキ(NC)	White 白
7		Regular nickel plating (NL) 普通ニッケルメッキ(NL)	White 白
8		Iron and steel phosphating (P1) 鉄鋼磷酸塩処理(P1)	Black 黒
9		Black zinc trivalent chromate treating (BZ3) 黒色亜鉛3価クロメート(BZ3)	Black 黒

# FIGURE ZZB MECHANICAL STANDARD PARTS (SCREWS)

## 1. Screws ねじ

How to read Parts Numbers  
部品番号の見方

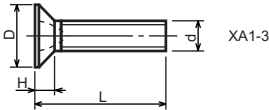
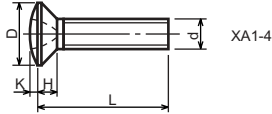
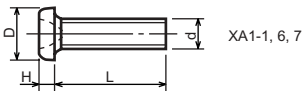
Screws  
ねじ

**XB1-2400-609**

Type No.  
類別番号  
Normal designation (d)  
ねじの呼び(d)  
Length (L)  
ねじの長さ(L)  
Material and Surface treatment  
材料および表面処理

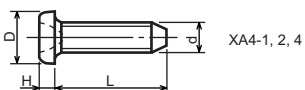
XB1-2 expresses Binding head machine screw.  
XB1-2は、バインドねじを表す  
40 expresses M4.0.  
40は、M4.0を表す  
0-60 expresses a length of 6.0mm.  
0-60は、6.0mmの長さを表す  
9 expresses Steel (Black zinc trivalent chromate treating) from Table 1.  
9は、表1より鋼(黒色亜鉛3価クロメート)を表す

### 1-1. Cross Recessed Head Screws for Precision Equipments 精密機器用十字穴付き小ねじ



Type No. 類別番号	Type 類別	Head size (mm) 頭部寸法 (mm)							
		M1.4	M1.6	M1.7	M2	M2.5	M2.6		
XA1-1	Pan head Class 1 なべ1種	D	XA1-1	2	2.4	2.5	3	3.8	4
		H	XA1-1	0.5	0.55	0.5	0.6	0.9	0.8
XA1-3	Countersunk head Class 1 さら1種	D	XA1-3	2	2.4	2.5	3	3.8	4
		H	XA1-3	0.48	0.55	0.58	0.73	0.85	0.93
XA1-4	Oval countersunk head Class 1 丸さら1種	D	XA1-4	2	2.4	2.5	3	3.8	4
		H + K	XA1-4	0.68	0.8	0.88	1	1.25	1.3
XA1-6	Pan head Class 3 なべ3種	D	XA1-6	2.5	2.8	3	3.5	4.3	4.5
		H	XA1-6	0.8	0.85	0.9	1	1.3	1.2
XA1-7	Pan head Class 2 なべ2種	D	XA1-7	2.5	2.8	3	3.5	4.3	4.5
		H	XA1-7	0.5	0.55	0.5	0.6	0.9	0.8

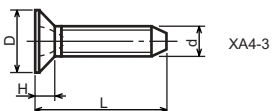
1-2. Precision Tapping Screws  
精密用タッピンねじ



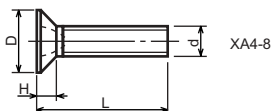
XA4-1, 2, 4



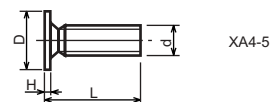
XA4-6, 7, 9



XA4-3



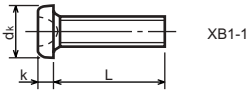
XA4-8



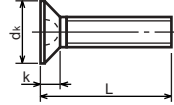
XA4-5

Type No. 類別番号	Type 類別	Head size (mm) 頭部寸法 (mm)						
		M1.4	M1.6	M1.7	M2	M2.5	M2.6	
XA4-1	With tapered end pan head Class 1 絞りなべ1種	D XA4-1	2	2.4	2.5	3	3.8	4
		H XA4-1	0.5	0.55	0.5	0.6	0.9	0.8
XA4-2	With tapered end pan head Class 3 絞りなべ3種	D XA4-2	2.5	2.8	3	3.5	4.3	4.5
		H XA4-2	0.8	0.85	0.9	1	1.3	1.2
XA4-3	With tapered end countersunk head 絞り-さら	D XA4-3	2	2.4	2.5	3	3.8	4
		H XA4-3	0.48	0.55	0.58	0.73	0.85	0.93
XA4-4	With tapered end pan head Class 2 絞りなべ2種	D XA4-4	2.5	2.8	3	3.5	4.3	4.5
		H XA4-4	0.5	0.55	0.5	0.6	0.9	0.8
XA4-5	With parallel end ultra thin head ストレート-超薄頭	D XA4-5	2.5	2.8	3	-	-	-
		H XA4-5	0.2	0.2	0.2	-	-	-
XA4-6	With parallel end pan head Class 1 ストレートなべ1種	D XA4-6	2	2.4	2.5	3	3.8	4
		H XA4-6	0.5	0.55	0.5	0.6	0.9	0.8
XA4-7	With parallel end pan head Class 3 ストレートなべ3種	D XA4-7	2.5	2.8	3	3.5	4.3	4.5
		H XA4-7	0.8	0.85	0.9	1	1.3	1.2
XA4-8	With parallel end countersunk head ストレート-さら	D XA4-8	2	2.4	2.5	3	3.8	4
		H XA4-8	0.48	0.55	0.58	0.73	0.85	0.93
XA4-9	With parallel end pan head Class 2 ストレートなべ2種	D XA4-9	2.5	2.8	3	3.5	4.3	4.5
		H XA4-9	0.5	0.55	0.5	0.6	0.9	0.8

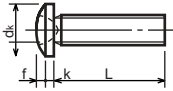
**1-3. Cross Recessed Head Screws**  
 一般用十字穴付き小ねじ



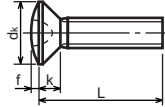
XB1-1



XB1-3



XB1-2

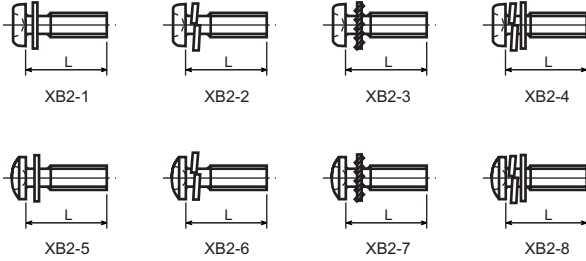


XB1-4

Type No. 類別番号	Type 類別
XB1-1	Pan head なべ
XB1-2	Binding head バインド
XB1-3	Countersunk head ざら
XB1-4	Oval countersunk head 丸ざら

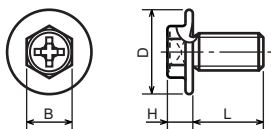
		Head size (mm) 頭部寸法 (mm)					
		M2	M2.5	M2.6	M3	M4	M5
dk	XB1-1	3.5	4.5	4.5	5.5	7	9
k	XB1-1	1.3	1.7	1.7	2	2.6	3.3
dk	XB1-2	4.3	5.3	5.5	6.3	8.3	10.3
k+f	XB1-2	1.2	1.5	1.6	1.9	2.5	3.1
dk	XB1-3	4	5	-	6	8	10
k	XB1-3	1.2	1.45	-	1.75	2.3	2.8
dk	XB1-4	4	5	-	6	8	10
k+f	XB1-4	1.6	2	-	2.45	3.2	4
Screw part length ねじ部長さ b		8	12	12	12	16	20

1-4. Cross Recessed Head Screws with Captive Washer  
座金組み十字穴付き小ねじ



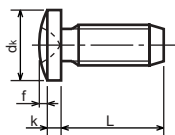
Type No. 類別番号	Type 類別
XB2-1	Pan head + Plain washer (circular bright) なべねじ+平座金
XB2-2	Pan head + Spring washer なべねじ+ばね座金
XB2-3	Pan head + Toothed lock washer なべねじ+歯付座金
XB2-4	Pan head + Spring washer and plain washer (circular bright) なべねじ+(ばね+平)座金
XB2-5	Binding head + Plain washer (circular bright) バインドねじ+平座金
XB2-6	Binding head + Spring washer バインドねじ+ばね座金
XB2-7	Binding head + Toothed lock washer バインドねじ+歯付座金
XB2-8	Binding head + Spring washer and plain washer (circular bright) バインドねじ+(ばね+平)座金

**1-5. Hexagon Head Tapping Screws for Metallic Materials**  
 金属用六角タッピンねじ



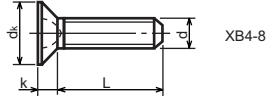
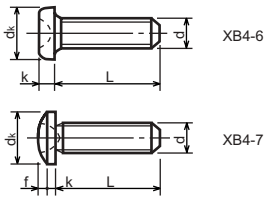
Type No. 類別番号	Type 類別	Head size (mm) 頭部寸法 (mm)	
		M3	M4
XB3-6	For metallic materials 金属用タッピン	D	8 10
		B	5.5 5.5
XB3-7	For metallic materials with clawed 金属用タッピン-つめ付き	H XB3-6	3.1 3.1
		H XB3-7	3.2 3.2

**1-6. Special Tapping Screws**  
 特殊タッピンねじ



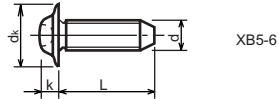
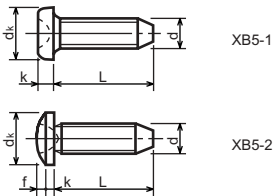
Type No. 類別番号	Type 類別	Head size (mm) 頭部寸法 (mm)	
		M3	M4
XB4-5	Binding head バインド	d <sub>k</sub>	6.3 8.3
		k	1.3 1.7
		k+f	1.9 2.5

1-7. General Head Tapping Screws  
一般用タッピンねじ



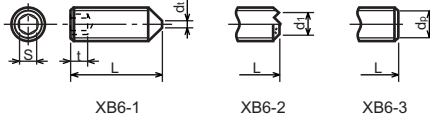
Type No. 類別番号	Type 類別	Head size (mm) 頭部寸法 (mm)						
		M2	M2.5	M2.6	M3	M4	M5	
XB4-6	Pan head なべ	$d_k$ XB4-6	3.5	4.5	4.5	5.5	7	9
		$k$ XB4-6	1.3	1.7	1.7	2	2.6	3.3
XB4-7	Binding head バインド	$d_k$ XB4-7	4.3	5.3	5.5	6.3	8.3	10.3
		$k+f$ XB4-7	1.2	1.5	1.6	1.9	2.5	3.1
XB4-8	Countersunk head さら	$d_k$ XB4-8	4	5	5.2	6	8	10
		$k$ XB4-8	1.2	1.45	1.5	1.75	2.3	2.8

1-8. Tapping Screws for Metallic Materials  
金属用タッピンねじ



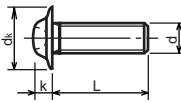
Type No. 類別番号	Type 類別	Head size (mm) 頭部寸法 (mm)					
		M2.5	M2.6	M3	M4	M5	
XB5-1	Pan head なべ	$d_k$ XB5-1	4.5	4.5	5.5	7	9
		$k$ XB5-1	1.7	1.7	2	2.6	3.3
XB5-2	Binding head バインド	$d_k$ XB5-2	5.5	5.5	6.3	8.3	10.3
		$k+f$ XB5-2	1.6	1.6	1.9	2.5	3.1
XB5-6	Flanged pan head つば付きなべ	$d_k$ XB5-6	6.5	6.5	8	10	12
		$k$ XB5-6	2.1	2.1	1.75	3.2	4

**1-9. Hexagon Socket Set Screws**  
六角穴付止めねじ



Type No. 類別番号	Type 類別	Head size (mm) 頭部寸法 (mm)							
		M1.6 M1.7	M2	M2.5 M2.6	M3	M5	M5	M6	
XB6-1	Cone point とがり先	S	0.7	0.9	1.3	1.5	2	2.5	3
		t	1.5	1.7	2	2	2.5	3	3.5
		d <sub>t max</sub> XB6-1	0.4	0.5	0.65	0.75	1	1.25	1.5
		d <sub>l max</sub> XB6-2	-	1.2	1.5	1.7	2.2	2.8	3.3
		d <sub>l min</sub> XB6-2	-	1	1.2	1.4	1.9	2.4	2.9
		d <sub>p max</sub> XB6-3	0.8	1	1.5	2	2.5	3.5	4
		d <sub>p min</sub> XB6-3	0.55	0.75	1.25	1.75	2.25	3.2	3.7

**1-10. Flanged Pan Head Machine Screws**  
つば付きなべ小ねじ



Type No. 類別番号	Type 類別	Head size (mm) 頭部寸法 (mm)					
		M2	M2.5 M2.6	M3	M5	M5	
XB6-7	Flanged pan head つば付きなべ	d <sub>k</sub>	5	6.5	8	10	12
		k	1.7	2.1	2.5	3.2	4

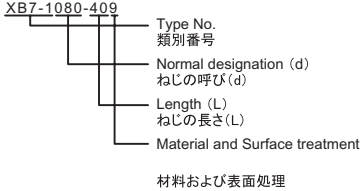


# FIGURE ZZC MECHANICAL STANDARD PARTS (BOLTS)

## 2. Bolts (Socket head cap screw) ボルト

How to read Parts Numbers  
部品番号の見方

Bolt (Socket head cap screw)  
ボルト



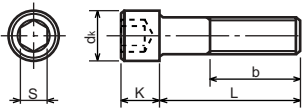
XB7-1 expresses Hexagon socket head cap screws.  
XB7-1は、六角穴付きボルトを表す

080 expresses M8.0.  
080は、M8.0を表す

40 expresses a length of 40mm.  
40は、40mmの長さを表す

9 expresses Steel (Black zinc trivalent chromate treating) from Table 1.  
9は、表1より鋼(黒色亜鉛3価クロメート)を表す

### 2-1. Hexagon socket head cap screws 六角穴付きボルト



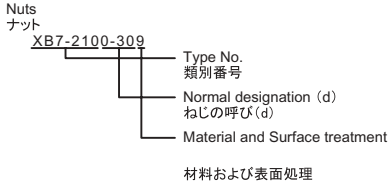
Type No. 類別番号	Type 類別
XB7-1	Hexagon socket head cap screws 六角穴付きボルト

	Head size (mm) 頭部寸法 (mm)						
	M3	M4	M5	M6	M8	M10	M12
S	2.5	3	4	5	6	8	10
$d_k$	5.5	7	8.5	10	13	16	18
K	3	4	5	6	8	10	12
Screw part length $b_{max}$ ねじ部長さ $b_{max}$	18	20	22	24	28	32	36

# FIGURE ZZD MECHANICAL STANDARD PARTS (NUTS)

## 3. Nuts ナット

How to read Parts Numbers  
部品番号の見方



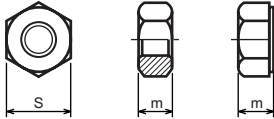
XB7-210 expresses Hexagon nut class 1.  
XB7-210は、六角ナット1種を表す

0-30 expresses M3.0.  
0-30は、M3.0を表す

9 expresses Steel (Black zinc trivalent chromate  
treating) from Table 1.

9は、表1より鋼(黒色亜鉛3価クロメート)を表す

### 3-1. Hexagon Nuts and Hexagon Thin Nuts 六角ナット



Type No. 類別番号	Type 類別
XB7-210	Hexagon nut Class 1 六角ナット-1種
XB7-220	Hexagon nut Class 3 六角ナット-3種
XB7-230	Hexagon nut Style 1 double chamfered 六角ナット-スタイル1-両面とり
XB7-231	Hexagon nut Style 1 washer faced 六角ナット-スタイル1-座付き
XB7-240	Hexagon nut Style 2 double chamfered 六角ナット-スタイル2-両面とり
XB7-241	Hexagon nut Style 2 washer faced 六角ナット-スタイル2-座付き
XB7-250	Hexagon nut 六角ナット
XB7-260	Hexagon thin nut double chamfered 六角低ナット-両面とり
XB7-270	Hexagon thin nut not chamfered 六角低ナット-面とり無し

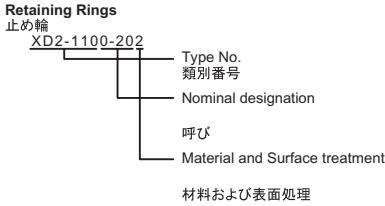
	Head size (mm) 頭部寸法 (mm)						
	M2	M2.5	M3	M4	M5	M6	M8
S	4	5	5.5	7	8	10	13
m XB7-210	1.6	2	2.4	3.2	4	5	6.5
m XB7-220	1.2	1.6	1.8	2.4	3.2	3.6	5
m XB7-230, 231	1.6	2	2.4	3.2	4.7	5.2	6.8
m XB7-240, 241	-	-	-	-	5.1	5.7	7.5
m XB7-250	-	-	-	-	5.6	6.1	7.9
m XB7-260	1.2	1.6	1.8	2.2	2.7	3.2	4
m XB7-270	1.2	1.6	1.8	2.2	2.7	3.2	4

# FIGURE ZZE MECHANICAL STANDARD PARTS (RETAINING RINGS)

## 5. Retaining Rings

止め輪

How to read Parts Numbers  
部品番号の見方



XD2-110 expresses retaining ring-E type (Type1).  
XD2-110は、E形止め輪(1種)を表す

0-20 expresses a 020 of nominal designation.  
(See Table 5)

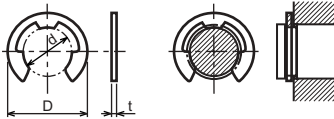
0-20は、呼び020を表す(表5参照)

2 expresses Stainless steel (Surface treatment is not to be given) from Table 1.

2は、表1よりステンレス(表面処理なし)を表す

### 5-1. Retaining Rings - E type

E形止め輪

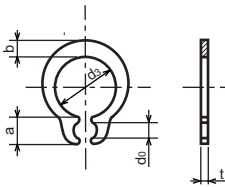


Type No. 類別番号	Type 類別
XD2-110	Retaining ring - E type (Type 1) E形止め輪(1種)
XD2-120	Retaining ring - E type (Type 2) E形止め輪(2種)

Table 5 表5

Type 種類	Nominal designation 呼び	d (mm)	D (mm)	t (mm)
Type 1 1種	007	0.65	2	0.2
	010	0.95	2.8	0.2
	013	1.25	3.3	0.3
	017	1.65	4.2	0.4
	020	1.95	4.6	0.5
	024	2.35	6	0.6
	028	2.74	6.5	0.6
	032	3.14	7.2	0.6
	037	3.64	8	0.7
	040	3.93	10	0.7
	042	4.13	10	0.7
	050	4.93	11	0.7
	058	5.73	12	0.7
	060	5.93	12.7	0.9
	064	6.32	13.5	0.9
	074	7.31	15	0.9
080	7.91	16.5	1	
Type 2 2種	008	0.8	2	0.2
	012	1.2	3	0.3
	015	1.5	4	0.4
	020	2	5	0.4
	025	2.5	6	0.4
	030	3	7	0.6
	040	4	9	0.6
	050	5	11	0.6
	060	6	12	0.8
	070	7	14	0.8
	080	8	16	0.8
	090	9	18	0.8
	100	10	20	1

5-2. Grip Rings  
グリップ止め輪

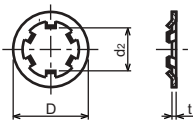


Type No. 類別番号	Type 類別
XD2-210	Grip ring グリップ止め輪

Table 5 表5

Nominal designation 呼び	d <sub>3</sub> (mm)	t (mm)	b (mm)	a (mm)	d <sub>0</sub> (mm)
020	1.9	0.5	1	1.8	0.8
025	2.35	0.5	1.2	1.9	0.9
030	2.85	0.6	1.4	1.9	0.9
035	3.3	0.6	1.6	2	0.9
040	3.8	0.8	1.8	2.8	1.2
045	4.25	0.8	2	2.9	1.3
050	4.75	0.8	2.2	2.9	1.3
060	5.7	1	2.4	3.1	1.4
070	6.7	1	2.7	3.3	1.4
080	7.7	1	3	3.5	1.4
090	8.65	1.2	3.3	4.7	1.5
100	9.65	1.2	3.5	4.7	2

5-3. Toothed Retaining Rings  
歯付き形止め輪



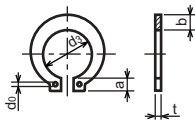
Type No. 類別番号	Type 類別
XD2-230	Toothed retaining ring 歯付き形止め輪

Table 5 表5

Nominal designation 呼び	d <sub>z</sub> (mm)	D (mm)	t (mm)	No of teeth 歯数
015	1.4	5.2	0.25	3
020	1.9	6	0.25	3
024	2.3	6.4	0.25	3
030	2.8	8	0.25	4
040	3.8	9	0.25	4
050	4.8	10	0.25	5
060	5.8	11	0.25	5
080	7.8	13	0.25	5
100	9.8	15.4	0.25	6

### 5-4. Retaining Rings - C Type

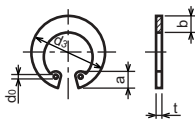
C形止め輪



Type No. 類別番号	Type 類別
XD2-310	Retaining ring - C type for shaft C形止め輪 軸用

Table 5 表5

Nominal designation 呼び	d <sub>3</sub> (mm)	t (mm)	b (mm)	a (mm)	d <sub>0</sub> (mm)
010	9.3	1	1.6	3	1.2
012	11.1	1	1.8	3.2	1.5
014	12.9	1	2	3.4	1.7
015	13.8	1	2.1	3.5	1.7
016	14.7	1	2.2	3.6	1.7
017	15.7	1	2.2	3.7	1.7
018	16.5	1.2	2.6	3.8	1.7
020	18.5	1.2	2.7	3.9	2
022	20.5	1.2	2.7	4.1	2
025	23.2	1.2	3.1	4.3	2
028	25.9	1.5	3.1	4.6	2
030	27.9	1.5	3.5	4.8	2
032	29.6	1.5	3.5	5	2.5
035	32.2	1.5	4	5.4	2.5



Type No. 類別番号	Type 類別
XD2-320	Retaining ring - C type for hole C形止め輪 穴用

Table 5 表5

Nominal designation 呼び	d <sub>3</sub> (mm)	t (mm)	b (mm)	a (mm)	d <sub>0</sub> (mm)
010	10.7	1	1.8	3.1	1.2
011	11.8	1	1.8	3.2	1.2
012	13	1	1.8	3.3	1.5
014	15.1	1	2	3.6	1.7
016	17.3	1	2	3.7	1.7
018	19.5	1	2.5	4	1.7
019	20.5	1	2.5	4	2
020	21.5	1	2.5	4	2
022	23.5	1	2.5	4.1	2
025	26.9	1.2	3	4.4	2
028	30.1	1.2	3	4.6	2
030	32.1	1.2	3	4.7	2
032	34.4	1.2	3.5	5.2	2.5
035	37.8	1.5	3.5	5.2	2.5
037	39.8	1.5	3.5	5.2	2.5
040	43.5	1.8	4	5.7	2.5
042	45.5	1.8	4	5.8	2.5
045	48.5	1.8	4.5	5.9	2.5
047	50.5	1.8	4.5	6.1	2.5
050	54.2	2	4.5	6.5	2.5
052	56.2	2	5.1	6.5	2.5
055	59.2	2	5.1	6.5	2.5
060	64.2	2	5.1	6.8	2.5
062	66.2	2	5.5	6.9	2.5
068	72.5	2.5	6	7.4	2.5
072	76.5	2.5	6.6	7.4	2.5
075	79.5	2.5	6.6	7.8	2.5
080	85.5	2.5	7	8	2.5
085	90.5	3	7	8	3
090	95.5	3	7.6	8.3	3
095	100.5	3	8	8.5	3



Prepared by  
OIP Business Support Group  
CANON INC.

**Canon**