

# **Color imageCLASS MF8380Cdw**

## **PARTS CATALOG**



# **Canon**

**September 24, 2011  
Rev. 0**



## **PREFACE**

This Parts Catalog contains listings of parts used

Diagrams are provided with the listings to aid the service technician in identifying clearly, the item to be ordered.

Whenever ordering parts, consult this Parts Catalog for all of the information pertaining to each item. Be sure to include, in the Parts Request, the full item description, the item part number, and the quantity.

***COPYRIGHT (C) 1999 CANON INC.***

Use of this manual should be strictly supervised to avoid disclosure of confidential information.





# Contents

## NUMERICAL INDEX

MF8380cdw/MF8360cdn/MF8340cdn Series(Numerical Index)..... 1-1

## MF8380cdw/MF8360cdn/MF8340cdn Series(Parts Catalog)

A1	ASSEMBLY LOCATION DIAGRAM .....	2-1
A2	OPTION PARTS CATALOG LIST .....	2-3
001	ACCESSORIES .....	2-4
100	EXTERNAL COVERS, PANELS, ETC. ....	2-6
101	INTERNAL COMPONENTS 1 .....	2-8
102	INTERNAL COMPONENTS 2 .....	2-10
103	INTERNAL COMPONENTS 3 .....	2-12
104	INTERNAL COMPONENTS 4 .....	2-14
105	INTERNAL COMPONENTS 5 .....	2-16
106	INTERNAL COMPONENTS 6 .....	2-18
107	INTERNAL COMPONENTS 7 .....	2-20
160	READER/ADF ASSEMBLY .....	2-22
162	PAPER FEEDER ASSEMBLY .....	2-25
300	CASSETTE .....	2-28
400	READER ASSEMBLY .....	2-29
460	LASER SCANNER ASS'Y .....	2-31
530	INTERMEDIATE TRANS. BELT ASS'Y .....	2-32
810	FIXING ASS'Y .....	2-33
900	MAIN CONTROLLER PCB ASSEMBLY .....	2-35
ZZA	MECHANICAL STANDARD PARTS (HOW TO USE) .....	2-36
ZZB	MECHANICAL STANDARD PARTS (SCREWS) .....	2-37
ZZC	MECHANICAL STANDARD PARTS (BOLTS) .....	2-44
ZZD	MECHANICAL STANDARD PARTS (NUTS) .....	2-45
ZZE	MECHANICAL STANDARD PARTS (RETAINING RINGS) .....	2-46



# NUMERICAL INDEX

## MF8380cdw/MF8360cdn/MF8340cdn Series(Numerical Index)

PARTS NUMBER	FIGURE & KEY NO.	PARTS NUMBER	FIGURE & KEY NO.	PARTS NUMBER	FIGURE & KEY NO
FC5-5256-000	100 - 1	FC9-7566-000	160 - 18	FM4-3796-000	107 - 5
FC7-6052-010	162 - 1	FC9-7567-000	160 - 18	FM4-3800-000	104 - 17
FC7-6182-000	162 - 32	FC9-7568-000	160 - 18	FM4-3803-000	105 - 6
FC7-6189-000	160 - 1	FC9-7573-000	400 - 5	FM4-3989-000	107 - 9
FC7-6278-000	162 - 33	FC9-7575-000	160 - 13	FM4-4279-000	300 -
FC7-6281-000	162 - 34	FC9-7576-000	160 - 13	FM4-4284-000	106 - 3
FC7-6297-000	162 - 2	FH2-7080-000	104 - 27	FM4-4285-000	100 - 11
FC7-6299-000	162 - 3	FH2-7082-000	104 - 26	FM4-4286-010	105 - 1
FC7-6300-000	162 - 4	FK2-3531-000	001 - 7	FM4-4287-000	100 - 12
FC7-6320-000	160 - 2	FK2-4390-000	104 - 24	FM4-4289-000	810 -
FC7-6321-000	160 - 3	FK2-5242-000	400 - 16	FM4-4290-000	810 -
FC7-6322-000	160 - 4	FK2-5274-000	001 - 12	FM4-4291-000	810 -
FC8-8715-000	103 - 1	FK2-5275-000	001 - 1	FM4-4292-000	103 - 10
FC8-8730-000	106 - 7	FK2-7852-000	900 - IC	FM4-4301-000	400 - 10
FC8-8742-000	100 - 2	FK2-8321-000	900 - IC	FM4-4308-000	400 - 8
FC8-8745-000	100 - 2	FK2-8767-000	107 - 6	FM4-8513-000	103 - 3
FC8-8748-000	103 - 2	FK2-9583-000	104 - 25	FM4-8514-000	103 - 4
FC9-1503-000	160 - 5	FK2-9878-000	107 - 8	FM4-8650-000	100 - 10
FC9-1512-000	162 - 5	FK3-1884-000	400 - 6	FM4-8651-000	100 - 10
FC9-1523-000	162 - 6	FK3-1894-000	107 - 2	FM4-8655-000	100 - 10
FC9-1526-000	162 - 7	FK3-1949-000	107 - 3	FM4-8656-000	100 - 10
FC9-1532-000	160 - 6	FK3-1950-000	400 - 7	FM4-8658-000	100 - 10
FC9-1533-000	160 - 7	FK3-1951-000	107 - 10	FM4-8659-000	100 - 10
FC9-1534-000	160 - 8	FK3-2953-000	001 - 8	FM4-8660-000	100 - 10
FC9-1535-000	160 - 9	FK3-2954-000	001 - 8	FM4-8852-000	400 -
FC9-1536-000	160 - 10	FK3-2955-000	001 - 8	FM4-8854-000	162 -
FC9-1539-000	160 - 11	FK3-2956-000	001 - 8	FM4-8855-000	162 - 14
FC9-1650-000	400 - 1	FK3-2957-000	001 - 8	FM4-8967-000	107 - 4
FC9-2101-000	400 - 2	FK3-2958-000	001 - 8	FM4-8968-000	107 - 4
FC9-4502-000	160 - 12	FL2-6637-000	160 - 19	FM4-9076-000	400 - 11
FC9-4507-000	107 - 1	FL3-1431-000	162 - 9	FM4-9255-000	107 - 7
FC9-4510-000	001 - 11	FL3-1437-000	162 - 10	FM4-9256-000	107 - 7
FC9-4541-000	100 - 3	FL3-2453-000	160 - 20	FM4-9257-000	107 - 7
FC9-4545-000	100 - 4	FL3-2458-000	162 - 12	FM4-9261-000	900 -
FC9-4546-000	106 - 1	FL3-3539-000	160 - 21	FM4-9262-000	900 -
FC9-4547-000	106 - 2	FM3-8292-000	810 - 1	FM4-9263-000	900 -
FC9-4551-000	100 - 5	FM3-9538-000	160 - 23	FM4-9264-000	900 -
FC9-4579-000	100 - 6	FM3-9541-000	162 - 35	FM4-9831-000	107 - 11
FC9-4584-000	100 - 7	FM3-9542-000	162 - 13	FU5-6992-000	162 - 15
FC9-4589-000	400 - 3	FM3-9543-000	162 - 36	FU6-2998-000	162 - 16
FC9-4590-000	400 - 4	FM4-1493-000	100 - 9	FU6-2999-000	162 - 17
FC9-5109-000	160 - 13	FM4-1873-000	162 - 31	FU7-0667-000	162 - 18
FC9-5115-000	160 - 13	FM4-1883-000	160 - 22	FU7-0668-000	162 - 19
FC9-5654-000	162 - 8	FM4-1885-000	162 - 11	FU7-0669-000	162 - 20
FC9-5655-000	160 - 14	FM4-3062-000	810 - 1	FU7-0671-000	162 - 21
FC9-5656-000	160 - 15	FM4-3063-000	810 - 1	FU7-0672-000	160 - 25
FC9-5657-000	160 - 16	FM4-3359-000	460 -	FU7-0676-000	162 - 22
FC9-7561-000	160 - 17	FM4-3653-000	400 - 9	FU7-0678-000	162 - 23
FC9-7562-000	160 - 17	FM4-3776-000	104 - 2	FU7-2016-000	162 - 24
FC9-7563-000	160 - 17	FM4-3786-010	104 - 3	FU7-2018-000	160 - 26
FC9-7564-000	160 - 17	FM4-3787-010	104 - 3	FU7-2021-000	162 - 26
FC9-7565-000	160 - 18	FM4-3788-010	104 - 3	FU7-8091-000	100 - 13

# NUMERICAL INDEX

## MF8380cdw/MF8360cdn/MF8340cdn Series(Numerical Index)

PARTS NUMBER	FIGURE & KEY NO.	PARTS NUMBER	FIGURE & KEY NO.	PARTS NUMBER	FIGURE & KEY NO
FU7-8108-000	106 - 16	RM1-4426-000	103 - 8	XA9-1671-000	102 - 3
FU7-8109-000	100 - 14	RM1-4836-000	101 - 2	XA9-1671-000	103 - 13
FU7-8111-000	810 - 2	RM1-4837-000	104 - 6	XA9-1671-000	104 - 21
FU7-8405-000	160 - 27	RM1-4838-000	106 - 9	XA9-1671-000	105 - 11
FU7-8406-000	160 - 27	RM1-4840-000	103 - 9	XA9-1671-000	106 - 15
FU7-8407-000	160 - 27	RM1-4850-000	102 - 2	XA9-1835-000	101 - 9
FU7-8411-000	001 - 9	RM1-4852-000	530 -	XA9-1835-000	103 - 14
FU7-8413-000	001 - 10	RM1-4876-000	106 - 10	XA9-1835-000	104 - 23
FU8-0895-000	160 - 28	RM1-4877-000	106 - 11	XA9-1835-000	105 - 10
FU8-2007-000	160 - 29	RM1-4879-000	106 - 12		
FU8-2008-000	162 - 25	RM1-4880-000	106 - 13		
HC1-0586-000	160 - 30	RM1-4896-000	105 - 2		
HC1-0586-000	162 - 27	RM1-5288-000	104 - 7		
HU1-1022-000	160 - 31	RM1-5293-000	104 - 8		
HU1-1022-000	162 - 28	RM1-5294-050	101 - 3		
NPN	001 -	RM1-5385-000	104 - 9		
NPN	100 -	RM1-5393-000	104 - 10		
NPN	101 -	RM1-5394-000	104 - 11		
NPN	102 -	RM1-5395-000	104 - 12		
NPN	103 -	RM1-5397-000	106 - 14		
NPN	104 -	RM1-5398-000	101 - 5		
NPN	105 -	RM1-5399-000	101 - 6		
NPN	106 -	RM1-5400-000	104 - 13		
NPN	107 -	RM1-5419-000	105 - 4		
NPN	160 -	RM1-5420-000	102 - 4		
QK1-6441-000	001 - 3	RM1-5428-000	103 - 11		
QK1-6443-000	001 - 4	RM1-5433-000	105 - 5		
QK1-6446-000	001 - 5	RM1-5434-000	104 - 14		
QK1-6449-000	001 - 6	RM1-5435-000	104 - 15		
QK1-6455-000	001 - 2	RM1-5438-000	104 - 16		
RC2-0062-000	100 - 1	RM1-7355-000	105 - 3		
RC2-2014-000	103 - 6	VS1-7177-002	162 - 37		
RC2-3367-000	810 - 3	VS1-7177-003	400 - 12		
RC2-3386-000	103 - 16	VS1-7177-004	400 - 13		
RC2-3387-000	103 - 17	VS1-7207-004	162 - 29		
RC2-3388-000	103 - 5	WG8-5696-000	101 - 7		
RC2-3395-000	102 - 5	WG8-5696-000	103 - 12		
RC2-3396-000	102 - 6	WG8-5696-000	104 - 18		
RC2-3555-000	103 - 15	WG8-5696-000	162 - 30		
RC2-3719-000	104 - 1	WG8-5696-000	400 - 14		
RC2-3750-000	106 - 4	WG8-5935-000	810 - 4		
RC2-3752-000	106 - 5	XA9-0476-000	160 - 32		
RC2-3774-000	106 - 6	XA9-0476-000	400 - 15		
RC2-3800-000	101 - 11	XA9-0679-000	104 - 19		
RC2-3801-000	101 - 12	XA9-0831-000	160 - 24		
RK2-2276-000	105 - 8	XA9-1418-000	104 - 20		
RK2-2276-000	106 - 8	XA9-1418-000	105 - 9		
RK2-2302-000	104 - 4	XA9-1420-000	101 - 8		
RK2-3267-000	101 - 1	XA9-1420-000	104 - 22		
RL1-1785-000	103 - 7	XA9-1420-000	105 - 7		
RL1-1800-000	104 - 5	XA9-1671-000	100 - 8		
RL1-1802-000	102 - 1	XA9-1671-000	101 - 10		

# MF8380cdw/MF8360cdn/MF8340cdn Series(Parts Catalog)

## Color imageCLASS MF8380Cdw

120V US            F16-2334-000   HXS

120V CA,LTN      F16-2334-000   HXY

## imageCLASS MF8380Cdw

230V AU            F16-2344-000   HYA

230V  
HK,SG,LTN        F16-2384-000   HXZ

## i-SENSYS MF8380Cdw

230V EUR           F16-2394-000   HXT

230V EUR           F16-2394-000   HXU

230V EUR           F16-2394-000   HXV

## i-SENSYS MF8360Cdn

230V EUR           F16-2393-000   HYE

230V EUR           F16-2393-000   HYF

230V EUR           F16-2393-000   HYG

## i-SENSYS MF8340Cdn

230V EUR           F16-2392-000   HYJ

230V EUR           F16-2392-000   HYK

Satera MF8380Cdw

100V JP            F16-2314-000   HXX

Satera MF8340Cdn

100V JP            F16-2311-000   HYL

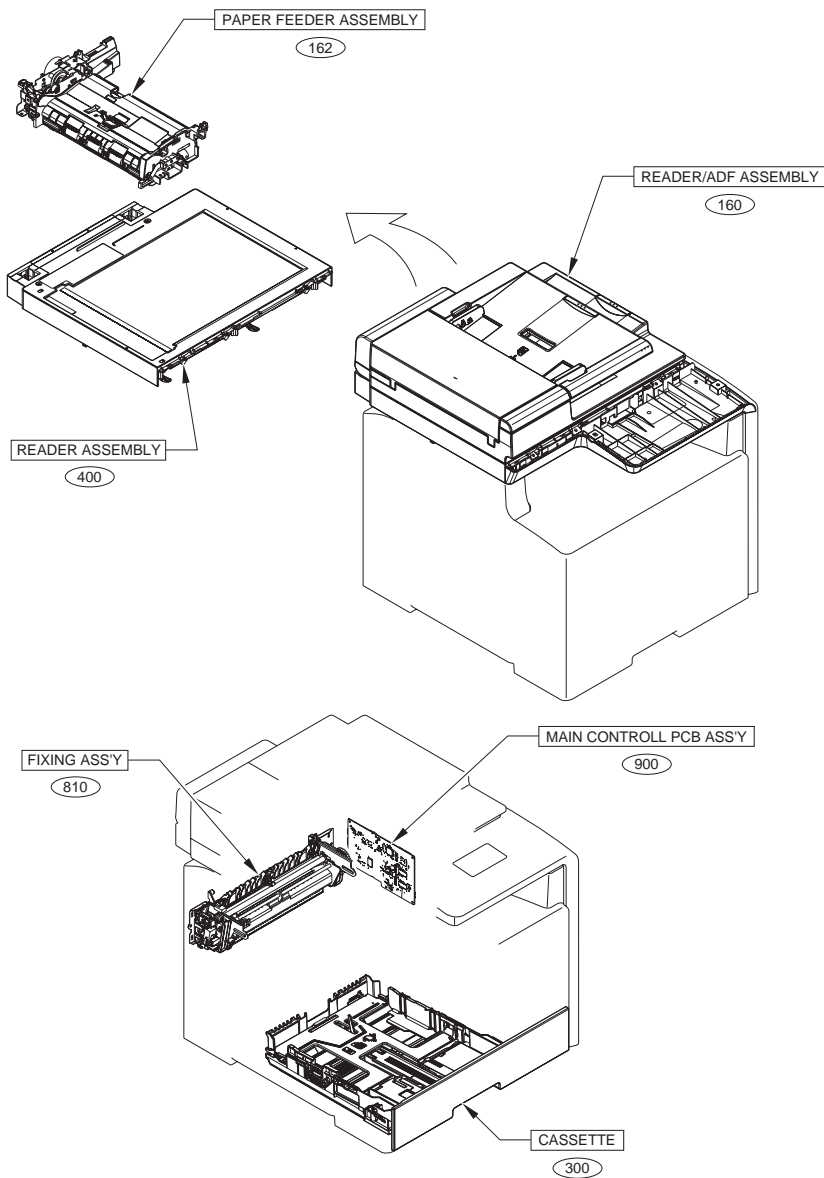
# Contents

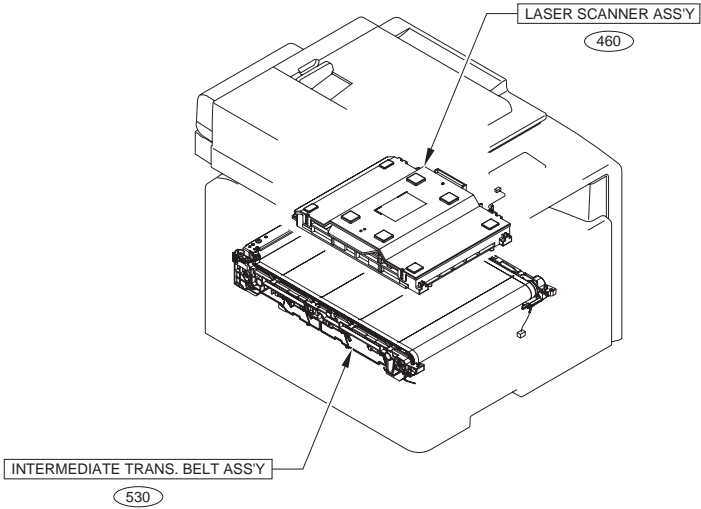
A1	ASSEMBLY LOCATION DIAGRAM .....	2-1
A2	OPTION PARTS CATALOG LIST .....	2-3
001	ACCESSORIES .....	2-4
100	EXTERNAL COVERS, PANELS, ETC. ....	2-6
101	INTERNAL COMPONENTS 1 .....	2-8
102	INTERNAL COMPONENTS 2 .....	2-10
103	INTERNAL COMPONENTS 3 .....	2-12
104	INTERNAL COMPONENTS 4 .....	2-14
105	INTERNAL COMPONENTS 5 .....	2-16
106	INTERNAL COMPONENTS 6 .....	2-18
107	INTERNAL COMPONENTS 7 .....	2-20
160	READER/ADF ASSEMBLY .....	2-22
162	PAPER FEEDER ASSEMBLY .....	2-25
300	CASSETTE .....	2-28
400	READER ASSEMBLY .....	2-29
460	LASER SCANNER ASS'Y .....	2-31
530	INTERMEDIATE TRANS. BELT ASS'Y .....	2-32
810	FIXING ASS'Y .....	2-33
900	MAIN CONTROLLER PCB ASSEMBLY .....	2-35
ZZA	MECHANICAL STANDARD PARTS (HOW TO USE) .....	2-36
ZZB	MECHANICAL STANDARD PARTS (SCREWS).....	2-37
ZZC	MECHANICAL STANDARD PARTS (BOLTS).....	2-44
ZZD	MECHANICAL STANDARD PARTS (NUTS).....	2-45
ZZE	MECHANICAL STANDARD PARTS (RETAINING RINGS) .....	2-46





# FIGURE A1 ASSEMBLY LOCATION DIAGRAM





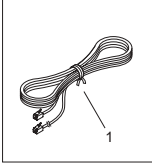
## FIGURE A2 OPTION PARTS CATALOG LIST

This is the table of the machine's options whose parts catalog is issued.  
本機のオプションで、パーツカタログが発行されている機種の一覧である。

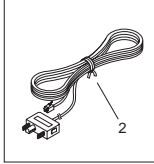
No.	Model Name(English)	Model Name(Japanese)
1	Cassette Feeding Module-V1	1段カセットユニット・V1
2	HANDSET KIT 3 Long cord	HANDSET KIT 3 Long cord
3	TELEPHONE 6 KIT Long cord	TELEPHONE 6 KIT Long cord

# FIGURE 001 ACCESSORIES

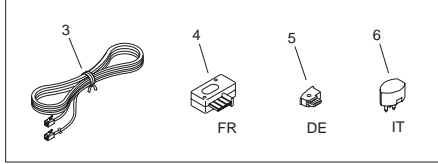
MF8380,MF8360  
EXCEPT AU



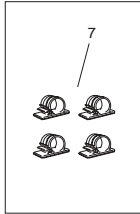
MF8380,MF8360  
AU



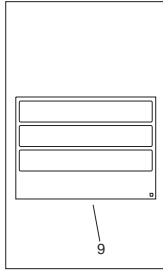
MF8380,MF8360  
EUR



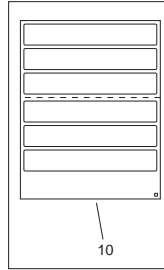
MF8380,MF8360  
AU,HK,SG,LTN,EUR



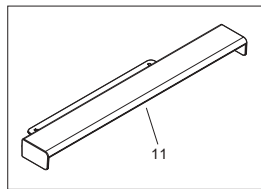
US,CA,LTN,HK,SG



EUR



US,CA,LTN



JP,AU,HK,SG,LTN

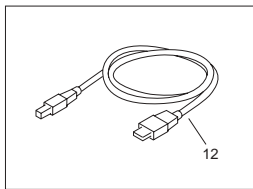


FIGURE & KEY NO.	PARTS NUMBER	RANK	Q'TY	DESCRIPTION	SERIAL NUMBER/REMARKS	SVC
Fig.001	NPN		RF	ACCESSORIES		
1	FK2-5275-000		1	CORD, MODULAR	MF8380,MF8360 EXCEPT AU	
2	QK1-6455-000		1	CORD, MODULAR	MF8380,MF8360 AU	
3	QK1-6441-000		1	CORD, MODULER	MF8380,MF8360 EUR	
4	QK1-6443-000		1	PLUG	MF8380,MF8360 FR	
5	QK1-6446-000		1	PLUG	MF8380,MF8360 DE	
6	QK1-6449-000		1	PLUG	MF8380,MF8360 IT	
7	FK2-3531-000		4	CLAMP, CABLE	MF8380,MF8360 AU,HK,SG,LTN,EUR	
8	FK3-2955-000		1	CD-ROM, USER SOFTWARE	Japanese	
8	FK3-2953-000		1	CD-ROM, USER SOFTWARE	US English	
8	FK3-2954-000		1	CD-ROM, USER SOFTWARE	US English,Canadian French	
8	FK3-2958-000		1	CD-ROM, USER SOFTWARE	English	
8	FK3-2956-000		1	CD-ROM, USER SOFTWARE	English,French,Italian,German,Spanish	
8	FK3-2957-000		1	CD-ROM, USER SOFTWARE	English,Russian,Dutch,Polish	
9	FU7-8411-000		1	LABEL, COPY PROHIBITION	US,CA,LTN,HK,SG	
10	FU7-8413-000		1	LABEL, COPY PROHIBITION	EUR	
11	FC9-4510-000		1	COVER, DUST	US,CA,LTN	
12	FK2-5274-000		1	CABLE, USB	JP,AU,HK,SG,LTN	

# FIGURE 100 EXTERNAL COVERS, PANELS, ETC.

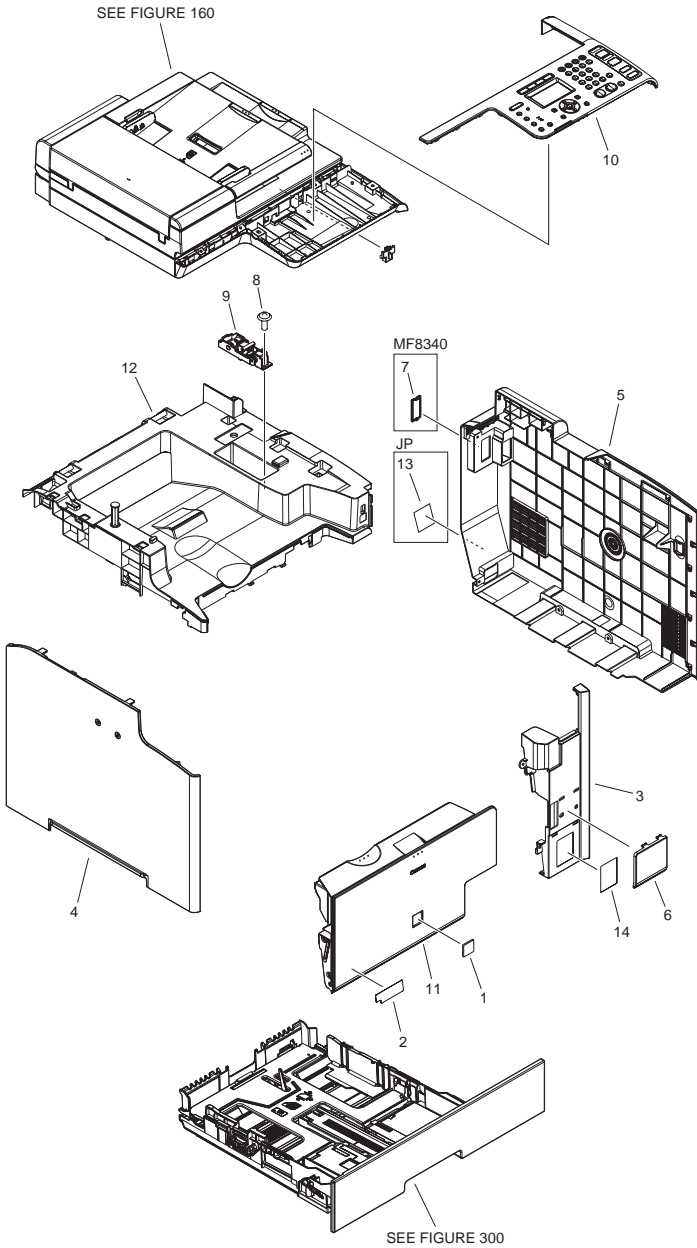


FIGURE & KEY NO.	PARTS NUMBER	R A N K	Q'TY	DESCRIPTION	SERIAL NUMBER/ REMARKS	S V C
Fig.100	NPN		RF	EXTERNAL COVERS, PANELS, ETC.		
1	FC5-5256-000		1	EMBLEM	JP	
1	RC2-0062-000		1	EMBLEM	EXCEPT JP	
2	FC8-8745-000		1	LABEL, PAPER SIZE	JP	
2	FC8-8742-000		1	LABEL, PAPER SIZE	EXCEPT JP	
3	FC9-4541-000		1	COVER, RIGHT FRONT		
4	FC9-4545-000		1	COVER, LEFT		
5	FC9-4551-000		1	COVER, RIGHT		
6	FC9-4579-000		1	COVER, SUB, FRONT		
7	FC9-4584-000		1	COVER, MODULAR	MF8340	
8	XA9-1671-000		AR	SCREW, D, M3X8		
9	FM4-1493-000		1	HINGE ASSEMBLY		
10	FM4-8650-000		1	CONTROL PANEL ASSEMBLY	MF8380 JP	
10	FM4-8651-000		1	CONTROL PANEL ASSEMBLY	MF8380 US,CA,LTN	
10	FM4-8655-000		1	CONTROL PANEL ASSEMBLY	MF8380 AU,HK,SG,LTN	
10	FM4-8656-000		1	CONTROL PANEL ASSEMBLY	MF8380 EUR	
10	FM4-8658-000		1	CONTROL PANEL ASSEMBLY	MF8360 EUR	
10	FM4-8660-000		1	CONTROL PANEL ASSEMBLY	MF8340 JP	
10	FM4-8659-000		1	CONTROL PANEL ASSEMBLY	MF8340 EUR	
11	FM4-4285-000		1	FRONT DOOR ASS'Y		
12	FM4-4287-000		1	COVER, TOP		
13	FU7-8091-000		1	LABEL,GROUNDING CAUTION	JP	
14	FU7-8109-000		1	LABEL, JAM		

# FIGURE 101 INTERNAL COMPONENTS 1

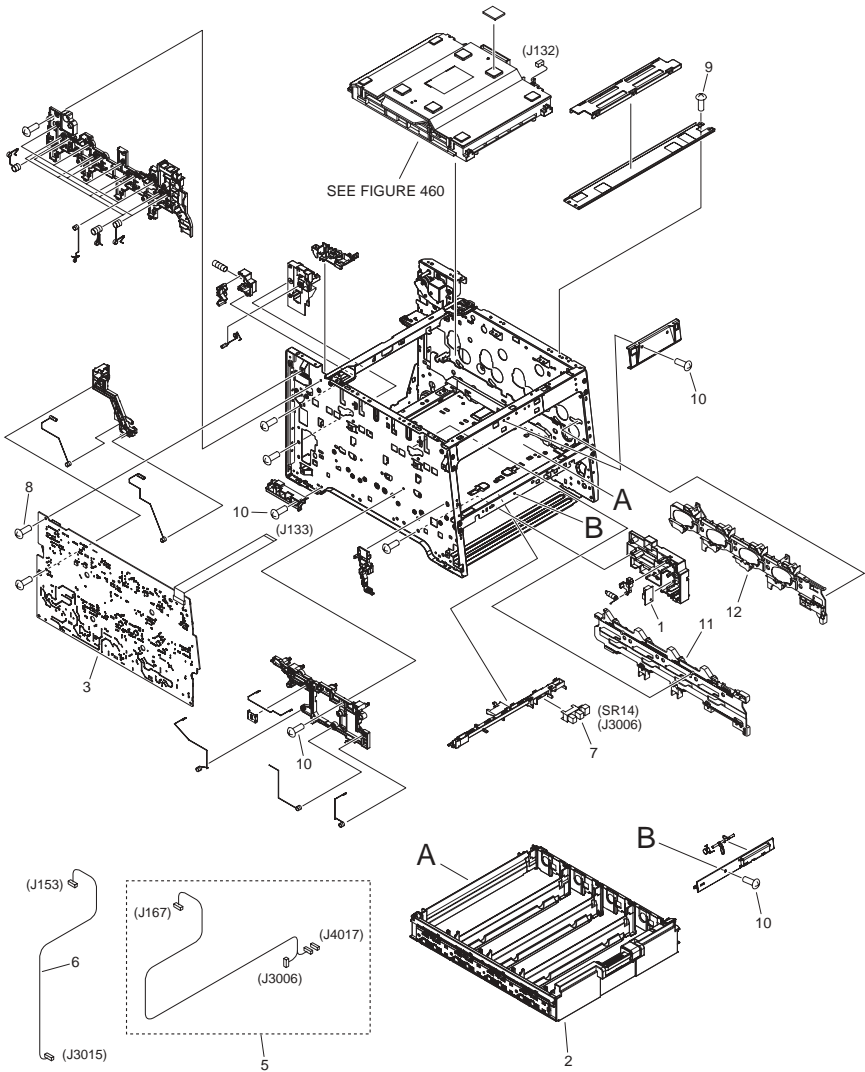




FIGURE & KEY NO.	PARTS NUMBER	R A N K	Q'TY	DESCRIPTION	SERIAL NUMBER/ REMARKS	S V C
Fig.101	NPN		RF	INTERNAL COMPONENTS 1		
1	RK2-3267-000		1	TEMPERATURE SENSOR UNIT		
2	RM1-4836-000		1	CARTRIDGE TRAY ASS'Y		
3	RM1-5294-050		1	H. V. POWER SUPPLY PCB ASS'Y		
5	RM1-5398-000		1	SENSOR CABLE ASS'Y		
6	RM1-5399-000		1	ENV. SENSOR CABLE ASS'Y		
7	WG8-5696-000		1	PHOTO INTERRUPTER, TLP1243	SR14	
8	XA9-1420-000		AR	SCREW, WWASHER, M3X8		
9	XA9-1835-000		AR	SCREW, D, M3X6		
10	XA9-1671-000		AR	SCREW, D, M3X8		
11	RC2-3800-000		1	RAIL, LEFT		
12	RC2-3801-000		1	RAIL, RIGHT		

# FIGURE 102 INTERNAL COMPONENTS 2

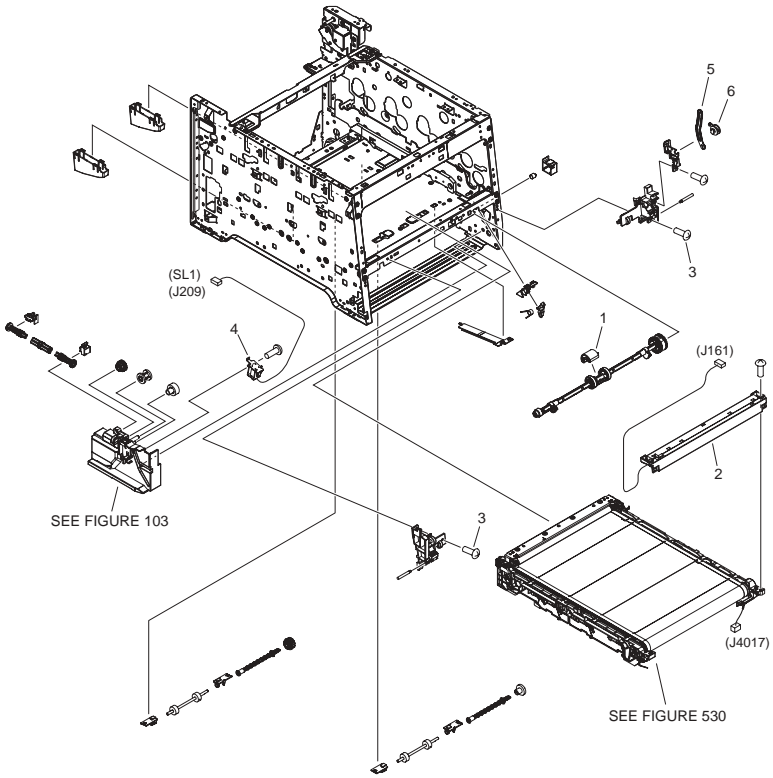


FIGURE & KEY NO.	PARTS NUMBER	RANK	Q'TY	DESCRIPTION	SERIAL NUMBER/REMARKS	SVC
Fig.102	NPN		RF	INTERNAL COMPONENTS 2		
1	RL1-1802-000		1	ROLLER, PAPER PICK-UP		
2	RM1-4850-000		1	COLOR MISREGIST. SENSOR ASS'Y		
3	XA9-1671-000		AR	SCREW, D, M3X8		
4	RM1-5420-000		1	MP SOLENOID ASS'Y	SL1	
5	RC2-3395-000		1	HINGE, MULTI-PURPOSE COVER		
6	RC2-3396-000		1	BUSHING		

# FIGURE 103 INTERNAL COMPONENTS 3

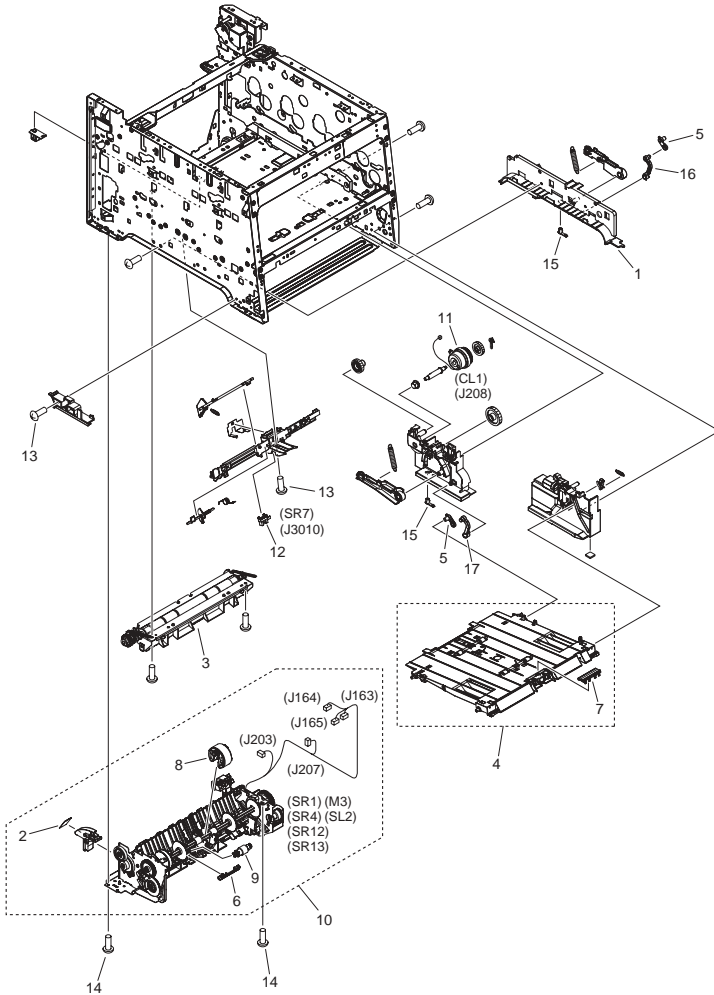


FIGURE & KEY NO.	PARTS NUMBER	R A N K	Q'TY	DESCRIPTION	SERIAL NUMBER/ REMARKS	S V C
Fig.103	NPN		RF	INTERNAL COMPONENTS 3		
1	FC8-8715-000		1	HANDLE, LEFT		
2	FC8-8748-000		1	LABEL, MOTOR CAUTION		
3	FM4-8513-000		1	REGISTRATION ASS'Y		
4	FM4-8514-000		1	MP PAPER PICK-UP ASS'Y		
5	RC2-3388-000		2	ARM, TRAY		
6	RC2-2014-000		1	COVER, HOLDER		
7	RL1-1785-000		1	PAD, SEPARATION		
8	RM1-4426-000		1	PICK-UP ROLLER ASS'Y		
9	RM1-4840-000		1	SEPARATION ROLLER ASS'Y		
10	FM4-4292-000		1	PAPER PICK-UP ASS'Y	SR1,SR4,SR12,SR13,M3, SL2	
11	RM1-5428-000		1	MP CLUTCH ASS'Y	CL1	
12	WG8-5696-000		1	PHOTO INTERRUPTER, TLP1243	SR7	
13	XA9-1671-000		AR	SCREW, D, M3X8		
14	XA9-1835-000		AR	SCREW, D, M3X6		
15	RC2-3555-000		2	STOPPER, ARM		
16	RC2-3386-000		1	ARM, TRAY, LEFT		
17	RC2-3387-000		1	ARM, TRAY, RIGHT		

# FIGURE 104 INTERNAL COMPONENTS 4

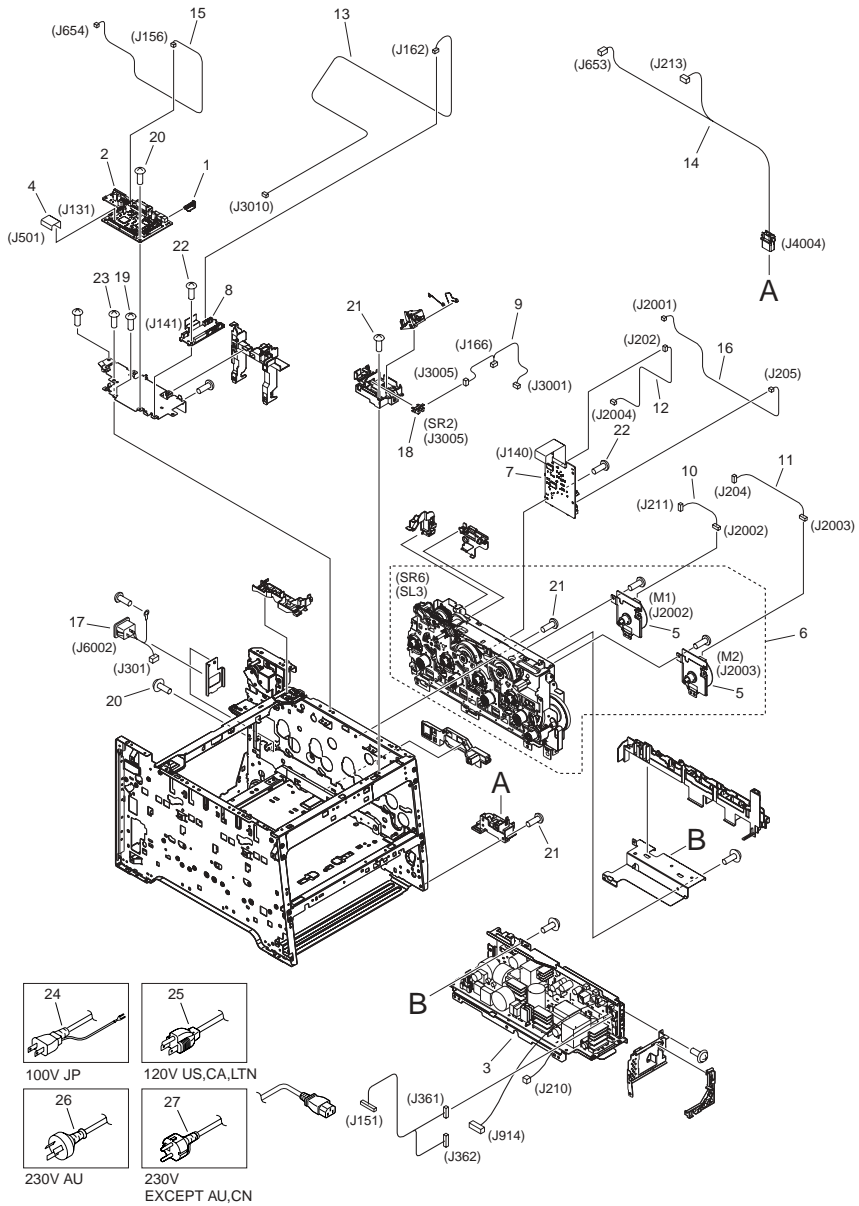


FIGURE & KEY NO.	PARTS NUMBER	R A N K	Q'TY	DESCRIPTION	SERIAL NUMBER/ REMARKS	S V C
Fig.104	NPN		RF	INTERNAL COMPONENTS 4		
1	RC2-3719-000		1	BUTTON, TEST PRINT SWITCH		
2	FM4-3776-000		1	DC CONTROLLER PCB ASS'Y		
3	FM4-3786-010		1	POWER SUPPLY ASS'Y	100V	
3	FM4-3787-010		1	POWER SUPPLY ASS'Y	120V	
3	FM4-3788-010		1	POWER SUPPLY ASS'Y	230V	
4	RK2-2302-000		1	CABLE, FLAT		
5	RL1-1800-000		2	MOTOR, DC	M1,M2	
6	RM1-4837-000		1	MAIN DRIVE ASS'Y	SR6,SL3	
7	RM1-5288-000		1	DRIVER PCB ASS'Y		
8	RM1-5293-000		1	RELAY PCB ASS'Y		
9	RM1-5385-000		1	SENSOR CABLE ASS'Y		
10	RM1-5393-000		1	DRAM MOTOR CABLE ASS'Y		
11	RM1-5394-000		1	DEVELOPING MOTOR CABLE ASS'Y		
12	RM1-5395-000		1	FEED MOTOR CABLE ASS'Y		
13	RM1-5400-000		1	SENSOR CABLE ASS'Y		
14	RM1-5434-000		1	OPTION CABLE ASS'Y		
15	RM1-5435-000		1	RLD CABLE ASS'Y		
16	RM1-5438-000		1	FIXING MOTOR CABLE ASS'Y		
17	FM4-3800-000		1	CORD, POWER SUPPLY		
18	WG8-5696-000		1	PHOTO INTERRUPTER, TLP1243	SR2	
19	XA9-0679-000		1	SCREW, MACH., FLAT HEAD, M3X4		
20	XA9-1418-000		AR	SCREW, TP, M3X6		
21	XA9-1671-000		AR	SCREW, D, M3X8		
22	XA9-1420-000		AR	SCREW, WWASHER, M3X8		
23	XA9-1835-000		AR	SCREW, D, M3X6		
24	FK2-4390-000		1	CORD, POWER	100V	
25	FK2-9583-000		1	CORD, POWER	120V	
26	FH2-7082-000		1	CORD, POWER	230V AU	
27	FH2-7080-000		1	CORD, POWER, 230V	230V EXCEPT AU	

# FIGURE 105 INTERNAL COMPONENTS 5

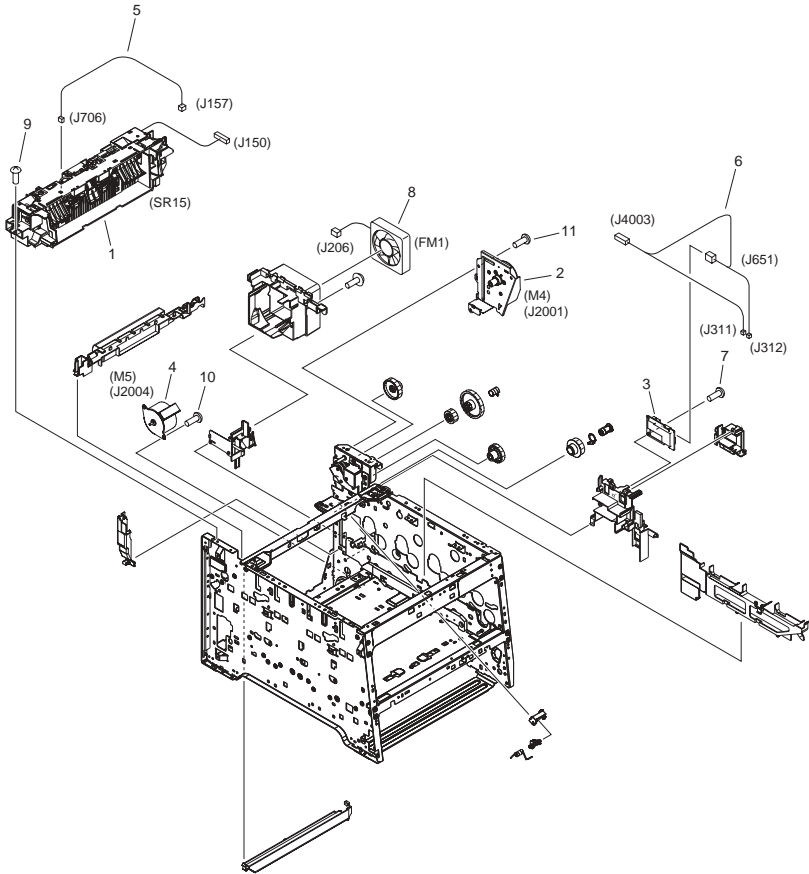




FIGURE & KEY NO.	PARTS NUMBER	R A N K	Q'TY	DESCRIPTION	SERIAL NUMBER/ REMARKS	S V C
Fig.105	NPN		RF	INTERNAL COMPONENTS 5		
1	FM4-4286-010		1	PAPER DELIVERY ASS'Y	SR15	
2	RM1-4896-000		1	FIXING MOTOR UNIT	M4	
3	RM1-7355-000		1	POWER SUPPLY SUB PCB ASS'Y		
4	RM1-5419-000		1	FEED MOTOR ASS'Y	M5	
5	RM1-5433-000		1	THERMISTOR CABLE ASS'Y		
6	FM4-3803-000		1	CABLE, FIXING		
7	XA9-1420-000		AR	SCREW, WWASHER, M3X8		
8	RK2-2276-000		1	FAN	FM1	
9	XA9-1418-000		AR	SCREW, TP, M3X6		
10	XA9-1835-000		AR	SCREW, D, M3X6		
11	XA9-1671-000		AR	SCREW, D, M3X8		

# FIGURE 106 INTERNAL COMPONENTS 6

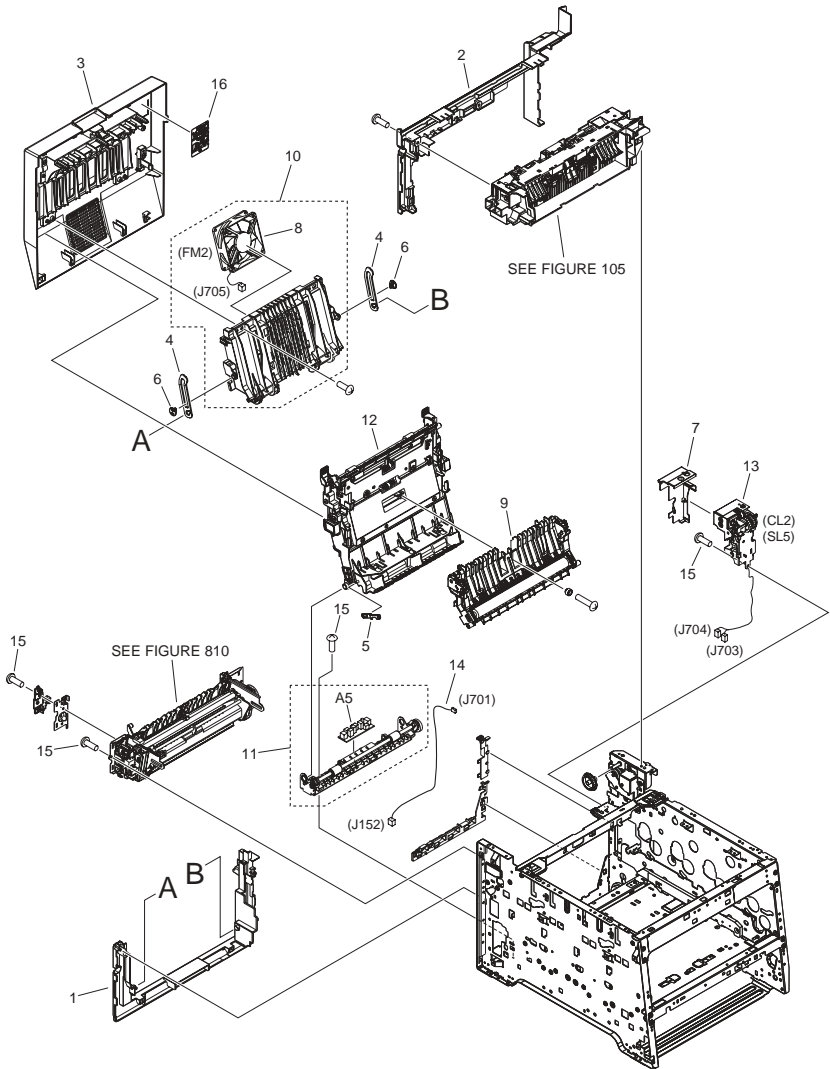


FIGURE & KEY NO.	PARTS NUMBER	R A N K	Q'TY	DESCRIPTION	SERIAL NUMBER/ REMARKS	S V C
Fig.106	NPN		RF	INTERNAL COMPONENTS 6		
1	FC9-4546-000		1	COVER, REAR LOWER		
2	FC9-4547-000		1	COVER, REAR UPPER		
3	FM4-4284-000		1	REAR DOOR ASS'Y		
4	RC2-3750-000		2	LINK, DOOR		
5	RC2-3752-000		1	LINK, GUIDE		
6	RC2-3774-000		2	CAP, LINK		
7	FC8-8730-000		1	COVER, REVERSE		
8	RK2-2276-000		1	FAN	FM2	
9	RM1-4838-000		1	PAPER FEED GUIDE ASS'Y		
10	RM1-4876-000		1	REAR DOOR RIB ASS'Y		
11	RM1-4877-000		1	PAPER RE-PICK UP GUIDE ASS'Y		
12	RM1-4879-000		1	DUPLEXING FEED GUIDE ASS'Y		
13	RM1-4880-000		1	REVERSE DRIVE ASS'Y	CL2,SL5	
14	RM1-5397-000		1	DUPLEX CABLE ASS'Y		
15	XA9-1671-000		AR	SCREW, D, M3X8		
16	FU7-8108-000		1	LABEL, DUPLEX JAM		

# FIGURE 107 INTERNAL COMPONENTS 7

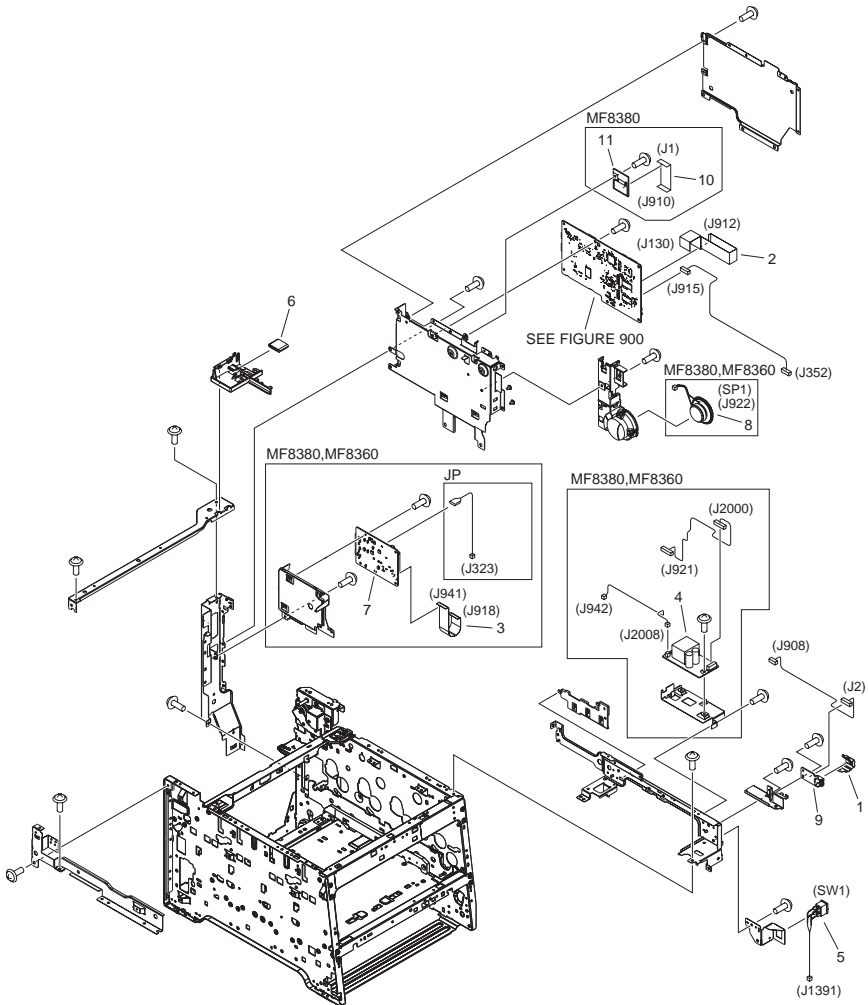


FIGURE & KEY NO.	PARTS NUMBER	RANK	Q'TY	DESCRIPTION	SERIAL NUMBER/REMARKS	SVC
Fig.107	NPN		RF	INTERNAL COMPONENTS 7		
1	FC9-4507-000		1	HINGE ASSEMBLY		
2	FK3-1894-000		1	CABLE, FLAT		
3	FK3-1949-000		1	CABLE, FLAT	MF8380,MF8360	
4	FM4-8967-000		1	P-CI PCB ASSEMBLY	MF8380 JP	
4	FM4-8968-000		1	OFFHOOK PCB ASSEMBLY	MF8380 EXCEPT JP MF8360	
5	FM4-3796-000		1	CABLE, MAIN SWITCH	SW1	
6	FK2-8767-000		1	CORE, FERRITE		
7	FM4-9255-000		1	MODEM PCB ASSEMBLY	MF8380 JP	
7	FM4-9257-000		1	MODEM PCB ASSEMBLY	MF8380 EUR	
7	FM4-9256-000		1	MODEM PCB ASSEMBLY	MF8380 EXCEPT JP,EUR MF8360	
8	FK2-9878-000		1	SPEAKER ASSEMBLY	MF8380,MF8360 SP1	
9	FM4-3989-000		1	USB PCB ASSEMBLY		
10	FK3-1951-000		1	CABLE, FLAT	MF8380	
11	FM4-9831-000		1	WIRELESS LAN PCB ASSEMBLY	MF8380	

# FIGURE 160 READER/ADF ASSEMBLY

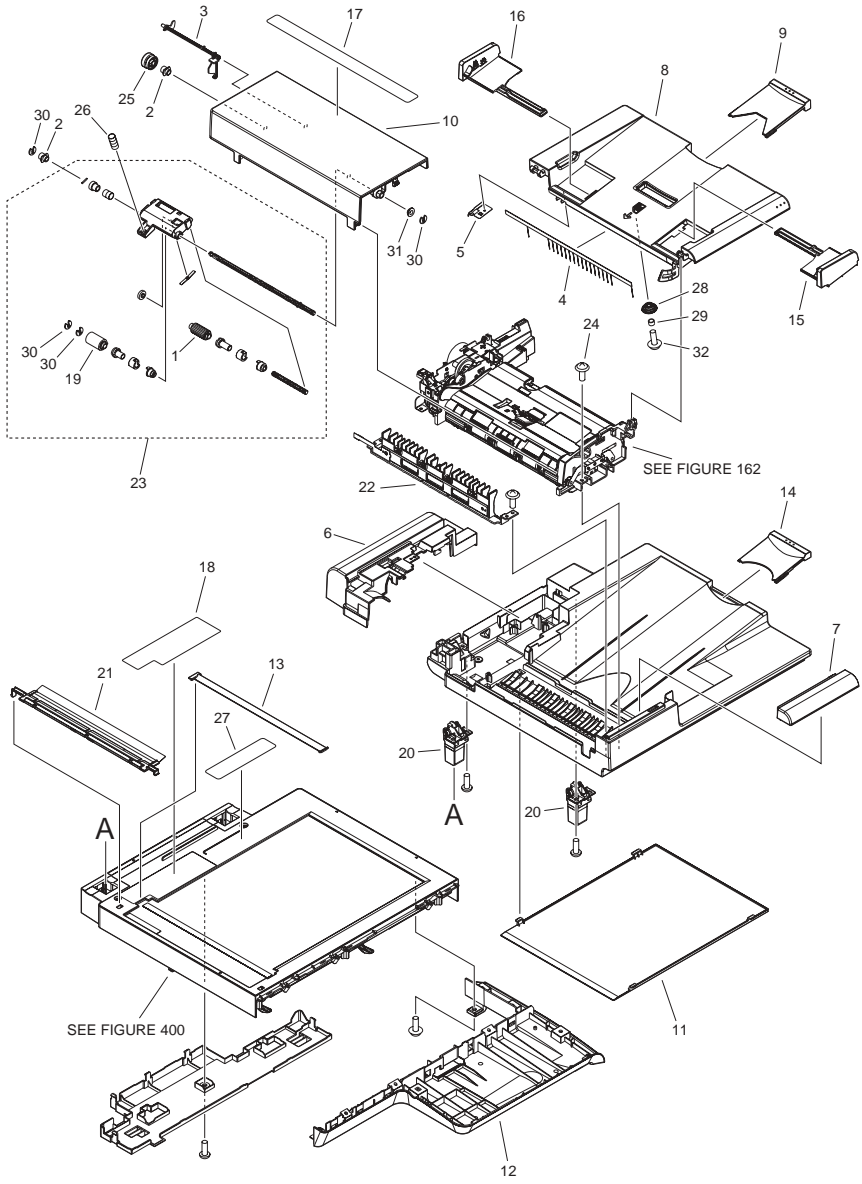


FIGURE & KEY NO.	PARTS NUMBER	R A N K	Q'TY	DESCRIPTION	SERIAL NUMBER/ REMARKS	S V C
Fig.160	NPN		RF	READER/ADF ASSEMBLY		
1	FC7-6189-000		1	ROLLER, PICK-UP		
2	FC7-6320-000		2	BUSHING		
3	FC7-6321-000		1	FLAG, DOCUMENT SCANNER		
4	FC7-6322-000		1	ELIMINATOR, STATIC CHARGE		
5	FC9-1503-000		1	PLATE, GROUNDING		
6	FC9-1532-000		1	COVER, REAR		
7	FC9-1533-000		1	COVER, FRONT UPPER		
8	FC9-1534-000		1	TRAY, DOCUMENT		
9	FC9-1535-000		1	TRAY, SUB DOCUMENT		
10	FC9-1536-000		1	PANEL, OPEN/CLOSE		
11	FC9-1539-000		1	SHEET, WHITE		
12	FC9-4502-000		1	COVER, BASE		
13	FC9-5115-000		1	PLATE, PAPER SIZE	A/B SIZE	
13	FC9-7575-000		1	PLATE, PAPER SIZE	A/INCH SIZE	
13	FC9-7576-000		1	PLATE, PAPER SIZE	A/B/INCH SIZE	
13	FC9-5109-000		1	PLATE, PAPER SIZE	A SIZE	
14	FC9-5655-000		1	TRAY, SUB		
15	FC9-5656-000		1	GUIDE, DOCUMENT, FRONT		
16	FC9-5657-000		1	GUIDE, DOCUMENT, REAR		
17	FC9-7561-000		1	LABEL, SIZE INDEX	A/B SIZE	
17	FC9-7562-000		1	LABEL, SIZE INDEX	A/INCH SIZE	
17	FC9-7564-000		1	LABEL, SIZE INDEX	A/B/INCH SIZE	
17	FC9-7563-000		1	LABEL, SIZE INDEX	A SIZE	
18	FC9-7565-000		1	LABEL, GLASS CLEANING	JP	
18	FC9-7566-000		1	LABEL, GLASS CLEANING	US,CA,LTN	
18	FC9-7568-000		1	LABEL, GLASS CLEANING	TW,AU,HK,SG,LTN	
18	FC9-7567-000		1	LABEL, GLASS CLEANING	EUR	
19	FL2-6637-000		1	ROLLER, SEPARATION		
20	FL3-2453-000		2	HINGE, ADF		
21	FL3-3539-000		1	HOLDER, DOCUMENT,RELEASE SHEET		
22	FM4-1883-000		1	PAPER FEED GUIDE ASSEMBLY		

FIGURE & KEY NO.	PARTS NUMBER	R A N K	Q'TY	DESCRIPTION	SERIAL NUMBER/ REMARKS	S V C
23	FM3-9538-000		1	SEPARATION ROLLER ASSEMBLY		
24	XA9-0831-000		6	SCREW,M3X10		
25	FU7-0672-000		1	GEAR, 24T		
26	FU7-2018-000		1	SPRING, COMPRESSION		
27	FU7-8405-000		1	LABEL, COPY PROHIBITION	JP	
27	FU7-8406-000		1	LABEL, COPY PROHIBITION	US,CA,LTN,AU,HK,SG	
27	FU7-8407-000		1	LABEL, COPY PROHIBITION	EUR	
28	FU8-0895-000		1	GEAR, 18T		
29	FU8-2007-000		1	SPRING, COMPRESSION		
30	HC1-0586-000		4	RETAINING RING		
31	HU1-1022-000		1	BUSHING		
32	XA9-0476-000		AR	SCREW,TP M3X8		



# FIGURE 162 PAPER FEEDER ASSEMBLY

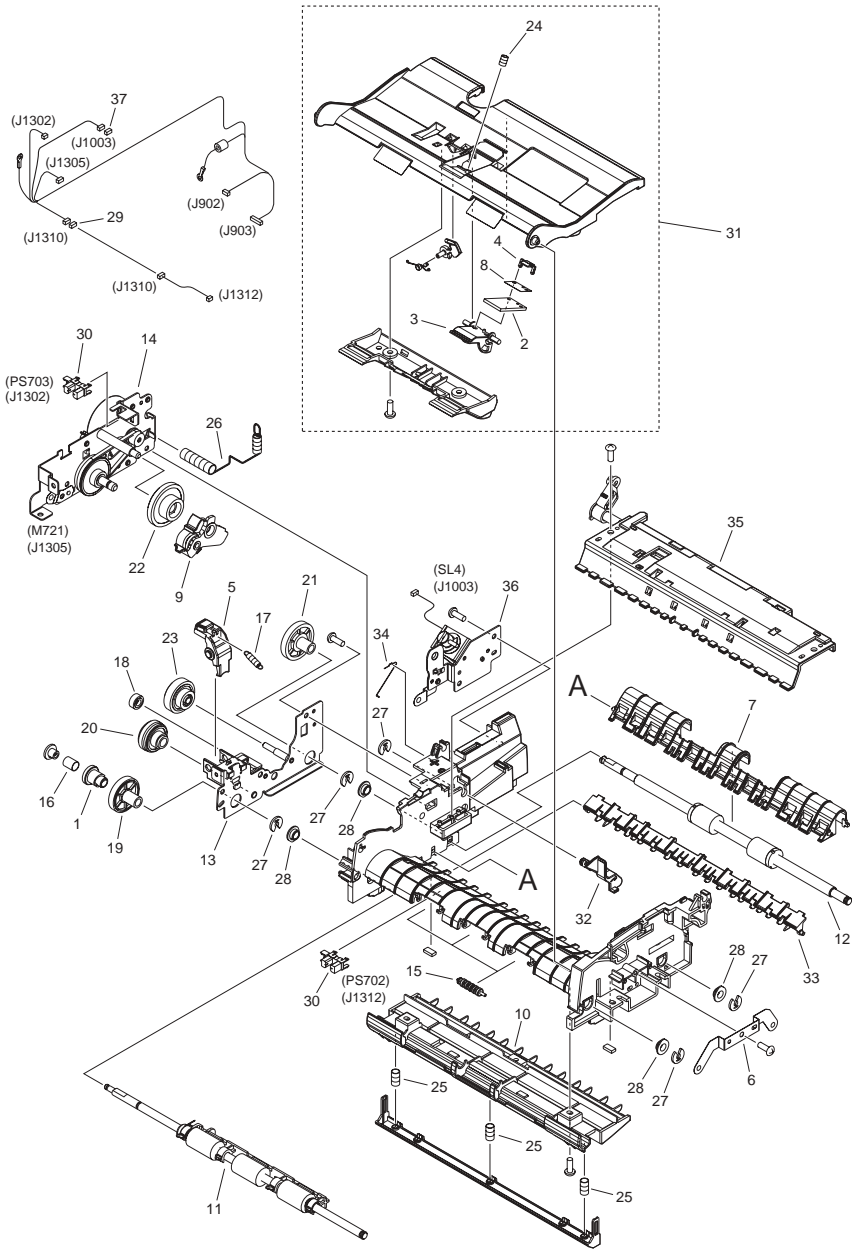


FIGURE & KEY NO.	PARTS NUMBER	R A N K	Q'TY	DESCRIPTION	SERIAL NUMBER/ REMARKS	S V C
Fig.162	FM4-8854-000		1	PAPER FEEDER ASSEMBLY		
1	FC7-6052-010		1	RATCHET, PAPER FEED ROLLER		
2	FC7-6297-000		1	PAD, SEPARATION		
3	FC7-6299-000		1	HOLDER, SEPARATION PAD		
4	FC7-6300-000		1	CLAMP, SEPARATION PAD		
5	FC9-1512-000		1	LEVER, RELEASE		
6	FC9-1523-000		1	PLATE, ROLLER GROUNDING		
7	FC9-1526-000		1	GUIDE, PAPER DELIVERY		
8	FC9-5654-000		1	SHEET, SEPARATION PAD		
9	FL3-1431-000		1	ARM, SEPARATION SWING		
10	FL3-1437-000		1	GUIDE LOWER ASSEMBLY		
11	FM4-1885-000		1	PAPER FEED ROLLER ASSEMBLY		
12	FL3-2458-000		1	PAPER DELIVERY ROLLER ASSY		
13	FM3-9542-000		1	DRIVE PLATE ASSEMBLY		
14	FM4-8855-000		1	MOTOR DRIVE ASSY	M721	
15	FU5-6992-000		3	ROLLER, AUXILIARY		
16	FU6-2998-000		1	SPRING, COMPRESSION		
17	FU6-2999-000		1	SPRING, TENSION		
18	FU7-0667-000		1	GEAR, 20T		
19	FU7-0668-000		1	GEAR, 54T		
20	FU7-0669-000		1	GEAR, 46T/23T		
21	FU7-0671-000		1	GEAR, 36T		
22	FU7-0676-000		1	GEAR, 21T/42T		
23	FU7-0678-000		1	GEAR, 51T/17T		
24	FU7-2016-000		1	SPRING, COMPRESSION		
25	FU8-2008-000		3	SPRING, COMPRESSION		
26	FU7-2021-000		1	SPRING, COMPRESSION		
27	HC1-0586-000		5	RETAINING RING		
28	HU1-1022-000		4	BUSHING		
29	VS1-7207-004		1	CONNECTOR, SNAP TIGHT, BK		
30	WG8-5696-000		2	PHOTO INTERRUPTER, TLP1243	PS702,PS703	
31	FM4-1873-000		1	GUIDE ASSEMBLY, UPPER		

FIGURE & KEY NO.	PARTS NUMBER	RANK	Q'TY	DESCRIPTION	SERIAL NUMBER/REMARKS	SVC
32	FC7-6182-000		1	LEVER, ROLLER RELEASE	SL4	
33	FC7-6278-000		1	FLAPPER, PAPER DELIVERY		
34	FC7-6281-000		1	SPRING, ARM		
35	FM3-9541-000		1	PAPER DELIVERY ASSEMBLY		
36	FM3-9543-000		1	SOLENOID ASSEMBLY		
37	VS1-7177-002		1	CONNECTOR, SNAP TIGHT, BK		

# FIGURE 300 CASSETTE

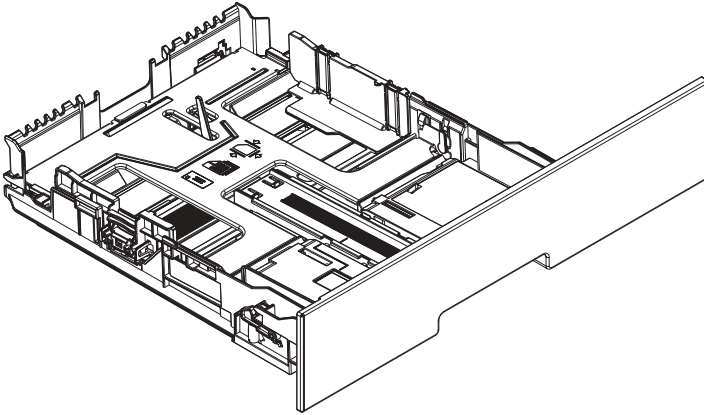
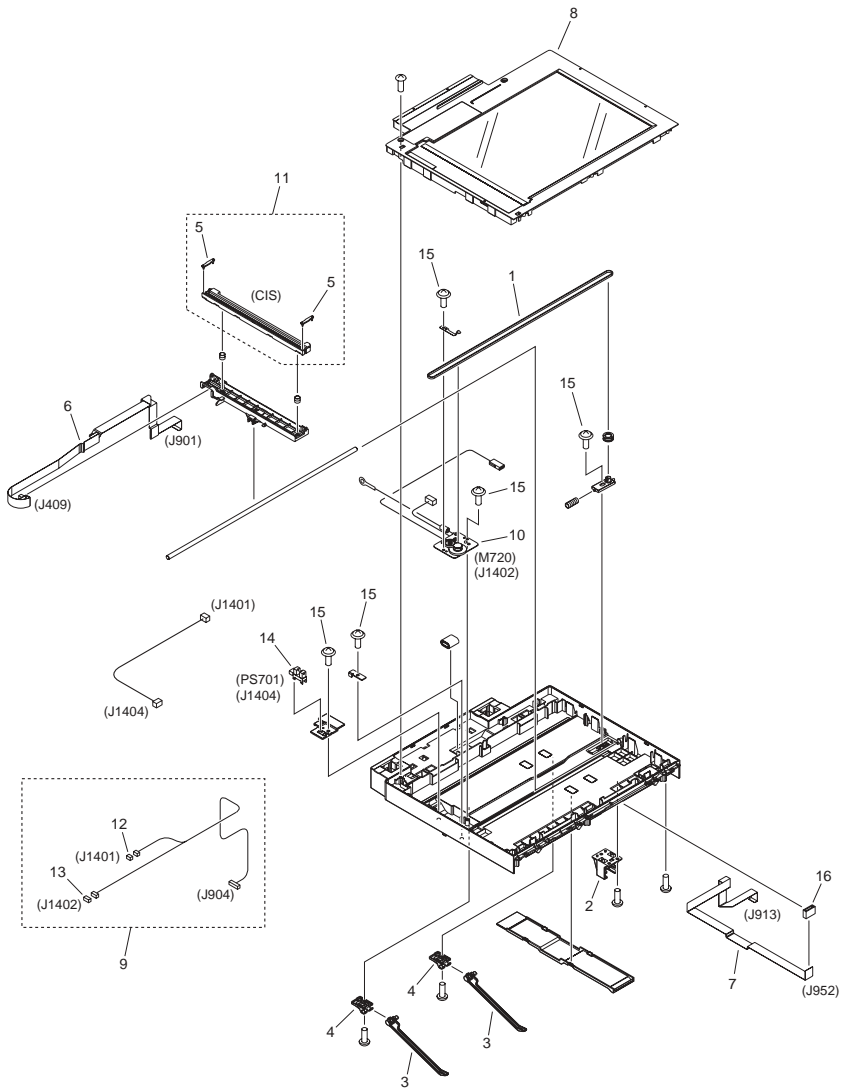


FIGURE & KEY NO.	PARTS NUMBER	RANK	QTY	DESCRIPTION	SERIAL NUMBER/REMARKS	S V C
Fig.300	FM4-4279-000		1	CASSETTE		

# FIGURE 400 READER ASSEMBLY



NOTE : This assembly does not include the part shown with key No. 16.

注 : このユニットにKey No. 16の部品は含まれません。

FIGURE & KEY NO.	PARTS NUMBER	R A N K	Q'TY	DESCRIPTION	SERIAL NUMBER/ REMARKS	S V C
Fig.400	FM4-8852-000		1	READER ASSEMBLY		
1	FC9-1650-000		1	BELT, TIMING		
2	FC9-2101-000		1	MOUNT, SUPPORTER		
3	FC9-4589-000		2	LEVER, FACE-DOWN		
4	FC9-4590-000		2	HOLDER, FACE-DOWN LEVER		
5	FC9-7573-000		2	SPACER, CIS		
6	FK3-1884-000		1	CABLE, FLAT		
7	FK3-1950-000		1	CABLE, FLAT		
8	FM4-4308-000		1	READER COVER UNIT		
9	FM4-3653-000		1	CABLE, READER		
10	FM4-4301-000		1	DC MOTOR ASSEMBLY	M720	
11	FM4-9076-000		1	CONTACT IMAGE SENSOR ASSY	CIS	
12	VS1-7177-003		1	CONNECTOR, SNAP TIGHT, BK		
13	VS1-7177-004		1	CONNECTOR, SNAP TIGHT, BK		
14	WG8-5696-000		1	PHOTO INTERRUPTER, TLP1243	PS701	
15	XA9-0476-000		AR	SCREW,TP M3X8		
16	FK2-5242-000		1	CORE	SEE NOTE	

# FIGURE 460 LASER SCANNER ASS'Y

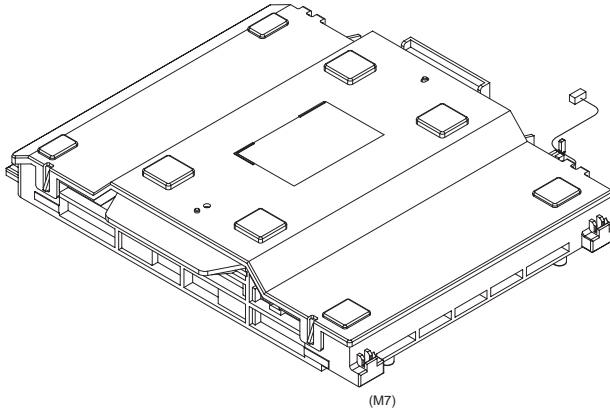
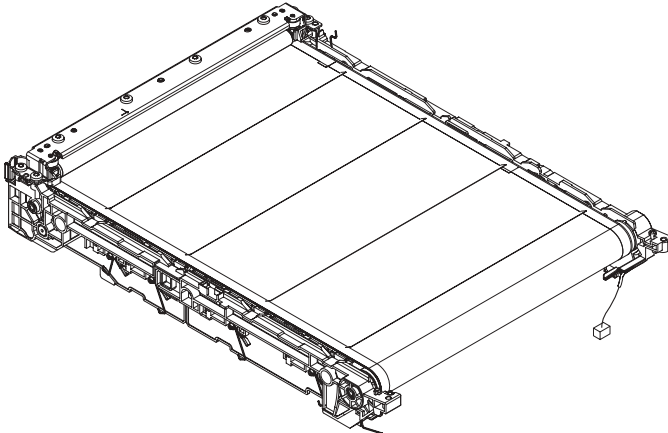


FIGURE & KEY NO.	PARTS NUMBER	RANK	QTY	DESCRIPTION	SERIAL NUMBER/REMARKS	SVC
Fig.460	FM4-3359-000		1	LASER SCANNER ASS'Y	M7	

# FIGURE 530 INTERMEDIATE TRANS. BELT ASS'Y



(SR16)

FIGURE & KEY NO.	PARTS NUMBER	RANK	QTY	DESCRIPTION	SERIAL NUMBER/REMARKS	SVC
Fig.530	RM1-4852-000		1	INTERMEDIATE TRANS. BELT ASS'Y	SR16	



FIGURE 810  
FIXING ASS'Y

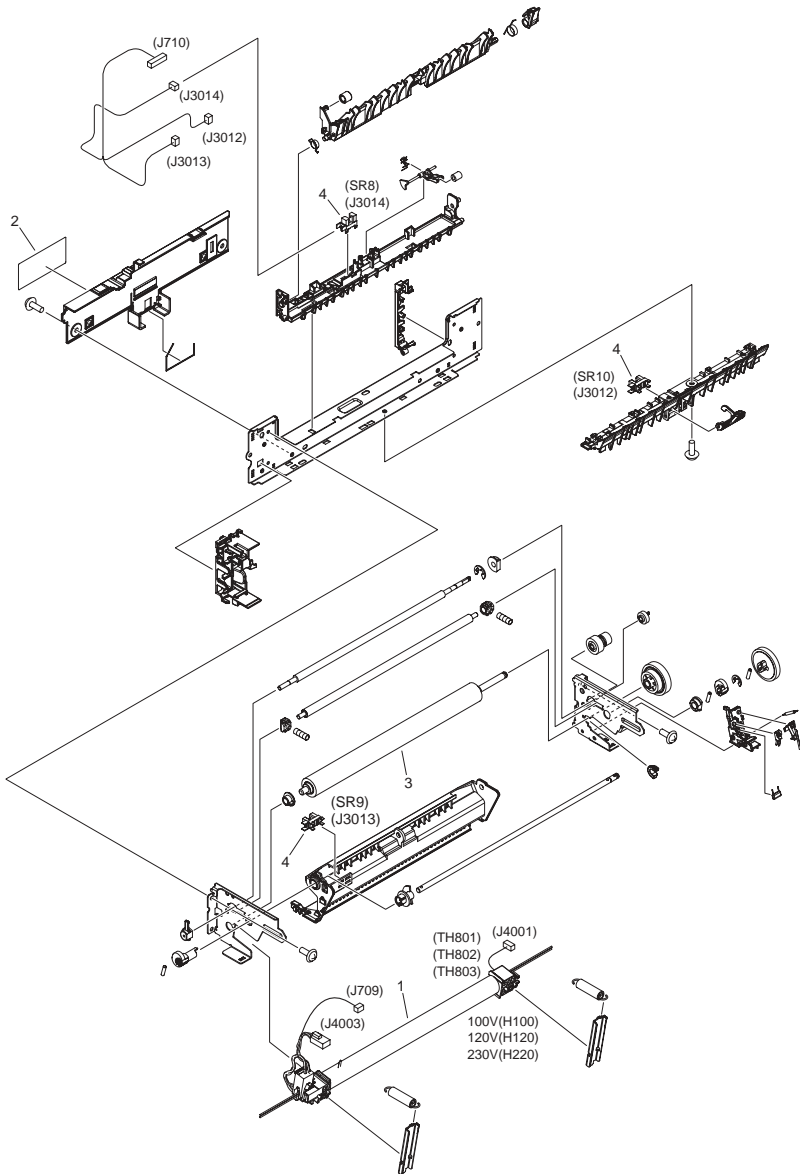


FIGURE & KEY NO.	PARTS NUMBER	RANK	Q'TY	DESCRIPTION	SERIAL NUMBER/REMARKS	SVC
Fig.810	FM4-4289-000		1	FIXING ASS'Y	100V	
Fig.810	FM4-4290-000		1	FIXING ASS'Y	120V	
Fig.810	FM4-4291-000		1	FIXING ASS'Y	230V	
1	FM3-8292-000		1	FIXING FILM ASSEMBLY	100V H100 TH801,TH802,TH803	
1	FM4-3062-000		1	FIXING FILM ASSEMBLY	120V H120 TH801,TH802,TH803	
1	FM4-3063-000		1	FIXING FILM ASSEMBLY	230V H220 TH801,TH802,TH803	
2	FU7-8111-000		1	LABEL, CAUTION		
3	RC2-3367-000		1	ROLLER, PRESSURE		
4	WG8-5935-000		3	IC, PHOTO INTERRUPTER	SR8,SR9,SR10	

# FIGURE 900 MAIN CONTROLLER PCB ASSEMBLY

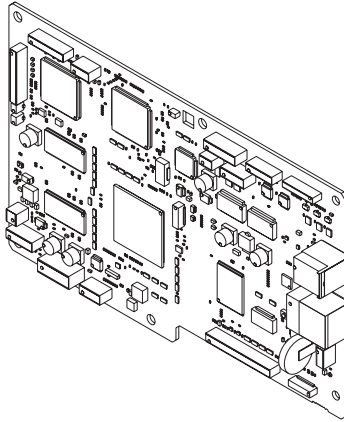


FIGURE & KEY NO.	PARTS NUMBER	RANK	QTY	DESCRIPTION	SERIAL NUMBER/REMARKS	SVC
Fig.900	FM4-9264-000		1	MAIN CONTROLLER PCB ASSEMBLY	MF8380	
Fig.900	FM4-9263-000		1	MAIN CONTROLLER PCB ASSEMBLY	MF8360	
Fig.900	FM4-9261-000		1	MAIN CONTROLLER PCB ASSEMBLY	MF8340 JP	
Fig.900	FM4-9262-000		1	MAIN CONTROLLER PCB ASSEMBLY	MF8340 EUR	
IC	FK2-7852-000		1	IC, T6TH5EFG-0002(0), STANDARD	IC4	
IC	FK2-8321-000		1	IC, MB87S1801	IC28	

# FIGURE ZZA

## MECHANICAL STANDARD PARTS (HOW TO USE)

### Mechanical standard parts

#### 機械標準部品

About a mechanical standard parts

A Mechanical standard parts is a mechanical part which not parts peculiar to a product. They are parts which are common to a Canon product and are used, such as a screw and a washer. The Fig No. and parts number of the mechanical standard parts are not listed in the product parts catalog. Refer to the parts catalog of mechanical standard parts when checking the parts number for screw or washer etc. and identify them by part shape or size.

機械標準部品とは

機械標準部品とは、製品特有の部品ではなく、ねじやワッシャなどキヤノン製品共通で使用されている機械部品（メカ部品）のことです。  
製品のパーツカタログには、機械標準部品のFig No.や部品番号は記載しておりません。  
ねじや、ワッシャ等の部品番号を調べるときは、機械標準部品のパーツカタログを参照し、部品の形状や大きさから判断し、使用している部品を調べてください。

Material and surface treatment of a mechanical standard parts

Material and surface treatment of mechanical standard parts are assigned commonly for each part. Refer to the Table 1 for the parts which material and surface treatment are assigned as numbers.

機械標準部品の材料および表面処理

機械標準部品の材料および表面処理については、各種部品共通で決められています。  
材料および表面処理が番号で決められている部品については、表1を参照してください。

Table 1 Material and Surface treatment  
表1 材料および表面処理

No. 番号	Material 材料	Surface treatment 表面処理	Color 色
1	Stainless steel ステンレス	Stainless steel black coloring (BC4) ステンレス黒着色(BC4)	Black 黒
2		not to be given なし	White 白
3	Brass 黄銅	Regular nickel plating (NL) 普通ニッケルメッキ(NL)	White 白
4		Black nickel plating (BN) 黒色ニッケルメッキ(BN)	Black 黒
5	Steel 鋼	White zinc trivalent chromate treating (ZC3) 白色亜鉛3価クロメート(ZC3)	White 白
6		Regular nickel chromium plating (NC) 普通ニッケルクロムメッキ(NC)	White 白
7		Regular nickel plating (NL) 普通ニッケルメッキ(NL)	White 白
8		Iron and steel phosphating (P1) 鉄鋼磷酸塩処理(P1)	Black 黒
9		Black zinc trivalent chromate treating (BZ3) 黒色亜鉛3価クロメート(BZ3)	Black 黒

# FIGURE ZZB MECHANICAL STANDARD PARTS (SCREWS)

## 1. Screws ねじ

How to read Parts Numbers  
部品番号の見方

Screws  
ねじ

XB1-2400-609

Type No.  
類別番号

Normal designation (d)  
ねじの呼び(d)

Length (L)  
ねじの長さ(L)

Material and Surface treatment  
材料および表面処理

XB1-2 expresses Binding head machine screw.  
XB1-2は、バインドねじを表す

40 expresses M4.0.  
40は、M4.0を表す

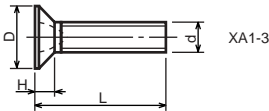
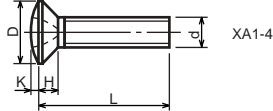
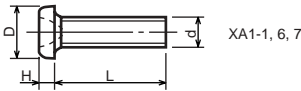
0-60 expresses a length of 6.0mm.  
0-60は、6.0mmの長さを表す

9 expresses Steel (Black zinc trivalent chromate  
treating) from Table 1.

9は、表1より鋼(黒色亜鉛3価クロメート)を表す

### 1-1. Cross Recessed Head Screws for Precision Equipments

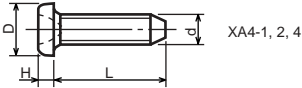
精密機器用十字穴付き小ねじ



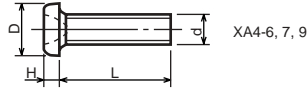
Type No. 類別番号	Type 類別
XA1-1	Pan head Class 1 なべ1種
XA1-3	Countersunk head Class 1 さら1種
XA1-4	Oval countersunk head Class 1 丸さら1種
XA1-6	Pan head Class 3 なべ3種
XA1-7	Pan head Class 2 なべ2種

		Head size (mm) 頭部寸法 (mm)					
		M1.4	M1.6	M1.7	M2	M2.5	M2.6
D	XA1-1	2	2.4	2.5	3	3.8	4
H	XA1-1	0.5	0.55	0.5	0.6	0.9	0.8
D	XA1-3	2	2.4	2.5	3	3.8	4
H	XA1-3	0.48	0.55	0.58	0.73	0.85	0.93
D	XA1-4	2	2.4	2.5	3	3.8	4
H + K	XA1-4	0.68	0.8	0.88	1	1.25	1.3
D	XA1-6	2.5	2.8	3	3.5	4.3	4.5
H	XA1-6	0.8	0.85	0.9	1	1.3	1.2
D	XA1-7	2.5	2.8	3	3.5	4.3	4.5
H	XA1-7	0.5	0.55	0.5	0.6	0.9	0.8

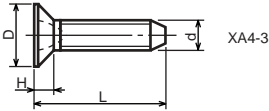
1-2. Precision Tapping Screws  
精密用タッピンねじ



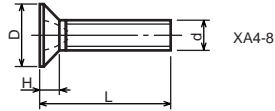
XA4-1, 2, 4



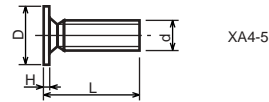
XA4-6, 7, 9



XA4-3



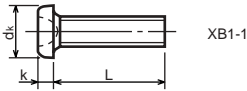
XA4-8



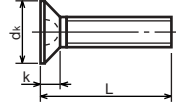
XA4-5

Type No. 類別番号	Type 類別	Head size (mm) 頭部寸法 (mm)						
		M1.4	M1.6	M1.7	M2	M2.5	M2.6	
XA4-1	With tapered end pan head Class 1 絞りなべ1種	D XA4-1	2	2.4	2.5	3	3.8	4
		H XA4-1	0.5	0.55	0.5	0.6	0.9	0.8
XA4-2	With tapered end pan head Class 3 絞りなべ3種	D XA4-2	2.5	2.8	3	3.5	4.3	4.5
		H XA4-2	0.8	0.85	0.9	1	1.3	1.2
XA4-3	With tapered end countersunk head 絞り-さら	D XA4-3	2	2.4	2.5	3	3.8	4
		H XA4-3	0.48	0.55	0.58	0.73	0.85	0.93
XA4-4	With tapered end pan head Class 2 絞りなべ2種	D XA4-4	2.5	2.8	3	3.5	4.3	4.5
		H XA4-4	0.5	0.55	0.5	0.6	0.9	0.8
XA4-5	With parallel end ultra thin head ストレート-超薄頭	D XA4-5	2.5	2.8	3	-	-	-
		H XA4-5	0.2	0.2	0.2	-	-	-
XA4-6	With parallel end pan head Class 1 ストレートなべ1種	D XA4-6	2	2.4	2.5	3	3.8	4
		H XA4-6	0.5	0.55	0.5	0.6	0.9	0.8
XA4-7	With parallel end pan head Class 3 ストレートなべ3種	D XA4-7	2.5	2.8	3	3.5	4.3	4.5
		H XA4-7	0.8	0.85	0.9	1	1.3	1.2
XA4-8	With parallel end countersunk head ストレート-さら	D XA4-8	2	2.4	2.5	3	3.8	4
		H XA4-8	0.48	0.55	0.58	0.73	0.85	0.93
XA4-9	With parallel end pan head Class 2 ストレートなべ2種	D XA4-9	2.5	2.8	3	3.5	4.3	4.5
		H XA4-9	0.5	0.55	0.5	0.6	0.9	0.8

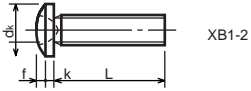
**1-3. Cross Recessed Head Screws**  
 一般用十字穴付き小ねじ



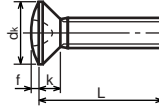
XB1-1



XB1-3



XB1-2

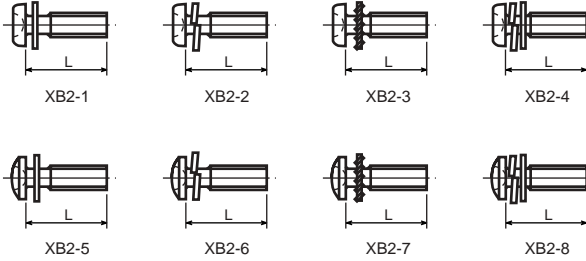


XB1-4

Type No. 類別番号	Type 類別
XB1-1	Pan head なべ
XB1-2	Binding head バインド
XB1-3	Countersunk head さら
XB1-4	Oval countersunk head 丸さら

		Head size (mm) 頭部寸法 (mm)					
		M2	M2.5	M2.6	M3	M4	M5
dk	XB1-1	3.5	4.5	4.5	5.5	7	9
k	XB1-1	1.3	1.7	1.7	2	2.6	3.3
dk	XB1-2	4.3	5.3	5.5	6.3	8.3	10.3
k+f	XB1-2	1.2	1.5	1.6	1.9	2.5	3.1
dk	XB1-3	4	5	-	6	8	10
k	XB1-3	1.2	1.45	-	1.75	2.3	2.8
dk	XB1-4	4	5	-	6	8	10
k+f	XB1-4	1.6	2	-	2.45	3.2	4
Screw part length ねじ部長さ b		8	12	12	12	16	20

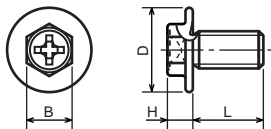
1-4. Cross Recessed Head Screws with Captive Washer  
座金組込み十字穴付き小ねじ



Type No. 類別番号	Type 類別
XB2-1	Pan head + Plain washer (circular bright) なべねじ+平座金
XB2-2	Pan head + Spring washer なべねじ+ばね座金
XB2-3	Pan head + Toothed lock washer なべねじ+歯付座金
XB2-4	Pan head + Spring washer and plain washer (circular bright) なべねじ+(ばね+平)座金
XB2-5	Binding head + Plain washer (circular bright) バインドねじ+平座金
XB2-6	Binding head + Spring washer バインドねじ+ばね座金
XB2-7	Binding head + Toothed lock washer バインドねじ+歯付座金
XB2-8	Binding head + Spring washer and plain washer (circular bright) バインドねじ+(ばね+平)座金

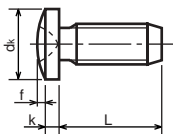


1-5. Hexagon Head Tapping Screws for Metallic Materials  
 金属用六角タッピンねじ



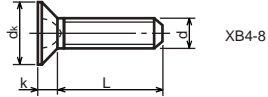
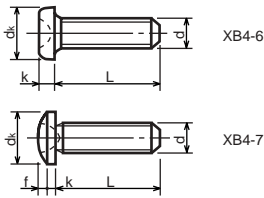
Type No. 類別番号	Type 類別	Head size (mm) 頭部寸法 (mm)	
		M3	M4
XB3-6	For metallic materials 金属用タッピン	D	8 10
		B	5.5 5.5
XB3-7	For metallic materials with clawed 金属用タッピン-つめ付き	H XB3-6	3.1 3.1
		H XB3-7	3.2 3.2

1-6. Special Tapping Screws  
 特殊タッピンねじ



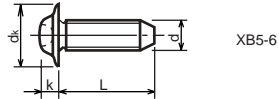
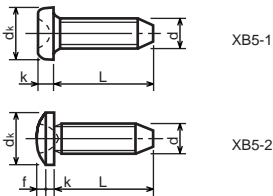
Type No. 類別番号	Type 類別	Head size (mm) 頭部寸法 (mm)	
		M3	M4
XB4-5	Binding head バインド	d <sub>k</sub>	6.3 8.3
		k	1.3 1.7
		k+f	1.9 2.5

1-7. General Head Tapping Screws  
一般用タッピンねじ



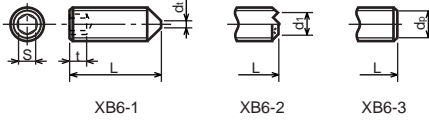
Type No. 類別番号	Type 類別	Head size (mm) 頭部寸法 (mm)						
		M2	M2.5	M2.6	M3	M4	M5	
XB4-6	Pan head なべ	$d_k$ XB4-6	3.5	4.5	4.5	5.5	7	9
		$k$ XB4-6	1.3	1.7	1.7	2	2.6	3.3
XB4-7	Binding head バインド	$d_k$ XB4-7	4.3	5.3	5.5	6.3	8.3	10.3
		$k+f$ XB4-7	1.2	1.5	1.6	1.9	2.5	3.1
XB4-8	Countersunk head さら	$d_k$ XB4-8	4	5	5.2	6	8	10
		$k$ XB4-8	1.2	1.45	1.5	1.75	2.3	2.8

1-8. Tapping Screws for Metallic Materials  
金属用タッピンねじ



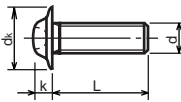
Type No. 類別番号	Type 類別	Head size (mm) 頭部寸法 (mm)					
		M2.5	M2.6	M3	M4	M5	
XB5-1	Pan head なべ	$d_k$ XB5-1	4.5	4.5	5.5	7	9
		$k$ XB5-1	1.7	1.7	2	2.6	3.3
XB5-2	Binding head バインド	$d_k$ XB5-2	5.5	5.5	6.3	8.3	10.3
		$k+f$ XB5-2	1.6	1.6	1.9	2.5	3.1
XB5-6	Flanged pan head つば付きなべ	$d_k$ XB5-6	6.5	6.5	8	10	12
		$k$ XB5-6	2.1	2.1	1.75	3.2	4

**1-9. Hexagon Socket Set Screws**  
六角穴付止めねじ



Type No. 類別番号	Type 類別	Head size (mm) 頭部寸法 (mm)							
		M1.6 M1.7	M2	M2.5 M2.6	M3	M5	M5	M6	
XB6-1	Cone point とがり先	S	0.7	0.9	1.3	1.5	2	2.5	3
		t	1.5	1.7	2	2	2.5	3	3.5
		$d_{t \max}$ XB6-1	0.4	0.5	0.65	0.75	1	1.25	1.5
		$d_{l \max}$ XB6-2	-	1.2	1.5	1.7	2.2	2.8	3.3
		$d_{l \min}$ XB6-2	-	1	1.2	1.4	1.9	2.4	2.9
		$d_{p \max}$ XB6-3	0.8	1	1.5	2	2.5	3.5	4
		$d_{p \min}$ XB6-3	0.55	0.75	1.25	1.75	2.25	3.2	3.7

**1-10. Flanged Pan Head Machine Screws**  
つば付きなべ小ねじ



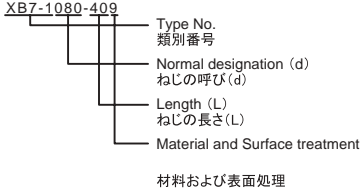
Type No. 類別番号	Type 類別	Head size (mm) 頭部寸法 (mm)					
		M2	M2.5 M2.6	M3	M5	M5	
XB6-7	Flanged pan head つば付きなべ	$d_k$	5	6.5	8	10	12
		k	1.7	2.1	2.5	3.2	4

# FIGURE ZZC MECHANICAL STANDARD PARTS (BOLTS)

## 2. Bolts (Socket head cap screw) ボルト

How to read Parts Numbers  
部品番号の見方

Bolt (Socket head cap screw)  
ボルト



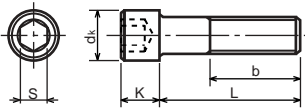
XB7-1 expresses Hexagon socket head cap screws.  
XB7-1は、六角穴付きボルトを表す

080 expresses M8.0.  
080は、M8.0を表す

40 expresses a length of 40mm.  
40は、40mmの長さを表す

9 expresses Steel (Black zinc trivalent chromate treating) from Table 1.  
9は、表1より鋼(黒色亜鉛3価クロメート)を表す

### 2-1. Hexagon socket head cap screws 六角穴付きボルト



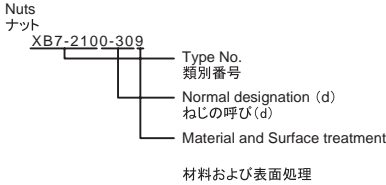
Type No. 類別番号	Type 類別
XB7-1	Hexagon socket head cap screws 六角穴付きボルト

	Head size (mm) 頭部寸法 (mm)						
	M3	M4	M5	M6	M8	M10	M12
S	2.5	3	4	5	6	8	10
$d_k$	5.5	7	8.5	10	13	16	18
K	3	4	5	6	8	10	12
Screw part length $b_{max}$ ねじ部長さ $b_{max}$	18	20	22	24	28	32	36

# FIGURE ZZD MECHANICAL STANDARD PARTS (NUTS)

## 3. Nuts ナット

How to read Parts Numbers  
部品番号の見方

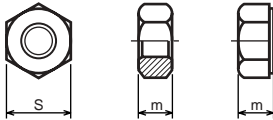


XB7-210 expresses Hexagon nut class 1.  
XB7-210は、六角ナット1種を表す

0-30 expresses M3.0.  
0-30は、M3.0を表す

9 expresses Steel (Black zinc trivalent chromate treating) from Table 1.  
9は、表1より鋼(黒色亜鉛3価クロメート)を表す

### 3-1. Hexagon Nuts and Hexagon Thin Nuts 六角ナット



Type No. 類別番号	Type 類別
XB7-210	Hexagon nut Class 1 六角ナット-1種
XB7-220	Hexagon nut Class 3 六角ナット-3種
XB7-230	Hexagon nut Style 1 double chamfered 六角ナット-スタイル1-両面とり
XB7-231	Hexagon nut Style 1 washer faced 六角ナット-スタイル1-座付き
XB7-240	Hexagon nut Style 2 double chamfered 六角ナット-スタイル2-両面とり
XB7-241	Hexagon nut Style 2 washer faced 六角ナット-スタイル2-座付き
XB7-250	Hexagon nut 六角ナット
XB7-260	Hexagon thin nut double chamfered 六角低ナット-両面とり
XB7-270	Hexagon thin nut not chamfered 六角低ナット-面とり無し

	Head size (mm) 頭部寸法 (mm)						
	M2	M2.5	M3	M4	M5	M6	M8
S	4	5	5.5	7	8	10	13
m XB7-210	1.6	2	2.4	3.2	4	5	6.5
m XB7-220	1.2	1.6	1.8	2.4	3.2	3.6	5
m XB7-230, 231	1.6	2	2.4	3.2	4.7	5.2	6.8
m XB7-240, 241	-	-	-	-	5.1	5.7	7.5
m XB7-250	-	-	-	-	5.6	6.1	7.9
m XB7-260	1.2	1.6	1.8	2.2	2.7	3.2	4
m XB7-270	1.2	1.6	1.8	2.2	2.7	3.2	4

# FIGURE ZZE MECHANICAL STANDARD PARTS (RETAINING RINGS)

## 5. Retaining Rings 止め輪

How to read Parts Numbers  
部品番号の見方

### Retaining Rings 止め輪

XD2-1100-202

Type No.  
類別番号

Nominal designation  
呼び

Material and Surface treatment  
材料および表面処理

XD2-110 expresses retaining ring-E type (Type1).  
XD2-110は、E形止め輪(1種)を表す

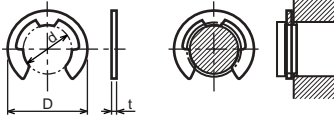
0-20 expresses a 020 of nominal designation.  
(See Table 5)

0-20は、呼び020を表す(表5参照)

2 expresses Stainless steel (Surface treatment is not to be given) from Table 1.

2は、表1よりステンレス(表面処理なし)を表す

### 5-1. Retaining Rings - E type E形止め輪

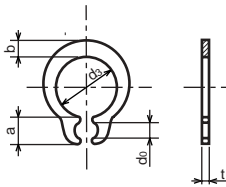


Type No. 類別番号	Type 類別
XD2-110	Retaining ring - E type (Type 1) E形止め輪(1種)
XD2-120	Retaining ring - E type (Type 2) E形止め輪(2種)

Table 5 表5

Type 種類	Nominal designation 呼び	d (mm)	D (mm)	t (mm)
Type 1 1種	007	0.65	2	0.2
	010	0.95	2.8	0.2
	013	1.25	3.3	0.3
	017	1.65	4.2	0.4
	020	1.95	4.6	0.5
	024	2.35	6	0.6
	028	2.74	6.5	0.6
	032	3.14	7.2	0.6
	037	3.64	8	0.7
	040	3.93	10	0.7
	042	4.13	10	0.7
	050	4.93	11	0.7
	058	5.73	12	0.7
	060	5.93	12.7	0.9
	064	6.32	13.5	0.9
	074	7.31	15	0.9
080	7.91	16.5	1	
Type 2 2種	008	0.8	2	0.2
	012	1.2	3	0.3
	015	1.5	4	0.4
	020	2	5	0.4
	025	2.5	6	0.4
	030	3	7	0.6
	040	4	9	0.6
	050	5	11	0.6
	060	6	12	0.8
	070	7	14	0.8
	080	8	16	0.8
	090	9	18	0.8
	100	10	20	1

5-2. Grip Rings  
グリップ止め輪

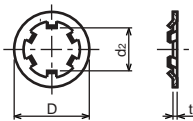


Type No. 類別番号	Type 類別
XD2-210	Grip ring グリップ止め輪

Table 5 表5

Nominal designation 呼び	$d_3$ (mm)	$t$ (mm)	$b$ (mm)	$a$ (mm)	$d_0$ (mm)
020	1.9	0.5	1	1.8	0.8
025	2.35	0.5	1.2	1.9	0.9
030	2.85	0.6	1.4	1.9	0.9
035	3.3	0.6	1.6	2	0.9
040	3.8	0.8	1.8	2.8	1.2
045	4.25	0.8	2	2.9	1.3
050	4.75	0.8	2.2	2.9	1.3
060	5.7	1	2.4	3.1	1.4
070	6.7	1	2.7	3.3	1.4
080	7.7	1	3	3.5	1.4
090	8.65	1.2	3.3	4.7	1.5
100	9.65	1.2	3.5	4.7	2

5-3. Toothed Retaining Rings  
歯付き形止め輪



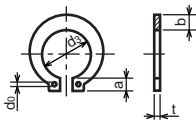
Type No. 類別番号	Type 類別
XD2-230	Toothed retaining ring 歯付き形止め輪

Table 5 表5

Nominal designation 呼び	$d_z$ (mm)	$D$ (mm)	$t$ (mm)	No of teeth 歯数
015	1.4	5.2	0.25	3
020	1.9	6	0.25	3
024	2.3	6.4	0.25	3
030	2.8	8	0.25	4
040	3.8	9	0.25	4
050	4.8	10	0.25	5
060	5.8	11	0.25	5
080	7.8	13	0.25	5
100	9.8	15.4	0.25	6

### 5-4. Retaining Rings - C Type

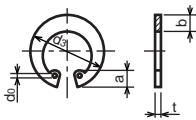
C形止め輪



Type No. 類別番号	Type 類別
XD2-310	Retaining ring - C type for shaft C形止め輪 軸用

Table 5 表5

Nominal designation 呼び	d <sub>s</sub> (mm)	t (mm)	b (mm)	a (mm)	d <sub>0</sub> (mm)
010	9.3	1	1.6	3	1.2
012	11.1	1	1.8	3.2	1.5
014	12.9	1	2	3.4	1.7
015	13.8	1	2.1	3.5	1.7
016	14.7	1	2.2	3.6	1.7
017	15.7	1	2.2	3.7	1.7
018	16.5	1.2	2.6	3.8	1.7
020	18.5	1.2	2.7	3.9	2
022	20.5	1.2	2.7	4.1	2
025	23.2	1.2	3.1	4.3	2
028	25.9	1.5	3.1	4.6	2
030	27.9	1.5	3.5	4.8	2
032	29.6	1.5	3.5	5	2.5
035	32.2	1.5	4	5.4	2.5



Type No. 類別番号	Type 類別
XD2-320	Retaining ring - C type for hole C形止め輪 穴用

Table 5 表5

Nominal designation 呼び	d <sub>s</sub> (mm)	t (mm)	b (mm)	a (mm)	d <sub>0</sub> (mm)
010	10.7	1	1.8	3.1	1.2
011	11.8	1	1.8	3.2	1.2
012	13	1	1.8	3.3	1.5
014	15.1	1	2	3.6	1.7
016	17.3	1	2	3.7	1.7
018	19.5	1	2.5	4	1.7
019	20.5	1	2.5	4	2
020	21.5	1	2.5	4	2
022	23.5	1	2.5	4.1	2
025	26.9	1.2	3	4.4	2
028	30.1	1.2	3	4.6	2
030	32.1	1.2	3	4.7	2
032	34.4	1.2	3.5	5.2	2.5
035	37.8	1.5	3.5	5.2	2.5
037	39.8	1.5	3.5	5.2	2.5
040	43.5	1.8	4	5.7	2.5
042	45.5	1.8	4	5.8	2.5
045	48.5	1.8	4.5	5.9	2.5
047	50.5	1.8	4.5	6.1	2.5
050	54.2	2	4.5	6.5	2.5
052	56.2	2	5.1	6.5	2.5
055	59.2	2	5.1	6.5	2.5
060	64.2	2	5.1	6.8	2.5
062	66.2	2	5.5	6.9	2.5
068	72.5	2.5	6	7.4	2.5
072	76.5	2.5	6.6	7.4	2.5
075	79.5	2.5	6.6	7.8	2.5
080	85.5	2.5	7	8	2.5
085	90.5	3	7	8	3
090	95.5	3	7.6	8.3	3
095	100.5	3	8	8.5	3



Prepared by  
OIP Service Management Center  
CANON INC.

**Canon**