

Color imageCLASS MF8350Cdn

PARTS CATALOG



Canon

JULY 30, 2009
REV. 0

PREFACE

This Parts Catalog contains listings of parts used

Diagrams are provided with the listings to aid the service technician in identifying clearly, the item to be ordered.

Whenever ordering parts, consult this Parts Catalog for all of the information pertaining to each item. Be sure to include, in the Parts Request, the full item description, the item part number, and the quantity.

COPYRIGHT (C) 1999 CANON INC.

Use of this manual should be strictly supervised to avoid disclosure of confidential information.

Contents

NUMERICAL INDEX

MF8350Cdn/MF8330Cdn Series(Numerical Index)..... 1-1

MF8350Cdn/MF8330Cdn Series(Parts Catalog)

| | | |
|-----|---|------|
| A1 | ASSEMBLY LOCATION DIAGRAM | 2-1 |
| A2 | OPTION PARTS CATALOG LIST | 2-2 |
| 001 | ACCESSORIES | 2-3 |
| 100 | EXTERNAL COVERS, PANELS, ETC. | 2-5 |
| 101 | INTERNAL COMPONENTS 1 | 2-7 |
| 102 | INTERNAL COMPONENTS 2 | 2-9 |
| 103 | INTERNAL COMPONENTS 3 | 2-11 |
| 104 | INTERNAL COMPONENTS 4 | 2-13 |
| 105 | INTERNAL COMPONENTS 5 | 2-16 |
| 106 | INTERNAL COMPONENTS 6 | 2-18 |
| 107 | INTERNAL COMPONENTS 7 | 2-20 |
| 160 | READER/ADF ASSEMBLY | 2-22 |
| 162 | PAPER FEEDER ASSEMBLY | 2-25 |
| 300 | CASSETTE ASSEMBLY | 2-27 |
| 400 | READER ASSEMBLY | 2-28 |
| 810 | FIXING ASS'Y | 2-30 |
| 900 | MAIN CONTROLLER PCB ASS'Y | 2-32 |
| ZZA | MECHANICAL STANDARD PARTS (HOW TO USE) | 2-33 |
| ZZB | MECHANICAL STANDARD PARTS (SCREWS) | 2-34 |
| ZZC | MECHANICAL STANDARD PARTS (BOLTS) | 2-41 |
| ZZD | MECHANICAL STANDARD PARTS (NUTS) | 2-42 |
| ZZE | MECHANICAL STANDARD PARTS (RETAINING RINGS) | 2-43 |

NUMERICAL INDEX

MF8350Cdn/MF8330Cdn Series(Numerical Index)

| PARTS NUMBER | FIGURE & KEY NO. | PARTS NUMBER | FIGURE & KEY NO. | PARTS NUMBER | FIGURE & KEY NO |
|--------------|------------------|--------------|------------------|--------------|-----------------|
| FC5-5256-000 | 100 - 1 | FC9-7567-000 | 160 - 18 | FM4-1879-000 | 162 - |
| FC7-6052-000 | 162 - 1 | FC9-7568-000 | 160 - 18 | FM4-1880-000 | 162 - 13 |
| FC7-6189-000 | 160 - 1 | FC9-7571-000 | 400 - 5 | FM4-1881-000 | 162 - 14 |
| FC7-6297-000 | 162 - 2 | FC9-7573-000 | 400 - 5 | FM4-1882-000 | 162 - 31 |
| FC7-6299-000 | 162 - 3 | FC9-7574-000 | 400 - 5 | FM4-1883-000 | 160 - 22 |
| FC7-6300-000 | 162 - 4 | FH2-7080-000 | 104 - 25 | FM4-1885-000 | 162 - 11 |
| FC7-6320-000 | 160 - 2 | FH2-7082-000 | 104 - 25 | FM4-3359-000 | 101 - 4 |
| FC7-6321-000 | 160 - 3 | FH2-7170-000 | 104 - 25 | FM4-3653-000 | 400 - 9 |
| FC7-6322-000 | 160 - 4 | FK2-1311-000 | 104 - 25 | FM4-3776-000 | 104 - 2 |
| FC8-8715-000 | 103 - 1 | FK2-4390-000 | 104 - 25 | FM4-3778-000 | 104 - 3 |
| FC8-8730-000 | 106 - 7 | FK2-5274-000 | 001 - 12 | FM4-3779-000 | 104 - 3 |
| FC8-8742-000 | 100 - 2 | FK2-5275-000 | 001 - 1 | FM4-3780-000 | 104 - 3 |
| FC8-8745-000 | 100 - 2 | FK2-5281-000 | 001 - 3 | FM4-3796-000 | 107 - 5 |
| FC8-8748-000 | 103 - 2 | FK2-8321-000 | 900 - IC | FM4-3800-000 | 104 - 17 |
| FC9-1486-000 | 160 - 13 | FK2-8641-000 | 001 - 17 | FM4-3802-000 | 105 - 11 |
| FC9-1503-000 | 160 - 5 | FK2-8643-000 | 001 - 16 | FM4-3960-000 | 900 - |
| FC9-1512-000 | 162 - 5 | FK2-8767-000 | 107 - 6 | FM4-3961-000 | 900 - |
| FC9-1523-000 | 162 - 6 | FK2-9581-000 | 400 - 6 | FM4-3970-000 | 107 - 7 |
| FC9-1526-000 | 162 - 7 | FK2-9583-000 | 104 - 25 | FM4-3971-000 | 107 - 7 |
| FC9-1532-000 | 160 - 6 | FK2-9738-000 | 107 - 2 | FM4-3972-000 | 107 - 7 |
| FC9-1533-000 | 160 - 7 | FK2-9747-000 | 104 - 1 | FM4-3973-000 | 107 - 7 |
| FC9-1534-000 | 160 - 8 | FK2-9836-000 | 107 - 3 | FM4-3985-000 | 107 - 8 |
| FC9-1535-000 | 160 - 9 | FK2-9839-000 | 001 - 10 | FM4-3989-000 | 107 - 9 |
| FC9-1536-000 | 160 - 10 | FK2-9840-000 | 001 - 10 | FM4-4279-000 | 300 - |
| FC9-1539-000 | 160 - 11 | FK2-9841-000 | 001 - 10 | FM4-4284-000 | 106 - 3 |
| FC9-1650-000 | 400 - 1 | FK2-9842-000 | 001 - 10 | FM4-4285-000 | 100 - 11 |
| FC9-2101-000 | 400 - 2 | FK2-9843-000 | 001 - 10 | FM4-4286-000 | 105 - 1 |
| FC9-4502-000 | 160 - 12 | FK2-9844-000 | 001 - 10 | FM4-4287-000 | 100 - 12 |
| FC9-4507-000 | 107 - 1 | FK2-9845-000 | 001 - 10 | FM4-4289-000 | 810 - |
| FC9-4510-000 | 001 - 11 | FK2-9861-000 | 400 - 7 | FM4-4290-000 | 810 - |
| FC9-4541-000 | 100 - 3 | FK2-9877-000 | 001 - 17 | FM4-4291-000 | 810 - |
| FC9-4545-000 | 100 - 4 | FL2-6637-000 | 160 - 19 | FM4-4301-000 | 400 - 10 |
| FC9-4546-000 | 106 - 1 | FL3-1431-000 | 162 - 9 | FM4-4306-000 | 400 - |
| FC9-4547-000 | 106 - 2 | FL3-1437-000 | 162 - 10 | FM4-4307-000 | 400 - 11 |
| FC9-4551-000 | 100 - 5 | FL3-2453-000 | 160 - 20 | FM4-4308-000 | 400 - 8 |
| FC9-4579-000 | 100 - 6 | FL3-2458-000 | 162 - 12 | FU5-6992-000 | 162 - 15 |
| FC9-4584-000 | 100 - 7 | FL3-3539-000 | 160 - 21 | FU6-2998-000 | 162 - 16 |
| FC9-4589-000 | 400 - 3 | FM3-5378-000 | 107 - 4 | FU6-2999-000 | 162 - 17 |
| FC9-4590-000 | 400 - 4 | FM3-8292-000 | 810 - 1 | FU7-0667-000 | 162 - 18 |
| FC9-5109-000 | 160 - 13 | FM3-8294-000 | 103 - 3 | FU7-0668-000 | 162 - 19 |
| FC9-5110-000 | 160 - 13 | FM3-8301-000 | 103 - 4 | FU7-0669-000 | 162 - 20 |
| FC9-5115-000 | 160 - 13 | FM3-9538-000 | 160 - 23 | FU7-0671-000 | 162 - 21 |
| FC9-5654-000 | 162 - 8 | FM4-1493-000 | 100 - 9 | FU7-0672-000 | 160 - 25 |
| FC9-5655-000 | 160 - 14 | FM4-1525-000 | 100 - 10 | FU7-0676-000 | 162 - 22 |
| FC9-5656-000 | 160 - 15 | FM4-1526-000 | 100 - 10 | FU7-0678-000 | 162 - 23 |
| FC9-5657-000 | 160 - 16 | FM4-1527-000 | 100 - 10 | FU7-2016-000 | 162 - 24 |
| FC9-7561-000 | 160 - 17 | FM4-1528-000 | 100 - 10 | FU7-2018-000 | 160 - 26 |
| FC9-7562-000 | 160 - 17 | FM4-1529-000 | 100 - 10 | FU7-8091-000 | 100 - 13 |
| FC9-7563-000 | 160 - 17 | FM4-1530-000 | 100 - 10 | FU7-8093-000 | 001 - 13 |
| FC9-7564-000 | 160 - 17 | FM4-1531-000 | 100 - 10 | FU7-8094-000 | 001 - 9 |
| FC9-7565-000 | 160 - 18 | FM4-1532-000 | 100 - 10 | FU7-8108-000 | 106 - 16 |
| FC9-7566-000 | 160 - 18 | FM4-1533-000 | 100 - 10 | FU7-8109-000 | 100 - 14 |

NUMERICAL INDEX

MF8350Cdn/MF8330Cdn Series(Numerical Index)

| PARTS NUMBER | FIGURE & KEY NO. | PARTS NUMBER | FIGURE & KEY NO. | PARTS NUMBER | FIGURE & KEY NO. |
|--------------|------------------|--------------|------------------|--------------|------------------|
| FU7-8111-000 | 810 - 2 | RM1-4837-000 | 104 - 6 | XA9-1671-000 | 101 - 10 |
| FU7-8405-000 | 160 - 27 | RM1-4838-000 | 106 - 9 | XA9-1671-000 | 102 - 5 |
| FU7-8406-000 | 160 - 27 | RM1-4840-000 | 103 - 9 | XA9-1671-000 | 103 - 13 |
| FU7-8407-000 | 160 - 27 | RM1-4845-000 | 810 - 1 | XA9-1671-000 | 104 - 24 |
| FU7-8408-000 | 160 - 27 | RM1-4850-000 | 102 - 2 | XA9-1671-000 | 105 - 12 |
| FU7-8409-000 | 160 - 27 | RM1-4852-000 | 102 - 3 | XA9-1671-000 | 106 - 15 |
| FU7-8410-000 | 160 - 27 | RM1-4853-000 | 103 - 10 | XA9-1835-000 | 101 - 9 |
| FU7-8411-000 | 160 - 27 | RM1-4876-000 | 106 - 10 | XA9-1835-000 | 103 - 14 |
| FU7-8413-000 | 160 - 27 | RM1-4877-000 | 106 - 11 | XA9-1835-000 | 104 - 23 |
| FU8-0895-000 | 160 - 28 | RM1-4879-000 | 106 - 12 | XA9-1835-000 | 105 - 10 |
| FU8-2007-000 | 160 - 29 | RM1-4880-000 | 106 - 13 | | |
| FU8-2008-000 | 162 - 25 | RM1-4893-000 | 810 - 1 | | |
| FU8-2010-000 | 162 - 26 | RM1-4896-000 | 105 - 2 | | |
| HB1-4978-000 | 001 - 14 | RM1-5288-000 | 104 - 7 | | |
| HC1-0586-000 | 160 - 30 | RM1-5293-000 | 104 - 8 | | |
| HC1-0586-000 | 162 - 27 | RM1-5294-000 | 101 - 3 | | |
| HC1-2034-000 | 001 - 15 | RM1-5303-000 | 105 - 3 | | |
| HK1-0175-000 | 001 - 4 | RM1-5385-000 | 104 - 9 | | |
| HU1-1022-000 | 160 - 31 | RM1-5393-000 | 104 - 10 | | |
| HU1-1022-000 | 162 - 28 | RM1-5394-000 | 104 - 11 | | |
| NPN | 001 - | RM1-5395-000 | 104 - 12 | | |
| NPN | 100 - | RM1-5397-000 | 106 - 14 | | |
| NPN | 101 - | RM1-5398-000 | 101 - 5 | | |
| NPN | 102 - | RM1-5399-000 | 101 - 6 | | |
| NPN | 103 - | RM1-5400-000 | 104 - 13 | | |
| NPN | 104 - | RM1-5419-000 | 105 - 4 | | |
| NPN | 105 - | RM1-5420-000 | 102 - 4 | | |
| NPN | 106 - | RM1-5428-000 | 103 - 11 | | |
| NPN | 107 - | RM1-5433-000 | 105 - 5 | | |
| NPN | 160 - | RM1-5434-000 | 104 - 14 | | |
| QK1-6441-000 | 001 - 5 | RM1-5435-000 | 104 - 15 | | |
| QK1-6443-000 | 001 - 7 | RM1-5437-000 | 105 - 6 | | |
| QK1-6446-000 | 001 - 6 | RM1-5438-000 | 104 - 16 | | |
| QK1-6449-000 | 001 - 8 | VS1-7177-003 | 400 - 12 | | |
| QK1-6455-000 | 001 - 2 | VS1-7177-004 | 400 - 13 | | |
| RB2-6297-000 | 103 - 5 | VS1-7207-004 | 162 - 29 | | |
| RC2-0062-000 | 100 - 1 | WG8-5696-000 | 101 - 7 | | |
| RC2-2014-000 | 103 - 6 | WG8-5696-000 | 103 - 12 | | |
| RC2-3367-000 | 810 - 3 | WG8-5696-000 | 104 - 18 | | |
| RC2-3719-000 | 104 - 21 | WG8-5696-000 | 162 - 30 | | |
| RC2-3750-000 | 106 - 4 | WG8-5696-000 | 400 - 14 | | |
| RC2-3752-000 | 106 - 5 | WG8-5696-000 | 810 - 4 | | |
| RC2-3774-000 | 106 - 6 | XA9-0476-000 | 160 - 32 | | |
| RK2-2276-000 | 105 - 8 | XA9-0476-000 | 400 - 15 | | |
| RK2-2276-000 | 106 - 8 | XA9-0679-000 | 104 - 19 | | |
| RK2-2302-000 | 104 - 4 | XA9-0831-000 | 160 - 24 | | |
| RK2-3267-000 | 101 - 1 | XA9-1418-000 | 104 - 20 | | |
| RL1-1785-000 | 103 - 7 | XA9-1418-000 | 105 - 9 | | |
| RL1-1800-000 | 104 - 5 | XA9-1420-000 | 101 - 8 | | |
| RL1-1802-000 | 102 - 1 | XA9-1420-000 | 104 - 22 | | |
| RM1-4426-000 | 103 - 8 | XA9-1422-000 | 105 - 7 | | |
| RM1-4836-000 | 101 - 2 | XA9-1671-000 | 100 - 8 | | |

MF8350Cdn/MF8330Cdn Series(Parts Catalog)

Satera MF8350Cdn

| | | |
|----|--------------|-----|
| JP | F15-7911-000 | EXA |
|----|--------------|-----|

Satera MF8330Cdn

| | | |
|----|--------------|-----|
| JP | F15-7912-000 | EZH |
|----|--------------|-----|

i-SENSYS MF8350Cdn

| | | |
|------|--------------|-----|
| EUR1 | F15-7991-000 | EWV |
|------|--------------|-----|

| | | |
|------|--------------|-----|
| EUR2 | F15-7991-000 | EWX |
|------|--------------|-----|

| | | |
|------|--------------|-----|
| EUR3 | F15-7991-000 | EWZ |
|------|--------------|-----|

i-SENSYS MF8330Cdn

| | | |
|------|--------------|-----|
| EUR1 | F15-7992-000 | EXK |
|------|--------------|-----|

| | | |
|------|--------------|-----|
| EUR2 | F15-7992-000 | EXL |
|------|--------------|-----|

imageCLASS MF8350Cdn

| | | |
|----|--------------|-----|
| TW | F15-7921-000 | EXG |
|----|--------------|-----|

| | | |
|----|--------------|-----|
| US | F15-7931-000 | EWU |
|----|--------------|-----|

| | | |
|----|--------------|-----|
| CA | F15-7931-000 | EXB |
|----|--------------|-----|

| | | |
|------|--------------|-----|
| ASIA | F15-7941-000 | EXC |
|------|--------------|-----|

| | | |
|----|--------------|-----|
| CN | F15-7951-000 | EXE |
|----|--------------|-----|

| | | |
|----|--------------|-----|
| KR | F15-7961-000 | EXF |
|----|--------------|-----|

| | | |
|----|--------------|-----|
| AU | F15-7981-000 | EXD |
|----|--------------|-----|

Contents

| | | |
|-----|---|------|
| A1 | ASSEMBLY LOCATION DIAGRAM | 2-1 |
| A2 | OPTION PARTS CATALOG LIST | 2-2 |
| 001 | ACCESSORIES | 2-3 |
| 100 | EXTERNAL COVERS, PANELS, ETC. | 2-5 |
| 101 | INTERNAL COMPONENTS 1 | 2-7 |
| 102 | INTERNAL COMPONENTS 2 | 2-9 |
| 103 | INTERNAL COMPONENTS 3 | 2-11 |
| 104 | INTERNAL COMPONENTS 4 | 2-13 |
| 105 | INTERNAL COMPONENTS 5 | 2-16 |
| 106 | INTERNAL COMPONENTS 6 | 2-18 |
| 107 | INTERNAL COMPONENTS 7 | 2-20 |
| 160 | READER/ADF ASSEMBLY | 2-22 |
| 162 | PAPER FEEDER ASSEMBLY | 2-25 |
| 300 | CASSETTE ASSEMBLY | 2-27 |
| 400 | READER ASSEMBLY | 2-28 |
| 810 | FIXING ASS'Y | 2-30 |
| 900 | MAIN CONTROLLER PCB ASS'Y | 2-32 |
| ZZA | MECHANICAL STANDARD PARTS (HOW TO USE) | 2-33 |
| ZZB | MECHANICAL STANDARD PARTS (SCREWS)..... | 2-34 |
| ZZC | MECHANICAL STANDARD PARTS (BOLTS)..... | 2-41 |
| ZZD | MECHANICAL STANDARD PARTS (NUTS)..... | 2-42 |
| ZZE | MECHANICAL STANDARD PARTS (RETAINING RINGS) | 2-43 |

FIGURE A1 ASSEMBLY LOCATION DIAGRAM

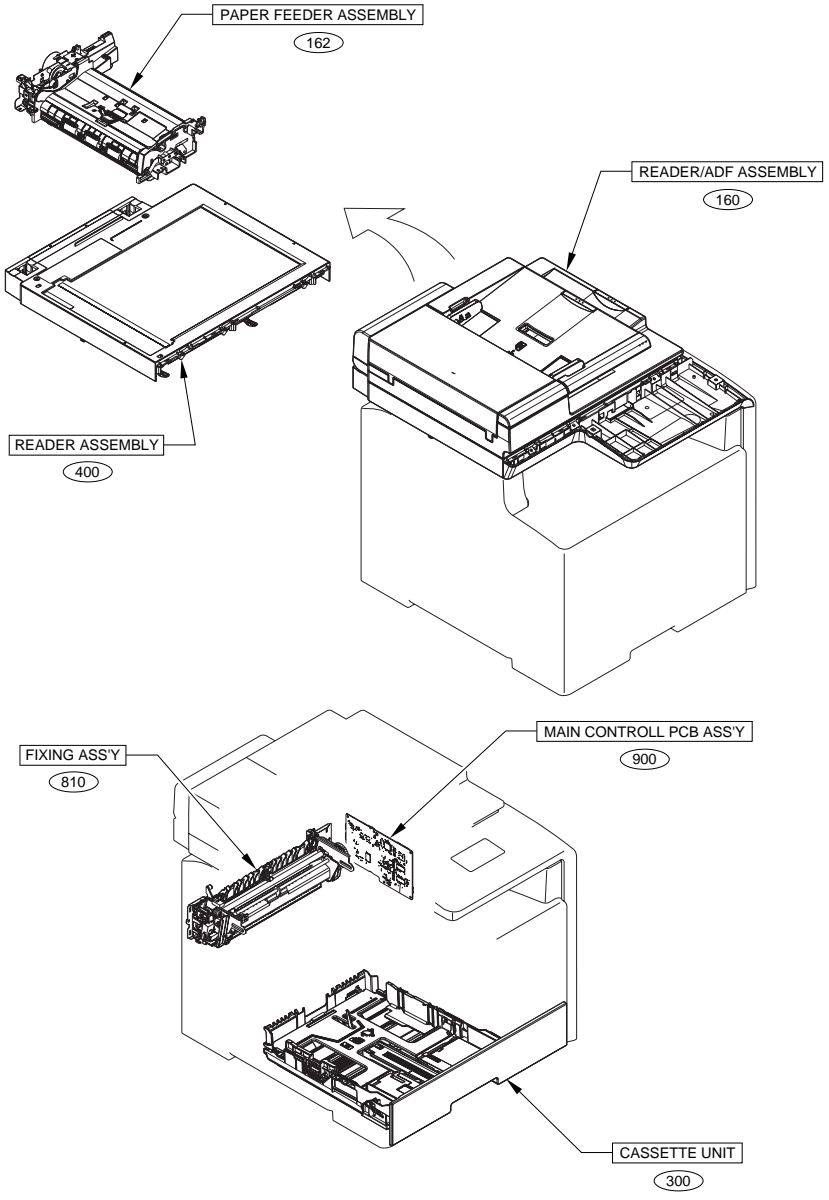
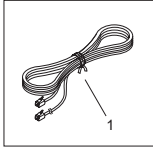


FIGURE A2 OPTION PARTS CATALOG LIST

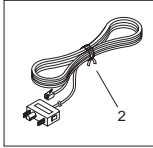
This is the table of the machine's options whose parts catalog is issued.

| No. | Model Name(English) | Model Name(Japanese) |
|-----|----------------------------|----------------------|
| 1 | Cassette Feeding Module-V1 | 1段カセットユニット・V1 |

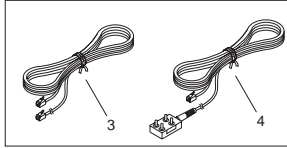
FIGURE 001 ACCESSORIES



JP, EUR, TW, CN, ASIA, US, CA



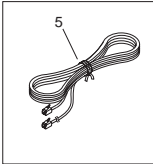
AU



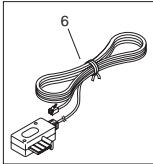
KR



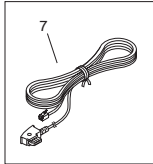
10



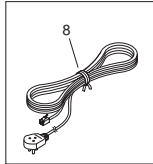
EUR



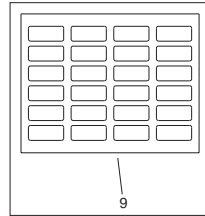
FR



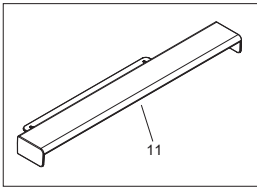
DE



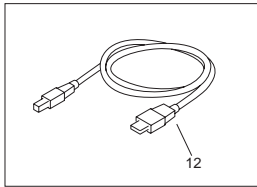
IT



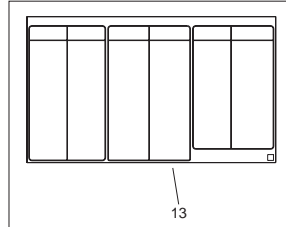
MF8350



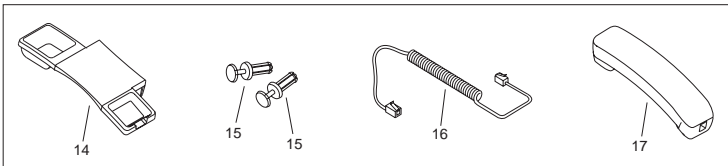
US, CA



EXCEPT EUR, US, CA



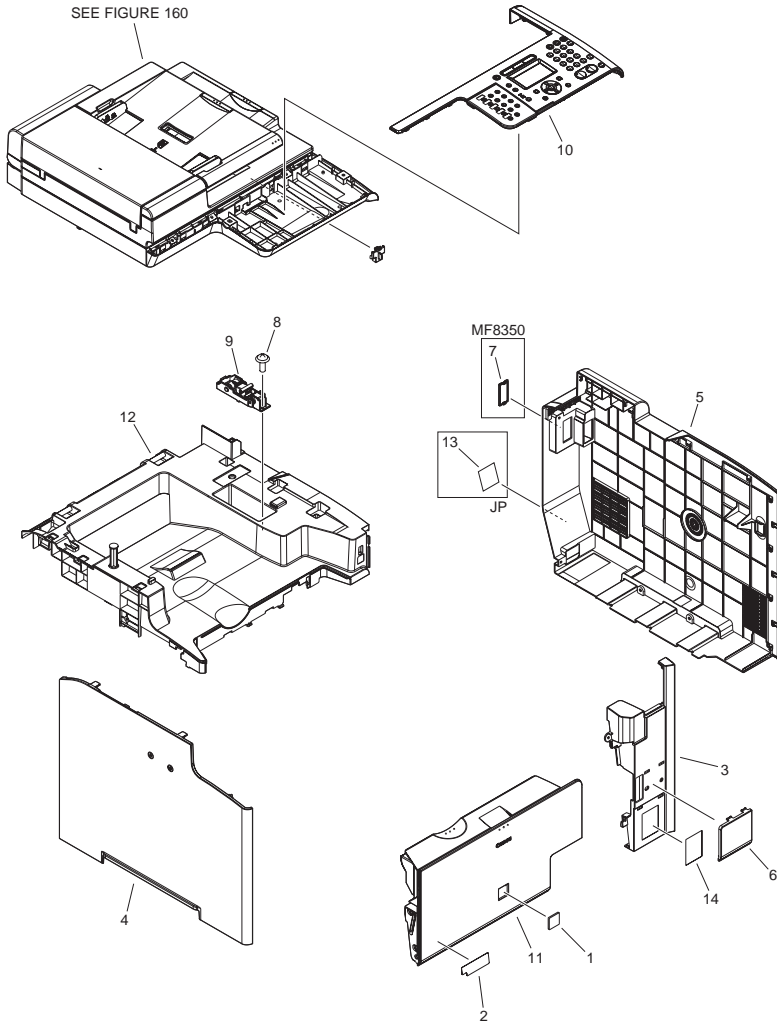
US, CA



TW, CN

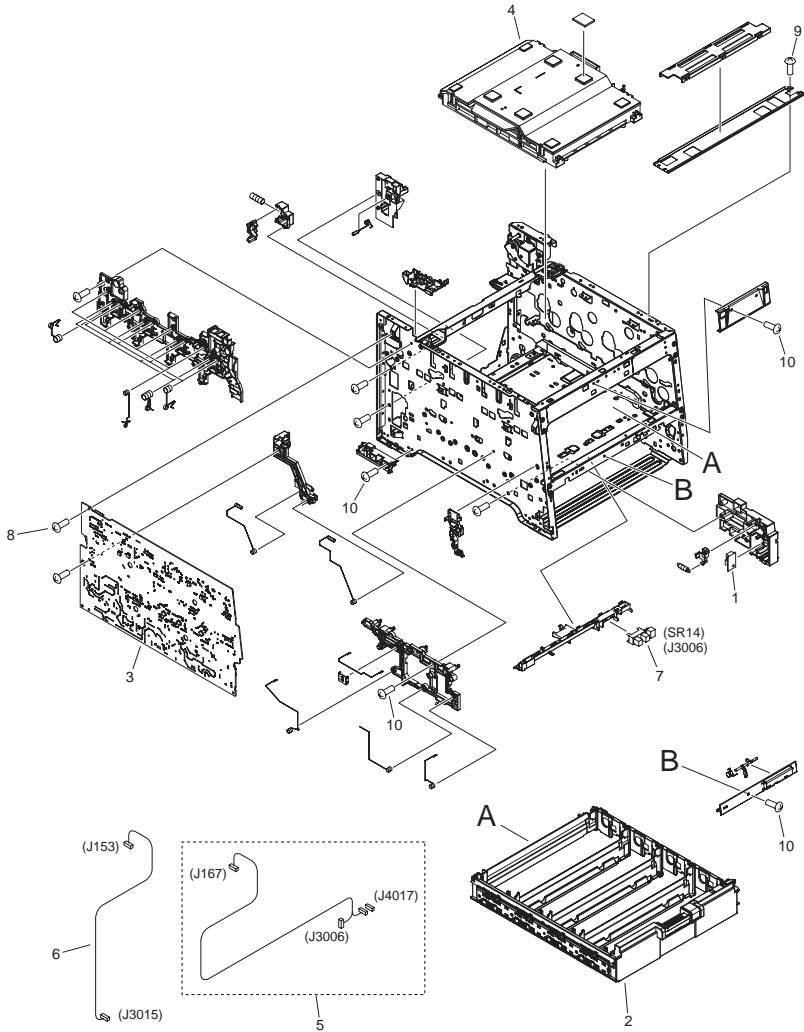
| FIGURE & KEY NO. | PARTS NUMBER | RANK | Q'TY | DESCRIPTION | SERIAL NUMBER/REMARKS | SVC |
|------------------|--------------|------|------|------------------------|---|-----|
| Fig.001 | NPN | | RF | ACCESSORIES | | |
| 1 | FK2-5275-000 | | 1 | CORD, MODULAR | MF8350 JP, EUR, TW, CN, ASIA, US, CA | |
| 2 | QK1-6455-000 | | 1 | CORD, MODULAR | MF8350 AU | |
| 3 | FK2-5281-000 | | 1 | CORD, MODULAR | MF8350 KR | |
| 4 | HK1-0175-000 | | 1 | CORD, MODULAR | MF8350 KR | |
| 5 | QK1-6441-000 | | 1 | CORD, MODULAR | MF8350 EUR | |
| 6 | QK1-6446-000 | | 1 | CORD, MODULAR | MF8350 FR | |
| 7 | QK1-6443-000 | | 1 | CORD, MODULAR | MF8350 DE | |
| 8 | QK1-6449-000 | | 1 | CORD, MODULAR | MF8350 IT | |
| 9 | FU7-8094-000 | | 1 | LABEL, DESTINATION | MF8350 | |
| 10 | FK2-9839-000 | | 1 | CD-ROM, USER SOFTWARE | US, CA | |
| 10 | FK2-9842-000 | | 1 | CD-ROM, USER SOFTWARE | EUR | |
| 10 | FK2-9843-000 | | 1 | CD-ROM, USER SOFTWARE | EUR | |
| 10 | FK2-9841-000 | | 1 | CD-ROM, USER SOFTWARE | JP | |
| 10 | FK2-9840-000 | | 1 | CD-ROM, USER SOFTWARE | US, CA | |
| 10 | FK2-9844-000 | | 1 | CD-ROM, USER SOFTWARE | AU, ASIA | |
| 10 | FK2-9845-000 | | 1 | CD-ROM, USER SOFTWARE | TW, KR, CN | |
| 11 | FC9-4510-000 | | 1 | COVER, PAPER | US, CA | |
| 12 | FK2-5274-000 | | 1 | CABLE, USB | EXCEPT EUR, US, CA | |
| 13 | FU7-8093-000 | | 1 | LABEL, CONTROL PANEL | US, CA | |
| 14 | HB1-4978-000 | | 1 | HOLDER, HANDSET CRADLE | TW, CN | |
| 15 | HC1-2034-000 | | 2 | RIVET | TW, CN | |
| 16 | FK2-8643-000 | | 1 | CORD, CURL | TW, CN | |
| 17 | FK2-8641-000 | | 1 | HANDSET | TW | |
| 17 | FK2-9877-000 | | 1 | HANDSET | CN | |

FIGURE 100 EXTERNAL COVERS, PANELS, ETC.



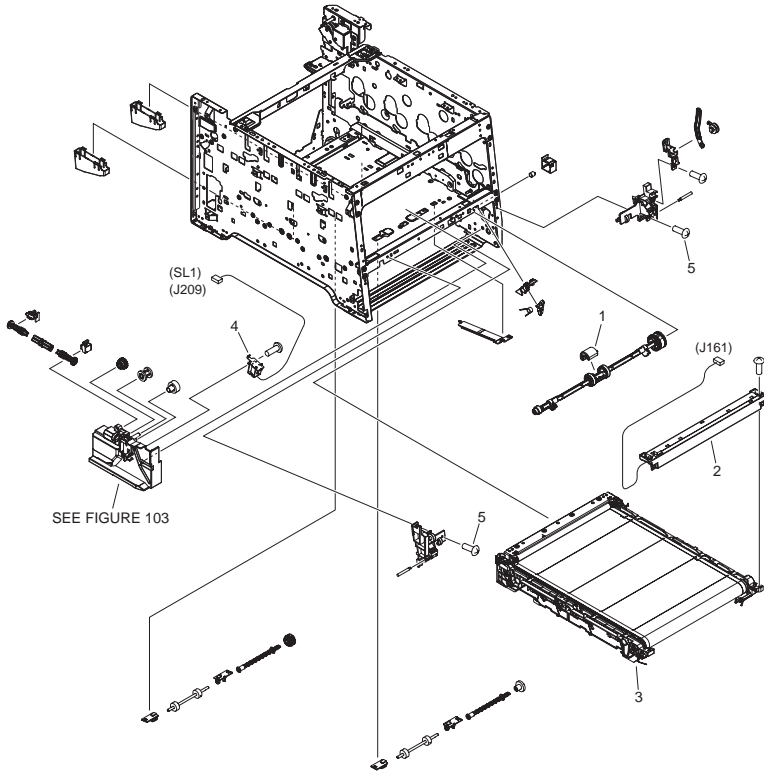
| FIGURE & KEY NO. | PARTS NUMBER | R A N K | Q'TY | DESCRIPTION | SERIAL NUMBER/ REMARKS | S V C |
|------------------|--------------|------------------|------|-------------------------------|---------------------------|-------------|
| Fig.100 | NPN | | RF | EXTERNAL COVERS, PANELS, ETC. | | |
| 1 | | | | | | |
| 1 | RC2-0062-000 | | 1 | EMBLEM | EXCEPT JP | |
| 2 | | | | | | |
| 2 | FC8-8742-000 | | 1 | LABEL, PAPER SIZE | EXCEPT JP | |
| 3 | FC9-4541-000 | | 1 | COVER, RIGHT FRONT | | |
| 4 | FC9-4545-000 | | 1 | COVER, LEFT | | |
| 5 | FC9-4551-000 | | 1 | COVER, RIGHT | | |
| 6 | FC9-4579-000 | | 1 | COVER, SUB, FRONT | | |
| 7 | | | | | | |
| 8 | XA9-1671-000 | | AR | SCREW, D, M3X8 | | |
| 9 | FM4-1493-000 | | 1 | HINGE ASSMBLY | | |
| 10 | | | | | | |
| 10 | | | | | | |
| 10 | | | | | | |
| 10 | | | | | | |
| 10 | | | | | | |
| 10 | FM4-1525-000 | | 1 | CONTROL PANEL ASSEMBLY | MF8350 US,CA | |
| 10 | | | | | | |
| 11 | FM4-4285-000 | | 1 | FRONT DOOR ASS'Y | | |
| 12 | FM4-4287-000 | | 1 | COVER, TOP | | |
| 13 | FU7-8091-000 | | 1 | LABEL,GROUNDING CAUTION | | |
| 14 | FU7-8109-000 | | 1 | LABEL, JAM | | |

FIGURE 101
INTERNAL COMPONENTS 1



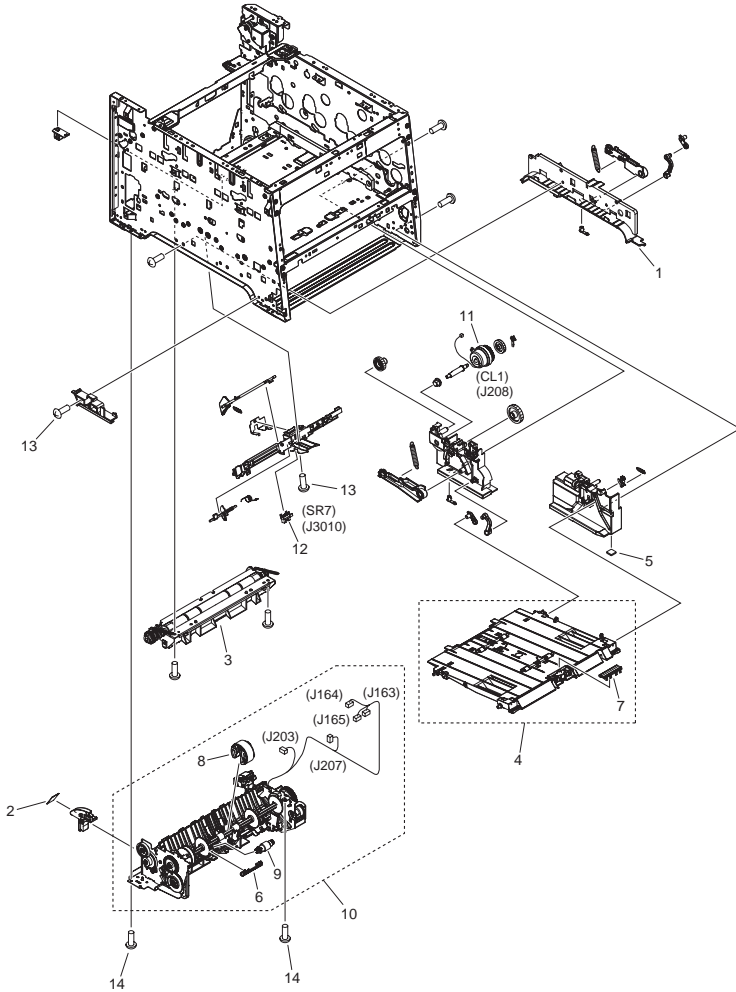
| FIGURE & KEY NO. | PARTS NUMBER | RANK | Q'TY | DESCRIPTION | SERIAL NUMBER/REMARKS | SVC |
|------------------|--------------|------|------|------------------------------|-----------------------|-----|
| Fig.101 | NPN | | RF | INTERNAL COMPONENTS 1 | | |
| 1 | RK2-3267-000 | | 1 | TEMPERATURE SENSOR UNIT | | |
| 2 | RM1-4836-000 | | 1 | CARTRIDGE TRAY ASS'Y | | |
| 3 | RM1-5294-000 | | 1 | H. V. POWER SUPPLY PCB ASS'Y | | |
| 4 | FM4-3359-000 | | 1 | LASER SCANNER ASS'Y | | |
| 5 | RM1-5398-000 | | 1 | SENSOR CABLE ASS'Y | | |
| 6 | RM1-5399-000 | | 1 | ENV. SENSOR CABLE ASS'Y | | |
| 7 | WG8-5696-000 | | 1 | PHOTO INTERRUPTER, TLP1243 | SR14 | |
| 8 | XA9-1420-000 | | 8 | SCREW, W/WASHER, M3X8 | | |
| 9 | XA9-1835-000 | | AR | SCREW, D, M3X6 | | |
| 10 | XA9-1671-000 | | AR | SCREW, D, M3X8 | | |

FIGURE 102
INTERNAL COMPONENTS 2



| FIGURE & KEY NO. | PARTS NUMBER | RANK | Q'TY | DESCRIPTION | SERIAL NUMBER/REMARKS | SVC |
|------------------|--------------|------|------|--------------------------------|-----------------------|-----|
| Fig.102 | NPN | | RF | INTERNAL COMPONENTS 2 | | |
| 1 | RL1-1802-000 | | 1 | ROLLER, PAPER PICK-UP | | |
| 2 | RM1-4850-000 | | 1 | COLOR MISREGIST. SENSOR ASS'Y | | |
| 3 | RM1-4852-000 | | 1 | INTERMEDIATE TRANS. BELT ASS'Y | | |
| 4 | RM1-5420-000 | | 1 | MP SOLENOID ASS'Y | SL1 | |
| 5 | XA9-1671-000 | | AR | SCREW, D, M3X8 | | |

FIGURE 103 INTERNAL COMPONENTS 3

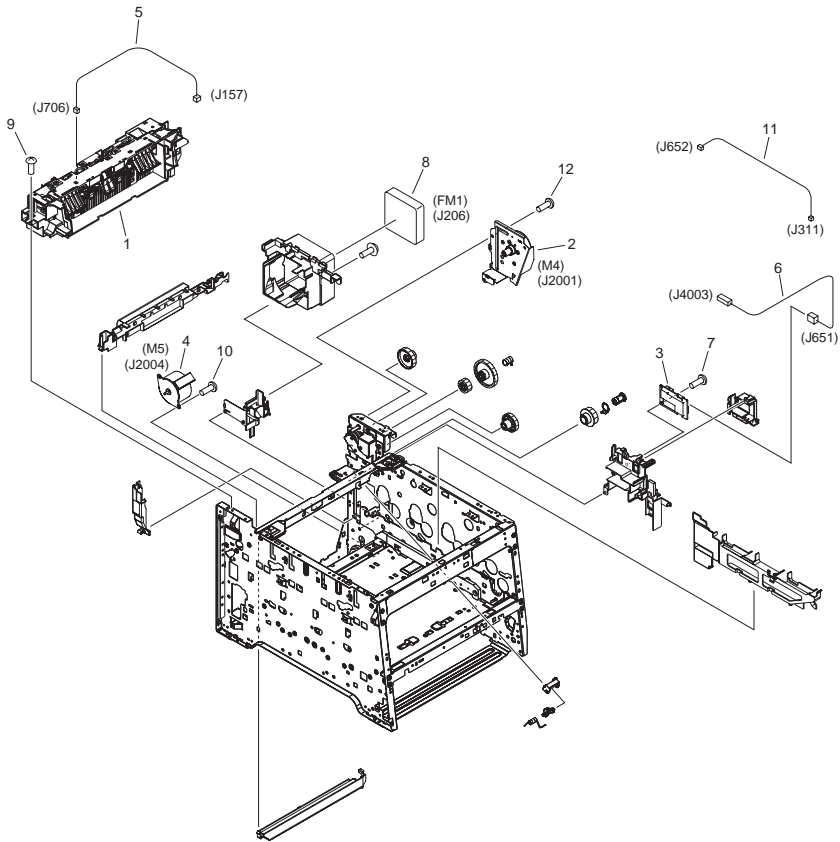


| FIGURE & KEY NO. | PARTS NUMBER | R A N K | Q'TY | DESCRIPTION | SERIAL NUMBER/REMARKS | S V C |
|------------------|--------------|---------|------|----------------------------|-----------------------|-------|
| Fig.103 | NPN | | RF | INTERNAL COMPONENTS 3 | | |
| 1 | FC8-8715-000 | | 1 | HANDLE, LEFT | | |
| 2 | FC8-8748-000 | | 1 | LABEL, MOTOR CAUTION | | |
| 3 | FM3-8294-000 | | 1 | REGISTRATION ASS'Y | | |
| 4 | FM3-8301-000 | | 1 | MP PAPER PICK-UP ASS'Y | | |
| 5 | RB2-6297-000 | | 1 | FOOT, RUBBER | | |
| 6 | RC2-2014-000 | | 1 | COVER, HOLDER | | |
| 7 | RL1-1785-000 | | 1 | PAD, SEPARATION | | |
| 8 | RM1-4426-000 | | 1 | PICK-UP ROLLER ASS'Y | | |
| 9 | RM1-4840-000 | | 1 | SEPARATION ROLLER ASS'Y | | |
| 10 | RM1-4853-000 | | 1 | PAPER PICK-UP ASS'Y | | |
| 11 | RM1-5428-000 | | 1 | MP CLUTCH ASS'Y | CL1 | |
| 12 | WG8-5696-000 | | 1 | PHOTO INTERRUPTER, TLP1243 | SR7 | |
| 13 | XA9-1671-000 | | AR | SCREW, D, M3X8 | | |
| 14 | XA9-1835-000 | | 6 | SCREW, D, M3X6 | | |

| FIGURE & KEY NO. | PARTS NUMBER | R A N K | Q'TY | DESCRIPTION | SERIAL NUMBER/ REMARKS | S V C |
|------------------|--------------|------------------|------|-------------------------------|---------------------------|-------------|
| Fig.104 | NPN | | RF | INTERNAL COMPONENTS 4 | | |
| 1 | FK2-9747-000 | | 1 | FAN | FM3 | |
| 2 | FM4-3776-000 | | 1 | DC CONTROLLER PCB ASS'Y | | |
| 3 | | | | | | |
| 3 | FM4-3779-000 | | 1 | POWER SUPPLY ASS'Y | 120V | |
| 3 | | | | | | |
| 4 | RK2-2302-000 | | 1 | CABLE, FLAT | | |
| 5 | RL1-1800-000 | | 2 | MOTOR, DC | M1,M2 | |
| 6 | RM1-4837-000 | | 1 | MAIN DRIVE ASS'Y | | |
| 7 | RM1-5288-000 | | 1 | DRIVER PCB ASS'Y | | |
| 8 | RM1-5293-000 | | 1 | RELAY PCB ASS'Y | | |
| 9 | RM1-5385-000 | | 1 | SENSOR CABLE ASS'Y | | |
| 10 | RM1-5393-000 | | 1 | DRAM MOTOR CABLE ASS'Y | | |
| 11 | RM1-5394-000 | | 1 | DEVELOPING MOTOR CABLE ASS'Y | | |
| 12 | RM1-5395-000 | | 1 | FEED MOTOR CABLE ASS'Y | | |
| 13 | RM1-5400-000 | | 1 | SENSOR CABLE ASS'Y | | |
| 14 | RM1-5434-000 | | 1 | OPTION CABLE ASS'Y | | |
| 15 | RM1-5435-000 | | 1 | RLD CABLE ASS'Y | | |
| 16 | RM1-5438-000 | | 1 | FIXING MOTOR CABLE ASS'Y | | |
| 17 | FM4-3800-000 | | 1 | CORD, POWER SUPPLY | 230V | |
| 18 | WG8-5696-000 | | 1 | PHOTO INTERRUPTER, TLP1243 | SR2 | |
| 19 | XA9-0679-000 | | 4 | SCREW, MACH., FLAT HEAD, M3X4 | | |
| 20 | XA9-1418-000 | | AR | SCREW, TP, M3X6 | | |
| 21 | RC2-3719-000 | | 1 | BUTTON, TEST PRINT SWITCH | | |
| 22 | XA9-1420-000 | | 4 | SCREW, WWASHER, M3X8 | | |
| 23 | XA9-1835-000 | | 2 | SCREW, D, M3X6 | | |
| 24 | XA9-1671-000 | | AR | SCREW, D, M3X8 | | |
| 25 | | | | | | |
| 25 | | | | | | |
| 25 | | | | | | |
| 25 | | | | | | |
| 25 | | | | | | |

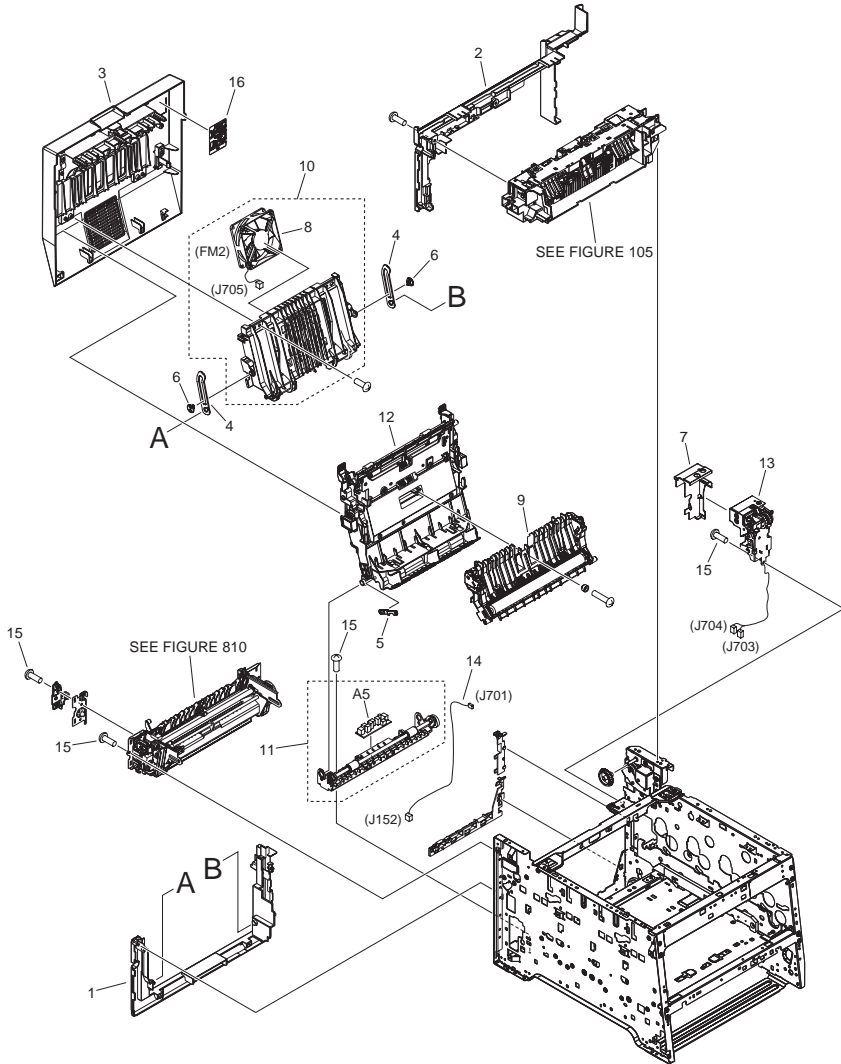
| FIGURE & KEY NO. | PARTS NUMBER | R A N K | Q'TY | DESCRIPTION | SERIAL NUMBER/ REMARKS | S V C |
|------------------------|-----------------|------------------|------|-------------|---------------------------|-------------|
| 25 | FK2-9583-000 | | 1 | CORD, POWER | 120V US,CA | |

FIGURE 105 INTERNAL COMPONENTS 5



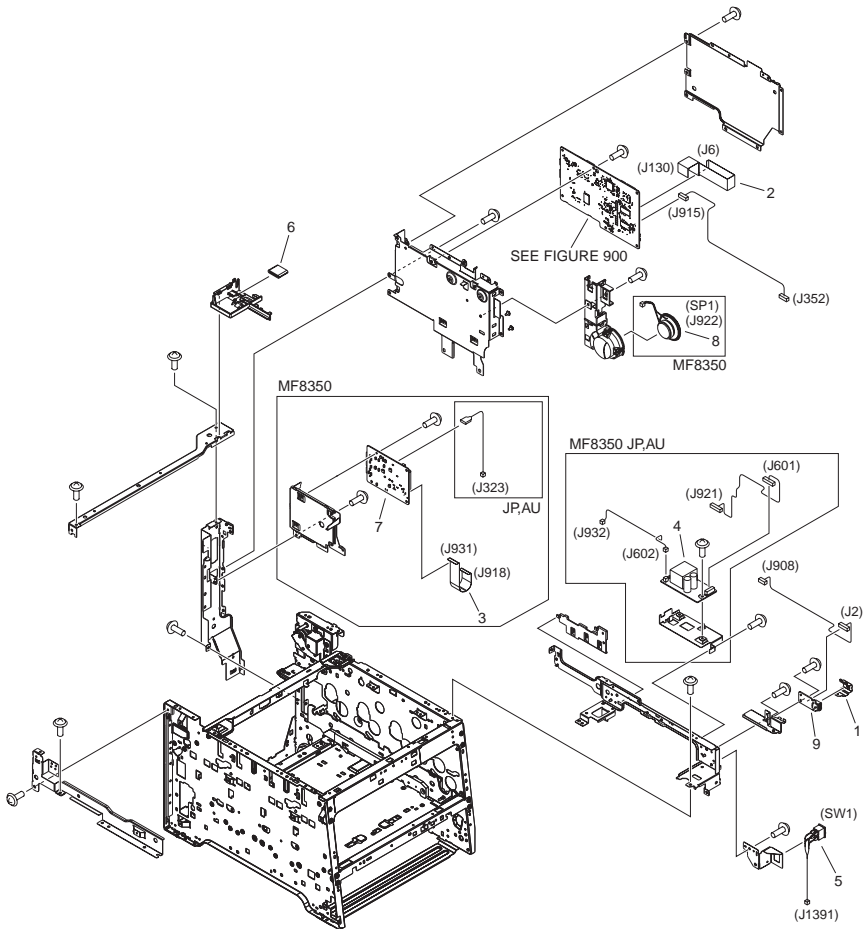
| FIGURE & KEY NO. | PARTS NUMBER | R A N K | Q'TY | DESCRIPTION | SERIAL NUMBER/ REMARKS | S V C |
|------------------|--------------|------------------|------|----------------------------|---------------------------|-------------|
| Fig.105 | NPN | | RF | INTERNAL COMPONENTS 5 | | |
| 1 | FM4-4286-000 | | 1 | PAPER DELIVERY ASS'Y | | |
| 2 | RM1-4896-000 | | 1 | FIXING MOTOR UNIT | M4 | |
| 3 | RM1-5303-000 | | 1 | POWER SUPPLY SUB PCB ASS'Y | | |
| 4 | RM1-5419-000 | | 1 | REGISTRATION MOTOR ASS'Y | M5 | |
| 5 | RM1-5433-000 | | 1 | THERMISTOR CABLE ASS'Y | | |
| 6 | RM1-5437-000 | | 1 | FIXING AC CABLE ASS'Y | | |
| 7 | XA9-1422-000 | | 1 | SCREW, WWASHER, M4X12 | | |
| 8 | RK2-2276-000 | | 1 | FAN | FM1 | |
| 9 | XA9-1418-000 | | AR | SCREW, TP, M3X6 | | |
| 10 | XA9-1835-000 | | AR | SCREW, D, M3X6 | | |
| 11 | FM4-3802-000 | | 1 | CABLE, FIXING SUB | | |
| 12 | XA9-1671-000 | | AR | SCREW, D, M3X8 | | |

FIGURE 106 INTERNAL COMPONENTS 6



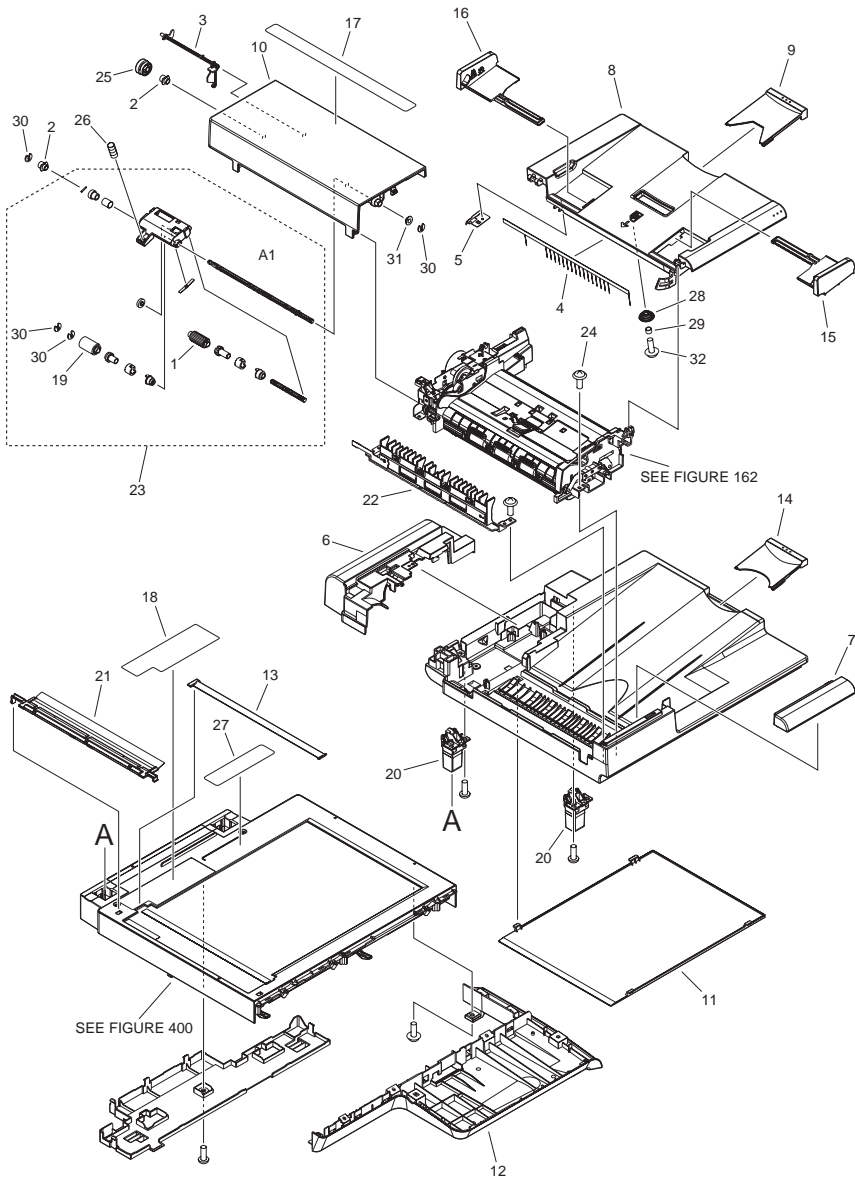
| FIGURE & KEY NO. | PARTS NUMBER | R A N K | Q'TY | DESCRIPTION | SERIAL NUMBER/ REMARKS | S V C |
|------------------|--------------|------------------|------|------------------------------|---------------------------|-------------|
| Fig.106 | NPN | | RF | INTERNAL COMPONENTS 6 | | |
| 1 | FC9-4546-000 | | 1 | COVER, REAR LOWER | | |
| 2 | FC9-4547-000 | | 1 | COVER, REAR UPPER | | |
| 3 | FM4-4284-000 | | 1 | REAR DOOR ASS'Y | | |
| 4 | RC2-3750-000 | | 2 | LINK, DOOR | | |
| 5 | RC2-3752-000 | | 1 | LINK, GUIDE | | |
| 6 | RC2-3774-000 | | 2 | CAP, LINK | | |
| 7 | FC8-8730-000 | | 1 | COVER, REVERSE | | |
| 8 | RK2-2276-000 | | 1 | FAN | FM2 | |
| 9 | RM1-4838-000 | | 1 | PAPER FEED GUIDE ASS'Y | | |
| 10 | RM1-4876-000 | | 1 | REAR DOOR RIB ASS'Y | | |
| 11 | RM1-4877-000 | | 1 | PAPER RE-PICK UP GUIDE ASS'Y | | |
| 12 | RM1-4879-000 | | 1 | DUPLEXING FEED GUIDE ASS'Y | | |
| 13 | RM1-4880-000 | | 1 | REVERSE DRIVE ASS'Y | | |
| 14 | RM1-5397-000 | | 1 | DUPLEX CABLE ASS'Y | | |
| 15 | XA9-1671-000 | | AR | SCREW, D, M3X8 | | |
| 16 | FU7-8108-000 | | 1 | LABEL, DUPLEX JAM | | |

FIGURE 107 INTERNAL COMPONENTS 7



| FIGURE & KEY NO. | PARTS NUMBER | RANK | Q'TY | DESCRIPTION | SERIAL NUMBER/REMARKS | SVC |
|------------------|--------------|------|------|------------------------|-----------------------|-----|
| Fig.107 | NPN | | RF | INTERNAL COMPONENTS 7 | | |
| 1 | FC9-4507-000 | | 1 | PLATE, USB GROUNDING | | |
| 2 | FK2-9738-000 | | 1 | CABLE, FLAT | | |
| 3 | FK2-9836-000 | | 1 | CABLE, FLAT | MF8350 | |
| 4 | | | | | | |
| 5 | FM4-3796-000 | | 1 | CABLE, MAIN SWITCH | SW1 | |
| 6 | FK2-8767-000 | | 1 | CORE, FERRITE | | |
| 7 | | | | | | |
| 7 | | | | | | |
| 7 | FM4-3971-000 | | 1 | NCU BOARD PCB ASSEMBLY | MF8350 TW,US,CN | |
| 7 | | | | | | |
| 8 | FM4-3985-000 | | 1 | SPEAKER ASSEMBLY | MF8350 SP1 | |
| 9 | FM4-3989-000 | | 1 | USB PCB ASSEMBLY | | |

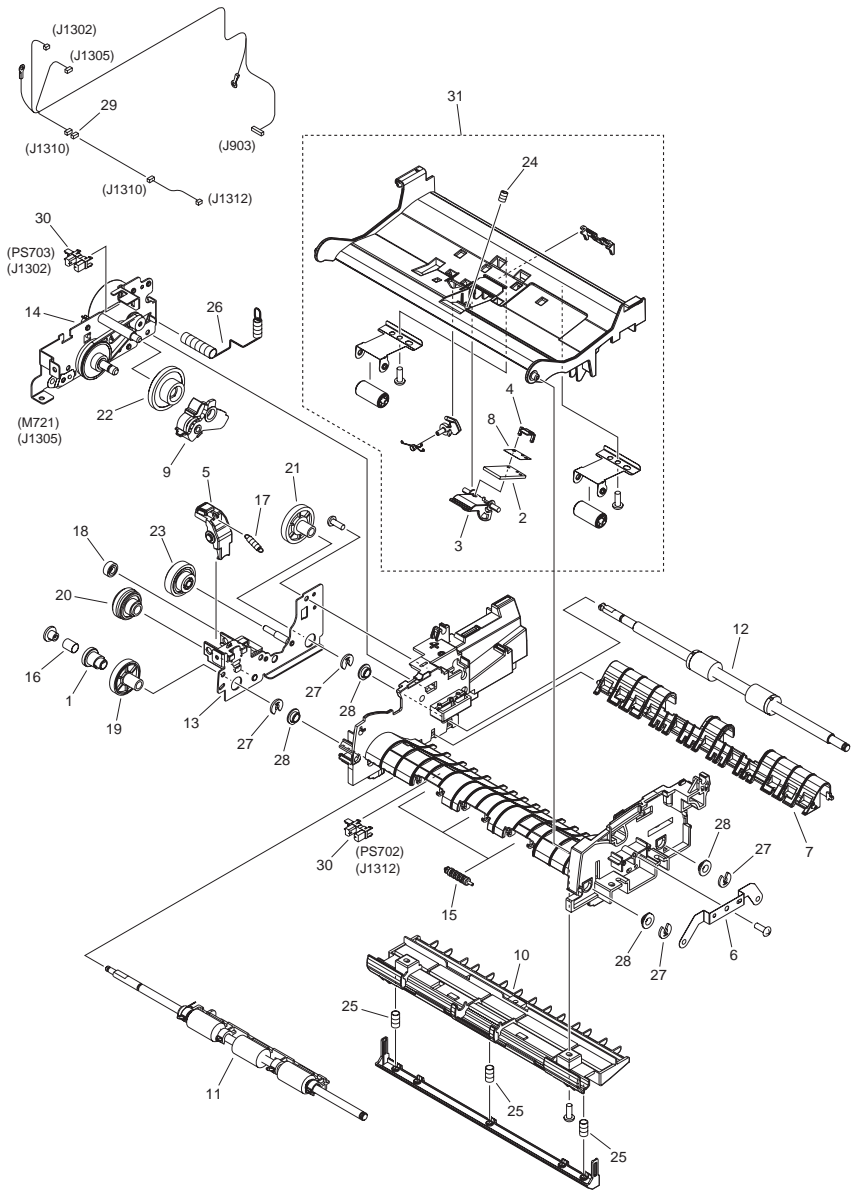
FIGURE 160 READER/ADF ASSEMBLY



| FIGURE & KEY NO. | PARTS NUMBER | R A N K | Q'TY | DESCRIPTION | SERIAL NUMBER/ REMARKS | S V C |
|------------------|--------------|------------------|------|--------------------------------|---------------------------|-------------|
| Fig.160 | NPN | | RF | READER/ADF ASSEMBLY | | |
| 1 | FC7-6189-000 | | 1 | ROLLER, PICK-UP | | |
| 2 | FC7-6320-000 | | 2 | BUSHING | | |
| 3 | FC7-6321-000 | | 1 | FLAG, DOCUMENT SCANNER | | |
| 4 | FC7-6322-000 | | 1 | ELIMINATOR, STATIC CHARGE | | |
| 5 | FC9-1503-000 | | 1 | PLATE, GROUNDING | | |
| 6 | FC9-1532-000 | | 1 | COVER, REAR | | |
| 7 | FC9-1533-000 | | 1 | COVER, FRONT UPPER | | |
| 8 | FC9-1534-000 | | 1 | TRAY, DOCUMENT | | |
| 9 | FC9-1535-000 | | 1 | TRAY, SUB DOCUMENT | | |
| 10 | FC9-1536-000 | | 1 | PANEL, OPEN/CLOSE | | |
| 11 | FC9-1539-000 | | 1 | SHEET, WHITE | | |
| 12 | FC9-4502-000 | | 1 | COVER, BASE | | |
| 13 | | | | | | |
| 13 | | | | | | |
| 13 | | | | | | |
| 13 | FC9-1486-000 | | 1 | PLATE, PAPER SIZE | INCH/A | |
| 14 | FC9-5655-000 | | 1 | TRAY, SUB | | |
| 15 | FC9-5656-000 | | 1 | GUIDE, DOCUMENT, FRONT | | |
| 16 | FC9-5657-000 | | 1 | GUIDE, DOCUMENT, REAR | | |
| 17 | | | | | | |
| 17 | | | | | | |
| 17 | | | | | | |
| 17 | FC9-7562-000 | | 1 | LABEL, SIZE INDEX | INCH/A | |
| 18 | | | | | | |
| 18 | | | | | | |
| 18 | | | | | | |
| 18 | FC9-7566-000 | | 1 | LABEL, GLASS CLEANING | US,CA | |
| 19 | FL2-6637-000 | | 1 | ROLLER, SEPARATION | | |
| 20 | FL3-2453-000 | | 2 | HINGE, ADF | | |
| 21 | FL3-3539-000 | | 1 | HOLDER, DOCUMENT,RELEASE SHEET | | |
| 22 | FM4-1883-000 | | 1 | PAPER FEED GUIDE ASSEMBLY | | |

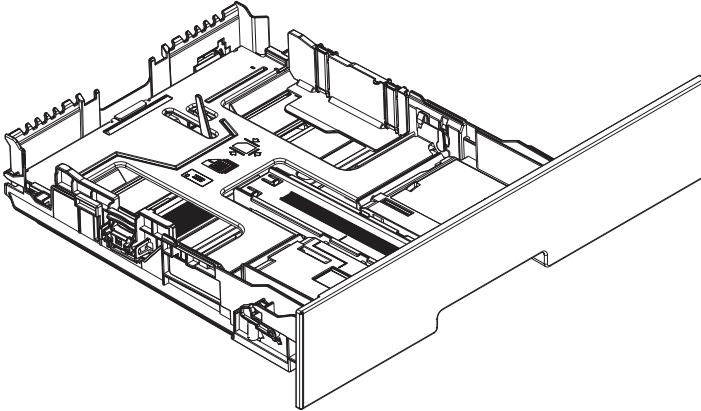
| FIGURE & KEY NO. | PARTS NUMBER | RANK | Q'TY | DESCRIPTION | SERIAL NUMBER/REMARKS | SVC |
|------------------|--------------|------|------|----------------------------|-----------------------|-----|
| 23 | FM3-9538-000 | | 1 | SEPARATION ROLLER ASSEMBLY | | |
| 24 | XA9-0831-000 | | 7 | SCREW,TP M3X8 | | |
| 25 | FU7-0672-000 | | 1 | GEAR, 24T | | |
| 26 | FU7-2018-000 | | 1 | SPRING, COMPRESSION | | |
| 27 | | | | | | |
| 27 | | | | | | |
| 27 | | | | | | |
| 27 | FU7-8406-000 | | 1 | LABEL, COPY PROHIBITION | AU,ASIA,US,CA | |
| 27 | | | | | | |
| 27 | | | | | | |
| 27 | FU7-8411-000 | | 1 | LABEL, COPY PROHIBITION | ASIA,US,CA | |
| 28 | FU8-0895-000 | | 1 | GEAR, 18T | | |
| 29 | FU8-2007-000 | | 1 | SPRING, COMPRESSION | | |
| 30 | HC1-0586-000 | | 4 | RETAINING RING | | |
| 31 | HU1-1022-000 | | 1 | BUSHING | | |
| 32 | XA9-0476-000 | | 1 | SCREW,TP M3X8 | | |

FIGURE 162 PAPER FEEDER ASSEMBLY



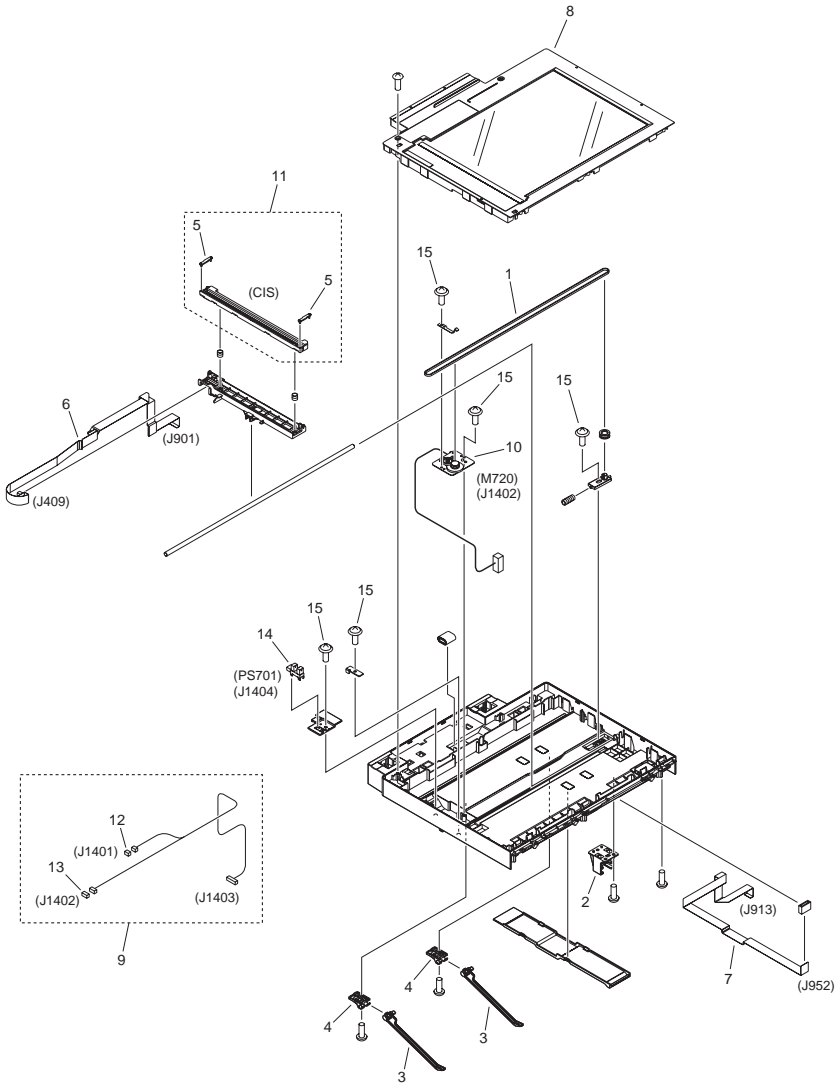
| FIGURE & KEY NO. | PARTS NUMBER | R A N K | Q'TY | DESCRIPTION | SERIAL NUMBER/ REMARKS | S V C |
|------------------|--------------|------------------|------|----------------------------|---------------------------|-------------|
| Fig.162 | FM4-1879-000 | | 1 | PAPER FEEDER ASSEMBLY | | |
| 1 | FC7-6052-000 | | 1 | RATCHET, PAPER FEED ROLLER | | |
| 2 | FC7-6297-000 | | 1 | PAD, SEPARATION | | |
| 3 | FC7-6299-000 | | 1 | HOLDER, SEPARATION PAD | | |
| 4 | FC7-6300-000 | | 1 | CLAMP, SEPARATION PAD | | |
| 5 | FC9-1512-000 | | 1 | LEVER, RELEASE | | |
| 6 | FC9-1523-000 | | 1 | PLATE, ROLLER GROUNDING | | |
| 7 | FC9-1526-000 | | 1 | GUIDE, PAPER DELIVERY | | |
| 8 | FC9-5654-000 | | 1 | SHEET, SEPARATION PAD | | |
| 9 | FL3-1431-000 | | 1 | ARM, SEPARATION SWING | | |
| 10 | FL3-1437-000 | | 1 | GUIDE, LOWER ASSEMBLY | | |
| 11 | FM4-1885-000 | | 1 | PAPER FEED ROLLER ASSEMBLY | | |
| 12 | FL3-2458-000 | | 1 | PAPER DELIVERY ROLLER ASSY | | |
| 13 | FM4-1880-000 | | 1 | DRIVE PLATE ASSEMBLY | | |
| 14 | FM4-1881-000 | | 1 | MOTOR ASSEMBLY | M721 | |
| 15 | FU5-6992-000 | | 3 | ROLLER, AUXILIARY | | |
| 16 | FU6-2998-000 | | 1 | SPRING, COMPRESSION | | |
| 17 | FU6-2999-000 | | 1 | SPRING, TENSION | | |
| 18 | FU7-0667-000 | | 1 | GEAR, 20T | | |
| 19 | FU7-0668-000 | | 1 | GEAR, 54T | | |
| 20 | FU7-0669-000 | | 1 | GEAR, 46T/23T | | |
| 21 | FU7-0671-000 | | 1 | GEAR, 36T | | |
| 22 | FU7-0676-000 | | 1 | GEAR, 21T/42T | | |
| 23 | FU7-0678-000 | | 1 | GEAR, 51T/17T | | |
| 24 | FU7-2016-000 | | 1 | SPRING, COMPRESSION | | |
| 25 | FU8-2008-000 | | 3 | SPRING, COMPRESSION | | |
| 26 | FU8-2010-000 | | 1 | SPRING, COMPRESSION | | |
| 27 | HC1-0586-000 | | 4 | RETAINING RING | | |
| 28 | HU1-1022-000 | | 4 | BUSHING | | |
| 29 | VS1-7207-004 | | 1 | CONNECTOR, SNAP TIGHT, BK | | |
| 30 | WG8-5696-000 | | 2 | PHOTO INTERRUPTER, TLP1243 | M702,M703 | |
| 31 | FM4-1882-000 | | 1 | GUIDE ASSEMBLY, UPPER | | |

FIGURE 300 CASSETTE ASSEMBLY



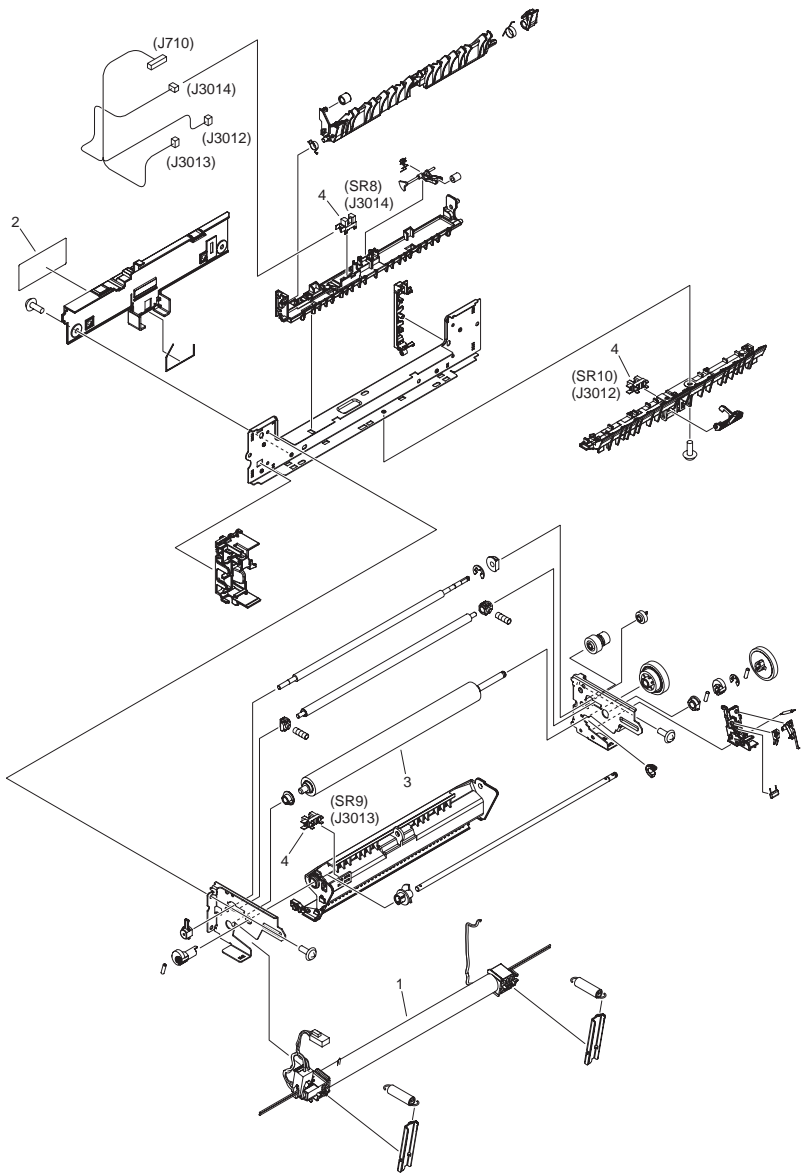
| FIGURE & KEY NO. | PARTS NUMBER | RANK | QTY | DESCRIPTION | SERIAL NUMBER/REMARKS | SVC |
|------------------|--------------|------|-----|-------------|-----------------------|-----|
| Fig.300 | FM4-4279-000 | | 1 | CASSETTE | | |

FIGURE 400 READER ASSEMBLY



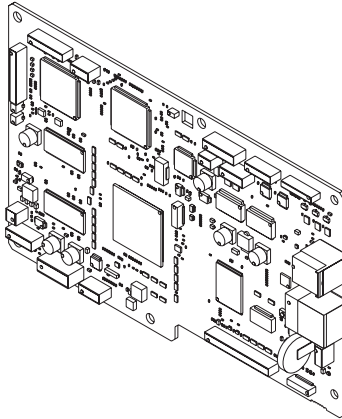
| FIGURE & KEY NO. | PARTS NUMBER | R A N K | Q'TY | DESCRIPTION | SERIAL NUMBER/REMARKS | S V C |
|------------------|--------------|---------|------|----------------------------|-----------------------|-------|
| Fig.400 | FM4-4306-000 | | 1 | READER, ASSEMBLY | | |
| 1 | FC9-1650-000 | | 1 | BELT, TIMING | | |
| 2 | FC9-2101-000 | | 1 | MOUNT, SUPPORTER | | |
| 3 | FC9-4589-000 | | 2 | LEVER, FACE-DOWN | | |
| 4 | FC9-4590-000 | | 2 | HOLDER, FACE-DOWN LEVER | | |
| 5 | FC9-7573-000 | | 2 | SPACER, CIS | rankA | |
| 5 | FC9-7571-000 | | 2 | SPACER, CIS | rankB | |
| 5 | FC9-7574-000 | | 2 | SPACER, CIS | rankC | |
| 6 | FK2-9581-000 | | 1 | CABLE, FLAT | | |
| 7 | FK2-9861-000 | | 1 | CABLE, FLAT | | |
| 8 | FM4-4308-000 | | 1 | READER COVER UNIT | | |
| 9 | FM4-3653-000 | | 1 | CABLE, READER | | |
| 10 | FM4-4301-000 | | 1 | DC MOTOR ASSEMBLY | M720 | |
| 11 | FM4-4307-000 | | 1 | CONTACT IMAGE SENSOR ASS'Y | CIS | |
| 12 | VS1-7177-003 | | 1 | CONNECTOR, SNAP TIGHT, BK | | |
| 13 | VS1-7177-004 | | 1 | CONNECTOR, SNAP TIGHT, BK | | |
| 14 | WG8-5696-000 | | 1 | PHOTO INTERRUPTER, TLP1243 | PS701 | |
| 15 | XA9-0476-000 | | 11 | SCREW,TP M3X8 | | |

FIGURE 810
FIXING ASS'Y



| FIGURE & KEY NO. | PARTS NUMBER | RANK | Q'TY | DESCRIPTION | SERIAL NUMBER/REMARKS | SVC |
|------------------|--------------|------|------|----------------------------|-----------------------|-----|
| Fig.810 | | | | | | |
| Fig.810 | | | | | | |
| Fig.810 | FM4-4290-000 | | 1 | FIXING ASS'Y | 120V | |
| 1 | | | | | | |
| 1 | | | | | | |
| 1 | RM1-4845-000 | | 1 | FIXING FILM ASSEMBLY | 120V | |
| 2 | FU7-8111-000 | | 1 | LABEL, CAUTION | | |
| 3 | RC2-3367-000 | | 1 | ROLLER, PRESSURE | | |
| 4 | WG8-5696-000 | | 3 | PHOTO INTERRUPTER, TLP1243 | SR8,SR9,SR10 | |

FIGURE 900 MAIN CONTORLLER PCB ASS'Y



| FIGURE & KEY NO. | PARTS NUMBER | RANK | QTY | DESCRIPTION | SERIAL NUMBER/REMARKS | SVC |
|------------------|--------------|------|-----|------------------------------|-----------------------|-----|
| Fig.900 | FM4-3961-000 | | 1 | MAIN CONTROLLER PCB ASSEMBLY | M F 8350 | |
| Fig.900 IC | FK2-8321-000 | | 1 | IC, MB87S1801 | | |

Cassette Feeding Module-V1

PARTS CATALOG



Canon

JULY 31, 2009
REV. 0

Contents

NUMERICAL INDEX

Cassette Feeding Module-V1(Numerical Index)..... 1-1

Cassette Feeding Module-V1(Parts Catalog)

| | | |
|-----|------------------------------------|-----|
| F10 | EXTERNAL COVERS, PANELS, ETC. | 2-1 |
| F11 | INTERNAL COMPONENTS | 2-3 |
| F30 | CASSETTE ASSEMBLY | 2-5 |

NUMERICAL INDEX

Cassette Feeding Module-V1(Numerical Index)

| PARTS NUMBER | FIGURE & KEY NO. | PARTS NUMBER | FIGURE & KEY NO. | PARTS NUMBER | FIGURE & KEY NO |
|--------------|------------------|--------------|------------------|--------------|-----------------|
| FC9-4573-000 | F10 - 1 | | | | |
| FC9-4574-000 | F10 - 2 | | | | |
| FC9-4575-000 | F10 - 3 | | | | |
| FC9-4576-000 | F10 - 4 | | | | |
| FC9-4577-000 | F10 - 5 | | | | |
| FM4-4279-000 | F30 - | | | | |
| NPN | F10 - | | | | |
| NPN | F11 - | | | | |
| RC2-2014-000 | F11 - 1 | | | | |
| RM1-4426-000 | F11 - 2 | | | | |
| RM1-4840-000 | F11 - 3 | | | | |
| RM1-4902-000 | F11 - 4 | | | | |
| RM1-6637-000 | F11 - 5 | | | | |
| WG8-5696-000 | F11 - 6 | | | | |
| XA9-1671-000 | F10 - 6 | | | | |
| XA9-1671-000 | F11 - 7 | | | | |

Cassette Feeding Module-V1(Parts Catalog)

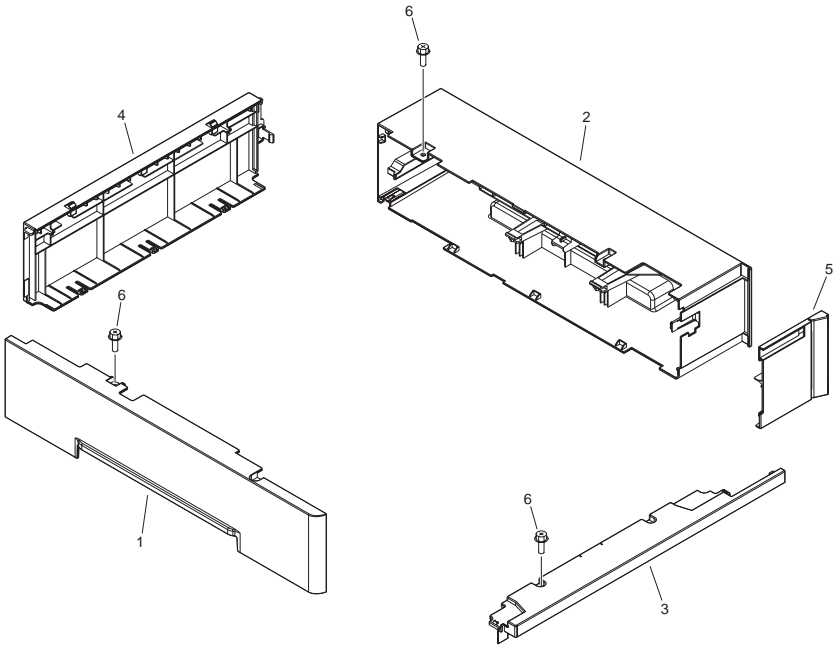
Cassette Feeding Module-V1

F27-7601-000 FDA

Contents

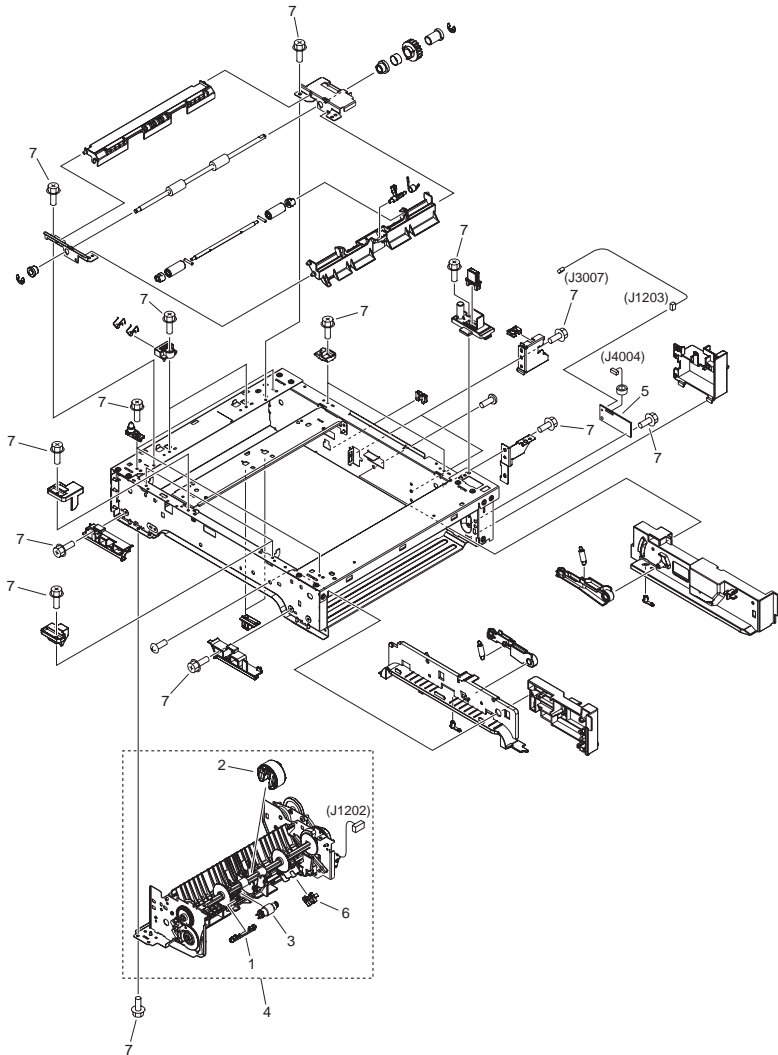
| | | |
|-----|------------------------------------|-----|
| F10 | EXTERNAL COVERS, PANELS, ETC. | 2-1 |
| F11 | INTERNAL COMPONENTS | 2-3 |
| F30 | CASSETTE ASSEMBLY | 2-5 |

FIGURE F10
EXTERNAL COVERS, PANELS, ETC.



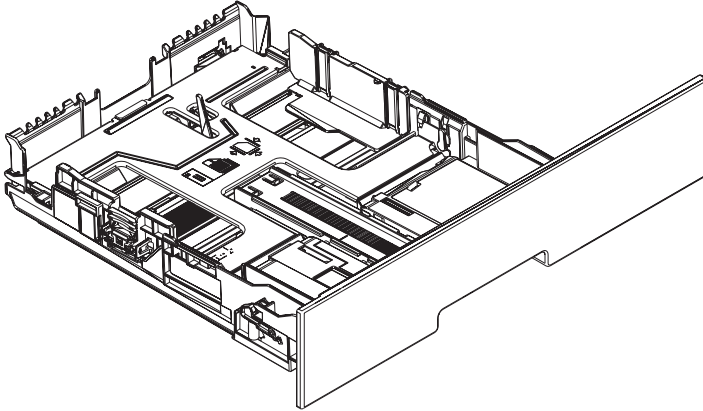
| FIGURE & KEY NO. | PARTS NUMBER | RANK | Q'TY | DESCRIPTION | SERIAL NUMBER/REMARKS | SVC |
|------------------|--------------|------|------|-------------------------------|-----------------------|-----|
| Fig.F10 | NPN | | RF | EXTERNAL PANELS, COVERS, ETC. | | |
| 1 | FC9-4573-000 | | 1 | COVER, LEFT, 1 | | |
| 2 | FC9-4574-000 | | 1 | COVER, RIGHT, 1 | | |
| 3 | FC9-4575-000 | | 1 | COVER, FRONT | | |
| 4 | FC9-4576-000 | | 1 | COVER, REAR | | |
| 5 | FC9-4577-000 | | 1 | COVER, RIGHT FRONT | | |
| 6 | XA9-1671-000 | | AR | SCREW, D, M3X8 | | |

FIGURE F11 INTERNAL COMPONENTS



| FIGURE & KEY NO. | PARTS NUMBER | RANK | Q'TY | DESCRIPTION | SERIAL NUMBER/REMARKS | SVC |
|------------------|--------------|------|------|----------------------------|-----------------------|-----|
| Fig.F11 | NPN | | RF | INTERNAL COMPONENTS | | |
| 1 | RC2-2014-000 | | 1 | COVER, HOLDER | | |
| 2 | RM1-4426-000 | | 1 | PICK-UP ROLLER ASS'Y | | |
| 3 | RM1-4840-000 | | 1 | SEPARATION ROLLER ASS'Y | | |
| 4 | RM1-4902-000 | | 1 | PAPER PICK-UP ASS'Y | | |
| 5 | RM1-6637-000 | | 1 | PAPER FEEDER PCB ASS'Y | | |
| 6 | WG8-5696-000 | | 1 | PHOTO INTERRUPTER, TLP1243 | | |
| 7 | XA9-1671-000 | | AR | SCREW, D, M3X8 | | |

FIGURE F30 CASSETTE ASSEMBLY



| FIGURE & KEY NO. | PARTS NUMBER | RANK | QTY | DESCRIPTION | SERIAL NUMBER/REMARKS | SVC |
|------------------|--------------|------|-----|-------------|-----------------------|-----|
| Fig.F30 | FM4-4279-000 | | 1 | CASSETTE | | |

FIGURE ZZA

MECHANICAL STANDARD PARTS (HOW TO USE)

Mechanical standard parts

機械標準部品

About a mechanical standard parts

A Mechanical standard parts is a mechanical part which not parts peculiar to a product. They are parts which are common to a Canon product and are used, such as a screw and a washer. The Fig No. and parts number of the mechanical standard parts are not listed in the product parts catalog. Refer to the parts catalog of mechanical standard parts when checking the parts number for screw or washer etc. and identify them by part shape or size.

機械標準部品とは

機械標準部品とは、製品特有の部品ではなく、ねじやワッシャなどキヤノン製品共通で使用されている機械部品（メカ部品）のことです。
製品のパーツカタログには、機械標準部品のFig No.や部品番号は記載していません。
ねじや、ワッシャ等の部品番号を調べるときは、機械標準部品のパーツカタログを参照し、部品の形状や大きさから判断し、使用している部品を調べてください。

Material and surface treatment of a mechanical standard parts

Material and surface treatment of mechanical standard parts are assigned commonly for each part. Refer to the Table 1 for the parts which material and surface treatment are assigned as numbers.

機械標準部品の材料および表面処理

機械標準部品の材料および表面処理については、各種部品共通で決められています。
材料および表面処理が番号で決められている部品については、表1を参照してください。

Table 1 Material and Surface treatment
表1 材料および表面処理

| No. 番号 | Material 材料 | Surface treatment 表面処理 | Color 色 |
|--------|--------------------------|--|------------|
| 1 | Stainless steel ステンレス | Stainless steel black coloring (BC4) ステンレス黒着色(BC4) | Black 黒 |
| 2 | | not to be given なし | White 白 |
| 3 | Brass 黄銅 | Regular nickel plating (NL) 普通ニッケルメッキ(NL) | White 白 |
| 4 | | Black nickel plating (BN) 黒色ニッケルメッキ(BN) | Black 黒 |
| 5 | Steel 鋼 | White zinc trivalent chromate treating (ZC3) 白色亜鉛3価クロメート(ZC3) | White 白 |
| 6 | | Regular nickel chromium plating (NC) 普通ニッケルクロムメッキ(NC) | White 白 |
| 7 | | Regular nickel plating (NL) 普通ニッケルメッキ(NL) | White 白 |
| 8 | | Iron and steel phosphating (P1) 鉄鋼磷酸塩処理(P1) | Black 黒 |
| 9 | | Black zinc trivalent chromate treating (BZ3) 黒色亜鉛3価クロメート(BZ3) | Black 黒 |

FIGURE ZZB MECHANICAL STANDARD PARTS (SCREWS)

1. Screws ねじ

How to read Parts Numbers
部品番号の見方

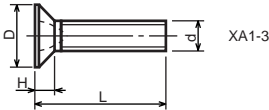
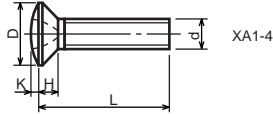
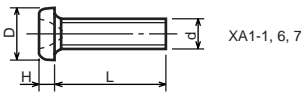
Screws
ねじ

XB1-2400-609

Type No.
類別番号
Normal designation (d)
ねじの呼び(d)
Length (L)
ねじの長さ(L)
Material and Surface treatment
材料および表面処理

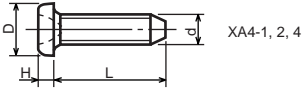
XB1-2 expresses Binding head machine screw.
XB1-2は、バインドねじを表す
40 expresses M4.0.
40は、M4.0を表す
0-60 expresses a length of 6.0mm.
0-60は、6.0mmの長さを表す
9 expresses Steel (Black zinc trivalent chromate
treating) from Table 1.
9は、表1より鋼(黒色亜鉛3価クロメート)を表す

1-1. Cross Recessed Head Screws for Precision Equipments 精密機器用十字穴付き小ねじ

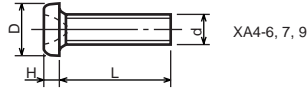


| Type No. 類別番号 | Type 類別 | Head size (mm) 頭部寸法 (mm) | | | | | | | |
|------------------|--|-----------------------------|-------|------|------|------|------|------|------|
| | | M1.4 | M1.6 | M1.7 | M2 | M2.5 | M2.6 | | |
| XA1-1 | Pan head Class 1 なべ1種 | D | XA1-1 | 2 | 2.4 | 2.5 | 3 | 3.8 | 4 |
| | | H | XA1-1 | 0.5 | 0.55 | 0.5 | 0.6 | 0.9 | 0.8 |
| XA1-3 | Countersunk head Class 1 さら1種 | D | XA1-3 | 2 | 2.4 | 2.5 | 3 | 3.8 | 4 |
| | | H | XA1-3 | 0.48 | 0.55 | 0.58 | 0.73 | 0.85 | 0.93 |
| XA1-4 | Oval countersunk head Class 1 丸さら1種 | D | XA1-4 | 2 | 2.4 | 2.5 | 3 | 3.8 | 4 |
| | | H + K | XA1-4 | 0.68 | 0.8 | 0.88 | 1 | 1.25 | 1.3 |
| XA1-6 | Pan head Class 3 なべ3種 | D | XA1-6 | 2.5 | 2.8 | 3 | 3.5 | 4.3 | 4.5 |
| | | H | XA1-6 | 0.8 | 0.85 | 0.9 | 1 | 1.3 | 1.2 |
| XA1-7 | Pan head Class 2 なべ2種 | D | XA1-7 | 2.5 | 2.8 | 3 | 3.5 | 4.3 | 4.5 |
| | | H | XA1-7 | 0.5 | 0.55 | 0.5 | 0.6 | 0.9 | 0.8 |

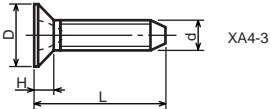
1-2. Precision Tapping Screws
精密用タッピンねじ



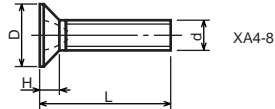
XA4-1, 2, 4



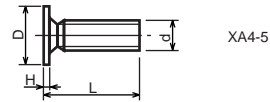
XA4-6, 7, 9



XA4-3



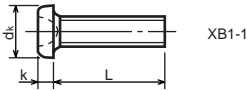
XA4-8



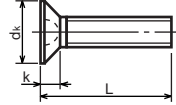
XA4-5

| Type No. 類別番号 | Type 類別 | Head size (mm) 頭部寸法 (mm) | | | | | | |
|------------------|---|-----------------------------|------|------|------|------|------|------|
| | | M1.4 | M1.6 | M1.7 | M2 | M2.5 | M2.6 | |
| XA4-1 | With tapered end pan head Class 1 絞りなべ1種 | D XA4-1 | 2 | 2.4 | 2.5 | 3 | 3.8 | 4 |
| | | H XA4-1 | 0.5 | 0.55 | 0.5 | 0.6 | 0.9 | 0.8 |
| XA4-2 | With tapered end pan head Class 3 絞りなべ3種 | D XA4-2 | 2.5 | 2.8 | 3 | 3.5 | 4.3 | 4.5 |
| | | H XA4-2 | 0.8 | 0.85 | 0.9 | 1 | 1.3 | 1.2 |
| XA4-3 | With tapered end countersunk head 絞りさら | D XA4-3 | 2 | 2.4 | 2.5 | 3 | 3.8 | 4 |
| | | H XA4-3 | 0.48 | 0.55 | 0.58 | 0.73 | 0.85 | 0.93 |
| XA4-4 | With tapered end pan head Class 2 絞りなべ2種 | D XA4-4 | 2.5 | 2.8 | 3 | 3.5 | 4.3 | 4.5 |
| | | H XA4-4 | 0.5 | 0.55 | 0.5 | 0.6 | 0.9 | 0.8 |
| XA4-5 | With parallel end ultra thin head ストレート超薄頭 | D XA4-5 | 2.5 | 2.8 | 3 | - | - | - |
| | | H XA4-5 | 0.2 | 0.2 | 0.2 | - | - | - |
| XA4-6 | With parallel end pan head Class 1 ストレートなべ1種 | D XA4-6 | 2 | 2.4 | 2.5 | 3 | 3.8 | 4 |
| | | H XA4-6 | 0.5 | 0.55 | 0.5 | 0.6 | 0.9 | 0.8 |
| XA4-7 | With parallel end pan head Class 3 ストレートなべ3種 | D XA4-7 | 2.5 | 2.8 | 3 | 3.5 | 4.3 | 4.5 |
| | | H XA4-7 | 0.8 | 0.85 | 0.9 | 1 | 1.3 | 1.2 |
| XA4-8 | With parallel end countersunk head ストレートさら | D XA4-8 | 2 | 2.4 | 2.5 | 3 | 3.8 | 4 |
| | | H XA4-8 | 0.48 | 0.55 | 0.58 | 0.73 | 0.85 | 0.93 |
| XA4-9 | With parallel end pan head Class 2 ストレートなべ2種 | D XA4-9 | 2.5 | 2.8 | 3 | 3.5 | 4.3 | 4.5 |
| | | H XA4-9 | 0.5 | 0.55 | 0.5 | 0.6 | 0.9 | 0.8 |

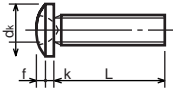
1-3. Cross Recessed Head Screws
 一般用十字穴付き小ねじ



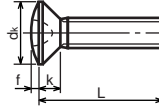
XB1-1



XB1-3



XB1-2

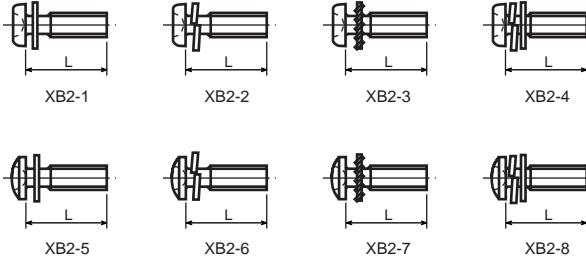


XB1-4

| Type No. 類別番号 | Type 類別 |
|------------------|------------------------------|
| XB1-1 | Pan head なべ |
| XB1-2 | Binding head バインド |
| XB1-3 | Countersunk head ざら |
| XB1-4 | Oval countersunk head 丸ざら |

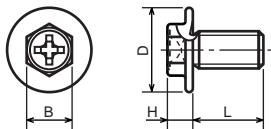
| | | Head size (mm) 頭部寸法 (mm) | | | | | |
|------------------------------|-------|-----------------------------|------|------|------|-----|------|
| | | M2 | M2.5 | M2.6 | M3 | M4 | M5 |
| dk | XB1-1 | 3.5 | 4.5 | 4.5 | 5.5 | 7 | 9 |
| k | XB1-1 | 1.3 | 1.7 | 1.7 | 2 | 2.6 | 3.3 |
| dk | XB1-2 | 4.3 | 5.3 | 5.5 | 6.3 | 8.3 | 10.3 |
| k+f | XB1-2 | 1.2 | 1.5 | 1.6 | 1.9 | 2.5 | 3.1 |
| dk | XB1-3 | 4 | 5 | - | 6 | 8 | 10 |
| k | XB1-3 | 1.2 | 1.45 | - | 1.75 | 2.3 | 2.8 |
| dk | XB1-4 | 4 | 5 | - | 6 | 8 | 10 |
| k+f | XB1-4 | 1.6 | 2 | - | 2.45 | 3.2 | 4 |
| Screw part length ねじ部長さ b | | 8 | 12 | 12 | 12 | 16 | 20 |

1-4. Cross Recessed Head Screws with Captive Washer
座金組込み十字穴付き小ねじ



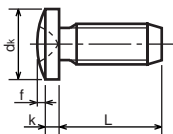
| Type No. 類別番号 | Type 類別 |
|------------------|---|
| XB2-1 | Pan head + Plain washer (circular bright) なべねじ+平座金 |
| XB2-2 | Pan head + Spring washer なべねじ+ばね座金 |
| XB2-3 | Pan head + Toothed lock washer なべねじ+歯付座金 |
| XB2-4 | Pan head + Spring washer and plain washer (circular bright) なべねじ+(ばね+平)座金 |
| XB2-5 | Binding head + Plain washer (circular bright) バインドねじ+平座金 |
| XB2-6 | Binding head + Spring washer バインドねじ+ばね座金 |
| XB2-7 | Binding head + Toothed lock washer バインドねじ+歯付座金 |
| XB2-8 | Binding head + Spring washer and plain washer (circular bright) バインドねじ+(ばね+平)座金 |

1-5. Hexagon Head Tapping Screws for Metallic Materials
 金属用六角タッピンねじ



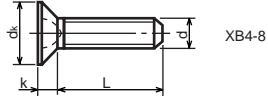
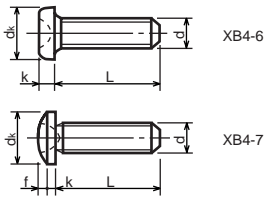
| Type No. 類別番号 | Type 類別 | Head size (mm) 頭部寸法 (mm) | |
|------------------|--|-----------------------------|---------|
| | | M3 | M4 |
| XB3-6 | For metallic materials 金属用タッピン | D | 8 10 |
| | | B | 5.5 5.5 |
| XB3-7 | For metallic materials with clawed 金属用タッピン-つめ付き | H XB3-6 | 3.1 3.1 |
| | | H XB3-7 | 3.2 3.2 |

1-6. Special Tapping Screws
 特殊タッピンねじ



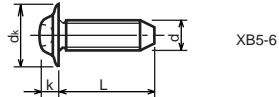
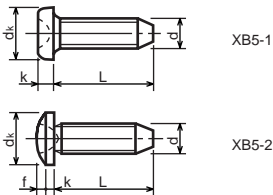
| Type No. 類別番号 | Type 類別 | Head size (mm) 頭部寸法 (mm) | |
|------------------|----------------------|-----------------------------|---------|
| | | M3 | M4 |
| XB4-5 | Binding head バインド | dk | 6.3 8.3 |
| | | k | 1.3 1.7 |
| | | k+f | 1.9 2.5 |

1-7. General Head Tapping Screws
一般用タッピンねじ



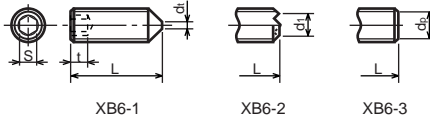
| Type No. 類別番号 | Type 類別 | Head size (mm) 頭部寸法 (mm) | | | | | | |
|------------------|------------------------|-----------------------------|------|------|-----|------|-----|------|
| | | M2 | M2.5 | M2.6 | M3 | M4 | M5 | |
| XB4-6 | Pan head なべ | d_k XB4-6 | 3.5 | 4.5 | 4.5 | 5.5 | 7 | 9 |
| | | k XB4-6 | 1.3 | 1.7 | 1.7 | 2 | 2.6 | 3.3 |
| XB4-7 | Binding head バインド | d_k XB4-7 | 4.3 | 5.3 | 5.5 | 6.3 | 8.3 | 10.3 |
| | | $k+f$ XB4-7 | 1.2 | 1.5 | 1.6 | 1.9 | 2.5 | 3.1 |
| XB4-8 | Countersunk head さら | d_k XB4-8 | 4 | 5 | 5.2 | 6 | 8 | 10 |
| | | k XB4-8 | 1.2 | 1.45 | 1.5 | 1.75 | 2.3 | 2.8 |

1-8. Tapping Screws for Metallic Materials
金属用タッピンねじ



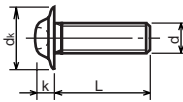
| Type No. 類別番号 | Type 類別 | Head size (mm) 頭部寸法 (mm) | | | | | |
|------------------|----------------------------|-----------------------------|------|-----|------|-----|------|
| | | M2.5 | M2.6 | M3 | M4 | M5 | |
| XB5-1 | Pan head なべ | d_k XB5-1 | 4.5 | 4.5 | 5.5 | 7 | 9 |
| | | k XB5-1 | 1.7 | 1.7 | 2 | 2.6 | 3.3 |
| XB5-2 | Binding head バインド | d_k XB5-2 | 5.5 | 5.5 | 6.3 | 8.3 | 10.3 |
| | | $k+f$ XB5-2 | 1.6 | 1.6 | 1.9 | 2.5 | 3.1 |
| XB5-6 | Flanged pan head つば付きなべ | d_k XB5-6 | 6.5 | 6.5 | 8 | 10 | 12 |
| | | k XB5-6 | 2.1 | 2.1 | 1.75 | 3.2 | 4 |

1-9. Hexagon Socket Set Screws
六角穴付止めねじ



| Type No. 類別番号 | Type 類別 | Head size (mm) 頭部寸法 (mm) | | | | | | | |
|------------------|--------------------|-----------------------------|------|--------------|------|------|------|------|-----|
| | | M1.6 M1.7 | M2 | M2.5 M2.6 | M3 | M5 | M5 | M6 | |
| XB6-1 | Cone point とがり先 | S | 0.7 | 0.9 | 1.3 | 1.5 | 2 | 2.5 | 3 |
| | | t | 1.5 | 1.7 | 2 | 2 | 2.5 | 3 | 3.5 |
| | | d _{t max} XB6-1 | 0.4 | 0.5 | 0.65 | 0.75 | 1 | 1.25 | 1.5 |
| | | d _{l max} XB6-2 | - | 1.2 | 1.5 | 1.7 | 2.2 | 2.8 | 3.3 |
| | | d _{l min} XB6-2 | - | 1 | 1.2 | 1.4 | 1.9 | 2.4 | 2.9 |
| | | d _{p max} XB6-3 | 0.8 | 1 | 1.5 | 2 | 2.5 | 3.5 | 4 |
| | | d _{p min} XB6-3 | 0.55 | 0.75 | 1.25 | 1.75 | 2.25 | 3.2 | 3.7 |

1-10. Flanged Pan Head Machine Screws
つば付きなべ小ねじ



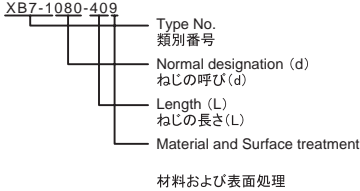
| Type No. 類別番号 | Type 類別 | Head size (mm) 頭部寸法 (mm) | | | | | |
|------------------|----------------------------|-----------------------------|--------------|-----|-----|-----|----|
| | | M2 | M2.5 M2.6 | M3 | M5 | M5 | |
| XB6-7 | Flanged pan head つば付きなべ | d _k | 5 | 6.5 | 8 | 10 | 12 |
| | | k | 1.7 | 2.1 | 2.5 | 3.2 | 4 |

FIGURE ZZC MECHANICAL STANDARD PARTS (BOLTS)

2. Bolts (Socket head cap screw) ボルト

How to read Parts Numbers
部品番号の見方

Bolt (Socket head cap screw)
ボルト



XB7-1 expresses Hexagon socket head cap screws.
XB7-1は、六角穴付きボルトを表す

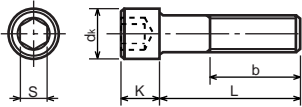
080 expresses M8.0.
080は、M8.0を表す

40 expresses a length of 40mm.
40は、40mmの長さを表す

9 expresses Steel (Black zinc trivalent chromate
treating) from Table 1.

9は、表1より鋼(黒色亜鉛3価クロメート)を表す

2-1. Hexagon socket head cap screws 六角穴付きボルト



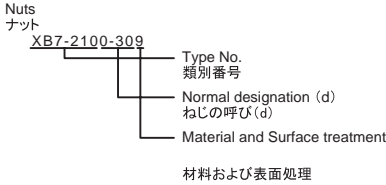
| Type No. 類別番号 | Type 類別 |
|------------------|--|
| XB7-1 | Hexagon socket head cap screws 六角穴付きボルト |

| | Head size (mm) 頭部寸法 (mm) | | | | | | |
|---|-----------------------------|----|-----|----|----|-----|-----|
| | M3 | M4 | M5 | M6 | M8 | M10 | M12 |
| S | 2.5 | 3 | 4 | 5 | 6 | 8 | 10 |
| d_k | 5.5 | 7 | 8.5 | 10 | 13 | 16 | 18 |
| K | 3 | 4 | 5 | 6 | 8 | 10 | 12 |
| Screw part length b_{max} ねじ部長さ b_{max} | 18 | 20 | 22 | 24 | 28 | 32 | 36 |

FIGURE ZZD MECHANICAL STANDARD PARTS (NUTS)

3. Nuts ナット

How to read Parts Numbers
部品番号の見方



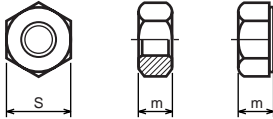
XB7-210 expresses Hexagon nut class 1.
XB7-210は、六角ナット1種を表す

0-30 expresses M3.0.
0-30は、M3.0を表す

9 expresses Steel (Black zinc trivalent chromate
treating) from Table 1.

9は、表1より鋼(黒色亜鉛3価クロメート)を表す

3-1. Hexagon Nuts and Hexagon Thin Nuts 六角ナット



| Type No. 類別番号 | Type 類別 |
|------------------|--|
| XB7-210 | Hexagon nut Class 1 六角ナット-1種 |
| XB7-220 | Hexagon nut Class 3 六角ナット-3種 |
| XB7-230 | Hexagon nut Style 1 double chamfered 六角ナット-スタイル1-両面とり |
| XB7-231 | Hexagon nut Style 1 washer faced 六角ナット-スタイル1-座付き |
| XB7-240 | Hexagon nut Style 2 double chamfered 六角ナット-スタイル2-両面とり |
| XB7-241 | Hexagon nut Style 2 washer faced 六角ナット-スタイル2-座付き |
| XB7-250 | Hexagon nut 六角ナット |
| XB7-260 | Hexagon thin nut double chamfered 六角低ナット-両面とり |
| XB7-270 | Hexagon thin nut not chamfered 六角低ナット-面とり無し |

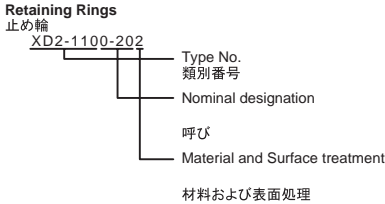
| | Head size (mm) 頭部寸法 (mm) | | | | | | |
|----------------|-----------------------------|------|-----|-----|-----|-----|-----|
| | M2 | M2.5 | M3 | M4 | M5 | M6 | M8 |
| S | 4 | 5 | 5.5 | 7 | 8 | 10 | 13 |
| m XB7-210 | 1.6 | 2 | 2.4 | 3.2 | 4 | 5 | 6.5 |
| m XB7-220 | 1.2 | 1.6 | 1.8 | 2.4 | 3.2 | 3.6 | 5 |
| m XB7-230, 231 | 1.6 | 2 | 2.4 | 3.2 | 4.7 | 5.2 | 6.8 |
| m XB7-240, 241 | - | - | - | - | 5.1 | 5.7 | 7.5 |
| m XB7-250 | - | - | - | - | 5.6 | 6.1 | 7.9 |
| m XB7-260 | 1.2 | 1.6 | 1.8 | 2.2 | 2.7 | 3.2 | 4 |
| m XB7-270 | 1.2 | 1.6 | 1.8 | 2.2 | 2.7 | 3.2 | 4 |

FIGURE ZZE MECHANICAL STANDARD PARTS (RETAINING RINGS)

5. Retaining Rings

止め輪

How to read Parts Numbers
部品番号の見方



XD2-110 expresses retaining ring-E type (Type1).
XD2-110は、E形止め輪(1種)を表す

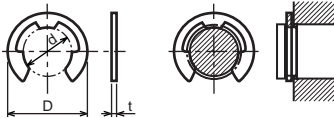
0-20 expresses a 020 of nominal designation.
(See Table 5)

0-20は、呼び020を表す(表5参照)

2 expresses Stainless steel (Surface treatment is not to be given) from Table 1.
2は、表1よりステンレス(表面処理なし)を表す

5-1. Retaining Rings - E type

E形止め輪

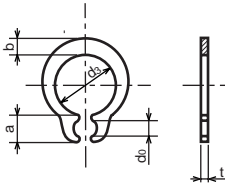


| Type No. 類別番号 | Type 類別 |
|------------------|---|
| XD2-110 | Retaining ring - E type (Type 1) E形止め輪(1種) |
| XD2-120 | Retaining ring - E type (Type 2) E形止め輪(2種) |

Table 5 表5

| Type 種類 | Nominal designation 呼び | d (mm) | D (mm) | t (mm) |
|--------------|------------------------------|--------|--------|--------|
| Type 1 1種 | 007 | 0.65 | 2 | 0.2 |
| | 010 | 0.95 | 2.8 | 0.2 |
| | 013 | 1.25 | 3.3 | 0.3 |
| | 017 | 1.65 | 4.2 | 0.4 |
| | 020 | 1.95 | 4.6 | 0.5 |
| | 024 | 2.35 | 6 | 0.6 |
| | 028 | 2.74 | 6.5 | 0.6 |
| | 032 | 3.14 | 7.2 | 0.6 |
| | 037 | 3.64 | 8 | 0.7 |
| | 040 | 3.93 | 10 | 0.7 |
| | 042 | 4.13 | 10 | 0.7 |
| | 050 | 4.93 | 11 | 0.7 |
| | 058 | 5.73 | 12 | 0.7 |
| | 060 | 5.93 | 12.7 | 0.9 |
| | 064 | 6.32 | 13.5 | 0.9 |
| 074 | 7.31 | 15 | 0.9 | |
| 080 | 7.91 | 16.5 | 1 | |
| Type 2 2種 | 008 | 0.8 | 2 | 0.2 |
| | 012 | 1.2 | 3 | 0.3 |
| | 015 | 1.5 | 4 | 0.4 |
| | 020 | 2 | 5 | 0.4 |
| | 025 | 2.5 | 6 | 0.4 |
| | 030 | 3 | 7 | 0.6 |
| | 040 | 4 | 9 | 0.6 |
| | 050 | 5 | 11 | 0.6 |
| | 060 | 6 | 12 | 0.8 |
| | 070 | 7 | 14 | 0.8 |
| | 080 | 8 | 16 | 0.8 |
| | 090 | 9 | 18 | 0.8 |
| | 100 | 10 | 20 | 1 |

5-2. Grip Rings
グリップ止め輪

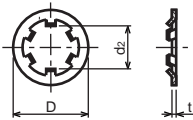


| Type No. 類別番号 | Type 類別 |
|------------------|----------------------|
| XD2-210 | Grip ring グリップ止め輪 |

Table 5 表5

| Nominal designation 呼び | d_3 (mm) | t (mm) | b (mm) | a (mm) | d_0 (mm) |
|---------------------------|------------|----------|----------|----------|------------|
| 020 | 1.9 | 0.5 | 1 | 1.8 | 0.8 |
| 025 | 2.35 | 0.5 | 1.2 | 1.9 | 0.9 |
| 030 | 2.85 | 0.6 | 1.4 | 1.9 | 0.9 |
| 035 | 3.3 | 0.6 | 1.6 | 2 | 0.9 |
| 040 | 3.8 | 0.8 | 1.8 | 2.8 | 1.2 |
| 045 | 4.25 | 0.8 | 2 | 2.9 | 1.3 |
| 050 | 4.75 | 0.8 | 2.2 | 2.9 | 1.3 |
| 060 | 5.7 | 1 | 2.4 | 3.1 | 1.4 |
| 070 | 6.7 | 1 | 2.7 | 3.3 | 1.4 |
| 080 | 7.7 | 1 | 3 | 3.5 | 1.4 |
| 090 | 8.65 | 1.2 | 3.3 | 4.7 | 1.5 |
| 100 | 9.65 | 1.2 | 3.5 | 4.7 | 2 |

5-3. Toothed Retaining Rings
歯付き形止め輪



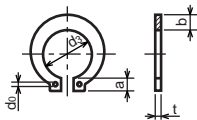
| Type No. 類別番号 | Type 類別 |
|------------------|-----------------------------------|
| XD2-230 | Toothed retaining ring 歯付き形止め輪 |

Table 5 表5

| Nominal designation 呼び | d_z (mm) | D (mm) | t (mm) | No of teeth 歯数 |
|---------------------------|------------|----------|----------|-------------------|
| 015 | 1.4 | 5.2 | 0.25 | 3 |
| 020 | 1.9 | 6 | 0.25 | 3 |
| 024 | 2.3 | 6.4 | 0.25 | 3 |
| 030 | 2.8 | 8 | 0.25 | 4 |
| 040 | 3.8 | 9 | 0.25 | 4 |
| 050 | 4.8 | 10 | 0.25 | 5 |
| 060 | 5.8 | 11 | 0.25 | 5 |
| 080 | 7.8 | 13 | 0.25 | 5 |
| 100 | 9.8 | 15.4 | 0.25 | 6 |

5-4. Retaining Rings - C Type

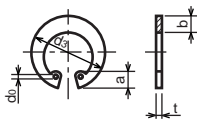
C形止め輪



| Type No. 類別番号 | Type 類別 |
|------------------|---|
| XD2-310 | Retaining ring - C type for shaft C形止め輪 軸用 |

Table 5 表5

| Nominal designation 呼び | d ₃ (mm) | t (mm) | b (mm) | a (mm) | d ₀ (mm) |
|---------------------------|---------------------|--------|--------|--------|---------------------|
| 010 | 9.3 | 1 | 1.6 | 3 | 1.2 |
| 012 | 11.1 | 1 | 1.8 | 3.2 | 1.5 |
| 014 | 12.9 | 1 | 2 | 3.4 | 1.7 |
| 015 | 13.8 | 1 | 2.1 | 3.5 | 1.7 |
| 016 | 14.7 | 1 | 2.2 | 3.6 | 1.7 |
| 017 | 15.7 | 1 | 2.2 | 3.7 | 1.7 |
| 018 | 16.5 | 1.2 | 2.6 | 3.8 | 1.7 |
| 020 | 18.5 | 1.2 | 2.7 | 3.9 | 2 |
| 022 | 20.5 | 1.2 | 2.7 | 4.1 | 2 |
| 025 | 23.2 | 1.2 | 3.1 | 4.3 | 2 |
| 028 | 25.9 | 1.5 | 3.1 | 4.6 | 2 |
| 030 | 27.9 | 1.5 | 3.5 | 4.8 | 2 |
| 032 | 29.6 | 1.5 | 3.5 | 5 | 2.5 |
| 035 | 32.2 | 1.5 | 4 | 5.4 | 2.5 |



| Type No. 類別番号 | Type 類別 |
|------------------|--|
| XD2-320 | Retaining ring - C type for hole C形止め輪 穴用 |

Table 5 表5

| Nominal designation 呼び | d ₃ (mm) | t (mm) | b (mm) | a (mm) | d ₀ (mm) |
|---------------------------|---------------------|--------|--------|--------|---------------------|
| 010 | 10.7 | 1 | 1.8 | 3.1 | 1.2 |
| 011 | 11.8 | 1 | 1.8 | 3.2 | 1.2 |
| 012 | 13 | 1 | 1.8 | 3.3 | 1.5 |
| 014 | 15.1 | 1 | 2 | 3.6 | 1.7 |
| 016 | 17.3 | 1 | 2 | 3.7 | 1.7 |
| 018 | 19.5 | 1 | 2.5 | 4 | 1.7 |
| 019 | 20.5 | 1 | 2.5 | 4 | 2 |
| 020 | 21.5 | 1 | 2.5 | 4 | 2 |
| 022 | 23.5 | 1 | 2.5 | 4.1 | 2 |
| 025 | 26.9 | 1.2 | 3 | 4.4 | 2 |
| 028 | 30.1 | 1.2 | 3 | 4.6 | 2 |
| 030 | 32.1 | 1.2 | 3 | 4.7 | 2 |
| 032 | 34.4 | 1.2 | 3.5 | 5.2 | 2.5 |
| 035 | 37.8 | 1.5 | 3.5 | 5.2 | 2.5 |
| 037 | 39.8 | 1.5 | 3.5 | 5.2 | 2.5 |
| 040 | 43.5 | 1.8 | 4 | 5.7 | 2.5 |
| 042 | 45.5 | 1.8 | 4 | 5.8 | 2.5 |
| 045 | 48.5 | 1.8 | 4.5 | 5.9 | 2.5 |
| 047 | 50.5 | 1.8 | 4.5 | 6.1 | 2.5 |
| 050 | 54.2 | 2 | 4.5 | 6.5 | 2.5 |
| 052 | 56.2 | 2 | 5.1 | 6.5 | 2.5 |
| 055 | 59.2 | 2 | 5.1 | 6.5 | 2.5 |
| 060 | 64.2 | 2 | 5.1 | 6.8 | 2.5 |
| 062 | 66.2 | 2 | 5.5 | 6.9 | 2.5 |
| 068 | 72.5 | 2.5 | 6 | 7.4 | 2.5 |
| 072 | 76.5 | 2.5 | 6.6 | 7.4 | 2.5 |
| 075 | 79.5 | 2.5 | 6.6 | 7.8 | 2.5 |
| 080 | 85.5 | 2.5 | 7 | 8 | 2.5 |
| 085 | 90.5 | 3 | 7 | 8 | 3 |
| 090 | 95.5 | 3 | 7.6 | 8.3 | 3 |
| 095 | 100.5 | 3 | 8 | 8.5 | 3 |

Prepared by
OIP Service Management Center
CANON INC.

Canon