

PARTS CATALOG

**MF7170i/imageCLASS
MF7120/MF7280**

Canon

Apr 15 2008

PREFACE

This Parts Catalog contains listings of parts used

Diagrams are provided with the listings to aid the service technician in identifying clearly, the item to be ordered.

Whenever ordering parts, consult this Parts Catalog for all of the information pertaining to each item. Be sure to include, in the Parts Request, the full item description, the item part number, and the quantity.

COPYRIGHT (C) 1999 CANON INC.

Use of this manual should be strictly supervised to avoid disclosure of confidential information.

Contents

NUMERICAL INDEX

MF7170i/imageCLASS MF7120/MF7280(Numerical Index) 1-1

MF7170i/imageCLASS MF7120/MF7280(Parts Catalog)

A	ASSEMBLY LOCATION DIAGRAM	2-1
001	ACCESSORIES	2-4
100	EXTERNAL COVERS, PANELS, ETC.	2-5
101	MACHINE FRONT PLATE	2-8
102	INTERNAL COMPONENTS 1	2-11
103	INTERNAL COMPONENTS 2	2-13
104	MACHINE REAR PLATE	2-16
130	CONTROL PANEL ASSEMBLY	2-19
140	LFET DOOR ASSEMBLY	2-21
141	PAPER FEEDER FRAME ASSEMBLY	2-24
210	READER ASSEMBLY	2-26
250	MAIN DRIVE ASSEMBLY	2-31
280	FIXING DRIVE ASSEMBLY	2-33
300	CASSETTE	2-35
310	CASSETTE FEEDER ASSEMBLY	2-37
311	PAPER PICK-UP ASSEMBLY	2-39
312	CASSETTE FEEDER ASSEMBLY(MF7280)	2-42
313	PAPER PICK-UP ASSEMBLY(MF7280)	2-45
315	MULTI FEED TRAY ASSEMBLY	2-48
350	PAPER DELIVERY ASSEMBLY	2-50
810	FIXING ASSEMBLY	2-52
P01	PACKING KIT	2-55
P11	ADF ASSEMBLY	2-57
P12	DOCUMENT TRAY ASSEMBLY	2-60
P31	OPEN/CLOSE PANEL ASSEMBLY	2-62
P33	PAPER FEEDER ASSEMBLY	2-64
S01	DUPLEX MOUNTING HARDWARE(MF7280)	2-67
S20	DUPLEX FEEDER ASSEMBLY(MF7280)	2-69
S50	DUPLEX REVERSE UNIT (MF7280)	2-72
X01	PACKING KIT	2-74
900	IMAGE PROCESSOR PCB ASSEMBLY	2-76
910	MODEM PCB ASSEMBLY	2-78
930	HVT PCB ASSEMBLY	2-79
X90	FAX BOARD PCB ASSEMBLY	2-80

NUMERICAL INDEX

MF7170i/imageCLASS MF7120/MF7280(Numerical Index)

PARTS NUMBER	FIGURE & KEY NO.	PARTS NUMBER	FIGURE & KEY NO.	PARTS NUMBER	FIGURE & KEY NO
FA3-8727-000	103 - 19	FB6-1650-000	300 - 7	FC3-1541-000	P31 - 7
FA3-8727-000	810 - 36	FB6-1660-000	311 - 4	FC3-1542-000	P31 - 12
FA4-1159-000	103 - 50	FB6-1660-000	313 - 21	FC3-1547-000	P01 - 3
FA8-2447-000	312 - 12	FB6-1722-000	104 - 1	FC3-1549-000	P11 - 19
FA8-2448-000	313 - 1	FB6-1905-000	313 - 22	FC3-1549-000	P31 - 13
FA8-2449-000	313 - 2	FB6-1908-000	311 - 20	FC3-1549-000	P33 - 15
FA9-2112-000	103 - 11	FB6-1908-000	313 - 31	FC3-1568-000	P33 - 53
FA9-3870-000	100 - 26	FB6-1909-000	311 - 5	FC3-1569-000	P11 - 37
FB4-5532-000	310 - 1	FB6-1909-000	313 - 23	FC3-1571-000	P01 - 1
FB4-5532-000	312 - 2	FB6-1910-000	310 - 5	FC3-1572-000	P01 - 2
FB4-5808-020	300 - 18	FB6-1910-000	312 - 7	FC5-0543-000	140 - 24
FB4-5809-020	300 - 9	FB6-1920-000	312 - 14	FC5-0792-000	210 - 12
FB4-5810-000	300 - 11	FB6-1996-000	312 - 15	FC5-1427-000	210 - 54
FB4-5813-020	300 - 10	FB6-1997-000	312 - 16	FC5-1444-000	210 - 13
FB4-5814-000	300 - 1	FB6-2000-000	300 - 4	FC5-4847-000	350 - 1
FB4-5824-000	300 - 19	FC3-1449-000	P11 - 10	FC5-4860-000	810 - 1
FB4-6032-000	313 - 3	FC3-1450-000	P11 - 11	FC5-5297-000	810 - 2
FB4-6033-000	313 - 4	FC3-1451-000	P11 - 23	FC5-6805-000	810 - 22
FB4-6034-000	313 - 5	FC3-1452-000	P11 - 12	FC6-4112-000	104 -
FB4-9817-030	311 - 25	FC3-1454-000	P11 - 13	FC6-4113-000	101 - 1
FB4-9817-030	313 - 39	FC3-1455-000	P11 - 14	FC6-4114-000	101 - 12
FB5-9410-000	001 - 2	FC3-1460-000	P33 - 1	FC6-4115-000	101 - 13
FB6-1336-000	210 - 48	FC3-1462-000	P33 - 2	FC6-4116-000	101 - 19
FB6-1337-000	210 - 49	FC3-1465-000	P33 - 4	FC6-4120-000	101 - 14
FB6-1536-000	312 - 13	FC3-1466-000	P33 - 5	FC6-4138-000	103 - 27
FB6-1541-000	311 - 22	FC3-1468-000	P11 - 1	FC6-4147-000	101 - 17
FB6-1541-000	313 - 33	FC3-1469-000	P33 - 6	FC6-4148-000	103 - 20
FB6-1550-000	311 - 1	FC3-1470-000	P33 - 7	FC6-4149-000	101 - 4
FB6-1550-000	313 - 6	FC3-1471-000	P33 - 8	FC6-4191-000	103 - 40
FB6-1551-000	313 - 7	FC3-1477-000	P31 - 2	FC6-4205-000	103 - 43
FB6-1608-000	310 - 2	FC3-1478-000	P31 - 3	FC6-4209-000	140 - 9
FB6-1608-000	312 - 3	FC3-1479-000	P31 - 4	FC6-4210-000	140 - 10
FB6-1613-000	313 - 8	FC3-1480-000	P31 - 5	FC6-4211-000	140 - 11
FB6-1614-000	312 - 9	FC3-1486-000	P12 - 2	FC6-4215-000	315 - 1
FB6-1614-000	313 - 9	FC3-1488-000	P12 - 3	FC6-4218-000	315 - 2
FB6-1615-000	313 - 10	FC3-1491-000	P11 - 15	FC6-4219-000	315 - 3
FB6-1616-000	313 - 11	FC3-1492-000	P11 - 2	FC6-4220-000	315 - 4
FB6-1623-000	313 - 12	FC3-1493-000	P33 - 9	FC6-4221-000	315 - 5
FB6-1624-000	313 - 13	FC3-1494-000	P33 - 10	FC6-4222-000	315 - 6
FB6-1626-000	311 - 2	FC3-1495-000	P11 - 16	FC6-4223-000	315 - 7
FB6-1626-000	313 - 14	FC3-1496-000	P11 - 3	FC6-4224-000	140 - 12
FB6-1628-000	313 - 15	FC3-1497-000	P11 - 17	FC6-4226-020	140 - 13
FB6-1631-030	313 - 40	FC3-1498-000	P11 - 18	FC6-4227-020	140 - 14
FB6-1633-000	311 - 3	FC3-1509-000	P33 - 11	FC6-4232-000	140 - 15
FB6-1633-000	313 - 17	FC3-1510-000	P33 - 12	FC6-4233-000	140 - 16
FB6-1634-000	313 - 18	FC3-1511-000	P33 - 13	FC6-4234-000	140 - 17
FB6-1635-000	313 - 19	FC3-1512-000	P33 - 14	FC6-4235-000	102 - 1
FB6-1636-000	313 - 20	FC3-1513-000	P11 - 24	FC6-4236-000	102 - 2
FB6-1640-000	300 - 2	FC3-1525-000	P31 - 11	FC6-4238-000	140 - 18
FB6-1644-000	300 - 3	FC3-1529-000	P12 - 5	FC6-4239-000	140 - 19
FB6-1646-000	300 - 12	FC3-1539-000	P11 - 4	FC6-4244-000	102 - 21
FB6-1649-000	300 - 13	FC3-1540-000	P31 - 6	FC6-4259-020	100 - 3

NUMERICAL INDEX

MF7170i/imageCLASS MF7120/MF7280(Numerical Index)

PARTS NUMBER	FIGURE & KEY NO.	PARTS NUMBER	FIGURE & KEY NO.	PARTS NUMBER	FIGURE & KEY NO
FC6-4260-000	100 - 4	FC6-4360-030	103 - 18	FC6-4525-000	210 - 50
FC6-4261-000	100 - 5	FC6-4361-000	300 - 6	FC6-4528-000	210 - 14
FC6-4262-000	100 - 6	FC6-4375-000	810 - 39	FC6-4529-000	100 - 20
FC6-4264-000	100 - 8	FC6-4376-000	140 - 2	FC6-4541-000	210 - 15
FC6-4265-020	100 - 9	FC6-4377-000	140 - 20	FC6-4558-000	210 - 20
FC6-4266-000	100 - 10	FC6-4386-000	140 - 3	FC6-4559-000	210 - 39
FC6-4267-000	100 - 11	FC6-4399-020	103 - 6	FC6-4561-000	210 - 40
FC6-4268-000	100 - 12	FC6-4413-000	140 - 5	FC6-4562-000	210 - 19
FC6-4269-040	100 - 13	FC6-4414-000	140 - 6	FC6-4573-000	210 - 16
FC6-4272-000	100 - 14	FC6-4435-000	103 - 7	FC6-4580-000	100 - 21
FC6-4273-000	100 - 16	FC6-4436-000	250 - 1	FC6-4582-000	210 - 5
FC6-4284-000	311 - 26	FC6-4437-000	250 - 2	FC6-4689-000	103 - 46
FC6-4285-000	311 - 6	FC6-4438-020	350 - 2	FC6-4690-000	101 - 5
FC6-4286-000	311 - 7	FC6-4446-000	103 - 8	FC6-4691-000	104 - 7
FC6-4288-020	313 - 51	FC6-4447-000	103 - 9	FC6-4693-000	102 - 20
FC6-4290-000	311 - 21	FC6-4448-000	810 - 21	FC6-4710-000	102 - 5
FC6-4290-000	313 - 32	FC6-4449-000	810 - 16	FC6-4720-000	102 - 6
FC6-4291-000	311 - 8	FC6-4450-000	810 - 17	FC6-4724-000	100 - 28
FC6-4297-000	310 - 9	FC6-4452-000	810 - 3	FC6-4727-000	210 - 17
FC6-4298-000	310 - 10	FC6-4453-000	810 - 4	FC6-4734-000	102 - 7
FC6-4300-000	310 - 11	FC6-4454-000	810 - 41	FC6-5399-000	101 - 25
FC6-4304-000	311 - 9	FC6-4458-020	810 - 38	FC6-5400-000	101 - 28
FC6-4304-000	313 - 24	FC6-4462-000	810 - 5	FC6-5401-000	101 - 11
FC6-4305-000	103 - 2	FC6-4463-000	810 - 6	FC6-5405-000	101 - 26
FC6-4306-000	103 - 3	FC6-4465-020	350 - 13	FC6-5408-000	101 - 2
FC6-4308-000	103 - 34	FC6-4467-000	810 - 43	FC6-5409-000	101 - 21
FC6-4309-030	103 - 35	FC6-4470-030	350 - 4	FC6-5410-000	101 - 3
FC6-4310-000	103 - 36	FC6-4473-020	350 - 14	FC6-5414-000	101 - 9
FC6-4311-020	103 - 4	FC6-4474-030	350 - 5	FC6-5415-000	101 - 10
FC6-4312-020	103 - 5	FC6-4476-000	100 - 1	FC6-5417-000	101 - 24
FC6-4313-000	141 - 7	FC6-4477-000	350 - 3	FC6-5425-000	130 - 1
FC6-4314-030	141 - 1	FC6-4478-000	102 - 3	FC6-5426-000	130 - 2
FC6-4315-000	141 - 2	FC6-4479-000	810 - 7	FC6-5427-000	130 - 3
FC6-4316-000	141 - 11	FC6-4480-000	810 - 8	FC6-5428-000	130 - 4
FC6-4317-000	141 - 3	FC6-4481-000	810 - 9	FC6-5429-000	130 - 5
FC6-4324-000	141 - 4	FC6-4482-000	102 - 4	FC6-5430-000	130 - 6
FC6-4326-000	311 - 10	FC6-4484-000	350 - 15	FC6-5431-000	130 - 7
FC6-4337-000	300 - 5	FC6-4492-000	810 - 10	FC6-5433-000	130 - 8
FC6-4348-000	311 - 11	FC6-4495-000	103 - 10	FC6-6706-000	312 - 5
FC6-4350-000	311 - 12	FC6-4497-000	250 - 3	FC6-6707-000	312 - 29
FC6-4350-000	313 - 36	FC6-4499-000	X01 - 2	FC6-6710-000	312 - 22
FC6-4351-000	311 - 27	FC6-4500-000	X01 - 3	FC6-6712-000	310 - 15
FC6-4352-000	311 - 13	FC6-4501-000	810 - 11	FC6-6712-000	312 - 24
FC6-4352-000	313 - 25	FC6-4502-000	350 - 7	FC6-6714-000	312 - 17
FC6-4355-000	311 - 14	FC6-4503-000	810 - 42	FC6-6720-000	312 - 1
FC6-4355-000	313 - 26	FC6-4504-000	350 - 19	FC6-6740-000	S20 - 23
FC6-4356-000	311 - 28	FC6-4506-000	210 - 30	FC6-6752-000	S20 - 1
FC6-4356-000	313 - 41	FC6-4511-000	210 - 37	FC6-6753-000	S20 - 2
FC6-4357-000	310 - 3	FC6-4513-000	100 - 25	FC6-6754-000	S20 - 15
FC6-4357-000	312 - 4	FC6-4514-000	210 - 31	FC6-6755-000	S20 - 3
FC6-4358-000	311 - 15	FC6-4519-000	100 - 19	FC6-6756-000	S20 - 4
FC6-4358-000	313 - 27	FC6-4522-000	210 - 2	FC6-6757-000	S20 - 5

NUMERICAL INDEX

MF7170i/imageCLASS MF7120/MF7280(Numerical Index)

PARTS NUMBER	FIGURE & KEY NO.	PARTS NUMBER	FIGURE & KEY NO.	PARTS NUMBER	FIGURE & KEY NO
FC6-6758-000	S20 - 6	FF3-4629-000	P31 - 8	FK2-1068-000	311 - 17
FC6-6759-000	S20 - 7	FF3-4630-000	P31 - 9	FK2-1070-000	140 - 21
FC6-6759-000	S50 - 2	FF3-4631-000	P33 - 19	FK2-1072-000	140 - 22
FC6-6760-000	S20 - 8	FF3-4632-000	P33 - 20	FK2-1074-000	103 - 13
FC6-6764-000	S20 - 24	FF3-4633-000	P33 - 16	FK2-1075-000	103 - 13
FC6-6765-000	S20 - 9	FF3-4634-000	P11 - 8	FK2-1080-000	103 - 47
FC6-6767-000	S20 - 10	FF3-4636-000	P33 - 17	FK2-1081-000	103 - 12
FC6-6768-000	S20 - 11	FF3-4638-000	P33 - 3	FK2-1082-000	311 - 16
FC6-6769-000	S20 - 25	FF6-1610-000	313 - 34	FK2-1084-000	140 - 8
FC6-6776-000	S20 - 12	FF6-1621-000	311 - 16	FK2-1085-000	104 - 8
FC6-6777-000	S20 - 13	FF6-1621-000	313 - 28	FK2-1086-000	104 - 8
FC6-6778-000	S01 - 5	FG3-3501-000	810 - 12	FK2-1104-000	313 - 29
FC6-6779-000	S50 - 3	FG3-4036-000	P12 -	FK2-1114-000	S20 - 17
FC6-6780-000	S50 - 4	FG3-4037-000	P31 -	FK2-1265-000	X90 - 1
FC6-6781-000	S50 - 1	FG3-4038-020	P33 -	FK2-1270-000	930 - T1
FC6-6782-000	S01 - 1	FG3-4039-000	P11 - 22	FK2-1271-000	930 - T2
FC6-6783-000	S01 - 2	FG3-4040-000	P33 - 18	FK2-1329-010	001 - 1
FC6-6784-000	S01 - 3	FG3-4041-000	P31 - 14	FK2-1331-010	001 - 1
FC6-7092-000	101 - 7	FG3-4043-000	P31 - 10	FK2-1332-010	001 - 1
FC6-7103-020	140 - 7	FG3-4044-000	P31 - 15	FK2-1333-010	001 - 1
FC6-8669-000	102 - 25	FG3-4045-000	P31 - 16	FK2-1348-000	930 - T4
FC6-8670-000	102 - 26	FG6-8440-000	312 - 6	FK2-1831-030	103 - 13
FC6-8671-000	102 - 27	FG6-8440-000	P11 - 32	FK2-1844-000	102 - 10
FC6-8672-000	101 - 27	FH2-7207-000	P12 - 10	FK2-2151-000	001 - 1
FC6-8673-000	100 - 17	FH2-7208-000	P12 - 11	FK2-3282-000	001 - 1
FC6-8674-000	100 - 18	FH2-7209-000	P33 - 25	FK2-4748-000	001 - 1
FC6-8679-000	100 - 15	FH2-7210-000	P11 - 33	FK2-4749-000	001 - 1
FC7-1017-000	101 - 22	FH2-7211-000	P11 - 25	FK2-5122-000	104 - 23
FC7-1018-000	101 - 22	FH2-7212-000	P12 - 12	FL2-3180-000	102 - 11
FC7-1019-000	101 - 22	FH3-5235-000	930 - T3	FL2-3181-000	102 - 12
FC7-1020-000	130 - 9	FH3-5255-000	930 - T7	FL2-3188-000	210 - 53
FC7-1027-000	100 - 2	FH5-1142-000	P33 - 49	FL2-3200-000	140 - 23
FC7-1028-000	100 - 2	FH5-3543-000	141 - 5	FL2-3201-000	140 - 25
FC7-1029-000	101 - 29	FH5-3730-000	P11 - 34	FL2-3202-000	140 - 26
FC7-1749-000	104 - 17	FH5-3731-000	P12 - 13	FL2-3207-000	210 - 24
FC7-1760-000	900 - 6	FH6-0772-000	130 - 10	FL2-3208-000	210 - 24
FC7-1770-000	311 - 44	FH6-5136-000	P11 - 26	FL2-3209-000	210 - 24
FC7-1771-000	810 - 44	FH7-7569-000	210 - 26	FL2-3213-000	103 - 15
FC8-0160-000	313 - 16	FH7-7569-000	210 - 26	FL2-3214-000	141 - 6
FC8-0165-000	140 - 32	FK2-0216-000	P11 - 20	FL2-3220-000	350 - 8
FC8-0166-000	140 - 48	FK2-0331-000	910 - IC14	FL2-3229-000	104 - 15
FC8-0167-000	140 - 16	FK2-0949-000	900 - IC140	FL2-3230-000	210 - 21
FC8-0168-000	140 - 13	FK2-0949-000	910 - IC140	FL2-3231-000	210 - 51
FC8-0215-000	350 - 6	FK2-1058-000	104 - 2	FL2-3233-000	210 - 52
FE5-4048-000	311 - 29	FK2-1059-000	104 - 3	FL2-3268-000	100 - 22
FE5-4048-000	313 - 42	FK2-1060-000	210 - 7	FL2-3269-000	100 - 23
FF3-4621-000	P11 - 5	FK2-1061-000	210 - 18	FL2-3280-000	210 - 24
FF3-4624-000	P11 - 7	FK2-1062-000	102 - 8	FL2-3286-000	210 - 38
FF3-4625-000	P12 - 4	FK2-1063-000	X01 - 1	FL2-3736-000	312 - 20
FF3-4626-000	P12 - 6	FK2-1064-000	210 - 8	FL2-3744-000	S20 - 26
FF3-4627-000	P12 - 8	FK2-1066-020	210 - 28	FL2-3746-000	350 - 6
FF3-4628-000	P12 - 9	FK2-1067-000	102 - 9	FL2-3856-000	S20 - 14

NUMERICAL INDEX

MF7170i/imageCLASS MF7120/MF7280(Numerical Index)

PARTS NUMBER	FIGURE & KEY NO.	PARTS NUMBER	FIGURE & KEY NO.	PARTS NUMBER	FIGURE & KEY NO
FL2-4784-000	130 - 12	FM2-4410-000	104 - 4	FM2-4893-000	900 - 1
FL2-4786-000	130 - 12	FM2-4411-000	810 - 25	FM2-5941-070	104 - 9
FL2-4787-000	130 - 12	FM2-4412-000	210 - 44	FM2-5942-070	104 - 9
FL2-4789-000	100 - 7	FM2-4413-000	103 - 41	FM2-5944-000	104 - 9
FL2-4790-000	100 - 7	FM2-4414-000	104 - 12	FM2-5945-000	104 - 9
FL2-4791-000	100 - 7	FM2-4416-000	104 - 18	FM2-5946-000	104 - 9
FL2-4792-000	100 - 7	FM2-4417-000	140 - 43	FM2-5951-000	103 - 14
FL2-4793-000	100 - 7	FM2-4418-000	210 - 10	FM2-5952-000	130 - 17
FL2-4875-000	100 - 7	FM2-4419-000	210 - 11	FM2-5954-080	930 -
FL2-4876-000	100 - 7	FM2-4420-000	103 - 1	FM2-5957-030	104 - 18
FL2-8094-000	S01 - 4	FM2-4421-000	140 - 27	FM2-6347-000	141 -
FM2-2753-000	130 - 13	FM2-4422-000	210 - 23	FM2-6350-000	140 -
FM2-2790-020	X90 - 2	FM2-4423-020	210 - 45	FM2-6351-000	810 -
FM2-3292-000	130 - 11	FM2-4424-000	103 - 48	FM2-6352-000	810 - 13
FM2-3294-000	315 -	FM2-4425-000	104 - 11	FM2-6354-000	130 - 18
FM2-3313-000	300 -	FM2-4427-000	210 - 34	FM2-6355-000	130 - 18
FM2-3319-000	310 - 4	FM2-4428-000	210 - 47	FM2-6356-000	130 - 18
FM2-3320-050	311 -	FM2-4433-000	101 - 8	FM2-6685-070	350 -
FM2-3325-000	300 - 8	FM2-4434-000	X01 - 4	FM2-9199-000	910 -
FM2-3326-000	300 - 17	FM2-4435-000	910 - 1	FS1-1205-000	311 - 30
FM2-3344-000	250 -	FM2-4435-000	X01 - 6	FS1-1205-000	313 - 43
FM2-3345-000	810 -	FM2-4483-000	312 - 11	FS2-1707-000	P11 - 27
FM2-3346-000	810 - 13	FM2-4484-010	313 -	FS2-1708-000	P31 - 17
FM2-3348-000	810 - 19	FM2-4493-000	S50 -	FS2-1708-000	P33 - 26
FM2-3349-000	810 - 20	FM2-4495-000	312 - 19	FS2-1709-000	P33 - 27
FM2-3350-000	280 -	FM2-4496-000	312 - 30	FS2-1710-000	P31 - 18
FM2-3351-000	350 -	FM2-4497-000	312 - 23	FS2-1710-000	P33 - 28
FM2-3352-000	810 -	FM2-4499-000	312 - 25	FS2-1711-000	P33 - 29
FM2-3353-000	810 - 13	FM2-4500-000	312 - 27	FS2-3885-000	P33 - 22
FM2-3368-000	210 -	FM2-4515-000	S20 - 41	FS2-3886-000	P33 - 30
FM2-3383-000	102 - 13	FM2-4516-000	S01 - 8	FS2-3887-000	P33 - 31
FM2-3384-000	102 - 13	FM2-4517-000	S20 - 30	FS2-9567-000	P11 - 35
FM2-4006-000	140 -	FM2-4518-030	S20 - 31	FS2-9567-000	P33 - 32
FM2-4010-000	130 -	FM2-4519-000	S20 - 32	FS2-9568-000	P11 - 28
FM2-4011-000	130 -	FM2-4520-000	S20 - 33	FS2-9569-000	P11 - 29
FM2-4012-000	130 -	FM2-4536-000	210 - 47	FS2-9569-000	P12 - 14
FM2-4013-000	130 - 14	FM2-4538-000	104 - 25	FS2-9569-000	P31 - 20
FM2-4020-000	101 - 16	FM2-4540-000	X01 - 8	FS2-9569-000	P33 - 33
FM2-4053-000	900 - 1	FM2-4540-000	X90 - 3	FS2-9570-000	P11 - 36
FM2-4055-000	900 - 3	FM2-4541-000	104 - 5	FS2-9570-000	P33 - 51
FM2-4056-000	900 - 3	FM2-4542-000	104 - 14	FS2-9571-000	P11 - 30
FM2-4058-000	104 - 10	FM2-4773-000	910 -	FS2-9572-000	P12 - 15
FM2-4060-000	900 - 5	FM2-4777-000	X90 - 4	FS2-9573-000	P31 - 19
FM2-4399-000	130 - 15	FM2-4778-000	X90 - 4	FS4-0644-000	P33 - 34
FM2-4400-000	210 - 41	FM2-4780-000	104 - 24	FS4-0645-000	P33 - 23
FM2-4401-000	102 - 24	FM2-4784-030	130 - 16	FS4-0646-000	P33 - 35
FM2-4402-000	102 - 22	FM2-4785-000	103 - 14	FS4-0647-000	P33 - 36
FM2-4403-000	310 - 7	FM2-4786-000	103 - 14	FS4-0648-000	P33 - 37
FM2-4404-000	104 - 13	FM2-4787-000	103 - 14	FS4-0649-000	P33 - 38
FM2-4405-000	810 - 24	FM2-4789-000	350 - 16	FS4-0650-000	P33 - 39
FM2-4408-000	103 - 44	FM2-4791-000	210 - 36	FS4-0651-000	P33 - 40
FM2-4409-000	102 - 19	FM2-4792-000	210 - 36	FS4-0652-000	P33 - 41

NUMERICAL INDEX

MF7170i/imageCLASS MF7120/MF7280(Numerical Index)

PARTS NUMBER	FIGURE & KEY NO.	PARTS NUMBER	FIGURE & KEY NO.	PARTS NUMBER	FIGURE & KEY NO
FS4-0653-000	P33 - 42	FU5-1498-000	102 - 17	FU6-0776-030	311 - 40
FS4-0654-000	P31 - 21	FU5-1519-000	810 - 26	FU6-0788-000	250 - 4
FS4-0657-000	P12 - 16	FU5-1520-000	810 - 27	FU6-0790-000	250 - 7
FS4-0658-000	P12 - 17	FU5-1522-000	350 - 10	FU6-0791-000	250 - 8
FS4-0659-000	P33 - 43	FU5-1527-000	140 - 28	FU6-0792-000	250 - 9
FS4-0660-000	P33 - 44	FU5-1528-000	140 - 29	FU6-0793-000	250 - 10
FS4-2743-000	P11 - 31	FU5-1529-000	140 - 30	FU6-0794-000	103 - 38
FS4-2744-000	P33 - 45	FU5-1530-000	140 - 31	FU6-0795-000	250 - 11
FS4-2745-000	P33 - 46	FU5-2470-000	810 - 18	FU6-0796-000	103 - 39
FS4-2746-000	P33 - 21	FU5-2476-000	141 - 9	FU6-0799-000	810 - 30
FS4-2747-000	P31 - 22	FU5-3339-000	210 - 32	FU6-0800-000	810 - 31
FS4-2749-000	P33 - 52	FU5-3340-000	210 - 33	FU6-0801-000	810 - 32
FS4-2752-000	P33 - 24	FU5-8575-000	810 - 28	FU6-0802-000	280 - 1
FS4-2753-000	P33 - 47	FU5-8576-000	810 - 29	FU6-0803-000	102 - 15
FS4-2754-000	P31 - 1	FU5-8581-000	210 - 25	FU6-0804-000	280 - 2
FS5-9714-000	313 - 52	FU5-8584-000	300 - 15	FU6-0806-000	103 - 17
FS6-2917-000	300 - 20	FU5-8585-000	310 - 8	FU6-0813-020	140 - 32
FS7-0207-000	300 - 21	FU5-8586-000	310 - 13	FU6-0814-000	140 - 33
FS7-0225-000	311 - 31	FU5-8587-000	300 - 16	FU6-0933-000	S20 - 18
FS7-0225-000	313 - 44	FU5-8588-000	300 - 14	FU6-0934-000	S20 - 19
FS7-0226-000	311 - 32	FU5-8589-000	315 - 9	FU6-0935-000	S20 - 34
FS7-0226-000	313 - 45	FU5-8590-000	210 - 25	FU6-0936-000	S20 - 20
FS7-0227-000	313 - 46	FU5-8591-000	210 - 27	FU6-0937-000	S20 - 35
FS7-0228-000	311 - 33	FU5-8592-000	210 - 25	FU6-0938-000	S20 - 27
FS7-0228-000	313 - 47	FU5-8595-000	210 - 27	FU6-0939-000	S20 - 28
FS7-0229-000	311 - 34	FU5-8596-000	210 - 27	FU6-0940-000	S20 - 36
FS7-0229-000	313 - 48	FU5-8597-000	210 - 27	FU6-2148-000	103 - 21
FS7-0230-000	311 - 35	FU5-8598-000	210 - 25	FU6-2149-000	103 - 22
FS7-0230-000	313 - 49	FU5-8600-000	300 - 23	FU6-2150-000	103 - 23
FS7-8335-000	102 - 14	FU5-8601-000	300 - 22	FU6-2151-000	103 - 24
FS9-0195-000	P01 - 6	FU5-8601-000	300 - 22	FU6-2152-000	103 - 25
FS9-0196-000	P01 - 6	FU5-8604-000	315 - 9	FU6-2156-000	103 - 28
FS9-0197-000	P11 - 21	FU5-8605-000	315 - 8	FU6-2157-000	103 - 29
FS9-0198-000	P11 - 6	FU5-8606-000	103 - 42	FU6-2158-000	103 - 30
FS9-0200-000	P01 - 9	FU5-8607-000	140 - 1	FU6-2159-000	103 - 31
FS9-0201-000	P01 - 9	FU5-8609-000	300 - 22	FU6-2160-000	140 - 44
FS9-0202-000	P01 - 9	FU5-8610-000	101 - 18	FU6-2162-000	140 - 45
FS9-0203-000	P11 - 9	FU5-8612-000	100 - 27	FU6-2170-000	310 - 12
FS9-0206-000	P01 - 10	FU5-8680-000	312 - 21	FU6-2171-000	141 - 8
FS9-0207-000	P01 - 10	FU5-8696-000	S20 - 16	FU6-2173-000	141 - 10
FS9-0208-000	P01 - 10	FU5-8697-000	S01 - 6	FU6-2174-000	311 - 41
FS9-0210-000	P12 - 7	FU5-8699-000	140 - 46	FU6-2175-000	311 - 42
FS9-0211-000	P01 - 7	FU5-8699-000	S01 - 7	FU6-2175-000	313 - 53
FS9-0211-000	P01 - 10	FU5-9139-000	P01 - 5	FU6-2176-000	103 - 16
FS9-0212-000	P01 - 11	FU5-9140-000	P01 - 4	FU6-2177-000	141 - 13
FS9-0213-000	P01 - 8	FU5-9340-000	900 - 2	FU6-2178-000	140 - 47
FS9-0214-000	P01 - 8	FU6-0766-000	250 - 5	FU6-2180-000	140 - 34
FS9-0217-000	P01 - 11	FU6-0767-000	250 - 6	FU6-2181-000	140 - 35
FS9-0224-000	P01 - 8	FU6-0769-000	311 - 36	FU6-2182-000	140 - 36
FS9-0248-000	P01 - 11	FU6-0770-000	311 - 37	FU6-2183-020	140 - 37
FU5-0732-000	350 - 9	FU6-0771-030	311 - 38	FU6-2184-000	250 - 12
FU5-0744-000	141 - 12	FU6-0775-000	311 - 39	FU6-2185-000	810 - 33

NUMERICAL INDEX

MF7170i/imageCLASS MF7120/MF7280(Numerical Index)

PARTS NUMBER	FIGURE & KEY NO.	PARTS NUMBER	FIGURE & KEY NO.	PARTS NUMBER	FIGURE & KEY NO
FU6-2186-000	810 - 34	VS1-7207-006	104 - 19	XB4-5401-007	S50 - 501
FU6-2188-000	810 - 23	VS1-7207-007	104 - 20	XB4-7401-009	101 - 502
FU6-2189-000	350 - 11	VS1-7207-012	S01 - 9	XB4-7401-009	103 - 502
FU6-2190-000	210 - 29	VT2-5177-005	900 - 4	XB4-7401-009	300 - 501
FU6-2191-000	210 - 42	WC2-5332-000	310 - 6	XB4-7401-009	311 - 501
FU6-2193-000	210 - 3	WC2-5332-000	312 - 8	XB4-7401-009	313 - 501
FU6-2194-000	101 - 15	WE8-6346-000	104 - 21	XB4-7401-209	350 - 501
FU6-2195-000	103 - 32	WG8-5624-000	313 - 50	XB6-7300-407	210 - 501
FU6-2198-000	103 - 26	WG8-5696-000	101 - 20	XB6-7300-609	311 - 502
FU6-2199-000	103 - 33	WG8-5696-000	103 - 37	XB6-7300-609	313 - 503
FU6-2206-000	350 - 12	WG8-5696-000	140 - 41	XB6-7300-609	S01 - 502
FU6-2207-020	102 - 16	WG8-5696-000	210 - 43	XB6-7300-805	102 - 501
FU6-2207-020	350 - 12	WG8-5696-000	311 - 43	XB6-7300-805	104 - 501
FU6-2208-000	810 - 40	WG8-5696-000	350 - 18	XB6-7300-805	X01 - 501
FU6-2209-000	103 - 45	WG8-5696-000	810 - 35	XB6-7300-805	X90 - 501
FU6-2210-000	350 - 17	WG8-5696-000	P12 - 1	XB6-7300-807	104 - 502
FU6-2236-000	210 - 1	WG8-5696-000	P33 - 48	XD1-1106-231	210 - 503
FU6-2387-000	S20 - 37	WG8-5696-000	S20 - 39	XD1-1106-235	312 - 503
FU6-2388-000	S20 - 38	WG8-5696-000	X01 - 5	XD2-1100-322	P33 - 501
FU7-2222-000	140 - 37	WK1-5130-000	900 - BAT951	XD2-1100-502	P31 - 501
FU7-2234-000	311 - 19	XA9-0702-000	810 - 15	XD2-1100-502	P33 - 503
FU7-2234-000	313 - 30	XA9-1116-030	S20 - 21	XD2-1100-642	P33 - 502
HH2-2824-000	X01 - 9	XA9-1386-000	101 - 23	XD3-1200-122	313 - 35
HK1-0544-000	X01 - 10	XA9-1415-000	210 - 22	XD3-2200-102	P11 - 502
HK1-0547-000	X01 - 10	XA9-1567-000	100 - 24	XD3-2200-102	P31 - 502
HK1-0551-000	X01 - 10	XA9-1567-000	101 - 6	XD9-0133-000	311 - 23
NPN	001 -	XA9-1567-000	102 - 18	XD9-0133-000	313 - 37
NPN	100 -	XA9-1567-000	103 - 49	XD9-0134-000	810 - 14
NPN	101 -	XA9-1567-000	104 - 16	XD9-0136-000	140 - 42
NPN	102 -	XA9-1567-000	210 - 46	XD9-0136-000	210 - 35
NPN	103 -	XB1-1401-407	101 - 501	XD9-0136-000	311 - 24
NPN	104 -	XB1-1401-407	P11 - 503	XD9-0136-000	312 - 18
NPN	210 -	XB1-2300-407	130 - 501	XD9-0136-000	313 - 38
NPN	300 -	XB1-2300-407	900 - 501	XD9-0136-000	810 - 37
NPN	310 -	XB1-2400-607	312 - 502	XD9-0136-000	S20 - 22
NPN	312 -	XB2-4300-605	P11 - 501	XF2-1109-040	S20 - 29
NPN	900 -	XB2-7300-607	250 - 501	XF2-1112-240	S20 - 40
NPN	P01 -	XB2-7300-607	311 - 503	XF2-1607-240	P33 - 50
NPN	P11 -	XB2-7300-607	312 - 504	XF2-4620-340	210 - 4
NPN	S01 -	XB2-7300-607	313 - 502	XF2-4661-440	210 - 9
NPN	S20 -	XB2-8400-805	210 - 502	XH9-0135-000	310 - 14
NPN	X01 -	XB4-5300-807	130 - 502	XH9-0135-000	312 - 28
NPN	X90 -	XB4-5401-005	100 - 501	XXX-XXX-XXX	900 - 7
RB2-1850-000	250 - 13	XB4-5401-005	103 - 501		
VS1-7177-002	140 - 38	XB4-5401-005	140 - 501		
VS1-7177-002	312 - 10	XB4-5401-005	141 - 501		
VS1-7177-003	102 - 23	XB4-5401-005	310 - 501		
VS1-7177-003	140 - 39	XB4-5401-005	315 - 501		
VS1-7177-004	140 - 40	XB4-5401-007	310 - 502		
VS1-7177-004	210 - 6	XB4-5401-007	312 - 501		
VS1-7177-010	104 - 6	XB4-5401-007	S01 - 501		
VS1-7177-013	312 - 26	XB4-5401-007	S20 - 501		

MF7170i/imageCLASS MF7280(Parts Catalog)

MF7120/

Satera MF7110

100V	F18-9011-000	SGN02001-
100V	F18-9021-000	SGN50001-

Satera MF7140

100V	F18-9013-000	SGP10001-
100V	F18-9023-000	SGP60001-

Satera MF7140N

100V	F18-9015-000	KUX02001-
100V	F18-9025-000	MEA60001-

Satera MF7140ND

100V	F18-9017-000	KUY02001-
100V	F18-9027-000	MEG6001-

Satera MF7210

100V	F18-9012-000	SGK02001-
100V	F18-9022-000	SGK50001-

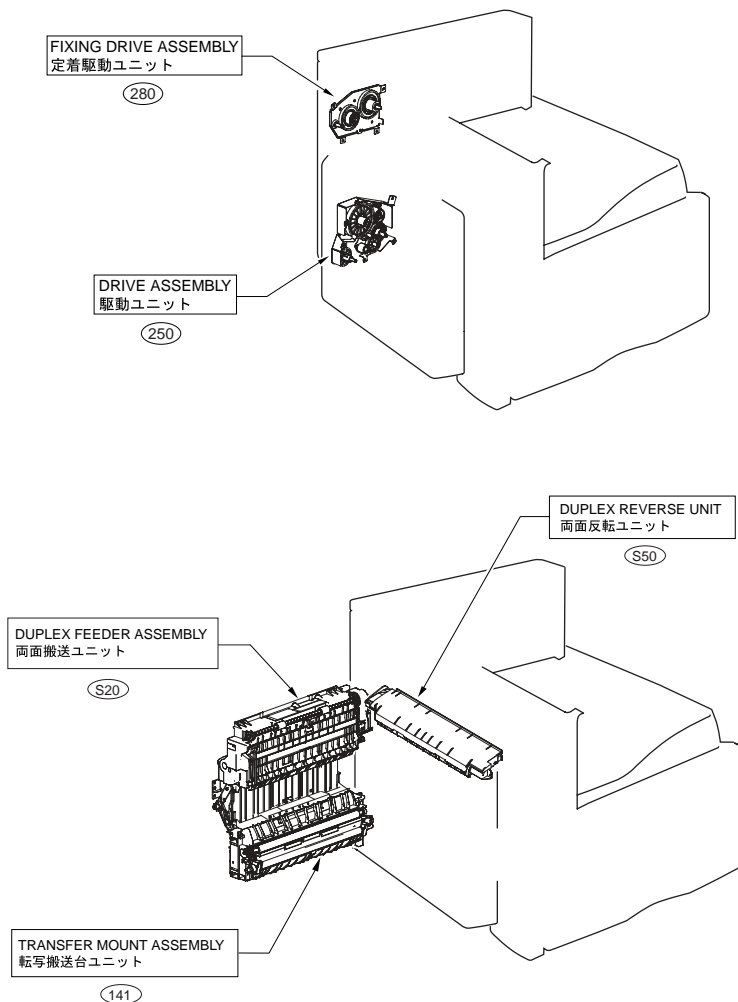
Satera MF7240

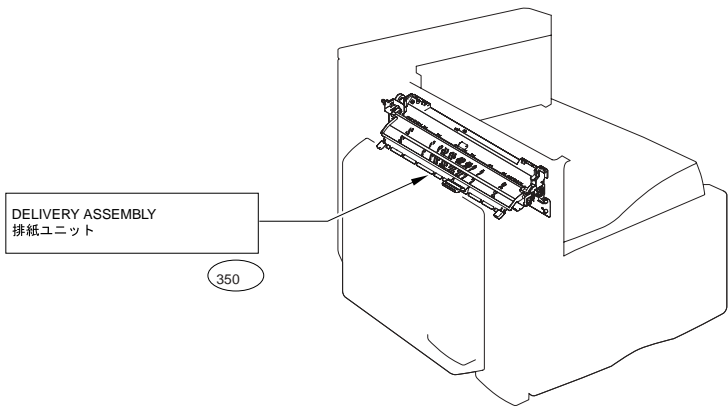
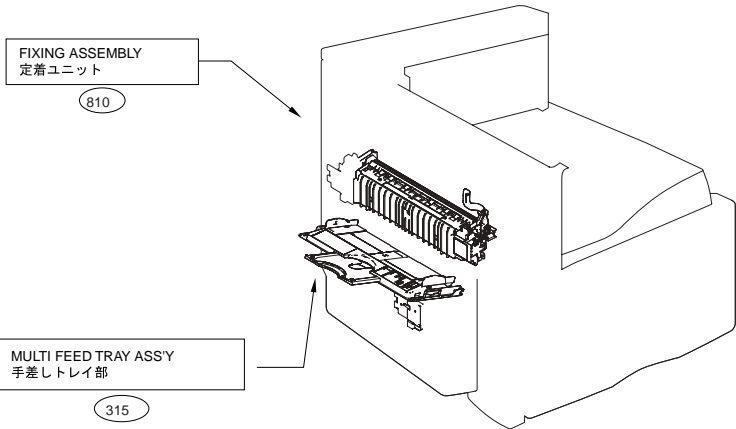
100V	F18-9014-000	SGL10001-
100V	F18-9024-000	SGL60001-

Contents

A	ASSEMBLY LOCATION DIAGRAM	2-1
001	ACCESSORIES	2-4
100	EXTERNAL COVERS, PANELS, ETC.	2-5
101	MACHINE FRONT PLATE	2-8
102	INTERNAL COMPONENTS 1	2-11
103	INTERNAL COMPONENTS 2	2-13
104	MACHINE REAR PLATE	2-16
130	CONTROL PANEL ASSEMBLY	2-19
140	LFET DOOR ASSEMBLY	2-21
141	PAPER FEEDER FRAME ASSEMBLY	2-24
210	READER ASSEMBLY	2-26
250	MAIN DRIVE ASSEMBLY	2-31
280	FIXING DRIVE ASSEMBLY	2-33
300	CASSETTE	2-35
310	CASSETTE FEEDER ASSEMBLY	2-37
311	PAPER PICK-UP ASSEMBLY	2-39
312	CASSETTE FEEDER ASSEMBLY(MF7280).....	2-42
313	PAPER PICK-UP ASSEMBLY(MF7280)	2-45
315	MULTI FEED TRAY ASSEMBLY	2-48
350	PAPER DELIVERY ASSEMBLY	2-50
810	FIXING ASSEMBLY	2-52
P01	PACKING KIT	2-55
P11	ADF ASSEMBLY	2-57
P12	DOCUMENT TRAY ASSEMBLY	2-60
P31	OPEN/CLOSE PANEL ASSEMBLY	2-62
P33	PAPER FEEDER ASSEMBLY	2-64
S01	DUPLEX MOUNTING HARDWARE(MF7280).....	2-67
S20	DUPLEX FEEDER ASSEMBLY(MF7280)	2-69
S50	DUPLEX REVERSE UNIT (MF7280)	2-72
X01	PACKING KIT	2-74
900	IMAGE PROCESSOR PCB ASSEMBLY	2-76
910	MODEM PCB ASSEMBLY	2-78
930	HVT PCB ASSEMBLY	2-79
X90	FAX BOARD PCB ASSEMBLY	2-80

FIGURE A ASSEMBLY LOCATION DIAGRAM





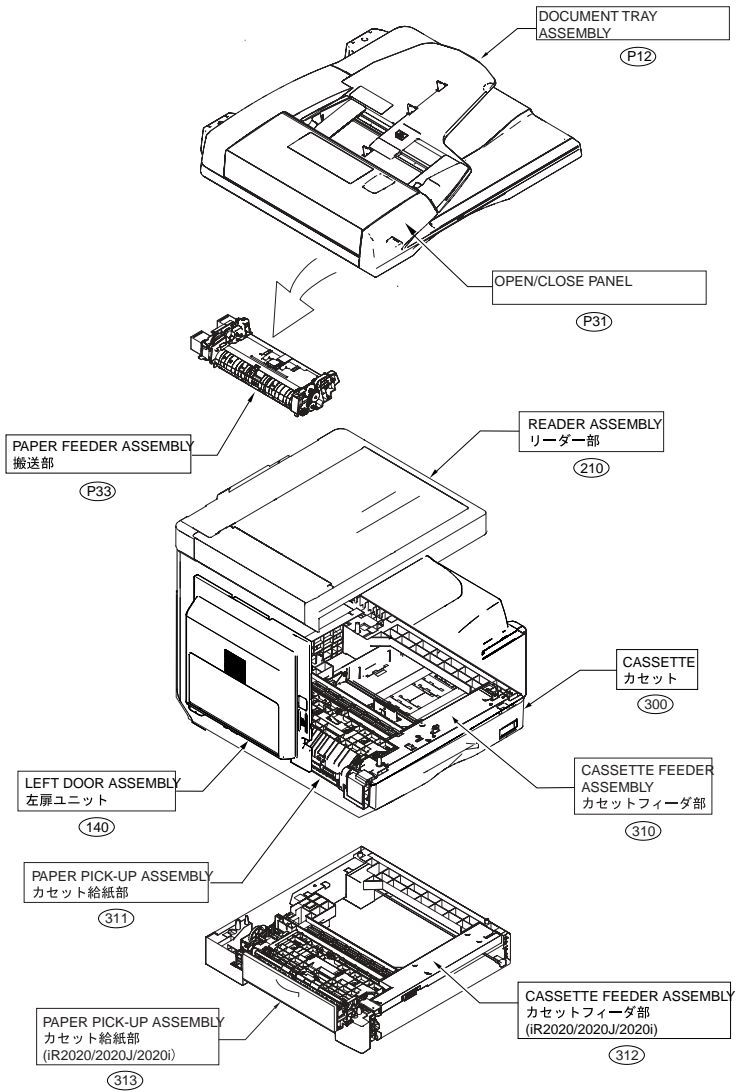


FIGURE 001 ACCESSORIES

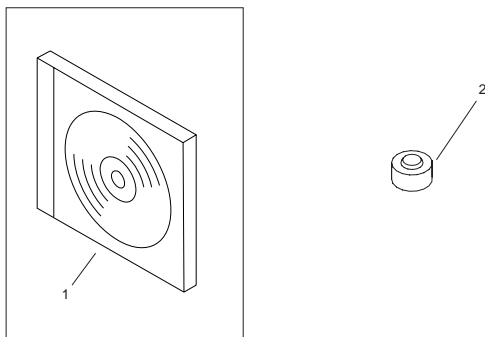


FIGURE & KEY NO.	PARTS NUMBER	RANK	QTY	DESCRIPTION	SERIAL NUMBER/REMARKS	S V C
Fig.001	NPN		RF	ACCESSORIES		
1	FK2-1331-010		1	CD-ROM, FAX DRIVER	SGL/SGP	
1	FK2-2151-000		1	CD-ROM, FAX DRIVER	SGL60001and later/ SGP60001and later	
1	FK2-3282-000		1	CD-ROM, FAX DRIVER	SGM	
1	FK2-4749-000		1	CD-ROM, FAX DRIVER	SGQ	
1	FK2-1329-010		1	CD-ROM, FAX DRIVER	SGR	
1	FK2-1332-010		1	CD-ROM, FAX DRIVER	SGR	
1	FK2-1333-010		1	CD-ROM, FAX DRIVER	SGR	
1	FK2-4748-000		1	CD-ROM, FAX DRIVER	SGR	
2	FB5-9410-000		1	STAMPER	SGL/SGM/SGP	

FIGURE 100 EXTERNAL COVERS, PANELS, ETC.

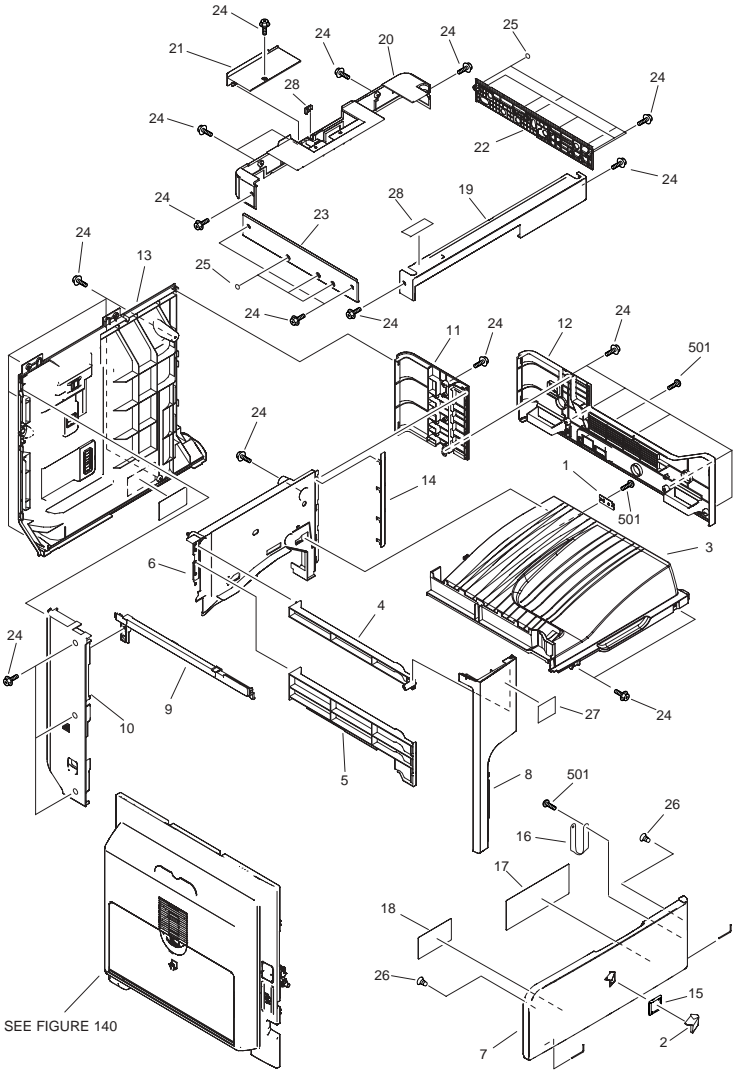


FIGURE & KEY NO.	PARTS NUMBER	R A N K	Q'TY	DESCRIPTION	SERIAL NUMBER/ REMARKS	S V C
Fig.100	NPN		RF	EXTERNAL COVERS, PANELS, ETC.		
1	FC6-4476-000		1	PLATE, SUPPORT, COVER		
2	FC7-1027-000		1	EMBLEM	100V	
2	FC7-1028-000		1	EMBLEM	120V/230V	
3	FC6-4259-020		1	TRAY, DELIVERY		
4	FC6-4260-000		1	COVER, PAPER FEED A	EXCEPT MF7280	
5	FC6-4261-000		1	COVER, PAPER FEED B		
6	FC6-4262-000		1	COVER, REAR, DELIVERY		
7	FL2-4789-000		1	COVER, FRONT	SGK	
7	FL2-4790-000		1	COVER, FRONT	SGL	
7	FL2-4791-000		1	COVER, FRONT	SGM	
7	FL2-4792-000		1	COVER, FRONT	SGN	
7	FL2-4793-000		1	COVER, FRONT	SGP	
7	FL2-4875-000		1	COVER, FRONT	SGQ	
7	FL2-4876-000		1	COVER, FRONT	SGR	
8	FC6-4264-000		1	COVER, LEFT, FRONT		
9	FC6-4265-020		1	COVER, LEFT, CENTER		
10	FC6-4266-000		1	COVER, REAR, LEFT		
11	FC6-4267-000		1	COVER, RIGHT, UPPER		
12	FC6-4268-000		1	COVER, RIGHT, LOWER		
13	FC6-4269-040		1	COVER, REAR		
14	FC6-4272-000		1	COVER, BLIND		
15	FC6-8679-000		1	MOUNT, EMBLEM		
16	FC6-4273-000		1	STRAP, COVER SUPPORT		
17	FC6-8673-000		1	LABEL, CRG EXCHANGE		
18	FC6-8674-000		1	LABEL, LOCK CAUTION		
19	FC6-4519-000		1	COVER, READER, FRONT		
20	FC6-4529-000		1	COVER, READER, REAR		
21	FC6-4580-000		1	WINDOW, PCB		
22	FL2-3268-000		1	COVER, READER, RIGHT		
23	FL2-3269-000		1	COVER, READER, LEFT		
24	XA9-1567-000		AR	SCREW, RS, M3X8.5		

FIGURE & KEY NO.	PARTS NUMBER	RANK	Q'TY	DESCRIPTION	SERIAL NUMBER/REMARKS	SVC
25	FC6-4513-000		6	SEAL	US	
26	FA9-3870-000		2	CATCH, MAGNET		
27	FU5-8612-000		1	LABEL, SUPER G3		
28	FC6-4724-000		1	COVER, CABLE, DF		
501	XB4-5401-005		2	SCREW, P, M4X10		

FIGURE 101 MACHINE FRONT PLATE

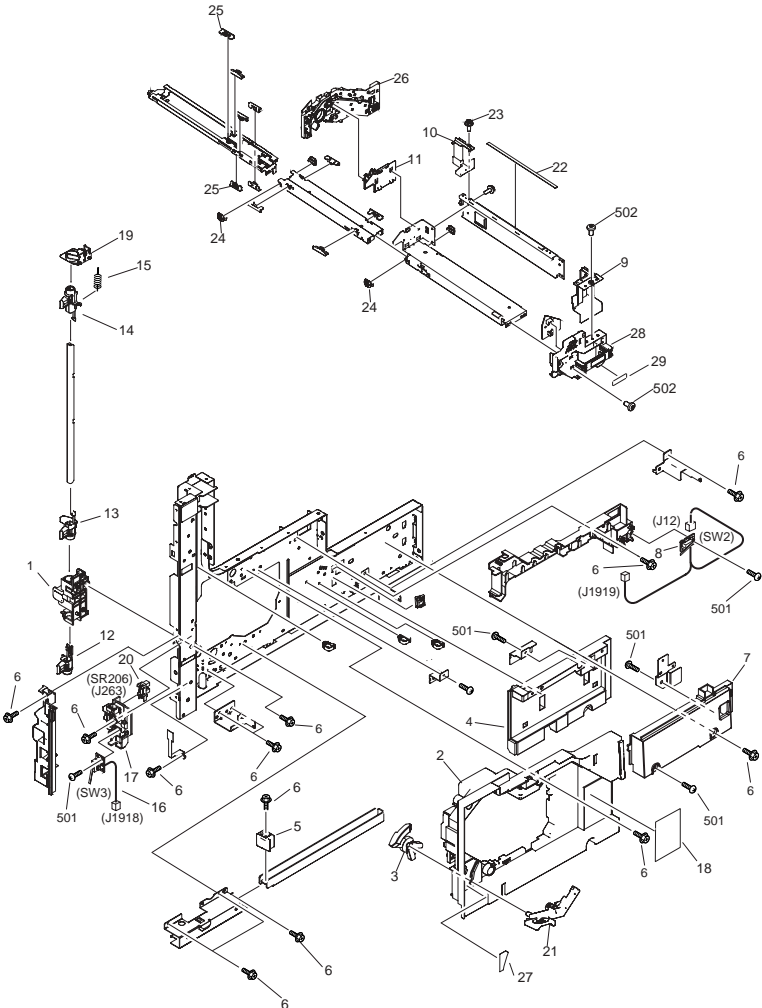


FIGURE & KEY NO.	PARTS NUMBER	RANK	Q'TY	DESCRIPTION	SERIAL NUMBER/REMARKS	SVC
Fig.101	NPN		RF	MACHINE FRONT PLATE		
1	FC6-4113-000		1	BUSHING, HOOK		
2	FC6-5408-000		1	PANEL, INNER		
3	FC6-5410-000		1	ARM, RELEASE, LEFT DOOR		
4	FC6-4149-000		1	PANEL, INNER, RIGHT		
5	FC6-4690-000		1	CAP, GRIP, FRONT		
6	XA9-1567-000		AR	SCREW, RS, M3X8.5		
7	FC6-7092-000		1	PANEL, INNER, UPPER		
8	FM2-4433-000		1	DOOR SWITCH PCB ASS'Y 2	SW2 J12,1919	
9	FC6-5414-000		1	GUIDE, CRG. F		
10	FC6-5415-000		1	GUIDE, CRG. R		
11	FC6-5401-000		1	PANEL,CRG.POSITION,R		
12	FC6-4114-000		1	HOOK, DOOR, LOWER		
13	FC6-4115-000		1	HOOK, DOOR, MIDDLE		
14	FC6-4120-000		1	HOOK, DOOR, UPPER		
15	FU6-2194-000		1	SPRING, TENSION		
16	FM2-4020-000		1	DOOR SWITCH PCB ASS'Y	SW3 J1918	
17	FC6-4147-000		1	GUIDE, SENSOR, TONER FULL		
18	FU5-8610-000		1	LABEL, CAUTION, LASER		
19	FC6-4116-000		1	BUSHING, DOOR HOOK, UPPER		
20	WG8-5696-000		1	PHOTO INTERRUPTER, TLP1243	SR206 J263	
21	FC6-5409-000		1	LEVER, CRG LOCK		
22	FC7-1019-000		1	LABEL, DRAW OPERATION	100V/CN	
22	FC7-1017-000		1	LABEL, DRAW OPERATION	120V	
22	FC7-1018-000		1	LABEL, DRAW OPERATION	EU	
23	XA9-1386-000		AR	SCREW, RS, M3X8		
24	FC6-5417-000		4	SLIDER 2		
25	FC6-5399-000		16	SLIDER		
26	FC6-5405-000		1	PANEL, INTERNAL, REAR		
27	FC6-8672-000		1	LABEL, LEVER POSITION		
28	FC6-5400-000		1	COVER, CARTRIDGE, FRONT		
29	FC7-1029-000		1	LABEL, HANDLE		

FIGURE & KEY NO.	PARTS NUMBER	R A N K	Q'TY	DESCRIPTION	SERIAL NUMBER/ REMARKS	S V C
501	XB1-1401-407		1	SCREW, MACH.,PAN HEA		
502	XB4-7401-009		5	SCREW, TAPPING,PAN HEAD,M4X10		

FIGURE 102 INTERNAL COMPONENTS 1

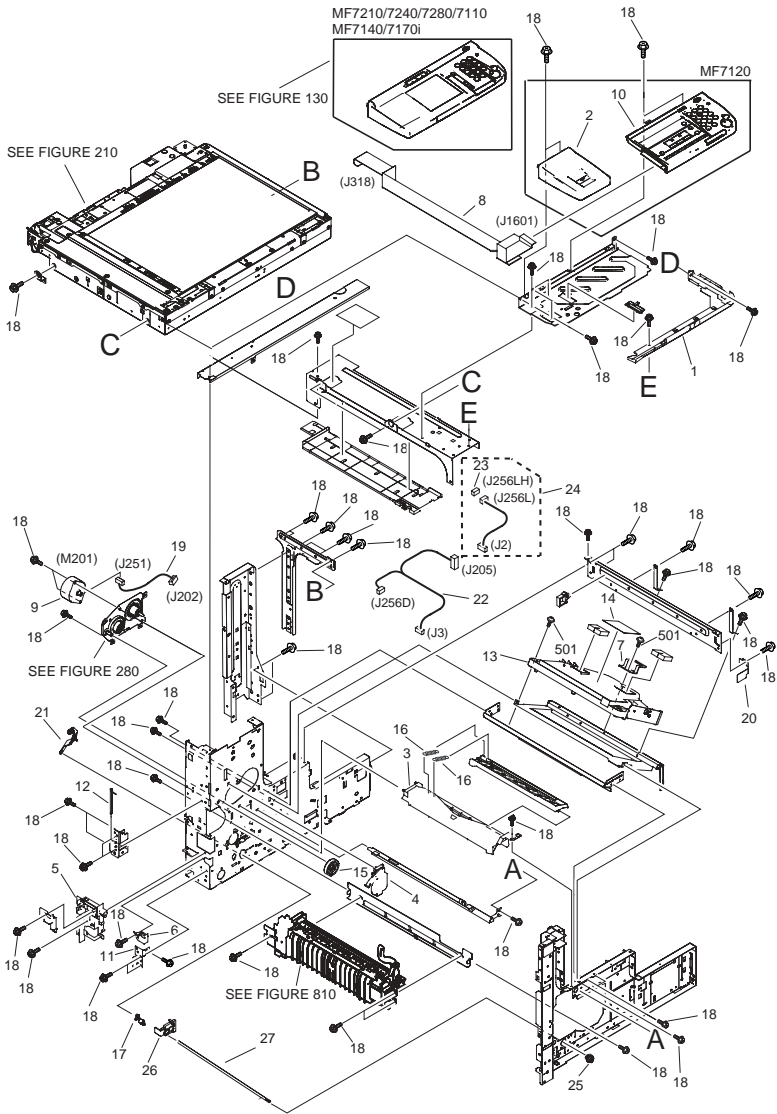


FIGURE & KEY NO.	PARTS NUMBER	R A N K	Q'TY	DESCRIPTION	SERIAL NUMBER/ REMARKS	S V C
Fig.102	NPN		RF	INTERNAL COMPONENTS		
1	FC6-4235-000		1	COVER, OPERATOR, LOWER		
2	FC6-4236-000		1	COVER, OPERATOR, LEFT	CN ONLY	
3	FC6-4478-000		1	DUCT, AIR		
4	FC6-4482-000		1	COVER, GEAR		
5	FC6-4710-000		1	BLOCK, POSITIONING, DOOR		
6	FC6-4720-000		1	BLOCK, POSITIONING, DOOR		
7	FC6-4734-000		1	WASHER, SQUARE		
8	FK2-1062-000		1	CABLE, FLAT, OPERATION	J318,1601	
9	FK2-1067-000		1	MOTOR, STEPPING, DC24V	M201	
10	FK2-1844-000		1	CONTROL PANEL ASSEMBLY	CN ONLY	
11	FL2-3180-000		1	PLATE, HINGE, LOWER		
12	FL2-3181-000		1	HINGE PIN UNIT		
13	FM2-3384-000		1	LASER SCANNER ASSEMBLY	MF7210/MF7240/MF7280/ MF7110/MF7140/MF7170i	
13	FM2-3383-000		1	LASER SCANNER ASSEMBLY	MF7120	
14	FS7-8335-000		1	LABEL, LASER WARNING		
15	FU6-0803-000		1	GEAR, 31T		
16	FU6-2207-020		2	SPRING, TORSION		
17	FU5-1498-000		1	BUSHING, DEVELOPING, REAR		
18	XA9-1567-000		88	SCREW, RS, M3X8.5		
19	FM2-4409-000		1	CABLE, FIXING MOTOR	J202,251	
20	FC6-4693-000		1	SPRING, LEAF		
21	FC6-4244-000		1	ARM, RELEASE, DEVELOPPING		
22	FM2-4402-000		1	CABLE, BD-POLYGON	J3,205,256D	
23	VS1-7177-003		1	CONNECTOR, SNAP TIGHT, BK	J256LH	
24	FM2-4401-000		1	CABLE, BD	J2,256L	
25	FC6-8669-000		1	BUSH,DRV RELEASE F		
26	FC6-8670-000		1	BUSH,DRV RELEASE R		
27	FC6-8671-000		1	GUIDE,DRV RLS BUSH		
501	XB6-7300-805		3	SCREW, BH3X8		

FIGURE 103 INTERNAL COMPONENTS 2

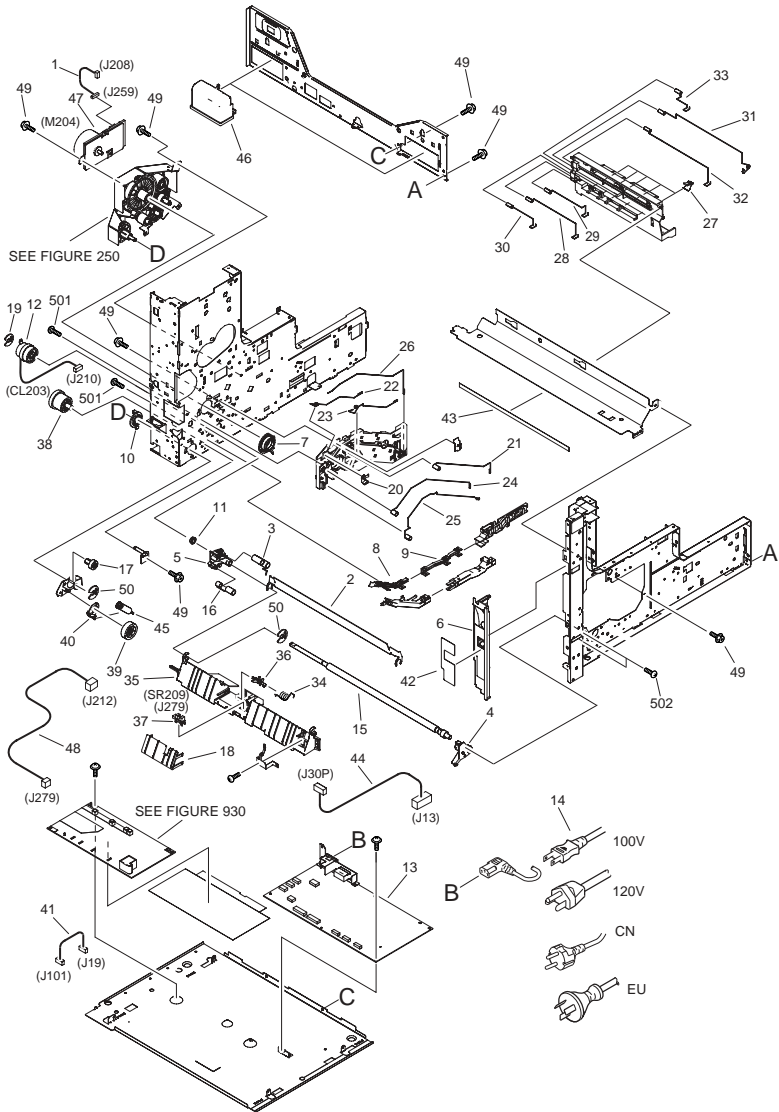


FIGURE & KEY NO.	PARTS NUMBER	RANK	Q'TY	DESCRIPTION	SERIAL NUMBER/REMARKS	SVC
Fig.103	NPN		RF	INTERNAL COMPONENTS		
1	FM2-4420-000		1	CABLE, MAIN MOTOR	J208,259	
2	FC6-4305-000		1	GUIDE, TRANSFER, UPPER		
3	FC6-4306-000		1	SPRING		
4	FC6-4311-020		1	BUSHING, TRANSFER, FRONT		
5	FC6-4312-020		1	BUSHING, TRANSFER, REAR		
6	FC6-4399-020		1	COVER, INNER, LEFT-UP		
7	FC6-4435-000		1	BUSHING		
8	FC6-4446-000		1	LID, AC-1		
9	FC6-4447-000		1	LID, AC-2		
10	FC6-4495-000		1	BUSHING		
11	FA9-2112-000		1	BUSHING, PL		
12	FK2-1081-000		1	CLUTCH, REGISTRATION	CL203 J210	
13	FK2-1831-030		1	POWER SUPPLY ASS'Y	100V	
13	FK2-1074-000		1	POWER SUPPLY ASS'Y	120V	
13	FK2-1075-000		1	POWER SUPPLY ASS'Y	230V	
14	FM2-5951-000		1	CORD, POWER 100V	100V	
14	FM2-4787-000		1	CORD, POWER 230V	CN	
14	FM2-4786-000		1	CORD, POWER 230V	EU	
14	FM2-4785-000		1	CORD, POWER 120V	UL	
15	FL2-3213-000		1	ROLLER, REGISTRATION		
16	FU6-2176-000		1	SPRING, EARTH		
17	FU6-0806-000		1	GEAR, 17T		
18	FC6-4360-030		1	GUIDE, PRE-REGIST SENSOR		
19	FA3-8727-000	N	1	RING, RETAINING		
20	FC6-4148-000		1	TERMINAL, LEAF, FIXING BIAS		
21	FU6-2148-000		1	TERMINAL, CHARGE		
22	FU6-2149-000		1	TERMINAL, DEVELOPING		
23	FU6-2150-000		1	TERMINAL, DETECTION		
24	FU6-2151-000		1	TERMINAL, STATIC ELIMINATOR		
25	FU6-2152-000		1	TERMINAL, TRANSFER		
26	FU6-2198-000		1	TERMINAL, FIXING		

FIGURE & KEY NO.	PARTS NUMBER	R A N K	Q'TY	DESCRIPTION	SERIAL NUMBER/ REMARKS	S V C
27	FC6-4138-000		5	TERMINAL, LEAF, HVT		
28	FU6-2156-000		1	TERMINAL, CHARGE		
29	FU6-2157-000		1	TERMINAL, DEVELOPING		
30	FU6-2158-000		1	TERMINAL, DETECTION		
31	FU6-2159-000		1	TERMINAL, STATIC ELIMINATOR		
32	FU6-2195-000		1	TERMINAL, TRANSFER		
33	FU6-2199-000		1	TERMINAL, FIXING		
34	FC6-4308-000		1	SPRING, TORSION		
35	FC6-4309-030		1	GUIDE, PRE-REGIST, UPPER		
36	FC6-4310-000		1	FLAG, SENSOR, PRE-REGIST		
37	WG8-5696-000		1	PHOTO INTERRUPTER, TLP1243	SR209 J279	
38	FU6-0794-000		1	GEAR, 29T		
39	FU6-0796-000		1	GEAR, 33T		
40	FC6-4191-000		1	STOPPER, MULTI FEED		
41	FM2-4413-000		1	CABLE, HVT POWER	J19,101	
42	FU5-8606-000		1	LABEL, JAM CLEARING	EXCEPT MF7280	
43	FC6-4205-000		1	SHEET, CLEANING		
44	FM2-4408-000		1	CABLE, FIXING HEATER	J13,30P	
45	FU6-2209-000		1	SPRING, TENSION		
46	FC6-4689-000		2	HANDLE		
47	FK2-1080-000		1	MOTOR, DC24V	M204	
48	FM2-4424-000		1	CABLE, RESIST SENSOR	J212,279	
49	XA9-1567-000		AR	SCREW, RS, M3X8.5		
50	FA4-1159-000		2	RING, RETAINING		
501	XB4-5401-005		AR	SCREW, P, M4X10		
502	XB4-7401-009		AR	SCREW,TAPPING,PAN HEAD,M4X10		

FIGURE 104 MACHINE REAR PLATE

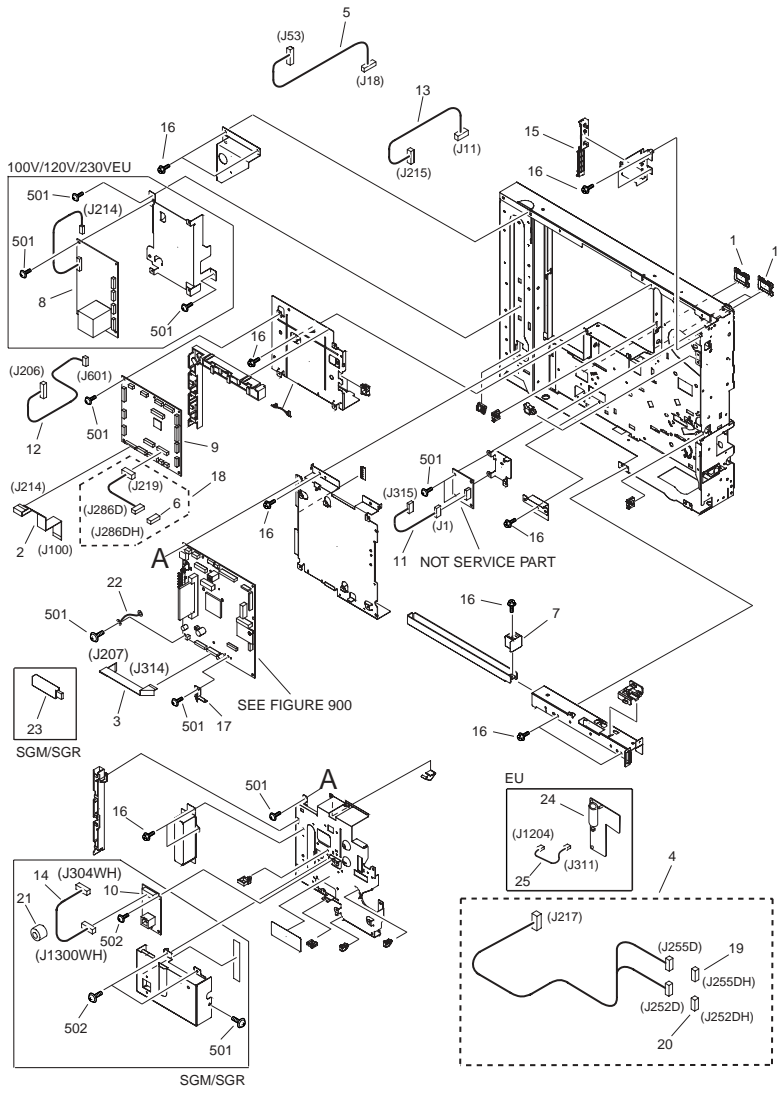
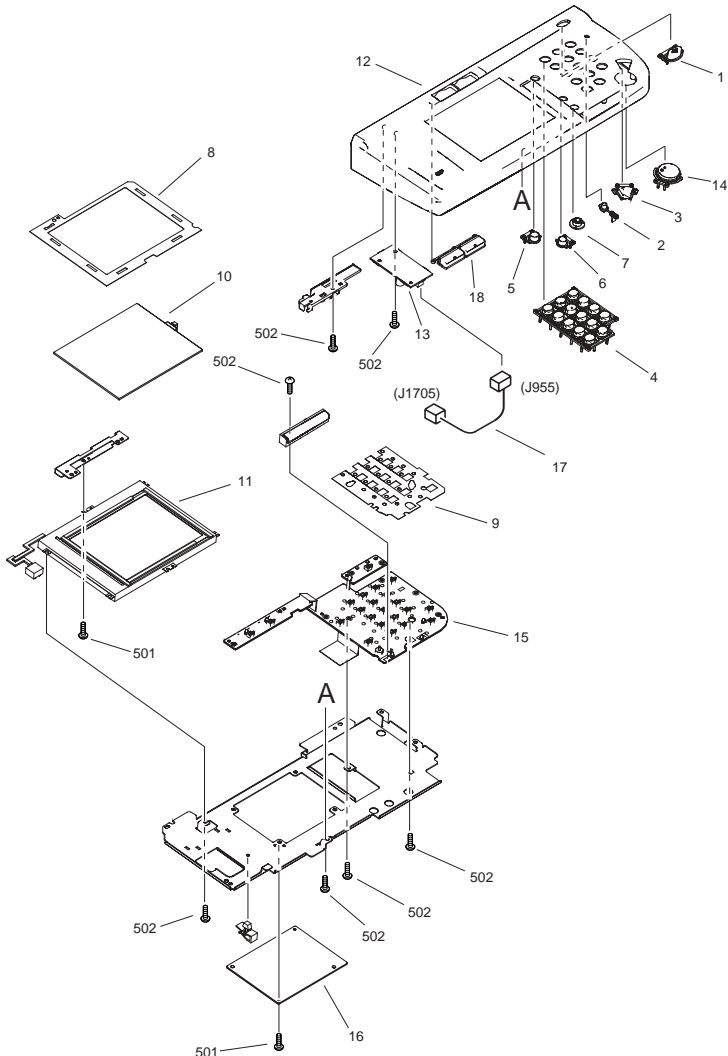


FIGURE & KEY NO.	PARTS NUMBER	R A N K	Q'TY	DESCRIPTION	SERIAL NUMBER/ REMARKS	S V C
Fig.104	NPN		RF	MACHINE REAR PLATE		
1	FB6-1722-000		3	BUSHING, SQUARE		
2	FK2-1058-000		1	CABLE, FLAT, HVT	J100,214	
3	FK2-1059-000		1	CABLE, FLAT, DC	J207,314	
4	FM2-4410-000		1	CABLE, FIXING ASSEMBLY	J217,252D,255D	
5	FM2-4541-000		1	CABLE, OPTION POWER SUPPLY	J18,53	
6	VS1-7177-010		1	CONNECTOR, SNAP TIGHT, BK	J286DH	
7	FC6-4691-000		1	CAP, GRIP, REAR		
8	FK2-1085-000		1	SUB POWER SUPPLY ASS'Y	100V/120V	
8	FK2-1086-000		1	SUB POWER SUPPLY ASS'Y	230V EU	
9	FM2-5942-070		1	DC CONTROLLER PCB ASSEMBLY	100V SGK/SGL	
9	FM2-5941-070		1	DC CONTROLLER PCB ASSEMBLY	100V SGN/SGP	
9	FM2-5944-000		1	DC CONTROLLER PCB ASSEMBLY	120V	
9	FM2-5946-000		1	DC CONTROLLER PCB ASSEMBLY	CN	
9	FM2-5945-000		1	DC CONTROLLER PCB ASSEMBLY	EU	
10	FM2-4058-000		1	LAN PCB ASSEMBLY	SGM/SGR	
11	FM2-4425-000		1	CABLE, SOFT ID	J1,315	
12	FM2-4414-000		1	CABLE, LASER	J206,601	
13	FM2-4404-000		1	CABLE, DC CONTROLLER	J11,215	
14	FM2-4542-000		1	CABLE, IP-LAN		
15	FL2-3229-000		1	CORE UNIT		
16	XA9-1567-000		AR	SCREW, RS, M3X8.5		
17	FC7-1749-000		1	PLATE, LEAF		
18	FM2-5957-030		1	CABLE, LEFT DOOR	100VJ219,286D,286DH	
18	FM2-4416-000		1	CABLE, LEFT DOOR	120V/ 230VJ219,286D,286DH	
19	VS1-7207-006		1	CONNECTOR, SNAP TIGHT	J255DH	
20	VS1-7207-007		1	CONNECTOR, SNAP TIGHT	J252DH	
21	WE8-6346-000		1	CORE,RING	120V	
23	FK2-5122-000		1	MEMORY, USB FLASH, 128M	SGM/SGR	
24	FM2-4780-000		1	CAPACITOR PCB ASSEMBLY	EU	
25	FM2-4538-000		1	CABLE, IP-CAP	SGL/SGM/SGPJ311,1204	

FIGURE & KEY NO.	PARTS NUMBER	RANK	Q'TY	DESCRIPTION	SERIAL NUMBER/REMARKS	SVC
501	XB6-7300-805		AR	SCREW, BH3X8 S		
502	XB6-7300-807		AR	SCREW, TAP TIGHT, BINDING HEAD		
	FC6-4112-000		1	GUIDE, GRIP, REAR		

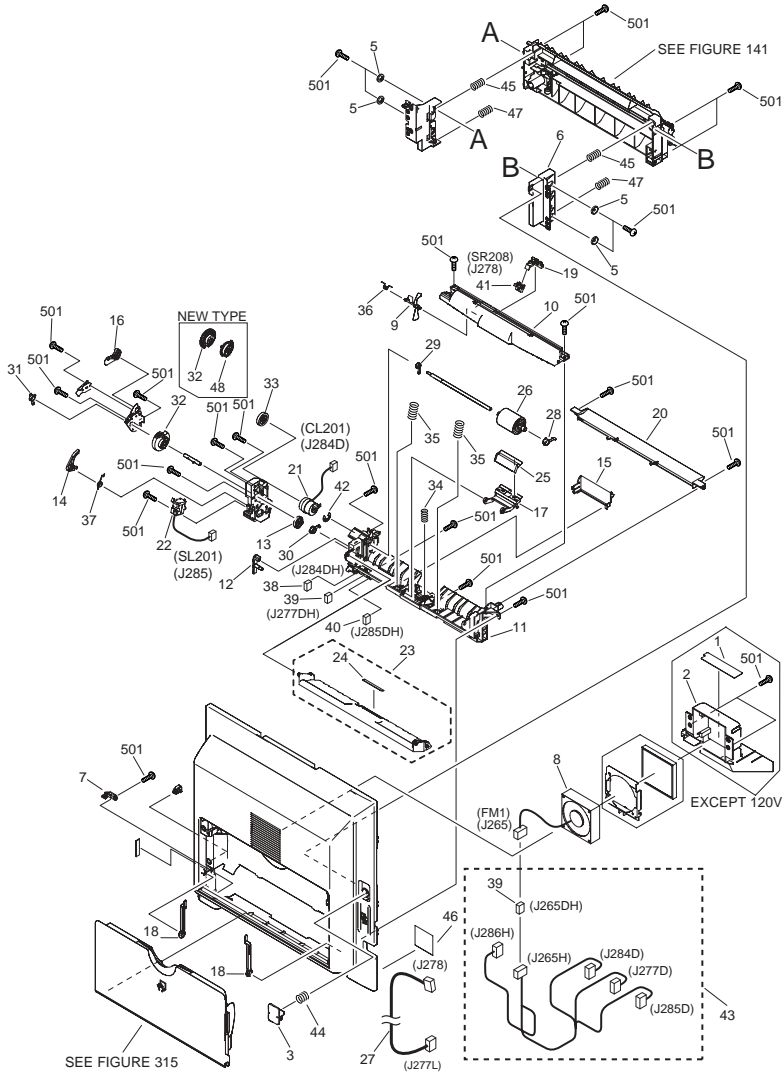
FIGURE 130 CONTROL PANEL ASSEMBLY



NOTE : This unit is used for EXCEPT MF7120
 注 : このユニットはMF7120以外に使用します。

FIGURE & KEY NO.	PARTS NUMBER	R A N K	Q'TY	DESCRIPTION	SERIAL NUMBER/REMARKS	S V C
Fig.130	FM2-4010-000	N	1	CONTROL PANEL ASSEMBLY	100V	
Fig.130	FM2-4011-000		1	CONTROL PANEL ASSEMBLY	120V	
Fig.130	FM2-4012-000		1	CONTROL PANEL ASSEMBLY	230V EU	
1	FC6-5425-000		1	KEY TOP, POWER SUPPLY		
2	FC6-5426-000		1	KEY TOP, COUNTER		
3	FC6-5427-000		1	KEY TOP, STOP		
4	FC6-5428-000		1	KEY TOP, NUMBERS		
5	FC6-5429-000		1	KEY TOP, RESET		
6	FC6-5430-000		1	KEY TOP, USER MODE		
7	FC6-5431-000		1	DIAL, CONTRAST		
8	FC6-5433-000		1	SHEET, LCD		
9	FC7-1020-000		1	SHEET, ELECTROSTATIC		
10	FH6-0772-000		1	PANEL, TOUCH		
11	FM2-3292-000		1	LCD CONTROL PANEL ASSY	MF7240/MF7110/MF7210/ MF7140	
12	FL2-4784-000		1	CONTROL PANEL UNIT	100V	
12	FL2-4787-000		1	CONTROL PANEL UNIT	120V	
12	FL2-4786-000		1	CONTROL PANEL UNIT	230V EU	
13	FM2-2753-000		1	C.PANEL INVERTER PCB ASSEMBLY		
14	FM2-4013-000		1	KEY TOP, START		
15	FM2-4399-000		1	SWITCH PCB ASSEMBLY		
16	FM2-4784-030		1	CONTROL PANEL CPU PCB ASSEMBLY		
17	FM2-5952-000		1	CABLE, CPU-INVERTER		
18	FM2-6354-000		1	KEY TOP, SYSTEM	100V	
18	FM2-6355-000		1	KEY TOP, SYSTEM	120V	
18	FM2-6356-000		1	KEY TOP, SYSTEM	EU	
501	XB1-2300-407		5	SCREW, BH3X4 (S)		
502	XB4-5300-807		19	SCREW, P, M3X8		

FIGURE 140 LFET DOOR ASSEMBLY



NOTE 1 : This assembly includes the assemblies shown in Figure 141 and 315.
注 1 : このユニットはFigure 141, 315のユニットを含みます。

FIGURE & KEY NO.	PARTS NUMBER	R A N K	QTY	DESCRIPTION	SERIAL NUMBER/REMARKS	S V C
Fig.140	FM2-4006-000		1	LEFT DOOR ASSEMBLY	SEE NOTE	
Fig.140	FM2-6350-000		1	LEFT DOOR ASSEMBLY	SEE NOTE EXCEPT MF7280	

FIGURE & KEY NO.	PARTS NUMBER	R A N K	Q'TY	DESCRIPTION	SERIAL NUMBER/ REMARKS	S V C
1	FU5-8607-000		1	LABEL, WARNING, ROLLER		
2	FC6-4376-000		1	HOLDER, FAN		
3	FC6-4386-000		1	BUTTON, PUSH		
5	FC6-4413-000		4	SPACER, FRAME, FEED		
6	FC6-4414-000		1	MOUNT, FRAME, FEED		
7	FC6-7103-020		1	BLOCK, COVER		
8	FK2-1084-000		1	FAN	FM1 J265	
9	FC6-4209-000		1	FLAG, SENSOR		
10	FC6-4210-000		1	COVER, ROLLER		
11	FC6-4211-000		1	GUIDE, MULTI FEED		
12	FC6-4224-000		1	SUPPORT, CAM, LIFTING		
13	FC8-0168-000		1	CAM, LIFTING PLATE	NEW TYPECQV/CQW/ CQR/CQS/CQT/CQU	
13	FC6-4226-020		1	CAM, LIFTING PLATE	OLD TYPEKUX/KUY/ MEA/MEG/SGK/SGL/ SGN/SGP/SGM/SGQ/ SGR	
14	FC6-4227-020		1	ARM, MULTI FEED		
15	FC6-4232-000		1	COVER, HARNESS		
16	FC8-0167-000		1	STOPPER, SWING PLATE	NEW TYPECQV/CQW/ CQR/CQS/CQT/CQU	
16	FC6-4233-000		1	STOPPER, SWING PLATE	OLD TYPEKUX/KUY/ MEA/MEG/SGK/SGL/ SGN/SGP/SGM/SGQ/ SGR	
17	FC6-4234-000		1	ARM, PAD, SEPARATION		
18	FC6-4238-000		2	STOPPER, MULTI FEED		
19	FC6-4239-000		1	HOLDER, SENSOR		
20	FC6-4377-000		1	GUIDE, FEED		
21	FK2-1070-000		1	CLUTCH, ELECTROMAGNETIC	CL201 J284D	
22	FK2-1072-000		1	SOLENOID	SL201 J285	
23	FL2-3200-000		1	LIFTING PLATE ASSEMBLY		
24	FC5-0543-000		1	SHEET, SEPARATION		
25	FL2-3201-000		1	SEPARATION PAD ASS'Y		
26	FL2-3202-000		1	ROLLER, PICK-UP		
27	FM2-4421-000		1	HARNESS, SENSOR, PAPER	J277L,278	

FIGURE & KEY NO.	PARTS NUMBER	R A N K	Q'TY	DESCRIPTION	SERIAL NUMBER/ REMARKS	S V C
28	FU5-1527-000		1	BUSHING, ROLLER, PICK-UP		
29	FU5-1528-000		1	BUSHING, SHAFT, PICK-UP		
30	FU5-1529-000		1	BUSHING, SHAFT, CAM (F)		
31	FU5-1530-000		1	BUSHING, SHAFT, CAM (R)		
32	FC8-0165-000		1	GEAR, MULTI FEED	NEW TYPECQV/CQW/ CQR/CQS/CQT/CQU	
32	FU6-0813-020		1	GEAR, MULTI FEED	OLD TYPEUX/KUY/MEA/ MEG/SGK/SGL/SGN/ SGP/SGM/SGQ/SGR	
33	FU6-0814-000		1	GEAR, 25T		
34	FU6-2180-000		1	SPRING, COMPRESSION		
35	FU6-2181-000		2	SPRING, COMPRESSION		
36	FU6-2182-000		1	SPRING, TORSION		
37	FU7-2222-000		1	SPRING, TORSION	NEW TYPECQV/CQW/ CQR/CQS/CQT/CQU	
37	FU6-2183-020		1	SPRING, TORSION	OLD TYPEKUX/KUY/ MEA/MEG/SGK/SGL/ SGN/SGP/SGM/SGQ/ SGR	
38	VS1-7177-002		1	CONNECTOR, SNAP TIGHT, BK	J284DH	
39	VS1-7177-003		2	CONNECTOR, SNAP TIGHT, BK	J265DH,277DH	
40	VS1-7177-004		1	CONNECTOR, SNAP TIGHT, BK	J285DH	
41	WG8-5696-000		1	PHOTO INTERRUPTER, TLP1243	SR208 J278	
42	XD9-0136-000		1	RING, E		
43	FM2-4417-000		1	CABLE, LEFT DOOR	J277D,284D,285D	
44	FU6-2160-000		1	SPRING, COMPRESSION		
45	FU6-2162-000		2	SPRING, COMPRESSION		
46	FU5-8699-000		1	LABEL, JAM CLEARING		
47	FU6-2178-000		2	SPRING, COMPRESSION		
48	FC8-0166-000		1	GEAR, 39T	NEW TYPECQV/CQW/ CQR/CQS/CQT/CQU	
501	XB4-5401-005		27	SCREW, P, M4X10		

FIGURE 141 PAPER FEEDER FRAME ASSEMBLY

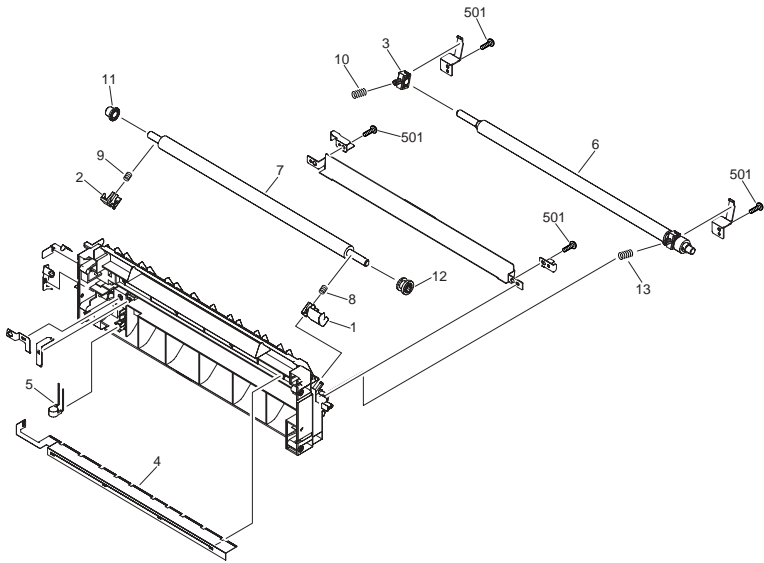


FIGURE & KEY NO.	PARTS NUMBER	R A N K	Q'TY	DESCRIPTION	SERIAL NUMBER/ REMARKS	S V C
Fig.141	FM2-6347-000		1	PAPER FEEDER FRAME ASSEMBLY	SEE NOTE	
1	FC6-4314-030		1	BUSHING, TRANSFER, FRONT		
2	FC6-4315-000		1	BUSHING, TRANSFER, LOWER		
3	FC6-4317-000		1	BUSHING, REGIST ROLLER		
4	FC6-4324-000		1	ELIMINATOR, STATIC CHARGE		
5	FH5-3543-000		1	VARISTOR		
6	FL2-3214-000		1	REGIST ROLLER ASSEMBLY		
7	FC6-4313-000		1	ROLLER, TRANSFER		
8	FU6-2171-000		1	SPRING, TRANSFER ROLLER, LEFT		
9	FU5-2476-000		1	SPRING, TRANSFER ROLLER, RIGHT		
10	FU6-2173-000		1	SPRING, COMPRESSION		
11	FC6-4316-000		1	ROLLER		
12	FU5-0744-000		1	GEAR, 31T		
13	FU6-2177-000		1	SPRING, COMPRESSION		
501	XB4-5401-005		4	SCREW, P, M4X10		

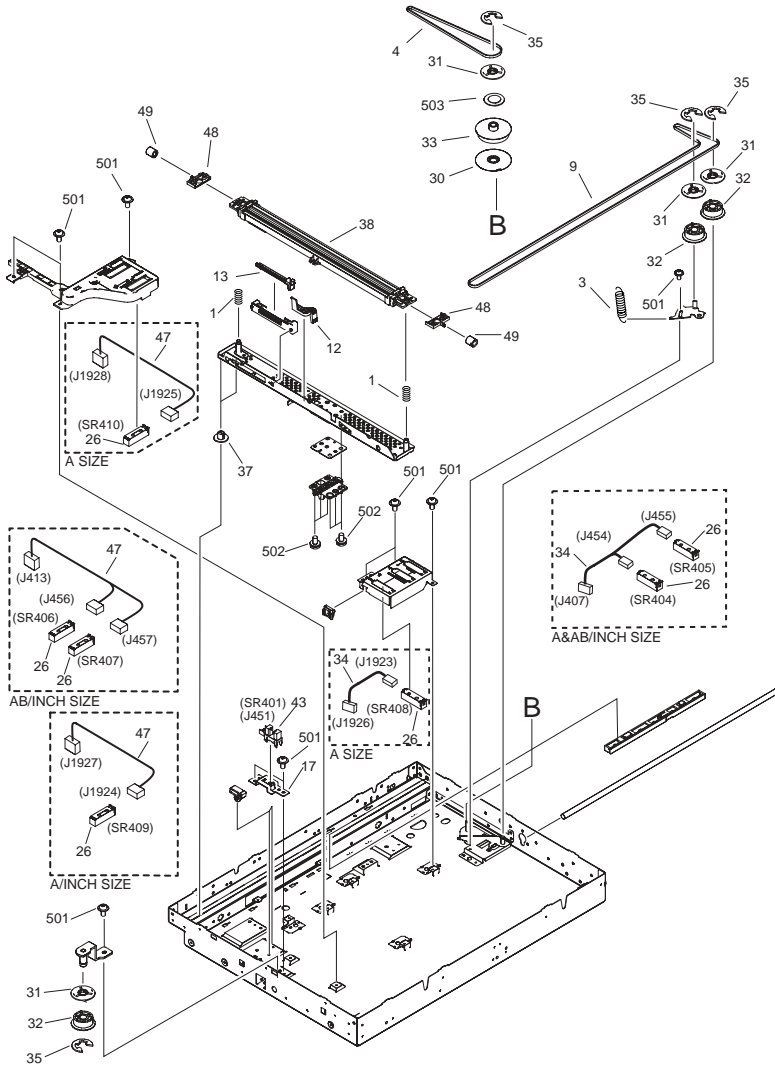


FIGURE & KEY NO.	PARTS NUMBER	R A N K	Q'TY	DESCRIPTION	SERIAL NUMBER/ REMARKS	S V C
Fig.210	NPN		RF	READER ASSEMBLY		
1	FU6-2236-000		2	SPRING, COMPRESSION		
2	FC6-4522-000		1	HOLDER, CORE		
3	FU6-2193-000		1	SPRING, TENSION		
4	XF2-4620-340		1	BELT, TIMING		
5	FC6-4582-000		1	CLAMP,FLEXIBLE		
6	VS1-7177-004		1	CONNECTOR, SNAP TIGHT, BK	J458DH	
7	FK2-1060-000		1	CABLE, FLAT, READER 1	J309,404	
8	FK2-1064-000		1	CABLE, FLAT, READER 2	J308,403	
9	XF2-4661-440		1	BELT, TIMING		
10	FM2-4418-000		1	CABLE, READER CONTROLLER 1	J20,402	
11	FM2-4419-000		1	CABLE, READER CONTROLLER 2	J21,401	
12	FC5-0792-000		1	RETAINER, BELT		
13	FC5-1444-000		1	HOLDER, FFC		
14	FC6-4528-000		1	LID, GRASS RETAINER		
15	FC6-4541-000		1	COVER, LEFT, UPPER	SGK/SGN/SGQ	
16	FC6-4573-000		1	PLATE, HINGE, RIGHT		
17	FC6-4727-000		1	HOLDER, SENSOR		
18	FK2-1061-000		1	CABLE, FLAT, READER	J408,460	
19	FC6-4562-000		1	COVER, HINGE, RIGHT		
20	FC6-4558-000		1	COVER, HINGE, LEFT		
21	FL2-3230-000		1	RETAINER, GLASS (R)		
22	XA9-1415-000		12	SCREW, FLAT HEAD, M4		
23	FM2-4422-000		1	CABLE, READER CONTROLLER	J10,310	
24	FL2-3207-000		1	GLASS, COPYBOARD	A INCH SIZE	
24	FL2-3208-000		1	GLASS, COPYBOARD	A SIZE	
24	FL2-3280-000		1	GLASS, COPYBOARD	AB INCH SIZE	
24	FL2-3209-000		1	GLASS, COPYBOARD	AB SIZE	
25	FU5-8592-000		1	PLATE, WIDTH INDEX	A INCH SIZE	
25	FU5-8581-000		1	PLATE, WIDTH INDEX	A SIZE	
25	FU5-8590-000		1	PLATE, WIDTH INDEX	AB INCH SIZE	
25	FU5-8598-000		1	PLATE, WIDTH INDEX	AB SIZE	

FIGURE & KEY NO.	PARTS NUMBER	R A N K	Q'TY	DESCRIPTION	SERIAL NUMBER/ REMARKS	S V C
26	FH7-7569-000		3	DOCUMENT SIZE SENSOR UNIT	A INCH SIZE SR404,405,407,409	
26	FH7-7569-000		4	DOCUMENT SIZE SENSOR UNIT	AB INCH SIZE SR404,405,406,407	
27	FU5-8595-000		1	PLATE, LENGTH INDEX	A INCH SIZE	
27	FU5-8596-000		1	PLATE, LENGTH INDEX	A SIZE	
27	FU5-8597-000		1	PLATE, LENGTH INDEX	AB INCH SIZE	
27	FU5-8591-000		1	PLATE, LENGTH INDEX	AB SIZE	
28	FK2-1066-020		1	MOTOR, STEPPING	M401 J458	
29	FU6-2190-000		1	SPRING, TENSION		
30	FC6-4506-000		1	FLANGE		
31	FC6-4514-000		4	FLANGE		
32	FU5-3339-000		3	PULLEY		
33	FU5-3340-000		1	PULLEY		
34	FM2-4427-000		1	CABLE, DOCUMENT SIZE SENSOR	100V/120V J407,454,455	
35	XD9-0136-000		4	RING, E		
36	FM2-4791-000		1	READER CONTROLLER PCB ASSEMBLY	CN ONLY	
37	FC6-4511-000		2	SLIDER		
38	FL2-3286-000		1	CONTACT IMAGE SENSOR		
39	FC6-4559-000		1	HOLDER, SENSOR		
40	FC6-4561-000		1	LEVER, SENSOR		
41	FM2-4400-000		1	CABLE, SENSOR	J405,452,453	
42	FU6-2191-000		1	SPRING, SENSOR		
43	WG8-5696-000		3	PHOTO INTERRUPTER, TLP1243	SR401,402,403 J451,452,453	
44	FM2-4412-000		1	CABLE, HP SENSOR	J406,451	
45	FM2-4423-020		1	CABLE, READER MOTOR	J409,458D	
46	XA9-1567-000		38	SCREW, RS, M3X8.5		
47	FM2-4428-000		1	CABLE, DOCUMENT SIZE SENSOR	100V J413,456,457	
47	FM2-4536-000		1	CABLE, DOCUMENT SIZE SENSOR	120V J1924,1927	
48	FB6-1336-000		2	GUIDE, CIS		
49	FB6-1337-000		2	COLLAR		
50	FC6-4525-000		1	RETAINER, GLASS	SGL/SGM/SGP/SGR	

FIGURE & KEY NO.	PARTS NUMBER	RANK	Q'TY	DESCRIPTION	SERIAL NUMBER/REMARKS	SVC
51	FL2-3231-000		1	RETAINER, GLASS, LEFT	SGL/SGM/SGP/SGR	
52	FL2-3233-000		1	GUIDE, PAPER	SGL/SGM/SGP/SGR	
53	FL2-3188-000		1	GLASS, READER		
54	FC5-1427-000		1	COVER, EDGE		
501	XB6-7300-407		4	SCREW, TP, M3X4		
502	XB2-8400-805		6	SCREW, W/WASHER, M4X8		
503	XD1-1106-231		1	WASHER, COP		
36	FM2-4792-000		1	READER CONTROLLER PCB ASSEMBLY	CN EXCEPT	
	FM2-3368-000		1	CARRIAGE UNIT	CN EXCEPT	

FIGURE 250 MAIN DRIVE ASSEMBLY

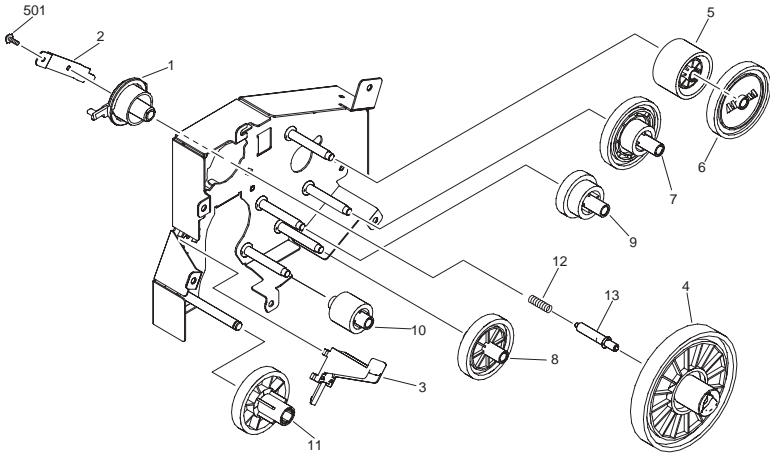


FIGURE & KEY NO.	PARTS NUMBER	R A N K	Q'TY	DESCRIPTION	SERIAL NUMBER/ REMARKS	S V C
Fig.250	FM2-3344-000		1	MAIN DRIVE ASSEMBLY		
1	FC6-4436-000		1	BUSHING		
2	FC6-4437-000		1	PLATE, EARTH		
3	FC6-4497-000		1	STOPPER, GEAR		
4	FU6-0788-000		1	GEAR, 161T		
5	FU6-0766-000		1	GEAR, 13T		
6	FU6-0767-000		1	GEAR, 9T		
7	FU6-0790-000		1	GEAR, 25T/91T		
8	FU6-0791-000		1	GEAR, 53T		
9	FU6-0792-000		1	GEAR, 37T/28T		
10	FU6-0793-000		1	GEAR, 25T		
11	FU6-0795-000		1	GEAR, 55T		
12	FU6-2184-000		1	SPRING, EARTH		
13	RB2-1850-000		1	PIN		
501	XB2-7300-607		1	SCREW,W/WASHER,M3X6		

FIGURE 280
FIXING DRIVE ASSEMBLY

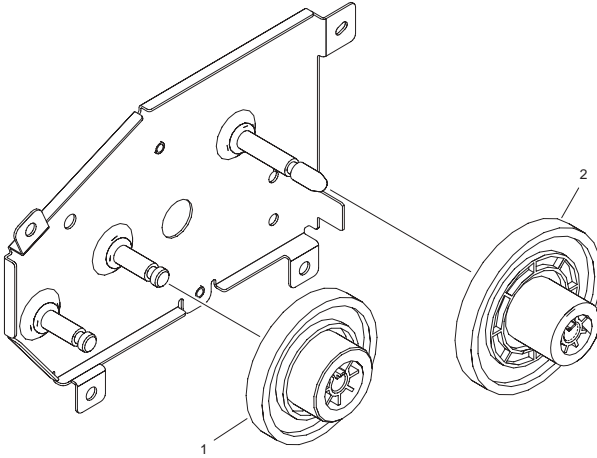


FIGURE & KEY NO.	PARTS NUMBER	RANK	Q'TY	DESCRIPTION	SERIAL NUMBER/REMARKS	SVC
Fig.280	FM2-3350-000		1	FIXING DRIVE ASSEMBLY		
1	FU6-0802-000		1	GEAR, 80T/17T		
2	FU6-0804-000		1	GEAR, 91T/19T		

FIGURE 300 CASSETTE

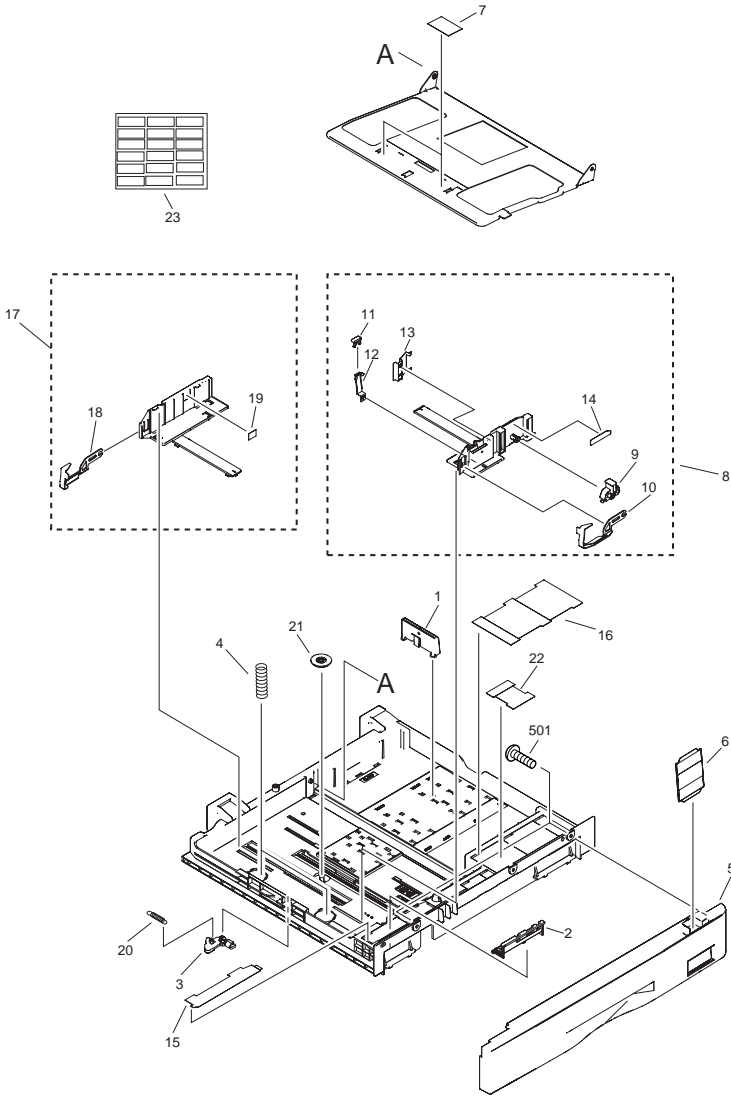


FIGURE & KEY NO.	PARTS NUMBER	R A N K	Q'TY	DESCRIPTION	SERIAL NUMBER/ REMARKS	S V C
Fig.300	NPN		RF	CASSETTE		
1	FB4-5814-000		1	PLATE, SIZE, REAR		
2	FB6-1640-000		1	LEVER, PAPER SIZE		
3	FB6-1644-000		1	LOCK, PAPER LIFTING PLATE		
4	FB6-2000-000		2	SPRING, COMPRESSION		
5	FC6-4337-000		1	COVER, CASSETTE		
6	FC6-4361-000		1	PLATE, SIZE INDICATOR		
7	FB6-1650-000		2	SHEET, SEPARATION		
8	FM2-3325-000		1	PAPER SIDE GUIDE (F) UNIT		
9	FB4-5809-020		1	LEVER, LOCK		
10	FB4-5813-020		1	PLATE, HOLD-DOWN TAB		
11	FB4-5810-000		1	PLATE, PAPER CONTACT		
12	FB6-1646-000		1	SPRING, LEAF		
13	FB6-1649-000		1	SPRING, LEAF		
14	FU5-8588-000		1	LABEL, SIDE LOCK		
15	FU5-8584-000		1	SHEET, PAPER SIZE SETTING		
16	FU5-8587-000		1	SHEET, PAPER SUPPLY		
17	FM2-3326-000		1	PAPER SIDE GUIDE (R) UNIT		
18	FB4-5808-020		1	PLATE, HOLD-DOWN TAB		
19	FB4-5824-000		1	LABEL, LIMIT		
20	FS6-2917-000		1	SPRING, TENSION		
21	FS7-0207-000		1	GEAR, 20T		
22	FU5-8609-000		1	SHEET, WARNING	100V/230 CN	
22	FU5-8601-000		1	SHEET, WARNING	100V/230 EU	
22	FU5-8601-000		2	SHEET, WARNING	120V	
23	FU5-8600-000		1	LABEL, PAPER SIZE		
501	XB4-7401-009		2	SCREW, TAPPING, PAN HEAD		
	FM2-3313-000		1	CASSETTE UNIT		

FIGURE 310 CASSETTE FEEDER ASSEMBLY

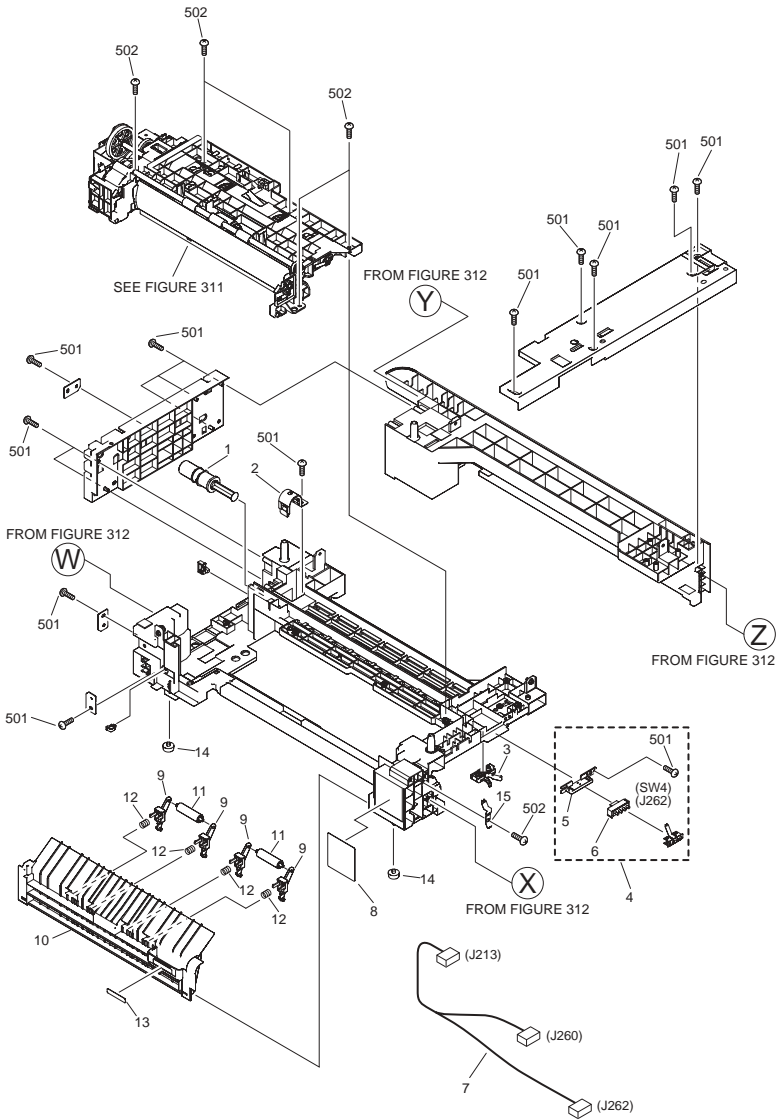


FIGURE & KEY NO.	PARTS NUMBER	R A N K	Q'TY	DESCRIPTION	SERIAL NUMBER/ REMARKS	S V C
Fig.310	NPN		RF	CASSETTE FEEDER ASSEMBLY		
1	FB4-5532-000		1	DAMPER		
2	FB6-1608-000		1	HOLDER, DAMPER		
3	FC6-4357-000		1	BLOCK, POSITION		
4	FM2-3319-000		1	SIZE DETECTION ASS'Y		
5	FB6-1910-000		1	MOUNT, SIZE SENSOR		
6	WC2-5332-000		1	SWITCH, PAPER SIZE	SW4 J262	
7	FM2-4403-000		1	CABLE, CASSETTE	J213,260,262	
8	FU5-8585-000		1	LABEL, JAM CLEARING		
9	FC6-4297-000		4	BUSHING, ROLLER, VERTICAL		
10	FC6-4298-000		1	COVER, CASSETTE, LEFT		
11	FC6-4300-000		2	ROLLER, VERTICAL PASS		
12	FU6-2170-000		4	SPRING, COMPRESSION		
13	FU5-8586-000		1	LABEL, COVER		
14	XH9-0135-000		2	FOOT, RUBBER		
15	FC6-6712-000		1	PLATE, EARTH		
501	XB4-5401-005		15	SCREW, P, M4X10		
502	XB4-5401-007		5	SCREW, M4X10		

FIGURE 311 PAPER PICK-UP ASSEMBLY

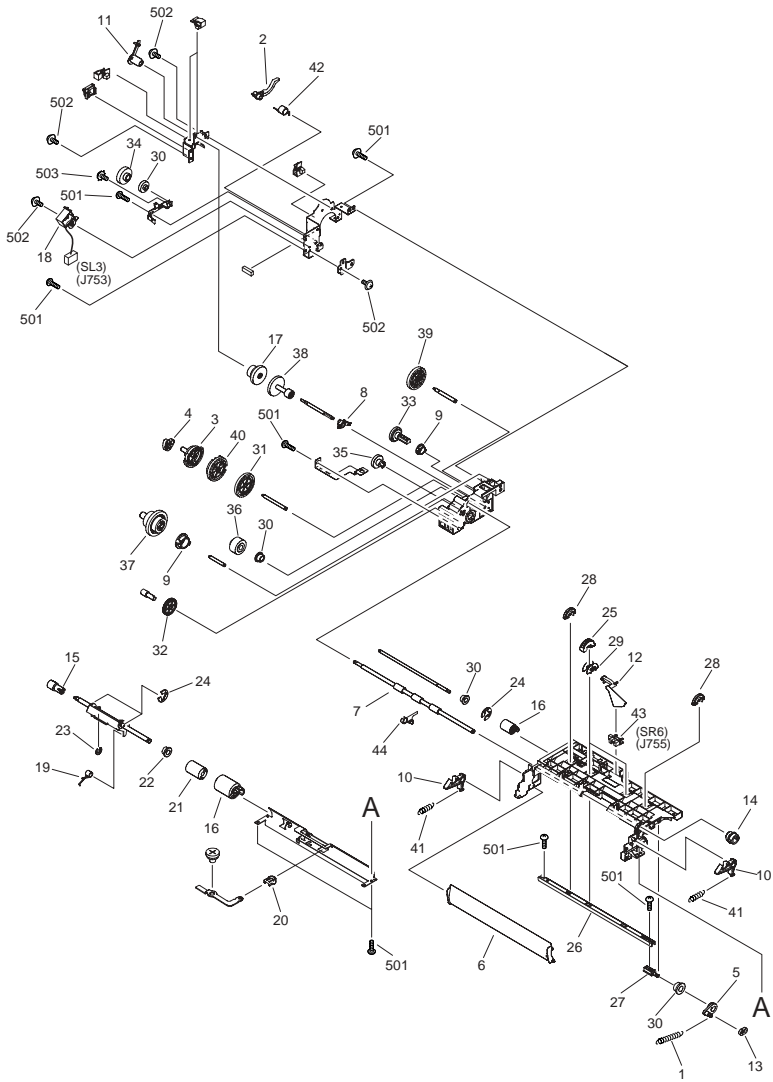


FIGURE & KEY NO.	PARTS NUMBER	R A N K	Q'TY	DESCRIPTION	SERIAL NUMBER/ REMARKS	S V C
Fig.311	FM2-3320-050		1	PAPER PICK-UP ASSEMBLY		
1	FB6-1550-000		1	SPRING, TENSION		
2	FB6-1626-000		1	LEVER, COUPLING		
3	FB6-1633-000		1	GEAR, 27T/50T		
4	FB6-1660-000		1	CAM		
5	FB6-1909-000		1	BUSHING		
6	FC6-4285-000		1	GUIDE, TURN		
7	FC6-4286-000		1	ROLLER, VERTICAL PATH		
8	FC6-4291-000		1	BUSHING, CLUTCH		
9	FC6-4304-000		2	BUSHING, ROLLER, PICK-UP		
10	FC6-4326-000		2	LOCK, VERTICAL PASS		
11	FC6-4348-000		1	BUSHING, CLUTCH, REAR		
12	FC6-4350-000		1	ARM, DETECTION, PAPER		
13	FC6-4352-000		1	COLLAR, SPRING		
14	FC6-4355-000		1	BUSHING		
15	FC6-4358-000		1	JOINT, RETARD		
16	FF6-1621-000		2	ROLLER, SEPARATION		
17	FK2-1068-000		1	CLUTCH, ELECTROMAGNETIC		
18	FK2-1082-000		1	SOLENOID		
19	FU7-2234-000		1	SPRING, TORSION		
20	FB6-1908-000		1	CAP		
21	FC6-4290-000		1	LIMITER, TORQUE		
22	FB6-1541-000		1	BUSHING		
23	XD9-0133-000		1	RING, E		
24	XD9-0136-000		3	RING, E		
25	FB4-9817-030		2	ROLLER, PICK-UP		
26	FC6-4284-000		1	SHAFT, ROLLER, PICK-UP		
27	FC6-4351-000		1	SHAFT, ROLLER		
28	FC6-4356-000		2	ROLLER, LOOP		
29	FE5-4048-000		2	BLOCK, PICK-UP ROLLER ADPTER		
30	FS1-1205-000		4	BUSHING		
31	FS7-0225-000		1	GEAR, 53T		

FIGURE & KEY NO.	PARTS NUMBER	R A N K	Q'TY	DESCRIPTION	SERIAL NUMBER/ REMARKS	S V C
32	FS7-0226-000		1	GEAR, 36T		
33	FS7-0228-000		1	GEAR, 31T		
34	FS7-0229-000		1	GEAR, 18T		
35	FS7-0230-000		1	GEAR, 27T		
36	FU6-0769-000		1	GEAR, 17T		
37	FU6-0770-000		1	GEAR, 21T/37T/22T		
38	FU6-0771-030		1	GEAR, 16T/34T		
39	FU6-0775-000		1	GEAR, 39T		
40	FU6-0776-030		1	GEAR, 29T		
41	FU6-2174-000		2	SPRING, TENSION		
42	FU6-2175-000		1	SPRING, TORSION		
43	WG8-5696-000		1	PHOTO INTERRUPTER, TLP1243	SR6 J755	
44	FC7-1770-000		1	BUSHING		
501	XB4-7401-009		8	SCREW,TAPPING,PAN HEAD,M4X10		
502	XB6-7300-609	N	4	SCREW, MACH, PAN HEAD, M3X8		
503	XB2-7300-607		1	SCREW, CROSS-RECESS, FCH		

FIGURE 312 CASSETTE FEEDER ASSEMBLY(MF7280)

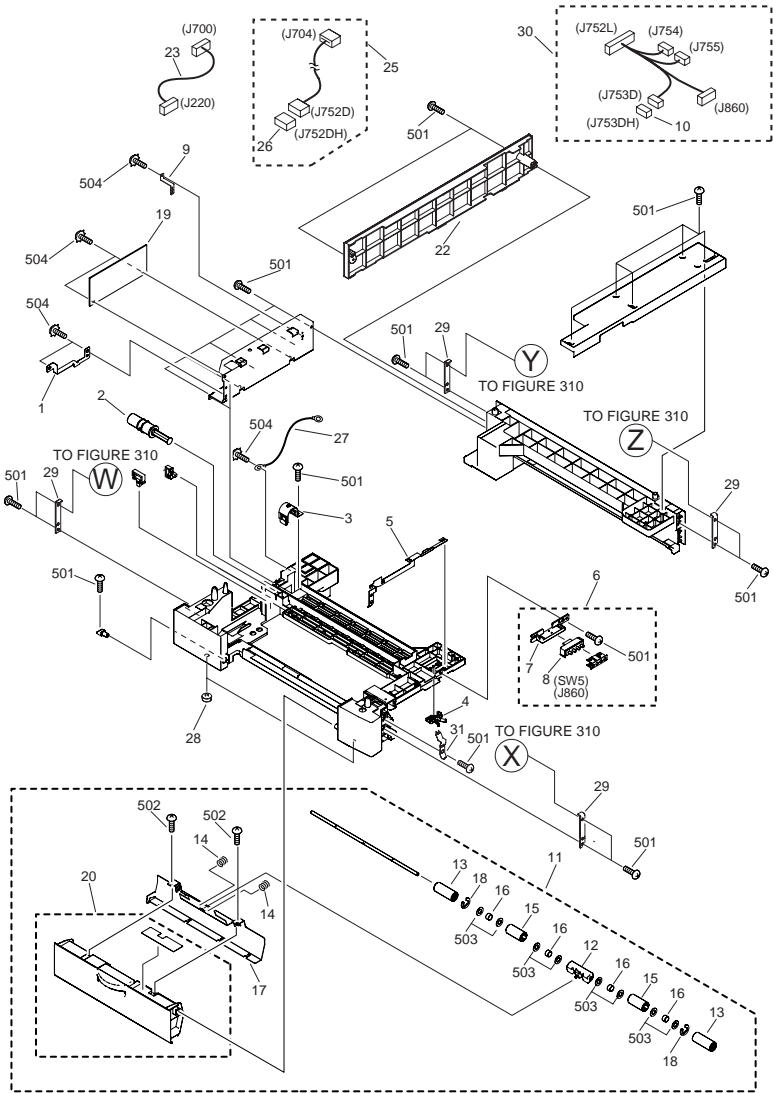


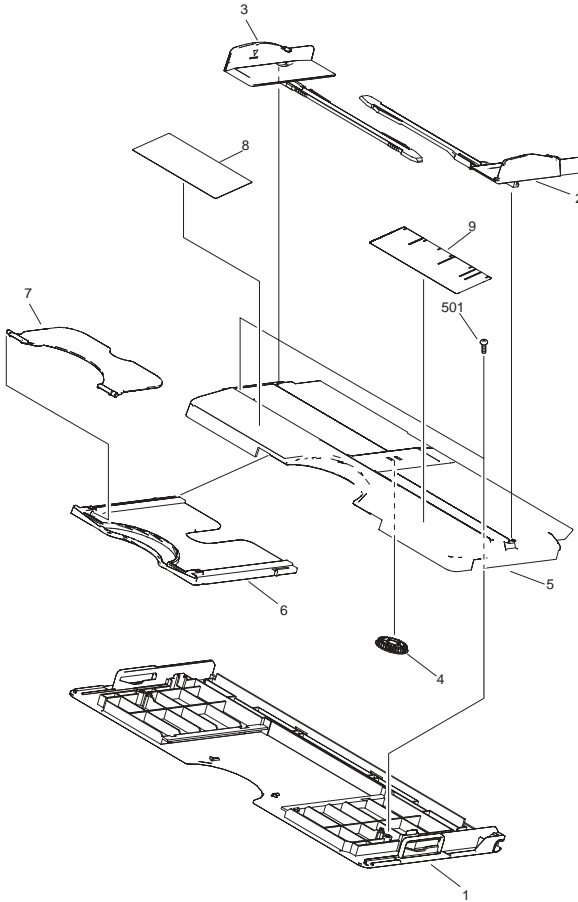
FIGURE & KEY NO.	PARTS NUMBER	R A N K	Q'TY	DESCRIPTION	SERIAL NUMBER/ REMARKS	S V C
Fig.312	NPN		RF	CASSETTE FEEDER ASSEMBLY	MF7280	
1	FC6-6720-000		1	PLATE, GROUNDING		
2	FB4-5532-000		1	DAMPER		
3	FB6-1608-000		1	HOLDER, DAMPER		
4	FC6-4357-000		1	BLOCK, POSITION		
5	FC6-6706-000		1	PLATE, EARTH		
6	FG6-8440-000		1	SIZE SENSOR UNIT		
7	FB6-1910-000		1	MOUNT, SIZE SENSOR		
8	WC2-5332-000		1	SWITCH, PAPER SIZE	SW5,J860	
9	FB6-1614-000		1	PLATE, GROUNDING		
10	VS1-7177-002		1	CONNECTOR, SNAP TIGHT, BK	J753D	
11	FM2-4483-000		1	VERTICAL PATH UNIT		
12	FA8-2447-000		1	MOUNT, ROLLER		
13	FB6-1536-000		2	ROLLER		
14	FB6-1920-000		2	SPRING, COMPRESSION		
15	FB6-1996-000		2	ROLLER, VERTICAL PATH		
16	FB6-1997-000		4	SPRING, COMPRESSION		
17	FC6-6714-000		1	GUIDE, VERTICAL PATH		
18	XD9-0136-000		2	RING, E		
19	FM2-4495-000		1	FEEDER CONTROLLER PCB ASS'Y		
20	FL2-3736-000		1	COVER, VERTICAL PATH		
21	FU5-8680-000		1	LABEL,JAM		
22	FC6-6710-000		1	COVER, CASSETTE, REAR		
23	FM2-4497-000		1	CABLE, INTERFACE, 1	J220,700	
24	FC6-6712-000		1	PLATE, EARTH		
25	FM2-4499-000		1	CABLE, FEEDER	J704,752D	
26	VS1-7177-013		1	CONNECTOR, SNAP TIGHT	J752DH	
27	FM2-4500-000		2	CABLE, EARTH		
28	XH9-0135-000		2	FOOT, RUBBER		
29	FC6-6707-000		4	PLATE, JOINT		
30	FM2-4496-000		1	CABLE, FEEDER	J752,754,755,860	
501	XB4-5401-007		22	SCREW, M4X10		

FIGURE & KEY NO.	PARTS NUMBER	R A N K	Q'TY	DESCRIPTION	SERIAL NUMBER/ REMARKS	S V C
502	XB1-2400-607		2	SCREW, CROSS-RECESS, FCH		
503	XD1-1106-235		8	WASHER,COP		
504	XB2-7300-607		7	SCREW, WWASHER, M3X6		

FIGURE & KEY NO.	PARTS NUMBER	R A N K	Q'TY	DESCRIPTION	SERIAL NUMBER/ REMARKS	S V C
Fig.313	FM2-4484-010		1	PAPER PICK-UP ASSEMBLY	MF7280	
1	FA8-2448-000		2	PAWL, LOCK		
2	FA8-2449-000		2	SHAFT, LOCK		
3	FB4-6032-000		1	SHAFT, CLUCH		
4	FB4-6033-000		1	SHAFT, IDLER		
5	FB4-6034-000		1	SHAFT		
6	FB6-1550-000		1	SPRING, TENSION		
7	FB6-1551-000		2	SPRING, TENSION		
8	FB6-1613-000		1	ROLLER, VERTICAL PATH		
9	FB6-1614-000		1	PLATE, GROUNDING		
10	FB6-1615-000		1	PLATE, GROUNDING		
11	FB6-1616-000		1	GUIDE, VERTICAL PATH		
12	FB6-1623-000		1	ARM, FEED SENSOR		
13	FB6-1624-000		1	SPRING, TORSION		
14	FB6-1626-000		1	LEVER, COUPLING		
15	FB6-1628-000		1	PLATE, GROUNDING		
16	FC8-0160-000		1	GEAR, 16T/34T		
17	FB6-1633-000		1	GEAR, 27T/50T		
18	FB6-1634-000		1	GEAR, 29T		
19	FB6-1635-000		1	SHAFT		
20	FB6-1636-000		1	GEAR, 39T		
21	FB6-1660-000		1	CAM		
22	FB6-1905-000		1	GEAR, 14T		
23	FB6-1909-000		1	BUSHING		
24	FC6-4304-000		2	BUSHING, ROLLER, PICK-UP		
25	FC6-4352-000		1	COLLAR, SPRING		
26	FC6-4355-000		1	BUSHING		
27	FC6-4358-000		1	JOINT, RETARD		
28	FF6-1621-000		2	ROLLER, SEPARATION		
29	FK2-1104-000		1	SOLENOID	SL3 J753	
30	FU7-2234-000		1	SPRING, TORSION		
31	FB6-1908-000		1	CAP		

FIGURE & KEY NO.	PARTS NUMBER	R A N K	Q'TY	DESCRIPTION	SERIAL NUMBER/ REMARKS	S V C
32	FC6-4290-000		1	LIMITER, TORQUE		
33	FB6-1541-000		2	BUSHING		
34	FF6-1610-000		1	HOLDER, SEPARATION ROLLER		
35	XD3-1200-122		2	SPRING PIN		
36	FC6-4350-000		1	ARM, DETECTION, PAPER		
37	XD9-0133-000		1	RING, E		
38	XD9-0136-000		5	RING, E		
39	FB4-9817-030		2	ROLLER, PICK-UP		
40	FB6-1631-030		1	SHAFT, PICK-UP ROLLER		
41	FC6-4356-000		2	ROLLER, LOOP		
42	FE5-4048-000		2	BLOCK, PICK-UP ROLLER ADPTER		
43	FS1-1205-000		4	BUSHING		
44	FS7-0225-000		1	GEAR, 53T		
45	FS7-0226-000		1	GEAR, 36T		
46	FS7-0227-000		1	GEAR, 21T/33T/22T		
47	FS7-0228-000		1	GEAR, 31T		
48	FS7-0229-000		1	GEAR, 18T		
49	FS7-0230-000		1	GEAR, 27T		
50	WG8-5624-000		2	PHOTO-INTERRUPTER, TLP1241	SR5,6 J755	
51	FC6-4288-020		1	LEVER, PRESSURE		
52	FS5-9714-000		1	SCREW, STEPPED, M3		
53	FU6-2175-000		1	SPRING, TORSION		
501	XB4-7401-009		10	SCREW, TAPPING, PAN HEAD, M4X10		
502	XB2-7300-607		2	SCREW, W/WASHER, M3X6		
503	XB6-7300-609		1	SCREW, MACH, PAN HEAD, M3X8		

FIGURE 315 MULTI FEED TRAY ASSEMBLY



NOTE1: This assembly is included in the assembly shown in Figure 140.
 NOTE2: This assembly does not include the part shown with key No.9.
 注 1: このユニットはFigure140のユニットに含まれます。
 注 2: このユニットにKey No.9の部品は含まれません。

FIGURE & KEY NO.	PARTS NUMBER	R A N K	Q'TY	DESCRIPTION	SERIAL NUMBER/ REMARKS	S V C
Fig.315	FM2-3294-000		1	MULTI FEED TRAY ASSY	SEE NOTE1	
1	FC6-4215-000		1	COVER, MULTI FEED		
2	FC6-4218-000		1	PLATE, LIMIT, FRONT		
3	FC6-4219-000		1	PLATE, LIMIT, REAR		
4	FC6-4220-000		1	GEAR, PINION		
5	FC6-4221-000		1	TRAY, MULTI FEED		
6	FC6-4222-000		1	TRAY, MULTI FEED, SUB (L)		
7	FC6-4223-000		1	TRAY, MULTI FEED, SUB (S)		
8	FU5-8605-000		1	LABEL, SET		
9	FU5-8604-000		1	LABEL, SIZE INSTRUCTION	CNSEE NOTE2	
9	FU5-8589-000		1	LABEL, SIZE INSTRUCTION	USSEE NOTE2	
501	XB4-5401-005		2	SCREW, P, M4X10		

FIGURE 350 PAPER DELIVERY ASSEMBLY

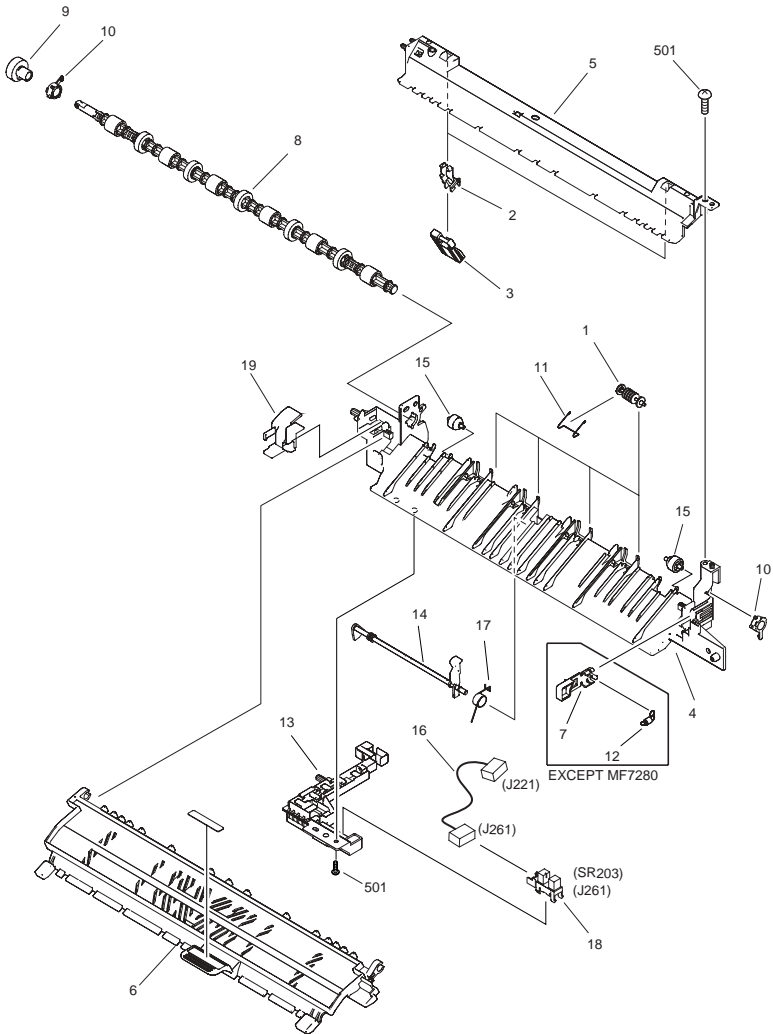
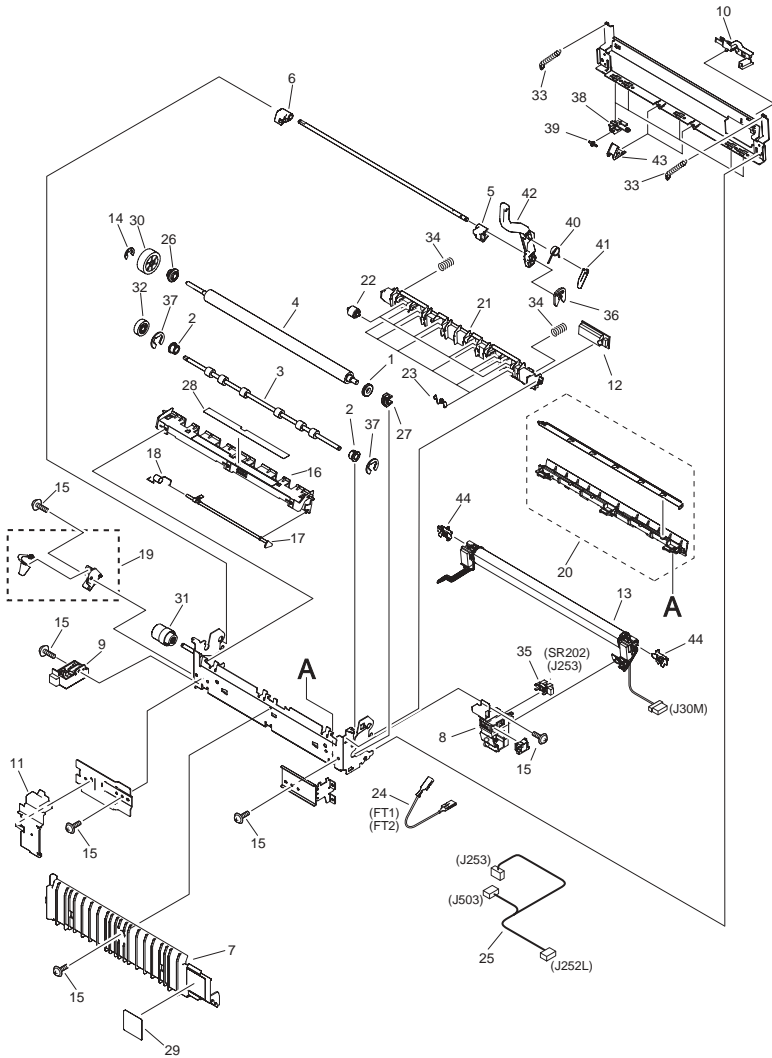


FIGURE & KEY NO.	PARTS NUMBER	R A N K	Q'TY	DESCRIPTION	SERIAL NUMBER/ REMARKS	S V C
Fig.350	FM2-3351-000		1	PAPER DELIVERY ASSEMBLY	100V/230V	
Fig.350	FM2-6685-070		1	PAPER DELIVERY ASSEMBLY	120V	
1	FC5-4847-000		4	ROLLER, FEEDING		
2	FC6-4438-020		2	HOLDER, RETAINING PLATE		
3	FC6-4477-000		2	PLATE,DELIVERY RETAINING		
4	FC6-4470-030		1	GUIDE, DELIVERY, LOWER		
5	FC6-4474-030		1	GUIDE, DELIVERY, UPPER		
6	FC8-0215-000		1	GUIDE, DELIVERY	100V/230V	
6	FL2-3746-000		1	GUIDE, DELIVERY	120V	
7	FC6-4502-000		1	STOPPER, DELIVERY GUIDE	EXCEPT MF7280	
8	FL2-3220-000		1	ROLLER, DELIVERY		
9	FU5-0732-000	N	1	GEAR, 17T		
10	FU5-1522-000		2	BUSHING, DELIVERY ROLLER		
11	FU6-2189-000		4	SPRING, TORSION		
12	FU6-2206-000		1	SPRING, TENSION	100V/230V	
12	FU6-2207-020		1	SPRING, TENSION	120V	
13	FC6-4465-020		1	HOLDER, SENSOR	SR203	
14	FC6-4473-020		1	LEVER, DELIVERY SENSOR		
15	FC6-4484-000		2	ROLLER		
16	FM2-4789-000		1	CABLE, SENSOR, DELIVERY	J221,261	
17	FU6-2210-000		1	SPRING, TORSION		
18	WG8-5696-000		1	PHOTO INTERRUPTER, TLP1243	SR203 J261	
19	FC6-4504-000		1	COVER, GEAR		
501	XB4-7401-209		1	SCREW,TAPPING,PAN HEAD,M4X10		

FIGURE 810 FIXING ASSEMBLY

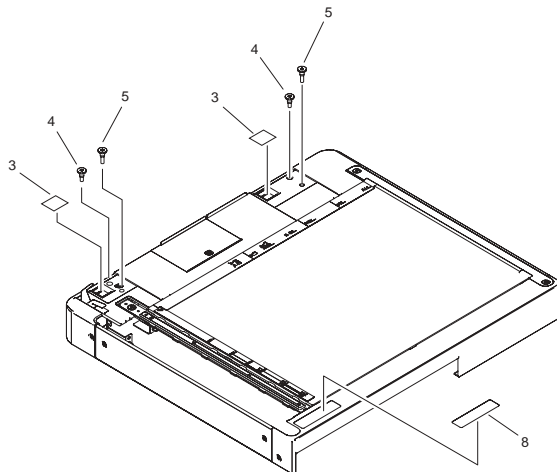
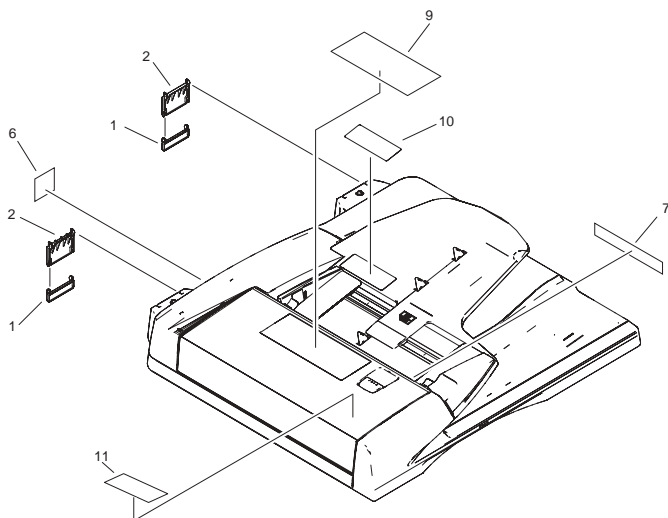


NOTE : This assembly does not include the parts shown with key No. 36, 40, 41 and 42.
 注 : このユニットにKey No.36, 40, 41, 42 の部品は含まれません。

FIGURE & KEY NO.	PARTS NUMBER	R A N K	Q'TY	DESCRIPTION	SERIAL NUMBER/ REMARKS	S V C
Fig.810	FM2-6351-000		1	FIXING ASSEMBLY	100V	
Fig.810	FM2-3345-000		1	FIXING ASSEMBLY	120V	
Fig.810	FM2-3352-000		1	FIXING ASSEMBLY	230V	
1	FC5-4860-000		1	RUBBER RING,CONDUCTIVE		
2	FC5-5297-000		2	BUSHING		
3	FC6-4452-000		1	ROLLER, DELIVERY, MIDDLE		
4	FC6-4453-000		1	ROLLER, PRESSURE		
5	FC6-4462-000		1	BLOCK, PRESSURE RELEASE (F)		
6	FC6-4463-000		1	BLOCK, PRESSURE RELEASE (R)		
7	FC6-4479-000		1	COVER, FIXING, LEFT		
8	FC6-4480-000		1	GUIDE, FIXING CABLE (F)		
9	FC6-4481-000		1	GUIDE, FIXING CABLE (R)		
10	FC6-4492-000		1	GUIDE, FILM SENSOR CABLE		
11	FC6-4501-000		1	COVER, FIXING GEAR		
12	FG3-3501-000		1	FIXING FILM SENSOR ASS'Y		
13	FM2-6352-000		1	FIXING FILM ASSEMBLY	100V	
13	FM2-3346-000		1	FIXING FILM ASSEMBLY	120V	
13	FM2-3353-000		1	FIXING FILM ASSEMBLY	230V	
14	XD9-0134-000		1	RING, E		
15	XA9-0702-000		5	SCREW, WWASHER, M3X6		
16	FC6-4449-000		1	GUIDE, DELIVERY, LOWER		
17	FC6-4450-000		17	LEVER, DELIVERY SENSOR		
18	FU5-2470-000		1	SPRING, TORSION		
19	FM2-3348-000		1	TERMINAL HOLDER ASSEMBLY		
20	FM2-3349-000		1	FIXING INLET GUIDE UNIT		
21	FC6-4448-000		1	GUIDE, DELIVERY, UPPER		
22	FC5-6805-000		6	ROLLER, DELIVERY, MIDDLE		
23	FU6-2188-000		6	SPRINGM, TORSION		
24	FM2-4405-000		1	CABLE, FILM BIAS	FT1,2	
25	FM2-4411-000		1	CABLE, FIXING SENSOR	J252L,253,503	
26	FU5-1519-000		1	BUSHING		
27	FU5-1520-000		1	BUSHING		

FIGURE & KEY NO.	PARTS NUMBER	R A N K	Q'TY	DESCRIPTION	SERIAL NUMBER/ REMARKS	S V C
28	FU5-8575-000		1	LABEL, WARNING, HIGH TEMP.		
29	FU5-8576-000		1	LABEL, DRUM CAUTION		
30	FU6-0799-000		1	GEAR, 27T		
31	FU6-0800-000		1	GEAR, 17T		
32	FU6-0801-000		1	GEAR, 17T		
33	FU6-2185-000		2	SPRING, TENSION		
34	FU6-2186-000		2	SPRING, COMPRESSION		
35	WG8-5696-000		1	PHOTO INTERRUPTER, TLP1243	SR202 J253	
36	FA3-8727-000		1	RING,E	SEE NOTE	
37	XD9-0136-000		2	RING, E		
38	FC6-4458-020		5	MOUNT, ROWEL		
39	FC6-4375-000		5	ROWEL		
40	FU6-2208-000		1	SPRING, TORSION	SEE NOTE	
41	FC6-4454-000		1	BLOCK, LEVER RETURN	SEE NOTE	
42	FC6-4503-000		1	LEVER, RELEASE, FRONT	SEE NOTE	
43	FC6-4467-000		2	GUIDDE, PAPER LIMIT		
44	FC7-1771-000		2	CAP, PRESSURE		

FIGURE P01 PACKING KIT



NOTE : This unit is used for MF7240/7280/7140/7170i
注 : このユニットはにMF7240/7280/7140/7170i使用します。

FIGURE & KEY NO.	PARTS NUMBER	R A N K	Q'TY	DESCRIPTION	SERIAL NUMBER/ REMARKS	S V C
Fig.P01	NPN		RF	PACKING KIT	MF7240/7280/7140/7170i	
1	FC3-1571-000		2	COVER, HINGE		
2	FC3-1572-000		2	COVER, HINGE		
3	FC3-1547-000		2	SHEET, BLANKING		
4	FU5-9140-000		2	SCREW, STEPPED, (M4X10)		
5	FU5-9139-000		2	SCREW, STEPPED(M5X6)		
6	FS9-0195-000		1	LABEL, CAUTION	SGL/SGP	
6	FS9-0196-000		1	LABEL, CAUTION	SGR	
7	FS9-0211-000		1	LABEL, DOCUMENT SIZE		
8	FS9-0213-000		1	LABEL, CLEANING	SGL/SGP	
8	FS9-0224-000		1	LABEL, CLEANING	SGM	
8	FS9-0214-000		1	LABEL, CLEANING	SRG	
9	FS9-0201-000		1	LABEL, DOCUMENT PROHIBITION	A INCH SIZEAB INCH	
9	FS9-0202-000		1	LABEL, DOCUMENT PROHIBITION	A SIZE	
9	FS9-0200-000		1	LABEL, DOCUMENT PROHIBITION	AB SIZE	
10	FS9-0207-000		1	LABEL, DOCUMENT SIZE	A INCH SIZE	
10	FS9-0211-000		1	LABEL, DOCUMENT SIZE	A INCH SIZEAB INCH	
10	FS9-0208-000		1	LABEL, DOCUMENT SIZE	A SIZE	
10	FS9-0206-000		1	LABEL, DOCUMENT SIZE	AB SIZE	
11	FS9-0212-000		1	LABEL, CLEANING	SGL/SGP	
11	FS9-0248-000		1	LABEL, CLEANING	SGM	
11	FS9-0217-000		1	LABEL, CLEANING	SGR	

FIGURE P11 ADF ASSEMBLY

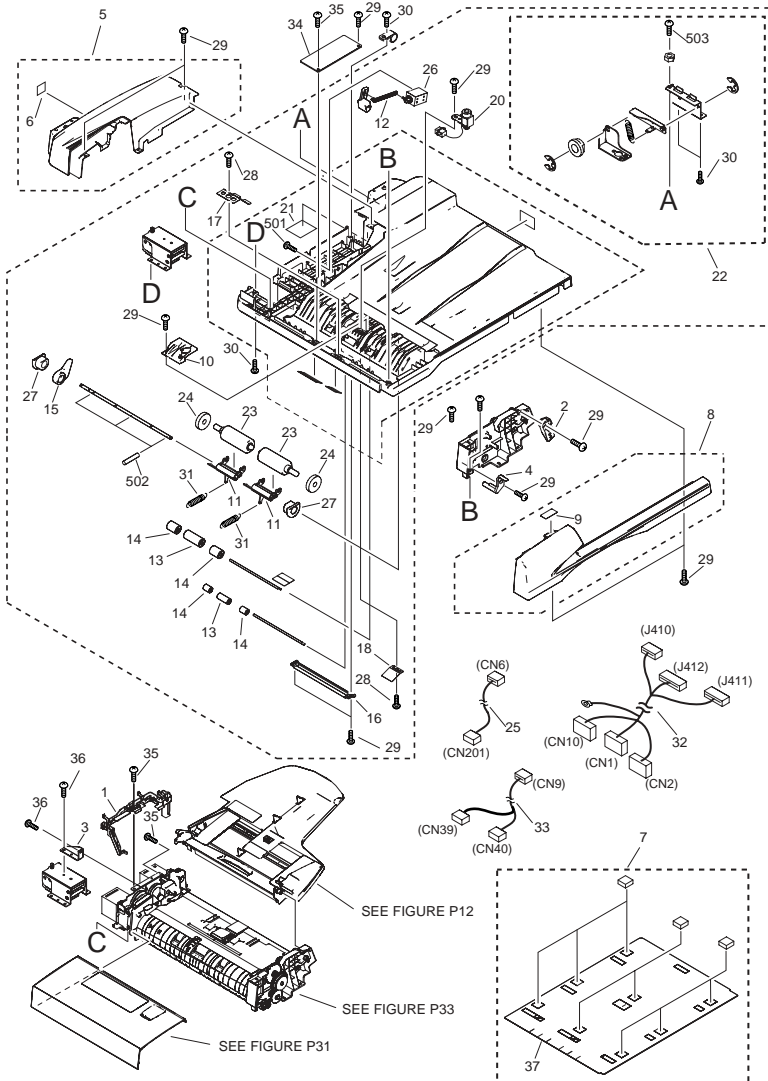


FIGURE & KEY NO.	PARTS NUMBER	R A N K	Q'TY	DESCRIPTION	SERIAL NUMBER/ REMARKS	S V C
Fig.P11	NPN		RF	ADF ASSEMBLY	MF7240/7280/7140/7170i	
1	FC3-1468-000		1	HOLDER, HARNESS		
2	FC3-1492-000		1	HOLDER, TRAY SHAFT		
3	FC3-1496-000		1	BRACKET, SUPPORT		
4	FC3-1539-000		1	HOLDER, FEEDER SHAFT		
5	FF3-4621-000		1	PANEL, REAR		
6	FS9-0198-000		1	LABEL, HINGE CAUTION		
7	FF3-4624-000		1	PANEL, COPYBOARD		
8	FF3-4634-000		1	PANEL, FRONT		
9	FS9-0203-000		1	LABEL, DIAL OPERATION		
10	FC3-1449-000		1	COVER, STAMP		
11	FC3-1450-000		2	HOLDER, DELIVERY RELEASE		
12	FC3-1452-000		1	ARM, SOLENOID		
13	FC3-1454-000		2	ROLLER, PAPER FEED, 1		
14	FC3-1455-000		4	ROLLER, PAPER, FEED, 2		
15	FC3-1491-000		1	ARM, DELIVERY RELEASE		
16	FC3-1495-000		1	COVER, FEED		
17	FC3-1497-000		2	SPRING, LEAF		
18	FC3-1498-000		2	SPRING, LEAF		
19	FC3-1549-000		3	CLIP		
20	FK2-0216-000		1	SOLENOID		
21	FS9-0197-000		1	LABEL, HINGE CAUTION		
22	FG3-4039-000		1	HINGE UNIT(RIGHT)		
23	FC3-1451-000		2	ROLLER		
24	FC3-1513-000		2	ROLLER, PRESS		
25	FH2-7211-000		1	CABLE, STAMP		
26	FH6-5136-000		1	SOLENOID		
27	FS2-1707-000		2	BUSHING, DELIVERY RELEASE		
28	FS2-9568-000		4	SCREW, M3X8		
29	FS2-9569-000		12	SCREW, M3X10		
30	FS2-9571-000		7	SCREW, M4X12		
31	FS4-2743-000		2	SPRING		

FIGURE & KEY NO.	PARTS NUMBER	RANK	Q'TY	DESCRIPTION	SERIAL NUMBER/REMARKS	SVC
32	FH2-7206-000		1	CABLE, INTERFACE		
33	FH2-7210-000		1	CABLE, OPEN/CLOSE SENSOR		
34	FH5-3730-000		1	CONNECTION PCB UNIT		
35	FS2-9567-000		3	SCREW, M3X6		
36	FS2-9570-000		2	SCREW, M4X7		
37	FC3-1569-000		1	COVER, COPYBOARD		
501	XB2-4300-605		1	SCREW, W/WASHER, M3X6		
502	XD3-2200-102		3	PIN, PARALLEL		
503	XB1-1401-407		1	SCREW, M4X14		

FIGURE P12 DOCUMENT TRAY ASSEMBLY

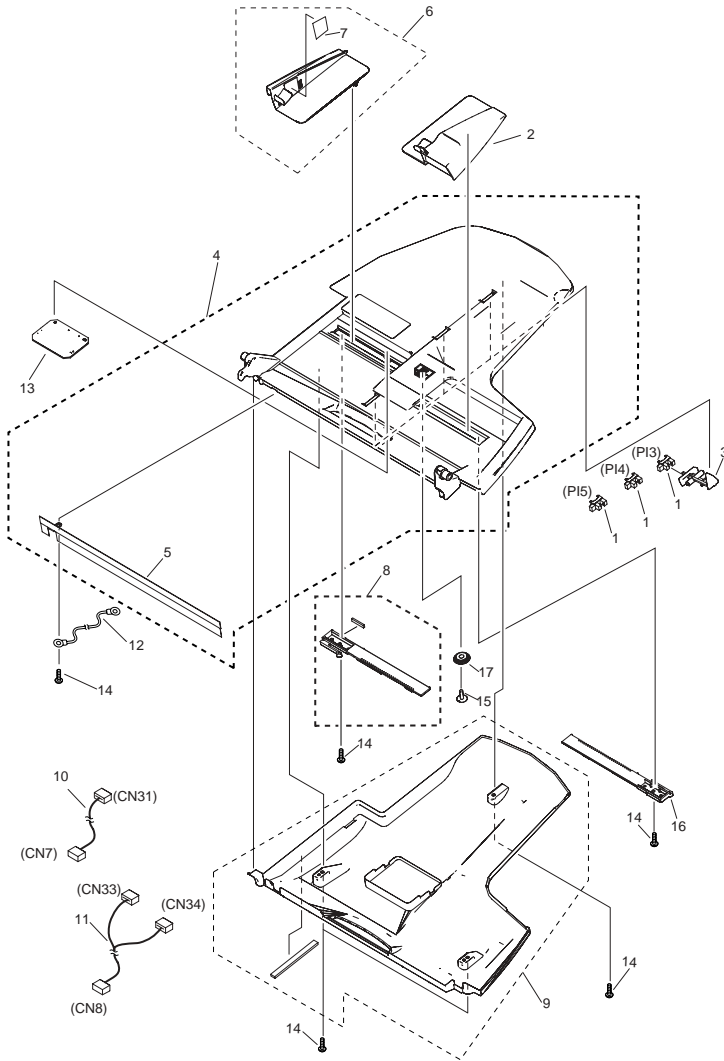


FIGURE & KEY NO.	PARTS NUMBER	R A N K	Q'TY	DESCRIPTION	SERIAL NUMBER/ REMARKS	S V C
Fig.P12	FG3-4036-000		1	DOCUMENT TRAY ASSEMBLY	MF7240/7280/7140/7170i	
1	WG8-5696-000		3	PHOTO INTERRUPTER, TLP1243		
2	FC3-1486-000		1	GUIDE, TRAY, FRONT		
3	FC3-1488-000		3	LEVER, TRAY SENSOR		
4	FF3-4625-000		1	TRAY, DOCUMENT, UPPER		
5	FC3-1529-000		1	ELIMINATOR, STATIC CHARGE		
6	FF3-4626-000		1	GUIDE, TRAY		
7	FS9-0210-000		1	LABEL, DOCUMENT HEIGHT LIMIT		
8	FF3-4627-000		1	RACK, TRAY		
9	FF3-4628-000		1	COVER, TRAY, LOWER		
10	FH2-7207-000		1	CABLE, DOCUMENT TRAY	CN7,31	
11	FH2-7208-000		1	CABLE, SIZE DETECTION SENSOR	CN8,33,34	
12	FH2-7212-000		1	CABLE, STATIC ELIMINATOR		
13	FH5-3731-000		1	CONNECTING PCB UNIT		
14	FS2-9569-000		6	SCREW, M3X10		
15	FS2-9572-000		1	SCREW, M3X10		
16	FS4-0657-000		1	RACK, TRAY		
17	FS4-0658-000		1	GEAR, 16T		

FIGURE P31 OPEN/CLOSE PANEL ASSEMBLY

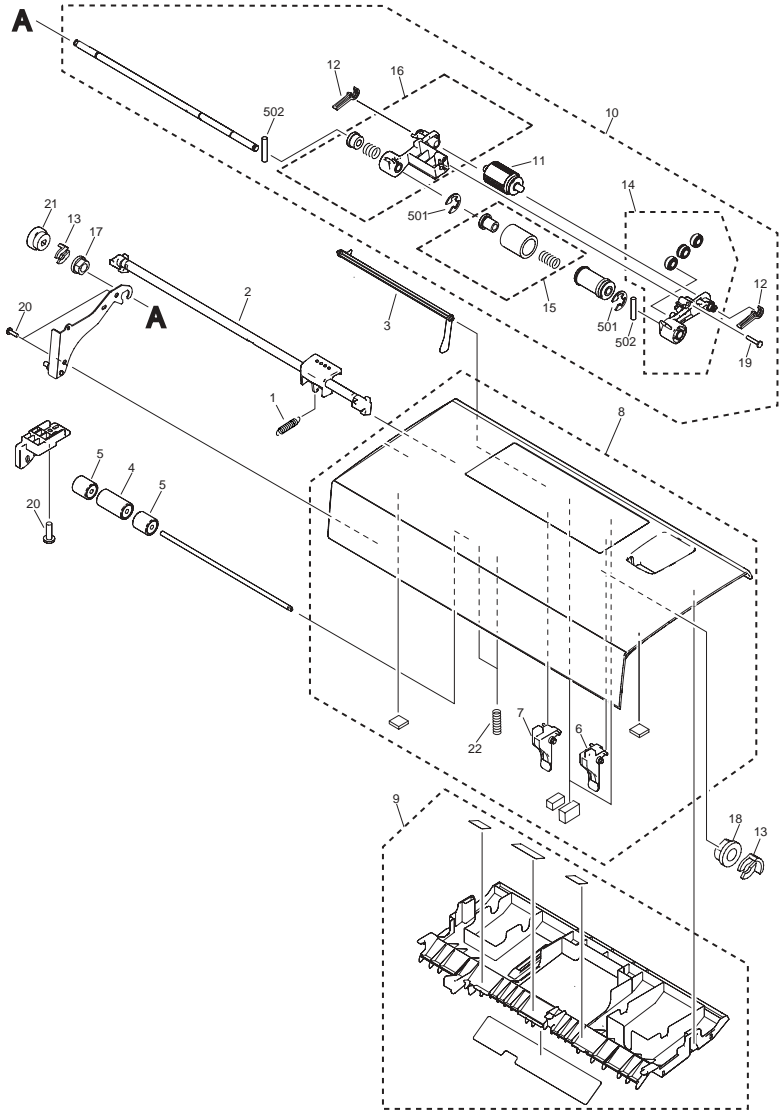


FIGURE & KEY NO.	PARTS NUMBER	R A N K	Q'TY	DESCRIPTION	SERIAL NUMBER/ REMARKS	S V C
Fig.P31	FG3-4037-000		1	OPEN/CLOSE PANEL ASSEMBLY	MF7240/7280/7140/7170i	
1	FS4-2754-000		1	SPRING, TENSION		
2	FC3-1477-000		1	LEVER, OPEN/CLOSE		
3	FC3-1478-000		1	LEVER, SENSOR		
4	FC3-1479-000		1	ROLLER, REGISTRATION, 1		
5	FC3-1480-000		2	ROLLER, REGISTRATION, 2		
6	FC3-1540-000		1	SHUTTER, FRONT		
7	FC3-1541-000		1	SHUTTER, REAR		
8	FF3-4629-000		1	PANEL, OPEN/CLOSE		
9	FF3-4630-000		1	GUIDE, OPEN/CLOSE		
10	FG3-4043-000		1	PICK-UP ROLLER ASSEMBLY		
11	FC3-1525-000		1	ROLLER, PICK-UP		
12	FC3-1542-000		2	STOPPER		
13	FC3-1549-000		2	CLIP		
14	FG3-4041-000		1	PICK-UP ARM UNIT, FRONT		
15	FG3-4044-000		1	SEPARATION ROLLER UNIT		
16	FG3-4045-000		1	PICK-UP ARM UNIT,REAR		
17	FS2-1708-000		1	BUSHING		
18	FS2-1710-000		1	BUSHING		
19	FS2-9573-000		1	SCREW, M3X16		
20	FS2-9569-000		4	SCREW, M3X10		
21	FS4-0654-000		1	GEAR, 25T		
22	FS4-2747-000		2	SPRING, COMPRESSION		
501	XD2-1100-502		2	RETAINING RING (E-TYPE)		
502	XD3-2200-102		2	PIN, PARALLEL		

FIGURE P33 PAPER FEEDER ASSEMBLY

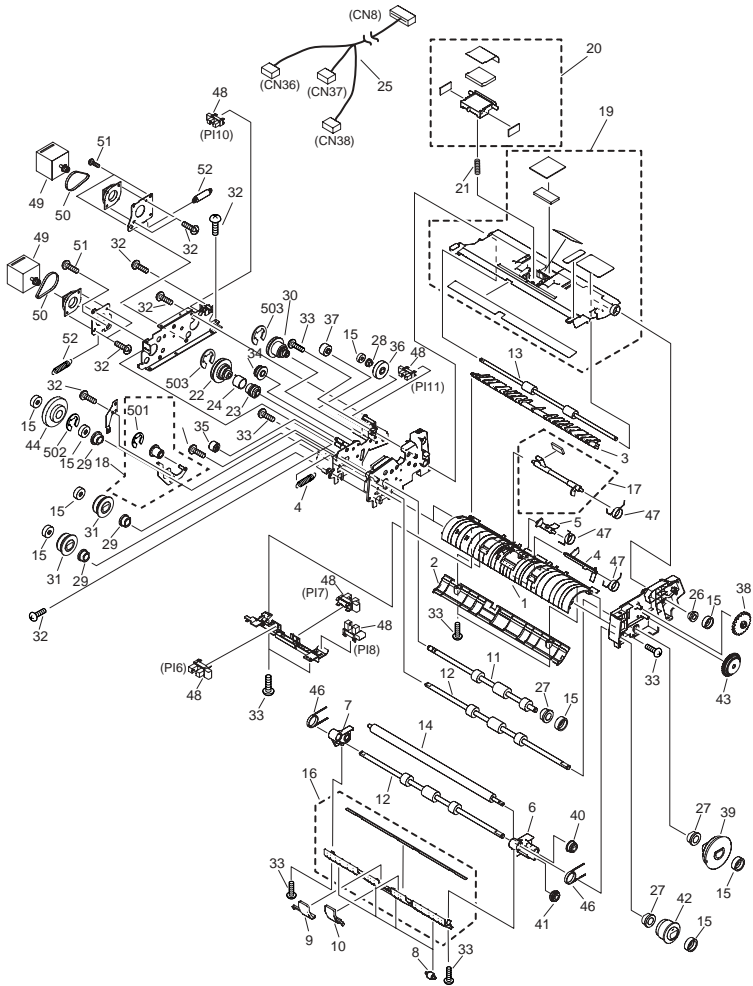


FIGURE & KEY NO.	PARTS NUMBER	R A N K	Q'TY	DESCRIPTION	SERIAL NUMBER/ REMARKS	S V C
Fig.P33	FG3-4038-020		1	PAPER FEEDER ASSEMBLY	MF7240/7280/7140/7170i	
1	FC3-1460-000		1	GUIDE, FEEDER		
2	FC3-1462-000		1	GUIDE, PLATEN		
3	FF3-4638-000		1	FLAPPER		
4	FC3-1465-000		1	FLAG, READ SENSOR		
5	FC3-1466-000		1	FLAG, DELIVERY REVERSE SENSOR		
6	FC3-1469-000		1	ARM, PLATEN, FRONT		
7	FC3-1470-000		1	ARM, PLATEN, REAR		
8	FC3-1471-000		4	ROLLER, PLATEN		
9	FC3-1493-000		1	SPACER, PLATEN, FRONT		
10	FC3-1494-000		1	SPACER, PLATEN, REAR		
11	FC3-1509-000		1	ROLLER, REGISTRATION, 1		
12	FC3-1510-000		2	ROLLER, READ		
13	FC3-1511-000		1	ROLLER, DELIVERY REVERSE		
14	FC3-1512-000		1	ROLLER, WHITE		
15	FC3-1549-000		9	CLIP		
16	FF3-4633-000		1	PLATEN GUIDE UNIT		
17	FF3-4636-000		1	REGISTRATION SENSOR UNIT		
18	FG3-4040-000		1	TENSION ROLLER UNIT		
19	FF3-4631-000		1	REVERSE GUIDE UNIT		
20	FF3-4632-000		1	SEPARATION PAD UNIT		
21	FS4-2746-000		1	SPRING, COMPRESSION		
22	FS2-3885-000		1	PULLEY, 57T,GEAR, 23T		
23	FS4-0645-000		1	GEAR, 16T		
24	FS4-2752-000		11	SPRING, TENSION		
25	FH2-7209-000		1	CABLE, FEEDER SENSOR	CN8,36,37,38	
26	FS2-1708-000		1	BUSHING		
27	FS2-1709-000		3	BUSHING		
28	FS2-1710-000		1	BUSHING		
29	FS2-1711-000		3	BUSHING		
30	FS2-3886-000		1	PULLEY, 57T/19T, GEAR, 23T		
31	FS2-3887-000		2	PULLEY, 27T		

FIGURE & KEY NO.	PARTS NUMBER	R A N K	Q'TY	DESCRIPTION	SERIAL NUMBER/ REMARKS	S V C
32	FS2-9567-000		9	SCREW,M3X6		
33	FS2-9569-000		12	SCREW, M3X10		
34	FS4-0644-000		1	GEAR, 16T		
35	FS4-0646-000		1	GEAR, 19T		
36	FS4-0647-000		1	GEAR, 25T		
37	FS4-0648-000		1	GEAR, 23T		
38	FS4-0649-000		1	DIAL		
39	FS4-0650-000		1	GEAR, 31T		
40	FS4-0651-000		1	GEAR, 14T		
41	FS4-0652-000		1	GEAR, 15T		
42	FS4-0653-000		1	GEAR, 18T		
43	FS4-0659-000		1	GEAR, 54T/39T		
44	FS4-0660-000		1	GEAR, 33T		
45	FS4-2744-000		1	SPRING, TENSION		
46	FS4-2745-000		2	SPRING, TORSION		
47	FS4-2753-000		3	SPRING, TORSION		
48	WG8-5696-000		5	PHOTO INTERRUPTER, TLP1243	Pl6,7,8,10,11	
49	FH5-1142-000		2	MOTOR, STEPPING		
50	XF2-1607-240		2	BELT, TIMING		
51	FS2-9570-000		4	SCREW, M4X7		
52	FS4-2749-000		2	SPRING, TENSION		
53	FC3-1568-000		1	PLATE, GROUNDING		
501	XD2-1100-322		1	RETAINING RING(E-TYPE)		
502	XD2-1100-642		1	RING, E		
503	XD2-1100-502		2	RETAINING RING(E-TYPE)		

FIGURE S01 DUPLEX MOUNTING HARDWARE(MF7280)

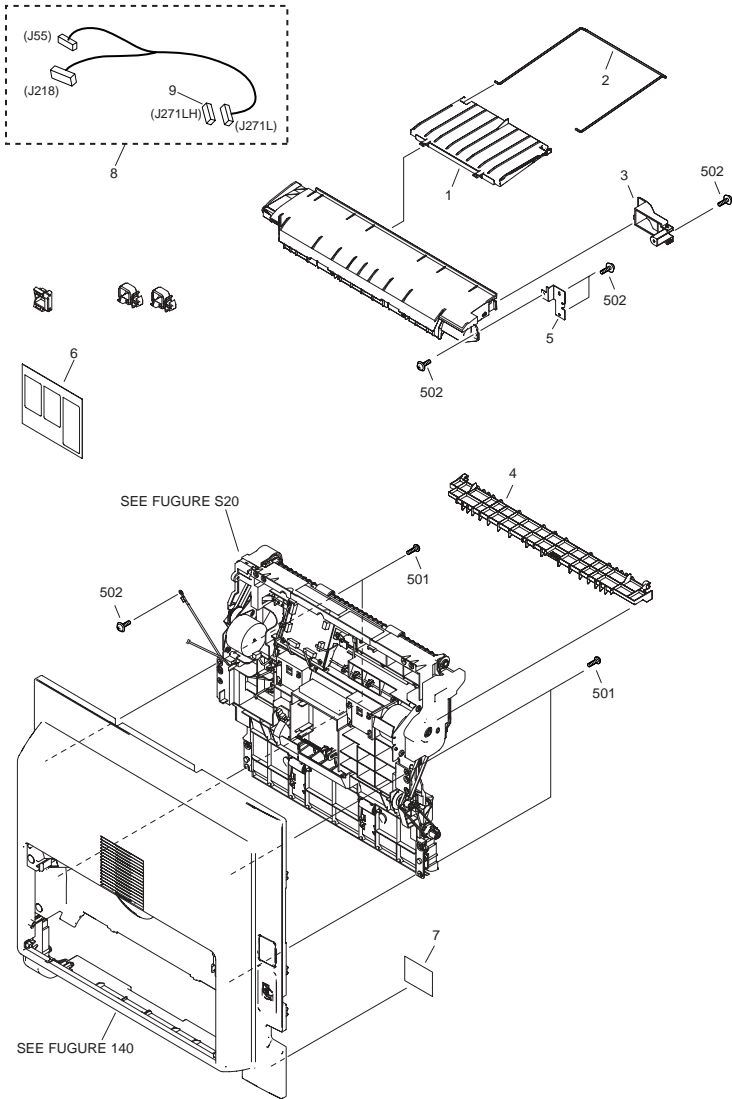


FIGURE & KEY NO.	PARTS NUMBER	R A N K	Q'TY	DESCRIPTION	SERIAL NUMBER/ REMARKS	S V C
Fig.S01	NPN		RF	DUPLEX MOUNTING HARDWARE	MF7280	
1	FC6-6782-000		1	TRAY, REVERSE		
2	FC6-6783-000		1	TRAY, SUB		
3	FC6-6784-000		1	COVER, REVERSE GUIDE		
4	FL2-8094-000		1	GUIDE, DELIVERY		
5	FC6-6778-000		1	MOUNT, REVERSE GUIDE		
6	FU5-8697-000		1	LABEL, JAM CLEAR		
7	FU5-8699-000		1	LABEL, JAM CLEAR		
8	FM2-4516-000		1	CABLE, DUPLEX UNIT		
9	VS1-7207-012		1	CONNECTOR		
501	XB4-5401-007		4	SCREW, M4X10		
502	XB6-7300-609		5	SCREW, MACH, PAN HEAD		

FIGURE S20 DUPLEX FEEDER ASSEMBLY(MF7280)

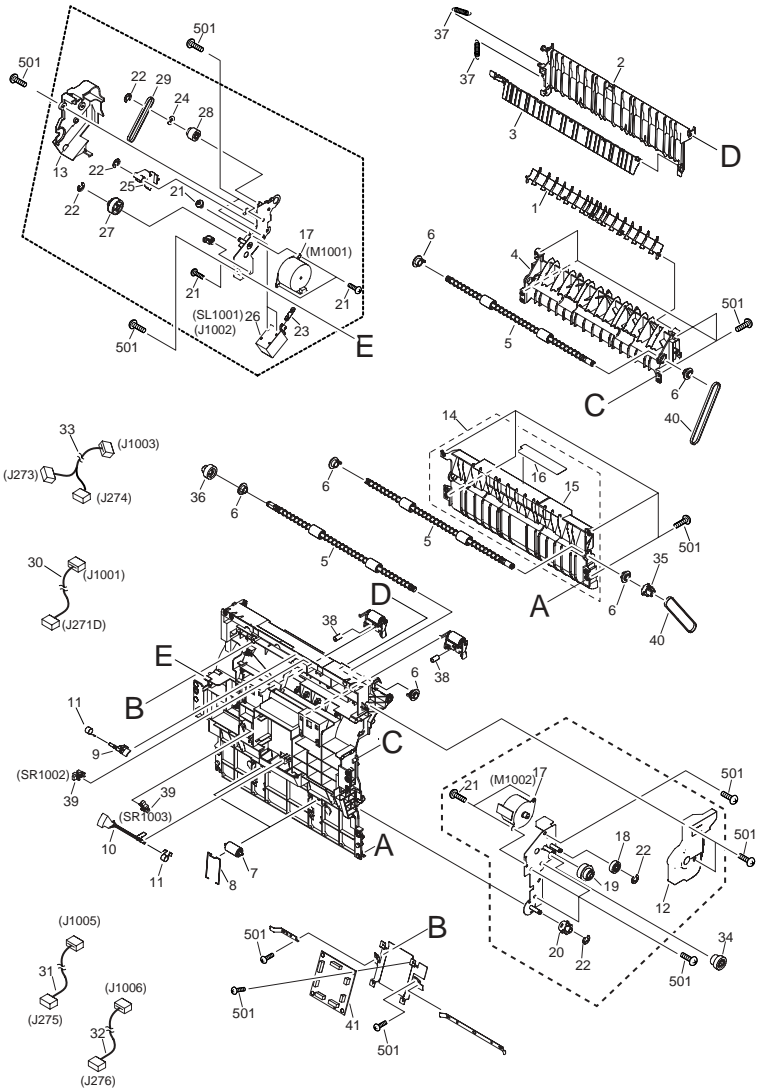


FIGURE & KEY NO.	PARTS NUMBER	R A N K	Q'TY	DESCRIPTION	SERIAL NUMBER/ REMARKS	S V C
Fig.S20	NPN		RF	DUPLEX FEEDER ASSEMBLY	MF7280	
1	FC6-6752-000		1	DEFLECTOR, REVERSE		
2	FC6-6753-000		1	GUIDE, DUPLEX SWING		
3	FC6-6755-000		1	DEFLECTOR, DUPLEX		
4	FC6-6756-000		1	GUIDE, RIGHT UPPER		
5	FC6-6757-000		3	ROLLER		
6	FC6-6758-000		6	BUSHING		
7	FC6-6759-000		4	ROLLER		
8	FC6-6760-000		2	SPRING, ROLLER		
9	FC6-6765-000		1	FLAG, REVERSE SENSOR		
10	FC6-6767-000		1	FLAG, FEEDER SENSOR		
11	FC6-6768-000		2	SPRING, TORSION		
12	FC6-6776-000		1	COVER, DUPLEX, FRONT		
13	FC6-6777-000		1	COVER, DUPLEX, REAR		
14	FL2-3856-000		1	GUIDE, RIGHT, LOWER		
15	FC6-6754-000		1	GUIDE, RIGHT, LOWER		
16	FU5-8696-000		1	LABEL, OPERATION PROHIBITION		
17	FK2-1114-000		2	MOTOR, STEPPING	M1001,1002	
18	FU6-0933-000		1	GEAR, 47T/17T		
19	FU6-0934-000		1	GEAR, 18T		
20	FU6-0936-000		1	GEAR, 28T		
21	XA9-1116-030		11	SCREW, 3X5		
22	XD9-0136-000		5	RING, E		
23	FC6-6740-000		1	PLATE, LINK		
24	FC6-6764-000		1	FLANGE		
25	FC6-6769-000		1	PLATE, LINK		
26	FL2-3744-000		1	SOLENOID	SL1001 J1002	
27	FU6-0938-000		1	GEAR, 47T/22T		
28	FU6-0939-000		1	GEAR, 22T/17T		
29	XF2-1109-040		1	BELT, TIMING		
30	FM2-4517-000		1	CABLE, DUPLEX RELAY	J271D,1001	
31	FM2-4518-030		1	CABLE, DUPLEX MOTOR	J275,1005	

FIGURE & KEY NO.	PARTS NUMBER	RANK	Q'TY	DESCRIPTION	SERIAL NUMBER/REMARKS	SVC
32	FM2-4519-000		1	CABLE, REVERSE MOTOR	J276,1006	
33	FM2-4520-000		1	CABLE, DUPLEX SENSOR	J273,274,1003	
34	FU6-0935-000		1	GEAR, 21T/28T		
35	FU6-0937-000		1	GEAR, 28T		
36	FU6-0940-000		1	GEAR, 21T		
37	FU6-2387-000		2	SPRING, TENSION		
38	FU6-2388-000		2	SPRING, COMPRESSION		
39	WG8-5696-000		2	PHOTO INTERRUPTER, RLP1243	SR1002,1003	
40	XF2-1112-240		2	BELT, TIMING		
41	FM2-4515-000		1	PWB, DUPLEX DRIVER		
501	XB4-5401-007		20	SCREW, M4X10		

FIGURE S50
DUPLEX REVERSE UNIT (MF7280)

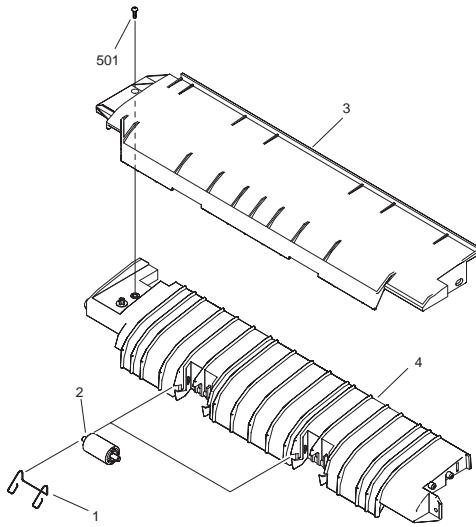
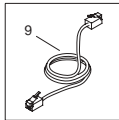
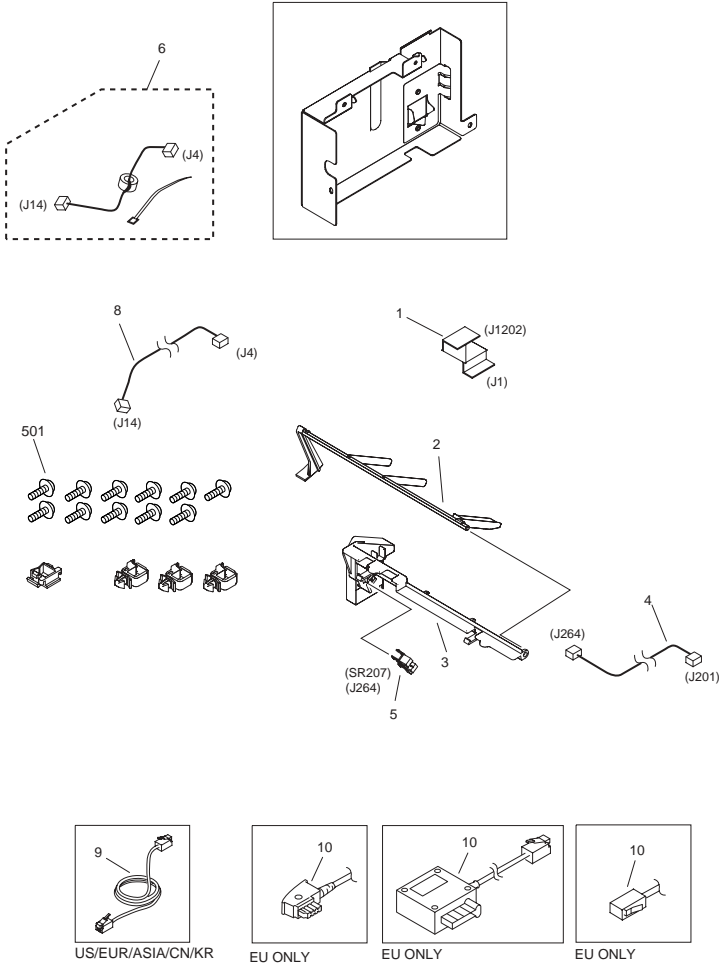
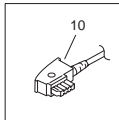


FIGURE & KEY NO.	PARTS NUMBER	RANK	Q'TY	DESCRIPTION	SERIAL NUMBER/REMARKS	SVC
Fig.S50	FM2-4493-000		1	DUPLEX REVERSE UNIT	MF7280	
1	FC6-6781-000		2	SPRING, ROLLER		
2	FC6-6759-000		2	ROLLER		
3	FC6-6779-000		1	GUIDE, REVERSE UPPER		
4	FC6-6780-000		1	GUIDE, REVERSE, LOWER		
501	XB4-5401-007		1	SCREW, M4X10		

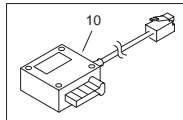
FIGURE X01 PACKING KIT



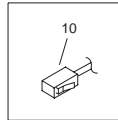
US/EUR/ASIA/CN/KR



EU ONLY



EU ONLY



EU ONLY

FIGURE & KEY NO.	PARTS NUMBER	R A N K	Q'TY	DESCRIPTION	SERIAL NUMBER/ REMARKS	S V C
Fig.X01	NPN		RF	PACKING KIT		
1	FK2-1063-000		1	CABLE, FLAT, MODEM	SGL/SGM/SGPJ1,1202	
2	FC6-4499-000		1	LEVER, SENSOR	SGL/SGM/SGP	
3	FC6-4500-000		1	HOLDER, SENSOR	SGL/SGM/SGP	
4	FM2-4434-000		1	CABLE, SENSOR	J201,264	
5	WG8-5696-000		1	PHOTO INTERRUPTER, TLP1243	SR207 J264	
6	FM2-4435-000		1	CABLE, MODEM	SGL/SGM/ SGPJ1201,1921	
8	FM2-4540-000		1	CABLE, NCU	SGL/SGM/SGPJ4,14	
9	HH2-2824-000		1	MODULAR CORD	SGL/SGM/SGP/SGR	
10	HK1-0551-000		1	MODULAR CORD	EU ONLY	
10	HK1-0547-000		1	MODULAR CORD	EU ONLY	
10	HK1-0544-000		1	MODULAR CORD	EU ONLY	
501	XB6-7300-805		11	SCREW, BH3X8		

FIGURE 900 IMAGE PROCESSOR PCB ASSEMBLY

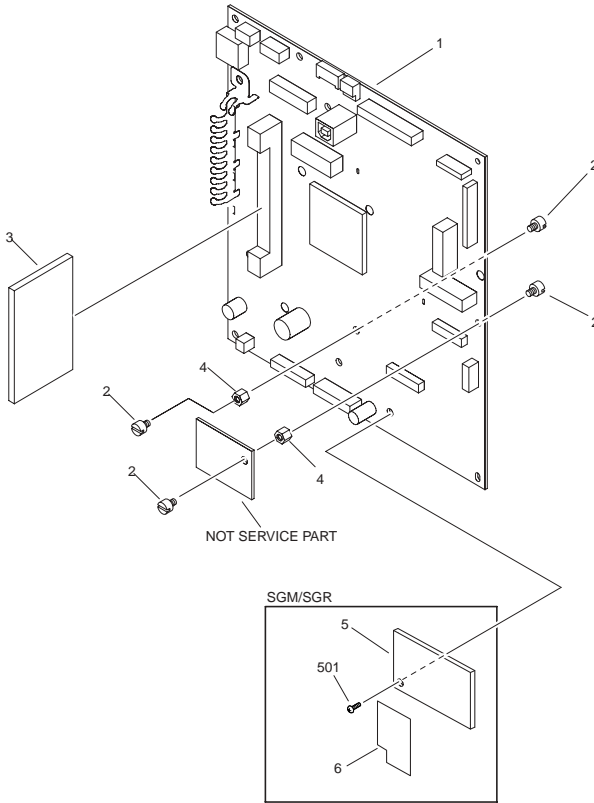


FIGURE & KEY NO.	PARTS NUMBER	R A N K	Q'TY	DESCRIPTION	SERIAL NUMBER/REMARKS	S V C
Fig.900	NPN		RF	COUNTER PCB ASSEMBLY		
1	FM2-4053-000		1	IMAGE PROCESSOR PCB ASS'Y	CN	
1	FM2-4893-000		1	IMAGE PROCESSOR PCB ASS'Y	SGK02001-/SGL10001-/ SGN02001-/SGP10001-/ KUX02001-/KUY02001-	
2	FU5-9340-000		4	SCREW, STEPPED, M3X4		
3	FM2-4055-000		1	DDR MODULE PCB ASS'Y	CN	
3	FM2-4056-000		1	DDR MODULE PCB ASS'Y	EXCEPT CN	
4	VT2-5177-005		2	SPACER, METAL		
5	FM2-4060-000		1	ROM PCB ASSEMBLY	KUX02001-/KUY02001-	
6	FC7-1760-000		1	SHEET, INSULATING		
7	XXX-XXXX- XXX		1	DDR MODULE PCB ASS'Y	CN	
501	XB1-2300-407		1	SCREW, BH3X4(S)		
BAT951	WK1-5130-000		1	BATTERY, LITHIUM, CR2032THJ6		
IC140	FK2-0949-000		1	IC, UPD65942GC-Y24, GATE ARRAY		

FIGURE 910 MODEM PCB ASSEMBLY

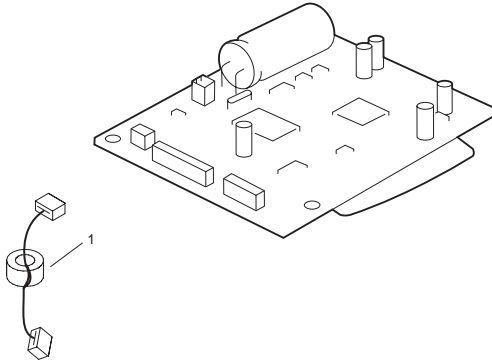


FIGURE & KEY NO.	PARTS NUMBER	RANK	QTY	DESCRIPTION	SERIAL NUMBER/REMARKS	SVC
Fig.910	FM2-9199-000		1	MODEM PCB ASSEMBLY	120V	
Fig.910	FM2-4773-000		1	MODEM PCB ASSEMBLY	SGL/SGP	
1	FM2-4435-000		1	CABLE, MODEM		
IC14	FK2-0331-000		1	IC, MSM6653A-631G3-K, CUSTOM	SGL/SGP	
IC140	FK2-0949-000		1	IC, UPD65942GC-Y24, GATE ARRAY		

FIGURE 930 HVT PCB ASSEMBLY

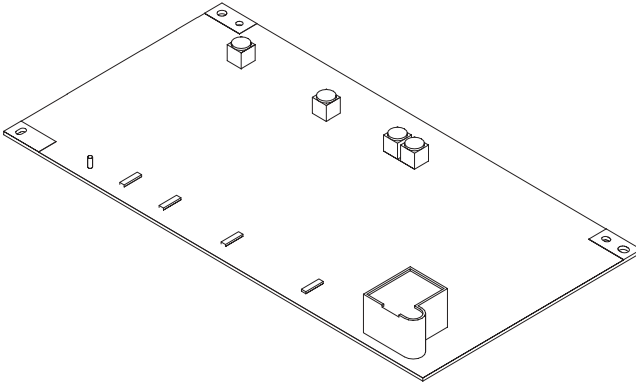


FIGURE & KEY NO.	PARTS NUMBER	RANK	QTY	DESCRIPTION	SERIAL NUMBER/REMARKS	SVC
Fig.930	FM2-5954-080		1	HVT PCB ASSEMBLY		
T1	FK2-1270-000		1	TRANSFORMER		
T2	FK2-1271-000		1	TRANSFORMER		
T3	FH3-5235-000		1	TRANSFORMER,INVERTER		
T4	FK2-1348-000		3	TRANSFORMER	T4,5,6	
T7	FH3-5255-000		1	TRANSFORMER, HIGH VOLTAGE		

FIGURE X90 FAX BOARD PCB ASSEMBLY

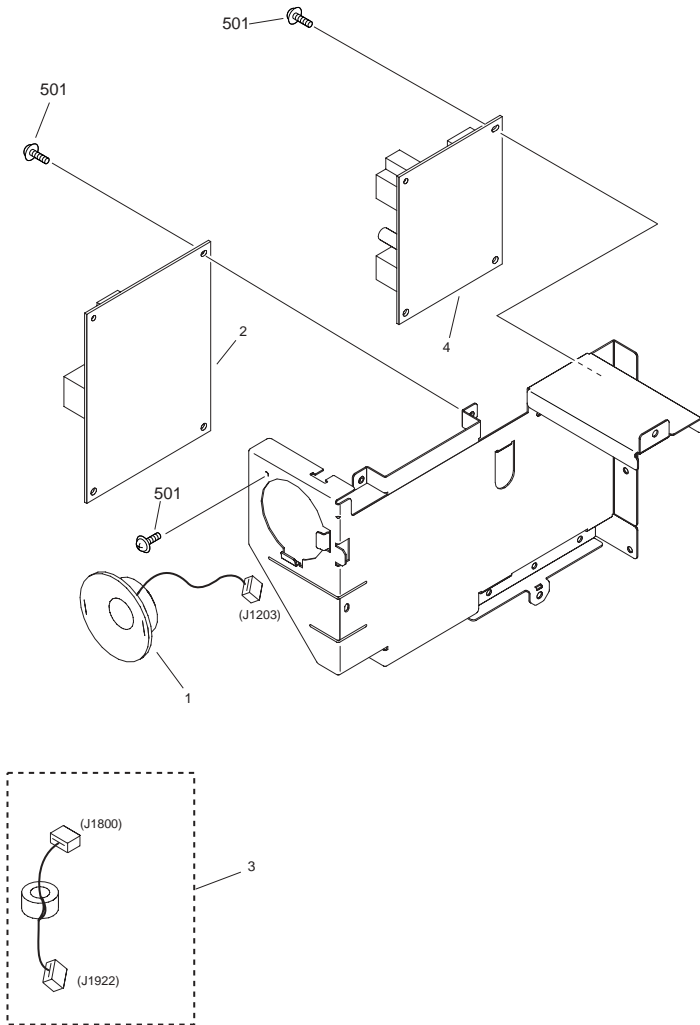


FIGURE & KEY NO.	PARTS NUMBER	RANK	Q'TY	DESCRIPTION	SERIAL NUMBER/REMARKS	SVC
Fig.X90	NPN		RF	FAX BOARD PCB ASSEMBLY	MF7240/7280/7140	
1	FK2-1265-000		1	SPEAKER	J1203	
2	FM2-2790-020		1	NCU PCB ASSEMBLY		
3	FM2-4540-000		1	CABLE, NCU		
4	FM2-4777-000		1	MODULAR PCB ASSEMBLY	120V	
4	FM2-4778-000		1	MODULAR PCB ASSEMBLY	SGL/SGP	
501	XB6-7300-805		16	SCREW, BH3X8		

Prepared by
OIP HFE Promotion Center
CANON INC.

Canon