

**PARTS
CATALOG**

**imageCLASS
MF4890dw
MF4880dw
MF4770n**



Canon

**July 3, 2012
Rev. 0**

PREFACE

This Parts Catalog contains listings of parts used.

Diagrams are provided with the listings to aid the service technician in identifying clearly, the item to be ordered.

Whenever ordering parts, consult this Parts Catalog for all of the information pertaining to each item. Be sure to include, in the Parts Request, the full item description, the item part number, and the quantity.

COPYRIGHT (C) 1999 CANON INC.

Use of this manual should be strictly supervised to avoid disclosure of confidential information.

Contents

NUMERICAL INDEX

imageCLASS MF4890dw/MF4880dw/MF4770n
(Numerical Index).....1-1

imageCLASS MF4890dw/MF4880dw/MF4770n (Parts Catalog)

A1	ASSEMBLY LOCATION DIAGRAM	2-1
A2	OPTION PARTS CATALOG LIST	2-2
001	ACCESSORIES	2-3
100	EXTERNAL COVERS, PANELS, ETC. (DADF model)	2-6
100A	EXTERNAL COVERS, PANELS, ETC. (ADF model)	2-8
100B	EXTERNAL COVERS, PANELS, ETC. (COPYBOARD model)	2-11
101	FRONT COVER ASS'Y	2-13
102	INTERNAL COMPONENTS 1	2-15
103	INTERNAL COMPONENTS 2	2-18
160	ADF ASS'Y (DADF model)	2-20
160A	ADF ASS'Y (ADF model)	2-22
161	PAPER FEEDER ASSEMBLY (DADF model)	2-25
400	READER ASSEMBLY (DADF model)	2-27
400A	READER ASSEMBLY (ADF model)	2-29
400B	READER ASSEMBLY (COPYBOARD model)	2-31
ZZA	MECHANICAL STANDARD PARTS (HOW TO USE)	2-33
ZZB	MECHANICAL STANDARD PARTS (SCREWS)	2-34
ZZC	MECHANICAL STANDARD PARTS (BOLTS)	2-41
ZZD	MECHANICAL STANDARD PARTS (NUTS)	2-42
ZZE	MECHANICAL STANDARD PARTS (RETAINING RINGS)	2-43

NUMERICAL INDEX

imageCLASS MF4890dw/MF4880dw/MF4770n (Numerical Index)

PARTS NUMBER	FIGURE & KEY NO.	PARTS NUMBER	FIGURE & KEY NO.	PARTS NUMBER	FIGURE & KEY NO.
FC0-1640-000	100A - 1	FC8-9251-000	160 - 8	FE2-2782-000	100A - 11
FC0-1640-000	100B - 1	FC8-9251-000	160A - 4	FE2-2783-000	100 - 11
FC0-1644-000	102 - 1	FC8-9307-000	100 - 7	FE2-2783-000	100A - 11
FC0-1645-000	102 - 2	FC8-9307-000	100A - 7	FE2-2784-000	100A - 11
FC0-1663-000	101 - 1	FC9-1324-000	100 - 7	FE2-2785-000	100A - 11
FC0-1664-000	101 - 2	FC9-1324-000	100A - 7	FE2-2786-000	100A - 11
FC0-1665-000	101 - 3	FC9-1324-000	100B - 6	FE2-3233-000	400 - 3
FC0-1698-000	160A - 1	FC9-1325-000	161 - 4	FE2-3233-000	400A - 3
FC0-1708-000	100 - 1	FC9-5060-000	160 - 9	FE2-3233-000	400B - 3
FC0-1708-000	100A - 2	FC9-5060-000	160A - 5	FE2-3239-000	100 - 12
FC0-1717-000	100A - 3	FE2-2466-000	100 - 8	FE2-3239-000	100A - 12
FC0-1744-000	160 - 1	FE2-2466-000	100A - 8	FE2-3241-000	160A - 7
FC0-1744-000	160A - 2	FE2-2466-000	100B - 7	FE2-3242-000	001 - 7
FC0-1745-010	160 - 2	FE2-2498-000	400 - 2	FK2-1317-000	001 - 2
FC0-1748-010	160 - 3	FE2-2498-000	400A - 2	FK2-3531-000	001 - 8
FC0-1771-000	100 - 2	FE2-2498-000	400B - 2	FK2-4390-000	001 - 1
FC0-1778-000	101 - 4	FE2-2512-000	101 - 5	FK2-6291-000	001 - 8
FC0-1787-000	100 - 3	FE2-2513-000	100 - 9	FK2-6890-000	001 - 4
FC0-1789-000	102 - 3	FE2-2513-000	100A - 9	FK3-1145-000	102 - 7
FC0-1805-000	160A - 2	FE2-2513-000	100B - 8	FK3-1153-000	400 - 4
FC0-1818-000	100A - 3	FE2-2514-000	100 - 10	FK3-1153-000	400A - 4
FC0-1936-000	100A - 2	FE2-2514-000	100A - 10	FK3-1153-000	400B - 4
FC0-1945-000	400 - 1	FE2-2514-000	100B - 9	FK3-1160-000	400 - 5
FC0-1945-000	400A - 1	FE2-2517-000	101 - 6	FK3-1160-000	400A - 5
FC0-1945-000	400B - 1	FE2-2518-000	101 - 7	FK3-1160-000	400B - 5
FC0-1986-000	100A - 4	FE2-2519-000	101 - 8	FK3-1175-000	102 - 8
FC0-1986-000	100B - 2	FE2-2538-000	160A - 6	FK3-1181-000	001 - 12
FC0-2037-000	100 - 4	FE2-2551-000	100 - 9	FK3-1182-000	001 - 13
FC0-2037-000	100A - 5	FE2-2551-000	100A - 9	FK3-1183-000	001 - 14
FC0-2037-000	100B - 3	FE2-2551-000	100B - 8	FK3-1184-000	001 - 10
FC0-2038-000	100A - 5	FE2-2552-000	100 - 10	FK3-1185-000	001 - 11
FC6-5204-000	100 - 5	FE2-2552-000	100A - 10	FK3-1187-000	001 - 5
FC6-5204-000	100A - 4	FE2-2552-000	100B - 9	FK3-2774-000	102 - 9
FC6-5204-000	100B - 2	FE2-2553-000	101 - 7	FK3-2884-000	001 - 9
FC6-5210-000	160 - 4	FE2-2567-000	160A - 6	FK3-3544-000	102 - 10
FC6-5210-000	160A - 3	FE2-2568-000	160A - 6	FK3-3627-000	001 - 3
FC6-5210-000	161 - 1	FE2-2569-000	160A - 6	FK3-3643-000	102 - 7
FC7-6182-000	161 - 2	FE2-2578-000	160 - 10	FK3-3655-000	400 - 6
FC7-6278-000	161 - 3	FE2-2580-000	101 - 5	FK3-3655-000	400A - 6
FC7-6321-000	160 - 5	FE2-2612-000	160 - 2	FK3-3655-000	400B - 6
FC7-6322-000	160 - 6	FE2-2619-000	100A - 1	FK3-3659-000	160A - 8
FC8-0654-000	100B - 4	FE2-2636-000	100A - 10	FK3-3667-000	103 - 4
FC8-1367-000	102 - 4	FE2-2636-000	100B - 9	FL2-5621-000	400B - 7
FC8-1368-000	102 - 5	FE2-2637-000	100A - 9	FL3-1023-000	160 - 12
FC8-1368-000	103 - 1	FE2-2637-000	100B - 8	FL3-1023-000	160A - 9
FC8-1369-000	103 - 2	FE2-2638-000	100A - 10	FL3-5062-000	400 - 7
FC8-1370-000	100 - 6	FE2-2639-000	100A - 9	FL3-5062-000	400A - 7
FC8-1370-000	100A - 6	FE2-2646-000	100A - 8	FL3-5062-000	400B - 8
FC8-1370-000	100B - 5	FE2-2646-000	100B - 7	FL3-5063-000	100 - 13
FC8-1370-000	102 - 6	FE2-2693-000	001 - 6	FL3-5063-000	100A - 13
FC8-1370-000	103 - 3	FE2-2781-000	100 - 11	FL3-5068-000	100A - 13
FC8-9210-000	160 - 7	FE2-2781-000	100A - 11	FL3-5071-000	400A - 8

NUMERICAL INDEX

imageCLASS MF4890dw/MF4880dw/MF4770n (Numerical Index)

PARTS NUMBER	FIGURE & KEY NO.	PARTS NUMBER	FIGURE & KEY NO.	PARTS NUMBER	FIGURE & KEY NO
FL3-5072-000	400 - 8	FM0-3949-000	102 - 13	FM0-4436-000	101 -
FL3-5072-000	400B - 7	FM0-3951-000	102 - 13	FM3-8679-000	160 - 17
FL3-5073-000	101 - 9	FM0-3953-000	102 - 13	FM3-8679-000	160A - 15
FL3-8612-000	160 - 13	FM0-3954-000	102 - 13	FM3-8682-000	161 - 6
FL3-8614-000	160A - 10	FM0-3957-000	102 - 13	FM3-8685-000	161 - 7
FL3-8615-000	160 - 10	FM0-4103-000	102 - 15	FM3-8687-000	160A - 16
FL3-8616-000	160 - 10	FM0-4104-000	102 - 15	FM3-8690-000	161 - 8
FL3-9247-000	160 - 11	FM0-4105-000	102 - 15	FM3-9491-000	161 - 9
FM0-1713-000	102 - 11	FM0-4106-000	102 - 15	FM4-6893-000	103 - 11
FM0-2242-000	102 - 12	FM0-4108-000	102 - 15	FM4-6895-000	102 - 16
FM0-3631-000	100 - 14	FM0-4109-000	102 - 15	FM4-6896-000	103 - 12
FM0-3632-000	100 - 14	FM0-4110-000	102 - 15	FM4-6898-000	100 - 15
FM0-3637-000	100 - 14	FM0-4128-000	161 - 5	FM4-6898-000	100A - 15
FM0-3638-000	100A - 14	FM0-4130-000	101 - 10	FM4-6898-000	100B - 12
FM0-3639-000	100A - 14	FM0-4131-000	103 - 9	FM4-6907-000	101 - 14
FM0-3640-000	100A - 14	FM0-4132-000	103 - 9	FM4-6919-000	161 - 10
FM0-3643-000	100A - 14	FM0-4133-000	103 - 10	FM4-6933-000	101 - 13
FM0-3646-000	100A - 14	FM0-4370-000	101 -	FM4-6983-000	102 - 17
FM0-3656-000	103 - 5	FM0-4372-000	101 -	FM4-7064-000	103 - 13
FM0-3669-000	100A - 14	FM0-4375-000	101 - 11	FM4-7491-000	103 - 14
FM0-3674-000	100A - 14	FM0-4376-000	101 - 12	FM4-7525-000	101 - 14
FM0-3675-000	100A - 14	FM0-4377-000	100 - 16	FM4-7531-000	160 - 18
FM0-3678-000	100A - 14	FM0-4377-000	100A - 16	FM4-7532-000	161 - 11
FM0-3679-000	100A - 14	FM0-4378-000	100 - 16	FU0-0204-000	160A - 17
FM0-3681-000	100B - 10	FM0-4378-000	100A - 16	FU5-1552-000	160 - 19
FM0-3686-000	103 - 7	FM0-4378-000	100B - 13	FU5-1552-000	160A - 18
FM0-3687-000	103 - 8	FM0-4381-000	103 - 6	FU5-1552-000	161 - 12
FM0-3688-000	100A - 14	FM0-4382-000	100B - 10	FU5-6711-000	160A - 19
FM0-3692-000	100B - 11	FM0-4385-000	100B - 10	FU6-2249-000	161 - 13
FM0-3695-000	400B -	FM0-4386-000	100 - 14	FU7-2021-000	161 - 14
FM0-3703-000	160A - 11	FM0-4387-000	100A - 14	FU7-2869-000	160 - 20
FM0-3704-000	400A -	FM0-4393-000	160 - 14	FU7-2869-000	160A - 20
FM0-3705-000	400A -	FM0-4394-000	160 - 15	FU8-0473-000	160 - 21
FM0-3708-000	400A -	FM0-4395-000	160 - 15	FV4-0006-000	001 - 15
FM0-3709-000	160A - 12	FM0-4396-000	400 -	FV4-0008-000	001 - 15
FM0-3710-000	160A - 12	FM0-4397-000	400 -	FV4-0009-000	001 - 15
FM0-3716-000	101 -	FM0-4402-000	160A - 11	FV4-0011-000	001 - 15
FM0-3722-000	100 - 15	FM0-4403-000	400A -	FV4-0012-000	001 - 15
FM0-3722-000	100A - 15	FM0-4404-000	400A -	FV4-0013-000	001 - 15
FM0-3723-000	103 - 8	FM0-4407-000	400A -	FV4-0015-000	001 - 15
FM0-3743-000	103 - 7	FM0-4409-000	160A - 12	FV4-0017-000	001 - 15
FM0-3745-000	161 -	FM0-4410-000	160A - 12	FV4-0019-000	001 - 15
FM0-3923-000	102 - 13	FM0-4413-000	160A - 13	FV4-0021-000	001 - 15
FM0-3924-000	102 - 13	FM0-4421-000	100B - 11	FV4-0024-000	001 - 15
FM0-3925-000	102 - 13	FM0-4422-000	400B -	FV4-0026-000	001 - 15
FM0-3927-000	102 - 13	FM0-4424-000	400B -	FV4-0028-000	001 - 15
FM0-3928-000	102 - 13	FM0-4430-000	160 - 16	FV4-0029-000	001 - 15
FM0-3930-000	102 - 14	FM0-4430-000	160A - 14	FV4-0030-000	001 - 15
FM0-3931-000	102 - 14	FM0-4431-000	160A - 14	NPN	001 -
FM0-3932-000	102 - 14	FM0-4434-000	400 - 9	NPN	100 -
FM0-3933-000	102 - 13	FM0-4434-000	400A - 9	NPN	100A -
FM0-3934-000	102 - 13	FM0-4434-000	400B - 9	NPN	100B -

NUMERICAL INDEX

imageCLASS MF4890dw/MF4880dw/MF4770n (Numerical Index)

PARTS NUMBER	FIGURE & KEY NO.	PARTS NUMBER	FIGURE & KEY NO.	PARTS NUMBER	FIGURE & KEY NO
NPN	102 -				
NPN	103 -				
NPN	160 -				
NPN	160A -				
RC2-1182-000	103 - 15				
RK2-0420-000	103 - 16				
RK2-3438-000	103 - 17				
RL1-1497-000	103 - 18				
RM1-7576-000	102 - 17				
RM1-7577-000	102 - 17				
WE8-6854-000	102 - 18				
WE8-7078-000	102 - 19				
WG8-5935-000	160A - 21				
WG8-5935-000	161 - 15				
XA9-0476-000	101 - 15				
XA9-0476-000	160 - 22				
XA9-0476-000	160A - 22				
XA9-0476-000	400 - 10				
XA9-0476-000	400A - 10				
XA9-0476-000	400B - 10				

MF4890dw/4880dw/4770n (Parts Catalog)

MF4890dw

100V JP	F16-4011-000	NSE	DADF/FAX/WIRELESS model
120V US,CA,LTN	F16-4030-000	NQS	DADF/FAX/WIRELESS model
120V US,CA,LTN	F16-4036-000	NRA	DADF/FAX/WIRELESS model
230V AU,LTN	F16-4041-000	NQR	DADF/FAX/WIRELESS model
230V SG,IN,HK,LTN	F16-4081-000	NKR	DADF/FAX/WIRELESS model

MF4880dw

120V US,CA,LTN	F16-4032-000	NWQ	ADF/FAX /WIRELESS model
120V US,CA,LTN	F16-4037-000	NXU	ADF/FAX /WIRELESS model

MF4870dn

100V JP	F16-4013-000	NYC	ADF/FAX model
230V SG,IN,HK,LTN	F16-4083-000	NWU	ADF/FAX model
230V EUR	F16-4093-000	NTA	ADF/FAX model
230V EUR	F16-4093-000	NUA	ADF/FAX model
230V EUR	F16-4093-000	NUX	ADF/FAX model

MF4830d

100V JP	F16-4014-000	NYD	ADF model
---------	--------------	-----	-----------

MF4820d

100V JP	F16-4015-000	NYE	COPYBOARD model
230V SG,IN,HK,LTN	F16-4085-000	NXB	COPYBOARD model

MF4770n

120V US,CA,LTN	F16-4131-000	NXV	ADF/FAX model
120V US,CA,LTN	F16-4138-000	NXW	ADF/FAX model

MF4750

100V JP	F16-4113-000	NYH	ADF/FAX model
230V SG,IN,HK,LTN	F16-4183-000	NXK	ADF/FAX model
230V EUR	F16-4193-000	NWN	ADF/FAX model
230V EUR	F16-4193-000	NWP	ADF/FAX model
230V EUR	F16-4193-000	NWR	ADF/FAX model

MF4730

230V EUR	F16-4194-000	NWS	ADF model
-----------------	---------------------	------------	-----------

MF4720w

230V SG,IN,HK,LTN	F16-4185-000	NXP	COPYBOARD/WIRELESS model
------------------------------	---------------------	------------	-----------------------------

Contents

A1	ASSEMBLY LOCATION DIAGRAM	2-1
A2	OPTION PARTS CATALOG LIST	2-2
001	ACCESSORIES	2-3
100	EXTERNAL COVERS, PANELS, ETC. (DADF model).....	2-6
100A	EXTERNAL COVERS, PANELS, ETC. (ADF model)	2-8
100B	EXTERNAL COVERS, PANELS, ETC. (COPYBOARD model)	2-11
101	FRONT COVER ASS'Y.....	2-13
102	INTERNAL COMPONENTS 1	2-15
103	INTERNAL COMPONENTS 2	2-18
160	ADF ASS'Y (DADF model).....	2-20
160A	ADF ASS'Y (ADF model)	2-22
161	PAPER FEEDER ASSEMBLY (DADF model).....	2-25
400	READER ASSEMBLY (DADF model).....	2-27
400A	READER ASSEMBLY (ADF model)	2-29
400B	READER ASSEMBLY (COPYBOARD model).....	2-31
ZZA	MECHANICAL STANDARD PARTS (HOW TO USE)	2-33
ZZB	MECHANICAL STANDARD PARTS (SCREWS).....	2-34
ZZC	MECHANICAL STANDARD PARTS (BOLTS).....	2-41
ZZD	MECHANICAL STANDARD PARTS (NUTS).....	2-42
ZZE	MECHANICAL STANDARD PARTS (RETAINING RINGS)	2-43

FIGURE A1 ASSEMBLY LOCATION DIAGRAM

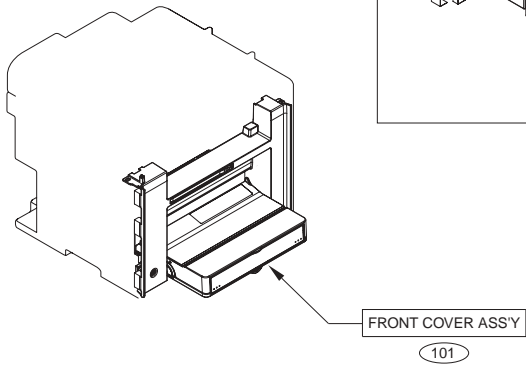
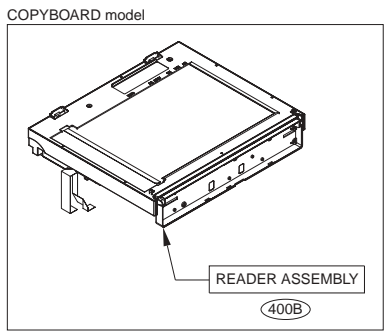
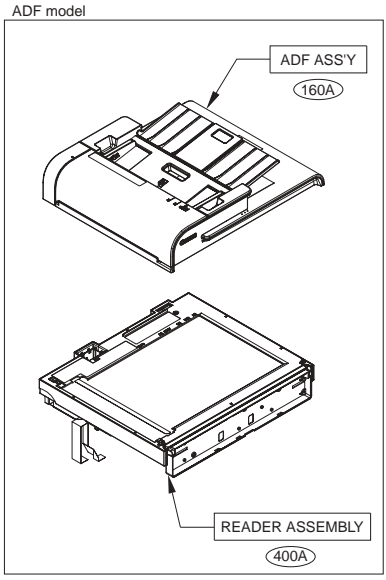
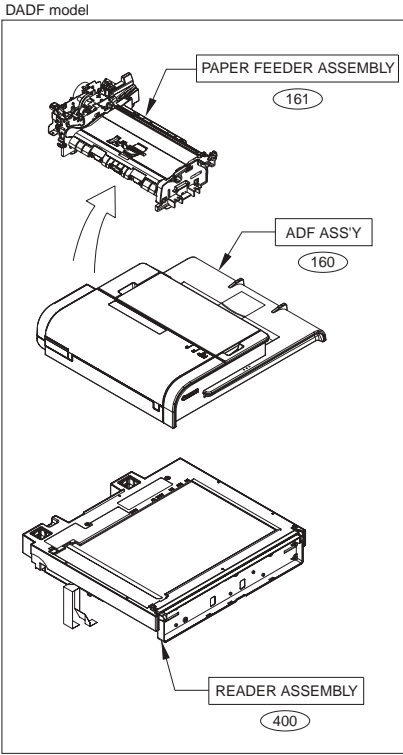


FIGURE A2 OPTION PARTS CATALOG LIST

This is the table of the machine's options whose parts catalog is issued.
本機のオプションで、パーツカタログが発行されている機種の一覧である。

No.	Model Name(English)	Model Name(Japanese)
1	HANDSET KIT 3 Long cord	
2	TELEPHONE 6 KIT Long cord	
3	TELEPHONE 6 KIT	
4		ハンドセットキット L11

FIGURE 001 ACCESSORIES

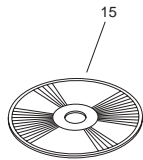
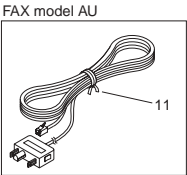
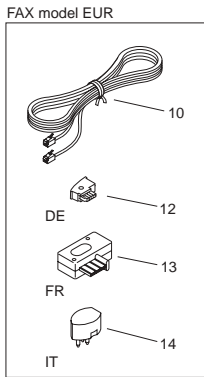
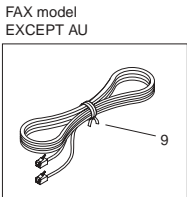
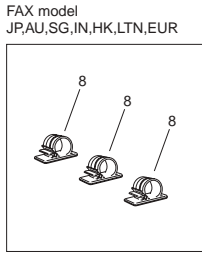
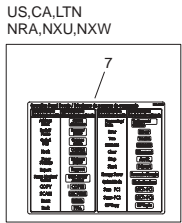
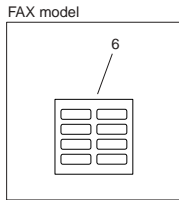
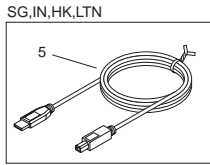
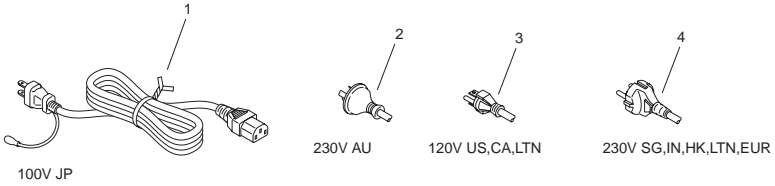


FIGURE & KEY NO.	PARTS NUMBER	RANK	Q'TY	DESCRIPTION	SERIAL NUMBER/REMARKS	SVC
Fig.001	NPN		RF	ACCESSORIES		
1	FK2-4390-000		1	CORD, POWER	100V JP	
2	FK2-1317-000		1	CORD, POWER	230V AU	
3	FK3-3627-000		1	CORD, POWER	120V US,CA,LTN	
4	FK2-6890-000		1	CORD, POWER	230V SG,IN,HK,LTN,EUR	
5	FK3-1187-000		1	CORD, USB	SG,IN,HK,LTN	
6	FE2-2693-000		1	LABEL, DESTINATION	FAX model	
7	FE2-3242-000		1	LABEL, PANEL	US,CA,LTN NRA,NXU,NXW	
8	FK2-3531-000		3	CLAMP, CABLE	FAX model MF4800 Series JP,AU,SG,IN,HK,LTN,EU R	
8	FK2-6291-000		3	CLAMP, CABLE	FAX model MF4700 Series JP,SG,IN,HK,LTN,EUR	
9	FK3-2884-000		1	CORD, MODULER	FAX model EXCEPT AU	
10	FK3-1184-000		1	CORD, MODULER	FAX model EUR	
11	FK3-1185-000		1	CORD, MODULER	FAXmodel AU	
12	FK3-1181-000		1	PLUG	FAX model EUR DE	
13	FK3-1182-000		1	PLUG	FAX model EUR FR	
14	FK3-1183-000		1	PLUG	FAX model EUR IT	
15	FV4-0006-000		1	CD-ROM, USER SOFTWARE	MF4890dw,4880dw US,CA,LTN NQS,NWQ	
15	FV4-0008-000		1	CD-ROM, USER SOFTWARE	MF4890dw,4880dw US,CA,LTN NRA,NXU	
15	FV4-0009-000		1	CD-ROM, USER SOFTWARE	MF4890dw,4870dn JP	
15	FV4-0011-000		1	CD-ROM, USER SOFTWARE	English, French, Italian, German, Spanish MF4870dn EUR	
15	FV4-0012-000		1	CD-ROM, USER SOFTWARE	English, Russian, Dutch, Polish MF4870dn EUR	
15	FV4-0013-000		1	CD-ROM, USER SOFTWARE	MF4890dw,4870dn AU,SG,IN,HK,LTN	
15	FV4-0015-000		1	CD-ROM, USER SOFTWARE	MF4830d,4820d JP	
15	FV4-0017-000		1	CD-ROM, USER SOFTWARE	MF4820d SG,IN,HK,LTN	
15	FV4-0019-000		1	CD-ROM, USER SOFTWARE	MF4770n US,CA,LTN NXV	
15	FV4-0021-000		1	CD-ROM, USER SOFTWARE	MF4770n US,CA,LTN NXW	

FIGURE & KEY NO.	PARTS NUMBER	R A N K	Q'TY	DESCRIPTION	SERIAL NUMBER/ REMARKS	S V C
15	FV4-0024-000		1	CD-ROM, USER SOFTWARE	MF4720w SG,IN,HK,LTN	
15	FV4-0026-000		1	CD-ROM, USER SOFTWARE	MF4750 JP	
15	FV4-0028-000		1	CD-ROM, USER SOFTWARE	English, French, Italian, German, Spanish MF4750,4730 EUR	
15	FV4-0029-000		1	CD-ROM, USER SOFTWARE	English, Russian, Dutch, Polish MF4750,4730 EUR	
15	FV4-0030-000		1	CD-ROM, USER SOFTWARE	MF4750 SG,IN,HK,LTN	

FIGURE 100
EXTERNAL COVERS, PANELS, ETC. (DADF model)

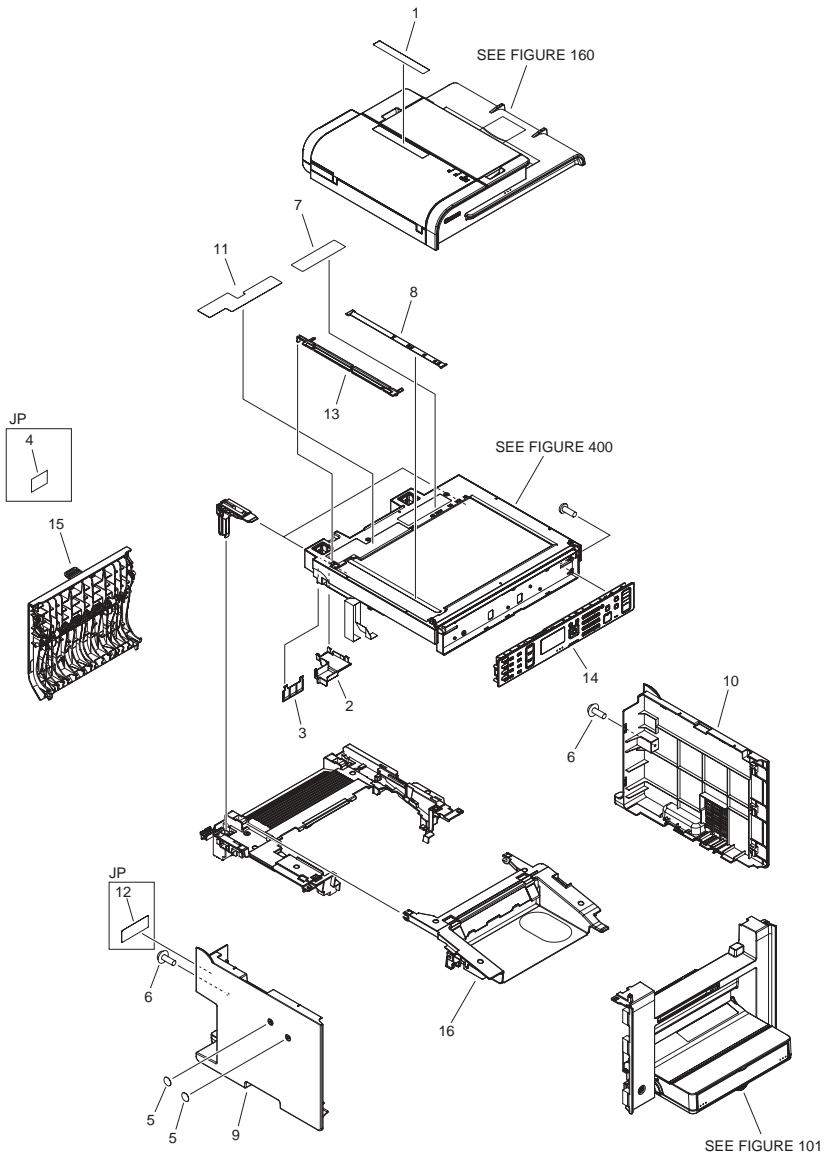


FIGURE & KEY NO.	PARTS NUMBER	R A N K	Q'TY	DESCRIPTION	SERIAL NUMBER/ REMARKS	S V C
Fig.100	NPN		RF	EXTERNAL COVERS, PANELS, ETC.	DADF model	
1	FC0-1708-000		1	LABEL, DOCUMENT PROHIBITION		
2	FC0-1771-000		1	GUIDE, CABLE		
3	FC0-1787-000		1	COVER, HINGE BLANKING		
4	FC0-2037-000		1	LABEL, GROUNDING CAUTION	JP	
5	FC6-5204-000		2	SHEET, HANDSET		
6	FC8-1370-000		AR	SCREW, TP, M3X6		
7	FC8-9307-000		1	LABEL, COPY PROHIBITION	US,CA,LTN	
7	FC9-1324-000		1	LABEL, COPY PROHIBITION	EXCEPT US,CA,LTN	
8	FE2-2466-000		1	PLATE, PAPER SIZE		
9	FE2-2513-000		1	COVER, LEFT	EXCEPT JP,US,CA,LTN NQS	
9	FE2-2551-000		1	COVER, LEFT	JP,US,CA,LTN NQS	
10	FE2-2514-000		1	COVER, RIGHT	EXCEPT JP,US,CA,LTN NQS	
10	FE2-2552-000		1	COVER, RIGHT	JP,US,CA,LTN NQS	
11	FE2-2781-000		1	LABEL, GLASS CLEANING	JP,AU,SG,IN,HK,LTN	
11	FE2-2783-000		1	LABEL, GLASS CLEANING	US,CA,LTN	
12	FE2-3239-000		1	SEAL, PORT DOCKING	JP	
13	FL3-5063-000		1	HOLDER, DOCUMENT GUIDE		
14	FM0-3631-000		1	CONTROL PANEL ASS'Y	MF4890dw AU,SG,IN,HK,LTN NKR,NQR	
14	FM0-3632-000		1	CONTROL PANEL ASS'Y	MF4890dw US,CA,LTN NQS	
14	FM0-3637-000		1	CONTROL PANEL ASS'Y	MF4890dw JP	
14	FM0-4386-000		1	CONTROL PANEL ASS'Y	MF4890dw US,CA,LTN NRA	
15	FM0-3722-000		1	DUPLEXING DOOR ASS'Y	US,CA,LTN NQS	
15	FM4-6898-000		1	DUPLEXING DOOR ASS'Y	EXCEPT US,CA,LTN NQS	
16	FM0-4377-000		1	CARTRIDGE DOOR ASS'Y	US,CA,LTN NQS	
16	FM0-4378-000		1	CARTRIDGE DOOR ASS'Y	EXCEPT US,CA,LTN NQS	

FIGURE 100A EXTERNAL COVERS, PANELS, ETC. (ADF model)

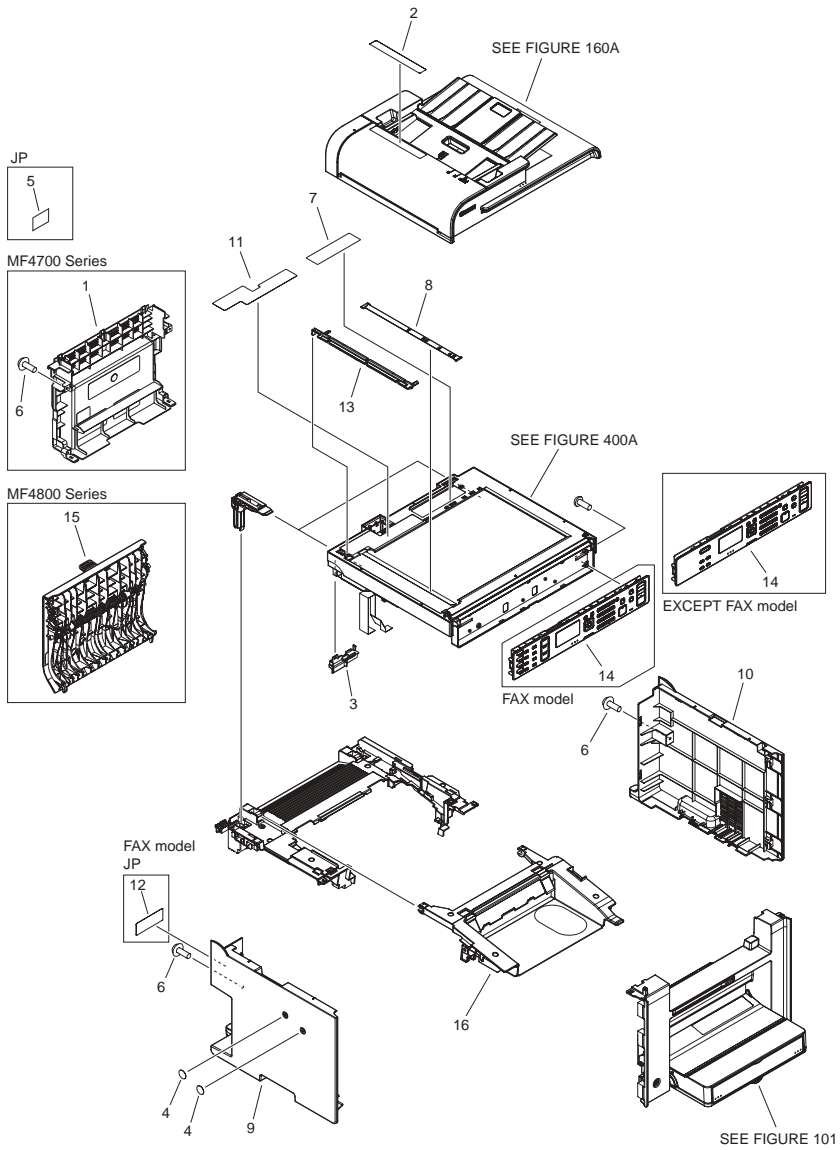


FIGURE & KEY NO.	PARTS NUMBER	R A N K	Q'TY	DESCRIPTION	SERIAL NUMBER/ REMARKS	S V C
Fig.100A	NPN		RF	EXTERNAL COVERS, PANELS, ETC.	ADF model	
1	FC0-1640-000		1	COVER, REAR	MF4700 Series EXCEPT US,CA,LTN NXV	
1	FE2-2619-000		1	COVER, REAR	MF4700 Series US,CA,LTN NXV	
2	FC0-1708-000		1	LABEL, DOCUMENT PROHIBITION	MF4800 Series	
2	FC0-1936-000		1	LABEL, DOCUMENT PROHIBITION	MF4700 Series	
3	FC0-1717-000		1	GUIDE, CABLE	MF4800 Series	
3	FC0-1818-000		1	GUIDE, CABLE	MF4700 Series	
4	FC0-1986-000		2	SHEET, HANDSET	MF4700 Series	
4	FC6-5204-000		2	SHEET, HANDSET	MF4800 Series	
5	FC0-2037-000		1	LABEL, GROUNDING CAUTION	MF4800 Series JP	
5	FC0-2038-000		1	LABEL, GROUNDING CAUTION	MF4700 Series JP	
6	FC8-1370-000		AR	SCREW, TP, M3X6		
7	FC8-9307-000		1	LABEL, COPY PROHIBITION	US,CA,LTN,EUR	
7	FC9-1324-000		1	LABEL, COPY PROHIBITION	EXCEPT US,CA,LTN,EUR	
8	FE2-2466-000		1	PLATE, PAPER SIZE	MF4800 Series	
8	FE2-2646-000		1	PLATE, PAPER SIZE	MF4700 Series	
9	FE2-2513-000		1	COVER, LEFT	MF4800 Series EXCEPT JP,US,CA,LTN NWQ	
9	FE2-2551-000		1	COVER, LEFT	MF4800 Series JP,US,CA,LTN NWQ	
9	FE2-2637-000		1	COVER, LEFT	MF4700 Series EXCEPT JP,US,CA,LTN NXV	
9	FE2-2639-000		1	COVER, LEFT	MF4700 Series JP,US,CA,LTN NXV	
10	FE2-2514-000		1	COVER, RIGHT	MF4800 Series EXCEPT JP,US,CA,LTN NWQ	
10	FE2-2552-000		1	COVER, RIGHT	MF4800 Series JP,US,CA,LTN NWQ	
10	FE2-2636-000		1	COVER, RIGHT	MF4700 Series EXCEPT JP,US,CA,LTN NXV	
10	FE2-2638-000		1	COVER, RIGHT	MF4700 Series JP,US,CA,LTN NXV	
11	FE2-2781-000		1	LABEL, GLASS CLEANING	MF4800 Series JP,SG,IN,HK,LTN	
11	FE2-2783-000		1	LABEL, GLASS CLEANING	MF4800 Series US,CA,LTN	

FIGURE & KEY NO.	PARTS NUMBER	RANK	Q'TY	DESCRIPTION	SERIAL NUMBER/REMARKS	SVC
11	FE2-2785-000		1	LABEL, GLASS CLEANING	MF4800 Series EUR	
11	FE2-2782-000		1	LABEL, GLASS CLEANING	MF4700 Series JP,SG,IN,HK,LTN	
11	FE2-2784-000		1	LABEL, GLASS CLEANING	MF4700 Series US,CA,LTN	
11	FE2-2786-000		1	LABEL, GLASS CLEANING	MF4700 Series EUR	
12	FE2-3239-000		1	SEAL, PORT DOCKING	FAX model JP	
13	FL3-5063-000		1	HOLDER, DOCUMENT GUIDE	MF4800 Series	
13	FL3-5068-000		1	HOLDER, DOCUMENT GUIDE	MF4700 Series	
14	FM0-3638-000		1	CONTROL PANEL ASS'Y	MF4880dw US,CA,LTN NWQ	
14	FM0-4387-000		1	CONTROL PANEL ASS'Y	MF4880dw US,CA,LTN NXU	
14	FM0-3639-000		1	CONTROL PANEL ASS'Y	MF4870dn SG,IN,HK,LTN	
14	FM0-3643-000		1	CONTROL PANEL ASS'Y	MF4870dn JP	
14	FM0-3640-000		1	CONTROL PANEL ASS'Y	MF4870dn EUR	
14	FM0-3646-000		1	CONTROL PANEL ASS'Y	MF4830d JP	
14	FM0-3669-000		1	CONTROL PANEL ASS'Y	MF4770n US,CA,LTN NXV	
14	FM0-3688-000		1	CONTROL PANEL ASS'Y	MF4770n US,CA,LTN NXW	
14	FM0-3675-000		1	CONTROL PANEL ASS'Y	MF4750 SG,IN,HK,LTN	
14	FM0-3678-000		1	CONTROL PANEL ASS'Y	MF4750 JP	
14	FM0-3674-000		1	CONTROL PANEL ASS'Y	MF4750 EUR	
14	FM0-3679-000		1	CONTROL PANEL ASS'Y	MF4730 EUR	
15	FM0-3722-000		1	DUPLEXING DOOR ASS'Y	MF4800 Series US,CA,LTN NWQ	
15	FM4-6898-000		1	DUPLEXING DOOR ASS'Y	MF4800 Series EXCEPT US,CA,LTN NWQ	
16	FM0-4377-000		1	CARTRIDGE DOOR ASS'Y	US,CA,LTN NWQ,NXV	
16	FM0-4378-000		1	CARTRIDGE DOOR ASS'Y	EXCEPT US,CA,LTN NWQ,NXV	

FIGURE 100B EXTERNAL COVERS, PANELS, ETC. (COPYBOARD model)

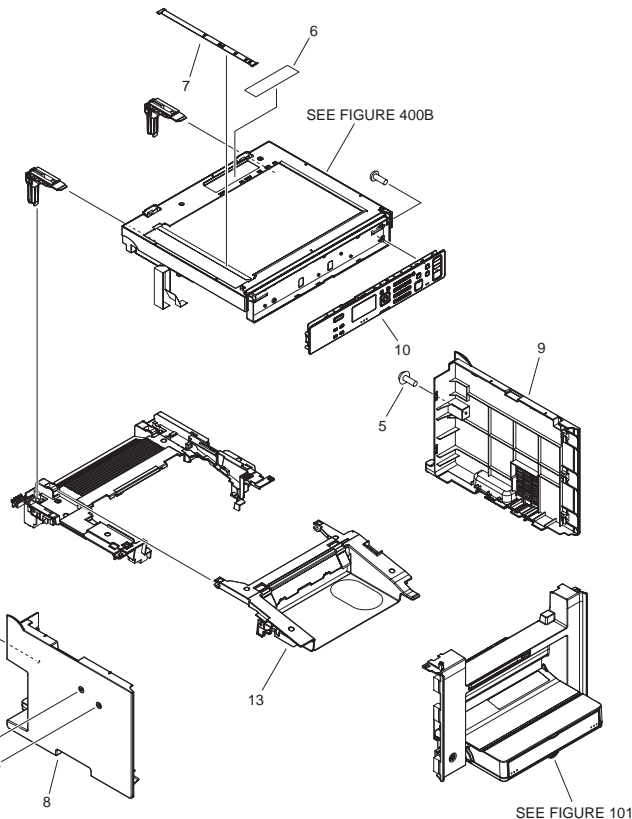
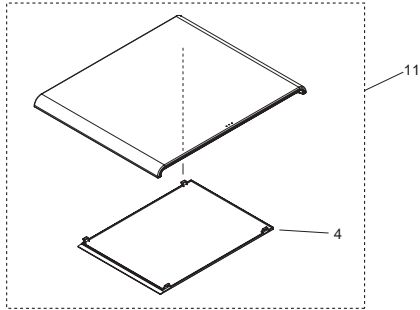
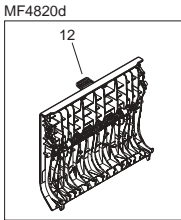
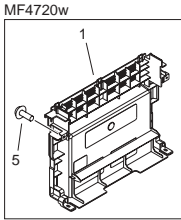
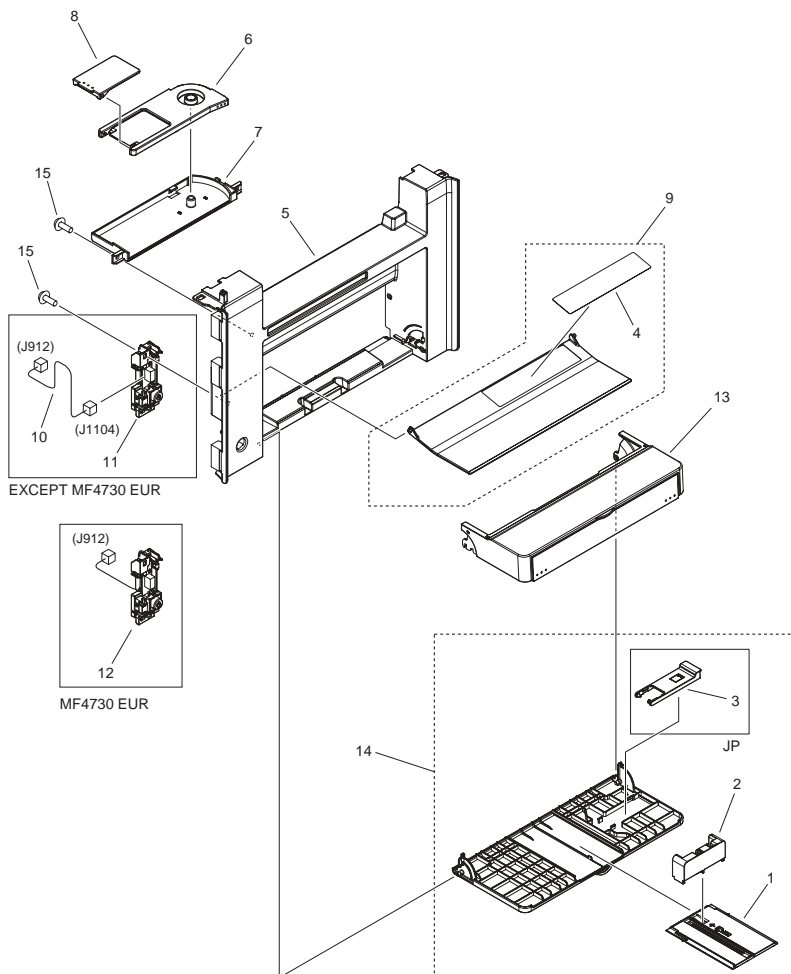


FIGURE & KEY NO.	PARTS NUMBER	R A N K	Q'TY	DESCRIPTION	SERIAL NUMBER/ REMARKS	S V C
Fig.100B	NPN		RF	EXTERNAL COVERS, PANELS, ETC.	COPYBOARD model	
1	FC0-1640-000		1	COVER, REAR	MF4720w	
2	FC0-1986-000		2	SHEET, HANDSET	MF4720w	
2	FC6-5204-000		2	SHEET, HANDSET	MF4820d	
3	FC0-2037-000		1	LABEL, GROUNDING CAUTION	JP	
4	FC8-0654-000		1	PANEL, COPYBOARD		
5	FC8-1370-000		AR	SCREW, TP, M3X6		
6	FC9-1324-000		1	LABEL, COPY PROHIBITION		
7	FE2-2466-000		1	PLATE, PAPER SIZE	MF4820d	
7	FE2-2646-000		1	PLATE, PAPER SIZE	MF4720w	
8	FE2-2551-000		1	COVER, LEFT	MF4820d JP	
8	FE2-2513-000		1	COVER, LEFT	MF4820d SG,IN,HK,LTN	
8	FE2-2637-000		1	COVER, LEFT	MF4720w SG,IN,HK,LTN	
9	FE2-2514-000		1	COVER, RIGHT	MF4820d SG,IN,HK,LTN	
9	FE2-2552-000		1	COVER, RIGHT	MF4820d JP	
9	FE2-2636-000		1	COVER, RIGHT	MF4720w SG,IN,HK,LTN	
10	FM0-4382-000		1	CONTROL PANEL ASS'Y	MF4820d SG,IN,HK,LTN	
10	FM0-4385-000		1	CONTROL PANEL ASS'Y	MF4820d JP	
10	FM0-3681-000		1	CONTROL PANEL ASS'Y	MF4720w SG,IN,HK,LTN	
11	FM0-3692-000		1	COPYBOARD COVER ASSEMBLY	MF4720w	
11	FM0-4421-000		1	COPYBOARD COVER ASSEMBLY	MF4820d	
12	FM4-6898-000		1	DUPLEXING DOOR ASS'Y	MF4820d	
13	FM0-4378-000		1	CARTRIDGE DOOR ASS'Y		

FIGURE 101 FRONT COVER ASS'Y



NOTE : This assembly does not include the part shown with key No. 10.
 注 : このユニットにKey No. 10の部品は含まれません。

FIGURE & KEY NO.	PARTS NUMBER	R A N K	Q'TY	DESCRIPTION	SERIAL NUMBER/ REMARKS	S V C
Fig.101	FM0-3716-000		1	FRONT COVER ASS'Y	EUR NWS	
Fig.101	FM0-4370-000		1	FRONT COVER ASS'Y	EXCEPT JP,US,CA,LTN NQS,NWQ,NXV,EUR NWS	
Fig.101	FM0-4436-000		1	FRONT COVER ASS'Y	US,CA,LTN NQS,NWQ,NXV	
Fig.101	FM0-4372-000		1	FRONT COVER ASS'Y	JP	
1	FC0-1663-000		1	PLATE, EXTENSION		
2	FC0-1664-000		1	STOPPER, PAPER		
3	FC0-1665-000		1	STOPPER, CARD	JP	
4	FC0-1778-000		1	LABEL, SIZE INSTRUCTION		
5	FE2-2512-000		1	COVER, FRONT	EXCEPT JP,US,CA,LTN NQS,NWQ,NXV	
5	FE2-2580-000		1	COVER, FRONT	JP,US,CA,LTN NQS,NWQ,NXV	
6	FE2-2517-000		1	TRAY, PAPER DELIVERY		
7	FE2-2518-000		1	MOUNT, PAPER DELIVERY TRAY	EXCEPT JP,US,CA,LTN NQS,NWQ,NXV	
7	FE2-2553-000		1	MOUNT, PAPER DELIVERY TRAY	JP,US,CA,LTN NQS,NWQ,NXV	
8	FE2-2519-000		1	STOPPER, PAPER DELIVERY		
9	FL3-5073-000		1	DUST COVER ASSEMBLY		
10	FM0-4130-000		1	CABLE, SWITCH	SEE NOTE EXCEPT MF4730 EUR	
11	FM0-4375-000		1	POWER SUPPLY SWITCH ASS'Y	EXCEPT MF4730 EUR	
12	FM0-4376-000		1	POWER SUPPLY SWITCH ASS'Y	MF4730 EUR	
13	FM4-6933-000		1	DUST COVER ASSEMBLY		
14	FM4-6907-000		1	PAPER PICK-UP TRAY ASS'Y	EXCEPT JP	
14	FM4-7525-000		1	PAPER PICK-UP TRAY ASS'Y	JP	
15	XA9-0476-000		4	SCREW,TP M3X8		

FIGURE 102 INTERNAL COMPONENTS 1

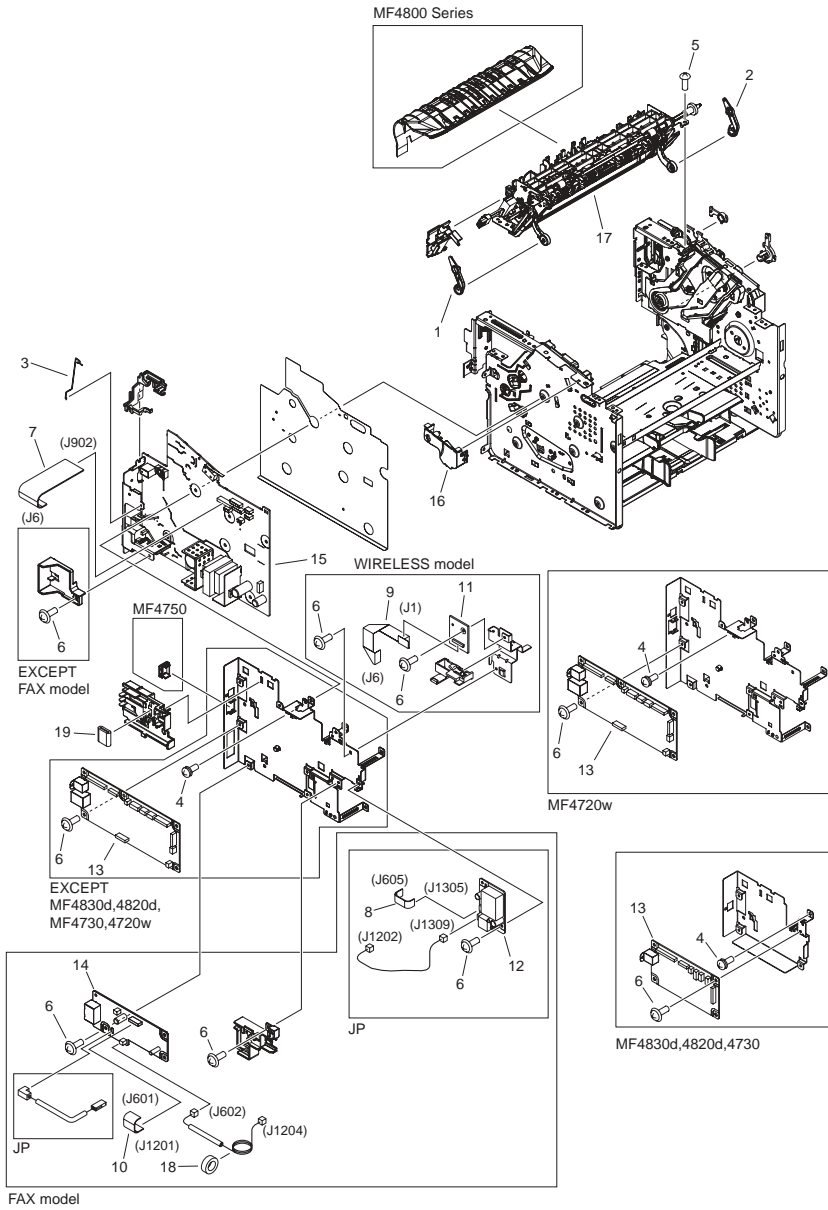


FIGURE & KEY NO.	PARTS NUMBER	R A N K	Q'TY	DESCRIPTION	SERIAL NUMBER/ REMARKS	S V C
Fig.102	NPN		RF	INTERNAL COMPONENTS 1		
1	FC0-1644-000		1	LINK, PRESSURE RELEASE, LEFT		
2	FC0-1645-000		1	LINK, PRESSURE RELEASE, RIGHT		
3	FC0-1789-000		1	SPRING		
4	FC8-1367-000		6	SCREW, W/WASHER, M3X8		
5	FC8-1368-000		AR	SCREW, S, M3X6		
6	FC8-1370-000		AR	SCREW, TP, M3X6		
7	FK3-1145-000		1	CABLE, FLAT, SCNT-CIS	FAX model	
7	FK3-3643-000		1	CABLE, FLAT, SCNT-CIS	EXCEPT FAX model	
8	FK3-1175-000		1	CABLE, FLAT, SCNT-CIS	FAX model JP	
9	FK3-2774-000		1	CABLE, FLAT	WIRELESS model	
10	FK3-3544-000		1	CABLE, FLAT, SCNT-CIS	FAX model	
11	FM0-1713-000		1	WIRELESS LAN PCB ASSEMBLY	WIRELESS model	
12	FM0-2242-000		1	PSEUDO CI PCB ASSEMBLY	FAX model JP	
13	FM0-3924-000		1	MAIN CONTROLLER ASSEMBLY	MF4890dw JP	
13	FM0-3923-000		1	MAIN CONTROLLER ASSEMBLY	MF4890dw EXCEPT JP	
13	FM0-3925-000		1	MAIN CONTROLLER ASSEMBLY	MF4880dw	
13	FM0-3933-000		1	MAIN CONTROLLER ASSEMBLY	MF4870dn JP	
13	FM0-3927-000		1	MAIN CONTROLLER ASSEMBLY	MF4870dn EXCEPT JP	
13	FM0-3934-000		1	MAIN CONTROLLER ASSEMBLY	MF4830d	
13	FM0-3928-000		1	MAIN CONTROLLER ASSEMBLY	MF4820d	
13	FM0-3949-000		1	MAIN CONTROLLER ASSEMBLY	MF4770n	
13	FM0-3957-000		1	MAIN CONTROLLER ASSEMBLY	MF4750 JP	
13	FM0-3951-000		1	MAIN CONTROLLER ASSEMBLY	MF4750 EXCEPT JP	
13	FM0-3953-000		1	MAIN CONTROLLER ASSEMBLY	MF4730	
13	FM0-3954-000		1	MAIN CONTROLLER ASSEMBLY	MF4720w	
14	FM0-3930-000		1	NCU PCB ASSEMBLY	FAX model JP	
14	FM0-3931-000		1	NCU PCB ASSEMBLY	FAX model EUR	
14	FM0-3932-000		1	NCU PCB ASSEMBLY	FAX model EXCEPT JP, EUR	
15	FM0-4103-000		1	ENGINE CONTROL PCB ASS'Y	100V MF4890dw	
15	FM0-4104-000		1	ENGINE CONTROL PCB ASS'Y	100V MF4870dn,4750	

FIGURE & KEY NO.	PARTS NUMBER	RANK	Q'TY	DESCRIPTION	SERIAL NUMBER/REMARKS	SVC
15	FM0-4105-000		1	ENGINE CONTROL PCB ASS'Y	100V MF4830d,4820d	
15	FM0-4106-000		1	ENGINE CONTROL PCB ASS'Y	120V	
15	FM0-4108-000		1	ENGINE CONTROL PCB ASS'Y	230V MF4890dw,4870dn,4750	
15	FM0-4109-000		1	ENGINE CONTROL PCB ASS'Y	230V MF4820d,4720w	
15	FM0-4110-000		1	ENGINE CONTROL PCB ASS'Y	230V MF4730	
16	FM4-6895-000		1	SWITCH LEVER ASS'Y		
17	FM4-6983-000		1	FIXING PAPER DELIVERY ASS'Y	100V	
17	RM1-7576-000		1	FIXING PAPER DELIVERY ASS'Y	120V	
17	RM1-7577-000		1	FIXING PAPER DELIVERY ASS'Y	230V	
18	WE8-6854-000		1	CORE,RING	FAX model	
19	WE8-7078-000		1	CORE, FERRITE		

FIGURE 103 INTERNAL COMPONENTS 2

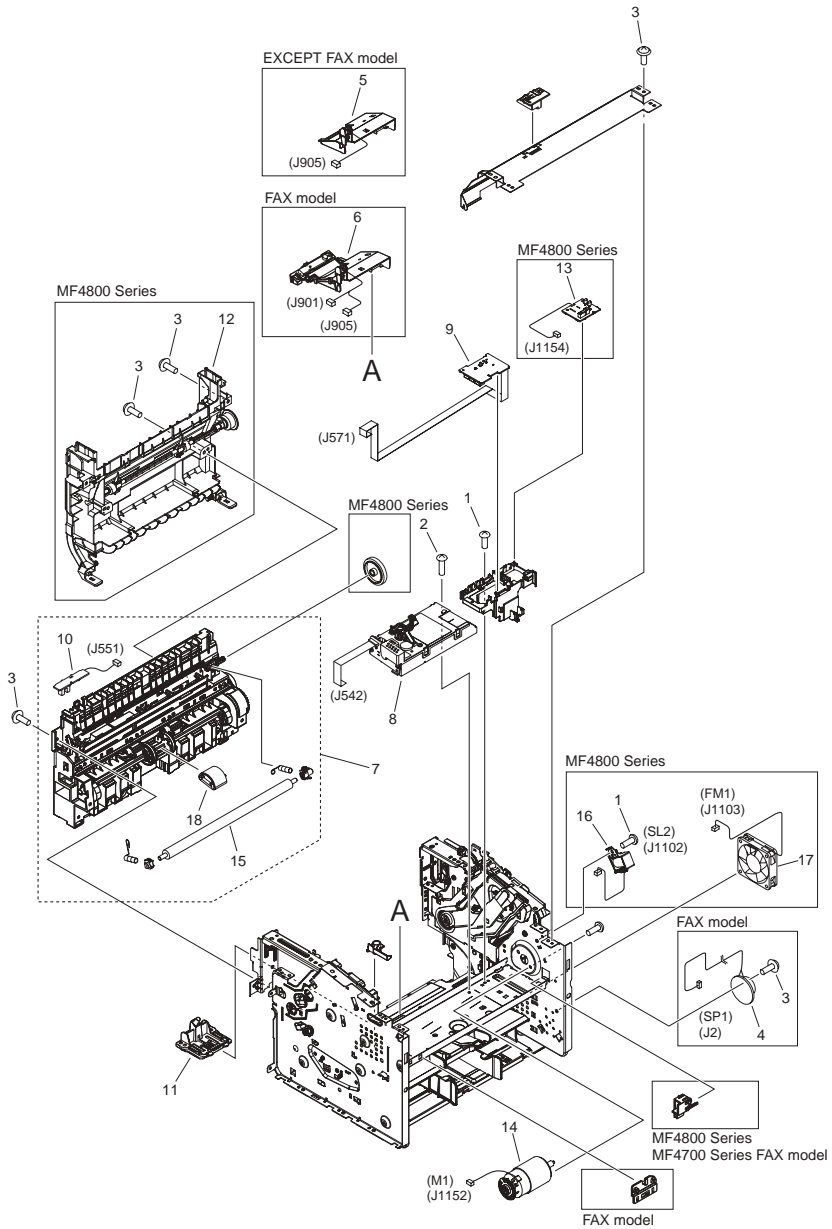


FIGURE & KEY NO.	PARTS NUMBER	R A N K	Q'TY	DESCRIPTION	SERIAL NUMBER/ REMARKS	S V C
Fig.103	NPN		RF	INTERNAL COMPONENTS 2		
1	FC8-1368-000		AR	SCREW, S, M3X6		
2	FC8-1369-000		4	SCREW, S, M3X10		
3	FC8-1370-000		AR	SCREW, TP, M3X6		
4	FK3-3667-000		1	SPEAKER	FAX model SP1	
5	FM0-3656-000		1	PHOTO SENSOR ASS'Y, MULTI	EXCEPT FAX model	
6	FM0-4381-000		1	PHOTO SENSOR ASS'Y, TONER	FAX model	
7	FM0-3686-000		1	PAPER PICK-UP ASS'Y	MF4700 Series	
7	FM0-3743-000		1	PAPER PICK-UP ASS'Y	MF4800 Series	
8	FM0-3687-000		1	LASER SCANNER ASS'Y	MF4700 Series	
8	FM0-3723-000		1	LASER SCANNER ASS'Y	MF4800 Series	
9	FM0-4131-000		1	MOTOR PCB ASS'Y	MF4800 Series	
9	FM0-4132-000		1	MOTOR PCB ASS'Y	MF4700 Series	
10	FM0-4133-000		1	PAPER PICK-UP SENSOR PCB ASS'Y		
11	FM4-6893-000		1	SEPARATION PAD ASS'Y		
12	FM4-6896-000		1	DUPLEXING FRAME ASS'Y	MF4800 Series	
13	FM4-7064-000		1	DUPLEXING PCB ASS'Y	MF4800 Series	
14	FM4-7491-000		1	MOTOR, DC24V	M1	
15	RC2-1182-000		1	ROLLER, TRANSFER		
16	RK2-0420-000		1	SOLENOID	MF4800 Series SL2	
17	RK2-3438-000		1	FAN	MF4800 Series FM1	
18	RL1-1497-000		1	ROLLER, PICK-UP		

FIGURE 160
ADF ASS'Y (DADF model)

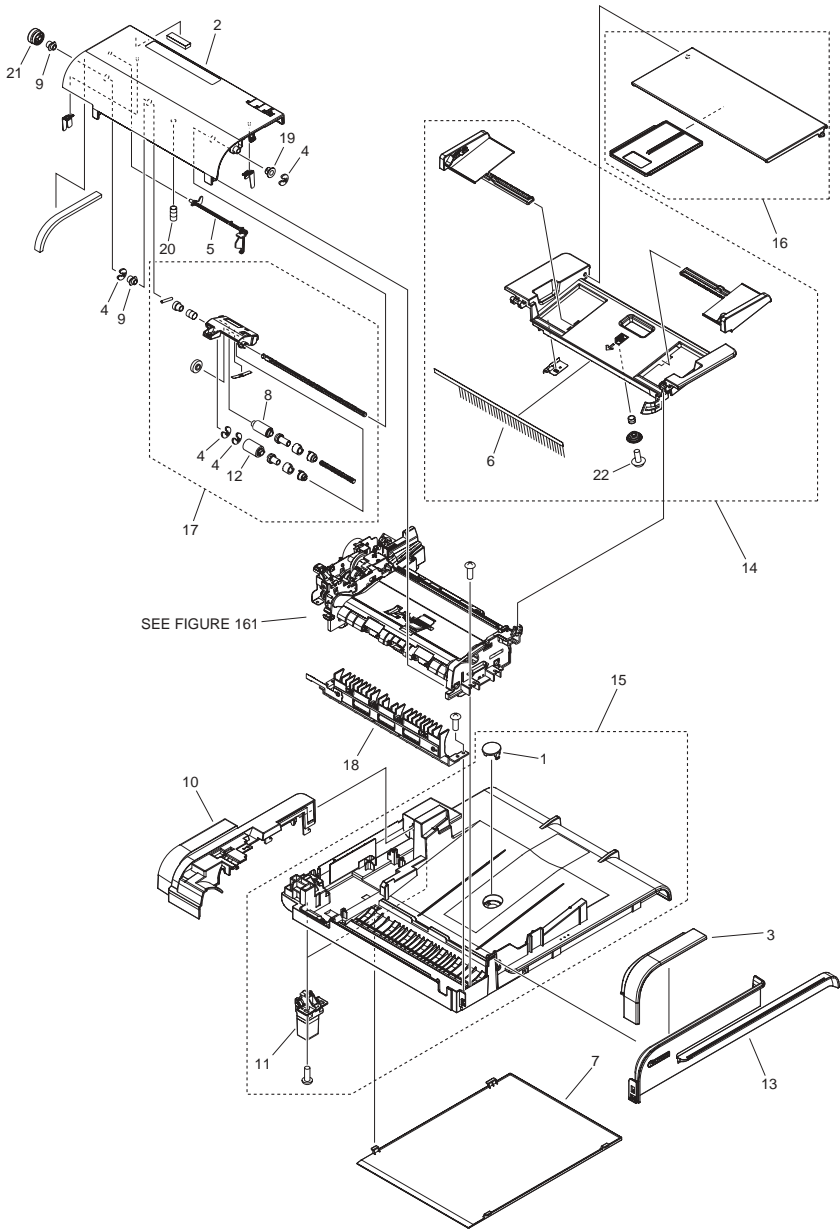


FIGURE & KEY NO.	PARTS NUMBER	R A N K	Q'TY	DESCRIPTION	SERIAL NUMBER/ REMARKS	S V C
Fig.160	NPN		RF	ADF ASS'Y	DADF model	
1	FC0-1744-000		1	CAP		
2	FC0-1745-010		1	COVER, DF	EXCEPT US,CA,LTN NQS	
2	FE2-2612-000		1	COVER, DF	US,CA,LTN NQS	
3	FC0-1748-010		1	COVER, FRONT UPPER		
4	FC6-5210-000		4	RETAINING RING (E-TYRE)		
5	FC7-6321-000		1	FLAG, DOCUMENT SCANNER		
6	FC7-6322-000		1	ELIMINATOR, STATIC CHARGE		
7	FC8-9210-000		1	PANEL, COPYBOARD		
8	FC8-9251-000		1	ROLLER, PICK-UP		
9	FC9-5060-000		2	BUSHING		
10	FE2-2578-000		1	COVER, DF, REAR	JP	
10	FL3-8615-000		1	COVER, DF, REAR	EXCEPT JP,US,CA,LTN NQS	
10	FL3-8616-000		1	COVER, DF, REAR	US,CA,LTN NQS	
11	FL3-9247-000		2	HINGE, ADF		
12	FL3-1023-000		1	ROLLER, SEPARATION		
13	FL3-8612-000		1	COVER, DF, FRONT		
14	FMO-4393-000		1	DOCUMENT TRAY ASSEMBLY		
15	FMO-4394-000		1	DADF BASE ASSEMBLY	EXCEPT US,CA,LTN NQS	
15	FMO-4395-000		1	DADF BASE ASSEMBLY	US,CA,LTN NQS	
16	FMO-4430-000		1	DOCUMENT TRAY ASSEMBLY		
17	FM3-8679-000		1	SEPARATION ROLLER ASS'Y		
18	FM4-7531-000		1	OPEN/CLOSE PANEL ASSEMBLY		
19	FU5-1552-000		1	BUSHING		
20	FU7-2869-000		1	SPRING, COMPRESSION		
21	FU8-0473-000		1	GEAR, 24T		
22	XA9-0476-000		1	SCREW,TP M3X8		

FIGURE 160A
ADF ASS'Y (ADF model)

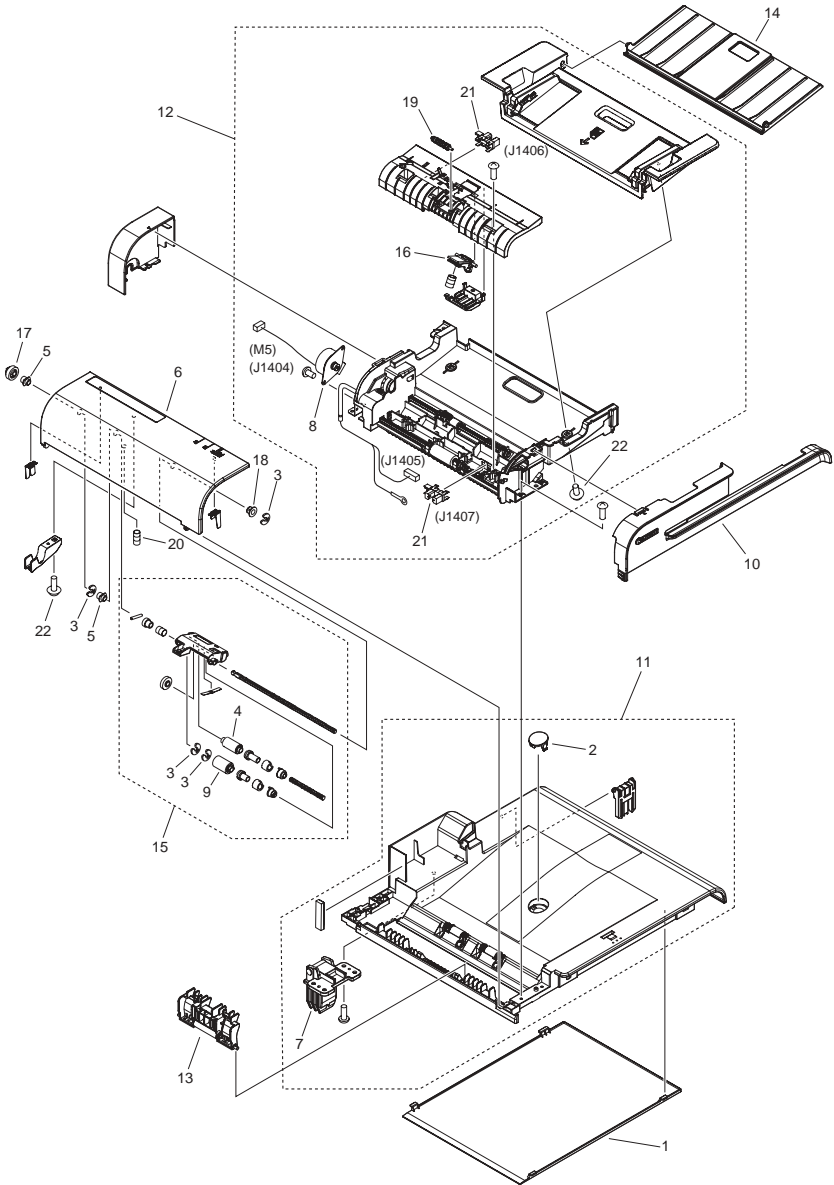


FIGURE & KEY NO.	PARTS NUMBER	R A N K	Q'TY	DESCRIPTION	SERIAL NUMBER/ REMARKS	S V C
Fig.160A	NPN		RF	ADF ASS'Y	ADF model	
1	FC0-1698-000		1	PANEL, COPYBOARD		
2	FC0-1744-000		1	CAP	MF4800 Series	
2	FC0-1805-000		1	CAP	MF4700 Series	
3	FC6-5210-000		4	RETAINING RING (E-TYRE)		
4	FC8-9251-000		1	ROLLER, PICK-UP		
5	FC9-5060-000		2	BUSHING		
6	FE2-2538-000		1	COVER, SADF	MF4800 Series EXCEPT JP,US,CA,LTN NWQ	
6	FE2-2568-000		1	COVER, SADF	MF4800 Series JP,US,CA,LTN NWQ	
6	FE2-2567-000		1	COVER, SADF	MF4700 Series EXCEPT JP,US,CA,LTN NXV	
6	FE2-2569-000		1	COVER, SADF	MF4700 Series JP,US,CA,LTN NXV	
7	FE2-3241-000		1	HINGE, ADF		
8	FK3-3659-000		1	MOTOR, STEPPING	M5	
9	FL3-1023-000		1	ROLLER, SEPARATION		
10	FL3-8614-000		1	COVER, DF, FRONT		
11	FM0-3703-000		1	ADF BASE ASSEMBLY	MF4700 Series	
11	FM0-4402-000		1	ADF BASE ASSEMBLY	MF4800 Series	
12	FM0-3709-000		1	AUTO DOCUMENT FEEDER ASSEMBLY	MF4700 Series EXCEPT JP,US,CA,LTN NXV	
12	FM0-3710-000		1	AUTO DOCUMENT FEEDER ASSEMBLY	MF4700 Series JP,US,CA,LTN NXV	
12	FM0-4409-000		1	AUTO DOCUMENT FEEDER ASSEMBLY	MF4800 Series EXCEPT JP,US,CA,LTN NWQ	
12	FM0-4410-000		1	AUTO DOCUMENT FEEDER ASSEMBLY	MF4800 Series JP,US,CA,LTN NWQ	
13	FM0-4413-000		1	FEED ROLLER ASS'Y		
14	FM0-4430-000		1	DOCUMENT TRAY ASSEMBLY	MF4800 Series	
14	FM0-4431-000		1	DOCUMENT TRAY ASSEMBLY	MF4700 Series	
15	FM3-8679-000		1	SEPARATION ROLLER ASS'Y		
16	FM3-8687-000		1	SEPARATION PAD ASSEMBLY		
17	FU0-0204-000		1	GEAR, 21T		
18	FU5-1552-000		1	BUSHING		

FIGURE & KEY NO.	PARTS NUMBER	R A N K	Q'TY	DESCRIPTION	SERIAL NUMBER/ REMARKS	S V C
19	FU5-6711-000		1	ROLLER, AUXILIARY		
20	FU7-2869-000		1	SPRING, COMPRESSION		
21	WG8-5935-000		2	IC, PHOTO INTERRUPTER		
22	XA9-0476-000		4	SCREW,TP M3X8		

FIGURE 161 PAPER FEEDER ASSEMBLY (DADF model)

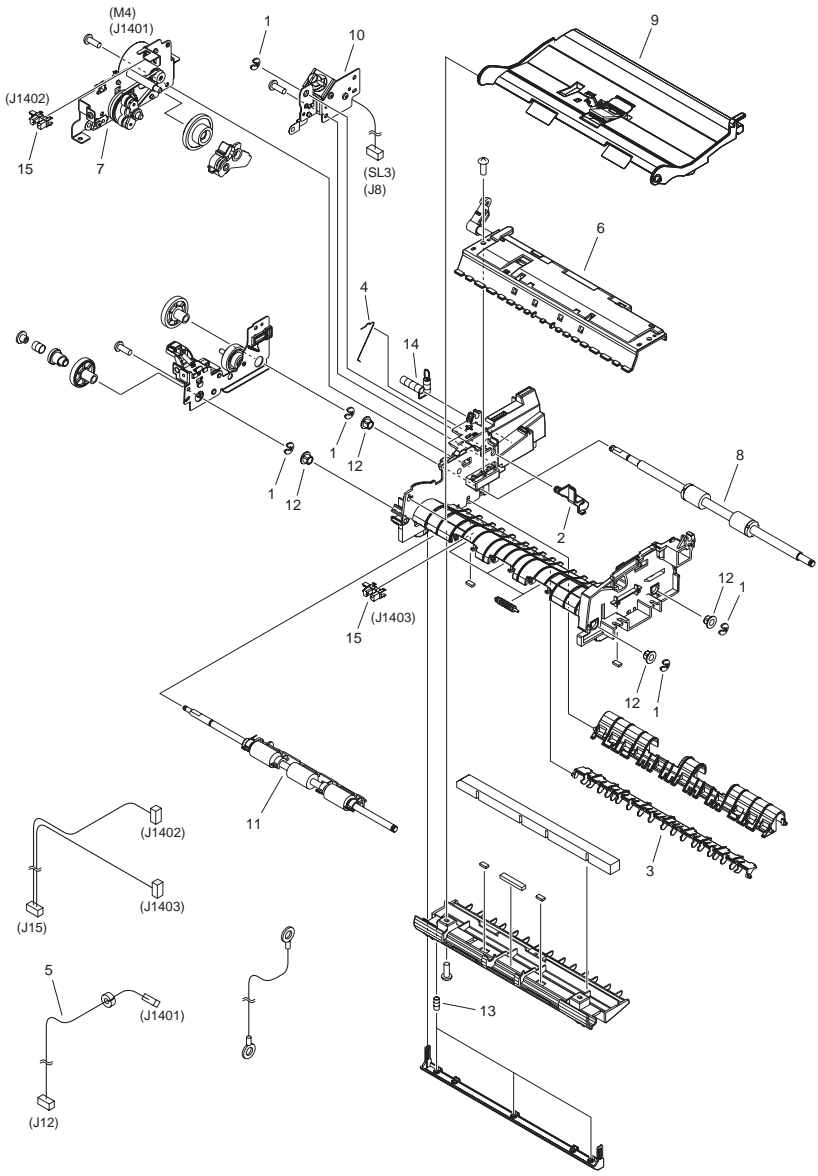


FIGURE & KEY NO.	PARTS NUMBER	R A N K	Q'TY	DESCRIPTION	SERIAL NUMBER/ REMARKS	S V C
Fig.161	FM0-3745-000		1	PAPER FEEDER ASSEMBLY	DADF model	
1	FC6-5210-000		5	RETAINING RING (E-TYPE)		
2	FC7-6182-000		1	LEVER, ROLLER RELEASE		
3	FC7-6278-000		1	FLAPPER, PAPER DELIVERY		
4	FC9-1325-000		1	SPRING,SEPARATION SWING ARM		
5	FM0-4128-000		1	CABLE, MOTOR		
6	FM3-8682-000		1	PAPER DELIVERY ASS'Y		
7	FM3-8685-000		1	MOTOR DRIVE ASS'Y	M4	
8	FM3-8690-000		1	PAPER DELIVERY ROLLER ASS'Y		
9	FM3-9491-000		1	GUIDE ASSEMBLY, UPPER		
10	FM4-6919-000		1	SOLENOID ASS'Y	SL3	
11	FM4-7532-000		1	PAPER FEED ROLLER ASSEMBLY		
12	FU5-1552-000		4	BUSHING		
13	FU6-2249-000		3	SPRING, COMPRESSION		
14	FU7-2021-000		1	SPRING, COMPRESSION		
15	WG8-5935-000		2	PHOTOINTERRUPTER		

FIGURE 400 READER ASSEMBLY (DADF model)

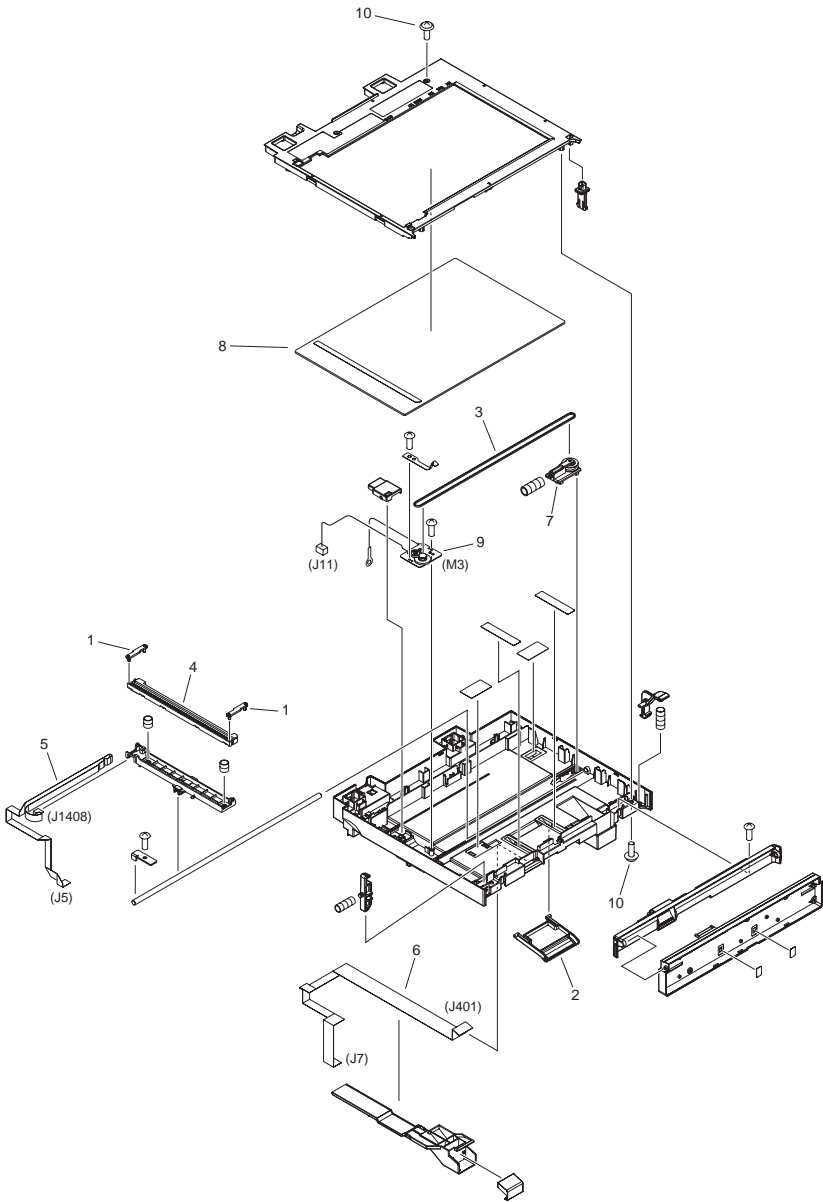


FIGURE & KEY NO.	PARTS NUMBER	R A N K	Q'TY	DESCRIPTION	SERIAL NUMBER/ REMARKS	S V C
Fig.400	FM0-4396-000		1	READER ASSEMBLY	DADF model EXCEPT US,CA,LTN NQS	
Fig.400	FM0-4397-000		1	READER ASSEMBLY	DADF model US,CA,LTN NQS	
1	FC0-1945-000		2	SPACER, CIS		
2	FE2-2498-000		1	LINK, TILT		
3	FE2-3233-000		1	BELT, TIMING		
4	FK3-1153-000		1	CONTACT IMAGE SENSOR		
5	FK3-1160-000		1	CABLE, FLAT, SCNT-OP		
6	FK3-3655-000		1	CABLE, FLAT		
7	FL3-5062-000		1	IDLER PULLEY HOLDER ASS'Y		
8	FL3-5072-000		1	COPYBOARD GLASS ASS'Y		
9	FM0-4434-000		1	MOTOR ASS'Y	M3	
10	XA9-0476-000		4	SCREW,TP M3X8		

FIGURE 400A READER ASSEMBLY (ADF model)

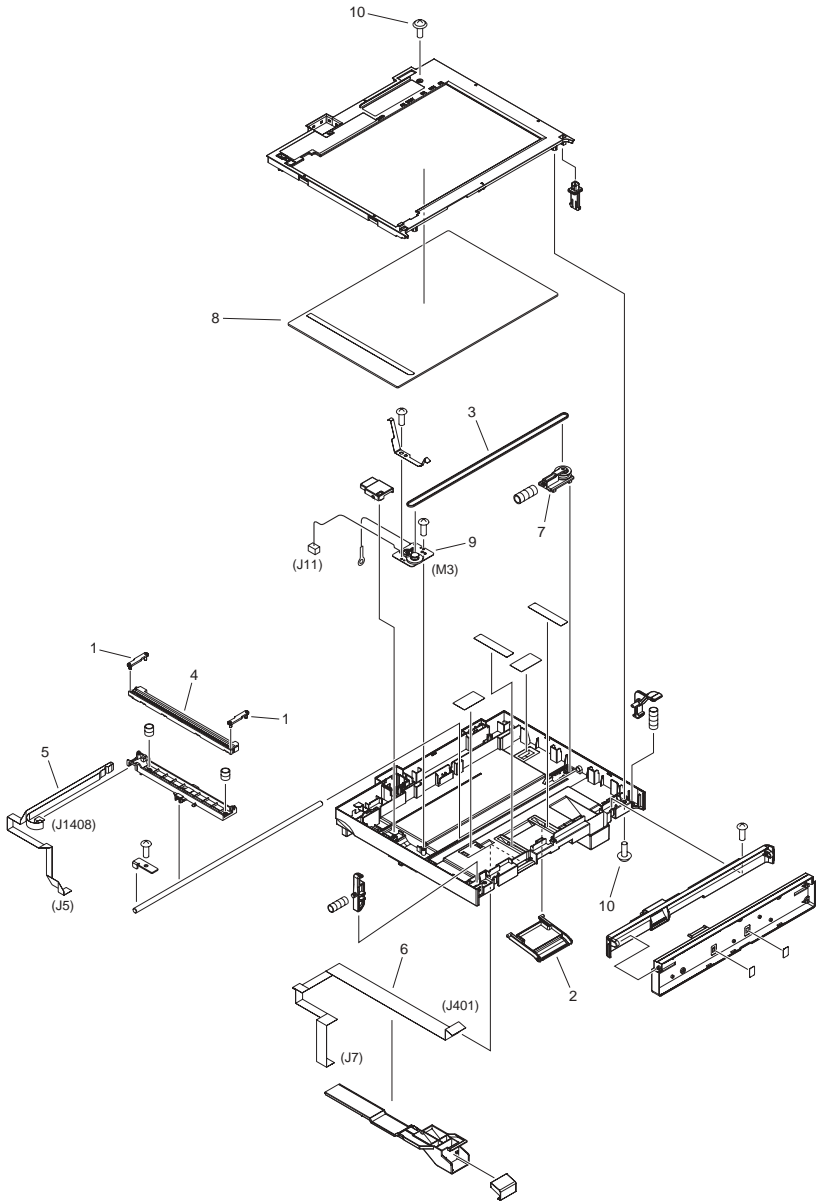


FIGURE & KEY NO.	PARTS NUMBER	R A N K	Q'TY	DESCRIPTION	SERIAL NUMBER/ REMARKS	S V C
Fig.400A	FM0-3704-000		1	READER ASSEMBLY	MF4700 Series EXCEPT US,CA,LTN NXV,EUR	
Fig.400A	FM0-3705-000		1	READER ASSEMBLY	MF4700 Series US,CA,LTN NXV	
Fig.400A	FM0-3708-000		1	READER ASSEMBLY	MF4700 Series EUR	
Fig.400A	FM0-4403-000		1	READER ASSEMBLY	MF4800 Series EXCEPT JP NYD,US,CA,LTN NWQ	
Fig.400A	FM0-4404-000		1	READER ASSEMBLY	MF4800 Series US,CA,LTN NWQ	
Fig.400A	FM0-4407-000		1	READER ASSEMBLY	MF4800 Series JP NYD	
1	FC0-1945-000		2	SPACER, CIS		
2	FE2-2498-000		1	LINK, TILT		
3	FE2-3233-000		1	BELT, TIMING		
4	FK3-1153-000		1	CONTACT IMAGE SENSOR		
5	FK3-1160-000		1	CABLE, FLAT, SCNT-OP		
6	FK3-3655-000		1	CABLE, FLAT		
7	FL3-5062-000		1	IDLER PULLEY HOLDER ASS'Y		
8	FL3-5071-000		1	COPYBOARD GLASS ASS'Y		
9	FM0-4434-000		1	MOTOR ASS'Y	M3	
10	XA9-0476-000		4	SCREW,TP M3X8		

FIGURE 400B READER ASSEMBLY (COPYBOARD model)

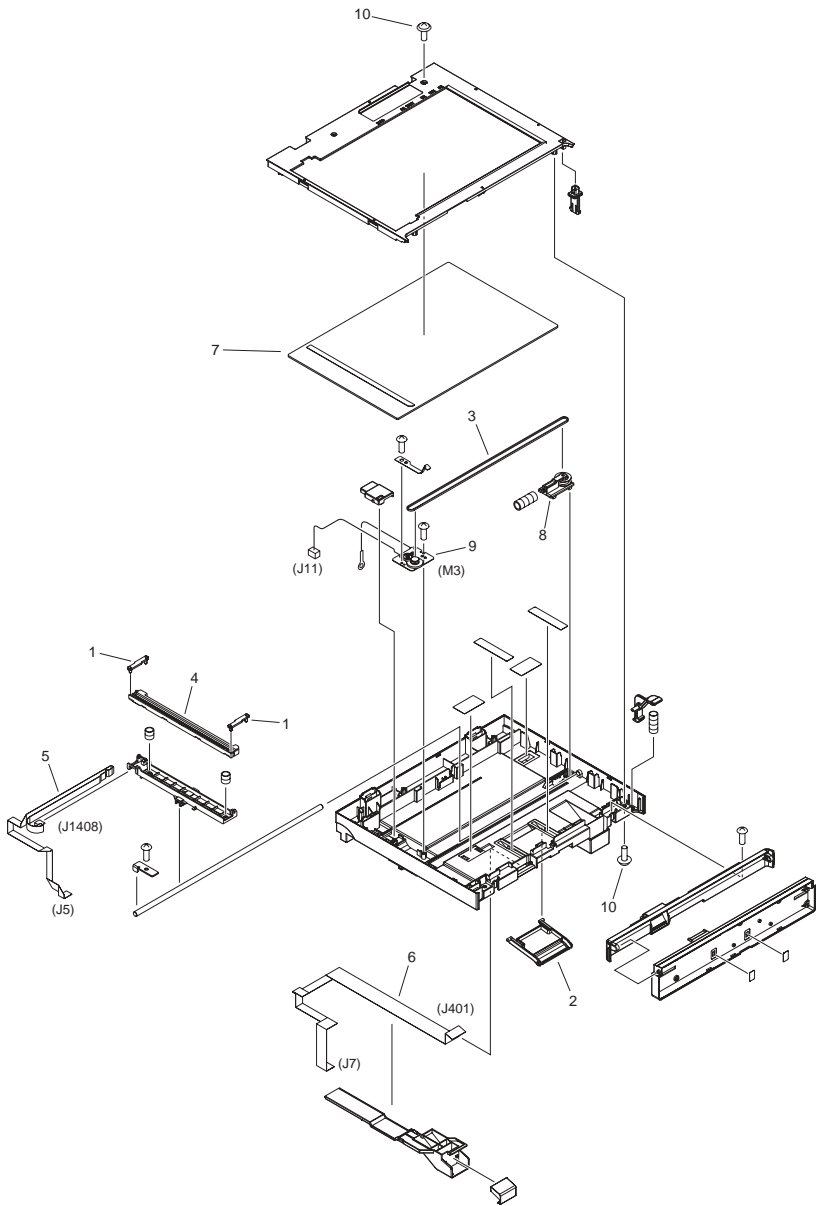


FIGURE & KEY NO.	PARTS NUMBER	R A N K	Q'TY	DESCRIPTION	SERIAL NUMBER/ REMARKS	S V C
Fig.400B	FM0-3695-000		1	READER ASSEMBLY	COPYBOARD model MF4720w	
Fig.400B	FM0-4422-000		1	READER ASSEMBLY	COPYBOARD model MF4820d JP	
Fig.400B	FM0-4424-000		1	READER ASSEMBLY	COPYBOARD model MF4820d SG,IN,HK,LTN	
1	FC0-1945-000		2	SPACER, CIS		
2	FE2-2498-000		1	LINK, TILT		
3	FE2-3233-000		1	BELT, TIMING		
4	FK3-1153-000		1	CONTACT IMAGE SENSOR		
5	FK3-1160-000		1	CABLE, FLAT, SCNT-OP		
6	FK3-3655-000		1	CABLE, FLAT		
7	FL2-5621-000		1	COPYBOARD GLASS ASS'Y	JP	
7	FL3-5072-000		1	COPYBOARD GLASS ASS'Y	SG,IN,HK,LTN	
8	FL3-5062-000		1	IDLER PULLEY HOLDER ASS'Y		
9	FM0-4434-000		1	MOTOR ASS'Y	M3	
10	XA9-0476-000		4	SCREW,TP M3X8		

FIGURE ZZA

MECHANICAL STANDARD PARTS (HOW TO USE)

Mechanical standard parts

機械標準部品

About a mechanical standard parts

A Mechanical standard parts is a mechanical part which not parts peculiar to a product. They are parts which are common to a Canon product and are used, such as a screw and a washer. The Fig No. and parts number of the mechanical standard parts are not listed in the product parts catalog. Refer to the parts catalog of mechanical standard parts when checking the parts number for screw or washer etc. and identify them by part shape or size.

機械標準部品とは

機械標準部品とは、製品特有の部品ではなく、ねじやワッシャなどキヤノン製品共通で使用されている機械部品（メカ部品）のことです。
製品のパーツカタログには、機械標準部品のFig No.や部品番号は記載しておりません。
ねじや、ワッシャ等の部品番号を調べるときは、機械標準部品のパーツカタログを参照し、部品の形状や大きさから判断し、使用している部品を調べてください。

Material and surface treatment of a mechanical standard parts

Material and surface treatment of mechanical standard parts are assigned commonly for each part. Refer to the Table 1 for the parts which material and surface treatment are assigned as numbers.

機械標準部品の材料および表面処理

機械標準部品の材料および表面処理については、各種部品共通で決められています。
材料および表面処理が番号で決められている部品については、表1を参照してください。

Table 1 Material and Surface treatment
表1 材料および表面処理

No. 番号	Material 材料	Surface treatment 表面処理	Color 色
1	Stainless steel ステンレス	Stainless steel black coloring (BC4) ステンレス黒着色(BC4)	Black 黒
2		not to be given なし	White 白
3	Brass 黄銅	Regular nickel plating (NL) 普通ニッケルメッキ(NL)	White 白
4		Black nickel plating (BN) 黒色ニッケルメッキ(BN)	Black 黒
5	Steel 鋼	White zinc trivalent chromate treating (ZC3) 白色亜鉛3価クロメート(ZC3)	White 白
6		Regular nickel chromium plating (NC) 普通ニッケルクロムメッキ(NC)	White 白
7		Regular nickel plating (NL) 普通ニッケルメッキ(NL)	White 白
8		Iron and steel phosphating (P1) 鉄鋼磷酸塩処理(P1)	Black 黒
9		Black zinc trivalent chromate treating (BZ3) 黒色亜鉛3価クロメート(BZ3)	Black 黒

FIGURE ZZB MECHANICAL STANDARD PARTS (SCREWS)

1. Screws ねじ

How to read Parts Numbers
部品番号の見方

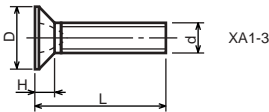
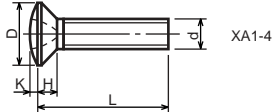
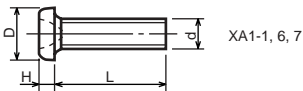
Screws
ねじ

XB1-2400-609

Type No.
類別番号
Normal designation (d)
ねじの呼び(d)
Length (L)
ねじの長さ(L)
Material and Surface treatment
材料および表面処理

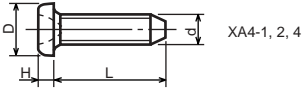
XB1-2 expresses Binding head machine screw.
XB1-2は、バインドねじを表す
40 expresses M4.0.
40は、M4.0を表す
0-60 expresses a length of 6.0mm.
0-60は、6.0mmの長さを表す
9 expresses Steel (Black zinc trivalent chromate
treating) from Table 1.
9は、表1より鋼(黒色亜鉛3価クロメート)を表す

1-1. Cross Recessed Head Screws for Precision Equipments 精密機器用十字穴付き小ねじ

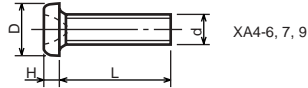


Type No. 類別番号	Type 類別	Head size (mm) 頭部寸法 (mm)							
		M1.4	M1.6	M1.7	M2	M2.5	M2.6		
XA1-1	Pan head Class 1 なべ1種	D	XA1-1	2	2.4	2.5	3	3.8	4
		H	XA1-1	0.5	0.55	0.5	0.6	0.9	0.8
XA1-3	Countersunk head Class 1 さら1種	D	XA1-3	2	2.4	2.5	3	3.8	4
		H	XA1-3	0.48	0.55	0.58	0.73	0.85	0.93
XA1-4	Oval countersunk head Class 1 丸さら1種	D	XA1-4	2	2.4	2.5	3	3.8	4
		H + K	XA1-4	0.68	0.8	0.88	1	1.25	1.3
XA1-6	Pan head Class 3 なべ3種	D	XA1-6	2.5	2.8	3	3.5	4.3	4.5
		H	XA1-6	0.8	0.85	0.9	1	1.3	1.2
XA1-7	Pan head Class 2 なべ2種	D	XA1-7	2.5	2.8	3	3.5	4.3	4.5
		H	XA1-7	0.5	0.55	0.5	0.6	0.9	0.8

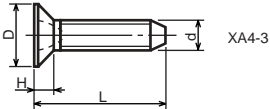
1-2. Precision Tapping Screws
精密用タッピンねじ



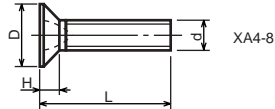
XA4-1, 2, 4



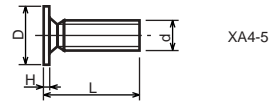
XA4-6, 7, 9



XA4-3



XA4-8



XA4-5

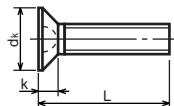
Type No. 類別番号	Type 類別	Head size (mm) 頭部寸法 (mm)						
		M1.4	M1.6	M1.7	M2	M2.5	M2.6	
XA4-1	With tapered end pan head Class 1 絞りなべ1種	D XA4-1	2	2.4	2.5	3	3.8	4
		H XA4-1	0.5	0.55	0.5	0.6	0.9	0.8
XA4-2	With tapered end pan head Class 3 絞りなべ3種	D XA4-2	2.5	2.8	3	3.5	4.3	4.5
		H XA4-2	0.8	0.85	0.9	1	1.3	1.2
XA4-3	With tapered end countersunk head 絞り-さら	D XA4-3	2	2.4	2.5	3	3.8	4
		H XA4-3	0.48	0.55	0.58	0.73	0.85	0.93
XA4-4	With tapered end pan head Class 2 絞りなべ2種	D XA4-4	2.5	2.8	3	3.5	4.3	4.5
		H XA4-4	0.5	0.55	0.5	0.6	0.9	0.8
XA4-5	With parallel end ultra thin head ストレート-超薄頭	D XA4-5	2.5	2.8	3	-	-	-
		H XA4-5	0.2	0.2	0.2	-	-	-
XA4-6	With parallel end pan head Class 1 ストレートなべ1種	D XA4-6	2	2.4	2.5	3	3.8	4
		H XA4-6	0.5	0.55	0.5	0.6	0.9	0.8
XA4-7	With parallel end pan head Class 3 ストレートなべ3種	D XA4-7	2.5	2.8	3	3.5	4.3	4.5
		H XA4-7	0.8	0.85	0.9	1	1.3	1.2
XA4-8	With parallel end countersunk head ストレート-さら	D XA4-8	2	2.4	2.5	3	3.8	4
		H XA4-8	0.48	0.55	0.58	0.73	0.85	0.93
XA4-9	With parallel end pan head Class 2 ストレートなべ2種	D XA4-9	2.5	2.8	3	3.5	4.3	4.5
		H XA4-9	0.5	0.55	0.5	0.6	0.9	0.8

1-3. Cross Recessed Head Screws

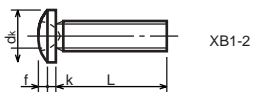
一般用十字穴付き小ねじ



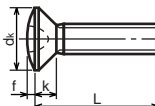
XB1-1



XB1-3



XB1-2

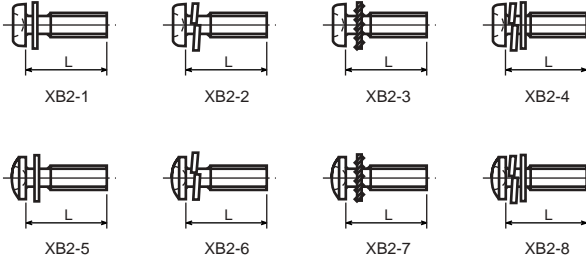


XB1-4

Type No. 類別番号	Type 類別
XB1-1	Pan head なべ
XB1-2	Binding head バインド
XB1-3	Countersunk head さら
XB1-4	Oval countersunk head 丸さら

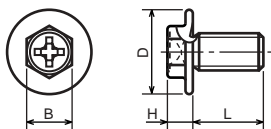
		Head size (mm) 頭部寸法 (mm)					
		M2	M2.5	M2.6	M3	M4	M5
dk	XB1-1	3.5	4.5	4.5	5.5	7	9
k	XB1-1	1.3	1.7	1.7	2	2.6	3.3
dk	XB1-2	4.3	5.3	5.5	6.3	8.3	10.3
k+f	XB1-2	1.2	1.5	1.6	1.9	2.5	3.1
dk	XB1-3	4	5	-	6	8	10
k	XB1-3	1.2	1.45	-	1.75	2.3	2.8
dk	XB1-4	4	5	-	6	8	10
k+f	XB1-4	1.6	2	-	2.45	3.2	4
Screw part length ねじ部長さ b		8	12	12	12	16	20

1-4. Cross Recessed Head Screws with Captive Washer
 座金組込み十字穴付き小ねじ



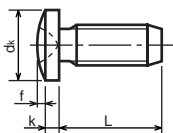
Type No. 類別番号	Type 類別
XB2-1	Pan head + Plain washer (circular bright) なべねじ+平座金
XB2-2	Pan head + Spring washer なべねじ+ばね座金
XB2-3	Pan head + Toothed lock washer なべねじ+歯付座金
XB2-4	Pan head + Spring washer and plain washer (circular bright) なべねじ+(ばね+平)座金
XB2-5	Binding head + Plain washer (circular bright) バインドねじ+平座金
XB2-6	Binding head + Spring washer バインドねじ+ばね座金
XB2-7	Binding head + Toothed lock washer バインドねじ+歯付座金
XB2-8	Binding head + Spring washer and plain washer (circular bright) バインドねじ+(ばね+平)座金

1-5. Hexagon Head Tapping Screws for Metallic Materials
 金属用六角タッピンねじ



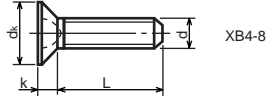
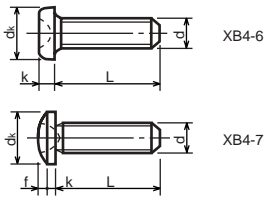
Type No. 類別番号	Type 類別	Head size (mm) 頭部寸法 (mm)	
		M3	M4
XB3-6	For metallic materials 金属用タッピン	D	8 10
		B	5.5 5.5
XB3-7	For metallic materials with clawed 金属用タッピン-つめ付き	H XB3-6	3.1 3.1
		H XB3-7	3.2 3.2

1-6. Special Tapping Screws
 特殊タッピンねじ



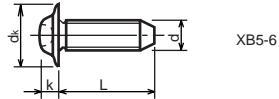
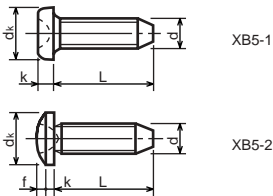
Type No. 類別番号	Type 類別	Head size (mm) 頭部寸法 (mm)	
		M3	M4
XB4-5	Binding head バインド	d _k	6.3 8.3
		k	1.3 1.7
		k+f	1.9 2.5

1-7. General Head Tapping Screws
一般用タッピンねじ



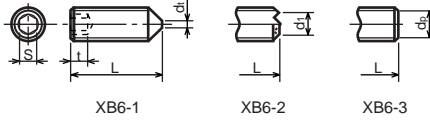
Type No. 類別番号	Type 類別	Head size (mm) 頭部寸法 (mm)						
		M2	M2.5	M2.6	M3	M4	M5	
XB4-6	Pan head なべ	d_k XB4-6	3.5	4.5	4.5	5.5	7	9
		k XB4-6	1.3	1.7	1.7	2	2.6	3.3
XB4-7	Binding head バインド	d_k XB4-7	4.3	5.3	5.5	6.3	8.3	10.3
		$k+f$ XB4-7	1.2	1.5	1.6	1.9	2.5	3.1
XB4-8	Countersunk head さら	d_k XB4-8	4	5	5.2	6	8	10
		k XB4-8	1.2	1.45	1.5	1.75	2.3	2.8

1-8. Tapping Screws for Metallic Materials
金属用タッピンねじ



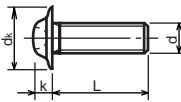
Type No. 類別番号	Type 類別	Head size (mm) 頭部寸法 (mm)					
		M2.5	M2.6	M3	M4	M5	
XB5-1	Pan head なべ	d_k XB5-1	4.5	4.5	5.5	7	9
		k XB5-1	1.7	1.7	2	2.6	3.3
XB5-2	Binding head バインド	d_k XB5-2	5.5	5.5	6.3	8.3	10.3
		$k+f$ XB5-2	1.6	1.6	1.9	2.5	3.1
XB5-6	Flanged pan head つば付きなべ	d_k XB5-6	6.5	6.5	8	10	12
		k XB5-6	2.1	2.1	1.75	3.2	4

1-9. Hexagon Socket Set Screws
六角穴付止めねじ



Type No. 類別番号	Type 類別	Head size (mm) 頭部寸法 (mm)							
		M1.6 M1.7	M2	M2.5 M2.6	M3	M5	M5	M6	
XB6-1	Cone point とがり先	S	0.7	0.9	1.3	1.5	2	2.5	3
		t	1.5	1.7	2	2	2.5	3	3.5
		$d_{t \max}$ XB6-1	0.4	0.5	0.65	0.75	1	1.25	1.5
		$d_{l \max}$ XB6-2	-	1.2	1.5	1.7	2.2	2.8	3.3
		$d_{l \min}$ XB6-2	-	1	1.2	1.4	1.9	2.4	2.9
		$d_{p \max}$ XB6-3	0.8	1	1.5	2	2.5	3.5	4
		$d_{p \min}$ XB6-3	0.55	0.75	1.25	1.75	2.25	3.2	3.7

1-10. Flanged Pan Head Machine Screws
つば付きなべ小ねじ



Type No. 類別番号	Type 類別	Head size (mm) 頭部寸法 (mm)					
		M2	M2.5 M2.6	M3	M5	M5	
XB6-7	Flanged pan head つば付きなべ	d_k	5	6.5	8	10	12
		k	1.7	2.1	2.5	3.2	4

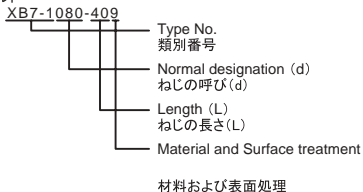
FIGURE ZZC MECHANICAL STANDARD PARTS (BOLTS)

2. Bolts (Socket head cap screw)

ボルト

How to read Parts Numbers
部品番号の見方

Bolt (Socket head cap screw)
ボルト



XB7-1 expresses Hexagon socket head cap screws.
XB7-1は、六角穴付きボルトを表す

080 expresses M8.0.
080は、M8.0を表す

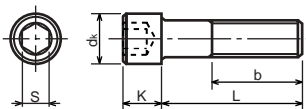
40 expresses a length of 40mm.
40は、40mmの長さを表す

9 expresses Steel (Black zinc trivalent chromate
treating) from Table 1.

9は、表1より鋼(黒色亜鉛3価クロメート)を表す

2-1. Hexagon socket head cap screws

六角穴付きボルト



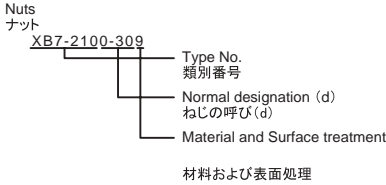
Type No. 類別番号	Type 類別
XB7-1	Hexagon socket head cap screws 六角穴付きボルト

	Head size (mm) 頭部寸法 (mm)						
	M3	M4	M5	M6	M8	M10	M12
S	2.5	3	4	5	6	8	10
d_k	5.5	7	8.5	10	13	16	18
K	3	4	5	6	8	10	12
Screw part length b_{max} ねじ部長さ b_{max}	18	20	22	24	28	32	36

FIGURE ZZD MECHANICAL STANDARD PARTS (NUTS)

3. Nuts ナット

How to read Parts Numbers
部品番号の見方



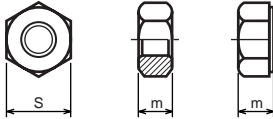
XB7-210 expresses Hexagon nut class 1.
XB7-210は、六角ナット1種を表す

0-30 expresses M3.0.
0-30は、M3.0を表す

9 expresses Steel (Black zinc trivalent chromate
treating) from Table 1.

9は、表1より鋼(黒色亜鉛3価クロメート)を表す

3-1. Hexagon Nuts and Hexagon Thin Nuts 六角ナット



Type No. 類別番号	Type 類別
XB7-210	Hexagon nut Class 1 六角ナット-1種
XB7-220	Hexagon nut Class 3 六角ナット-3種
XB7-230	Hexagon nut Style 1 double chamfered 六角ナット-スタイル1-両面とり
XB7-231	Hexagon nut Style 1 washer faced 六角ナット-スタイル1-座付き
XB7-240	Hexagon nut Style 2 double chamfered 六角ナット-スタイル2-両面とり
XB7-241	Hexagon nut Style 2 washer faced 六角ナット-スタイル2-座付き
XB7-250	Hexagon nut 六角ナット
XB7-260	Hexagon thin nut double chamfered 六角低ナット-両面とり
XB7-270	Hexagon thin nut not chamfered 六角低ナット-面とり無し

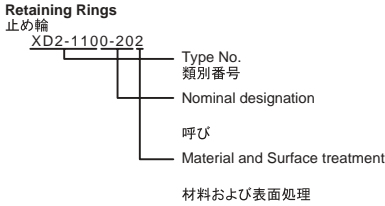
	Head size (mm) 頭部寸法 (mm)						
	M2	M2.5	M3	M4	M5	M6	M8
S	4	5	5.5	7	8	10	13
m XB7-210	1.6	2	2.4	3.2	4	5	6.5
m XB7-220	1.2	1.6	1.8	2.4	3.2	3.6	5
m XB7-230, 231	1.6	2	2.4	3.2	4.7	5.2	6.8
m XB7-240, 241	-	-	-	-	5.1	5.7	7.5
m XB7-250	-	-	-	-	5.6	6.1	7.9
m XB7-260	1.2	1.6	1.8	2.2	2.7	3.2	4
m XB7-270	1.2	1.6	1.8	2.2	2.7	3.2	4

FIGURE ZZE MECHANICAL STANDARD PARTS (RETAINING RINGS)

5. Retaining Rings

止め輪

How to read Parts Numbers
部品番号の見方



XD2-110 expresses retaining ring-E type (Type1).
XD2-110は、E形止め輪(1種)を表す

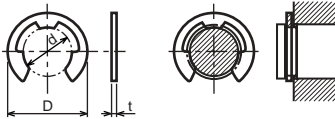
0-20 expresses a 020 of nominal designation.
(See Table 5)

0-20は、呼び020を表す(表5参照)

2 expresses Stainless steel (Surface treatment is not to be given) from Table 1.
2は、表1よりステンレス(表面処理なし)を表す

5-1. Retaining Rings - E type

E形止め輪

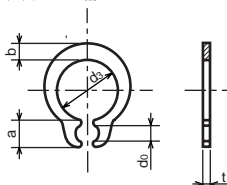


Type No. 類別番号	Type 類別
XD2-110	Retaining ring - E type (Type 1) E形止め輪(1種)
XD2-120	Retaining ring - E type (Type 2) E形止め輪(2種)

Table 5 表5

Type 種類	Nominal designation 呼び	d (mm)	D (mm)	t (mm)
Type 1 1種	007	0.65	2	0.2
	010	0.95	2.8	0.2
	013	1.25	3.3	0.3
	017	1.65	4.2	0.4
	020	1.95	4.6	0.5
	024	2.35	6	0.6
	028	2.74	6.5	0.6
	032	3.14	7.2	0.6
	037	3.64	8	0.7
	040	3.93	10	0.7
	042	4.13	10	0.7
	050	4.93	11	0.7
	058	5.73	12	0.7
	060	5.93	12.7	0.9
	064	6.32	13.5	0.9
	074	7.31	15	0.9
080	7.91	16.5	1	
Type 2 2種	008	0.8	2	0.2
	012	1.2	3	0.3
	015	1.5	4	0.4
	020	2	5	0.4
	025	2.5	6	0.4
	030	3	7	0.6
	040	4	9	0.6
	050	5	11	0.6
	060	6	12	0.8
	070	7	14	0.8
	080	8	16	0.8
	090	9	18	0.8
	100	10	20	1

5-2. Grip Rings
グリップ止め輪

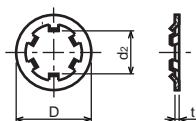


Type No. 類別番号	Type 類別
XD2-210	Grip ring グリップ止め輪

Table 5 表5

Nominal designation 呼び	d ₃ (mm)	t (mm)	b (mm)	a (mm)	d ₀ (mm)
020	1.9	0.5	1	1.8	0.8
025	2.35	0.5	1.2	1.9	0.9
030	2.85	0.6	1.4	1.9	0.9
035	3.3	0.6	1.6	2	0.9
040	3.8	0.8	1.8	2.8	1.2
045	4.25	0.8	2	2.9	1.3
050	4.75	0.8	2.2	2.9	1.3
060	5.7	1	2.4	3.1	1.4
070	6.7	1	2.7	3.3	1.4
080	7.7	1	3	3.5	1.4
090	8.65	1.2	3.3	4.7	1.5
100	9.65	1.2	3.5	4.7	2

5-3. Toothed Retaining Rings
歯付き形止め輪



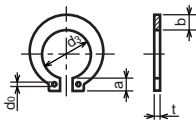
Type No. 類別番号	Type 類別
XD2-230	Toothed retaining ring 歯付き形止め輪

Table 5 表5

Nominal designation 呼び	d _z (mm)	D (mm)	t (mm)	No of teeth 歯数
015	1.4	5.2	0.25	3
020	1.9	6	0.25	3
024	2.3	6.4	0.25	3
030	2.8	8	0.25	4
040	3.8	9	0.25	4
050	4.8	10	0.25	5
060	5.8	11	0.25	5
080	7.8	13	0.25	5
100	9.8	15.4	0.25	6

5-4. Retaining Rings - C Type

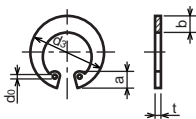
C形止め輪



Type No. 類別番号	Type 類別
XD2-310	Retaining ring - C type for shaft C形止め輪 軸用

Table 5 表5

Nominal designation 呼び	d ₃ (mm)	t (mm)	b (mm)	a (mm)	d ₀ (mm)
010	9.3	1	1.6	3	1.2
012	11.1	1	1.8	3.2	1.5
014	12.9	1	2	3.4	1.7
015	13.8	1	2.1	3.5	1.7
016	14.7	1	2.2	3.6	1.7
017	15.7	1	2.2	3.7	1.7
018	16.5	1.2	2.6	3.8	1.7
020	18.5	1.2	2.7	3.9	2
022	20.5	1.2	2.7	4.1	2
025	23.2	1.2	3.1	4.3	2
028	25.9	1.5	3.1	4.6	2
030	27.9	1.5	3.5	4.8	2
032	29.6	1.5	3.5	5	2.5
035	32.2	1.5	4	5.4	2.5



Type No. 類別番号	Type 類別
XD2-320	Retaining ring - C type for hole C形止め輪 穴用

Table 5 表5

Nominal designation 呼び	d ₃ (mm)	t (mm)	b (mm)	a (mm)	d ₀ (mm)
010	10.7	1	1.8	3.1	1.2
011	11.8	1	1.8	3.2	1.2
012	13	1	1.8	3.3	1.5
014	15.1	1	2	3.6	1.7
016	17.3	1	2	3.7	1.7
018	19.5	1	2.5	4	1.7
019	20.5	1	2.5	4	2
020	21.5	1	2.5	4	2
022	23.5	1	2.5	4.1	2
025	26.9	1.2	3	4.4	2
028	30.1	1.2	3	4.6	2
030	32.1	1.2	3	4.7	2
032	34.4	1.2	3.5	5.2	2.5
035	37.8	1.5	3.5	5.2	2.5
037	39.8	1.5	3.5	5.2	2.5
040	43.5	1.8	4	5.7	2.5
042	45.5	1.8	4	5.8	2.5
045	48.5	1.8	4.5	5.9	2.5
047	50.5	1.8	4.5	6.1	2.5
050	54.2	2	4.5	6.5	2.5
052	56.2	2	5.1	6.5	2.5
055	59.2	2	5.1	6.5	2.5
060	64.2	2	5.1	6.8	2.5
062	66.2	2	5.5	6.9	2.5
068	72.5	2.5	6	7.4	2.5
072	76.5	2.5	6.6	7.4	2.5
075	79.5	2.5	6.6	7.8	2.5
080	85.5	2.5	7	8	2.5
085	90.5	3	7	8	3
090	95.5	3	7.6	8.3	3
095	100.5	3	8	8.5	3

Prepared by
OIP Business Support Group
CANON INC.

Canon