

# **PARTS CATALOG**

**MF4580/4570/4554/4553/  
4550/4453/4452/4450/4430/  
4420/4412/4410/D550/520**

**Canon**

**Sep 17 2010**



## **PREFACE**

This Parts Catalog contains listings of parts used

Diagrams are provided with the listings to aid the service technician in identifying clearly, the item to be ordered.

Whenever ordering parts, consult this Parts Catalog for all of the information pertaining to each item. Be sure to include, in the Parts Request, the full item description, the item part number, and the quantity.

***COPYRIGHT (C) 1999 CANON INC.***

Use of this manual should be strictly supervised to avoid disclosure of confidential information.



# Contents

## NUMERICAL INDEX

MF4580/4570/4554/4553/4550/4453/4452/4450/4430/4420/4412/4410/  
D550/520(Numerical Index)..... 1-1

## MF4580/4570/4554/4553/4550/4453/4452/4450/4430/4420/4412/4410/ D550/520(Parts Catalog)

A1	ASSEMBLY LOCATION DIAGRAM .....	2-1
A2	OPTION PARTS CATALOG LIST .....	2-2
001	ACCESSORIES .....	2-3
100	EXTERNAL COVERS, PANELS, ETC.(DADF model) .....	2-6
100A	EXTERNAL COVERS, PANELS, ETC.(ADF model) .....	2-8
100B	EXTERNAL COVERS, PANELS, ETC.(COPYBOARD model) .....	2-12
101	FRONT COVER ASS'Y .....	2-16
102	INTERNAL COMPONENTS 1 .....	2-19
103	INTERNAL COMPONENTS 2 .....	2-22
160	ADF ASS'Y (DADF model) .....	2-24
160A	ADF ASS'Y (ADF model) .....	2-26
161	ADF PAPER FEED ASS'Y (DADF model) .....	2-28
400	READER ASSEMBLY (DADF model) .....	2-30
400A	READER ASSEMBLY (ADF model) .....	2-32
400B	READER ASSEMBLY (COPYBOARD model) .....	2-34
ZZA	MECHANICAL STANDARD PARTS (HOW TO USE) .....	2-36
ZZB	MECHANICAL STANDARD PARTS (SCREWS) .....	2-37
ZZC	MECHANICAL STANDARD PARTS (BOLTS) .....	2-44
ZZD	MECHANICAL STANDARD PARTS (NUTS) .....	2-45
ZZE	MECHANICAL STANDARD PARTS (RETAINING RINGS) .....	2-46



# NUMERICAL INDEX

MF4580/4570/4554/4553/4550/4453/4452/4450/4430/4420/4412/4410/D550

PARTS NUMBER	FIGURE & KEY NO.	PARTS NUMBER	FIGURE & KEY NO.	PARTS NUMBER	FIGURE & KEY NO.
FC0-1640-000	100A - 6	FC0-1848-000	100B - 2	FC6-5210-000	160A - 13
FC0-1640-000	100B - 6	FC0-1849-000	100B - 2	FC6-5210-000	161 - 1
FC0-1644-000	102 - 16	FC0-1850-000	100 - 2	FC7-3630-000	400 - 1
FC0-1645-000	102 - 17	FC0-1850-000	100A - 2	FC7-3630-000	400A - 1
FC0-1647-000	100 - 2	FC0-1851-000	100A - 2	FC7-3630-000	400B - 1
FC0-1647-000	100A - 2	FC0-1852-000	100A - 2	FC7-6182-000	161 - 3
FC0-1648-000	100 - 1	FC0-1853-000	100A - 2	FC7-6278-000	161 - 4
FC0-1648-000	100A - 1	FC0-1854-000	100A - 2	FC7-6321-000	160 - 7
FC0-1648-000	100B - 1	FC0-1862-000	100A - 1	FC8-0654-000	100B - 8
FC0-1660-000	101 - 1	FC0-1862-000	100B - 1	FC8-1367-000	102 - 10
FC0-1661-000	101 - 2	FC0-1865-000	160A - 4	FC8-1368-000	102 - 11
FC0-1663-000	101 - 8	FC0-1866-000	160A - 4	FC8-1368-000	103 - 10
FC0-1664-000	101 - 10	FC0-1867-000	160A - 4	FC8-1369-000	103 - 11
FC0-1665-000	101 - 9	FC0-1881-000	100A - 3	FC8-1370-000	100 - 14
FC0-1698-000	160A - 6	FC0-1881-000	100B - 3	FC8-1370-000	100A - 13
FC0-1706-000	160A - 4	FC0-1888-000	100B - 2	FC8-1370-000	100B - 10
FC0-1708-000	100 - 10	FC0-1889-000	100B - 2	FC8-1370-000	102 - 12
FC0-1708-000	100A - 10	FC0-1890-000	100A - 2	FC8-1370-000	103 - 12
FC0-1717-000	100A - 8	FC0-1890-000	100B - 2	FC8-9210-000	160 - 11
FC0-1743-000	160 - 5	FC0-1891-000	100A - 2	FC8-9251-000	160 - 13
FC0-1744-000	160 - 1	FC0-1891-000	100B - 2	FC8-9307-000	100 - 5
FC0-1744-000	160A - 1	FC0-1901-000	101 - 4	FC8-9307-000	100A - 5
FC0-1745-000	160 - 2	FC0-1902-000	001 - 2	FC8-9307-000	100B - 5
FC0-1746-000	160 - 6	FC0-1929-000	100A - 11	FC9-1324-000	100 - 5
FC0-1747-000	160 - 3	FC0-1930-000	100 - 11	FC9-1324-000	100A - 5
FC0-1748-000	160 - 4	FC0-1930-000	100A - 11	FC9-1324-000	100B - 5
FC0-1760-000	100 - 3	FC0-1931-000	100A - 11	FC9-1325-000	161 - 6
FC0-1760-000	100A - 3	FC0-1934-000	100 - 11	FC9-1345-000	160 - 10
FC0-1760-000	100B - 3	FC0-1934-000	100A - 11	FC9-5060-000	160 - 8
FC0-1771-000	100 - 8	FC0-1935-000	100A - 11	FK2-1311-000	001 - 5
FC0-1772-000	100 - 11	FC0-1936-000	100A - 10	FK2-1316-000	001 - 7
FC0-1772-000	100A - 11	FC0-1945-000	400 - 9	FK2-1317-000	001 - 7
FC0-1773-000	100A - 1	FC0-1945-000	400A - 9	FK2-4390-000	001 - 4
FC0-1773-000	100B - 1	FC0-1945-000	400B - 9	FK2-4393-000	001 - 6
FC0-1778-000	101 - 4	FC0-1979-000	101 - 12	FK2-6890-000	001 - 8
FC0-1787-000	100 - 13	FC0-1980-000	101 - 12	FK2-7595-000	001 - 9
FC0-1789-000	102 - 1	FC0-1981-000	101 - 11	FK2-7600-000	102 - 7
FC0-1795-000	160 - 3	FC0-1982-000	101 - 11	FK3-1144-000	103 - 1
FC0-1796-000	160 - 3	FC0-1984-000	160A - 5	FK3-1145-000	102 - 13
FC0-1799-000	160 - 4	FC0-1986-000	100A - 4	FK3-1153-000	400 - 2
FC0-1802-000	160 - 5	FC0-1986-000	100B - 4	FK3-1153-000	400A - 2
FC0-1805-000	160A - 1	FC0-1987-000	001 - 3	FK3-1153-000	400B - 2
FC0-1818-000	100A - 8	FC0-1988-000	001 - 3	FK3-1154-000	400 - 3
FC0-1828-000	100 - 1	FC0-2037-000	100 - 15	FK3-1154-000	400A - 3
FC0-1828-000	100A - 1	FC0-2037-000	100A - 14	FK3-1157-000	400 - 3
FC0-1828-000	100B - 1	FC0-2038-000	100A - 14	FK3-1157-000	400A - 3
FC0-1833-000	101 - 1	FC0-2038-000	100B - 12	FK3-1157-000	400B - 3
FC0-1834-000	101 - 1	FC5-4822-000	101 - 6	FK3-1160-000	400 - 4
FC0-1835-000	101 - 1	FC6-5204-000	100 - 4	FK3-1160-000	400A - 4
FC0-1836-000	101 - 2	FC6-5204-000	100A - 4	FK3-1160-000	400B - 4
FC0-1837-000	101 - 8	FC6-5204-000	100B - 4	FK3-1164-000	160A - 14
FC0-1848-000	100 - 2	FC6-5210-000	160 - 9	FK3-1174-000	102 - 14

# NUMERICAL INDEX

MF4580/4570/4554/4553/4550/4453/4452/4450/4430/4420/4412/4410/D550

PARTS NUMBER	FIGURE & KEY NO.	PARTS NUMBER	FIGURE & KEY NO.	PARTS NUMBER	FIGURE & KEY NO.
FK3-1175-000	102 - 15	FM3-8685-000	161 - 11	FM4-6958-000	100A - 9
FK3-1179-000	102 - 14	FM3-8690-000	161 - 12	FM4-6959-000	100 - 9
FK3-1206-000	102 - 8	FM3-9491-000	161 - 13	FM4-6960-000	100A - 9
FK3-1500-000	001 - 1	FM4-6882-000	160A - 11	FM4-6961-000	100 - 9
FK3-1501-000	001 - 1	FM4-6892-000	103 - 2	FM4-6962-000	100A - 9
FK3-1502-000	001 - 1	FM4-6893-000	103 - 3	FM4-6963-000	100A - 9
FK3-1503-000	001 - 1	FM4-6894-000	103 - 4	FM4-6964-000	100B - 9
FK3-1504-000	001 - 1	FM4-6895-000	102 - 2	FM4-6965-000	100B - 9
FK3-1505-000	001 - 1	FM4-6896-000	103 - 5	FM4-6966-000	101 -
FK3-1506-000	001 - 1	FM4-6898-000	100 - 6	FM4-6967-000	101 -
FK3-1509-000	001 - 1	FM4-6898-000	100A - 6	FM4-6968-000	101 -
FK3-1510-000	001 - 1	FM4-6898-000	100B - 6	FM4-6971-000	100A - 9
FK3-1511-000	001 - 1	FM4-6900-000	103 - 6	FM4-6983-000	102 - 5
FK3-1513-000	001 - 1	FM4-6901-000	100 - 7	FM4-7057-000	102 - 3
FK3-1514-000	001 - 1	FM4-6901-000	100A - 7	FM4-7058-000	102 - 3
FK3-1515-000	001 - 1	FM4-6901-000	100B - 7	FM4-7059-000	102 - 3
FK3-1516-000	001 - 1	FM4-6903-000	101 -	FM4-7062-000	103 - 7
FK3-1517-000	001 - 1	FM4-6904-000	400A -	FM4-7063-000	103 - 7
FK3-1519-000	001 - 1	FM4-6906-000	160A - 7	FM4-7064-000	103 - 8
FK3-1520-000	001 - 1	FM4-6907-000	101 - 7	FM4-7066-000	103 - 15
FK3-1521-000	001 - 1	FM4-6911-000	101 - 5	FM4-7087-000	102 - 3
FK3-1522-000	001 - 1	FM4-6913-000	160 - 18	FM4-7162-000	102 - 4
FK3-1523-000	001 - 1	FM4-6915-000	400 -	FM4-7163-000	102 - 4
FK3-1524-000	001 - 1	FM4-6916-000	400 - 7	FM4-7164-000	102 - 4
FK3-1525-000	001 - 1	FM4-6916-000	400A - 7	FM4-7165-000	102 - 4
FK3-1528-000	001 - 1	FM4-6916-000	400B - 7	FM4-7166-000	102 - 4
FK3-1529-000	001 - 1	FM4-6918-000	161 -	FM4-7167-000	102 - 4
FK3-1530-000	001 - 1	FM4-6919-000	161 - 14	FM4-7168-000	102 - 4
FK3-1531-000	001 - 1	FM4-6920-000	100B - 11	FM4-7169-000	102 - 4
FK3-1532-000	001 - 1	FM4-6921-000	400B -	FM4-7171-000	102 - 4
FK3-1533-000	001 - 1	FM4-6922-000	100A - 9	FM4-7172-000	102 - 4
FL2-3453-000	160A - 8	FM4-6923-000	100 - 9	FM4-7173-000	102 - 4
FL2-5621-000	400 - 5	FM4-6926-000	103 - 2	FM4-7174-000	102 - 4
FL2-5621-000	400B - 5	FM4-6929-000	103 - 4	FM4-7175-000	102 - 4
FL2-8496-000	400A - 5	FM4-6930-000	101 -	FM4-7176-000	102 - 18
FL3-1021-000	160 - 14	FM4-6932-000	101 - 7	FM4-7185-000	102 - 18
FL3-1023-000	160 - 15	FM4-6933-000	101 - 5	FM4-7186-000	102 - 18
FL3-5062-000	400 - 6	FM4-6934-000	101 - 5	FM4-7187-000	102 - 6
FL3-5062-000	400A - 6	FM4-6936-000	100B - 11	FM4-7282-000	102 - 4
FL3-5062-000	400B - 6	FM4-6937-000	400B -	FM4-7283-000	102 - 4
FL3-5063-000	100 - 12	FM4-6938-000	100 - 9	FM4-7491-000	103 - 9
FL3-5063-000	100A - 12	FM4-6944-000	160A - 7	FM4-7494-000	400 -
FL3-5066-000	160A - 10	FM4-6948-000	160A - 11	FM4-7495-000	100B - 9
FL3-5067-000	160A - 10	FM4-6949-000	400A -	FM4-7496-000	100A - 9
FL3-5068-000	100A - 12	FM4-6950-000	400A -	FM4-7497-000	100A - 9
FL3-5073-000	101 - 3	FM4-6951-000	100B - 9	FM4-7498-000	103 - 6
FL3-5074-000	101 - 3	FM4-6952-000	100B - 9	FM4-7499-000	100A - 9
FL3-5077-000	160A - 10	FM4-6953-000	100 - 9	FM4-7500-000	100B - 9
FM2-3963-000	160A - 9	FM4-6954-000	100A - 9	FM4-7501-000	100A - 9
FM3-8677-000	160 - 16	FM4-6956-000	100 - 7	FM4-7502-000	100A - 9
FM3-8679-000	160 - 17	FM4-6956-000	100B - 7	FM4-7503-000	100B - 9
FM3-8682-000	161 - 9	FM4-6957-000	100 - 9	FM4-7504-000	100A - 9



# NUMERICAL INDEX

MF4580/4570/4554/4553/4550/4453/4452/4450/4430/4420/4412/4410/D550

PARTS NUMBER	FIGURE & KEY NO.	PARTS NUMBER	FIGURE & KEY NO.	PARTS NUMBER	FIGURE & KEY NO
FM4-7505-000	100B - 9	XA9-0476-000	160 - 21		
FM4-7506-000	100A - 9	XA9-0476-000	160A - 12		
FM4-7507-000	100A - 9	XA9-0476-000	400 - 8		
FM4-7508-000	100A - 9	XA9-0476-000	400A - 8		
FM4-7510-000	100B - 9	XA9-0476-000	400B - 8		
FM4-7512-000	100A - 9				
FM4-7513-000	100A - 9				
FM4-7514-000	100A - 9				
FM4-7515-000	100B - 9				
FM4-7516-000	100B - 9				
FM4-7518-000	100A - 9				
FM4-7519-000	100A - 9				
FM4-7520-000	100A - 9				
FM4-7521-000	100B - 9				
FM4-7522-000	100B - 9				
FM4-7523-000	100A - 9				
FM4-7525-000	101 - 7				
FM4-7526-000	100A - 9				
FM4-7527-000	100A - 9				
FM4-7528-000	100A - 9				
FM4-7531-000	160 - 16				
FM4-7532-000	161 - 8				
FU5-1552-000	160 - 19				
FU5-1552-000	160A - 2				
FU5-1552-000	161 - 10				
FU6-2249-000	161 - 7				
FU7-2018-000	160 - 20				
FU7-2021-000	161 - 2				
FU8-0473-000	160 - 12				
HH2-2824-000	001 - 10				
NPN	001 -				
NPN	100 -				
NPN	100A -				
NPN	100B -				
NPN	102 -				
NPN	103 -				
NPN	160 -				
NPN	160A -				
QK1-6441-000	001 - 12				
QK1-6443-000	001 - 13				
QK1-6446-000	001 - 14				
QK1-6449-000	001 - 15				
QK1-6455-000	001 - 11				
RC2-1182-000	103 - 16				
RK2-0420-000	103 - 14				
RK2-3438-000	103 - 13				
RL1-1497-000	103 - 17				
RM1-7576-000	102 - 5				
RM1-7577-000	102 - 5				
WE8-6854-000	102 - 9				
WG8-5696-000	160A - 3				
WG8-5696-000	161 - 5				



# **MF4580/4570/4554/4553/4550/4453/ 4452/4450/4430/4420/4412/4410/D550/ 520(Parts Catalog)**

## **imageCLASS MF4580dn**

<b>230V LTN,SG,HK</b>	<b>F15-9341-000</b>	<b>HAN</b>	<b>DADF/FAX model</b>
<b>230V AU</b>	<b>F15-9344-000</b>	<b>HAP</b>	<b>DADF/FAX model</b>
<b>230V KR</b>	<b>F15-9361-000</b>	<b>HAR</b>	<b>DADF/FAX model</b>

## **imageCLASS MF4570dn**

<b>120V TW</b>	<b>F15-9322-000</b>	<b>HBK</b>	<b>ADF/FAX model</b>
<b>120V US</b>	<b>F15-9331-000</b>	<b>HBF</b>	<b>ADF/FAX model</b>
<b>120V CA,LTN</b>	<b>F15-9331-000</b>	<b>HBG</b>	<b>ADF/FAX model</b>
<b>230V LTN,SG,HK</b>	<b>F15-9342-000</b>	<b>HBA</b>	<b>ADF/FAX model</b>
<b>230V AU</b>	<b>F15-9345-000</b>	<b>HBD</b>	<b>ADF/FAX model</b>
<b>230V CN</b>	<b>F15-9352-000</b>	<b>HBO</b>	<b>ADF/FAX model</b>
<b>230V KR</b>	<b>F15-9362-000</b>	<b>HBE</b>	<b>ADF/FAX model</b>

## **imageCLASS MF4554d**

<b>230V KR</b>	<b>F15-9367-000</b>	<b>HFB</b>	<b>ADF/FAX model</b>
----------------	---------------------	------------	----------------------

## **imageCLASS MF4553d**

<b>230V KR</b>	<b>F15-9366-000</b>	<b>HDN</b>	<b>ADF/FAX model</b>
----------------	---------------------	------------	----------------------

## imageCLASS MF4550d

<b>230V LTN,SG,HK</b>	<b>F15-9343-000</b>	<b>HBT</b>	ADF/FAX model
<b>230V AU</b>	<b>F15-9346-000</b>	<b>HBU</b>	ADF/FAX model
<b>230V CN</b>	<b>F15-9353-000</b>	<b>HBS</b>	ADF/FAX model
<b>230V KR</b>	<b>F15-9363-000</b>	<b>HBV</b>	ADF/FAX model

## imageCLASS MF4453

<b>230V KR</b>	<b>F15-9565-000</b>	<b>HCY</b>	ADF/FAX model
----------------	---------------------	------------	---------------

## imageCLASS MF4452

<b>230V CN</b>	<b>F15-9555-000</b>	<b>HCC</b>	ADF/FAX model
----------------	---------------------	------------	---------------

## imageCLASS MF4450

<b>120V TW</b>	<b>F15-9521-000</b>	<b>HCK</b>	ADF/FAX model
<b>120V US</b>	<b>F15-9531-000</b>	<b>HCG</b>	ADF/FAX model
<b>120V CA,LTN</b>	<b>F15-9531-000</b>	<b>HCH</b>	ADF/FAX model
<b>230V LTN.SG,HK</b>	<b>F15-9541-000</b>	<b>HCE</b>	ADF/FAX model
<b>230V CN</b>	<b>F15-9551-000</b>	<b>HCM</b>	ADF/FAX model
<b>230V KR</b>	<b>F15-9561-000</b>	<b>HCF</b>	ADF/FAX model

## imageCLASS MF4430

<b>230V KR</b>	<b>F15-9562-000</b>	<b>HCU</b>	ADF model
----------------	---------------------	------------	-----------

## imageCLASS MF4420n

<b>230V AU</b>	<b>F15-9547-000</b>	<b>HCX</b>	COPYBOARD model
<b>230V CN</b>	<b>F15-9553-000</b>	<b>HCW</b>	COPYBOARD model

## imageCLASS MF4412

<b>230V LTN.SG,HK</b>	<b>F15-9544-000</b>	<b>HDH</b>	COPYBOARD model
---------------------------	---------------------	------------	-----------------

<b>230V CN</b>	<b>F15-9558-000</b>	<b>HDG</b>	COPYBOARD model
----------------	---------------------	------------	-----------------

## imageCLASS MF4410

<b>230V CN</b>	<b>F15-9554-000</b>	<b>HDF</b>	COPYBOARD model
----------------	---------------------	------------	-----------------

<b>230V KR</b>	<b>F15-9564-000</b>	<b>HDJ</b>	COPYBOARD model
----------------	---------------------	------------	-----------------

## imageCLASS D550

<b>120V US</b>	<b>F15-9431-000</b>	<b>HDU</b>	DADF model
----------------	---------------------	------------	------------

<b>120V CA,LTN</b>	<b>F15-9431-000</b>	<b>HDV</b>	DADF model
--------------------	---------------------	------------	------------

## imageCLASS D520

<b>120V US</b>	<b>F15-9432-000</b>	<b>HFC</b>	COPYBOARD model
----------------	---------------------	------------	-----------------

<b>120V CA,LTN</b>	<b>F15-9432-000</b>	<b>HFD</b>	COPYBOARD model
--------------------	---------------------	------------	-----------------

<b>230V LTN,SG,HK</b>	<b>F15-9442-000</b>	<b>HFA</b>	COPYBOARD model
---------------------------	---------------------	------------	-----------------

<b>230V CN</b>	<b>F15-9452-000</b>	<b>HEZ</b>	COPYBOARD model
----------------	---------------------	------------	-----------------

## i-SENSYS MF4580dn

<b>230V EUR</b>	<b>F15-9391-000</b>	<b>HAK</b>	DADF/FAX model
-----------------	---------------------	------------	----------------

<b>230V EUR</b>	<b>F15-9391-000</b>	<b>HAL</b>	DADF/FAX model
-----------------	---------------------	------------	----------------

<b>230V EUR</b>	<b>F15-9391-000</b>	<b>HAM</b>	DADF/FAX model
-----------------	---------------------	------------	----------------

## i-SENSYS MF4570dn

<b>230V EUR</b>	<b>F15-9392-000</b>	<b>HAT</b>	ADF/FAX model
-----------------	---------------------	------------	---------------

<b>230V EUR</b>	<b>F15-9392-000</b>	<b>HAU</b>	ADF/FAX model
-----------------	---------------------	------------	---------------

<b>230V EUR</b>	<b>F15-9392-000</b>	<b>HAV</b>	ADF/FAX model
-----------------	---------------------	------------	---------------

### i-SENSYS MF4550d

<b>230V EUR</b>	<b>F15-9393-000</b>	<b>HBM</b>	ADF/FAX model
-----------------	---------------------	------------	---------------

<b>230V EUR</b>	<b>F15-9393-000</b>	<b>HBN</b>	ADF/FAX model
-----------------	---------------------	------------	---------------

<b>230V EUR</b>	<b>F15-9393-000</b>	<b>HBR</b>	ADF/FAX model
-----------------	---------------------	------------	---------------

### i-SENSYS MF4450

<b>230V EUR</b>	<b>F15-9591-000</b>	<b>HBX</b>	ADF/FAX model
-----------------	---------------------	------------	---------------

<b>230V EUR</b>	<b>F15-9591-000</b>	<b>HBY</b>	ADF/FAX model
-----------------	---------------------	------------	---------------

<b>230V EUR</b>	<b>F15-9591-000</b>	<b>HBZ</b>	ADF/FAX model
-----------------	---------------------	------------	---------------

### i-SENSYS MF4430

<b>230V EUR</b>	<b>F15-9592-000</b>	<b>HCS</b>	ADF model
-----------------	---------------------	------------	-----------

<b>230V EUR</b>	<b>F15-9592-000</b>	<b>HCT</b>	ADF model
-----------------	---------------------	------------	-----------

### i-SENSYS MF4410

<b>230V EUR</b>	<b>F15-9594-000</b>	<b>HAD</b>	COPYBOARD model
-----------------	---------------------	------------	-----------------

<b>230V EUR</b>	<b>F15-9594-000</b>	<b>HDB</b>	COPYBOARD model
-----------------	---------------------	------------	-----------------

### PC-D550

<b>230V EUR</b>	<b>F15-9491-000</b>	<b>HDM</b>	DADF model
-----------------	---------------------	------------	------------

### PC-D520

<b>230V EUR</b>	<b>F15-9492-000</b>	<b>HEU</b>	COPYBOARD model
-----------------	---------------------	------------	-----------------

<b>230V EUR</b>	<b>F15-9492-000</b>	<b>HEV</b>	COPYBOARD model
-----------------	---------------------	------------	-----------------

Satera MF4580dn

**100V JP**            **F15-9311-000**   **HAS**                            DADF/FAX model

Satera MF4570dn

**100V JP**            **F15-9312-000**   **HBL**                            ADF/FAX model

Satera MF4550d

**100V JP**            **F15-9313-000**   **HBW**                            ADF/FAX model

Satera MF4450

**100V JP**            **F15-9511-000**   **HCM**                            ADF/FAX model

Satera MF4430

**100V JP**            **F15-9512-000**   **HBL**                            ADF model

Satera MF4420n

**100V JP**            **F15-9513-000**   **HCZ**                            COPYBOARD model

Satera MF4410

**100V JP**            **F15-9514-000**   **HDK**                            COPYBOARD model



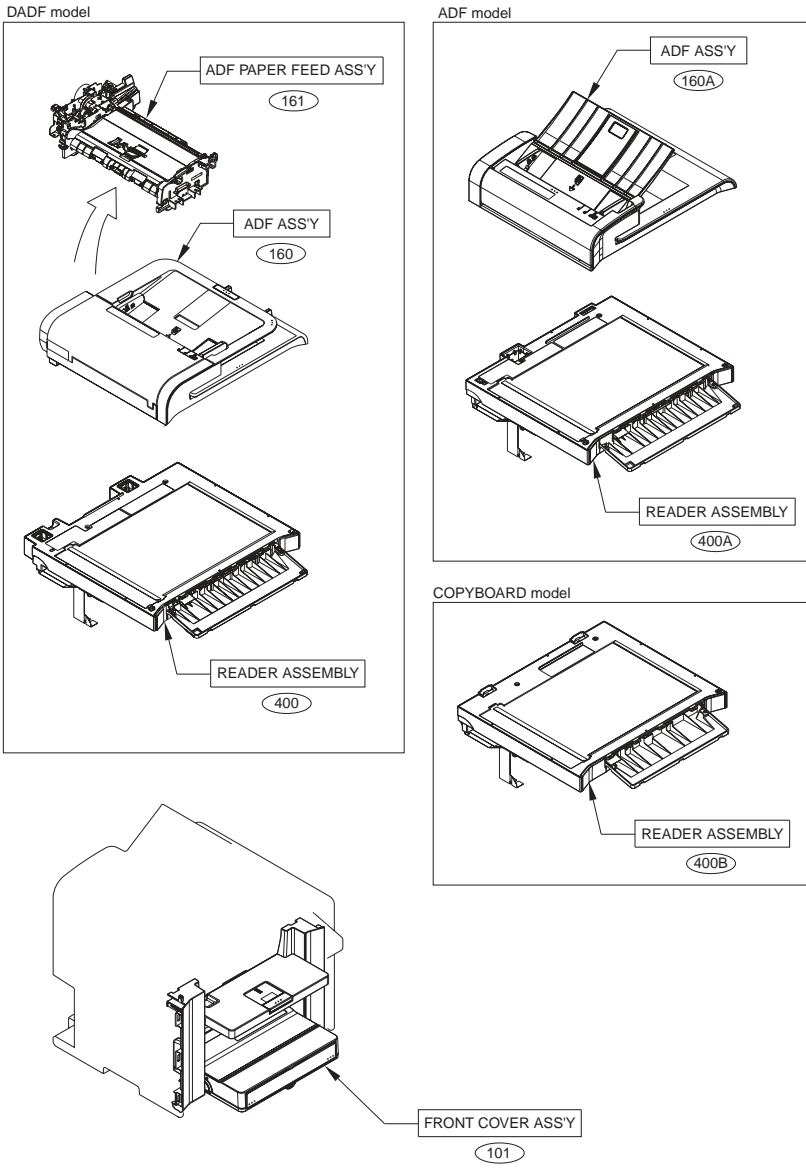


# Contents

A1	ASSEMBLY LOCATION DIAGRAM .....	2-1
A2	OPTION PARTS CATALOG LIST .....	2-2
001	ACCESSORIES .....	2-3
100	EXTERNAL COVERS, PANELS, ETC.(DADF model).....	2-6
100A	EXTERNAL COVERS, PANELS, ETC.(ADF model) .....	2-8
100B	EXTERNAL COVERS, PANELS, ETC.(COPYBOARD model) .....	2-12
101	FRONT COVER ASS'Y.....	2-16
102	INTERNAL COMPONENTS 1 .....	2-19
103	INTERNAL COMPONENTS 2 .....	2-22
160	ADF ASS'Y (DADF model).....	2-24
160A	ADF ASS'Y (ADF model) .....	2-26
161	ADF PAPER FEED ASS'Y (DADF model).....	2-28
400	READER ASSEMBLY (DADF model).....	2-30
400A	READER ASSEMBLY (ADF model) .....	2-32
400B	READER ASSEMBLY (COPYBOARD model).....	2-34
ZZA	MECHANICAL STANDARD PARTS (HOW TO USE) .....	2-36
ZZB	MECHANICAL STANDARD PARTS (SCREWS).....	2-37
ZZC	MECHANICAL STANDARD PARTS (BOLTS).....	2-44
ZZD	MECHANICAL STANDARD PARTS (NUTS).....	2-45
ZZE	MECHANICAL STANDARD PARTS (RETAINING RINGS) .....	2-46



# FIGURE A1 ASSEMBLY LOCATION DIAGRAM



## FIGURE A2 OPTION PARTS CATALOG LIST

This is the table of the machine's options whose parts catalog is issued.  
本機のオプションで、パーツカタログが発行されている機種の一覧である。

No.	Model Name(English)	Model Name(Japanese)
1	HANDESET KIT 3 Long cord	
2	TELEPHONE 6 KIT Long cord	
3	TELEPHONE 6 KIT	
4		ハンドセットキット L11

# FIGURE 001 ACCESSORIES

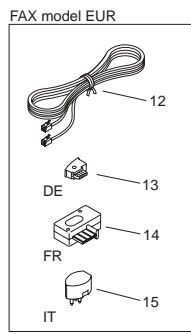
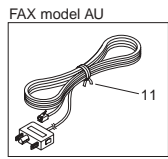
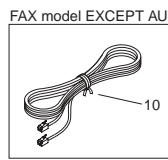
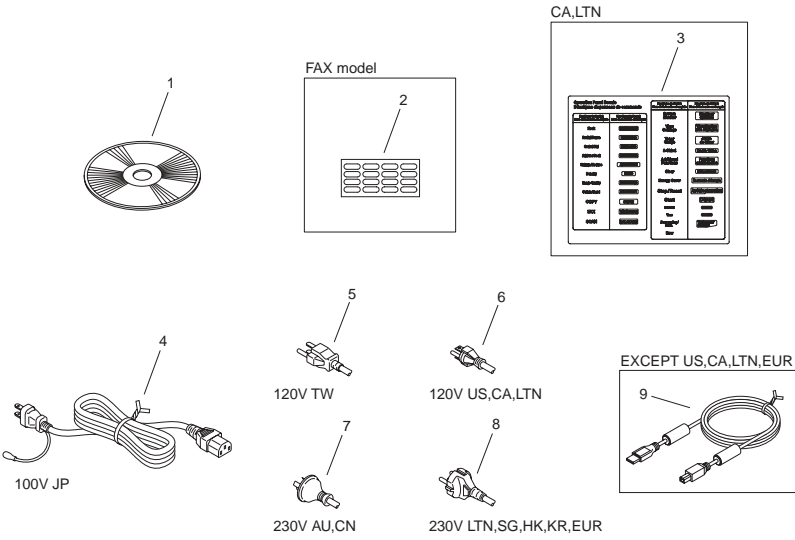


FIGURE & KEY NO.	PARTS NUMBER	RANK	Q'TY	DESCRIPTION	SERIAL NUMBER/REMARKS	SVC
Fig.001	NPN		RF	ACCESSORIES		
1	FK3-1502-000		1	CD-ROM, USER SOFTWARE	Japanese MF4580dn,4570dn	
1	FK3-1513-000		1	CD-ROM, USER SOFTWARE	Japanese MF4550d	
1	FK3-1521-000		1	CD-ROM, USER SOFTWARE	Japanese MF4450,4430,4410	
1	FK3-1509-000		1	CD-ROM, USER SOFTWARE	Japanese MF4420n	
1	FK3-1500-000		1	CD-ROM, USER SOFTWARE	US English MF4570dn	
1	FK3-1519-000		1	CD-ROM, USER SOFTWARE	US English MF4450	
1	FK3-1528-000		1	CD-ROM, USER SOFTWARE	US English D550,520	
1	FK3-1501-000		1	CD-ROM, USER SOFTWARE	Canadian French MF4570dn	
1	FK3-1520-000		1	CD-ROM, USER SOFTWARE	Canadian French MF4450	
1	FK3-1529-000		1	CD-ROM, USER SOFTWARE	Canadian French D550,520	
1	FK3-1505-000		1	CD-ROM, USER SOFTWARE	English MF4580dn,4570dn	
1	FK3-1516-000		1	CD-ROM, USER SOFTWARE	English MF4550d	
1	FK3-1524-000		1	CD-ROM, USER SOFTWARE	English MF4450,4412	
1	FK3-1510-000		1	CD-ROM, USER SOFTWARE	English MF4420n	
1	FK3-1532-000		1	CD-ROM, USER SOFTWARE	English D520	
1	FK3-1506-000		1	CD-ROM, USER SOFTWARE	English,Chinese,Korean MF4580dn,4570dn	
1	FK3-1517-000		1	CD-ROM, USER SOFTWARE	English,Chinese,Korean MF4553d,4552d,4550d	
1	FK3-1525-000		1	CD-ROM, USER SOFTWARE	English,Chinese,Korean MF4453,4452,4450,4430,4412,4410	
1	FK3-1511-000		1	CD-ROM, USER SOFTWARE	English,Chinese,Korean MF4420n	
1	FK3-1533-000		1	CD-ROM, USER SOFTWARE	English,Chinese,Korean D520	
1	FK3-1503-000		1	CD-ROM, USER SOFTWARE	UK English,French,Italian,German,Spanish MF4580dn,4570dn	
1	FK3-1514-000		1	CD-ROM, USER SOFTWARE	UK English,French,Italian,German,Spanish MF4550d	

FIGURE & KEY NO.	PARTS NUMBER	R A N K	Q'TY	DESCRIPTION	SERIAL NUMBER/ REMARKS	S V C
1	FK3-1522-000		1	CD-ROM, USER SOFTWARE	UK English,French,Italian,German,Spanish MF4450,4430,4410	
1	FK3-1530-000		1	CD-ROM, USER SOFTWARE	UK English,French,Italian,German,Spanish D550,520	
1	FK3-1504-000		1	CD-ROM, USER SOFTWARE	UK English,Russian,Dutch,Polish MF4580dn,4570dn	
1	FK3-1515-000		1	CD-ROM, USER SOFTWARE	UK English,Russian,Dutch,Polish MF4550d	
1	FK3-1523-000		1	CD-ROM, USER SOFTWARE	UK English,Russian,Dutch,Polish MF4450,4430,4410	
1	FK3-1531-000		1	CD-ROM, USER SOFTWARE	UK English,Russian,Dutch,Polish D550,520	
2	FC0-1902-000		1	LABEL, DESTINATION	FAX model	
3	FC0-1987-000		1	LABEL, PANEL	MF4500,4400 Series CA,LTN	
3	FC0-1988-000		1	LABEL, PANEL	D500 Series CA,LTN	
4	FK2-4390-000		1	CORD, POWER	100V JP	
5	FK2-1311-000		1	CORD, POWER	120V TW	
6	FK2-4393-000		1	CORD, POWER	120V US,CA,LTN	
7	FK2-1316-000		1	CORD, POWER	230V CN	
7	FK2-1317-000		1	CORD, POWER	230V AU	
8	FK2-6890-000		1	CORD, POWER	230V LTN,SG,HK,KR,EUR	
9	FK2-7595-000		1	CABLE, USB	EXCEPT US,CA,LTN,EUR	
10	HH2-2824-000		1	CORD, MODULER	FAX model EXCEPT AU	
11	QK1-6455-000		1	CORD, MODULER	FAX model AU	
12	QK1-6441-000		1	CORD, MODULER	FAX model EUR	
13	QK1-6443-000		1	PLUG	FAX model EUR DE	
14	QK1-6446-000		1	PLUG	FAX model EUR FR	
15	QK1-6449-000		1	PLUG	FAX model EUR IT	

# FIGURE 100 EXTERNAL COVERS, PANELS, ETC.(DADF model)

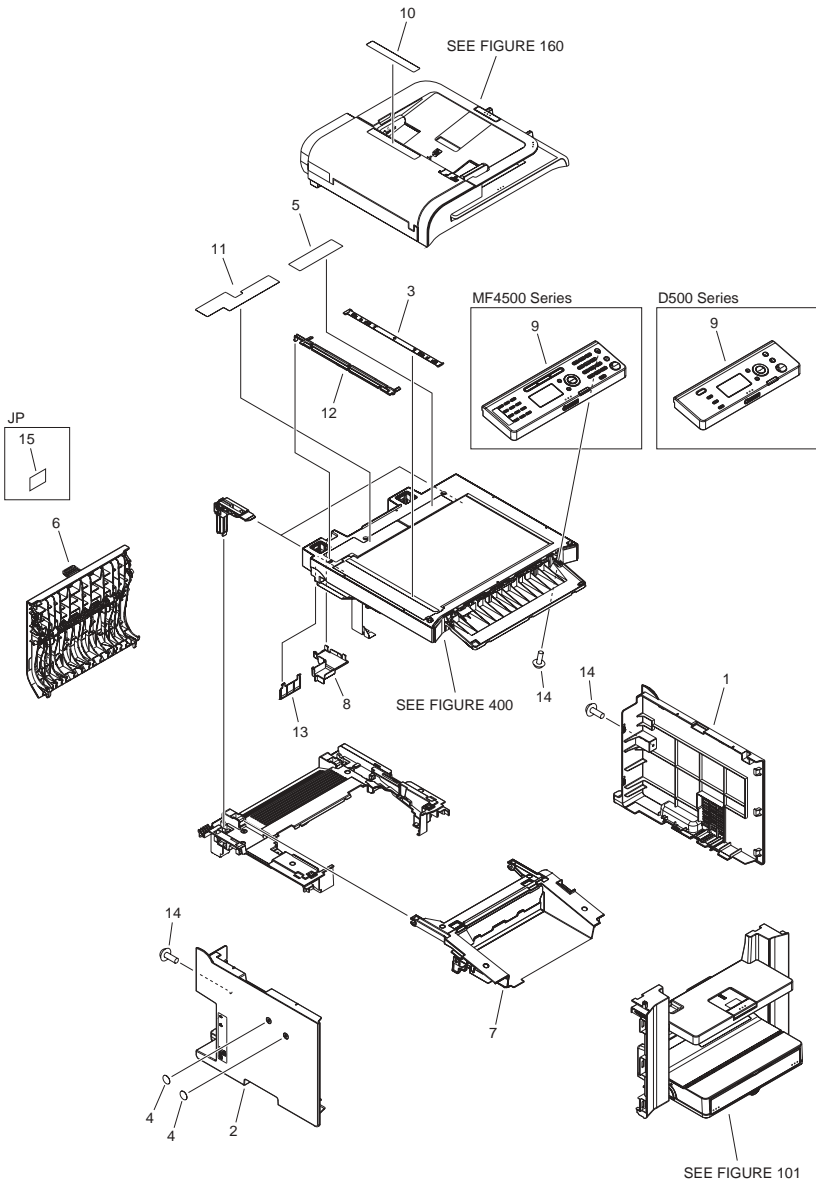




FIGURE & KEY NO.	PARTS NUMBER	R A N K	Q'TY	DESCRIPTION	SERIAL NUMBER/ REMARKS	S V C
Fig.100	NPN		RF	EXTERNAL COVERS, PANELS, ETC.	DADF model	
1	FC0-1648-000		1	COVER, RIGHT	EXCEPT JP	
1	FC0-1828-000		1	COVER, RIGHT	JP	
2	FC0-1647-000		1	COVER, LEFT	MF4580dn EXCEPT JP	
2	FC0-1850-000		1	COVER, LEFT	MF4580dn JP	
2	FC0-1848-000		1	COVER, LEFT	D550	
3	FC0-1760-000		1	PLATE, PAPER SIZE		
4	FC6-5204-000		2	SHEET, HANDSET		
5	FC9-1324-000		1	LABEL, COPY PROHIBITION	JP,LTN,SG,HK,AU,KR	
5	FC8-9307-000		1	LABEL, COPY PROHIBITION	US,CA,LTN,EUR	
6	FM4-6898-000		1	DUPLEXING DOOR ASS'Y		
7	FM4-6901-000		1	CARTRIDGE DOOR ASS'Y	MF4580dn	
7	FM4-6956-000		1	CARTRIDGE DOOR ASS'Y	D550	
8	FC0-1771-000		1	GUIDE, CABLE		
9	FM4-6961-000		1	CONTROL PANEL ASS'Y	MF4580dn JP	
9	FM4-6938-000		1	CONTROL PANEL ASS'Y	MF4580dn LTN,SG,HK,AU	
9	FM4-6953-000		1	CONTROL PANEL ASS'Y	MF4580dn KR	
9	FM4-6957-000		1	CONTROL PANEL ASS'Y	MF4580dn EUR	
9	FM4-6923-000		1	CONTROL PANEL ASS'Y	D550 US,CA,LTN	
9	FM4-6959-000		1	CONTROL PANEL ASS'Y	D550 EUR	
10	FC0-1708-000		1	LABEL, DOCUMENT PROHIBITION		
11	FC0-1930-000		1	LABEL, GLASS CLEANING	US,CA,LTN	
11	FC0-1772-000		1	LABEL, GLASS CLEANING	EUR	
11	FC0-1934-000		1	LABEL, GLASS CLEANING	JP,LTN,SG,HK,AU,KR	
12	FL3-5063-000		1	HOLDER, DOCUMENT GUIDE		
13	FC0-1787-000		1	COVER, HINGE BLANKING		
14	FC8-1370-000		AR	SCREW, TP, M3X6		
15	FC0-2037-000		1	LABEL, GROUNDING CAUTION	JP	

# FIGURE 100A EXTERNAL COVERS, PANELS, ETC.(ADF model)

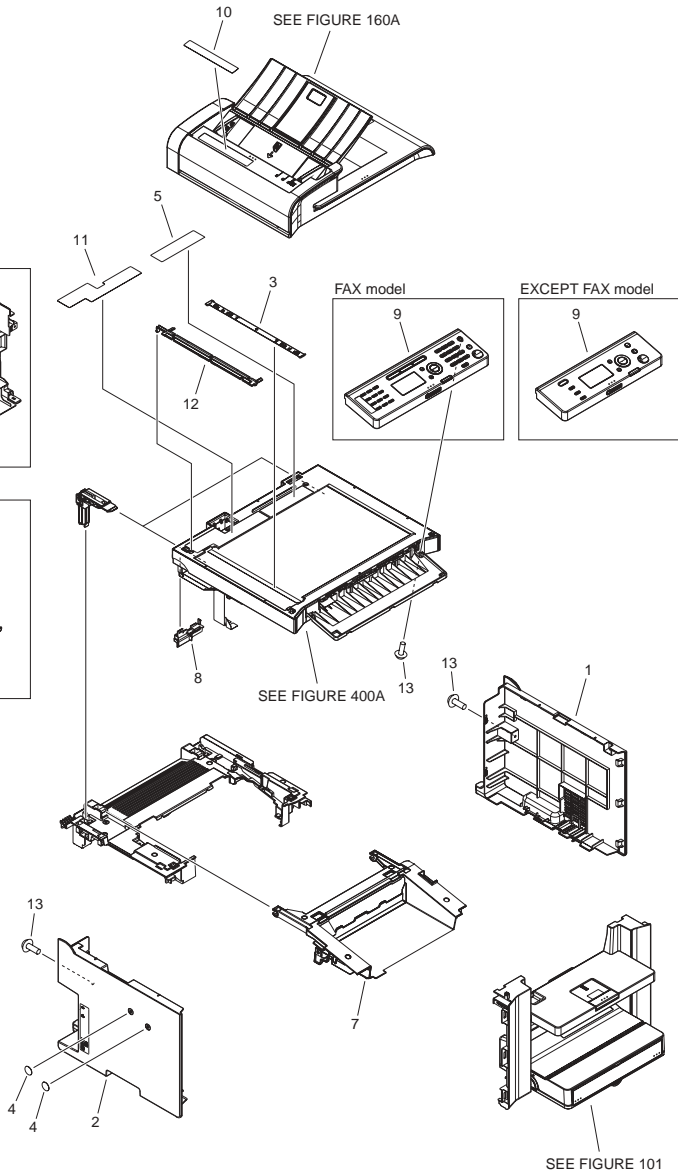
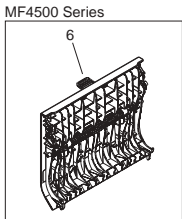
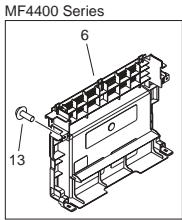


FIGURE & KEY NO.	PARTS NUMBER	R A N K	Q'TY	DESCRIPTION	SERIAL NUMBER/ REMARKS	S V C
Fig.100A	NPN		RF	EXTERNAL COVERS, PANELS, ETC.	ADF model	
1	FC0-1648-000		1	COVER, RIGHT	MF4500 Series EXCEPT JP,CN	
1	FC0-1828-000		1	COVER, RIGHT	MF4500 Series JP,CN	
1	FC0-1773-000		1	COVER, RIGHT	MF4400 Series EXCEPT JP,CN	
1	FC0-1862-000		1	COVER, RIGHT	MF4400 Series JP,CN	
2	FC0-1647-000		1	COVER, LEFT	MF4570dn EXCEPT JP,CN	
2	FC0-1850-000		1	COVER, LEFT	MF4570dn JP,CN	
2	FC0-1852-000		1	COVER, LEFT	MF4550d EXCEPT JP,CN	
2	FC0-1854-000		1	COVER, LEFT	MF4550d JP,CN	
2	FC0-1851-000		1	COVER, LEFT	MF4450 EXCEPT JP,CN	
2	FC0-1853-000		1	COVER, LEFT	MF4450 JP,CN	
2	FC0-1890-000		1	COVER, LEFT	MF4430 EXCEPT JP	
2	FC0-1891-000		1	COVER, LEFT	MF4430 JP	
3	FC0-1760-000		1	PLATE, PAPER SIZE	MF4500 Series	
3	FC0-1881-000		1	PLATE, PAPER SIZE	MF4400 Series	
4	FC6-5204-000		2	SHEET, HANDSET	MF4500 Series	
4	FC0-1986-000		2	SHEET, HANDSET	MF4400 Series	
5	FC9-1324-000		1	LABEL, COPY PROHIBITION	EXCEPT US,CA,LTN,EUR	
5	FC8-9307-000		1	LABEL, COPY PROHIBITION	US,CA,LTN,EUR	
6	FM4-6898-000		1	DUPLEXING DOOR ASS'Y	MF4500 Series	
6	FC0-1640-000		1	COVER, REAR	MF4400 Series	
7	FM4-6901-000		1	CARTRIDGE DOOR ASS'Y		
8	FC0-1717-000		1	GUIDE, CABLE, D	MF4500 Series	
8	FC0-1818-000		1	GUIDE, CABLE, D	MF4400 Series	
9	FM4-7518-000		1	CONTROL PANEL ASS'Y	MF4570dn JP	
9	FM4-6922-000		1	CONTROL PANEL ASS'Y	MF4570dn US,CA,LTN	
9	FM4-6960-000		1	CONTROL PANEL ASS'Y	MF4570dn TW	
9	FM4-7496-000		1	CONTROL PANEL ASS'Y	MF4570dn LTN,SG,HK,AU	
9	FM4-6963-000		1	CONTROL PANEL ASS'Y	MF4570dn CN	
9	FM4-7506-000		1	CONTROL PANEL ASS'Y	MF4570dn KR	

FIGURE & KEY NO.	PARTS NUMBER	R A N K	Q'TY	DESCRIPTION	SERIAL NUMBER/ REMARKS	S V C
9	FM4-7512-000		1	CONTROL PANEL ASS'Y	MF4570dn EUR	
9	FM4-7526-000		1	CONTROL PANEL ASS'Y	MF4554d KR	
9	FM4-7527-000		1	CONTROL PANEL ASS'Y	MF4553d KR	
9	FM4-7519-000		1	CONTROL PANEL ASS'Y	MF4550d JP	
9	FM4-7497-000		1	CONTROL PANEL ASS'Y	MF4550d LTN,SG,HK,AU	
9	FM4-7501-000		1	CONTROL PANEL ASS'Y	MF4550d CN	
9	FM4-7507-000		1	CONTROL PANEL ASS'Y	MF4550d KR	
9	FM4-7513-000		1	CONTROL PANEL ASS'Y	MF4550d EUR	
9	FM4-7528-000		1	CONTROL PANEL ASS'Y	MF4453 KR	
9	FM4-7504-000		1	CONTROL PANEL ASS'Y	MF4452 CN	
9	FM4-7520-000		1	CONTROL PANEL ASS'Y	MF4450 JP	
9	FM4-6971-000		1	CONTROL PANEL ASS'Y	MF4450 US,CA,LTN	
9	FM4-7523-000		1	CONTROL PANEL ASS'Y	MF4450 TW	
9	FM4-7499-000		1	CONTROL PANEL ASS'Y	MF4450 LTN,SG,HK	
9	FM4-7502-000		1	CONTROL PANEL ASS'Y	MF4450 CN	
9	FM4-7508-000		1	CONTROL PANEL ASS'Y	MF4450 KR	
9	FM4-7514-000		1	CONTROL PANEL ASS'Y	MF4450 EUR	
9	FM4-6962-000		1	CONTROL PANEL ASS'Y	MF4430 JP	
9	FM4-6954-000		1	CONTROL PANEL ASS'Y	MF4430 KR	
9	FM4-6958-000		1	CONTROL PANEL ASS'Y	MF4430 EUR	
10	FC0-1708-000		1	LABEL, DOCUMENT PROHIBITION	MF4500 Series	
10	FC0-1936-000		1	LABEL, DOCUMENT PROHIBITION	MF4400 Series	
11	FC0-1930-000		1	LABEL, GLASS CLEANING	MF4500 Series US,CA,LTN	
11	FC0-1931-000		1	LABEL, GLASS CLEANING	MF4400 Series US,CA,LTN	
11	FC0-1772-000		1	LABEL, GLASS CLEANING	MF4500 Series EUR	
11	FC0-1929-000		1	LABEL, GLASS CLEANING	MF4400 Series EUR	
11	FC0-1934-000		1	LABEL, GLASS CLEANING	MF4500 Series EXCEPT US,CA,LTN,EUR	
11	FC0-1935-000		1	LABEL, GLASS CLEANING	MF4400 Series EXCEPT US,CA,LTN,EUR	
12	FL3-5063-000		1	HOLDER, DOCUMENT GUIDE	MF4500 Series	
12	FL3-5068-000		1	HOLDER, DOCUMENT GUIDE	MF4400 Series	

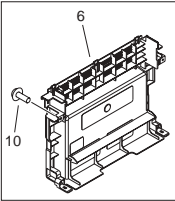
FIGURE & KEY NO.	PARTS NUMBER	R A N K	Q'TY	DESCRIPTION	SERIAL NUMBER/ REMARKS	S V C
13	FC8-1370-000		AR	SCREW, TP, M3X6		
14	FC0-2037-000		1	LABEL, GROUNDING CAUTION	MF4500 Series JP	
14	FC0-2038-000		1	LABEL, GROUNDING CAUTION	MF4400 Series JP	

FIGURE 100B  
EXTERNAL COVERS, PANELS, ETC.(COPYBOARD  
model)

JP



MF4400 Series



D500 Series

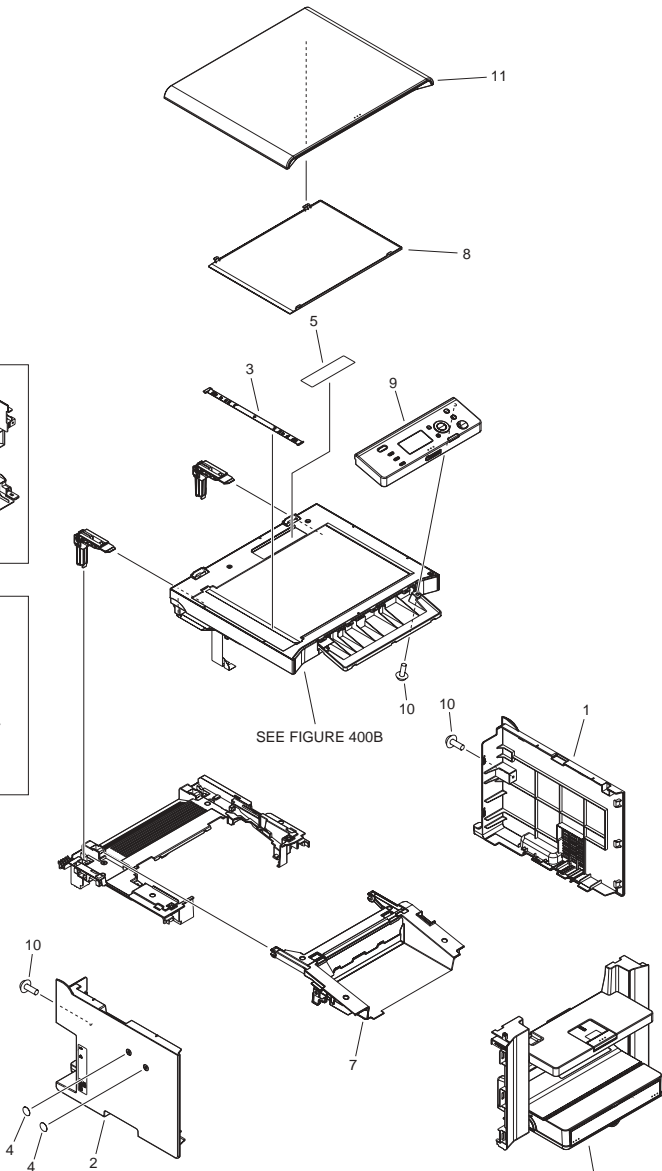
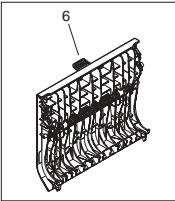


FIGURE & KEY NO.	PARTS NUMBER	R A N K	Q'TY	DESCRIPTION	SERIAL NUMBER/ REMARKS	S V C
Fig.100B	NPN		RF	EXTERNAL COVERS, PANELS, ETC.	COPYBOARD model	
1	FC0-1773-000		1	COVER, RIGHT	MF4400 Series EXCEPT JP,CN	
1	FC0-1862-000		1	COVER, RIGHT	MF4400 Series JP,CN	
1	FC0-1648-000		1	COVER, RIGHT	D500 Series EXCEPT CN	
1	FC0-1828-000		1	COVER, RIGHT	D500 Series CN	
2	FC0-1888-000		1	COVER, LEFT	MF4420 AU	
2	FC0-1889-000		1	COVER, LEFT	MF4420 JP,CN	
2	FC0-1890-000		1	COVER, LEFT	MF4410 EXCEPT JP,CN MF4412 LTN,SG,HK	
2	FC0-1891-000		1	COVER, LEFT	MF4410 JP,CN MF4412 CN	
2	FC0-1848-000		1	COVER, LEFT	D500 Series EXCEPT CN	
2	FC0-1849-000		1	COVER, LEFT	D500 Series CN	
3	FC0-1881-000		1	PLATE, PAPER SIZE	MF4400 Series	
3	FC0-1760-000		1	PLATE, PAPER SIZE	D500 Series	
4	FC6-5204-000		2	SHEET, HANDSET	MF4400 Series	
4	FC0-1986-000		2	SHEET, HANDSET	D500 Series	
5	FC9-1324-000		1	LABEL, COPY PROHIBITION	EXCEPT US,CA,LTN,EUR	
5	FC8-9307-000		1	LABEL, COPY PROHIBITION	US,CA,LTN,EUR	
6	FM4-6898-000		1	DUPLEXING DOOR ASS'Y	D500 Series	
6	FC0-1640-000		1	COVER, REAR	MF4400 Series	
7	FM4-6901-000		1	CARTRIDGE DOOR ASS'Y	MF4400 Series	
7	FM4-6956-000		1	CARTRIDGE DOOR ASS'Y	D500 Series	
8	FC8-0654-000		1	PANEL, COPYBOARD		
9	FM4-7521-000		1	CONTROL PANEL ASS'Y	MF4420n JP	
9	FM4-6951-000		1	CONTROL PANEL ASS'Y	MF4420n AU	
9	FM4-6964-000		1	CONTROL PANEL ASS'Y	MF4420n CN	
9	FM4-7500-000		1	CONTROL PANEL ASS'Y	MF4412 LTN,SG,HK	
9	FM4-7505-000		1	CONTROL PANEL ASS'Y	MF4412 CN	
9	FM4-7522-000		1	CONTROL PANEL ASS'Y	MF4410 JP	
9	FM4-7503-000		1	CONTROL PANEL ASS'Y	MF4410 CN	
9	FM4-7510-000		1	CONTROL PANEL ASS'Y	MF4410 KR	



FIGURE & KEY NO.	PARTS NUMBER	RANK	Q'TY	DESCRIPTION	SERIAL NUMBER/REMARKS	SVC
9	FM4-7515-000		1	CONTROL PANEL ASS'Y	MF4410 EUR	
9	FM4-7495-000		1	CONTROL PANEL ASS'Y	D520 US,CA,LTN	
9	FM4-6952-000		1	CONTROL PANEL ASS'Y	D520 LTN,SG,HK	
9	FM4-6965-000		1	CONTROL PANEL ASS'Y	D520 CN	
9	FM4-7516-000		1	CONTROL PANEL ASS'Y	D520 EUR	
10	FC8-1370-000		AR	SCREW, TP, M3X6		
11	FM4-6920-000		1	COPYBOARD COVER ASSEMBLY	MF4400 Series	
11	FM4-6936-000		1	COPYBOARD COVER ASSEMBLY	D500 Series	
12	FC0-2038-000		1	LABEL, GROUNDING CAUTION	JP	

# FIGURE 101 FRONT COVER ASS'Y

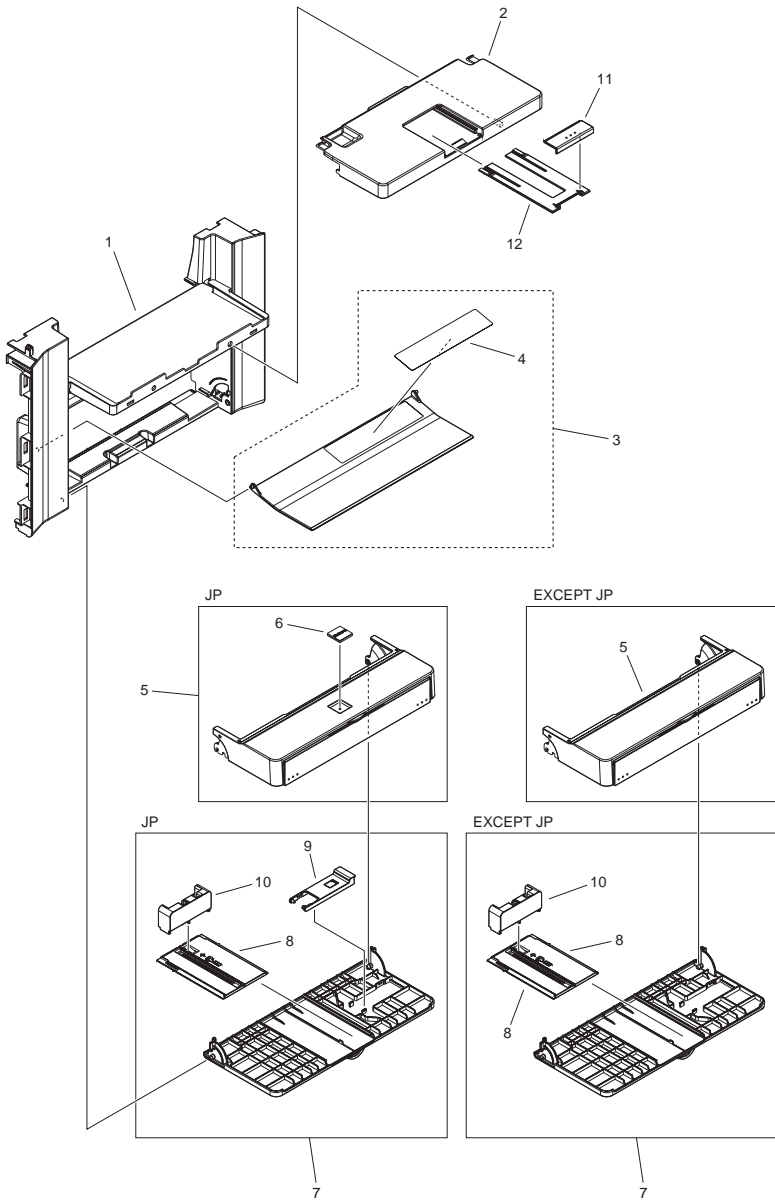


FIGURE & KEY NO.	PARTS NUMBER	R A N K	Q'TY	DESCRIPTION	SERIAL NUMBER/ REMARKS	S V C
Fig.101	FM4-6968-000		1	FRONT COVER ASS'Y	MF4500,4400 Series JP	
Fig.101	FM4-6903-000		1	FRONT COVER ASS'Y	MF4500,4400 Series EXCEPT JP,CN	
Fig.101	FM4-6966-000		1	FRONT COVER ASS'Y	MF4500,4400 Series CN	
Fig.101	FM4-6930-000		1	FRONT COVER ASS'Y	D500 Series EXCEPT CN	
Fig.101	FM4-6967-000		1	FRONT COVER ASS'Y	D500 Series CN	
1	FC0-1660-000		1	COVER, FRONT	MF4500,4400 Series EXCEPT JP,CN	
1	FC0-1834-000		1	COVER, FRONT	MF4500,4400 Series JP,CN	
1	FC0-1833-000		1	COVER, FRONT	D500 Series EXCEPT CN	
1	FC0-1835-000		1	COVER, FRONT	D500 Series CN	
2	FC0-1661-000		1	COVER, FRONT UPPER	MF4500,4400 Series	
2	FC0-1836-000		1	COVER, FRONT UPPER	D500 Series	
3	FL3-5073-000		1	DUST COVER ASSEMBLY	MF4500,4400 Series	
3	FL3-5074-000		1	DUST COVER ASSEMBLY	D500 Series	
4	FC0-1778-000		1	LABEL, SIZE INSTRUCTION	MF4500,4400 Series	
4	FC0-1901-000		1	LABEL, SIZE INSTRUCTION	D500 Series	
5	FM4-6911-000		1	DUST COVER ASSEMBLY	MF4500,4400 Series JP	
5	FM4-6933-000		1	DUST COVER ASSEMBLY	MF4500,4400 Series EXCEPT JP	
5	FM4-6934-000		1	DUST COVER ASSEMBLY	D500 Series	
6	FC5-4822-000		1	PLATE, NAME	MF4500,4400 Series JP	
7	FM4-7525-000		1	PAPER PICK-UP TRAY ASS'Y	MF4500,4400 Series JP	
7	FM4-6907-000		1	PAPER PICK-UP TRAY ASS'Y	MF4500,4400 Series EXCEPT JP	
7	FM4-6932-000		1	PAPER PICK-UP TRAY ASS'Y	D500 Series	
8	FC0-1663-000		1	PLATE, EXTENSION	MF4500,4400 Series	
8	FC0-1837-000		1	PLATE, EXTENSION	D500 Series	
9	FC0-1665-000		1	STOPPER, CARD	JP	
10	FC0-1664-000		1	STOPPER, PAPER		
11	FC0-1981-000		1	STOPPER, PAPER DELIVERY	MF4500,4400 Series	
11	FC0-1982-000		1	STOPPER, PAPER DELIVERY	D500 Series	
12	FC0-1979-000		1	TRAY, PAPER DELIVERY	MF4500,4400 Series	

FIGURE & KEY NO.	PARTS NUMBER	R A N K	Q'TY	DESCRIPTION	SERIAL NUMBER/ REMARKS	S V C
12	FC0-1980-000		1	TRAY, PAPER DELIVERY	D500 Series	

# FIGURE 102 INTERNAL COMPONENTS 1

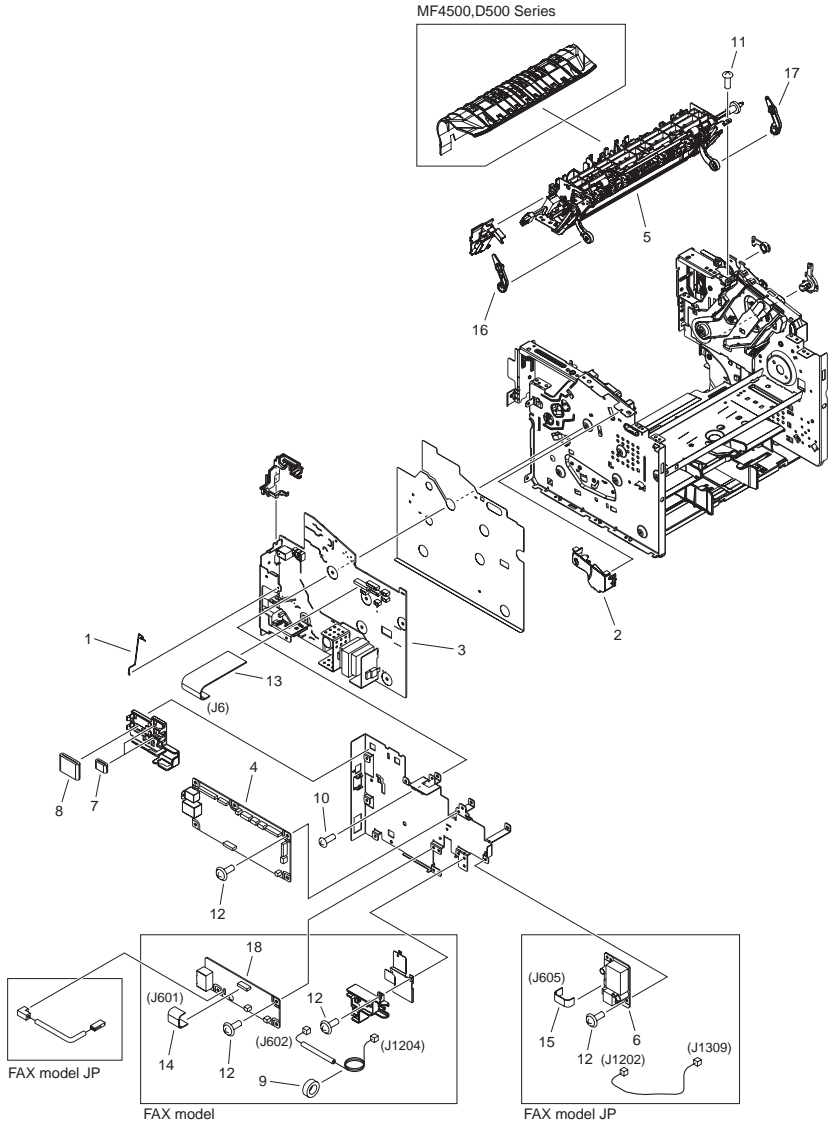


FIGURE & KEY NO.	PARTS NUMBER	R A N K	Q'TY	DESCRIPTION	SERIAL NUMBER/ REMARKS	S V C
Fig.102	NPN		RF	INTERNAL COMPONENTS 1		
1	FC0-1789-000		1	SPRING		
2	FM4-6895-000		1	SWITCH LEVER ASS'Y		
3	FM4-7057-000		1	ENGINE CONTROL PCB ASS'Y	100V MF4570dn,4550d,4450	
3	FM4-7087-000		1	ENGINE CONTROL PCB ASS'Y	100V MF4580dn,4430,4420n,4410	
3	FM4-7058-000		1	ENGINE CONTROL PCB ASS'Y	120V	
3	FM4-7059-000		1	ENGINE CONTROL PCB ASS'Y	230V	
4	FM4-7163-000		1	MAIN CONTROLLER PCB ASS'Y	MF4580dn JP	
4	FM4-7162-000		1	MAIN CONTROLLER PCB ASS'Y	MF4580dn EXCEPT JP	
4	FM4-7165-000		1	MAIN CONTROLLER PCB ASS'Y	MF4570dn JP	
4	FM4-7164-000		1	MAIN CONTROLLER PCB ASS'Y	MF4570dn EXCEPT JP	
4	FM4-7167-000		1	MAIN CONTROLLER PCB ASS'Y	MF4550d JP	
4	FM4-7166-000		1	MAIN CONTROLLER PCB ASS'Y	MF4550d EXCEPT JP MF4553d,4554d	
4	FM4-7283-000		1	MAIN CONTROLLER PCB ASS'Y	MF4450 JP	
4	FM4-7282-000		1	MAIN CONTROLLER PCB ASS'Y	MF4450 EXCEPT JP MF4453	
4	FM4-7171-000		1	MAIN CONTROLLER PCB ASS'Y	MF4452	
4	FM4-7172-000		1	MAIN CONTROLLER PCB ASS'Y	MF4430	
4	FM4-7173-000		1	MAIN CONTROLLER PCB ASS'Y	MF4420n	
4	FM4-7174-000		1	MAIN CONTROLLER PCB ASS'Y	MF4410 MF4412 LTN,SG,HK	
4	FM4-7175-000		1	MAIN CONTROLLER PCB ASS'Y	MF4412 CN	
4	FM4-7168-000		1	MAIN CONTROLLER PCB ASS'Y	D550	
4	FM4-7169-000		1	MAIN CONTROLLER PCB ASS'Y	D520	
5	FM4-6983-000		1	FIXING PAPER DELIVERY ASS'Y	100V	
5	RM1-7576-000		1	FIXING PAPER DELIVERY ASS'Y	120V	
5	RM1-7577-000		1	FIXING PAPER DELIVERY ASS'Y	230V	
6	FM4-7187-000		1	PSEUDO CI PCB ASSEMBLY	FAX model JP	
7	FK2-7600-000		2	CORE, RING		
8	FK3-1206-000		1	CORE, FERRITE		
9	WE8-6854-000		1	CORE, RING	FAX model	

FIGURE & KEY NO.	PARTS NUMBER	R A N K	Q'TY	DESCRIPTION	SERIAL NUMBER/ REMARKS	S V C
10	FC8-1367-000		6	SCREW, W/WASHER, M3X8		
11	FC8-1368-000		AR	SCREW, S, M3X6		
12	FC8-1370-000		AR	SCREW, TP, M3X6		
13	FK3-1145-000		1	CABLE, FLAT, SCNT-CIS		
14	FK3-1174-000		1	CABLE, FLAT, SCNT-CIS	FAX model JP	
14	FK3-1179-000		1	CABLE, FLAT, SCNT-CIS	FAX model EXCEPT JP	
15	FK3-1175-000		1	CABLE, FLAT, SCNT-CIS	FAX model JP	
16	FC0-1644-000		1	LINK, PRESSURE RELEASE, LEFT		
17	FC0-1645-000		1	LINK, PRESSURE RELEASE, RIGHT		
18	FM4-7176-000		1	NCU PCB ASSEMBLY	FAX model EXCEPT JP,AU	
18	FM4-7185-000		1	NCU PCB ASSEMBLY	FAX model JP	
18	FM4-7186-000		1	NCU PCB ASSEMBLY	FAX model AU	

# FIGURE 103 INTERNAL COMPONENTS 2

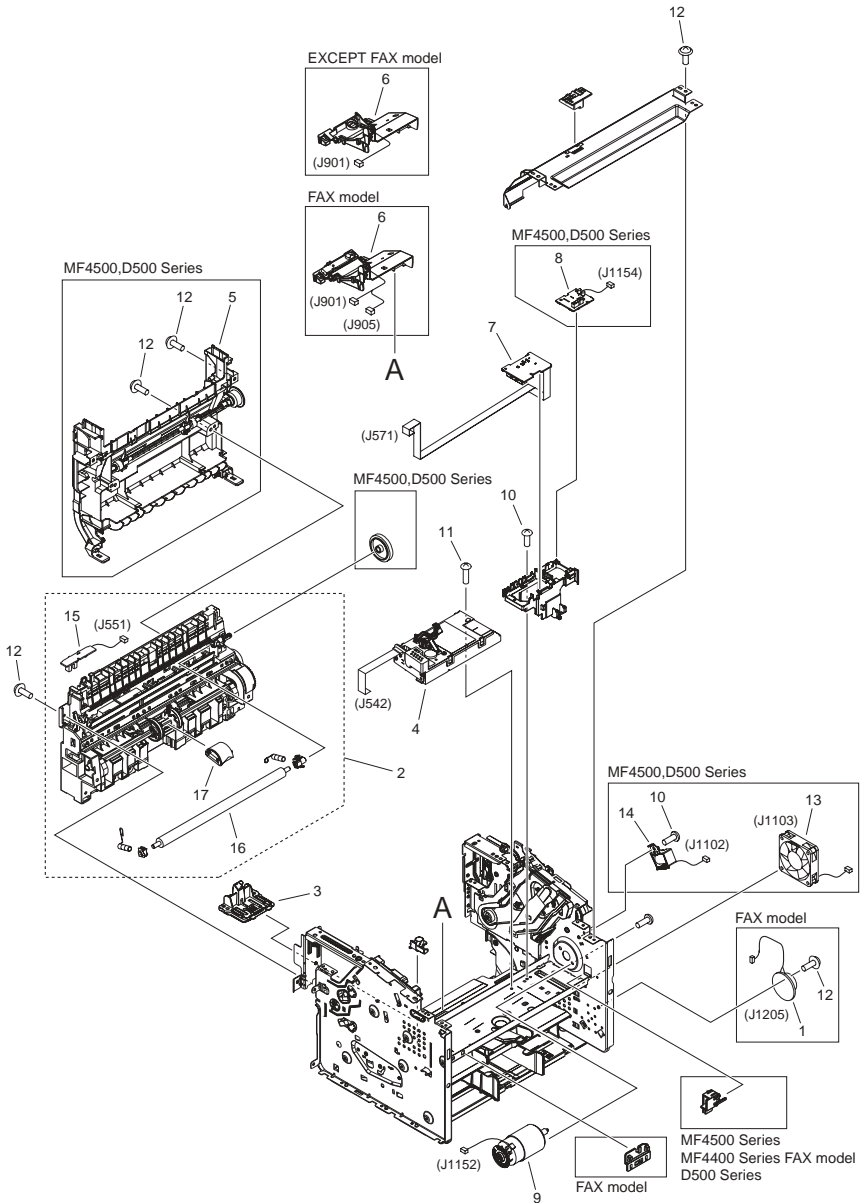




FIGURE & KEY NO.	PARTS NUMBER	R A N K	Q'TY	DESCRIPTION	SERIAL NUMBER/ REMARKS	S V C
Fig.103	NPN		RF	INTERNAL COMPONENTS 2		
1	FK3-1144-000		1	SPEAKER	FAX model	
2	FM4-6892-000		1	PAPER PICK-UP ASS'Y	MF4500,D500 Series	
2	FM4-6926-000		1	PAPER PICK-UP ASS'Y	MF4400 Series	
3	FM4-6893-000		1	SEPARATION PAD ASS'Y		
4	FM4-6894-000		1	LASER SCANNER ASS'Y	MF4500,D500 Series	
4	FM4-6929-000		1	LASER SCANNER ASS'Y	MF4400 Series	
5	FM4-6896-000		1	DUPLEXING FRAME ASS'Y	MF4500,D500 Series	
6	FM4-6900-000		1	PHOTO SENSOR ASS'Y, TONER	FAX model	
6	FM4-7498-000		1	PHOTO SENSOR ASS'Y, MULTI	EXCEPT FAX model	
7	FM4-7062-000		1	MOTOR PCB ASS'Y	MF4500,D500 Series	
7	FM4-7063-000		1	MOTOR PCB ASS'Y	MF4400 Series	
8	FM4-7064-000		1	DUPLEXING PCB ASS'Y	MF4500,D500 Series	
9	FM4-7491-000		1	MOTOR, DC24V		
10	FC8-1368-000		AR	SCREW, S, M3X6		
11	FC8-1369-000		4	SCREW, S, M3X10		
12	FC8-1370-000		AR	SCREW, TP, M3X6		
13	RK2-3438-000		1	FAN	MF4500,D500 Series	
14	RK2-0420-000		1	SOLENOID	MF4500,D500 Series	
15	FM4-7066-000		1	PAPER PICK-UP SENSOR PCB ASS'Y		
16	RC2-1182-000		1	ROLLER, TRANSFER		
17	RL1-1497-000		1	ROLLER, PICK-UP		

FIGURE 160  
ADF ASS'Y (DADF model)

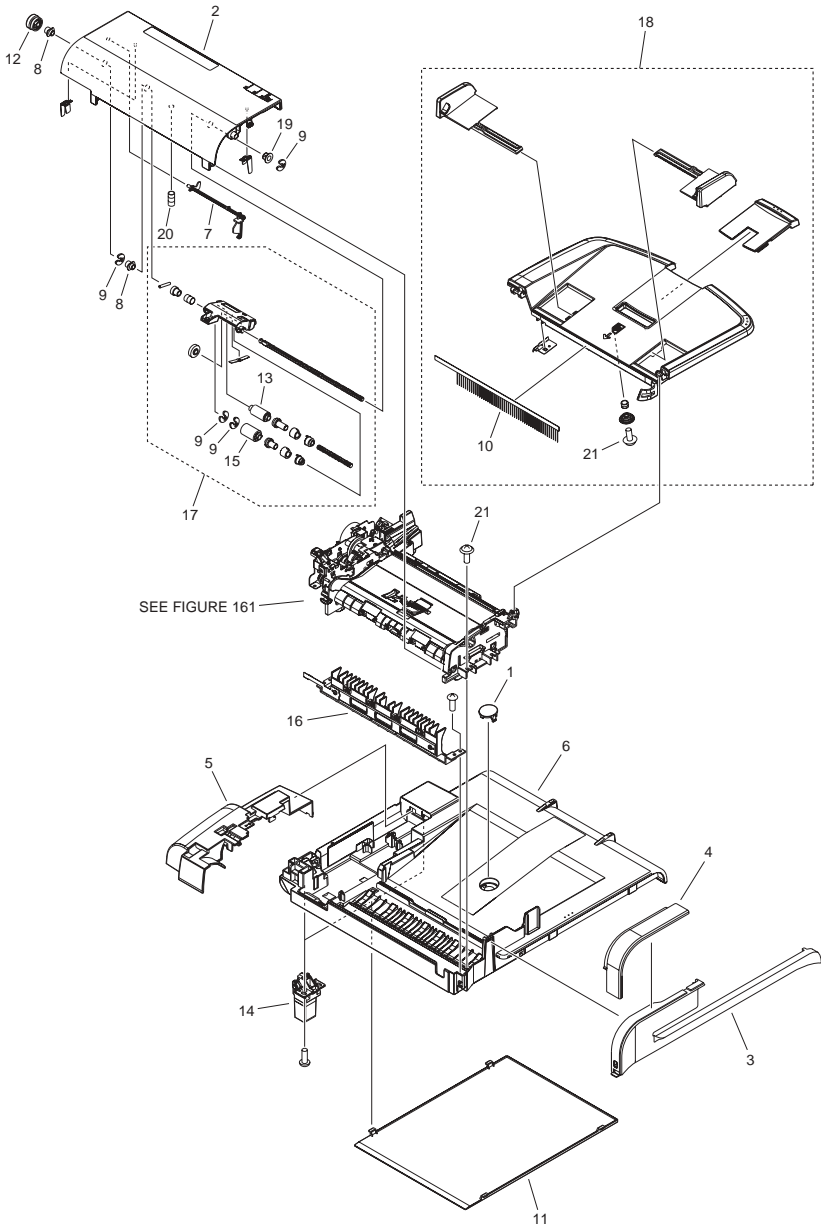


FIGURE & KEY NO.	PARTS NUMBER	R A N K	Q'TY	DESCRIPTION	SERIAL NUMBER/ REMARKS	S V C
Fig.160	NPN		RF	ADF ASS'Y	DADF model	
1	FC0-1744-000		1	CAP		
2	FC0-1745-000		1	COVER, DF		
3	FC0-1747-000		1	COVER, DF, FRONT	MF4580dn EXCEPT JP	
3	FC0-1796-000		1	COVER, DF, FRONT	MF4580dn JP	
3	FC0-1795-000		1	COVER, DF, FRONT	D550	
4	FC0-1748-000		1	COVER, DF, FRONT UPPER	MF4580dn EXCEPT JP D550	
4	FC0-1799-000		1	COVER, DF, FRONT UPPER	MF4580dn JP	
5	FC0-1743-000		1	COVER, REAR	MF4580dn EXCEPT JP D550	
5	FC0-1802-000		1	COVER, REAR	MF4580dn JP	
6	FC0-1746-000		1	COVER, UPPER		
7	FC7-6321-000		1	FLAG, DOCUMENT SCANNER		
8	FC9-5060-000		2	BUSHING		
9	FC6-5210-000		4	RETAINING RING (E-TYRE)		
10	FC9-1345-000		1	ELIMINATOR, STATIC CHARGE		
11	FC8-9210-000		1	PANEL, COPYBOARD		
12	FU8-0473-000		1	GEAR, 24T		
13	FC8-9251-000		1	ROLLER, PICK-UP		
14	FL3-1021-000		2	HINGE, ADF		
15	FL3-1023-000		1	ROLLER, SEPARATION		
16	FM3-8677-000		1	OPEN/CLOSE PANEL ASSEMBLY	MF4500 Series EXCEPT JP	
16	FM4-7531-000		1	OPEN/CLOSE PANEL ASSEMBLY	MF4500 Series JP D500 Series	
17	FM3-8679-000		1	SEPARATION ROLLER ASS'Y		
18	FM4-6913-000		1	DOCUMENT TRAY ASSEMBLY		
19	FU5-1552-000		1	BUSHING		
20	FU7-2018-000		1	SPRING, COMPRESSION		
21	XA9-0476-000		3	SCREW,TP M3X8		

FIGURE 160A  
ADF ASS'Y (ADF model)

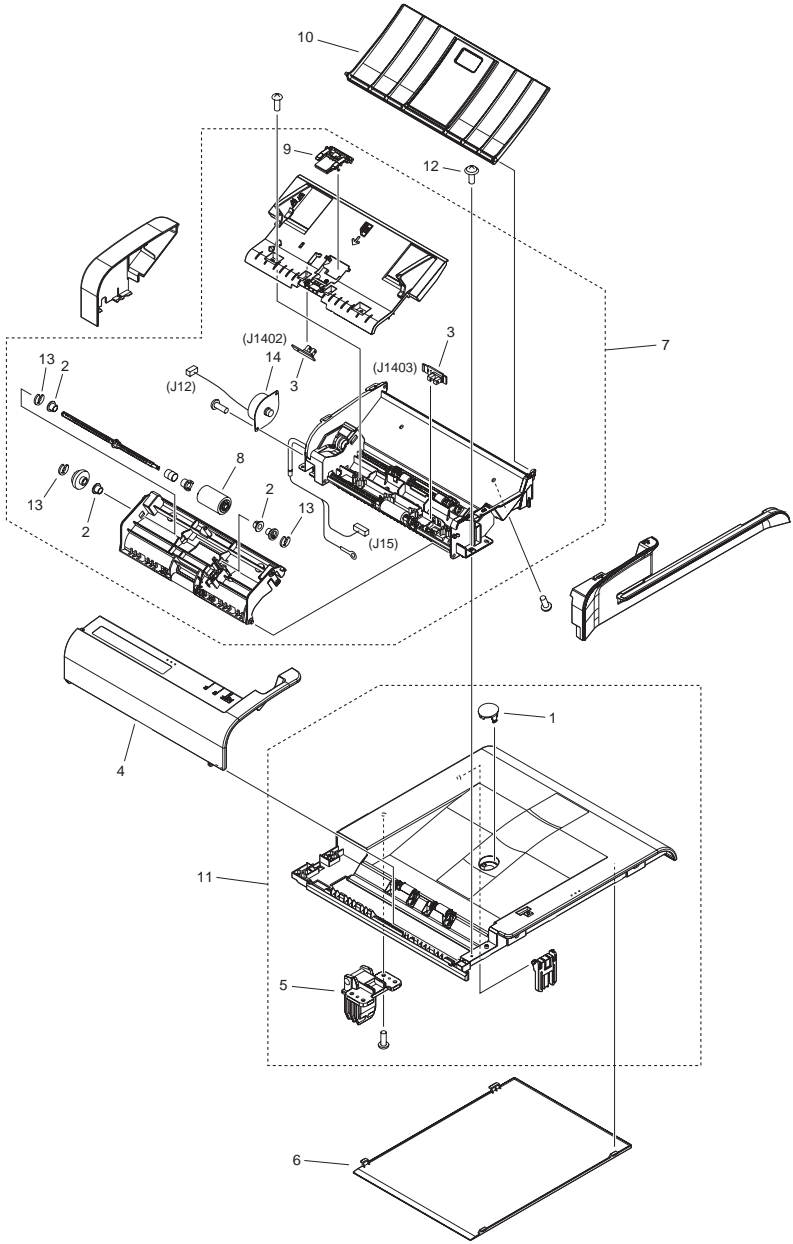


FIGURE & KEY NO.	PARTS NUMBER	R A N K	Q'TY	DESCRIPTION	SERIAL NUMBER/ REMARKS	S V C
Fig.160A	NPN		RF	ADF ASS'Y	ADF model	
1	FC0-1744-000		1	CAP	MF4500 Series	
1	FC0-1805-000		1	CAP	MF4400 Series	
2	FU5-1552-000		3	BUSHING		
3	WG8-5696-000		2	PHOTO INTERRUPTER, TLP1243		
4	FC0-1706-000		1	COVER, SADF	MF4500 Series EXCEPT JP,CN	
4	FC0-1866-000		1	COVER, SADF	MF4500 Series JP,CN	
4	FC0-1865-000		1	COVER, SADF	MF4400 Series EXCEPT JP,CN	
4	FC0-1867-000		1	COVER, SADF	MF4400 Series JP,CN	
5	FC0-1984-000		1	HINGE, ADF		
6	FC0-1698-000		1	PANEL, COPYBOARD		
7	FM4-6906-000		1	ADF ASSEMBLY	MF4500 Series	
7	FM4-6944-000		1	ADF ASSEMBLY	MF4400 Series	
8	FL2-3453-000		1	ROLLER, SEPARATION		
9	FM2-3963-000		1	SEPARATION GUIDE UNIT		
10	FL3-5066-000		1	DOCUMENT TRAY ASSEMBLY	MF4500 Series	
10	FL3-5067-000		1	DOCUMENT TRAY ASSEMBLY	MF4400 Series EXCEPT JP,CN	
10	FL3-5077-000		1	DOCUMENT TRAY ASSEMBLY	MF4400 Series JP,CN	
11	FM4-6882-000		1	ADF BASE ASSEMBLY	MF4500 Series	
11	FM4-6948-000		1	ADF BASE ASSEMBLY	MF4400 Series	
12	XA9-0476-000		2	SCREW,TP M3X8		
13	FC6-5210-000		3	RETAINING RING (E-TYRE)		
14	FK3-1164-000		1	MOTOR, STEPPING		

**FIGURE 161**  
**ADF PAPER FEED ASS'Y (DADF model)**

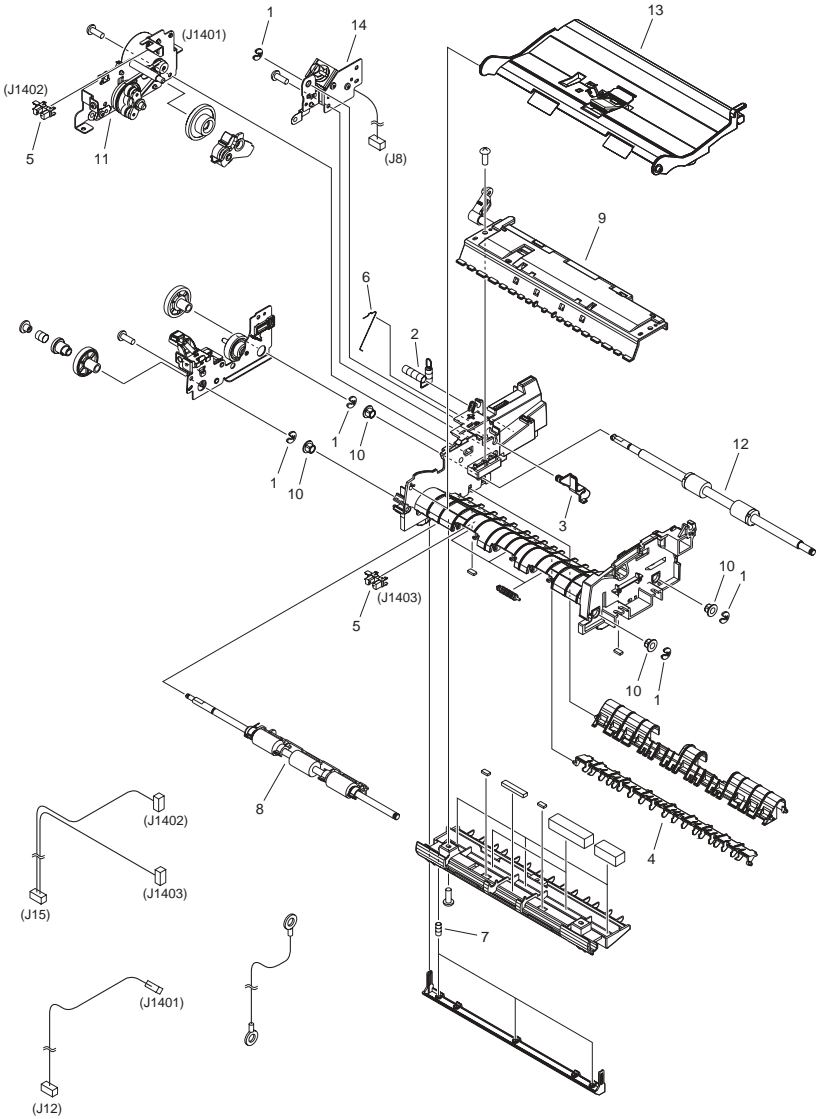


FIGURE & KEY NO.	PARTS NUMBER	R A N K	Q'TY	DESCRIPTION	SERIAL NUMBER/ REMARKS	S V C
Fig.161	FM4-6918-000		1	PAPER FEEDER ASSEMBLY	DADF model	
1	FC6-5210-000		5	RETAINING RING (E-TYRE)		
2	FU7-2021-000		1	SPRING, COMPRESSION		
3	FC7-6182-000		1	LEVER, ROLLER RELEASE		
4	FC7-6278-000		1	FLAPPER, PAPER DELIVERY		
5	WG8-5696-000		2	PHOTOINTERRUPTER		
6	FC9-1325-000		1	SPRING,SEPARATION SWING ARM		
7	FU6-2249-000		3	SPRING, COMPRESSION		
8	FM4-7532-000		1	PAPER FEED ROLLER ASSEMBLY		
9	FM3-8682-000		1	PAPER DELIVERY ASS'Y		
10	FU5-1552-000		4	BUSHING		
11	FM3-8685-000		1	MOTOR DRIVE ASS'Y		
12	FM3-8690-000		1	PAPER DELIVERY ROLLER ASS'Y		
13	FM3-9491-000		1	GUIDE ASSEMBLY, UPPER		
14	FM4-6919-000		1	SOLENOID ASS'Y		

# FIGURE 400 READER ASSEMBLY (DADF model)

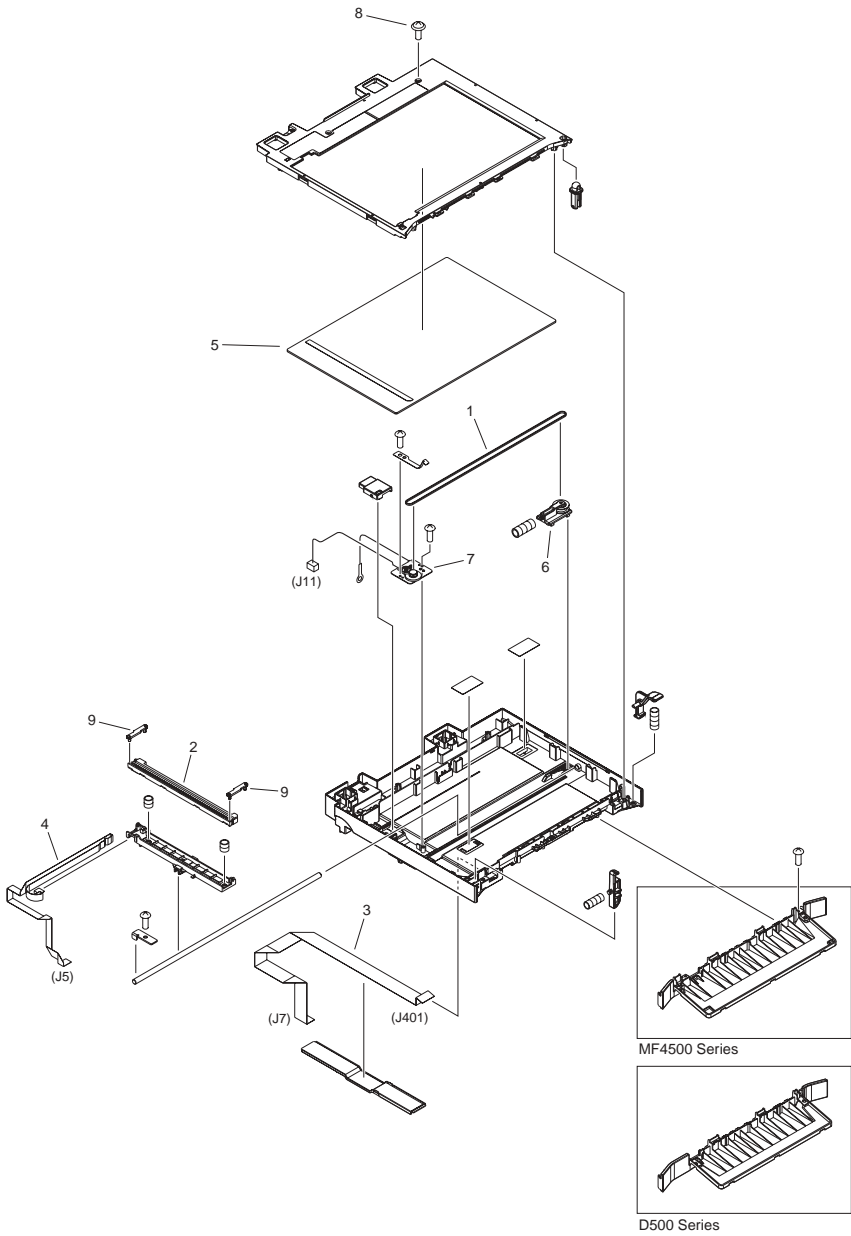




FIGURE & KEY NO.	PARTS NUMBER	R A N K	Q'TY	DESCRIPTION	SERIAL NUMBER/ REMARKS	S V C
Fig.400	FM4-6915-000		1	READER ASSEMBLY	DADF model MF4500 Series	
Fig.400	FM4-7494-000		1	READER ASSEMBLY	DADF model D500 Series	
1	FC7-3630-000		1	BELT, TIMING		
2	FK3-1153-000		1	CONTACT IMAGE SENSOR ASS'Y		
3	FK3-1154-000		1	CABLE, FLAT, SCNT-OP	MF4500 Series	
3	FK3-1157-000		1	CABLE, FLAT, SCNT-OP	D500 Series	
4	FK3-1160-000		1	CABLE, FLAT, SCNT-OP		
5	FL2-5621-000		1	COPYBOARD GLASS ASS'Y		
6	FL3-5062-000		1	IDLER PULLEY HOLDER ASS'Y		
7	FM4-6916-000		1	CIS DRIVE MOTOR ASS'Y		
8	XA9-0476-000		4	SCREW,TP M3X8		
9	FC0-1945-000		2	SPACER, CIS		

# FIGURE 400A READER ASSEMBLY (ADF model)

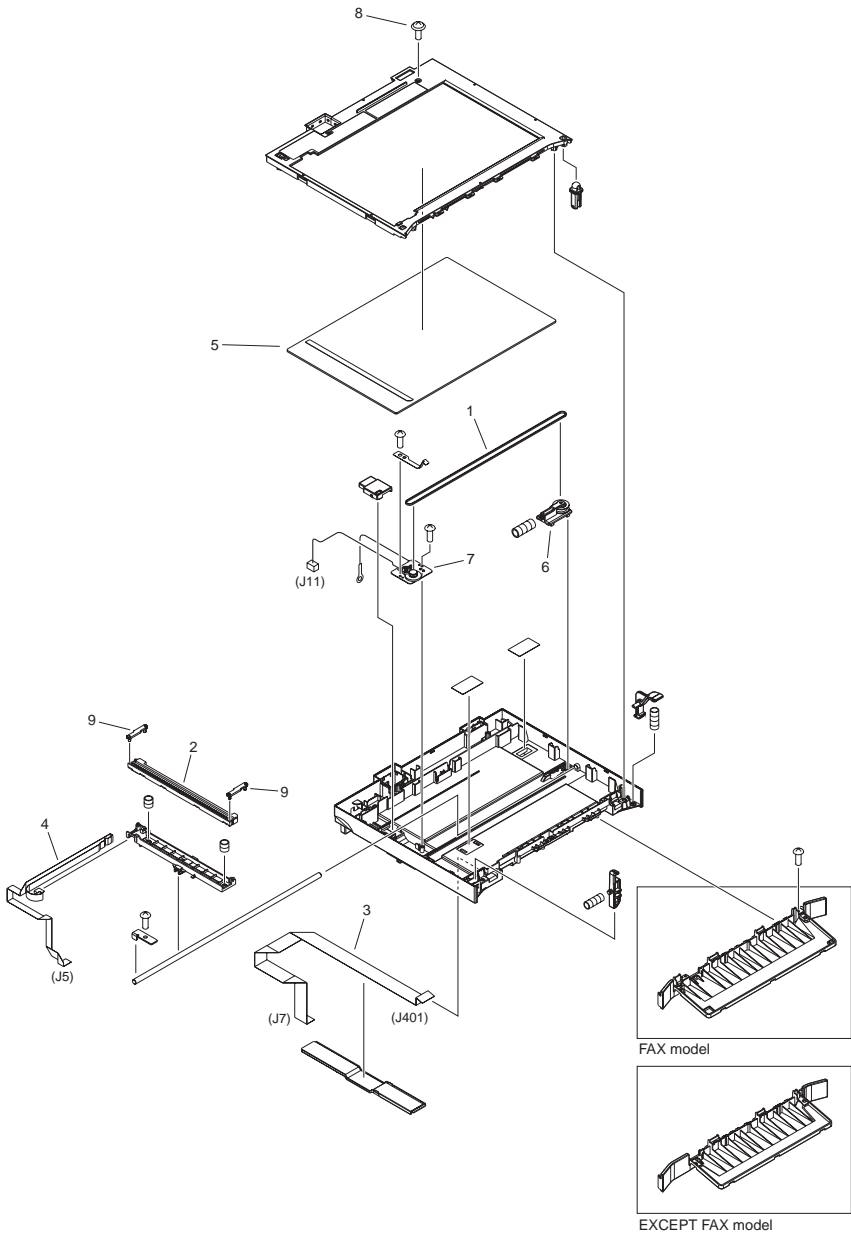


FIGURE & KEY NO.	PARTS NUMBER	R A N K	Q'TY	DESCRIPTION	SERIAL NUMBER/ REMARKS	S V C
Fig.400A	FM4-6904-000		1	READER ASSEMBLY	ADF/FAX model MF4500 Series	
Fig.400A	FM4-6949-000		1	READER ASSEMBLY	ADF/FAX model MF4400 Series	
Fig.400A	FM4-6950-000		1	READER ASSEMBLY	ADF model MF4400 Series	
1	FC7-3630-000		1	BELT, TIMING		
2	FK3-1153-000		1	CONTACT IMAGE SENSOR ASSY		
3	FK3-1154-000		1	CABLE, FLAT, SCNT-OP	FAX model	
3	FK3-1157-000		1	CABLE, FLAT, SCNT-OP	EXCEPT FAX model	
4	FK3-1160-000		1	CABLE, FLAT, SCNT-OP		
5	FL2-8496-000		1	COPYBOARD GLASS ASS'Y		
6	FL3-5062-000		1	IDLER PULLEY HOLDER ASS'Y		
7	FM4-6916-000		1	CIS DRIVE MOTOR ASS'Y		
8	XA9-0476-000		4	SCREW,TP M3X8		
9	FC0-1945-000		2	SPACER, CIS		

# FIGURE 400B READER ASSEMBLY (COPYBOARD model)

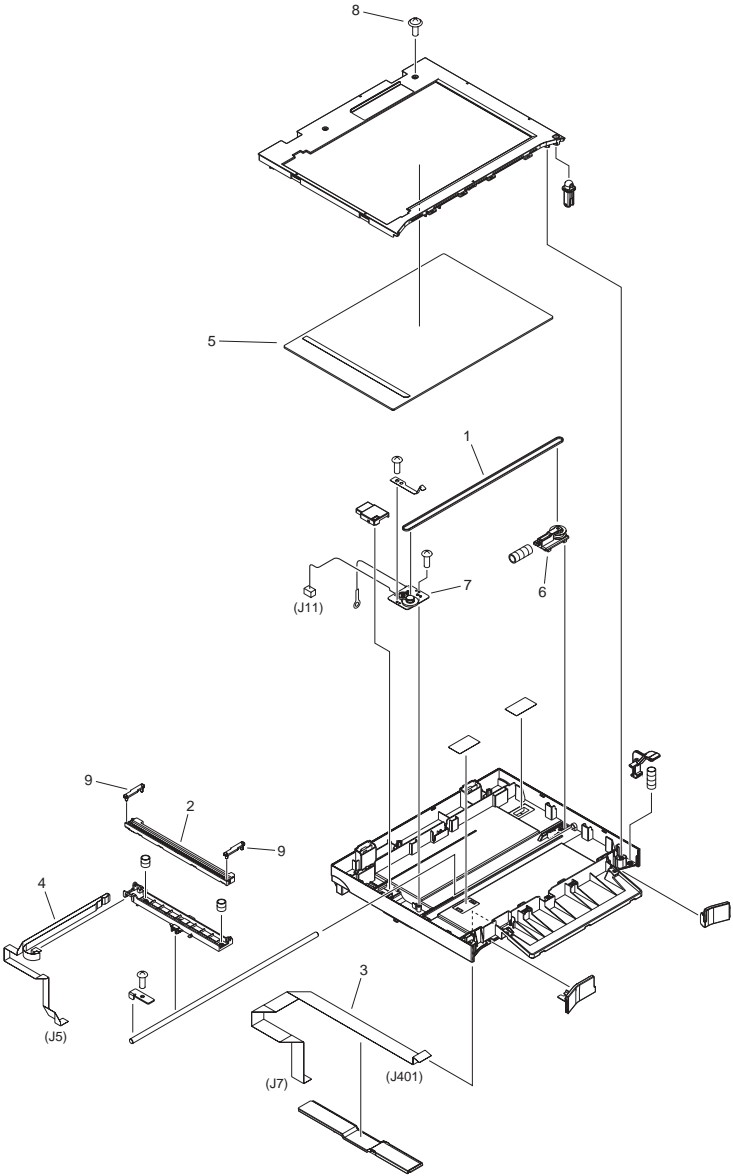


FIGURE & KEY NO.	PARTS NUMBER	R A N K	Q'TY	DESCRIPTION	SERIAL NUMBER/ REMARKS	S V C
Fig.400B	FM4-6921-000		1	READER ASSEMBLY	COPYBOARD model MF4400 Series	
Fig.400B	FM4-6937-000		1	READER ASSEMBLY	COPYBOARD model D500 Series	
1	FC7-3630-000		1	BELT, TIMING		
2	FK3-1153-000		1	CONTACT IMAGE SENSOR ASS'Y		
3	FK3-1157-000		1	CABLE, FLAT, SCNT-OP		
4	FK3-1160-000		1	CABLE, FLAT, SCNT-OP		
5	FL2-5621-000		1	COPYBOARD GLASS ASS'Y		
6	FL3-5062-000		1	IDLER PULLEY HOLDER ASS'Y		
7	FM4-6916-000		1	CIS DRIVE MOTOR ASS'Y		
8	XA9-0476-000		2	SCREW,TP M3X8		
9	FC0-1945-000		2	SPACER, CIS		

# FIGURE ZZA

## MECHANICAL STANDARD PARTS (HOW TO USE)

### Mechanical standard parts

#### 機械標準部品

#### About a mechanical standard parts

A Mechanical standard parts is a mechanical part which not parts peculiar to a product. They are parts which are common to a Canon product and are used, such as a screw and a washer. The Fig No. and parts number of the mechanical standard parts are not listed in the product parts catalog. Refer to the parts catalog of mechanical standard parts when checking the parts number for screw or washer etc. and identify them by part shape or size.

#### 機械標準部品とは

機械標準部品とは、製品特有の部品ではなく、ねじやワッシャなどキヤノン製品共通で使用されている機械部品（メカ部品）のことです。  
製品のパーツカタログには、機械標準部品のFig No.や部品番号は記載しておりません。  
ねじや、ワッシャ等の部品番号を調べるときは、機械標準部品のパーツカタログを参照し、部品の形状や大きさから判断し、使用している部品を調べてください。

#### Material and surface treatment of a mechanical standard parts

Material and surface treatment of mechanical standard parts are assigned commonly for each part. Refer to the Table 1 for the parts which material and surface treatment are assigned as numbers.

#### 機械標準部品の材料および表面処理

機械標準部品の材料および表面処理については、各種部品共通で決められています。  
材料および表面処理が番号で決められている部品については、表1を参照してください。

Table 1 Material and Surface treatment

表1 材料および表面処理

No. 番号	Material 材料	Surface treatment 表面処理	Color 色
1	Stainless steel ステンレス	Stainless steel black coloring (BC4) ステンレス黒着色(BC4)	Black 黒
2		not to be given なし	White 白
3	Brass 黄銅	Regular nickel plating (NL) 普通ニッケルメッキ(NL)	White 白
4		Black nickel plating (BN) 黒色ニッケルメッキ(BN)	Black 黒
5	Steel 鋼	White zinc trivalent chromate treating (ZC3) 白色亜鉛3価クロメート(ZC3)	White 白
6		Regular nickel chromium plating (NC) 普通ニッケルクロムメッキ(NC)	White 白
7		Regular nickel plating (NL) 普通ニッケルメッキ(NL)	White 白
8		Iron and steel phosphating (P1) 鉄鋼磷酸塩処理(P1)	Black 黒
9		Black zinc trivalent chromate treating (BZ3) 黒色亜鉛3価クロメート(BZ3)	Black 黒

# FIGURE ZZB MECHANICAL STANDARD PARTS (SCREWS)

## 1. Screws ねじ

How to read Parts Numbers  
部品番号の見方

Screws  
ねじ

**XB1-2400-609**

Type No.  
類別番号

Normal designation (d)  
ねじの呼び(d)

Length (L)  
ねじの長さ(L)

Material and Surface treatment  
材料および表面処理

XB1-2 expresses Binding head machine screw.  
XB1-2は、バインドねじを表す

40 expresses M4.0.  
40は、M4.0を表す

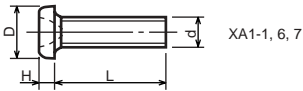
0-60 expresses a length of 6.0mm.  
0-60は、6.0mmの長さを表す

9 expresses Steel (Black zinc trivalent chromate  
treating) from Table 1.

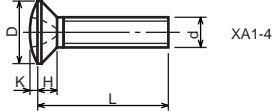
9は、表1より鋼(黒色亜鉛3価クロメート)を表す

### 1-1. Cross Recessed Head Screws for Precision Equipments

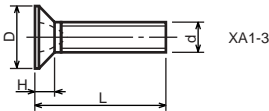
精密機器用十字穴付き小ねじ



XA1-1, 6, 7



XA1-4

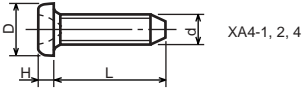


XA1-3

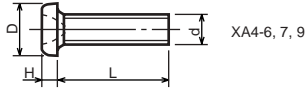
Type No. 類別番号	Type 類別
XA1-1	Pan head Class 1 なべ1種
XA1-3	Countersunk head Class 1 さら1種
XA1-4	Oval countersunk head Class 1 丸さら1種
XA1-6	Pan head Class 3 なべ3種
XA1-7	Pan head Class 2 なべ2種

		Head size (mm) 頭部寸法 (mm)					
		M1.4	M1.6	M1.7	M2	M2.5	M2.6
D	XA1-1	2	2.4	2.5	3	3.8	4
H	XA1-1	0.5	0.55	0.5	0.6	0.9	0.8
D	XA1-3	2	2.4	2.5	3	3.8	4
H	XA1-3	0.48	0.55	0.58	0.73	0.85	0.93
D	XA1-4	2	2.4	2.5	3	3.8	4
H + K	XA1-4	0.68	0.8	0.88	1	1.25	1.3
D	XA1-6	2.5	2.8	3	3.5	4.3	4.5
H	XA1-6	0.8	0.85	0.9	1	1.3	1.2
D	XA1-7	2.5	2.8	3	3.5	4.3	4.5
H	XA1-7	0.5	0.55	0.5	0.6	0.9	0.8

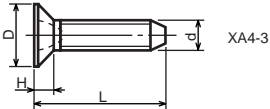
1-2. Precision Tapping Screws  
精密用タッピンねじ



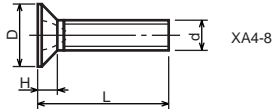
XA4-1, 2, 4



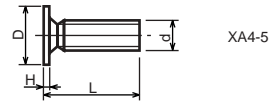
XA4-6, 7, 9



XA4-3



XA4-8

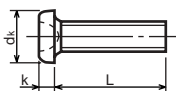


XA4-5

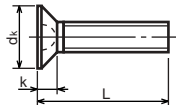
Type No. 類別番号	Type 類別	Head size (mm) 頭部寸法 (mm)						
		M1.4	M1.6	M1.7	M2	M2.5	M2.6	
XA4-1	With tapered end pan head Class 1 絞りなべ1種	D XA4-1	2	2.4	2.5	3	3.8	4
		H XA4-1	0.5	0.55	0.5	0.6	0.9	0.8
XA4-2	With tapered end pan head Class 3 絞りなべ3種	D XA4-2	2.5	2.8	3	3.5	4.3	4.5
		H XA4-2	0.8	0.85	0.9	1	1.3	1.2
XA4-3	With tapered end countersunk head 絞り-さら	D XA4-3	2	2.4	2.5	3	3.8	4
		H XA4-3	0.48	0.55	0.58	0.73	0.85	0.93
XA4-4	With tapered end pan head Class 2 絞りなべ2種	D XA4-4	2.5	2.8	3	3.5	4.3	4.5
		H XA4-4	0.5	0.55	0.5	0.6	0.9	0.8
XA4-5	With parallel end ultra thin head ストレート-超薄頭	D XA4-5	2.5	2.8	3	-	-	-
		H XA4-5	0.2	0.2	0.2	-	-	-
XA4-6	With parallel end pan head Class 1 ストレートなべ1種	D XA4-6	2	2.4	2.5	3	3.8	4
		H XA4-6	0.5	0.55	0.5	0.6	0.9	0.8
XA4-7	With parallel end pan head Class 3 ストレートなべ3種	D XA4-7	2.5	2.8	3	3.5	4.3	4.5
		H XA4-7	0.8	0.85	0.9	1	1.3	1.2
XA4-8	With parallel end countersunk head ストレート-さら	D XA4-8	2	2.4	2.5	3	3.8	4
		H XA4-8	0.48	0.55	0.58	0.73	0.85	0.93
XA4-9	With parallel end pan head Class 2 ストレートなべ2種	D XA4-9	2.5	2.8	3	3.5	4.3	4.5
		H XA4-9	0.5	0.55	0.5	0.6	0.9	0.8



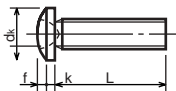
**1-3. Cross Recessed Head Screws**  
 一般用十字穴付き小ねじ



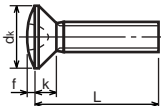
XB1-1



XB1-3



XB1-2

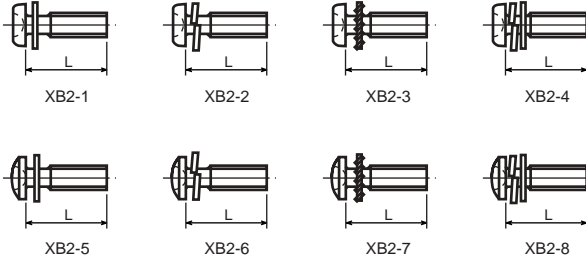


XB1-4

Type No. 類別番号	Type 類別
XB1-1	Pan head なべ
XB1-2	Binding head バインド
XB1-3	Countersunk head さら
XB1-4	Oval countersunk head 丸さら

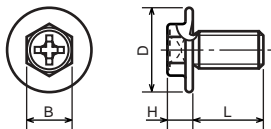
		Head size (mm) 頭部寸法 (mm)					
		M2	M2.5	M2.6	M3	M4	M5
dk	XB1-1	3.5	4.5	4.5	5.5	7	9
k	XB1-1	1.3	1.7	1.7	2	2.6	3.3
dk	XB1-2	4.3	5.3	5.5	6.3	8.3	10.3
k+f	XB1-2	1.2	1.5	1.6	1.9	2.5	3.1
dk	XB1-3	4	5	-	6	8	10
k	XB1-3	1.2	1.45	-	1.75	2.3	2.8
dk	XB1-4	4	5	-	6	8	10
k+f	XB1-4	1.6	2	-	2.45	3.2	4
Screw part length ねじ部長さ b		8	12	12	12	16	20

1-4. Cross Recessed Head Screws with Captive Washer  
座金組み十字穴付き小ねじ



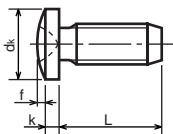
Type No. 類別番号	Type 類別
XB2-1	Pan head + Plain washer (circular bright) なべねじ+平座金
XB2-2	Pan head + Spring washer なべねじ+ばね座金
XB2-3	Pan head + Toothed lock washer なべねじ+歯付座金
XB2-4	Pan head + Spring washer and plain washer (circular bright) なべねじ+(ばね+平)座金
XB2-5	Binding head + Plain washer (circular bright) バインドねじ+平座金
XB2-6	Binding head + Spring washer バインドねじ+ばね座金
XB2-7	Binding head + Toothed lock washer バインドねじ+歯付座金
XB2-8	Binding head + Spring washer and plain washer (circular bright) バインドねじ+(ばね+平)座金

1-5. Hexagon Head Tapping Screws for Metallic Materials  
 金属用六角タッピンねじ



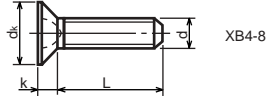
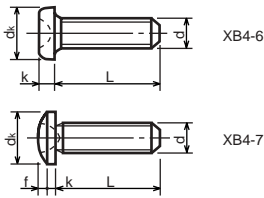
Type No. 類別番号	Type 類別	Head size (mm) 頭部寸法 (mm)	
		M3	M4
XB3-6	For metallic materials 金属用タッピン	D	8 10
		B	5.5 5.5
XB3-7	For metallic materials with clawed 金属用タッピン-つめ付き	H XB3-6	3.1 3.1
		H XB3-7	3.2 3.2

1-6. Special Tapping Screws  
 特殊タッピンねじ



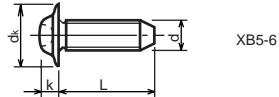
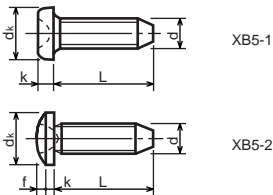
Type No. 類別番号	Type 類別	Head size (mm) 頭部寸法 (mm)	
		M3	M4
XB4-5	Binding head バインド	d <sub>k</sub>	6.3 8.3
		k	1.3 1.7
		k+f	1.9 2.5

1-7. General Head Tapping Screws  
一般用タッピンねじ



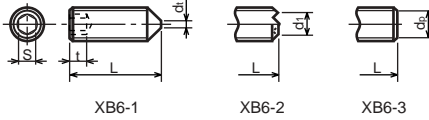
Type No. 類別番号	Type 類別	Head size (mm) 頭部寸法 (mm)						
		M2	M2.5	M2.6	M3	M4	M5	
XB4-6	Pan head なべ	d <sub>k</sub> XB4-6	3.5	4.5	4.5	5.5	7	9
		k XB4-6	1.3	1.7	1.7	2	2.6	3.3
XB4-7	Binding head バインド	d <sub>k</sub> XB4-7	4.3	5.3	5.5	6.3	8.3	10.3
		k+f XB4-7	1.2	1.5	1.6	1.9	2.5	3.1
XB4-8	Countersunk head さら	d <sub>k</sub> XB4-8	4	5	5.2	6	8	10
		k XB4-8	1.2	1.45	1.5	1.75	2.3	2.8

1-8. Tapping Screws for Metallic Materials  
金属用タッピンねじ



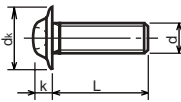
Type No. 類別番号	Type 類別	Head size (mm) 頭部寸法 (mm)					
		M2.5	M2.6	M3	M4	M5	
XB5-1	Pan head なべ	d <sub>k</sub> XB5-1	4.5	4.5	5.5	7	9
		k XB5-1	1.7	1.7	2	2.6	3.3
XB5-2	Binding head バインド	d <sub>k</sub> XB5-2	5.5	5.5	6.3	8.3	10.3
		k+f XB5-2	1.6	1.6	1.9	2.5	3.1
XB5-6	Flanged pan head つば付きなべ	d <sub>k</sub> XB5-6	6.5	6.5	8	10	12
		k XB5-6	2.1	2.1	1.75	3.2	4

**1-9. Hexagon Socket Set Screws**  
六角穴付止めねじ



Type No. 類別番号	Type 類別	Head size (mm) 頭部寸法 (mm)							
		M1.6 M1.7	M2	M2.5 M2.6	M3	M5	M5	M6	
XB6-1	Cone point とがり先	S	0.7	0.9	1.3	1.5	2	2.5	3
		t	1.5	1.7	2	2	2.5	3	3.5
		$d_{t \max}$ XB6-1	0.4	0.5	0.65	0.75	1	1.25	1.5
		$d_{l \max}$ XB6-2	-	1.2	1.5	1.7	2.2	2.8	3.3
		$d_{l \min}$ XB6-2	-	1	1.2	1.4	1.9	2.4	2.9
		$d_{p \max}$ XB6-3	0.8	1	1.5	2	2.5	3.5	4
		$d_{p \min}$ XB6-3	0.55	0.75	1.25	1.75	2.25	3.2	3.7

**1-10. Flanged Pan Head Machine Screws**  
つば付きなべ小ねじ



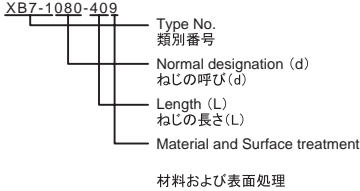
Type No. 類別番号	Type 類別	Head size (mm) 頭部寸法 (mm)					
		M2	M2.5 M2.6	M3	M5	M5	
XB6-7	Flanged pan head つば付きなべ	$d_k$	5	6.5	8	10	12
		k	1.7	2.1	2.5	3.2	4

# FIGURE ZZC MECHANICAL STANDARD PARTS (BOLTS)

## 2. Bolts (Socket head cap screw) ボルト

How to read Parts Numbers  
部品番号の見方

Bolt (Socket head cap screw)  
ボルト



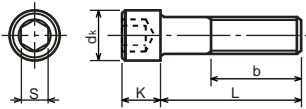
XB7-1 expresses Hexagon socket head cap screws.  
XB7-1は、六角穴付きボルトを表す

080 expresses M8.0.  
080は、M8.0を表す

40 expresses a length of 40mm.  
40は、40mmの長さを表す

9 expresses Steel (Black zinc trivalent chromate treating) from Table 1.  
9は、表1より鋼(黒色亜鉛3価クロメート)を表す

### 2-1. Hexagon socket head cap screws 六角穴付きボルト



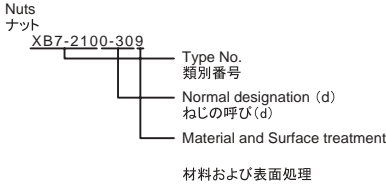
Type No. 類別番号	Type 類別
XB7-1	Hexagon socket head cap screws 六角穴付きボルト

	Head size (mm) 頭部寸法 (mm)						
	M3	M4	M5	M6	M8	M10	M12
S	2.5	3	4	5	6	8	10
$d_k$	5.5	7	8.5	10	13	16	18
K	3	4	5	6	8	10	12
Screw part length $b_{max}$ ねじ部長さ $b_{max}$	18	20	22	24	28	32	36

# FIGURE ZZD MECHANICAL STANDARD PARTS (NUTS)

## 3. Nuts ナット

How to read Parts Numbers  
部品番号の見方

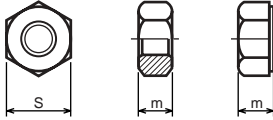


XB7-210 expresses Hexagon nut class 1.  
XB7-210は、六角ナット1種を表す

0-30 expresses M3.0.  
0-30は、M3.0を表す

9 expresses Steel (Black zinc trivalent chromate treating) from Table 1.  
9は、表1より鋼(黒色亜鉛3価クロメート)を表す

### 3-1. Hexagon Nuts and Hexagon Thin Nuts 六角ナット



Type No. 類別番号	Type 類別
XB7-210	Hexagon nut Class 1 六角ナット-1種
XB7-220	Hexagon nut Class 3 六角ナット-3種
XB7-230	Hexagon nut Style 1 double chamfered 六角ナット-スタイル1-両面とり
XB7-231	Hexagon nut Style 1 washer faced 六角ナット-スタイル1-座付き
XB7-240	Hexagon nut Style 2 double chamfered 六角ナット-スタイル2-両面とり
XB7-241	Hexagon nut Style 2 washer faced 六角ナット-スタイル2-座付き
XB7-250	Hexagon nut 六角ナット
XB7-260	Hexagon thin nut double chamfered 六角低ナット-両面とり
XB7-270	Hexagon thin nut not chamfered 六角低ナット-面とり無し

	Head size (mm) 頭部寸法 (mm)						
	M2	M2.5	M3	M4	M5	M6	M8
S	4	5	5.5	7	8	10	13
m XB7-210	1.6	2	2.4	3.2	4	5	6.5
m XB7-220	1.2	1.6	1.8	2.4	3.2	3.6	5
m XB7-230, 231	1.6	2	2.4	3.2	4.7	5.2	6.8
m XB7-240, 241	-	-	-	-	5.1	5.7	7.5
m XB7-250	-	-	-	-	5.6	6.1	7.9
m XB7-260	1.2	1.6	1.8	2.2	2.7	3.2	4
m XB7-270	1.2	1.6	1.8	2.2	2.7	3.2	4

# FIGURE ZZE MECHANICAL STANDARD PARTS (RETAINING RINGS)

## 5. Retaining Rings

止め輪

How to read Parts Numbers  
部品番号の見方

### Retaining Rings

止め輪

XD2-1100-202

Type No.  
類別番号

Nominal designation  
呼び

Material and Surface treatment  
材料および表面処理

XD2-110 expresses retaining ring-E type (Type1).  
XD2-110は、E形止め輪(1種)を表す

0-20 expresses a 020 of nominal designation.  
(See Table 5)

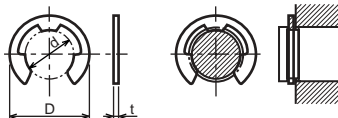
0-20は、呼び020を表す(表5参照)

2 expresses Stainless steel (Surface treatment is not to be given) from Table 1.

2は、表1よりステンレス(表面処理なし)を表す

### 5-1. Retaining Rings - E type

E形止め輪



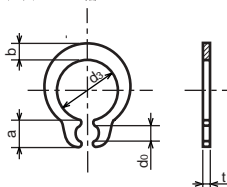
Type No. 類別番号	Type 類別
XD2-110	Retaining ring - E type (Type 1) E形止め輪(1種)
XD2-120	Retaining ring - E type (Type 2) E形止め輪(2種)

Table 5 表5

Type 種類	Nominal designation 呼び	d (mm)	D (mm)	t (mm)
Type 1 1種	007	0.65	2	0.2
	010	0.95	2.8	0.2
	013	1.25	3.3	0.3
	017	1.65	4.2	0.4
	020	1.95	4.6	0.5
	024	2.35	6	0.6
	028	2.74	6.5	0.6
	032	3.14	7.2	0.6
	037	3.64	8	0.7
	040	3.93	10	0.7
	042	4.13	10	0.7
	050	4.93	11	0.7
	058	5.73	12	0.7
	060	5.93	12.7	0.9
	064	6.32	13.5	0.9
	074	7.31	15	0.9
080	7.91	16.5	1	
Type 2 2種	008	0.8	2	0.2
	012	1.2	3	0.3
	015	1.5	4	0.4
	020	2	5	0.4
	025	2.5	6	0.4
	030	3	7	0.6
	040	4	9	0.6
	050	5	11	0.6
	060	6	12	0.8
	070	7	14	0.8
	080	8	16	0.8
	090	9	18	0.8
	100	10	20	1



5-2. Grip Rings  
グリップ止め輪

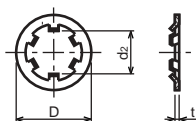


Type No. 類別番号	Type 類別
XD2-210	Grip ring グリップ止め輪

Table 5 表5

Nominal designation 呼び	$d_3$ (mm)	$t$ (mm)	$b$ (mm)	$a$ (mm)	$d_b$ (mm)
020	1.9	0.5	1	1.8	0.8
025	2.35	0.5	1.2	1.9	0.9
030	2.85	0.6	1.4	1.9	0.9
035	3.3	0.6	1.6	2	0.9
040	3.8	0.8	1.8	2.8	1.2
045	4.25	0.8	2	2.9	1.3
050	4.75	0.8	2.2	2.9	1.3
060	5.7	1	2.4	3.1	1.4
070	6.7	1	2.7	3.3	1.4
080	7.7	1	3	3.5	1.4
090	8.65	1.2	3.3	4.7	1.5
100	9.65	1.2	3.5	4.7	2

5-3. Toothed Retaining Rings  
歯付き形止め輪



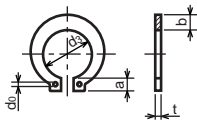
Type No. 類別番号	Type 類別
XD2-230	Toothed retaining ring 歯付き形止め輪

Table 5 表5

Nominal designation 呼び	$d_z$ (mm)	$D$ (mm)	$t$ (mm)	No of teeth 歯数
015	1.4	5.2	0.25	3
020	1.9	6	0.25	3
024	2.3	6.4	0.25	3
030	2.8	8	0.25	4
040	3.8	9	0.25	4
050	4.8	10	0.25	5
060	5.8	11	0.25	5
080	7.8	13	0.25	5
100	9.8	15.4	0.25	6

### 5-4. Retaining Rings - C Type

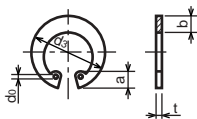
C形止め輪



Type No. 類別番号	Type 類別
XD2-310	Retaining ring - C type for shaft C形止め輪 軸用

Table 5 表5

Nominal designation 呼び	d <sub>3</sub> (mm)	t (mm)	b (mm)	a (mm)	d <sub>0</sub> (mm)
010	9.3	1	1.6	3	1.2
012	11.1	1	1.8	3.2	1.5
014	12.9	1	2	3.4	1.7
015	13.8	1	2.1	3.5	1.7
016	14.7	1	2.2	3.6	1.7
017	15.7	1	2.2	3.7	1.7
018	16.5	1.2	2.6	3.8	1.7
020	18.5	1.2	2.7	3.9	2
022	20.5	1.2	2.7	4.1	2
025	23.2	1.2	3.1	4.3	2
028	25.9	1.5	3.1	4.6	2
030	27.9	1.5	3.5	4.8	2
032	29.6	1.5	3.5	5	2.5
035	32.2	1.5	4	5.4	2.5



Type No. 類別番号	Type 類別
XD2-320	Retaining ring - C type for hole C形止め輪 穴用

Table 5 表5

Nominal designation 呼び	d <sub>3</sub> (mm)	t (mm)	b (mm)	a (mm)	d <sub>0</sub> (mm)
010	10.7	1	1.8	3.1	1.2
011	11.8	1	1.8	3.2	1.2
012	13	1	1.8	3.3	1.5
014	15.1	1	2	3.6	1.7
016	17.3	1	2	3.7	1.7
018	19.5	1	2.5	4	1.7
019	20.5	1	2.5	4	2
020	21.5	1	2.5	4	2
022	23.5	1	2.5	4.1	2
025	26.9	1.2	3	4.4	2
028	30.1	1.2	3	4.6	2
030	32.1	1.2	3	4.7	2
032	34.4	1.2	3.5	5.2	2.5
035	37.8	1.5	3.5	5.2	2.5
037	39.8	1.5	3.5	5.2	2.5
040	43.5	1.8	4	5.7	2.5
042	45.5	1.8	4	5.8	2.5
045	48.5	1.8	4.5	5.9	2.5
047	50.5	1.8	4.5	6.1	2.5
050	54.2	2	4.5	6.5	2.5
052	56.2	2	5.1	6.5	2.5
055	59.2	2	5.1	6.5	2.5
060	64.2	2	5.1	6.8	2.5
062	66.2	2	5.5	6.9	2.5
068	72.5	2.5	6	7.4	2.5
072	76.5	2.5	6.6	7.4	2.5
075	79.5	2.5	6.6	7.8	2.5
080	85.5	2.5	7	8	2.5
085	90.5	3	7	8	3
090	95.5	3	7.6	8.3	3
095	100.5	3	8	8.5	3

Prepared by  
OIP Service Management Center  
CANON INC.

**Canon**