

imageCLASS LBP6780dn

PARTS CATALOG



Canon

December 1, 2012
Rev. 0

PREFACE

This Parts Catalog contains listings of parts used

Diagrams are provided with the listings to aid the service technician in identifying clearly, the item to be ordered.

Whenever ordering parts, consult this Parts Catalog for all of the information pertaining to each item. Be sure to include, in the Parts Request, the full item description, the item part number, and the quantity.

COPYRIGHT (C) 1999 CANON INC.

Use of this manual should be strictly supervised to avoid disclosure of confidential information.

Contents

NUMERICAL INDEX

LBP6780dn (Numerical Index) 1-1

LBP6780dn (Parts Catalog)

A1	ASSEMBLY LOCATION DIAGRAM	2-1
A2	OPTION PARTS CATALOG LIST	2-2
001	ACCESSORIES	2-3
100	EXTERNAL COVERS, PANEL, ETC.	2-5
101	INTERNAL COMPONENTS 1	2-8
102	INTERNAL COMPONENTS 2	2-10
103	INTERNAL COMPONENTS 3	2-12
104	INTERNAL COMPONENTS 4	2-14
105	INTERNAL COMPONENTS 5	2-16
106	INTERNAL COMPONENTS 6	2-18
930	MAIN CONTROLLER PCB ASS'Y (LBP6700,6750)	2-20
931	MAIN CONTROLLER PCB ASS'Y (LBP6710,6780)	2-21
ZZA	MECHANICAL STANDARD PARTS (HOW TO USE)	2-22
ZZB	MECHANICAL STANDARD PARTS (SCREWS)	2-23
ZZC	MECHANICAL STANDARD PARTS (BOLTS)	2-30
ZZD	MECHANICAL STANDARD PARTS (NUTS)	2-31
ZZE	MECHANICAL STANDARD PARTS (RETAINING RINGS)	2-32

NUMERICAL INDEX

LBP6780dn (Numerical Index)

PARTS NUMBER	FIGURE & KEY NO.	PARTS NUMBER	FIGURE & KEY NO.	PARTS NUMBER	FIGURE & KEY NO.
FC5-5256-000	100 - 1	FM1-C907-000	001 - 1	RK2-1499-000	104 - 1
FC7-0496-000	100 - 1	FM1-C908-000	001 - 1	RK2-3101-000	104 - 9
FC9-5308-000	100 - 2	FM1-C911-000	001 - 1	RK2-4218-000	101 - 5
FC9-5311-000	100 - 3	FM1-D916-000	105 - 6	RL1-2412-000	103 - 2
FC9-5318-000	100 - 4	FM1-D917-000	105 - 6	RM1-6263-000	104 - 2
FC9-5319-000	101 - 8	FM1-D918-000	105 - 6	RM1-6270-000	104 - 3
FC9-5336-000	105 - 13	FM4-2203-000	100 - 13	RM1-6271-000	105 - 3
FC9-5353-000	100 - 5	FM4-2205-000	100 - 14	RM1-6272-000	103 - 1
FC9-5356-000	100 - 6	FM4-2208-000	100 - 15	RM1-6273-000	104 - 4
FC9-5363-000	103 - 9	FM4-2210-000	100 - 16	RM1-6274-020	105 - 5
FC9-5364-000	101 - 10	FM4-2211-000	100 - 17	RM1-6280-000	104 - 5
FC9-5365-000	100 - 7	FM4-2215-000	100 - 18	RM1-6284-000	101 - 1
FC9-5366-000	100 - 8	FM4-2216-000	103 - 4	RM1-6296-000	106 - 2
FC9-5367-000	100 - 9	FM4-2218-000	105 - 5	RM1-6301-000	106 - 3
FC9-5368-000	100 - 10	FM4-2222-000	105 - 2	RM1-6303-000	103 - 8
FC9-5369-000	100 - 11	FM4-2244-000	100 - 17	RM1-6306-000	103 - 5
FC9-5370-000	100 - 12	FM4-2245-000	100 - 17	RM1-6311-000	106 - 4
FC9-5377-000	100 - 8	FM4-2251-000	100 - 21	RM1-6313-000	105 - 10
FE2-2844-000	105 - 14	FM4-2252-000	100 - 17	RM1-6315-000	103 - 3
FE2-2856-000	100 - 2	FM4-5033-000	105 - 6	RM1-6319-000	105 - 5
FH4-6302-000	930 - IC	FM4-5036-000	100 - 19	RM1-6321-000	103 - 6
FK2-9583-000	001 - 6	FM4-5037-000	105 - 4	RM1-6322-000	101 - 2
FK3-0155-000	105 - 11	FM4-5038-000	104 - 6	RM1-6342-000	106 - 8
FK3-1130-000	001 - 5	FM4-5673-000	104 - 7	RU6-0953-000	102 - 4
FK3-1228-000	001 - 3	FM4-5674-000	106 - 1	WA7-4673-000	930 - 1
FK3-1230-000	001 - 4	FM4-5676-000	105 - 9	WC4-5171-000	105 - 8
FK3-1800-000	931 - IC	FM4-5678-000	105 - 6	WG8-5935-000	101 - 3
FL3-8776-000	105 - 15	FM4-6142-000	100 - 20	WG8-5935-000	106 - 5
FM0-2640-000	001 - 1	FM4-6143-000	930 -	XA9-1420-000	100 - 23
FM0-2641-000	001 - 1	FM4-6144-000	930 -	XA9-1420-000	101 - 6
FM0-3834-000	100 - 20	FM4-6145-000	930 -	XA9-1420-000	105 - 18
FM0-3835-000	100 - 15	FM4-6211-000	100 - 20	XA9-1503-000	100 - 22
FM0-4623-000	105 - 16	FM4-6212-000	100 - 20	XA9-1503-000	101 - 9
FM0-4627-000	105 - 17	FM4-6213-000	100 - 20	XA9-1503-000	104 - 10
FM0-4628-000	100 - 27	FM4-7028-000	001 - 1	XA9-1503-000	105 - 7
FM0-4629-000	100 - 19	FM4-7030-000	001 - 1	XA9-1503-000	106 - 6
FM0-4631-000	104 - 6	NPN	001 -	XA9-1671-000	100 - 24
FM0-4632-000	105 - 4	NPN	100 -	XA9-1671-000	101 - 7
FM0-4633-000	104 - 7	NPN	101 -	XA9-1671-000	102 - 3
FM0-4634-000	106 - 1	NPN	102 -	XA9-1671-000	104 - 8
FM0-4635-000	105 - 9	NPN	103 -	XA9-1671-000	105 - 12
FM0-4638-000	931 -	NPN	104 -	XA9-1671-000	106 - 7
FM0-4639-000	931 -	NPN	105 -		
FM0-4643-000	100 - 28	NPN	106 -		
FM0-4731-000	100 - 6	RC2-7705-000	100 - 25		
FM0-4732-000	100 - 18	RC2-7706-000	100 - 26		
FM0-4733-000	100 - 16	RC2-7928-000	101 - 4		
FM0-4735-000	100 - 20	RC2-8575-000	103 - 7		
FM0-4736-000	100 - 20	RK2-1302-000	001 - 2		
FM0-4806-000	100 - 16	RK2-1490-000	102 - 1		
FM0-4811-000	100 - 16	RK2-1492-000	102 - 2		
FM1-C906-000	001 - 1	RK2-1497-000	105 - 1		

LBP6780dn/6780x/6750dn/6710i/ 6700(Parts Catalog)

LASER SHOT LBP6750dn

230V ASIA F15-7641-000 MGMA

230V CN F15-7651-000 MGNA

i-SENSYS LBP6750dn

230V EUR F15-7691-000 MGLA

i-SENSYS LBP6780x

230V EUR F16-5291-000 MXDA

imageCLASS LBP6780dn

120V US F16-5231-000 MXHA

Satera LBP6700

100V JP F15-7511-000 MGJA

Satera LBP6710i

100V JP F16-5111-000 MXCA

Contents

A1	ASSEMBLY LOCATION DIAGRAM	2-1
A2	OPTION PARTS CATALOG LIST	2-2
001	ACCESSORIES	2-3
100	EXTERNAL COVERS, PANEL, ETC.	2-5
101	INTERNAL COMPONENTS 1	2-8
102	INTERNAL COMPONENTS 2	2-10
103	INTERNAL COMPONENTS 3	2-12
104	INTERNAL COMPONENTS 4	2-14
105	INTERNAL COMPONENTS 5	2-16
106	INTERNAL COMPONENTS 6	2-18
930	MAIN CONTROLLER PCB ASS'Y (LBP6700,6750).....	2-20
931	MAIN CONTROLLER PCB ASS'Y (LBP6710,6780).....	2-21
ZZA	MECHANICAL STANDARD PARTS (HOW TO USE)	2-22
ZZB	MECHANICAL STANDARD PARTS (SCREWS).....	2-23
ZZC	MECHANICAL STANDARD PARTS (BOLTS).....	2-30
ZZD	MECHANICAL STANDARD PARTS (NUTS).....	2-31
ZZE	MECHANICAL STANDARD PARTS (RETAINING RINGS)	2-32

FIGURE A1 ASSEMBLY LOCATION DIAGRAM

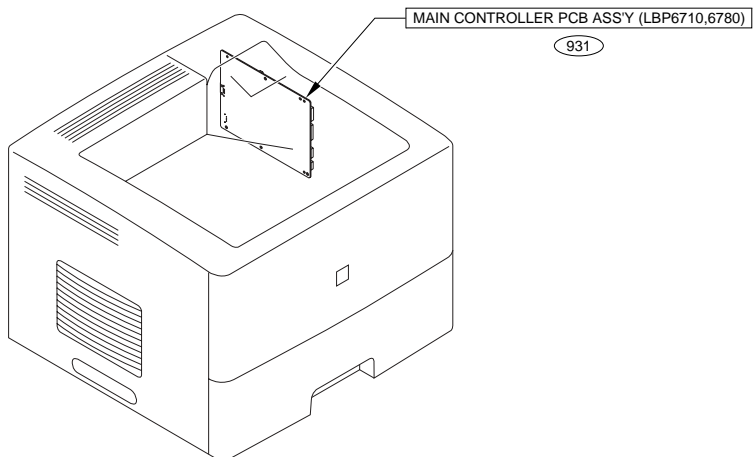
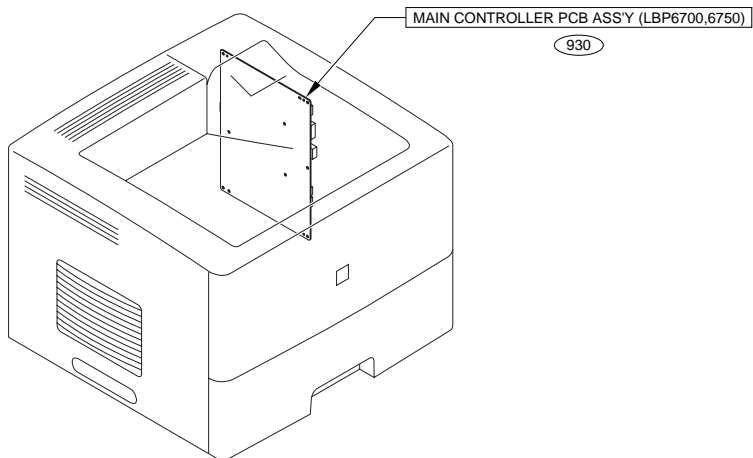
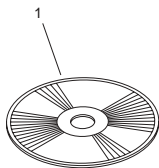


FIGURE A2 OPTION PARTS CATALOG LIST

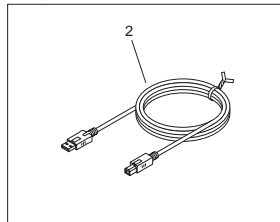
This is the table of the machine's options whose parts catalog is issued.
本機のオプションで、パーツカタログが発行されている機種の一覧である。

No.	Model Name(English)	Model Name(Japanese)
1	Paper Feeder Unit PF-45	ペーパーフィーダユニット PF-45
2	Intelligent Controller NB-J2	インテリジェントコントローラ NB-J2
3	Wireless Network Board-W2	内蔵型無線プリントサーバ NB-W2
4	CONTROL ROM CR-MET/MEV/MEU	CONTROL ROM CR-MET/MEV/MEU
5	PS ROM A-45/Barcode ROM A-45	PS ROM A-45/Barcode ROM A-45

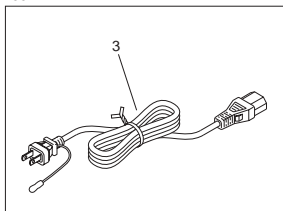
FIGURE 001 ACCESSORIES



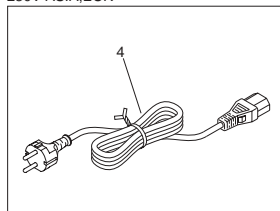
ASIA,CN



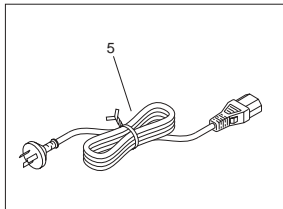
100V



230V ASIA,EUR



230V CN



120V

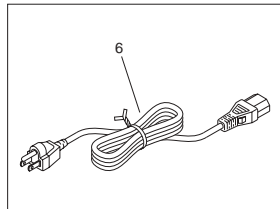


FIGURE & KEY NO.	PARTS NUMBER	RANK	Q'TY	DESCRIPTION	SERIAL NUMBER/REMARKS	SVC
Fig.001	NPN		RF	ACCESSORIES		
1	FM4-7028-000		1	CD- ROM, USER SOFTWARE	LASER SHOT LBP6750dn	
1	FM4-7030-000		1	CD- ROM, USER SOFTWARE	Satera LBP6700	
1	FM0-2640-000		1	CD- ROM, USER SOFTWARE	i-SENSYS LBP6750dn	
1	FM0-2641-000		1	CD- ROM, USER SOFTWARE	i-SENSYS LBP6750dn	
1	FM1-C906-000		1	CD-ROM, USER SOFTWARE	Satera LBP6710i	
1	FM1-C907-000		1	CD-ROM, USER SOFTWARE	i-SENSYS LBP6780x	
1	FM1-C908-000		1	CD-ROM, USER SOFTWARE	i-SENSYS LBP6780x	
1	FM1-C911-000		1	CD-ROM, USER SOFTWARE	imageCLASS LBP6780dn	
2	RK2-1302-000		1	CABLE, USB HOST POWER SUPPLY	ASIA,CN	
3	FK3-1228-000		1	CORD, POWER	100V	
4	FK3-1230-000		1	CORD, POWER	230V ASIA,EUR	
5	FK3-1130-000		1	CORD, POWER	230V CN	
6	FK2-9583-000		1	CORD, POWER	120V	

FIGURE 100 EXTERNAL COVERS, PANEL, ETC.

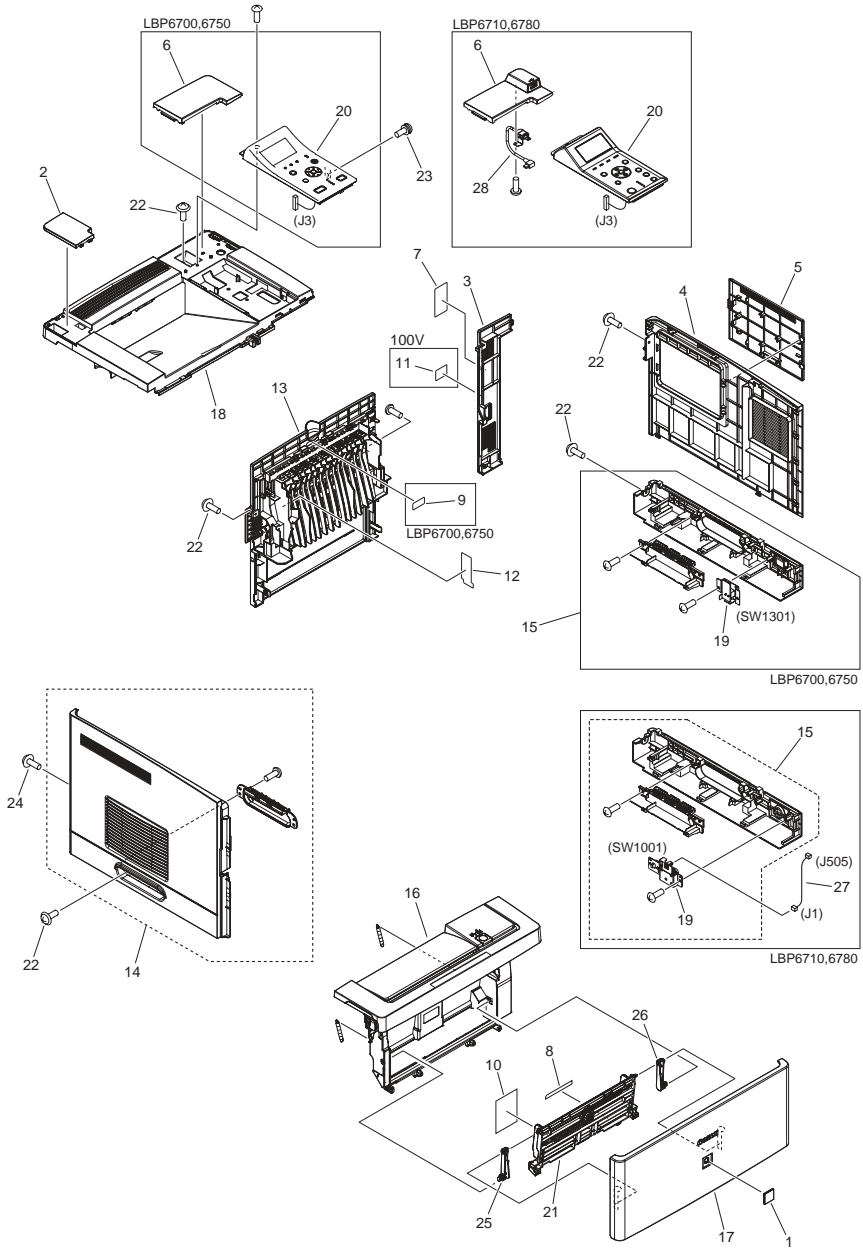


FIGURE & KEY NO.	PARTS NUMBER	R A N K	Q'TY	DESCRIPTION	SERIAL NUMBER/ REMARKS	S V C
Fig.100	NPN		RF	EXTERNAL COVERS, PANELS, ETC.		
1	FC5-5256-000		1	EMBLEM	Satera	
1	FC7-0496-000		1	EMBLEM	EXCEPT Satera	
2	FC9-5308-000		1	COVER, TOP UPPER LEFT	LBP6700,6750	
2	FE2-2856-000		1	COVER, TOP UPPER LEFT	LBP6710,6780	
3	FC9-5311-000		1	COVER, RIGHT REAR		
4	FC9-5318-000		1	COVER, RIGHT		
5	FC9-5353-000		1	COVER, DIMM		
6	FC9-5356-000		1	COVER, TOP UPPER RIGHT	LBP6700,6750	
6	FMO-4731-000		1	COVER, TOP UPPER RIGHT	LBP6710,6780	
7	FC9-5365-000		1	LABEL, JAM OPERATOR, REAR		
8	FC9-5366-000		1	LABEL, MULTI-PURPOSE SIZE	JP	
8	FC9-5377-000		1	LABEL, MULTI-PURPOSE SIZE	EXCEPT JP	
9	FC9-5367-000		1	LABEL, TRAY EXTENSION MARK	LBP6700,6750	
10	FC9-5368-000		1	LABEL, PRINT INSTRUCTION		
11	FC9-5369-000		1	LABEL, GROUNDING CAUTION	100V	
12	FC9-5370-000		1	LABEL, HIGH TMP. CAUTION		
13	FM4-2203-000		1	REAR COVER ASS'Y		
14	FM4-2205-000		1	LEFT COVER ASS'Y		
15	FM4-2208-000		1	COVER ASS'Y, RIGHT LOWER	LBP6700,6750	
15	FMO-3835-000		1	COVER ASS'Y, RIGHT LOWER	LBP6710,6780	
16	FM4-2210-000		1	CARTRIDGE DOOR ASS'Y	LBP6700,6750	
16	FMO-4806-000		1	CARTRIDGE DOOR ASS'Y	i-SENSYS LBP6780x	
16	FMO-4811-000		1	CARTRIDGE DOOR ASS'Y	LBP6780dn	
16	FMO-4733-000		1	CARTRIDGE DOOR ASS'Y	LBP6710i	
17	FM4-2211-000		1	M.P. TRAY COVER ASS'Y	Satera LBP6700	
17	FM4-2244-000		1	M.P. TRAY COVER ASS'Y	i-SENSYS LBP6750dn	
17	FM4-2245-000		1	M.P. TRAY COVER ASS'Y	LASER SHOT LBP6750dn	
17	FM4-2252-000		1	M.P. TRAY COVER ASS'Y	LBP6710,6780	
18	FM4-2215-000		1	TOP, COVER, UNIT	LBP6700,6750	
18	FMO-4732-000		1	TOP COVER ASS'Y, RIGHT	LBP6710,6780	
19	FM4-5036-000		1	POWER SUPPLY SWITCH PCB ASS'Y	LBP6700,6750 SW1301	

FIGURE & KEY NO.	PARTS NUMBER	R A N K	Q'TY	DESCRIPTION	SERIAL NUMBER/ REMARKS	S V C
19	FM0-4629-000		1	POWER SUPPLY SWITCH PCB ASS'Y	LBP6710,6780 SW1001	
20	FM4-6142-000		1	OPERATION PANEL ASS'Y	LBP6700	
20	FM4-6211-000		1	OPERATION PANEL ASS'Y	LBP6750 ASIA	
20	FM4-6212-000		1	OPERATION PANEL ASS'Y	LBP6750 EUR	
20	FM4-6213-000		1	OPERATION PANEL ASS'Y	LBP6750 CN	
20	FM0-3834-000		1	OPERATION PANEL ASS'Y	LBP6710	
20	FM0-4735-000		1	OPERATION PANEL ASS'Y	LBP6780 US	
20	FM0-4736-000		1	OPERATION PANEL ASS'Y	LBP6780 EUR	
21	FM4-2251-000		1	M.P. TRAY LIFTING PLATE ASS'Y		
22	XA9-1503-000		7	SCREW, TAP, M3X6		
23	XA9-1420-000		1	SCREW, W/WASHER, M3X8		
24	XA9-1671-000		1	SCREW, D, M3X8		
25	RC2-7705-000		1	HINGE, MULTI-PURPOSE, LEFT		
26	RC2-7706-000		1	HINGE, MULTI-PURPOSE, RIGHT		
27	FM0-4628-000		1	CABLE, SWITCH	LBP6710,6780	
28	FM0-4643-000		1	CABLE, USB	LBP6710,6780	

FIGURE 101 INTERNAL COMPONENTS 1

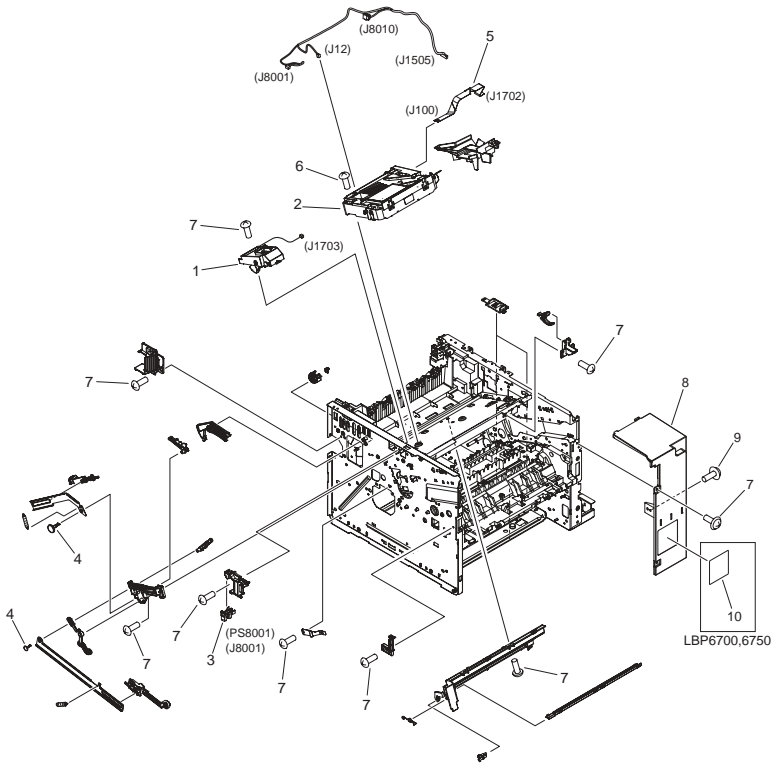


FIGURE & KEY NO.	PARTS NUMBER	RANK	Q'TY	DESCRIPTION	SERIAL NUMBER/REMARKS	SVC
Fig.101	NPN		RF	INTERNAL COMPONENTS 1		
1	RM1-6284-000		1	TAG HOLDER ASS'Y		
2	RM1-6322-000		1	LASER SCANNER ASS'Y		
3	WG8-5935-000		1	IC, PHOTO INTERRUPTER	PS8001	
4	RC2-7928-000		2	STOPPER, BUSHING ARM		
5	RK2-4218-000		1	CABLE, FLAT		
6	XA9-1420-000		4	SCREW, W/WASHER, M3X8		
7	XA9-1671-000		AR	SCREW, D, M3X8		
8	FC9-5319-000		1	COVER, RIGHT FRONT		
9	XA9-1503-000		1	SCREW, TAP, M3X6		
10	FC9-5364-000		1	LABEL, DUPLEXING JAM CLEARING	LBP6700,6750	

FIGURE 102
INTERNAL COMPONENTS 2

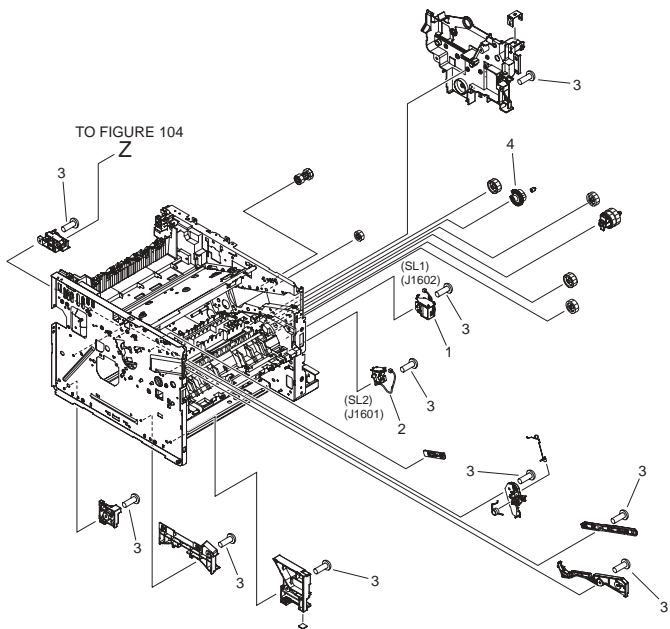


FIGURE & KEY NO.	PARTS NUMBER	RANK	Q'TY	DESCRIPTION	SERIAL NUMBER/REMARKS	SVC
Fig.102	NPN		RF	INTERNAL COMPONENTS 2		
1	RK2-1490-000		1	SOLENOID	SL1	
2	RK2-1492-000		1	SOLENOID	SL2	
3	XA9-1671-000		5	SCREW, D, M3X8		
4	RU6-0953-000		1	GEAR, 30T		

FIGURE 103
INTERNAL COMPONENTS 3

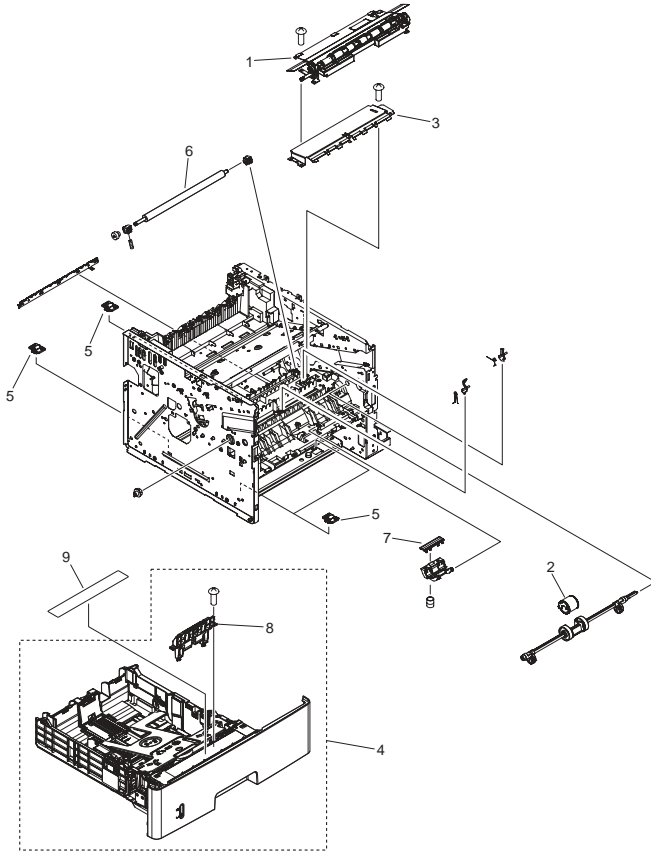


FIGURE & KEY NO.	PARTS NUMBER	RANK	Q'TY	DESCRIPTION	SERIAL NUMBER/REMARKS	SVC
Fig.103	NPN		RF	INTERNAL COMPONENTS 3		
1	RM1-6272-000		1	REGISTRATION ROLLER ASS'Y		
2	RL1-2412-000		1	ROLLER, MULTI-PURPOSE		
3	RM1-6315-000		1	TRANSFER LOWER GUIDE ASS'Y		
4	FM4-2216-000		1	CASSETTE ASS'Y		
5	RM1-6306-000		4	BASE PLATE ROLLER ASS'Y		
6	RM1-6321-000		1	ROLLER, TRANSFER		
7	RC2-8575-000		1	PAD, MULTI-PURPOSE SEPARATION		
8	RM1-6303-000		1	SEPARATION HOLDER ASS'Y		
9	FC9-5363-000		1	LABEL, CST. PAPER SET		

FIGURE 104
INTERNAL COMPONENTS 4

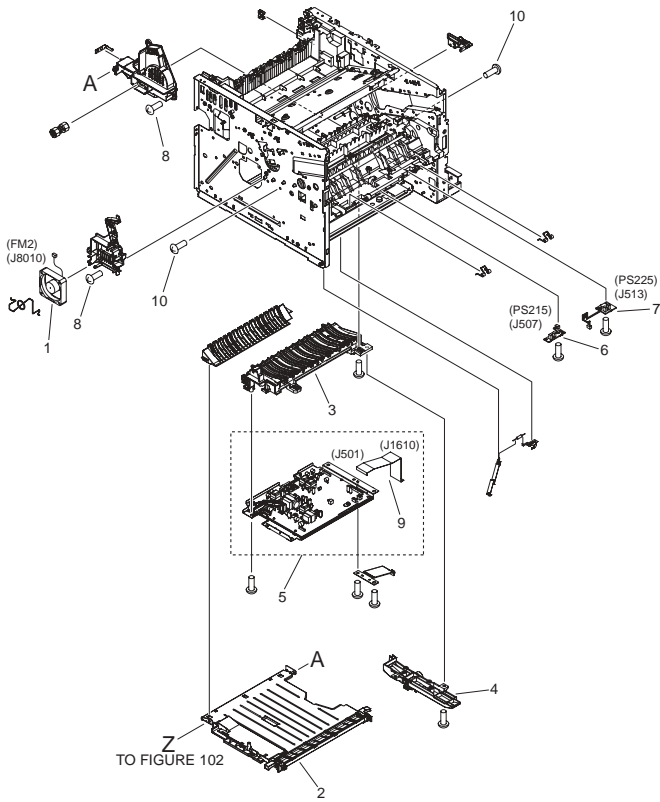


FIGURE & KEY NO.	PARTS NUMBER	R A N K	Q'TY	DESCRIPTION	SERIAL NUMBER/REMARKS	S V C
Fig.104	NPN		RF	INTERNAL COMPONENTS 4		
1	RK2-1499-000		1	FAN	FM2	
2	RM1-6263-000		1	LOWER PAPER FEED GUIDE ASS'Y		
3	RM1-6270-000		1	PAPER FEED GUIDE ASS'Y		
4	RM1-6273-000		1	POSITION GUIDE ASS'Y		
5	RM1-6280-000		1	H.V. POWER SUPPLY PCB ASS'Y		
6	FM4-5038-000		1	TOP SENSOR PCB ASS'Y	LBP6700,6750 PS215	
6	FM0-4631-000		1	TOP SENSOR PCB ASS'Y	LBP6710,6780 PS215	
7	FM4-5673-000		1	PAPER WIDTH SENSOR PCB ASS'Y	LBP6700,6750 PS225	
7	FM0-4633-000		1	PAPER WIDTH SENSOR PCB ASS'Y	LBP6710,6780 PS225	
8	XA9-1671-000		6	SCREW, D, M3X8		
9	RK2-3101-000		1	CABLE, FLAT		
10	XA9-1503-000		3	SCREW, TAP, M3X6		

FIGURE 105 INTERNAL COMPONENTS 5

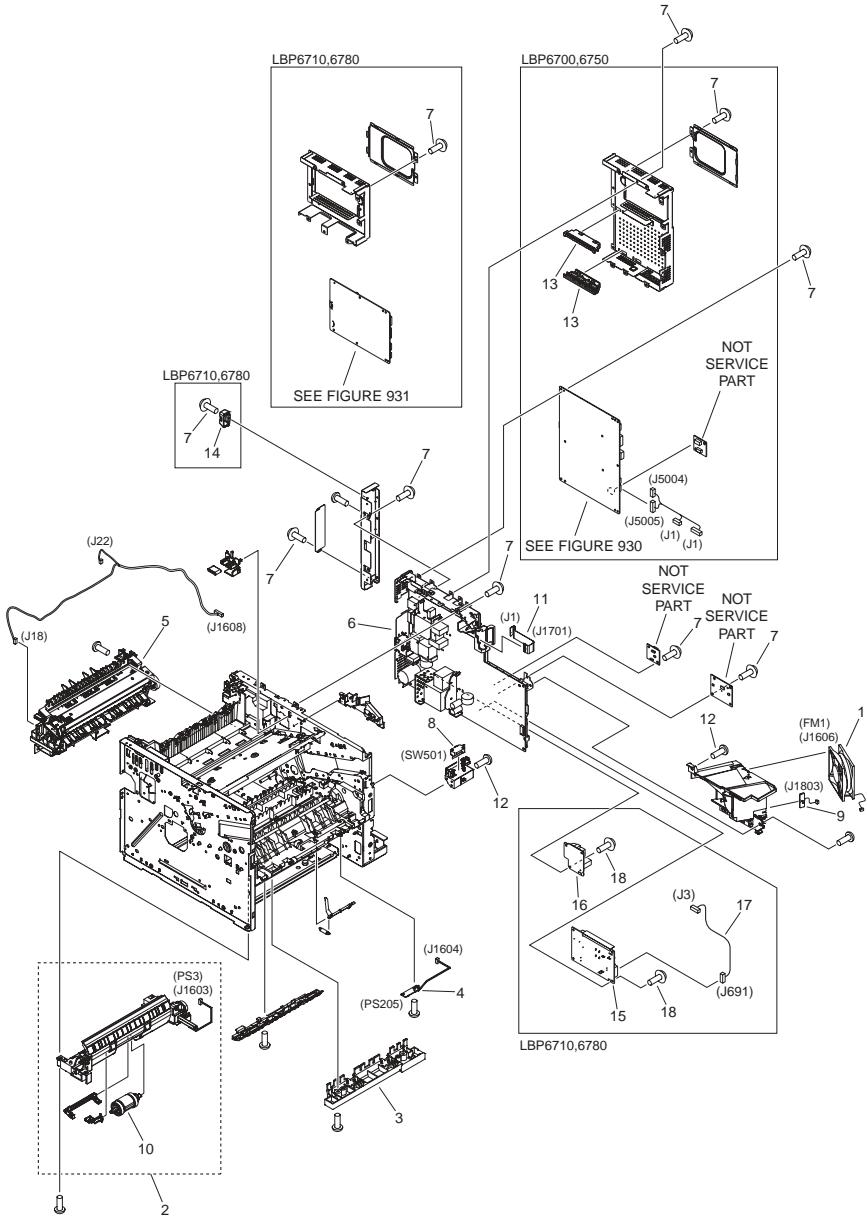


FIGURE & KEY NO.	PARTS NUMBER	R A N K	Q'TY	DESCRIPTION	SERIAL NUMBER/ REMARKS	S V C
Fig.105	NPN		RF	INTERNAL COMPONENTS 5		
1	RK2-1497-000		1	FAN	FM1	
2	FM4-2222-000		1	CASSETTE PAPER PICK-UP ASS'Y		
3	RM1-6271-000		1	IDLER ROLLER ASS'Y		
4	FM4-5037-000		1	MULTI-PURPOSE SENSOR PCB ASS'Y	LBP6700,6750 PS205	
4	FM0-4632-000		1	MULTI-PURPOSE SENSOR PCB ASS'Y	LBP6710,6780 PS205	
5	FM4-2218-000		1	FIXING ASS'Y	100V	
5	RM1-6274-020		1	FIXING ASS'Y	120V	
5	RM1-6319-000		1	FIXING ASS'Y	230V	
6	FM4-5033-000		1	ENGINE CONTROLLER ASS'Y	LBP6700 100V	
6	FM4-5678-000		1	ENGINE CONTROLLER ASS'Y	LBP6750 230V	
6	FM1-D916-000		1	ENGINE CONTROLLER PCB ASS'Y	LBP6710 100V	
6	FM1-D917-000		1	ENGINE CONTROLLER PCB ASS'Y	LBP6780 120V	
6	FM1-D918-000		1	ENGINE CONTROLLER PCB ASS'Y	LBP6780 230V	
7	XA9-1503-000		AR	SCREW, TAP, M3X6		
8	WC4-5171-000		1	MICROSWITCH	SW501	
9	FM4-5676-000		1	TEMPERATURE SENSOR ASS'Y	LBP6700,6750	
9	FM0-4635-000		1	TEMPERATURE SENSOR PCB ASS'Y	LBP6710,6780	
10	RM1-6313-000		1	CST. PICK-UP ROLLER ASS'Y		
11	FK3-0155-000		1	CABLE, FLAT		
12	XA9-1671-000		4	SCREW, D, M3X8		
13	FC9-5336-000		2	RAIL, ISLOT	LBP6700,6750	
14	FE2-2844-000		1	COVER, SD	LBP6710,6780	
15	FL3-8776-000		1	A.N. POWER SUPPLY PCB ASSEMBLY	LBP6710,6780	
16	FM0-4623-000		1	AC CONNECTING PCB ASSEMBLY	LBP6710,6780	
17	FM0-4627-000		1	CABLE, SUB POWER SUPPLY REMOTE	LBP6710,6780	
18	XA9-1420-000		1	SCREW, W/WASHER, M3X8	LBP6710,6780	

FIGURE 106 INTERNAL COMPONENTS 6

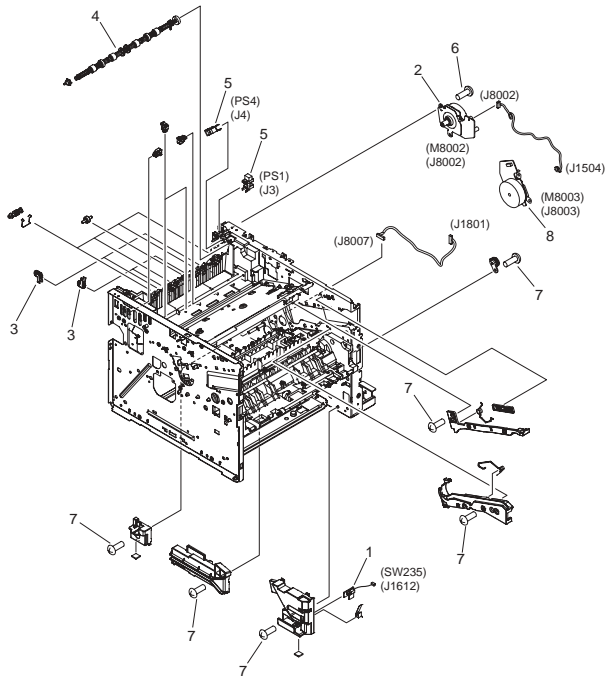


FIGURE & KEY NO.	PARTS NUMBER	RANK	Q'TY	DESCRIPTION	SERIAL NUMBER/REMARKS	SVC
Fig.106	NPN		RF	INTERNAL COMPONENTS 6		
1	FM4-5674-000		1	TRAY SENSOR PCB ASS'Y	LBP6700,6750 SW235	
1	FM0-4634-000		1	TRAY SENSOR PCB ASS'Y	LBP6710,6780 SW235	
2	RM1-6296-000		1	FIXING MOTOR ASS'Y	M8002	
3	RM1-6301-000		4	PAPER DELIVERY ROLLER ASS'Y		
4	RM1-6311-000		1	FACE-DOWN ROLLER ASS'Y		
5	WG8-5935-000		2	IC, PHOTO INTERRUPTER	PS1,PS4	
6	XA9-1503-000		3	SCREW, TAP, M3X6		
7	XA9-1671-000		AR	SCREW, D, M3X8		
8	RM1-6342-000		1	MOTOR, DC	M8003	

FIGURE 930 MAIN CONTROLLER PCB ASS'Y (LBP6700,6750)

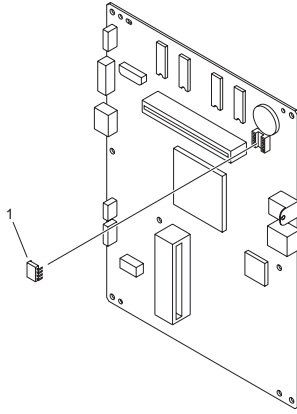


FIGURE & KEY NO.	PARTS NUMBER	RANK	QTY	DESCRIPTION	SERIAL NUMBER/REMARKS	SVC
Fig.930	FM4-6143-000		1	MAIN CONTROLLER PCB ASS'Y	Satera LBP6700	
Fig.930	FM4-6145-000		1	MAIN CONTROLLER PCB ASS'Y	i-SENSYS LBP6750dn	
Fig.930	FM4-6144-000		1	MAIN CONTROLLER PCB ASS'Y	LASER SHOT LBP6750dn	
1	WA7-4673-000		1	IC, 24LC256-I/PG, EEP-ROM	IC9	
IC	FH4-6302-000		1	IC,S1L50552F32L000,ASIC	IC1009	

FIGURE 931 MAIN CONTROLLER PCB ASS'Y (LBP6710,6780)

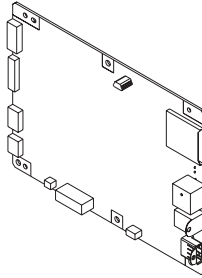


FIGURE & KEY NO.	PARTS NUMBER	RANK	Q'TY	DESCRIPTION	SERIAL NUMBER/REMARKS	SVC
Fig.931	FM0-4638-000		1	MAIN CONTROLLER PCB ASS'Y	LBP6710	
Fig.931	FM0-4639-000		1	MAIN CONTROLLER PCB ASS'Y	LBP6780	
IC	FK3-1800-000		1	IC, ASIC, MB8AA4241EPBH-GE1	IC13	

FIGURE ZZA

MECHANICAL STANDARD PARTS (HOW TO USE)

Mechanical standard parts

機械標準部品

About a mechanical standard parts

A Mechanical standard parts is a mechanical part which not parts peculiar to a product. They are parts which are common to a Canon product and are used, such as a screw and a washer. The Fig No. and parts number of the mechanical standard parts are not listed in the product parts catalog. Refer to the parts catalog of mechanical standard parts when checking the parts number for screw or washer etc. and identify them by part shape or size.

機械標準部品とは

機械標準部品とは、製品特有の部品ではなく、ねじやワッシャなどキヤノン製品共通で使用されている機械部品（メカ部品）のことです。
製品のパーツカタログには、機械標準部品のFig No.や部品番号は記載しておりません。
ねじや、ワッシャ等の部品番号を調べるときは、機械標準部品のパーツカタログを参照し、部品の形状や大きさから判断し、使用している部品を調べてください。

Material and surface treatment of a mechanical standard parts

Material and surface treatment of mechanical standard parts are assigned commonly for each part. Refer to the Table 1 for the parts which material and surface treatment are assigned as numbers.

機械標準部品の材料および表面処理

機械標準部品の材料および表面処理については、各種部品共通で決められています。
材料および表面処理が番号で決められている部品については、表1を参照してください。

Table 1 Material and Surface treatment
表1 材料および表面処理

No. 番号	Material 材料	Surface treatment 表面処理	Color 色
1	Stainless steel ステンレス	Stainless steel black coloring (BC4) ステンレス黒着色(BC4)	Black 黒
2		not to be given なし	White 白
3	Brass 黄銅	Regular nickel plating (NL) 普通ニッケルメッキ(NL)	White 白
4		Black nickel plating (BN) 黒色ニッケルメッキ(BN)	Black 黒
5	Steel 鋼	White zinc trivalent chromate treating (ZC3) 白色亜鉛3価クロメート(ZC3)	White 白
6		Regular nickel chromium plating (NC) 普通ニッケルクロムメッキ(NC)	White 白
7		Regular nickel plating (NL) 普通ニッケルメッキ(NL)	White 白
8		Iron and steel phosphating (P1) 鉄鋼磷酸塩処理(P1)	Black 黒
9		Black zinc trivalent chromate treating (BZ3) 黒色亜鉛3価クロメート(BZ3)	Black 黒

FIGURE ZZB MECHANICAL STANDARD PARTS (SCREWS)

1. Screws ねじ

How to read Parts Numbers
部品番号の見方

Screws
ねじ

XB1-2400-609

Type No.
類別番号

Normal designation (d)
ねじの呼び(d)

Length (L)
ねじの長さ(L)

Material and Surface treatment
材料および表面処理

XB1-2 expresses Binding head machine screw.
XB1-2は、バインドねじを表す

40 expresses M4.0.
40は、M4.0を表す

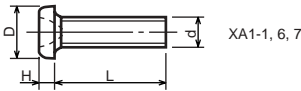
0-60 expresses a length of 6.0mm.
0-60は、6.0mmの長さを表す

9 expresses Steel (Black zinc trivalent chromate
treating) from Table 1.

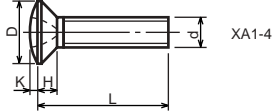
9は、表1より鋼(黒色亜鉛3価クロメート)を表す

1-1. Cross Recessed Head Screws for Precision Equipments

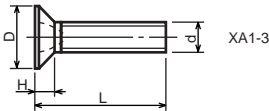
精密機器用十字穴付き小ねじ



XA1-1, 6, 7



XA1-4

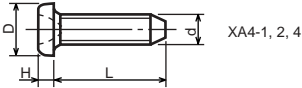


XA1-3

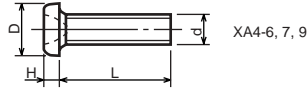
Type No. 類別番号	Type 類別
XA1-1	Pan head Class 1 なべ1種
XA1-3	Countersunk head Class 1 さら1種
XA1-4	Oval countersunk head Class 1 丸さら1種
XA1-6	Pan head Class 3 なべ3種
XA1-7	Pan head Class 2 なべ2種

		Head size (mm) 頭部寸法 (mm)					
		M1.4	M1.6	M1.7	M2	M2.5	M2.6
D	XA1-1	2	2.4	2.5	3	3.8	4
H	XA1-1	0.5	0.55	0.5	0.6	0.9	0.8
D	XA1-3	2	2.4	2.5	3	3.8	4
H	XA1-3	0.48	0.55	0.58	0.73	0.85	0.93
D	XA1-4	2	2.4	2.5	3	3.8	4
H + K	XA1-4	0.68	0.8	0.88	1	1.25	1.3
D	XA1-6	2.5	2.8	3	3.5	4.3	4.5
H	XA1-6	0.8	0.85	0.9	1	1.3	1.2
D	XA1-7	2.5	2.8	3	3.5	4.3	4.5
H	XA1-7	0.5	0.55	0.5	0.6	0.9	0.8

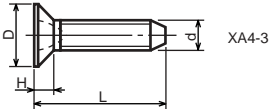
1-2. Precision Tapping Screws
精密用タッピンねじ



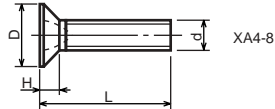
XA4-1, 2, 4



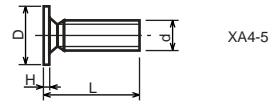
XA4-6, 7, 9



XA4-3



XA4-8



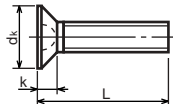
XA4-5

Type No. 類別番号	Type 類別	Head size (mm) 頭部寸法 (mm)						
		M1.4	M1.6	M1.7	M2	M2.5	M2.6	
XA4-1	With tapered end pan head Class 1 絞りなべ1種	D XA4-1	2	2.4	2.5	3	3.8	4
		H XA4-1	0.5	0.55	0.5	0.6	0.9	0.8
XA4-2	With tapered end pan head Class 3 絞りなべ3種	D XA4-2	2.5	2.8	3	3.5	4.3	4.5
		H XA4-2	0.8	0.85	0.9	1	1.3	1.2
XA4-3	With tapered end countersunk head 絞り-さら	D XA4-3	2	2.4	2.5	3	3.8	4
		H XA4-3	0.48	0.55	0.58	0.73	0.85	0.93
XA4-4	With tapered end pan head Class 2 絞りなべ2種	D XA4-4	2.5	2.8	3	3.5	4.3	4.5
		H XA4-4	0.5	0.55	0.5	0.6	0.9	0.8
XA4-5	With parallel end ultra thin head ストレート-超薄頭	D XA4-5	2.5	2.8	3	-	-	-
		H XA4-5	0.2	0.2	0.2	-	-	-
XA4-6	With parallel end pan head Class 1 ストレートなべ1種	D XA4-6	2	2.4	2.5	3	3.8	4
		H XA4-6	0.5	0.55	0.5	0.6	0.9	0.8
XA4-7	With parallel end pan head Class 3 ストレートなべ3種	D XA4-7	2.5	2.8	3	3.5	4.3	4.5
		H XA4-7	0.8	0.85	0.9	1	1.3	1.2
XA4-8	With parallel end countersunk head ストレート-さら	D XA4-8	2	2.4	2.5	3	3.8	4
		H XA4-8	0.48	0.55	0.58	0.73	0.85	0.93
XA4-9	With parallel end pan head Class 2 ストレートなべ2種	D XA4-9	2.5	2.8	3	3.5	4.3	4.5
		H XA4-9	0.5	0.55	0.5	0.6	0.9	0.8

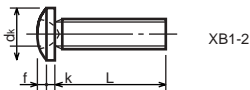
1-3. Cross Recessed Head Screws
一般用十字穴付き小ねじ



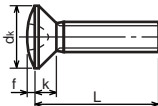
XB1-1



XB1-3



XB1-2

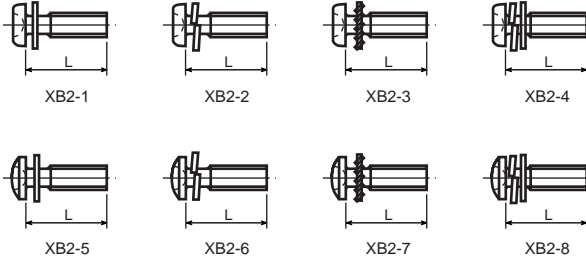


XB1-4

Type No. 類別番号	Type 類別
XB1-1	Pan head なべ
XB1-2	Binding head バインド
XB1-3	Countersunk head ざら
XB1-4	Oval countersunk head 丸ざら

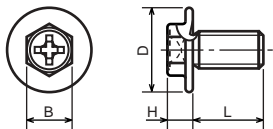
		Head size (mm) 頭部寸法 (mm)					
		M2	M2.5	M2.6	M3	M4	M5
dk	XB1-1	3.5	4.5	4.5	5.5	7	9
k	XB1-1	1.3	1.7	1.7	2	2.6	3.3
dk	XB1-2	4.3	5.3	5.5	6.3	8.3	10.3
k+f	XB1-2	1.2	1.5	1.6	1.9	2.5	3.1
dk	XB1-3	4	5	-	6	8	10
k	XB1-3	1.2	1.45	-	1.75	2.3	2.8
dk	XB1-4	4	5	-	6	8	10
k+f	XB1-4	1.6	2	-	2.45	3.2	4
Screw part length ねじ部長さ b		8	12	12	12	16	20

1-4. Cross Recessed Head Screws with Captive Washer
 座金組込み十字穴付き小ねじ



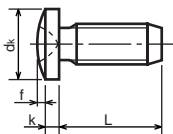
Type No. 類別番号	Type 類別
XB2-1	Pan head + Plain washer (circular bright) なべねじ+平座金
XB2-2	Pan head + Spring washer なべねじ+ばね座金
XB2-3	Pan head + Toothed lock washer なべねじ+歯付座金
XB2-4	Pan head + Spring washer and plain washer (circular bright) なべねじ+(ばね+平)座金
XB2-5	Binding head + Plain washer (circular bright) バインドねじ+平座金
XB2-6	Binding head + Spring washer バインドねじ+ばね座金
XB2-7	Binding head + Toothed lock washer バインドねじ+歯付座金
XB2-8	Binding head + Spring washer and plain washer (circular bright) バインドねじ+(ばね+平)座金

1-5. Hexagon Head Tapping Screws for Metallic Materials
 金属用六角タッピンねじ



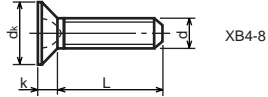
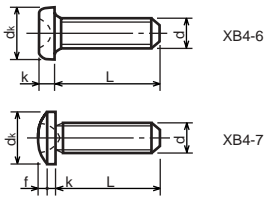
Type No. 類別番号	Type 類別	Head size (mm) 頭部寸法 (mm)	
		M3	M4
XB3-6	For metallic materials 金属用タッピン	D	8 10
		B	5.5 5.5
XB3-7	For metallic materials with clawed 金属用タッピン-つめ付き	H XB3-6	3.1 3.1
		H XB3-7	3.2 3.2

1-6. Special Tapping Screws
 特殊タッピンねじ



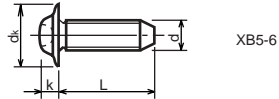
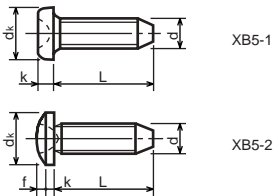
Type No. 類別番号	Type 類別	Head size (mm) 頭部寸法 (mm)	
		M3	M4
XB4-5	Binding head バインド	d _k	6.3 8.3
		k	1.3 1.7
		k+f	1.9 2.5

1-7. General Head Tapping Screws
一般用タッピンねじ



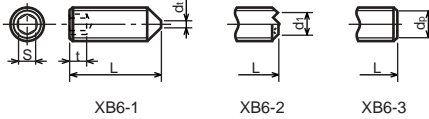
Type No. 類別番号	Type 類別	Head size (mm) 頭部寸法 (mm)						
		M2	M2.5	M2.6	M3	M4	M5	
XB4-6	Pan head なべ	d_k XB4-6	3.5	4.5	4.5	5.5	7	9
		k XB4-6	1.3	1.7	1.7	2	2.6	3.3
XB4-7	Binding head バインド	d_k XB4-7	4.3	5.3	5.5	6.3	8.3	10.3
		$k+f$ XB4-7	1.2	1.5	1.6	1.9	2.5	3.1
XB4-8	Countersunk head さら	d_k XB4-8	4	5	5.2	6	8	10
		k XB4-8	1.2	1.45	1.5	1.75	2.3	2.8

1-8. Tapping Screws for Metallic Materials
金属用タッピンねじ



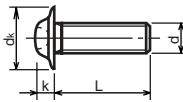
Type No. 類別番号	Type 類別	Head size (mm) 頭部寸法 (mm)					
		M2.5	M2.6	M3	M4	M5	
XB5-1	Pan head なべ	d_k XB5-1	4.5	4.5	5.5	7	9
		k XB5-1	1.7	1.7	2	2.6	3.3
XB5-2	Binding head バインド	d_k XB5-2	5.5	5.5	6.3	8.3	10.3
		$k+f$ XB5-2	1.6	1.6	1.9	2.5	3.1
XB5-6	Flanged pan head つば付きなべ	d_k XB5-6	6.5	6.5	8	10	12
		k XB5-6	2.1	2.1	1.75	3.2	4

1-9. Hexagon Socket Set Screws
六角穴付止めねじ



Type No. 類別番号	Type 類別	Head size (mm) 頭部寸法 (mm)							
		M1.6 M1.7	M2	M2.5 M2.6	M3	M5	M5	M6	
XB6-1	Cone point とがり先	S	0.7	0.9	1.3	1.5	2	2.5	3
		t	1.5	1.7	2	2	2.5	3	3.5
		$d_{t \max}$ XB6-1	0.4	0.5	0.65	0.75	1	1.25	1.5
		$d_{l \max}$ XB6-2	-	1.2	1.5	1.7	2.2	2.8	3.3
		$d_{l \min}$ XB6-2	-	1	1.2	1.4	1.9	2.4	2.9
		$d_{p \max}$ XB6-3	0.8	1	1.5	2	2.5	3.5	4
		$d_{p \min}$ XB6-3	0.55	0.75	1.25	1.75	2.25	3.2	3.7

1-10. Flanged Pan Head Machine Screws
つば付きなべ小ねじ



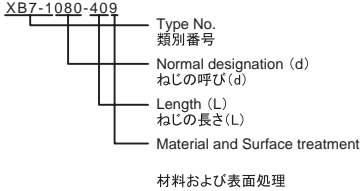
Type No. 類別番号	Type 類別	Head size (mm) 頭部寸法 (mm)					
		M2	M2.5 M2.6	M3	M5	M5	
XB6-7	Flanged pan head つば付きなべ	d_k	5	6.5	8	10	12
		k	1.7	2.1	2.5	3.2	4

FIGURE ZZC MECHANICAL STANDARD PARTS (BOLTS)

2. Bolts (Socket head cap screw) ボルト

How to read Parts Numbers
部品番号の見方

Bolt (Socket head cap screw)
ボルト



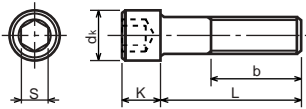
XB7-1 expresses Hexagon socket head cap screws.
XB7-1は、六角穴付きボルトを表す

080 expresses M8.0.
080は、M8.0を表す

40 expresses a length of 40mm.
40は、40mmの長さを表す

9 expresses Steel (Black zinc trivalent chromate treating) from Table 1.
9は、表1より鋼(黒色亜鉛3価クロメート)を表す

2-1. Hexagon socket head cap screws 六角穴付きボルト



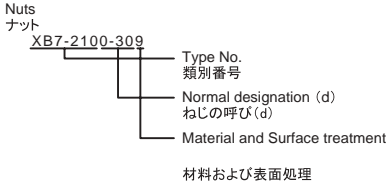
Type No. 類別番号	Type 類別
XB7-1	Hexagon socket head cap screws 六角穴付きボルト

	Head size (mm) 頭部寸法 (mm)						
	M3	M4	M5	M6	M8	M10	M12
S	2.5	3	4	5	6	8	10
d_k	5.5	7	8.5	10	13	16	18
K	3	4	5	6	8	10	12
Screw part length b_{max} ねじ部長さ b_{max}	18	20	22	24	28	32	36

FIGURE ZZD MECHANICAL STANDARD PARTS (NUTS)

3. Nuts ナット

How to read Parts Numbers
部品番号の見方

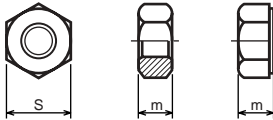


XB7-210 expresses Hexagon nut class 1.
XB7-210は、六角ナット1種を表す

0-30 expresses M3.0.
0-30は、M3.0を表す

9 expresses Steel (Black zinc trivalent chromate treating) from Table 1.
9は、表1より鋼(黒色亜鉛3価クロメート)を表す

3-1. Hexagon Nuts and Hexagon Thin Nuts 六角ナット



Type No. 類別番号	Type 類別
XB7-210	Hexagon nut Class 1 六角ナット-1種
XB7-220	Hexagon nut Class 3 六角ナット-3種
XB7-230	Hexagon nut Style 1 double chamfered 六角ナット-スタイル1-両面とり
XB7-231	Hexagon nut Style 1 washer faced 六角ナット-スタイル1-座付き
XB7-240	Hexagon nut Style 2 double chamfered 六角ナット-スタイル2-両面とり
XB7-241	Hexagon nut Style 2 washer faced 六角ナット-スタイル2-座付き
XB7-250	Hexagon nut 六角ナット
XB7-260	Hexagon thin nut double chamfered 六角低ナット-両面とり
XB7-270	Hexagon thin nut not chamfered 六角低ナット-面とり無し

	Head size (mm) 頭部寸法 (mm)						
	M2	M2.5	M3	M4	M5	M6	M8
S	4	5	5.5	7	8	10	13
m XB7-210	1.6	2	2.4	3.2	4	5	6.5
m XB7-220	1.2	1.6	1.8	2.4	3.2	3.6	5
m XB7-230, 231	1.6	2	2.4	3.2	4.7	5.2	6.8
m XB7-240, 241	-	-	-	-	5.1	5.7	7.5
m XB7-250	-	-	-	-	5.6	6.1	7.9
m XB7-260	1.2	1.6	1.8	2.2	2.7	3.2	4
m XB7-270	1.2	1.6	1.8	2.2	2.7	3.2	4

FIGURE ZZE MECHANICAL STANDARD PARTS (RETAINING RINGS)

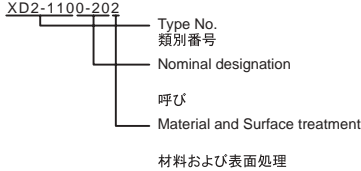
5. Retaining Rings

止め輪

How to read Parts Numbers
部品番号の見方

Retaining Rings

止め輪



XD2-110 expresses retaining ring-E type (Type1).
XD2-110は、E形止め輪(1種)を表す

0-20 expresses a 020 of nominal designation.
(See Table 5)

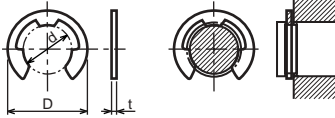
0-20は、呼び020を表す(表5参照)

2 expresses Stainless steel (Surface treatment is not to be given) from Table 1.

2は、表1よりステンレス(表面処理なし)を表す

5-1. Retaining Rings - E type

E形止め輪

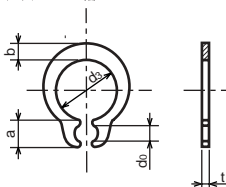


Type No. 類別番号	Type 類別
XD2-110	Retaining ring - E type (Type 1) E形止め輪(1種)
XD2-120	Retaining ring - E type (Type 2) E形止め輪(2種)

Table 5 表5

Type 種類	Nominal designation 呼び	d (mm)	D (mm)	t (mm)
Type 1 1種	007	0.65	2	0.2
	010	0.95	2.8	0.2
	013	1.25	3.3	0.3
	017	1.65	4.2	0.4
	020	1.95	4.6	0.5
	024	2.35	6	0.6
	028	2.74	6.5	0.6
	032	3.14	7.2	0.6
	037	3.64	8	0.7
	040	3.93	10	0.7
	042	4.13	10	0.7
	050	4.93	11	0.7
	058	5.73	12	0.7
	060	5.93	12.7	0.9
	064	6.32	13.5	0.9
	074	7.31	15	0.9
080	7.91	16.5	1	
Type 2 2種	008	0.8	2	0.2
	012	1.2	3	0.3
	015	1.5	4	0.4
	020	2	5	0.4
	025	2.5	6	0.4
	030	3	7	0.6
	040	4	9	0.6
	050	5	11	0.6
	060	6	12	0.8
	070	7	14	0.8
	080	8	16	0.8
	090	9	18	0.8
	100	10	20	1

5-2. Grip Rings
グリップ止め輪

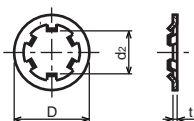


Type No. 類別番号	Type 類別
XD2-210	Grip ring グリップ止め輪

Table 5 表5

Nominal designation 呼び	d_3 (mm)	t (mm)	b (mm)	a (mm)	d_0 (mm)
020	1.9	0.5	1	1.8	0.8
025	2.35	0.5	1.2	1.9	0.9
030	2.85	0.6	1.4	1.9	0.9
035	3.3	0.6	1.6	2	0.9
040	3.8	0.8	1.8	2.8	1.2
045	4.25	0.8	2	2.9	1.3
050	4.75	0.8	2.2	2.9	1.3
060	5.7	1	2.4	3.1	1.4
070	6.7	1	2.7	3.3	1.4
080	7.7	1	3	3.5	1.4
090	8.65	1.2	3.3	4.7	1.5
100	9.65	1.2	3.5	4.7	2

5-3. Toothed Retaining Rings
歯付き形止め輪



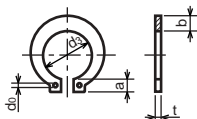
Type No. 類別番号	Type 類別
XD2-230	Toothed retaining ring 歯付き形止め輪

Table 5 表5

Nominal designation 呼び	d_z (mm)	D (mm)	t (mm)	No of teeth 歯数
015	1.4	5.2	0.25	3
020	1.9	6	0.25	3
024	2.3	6.4	0.25	3
030	2.8	8	0.25	4
040	3.8	9	0.25	4
050	4.8	10	0.25	5
060	5.8	11	0.25	5
080	7.8	13	0.25	5
100	9.8	15.4	0.25	6

5-4. Retaining Rings - C Type

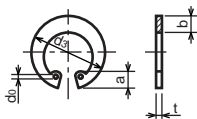
C形止め輪



Type No. 類別番号	Type 類別
XD2-310	Retaining ring - C type for shaft C形止め輪 軸用

Table 5 表5

Nominal designation 呼び	d _s (mm)	t (mm)	b (mm)	a (mm)	d ₀ (mm)
010	9.3	1	1.6	3	1.2
012	11.1	1	1.8	3.2	1.5
014	12.9	1	2	3.4	1.7
015	13.8	1	2.1	3.5	1.7
016	14.7	1	2.2	3.6	1.7
017	15.7	1	2.2	3.7	1.7
018	16.5	1.2	2.6	3.8	1.7
020	18.5	1.2	2.7	3.9	2
022	20.5	1.2	2.7	4.1	2
025	23.2	1.2	3.1	4.3	2
028	25.9	1.5	3.1	4.6	2
030	27.9	1.5	3.5	4.8	2
032	29.6	1.5	3.5	5	2.5
035	32.2	1.5	4	5.4	2.5



Type No. 類別番号	Type 類別
XD2-320	Retaining ring - C type for hole C形止め輪 穴用

Table 5 表5

Nominal designation 呼び	d _s (mm)	t (mm)	b (mm)	a (mm)	d ₀ (mm)
010	10.7	1	1.8	3.1	1.2
011	11.8	1	1.8	3.2	1.2
012	13	1	1.8	3.3	1.5
014	15.1	1	2	3.6	1.7
016	17.3	1	2	3.7	1.7
018	19.5	1	2.5	4	1.7
019	20.5	1	2.5	4	2
020	21.5	1	2.5	4	2
022	23.5	1	2.5	4.1	2
025	26.9	1.2	3	4.4	2
028	30.1	1.2	3	4.6	2
030	32.1	1.2	3	4.7	2
032	34.4	1.2	3.5	5.2	2.5
035	37.8	1.5	3.5	5.2	2.5
037	39.8	1.5	3.5	5.2	2.5
040	43.5	1.8	4	5.7	2.5
042	45.5	1.8	4	5.8	2.5
045	48.5	1.8	4.5	5.9	2.5
047	50.5	1.8	4.5	6.1	2.5
050	54.2	2	4.5	6.5	2.5
052	56.2	2	5.1	6.5	2.5
055	59.2	2	5.1	6.5	2.5
060	64.2	2	5.1	6.8	2.5
062	66.2	2	5.5	6.9	2.5
068	72.5	2.5	6	7.4	2.5
072	76.5	2.5	6.6	7.4	2.5
075	79.5	2.5	6.6	7.8	2.5
080	85.5	2.5	7	8	2.5
085	90.5	3	7	8	3
090	95.5	3	7.6	8.3	3
095	100.5	3	8	8.5	3

Prepared by
OIP Business Support Group
CANON INC.

Canon