

# Parts catalog

## Legend

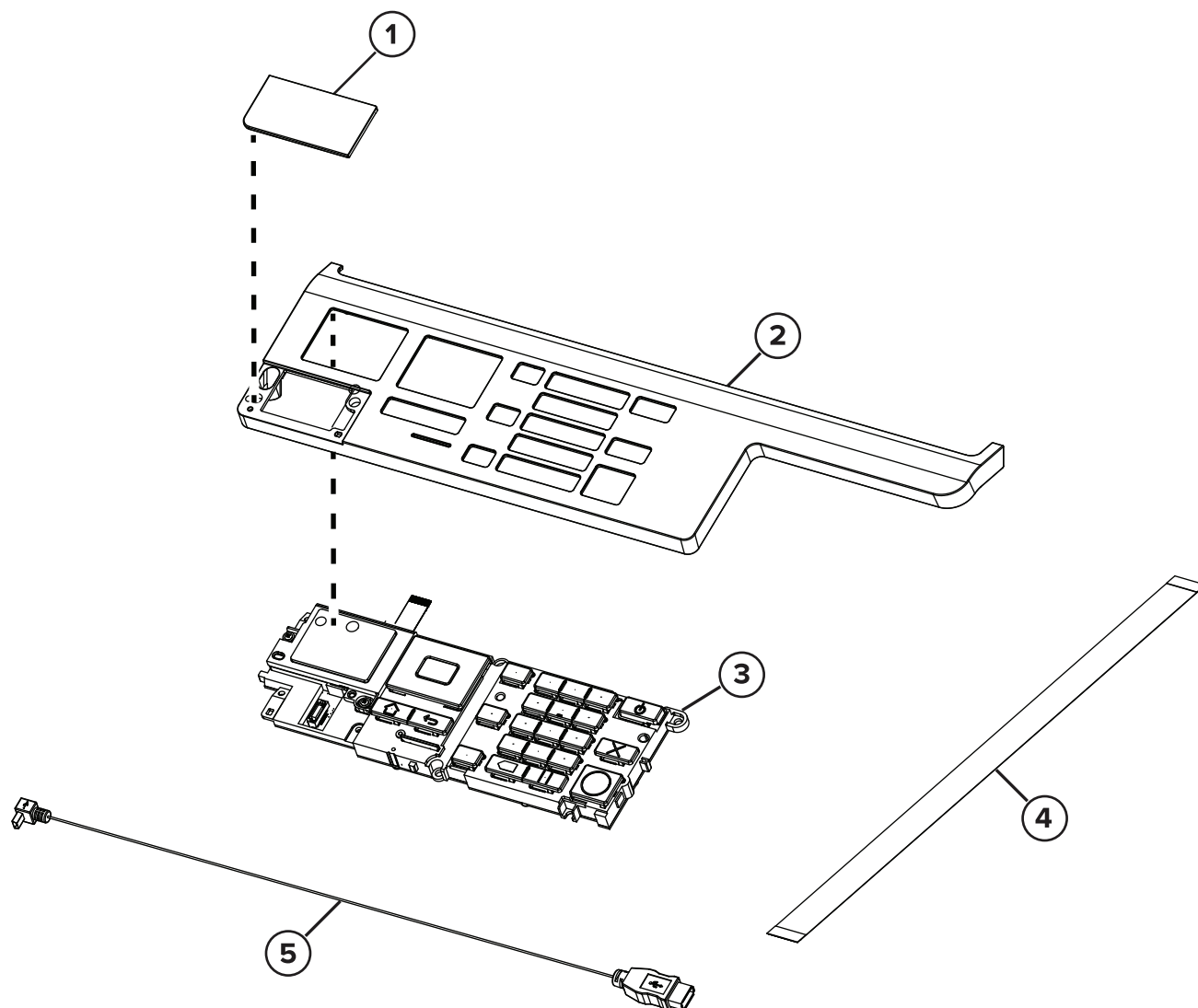
The following column headings are used in the parts catalog:

- **Asm-index**—Identifies the item in the illustration
- **P/N**—Identifies the part number of a FRU
- **Units/mach**—Refers to the number of units in a printer
- **Units/opt**—Refers to the number of units in an option
- **Units/FRU**—Refers to the number of units in a FRU
- **Description**—A brief description of the part

The following abbreviations are used in the parts catalog:

- **NS** (not shown) in the Asm-index column indicates that the part is procurable but is not shown in the illustration.
- **PP** (parts packet) in the Description column indicates that the part is contained in a parts packet.

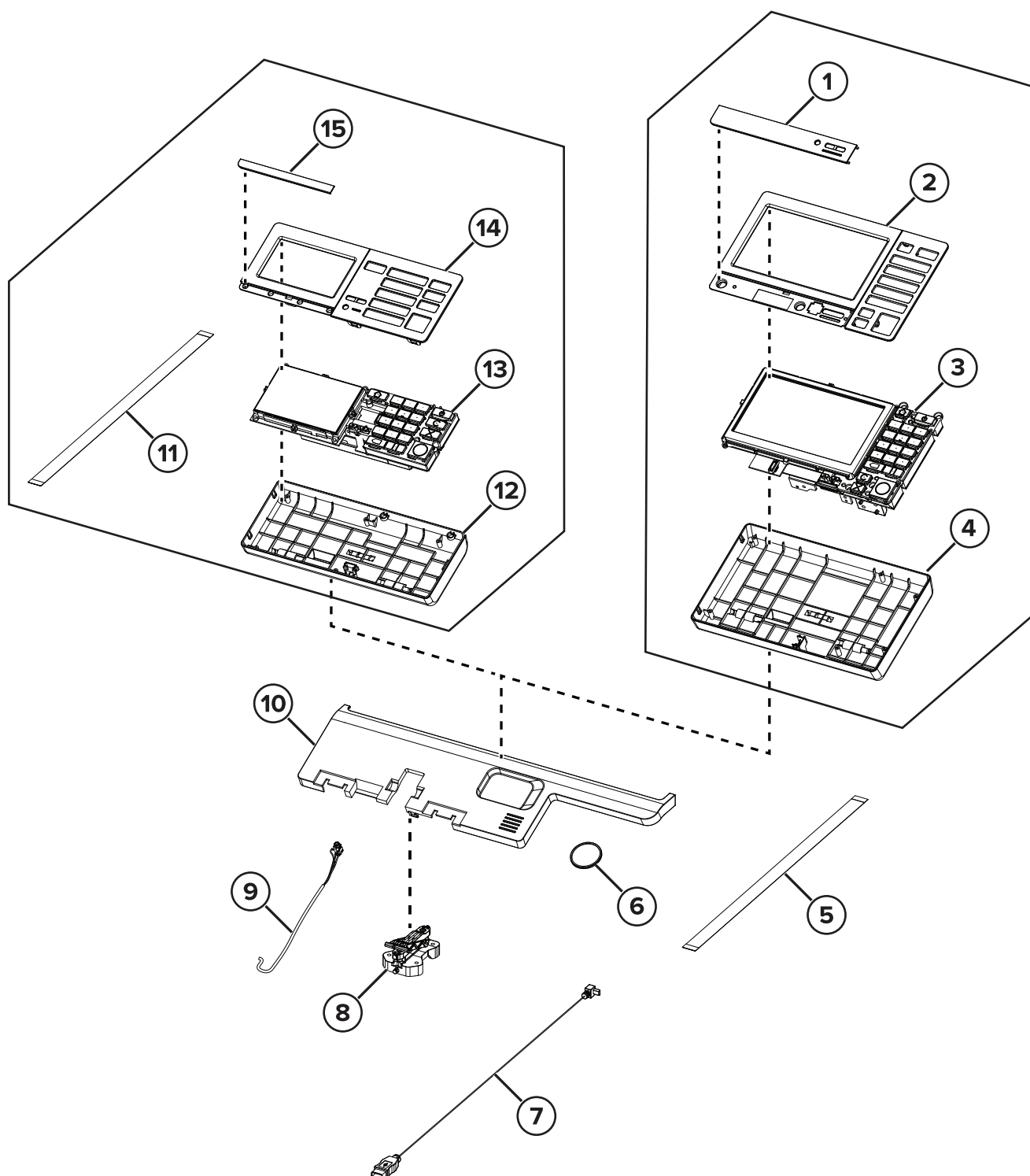
## Assembly 1: 2.4-inch control panel



## Assembly 1: 2.4-inch control panel

Asm-index	P/N	Units/mach	Units/FRU	Description	Removal procedure
1	41X2056	1	1	MC2325 control panel badge cover	<a href="#">“2.4-inch control panel badge cover removal” on page 328</a>
1	41X2131	1	1	MC2425 control panel badge cover	<a href="#">“2.4-inch control panel badge cover removal” on page 328</a>
1	41X2057	1	1	CX321 control panel badge cover	<a href="#">“2.4-inch control panel badge cover removal” on page 328</a>
1	41X2065	1	1	CX421 control panel badge cover	<a href="#">“2.4-inch control panel badge cover removal” on page 328</a>
2	41X1044	1	1	2.4-inch control panel top cover	<a href="#">“2.4-inch control panel top cover and control panel removal” on page 331</a>
3	41X1368	1	1	2.4-inch control panel assembly	<a href="#">“2.4-inch control panel top cover and control panel removal” on page 331</a>
4	41X2024	1	1	2.4-inch control panel ribbon cable	<a href="#">“2.4-inch control panel top cover and control panel removal” on page 331</a>
5	41X2023	1	1	USB cable	--

## Assembly 2: 4.3-inch and 7-inch control panel



## Assembly 2: 4.3-inch and 7-inch control panel

Asm-index	P/N	Units/mach	Units/FRU	Description	Removal procedure
1	41X2128	1	1	CX625 control panel badge cover	<a href="#">“7-inch control panel badge cover removal” on page 329</a>
1	41X2129	1	1	XC4240 control panel badge cover	<a href="#">“7-inch control panel badge cover removal” on page 329</a>
2	41X0543	1	1	7-inch control panel bezel (CX625 and XC2420)	<a href="#">“7-inch control panel bezel removal” on page 330</a>
3	41X0051	1	1	7-inch control panel assembly (CX625 and XC2420)	<a href="#">“7-inch control panel removal” on page 336</a>
4	41X1048	1	1	7-inch control panel base cover (CX625 and XC2420)	<a href="#">“7-inch control panel removal” on page 336</a>
5	41X2025	1	1	7-inch control panel ribbon cable (CX625 and XC2420)	<a href="#">“7-inch control panel removal” on page 336</a>
6	40X6517	1	1	Speaker (MC2325, CX421, and MC2425)	<a href="#">“Speaker (MC2325, CX421, MC2425) removal” on page 337</a>
6	41X1311	1	1	Speaker (CX522, CX622, CX625, XC2235, XC4240, MC2325, MC2425, MC2535, and MC2640)	<a href="#">“Speaker (CX522, CX622, CX625, XC2235, XC4240, MC2535, MC2640) removal” on page 338</a>
7	41X2023	1	1	USB cable	--
8	41X1047	1	1	Control panel rotation arm	--
9	41X2306	1	1	Headphone cable with clip	--
10	41X1045	1	1	Scanner top front cover	--
11	41X2024	1	1	4.3-inch control panel ribbon cable (CX522, CX622, MC2535, and XC2235)	<a href="#">“4.3-inch control panel removal” on page 335</a>
12	41X1046	1	1	4.3-inch control panel base cover (CX522, CX622, MC2535, and XC2235)	--
13	41X1359	1	1	4.3-inch control panel assembly (CX522, CX622, MC2535, and XC2235)	<a href="#">“4.3-inch control panel removal” on page 335</a>
14	41X1727	1	1	4.3-inch control panel bezel (CX522, CX622, MC2535, and XC2235)	<a href="#">“4.3-inch control panel bezel removal” on page 329</a>
15	41X2130	1	1	MC2535 control panel badge cover	<a href="#">“4.3-inch control panel badge cover removal” on page 328</a>
15	41X2058	1	1	CX522 control panel badge cover	<a href="#">“4.3-inch control panel badge cover removal” on page 328</a>

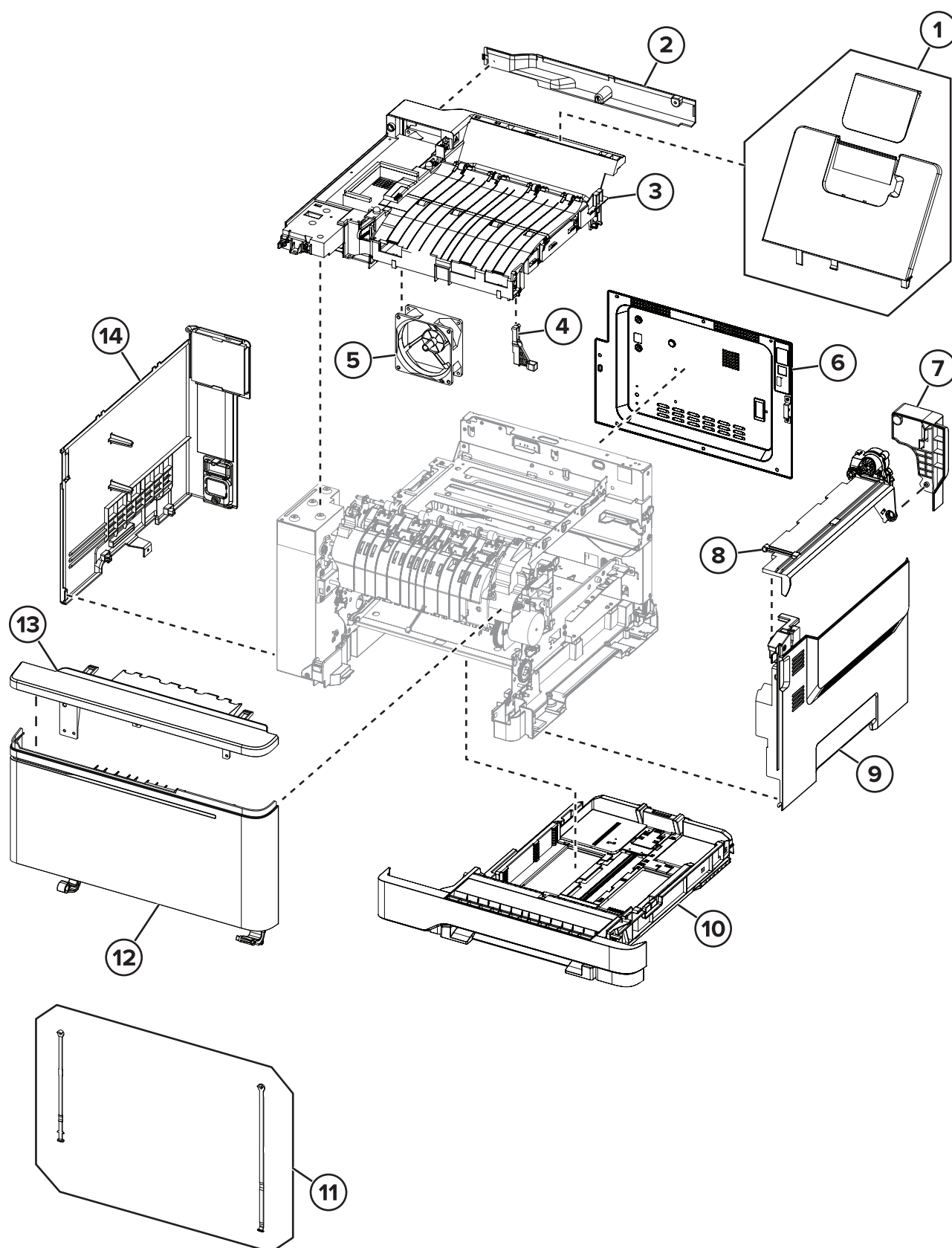
Asm-index	P/N	Units/mach	Units/FRU	Description	Removal procedure
15	41X2059	1	1	XC2235 control panel badge cover	<a href="#">“4.3-inch control panel badge cover removal” on page 328</a>
15	41X2067	1	1	CX622 control panel badge cover	<a href="#">“4.3-inch control panel badge cover removal” on page 328</a>
NS	41X1731	1	1	Front bracket cover	<a href="#">“Front bracket cover removal” on page 337</a>
NS	41X2022	1	1	Control panel power cable	--







## Assembly 3: Covers

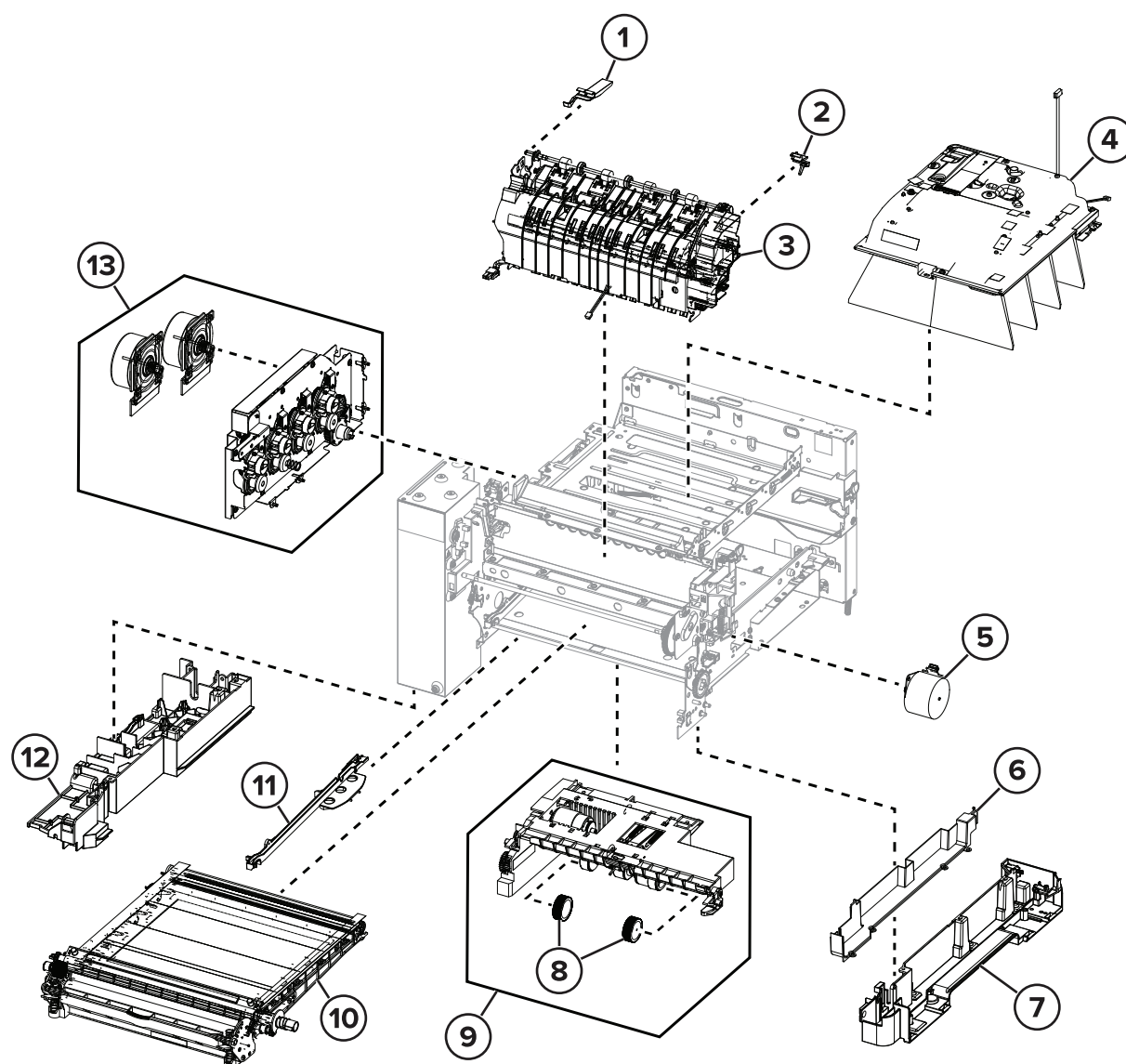


## Assembly 3: Covers

Asm-index	P/N	Units/mach	Units/FRU	Description	Removal procedure
1	41X1295	1	1	Output bin	<a href="#">“Output bin and paper bail removal” on page 381</a>
2	41X1288	1	1	MFP cable cover	--
3	41X1284	1	1	Top cover with fan	<a href="#">“Top cover removal” on page 377</a>
4	41X2114	1	1	Front toner door pivot bracket	<a href="#">“Flatbed pivot link (front left) removal” on page 415</a>
5	41X0397	1	1	System fan	<a href="#">“System fan removal” on page 371</a>
6	41X1787	1	1	Rear cover (CX622, CX625, MC2640, and XC4240)	<a href="#">“Rear cover removal” on page 373</a>
6	41X2101	1	1	Rear cover (CX522 and MC2535)	<a href="#">“Rear cover removal” on page 373</a>
6	41X2102	1	1	Rear cover (CX421 and MC2425)	<a href="#">“Rear cover removal” on page 373</a>
6	41X2104	1	1	Rear cover (CX321 and MC2325)	<a href="#">“Rear cover removal” on page 373</a>
7	41X1296	1	1	MFP link	<a href="#">“MFP link removal” on page 384</a>
8	41X1049	1	1	Toner cover with damper	<a href="#">“MFP toner cover removal” on page 383</a>
9	40X7823	1	1	Right cover	<a href="#">“Right cover removal” on page 299</a>
10	41X1285	1	1	250-sheet tray	--
11	40X7619	1	2	Door straps	--
12	41X1286	1	1	Front door	<a href="#">“Front door removal” on page 322</a>
13	41X1287	1	1	Front middle cover	<a href="#">“Front middle cover removal” on page 326</a>
14	41X1291	1	1	Left cover	<a href="#">“Left cover removal” on page 289</a>



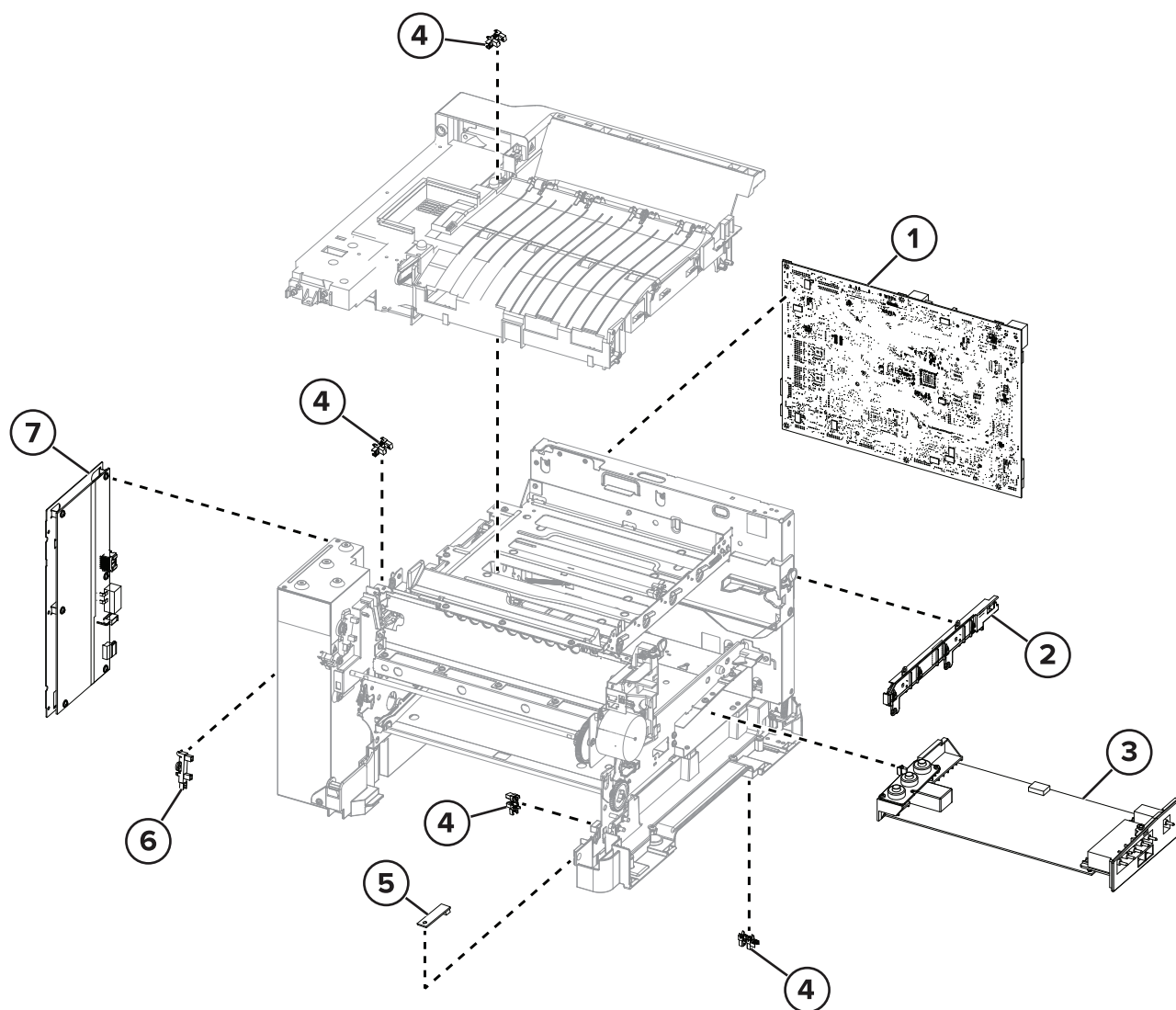
## Assembly 4: Paper path and frame



## Assembly 4: Paper path and frame

Asm-index	P/N	Units/mach	Units/FRU	Description	Removal procedure
1	41X2307	1	1	Narrow media sensor flag	<a href="#">“Narrow media sensor flag removal” on page 388</a>
2	40X8819	1	1	Right fuser deflector	<a href="#">“MFP fuser deflector flag removal” on page 386</a>
3	41X1041	1	1	110 V Fuser	<a href="#">“Fuser removal” on page 342</a>
3	41X1300	1	1	220 V Fuser	<a href="#">“Fuser removal” on page 342</a>
3	41X1299	1	1	100 V Fuser	<a href="#">“Fuser removal” on page 342</a>
4	41X1040	1	1	Printhead	<a href="#">“Printhead removal” on page 389</a>
5	40X7629	1	1	Motor (fuser drive)	<a href="#">“Motor (fuser drive) removal” on page 300</a>
6	41X2327	1	1	Subframe cable cover	--
7	41X1312	1	1	Lower right subframe	<a href="#">“Lower right frame removal” on page 357</a>
8	40X5168	2	2	Pick tires	<a href="#">“Pick tires removal” on page 347</a>
9	41X1292	1	1	Media feeder	<a href="#">“Tray 1 media feeder removal” on page 368</a>
10	41X1039	1	1	Transfer module	<a href="#">“Transfer module removal” on page 312</a>
11	41X0580	1	1	Transfer module guide	<a href="#">“Transfer module guide removal” on page 364</a>
12	41X2326	1	1	Lower left subframe	<a href="#">“Lower left frame removal” on page 349</a>
13	41X1289	1	1	EP drive assembly	<a href="#">“EP drive assembly removal” on page 291</a>
NS	41X2360	4	4	Sub-frame foot	--

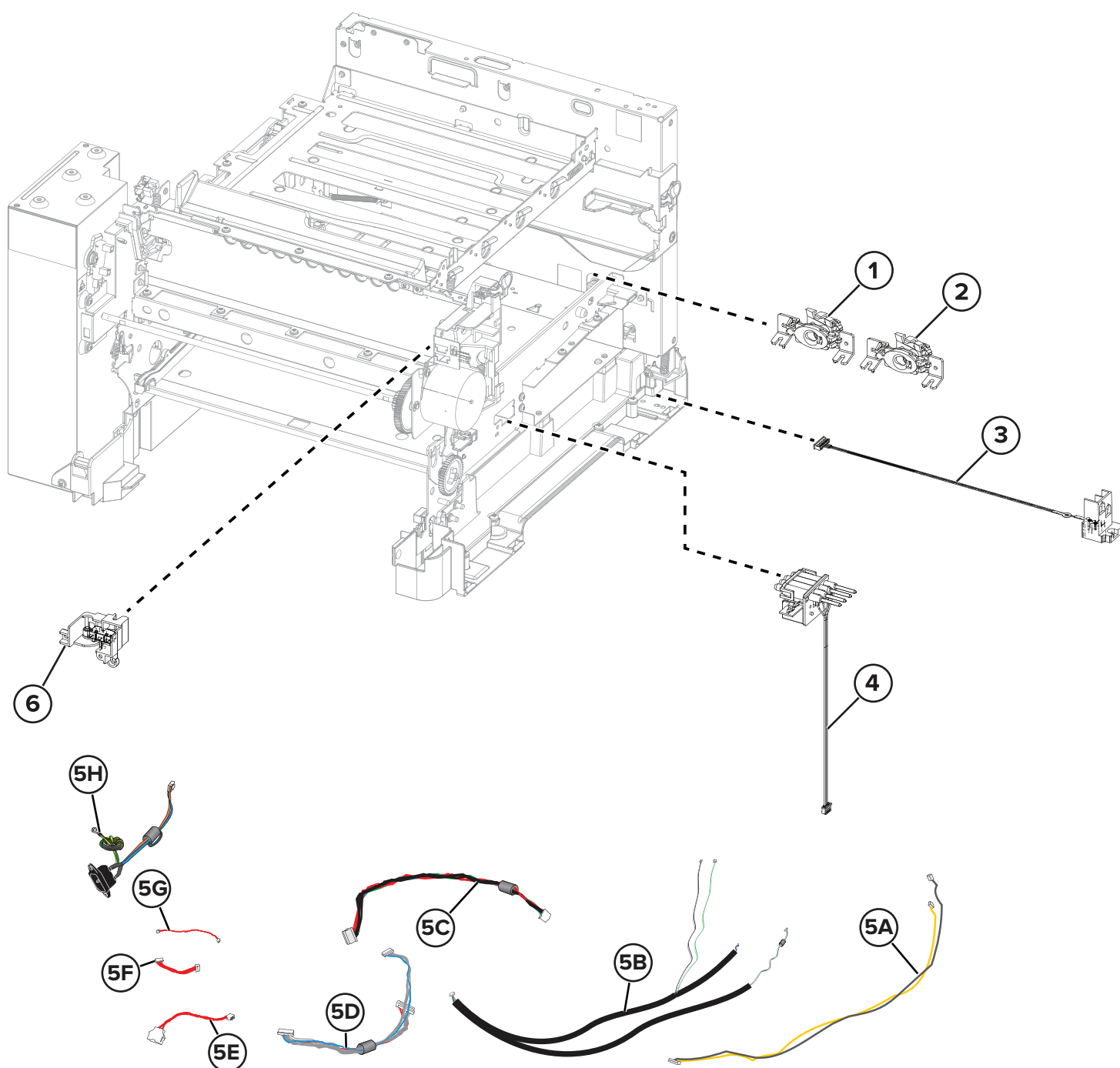
## Assembly 5: Electronics



## Assembly 5: Electronics

Asm-index	P/N	Units/mach	Units/FRU	Description	Removal procedure
1	41X1785	1	1	Controller board (CX321, MC2325, CX421, and MC2425)	<a href="#">“Controller board removal” on page 375</a>
1	41X2099	1	1	Controller board (CX522 and MC2535)	<a href="#">“Controller board removal” on page 375</a>
1	41X1786	1	1	Controller board (CX622, CX625, MC2640, and XC4240)	<a href="#">“Controller board removal” on page 375</a>
2	40X7620	1	1	Toner meter card	<a href="#">“TMC card removal” on page 301</a>
3	41X1042	1	1	High-voltage power supply	<a href="#">“HVPS removal” on page 307</a>
4	40X7301	4	1	Photo sensors: <ul style="list-style-type: none"> <li>• Sensor (tray present)</li> <li>• Sensor (duplex)</li> <li>• Sensor (bin full/narrow media)</li> </ul>	<a href="#">“Sensor (tray present) removal” on page 367</a> <a href="#">“Sensor (duplex) removal” on page 363</a> <a href="#">“Sensor (narrow media) removal” on page 387</a>
5	41X1290	1	1	Weather station	<a href="#">“Weather station removal” on page 338</a>
6	40X5413	1	1	Sensor (fuser exit)	<a href="#">“Sensor (fuser exit) removal” on page 296</a>
7	41X1043	1	1	Low-voltage power supply (170 W)	<a href="#">“LVPS removal” on page 294</a>

## Assembly 6: Cables and sensors

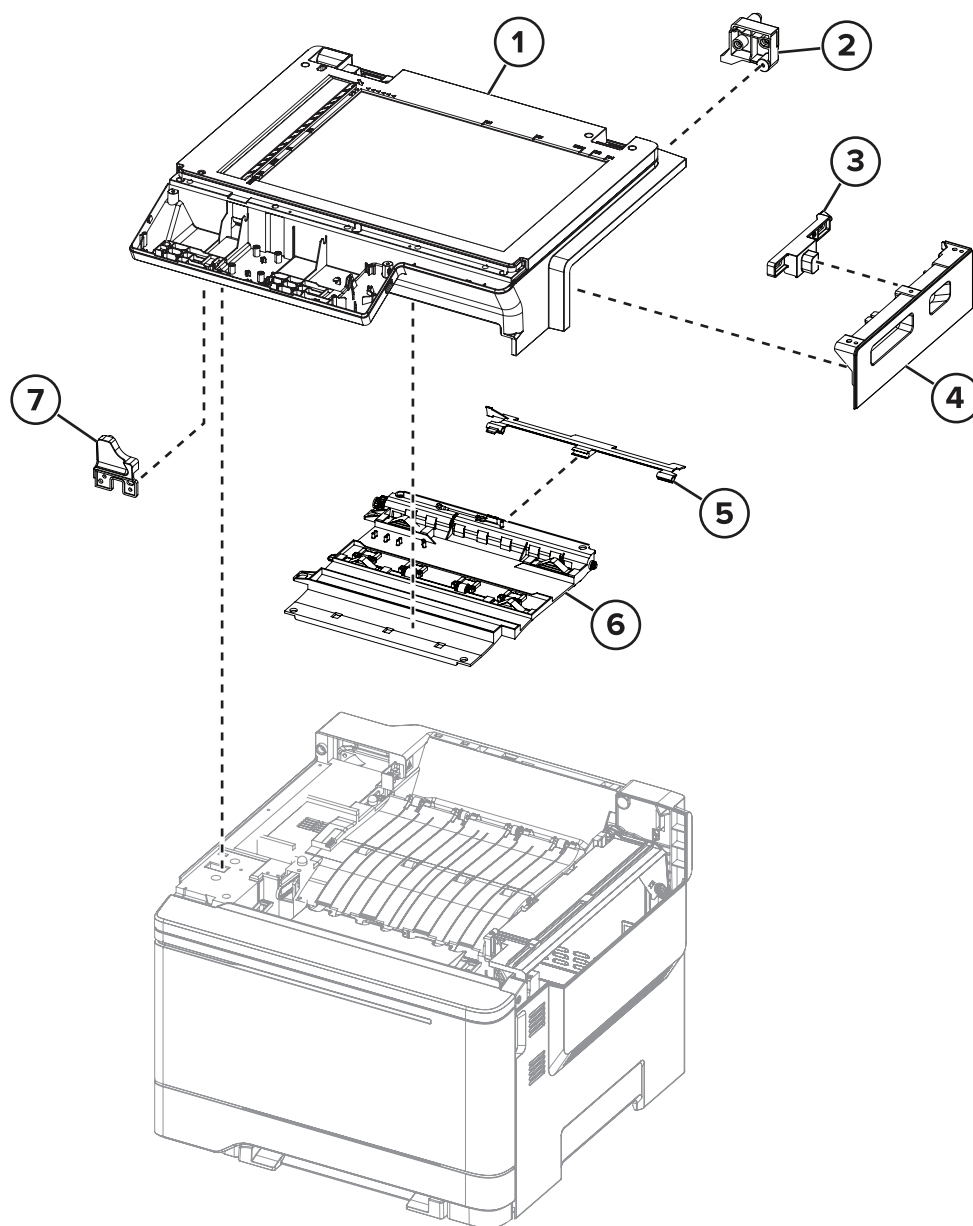




## Assembly 6: Cables and sensors

Asm-index	P/N	Units/mach	Units/FRU	Description	Removal procedure
1	41X1904	1	1	Sensor (left toner patch with thermistor)	<a href="#">“Sensors (toner patch) removal” on page 304</a>
2	41X2348	1	1	Sensor (right toner patch with thermistor)	<a href="#">“Sensors (toner patch) removal” on page 304</a>
3	41X1722	1	1	Waste toner bottle contact block	<a href="#">“Waste toner bottle contact block removal” on page 321</a>
4	41X1723	4	1	Toner cartridge contact	<a href="#">“Toner cartridge contacts removal” on page 318</a>
5A	41X2328	1	1	Fuser exit narrow media to controller board	--
5B	41X2329	1	1	Fuser/input sensor cable	--
5C	41X2332	1	1	LVPS to controller board cable	--
5D	41X2330	1	1	EP motor to controller board cable	--
5E	41X2335	1	1	Tray 2 to controller board cable	--
5F	41X2334	1	1	HVPS to controller board cable	--
5G	41X2336	1	1	Tray present sensor cable	--
5H	41X2331	1	1	AC power to LVPS cable	--
6	41X1561	1	1	Front and right side interlock switch cover assembly	<a href="#">“Interlock switch cover assembly removal” on page 326</a>
NS	41X2333	1	1	Weather station cable	<a href="#">“Weather station removal” on page 338</a>

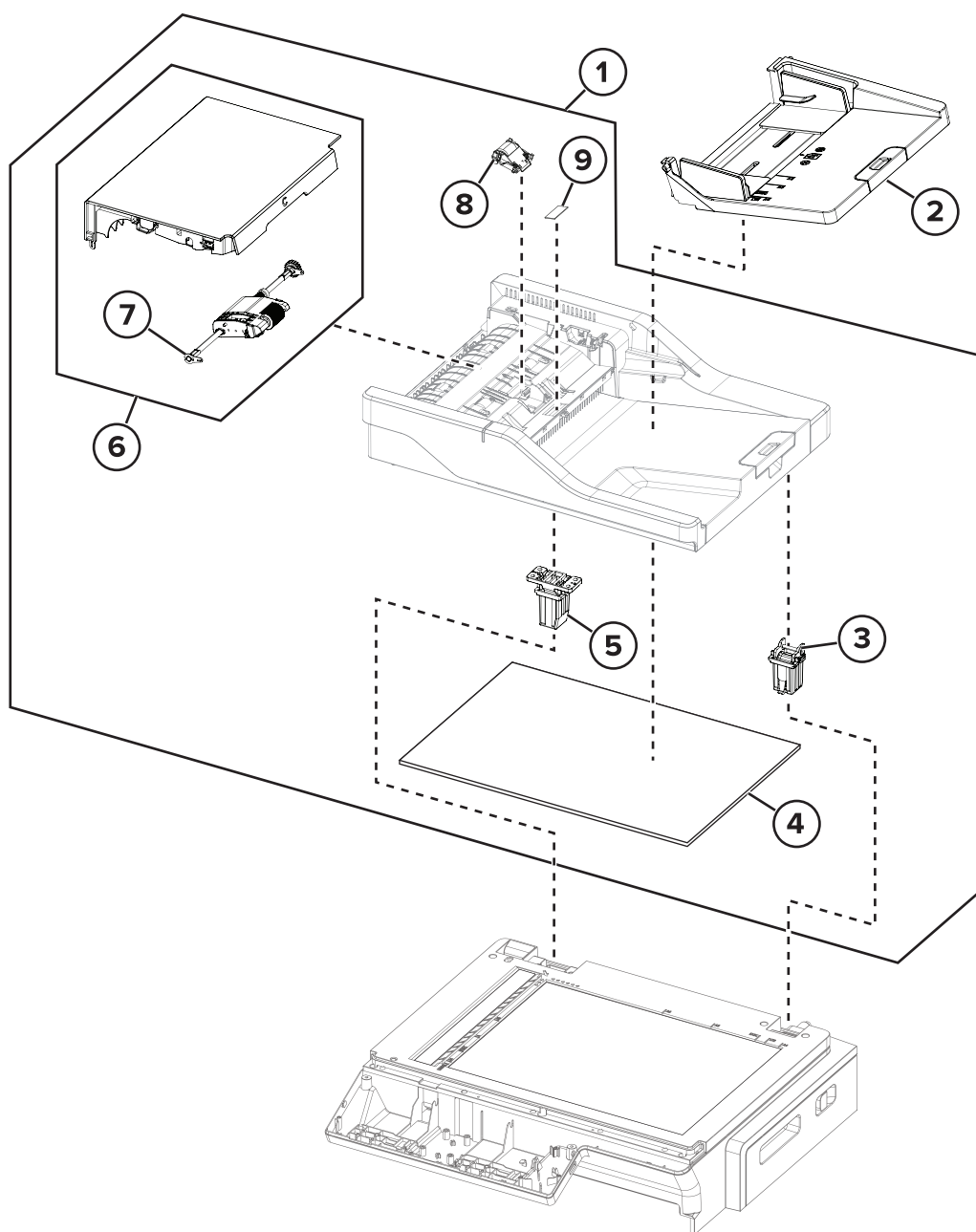
## Assembly 7: Scanner



## Assembly 7: Scanner

Asm-index	P/N	Units/mach	Units/FRU	Description	Removal procedure
1	41X1294	1	1	Flatbed scanner assembly (CX321, MC2325, CX421, MC2425, CX522, and MC2535)	<a href="#">“Flatbed scanner assembly removal” on page 409</a>
1	41X2071	1	1	Flatbed scanner assembly (CX622, CX625, MC2640, and XC4240)	<a href="#">“Flatbed scanner assembly removal” on page 409</a>
2	41X1282	1	1	Flatbed pivot link (rear right)	<a href="#">“Flatbed pivot link (rear right) removal” on page 414</a>
3	41X1560	1	1	Release lever	<a href="#">“Release lever removal” on page 385</a>
4	41X1281	1	1	Scanner right cover	<a href="#">“Scanner right cover removal” on page 408</a>
5	41X2126	1	1	Bin full flag	<a href="#">“Bin full flag removal” on page 386</a>
6	41X1559	1	1	Redrive unit	<a href="#">“Redrive unit removal” on page 391</a>
7	41X1283	1	1	Flatbed pivot link (front left)	<a href="#">“Flatbed pivot link (front left) removal” on page 415</a>
NS	40X2252	2	2	Redrive spacer screws	--

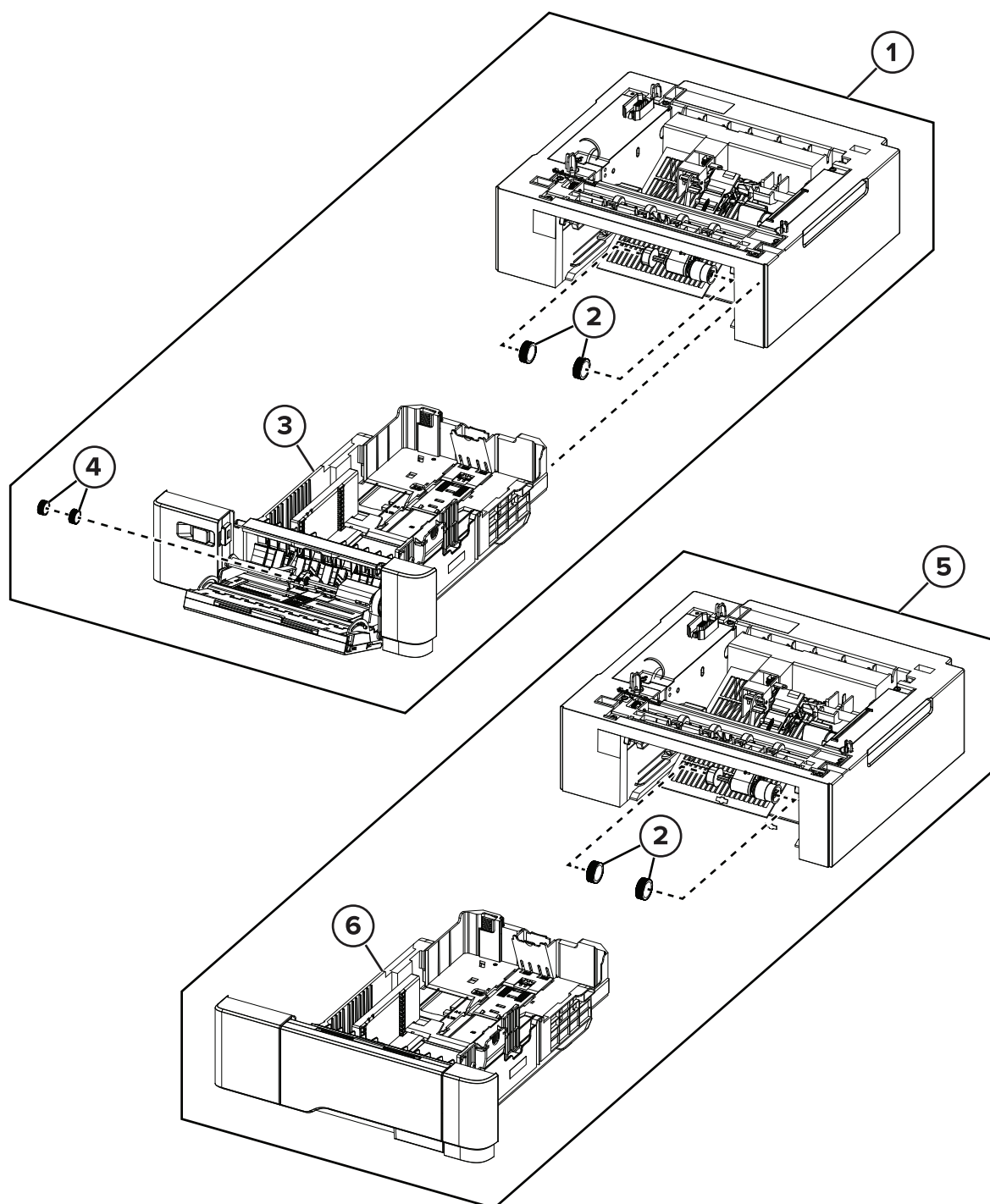
## Assembly 8: ADF



## Assembly 8: ADF

Asm-index	P/N	Units/mach	Units/FRU	Description	Removal procedure
1	41X1276	1	1	ADF assembly (CX421, MC2425, CX522, and MC2535)	<a href="#">“ADF assembly removal (SADF/RADF)” on page 392</a>
1	41X1293	1	1	ADF assembly (CX622, CX625, MC2640, and XC4240)	<a href="#">“ADF assembly removal (DADF)” on page 395</a>
1	41X1275	1	1	ADF assembly (CX321 and MC2325)	<a href="#">“ADF assembly removal (SADF/RADF)” on page 392</a>
2	41X1333	1	1	ADF tray (CX321, MC2325, CX421, MC2425, CX522, and MC2535)	<a href="#">“ADF tray removal” on page 401</a>
2	41X1335	1	1	ADF tray (CX622, CX625, MC2640, and XC4240)	<a href="#">“ADF tray removal” on page 401</a>
3	40X8734	1	1	ADF right hinge	--
4	41X1974	1	1	Flatbed cushion	--
5	40X8735	1	1	ADF left hinge	--
6	41X2116	1	1	ADF top cover assembly (CX321 and MC2325)	<a href="#">“ADF top cover removal” on page 404</a>
6	41X2117	1	1	ADF top cover assembly (CX622, CX625, MC2640, and XC4240)	<a href="#">“ADF top cover removal” on page 404</a>
6	41X2118	1	1	ADF top cover assembly (CX421, MC2425, CX522, and MC2535)	<a href="#">“ADF top cover removal” on page 404</a>
7	40X8736	1	1	ADF pick roller (CX321, MC2325, CX421, MC2425, CX522, and MC2535)	--
7	41X1326	1	1	ADF pick roller (CX622, CX625, MC2640, and XC4240)	--
8	40X6247	1	1	ADF separator pad (CX321 and MC2325)	<a href="#">“ADF separator pad removal” on page 403</a>
8	41X0917	1	1	ADF separator roller (CX421, MC2425, CX522, and MC2535)	<a href="#">“ADF separator roller removal” on page 402</a>
8	41X1325	1	1	ADF separator roller (CX622, CX625, MC2640, and XC4240)	<a href="#">“ADF separator roller removal” on page 402</a>
9	41X1973	1	1	ADF restraint pad (CX321, MC2325, CX421, MC2425, CX522, and MC2535)	--
9	41X1322	1	1	ADF restraint pad (CX622, CX625, MC2640, and XC4240)	--
NS	41X2159	1	1	ADF FFC guide	--

## Assembly 9: Option trays



## Assembly 9: Option trays

Asm-index	P/N	Units/mach	Units/FRU	Description	Removal procedure
1	41X1783	1	1	Optional 650-sheet duo tray	<a href="#">“650-sheet duo tray removal” on page 418</a>
2	40X5168	2	2	Pick tires	<a href="#">“Pick tire removal” on page 420</a>
3	41X1784	1	1	650-sheet duo tray insert	<a href="#">“650-sheet duo tray insert removal” on page 417</a>
4	40X7178	2	1	650-sheet duo tray MPF rollers	--
5	41X1780	1	1	550-sheet tray	--
6	41X1781	1	1	550-sheet tray insert	--

## Assembly 10: Miscellaneous

Asm-index	P/N	Units/mach	Units/FRU	Description	Removal procedure
NS	41X2096	1	1	115 V Fuser maintenance kit	--
NS	41X2097	1	1	230 V Fuser maintenance kit	--
NS	41X2095	1	1	100 V Fuser maintenance kit	--
NS	40X9934	1	1	320 GB SATA hard disk drive	--
NS	41X1373	1	1	SATA hard disk drive with FIPS	--
NS	41X1873	1	1	Wireless network card cardlet without cable	--
NS	41X1871	1	1	1 port vertical fax card	--
NS	40X4823	1	1	1284-B THCK parallel adapter	--
NS	41X1945	1	1	N8230 fiber ISP with side cover adapter	--
NS	41X1946	1	1	N8230 fiber ISP with backpack adapter	--
NS	41X1013	1	1	Simplified Chinese font card	--
NS	41X1014	1	1	Traditional Chinese font card	--
NS	41X1015	1	1	Korean font card	--
NS	41X1016	1	1	Japanese font card	--
NS	41X1010	1	1	256 MB flash card	--
NS	41X2055	1	1	Security element smart card with interconnect	--
NS	41X0020	1	1	Serial ISP with backpack adapter	--
NS	41X0997	1	1	Contact front solutions module	--
NS	41X0998	1	1	Contactless front solutions module	--
NS	41X0045	1	1	English keyboard	--
NS	41X0046	1	1	French keyboard	--
NS	41X0048	1	1	German keyboard	--
NS	41X0049	1	1	Spanish keyboard	--
NS	41X2033	1	1	PCIe 8 GB x32 DDP RAM card	--
NS	41X2302	1	1	Braille label kit	--
NS	41X0357	1	1	110 V surge protector	--
NS	41X0370	1	1	220 V surge protector	--
NS	40X1367	1	1	10 ft. parallel cable	--
NS	40X1368	1	1	USB cable	--
NS	40X7648	1	1	Screws parts pack	--
NS	40X7652	1	1	Spring kit	--



Asm-index	P/N	Units/mach	Units/FRU	Description	Removal procedure
NS	3085348	1	N/A	Software and document CD <b>Note:</b> This part number is for internal use only and is not available for order.	--
NS	41X2055	1	1	Smart card	--