

# Parts catalog

## Legend

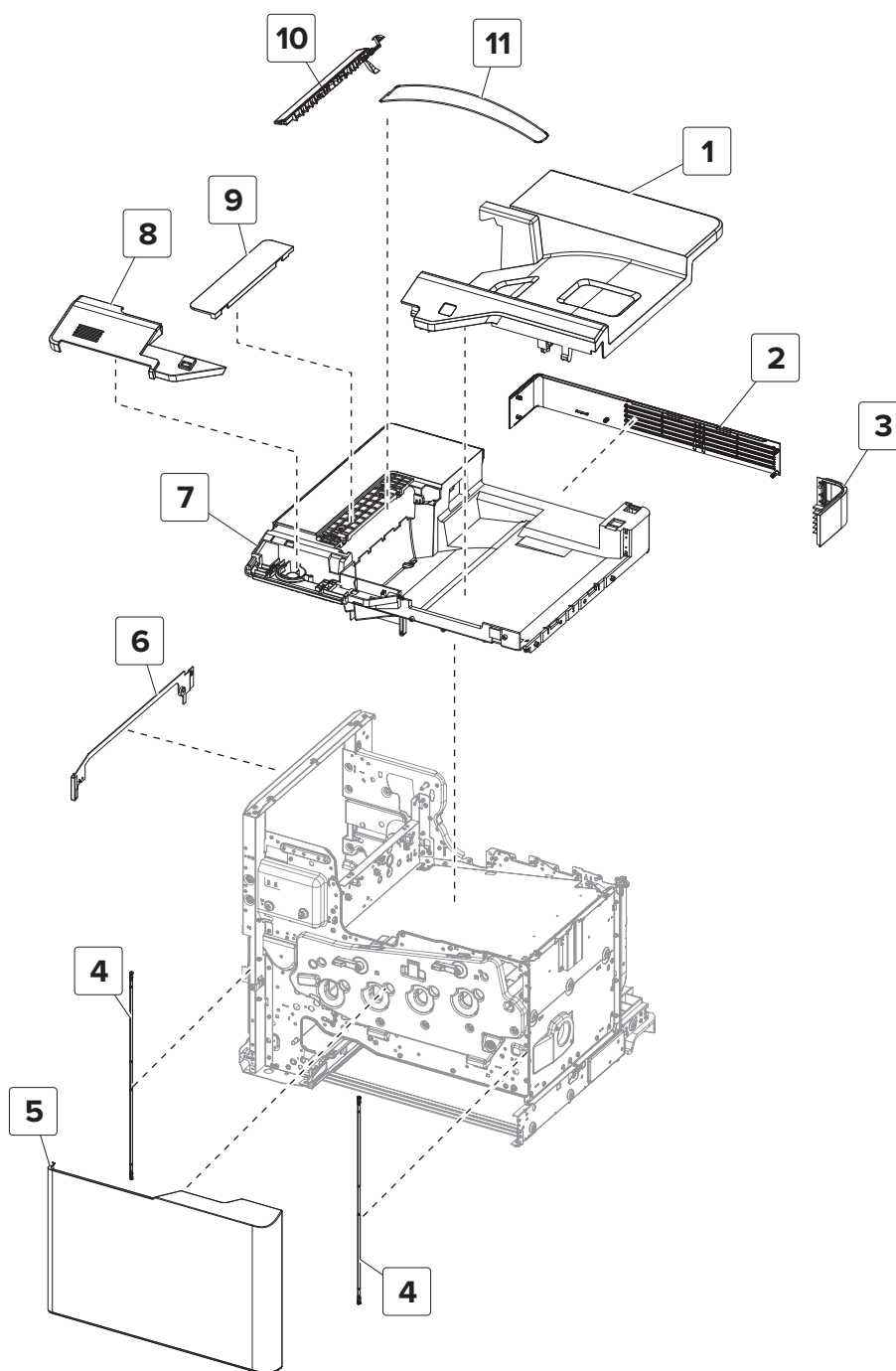
The following column headings are used in the parts catalog:

- **Asm-index**—Identifies the item in the illustration
- **P/N**—Identifies the part number of a FRU
- **Units/mach**—Refers to the number of units in a printer
- **Units/opt**—Refers to the number of units in an option
- **Units/FRU**—Refers to the number of units in a FRU
- **Description**—A brief description of the part

The following abbreviations are used in the parts catalog:

- **NS** (not shown) in the Asm-index column indicates that the part is procurable but is not shown in the illustration.
- **PP** (parts packet) in the Description column indicates that the part is contained in a parts packet.

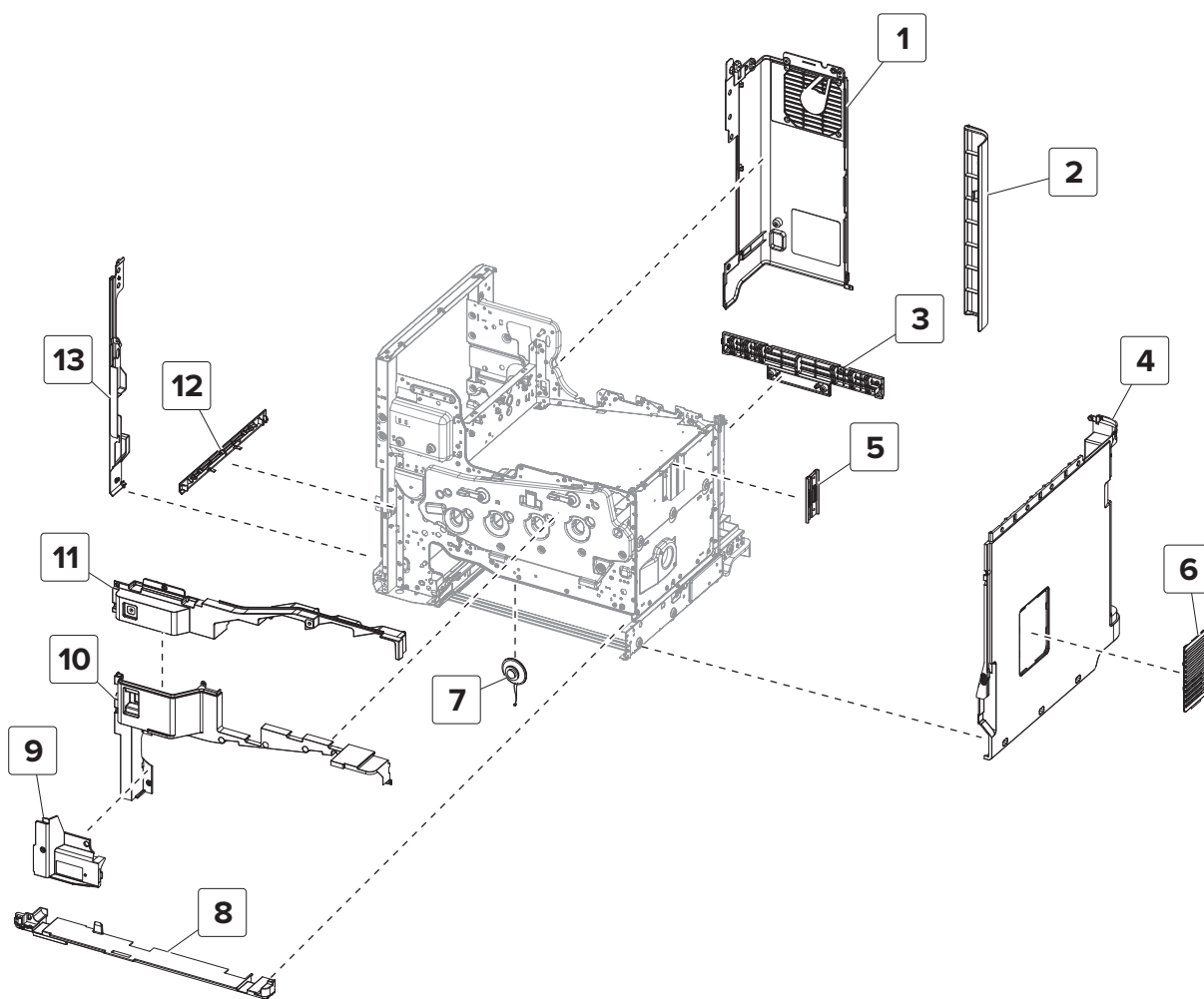
# Assembly 1: Covers 1



## Assembly 1: Covers 1

Asm-index	P/N	Units/mach	Units/FRU	Description	Removal procedure
1	41X0183	1	1	Standard bin insert cover	<a href="#">“Standard bin insert cover removal” on page 482</a>
2	41X0185	1	1	Rear upper cover	<a href="#">“Rear upper cover removal” on page 453</a>
3	41X0186	1	1	Rear corner cover	--
4	41X0780	1	1	Front door strap	--
5	41X0192	1	1	Front door	<a href="#">“Front door removal” on page 430</a>
6	41X0187	1	1	Left spacer	--
7	41X0182	1	1	Standard bin cover	--
8	41X0188	1	1	Control panel support cover	<a href="#">“Control panel support cover removal” on page 421</a>
9	41X0184	1	1	Redrive cover	--
10	41X0212	1	1	Static brush and bin full actuator	--
11	41X0716	1	1	Stacking bail	--

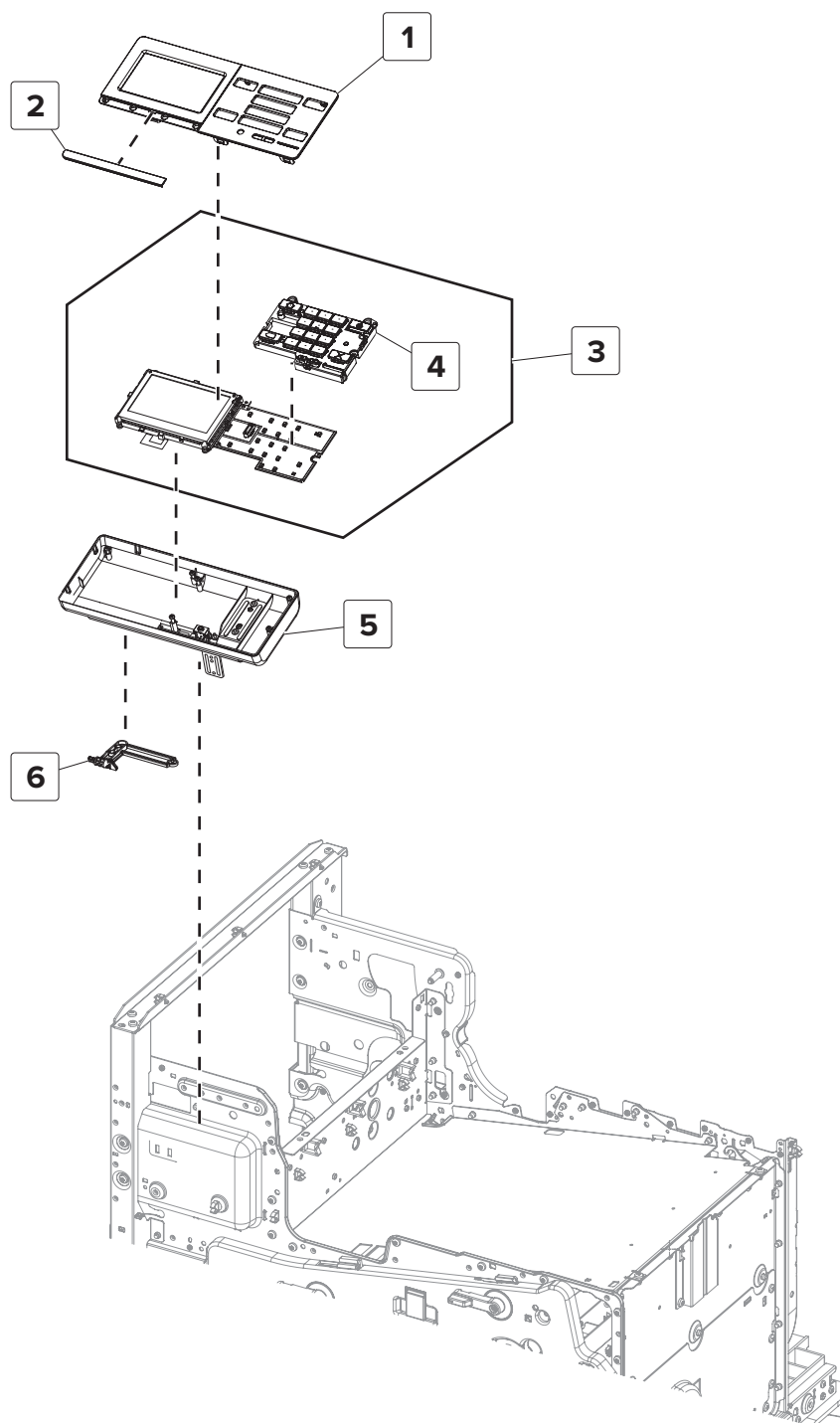
## Assembly 2: Covers 2



## Assembly 2: Covers 2

Asm-index	P/N	Units/mach	Units/FRU	Description	Removal procedure
1	41X0089	1	1	Rear left cover	<a href="#">“Rear left cover removal” on page 451</a>
2	41X0099	1	1	Connector access cover	--
3	41X0088	1	1	Rear lower cover	<a href="#">“Rear lower cover removal” on page 451</a>
4	41X0092	1	1	Right cover	<a href="#">“Right cover removal” on page 411</a>
5	41X0070	1	1	Right cover bracket	--
6	41X0090	1	1	Vent cover	<a href="#">“Vent cover removal” on page 410</a>
7	40X9079	1	1	Audio speaker	--
8	41X0094	1	1	Lower front cover	<a href="#">“Lower front cover removal” on page 443</a>
9	41X0097	1	1	Door rod cover	<a href="#">“Door rod cover removal” on page 435</a>
10	41X0093	1	1	Inner lower cover	<a href="#">“Inner lower cover removal” on page 429</a>
11	41X0715	1	1	Inner upper cover	<a href="#">“Inner upper cover removal” on page 429</a>
12	41X0096	1	1	Left lower cover	--
13	41X0091	1	1	Left front cover	--

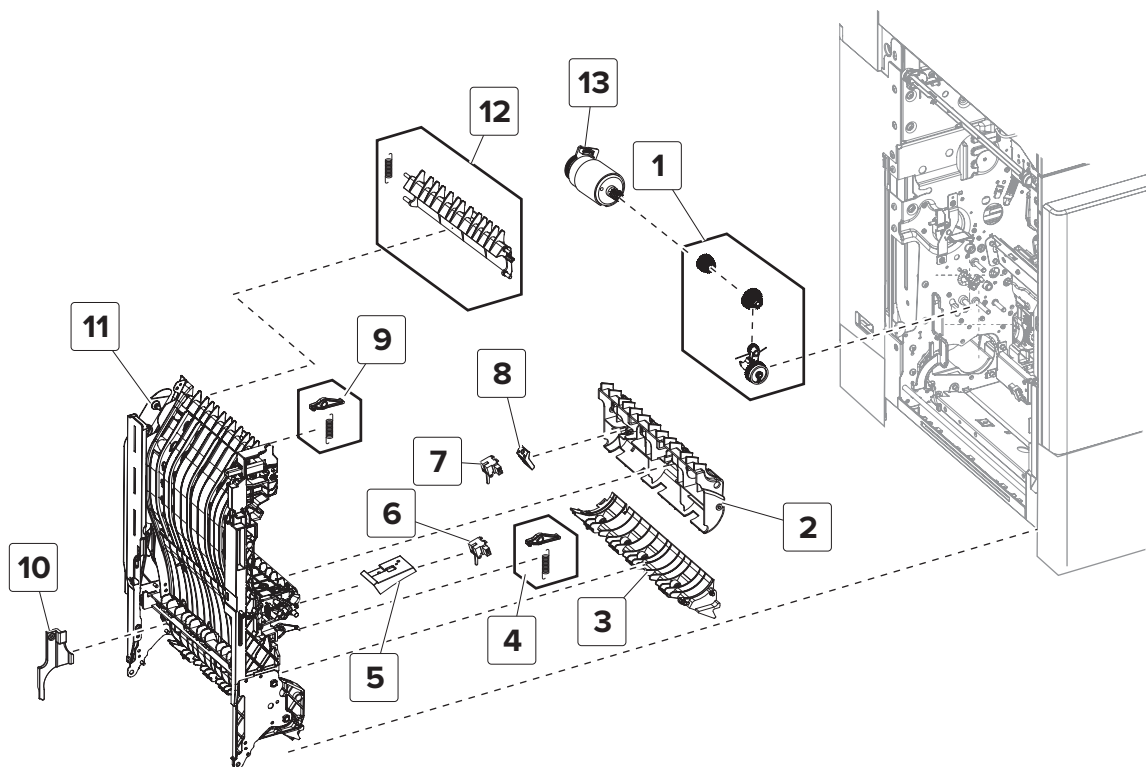
## Assembly 3: Control panel



## Assembly 3: Control panel

Asm-index	P/N	Units/mach	Units/FRU	Description	Removal procedure
1	41X0542	1	1	Bezel, 4.3-inch control panel	--
2	41X0898	1	1	Model plate (CS820)	--
2	41X0899	1	1	Model plate (C6160)	--
3	41X0050	1	1	Board, control panel	<a href="#">“Control panel board removal” on page 424</a>
4	41X0191	1	1	Button kit, 4.3-inch control panel	<a href="#">“Control panel button kit removal” on page 423</a>
5	41X0541	1	1	Control panel	<a href="#">“Control panel removal” on page 425</a>
6	41X0189	1	1	Pivot, control panel	--

## Assembly 4: Duplex

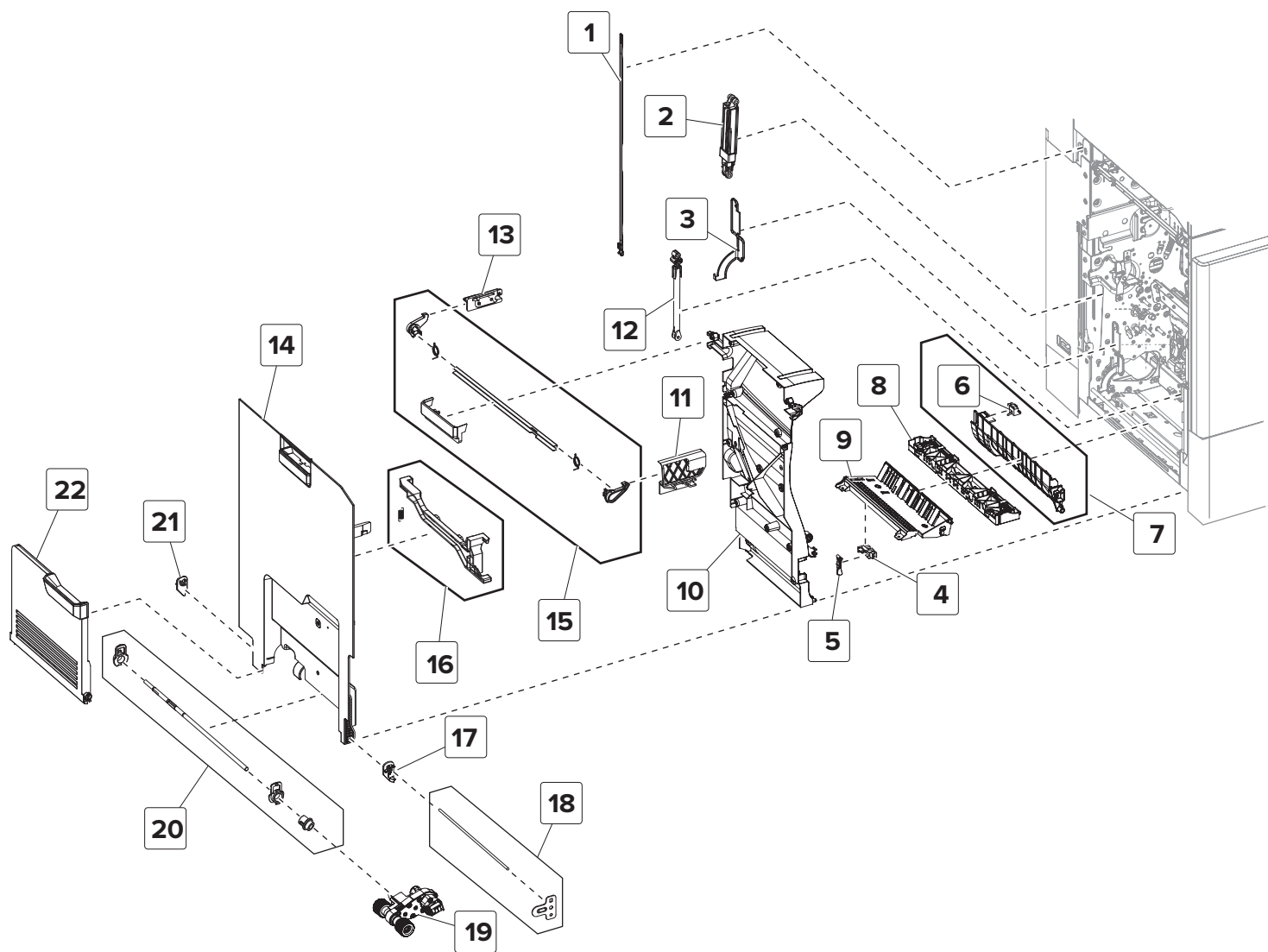




## Assembly 4: Duplex

Asm-index	P/N	Units/mach	Units/FRU	Description	Removal procedure
1	41X0133	1	1	Duplex drive gears	<a href="#">“Duplex drive gears removal” on page 389</a>
2	41X0123	1	1	Duplex lower pinch roller guide	--
3	41X0121	1	1	Duplex turn guide	--
4	41X0066	1	1	Front nip release arm	--
5	41X0072	1	1	Lower duplex sensor bracket	--
6	41X0446	1	1	Sensor (duplex path 2)	--
7	41X0446	1	1	Sensor (duplex path 1)	--
8	41X0071	1	1	Upper duplex sensor bracket	--
9	41X0065	1	1	Rear nip release arm	--
10	41X0098	1	1	Connector cover, plastic	<a href="#">“Plastic connector cover removal” on page 394</a>
11	41X0105	1	1	Duplex	<a href="#">“Left door, duplex, and MPF removal” on page 395</a>
12	41X0122	1	1	Duplex upper guide	--
13	41X0140	1	1	Motor (duplex)	--

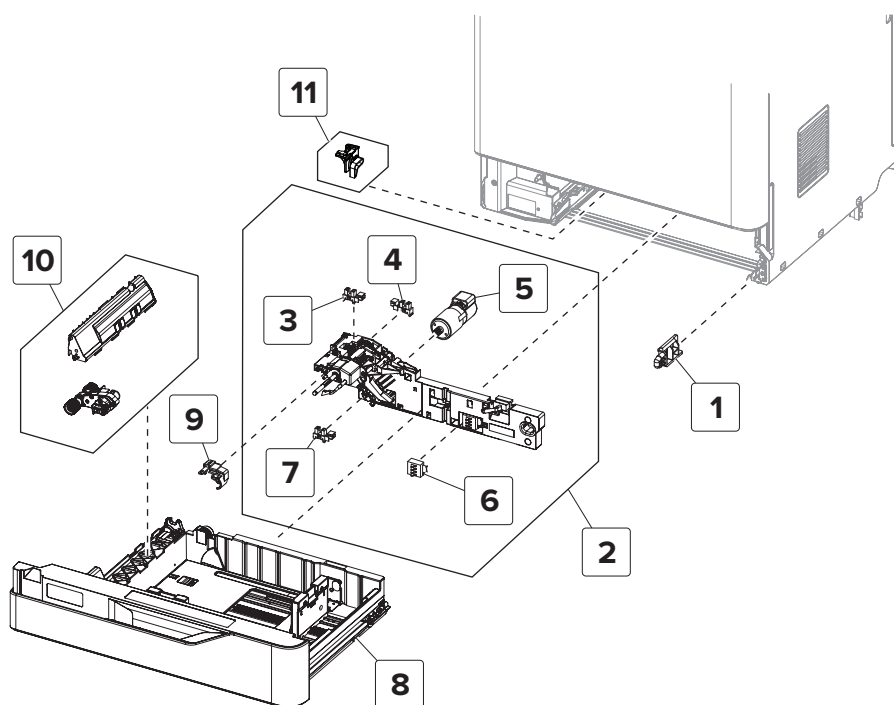
# Assembly 5: Left door



## Assembly 5: Left door

Asm-index	P/N	Units/mach	Units/FRU	Description	Removal procedure
1	41X0173	1	1	Left door support strap	--
2	41X0174	1	1	Left door support	--
3	41X0073	1	1	Connector cover, metal	--
4	41X0684	1	1	Sensor (MPF paper present)	--
5	41X0058	1	1	MPF media present actuator	--
6	41X0914	1	1	Sensor (MPF/pass-through)	<a href="#">“Sensor (MPF/pass-through) with deflector removal” on page 404</a>
7	41X0120	1	1	Deflector with sensor (MPF/pass-through)	<a href="#">“Sensor (MPF/pass-through) with deflector removal” on page 404</a>
8	41X0172	1	1	MPF tray stop	<a href="#">“MPF tray stop removal” on page 401</a>
9	41X0119	1	1	MPF pick guide	<a href="#">“MPF pick guide removal” on page 399</a>
10	41X0124	1	1	Left door paper guide	--
11	41X0081	1	1	Left door front catch	--
12	41X0100	1	1	Left door damper	--
13	41X0080	1	1	Left door rear catch	--
14	41X0101	1	1	Left door	<a href="#">“Left door, duplex, and MPF removal” on page 395</a>
15	41X0136	1	1	Left door release latch	--
16	41X0135	1	1	Duplex release latch	<a href="#">“Duplex release latch removal” on page 390</a>
17	41X0059	1	1	MPF tray front actuator	--
18	41X0250	1	1	Left door rod	<a href="#">“Door rod cover removal” on page 435</a>
19	41X0993	1	1	Pick roller	<a href="#">“MPF pick roller removal” on page 398</a>
20	41X0167	1	1	MPF pick shaft	--
21	41X0060	1	1	MPF tray rear actuator	--
22	41X0176	1	1	MPF tray	<a href="#">“Left door, duplex, and MPF removal” on page 395</a>

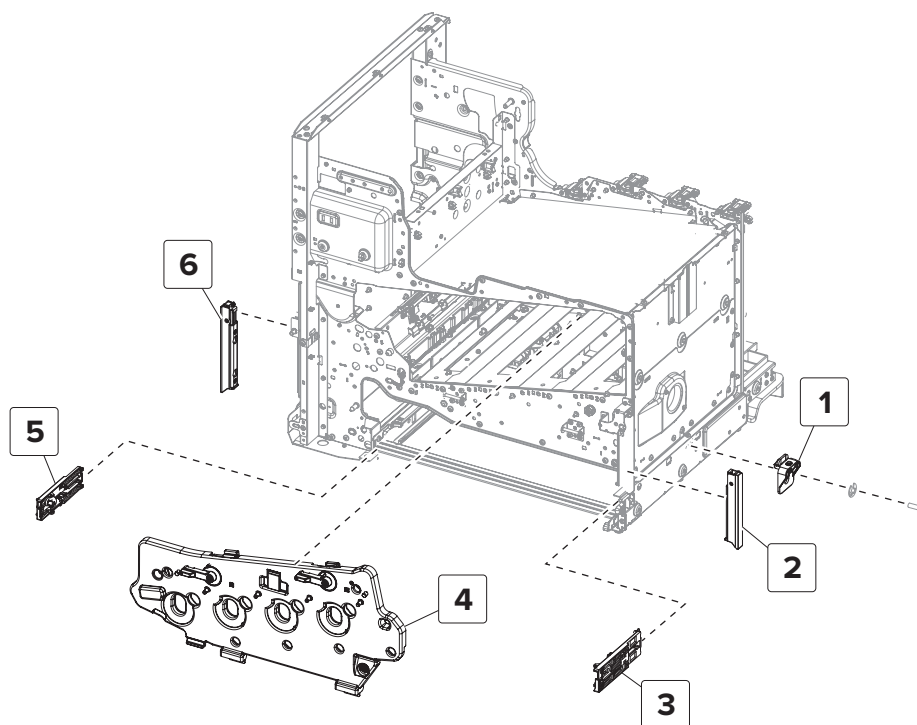
## Assembly 6: Feeder



## Assembly 6: Feeder

Asm-index	P/N	Units/mach	Units/FRU	Description	Removal procedure
1	41X0129	1	1	Paper tray guide	--
2	41X0106	1	1	Paper feeder	<a href="#">“Paper feeder removal” on page 444</a>
3	41X0470	1	1	Sensor (pick roller index)	--
4	41X0470	1	1	Sensor (media out)	--
5	41X0140	1	1	Motor (pick)	--
6	40X7911	1	1	Sensor (media size)	--
7	41X0470	1	1	Sensor (media low)	--
8	41X0175	1	1	Media tray	--
9	41X0067	1	1	Feeder bearing	<a href="#">“Paper feeder removal” on page 444</a>
10	41X0999	1	1	Pick roller and separator pad	<a href="#">“Pick roller removal” on page 433</a>
11	41X1033	1	1	Paper overfill stop	--

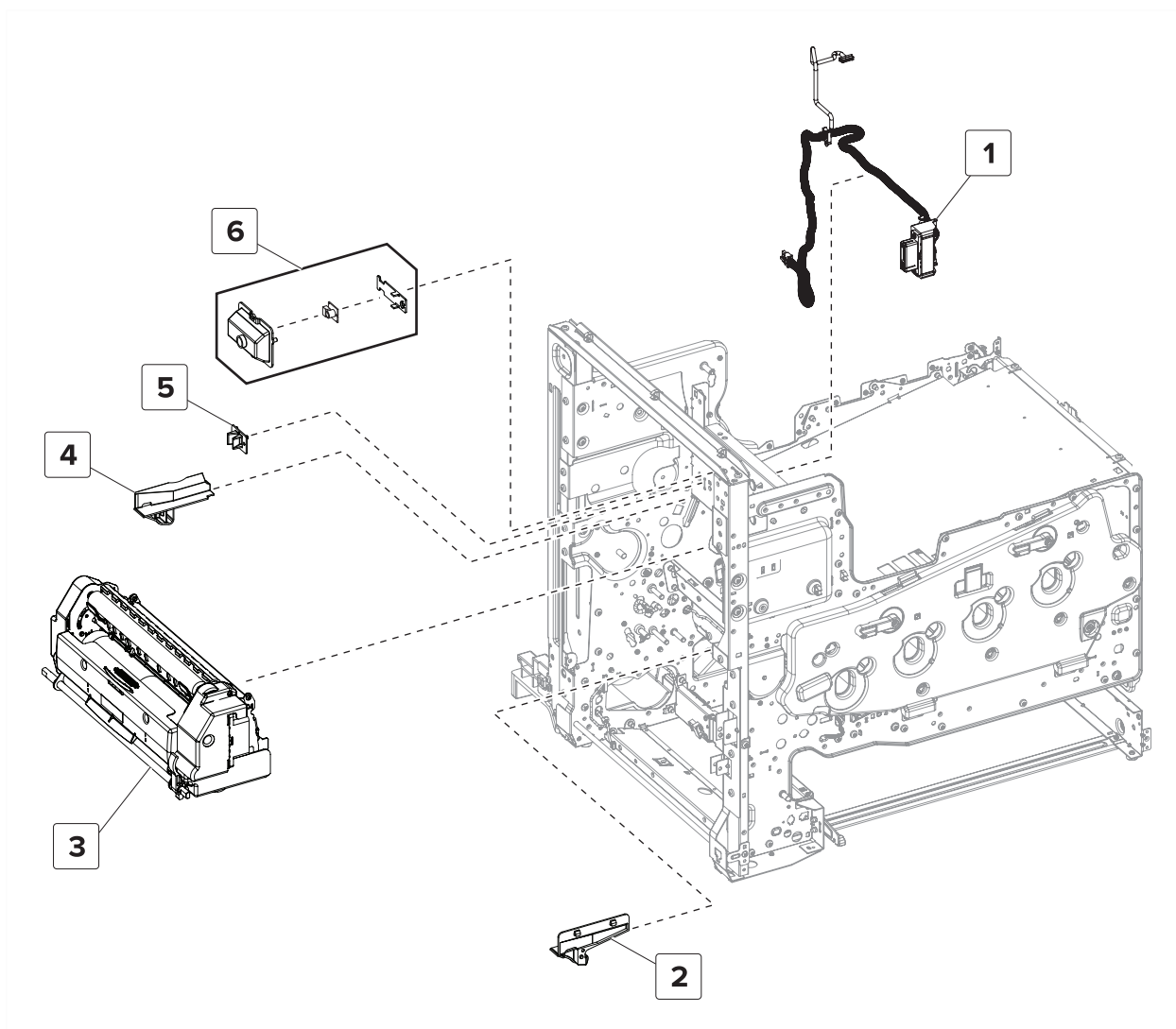
## Assembly 7: Frame



## Assembly 7: Frame

Asm-index	P/N	Units/mach	Units/FRU	Description	Removal procedure
1	41X0074	1	1	Frame connector bracket	--
2	41X0131	1	1	Right handle	--
3	41X0991	1	1	Tray close rail, right	--
4	41X0103	1	1	PC unit/developer door	<a href="#">“Developer unit and photoconductor unit removal” on page 426</a>
5	41X0992	1	1	Tray close rail, left	--
6	41X0130	1	1	Left handle	--

## Assembly 8: Fuser

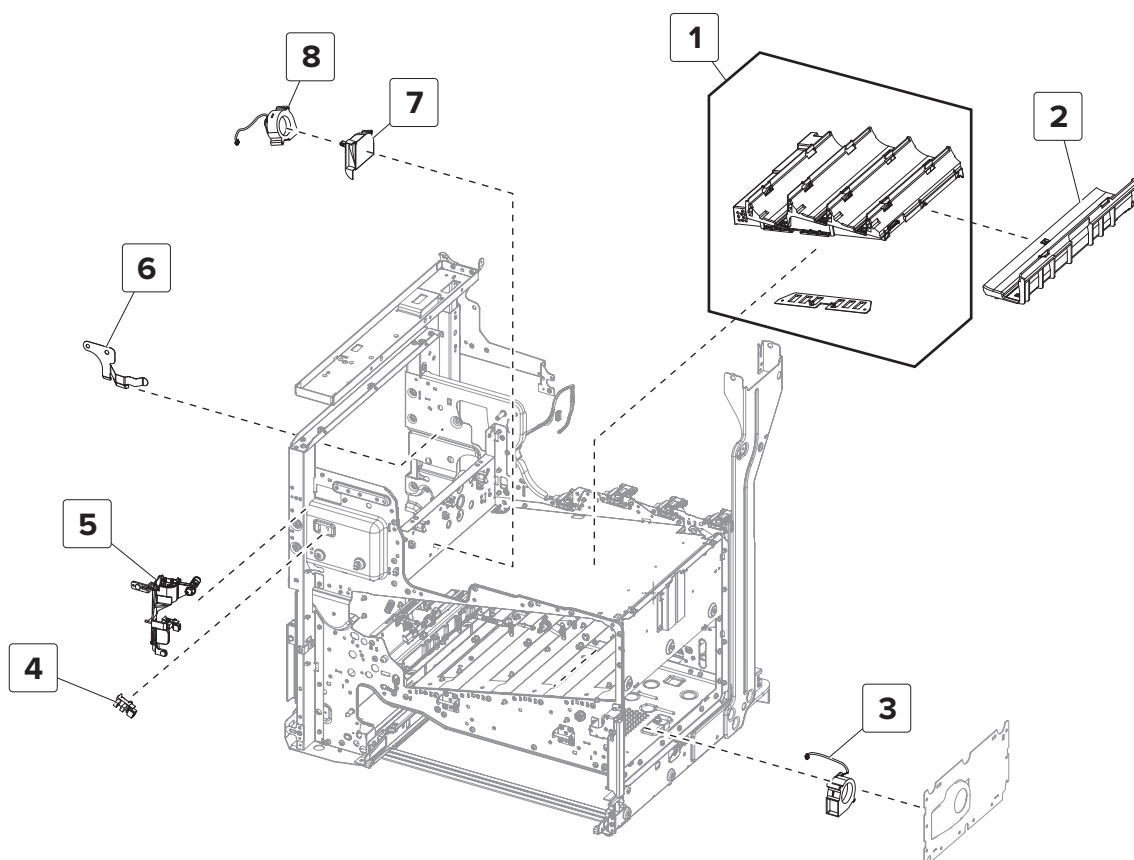




## Assembly 8: Fuser

Asm-index	P/N	Units/mach	Units/FRU	Description	Removal procedure
1	41X0078	1	1	Fuser connect cable	--
2	41X0125	1	1	Fuser front loading guide	--
3	41X0248	1	1	Fuser (100 V)	<a href="#">“Fuser removal” on page 387</a>
3	41X0246	1	1	Fuser (115 V)	<a href="#">“Fuser removal” on page 387</a>
3	41X0247	1	1	Fuser (230 V)	<a href="#">“Fuser removal” on page 387</a>
4	41X0126	1	1	Fuser rear loading guide	--
5	41X0127	1	1	Fuser alignment guide	--
6	41X0165	1	1	Sensor (fuser temperature)	--

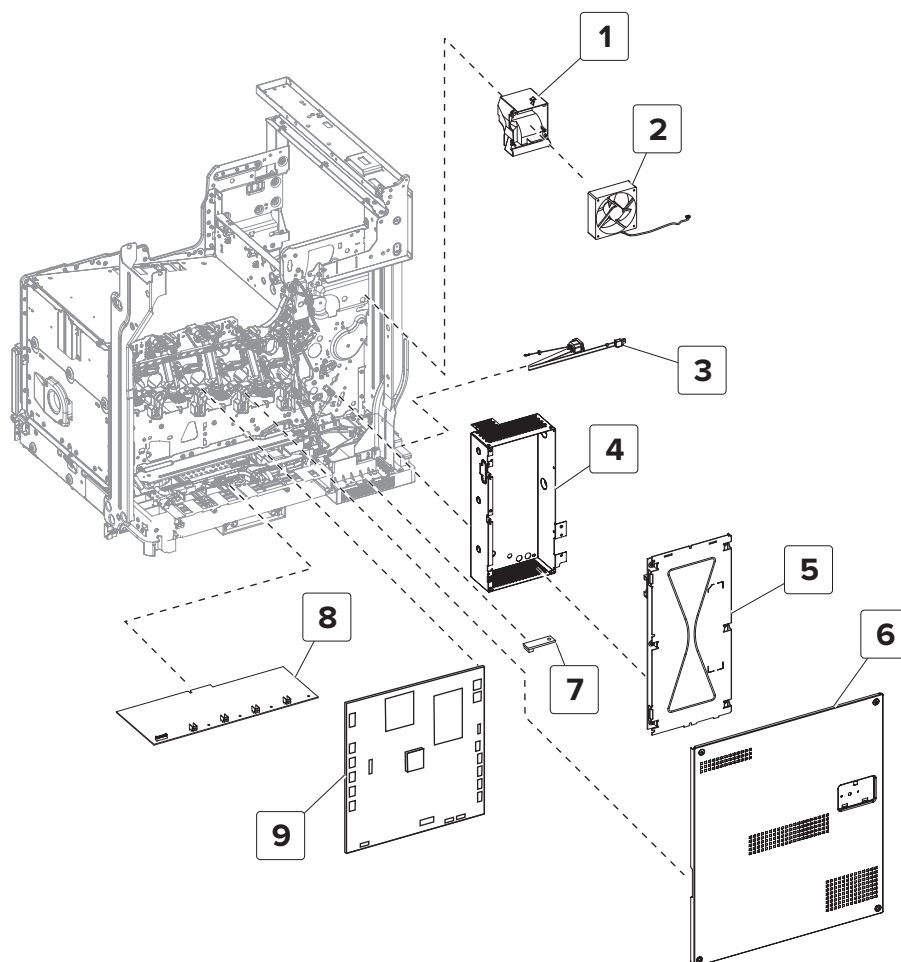
## Assembly 9: Electronics—Front



## Assembly 9: Electronics—Front

Asm-index	P/N	Units/mach	Units/FRU	Description	Removal procedure
1	41X0143	1	1	Main HVPS	<a href="#">“Main HVPS removal” on page 440</a>
2	41X0117	1	1	Toner cartridge guide	--
3	41X0975	1	1	Printhead fan	<a href="#">“Printhead fan removal” on page 415</a>
4	41X0684	1	1	Sensor (door interlock)	<a href="#">“Sensor (door interlock) removal” on page 436</a>
5	41X0162	1	1	Door interlock actuator	--
6	41X0141	1	1	Grounding plate	--
7	41X0973	1	1	Fan duct	--
8	41X0974	1	1	HVPS fan	<a href="#">“Main HVPS fan removal” on page 437</a>

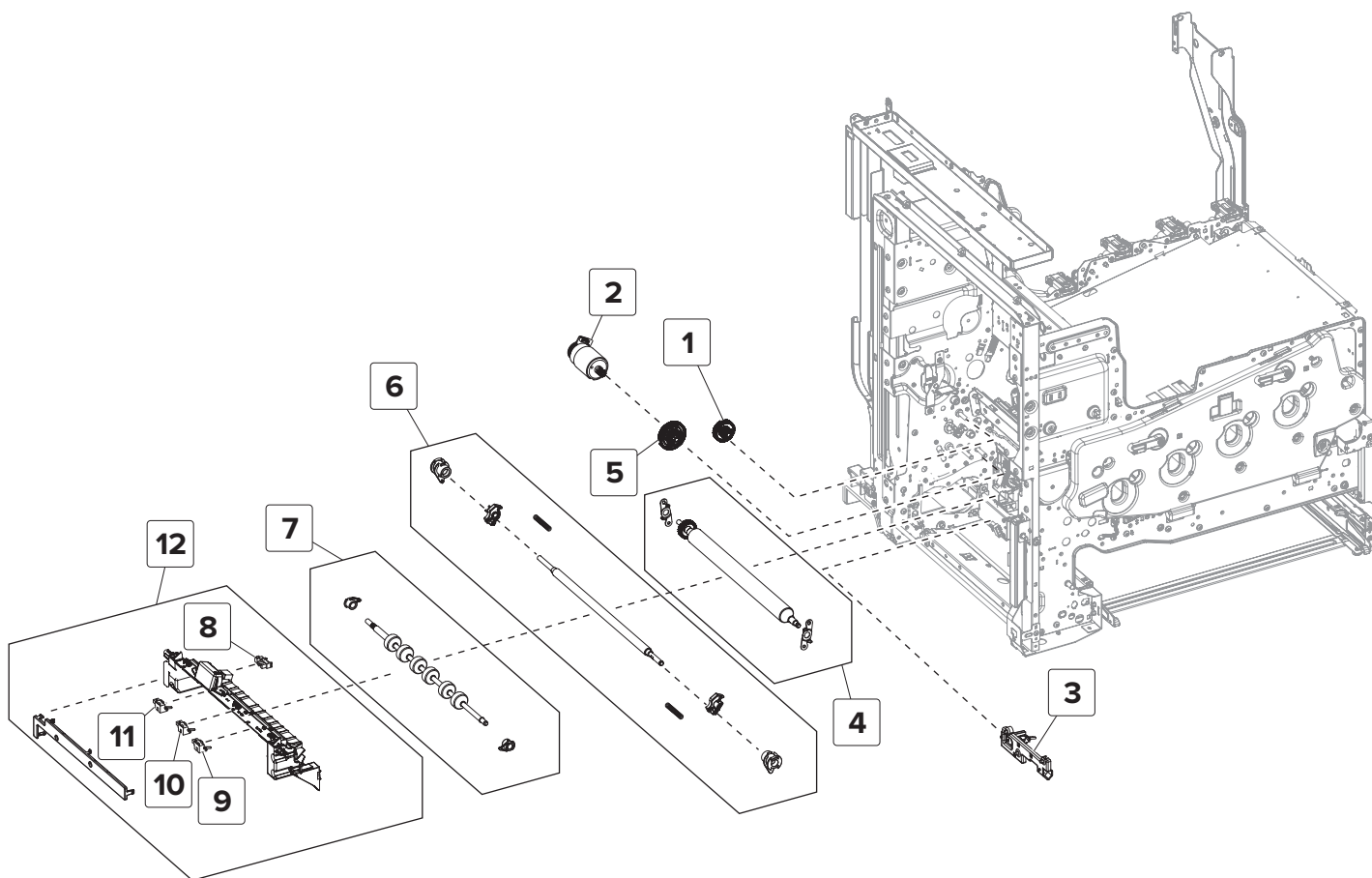
## Assembly 10: Electronics—Rear



## Assembly 10: Electronics—Rear

Asm-index	P/N	Units/mach	Units/FRU	Description	Removal procedure
1	41X0104	1	1	Main fan duct	<a href="#">“Main fan duct removal” on page 467</a>
2	41X0954	1	1	Main fan	<a href="#">“Main fan removal” on page 458</a>
3	41X0260	1	1	AC power input cable	--
4	41X0244	1	1	LVPS cage	<a href="#">“LVPS cage removal” on page 461</a>
5	41X0242	1	1	LVPS	<a href="#">“LVPS removal” on page 459</a>
6	41X0087	1	1	Controller board cover	<a href="#">“Controller board cover removal” on page 450</a>
7	41X0785	1	1	Weather station	<a href="#">“Weather station removal” on page 462</a>
8	41X0241	1	1	Charge roller HVPS	<a href="#">“Charge roller HVPS removal” on page 453</a>
9	41X0368	1	1	Controller board	<a href="#">“Controller board removal” on page 457</a>

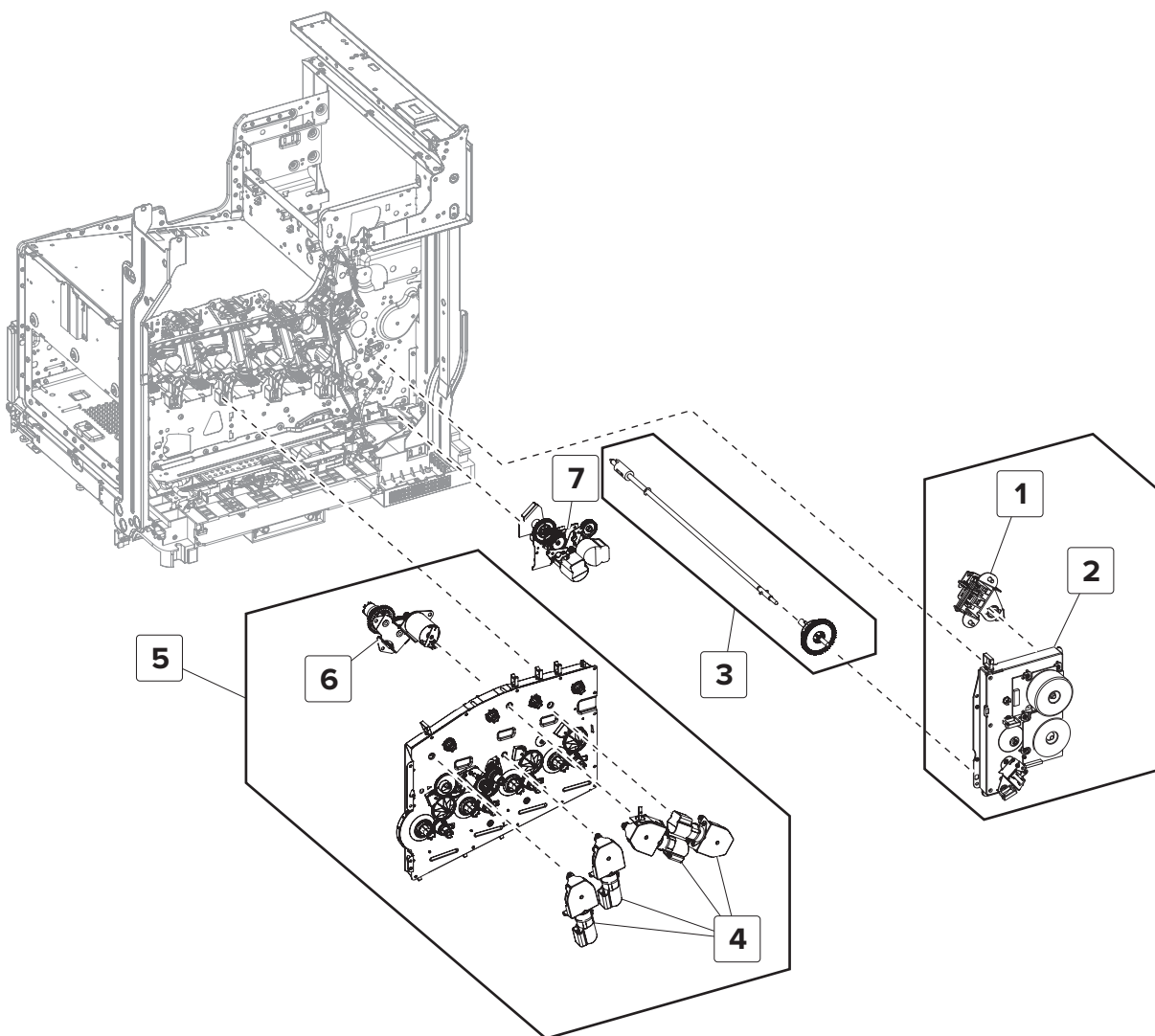
# Assembly 11: Registration



## Assembly 11: Registration

Asm-index	P/N	Units/mach	Units/FRU	Description	Removal procedure
1	41X0108	1	1	Deskew roller gear	--
2	41X0140	1	1	Motor (deskew)	--
3	41X0163	1	1	Sensor (input)	<a href="#">“Sensor (input) removal” on page 403</a>
4	41X0155	1	1	Deskew roller	--
5	41X0107	1	1	Isolation roller gear	<a href="#">“Isolation roller gear removal” on page 408</a>
6	41X0156	1	1	Deskew pinch roller	--
7	41X0168	1	1	Isolation roller shaft	--
8	40X7779	1	1	Sensor (deskew roller exit)	--
9	41X0914	1	1	Sensor (near narrow media)	--
10	41X0914	1	1	Sensor (narrow media)	--
11	41X0914	1	1	Sensor (deskew roller entry)	--
12	41X0128	1	1	Deskew roller sensor guide	<a href="#">“Deskew roller sensor guide removal” on page 392</a>

## Assembly 12: Motors

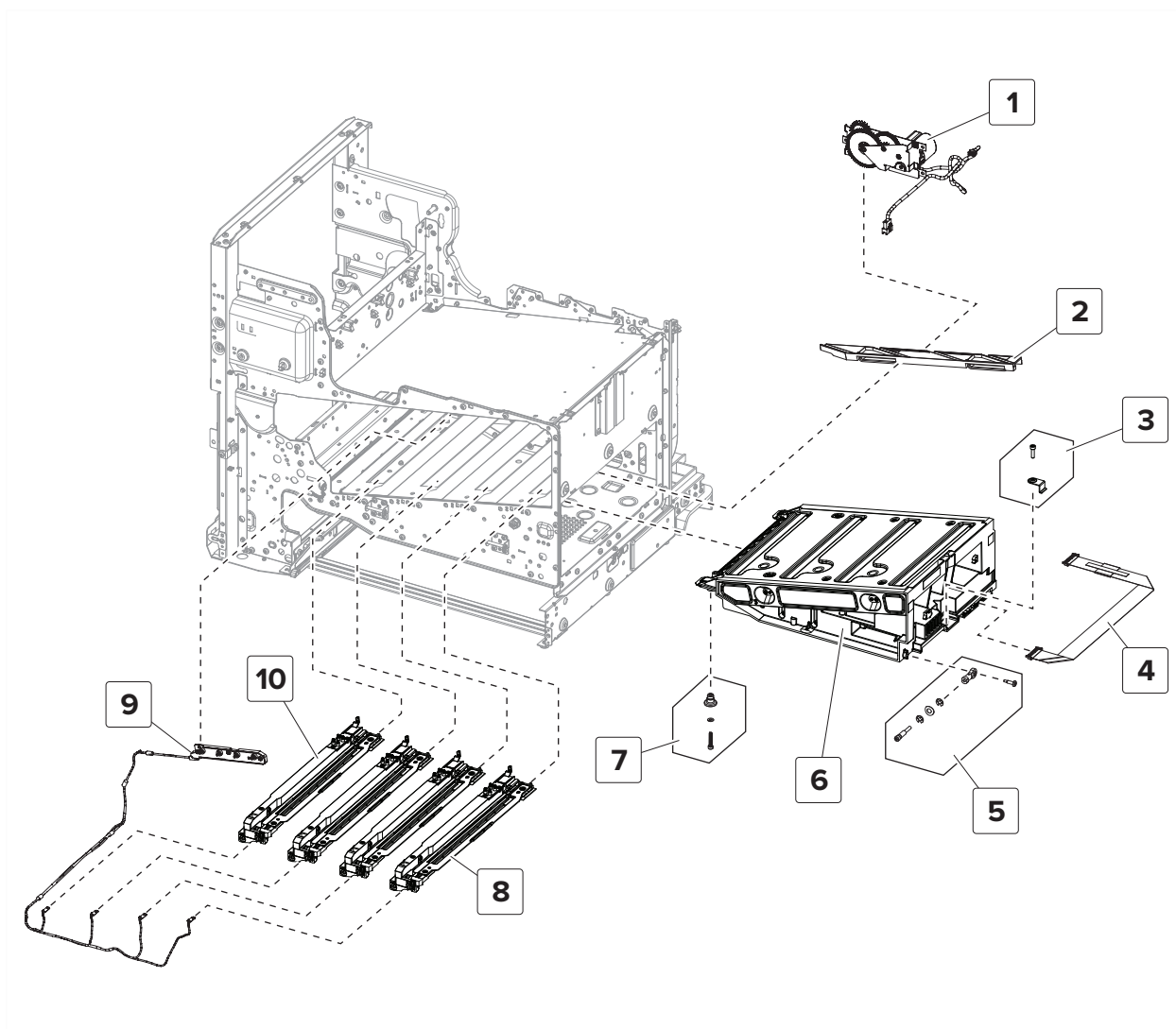




## Assembly 12: Motors

Asm-index	P/N	Units/mach	Units/FRU	Description	Removal procedure
1	41X0159	1	1	Sensor (waste toner full)	--
2	41X0111	1	1	Fuser/transfer belt motor gearbox	<a href="#">“Fuser/transfer belt motor gearbox removal” on page 471</a>
3	41X0109	1	1	Waste toner gear and shaft	<a href="#">“Waste toner gear removal” on page 473</a>
4	41X0113	3	1	Toner add motor gearbox (K, C, and M)	<a href="#">“Toner add motor gearbox (K, C, and M) removal” on page 465</a>
4	41X0113	1	1	Toner add motor gearbox (Y)	<a href="#">“Toner add motor gearbox (Y) removal” on page 466</a>
5	41X0112	1	1	EP, developer, toner add gearbox	<a href="#">“EP, developer, toner add gearbox removal” on page 468</a>
6	41X0114	1	1	Motor (black only retract)	--
7	41X0115	1	1	MPF, reference edge gearbox	<a href="#">“Reference edge motor gearbox removal” on page 405</a>

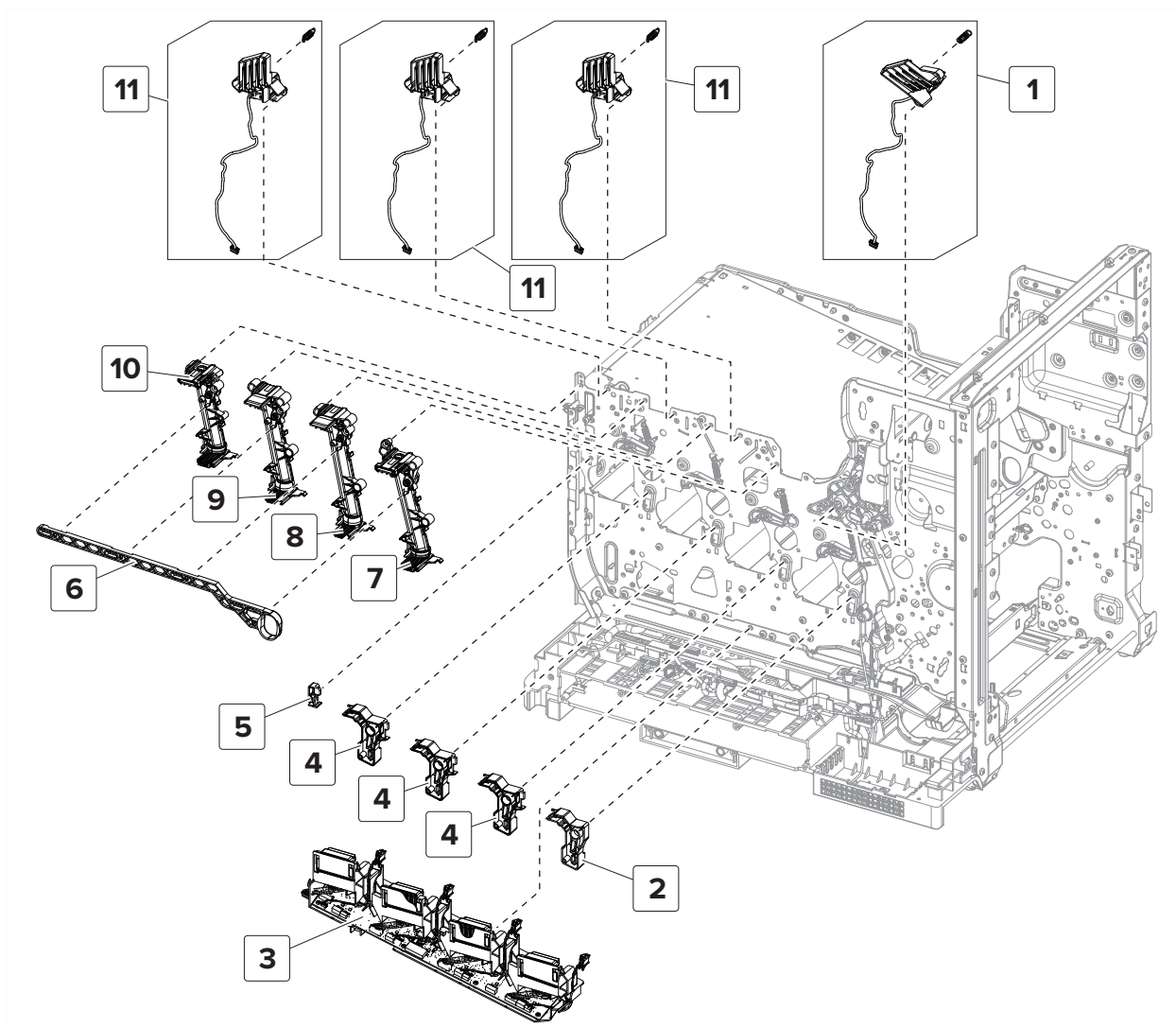
## Assembly 13: Printhead



## Assembly 13: Printhead

Asm-index	P/N	Units/mach	Units/FRU	Description	Removal procedure
1	41X0139	1	1	Motor (printhead wiper)	<a href="#">“Motor (printhead wiper) removal” on page 419</a>
2	41X0145	1	1	Printhead wiper actuator rack	--
3	41X0082	1	1	Printhead clamp	--
4	41X0076	1	1	Printhead data cable	--
5	41X0240	1	1	Printhead adjustment parts pack	--
6	41X0144	1	1	Laser printhead	<a href="#">“Printhead removal” on page 416</a>
7	41X0132	1	1	Printhead post	--
8	41X0147	3	1	Developer/PC unit CMY wiper rail	<a href="#">“Developer/PC unit CMY wiper rail removal” on page 447</a>
9	41X0086	1	1	Developer roll power contact	--
10	41X0146	1	1	Developer/PC unit K wiper rail	<a href="#">“Developer/PC unit K wiper rail removal” on page 448</a>

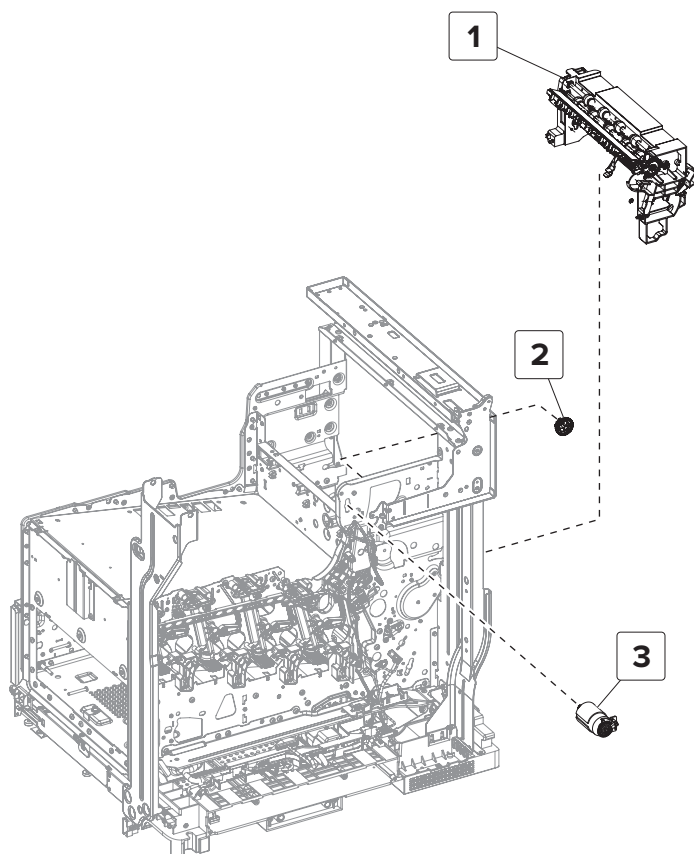
## Assembly 14: Toner supply



## Assembly 14: Toner supply

Asm-index	P/N	Units/mach	Units/FRU	Description	Removal procedure
1	41X0084	1	1	Toner cartridge contact (K)	<a href="#">“Toner cartridge contact removal” on page 477</a>
2	41X0152	1	1	Toner port retainer (K)	--
3	41X0069	1	1	smart chip interface board	<a href="#">“Smart chip interface board removal” on page 476</a>
4	41X0151	3	1	Toner port retainer (CMY)	--
5	41X0150	1	1	Toner port retainer	--
6	41X0056	1	1	Toner supply actuator	<a href="#">“Toner supply actuator removal” on page 475</a>
7	41X0180	1	1	Toner add tube (K)	<a href="#">“Toner add tube removal” on page 479</a>
8	41X0178	1	1	Toner add tube (M)	<a href="#">“Toner add tube removal” on page 479</a>
9	41X0177	1	1	Toner add tube (C)	<a href="#">“Toner add tube removal” on page 479</a>
10	41X0179	1	1	Toner add tube (Y)	<a href="#">“Toner add tube removal” on page 479</a>
11	41X0083	3	1	Toner cartridge contact (CMY)	<a href="#">“Toner cartridge contact removal” on page 477</a>

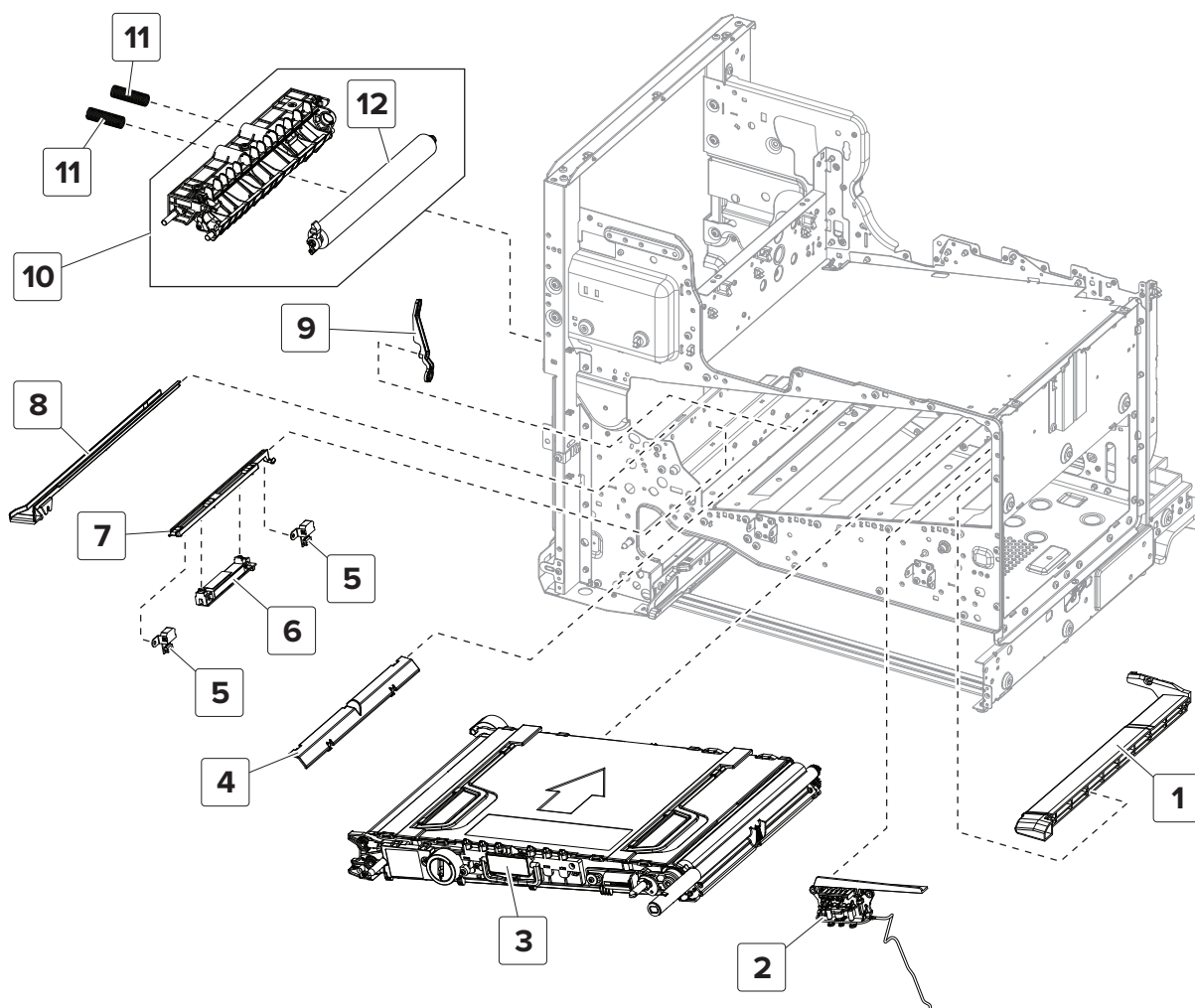
## Assembly 15: Redrive



## Assembly 15: Redrive

Asm-index	P/N	Units/mach	Units/FRU	Description	Removal procedure
1	41X0148	1	1	Redrive	<a href="#">“Redrive removal” on page 401</a>
2	41X0110	1	1	Redrive gear	<a href="#">“Redrive gear removal” on page 403</a>
3	41X0451	1	1	Motor (redrive)	--

## Assembly 16: Transfer—Front

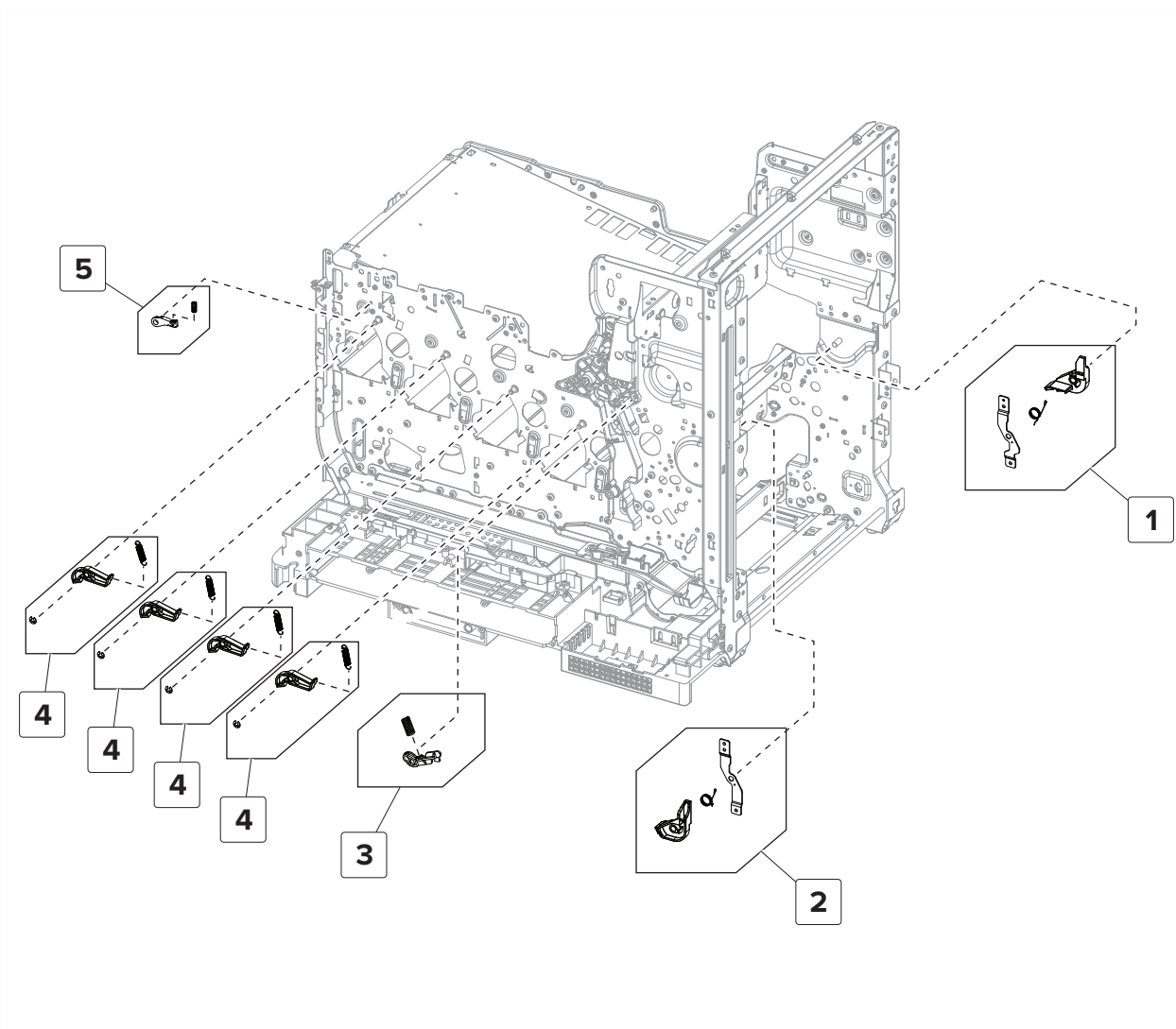




## Assembly 16: Transfer—Front

Asm-index	P/N	Units/mach	Units/FRU	Description	Removal procedure
1	41X0116	1	1	Transfer belt right guide	--
2	41X0085	1	1	Transfer belt contact	--
3	41X0245	1	1	Transfer belt	<a href="#">“Transfer belt removal” on page 431</a>
4	41X0095	1	1	Wiring cover	--
5	41X0161	2	1	Sensor (auto alignment)	<a href="#">“Sensor (auto alignment) removal” on page 446</a>
6	41X0160	1	1	Sensor (TPS)	<a href="#">“Sensor (TPS) removal” on page 446</a>
7	41X0181	1	1	TPS sensor wiper	<a href="#">“TPS sensor wiper removal” on page 447</a>
8	41X0118	1	1	Transfer belt left guide	--
9	41X0057	1	1	TPS wiper actuator	--
10	41X0079	1	1	Transfer roller housing	--
11	41X0171	2	1	Transfer roller carriage spring	--
12	41X0154	2	1	Transfer roller	<a href="#">“Transfer roller removal” on page 388</a>

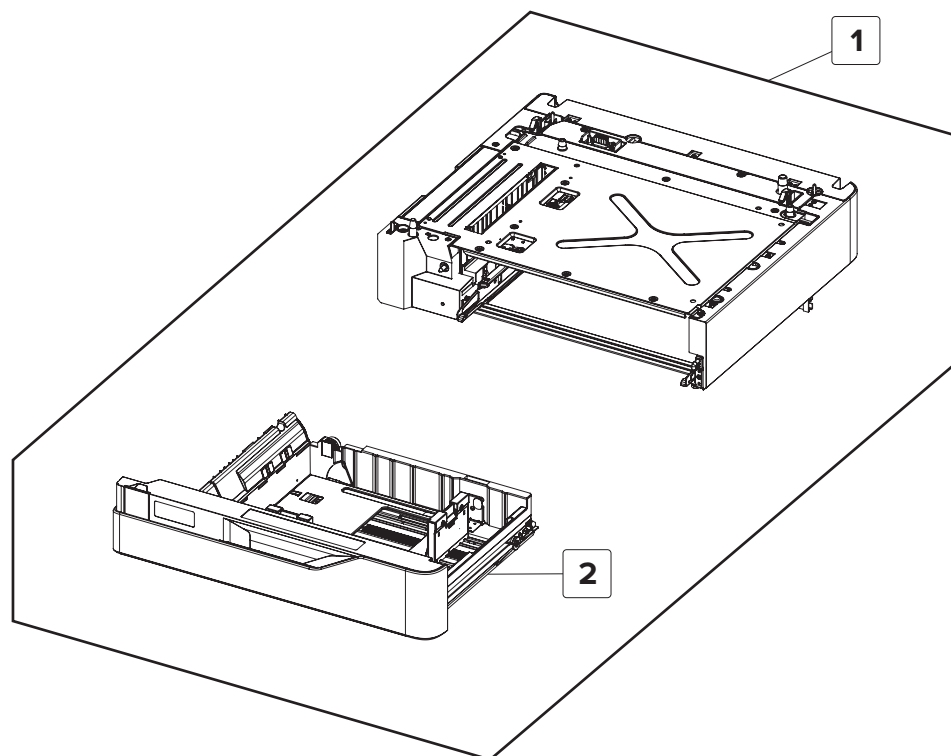
## Assembly 17: Transfer—Rear



## Assembly 17: Transfer—Rear

Asm-index	P/N	Units/mach	Units/FRU	Description	Removal procedure
1	41X0137	1	1	Transfer roller front latch	--
2	41X0138	1	1	Transfer roller rear latch	--
3	41X0064	1	1	Transfer belt left bias arm	--
4	41X0062	4	1	Hold down arm	--
5	41X0063	1	1	Transfer belt right bias arm	--

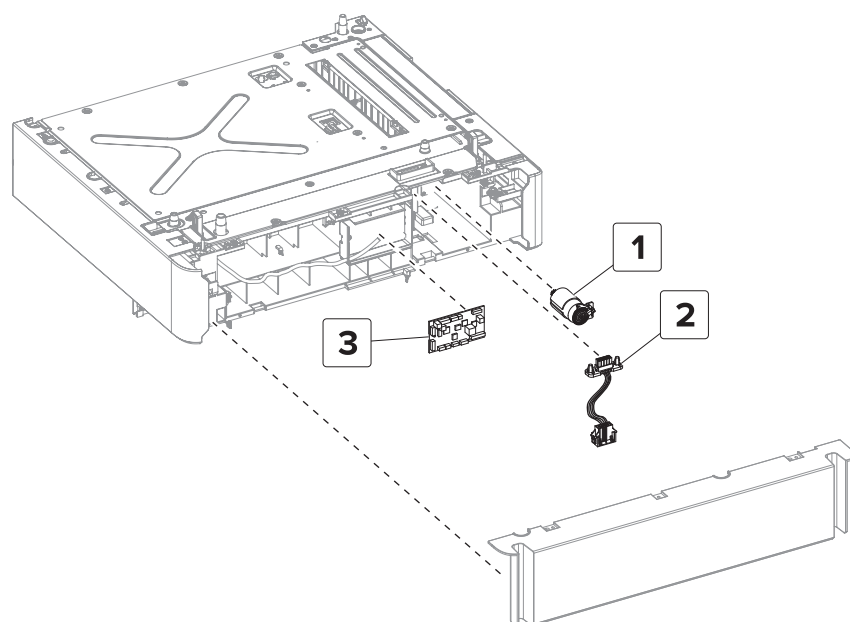
## Assembly 18: 550-sheet tray



## Assembly 18: 550-sheet tray

Asm-index	P/N	Units/opt	Units/FRU	Description	Removal procedure
1	41X0326	1	1	550-sheet tray	--
2	41X0175	1	1	550-sheet tray insert	--

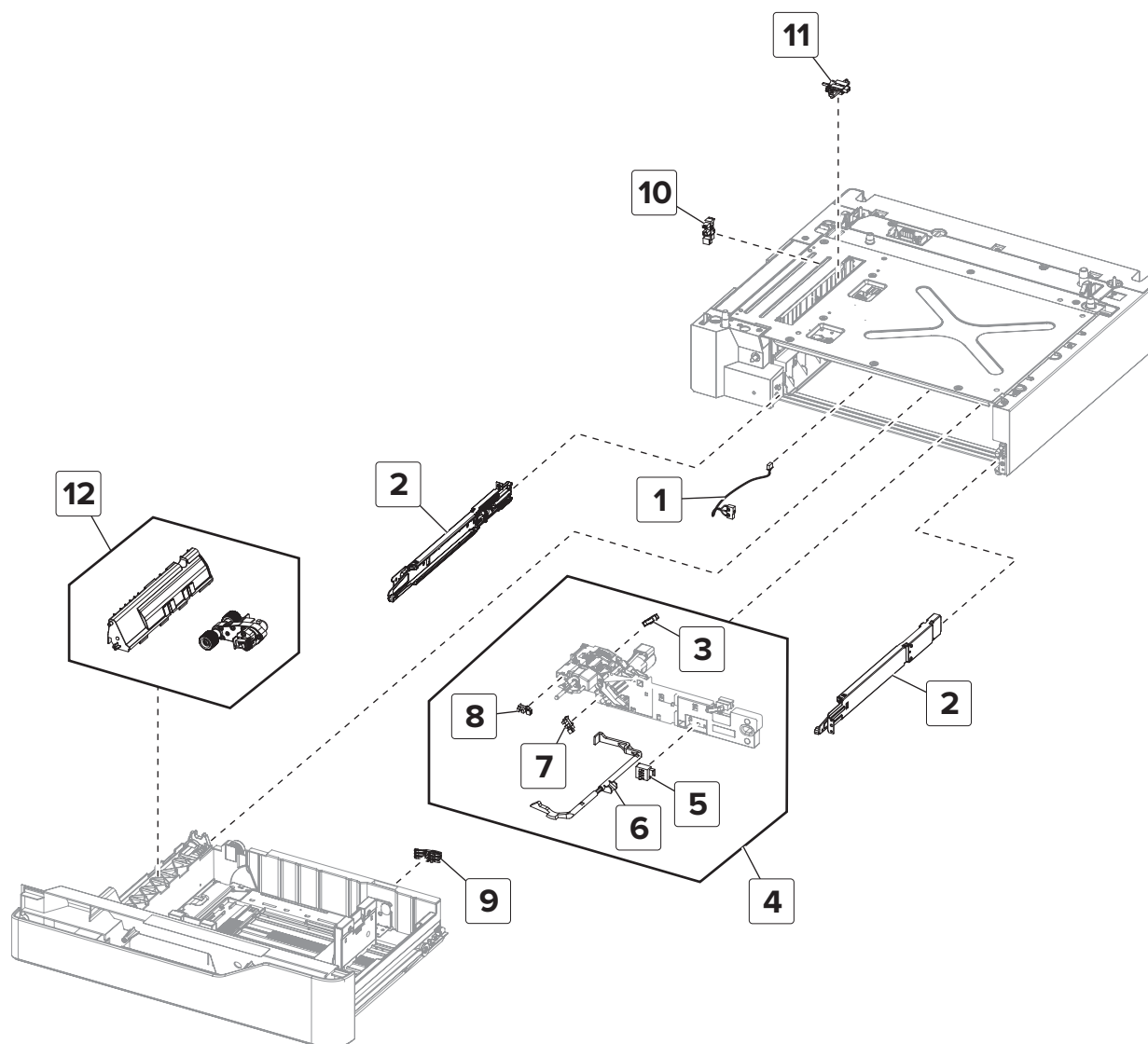
## Assembly 19: 550-sheet tray—Rear



## Assembly 19: 550-sheet tray—Rear

Asm-index	P/N	Units/opt	Units/FRU	Description	Removal procedure
1	41X0451	1	1	Motor (550-sheet tray pass-through)	<a href="#">“Motor (550-sheet tray pass-through) removal” on page 497</a>
2	41X0336	1	1	550-sheet tray interface cable	<a href="#">“550-sheet tray interface cable removal” on page 492</a>
3	41X0331	1	1	550-sheet tray controller board	<a href="#">“550-sheet tray controller board removal” on page 492</a>

## Assembly 20: 550-sheet tray—Front

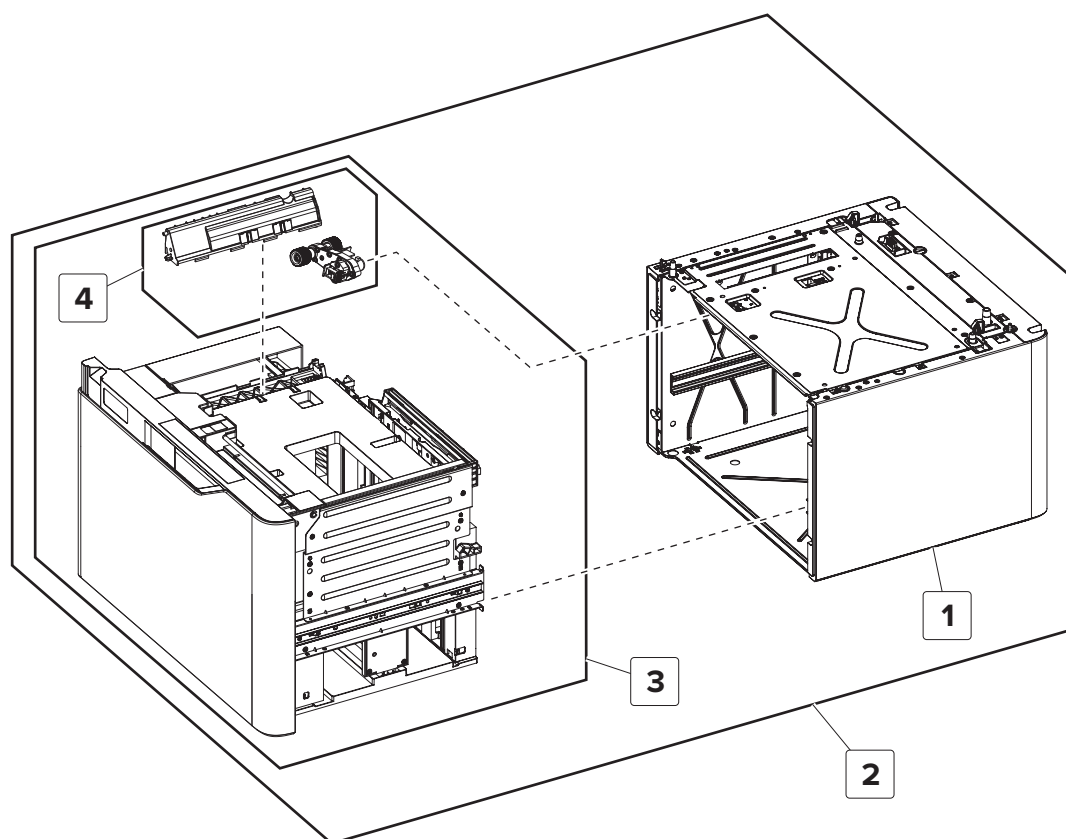




## Assembly 20: 550-sheet tray—Front

Asm-index	P/N	Units/opt	Units/FRU	Description	Removal procedure
1	41X0335	1	1	550-sheet tray wake-up switch	<a href="#">“550-sheet tray wake up switch removal” on page 498</a>
2	41X0342	1	1	550-sheet tray rails	<a href="#">“550-sheet tray right rail removal” on page 486</a> <a href="#">“550-sheet tray left rail removal” on page 496</a>
3	41X0470	1	1	Sensor (550-sheet tray media out)	<a href="#">“Sensor (550-sheet tray media out) removal” on page 487</a>
4	41X0106	1	1	550-sheet tray paper feeder	<a href="#">“550-sheet tray paper feeder removal” on page 487</a>
5	40X7911	1	1	Sensor (550-sheet tray media size)	<a href="#">“Sensor (550-sheet tray media size) removal” on page 485</a>
6	41X0338	1	1	550-sheet tray media out sensor actuator	<a href="#">“Sensor (550-sheet tray media out) removal” on page 487</a>
7	41X0470	1	1	Sensor (550-sheet tray media low)	<a href="#">“Sensor (550-sheet tray media low) removal” on page 485</a>
8	41X0470	1	1	Sensor (550-sheet tray pick roller index)	<a href="#">“Sensor (550-sheet tray pick roller index) removal” on page 495</a>
9	40X8541	1	1	550-sheet tray media size sensor actuators	<a href="#">“550-sheet tray media size sensor actuators removal” on page 484</a>
10	41X0470	1	1	Sensor (550-sheet tray jam door)	<a href="#">“Sensor (550-sheet tray jam door)” on page 486</a>
11	41X0951	1	1	Sensor (550-sheet tray pass-through)	--
12	41X0999	1	1	Pick roller and separator pad	<a href="#">“Pick roller removal” on page 433</a>

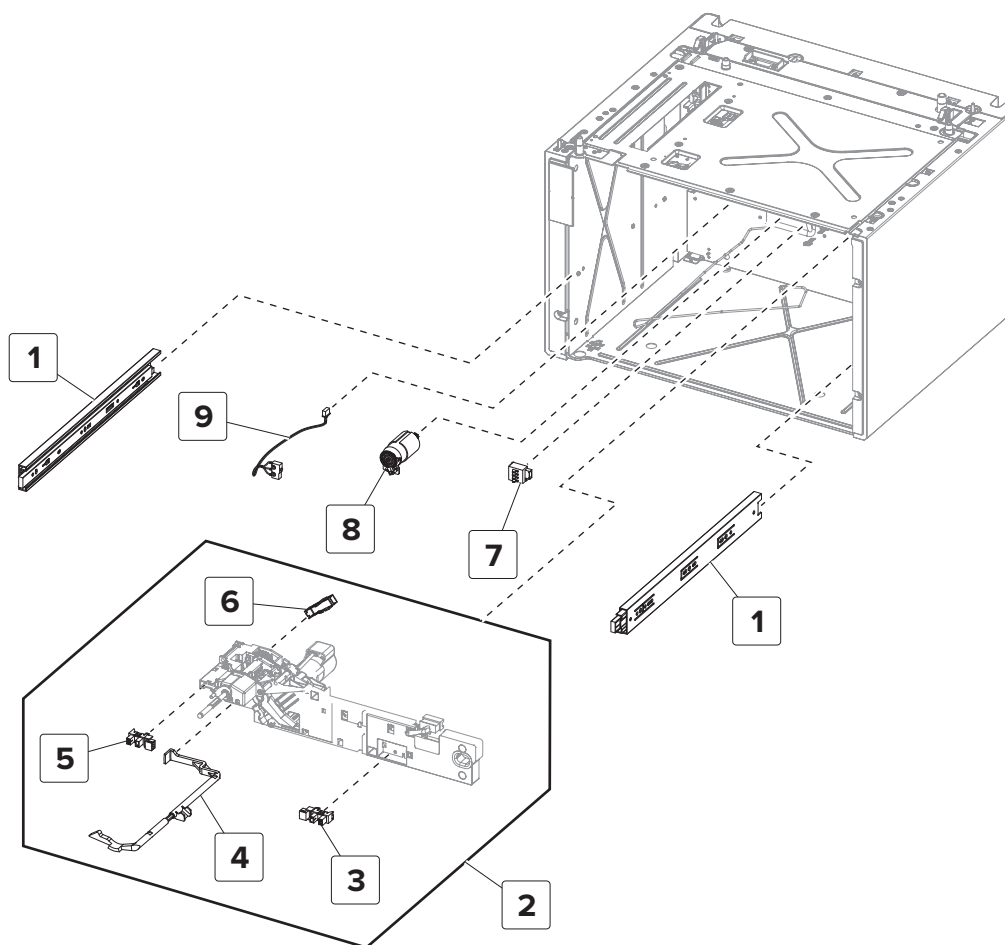
## Assembly 21: 2200-sheet tray



## Assembly 21: 2200-sheet tray

Asm-index	P/N	Units/opt	Units/FRU	Description	Removal procedure
1	41X0329	1	1	2200-sheet tray base	--
2	41X0328	1	1	2200-sheet tray	--
3	41X0330	1	1	2200-sheet tray insert	<a href="#">"2200-sheet tray insert removal" on page 499</a>
4	41X0999	1	1	Pick roller and separator pad	--

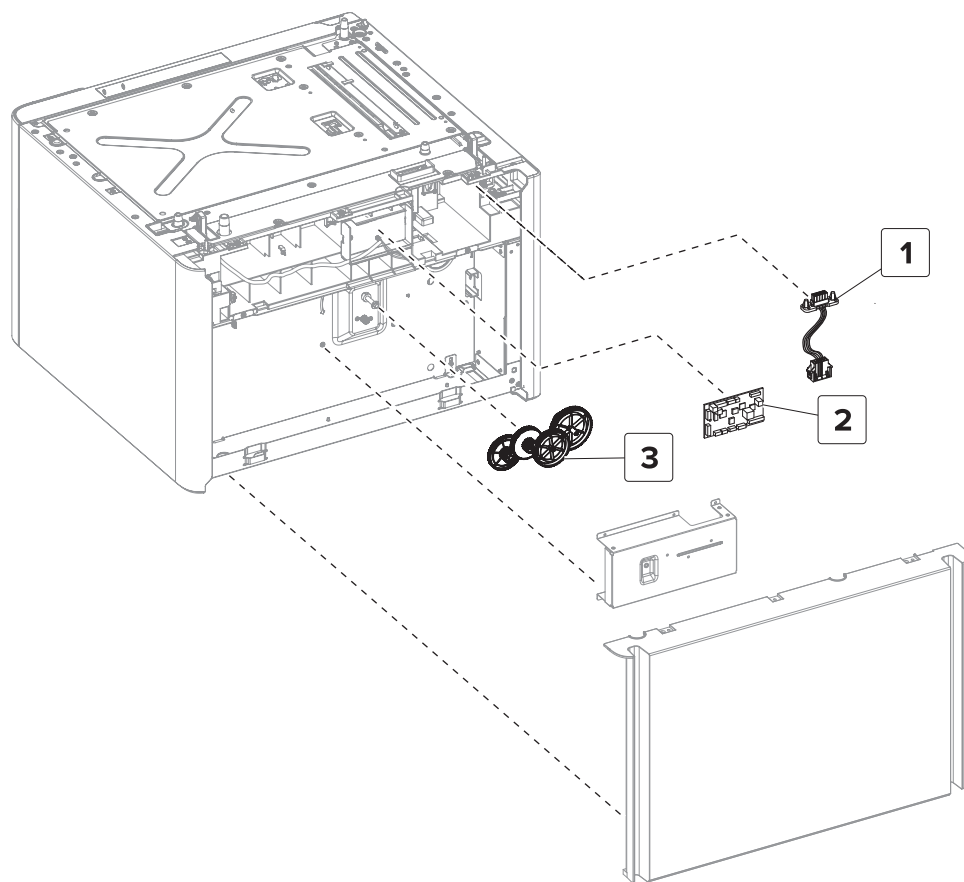
## Assembly 22: 2200-sheet tray—Front



## Assembly 22: 2200-sheet tray—Front

Asm-index	P/N	Units/opt	Units/FRU	Description	Removal procedure
1	41X0343	1	1	2200-sheet tray rails	<a href="#">“2200-sheet tray rail removal” on page 500</a>
2	41X0369	1	1	2200-sheet tray paper feeder	<a href="#">“2200-sheet tray paper feeder removal” on page 509</a>
3	41X0470	1	1	Sensor (2200-sheet tray media low)	<a href="#">“Sensor (2200-sheet tray media low) removal” on page 502</a>
4	41X0338	1	1	2200-sheet tray media out sensor actuator	<a href="#">“2200-sheet tray media out sensor actuator removal” on page 512</a>
5	41X0470	1	1	Sensor (2200-sheet tray pick roller index)	<a href="#">“Sensor (2200-sheet tray pick roller index) removal” on page 510</a>
6	41X0470	1	1	Sensor (2200-sheet tray media out)	<a href="#">“Sensor (2200-sheet tray media out) removal” on page 509</a>
7	40X7911	1	1	Sensor (2200-sheet tray media size)	<a href="#">“Sensor (2200-sheet tray media size) removal” on page 502</a>
8	41X0140	1	1	Lift motor	<a href="#">“Motor (2200-sheet tray elevator) removal” on page 507</a>
9	41X0335	1	1	2200-sheet tray wake up switch	<a href="#">“2200-sheet tray wake up switch removal” on page 515</a>

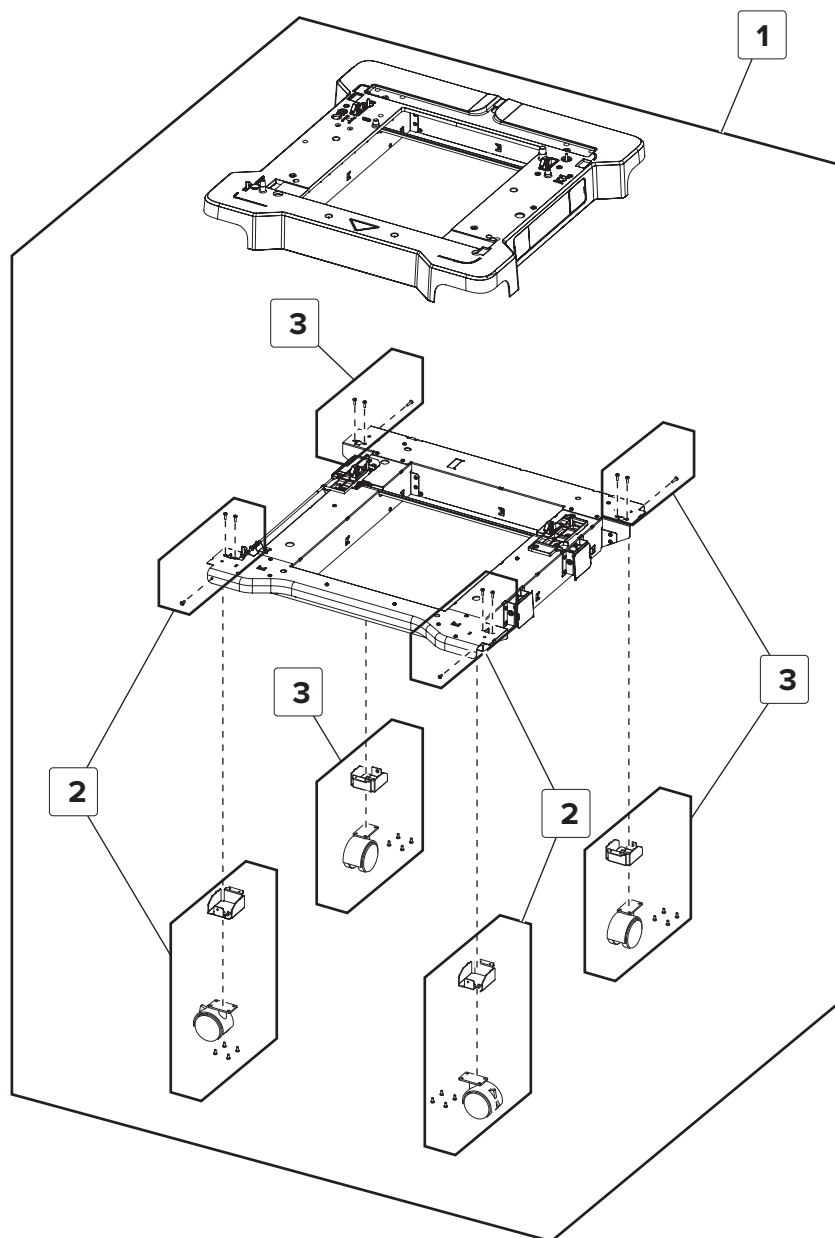
## Assembly 23: 2200-sheet tray—Rear



## Assembly 23: 2200-sheet tray—Rear

Asm-index	P/N	Units/opt	Units/FRU	Description	Removal procedure
1	41X0337	1	1	2200-sheet tray interface cable	<a href="#">“2200-sheet tray interface cable removal” on page 504</a>
2	41X0332	1	1	2200-sheet tray controller board	<a href="#">“2200-sheet tray controller board removal” on page 503</a>
3	41X0351	1	1	2200-sheet tray elevator gears	<a href="#">“2200-sheet tray elevator gears removal” on page 506</a>

## Assembly 24: Caster base





## Assembly 24: Caster base

Asm-index	P/N	Units/opt	Units/FRU	Description	Removal procedure
1	41X0762	1	1	Caster base	--
2	41X0774	2	1	Caster base locking caster	<a href="#">“Locking caster removal” on page 516</a>
3	41X0775	2	1	Caster base non-locking caster	<a href="#">“Non-locking caster removal” on page 519</a>

## Assembly 25: Cables

Asm-index	P/N	Units/mach	Units/FRU	Description	Removal procedure
NS	41X0890	1	1	Paper feed cables parts pack <ul style="list-style-type: none"> <li>• Tray 1 sensor cable</li> <li>• Deskew/duplex motor cable</li> <li>• MPF/pass through motor cable</li> <li>• Redrive sensor/motor cable</li> <li>• Redrive extension cable</li> <li>• MPF cable</li> <li>• Paper path sensor</li> <li>• Duplex door beacon cable</li> <li>• Paper path sensor module cable</li> </ul>	N/A
NS	41X0891	1	1	Motor cables parts pack <ul style="list-style-type: none"> <li>• Waste toner motor cable</li> <li>• Fuser/transfer belt motor cable</li> <li>• Developers drive motor cable</li> <li>• Drums drive motor cable</li> <li>• Printhead fan extension cable</li> <li>• HVPS fan extension cable</li> </ul>	N/A
NS	41X0892	1	1	HVPS cables parts pack <ul style="list-style-type: none"> <li>• Charge roller HVPS cable</li> <li>• Wiper/printhead mirror motor cable</li> <li>• Main HVPS cable</li> </ul>	N/A
NS	41X0893	1	1	LVPS cables parts kit <ul style="list-style-type: none"> <li>• AC power cable</li> <li>• LVPS/controller board cable</li> <li>• Fuser power cable</li> </ul>	N/A
NS	41X0894	1	1	Miscellaneous cables parts pack <ul style="list-style-type: none"> <li>• Waste toner bottle present sensor cable</li> <li>• Door interlock switch cable</li> <li>• Ground cable</li> <li>• Flat flex ground cable</li> <li>• Distribution card cable</li> </ul>	N/A

Asm-index	P/N	Units/mach	Units/FRU	Description	Removal procedure
NS	41X0895	1	1	Control panel cables kit <ul style="list-style-type: none"> <li>• Control panel cable (SFP)</li> <li>• Proximity sensor cable (MFP)</li> <li>• LCD cable</li> <li>• USB cable</li> <li>• Speaker extension cable</li> <li>• Headphone cable (MFP)</li> <li>• Keyboard USB cable</li> </ul>	N/A
NS	41X0896	1	1	Options interface cables parts kit <ul style="list-style-type: none"> <li>• Input option cable</li> <li>• Output option cable (SFP)</li> <li>• Output option cable (MFP)</li> </ul>	N/A
NS	41X0950	1	1	Optional tray cables parts pack <ul style="list-style-type: none"> <li>• Separator motor cable</li> <li>• Paper feeder extension cable</li> <li>• Paper feeder cable</li> </ul>	N/A

## Assembly 26: Maintenance kits

Asm-index	P/N	Units/mach	Units/FRU	Description	Removal procedure
NS	41X0927	1	1	Maintenance kit, 300K (100 V Combo fuser and transfer module) includes: <ul style="list-style-type: none"> <li>• Fuser</li> <li>• Transfer belt</li> <li>• Transfer roller</li> <li>• 3 pick rollers</li> <li>• 3 separator pads</li> </ul>	--
NS	41X0928	1	1	Maintenance kit, 300K (115 V Combo fuser and transfer module) includes: <ul style="list-style-type: none"> <li>• Fuser</li> <li>• Transfer belt</li> <li>• Transfer roller</li> <li>• 3 pick rollers</li> <li>• 3 separator pads</li> </ul>	--
NS	41X0929	1	1	Maintenance kit, 300K (220 V Combo fuser and transfer module) includes: <ul style="list-style-type: none"> <li>• Fuser</li> <li>• Transfer belt</li> <li>• Transfer roller</li> <li>• 3 pick rollers</li> <li>• 3 separator pads</li> </ul>	--

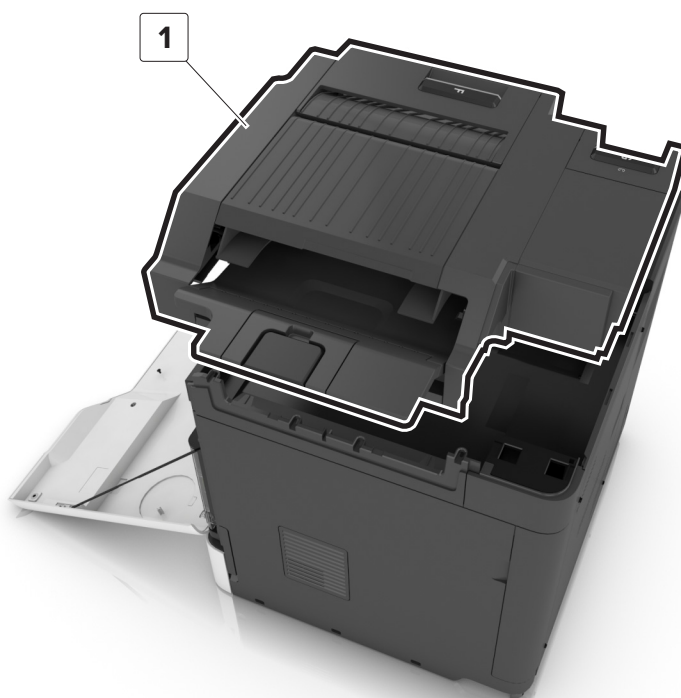


## Assembly 27: Miscellaneous

Asm-index	P/N	Units/mach	Units/FRU	Description	Removal procedure
NS	40X8671	1	1	Cover, Removable HDD kit	--
NS	40X9934	1	1	Hard disk drive, 320+ GB	--
NS	40X8737	1	1	Authentication device, RFID	--
NS	41X0015	1	1	Adapter, N8360 ISP + NFC/BLE DualBand	--
NS	40X9652	1	1	Adapter, Fiber Gigabit ISP	--
NS	41X0029	1	1	DDR3 RAM, 2GB, 256Mx64, 204 SODIMM	--
NS	41X1011	1	1	Font card, Hebrew	--
NS	41X1012	1	1	Font card, Arabic	--
NS	41X1013	1	1	Font card, Simplified Chinese	--
NS	41X1014	1	1	Font card, Traditional Chinese	--
NS	41X1015	1	1	Font card, Korean	--
NS	41X1016	1	1	Font card, Japanese	--
NS	41X1001	1	1	Forms and Bar Code card	--
NS	41X1029	1	1	Forms and Simplified Chinese font card	--
NS	41X1005	1	1	PRESCRIBE card	--
NS	41X1003	1	1	IPDS SCS TNE card	--
NS	41X1010	1	1	User Flash Memory, 256MB	--
NS	40X9879	1	1	Authentication device, Contact	--
NS	41X0027	1	1	Smart card, Security Element	--
NS	41X0997	1	1	Authentication Device, Contact Front Solutions Module	--
NS	41X0998	1	1	Authentication Device, Contactless Front Solutions Module	--
NS	41X0035	1	1	Keypad, English keyboard kit	--
NS	41X0036	1	1	Keypad, French keyboard kit	--
NS	41X0037	1	1	Keypad, Italian keyboard kit	--
NS	41X0038	1	1	Keypad, German keyboard kit	--
NS	41X0039	1	1	Keypad, Spanish keyboard kit	--
NS	41X0045	1	1	Keypad, English keyboard	--
NS	41X0046	1	1	Keypad, French keyboard	--
NS	41X0047	1	1	Keypad, Italian keyboard	--
NS	41X0048	1	1	Keypad, German keyboard	--
NS	41X0049	1	1	Keypad, Spanish keyboard	--

Asm-index	P/N	Units/mach	Units/FRU	Description	Removal procedure
NS	41X0357	1	1	Surge protector, 110V	--
NS	41X0370	1	1	Surge protector, 220V	--

## Assembly 28: Staple finisher option

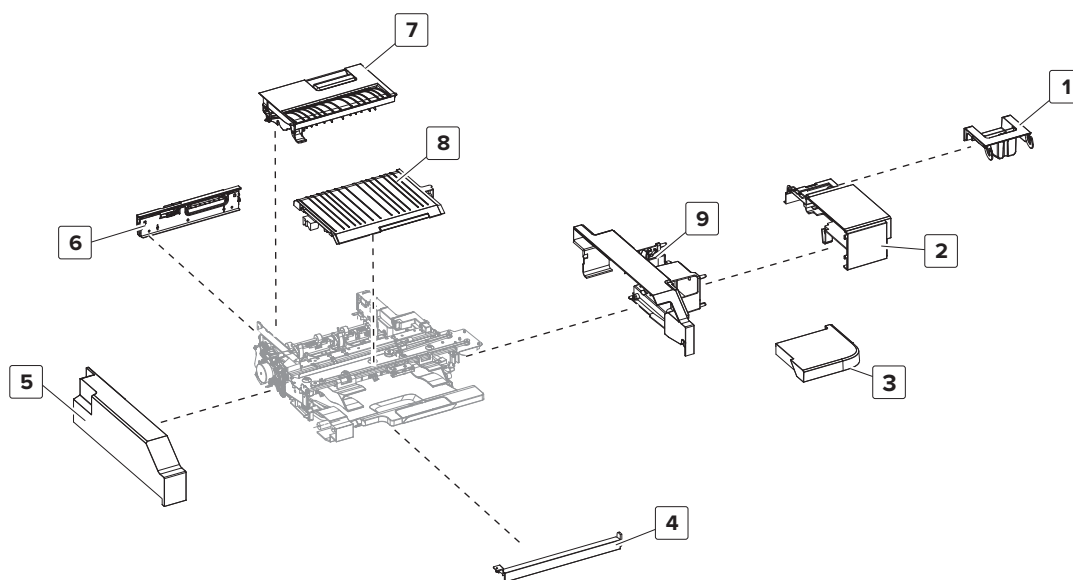




## Assembly 28: Staple finisher option

Asm-index	P/N	Units/opt	Units/FRU	Description	Removal procedure
1	41X0746	1	1	Staple finisher option	--

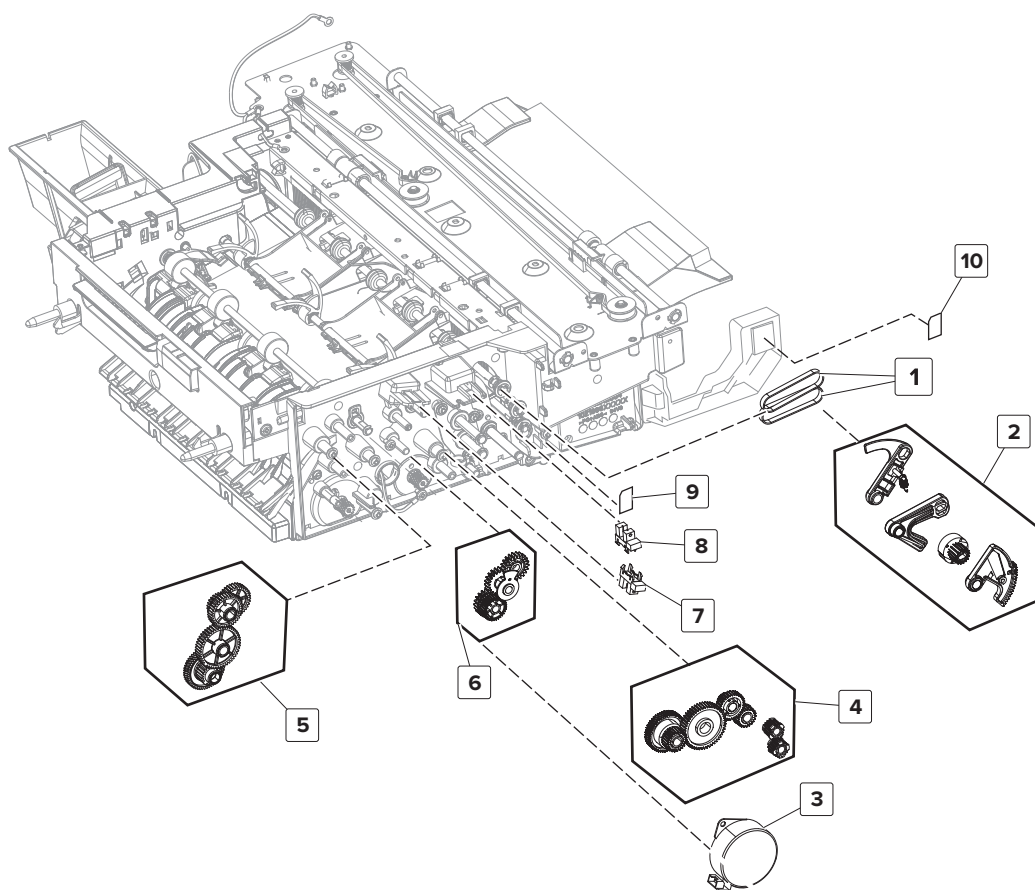
## Assembly 29: Staple finisher—Covers



## Assembly 29: Staple finisher—Covers

Asm-index	P/N	Units/opt	Units/FRU	Description	Removal procedure
1	41X0531	1	1	Staple finisher staple cartridge door	<a href="#">“Staple finisher staple cartridge door removal” on page 526</a>
2	41X0495	1	1	Staple finisher rear cover	<a href="#">“Staple finisher rear cover removal” on page 523</a>
3	41X0933	1	1	Staple finisher cover	--
4	41X0493	1	1	Staple finisher right cover	<a href="#">“Staple finisher right cover removal” on page 522</a>
5	41X0494	1	1	Staple finisher front cover	<a href="#">“Staple finisher front cover removal” on page 522</a>
6	41X0520	1	1	Staple finisher lock assembly	<a href="#">“Staple finisher lock assembly removal” on page 528</a>
7	41X0498	1	1	Staple finisher jam door	<a href="#">“Staple finisher jam access door removal” on page 527</a>
8	41X0507	1	1	Staple finisher top cover	<a href="#">“Staple finisher tamper top cover removal” on page 561</a>
9	41X0497	1	1	Staple finisher inner rear cover	<a href="#">“Staple finisher inner rear cover removal” on page 525</a>

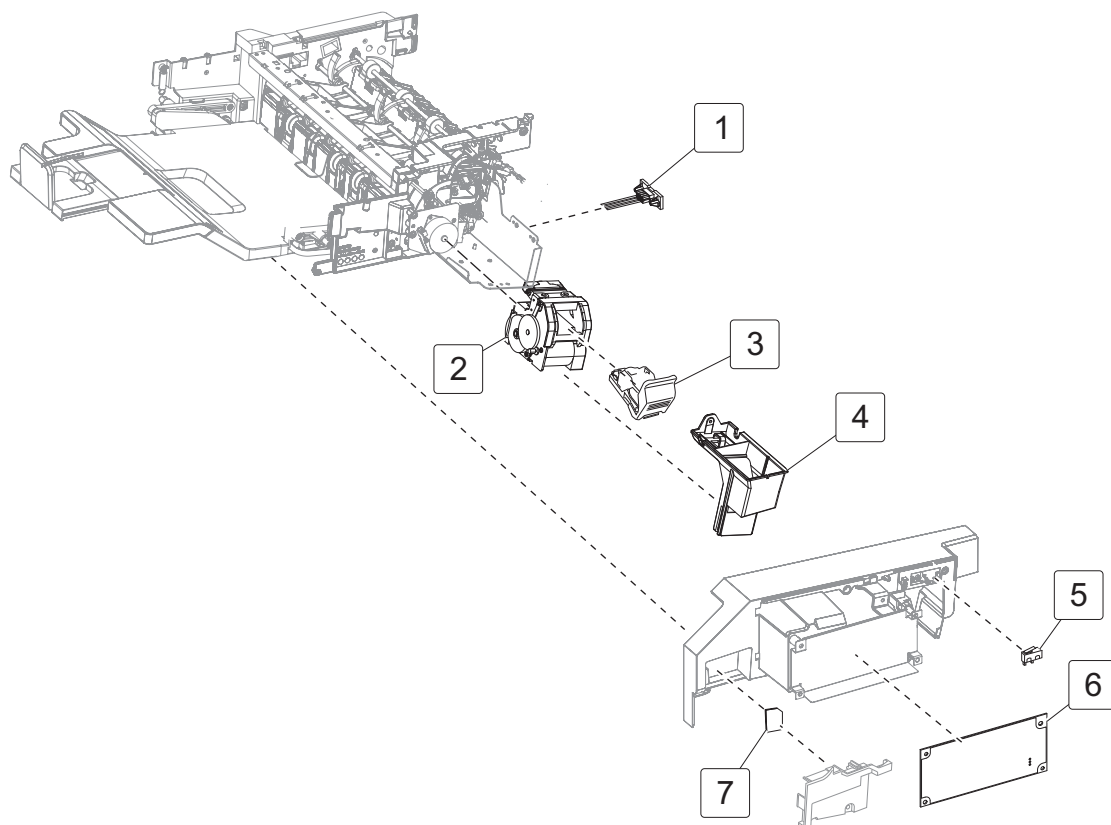
## Assembly 30: Staple finisher—Front



## Assembly 30: Staple finisher—Front

Asm-index	P/N	Units/opt	Units/FRU	Description	Removal procedure
1	41X0521	2	1	Staple finisher exit roller belts	<a href="#">“Staple finisher exit roller belts removal” on page 557</a>
2	41X0516	1	1	Staple finisher front upper exit roller position gears	<a href="#">“Staple finisher front upper position exit roller gears removal” on page 553</a>
3	40X8753	1	1	Motor (staple finisher aligner paddle)	<a href="#">“Motor (staple finisher aligner paddle) removal ” on page 548</a>
4	41X0514	1	1	Staple finisher exit gears	<a href="#">“Staple finisher exit gears removal” on page 555</a>
5	41X0512	1	1	Staple finisher transport gears	<a href="#">“Staple finisher transport gears removal” on page 548</a>
6	41X0513	1	1	Staple finisher aligner paddle gears	<a href="#">“Staple finisher aligner paddle gears removal” on page 550</a>
7	40X7301	1	1	Sensor (staple finisher aligner paddle)	<a href="#">“Staple finisher aligner paddle gears removal” on page 550</a>
8	40X7301	1	1	Sensor (staple finisher upper exit roller)	<a href="#">“Sensor (staple finisher upper exit roller) removal” on page 552</a>
9	41X0504	1	1	Sensor (staple finisher front lower bin full)	<a href="#">“Sensor (staple finisher lower bin full) removal” on page 530</a>
10	41X0504	1	1	Sensor (staple finisher front upper bin full)	<a href="#">“Sensor (staple finisher upper bin full) removal” on page 531</a>

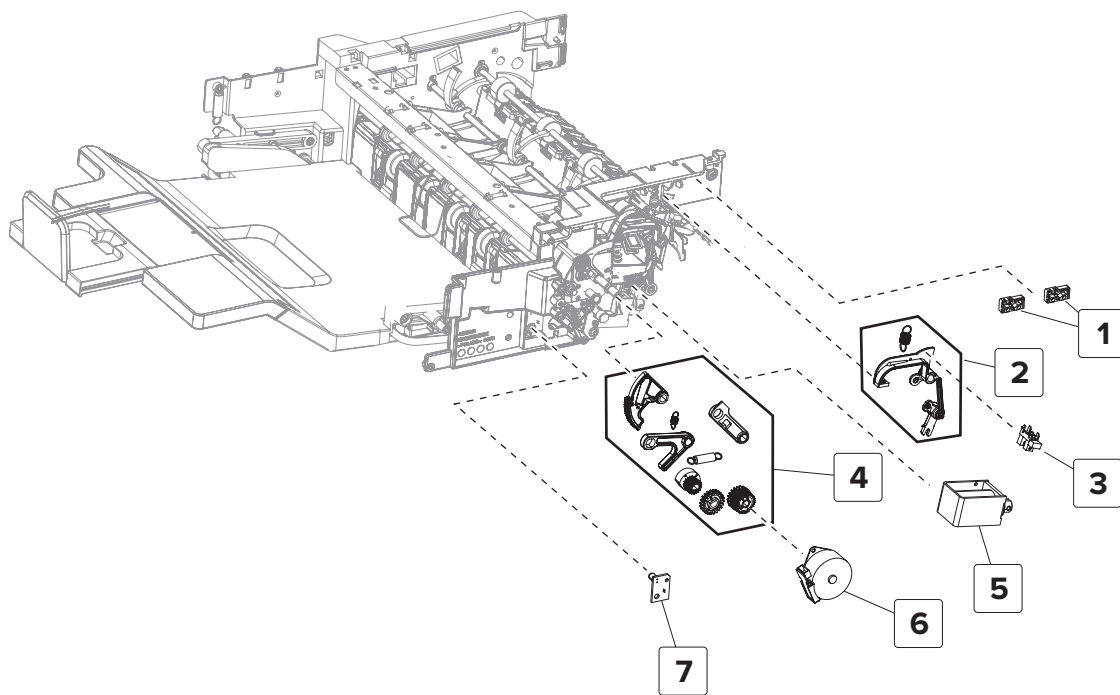
## Assembly 31: Staple finisher—Electrical



## Assembly 31: Staple finisher—Electrical

Asm-index	P/N	Units/opt	Units/FRU	Description	Removal procedure
1	41X0506	1	1	Staple finisher interface cable	<a href="#">“Staple finisher interface cable removal” on page 533</a>
2	41X0501	1	1	Staple finisher staple unit	<a href="#">“Staple finisher staple unit removal” on page 540</a>
3	41X0530	1	1	Staple finisher staple cartridge holder	--
4	41X0500	1	1	Staple finisher staple cartridge ejector	<a href="#">“Staple finisher staple unit ejector removal” on page 538</a>
5	41X0499	1	1	Staple finisher staple cartridge door switch	<a href="#">“Staple finisher staple cartridge door switch removal” on page 529</a>
6	41X0496	1	1	Staple finisher controller board	<a href="#">“Staple finisher controller board removal” on page 525</a>
7	41X0504	1	1	Sensor (staple finisher rear lower bin full)	<a href="#">“Sensor (staple finisher lower bin full) removal” on page 530</a>
NS	41X0783	1	1	Staple finisher cable parts pack	--

## Assembly 32: Staple finisher—Rear

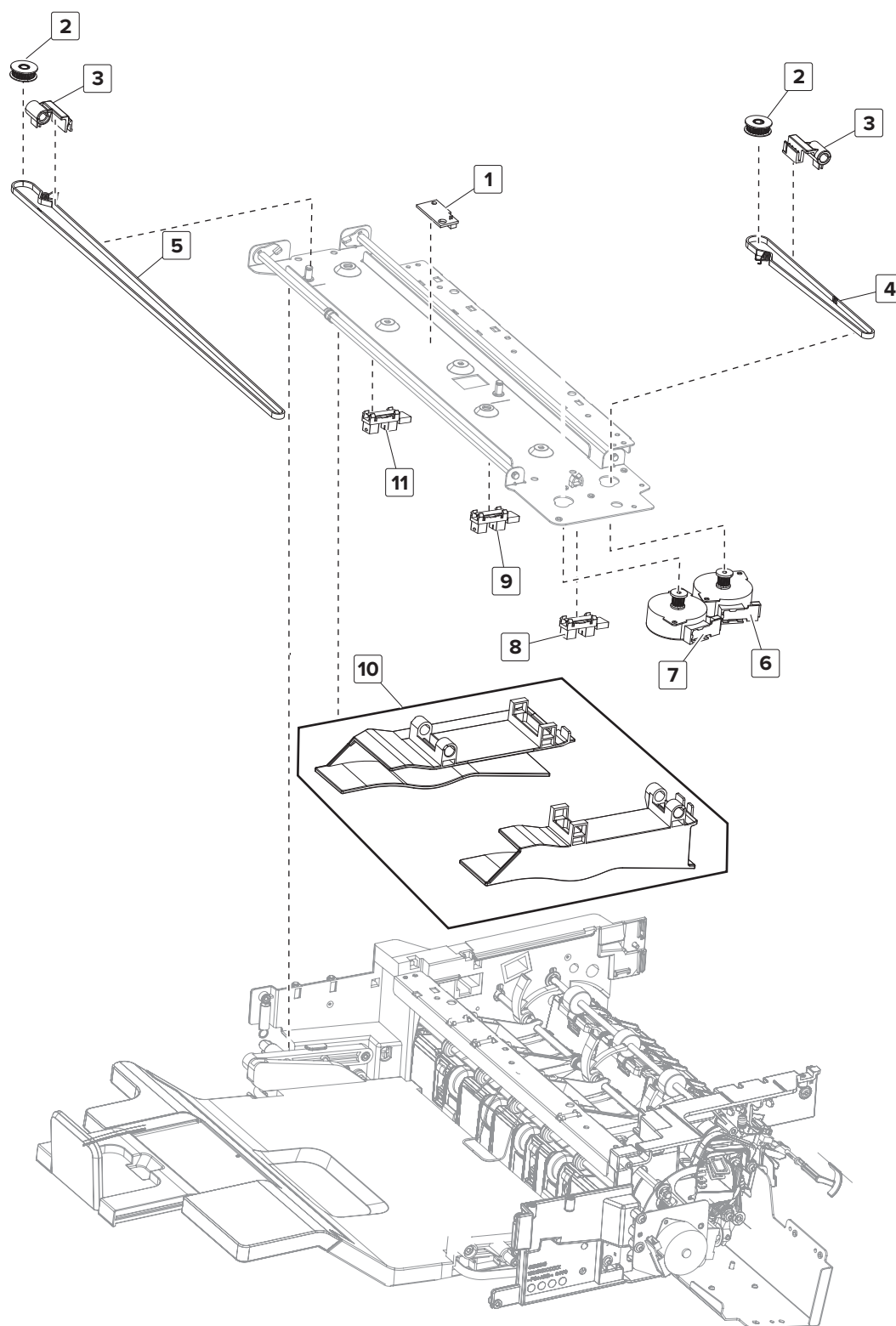




## Assembly 32: Staple finisher—Rear

Asm-index	P/N	Units/opt	Units/FRU	Description	Removal procedure
1	41X0505	1	2	Staple finisher jam door switch	<a href="#">“Staple finisher jam door switches removal” on page 542</a>
2	41X0503	1	1	Staple finisher stack clamp	<a href="#">“Staple finisher stack clamp removal” on page 544</a>
3	40X7301	1	1	Sensor (staple finisher stack clamp)	<a href="#">“Staple finisher stack clamp removal” on page 544</a>
4	41X0784	1	1	Staple finisher rear upper exit roller position gears	<a href="#">“Staple finisher rear upper position exit roller gears removal” on page 535</a>
5	41X0502	1	1	Staple finisher stack clamp solenoid	<a href="#">“Staple finisher stack clamp solenoid removal” on page 543</a>
6	40X8256	1	1	Motor (staple finisher upper exit roller)	<a href="#">“Motor (staple finisher upper exit roller) removal” on page 534</a>
7	41X0504	1	1	Sensor (staple finisher rear upper bin full)	<a href="#">“Sensor (staple finisher upper bin full) removal” on page 531</a>

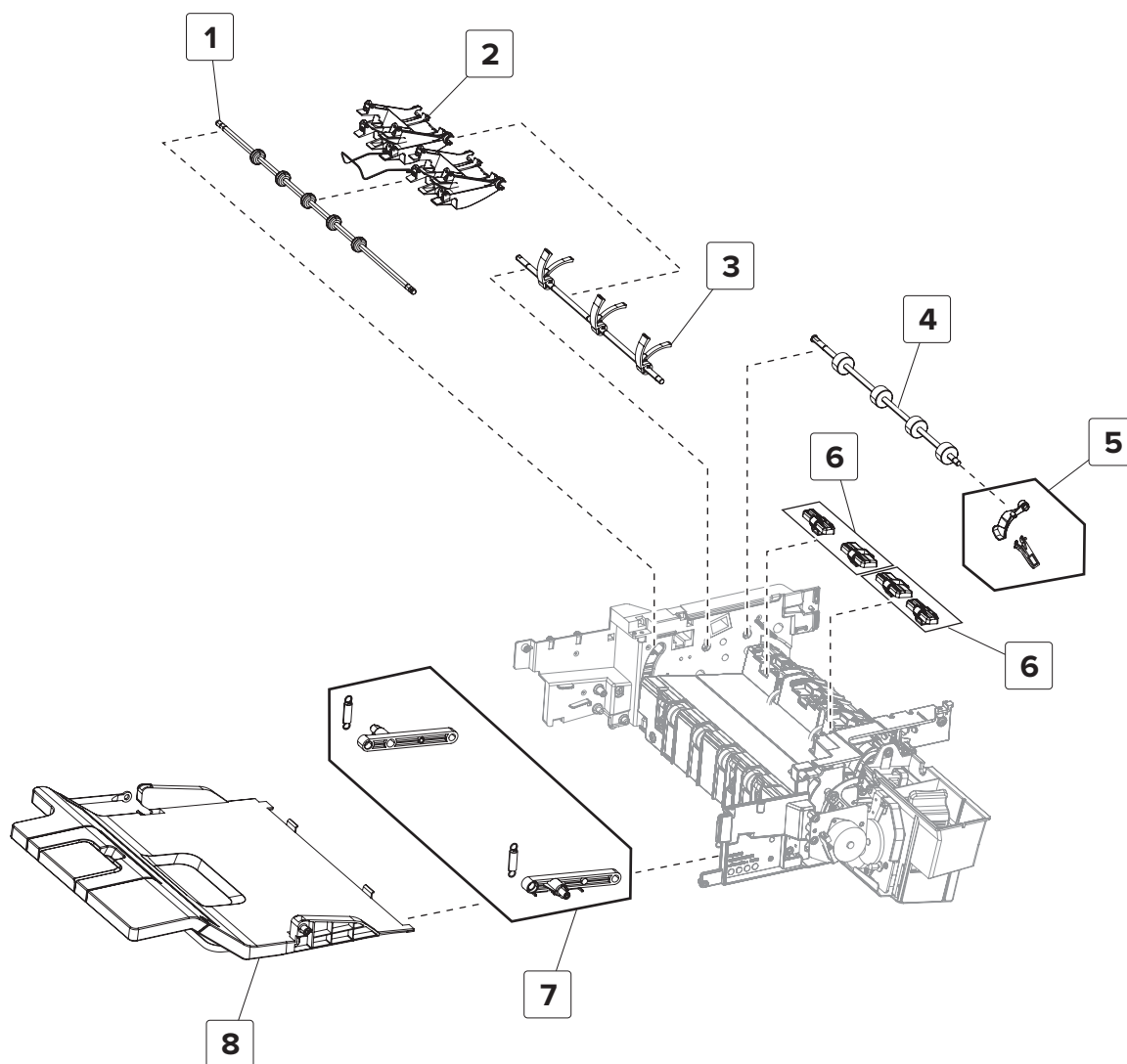
## Assembly 33: Staple finisher—Tamper



## Assembly 33: Staple finisher—Tamper

Asm-index	P/N	Units/opt	Units/FRU	Description	Removal procedure
1	41X0778	1	1	Staple finisher cave light	<a href="#">“Staple finisher tamper top cover removal” on page 561</a>
2	41X0776	1	1	Staple finisher tamper pulley gears	<a href="#">“Staple finisher tamper pulley gear removal” on page 565</a>
3	41X0508	1	1	Staple finisher tamper belt holders	<a href="#">“Staple finisher tamper removal” on page 566</a>
4	41X0535	1	1	Staple finisher rear tamper belt	<a href="#">“Staple finisher tamper belts removal” on page 564</a>
5	41X0534	1	1	Staple finisher front tamper belt	<a href="#">“Staple finisher tamper belts removal” on page 564</a>
6	40X8211	1	1	Motor (staple finisher rear tamper)	<a href="#">“Motor (staple finisher tamper) removal” on page 562</a>
7	40X8211	1	7	Motor (staple finisher front tamper)	<a href="#">“Motor (staple finisher tamper) removal” on page 562</a>
8	40X7301	1	1	Sensor (staple finisher rear tamper home)	<a href="#">“Sensor (staple finisher tamper position) removal” on page 562</a>
9	40X7301	1	1	Sensor (staple finisher narrow media tamper)	<a href="#">“Sensor (staple finisher tamper position) removal” on page 562</a>
10	41X0509	1	1	Staple finisher tampers	<a href="#">“Staple finisher tamper removal” on page 566</a>
11	40X7301	1	1	Sensor (staple finisher front tamper home)	<a href="#">“Sensor (staple finisher tamper position) removal” on page 562</a>

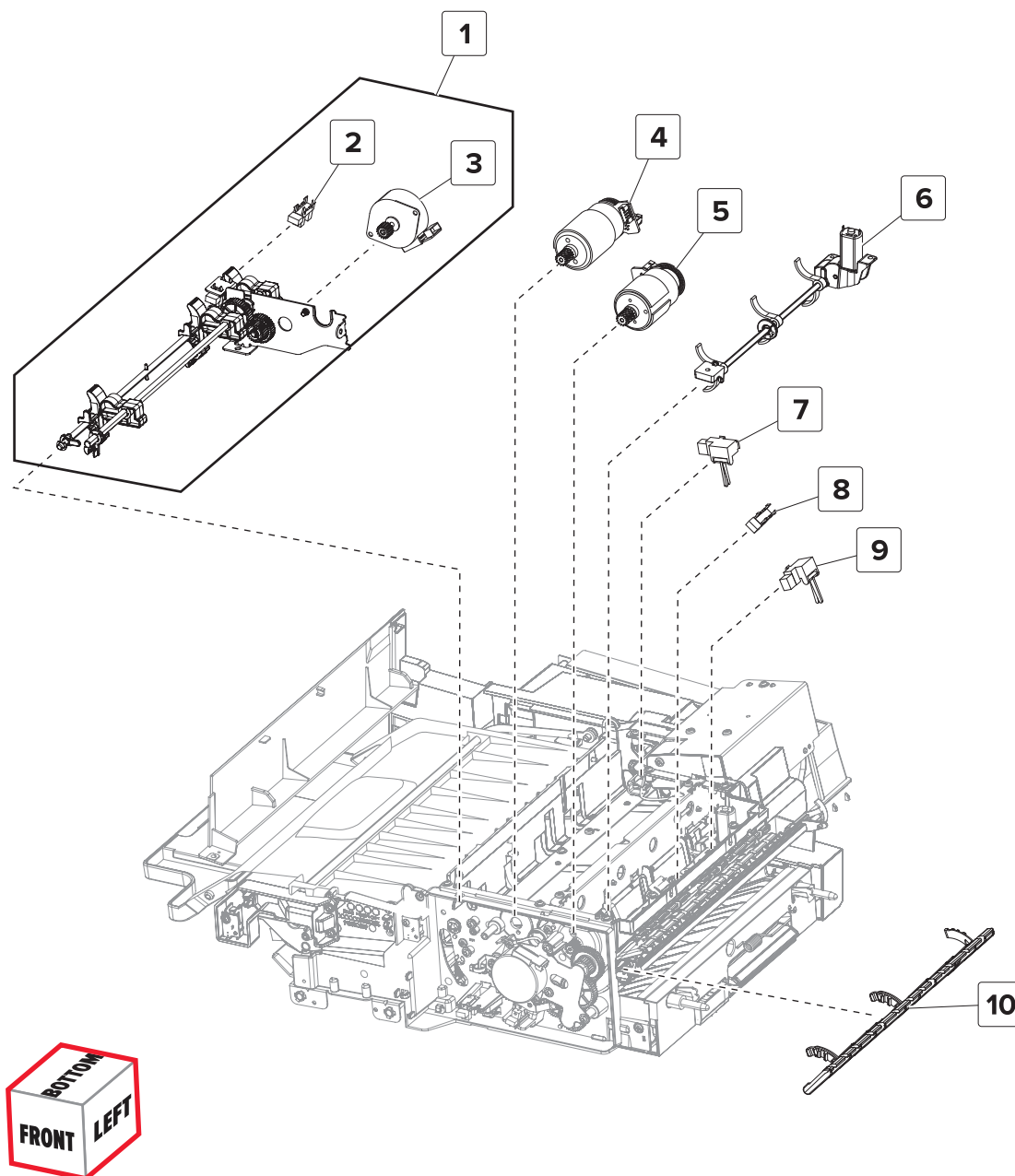
## Assembly 34: Staple finisher—Transport



## Assembly 34: Staple finisher—Transport

Asm-index	P/N	Units/opt	Units/FRU	Description	Removal procedure
1	41X0515	1	1	Staple finisher upper exit roller	<a href="#">“Staple finisher upper exit roller removal” on page 578</a>
2	41X0519	1	1	Staple finisher upper paper guide	<a href="#">“Staple finisher aligner paddle and upper paper guide removal” on page 575</a>
3	41X0518	1	1	Staple finisher aligner paddle	<a href="#">“Staple finisher aligner paddle and upper paper guide removal” on page 575</a>
4	41X0517	1	1	Staple finisher compiler feed roller	<a href="#">“Staple finisher compiler feed roller removal” on page 572</a>
5	41X0525	1	1	Staple finisher compiler paper guide	<a href="#">“Staple finisher compiler paper guide removal” on page 570</a>
6	41X0526	2	1	Staple finisher compiler feed idler	<a href="#">“Staple finisher compiler feed idler removal” on page 574</a>
7	41X0527	1	1	Staple finisher bin link	<a href="#">“Staple finisher bin link removal” on page 568</a>
8	41X0528	1	1	Staple finisher bin	<a href="#">“Staple finisher bin removal” on page 569</a>

## Assembly 35: Staple finisher—Bottom



## Assembly 35: Staple finisher—Bottom

Asm-index	P/N	Units/opt	Units/FRU	Description	Removal procedure
1	41X0532	1	1	Staple finisher bin clamp assembly	<a href="#">“Staple finisher bin clamp assembly removal” on page 582</a>
2	40X7301	1	1	Sensor (staple finisher bin clamp)	<a href="#">“Sensor (staple finisher bin clamp) removal” on page 590</a>
3	40X8256	1	1	Motor (staple finisher bin clamp)	<a href="#">“Motor (staple finisher bin clamp) removal” on page 591</a>
4	41X0529	1	1	Motor (staple finisher exit)	<a href="#">“Motor (staple finisher exit) removal” on page 596</a>
5	41X0529	1	1	Motor (staple finisher transport)	<a href="#">“Motor (staple finisher transport) removal” on page 596</a>
6	41X0523	1	1	Staple finisher decurl paddle	<a href="#">“Staple finisher decurl assembly removal” on page 598</a>
7	40X8745	1	1	Sensor (staple finisher staple unit paper present)	<a href="#">“Sensor (staple finisher staple unit paper present) removal” on page 599</a>
8	40X7301	1	1	Sensor (staple finisher decurl)	<a href="#">“Sensor (staple finisher decurl) removal” on page 600</a>
9	40X8745	1	1	Sensor (staple finisher transport)	<a href="#">“Sensor (staple finisher transport) removal” on page 601</a>
10	41X0511	1	1	Staple finisher entrance paper guide	<a href="#">“Staple finisher entrance paper guide removal” on page 581</a>
NS	41X0786	1	1	Staple finisher screw parts pack	--
NS	41X0787	1	1	Staple finisher plastic clip	--