

Parts catalog

Legend

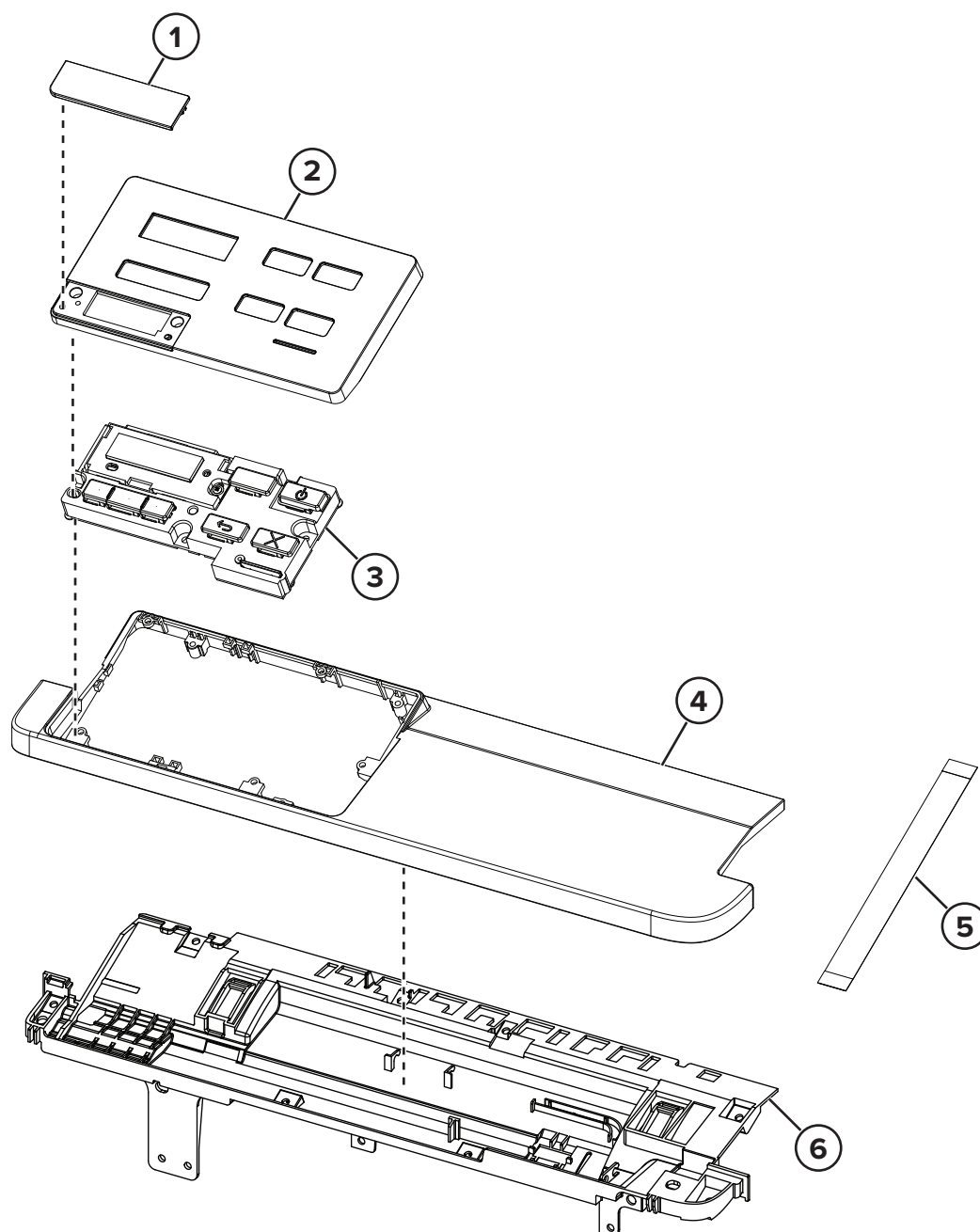
The following column headings are used in the parts catalog:

- **Asm-index**—Identifies the item in the illustration
- **P/N**—Identifies the part number of a FRU
- **Units/mach**—Refers to the number of units in a printer
- **Units/opt**—Refers to the number of units in an option
- **Units/FRU**—Refers to the number of units in a FRU
- **Description**—A brief description of the part

The following abbreviations are used in the parts catalog:

- **NS** (not shown) in the Asm-index column indicates that the part is procurable but is not shown in the illustration.
- **PP** (parts packet) in the Description column indicates that the part is contained in a parts packet.

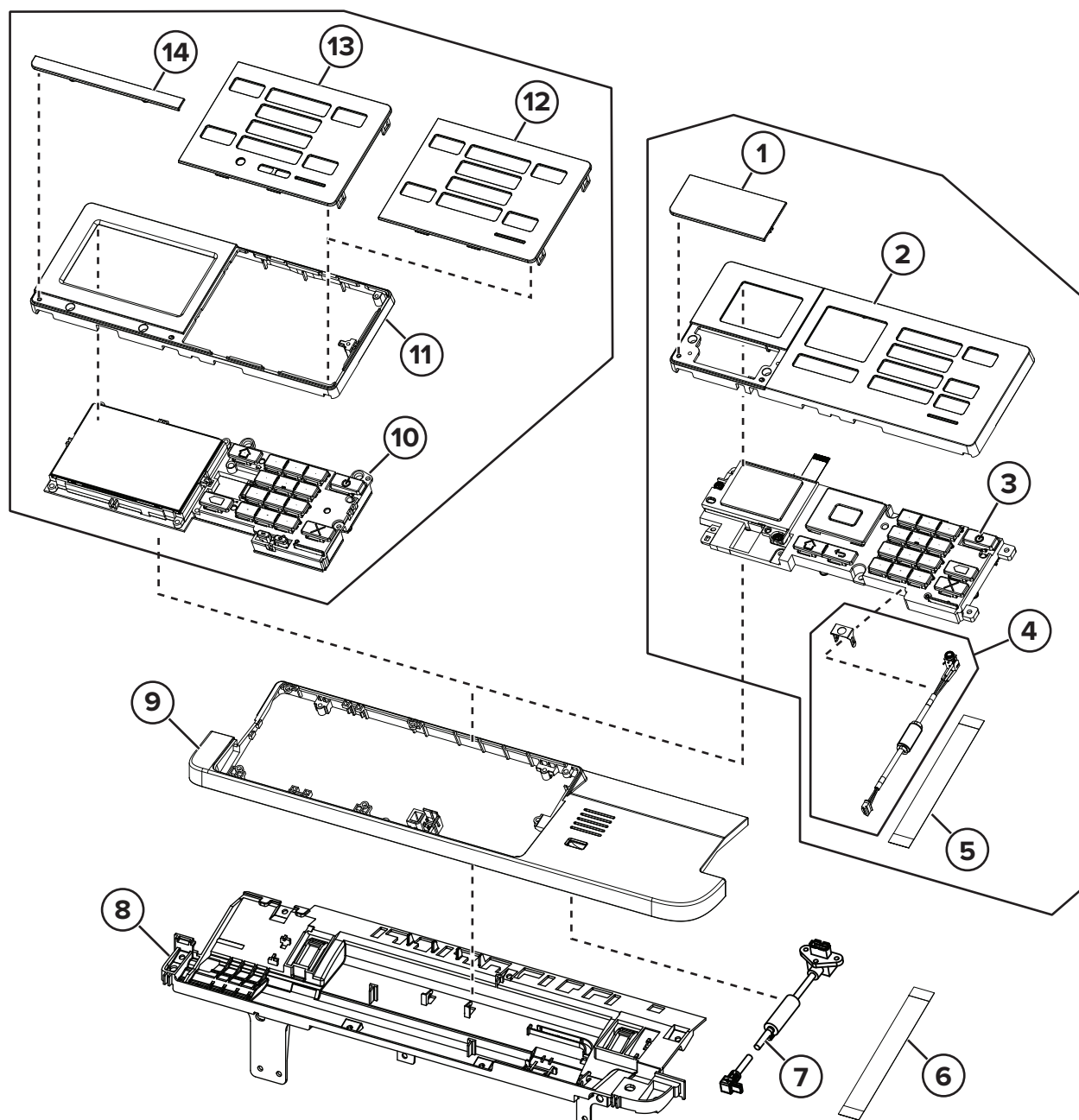
Assembly 1: 2-line control panel



Assembly 1: 2-line control panel

Asm-index	P/N	Units/mach	Units/FRU	Description	Removal procedure
1	41X2070	1	1	CS321 control panel badge cover	“2-line control panel badge cover removal” on page 289
1	41X2127	1	1	SC2325 control panel badge cover	“2-line control panel badge cover removal” on page 289
2	41X2044	1	1	2-line control panel bezel	“2-line control panel bezel removal” on page 291
3	41X2047	1	1	2-line control panel assembly	“2-line control panel assembly removal” on page 294
4	41X2045	1	1	2-line control panel top cover	“2-line control panel top cover removal” on page 295
5	41X2046	1	1	2-line control panel ribbon cable	“2-line control panel top cover removal” on page 295
6	41X1305	1	1	2-line control panel base cover	“Control panel base removal” on page 288

Assembly 2: 2.4-inch and 4.3-inch control panel

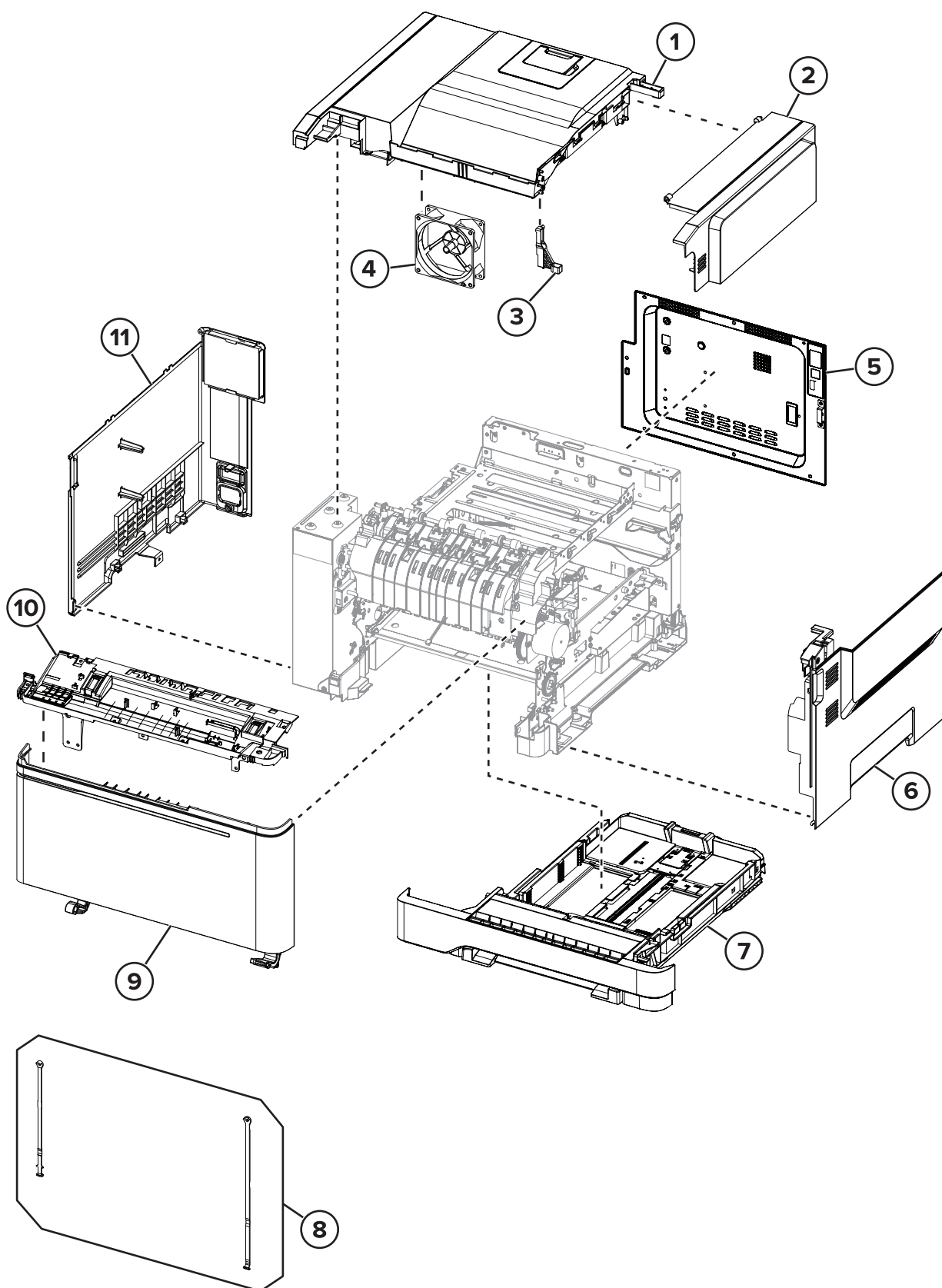


Assembly 2: 2.4-inch and 4.3-inch control panel

Asm-index	P/N	Units/mach	Units/FRU	Description	Removal procedure
1	41X2049	1	1	CS421 control panel badge cover	“2.4-inch control panel badge cover removal” on page 290
1	41X2050	1	1	CS521 control panel badge cover	“2.4-inch control panel badge cover removal” on page 290
1	41X2132	1	1	SC2425 control panel badge cover	“2.4-inch control panel badge cover removal” on page 290
1	41X2133	1	1	SC2535 control panel badge cover	“2.4-inch control panel badge cover removal” on page 290
2	41X1304	1	1	2.4-inch control panel bezel (CS421, C2425, CS521, and CS2535)	“2.4-inch control panel bezel removal” on page 291
3	41X1627	1	1	2.4-inch control panel assembly (CS421, C2425, CS521, and CS2535)	“2.4-inch control panel top cover removal” on page 296
4	41X1308	1	1	Headphone cable	--
5	41X1309	1	1	2.4-inch control panel FFC (CS421, C2425, CS521, and CS2535)	“2.4-inch control panel top cover removal” on page 296
5	41X2021	1	1	4.3-inch control panel FFC (CS622 and CS2240)	“4.3-inch control panel top cover removal” on page 298
6	41X2021	1	1	Control panel ribbon cable	--
7	41X1307	1	1	USB cable	“Front USB cable removal” on page 305
8	41X1305	1	1	Control panel base cover	“Control panel base removal” on page 288
9	41X1306	1	1	4.3-inch control panel top cover (CS622 and CS2240)	“4.3-inch control panel top cover removal” on page 298
10	41X2113	1	1	4.3-inch control panel assembly (CS622 and CS2240)	“4.3-inch control panel top cover removal” on page 298
11	41X1302	1	1	4.3-inch control panel bezel (CS622 and CS2240)	“4.3-inch control panel bezel removal” on page 292
12	41X2115	1	1	4.3-inch control panel keyboard cover without volume (CS622 and CS2240)	“4.3-inch control panel top cover removal” on page 298
13	41X1310	1	1	4.3-inch control panel keyboard cover (CS622 and CS2240)	“4.3-inch control panel top cover removal” on page 298
14	41X2048	1	1	CS622 control panel badge cover	“4.3-inch control panel badge cover removal” on page 290

Asm-index	P/N	Units/mach	Units/FRU	Description	Removal procedure
14	41X2134	1	1	C2240 control panel badge cover	“4.3-inch control panel badge cover removal” on page 290
NS	41X2119	1	1	Control panel power cable	--

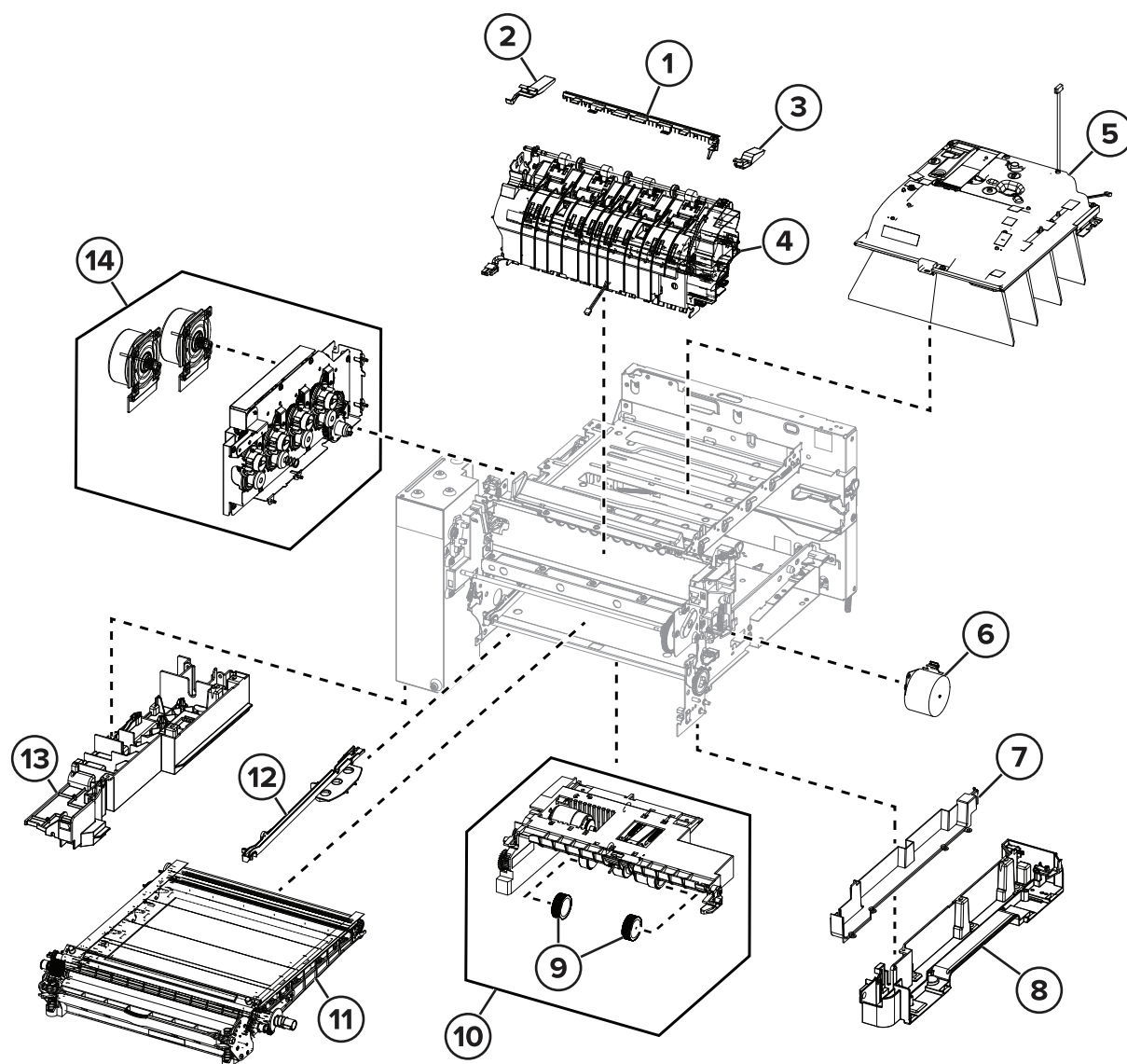
Assembly 3: Covers



Assembly 3: Covers

Asm-index	P/N	Units/mach	Units/FRU	Description	Removal procedure
1	40X7633	1	1	Top cover	“Top cover removal” on page 344
2	40X7621	1	1	Toner cover	--
3	40X9244	1	1	Front toner door bracket	--
4	41X0397	1	1	System fan	“System fan removal” on page 340
5	41X2100	1	1	Rear cover, CS62x	“Rear cover removal” on page 341
5	41X1788	1	1	Rear cover, CS3x, CS4x, CS52x	“Rear cover removal” on page 341
6	40X7630	1	1	Right cover	“Right cover removal” on page 257
7	41X1285	1	1	250-sheet tray assembly	--
8	40X7619	1	2	Door straps	--
9	41X1286	1	1	Front door assembly	“Front door removal” on page 282
10	41X1305	1	1	Control pane base	“Control panel base removal” on page 288
11	41X1291	1	1	Left cover	“Left cover removal” on page 244

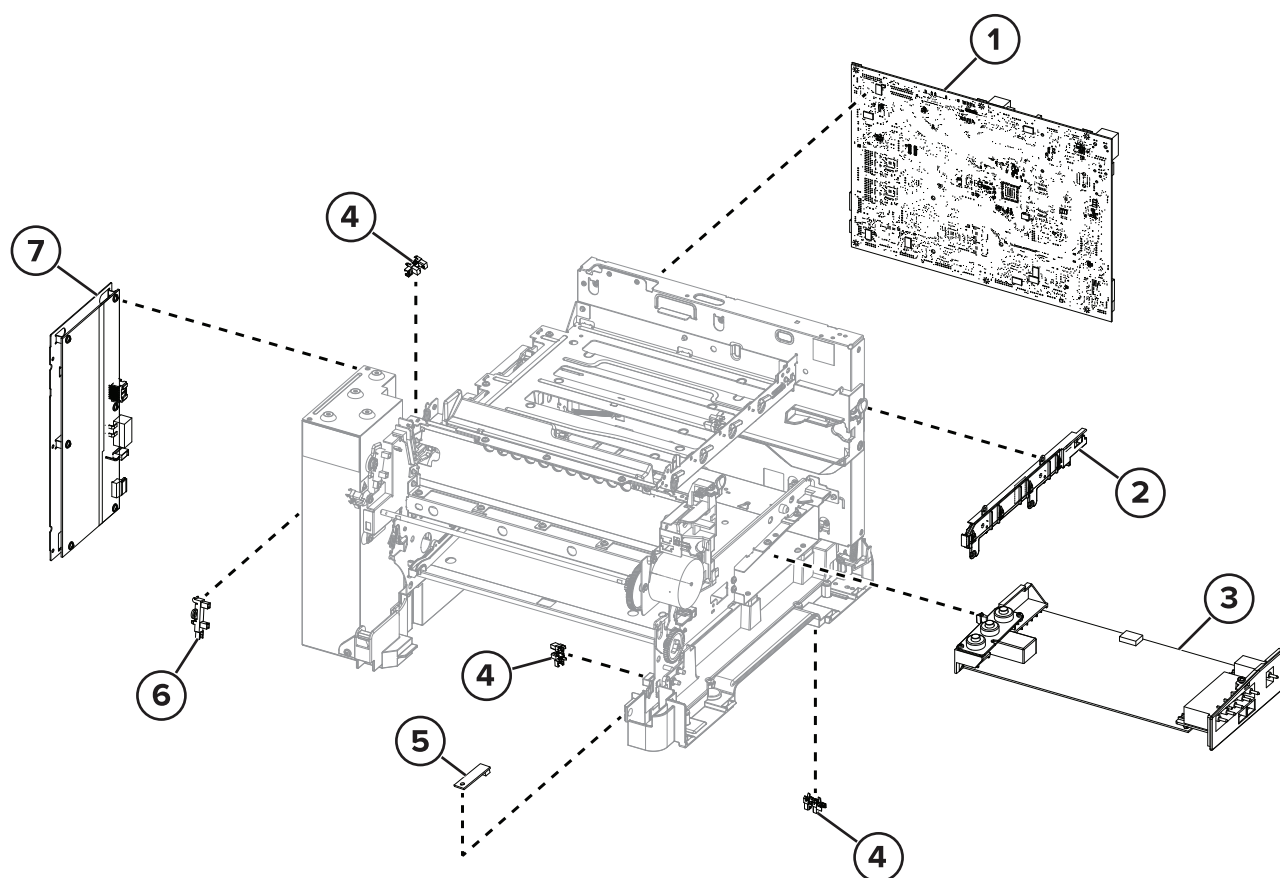
Assembly 4: Paper path and frame



Assembly 4: Paper path and frame

Asm-index	P/N	Units/mach	Units/FRU	Description	Removal procedure
1	41X2305	1	1	Fuser deflector	“Exit deflector removal” on page 312
2	41X2349	1	1	Narrow media/bin full flag	“Narrow media/bin full sensor flag removal” on page 350
3	41X2350	1	1	Right deflector flag	“Right output bin deflector removal” on page 352
4	41X1041	1	1	110 V Fuser	“Fuser removal” on page 309
4	41X1300	1	1	220 V Fuser	“Fuser removal” on page 309
4	41X1299	1	1	100 V Fuser	“Fuser removal” on page 309
5	41X1040	1	1	Printhead	“Printhead removal” on page 350
6	40X7629	1	1	Motor (fuser drive)	“Motor (fuser drive) removal” on page 260
7	41X2327	1	1	Subframe cable cover	--
8	41X1312	1	1	Lower right subframe	“Lower right frame removal” on page 326
9	40X5168	2	2	Pick tires	“Pick tires removal” on page 314
10	41X1292	1	1	Media feeder	“Tray 1 media feeder removal” on page 337
11	41X1039	1	1	Transfer module	“Transfer module removal” on page 272
12	41X0580	1	1	Transfer module guide	“Transfer module guide removal” on page 333
13	41X2326	1	1	Lower left subframe	“Lower left frame removal” on page 316
14	41X1289	1	1	EP drive assembly	“EP drive assembly removal” on page 247
NS	41X2360	4	4	Sub-frame foot	--

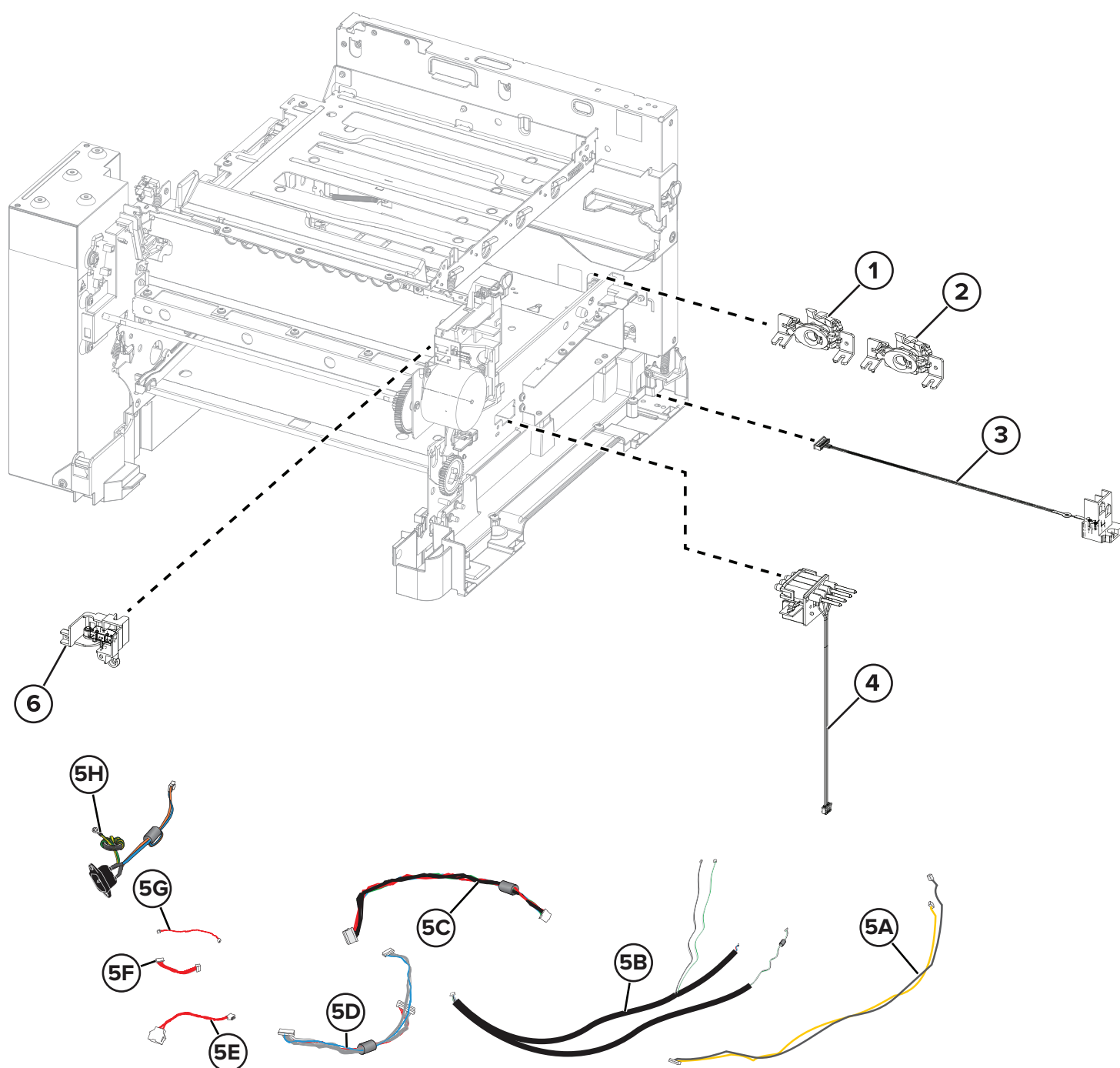
Assembly 5: Electronics



Assembly 5: Electronics

Asm-index	P/N	Units/mach	Units/FRU	Description	Removal procedure
1	41X1789	1	1	Controller board (CS421 and C2425)	“Controller board removal” on page 343
1	41X2098	1	1	Controller board (CS521 and CS2535)	“Controller board removal” on page 343
1	41X1790	1	1	Controller board (CS622 and CS2240)	“Controller board removal” on page 343
1	41X2140	1	1	Controller board (CS2325)	“Controller board removal” on page 343
2	40X7620	1	1	Toner meter card	“TMC card removal” on page 261
3	41X1042	1	1	High voltage power supply	“HVPS removal” on page 267
4	40X7301	3	1	Photo sensors: <ul style="list-style-type: none"> • Sensor (tray present) • Sensor (duplex) • Sensor (narrow media/bin full) 	“Sensor (tray present) removal” on page 336 “Sensor (duplex) removal” on page 332 “Sensor (narrow media/output bin full) removal” on page 348
5	41X1290	1	1	Weather station	“Weather station service check” on page 173
6	40X5413	1	1	Sensor (fuser exit)	“Sensor (fuser exit) removal” on page 252
7	41X2019	1	1	110 W low-voltage power supply (CS2325)	“LVPS removal” on page 250
7	41X1043	1	1	175 W low voltage power supply (CS421, C2425, CS521, CS2535, CS622 and CS2240)	“LVPS removal” on page 250
NS	41X1311	1	1	Speaker (CS622)	“Speaker (CS622) removal” on page 257

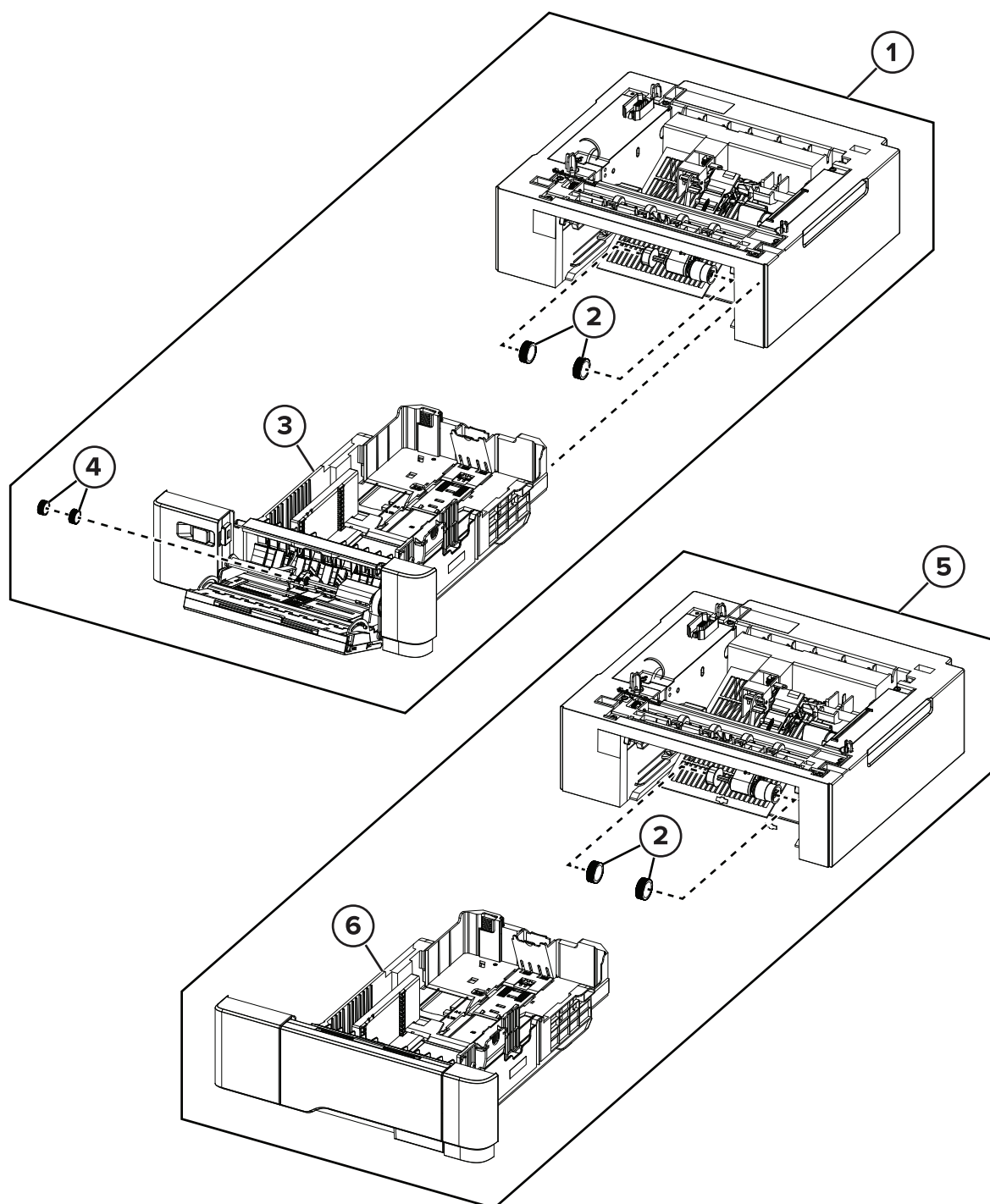
Assembly 6: Cables and sensors



Assembly 6: Cables and sensors

Asm-index	P/N	Units/mach	Units/FRU	Description	Removal procedure
1	41X1904	1	1	Sensor (left toner patch with thermistor)	“Sensors (toner patch) removal” on page 264
2	41X2348	1	1	Sensor (right toner patch with thermistor)	“Sensors (toner patch) removal” on page 264
3	41X1722	1	1	Waste toner bottle contact block	“Waste toner bottle contact block removal” on page 281
4	41X1723	4	1	Toner cartridge contact	“Toner cartridge contacts removal” on page 278
5A	41X2328	1	1	Fuser exit narrow media to controller board	--
5B	41X2329	1	1	Fuser/input sensor cable	--
5C	41X2332	1	1	LVPS to controller board cable	--
5D	41X2330	1	1	EP motor to controller board cable	--
5E	41X2335	1	1	Tray 2 to controller board cable	--
5F	41X2334	1	1	HVPS to controller board cable	--
5G	41X2336	1	1	Tray present sensor cable	--
5H	41X2331	1	1	AC power to LVPS cable	--
6	41X1561	1	1	Front and right side interlock switch cover assembly	“Interlock switch cover assembly removal” on page 286
NS	41X2333	1	1	Weather station cable	“Weather station removal” on page 301

Assembly 7: Option trays



Assembly 7: Option trays

Asm-index	P/N	Units/mach	Units/FRU	Description	Removal procedure
1	41X1783	1	1	Optional 650-sheet duo tray	“650-sheet duo tray removal” on page 354
2	40X5168	2	2	Pick tires	“Pick tire removal” on page 356
3	41X1784	1	1	650-sheet duo tray insert	“650-sheet duo tray insert removal” on page 353
4	40X7178	2	1	650-sheet duo tray MPF rollers	--
5	41X1780	1	1	550-sheet tray	--
6	41X1781	1	1	550-sheet tray insert	--

Assembly 8: Miscellaneous

Asm-index	P/N	Units/mach	Units/FRU	Description	Removal procedure
NS	41X2096	1	1	115 V Fuser maintenance kit	--
NS	41X2097	1	1	230 V Fuser maintenance kit	--
NS	41X2095	1	1	100 V Fuser maintenance kit	--
NS	40X9934	1	1	320 GB SATA hard disk drive	--
NS	41X1373	1	1	SATA hard disk drive with FIPS	--
NS	41X1873	1	1	Wireless network card cardlet without cable	--
NS	41X1871	1	1	1 port vertical fax card	--
NS	40X4823	1	1	1284-B THCK parallel adapter	--
NS	41X1945	1	1	N8230 fiber ISP with side cover adapter	--
NS	41X1946	1	1	N8230 fiber ISP with backpack adapter	--
NS	41X1013	1	1	Simplified Chinese font card	--
NS	41X1014	1	1	Traditional Chinese font card	--
NS	41X1015	1	1	Korean font card	--
NS	41X1016	1	1	Japanese font card	--
NS	41X1010	1	1	256 MB flash card	--
NS	41X2055	1	1	Security element smart card with interconnect	--
NS	41X0020	1	1	Serial ISP with backpack adapter	--
NS	41X0997	1	1	Contact front solutions module	--
NS	41X0998	1	1	Contactless front solutions module	--
NS	41X0045	1	1	English keyboard	--
NS	41X0046	1	1	French keyboard	--
NS	41X0048	1	1	German keyboard	--
NS	41X0049	1	1	Spanish keyboard	--
NS	41X2033	1	1	PCIe 8 GB x32 DDP RAM card	--
NS	41X2302	1	1	Braille label kit	--
NS	41X0357	1	1	110 V surge protector	--
NS	41X0370	1	1	220 V surge protector	--
NS	40X1367	1	1	10 ft. parallel cable	--
NS	40X1368	1	1	USB cable	--
NS	40X7648	1	1	Screws parts pack	--
NS	40X7652	1	1	Spring kit	--

Asm-index	P/N	Units/mach	Units/FRU	Description	Removal procedure
NS	3085348	1	N/A	Software and document CD Note: This part number is for internal use only and is not available for order.	--
NS	41X2055	1	1	Smart card	--