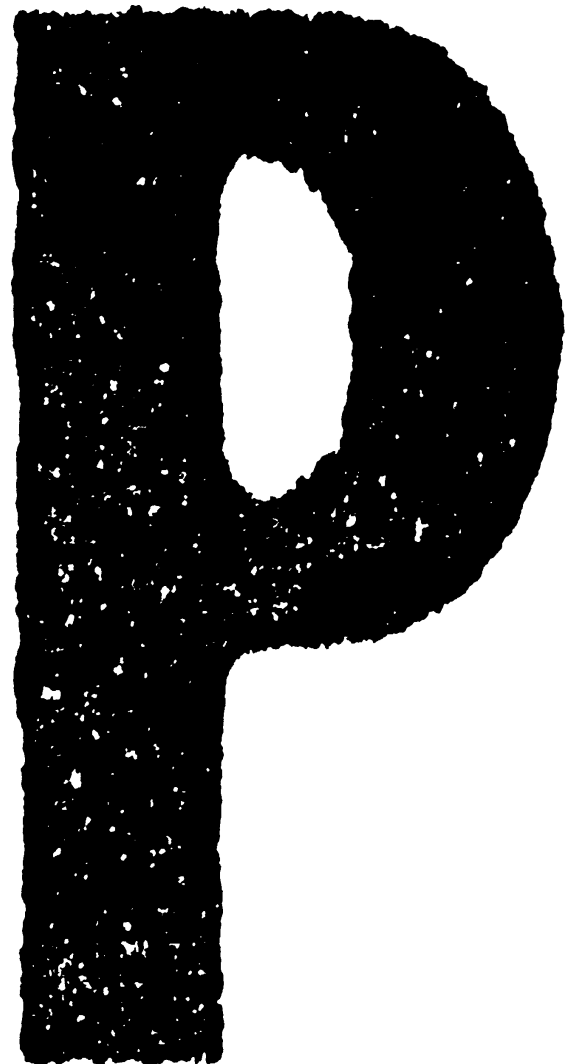


TOSHIBA

SERVICE PARTS LIST

Z-Folding Unit

ZF-4000



© 2006 TOSHIBA TEC CORPORATION All rights reserved

Under the copyright laws, this manual cannot be reproduced in any form without prior written permission of TOSHIBA TEC CORPORATION. No patent liability is assumed, however, with respect to the use of the information contained herein.

EXPLANATION OF SERVICE-PARTS LIST

1. HOW TO READ THE PARTS LIST

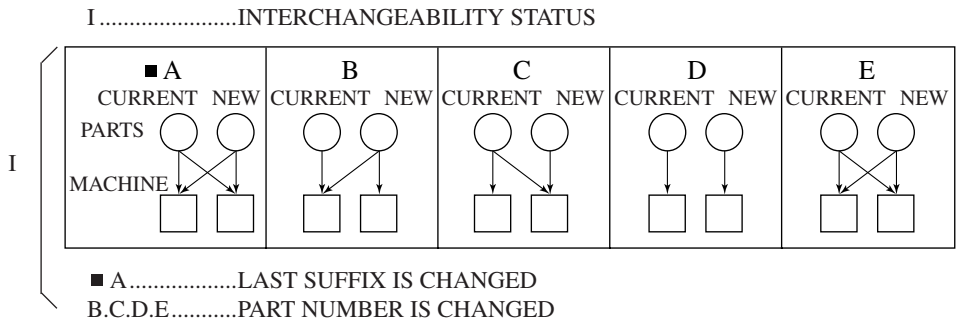
- (1) Number of pieces
The number of pieces in the list denotes total pieces used per unit. But the numbers in the list for PACKING MATERIAL and ACCESSORY denote total pieces used per machine.
- (2) One pack of screws in the list includes 50 pieces.
- (3) ABBREVIATED CODES

QTY/PAC

- QTY.....one piece
- PAC.....one pack
- 1/P.....one piece packed in polyethylene bag
- 1/S.....one piece packed in special pack
- 1/C.....one piece packed in carton box
- 1/PP.....one piece packed in paper and polyethylene bag
- 1/KP.....one piece packed in polyethylene bag with cardboard
- 1/D.....one piece packed in polyethylene-cushion bag
- 1/SB.....one piece packed in shielding bag
- N/A.....not available

P

- P.....PURPOSE
- A.....ADD
- B.....DELETE
- C.....CHANGE
- D.....QTY, CHANGE
- E.....MISENTRY
- F.....OMISSION



2. HOW TO PLACE ORDER FOR PARTS

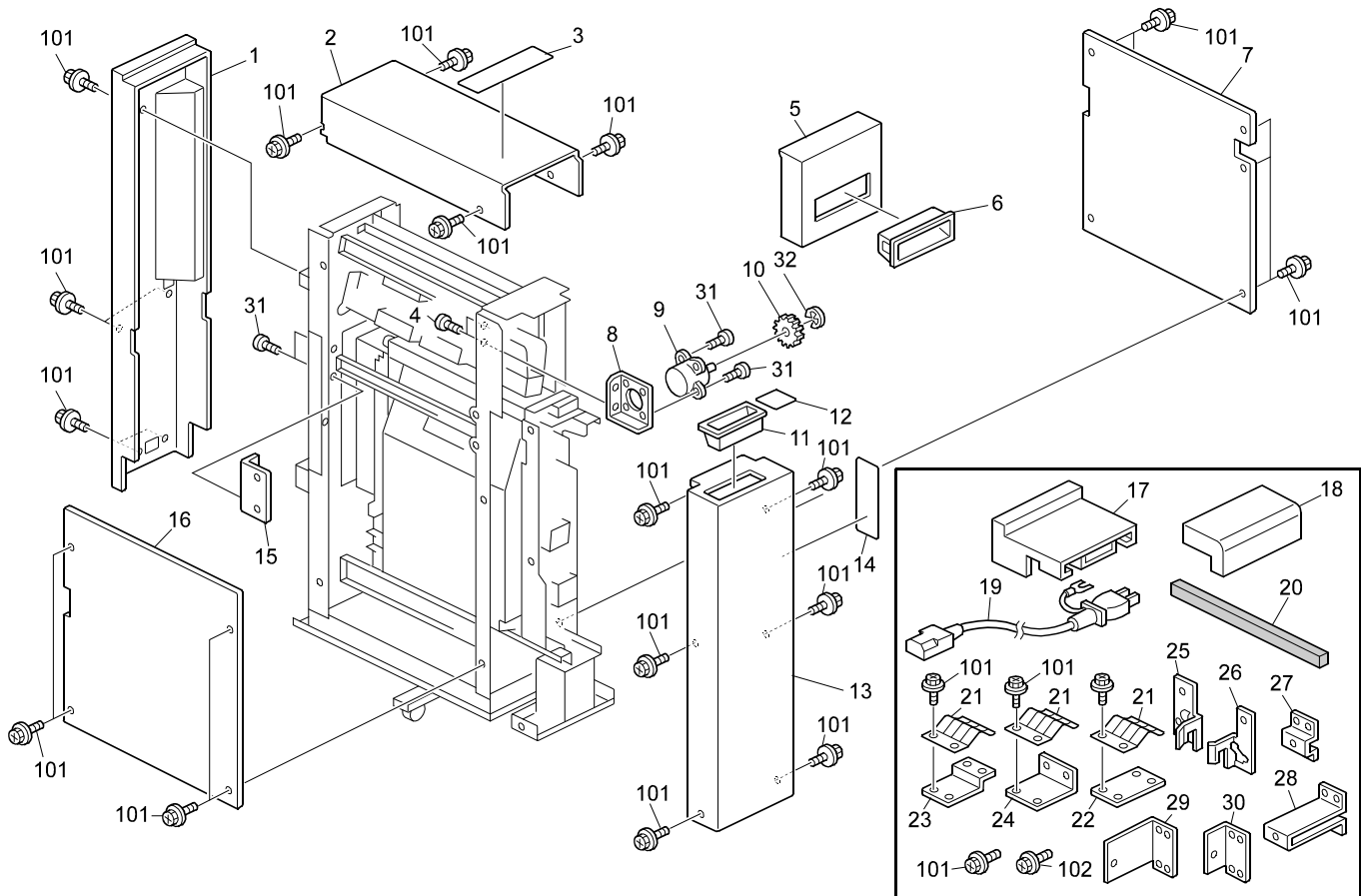
- (1) The parts handled as service parts are only those with their "QTY/PACK" column listed with a quantity other than "N/A***" or "SUPPLY".
Those parts with "N/A***" are listed only for the purpose of showing the mechanical construction, those listed with "SUPPLY" are handled only as a sales item, and therefore both types of parts are not supplied as service parts.
- (2) Orders for any parts which form a component of a semi-assembled unit are not acceptable.
Note: All the screws and nuts used are ISO standard.

3. REGION

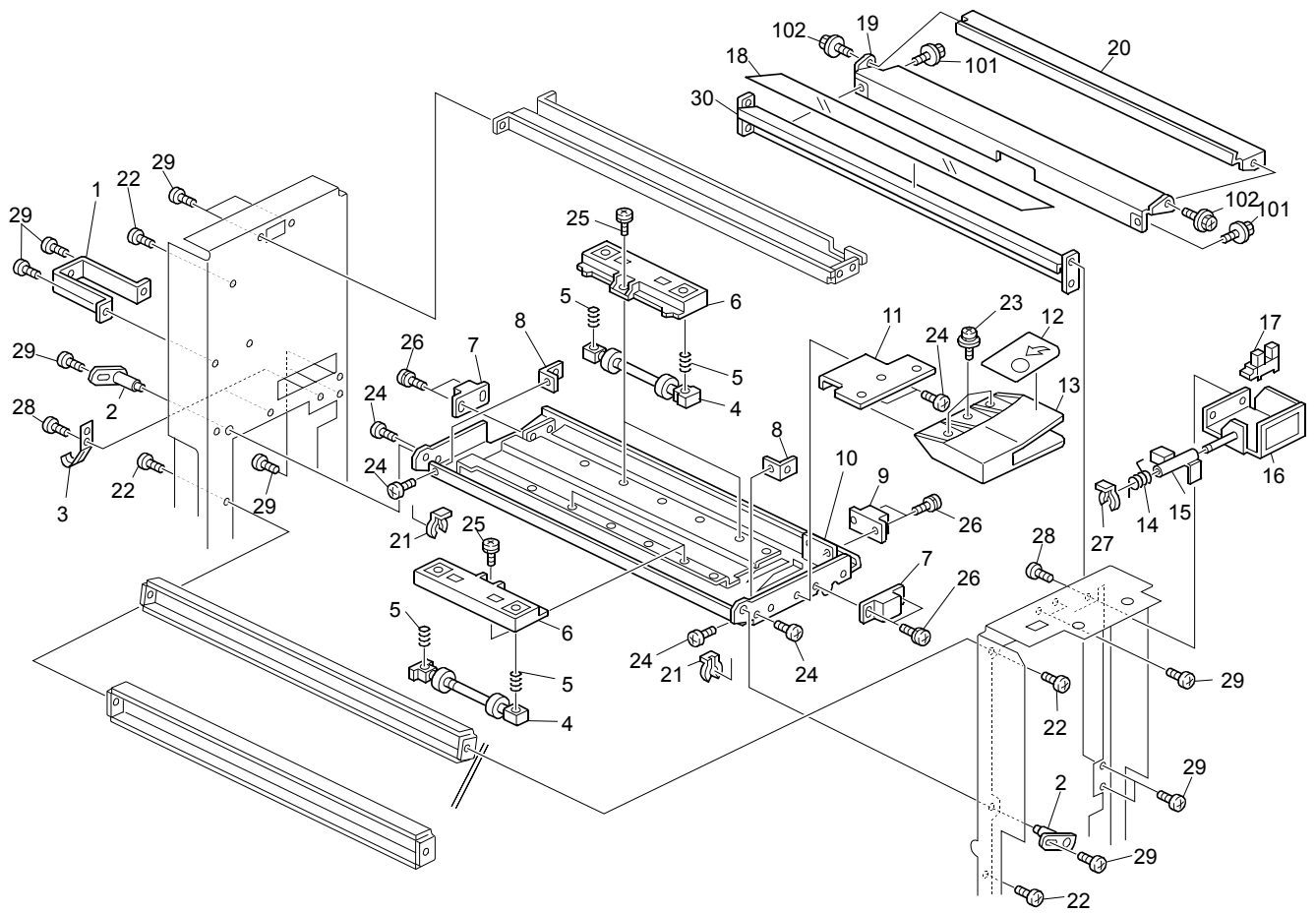
- NAD.....115V
50/60Hz, NORTH AMERICA, SOUTH AMERICA
- TWD.....110/220V
50/60Hz, TAIWAN
- SAD.....127V/60Hz, SAUDI ARABIA
- ASD.....220-240V
50/60Hz, ASIA, SOUTH AMERICA, etc.
- ASU.....220-240V
50/60Hz, ASIA, etc.
- AUD.....220-240V
50/60Hz, AUSTRALIA
- MJD.....220-240V
50/60Hz, EUROPE
- CND.....220-240V
50/60Hz, CHINA
- KRD.....220-240V
50/60Hz, KOREA

CONTENTS

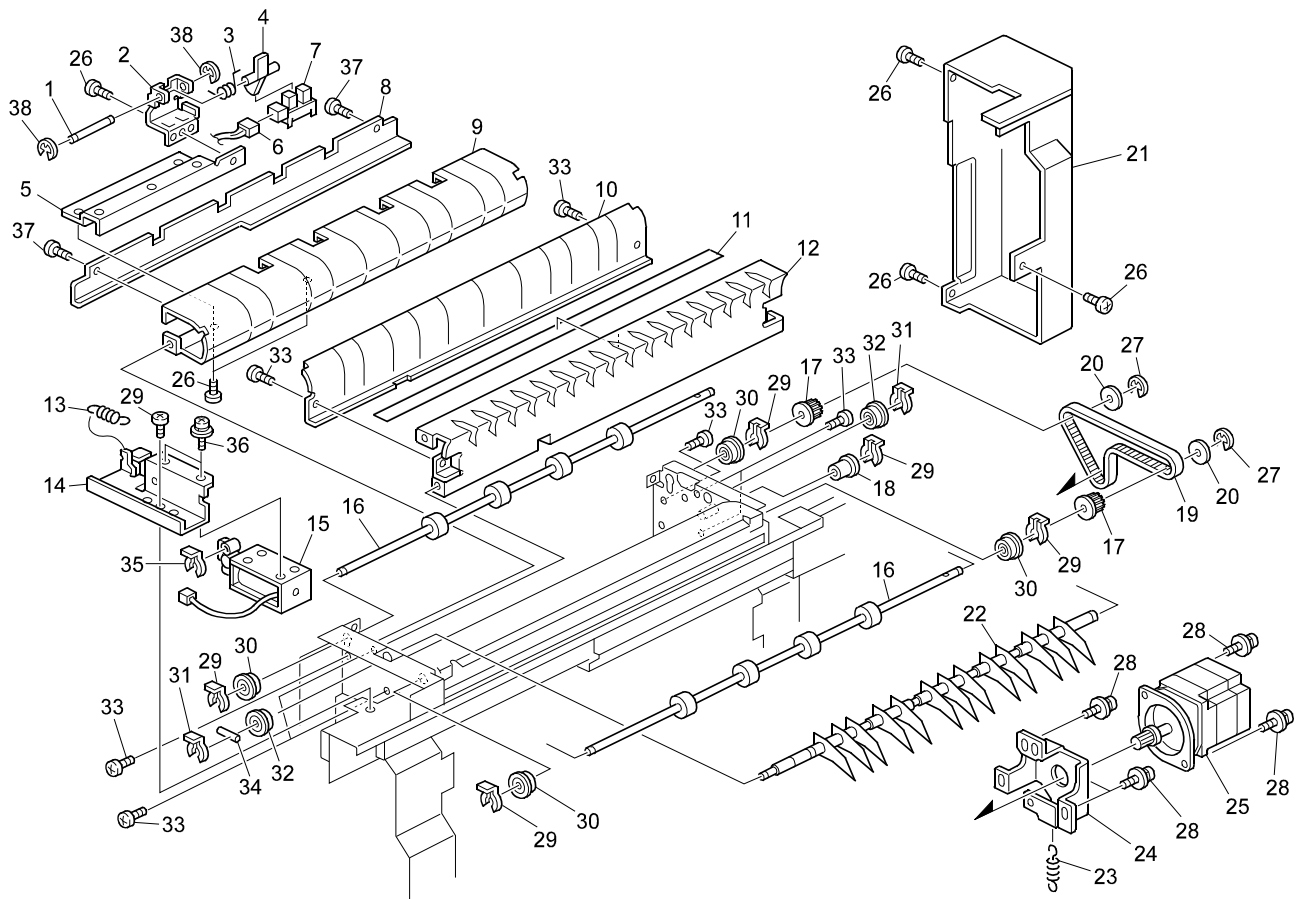
EXTERIOR	1
PAPER TRANSFER 1.....	2
PAPER TRANSFER 2.....	3
FOLDER SECTION 1	4
FOLDER SECTION 2	5
FOLDER SECTION 3	6
FOLDER SECTION 4	7
FOLDER SECTION 5	8
FOLDER SECTION 6	9
DRIVE SECTION.....	10
ELECTRICALSECTION.....	11
FRAME SECTION	12



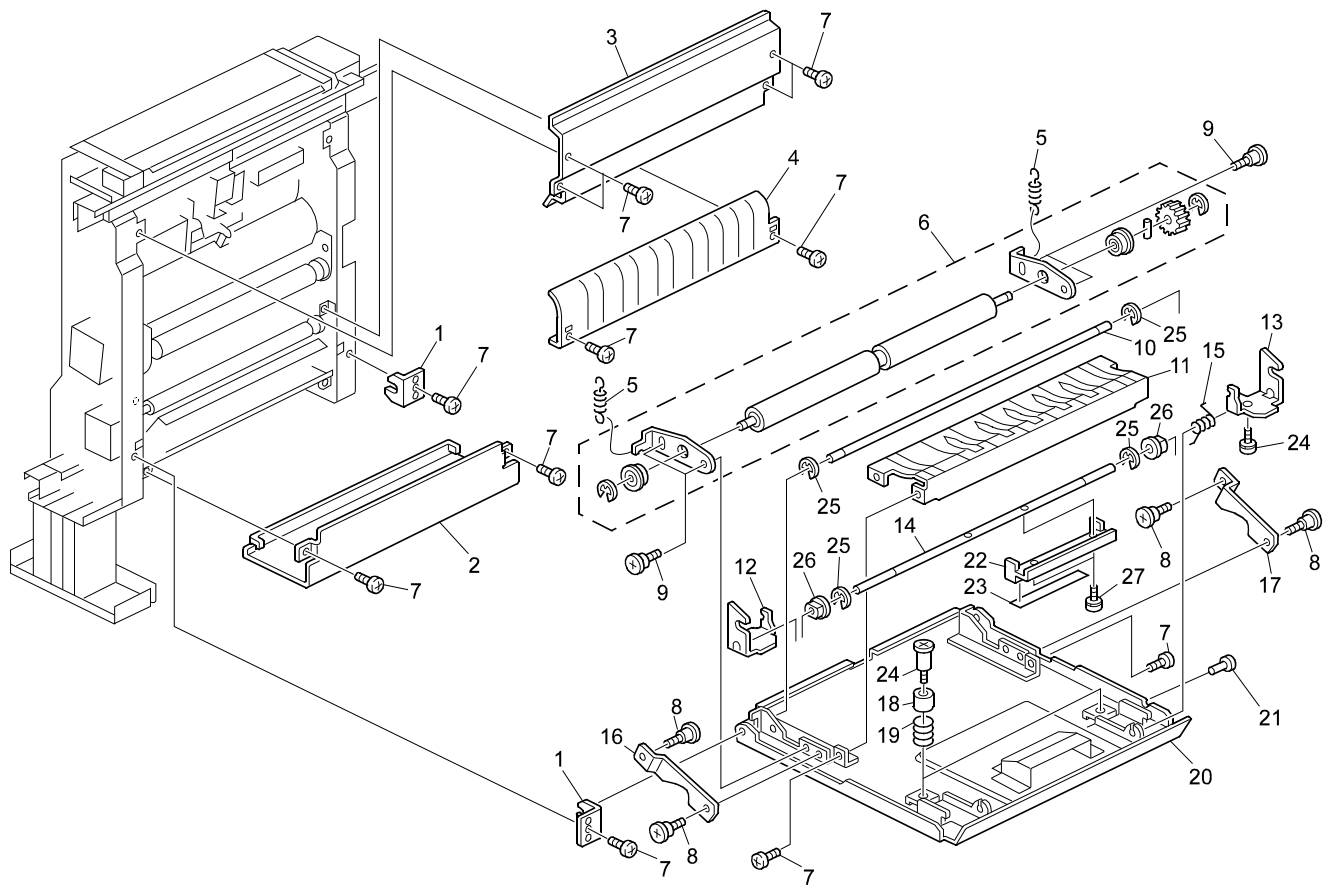
ITEM NO.	PARTS NO.	PARTS NAME	Q'TY / PAGE	Q'TY / PACK	P	I	R	B S I NO.	T O	T	F R O M	S E R I A L NO.	R E M A R K S	C
1	B6603175	Rear Cover	1											
2	B6603171	Upper Cover	1											
3	B6603311	Decal - Misfeed Removal N	1											
4	B6604541	Screw	2											
5	B6603215	Front Cover	1											
6	B6601645	Cover Grip	1											
7	B6603221	Frame Cover	1											
8	B6601585	Damper Bracket	1											
9	B6601921	Damper	1											
10	B6601915	Gear - Z20	1											
11	B6603135	Cover Grip	1											
12	B6603321	Decal - Misfeed Removal N	1											
13	B6603165	Front Cover	1											
14	B6603331	Decal - Misfeed Removal N	1											
15	B6601441	Coupling Bracket	1											
16	B6603191	Frame Cover	1											
17	B6604185	Rear Upper Cover	1											
18	B6604181	Front Upper Cover	1											
19	B6604172	Power Supply Cord:NA	1											
20	B6604161	Right Cover Sponge	1											
21	B3021163	Grounding Plate	3											
22	B6604132	Ground Plate Bracket CF	1											
23	B6604122	Ground Plate Bracket FIN	1											
24	B6604112	Ground Plate Bracket FIN	1											
25	A6971144	Rear Joint Bracket	1											
26	A6971153	Front Joint Bracket	1											
27	B6604141	Front Fin Coupling Bracke	1											
28	B6604151	Cf Fin Coupling Bracket	1											
29	B6604155	Cf Fin Coupling Bracket	1											
30	B6604145	Rear Fin Coupling Bracket	1											
31	B6604835	Screw:Ns-scr00045a	4											
32	B6604625	Retaining Ring	1											
101	0451006N	Tapping Screw - 3x6												
102	0451006N	Tapping Screw - 3x6												



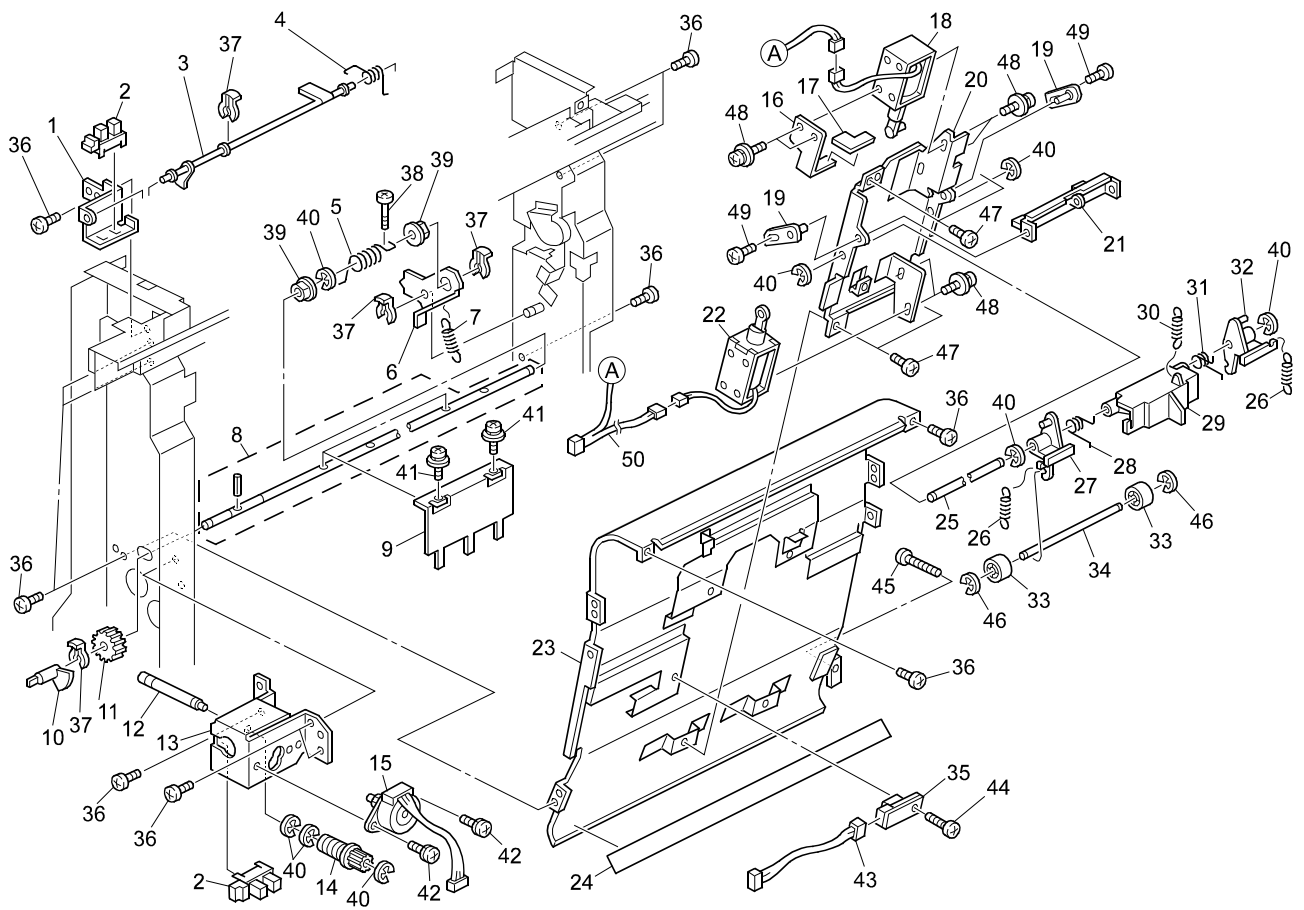
ITEM NO.	PARTS NO.	PARTS NAME	Q'TY / PAGE	Q'TY / PACK	P	I	R	BSI NO.	TO	T	FROM	SERIAL NO.	REMARKS	C
1	B6601561	Cover Bracket	1											
2	B6602251	Horizontal Guide Plate	2											
3	B6601165	Frame Spring Plate	1											
4	AF022147	Driven Roller	4											
5	B6601821	Roller Spring	8											
6	B6601635	Roller Holder	4											
7	B6601795	Magnet Catch	2											
8	B6601595	Guide Plate Bracket	2											
9	B6601111	Magnet Catch	1											
10	B6601755	Horizontal Guide Plate	1											
11	B6601581	Guide Plate Bracket	1											
12	B6603341	Decal - Grip N1	1											
13	B6603125	Grip Guide Plate	1											
14	B6601865	Sensor Spring	1											
15	B6601631	Sensor Lever	1											
16	B6602291	Roller Bracket	1											
17	B6605441	No.1 Entrance Sensor	1											
18	B6601961	Entrance Guide	1											
19	B4082191	Guide Plate - Connecting	1											
20	B4682196	Upper Guide Plate	1											
21	B6604835	Screw:Ns-scr00045a	2											
22	B6604541	Screw	2											
23	B6604545	Screw	3											
24	B6604521	Screw	6											
25	B6604531	Screw	4											
26	B6604525	Screw	6											
27	B6604811	External Circlip	1											
28	B6604831	Screw	1											
29	B6604511	Screw	4											
30	B6601751	Horizontal Guide Plate: P	1											
101	0451006N	Tapping Screw - 3x6												
102	08025276	Tapping Screw With Washer												



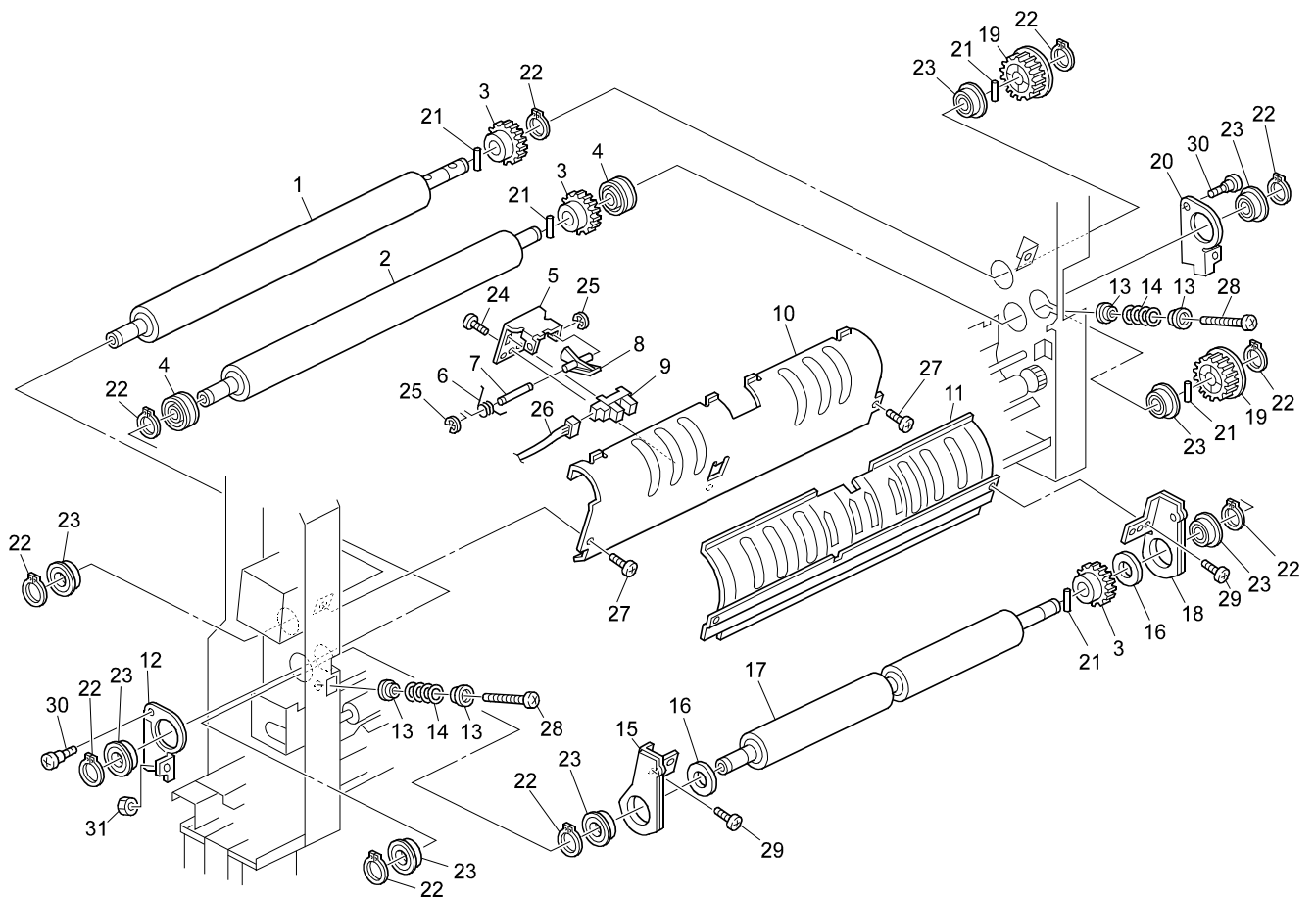
ITEM NO.	PARTS NO.	PARTS NAME	Q'TY / PAGE	Q'TY / PACK	P	I	R	B S I NO.	T O	T	F R O M	S E R I A L NO.	R E M A R K S	C
1	B6601775	Sensor Shaft	1											
2	B6601455	Sensor Bracket	1											
3	B6601831	Sensor Spring	1											
4	B6601621	Sensor Lever	1											
5	B6601425	Guide Plate Bracket	1											
6	B6605195	Harness - Exit Sensor	1											
7	B6605441	No.1 Entrance Sensor	1											
8	B6603145	Paper Crimp Sub-unit Cove	1											
9	B6601685	Horizontal Guide Plate	1											
10	B6601695	Exit Guide Plate	1											
11	B6601845	Paper Crimp Guide Sub-uni	1											
12	B6601691	Horizontal Guide Plate	1											
13	B6601825	Solenoid Spring	1											
14	B6601411	Solenoid Bracket	1											
15	B6602231	DC Solenoid - Exchange Po	1											
16	B6602695	Paper Crimp Transport Rol	2											
17	B6602555	Timing Pulley - S2M25	1											
18	B6602521	Tension Roller	1											
19	B6602461	Timing Belt	1											
20	B6602515	Flange	2											
21	B6603195	Drive Sub-unit Cover	1											
22	B6601861	Entrance Exchange Powl	1											
23	B6601891	Motor Tension Spring	1											
24	B6602591	Motor Bracket	1											
25	B6605411	Stepper Motor	1											
26	B6604541	Screw	3											
27	B6604621	Retaining Ring	1											
28	B6604545	Screw	5											
29	B6604625	Retaining Ring	5											
30	B6604843	Ball Bearing	4											
31	B6604821	External Circlip	2											
32	B6604847	Bushing	2											
33	B6604835	Screw:Ns-scr00045a	8											
34	B6604781	Spring Pin:3X12:SP030120F	1											
35	B6604811	External Circlip	1											
36	B6604515	Screw	2											
37	B6604511	Screw	2											
38	B6604611	Retaining Ring	2											



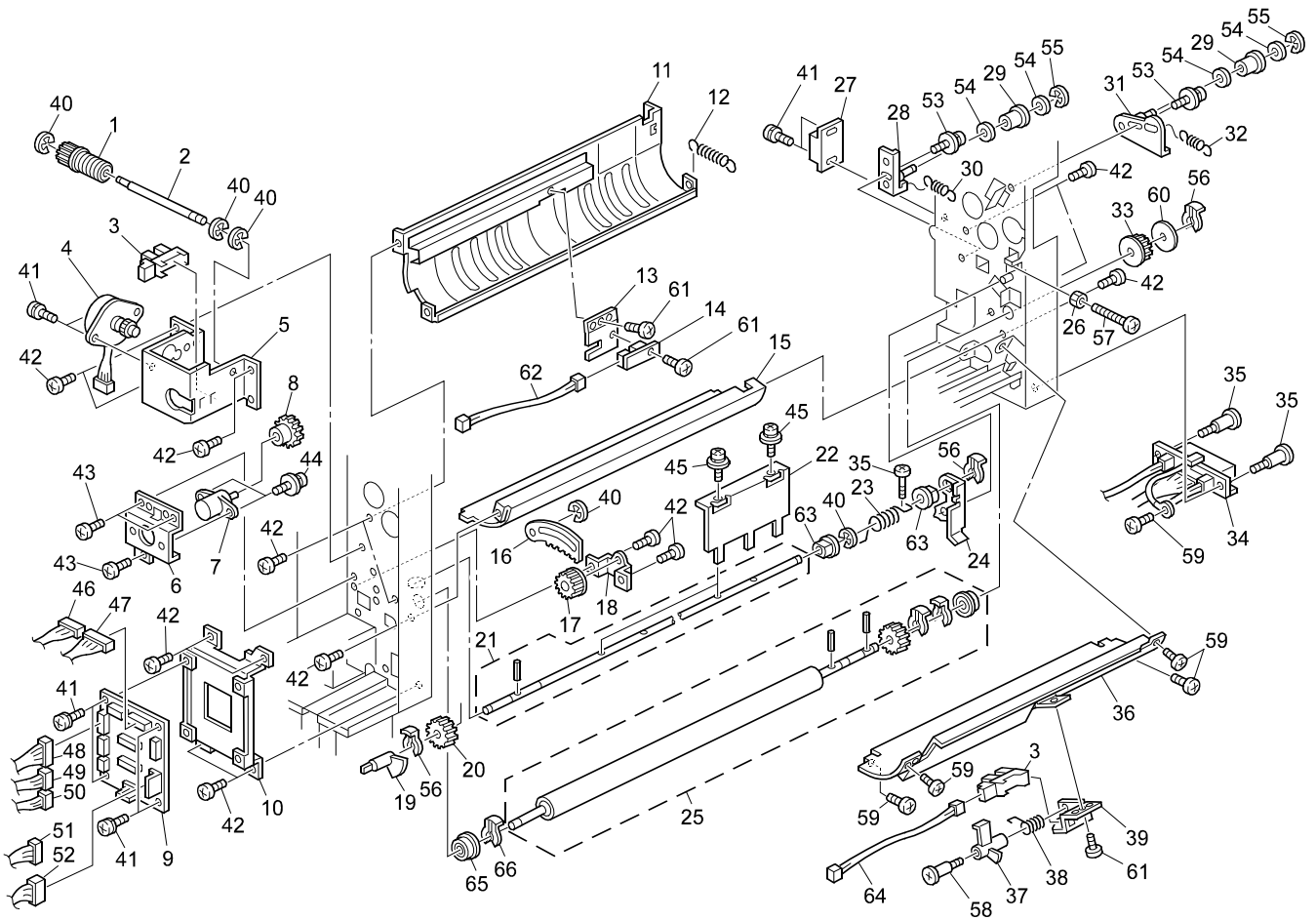
ITEM NO.	PARTS NO.	PARTS NAME	Q'TY / PAGE	Q'TY / PACK	P	I	R	B S I NO.	T O	T	F R O M	S E R I A L NO.	R E M A R K S	C
1	B6601995	Stud Bracket	2											
2	B6603155	Paper Crimp Sub-unit Cove	1											
3	B6603151	Paper Crimp Sub-unit Cove	1											
4	B6601731	Right Lower Guide Plate	1											
5	B6601871	Roller Spring	2											
6	B6602750	Roller:Ass'y	1											
7	B6604541	Screw	12											
8	B6604915	Screw	4											
9	B6604921	Screw	2											
10	B6601225	Cover Shaft	1											
11	B6601675	Right Lower Guide Plate	1											
12	B6601451	Grip Arm	1											
13	B6601445	Grip Arm	1											
14	B6602625	Grip Shaft	1											
15	B6601781	Grip Spring	1											
16	B6601381	Cover Arm	1											
17	B6601521	Cover Arm	1											
18	B6603121	Cover Spacer	2											
19	B6061895	Lock Spring	2											
20	B6603141	Paper Crimp Sub-unit Cove	1											
21	B6603115	Spacer	1											
22	B6603131	Grip	1											
23	B6603351	Decal - Grip N2	1											
24	B6604841	Screw	2											
25	B6604625	Retaining Ring	4											
26	B6604847	Bushing	2											
27	B6604525	Screw	2											



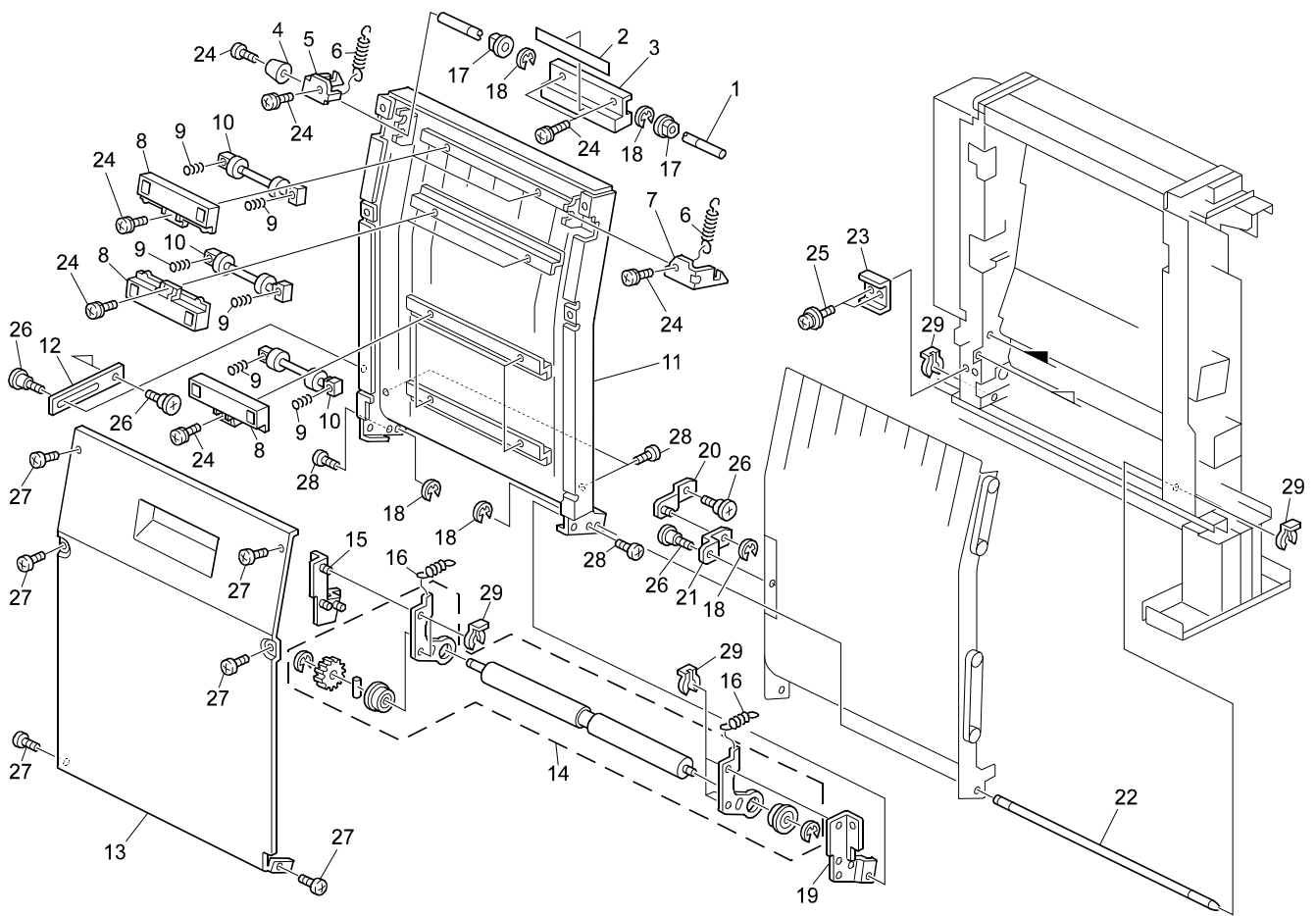
ITEM NO.	PARTS NO.	PARTS NAME	Q'TY / PAGE	Q'TY / PACK	P	I	R	BSI NO.	TO	T	FROM	SERIAL NO.	REMARKS	C
1	B6601591	Sensor Bracket	1											
2	B6605441	No.1 Entrance Sensor	2											
3	B6601651	Sensor Lever	1											
4	B6601935	Transport Sensor Spring	1											
5	B6601955	Shaft Spring	1											
6	B6601975	Stopper Stay	1											
7	B6601925	Spring	1											
8	B6602634	Shaft:Ass'y	1											
9	B6601745	Pawl Stopper	1											
10	B6602531	Sensor Lever	1											
11	B6602535	Gear - Z20	1											
12	B6602631	Gear Z16 Shaft	1											
13	B6601415	Motor Bracket	1											
14	B6602525	Gear - Z16	1											
15	B6605421	Stepper Motor	1											
16	B6601541	Stopper Arm	1											
17	B6601911	Solenoid Spacer	1											
18	B6602211	DC Solenoid - Release	1											
19	B6602241	Pressure Arm	2											
20	B6601485	Pressure Roller Bracket	1											
21	B6601535	Pressure Roller Arm	1											
22	B6602221	DC Solenoid - Nip	1											
23	B6601761	Guide Plate:Horizontal	1											
24	B6601841	Guide:Paper Crimp Sub-uni	1											
25	B6602641	Pressure Roller Shaft	1											
26	B6601885	Pressure Roller Spring	2											
27	B6601655	Roller Holder	1											
28	B6601875	Pressure Roller Spring	1											
29	B6601671	Pressure Roller Holder	1											
30	B6601825	Solenoid Spring	1											
31	B6601881	Pressure Roller Spring	1											
32	B6601665	Roller Holder	1											
33	B6601661	Pressure Roller	2											
34	B6602681	Roller Shaft	1											
35	B6605451	No.2 Entrance Sensor	1											
36	B6604835	Screw:Ns-scr00045a	10											
37	B6604821	External Circlip	3											
38	B6604925	Drawer Screw	1											
39	B6604846	Bushing	2											
40	B6604625	Retaining Ring	8											
41	B6604531	Screw	2											
42	B6604525	Screw	2											
43	B6605121	Harness - Sensor Pressure	1											
44	B6604521	Screw	1											
45	B6604561	Screw	1											
46	B6604615	Retaining Ring	2											
47	B6604535	Screw	2											
48	B6604515	Screw	4											
49	B6604831	Screw	2											
50	B6605151	Harness - Solenoid	1											



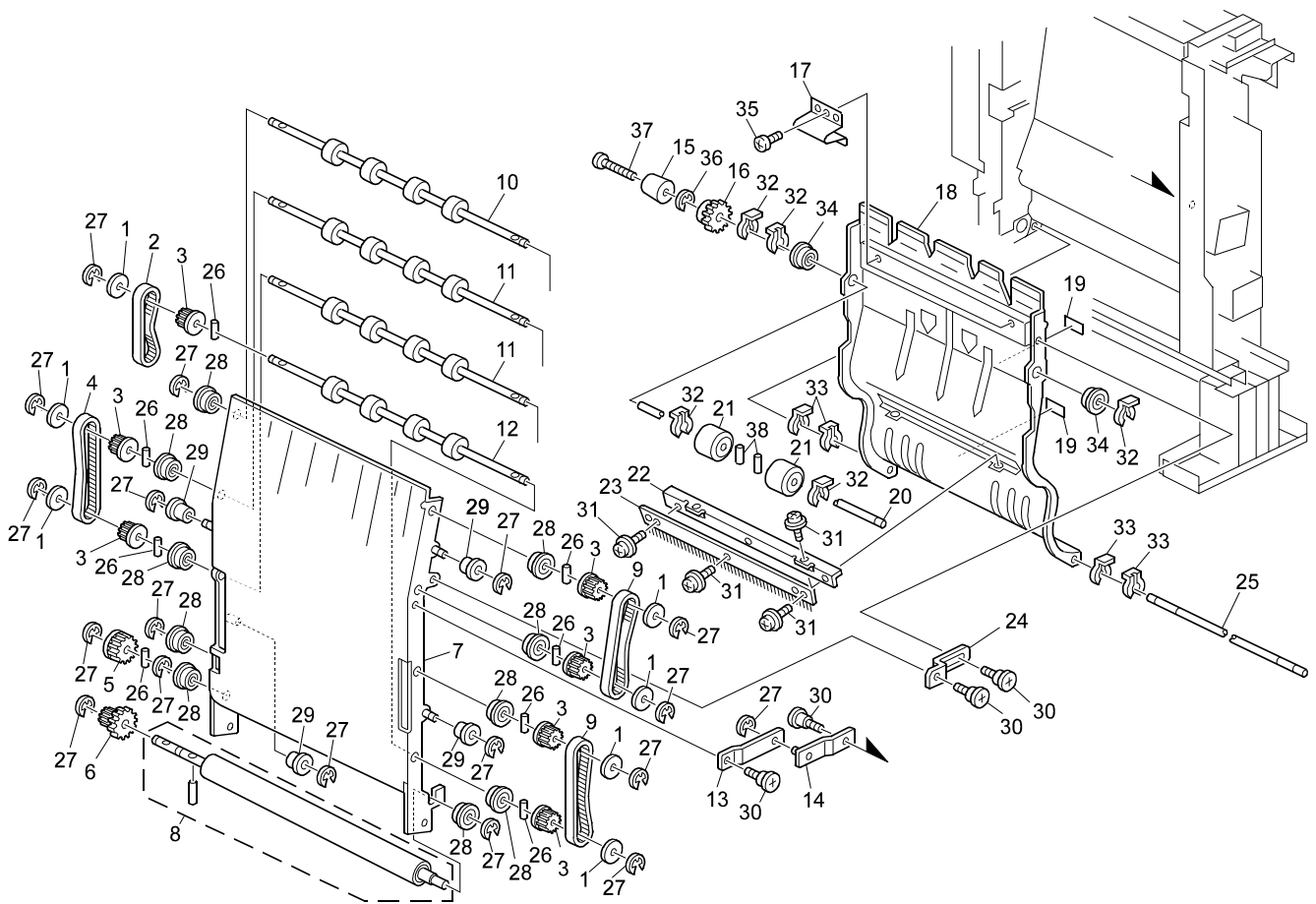
ITEM NO.	PARTS NO.	PARTS NAME	Q'TY / PAGE	Q'TY / PACK	P	I	R	B S I NO.	T O	T	F R O M	S E R I A L NO.	R E M A R K S	C
1	B6602785	Roller	1											
2	B6602791	Roller	1											
3	B6602775	Gear - Z40	3											
4	B6602761	Collar	2											
5	B6601465	Sensor Bracket	1											
6	B6601831	Sensor Spring	1											
7	B6601775	Sensor Shaft	1											
8	B6601621	Sensor Lever	1											
9	B6605441	No.1 Entrance Sensor	1											
10	B6601725	Right Upper Guide Plate	1											
11	B6601721	Right Upper Guide Plate	1											
12	B6601421	Paper Crimp Arm Sub-unit	1											
13	B6601615	Paper Crimp Flange Sub-un	4											
14	B6601785	Paper Crimp Spring Sub-un	2											
15	B6601511	Roller Bracket	1											
16	B6603225	Spacer	2											
17	B6602795	Roller	1											
18	B6601515	Roller Bracket	1											
19	B6602511	Timing Pulley - 20Z	2											
20	B6601475	Paper Crimp Arm Sub-unit	1											
21	B6604721	Parallel Pin	4											
22	B6604635	Retaining Rings-c	10											
23	B6604845	Ball Bearing	8											
24	B6604511	Screw	12											
25	B6604611	Retaining Ring	1											
26	B6605141	Harness - Sensor	1											
27	B6604541	Screw	2											
28	B6604565	Screw	2											
29	B6604835	Screw:Ns-scr00045a	2											
30	B6604921	Screw	2											
31	B6604751	Nut	1											



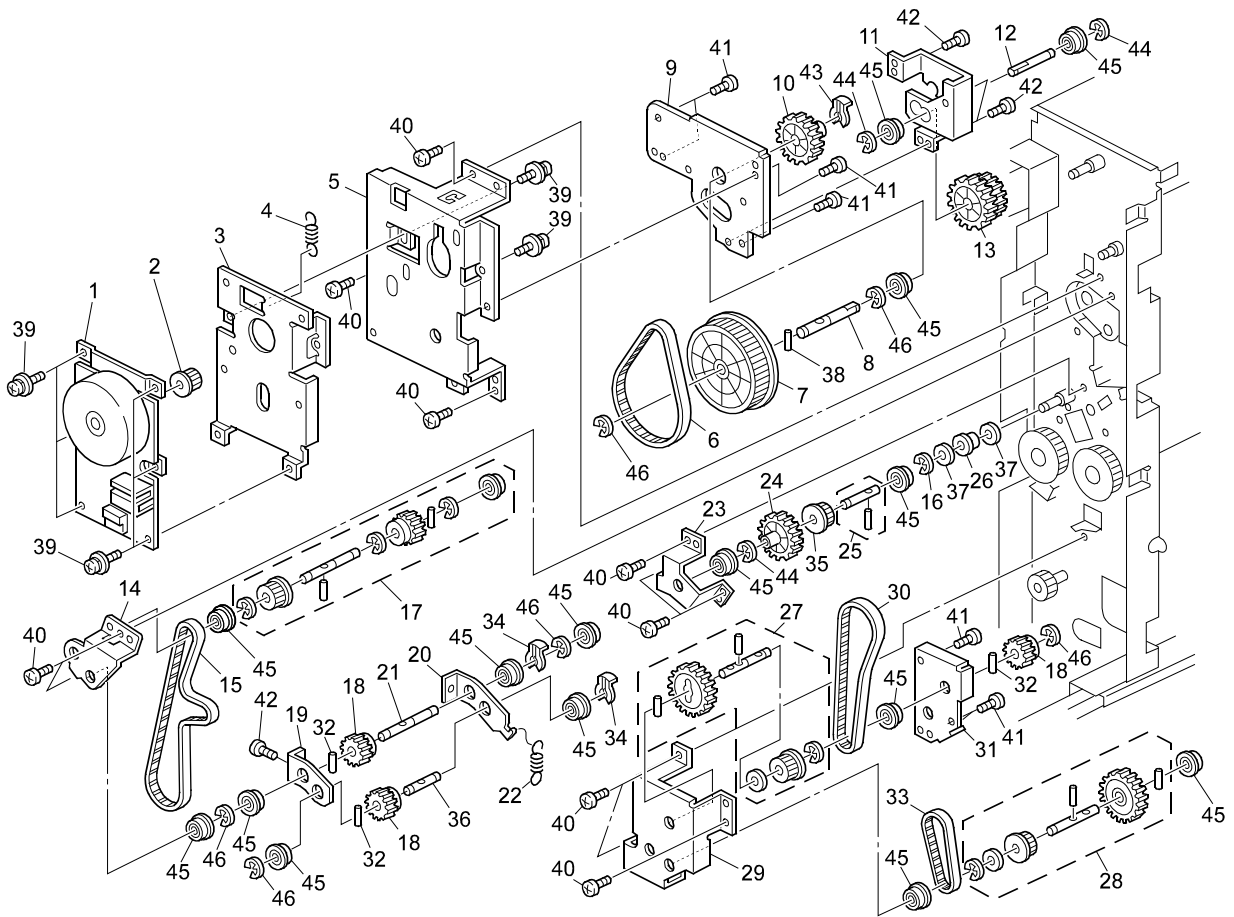
ITEM NO.	PARTS NO.	PARTS NAME	Q'TY / PAGE	Q'TY / PACK	P I R	B S I NO.	T O	T	F R O M	S E R I A L NO.	R E M A R K S	C
1	B6602525	Gear - Z16	1									
2	B6602631	Gear Z16 Shaft	1									
3	B6605441	No.1 Entrance Sensor	2									
4	B6605421	Stepper Motor	1									
5	B6601415	Motor Bracket	1									
6	B6602121	Damper Bracket	1									
7	B6601921	Damper	1									
8	B6601915	Gear - Z20	1									
9	B6605522	Base:Relay:Main Control:P	1									
10	B6601545	Base Bracket	1									
11	B6601735	Middle Guide Plate	1									
12	B6601925	Spring	1									
13	B6602111	Sensor Bracket	1									
14	B6605451	No.2 Entrance Sensor	1									
15	B6601711	Lower Guide Plate	1									
16	B6601481	Paper Crimp Rack Sub-unit	1									
17	B6601951	Gear - Z16	1									
18	B6601611	Gear Bracket	1									
19	B6602531	Sensor Lever	1									
20	B6602535	Gear - Z20	1									
21	B6602634	Shaft:Ass'y	1									
22	B6601745	Pawl Stopper	1									
23	B6601955	Shaft Spring	1									
24	B6601971	Stopper Stay	1									
25	B6602724	Roller:Ass'y	1									
26	B6604751	Nut	1									
27	B6601795	Magnet Catch	1									
28	B6602831	Drive Stay	1									
29	B6602487	Pulley	2									
30	B6601931	Motor Tension Spring	1									
31	B6602821	Drive Stay	1									
32	B6601811	Drive Tension Spring	1									
33	B6602812	Timing Pulley	1									
34	B6605175	Harness - Drawer	1									
35	B6604925	Drawer Screw	2									
36	B6601715	Lower Guide Plate	1									
37	B6601641	Sensor Lever	1									
38	B6601815	Sensor Spring	1									
39	B6601461	Sensor Bracket	1									
40	B6604625	Retaining Ring	5									
41	B6604525	Screw	8									
42	B6604835	Screw:Ns-scr00045a	14									
43	B6604535	Screw	3									
44	B6604555	Screw	2									
45	B6604531	Screw	2									
46	B6605145	Harness - Solenoid	1									
47	B6605131	Harness - Upper Stopper	1									
48	B6605111	Harness - Sensor	1									
49	B6605135	Harness - Sensor	1									
50	B6605115	Harness - Sensor Pressure	1									
51	B6605191	Harness - Horizontal Tran	1									
52	B6605165	Harness - Paper Crimp	1									
53	B6604545	Screw	2									
54	B6604842	Ball Bearing	4									
55	B6604631	Retaining Ring	2									
56	B6604821	External Circlip	3									
57	B6604561	Screw	1									
58	B6604931	Screw	1									
59	B6604541	Screw	5									
60	B6602815	Spacer	1									
61	B6604511	Screw	1									
62	B6605115	Harness - Sensor Pressure	1									
63	B6604846	Bushing	2									
64	B6605141	Harness - Sensor	1									
65	B6604844	Ball Bearing	1									
66	B6604825	External Circlip	1									



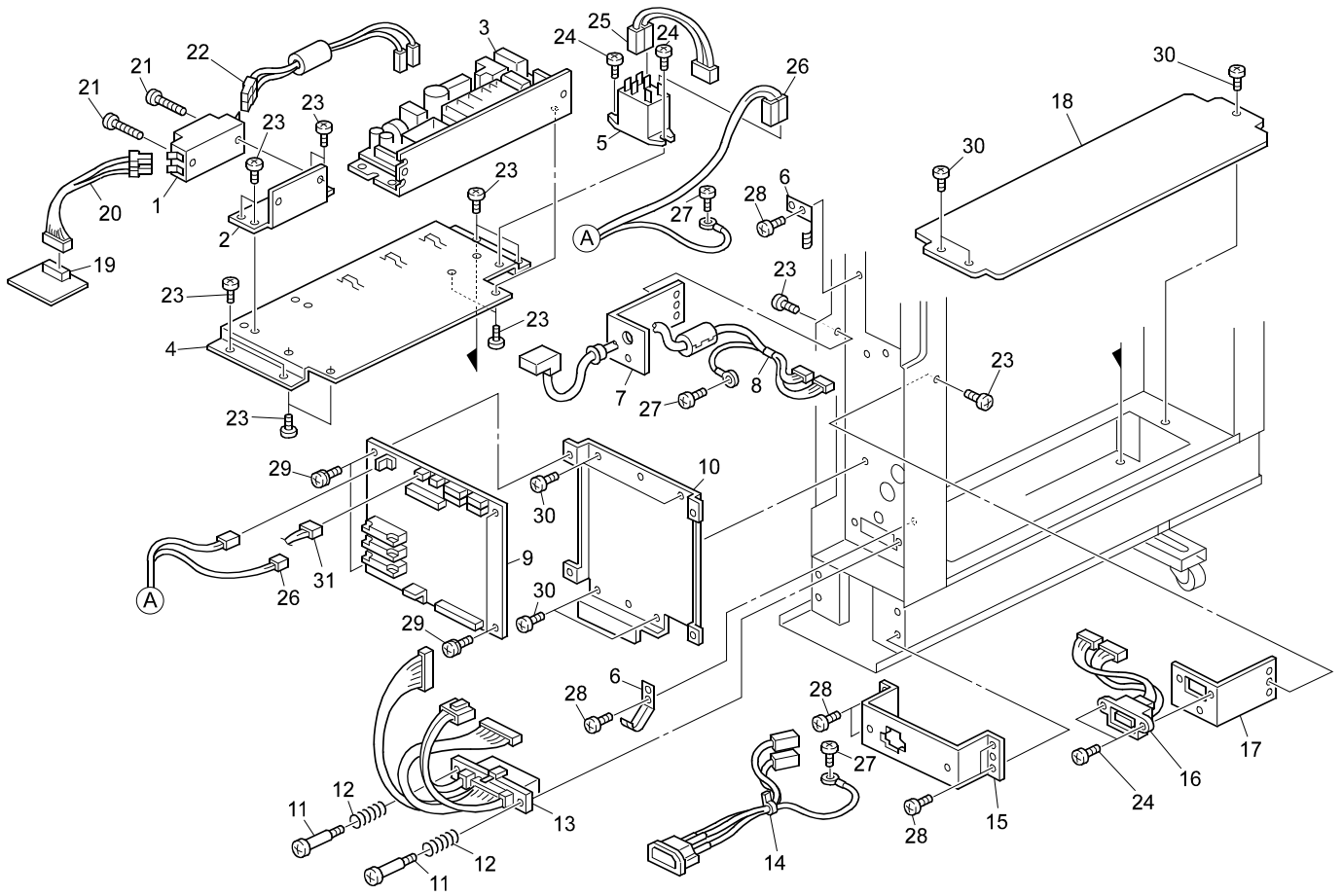
ITEM NO.	PARTS NO.	PARTS NAME	Q'TY / PAGE	Q'TY / PACK	P	I	R	B S I NO.	T O	T	F R O M	S E R I A L NO.	R E M A R K S	C
1	B6601771	Grip Shaft	1											
2	B6603361	Decal - Grip N3	1											
3	B6603131	Grip	1											
4	B6600311	Rubber Foot	1											
5	B6601451	Grip Arm	1											
6	B6601855	Grip Spring	2											
7	B6601445	Grip Arm	1											
8	B6601635	Roller Holder	6											
9	B6601821	Roller Spring	12											
10	AF022147	Driven Roller	6											
11	B6601765	Left Guide Plate	1											
12	B6601471	Guide Plate Arm	1											
13	B6603161	Paper Crimp Sub-unit Cove	1											
14	B6602740	Roller	1											
15	B6602311	Roller Bracket	1											
16	B6601945	Roller Spring	2											
17	B6604847	Bushing	2											
18	B6604625	Retaining Ring	5											
19	B6602291	Roller Bracket	1											
20	B6602271	Open And Close Stay	1											
21	B6601991	Guide Plate - Stay	1											
22	B6601221	Guide Plate Shaft	1											
23	B6602125	Stopper Positioning Plate	1											
24	B6604525	Screw	10											
25	B6604531	Screw	1											
26	B6604921	Screw	4											
27	B6604541	Screw	6											
28	B6604911	Screw	4											
29	B6604821	External Circlip	2											



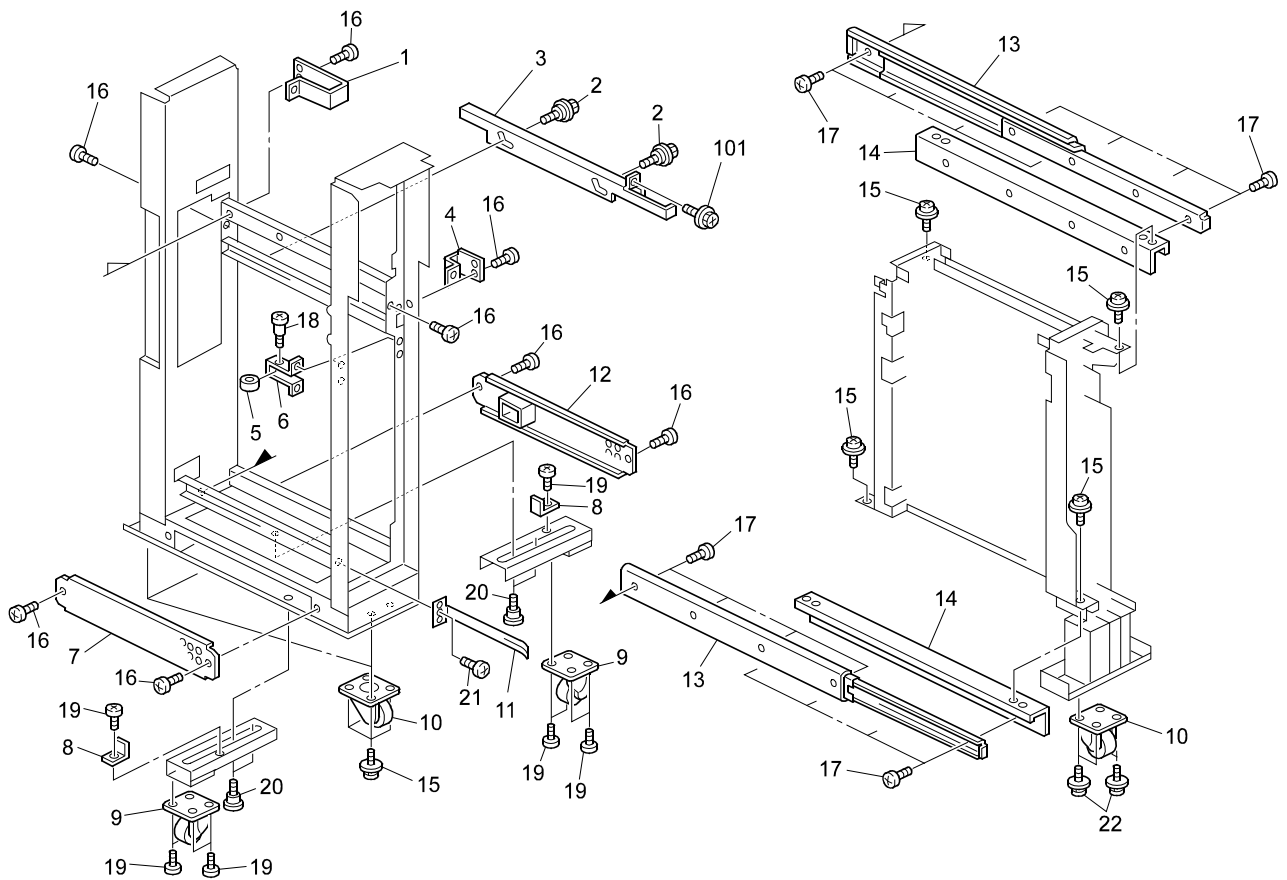
ITEM NO.	PARTS NO.	PARTS NAME	Q'TY / PAGE	Q'TY / PACK	P	I	R	B S I NO.	T O	T	F R O M	S E R I A L NO.	R E M A R K S	C
1	B6602515	Flange	7											
2	B6602411	Timing Belt	1											
3	B6602511	Timing Pulley - 20Z	7											
4	B6602481	Timing Belt	1											
5	B6602541	Gear - Z20	1											
6	B6602781	Gear - Z20	1											
7	B6601681	Left Upper Guide Plate	1											
8	B6602734	Roller:Ass'y	1											
9	B6602471	Timing Belt	2											
10	B6602711	Upper Transport Roller	1											
11	B6602715	Middle Transport Roller	2											
12	B6602721	Lower Transport Roller	1											
13	B6601985	Guide Plate - Stay	1											
14	B6602261	Open And Close Stay	1											
15	B6600311	Rubber Foot	1											
16	B6602745	Gear - Z20	1											
17	B6601395	Guide Plate Spring	2											
18	B6601741	Middle Guide Plate	1											
19	B6601625	Sensor Reflector	2											
20	B6602675	Paper Crimp Sub-unit Cove	1											
21	B6602731	Release Roller	2											
22	B6602115	Discharge Brush Bracket	1											
23	B6601835	Discharge Brush	1											
24	B6601981	Guide Plate - Stay	1											
25	B6601215	Guide Plate Shaft	1											
26	B6604711	Parallel Pin	8											
27	B6604625	Retaining Ring	17											
28	B6604843	Ball Bearing	10											
29	B6602521	Tension Roller	4											
30	B6604921	Screw	4											
31	B6604535	Screw	4											
32	B6604825	External Circlip	5											
33	B6604821	External Circlip	4											
34	B6604844	Ball Bearing	2											
35	B6604835	Screw:Ns-scr00045a	2											
36	B6604631	Retaining Ring	1											
37	B6604525	Screw	1											
38	B6604715	Parallel Pin	2											



ITEM NO.	PARTS NO.	PARTS NAME	Q'TY / PAGE	Q'TY / PACK	P	I	R	B S I NO.	T O	T	F R O M	S E R I A L NO.	R E M A R K S	C
1	B6605431	Brushless Motor	1											
2	B6602811	Timing Pulley - S3M16	1											
3	B6602621	Motor Stay	1											
4	B6601931	Motor Tension Spring	1											
5	B6602575	Motor Bracket	1											
6	B6602421	Timing Belt	1											
7	B6602545	Timing Pulley - S3M64	1											
8	B6602655	Drive Shaft	1											
9	B6602595	Motor Stay	1											
10	B6602565	Gear - Z25	1											
11	B6602755	Gear - Z30/Z32 BRACKET	1											
12	B6602691	Gear Shaft	1											
13	B6602571	Gear - Z30/Z32	1											
14	B6601491	Pulley Bracket	1											
15	B6602441	Timing Belt	1											
16	B6604631	Retaining Ring	1											
17	B6602660	Gear:Drive:Ass'y	1											
18	B6602541	Gear - Z20	3											
19	B6602615	Drive Bracket	1											
20	B6602611	Drive Stay	1											
21	B6602665	Drive Shaft	1											
22	B6601885	Pressure Roller Spring	1											
23	B6601565	Pulley Bracket	1											
24	B6602561	Gear - Z31	1											
25	B6602684	Shaft:Pulley:Ass'y	1											
26	B6602487	Pulley	1											
27	B6602644	Shaft:Drive:Ass'y	1											
28	B6602650	Shaft:Gear:Ass'y	1											
29	B6602581	Drive Bracket	1											
30	B6602485	Timing Belt	1											
31	B6602585	Drive Stay	1											
32	B6604771	Spring Pin:SP020120FPA	3											
33	B6602486	Timing Belt	1											
34	B6604821	External Circlip	2											
35	B6602488	Timing Pulley	1											
36	B6602671	Drive Shaft	1											
37	B6604842	Ball Bearing	2											
38	B6604725	Parallel Pin	1											
39	B6604545	Screw	8											
40	B6604835	Screw:Ns-scr00045a	11											
41	B6604541	Screw	6											
42	B6604511	Screw	4											
43	B6604815	External Circlip	1											
44	B6604621	Retaining Ring	3											
45	B6604843	Ball Bearing	12											
46	B6604625	Retaining Ring	6											



ITEM NO.	PARTS NO.	PARTS NAME	Q'TY / PAGE	Q'TY / PACK	P	I	R	BSI NO.	TO	T	FROM	SERIAL NO.	REMARKS	C
1	B6605261	Leak Breaker	1											
2	B6601571	Leak Breaker Bracket	1											
3	B6605265	Power Supply Unit	1											
4	B6601495	Power Source Bracket	1											
5	B6605255	Relay	1											
6	B6601165	Frame Spring Plate	2											
7	B6601551	Interface Bracket	1											
8	B6605155	Harness - Interface	1											
9	B6605541	Base:Main Control:PF4132K	1											
10	B6601531	Base Bracket	1											
11	B6604925	Drawer Screw	2											
12	B6601851	Drawer Spring	2											
13	B6605171	Harness - Drawer	1											
14	B6605245	Harness - Inlet	1											
15	B6601525	AC Power Supply Bracket	1											
16	B6605161	Harness - Interface Fin	1											
17	B6601555	Interface Bracket	1											
18	B6603181	Holder Cover	1											
19	B6605512	Base:Connecting:Ass'y	1											
20	B6605251	Harness - SP Base	1											
21	B6604561	Screw	2											
22	B6605215	Harness - AC Power Supply	1											
23	B6604541	Screw	14											
24	B6604521	Screw	4											
25	B6605231	Harness - AC Power Supply	1											
26	B6605185	Harness - Power Source	1											
27	B6604545	Screw	3											
28	B6604831	Screw	6											
29	B6604525	Screw	4											
30	B6604835	Screw:Ns-scr00045a	8											
31	B6605125	Harness - Cover Sensor	1											



ITEM NO.	PARTS NO.	PARTS NAME	Q'TY / PAGE	Q'TY / PACK	P	I	R	B S I NO.	T O	T	F R O M	S E R I A L NO.	R E M A R K S	C
1	B6601435	Ground Plate Bracket	1											
2	A6971125	Stepped Screw - Lever	2											
3	B6601211	Coupling Lever	1											
4	B6601431	Ground Plate Bracket	1											
5	B6601121	Lock Roller	1											
6	B6601575	Roller Bracket	1											
7	B6603185	Holder Cover	1											
8	B6601601	Stay Bracket	2											
9	B6601231	Caster Stay	2											
10	B6601115	Caster	2											
11	B6601161	Frame Spring Plate	1											
12	B6603211	Holder Cover	1											
13	B6601791	Slide Rail	2											
14	B6601171	Rail Stay	2											
15	B6604535	Screw	8											
16	B6604835	Screw:Ns-scr00045a	7											
17	B6604541	Screw	16											
18	B6604841	Screw	1											
19	B6604511	Screw	10											
20	B6604921	Screw	4											
21	B6604831	Screw	1											
101	0451006N	Tapping Screw - 3x6												

TOSHIBA

TOSHIBA TEC CORPORATION

2-17-2, HIGASHIGOTANDA, SHINAGAWA-KU, TOKYO, 141-8664, JAPAN