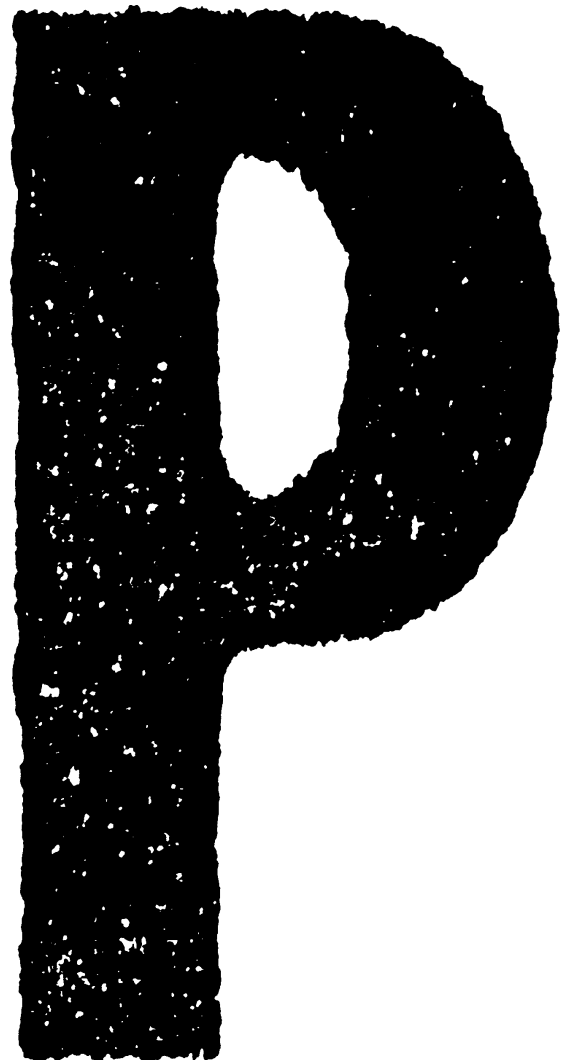


TOSHIBA

SERVICE PARTS LIST

AUTOMATIC DUPLEXING UNIT

MD-0103



© 2006 TOSHIBA TEC CORPORATION All rights reserved

Under the copyright laws, this manual cannot be reproduced in any form without prior written permission of TOSHIBA TEC CORPORATION. No patent liability is assumed, however, with respect to the use of the information contained herein.

EXPLANATION OF SERVICE-PARTS LIST

1. HOW TO READ THE PARTS LIST

(1) Number of pieces

The number of pieces in the list denotes total pieces used per unit. But the numbers in the list for PACKING MATERIAL and ACCESSORY denote total pieces used per machine.

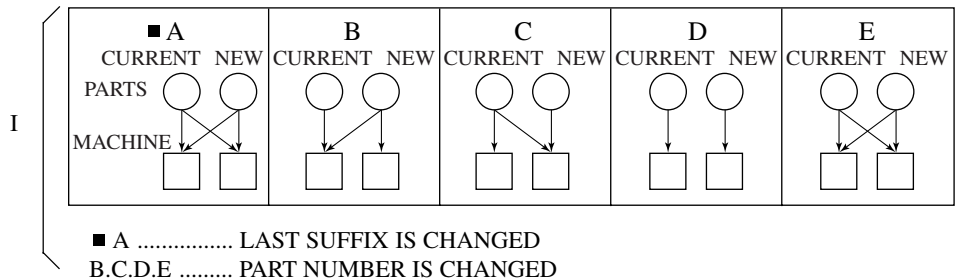
(2) One pack of screws in the list includes 50 pieces.

(3) ABBREVIATED CODES

QTY/PAC	QTY	one piece
	PAC	one pack
	1/P	one piece packed in polyethylene bag
	1/S	one piece packed in special pack
	1/C	one piece packed in carton box
	1/PP	one piece packed in paper and polyethylene bag
	1/KP	one piece packed in polyethylene bag with cardboard
	1/D	one piece packed in polyethylene-cushion bag
	1/SB	one piece packed in shielding bag
	N/A	not available

P	P	PURPOSE
	A	ADD
	B	DELETE
	C	CHANGE
	D	QTY, CHANGE
	E	MISENTRY
	F	OMISSION

I INTERCHANGEABILITY STATUS



2. HOW TO PLACE ORDER FOR PARTS

(1) The parts handled as service parts are only those with their "QTY/PACK" column listed with a quantity other than "N/A***" or "SUPPLY".

Those parts with "N/A***" are listed only for the purpose of showing the mechanical construction, those listed with "SUPPLY" are handled only as a sales item, and therefore both types of parts are not supplied as service parts.

(2) Orders for any parts which form a component of a semi-assembled unit are not acceptable.

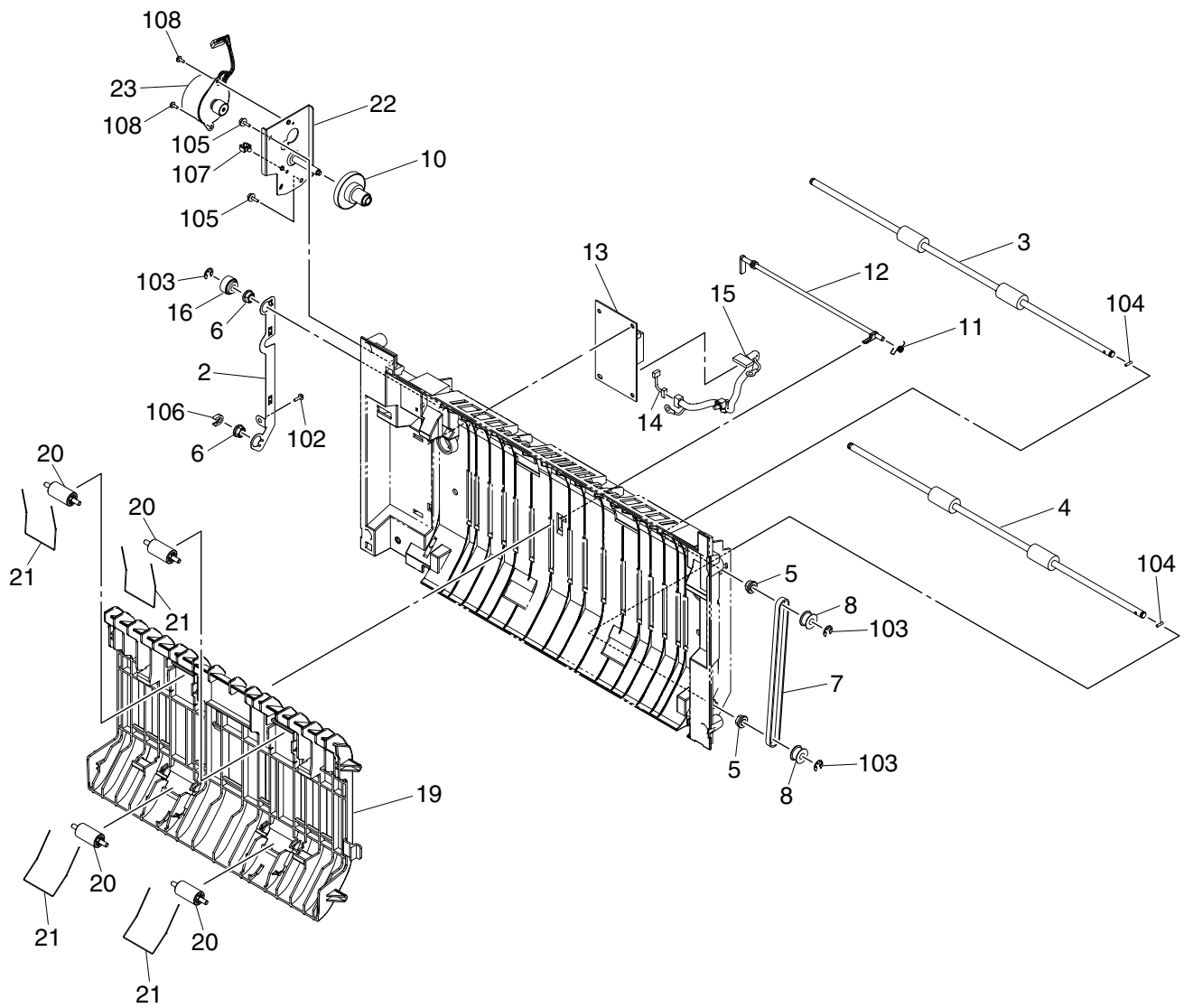
Note: All the screws and nuts used are ISO standard.

3. REGION

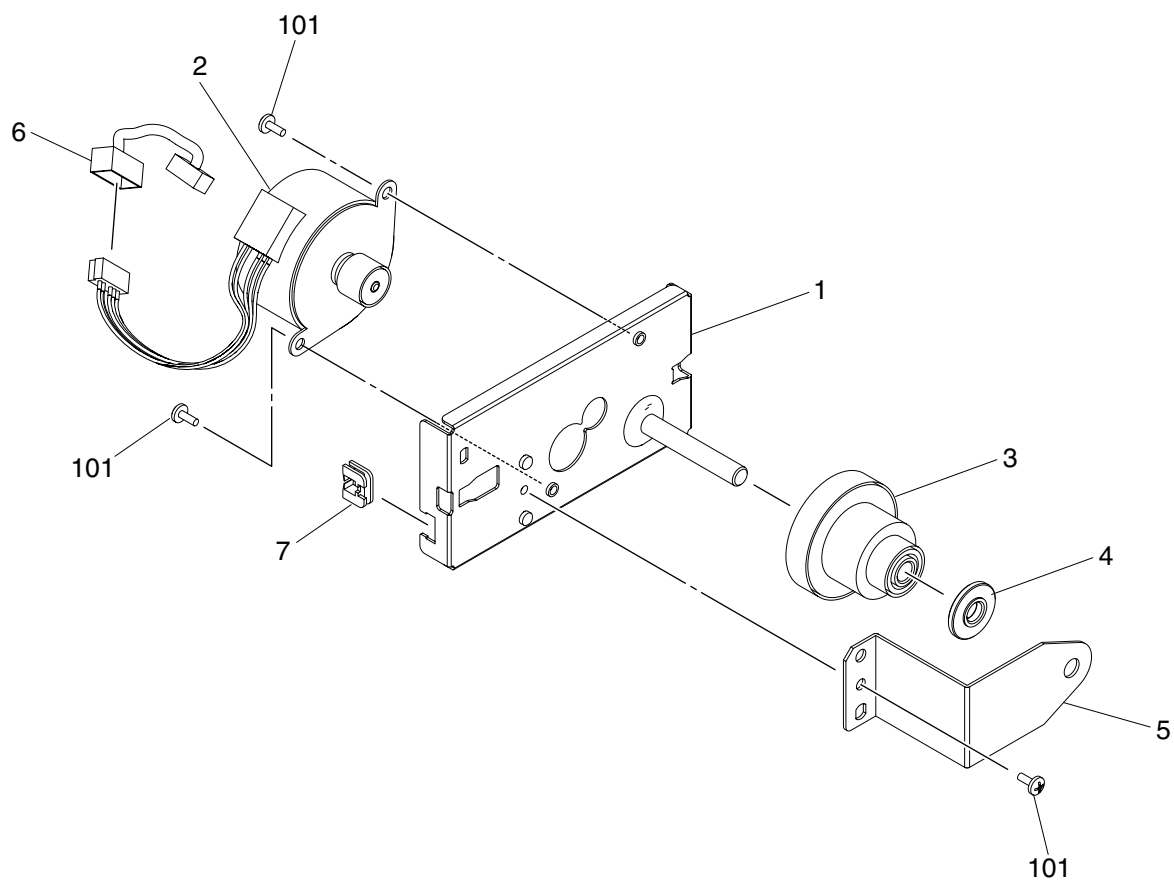
NAD	115V
	50/60Hz, NORTH AMERICA, SOUTH AMERICA
TWD	110/220V
	50/60Hz, TAIWAN
SAD	127V/60Hz, SAUDI ARABIA
ASD	220-240V
	50/60Hz, ASIA, SOUTH AMERICA, etc.
ASU	220-240V
	50/60Hz, ASIA, etc.
AUD	220-240V
	50/60Hz, AUSTRALIA
MJD	220-240V
	50/60Hz, EUROPE
CND	220-240V
	50/60Hz, CHINA
KRD	220-240V
	50/60Hz, KOREA

CONTENTS

ADU	1
DRV-EXIT	2



ITEM NO.	PARTS NO.	PARTS NAME	Q'TY / PAGE	Q'TY / PACK	P	I	R	BSI NO.	TO	T	FROM	SERIAL NO.	REMARKS	C
2	6LE52840000	EARTH-ADU-ROL-280		1/1/P										
3	6LE52850000	ROLL-TRANS-U		1/1/KP										
4	6LE52860000	ROLL-TRANS-L		1/1/KP										
5	44201492000	BUSH-6-POM		2/5/P										
6	4407734980	BUSH-6-GCB		2/5/P										
7	6LE52880000	BLT_T-340-2GT-5		1/1/P										
8	41317051000	PLY/T-2GT020-6F		2/1/P										
10	6LE52940000	GEAR-8S14_8S44-6		1/1/P										
11	6LE52820000	SPG-T-ACT-ADU-280		1/1/P										
12	6LE52810000	ACTR-ADU-280		1/1/P										
13	6LE62776000	PWA-F-ADU-642		1/1/SB										
14	6LE63338000	HRNS-ADU1-642		1/1/P										
15	6LE63339000	HRNS-ADU2-642		1/1/P										
16	41316032000	GEAR-08S18-06CL		1/1/P										
19	6LE52961000	GUIDE-PAPER-IN-280		1/1/P										
20	41316101000	ROLL-TRANS-IDLE		4/1/P										
21	41316103000	SPR-IDLE		4/1/P										
22	6LE52900000	ASYS-BRKT-MOT-ADU		1/1/P										
23	6LE52930000	ASYS-MOTR-S-ADU-280		1/1/C										
102	6LA80090000	S/TPP/BID-3*8-NI		1/5/P										
103	X0-00966000	RR/E-5-SS		3/10/P										
104	X0-00979000	P/PRL/AH7-2X8-SS		2/10/P										
105	X0-02247000	S/TPP/FHEXM-3X8-NI		2/10/P										
106	4407972860	STOP-RING-6-5		1/5/P										
107	F0-00044000	UAMS-05-2		1/5/P										
108	X0-00676000	S/TPS/BID-3X6-NI		2/10/P										



T O S H I B A

TOSHIBA

TOSHIBA TEC CORPORATION

2-17-2, HIGASHIGOTANDA, SHINAGAWA-KU, TOKYO, 141-8664, JAPAN