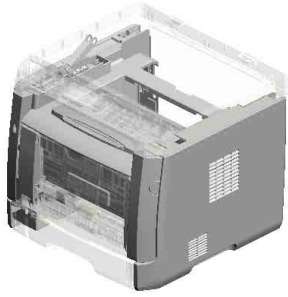


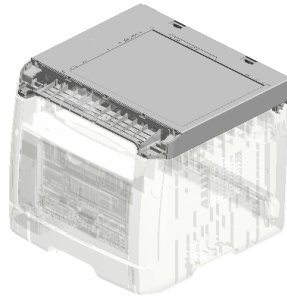
SP 325SNw/377SNwX
(M288/M0BC)
Parts Catalog

Model	Product Code	PC Style
SP 320DN	M0A7	3D
SP 325DNw	M287	3D
SP 377DNwX	M0BB	3D
SP 320SN	M0A8	3D
SP 325SNw	M288	3D
SP 377SNwX	M0BC	3D
SP 320SFN	M0A9	3D
SP 325SFNw	M289	3D
SP 377SFNwX	M0BD	3D
ARDF	M2891601	Traditional

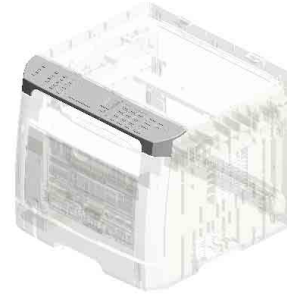
Unit All



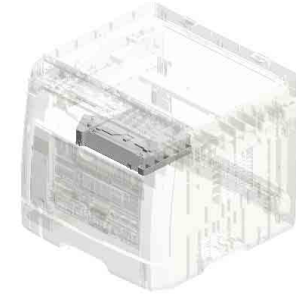
U001
EXTERIOR



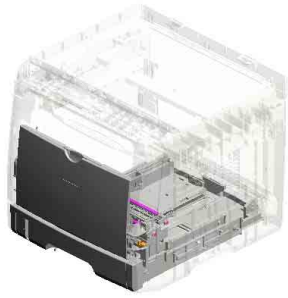
U002
ARDF/SCANNER



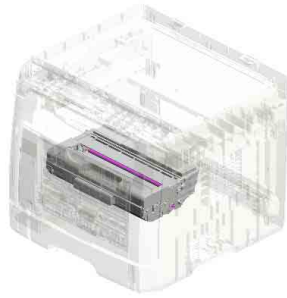
U003
OPERATION



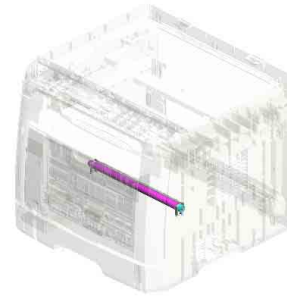
U004
LASER UNIT



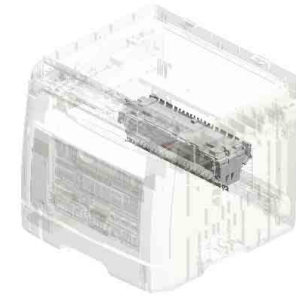
U005
PAPER FEED



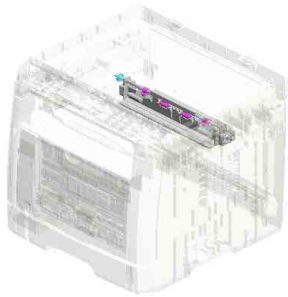
U006
PCU



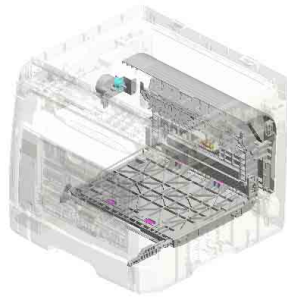
U007
TRANSFER/SEPARATION



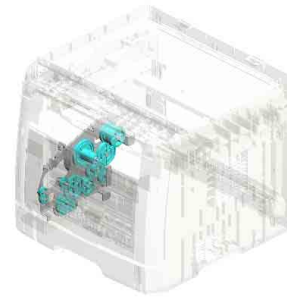
U008
FUSING



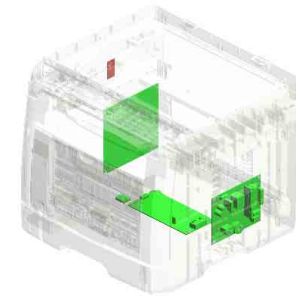
U009
PAPER EXIT



U010
DUPLEX

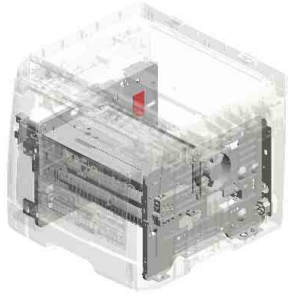


U011
MAIN DRIVE



U012
ELECTRICAL

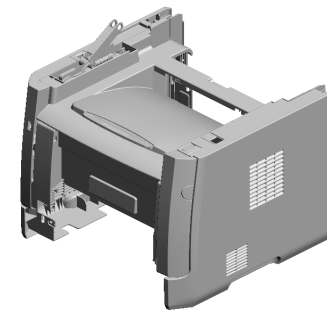
Unit All



U013
MAIN FRAME

U001 EXTERIOR

- 7.G0521518 SPRING - LOCK LEVER
- 3.04513006N (x6) TAPPING SCREW - 3X6
- 1.04503008N (x2) TAPPING SCREW - M3X8
- 8.M1341382 RAIL:SCANNER:OPEN AND CLOSE
- 15.M1561392 GUIDE PLATE:SCANNER:OPEN AND CLOSE



10.M1561240
EXTENSION TRAY:
MF:ASSY

6.AG070514
MAGNET CATCH

19.M2891252
BUTTON

17.M2882632
DECAL:PICK-UP P
APER JAM

18.M2891251
COVER:FRONT

4.04513008N
(x4)
TAPPING SCREW -
M3X8

2.04503012N
(x4)
TAPPING SCREW:
3X12

13.M1561256
SHAFT:TURN:SCA
NNER:RIGHT

11.M1561250
COVER:UPPER:MF
P

16.M2871370
COVER:REAR LO
WER

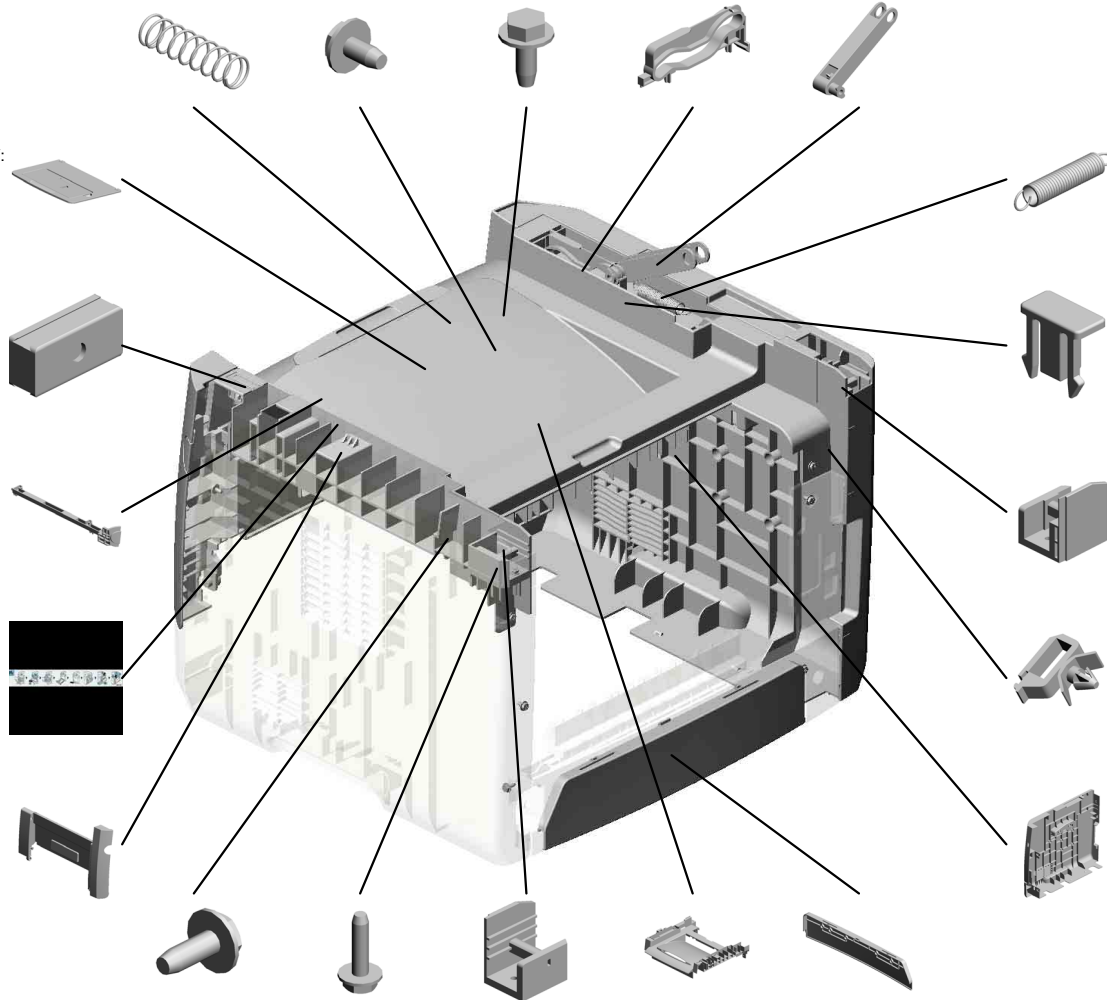
14.M1561272
COIL SPRING:SCA
NNER

9.M1341386
RAIL:STOPPER:SC
ANNER:OPEN AND
CLOSE

12.M1561254
SHAFT:TURN:SCA
NNER:LEFT

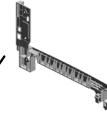
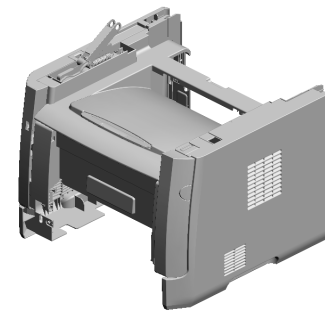
5.11050761
CLAMP:LWS-0511A

20.M2891253
COVER:SIDE PLAT
E:LEFT

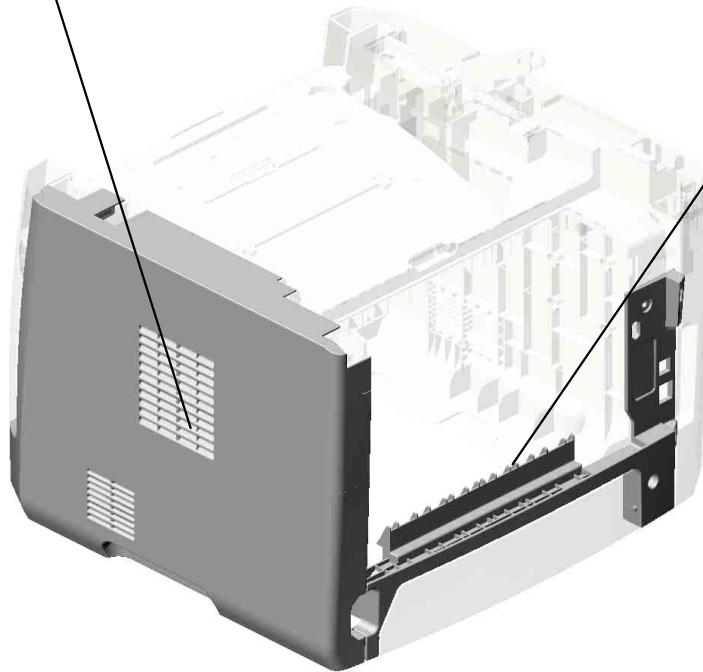


U001
EXTERIOR

21.M2891255
COVER:SIDE PLAT
E:RIGHT



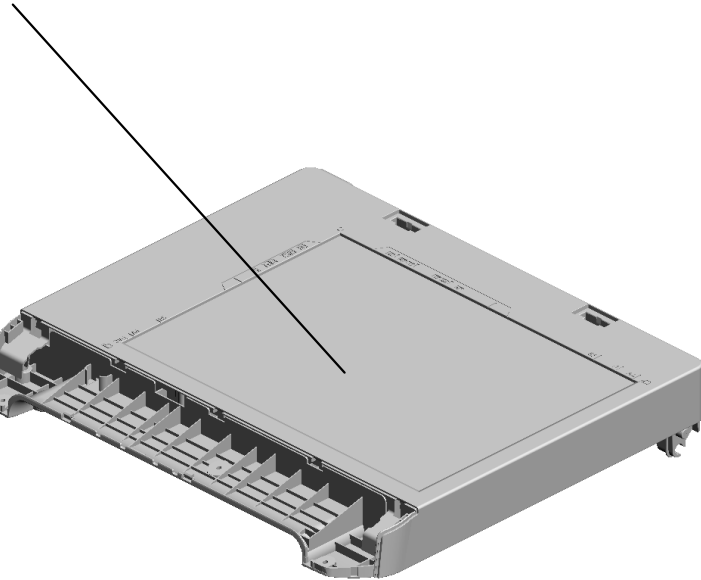
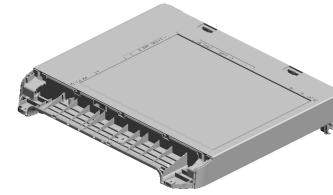
22.M2891259
COVER:REAR MID
DLE:3IN1



U001	U002	U003	U004	U005	U006	U007	U008	U009	U010	U011	U012	U013
------	------	------	------	------	------	------	------	------	------	------	------	------

U002
ARDF/SCANNER

1.M2881600
SCANNER:ASSY



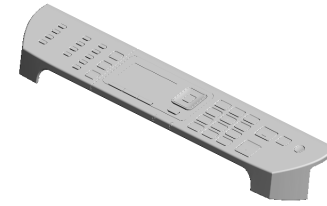
See 2D parts catalog
for the components of
the ARDF.

2.Note
See 2D parts catalog
for the components of
the ARDF.

U001	U002	U003	U004	U005	U006	U007	U008	U009	U010	U011	U012	U013
------	------	------	------	------	------	------	------	------	------	------	------	------

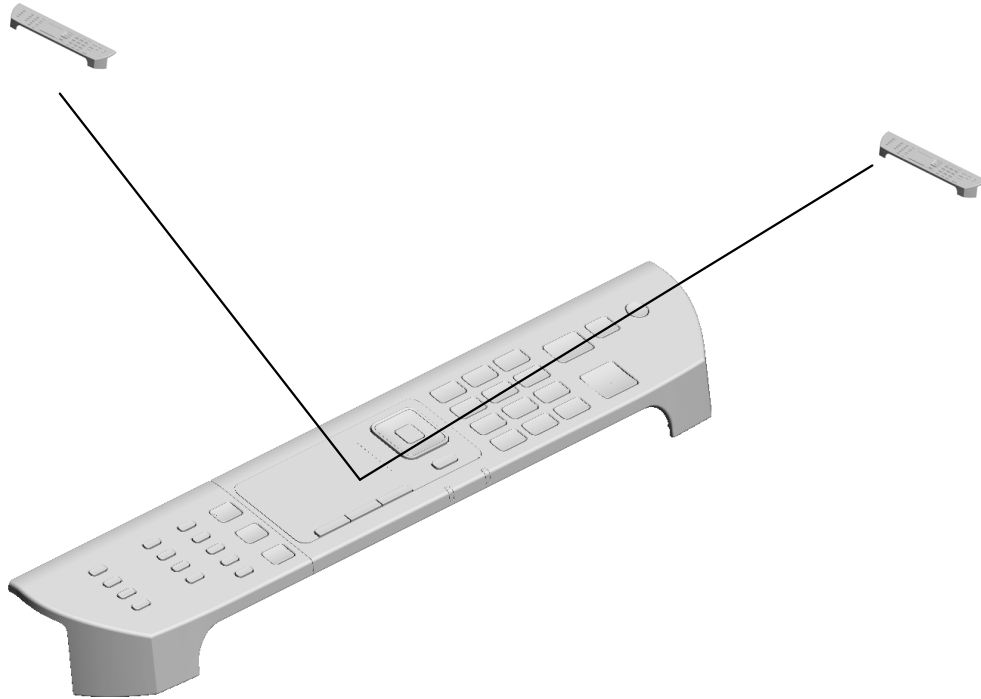
U003 OPERATION

2.M2881402
(x2)
(EU/AA/NA):OPERA
TION PANEL:3IN1:
ASS'Y



1.04503010N (x 3)
TAPPING SCREW - M3X10

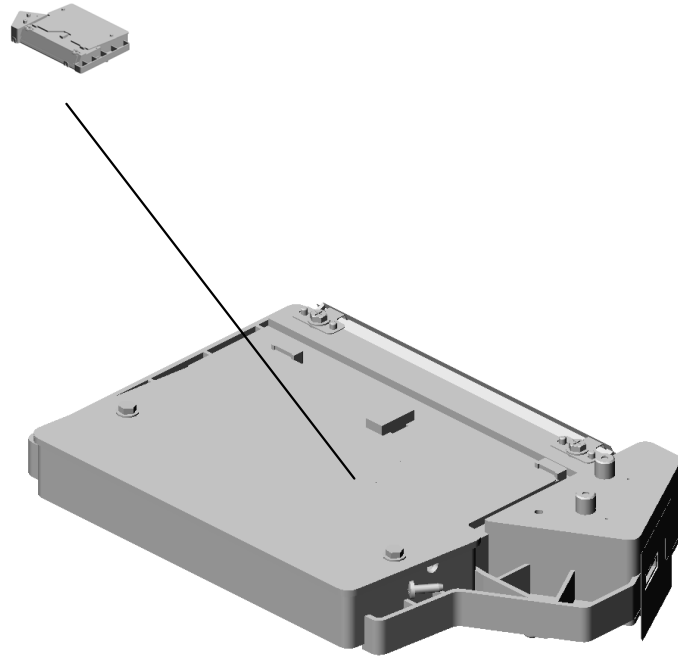
3.M2881404
(CHN):OPERATION
PANEL:3IN1:ASS'Y



U001	U002	U003	U004	U005	U006	U007	U008	U009	U010	U011	U012	U013
------	------	------	------	------	------	------	------	------	------	------	------	------

U004.LASER UNIT

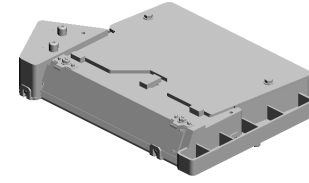
U004_S001
M2871851
OPTICAL WRITING UNIT:ASS
Y



U001	U002	U003	U004	U005	U006	U007	U008	U009	U010	U011	U012	U013
------	------	------	------	------	------	------	------	------	------	------	------	------

U004
LASER UNIT

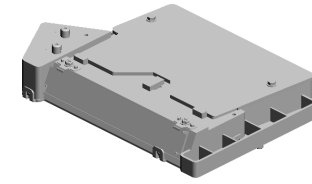
6.04543008Q
(x3)
TAPPING SCREW:
3X8



U001	U002	U003	U004	U005	U006	U007	U008	U009	U010	U011	U012	U013
------	------	------	------	------	------	------	------	------	------	------	------	------

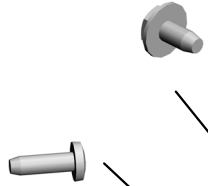
U004_S001
OPTICAL WRITING UNIT:ASS'Y

3.04513006N
TAPPING SCREW -
3X6



7.M2871851
OPTICAL WRITING
UNIT:ASS'Y

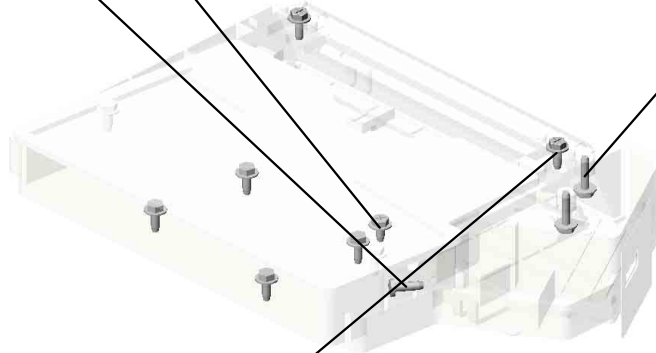
4.04523010N
BINDING SELF-TA
PPING SCREW:3X
10



5.04543006Q (x 2)
TAPPING SCREW - M3X6



2.04503012N
(x2)
TAPPING SCREW:
3X12



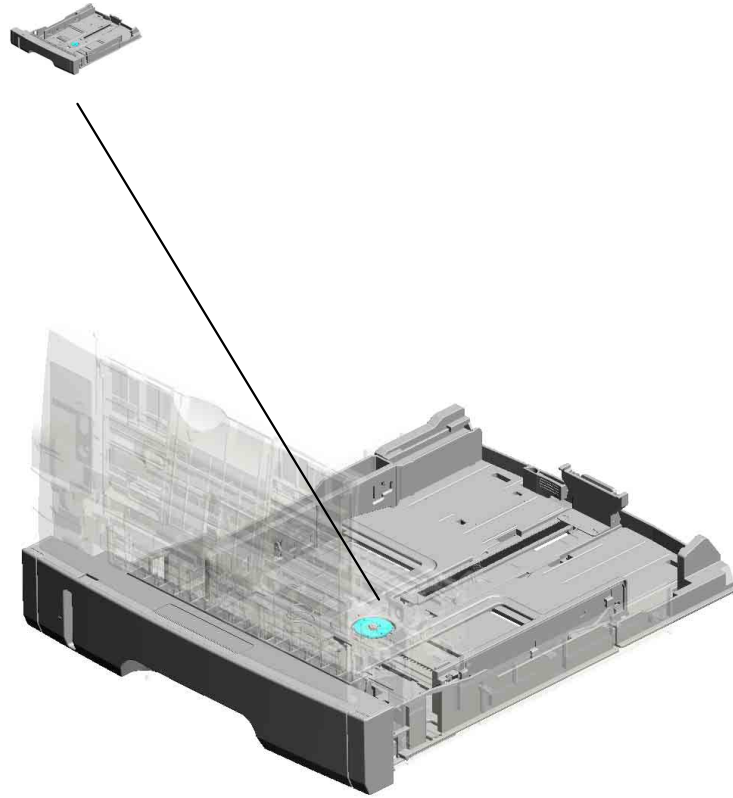
1.04503008N
(x6)
TAPPING SCREW -
M3X8



U001	U002	U003	U004	U005	U006	U007	U008	U009	U010	U011	U012	U013
------	------	------	------	------	------	------	------	------	------	------	------	------

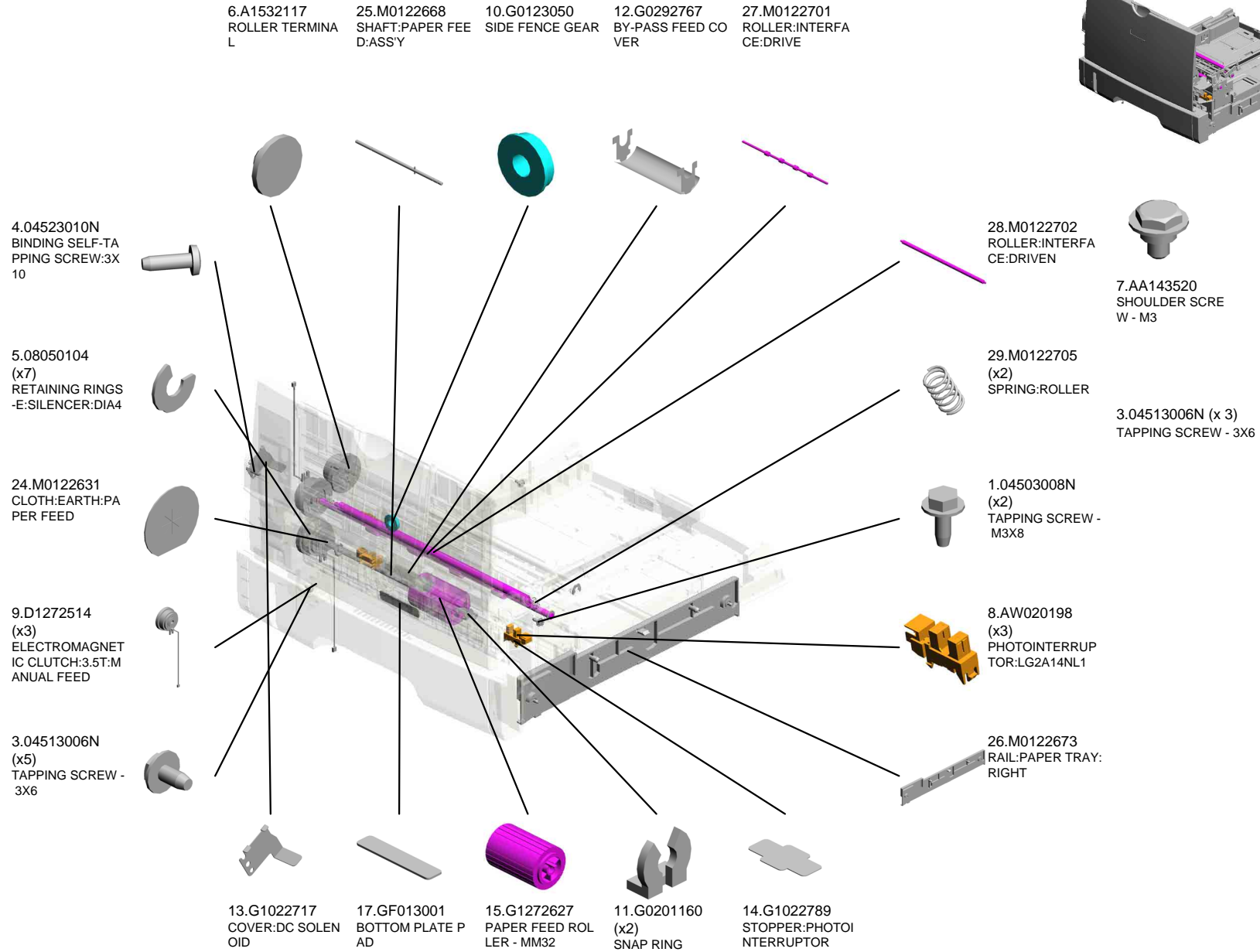
U005.PAPER FEED

U005_S001
M2872505
PAPER TRAY:ASSY



U001	U002	U003	U004	U005	U006	U007	U008	U009	U010	U011	U012	U013
------	------	------	------	-------------	------	------	------	------	------	------	------	------

U005 PAPER FEED



U005 PAPER FEED

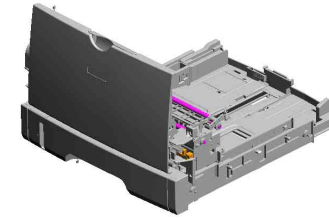
30.M0122711
BUSHING:REGISTRATION:DRIVEN:LEFT

41.M0122744
(x2)
GUIDE:REGISTRATION

48.M0122833
DECAL:SIDE FENCE:MANUAL FEED

31.M0122715
GUIDE PLATE:TRANSPORT:UPPER

32.M0122718
REGISTRATION ROLLER:DRIVEN



39.M0122742
GROUND PLATE:DRIVEN:REGISTRATION ROLLER

38.M0122741
GROUND PLATE:DRIVEN:REGISTRATION ROLLER

47.M0122830
MECHANICAL SPRING CLUTCH:MANUAL FEED

36.M0122725
SPRING:FEELER:REGISTRATION

49.M0122859
GUIDE PLATE:UPPER:MANUAL FEED

45.M0122816
FRICTION PAD:HOLDER:MANUAL FEED:ASSY

35.M0122723
FEELER:REGISTRATION:SENSOR

44.M0122806
SHEET:GUIDE:MANUAL FEED SUBUNIT

46.M0122824
FEELER:MANUAL FEED

40.M0122743
DECAL:GUIDE PLATE:TRANSPORT:UPPER

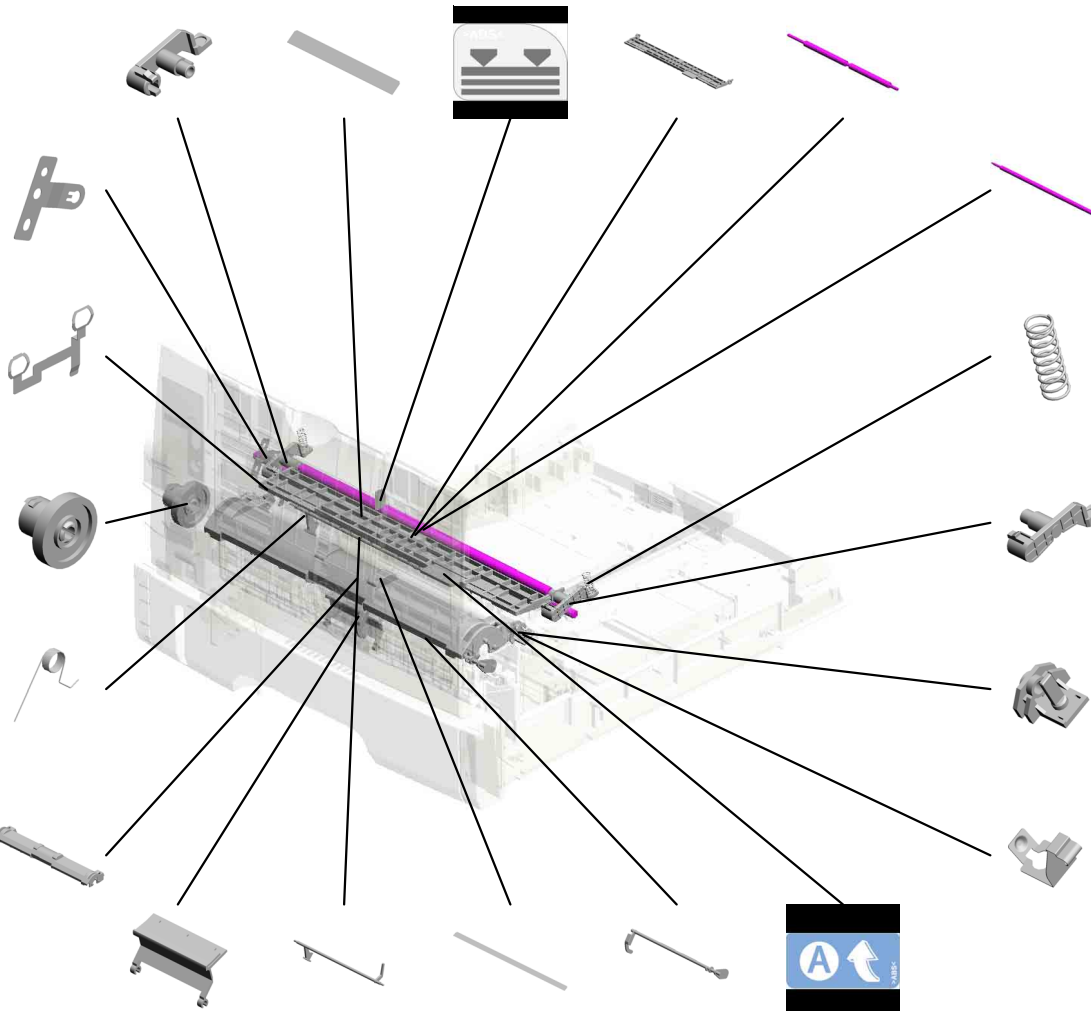
33.M0122719
REGISTRATION ROLLER:DRIVEN

34.M0122722
(x2)
SPRING:ROLLER:REGISTRATION

37.M0122730
BUSHING:REGISTRATION:DRIVEN:RIGHT

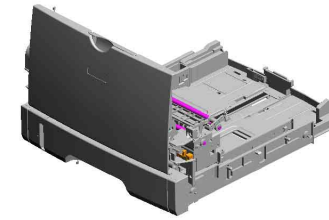
43.M0122753
(x2)
BUSHING:ROLLER:DRIVEN

42.M0122745
GROUND PLATE:DRIVEN



U005 PAPER FEED

85.M2872876 SIDE FENCE:MANUAL FEED:LEFT
 67.M1542879 EXTENSION TRAY:MANUAL FEED
 84.M2872875 SIDE FENCE:MANUAL FEED:RIGHT
 86.M2872878 (x2) RACK:MANUAL FEED



65.M1542815 DECAL:FEED PAPER AGAIN:PREVENTION



66.M1542831 DC SOLENOID:9.6W:24V



83.M2872871 COVER:MANUAL FEED TABLE



88.M2872881 BASE:MANUAL FEED TABLE



58.M1162672 RAIL:PAPER TRAY:LEFT



87.M2872879 (x2) COMPRESSION SPRING:SIDE FENCE:MANUAL FEED



82.M2872671 FEELER:PAPER END SENSOR



53.M0124488 (x6) BUSHING:DIA6XDI A10X6



50.M0122860 PAPER FEED ROLLER:MANUAL FEED



51.M0122874 COMPRESSION SPRING:MANUAL FEED



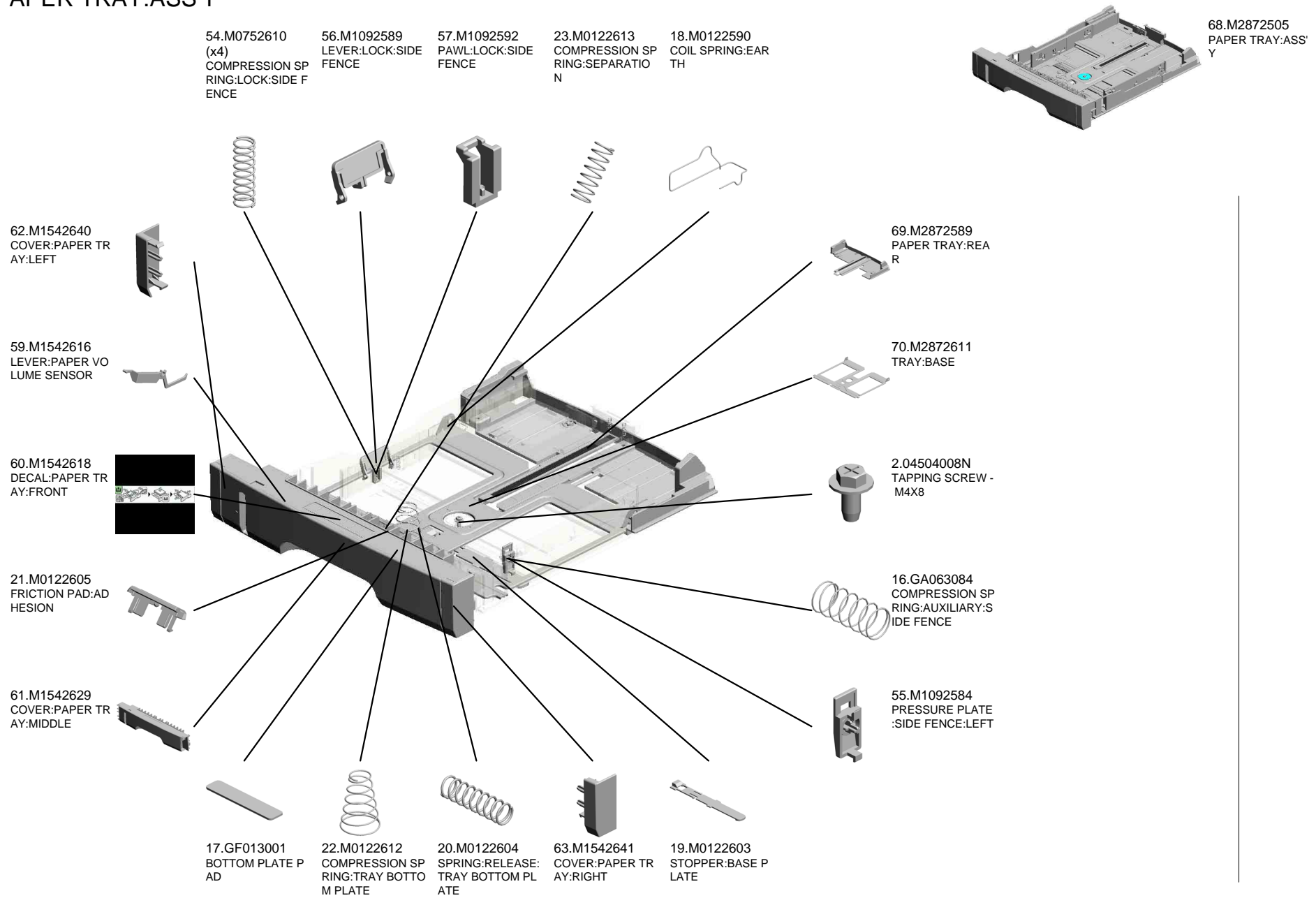
64.M1542805 GUIDE PLATE:MANUAL FEED:LOWER



52.M0122880 COMPRESSION SPRING:SEPARATION



U005_S001 PAPER TRAY:ASS'Y



U001	U002	U003	U004	U005	U006	U007	U008	U009	U010	U011	U012	U013
------	------	------	------	------	------	------	------	------	------	------	------	------

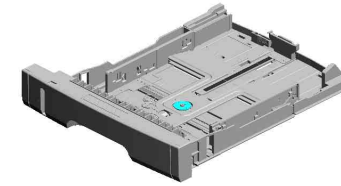
U005_S001
PAPER TRAY:ASS'Y

73.M2872618
COVER:SIDE FENCE:LEFT

72.M2872615
SIDE FENCE:LEFT

79.M2872626
DECAL:EXTENSION TRAY

78.M2872625
LEVER:LOCK:EXTENSION TRAY

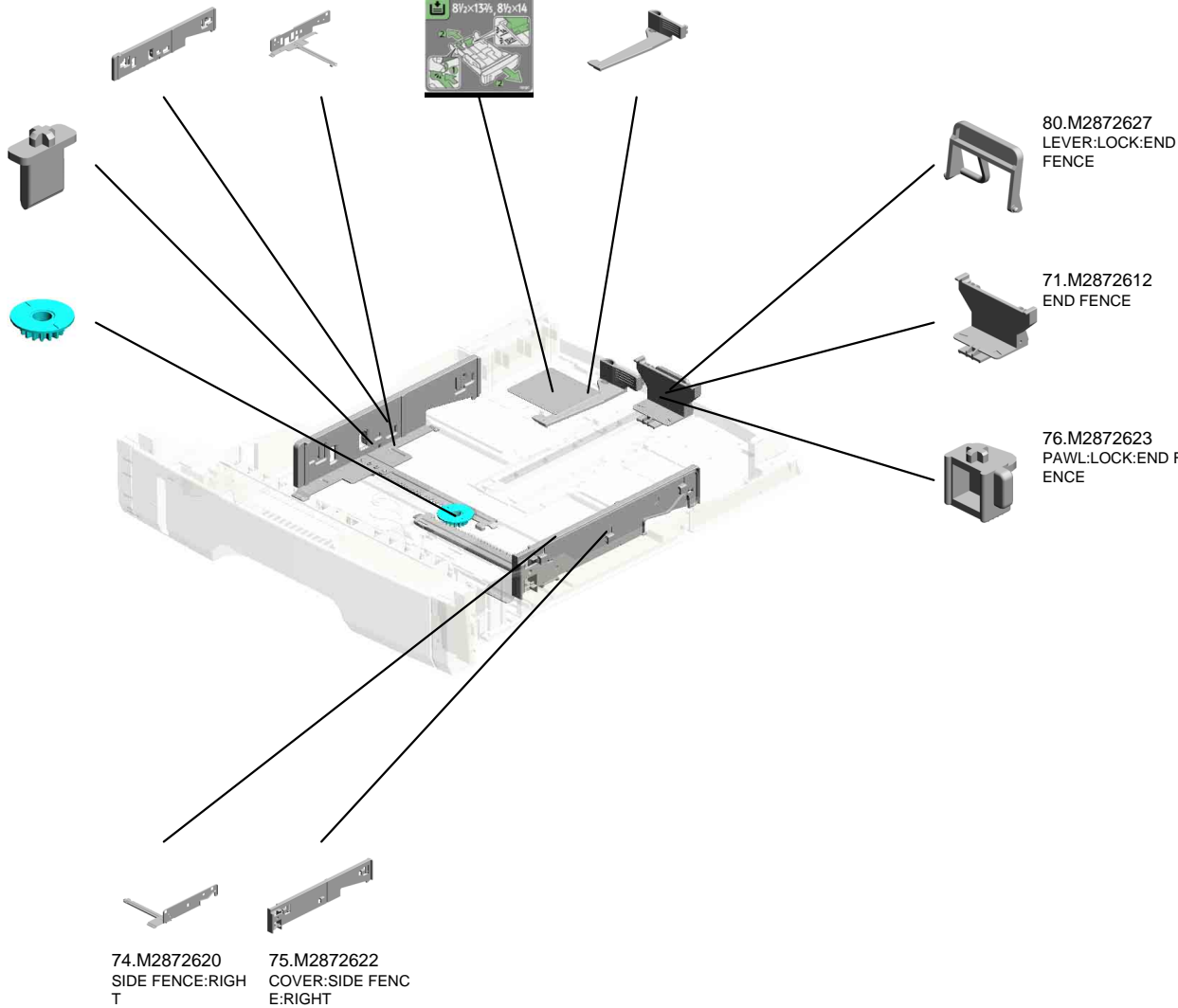


68.M2872505
PAPER TRAY:ASS'Y



77.M2872624
(x2)
CLICK:SIDE FENCE

81.M2872636
GEAR:16Z



80.M2872627
LEVER:LOCK:END FENCE

71.M2872612
END FENCE

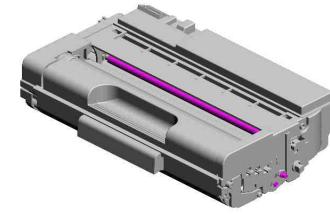
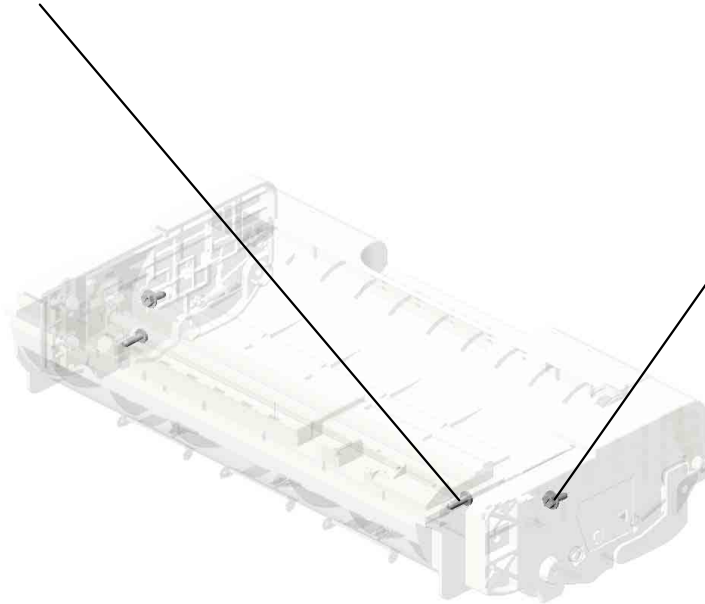
76.M2872623
PAWL:LOCK:END FENCE

74.M2872620
SIDE FENCE:RIGHT

75.M2872622
COVER:SIDE FENCE:RIGHT

U006
PCU

2.04523010N
(x2)
BINDING SELF-TAP-
PING SCREW:3X
10



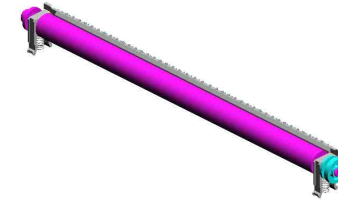
1.04503008N
(x2)
TAPPING SCREW -
M3X8

1.04503008N (x 4)
TAPPING SCREW - M3X8

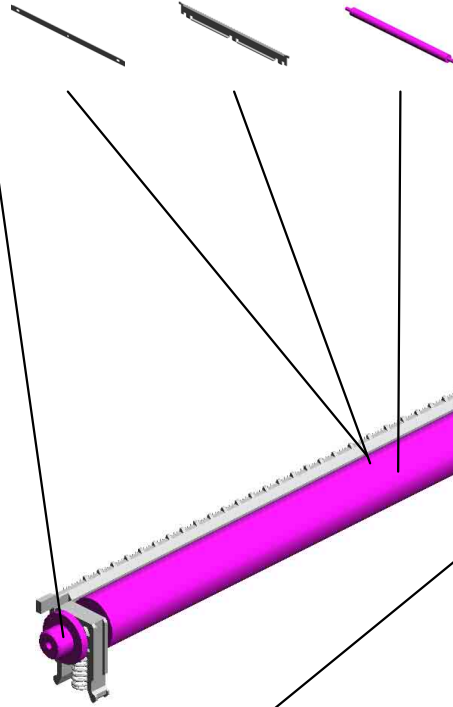
U001	U002	U003	U004	U005	U006	U007	U008	U009	U010	U011	U012	U013
------	------	------	------	------	-------------	------	------	------	------	------	------	------

U007 TRANSFER/SEPARATION

7.M01016259 ELECTRODE PLATE:SEPARATION
 5.M0126260 COVER:ELECTRODE PLATE
 6.M01016250 TRANSFER ROLLER



4.M0126256 ROLLER:POSITIONING:TRANSFER ROLLER



3.M0126255 GEAR:TRANSFER ROLLER



1.M0126252 (x2) BUSHING:TRANSFER ROLLER:RIGHT



2.M0126254 (x2) SPRING:TRANSFER ROLLER



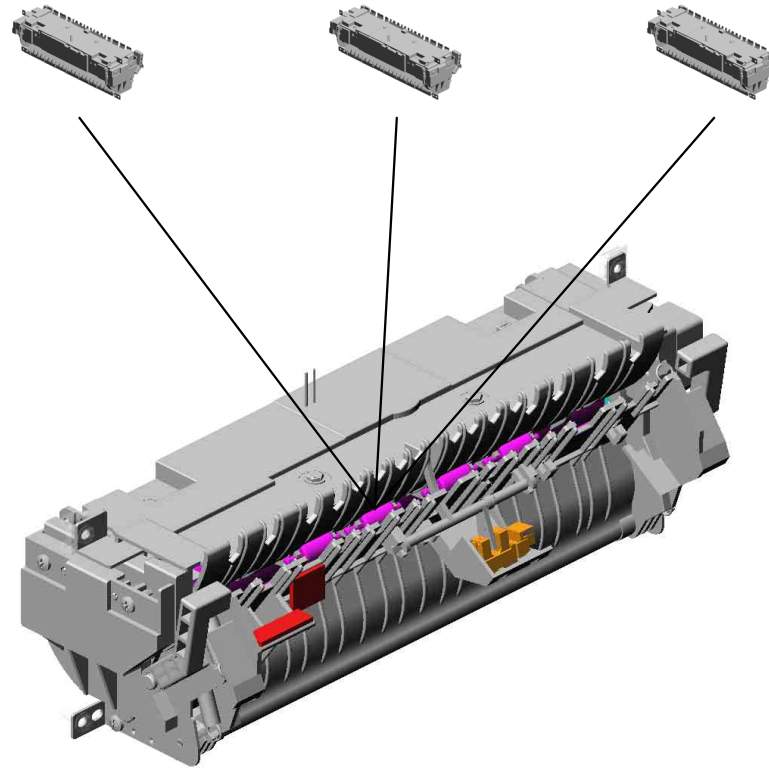
U001	U002	U003	U004	U005	U006	U007	U008	U009	U010	U011	U012	U013
------	------	------	------	------	------	------	------	------	------	------	------	------

U008.FUSING

U008_S001
M2874031
(EU/AA):FUSING UNIT:ASSY

U008_S002
M2874033
(CHN):FUSING UNIT:ASSY

U008_S003
M2874030
(NA):FUSING UNIT:ASSY



U001	U002	U003	U004	U005	U006	U007	U008	U009	U010	U011	U012	U013
------	------	------	------	------	------	------	-------------	------	------	------	------	------

U008 FUSING

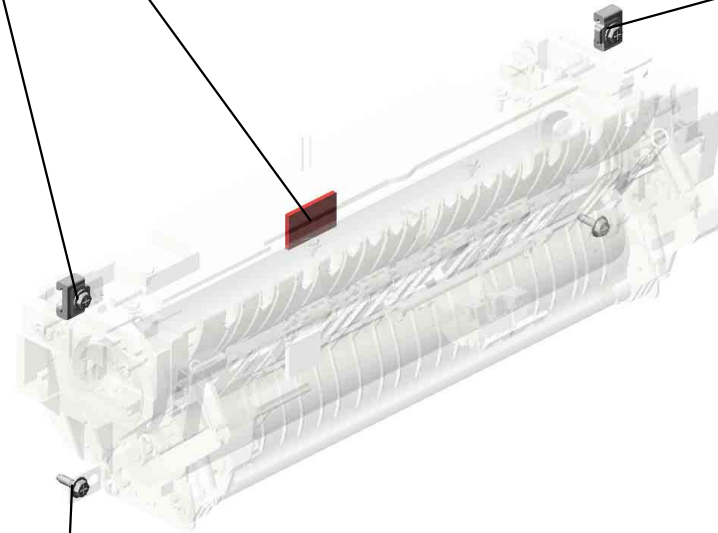
46.M0124699
DECAL:WARNING (HIGH TEMPERATURE):FRONT



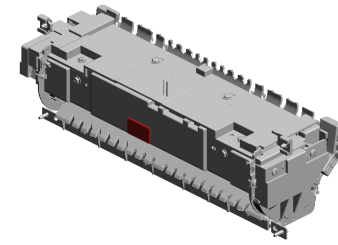
4.04513008N
(x2)
TAPPING SCREW - M3X8



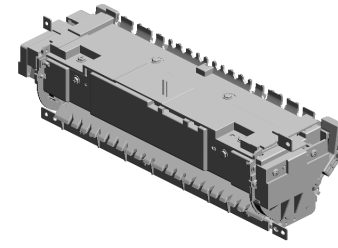
35.M0124270
(x2)
THERMAL INSULATING BUSHING:FUSING UNIT



2.04503010N
(x2)
TAPPING SCREW - M3X10



U008_S001
(EU/AA):FUSING UNIT:ASS'Y



48.M2874031
(EU/AA):FUSING UNIT:ASS'Y

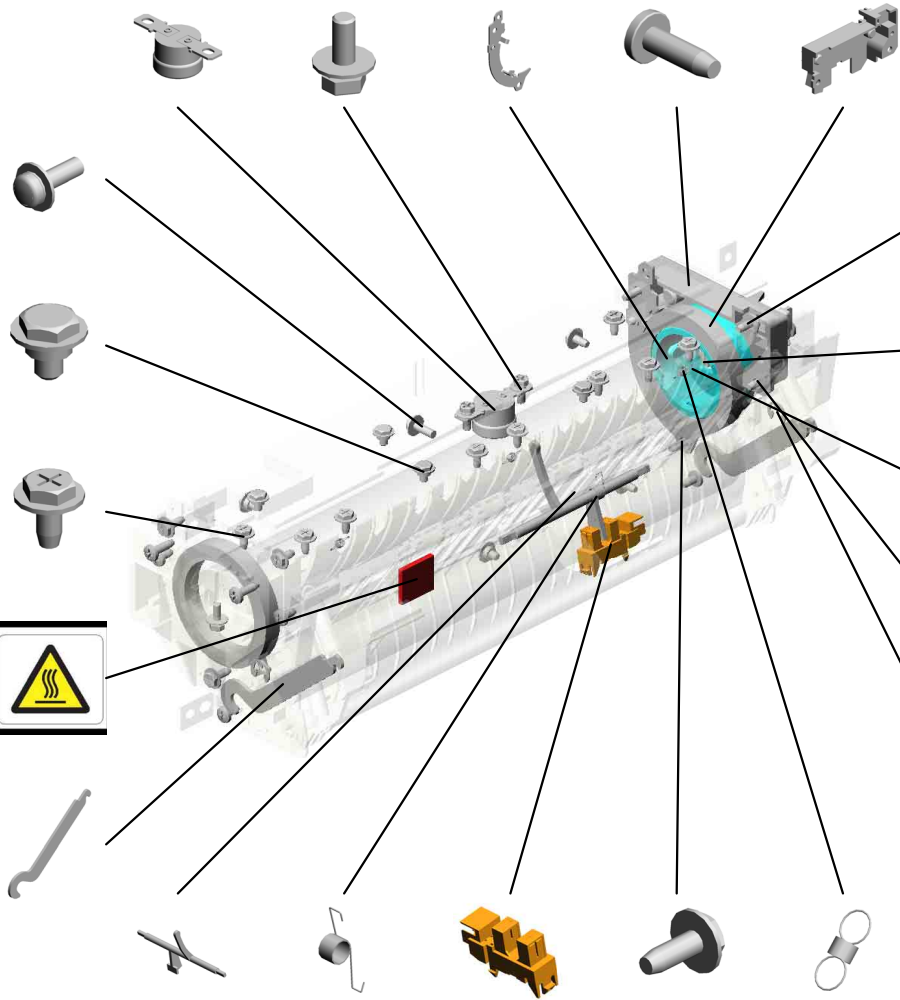
12.AW110116
THERMOSTAT

8.08046127
(x4)
HEXAGONAL BOLT
:DOUBLE SCREW:
M3X8

21.M0124204
LEVER:LEFT:FRAM
E:FUSING

7.08025318
(x4)
BINDING HEAD TA
PPING SCREW:ES:
3X10

19.M0124186
COVER:LEFT UPP
ER:ASS'Y



9.09543010N
SCREW:POLISHED
ROUND/SPRING:M
3X10

10.AA143520
(x7)
SHOULDER SCRE
W - M3

1.03603006N
(x11)
SCREW - M3X6

13.G1274328
DECAL - HIGH TEM
PERATURE



20.M0124202
(x2)
LEVER:PRESSURE

18.M0124135
FEELER:PAPER FE
ED SENSOR

16.M0124109
SPRING:FEELER:E
XIT

11.AW020198
PHOTOINTERRUP
TOR:LG2A14NL1

4.04513008N
(x4)
TAPPING SCREW -
M3X8

17.M0124120
(x3)
TENSION SPRING:
PICKOFF PAWL

3.04513006N
(x2)
TAPPING SCREW -
3X6

14.M0124053
GEAR:HOT ROLLE
R

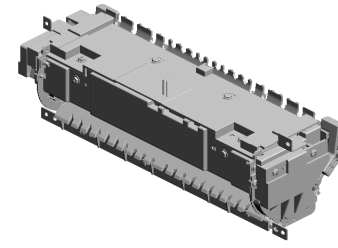
15.M0124055
(x2)
RADIAL BALL BEA
RING:35X47X7

5.04533006N
(x6)
TAPPING SCREW -
M3X6

6.07200040E
(x2)
RETAINING RING -
M4

U001	U002	U003	U004	U005	U006	U007	U008	U009	U010	U011	U012	U013
------	------	------	------	------	------	------	------	------	------	------	------	------

U008_S001
(EU/AA):FUSING UNIT:ASS'Y



48.M2874031
(EU/AA):FUSING UNIT:ASSY

41.M0124287 COVER:RIGHT UPPER:FUSING
 38.M0124281 (x2) RETAINING RINGS-C:HOT ROLLER
 39.M0124284 LEVER:PRESSURE:LEFT
 25.M0124212 FUSING ENTRANCE GUIDE PLATE:UPPER
 42.M0124292 FUSING COVER:UPPER

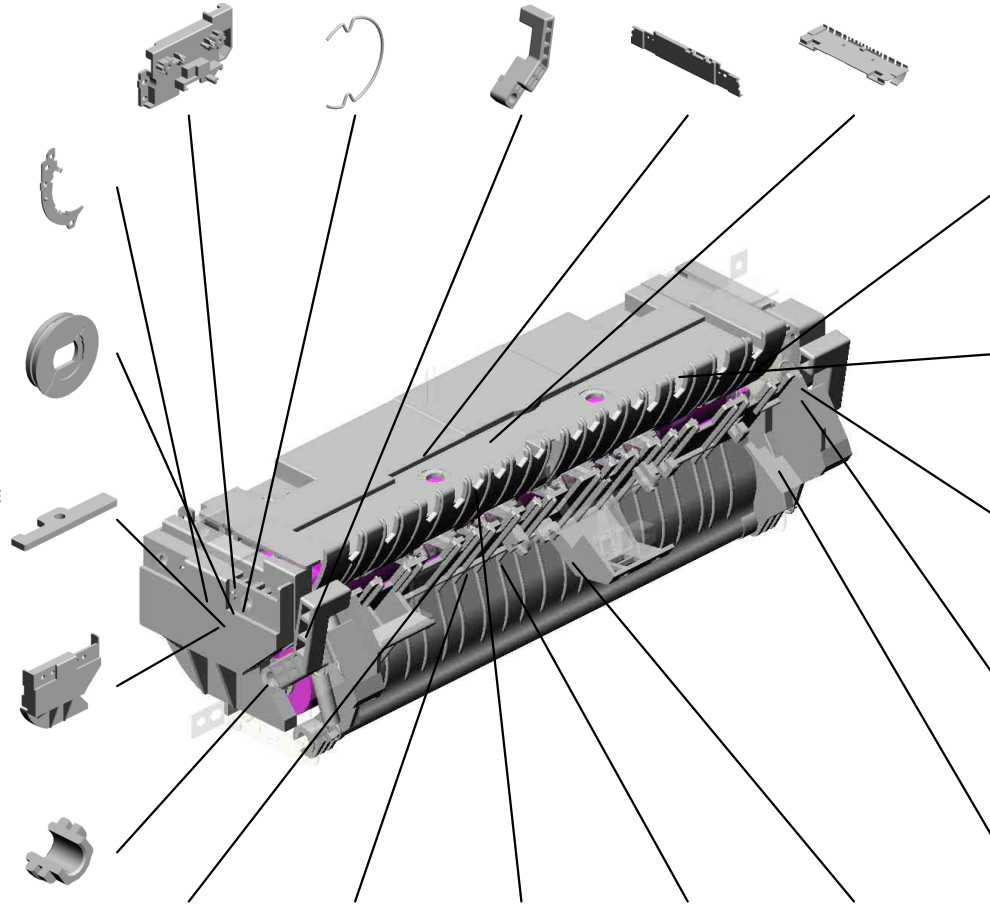
22.M0124205 LEVER:RIGHT FRAME:FUSING

31.M0124223 THERMAL INSULATING BUSHING:HOT ROLLER

24.M0124211 PLATE NUT:HEATER

34.M0124266 COVER:RIGHT LOWER:FUSING

26.M0124213 (x2) BUSHING:PRESSURE ROLLER



36.M0124276 COVER:LEFT:LOWER:FUSING

23.M0124208 (x3) BRACKET:GATE PLATE

40.M0124285 LEVER:PRESSURE:RIGHT

32.M0124229 (x2) TENSION SPRING:FUSING:PRESSURE

28.M0124216 (x2) TENSION SPRING:FUSING:GUIDE PLATE

29.M0124217 FUSING ENTRANCE GUIDE PLATE:LOWER
 37.M0124279 CLEANING ROLLER:ASSY
 30.M0124220 HOT ROLLER
 33.M0124253 PRESSURE ROLLER:DIA30
 27.M0124215 GUIDE PLATE:EXIT

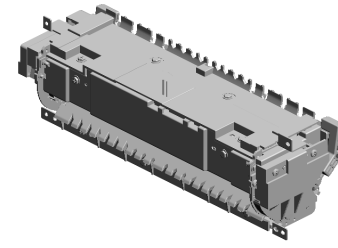
U001	U002	U003	U004	U005	U006	U007	U008	U009	U010	U011	U012	U013
------	------	------	------	------	------	------	------	------	------	------	------	------

U008_S001
(EU/AA):FUSING UNIT:ASS'Y

54.M2874263
THERMISTOR

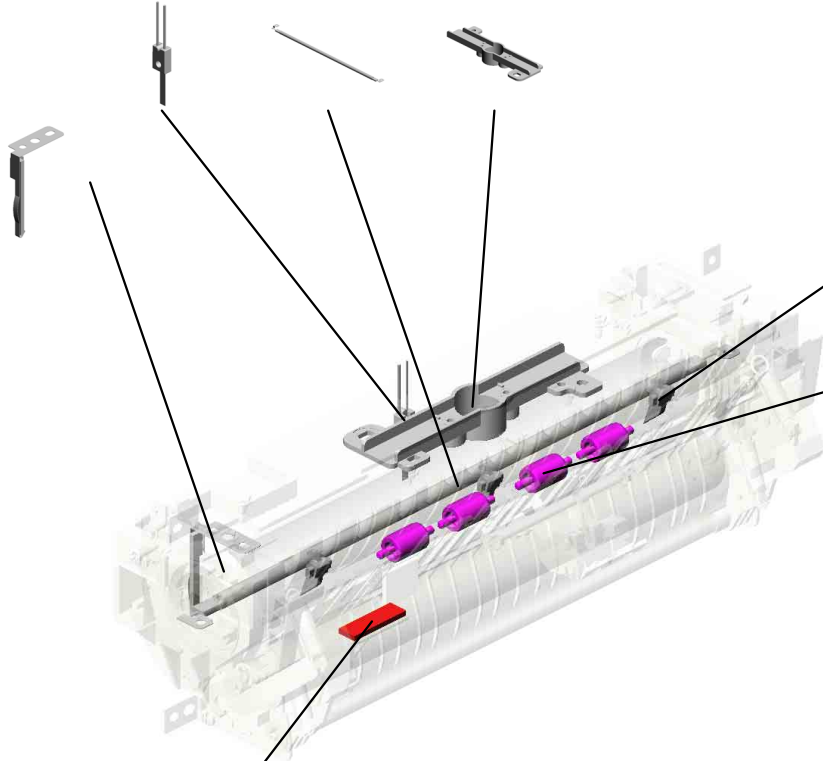
52.M2874221
(EU/AA/CHN):HEAT
ER:700W:220V:INF
RARED

53.M2874234
HOUSING:THERM
OSTAT:ASS'Y



48.M2874031
(EU/AA):FUSING U
NIT:ASS'Y

44.M0124295
GROUND PLATE:A
SS'Y



50.M2874206
(x3)
STRIPPER PAWLS

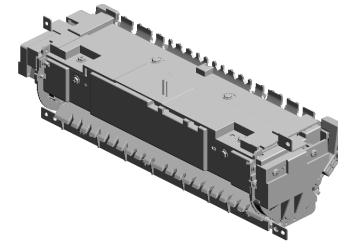
43.M0124293
(x4)
EXIT ROLLER:EXIT
:FUSING



45.M0124603
DECAL:GUIDE PLA
TE:B

U001	U002	U003	U004	U005	U006	U007	U008	U009	U010	U011	U012	U013
------	------	------	------	------	------	------	------	------	------	------	------	------

U008_S002
(CHN):FUSING UNIT:ASS'Y



49.M2874033
(CHN):FUSING UNIT:ASS'Y

12.AW110116
THERMOSTAT

21.M0124204
LEVER:LEFT:FRAM
E:FUSING

17.M0124120
(x3)
TENSION SPRING:
PICKOFF PAWL

7.08025318
(x4)
BINDING HEAD TA
PPING SCREW:ES:
3X10

19.M0124186
COVER:LEFT UPP
ER:ASS'Y

8.08046127
(x4)
HEXAGONAL BOLT
:DOUBLE SCREW:
M3X8

9.09543010N
SCREW:POLISHED
ROUND/SPRING:M
3X10

10.AA143520
(x7)
SHOULDER SCRE
W - M3

1.03603006N
(x11)
SCREW - M3X6

13.G1274328
DECAL - HIGH TEM
PERATURE



18.M0124135
FEELER:PAPER FE
ED SENSOR

16.M0124109
SPRING:FEELER:E
XIT

11.AW020198
PHOTOINTERRUP
TOR:LG2A14NL1

4.04513008N
(x4)
TAPPING SCREW -
M3X8

20.M0124202
(x2)
LEVER:PRESSURE

3.04513006N
(x2)
TAPPING SCREW -
3X6

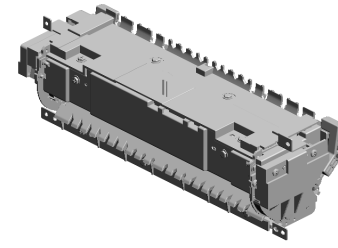
14.M0124053
GEAR:HOT ROLLE
R

15.M0124055
(x2)
RADIAL BALL BEA
RING:35X47X7

5.04533006N
(x6)
TAPPING SCREW -
M3X6

6.07200040E
(x2)
RETAINING RING -
M4

U008_S002
(CHN):FUSING UNIT:ASS'Y



49.M2874033
(CHN):FUSING UNIT:ASS'Y

41.M0124287 COVER:RIGHT UPPER:FUSING
 38.M0124281 (x2) RETAINING RINGS-C:HOT ROLLER
 39.M0124284 LEVER:PRESSURE:LEFT
 25.M0124212 FUSING ENTRANCE GUIDE PLATE:UPPER
 42.M0124292 FUSING COVER:UPPER

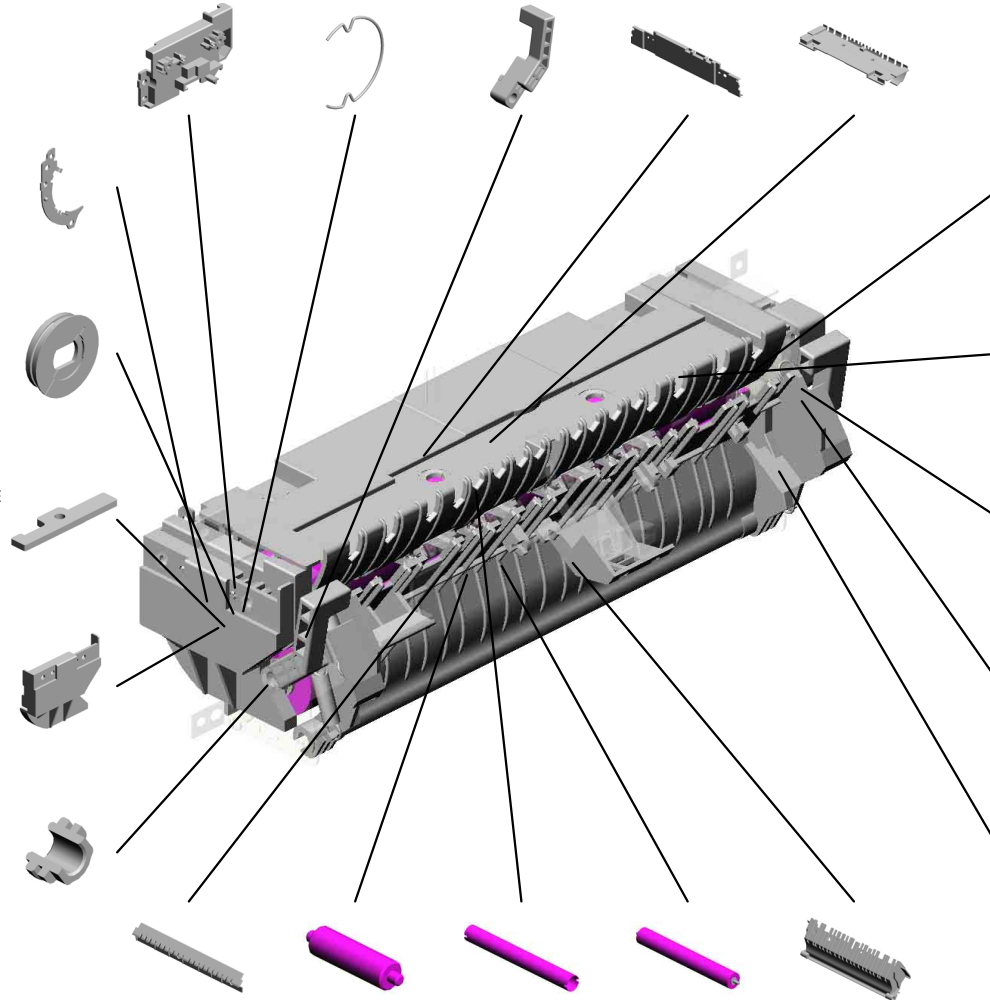
22.M0124205 LEVER:RIGHT FRAME:FUSING

31.M0124223 THERMAL INSULATING BUSHING:HOT ROLLER

24.M0124211 PLATE NUT:HEATER

34.M0124266 COVER:RIGHT LOWER:FUSING

26.M0124213 (x2) BUSHING:PRESSURE ROLLER



36.M0124276 COVER:LEFT LOWER:FUSING

23.M0124208 (x3) BRACKET:GATE PLATE

40.M0124285 LEVER:PRESSURE:RIGHT

32.M0124229 (x2) TENSION SPRING:FUSING:PRESSURE

28.M0124216 (x2) TENSION SPRING:FUSING:GUIDE PLATE

29.M0124217 FUSING ENTRANCE GUIDE PLATE:LOWER
 37.M0124279 CLEANING ROLLER:ASSY
 30.M0124220 HOT ROLLER
 33.M0124253 PRESSURE ROLLER:DIA30
 27.M0124215 GUIDE PLATE:EXIT

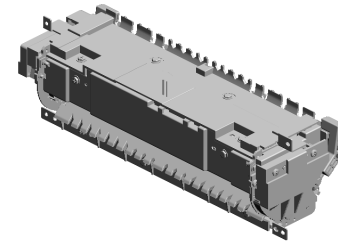
U001	U002	U003	U004	U005	U006	U007	U008	U009	U010	U011	U012	U013
------	------	------	------	------	------	------	------	------	------	------	------	------

U008_S002
(CHN):FUSING UNIT:ASS'Y

54.M2874263
THERMISTOR

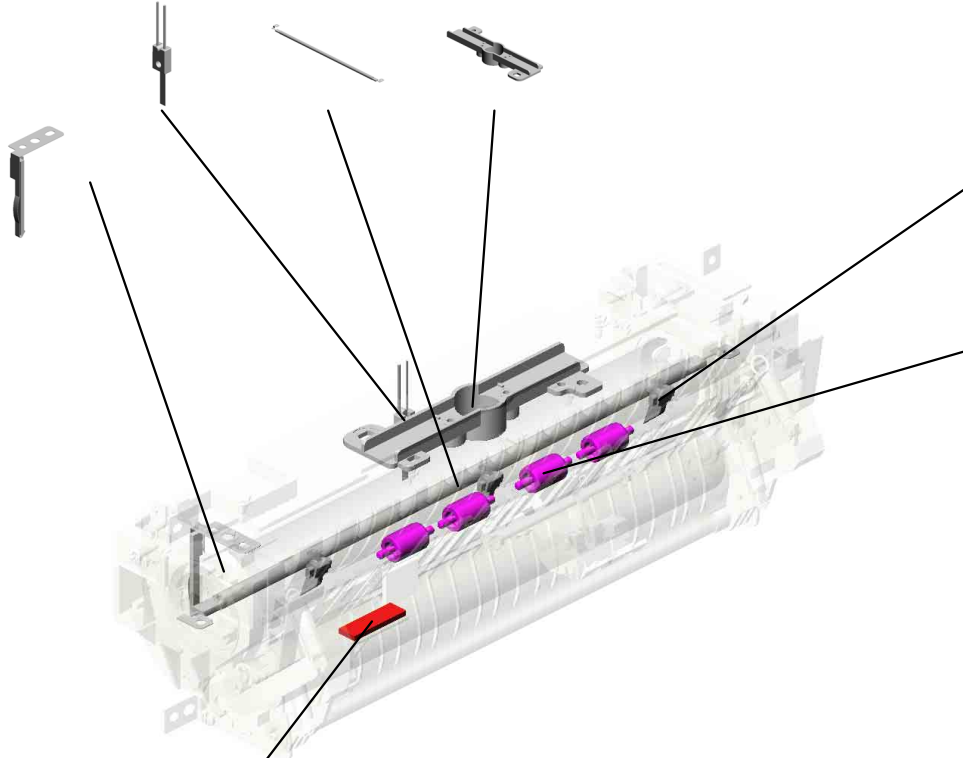
52.M2874221
(EU/AA/CHN):HEAT
ER:700W:220V:INF
RARED

53.M2874234
HOUSING:THERM
OSTAT:ASS'Y



49.M2874033
(CHN):FUSING UNI
T:ASS'Y

44.M0124295
GROUND PLATE:A
SS'Y



50.M2874206
(x3)
STRIPPER PAWLS

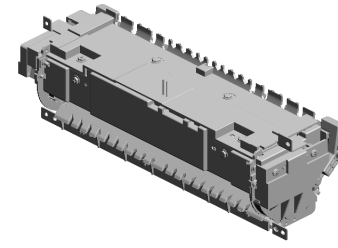
43.M0124293
(x4)
EXIT ROLLER:EXIT
:FUSING



45.M0124603
DECAL:GUIDE PLA
TE:B

U001	U002	U003	U004	U005	U006	U007	U008	U009	U010	U011	U012	U013
------	------	------	------	------	------	------	------	------	------	------	------	------

U008_S003
(NA):FUSING UNIT:ASS'Y



47.M2874030
(NA):FUSING UNIT:
ASS'Y

12.AW110116
THERMOSTAT

21.M0124204
LEVER:LEFT:FRAM
E:FUSING

17.M0124120
(x3)
TENSION SPRING:
PICKOFF PAWL

7.08025318
(x4)
BINDING HEAD TA
PPING SCREW:ES:
3X10

19.M0124186
COVER:LEFT UPP
ER:ASS'Y

8.08046127
(x4)
HEXAGONAL BOLT
:DOUBLE SCREW:
M3X8

9.09543010N
SCREW:POLISHED
ROUND/SPRING:M
3X10

10.AA143520
(x7)
SHOULDER SCRE
W - M3

1.03603006N
(x11)
SCREW - M3X6

13.G1274328
DECAL - HIGH TEM
PERATURE



18.M0124135
FEELER:PAPER FE
ED SENSOR

16.M0124109
SPRING:FEELER:E
XIT

11.AW020198
PHOTOINTERRUP
TOR:LG2A14NL1

4.04513008N
(x4)
TAPPING SCREW -
M3X8

20.M0124202
(x2)
LEVER:PRESSURE

3.04513006N
(x2)
TAPPING SCREW -
3X6

14.M0124053
GEAR:HOT ROLLE
R

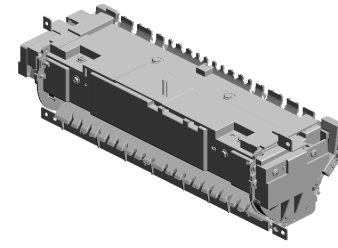
15.M0124055
(x2)
RADIAL BALL BEA
RING:35X47X7

5.04533006N
(x6)
TAPPING SCREW -
M3X6

6.07200040E
(x2)
RETAINING RING -
M4

U001	U002	U003	U004	U005	U006	U007	U008	U009	U010	U011	U012	U013
------	------	------	------	------	------	------	------	------	------	------	------	------

U008_S003
(NA):FUSING UNIT:ASS'Y



47.M2874030
(NA):FUSING UNIT:
ASSY

41.M0124287 COVER:RIGHT UP
PER:FUSING
38.M0124281 (x2)
RETAINING RINGS
-C:HOT ROLLER
39.M0124284 LEVER:PRESSURE
:LEFT
25.M0124212 FUSING ENTRANC
E GUIDE PLATE:U
PPER
42.M0124292 FUSING COVER:U
PPER

22.M0124205 LEVER:RIGHT:FRA
ME:FUSING

31.M0124223 THERMAL INSULA
TING BUSHING:HO
T ROLLER

24.M0124211 PLATE NUT:HEATE
R

34.M0124266 COVER:RIGHT LO
WER:FUSING

26.M0124213 (x2)
BUSHING:PRESSU
RE ROLLER

29.M0124217 FUSING ENTRANC
E GUIDE PLATE:LO
WER
37.M0124279 CLEANING ROLLE
R:ASSY
30.M0124220 HOT ROLLER
33.M0124253 PRESSURE ROLLE
R:DIA30
27.M0124215 GUIDE PLATE:EXIT

36.M0124276 COVER:LEFT:LOW
ER:FUSING

23.M0124208 (x3)
BRACKET:GATE P
AWL

40.M0124285 LEVER:PRESSURE
:RIGHT

32.M0124229 (x2)
TENSION SPRING:
FUSING:PRESSUR
E

28.M0124216 (x2)
TENSION SPRING:
FUSING:GUIDE PL
ATE

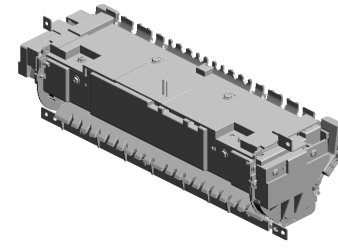
U001	U002	U003	U004	U005	U006	U007	U008	U009	U010	U011	U012	U013
------	------	------	------	------	------	------	------	------	------	------	------	------

U008_S003
(NA):FUSING UNIT:ASS'Y

54.M2874263
THERMISTOR

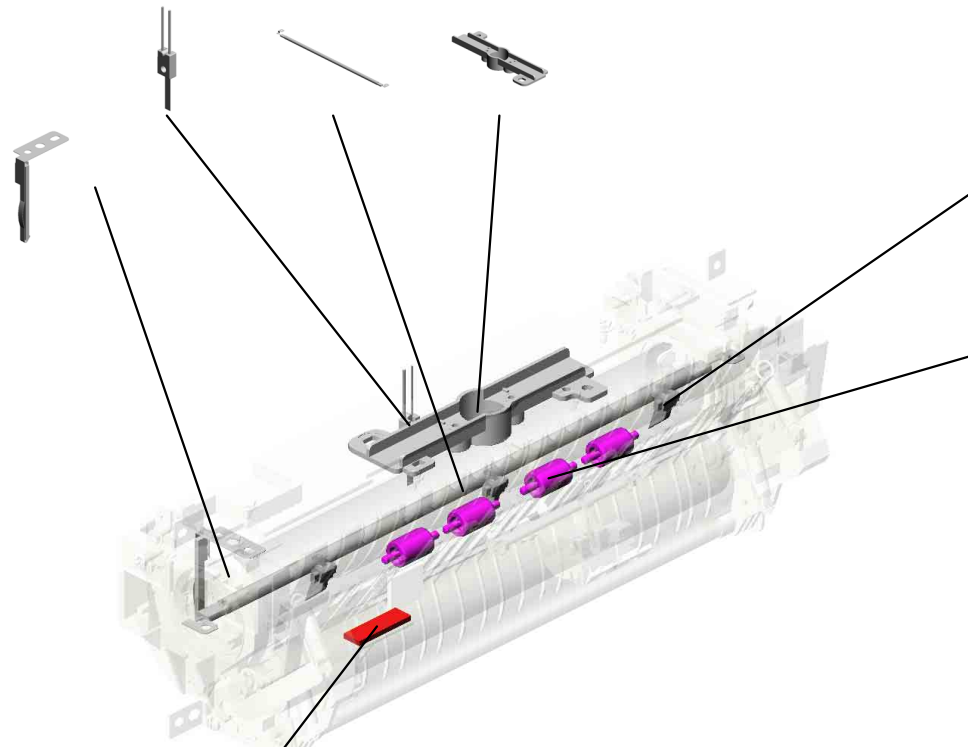
51.M2874220
(NA)FHEATER:700
W:120V:INFRARED

53.M2874234
HOUSING:THERM
OSTAT:ASS'Y



47.M2874030
(NA):FUSING UNIT:
ASS'Y

44.M0124295
GROUND PLATE:A
SS'Y



50.M2874206
(x3)
STRIPPER PAWLS

43.M0124293
(x4)
EXIT ROLLER:EXIT
:FUSING



45.M0124603
DECAL:GUIDE PLA
TE:B

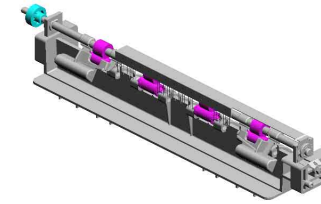
U001	U002	U003	U004	U005	U006	U007	U008	U009	U010	U011	U012	U013
------	------	------	------	------	------	------	------	------	------	------	------	------

U009 PAPER EXIT

2.07200040E (x2)
RETAINING RING - M4

6.M0124488 (x2)
BUSHING:DIA6XDI A10X6

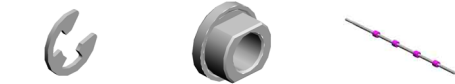
8.M0134470 (x2)
EXIT ROLLER:DUPLEX



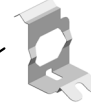
7.M0134455
GEAR:DRIVE:EXIT ROLLER



1.04503008N (x2)
TAPPING SCREW - M3X8



9.M1544499
GROUND PLATE:EXIT ROLLER



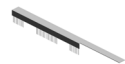
3.M0124453 (x4)
EXIT ROLLER



4.M0124454 (x4)
SPRING:EXIT ROLLER:EXIT



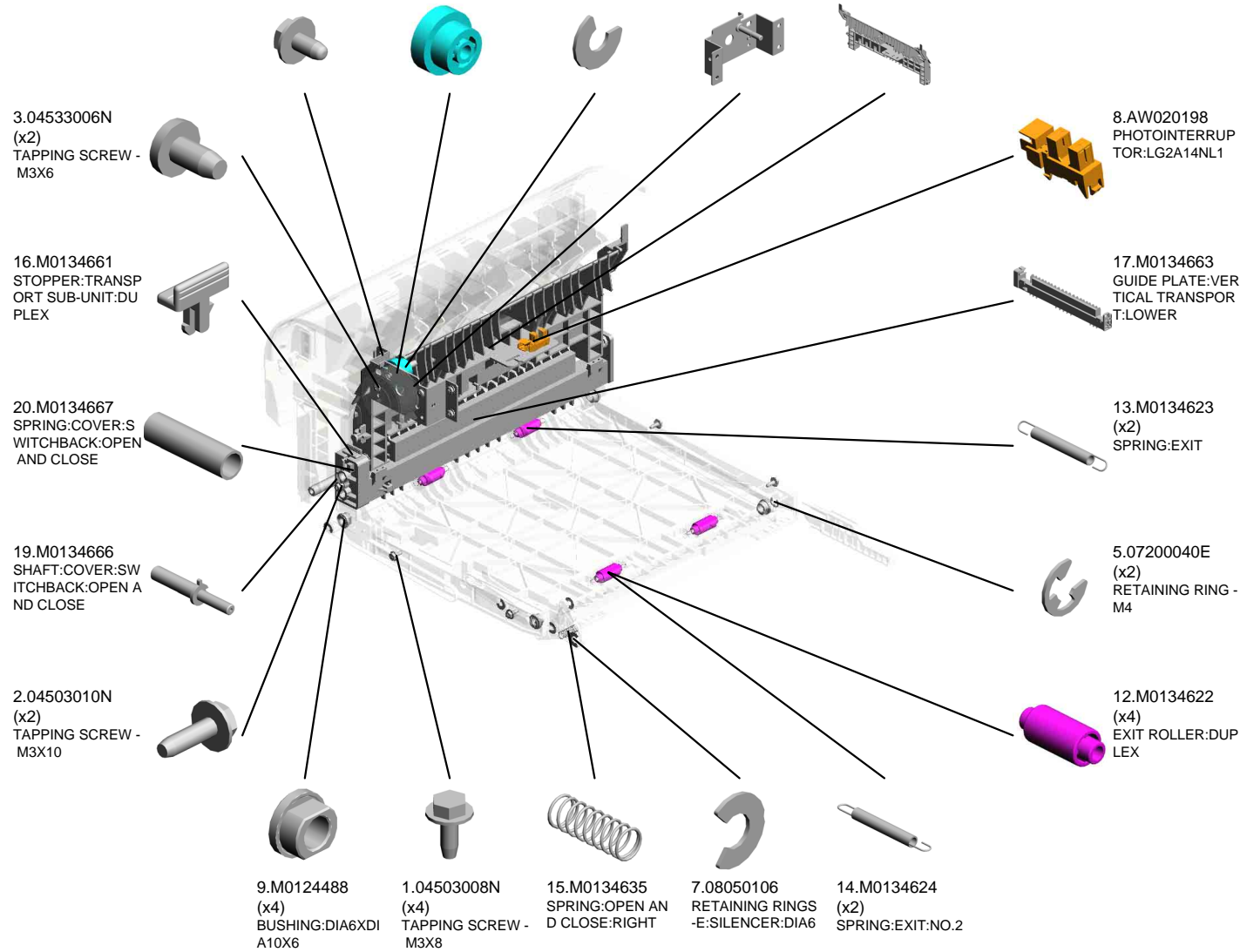
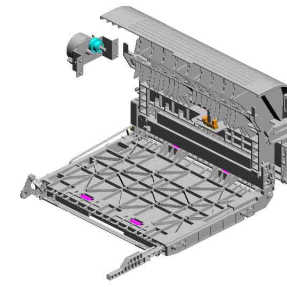
5.M0124458
DISCHARGE BRUSH:EXIT:ASS'Y DRAWING



U001	U002	U003	U004	U005	U006	U007	U008	U009	U010	U011	U012	U013
------	------	------	------	------	------	------	------	------	------	------	------	------

U010 DUPLEX

- 4.04543006Q (x4) TAPPING SCREW - M3X6
- 10.M0134610 GEAR:DRIVE:DUPL EX
- 6.08050104 (x7) RETAINING RINGS -E:SILENCER:DIA4
- 11.M0134611 BRACKET:DRIVE:D UPLEX:ASS'Y
- 18.M0134664 GUIDE PLATE:VER TICAL TRANSPOR T:UPPER



U001	U002	U003	U004	U005	U006	U007	U008	U009	U010	U011	U012	U013
------	------	------	------	------	------	------	------	------	------	------	------	------

U010 DUPLEX

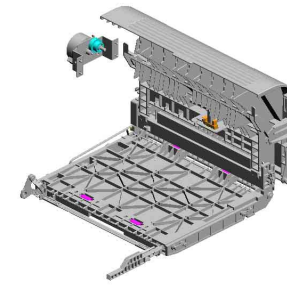
22.M0134669
(x2)
MAGNET CATCH:AS
SY

40.M0134794
DECAL:GUIDE PLA
TE:VERTICAL TRA
NSPORT:UPPER

34.M0134761
TRANSPORT ROLL
ER:DUPLEX:MIDDL
E

27.M0134684
SHEET:DUPLEX

23.M0134671
SHEET:HORIZONT
AL TRANSPORT:LE
FT



24.M0134672
SHEET:HORIZONT
AL TRANSPORT:RI
GHT

29.M0134688
GROUND PLATE:H
ORIZONTAL TRAN
SPORT:REAR

36.M0134765
(x3)
PULLEY:TRANSP
ORT

38.M0134772
TIMING BELT:DRIV
E

30.M0134691
LEVER:OPEN AND
CLOSE:LOWER

25.M0134673
LEVER:OPEN AND
CLOSE:NO.1

26.M0134674
LEVER:OPEN AND
CLOSE:NO.2

31.M0134696
LEVER:OPEN AND
CLOSE:LEFT

35.M0134762
TRANSPORT ROLL
ER:DUPLEX:EXIT

33.M0134698
BRACKET:OPEN A
ND CLOSE:LOWER

37.M0134771
TIMING BELT:HORI
ZONTAL TRANSP
ORT

21.M0134668
SHEET:GUIDE:HO
RIZONTAL TRAN
SPORT:LOWER

39.M0134785
SPRING:COVER:S
WITCHBACK:OPEN
AND CLOSE

32.M0134697
LEVER:OPEN AND
CLOSE:RIGHT

28.M0134685
BUTTON:OPEN AN
D CLOSE:LOWER

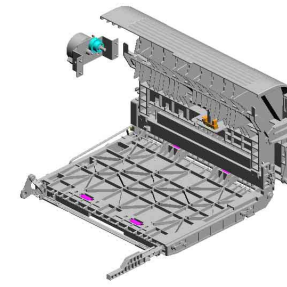


U010 DUPLEX

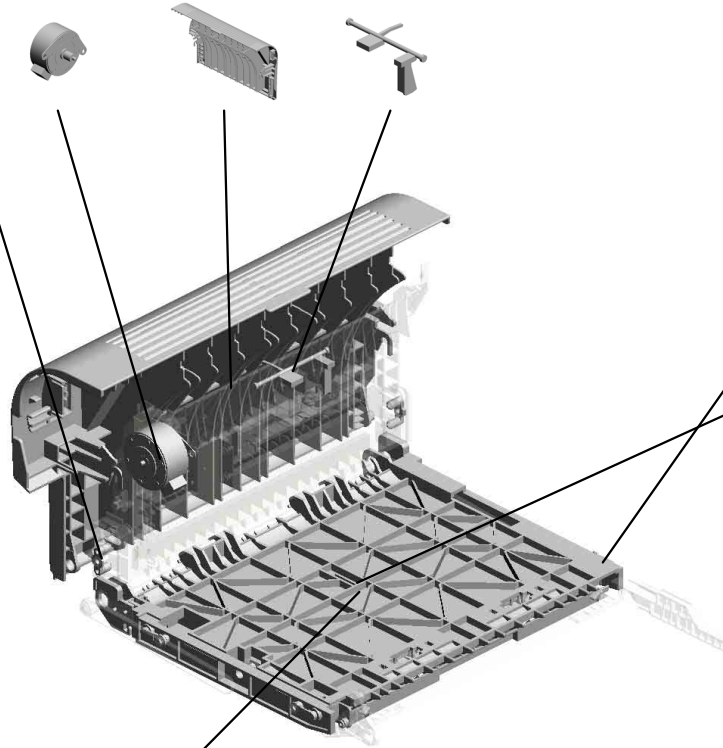
43.M1540265
STEPPER MOTOR

42.M1174662
COVER:SWITCHBA
CK:OPEN AND CL
OSE

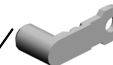
41.M0134797
FEELER:SENSOR:
VERTICAL TRANS
PORT



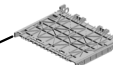
46.M2874719
(x2)
PIN:GUIDE:TRANS
PORT



47.M2874895
(x4)
PIN:GUIDE:UPPER



44.M1544694
GUIDE:HORIZONT
AL TRANSPORT:U
PPER



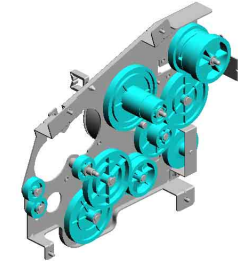
45.M1544695
GUIDE:HORIZONT
AL TRANSPORT:L
OWER



U001	U002	U003	U004	U005	U006	U007	U008	U009	U010	U011	U012	U013
------	------	------	------	------	------	------	------	------	------	------	------	------

U011 MAIN DRIVE

7.11050758 CLAMP:LWSM-030 6A
 11.M0121120 GEAR:DRIVE:FUSI NG:NO.3
 13.M0121128 GEAR:DRIVE:FUSI NG:NO.4
 3.07200040E RETAINING RING - M4
 2.04543006Q TAPPING SCREW - M3X6



8.G0521120 SPRING - PAPER EXIT RELEASE



4.08050104 (x6) RETAINING RINGS -E:SILENCER:DIA4



10.M0121119 GEAR:DRIVE:FUSI NG:NO.2



9.M0121117 GEAR:DRIVE:DRUM



17.M0131178 BRACKET:DRIVE:DUPLIX



14.M0121150 BRUSHLESS MOTOR:DC 36.7W



18.M1161118 GEAR:DRIVE:FUSI NG:NO.1



19.M1161121 GEAR:DRIVE:PAPER FEED:NO.1



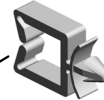
20.M1161122 GEAR:DRIVE:PAPER FEED:NO.2



6.11050568 CLAMP:LWSS-0504



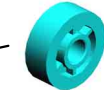
5.11050197 WIRE SADDLE



1.04513006N (x10) TAPPING SCREW - 3X6



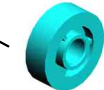
12.M0121123 GEAR:DRIVE:PAPER FEED:NO.3



16.M0121172 GEAR:DRIVE:MANUAL FEED SECTION:NO.2

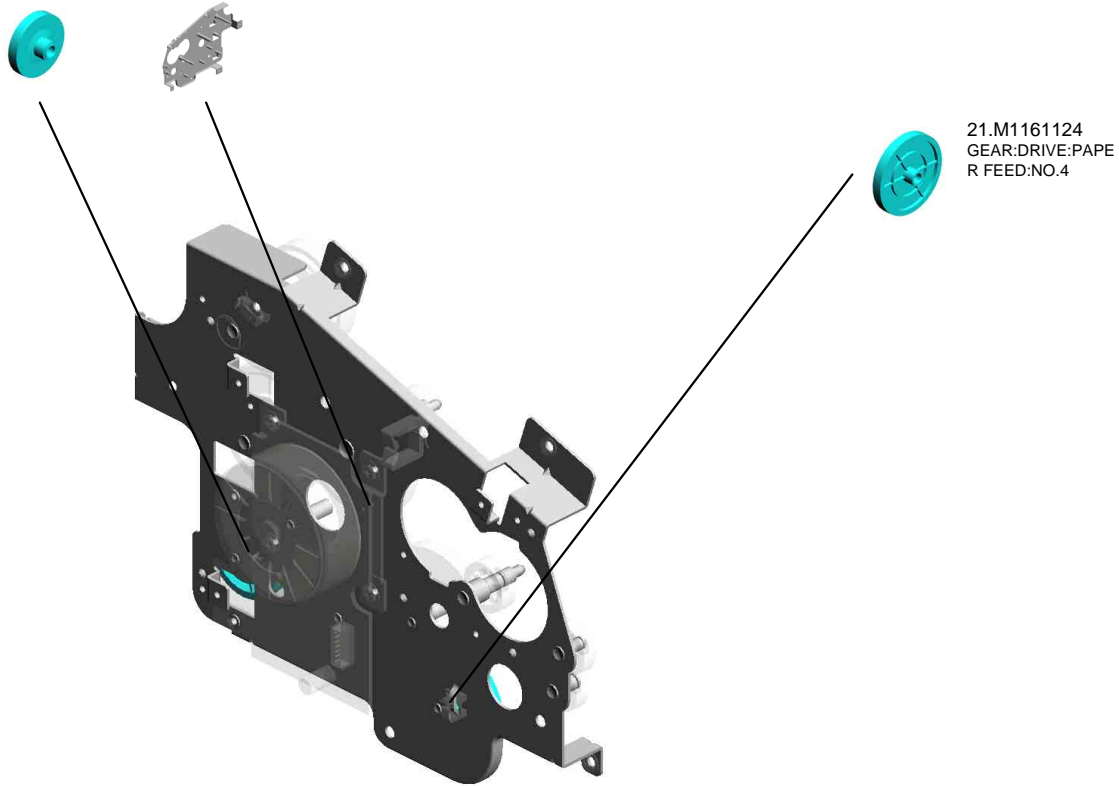
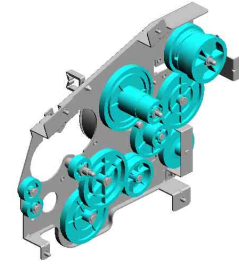


15.M0121171 GEAR:DRIVE:MANUAL FEED SECTION:NO.1



U011 MAIN DRIVE

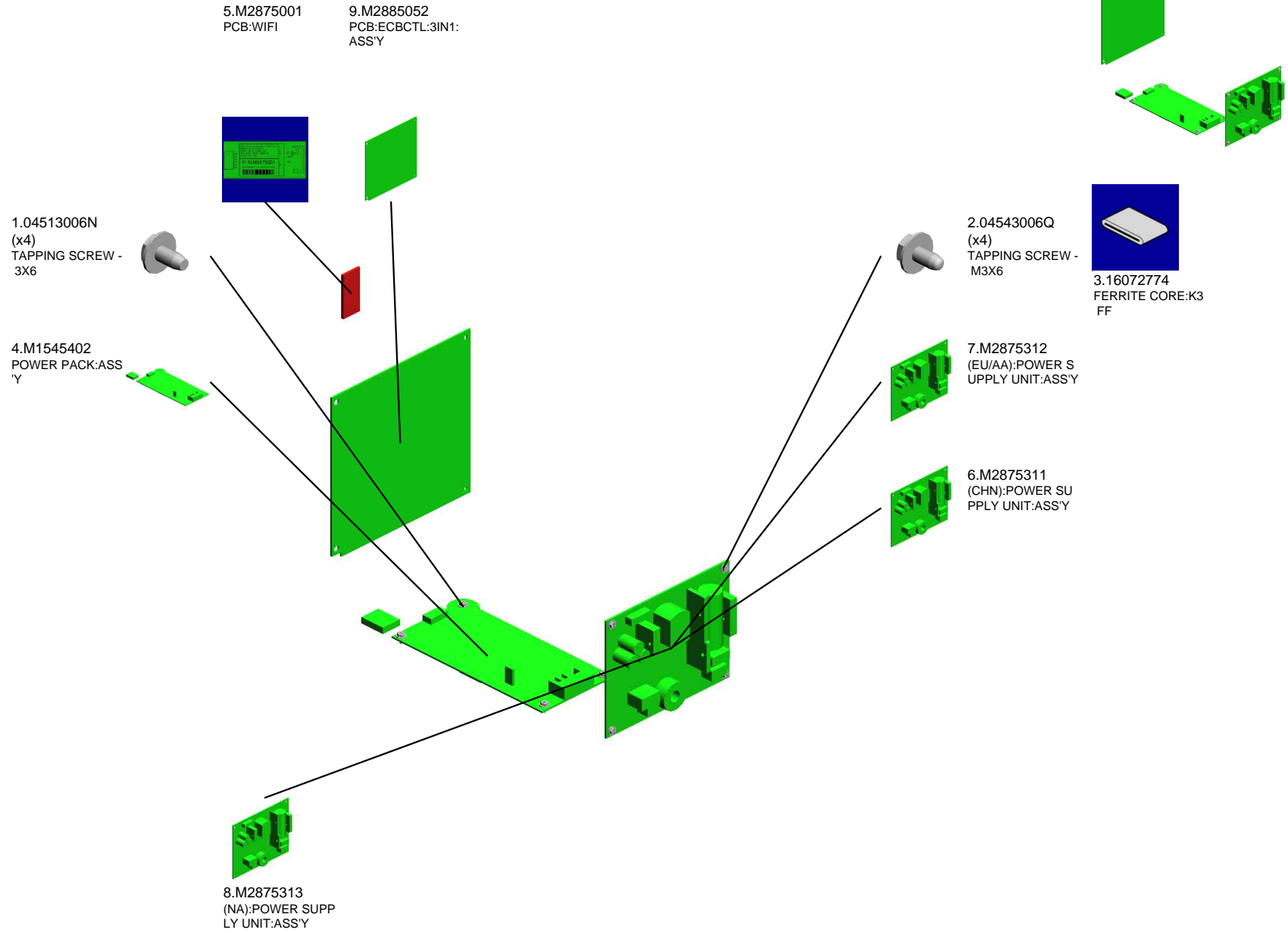
22.M1171136 23.M1541177
GEAR:DRIVE:DUPL CASE:DRIVE:ASS'Y
EX SECTION



21.M1161124
GEAR:DRIVE:PAPE
R FEED:NO.4

U001	U002	U003	U004	U005	U006	U007	U008	U009	U010	U011	U012	U013
------	------	------	------	------	------	------	------	------	------	------	------	------

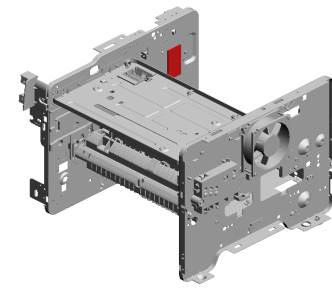
U012 ELECTRICAL



U001	U002	U003	U004	U005	U006	U007	U008	U009	U010	U011	U012	U013
------	------	------	------	------	------	------	------	------	------	------	------	------

U013 MAIN FRAME

- 2.04513006N (x21) TAPPING SCREW - 3X6
- 17.M0121037 TONER BOTTLE:C ASE
- 18.M0121040 CASE:DISCHARGE LAMP
- 6.04543014Q TAPPING SCREW: 3X14
- 13.12042612 (x2) MICRO SWITCH:D3 V-16506-3C25



- 3.04513014N TAPPING SCREW: 3X14

- 16.GW010007 PHOTO REFLECTI ON SENSOR:EXIT

- 8.11050568 CLAMP:LWSS-0504

- 1.04503008N (x12) TAPPING SCREW - M3X8

- 10.11050758 (x7) CLAMP:LWSM-030 6A

- 12.11050762 (x2) CLAMP:LWS-0711A

- 15.G0271180 (x2) RUBBER FOOT - G F

- 20.M0121065 CASE:TERMINAL

- 19.M0121063 (x4) TERMINAL:CHARG E

- 9.11050598 CLAMP:LWSS-1N

- 11.11050760 (x8) CLAMP:LWSM-051 1A

- 10.11050758 CLAMP:LWSM-030 6A

- 5.04543006Q (x5) TAPPING SCREW - M3X6

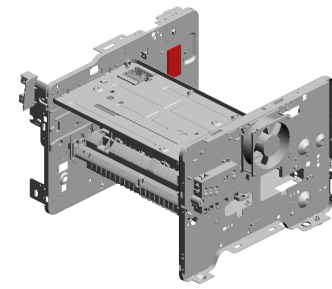
- 14.AX640199 FAN:MM80:25MM:D C 2.16W

- 4.04513030N (x2) TAPPING SCREW: 3X30

- 7.09504006N SCREW - M4X6

U013 MAIN FRAME

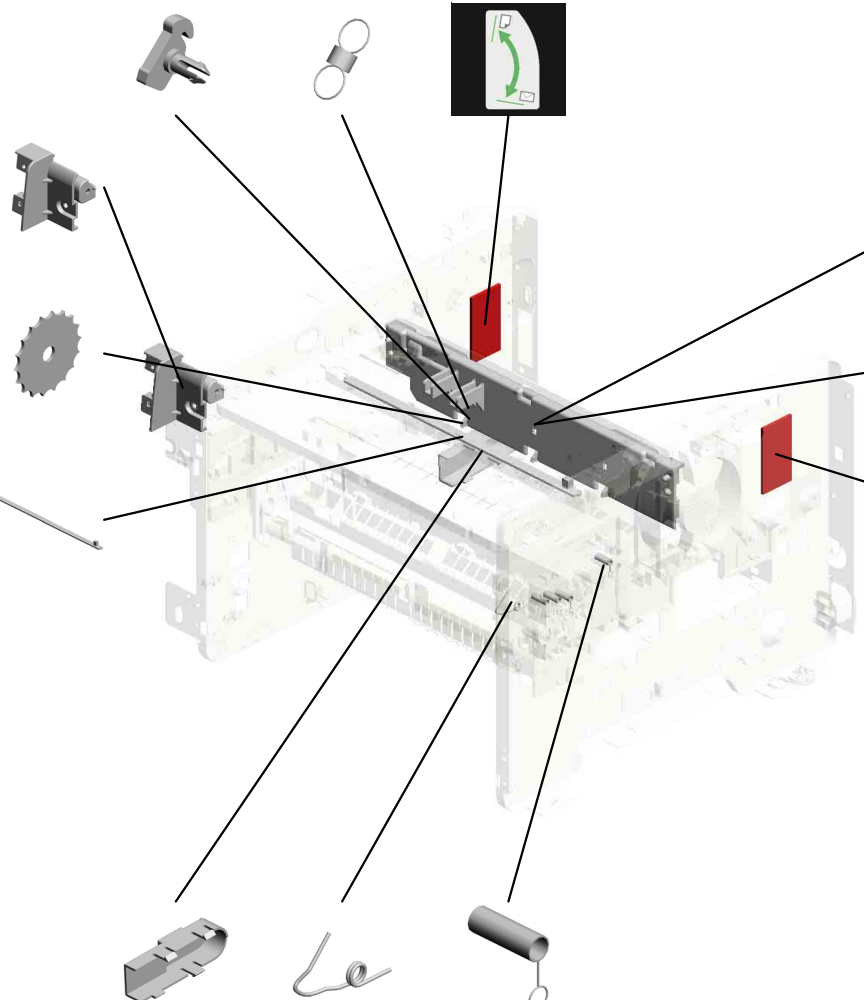
24.M0121097 (x3) SUPPORTER:PAPE R:TRANSPORT
 25.M0124120 (x3) TENSION SPRING: PICKOFF PAWL
 26.M0124601 DECAL:LEVER:EN VELOPE:LEFT



32.M2881089 CASE:USB

23.M0121089 (x3) GUIDE:PAPER:LEA DING EDGE

30.M1542056 DISCHARGE LAMP



28.M0BB1100 (EU/AA):(M0BC):HE AT INSULATING PL ATE:FUSING:FRON T

29.M1541099 (M288):HEAT INSU LATING PLATE:FU SING:FRONT:TYPE A

27.M0124602 DECAL:LEVER:EN VELOPE:RIGHT

31.M2871043 COVER:U CONVEY ER BELT:DUPL EX

22.M0121088 COIL SPRING:RAIL :RIGHT

21.M0121066 (x4) SPRING:TERMINAL :CHARGE

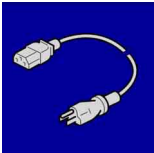
ACCESSORIES



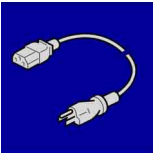
1.M0BC0431
(EU/AA):(M0BC):MODEL NAME PLAT
E:SP325SNW:EXTRA



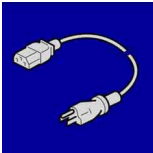
2.M1011301
PLATE:LOGO:RIC



3.M1015799
(CHN):POWER SUPPLY CORD



4.M1545697
(NA):POWER SUPPLY CORD:125V:10
A



5.M1545699
(EU/AA):POWER SUPPLY CORD:250
V:10A



6.M2880431
(M288):MODEL NAME PLATE:SP325S
NW

Exclusive Parts

Number	Part Name	Group	ID
A1532117	ROLLER TERMINAL	U005	6
AA143520	SHOULDER SCREW - M3	U005	7
		U008_S001	10
		U008_S002	10
		U008_S003	10
AG070514	MAGNET CATCH	U001	6
AW020198	PHOTOINTERRUPTOR:LG2A14NL 1	U005	8
		U008_S001	11
		U008_S002	11
		U008_S003	11
		U010	8
AW110116	THERMOSTAT	U008_S001	12
		U008_S002	12
		U008_S003	12
AX640199	FAN:MM80:25MM:DC 2.16W	U013	14
D1272514	ELECTROMAGNETIC CLUTCH:3.5 T:MANUAL FEED	U005	9
G0123050	SIDE FENCE GEAR	U005	10
G0201160	SNAP RING	U005	11
G0271180	RUBBER FOOT - GF	U013	15
G0292767	BY-PASS FEED COVER	U005	12
G0521120	SPRING - PAPER EXIT RELEASE	U011	8
G0521518	SPRING - LOCK LEVER	U001	7
G1022717	COVER:DC SOLENOID	U005	13
G1022789	STOPPER:PHOTOINTERRUPTOR	U005	14
G1272627	PAPER FEED ROLLER - MM32	U005	15
G1274328	DECAL - HIGH TEMPERATURE	U008_S001	13
		U008_S002	13
		U008_S003	13
GA063084	COMPRESSION SPRING:AUXILIAR Y:SIDE FENCE	U005_S001	16
GF013001	BOTTOM PLATE PAD	U005	17
		U005_S001	17
GW010007	PHOTO REFLECTION SENSOR:EXI T	U013	16
M0121037	TONER BOTTLE:CASE	U013	17
M0121040	CASE:DISCHARGE LAMP	U013	18
M0121063	TERMINAL:CHARGE	U013	19

Number	Part Name	Group	ID
M0121065	CASE:TERMINAL	U013	20
M0121066	SPRING:TERMINAL:CHARGE	U013	21
M0121088	COIL SPRING:RAIL:RIGHT	U013	22
M0121089	GUIDE:PAPER:LEADING EDGE	U013	23
M0121097	SUPPORTER:PAPER:TRANSPORT	U013	24
M0121117	GEAR:DRIVE:DRUM	U011	9
M0121119	GEAR:DRIVE:FUSING:NO.2	U011	10
M0121120	GEAR:DRIVE:FUSING:NO.3	U011	11
M0121123	GEAR:DRIVE:PAPER FEED:NO.3	U011	12
M0121128	GEAR:DRIVE:FUSING:NO.4	U011	13
M0121150	BRUSHLESS MOTOR:DC 36.7W	U011	14
M0121171	GEAR:DRIVE:MANUAL FEED SECT ION:NO.1	U011	15
M0121172	GEAR:DRIVE:MANUAL FEED SECT ION:NO.2	U011	16
M0122590	COIL SPRING:EARTH	U005_S001	18
M0122603	STOPPER:BASE PLATE	U005_S001	19
M0122604	SPRING:RELEASE:TRAY BOTTOM PLATE	U005_S001	20
M0122605	FRICTION PAD:ADHESION	U005_S001	21
M0122612	COMPRESSION SPRING:TRAY BO TTOM PLATE	U005_S001	22
M0122613	COMPRESSION SPRING:SEPARAT ION	U005_S001	23
M0122631	CLOTH:EARTH:PAPER FEED	U005	24
M0122668	SHAFT:PAPER FEED:ASS'Y	U005	25
M0122673	RAIL:PAPER TRAY:RIGHT	U005	26
M0122701	ROLLER:INTERFACE:DRIVE	U005	27
M0122702	ROLLER:INTERFACE:DRIVEN	U005	28
M0122705	SPRING:ROLLER	U005	29
M0122711	BUSHING:REGISTRATION:DRIVEN :LEFT	U005	30
M0122715	GUIDE PLATE:TRANSPORT:UPPE R	U005	31
M0122718	REGISTRATION ROLLER:DRIVE	U005	32
M0122719	REGISTRATION ROLLER:DRIVEN	U005	33
M0122722	SPRING:ROLLER:REGISTRATION	U005	34
M0122723	FEELER:REGISTRATION:SENSOR	U005	35

Exclusive Parts

Number	Part Name	Group	ID
M0122725	SPRING:FEELER:REGISTRATION	U005	36
M0122730	BUSHING:REGISTRATION:DRIVEN:RIGHT	U005	37
M0122741	GROUND PLATE:DRIVE:REGISTRATION ROLLER	U005	38
M0122742	GROUND PLATE:DRIVEN:REGISTRATION ROLLER	U005	39
M0122743	DECAL:GUIDE PLATE:TRANSPORT:UPPER	U005	40
M0122744	GUIDE:REGISTRATION	U005	41
M0122745	GROUND PLATE:DRIVEN	U005	42
M0122753	BUSHING:ROLLER:DRIVEN	U005	43
M0122806	SHEET:GUIDE:MANUAL FEED SUB-UNIT	U005	44
M0122816	FRICTION PAD:HOLDER:MANUAL FEED:ASS'Y	U005	45
M0122824	FEELER:MANUAL FEED	U005	46
M0122830	MECHANICAL SPRING CLUTCH:MANUAL FEED	U005	47
M0122833	DECAL:SIDE FENCE:MANUAL FEED	U005	48
M0122859	GUIDE PLATE:UPPER:MANUAL FEED	U005	49
M0122860	PAPER FEED ROLLER:MANUAL FEED	U005	50
M0122874	COMPRESSION SPRING:MANUAL FEED	U005	51
M0122880	COMPRESSION SPRING:SEPARATION	U005	52
M0124053	GEAR:HOT ROLLER	U008_S001	14
		U008_S002	14
		U008_S003	14
M0124055	RADIAL BALL BEARING:35X47X7	U008_S001	15
		U008_S002	15
		U008_S003	15
M0124109	SPRING:FEELER:EXIT	U008_S001	16
		U008_S002	16
		U008_S003	16

Number	Part Name	Group	ID
M0124120	TENSION SPRING:PICKOFF PAWL	U008_S001	17
		U008_S002	17
		U008_S003	17
		U013	25
M0124135	FEELER:PAPER FEED SENSOR	U008_S001	18
		U008_S002	18
		U008_S003	18
M0124186	COVER:LEFT UPPER:ASS'Y	U008_S001	19
		U008_S002	19
		U008_S003	19
M0124202	LEVER:PRESSURE	U008_S001	20
		U008_S002	20
		U008_S003	20
M0124204	LEVER:LEFT:FRAME:FUSING	U008_S001	21
		U008_S002	21
		U008_S003	21
M0124205	LEVER:RIGHT:FRAME:FUSING	U008_S001	22
		U008_S002	22
		U008_S003	22
M0124208	BRACKET:GATE PAWL	U008_S001	23
		U008_S002	23
		U008_S003	23
M0124211	PLATE NUT:HEATER	U008_S001	24
		U008_S002	24
		U008_S003	24
M0124212	FUSING ENTRANCE GUIDE PLATE:UPPER	U008_S001	25
		U008_S002	25
		U008_S003	25
M0124213	BUSHING:PRESSURE ROLLER	U008_S001	26
		U008_S002	26
		U008_S003	26
M0124215	GUIDE PLATE:EXIT	U008_S001	27
		U008_S002	27
		U008_S003	27
M0124216	TENSION SPRING:FUSING:GUIDE PLATE	U008_S001	28
		U008_S002	28
		U008_S003	28
M0124217	FUSING ENTRANCE GUIDE PLATE	U008_S001	29

Exclusive Parts

Number	Part Name	Group	ID
	:LOWER	U008_S002	29
		U008_S003	29
M0124220	HOT ROLLER	U008_S001	30
		U008_S002	30
		U008_S003	30
M0124223	THERMAL INSULATING BUSHING: HOT ROLLER	U008_S001	31
		U008_S002	31
		U008_S003	31
M0124229	TENSION SPRING:FUSING:PRESSURE	U008_S001	32
		U008_S002	32
		U008_S003	32
M0124253	PRESSURE ROLLER:DIA30	U008_S001	33
		U008_S002	33
		U008_S003	33
M0124266	COVER:RIGHT LOWER:FUSING	U008_S001	34
		U008_S002	34
		U008_S003	34
M0124270	THERMAL INSULATING BUSHING: FUSING UNIT	U008	35
M0124276	COVER:LEFT:LOWER:FUSING	U008_S001	36
		U008_S002	36
		U008_S003	36
M0124279	CLEANING ROLLER:ASS'Y	U008_S001	37
		U008_S002	37
		U008_S003	37
M0124281	RETAINING RINGS-C:HOT ROLLER	U008_S001	38
		U008_S002	38
		U008_S003	38
M0124284	LEVER:PRESSURE:LEFT	U008_S001	39
		U008_S002	39
		U008_S003	39
M0124285	LEVER:PRESSURE:RIGHT	U008_S001	40
		U008_S002	40
		U008_S003	40
M0124287	COVER:RIGHT UPPER:FUSING	U008_S001	41
		U008_S002	41
		U008_S003	41
M0124292	FUSING COVER:UPPER	U008_S001	42

Number	Part Name	Group	ID
		U008_S002	42
		U008_S003	42
M0124293	EXIT ROLLER:EXIT:FUSING	U008_S001	43
		U008_S002	43
		U008_S003	43
M0124295	GROUND PLATE:ASS'Y	U008_S001	44
		U008_S002	44
		U008_S003	44
M0124453	EXIT ROLLER	U009	3
M0124454	SPRING:EXIT ROLLER:EXIT	U009	4
M0124458	DISCHARGE BRUSH:EXIT:ASS'Y DRAWING	U009	5
M0124488	BUSHING:DIA6XDIA10X6	U005	53
		U009	6
		U010	9
M0124601	DECAL:LEVER:ENVELOPE:LEFT	U013	26
M0124602	DECAL:LEVER:ENVELOPE:RIGHT	U013	27
M0124603	DECAL:GUIDE PLATE:B	U008_S001	45
		U008_S002	45
		U008_S003	45
M0124699	DECAL:WARNING (HIGH TEMPERATURE):FRONT	U008	46
M0126252	BUSHING:TRANSFER ROLLER:RIGHT	U007	1
M0126254	SPRING:TRANSFER ROLLER	U007	2
M0126255	GEAR:TRANSFER ROLLER	U007	3
M0126256	ROLLER:POSITIONING:TRANSFER ROLLER	U007	4
M0126260	COVER:ELECTRODE PLATE	U007	5
M0131178	BRACKET:DRIVE:DUPLEX	U011	17
M0134455	GEAR:DRIVE:EXIT ROLLER	U009	7
M0134470	EXIT ROLLER:DUPLEX	U009	8
M0134610	GEAR:DRIVE:DUPLEX	U010	10
M0134611	BRACKET:DRIVE:DUPLEX:ASS'Y	U010	11
M0134622	EXIT ROLLER:DUPLEX	U010	12
M0134623	SPRING:EXIT	U010	13
M0134624	SPRING:EXIT:NO.2	U010	14
M0134635	SPRING:OPEN AND CLOSE:RIGHT	U010	15

Exclusive Parts

Number	Part Name	Group	ID
M0134661	STOPPER:TRANSPORT SUB-UNIT:DUPLIX	U010	16
M0134663	GUIDE PLATE:VERTICAL TRANSPORT:LOWER	U010	17
M0134664	GUIDE PLATE:VERTICAL TRANSPORT:UPPER	U010	18
M0134666	SHAFT:COVER:SWITCHBACK:OPEN AND CLOSE	U010	19
M0134667	SPRING:COVER:SWITCHBACK:OPEN AND CLOSE	U010	20
M0134668	SHEET:GUIDE:HORIZONTAL TRANSPORT:LOWER	U010	21
M0134669	MAGNET CATCH:ASS'Y	U010	22
M0134671	SHEET:HORIZONTAL TRANSPORT:LEFT	U010	23
M0134672	SHEET:HORIZONTAL TRANSPORT:RIGHT	U010	24
M0134673	LEVER:OPEN AND CLOSE:NO.1	U010	25
M0134674	LEVER:OPEN AND CLOSE:NO.2	U010	26
M0134684	SHEET:DUPLIX	U010	27
M0134685	BUTTON:OPEN AND CLOSE:LOWER	U010	28
M0134688	GROUND PLATE:HORIZONTAL TRANSPORT:REAR	U010	29
M0134691	LEVER:OPEN AND CLOSE:LOWER	U010	30
M0134696	LEVER:OPEN AND CLOSE:LEFT	U010	31
M0134697	LEVER:OPEN AND CLOSE:RIGHT	U010	32
M0134698	BRACKET:OPEN AND CLOSE:LOWER	U010	33
M0134761	TRANSPORT ROLLER:DUPLIX:MIDDLE	U010	34
M0134762	TRANSPORT ROLLER:DUPLIX:EXIT	U010	35
M0134765	PULLEY:TRANSPORT	U010	36
M0134771	TIMING BELT:HORIZONTAL TRANSPORT	U010	37
M0134772	TIMING BELT:DRIVE	U010	38
M0134785	SPRING:COVER:SWITCHBACK:OPEN	U010	39

Number	Part Name	Group	ID
	EN AND CLOSE		
M0134794	DECAL:GUIDE PLATE:VERTICAL TRANSPORT:UPPER	U010	40
M0134797	FEELER:SENSOR:VERTICAL TRANSPORT	U010	41
M0752610	COMPRESSION SPRING:LOCK:SIDE FENCE	U005_S001	54
M0BB1100	(EU/AA):(M0BC):HEAT INSULATING PLATE:FUSING:FRONT	U013	28
M0BC0431	(EU/AA):(M0BC):MODEL NAME PLATE:SP325SNW:EXTRA	ACCESSORIES	1
M1011301	PLATE:LOGO:RIC	ACCESSORIES	2
M1015799	(CHN):POWER SUPPLY CORD	ACCESSORIES	3
M1016250	TRANSFER ROLLER	U007	6
M1016259	ELECTRODE PLATE:SEPARATION	U007	7
M1092584	PRESSURE PLATE:SIDE FENCE:LEFT	U005_S001	55
M1092589	LEVER:LOCK:SIDE FENCE	U005_S001	56
M1092592	PAWL:LOCK:SIDE FENCE	U005_S001	57
M1161118	GEAR:DRIVE:FUSING:NO.1	U011	18
M1161121	GEAR:DRIVE:PAPER FEED:NO.1	U011	19
M1161122	GEAR:DRIVE:PAPER FEED:NO.2	U011	20
M1161124	GEAR:DRIVE:PAPER FEED:NO.4	U011	21
M1162672	RAIL:PAPER TRAY:LEFT	U005	58
M1171136	GEAR:DRIVE:DUPLIX SECTION	U011	22
M1174662	COVER:SWITCHBACK:OPEN AND CLOSE	U010	42
M1341382	RAIL:SCANNER:OPEN AND CLOSE	U001	8
M1341386	RAIL:STOPPER:SCANNER:OPEN AND CLOSE	U001	9
M1540265	STEPPER MOTOR	U010	43
M1541099	(M288):HEAT INSULATING PLATE:FUSING:FRONT:TYPE A	U013	29
M1541177	CASE:DRIVE:ASS'Y	U011	23
M1542056	DISCHARGE LAMP	U013	30
M1542616	LEVER:PAPER VOLUME SENSOR	U005_S001	59
M1542618	DECAL:PAPER TRAY:FRONT	U005_S001	60
M1542629	COVER:PAPER TRAY:MIDDLE	U005_S001	61

Exclusive Parts

Number	Part Name	Group	ID
M1542640	COVER:PAPER TRAY:LEFT	U005_S001	62
M1542641	COVER:PAPER TRAY:RIGHT	U005_S001	63
M1542805	GUIDE PLATE:MANUAL FEED:LOWER	U005	64
M1542815	DECAL:FEED PAPER AGAIN:PREVENTION	U005	65
M1542831	DC SOLENOID:9.6W:24V	U005	66
M1542879	EXTENSION TRAY:MANUAL FEED	U005	67
M1544499	GROUND PLATE:EXIT ROLLER	U009	9
M1544694	GUIDE:HORIZONTAL TRANSPORT:UPPER	U010	44
M1544695	GUIDE:HORIZONTAL TRANSPORT:LOWER	U010	45
M1545402	POWER PACK:ASS'Y	U012	4
M1545697	(NA):POWER SUPPLY CORD:125V:10A	ACCESSORIES	4
M1545699	(EU/AA):POWER SUPPLY CORD:250V:10A	ACCESSORIES	5
M1561240	EXTENSION TRAY:MF:ASS'Y	U001	10
M1561250	COVER:UPPER:MFP	U001	11
M1561254	SHAFT:TURN:SCANNER:LEFT	U001	12
M1561256	SHAFT:TURN:SCANNER:RIGHT	U001	13
M1561272	COIL SPRING:SCANNER	U001	14
M1561392	GUIDE PLATE:SCANNER:OPEN AND CLOSE	U001	15
M2871043	COVER:U CONVEYER BELT:DUPLICATE	U013	31
M2871370	COVER:REAR LOWER	U001	16
M2871851	OPTICAL WRITING UNIT:ASS'Y	U004_S001	7
M2872505	PAPER TRAY:ASS'Y	U005_S001	68
M2872589	PAPER TRAY:REAR	U005_S001	69
M2872611	TRAY:BASE	U005_S001	70
M2872612	END FENCE	U005_S001	71
M2872615	SIDE FENCE:LEFT	U005_S001	72
M2872618	COVER:SIDE FENCE:LEFT	U005_S001	73
M2872620	SIDE FENCE:RIGHT	U005_S001	74
M2872622	COVER:SIDE FENCE:RIGHT	U005_S001	75
M2872623	PAWL:LOCK:END FENCE	U005_S001	76

Number	Part Name	Group	ID
M2872624	CLICK:SIDE FENCE	U005_S001	77
M2872625	LEVER:LOCK:EXTENSION TRAY	U005_S001	78
M2872626	DECAL:EXTENSION TRAY	U005_S001	79
M2872627	LEVER:LOCK:END FENCE	U005_S001	80
M2872636	GEAR:16Z	U005_S001	81
M2872671	FEELER:PAPER END SENSOR	U005	82
M2872871	COVER:MANUAL FEED TABLE	U005	83
M2872875	SIDE FENCE:MANUAL FEED:RIGHT	U005	84
M2872876	SIDE FENCE:MANUAL FEED:LEFT	U005	85
M2872878	RACK:MANUAL FEED	U005	86
M2872879	COMPRESSION SPRING:SIDE FENCE:MANUAL FEED	U005	87
M2872881	BASE:MANUAL FEED TABLE	U005	88
M2874030	(NA):FUSING UNIT:ASS'Y	U008_S003	47
M2874031	(EU/AA):FUSING UNIT:ASS'Y	U008_S001	48
M2874033	(CHN):FUSING UNIT:ASS'Y	U008_S002	49
M2874206	STRIPPER PAWLS	U008_S001	50
		U008_S002	50
		U008_S003	50
M2874220	(NA)FHEATER:700W:120V:INFRARED	U008_S003	51
M2874221	(EU/AA/CHN):HEATER:700W:220V:INFRARED	U008_S001	52
		U008_S002	52
M2874234	HOUSING:THERMOSTAT:ASS'Y	U008_S001	53
		U008_S002	53
		U008_S003	53
M2874263	THERMISTOR	U008_S001	54
		U008_S002	54
		U008_S003	54
M2874719	PIN:GUIDE:TRANSPORT	U010	46
M2874895	PIN:GUIDE:UPPER	U010	47
M2875001	PCB:WIFI	U012	5
M2875311	(CHN):POWER SUPPLY UNIT:ASS'Y	U012	6
M2875312	(EU/AA):POWER SUPPLY UNIT:ASS'Y	U012	7
M2875313	(NA):POWER SUPPLY UNIT:ASS'Y	U012	8

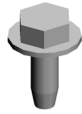
Exclusive Parts

Number	Part Name	Group	ID
M2880431	(M288):MODEL NAME PLATE:SP32 5SNW	ACCESSORIES	6
M2881089	CASE:USB	U013	32
M2881402	(EU/AA/NA):OPERATION PANEL:3I N1:ASS'Y	U003	2
M2881404	(CHN):OPERATION PANEL:3IN1:AS S'Y	U003	3
M2881600	SCANNER:ASS'Y	U002	1
M2882632	DECAL:PICK-UP PAPER JAM	U001	17
M2885052	PCB:ECBCTL:3IN1:ASS'Y	U012	9
M2891251	COVER:FRONT	U001	18
M2891252	BUTTON	U001	19
M2891253	COVER:SIDE PLATE:LEFT	U001	20
M2891255	COVER:SIDE PLATE:RIGHT	U001	21
M2891259	COVER:REAR MIDDLE:3IN1	U001	22
Note	See 2D parts catalog for the compon ents of the ARDF.	U002	2

Standard Parts



03603006N
SCREW - M3X6



04503008N
TAPPING SCREW - M3X8



04503010N
TAPPING SCREW - M3X10



04503012N
TAPPING SCREW:3X12



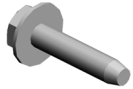
04504008N
TAPPING SCREW - M4X8



04513006N
TAPPING SCREW - 3X6



04513008N
TAPPING SCREW - M3X8



04513014N
TAPPING SCREW:3X14



04513030N
TAPPING SCREW:3X30



04523010N
BINDING SELF-TAPPING SCREW:3X10



04533006N
TAPPING SCREW - M3X6



04543006Q
TAPPING SCREW - M3X6



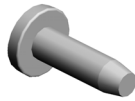
04543008Q
TAPPING SCREW:3X8



04543014Q
TAPPING SCREW:3X14



07200040E
RETAINING RING - M4



08025318
BINDING HEAD TAPPING SCREW:ES:3X10



08046127
HEXAGONAL BOLT:DOUBLE SCREW:M3X8



08050104
RETAINING RINGS-E:SILENCER:DIA4



08050106
RETAINING RINGS-E:SILENCER:DIA6



09504006N
SCREW - M4X6



09543010N
SCREW:POLISHED ROUND/SPRING:M3X10



11050197
WIRE SADDLE



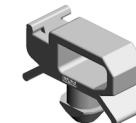
11050568
CLAMP:LWSS-0504



11050598
CLAMP:LWSS-1N



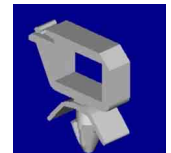
11050758
CLAMP:LWSM-0306A



11050760
CLAMP:LWSM-0511A



11050761
CLAMP:LWS-0511A



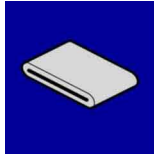
11050762
CLAMP:LWS-0711A

Standard Parts



12042612

MICRO SWITCH:D3V-16506-3
C25



16072774

FERRITE CORE:K3 FF

