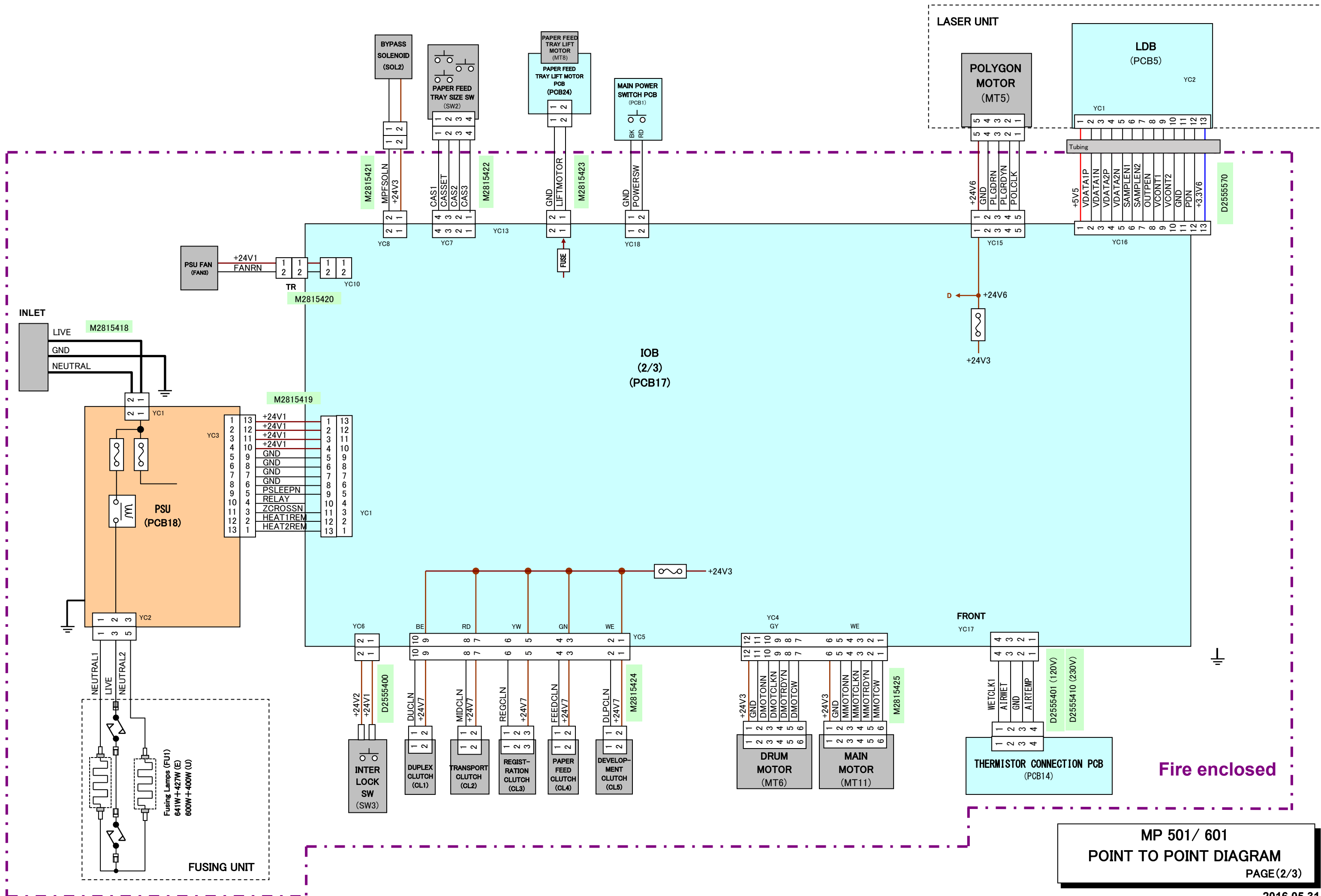
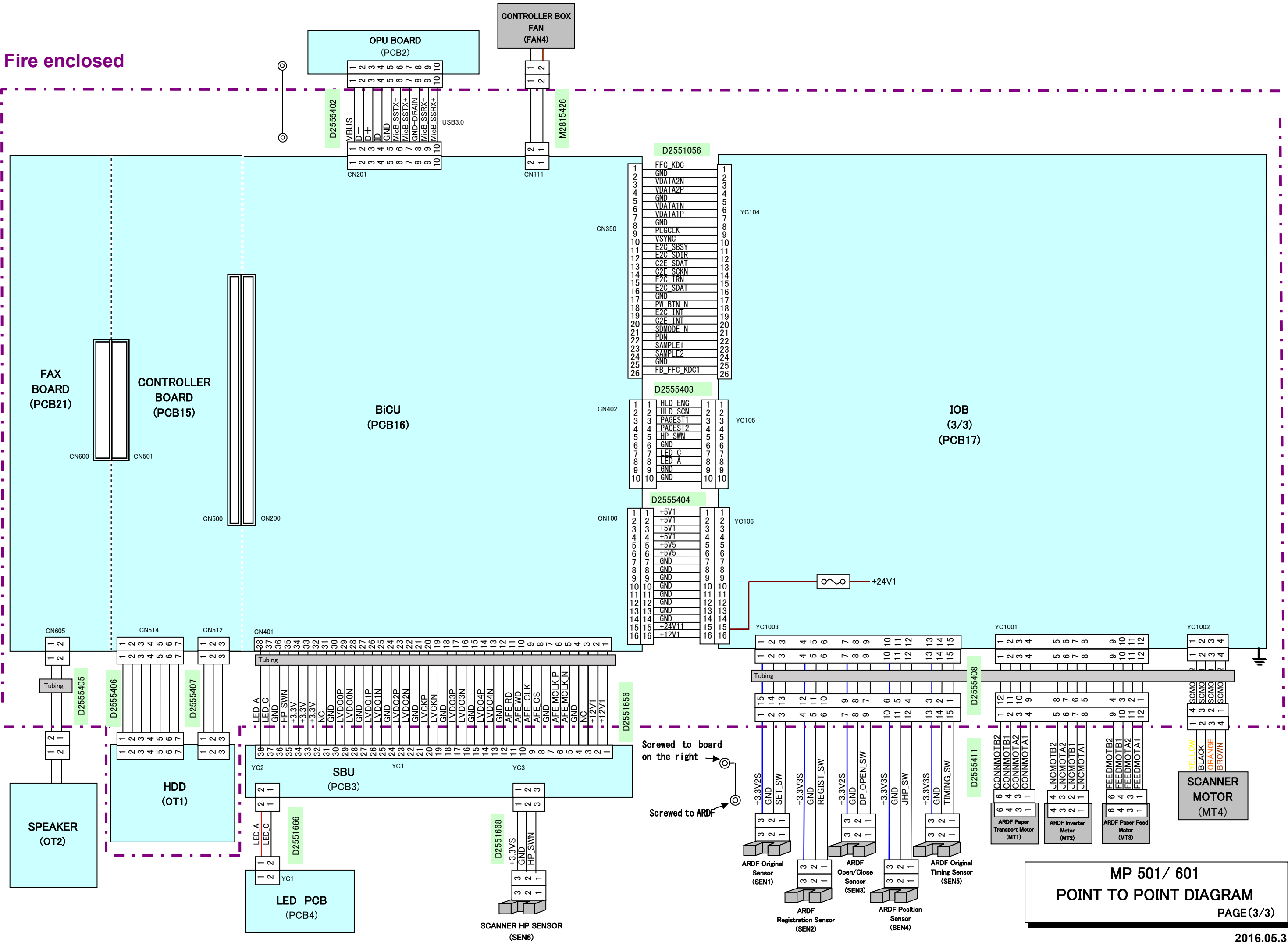


※ To facilitate connecting and disconnecting live wires (3 POINTS)



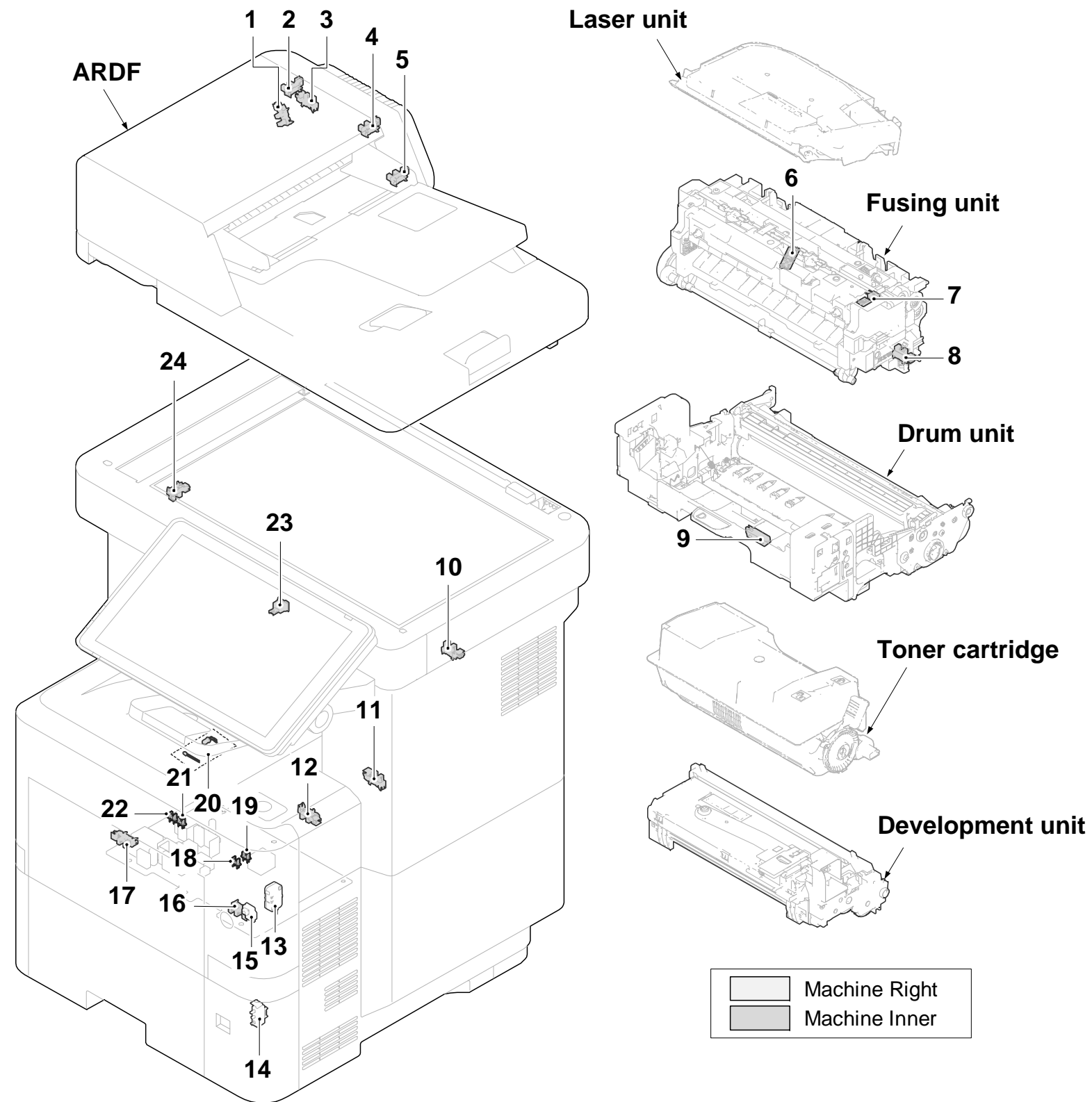
MP 501/ 601
POINT TO POINT DIAGRAM
 PAGE(2/3)

Fire enclosed



MP 501/ 601
POINT TO POINT DIAGRAM
 PAGE(3/3)

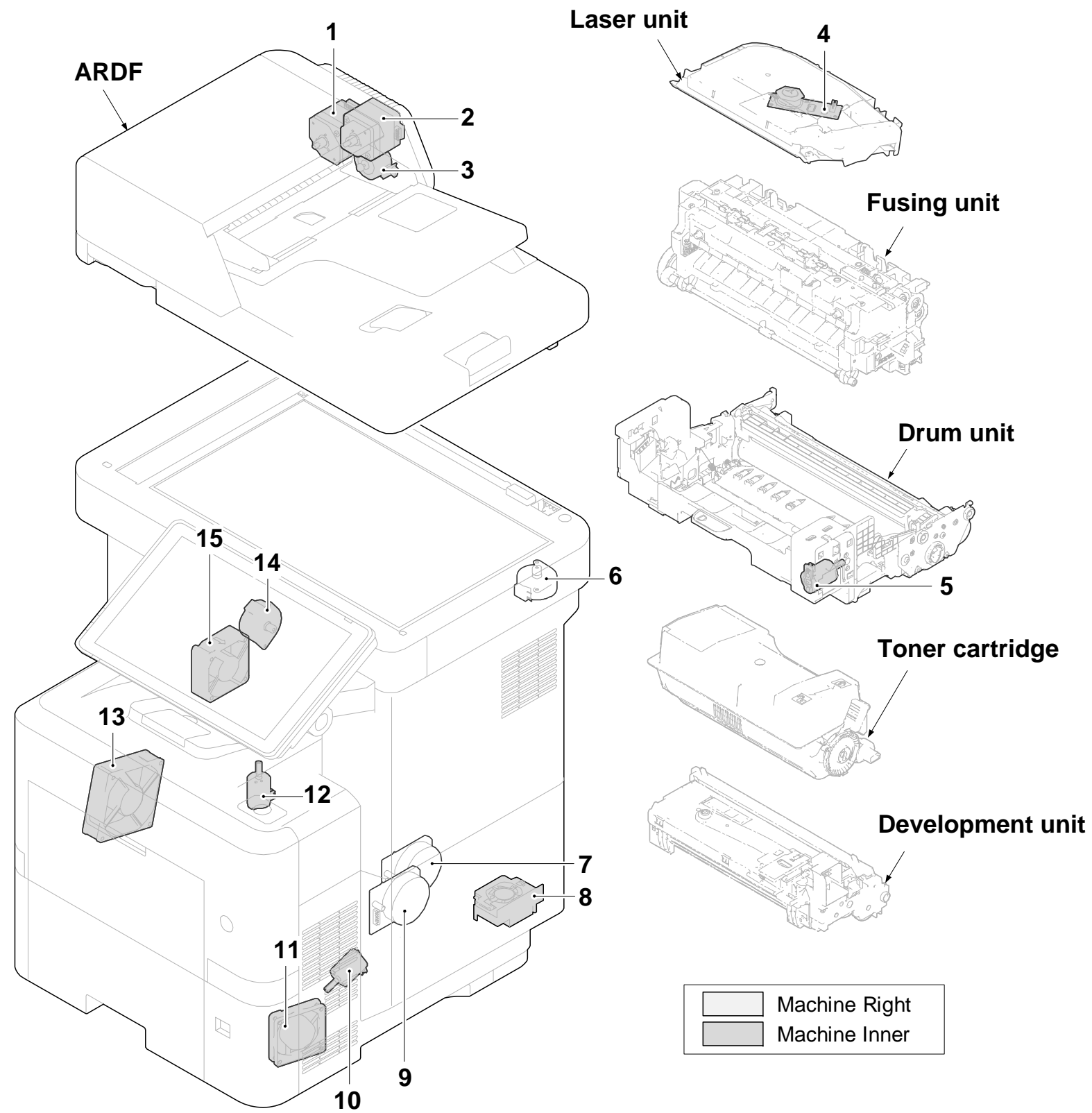
MP 501/601 Component Layout (1/4)



Symbol	Layout	Part Name
Sensors		
SEN1	Fig.1-4	ARDF Original Sensor
SEN2	Fig.1-1	ARDF Registration Sensor
SEN3	Fig.1-3	ARDF Open/Close Sensor
SEN4	Fig.1-5	ARDF Position Sensor
SEN5	Fig.1-2	ARDF Original Timing Sensor
SEN6	Fig.1-24	Scanner HP Sensor
SEN7	Fig.1-16	Paper Feed Tray Limit Sensor
SEN8	Fig.1-10	Paper Exit Full Sensor
SEN9	Fig.1-17	Bypass Paper End Sensor
SEN10	Fig.1-12	Envelope Sensor
SEN11	Fig.1-21	Paper End Sensor 1
SEN12	Fig.1-22	Paper End Sensor 2
SEN13	Fig.1-9	Registration Sensor 1
SEN14	Fig.1-18	Registration Sensor 2
SEN15	Fig.1-8	Fusing Sensor
SEN16	Fig.1-11	Duplex Sensor 1
SEN17	Fig.1-19	Duplex Sensor 2
SEN18	Fig.1-20	Waste Toner Full Sensor
Switches		
SW1	Fig.1-23	Rear Cover Switch
SW2	Fig.1-14	Paper Feed Tray Size Switch
SW3	Fig.1-13	Interlock Switch
PCBs		
PCB1	Fig.1-15	Main Power Switch PCB

Fig.1

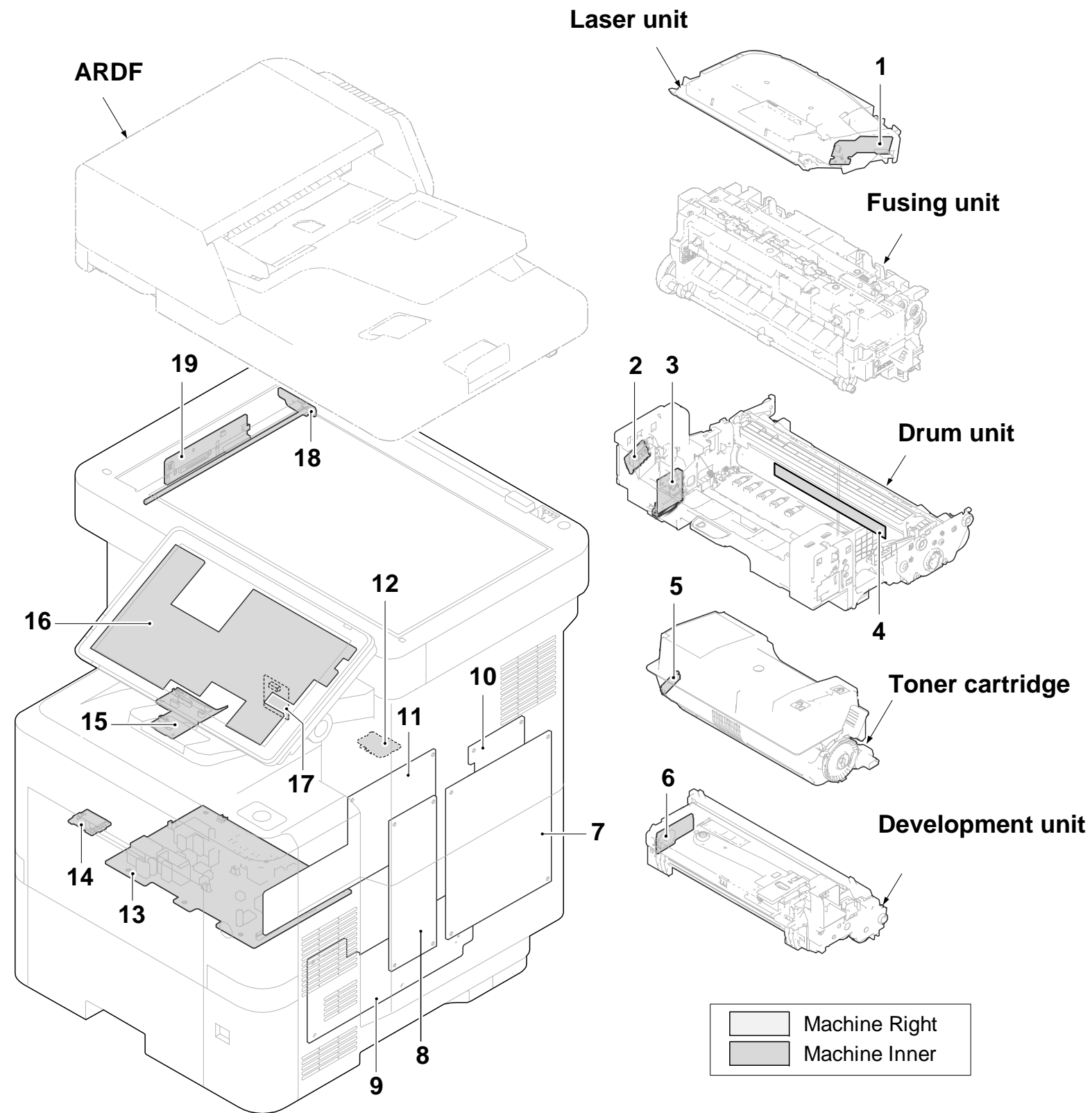
MP 501/601 Component Layout (2/4)



Symbol	Layout	Part Name
Motors		
MT1	Fig.2-1	ARDF Paper Transport Motor
MT2	Fig.2-3	ARDF Inverter Motor
MT3	Fig.2-2	ARDF Paper Feed Motor
MT4	Fig.2-6	Scanner Motor
MT5	Fig.2-4	Polygon Motor
MT6	Fig.2-7	Drum Motor
MT7	Fig.2-5	Toner Supply Motor
MT8	Fig.2-10	Paper Feed Tray Lift Motor
MT9	Fig.2-12	Fusing Pressure Release Motor
MT10	Fig.2-14	Paper Exit Motor
MT11	Fig.2-9	Main Motor
Fan Motors		
FAN1	Fig.2-15	Laser Fan
FAN2	Fig.2-13	Development Fan
FAN3	Fig.2-11	PSU Fan
FAN4	Fig.2-8	Controller Box Fan

Fig.2

MP 501/601 Component Layout (3/4)



Symbol	Layout	Part Name
PCBs		
PCB2	Fig.3-16	OPU Board
PCB3	Fig.3-19	SBU
PCB4	Fig.3-18	LED PCB
PCB5	Fig.3-1	LDB
PCB6	Fig.3-5	Toner Cartridge PCB
PCB7	Fig.3-2	Toner Cartridge Connection PCB
PCB8	Fig.3-6	Toner Density Sensor PCB
PCB9	-	Eraser PCB
PCB10	Fig.3-3	Drum PCB
PCB11	Fig.3-14	Drum Connection PCB
PCB12	Fig.3-4	Drum Heater PCB (Asia Only)
PCB13	Fig.3-12	Thermostat Connection PCB
PCB14	Fig.3-17	Thermistor Connection PCB
PCB15	Fig.3-7	Controller Board
PCB16	Fig.3-8	BiCU
PCB17	Fig.3-11	IOB
PCB18	Fig.3-9	PSU
PCB19	Fig.3-13	Power Pack
PCB20	Fig.3-15	Connect-Left PCB
PCB21	Fig.3-10	Fax Board
PCB22	-	Toner Motor PCB
PCB23	-	Fusing Pressure Release Motor PCB
PCB24	-	Paper Feed Tray Lift Motor PCB

Fig.3

MP 501/601 Component Layout (4/4)

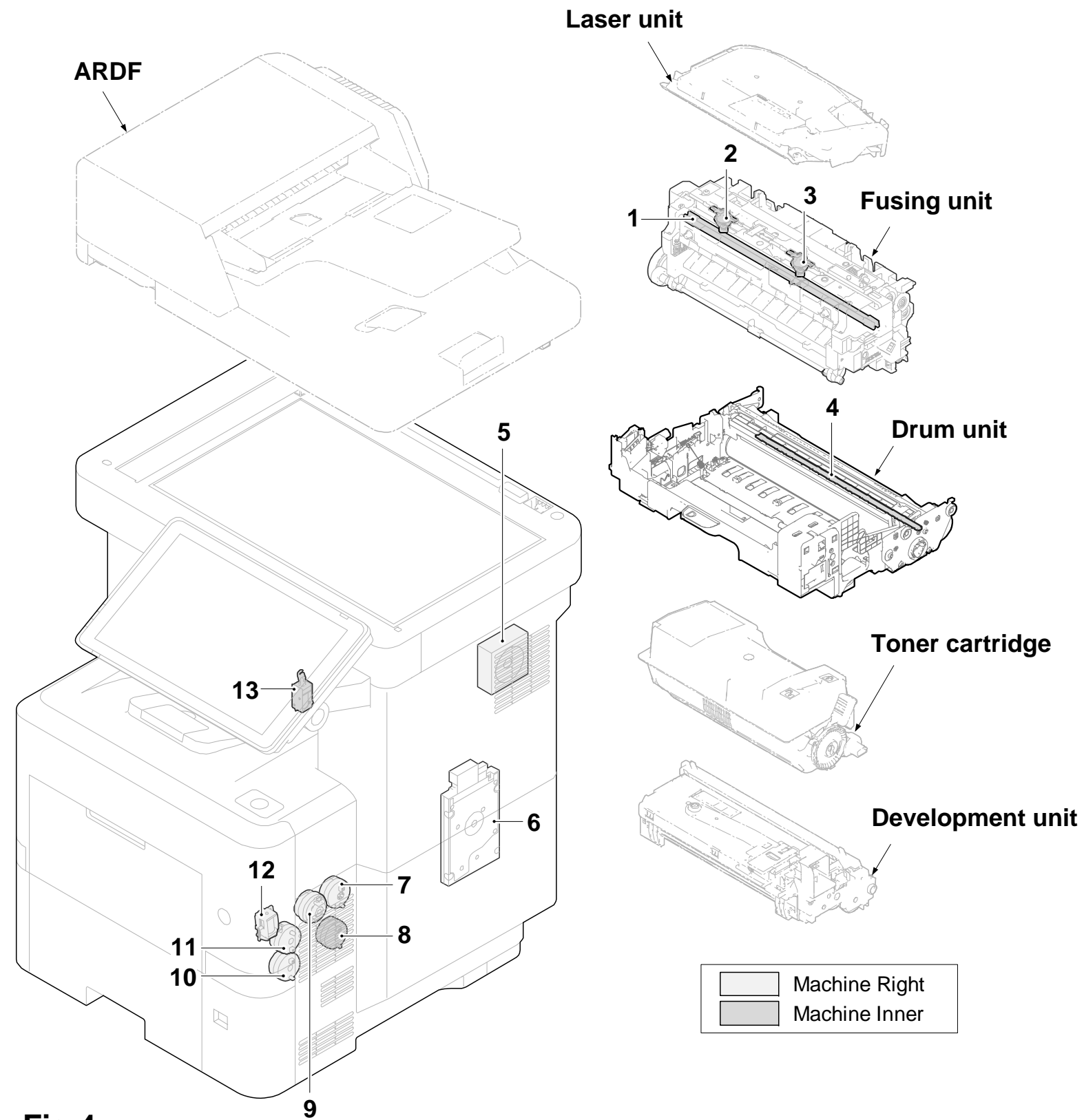


Fig.4

d255c9003.wmf

Symbol	Layout	Part Name
Clutches		
CL1	Fig.4-8	Duplex Clutch
CL2	Fig.4-11	Transport Clutch
CL3	Fig.4-9	Registration Clutch
CL4	Fig.4-10	Paper Feed Clutch
CL5	Fig.4-7	Development Clutch
Solenoids		
SOL1	Fig.4-13	Inverter Solenoid
SOL2	Fig.4-12	Bypass Solenoid
Lamp		
FU1	Fig.4-1	Fusing Lamps
Thermostats		
TS1	Fig.4-2	Fusing Thermostat 1 (End)
TS2	Fig.4-3	Fusing Thermostat 2 (Center)
Others		
OT1	Fig.4-6	HDD
OT2	Fig.4-5	Speaker