

Digital B&W Copiers
(M148/M166-27)
Parts Catalog

Parts change information sample

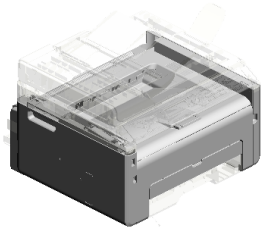
 **Add**

 **Update**

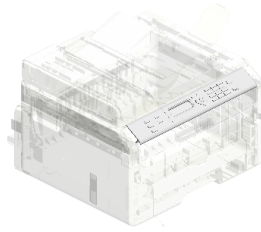
 **Delete**

Model	Product Code	PC Style
Digital Copier	M142/M143/144 M145/M147/M148/M149/M150 M162/M163/M165/M166/M167/M168	3D

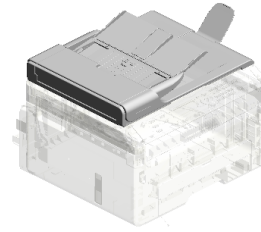
Unit All



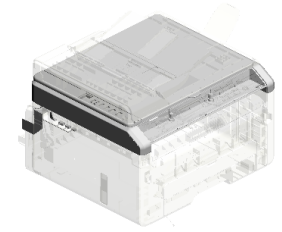
U001
EXTERIOR



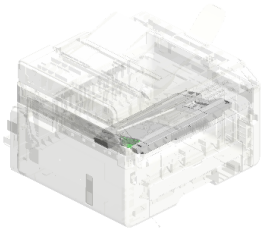
U002
OPERATION



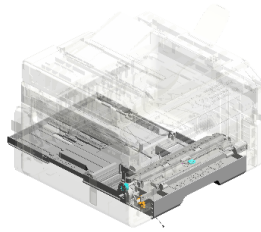
U003
ADF



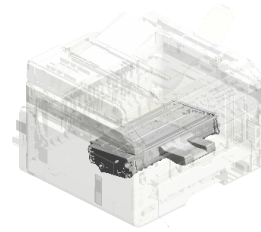
U004
SCANNER



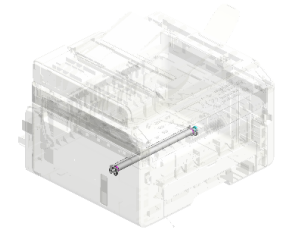
U005
LASER UNIT



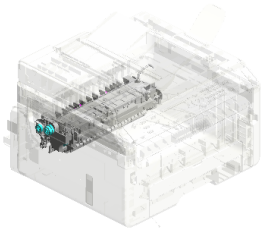
U006
PAPER FEED



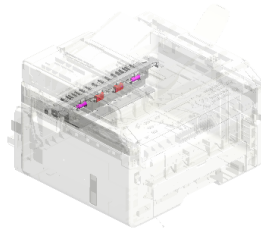
U007
PCU



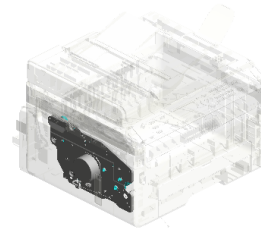
U008
TRANSFER/SEPARATION



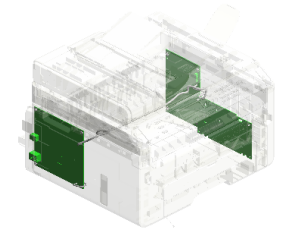
U009
FUSING



U010
PAPER EXIT

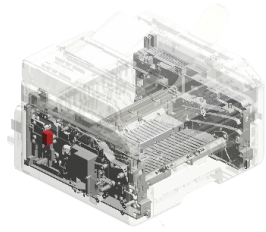


U011
MAIN DRIVE



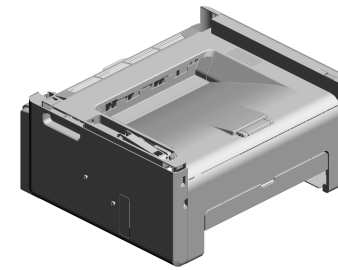
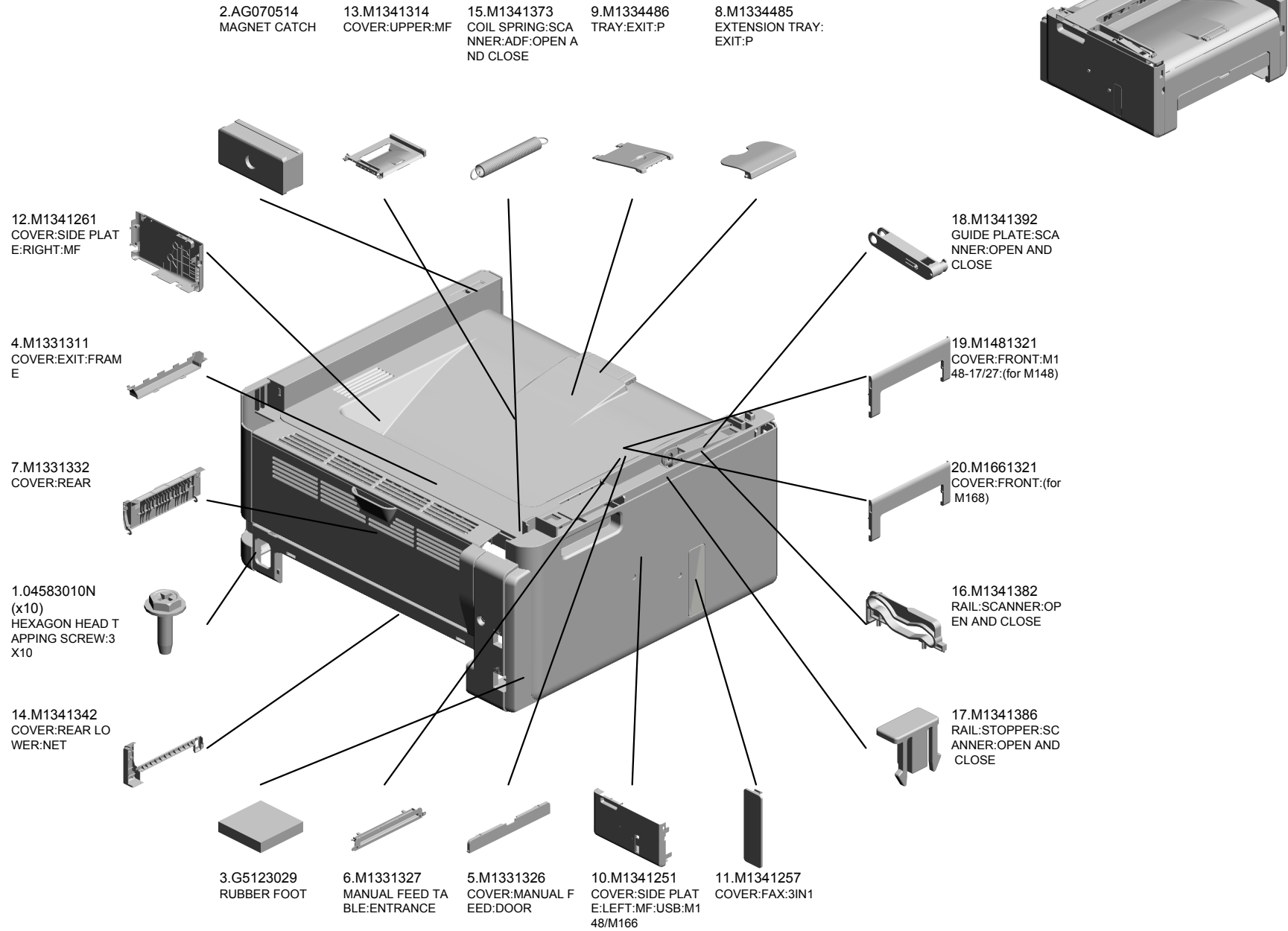
U012
ELECTRICAL

Unit All



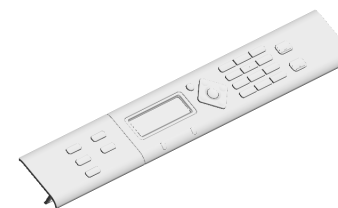
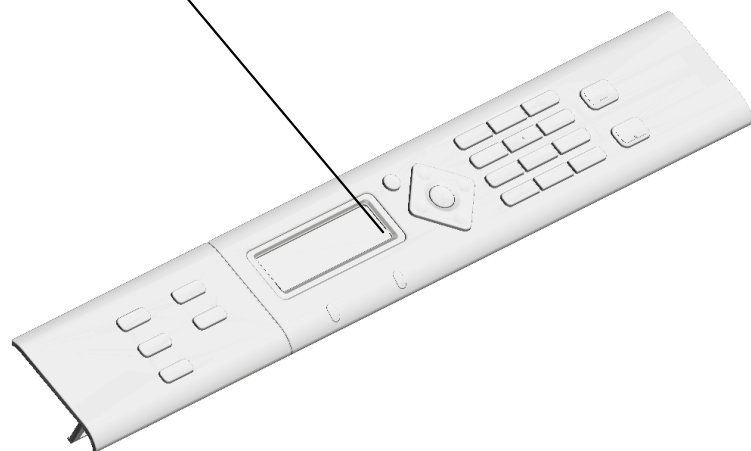
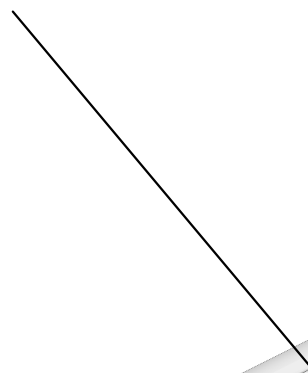
U013
MAIN FRAME

U001 EXTERIOR



U002 OPERATION

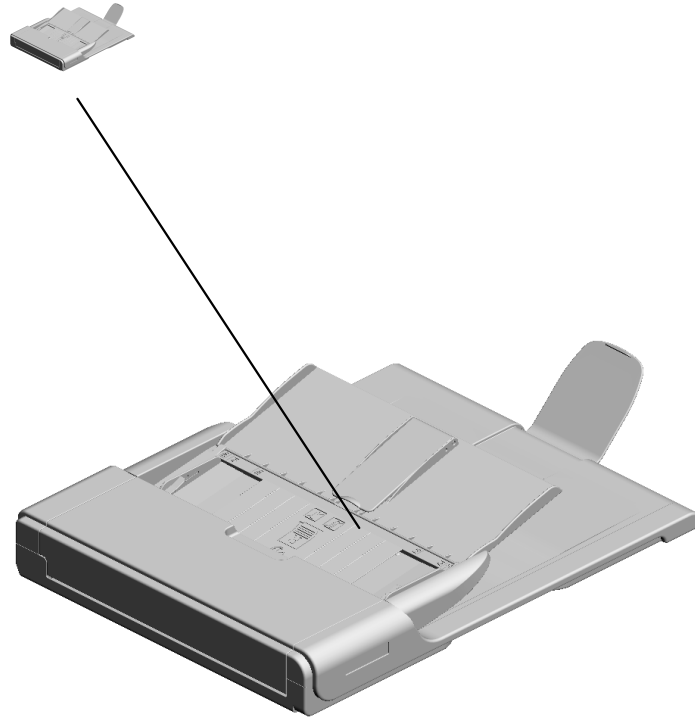
1.M1480051
OPERATION PANE
L:ASS'Y:EU/AP:M14
8/M166



U001	U002	U003	U004	U005	U006	U007	U008	U009	U010	U011	U012	U013
------	-------------	------	------	------	------	------	------	------	------	------	------	------

U003.ADF

U003 S001
M1351615
ADF:ASS'Y



U001	U002	U003	U004	U005	U006	U007	U008	U009	U010	U011	U012	U013
------	------	------	------	------	------	------	------	------	------	------	------	------

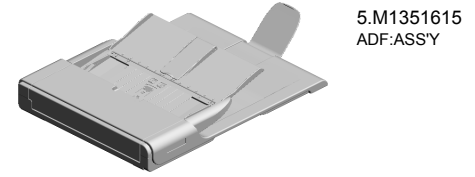
U003
ADF



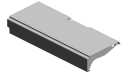
U001	U002	U003	U004	U005	U006	U007	U008	U009	U010	U011	U012	U013
------	------	------	------	------	------	------	------	------	------	------	------	------

U003_S001
ADF:ASS'Y

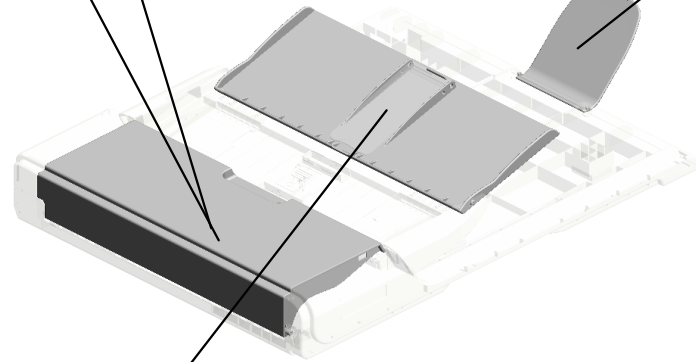
3.M1031694
COVER:ADF



2.M1031675
PAD:ASS'Y



4.M1031714
COVER:MAIN:EXT
ENSION TRAY



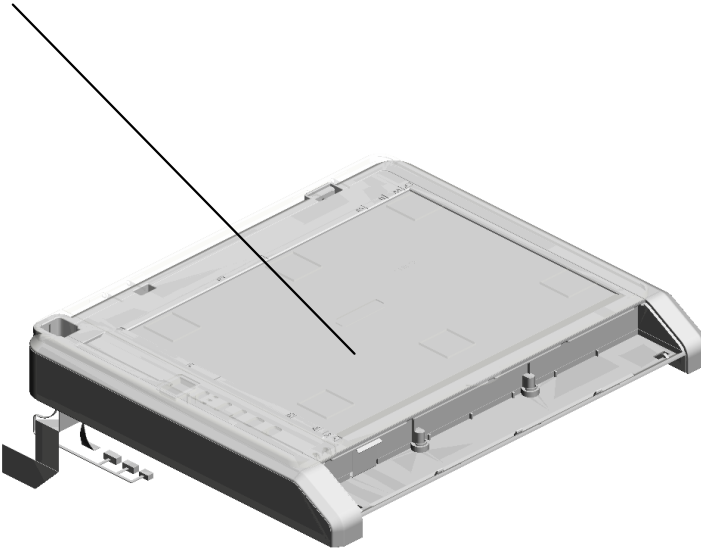
1.M1031659
GUIDE:ORIGINAL:E
XTENSION TRAY:1



U001	U002	U003	U004	U005	U006	U007	U008	U009	U010	U011	U012	U013
------	------	------	------	------	------	------	------	------	------	------	------	------

U004
SCANNER

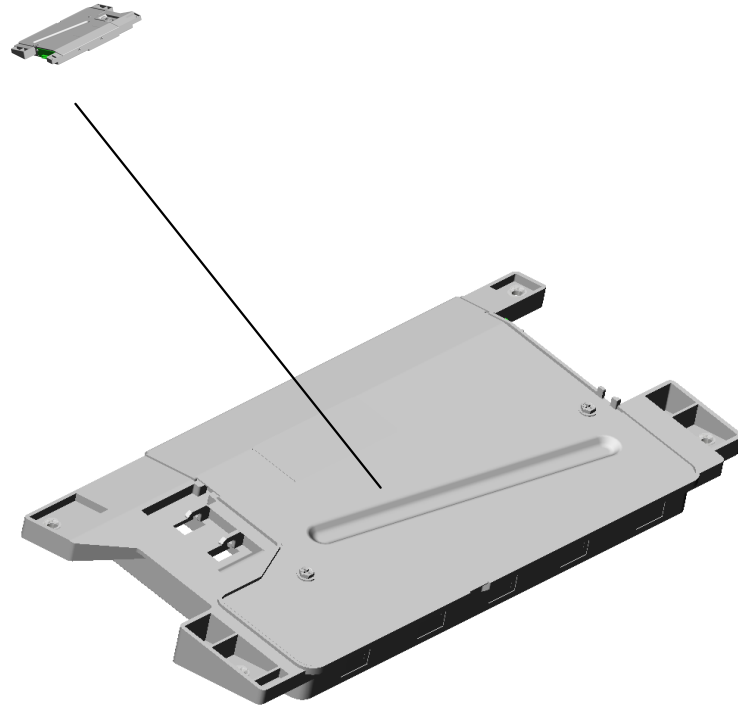
1.M1351600
SCANNER:ASSY



U001	U002	U003	U004	U005	U006	U007	U008	U009	U010	U011	U012	U013
------	------	------	------	------	------	------	------	------	------	------	------	------

U005.LASER UNIT

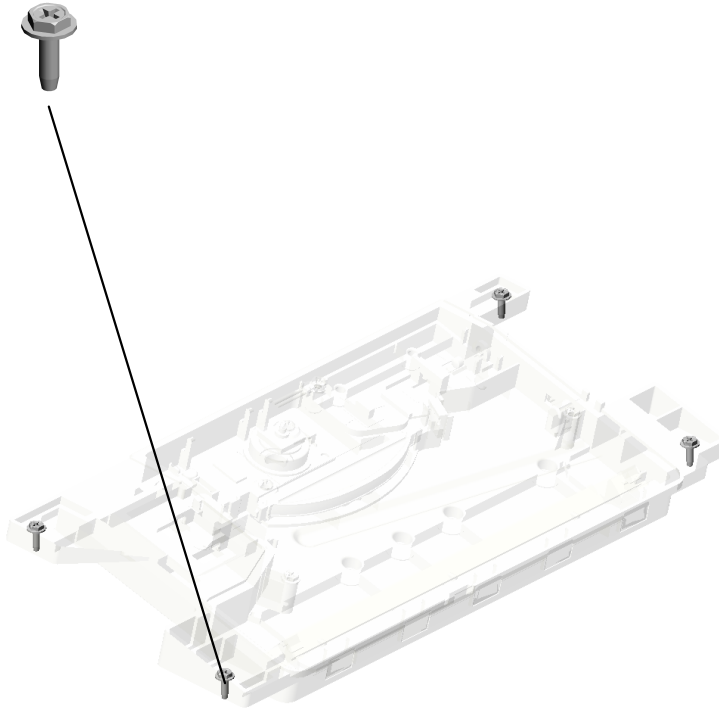
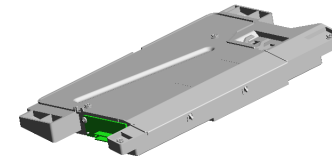
U005 S001
M1331850
OPTICAL WRITING UNIT



U001	U002	U003	U004	U005	U006	U007	U008	U009	U010	U011	U012	U013
------	------	------	------	------	------	------	------	------	------	------	------	------

U005
LASER UNIT

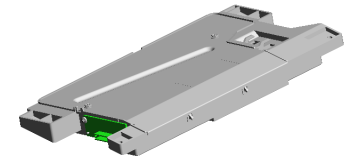
1.04583010N
(x4)
HEXAGON HEAD TAPPING SCREW:3
X10



U001	U002	U003	U004	U005	U006	U007	U008	U009	U010	U011	U012	U013
------	------	------	------	-------------	------	------	------	------	------	------	------	------

U005_S001
OPTICAL WRITING UNIT

1.04583010N
(x2)
HEXAGON HEAD TAPPING SCREW:3
X10

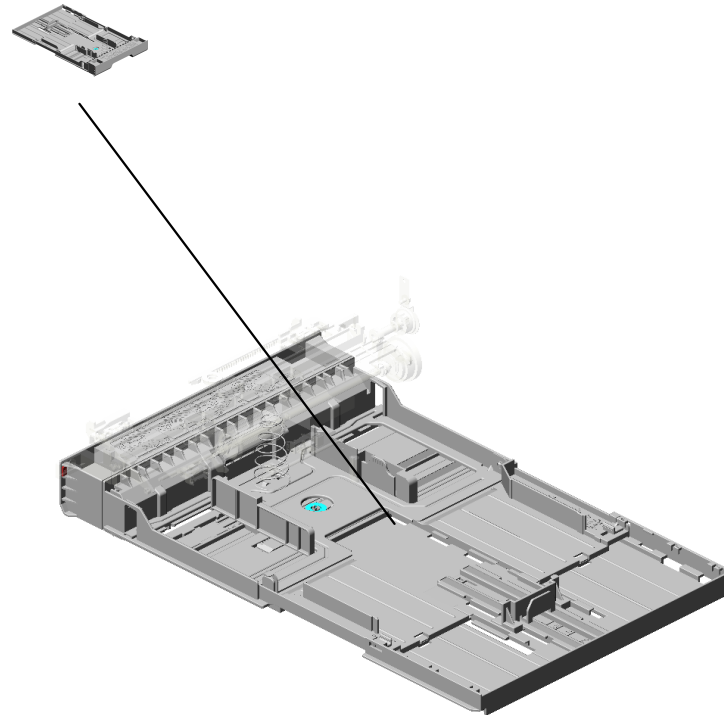


2.M1331850
OPTICAL WRITING
UNIT

U001	U002	U003	U004	U005	U006	U007	U008	U009	U010	U011	U012	U013
------	------	------	------	------	------	------	------	------	------	------	------	------

U006.PAPER FEED

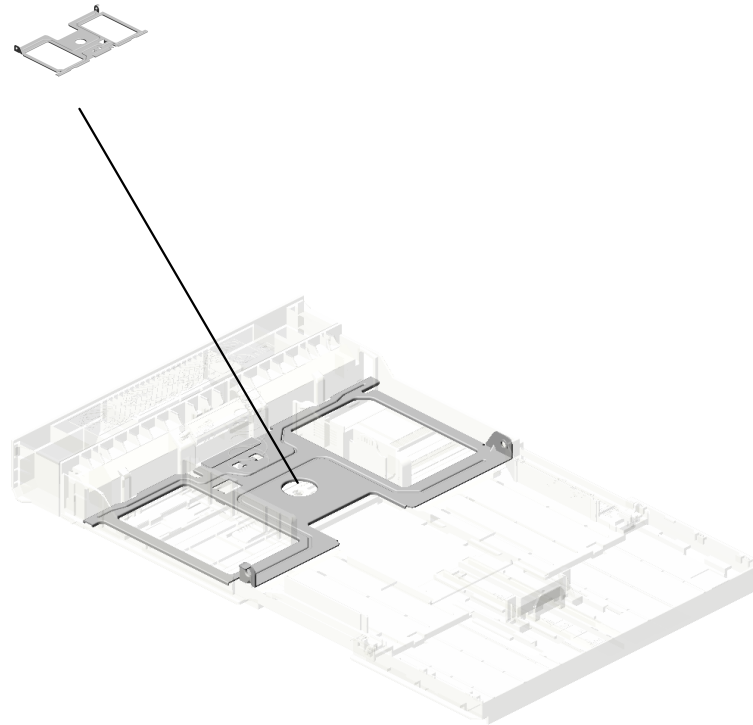
U006 S001
M1332501
PAPER TRAY:ASSY



U001	U002	U003	U004	U005	U006	U007	U008	U009	U010	U011	U012	U013
------	------	------	------	------	-------------	------	------	------	------	------	------	------

U006_S001.PAPER TRAY:ASS'Y

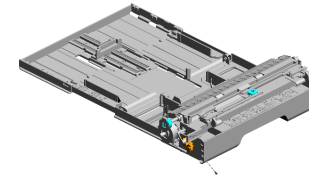
U006 S001 S001
M1332610
TRAY BOTTOM PLATE



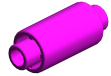
U001	U002	U003	U004	U005	U006	U007	U008	U009	U010	U011	U012	U013
------	------	------	------	------	-------------	------	------	------	------	------	------	------

U006 PAPER FEED

8.G8003133 SIDE FENCE GEAR
 11.M0124488 (x2) BUSHING:DIA6XDI A10X6
 7.G0201160 (x2) SNAP RING
 33.M1332741 GUIDE PLATE:CON NECTING
 34.M1332742 TRANSPORT ROLL ER:CONNECTING



12.M0134622 (x2) EXIT ROLLER:DUP LEX



4.08050089 (x2) RETAINING RING - M4



16.M1332550 (x2) BUSHING:FLANGE TYPE:DIA6



29.M1332732 FEELER:PAPER END SENSOR:PAPE R FEED



6.AW020198 (x3) PHOTOINTERRUPTOR:LG2A14NL1



10.M0122631 CLOTH:EARTH:PA PER FEED



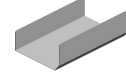
13.M0134623 (x2) SPRING:EXIT



35.M1332743 FEELER:REGISTR ATION SENSOR



31.M1332735 FILM:PAPER FEED



32.M1332737 SHAFT:FEED



1.04513006N TAPPING SCREW - 3X6



14.M1014452 GEAR:EXIT ROLLER:PAPER EXIT UNIT



2.04583010N (x2) HEXAGON HEAD TAPPING SCREW:3 X10



3.07200040E RETAINING RING - M4

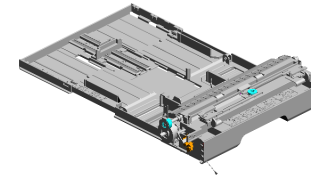


30.M1332734 ELECTROMAGNETIC CLUTCH:PAPER FEED

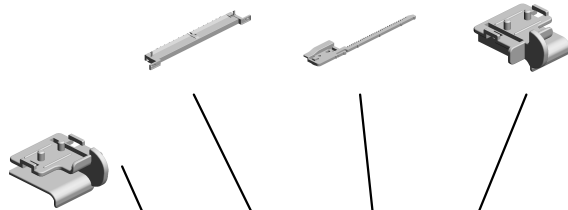


U006 PAPER FEED

36.M1332750 GUIDE PLATE:MAN
UAL FEED:ASSY
39.M1332754 (x2)
RACK:SIDE FENCE
37.M1332752 SIDE FENCE:MAN
UAL FEED:LEFT

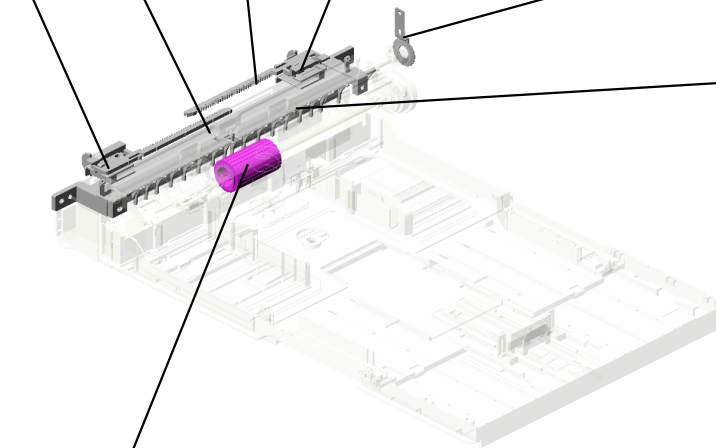


38.M1332753
SIDE FENCE:MAN
UAL FEED:RIGHT



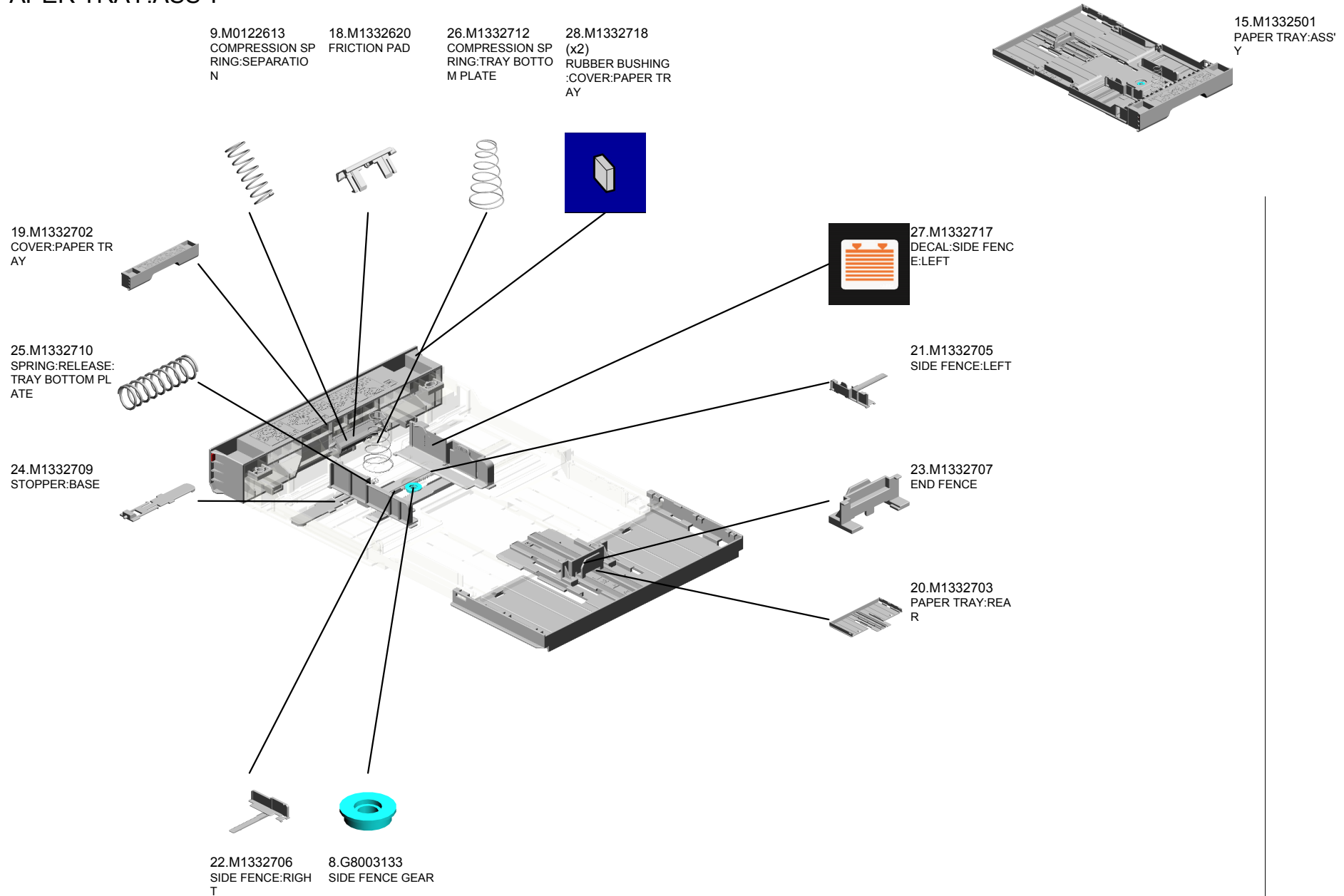
42.M1332762
GROUND PLATE:R
OLLER:CONNECTI
NG

40.M1332755
FEELER-MANUAL
FEED SENSOR



41.M1332759
PAPER FEED ROL
LER

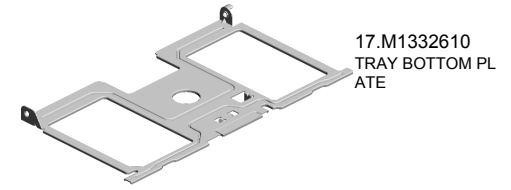
U006_S001
PAPER TRAY:ASS'Y



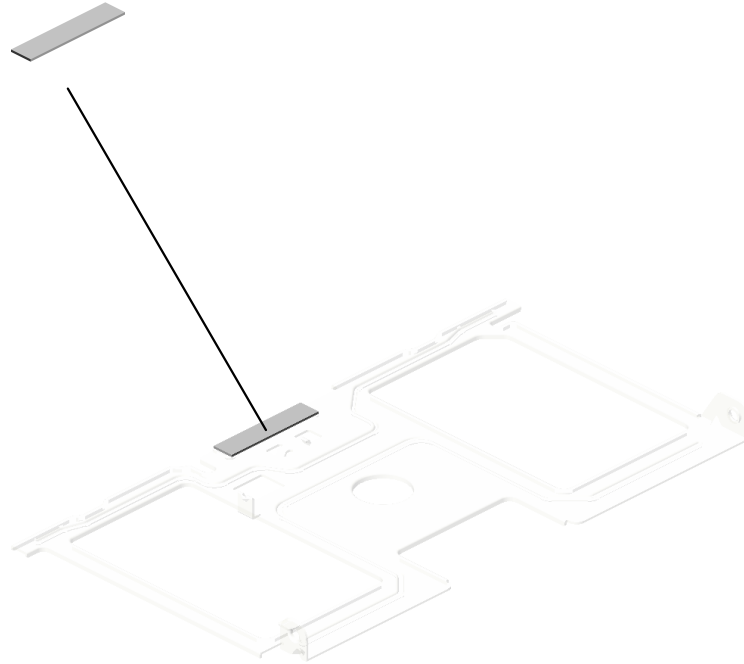
U001	U002	U003	U004	U005	U006	U007	U008	U009	U010	U011	U012	U013
------	------	------	------	------	------	------	------	------	------	------	------	------

U006_S001_S001
TRAY BOTTOM PLATE

5.52152713
BOTTOM PLATE P
AD



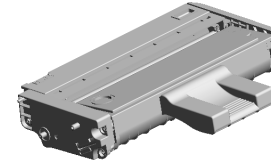
17.M1332610
TRAY BOTTOM PL
ATE



U001	U002	U003	U004	U005	U006	U007	U008	U009	U010	U011	U012	U013
------	------	------	------	------	-------------	------	------	------	------	------	------	------

U007
PCU

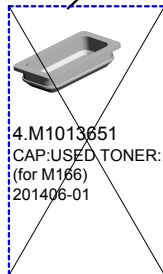
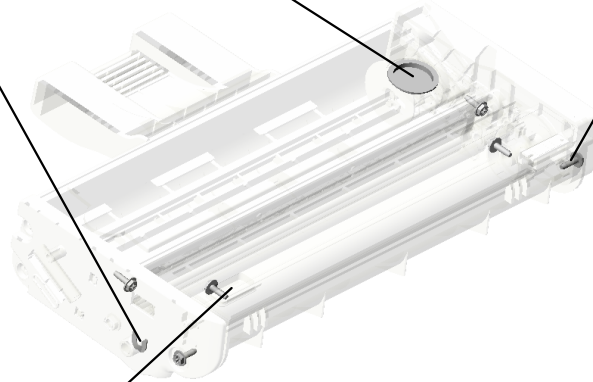
3.G0113941
CAP:TONER HOPP
ER:(for M166)



2.08050089
RETAINING RING -
M4



1.04583010N
(x6)
HEXAGON HEAD T
APPING SCREW:3
X10



4.M1013651
CAP:USED TONER:
(for M166)
201406-01

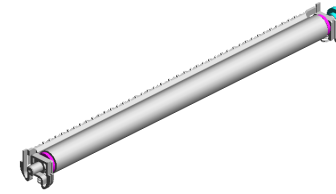
U001	U002	U003	U004	U005	U006	U007	U008	U009	U010	U011	U012	U013
------	------	------	------	------	------	------	------	------	------	------	------	------

U008 TRANSFER/SEPARATION

4.M1336259
(x2)
ROLLER:POSITION
ING:TRANSFER R
OLLER

1.M1336201
SEPARATION UNIT
:ASS'Y

2.M1336250
TRANSFER ROLLE
R



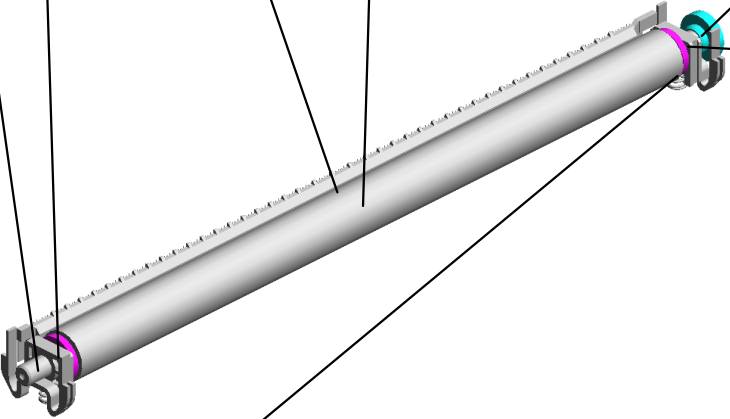
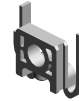
5.M1336262
BUSHING:TRANSF
ER ROLLER:RIGHT



3.M1336254
GEAR:TRANSFER
ROLLER



6.M1336263
BUSHING:TRANSF
ER ROLLER:LEFT



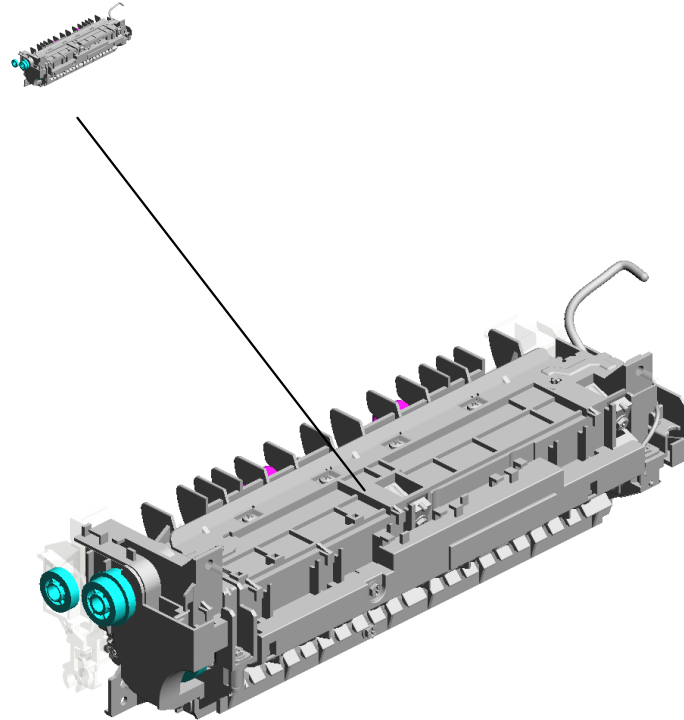
7.M1336264
(x2)
SPRING:TRANSFE
R ROLLER



U001	U002	U003	U004	U005	U006	U007	U008	U009	U010	U011	U012	U013
------	------	------	------	------	------	------	------	------	------	------	------	------

U009.FUSING

U009 S001
M1494002
FUSING UNIT:EU/AP:ASS'Y



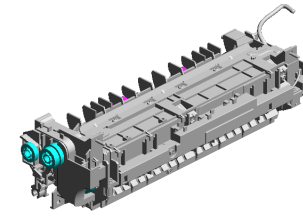
U001	U002	U003	U004	U005	U006	U007	U008	U009	U010	U011	U012	U013
------	------	------	------	------	------	------	------	------	------	------	------	------

U009 FUSING

30.M1334240 EXIT ROLLER:STR
AIGHT

20.M1334220 COIL SPRING:FEE
LER:EXIT

16.M1334216 GUIDE PLATE:STR
AIGHT



36.M1334254
DECAL:WARNING (HIGH TEMPERATU
RE):REAR RART



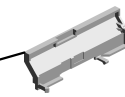
2.04503014N
(x2)
TAPPING SCREW:
M3X14



19.M1334219
FEELER:EXIT:SEN
SOR



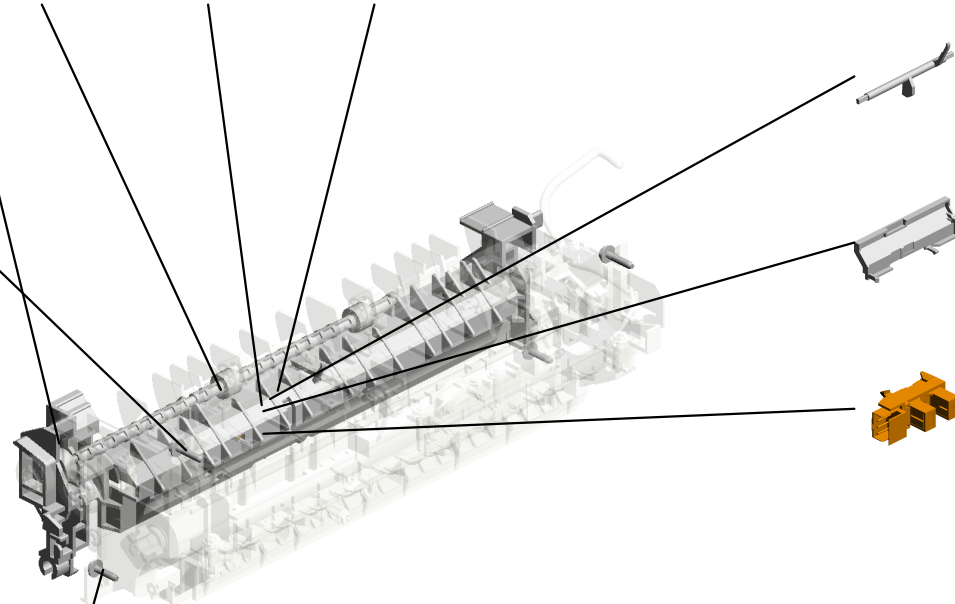
26.M1334228
COVER:FEELER



7.AW020198
PHOTOINTERRUP
TOR:LG2A14NL1

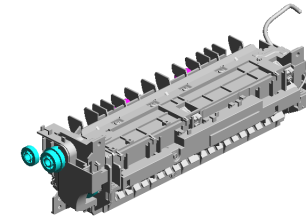


5.04583012N
(x2)
HEXAGON HEAD T
APPING SCREW:3
X12

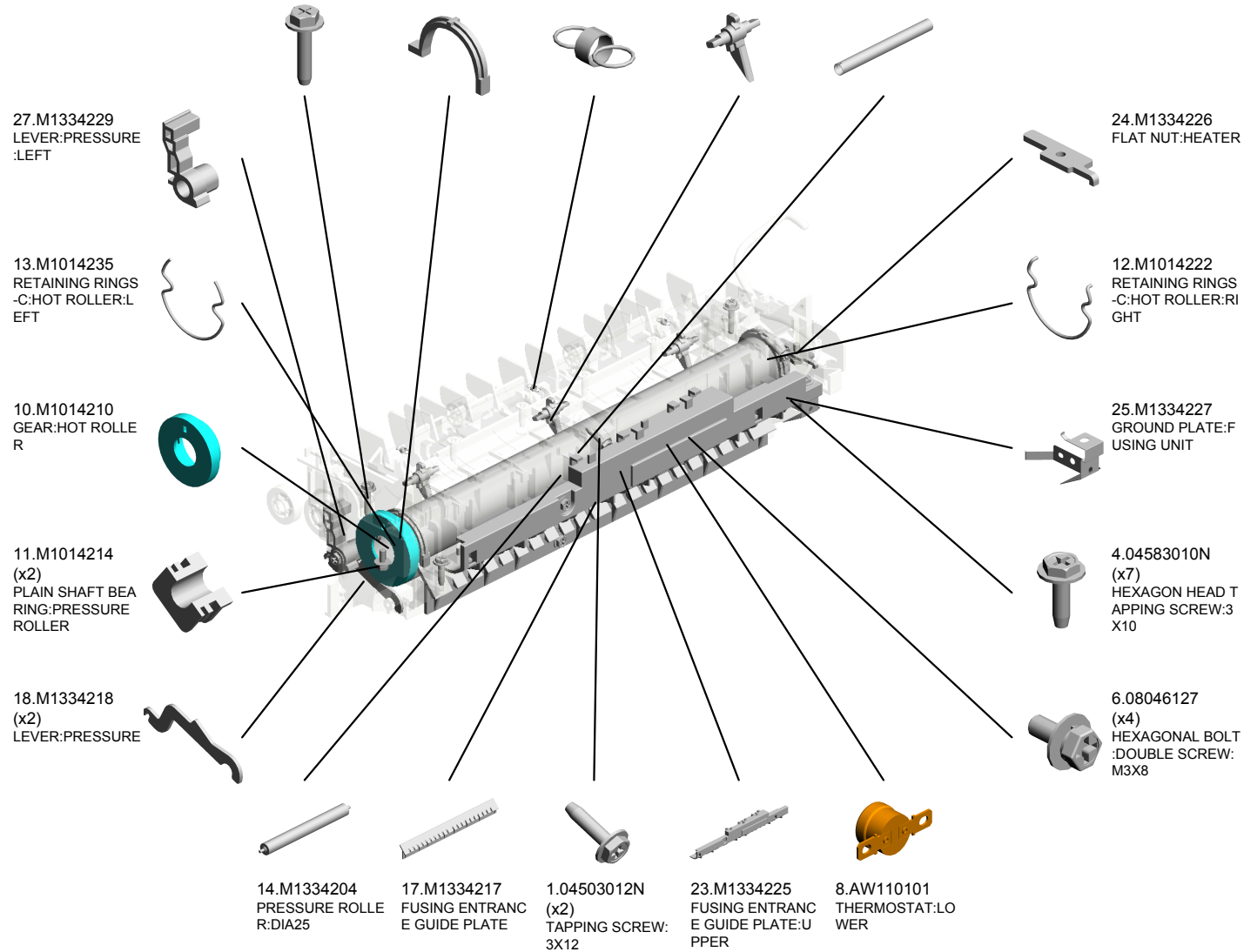


U009_S001
FUSING UNIT:EU/AP:ASS'Y

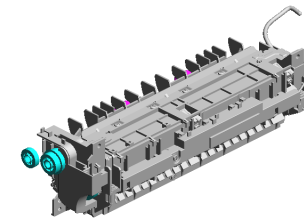
3.04523014N (x4) BINDING SELF-TAPPING SCREW:M3 X14
 15.M1334208 (x2) PLAIN SHAFT BEARING RING:HOT ROLLER
 22.M1334223 (x3) TENSION SPRING: PICKOFF PAWL
 21.M1334221 (x3) STRIPPER PAWLS
 9.M1014203 HOT ROLLER



46.M1494002
FUSING UNIT:EU/AP:ASSY



U009_S001
FUSING UNIT:EU/AP:ASS'Y



46.M1494002
FUSING UNIT:EU/AP:ASSY

41.M1334263 SHEET:HOOK:LEFT
39.M1334261 HOOK:PRESSURE:LEFT
32.M1334243 (x2) EXIT ROLLER:FUSING
34.M1334245 (x2) SPRING:EXIT ROLLER:FUSING

38.M1334258 GEAR:CONNECTING:STRAIGHT

43.M1334265 SHEET:PRESSURE RELEASE:LEFT

37.M1334257 GEAR:DRIVE:STRAIGHT

29.M1334231 (x2) TENSION SPRING:FUSING:PRESSURE

33.M1334244 ELECTRODE:LEFT
45.M1454212 HEATER:700W:230V
31.M1334241 HOUSING:THERMOSTAT
35.M1334248 THERMISTOR

44.M1334266 SHEET:PRESSURE RELEASE:RIGHT

42.M1334264 SHEET:HOOK:RIGHT

40.M1334262 HOOK:PRESSURE:RIGHT

28.M1334230 LEVER:PRESSURE:RIGHT

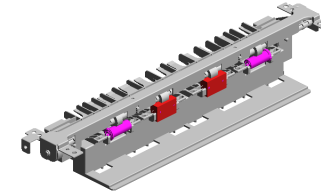
U001	U002	U003	U004	U005	U006	U007	U008	U009	U010	U011	U012	U013
------	------	------	------	------	------	------	------	------	------	------	------	------

U010 PAPER EXIT

5.M1334457
(x2)
EXIT ROLLER

9.M1334467
GUIDE PLATE:EXIT
:LOWER

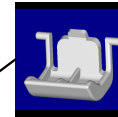
3.M1334451
EXIT ROLLER:PAP
ER EXIT UNIT



6.M1334459
(x2)
EXIT ROLLER



8.M1334466
GUIDE PLATE:EXIT
:UPPER



7.M1334465
(x2)
PLATE:EXIT



4.M1334453
(x2)
PLAIN SHAFT BEA
RING:EXIT



1.04513008N
(x2)
TAPPING SCREW -
M3X8

2.M0124454
(x4)
SPRING:EXIT ROL
LER:EXIT



U001	U002	U003	U004	U005	U006	U007	U008	U009	U010	U011	U012	U013
------	------	------	------	------	------	------	------	------	------	------	------	------

U011 MAIN DRIVE

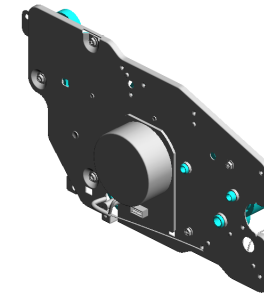
1.03530030N
(x3)
SCREW:M3X3

5.M1331118
GEAR:DRIVE:FUSI
NG:NO.1

6.M1331119
GEAR:DRIVE:FUSI
NG:NO.2

2.04583010N
(x5)
HEXAGON HEAD T
APPING SCREW:3
X10

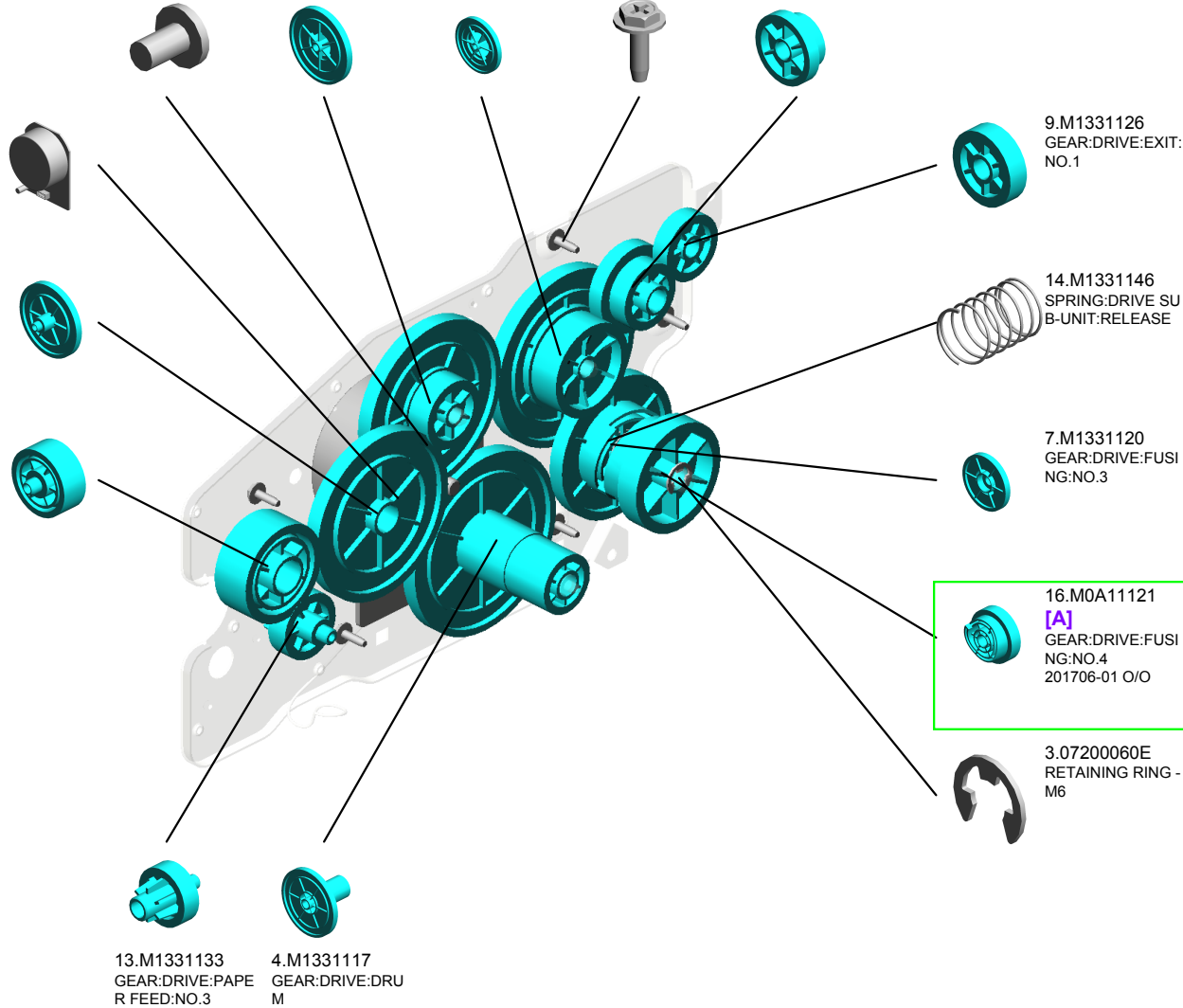
10.M1331127
GEAR:DRIVE:EXIT:
NO.2



15.M1331155
DC BRUSHLESS M
OTOR:20W

11.M1331131
GEAR:DRIVE:PAPE
R FEED:NO.1

12.M1331132
GEAR:DRIVE:PAPE
R FEED:NO.2



13.M1331133
GEAR:DRIVE:PAPE
R FEED:NO.3

4.M1331117
GEAR:DRIVE:DRU
M

9.M1331126
GEAR:DRIVE:EXIT:
NO.1

14.M1331146
SPRING:DRIVE SU
B-UNIT:RELEASE

7.M1331120
GEAR:DRIVE:FUSI
NG:NO.3

16.M0A11121
[A]
GEAR:DRIVE:FUSI
NG:NO.4
201706-01 O/O

3.07200060E
RETAINING RING -
M6



M1331121
[A]
GEAR:DRIVE:FUSI
NG:NO.4
201706-01 O/O

U012 ELECTRICAL

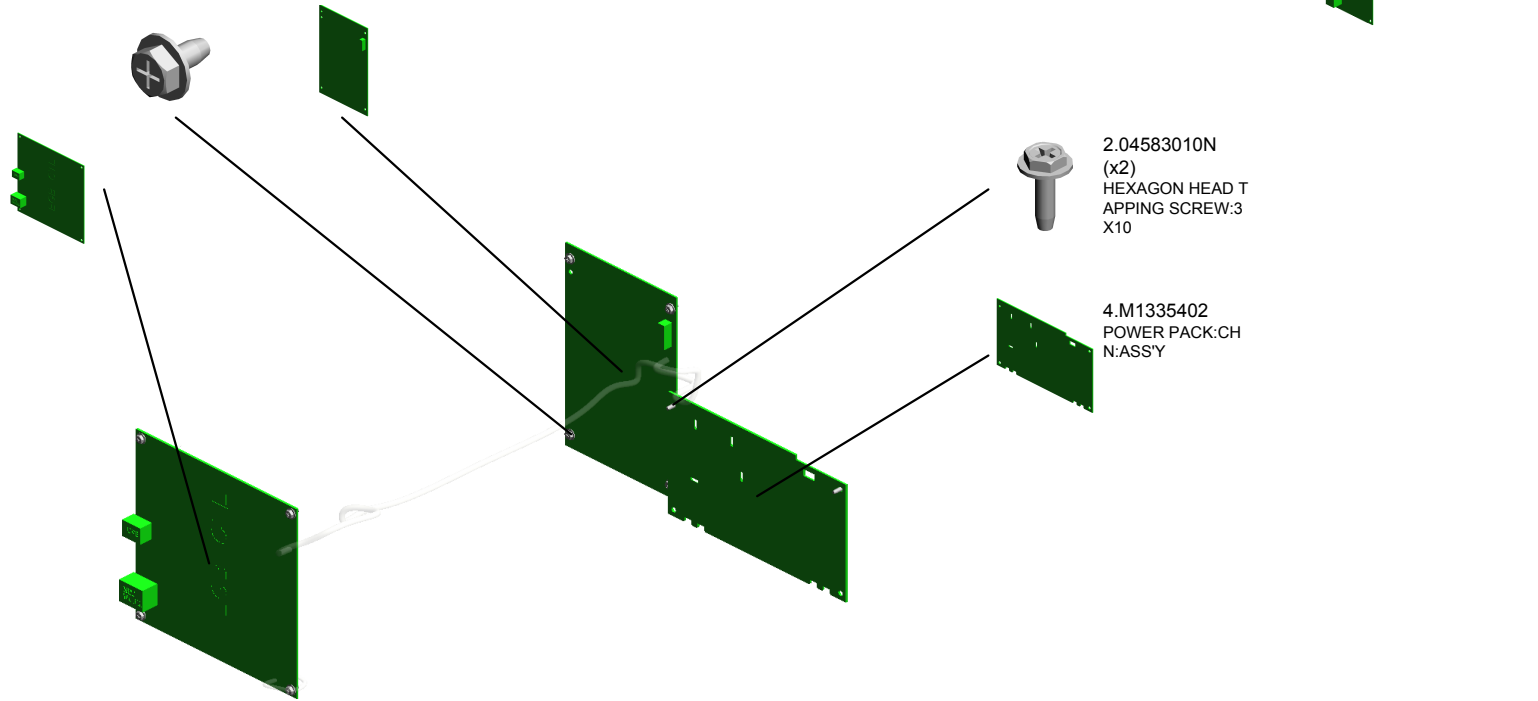
1.04513006N
(x8)
TAPPING SCREW -
3X6

3.M1335313
POWER SUPPLY U
NIT:60.09W:EU:AS
SY

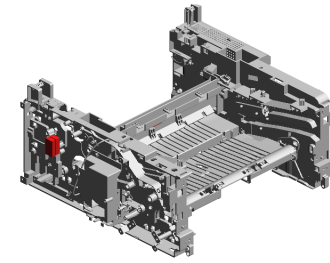
5.M1485050
PCB:ECBCTLWW:
ASS'Y:M148/M166

2.04583010N
(x2)
HEXAGON HEAD T
APPING SCREW:3
X10

4.M1335402
POWER PACK:CH
N:ASS'Y



U013 MAIN FRAME



2.04513006N
(x7)
TAPPING SCREW -
3X6

20.M1451099
(M148);HEAT INSU
LATING PLATE:FU
SING:FRONT
201408-01

7.M0124699
DECAL:WARNING (H
IGH TEMPERATU
RE):FRONT

17.M1331094
COIL SPRING:RIG
HT:EXIT

19.M1341098
SHAFT:TURN:SCA
NNER:RIGHT



18.M1341097
SHAFT:TURN:SCA
NNER:LEFT

16.M1331093
COIL SPRING:LEFT
:EXIT

15.M1331090
SAFETY SWITCH:A
RM

1.04503020N
TAPPING SCREW:
M3X20

8.M1331061
COIL SPRING:DISC
HARGE:ELECTRO
DE PLATE

10.M1331063
COIL SPRING:DISC
HARGE:AIO

5.G5123029
(x3)
RUBBER FOOT

4.12042612
(x2)
MICRO SWITCH:D3
V-16506-3C25

11.M1331064
PAPER TRAY:DISC
HARGE

9.M1331062
ELECTRODE PLAT
E:TRANSFER

12.M1331066
(x3)
COIL SPRING:TER
MINAL

6.M0121063
(x3)
TERMINAL:CHARG
E

14.M1331068
COIL SPRING:EAR
TH:PAPER TRAY

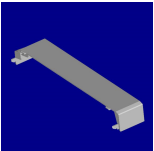
13.M1331067
COIL SPRING:TRA
NSFER:CHARGE

3.04583010N
(x18)
HEXAGON HEAD T
APPING SCREW:3
X10

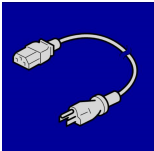
ACCESSORIES



1.M1011301
PLATE:LOGO:RIC



2.M1332715
COVER:PREVENTFENCE:PAPER TR
AY:A4



3.M1545699
POWER SUPPLY CORD:250V:10A:EU

Exclusive Parts

Number	Part Name	Group	ID
52152713	BOTTOM PLATE PAD	U006_S001_S001	5
AG070514	MAGNET CATCH	U001	2
AW020198	PHOTOINTERRUPTOR:LG2A14NL 1	U006	6
		U009	7
AW110101	THERMOSTAT:LOWER	U009_S001	8
G0113941	CAP:TONER HOPPER:(for M166)	U007	3
G0201160	SNAP RING	U006	7
G5123029	RUBBER FOOT	U001	3
		U013	5
G8003133	SIDE FENCE GEAR	U006	8
		U006_S001	8
M0121063	TERMINAL:CHARGE	U013	6
M0122613	COMPRESSION SPRING:SEPARATION	U006_S001	9
M0122631	CLOTH:EARTH:PAPER FEED	U006	10
M0124454	SPRING:EXIT ROLLER:EXIT	U010	2
M0124488	BUSHING:DIA6XDIA10X6	U006	11
M0124699	DECAL:WARNING (HIGH TEMPERATURE):FRONT	U013	7
M0134622	EXIT ROLLER:DUPLEX	U006	12
M0134623	SPRING:EXIT	U006	13
M0A11121	GEAR:DRIVE:FUSING:NO.4	U011	16
M1011301	PLATE:LOGO:RIC	ACCESSORIES	1
M1014203	HOT ROLLER	U009_S001	9
M1014210	GEAR:HOT ROLLER	U009_S001	10
M1014214	PLAIN SHAFT BEARING:PRESSURE ROLLER	U009_S001	11
M1014222	RETAINING RINGS-C:HOT ROLLER:RIGHT	U009_S001	12
M1014235	RETAINING RINGS-C:HOT ROLLER:LEFT	U009_S001	13
M1014452	GEAR:EXIT ROLLER:PAPER EXIT UNIT	U006	14
M1031659	GUIDE:ORIGINAL:EXTENSION TRAY:1	U003_S001	1
M1031675	PAD:ASS'Y	U003_S001	2
M1031694	COVER:ADF	U003_S001	3
M1031714	COVER:MAIN:EXTENSION TRAY	U003_S001	4

Number	Part Name	Group	ID
M1331061	COIL SPRING:DISCHARGE:ELECTRODE PLATE	U013	8
M1331062	ELECTRODE PLATE:TRANSFER	U013	9
M1331063	COIL SPRING:DISCHARGE:AIO	U013	10
M1331064	PAPER TRAY:DISCHARGE	U013	11
M1331066	COIL SPRING:TERMINAL	U013	12
M1331067	COIL SPRING:TRANSFER:CHARGE	U013	13
M1331068	COIL SPRING:EARTH:PAPER TRAY	U013	14
M1331090	SAFETY SWITCH:ARM	U013	15
M1331093	COIL SPRING:LEFT:EXIT	U013	16
M1331094	COIL SPRING:RIGHT:EXIT	U013	17
M1331117	GEAR:DRIVE:DRUM	U011	4
M1331118	GEAR:DRIVE:FUSING:NO.1	U011	5
M1331119	GEAR:DRIVE:FUSING:NO.2	U011	6
M1331120	GEAR:DRIVE:FUSING:NO.3	U011	7
M1331126	GEAR:DRIVE:EXIT:NO.1	U011	9
M1331127	GEAR:DRIVE:EXIT:NO.2	U011	10
M1331131	GEAR:DRIVE:PAPER FEED:NO.1	U011	11
M1331132	GEAR:DRIVE:PAPER FEED:NO.2	U011	12
M1331133	GEAR:DRIVE:PAPER FEED:NO.3	U011	13
M1331146	SPRING:DRIVE SUB-UNIT:RELEASE	U011	14
M1331155	DC BRUSHLESS MOTOR:20W	U011	15
M1331311	COVER:EXIT:FRAME	U001	4
M1331326	COVER:MANUAL FEED:DOOR	U001	5
M1331327	MANUAL FEED TABLE:ENTRANCE	U001	6
M1331332	COVER:REAR	U001	7
M1331850	OPTICAL WRITING UNIT	U005_S001	2
M1332501	PAPER TRAY:ASS'Y	U006_S001	15
M1332550	BUSHING:FLANGE TYPE:DIA6	U006	16
M1332610	TRAY BOTTOM PLATE	U006_S001_S001	17
M1332620	FRICTION PAD	U006_S001	18
M1332702	COVER:PAPER TRAY	U006_S001	19
M1332703	PAPER TRAY:REAR	U006_S001	20
M1332705	SIDE FENCE:LEFT	U006_S001	21
M1332706	SIDE FENCE:RIGHT	U006_S001	22

Exclusive Parts

Number	Part Name	Group	ID
M1332707	END FENCE	U006_S001	23
M1332709	STOPPER:BASE	U006_S001	24
M1332710	SPRING:RELEASE:TRAY BOTTOM PLATE	U006_S001	25
M1332712	COMPRESSION SPRING:TRAY BOTTOM PLATE	U006_S001	26
M1332715	COVER:PREVENTFENCE:PAPER TRAY:A4	ACCESSORIES	2
M1332717	DECAL:SIDE FENCE:LEFT	U006_S001	27
M1332718	RUBBER BUSHING:COVER:PAPER TRAY	U006_S001	28
M1332732	FEELER:PAPER END SENSOR:PAPER FEED	U006	29
M1332734	ELECTROMAGNETIC CLUTCH:PAPER FEED	U006	30
M1332735	FILM:PAPER FEED	U006	31
M1332737	SHAFT:FEED	U006	32
M1332741	GUIDE PLATE:CONNECTING	U006	33
M1332742	TRANSPORT ROLLER:CONNECTING	U006	34
M1332743	FEELER:REGISTRATION SENSOR	U006	35
M1332750	GUIDE PLATE:MANUAL FEED:ASSY	U006	36
M1332752	SIDE FENCE:MANUAL FEED:LEFT	U006	37
M1332753	SIDE FENCE:MANUAL FEED:RIGHT	U006	38
M1332754	RACK:SIDE FENCE	U006	39
M1332755	FEELER:MANUAL FEED SENSOR	U006	40
M1332759	PAPER FEED ROLLER	U006	41
M1332762	GROUND PLATE:ROLLER:CONNECTING	U006	42
M1334204	PRESSURE ROLLER:DIA25	U009_S001	14
M1334208	PLAIN SHAFT BEARING:HOT ROLLER	U009_S001	15
M1334216	GUIDE PLATE:STRAIGHT	U009	16
M1334217	FUSING ENTRANCE GUIDE PLATE	U009_S001	17
M1334218	LEVER:PRESSURE	U009_S001	18
M1334219	FEELER:EXIT:SENSOR	U009	19

Number	Part Name	Group	ID
M1334220	COIL SPRING:FEELER:EXIT	U009	20
M1334221	STRIPPER PAWLS	U009_S001	21
M1334223	TENSION SPRING:PICKOFF PAWL	U009_S001	22
M1334225	FUSING ENTRANCE GUIDE PLATE:UPPER	U009_S001	23
M1334226	FLAT NUT:HEATER	U009_S001	24
M1334227	GROUND PLATE:FUSING UNIT	U009_S001	25
M1334228	COVER:FEELER	U009	26
M1334229	LEVER:PRESSURE:LEFT	U009_S001	27
M1334230	LEVER:PRESSURE:RIGHT	U009_S001	28
M1334231	TENSION SPRING:FUSING:PRESSURE	U009_S001	29
M1334240	EXIT ROLLER:STRAIGHT	U009	30
M1334241	HOUSING:THERMOSTAT	U009_S001	31
M1334243	EXIT ROLLER:FUSING	U009_S001	32
M1334244	ELECTRODE:LEFT	U009_S001	33
M1334245	SPRING:EXIT ROLLER:FUSING	U009_S001	34
M1334248	THERMISTOR	U009_S001	35
M1334254	DECAL:WARNING (HIGH TEMPERATURE):REAR PART	U009	36
M1334257	GEAR:DRIVE:STRAIGHT	U009_S001	37
M1334258	GEAR:CONNECTING:STRAIGHT	U009_S001	38
M1334261	HOOK:PRESSURE:LEFT	U009_S001	39
M1334262	HOOK:PRESSURE:RIGHT	U009_S001	40
M1334263	SHEET:HOOK:LEFT	U009_S001	41
M1334264	SHEET:HOOK:RIGHT	U009_S001	42
M1334265	SHEET:PRESSURE RELEASE:LEFT	U009_S001	43
M1334266	SHEET:PRESSURE RELEASE:RIGHT	U009_S001	44
M1334451	EXIT ROLLER:PAPER EXIT UNIT	U010	3
M1334453	PLAIN SHAFT BEARING:EXIT	U010	4
M1334457	EXIT ROLLER	U010	5
M1334459	EXIT ROLLER	U010	6
M1334465	PLATE:EXIT	U010	7
M1334466	GUIDE PLATE:EXIT:UPPER	U010	8
M1334467	GUIDE PLATE:EXIT:LOWER	U010	9
M1334485	EXTENSION TRAY:EXIT:P	U001	8

Exclusive Parts

Number	Part Name	Group	ID
M1334486	TRAY:EXIT:P	U001	9
M1335313	POWER SUPPLY UNIT:60.09W:EU:ASS'Y	U012	3
M1335402	POWER PACK:CHN:ASS'Y	U012	4
M1336201	SEPARATION UNIT:ASS'Y	U008	1
M1336250	TRANSFER ROLLER	U008	2
M1336254	GEAR:TRANSFER ROLLER	U008	3
M1336259	ROLLER:POSITIONING:TRANSFER ROLLER	U008	4
M1336262	BUSHING:TRANSFER ROLLER:RIGHT	U008	5
M1336263	BUSHING:TRANSFER ROLLER:LEFT	U008	6
M1336264	SPRING:TRANSFER ROLLER	U008	7
M1341097	SHAFT:TURN:SCANNER:LEFT	U013	18
M1341098	SHAFT:TURN:SCANNER:RIGHT	U013	19
M1341251	COVER:SIDE PLATE:LEFT:MF:USB:M148/M166	U001	10
M1341257	COVER:FAX:3IN1	U001	11
M1341261	COVER:SIDE PLATE:RIGHT:MF	U001	12
M1341314	COVER:UPPER:MF	U001	13
M1341342	COVER:REAR LOWER:NET	U001	14
M1341373	COIL SPRING:SCANNER:ADF:OPEN AND CLOSE	U001	15
M1341382	RAIL:SCANNER:OPEN AND CLOSE	U001	16
M1341386	RAIL:STOPPER:SCANNER:OPEN AND CLOSE	U001	17
M1341392	GUIDE PLATE:SCANNER:OPEN AND CLOSE	U001	18
M1351600	SCANNER:ASS'Y	U004	1
M1351615	ADF:ASS'Y	U003_S001	5
M1451099	(M148):HEAT INSULATING PLATE:FUSING:FRONT	U013	20
M1454212	HEATER:700W:230V	U009_S001	45
M1480051	OPERATION PANEL:ASS'Y:EU/AP:M148/M166	U002	1
M1481321	COVER:FRONT:M148-17/27:(for M148)	U001	19

Number	Part Name	Group	ID
M1485050	PCB:ECBCTLWW:ASS'Y:M148/M166	U012	5
M1494002	FUSING UNIT:EU/AP:ASS'Y	U009_S001	46
M1545699	POWER SUPPLY CORD:250V:10A:EU	ACCESSORIES	3
M1661321	COVER:FRONT:(for M168)	U001	20

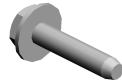
Standard Parts



03530030N
SCREW:M3X3



04503012N
TAPPING SCREW:3X12



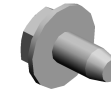
04503014N
TAPPING SCREW:M3X14



04503020N
TAPPING SCREW:M3X20



04513006N
TAPPING SCREW - 3X6



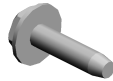
04513008N
TAPPING SCREW - M3X8



04523014N
BINDING SELF-TAPPING SCREW:M3X14



04583010N
HEXAGON HEAD TAPPING SCREW:3X10



04583012N
HEXAGON HEAD TAPPING SCREW:3X12



07200040E
RETAINING RING - M4



07200060E
RETAINING RING - M6



08046127
HEXAGONAL BOLT:DOUBLE SCREW:M3X8



08050089
RETAINING RING - M4



12042612
MICRO SWITCH:D3V-16506-3 C25

Design Change List

Number	Title	Set	Old Part		New Part		Index No.		Q'ty	Interchg		Reason	Cut-in S/N
			P/N	Name	P/N	Name	Group	ID		Indiv.	Set		
201706-01	1706 Modification	-	M1331121	GEAR:DRIVE:FUSING:NO.4	M0A11121	GEAR:DRIVE:FUSING:NO.4	U011	16	1	O/O			M14827:
201408-01	1408 Modification	-			M1451099	(M148):HEAT INSULATING PLATE:FUSING:FRONT	U013	20	1				M14827:
201406-01	1406 Modification	-	M1013651	CAP:USED TONER:(for M166)			U007	4	1				M14827:

