

**B&W Printers
(M012/M013-NA)
Parts Catalog**

Parts change information sample

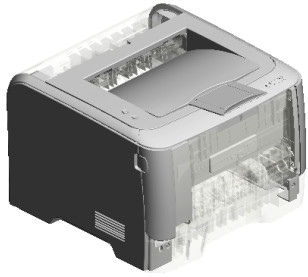
 **Add**

 **Update**

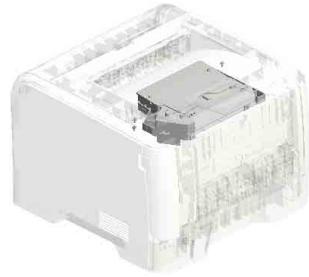
 **Delete**

Model	Product Code	PC Style
B/W Printer	M012/M013	3D
Paper Feed Unit TK 1080	M355	3D

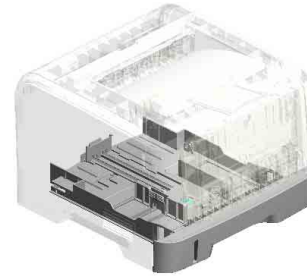
Unit All



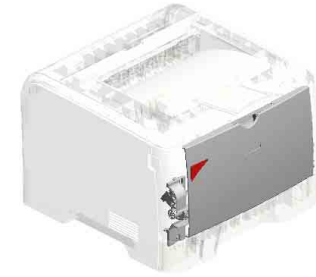
U001
EXTERIOR



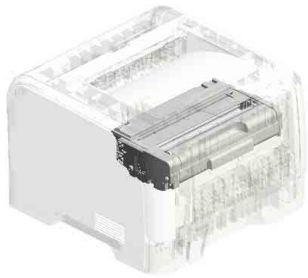
U002
LASER UNIT



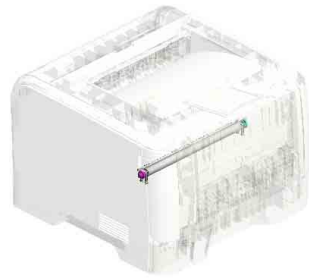
U003
PAPER TRAY



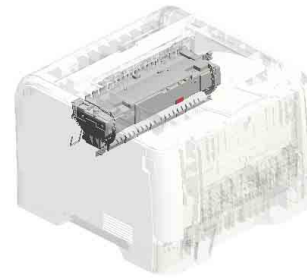
U004
MANUAL FEED



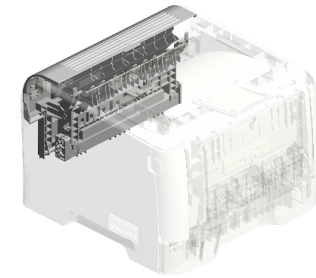
U005
PCU



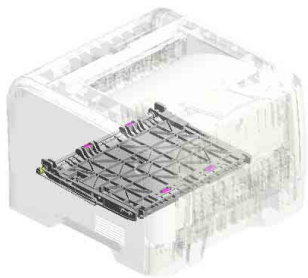
U006
TRANSFER/SEPARATION



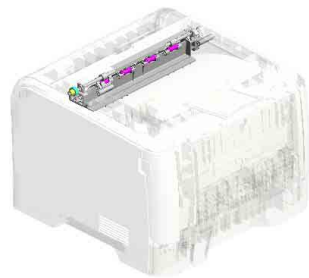
U007
FUSING



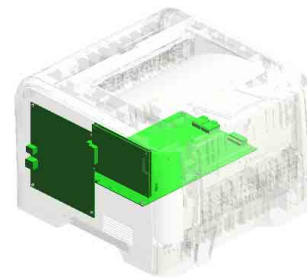
U008
DUPLEX(Vertical paper feed)



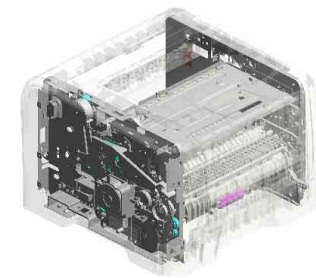
U009
DUPLEX(Horizontal paper feed)



U010
PAPER EXIT



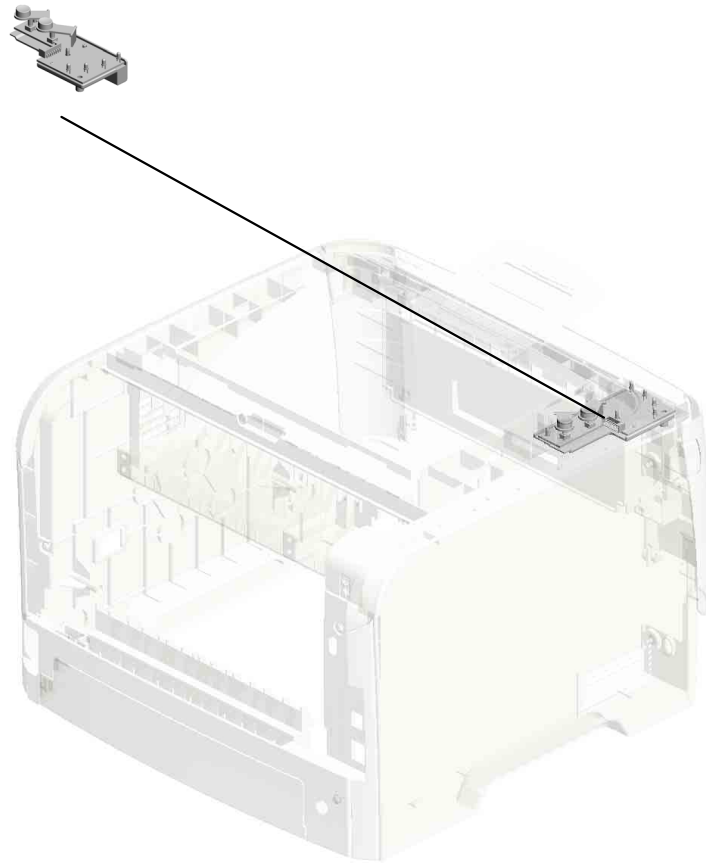
U011
ELECTRICAL



U012
MAIN FRAME/PAPER FEED

U001.EXTERIOR

U001_S001
M0120050
OPERATION PANEL:ASSY



U001	U002	U003	U004	U005	U006	U007	U008	U009	U010	U011	U012
------	------	------	------	------	------	------	------	------	------	------	------

U001 EXTERIOR

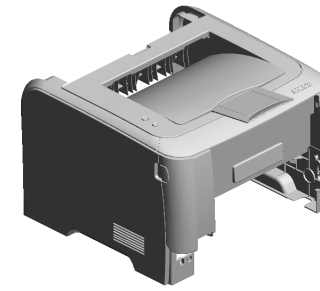
5.J0121508
PLATE:LOGO:RIC

8.M0121301
BUTTON:RIGHT

23.M0121325
201010-06 X/O

10.M0121311
COVER:UPPER FR
ONT:TRANSPARE
NT

22.M0121324
201010-02 X/O



15.M0121341
COVER:RIGHT UP
PER:TRANSPAREN
T

4.G0521518
SPRING - LOCK LE
VER

9.M0121302
COVER:UPPER:NA

20.M0122630
DECAL:PICK-UP P
APER JAM

16.M0121345
COVER:SIDE PLAT
E:RIGHT:110V

21.M0132630
DECAL:PICK-UP P
APER JAM:(for M01
3)

17.M0121350
GUIDE PLATE:(for
M012)

7.M0121300
COVER:FRONT

1.04503008N
(x2)
TAPPING SCREW -
M3X8

3.04513006N
(x8)
TAPPING SCREW -
3X6

19.M0121370
COVER:REAR LO
WER

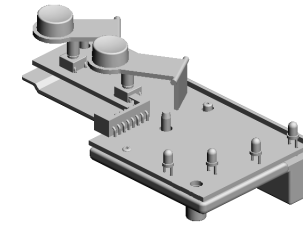
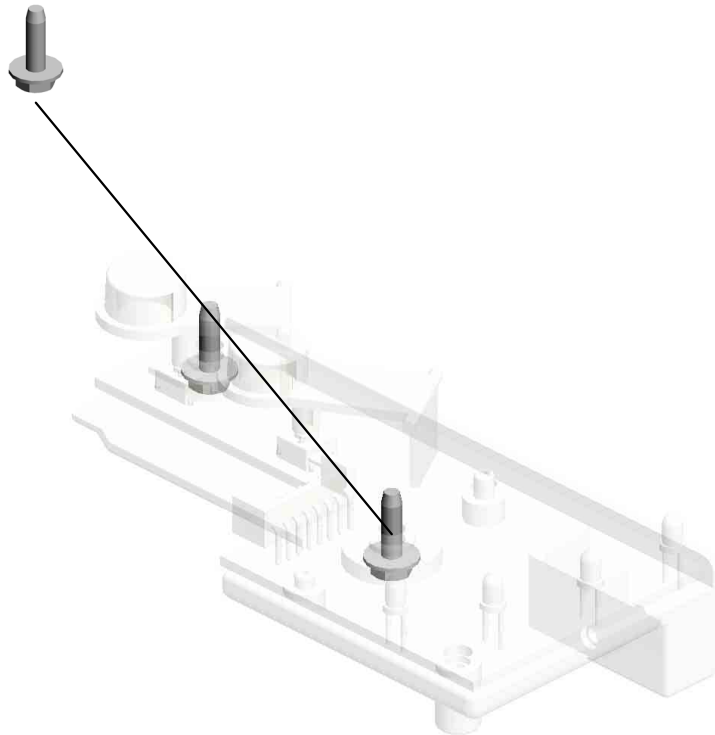
18.M0121360
COVER:REAR MID
DLE

14.M0121331
COVER:LEFT UPP
ER:TRANSPARENT

13.M0121330
COVER:LEFT

U001_S001
OPERATION PANEL:ASS'Y

2.04503010N
(x2)
TAPPING SCREW -
M3X10

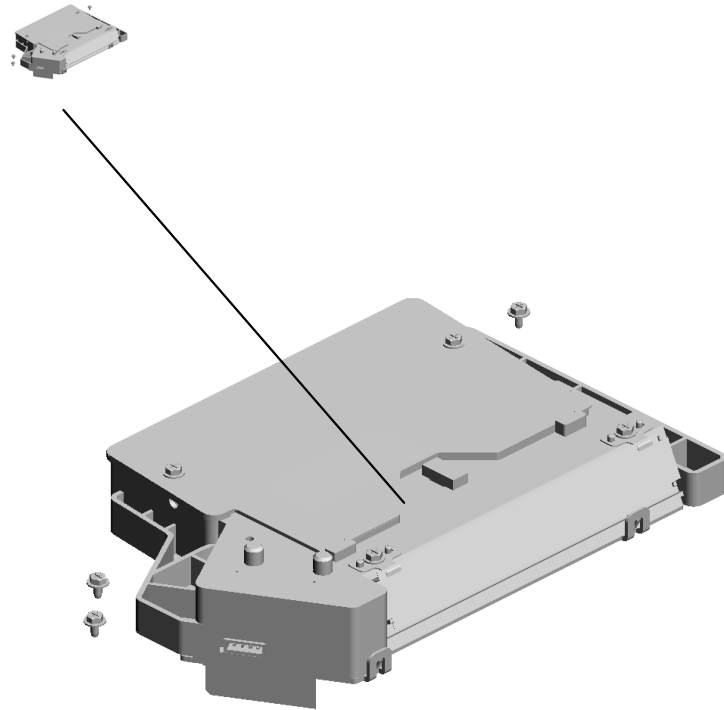


6.M0120050
OPERATION PANE
L:ASS'Y

U001	U002	U003	U004	U005	U006	U007	U008	U009	U010	U011	U012
------	------	------	------	------	------	------	------	------	------	------	------

U002.LASER UNIT

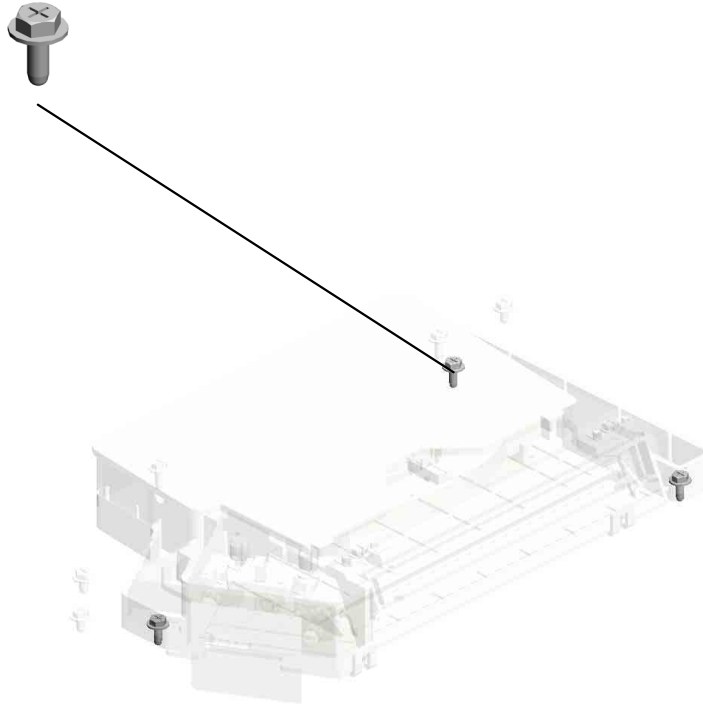
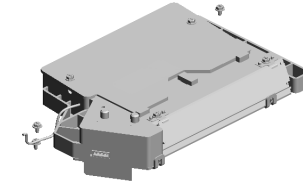
U002_S001
M0121851
IMAGING UNIT



U001	U002	U003	U004	U005	U006	U007	U008	U009	U010	U011	U012
------	-------------	------	------	------	------	------	------	------	------	------	------

U002
LASER UNIT

4.04543008Q
(x3)
TAPPING SCREW:
3X8

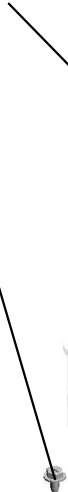


U001	U002	U003	U004	U005	U006	U007	U008	U009	U010	U011	U012
------	-------------	------	------	------	------	------	------	------	------	------	------

U002_S001 IMAGING UNIT

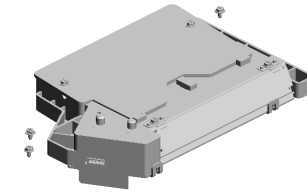
1.04503008N
(x4)
TAPPING SCREW -
M3X8

2.04513006N
TAPPING SCREW -
3X6



6.M0121957
POLYGON MOTOR
:DC 18W

3.04523010N
BINDING SELF-TA
PPING SCREW:3X
10

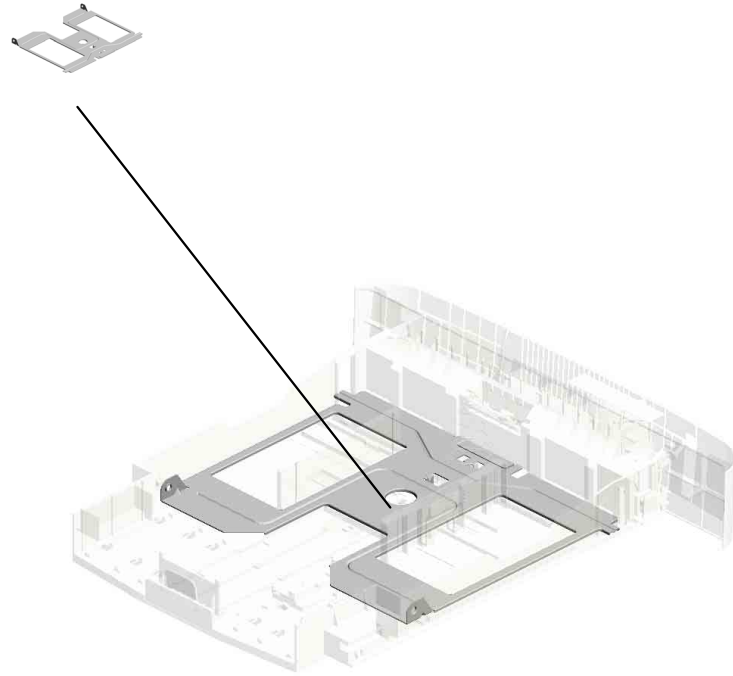


5.M0121851
IMAGING UNIT

U001	U002	U003	U004	U005	U006	U007	U008	U009	U010	U011	U012
------	-------------	------	------	------	------	------	------	------	------	------	------

U003.PAPER TRAY

U003_S001
M0122610
TRAY BOTTOM PLATE



U001	U002	U003	U004	U005	U006	U007	U008	U009	U010	U011	U012
------	------	------	------	------	------	------	------	------	------	------	------

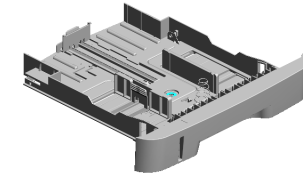
U003 PAPER TRAY

6.M0122603
STOPPER:BASE P
LATE

14.M0122615
SIDE FENCE:RIGH
T

11.M0122612
COMPRESSION SP
RING:TRAY BOTTO
M PLATE

8.M0122605
FRICTION PAD:AD
HESION



3.M0122504
PAPER TRAY

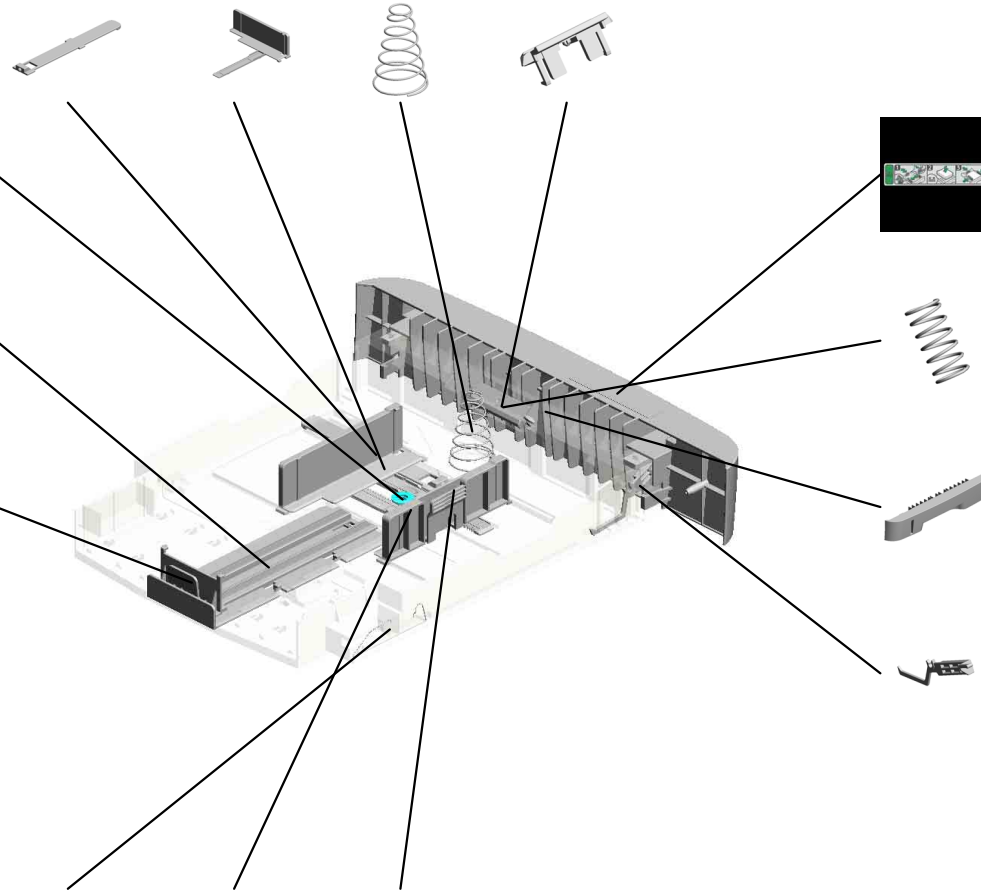
1.G8003133
SIDE FENCE GEAR



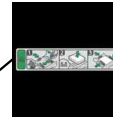
4.M0122589
PAPER TRAY:REA
R



9.M0122608
END FENCE



16.M0122618
DECAL:PAPER TR
AY:FRONT



12.M0122613
COMPRESSION SP
RING:SEPARATIO
N



17.M0122629
COVER:PAPER TR
AY



15.M0122616
LEVER:PAPER VO
LUME SENSOR



5.M0122590
COIL SPRING:EAR
TH



13.M0122614
SIDE FENCE:LEFT

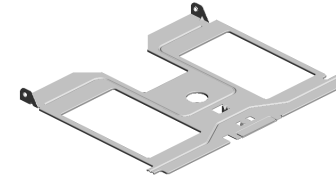


7.M0122604
SPRING:RELEASE:
TRAY BOTTOM PL
ATE

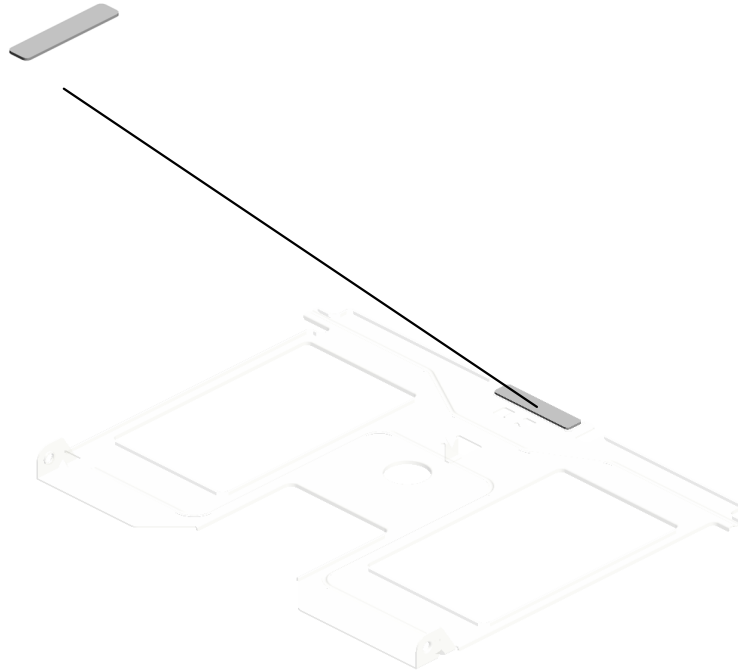


U003_S001
TRAY BOTTOM PLATE

2.GF013001
BOTTOM PLATE P
AD



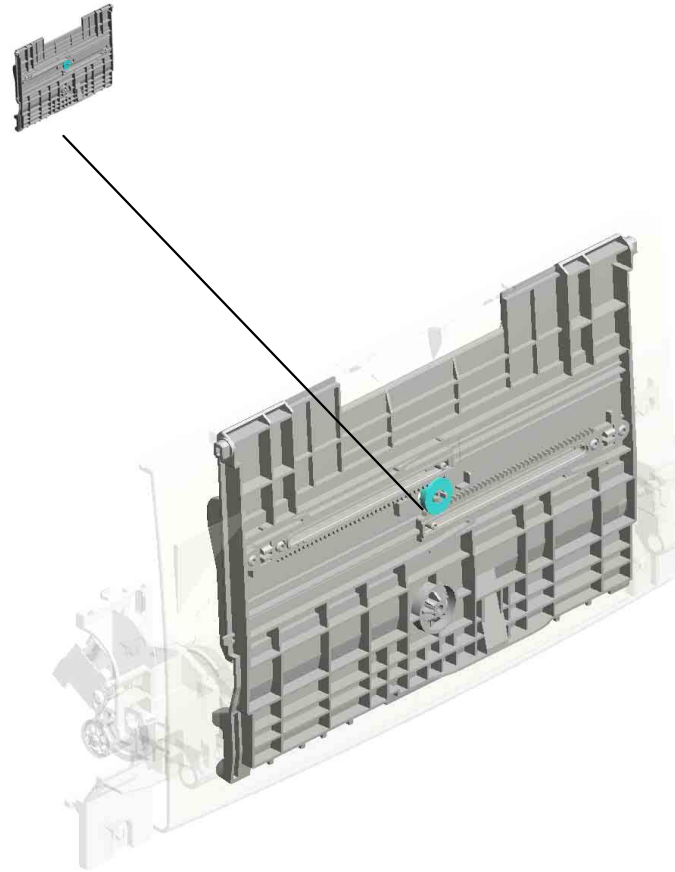
10.M0122610
TRAY BOTTOM PL
ATE



U001	U002	U003	U004	U005	U006	U007	U008	U009	U010	U011	U012
------	------	------	------	------	------	------	------	------	------	------	------

U004.MANUAL FEED

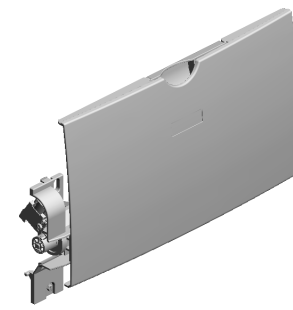
U004_S001
M0122869
MANUAL FEED TABLE:SUB-A
SS'Y



U001	U002	U003	U004	U005	U006	U007	U008	U009	U010	U011	U012
------	------	------	------	------	------	------	------	------	------	------	------

U004 MANUAL FEED

- 20.M0122860 PAPER FEED ROLLER:MANUAL FEED
- 12.M0122806 SHEET:GUIDE:MANUAL FEED SUB-UNIT
- 19.M0122859 GUIDE PLATE:UPPER:MANUAL FEED
- 22.M0122870 COVER:MANUAL FEED TABLE
- 26.M0122879 EXTENSION TRAY:MANUAL FEED



13.M0122815
DECAL:FEED PAPER AGAIN:PREVENTION:EXP



17.M0122831
DC SOLENOID:9.6W:24V



6.G1022717
COVER:DC SOLENOID



2.04523010N
BINDING SELF-TAPPING SCREW:3X10



16.M0122830
MECHANICAL SPRING CLUTCH:MANUAL FEED



11.M0122805
GUIDE PLATE:MANUAL FEED:LOWER



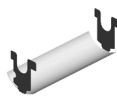
27.M0122880
COMPRESSION SPRING:SEPARATION



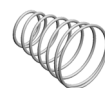
14.M0122816
FRICTION PAD:HOLDER:MANUAL FEED:ASSY



5.G0292767
BY-PASS FEED COVER



23.M0122874
COMPRESSION SPRING:MANUAL FEED



3.AA143520
SHOULDER SCREW - M3



10.GW020020
PHOTOINTERRUPTOR:LG248NL1



8.G1022789
STOPPER:PHOTOINTERRUPTOR



15.M0122824
FEELER:MANUAL FEED

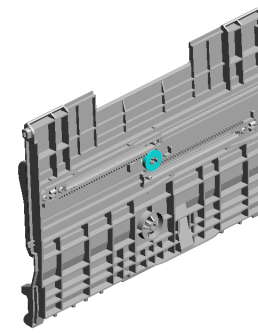


1.04513006N
(x3)
TAPPING SCREW - 3X6



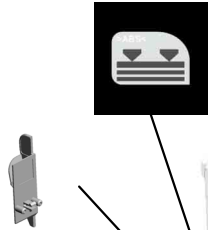
U004_S001
 MANUAL FEED TABLE:SUB-ASS'Y

18.M0122833 4.G0123050
 DECAL:SIDE FENC SIDE FENCE GEAR
 E:MANUAL FEED



21.M0122869
 MANUAL FEED TA
 BLE:SUB-ASS'Y

24.M0122875
 SIDE FENCE:MAN
 UAL FEED:RIGHT



7.G1022755
 (x2)
 RACK:SIDE FENCE
 :REAR



25.M0122877
 SIDE FENCE:MAN
 UAL FEED:LEFT

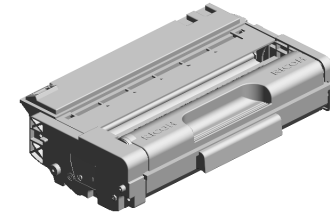


9.GF013001
 BOTTOM PLATE P
 AD



U001	U002	U003	U004	U005	U006	U007	U008	U009	U010	U011	U012
------	------	------	------	------	------	------	------	------	------	------	------

U005
PCU

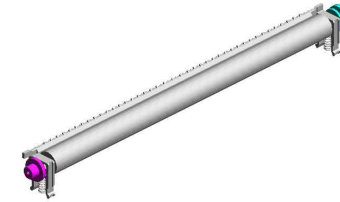


U001	U002	U003	U004	U005	U006	U007	U008	U009	U010	U011	U012
------	------	------	------	------	------	------	------	------	------	------	------

U006 TRANSFER/SEPARATION

7.M0126259
SEPARATION ELE
CTRODE PLATE

8.M0126260
COVER:ELECTRO
DE PLATE



6.M0126256
ROLLER:POSITION
ING:TRANSFER R
OLLER



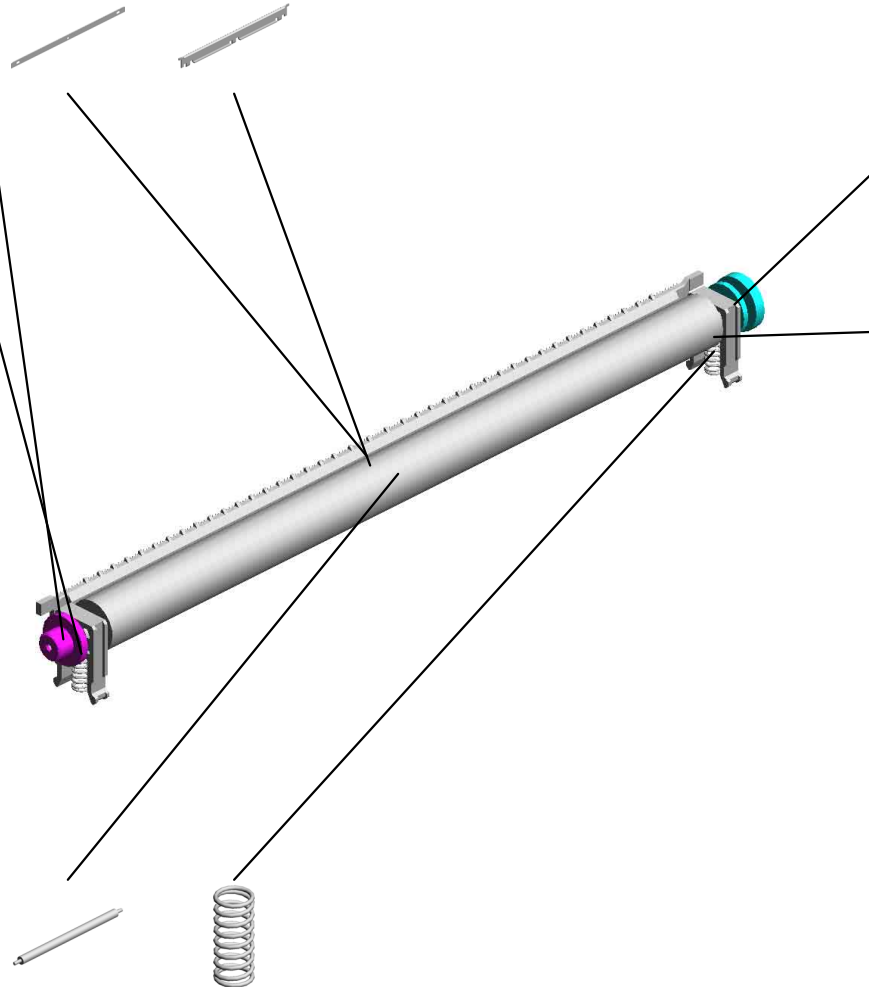
3.M0126253
BUSHING:TRANSF
ER ROLLER:LEFT



5.M0126255
GEAR:TRANSFER
ROLLER



2.M0126252
BUSHING:TRANSF
ER ROLLER:RIGHT

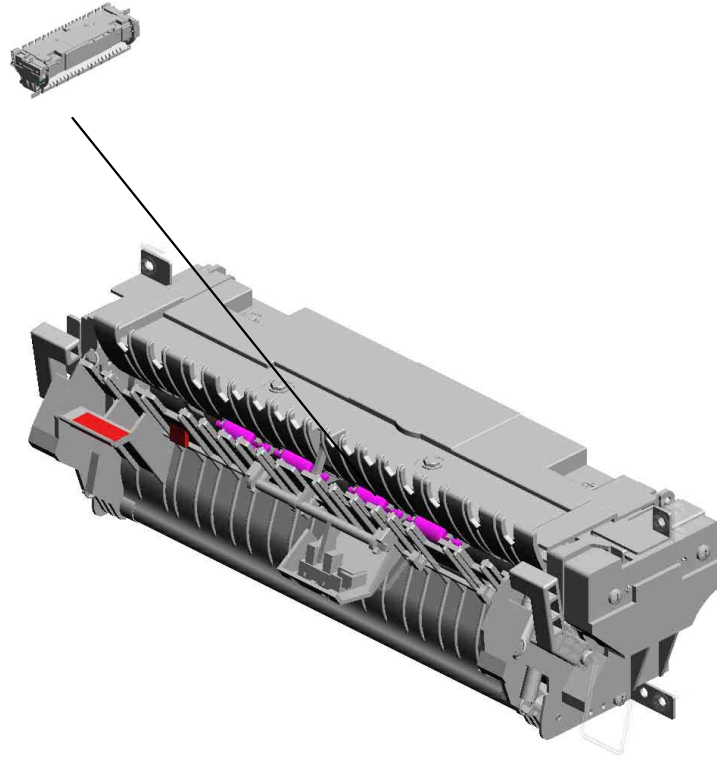


1.M0126250
TRANSFER ROLLE
R:ASS'Y

4.M0126254
(x2)
SPRING:TRANSFE
R ROLLER

U007.FUSING

U007_S001
M0124030
FUSING UNIT:NA



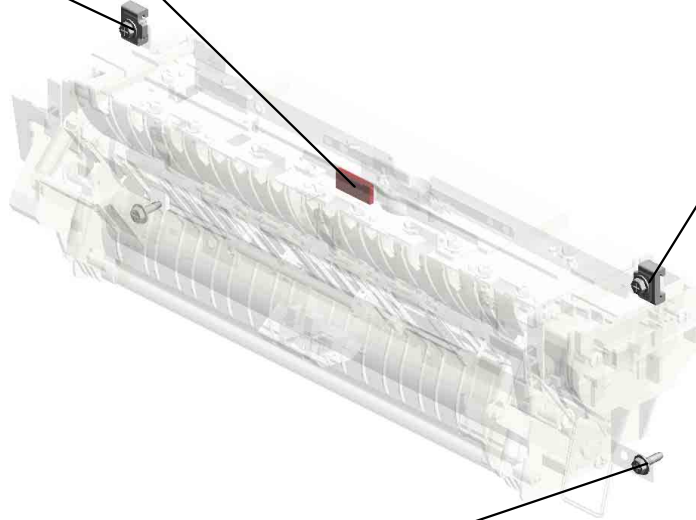
U001	U002	U003	U004	U005	U006	U007	U008	U009	U010	U011	U012
------	------	------	------	------	------	------	------	------	------	------	------

U007 FUSING

50.M0124699
DECAL:WARNING (HIGH TEMPERATURE):FRONT

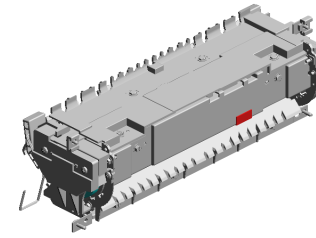


3.04513008N
(x2)
TAPPING SCREW - M3X8



39.M0124270
(x2)
THERMAL INSULATING BUSHING:FUSING UNIT

2.04503010N
(x2)
TAPPING SCREW - M3X10



U001	U002	U003	U004	U005	U006	U007	U008	U009	U010	U011	U012
------	------	------	------	------	------	------	------	------	------	------	------

U007_S001
FUSING UNIT:NA

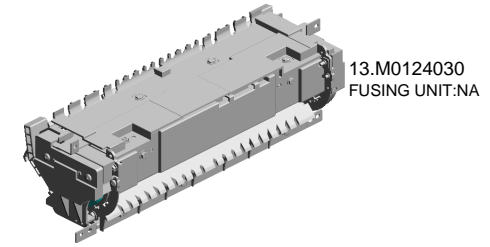
9.AA143520
(x7)
SHOULDER SCREW - M3

18.M0124123
HEATER:700W:120V

7.08046127
(x4)
HEXAGONAL BOLT :DOUBLE SCREW: M3X8

8.09543010N
SCREW:POLISHED ROUND/SPRING:M 3X10

10.AW110058
THERMOSTAT:177



13.M0124030
FUSING UNIT:NA

11.G1274328
DECAL - HIGH TEMPERATURE



4.04533006N
(x6)
TAPPING SCREW - M3X6



16.M0124109
SPRING:FEELER:EXIT



19.M0124135
FEELER:PAPER FEED SENSOR



12.GW020020
PHOTOINTERRUPTOR:LG248NL1



1.03603006N
(x11)
SCREW - M3X6



17.M0124120
(x3)
TENSION SPRING: PICKOFF PAWL



21.M0124202
(x2)
LEVER:PRESSURE



5.07200040E
(x2)
RETAINING RING - M4



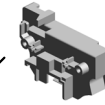
3.04513008N
(x4)
TAPPING SCREW - M3X8



6.08025318
(x4)
BINDING HEAD TAPPING SCREW:ES: 3X10



20.M0124186
COVER:LEFT UPPER:ASSY



22.M0124204
LEVER:LEFT:FRAME:FUSING



15.M0124055
(x2)
RADIAL BALL BEARING:35X47X7



14.M0124053
GEAR:HOT ROLLER



U007_S001
FUSING UNIT:NA

42.M0124281
(x2)
RETAINING RINGS
-C:HOT ROLLER

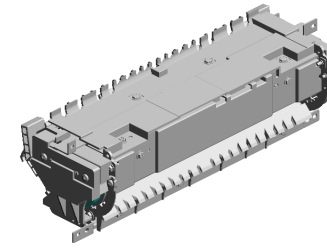
33.M0124223
THERMAL INSULA
TING BUSHING:HO
T ROLLER

23.M0124205
LEVER:RIGHT:FRA
ME:FUSING

37.M0124263
THERMISTOR:FUSI
NG

35.M0124234
HOUSING:THERM
OSTAT:ASSY

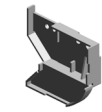
13.M0124030
FUSING UNIT:NA



26.M0124211
PLATE NUT:HEATE
R



38.M0124266
COVER:RIGHT LO
WER:FUSING



43.M0124284
LEVER:PRESSURE
:LEFT



28.M0124213
(x2)
BUSHING:PRESSU
RE ROLLER



29.M0124215
GUIDE PLATE:EXIT



36.M0124253
PRESSURE ROLLE
R:DIA30



41.M0124279
CLEANING ROLLE
R:ASSY



31.M0124217
FUSING ENTRANC
E GUIDE PLATE:LO
WER



34.M0124229
(x2)
TENSION SPRING:
FUSING:PRESSUR
E



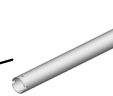
30.M0124216
(x2)
TENSION SPRING:
FUSING:GUIDE PL
ATE



27.M0124212
FUSING ENTRANC
E GUIDE PLATE:U
PPER



32.M0124220
HOT ROLLER



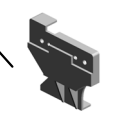
25.M0124208
(x3)
BRACKET:GATE P
AWL



24.M0124206
(x3)
STRIPPER PAWLS



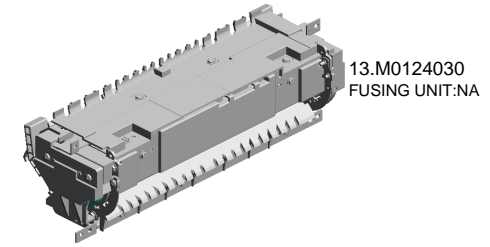
40.M0124276
COVER:LEFT:LOW
ER:FUSING



U007_S001
FUSING UNIT:NA

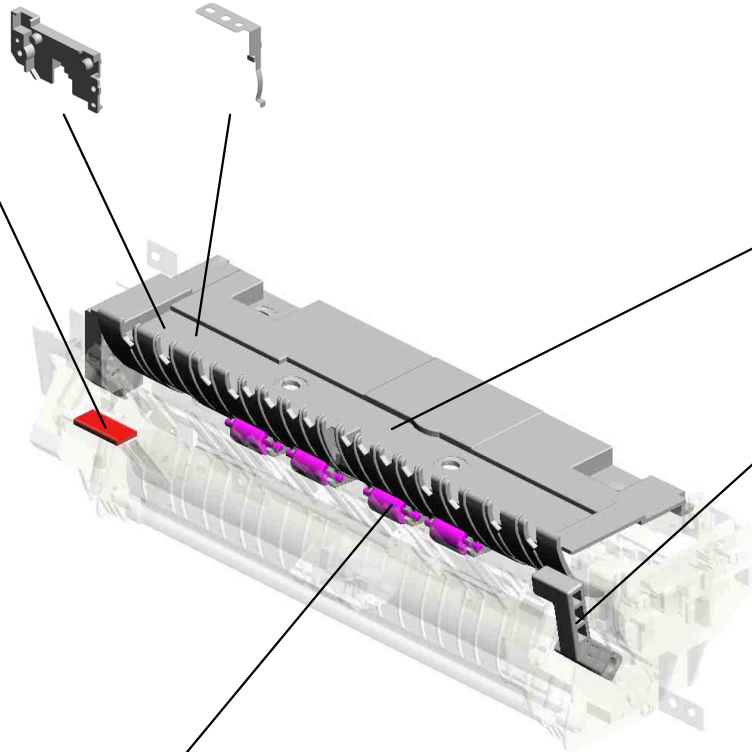
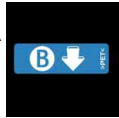
45.M0124287
COVER:RIGHT UP
PER:FUSING

48.M0124295
GROUND PLATE:A
SS'Y



13.M0124030
FUSING UNIT:NA

49.M0124603
DECAL:GUIDE PLATE:B



46.M0124292
FUSING COVER:UPPER



44.M0124285
LEVER:PRESSURE:RIGHT



47.M0124293
(x4)
EXIT ROLLER:EXIT:FUSING



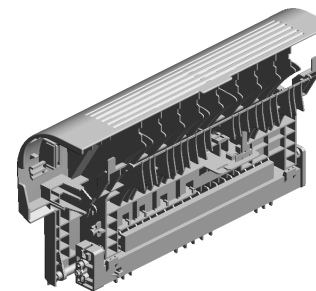
U001	U002	U003	U004	U005	U006	U007	U008	U009	U010	U011	U012
------	------	------	------	------	------	------	------	------	------	------	------

U008 DUPLEX(Vertical paper feed)

10.M0134684
SHEET:DUPLEX:(for M013)

6.M0134664
GUIDE PLATE:VERTICAL TRANSPORT:UPPER:(for M013)

4.M0134662
COVER:SWITCHBACK:OPEN AND CLOSE



11.M0134794
DECAL:GUIDE PLATE:VERTICAL TRANSPORT:UPPER



12.M0134797
FEELER:SENSOR:VERTICAL TRANSPORT:(for M013)



3.GW020020
PHOTOINTERRUPTOR:LG248NL1



1.04503010N
(x2)
TAPPING SCREW - M3X10

5.M0134663
GUIDE PLATE:VERTICAL TRANSPORT:LOWER:(for M013)

8.M0134667
SPRING:COVER:SWITCHBACK:OPEN AND CLOSE

9.M0134669
(x2)
MAGNET CATCHASSY



2.G0961019
(x2)
TRANSPORT GUIDE PIN



7.M0134666
SHAFT:COVER:SWITCHBACK:OPEN AND CLOSE



13.M0134661
STOPPER:TRANSPORT SUB-UNIT:DUPLICATION
201106-04

U009 DUPLEX(Horizontal paper feed)



- 10.M0134672 SHEET:HORIZONTAL TRANSPORT:RI
GHT:(for M013)
- 4.GW020020 PHOTOINTERRUPTOR:LG248NL1
- 16.M0134761 TRANSPORT ROLLER:DUPL
EX:MIDDLE:(for M013)
- 7.M0134624 (x2) SPRING:EXIT:NO.2
:(for M013)
- 9.M0134671 SHEET:HORIZONTAL TRANSPORT:LE
FT:(for M013)

3.G1272575
(x4)
BUSHING - 6X10X6



12.M0134688
GROUND PLATE:HORIZONTAL TRANSPORT:REAR:(for M013)



18.M0134765
(x3)
PULLEY:TRANSPORT:(for M013)



2.08050089
(x6)
RETAINING RING - M4



1.04503008N
(x4)
TAPPING SCREW - M3X8



21.M0134778
FEELER:SENSOR:HORIZONTAL TRANSPORT:(for M013)



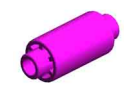
13.M0134691
LEVER:OPEN AND CLOSE:LOWER:(for M013)



11.M0134687
GROUND PLATE:HORIZONTAL TRANSPORT:FRONT:(for M013)



5.M0134622
(x4)
EXIT ROLLER:DUPL
LEX:(for M013)



6.M0134623
(x2)
SPRING:EXIT:(for M013)



8.M0134668
SHEET:GUIDE:HORIZONTAL TRANSPORT:LOWER:(for M013)



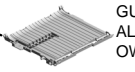
22.M0134795
(x4)
PIN:GUIDE:UPPER:(for M013)



14.M0134694
GUIDE:HORIZONTAL TRANSPORT:UPPER:(for M013)



15.M0134695
GUIDE:HORIZONTAL TRANSPORT:LOWER:(for M013)

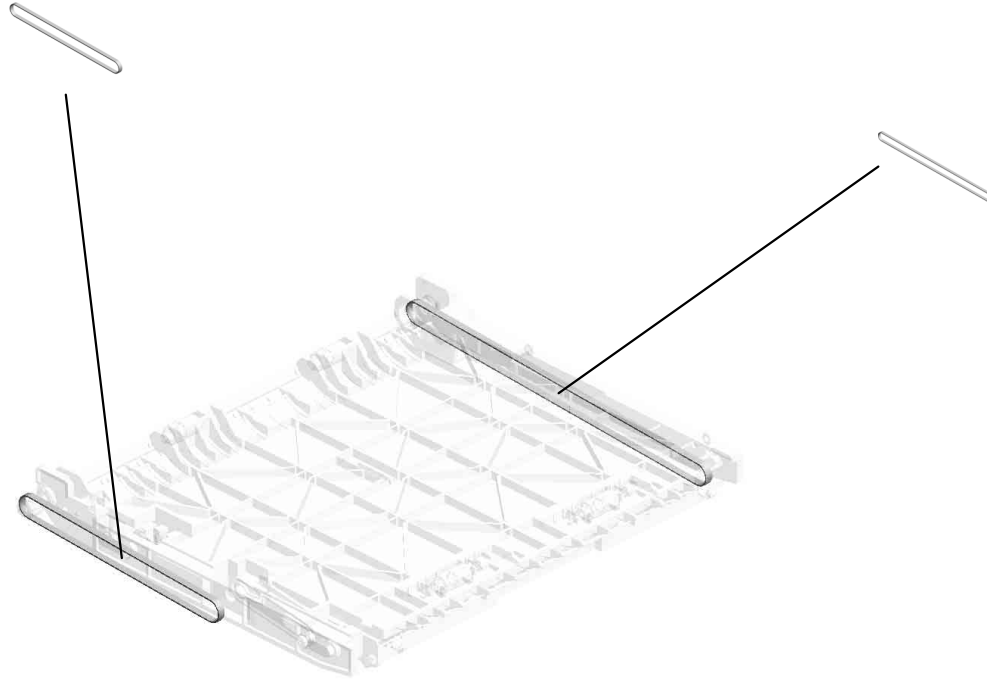


17.M0134762
TRANSPORT ROLLER:DUPL
EX:EXIT:(for M013)



U009
DUPLEX(Horizontal paper feed)

24.M0134772
201010-05 O/O



23.M0134771
201010-04 O/O

U001	U002	U003	U004	U005	U006	U007	U008	U009	U010	U011	U012
------	------	------	------	------	------	------	------	------	------	------	------

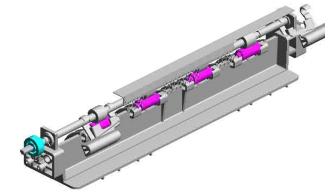
U010 PAPER EXIT

4.M0124453
(x4)
EXIT ROLLER

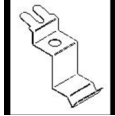
5.M0124454
(x4)
SPRING:EXIT ROL
LER:EXIT

7.M0124458
DISCHARGE BRUS
H:EXIT:ASSY DRA
WING

9.M0124470
EXIT ROLLER:ASS'
Y:(for M012)



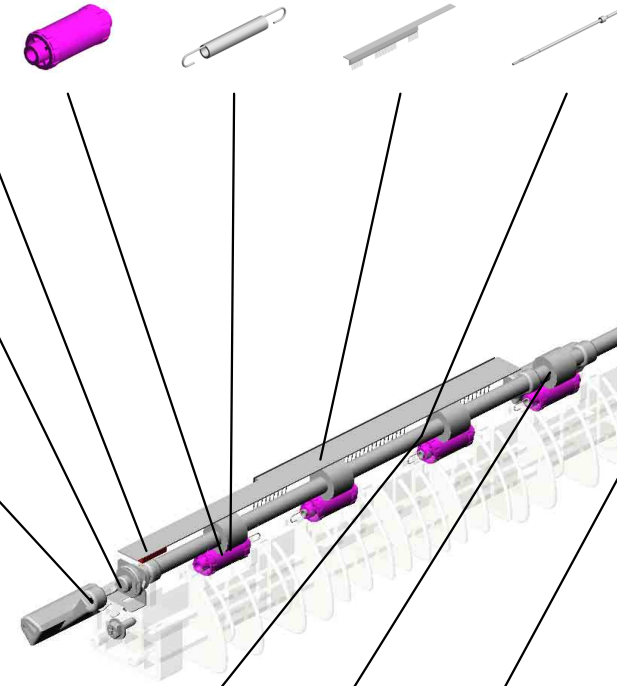
6.M0124457
GROUND PLATE:E
XIT:DISCHARGE B
RUSH



12.M0124499
GROUND PLATE:E
XIT ROLLER



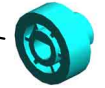
11.M0124482
PLATE:RIGHT:EXIT



8.M0124465
PULLEY:EXIT:(for M
012)



13.M0134455
GEAR:DRIVE:EXIT
ROLLER:(for M013)



2.07200040E
(x2)
RETAINING RING -
M4



3.G1272575
(x2)
BUSHING - 6X10X6



14.M0134470
EXIT ROLLER:DUP
LEX:(for M013)



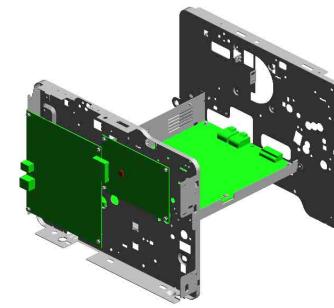
10.M0124481
PLATE:LEFT:EXIT



1.04503008N
(x2)
TAPPING SCREW -
M3X8



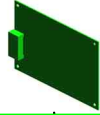
U011 ELECTRICAL



6.14077435
201010-07 O/O



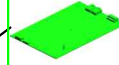
8.M0125452
[C]
PCB:ECB:(for M012
)
201106-01 O/O



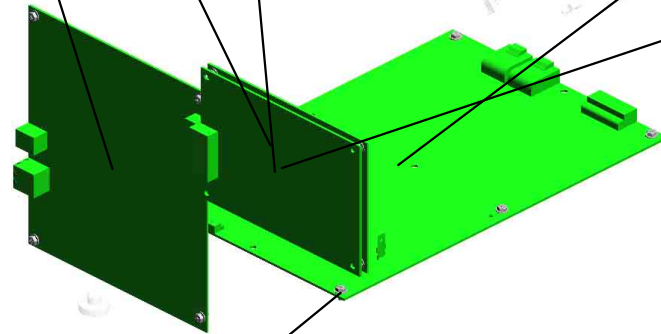
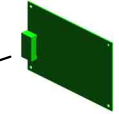
4.M0125103
[B]
PCB:CTL-P:ASS'Y
201106-03 X/O



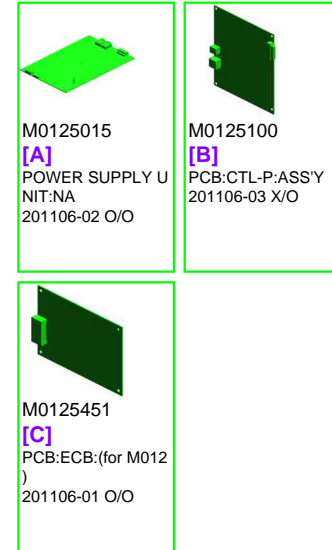
3.M0125020
[A]
POWER SUPPLY U
NIT:NA
201106-02 O/O



7.M0135452
PCB:ECB:(for M013
)
201103-01 O/O

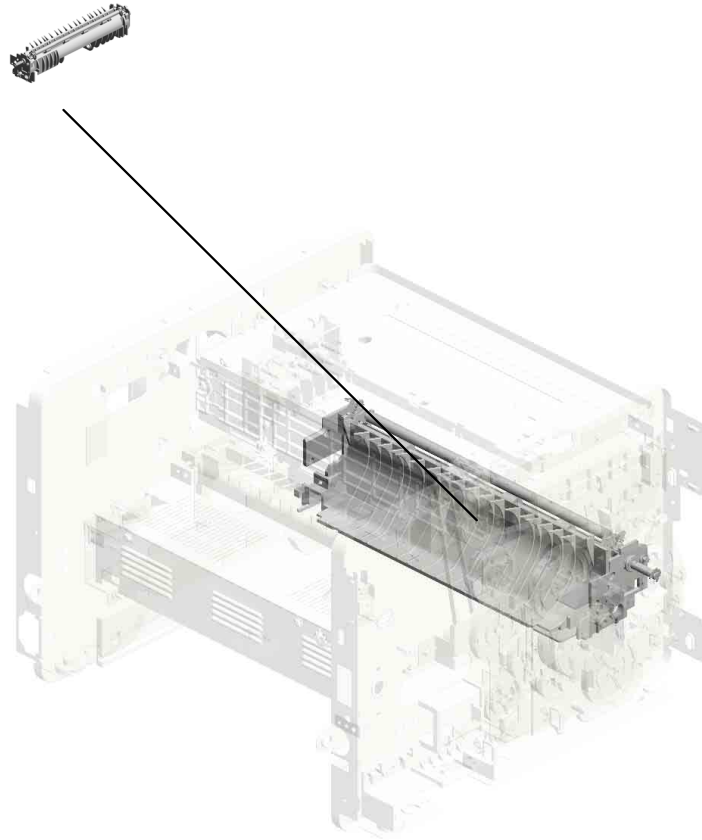


1.04513006N
(x12)
TAPPING SCREW -
3X6



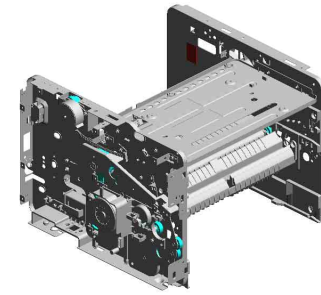
U012.MAIN FRAME/PAPER FEED

U012_S001
M0122516
JOINT UNIT:ASSY



U001	U002	U003	U004	U005	U006	U007	U008	U009	U010	U011	U012
------	------	------	------	------	------	------	------	------	------	------	------

U012 MAIN FRAME/PAPER FEED



- 4.04513030N (x2) TAPPING SCREW: 3X30
- 1.04503008N (x12) TAPPING SCREW - M3X8
- 6.04543006Q (x9) TAPPING SCREW - M3X6
- 14.11050534 (x2) CLAMP
- 20.G0201160 (x2) SNAP RING

18.AX640199
FAN:MM80:25MM:D
C 2.16W



11.09504006N
SCREW - M4X6



15.12042757
SWITCH:SDDJF319
00



2.04513006N
(x31)
TAPPING SCREW -
3X6



19.B2681085
(x2)
SWITCH:LF-105-11



7.04543014Q
TAPPING SCREW:
3X14



5.04533006N
(x2)
TAPPING SCREW -
M3X6



8.07200040E
RETAINING RING -
M4



10.08050089
(x13)
RETAINING RING -
M4



9.08050088
RETAINING RING -
M6



3.04513014N
TAPPING SCREW:
3X14



17.AX050265
STEPPER MOTOR:
DC24V 7.2W:(for M
013)



16.A1532117
ROLLER TERMINA
L



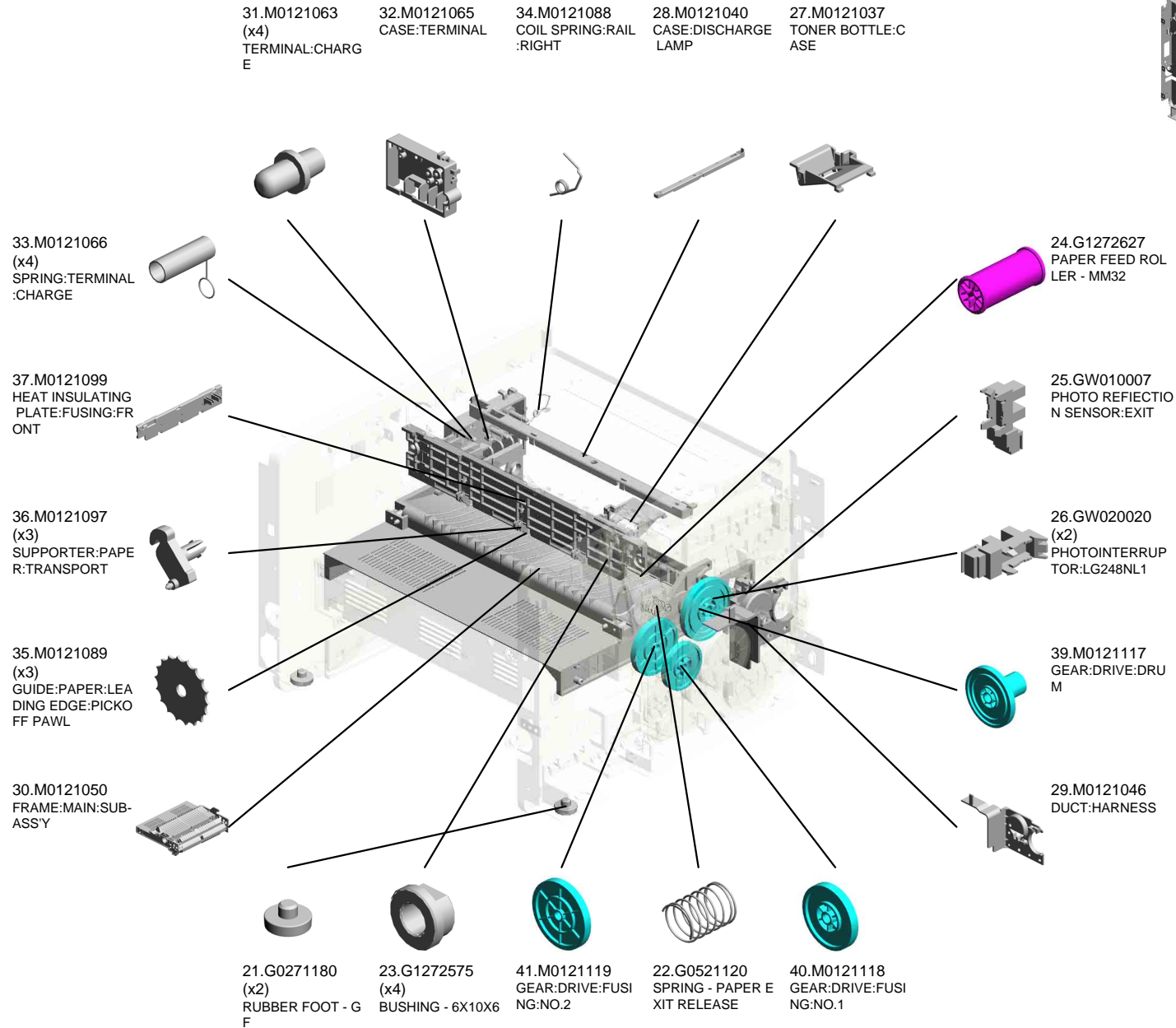
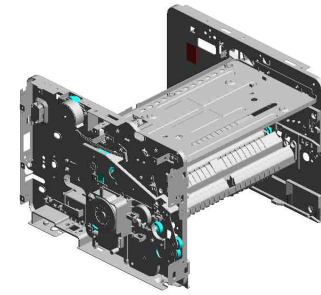
13.11050511
(x12)
HARNESS CLAMP -
LWS-0306ZC



12.11050508
(x4)
HARNESS CLAMP -
LWS-0711

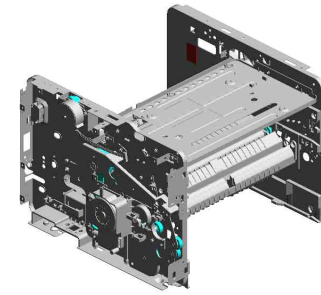


U012 MAIN FRAME/PAPER FEED



U012 MAIN FRAME/PAPER FEED

52.M0122056 DISCHARGE LAMP
 64.M0122719 REGISTRATION ROLLER:DRIVEN
 63.M0122717 REGISTRATION ROLLER:DRIVE
 62.M0122715 GUIDE PLATE:TRANSPORT:UPPER
 55.M0122671 FEELER:PAPER END SENSOR



65.M0122722 (x2)
 SPRING:ROLLER:REGISTRATION



48.M0121128 GEAR:DRIVE:FUSION:NO.4



57.M0122673 RAIL:PAPER TRAY:RIGHT



42.M0121120 GEAR:DRIVE:FUSION:NO.3



47.M0121127 GEAR:DRIVE:EXIT:
 (for M012)



56.M0122672 RAIL:PAPER TRAY:LEFT



43.M0121121 GEAR:DRIVE:PAPER FEED:NO.1



49.M0121150 BRUSHLESS MOTOR:DC 36.7W



44.M0121122 GEAR:DRIVE:PAPER FEED:NO.2



46.M0121124 GEAR:DRIVE:PAPER FEED:NO.4



61.M0122711 BUSHING:REGISTRATION:DRIVEN:LEFT



54.M0122668 SHAFT:PAPER FEED:ASSY



51.M0121172 GEAR:DRIVE:MANUAL FEED SECTION:NO.2



45.M0121123 GEAR:DRIVE:PAPER FEED:NO.3

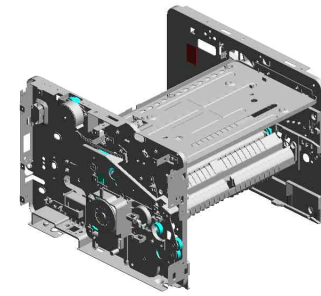


50.M0121171 GEAR:DRIVE:MANUAL FEED SECTION:NO.1



U012 MAIN FRAME/PAPER FEED

- 68.M0122730 BUSHING:REGISTRATION:DRIVEN:RIGHT
- 85.M0134685 BUTTON:OPEN AND CLOSE:LOWER:(for M013)
- 71.M0122743 DECAL:GUIDE PLATE:TRANSPORT:UPPER
- 81.M0134610 GEAR:DRIVE:DUPL EX:(for M013)
- 72.M0122744 (x2) GUIDE:REGISTRATION



78.M0124602
DECAL:LEVER:ENVELOPE:RIGHT



76.M0124120
(x3)
TENSION SPRING:
PICKOFF PAWL



87.M0134697
LEVER:OPEN AND
CLOSE:RIGHT:(for
M013)



88.M0134698
BRACKET:OPEN AND
CLOSE:LOWER:
(for M013)



77.M0124601
DECAL:LEVER:ENVELOPE:LEFT



80.M0131178
BRACKET:DRIVE:DUPL
EX:(for M013)



79.M0131136
GEAR:DRIVE:DUPL
EX SECTION:(for M013)



86.M0134696
LEVER:OPEN AND
CLOSE:LEFT:(for M013)



84.M0134674
LEVER:OPEN AND
CLOSE:NO.2:(for M013)



82.M0134635
SPRING:OPEN AND
CLOSE:RIGHT:(for M013)



66.M0122723
FEELER:REGISTRATION:SENSOR



70.M0122742
GROUND PLATE:DRIVEN:REGISTRATION ROLLER



69.M0122741
GROUND PLATE:DRIVEN:REGISTRATION ROLLER



74.M0122751
(x3)
MAGNETIC CLUTCH:TRANSPORT



83.M0134673
LEVER:OPEN AND
CLOSE:NO.1:(for M013)



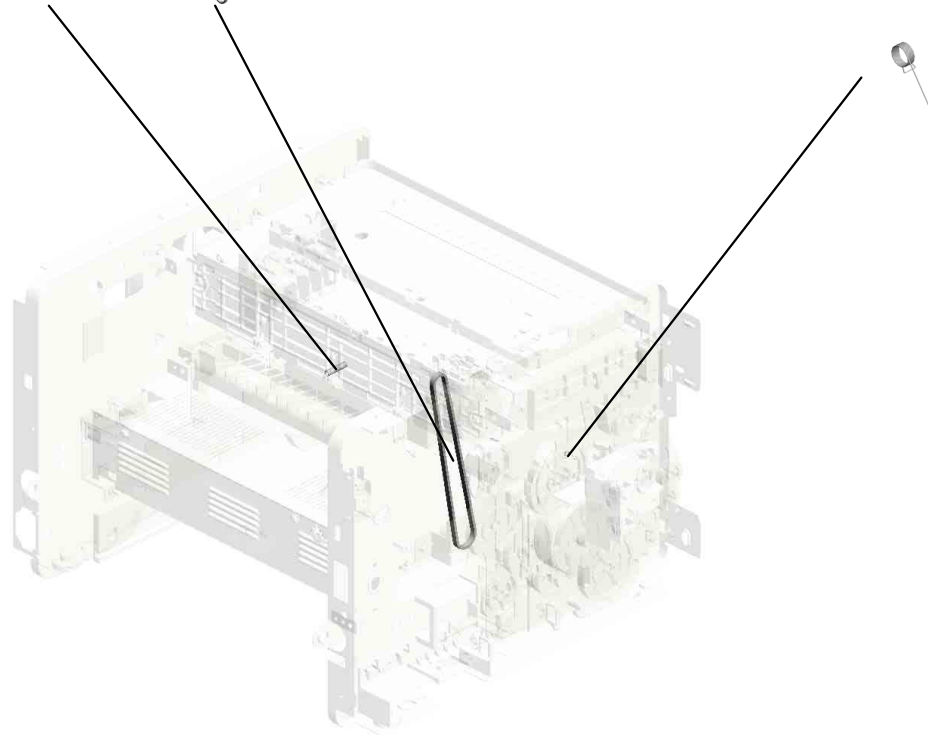
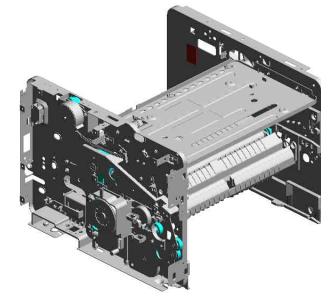
U012 MAIN FRAME/PAPER FEED

89.M0134785
SPRING:COVER:S
WITCHBACK:OPEN
AND CLOSE:(for M
013)

90.M0121115
201010-03 O/O



91.M0122725
201010-01 X/O



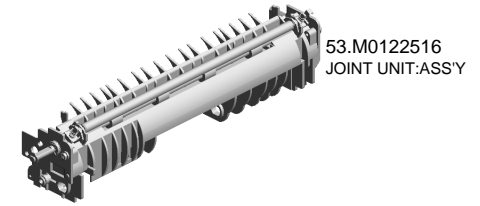
U001	U002	U003	U004	U005	U006	U007	U008	U009	U010	U011	U012
------	------	------	------	------	------	------	------	------	------	------	------

U012_S001
JOINT UNIT:ASS'Y

73.M0122745
GROUND PLATE:D
RIVEN

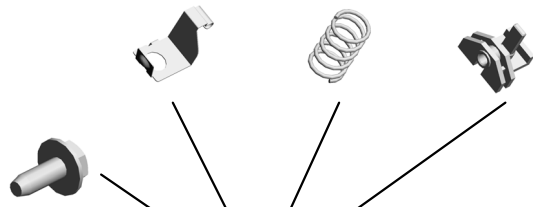
60.M0122705
(x2)
SPRING:ROLLER

75.M0122753
(x2)
BUSHING:ROLLER:
DRIVEN



53.M0122516
JOINT UNIT:ASS'Y

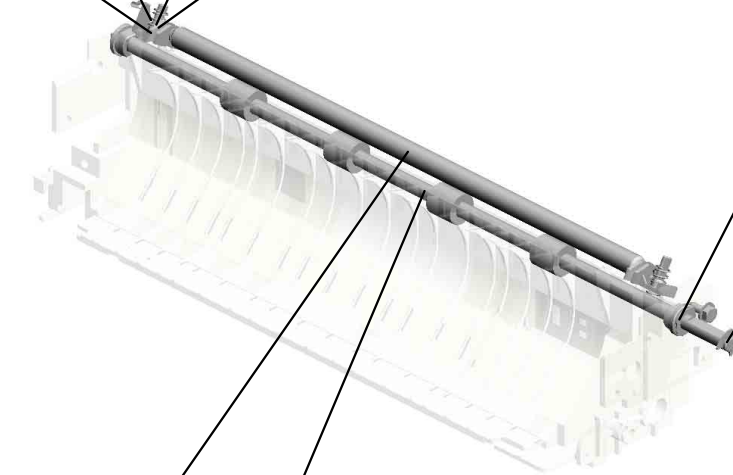
1.04503008N
(x2)
TAPPING SCREW -
M3X8



23.G1272575
(x2)
BUSHING - 6X10X6



10.08050089
(x3)
RETAINING RING -
M4



59.M0122702
ROLLER:INTERFA
CE:DRIVEN

58.M0122701
ROLLER:INTERFA
CE:DRIVE



ACCESSORIES



1.M0120402
MODEL NAME PLATE:M012:(for M012
)



1.M0130402
MODEL NAME PLATE:M013:(for M013
)



2.M0125697
POWER SUPPLY CORD:125V:13A:NA



3.M0127418
MODEL NAME PLATE:NA:GER:(for M
012)



4.M0137418
MODEL NAME PLATE:NA:GER:(for M
013)

Exclusive Parts

Number	Part Name	Group	ID
A1532117	ROLLER TERMINAL	U012	16
AA143520	SHOULDER SCREW - M3	U004	3
		U007_S001	9
AW110058	THERMOSTAT:177	U007_S001	10
AX050265	STEPPER MOTOR:DC24V 7.2W:(for M013)	U012	17
AX640199	FAN:MM80:25MM:DC 2.16W	U012	18
B2681085	SWITCH:LF-105-11	U012	19
G0123050	SIDE FENCE GEAR	U004_S001	4
G0201160	SNAP RING	U012	20
G0271180	RUBBER FOOT - GF	U012	21
G0292767	BY-PASS FEED COVER	U004	5
G0521120	SPRING - PAPER EXIT RELEASE	U012	22
G0521518	SPRING - LOCK LEVER	U001	4
G0961019	TRANSPORT GUIDE PIN	U008	2
G1022717	COVER:DC SOLENOID	U004	6
G1022755	RACK:SIDE FENCE:REAR	U004_S001	7
G1022789	STOPPER:PHOTOINTERRUPTOR	U004	8
G1272575	BUSHING - 6X10X6	U009	3
		U010	3
		U012	23
		U012_S001	23
G1272627	PAPER FEED ROLLER - MM32	U012	24
G1274328	DECAL - HIGH TEMPERATURE	U007_S001	11
G8003133	SIDE FENCE GEAR	U003	1
GF013001	BOTTOM PLATE PAD	U003_S001	2
		U004_S001	9
GW010007	PHOTO REFLECTION SENSOR:EXIT	U012	25
GW020020	PHOTOINTERRUPTOR:LG248NL1	U004	10
		U007_S001	12
		U008	3
		U009	4
		U012	26
J0121508	PLATE:LOGO:RIC	U001	5
M0120050	OPERATION PANEL:ASS'Y	U001_S001	6
M0120402	MODEL NAME PLATE:M012:(for M012)	ACCESSORIES	1

Number	Part Name	Group	ID
M0121037	TONER BOTTLE:CASE	U012	27
M0121040	CASE:DISCHARGE LAMP	U012	28
M0121046	DUCT:HARNESS	U012	29
M0121050	FRAME:MAIN:SUB-ASS'Y	U012	30
M0121063	TERMINAL:CHARGE	U012	31
M0121065	CASE:TERMINAL	U012	32
M0121066	SPRING:TERMINAL:CHARGE	U012	33
M0121088	COIL SPRING:RAIL:RIGHT	U012	34
M0121089	GUIDE:PAPER:LEADING EDGE:PICKOFF PAWL	U012	35
M0121097	SUPPORTER:PAPER:TRANSPORT	U012	36
M0121099	HEAT INSULATING PLATE:FUSING:FRONT	U012	37
		U012	90
M0121117	GEAR:DRIVE:DRUM	U012	39
M0121118	GEAR:DRIVE:FUSING:NO.1	U012	40
M0121119	GEAR:DRIVE:FUSING:NO.2	U012	41
M0121120	GEAR:DRIVE:FUSING:NO.3	U012	42
M0121121	GEAR:DRIVE:PAPER FEED:NO.1	U012	43
M0121122	GEAR:DRIVE:PAPER FEED:NO.2	U012	44
M0121123	GEAR:DRIVE:PAPER FEED:NO.3	U012	45
M0121124	GEAR:DRIVE:PAPER FEED:NO.4	U012	46
M0121127	GEAR:DRIVE:EXIT:(for M012)	U012	47
M0121128	GEAR:DRIVE:FUSING:NO.4	U012	48
M0121150	BRUSHLESS MOTOR:DC 36.7W	U012	49
M0121171	GEAR:DRIVE:MANUAL FEED SECTION:NO.1	U012	50
		U012	51
M0121172	GEAR:DRIVE:MANUAL FEED SECTION:NO.2	U012	51
M0121300	COVER:FRONT	U001	7
M0121301	BUTTON:RIGHT	U001	8
M0121302	COVER:UPPER:NA	U001	9
M0121311	COVER:UPPER FRONT:TRANSPARENT	U001	10
		U001	22
M0121324		U001	22
M0121325		U001	23
M0121330	COVER:LEFT	U001	13
M0121331	COVER:LEFT UPPER:TRANSPARENT	U001	14

Exclusive Parts

Number	Part Name	Group	ID
	NT		
M0121341	COVER:RIGHT UPPER:TRANSPARENT	U001	15
M0121345	COVER:SIDE PLATE:RIGHT:110V	U001	16
M0121350	GUIDE PLATE:(for M012)	U001	17
M0121360	COVER:REAR MIDDLE	U001	18
M0121370	COVER:REAR LOWER	U001	19
M0121851	IMAGING UNIT	U002_S001	5
M0121957	POLYGON MOTOR:DC 18W	U002_S001	6
M0122056	DISCHARGE LAMP	U012	52
M0122504	PAPER TRAY	U003	3
M0122516	JOINT UNIT:ASS'Y	U012_S001	53
M0122589	PAPER TRAY:REAR	U003	4
M0122590	COIL SPRING:EARTH	U003	5
M0122603	STOPPER:BASE PLATE	U003	6
M0122604	SPRING:RELEASE:TRAY BOTTOM PLATE	U003	7
M0122605	FRICTION PAD:ADHESION	U003	8
M0122608	END FENCE	U003	9
M0122610	TRAY BOTTOM PLATE	U003_S001	10
M0122612	COMPRESSION SPRING:TRAY BOTTOM PLATE	U003	11
M0122613	COMPRESSION SPRING:SEPARATION	U003	12
M0122614	SIDE FENCE:LEFT	U003	13
M0122615	SIDE FENCE:RIGHT	U003	14
M0122616	LEVER:PAPER VOLUME SENSOR	U003	15
M0122618	DECAL:PAPER TRAY:FRONT	U003	16
M0122629	COVER:PAPER TRAY	U003	17
M0122630	DECAL:PICK-UP PAPER JAM	U001	20
M0122668	SHAFT:PAPER FEED:ASS'Y	U012	54
M0122671	FEELER:PAPER END SENSOR	U012	55
M0122672	RAIL:PAPER TRAY:LEFT	U012	56
M0122673	RAIL:PAPER TRAY:RIGHT	U012	57
M0122701	ROLLER:INTERFACE:DRIVE	U012_S001	58
M0122702	ROLLER:INTERFACE:DRIVEN	U012_S001	59
M0122705	SPRING:ROLLER	U012_S001	60
M0122711	BUSHING:REGISTRATION:DRIVEN	U012	61

Number	Part Name	Group	ID
	:LEFT		
M0122715	GUIDE PLATE:TRANSPORT:UPPER	U012	62
M0122717	REGISTRATION ROLLER:DRIVE	U012	63
M0122719	REGISTRATION ROLLER:DRIVEN	U012	64
M0122722	SPRING:ROLLER:REGISTRATION	U012	65
M0122723	FEELER:REGISTRATION:SENSOR	U012	66
M0122725		U012	91
M0122730	BUSHING:REGISTRATION:DRIVEN:RIGHT	U012	68
M0122741	GROUND PLATE:DRIVE:REGISTRATION ROLLER	U012	69
M0122742	GROUND PLATE:DRIVEN:REGISTRATION ROLLER	U012	70
M0122743	DECAL:GUIDE PLATE:TRANSPORT:UPPER	U012	71
M0122744	GUIDE:REGISTRATION	U012	72
M0122745	GROUND PLATE:DRIVEN	U012_S001	73
M0122751	MAGNETIC CLUTCH:TRANSPORT	U012	74
M0122753	BUSHING:ROLLER:DRIVEN	U012_S001	75
M0122805	GUIDE PLATE:MANUAL FEED:LOWER	U004	11
M0122806	SHEET:GUIDE:MANUAL FEED SUB-UNIT	U004	12
M0122815	DECAL:FEED PAPER AGAIN:PREVENTION:EXP	U004	13
M0122816	FRICTION PAD:HOLDER:MANUAL FEED:ASS'Y	U004	14
M0122824	FEELER:MANUAL FEED	U004	15
M0122830	MECHANICAL SPRING CLUTCH:MANUAL FEED	U004	16
M0122831	DC SOLENOID:9.6W:24V	U004	17
M0122833	DECAL:SIDE FENCE:MANUAL FEED	U004_S001	18
M0122859	GUIDE PLATE:UPPER:MANUAL FEED	U004	19
M0122860	PAPER FEED ROLLER:MANUAL FEED	U004	20

Exclusive Parts

Number	Part Name	Group	ID
M0122869	MANUAL FEED TABLE:SUB-ASS'Y	U004_S001	21
M0122870	COVER:MANUAL FEED TABLE	U004	22
M0122874	COMPRESSION SPRING:MANUAL FEED	U004	23
M0122875	SIDE FENCE:MANUAL FEED:RIGHT	U004_S001	24
M0122877	SIDE FENCE:MANUAL FEED:LEFT	U004_S001	25
M0122879	EXTENSION TRAY:MANUAL FEED	U004	26
M0122880	COMPRESSION SPRING:SEPARATION	U004	27
M0124030	FUSING UNIT:NA	U007_S001	13
M0124053	GEAR:HOT ROLLER	U007_S001	14
M0124055	RADIAL BALL BEARING:35X47X7	U007_S001	15
M0124109	SPRING:FEELER:EXIT	U007_S001	16
M0124120	TENSION SPRING:PICKOFF PAWL	U007_S001	17
		U012	76
M0124123	HEATER:700W:120V	U007_S001	18
M0124135	FEELER:PAPER FEED SENSOR	U007_S001	19
M0124186	COVER:LEFT UPPER:ASS'Y	U007_S001	20
M0124202	LEVER:PRESSURE	U007_S001	21
M0124204	LEVER:LEFT:FRAME:FUSING	U007_S001	22
M0124205	LEVER:RIGHT:FRAME:FUSING	U007_S001	23
M0124206	STRIPPER PAWLS	U007_S001	24
M0124208	BRACKET:GATE PAWL	U007_S001	25
M0124211	PLATE NUT:HEATER	U007_S001	26
M0124212	FUSING ENTRANCE GUIDE PLATE:UPPER	U007_S001	27
M0124213	BUSHING:PRESSURE ROLLER	U007_S001	28
M0124215	GUIDE PLATE:EXIT	U007_S001	29
M0124216	TENSION SPRING:FUSING:GUIDE PLATE	U007_S001	30
M0124217	FUSING ENTRANCE GUIDE PLATE:LOWER	U007_S001	31
M0124220	HOT ROLLER	U007_S001	32
M0124223	THERMAL INSULATING BUSHING:HOT ROLLER	U007_S001	33
M0124229	TENSION SPRING:FUSING:PRESSURE	U007_S001	34

Number	Part Name	Group	ID
M0124234	HOUSING:THERMOSTAT:ASS'Y	U007_S001	35
M0124253	PRESSURE ROLLER:DIA30	U007_S001	36
M0124263	THERMISTOR:FUSING	U007_S001	37
M0124266	COVER:RIGHT LOWER:FUSING	U007_S001	38
M0124270	THERMAL INSULATING BUSHING:FUSING UNIT	U007	39
M0124276	COVER:LEFT:LOWER:FUSING	U007_S001	40
M0124279	CLEANING ROLLER:ASS'Y	U007_S001	41
M0124281	RETAINING RINGS-C:HOT ROLLER	U007_S001	42
M0124284	LEVER:PRESSURE:LEFT	U007_S001	43
M0124285	LEVER:PRESSURE:RIGHT	U007_S001	44
M0124287	COVER:RIGHT UPPER:FUSING	U007_S001	45
M0124292	FUSING COVER:UPPER	U007_S001	46
M0124293	EXIT ROLLER:EXIT:FUSING	U007_S001	47
M0124295	GROUND PLATE:ASS'Y	U007_S001	48
M0124453	EXIT ROLLER	U010	4
M0124454	SPRING:EXIT ROLLER:EXIT	U010	5
M0124457	GROUND PLATE:EXIT:DISCHARGE BRUSH	U010	6
M0124458	DISCHARGE BRUSH:EXIT:ASS'Y DRAWING	U010	7
M0124465	PULLEY:EXIT:(for M012)	U010	8
M0124470	EXIT ROLLER:ASS'Y:(for M012)	U010	9
M0124481	PLATE:LEFT:EXIT	U010	10
M0124482	PLATE:RIGHT:EXIT	U010	11
M0124499	GROUND PLATE:EXIT ROLLER	U010	12
M0124601	DECAL:LEVER:ENVELOPE:LEFT	U012	77
M0124602	DECAL:LEVER:ENVELOPE:RIGHT	U012	78
M0124603	DECAL:GUIDE PLATE:B	U007_S001	49
M0124699	DECAL:WARNING (HIGH TEMPERATURE):FRONT	U007	50
M0125020	POWER SUPPLY UNIT:NA	U011	3
M0125103	PCB:CTL-P:ASS'Y	U011	4
M0125452	PCB:ECB:(for M012)	U011	8
M0125697	POWER SUPPLY CORD:125V:13A:NA	ACCESSORIES	2
M0126250	TRANSFER ROLLER:ASS'Y	U006	1

Exclusive Parts

Number	Part Name	Group	ID
M0126252	BUSHING:TRANSFER ROLLER:RIG HT	U006	2
M0126253	BUSHING:TRANSFER ROLLER:LE FT	U006	3
M0126254	SPRING:TRANSFER ROLLER	U006	4
M0126255	GEAR:TRANSFER ROLLER	U006	5
M0126256	ROLLER:POSITIONING:TRANSFER ROLLER	U006	6
M0126259	SEPARATION ELECTRODE PLATE	U006	7
M0126260	COVER:ELECTRODE PLATE	U006	8
M0127418	MODEL NAME PLATE:NA:GER:(for M012)	ACCESSORIES	3
M0130402	MODEL NAME PLATE:M013:(for M0 13)	ACCESSORIES	1
M0131136	GEAR:DRIVE:DUPLEX SECTION:(f or M013)	U012	79
M0131178	BRACKET:DRIVE:DUPLEX:(for M01 3)	U012	80
M0132630	DECAL:PICK-UP PAPER JAM:(for M 013)	U001	21
M0134455	GEAR:DRIVE:EXIT ROLLER:(for M0 13)	U010	13
M0134470	EXIT ROLLER:DUPLEX:(for M013)	U010	14
M0134610	GEAR:DRIVE:DUPLEX:(for M013)	U012	81
M0134622	EXIT ROLLER:DUPLEX:(for M013)	U009	5
M0134623	SPRING:EXIT:(for M013)	U009	6
M0134624	SPRING:EXIT:NO.2:(for M013)	U009	7
M0134635	SPRING:OPEN AND CLOSE:RIGHT :(for M013)	U012	82
M0134661	STOPPER:TRANSPORT SUB-UNIT: DUPLEX	U008	13
M0134662	COVER:SWITCHBACK:OPEN AND CLOSE	U008	4
M0134663	GUIDE PLATE:VERTICAL TRANSP ORT:LOWER:(for M013)	U008	5
M0134664	GUIDE PLATE:VERTICAL TRANSP ORT:UPPER:(for M013)	U008	6
M0134666	SHAFT:COVER:SWITCHBACK:OPE	U008	7

Number	Part Name	Group	ID
	N AND CLOSE		
M0134667	SPRING:COVER:SWITCHBACK:OP EN AND CLOSE	U008	8
M0134668	SHEET:GUIDE:HORIZONTAL TRAN SPORT:LOWER:(for M013)	U009	8
M0134669	MAGNET CATCH:ASS'Y	U008	9
M0134671	SHEET:HORIZONTAL TRANSPORT :LEFT:(for M013)	U009	9
M0134672	SHEET:HORIZONTAL TRANSPORT :RIGHT:(for M013)	U009	10
M0134673	LEVER:OPEN AND CLOSE:NO.1:(fo r M013)	U012	83
M0134674	LEVER:OPEN AND CLOSE:NO.2:(fo r M013)	U012	84
M0134684	SHEET:DUPLEX:(for M013)	U008	10
M0134685	BUTTON:OPEN AND CLOSE:LOWE R:(for M013)	U012	85
M0134687	GROUND PLATE:HORIZONTAL TR ANSPORT:FRONT:(for M013)	U009	11
M0134688	GROUND PLATE:HORIZONTAL TR ANSPORT:REAR:(for M013)	U009	12
M0134691	LEVER:OPEN AND CLOSE:LOWER :(for M013)	U009	13
M0134694	GUIDE:HORIZONTAL TRANSPORT :UPPER:(for M013)	U009	14
M0134695	GUIDE:HORIZONTAL TRANSPORT :LOWER:(for M013)	U009	15
M0134696	LEVER:OPEN AND CLOSE:LEFT:(f or M013)	U012	86
M0134697	LEVER:OPEN AND CLOSE:RIGHT:(for M013)	U012	87
M0134698	BRACKET:OPEN AND CLOSE:LOW ER:(for M013)	U012	88
M0134761	TRANSPORT ROLLER:DUPLEX:MI DDLE:(for M013)	U009	16
M0134762	TRANSPORT ROLLER:DUPLEX:EX IT:(for M013)	U009	17
M0134765	PULLEY:TRANSPORT:(for M013)	U009	18

Exclusive Parts

Number	Part Name	Group	ID
M0134771		U009	23
M0134772		U009	24
M0134778	FEELER:SENSOR:HORIZONTAL TRANSPORT:(for M013)	U009	21
M0134785	SPRING:COVER:SWITCHBACK:OPEN AND CLOSE:(for M013)	U012	89
M0134794	DECAL:GUIDE PLATE:VERTICAL TRANSPORT:UPPER	U008	11
M0134795	PIN:GUIDE:UPPER:(for M013)	U009	22
M0134797	FEELER:SENSOR:VERTICAL TRANSPORT:(for M013)	U008	12
M0135452	PCB:ECB:(for M013)	U011	7
M0137418	MODEL NAME PLATE:NA:GER:(for M013)	ACCESSORIES	4

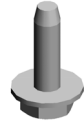
Standard Parts



03603006N
SCREW - M3X6



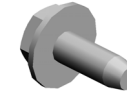
04503008N
TAPPING SCREW - M3X8



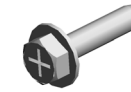
04503010N
TAPPING SCREW - M3X10



04513006N
TAPPING SCREW - 3X6



04513008N
TAPPING SCREW - M3X8



04513014N
TAPPING SCREW:3X14



04513030N
TAPPING SCREW:3X30



04523010N
BINDING SELF-TAPPING SC
REW:3X10



04533006N
TAPPING SCREW - M3X6



04543006Q
TAPPING SCREW - M3X6



04543008Q
TAPPING SCREW:3X8



04543014Q
TAPPING SCREW:3X14



07200040E
RETAINING RING - M4



08025318
BINDING HEAD TAPPING SC
REW:ES:3X10



08046127
HEXAGONAL BOLT:DOUBLE
SCREW:M3X8



08050088
RETAINING RING - M6



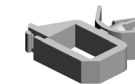
08050089
RETAINING RING - M4



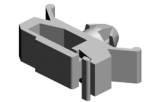
09504006N
SCREW - M4X6



09543010N
SCREW:POLISHED ROUND/
SPRING:M3X10



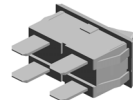
11050508
HARNES CLAMP - LWS-071
1



11050511
HARNES CLAMP - LWS-030
6ZC



11050534
CLAMP



12042757
SWITCH:SDDJF31900



14076657
EEPROM:BR93L76-W



14077435

Design Change List

Number	Title	Set	Old Part		New Part		Index No.		Q'ty	Interchg		Reason	Cut-in S/N
			P/N	Name	P/N	Name	Group	ID		Indiv.	Set		
201106-01	1106 Modification	-	M0125451	PCB:ECB:(for M0	M0125452	PCB:ECB:(for M0	U011	8	1	O/O			M01317:
201106-02	1106 Modification	-	M0125015	POWER SUPPLY UNIT:NA	M0125020	POWER SUPPLY UNIT:NA	U011	3	1	O/O			M01317:
201106-03	1106 Modification	-	M0125100	PCB:CTL-P:ASS' Y	M0125103	PCB:CTL-P:ASS' Y	U011	4	1	X/O		M0125100~M0125 102~M0125103	M01317:
201106-04	1106 Modification	-			M0134661	STOPPER:TRAN SPORT SUB-UNI T:DUPLEX	U008	13	1				M01317:
201103-01	1103 Modification	-	M0135451	PCB:ECB:(for M0 13)	M0135452	PCB:ECB:(for M0 13)	U011	7	1	O/O			M01317:
201010-01	1010 Modification	-	M0122724	SPRING:FEELER :REGISTRATION	M0122725		U012	91	1	X/O			M01317:
201010-02	1010 Modification	-	M0121321	EXTENSION TRA Y:GUIDE	M0121324		U001	22	1	X/O			M01317:
201010-03	1010 Modification	-	M0121114	TIMING BELT:DR IVE:EXIT	M0121115		U012	90	1	O/O			M01317:
201010-04	1010 Modification	-	M0134766	TIMING BELT:HO RIZONTAL TRAN SPORT:(for M013)	M0134771		U009	23	1	O/O			M01317:
201010-05	1010 Modification	-	M0134770	TIMING BELT:DR IVE:(for M013)	M0134772		U009	24	1	O/O			M01317:
201010-06	1010 Modification	-	M0121320	EXTENSION TRA Y:EXIT	M0121325		U001	23	1	X/O			M01317:
201010-07	1010 Modification	-	14076657	EEPROM:BR93L7 6-W	14077435		U011	6	1	O/O			M01317:

