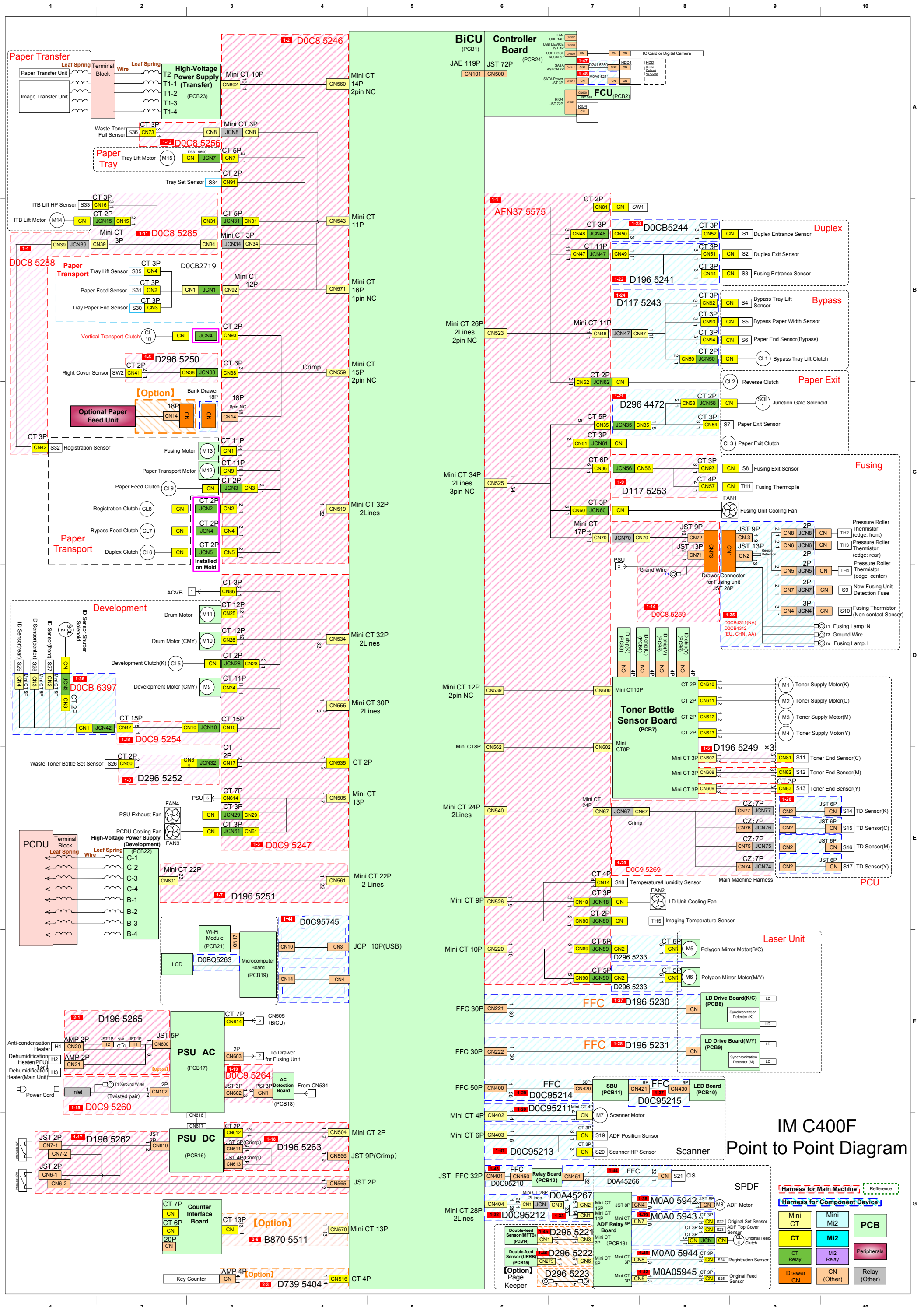


IM C300/C300F Point to Point Diagram

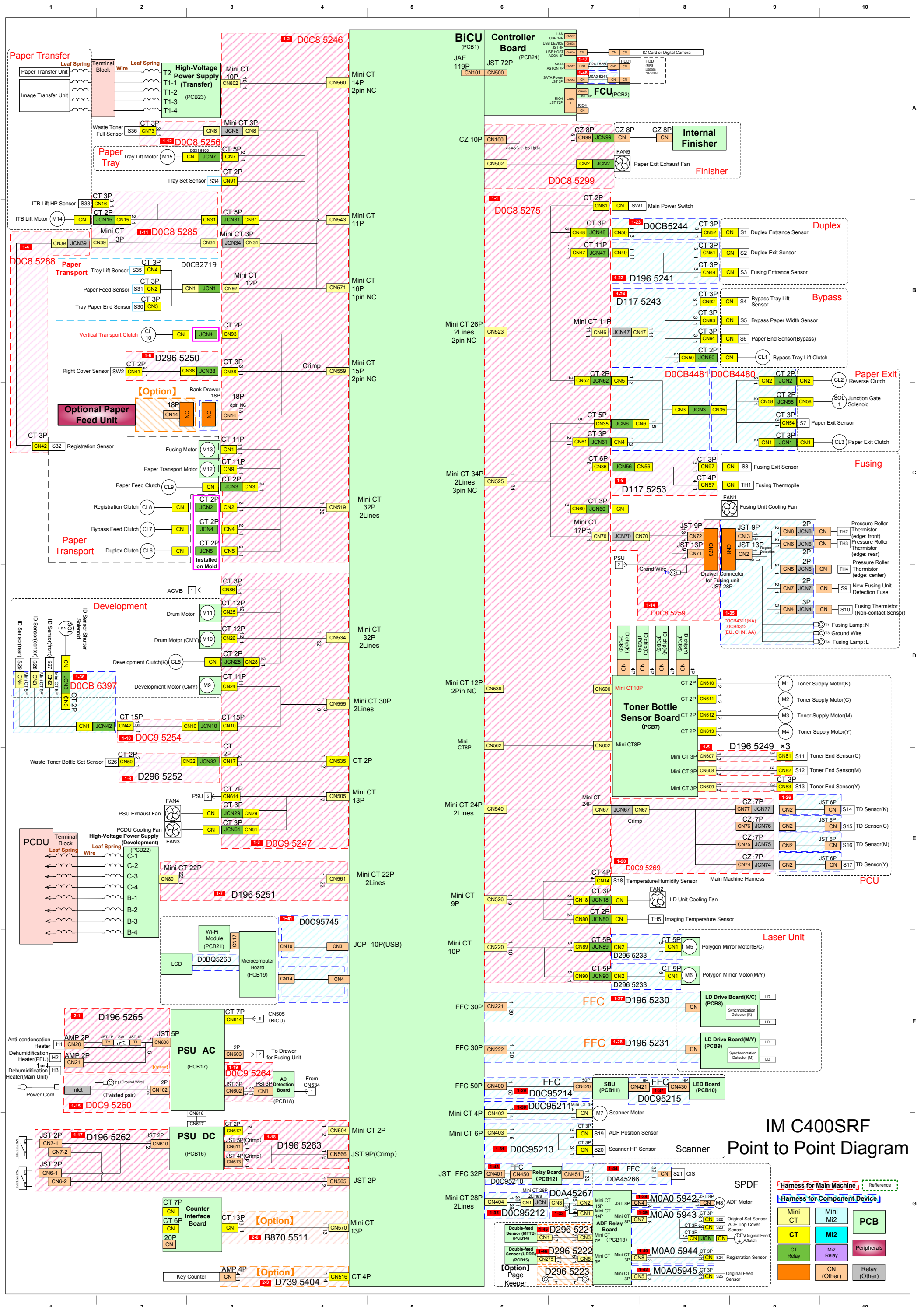
Harness for Main Machine		Reference	
Mini CT	Mini Mi2	PCB	
CT	Mi2	Peripherals	
CT Relay	M2 Relay	Relay (Other)	
Drawer CN	CN (Other)		

Harness for Component Device	
Mini CT	Mini Mi2
CT	Mi2
CT Relay	M2 Relay
Drawer CN	CN (Other)

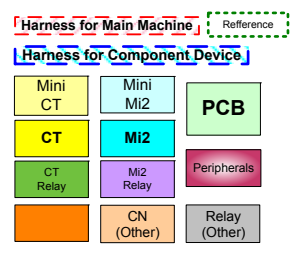


IM C400F Point to Point Diagram

- Harness for Main Machine**
- Mini CT
 - Mini Mi2
 - CT
 - Mi2
 - Relay
 - Mi2 Relay
 - Drawer CN
 - CN (Other)
- Harness for Component Device**
- PCB
 - Peripherals
 - Relay (Other)



IM C400SRF Point to Point Diagram



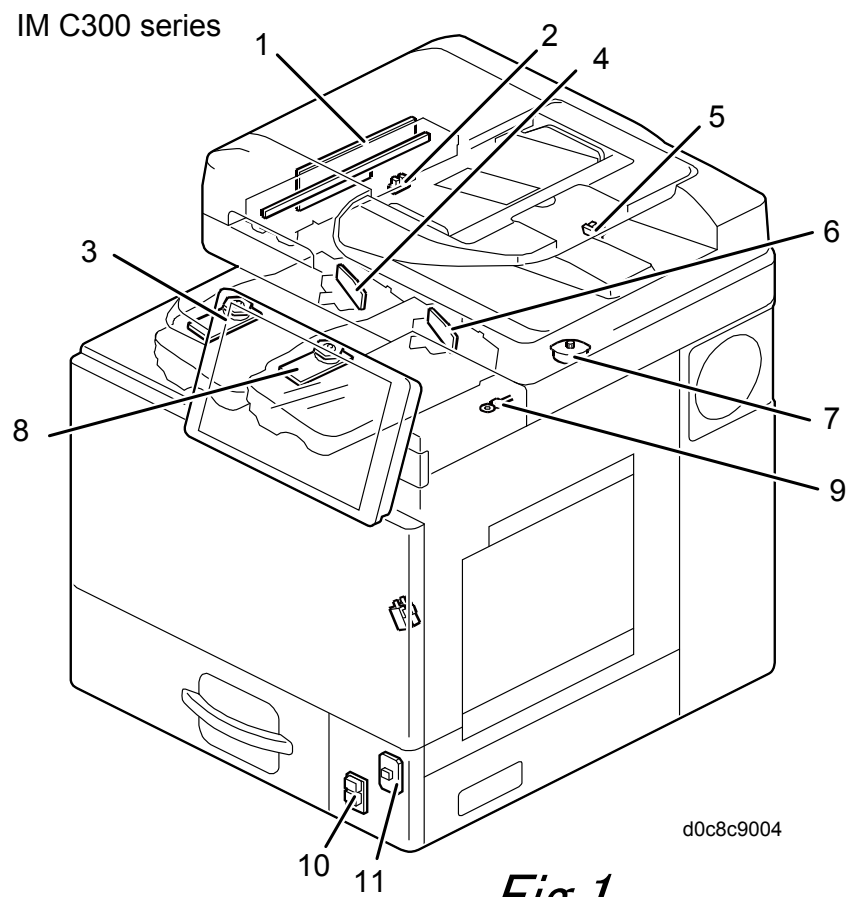


Fig.1

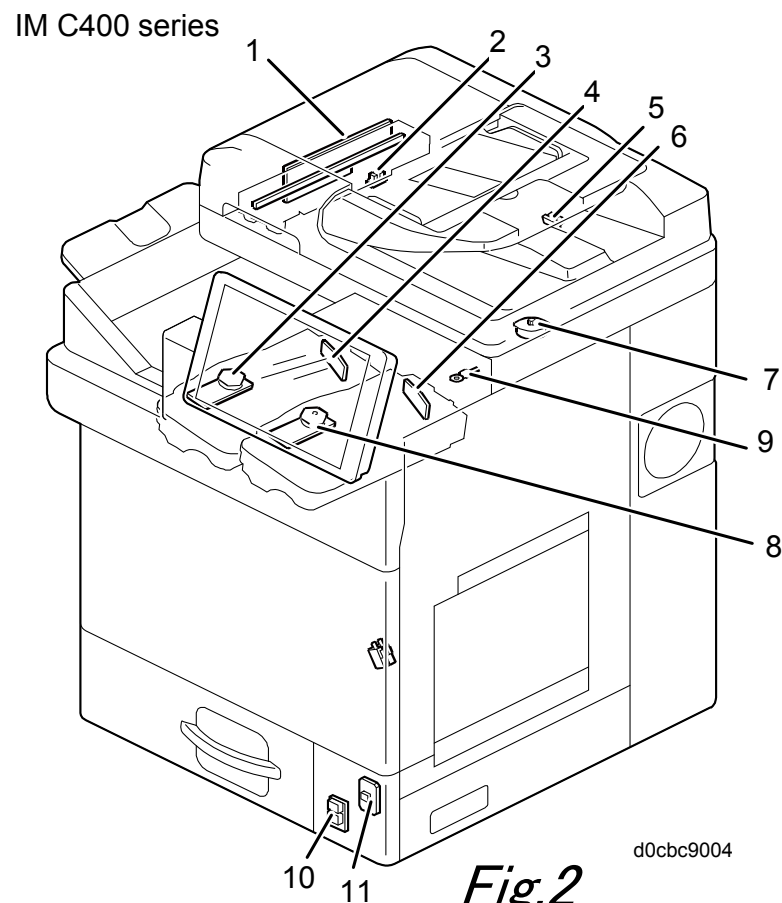


Fig.2

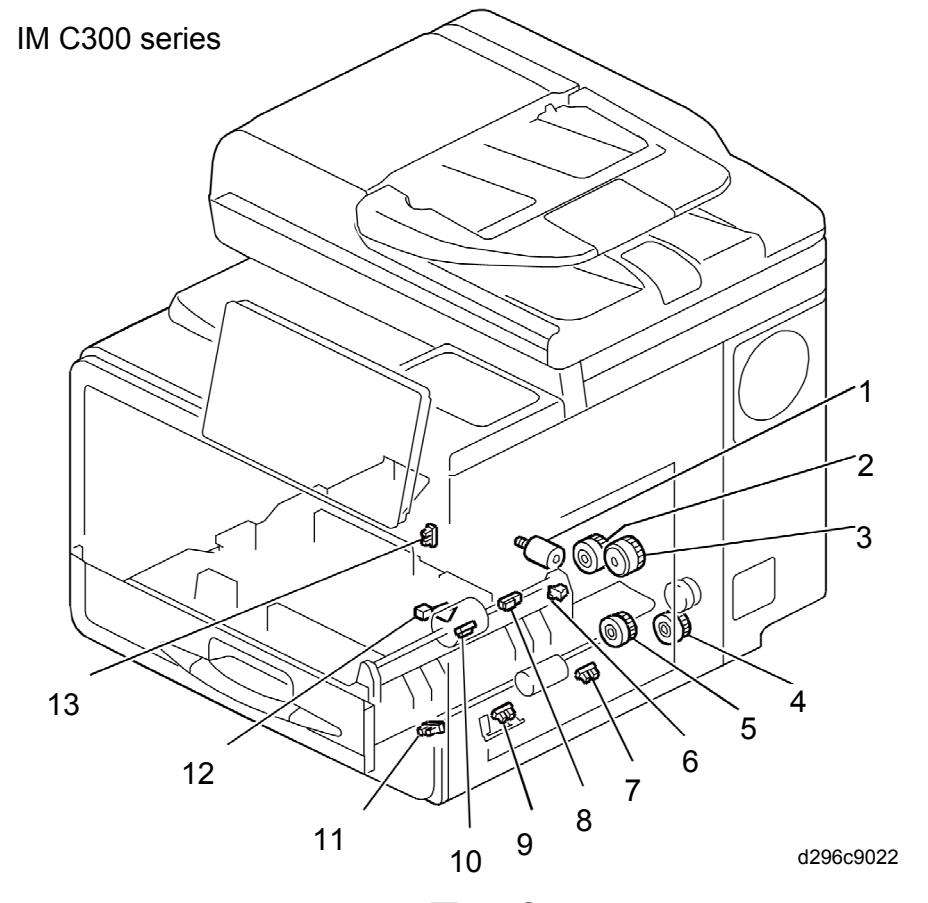


Fig.3

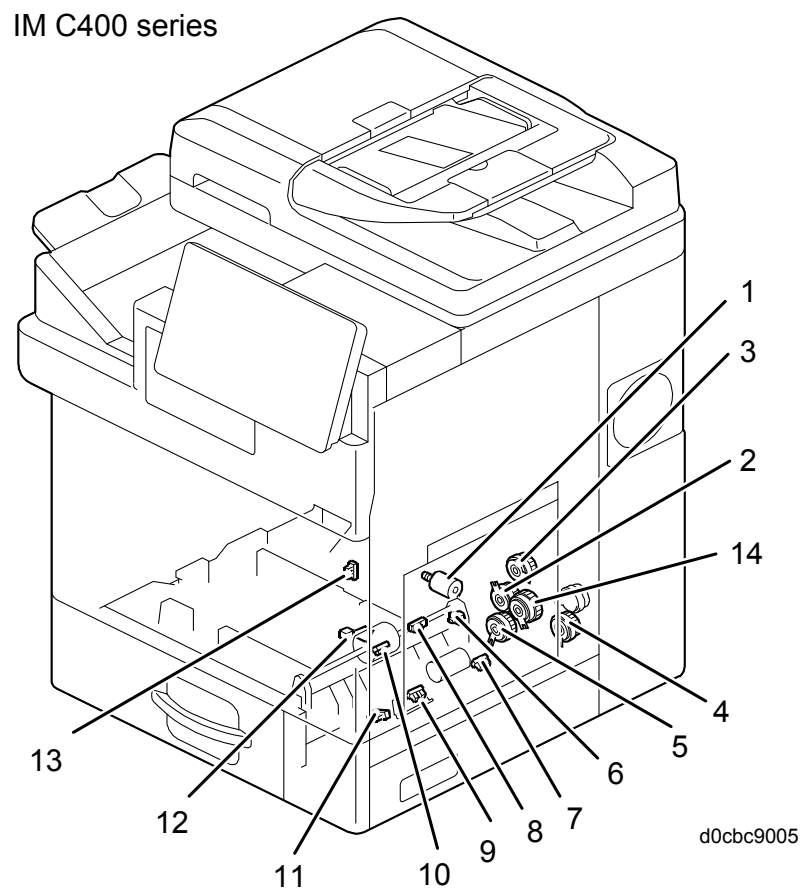


Fig.4

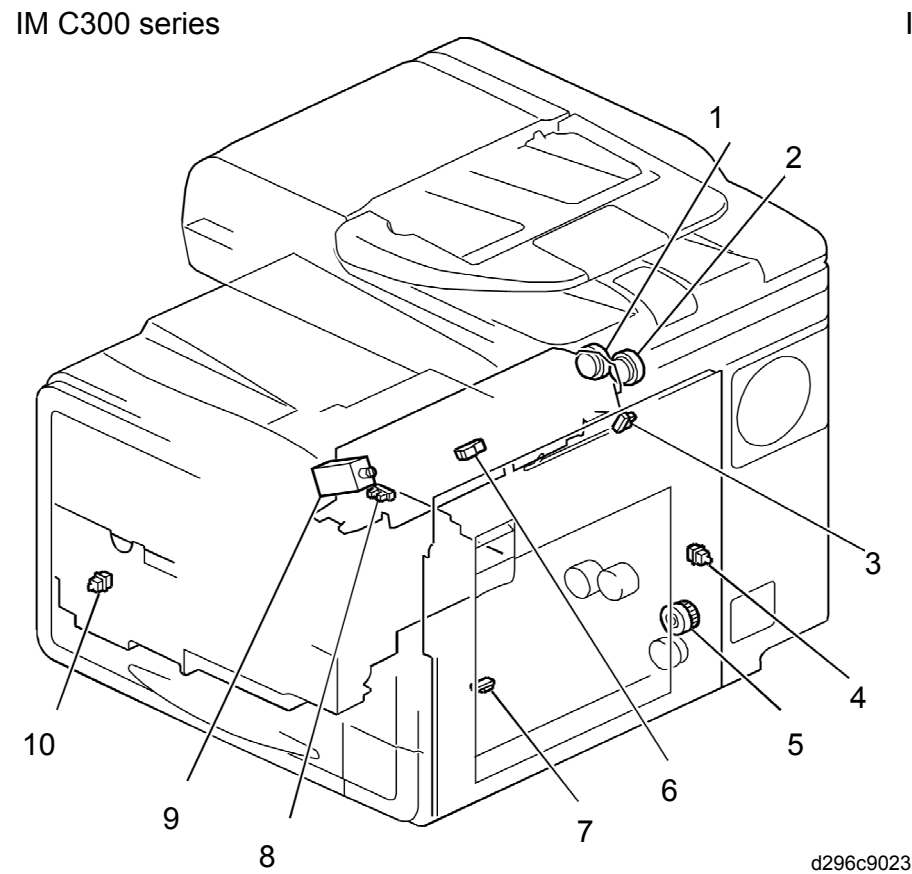


Fig.5

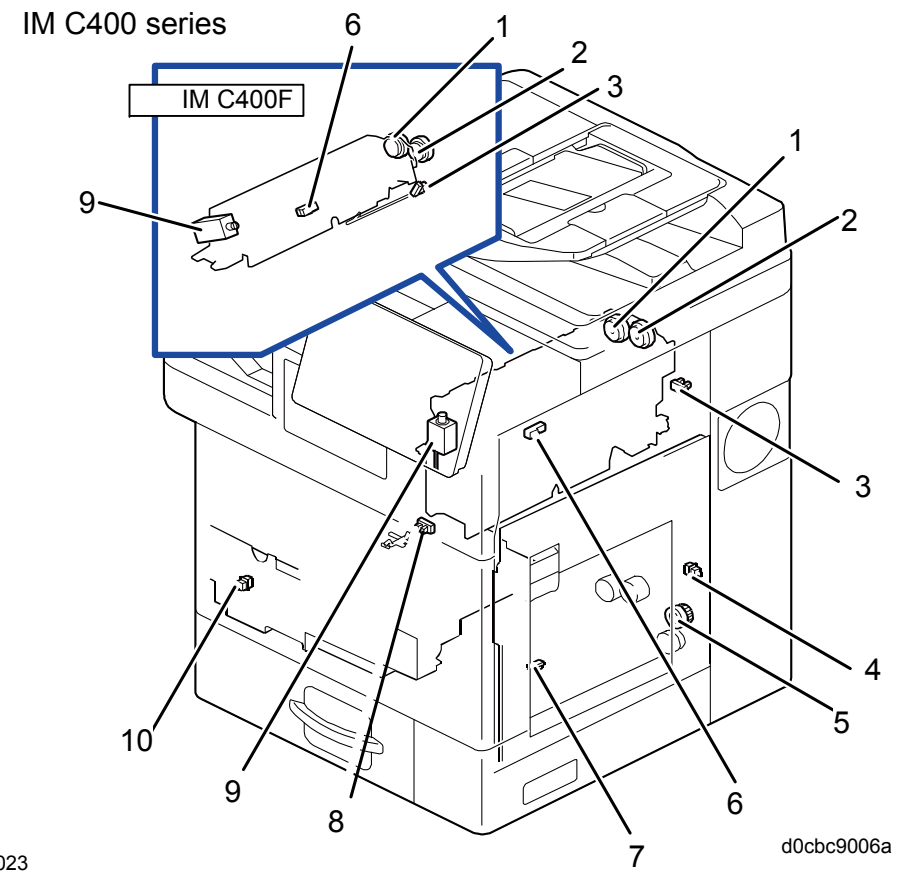


Fig.6

IM C300 series

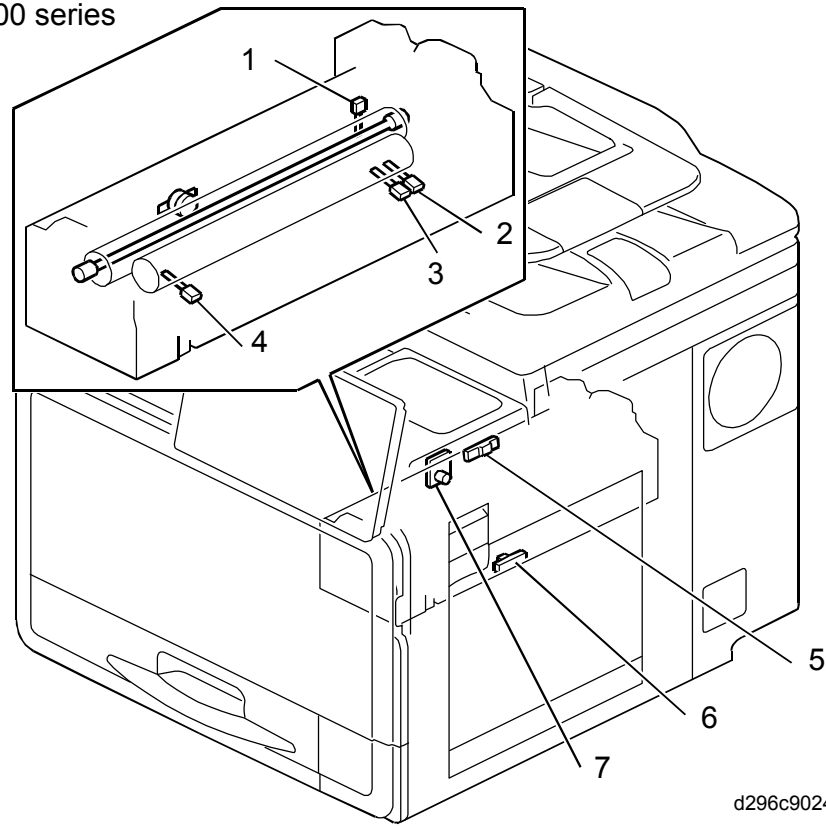


Fig.7

IM C400 series

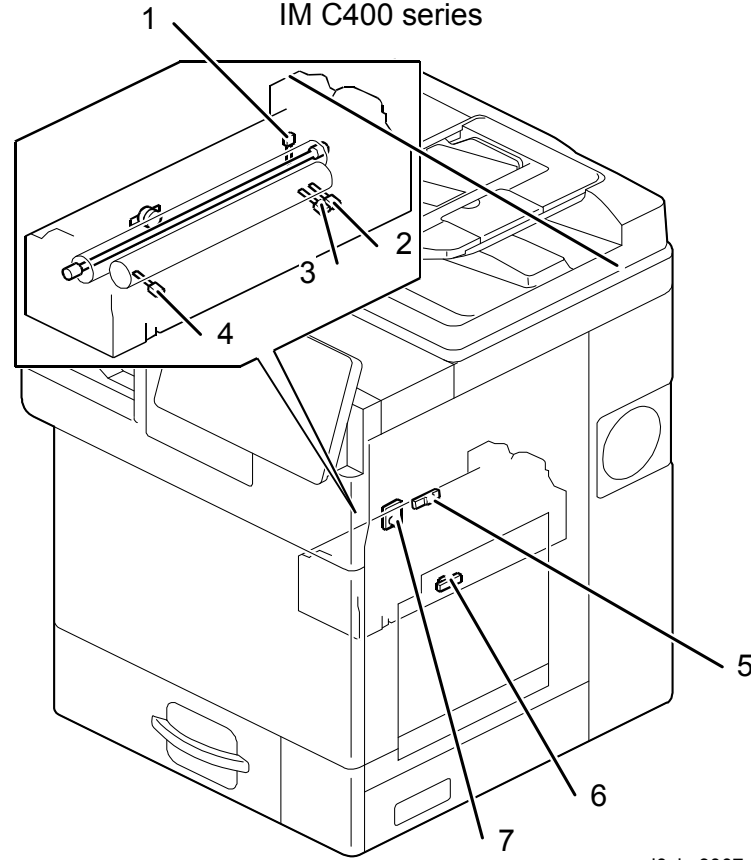


Fig.8

IM C300 series

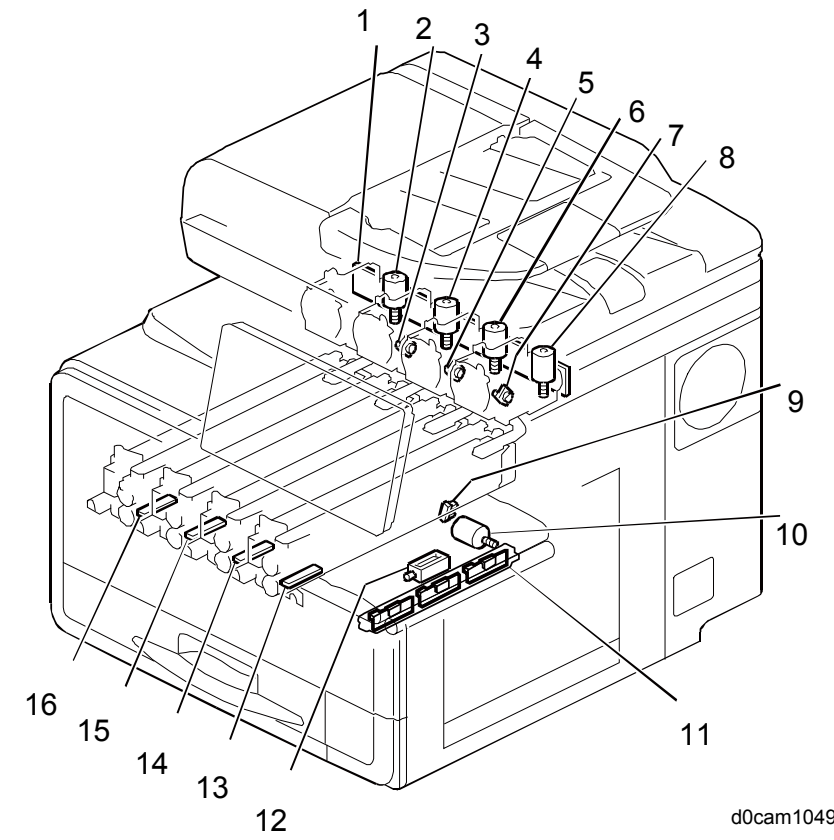


Fig.9

IM C400 series

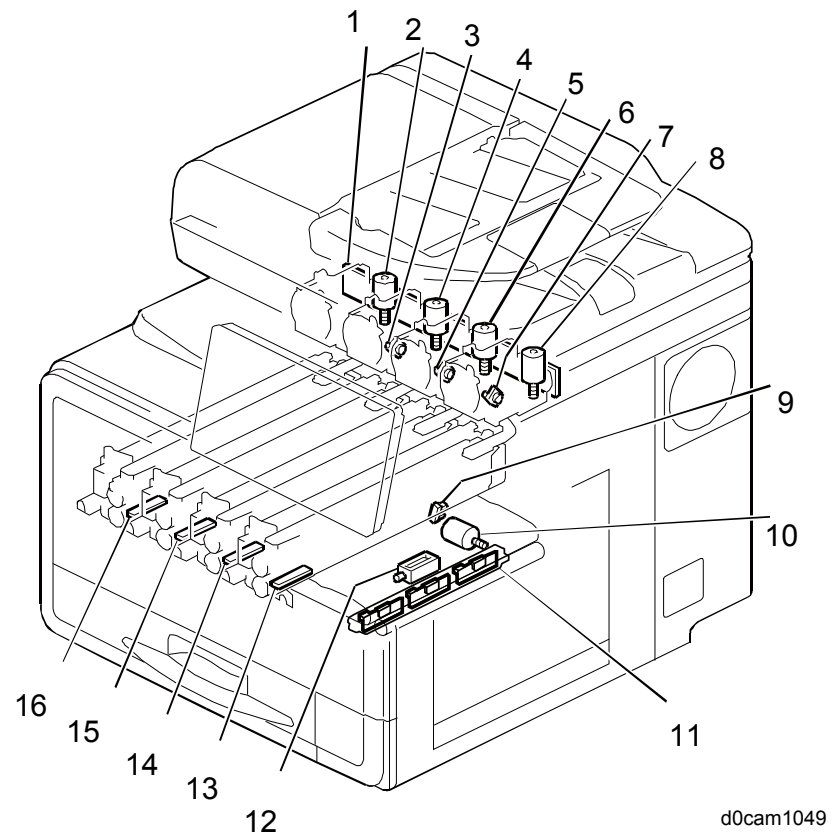


Fig.10

IM C300 series

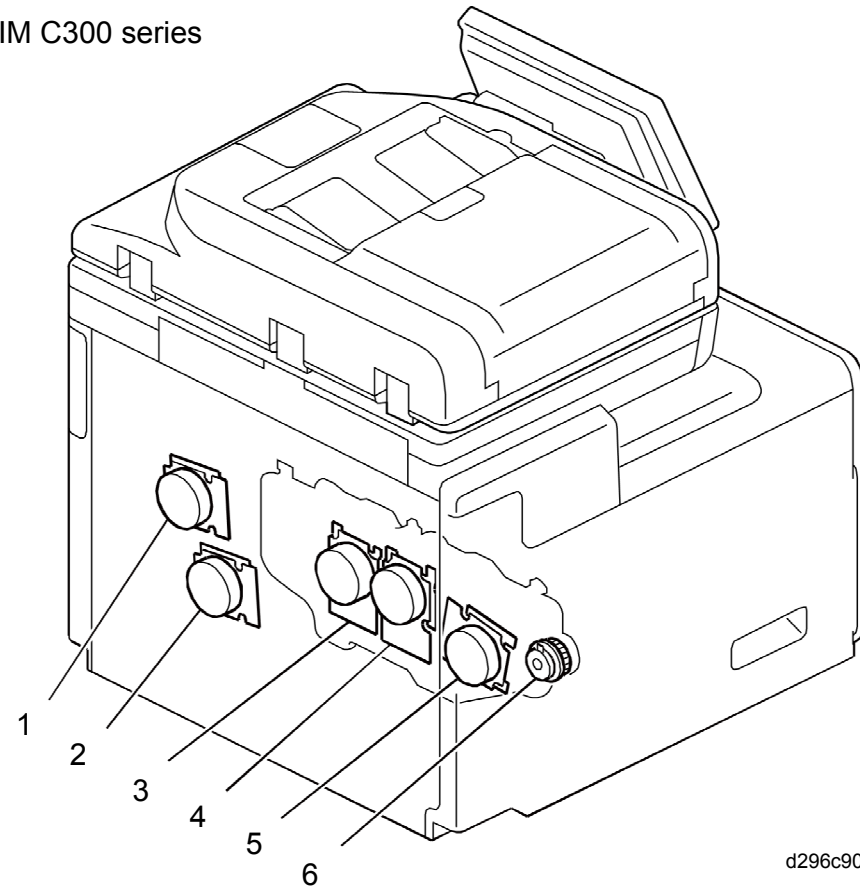


Fig.11

IM C400 series

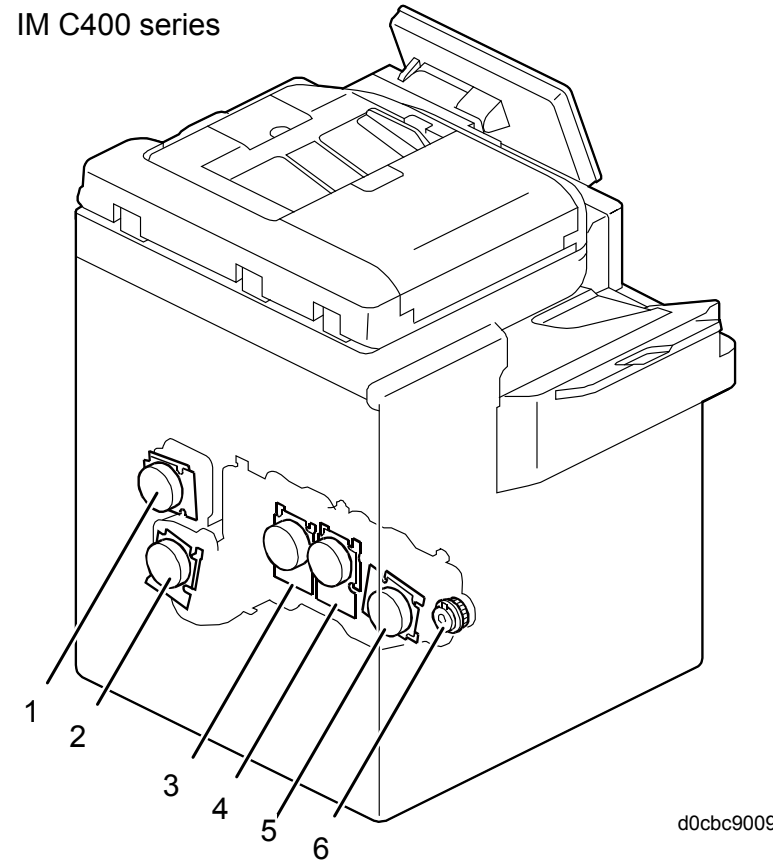


Fig.12

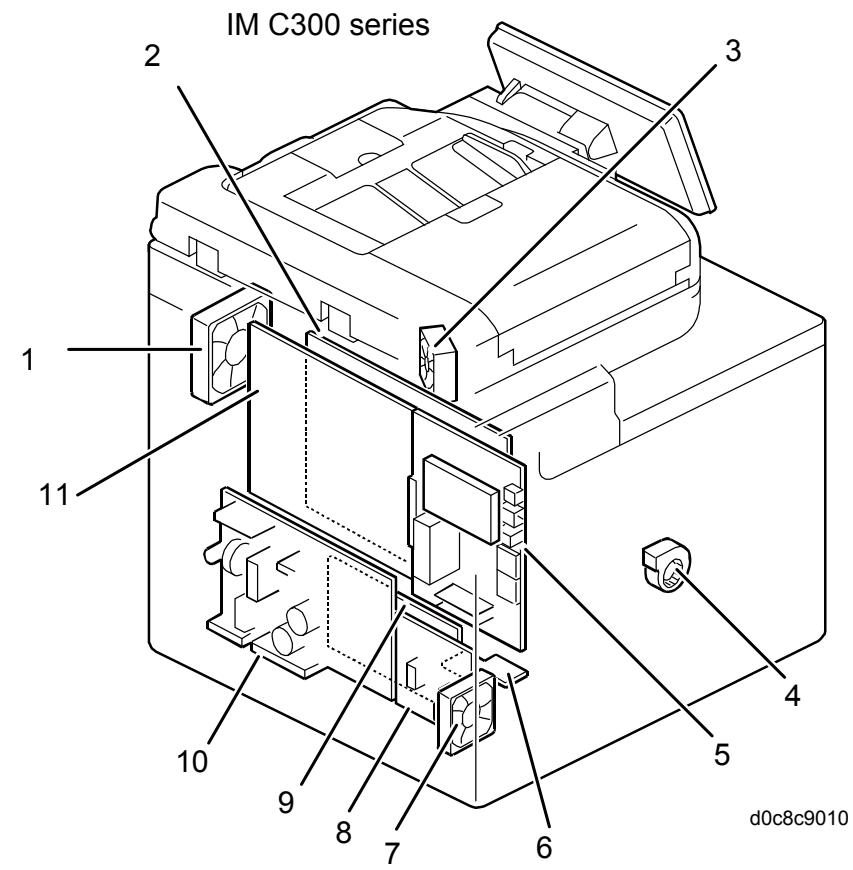


Fig.13

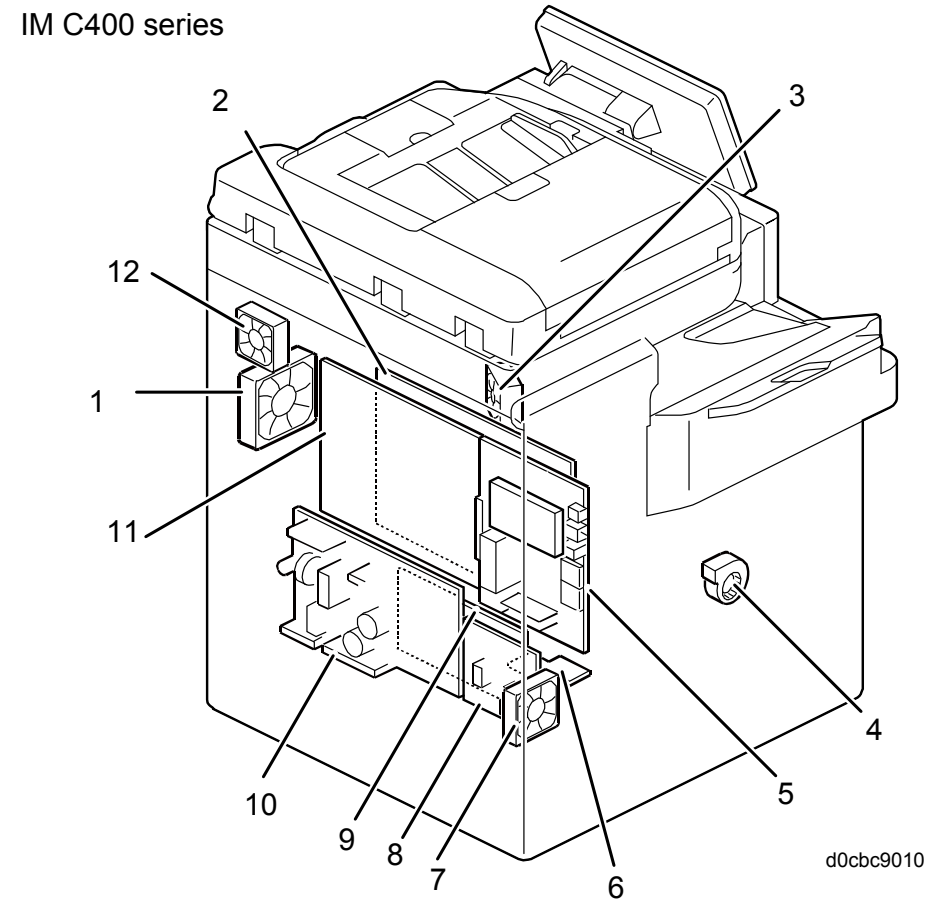


Fig.14

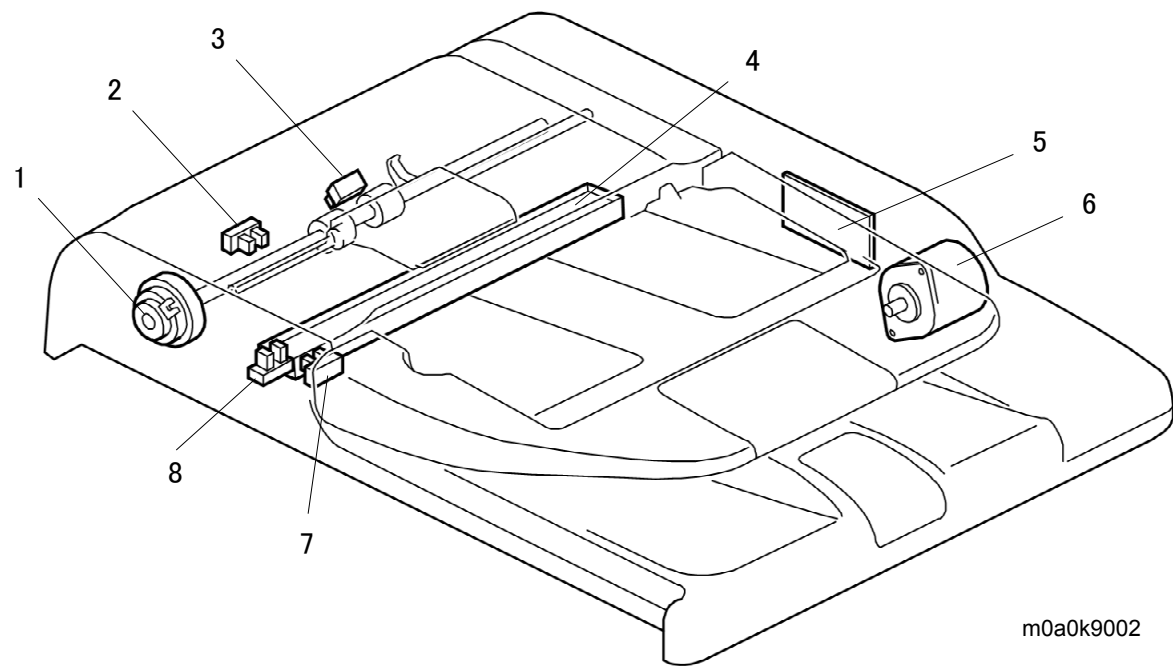
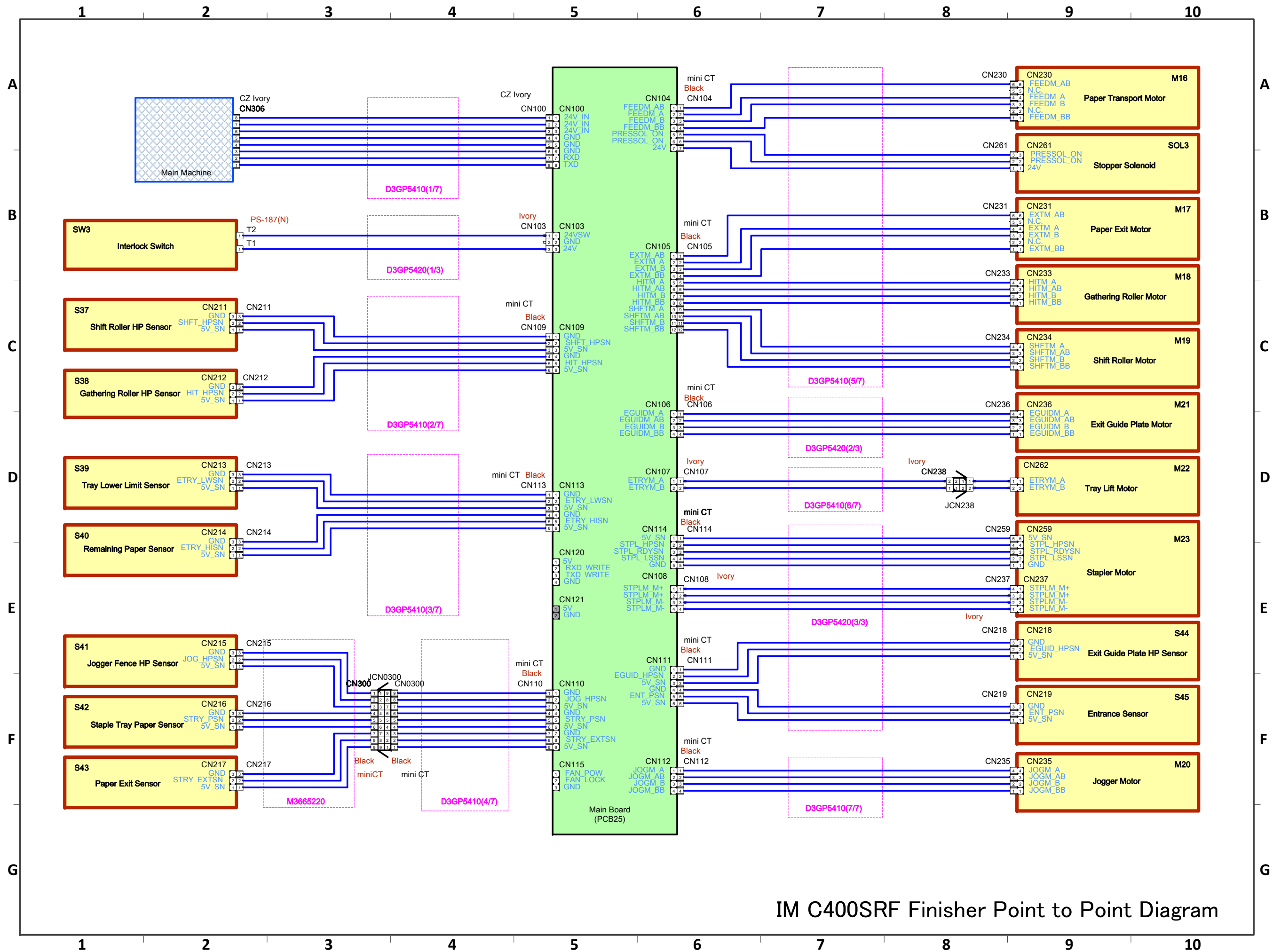


Fig.15

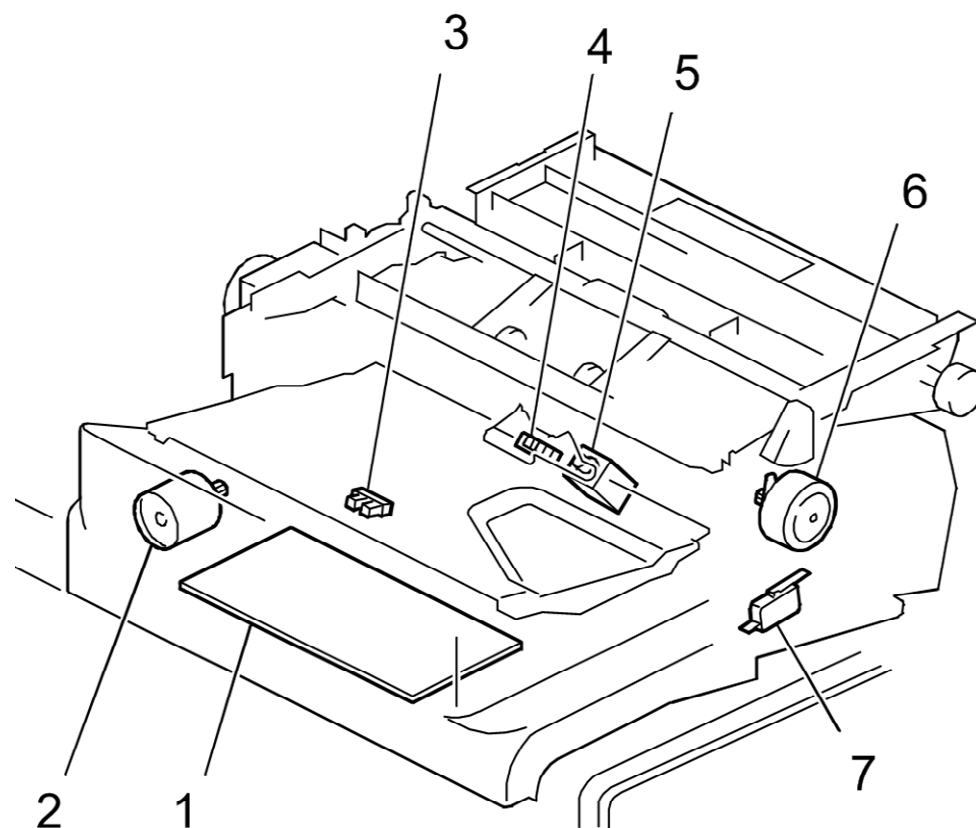
Symbol	Index No.	Description	P to P
Sensors			
S1	Fig.5,6-3	Duplex Entrance Sensor	B9
S2	Fig.5,6-7	Duplex Exit Sensor	B9
S3	Fig.7,8-6	Fusing Entrance Sensor	B9
S4	Fig.3,4-11	Bypass Tray Lift Sensor	B9
S5	Fig.3,4-9	Bypass Paper Width Sensor	B9
S6	Fig.3,4-7	Paper End Sensor(Bypass)	B9
S7	Fig.5,6-6	Paper Exit Sensor	C9
S8	Fig.7,8-5	Fusing Exit Sensor	C9
S9	-	New Fusing Unit Detection Fuse	D10
S10	Fig.7,8-1	Fusing Thermistor (Non-contact Sensor)	D10
S11	Fig.9,10-3	Toner End Sensor(C)	E9
S12	Fig.9,10-5	Toner End Sensor(M)	E9
S13	Fig.9,10-7	Toner End Sensor(Y)	E9
S14	Fig.9,10-16	TD Sensor(K)	E10
S15	Fig.9,10-15	TD Sensor(C)	E10
S16	Fig.9,10-14	TD Sensor(M)	E10
S17	Fig.9,10-13	TD Sensor(Y)	E10
S18	Fig.1,2-10	Temperature/Humidity Sensor	E7
S19	Fig.1,2-5	ADF Position Sensor	G7
S20	Fig.1,2-2	Scanner HP Sensor	G7
S21	Fig.15-4	CIS	G8
S22	Fig.15-8	Original Set Sensor	G8
S23	Fig.15-7	ADF Top Cover Sensor	G8
S24	Fig.15-3	Registration Sensor	G8
S25	Fig.15-2	Original Feed Sensor	G8
S26	Fig.5,6-10	Waste Toner Bottle Set Sensor	D2
S27	Fig.9,10-11	ID Sensor(front)	D1
S28	Fig.9,10-11	ID Sensor(center)	D1
S29	Fig.9,10-11	ID Sensor(rear)	D1
S30	Fig.3,4-12	Tray Paper End Sensor (Main Unit)	C1/B2
S31	Fig.3,4-10	Paper Feed Sensor	C1/B2
S32	Fig.3,4-8	Registration Sensor	C1
S33	Fig.9,10-9	ITB Lift HP Sensor	A1
S34	Fig.3,4-6	Tray Set Sensor	A3
S35	Fig.3,4-13	Tray Lift Sensor	A2/B2
S36	Fig.5,6-8	Waste Toner Full Sensor	A2
Motors			
M1	Fig.9,10-2	Toner Supply Motor(K)	D9
M2	Fig.9,10-4	Toner Supply Motor(C)	D9
M3	Fig.9,10-6	Toner Supply Motor(M)	D9
M4	Fig.9,10-8	Toner Supply Motor(Y)	D9
M5	Fig.1,2-3	Polygon Mirror Motor(B/C)	F8
M6	Fig.1,2-8	Polygon Mirror Motor(MY)	F8
M7	Fig.1,2-7	Scanner Motor	G7
M8	Fig.15-6	ADF Motor	G8
M9	Fig.11,12-3	Development Motor (CMY)	D3
M10	Fig.11,12-4	Drum Motor (CMY)	D3
M11	Fig.11,12-5	Drum Motor	D3
M12	Fig.11,12-2	Paper Transport Motor	C2
M13	Fig.11,12-1	Fusing Motor	C2
M14	Fig.9,10-10	ITB Lift Motor	B1
M15	Fig.3,4-1	Tray Lift Motor	A2

Symbol	Index No.	Description	P to P
Clutches			
CL1	Fig.3,4-5	Bypass Tray Lift Clutch	B9
CL2	Fig.5,6-1	Reverse Clutch	B9
CL3	Fig.5,6-2	Paper Exit Clutch	C9
CL4	Fig.15-1	Original Feed Clutch	G9
CL5	Fig.11,12-6	Development Clutch(K)	D2
CL6	Fig.5,6-5	Duplex Clutch	C2
CL7	Fig.3,4-4	Bypass Feed Clutch	C2
CL8	Fig.3,4-3	Registration Clutch	C2
CL9	Fig.3,4-2	Paper Feed Clutch	C2
CL10	Fig.4-14	Vertical Transport Clutch	B2
Switches			
SW1	Fig.1,2-11	Main Power Switch	B8
SW2	Fig.5,6-4	Right Cover Sensor	B2
Solenoids			
SOL1	Fig.5,6-9	Junction Gate Solenoid	C9
SOL2	Fig.9,10-12	ID Sensor Shutter Solenoid	D1
FANs			
FAN1	Fig.13,14-1	Fusing Unit Cooling Fan	C9
FAN2	Fig.13,14-3	LD Unit Cooling Fan	E8
FAN3	Fig.13,14-4	PCDU Cooling Fan	E2
FAN4	Fig.13,14-7	PSU Exhaust Fan	E2
FAN5	Fig.14-12	Paper Exit Exhaust Fan	A7
Thermopile/Thermistors			
TH1	Fig.7,8-7	Fusing Thermopile	C9
TH2	Fig.7,8-4	Pressure Roller Thermistor(edge: front)	C10
TH3	Fig.7,8-2	Pressure Roller Thermistor(edge: rear)	C10
TH4	Fig.7,8-3	Pressure Roller Thermistor(edge: center)	D10
TH5	Fig.1,2-9	Imaging Temperature Sensor	E8
Heaters			
H1	-	Anti-condensation Heater	F1
H2	-	Dehumidification Heater(PFU)	F1
H3	-	Dehumidification Heater(Main Unit)	F1
PCBs			
PCB1	Fig.13,14-11	BiCU	A6
PCB2	-	FCU	A7
PCB3	-	ID chip(K)	D7
PCB4	-	ID chip(C)	D8
PCB5	-	ID chip(M)	D8
PCB6	-	ID chip(Y)	D8
PCB7	Fig.9,10-1	Toner Bottle Sensor Board	D8
PCB8	Fig.1,2-4	LD Drive Board(K/C)	F8
PCB9	Fig.1,2-6	LD Drive Board(MY)	F8
PCB10	-	LED Board	F8
PCB11	Fig.1,2-1	SBU	F7
PCB12	-	Relay Board	G6
PCB13	Fig.15-5	ADF Relay Board	G7
PCB14	-	Double-feed Sensor (MFTB) (emitter)	G6
PCB15	-	Double-feed Sensor (URRB)(receiver)	G6
PCB16	Fig.13,14-10	PSU DC	G3
PCB17	Fig.13,14-8	PSU AC	F3
PCB18	Fig.13,14-6	AC Detection Board	F3
PCB19	-	Microcomputer Board	F3
PCB21	-	Wi-Fi Module	F3
PCB22	Fig.13,14-2	High-Voltage Power Supply (Development)	E2
PCB23	Fig.13,14-9	High-Voltage Power Supply (Transfer)	A3
PCB24	Fig.13,14-5	Controller Board	A6

IM C300/C300F/C400F/C400SRF Electrical Component List

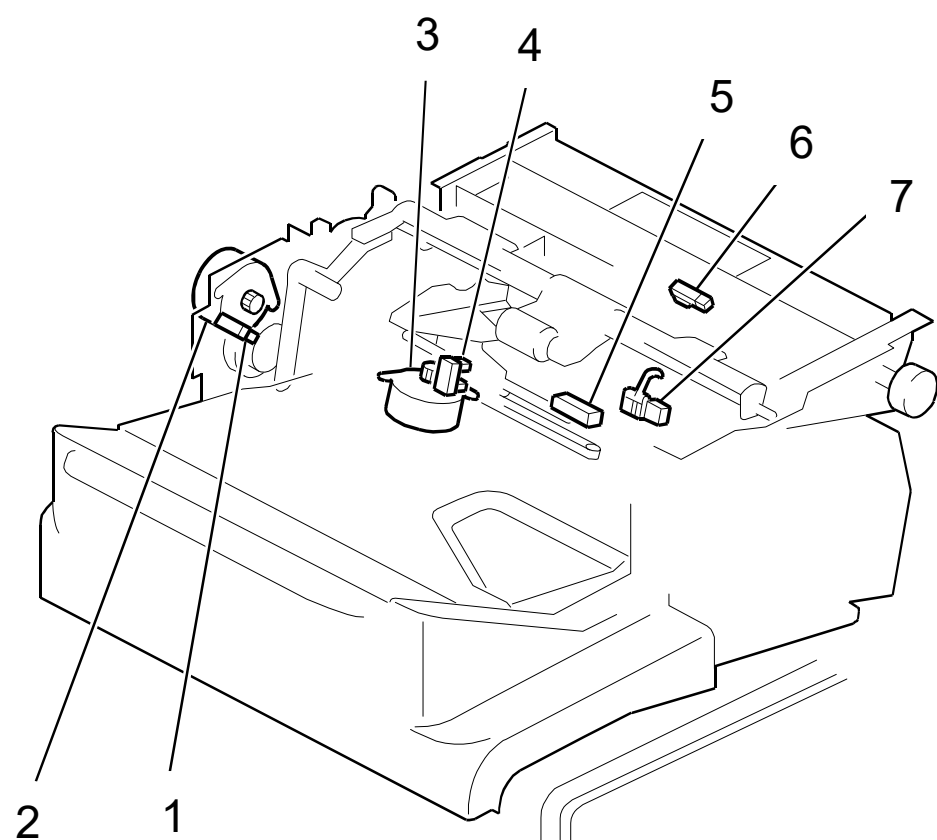


IM C400SRF Finisher Point to Point Diagram



d0cam0090

Fig.1

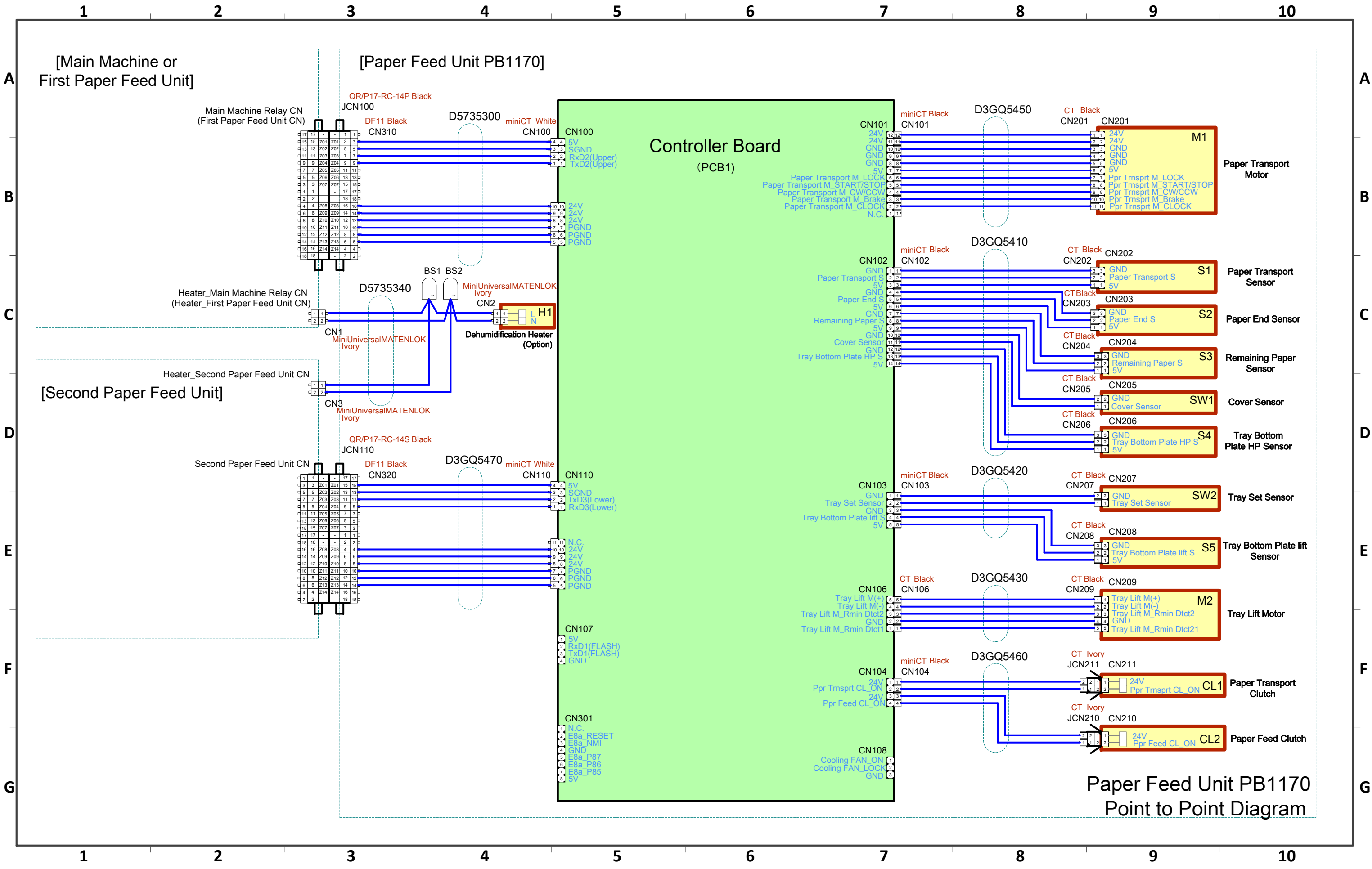


d0cam0091

Fig.2

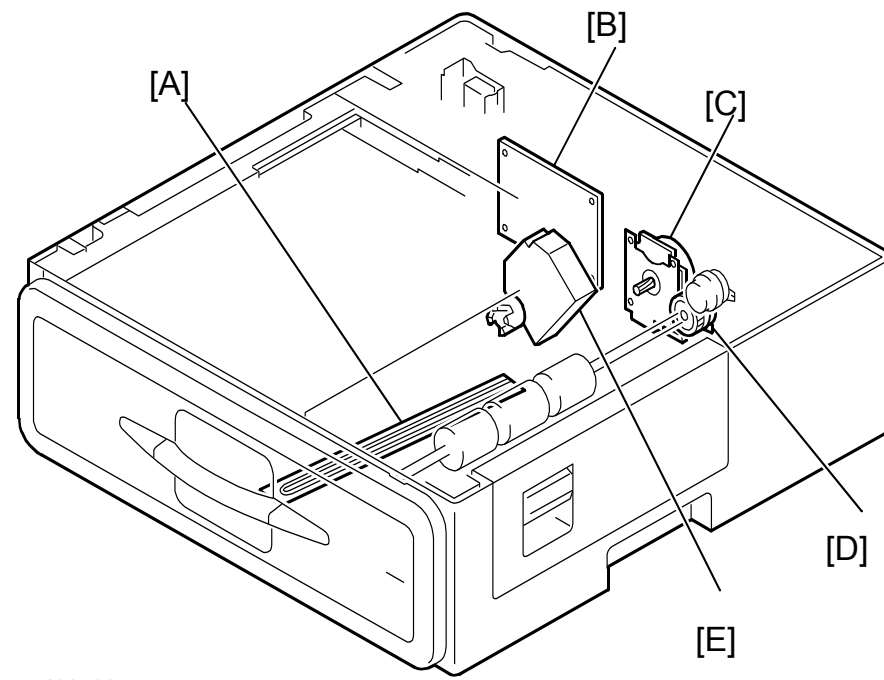
Symbol	Index No.	Description	P to P
Sensors			
S37	-	Shift Roller HP Sensor	C1
S38	Fig.2-1	Gathering Roller HP Sensor	C2
S39	Fig.1-3	Tray Lower Limit Sensor	D1
S40	Fig.1-4	Remaining Paper Sensor	D1
S41	Fig.2-4	Jogger Fence HP Sensor	E1
S42	Fig.2-7	Staple Tray Paper Sensor	F1
S43	Fig.2-5	Paper Exit Sensor	F1
S44	-	Exit Guide Plate HP Sensor	E10
S45	Fig.2-6	Entrance Sensor	F10
Motors			
M16	-	Paper Transport Motor	A10
M17	-	Paper Exit Motor	B10
M18	Fig.2-2	Gathering Roller Motor	B10
M19	-	Shift Roller Motor	C10
M20	Fig.2-3	Jogger Motor	F10
M21	Fig.1-6	Exit Guide Plate Motor	D10
M22	Fig.1-2	Tray Lift Motor	D10
M23	-	Stapler Motor	E10
Others			
SW3	Fig.1-7	Interlock Switch	B1
SOL3	Fig.1-5	Stopper Solenoid	A10
PCB25	Fig.1-1	Main Board	G5

IM C400SRF Finisher Electrical Component Layout



**Controller Board
(PCB1)**

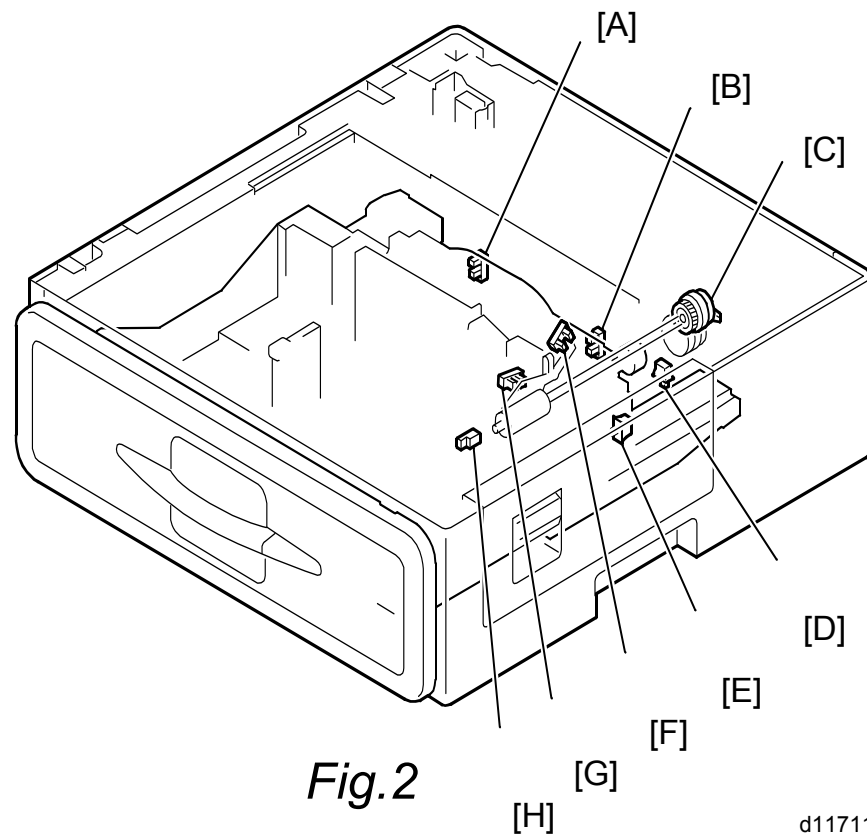
**Paper Feed Unit PB1170
Point to Point Diagram**



d1171145

Fig.1

Symbol	Index No.	Description	P to P
S1	Fig.2-H	Paper Transport Sensor	C9
S2	Fig.2-F	Paper End Sensor	C9
S3	Fig.2-G	Remaining Paper Sensor	C9
S4	Fig.2-B	Tray Bottom Plate HP Sensor	D9
S5	Fig.2-A	Tray Bottom Plate lift Sensor	E9
M1	Fig.1-C	Paper Transport Motor	B9
M2	Fig.1-E	Tray Lift Motor	E9
SW1	Fig.2-D	Cover Sensor	D9
SW2	Fig.2-E	Tray Set Sensor	E9
CL1	Fig.2-C	Paper Transport Clutch	F9
CL2	Fig.1-D	Paper Feed Clutch	G9
PCB1	Fig.1-B	Controller Board	B6
H1	Fig.1-A	Dehumidification Heater	C4



d1171146

Fig.2

Paper Feed Unit PB1170 Electrical Component Layout