

**Model PE-MF4**  
**(M203/M204)**  
**Parts Catalog**

**Parts change information sample**

 **Add**

 **Update**

 **Delete**

# Unit All



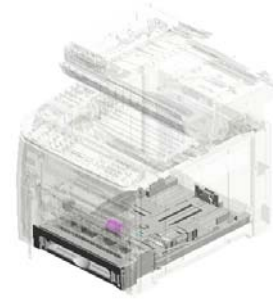
U001  
EXTERIOR



U002  
OPERATION



U003  
SCANNER/ADF



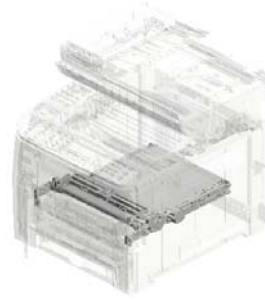
U004  
PAPER TRAY



U005  
LASER UNIT



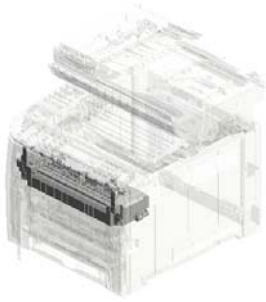
U006  
PCU



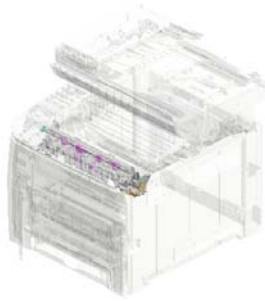
U007  
ITB CLEANING



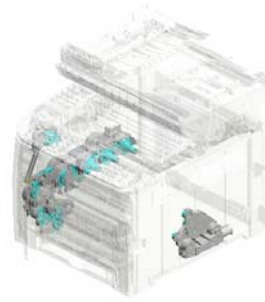
U008  
PAPER TRANSPORT



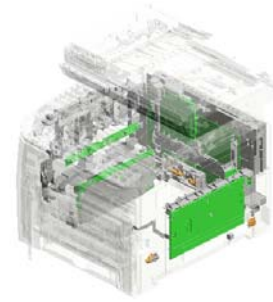
U009  
FUSING



U010  
PAPER EXIT



U011  
MAIN DRIVE



U012  
ELECTRICAL

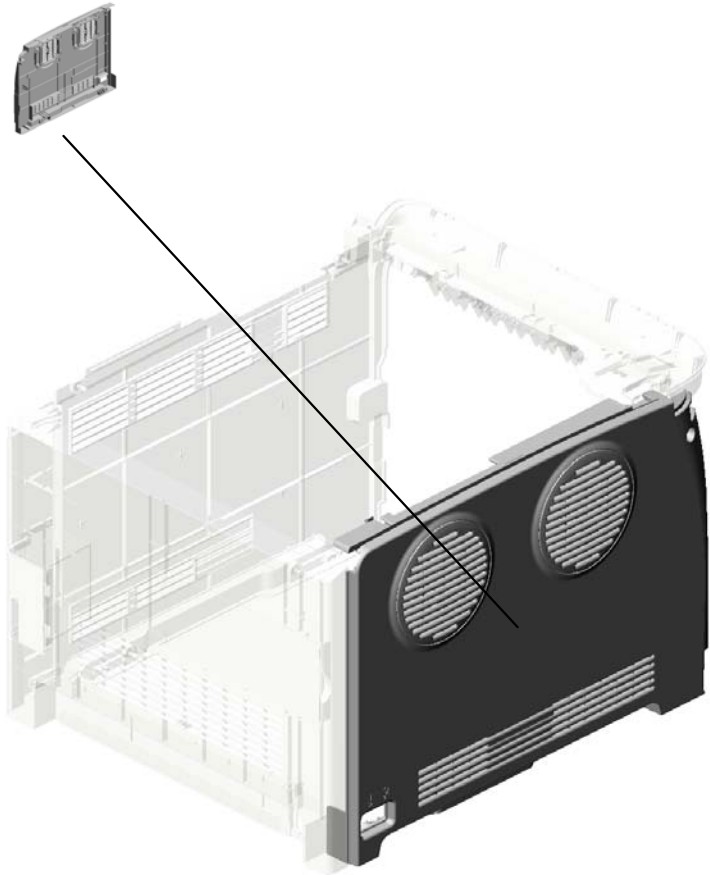
# Unit All



U013  
MAIN FRAME

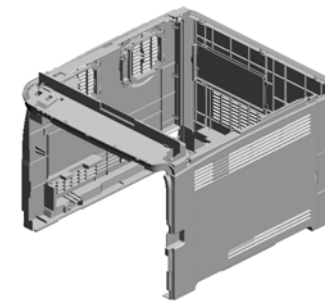
# U001.EXTERIOR

U001\_S001  
M0960042  
COVER:LEFT:ASS'Y



U001	U002	U003	U004	U005	U006	U007	U008	U009	U010	U011	U012	U013
------	------	------	------	------	------	------	------	------	------	------	------	------

# U001 EXTERIOR



- 19.M1981333 COVER:RIGHT:M198
- 21.M2021259 COVER:MEMORY:M202
- 4.04524010N (x5) BINDING SELF-TAPPING SCREW:4X10
- 23.M2021277 COVER:PAPER EXIT SUB-UNIT:M202

- 20.M2021258 COVER:INTERFACE:M202

- 22.M2021274 COVER:REAR:M202

- 3.04504010N (x2) TAPPING SCREW:M4X10

- 18.M1981262 COVER:CASSETTE:M198

- 10.G1661318 SHEET - CASSETTE COVER
- 7.G1661311 SEAL - 5X15X222MM
- 9.G1661313 SEAL - 3X8X411MM
- 8.G1661312 SEAL - 7X25X176MM

- 6.G1661261 INNER COVER - EXIT

- 1.03603010N SCREW:M3X10

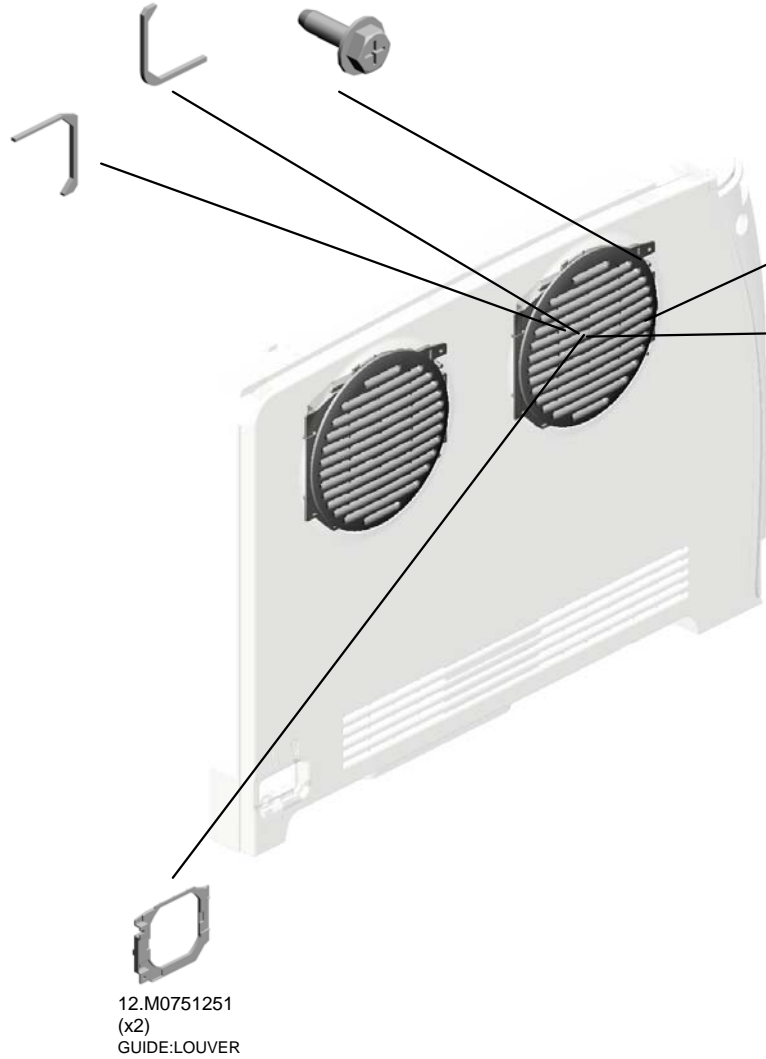
- 5.04543008Q (x3) TAPPING SCREW:3X8

- 11.G1661319 (x2) SEAL:COVER:LEFT:7

U001\_S001  
COVER:LEFT:ASS'Y

16.M0751309 (x2)  
SEAL:GUIDE:LOUVER:LOWER  
2.04503010N (x4)  
TAPPING SCREW - M3X10

15.M0751308 (x2)  
SEAL:GUIDE:LOUVER:UPPER



17.M0960042  
COVER:LEFT:ASS'Y

U001	U002	U003	U004	U005	U006	U007	U008	U009	U010	U011	U012	U013
------	------	------	------	------	------	------	------	------	------	------	------	------

# U002.OPERATION

U002\_S001  
M2041400  
(M204):(NA):OPERATION PA  
NEL:ASS'Y

U002\_S002  
M2031400  
(M203):(NA):OPERATION PA  
NEL:ASS'Y

U002\_S004  
M2031401  
(M203):(EU):OPERATION PA  
NEL:ASS'Y

U002\_S003  
M2041401  
(M204):(EU):OPERATION PA  
NEL:ASS'Y

U002\_S005  
M2041403  
(TWN):OPERATION PANEL:A  
SS'Y

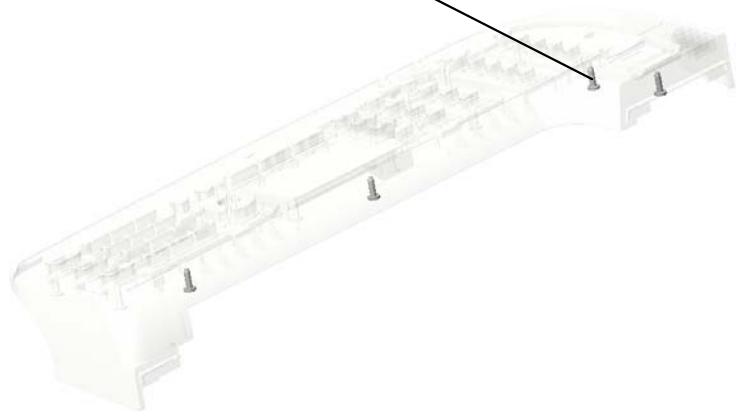
U002\_S006  
M2041402  
(CHN):OPERATION PANEL:A  
SS'Y

U001	<b>U002</b>	U003	U004	U005	U006	U007	U008	U009	U010	U011	U012	U013
------	-------------	------	------	------	------	------	------	------	------	------	------	------



# U002 OPERATION

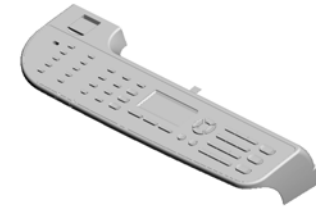
1.04503010N  
(x4)  
TAPPING SCREW -  
M3X10



1.04503010N (x 1)  
TAPPING SCREW - M3X10

U002\_S001  
(M204):(NA):OPERATION PANEL:ASS'Y

4.M2021473  
(M204):(NA):SHEET  
:OPERATION SUB-  
UNIT



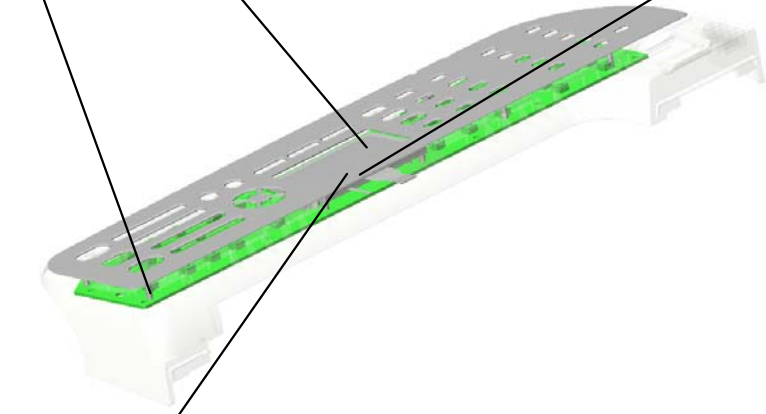
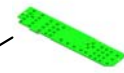
12.M2041400  
(M204):(NA):OPER  
ATION PANEL:ASS'  
Y

1.04503010N  
(x9)  
TAPPING SCREW -  
M3X10

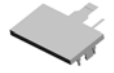


1.04503010N (x 1)  
TAPPING SCREW - M3X10

3.M2021466  
OPERATION PANE  
L BOARD



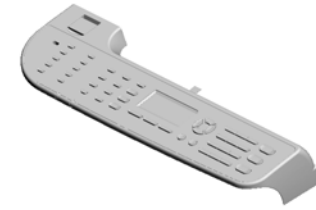
2.M0751498  
LCD:STN:MV



U001	<b>U002</b>	U003	U004	U005	U006	U007	U008	U009	U010	U011	U012	U013
------	-------------	------	------	------	------	------	------	------	------	------	------	------

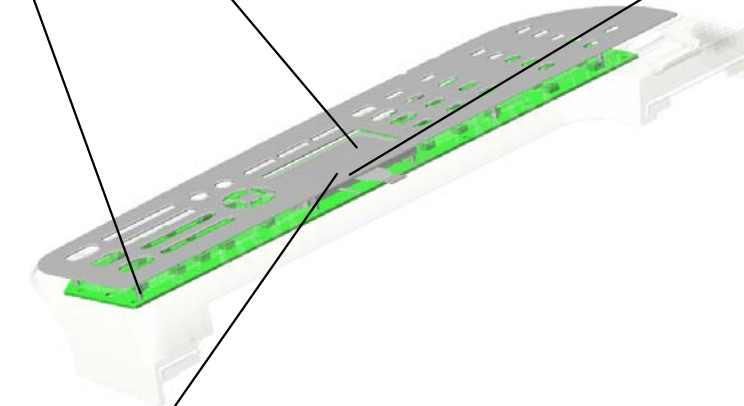
U002\_S002  
(M203):(NA):OPERATION PANEL:ASS'Y

6.M2021475  
(M203):(NA):SHEET  
:OPERATION SUB-  
UNIT



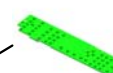
10.M2031400  
(M203):(NA):OPER  
ATION PANEL:ASS'  
Y

1.04503010N  
(x9)  
TAPPING SCREW -  
M3X10



1.04503010N (x 1)  
TAPPING SCREW - M3X10

3.M2021466  
OPERATION PANE  
L BOARD



2.M0751498  
LCD:STN:MV



U001	<b>U002</b>	U003	U004	U005	U006	U007	U008	U009	U010	U011	U012	U013
------	-------------	------	------	------	------	------	------	------	------	------	------	------

U002\_S003  
(M204):(EU):OPERATION PANEL:ASS'Y

5.M2021474  
(M204):(EU):SHEET  
:OPERATION SUB-  
UNIT



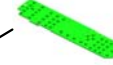
13.M2041401  
(M204):(EU):OPER  
ATION PANEL:ASS'  
Y

1.04503010N  
(x9)  
TAPPING SCREW -  
M3X10



1.04503010N (x 1)  
TAPPING SCREW - M3X10

3.M2021466  
OPERATION PANE  
L BOARD



2.M0751498  
LCD:STN:MV



U001	<b>U002</b>	U003	U004	U005	U006	U007	U008	U009	U010	U011	U012	U013
------	-------------	------	------	------	------	------	------	------	------	------	------	------

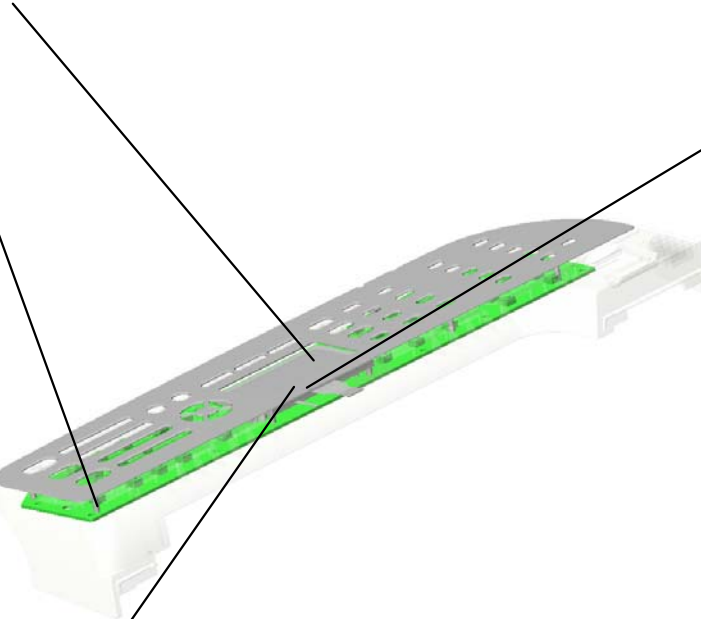
U002\_S004  
(M203):(EU):OPERATION PANEL:ASS'Y

7.M2021476  
(M203):(EU):SHEET  
:OPERATION SUB-  
UNIT



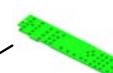
11.M2031401  
(M203):(EU):OPER  
ATION PANEL:ASS'  
Y

1.04503010N  
(x9)  
TAPPING SCREW -  
M3X10



1.04503010N (x 1)  
TAPPING SCREW - M3X10

3.M2021466  
OPERATION PANE  
L BOARD



2.M0751498  
LCD:STN:MV



U001	<b>U002</b>	U003	U004	U005	U006	U007	U008	U009	U010	U011	U012	U013
------	-------------	------	------	------	------	------	------	------	------	------	------	------

U002\_S005  
(TWN):OPERATION PANEL:ASS'Y

9.M2021479  
(TWN):SHEET:OPERATION  
SUB-UNIT



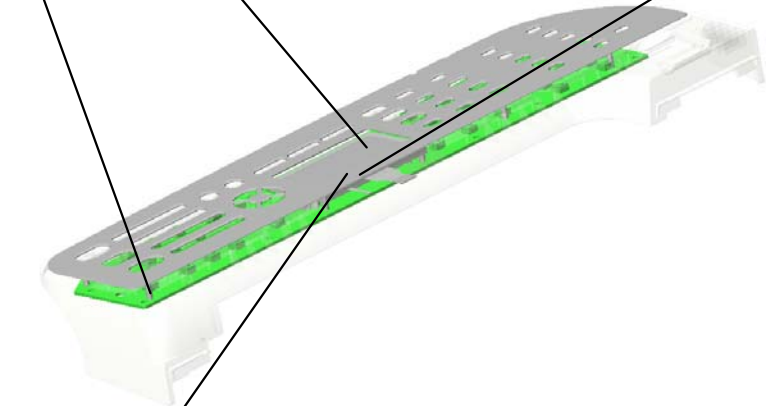
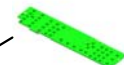
15.M2041403  
(TWN):OPERATION  
PANEL:ASS'Y

1.04503010N  
(x9)  
TAPPING SCREW -  
M3X10



1.04503010N (x 1)  
TAPPING SCREW - M3X10

3.M2021466  
OPERATION PANE  
L BOARD



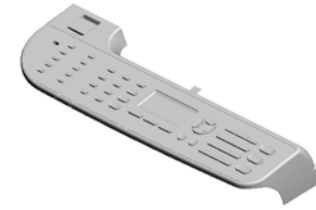
2.M0751498  
LCD:STN:MV



U001	<b>U002</b>	U003	U004	U005	U006	U007	U008	U009	U010	U011	U012	U013
------	-------------	------	------	------	------	------	------	------	------	------	------	------

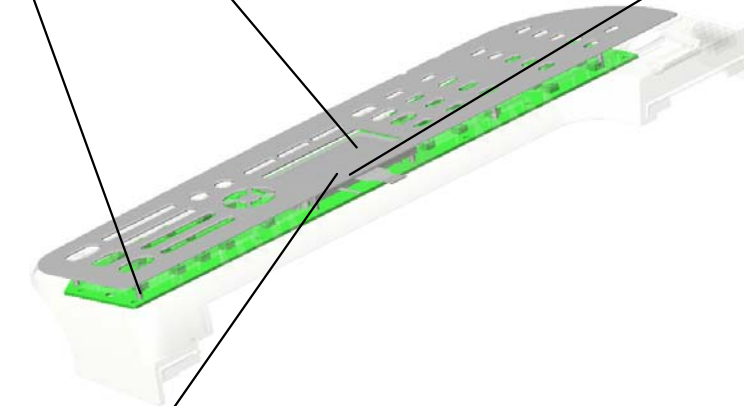
U002\_S006  
(CHN):OPERATION PANEL:ASS'Y

8.M2021478  
(CHN):SHEET:OPERATION SUB-UNIT

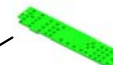


14.M2041402  
(CHN):OPERATION PANEL:ASS'Y

1.04503010N  
(x9)  
TAPPING SCREW - M3X10



3.M2021466  
OPERATION PANEL BOARD



1.04503010N (x 1)  
TAPPING SCREW - M3X10

2.M0751498  
LCD:STN:MV



U001	<b>U002</b>	U003	U004	U005	U006	U007	U008	U009	U010	U011	U012	U013
------	-------------	------	------	------	------	------	------	------	------	------	------	------

# U003.SCANNER/ADF

U003\_S001  
M2021630  
ADF:ASS'Y

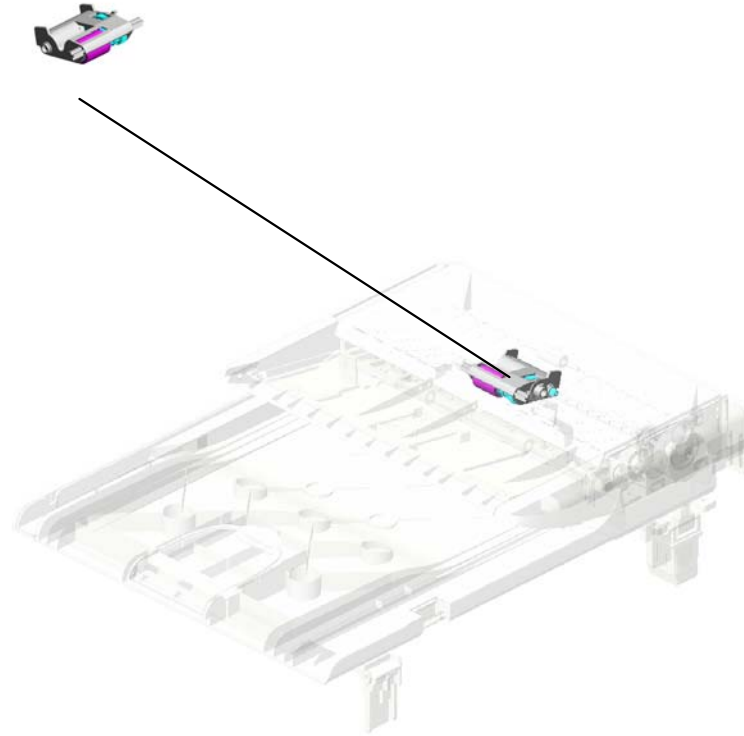


U001	U002	U003	U004	U005	U006	U007	U008	U009	U010	U011	U012	U013
------	------	------	------	------	------	------	------	------	------	------	------	------



# U003\_S001.ADF:ASS'Y

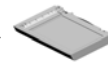
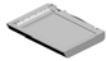
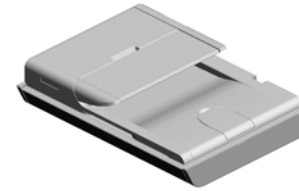
U003\_S001\_S001  
M2021643  
PICKUP ROLLER:ASS'Y



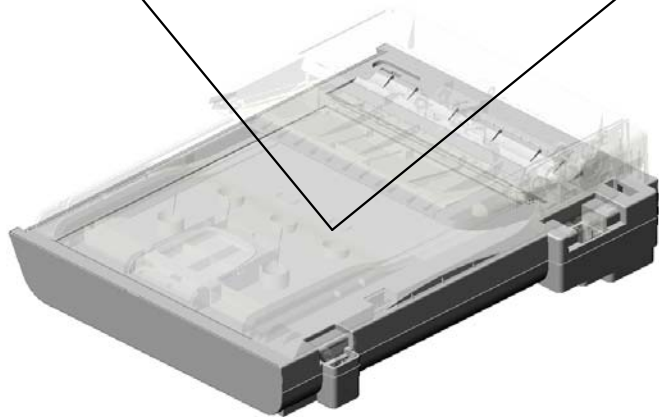
U001	U002	U003	U004	U005	U006	U007	U008	U009	U010	U011	U012	U013
------	------	------	------	------	------	------	------	------	------	------	------	------

U003  
SCANNER/ADF

38.M2011600  
(x2)  
(M203):(NA/EU):SC  
ANNER:M201:ASS'  
Y



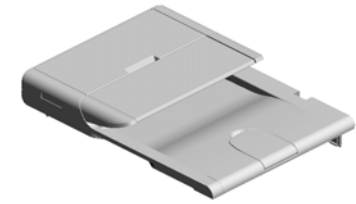
39.M2021600  
(M204):SCANNER:  
ASSY



U001	U002	U003	U004	U005	U006	U007	U008	U009	U010	U011	U012	U013
------	------	------	------	------	------	------	------	------	------	------	------	------

U003\_S001  
ADF:ASS'Y

- 13.M1562836 COIL SPRING:FEE  
D ROLLER:UPPER
- 9.M1562832 SHAFT:TRANSPOR  
T ROLLER:UPPER  
PAPER FEED
- 28.M1562862 ARM:REGISTRATI  
ON SENSOR
- 27.M1562861 REGISTRATION R  
OLLER:ASS'Y
- 11.M1562834 SHAFT:PICKUP



40.M2021630  
ADF:ASS'Y

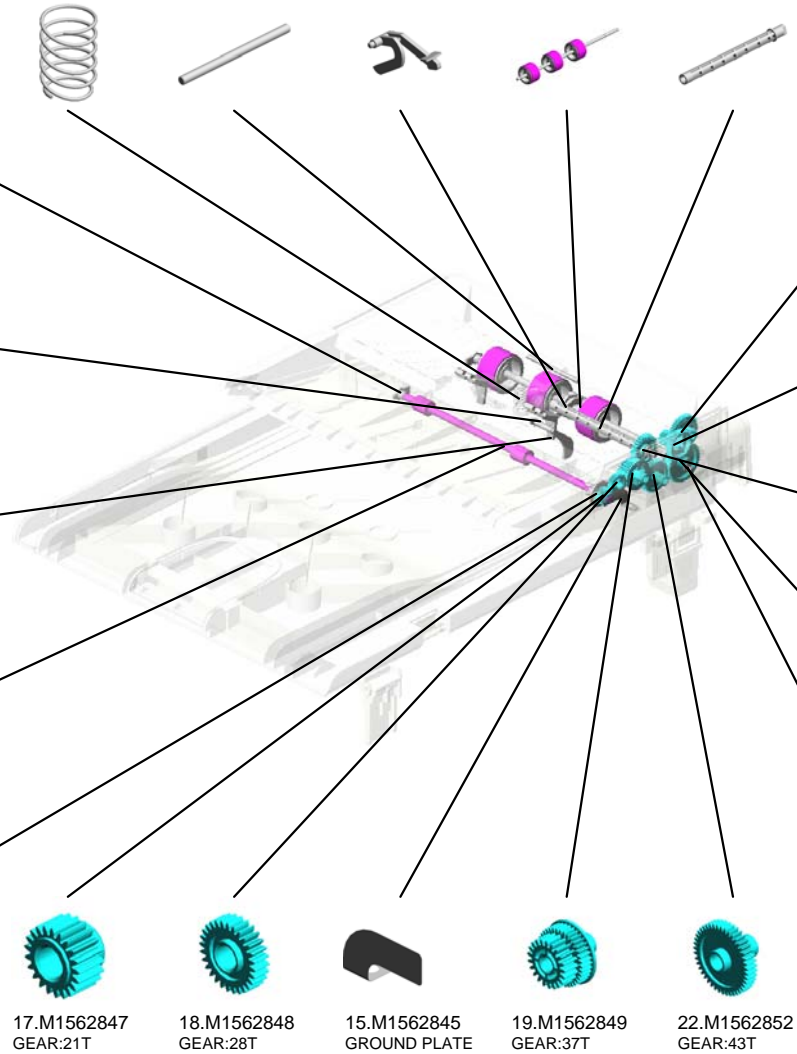
25.M1562857  
(x2)  
PLAIN SHAFT BEA  
RING:LEFT:EXIT R  
OLLER

3.M1562824  
(x2)  
ARM:STOPPER

10.M1562833  
ARM:ORIGINAL SE  
NSOR

24.M1562856  
EXIT ROLLER

26.M1562858  
(x2)  
PLAIN SHAFT BEA  
RING:RIGHT:EXIT  
ROLLER



17.M1562847  
GEAR:21T

18.M1562848  
GEAR:28T

15.M1562845  
GROUND PLATE

19.M1562849  
GEAR:37T

22.M1562852  
GEAR:43T

21.M1562851  
GEAR:46T

20.M1562850  
GEAR:39T

12.M1562835  
GEAR:28T

23.M1562853  
GEAR:53T

16.M1562846  
(x2)  
SCREW:3X4



13.M1562836  
COIL SPRING:FEE  
D ROLLER:UPPER



26.M1562858  
PLAIN SHAFT BEA  
RING:RIGHT:EXIT  
ROLLER



34.M1562892  
(x13)  
SCREW:3X8



36.M1562898  
SCREW:3X6

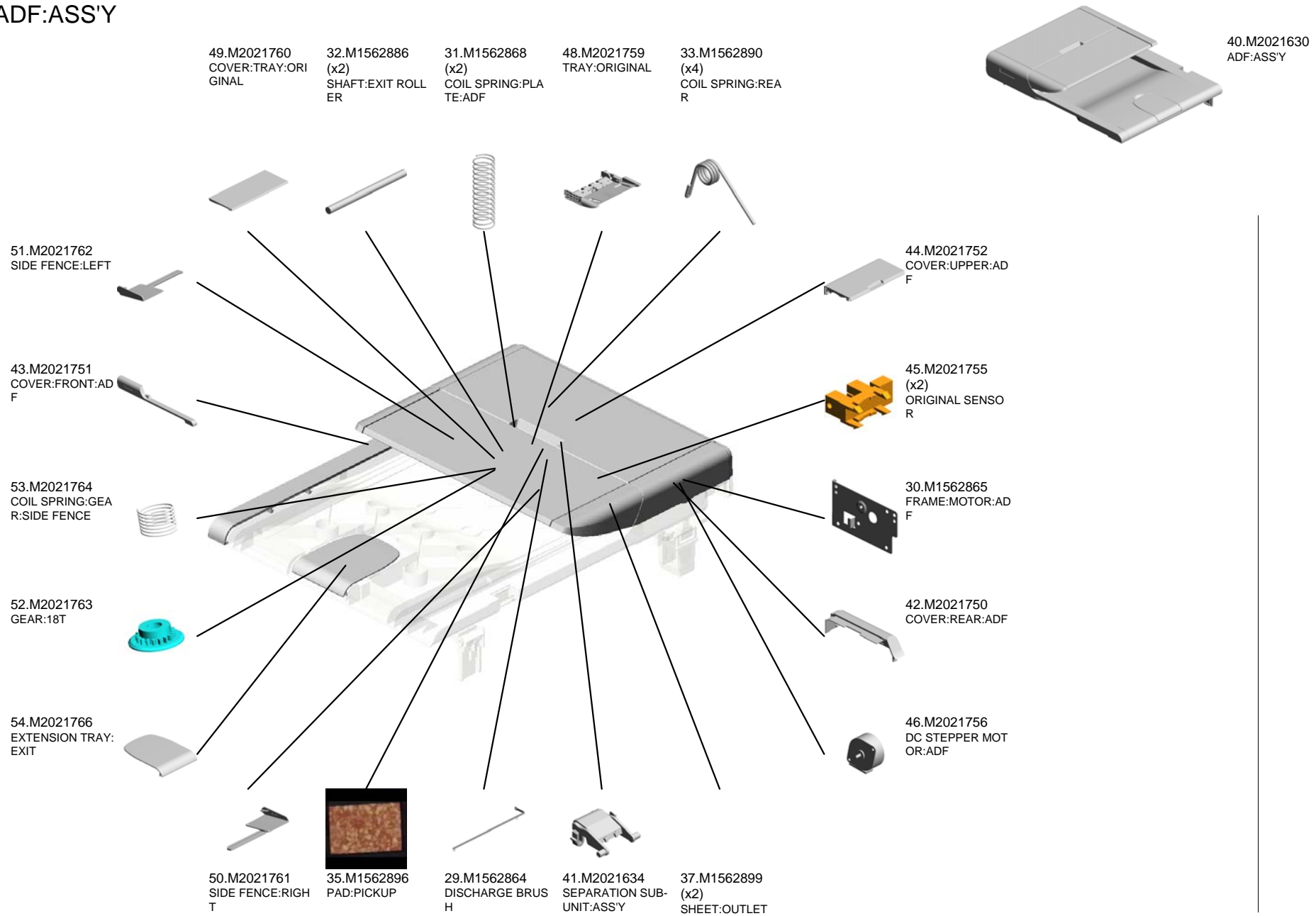


47.M2021758  
CONNECTOR:HAR  
NESS



56.M2021768  
(x4)  
SCREW:4X8

U003\_S001  
ADF:ASS'Y

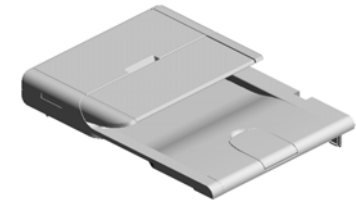


U003\_S001  
ADF:ASS'Y

62.M2021775  
PRESSURE PLATE  
:ADF:M202

60.M2021772  
DRIVEN ROLLER:T  
RANSPORT:UPPE  
R:ADF

64.M2021777  
SHAFT:DRIVEN RO  
LLER:TRANSPORT  
:ADF:M202



40.M2021630  
ADF:ASS'Y

58.M2021770  
(x2)  
EXIT ROLLER



63.M2021776  
SPONGE:ADF:M20  
2



65.M2021778  
(x2)  
DRIVEN ROLLER:T  
RANSPORT:ADF:M  
202



59.M2021771  
COVER:LOWER:A  
DF



55.M2021767  
HINGE:LEFT



57.M2021769  
HINGE:RIGHT



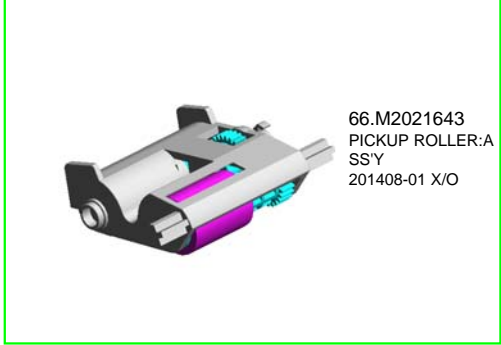
U001	U002	U003	U004	U005	U006	U007	U008	U009	U010	U011	U012	U013
------	------	------	------	------	------	------	------	------	------	------	------	------

U003\_S001\_S001  
 PICKUP ROLLER:ASS'Y

1.M1562822  
 FRAME:PICKUP

6.M1562828  
 GEAR:28T

14.M1562837  
 COIL SPRING:PAW  
 L

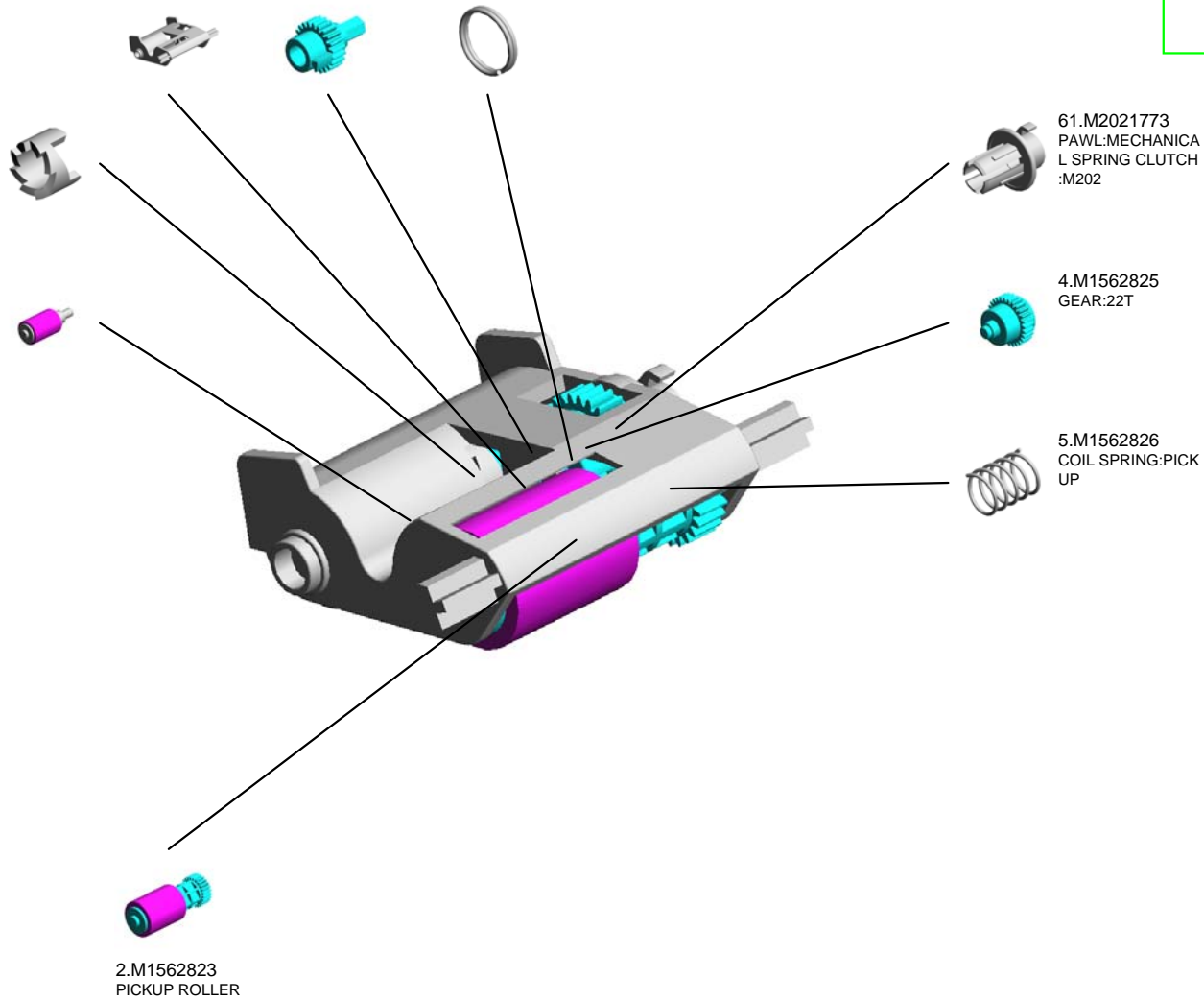


66.M2021643  
 PICKUP ROLLER:AS  
 SS'Y  
 201408-01 X/O

7.M1562829  
 PAWL:PICKUP



8.M1562830  
 FEED ROLLER



61.M2021773  
 PAWL:MECHANICA  
 L SPRING CLUTCH  
 :M202



4.M1562825  
 GEAR:22T



5.M1562826  
 COIL SPRING:PICK  
 UP



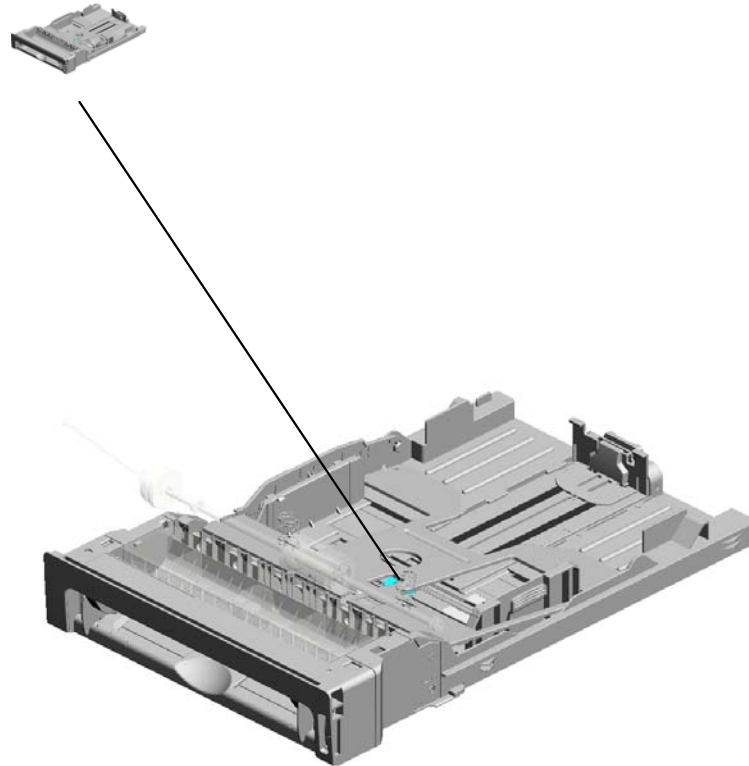
2.M1562823  
 PICKUP ROLLER



U001	U002	U003	U004	U005	U006	U007	U008	U009	U010	U011	U012	U013
------	------	------	------	------	------	------	------	------	------	------	------	------

# U004.PAPER TRAY

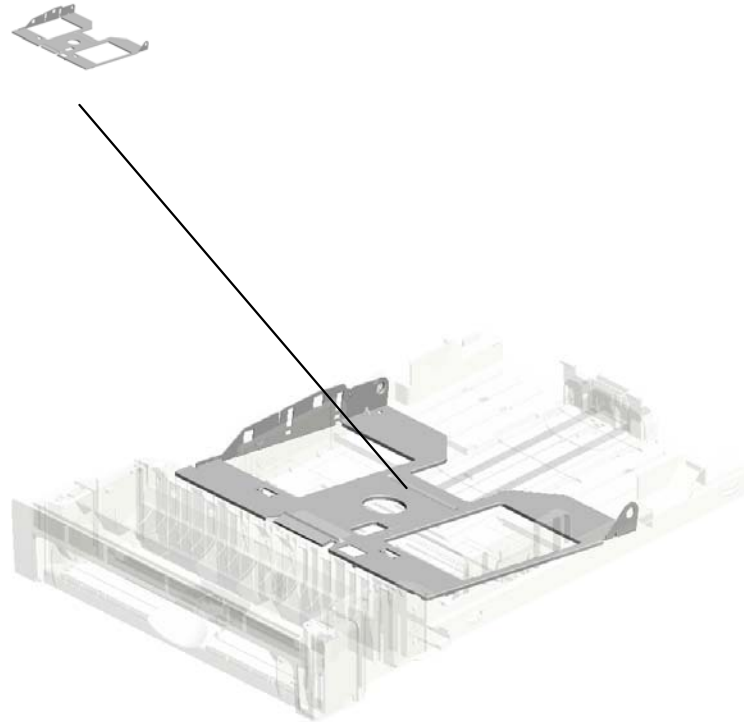
U004\_S001  
M0962550  
PAPER TRAY:ASSY



U001	U002	U003	U004	U005	U006	U007	U008	U009	U010	U011	U012	U013
------	------	------	------	------	------	------	------	------	------	------	------	------

# U004\_S001.PAPER TRAY:ASS'Y

U004\_S001\_S001  
M0182562  
BASE:ADHESION



U001	U002	U003	U004	U005	U006	U007	U008	U009	U010	U011	U012	U013
------	------	------	------	------	------	------	------	------	------	------	------	------

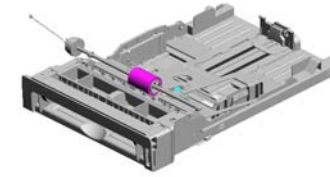


# U004 PAPER TRAY

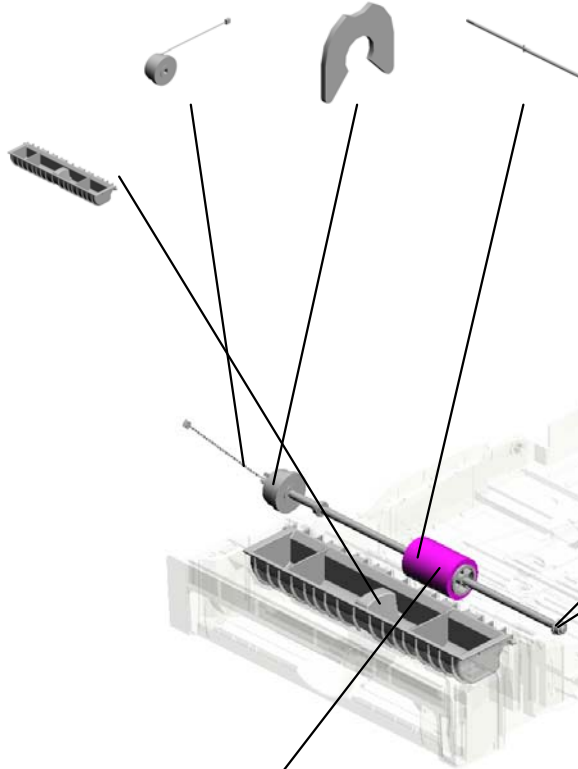
31.GX201123  
MAGNETIC CLUTCH  
H:0.25N

32.H5213355  
C RING - PAPER FEED ROLLER

39.M1982580  
SHAFT: PAPER FEED ROLLER



13.G1662554  
DUPLEX GUIDE



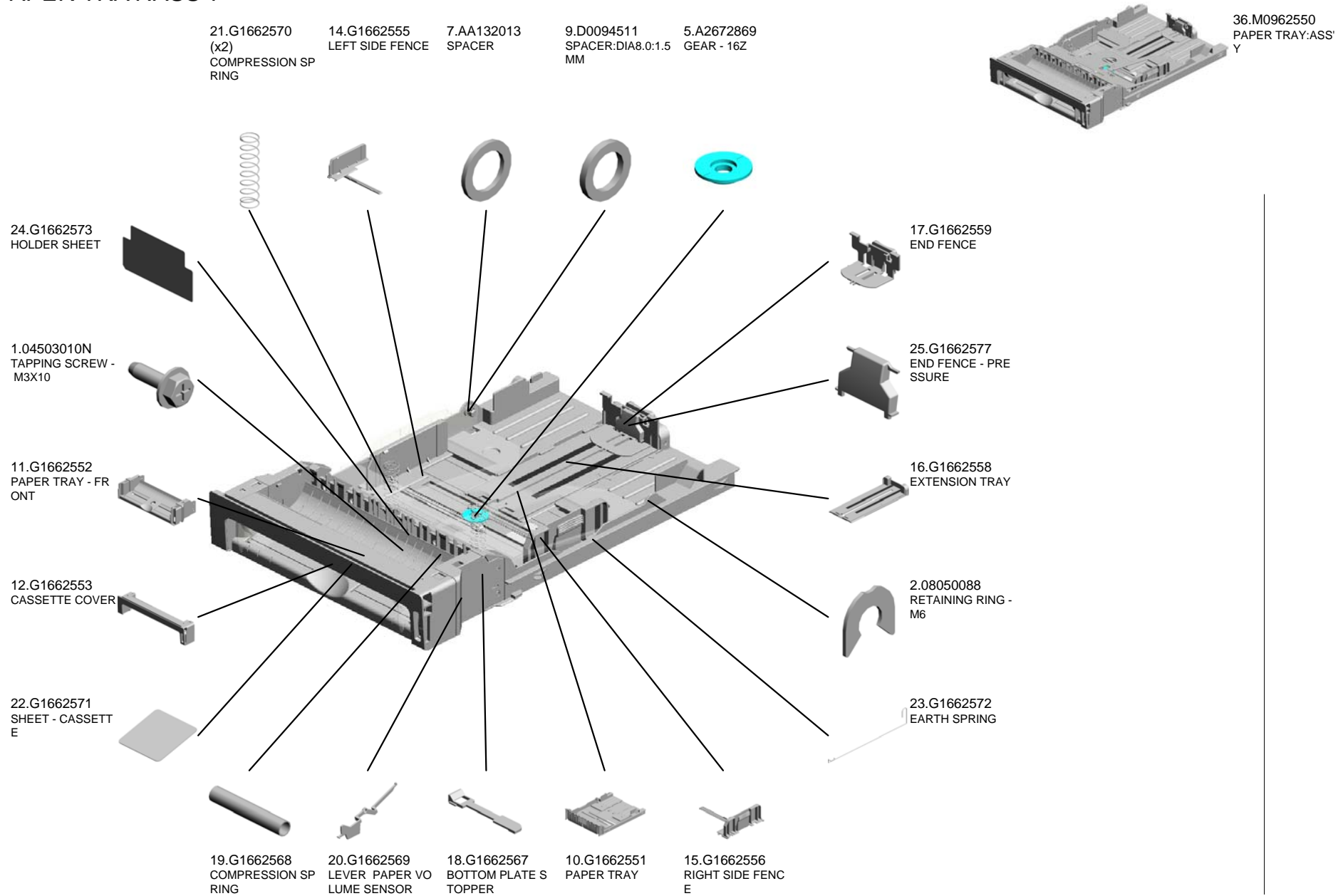
3.08050089  
(x2)  
RETAINING RING - M4

6.AA082101  
(x2)  
BUSHING - 6X10X6

8.AF031061  
PAPER FEED ROLLER

U001	U002	U003	U004	U005	U006	U007	U008	U009	U010	U011	U012	U013
------	------	------	------	------	------	------	------	------	------	------	------	------

U004\_S001  
PAPER TRAY:ASS'Y

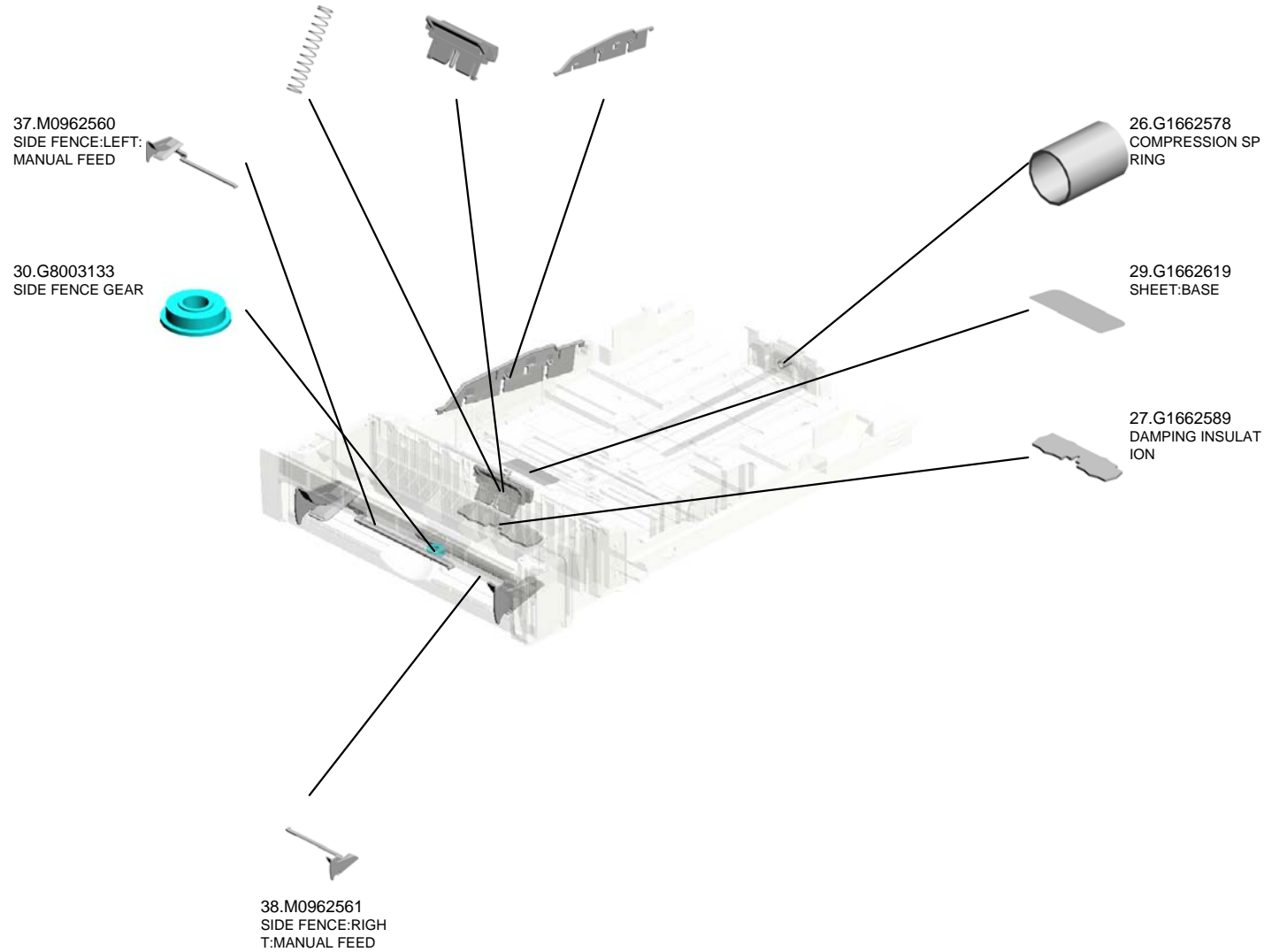


U004\_S001  
PAPER TRAY:ASS'Y

28.G1662606 COMPRESSION SP RING  
 35.M0352620 FRICTION PAD  
 34.M0182608 COVER:BASE



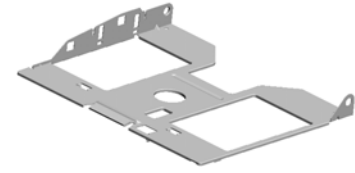
36.M0962550  
PAPER TRAY:ASS'Y



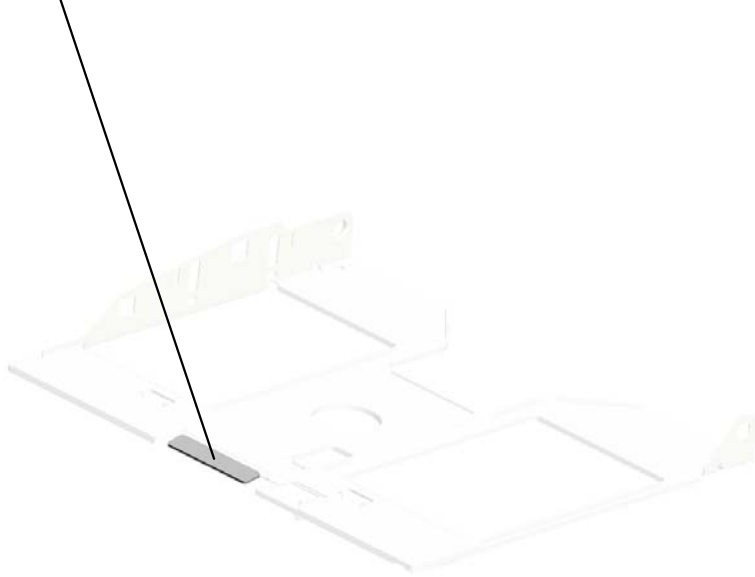
U001	U002	U003	U004	U005	U006	U007	U008	U009	U010	U011	U012	U013
------	------	------	------	------	------	------	------	------	------	------	------	------

U004\_S001\_S001  
BASE:ADHESION

4.52152713  
BOTTOM PLATE P  
AD



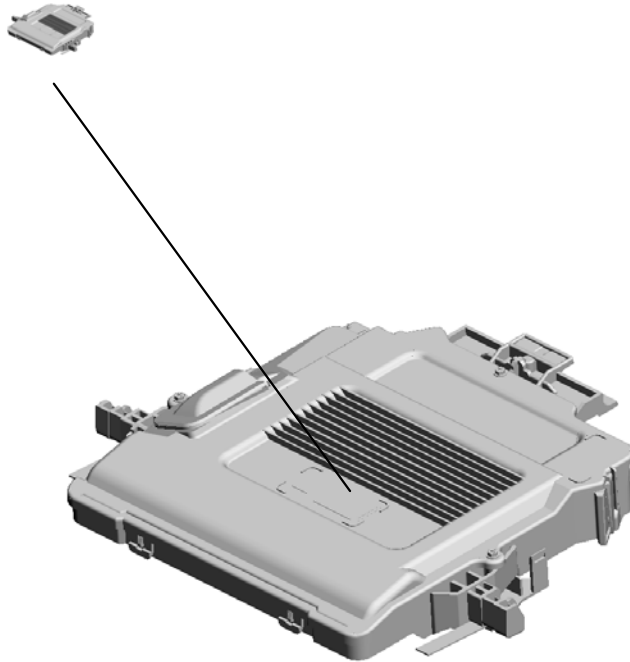
33.M0182562  
BASE:ADHESION



U001	U002	U003	<b>U004</b>	U005	U006	U007	U008	U009	U010	U011	U012	U013
------	------	------	-------------	------	------	------	------	------	------	------	------	------

U005  
LASER UNIT

1.M0931851  
IMAGING UNIT:AS  
S'Y



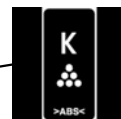
U001	U002	U003	U004	<b>U005</b>	U006	U007	U008	U009	U010	U011	U012	U013
------	------	------	------	-------------	------	------	------	------	------	------	------	------

U006  
PCU

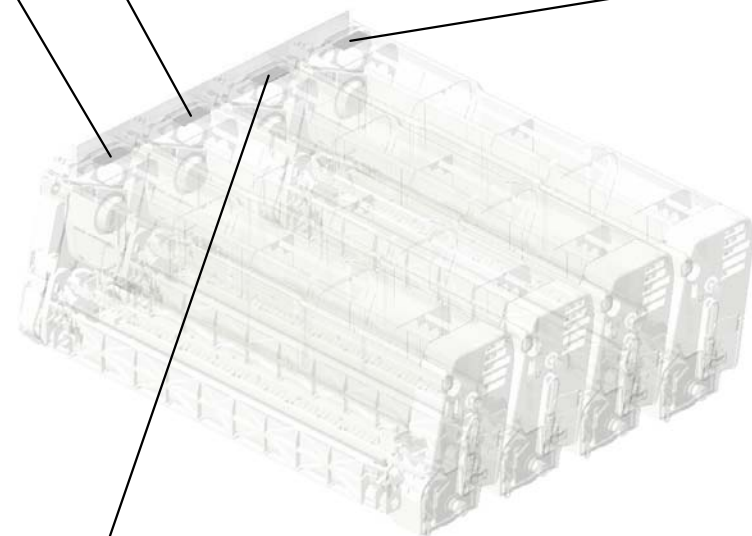
2.G1663332  
DECAL - MAGENTA



3.G1663333  
DECAL - CYAN



1.G1663331  
DECAL - BLACK

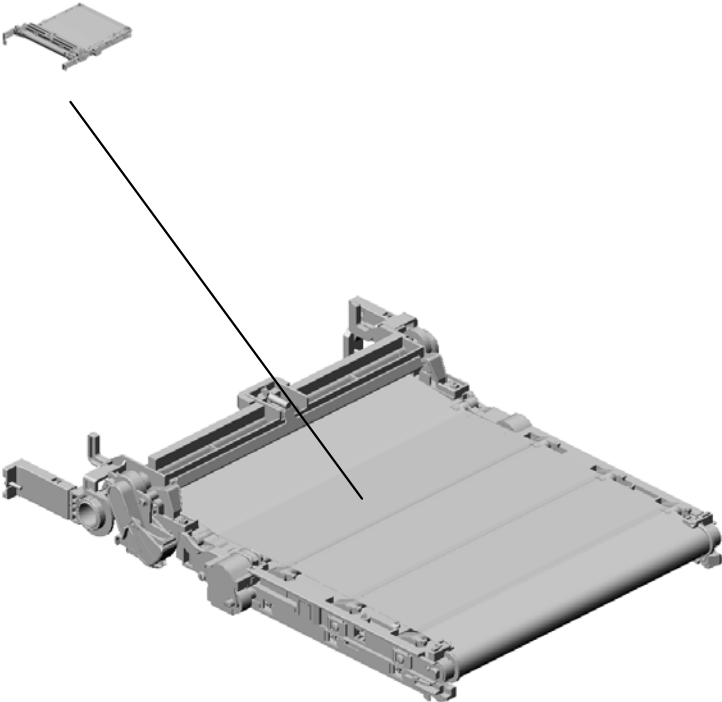


4.G1663334  
DECAL - YELLOW

U001	U002	U003	U004	U005	<b>U006</b>	U007	U008	U009	U010	U011	U012	U013
------	------	------	------	------	-------------	------	------	------	------	------	------	------

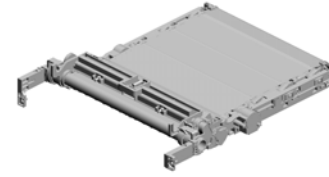
# U007.ITB CLEANING

U007\_S001  
M0966000  
INTERMEDIATE TRANSFER  
SECTION:ASSY



U001	U002	U003	U004	U005	U006	U007	U008	U009	U010	U011	U012	U013
------	------	------	------	------	------	------	------	------	------	------	------	------

U007  
ITB CLEANING



U001	U002	U003	U004	U005	U006	U007	U008	U009	U010	U011	U012	U013
------	------	------	------	------	------	------	------	------	------	------	------	------



U007\_S001

INTERMEDIATE TRANSFER SECTION:ASS'Y

6.G1666194  
RIGHT HOLDER - T  
TRANSFER BELT U  
NIT

3.G1666026  
(x2)  
BUSHING - 19MM



**9.M0966000**  
**INTERMEDIATE TR**  
**ANSFER SECTION:**  
**ASS'Y**

7.G1666196  
RIGHT SLIDER - T  
TRANSFER BELT U  
NIT

4.G1666099  
(x2)  
COMPRESSION SP  
RING

5.G1666193  
LEFT HOLDER - TR  
ANSFER BELT UNI  
T

2.07200040E  
(x2)  
RETAINING RING -  
M4

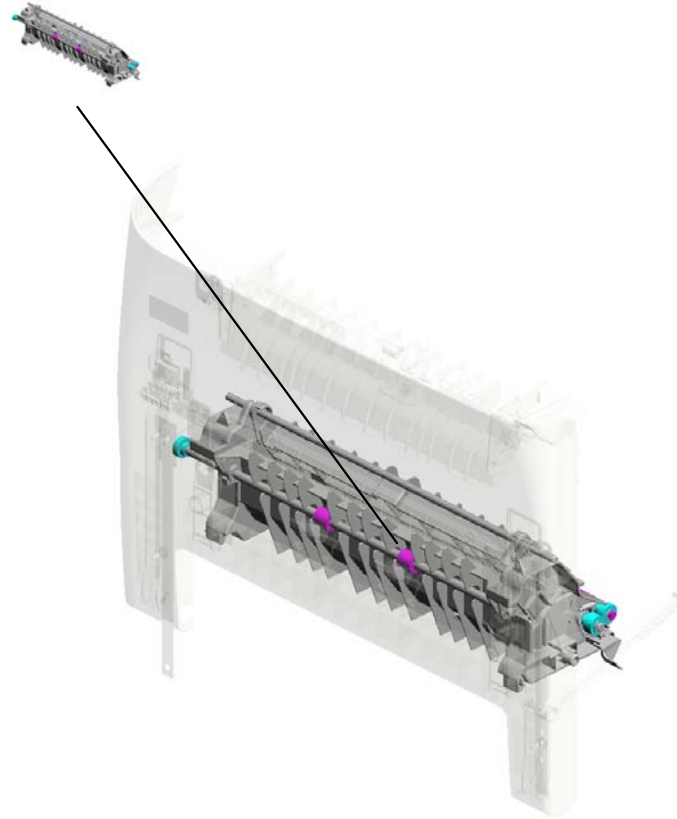
1.04503010N  
(x5)  
TAPPING SCREW -  
M3X10

8.G1666197  
LEFT SLIDER - TR  
ANSFER BELT UNI  
T

U001	U002	U003	U004	U005	U006	U007	U008	U009	U010	U011	U012	U013
------	------	------	------	------	------	------	------	------	------	------	------	------

# U008.PAPER TRANSPORT

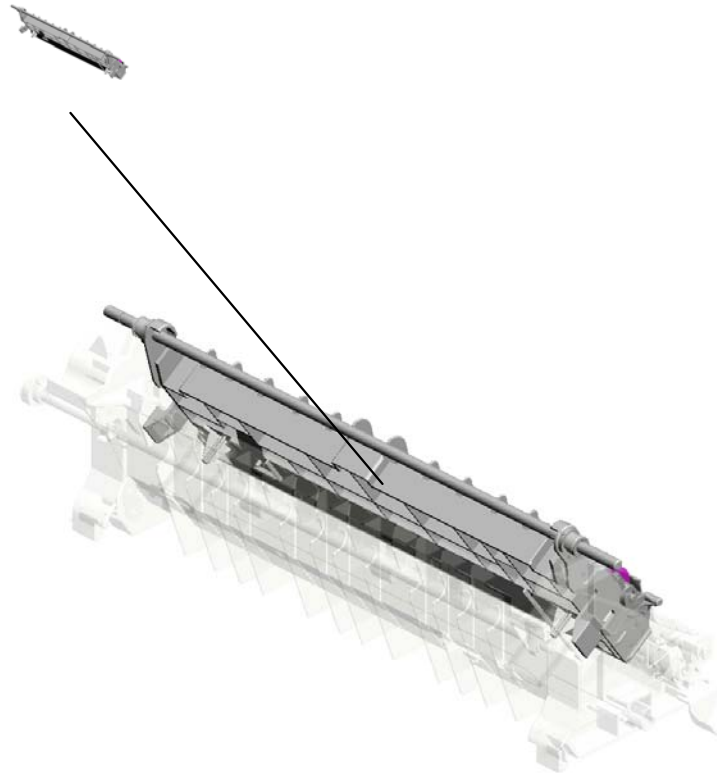
U008\_S001  
M0963802  
HOUSING:TRANSPORT SUB-  
UNIT:ASS'Y



U001	U002	U003	U004	U005	U006	U007	U008	U009	U010	U011	U012	U013
------	------	------	------	------	------	------	------	------	------	------	------	------

# U008\_S001.HOUSING:TRANSPORT SUB-UNIT:ASS'Y

U008\_S001\_S001  
M0966202  
TRANSFER ROLLER:SUB-AS  
S'Y



U001	U002	U003	U004	U005	U006	U007	U008	U009	U010	U011	U012	U013
------	------	------	------	------	------	------	------	------	------	------	------	------

# U008 PAPER TRANSPORT

36.G1664464  
DECAL:HIGHTEMP  
ERATURE

33.G1663972  
(x2)  
COMPRESSION SP  
RING - GRIP

17.G1663908  
LOCK LEVER ARM

24.G1663933  
STOPPER:FEELER  
:PAPER FEED SEN  
SOR

21.G1663925  
TORSION SPRING  
- FEELER



31.G1663970  
LEFT HOOK

15.G1663906  
LEFT LOCK LEVER

19.G1663910  
GROUND WIRE

13.G1663904  
LEFT FRAME - FR  
ONT COVER

22.G1663927  
STOPER BAND



16.G1663907  
LOCK GUIDE

25.G1663957  
(x2)  
WASHER - 0.8X10.  
8MM

27.G1663962  
(x2)  
COMPRESSION SP  
RING HOLDER

12.G1663903  
RIGHT FRAME - FR  
ONT COVER

1.04503010N  
(x13)  
TAPPING SCREW -  
M3X10

20.G1663921  
(x2)  
GUIDE PLATE SPR  
ING - MIDDLE

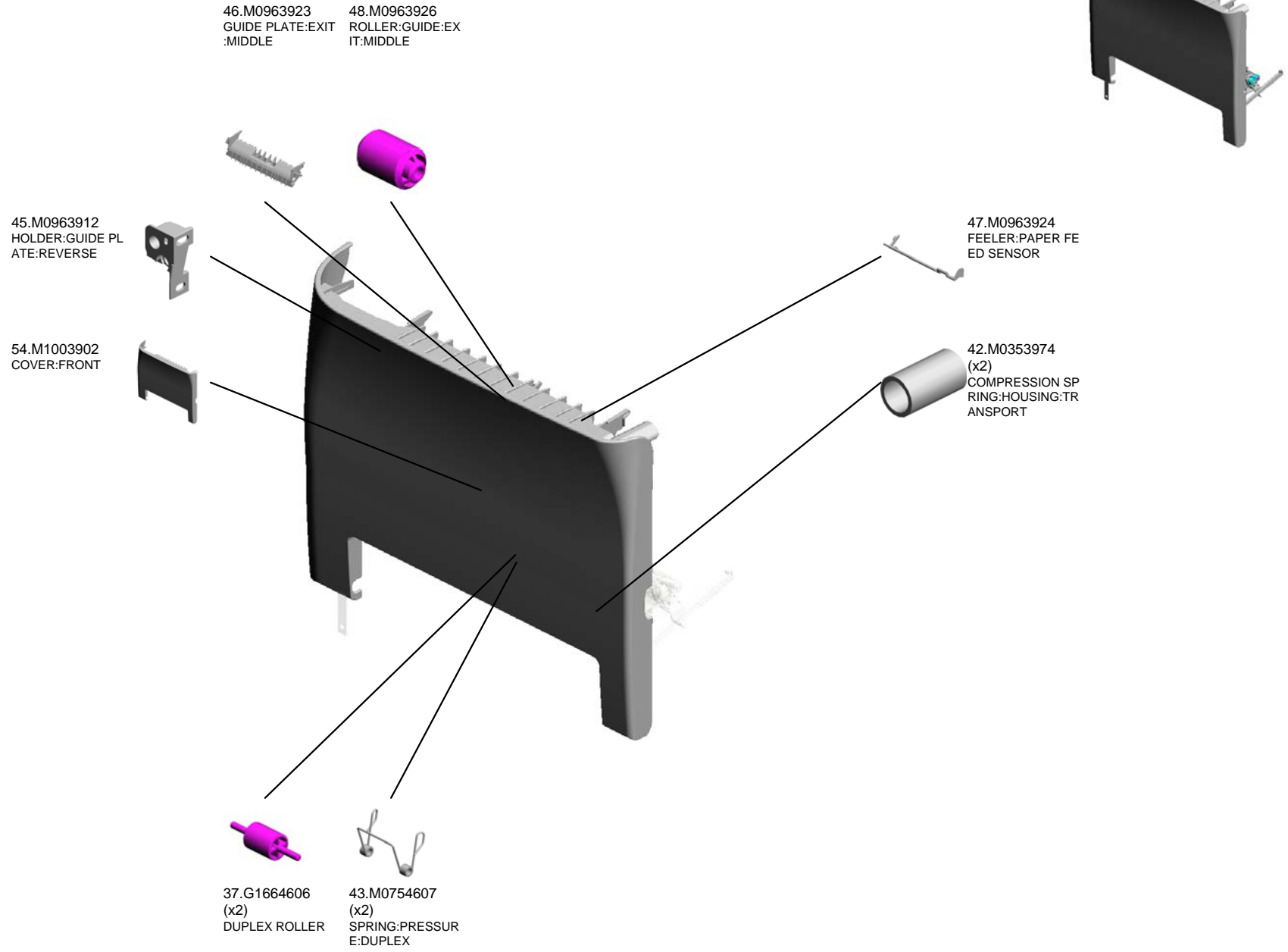
32.G1663971  
RIGHT FHOOK

18.G1663909  
TENSION SPRING

14.G1663905  
RIGHT LOCK LEVE  
R

23.G1663928  
BRAKE RACK - FR  
ONT COVER

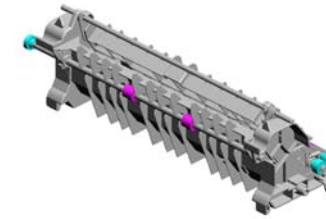
# U008 PAPER TRANSPORT



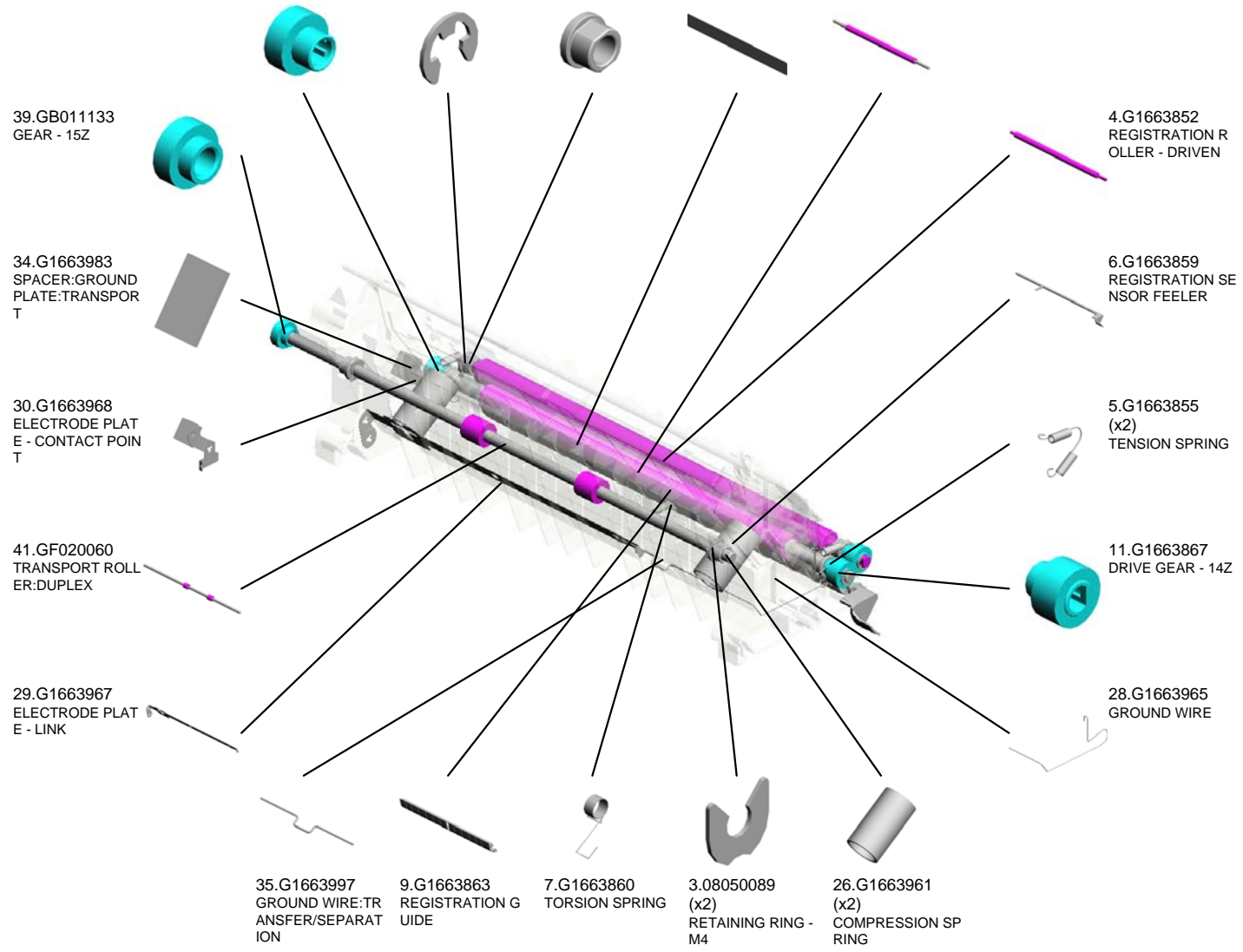
U001	U002	U003	U004	U005	U006	U007	U008	U009	U010	U011	U012	U013
------	------	------	------	------	------	------	------	------	------	------	------	------

U008\_S001  
HOUSING:TRANSPORT SUB-UNIT:ASS'Y

- 10.G1663865 (x2) GEAR - 14Z
- 2.07200040E (x5) RETAINING RING - M4
- 38.GA082015 (x6) PLAIN SHAFT BEARING RING:DIA6:DIA9:7
- 8.G1663862 (x2) GUIDE SHEET - REGISTRATION
- 40.GF020000 REGISTRATION ROLLER - DRIVE



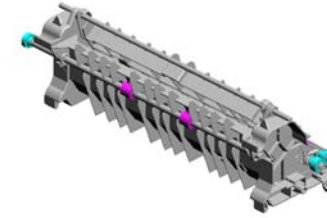
44.M0963802  
HOUSING:TRANSPORT SUB-UNIT:ASS'Y



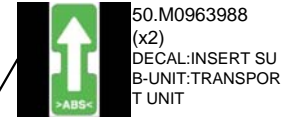
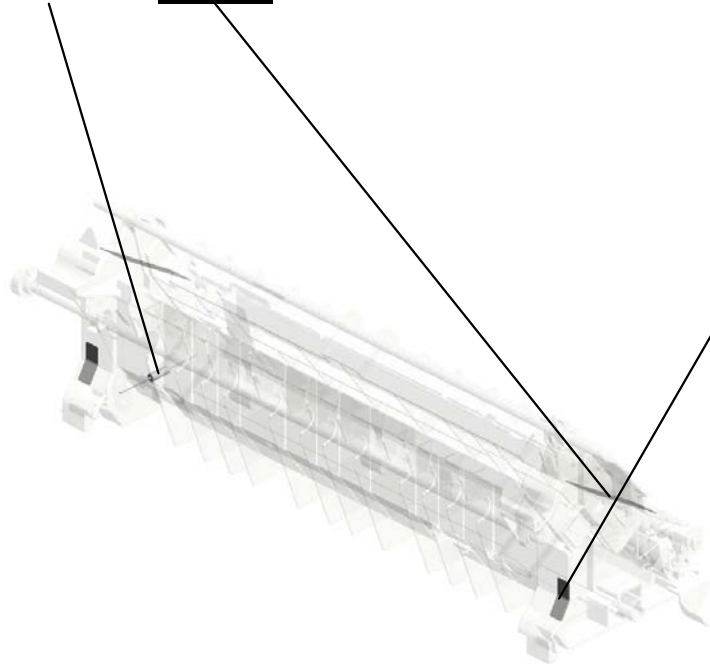
U001	U002	U003	U004	U005	U006	U007	U008	U009	U010	U011	U012	U013
------	------	------	------	------	------	------	------	------	------	------	------	------

U008\_S001  
HOUSING:TRANSPORT SUB-UNIT:ASS'Y

51.M0963989    49.M0963987  
RESISTOR:TRANS    (x2)  
FER/SEPARATION    DECAL:GRIP:HOUSING



44.M0963802  
HOUSING:TRANSPORT SUB-UNIT:ASS'Y



50.M0963988  
(x2)  
DECAL:INSERT SUB-UNIT:TRANSPORT UNIT

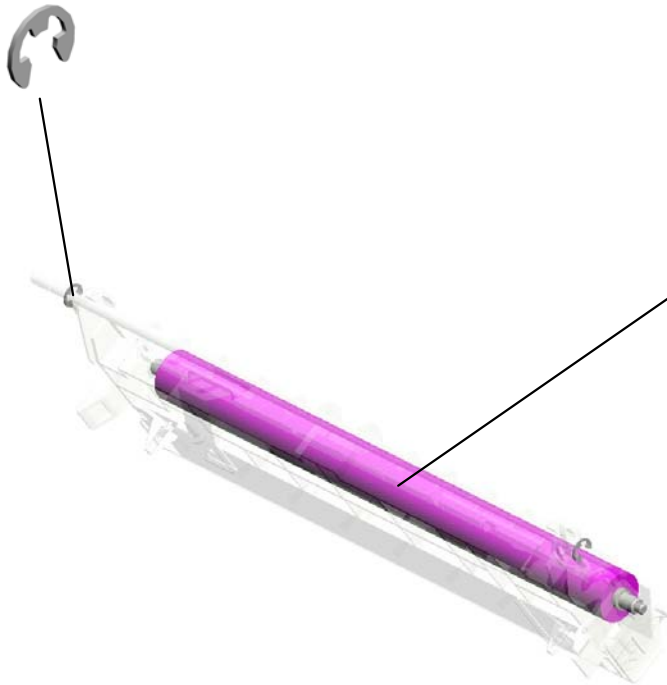
U001	U002	U003	U004	U005	U006	U007	<b>U008</b>	U009	U010	U011	U012	U013
------	------	------	------	------	------	------	-------------	------	------	------	------	------

U008\_S001\_S001  
TRANSFER ROLLER:SUB-ASS'Y

2.07200040E  
(x2)  
RETAINING RING -  
M4



52.M0966202  
TRANSFER ROLLE  
R:SUB-ASS'Y



53.M0976250  
TRANSFER ROLLE  
R:TRANSFER/SEP  
ARATION

U001	U002	U003	U004	U005	U006	U007	U008	U009	U010	U011	U012	U013
------	------	------	------	------	------	------	------	------	------	------	------	------

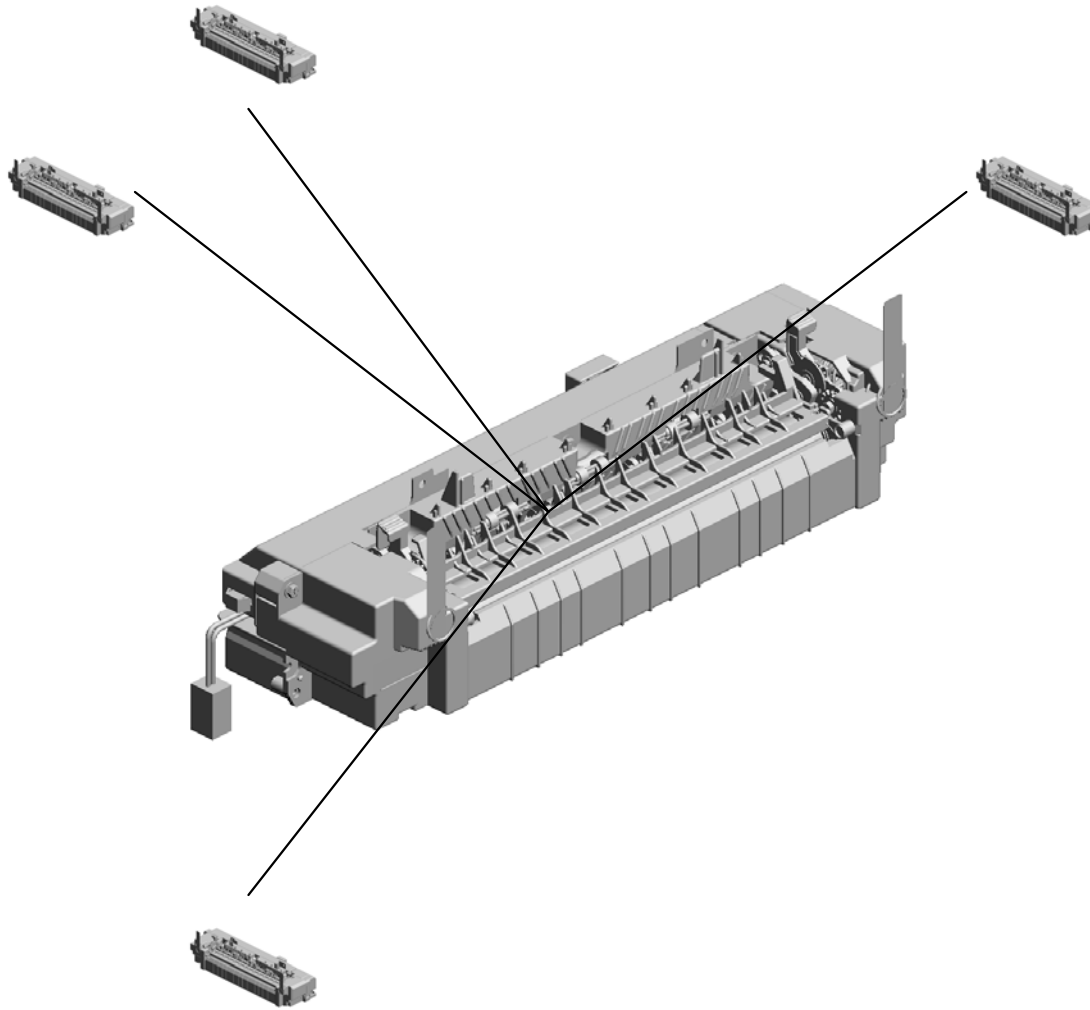


# U009.FUSING

U009\_S001  
M0964027  
(CHN/EU):FUSING UNIT - 230  
V

U009\_S002  
M0964017  
(NA):FUSING UNIT - 120V

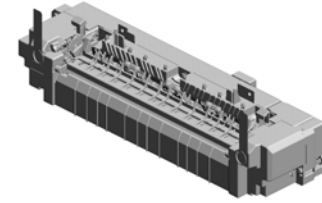
U009\_S003  
M0964019  
(TWN):FUSING UNIT - 110V



U009\_S004  
M0964027  
(CHN/EU):FUSING UNIT - 230  
V

U001	U002	U003	U004	U005	U006	U007	U008	U009	U010	U011	U012	U013
------	------	------	------	------	------	------	------	------	------	------	------	------

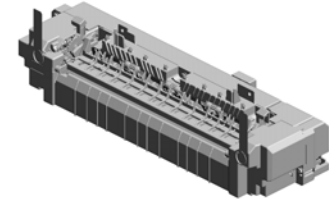
U009  
FUSING



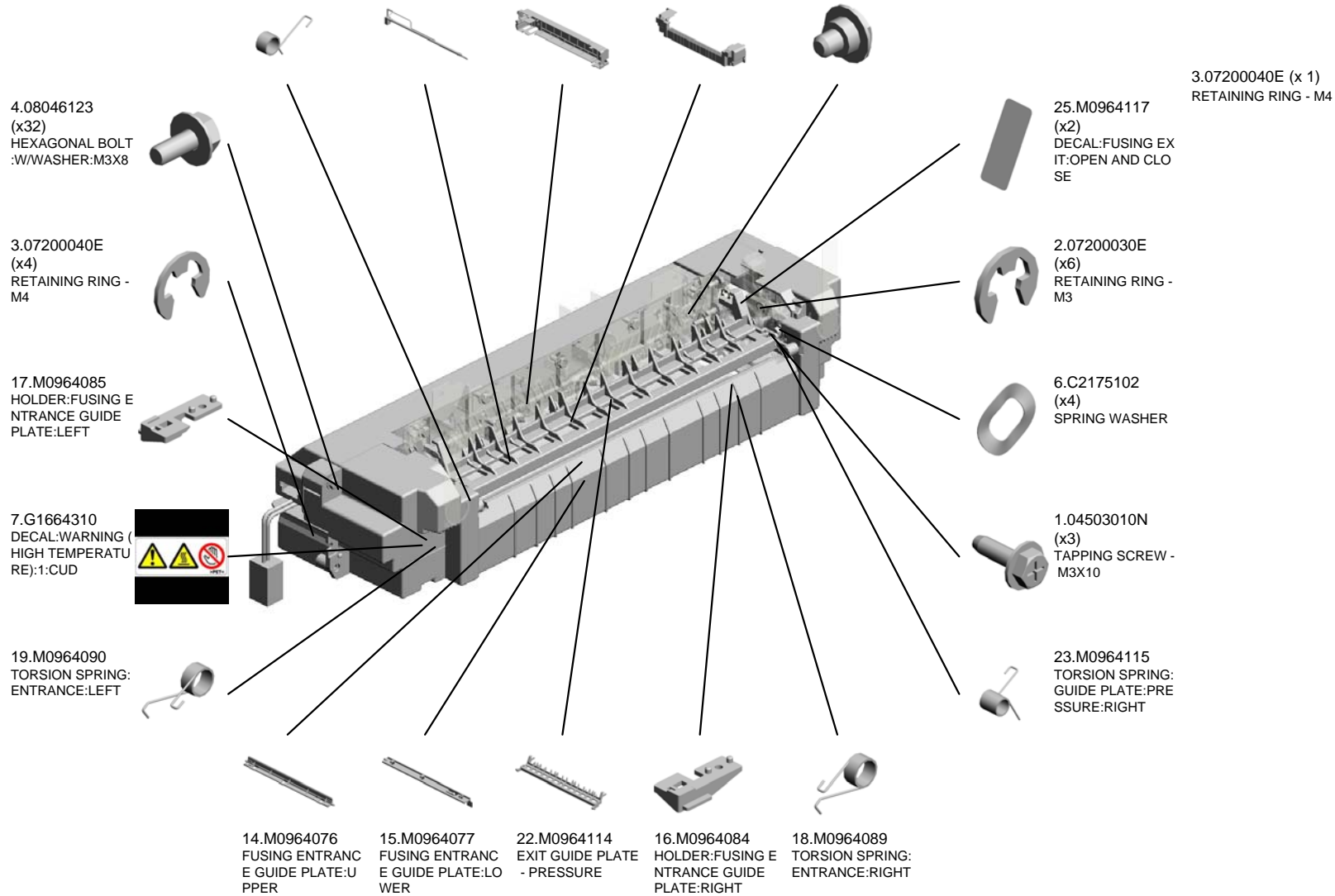
U001	U002	U003	U004	U005	U006	U007	U008	U009	U010	U011	U012	U013
------	------	------	------	------	------	------	------	------	------	------	------	------

U009\_S001  
(CHN/EU):FUSING UNIT - 230V

24.M0964116 TORSION SPRING: GUIDE PLATE:PRESSURE:LEFT  
 10.GX450009 (CHN/EU):HEATER:230V:1000W  
 20.M0964111 COVER:FUSING  
 21.M0964112 PRESSURE COVER  
 5.AA143520 SHOULDER SCREW - M3

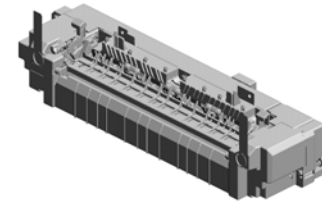
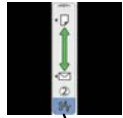


13.M0964027  
(CHN/EU):FUSING UNIT - 230V

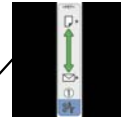


U009\_S001  
(CHN/EU):FUSING UNIT - 230V

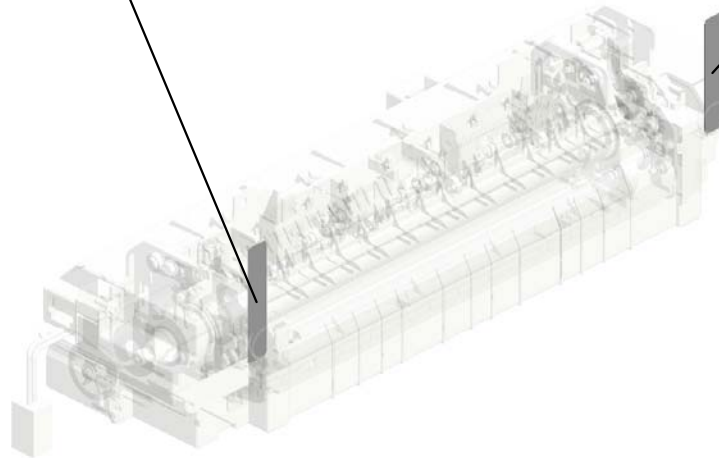
27.M0964127  
DECAL:FUSING:LE  
VER:RIGHT



13.M0964027  
(CHN/EU):FUSING  
UNIT - 230V



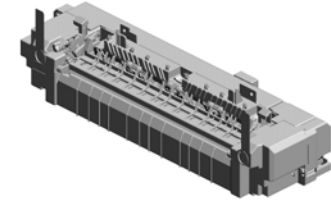
26.M0964126  
DECAL:FUSING:LE  
VER:LEFT



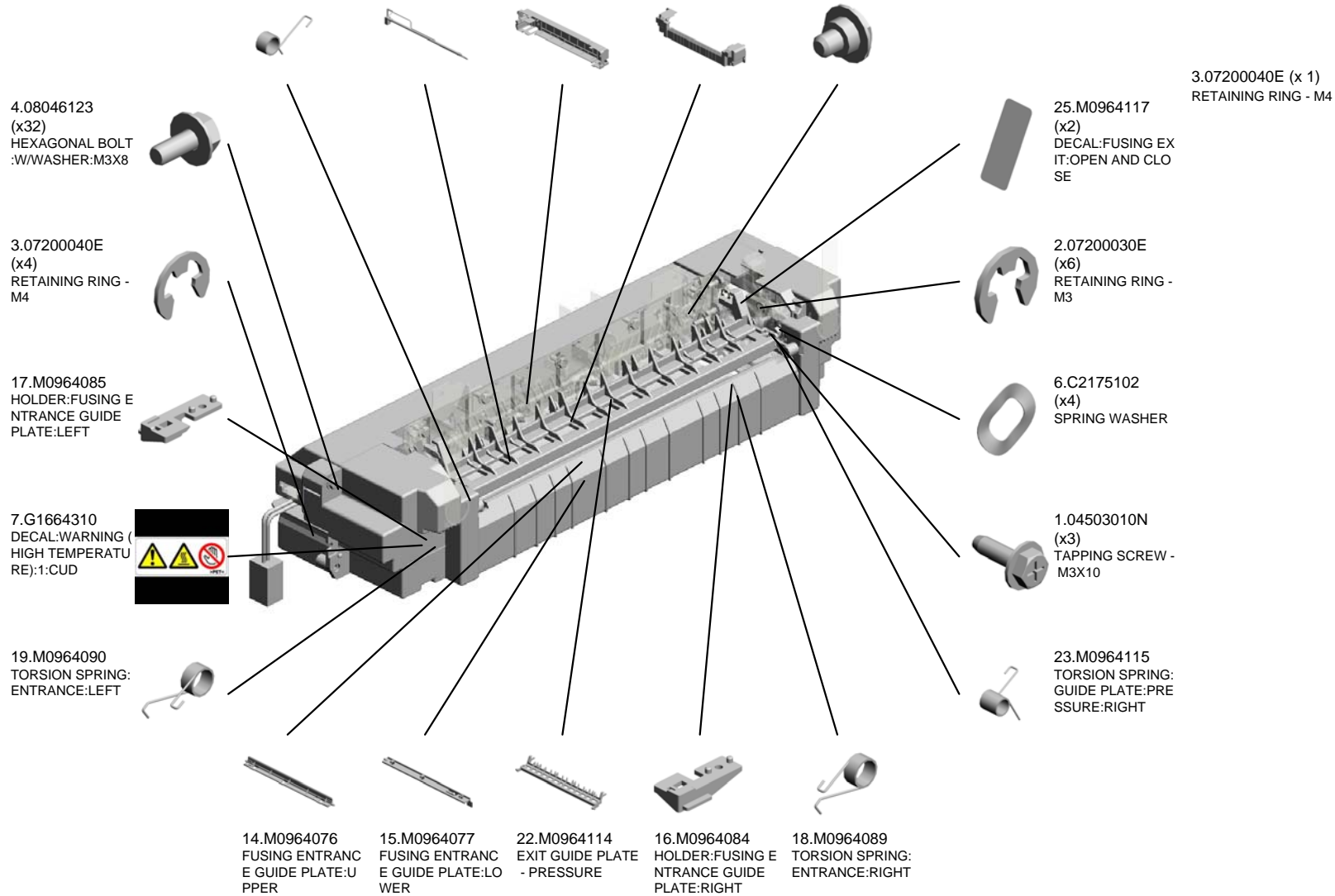
U001	U002	U003	U004	U005	U006	U007	U008	U009	U010	U011	U012	U013
------	------	------	------	------	------	------	------	------	------	------	------	------

U009\_S002  
(NA):FUSING UNIT - 120V

- 24.M0964116 TORSION SPRING: GUIDE PLATE:PRESSURE:LEFT
- 9.GX450008 (NA):HEATER:120V:1000W:INFRARED
- 20.M0964111 COVER:FUSING
- 21.M0964112 PRESSURE COVER
- 5.AA143520 SHOULDER SCREW - M3

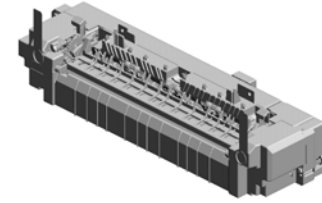
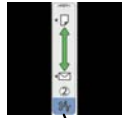


11.M0964017  
(NA):FUSING UNIT - 120V

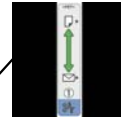


U009\_S002  
(NA):FUSING UNIT - 120V

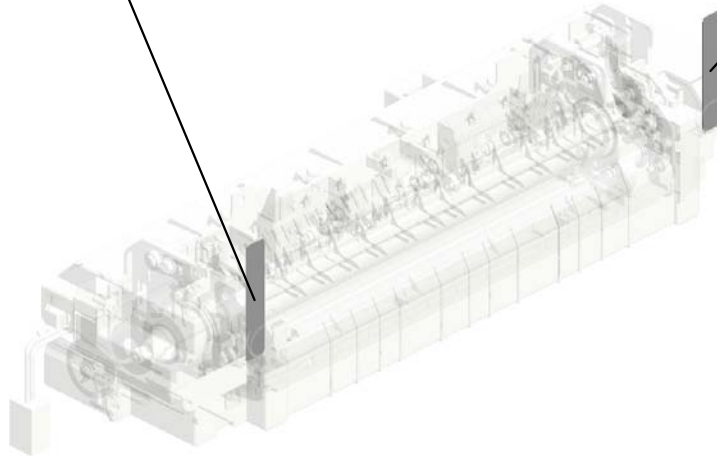
27.M0964127  
DECAL:FUSING:LE  
VER:RIGHT



11.M0964017  
(NA):FUSING UNIT  
- 120V



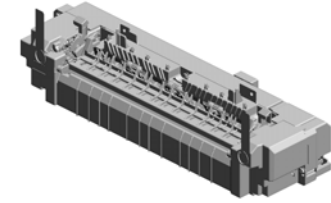
26.M0964126  
DECAL:FUSING:LE  
VER:LEFT



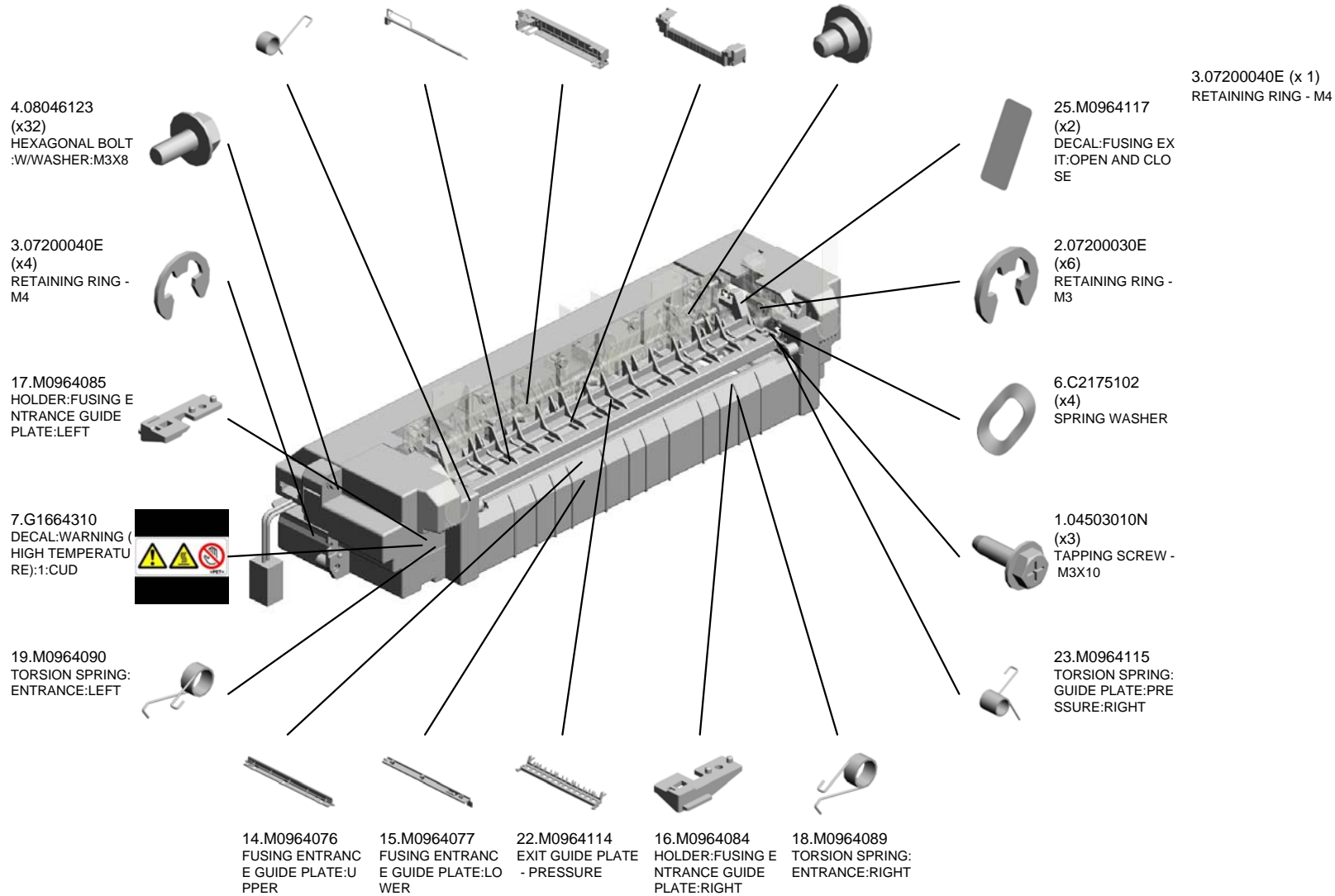
U001	U002	U003	U004	U005	U006	U007	U008	U009	U010	U011	U012	U013
------	------	------	------	------	------	------	------	------	------	------	------	------

U009\_S003  
(TWN):FUSING UNIT - 110V

24.M0964116 TORSION SPRING: GUIDE PLATE:PRESSURE:LEFT  
 8.GX450006 (TWN):HEATER:110V:1000W  
 20.M0964111 COVER:FUSING  
 21.M0964112 PRESSURE COVER  
 5.AA143520 SHOULDER SCREW - M3

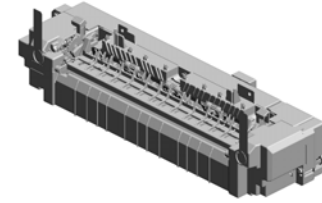
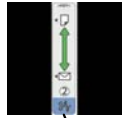


12.M0964019  
(TWN):FUSING UNIT - 110V

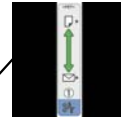


U009\_S003  
(TWN):FUSING UNIT - 110V

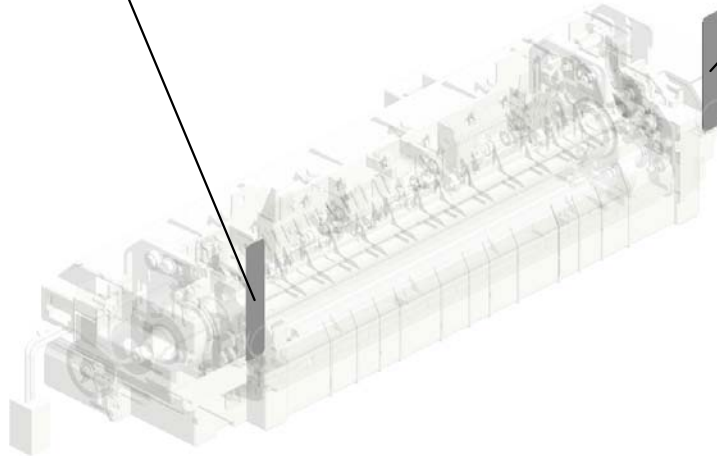
27.M0964127  
DECAL:FUSING:LE  
VER:RIGHT



12.M0964019  
(TWN):FUSING UNI  
T - 110V



26.M0964126  
DECAL:FUSING:LE  
VER:LEFT

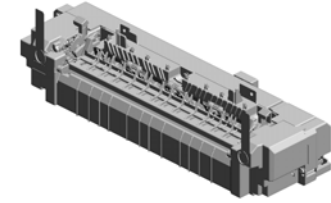


U001	U002	U003	U004	U005	U006	U007	U008	U009	U010	U011	U012	U013
------	------	------	------	------	------	------	------	------	------	------	------	------



U009\_S004  
(CHN/EU):FUSING UNIT - 230V

24.M0964116 TORSION SPRING: GUIDE PLATE:PRESSURE:LEFT  
 10.GX450009 (CHN/EU):HEATER:230V:1000W  
 20.M0964111 COVER:FUSING  
 21.M0964112 PRESSURE COVER  
 5.AA143520 SHOULDER SCREW - M3



13.M0964027  
(CHN/EU):FUSING UNIT - 230V

4.08046123 (x31)  
HEXAGONAL BOLT :W/WASHER:M3X8



3.07200040E (x4)  
RETAINING RING - M4



17.M0964085 HOLDER:FUSING ENTRANCE GUIDE PLATE:LEFT



7.G1664310 DECAL:WARNING (HIGH TEMPERATURE):1:CUD



19.M0964090 TORSION SPRING: ENTRANCE:LEFT



14.M0964076 FUSING ENTRANCE GUIDE PLATE:UPPER

15.M0964077 FUSING ENTRANCE GUIDE PLATE:LOWER

22.M0964114 EXIT GUIDE PLATE - PRESSURE

16.M0964084 HOLDER:FUSING ENTRANCE GUIDE PLATE:RIGHT

18.M0964089 TORSION SPRING: ENTRANCE:RIGHT

25.M0964117 (x2)  
DECAL:FUSING EXIT:OPEN AND CLOSE



2.07200030E (x6)  
RETAINING RING - M3



6.C2175102 (x4)  
SPRING WASHER



1.04503010N (x3)  
TAPPING SCREW - M3X10



23.M0964115 TORSION SPRING: GUIDE PLATE:PRESSURE:RIGHT

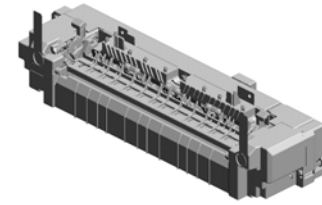
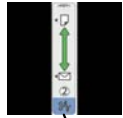


4.08046123  
HEXAGONAL BOLT :W/WASHER:M3X8

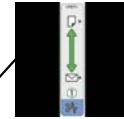
3.07200040E (x 1)  
RETAINING RING - M4

U009\_S004  
(CHN/EU):FUSING UNIT - 230V

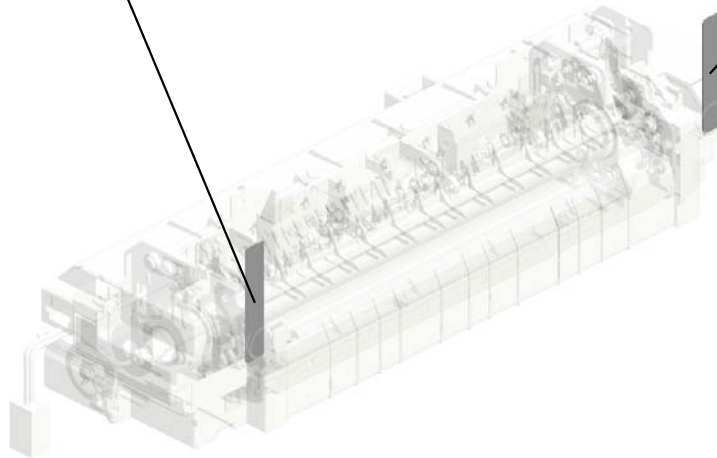
27.M0964127  
DECAL:FUSING:LE  
VER:RIGHT



13.M0964027  
(CHN/EU):FUSING  
UNIT - 230V



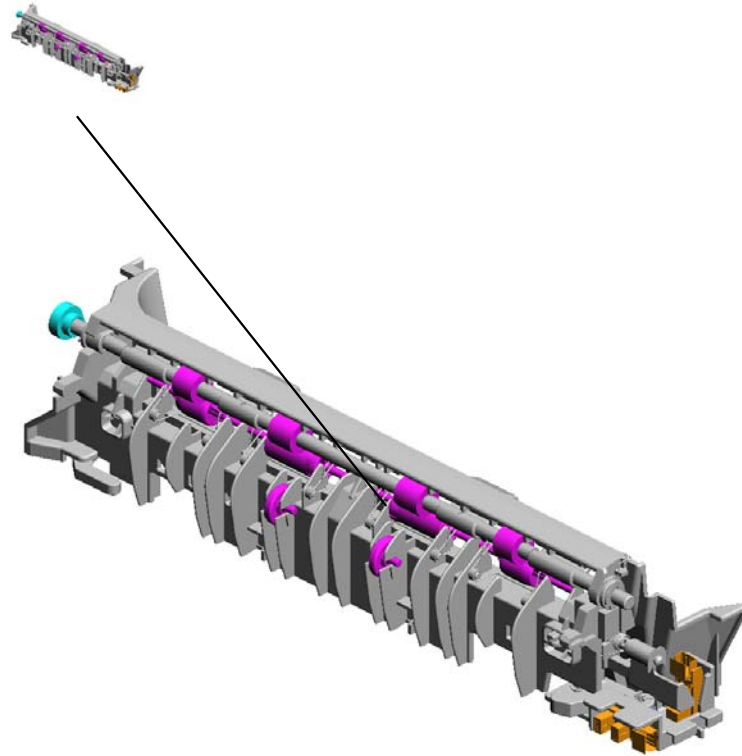
26.M0964126  
DECAL:FUSING:LE  
VER:LEFT



U001	U002	U003	U004	U005	U006	U007	U008	U009	U010	U011	U012	U013
------	------	------	------	------	------	------	------	------	------	------	------	------

# U010.PAPER EXIT

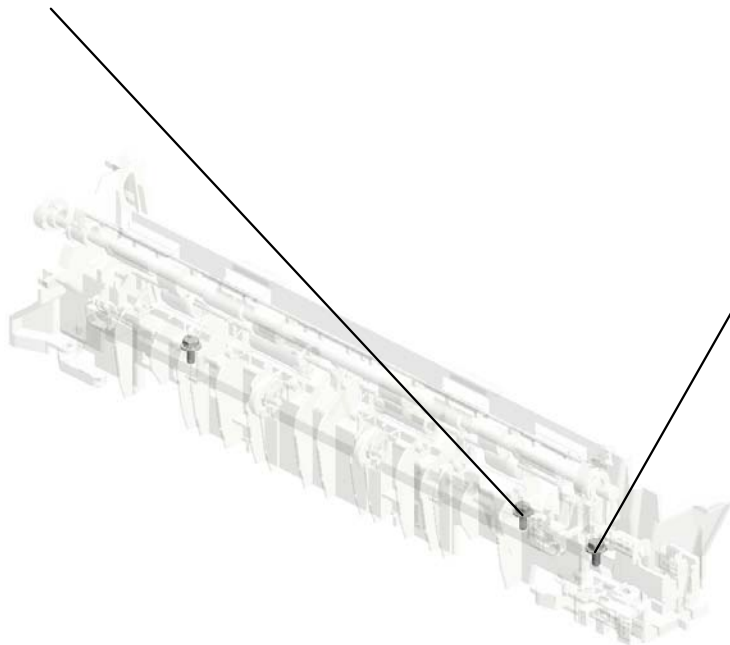
U010\_S001  
M1984450  
GUIDE.EXIT.ASS'Y



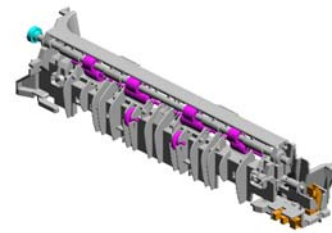
U001	U002	U003	U004	U005	U006	U007	U008	U009	U010	U011	U012	U013
------	------	------	------	------	------	------	------	------	------	------	------	------

U010  
PAPER EXIT

2.04543006Q  
TAPPING SCREW -  
M3X6

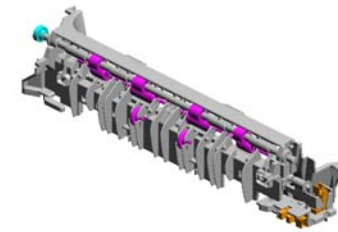


4.08046123  
(x2)  
HEXAGONAL BOLT  
:W/WASHER:M3X8



U001	U002	U003	U004	U005	U006	U007	U008	U009	U010	U011	U012	U013
------	------	------	------	------	------	------	------	------	------	------	------	------

U010\_S001  
GUIDE:EXIT:ASS'Y



31.M1984450  
GUIDE:EXIT:ASS'Y

- 17.M0184459 (x2) ROLLER:DRIVEN:EXIT:OUTER
- 10.G1664456 (x2) GUIDE ROLLER - EXIT
- 16.GF020061 EXIT ROLLER
- 14.GA120011 DISCHARGE BRUSH EXIT
- 11.G1664457 (x2) DRIVEN ROLLER - EXIT

3.07200040E  
RETAINING RING - M4

15.GB011133  
GEAR - 15Z

13.GA082014 (x2)  
PLAIN SHAFT BEARING RING: DIA6: DIA10: 9

1.04503010N (x2)  
TAPPING SCREW - M3X10

9.G1663957 (x2)  
WASHER - 0.8X10.8MM

19.M0963994  
RESISTOR: EARTH: EXIT: DISCHARGE SECTION

21.M0964456  
GROUND PLATE: EXIT: 2

4.08046123  
HEXAGONAL BOLT: W/ WASHER: M3X8

7.AW020198 (x2)  
PHOTO INTERRUPTOR: LG2A14NL1

8.G1022789 (x2)  
STOPPER: PHOTO INTERRUPTOR

12.G1664463 (x2)  
EXIT GUIDE PLATE

18.M0184464 (x2)  
GUIDE: PLATE: EXIT: OUTER

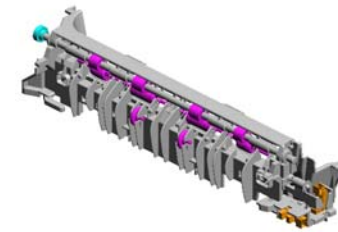
5.08050089 (x2)  
RETAINING RING - M4

20.M0964455  
GROUND PLATE: EXIT: 1

6.08050092 (x2)  
RETAINING RING - 3M

U001	U002	U003	U004	U005	U006	U007	U008	U009	U010	U011	U012	U013
------	------	------	------	------	------	------	------	------	------	------	------	------

U010\_S001  
GUIDE:EXIT:ASS'Y



31.M1984450  
GUIDE:EXIT:ASS'Y

24.M0964460  
(x2)  
SPRING:PRESSUR  
E:EXIT:OUTER

26.M0964462  
LINK:SLIDE

32.M1984453  
GUIDE:EXIT:LOWE  
R:M198

28.M0964464  
COMPRESSION SP  
RING

23.M0964459  
FEELER:L

29.M0964465  
TORSION SPRING:  
1

27.M0964463  
LINK:TURN

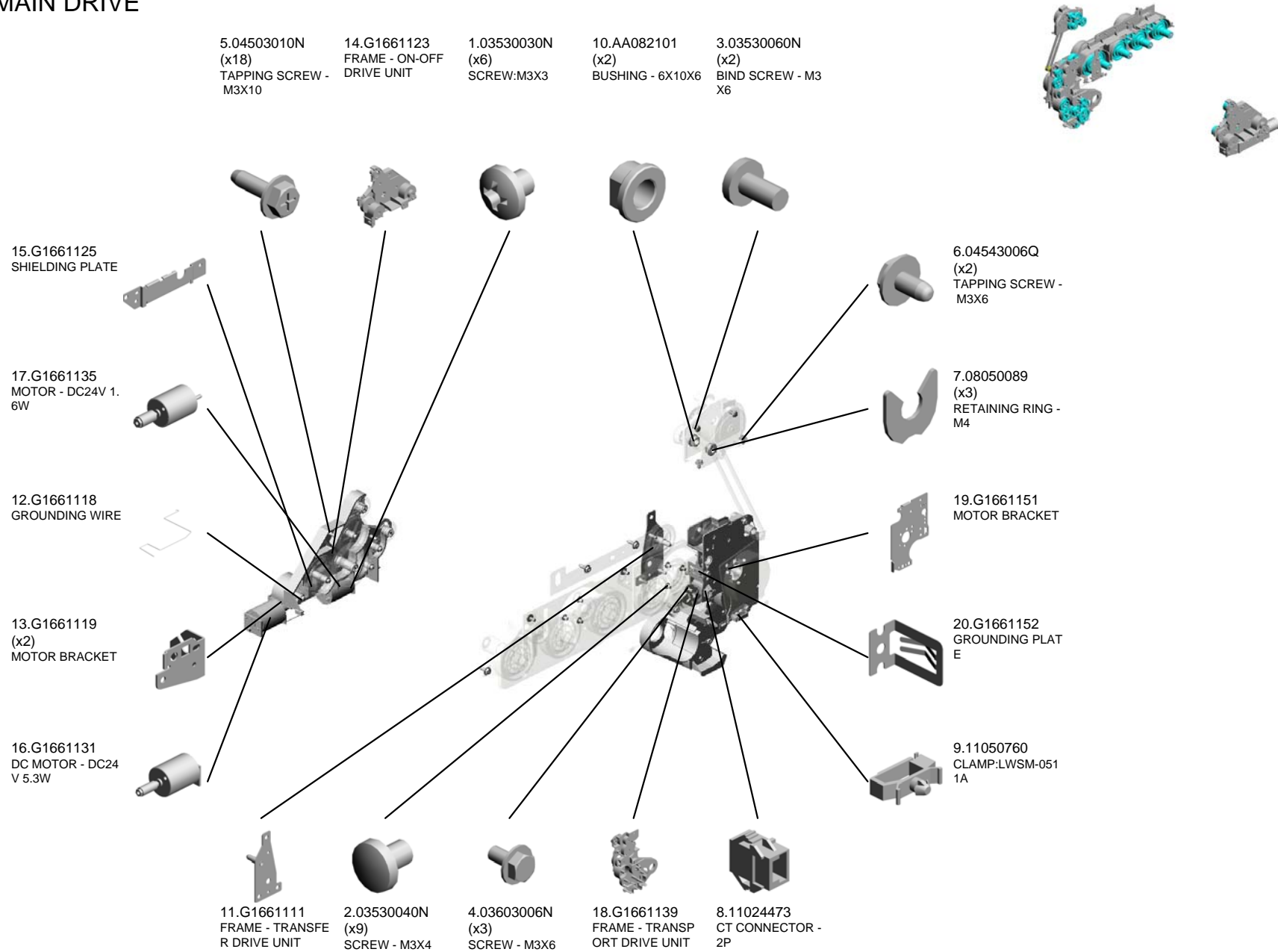
30.M0964466  
TORSION SPRING:  
2

22.M0964458  
(x2)  
SPRING:PRESSUR  
E:EXIT:INNER

25.M0964461  
FEELER:R

U001	U002	U003	U004	U005	U006	U007	U008	U009	U010	U011	U012	U013
------	------	------	------	------	------	------	------	------	------	------	------	------

# U011 MAIN DRIVE



U001	U002	U003	U004	U005	U006	U007	U008	U009	U010	U011	U012	U013
------	------	------	------	------	------	------	------	------	------	------	------	------

# U011 MAIN DRIVE

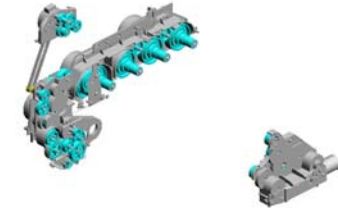
37.GB011108  
(x2)  
GEAR - 21Z

26.GA145014  
SHAFT - 6 X 55.3M  
M

40.GB011111  
GEAR - 19Z

22.G1665745  
HARNES COVER

21.G1661194  
FRAME - DUPLEX  
DRIVE UNIT



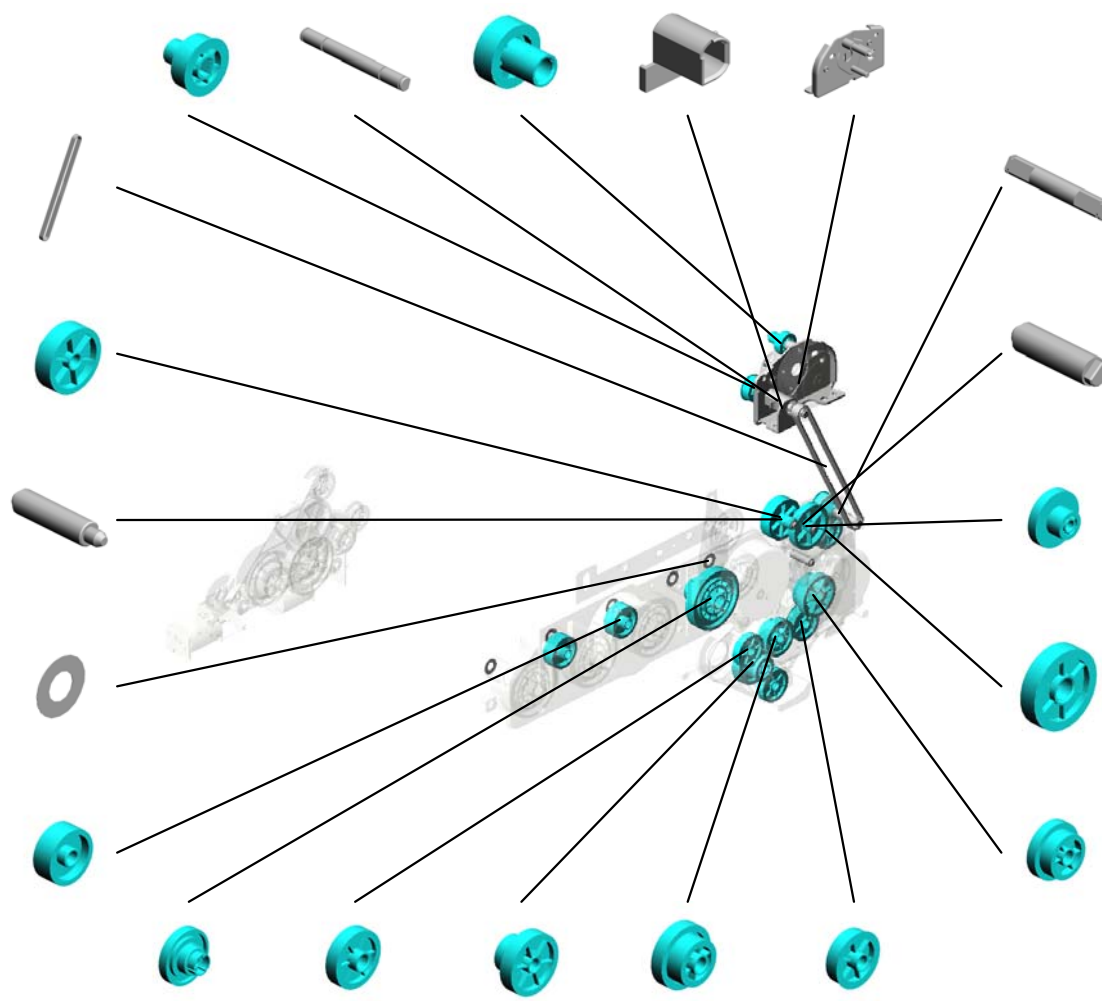
23.GA043030  
TIMING BELT - 60S  
2M280

32.GB011102  
GEAR - 19/38Z

27.GA148016  
SHAFT - 6 X 26.7M  
M

24.GA132101  
(x5)  
SPACER - 0.13 X 1  
2MM

29.GB010039  
(x2)  
GEAR:AIO:DRIVE:  
MIDDLE



25.GA145013  
SHAFT - 6 X 39.5M  
M

28.GA148018  
(x2)  
SHAFT - 6 X 21.9M  
M

31.GB011101  
GEAR - 37Z

39.GB011110  
GEAR - 31Z

33.GB011103  
GEAR - 28/36Z

30.GB010040  
GEAR:AIO:DRIVE:1

38.GB011109  
(x2)  
GEAR - 28Z

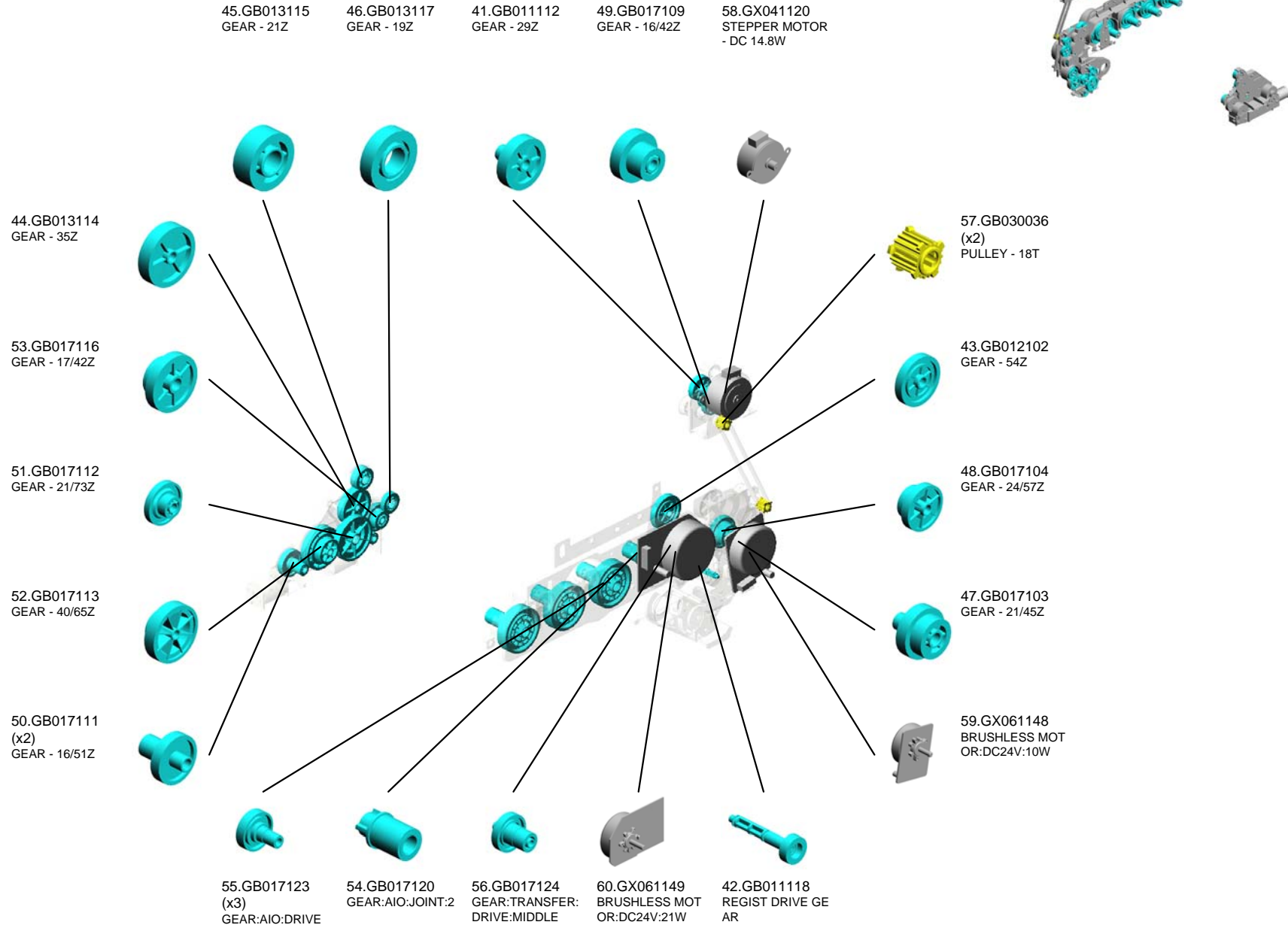
34.GB011104  
GEAR - 20/35Z

36.GB011106  
GEAR - 22/31Z

35.GB011105  
GEAR - 29Z



# U011 MAIN DRIVE



U001	U002	U003	U004	U005	U006	U007	U008	U009	U010	U011	U012	U013
------	------	------	------	------	------	------	------	------	------	------	------	------

# U011 MAIN DRIVE

64.M0751107  
SHIELDING PLATE:  
GEAR:2

61.GX061150  
BRUSHLESS MOT  
OR:DC24V:35W

62.GX201123  
MAGNETIC CLUTCH  
H:0.25N

63.M0751105  
BRACKET:MOTOR

U001	U002	U003	U004	U005	U006	U007	U008	U009	U010	U011	U012	U013
------	------	------	------	------	------	------	------	------	------	------	------	------

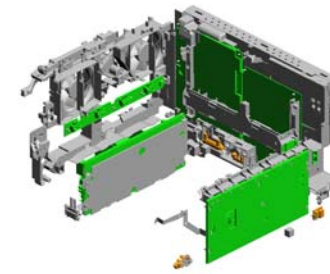
# U012.ELECTRICAL

U012\_S001  
M1986003  
DENSITY SENSOR:ASS'Y



U001	U002	U003	U004	U005	U006	U007	U008	U009	U010	U011	U012	U013
------	------	------	------	------	------	------	------	------	------	------	------	------

# U012 ELECTRICAL



- 17.16072056 FERRITE CORE:33.5X6.5X20
- 4.04543006Q (x12) TAPPING SCREW - M3X6
- 14.11050762 (x4) CLAMP:LWS-0711A
- 16.14075317 EEPROM:M24C16-WBN6(REV.S/W/G)
- 19.AW020198 (x4) PHOTOINTERRUPTOR:LG2A14NL1

1.03530040N  
SCREW - M3X4

13.11050761  
(x2)  
CLAMP:LWS-0511A

10.11050724  
CLAMPS:WES-1210

20.AW140015  
TEMPERATURE &  
HUMIDITY SENSOR

12.11050760  
(x2)  
CLAMP:LWSM-0511A

3.04503010N  
(x35)  
TAPPING SCREW - M3X10

2.03603006N  
(x27)  
SCREW - M3X6

8.11024559  
(x2)  
CONNECTOR - 3P

6.08046123  
(x6)  
HEXAGONAL BOLT :WASHER:M3X8

18.AA143592  
SCREW- M4X6

11.11050758  
CLAMP:LWSM-0306A

15.12042612  
(x3)  
MICRO SWITCH:D3 V-16506-3C25

5.04543008Q  
(x2)  
TAPPING SCREW: 3X8

21.AX640199  
(x2)  
FAN:MM80:25MM:D C 2.16W

9.11033902  
CONNECTOR - 10P

5.04543008Q (x 2)  
TAPPING SCREW:3X8  
7.09543008N (x 2)  
SCREW - M3X8

U001	U002	U003	U004	U005	U006	U007	U008	U009	U010	U011	U012	U013
------	------	------	------	------	------	------	------	------	------	------	------	------

# U012 ELECTRICAL

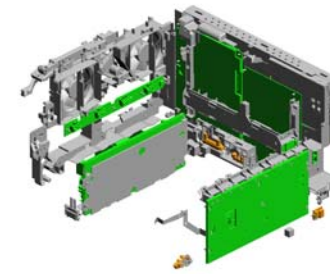
33.G1665716  
(x12)  
TERMINAL:AIO

23.G1631068  
(x2)  
BRACKET - PHOTO  
INTERRUPTOR

31.G1665708  
2ND TERMINAL- T  
RANSFER

24.G1635728  
(x4)  
SEAL:FAN:2

39.G1665736  
TENSION SPRING -  
SAFETY SWITCH



25.G1635731  
BASE:HIGH VOLTA  
GE:3

41.G1665738  
1ST TERMINAL - T  
RANSFER

34.G1665725  
HARNESS COVER

35.G1665726  
(x2)  
CUSHION - HARNE  
SS

22.G1022789  
STOPPER:PHOTOI  
NTERRUPTOR

32.G1665715  
BRACKET - MAIN S  
WITCH

27.G1661059  
DUCT

30.G1665700  
BRACKET - POWE  
R SUPPLY UNIT

29.G1665280  
TERMINAL BOARD

28.G1661110  
HARNESS GUIDE

40.G1665737  
COMPRESSION SP  
RING - SAFETY S  
WITCH

38.G1665734  
TORSION SPRING  
- SAFETY SWITCH

37.G1665733  
LINK - SAFETY SW  
ITCH

36.G1665732  
BRACKET SAFETY  
SWITCH

26.G1661058  
EXIT DUCT

# U012 ELECTRICAL

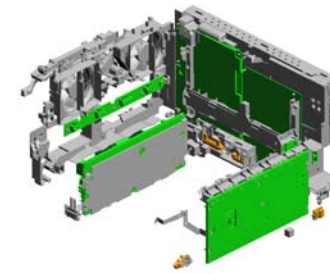
56.G1835824  
CASE - CORE

61.GZ300004  
POWER PACK

62.M0185711  
COVER:CONTROL  
BOARD:ASS'Y

53.G1666586  
FEELER - SET SEN  
SOR

54.G1666587  
SENSOR BRACKE  
T



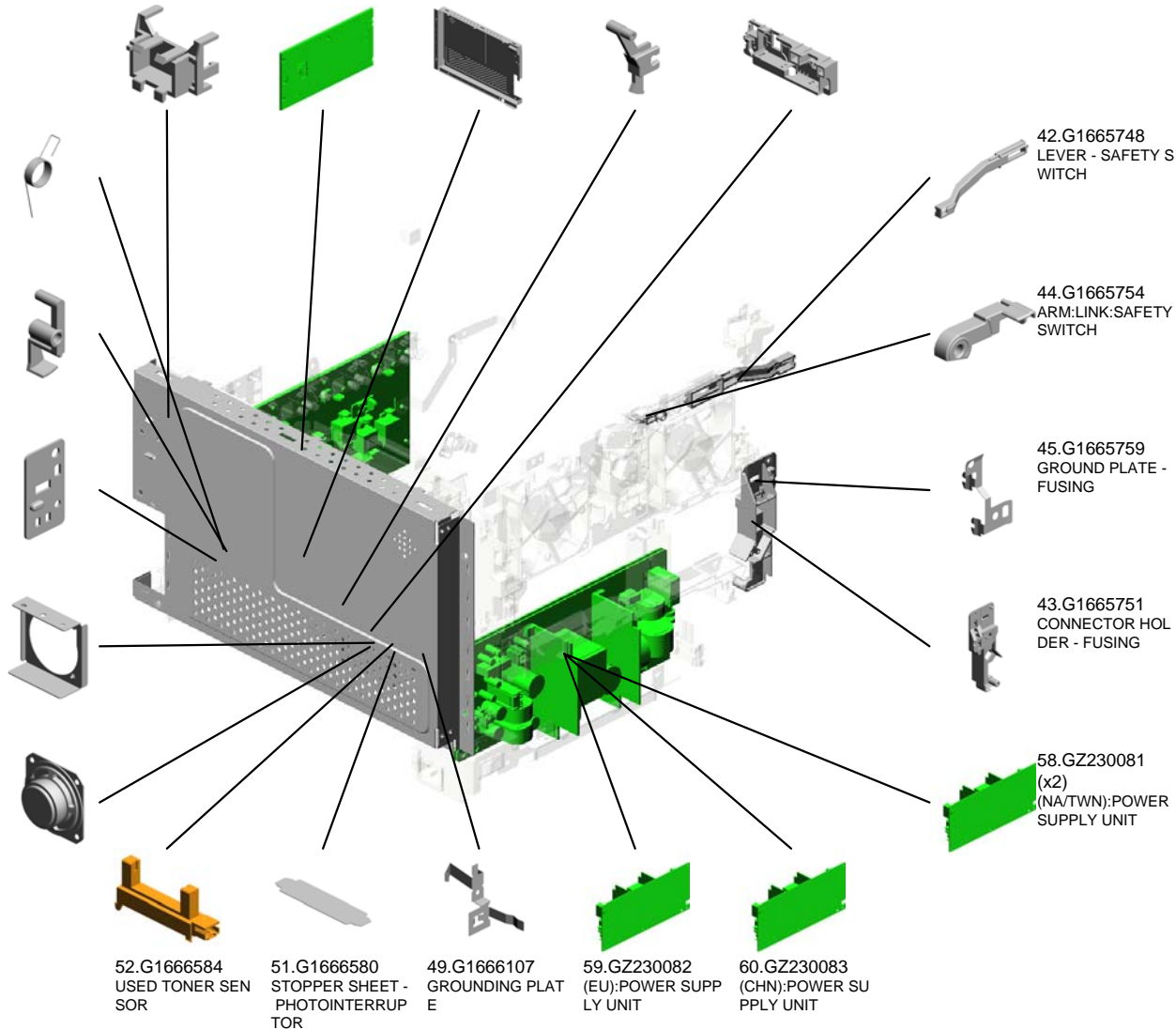
46.G1666045  
SPRING - FEELER

47.G1666046  
SENSOR FEELER

48.G1666103  
SENSOR HOLDER

57.G1835826  
BRACKET - SPEAK  
ER

55.G1835300  
SPEAKER - DIA50



42.G1665748  
LEVER - SAFETY S  
WITCH

44.G1665754  
ARM:LINK:SAFETY  
SWITCH

45.G1665759  
GROUND PLATE -  
FUSING

43.G1665751  
CONNECTOR HOL  
DER - FUSING

58.GZ230081  
(x2)  
(NA/TWN):POWER  
SUPPLY UNIT

52.G1666584  
USED TONER SEN  
SOR

51.G1666580  
STOPPER SHEET -  
PHOTOINTERRUP  
TOR

49.G1666107  
GROUNDING PLAT  
E

59.GZ230082  
(EU):POWER SUPP  
PLY UNIT

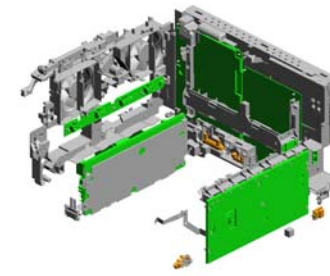
60.GZ230083  
(CHN):POWER SU  
PLY UNIT

U001 U002 U003 U004 U005 U006 U007 U008 U009 U010 U011 **U012** U013



# U012 ELECTRICAL

71.M2025825 SHEET:FFC:SCANNER  
69.M2025001 PCB:WIFI  
67.M1985721 BASE:TRANCEIVER:LAN ADAPTER:M198



63.M0185752  
SPACER:GROUND  
PLATE:FLAT CABLE:SCANNER UNIT

72.M2045652  
PCB:CTL:MPDL:ASSY

74.M2045674  
(x2)  
(CHN/EU):PCB:FAX:ASSY

75.M2045676  
(TWN):PCB:FAX:ASSY

73.M2045672  
(NA):PCB:FAX:ASSY

70.M2025126  
PCB:EGB:ASSY

65.M1001060  
HOLDER:USB

66.M1001061  
BASE:USB

64.M0965711  
SHADEING PLATE:  
HARNESS:POWER  
SUPPLY UNIT

U001	U002	U003	U004	U005	U006	U007	U008	U009	U010	U011	U012	U013
------	------	------	------	------	------	------	------	------	------	------	------	------

U012\_S001  
DENSITY SENSOR:ASS'Y

50.G1666191  
CLEANER DECAL -  
DENSITY SENSOR



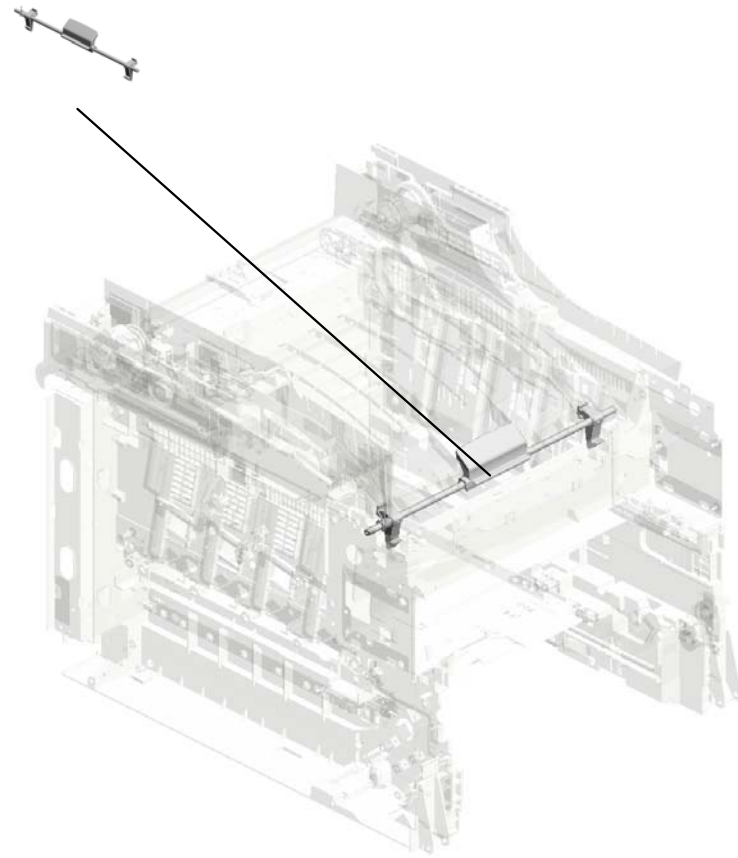
68.M1986003  
DENSITY SENSOR:  
ASS'Y

U001	U002	U003	U004	U005	U006	U007	U008	U009	U010	U011	U012	U013
------	------	------	------	------	------	------	------	------	------	------	------	------



# U013.MAIN FRAME

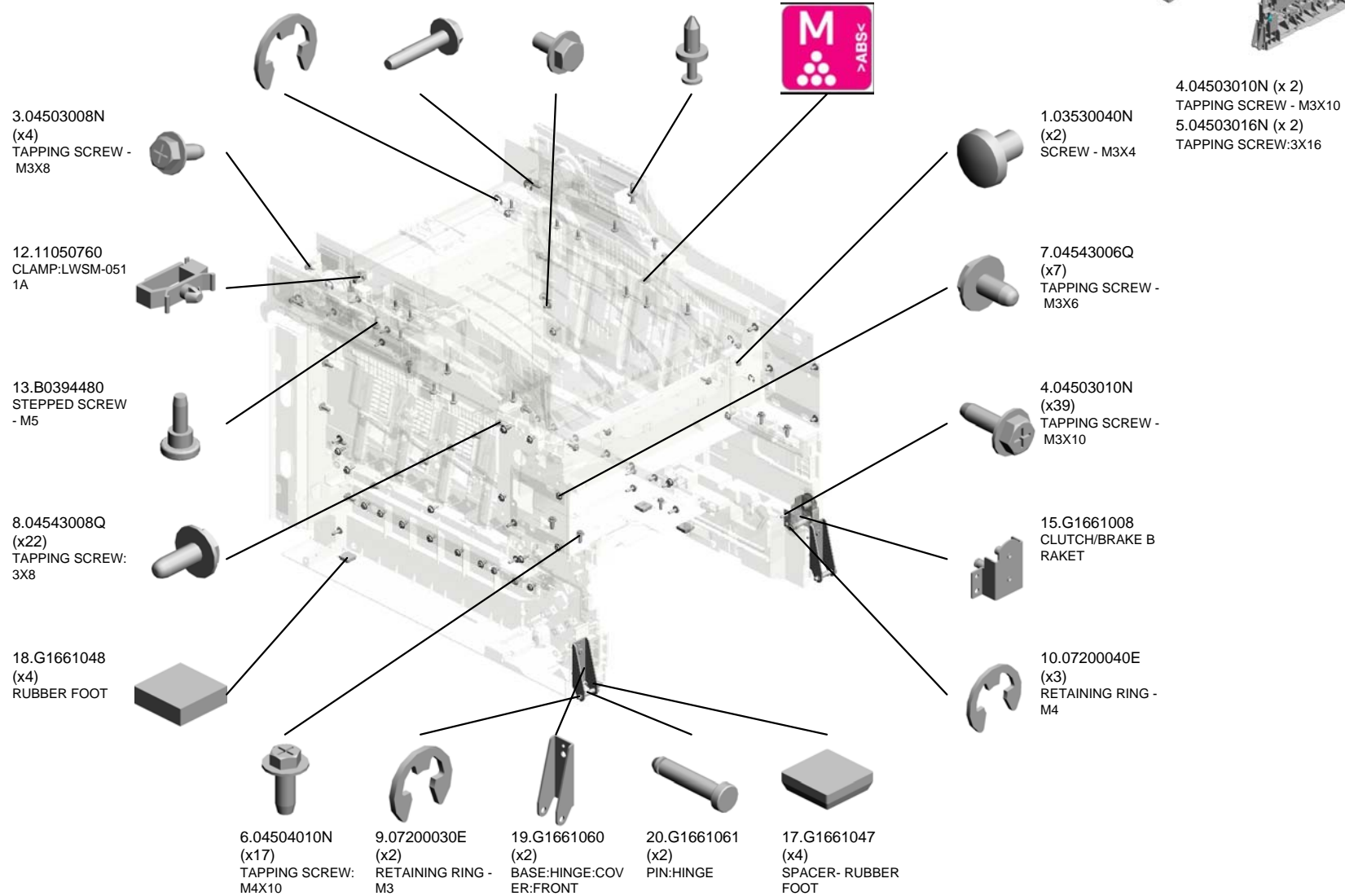
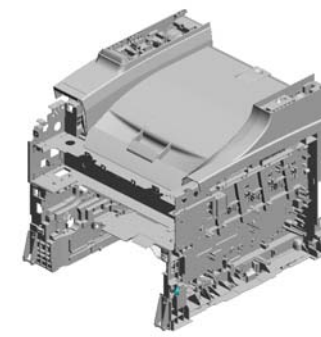
U013\_S001  
M2021012  
SHAFT:LOCK:M202:ASS'Y



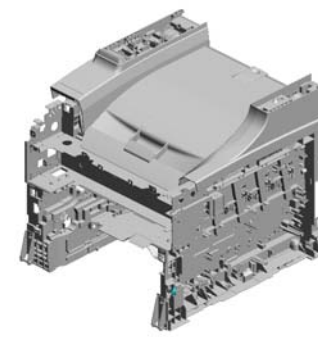
U001	U002	U003	U004	U005	U006	U007	U008	U009	U010	U011	U012	U013
------	------	------	------	------	------	------	------	------	------	------	------	------

# U013 MAIN FRAME

11.07200060E (x4) RETAINING RING - M6  
 5.04503016N (x2) TAPPING SCREW: 3X16  
 2.03603006N (x2) SCREW - M3X6  
 14.B1251474 RIVET:MM5  
 16.G1661046 COLOR DECAL - M AGENTA



# U013 MAIN FRAME



- 33.G1661083 GROUNDING PLATE - HIGH VOLTAGE
- 28.G1661071 FRAME:UPPER RIGHT
- 35.G1661086 (x2) BRACKET:OPTICAL UNIT:FRAME:UPPER
- 29.G1661072 (x4) SPRING:PLATE:AI O
- 36.G1661087 (x2) SPRING:CUSHION:FRAME:UPPER

30.G1661073  
SHAFT

32.G1661081  
TWIST SPRING - LEFT

27.G1661070  
FRAME:UPPER LEFT

31.G1661078  
(x2)  
COMPRESSION SPRING

39.G1661090  
GROUND PLATE - DCHIP

37.G1661088  
UPPER FRONT DUCT

25.G1661068  
FUSING DUCT

23.G1661066  
CLUTCH/BRAKE CASE

22.G1661065  
CLUTCH SPRING

21.G1661064  
CLUTCH/BRAKE SPRING

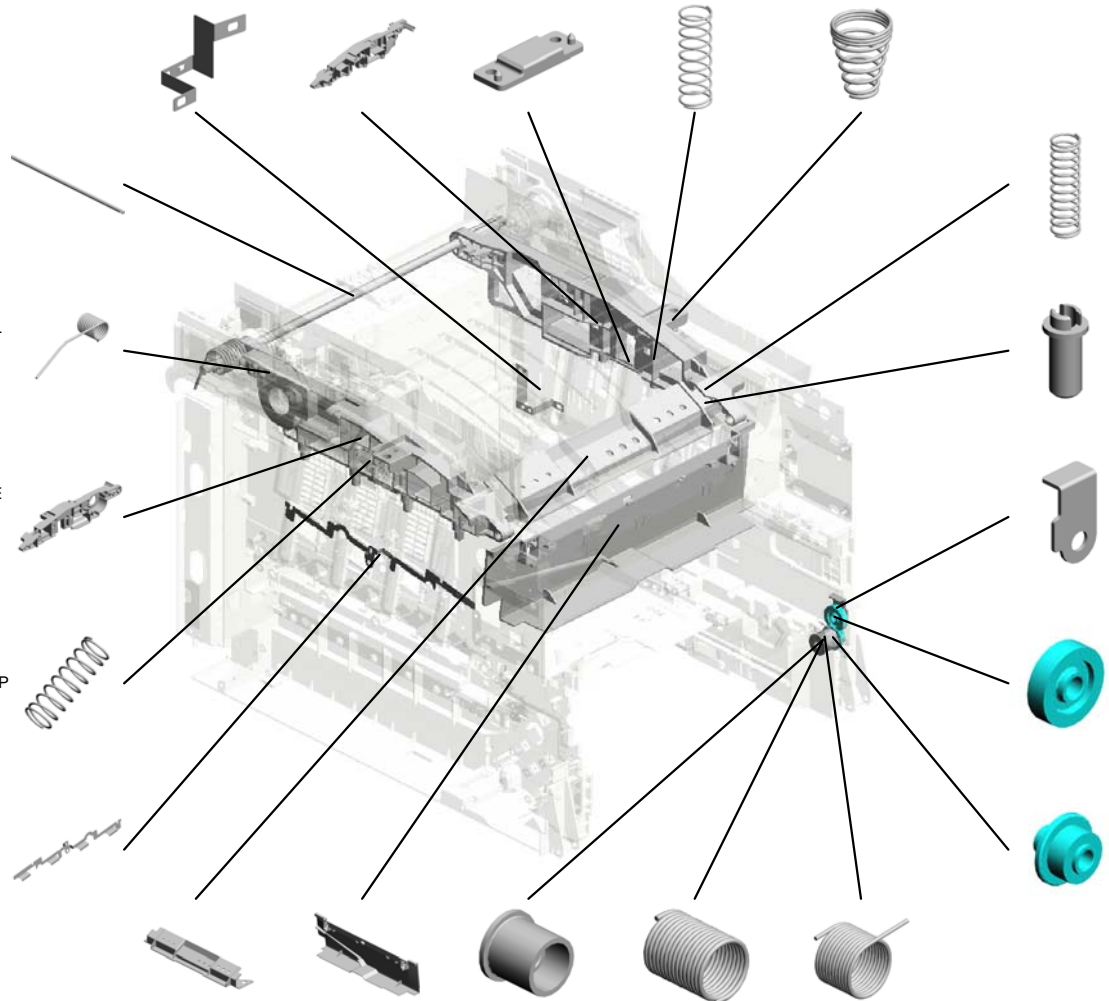
34.G1661084  
(x4)  
SPRING:PLATE:AI O:BLACK

38.G1661089  
(x8)  
PIN:PLATE:DEVELOPMENT UNIT

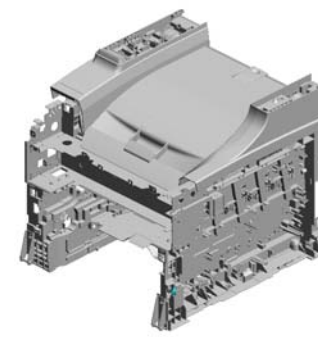
26.G1661069  
RACK SUPPORTER

40.G1661093  
GEAR - 20Z

24.G1661067  
GEAR - 14Z



# U013 MAIN FRAME



- 48.G1661316 (x2) LOWER SEAL - 3
- 50.G1661343 KEY:FUSING
- 47.G1661315 (x3) LOWER SEAL - 2
- 49.G1661323 (x3) SHEET:FRAME:RIG HT
- 60.G1663331 DECAL - BLACK

51.G1661382  
BRACKET:BRAKE:  
COVER:UPPER

45.G1661280  
CUSHION - IMAGIN  
G UNIT

43.G1661097  
GROUND PLATE -  
LEFT

44.G1661112  
GEAR COVER

56.G1662588  
HOLDER:PAPER T  
RAY:POSITIONING

42.G1661096  
GROUND PLATE -  
FRONT

57.G1662596  
HOLDER:RESISTO  
R:BASE

58.G1662597  
SPRING PLATE:RE  
SISTOR:BASE:LO  
WER

55.G1662586  
FEELER HOLDER

54.G1662585  
FEELER - PAPER E  
ND SENSOR

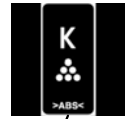
59.G1662598  
SPRING PLATE:RE  
SISTOR:BASE:UPP  
ER

41.G1661095  
(x3)  
SHEET:BASE:FRA  
ME

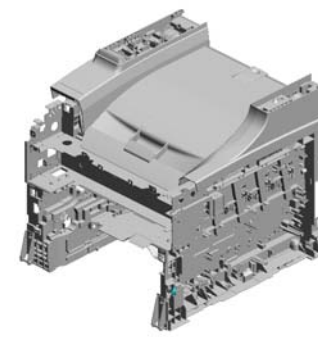
52.G1662582  
GROUNDING SPRI  
NG

53.G1662583  
SPRING PLATE:PA  
PER TRAY:POSITI  
ONING

46.G1661314  
LOWER SEAL - 1



# U013 MAIN FRAME



64.G1665724  
HARNES CLAMP  
HOLDER

74.G1831067  
STOPPER PLATE -  
SCANNER

79.G1831072  
WIRE - SCANNER  
LOCK

63.G1665706  
GROUND PLATE:S  
HAFT:IMAGING UN  
IT

69.G1831053  
RIGHT TORSION S  
PRING - ARM

68.G1831052  
LEFT TORSION SP  
RING - ARM

73.G1831066  
TORSION SPRING-  
SLIDE STOPPER

78.G1831071  
RIGHT ACTUATOR  
- STOPPER

66.G1831050  
LEFT SLIDE ARM

70.G1831054  
SLIDE RAIL:LEFT

72.G1831061  
TORSION SPRING  
- SEPARATION PL  
ATE

77.G1831070  
UPPER SUPPORTI  
NG PLATE - COVE  
R

80.G1831075  
PLATE:SHAFT

61.G1663333  
DECAL - CYAN

65.G1666592  
(x2)  
SPRING PLATE -C  
OLLECTION BOTTL  
E

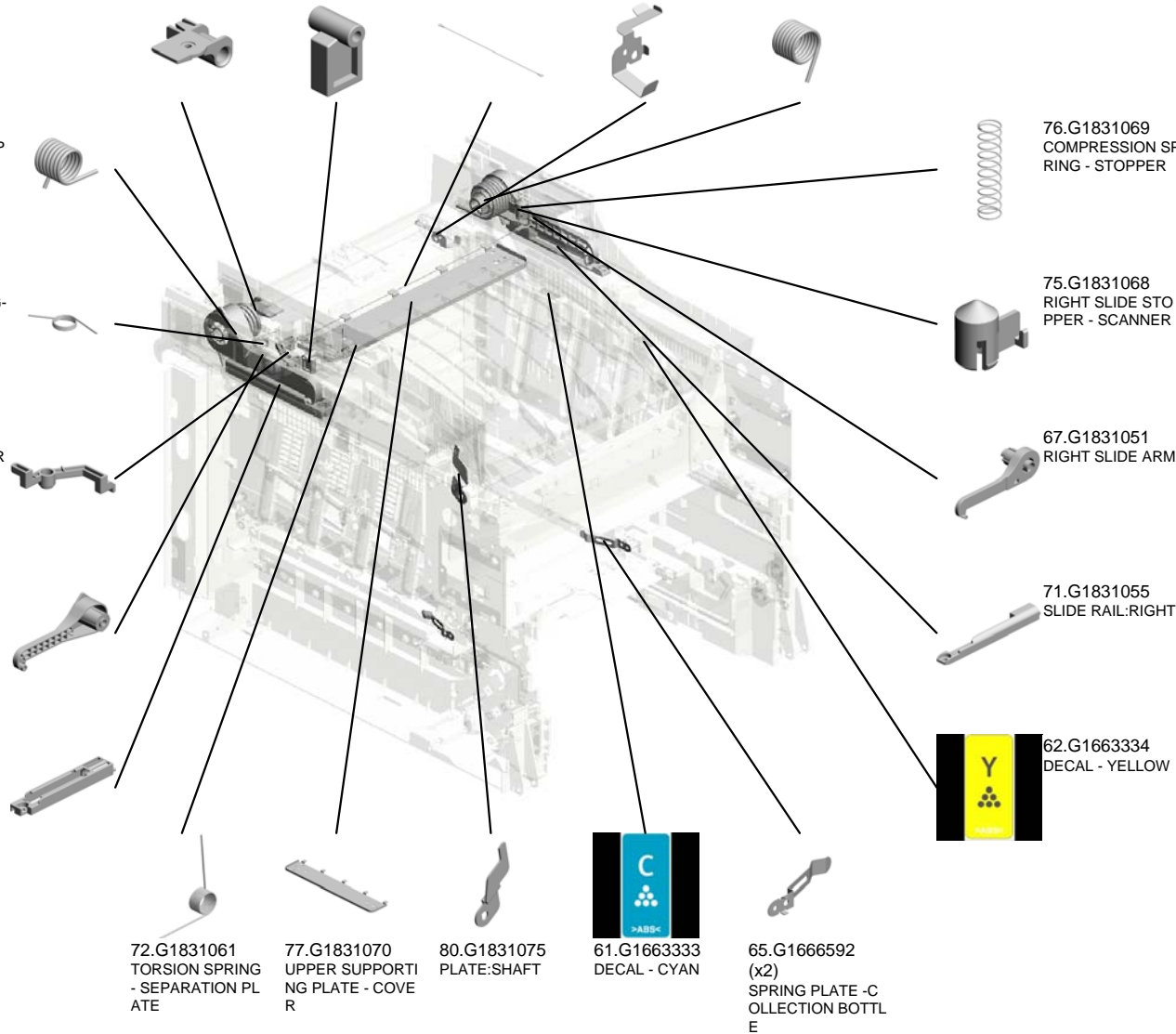
76.G1831069  
COMPRESSION SP  
RING - STOPPER

75.G1831068  
RIGHT SLIDE STO  
PPER - SCANNER

67.G1831051  
RIGHT SLIDE ARM

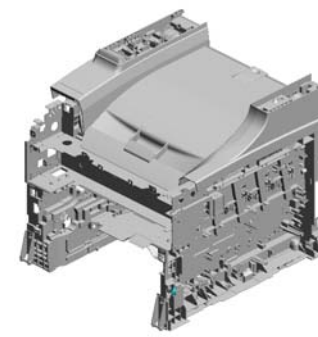
71.G1831055  
SLIDE RAIL:RIGHT

62.G1663334  
DECAL - YELLOW





# U013 MAIN FRAME



- 82.G1831085 BRACKET - ARM
- 95.M1981281 BASE:END FENCE: EXIT:M198
- 96.M1981282 END FENCE:EXIT: REAR:M198
- 97.M1981283 END FENCE:EXIT:F RONT:M198
- 102.M2021251 COVER:HARNESS: SCANNER:RIGHT: M202

86.G1831834 LEFT GROUND PLATE - SCANNER



92.M1001056 HINGE:TORQUE LIMITER



87.M0185757 HARNESS COVER SHEET:ADF



84.G1831090 GROUND PLATE: SUPPORTING PLATE:LEFT



100.M2021065 STOPPER:SLIDE:SCANNER:LEFT:M202



83.G1831088 TENSION SPRING - LOCK ARM



99.M2021060 SEPARATION PLATE:SLIDE:M202



81.G1831082 ARM - LOCK LEVEL



91.M0965761 GROUND PLATE:BASE:PSU



90.M0965760 GROUND PLATE:REGISTRATION ROLLER



85.G1831091 GROUND PLATE: SUPPORTING PLATE:RIGHT



94.M1981085 SPRING PLATE:POSITIONING



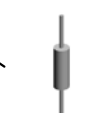
101.M2021250 COVER:UPPER:M202



89.M0965703 DC SOLENOID:FUSING:ASSY

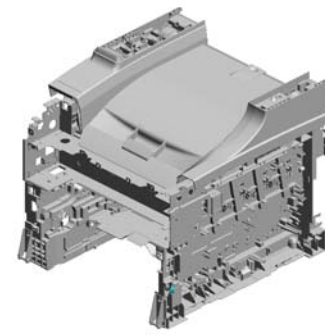
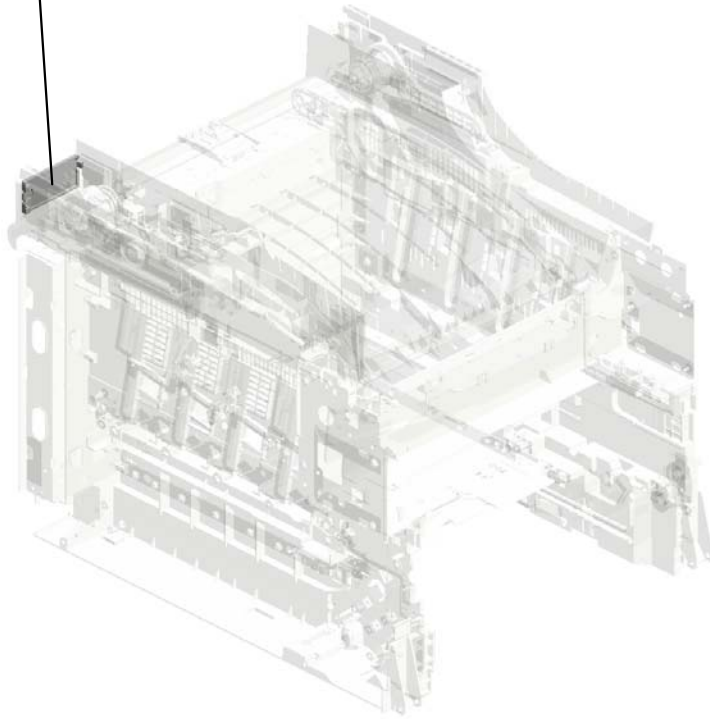


88.M0963993 RESISTOR:EARTH: PAPER FEED



U013  
MAIN FRAME

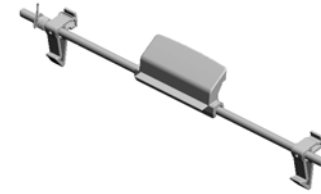
103.M2021252  
COVER:HARNES:  
SCANNER:LEFT:M  
202



U001	U002	U003	U004	U005	U006	U007	U008	U009	U010	U011	U012	U013
------	------	------	------	------	------	------	------	------	------	------	------	------

U013\_S001  
SHAFT:LOCK:M202:ASS'Y

10.07200040E  
RETAINING RING -  
M4



98.M2021012  
SHAFT:LOCK:M202  
:ASS'Y

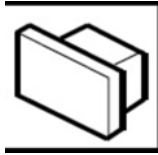


93.M1981076  
LEVER:LOCK:UPP  
ER:M198

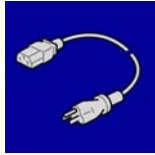
U001	U002	U003	U004	U005	U006	U007	U008	U009	U010	U011	U012	U013
------	------	------	------	------	------	------	------	------	------	------	------	------



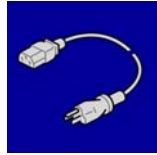
# ACCESSORIES



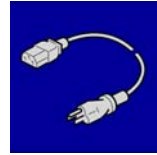
1.11033734  
(NA):CONNECTOR:TM-6-DC1(01)



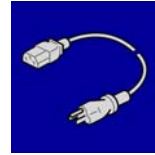
2.11500409  
(TWN):POWER SUPPLY CODE:125V:15A



3.11500427  
(NA):POWER SUPPLY CODE:125V:15A



4.11500457  
(EU):POWER SUPPLY CODE:250V:10A



5.11500460  
POWER SUPPLY CODE:250V:10A



6.G1661390  
CAUTION DECAL - TRANSFER BELT



7.G1661397  
(x3)  
(NA/TWN/EU):DECAL:CAUTION:PRESSURE RELEASE



8.G1661398  
(CHN):DECAL:FUSING PRESSURE RELEASE



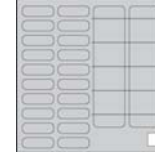
9.G1662592  
SIDE FENCE DECAL



10.G1662593  
(EU):CAUTION DECAL - INKJET PAPER



11.G1663996  
(x2)  
DECAL:INSERT SUB-UNIT:COVER



12.G1831475  
SHEET:PANEL:ADDRESS



13.H5235350  
(NA):TELEPHONE CABLE



14.M1001372  
(EU):DECAL:SHORT\_CUT\_KEY:SYMBOL-EU



15.M1981301  
PLATE:LOGO:RIC:ULG



16.M1984128  
DECAL:CAUTION:FUSING PRESSURE RELEASE:M198



17.M2021390  
DECAL:CAUTION:WEIGHT:29KG:M202



18.M2031381  
(x2)  
(M203):(NA/27):DECAL:NAME PLATE:M203



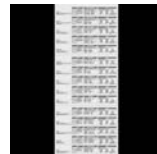
19.M2041323  
(EU):DECAL:EAC-TRCU:PS



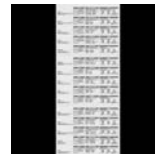
20.M2041381  
(M204):DECAL:NAME PLATE:M204



21.M2041881  
(x2)  
(NA/EU):DECAL:CAUTION:COPY



22.M2041883  
(EU):DECAL:CAUTION:COPY



23.M2041884  
(TWN):DECAL:CAUTION:COPY

## Exclusive Parts

Number	Part Name	Group	ID
52152713	BOTTOM PLATE PAD	U004_S001_S001	4
A2672869	GEAR - 16Z	U004_S001	5
AA082101	BUSHING - 6X10X6	U004	6
		U011	10
AA132013	SPACER	U004_S001	7
AA143520	SHOULDER SCREW - M3	U009_S001	5
		U009_S002	5
		U009_S003	5
		U009_S004	5
AA143592	SCREW- M4X6	U012	18
AF031061	PAPER FEED ROLLER	U004	8
AW020198	PHOTOINTERRUPTOR:LG2A14NL 1	U010_S001	7
		U012	19
AW140015	TEMPERATURE & HUMIDITY SEN SOR	U012	20
AX640199	FAN:MM80:25MM:DC 2.16W	U012	21
B0394480	STEPPED SCREW - M5	U013	13
B1251474	RIVET:MM5	U013	14
C2175102	SPRING WASHER	U009_S001	6
		U009_S002	6
		U009_S003	6
		U009_S004	6
D0094511	SPACER:DIA8.0:1.5MM	U004_S001	9
G1022789	STOPPER:PHOTOINTERRUPTOR	U010_S001	8
		U012	22
G1631068	BRACKET - PHOTOINTERRUPTOR	U012	23
G1635728	SEAL:FAN:2	U012	24
G1635731	BASE:HIGH VOLTAGE:3	U012	25
G1661008	CLUTCH/BRAKE BRAKET	U013	15
G1661046	COLOR DECAL - MAGENTA	U013	16
G1661047	SPACER- RUBBER FOOT	U013	17
G1661048	RUBBER FOOT	U013	18
G1661058	EXIT DUCT	U012	26
G1661059	DUCT	U012	27
G1661060	BASE:HINGE:COVER:FRONT	U013	19
G1661061	PIN:HINGE	U013	20
G1661064	CLUTCH/BRAKE SPRING	U013	21
G1661065	CLUTCH SPRING	U013	22

Number	Part Name	Group	ID
G1661066	CLUTCH/BRAKE CASE	U013	23
G1661067	GEAR - 14Z	U013	24
G1661068	FUSING DUCT	U013	25
G1661069	RACK SUPPORTER	U013	26
G1661070	FRAME:UPPER LEFT	U013	27
G1661071	FRAME:UPPER RIGHT	U013	28
G1661072	SPRING:PLATE:AIO	U013	29
G1661073	SHAFT	U013	30
G1661078	COMPRESSION SPRING	U013	31
G1661081	TWIST SPRING - LEFT	U013	32
G1661083	GROUNDING PLATE - HIGH VOLT AGE	U013	33
G1661084	SPRING:PLATE:AIO:BLACK	U013	34
G1661086	BRACKET:OPTICAL UNIT:FRAME: UPPER	U013	35
G1661087	SPRING:CUSHION:FRAME:UPPER	U013	36
G1661088	UPPER FRONT DUCT	U013	37
G1661089	PIN:PLATE:DEVELOPMENT UNIT	U013	38
G1661090	GROUND PLATE - DCHIP	U013	39
G1661093	GEAR - 20Z	U013	40
G1661095	SHEET:BASE:FRAME	U013	41
G1661096	GROUND PLATE - FRONT	U013	42
G1661097	GROUND PLATE - LEFT	U013	43
G1661110	HARNESS GUIDE	U012	28
G1661111	FRAME - TRANSFER DRIVE UNIT	U011	11
G1661112	GEAR COVER	U013	44
G1661118	GROUNDING WIRE	U011	12
G1661119	MOTOR BRACKET	U011	13
G1661123	FRAME - ON-OFF DRIVE UNIT	U011	14
G1661125	SHIELDING PLATE	U011	15
G1661131	DC MOTOR - DC24V 5.3W	U011	16
G1661135	MOTOR - DC24V 1.6W	U011	17
G1661139	FRAME - TRANSPORT DRIVE UNIT	U011	18
G1661151	MOTOR BRACKET	U011	19
G1661152	GROUNDING PLATE	U011	20
G1661194	FRAME - DUPLEX DRIVE UNIT	U011	21
G1661261	INNER COVER - EXIT	U001	6
G1661280	CUSHION - IMAGING UNIT	U013	45

## Exclusive Parts

Number	Part Name	Group	ID
G1661311	SEAL - 5X15X222MM	U001	7
G1661312	SEAL - 7X25X176MM	U001	8
G1661313	SEAL - 3X8X411MM	U001	9
G1661314	LOWER SEAL - 1	U013	46
G1661315	LOWER SEAL - 2	U013	47
G1661316	LOWER SEAL - 3	U013	48
G1661318	SHEET - CASSETTE COVER	U001	10
G1661319	SEAL:COVER:LEFT:7	U001	11
G1661323	SHEET:FRAME:RIGHT	U013	49
G1661343	KEY:FUSING	U013	50
G1661382	BRACKET:BRAKE:COVER:UPPER	U013	51
G1661390	CAUTION DECAL - TRANSFER BELT	ACCESSORIES	6
G1661397	(NA/TWN/EU):DECAL:CAUTION:PRESSURE RELEASE	ACCESSORIES	7
G1661398	(CHN):DECAL:FUSING PRESSURE RELEASE	ACCESSORIES	8
G1662551	PAPER TRAY	U004_S001	10
G1662552	PAPER TRAY - FRONT	U004_S001	11
G1662553	CASSETTE COVER	U004_S001	12
G1662554	DUPLEX GUIDE	U004	13
G1662555	LEFT SIDE FENCE	U004_S001	14
G1662556	RIGHT SIDE FENCE	U004_S001	15
G1662558	EXTENSION TRAY	U004_S001	16
G1662559	END FENCE	U004_S001	17
G1662567	BOTTOM PLATE STOPPER	U004_S001	18
G1662568	COMPRESSION SPRING	U004_S001	19
G1662569	LEVER PAPER VOLUME SENSOR	U004_S001	20
G1662570	COMPRESSION SPRING	U004_S001	21
G1662571	SHEET - CASSETTE	U004_S001	22
G1662572	EARTH SPRING	U004_S001	23
G1662573	HOLDER SHEET	U004_S001	24
G1662577	END FENCE - PRESSURE	U004_S001	25
G1662578	COMPRESSION SPRING	U004_S001	26
G1662582	GROUNDING SPRING	U013	52
G1662583	SPRING PLATE:PAPER TRAY:POSITIONING	U013	53
G1662585	FEELER - PAPER END SENSOR	U013	54

Number	Part Name	Group	ID
G1662586	FEELER HOLDER	U013	55
G1662588	HOLDER:PAPER TRAY:POSITIONING	U013	56
G1662589	DAMPING INSULATION	U004_S001	27
G1662592	SIDE FENCE DECAL	ACCESSORIES	9
G1662593	(EU):CAUTION DECAL - INKJET PAPER	ACCESSORIES	10
G1662596	HOLDER:RESISTOR:BASE	U013	57
G1662597	SPRING PLATE:RESISTOR:BASE:LOWER	U013	58
G1662598	SPRING PLATE:RESISTOR:BASE:UPPER	U013	59
G1662606	COMPRESSION SPRING	U004_S001	28
G1662619	SHEET:BASE	U004_S001	29
G1663331	DECAL - BLACK	U006	1
		U013	60
G1663332	DECAL - MAGENTA	U006	2
G1663333	DECAL - CYAN	U006	3
		U013	61
G1663334	DECAL - YELLOW	U006	4
		U013	62
G1663852	REGISTRATION ROLLER - DRIVEN	U008_S001	4
G1663855	TENSION SPRING	U008_S001	5
G1663859	REGISTRATION SENSOR FEELER	U008_S001	6
G1663860	TORSION SPRING	U008_S001	7
G1663862	GUIDE SHEET - REGISTRATION	U008_S001	8
G1663863	REGISTRATION GUIDE	U008_S001	9
G1663865	GEAR - 14Z	U008_S001	10
G1663867	DRIVE GEAR - 14Z	U008_S001	11
G1663903	RIGHT FRAME - FRONT COVER	U008	12
G1663904	LEFT FRAME - FRONT COVER	U008	13
G1663905	RIGHT LOCK LEVER	U008	14
G1663906	LEFT LOCK LEVER	U008	15
G1663907	LOCK GUIDE	U008	16
G1663908	LOCK LEVER ARM	U008	17
G1663909	TENSION SPRING	U008	18
G1663910	GROUND WIRE	U008	19
G1663921	GUIDE PLATE SPRING - MIDDLE	U008	20

## Exclusive Parts

Number	Part Name	Group	ID
G1663925	TORSION SPRING - FEELER	U008	21
G1663927	STOPER BAND	U008	22
G1663928	BRAKE RACK - FRONT COVER	U008	23
G1663933	STOPPER:FEELER:PAPER FEED S ENSOR	U008	24
G1663957	WASHER - 0.8X10.8MM	U008	25
		U010_S001	9
G1663961	COMPRESSION SPRING	U008_S001	26
G1663962	COMPRESSION SPRING HOLDER	U008	27
G1663965	GROUND WIRE	U008_S001	28
G1663967	ELECTRODE PLATE - LINK	U008_S001	29
G1663968	ELECTRODE PLATE - CONTACT P OINT	U008_S001	30
G1663970	LEFT HOOK	U008	31
G1663971	RIGHT FHOOK	U008	32
G1663972	COMPRESSION SPRING - GRIP	U008	33
G1663983	SPACER:GROUND PLATE:TRANS PORT	U008_S001	34
G1663996	DECAL:INSERT SUB-UNIT:COVER	ACCESSORIES	11
G1663997	GROUND WIRE:TRANSFER/SEPA RATION	U008_S001	35
G1664310	DECAL:WARNING (HIGH TEMPER ATURE):1:CUD	U009_S001	7
		U009_S002	7
		U009_S003	7
		U009_S004	7
G1664456	GUIDE ROLLER - EXIT	U010_S001	10
G1664457	DRIVEN ROLLER - EXIT	U010_S001	11
G1664463	EXIT GUIDE PLATE	U010_S001	12
G1664464	DECAL:HIGHTEMPERATURE	U008	36
G1664606	DUPLEX ROLLER	U008	37
G1665280	TERMINAL BOARD	U012	29
G1665700	BRACKET - POWER SUPPLY UNIT	U012	30
G1665706	GROUND PLATE:SHAFT:IMAGING UNIT	U013	63
G1665708	2ND TERMINAL- TRANSFER	U012	31
G1665715	BRACKET - MAIN SWITCH	U012	32
G1665716	TERMINAL:AIO	U012	33
G1665724	HARNESS CLAMP HOLDER	U013	64

Number	Part Name	Group	ID
G1665725	HARNESS COVER	U012	34
G1665726	CUSHION - HARNESS	U012	35
G1665732	BRACKET SAFETY SWITCH	U012	36
G1665733	LINK - SAFETY SWITCH	U012	37
G1665734	TORSION SPRING - SAFETY SWIT CH	U012	38
G1665736	TENSION SPRING - SAFETY SWIT CH	U012	39
G1665737	COMPRESSION SPRING - SAFETY SWITCH	U012	40
G1665738	1ST TERMINAL - TRANSFER	U012	41
G1665745	HARNESS COVER	U011	22
G1665748	LEVER - SAFETY SWITCH	U012	42
G1665751	CONNECTOR HOLDER - FUSING	U012	43
G1665754	ARM:LINK:SAFETY SWITCH	U012	44
G1665759	GROUND PLATE - FUSING	U012	45
G1666026	BUSHING - 19MM	U007_S001	3
G1666045	SPRING - FEELER	U012	46
G1666046	SENSOR FEELER	U012	47
G1666099	COMPRESSION SPRING	U007_S001	4
G1666103	SENSOR HOLDER	U012	48
G1666107	GROUNDING PLATE	U012	49
G1666191	CLEANER DECAL - DENSITY SENS OR	U012_S001	50
G1666193	LEFT HOLDER - TRANSFER BELT UNIT	U007_S001	5
G1666194	RIGHT HOLDER - TRANSFER BEL T UNIT	U007_S001	6
G1666196	RIGHT SLIDER - TRANSFER BELT UNIT	U007_S001	7
G1666197	LEFT SLIDER - TRANSFER BELT U NIT	U007_S001	8
G1666580	STOPPER SHEET - PHOTOINTERR UPTOR	U012	51
G1666584	USED TONER SENSOR	U012	52
G1666586	FEELER - SET SENSOR	U012	53
G1666587	SENSOR BRACKET	U012	54
G1666592	SPRING PLATE -COLLECTION BO	U013	65

## Exclusive Parts

Number	Part Name	Group	ID
	TTLE		
G1831050	LEFT SLIDE ARM	U013	66
G1831051	RIGHT SLIDE ARM	U013	67
G1831052	LEFT TORSION SPRING - ARM	U013	68
G1831053	RIGHT TORSION SPRING - ARM	U013	69
G1831054	SLIDE RAIL:LEFT	U013	70
G1831055	SLIDE RAIL:RIGHT	U013	71
G1831061	TORSION SPRING - SEPARATION PLATE	U013	72
G1831066	TORSION SPRING- SLIDE STOPPE R	U013	73
G1831067	STOPPER PLATE - SCANNER	U013	74
G1831068	RIGHT SLIDE STOPPER - SCANNE R	U013	75
G1831069	COMPRESSION SPRING - STOPPE R	U013	76
G1831070	UPPER SUPPORTING PLATE - CO VER	U013	77
G1831071	RIGHT ACTUATOR - STOPPER	U013	78
G1831072	WIRE - SCANNER LOCK	U013	79
G1831075	PLATE:SHAFT	U013	80
G1831082	ARM - LOCK LEVER	U013	81
G1831085	BRACKET - ARM	U013	82
G1831088	TENSION SPRING -LOCK ARM	U013	83
G1831090	GROUND PLATE:SUPPORTING PL ATE:LEFT	U013	84
G1831091	GROUND PLATE:SUPPORTING PL ATE:RIGHT	U013	85
G1831475	SHEET:PANEL:ADDRESS	ACCESSORIES	12
G1831834	LEFT GROUND PLATE - SCANNER	U013	86
G1835300	SPEAKER - DIA50	U012	55
G1835824	CASE - CORE	U012	56
G1835826	BRACKET - SPEAKER	U012	57
G8003133	SIDE FENCE GEAR	U004_S001	30
GA043030	TIMING BELT - 60S2M280	U011	23
GA082014	PLAIN SHAFT BEARING:DIA6:DIA1 0:9	U010_S001	13
GA082015	PLAIN SHAFT BEARING:DIA6:DIA9:	U008_S001	38

Number	Part Name	Group	ID
	7		
GA120011	DISCHARGE BRUSH EXIT	U010_S001	14
GA132101	SPACER - 0.13 X 12MM	U011	24
GA145013	SHAFT - 6 X 39.5MM	U011	25
GA145014	SHAFT - 6 X 55.3MM	U011	26
GA148016	SHAFT - 6 X 26.7MM	U011	27
GA148018	SHAFT - 6 X 21.9MM	U011	28
GB010039	GEAR:AIO:DRIVE:MIDDLE	U011	29
GB010040	GEAR:AIO:DRIVE:1	U011	30
GB011101	GEAR - 37Z	U011	31
GB011102	GEAR - 19/38Z	U011	32
GB011103	GEAR - 28/36Z	U011	33
GB011104	GEAR - 20/35Z	U011	34
GB011105	GEAR - 29Z	U011	35
GB011106	GEAR - 22/31Z	U011	36
GB011108	GEAR - 21Z	U011	37
GB011109	GEAR - 28Z	U011	38
GB011110	GEAR - 31Z	U011	39
GB011111	GEAR - 19Z	U011	40
GB011112	GEAR - 29Z	U011	41
GB011118	REGIST DRIVE GEAR	U011	42
GB011133	GEAR - 15Z	U008_S001	39
		U010_S001	15
GB012102	GEAR - 54Z	U011	43
GB013114	GEAR - 35Z	U011	44
GB013115	GEAR - 21Z	U011	45
GB013117	GEAR - 19Z	U011	46
GB017103	GEAR - 21/45Z	U011	47
GB017104	GEAR - 24/57Z	U011	48
GB017109	GEAR - 16/42Z	U011	49
GB017111	GEAR - 16/51Z	U011	50
GB017112	GEAR - 21/73Z	U011	51
GB017113	GEAR - 40/65Z	U011	52
GB017116	GEAR - 17/42Z	U011	53
GB017120	GEAR:AIO:JOINT:2	U011	54
GB017123	GEAR:AIO:DRIVE	U011	55
GB017124	GEAR:TRANSFER:DRIVE:MIDDLE	U011	56
GB030036	PULLEY - 18T	U011	57

## Exclusive Parts

Number	Part Name	Group	ID
GF020000	REGISTRATION ROLLER - DRIVE	U008_S001	40
GF020060	TRANSPORT ROLLER:DUPLX	U008_S001	41
GF020061	EXIT ROLLER	U010_S001	16
GX041120	STEPPER MOTOR - DC 14.8W	U011	58
GX061148	BRUSHLESS MOTOR:DC24V:10W	U011	59
GX061149	BRUSHLESS MOTOR:DC24V:21W	U011	60
GX061150	BRUSHLESS MOTOR:DC24V:35W	U011	61
GX201123	MAGNETIC CLUTCH:0.25N	U004	31
		U011	62
GX450006	(TWN):HEATER:110V:1000W	U009_S003	8
GX450008	(NA):HEATER:120V:1000W:INFRARED	U009_S002	9
GX450009	(CHN/EU):HEATER:230V:1000W	U009_S001	10
		U009_S004	10
GZ230081	(NA/TWN):POWER SUPPLY UNIT	U012	58
GZ230082	(EU):POWER SUPPLY UNIT	U012	59
GZ230083	(CHN):POWER SUPPLY UNIT	U012	60
GZ300004	POWER PACK	U012	61
H5213355	C RING - PAPER FEED ROLLER	U004	32
H5235350	(NA):TELEPHONE CABLE	ACCESSORIES	13
M0182562	BASE:ADHESION	U004_S001_S001	33
M0182608	COVER:BASE	U004_S001	34
M0184459	ROLLER:DRIVEN:EXIT:OUTER	U010_S001	17
M0184464	GUIDE:PLATE:EXIT:OUTER	U010_S001	18
M0185711	COVER:CONTROL BOARD:ASS'Y	U012	62
M0185752	SPACER:GROUND PLATE:FLAT CABLE:SCANNER UNIT	U012	63
M0185757	HARNESS COVER SHEET:ADF	U013	87
M0352620	FRICTION PAD	U004_S001	35
M0353974	COMPRESSION SPRING:HOUSING:TRANSPORT	U008	42
M0751105	BRACKET:MOTOR	U011	63
M0751107	SHIELDING PLATE:GEAR:2	U011	64
M0751251	GUIDE:LOUVER	U001_S001	12
M0751252	SEAL:STOPPER:LOUVER	U001_S001	13
M0751253	LOUVER	U001_S001	14
M0751308	SEAL:GUIDE:LOUVER:UPPER	U001_S001	15
M0751309	SEAL:GUIDE:LOUVER:LOWER	U001_S001	16

Number	Part Name	Group	ID
M0751498	LCD:STN:MV	U002_S001	2
		U002_S002	2
		U002_S003	2
		U002_S004	2
		U002_S005	2
		U002_S006	2
M0754607	SPRING:PRESSURE:DUPLX	U008	43
M0931851	IMAGING UNIT:ASS'Y	U005	1
M0960042	COVER:LEFT:ASS'Y	U001_S001	17
M0962550	PAPER TRAY:ASS'Y	U004_S001	36
M0962560	SIDE FENCE:LEFT:MANUAL FEED	U004_S001	37
M0962561	SIDE FENCE:RIGHT:MANUAL FEED	U004_S001	38
M0963802	HOUSING:TRANSPORT SUB-UNIT:ASS'Y	U008_S001	44
M0963912	HOLDER:GUIDE PLATE:REVERSE	U008	45
M0963923	GUIDE PLATE:EXIT:MIDDLE	U008	46
M0963924	FEELER:PAPER FEED SENSOR	U008	47
M0963926	ROLLER:GUIDE:EXIT:MIDDLE	U008	48
M0963987	DECAL:GRIP:HOUSING	U008_S001	49
M0963988	DECAL:INSERT SUB-UNIT:TRANSPORT UNIT	U008_S001	50
M0963989	RESISTOR:TRANSFER/SEPARATION	U008_S001	51
M0963993	RESISTOR:EARTH:PAPER FEED	U013	88
M0963994	RESISTOR:EARTH:EXIT:DISCHARGE SECTION	U010_S001	19
M0964017	(NA):FUSING UNIT - 120V	U009_S002	11
M0964019	(TWN):FUSING UNIT - 110V	U009_S003	12
M0964027	(CHN/EU):FUSING UNIT - 230V	U009_S001	13
		U009_S004	13
M0964076	FUSING ENTRANCE GUIDE PLATE:UPPER	U009_S001	14
		U009_S002	14
		U009_S003	14
		U009_S004	14
M0964077	FUSING ENTRANCE GUIDE PLATE:LOWER	U009_S001	15
		U009_S002	15
		U009_S003	15

## Exclusive Parts

Number	Part Name	Group	ID
		U009_S004	15
M0964084	HOLDER:FUSING ENTRANCE GUIDE PLATE:RIGHT	U009_S001	16
		U009_S002	16
		U009_S003	16
		U009_S004	16
M0964085	HOLDER:FUSING ENTRANCE GUIDE PLATE:LEFT	U009_S001	17
		U009_S002	17
		U009_S003	17
		U009_S004	17
M0964089	TORSION SPRING:ENTRANCE:RIGHT	U009_S001	18
		U009_S002	18
		U009_S003	18
		U009_S004	18
M0964090	TORSION SPRING:ENTRANCE:LEFT	U009_S001	19
		U009_S002	19
		U009_S003	19
		U009_S004	19
M0964111	COVER:FUSING	U009_S001	20
		U009_S002	20
		U009_S003	20
		U009_S004	20
M0964112	PRESSURE COVER	U009_S001	21
		U009_S002	21
		U009_S003	21
		U009_S004	21
M0964114	EXIT GUIDE PLATE - PRESSURE	U009_S001	22
		U009_S002	22
		U009_S003	22
		U009_S004	22
M0964115	TORSION SPRING:GUIDE PLATE:PRESSURE:RIGHT	U009_S001	23
		U009_S002	23
		U009_S003	23
		U009_S004	23
M0964116	TORSION SPRING:GUIDE PLATE:PRESSURE:LEFT	U009_S001	24
		U009_S002	24
		U009_S003	24
		U009_S004	24
M0964117	DECAL:FUSING EXIT:OPEN AND C	U009_S001	25

Number	Part Name	Group	ID
	LOSE	U009_S002	25
		U009_S003	25
		U009_S004	25
M0964126	DECAL:FUSING:LEVER:LEFT	U009_S001	26
		U009_S002	26
		U009_S003	26
		U009_S004	26
M0964127	DECAL:FUSING:LEVER:RIGHT	U009_S001	27
		U009_S002	27
		U009_S003	27
		U009_S004	27
M0964455	GROUND PLATE:EXIT:1	U010_S001	20
M0964456	GROUND PLATE:EXIT:2	U010_S001	21
M0964458	SPRING:PRESSURE:EXIT:INNER	U010_S001	22
M0964459	FEELER:L	U010_S001	23
M0964460	SPRING:PRESSURE:EXIT:OUTER	U010_S001	24
M0964461	FEELER:R	U010_S001	25
M0964462	LINK:SLIDE	U010_S001	26
M0964463	LINK:TURN	U010_S001	27
M0964464	COMPRESSION SPRING	U010_S001	28
M0964465	TORSION SPRING:1	U010_S001	29
M0964466	TORSION SPRING:2	U010_S001	30
M0965703	DC SOLENOID:FUSING:ASS'Y	U013	89
M0965711	SHADEING PLATE:HARNESS:POWER SUPPLY UNIT	U012	64
M0965760	GROUND PLATE:REGISTRATION ROLLER	U013	90
M0965761	GROUND PLATE:BASE:PSU	U013	91
M0966000	INTERMEDIATE TRANSFER SECTION:ASS'Y	U007_S001	9
M0966202	TRANSFER ROLLER:SUB-ASS'Y	U008_S001_S001	52
M0976250	TRANSFER ROLLER:TRANSFER/SEPARATION	U008_S001_S001	53
M1001056	HINGE:TORQUE LIMITER	U013	92
M1001060	HOLDER:USB	U012	65
M1001061	BASE:USB	U012	66
M1001372	(EU):DECAL:SHORT_CUT_KEY:SYMBOL-EU	ACCESSORIES	14

## Exclusive Parts

Number	Part Name	Group	ID
M1003902	COVER:FRONT	U008	54
M1562822	FRAME:PICKUP	U003_S001_S001	1
M1562823	PICKUP ROLLER	U003_S001_S001	2
M1562824	ARM:STOPPER	U003_S001	3
M1562825	GEAR:22T	U003_S001_S001	4
M1562826	COIL SPRING:PICKUP	U003_S001_S001	5
M1562828	GEAR:28T	U003_S001_S001	6
M1562829	PAWL:PICKUP	U003_S001_S001	7
M1562830	FEED ROLLER	U003_S001_S001	8
M1562832	SHAFT:TRANSPORT ROLLER:UPPER PAPER FEED	U003_S001	9
M1562833	ARM:ORIGINAL SENSOR	U003_S001	10
M1562834	SHAFT:PICKUP	U003_S001	11
M1562835	GEAR:28T	U003_S001	12
M1562836	COIL SPRING:FEED ROLLER:UPPER	U003_S001	13
M1562837	COIL SPRING:PAWL	U003_S001_S001	14
M1562845	GROUND PLATE	U003_S001	15
M1562846	SCREW:3X4	U003_S001	16
M1562847	GEAR:21T	U003_S001	17
M1562848	GEAR:28T	U003_S001	18
M1562849	GEAR:37T	U003_S001	19
M1562850	GEAR:39T	U003_S001	20
M1562851	GEAR:46T	U003_S001	21
M1562852	GEAR:43T	U003_S001	22
M1562853	GEAR:53T	U003_S001	23
M1562856	EXIT ROLLER	U003_S001	24
M1562857	PLAIN SHAFT BEARING:LEFT:EXIT ROLLER	U003_S001	25
M1562858	PLAIN SHAFT BEARING:RIGHT:EXIT ROLLER	U003_S001	26
M1562861	REGISTRATION ROLLER:ASS'Y	U003_S001	27
M1562862	ARM:REGISTRATION SENSOR	U003_S001	28
M1562864	DISCHARGE BRUSH	U003_S001	29
M1562865	FRAME:MOTOR:ADF	U003_S001	30
M1562868	COIL SPRING:PLATE:ADF	U003_S001	31
M1562886	SHAFT:EXIT ROLLER	U003_S001	32
M1562890	COIL SPRING:REAR	U003_S001	33

Number	Part Name	Group	ID
M1562892	SCREW:3X8	U003_S001	34
M1562896	PAD:PICKUP	U003_S001	35
M1562898	SCREW:3X6	U003_S001	36
M1562899	SHEET:OUTLET	U003_S001	37
M1981076	LEVER:LOCK:UPPER:M198	U013_S001	93
M1981085	SPRING PLATE:LSU:POSITIONING	U013	94
M1981262	COVER:CASSETTE:M198	U001	18
M1981281	BASE:END FENCE:EXIT:M198	U013	95
M1981282	END FENCE:EXIT:REAR:M198	U013	96
M1981283	END FENCE:EXIT:FRONT:M198	U013	97
M1981301	PLATE:LOGO:RIC:ULG	ACCESSORIES	15
M1981333	COVER:RIGHT:M198	U001	19
M1982580	SHAFT:PAPER FEED ROLLER	U004	39
M1984128	DECAL:CAUTION:FUSING PRESSURE RELEASE:M198	ACCESSORIES	16
M1984450	GUIDE:EXIT:ASS'Y	U010_S001	31
M1984453	GUIDE:EXIT:LOWER:M198	U010_S001	32
M1985721	BASE:TRANSCIVER:LAN ADAPTER:M198	U012	67
M1986003	DENSITY SENSOR:ASS'Y	U012_S001	68
M2011600	(M203):(NA/EU):SCANNER:M201:ASS'Y	U003	38
M2021012	SHAFT:LOCK:M202:ASS'Y	U013_S001	98
M2021060	SEPARATION PLATE:SLIDE:M202	U013	99
M2021065	STOPPER:SLIDE:SCANNER:LEFT:M202	U013	100
M2021250	COVER:UPPER:M202	U013	101
M2021251	COVER:HARNESS:SCANNER:RIGHT:M202	U013	102
M2021252	COVER:HARNESS:SCANNER:LEFT:M202	U013	103
M2021258	COVER:INTERFACE:M202	U001	20
M2021259	COVER:MEMORY:M202	U001	21
M2021274	COVER:REAR:M202	U001	22
M2021277	COVER:PAPER EXIT SUB-UNIT:M202	U001	23
M2021390	DECAL:CAUTION:WEIGHT:29KG:M202	ACCESSORIES	17



## Exclusive Parts

Number	Part Name	Group	ID
M2021466	OPERATION PANEL BOARD	U002_S001	3
		U002_S002	3
		U002_S003	3
		U002_S004	3
		U002_S005	3
		U002_S006	3
M2021473	(M204):(NA):SHEET:OPERATION SUB-UNIT	U002_S001	4
M2021474	(M204):(EU):SHEET:OPERATION SUB-UNIT	U002_S003	5
M2021475	(M203):(NA):SHEET:OPERATION SUB-UNIT	U002_S002	6
M2021476	(M203):(EU):SHEET:OPERATION SUB-UNIT	U002_S004	7
M2021478	(CHN):SHEET:OPERATION SUB-UNIT	U002_S006	8
M2021479	(TWN):SHEET:OPERATION SUB-UNIT	U002_S005	9
M2021600	(M204):SCANNER:ASS'Y	U003	39
M2021630	ADF:ASS'Y	U003_S001	40
M2021634	SEPARATION SUB-UNIT:ASS'Y	U003_S001	41
<b>M2021643</b>	<b>PICKUP ROLLER:ASS'Y</b>	<b>U003_S001_S001</b>	<b>66</b>
M2021750	COVER:REAR:ADF	U003_S001	42
M2021751	COVER:FRONT:ADF	U003_S001	43
M2021752	COVER:UPPER:ADF	U003_S001	44
M2021755	ORIGINAL SENSOR	U003_S001	45
M2021756	DC STEPPER MOTOR:ADF	U003_S001	46
M2021758	CONNECTOR:HARNESS	U003_S001	47
M2021759	TRAY:ORIGINAL	U003_S001	48
M2021760	COVER:TRAY:ORIGINAL	U003_S001	49
M2021761	SIDE FENCE:RIGHT	U003_S001	50
M2021762	SIDE FENCE:LEFT	U003_S001	51
M2021763	GEAR:18T	U003_S001	52
M2021764	COIL SPRING:GEAR:SIDE FENCE	U003_S001	53
M2021766	EXTENSION TRAY:EXIT	U003_S001	54
M2021767	HINGE:LEFT	U003_S001	55
M2021768	SCREW:4X8	U003_S001	56
M2021769	HINGE:RIGHT	U003_S001	57

Number	Part Name	Group	ID
M2021770	EXIT ROLLER	U003_S001	58
M2021771	COVER:LOWER:ADF	U003_S001	59
M2021772	DRIVEN ROLLER:TRANSPORT:UPPER:ADF	U003_S001	60
M2021773	PAWL:MECHANICAL SPRING CLUTCH:M202	U003_S001_S001	61
M2021775	PRESSURE PLATE:ADF:M202	U003_S001	62
M2021776	SPONGE:ADF:M202	U003_S001	63
M2021777	SHAFT:DRIVEN ROLLER:TRANSPORT:ADF:M202	U003_S001	64
M2021778	DRIVEN ROLLER:TRANSPORT:ADF:M202	U003_S001	65
M2025001	PCB:WIFI	U012	69
M2025126	PCB:EGB:ASS'Y	U012	70
M2025825	SHEET:FFC:SCANNER	U012	71
M2031381	(M203):(NA/27):DECAL:NAME PLATE:M203	ACCESSORIES	18
M2031400	(M203):(NA):OPERATION PANEL:ASS'Y	U002_S002	10
M2031401	(M203):(EU):OPERATION PANEL:ASS'Y	U002_S004	11
M2041323	(EU):DECAL:EAC-TRCU:PS	ACCESSORIES	19
M2041381	(M204):DECAL:NAME PLATE:M204	ACCESSORIES	20
M2041400	(M204):(NA):OPERATION PANEL:ASS'Y	U002_S001	12
M2041401	(M204):(EU):OPERATION PANEL:ASS'Y	U002_S003	13
M2041402	(CHN):OPERATION PANEL:ASS'Y	U002_S006	14
M2041403	(TWN):OPERATION PANEL:ASS'Y	U002_S005	15
M2041881	(NA/EU):DECAL:CAUTION:COPY	ACCESSORIES	21
M2041883	(EU):DECAL:CAUTION:COPY	ACCESSORIES	22
M2041884	(TWN):DECAL:CAUTION:COPY	ACCESSORIES	23
M2045652	PCB:CTL:MPDL:ASS'Y	U012	72
M2045672	(NA):PCB:FAX:ASS'Y	U012	73
M2045674	(CHN/EU):PCB:FAX:ASS'Y	U012	74
M2045676	(TWN):PCB:FAX:ASS'Y	U012	75

## Standard Parts



03530030N  
SCREW:M3X3



03530040N  
SCREW - M3X4



03530060N  
BIND SCREW - M3X6



03603006N  
SCREW - M3X6



03603010N  
SCREW:M3X10



04503008N  
TAPPING SCREW - M3X8



04503010N  
TAPPING SCREW - M3X10



04503016N  
TAPPING SCREW:3X16



04504010N  
TAPPING SCREW:M4X10



04524010N  
BINDING SELF-TAPPING SCREW:4X10



04543006Q  
TAPPING SCREW - M3X6



04543008Q  
TAPPING SCREW:3X8



07200030E  
RETAINING RING - M3



07200040E  
RETAINING RING - M4



07200060E  
RETAINING RING - M6



08046123  
HEXAGONAL BOLT:W/WASHER:M3X8



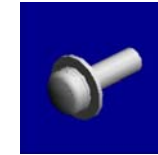
08050088  
RETAINING RING - M6



08050089  
RETAINING RING - M4



08050092  
RETAINING RING - 3M



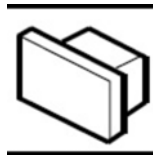
09543008N  
SCREW - M3X8



11024473  
CT CONNECTOR - 2P



11024559  
CONNECTOR - 3P



11033734  
(NA):CONNECTOR:TM-6-DC1(01)



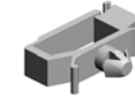
11033902  
CONNECTOR - 10P



11050724  
CLAMPS:WES-1210



11050758  
CLAMP:LWSM-0306A



11050760  
CLAMP:LWSM-0511A

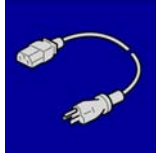


11050761  
CLAMP:LWS-0511A

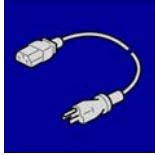
## Standard Parts



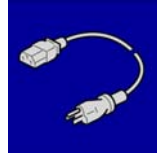
11050762  
CLAMP:LWS-0711A



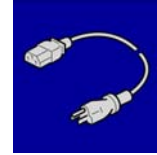
11500409  
(TWN):POWER SUPPLY COD  
E:125V:15A



11500427  
(NA):POWER SUPPLY CODE:  
125V:15A



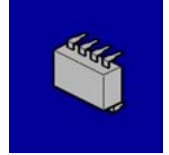
11500457  
(EU):POWER SUPPLY CODE:  
250V:10A



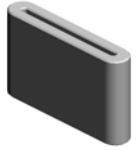
11500460  
POWER SUPPLY CODE:250V  
:10A



12042612  
MICRO SWITCH:D3V-16506-3  
C25



14075317  
EEPROM:M24C16-WBN6(RE  
V.S/W/G)



16072056  
FERRITE CORE:33.5X6.5X20

## PM Part List

Number	Part Name	Num	Group	ID
M0964017	(NA):FUSING UNIT - 120V	1	U009_S002	11
M0964019	(TWN):FUSING UNIT - 110V	1	U009_S003	12
M0964027	(CHN/EU):FUSING UNIT - 230V	2	U009_S001	13
			U009_S004	13
M0966000	INTERMEDIATE TRANSFER SECTION:ASS'Y	1	U007_S001	9
M0966202	TRANSFER ROLLER:SUB-ASS'Y	1	U008_S001_S001	52

## Design Change List

Number	Title	Set	Old Part		New Part		Index No.		Q'ty	Interchg		Reason	Cut-in S/N
			P/N	Name	P/N	Name	Group	ID		Indiv.	Set		
201408-01	1408 Modification	-			M2021643	PICKUP ROLLER :ASS'Y	U003_S001 _S001	66	1	X/O			M20417:

