



RICOH UNIVERSITY

Learning ♦ Knowledge ♦ Performance



G186
PARTS CATALOG

003109MIU

LANIER RICOH SAVIN



G186
PARTS CATALOG

LANIER
RICOH
SAVIN



RICOH UNIVERSITY

Learning ♦ Knowledge ♦ Performance

G186 PARTS CATALOG

003109MIU (rev. 04/26/07)

LANIER RICOH SAVIN®

It is the reader's responsibility when discussing the information contained within this document to maintain a level of confidentiality that is in the best interest of Ricoh Corporation and its member companies.

**NO PART OF THIS DOCUMENT MAY BE REPRODUCED IN ANY
FASHION AND DISTRIBUTED WITHOUT THE PRIOR
PERMISSION OF RICOH CORPORATION.**

All product names, domain names or product illustrations, including desktop images, used in this document are trademarks, registered trademarks or the property of their respective companies.

They are used throughout this book in an informational or editorial fashion only and for the benefit of such companies. No such use, or the use of any trade name, or web site is intended to convey endorsement or other affiliation with Ricoh products.

LEGEND

PRODUCT CODE	COMPANY			
	GESTETNER	LANIER	RICOH	SAVIN
G186	SP 5100N (RLA only)	SP 5100N	Aficio SP 5100N	SP 5100N
M306*	SCF Unit			
M307*	Duplex Unit			

*Does not have a separate Parts Catalog. Part numbers are included in mainframe parts catalog.

DOCUMENTATION HISTORY

REV. NO.	DATE	COMMENTS
*	04/2007	Original Printing

G186

TABLE OF CONTENTS

G186 (includes M306/M307) PARTS LOCATION AND LIST

1.Main Assembly (G186)	2
2.Cover Assembly (G186)	4
3.Frame Assembly 1 (G186).....	6
4.Frame Assembly 2 (G186).....	8
5.Fuse Unit (G186)	10
6.REGI Assembly (G186)	12
7.Main Motor Assembly (G186).....	14
8.Deve Motor Assembly (G186)	16
9.Duplex Solenoid Assembly (G186).....	18
10.Cassette Assembly (G186).....	20
11.Duplex Unit (M307).....	22
12.SCF Unit (M306).....	24

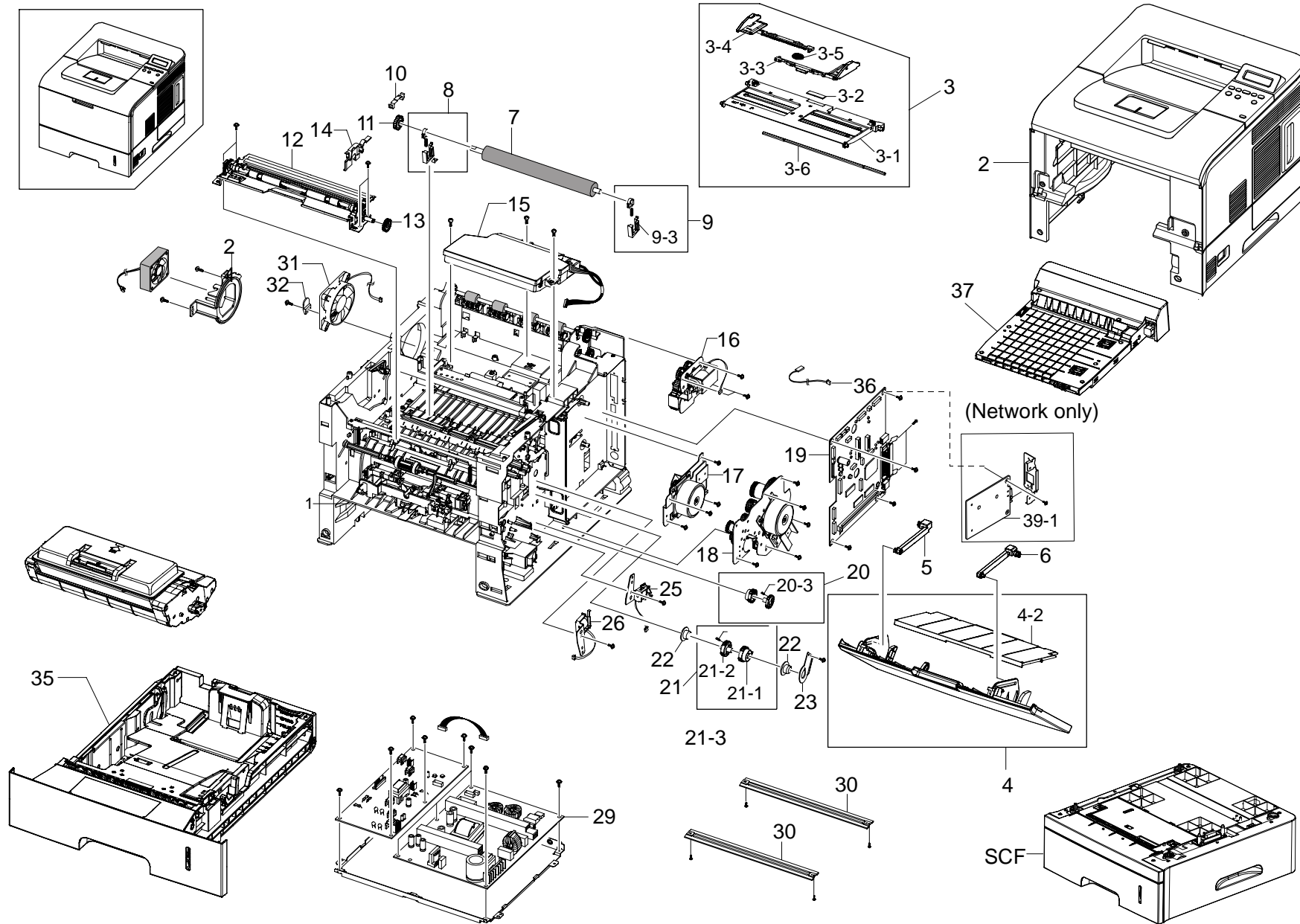
G186 (includes M306/M307) PARTS INDEX

PARTS INDEX.....	2
-------------------------	----------

G186
(includes M306/M307)
PARTS LOCATION AND LIST

This section instructs you as to the numbers and names of parts on this machine.

1.Main Assembly (G186)

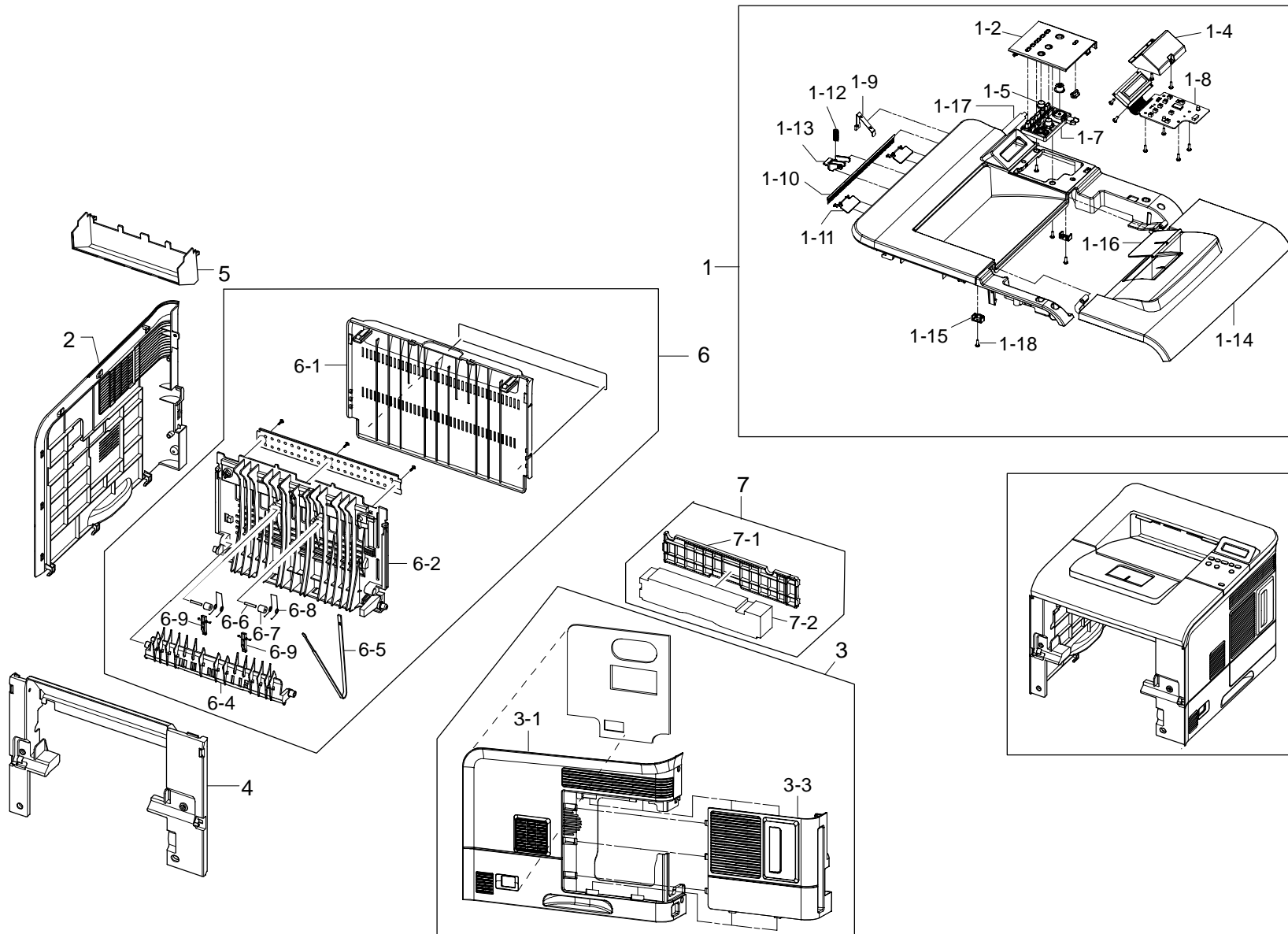


1.Main Assembly (G186)

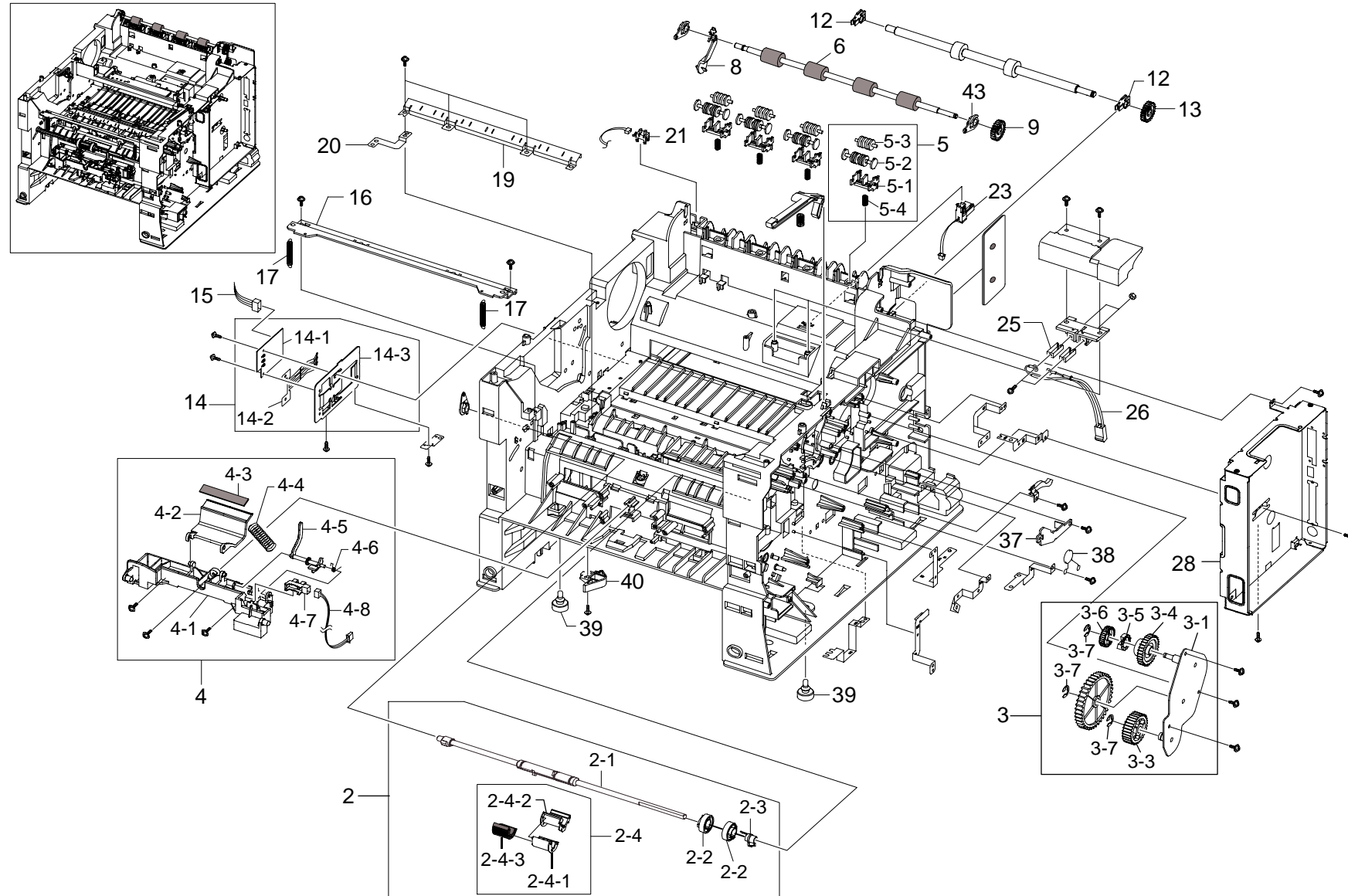
Index No.	Part No.	Description	Q'ty Per Assembly
1	G186 1001	ELA Unit-Frame Base-US	1
1	G186 1501	ELA Unit-Frame Base-UK	1
3	G186 1002	MEA Unit-Knock_Up Mp	1
3-1	G186 1003	Plate-M_Knock Up Mp	1
3-2	G186 1004	MPR-Pad Knock Up Mp	1
3-3	G186 1005	Pmo-Side Guide Mp(R)	1
3-4	G186 1006	Pmo-Side Guide Mp(L)	1
3-5	G186 1007	Gear-Pinion	1
4	G186 1008	MEA Unit-Cover MP	1
4-2	G186 1009	Tray-M_Extend_MP	1
5	G186 1010	Tray-M_Link MP(L)	1
6	G186 1011	Tray-M_Link MP(R)	1
7	G186 1012	Roller-Transfer	1
8	G186 1013	ELA Unit-Holder TR R	1
9	G186 1014	ELA Unit-Holder_TR_L	1
9-3	G186 1315	PMO-Transfer Holder L	1
10	G186 1016	PMO-Cap TR	1
11	G186 1017	Gear-TR29	1
12	G186 1018	ELA Unit-Regi	1
13	G186 1019	Gear-Regi Z25	1
14	G186 1020	Cap-M-Gear	1
15	G186 1021	ELA Unit-Lsu	1
16	G186 1022	ELA Unit-Exit Sol	1
17	G186 1023	ELA Unit-Deve Motor	1
18	G186 1024	ELA Unit-Main	1
19	G186 1026	PBA-Main	1
19	G186 1027	PNA Main-Dimm	1
20	G186 1028	MEA Unit-Gear Pick Up	1
20-3	G186 1029	Spring ETC--Cam MP	1
21	G186 1030	MEA Unit-Gear P/Up MP Cardina	1
21-1	G186 1031	Gear-MP Holder_CAM	1
21-2	G186 1032	Gear-MP Pick_Up	1
21-3	G186 1029	Spring ETC--CAM MP	1
22	G186 1034	Bearing-Pick Up	2
23	G186 1035	Bracket-P-Shaft MP	1

Index No.	Part No.	Description	Q'ty Per Assembly
24	G186 1036	Holder-Fan	1
25	G186 1037	Solenoid-Main	1
26	G186 1038	Solenoid-MP	1
27	G186 1039	ELA Unit-Deve_Eraser	1
29	G186 1041	ELA Hou-Smps_Hvps_V1 (110V)	1
29	G186 1502	ELA Hou-Smps_Hvps_V2 (220V)	1
30	G186 1042	Bar-P_Cross Bottom	2
31	G186 1043	FAN:AD0424HB	1
32	G186 1044	Stopper-M-Fan80	1
33	G186 1045	Holder-Eraser	1
35	G186 1046	ELA Unit-Cassette	1
36	G186 1047	PBA-Erase_Lamp	1
38	G186 1049	FAN:AD0824MS	1
39	G186 1050	PBA Sub-NPC_PRT	1

2.Cover Assembly (G186)



3.Frame Assembly 1 (G186)

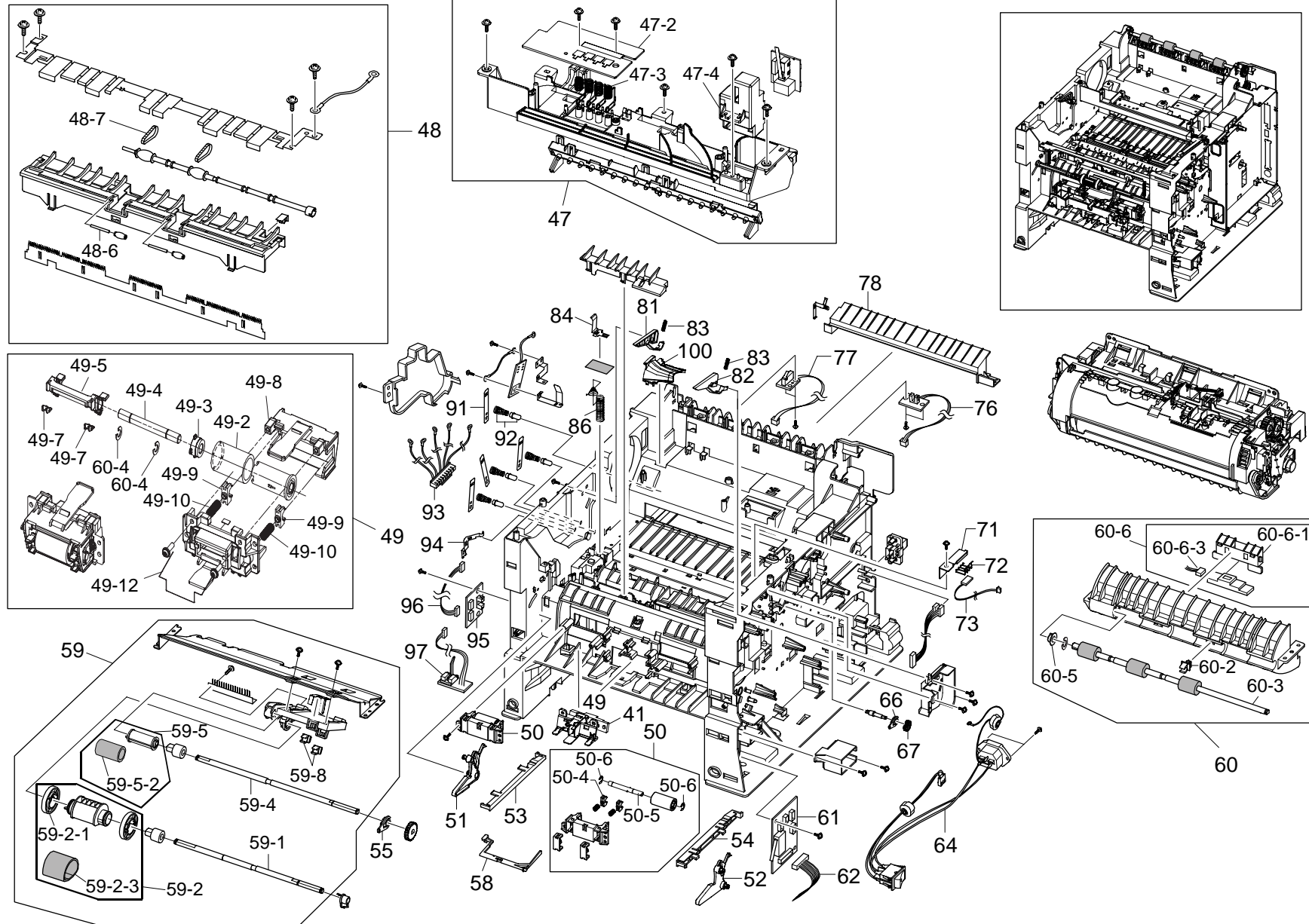


3.Frame Assembly 1 (G186)

Index No.	Part No.	Description	Q'ty Per Assembly
2	G186 1081	Mea Unit-Pick Up MP	1
2-1	G186 1082	Shaft-Pick Up MP	1
2-2	G186 1083	PMO-Idle Pick Up MP	2
2-3	G186 1084	CAM-M-Shaft	1
2-4	G186 1085	ELA Unit-Roller P/Up MP	1
2-4-1	G186 1086	Holder-M-Pickup MP	1
2-4-2	G186 1087	Housing-M-Pick Up MP	1
2-4-3	G186 1088	Rubber-Pick Up MP	1
3	G186 1089	MEA Unit-Gear Idle	1
4	G186 1096	ELA Hou Base-Holder	1
4-2	G186 1097	Holder-M-Pad	1
4-3	G186 1098	RPR-Friction Pad MP	1
4-5	G186 1100	PMO-Actuator Empty MP	1
4-6	G186 1101	Spring ETC-Empty	1
4-7	G186 1102	Photo-Interrupter	1
4-8	G186 1103	CBF Harness-Mp_Empty	1
5	G186 1104	MEA Rack-Exit Roller	1
5-1	G186 1105	PMO-Holder Exit Roll	1
5-2	G186 1106	PMO-Roller FD F	1
5-3	G186 1107	PMO-Roller FD R	1
5-4	G186 1108	Spring Etc-Exit Roll FD	1
6	G186 1109	Roller-Exit_F/Down	1
8	G186 1110	PMO-Actuator Outfull	1
9	G186 1111	Gear-M-Exit Z17	1
12	G186 1112	Bush-M_Exit D7	2
13	G186 1113	Gear-M-Exit DUP Z21	1
14	G186 1114	ELA Hou-Cst Sensor Hawk16	1
14-1	G186 1342	PBA Sub-Cassette	1
14-2	G186 1115	IPR-Plate Sensor	1
14-3	G186 1116	IPR-Bracket Sensor	1
15	G186 1117	CBF Harness-Sensor	1
16	G186 1118	Guide-P_Regi Upper	1
17	G186 1119	Spring ETC-Lever	2
19	G186 1120	Guide-Plate Paper	1
20	G186 1121	IPR-P_Ground Plate Paper	1

Index No.	Part No.	Description	Q'ty Per Assembly
21	G186 1102	Photo-Interrupter	1
23	G186 1123	CBF Harness-Therm	1
25	G186 1125	Terminal-P-Fuser	1
26	G186 1126	CBF Harness-Fuser	1
28	G186 1128	Shield-Ctrl	1
37	G186 1137	PMO-Dummy_Deve	1
38	G186 1138	ELA Hou-Varistor	1
39	G186 1139	Foot-MI80	2
40	G186 1140	PMO-Remove_Lock_CST	1

4.Frame Assembly 2 (G186)

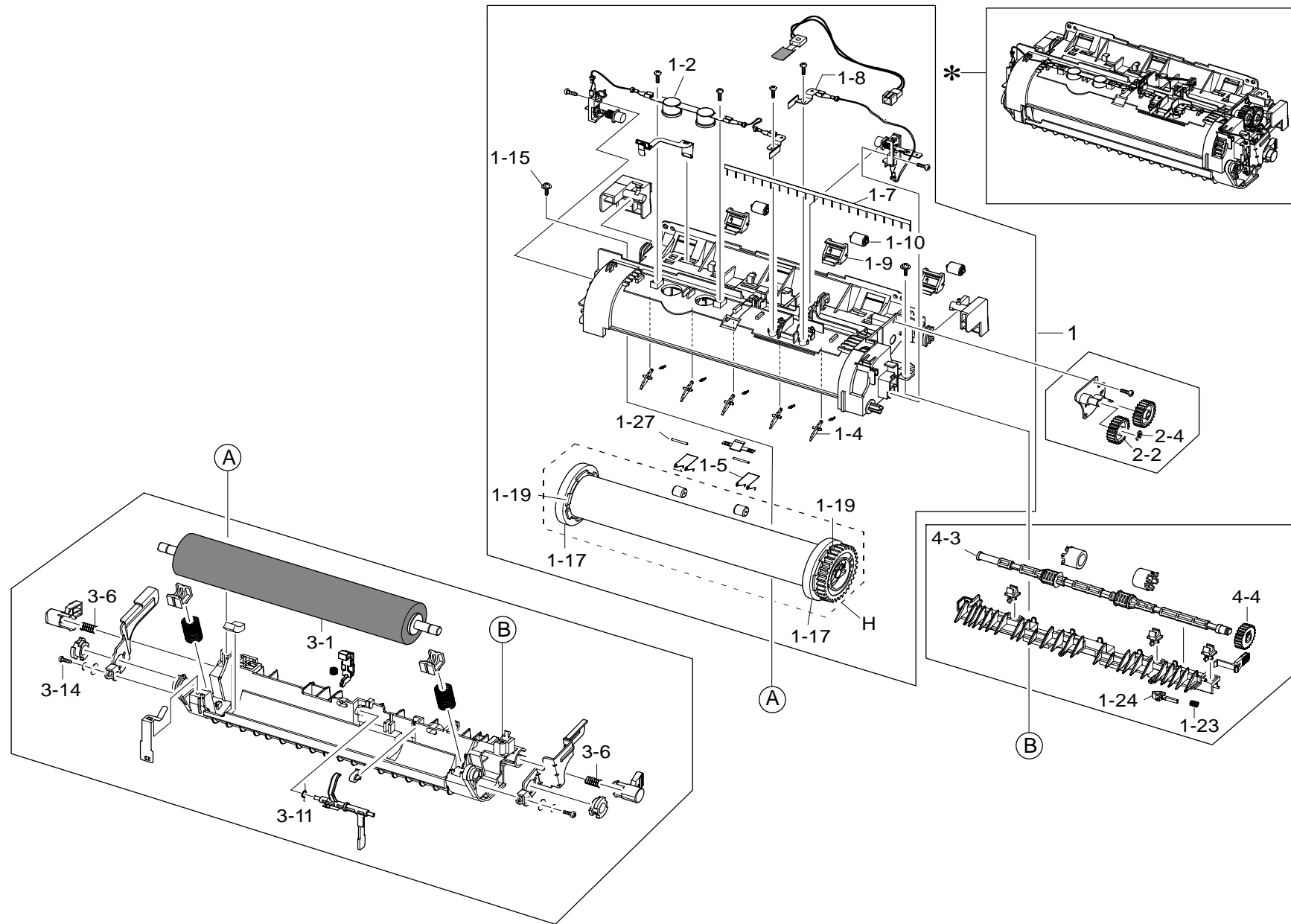


4.Frame Assembly 2 (G186)

Index No.	Part No.	Description	Q'ty Per Assembly
41	G186 1141	PMO-Bearing Shaft	1
47	G186 1142	ELA Hou-Frame_LSU_LO	1
47-2	G186 1144	PBA Sub-Toner_Sensor	1
47-3	G186 1145	Terminal-P_Deve	1
47-4	G186 1146	PBA Sub-Cover Oepn	1
48	G186 1148	ELA Unit-Feed3X5	1
48-6	G186 1076	IEX-Shaft Idle,F/Up	1
48-7	G186 1155	Rubber-Belt_Feed	1
49	G186 1157	ELA Unit-Roller_Idle	1
49-2	G186 1158	Housing-M-Retard	1
49-3	G186 1159	Rubber-Retard	1
49-4	G186 1160	PMO-Hub Out Retard	1
49-5	G186 1329	Shaft-Idle_Feed	1
49-6	G186 1328	Shutter-Path_Feed	1
49-9	G186 1327	Holder-Idle_Front	2
49-10	G186 1161	Bush-M-Retard	2
49-12	G186 1326	Holder-Idle_Rear	1
49-14	G186 1162	Shutter-Tension	1
50	G186 1163	ELA Unit-Feed2 Idle	2
50-4	G186 1161	Bush-M-Retard	1
50-5	G186 1165	Shaft-Idle_Feed2	1
50-6	G186 1166	Ring-E	1
51	G186 1167	Stopper-M-Knock Up MP_L	1
52	G186 1168	Stopper-M-Knock Up MP_R	1
53	G186 1169	Rail-M-Left_DUP	1
54	G186 1170	Rail-M-Right_DUP	1
55	G186 1141	PMO-Bearing Shaft	1
58	G186 1174	PMO-Actuator Empty	1
59	G186 1175	ELA Unit-Pick Up	1
59-1	G186 1176	Shaft-Pick Up	1
59-2	G186 1177	MEA Unit-P/Up_Housing	1
59-2-1	G186 1178	PMO-M Idle-Pick Up	1
59-2-3	G186 1179	Rubber-Pick_Up	1
59-4	G186 1180	Shaft-Feed1	1
59-5	G186 1181	As-Unit_Feed1	1

Index No.	Part No.	Description	Q'ty Per Assembly
59-5-2	G186 1182	Rubber-Feed1	1
59-8	G186 1183	PMO-Bushing Feed	1
60	G186 1184	ELA Unit-Feed	1
60-2	G186 1183	PMO-Bushing Feed	1
60-3	G186 1330	Roller-Shaft_Feed	1
60-5	G186 1034	Bearing-Pick Up	1
60-6	G186 1331	ELA Unit-Feed_Sensor	1
61-6-1	G186 1333	Cap-Sensor_Frame	1
61-6-3	G186 1332	CBF Harness-Pla_Cover	1
61	G186 1185	PBA Sub-Joint	1
62	G186 1186	CBF Harness-Tray Out	1
64	G186 1188	Harness-Inlet	1
66	G186 1141	PMO-Bearing Shaft	1
67	G186 1111	Gear-M-Exit Z17	1
71	G186 1194	Cap-M-Wire PTL Lower	1
72	G186 1195	Terminal-P_PTL	1
73	G186 1196	PBA Sub-PTL2	1
76	G186 1197	PBA Sub-Exit Sensor	1
77	G186 1198	PBA Sub-Fuser SW	1
78	G186 1199	Guide-M-Front	1
81	G186 1201	PMO-Guide Deve L	1
82	G186 1202	PMO-Guide Deve R	1
83	G186 1203	Spring ETC-Guide Deve	2
84	G186 1204	Terminal-P-TR_Kestrel	1
86	G186 1205	Terminal-Spring_TR	1
91	G186 1208	Terminal-P_HV Cardinal	1
92	G186 1209	MEA Unit-Terminal:TR	1
93	G186 1210	Harness-HVPS	1
94	G186 1211	IPR-P_Ground OPC	1
95	G186 1212	PBA Sub-Empty	1
96	G186 1213	Harness-Sensor	1
97	G186 1214	PBA Sub-Feed Sensor	1

5.Fuse Unit (G186)

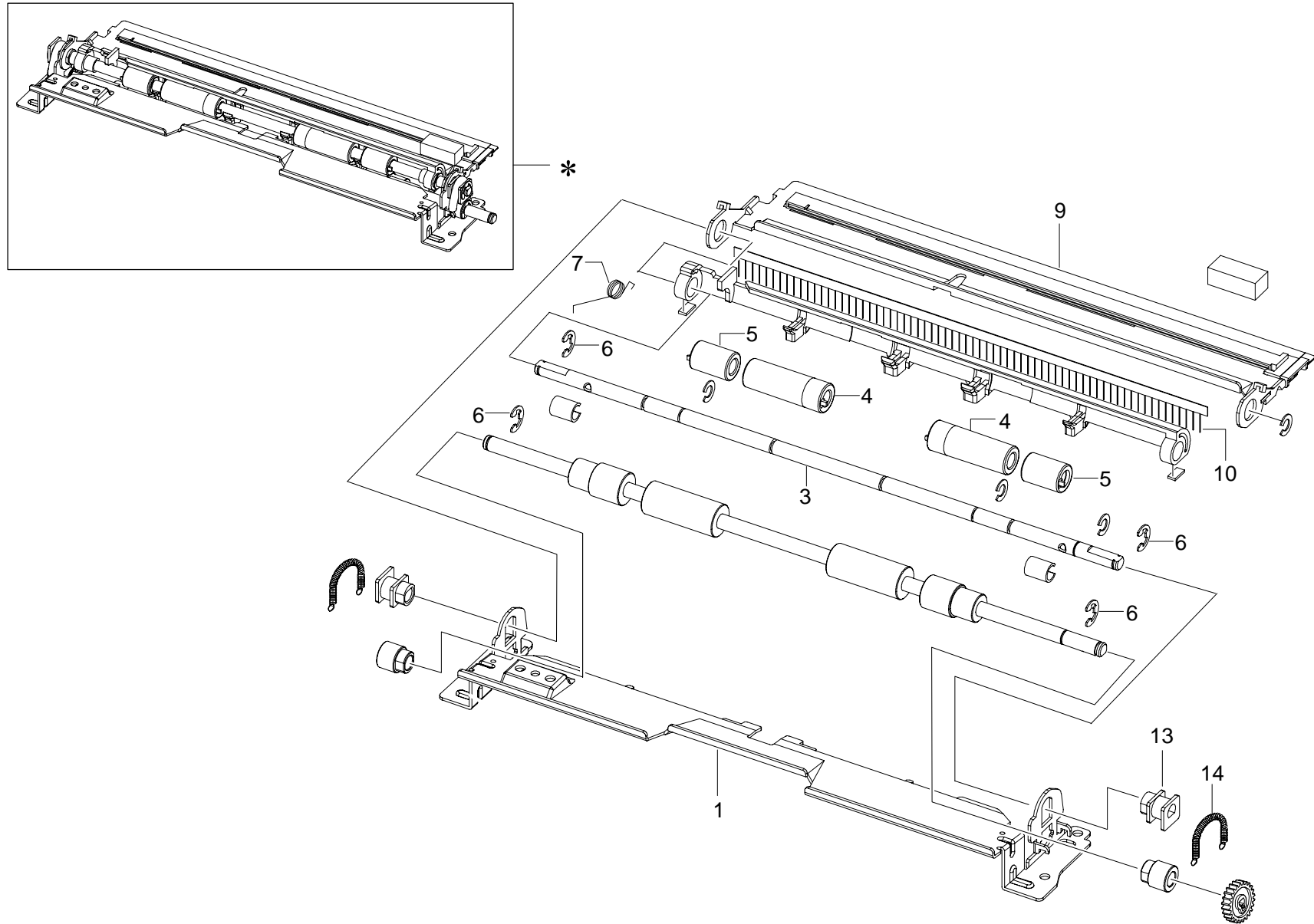


5.Fuse Unit (G186)

Index No.	Part No.	Description	Q'ty Per Assembly
*	G186 1217	ELA Unit-Fuser_110V	1
*	G186 1503	ELA Unit-Fuser_220V	1
1	G186 1319	ELA Unit-Heat_110V	1
1	G186 1225	ELA Unit-Heat_220V	1
1-2	G186 1322	ELA Unit-Thermostat L	1
1-4	G186 1219	PMO-Guide Claw Green	1
1-5	G186 1220	Spring-TS	1
1-7	G186 1344	MEC-Brush Antistatic	1
1-9	G186 1222	Holder-M-Idle Roller	1
1-10	G186 1223	PMO-Roller Upper DP	1
1-15	G186 1224	Screw-Taptite	1
1-17	G186 1226	Bearing-Ball	2
1-19	G186 1227	Bush-M_HR	1
1-23	G186 1203	Spring ETC-Guide Deve	1
1-27	G186 1076	IEX-Shaft Idle,F/Up	1
2-2	G186 1325	Gear-Idle 23 Fuser	1
2-4	G186 1095	Ring-E	1
3-1	G186 1231	Roller-Pressure	1
3-6	G186 1234	Spring-CS	2
3-11	G186 1238	Spring ETC-Actuator	1
3-17	G186 1323	Bearing-Ball	1
4-3	G186 1324	MEA Unit-Exit F_Up	1
4-4	G186 1113	Gear-M-Exit DUP Z21	1

Index No.	Part No.	Description	Q'ty Per Assembly

6.REGI Assembly (G186)

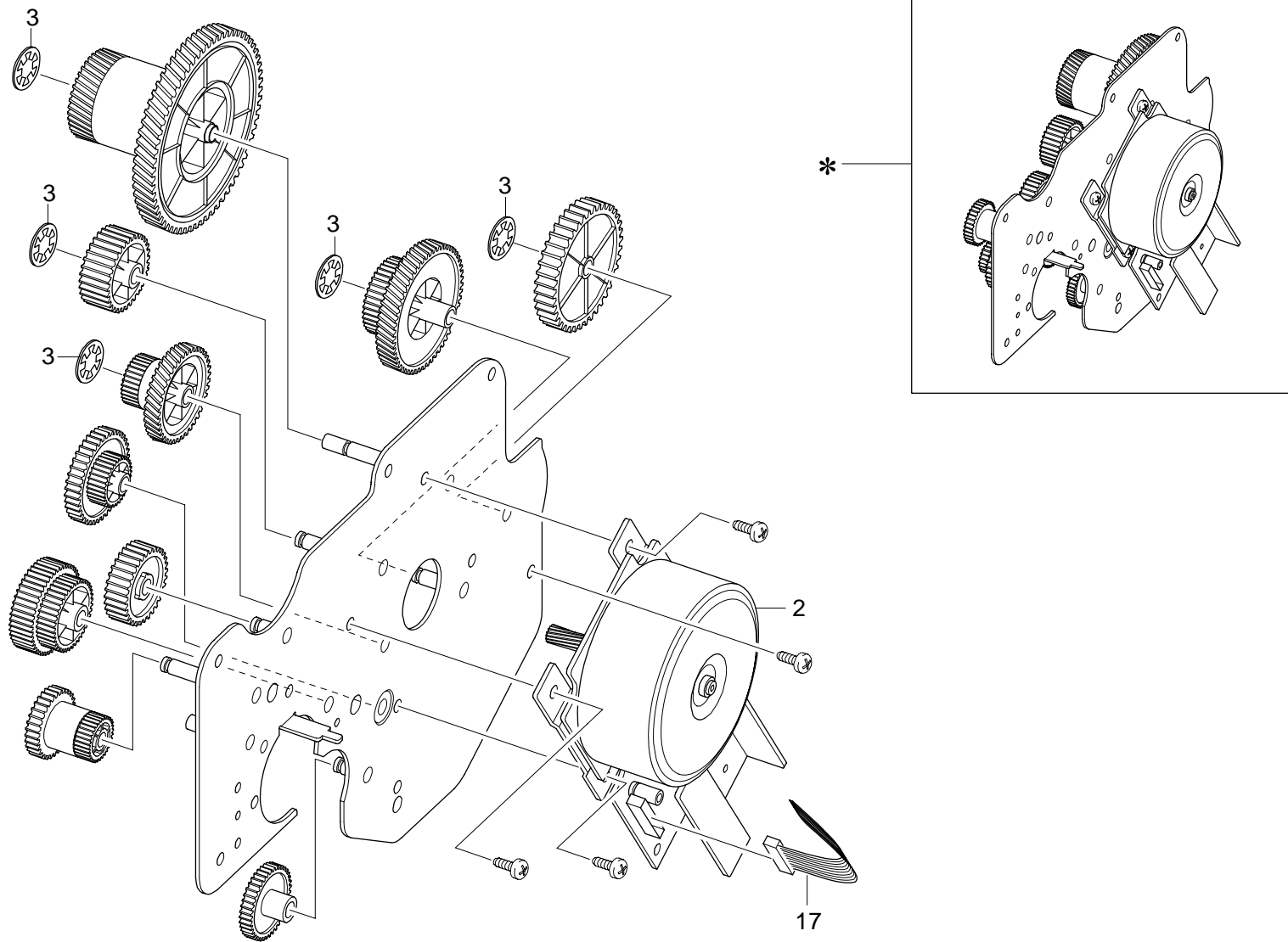


6.REGI Assembly (G186)

Index No.	Part No.	Description	Q'ty Per Assembly
*	G186 1018	ELA Unit-Regi	1
1	G186 1246	Guide-P_Regi Lower	1
3	G186 1248	Shaft-Regi Upper	1
4	G186 1249	Roller-M_Regi Idle L25	2
5	G186 1250	Roller-M_Regi Idle S25	2
6	G186 1095	Ring-E	4
7	G186 1252	Spring-Ts	1
8	G186 1253	PMO-Actuator Regishutter	1
9	G186 1254	Guide-P_Regi Plate	1
10	G186 1059	MEC-Brush Antistatic	1
13	G186 1256	Bush-M-Roller Regi U	1
14	G186 1259	Spring-ES	1

Index No.	Part No.	Description	Q'ty Per Assembly

7.Main Motor Assembly (G186)

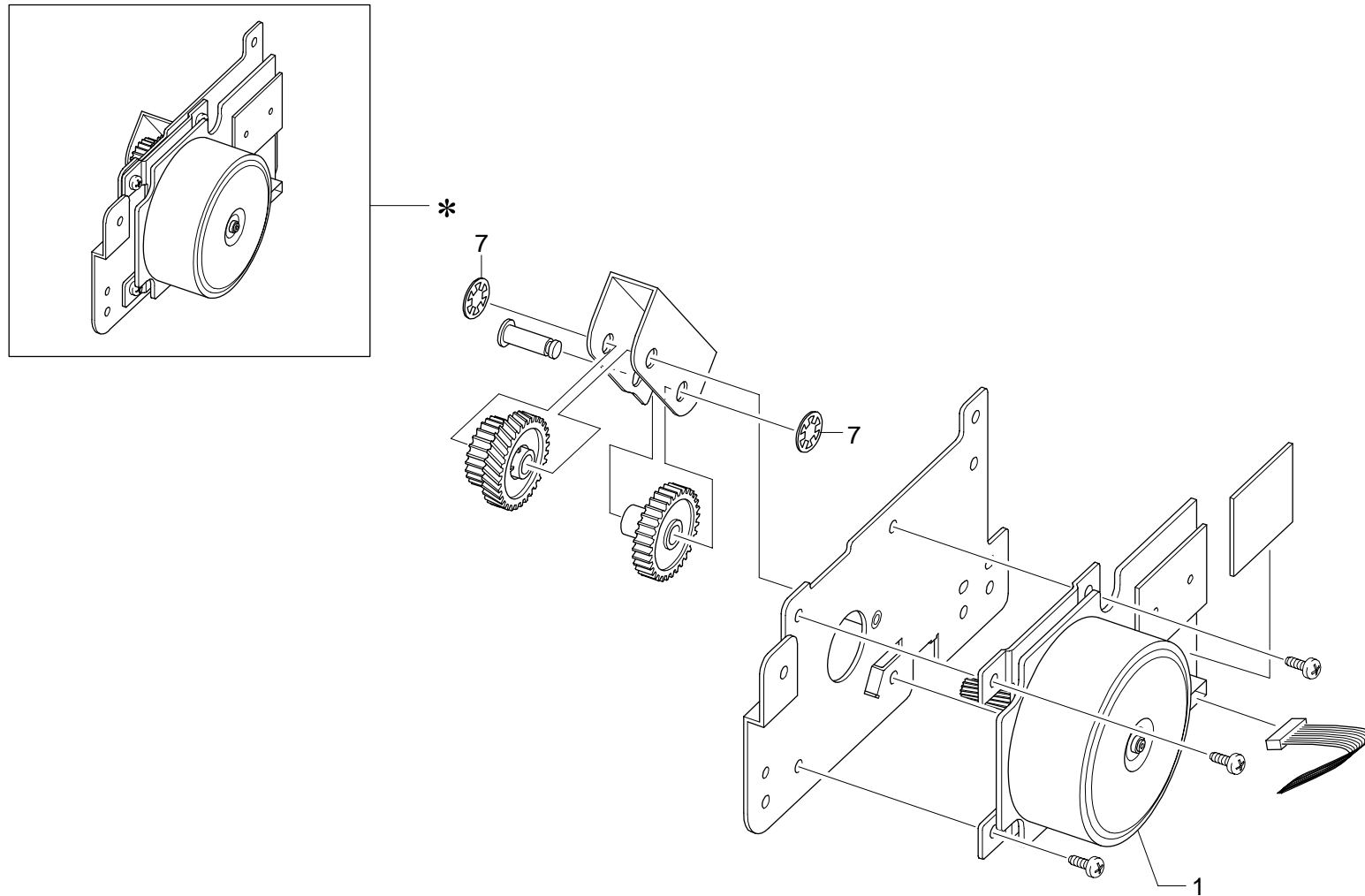


7.Main Motor Assembly (G186)

Index No.	Part No.	Description	Q'ty Per Assembly
*	G186 1024	ELA Unit-Main	1
2	G186 1261	Motor Dc-Bldc Main	1
3	G186 1262	Washer-Plain	5
17	G186 1336	CBF Harness-Dc_Motor	1

Index No.	Part No.	Description	Q'ty Per Assembly

8.Deve Motor Assembly (G186)

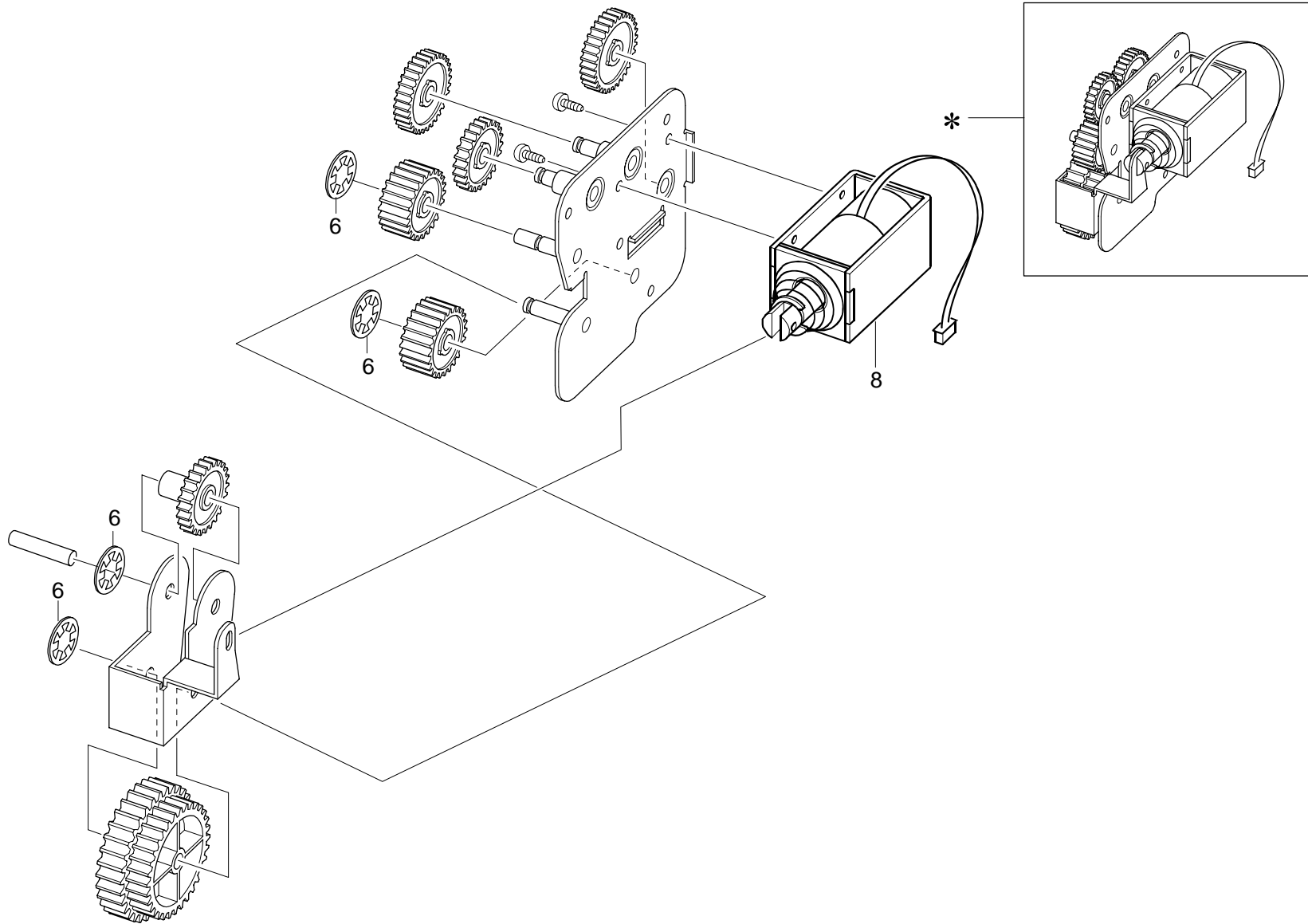


8.Deve Motor Assembly (G186)

Index No.	Part No.	Description	Q'ty Per Assembly
*	G186 1023	ELA Unit-Deve Motor	1
1	G186 1274	Motor Dc-Bldc Deve	1
7	G186 1262	Washer-Plain	2

Index No.	Part No.	Description	Q'ty Per Assembly

9. Duplex Solenoid Assembly (G186)

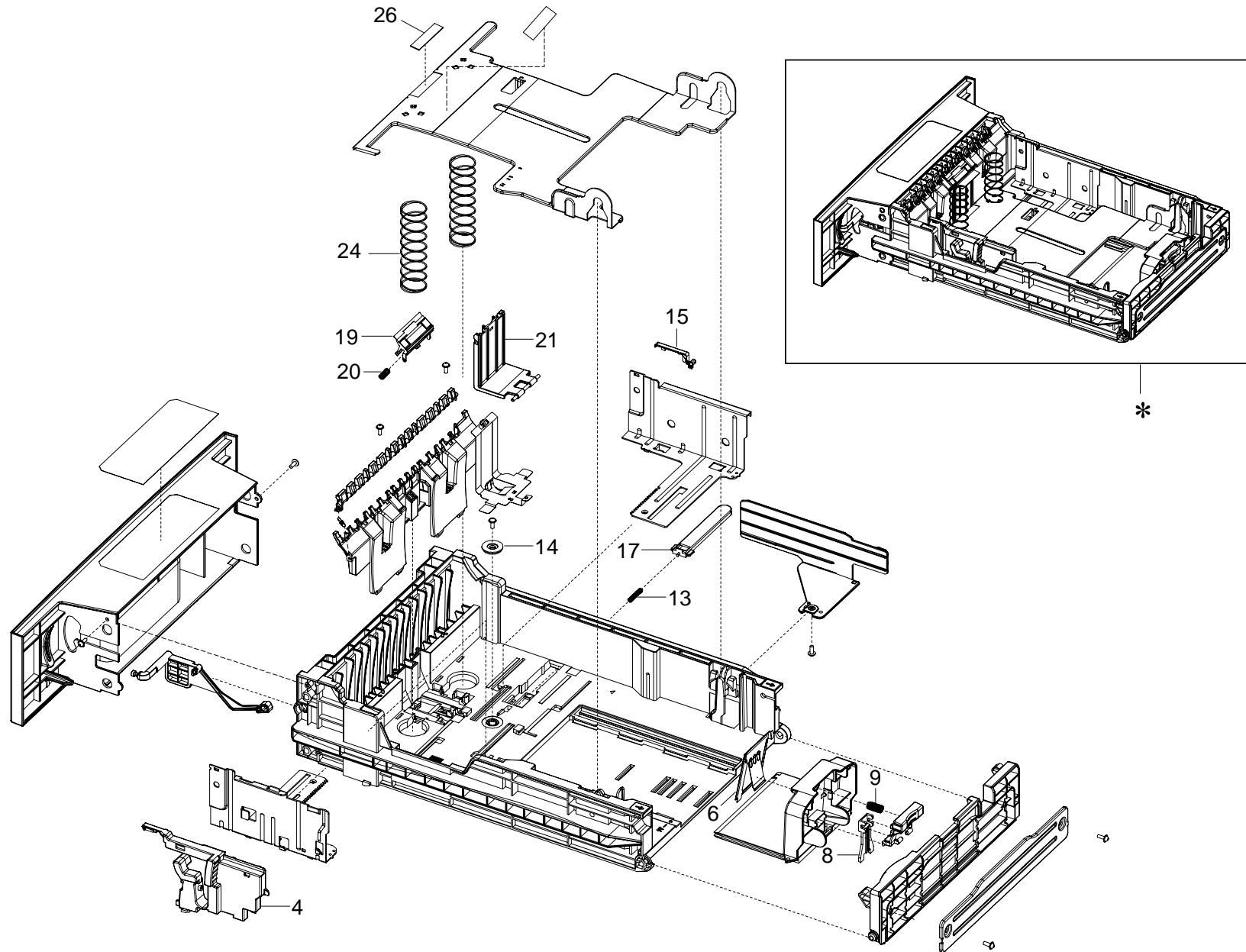


9.Duplex Solenoid Assembly (G186)

Index No.	Part No.	Description	Q'ty Per Assembly
*	G186 1022	ELA Unit-Exit Sol	1
4	G186 1280	Gear-Dp,Idle	1
6	G186 1262	Washer-Plain	4
8	G186 1283	Solenoid-Duplex	1

Index No.	Part No.	Description	Q'ty Per Assembly

10.Cassette Assembly (G186)

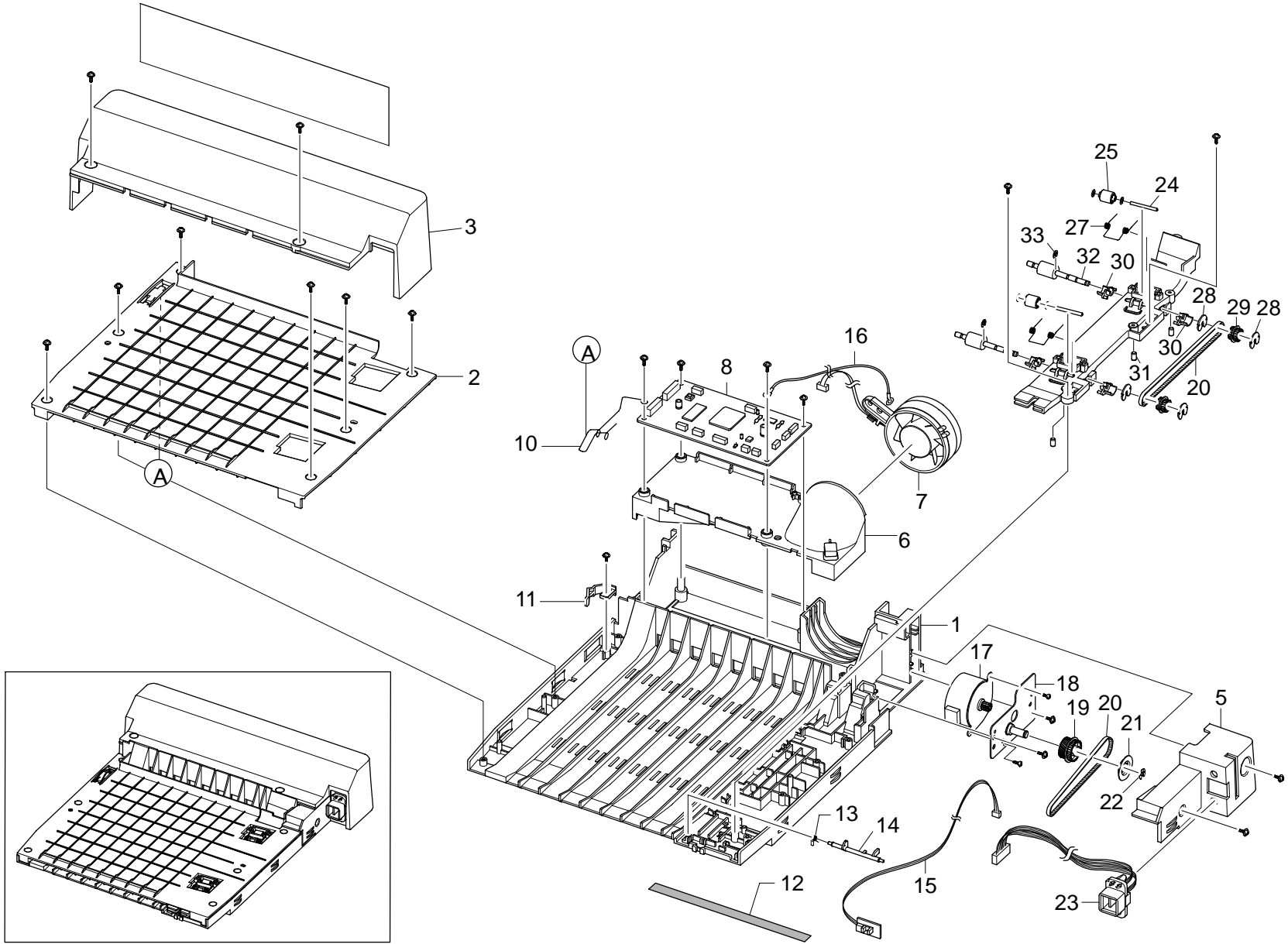


10.Cassette Assembly (G186)

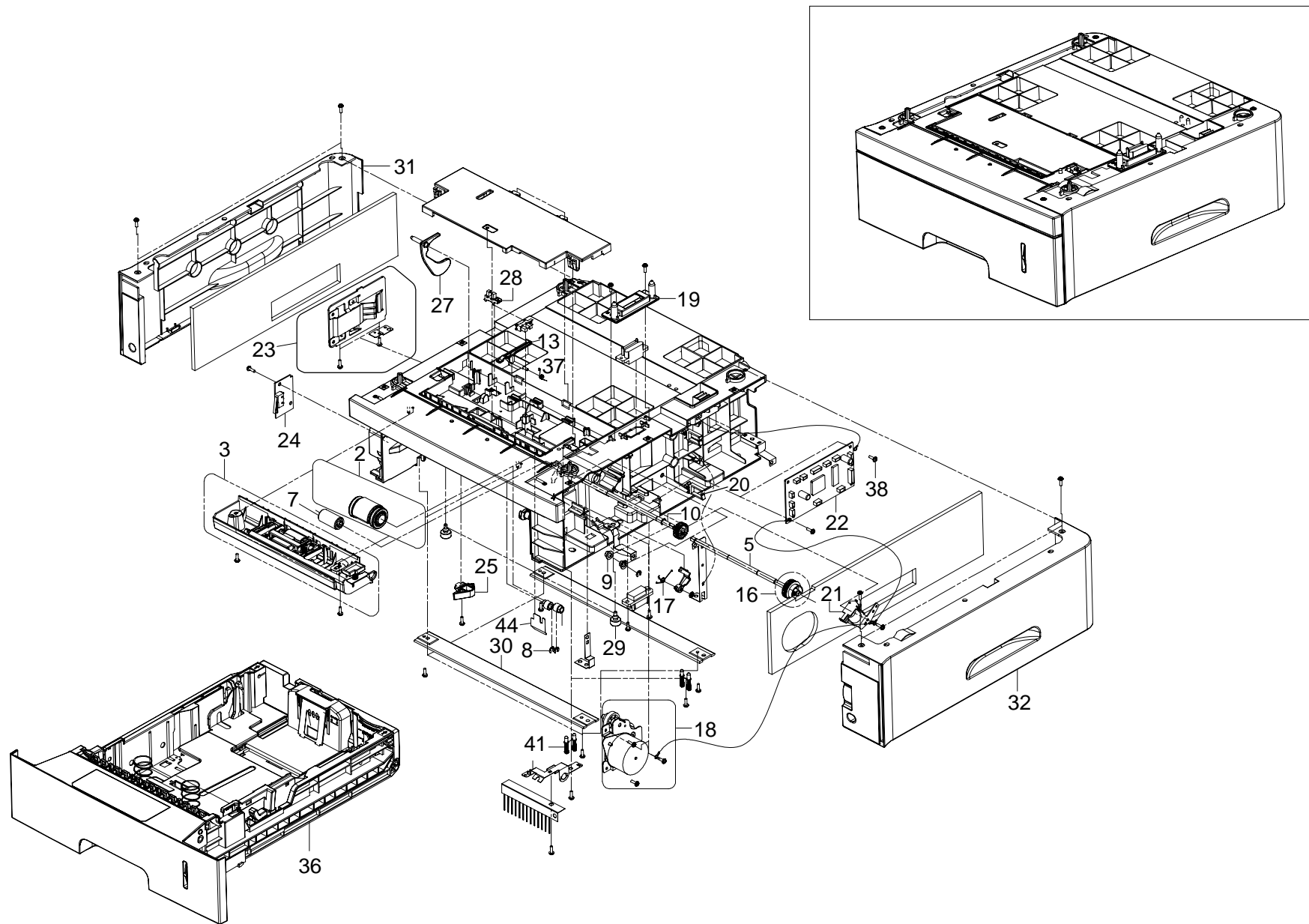
Index No.	Part No.	Description	Q'ty Per Assembly
*	G186 1046	ELA Unit-Cassette	1
4	G186 1334	Guide-M_Side Lock	1
6	G186 1292	Guide-P-Rear Paper CST	1
8	G186 1300	Guide-M_Lock A	1
9	G186 1295	Spring Etc-Guide Paper	1
13	G186 1299	Spring Etc-Locker,Plate	1
14	G186 1007	Gear-Pinion	1
15	G186 1301	Cap-M-Guide Side,L	1
17	G186 1303	PMO-Locker Plate	1
19	G186 1305	MEA Unit-Holder Pad	1
19-4	G186 1335	IPR-Plate Pad	1
20	G186 1108	Spring Etc-Exit Roll FD	1
21	G186 1307	Holder-M-Pad_Housing	1
24	G186 1310	Spring Etc-Plate K/Up	1
26	G186 1312	RPR-Pad Cassette	1

Index No.	Part No.	Description	Q'ty Per Assembly

11. Duplex Unit (M307)



12.SCF Unit (M306)



G186
(includes M306/M307)
PARTS INDEX

This section instructs you as to the numbers and names of parts on this machine

Parts Index

Part No.	Description	Page and Index No.
G186 1001	ELA Unit-Frame Base-US	3 - 1
G186 1002	MEA Unit-Knock_Up Mp	3 - 3
G186 1003	Plate-M_Knock Up Mp	3 - 3
G186 1004	MPR-Pad Knock Up Mp	3 - 3
G186 1005	Pmo-Side Guide Mp(R)	3 - 3
G186 1006	Pmo-Side Guide Mp(L)	3 - 3
G186 1007	Gear-Pinion	21 - 14
G186 1007	Gear-Pinion	3 - 4
G186 1008	MEA Unit-Cover MP	3 - 4
G186 1009	Tray-M_Extend_MP	3 - 4
G186 1010	Tray-M_Link MP(L)	3 - 5
G186 1011	Tray-M_Link MP(R)	3 - 6
G186 1012	Roller-Transfer	3 - 7
G186 1013	ELA Unit-Holder TR R	3 - 8
G186 1014	ELA Unit-Holder_TR_L	3 - 9
G186 1016	PMO-Cap TR	3 - 10
G186 1017	Gear-TR29	3 - 11
G186 1018	ELA Unit-Regi	3 - 12
G186 1018	ELA Unit-Regi	13 - *
G186 1019	Gear-Regi Z25	3 - 13
G186 1020	Cap-M-Gear	3 - 14
G186 1021	ELA Unit-Lsu	3 - 15
G186 1022	ELA Unit-Exit Sol	3 - 16
G186 1022	ELA Unit-Exit Sol	19 - *
G186 1023	ELA Unit-Deve Motor	3 - 17
G186 1023	ELA Unit-Deve Motor	17 - *
G186 1024	ELA Unit-Main	15 - *
G186 1024	ELA Unit-Main	3 - 18
G186 1026	PBA-Main	3 - 19
G186 1027	PNA Main-Dimm	3 - 19
G186 1028	MEA Unit-Gear Pick Up	3 - 20
G186 1029	Spring ETC--CAM MP	3 - 21
G186 1029	Spring ETC--Cam MP	3 - 20
G186 1030	MEA Unit-Gear P/Up MP Cardina	3 - 21
G186 1031	Gear-MP Holder_CAM	3 - 21

Part No.	Description	Page and Index No.
G186 1032	Gear-MP Pick_Up	3 - 21
G186 1034	Bearing-Pick Up	25 - 9
G186 1034	Bearing-Pick Up	9 - 61
G186 1034	Bearing-Pick Up	3 - 22
G186 1035	Bracket-P-Shaft MP	3 - 23
G186 1036	Holder-Fan	3 - 24
G186 1037	Solenoid-Main	3 - 25
G186 1037	Solenoid-Main	25 - 21
G186 1038	Solenoid-MP	3 - 26
G186 1039	ELA Unit-Deve_Eraser	3 - 27
G186 1041	ELA Hou-Smps_Hvps_V1 (110V)	3 - 29
G186 1042	Bar-P_Cross Bottom	25 - 30
G186 1042	Bar-P_Cross Bottom	3 - 30
G186 1043	FAN:AD0424HB	3 - 31
G186 1044	Stopper-M-Fan80	3 - 32
G186 1045	Holder-Eraser	3 - 33
G186 1046	ELA Unit-Cassette	21 - *
G186 1046	ELA Unit-Cassette	3 - 35
G186 1046	ELA Unit-Cassette	25 - 36
G186 1047	PBA-Erase_Lamp	3 - 36
G186 1049	FAN:AD0824MS	3 - 38
G186 1050	PBA Sub-NPC_PRT	3 - 39
G186 1053	Cover-OP Panel	5 - 1
G186 1054	PMO-Stacker_RX	5 - 1
G186 1055	Lever-M_Stacking 38	5 - 1
G186 1056	Stopper-M-Hinge Open	5 - 1
G186 1059	MEC-Brush Antistatic	13 - 10
G186 1063	Key-M-Save Mode	5 - 2
G186 1064	Window-M-LCD	5 - 1
G186 1065	Cover-Open	5 - 1
G186 1066	Cover-M_Left	5 - 2
G186 1067	MEA Unit-Cover Right	5 - 3
G186 1070	MEA Unit-Cover Rear	5 - 6
G186 1071	Cover-M_Rear	5 - 6
G186 1072	PMO-Stacker Rear	5 - 6

Part No.	Description	Page and Index No.
G186 1074	Guide-M_Exit	5 - 6
G186 1075	PMO-Stripe	5 - 7
G186 1076	IEX-Shaft Idle,F/Up	5 - 7
G186 1076	IEX-Shaft Idle,F/Up	9 - 49
G186 1076	IEX-Shaft Idle,F/Up	11 - 1
G186 1077	PEX-Roller F/Up(2)	5 - 7
G186 1078	Spring-TS	5 - 7
G186 1081	Mea Unit-Pick Up MP	7 - 2
G186 1082	Shaft-Pick Up MP	7 - 2
G186 1083	PMO-Idle Pick Up MP	7 - 2
G186 1084	CAM-M-Shaft	7 - 2
G186 1085	ELA Unit-Roller P/Up MP	7 - 2
G186 1086	Holder-M-Pickup MP	7 - 2
G186 1087	Housing-M-Pick Up MP	7 - 2
G186 1088	Rubber-Pick Up MP	7 - 2
G186 1089	MEA Unit-Gear Idle	7 - 3
G186 1095	Ring-E	13 - 6
G186 1095	Ring-E	11 - 2
G186 1095	Ring-E	23 - 22
G186 1096	ELA Hou Base-Holder	7 - 4
G186 1097	Holder-M-Pad	7 - 4
G186 1098	RPR-Friction Pad MP	7 - 4
G186 1100	PMO-Actuator Empty MP	7 - 5
G186 1101	Spring ETC-Empty	7 - 5
G186 1102	Photo-Interrupter	7 - 5
G186 1102	Photo-Interrupter	7 - 21
G186 1102	Photo-Interrupter	25 - 28
G186 1103	CBF Harness-Mp_Empty	7 - 5
G186 1104	MEA Rack-Exit Roller	7 - 5
G186 1105	PMO-Holder Exit Roll	7 - 5
G186 1106	PMO-Roller FD F	7 - 5
G186 1107	PMO-Roller FD R	7 - 5
G186 1108	Spring Etc-Exit Roll FD	7 - 5
G186 1108	Spring Etc-Exit Roll FD	21 - 20
G186 1109	Roller-Exit_F/Down	7 - 6

Part No.	Description	Page and Index No.
G186 1110	PMO-Actuator Outfull	7 - 8
G186 1111	Gear-M-Exit Z17	7 - 9
G186 1111	Gear-M-Exit Z17	9 - 67
G186 1112	Bush-M_Exit D7	7 - 12
G186 1113	Gear-M-Exit DUP Z21	7 - 13
G186 1113	Gear-M-Exit DUP Z21	11 - 4
G186 1114	ELA Hou-CST Sensor Hawk16	25 - 23
G186 1114	ELA Hou-Cst Sensor Hawk16	7 - 14
G186 1115	IPR-Plate Sensor	7 - 14
G186 1116	IPR-Bracket Sensor	7 - 14
G186 1117	CBF Harness-Sensor	7 - 15
G186 1118	Guide-P_Regi Upper	7 - 16
G186 1119	Spring ETC-Lever	7 - 17
G186 1120	Guide-Plate Paper	7 - 19
G186 1121	IPR-P_Ground Plate Paper	7 - 20
G186 1123	CBF Harness-Therm	7 - 23
G186 1125	Terminal-P-Fuser	7 - 25
G186 1126	CBF Harness-Fuser	7 - 26
G186 1128	Shield-Ctrl	7 - 28
G186 1137	PMO-Dummy_Deve	7 - 37
G186 1138	ELA Hou-Varistor	7 - 38
G186 1139	Foot-MI80	7 - 39
G186 1139	Foot-MI80	25 - 29
G186 1140	PMO-Remove_Lock_CST	25 - 25
G186 1140	PMO-Remove_Lock_CST	7 - 40
G186 1141	PMO-Bearing Shaft	9 - 41
G186 1141	PMO-Bearing Shaft	9 - 66
G186 1141	PMO-Bearing Shaft	9 - 55
G186 1142	ELA Hou-Frame_LSU_LO	9 - 47
G186 1144	PBA Sub-Toner_Sensor	9 - 47
G186 1145	Terminal-P_Deve	9 - 47
G186 1146	PBA Sub-Cover Oepn	9 - 47
G186 1148	ELA Unit-Feed3X5	9 - 48
G186 1155	Rubber-Belt_Feed	9 - 49
G186 1157	ELA Unit-Roller_Idle	9 - 49

Part No.	Description	Page and Index No.
G186 1158	Housing-M-Retard	9 - 49
G186 1159	Rubber-Retard	9 - 49
G186 1160	PMO-Hub Out Retard	9 - 49
G186 1161	Bush-M-Retard	9 - 50
G186 1161	Bush-M-Retard	9 - 49
G186 1162	Shutter-Tension	9 - 49
G186 1163	ELA Unit-Feed2 Idle	9 - 50
G186 1165	Shaft-Idle_Feed2	9 - 51
G186 1166	Ring-E	9 - 51
G186 1166	Ring-E	25 - 8
G186 1167	Stopper-M-Knock Up MP_L	9 - 51
G186 1168	Stopper-M-Knock Up MP_R	9 - 52
G186 1169	Rail-M-Left_DUP	9 - 53
G186 1170	Rail-M-Right_DUP	9 - 54
G186 1174	PMO-Actuator Empty	9 - 58
G186 1175	ELA Unit-Pick Up	9 - 59
G186 1176	Shaft-Pick Up	9 - 59
G186 1177	MEA Unit-P/Up_Housing	25 - 2
G186 1177	MEA Unit-P/Up_Housing	9 - 59
G186 1178	PMO-M Idle-Pick Up	9 - 59
G186 1179	Rubber-Pick_Up	9 - 59
G186 1180	Shaft-Feed1	9 - 59
G186 1181	As-Unit_Feed1	9 - 60
G186 1181	As-Unit_Feed1	25 - 7
G186 1182	Rubber-Feed1	9 - 60
G186 1183	PMO-Bushing Feed	9 - 60
G186 1183	PMO-Bushing Feed	9 - 60
G186 1184	ELA Unit-Feed	9 - 60
G186 1185	PBA Sub-Joint	9 - 61
G186 1186	CBF Harness-Tray Out	9 - 62
G186 1188	Harness-Inlet	9 - 64
G186 1194	Cap-M-Wire PTL Lower	9 - 71
G186 1195	Terminal-P_PTL	9 - 72
G186 1196	PBA Sub-PTL2	9 - 73
G186 1197	PBA Sub-Exit Sensor	9 - 76

Part No.	Description	Page and Index No.
G186 1198	PBA Sub-Fuser SW	9 - 77
G186 1199	Guide-M-Front	9 - 78
G186 1201	PMO-Guide Deve L	9 - 81
G186 1202	PMO-Guide Deve R	9 - 82
G186 1203	Spring ETC-Guide Deve	9 - 83
G186 1203	Spring ETC-Guide Deve	11 - 1
G186 1204	Terminal-P-TR_Kestrel	9 - 84
G186 1205	Terminal-Spring_TR	9 - 86
G186 1208	Terminal-P_HV Cardinal	9 - 91
G186 1209	MEA Unit-Terminal:TR	9 - 92
G186 1209	MEA Unit-Terminal:Tr	25 - 41
G186 1210	Harness-HVPS	9 - 93
G186 1211	IPR-P_Ground OPC	9 - 94
G186 1212	PBA Sub-Empty	9 - 95
G186 1213	Harness-Sensor	9 - 96
G186 1214	PBA Sub-Feed Sensor	9 - 97
G186 1217	ELA Unit-Fuser_110V	11 - *
G186 1219	PMO-Guide Claw Green	11 - 1
G186 1220	Spring-TS	11 - 2
G186 1222	Holder-M-Idle Roller	11 - 2
G186 1223	PMO-Roller Upper DP	11 - 1
G186 1224	Screw-Taptite	5 - 1
G186 1224	Screw-Taptite	25 - 38
G186 1224	Screw-Taptite	11 - 1
G186 1225	ELA Unit-Heat_220V	11 - 1
G186 1226	Bearing-Ball	11 - 1
G186 1227	Bush-M_HR	11 - 1
G186 1231	Roller-Pressure	11 - 3
G186 1234	Spring-CS	11 - 4
G186 1238	Spring ETC-Actuator	11 - 3
G186 1246	Guide-P_Regi Lower	13 - 1
G186 1248	Shaft-Regi Upper	13 - 3
G186 1249	Roller-M_Regi Idle L25	13 - 4
G186 1250	Roller-M_Regi Idle S25	13 - 5
G186 1252	Spring-Ts	13 - 7

Part No.	Description	Page and Index No.
G186 1253	PMO-Actuator Regi shutter	13 - 8
G186 1254	Guide-P_Regi Plate	13 - 9
G186 1256	Bush-M-Roller Regi U	13 - 13
G186 1259	Spring-ES	13 - 14
G186 1261	Motor DC-Bldc Main	15 - 2
G186 1262	Washer-Plain	15 - 3
G186 1262	Washer-Plain	17 - 7
G186 1262	Washer-Plain	19 - 6
G186 1274	Motor DC-Bldc Deve	17 - 1
G186 1280	Gear-Dp,Idle	19 - 4
G186 1283	Solenoid-Duplex	19 - 8
G186 1292	Guide-P-Rear Paper CST	21 - 6
G186 1295	Spring Etc-Guide Paper	21 - 9
G186 1299	Spring Etc-Locker,Plate	21 - 13
G186 1300	Guide-M_Lock A	21 - 8
G186 1301	Cap-M-Guide Side,L	21 - 15
G186 1303	PMO-Locker Plate	21 - 17
G186 1305	MEA Unit-Holder Pad	21 - 19
G186 1307	Holder-M-Pad_Housing	21 - 21
G186 1310	Spring Etc-Plate K/Up	21 - 24
G186 1312	RPR-Pad Cassette	21 - 26
G186 1315	PMO-Transfer Holder L	3 - 9
G186 1317	Cover-M_Right	5 - 3
G186 1318	Cover-M_Control Box	5 - 3
G186 1319	ELA Unit-Heat_110V	11 - 1
G186 1322	ELA Unit-Thermostat L	11 - 1
G186 1323	Bearing-Ball	11 - 3
G186 1324	MEA Unit-Exit F_Up	11 - 4
G186 1325	Gear-Idle 23 Fuser	11 - 2
G186 1326	Holder-Idle_Rear	9 - 49
G186 1327	Holder-Idle_Front	9 - 50
G186 1328	Shutter-Path_Feed	9 - 50
G186 1329	Shaft-Idle_Feed	9 - 50
G186 1330	Roller-Shaft_Feed	9 - 60
G186 1331	ELA Unit-Feed_Sensor	9 - 61

Part No.	Description	Page and Index No.
G186 1332	CBF Harness-Pla_Cover	9 - 61
G186 1333	Cap-Sensor_Frame	9 - 61
G186 1334	Guide-M_Side Lock	21 - 4
G186 1335	IPR-Plate Pad	21 - 19
G186 1336	CBF Harness-DC_Motor	15 - 17
G186 1337	Guide-M-Duplex	5 - 7
G186 1339	Spring Etc-Duplex Cover	5 - 1
G186 1340	Cover-Window SF-530	5 - 1
G186 1341	PMO-Stacker Locker	5 - 1
G186 1342	PBA Sub-Cassette	7 - 14
G186 1343	MEA Unit-Cover Dummy	5 - 7
G186 1344	MEC-Brush Antistatic	11 - 2
G186 1345	Cover-M_Front Inner	5 - 4
G186 1346	Cover-M_Frame Exit	5 - 5
G186 1347	ELA Unit-Cover Top For EU	5 - 1
G186 1348	ELA Unit-Cover Top For NA	5 - 1
G186 1349	Ground-P-Top_Cover	5 - 2
G186 1350	Key-M_Button	5 - 2
G186 1351	MEC-Brush Antistatic	5 - 1
G186 1352	PBA Sub-Panel	5 - 2
G186 1501	ELA Unit-Frame Base-UK	3 - 1
G186 1502	ELA Hou-Smps_Hvps_V2 (220V)	3 - 29
G186 1503	ELA Unit-Fuser_220V	11 - *

Part No.	Description	Page and Index No.
M306 1002	ELA Unit-Idle_SCF	25 - 3
M306 1004	Shaft-Pick Up_SCF	25 - 5
M306 1009	Shaft-Feed_SCF	25 - 10
M306 1012	Actuator-Feed	25 - 13
M306 1015	MEA Unit-Gear_Pick_Up	25 - 16
M306 1016	Spring-Ts	25 - 17
M306 1017	ELA Unit-Motor SCF	25 - 18
M306 1018	Holder-Connector_SCF	25 - 19
M306 1019	Cable Clamp	25 - 20
M306 1021	PBA Sub-SCF	25 - 22
M306 1026	PMO-Actuator Empty,SCT	25 - 27
M306 1036	Spring-Ts	25 - 37
M306 1043	Sheet-Guide_Path	25 - 44
M306 1044	CBF Harness-S_P_Size	25 - 45
M306 1045	CBF Harness-Ope	25 - 46
M306 1046	CBF Harness-S_Empty	25 - 47
M306 1047	CBF Harness-SCF	25 - 49
M306 1048	CBF Harness-Motor	25 - 50
M306 1049	CBF Harness-Cassette	25 - 52
M306 1050	Cover-M_Left_Scf	25 - 31
M306 1051	Cover-M_Right_Scf	25 - 32
M306 1052	PBA Sub-SCF_Coveropen	25 - 24
M307 1002	Frame-M-Duplex	23 - 1
M307 1003	Guide-M-Upper_Dup	23 - 2
M307 1004	Cover-M_Rear_Dup	23 - 3
M307 1006	Cap-M-Connector_Dup	23 - 5
M307 1007	Duct-M-Fan_Dup	23 - 6
M307 1008	Fan-DC_Hawk	23 - 7
M307 1009	PBA Sub-Duplex	23 - 8
M307 1011	IPR-Terminal Gnd_Dup	23 - 10
M307 1012	Locker-M-Dup	23 - 11
M307 1013	Sheet-Frame_Dup	23 - 12
M307 1014	Spring-TS	23 - 13
M307 1015	PMO-Actuator Feed Dup	23 - 14
M307 1016	PBA Sub-Mp Sen	23 - 15

Part No.	Description	Page and Index No.
M307 1017	CBF Harness-Liu Gnd	23 - 16
M307 1018	Motor Step	23 - 17
M307 1019	Bracket-P-Motor_Dup	23 - 18
M307 1020	Pulley-M-30_Dup	23 - 19
M307 1021	Belt-Timing Gear	23 - 20
M307 1022	Pulley-M-30-Dummy_Dup	23 - 21
M307 1024	CBF Harness-D_Joint	23 - 23
M307 1025	Shaft-Idle Roll, Dup	23 - 24
M307 1026	Roller-M-Idle_ Dup	23 - 25
M307 1028	Spring ETC-Dup	23 - 27
M307 1029	Pulley-M-18-Dummy_Dup	23 - 28
M307 1030	Pulley-18_Dup	23 - 29
M307 1031	Bush-M-Feed, Dup	23 - 30
M307 1032	Roller-Feed_Dup	23 - 32
M307 1033	Ring-C	23 - 33
M307 1034	ICT-Stud Paper Guide, Dp	23 - 31