



RICOH UNIVERSITY

Learning ♦ Knowledge ♦ Performance



M020/M021 PARTS CATALOG

LANIER RICOH SAVIN®

It is the reader's responsibility when discussing the information contained within this document to maintain a level of confidentiality that is in the best interest of Ricoh Americas Corporation and its member companies.

**NO PART OF THIS DOCUMENT MAY BE REPRODUCED IN ANY
*FASHION AND DISTRIBUTED WITHOUT THE PRIOR
PERMISSION OF RICOH AMERICAS CORPORATION.***

All product names, domain names or product illustrations, including desktop images, used in this document are trademarks, registered trademarks or the property of their respective companies.

They are used throughout this book in an informational or editorial fashion only and for the benefit of such companies. No such use, or the use of any trade name, or web site is intended to convey endorsement or other affiliation with Ricoh products.

LEGEND

PRODUCT CODE	COMPANY		
	LANIER	RICOH	SAVIN
M020	SP5200DN	Aficio SP 5200DN	SP5200DN
M021	SP5210DN	Aficio SP 5210DN	SP5210DN
M386/M389	Paper Feed Unit TK1120/TK1130		
M02099	Controller Options		

DOCUMENTATION HISTORY

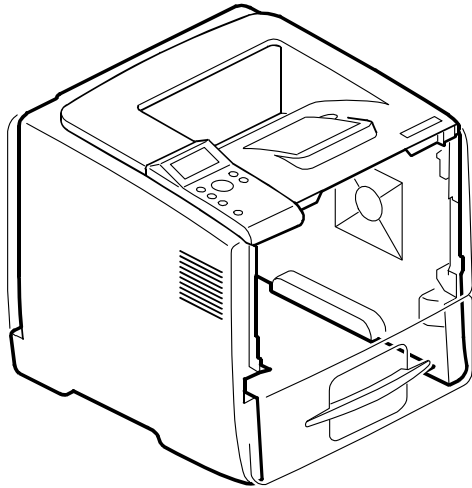
REV. NO.	DATE	COMMENTS
*	11/2011	Original Printing

M020/M021
PARTS LOCATION AND LIST

This section shows you the part numbers and descriptions used on this machine.

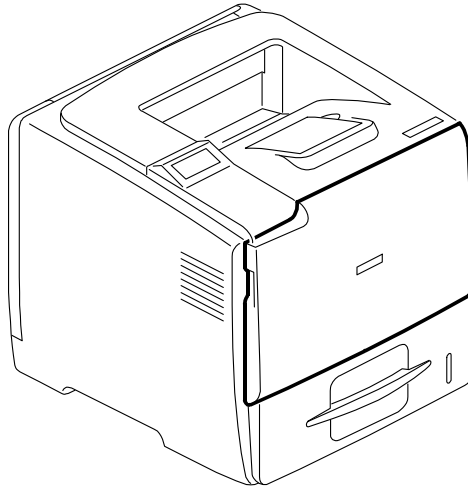
LOCATIONS OF UNITS

1. Exterior 1 (M020/M021)



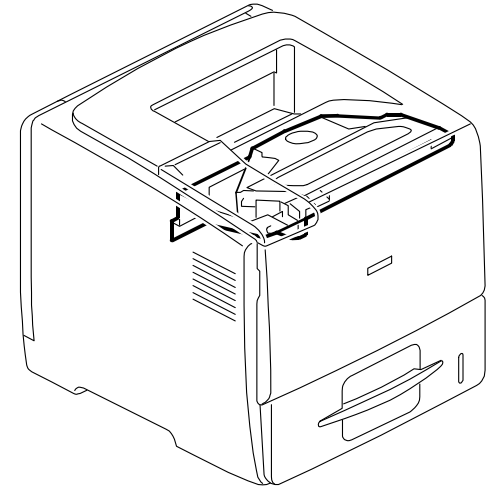
See Page 7

2. Exterior 2 (M020/M021)



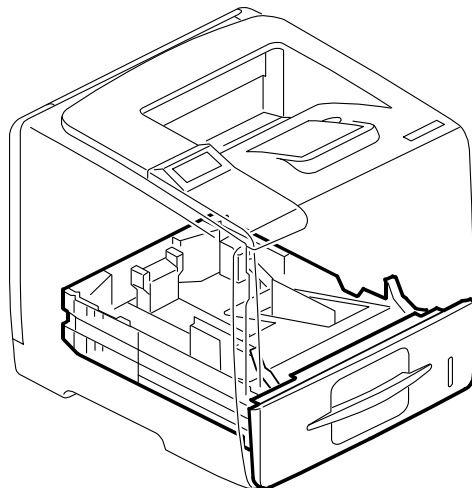
See Page 9

3. Laser Unit (M020/M021)



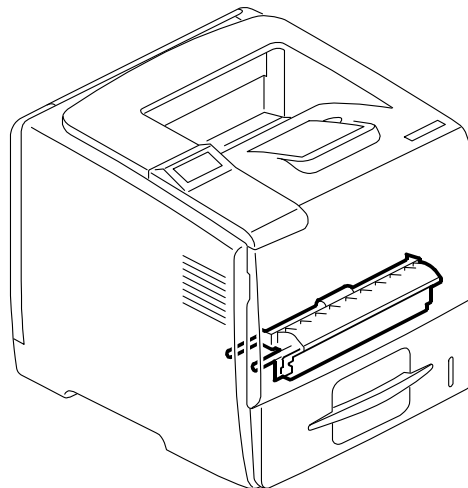
See Page 11

4. Paper Tray (M020/M021)



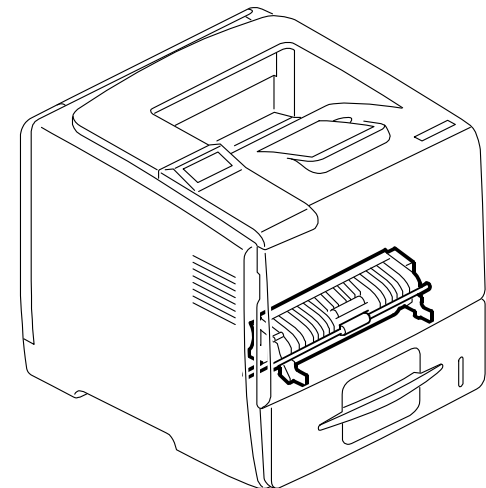
See Page 13

5. Paper Feed 1 (M020/M021)



See Page 15

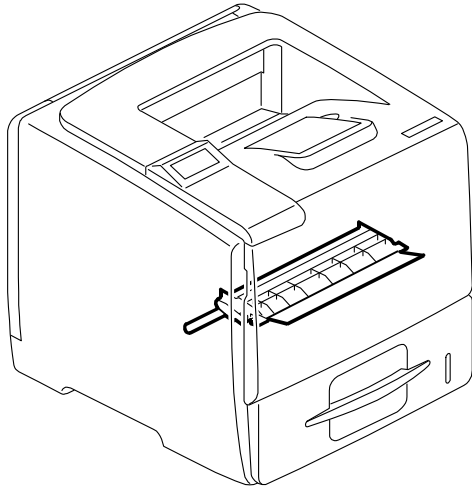
6. Paper Feed 2 (M020/M021)



See Page 17

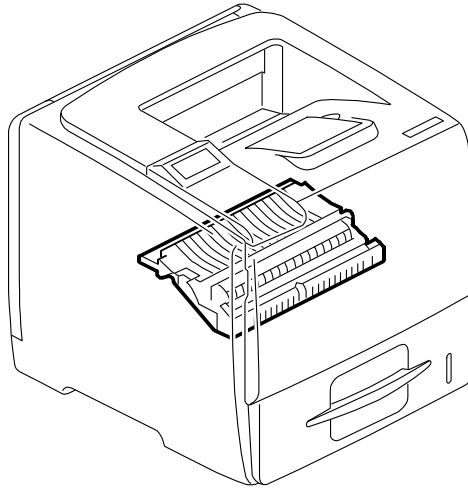
LOCATIONS OF UNITS

7. Paper Regist (M020/M021)



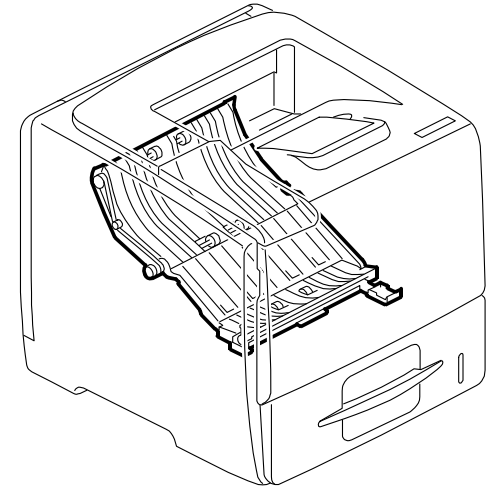
See Page 19

8. Paper Transfer 1 (M020/M021)



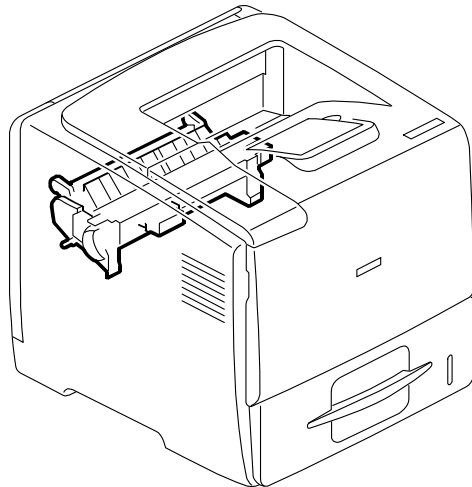
See Page 21

9. Paper Transfer 2 (M020/M021)



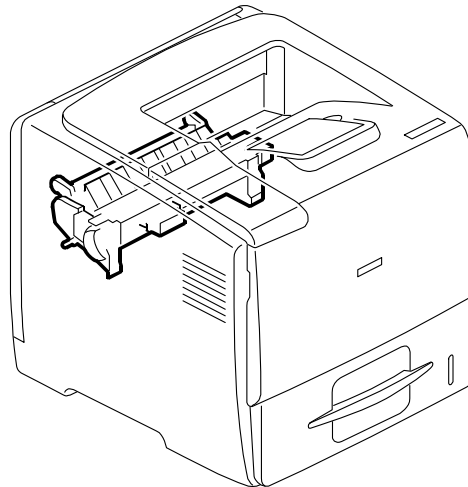
See Page 23

10. Fusing Unit 1 (M020/M021)



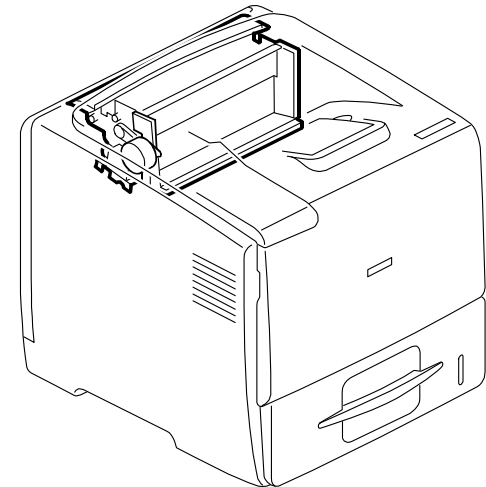
See Page 25

11. Fusing Unit 2 (M020/M021)



See Page 27

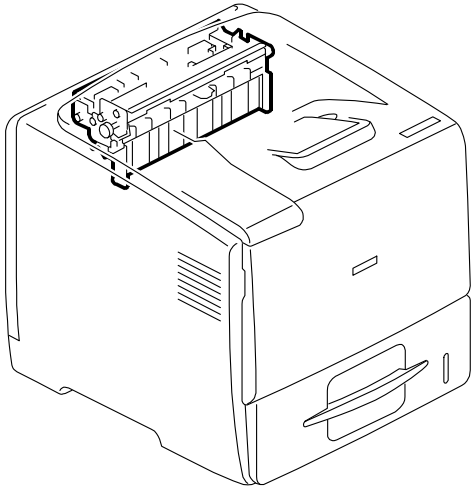
12. Paper Exit 1 (M020/M021)



See Page 29

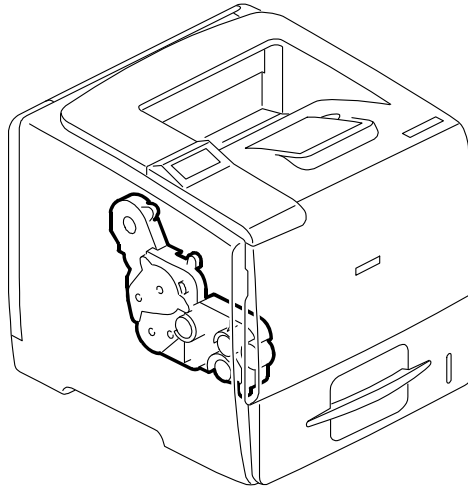
LOCATIONS OF UNITS

13. Paper Exit 2 (M020/M021)



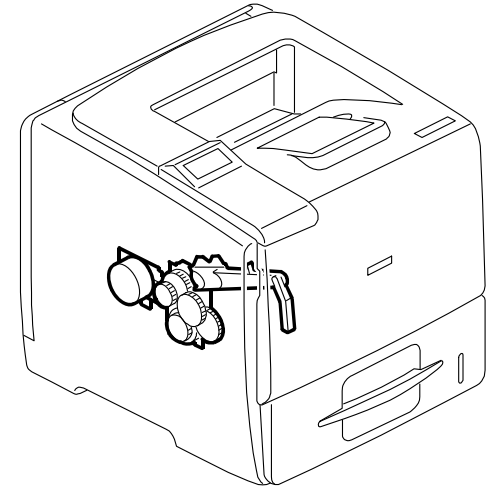
See Page 31

14. Drive Section 1 (M020/M021)



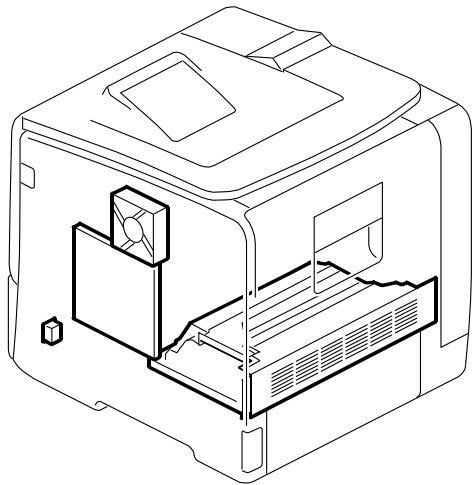
See Page 33

15. Drive Section 2 (M020/M021)



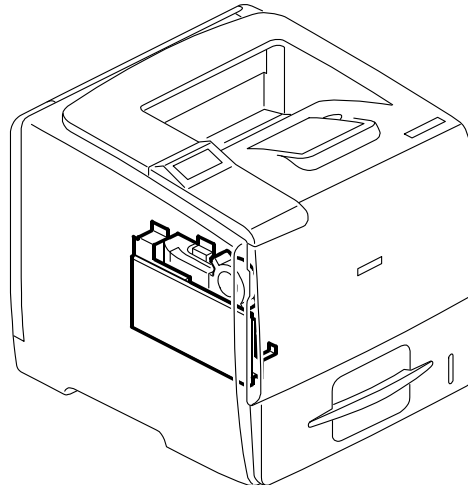
See Page 35

16. Electrical Section 1 (M020/M021)



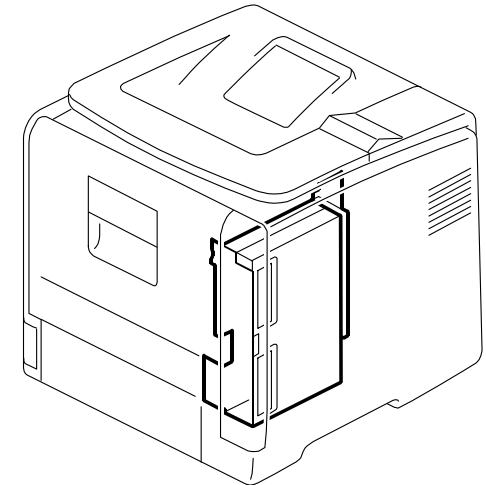
See Page 37

17. Electrical Section 2 (M020/M021)



See Page 39

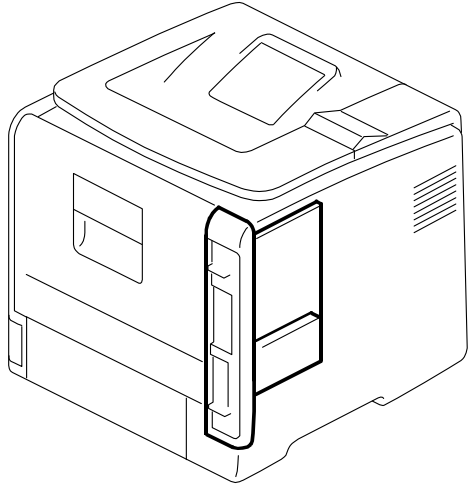
18. Electrical Section 3 (M020/M021)



See Page 41

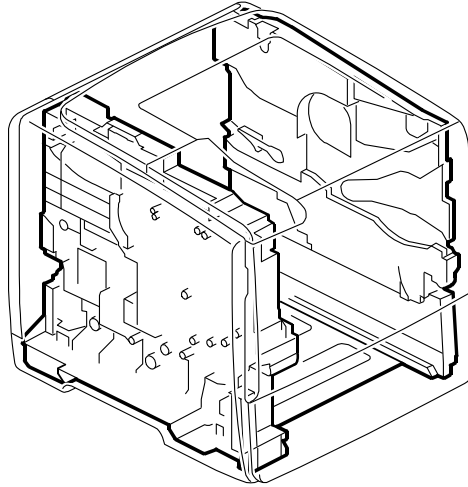
LOCATIONS OF UNITS

19. Controller Unit (M020/M021)



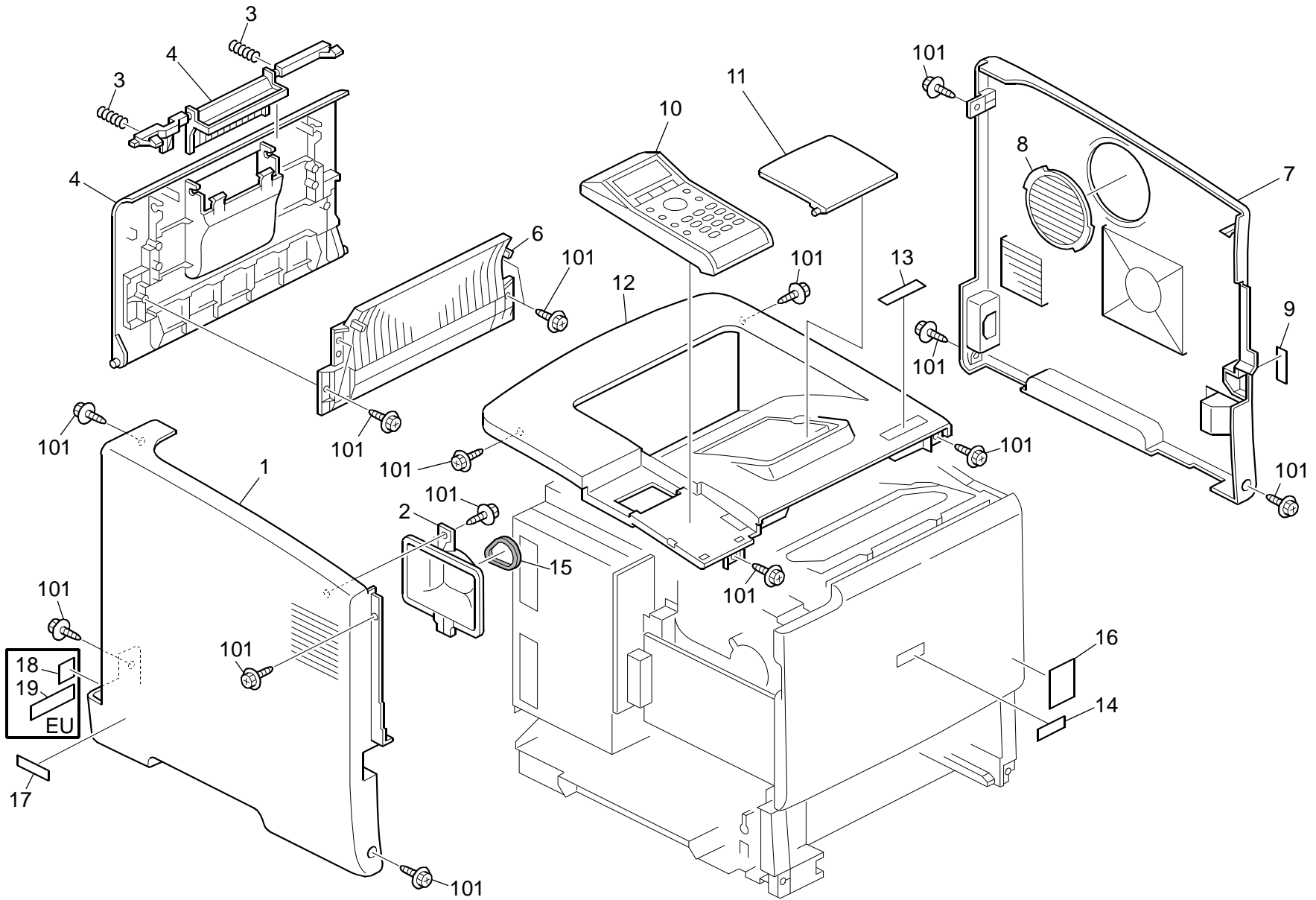
See Page 43

20. Frame Section (M020/M021)



See Page 45

1.Exterior 1 (M020/M021)

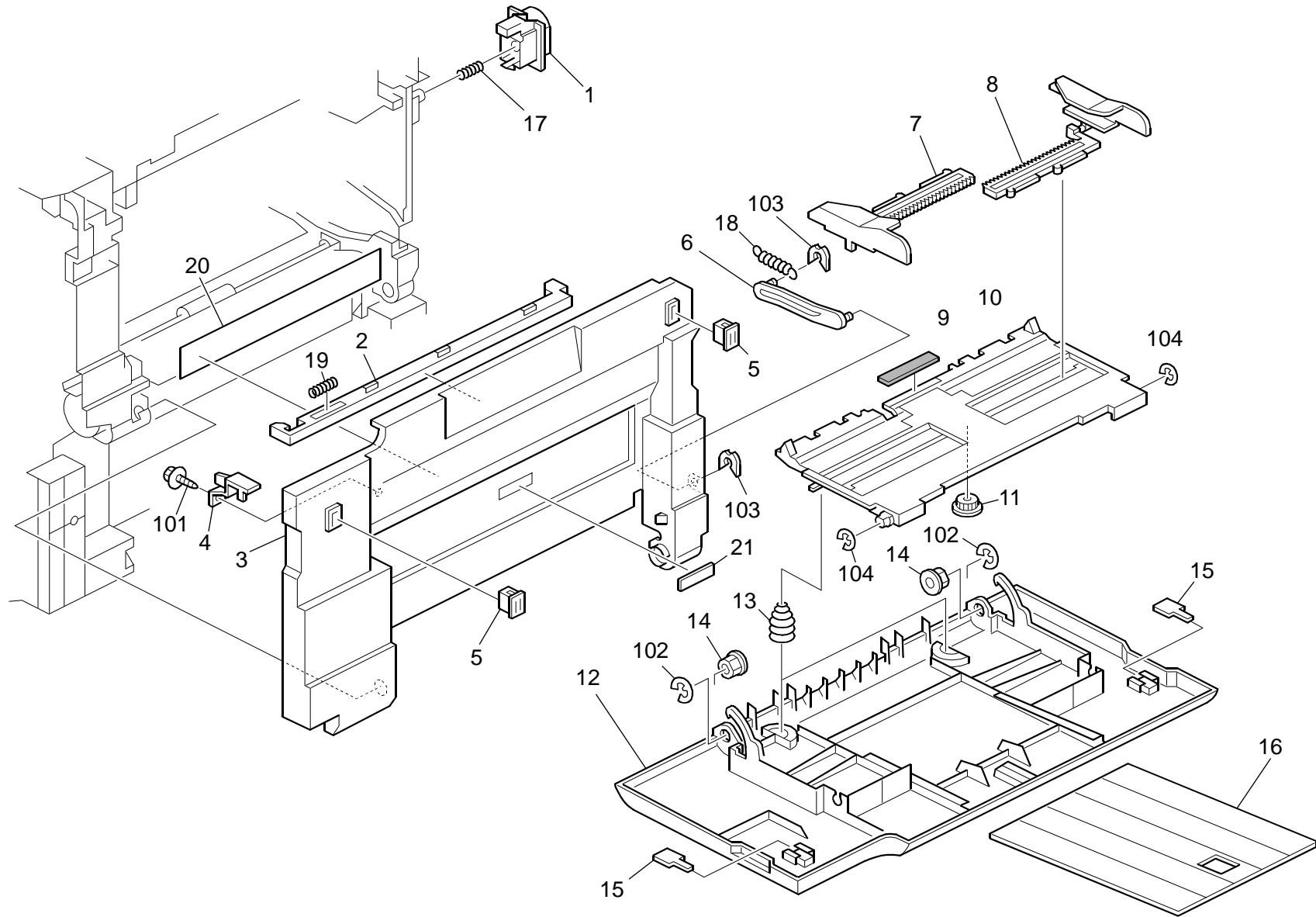


1.Exterior 1 (M020/M021)

Index No.	Part No.	Description	Q'ty Per Assembly
1	M021 1214	Cover: Left: NA	1
1	M021 1213	Cover: Left: EU	1
2	M021 1263	Duct: Cover: Left	1
3	A250 1388	Spring	2
4	M021 4473	Lever: Exit: P	1
5	M021 1275	Cover: Rear	1
6	M021 4472	Guide: Reverse: Exit	1
7	M021 1228	Cover: Right: NA	1
7	M021 1227	Cover: Right: EU	1
8	M021 1282	Louver	1
9	M052 6936	Decal: Main SW: NA: P	1
9	M052 6937	Decal: Main SW: EU: P	1
10	M021 1401	Operation Sub-unit: EXP: Ass'y	1
11	M021 1236	Guide: Slide: Exit: NA	1
11	M021 1235	Guide: Slide: Exit: EU	1
12	M021 1219	Cover: Upper: Middle: NA	1
12	M021 1218	Cover: Upper: Middle: EU	1
13	M020 6641	Model Name Plate: M020: RIC	1
13	M021 6641	Model Name Plate: M021: RIC	1
14	M052 1210	Plate: Logo: RIC	1
15	M021 1264	Cushion: Duct: P	1
16	GA00 3245	Decal: Energy Star: PS3: ABS	1
17	M052 6938	Decal: Caution: Weight: P	1
18	B121 7450	Decal: WEEE: EU	1
19	AA00 0267	Decal: Earth: NE: ABS	1

Index No.	Part No.	Description	Q'ty Per Assembly
101	0450 3008N	Tapping Screw - M3x8	

2.Exterior 2 (M020/M021)

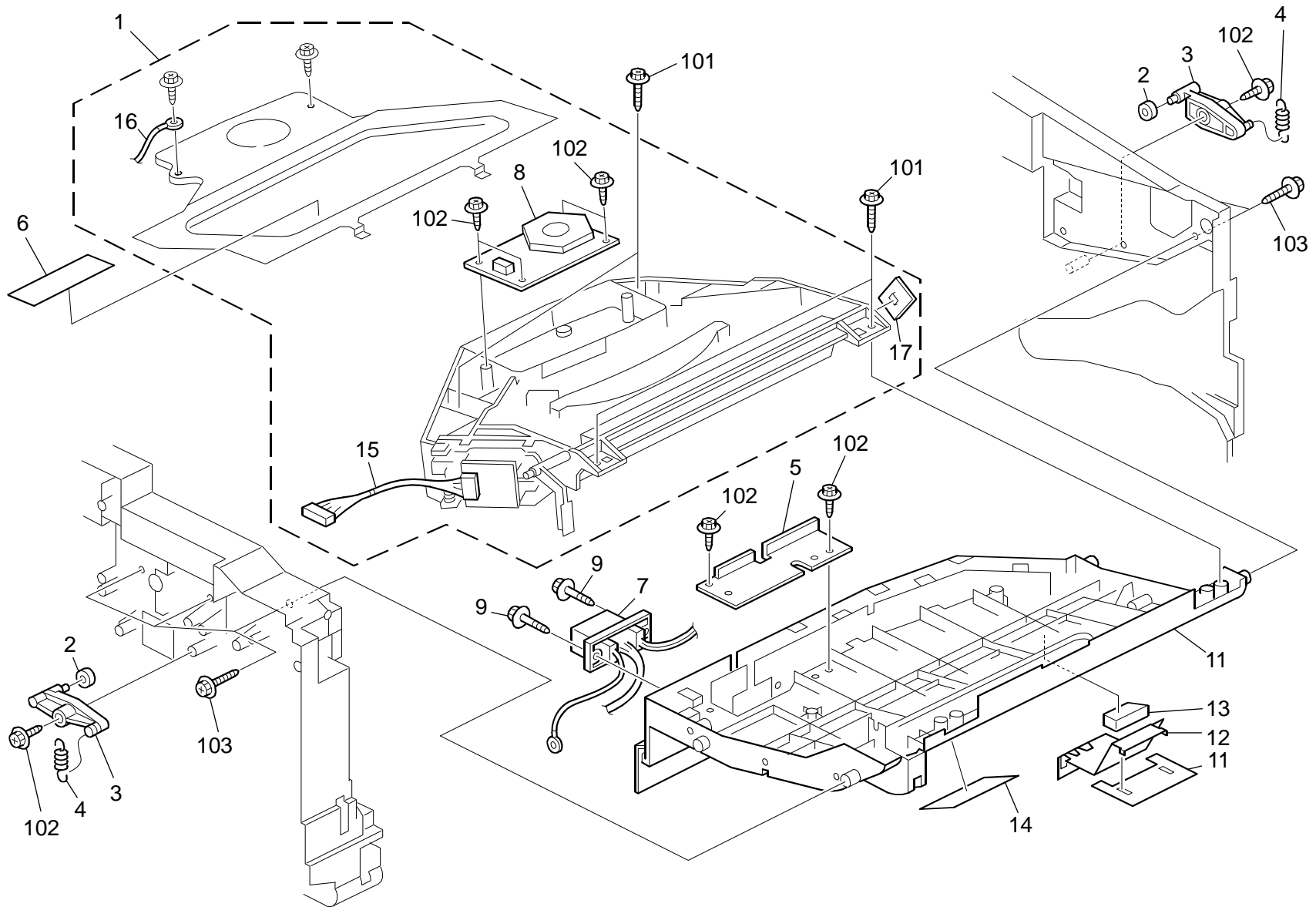


2.Exterior 2 (M020/M021)

Index No.	Part No.	Description	Q'ty Per Assembly
1	M021 1268	Button: Door: Lever	1
2	M021 1250	Lever: Door	1
3	M021 1251	Door: Front	1
3	M021 1201	Door: Front: EU	1
4	M021 1254	Feeler: Shutter	1
5	AA02 1031	Magnetic Catch	2
6	M052 2026	Link: Door: Front	1
7	M021 2753	Side Fence: Manual Feed: Left	1
8	M021 2752	Side Fence: Manual Feed: Right	1
9	G555 3069	Pad: Base	1
10	M021 2751	Base: Manual Feed	1
11	M021 2758	Gear: Side Fence	1
12	M021 2756	Cover: Front	1
13	G052 3278	Spring - Bypass	2
14	M021 2771	Hinge: Cover: Manual Feed	2
15	B039 1361	Magnet Catch	2
16	M021 2755	Extension Tray: Manual Feed	1
17	M021 1256	Coil Spring: Button: Door	1
18	M052 2028	Coil Spring: Link	1
19	M052 2027	Compression Spring: Door: Lever	1
20	M052 6922	DecalL: Jam: Repair	1
21	M052 1211	Decal: Logo: RIC	1

Index No.	Part No.	Description	Q'ty Per Assembly
101	0450 3008N	Tapping Screw - M3x8	
102	0720 0080G	C-ring - M8	
103	0805 0089	Retaining Ring - M4	
104	0720 0040E	Retaining Ring - M4	

3.Laser Unit (M020/M021)

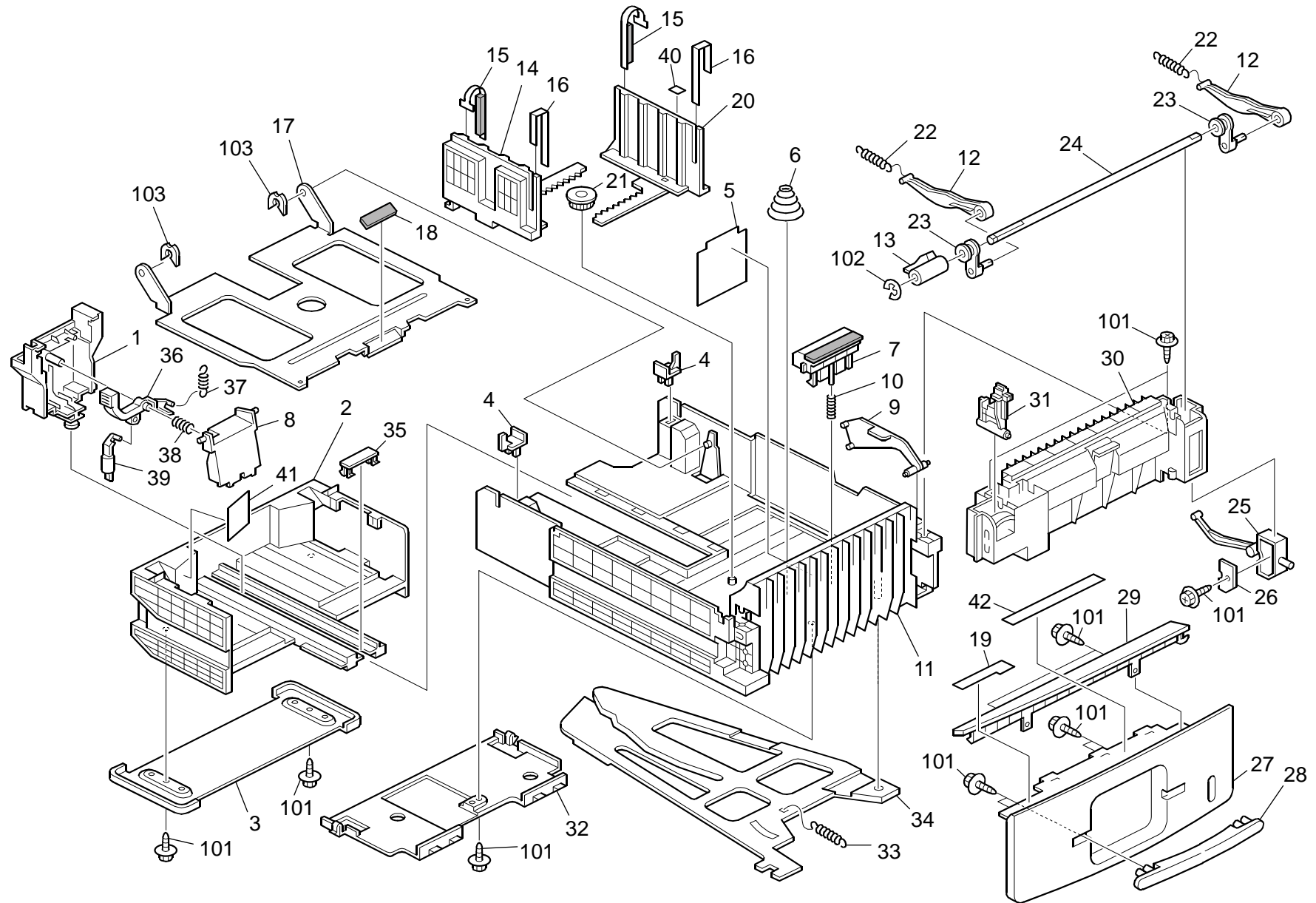


3.Laser Unit (M020/M021)

Index No.	Part No.	Description	Q'ty Per Assembly
1	M001 1904	Imaging Unit	1
2	M021 3345	Roller: Guide	2
3	M021 1052	Tightener: AIO	2
4	M021 1054	Coil Spring: Tightener: AIO	2
5	M052 1051	Cover: Stay: LSU	1
6	G111 1910	Caution Decal - Laser	1
7	M052 5444	Drawer: Fusing Sub-Unit: Set Sensor: NA	1
7	M052 5445	Drawer: Fusing Sub-Unit: Set Sensor: EU	1
8	GX06 0029	Polygon Scanner Motor: DC24V 24W	1
9	M052 1070	Screw: Drawer: Fusing	2
10	M021 1070	Stay: LSU	1
11	M052 1095	Guide: Sheet: Block: Laser	1
12	M052 1094	Sheet: Block: Laser	1
13	M052 1096	Support: Sheet: Block: Laser	1
14	M052 6923	Decal: High Temperature: Fixation Roller	1
15	M021 5413	M/H Ass'y: LDD	1
16	G168 5403	Harness: Polygon Mirror: Syncdetector: Board	1
17	G052 5060	Syncronization Detector	1

Index No.	Part No.	Description	Q'ty Per Assembly
101	0450 3012N	Tapping Screw: 3x12	
102	0450 3008N	Tapping Screw - M3x8	
103	0450 3010N	Tapping Screw - M3x10	

4.Paper Tray (M020/M021)

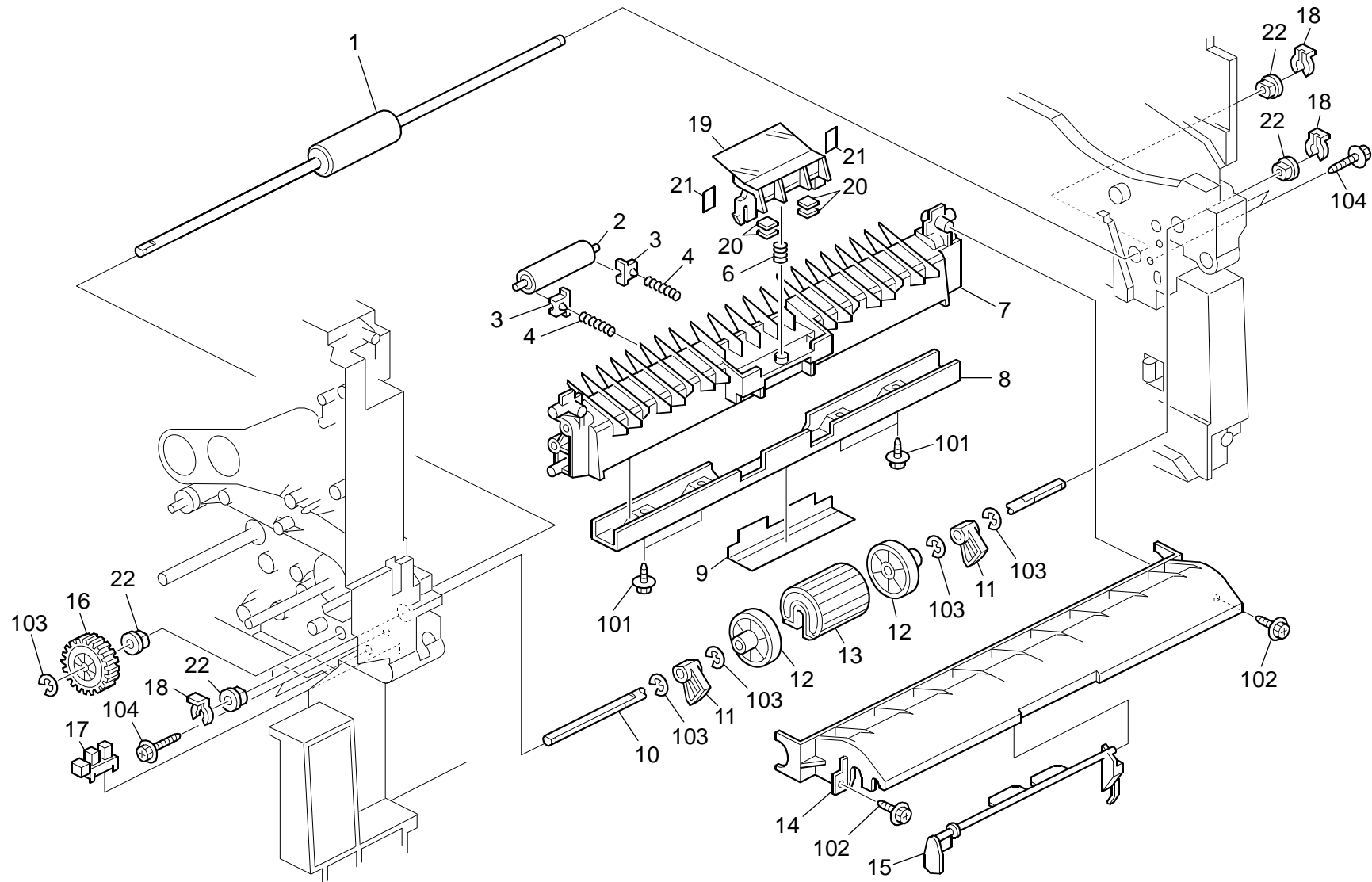


4.Paper Tray (M020/M021)

Index No.	Part No.	Description	Q'ty Per Assembly
1	M021 2565	Base End Fence	1
2	M021 2551	Rear Tray Paper Feed	1
3	M021 2552	Supporting Plate: Rear Tray	1
4	M021 2609	Stopper: Rear Tray	2
5	M021 2603	Sheet: Holder: Paper Tray	1
6	G102 2817	Compression Spring: Tray Bottom Plate	1
7	G096 3066	Friction Pad Adhesion	1
8	M021 2568	Pressure Plate: End Fence	1
9	M052 2605	Feeler Paper Volume Bottom Plate Tray	1
10	M021 2674	Compression Spring Separation	1
11	M021 2601	Front Tray: Paper Fedd	1
12	M021 2575	Arm Pressuer Paper Tray	2
13	M021 2576	Change Feeler: Pressuer: Paper Tray	1
14	M021 2665	Side Fence: Left	1
15	M021 2613	Seal: Side Fence: Rear	2
16	M021 2614	Seal: Side Fence: Front	2
17	M021 2658	Tray Bottom Plate	1
18	M021 2657	Pad: Bottom Plate: Tray	1
19	M052 6930	Decal: Paper Pressure: Lever	1
20	M021 2656	Side Fence: Right	1
21	B090 2869	Gear - 16Z	1
22	G096 3083	Spring Tension	2
23	M021 2577	Cam: Pressure: Paper Tray	2
24	M021 2574	Shaft: Pressure: Paper Tray	1
25	M021 2581	Indicator: Paper Volume: Bottom Plate	1
26	M021 2582	Weight: Indicator: Paper Volume	1
27	M021 2591	Cover: Paper Tray: Front	1
28	M052 2592	Handle: Paper Tray: Front	1
29	M021 2593	Cover: Paper Tray: Front Upper	1
30	M021 2572	Guide: Paper Pressure: Tray	1
31	M021 2573	Change Lever: Pressure: Tray	1
32	M021 2654	Cover: Paper Size Sensing Plate: Tray	1
33	M021 2655	Spring: Paper Size Sensing Plate: Tray	1
34	M021 2652	Plate: Paper Size Sensing: Tray	1
35	M021 2553	Cap: Paper Tray	1

Index No.	Part No.	Description	Q'ty Per Assembly
36	M052 2569	Tension Spring End Fence	1
37	G096 3090	End Fence Tension Spring 12N	1
38	G096 3089	End Fence Compression Spring 3.5N	1
39	M021 2567	Protection: End Fence	1
40	M052 2653	Decal: Operating Arrow Direction Right Side Fence	1
41	M052 6933	Decal: Operating Explanation Extension Tray	1
42	M052 6932	Decal: Paper Setting	1
101	0450 3008N	Tapping Screw - M3x8	
102	0720 0040E	Retaining Ring - M4	
103	0805 0089	Retaining Ring - M4	

5.Paper Feed 1 (M020/M021)

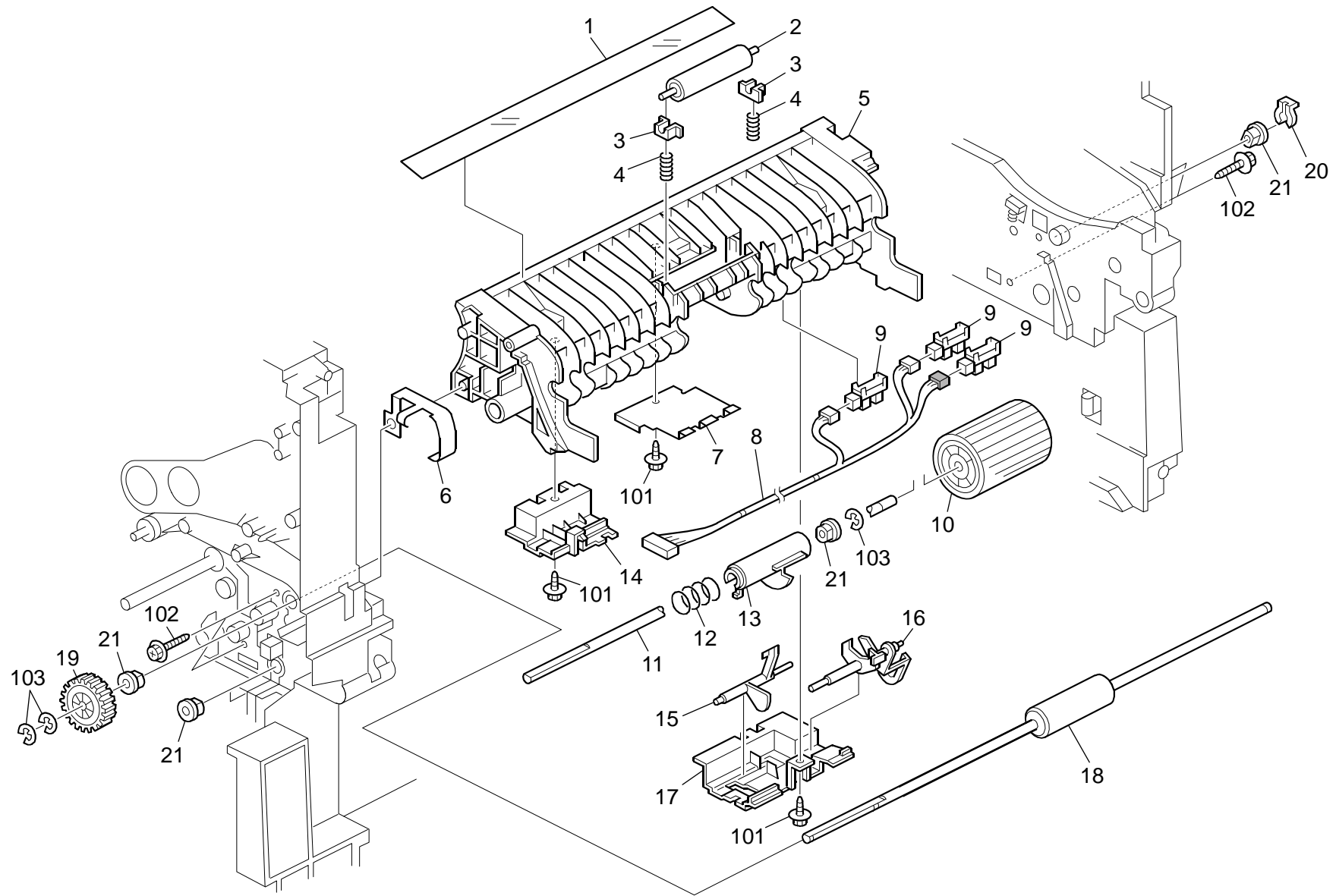


5.Paper Feed 1 (M020/M021)

Index No.	Part No.	Description	Q'ty Per Assembly
1	M021 2831	Roller: Connecting: Lower	1
2	B090 2742	Roller: Pull Out: Option Tray	1
3	AA08 2144	Bushing - 8x12x7	2
4	AA06 3399	Spring - Vertical Transport	2
5	M021 2711	Holder: Friction Pad: Manual Feed	1
6	M021 2763	Compression Spring: Separation: Manual Feed	1
7	M021 2701	Stay: Manual Feed	1
8	M021 2702	Supporting Plate: Stay: Manual Feed	1
9	M021 2717	Mylar: Say: Manual Feed	1
10	M021 2730	Shaft: Roller: Manual Feed: Ass'y	1
11	M021 2722	Cam: Shaft: Manual Feed	2
12	M021 2724	Roller: Guide: Manual Feed	2
13	GF03 1003	Paper Feed Roller: MM30	1
14	M021 2762	Frame: Manual Feed	1
15	M021 2769	Feeler: Manual Feed	1
16	M021 2833	Gear: Connecting: Roller	1
17	AW02 0141	Photointerruptor	1
18	5447 2681	Snap Ring	3
19	M021 2712	Mylar Holder: Friction Pad: Manual Feed	1
20	M021 2713	Balancer: Friction Pad: Manual Feed	4
21	M052 2714	Rear Mylar Holder: Friction Pad:	2
22	AA08 2118	Bushing - 6mm	2

Index No.	Part No.	Description	Q'ty Per Assembly
101	0450 3008N	Tapping Screw - M3x8	
102	0450 3010N	Tapping Screw - M3x10	
103	0720 0040E	Retaining Ring - M4	
104	0450 3012N	Tapping Screw: 3x12	

6.Paper Feed 2 (M020/M021)

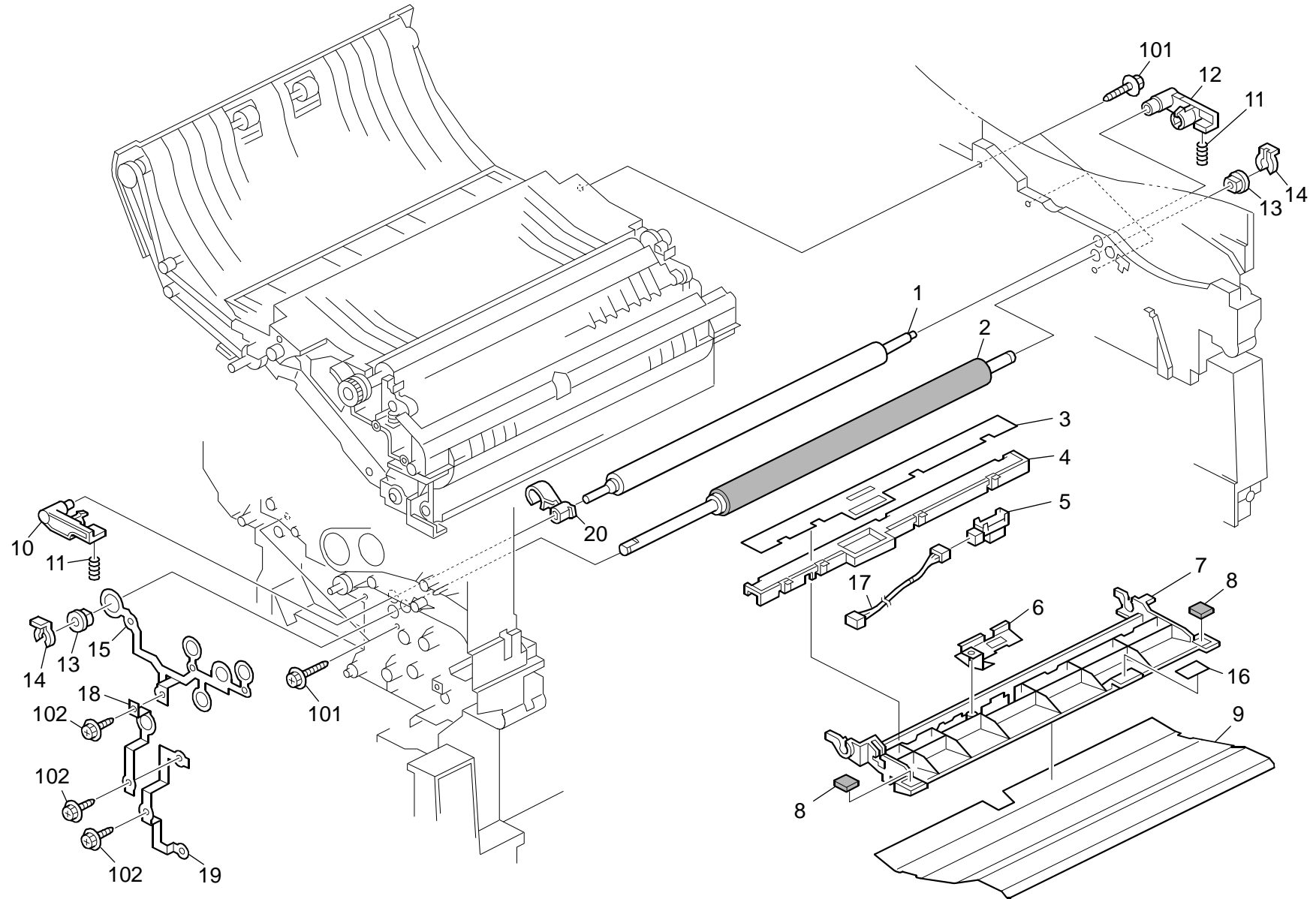


6.Paper Feed 2 (M020/M021)

Index No.	Part No.	Description	Q'ty Per Assembly
1	M021 2804	Guide Mylar: Feed Stay: Upper	1
2	B090 2742	Roller: Pull Out: Option Tray	1
3	AA08 0249	Bushing - Vertical Transport	2
4	M052 2826	Compression Spring: Connecting Roller: Driven	2
5	M021 2801	Stay: Paper Feed	1
6	M021 2813	Ground Plate: Paper Tray: Stay	1
7	M021 2815	Shield Plate: Paper Feed	1
8	M052 5424	M/H Ass'y: Tray	1
9	AW02 0141	Photointerruptor	3
10	G052 3103	Paper Feed Roller	1
11	M021 2814	Shaft: Paper Feed	1
12	M021 2816	Compression Spring: Lever: Feed Roller	1
13	M021 2803	Lever Release Feed Roller	1
14	M021 2810	Cover: Stay: Left	1
15	M021 2808	Feeler: Paper End Sensor: Stay	1
16	M021 2809	Feeler: Paper Volume: Stay	1
17	M021 2811	Cover: Stay: Right	1
18	M021 2832	Roller: Connecting: Upper	1
19	M021 2833	Gear: Connecting: Roller	1
20	5447 2681	Snap Ring	1
21	AA08 2118	Bushing - 6mm	2

Index No.	Part No.	Description	Q'ty Per Assembly
101	0450 3010N	Tapping Screw - M3x10	
102	0450 3012N	Tapping Screw: 3x12	
103	0720 0040E	Retaining Ring - M4	

7.Paper Regist (M020/M021)

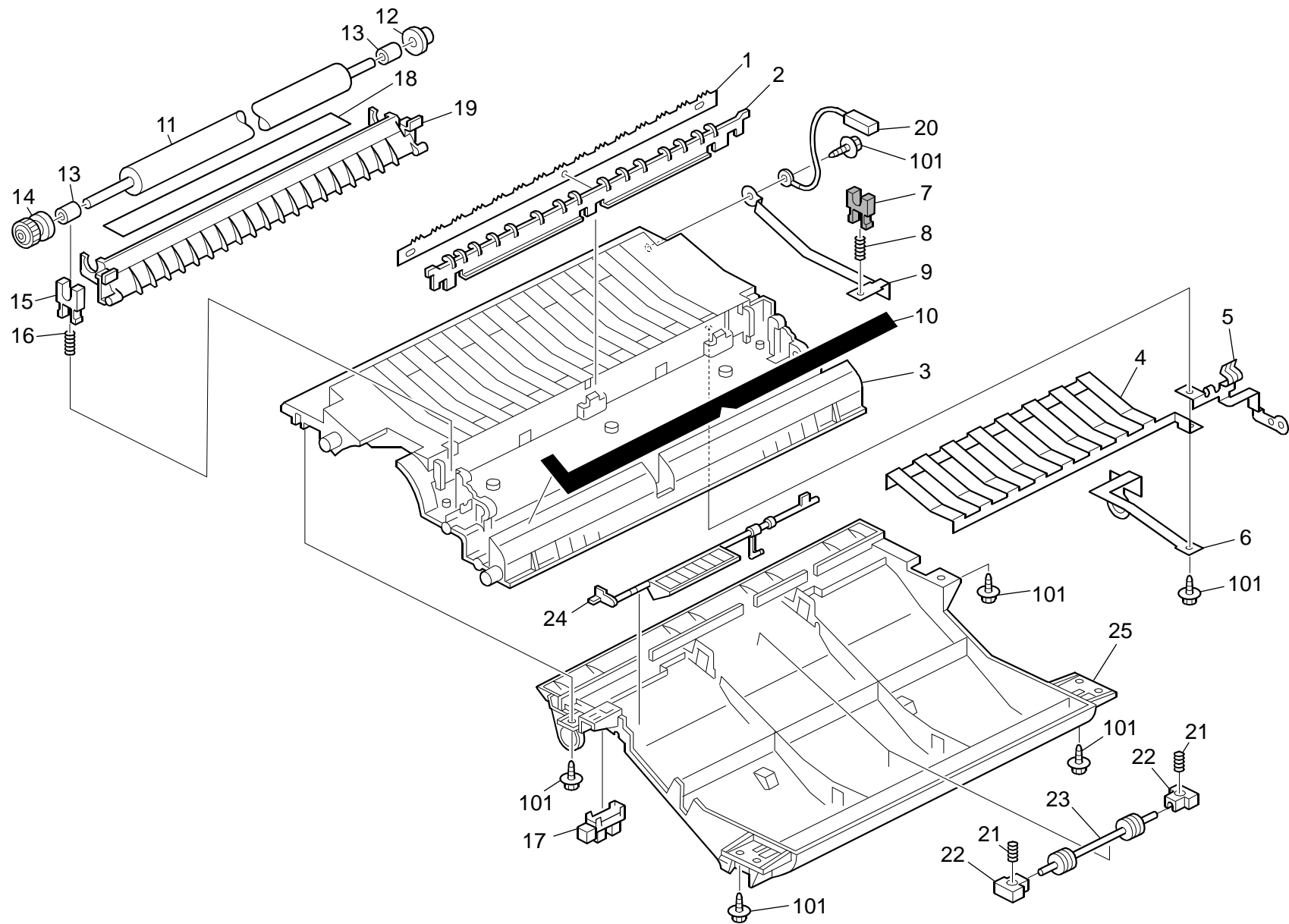


7.Paper Regist (M020/M021)

Index No.	Part No.	Description	Q'ty Per Assembly
1	M021 2916	Registration Roller: Drive	1
2	M021 2917	Roller Registration Driven 14.12	1
3	M021 2967	Sheet: Cleaner: Registration	1
4	M021 2968	Bracket: Sensor: Registration	1
5	GW01 0007	Photo Reflection Sensor: Exit	1
6	M021 2965	Ground Plate: Sensor: Registration	1
7	M021 2966	Guide Plate: Registration: Upper	1
8	M021 2964	Seal: Registration Guide: Poron	2
9	M052 2912	Seal: Guide Plate: Registration: Upper	1
10	G052 3258	Left Bushing - Registration	1
11	AA06 3539	Spring - Registration Roller	2
12	G052 3257	Right Bushing - Registration	1
13	AA08 2116	Bushing - 8x12x7	2
14	5215 2621	Snap Ring - M6	2
15	M021 2844	Ground Plate: Shaft: Drive Rollers	1
16	M052 6920	Decal: Guide Plate: B	1
17	M021 5410	M/H Ass'y: Regist Sensor: Connecting	1
18	M021 2843	Ground Plate: Shaft: Paper Feed	1
19	M052 2842	Ground Plate: Sensor Board	1
20	M052 2919	Blocking Cap: Bushing: Registration	1

Index No.	Part No.	Description	Q'ty Per Assembly
101	0450 3012N	Tapping Screw: 3x12	
102	0450 3008N	Tapping Screw - M3x8	

8.Paper Transfer 1 (M020/M021)

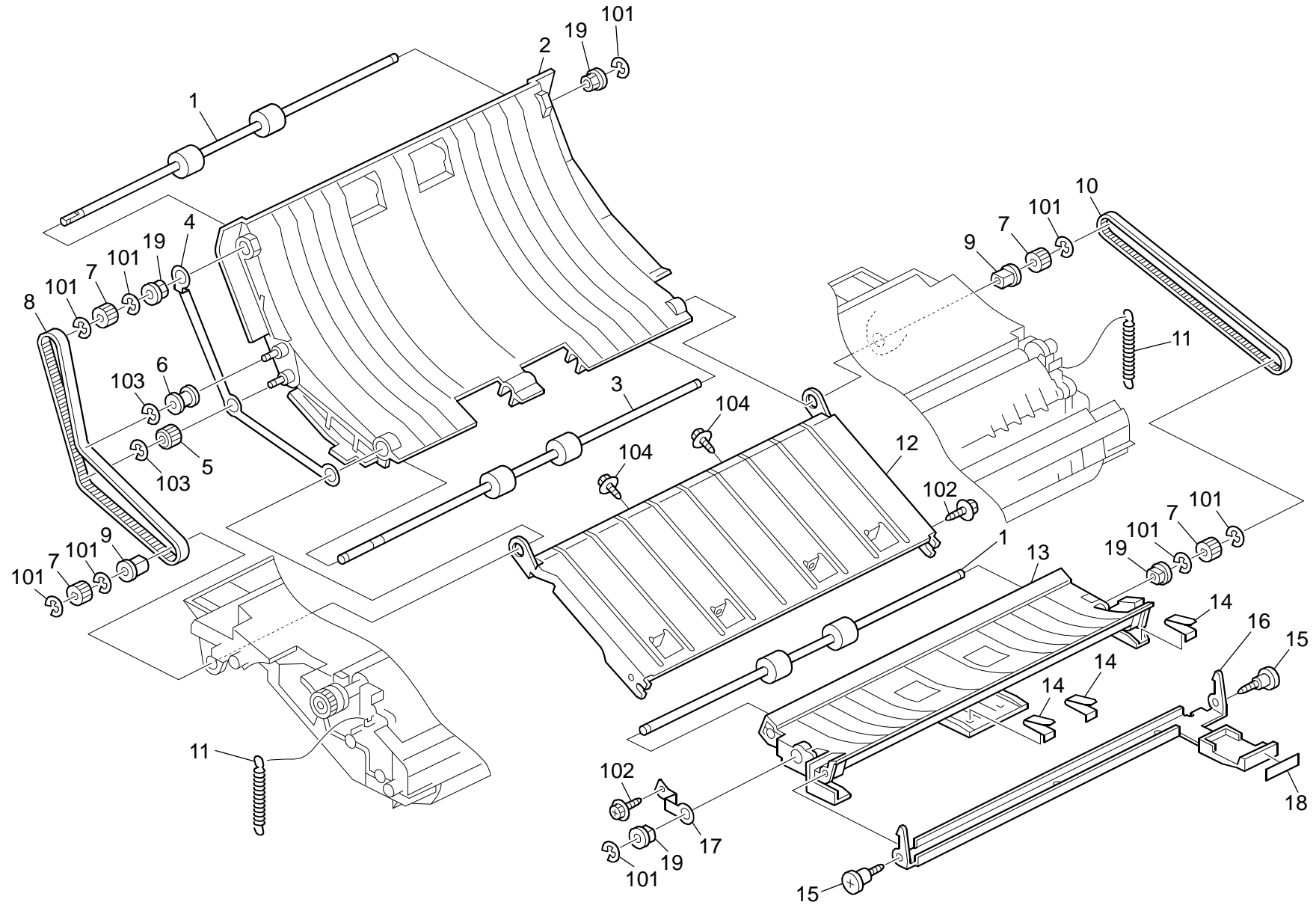


8.Paper Transfer 1 (M020/M021)

Index No.	Part No.	Description	Q'ty Per Assembly
1	M021 3867	Electrode Plate: Separation	1
2	M021 3868	Cover: Electrode Plate	1
3	M021 3861	Guide: Transfer: Upper	1
4	M021 3864	Ground Plate: Guide: Transport	1
5	M021 3862	Terminal: Transfer	1
6	M021 3865	Ground Plate: Guide: Duplex	1
7	G052 3625	Right Bushing - Transfer	2
8	M021 3879	Compression Spring: Transfer Roller: Right	2
9	M021 3863	Terminal: Separation	1
10	M021 3866	Registration Guide	1
11	M052 3871	Transfer Roller	1
12	M052 6251	Roller: Positioning: Transfer Roller	1
13	G129 6255	Bushing	2
14	M021 6252	Gear: Transfer Roller	1
15	G052 3626	Left Bushing - Transfer	1
16	M021 3869	Compression Spring: Transfer Roller	1
17	GW02 0020	Photointerruptor: LG248NL1	1
18	M052 3852	Sheet: Guide Plate: Transfer	1
19	M052 3851	Guide Plate: Transfer	1
20	M021 5411	M/H Ass'y: High Voltage Line: T	1
21	M021 4619	Compression Spring: 2N	2
22	D010 4313	Bushing: MM4	4
23	M021 4618	Driven Roller: Duplex	4
24	M021 4621	Feeler: Duplex: Middle	2
25	M021 4617	Guide: Transport: Duplex	1

Index No.	Part No.	Description	Q'ty Per Assembly
101	0450 3008N	Tapping Screw - M3x8	

9.Paper Transfer 2 (M020/M021)

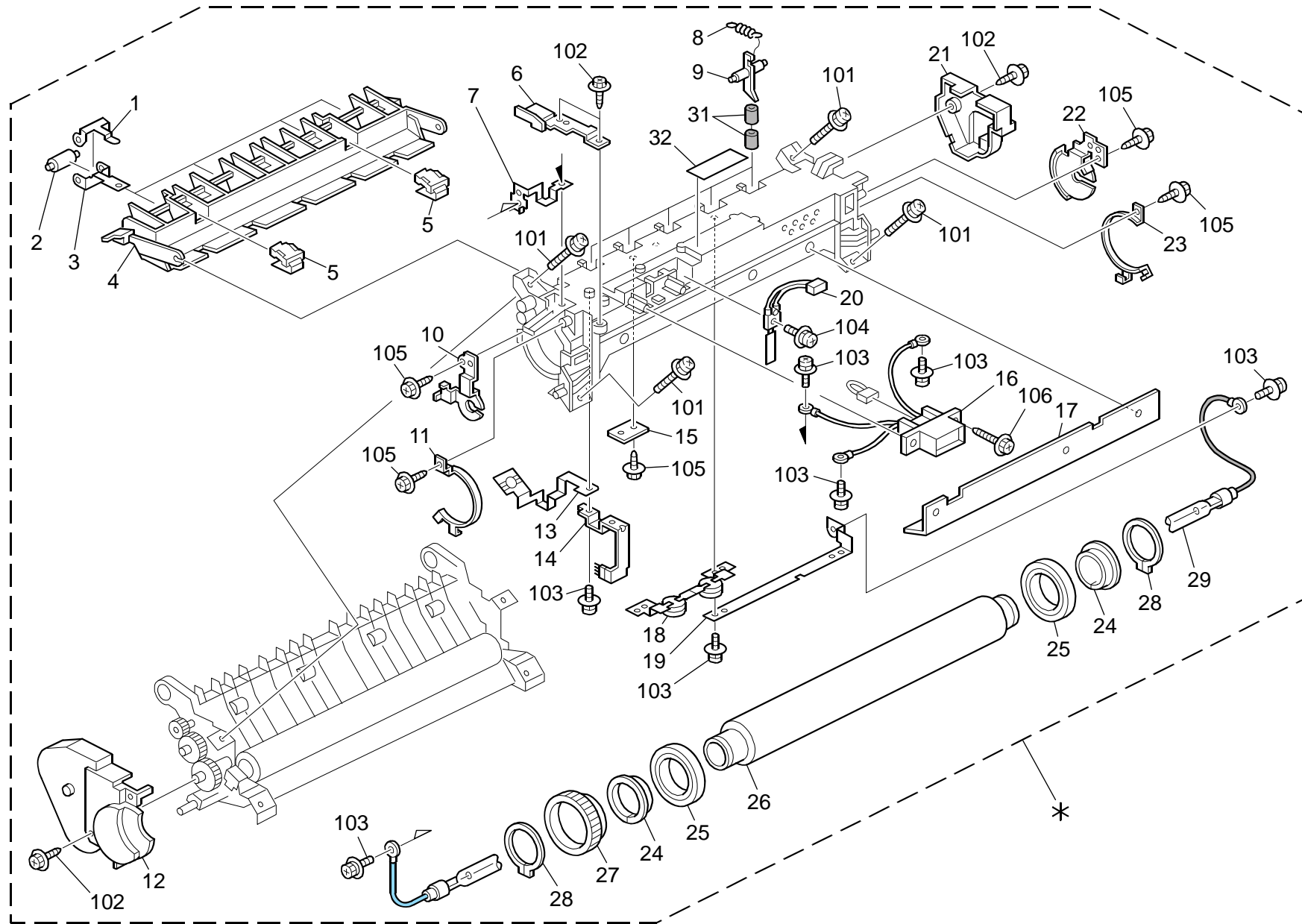


9.Paper Transfer 2 (M020/M021)

Index No.	Part No.	Description	Q'ty Per Assembly
1	M021 4612	Roller: Duplex: Front	2
2	M021 4601	Guide: Duplex: Rear: Ass'y	1
3	M021 4994	Transport Roller: Duplex: Middle: P	1
4	M021 4663	Ground Plate: Guide: Rear	1
5	M021 4605	Pulley: Idler: 15T	1
6	M021 4606	Pulley: Idler	1
7	M021 4608	Pulley: 25T	4
8	M052 4996	Synchronous Belt: Rear	1
9	AA08 2058	Bushing - 6x10x9mm	2
10	M052 4997	Synchronous Belt: Front	1
11	M021 4625	Coil Spring: Duplex	2
12	M021 4610	Guide: Duplex: Front: Ass'y	1
13	M021 4633	Guide: Duplex: Feed Paper Again	1
14	M021 4634	Spring Plate: Feed Paper Again	3
15	B039 4480	Stepped Screw - M5	2
16	M021 4630	Handle: Cover	1
17	M021 4662	Ground Plate: Guide: Feed Paper Again	1
18	M052 6921	Decal: Guide Plate: Z2	1
19	AA08 2118	Bushing - 6mm	2

Index No.	Part No.	Description	Q'ty Per Assembly
101	0720 0040E	Retaining Ring - M4	
102	0450 3010N	Tapping Screw - M3x10	
103	0720 0030E	Retaining Ring - M3	

10.Fusing Unit 1 (M020/M021)

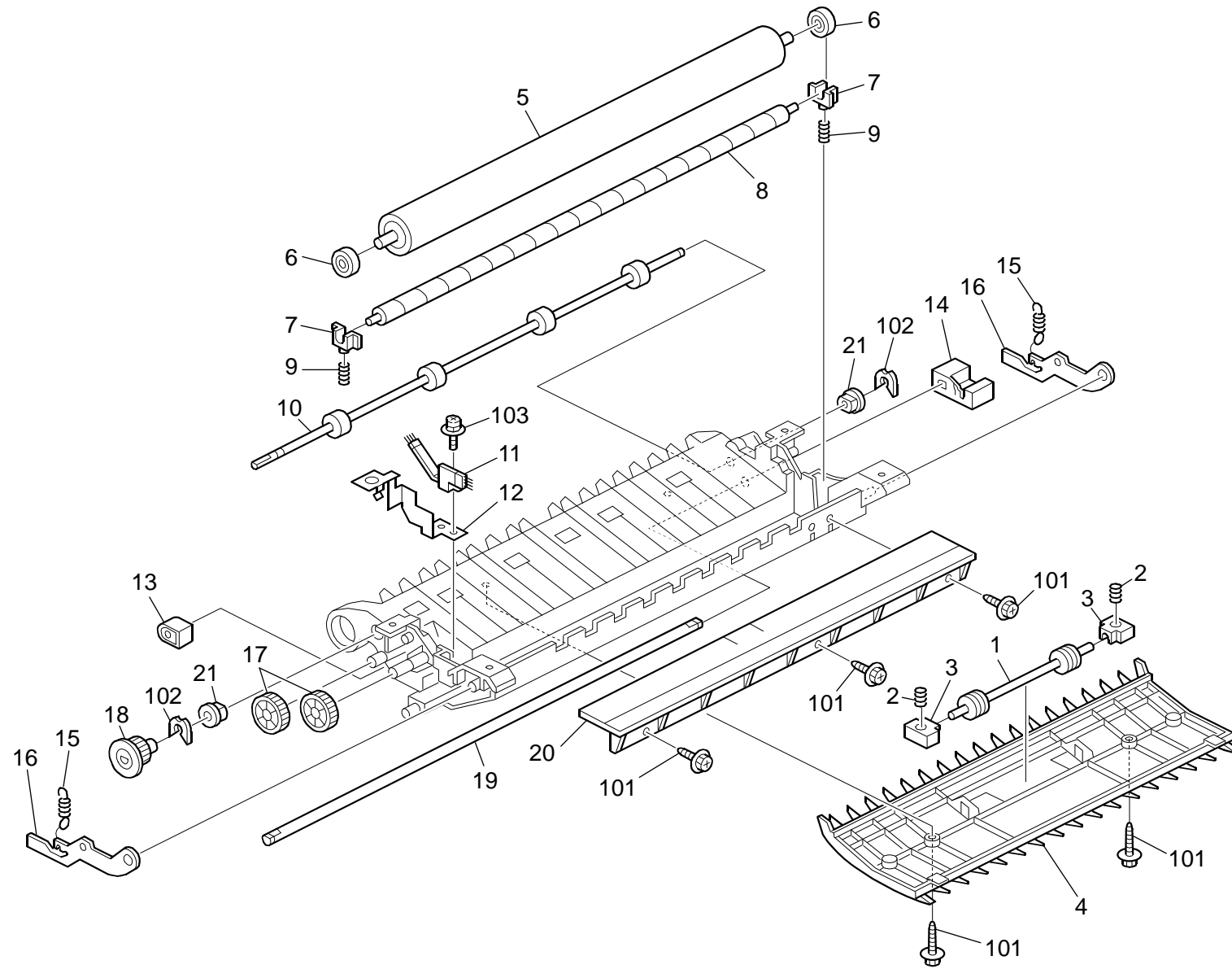


10.Fusing Unit 1 (M020/M021)

Index No.	Part No.	Description	Q'ty Per Assembly
*	M052 0211	Fusing Unit: NA	1
*	M052 0212	Fusing Unit: EU/AP	1
1	G096 4638	Exit Roller Supporting Plate	4
2	G800 4854	Exit Roller	4
3	G052 4639	Exit Roller Holder	4
4	M052 4200	Guide: Exit: Fusing	1
5	M052 4235	Spring Plate: Fusing Exit: Ass'y	2
6	M052 4227	Plate: Harness: Upper	1
7	M052 4082	Ground Plate: Fusing	1
8	M052 4063	Spring - Fusing Stripper	5
9	G052 4624	Hot Roller Stripper	5
10	M052 4225	Bracket: Heater: Left	1
11	M052 4231	Bracket: Bearing: Fusing: Left	1
12	M052 4310	Cover: Fusing: Left	1
13	M052 4239	Electrode: Heater	1
14	M052 4237	Discharge Brush: Hot Roller	1
15	M042 4226	Plate: Harness: Fusing	1
16	M052 5442	Drawer: Fusing: 120V	1
16	M052 5443	Drawer: Fusing: 230V	1
17	G175 4644	Entrance Guide Plate - Upper	1
18	M052 4243	Thermostat: Ass'y	1
19	G175 4602	Electrode Plate - Right	1
20	M052 4241	Thermistor	1
21	M052 4300	Cover: Fusing: Right	1
22	G096 4616	Right Heater Bracket	1
23	M052 4232	Bracket: Bearing: Fusing: Right	1
24	AE03 2027	Thermal Insulating Bushing	2
25	G052 4618	Bearing 30x42x7	2
26	M052 4101	Hot Roller	1
27	M052 4102	Gear: Hot Roller	1
28	M052 4236	End Ring: Hot Roller	2
29	M052 4115	Heater: 1025W: 120V: QIRF	1
29	M052 1116	Heater: 1025W: 220V: QIRF	1
30	M052 4080	Upper Frame: Fuser	1
31	M052 4302	Heat Shrinkable Tube: Stripper Pawls	10

Index No.	Part No.	Description	Q'ty Per Assembly
32	M052 6924	Decal: Warning High Temperature: Fusing Unit	1
101	0954 3012N	Screw - M3x12	
102	0450 3010N	Tapping Screw - M3x10	
103	0954 3008N	Screw - M3x8	
104	0954 3010N	Screw: Polished Round/Spring: M3x10	
105	0450 3008N	Tapping Screw - M3x8	
106	0451 3012N	Screw: M3x12	

11.Fusing Unit 2 (M020/M021)

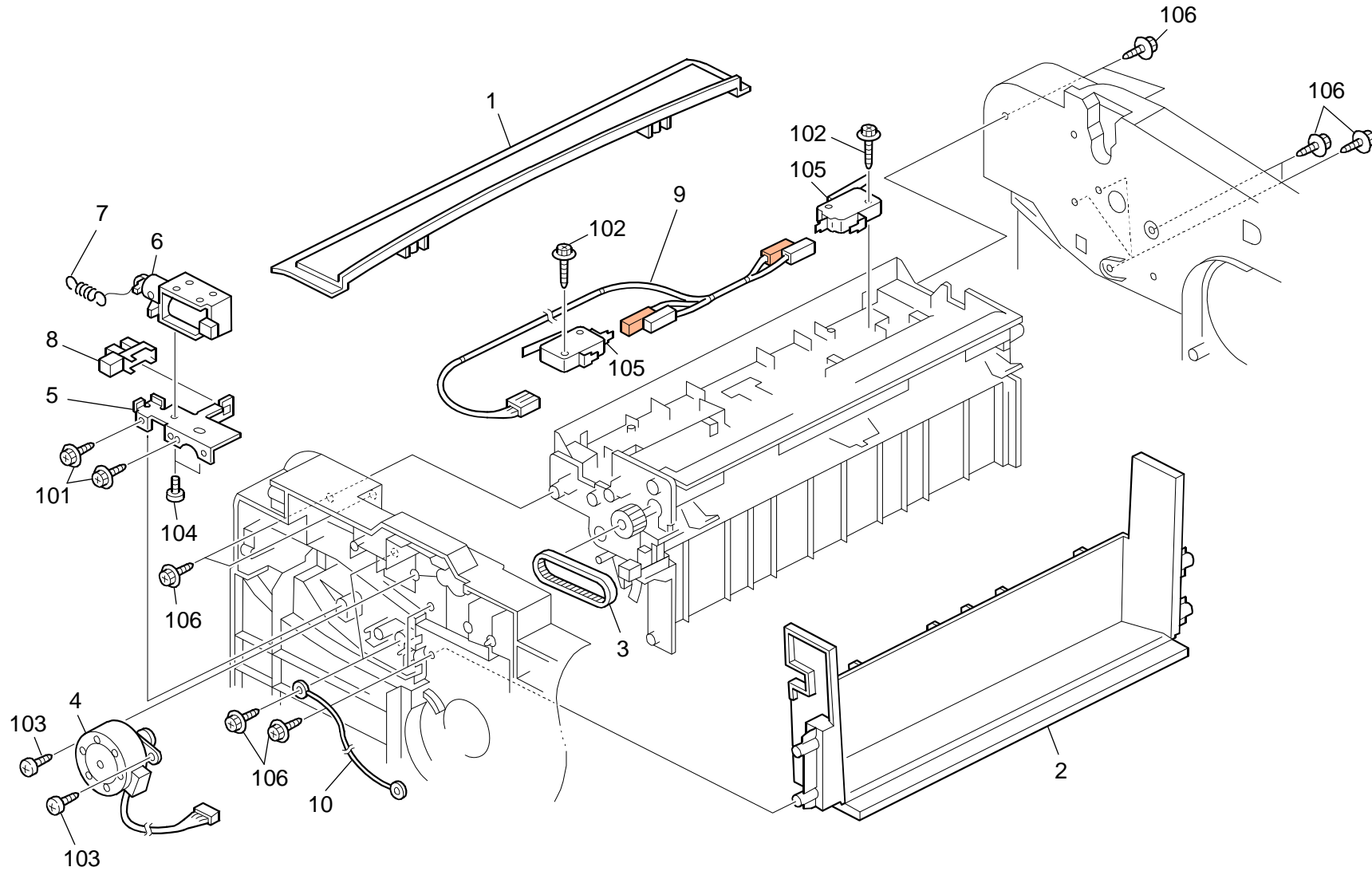


11.Fusing Unit 2 (M020/M021)

Index No.	Part No.	Description	Q'ty Per Assembly
1	M052 4618	Driven Roller: Duplex: Drive	1
2	M021 4619	Compression Spring: 2N	2
3	D010 4313	Bushing: MM4	2
4	M052 4071	Frame: Pressure	1
5	M052 4059	Pressure Roller	1
6	A232 3553	Ball Bearing - 8x16x5	1
7	AA08 2073	Roller Busing	2
8	M052 4202	Cleaning Roller: Ass'y	1
9	M052 4224	Compression Spring: Cleaning Roller: Fusing	2
10	M052 4066	Exit Roller: Fusing	1
11	M052 4053	Discharge Brush: Pressure	1
12	M052 4053	Discharge Brush: Pressure	1
13	M052 4052	Ground Plate: Pressure	1
14	M052 4182	Left Pressure Lever	1
15	M052 4183	Right Pressure Lever	2
16	M052 4062	Pressure Spring - Fusing	2
17	M052 4061	Lever: Pressure	2
18	M052 4070	Gear: 28T: Fusing: Exit	1
19	M052 4228	Gear: Exit Roller	1
20	M052 4055	Shaft: Pressure	1
21	AA08 2118	Bushing - 6mm	2

Index No.	Part No.	Description	Q'ty Per Assembly
101	0450 3010N	Tapping Screw - M3x10	
102	0805 0089	Retaining Ring - M4	
103	0954 3008N	Screw - M3x8	

12.Paper Exit 1 (M020/M021)

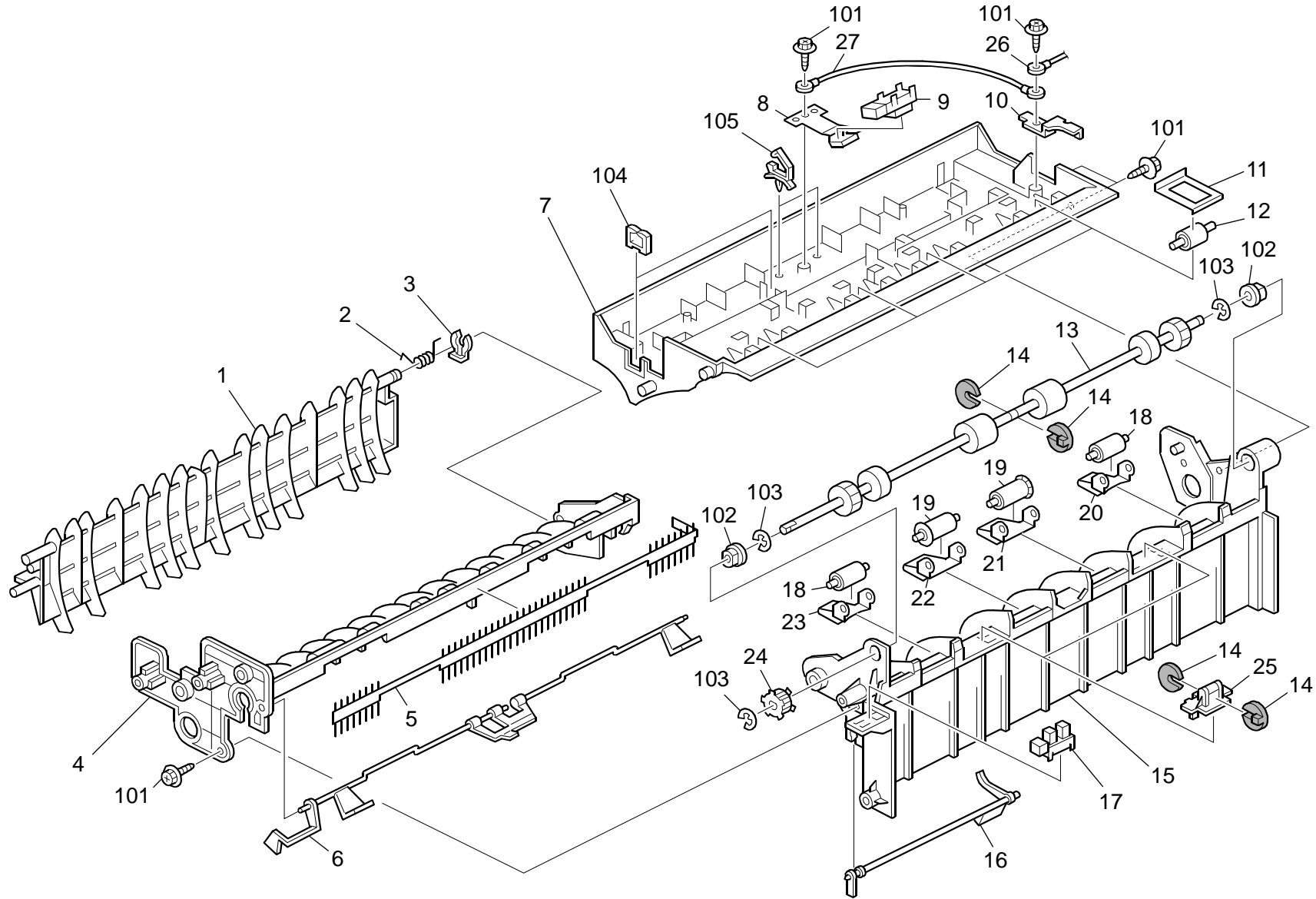


12.Paper Exit 1 (M020/M021)

Index No.	Part No.	Description	Q'ty Per Assembly
1	M021 1224	Cover: Upper: Rear: NA	1
1	M021 1223	Cover: Upper: Rear: EU	1
2	M021 1234	Cover: Upper: Exit: NA	1
2	M021 1233	Cover: Upper: Exit: EU	1
3	M021 4471	Synchronous Belt: Exit	1
4	M021 4404	DC Stepper Motor: Exit: P	1
5	M052 4454	Bracket: Solenoid	1
6	M052 4410	Solenoid: Ass'y: Exit	1
7	M021 4402	Tension Spring: Driven Roller	1
8	GW02 0020	Photointerruptor: LG248NL1	1
9	M021 5412	M/H Ass'y: Interlock SW: Rear	1
10	M021 5421	M/H Ass'y: Ground Wire: Exit Motor: P1	1

Index No.	Part No.	Description	Q'ty Per Assembly
101	0450 3008N	Tapping Screw - M3x8	
102	0450 3016N	Tapping Screw: 3x16	
103	0452 3008N	Tapping Screw - M3x8	
104	0313 0040N	Screw: M3x4	
105	1204 2521	Micro Switch	
106	0450 3010N	Tapping Screw - M3x10	

13.Paper Exit 2 (M020/M021)

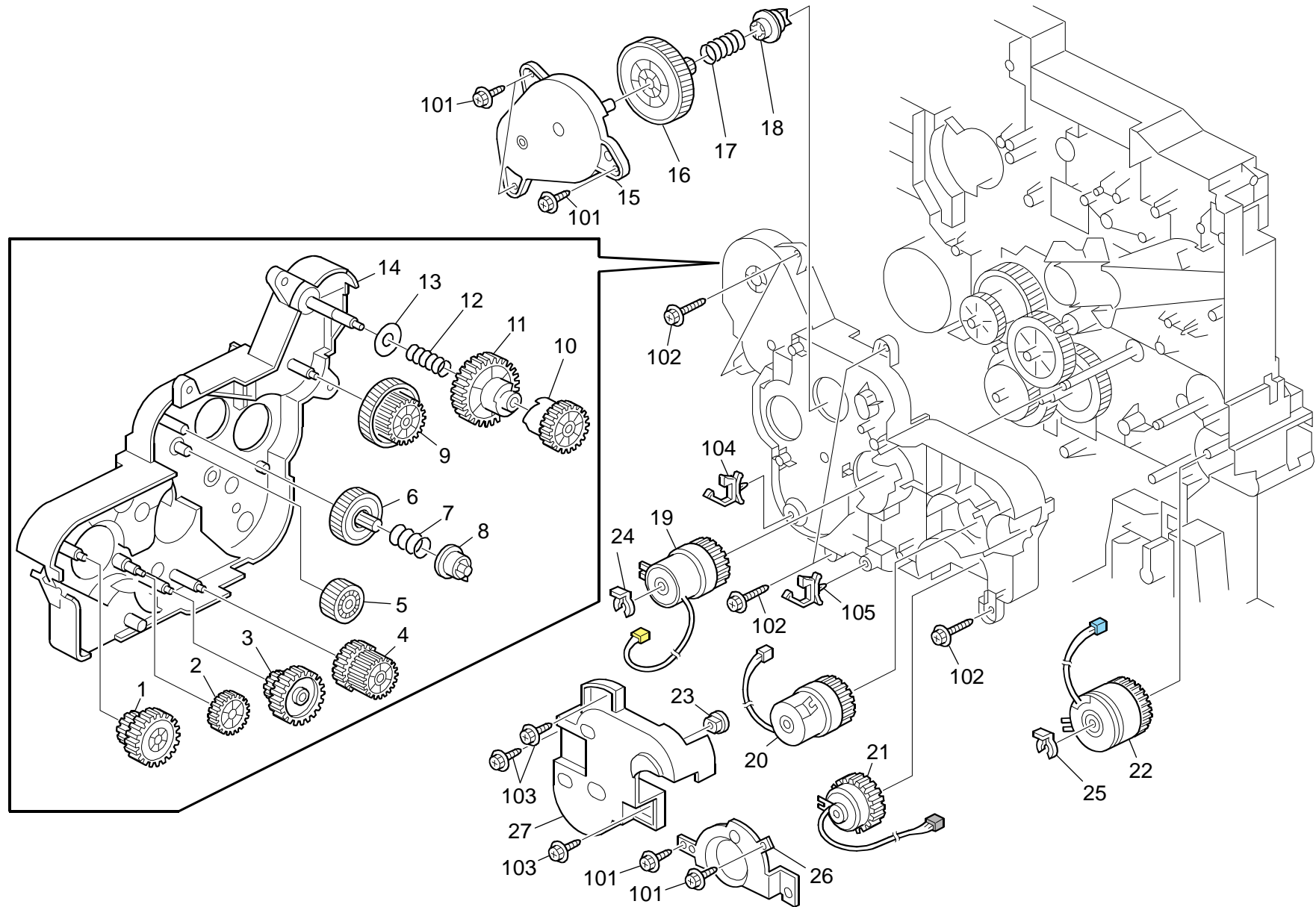


13.Paper Exit 2 (M020/M021)

Index No.	Part No.	Description	Q'ty Per Assembly
1	M052 4495	Pickoff Pawl: Reverse	1
2	M052 4496	Torsion Spring: Gate Pawl: M020	1
3	5447 2681	Snap Ring	1
4	M021 4459	Guide: Reverse: Lower: MF1A	1
5	M052 4489	Antistatic Brush: Exit	1
6	M052 4493	Feeler: Exit: Overflow	1
7	M021 4456	Guide: Exit: Upper	1
8	M021 4470	Bracket: Sensor: Reverse: P	1
9	GW02 0020	Photointerruptor: LG248NL1	1
10	M021 4466	Ground Plate: Exit Roller	1
11	M052 4486	Spring Plate: Idler: Reverse	4
12	M052 4485	Driven Roller: Reverse	4
13	M021 4468	Roller: Exit: P	1
14	M052 4469	Roller: Guide	6
15	M052 4488	Cover: Exit	1
16	M052 4468	Feeler: Paper Feed Sensor	1
17	GW01 0007	Photo Reflection Sensor: Exit	1
18	M052 4434	Exit: Roller Driven	2
19	M052 4875	Roller: Paper: Exit	2
20	G052 4877	Right Spring Plate	1
21	G052 4872	Right Holder - Exit Driven Roller	1
22	G052 4871	Left Holder - Exit Driven Roller	1
23	G052 4876	Left Spring Plate	1
24	M021 4463	Gear: Exit	1
25	M052 4438	Base: Decurire: Exit	2
26	M021 5419	M/H Ass'y: Ground Wire: Exit	1
27	M021 5418	M/H Ass'y: Ground Wire: Duplex Sensor	1

Index No.	Part No.	Description	Q'ty Per Assembly
101	0450 3008N	Tapping Screw - M3x8	
102	0805 3480	Bushing - 6mm	
103	0720 0040E	Retaining Ring - M4	
104	1105 0328	Harness Clamp - ES-0505	
105	1105 0516	Clamp	

14. Drive Section 1 (M020/M021)

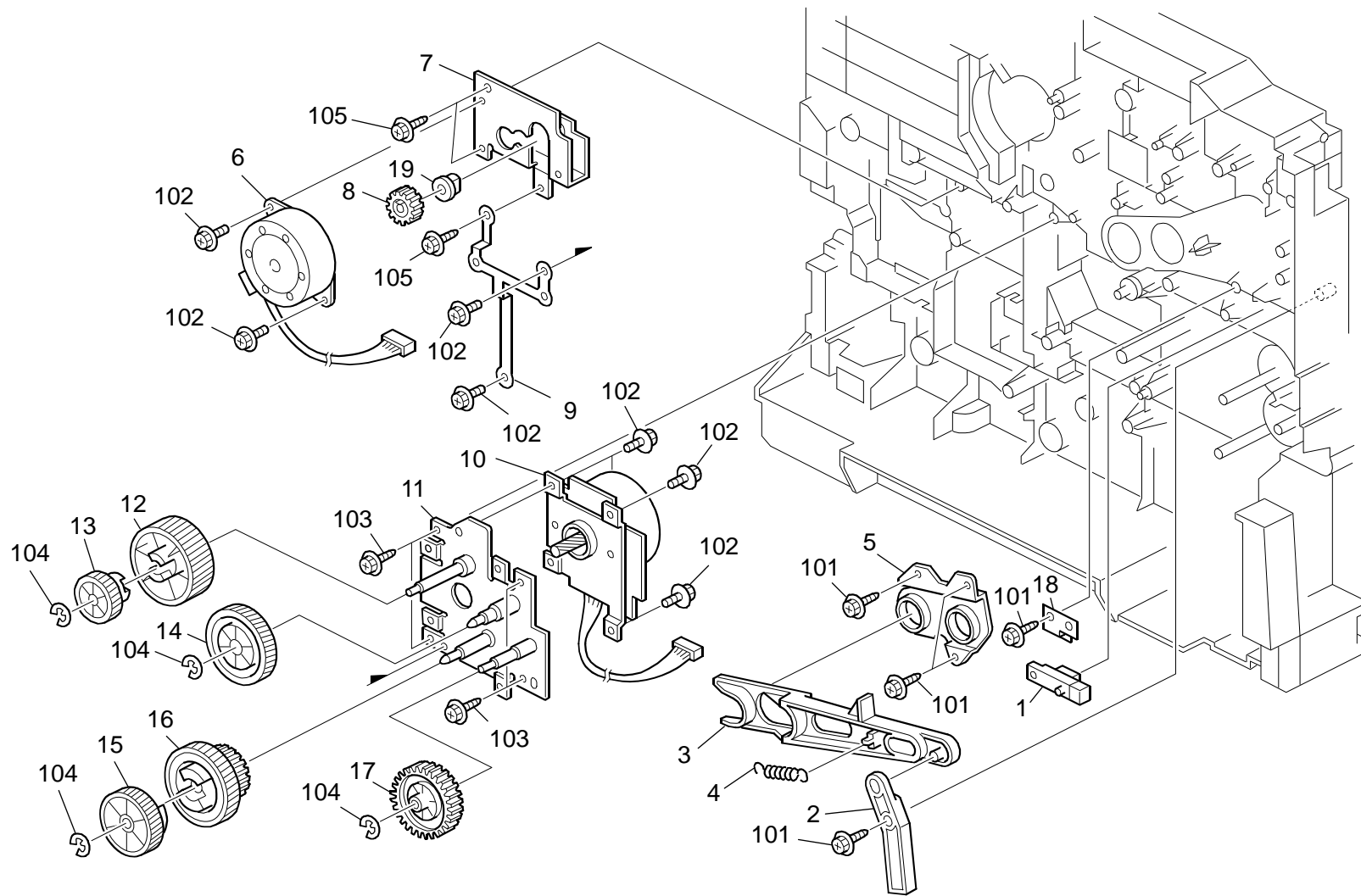


14. Drive Section 1 (M020/M021)

Index No.	Part No.	Description	Q'ty Per Assembly
1	M021 1129	Gear: Manual Feed: No.1	1
2	M021 1128	Gear: Connecting: No.1	1
3	M021 1127	Gear: Paper Feed: No.3	1
4	M021 1126	Gear: Paper Feed: No.2	1
5	M021 1134	Gear: Development: No.4: Ass'y	1
6	M021 1136	Gear: Joint: Development	1
7	M021 1138	Coil Spring: Joint: Development	1
8	M021 1137	Joint: Drive: Development	1
9	M021 1145	Gear: Fusing: No.1	1
10	M021 1148	Gear: Fusing: No.3	1
11	M021 1147	Gear: Fusing: No.2	1
12	G052 1120	Spring - Paper Exit Release	1
13	G052 1123	Spacer - Drive Unit	1
14	M021 1125	Housing: Main	1
15	M052 1141	Housing: Drive: Sub	1
16	M021 1142	Gear: Joint: Drum	1
17	M021 1144	Coil Spring: Joint: Drum	1
18	M021 1143	Joint: Drive: Drum	1
19	M021 2900	Electromagnetic Clutch: Registration: Ass'y	1
20	M021 2835	Electromagnetic Clutch: Connecting: Ass'y	1
21	M021 2825	Electromagnetic Clutch: Paper Feed: Ass'y	1
22	M052 2761	Electromagnetic Clutch: 1Turn: Z41: Manual Feed	1
23	AA08 2118	Bushing - 6mm	2
24	5215 2621	Snap Ring - M6	1
25	5447 2681	Snap Ring	1
26	M052 1168	Bracket: Clutch: Feed	1
27	M052 1195	Cover: Drive: Clutch	1

Index No.	Part No.	Description	Q'ty Per Assembly
101	0450 3010N	Tapping Screw - M3x10	
102	0450 3012N	Tapping Screw: 3x12	
103	0450 3008N	Tapping Screw - M3x8	
104	1105 0516	Clamp	
105	1105 0291	Harness Clamp - LWS-3S	

15. Drive Section 2 (M020/M021)

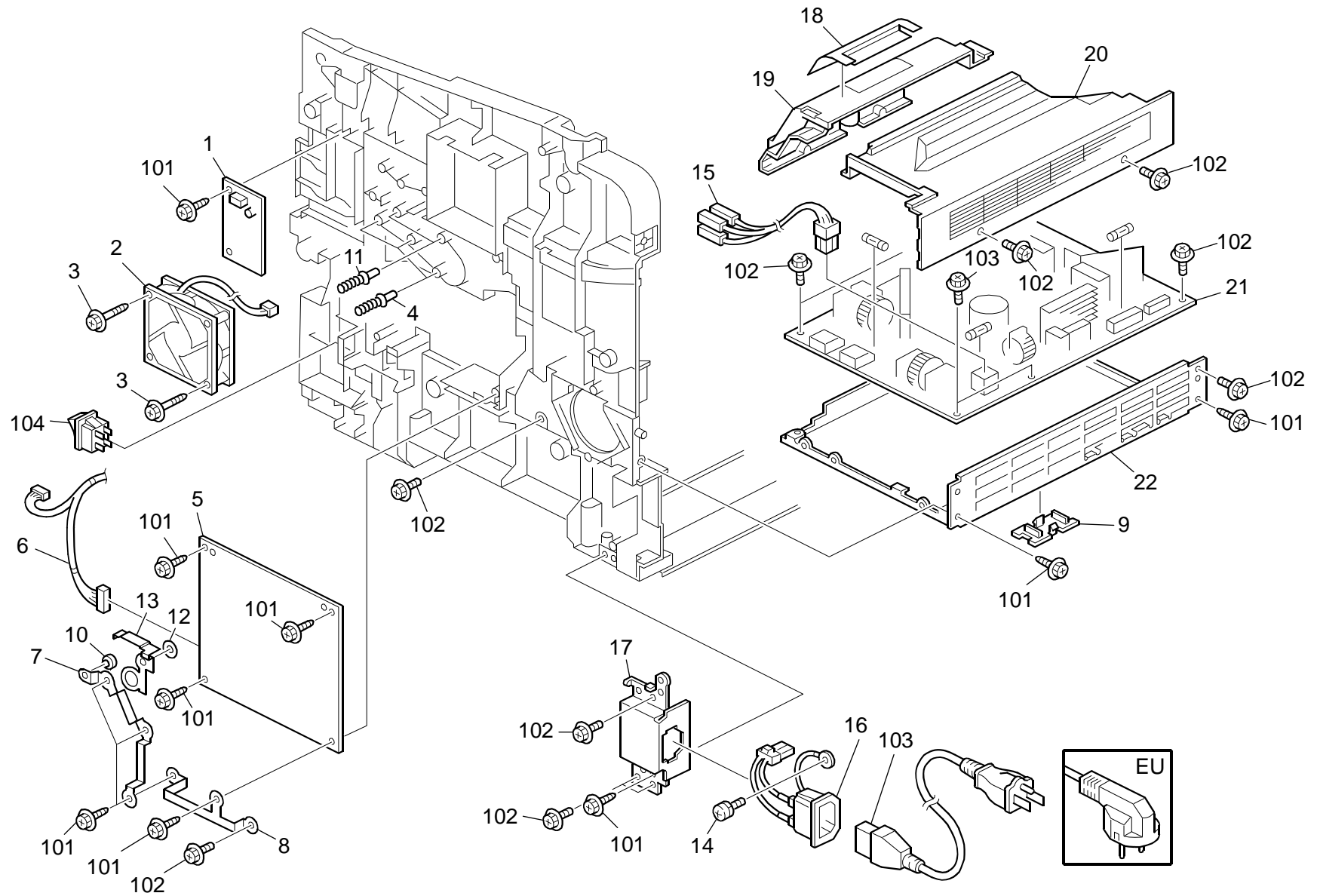


15. Drive Section 2 (M020/M021)

Index No.	Part No.	Description	Q'ty Per Assembly
1	G175 2551	Photosensor	1
2	M021 1122	Lever: Opener	1
3	M021 1121	Joint: Drive: Release	1
4	M021 1123	Coil Spring: Joint: Pressure	1
5	M052 1059	Plain Shaft Bearing: Frame: Drum	1
6	M021 4622	DC Stepper Motor: Duplex: Ass'y	1
7	M021 4626	Bracket: DC Stepper Motor: P	1
8	M021 4628	Gear: Drive: Duplex	1
9	M021 1086	Ground Plate: Bracket: Motor	1
10	M021 1108	DC Brushless Motor: 46W	1
11	M021 1102	Bracket: Brushless Motor: Ass'y	1
12	M021 1113	Gear: Drum: No.1: Ass'y	1
13	M021 1114	Gear: Drum: No.2	1
14	M021 1111	Gear: Z73	1
15	M021 1110	Gear: Z61	1
16	M021 1109	Gear: Z96/Z30	1
17	M021 1112	Gear: Paper Feed: No.1	1
18	M052 1061	Bracket: Toner End Sensor	1
19	AA08 2118	Bushing - 6mm	2

Index No.	Part No.	Description	Q'ty Per Assembly
101	0450 3008N	Tapping Screw - M3x8	
102	0451 3006N	Screw: Flange: M3.0x6	
103	0450 4010N	Tapping Screw: M4x10	
104	0720 0040E	Retaining Ring - M4	
105	0450 4008N	Tapping Screw - M4x8	

16.Electrical Section 1 (M020/M021)

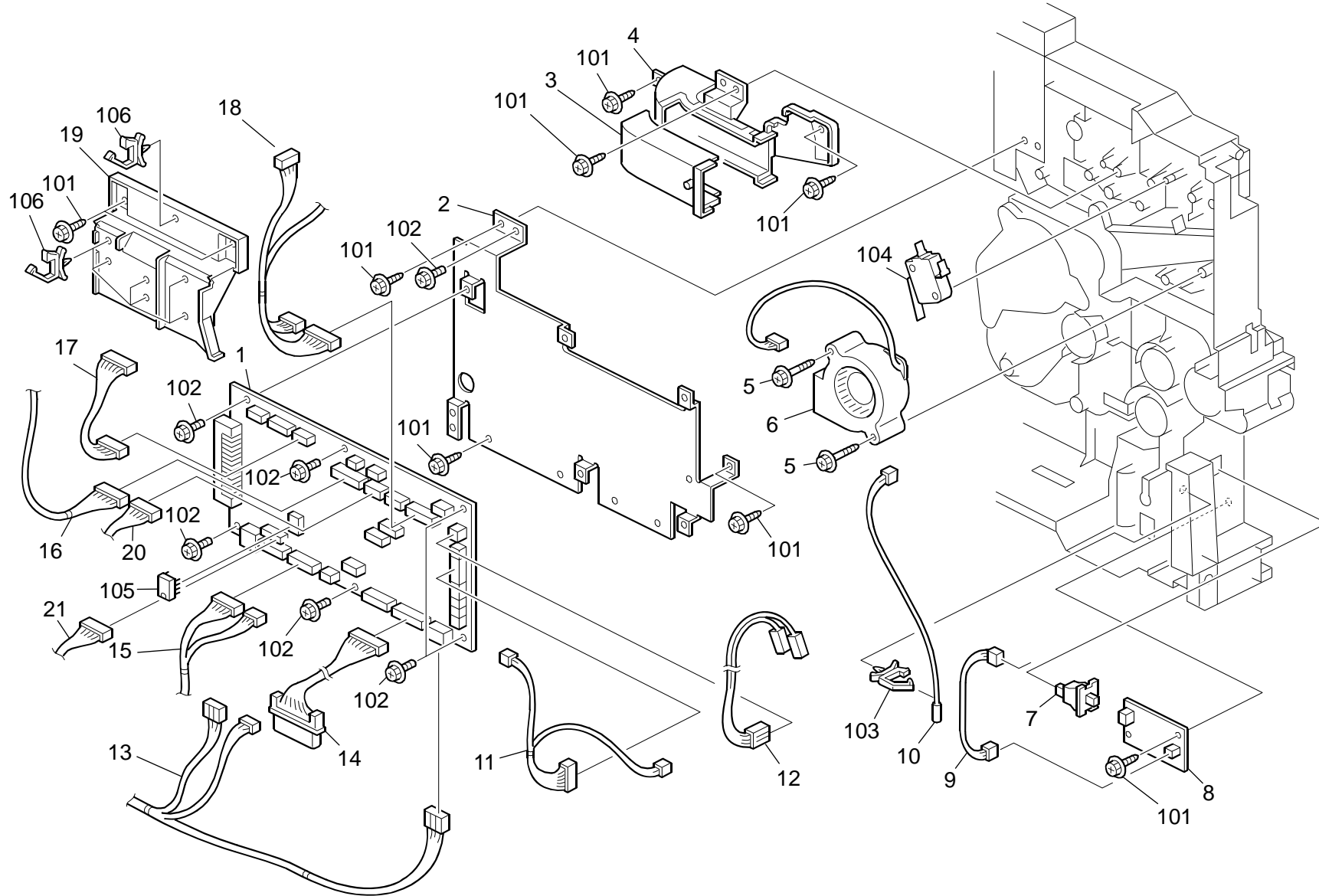


16.Electrical Section 1 (M020/M021)

Index No.	Part No.	Description	Q'ty Per Assembly
1	M052 5500	PCB: RFID-R/W	1
2	M052 1066	DC Fan Motor: MM80: 24V	1
3	B259 1119	Tapping Screw: M3x33	2
4	M021 1191	Shaft: High Voltage: Ass'y	3
5	M052 5006	Power Pack	1
6	M021 5415	M/H Ass'y: HVP	1
7	M052 2939	Ground Plate: Roller: Registration: Driven	1
8	M052 1092	Earth Plate: PSU	1
9	M052 5125	Cap: Bracket: Power Supply Unit	1
10	A153 2117	Terminal: Roller	1
11	M052 1191	Shaft: High Voltage: Ass'y	2
12	LA25 2536	Spacer: Lower: Body	1
13	M052 1047	Earth Plate: Shutter: AIO	1
14	AA14 3592	Screw- M4x6	1
15	M021 5409	M/H Ass'y: Main SW	1
16	M021 5417	Inlet: Ass'y	1
17	M021 5134	Bracket: Inlet	1
18	M052 5152	Sheet: Cover: Power Supply Unit: Front	1
19	M052 1404	Cover: Power Supply Unit: Front	1
20	M021 1162	Cover: Power Supply Unit: Middle Rear	1
21	GZ23 0053	Power Supply Unit: NA	1
21	GZ23 0055	Power Supply Unit: EU/AA: 170W	1
22	M021 1101	Bracket: Power Supply Unit	1

Index No.	Part No.	Description	Q'ty Per Assembly
101	0450 3008N	Tapping Screw - M3x8	
102	0451 3006N	Screw: Flange: M3.0x6	
103	1150 0377	Power Supply Code: 250V: 10A: EU	
103	1150 0415	Power Supply Code: 125V: NA	
104	1204 2537	Rocker Switch: AC250V/10A: Black	

17.Electrical Section 2 (M020/M021)

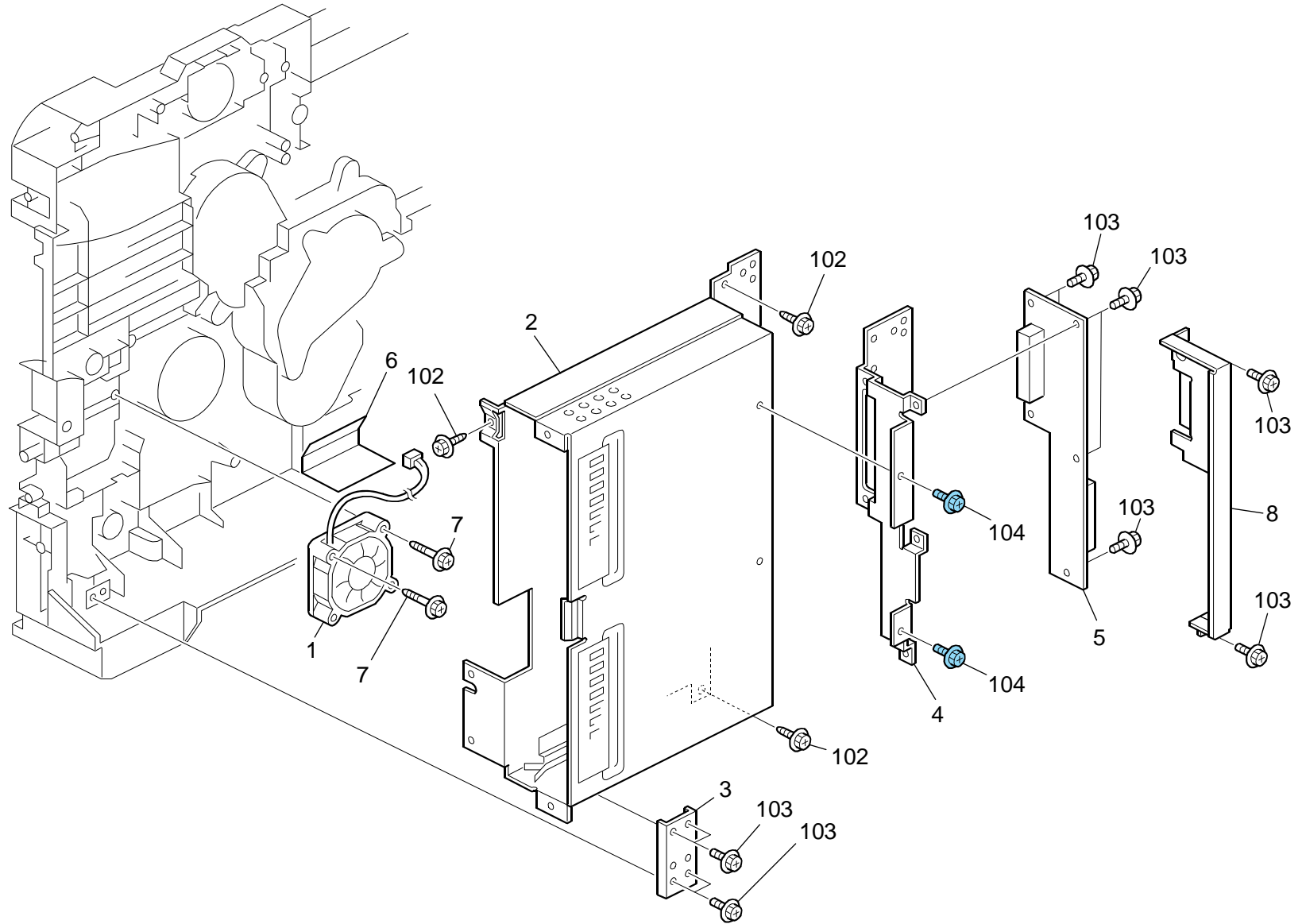


17.Electrical Section 2 (M020/M021)

Index No.	Part No.	Description	Q'ty Per Assembly
1	M021 5010	PCB: EGB: Ass'y	1
2	M021 1151	Bracket: EGB	1
3	M052 1067	Duct: Upper: Cooling: AIO	1
4	M052 1068	Duct: lower: Cooling: AIO	1
5	B259 1119	Tapping Screw: M3x33	2
6	M052 1069	Fan: Cooling: AIO	1
7	G020 5626	Push Switch	1
8	M052 5551	PCB: Sensor	1
9	M052 5428	M/H Ass'y: Tray Set Detection	1
10	M021 1253	Thermistor: Transfer	1
11	M021 5416	M/H Ass'y: Toner End Detection	1
12	M021 5403	M/H Ass'y: Interlock SW: Front	1
13	M021 5400	M/H Ass'y: Power	1
14	M021 5402	M/H Ass'y: Feed: Option	1
15	M021 5401	M/H Ass'y: Feed	1
16	M021 5406	M/H Ass'y: Exit Sensor	1
17	M021 5420	M/H Ass'y: Motor: LSU	1
18	M021 5415	M/H Ass'y: HVP	1
19	M052 5171	Harness Guide: EGB	1
20	M021 5404	M/H Ass'y: Fusing: NA	1
20	M021 5405	M/H Ass'y: Fusing: EU	1
21	M021 5422	M/H Ass'y: PSU Fan: Connecting	1

Index No.	Part No.	Description	Q'ty Per Assembly
101	0450 3008N	Tapping Screw - M3x8	
102	0451 3006N	Screw: Flange: M3.0x6	
103	1105 0511	Harness Clamp - LWS-0306ZC	
104	1204 2521	Micro Switch	
105	1407 6056	EEPROM: M24C08-WBN6(REV.W)	
106	1105 0516	Clamp	

18. Electrical Section 3 (M020/M021)

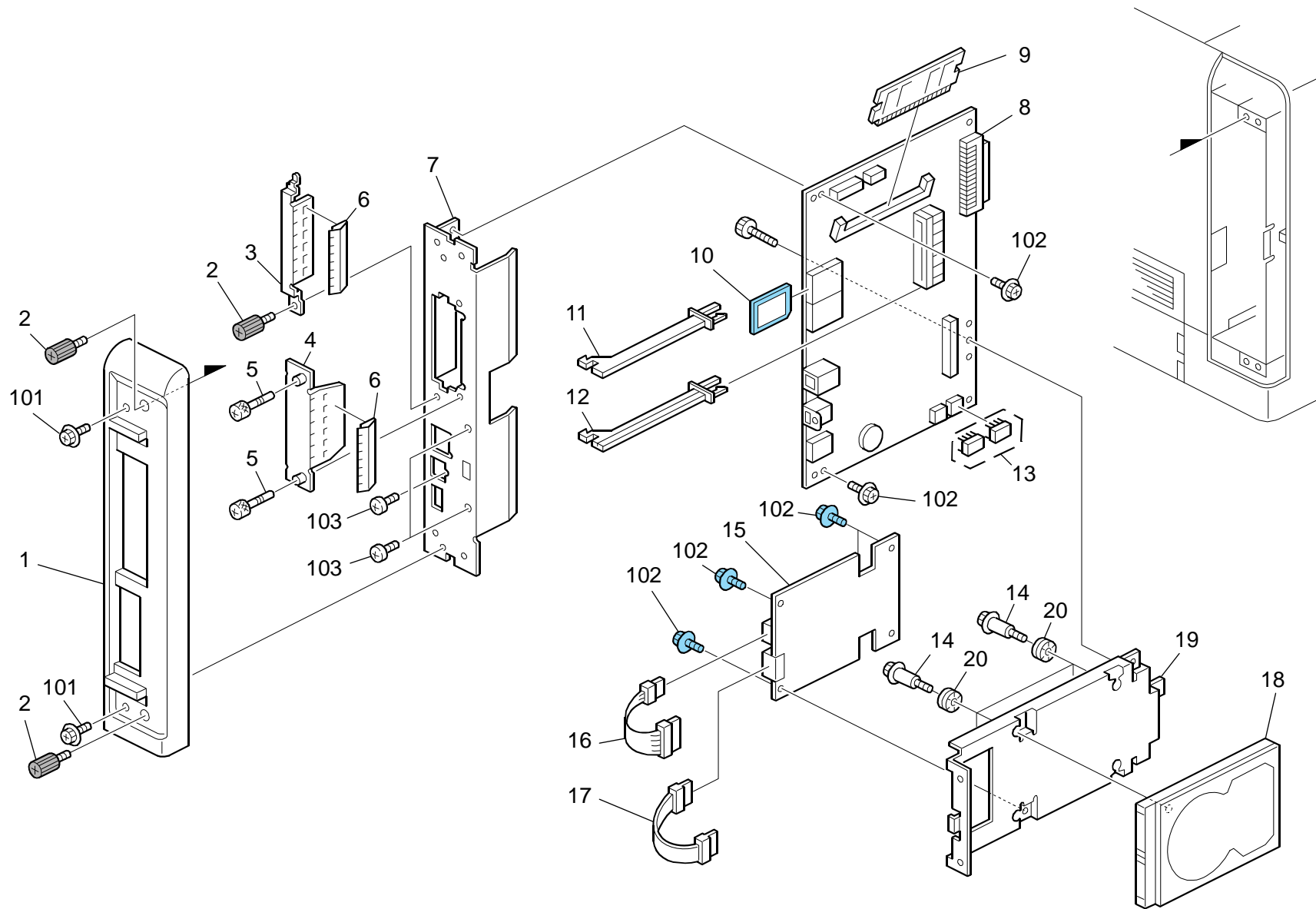


18.Electrical Section 3 (M020/M021)

Index No.	Part No.	Description	Q'ty Per Assembly
1	M052 4660	DC Fan Motor: Mm60	1
2	M021 1171	Bracket: Control Board: Ass'y	1
3	M021 5138	Ground Plate: Frame: Left: Lower	1
4	M021 1154	Bracket: Interface: EGB	1
5	M021 5570	PCB: EGB-Bridge	1
6	M052 1072	Duct: Fan: PSU	1
7	M052 5150	Screw: DC Fan Motor: Power Supply Unit: 3x222	3
8	M021 1153	Cover: EGB	1

Index No.	Part No.	Description	Q'ty Per Assembly
101	0450 3020N	Tapping Screw: M3x20	
102	0450 3008N	Tapping Screw - M3x8	
103	0451 3006N	Screw: Flange: M3.0x6	
104	0450 3006Q	Tapping Screw - 3x6	

19.Controller Unit (M020/M021)

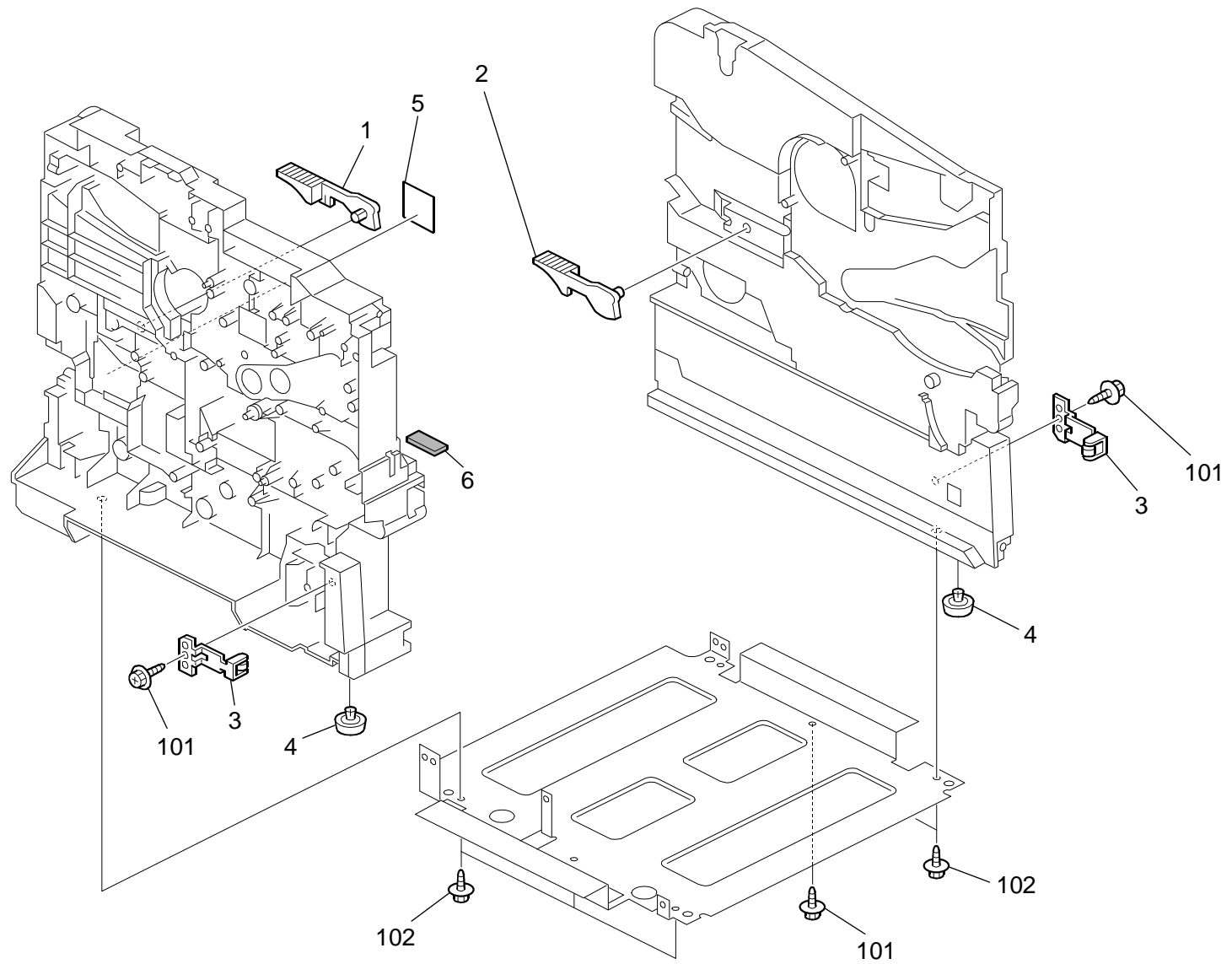


19.Controller Unit (M020/M021)

Index No.	Part No.	Description	Q'ty Per Assembly
1	M021 1222	Cover: Left: Terminal: NA	1
1	M021 1211	Cover: Left: Terminal: EU	1
2	G104 5141	Knob Screw: M3	3
3	G168 5118	Card Cover	1
4	B132 5836	Panel - Interface	1
5	B622 5825	Panel Knob Screw	2
6	B070 6899	Ground Plate: Panel	1
7	M021 1182	Panel: Control Board: Ass'y	1
8	M020 5372	PCB: CTL: M020: Ass'y	1
8	M020 5373	PCB: CTL: M021: Ass'y	1
9	B585 5140	PCB: DDR1-DIMM-32B: 512MB: Ass'y	1
10	M021 5023	SD-Card: ENCRY_ZOFFY: EXP: Ass'y	1
11	G108 5107	Left Guide 1	1
12	G108 5108	Right Guide 1	1
13	M020 9590	NVRAM	1
14	AA14 3848	Stepped Screw - M3	4
15	M352 5320	PCB: OPTHDD: SATIE-KAI: Ass'y	1
16	M352 5322	Cable: HDD: SATA: Power: Power55	1
17	D362 5132	Harness - HDD	1
18	D105 5705	HDD: 160GB: MK1665GSX	1
19	M001 1108	Bracket: HDD	1
20	AA16 1125	Rubber Cushion	4

Index No.	Part No.	Description	Q'ty Per Assembly
101	0451 3006N	Screw: Flange: M3.0x6	
102	0454 3006Q	Tapping Screw - M3x6	
103	0353 0040N	Screw - M3x4	

20.Frame Section (M020/M021)



20.Frame Section (M020/M021)

Index No.	Part No.	Description	Q'ty Per Assembly
1	M052 1053	Lever: Fusing: Left	1
2	M052 1052	Lever: Fusing: Right	1
3	G096 1087	Paper Tray Spring Plate Ass'y	2
4	M021 1071	Rubber Foot: FF005-AR79_P4050	2
5	M052 6926	Decal: Warning: High Temperatue	1
6	M052 1074	Cushion: Shutter: AIO	1

Index No.	Part No.	Description	Q'ty Per Assembly
101	0450 3008N	Tapping Screw - M3x8	
102	0450 4010N	Tapping Screw: M4x10	

**M020/M021
PARTS INDEX**

This section shows you the part numbers and descriptions used on this machine.

Parts Index

Part No.	Description	Page and Index No.
M020 5372	PCB: CTL: M020: Ass'y	43 - 8
M020 5373	PCB: CTL: M021: Ass'y	43 - 8
M020 6641	Model Name Plate: M020: RIC	7 - 13
M020 9590	NVRAM	43 - 13
M021 1052	Tightener: AIO	11 - 3
M021 1054	Coil Spring: Tightener: AIO	11 - 4
M021 1070	Stay: LSU	11 - 10
M021 1071	Rubber Foot: FF005-AR79_P4050	45 - 4
M021 1086	Ground Plate: Bracket: Motor	35 - 9
M021 1101	Bracket: Power Supply Unit	37 - 22
M021 1102	Bracket: Brushless Motor: Ass'y	35 - 11
M021 1108	DC Brushless Motor: 46W	35 - 10
M021 1109	Gear: Z96/Z30	35 - 16
M021 1110	Gear: Z61	35 - 15
M021 1111	Gear: Z73	35 - 14
M021 1112	Gear: Paper Feed: No.1	35 - 17
M021 1113	Gear: Drum: No.1: Ass'y	35 - 12
M021 1114	Gear: Drum: No.2	35 - 13
M021 1121	Joint: Drive: Release	35 - 3
M021 1122	Lever: Opener	35 - 2
M021 1123	Coil Spring: Joint: Pressure	35 - 4
M021 1125	Housing: Main	33 - 14
M021 1126	Gear: Paper Feed: No.2	33 - 4
M021 1127	Gear: Paper Feed: No.3	33 - 3
M021 1128	Gear: Connecting: No.1	33 - 2
M021 1129	Gear: Manual Feed: No.1	33 - 1
M021 1134	Gear: Development: No.4: Ass'y	33 - 5
M021 1136	Gear: Joint: Development	33 - 6
M021 1137	Joint: Drive: Development	33 - 8
M021 1138	Coil Spring: Joint: Development	33 - 7
M021 1142	Gear: Joint: Drum	33 - 16
M021 1143	Joint: Drive: Drum	33 - 18
M021 1144	Coil Spring: Joint: Drum	33 - 17
M021 1145	Gear: Fusing: No.1	33 - 9
M021 1147	Gear: Fusing: No.2	33 - 11

Part No.	Description	Page and Index No.
M021 1148	Gear: Fusing: No.3	33 - 10
M021 1151	Bracket: EGB	39 - 2
M021 1153	Cover: EGB	41 - 8
M021 1154	Bracket: Interface: EGB	41 - 4
M021 1162	Cover: Power Supply Unit: Middle Rear	37 - 20
M021 1171	Bracket: Control Board: Ass'y	41 - 2
M021 1182	Panel: Control Board: Ass'y	43 - 7
M021 1191	Shaft: High Voltage: Ass'y	37 - 4
M021 1201	Door: Front: EU	9 - 3
M021 1211	Cover: Left: Terminal: EU	43 - 1
M021 1213	Cover: Left: EU	7 - 1
M021 1214	Cover: Left: NA	7 - 1
M021 1218	Cover: Upper: Middle: EU	7 - 12
M021 1219	Cover: Upper: Middle: NA	7 - 12
M021 1222	Cover: Left: Terminal: NA	43 - 1
M021 1223	Cover: Upper: Rear: EU	29 - 1
M021 1224	Cover: Upper: Rear: NA	29 - 1
M021 1227	Cover: Right: EU	7 - 7
M021 1228	Cover: Right: NA	7 - 7
M021 1233	Cover: Upper: Exit: EU	29 - 2
M021 1234	Cover: Upper: Exit: NA	29 - 2
M021 1235	Guide: Slide: Exit: EU	7 - 11
M021 1236	Guide: Slide: Exit: NA	7 - 11
M021 1250	Lever: Door	9 - 2
M021 1251	Door: Front	9 - 3
M021 1253	Thermistor: Transfer	39 - 10
M021 1254	Feeler: Shutter	9 - 4
M021 1256	Coil Spring: Button: Door	9 - 17
M021 1263	Duct: Cover: Left	7 - 2
M021 1264	Cushion: Duct: P	7 - 15
M021 1268	Button: Door: Lever	9 - 1
M021 1275	Cover: Rear	7 - 5
M021 1282	Louver	7 - 8
M021 1401	Operation Sub-unit: EXP: Ass'y	7 - 10
M021 2551	Rear Tray Paper Feed	13 - 2

Part No.	Description	Page and Index No.
M021 2552	Supporting Plate: Rear Tray	13 - 3
M021 2553	Cap: Paper Tray	13 - 35
M021 2565	Base End Fence	13 - 1
M021 2567	Protection: End Fence	13 - 39
M021 2568	Pressure Plate: End Fence	13 - 8
M021 2572	Guide: Paper Pressure: Tray	13 - 30
M021 2573	Change Lever: Pressure: Tray	13 - 31
M021 2574	Shaft: Pressure: Paper Tray	13 - 24
M021 2575	Arm Pressuer Paper Tray	13 - 12
M021 2576	Change Feeler: Pressuer: Paper Tray	13 - 13
M021 2577	Cam: Pressure: Paper Tray	13 - 23
M021 2581	Indicator: Paper Volume: Bottom Plate	13 - 25
M021 2582	Weight: Indicator: Paper Volume	13 - 26
M021 2591	Cover: Paper Tray: Front	13 - 27
M021 2593	Cover: Paper Tray: Front Upper	13 - 29
M021 2601	Front Tray: Paper Fedd	13 - 11
M021 2603	Sheet: Holder: Paper Tray	13 - 5
M021 2609	Stopper: Rear Tray	13 - 4
M021 2613	Seal: Side Fence: Rear	13 - 15
M021 2614	Seal: Side Fence: Front	13 - 16
M021 2652	Plate: Paper Size Sensing: Tray	13 - 34
M021 2654	Cover: Paper Size Sensing Plate: Tray	13 - 32
M021 2655	Spring: Paper Size Sensing Plate: Tray	13 - 33
M021 2656	Side Fence: Right	13 - 20
M021 2657	Pad: Bottom Plate: Tray	13 - 18
M021 2658	Tray Bottom Plate	13 - 17
M021 2665	Side Fence: Left	13 - 14
M021 2674	Compression Spring Separation	13 - 10
M021 2701	Stay: Manual Feed	15 - 7
M021 2702	Supporting Plate: Stay: Manual Feed	15 - 8
M021 2711	Holder: Friction Pad: Manual Feed	15 - 5
M021 2712	Mylar Holder: Friction Pad: Manual Feed	15 - 19
M021 2713	Balancer: Friction Pad: Manual Feed	15 - 20
M021 2717	Mylar: Say: Manual Feed	15 - 9
M021 2722	Cam: Shaft: Manual Feed	15 - 11

Part No.	Description	Page and Index No.
M021 2724	Roller: Guide: Manual Feed	15 - 12
M021 2730	Shaft: Roller: Manual Feed: Ass'y	15 - 10
M021 2751	Base: Manual Feed	9 - 10
M021 2752	Side Fence: Manual Feed: Right	9 - 8
M021 2753	Side Fence: Manual Feed: Left	9 - 7
M021 2755	Extension Tray: Manual Feed	9 - 16
M021 2756	Cover: Front	9 - 12
M021 2758	Gear: Side Fence	9 - 11
M021 2762	Frame: Manual Feed	15 - 14
M021 2763	Compression Spring: Separation: Manual Feed	15 - 6
M021 2769	Feeler: Manual Feed	15 - 15
M021 2771	Hinge: Cover: Manual Feed	9 - 14
M021 2801	Stay: Paper Feed	17 - 5
M021 2803	Lever Release Feed Roller	17 - 13
M021 2804	Guide Mylar: Feed Stay: Upper	17 - 1
M021 2808	Feeler: Paper End Sensor: Stay	17 - 15
M021 2809	Feeler: Paper Volume: Stay	17 - 16
M021 2810	Cover: Stay: Left	17 - 14
M021 2811	Cover: Stay: Right	17 - 17
M021 2813	Ground Plate: Paper Tray: Stay	17 - 6
M021 2814	Shaft: Paper Feed	17 - 11
M021 2815	Shield Plate: Paper Feed	17 - 7
M021 2816	Compression Spring: Lever: Feed Roller	17 - 12
M021 2825	Electromagnetic Clutch: Paper Feed: Ass'y	33 - 21
M021 2831	Roller: Connecting: Lower	15 - 1
M021 2832	Roller: Connecting: Upper	17 - 18
M021 2833	Gear: Connecting: Roller	15 - 16
M021 2833	Gear: Connecting: Roller	17 - 19
M021 2835	Electromagnetic Clutch: Connecting: Ass'y	33 - 20
M021 2843	Ground Plate: Shaft: Paper Feed	19 - 18
M021 2844	Ground Plate: Shaft: Drive Rollers	19 - 15
M021 2900	Electromagnetic Clutch: Registration: Ass'y	33 - 19
M021 2916	Registration Roller: Drive	19 - 1
M021 2917	Roller Registration Driven 14.12	19 - 2
M021 2964	Seal: Registration Guide: Poron	19 - 8

Part No.	Description	Page and Index No.
M021 2965	Ground Plate: Sensor: Registration	19 - 6
M021 2966	Guide Plate: Registration: Upper	19 - 7
M021 2967	Sheet: Cleaner: Registration	19 - 3
M021 2968	Bracket: Sensor: Registration	19 - 4
M021 3345	Roller: Guide	11 - 2
M021 3861	Guide: Transfer: Upper	21 - 3
M021 3862	Terminal: Transfer	21 - 5
M021 3863	Terminal: Separation	21 - 9
M021 3864	Ground Plate: Guide: Transport	21 - 4
M021 3865	Ground Plate: Guide: Duplex	21 - 6
M021 3866	Registration Guide	21 - 10
M021 3867	Electrode Plate: Separation	21 - 1
M021 3868	Cover: Electrode Plate	21 - 2
M021 3869	Compression Spring: Transfer Roller	21 - 16
M021 3879	Compression Spring: Transfer Roller: Right	21 - 8
M021 4402	Tension Spring: Driven Roller	29 - 7
M021 4404	DC Stepper Motor: Exit: P	29 - 4
M021 4456	Guide: Exit: Upper	31 - 7
M021 4459	Guide: Reverse: Lower: μ F1A	31 - 4
M021 4463	Gear: Exit	31 - 24
M021 4466	Ground Plate: Exit Roller	31 - 10
M021 4468	Roller: Exit: P	31 - 13
M021 4470	Bracket: Sensor: Reverse: P	31 - 8
M021 4471	Synchronous Belt: Exit	29 - 3
M021 4472	Guide: Reverse: Exit	7 - 6
M021 4473	Lever: Exit: P	7 - 4
M021 4601	Guide: Duplex: Rear: Ass'y	23 - 2
M021 4605	Pulley: Idler: 15T	23 - 5
M021 4606	Pulley: Idler	23 - 6
M021 4608	Pulley: 25T	23 - 7
M021 4610	Guide: Duplex: Front: Ass'y	23 - 12
M021 4612	Roller: Duplex: Front	23 - 1
M021 4617	Guide: Transport: Duplex	21 - 25
M021 4618	Driven Roller: Duplex	21 - 23
M021 4619	Compression Spring: 2N	27 - 2

Part No.	Description	Page and Index No.
M021 4619	Compression Spring: 2N	21 - 21
M021 4621	Feeler: Duplex: Middle	21 - 24
M021 4622	DC Stepper Motor: Duplex: Ass'y	35 - 6
M021 4625	Coil Spring: Duplex	23 - 11
M021 4626	Bracket: DC Stepper Motor: P	35 - 7
M021 4628	Gear: Drive: Duplex	35 - 8
M021 4630	Handle: Cover	23 - 16
M021 4633	Guide: Duplex: Feed Paper Again	23 - 13
M021 4634	Spring Plate: Feed Paper Again	23 - 14
M021 4662	Ground Plate: Guide: Feed Paper Again	23 - 17
M021 4663	Ground Plate: Guide: Rear	23 - 4
M021 4994	Transport Roller: Duplex: Middle: P	23 - 3
M021 5010	PCB: EGB: Ass'y	39 - 1
M021 5023	SD-Card: ENCRY_ZOFFY: EXP: Ass'y	43 - 10
M021 5134	Bracket: Inlet	37 - 17
M021 5138	Ground Plate: Frame: Left: Lower	41 - 3
M021 5400	M/H Ass'y: Power	39 - 13
M021 5401	M/H Ass'y: Feed	39 - 15
M021 5402	M/H Ass'y: Feed: Option	39 - 14
M021 5403	M/H Ass'y: Interlock SW: Front	39 - 12
M021 5404	M/H Ass'y: Fusing: NA	39 - 20
M021 5405	M/H Ass'y: Fusing: EU	39 - 20
M021 5406	M/H Ass'y: Exit Sensor	39 - 16
M021 5409	M/H Ass'y: Main SW	37 - 15
M021 5410	M/H Ass'y: Regist Sensor: Connecting	19 - 17
M021 5411	M/H Ass'y: High Voltage Line: T	21 - 20
M021 5412	M/H Ass'y: Interlock SW: Rear	29 - 9
M021 5413	M/H Ass'y: LDD	11 - 15
M021 5415	M/H Ass'y: HVP	39 - 18
M021 5415	M/H Ass'y: HVP	37 - 6
M021 5416	M/H Ass'y: Toner End Detection	39 - 11
M021 5417	Inlet: Ass'y	37 - 16
M021 5418	M/H Ass'y: Ground Wire: Duplex Sensor	31 - 27
M021 5419	M/H Ass'y: Ground Wire: Exit	31 - 26
M021 5420	M/H Ass'y: Motor: LSU	39 - 17

Part No.	Description	Page and Index No.
M021 5421	M/H Ass'y: Ground Wire: Exit Motor: P1	29 - 10
M021 5422	M/H Ass'y: PSU Fan: Connecting	39 - 21
M021 5570	PCB: EGB-Bridge	41 - 5
M021 6252	Gear: Transfer Roller	21 - 14
M021 6641	Model Name Plate: M021: RIC	7 - 13

Part No.	Description	Page and Index No.
A153 2117	Terminal: Roller	37 - 10
A232 3553	Ball Bearing - 8x16x5	27 - 6
A250 1388	Spring	7 - 3
B039 1361	Magnet Catch	9 - 15
B039 4480	Stepped Screw - M5	23 - 15
B070 6899	Ground Plate: Panel	43 - 6
B090 2742	Roller: Pull Out: Option Tray	15 - 2
B090 2742	Roller: Pull Out: Option Tray	17 - 2
B090 2869	Gear - 16Z	13 - 21
B121 7450	Decal: WEEE: EU	7 - 18
B132 5836	Panel - Interface	43 - 4
B259 1119	Tapping Screw: M3x33	37 - 3
B259 1119	Tapping Screw: M3x33	39 - 5
B585 5140	PCB: DDR1-DIMM-32B: 512MB: Ass'y	43 - 9
B622 5825	Panel Knob Screw	43 - 5
D010 4313	Bushing: MM4	21 - 22
D010 4313	Bushing: MM4	27 - 3
D105 5705	HDD: 160GB: MK1665GSX	43 - 18
D362 5132	Harness - HDD	43 - 17
G020 5626	Push Switch	39 - 7
G052 1120	Spring - Paper Exit Release	33 - 12
G052 1123	Spacer - Drive Unit	33 - 13
G052 3103	Paper Feed Roller	17 - 10
G052 3257	Right Bushing - Registration	19 - 12
G052 3258	Left Bushing - Registration	19 - 10
G052 3278	Spring - Bypass	9 - 13
G052 3625	Right Bushing - Transfer	21 - 7
G052 3626	Left Bushing - Transfer	21 - 15
G052 4618	Bearing 30x42x7	25 - 25
G052 4624	Hot Roller Stripper	25 - 9
G052 4639	Exit Roller Holder	25 - 3
G052 4871	Left Holder - Exit Driven Roller	31 - 22
G052 4872	Right Holder - Exit Driven Roller	31 - 21
G052 4876	Left Spring Plate	31 - 23
G052 4877	Right Spring Plate	31 - 20

Part No.	Description	Page and Index No.
G052 5060	Synchronization Detector	11 - 17
G096 1087	Paper Tray Spring Plate Ass'y	45 - 3
G096 3066	Friction Pad Adhesion	13 - 7
G096 3083	Spring Tension	13 - 22
G096 3089	End Fence Compression Spring 3.5N	13 - 38
G096 3090	End Fence Tension Spring 12N	13 - 37
G096 4616	Right Heater Bracket	25 - 22
G096 4638	Exit Roller Supporting Plate	25 - 1
G102 2817	Compression Spring: Tray Bottom Plate	13 - 6
G104 5141	Knob Screw: M3	43 - 2
G108 5107	Left Guide 1	43 - 11
G108 5108	Right Guide 1	43 - 12
G111 1910	Caution Decal - Laser	11 - 6
G129 6255	Bushing	21 - 13
G168 5118	Card Cover	43 - 3
G168 5403	Harness: Polygon Mirror: Syncdetector: Board	11 - 16
G175 2551	Photosensor	35 - 1
G175 4602	Electrode Plate - Right	25 - 19
G175 4644	Entrance Guide Plate - Upper	25 - 17
G555 3069	Pad: Base	9 - 9
G800 4854	Exit Roller	25 - 2

Part No.	Description	Page and Index No.
M001 1108	Bracket: HDD	43 - 19
M001 1904	Imaging Unit	11 - 1
M042 4226	Plate: Harness: Fusing	25 - 15
M052 0211	Fusing Unit: NA	25 - *
M052 0212	Fusing Unit: EU/AP	25 - *
M052 1047	Earth Plate: Shutter: AIO	37 - 13
M052 1051	Cover: Stay: LSU	11 - 5
M052 1052	Lever: Fusing: Right	45 - 2
M052 1053	Lever: Fusing: Left	45 - 1
M052 1059	Plain Shaft Bearing: Frame: Drum	35 - 5
M052 1061	Bracket: Toner End Sensor	35 - 18
M052 1066	DC Fan Motor: MM80: 24V	37 - 2
M052 1067	Duct: Upper: Cooling: AIO	39 - 3
M052 1068	Duct: lower: Cooling: AIO	39 - 4
M052 1069	Fan: Cooling: AIO	39 - 6
M052 1070	Screw: Drawer: Fusing	11 - 9
M052 1072	Duct: Fan: PSU	41 - 6
M052 1074	Cushion: Shutter: AIO	45 - 6
M052 1092	Earth Plate: PSU	37 - 8
M052 1094	Sheet: Block: Laser	11 - 12
M052 1095	Guide: Sheet: Block: Laser	11 - 11
M052 1096	Support: Sheet: Block: Laser	11 - 13
M052 1116	Heater: 1025W: 220V: QIRF	25 - 29
M052 1141	Housing: Drive: Sub	33 - 15
M052 1168	Bracket: Clutch: Feed	33 - 26
M052 1191	Shaft: High Voltage: Ass'y	37 - 11
M052 1195	Cover: Drive: Clutch	33 - 27
M052 1210	Plate: Logo: RIC	7 - 14
M052 1211	Decal: Logo: RIC	9 - 21
M052 1404	Cover: Power Supply Unit: Front	37 - 19
M052 2026	Link: Door: Front	9 - 6
M052 2027	Compression Spring: Door: Lever	9 - 19
M052 2028	Coil Spring: Link	9 - 18
M052 2569	Tension Spring End Fence	13 - 36
M052 2592	Handle: Paper Tray: Front	13 - 28

Part No.	Description	Page and Index No.
M052 2605	Feeler Paper Volume Bottom Plate Tray	13 - 9
M052 2653	Decal: Operating Arrow Direction Right Side Fence	13 - 40
M052 2714	Rear Mylar Holder: Friction Pad:	15 - 21
M052 2761	Electromagnetic Clutch: 1Turn: Z41: Manual Feed	33 - 22
M052 2826	Compression Spring: Connecting Roller: Driven	17 - 4
M052 2842	Ground Plate: Sensor Board	19 - 19
M052 2912	Seal: Guide Plate: Registration: Upper	19 - 9
M052 2919	Blocking Cap: Bushing: Registration	19 - 20
M052 2939	Ground Plate: Roller: Registration: Driven	37 - 7
M052 3851	Guide Plate: Transfer	21 - 19
M052 3852	Sheet: Guide Plate: Transfer	21 - 18
M052 3871	Transfer Roller	21 - 11
M052 4052	Ground Plate: Pressure	27 - 13
M052 4053	Discharge Brush: Pressure	27 - 12
M052 4053	Discharge Brush: Pressure	27 - 11
M052 4055	Shaft: Pressure	27 - 20
M052 4059	Pressure Roller	27 - 5
M052 4061	Lever: Pressure	27 - 17
M052 4062	Pressure Spring - Fusing	27 - 16
M052 4063	Spring - Fusing Stripper	25 - 8
M052 4066	Exit Roller: Fusing	27 - 10
M052 4070	Gear: 28T: Fusing: Exit	27 - 18
M052 4071	Frame: Pressure	27 - 4
M052 4080	Upper Frame: Fuser	25 - 30
M052 4082	Ground Plate: Fusing	25 - 7
M052 4101	Hot Roller	25 - 26
M052 4102	Gear: Hot Roller	25 - 27
M052 4115	Heater: 1025W: 120V: QIRF	25 - 29
M052 4182	Left Pressure Lever	27 - 14
M052 4183	Right Pressure Lever	27 - 15
M052 4200	Guide: Exit: Fusing	25 - 4
M052 4202	Cleaning Roller: Ass'y	27 - 8

Part No.	Description	Page and Index No.
M052 4224	Compression Spring: Cleaning Roller: Fusing	27 - 9
M052 4225	Bracket: Heater: Left	25 - 10
M052 4227	Plate: Harness: Upper	25 - 6
M052 4228	Gear: Exit Roller	27 - 19
M052 4231	Bracket: Bearing: Fusing: Left	25 - 11
M052 4232	Bracket: Bearing: Fusing: Right	25 - 23
M052 4235	Spring Plate: Fusing Exit: Ass'y	25 - 5
M052 4236	End Ring: Hot Roller	25 - 28
M052 4237	Discharge Brush: Hot Roller	25 - 14
M052 4239	Electrode: Heater	25 - 13
M052 4241	Thermistor	25 - 20
M052 4243	Thermostat: Ass'y	25 - 18
M052 4300	Cover: Fusing: Right	25 - 21
M052 4302	Heat Shrinkable Tube: Stripper Pawls	25 - 31
M052 4310	Cover: Fusing: Left	25 - 12
M052 4410	Solenoid: Ass'y: Exit	29 - 6
M052 4434	Exit: Roller Driven	31 - 18
M052 4438	Base: Decurire: Exit	31 - 25
M052 4454	Bracket: Solenoid	29 - 5
M052 4468	Feeler: Paper Feed Sensor	31 - 16
M052 4469	Roller: Guide	31 - 14
M052 4485	Driven Roller: Reverse	31 - 12
M052 4486	Spring Plate: Idler: Reverse	31 - 11
M052 4488	Cover: Exit	31 - 15
M052 4489	Antistatic Brush: Exit	31 - 5
M052 4493	Feeler: Exit: Overflow	31 - 6
M052 4495	Pickoff Pawl: Reverse	31 - 1
M052 4496	Torsion Spring: Gate Pawl: M020	31 - 2
M052 4618	Driven Roller: Duplex: Drive	27 - 1
M052 4660	DC Fan Motor: Mm60	41 - 1
M052 4875	Roller: Paper: Exit	31 - 19
M052 4996	Synchronous Belt: Rear	23 - 8
M052 4997	Synchronous Belt: Front	23 - 10
M052 5006	Power Pack	37 - 5
M052 5125	Cap: Bracket: Power Supply Unit	37 - 9

Part No.	Description	Page and Index No.
M052 5150	Screw: DC Fan Motor: Power Supply Unit: 3x22	41 - 7
M052 5152	Sheet: Cover: Power Supply Unit: Front	37 - 18
M052 5171	Harness Guide: EGB	39 - 19
M052 5424	M/H Ass'y: Tray	17 - 8
M052 5428	M/H Ass'y: Tray Set Detection	39 - 9
M052 5442	Drawer: Fusing: 120V	25 - 16
M052 5443	Drawer: Fusing: 230V	25 - 16
M052 5444	Drawer: Fusing Sub-Unit: Set Sensor: NA	11 - 7
M052 5445	Drawer: Fusing Sub-Unit: Set Sensor: EU	11 - 7
M052 5500	PCB: RFID-R/W	37 - 1
M052 5551	PCB: Sensor	39 - 8
M052 6251	Roller: Positioning: Transfer Roller	21 - 12
M052 6920	Decal: Guide Plate: B	19 - 16
M052 6921	Decal: Guide Plate: Z2	23 - 18
M052 6922	DecalL: Jam: Repair	9 - 20
M052 6923	Decal: High Temperature: Fixation Roller	11 - 14
M052 6924	Decal: Warning High Temperature: Fusing Unit	25 - 32
M052 6926	Decal: Warning: High Temperatue	45 - 5
M052 6930	Decal: Paper Pressure: Lever	13 - 19
M052 6932	Decal: Paper Setting	13 - 42
M052 6933	Decal: Operating Explanation Extension Tray	13 - 41
M052 6936	Decal: Main SW: NA: P	7 - 9
M052 6937	Decal: Main SW: EU: P	7 - 9
M052 6938	Decal: Caution: Weight: P	7 - 17
M352 5320	PCB: OPTHDD: SATIE-KAI: Ass'y	43 - 15
M352 5322	Cable: HDD: SATA: Power: Power55	43 - 16

Part No.	Description	Page and Index No.
AA00 0267	Decal: Earth: NE: ABS	7 - 19
AA02 1031	Magnetic Catch	9 - 5
AA06 3399	Spring - Vertical Transport	15 - 4
AA06 3539	Spring - Registration Roller	19 - 11
AA08 0249	Bushing - Vertical Transport	17 - 3
AA08 2058	Bushing - 6x10x9mm	23 - 9
AA08 2073	Roller Busing	27 - 7
AA08 2116	Bushing - 8x12x7	19 - 13
AA08 2118	Bushing - 6mm	17 - 21
AA08 2118	Bushing - 6mm	23 - 19
AA08 2118	Bushing - 6mm	35 - 19
AA08 2118	Bushing - 6mm	27 - 21
AA08 2118	Bushing - 6mm	33 - 23
AA08 2118	Bushing - 6mm	15 - 22
AA08 2144	Bushing - 8x12x7	15 - 3
AA14 3592	Screw- M4x6	37 - 14
AA14 3848	Stepped Screw - M3	43 - 14
AA16 1125	Rubber Cushion	43 - 20
AE03 2027	Thermal Insulating Bushing	25 - 24
AW02 0141	Photointerruptor	15 - 17
AW02 0141	Photointerruptor	17 - 9
GA00 3245	Decal: Energy Star: PS3: ABS	7 - 16
GF03 1003	Paper Feed Roller: MM30	15 - 13
GW01 0007	Photo Reflection Sensor: Exit	31 - 17
GW01 0007	Photo Reflection Sensor: Exit	19 - 5
GW02 0020	Photointerruptor: LG248NL1	31 - 9
GW02 0020	Photointerruptor: LG248NL1	29 - 8
GW02 0020	Photointerruptor: LG248NL1	21 - 17
GX06 0029	Polygon Scanner Motor: DC24V 24W	11 - 8
GZ23 0053	Power Supply Unit: NA	37 - 21
GZ23 0055	Power Supply Unit: EU/AA: 170W	37 - 21

Part No.	Description	Page and Index No.
LA25 2536	Spacer: Lower: Body	37 - 12

Part No.	Description	Page and Index No.
0313 0040N	Screw: M3x4	29 - 104
0353 0040N	Screw - M3x4	43 - 103
0450 3006Q	Tapping Screw - 3x6	41 - 104
0450 3008N	Tapping Screw - M3x8	19 - 102
0450 3008N	Tapping Screw - M3x8	45 - 101
0450 3008N	Tapping Screw - M3x8	41 - 102
0450 3008N	Tapping Screw - M3x8	39 - 101
0450 3008N	Tapping Screw - M3x8	37 - 101
0450 3008N	Tapping Screw - M3x8	35 - 101
0450 3008N	Tapping Screw - M3x8	33 - 103
0450 3008N	Tapping Screw - M3x8	31 - 101
0450 3008N	Tapping Screw - M3x8	29 - 101
0450 3008N	Tapping Screw - M3x8	25 - 105
0450 3008N	Tapping Screw - M3x8	21 - 101
0450 3008N	Tapping Screw - M3x8	7 - 101
0450 3008N	Tapping Screw - M3x8	9 - 101
0450 3008N	Tapping Screw - M3x8	11 - 102
0450 3008N	Tapping Screw - M3x8	13 - 101
0450 3008N	Tapping Screw - M3x8	15 - 101
0450 3010N	Tapping Screw - M3x10	25 - 102
0450 3010N	Tapping Screw - M3x10	11 - 103
0450 3010N	Tapping Screw - M3x10	33 - 101
0450 3010N	Tapping Screw - M3x10	29 - 106
0450 3010N	Tapping Screw - M3x10	27 - 101
0450 3010N	Tapping Screw - M3x10	15 - 102
0450 3010N	Tapping Screw - M3x10	17 - 101
0450 3010N	Tapping Screw - M3x10	23 - 102
0450 3012N	Tapping Screw: 3x12	33 - 102
0450 3012N	Tapping Screw: 3x12	17 - 102
0450 3012N	Tapping Screw: 3x12	11 - 101
0450 3012N	Tapping Screw: 3x12	19 - 101
0450 3012N	Tapping Screw: 3x12	15 - 104
0450 3016N	Tapping Screw: 3x16	29 - 102
0450 3020N	Tapping Screw: M3x20	41 - 101
0450 4008N	Tapping Screw - M4x8	35 - 105

Part No.	Description	Page and Index No.
0450 4010N	Tapping Screw: M4x10	35 - 103
0450 4010N	Tapping Screw: M4x10	45 - 102
0451 3006N	Screw: Flange: M3.0x6	43 - 101
0451 3006N	Screw: Flange: M3.0x6	37 - 102
0451 3006N	Screw: Flange: M3.0x6	35 - 102
0451 3006N	Screw: Flange: M3.0x6	41 - 103
0451 3006N	Screw: Flange: M3.0x6	39 - 102
0451 3012N	Screw: M3x12	25 - 106
0452 3008N	Tapping Screw - M3x8	29 - 103
0454 3006Q	Tapping Screw - M3x6	43 - 102
0720 0030E	Retaining Ring - M3	23 - 103
0720 0040E	Retaining Ring - M4	15 - 103
0720 0040E	Retaining Ring - M4	31 - 103
0720 0040E	Retaining Ring - M4	13 - 102
0720 0040E	Retaining Ring - M4	35 - 104
0720 0040E	Retaining Ring - M4	17 - 103
0720 0040E	Retaining Ring - M4	23 - 101
0720 0040E	Retaining Ring - M4	9 - 104
0720 0080G	C-ring - M8	9 - 102
0805 0089	Retaining Ring - M4	13 - 103
0805 0089	Retaining Ring - M4	9 - 103
0805 0089	Retaining Ring - M4	27 - 102
0805 3480	Bushing - 6mm	31 - 102
0954 3008N	Screw - M3x8	25 - 103
0954 3008N	Screw - M3x8	27 - 103
0954 3010N	Screw: Polished Round/Spring: M3x10	25 - 104
0954 3012N	Screw - M3x12	25 - 101
1105 0291	Harness Clamp - LWS-3S	33 - 105
1105 0328	Harness Clamp - ES-0505	31 - 104
1105 0511	Harness Clamp - LWS-0306ZC	39 - 103
1105 0516	Clamp	39 - 106
1105 0516	Clamp	33 - 104
1105 0516	Clamp	31 - 105
1150 0377	Power Supply Code: 250V: 10A: EU	37 - 103
1150 0415	Power Supply Code: 125V: NA	37 - 103

Part No.	Description	Page and Index No.
1204 2521	Micro Switch	39 - 104
1204 2521	Micro Switch	29 - 105
1204 2537	Rocker Switch: AC250V/10A: Black	37 - 104
1407 6056	EEPROM: M24C08-WBN6(REV.W)	39 - 105

Part No.	Description	Page and Index No.
5215 2621	Snap Ring - M6	19 - 14
5215 2621	Snap Ring - M6	33 - 24
5447 2681	Snap Ring	15 - 18
5447 2681	Snap Ring	17 - 20
5447 2681	Snap Ring	31 - 3
5447 2681	Snap Ring	33 - 25

Part No.	Description	Page and Index No.
----------	-------------	--------------------