



RICOH UNIVERSITY

Learning ♦ Knowledge ♦ Performance



M118/M119 PARTS CATALOG

LANIER RICOH SAVIN®

It is the reader's responsibility when discussing the information contained within this document to maintain a level of confidentiality that is in the best interest of Ricoh Americas Corporation and its member companies.

**NO PART OF THIS DOCUMENT MAY BE REPRODUCED IN ANY
*FASHION AND DISTRIBUTED WITHOUT THE PRIOR
PERMISSION OF RICOH AMERICAS CORPORATION.***

All product names, domain names or product illustrations, including desktop images, used in this document are trademarks, registered trademarks or the property of their respective companies.

They are used throughout this book in an informational or editorial fashion only and for the benefit of such companies. No such use, or the use of any trade name, or web site is intended to convey endorsement or other affiliation with Ricoh products.

LEGEND

PRODUCT CODE	COMPANY		
	LANIER	RICOH	SAVIN
M118	SP 3500SF	Aficio SP 3500SF	SP 3500SF
M119	SP 3510SF	Aficio SP 3510SF	SP 3510SF
M355	Paper Feed Unit TK1080		

DOCUMENTATION HISTORY

REV. NO.	DATE	COMMENTS
*	05/2012	Original Printing

Unit All



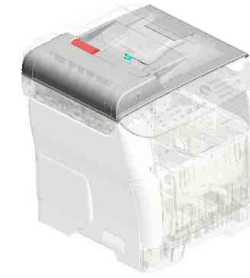
U001
EXTERIOR



U002
OPERATION



U003
ARDF:(for M119)



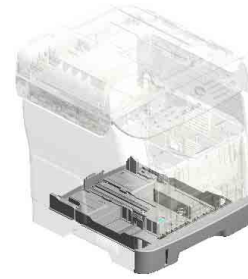
U004
ADF:(for M118)



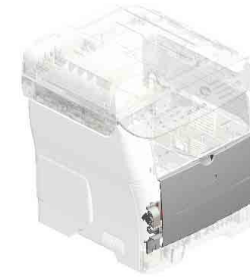
U005
SCANNER



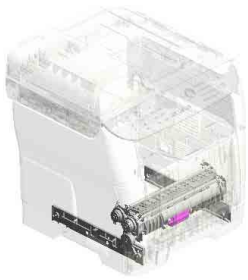
U006
LASER UNIT



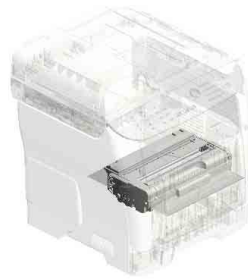
U007
PAPER TRAY



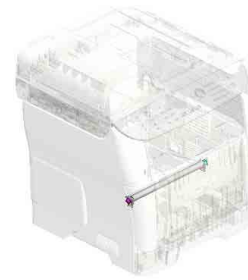
U008
BY-PASS FEED



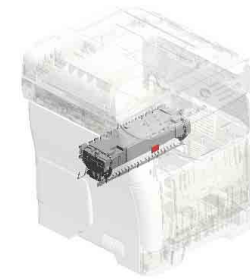
U009
PAPER FEED



U010
PCU

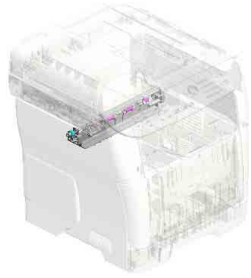


U011
TRANSFER/SEPARATION

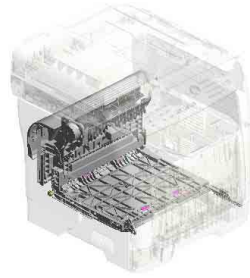


U012
FUSING

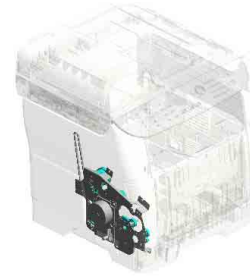
Unit All



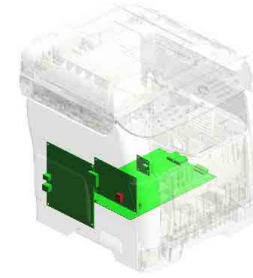
U013
PAPER EXIT



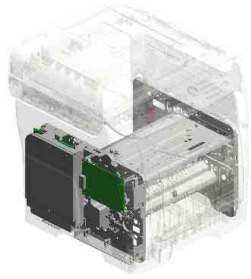
U014
DUPLEX



U015
MAIN DRIVE

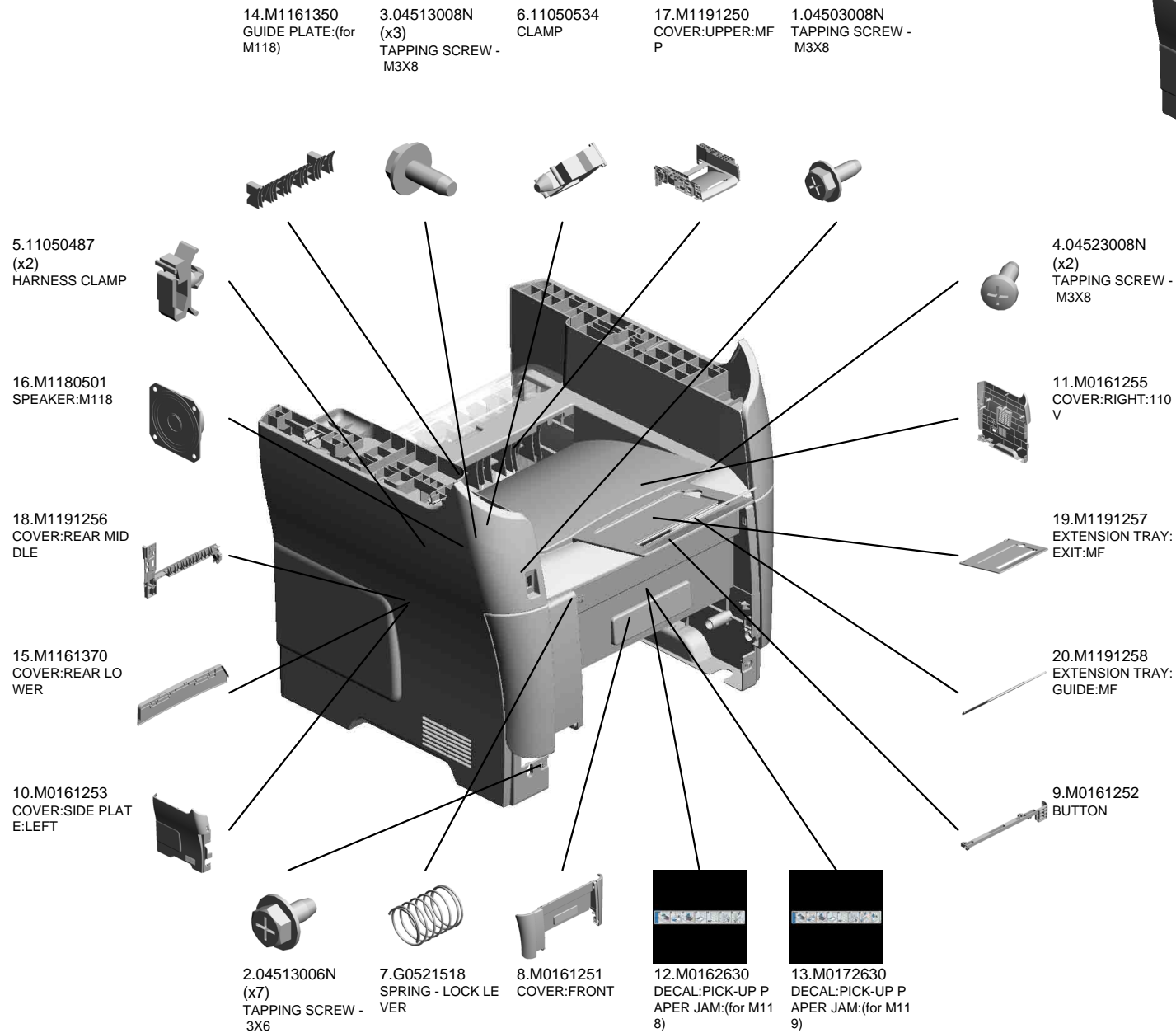
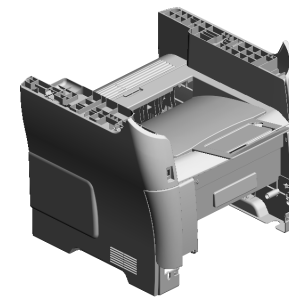


U016
ELECTRICAL



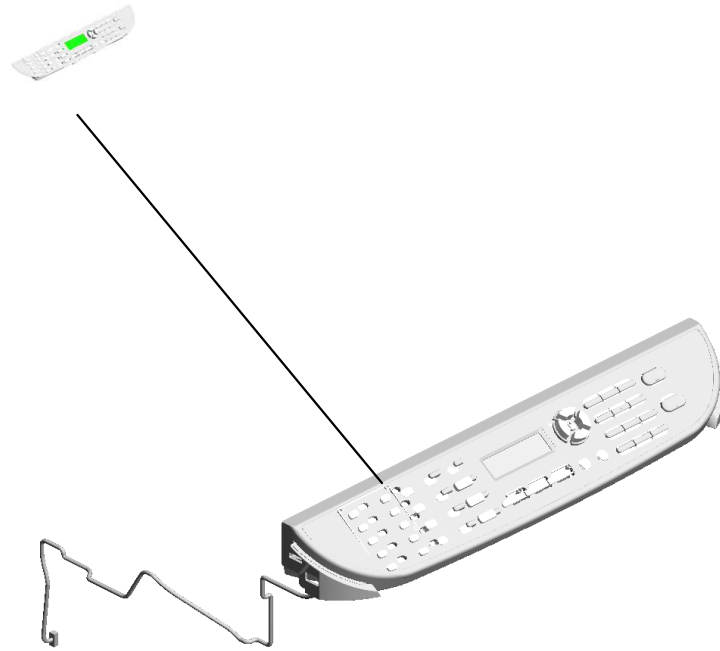
U017
MAIN FRAME

U001 EXTERIOR



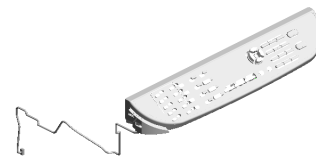
U002.OPERATION

U002_S001
M1191527
OPERATION PANEL:ASSY



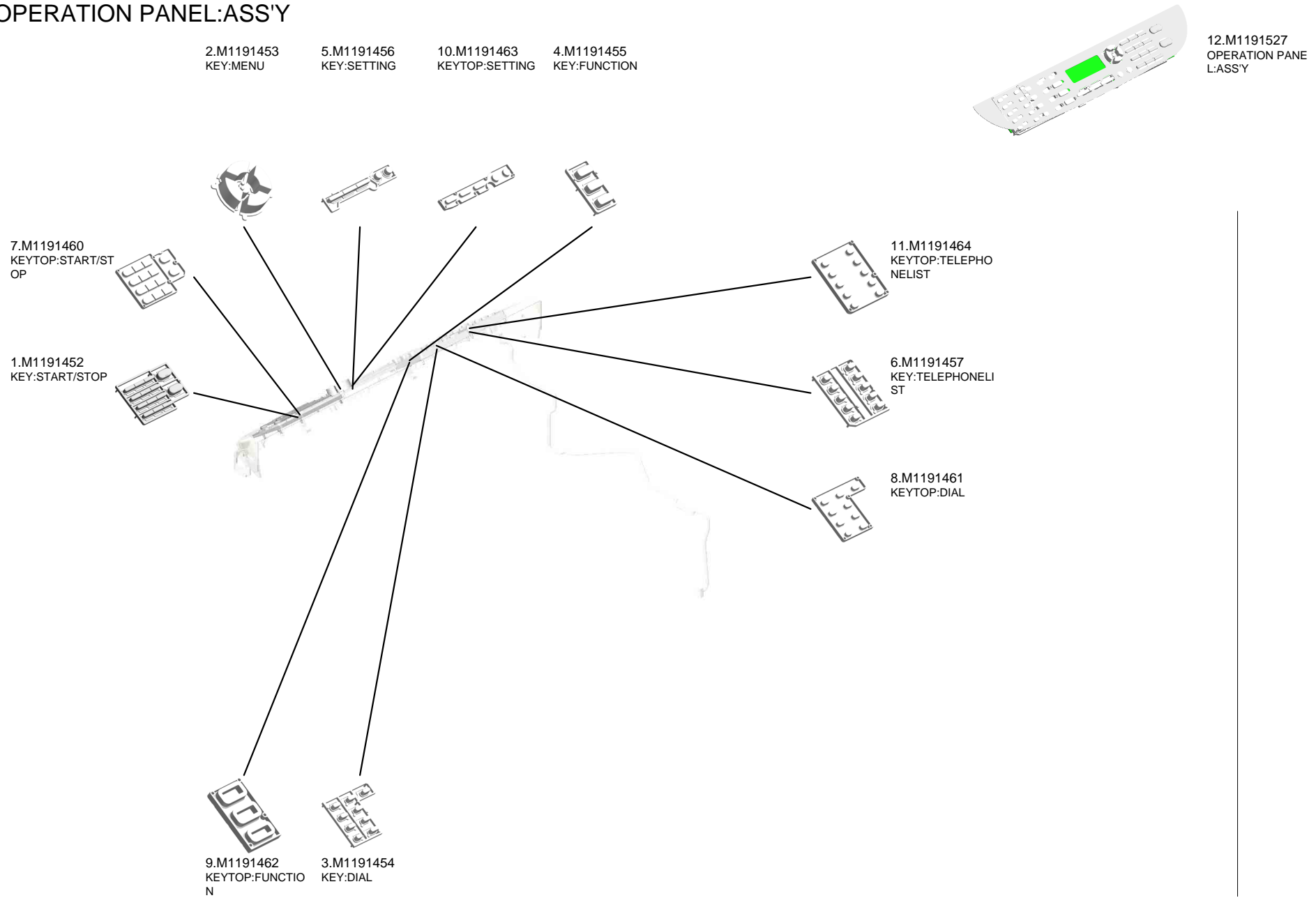
U001	U002	U003	U004	U005	U006	U007	U008	U009	U010	U011	U012	U013	U014	U015	U016	U017
------	-------------	------	------	------	------	------	------	------	------	------	------	------	------	------	------	------

U002
OPERATION



U001	U002	U003	U004	U005	U006	U007	U008	U009	U010	U011	U012	U013	U014	U015	U016	U017
------	-------------	------	------	------	------	------	------	------	------	------	------	------	------	------	------	------

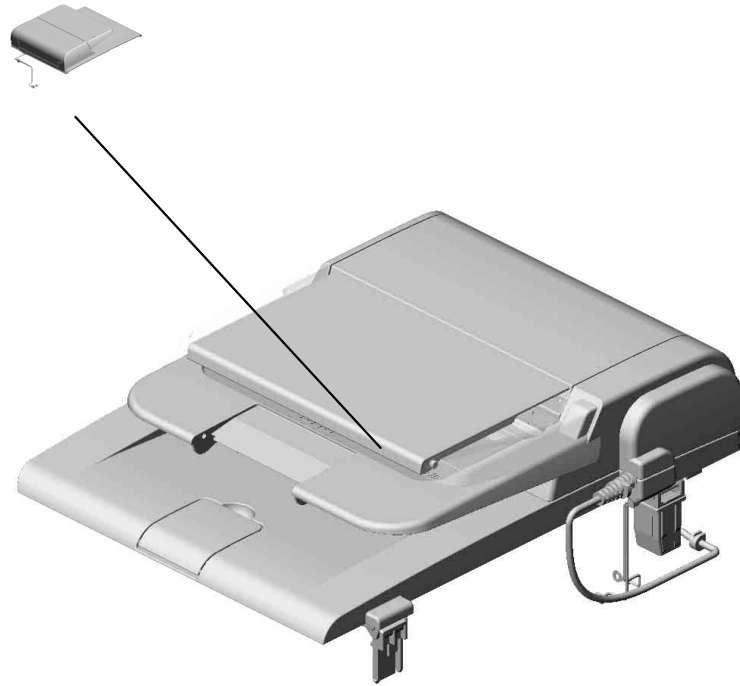
U002_S001
OPERATION PANEL:ASS'Y



U001	U002	U003	U004	U005	U006	U007	U008	U009	U010	U011	U012	U013	U014	U015	U016	U017
------	------	------	------	------	------	------	------	------	------	------	------	------	------	------	------	------

U003.ARDF:(for M119)

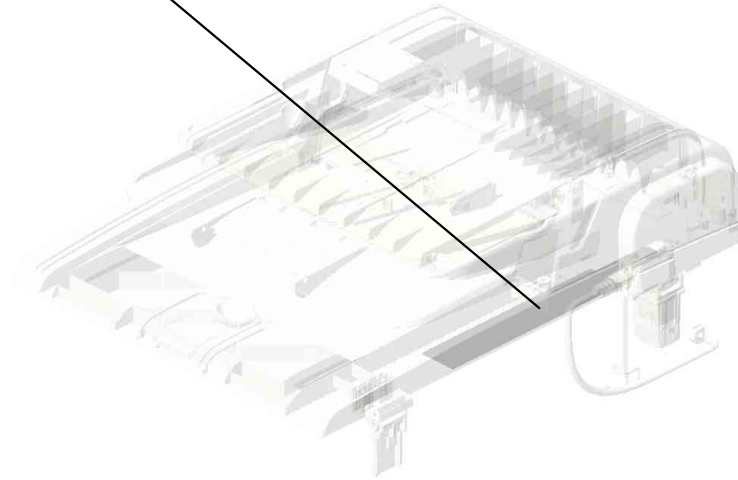
U003_S001
M1191631
ARDF:ASS'Y:(for M119)



U001	U002	U003	U004	U005	U006	U007	U008	U009	U010	U011	U012	U013	U014	U015	U016	U017
------	------	------	------	------	------	------	------	------	------	------	------	------	------	------	------	------

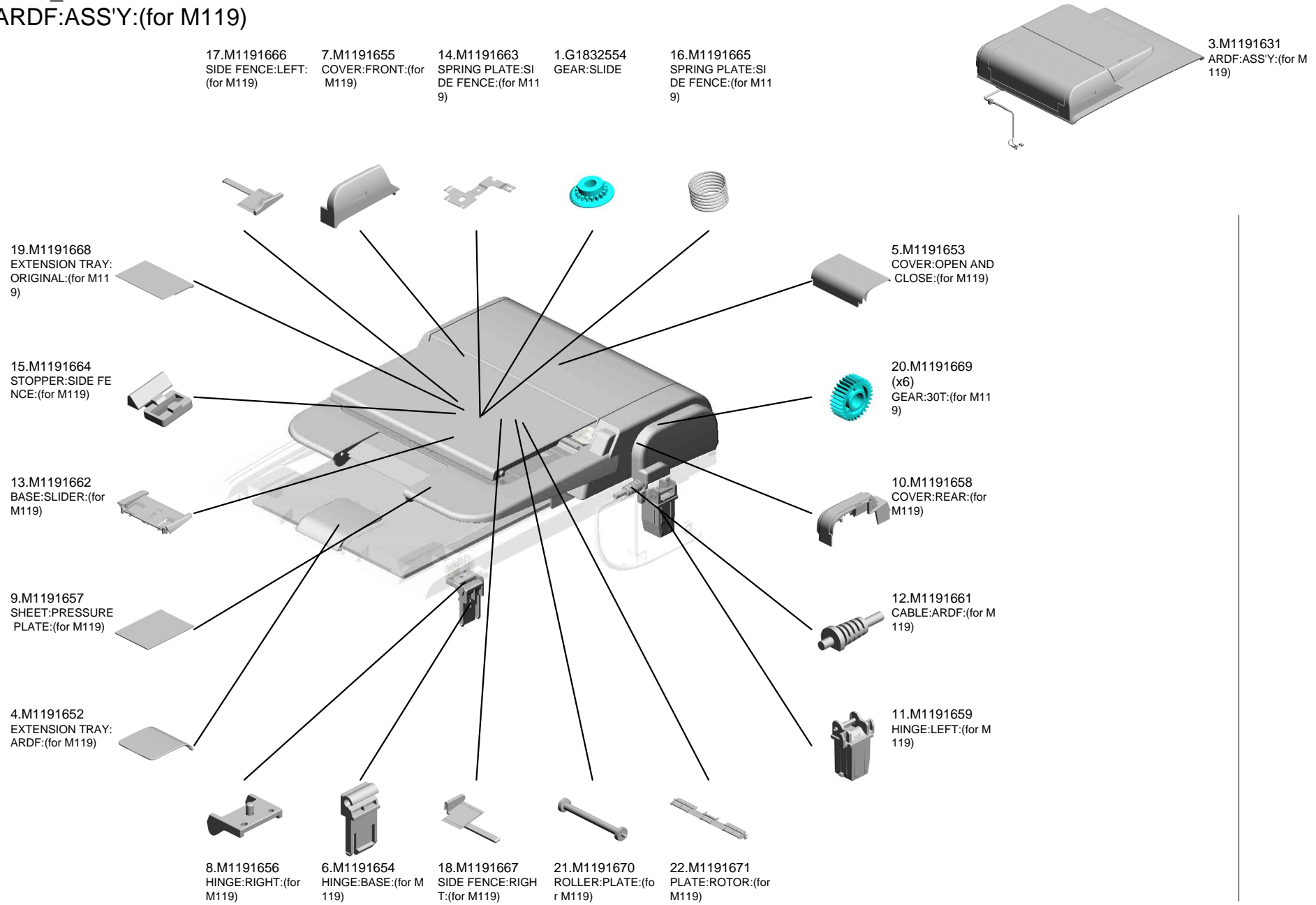
U003
ARDF:(for M119)

2.M0160454
DECAL:CAUTION:C
OPY:NA



U001	U002	U003	U004	U005	U006	U007	U008	U009	U010	U011	U012	U013	U014	U015	U016	U017
------	------	------	------	------	------	------	------	------	------	------	------	------	------	------	------	------

U003_S001
ARDF:ASS'Y:(for M119)



U003_S001
ARDF:ASS'Y:(for M119)

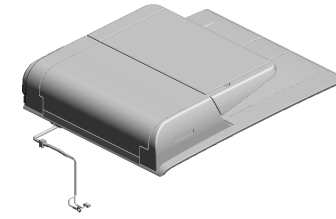
33.M1191683
(x4)
PLAIN SHAFT BEARING RING:(for M119)

34.M1191684
DISCHARGE BRUSH:(for M119)

24.M1191673
PLATE:(for M119)

38.M1191688
SPONGE:GUIDE:(for M119)

35.M1191685
GUIDE:MIDDLE:(for M119)



3.M1191631
ARDF:ASS'Y:(for M119)

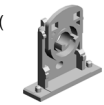
40.M1191690
COIL SPRING:EAR TH:(for M119)



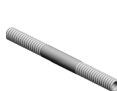
27.M1191676
(x6)
SPONGE:(for M119)



26.M1191675
FRAME:EXHAUST:(for M119)



31.M1191681
(x2)
COIL SPRING:SHAFT:(for M119)



23.M1191672
EXIT ROLLER:ARDF:(for M119)



30.M1191680
GUIDE:ORIGINAL:LOWER:(for M119)



32.M1191682
(x4)
ROLLER:TENSION:DUPLEX:(for M119)



28.M1191677
COIL SPRING:CAM LINK:(for M119)



39.M1191689
CAM:18T:(for M119)



25.M1191674
CABLE:(for M119)



36.M1191686
FEED ROLLER:ARDF:(for M119)



29.M1191679
COIL SPRING:TENSION:TRANSPORT ROLLER:(for M119)



37.M1191687
ARM:DUPLEX:(for M119)



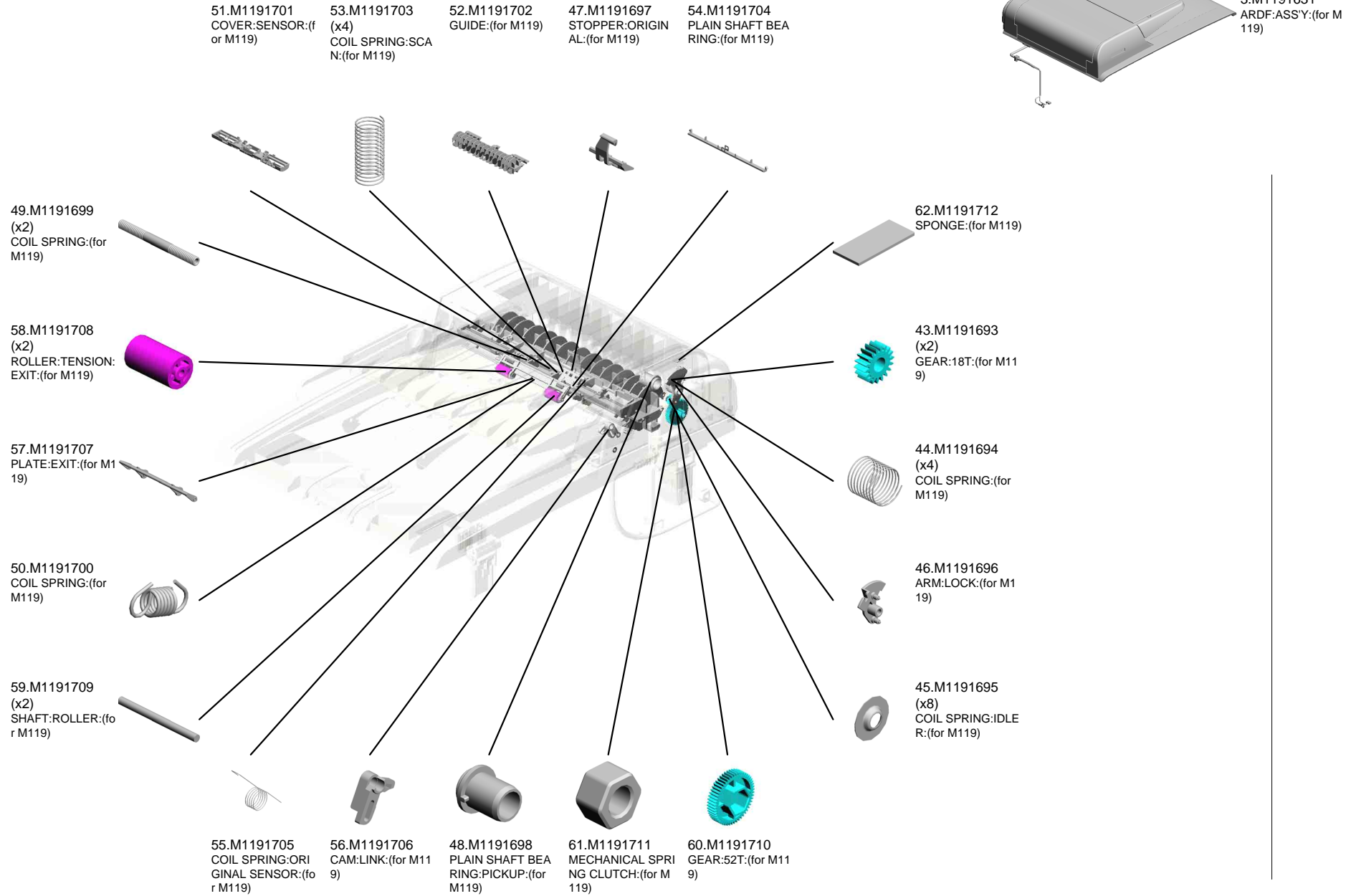
42.M1191692
ARM:(for M119)



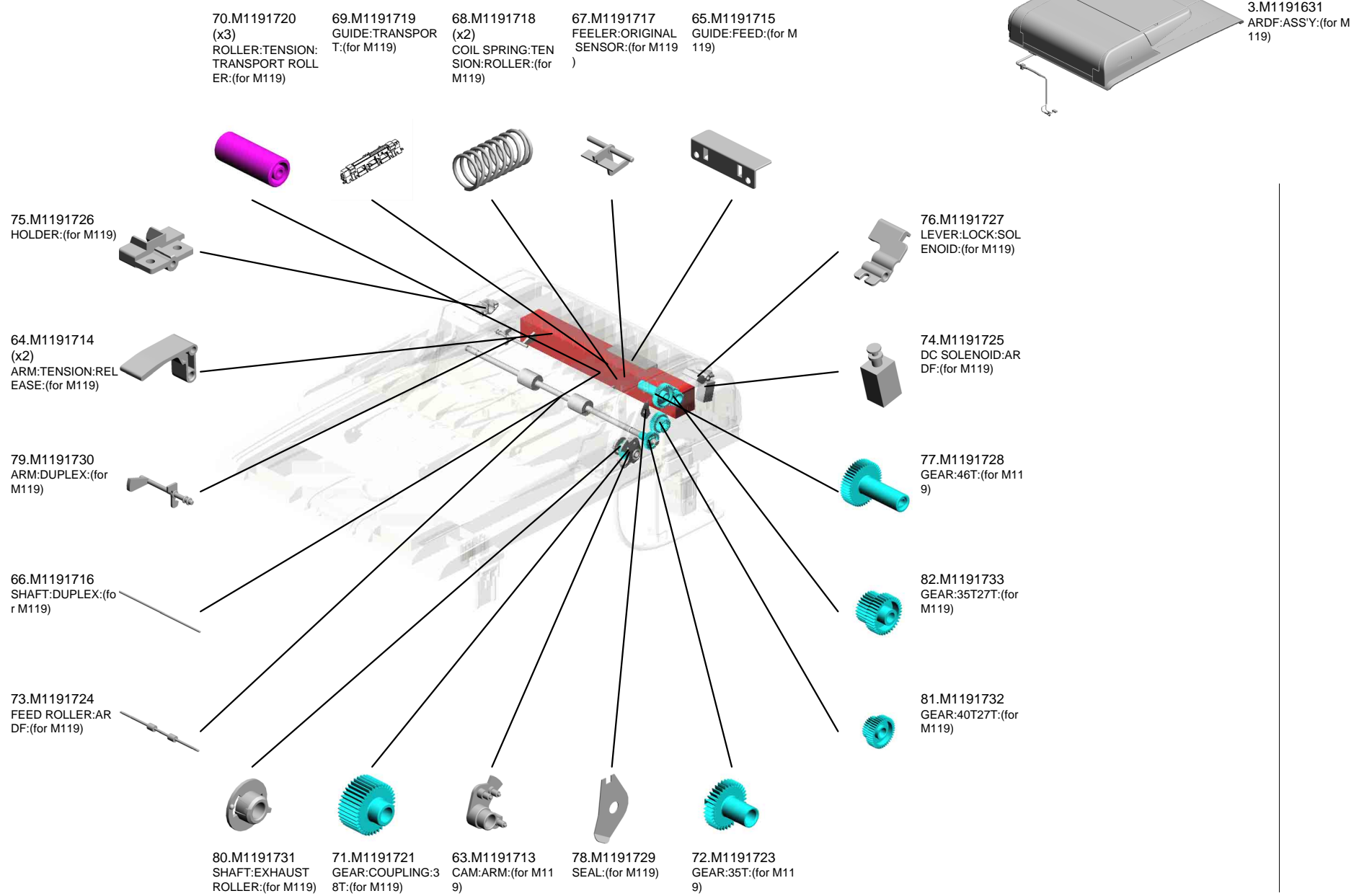
41.M1191691
GEAR:24T:(for M119)



U003_S001
ARDF:ASS'Y:(for M119)

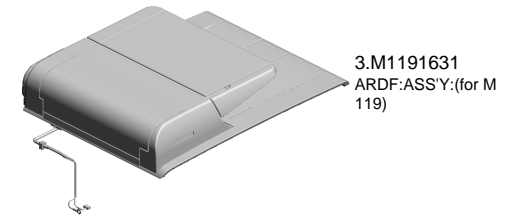


U003_S001
ARDF:ASS'Y:(for M119)



U003_S001
ARDF:ASS'Y:(for M119)

88.M1191739 SEPARATION UNIT :ARDF:ASS'Y:(for M119)
 91.M1191841 PCB:SET SENSOR:(for M119)
 92.M1191842 PCB:SENSOR:DUPLEX:(for M119)



3.M1191631
ARDF:ASS'Y:(for M119)

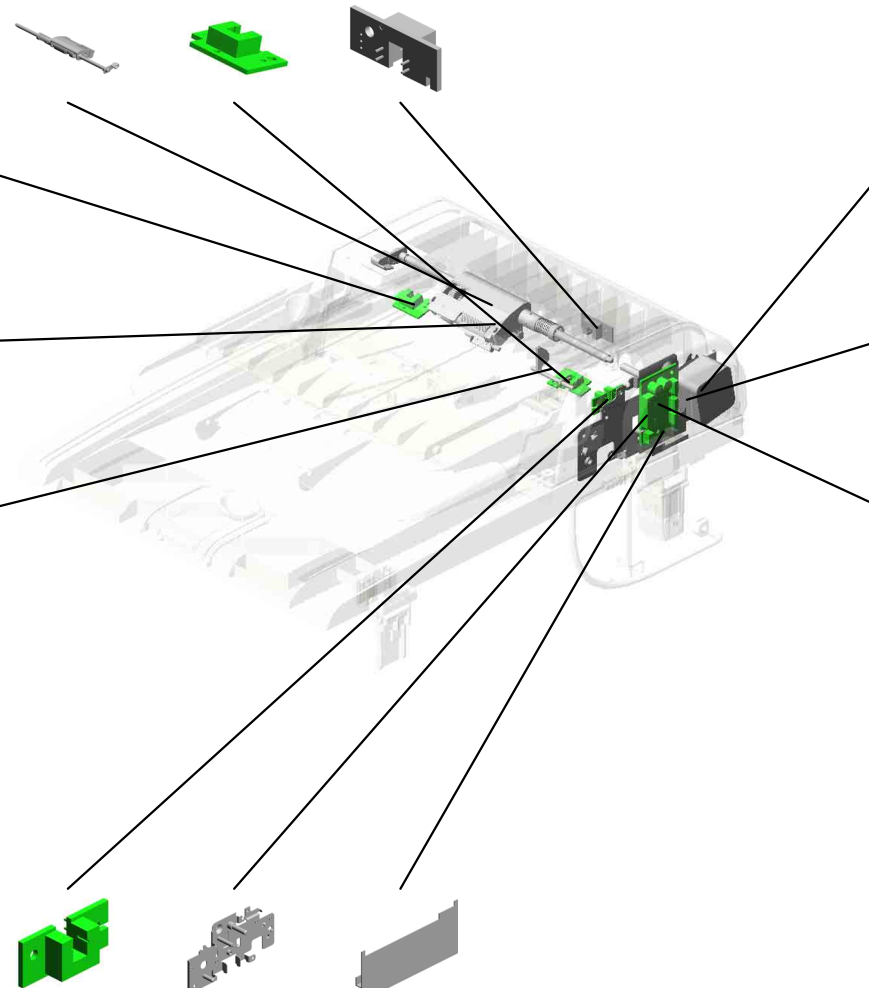
90.M1191840
PCB:FEED:SENSOR:(for M119)



89.M1191740
SEPARATION PAD:ARDF:ASS'Y:(for M119)



83.M1191734
ARM:ORIGINAL SENSOR:(for M119)



87.M1191738
DC STEPPER MOTOR:(for M119)



85.M1191736
GEAR:40T23T:(for M119)



94.M1191844
PCB:ARDF:(for M119)



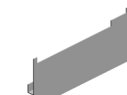
93.M1191843
PCB:ON OFF DETECTOR:(for M119)



86.M1191737
PLATE:DC STEPPER MOTOR:(for M119)



84.M1191735
SEAL:(for M119)



U004 ADF:(for M118)

- 4.G1832551 COIL SPRING:ARM :SENSOR:(for M118)
- 15.G1832566 FLANGE:BUSHING: GEAR:(for M118)
- 3.G1832550 ARM:SENSOR:(for M118)
- 2.G1831822 ADF DECAL - PICK-UP PAPER JAM:(for M118)
- 16.G1832567 FRAME:LOWER:(for M118)



13.G1832563 PCB:DIP:ADF:(for M118)

5.G1832552 (x2) SHEET:ADF:KILO:(for M118)

1.G1831775 HOOK:ADF:(for M118)

17.G1832569 COIL SPRING:PLATE:(for M118)

18.G1832570 PLATE:(for M118)

19.G1832571 (x2) SHEET:GUIDE:(for M118)

12.G1832562 COVER:EXIT:(for M118)

10.G1832560 SHAFT:DRIVEN ROLLER:EXIT:(for M118)

11.G1832561 (x2) COIL SPRING:EXIT:(for M118)

20.G1832572 (x4) FLANGE:BUSHING:(for M118)

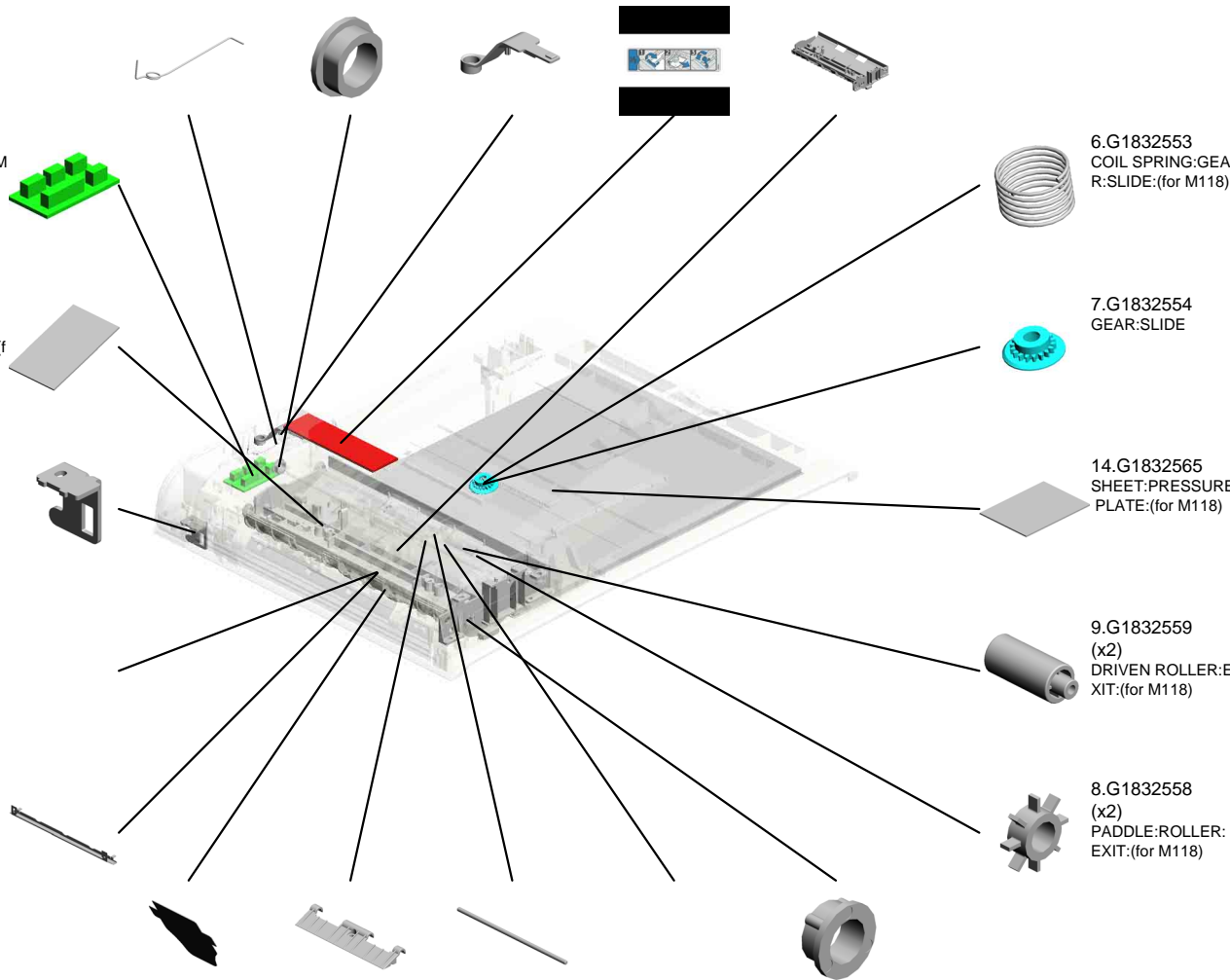
6.G1832553 COIL SPRING:GEAR:SLIDE:(for M118)

7.G1832554 GEAR:SLIDE

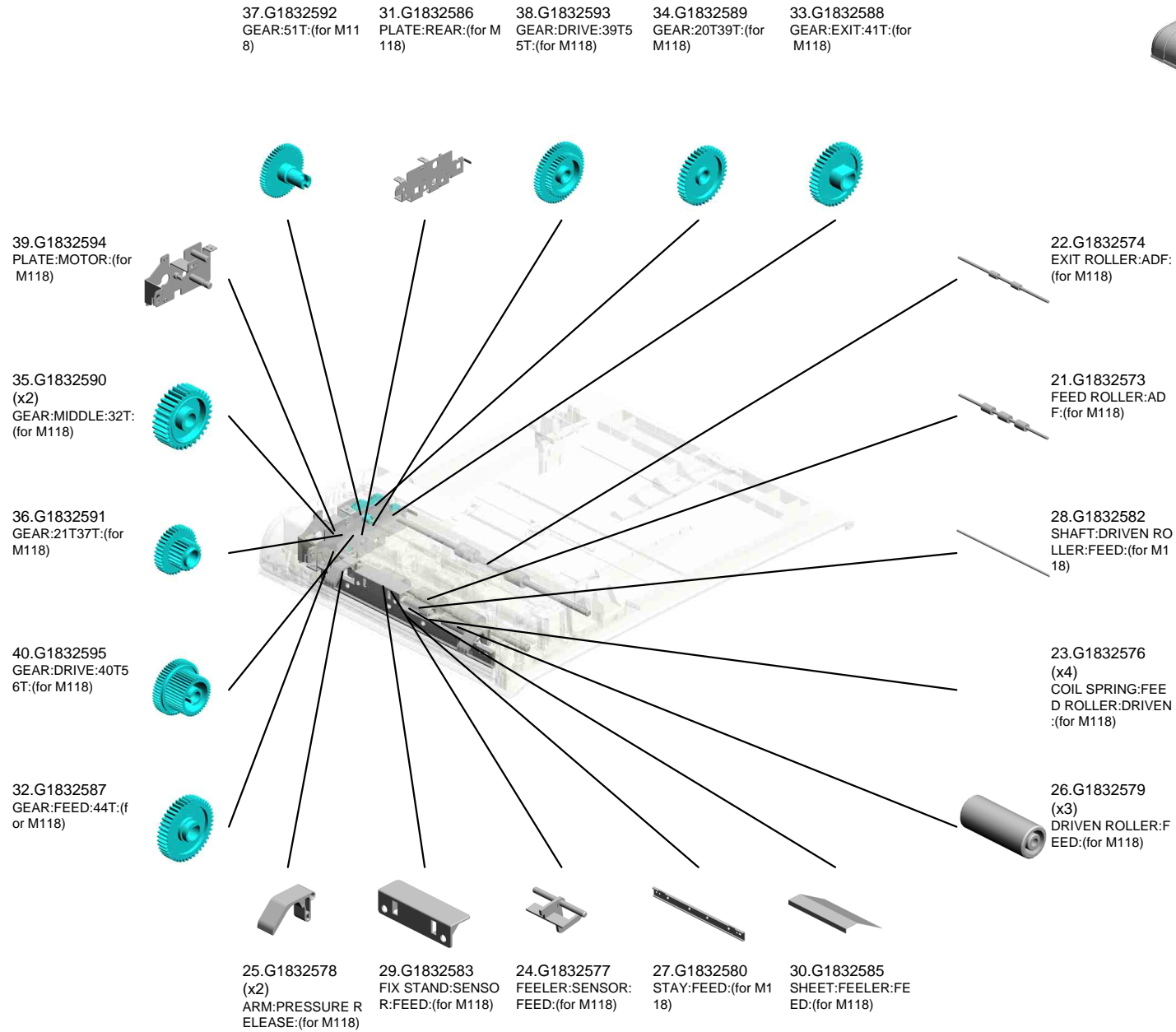
14.G1832565 SHEET:PRESSURE PLATE:(for M118)

9.G1832559 (x2) DRIVEN ROLLER:EXIT:(for M118)

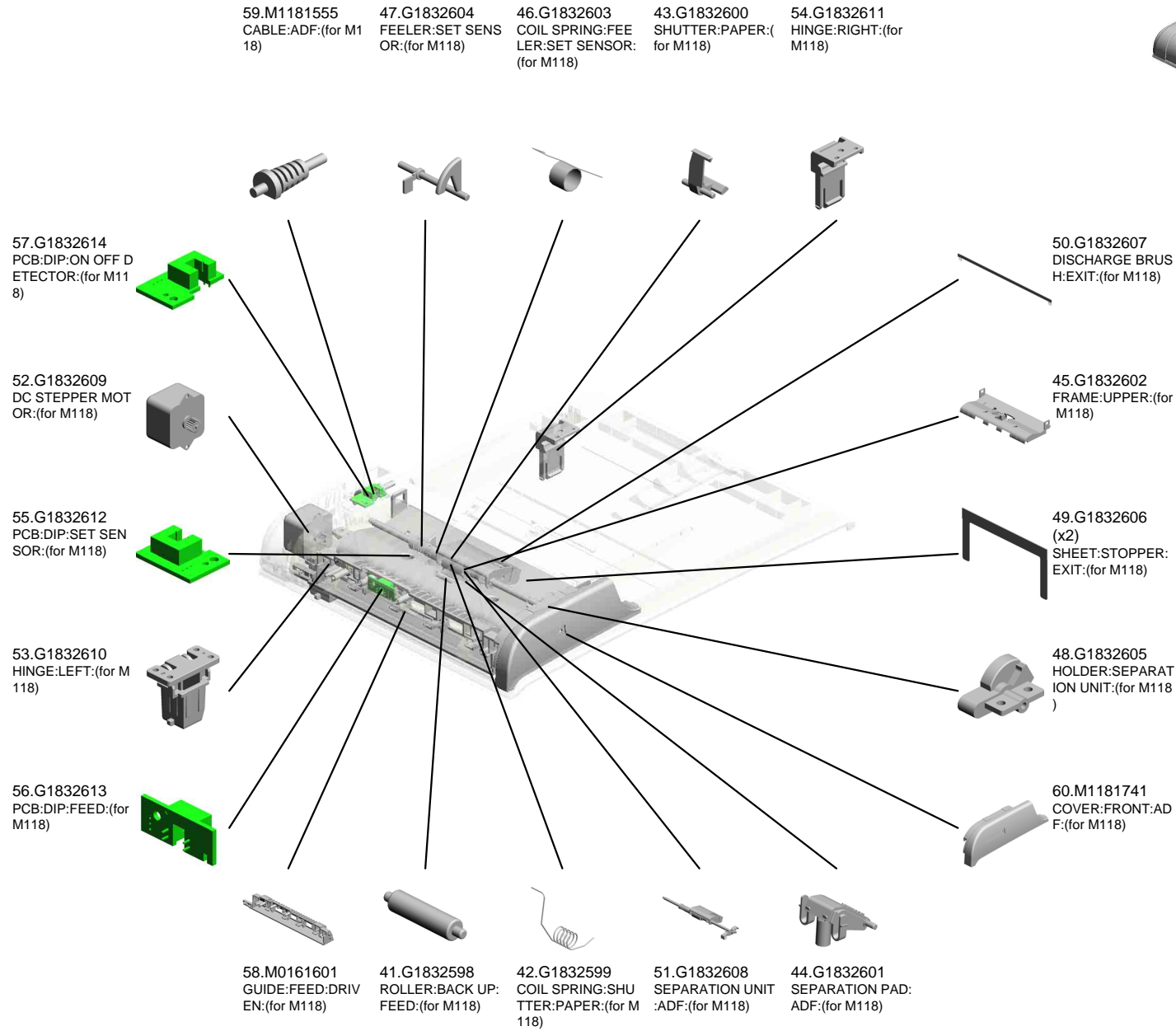
8.G1832558 (x2) PADDLE:ROLLER:EXIT:(for M118)



U004 ADF:(for M118)



U004
ADF:(for M118)



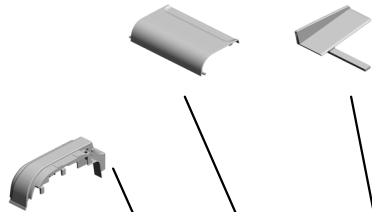
U004
ADF:(for M118)

66.M1182564
COVER:ADF:(for M
118)

62.M1181744
SIDE FENCE:RIGH
T:(for M118)

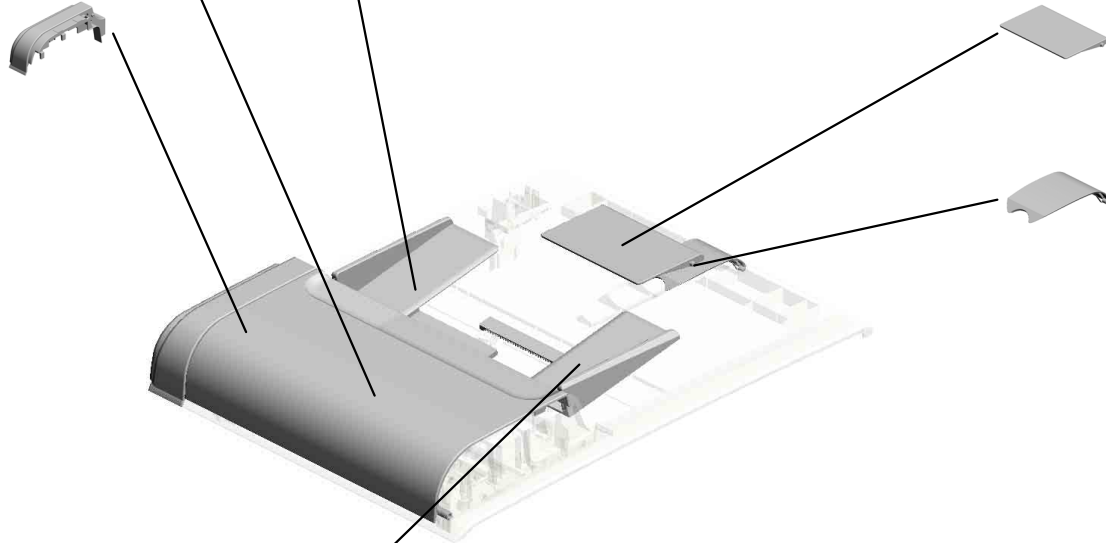


61.M1181742
COVER:REAR:ADF:
(for M118)



64.M1181746
EXTENSION TRAY:
ADF:(for M118)

65.M1181747
PAPER STOPPER:
ADF:(for M118)

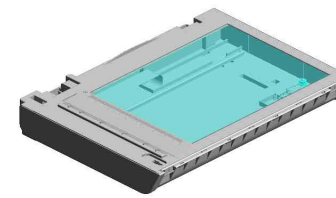


63.M1181745
SIDE FENCE:LEFT:
(for M118)

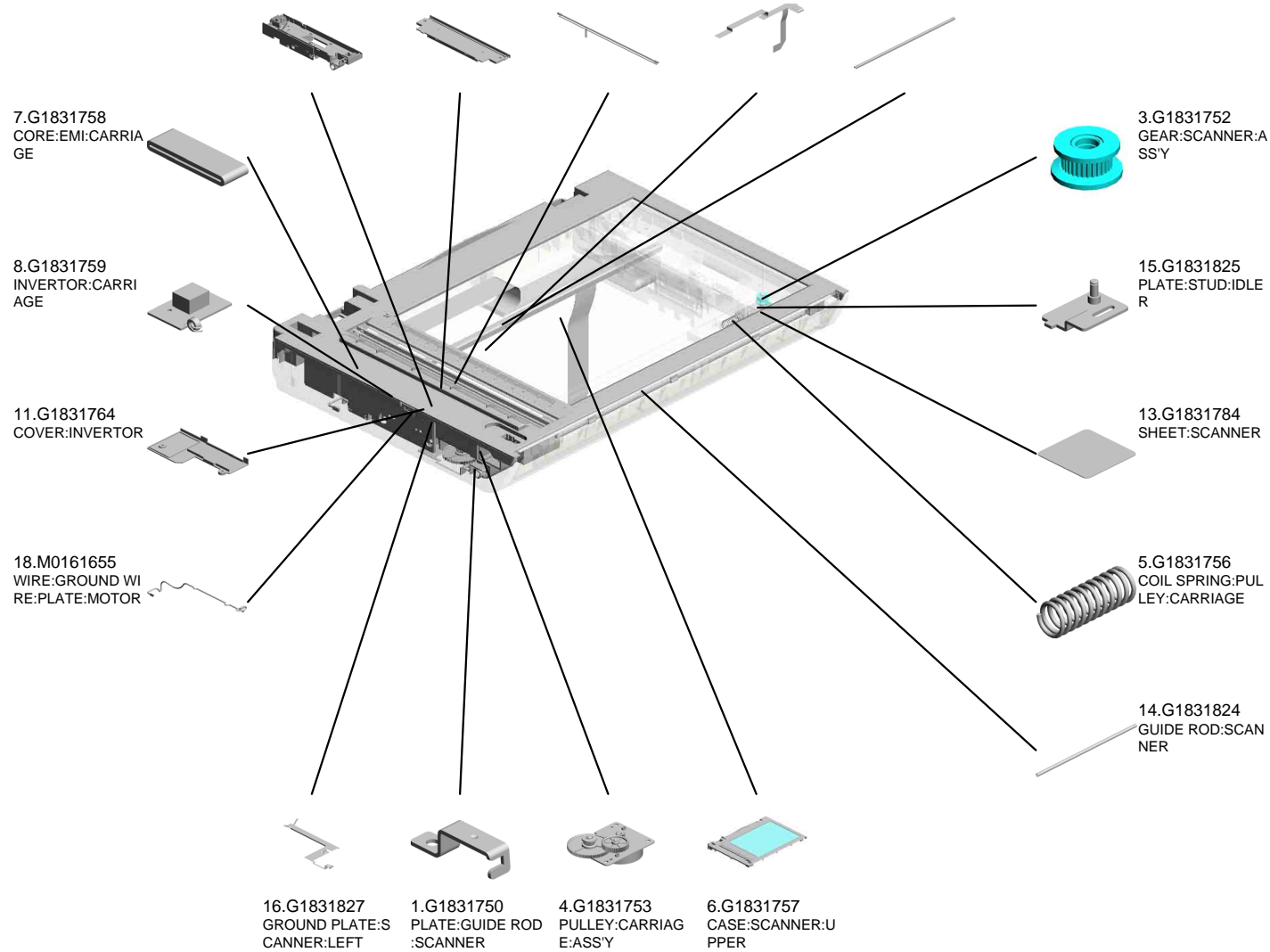


U001	U002	U003	U004	U005	U006	U007	U008	U009	U010	U011	U012	U013	U014	U015	U016	U017
------	------	------	-------------	------	------	------	------	------	------	------	------	------	------	------	------	------

U005 SCANNER



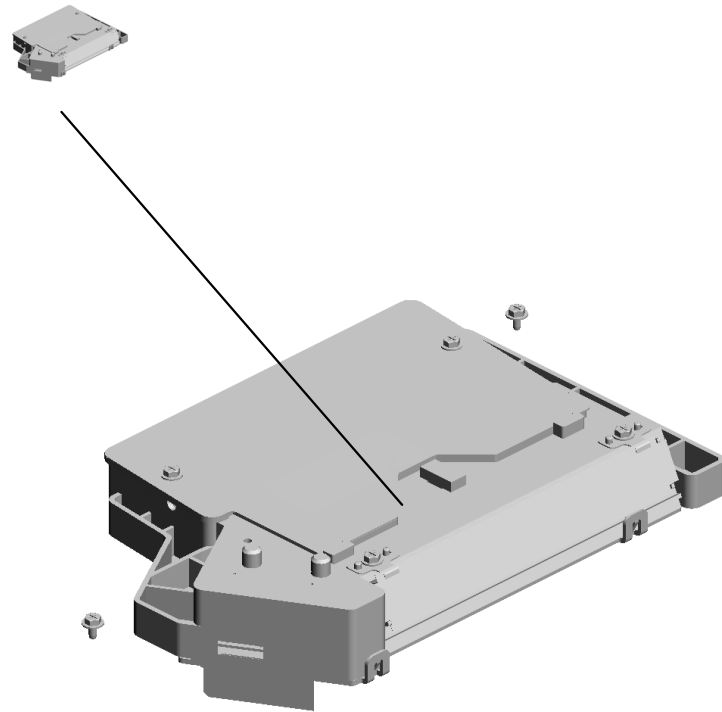
- 12.G1831765 CCD:MODULE:ASSY
- 9.G1831761 COVER:CARRIAGE:UPPER
- 10.G1831762 FLUORESCENT TUBE:CARRIAGE
- 17.M0161654 FLAT CABLE:CARRIAGE
- 2.G1831751 SLIDE RAIL:CARRIAGE



U001	U002	U003	U004	U005	U006	U007	U008	U009	U010	U011	U012	U013	U014	U015	U016	U017
------	------	------	------	------	------	------	------	------	------	------	------	------	------	------	------	------

U006.LASER UNIT

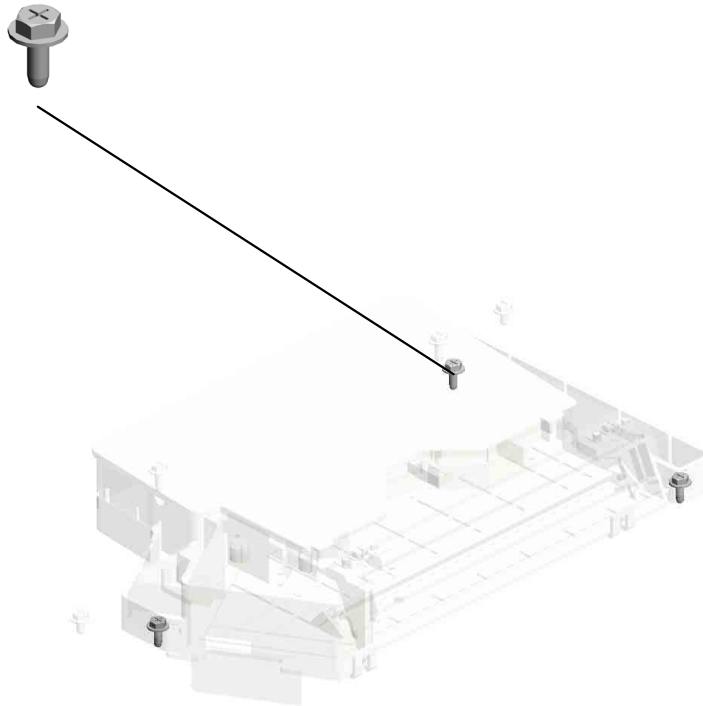
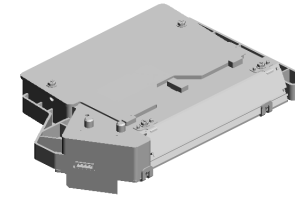
U006_S001
M1171851
IMAGING UNIT:ASS'Y



U001	U002	U003	U004	U005	U006	U007	U008	U009	U010	U011	U012	U013	U014	U015	U016	U017
------	------	------	------	------	-------------	------	------	------	------	------	------	------	------	------	------	------

U006
LASER UNIT

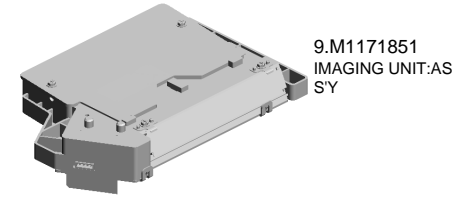
3.04543008Q
(x3)
TAPPING SCREW:
3X8



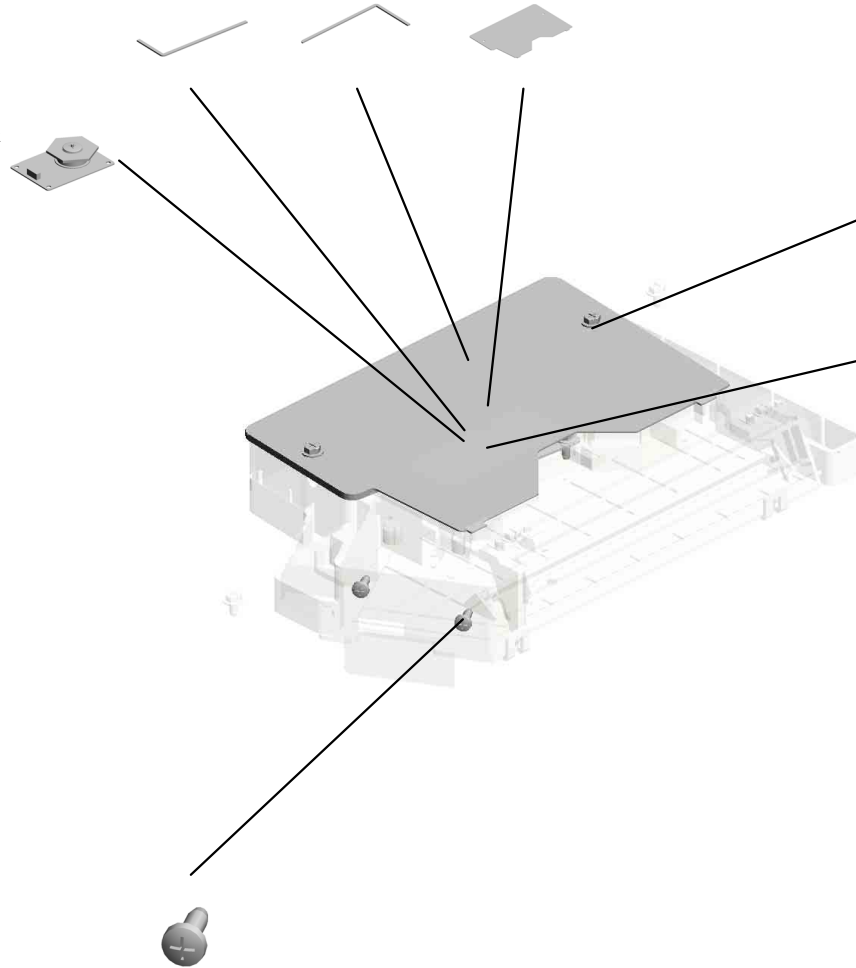
U001	U002	U003	U004	U005	U006	U007	U008	U009	U010	U011	U012	U013	U014	U015	U016	U017
------	------	------	------	------	-------------	------	------	------	------	------	------	------	------	------	------	------

U006_S001
IMAGING UNIT:ASS'Y

8.M0121980 SEAL:COVER:NO.1
7.M0121979 SEAL:COVER:NO.2
5.M0121908 COVER:OPTICAL UNIT



6.M0121957
POLYGON MOTOR
:DC 18W



1.04503008N
(x6)
TAPPING SCREW -
M3X8

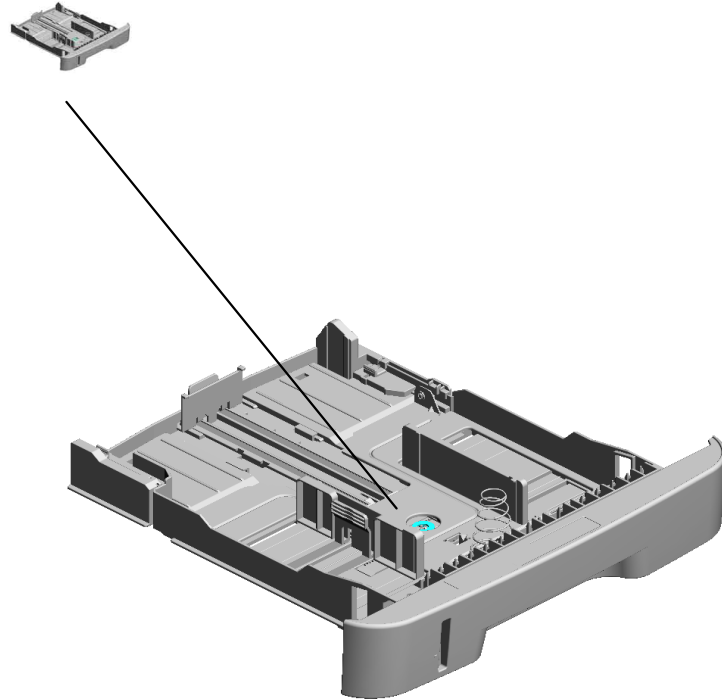


2.04523008N
(x2)
TAPPING SCREW -
M3X8

U001	U002	U003	U004	U005	U006	U007	U008	U009	U010	U011	U012	U013	U014	U015	U016	U017
------	------	------	------	------	------	------	------	------	------	------	------	------	------	------	------	------

U007.PAPER TRAY

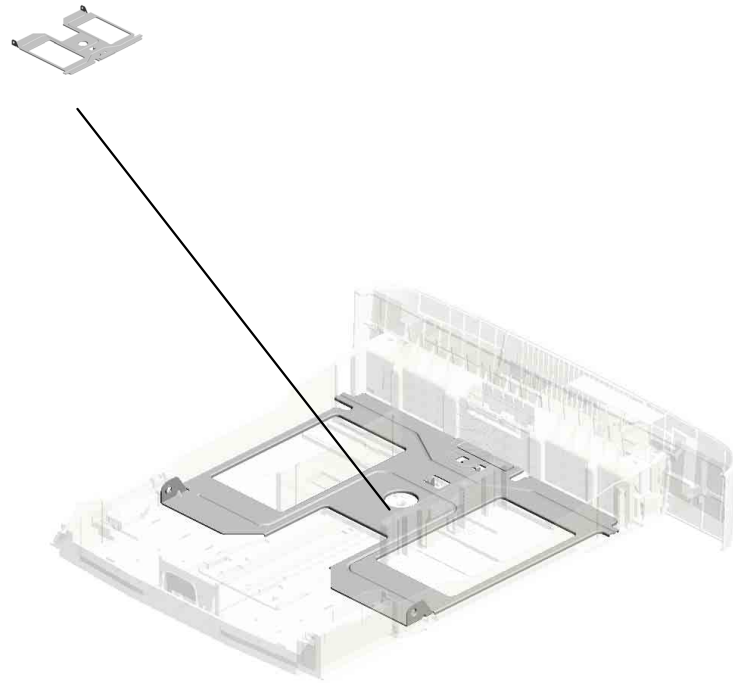
U007_S001
M0122504
PAPER TRAY:ASSY



U001	U002	U003	U004	U005	U006	U007	U008	U009	U010	U011	U012	U013	U014	U015	U016	U017
------	------	------	------	------	------	------	------	------	------	------	------	------	------	------	------	------

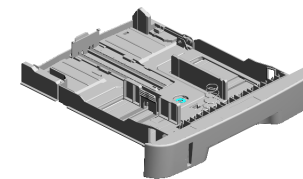
U007_S001.PAPER TRAY:ASS'Y

U007_S001_S001
M0122610
TRAY BOTTOM PLATE



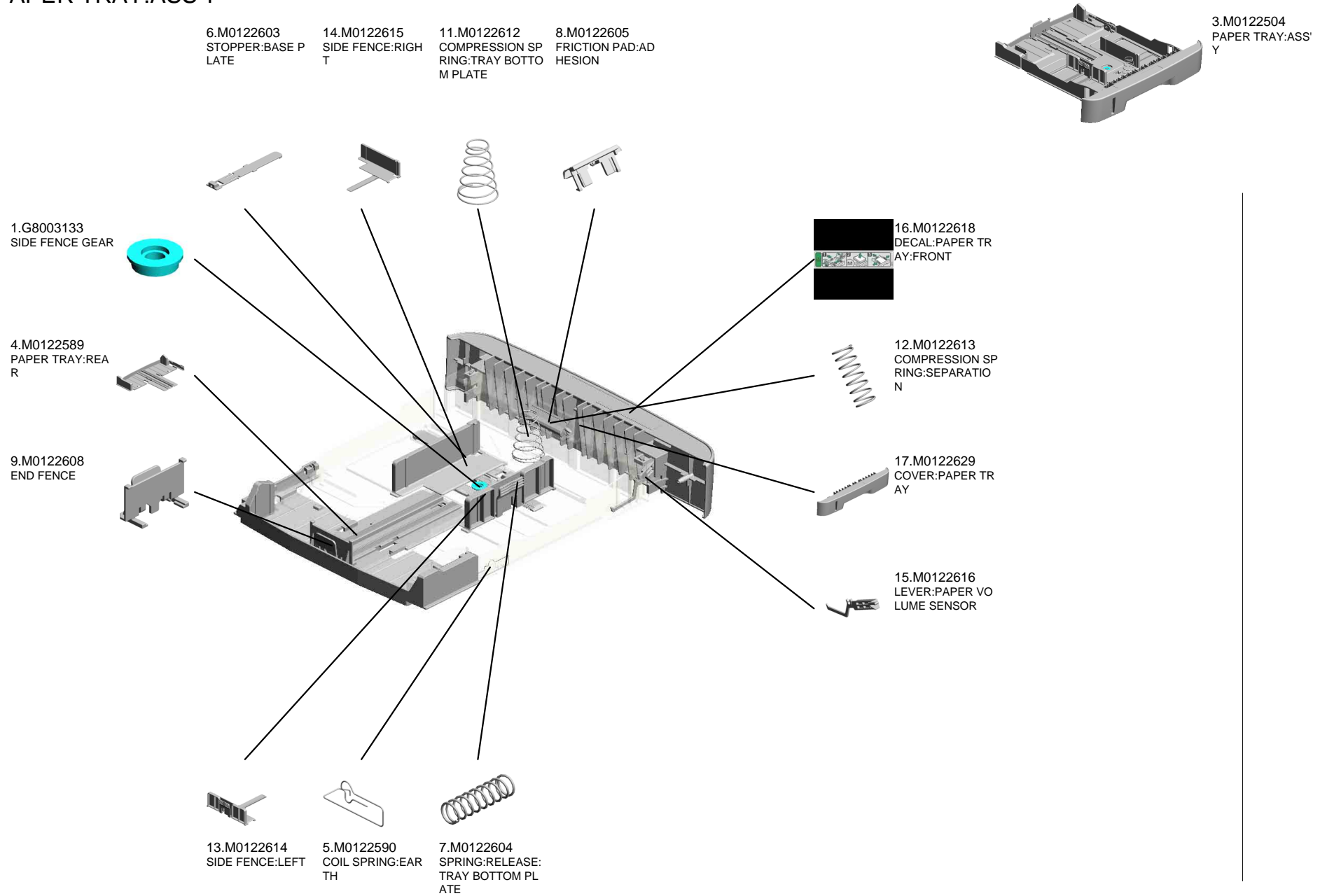
U001	U002	U003	U004	U005	U006	U007	U008	U009	U010	U011	U012	U013	U014	U015	U016	U017
------	------	------	------	------	------	------	------	------	------	------	------	------	------	------	------	------

U007
PAPER TRAY



U001	U002	U003	U004	U005	U006	U007	U008	U009	U010	U011	U012	U013	U014	U015	U016	U017
------	------	------	------	------	------	------	------	------	------	------	------	------	------	------	------	------

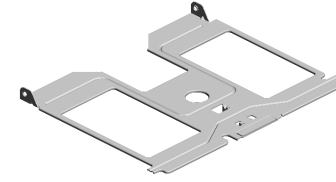
U007_S001 PAPER TRAY:ASS'Y



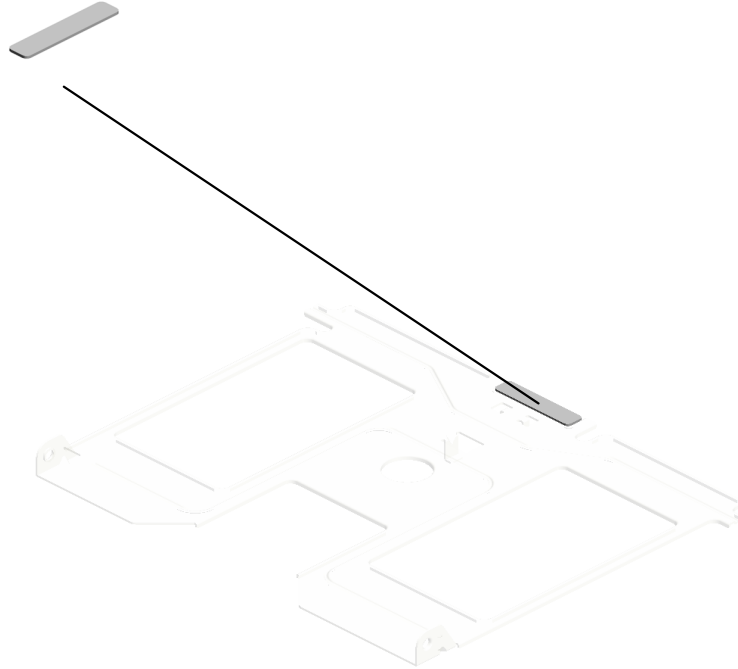
U001	U002	U003	U004	U005	U006	U007	U008	U009	U010	U011	U012	U013	U014	U015	U016	U017
------	------	------	------	------	------	------	------	------	------	------	------	------	------	------	------	------

U007_S001_S001
TRAY BOTTOM PLATE

2.GF013001
BOTTOM PLATE P
AD



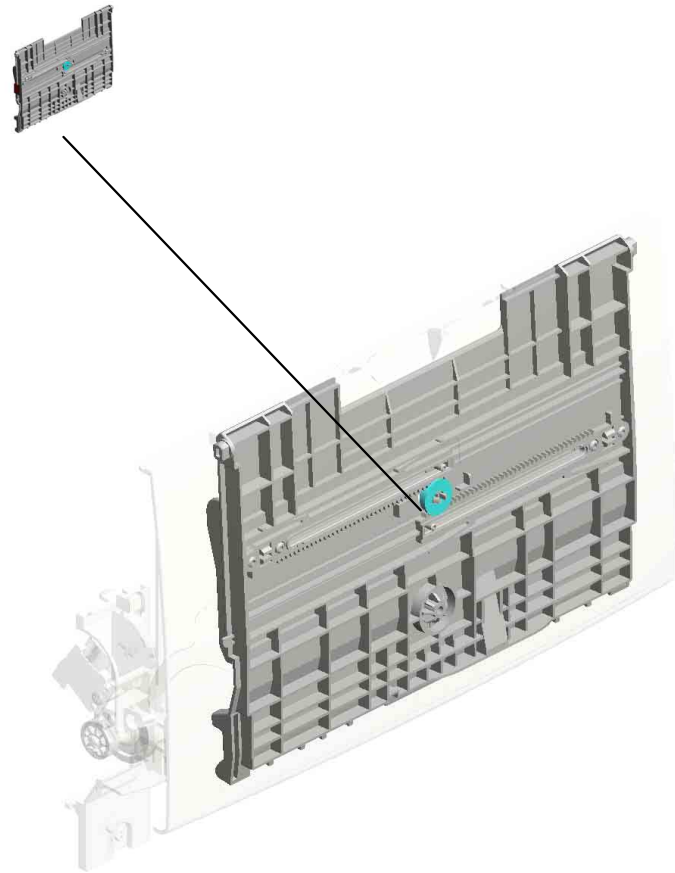
10.M0122610
TRAY BOTTOM PL
ATE



U001	U002	U003	U004	U005	U006	U007	U008	U009	U010	U011	U012	U013	U014	U015	U016	U017
------	------	------	------	------	------	------	------	------	------	------	------	------	------	------	------	------

U008.BY-PASS FEED

U008_S001
M0122868
MANUAL FEED TABLE:SUB-A
SS'Y



U001	U002	U003	U004	U005	U006	U007	U008	U009	U010	U011	U012	U013	U014	U015	U016	U017
------	------	------	------	------	------	------	-------------	------	------	------	------	------	------	------	------	------

U008 BY-PASS FEED

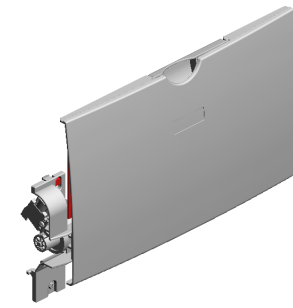
27.M0162815
DECAL:FEED PAPER AGAIN:PREVENTION

12.M0122806
SHEET:GUIDE:MANUAL FEED SUB-UNIT

19.M0122860
PAPER FEED ROLLER:MANUAL FEED

21.M0122870
COVER:MANUAL FEED TABLE

25.M0122879
EXTENSION TRAY:MANUAL FEED



3.AA143520
SHOULDER SCREW - M3



16.M0122831
DC SOLENOID:9.6W:24V



7.G1022717
COVER:DC SOLENOID



15.M0122830
MECHANICAL SPRING CLUTCH:MANUAL FEED



2.04523010N
BINDING SELF-TAPPING SCREW:3X10



11.M0122805
GUIDE PLATE:MANUAL FEED:LOWER



26.M0122880
COMPRESSION SPRING:SEPARATION



13.M0122816
FRICTION PAD:HOLDER:MANUAL FEED:ASSY



18.M0122859
GUIDE PLATE:UPPER:MANUAL FEED



6.G0292767
BY-PASS FEED COVER



4.AW020198
PHOTO INTERRUPTOR:LG2A14NL1



9.G1022789
STOPPER:PHOTO INTERRUPTOR



14.M0122824
FEELER:MANUAL FEED



1.04513006N (x3)
TAPPING SCREW - 3X6

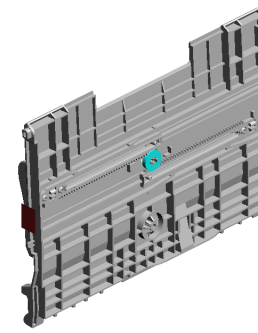


22.M0122874
COMPRESSION SPRING:MANUAL FEED



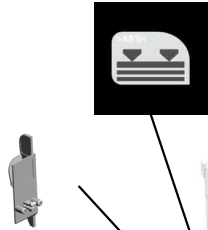
U008_S001
 MANUAL FEED TABLE:SUB-ASS'Y

17.M0122833 5.G0123050
 DECAL:SIDE FENC SIDE FENCE GEAR
 E:MANUAL FEED



20.M0122868
 MANUAL FEED TA
 BLE:SUB-ASS'Y

23.M0122875
 SIDE FENCE:MAN
 UAL FEED:RIGHT



8.G1022755
 (x2)
 RACK:SIDE FENCE
 :REAR



24.M0122877
 SIDE FENCE:MAN
 UAL FEED:LEFT



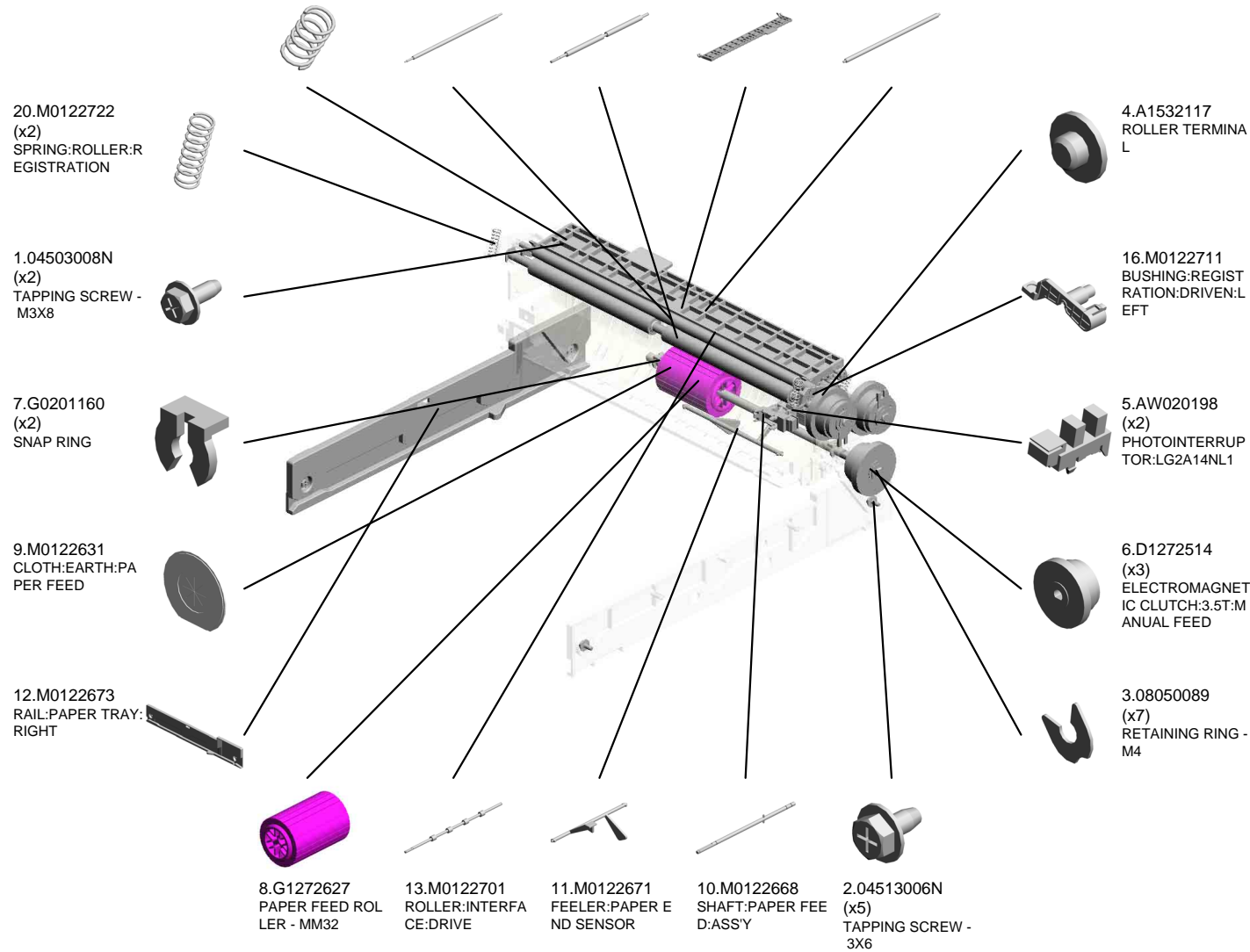
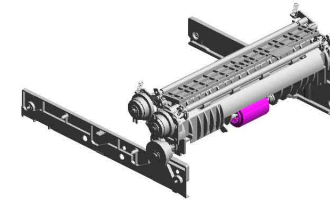
10.GF013001
 BOTTOM PLATE P
 AD



U001	U002	U003	U004	U005	U006	U007	U008	U009	U010	U011	U012	U013	U014	U015	U016	U017
------	------	------	------	------	------	------	------	------	------	------	------	------	------	------	------	------

U009 PAPER FEED

- 15.M0122705 (x2) SPRING:ROLLER
- 19.M0122719 REGISTRATION ROLLER:DRIVEN
- 18.M0122718 REGISTRATION ROLLER:DRIVE
- 17.M0122715 GUIDE PLATE:TRANSPORT:UPPER
- 14.M0122702 ROLLER:INTERFACE:DRIVEN



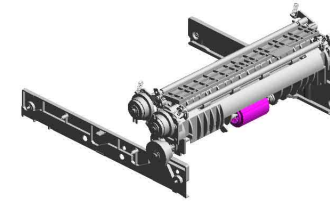
U009 PAPER FEED

28.M0122745
GROUND PLATE:D
RIVEN

26.M0122743
DECAL:GUIDE PLA
TE:TRANSPORT:U
PPER

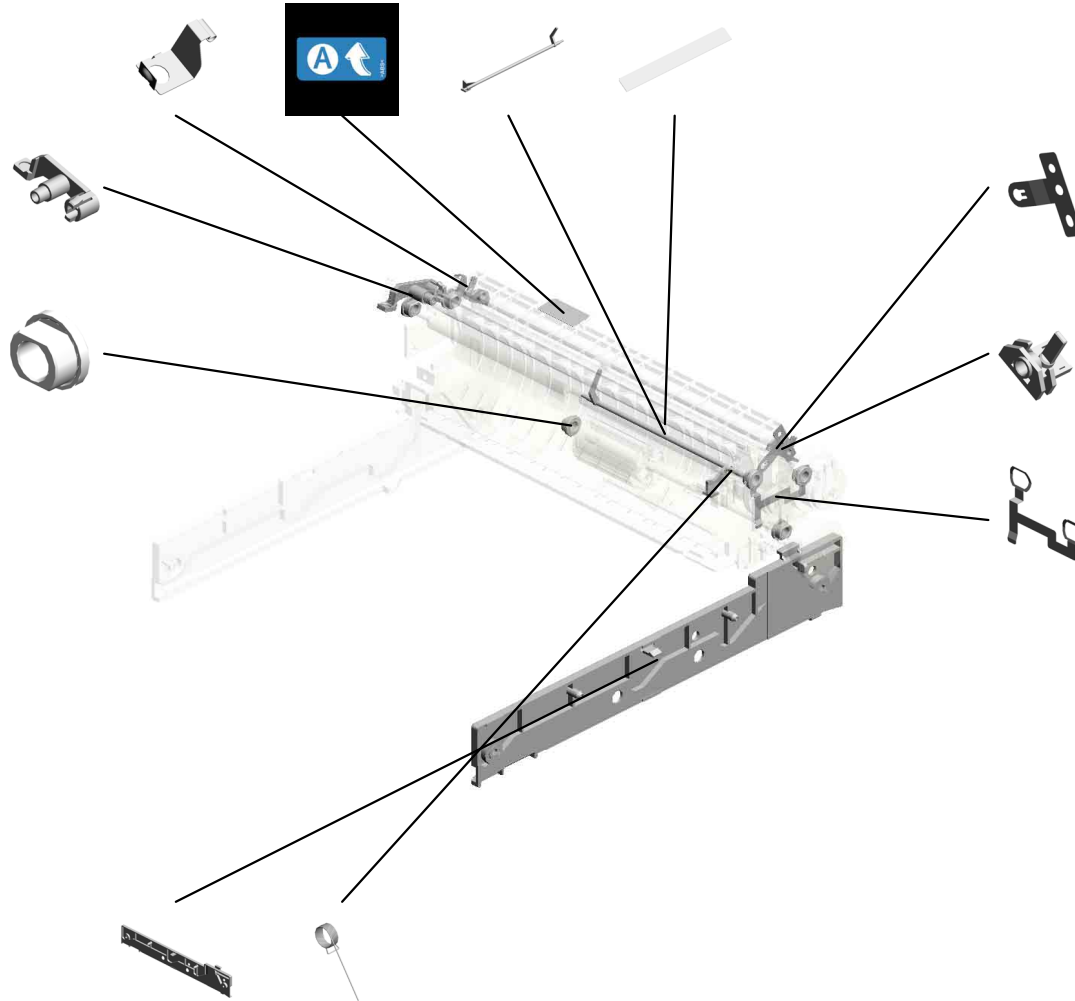
21.M0122723
FEELER:REGISTR
ATION:SENSOR

27.M0122744
(x2)
GUIDE:REGISTRAT
ION



23.M0122730
BUSHING:REGIST
RATION:DRIVEN:RI
GHT

30.M0124488
(x6)
BUSHING:DIA6XDI
A10X6



25.M0122742
GROUND PLATE:D
RIVEN:REGISTRAT
ION ROLLER

29.M0122753
(x2)
BUSHING:ROLLER:
DRIVEN

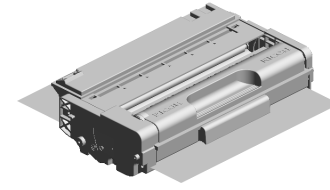
24.M0122741
GROUND PLATE:D
RIVE:REGISTRATI
ON ROLLER

31.M1162672
RAIL:PAPER TRAY:
LEFT

22.M0122725
SPRING:FEELER:R
EGISTRATION

U001	U002	U003	U004	U005	U006	U007	U008	U009	U010	U011	U012	U013	U014	U015	U016	U017
------	------	------	------	------	------	------	------	------	------	------	------	------	------	------	------	------

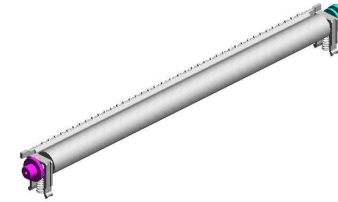
U010
PCU



U001	U002	U003	U004	U005	U006	U007	U008	U009	U010	U011	U012	U013	U014	U015	U016	U017
------	------	------	------	------	------	------	------	------	------	------	------	------	------	------	------	------

U011 TRANSFER/SEPARATION

1.M0126252 BUSHING:TRANSFER ROLLER:RIGHT
8.M1016250 TRANSFER ROLLER



4.M0126255 GEAR:TRANSFER ROLLER



3.M0126254 (x2) SPRING:TRANSFER ROLLER



5.M0126256 ROLLER:POSITIONING:TRANSFER ROLLER



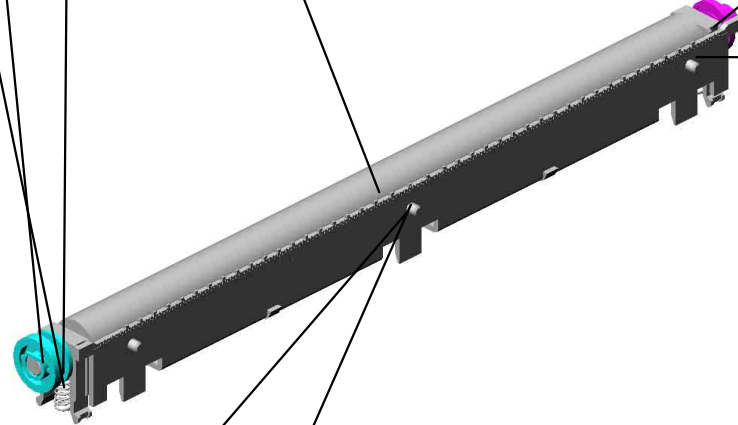
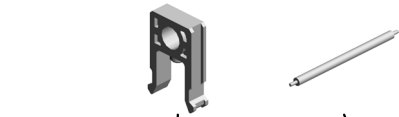
2.M0126253 BUSHING:TRANSFER ROLLER:LEFT



7.M0126260 COVER:ELECTRODE PLATE



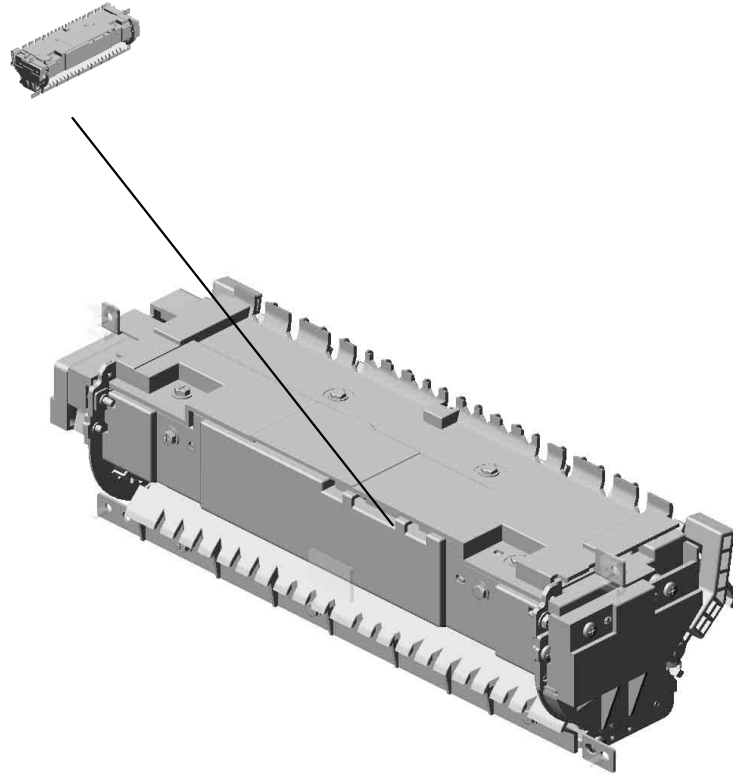
6.M0126259 ELECTRODE PLATE:SEPARATION



U001	U002	U003	U004	U005	U006	U007	U008	U009	U010	U011	U012	U013	U014	U015	U016	U017
------	------	------	------	------	------	------	------	------	------	------	------	------	------	------	------	------

U012.FUSING

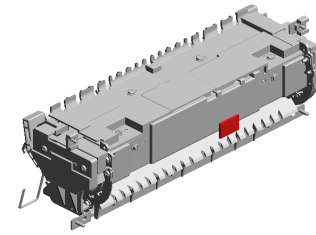
U012_S001
M1164030
FUSING UNIT:NA:ASS'Y



U001	U002	U003	U004	U005	U006	U007	U008	U009	U010	U011	U012	U013	U014	U015	U016	U017
------	------	------	------	------	------	------	------	------	------	------	------	------	------	------	------	------

U012 FUSING

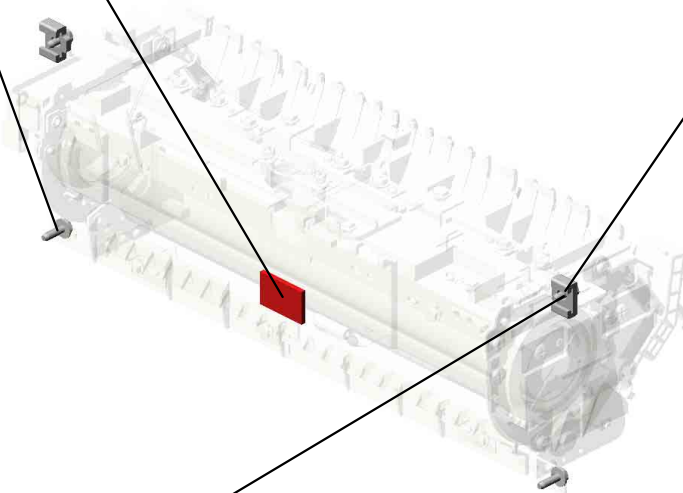
50.M0124699
DECAL:WARNING (HIGH TEMPERATURE):FRONT



2.04503010N
(x2)
TAPPING SCREW - M3X10



4.04513008N
(x2)
TAPPING SCREW - M3X8



39.M0124270
(x2)
THERMAL INSULATING BUSHING:FUSING UNIT



U001	U002	U003	U004	U005	U006	U007	U008	U009	U010	U011	U012	U013	U014	U015	U016	U017
------	------	------	------	------	------	------	------	------	------	------	------	------	------	------	------	------

U012_S001
FUSING UNIT:NA:ASS'Y

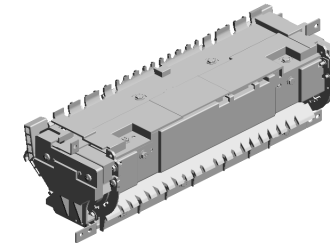
20.M0124186
COVER:LEFT UPPER:ASS'Y

6.07200040E
(x2)
RETAINING RING - M4

3.04513006N
TAPPING SCREW - 3X6

17.M0124120
(x3)
TENSION SPRING: PICKOFF PAWL

1.03603006N
(x11)
SCREW - M3X6



51.M1164030
FUSING UNIT:NA:ASS'Y

7.08025318
(x4)
BINDING HEAD TAPPING SCREW:ES: 3X10

14.M0124053
GEAR:HOT ROLLER

15.M0124055
(x2)
RADIAL BALL BEARING:35X47X7

21.M0124202
(x2)
LEVER:PRESSURE

4.04513008N
(x4)
TAPPING SCREW - M3X8

12.AW110058
THERMOSTAT:177

9.09543010N
SCREW:POLISHED ROUND/SPRING:M 3X10

18.M0124123
HEATER:700W:120V

10.AA143520
(x7)
SHOULDER SCREW - M3

5.04533006N
(x6)
TAPPING SCREW - M3X6

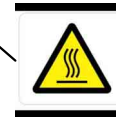
19.M0124135
FEELER:PAPER FEED SENSOR

8.08046127
(x4)
HEXAGONAL BOLT :DOUBLE SCREW: M3X8

16.M0124109
SPRING:FEELER:EXIT

11.AW020198
PHOTOINTERRUPTOR:LG2A14NL1

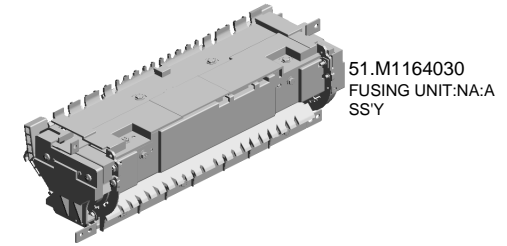
13.G1274328
DECAL - HIGH TEMPERATURE



U001	U002	U003	U004	U005	U006	U007	U008	U009	U010	U011	U012	U013	U014	U015	U016	U017
------	------	------	------	------	------	------	------	------	------	------	------	------	------	------	------	------

U012_S001
FUSING UNIT:NA:ASS'Y

- 34.M0124229 (x2) TENSION SPRING: FUSING:PRESSURE
- 25.M0124208 (x3) BRACKET:GATE PAWL
- 35.M0124234 HOUSING:THERMOSTAT:ASS'Y
- 37.M0124263 THERMISTOR:FUSING
- 32.M0124220 HOT ROLLER



40.M0124276 COVER:LEFT:LOWER:FUSING



24.M0124206 (x3) STRIPPER PAWLS



30.M0124216 (x2) TENSION SPRING: FUSING:GUIDE PLATE



22.M0124204 LEVER:LEFT:FRAME:FUSING



27.M0124212 FUSING ENTRANCE GUIDE PLATE:UPPER



31.M0124217 FUSING ENTRANCE GUIDE PLATE:LOWER



41.M0124279 CLEANING ROLLER:ASS'Y



36.M0124253 PRESSURE ROLLER:DIA30



23.M0124205 LEVER:RIGHT:FRAME:FUSING



28.M0124213 (x2) BUSHING:PRESSURE ROLLER



29.M0124215 GUIDE PLATE:EXIT



38.M0124266 COVER:RIGHT:LOWER:FUSING



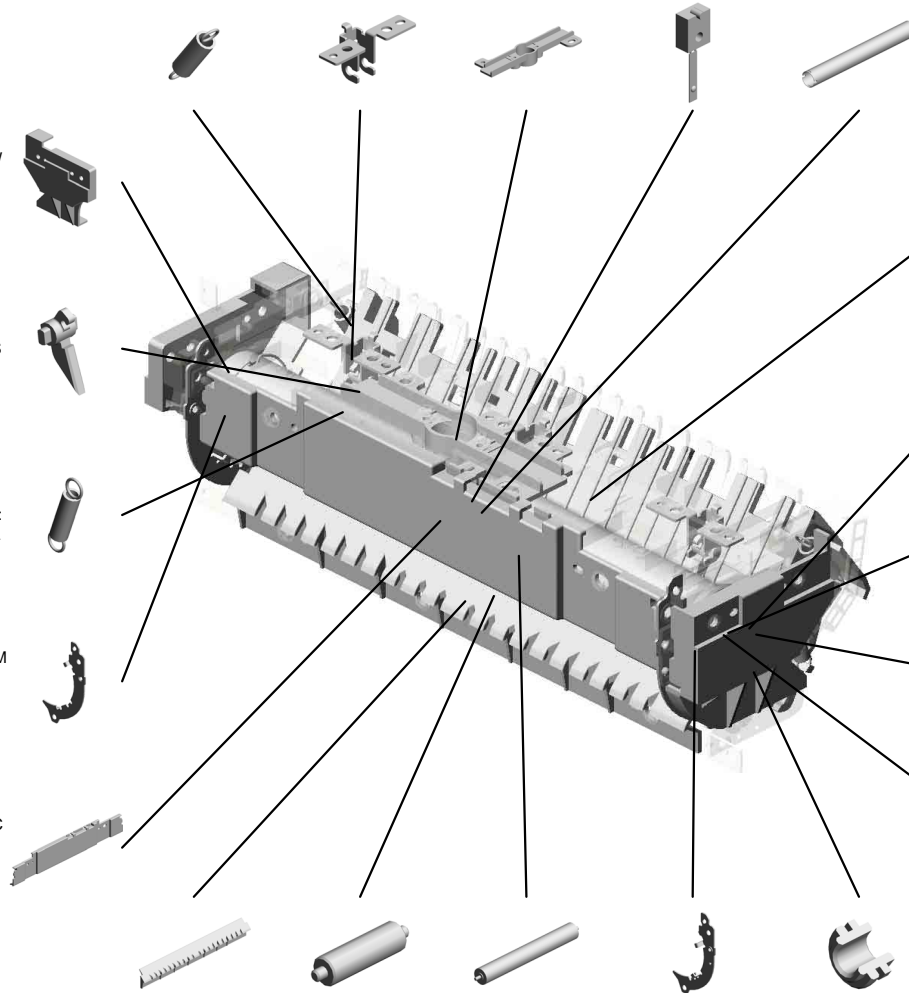
42.M0124281 (x2) RETAINING RINGS -C:HOT ROLLER



26.M0124211 PLATE NUT:HEATER



33.M0124223 THERMAL INSULATING BUSHING:HOT ROLLER

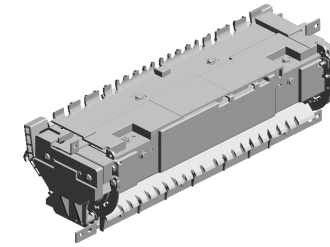


U012_S001
FUSING UNIT:NA:ASS'Y

46.M0124292
FUSING COVER:U
PPER

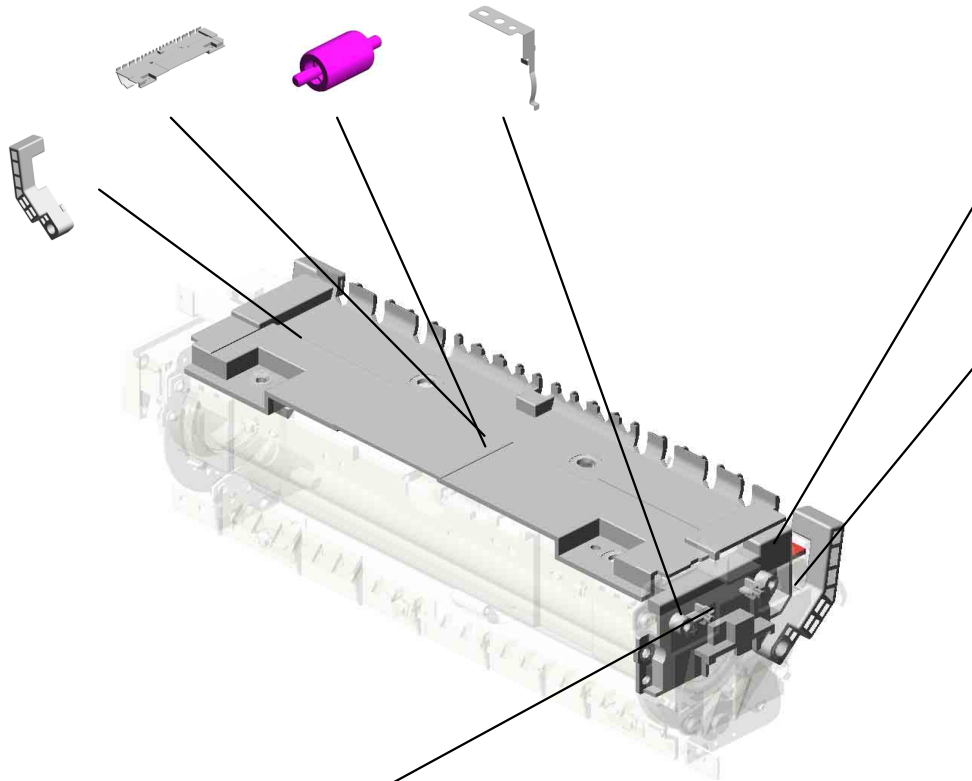
47.M0124293
(x4)
EXIT ROLLER:EXIT
:FUSING

48.M0124295
GROUND PLATE:A
SS'Y



51.M1164030
FUSING UNIT:NA:A
SS'Y

44.M0124285
LEVER:PRESSURE
:RIGHT



49.M0124603
DECAL:GUIDE PLA
TE:B

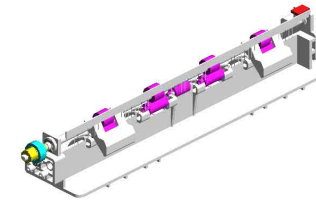
43.M0124284
LEVER:PRESSURE
:LEFT

45.M0124287
COVER:RIGHT UP
PER:FUSING

U001	U002	U003	U004	U005	U006	U007	U008	U009	U010	U011	U012	U013	U014	U015	U016	U017
------	------	------	------	------	------	------	------	------	------	------	------	------	------	------	------	------

U013 PAPER EXIT

- 4.M0124454 (x4) SPRING:EXIT ROLLER:EXIT
- 6.M0124458 DISCHARGE BRUSH:EXIT:ASS'Y DRA WING
- 8.M0124470 EXIT ROLLER:ASS'Y:(for M118)



- 5.M0124457 GROUND PLATE:EXIT:DISCHARGE BRUSH



- 10.M0124499 GROUND PLATE:EXIT ROLLER



- 3.M0124453 (x4) EXIT ROLLER



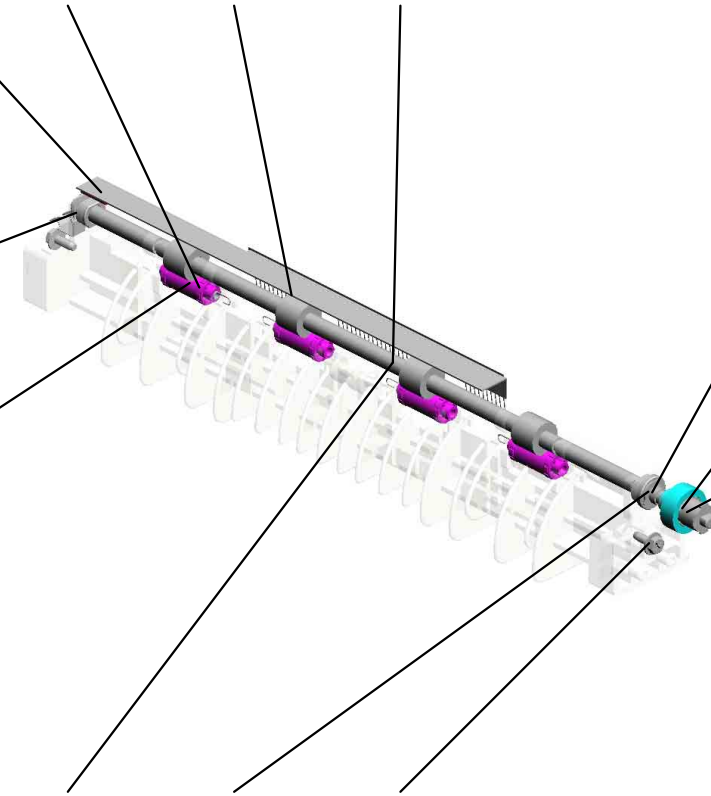
- 2.07200040E (x2) RETAINING RING - M4



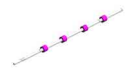
- 11.M0134455 GEAR:DRIVE:EXIT ROLLER:(for M119)



- 7.M0124465 PULLEY:EXIT:(for M118)



- 12.M0134470 EXIT ROLLER:DUPLEX:(for M119)



- 9.M0124488 (x2) BUSHING:DIA6XDI A10X6

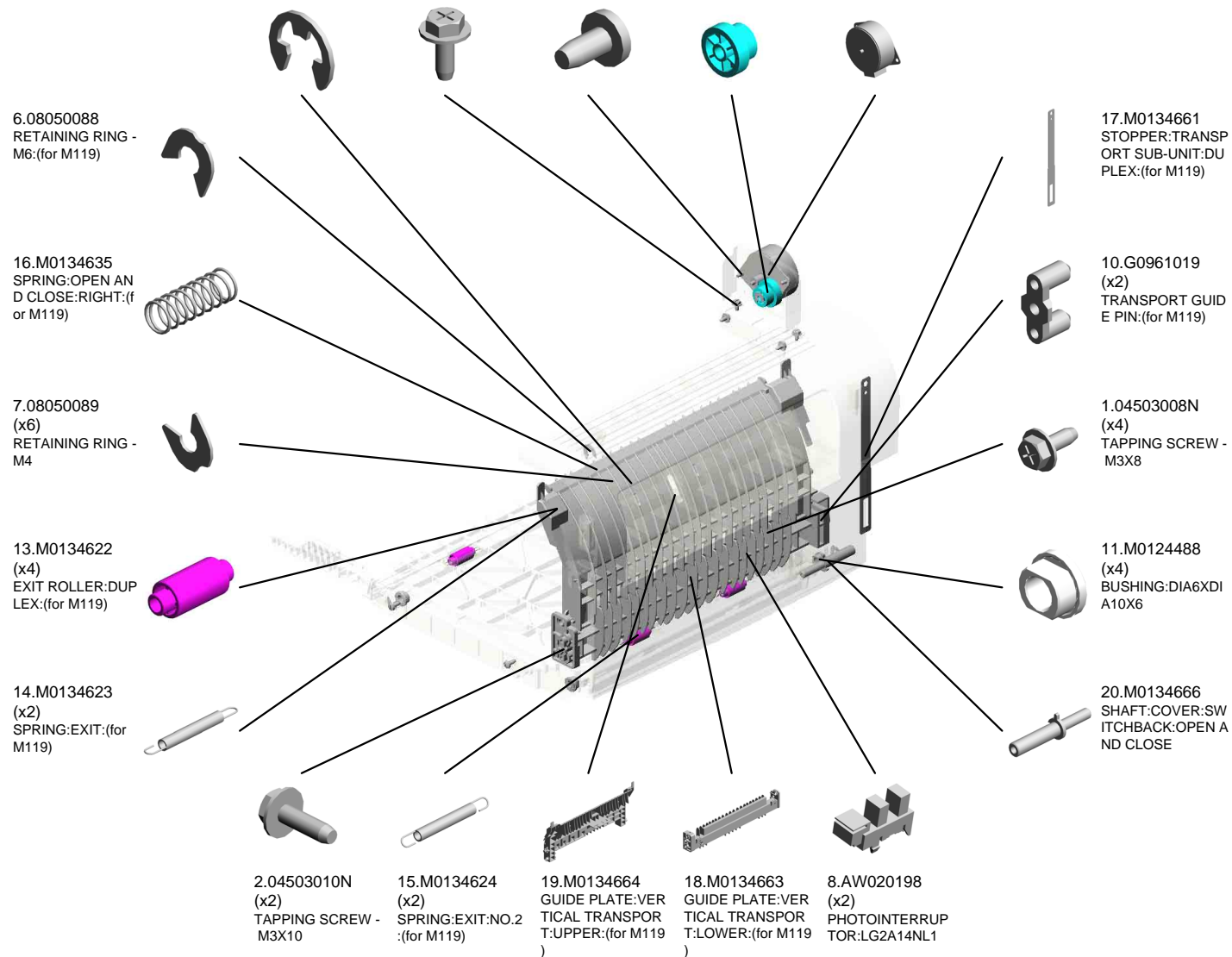
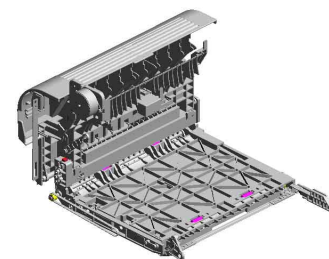


- 1.04503008N (x2) TAPPING SCREW - M3X8



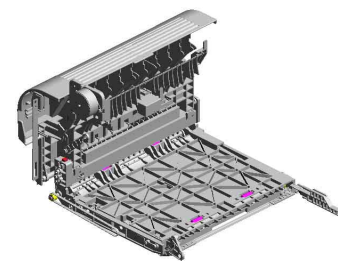
U014 DUPLEX

- 5.07200040E (x2) RETAINING RING - M4
- 4.04543006Q (x4) TAPPING SCREW - M3X6
- 3.04533006N (x2) TAPPING SCREW - M3X6
- 12.M0134610 GEAR:DRIVE:DUPL EX:(for M119)
- 9.AX050265 STEPPER MOTOR: DC24V 7.2W:(for M119)



U001	U002	U003	U004	U005	U006	U007	U008	U009	U010	U011	U012	U013	U014	U015	U016	U017
------	------	------	------	------	------	------	------	------	------	------	------	------	------	------	------	------

U014 DUPLEX



- 35.M0134696 LEVER:OPEN AND CLOSE:LEFT:(for M119)
- 27.M0134674 LEVER:OPEN AND CLOSE:NO.2:(for M119)
- 26.M0134673 LEVER:OPEN AND CLOSE:NO.1:(for M119)
- 30.M0134687 GROUND PLATE:HORIZONTAL TRANSPORT:FRONT:(for M119)
- 28.M0134684 SHEET:DUPLEX:(for M119)

37.M0134698 BRACKET:OPEN AND CLOSE:LOWER:(for M119)

39.M0134762 TRANSPORT ROLLER:DUPLEX:EXIT:(for M119)

29.M0134685 BUTTON:OPEN AND CLOSE:LOWER:(for M119)

36.M0134697 LEVER:OPEN AND CLOSE:RIGHT:(for M119)

22.M0134668 SHEET:GUIDE:HORIZONTAL TRANSPORT:LOWER:(for M119)

24.M0134671 SHEET:HORIZONTAL TRANSPORT:LEFT:(for M119)

34.M0134695 GUIDE:HORIZONTAL TRANSPORT:LOWER:(for M119)

33.M0134694 GUIDE:HORIZONTAL TRANSPORT:UPPER:(for M119)

32.M0134691 LEVER:OPEN AND CLOSE:LOWER:(for M119)

38.M0134761 TRANSPORT ROLLER:DUPLEX:MIDDLE:(for M119)

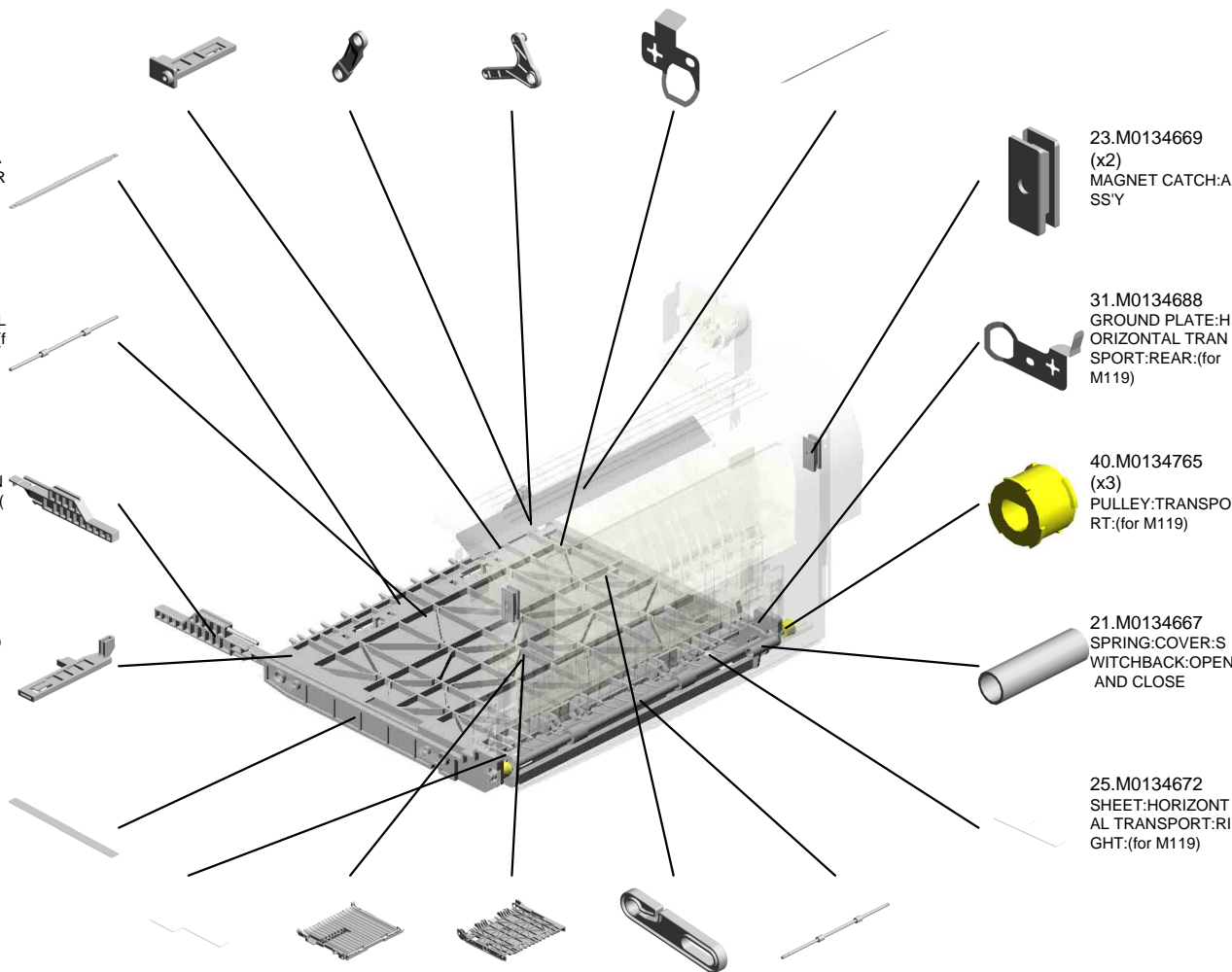
23.M0134669 (x2) MAGNET CATCH:ASSY

31.M0134688 GROUND PLATE:HORIZONTAL TRANSPORT:REAR:(for M119)

40.M0134765 (x3) PULLEY:TRANSPORT:(for M119)

21.M0134667 SPRING:COVER:SWITCHBACK:OPEN AND CLOSE

25.M0134672 SHEET:HORIZONTAL TRANSPORT:RIGHT:(for M119)

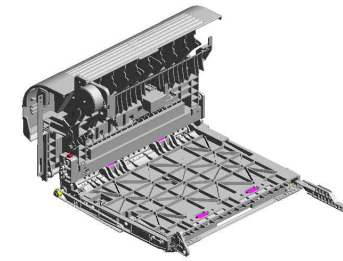


U014 DUPLEX

41.M0134771 TIMING BELT:HORI
ZONTAL TRANSPOR
T:(for M119)

47.M0134797 FEELER:SENSOR:
VERTICAL TRAN
SPORT:(for M119)

48.M0174611 BRACKET:DRIVE:M
FP1B:ASS'Y:(for M1
19)



44.M0134785 SPRING:COVER:S
WITCHBACK:OPEN
AND CLOSE:(for M
119)

46.M0134795
(x4)
PIN:GUIDE:UPPER:
(for M119)

45.M0134794
 DECAL:GUIDE PLA
TE:VERTICAL TRA
NSPORT:UPPER:(f
or M119)

49.M1174662
COVER:SWITCHBA
CK:OPEN AND CL
OSE

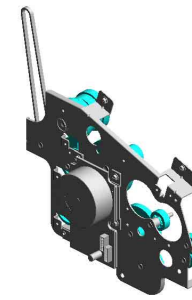
42.M0134772
TIMING BELT:DRIV
E:(for M119)

43.M0134778
FEELER:SENSOR:
HORIZONTAL TRA
NSPORT:(for M119)

U001	U002	U003	U004	U005	U006	U007	U008	U009	U010	U011	U012	U013	U014	U015	U016	U017
------	------	------	------	------	------	------	------	------	------	------	------	------	------	------	------	------

U015 MAIN DRIVE

- 5.M0121115 TIMING BELT:DRIVE:EXIT:(for M118)
- 8.M0121120 GEAR:DRIVE:FUSION:NG:NO.3
- 10.M0121128 GEAR:DRIVE:FUSION:NG:NO.4
- 2.07200040E RETAINING RING - M4
- 1.04513006N (x11) TAPPING SCREW - 3X6



4.G0521120
SPRING - PAPER EXIT RELEASE



19.M1161127
GEAR:DRIVE:EXIT:
(for M118)



3.08050089
(x6)
RETAINING RING - M4



7.M0121119
GEAR:DRIVE:FUSION:NG:NO.2



20.M1171136
GEAR:DRIVE:DUPLICATION SECTION:(for M119)



14.M0131178
BRACKET:DRIVE:DUPLICATION:(for M119)



11.M0121150
BRUSHLESS MOTOR:DC 36.7W



15.M1161118
GEAR:DRIVE:FUSION:NG:NO.1



16.M1161121
GEAR:DRIVE:PAPER FEED:NO.1



18.M1161124
GEAR:DRIVE:PAPER FEED:NO.4



6.M0121117
GEAR:DRIVE:DRUM



9.M0121123
GEAR:DRIVE:PAPER FEED:NO.3



17.M1161122
GEAR:DRIVE:PAPER FEED:NO.2



13.M0121172
GEAR:DRIVE:MANUAL FEED SECTION:NO.2

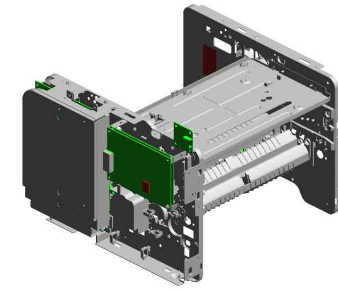


12.M0121171
GEAR:DRIVE:MANUAL FEED SECTION:NO.1

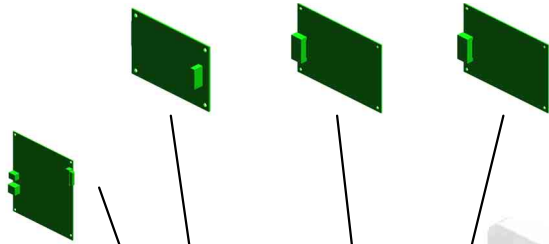


U016 ELECTRICAL

7.M1185045 PCB:FAX:NA:ASSY
 4.M1165453 PCB:ECB:M116/M118:ASSY:(for M118)
 5.M1175453 PCB:ECB:M117/M119:ASSY:(for M119)



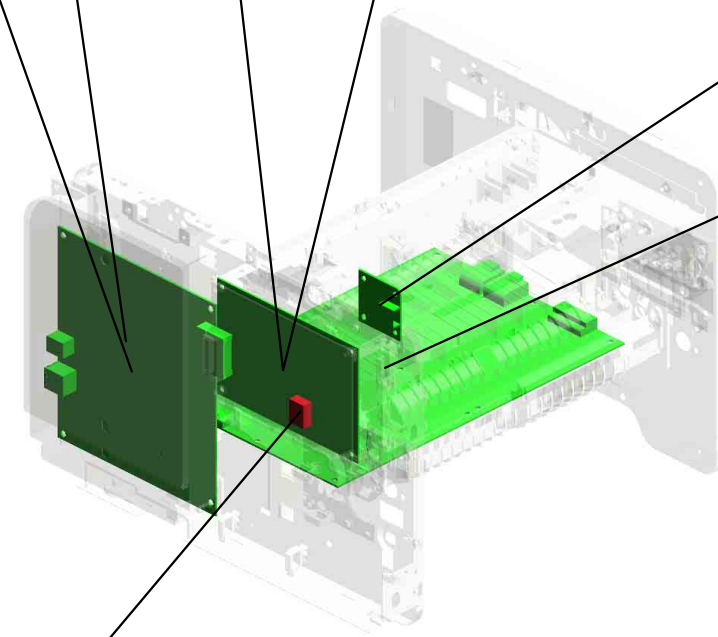
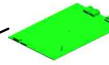
6.M1185008 PCB:CTL:ASSY



3.M0165001 PCB:USBHOST



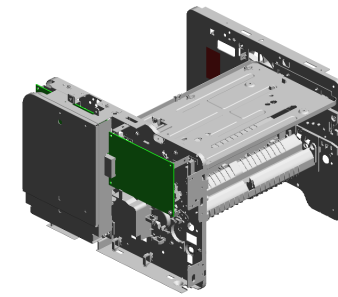
2.M0125020 POWER SUPPLY U
NIT:NA



1.14077435 EEPROM:CAT93C7
6LI-G

U001	U002	U003	U004	U005	U006	U007	U008	U009	U010	U011	U012	U013	U014	U015	U016	U017
------	------	------	------	------	------	------	------	------	------	------	------	------	------	------	------	------

U017 MAIN FRAME



10.11050534
(x2)
CLAMP

17.M0121040
CASE:DISCHARGE
LAMP

9.11050511
(x12)
HARNESS CLAMP -
LWS-0306ZC

3.04513014N
TAPPING SCREW:
3X14

15.GW010007
PHOTO REFLECTI
ON SENSOR:EXIT

19.M0121063
(x4)
TERMINAL:CHARG
E

1.04503008N
(x12)
TAPPING SCREW -
M3X8

20.M0121065
CASE:TERMINAL

12.AX640199
FAN:MM80:25MM:D
C 2.16W

4.04513030N
(x2)
TAPPING SCREW:
3X30

11.12042757
SWITCH:SDDJF319
00

2.04513006N
(x12)
TAPPING SCREW -
3X6

7.09504006N
SCREW - M4X6

18.M0121050
FRAME:MAIN:SUB-
ASS'Y

8.11050508
(x4)
HARNESS CLAMP -
LWS-0711

16.M0121037
TONER BOTTLE:C
ASE

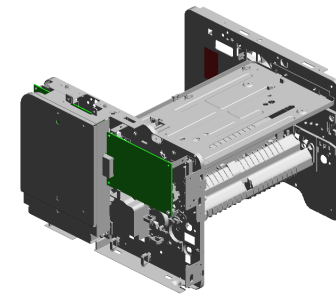
5.04543006Q
(x2)
TAPPING SCREW -
M3X6

13.B2681085
(x2)
SWITCH:LF-105-11

6.04543014Q
TAPPING SCREW:
3X14

14.G0271180
(x2)
RUBBER FOOT - G
F

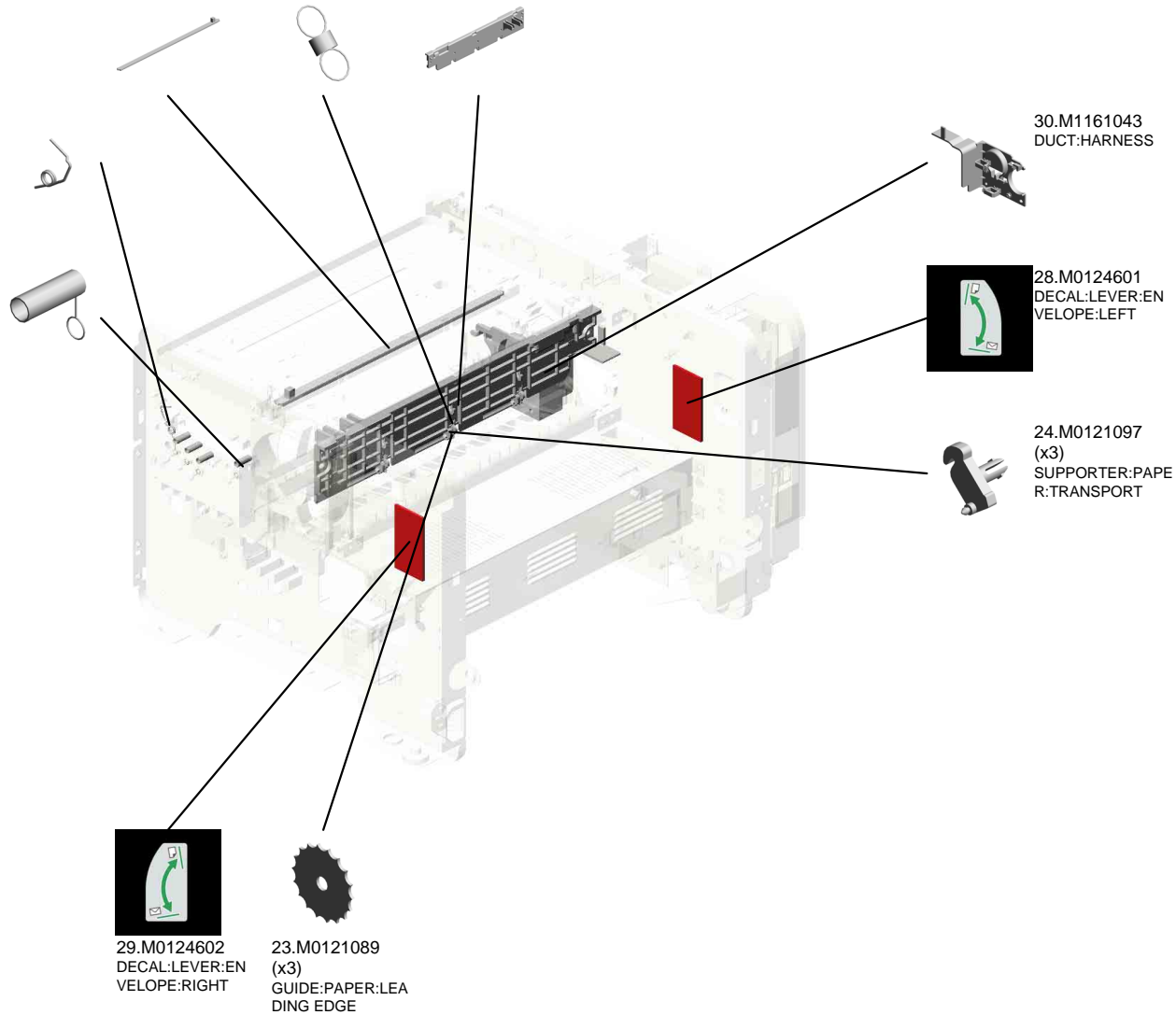
U017 MAIN FRAME



- 26.M0122056 DISCHARGE LAMP
- 27.M0124120 (x3) TENSION SPRING: PICKOFF PAWL
- 25.M0121099 HEAT INSULATING PLATE:FUSING:FRONT

- 22.M0121088 COIL SPRING:RAIL:RIGHT

- 21.M0121066 (x4) SPRING:TERMINAL:CHARGE



- 30.M1161043 DUCT:HARNESS

- 28.M0124601 DECAL:LEVER:ENVELOPE:LEFT

- 24.M0121097 (x3) SUPPORTER:PAPER:TRANSPORT

- 29.M0124602 DECAL:LEVER:ENVELOPE:RIGHT

- 23.M0121089 (x3) GUIDE:PAPER:LEADING EDGE

ACCESSORIES



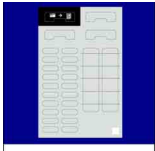
1.J0121508
PLATE:LOGO:RIC



2.M0125697
POWER SUPPLY CORD:125V:13A:NA



3.M1180402
MODEL NAME PLATE:M118:(for M118



4.M1180426
SHEET:ONE TOUCH:EXP



5.M1190402
MODEL NAME PLATE:M119:(for M119

Exclusive Parts

Number	Part Name	Group	ID
A1532117	ROLLER TERMINAL	U009	4
AA000217	DECAL - LD 655:(for M119)	U006_S001	4
AA143520	SHOULDER SCREW - M3	U008	3
		U012_S001	10
AW020198	PHOTOINTERRUPTOR:LG2A14NL 1	U008	4
		U009	5
		U012_S001	11
		U014	8
AW110058	THERMOSTAT:177	U012_S001	12
AX050265	STEPPER MOTOR:DC24V 7.2W:(for M119)	U014	9
AX640199	FAN:MM80:25MM:DC 2.16W	U017	12
B2681085	SWITCH:LF-105-11	U017	13
D1272514	ELECTROMAGNETIC CLUTCH:3.5 T:MANUAL FEED	U009	6
G0123050	SIDE FENCE GEAR	U008_S001	5
G0201160	SNAP RING	U009	7
G0271180	RUBBER FOOT - GF	U017	14
G0292767	BY-PASS FEED COVER	U008	6
G0521120	SPRING - PAPER EXIT RELEASE	U015	4
G0521518	SPRING - LOCK LEVER	U001	7
G0961019	TRANSPORT GUIDE PIN:(for M119)	U014	10
G1022717	COVER:DC SOLENOID	U008	7
G1022755	RACK:SIDE FENCE:REAR	U008_S001	8
G1022789	STOPPER:PHOTOINTERRUPTOR	U008	9
G1272627	PAPER FEED ROLLER - MM32	U009	8
G1274328	DECAL - HIGH TEMPERATURE	U012_S001	13
G1831750	PLATE:GUIDE ROD:SCANNER	U005	1
G1831751	SLIDE RAIL:CARRIAGE	U005	2
G1831752	GEAR:SCANNER:ASS'Y	U005	3
G1831753	PULLEY:CARRIAGE:ASS'Y	U005	4
G1831756	COIL SPRING:PULLEY:CARRIAGE	U005	5
G1831757	CASE:SCANNER:UPPER	U005	6
G1831758	CORE:EMI:CARRIAGE	U005	7
G1831759	INVERTOR:CARRIAGE	U005	8
G1831761	COVER:CARRIAGE:UPPER	U005	9
G1831762	FLUORESCENT TUBE:CARRIAGE	U005	10
G1831764	COVER:INVERTOR	U005	11

Number	Part Name	Group	ID
G1831765	CCD:MODULE:ASS'Y	U005	12
G1831775	HOOK:ADF:(for M118)	U004	1
G1831784	SHEET:SCANNER	U005	13
G1831822	ADF DECAL - PICK-UP PAPER JAM :(for M118)	U004	2
G1831824	GUIDE ROD:SCANNER	U005	14
G1831825	PLATE:STUD:IDLER	U005	15
G1831827	GROUND PLATE:SCANNER:LEFT	U005	16
G1832550	ARM:SENSOR:(for M118)	U004	3
G1832551	COIL SPRING:ARM:SENSOR:(for M 118)	U004	4
G1832552	SHEET:ADF:KILO:(for M118)	U004	5
G1832553	COIL SPRING:GEAR:SLIDE:(for M1 18)	U004	6
G1832554	GEAR:SLIDE	U003_S001	1
		U004	7
G1832558	PADDLE:ROLLER:EXIT:(for M118)	U004	8
G1832559	DRIVEN ROLLER:EXIT:(for M118)	U004	9
G1832560	SHAFT:DRIVEN ROLLER:EXIT:(for M118)	U004	10
G1832561	COIL SPRING:EXIT:(for M118)	U004	11
G1832562	COVER:EXIT:(for M118)	U004	12
G1832563	PCB:DIP:ADF:(for M118)	U004	13
G1832565	SHEET:PRESSURE PLATE:(for M11 8)	U004	14
G1832566	FLANGE:BUSHING:GEAR:(for M118)	U004	15
G1832567	FRAME:LOWER:(for M118)	U004	16
G1832569	COIL SPRING:PLATE:(for M118)	U004	17
G1832570	PLATE:(for M118)	U004	18
G1832571	SHEET:GUIDE:(for M118)	U004	19
G1832572	FLANGE:BUSHING:(for M118)	U004	20
G1832573	FEED ROLLER:ADF:(for M118)	U004	21
G1832574	EXIT ROLLER:ADF:(for M118)	U004	22
G1832576	COIL SPRING:FEED ROLLER:DRIV EN:(for M118)	U004	23
G1832577	FEELER:SENSOR:FEED:(for M118)	U004	24
G1832578	ARM:PRESSURE RELEASE:(for M1	U004	25

Exclusive Parts

Number	Part Name	Group	ID
	18)		
G1832579	DRIVEN ROLLER:FEED:(for M118)	U004	26
G1832580	STAY:FEED:(for M118)	U004	27
G1832582	SHAFT:DRIVEN ROLLER:FEED:(for M118)	U004	28
G1832583	FIX STAND:SENSOR:FEED:(for M118)	U004	29
G1832585	SHEET:FEELER:FEED:(for M118)	U004	30
G1832586	PLATE:REAR:(for M118)	U004	31
G1832587	GEAR:FEED:44T:(for M118)	U004	32
G1832588	GEAR:EXIT:41T:(for M118)	U004	33
G1832589	GEAR:20T39T:(for M118)	U004	34
G1832590	GEAR:MIDDLE:32T:(for M118)	U004	35
G1832591	GEAR:21T37T:(for M118)	U004	36
G1832592	GEAR:51T:(for M118)	U004	37
G1832593	GEAR:DRIVE:39T55T:(for M118)	U004	38
G1832594	PLATE:MOTOR:(for M118)	U004	39
G1832595	GEAR:DRIVE:40T56T:(for M118)	U004	40
G1832598	ROLLER:BACK UP:FEED:(for M118)	U004	41
G1832599	COIL SPRING:SHUTTER:PAPER:(for M118)	U004	42
G1832600	SHUTTER:PAPER:(for M118)	U004	43
G1832601	SEPARATION PAD:ADF:(for M118)	U004	44
G1832602	FRAME:UPPER:(for M118)	U004	45
G1832603	COIL SPRING:FEELER:SET SENSOR:(for M118)	U004	46
G1832604	FEELER:SET SENSOR:(for M118)	U004	47
G1832605	HOLDER:SEPARATION UNIT:(for M118)	U004	48
G1832606	SHEET:STOPPER:EXIT:(for M118)	U004	49
G1832607	DISCHARGE BRUSH:EXIT:(for M118)	U004	50
G1832608	SEPARATION UNIT:ADF:(for M118)	U004	51
G1832609	DC STEPPER MOTOR:(for M118)	U004	52
G1832610	HINGE:LEFT:(for M118)	U004	53
G1832611	HINGE:RIGHT:(for M118)	U004	54
G1832612	PCB:DIP:SET SENSOR:(for M118)	U004	55
G1832613	PCB:DIP:FEED:(for M118)	U004	56

Number	Part Name	Group	ID
G1832614	PCB:DIP:ON OFF DETECTOR:(for M118)	U004	57
G8003133	SIDE FENCE GEAR	U007_S001	1
GF013001	BOTTOM PLATE PAD	U007_S001_S001	2
		U008_S001	10
GW010007	PHOTO REFLECTION SENSOR:EXIT	U017	15
J0121508	PLATE:LOGO:RIC	ACCESSORIES	1
M0121037	TONER BOTTLE:CASE	U017	16
M0121040	CASE:DISCHARGE LAMP	U017	17
M0121050	FRAME:MAIN:SUB-ASS'Y	U017	18
M0121063	TERMINAL:CHARGE	U017	19
M0121065	CASE:TERMINAL	U017	20
M0121066	SPRING:TERMINAL:CHARGE	U017	21
M0121088	COIL SPRING:RAIL:RIGHT	U017	22
M0121089	GUIDE:PAPER:LEADING EDGE	U017	23
M0121097	SUPPORTER:PAPER:TRANSPORT	U017	24
M0121099	HEAT INSULATING PLATE:FUSING:FRONT	U017	25
M0121115	TIMING BELT:DRIVE:EXIT:(for M118)	U015	5
M0121117	GEAR:DRIVE:DRUM	U015	6
M0121119	GEAR:DRIVE:FUSING:NO.2	U015	7
M0121120	GEAR:DRIVE:FUSING:NO.3	U015	8
M0121123	GEAR:DRIVE:PAPER FEED:NO.3	U015	9
M0121128	GEAR:DRIVE:FUSING:NO.4	U015	10
M0121150	BRUSHLESS MOTOR:DC 36.7W	U015	11
M0121171	GEAR:DRIVE:MANUAL FEED SECTION:NO.1	U015	12
M0121172	GEAR:DRIVE:MANUAL FEED SECTION:NO.2	U015	13
M0121908	COVER:OPTICAL UNIT	U006_S001	5
M0121957	POLYGON MOTOR:DC 18W	U006_S001	6
M0121979	SEAL:COVER:NO.2	U006_S001	7
M0121980	SEAL:COVER:NO.1	U006_S001	8
M0122056	DISCHARGE LAMP	U017	26
M0122504	PAPER TRAY:ASS'Y	U007_S001	3
M0122589	PAPER TRAY:REAR	U007_S001	4

Exclusive Parts

Number	Part Name	Group	ID
M0122590	COIL SPRING:EARTH	U007_S001	5
M0122603	STOPPER:BASE PLATE	U007_S001	6
M0122604	SPRING:RELEASE:TRAY BOTTOM PLATE	U007_S001	7
M0122605	FRICTION PAD:ADHESION	U007_S001	8
M0122608	END FENCE	U007_S001	9
M0122610	TRAY BOTTOM PLATE	U007_S001_S001	10
M0122612	COMPRESSION SPRING:TRAY BOTTOM PLATE	U007_S001	11
M0122613	COMPRESSION SPRING:SEPARATION	U007_S001	12
M0122614	SIDE FENCE:LEFT	U007_S001	13
M0122615	SIDE FENCE:RIGHT	U007_S001	14
M0122616	LEVER:PAPER VOLUME SENSOR	U007_S001	15
M0122618	DECAL:PAPER TRAY:FRONT	U007_S001	16
M0122629	COVER:PAPER TRAY	U007_S001	17
M0122631	CLOTH:EARTH:PAPER FEED	U009	9
M0122668	SHAFT:PAPER FEED:ASS'Y	U009	10
M0122671	FEELER:PAPER END SENSOR	U009	11
M0122673	RAIL:PAPER TRAY:RIGHT	U009	12
M0122701	ROLLER:INTERFACE:DRIVE	U009	13
M0122702	ROLLER:INTERFACE:DRIVEN	U009	14
M0122705	SPRING:ROLLER	U009	15
M0122711	BUSHING:REGISTRATION:DRIVEN:LEFT	U009	16
M0122715	GUIDE PLATE:TRANSPORT:UPPER	U009	17
M0122718	REGISTRATION ROLLER:DRIVE	U009	18
M0122719	REGISTRATION ROLLER:DRIVEN	U009	19
M0122722	SPRING:ROLLER:REGISTRATION	U009	20
M0122723	FEELER:REGISTRATION:SENSOR	U009	21
M0122725	SPRING:FEELER:REGISTRATION	U009	22
M0122730	BUSHING:REGISTRATION:DRIVEN:RIGHT	U009	23
M0122741	GROUND PLATE:DRIVE:REGISTRATION ROLLER	U009	24
M0122742	GROUND PLATE:DRIVEN:REGISTRATION ROLLER	U009	25

Number	Part Name	Group	ID
M0122743	DECAL:GUIDE PLATE:TRANSPORT:UPPER	U009	26
M0122744	GUIDE:REGISTRATION	U009	27
M0122745	GROUND PLATE:DRIVEN	U009	28
M0122753	BUSHING:ROLLER:DRIVEN	U009	29
M0122805	GUIDE PLATE:MANUAL FEED:LOWER	U008	11
M0122806	SHEET:GUIDE:MANUAL FEED SUB-UNIT	U008	12
M0122816	FRICTION PAD:HOLDER:MANUAL FEED:ASS'Y	U008	13
M0122824	FEELER:MANUAL FEED	U008	14
M0122830	MECHANICAL SPRING CLUTCH:MANUAL FEED	U008	15
M0122831	DC SOLENOID:9.6W:24V	U008	16
M0122833	DECAL:SIDE FENCE:MANUAL FEED	U008_S001	17
M0122859	GUIDE PLATE:UPPER:MANUAL FEED	U008	18
M0122860	PAPER FEED ROLLER:MANUAL FEED	U008	19
M0122868	MANUAL FEED TABLE:SUB-ASS'Y	U008_S001	20
M0122870	COVER:MANUAL FEED TABLE	U008	21
M0122874	COMPRESSION SPRING:MANUAL FEED	U008	22
M0122875	SIDE FENCE:MANUAL FEED:RIGHT	U008_S001	23
M0122877	SIDE FENCE:MANUAL FEED:LEFT	U008_S001	24
M0122879	EXTENSION TRAY:MANUAL FEED	U008	25
M0122880	COMPRESSION SPRING:SEPARATION	U008	26
M0124053	GEAR:HOT ROLLER	U012_S001	14
M0124055	RADIAL BALL BEARING:35X47X7	U012_S001	15
M0124109	SPRING:FEELER:EXIT	U012_S001	16
M0124120	TENSION SPRING:PICKOFF PAWL	U012_S001	17
		U017	27
M0124123	HEATER:700W:120V	U012_S001	18
M0124135	FEELER:PAPER FEED SENSOR	U012_S001	19

Exclusive Parts

Number	Part Name	Group	ID
M0124186	COVER:LEFT UPPER:ASS'Y	U012_S001	20
M0124202	LEVER:PRESSURE	U012_S001	21
M0124204	LEVER:LEFT:FRAME:FUSING	U012_S001	22
M0124205	LEVER:RIGHT:FRAME:FUSING	U012_S001	23
M0124206	STRIPPER PAWLS	U012_S001	24
M0124208	BRACKET:GATE PAWL	U012_S001	25
M0124211	PLATE NUT:HEATER	U012_S001	26
M0124212	FUSING ENTRANCE GUIDE PLATE :UPPER	U012_S001	27
M0124213	BUSHING:PRESSURE ROLLER	U012_S001	28
M0124215	GUIDE PLATE:EXIT	U012_S001	29
M0124216	TENSION SPRING:FUSING:GUIDE PLATE	U012_S001	30
M0124217	FUSING ENTRANCE GUIDE PLATE :LOWER	U012_S001	31
M0124220	HOT ROLLER	U012_S001	32
M0124223	THERMAL INSULATING BUSHING: HOT ROLLER	U012_S001	33
M0124229	TENSION SPRING:FUSING:PRESS URE	U012_S001	34
M0124234	HOUSING:THERMOSTAT:ASS'Y	U012_S001	35
M0124253	PRESSURE ROLLER:DIA30	U012_S001	36
M0124263	THERMISTOR:FUSING	U012_S001	37
M0124266	COVER:RIGHT LOWER:FUSING	U012_S001	38
M0124270	THERMAL INSULATING BUSHING: FUSING UNIT	U012	39
M0124276	COVER:LEFT:LOWER:FUSING	U012_S001	40
M0124279	CLEANING ROLLER:ASS'Y	U012_S001	41
M0124281	RETAINING RINGS-C:HOT ROLLE R	U012_S001	42
M0124284	LEVER:PRESSURE:LEFT	U012_S001	43
M0124285	LEVER:PRESSURE:RIGHT	U012_S001	44
M0124287	COVER:RIGHT UPPER:FUSING	U012_S001	45
M0124292	FUSING COVER:UPPER	U012_S001	46
M0124293	EXIT ROLLER:EXIT:FUSING	U012_S001	47
M0124295	GROUND PLATE:ASS'Y	U012_S001	48
M0124453	EXIT ROLLER	U013	3
M0124454	SPRING:EXIT ROLLER:EXIT	U013	4

Number	Part Name	Group	ID
M0124457	GROUND PLATE:EXIT:DISCHARG E BRUSH	U013	5
M0124458	DISCHARGE BRUSH:EXIT:ASS'Y D RAWING	U013	6
M0124465	PULLEY:EXIT:(for M118)	U013	7
M0124470	EXIT ROLLER:ASS'Y:(for M118)	U013	8
M0124488	BUSHING:DIA6XDIA10X6	U009	30
		U013	9
		U014	11
M0124499	GROUND PLATE:EXIT ROLLER	U013	10
M0124601	DECAL:LEVER:ENVELOPE:LEFT	U017	28
M0124602	DECAL:LEVER:ENVELOPE:RIGHT	U017	29
M0124603	DECAL:GUIDE PLATE:B	U012_S001	49
M0124699	DECAL:WARNING (HIGH TEMPER ATURE):FRONT	U012	50
M0125020	POWER SUPPLY UNIT:NA	U016	2
M0125697	POWER SUPPLY CORD:125V:13A: NA	ACCESSORIES	2
M0126252	BUSHING:TRANSFER ROLLER:RIG HT	U011	1
M0126253	BUSHING:TRANSFER ROLLER:LE FT	U011	2
M0126254	SPRING:TRANSFER ROLLER	U011	3
M0126255	GEAR:TRANSFER ROLLER	U011	4
M0126256	ROLLER:POSITIONING:TRANSFER ROLLER	U011	5
M0126259	ELECTRODE PLATE:SEPARATION	U011	6
M0126260	COVER:ELECTRODE PLATE	U011	7
M0131178	BRACKET:DRIVE:DUPLEX:(for M11 9)	U015	14
M0134455	GEAR:DRIVE:EXIT ROLLER:(for M1 19)	U013	11
M0134470	EXIT ROLLER:DUPLEX:(for M119)	U013	12
M0134610	GEAR:DRIVE:DUPLEX:(for M119)	U014	12
M0134622	EXIT ROLLER:DUPLEX:(for M119)	U014	13
M0134623	SPRING:EXIT:(for M119)	U014	14
M0134624	SPRING:EXIT:NO.2:(for M119)	U014	15
M0134635	SPRING:OPEN AND CLOSE:RIGHT	U014	16

Exclusive Parts

Number	Part Name	Group	ID
	:(for M119)		
M0134661	STOPPER:TRANSPORT SUB-UNIT:DUPLEX:(for M119)	U014	17
M0134663	GUIDE PLATE:VERTICAL TRANSPORT:LOWER:(for M119)	U014	18
M0134664	GUIDE PLATE:VERTICAL TRANSPORT:UPPER:(for M119)	U014	19
M0134666	SHAFT:COVER:SWITCHBACK:OPEN AND CLOSE	U014	20
M0134667	SPRING:COVER:SWITCHBACK:OPEN AND CLOSE	U014	21
M0134668	SHEET:GUIDE:HORIZONTAL TRANSPORT:LOWER:(for M119)	U014	22
M0134669	MAGNET CATCH:ASS'Y	U014	23
M0134671	SHEET:HORIZONTAL TRANSPORT:LEFT:(for M119)	U014	24
M0134672	SHEET:HORIZONTAL TRANSPORT:RIGHT:(for M119)	U014	25
M0134673	LEVER:OPEN AND CLOSE:NO.1:(for M119)	U014	26
M0134674	LEVER:OPEN AND CLOSE:NO.2:(for M119)	U014	27
M0134684	SHEET:DUPLEX:(for M119)	U014	28
M0134685	BUTTON:OPEN AND CLOSE:LOWER:(for M119)	U014	29
M0134687	GROUND PLATE:HORIZONTAL TRANSPORT:FRONT:(for M119)	U014	30
M0134688	GROUND PLATE:HORIZONTAL TRANSPORT:REAR:(for M119)	U014	31
M0134691	LEVER:OPEN AND CLOSE:LOWER:(for M119)	U014	32
M0134694	GUIDE:HORIZONTAL TRANSPORT:UPPER:(for M119)	U014	33
M0134695	GUIDE:HORIZONTAL TRANSPORT:LOWER:(for M119)	U014	34
M0134696	LEVER:OPEN AND CLOSE:LEFT:(for M119)	U014	35
M0134697	LEVER:OPEN AND CLOSE:RIGHT:(for M119)	U014	36

Number	Part Name	Group	ID
	for M119)		
M0134698	BRACKET:OPEN AND CLOSE:LOWER:(for M119)	U014	37
M0134761	TRANSPORT ROLLER:DUPLEX:MIDDLE:(for M119)	U014	38
M0134762	TRANSPORT ROLLER:DUPLEX:EXIT:(for M119)	U014	39
M0134765	PULLEY:TRANSPORT:(for M119)	U014	40
M0134771	TIMING BELT:HORIZONTAL TRANSPORT:(for M119)	U014	41
M0134772	TIMING BELT:DRIVE:(for M119)	U014	42
M0134778	FEELER:SENSOR:HORIZONTAL TRANSPORT:(for M119)	U014	43
M0134785	SPRING:COVER:SWITCHBACK:OPEN AND CLOSE:(for M119)	U014	44
M0134794	DECAL:GUIDE PLATE:VERTICAL TRANSPORT:UPPER:(for M119)	U014	45
M0134795	PIN:GUIDE:UPPER:(for M119)	U014	46
M0134797	FEELER:SENSOR:VERTICAL TRANSPORT:(for M119)	U014	47
M0160454	DECAL:CAUTION:COPY:NA	U003	2
M0161251	COVER:FRONT	U001	8
M0161252	BUTTON	U001	9
M0161253	COVER:SIDE PLATE:LEFT	U001	10
M0161255	COVER:RIGHT:110V	U001	11
M0161601	GUIDE:FEED:DRIVEN:(for M118)	U004	58
M0161654	FLAT CABLE:CARRIAGE	U005	17
M0161655	WIRE:GROUND WIRE:PLATE:MOTOR	U005	18
M0162630	DECAL:PICK-UP PAPER JAM:(for M118)	U001	12
M0162815	DECAL:FEED PAPER AGAIN:PREVENTION	U008	27
M0165001	PCB:USBHOST	U016	3
M0172630	DECAL:PICK-UP PAPER JAM:(for M119)	U001	13
M0174611	BRACKET:DRIVE:MFP1B:ASS'Y:(for M119)	U014	48

Exclusive Parts

Number	Part Name	Group	ID
M1016250	TRANSFER ROLLER	U011	8
M1161043	DUCT:HARNES	U017	30
M1161118	GEAR:DRIVE:FUSING:NO.1	U015	15
M1161121	GEAR:DRIVE:PAPER FEED:NO.1	U015	16
M1161122	GEAR:DRIVE:PAPER FEED:NO.2	U015	17
M1161124	GEAR:DRIVE:PAPER FEED:NO.4	U015	18
M1161127	GEAR:DRIVE:EXIT:(for M118)	U015	19
M1161350	GUIDE PLATE:(for M118)	U001	14
M1161370	COVER:REAR LOWER	U001	15
M1162672	RAIL:PAPER TRAY:LEFT	U009	31
M1164030	FUSING UNIT:NA:ASS'Y	U012_S001	51
M1165453	PCB:ECB:M116/M118:ASS'Y:(for M118)	U016	4
M1171136	GEAR:DRIVE:DUPLEX SECTION:(for M119)	U015	20
M1171851	IMAGING UNIT:ASS'Y	U006_S001	9
M1174662	COVER:SWITCHBACK:OPEN AND CLOSE	U014	49
M1175453	PCB:ECB:M117/M119:ASS'Y:(for M119)	U016	5
M1180402	MODEL NAME PLATE:M118:(for M118)	ACCESSORIES	3
M1180426	SHEET:ONE TOUCH:EXP	ACCESSORIES	4
M1180501	SPEAKER:M118	U001	16
M1181555	CABLE:ADF:(for M118)	U004	59
M1181741	COVER:FRONT:ADF:(for M118)	U004	60
M1181742	COVER:REAR:ADF:(for M118)	U004	61
M1181744	SIDE FENCE:RIGHT:(for M118)	U004	62
M1181745	SIDE FENCE:LEFT:(for M118)	U004	63
M1181746	EXTENSION TRAY:ADF:(for M118)	U004	64
M1181747	PAPER STOPPER:ADF:(for M118)	U004	65
M1182564	COVER:ADF:(for M118)	U004	66
M1185008	PCB:CTL:ASS'Y	U016	6
M1185045	PCB:FAX:NA:ASS'Y	U016	7
M1190402	MODEL NAME PLATE:M119:(for M119)	ACCESSORIES	5
M1191250	COVER:UPPER:MFP	U001	17
M1191256	COVER:REAR MIDDLE	U001	18

Number	Part Name	Group	ID
M1191257	EXTENSION TRAY:EXIT:MF	U001	19
M1191258	EXTENSION TRAY:GUIDE:MF	U001	20
M1191452	KEY:START/STOP	U002_S001	1
M1191453	KEY:MENU	U002_S001	2
M1191454	KEY:DIAL	U002_S001	3
M1191455	KEY:FUNCTION	U002_S001	4
M1191456	KEY:SETTING	U002_S001	5
M1191457	KEY:TELEPHONELIST	U002_S001	6
M1191460	KEYTOP:START/STOP	U002_S001	7
M1191461	KEYTOP:DIAL	U002_S001	8
M1191462	KEYTOP:FUNCTION	U002_S001	9
M1191463	KEYTOP:SETTING	U002_S001	10
M1191464	KEYTOP:TELEPHONELIST	U002_S001	11
M1191527	OPERATION PANEL:ASS'Y	U002_S001	12
M1191631	ARDF:ASS'Y:(for M119)	U003_S001	3
M1191652	EXTENSION TRAY:ARDF:(for M119)	U003_S001	4
M1191653	COVER:OPEN AND CLOSE:(for M119)	U003_S001	5
M1191654	HINGE:BASE:(for M119)	U003_S001	6
M1191655	COVER:FRONT:(for M119)	U003_S001	7
M1191656	HINGE:RIGHT:(for M119)	U003_S001	8
M1191657	SHEET:PRESSURE PLATE:(for M119)	U003_S001	9
M1191658	COVER:REAR:(for M119)	U003_S001	10
M1191659	HINGE:LEFT:(for M119)	U003_S001	11
M1191661	CABLE:ARDF:(for M119)	U003_S001	12
M1191662	BASE:SLIDER:(for M119)	U003_S001	13
M1191663	SPRING PLATE:SIDE FENCE:(for M119)	U003_S001	14
M1191664	STOPPER:SIDE FENCE:(for M119)	U003_S001	15
M1191665	SPRING PLATE:SIDE FENCE:(for M119)	U003_S001	16
M1191666	SIDE FENCE:LEFT:(for M119)	U003_S001	17
M1191667	SIDE FENCE:RIGHT:(for M119)	U003_S001	18
M1191668	EXTENSION TRAY:ORIGINAL:(for M119)	U003_S001	19
M1191669	GEAR:30T:(for M119)	U003_S001	20

Exclusive Parts

Number	Part Name	Group	ID
M1191670	ROLLER:PLATE:(for M119)	U003_S001	21
M1191671	PLATE:ROTOR:(for M119)	U003_S001	22
M1191672	EXIT ROLLER:ARDF:(for M119)	U003_S001	23
M1191673	PLATE:(for M119)	U003_S001	24
M1191674	CABLE:(for M119)	U003_S001	25
M1191675	FRAME:EXHAUST:(for M119)	U003_S001	26
M1191676	SPONGE:(for M119)	U003_S001	27
M1191677	COIL SPRING:CAM:LINK:(for M119)	U003_S001	28
M1191679	COIL SPRING:TENSION:TRANSPORT ROLLER:(for M119)	U003_S001	29
M1191680	GUIDE:ORIGINAL:LOWER:(for M119)	U003_S001	30
M1191681	COIL SPRING:SHAFT:(for M119)	U003_S001	31
M1191682	ROLLER:TENSION:DUPLEX:(for M119)	U003_S001	32
M1191683	PLAIN SHAFT BEARING:(for M119)	U003_S001	33
M1191684	DISCHARGE BRUSH:(for M119)	U003_S001	34
M1191685	GUIDE:MIDDLE:(for M119)	U003_S001	35
M1191686	FEED ROLLER:ARDF:(for M119)	U003_S001	36
M1191687	ARM:DUPLEX:(for M119)	U003_S001	37
M1191688	SPONGE:GUIDE:(for M119)	U003_S001	38
M1191689	CAM:18T:(for M119)	U003_S001	39
M1191690	COIL SPRING:EARTH:(for M119)	U003_S001	40
M1191691	GEAR:24T:(for M119)	U003_S001	41
M1191692	ARM:(for M119)	U003_S001	42
M1191693	GEAR:18T:(for M119)	U003_S001	43
M1191694	COIL SPRING:(for M119)	U003_S001	44
M1191695	COIL SPRING:IDLER:(for M119)	U003_S001	45
M1191696	ARM:LOCK:(for M119)	U003_S001	46
M1191697	STOPPER:ORIGINAL:(for M119)	U003_S001	47
M1191698	PLAIN SHAFT BEARING:PICKUP:(for M119)	U003_S001	48
M1191699	COIL SPRING:(for M119)	U003_S001	49
M1191700	COIL SPRING:(for M119)	U003_S001	50
M1191701	COVER:SENSOR:(for M119)	U003_S001	51
M1191702	GUIDE:(for M119)	U003_S001	52
M1191703	COIL SPRING:SCAN:(for M119)	U003_S001	53
M1191704	PLAIN SHAFT BEARING:(for M119)	U003_S001	54

Number	Part Name	Group	ID
M1191705	COIL SPRING:ORIGINAL SENSOR:(for M119)	U003_S001	55
M1191706	CAM:LINK:(for M119)	U003_S001	56
M1191707	PLATE:EXIT:(for M119)	U003_S001	57
M1191708	ROLLER:TENSION:EXIT:(for M119)	U003_S001	58
M1191709	SHAFT:ROLLER:(for M119)	U003_S001	59
M1191710	GEAR:52T:(for M119)	U003_S001	60
M1191711	MECHANICAL SPRING CLUTCH:(for M119)	U003_S001	61
M1191712	SPONGE:(for M119)	U003_S001	62
M1191713	CAM:ARM:(for M119)	U003_S001	63
M1191714	ARM:TENSION:RELEASE:(for M119)	U003_S001	64
M1191715	GUIDE:FEED:(for M119)	U003_S001	65
M1191716	SHAFT:DUPLEX:(for M119)	U003_S001	66
M1191717	FEELER:ORIGINAL SENSOR:(for M119)	U003_S001	67
M1191718	COIL SPRING:TENSION:ROLLER:(for M119)	U003_S001	68
M1191719	GUIDE:TRANSPORT:(for M119)	U003_S001	69
M1191720	ROLLER:TENSION:TRANSPORT ROLLER:(for M119)	U003_S001	70
M1191721	GEAR:COUPLING:38T:(for M119)	U003_S001	71
M1191723	GEAR:35T:(for M119)	U003_S001	72
M1191724	FEED ROLLER:ARDF:(for M119)	U003_S001	73
M1191725	DC SOLENOID:ARDF:(for M119)	U003_S001	74
M1191726	HOLDER:(for M119)	U003_S001	75
M1191727	LEVER:LOCK:SOLENOID:(for M119)	U003_S001	76
M1191728	GEAR:46T:(for M119)	U003_S001	77
M1191729	SEAL:(for M119)	U003_S001	78
M1191730	ARM:DUPLEX:(for M119)	U003_S001	79
M1191731	SHAFT:EXHAUST ROLLER:(for M119)	U003_S001	80
M1191732	GEAR:40T27T:(for M119)	U003_S001	81
M1191733	GEAR:35T27T:(for M119)	U003_S001	82
M1191734	ARM:ORIGINAL SENSOR:(for M119)	U003_S001	83

Exclusive Parts

Number	Part Name	Group	ID
M1191735	SEAL:(for M119)	U003_S001	84
M1191736	GEAR:40T23T:(for M119)	U003_S001	85
M1191737	PLATE:DC STEPPER MOTOR:(for M119)	U003_S001	86
M1191738	DC STEPPER MOTOR:(for M119)	U003_S001	87
M1191739	SEPARATION UNIT:ARDF:ASS'Y:(for M119)	U003_S001	88
M1191740	SEPARATION PAD:ARDF:ASS'Y:(for M119)	U003_S001	89
M1191840	PCB:FEED:SENSOR:(for M119)	U003_S001	90
M1191841	PCB:SET SENSOR:(for M119)	U003_S001	91
M1191842	PCB:SENSOR:DUPLEX:(for M119)	U003_S001	92
M1191843	PCB:ON OFF DETECTOR:(for M119)	U003_S001	93
M1191844	PCB:ARDF:(for M119)	U003_S001	94

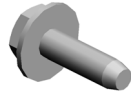
Standard Parts



03603006N
SCREW - M3X6



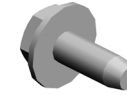
04503008N
TAPPING SCREW - M3X8



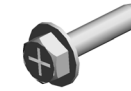
04503010N
TAPPING SCREW - M3X10



04513006N
TAPPING SCREW - 3X6



04513008N
TAPPING SCREW - M3X8



04513014N
TAPPING SCREW:3X14



04513030N
TAPPING SCREW:3X30



04523008N
TAPPING SCREW - M3X8



04523010N
BINDING SELF-TAPPING SCREW:3X10



04533006N
TAPPING SCREW - M3X6



04543006Q
TAPPING SCREW - M3X6



04543008Q
TAPPING SCREW:3X8



04543014Q
TAPPING SCREW:3X14



07200040E
RETAINING RING - M4



08025318
BINDING HEAD TAPPING SCREW:ES:3X10



08046127
HEXAGONAL BOLT:DOUBLE SCREW:M3X8



08050088
RETAINING RING - M6:(for M19)



08050089
RETAINING RING - M4



09504006N
SCREW - M4X6



09543010N
SCREW:POLISHED ROUND/SPRING:M3X10



11050487
HARNESS CLAMP



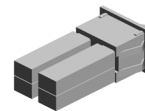
11050508
HARNESS CLAMP - LWS-071



11050511
HARNESS CLAMP - LWS-030



11050534
CLAMP



12042757
SWITCH:SDDJF31900



14077435
EEPROM:CAT93C76LI-G

