



RICOH UNIVERSITY

Learning ♦ Knowledge ♦ Performance



M000/M009
PARTS CATALOG

003788MIU

LANIER RICOH SAVIN



M000/M009
PARTS CATALOG

LANIER
RICOH
SAVIN®



RICOH UNIVERSITY

Learning ♦ Knowledge ♦ Performance

M000/M009 PARTS CATALOG

003788MIU

LANIER RICOH SAVIN®

It is the reader's responsibility when discussing the information contained within this document to maintain a level of confidentiality that is in the best interest of Ricoh Americas Corporation and its member companies.

**NO PART OF THIS DOCUMENT MAY BE REPRODUCED IN ANY
FASHION AND DISTRIBUTED WITHOUT THE PRIOR
PERMISSION OF RICOH AMERICAS CORPORATION.**

All product names, domain names or product illustrations, including desktop images, used in this document are trademarks, registered trademarks or the property of their respective companies.

They are used throughout this book in an informational or editorial fashion only and for the benefit of such companies. No such use, or the use of any trade name, or web site is intended to convey endorsement or other affiliation with Ricoh products.

LEGEND

PRODUCT CODE	COMPANY		
	LANIER	RICOH	SAVIN
M000	SP 3300DN	Aficio SP 3300DN	SP 3300DN
M009	SP 3300D	Aficio SP 3300D	SP 3300D

DOCUMENTATION HISTORY

REV. NO.	DATE	COMMENTS
*	05/2008	Original Printing

M000/M009

TABLE OF CONTENTS

M000/M009 PARTS LOCATION AND LIST

1.Exterior 1 (M000/M009)	2
2.Exterior 2 (M000/M009)	4
3.Exterior 3 (M000/M009)	6
4.Exterior 4 (M000/M009)	8
5.Exterior 5 (M000/M009)	10
6.Frame Section 1 (M000/M009)	12
7.Frame Section 2 (M000/M009)	14
8.Drive Section (M000/M009)	16
9.Paper Exit Section (M000/M009)	18
10.Fusing Unit (M000/M009)	20
11.Duplex Unit (M000/M009)	22
12.Cassette Unit (M000/M009)	24

M000/M009 PARTS INDEX

PARTS INDEX	2
-------------------	---

PAPER FEED UNIT TYPE TK1070 (M347)

PARTS LOCATION AND LIST

1.Paper Feed Unit (M347)	2
--------------------------------	---

PAPER FEED UNIT TYPE TK1070 (M347) PARTS INDEX

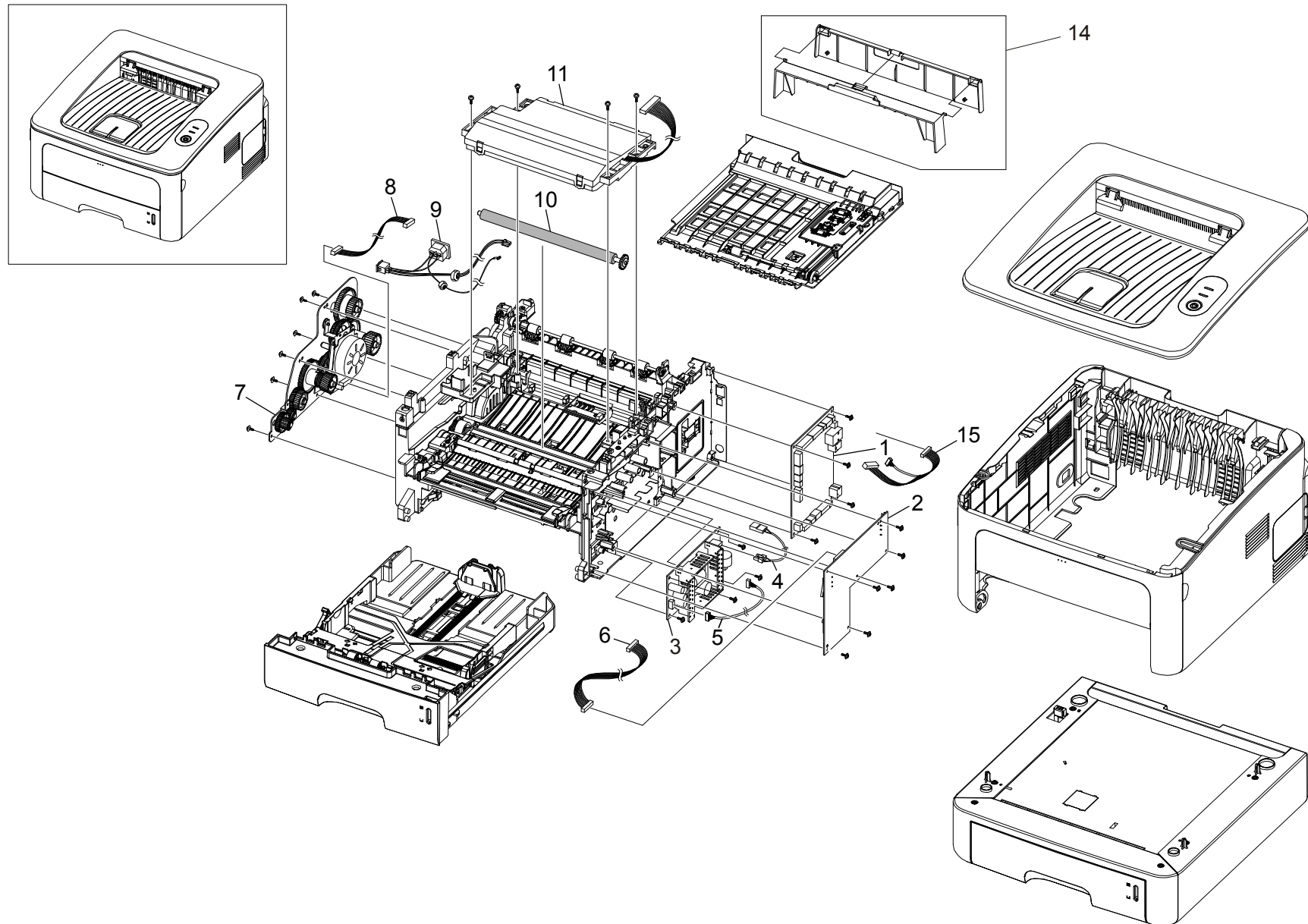
PARTS INDEX	2
-------------------	---

M000/M009
PARTS LOCATION AND LIST

This section instructs you as to the numbers and names of parts on this machine.

1.Exterior 1 (M000/M009)

Rev. 01/26/2010



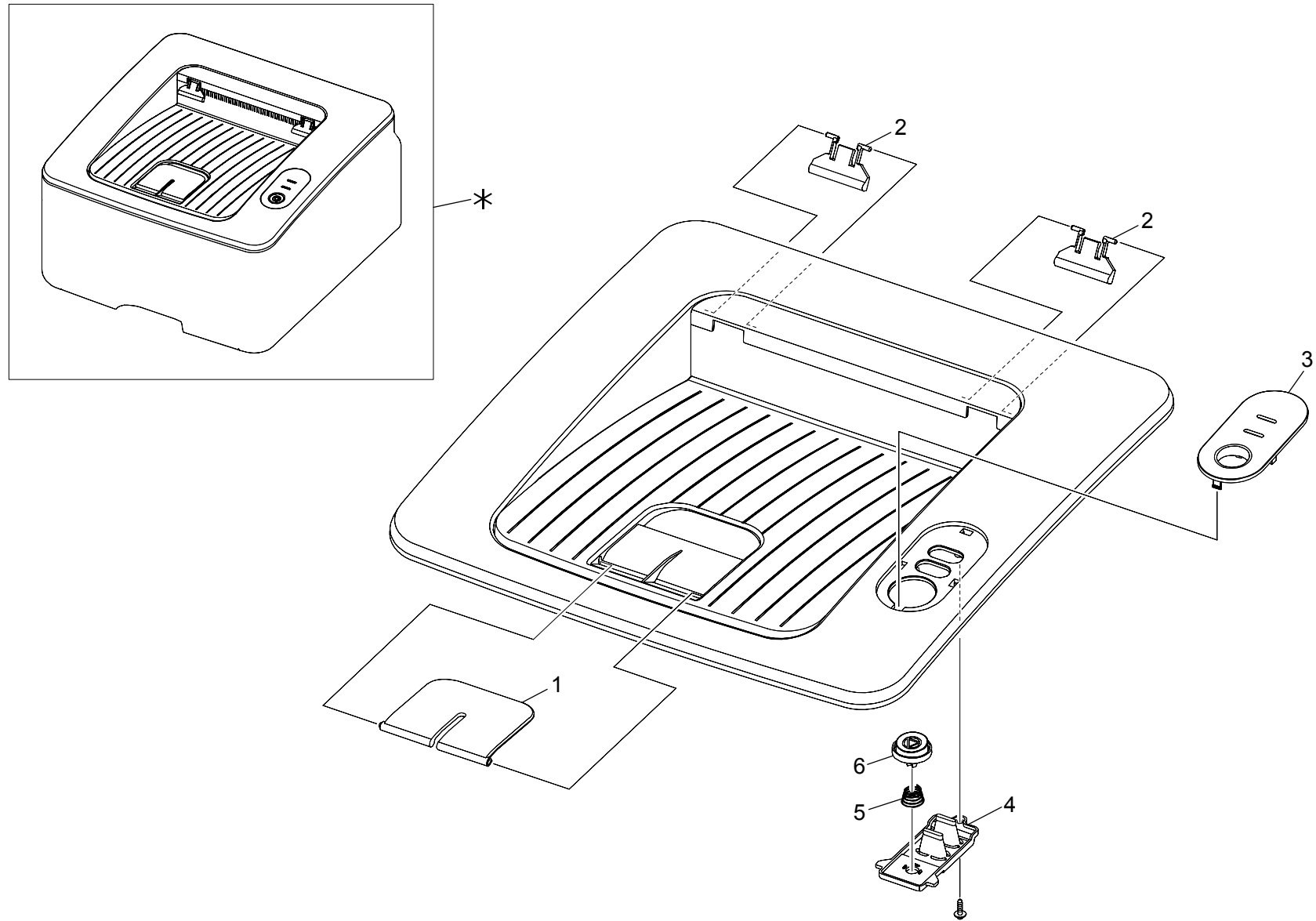
1.Exterior 1 (M000/M009)

Rev. 01/26/2010

Index No.	Part No.	Description	Q'ty Per Assembly
1	M000 1194	Main Board	1
1	M009 1001	Main Board	1
2	M000 1035	Power Pack	1
3	M000 1034	Power Supply Unit: 110v: NA [TSB001]	1
3	M000 1502	Power Supply Unit: 220v: EU [TSB001]	1
4	M000 1029	Harness: Fuser AC	1
5	M000 1033	Harness	1
6	M000 1031	Harness: Power Pack	1
7	M000 1170	Drive Unit	1
8	M000 1030	Harness: Motor/SOL	1
9	M000 1028	Harness: AC Inlet	1
10	M000 1115	Transfer Roller	1
11	M000 1172	Writing Unit	1
14	M000 1602	Unit Duplex Cover	1
15	M000 1604	Harness-Jnt: Thermistor [TSB#004R]	1

Index No.	Part No.	Description	Q'ty Per Assembly

2.Exterior 2 (M000/M009)

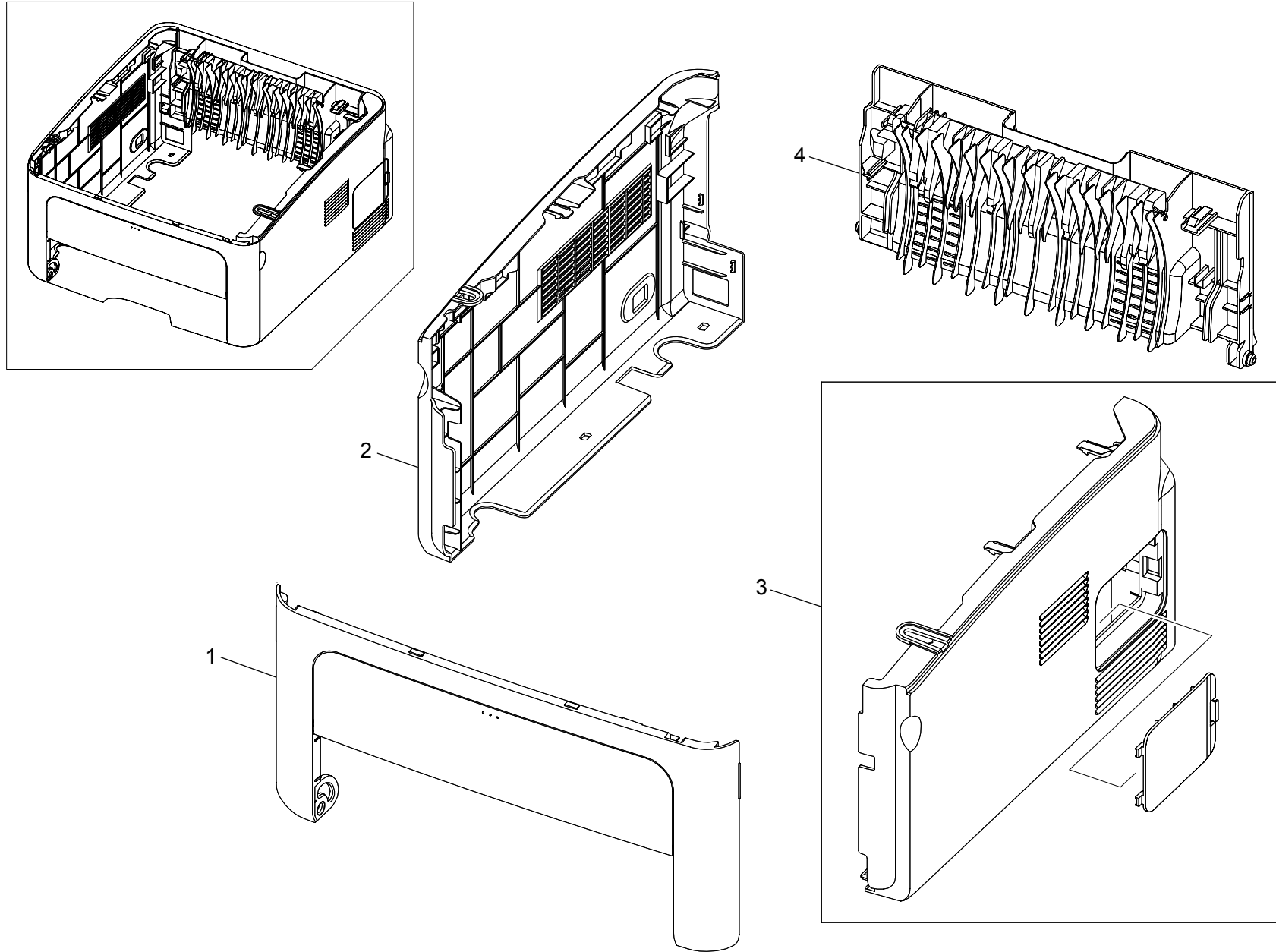


2.Exterior 2 (M000/M009)

Index No.	Part No.	Description	Q'ty Per Assembly
*	M000 1197	MEA Unit-Cover Top	1
1	M000 1056	Stacker-RX	1
2	M000 1165	Sub Stacker	2
3	M000 1203	Sheet-Overlay	1
4	M000 1158	Lens Led	1
5	G144 9653	OP- Spring	1
6	M000 1105	Key: On line	1

Index No.	Part No.	Description	Q'ty Per Assembly

3.Exterior 3 (M000/M009)



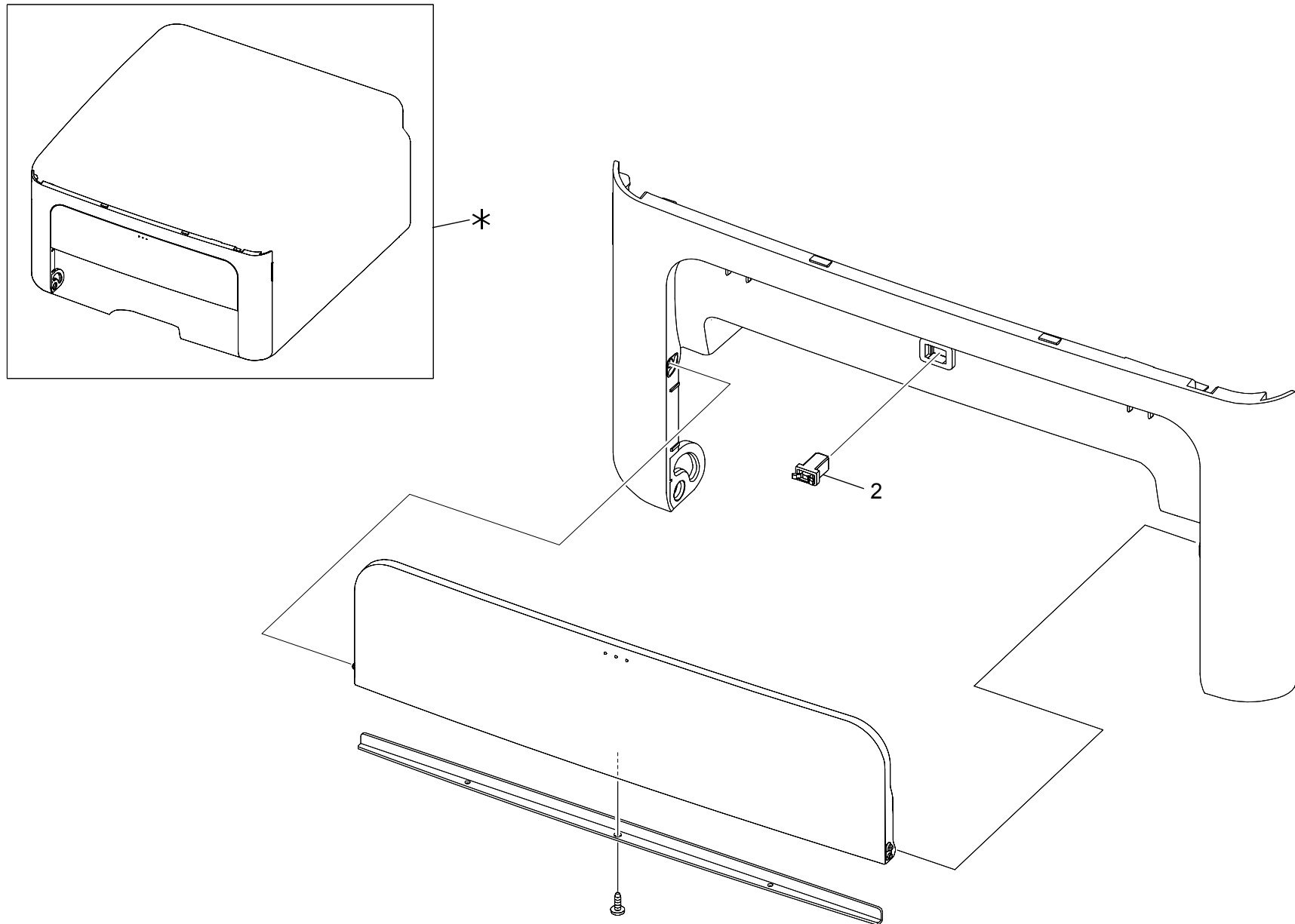
3.Exterior 3 (M000/M009)

Index No.	Part No.	Description	Q'ty Per Assembly
1	M000 1201	MEA Unit-Cover Front	1
2	M000 1198	MEA Unit-Cover Left	1
3	M000 1199	MEA Unit-Cover Right	1
3	M009 1003	MEA Unit-Cover Right	1
4	M000 1200	MEA Unit-Cover Rear	1

Index No.	Part No.	Description	Q'ty Per Assembly

4.Exterior 4 (M000/M009)

Rev. 07/17/2008



4.Exterior 4 (M000/M009)

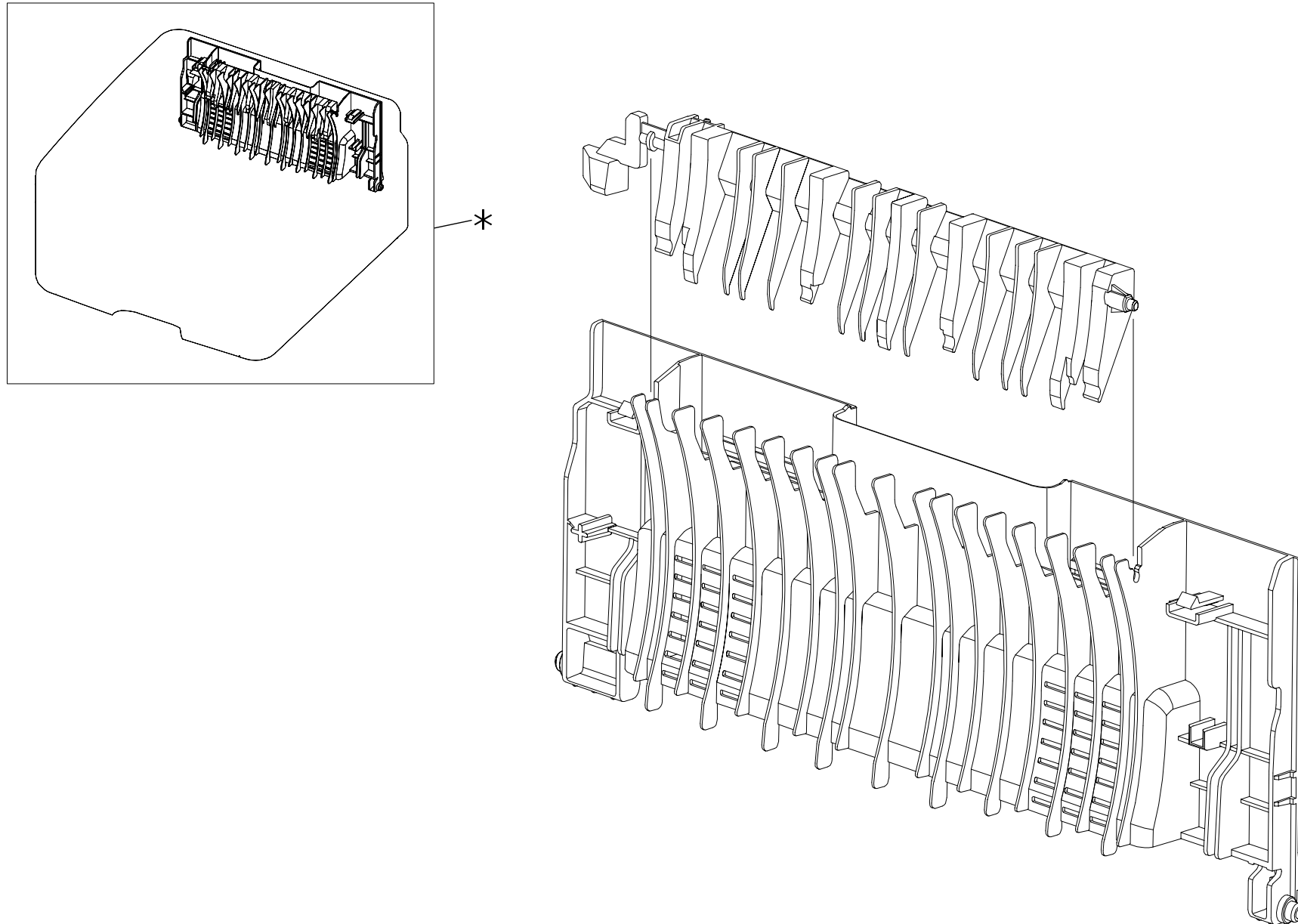
Rev. 07/17/2008

Index No.	Part No.	Description	Q'ty Per Assembly
*	M000 1201	MEA Unit-Cover Front	1
2	M000 1024	Locker: Latch Push	1

Index No.	Part No.	Description	Q'ty Per Assembly

5.Exterior 5 (M000/M009)

Rev. 07/17/2008



5.Exterior 5 (M000/M009)

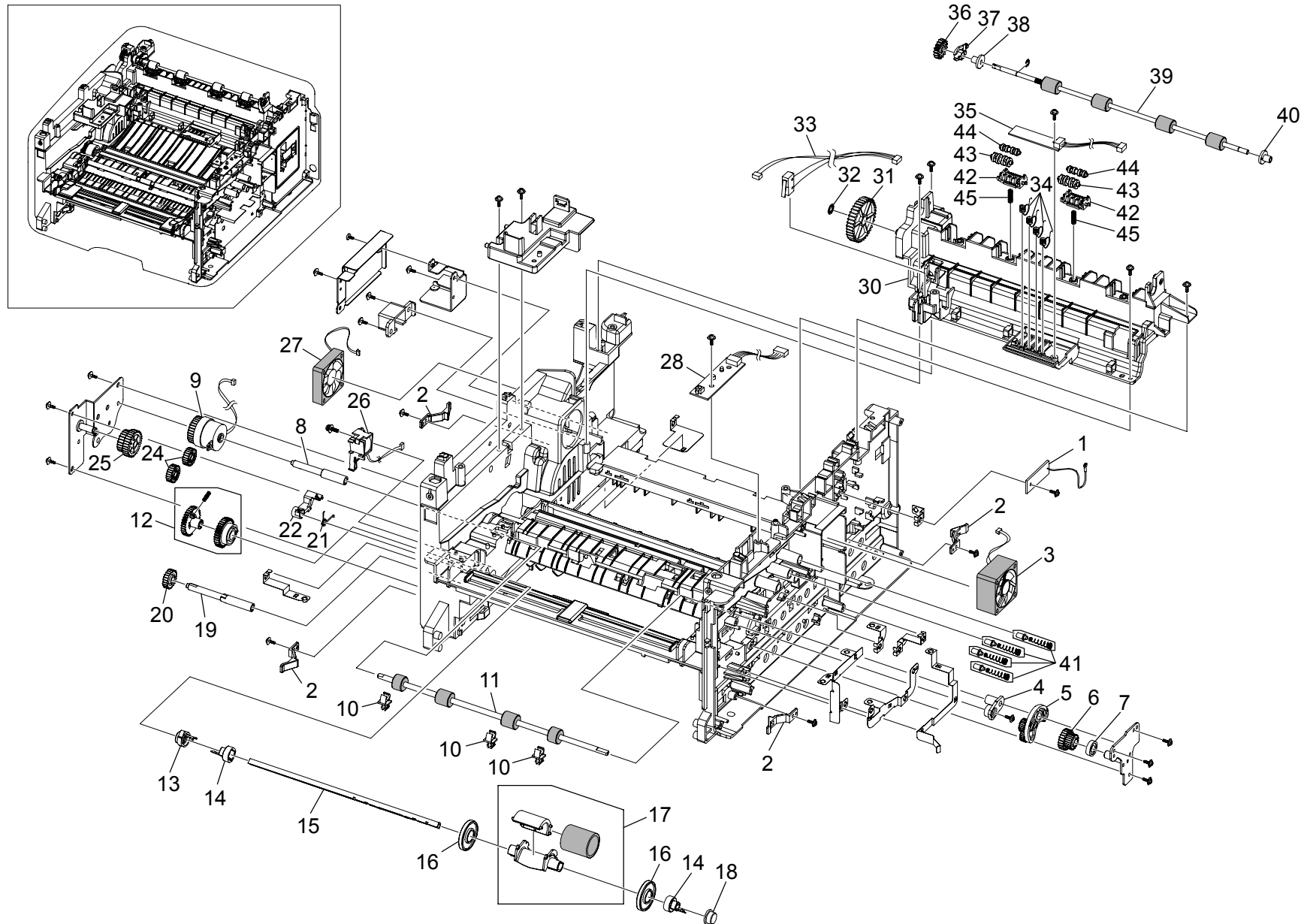
Rev. 07/17/2008

Index No.	Part No.	Description	Q'ty Per Assembly
*	M000 1200	MEA Unit-Cover Rear	1

Index No.	Part No.	Description	Q'ty Per Assembly
-----------	----------	-------------	-------------------

6.Frame Section 1 (M000/M009)

Rev. 07/17/2008



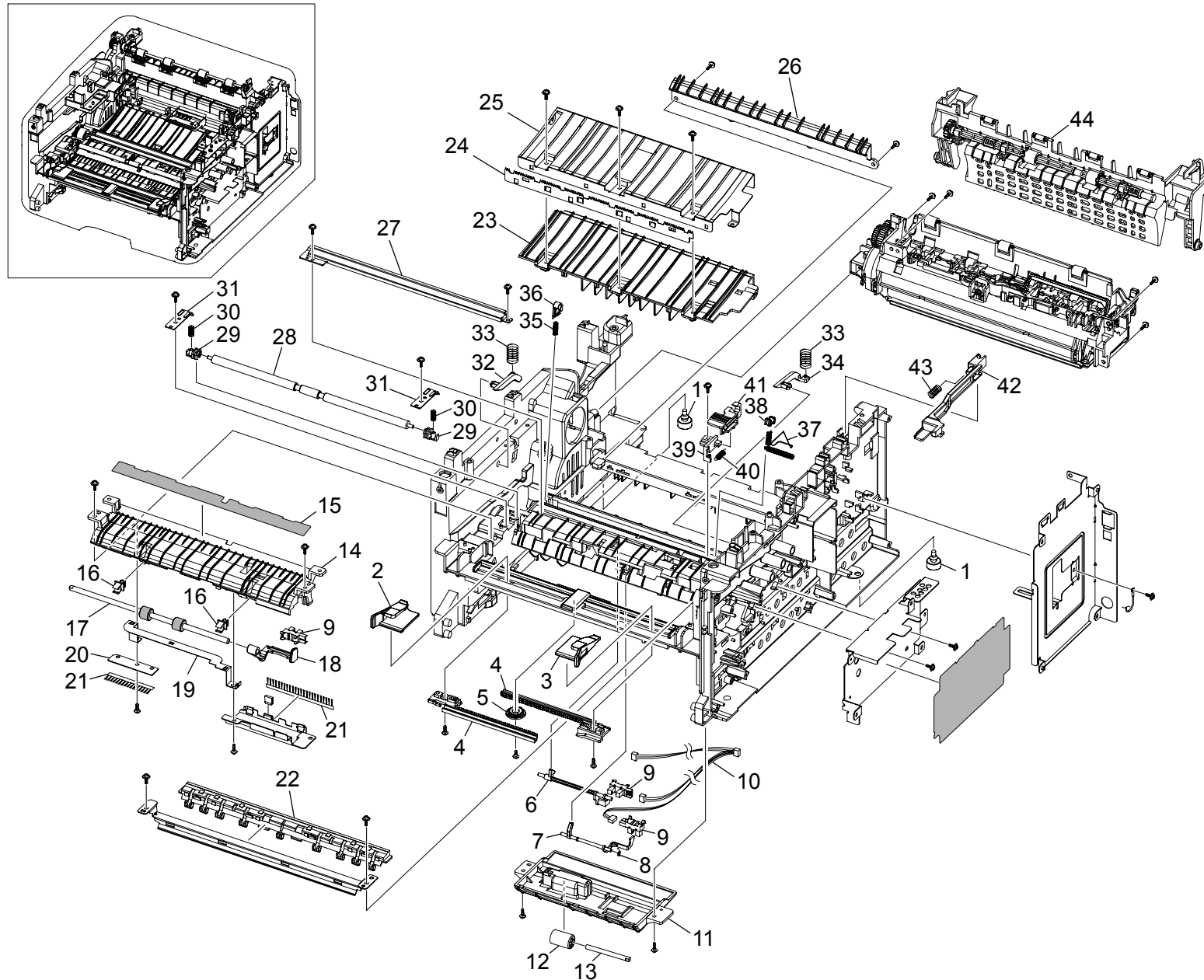
6.Frame Section 1 (M000/M009)

Rev. 11/17/2010

Index No.	Part No.	Description	Q'ty Per Assembly
1	M000 1215	RZL: PBA_Main-Zener: JC92-01488B	1
2	G960 1141	Lock Plate	4
3	M000 1025	Fan: DC	1
4	M000 1059	Holder-REGI	1
5	M000 1171	MEA Unit Swing	1
6	M000 1140	Gear: Duplex	1
7	M000 1052	Collar Swing	1
8	M000 1142	Shaft-Feed REGI	1
9	M000 1153	Magnetic Clutch	1
10	G186 1183	Bushing	3
11	M000 1143	Roller-Feed REGI	1
12	M000 1179	MEA Unit-Gear Pick Up	1
13	M000 1154	Cam-Pick Up	1
14	G960 1140	Idler - Pick-up	2
15	M000 1150	Shaft-P-Pick up	1
16	G960 1070	Stopper - Pick-up RO	2
17	M000 1177	Pick-up Roller	1
18	G960 1059	Bushing - Pickup Roller	1
19	M000 1145	Shaft-Feed	1
20	M000 1130	Gear: Feed Drive	1
21	M000 1017	Spring	1
22	G960 1099	Cam - Pick-up	1
24	M000 1155	Gear: Exit: Z17	2
25	M000 1126	Gear: Feed	1
26	M000 1027	Solenoid: Pick-up	1
27	M000 1025	Fan: DC	1
28	G144 9674	OP - Board	1
30	M000 1073	Frame-Exit High	1
31	M000 1113	Gear-M-Fuser Idle 1	1
32	M000 1013	Ring-CS	1
33	M000 1032	Harness: LSU SW/Fan	1
34	G960 1096	Terminal	4
35	G960 1161	Terminal Board	1
36	G960 1126	Gear - Exit Roller	1
37	G186 1141	Exit Roller Bushing	2

Index No.	Part No.	Description	Q'ty Per Assembly
38	M000 1071	Support-Roller	1
39	M000 1147	Roller: Exit F/Down	1
40	M000 1037	Bush	1
41	M000 1600	Unit - Terminal	4
42	M000 1041	Holder - M - Exit	2
43	M000 1111	Roller - Exit Main	2
44	M000 1112	Roller - Exit FR	2
45	M000 1015	Spring CS	2

7.Frame Section 2 (M000/M009)

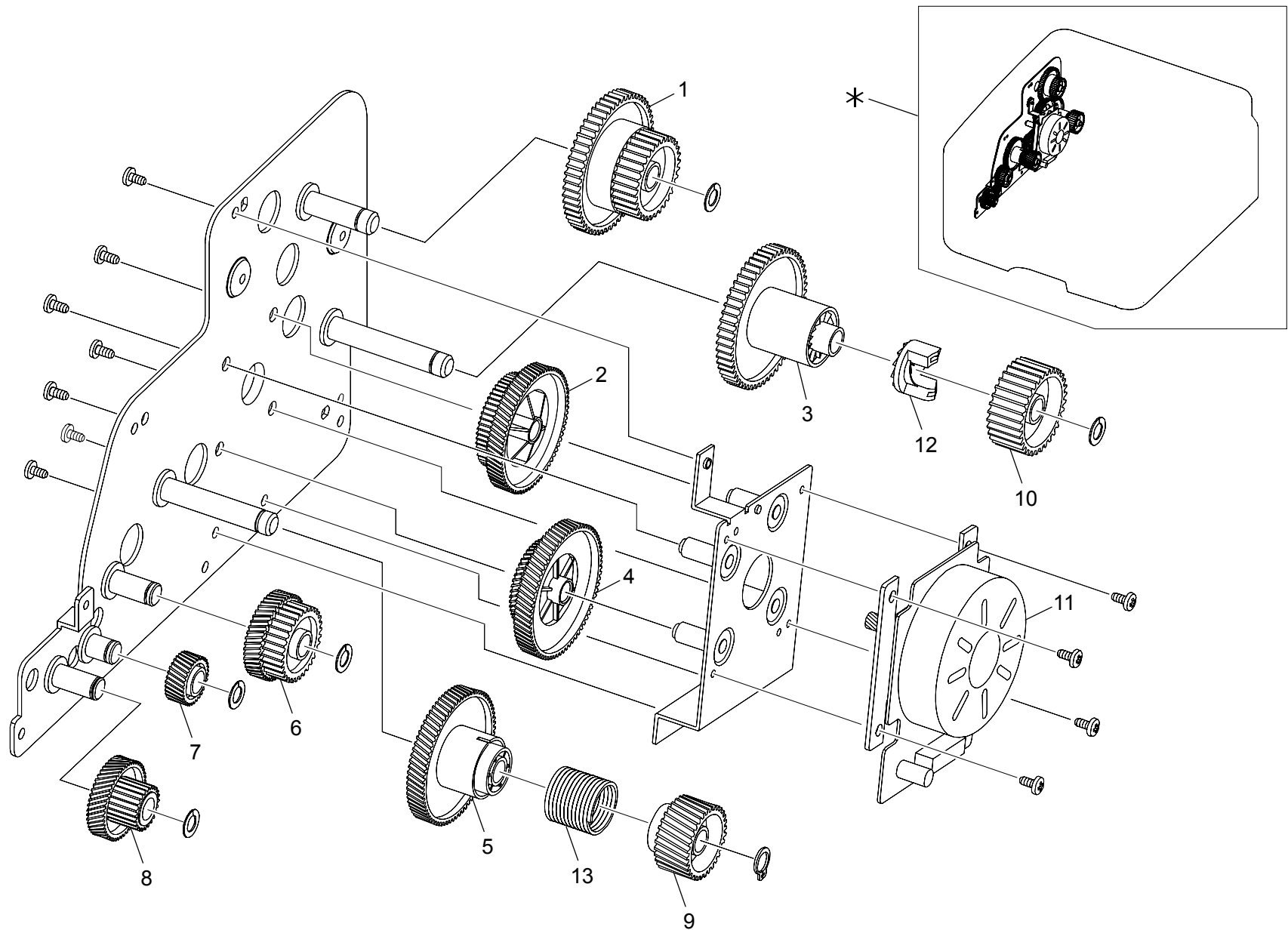


7.Frame Section 2 (M000/M009)

Index No.	Part No.	Description	Q'ty Per Assembly
1	G186 1139	Foot-ML80	2
2	M000 1161	Left Guide: Table	1
3	M000 1162	Right Guide: Table	1
4	M000 1160	Rack: Table	2
5	M000 1110	Gear-Rack Pinion	1
6	M000 1136	Actuator: Feed	1
7	M000 1135	Actuator-Duplex	1
8	G960 1015	Spring	2
9	G186 1102	Photointerrupter	3
10	M000 1031	Harness: Power Pack	1
11	M000 1072	Frame-Duplex Path	1
12	M000 1114	Roller-M-Idle SCF	1
13	M000 1152	Shaft-DUP Roller	1
14	M000 1066	Guide-Frame Duplex	1
15	M000 1104	Sheet-Guide DUP Path	1
16	G186 1183	Bushing	2
17	H914 9709	Feed Roller	1
18	M000 1137	Actuator: Empty	1
19	M000 1095	Ground-Pick up	1
20	G964 1030	Sheet - Brush	1
21	G186 1344	Antistatic Brush	1
22	M000 1082	Guide Front Paper	1
23	M000 1068	Guide-TR RIB	1
24	G960 1061	Plate	1
25	M000 1070	Guide-TR	1
26	M000 1049	Guide-INPUT	1
27	M000 1061	Plate Earth Transfer	1
28	M000 1141	Shaft-Feed Idle	1
29	G960 1058	Bushing - Idle Roller	2
30	G960 1080	Pressure Spring	2
31	G960 1236	Holder Plate	2
32	G960 1142	Left Guide Plate	1
33	G186 1203	Spring - Guide	2
34	G960 1143	Right Guide Plate	1
35	M000 1020	Spring: T Roller	1

Index No.	Part No.	Description	Q'ty Per Assembly
36	M000 1083	Bush-TR L	1
37	M000 1106	Terminal Spring	1
38	G960 1060	Left Bushing	1
39	M000 1067	Guide-Holder TR	1
40	M000 1038	Spring ETC-ES (Guide Holder TR)	1
41	M000 1057	Holder-Transfer	1
42	M000 1138	Link-Cover Rear	1
43	G186 1234	Spring	1
44	M000 1178	Rear Guide Unit	1

8. Drive Section (M000/M009)



8. Drive Section (M000/M009)

Index No.	Part No.	Description	Q'ty Per Assembly
*	M000 1170	Drive Unit	1
1	M000 1134	Gear: Exit: 61/28	1
2	M000 1127	Gear: 83/40	1
3	M000 1128	Gear: Fuser: 61	1
4	M000 1125	Gear: 89/55	1
5	M000 1129	Gear: OPC: 89	1
6	M000 1124	Gear: Feed: 56/25	1
7	M000 1133	Gear: Pick-up: 31	1
8	M000 1139	Gear: 52/18	1
9	M000 1151	Gear: OPC Clutch: 29	1
10	M000 1131	Gear: Fuser: 31	1
11	M000 1026	Motor: Main	1
12	M000 1163	Hub-Clutch	1
13	M000 1021	Spring Clutch	1

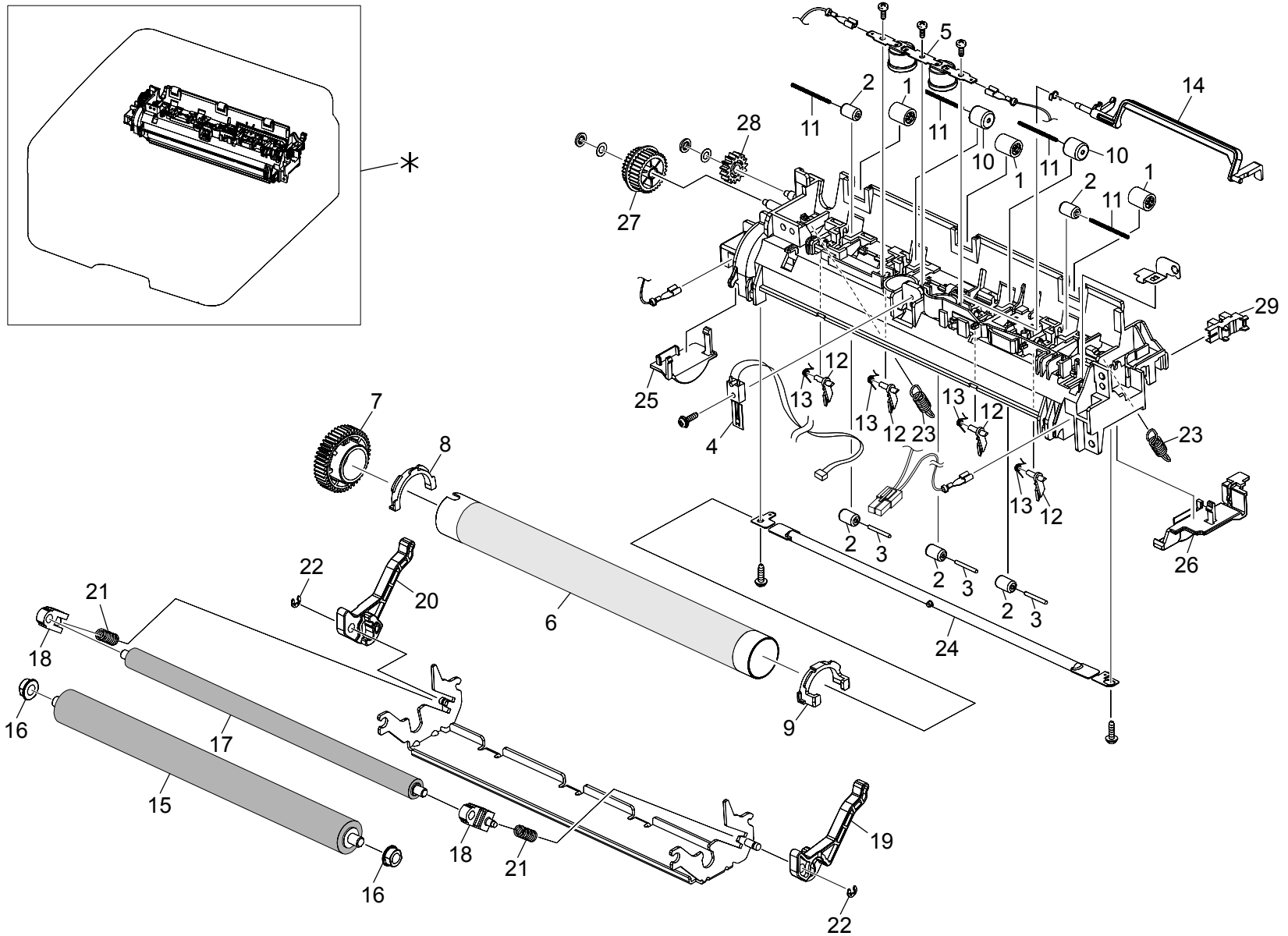
Index No.	Part No.	Description	Q'ty Per Assembly

9.Paper Exit Section (M000/M009)

Index No.	Part No.	Description	Q'ty Per Assembly
*	M000 1178	Rear Guide Unit	1
1	M000 1119	Gear: Exit	1

Index No.	Part No.	Description	Q'ty Per Assembly

10.Fusing Unit (M000/M009)



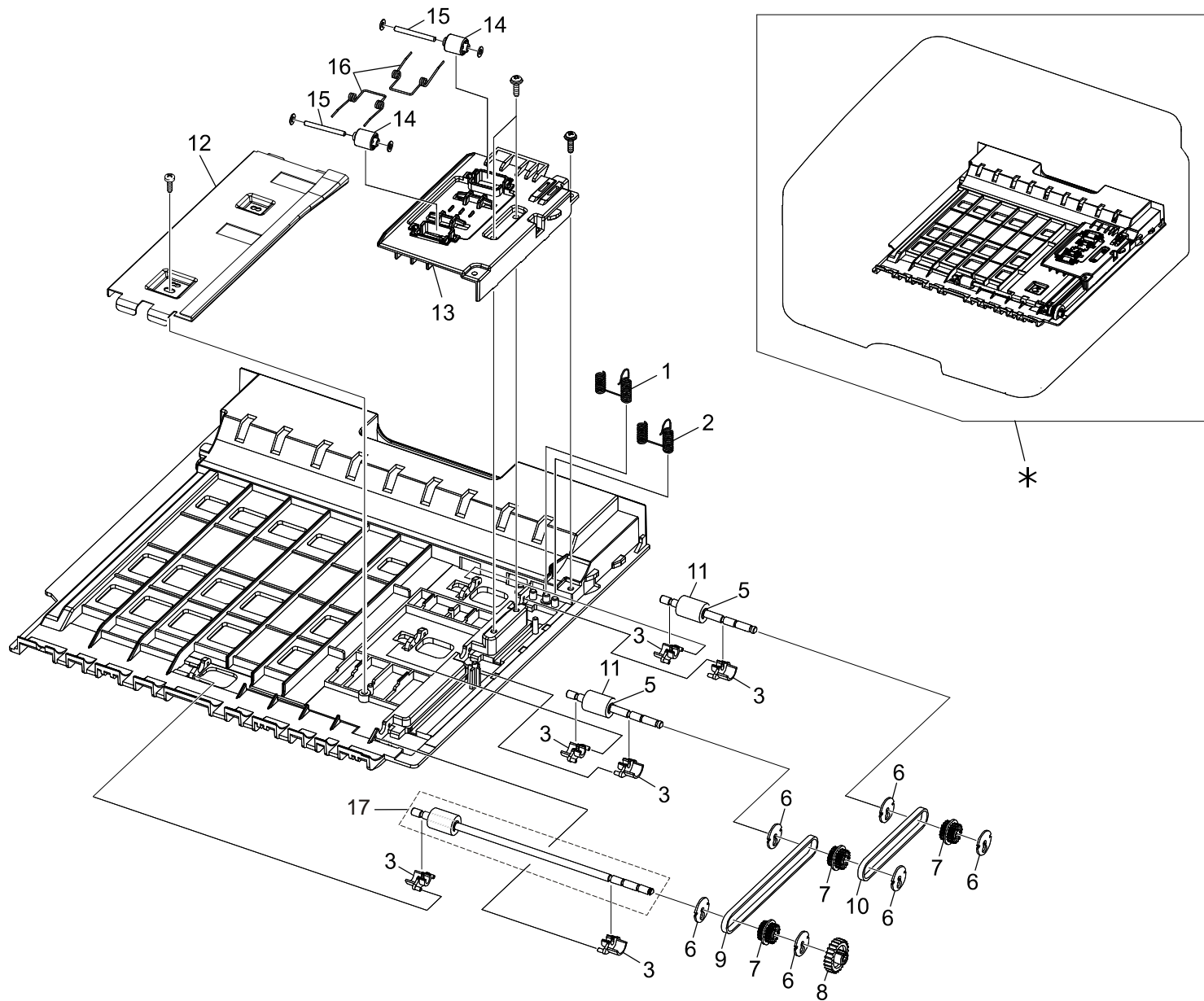
10.Fusing Unit (M000/M009)

Index No.	Part No.	Description	Q'ty Per Assembly
*	M000 1169	Fusing Unit: 110V	1
*	M000 1503	Fusing Unit: 220V	1
1	G186 1223	Upper Idle Roller	3
2	M000 1118	Roller: Idle	5
3	G186 1076	Idle Roller Shaft	3
4	M000 1001	Thermistor	1
5	G960 1007	Thermostat	1
6	M000 1117	Roller: Heat	1
7	M000 1116	Gear: Fuser	1
8	M000 1077	Bush-HR-L	1
9	M000 1078	Bush-HR-R	1
10	G186 1077	Idle Roller	2
11	M000 1018	Spring	4
12	M000 1044	Guide-Claw	4
13	M000 1042	Spring: Claw	4
14	M000 1121	Actuator-Exit	1
15	M000 1148	Roller: Pressure	1
16	M000 1079	Bush-PR-1st	2
17	M000 1149	Roller: Pressure: 2nd	1
18	M000 1080	Bush-PR-2nd	2
19	M000 1123	Lever-Link Jam R	1
20	M000 1122	Lever: Link Jam: Left	1
21	M000 1016	Spring	2
22	G960 1011	C-Ring	2
23	M000 1019	Spring	2
24	M000 1004	Lamp: Halogen: 110V	1
24	M000 1501	Lamp: Halogen: 220V	1
25	M000 1156	Cap-Lamp L	1
26	M000 1157	Cap-Lamp R	1
27	M000 1132	Gear: Fuser: 28/20	1
28	M000 1109	Gear-MPF 5	1
29	G186 1102	Photo - Interrupter	1

Index No.	Part No.	Description	Q'ty Per Assembly

11. Duplex Unit (M000/M009)

Rev. 07/31/2009



11.Duplex Unit (M000/M009)

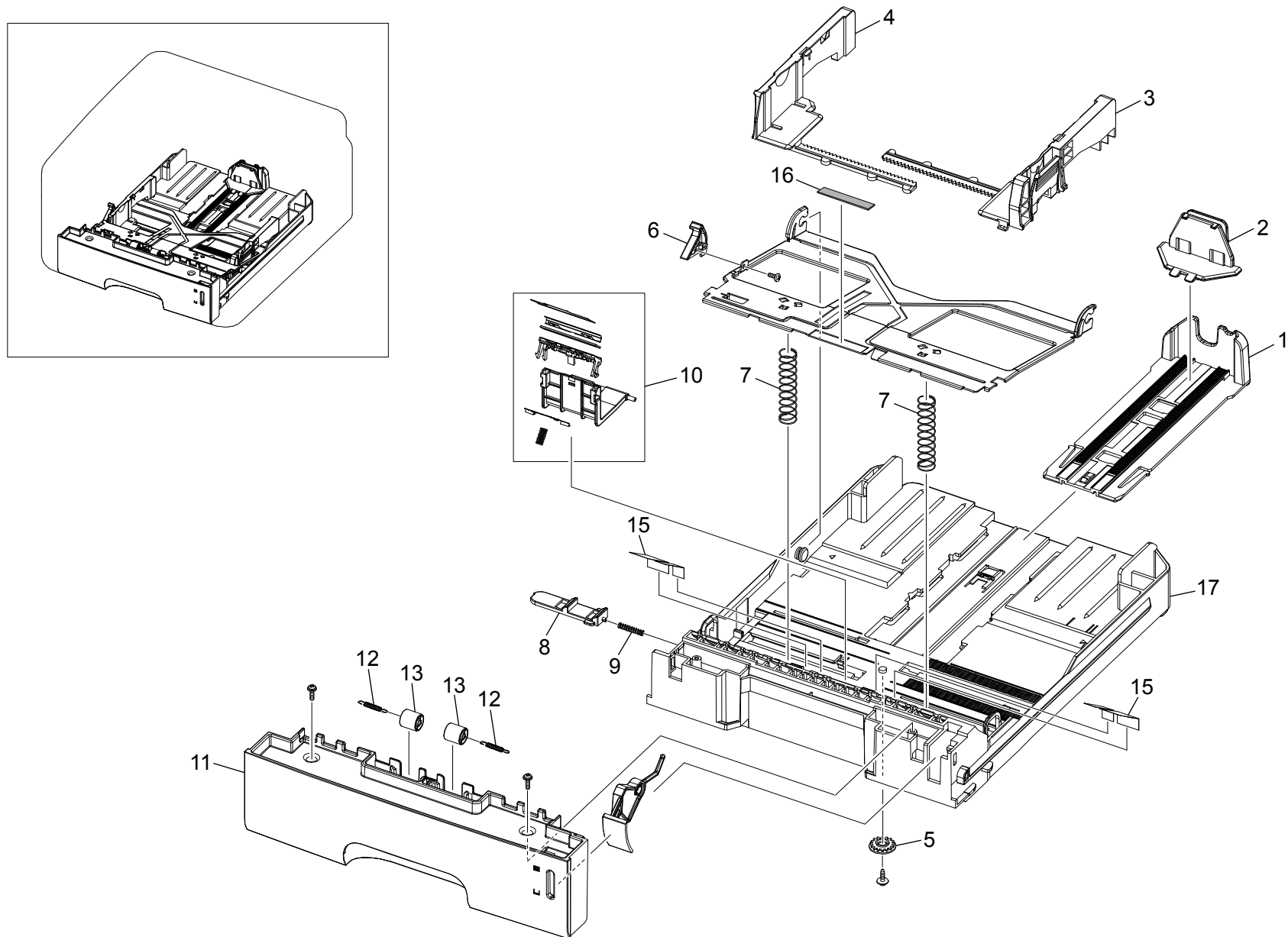
Rev. 07/31/2009

Index No.	Part No.	Description	Q'ty Per Assembly
*	M000 1195	ELA Unit-Duplex	1
1	M000 1108	Terminal: Ground: Large	1
2	M000 1107	Terminal: Ground: Small	1
3	M307 1031	Bushing - Feed Roller	6
5		[TSB#003]	
6	M307 1029	Belt Stopper	6
7	M307 1030	Pulley - 18T	3
8	G960 1097	Gear - Exit Roller	1
9	M000 1023	Timing Belt	1
10	M000 1022	Timing Belt	1
11	M307 1032	Duplex Feed Roller	2
12	M000 1060	Bracket-Duplex Align	1
13	M000 1076	Guide-Duplex Upper	1
14	M307 1026	Idle Roller	2
15	M307 1025	Idle Roller Shaft	2
16	G960 1013	Spring	2
17	M000 1603	RZL:ELAUNIT-Dup2 [TSB#003]	1

Index No.	Part No.	Description	Q'ty Per Assembly

12.Cassette Unit (M000/M009)

Rev. 04/22/2010



12.Cassette Unit (M000/M009)

Rev. 04/22/2010

Index No.	Part No.	Description	Q'ty Per Assembly
1	G144 9739	Extension - End	1
2	M000 1193	End Fence	1
3	M000 1192	Side Fence: Right	1
4	M000 1159	Side Fence: Left	1
5	G186 1007	Gear-16Z	1
6	G960 1411	RZL: Cam-M-Knock up	1
7	G960 1016	Spring - Cassette	2
8	G960 1138	Lock Plate	1
9	G960 1194	Pressure Spring	1
10	M000 1176	Housing: Pad Holder	1
11	M000 1186	Cover-Handle Cassette	1
12	G964 1002	Spring - ES	2
13	G144 9722	Idle Feed Roller	2
14	M000 1191	Indicator-Paper	1
15	M000 1101	Sheet-Guide Side Far	2
16	G186 1312	Pad - Cassette	1
17	M000 1040	Frame: Cassette: JC61-00876L	1

Index No.	Part No.	Description	Q'ty Per Assembly

**M000/M009
PARTS INDEX**

This section instructs you as to the numbers and names of parts on this machine.

Parts Index

Part No.	Description	Page and Index No.
M000 1001	Thermistor	21 - 4
M000 1004	Lamp: Halogen: 110V	21 - 24
M000 1012	Ring-CS;ID3,OD3,T0.25,Black,SU	13 - 23
M000 1013	Ring-CS	13 - 32
M000 1016	Spring	21 - 21
M000 1017	Spring	13 - 21
M000 1018	Spring	21 - 11
M000 1019	Spring	21 - 23
M000 1020	Spring: T Roller	15 - 35
M000 1021	Spring Clutch	17 - 13
M000 1022	Timing Belt	23 - 10
M000 1023	Timing Belt	23 - 9
M000 1024	Locker: Latch Push	9 - 2
M000 1025	Fan: DC	13 - 3
M000 1025	Fan: DC	13 - 27
M000 1026	Motor: Main	17 - 11
M000 1027	Solenoid: Pick-up	13 - 26
M000 1028	Harness: AC Inlet	3 - 9
M000 1029	Harness: Fuser AC	3 - 4
M000 1030	Harness: Motor/SOL	3 - 8
M000 1031	Harness: Power Pack	15 - 10
M000 1031	Harness: Power Pack	3 - 6
M000 1032	Harness: LSU SW/Fan	13 - 33
M000 1033	Harness	3 - 5
M000 1034	Power Supply Unit	3 - 3
M000 1035	Power Pack	3 - 2
M000 1037	Bush	13 - 40
M000 1038	Spring ETC-ES (Guide Holder TR)	15 - 40
M000 1041	Holder - M - Exit	13 - 42
M000 1042	Spring: Claw	21 - 13
M000 1044	Guide-Claw	21 - 12
M000 1049	Guide-INPUT	15 - 26
M000 1052	Collar Swing	13 - 7
M000 1056	Stacker-RX	5 - 1
M000 1057	Holder-Transfer	15 - 41

Part No.	Description	Page and Index No.
M000 1059	Holder-REGI	13 - 4
M000 1060	Bracket-Duplex Align	23 - 12
M000 1061	Plate Earth Transfer	15 - 27
M000 1066	Guide-Frame Duplex	15 - 14
M000 1067	Guide-Holder TR	15 - 39
M000 1068	Guide-TR RIB	15 - 23
M000 1070	Guide-TR	15 - 25
M000 1071	Support-Roller	13 - 38
M000 1072	Frame-Duplex Path	15 - 11
M000 1073	Frame-Exit High	13 - 30
M000 1075	Frame-LSU-Holder-R	13 - 29
M000 1076	Guide-Duplex Upper	23 - 13
M000 1077	Bush-HR-L	21 - 8
M000 1078	Bush-HR-R	21 - 9
M000 1079	Bush-PR-1st	21 - 16
M000 1080	Bush-PR-2nd	21 - 18
M000 1081	Guide-Change DUP	11 - 1
M000 1082	Guide Front Paper	15 - 22
M000 1083	Bush-TR L	15 - 36
M000 1095	Ground-Pick-up	15 - 19
M000 1101	Sheet-Guide Side Far	25 - 15
M000 1104	Sheet-Guide DUP Path	15 - 15
M000 1105	Key: On line	5 - 6
M000 1106	Terminal Spring	15 - 37
M000 1107	Terminal: Ground: Small	23 - 2
M000 1108	Terminal: Ground: Large	23 - 1
M000 1109	Gear-MPF 5	21 - 28
M000 1110	Gear-Rack Pinion	15 - 5
M000 1111	Roller - Exit Main	13 - 43
M000 1112	Roller - Exit FR	13 - 44
M000 1113	Gear-M-Fuser Idle 1	13 - 31
M000 1114	Roller-M-Idle SCF	15 - 12
M000 1115	Transfer Roller	3 - 10
M000 1115	Spring CS	13 - 45
M000 1116	Gear: Fuser	21 - 7

Part No.	Description	Page and Index No.
M000 1117	Roller: Heat	21 - 6
M000 1118	Roller: Idle	21 - 2
M000 1119	Gear: Exit	19 - 1
M000 1121	Actuator-Exit	21 - 14
M000 1122	Lever: Link Jam: Left	21 - 20
M000 1123	Lever-Link Jam R	21 - 19
M000 1124	Gear: Feed: 56/25	17 - 6
M000 1125	Gear: 89/55	17 - 4
M000 1126	Gear: Feed	13 - 25
M000 1127	Gear: 83/40	17 - 2
M000 1128	Gear: Fuser: 61	17 - 3
M000 1129	Gear: OPC: 89	17 - 5
M000 1130	Gear: Feed Drive	13 - 20
M000 1131	Gear: Fuser: 31	17 - 10
M000 1132	Gear: Fuser: 28/20	21 - 27
M000 1133	Gear: Pick-up: 31	17 - 7
M000 1134	Gear: Exit: 61/28	17 - 1
M000 1135	Actuator-Duplex	15 - 7
M000 1136	Actuator: Feed	15 - 6
M000 1137	Actuator: Empty	15 - 18
M000 1138	Link-Cover Rear	15 - 42
M000 1139	Gear: 52/18	17 - 8
M000 1140	Gear: Duplex	13 - 6
M000 1141	Shaft-Feed Idle	15 - 28
M000 1142	Shaft-Feed REGI	13 - 8
M000 1143	Roller-Feed REGI	13 - 11
M000 1144	Roller-Feed DUP2	23 - 4
M000 1145	Shaft-Feed	13 - 19
M000 1147	Roller: Exit F/Down	13 - 39
M000 1148	Roller: Pressure	21 - 15
M000 1149	Roller: Pressure: 2nd	21 - 17
M000 1150	Shaft-P-Pick up	13 - 15
M000 1151	Gear: OPC Clutch: 29	17 - 9
M000 1152	Shaft-DUP Roller	15 - 13
M000 1153	Magnetic Clutch	13 - 9

Part No.	Description	Page and Index No.
M000 1154	Cam-Pick Up	13 - 13
M000 1155	Gear: Exit: Z17	13 - 24
M000 1156	Cap-Lamp L	21 - 25
M000 1157	Cap-Lamp R	21 - 26
M000 1158	Lens Led	5 - 4
M000 1159	Side Fence: Left	25 - 4
M000 1160	Rack: Table	15 - 4
M000 1161	Left Guide: Table	15 - 2
M000 1162	Right Guide: Table	15 - 3
M000 1163	Hub-Clutch	17 - 12
M000 1165	Sub Stacker	5 - 2
M000 1168	PCB: Main-Zener	13 - 1
M000 1169	Fusing Unit: 110V	21 - *
M000 1170	Drive Unit	17 - *
M000 1170	Drive Unit	3 - 7
M000 1171	MEA Unit Swing	13 - 5
M000 1172	Writing Unit	3 - 11
M000 1176	Housing: Pad Holder	25 - 10
M000 1177	Pick-up Roller	13 - 17
M000 1178	Rear Guide Unit	19 - *
M000 1178	Rear Guide Unit	15 - 44
M000 1179	MEA Unit-Gear Pick Up	13 - 12
M000 1185	Cover-Front	9 - 1
M000 1186	Cover-Handle Cassette	25 - 11
M000 1187	Cover: Manual	9 - 3
M000 1189	Cover - Duplex	3 - 12
M000 1190	Cover - Rear - Duplex	3 - 13
M000 1191	Indicator-Paper	25 - 14
M000 1192	Side Fence: Right	25 - 3
M000 1193	End Fence	25 - 2
M000 1194	Main Board	3 - 1
M000 1195	ELA Unit-Duplex	23 - *
M000 1197	MEA Unit-Cover Top	5 - *
M000 1198	MEA Unit-Cover Left	7 - 2
M000 1199	MEA Unit-Cover Right	7 - 3

Part No.	Description	Page and Index No.
M000 1200	MEA Unit-Cover Rear	7 - 4
M000 1200	MEA Unit-Cover Rear	11 - *
M000 1201	MEA Unit-Cover Front	7 - 1
M000 1201	MEA Unit-Cover Front	9 - *
M000 1203	Sheet-Overlay	5 - 3
M000 1501	Lamp: Halogen: 220V	21 - 24
M000 1502	Power Supply Unit	3 - 3
M000 1503	Fusing Unit: 220V	21 - *
M009 1001	Main Board	3 - 1
M009 1003	MEA Unit-Cover Right	7 - 3

Part No.	Description	Page and Index No.
G144 9653	OP- Spring	5 - 5
G144 9674	OP - Board	13 - 28
G144 9722	Idle Feed Roller	25 - 13
G144 9739	Extension - End	25 - 1
G186 1007	Gear-16Z	25 - 5
G186 1076	Idle Roller Shaft	21 - 3
G186 1077	Idle Roller	21 - 10
G186 1102	Photo - Interrupter	21 - 29
G186 1102	Photointerrupter	15 - 9
G186 1139	Foot-ML80	15 - 1
G186 1141	Exit Roller Bushing	13 - 37
G186 1183	Bushing	15 - 16
G186 1183	Bushing	13 - 10
G186 1203	Spring - Guide	15 - 33
G186 1223	Upper Idle Roller	21 - 1
G186 1234	Spring	15 - 43
G186 1344	Antistatic Brush	15 - 21
G960 1007	Thermostat	21 - 5
G960 1011	C-Ring	21 - 22
G960 1013	Spring	23 - 16
G960 1015	Spring	15 - 8
G960 1016	Spring - Cassette	25 - 7
G960 1058	Bushing - Idle Roller	15 - 29
G960 1059	Bushing - Pickup Roller	13 - 18
G960 1060	Left Bushing	15 - 38
G960 1061	Plate	15 - 24
G960 1070	Stopper - Pick-up RO	13 - 16
G960 1080	Pressure Spring	15 - 30
G960 1096	Terminal	13 - 34
G960 1097	Gear - Exit Roller	23 - 8
G960 1099	Cam - Pick-up	13 - 22
G960 1126	Gear - Exit Roller	13 - 36
G960 1138	Lock Plate	25 - 8
G960 1140	Idler - Pick-up	13 - 14
G960 1141	Lock Plate	13 - 2

Part No.	Description	Page and Index No.
G960 1142	Left Guide Plate	15 - 32
G960 1143	Right Guide Plate	15 - 34
G960 1154	Pad - Cassette	25 - 16
G960 1161	Terminal Board	13 - 35
G960 1194	Pressure Spring	25 - 9
G960 1236	Holder Plate	15 - 31
G960 1411	RZL: Cam-M-Knock up	25 - 6
G964 1002	Spring - ES	25 - 12
G964 1030	Sheet - Brush	15 - 20
H914 9709	Feed Roller	15 - 17

Part No.	Description	Page and Index No.
M307 1025	Idle Roller Shaft	23 - 15
M307 1026	Idle Roller	23 - 14
M307 1029	Belt Stopper	23 - 6
M307 1030	Pulley - 18T	23 - 7
M307 1031	Bushing - Feed Roller	23 - 3
M307 1032	Duplex Feed Roller	23 - 11
M307 1033	C-Ring	23 - 5