

Product Support Guide Model D094

Introduction

Model Type

Wide Format

Launch Date

2/1/2011

**Serial Number
Prefix**

W12

Product Code

D094

Brand/Model Name

| Product Code | Lanier | Ricoh | Savin |
|--------------|--------|-----------------|--------|
| D094 | LW426 | Aficio MP W3601 | 3406WD |

Product Concept

Replaces the B289 with several technical enhancements.

Hardware

- Wide Color VGA LCD.
- Scan to USB/SD.
- SDK available with GW printer option.
- Color scanner.

Connectivity/Software

- New Printer Driver Core (YAPD2.0).
- Using Scan to Multimedia, FAT32 is now supported.
- New Secure PDF encryption method: AES 128bit.
- Carry-over Setting for Address Book Auto-program.
- DDNS procedure(Specification change).



•

Product Support Guide

Model D094

Main Frame

| Item | Model Name | EDP Code | Notes |
|------|---|----------|-------|
| D094 | Lanier LW426 Ricoh Aficio MP W3601 Savin 3406WD | 415432 | |

NOTE: Order Numbers are provided for reference purposes only. Please use your Pricing Guide for proper order numbers to insure you receive the correct branding emblem.

Order Number

Options

| Item | Description | EDP Code | Product Code | Common / Unique | Notes |
|----------------------------|-------------------------------------|----------|--------------|----------------------------------|-----------------------------|
| 1 Roll Feeder | 1 Roll Feeder Type 3601A | 415435 | D503 | U | |
| 2 Roll Feeder | 2 Roll Feeder Type 3601B | 415438 | D504 | U | |
| Paper Cassette Option (A3) | Paper cassette Type 240 | 412708 | B853 | B286 / B125 | |
| Scan to Multimedia | USB2.0 / SD Slot Type E | 415457 | D534 | U | |
| GW Printer Option | Printer Option Type W3601 | 415441 | D506 | U | PostScript and SDK Standard |
| GW Scanner Option | Scanner Option Type W3601 | 415444 | D507 | U | |
| File Format Converter | File Format Converter Type F | 415506 | D533 | U | |
| Roll Holder Unit | Roll Holder Unit Type A | 410844 | B394 | B010 / B188 / B125 / B286 / D046 | |
| Table Option | Table Type 240 | 410844 | B854 | B125 / B286 | |
| Original Hanger | Original Hanger | 413717 | D311 | B286 | |
| Rear Stacker | Rear Stacker | 413718 | D312 | B286 | |
| Wireless LAN (a/g) | IEEE802.11a/g Interface Unit Type J | 414008 | D377 | B286 | |
| Gigabit Ethernet Type B | Gigabit Ethernet Type B | 414204 | D377 | B286 | |

Product Support Guide

Model D094

| Item | Description | EDP Code | Product Code | Common / Unique | Notes |
|--------------|---------------------|----------|--------------|-----------------|-------|
| Browser Unit | Browser Unit Type E | 414716 | D430 | B286 | |

Note: Data Overwrite Security Unit and HDD Encryption Unit standard with standard HDD.

Supplies/Yields

| Item | Name | Order Code | Target Yield |
|---------------|--------------------------------|-------------------------|--|
| Lanier | | | |
| Toner | Black Toner for LW324 | 480-0161 | Average 2.2K copies @A1/D LEF, Ricoh 6% chart* / cartridge |
| Developer | Black Developer for LW324 | 480-0216 B125 9640** | @A1/D LEF, Ricoh 6% chart/1.0kg x 2 bags (2.0kg) |
| Ricoh | | | |
| Toner | Ricoh Toner Type 1160W Black | 888029 | Average 2.2K copies @A1/D LEF, Ricoh 6% chart* / cartridge |
| Developer | Ricoh Developer Type 30W Black | 888214 B125 9640** | @A1/D LEF, Ricoh 6% chart/1.0kg x 2 bags (2.0kg) |
| Savin | | | |
| Toner | Savin toner Type 4700W Black | 9890 | Average 2.2K copies @A1/D LEF, Ricoh 6% chart* / cartridge |
| Developer | Savin Developer 2400WD | 9905 B125 9640** | @A1/D LEF, Ricoh 6% chart/1.0kg x 2 bags (2.0kg) |

NOTE: *A1/D, 6% chart is used to measure the above yield. Storage period for toner is max. 2 years from production.

NOTE: ** Part Number

Product Support Guide

Model D094

Option Compatibility

| | 1 | 2 | 3 | 4 | 5 | 6 | 7 | 8 | 9 | 10 | 11 | 12 | 13 | 14 | 15 |
|----------------------------------|---|---|---|---|---|---|---|---|---|----|----|----|----|----|----|
| 1.Roll Feeder Type 3601A | | X | | X | | | M | | | | | | | | |
| 2.Roll Feeder Type 3601B | X | | | X | | | M | | | | | | | | |
| 3. Paper Cassette | | | | X | | | | | | | | | | | |
| 4. Table | X | X | X | | | X | | | | | | | | | |
| 5. Original Hanger | | | | | | | | | | | | | | | |
| 6. Rear Stacker | | | | X | | | | | | | | | | | |
| 7. Printer Option Type 3601 | M | M | | | | | | | | | | | | | |
| 8. Scanner Option Type 3601 | | | | | | | | | | | M | | | | M |
| 9. VM Card | | | | | | | | | | | | | | | |
| 10. Web Browser Card | | | | | | | | | | | | | | | |
| 11. File Format Converter | | | | | | | | M | | | | | | | |
| 12. 1000 Base-T | | | | | | | | | | | | | X | | |
| 13. Wireless LAN | | | | | | | | | | | | X | | | |
| 14. Data Overwrite Security Unit | | | | | | | | | | | | | | | |
| 15. USB2.0 / SD Slot Type E | | | | | | | | M | | | | | | | |

X: Cannot be installed together
M: Must be installed together

Product Support Guide

Model D094

Branding Information

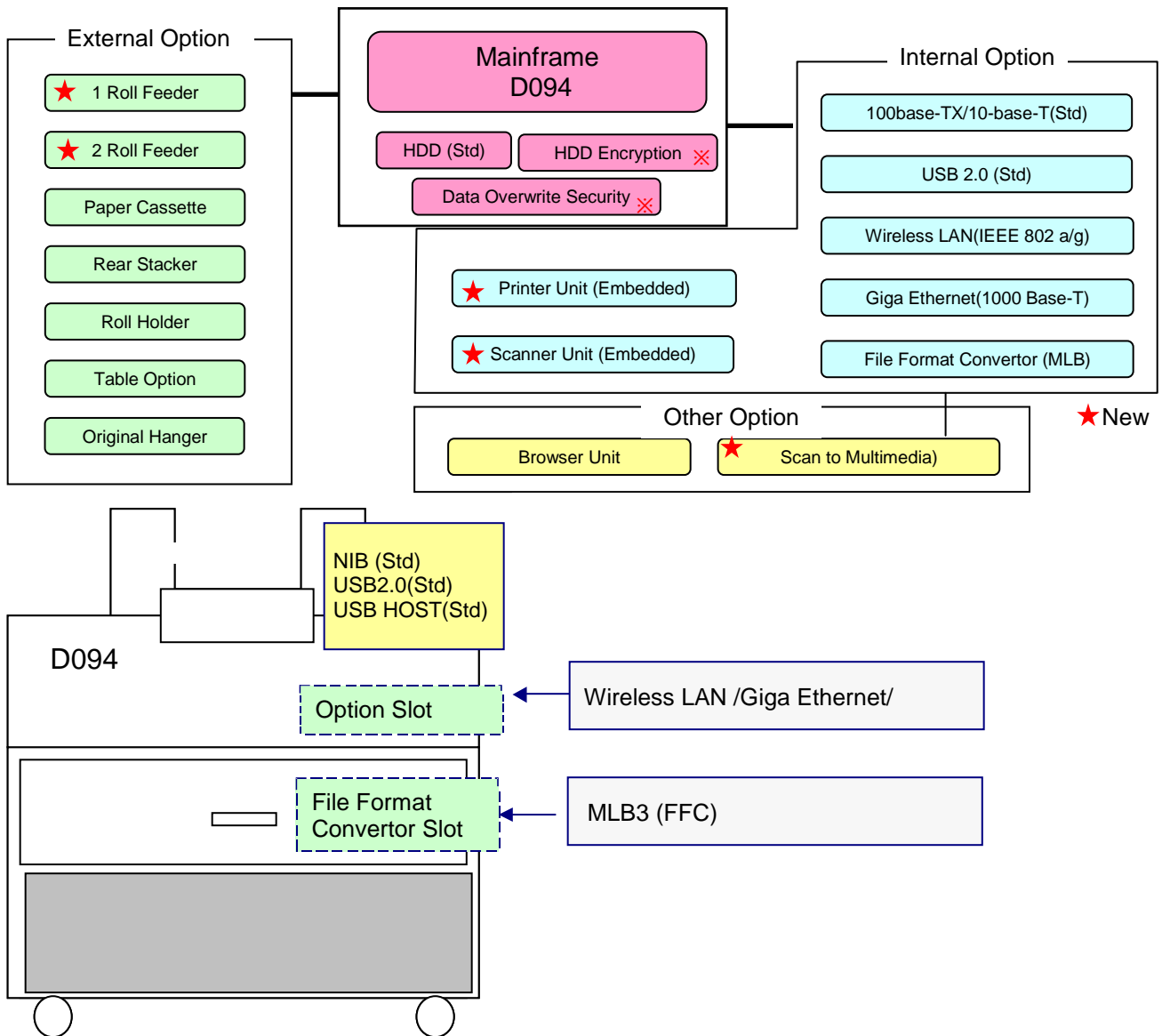
Branding is required as the machines are shipped as a generic version.

Ricoh version machines: You must attach the model label (provided) to the front cover.

Savin/Lanier: You must attach the model label (provided) to the front cover and set the Plug and Play name with SP 5-907.

Configuration

Main Frame Configuration

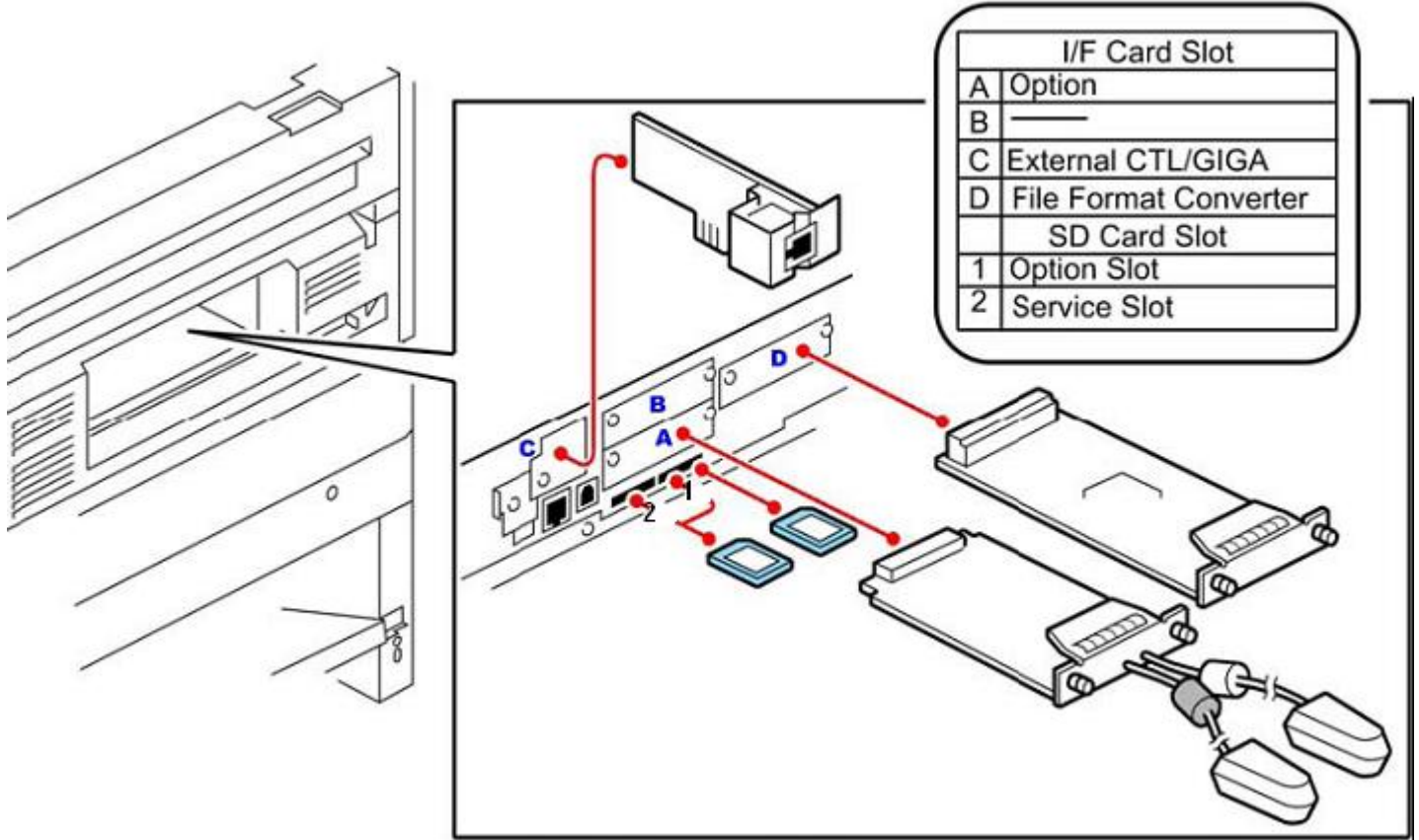


Product Support Guide

Model D094

MFP Options

MFP Option Board Slot / SD Card Assignments



Product Support Guide

Model D094

Feature Comparison To Previous Version

| Feature Comparison To Previous Version | D094 | B286 |
|--|---|------------------------------------|
| Appliance | | |
| Operation Panel | Wide Color VGA | Wide VGA |
| Productivity | | |
| Original Table Spec | Extend front length +40mm compared to B286 | - |
| Upper Stacker Spec | Up to 50 sheets (A1/Dsize SEF) | Up to 50 sheets (A1/Dsize LEF) |
| Feature | | |
| External Controller (Printer/Scanner) | No | Yes (RATIO CTL) |
| Embedded Controller (Printer/Scanner) | Yes (RICOH CTL) | Yes (RICOH CTL) |
| Color Scanner | Yes | No |
| App 2 me | TBA | No |
| Folder | N/A | Yes (Option) |
| SDK | Yes With Printer Option | No |
| PDF Batch Print | Yes | Yes(Update firmware for Mainframe) |
| Scan to Multimedia | Yes(option) | No |
| Printing & Scan tool | TBD | No |
| HDD overwrite/encryption functions | Yes | Yes (Option) |
| Specification | | |
| Memory | (Standard) 1G byte + 160G byte HDD (With Scanner Option) 2G byte + 160G byte HDD | 1G byte + 80G byte HDD |
| Scan Speed | 80mm/sec (Monochrome) 26.7mm/sec (Color) | 80mm/sec (Monochrome) |
| Language | 18 Languages | 9 Languages |

Product Support Guide

Model D094

Installation

Installation Requirements

Temperature Range: 10 °C to 30 °C (50 °F to 86 °F)
Humidity Range: 15% to 90% RH
Ambient Illumination: Less than 1,500 lux (do not expose to direct sunlight)
Ventilation: 3 times/hr/person
Ambient Dust: Less than 0.10 mg/m³ (2.7 x 10⁻⁶oz/yd³)
Avoid areas exposed to sudden temperature changes:

- Areas directly exposed to cool air from an air conditioner.
- Areas directly exposed to heat from a heater.

Do not place machine where it will be exposed to corrosive gas or vapor.
Do not install the machine at any location over 2,000m (6,500 ft.) above sea level.
Place the machine on a strong and level base.

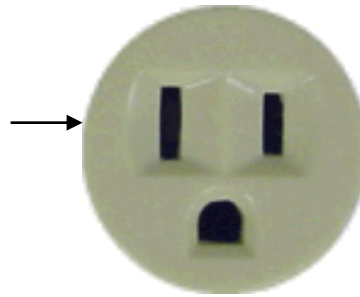
Machine level

- Front to back: within 5mm (0.2") of level
- Right to left: within 5mm (0.2") of level

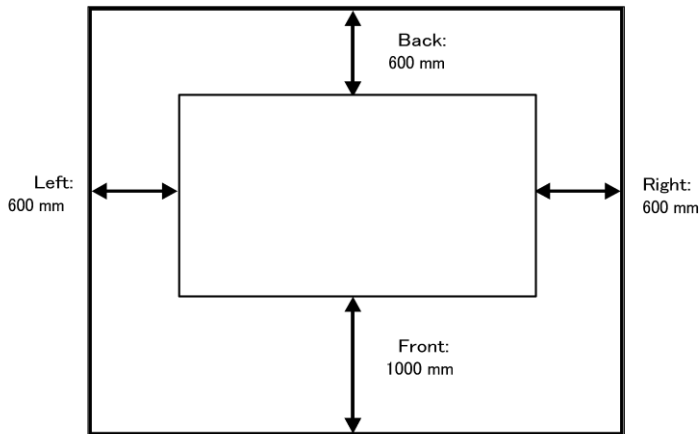
Load Support: **★ Important** The floor must be able to support a load of more than 2.94 kPa (300 kgf/m²).
Do not install the machine in an area where there are frequent strong vibrations

Power Requirements

Input voltage level: 110 - 120 V, 60Hz:15A
Do not place anything on power cord.
The required wall outlet is a NEMA 5-15R (receptacle)



Space



| | |
|-----------|---------------|
| A (Front) | 1000 mm (40") |
| B (Left) | 600mm (24") |
| C (Rear) | 600mm (24") |
| D (Right) | 600mm (24") |

The recommended 1000 mm (40") front space is sufficient to allow the paper drawer to be pulled out. Additional the front space is required to allow operators to stand at the front of the machine.

Foot Print

Mainframe Dimensions (W x D x H): 1080 mm x 637mm x 580mm (42.5" x 25" x 22.8")
Roll feeder Dimensions (W x D x H): 1080 mm x 720 mm x 700 mm (43" x 28" x 27")
NOTE: Measurement Conditions: Without trays or guides.

Product Support Guide

Model D094

Power Consumption / Noise Emission

Power Consumption

| | Power consumption | BTU |
|-----------------------------------|-------------------|-------|
| Auto Off Timer -Off Mode- | Less than 30 W | 102 |
| Energy Save Timer -Sleep Mode- | Less than 30 W | 102 |
| Max. power Consumption | 1400W | 4,781 |

Noise Emission

| | | D094 Full System |
|----------|----------------------|---------------------|
| Stand-by | Sound Power Level | 43dB or less |
| | Sound Pressure Level | 37dB or less |
| Copying | Sound Power Level | 70dB or less |
| | Sound Pressure Level | 62dB or less |

NOTE: The above measurements were made in accordance with ISO 7779. The measurements were taken from the normal position of the operator.

Installation Times

| Unit | Installation Time (Minutes) | Unit | Installation Time (Minutes) |
|--|--------------------------------|------------------------------|--------------------------------|
| Roll Feeder Type 3601 A/B | 20 (2 persons) | HDD Encryption Unit Type A | 5 |
| Paper Cassette Type 240 | 15 | Giga Bit Ethernet Type B | 10 |
| Table Type 240 | 5 (2 persons) | Browser Unit Type E | 3 |
| Original Hanger | 1 | Printer Option Type W3601 | 3 |
| Rear Stacker | 5 | Scanner Option Type W3601 | 3 |
| IEEE802.11a/g Interface Unit Type J/K | 5 | File Format Converter Type F | 3 |
| Data Overwrite Security Unit Type H | 5 | USB2.0/SD Slot Type E | 10 |

Storage/Transportation

| | Storage | Transportation |
|------------|---|---------------------------|
| Mainframe | -30~40°C -22~104°F | -30~50°C -22~122°F |
| | Less than 75% RH | 15 - 90% RH |
| | Max of 4 cartons stacking | Max of 3 cartons stacking |
| | Maximum Storage Time 18 months from production date (No more than 1 month at 35~40 °C / 95~104°F) | |
| Toner (*1) | under 40°C / 104°F (*1) | under 40°C / 104°F (*1) |

Product Support Guide

Model D094

| | Storage | Transportation |
|-----------------------|--|--|
| | Maximum Storage Time 24 month from the production date (*2) | Maximum Storage Time 24 month from the production date (*2) |
| Developer (*1) | under 40°C / 104°F (*1) | under 40°C / 104°F (*1) |
| | Maximum Storage Time 24 month from the production date (*2) | Maximum Storage Time 24 month from the production date (*2) |

NOTE: (*1) Do not store more than 12 hours under the temperature between 40 and 50°C (104 and 122°F). Do not store more than a month under the temperature between 35 and 40°C (95 and 104°F). Store in a dry, dark place where temperature does not exceed 40°C / 104°F on continuance storage/transportation conditions.
(*2) Unopened.

Parts / Special Tools / Maintenance

PM Parts / Yields

Mainframe

Unique/Common
U: Unique for this model
C: Common with listed model

*pm kit?

| Part Number | Description | Q'ty/ Unit | PM Interval | Unique or Common |
|-----------------------------------|-------------------------------|---------------|-------------|---------------------|
| Around the Drum | | | | |
| AD020089 | Charge Corona Wire - G | 1 | 36,000 | Common with B286 |
| AD020059 | Corona Wire - Main (Transfer) | 1 | 36,000 | Common with B286 |
| AD020072 | Corona Wire - Separation | 1 | 36,000 | Common with B286 |
| B1252061 | Cleaner: Charge Corona | 1 | 18,000 | Common with B286 |
| Development Unit | | | | |
| B1259640 | Developer (1000g) | 2 | 97,450 | Common with B286 |
| Cleaning Unit | | | | |
| B2863581 | Cleaning Blade | 1 | 36,000 | Common with B286 |
| Fusing Unit and Paper Exit | | | | |
| AE011122 | Hot Roller – MM50 | 1 | 90,000 | Common with B286 |
| AE031056 | Bushing - Fusing (Hot Roller) | 2 | 90,000 | Common with B286 |
| AE020148 | Pressure Roller: MM55 | 1 | 108,000 | Common with B286 |
| AE042047 | Fusing Cleaning Roller | 1 | 90,000 | Common with B286 |
| Other | | | | |
| AA010119 | Exhaust Ozone Filter | 1 | 18,000 | Common with B286 |

Options

Roll Feeder: D503 / D504

Unique/Common
U: Unique for this model
C: Common with listed model

| Part Number | Description | Q'ty/ /Unit | Yield | Unique or Common |
|-------------|-------------|----------------|-------|---------------------|
|-------------|-------------|----------------|-------|---------------------|

Product Support Guide

Model D094

| | | | | |
|----------|-------------|---|-------------|------------------|
| AJ030013 | Cutter Unit | 1 | 127K cuts*1 | Common with B286 |
|----------|-------------|---|-------------|------------------|

*1: The cutter unit can be used up to 127K actual cuts (regardless of paper length).
127 K cuts X 0.594 m (A1/D LEF) = 75.4 Km (247,312 feet)

Product Support Guide

Model D094

Special Tools & Lubricants

| Item | Part Number | Description | Q'ty | Unique or Common |
|------|-------------|--|------|---------------------------|
| 1 | B6455010 | SD Card | 1 | C (General) |
| 2 | G0219350 | Loop-back Connector – Parallel | 1 | C (General) |
| 3 | B6456820 | USB Reader/Writer | 1 | C (General) |
| 4 | A0239504 | Test Chart OS-A1 (2 sheets/set) | 1 | Common (B286) |
| 5 | A2579300 | Grease Barrierta – S552R | 1 | Common (B286) |
| 6 | 52039502 | Silicon Grease G-501 | 1 | C (General) Common (B286) |
| 7 | VSSM9000 | Digital Multimeter – FLUKE 187 | 1 | C (General) |
| 8 | --- | Ricoh System Information Tool (Support Tool Version 2) - Basic version - Mail version - Rlogtool (for use with GW controller) | 1 | C (General) |

Target Reliability

| Model | |
|-------------------------------|--------------------|
| Average Monthly Volume | 1,771 feet / month |
| Max. Monthly Volume | 9,840 feet / month |
| PM Interval | 18,000 feet |

Product Support Guide

Model D094

Basic Specification

Specifications / Documentation

| D094 Mainframe | | |
|--------------------------|--|---|
| Technology | | |
| Configuration | Desk top | |
| Copying/Printing Process | Electro-photographic printing | |
| Photo-conductor | OPC drum 970mm x ϕ 80mm / 38.19" x ϕ 3.15" | |
| Drum yield | 40K copies(A1/D size LEF) / 24km / 80K ft | |
| Charge system | Scorotron (corona charge) | |
| Imaging lens | SELFOC lens | |
| Development system | Magnetic brush Dual component dry toner system | |
| Fusing | Method | Heat and pressure |
| | Roller materials | Heat roller : Teflon Pressure roller : Silicone rubber |
| | Fuse oil | Use little |
| Cleaning system | Counter blade | |
| PM cycle | 5.6km / 18.4K ft | |

| Copier General Features | | |
|----------------------------|----------------------------|---|
| Basic Specification | | |
| Resolution | 600 dpi | |
| Gray Scale | Scanning | 256 levels |
| | Writing | 2 levels |
| Original | feed | Sheet |
| | Set position | Center |
| | Scanning method | CIS |
| | Scanning speed | (Metric) 20 – 320 mm/s (Inches) .8 - 12.6 in/s |
| | Maximum Scan size | (Metric) 914mm x 15,000mm (Inches) 36" x 590" |
| | Minimum Scan size | (Metric) 210mm x 210mm (Inches) 8.5" x 8.5" |
| | Original width | (Metric) 210 / 257 / 297 / 364 / 420 / 440 / 490 / 515 / 594 / 620 / 625 / 680 / 707 / 728 / 841 / 880 / 914.4mm *APS and Rotate Sort do not work for 620/625/707mm. (Inches) 8.5" / 9" / 11" / 12" / 17" / 18" / 22" / 24" / 30" / 34" / 36" |
| | Max. width | Metric : Up to 914.4mm Inches : Up to 36" |
| | Max Length (w/ limitation) | Metric : Up to 15,000mm Inches : Up to 590" (49.2ft) |
| | Paper output | Two ways: On top, and Straight to rear |
| | Original Stacker | Holds 1 sheet up to A1/D LEF. Size. |

Product Support Guide

Model D094

| Copier General Features | | | | | |
|-------------------------|---|---|-------------------------------|-------------------------------|----------------|
| Copy | Maximum sizes | (Metrics) 914mm x 15,000mm (roll feeder) 914mm x 2,000mm (bypass) (Inches) 36" x 590" (roll feeder) 36" x 78" (bypass) 12" x 18" (Paper cassette) | | | |
| | Minimum sizes | (Metrics) 210mm x 279.4mm (Roll feeder, Paper cassette) 210mm x 257mm (Bypass) (Inches) 8.5" x 11" | | | |
| | Paper width | (Metric) 210 / 257 / 297 / 364 / 420 / 440 / 490 / 515 / 594 / 620 / 625 / 660 / 680 / 707 / 728 / 800 / 841 / 880 / 914.4mm (Inches) 8.5" / 11" / 12" / 18" / 22" / 24" / 30" / 34" / 36" | | | |
| | Speed | 3.4 cpm/ppm @ A0/E SEF 6.4 cpm/ppm @ A1/D LEF | | | |
| | Paper feed | Two ways : Top(standard), Rear(with RF or Table option) | | | |
| | Reproduction ratio | 1 : 1 | | | |
| | Reduce/ Enlargement | [Preset Reduce/Enlargement] | | | |
| | | | Inch Version | | Metric Version |
| | | | Engineer | Architecture | |
| | | Reduce | 25%, 32.4%, 50%, 64.7% | 25%, 33.3%, 50%, 66.7% | Reduce |
| | | 100% | 100% | 100% | 100% |
| | | Enlarge | 129.4%, 200%, 258.8%, 400% | 133.3%, 200%, 266.7%, 400% | Enlarge |
| | | [Zoom] 25% to 400% by 0.1% step | | | |
| | Image density | Auto 9 steps, Manual 9 steps | | | |
| Warm up time | Less than 120 seconds (23 degrees Celsius, 73.4 degrees Fahrenheit (US:120v, EU/Asia:230V China:220v)) | | | | |
| First Copy time | Metric | | | | |
| | Tray | A1 LEF | A0 SEF | Paper exit | |
| | 1 st Roll | 18/17 sec | 25/24 sec | Upper/bottom | |
| | 2 nd Roll | 18/17 sec | 25/24 sec | Upper/bottom | |
| | Tray | A4 SEF | A3 SEF | Paper exit | |
| | Cassette | 17/16 sec | 19/18 sec | Upper/bottom | |
| | Inch | | | | |
| | Tray | 24"x36" LEF | 36"x48" SEF | Paper exit | |
| | 1 st Roll | 18/17 sec | 26/25 sec | Upper/bottom | |
| | 2 nd Roll | 18/17 sec | 26/25 sec | Upper/bottom | |
| Number of repeat copy | 1 to 99 (ten key input) | | | | |
| Paper feeding capacity | 1 Roll Feeder (option) | 1 roll paper Width : 210mm – 914mm / 8.27" – 36" Max length: 150,000mm / 5905.5" / 492ft (500ft) Max diameter: ϕ 175mm / ϕ 6.9" | | | |
| | 2 Roll Feeder (option) | 2 roll papers Width : 210mm – 914mm / 8.27" – 36" Max length: 150,000mm / 5905.5" / 492ft (500ft) Max diameter: ϕ 175mm / ϕ 6.9" | | | |
| | Paper cassette (option) | 250 sheets (64 – 81g/m ²)(20lb bond) | | | |
| | Bypass feed | 1 sheet | | | |

Product Support Guide

Model D094

| Copier General Features | | |
|-------------------------|---------------------------------------|--|
| | (standard) | |
| Paper output capacity | Top | 50 sheets @ A1/D SEF (plain paper) (Larger than A1/D size cannot be stacked.) 1 sheet @ A1/D SEF (application paper) No film stacking |
| | Bottom (Roll Feeder option mandatory) | 40 sheets @ A0/E SEF (plain paper) (Smaller than A2/C size cannot be stacked) 10 sheets @ A0/E SEF (application paper) No film stacking |
| Paper cut method | | Preset size cut / Synchronized cut / Variable cut |
| Memory Capacity | | 1024MB (Shared with Copy/Printer/Scanner applications) |
| HDD | | 160G byte (Shared with Copy/Printer/Scanner applications) |
| Power | NA | 120V 15A 60Hz |
| Source | EU/CHN/AP | 220V-240V/8A 50/60Hz |
| Max. power Consumption | | 1400W |
| Dimensions | | 1080mm x 637mm x 580mm (W x D x H) 42.5" x 25.1" x 22.8" |
| Weight | | 107kg / 236lb |

| Copier Enhanced Features | |
|--------------------------|---|
| Copy mode | Drawing mode (Default) Text mode Text/Photo mode Other modes Photo mode Generation mode Pasted Original mode Background Line mode |
| Paper selection | Auto Paper Selection(APS) 1 st roll tray (Available when roll feeder option is installed) 2 nd roll tray (only available when 2 roll feeder option is installed) A3 cut sheet tray (option) Bypass Tray |
| Jog program | Standard (10 jobs) |
| Interrupt job | Standard |
| Reduce / Enlarge | Auto Reduce/Enlargement User Auto Reduce/Enlargement Preset Reduce/Enlargement Zoom Size Magnification Directional Magnification (%) Directional Size Magnification (mm/inch) Fine Magnification |
| Image Editing | Image Overlay Format Overlay Negative / Positive Mirroring Double Copy Repeat Copy |
| Image shift | Front / Rear / Left / Right : 0+/-200mm by 1mm |
| Erase | Erase edge / inside / outside |
| Margin adjustment | 0 to +200mm (by 1mm step) |

Product Support Guide

Model D094

| Copier Enhanced Features | | |
|---|--|-------------------------------------|
| Stamp | Preset stamps User preset stamps Date stamp Page stamp | |
| Preset job | Standard | |
| | Size | # of pages available for preset job |
| | A0/E | 100 or less |
| | A1/D | 100 or less |
| | A2/C | 200 or less |
| | A3/B | 400 or less |
| | A4/A | 400 or less |
| Emergency Stop | Standard : key | |
| Sample copy | 1 st set of job out of multiple set of jobs will be printed. | |
| Partial copy | 210mm to 15,000mm / 8.27in to 49.2ft length can be defined as partial | |
| Additional copy | NO. (Please use document server function for additional copy.) | |
| Combine | Standard [2in1/4in1/8in1] up to A2/C size | |
| Clear | Standard : Clear/Stop key | |
| Copy Auto clear | Standard | |
| Auto off | Standard | |
| Energy saver | Standard: Energy saver key | |
| Auto energy save mode | Standard | |
| Reset | Standard: Reset key | |
| Auto Start | Standard | |
| User code | Standard : up to 500 users | |
| Limitless paper feeding | Only with 2 roll feeder option. Not with cassette option. | |
| Display of Paper type | Standard | |
| Electronic sort | Standard | |
| | Size | # of pages available for sorting |
| | A0/E | 100 or less |
| | A1/D | 100 or less |
| | A2/C | 200 or less |
| | A3/B | 400 or less |
| Electronic sort is not available for custom sizes: 880, 800, 707, 680, 660, 625, 620, 490, 440mm | | |

Product Support Guide

Model D094

Options

| Roll Feeder Option (New) | |
|---------------------------------|---|
| No. of Roll paper | 1 or 2 rolls (1 roll option cannot be upgraded to 2 rolls) |
| Roll Paper Size | Maximum Metric: 914mm x 15,000mm Inch: 36" x 590" Minimum Metric: 210mm x 210mm Inch : 8.3" x 8.3" |
| Roll Paper Diameter | 175mm / 6.9" |
| Dimensions (W x H x D) | 1080mm x 720mm x 700mm / 42.5" x 28.6 x 27.6 |
| Weight | 70 kg / 154.3lb (1 Roll), 72 kg / 158.7lb (2 Roll) |

D503



D504



| Paper Cassette Option (common with B286) | |
|---|---|
| Paper Size | Maximum Metric : A3 (297mm x 420mm) Inch : 12" x 18" Minimum Metric : A4 (210mm x 297mm) Inch : 8.5" x 11" |
| Paper Weight | Metric : 64 – 105g/m2, (55 –99kg) Inch : 17 – 28lbs |
| Paper Capacity | 250 sheets (with the paper spec of 64 – 81g/m2, or 17 – 20lbs.) |
| Dimensions (W x H x D) | 620mm x 130mm x 570mm / 24.4" x 5.12" x 22.4" |
| Weight | Less than 60kg / 132.3lb |

B853



Product Support Guide

Model D094

Table Option (common with B286)

| | |
|------------------------|--|
| Dimensions (W x H x D) | 1080mm x 720mm x 700mm / 42.5" x 28.3" x 27.6" |
| Weight | 34kg / 75lb |



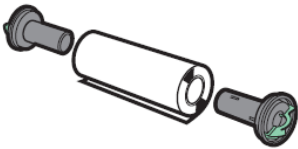
Originals Hanger Option (common with B286)

This is a hanger for original documents before making copy.



Roll Holder Unit Type A (common with B286)

This is an extra option (which comes with 2 pieces/set) to be put on the both sides of the roll paper.



Rear Stacker (common with B286)

Users can select either this rear stacker (option) as a lower tray or the standard lower stacker. It holds maximum of 20 sheets of A1/D LEF. [Important] When the rear stacker option is installed, the standard lower stacker will not be available..



Product Support Guide

Model D094

Printer

| General Features Printer Option Type W3601 (Embedded Printer) | | |
|--|----|---|
| Items | | Specification |
| Controller Board | | Embedded |
| Controller CPU | | Celeron-M (1.0GHz) |
| Print Speed | | 3.4ppm @A0/E SEF, 6.4ppm @A1/D SEF |
| Print Resolution | | 200, 300, 400, 600 dpi |
| RAM | | 1024MB (Copy/Printer) ,2048MB(With Scanner Option) |
| HDD | | 160GB (Shared with other applications such as Copy/Scanner) |
| IC card slot | | No |
| Host Interface | | Standard 100 Base-TX 10 Base-T/ USB 2.0 |
| | | Option Giga Ethernet,/ Wireless LAN (IEEE 802.11a/g) |
| Supported printer language | | PostScript Level3(PDF), , Emulation: HP-GL, HP-GL/2(HP-RTL), TIFF(CALS), |
| Fonts | PS | Yes |
| Interface | | Standard Ethernet (100 Base-TX/10 base-T) / USB2.0 |
| | | Option Wireless LAN (IEEE 802.11a/g), 1000base-T(Gigabit Ethernet) |
| Network Protocol | | TCP/IP(IPv4, IPv6), IPX/SPX, Auto switching available |
| MIB | | Standard MIB MIB-II(RFC1213), Host Resource(RFC1514), PrinterMib(RFC1759) SNMPv3 (RFC2574) |
| | | Private MIB Ricoh private MIB |
| Supported Operating Systems | | PS driver Windows 2000/XP/2003server/Vista/2008Server/Windows7 Mac OS X (later than Mac OS X10.2) |
| Supported CAD version | | HDI driver AutoCAD2000, 2002, 2002i, 2004, 2005, 2006, 2007,2008,2009,2010 |
| Supported Languages | | 1.English, 2.German, 3.French, 4.Italian, 5.Spanish, 6.Dutch, 7.Swedish, 8.Norwegian, 9.Danish, 10.Finnish, 11.Hungarian, 12.Czech, 13.Polish, 14.Portuguese, 15.Russian, 16.Catalan, 17. Turkish, 18.Simplified Chinese Condition: OS need to have the same language. |

| GL2&TIFF filter (standard with Printer option) | |
|--|---|
| HDI driver | HDI driver is a driver for AutoCAD (later than AutoCAD 2000) |
| Web Printing Tool (Web Browser based Utility Software) (Webprint) | Direct-print of PDF, HP-GL, HP-GL2, HP-RTL, TIFF and CALS files format through web browser. Requires Java loaded on the workstation. |

Product Support Guide

Model D094

Scanner

| Scanner Option Type W3601 | | |
|---------------------------|--|------------------------------|
| Items | Specification | |
| Optical Resolution: | Scan to email/folder: 150 / 200* / 300 / 400 / 600 dpi, *Default Twain: 150-1,200dpi | |
| Scan Speed: | Monochrome: 80mm/sec (600dpi) Color: 26.7mm/sec (600dpi) | |
| Scan detection | Auto Detect, Preset Paper size, Custom size, | |
| Network Interface: | Ethernet 10/100BaseTX: Standard Giga Ethernet , Wireless LAN (IEEE 802.11a/g): Option | |
| Protocol: | Network: TCP/IP Sending E-mail: SMTP, POP3 Scan to Folder: SMB, FTP, NCP | |
| Compression Method: | B&W | BW / Binary: TIFF MH/MR/MMR |
| | Color | Grayscale / Full Color: JPEG |
| Scan Mode: | BW Text/Line Art(Default),BW Drawing, BW Text/Photo, BW Photo, BW Photo, BW Grayscale, FC Text/Photo, FC Photo, | |
| Image Density: | Lighter to Darker: 7 Levels | |
| Edit | Erase boarder, Positive/Negative, Mirror Image | |
| Bundled Scanner driver | Network Twain Driver | |

| Scan to E-mail | | |
|--------------------------------|---|--|
| Items | Specification | |
| Requirement | SMTP Gateway and TCP/IP | |
| Authentication | SMTP POP before SMTP | |
| Resolution | Default: 200 dpi 100 / 150 / 200 / 300 / 400 / 600 dpi | |
| Register E-mail Address in HDD | Max. 2,000 addresses | |
| Register Group Address in HDD | Max. 500 Addresses Max. 100 Addresses in One Group Addresses | |
| Maintain E-mail Address in HDD | Direct input on operation panel, Web image Monitor, Smart Device Monitor | |
| Search E-mail Address in HDD | By name & E-mail address | |
| LDAP | Yes | |
| Max Address Number per Send | Max. 500 addresses | |
| Address Number per send | via Address Book | Max. 500 addresses |
| | Direct Input | Max. 100 addresses |
| | via LDAP | Max. 100 addresses |
| Attention | To, cc, bcc | |
| Subject | Manual Input | Max. 128 characters |
| Body Message | Manual Input | Max. 80 characters |
| | Pre-register by user | 5 body messages. 80 characters x 5 lines per a body message. Title name of the body message: Max. 20 characters per a name. |
| | Preset | Message: "This e-mail included attached file sent from xxxx (machine model name)." |
| E-mail Size Restriction | With restriction | 128 - 102,400KB *Default = 2,048KB |
| | W/O restriction | 725MB |

Product Support Guide

Model D094

| Scan to E-mail | |
|-----------------------|--|
| Items | Specification |
| File Type | Single Page TIFF, Single Page JPEG, Single Page PDF, Multi Page TIFF, Multi Page PDF |
| Program User Setting | Yes (Up to 10 programs) |
| Divided & Send E-mail | Yes (By page or size) / No, Default = Yes (By size) |
| Resend | Yes / No, Default = Yes |

| Scan to Folder | |
|---|--|
| Items | Specification |
| Protocol Support | SMB, FTP, NCP |
| Security | Client folder log-in (log-in name and password) Encryption of log-in name and password during transmission |
| Resolution | Default: 200dpi 100, 150, 200, 300, 400, 600dpi |
| Max. Resisted Client Folder Address in HDD | Max. 2,000 folders |
| Maintain Client Folder Address in HDD | Via Operation Panel, Web Image Monitor |
| Max. Client Folders per send | Max. 50 client folders |
| Group Address | Max. 100 destinations (To Folder: 50, To e-mail: 100) *1 |
| Input Subject | No |
| Scan file size | 1 document Up to 2000MB |
| File size when combined Scan to Folder & Scan to E-mail | 128-102,400KB, Default = 2,048KB (With restriction) 725MB (W/O restriction) (Conforming to the scan to e-mail specification) |
| File Type | Single Page TIFF/JPEG, Single Page PDF, Multi Page TIFF, Multi Page PDF, |

| Max. address numbers per sending (combination between E-mail and Folder) | | | | |
|--|--------------|--|---|---|
| | Input via | Condition 1 Max. address can select or input(Total 500) | Condition 2 Max. address allow in single operation (Total 500) | Condition 3 Combination of Address: Max. |
| Scan to E-mail | Address book | 500 | 500 | 550 |
| | Manual input | 100 | | |
| Scan to Folder | Address book | 50 | 50 | |
| | Manual input | 50 | | |

| Network TWAIN Driver | |
|----------------------|---|
| Items | Specification |
| Correspondence OS | Windows 2000/XP/Vista/7 Windows Server 2003, 2008, |
| Resolution | 150-1200dpi |
| Scan Mode | Standard, Diazo type |
| Image Adjustment | Brightness, Contrast, Threshold, Gamma Adjustment, Halftone Pattern |
| Stamp | Not Supported |
| Endorse | Not Supported |
| Read-Ahead Mode | Not Supported |

Product Support Guide

Model D094

Scan to USB/SD (Option) “New”

By using this option, users will be able to scan their original documents and save the documents in electronic format into an SD memory card and/or USB memory devices*1.

Note) *1 There are some SD Memory Card/ USB Memory that the users can not be used with this option. D534



Gigabit Ethernet Type B (Common with D046)

| | |
|--------------------------|---|
| Interface Connector | Ethernet (10Base-T, 100Base-TX, 1000Base-T) |
| Data Transmission Speed | Ethernet: 1000 Mbps, 100 Mbps, 10 Mbps |
| Protocol | TCP/IP, IPX/SPX |
| Distance Between Devices | Ethernet: 100m |

IEEE802.11a/g Interface Unit Type J (Common with D046)

| | |
|---------------------|---|
| Transmission spec | Based on IEEE 802.11a/g (wireless LAN) |
| Data transfer speed | Auto select from the following speed: 1 Mbps, 2 Mbps, 5.5 Mbps, 6 Mbps, 9 Mbps 11 Mbps, 12 Mbps, 18 Mbps, 24 Mbps, 36 Mbps, 48 Mbps, 54 Mbps |
| Frequency range | 2412 - 2462 MHz (1-11 channels) |
| Transmission mode | Ad hoc, and infrastructure mode |

Product Support Guide

Model D094

MFP Supported Environments

| Windows Environments | | | | | |
|----------------------|--------------------|-------|------|-------------|-----|
| OS | Type | PCL5e | PCL6 | PostScript3 | XPS |
| Windows 2000 | Professional | Y | Y | Y*1 | N |
| | Server | Y | Y | Y*1 | N |
| | Advanced Server | Y | Y | Y*1 | N |
| | Datacenter Server | N | N | N | N |
| Windows XP | Professional | Y | Y | Y*1 | N |
| | Home Edition | Y | Y | Y*1 | N |
| Windows Server 2003 | Standard Edition | Y | Y | Y*1 | N |
| | Enterprise Edition | Y | Y | Y*1 | N |
| | Datacenter Edition | N | N | N | N |
| | Web Edition | N | N | N | N |
| Windows VISTA | Home Basic | Y | Y | Y | Y |
| | Home Premium | Y | Y | Y | Y |
| | Business | Y | Y | Y | Y |
| | Ultimate | Y | Y | Y | Y |
| | Enterprise | Y | Y | Y | Y |
| Windows Server 2008 | Standard Edition | Y | Y | Y | Y |
| | Enterprise Edition | Y | Y | Y | Y |
| | Datacenter Edition | N | N | N | N |
| | Web Edition | N | N | N | N |

*1: PS3 driver for Windows Vista is not contained in a CD-ROM. Please download it from web site.

Mac OS

| | PostScript3 | Printer Utility for MAC |
|---------------------------------------|-------------|-------------------------|
| Mac OS 8.6 or later, Mac OS X classic | Yes | Yes |
| Mac OS X Native : v. 10.2 or later *1 | Yes | Yes |

*1: Mac OS X v.10.0.X is not supported.

UNIX Filter

TBD

Novell Netware

TBD

SAP/R3 Environment (Device Type / Barcode & OCR Package)

NA

Product Support Guide

Model D094

| Software | Description |
|---|---|
| For GW Controller Font Manager | This software enables you to use screen fonts. |
| Smart Device Monitor for Admin | This software enables you to manage and monitor printers and other devices over the network. |
| DeskTopBinder – SmartDeviceMonitor for Client | This software enables you to access networked printers to print, monitor or to receive notifications. With DeskTopBinder Lite you can connect client computers to I/O devices enabling you to efficiently manage data. |
| Device Graphic Update Module | Device Graphic Update Module provides bitmap images used to represent the various statuses of devices graphically within Smart Device Monitor or Web Smart Device Monitor. Available on website. |
| Printer Utility for Mac | This is a utility for Macintosh that provides access to several network printing administrative features. |
| PS Descriptions | PPD for Mac By interacting with the Adobe PostScript 3 controller in the device, this PPD is able to produce an accurate representation of the screen image. |
| Mac OS X PPD Installer | This PPD installer is used to install a PPD (Postscript Printer Description) file on Mac OSX. PPD files contain descriptions of printer capabilities such as paper sizes, number of input trays and duplexing. Once the PPD file is installed on the system using the PPD installer, the PS driver that comes bundled with Mac OS X can use the information in the PPD to control the print device and enable full functionality. It supports the Mac OS X 10.1 or later. Please see the Readme file for information about compatibility with versions of Mac OS X. |
| PCL 6 Driver | Printer driver for B/W printing in Windows. It supports HP PCL XL commands and is optimized for the Windows GDI. High performance printing can be expected. |
| PCL 5e Driver | Printer driver for printing in Windows. It supports HP PCL 5e commands. |
| Post Script Driver | By interacting with the Adobe PostScript 3 controller in the device, this driver is able to produce an accurate representation of the screen image. |
| GW Controller Network TWAIN Driver | TWAIN scanner driver for network connections with new features Combine/Series, compatible with SNMP V3 and Network Connection Tool. |

Print Driver Information

PostScript and HDI driver support.

Other MFP Support Information

Not Applicable

Product Support Guide

Model D094

Counters

Total Counter Access

- User Tools / Counter → Counter → Print Counter List → Start *1
- User Tools / Counter → System Settings → Administrator Tools → Display / Print Counter → Print Counter List → Start . *2
- User Tools / Counter → Printer Features → List/Test Print → Config. Page. This is a Total Only.

*1 information shown depends on setting chosen in SP 5045

Counter Information

- *1 – Total counter
- *2 – Total, Copier, Printer.

Counter Specifications

Maximum 7 digits

Paper

Recommended Throughput Material

| Tray Type | Recommended paper type | Recommended paper size | Remarks |
|-------------|---|---|---------------------------------|
| Paper Roll | Plain paper 51 – 110g/m2 (13.9 – 29.3 lb) | Max. Roll paper diameter: 6.9" Max. Core diameter: 3"+-0.0098" Width: 8-1/2", 11", 17", 22", 30", 34" or 9", 12", 18", 24", 30", 36" Roll length: 49.2ft | |
| | Translucent paper 76-110g/m2 | | |
| | Velum 61-110g/m2 | | |
| Bypass Tray | Plain paper 51 – 110g/m2 (13.9 – 29.3 lb) | Engineering E(34"x44"):SEF D(22"x34"):SEF/LEF C(17"x22") :SEF/LEF B(11"x17") :SEF/LEF A(8 1/2"x 11") :SEF Architecture E(36"x48"):SEF D(24"x36"):SEF/LEF C(18"x24") :SEF/LEF B(12"x18") :SEF/LEF A(9"x 12") :SEF Paper width : 11"x36" Paper length: 8 1/2 x 78" | 1 sheet can be set from bypass. |
| | Translucent paper 76-110g/m2 | | |
| | Vellum 61-110g/m2 | | |

Product Support Guide

Model D094

Non Recommended Throughput Material

Refer to pages in the Operators Instructions Hardware Guide.

Do not use any of the following kinds of paper or a fault might occur:

- Aluminum Foil, Carbon paper,
- Conductive paper
- Paper meant for an inkjet printer
- Bent, folded, or creased paper
- Torn paper
- Thermal fax paper
- Art paper
- Paper with perforated lines
- Hemmed-edge paper
- Tab stock
- Slippery paper
- Perforated paper
- Rough paper
- Thin paper with little stiffness
- Paper with a dusty surface

Special Paper

Not Applicable

Firmware Information

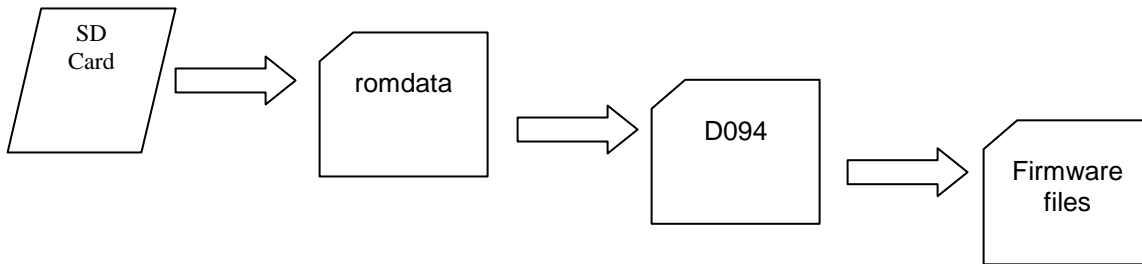
Firmware

| Firmware Type | Firmware SD Card RFG E-Source Number | Firmware Remote RFG E-Source Number |
|--------------------------|---|--|
| Browser option Type E | TBA | N/A |
| Data Erase Std | rfg047156 | rfg047176 |
| Engine | rfg047160 | rfg047179 |
| GL2&TIFF-Filter | rfg047169 | N/A |
| Language | rfg047157 | N/A |
| Network DocBox | rfg047161 | rfg047180 |
| Network Support | rfg047151 | rfg047183 |
| OpPanel.EXP | rfg047152 | rfg047173 |
| SubCPU (PowerSaving Sys) | rfg047158 | rfg047177 |
| Printer | rfg047166 | rfg047181 |
| PS3/PDF | rfg047170 | rfg047184 |
| RPCS | rfg047153 | rfg047174 |
| Scanner | rfg047159 | rfg047178 |
| System/Copy | rfg047167 | rfg047182 |
| Web Support | rfg047171 | rfg047185 |
| Web Uapl | rfg047154 | rfg047175 |

Product Support Guide

Model D094

SD Card Arrangement



Contact Information

| Name | Contact |
|--|---|
| Technical Services Call Center (Hotline) | Ricoh: (800) 537-4264 Savin/Gestetner: (800) 291-6044 Lanier: (800) 333-3147 |
| Application Help Desk (Software Issues) | Ricoh Phone Card: 2 Call - 000781MIU, 5 Call - 000900MIU Savin Phone Card: 2 Call - 12992, 5 Call - 12993 Gestetner Phone Card: 2 Call - 12994, 5 Call - 12995 |
| Hytec Parts and Logistics Control | (800) 557-4264 http://www.nrc-usa.com |
| Technology Solutions Resource Center | http://www.tscweb.net |
| Ricoh Web Site | http://www.ricoh-usa.com/ |
| Savin iLINC Web Site | http://www.savin.com |
| Headquarter Web Sites | Ricoh Corporation: http://www.ricoh-usa.com Savin Corporation: http://www.savin.com Gestetner Corporation: http://www.gestetnerusa.com/ Lanier Corporation: http://www.lanier.com |
| Material Safety Data Sheets | (800) 336-MSDS (6737) |
| Ricoh University | 973.882.2200. http://www.ricohuniversity.com |

Product Support Guide

Model D094

Training Information

Documentation

| Description | EDP Code | RFG E-Source Number |
|---|----------|---------------------|
| Service Manual | TBA | rfg047126 |
| Part Catalog | TBA | rfg047127 |
| Point-to-Point | TBA | rfg047128 |
| D094 Service Documentation Update Package | TBA | TBA |
| Operating Instruction Manual | TBA | rfg047129 |

Please refer to the <http://www.ricohuniversity.com/> web site for the most up to date training information.

Please be aware that once a model or series is out of production, the Field Service Manual, Technical Service Bulletins and Ricoh University should be referenced for the most current information. Check the TSC website and e-source.

Product Support Guide

Model D094

Revisions

1.0 Original

1.1 Added rfg numbers for firmware and documentation.