

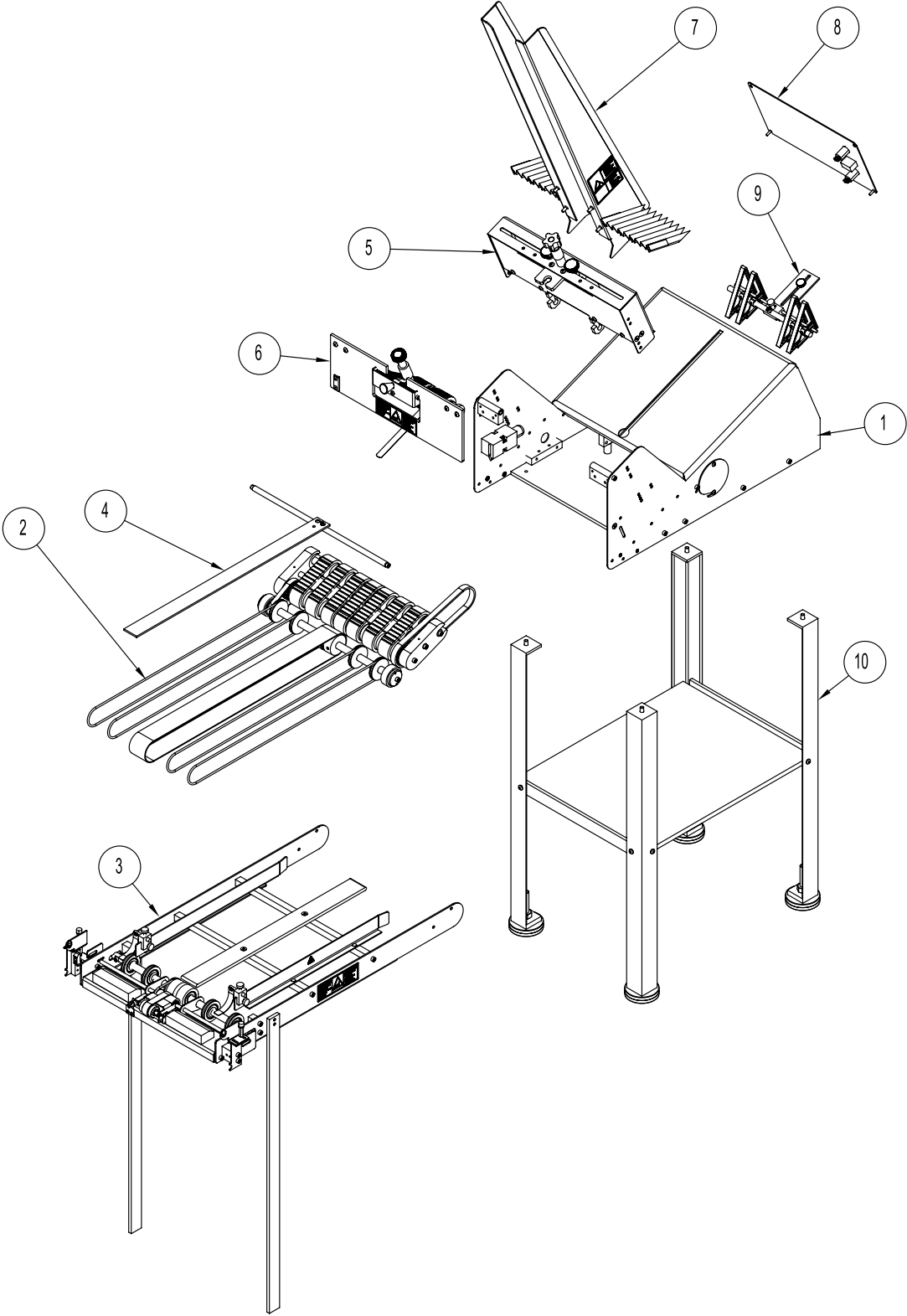
pro900DP Feeder / Conveyor

Maintenance Guide



Mechanical Components

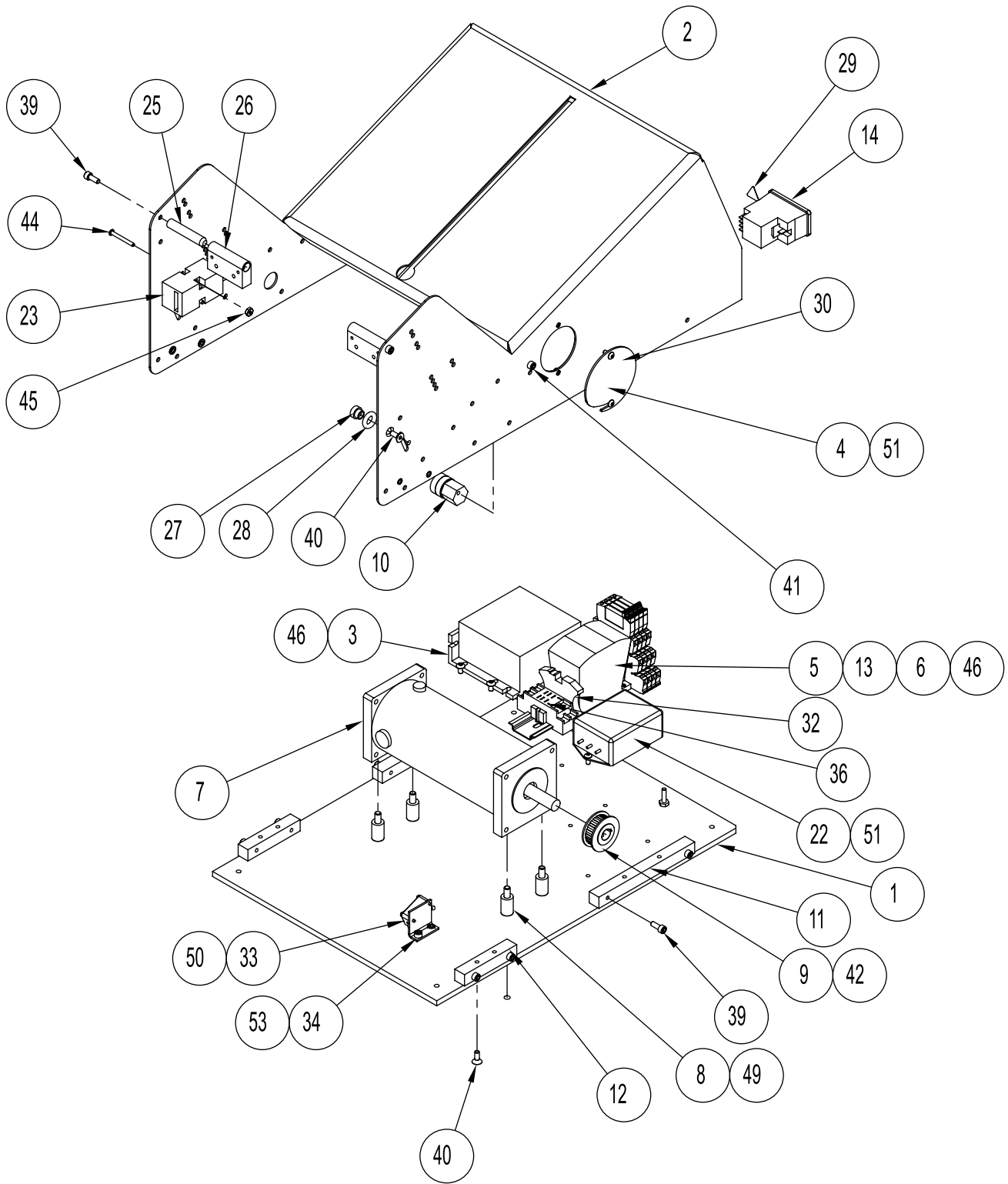
FEEDER ASSEMBLIES



FEEDER ASSEMBLIES

ITEM	QTY.	PART NUMBER	DESCRIPTION
1	1	50242901	ASSY, BASE
2	1	53366101	ASSY, CARRIAGE
3	1		ASSY, DISCHARGE
4	1		ASSY, HOLDOWN
5	1		ASSY, GATPLT 1KNB
6	1		ASSY, ADVONGGTHRZSDOW/CV2700
7	1		ASSY, SIDE GUIDES
8	1		ASSY, BACK PANEL
9	1		ASSY, TRIANGLE WEDGE
10	1		ASSY, STAND

BASE ASSEMBLY
Assembly # : 311-0590



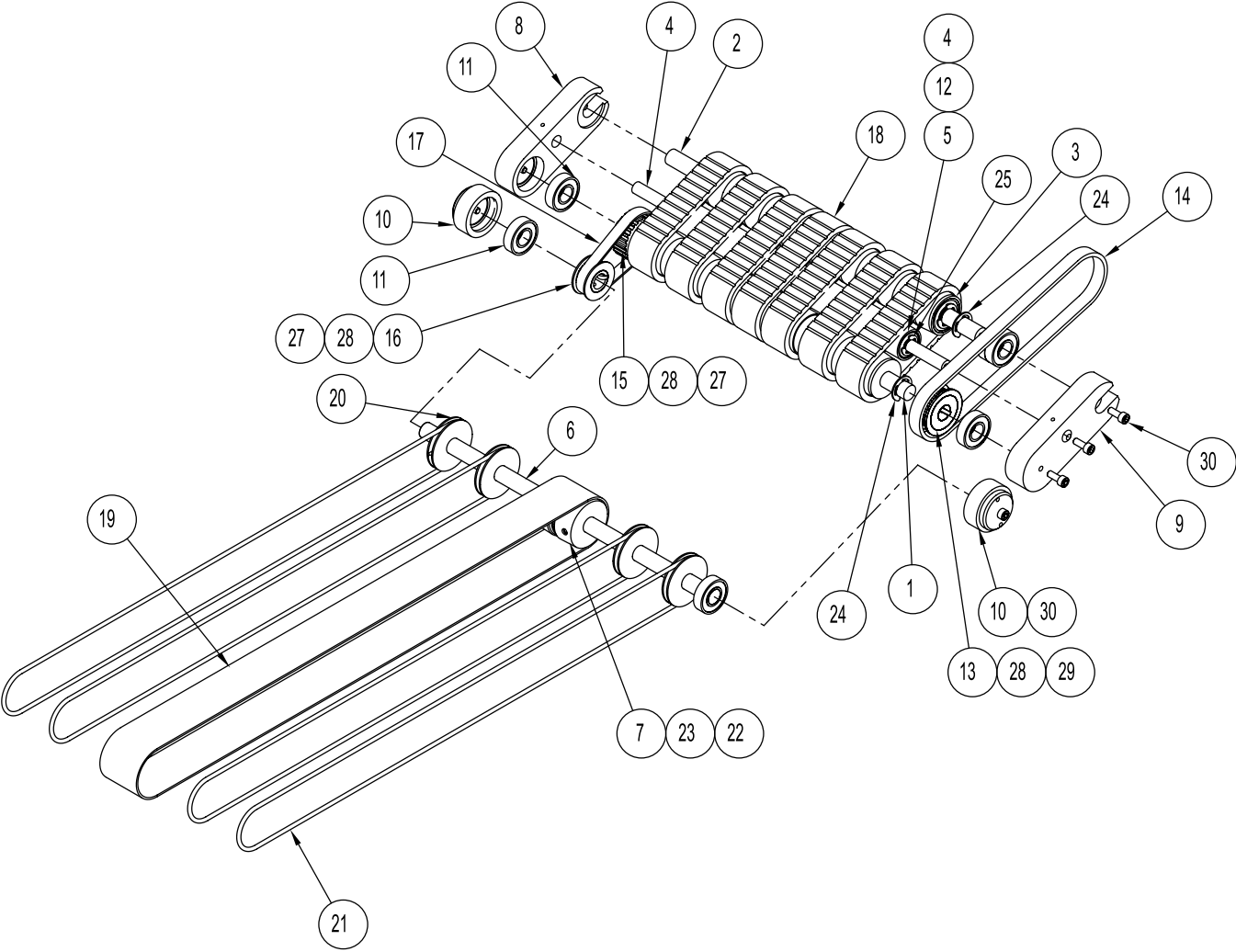
BASE ASSEMBLY
Assembly # : 311-0590

ITEM	QTY.	PART NO.	DESCRIPTION
1	1		PLATE, BASE
2	1		2700 SHELL
3	1		DRIVE, REGEN
4	1		SIDE COVER
5	1	56423001	POWER SUPPLU
6	3		DIN RAIL
7	1		ASSY, MOTOR 90VDC V710
8	4		MOTOR STAND OFF
9	1		PULLEY
10	1		ASSY, BELT TENSIONER
11	2		BACK BASE PLATE MOUNT
12	2		MOUNT, FRONT
13	4	56217801	PLC RELAY FORM C
14	1		MODULE, POWER ENTRY
15	1		CORD, PWR 115V
16	2		TERMINAL, FEMALE
17	2		FUSE, 5A
18	1		ELECTRICAL SCHEMATIC
19	1		HARNESS, ELECTRICAL MAIN
20	1		ASSY, CABLE GROUND WIRE
21	1		DC MOTOR EXTENSION HARNESS
22	1		HARNESS, POWER FILTER CE
23	1	56218201	ASSY, SWITCH SAFETY INTERLOCK
24	1		HARNESS, SPEED SET
25	2		SHAFT, MTG, COVER
26	2		BLOCK, HINGE COVER MOUNT
27	1		RUBBER SPACER BRACKET

ITEM	QTY.	PART NO.	DESCRIPTION
28	1		O RING, SUPPORT COVER
29	1		LABEL, ELECTRICAL SHOCK
30	1		LABEL, BELT ROUTING
31	1		ASSY, GROUND WIRE FORK TO #10
32	1		PLATE, ANCHOR END
33	1	50428002	SENSOR, NO PRODUCT
34	1		BRACKET, SENSOR MOUNT
35	1		HARNESS POWER, 24VDC
36	1		BASE, 24V RELAY
37	1		RELAY, DPDT 240VAC K10P
38	1		HARNESS, DRIVE ENABLE
39	10		SHCS #10-32 X 1/2
40	9		FHCS #10-32 X 1/2
41	1		SHCS #10-32 X 3/8
42	2		SSSCPPT #10-32 X 1/4
43	2		KEP NUT #8-32
44	2		BHCS 6-32 X 1.25
45	2		NUT, NYLOCK 6-32
46	6		BHCS 10-32 X .31
47	10		CABLE TIE
48	3		CABLE TIE MOUNT
49	4		FHCS 1/4-20 X 1.50
50	2		PHMSPH M2.5 X 16
51	3		BHCS #8-32 UNC X .38 LG
52	1		BHCS 8-32 X .25
53	2		SHCS #10-32 X 1/4
54	1		FHCS #8-32 X 1.00

CARRIAGE ASSEMBLY

Assembly # : 311-0518

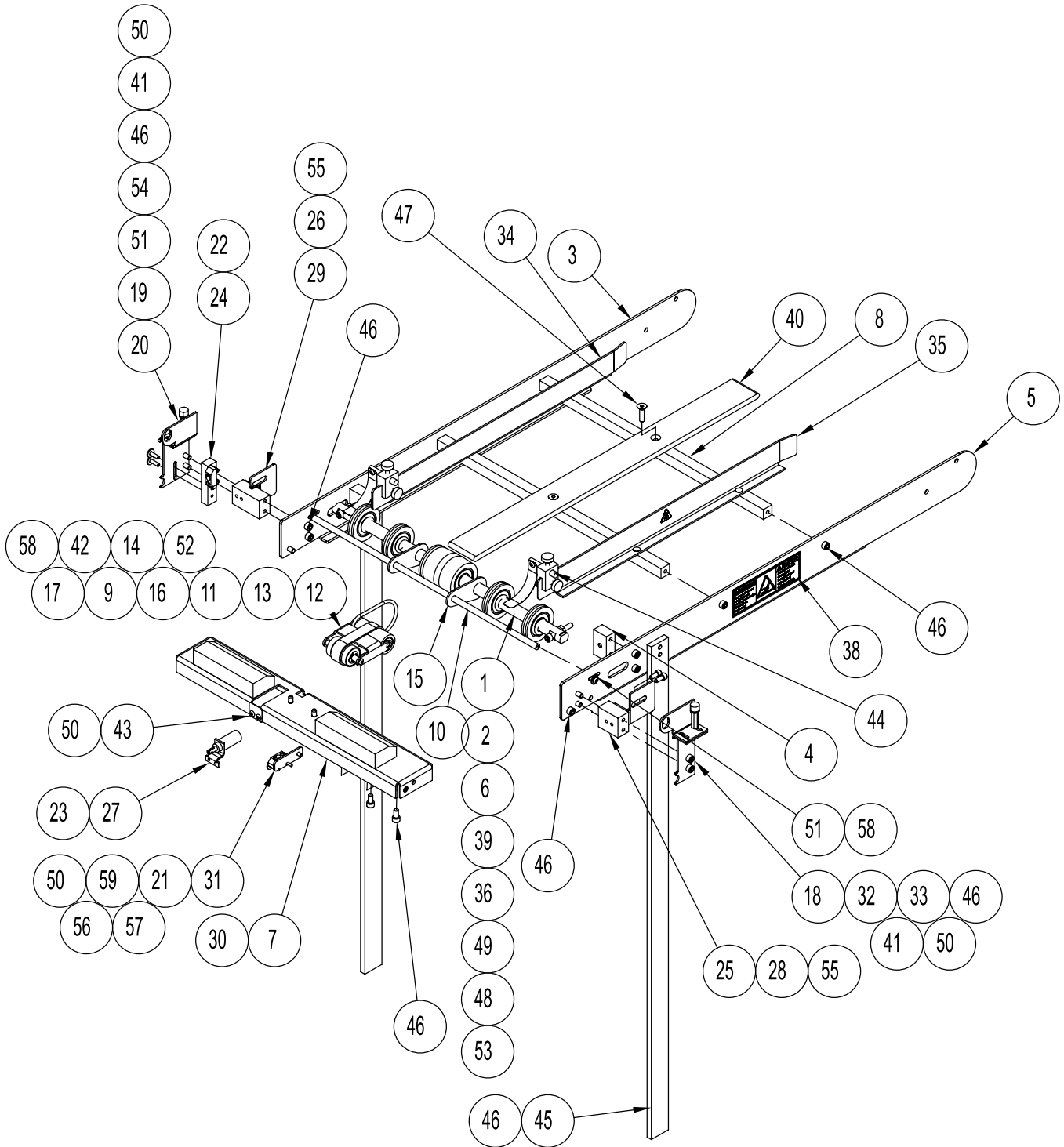


CARRIAGE ASSEMBLY
Assembly # : 311-0518

ITEM	QTY.	PART NUMBER	DESCRIPTION
1	1		DRIVE SHAFT
2	1		IDLER SHAFT
3	1		DRIVEN TUBE
4	1		VACUUM CARRIAGE SHAFT
5	1		BELT SUPPORT TUBE
6	1		DRIVE SHAFT
7	1		CROWN PULLY VACUUM
8	1		HOLDER, CARRIAGE
9	1		HOLDER, CARRIAGE
10	2		HOLDER, R8 BEARING CUP
11	8		BEARING, R8
12	2		BEARING, BALL
13	1		PULLEY, 20T TIMING
14	1		BELT TIMING
15	1		PULLEY, TIMING
16	1		16T TIMING PULLY
17	1		BELT, TIMING 78XL037 KEVLAR
18	7	51312701	FEED BELT TAN GUM
19	1		BELT, EXT DISCHARGE SOLID
20	4		PULLEY, O-RING
21	4	51312602	BELT, O-RING
22	2		O-RING, STANDARD GATE
23	2		SSSCPPT 1/4-20NC X .50
24	5		E-CLIP 1/2
25	2		E CLIP 3/8
26	1		SSSCPPT #10-32 X 1/4
27	2		SSSCPPT #10-32 X 1/8
28	3		1/8 X 3/8 WOODRUFF KEY
29	7		SSSCPPT #10-32 X .31
30	8		SHCS #10-32 X 1/2

18A 1 KIT: FEED BELT(x7) TAN GUM

DISCHARGE ASSEMBLY
Assembly # : 311-0591



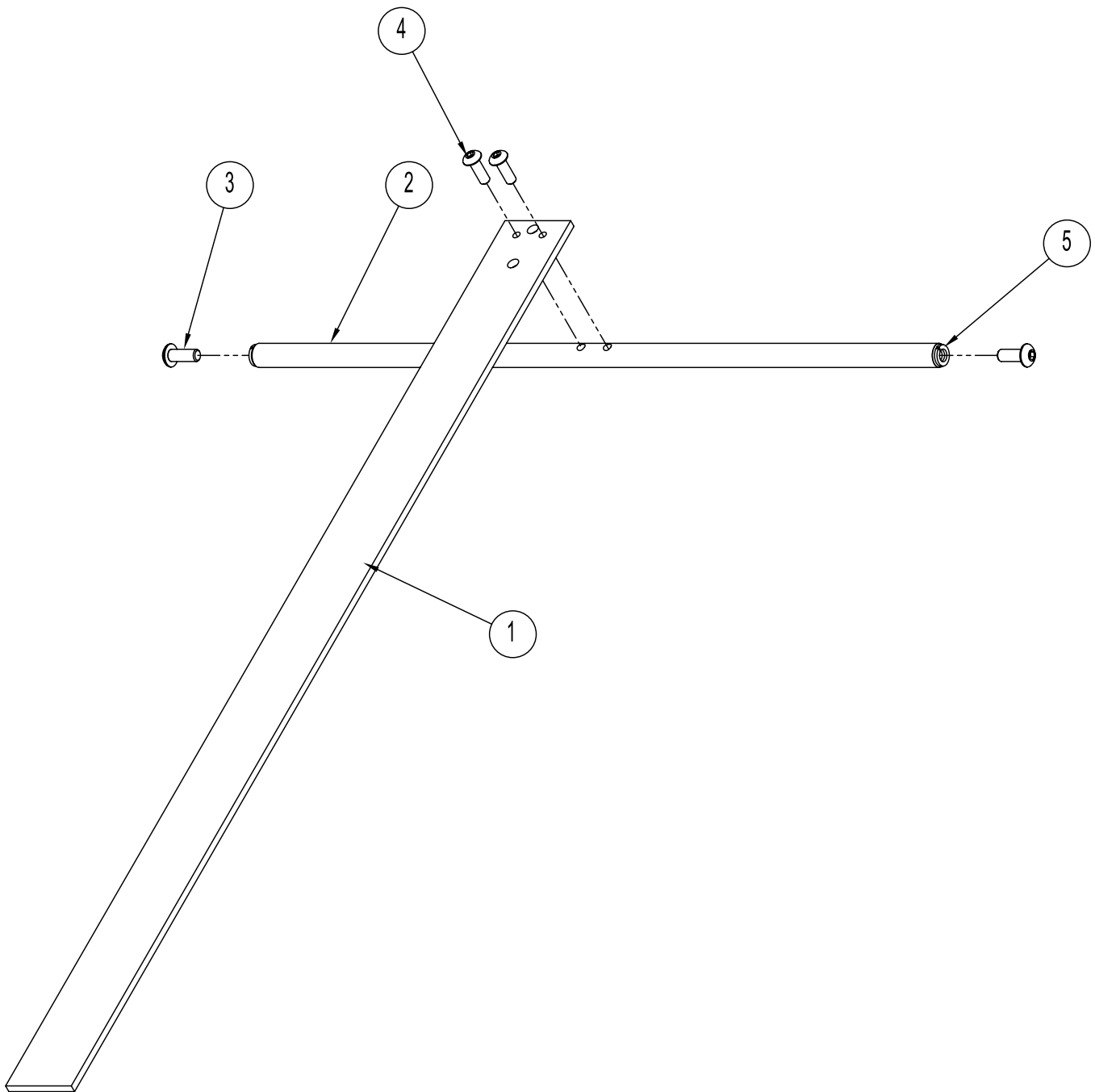
DISCHARGE ASSEMBLY

Assembly # : 311-0591

ITEM	QTY.	PART NO.	DESCRIPTION
1	1		SHAFT, ADJUSTABLE
2	1		PULLEY, CROWN
3	1		RAIL, LH SIDE
4	2		ADJUSTABLE BLOCK
5	1		RAIL, RH SIDE
6	4		PULLEY, O-RING DRIVE
7	1		DECK
8	2		BAR, SUPPORT
9	4		R4 BEARING
10	1		SHAFT, SUPPORT
11	1		PULLEY, BELT
12	1		PLATE, ROLLER MOUNT
13	1		SHAFT, ROLLER
14	1		ROLLER, CROWN
15	2		SPACER
16	1		DISCHARGE BELT
17	1		BELT, O-RING
18	1		BRACKET, MOUNTING
19	1		BRACKET, MOUNTING
20	1		BRACKET, MOUNTING
21	1		SENSOR, SHEET RETRO
22	1	50428001	SENSOR, LIFT ARM
23	1		ASSY, SOLENOID 24VDC
24	1	50427901	MOUNT, SENSOR
25	1		SPACER
26	1		SUPPORT
27	1		BRACKET, SOLENOID
28	1		BRACKET
29	1		BRACKET
30	2		BLOCK, SPACER
31	1	50427902	BRACKET, SENSOR MOUNT

ITEM	QTY.	PART NO.	DESCRIPTION
32	1		BRACKET, MOUNT
33	2		KNOB, 3/8DIA 6-32 X 3/8
34	1		ASSY, SIDE GUIDE RH
35	1		ASSY, SIDE GUIDE LH
36	8		O-RING 7/16
37	2		SPRING
38	2		LABEL, WARNING INJURY
39	6		BEARING, R8
40	1		PLATE, BELT SUPPORT
41	2		STANDOFF, MALE/FEMALE
42	2		BALL BEARING
43	1		PLATE, SOLENOID STOP
44	2		ASSY, HOLD DOWN
45	2		LEG, SUPPORT
46	26		SHCS #10-32 X 3/8
47	2		FHCS #10-32 X 3/4
48	2		#10 HEX NUT
49	2		SHCS 10-32 X 1.25
50	5		BHCS #6-32 X 1/4
51	4		FLAT WASHER #6
52	2		E CLIP, 1/4
53	2		SNAP RING 1/2
54	2		BHCS #6-32 X .50
55	4		SHCS 8-32 X .38
56	2		#4 FLAT WASHER
57	1		PHMSPH M2.5 X 12
58	4		BHCS 6-32 X .38
59	1		PHMSPH M2.5 X 16
60	8		CABLE TIE
61	5		CABLE TIE MOUNT

HOLD DOWN ASSEMBLY
Assembly # : 311-0422



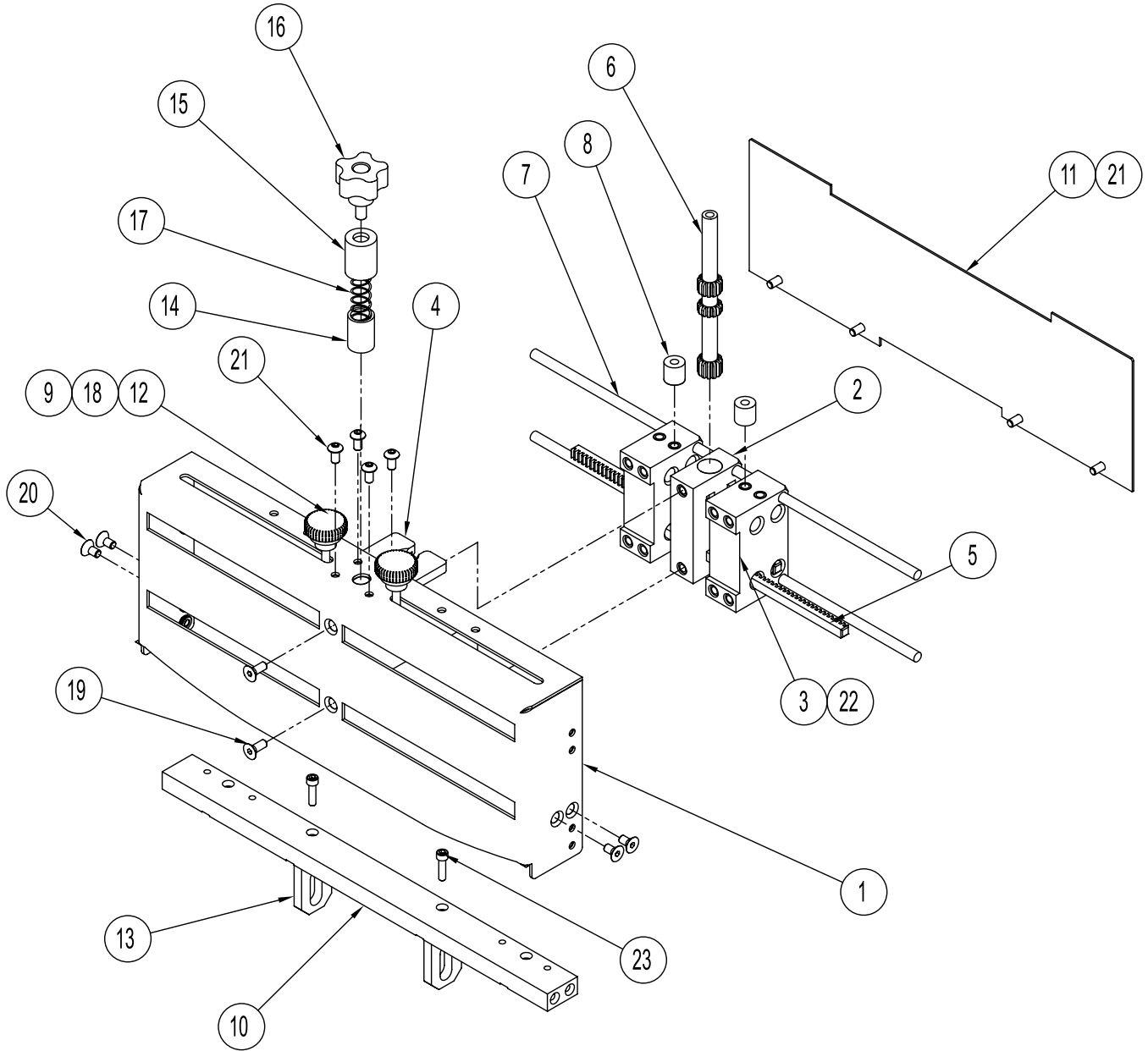
HOLD DOWN ASSEMBLY

Assembly # : 311-0422

ITEM	QTY.	PART NUMBER	DESCRIPTION
1	1		GREEN BELTING
2	1		SHAFT, MOUNT
3	2		BHCS #10-32 X 1/2
4	2		BHCS #8-32 X 1/2
5	2		WASHER, SPRING LOCK #10

GATPLT 1KNB ASSEMBLY

Assembly # : 64011004



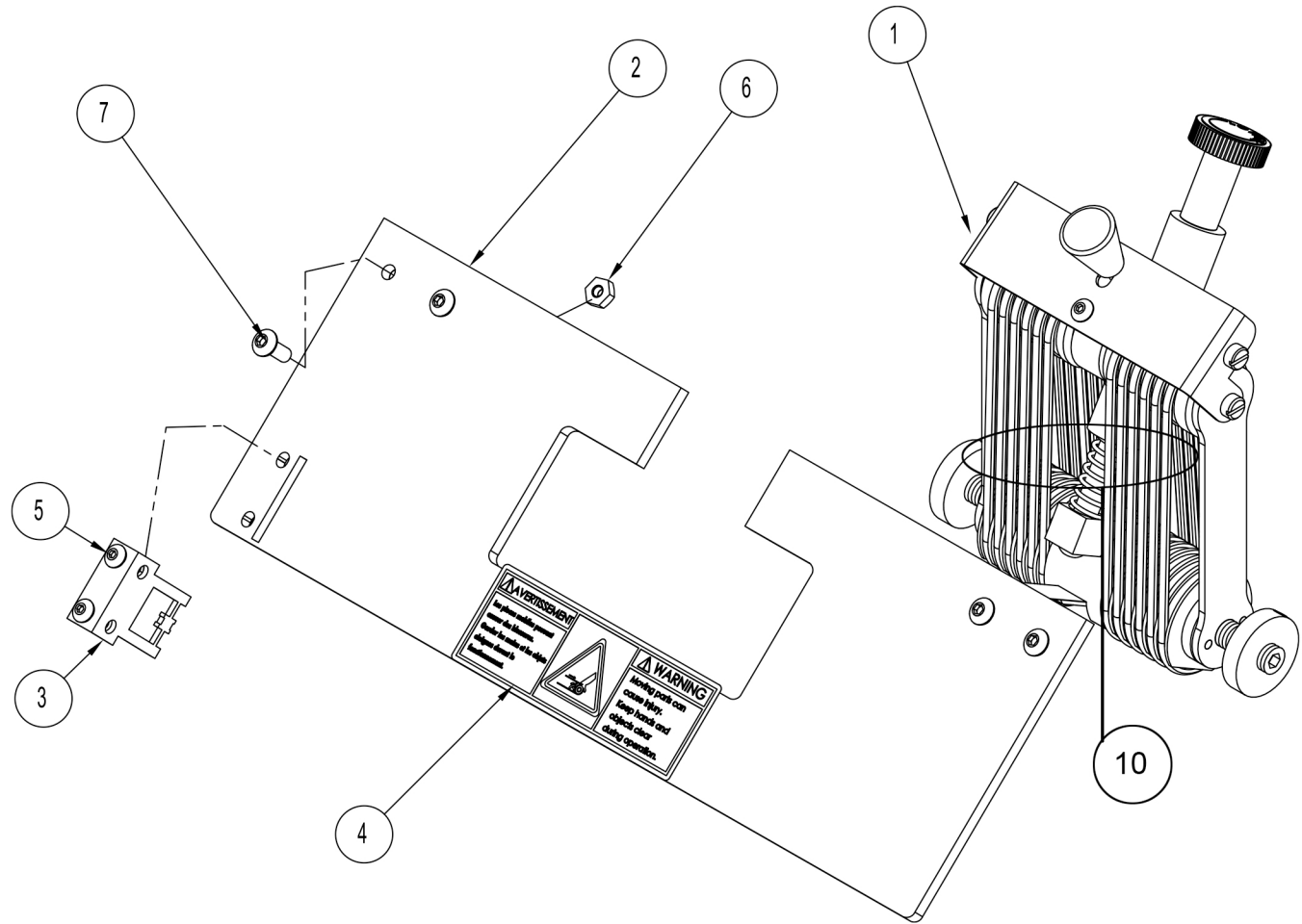
GATPLT 1KNB ASSEMBLY

Assembly # : 64011004

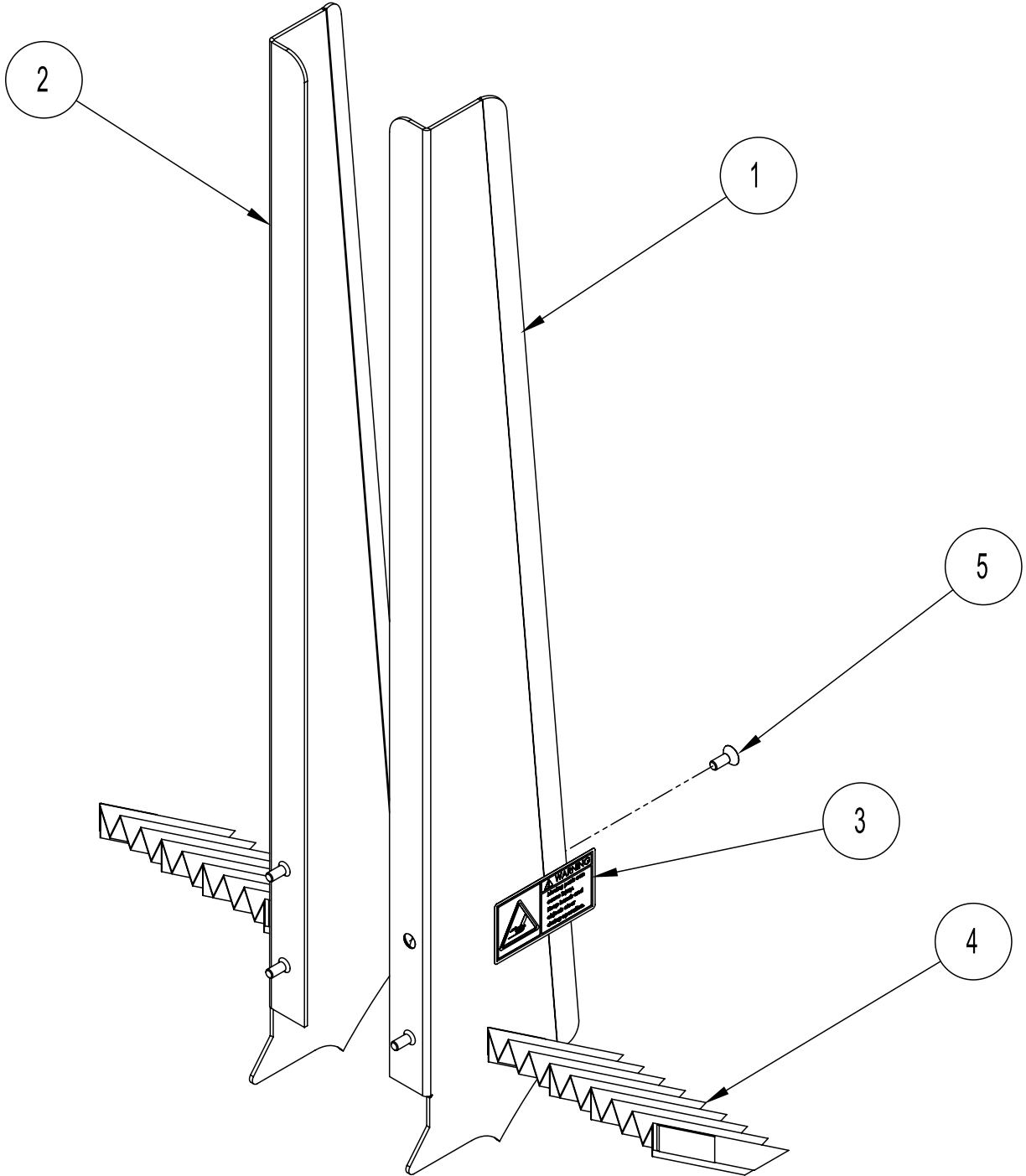
ITEM	QTY.	PART NUMBER	DESCRIPTION
1	1		PLATE, SOLID GATE
2	1		BLOCK, SIDE GUIDE
3	2		BLOCK, SIDE GUIDE ADJUSTING
4	1		BLOCK, ADJUSTMENT REFERENCE
5	2		RACK
6	1		SHAFT, PINION ADJUSTMENT
7	2		GUIDE, RAIL SIDE SUPPORT
8	2		SPACER, LOWER
9	2		SPACER, UPPER
10	1		BAR, LOWER GATE SUPPORT
11	1		COVER, GUIDE ADJUSTMENT
12	2		KNOB
13	2		GATE "J" HOOK
14	1		RETAINER, LOWER SPRING
15	1		RETAINER, UPPER SPRING
16	1	51903901	KNOB, 5 LOB 1-1/4
17	1	50940901	SPRING, COMPRESSION
18	2		SET SCREW, #10-32 X 1.50
19	2		FHCSS/S 10-32 X .50
20	4		FHCS #10-32 X 3/8
21	8		BHCSS/S 10-32 X .38
22	2		SSSCPPT 1/4-20NC X .25
23	2		SHCS 8-32 X 5/8

ADVONGGTHRZSDOW/CV2700 ASSEMBLY

Assembly # : 311-0623



SIDE GUIDES ASSEMBLY
Assembly # : 311-0470

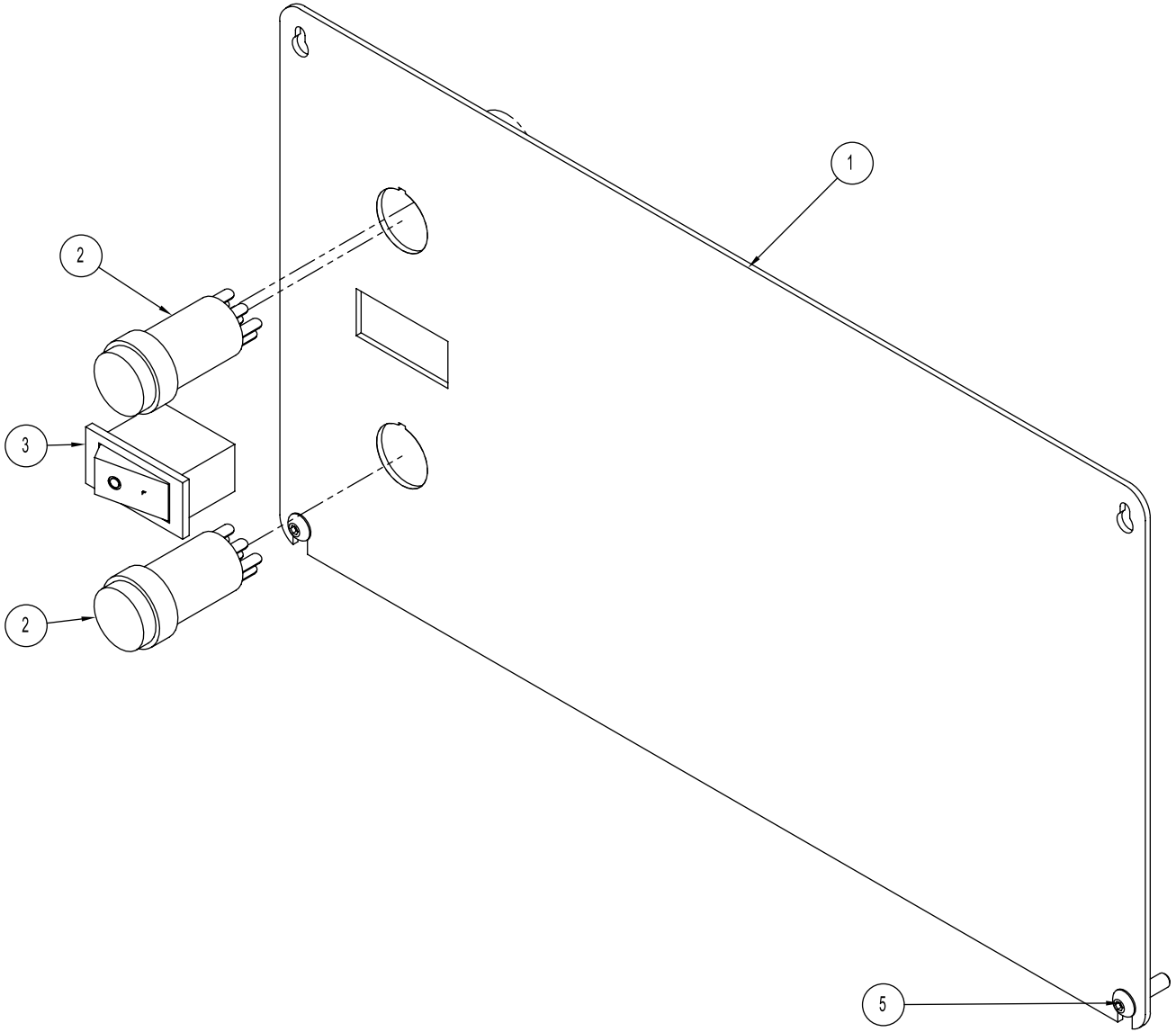


SIDE GUIDES ASSEMBLY

Assembly # : 311-0470

ITEM	QTY.	PART NUMBER	DESCRIPTION
1	1		GUIDE, LEFT 1424
2	1		GUIDE, RIGHT 1424
3	2		LABEL, WARN INJURY 2.7 X 1.4
4	2	53366001	GUARD, REAR ACCORDION
5	4		FHCS #10-32 X 1/2

BACK PANEL ASSEMBLY
Assembly # : 311-0592

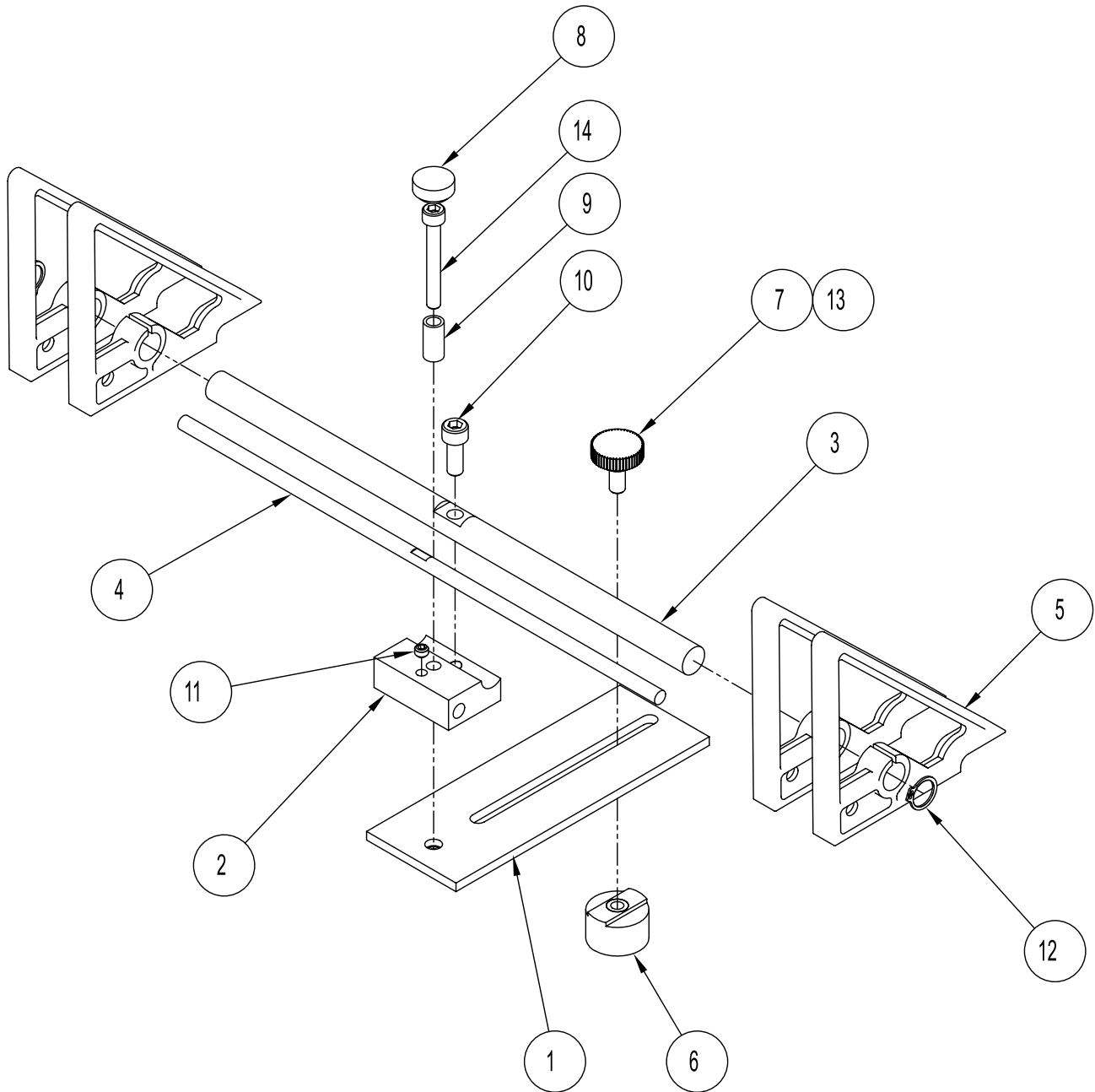


BACK PANEL ASSEMBLY

Assembly # : 311-0592

ITEM	QTY.	PART NUMBER	DESCRIPTION
1	1		PLATE, COVER
2	2	56126001	BUTTON, BLUE
3	1	56217901	SWITCH, ON/OFF
4	1		GRAPHIC SET, OKI DATA
5	2		BHCS #6-32 X .50

TRIANGLE WEDGE ASSEMBLY
Assembly # : 311-0437

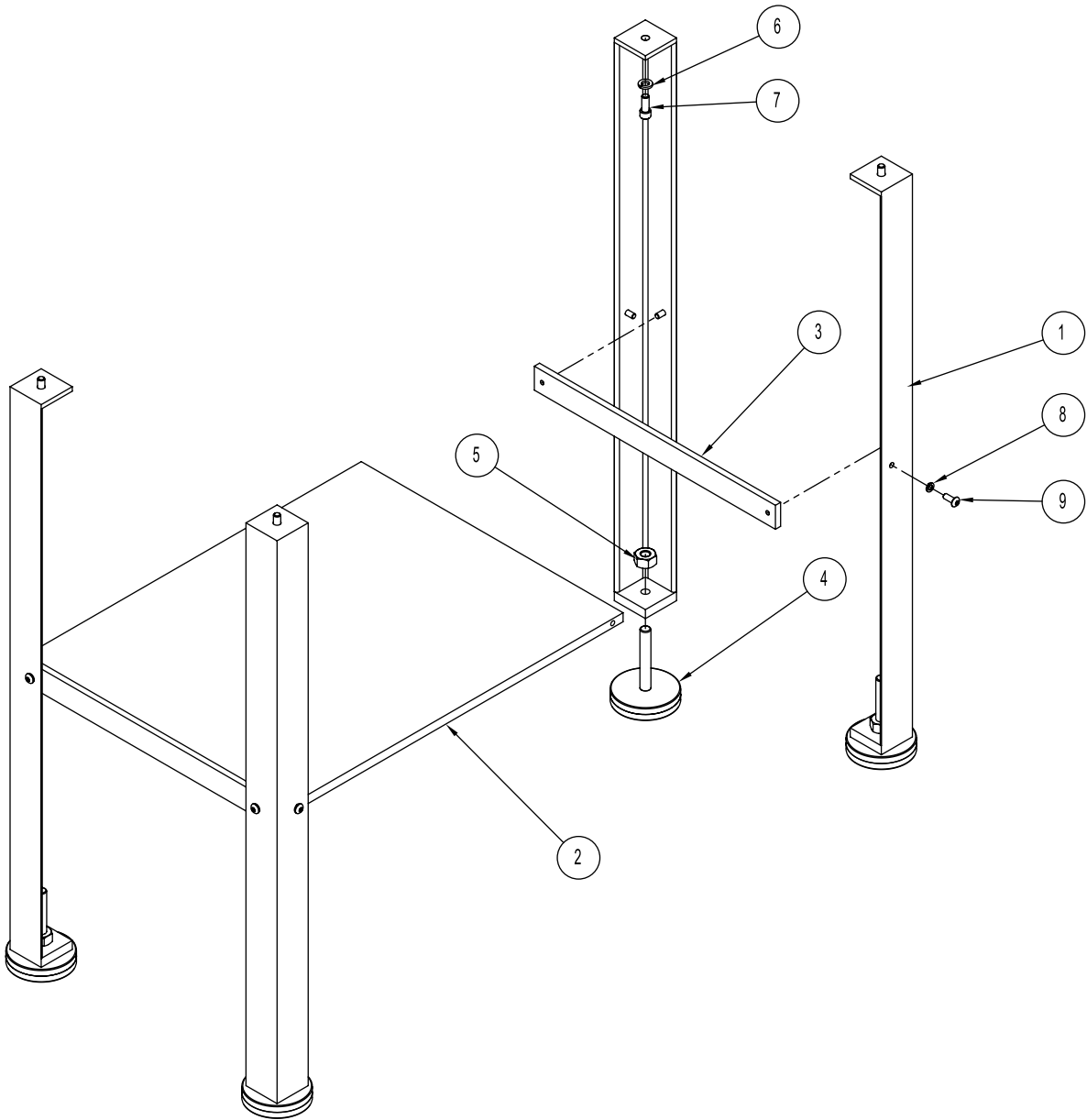


TRIANGLE WEDGE ASSEMBLY

Assembly # : 311-0437

ITEM	QTY.	PART NUMBER	DESCRIPTION
1	1		PLATE, WEDGE BASE
2	1		BLOCK, WEDGE
3	1		WEDGE GUIDE SHAFT
4	1		WEDGE SUPPORT SHAFT
5	4		MATERIAL SUPPORT
6	1		ROUND T-NUT
7	1		KNOB 5/8 DIA
8	1		KNOB, 1/2 DIA. #8 W/O SCREW
9	1		SPACER, KNOB
10	1		SHCS #10-32 X 1/2
11	1		SET SCREW, #8-32 X 3/16
12	2		SNAP RING 3/8
13	1		SHCS #10-32 X 3/8
14	1		SHCS 8-32 X 1.25

STAND ASSEMBLY
Assembly # : 311-0609

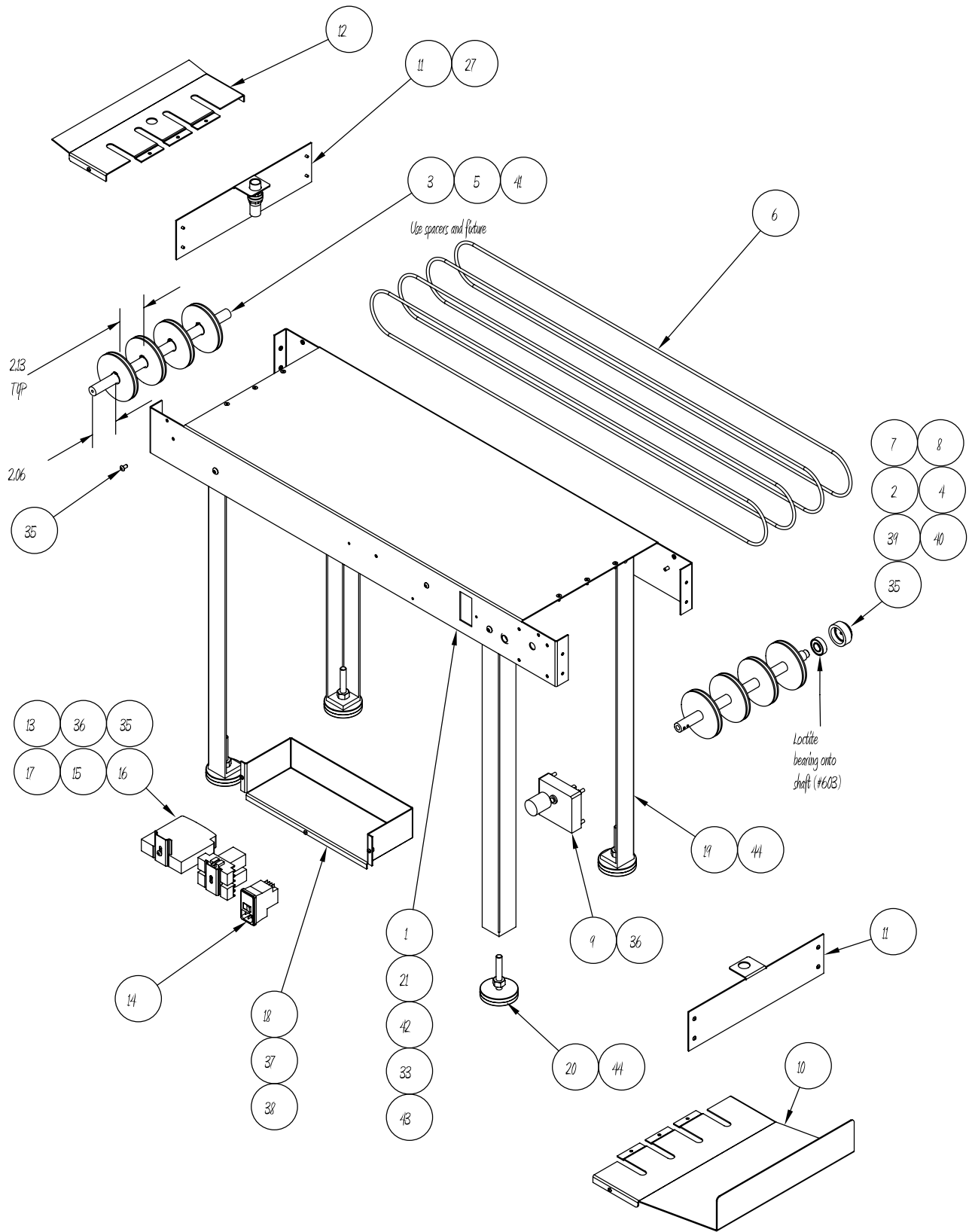


STAND ASSEMBLY
Assembly # : 311-0609

ITEM	QTY.	PART NUMBER	DESCRIPTION
1	4		Weldment, Legs
2	1		Shelf
3	2		Bar, Support
4	4		Feet, Leveling RT
5	4		Nut, Hex 3/8-16NC
6	4		LOCK WASHER 1/4"
7	4		SHCS 1/4-20 x .63
8	8		Washer, Spring Lock SS #10
9	8		BHCS #10-32 X 1/2

CONVEYOR ASSEMBLY

Assembly # : 311-0593



CONVEYOR ASSEMBLY

Assembly # : 311-0593

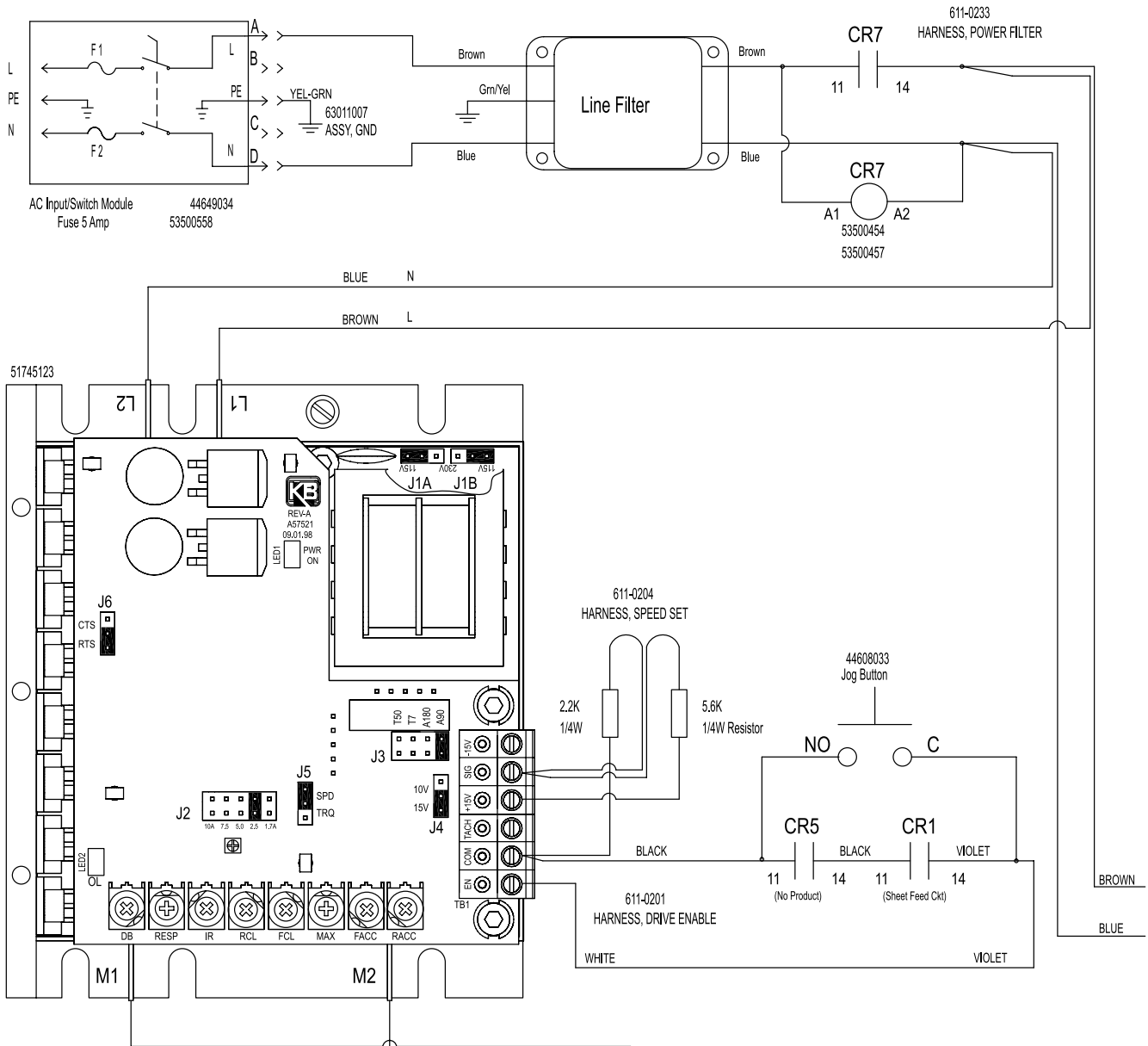
ITEM	QTY.	PART NO.	DESCRIPTION
1	1		Conveyor, Weldment
2	1		Conveyor, Drive Shaft
3	1		Conveyor, Idler Shaft
4	4		Conveyor, Pulley
5	4		Conveyor, Pulley
6	4	51312601	Conveyor, O-Ring Belt
7	1		Holder, R8 Bearing Cup
8	1		BEARING, BALL
9	1		Motor Assy 12VDC
10	1		Conveyor, Catch Tray
11	2		Conveyor, Sensor Bracket
12	1		Conveyor, End Comb
13	1	56422901	Power Supply
14	1		MODULE, POWER ENTRY
15	2		Base, 24V Relay
16	2		Din Rail
17	2		Relay, DPDT 12VDC
18	1		Conveyor, Electrical Box
19	4		Conveyor, Leg
20	4		Feet, Leveling RT
21	1		Grommet, 9/16x1/16 7/16 3/4
22	1		Cord, Pwr 115V
23	1		Electrical Schematic
24	1		Harness, Motor Power

ITEM	QTY.	PART NO.	DESCRIPTION
25	1		Harness, Power Supply Output
26	1		Harness, Power Supply Input
27	1		Cable, Sheet Sensor Assy
28	2		Fuse, 3.15A 250V
29	2		Terminal, Female
30	1		Graphic Shingling Conveyor
31	1		Assy, Cable Ground Wire
32	1		Packaging, RT100
33	6		FHCS 6-32NC X 0.38
34	12		BHCS #6-32 X 1/4
35	5		BHCS #10-32 X 3/8
36	6		#10 KEP NUT
37	3		BHCS 6-32 x .38
38	3		Kep Nut 6-32
39	8		SET SCREW, #10-32 X 1
40	2		SSSCPPT 10-32 x .19
41	8		Snap Ring, 5/8
42	8		BHCS 1/4-20 X 1/2
43	8		Nut, Nyloc 1/4-20
44	4		Nut, Hex 3/8-16NC
45	4		Cable Tie
46	2		Cable Tie Mount

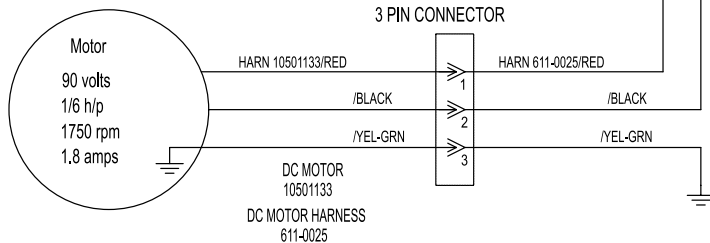
Electrical Diagrams

115 VOLT CONFIGURATION

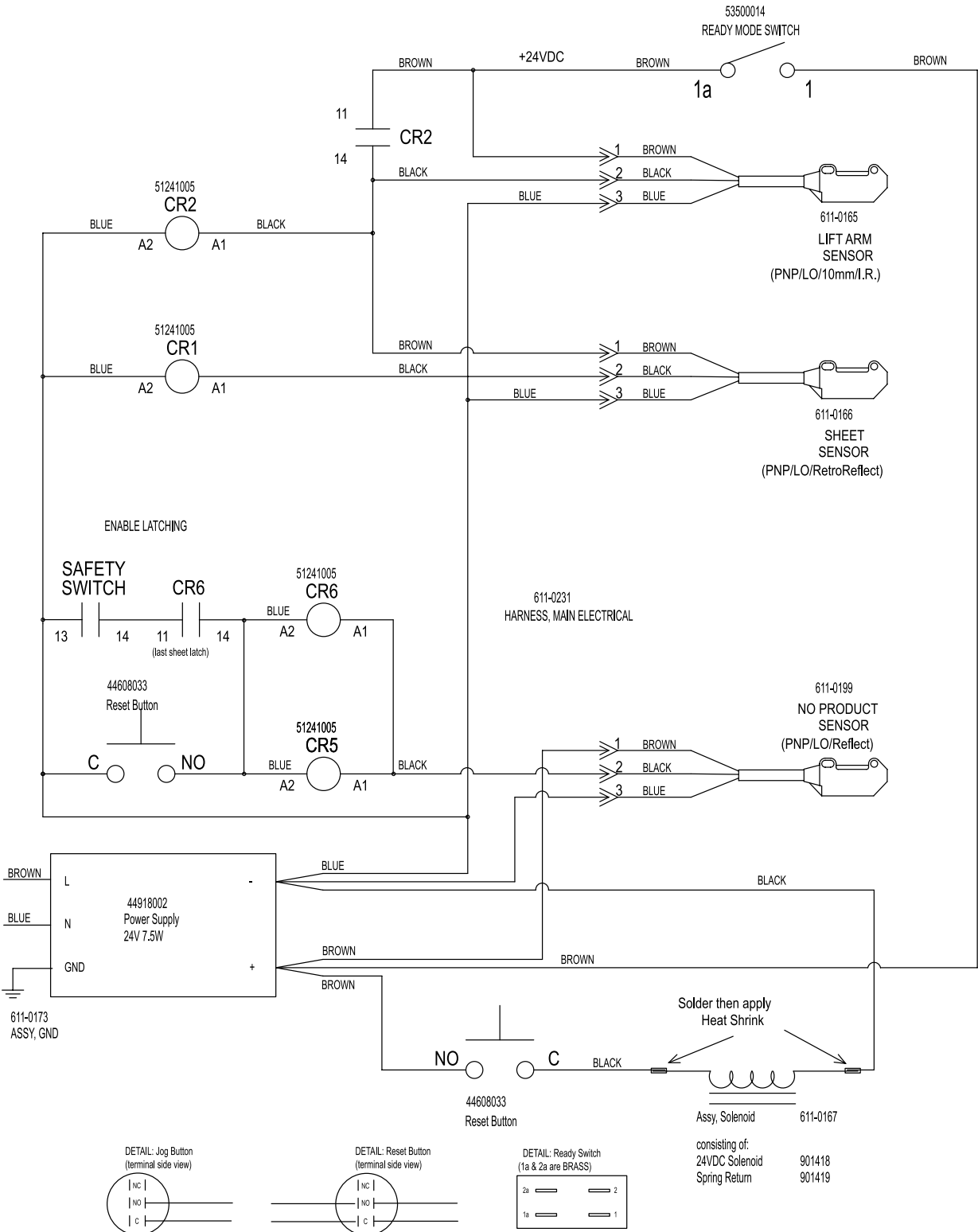
Power Switch On/Off



NOTE: TRIMPOT SETTINGS SHOWN AS STARTING POINT
 ADJUST "MAX" FOR A SPEED OF 2200-2600 IN/MIN ON DISCHARGE BELT
 (This corresponds to a voltage on the motor of approx 23 VDC)



115 VOLT CONFIGURATION (continued)



230 VOLT CONFIGURATION (continued)

