

CX3535 / CX4545

**Setup
and
Installation
Guide**

This document has been designed to outline the proper procedure for the set-up and installation of the CX3535 / CX4545 MFP. It is a complimentary guide to the installation instructions packaged with the device and is designed to clarify the unpacking and installation instructions of the product.

**ES9460 MFP/ES9470 MFP
CX3535 MFP/CX4545 MFP**

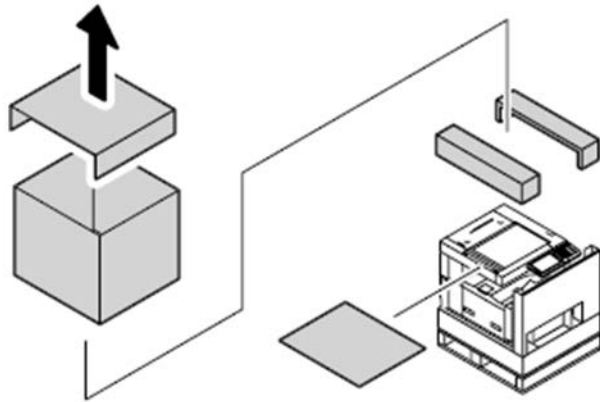
WARNING 警告 警告			CAUTION 注意 注意		
<ul style="list-style-type: none"> The unpacking and setup procedure shall be done by a qualified service technician. Do not touch the power cable of the equipment before unpacking and setting up the product. 本製品の unpacking と設置作業は、必ずしも有資格のサービス技術者によって行われなければなりません。 unpacking と設置作業の前には、製品の電源ケーブルにさわらないでください。 La déballage et l'installation de cet équipement doivent être effectués par un technicien d'entretien qualifié. Ne touchez pas le câble d'alimentation de l'équipement avant l'installation et la configuration du produit. Das Auspacken und Installationsverfahren muss von einem qualifizierten Service-Techniker durchgeführt werden. El procedimiento de desembalaje e instalación debe ser realizado por un técnico de servicio cualificado. Advertencia de descuido: el cable de alimentación de este equipo debe de ser manipulado en configuración de producto. 本製品の unpacking と設置作業は、必ずしも有資格のサービス技術者によって行われなければなりません。 			<ul style="list-style-type: none"> Install the equipment near the outlet. Be sure to wire the power cable securely so as to unplug it easily and safely (Fig. 1). 本製品は電源コンセントの近くに設置してください。電源ケーブルを確実に接続してください。簡単に抜き差しできるようにしてください。 Installez l'équipement près de la prise de courant. Placez le câble d'alimentation de manière qu'il soit facile à débrancher et sans provoquer de blessures sur le câble. Das Gerät in der Nähe der Steckdose installieren. Das Netzkabel richtig befestigen, damit es leicht herausgelöst werden kann. Instalar el equipo cerca de la toma de alimentación. Advertencia de que se debe al cable de alimentación de manera que sea fácil desenchufarlo y que no se dañe con el cable. 本製品は電源コンセントの近くに設置してください。電源ケーブルを確実に接続してください。簡単に抜き差しできるようにしてください。 		
1 OPEN 開ける OUVRIRE OFFNEN ABRIR 打开	2 TAKE OUT 取り出す SORTIR HERAUSNEHMEN SACAR 取出	3 TAKE OUT 取り出す SORTIR HERAUSNEHMEN SACAR 取出	4 TAKE OUT 取り出す SORTIR HERAUSNEHMEN SACAR 取出	4 TAKE OUT 取り出す SORTIR HERAUSNEHMEN SACAR 取出	5 INSTALL 取り付け INSTALLER EINSETZEN 嵌上
4 TAKE OUT 取り出す SORTIR HERAUSNEHMEN SACAR 取出	6 CLOSE 閉める FERMER CERRAR 合上	7 TAKE OUT 取り出す SORTIR HERAUSNEHMEN SACAR 取出	8 CLOSE 閉める FERMER CERRAR 合上	9 REMOVE 取り出す ENLEVER ENTFERNEN QUITAR 取出	10 ATTACH 取り付け COLLER KLEBEN 貼上
11 INSTALL 取り付け INSTALLER EINSETZEN 嵌上	MR-3022 ● The adjustment of MR-3022 should be performed after step "48" in the instructions. ● MR-3022 調整は、必ずしもステップ "48" の後に実施してください。 ● Le réglage du MR-3022 doit être effectué après l'étape "48" dans les instructions. ● Die Justierung der MR-3022 muss nach Schritt "48" in den Anleitungen durchgeführt werden. ● El ajuste del MR-3022 debe efectuarse después del paso "48" en las instrucciones. ● 必ずしもステップ "48" の後に調整してください。 調整 №_3022。				

● According to the equipment model, these illustrations may differ from the appearances.
 ● 本製品の unpacking と設置作業は、必ずしも有資格のサービス技術者によって行われなければなりません。
 ● Selon le modèle, il est possible que ces illustrations changent.
 ● Je nach Modell können sich die Abbildungen ändern.
 ● Según el modelo, es posible que estas figuras varíen.
 ● 本製品の unpacking と設置作業は、必ずしも有資格のサービス技術者によって行われなければなりません。

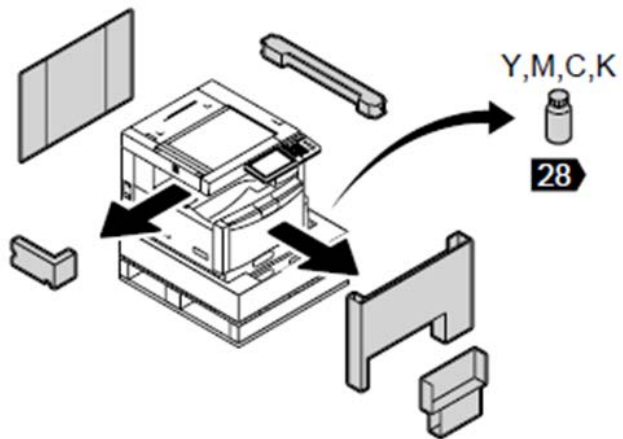
UM1100K208
RUM4952000

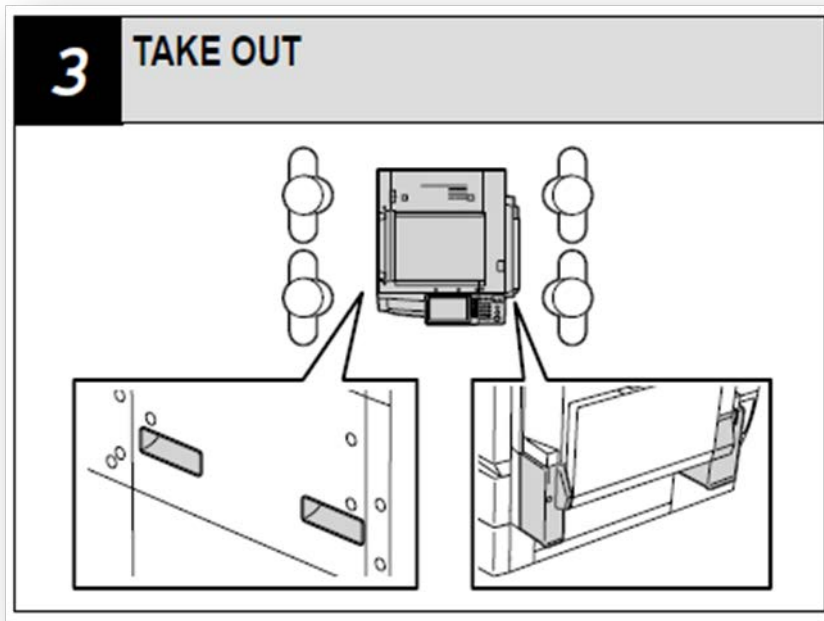
This document is in sequential order.
Do not skip steps.

1 OPEN

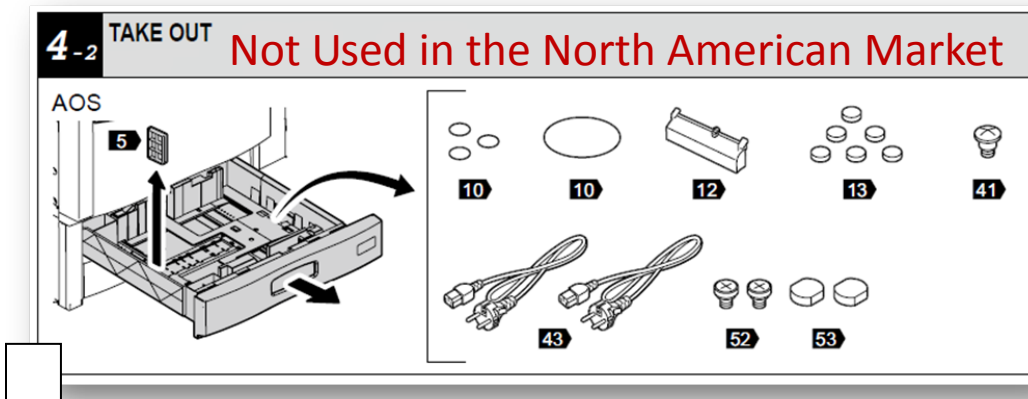
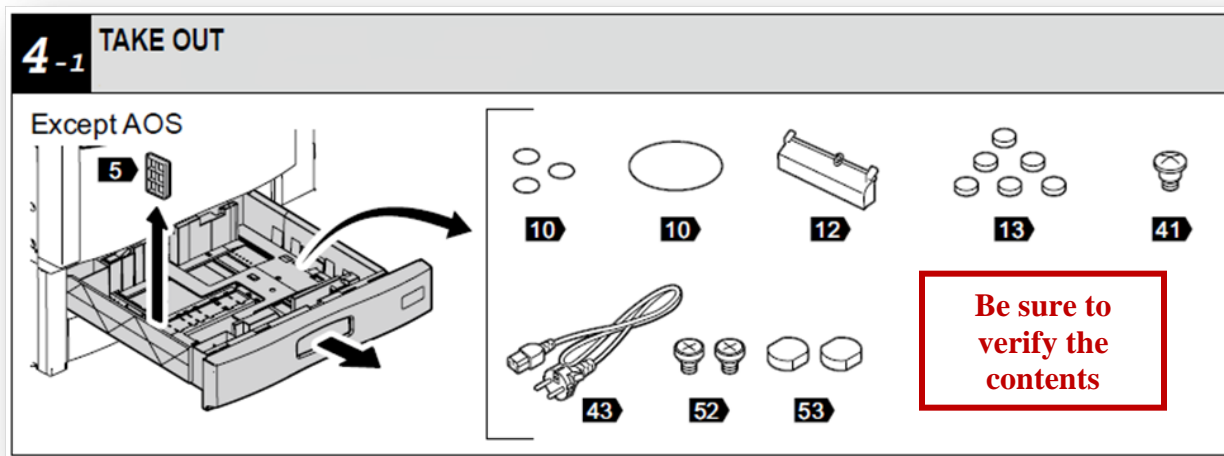


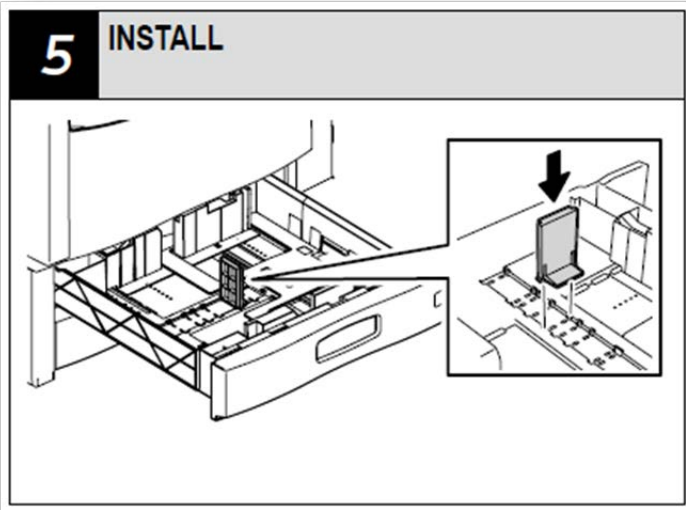
2 TAKE OUT



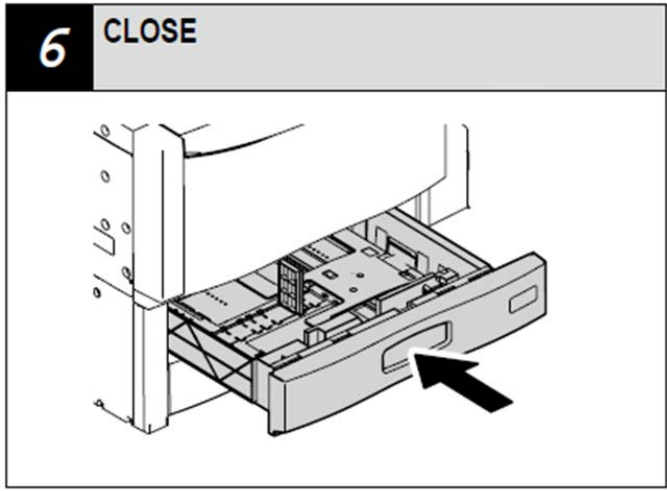


Note: It is highly recommended that you utilize four (4) people when lifting this product to avoid injury.

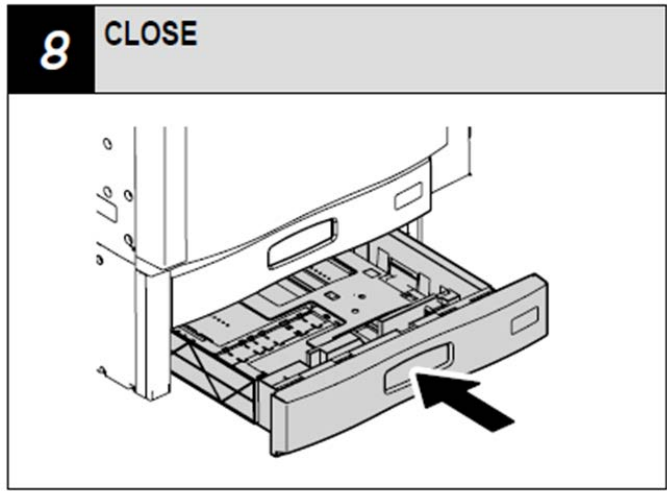
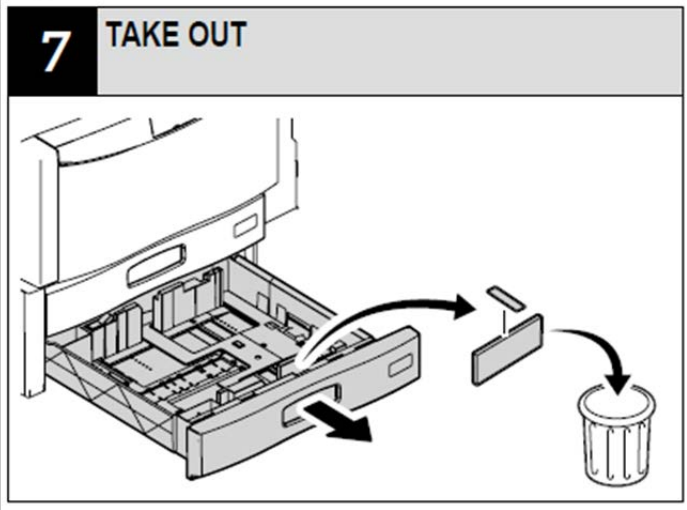


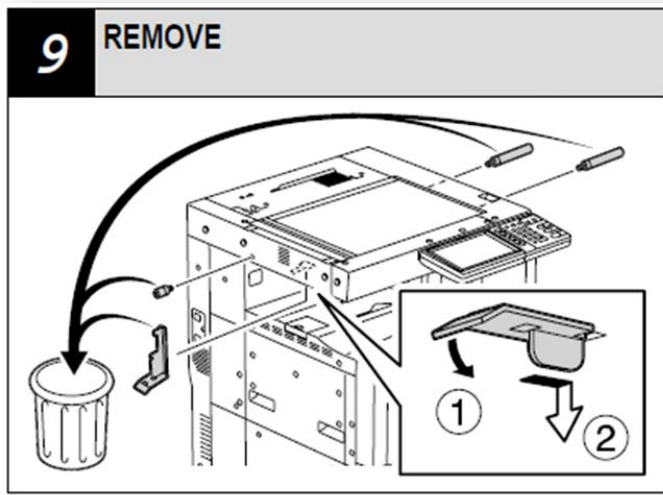


Install the paper guide in paper tray # 1.



Remove the packing materials in paper tray # 2.

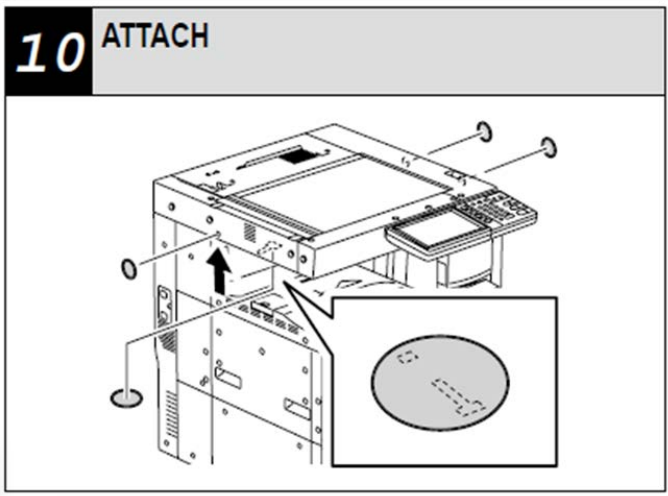
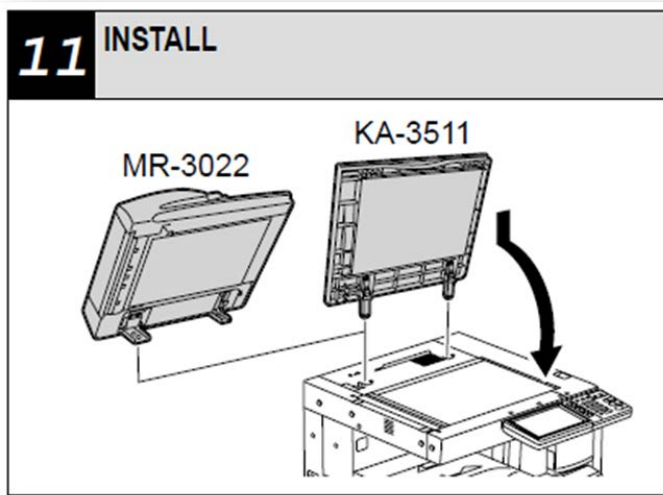




Scanner Locks - Be sure to remove or damage to the scanner can occur.



Be sure to install the covers to prevent stray light from entering the scanner. Failure to do so may result in poor print quality.



Unpack and install the MR-3022 RADF. Adjustment instructions will be found later in this document.

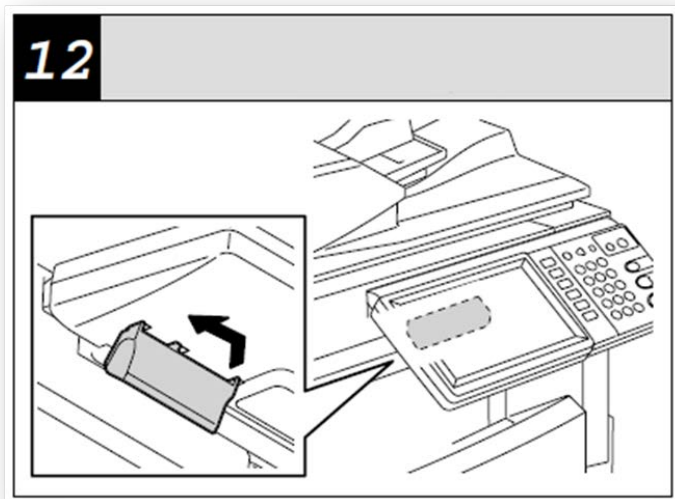


This document is in sequential order. Do not skip steps.

MR-3022

- The adjustment of MR-3022 should be performed after step *48 in the instructions.

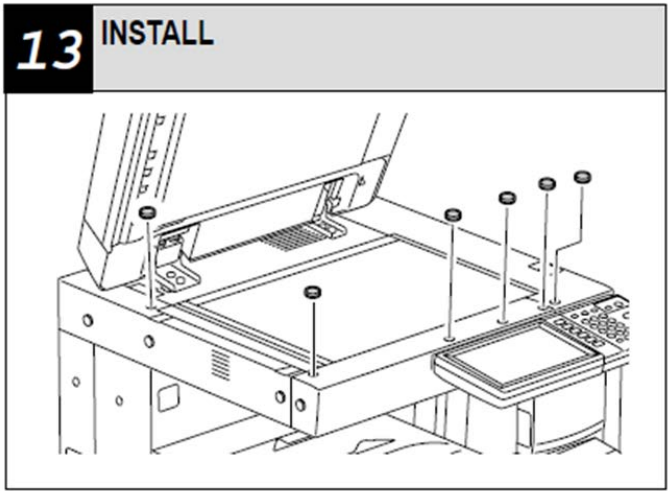
Adjustment instructions will be found later in this document.



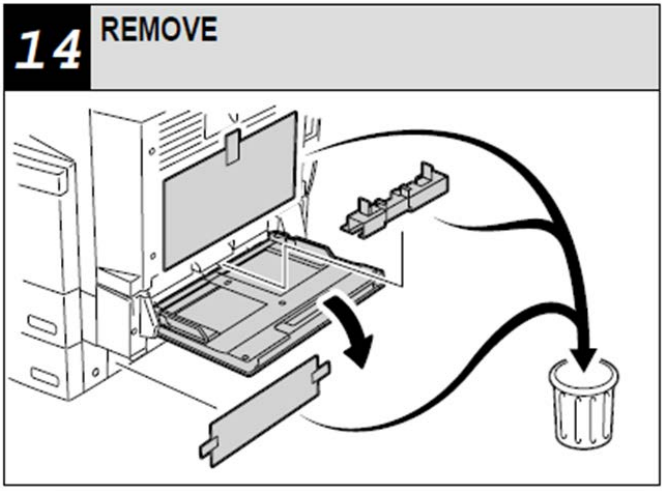
Install the screw covers.



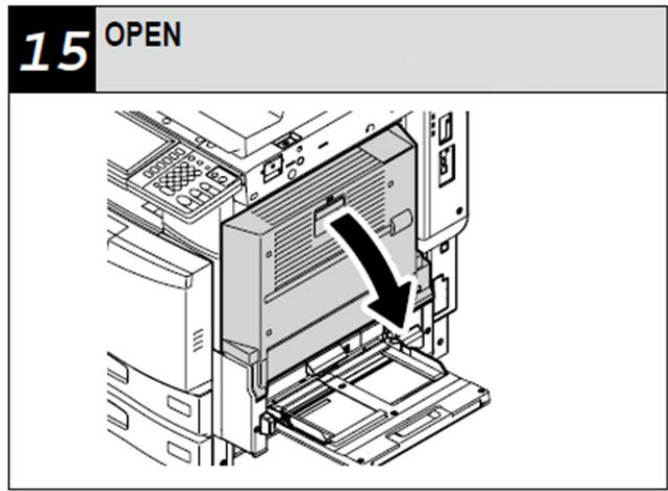
Install the Control Panel Stop.



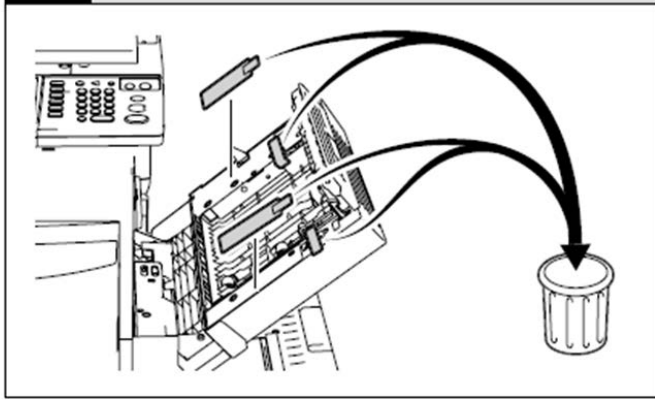
Remove the Manual Feed packing materials.



Open the Duplex Cover.



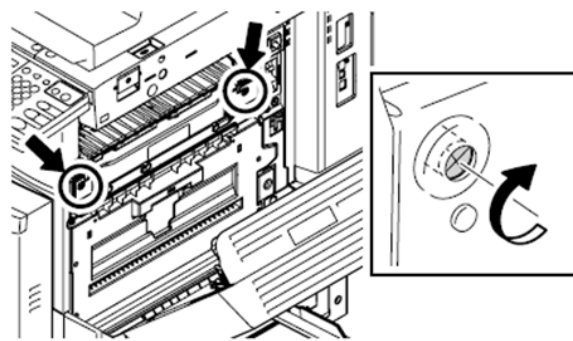
16 REMOVE



Remove the Duplex Unit packing materials.



17 SCREW

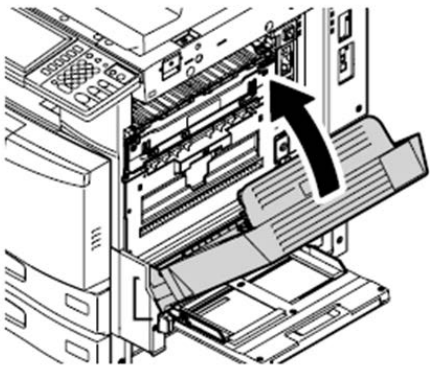


- Tighten the pressure screw until it ceases to turn. (Approx. 20 turns)

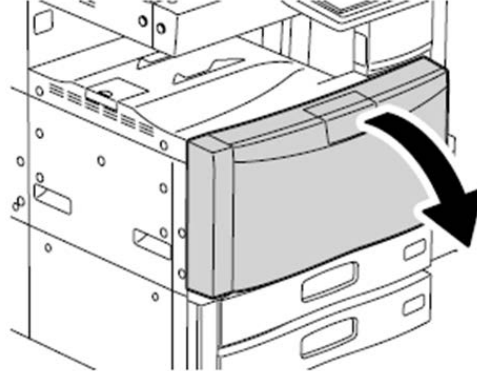


Do not skip this step or poor fusing will result.

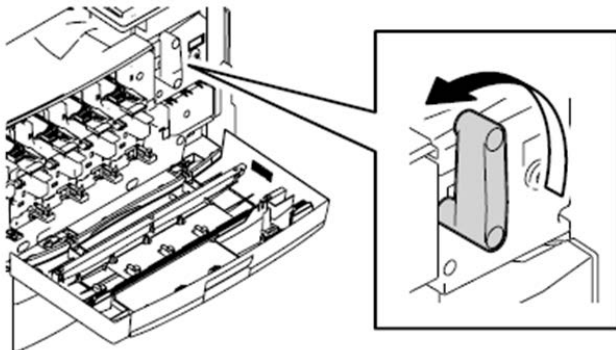
18 CLOSE



19 OPEN



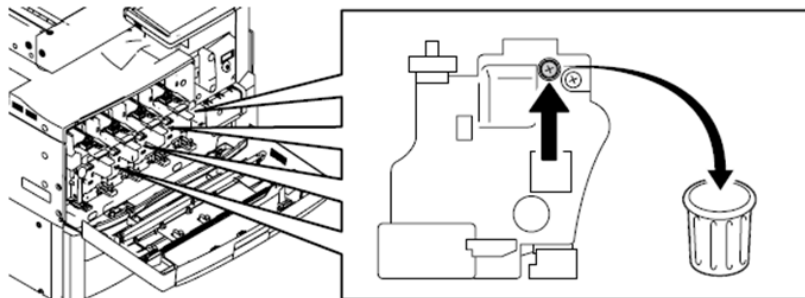
20 UNLOCK



Rotate the handle to unlock the Imaging Drums.



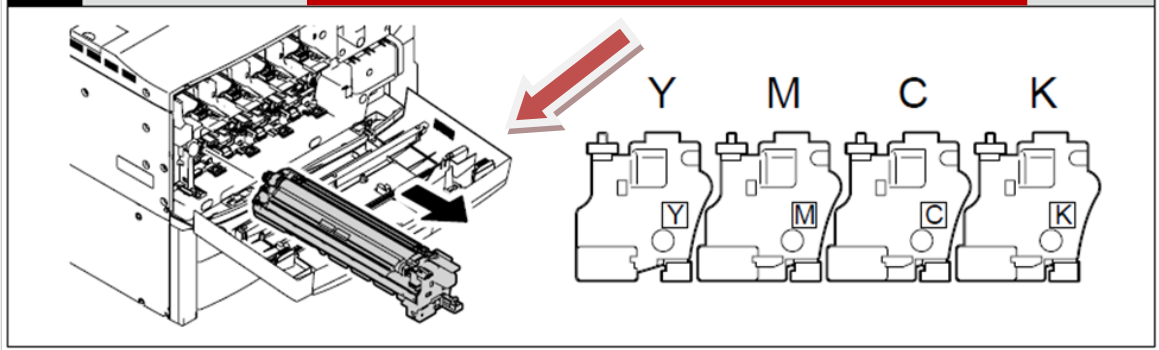
21 REMOVE



Remove the packing screws holding the Imaging Drums in place for shipping and discard the screws.
Remove each screw in all four (4) Imaging Drums.

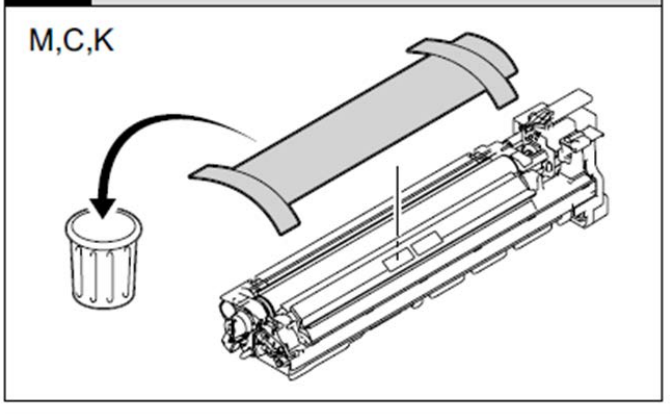
22 REMOVE

Remove the four (4) Imaging Drums.



23 REMOVE

M,C,K

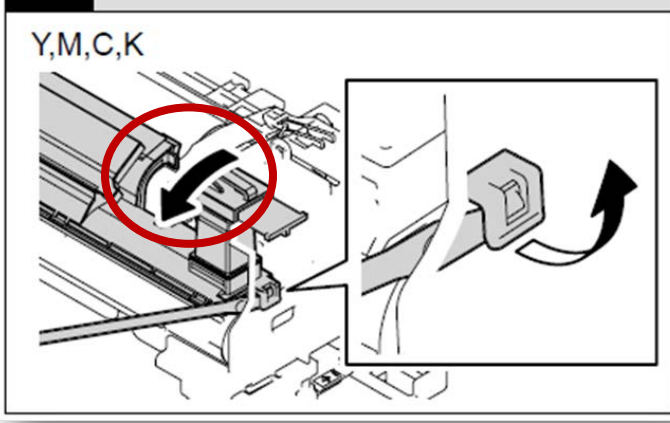


Remove the protective coverings from the three (3) Imaging Drums (M, C, K).



24 UNLOCK

Y,M,C,K

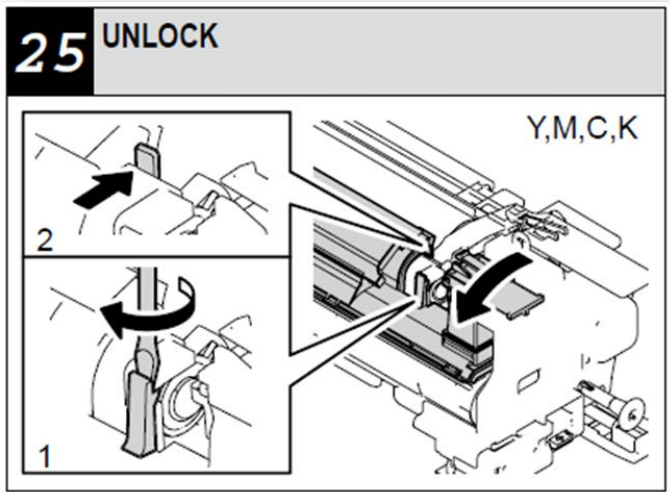


Unlock the Front Retaining Tab for each developer cover of the (4) Imaging Drums (Y, M, C, K).



These tabs are made of plastic. Use caution when releasing the tabs to avoid breaking the tabs.

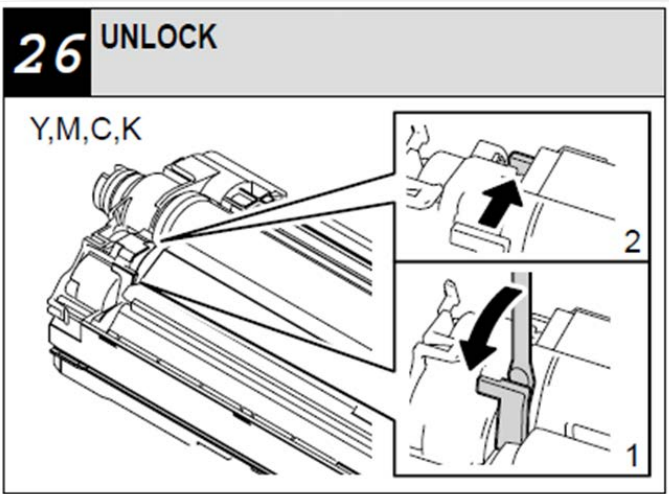
Gently rotate the cover forward as indicated.



Unlock the Front Retaining Tab for each developer cover of the (4) Imaging Drums (Y, M, C, K).



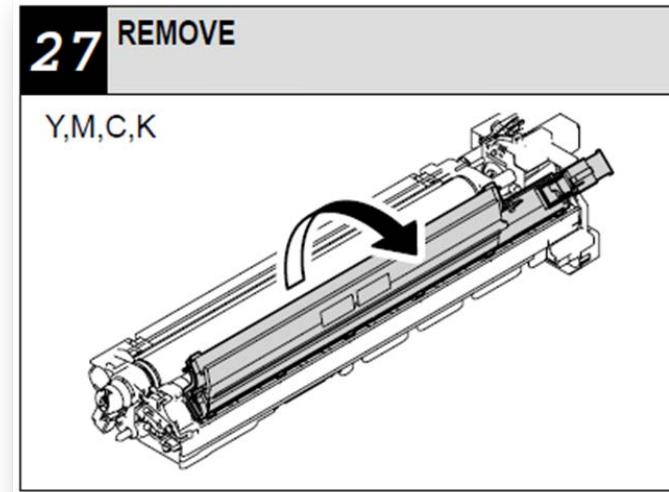
These tabs are made of plastic. Use caution when releasing the tabs to avoid breaking the tabs.



Unlock the Rear Retaining Tab for each developer cover of the (4) Imaging Drums (Y, M, C, K).



These tabs are made of plastic. Use caution when releasing the tabs to avoid breaking the tabs.

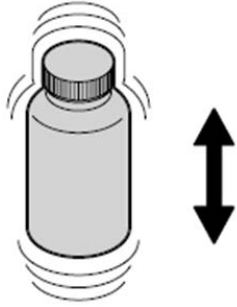


Remove the developer cover.



28 SHAKE

Y,M,C,K



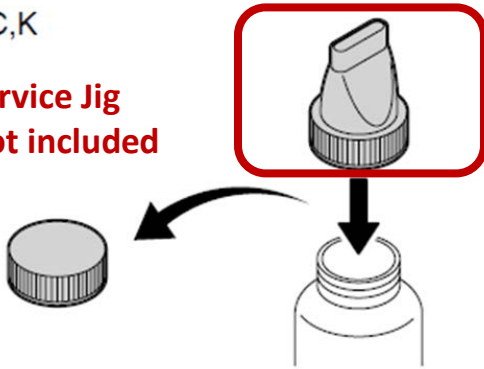
Shake the supplied developer to ensure that there is no clumping and that it will pour properly.

Be sure to match the color developer with the color imaging unit!

29 INSTALL

Y,M,C,K

Service Jig
Not included

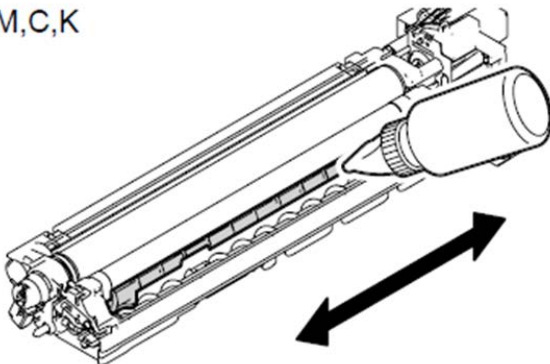


Install the developer *Pouring Jig* onto the developer bottle.

Note: The Pouring Jig is **NOT INCLUDED** with the product.

30 FILL

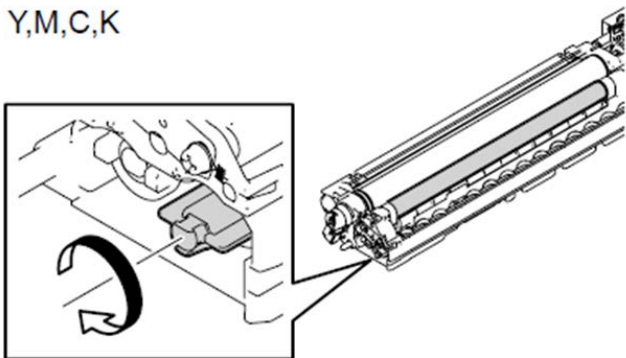
Y,M,C,K



Fill the developer unit evenly.

31 ROTATE

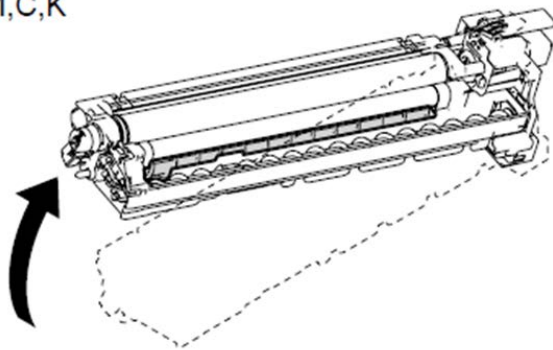
Y,M,C,K



Rotate the developer roller to ensure an even coating. Be sure to rotate the roller in the direction indicated.

32 LEVEL

Y,M,C,K

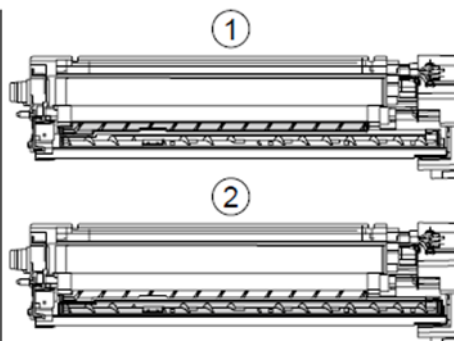
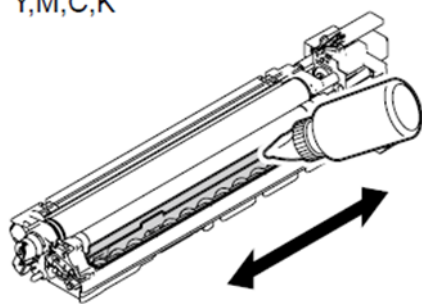


Ensure that the developer material is level in the unit.

33 FILL

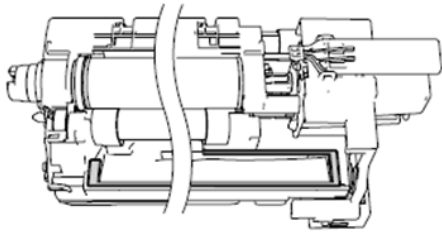
Y,M,C,K

Repeat the procedure for each developer unit.



34 CHECK

Y,M,C,K

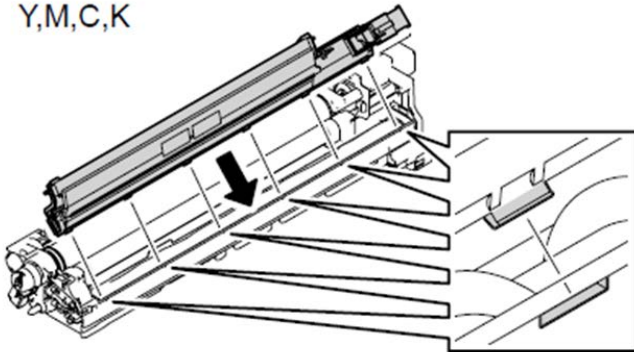


- Check that there is no developer adhering to the joint of the cover.

Ensure that there is no material around the cover seal or developer may leak!

35 INSTALL

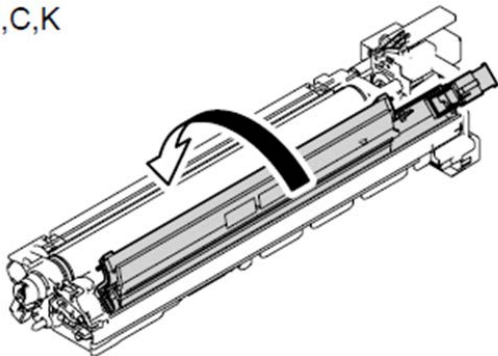
Y,M,C,K



When replacing the cover, pay special attention to ensure that the "Hooks" and "Tabs" of the cover align!

36 INSTALL

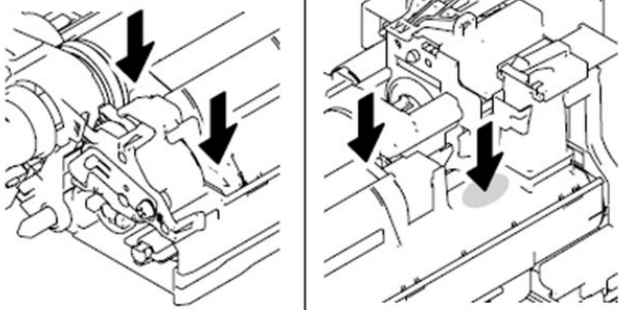
Y,M,C,K



Rotate the cover into position.

37 LOCK

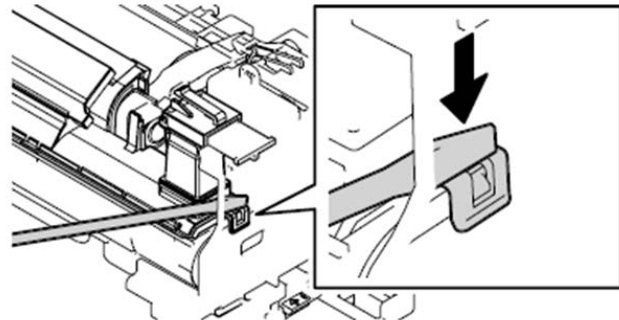
Y,M,C,K



Ensure that the Rear Locking Tabs are securely in place.

38 LOCK

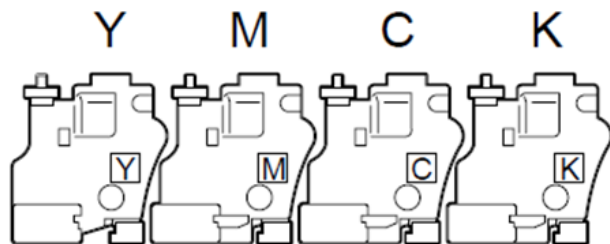
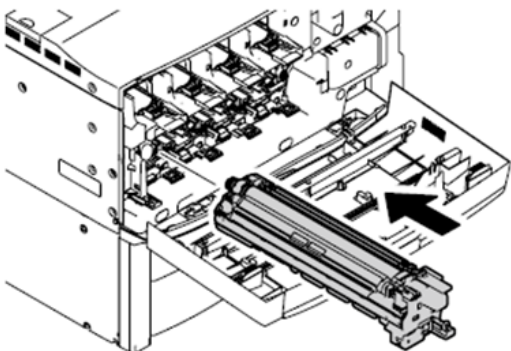
Y,M,C,K



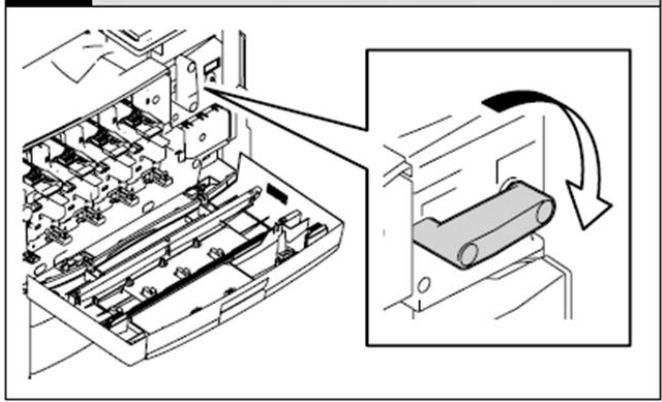
Ensure that the Front Locking Tabs are securely in place.

39 INSTALL

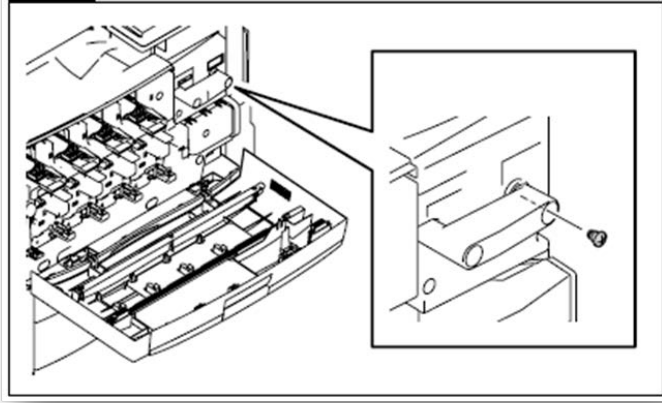
Re-install each developer unit in the printer.



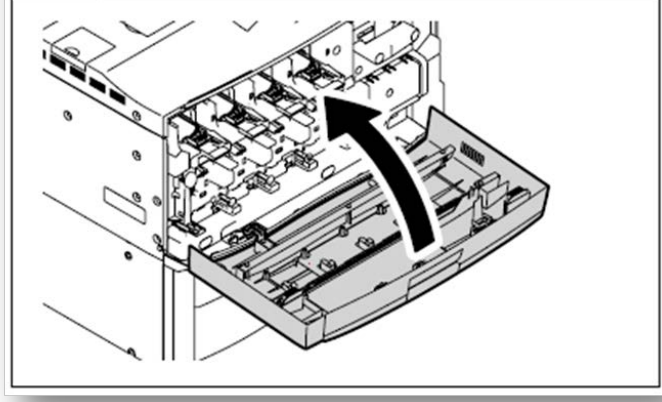
40 LOCK



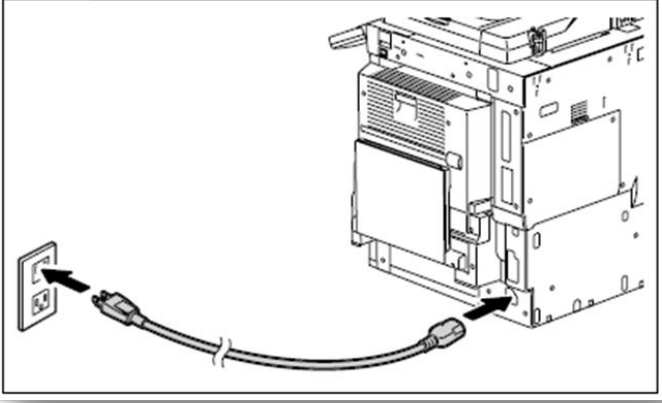
41 INSTALL



42 CLOSE



43 PLUG IN



44**ADJUST**

- See step *44.

**Follow the procedure as outlined.
Do Not Skip Steps!**

44*ADJUST**

ES9460 MFP/ES9470 MFP/CX3535 MFP/
CX4545 MFP is an automatic setup machine.
Never turn the power OFF with the main power
switch until the adjustment from step *44 to *47
is completed according to the procedures in the
Unpacking & Installation Instructions.

1. Turn the power ON with the main power
switch.
2. Press [OK] on the AUTHENTICATION screen.
A password is unnecessary.
3. When the following message appears on the
ADJUSTMENT screen, press [OK].

"Start easy setup.
Press "OK"."

In a while, the following message appears.

The current voltage (V) automatically
changes, gradually approaching the reference
one for the adjustment.

Y	M	C	K
Y	M	C	K
Y	M	C	K

4. When [OK] appears, press it.

45-1 INSTALL

- See step *45-1.

**Follow the procedure as outlined.
Do Not Skip Steps!**

*45-1 INSTALL

Installing Toner Cartridges (Steps 45-2 to 45-6)

1. When the following message appears on the ADJUSTMENT screen, install the toner cartridge for each color (Y, M, C, K). See steps 45-2 to 45-6 for the installing procedure.

"Set the cartridge for each of the 4 colors(Y,M,C,K)."

2. The following message appears when the 4 colors (Y, M, C, K) toner cartridges are installed, press [OK].

"Are all the toner cartridges installed?"

Image Quality Control Adjustment

This control automatically starts after pressing [OK] in the above step 2.

The following message appears during the adjustment.

"WAIT
Initialization of image quality control is doing."

Color Registration Control Adjustment

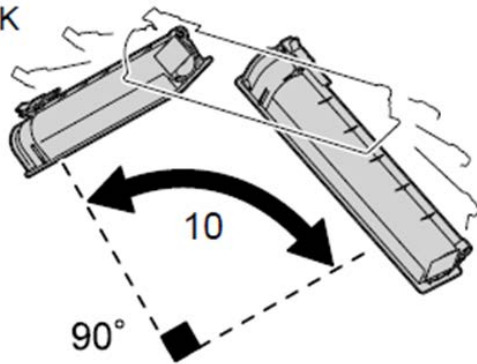
This control automatically starts after completing the image quality control.

The following message appears during the adjustment.

"WAIT
Forced color registration adjustment is doing."

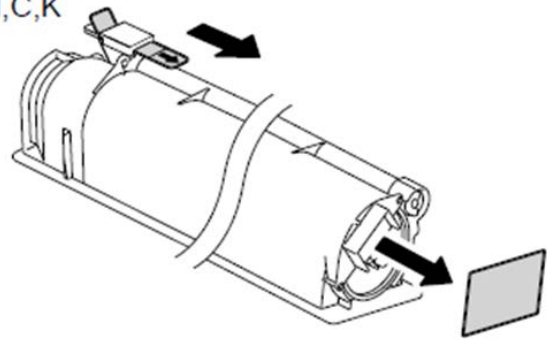
45-2 SHAKE

Y,M,C,K

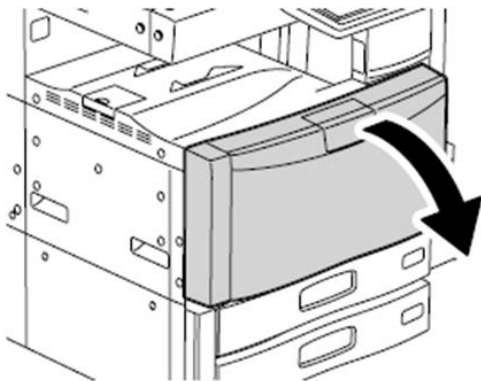


45-3 REMOVE

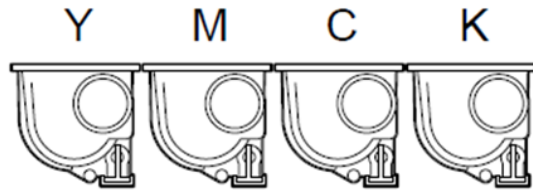
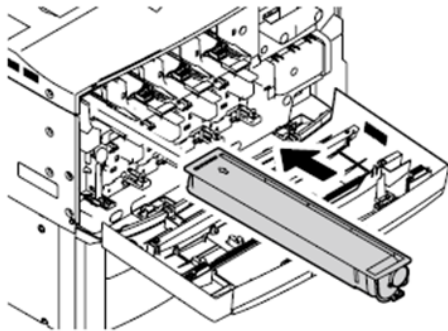
Y,M,C,K



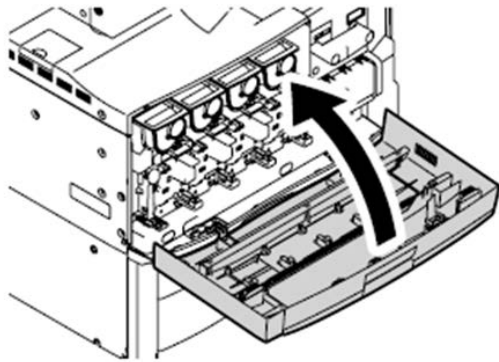
45-4 OPEN



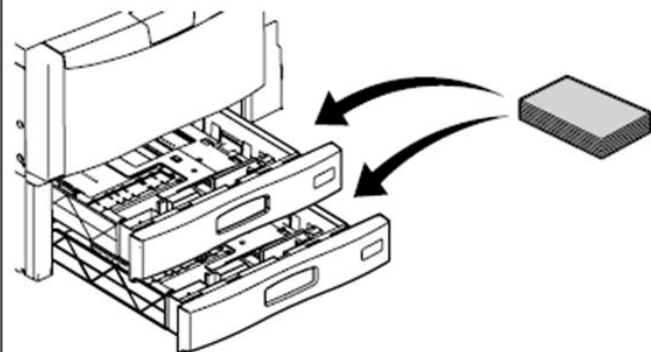
45-5 INSTALL



45-6 CLOSE



46 PLACE



47**ADJUST**

- See step *47.

**Follow the procedure as outlined.
Do Not Skip Steps!**

47*ADJUST**

Automatic Gamma Adjustment for Copying

1. When the following message appears, press [OK]. (Be sure to first set A4 or LT paper in drawer.)
"Execute copy gamma adjustment. Set A4/LT paper in the upper drawer and press [OK]."
2. The test chart for the adjustment is output.
3. When the following message appears, set the output test chart face down on the glass. Be sure to set the test chart aligned to the top left corner.
"Place the printed chart with its face down and the 2 black solid rectangles to the left. Then close the original cover or the ADF and press [OK]."
4. When [OK] is pressed, the automatic gamma adjustment is started.
The scanner automatically reads the original and carries out the calibration of the gradation.

Note:

If the adjustment fails in 4, the following message appears. The original may have deviated from an appropriate setting position. Reset the original, and then press [OK].

"ERROR
Press [OK] to perform the adjustment again or [CANCEL] to finish it."

***47** ADJUST

Automatic Gamma Adjustment for Printing

1. Perform the adjustment according to the above procedures 1 to 4 for copying. The following message appears.

"Execute 600dpi print gamma adjustment. Set A4/LT paper in the upper drawer and press [OK]."

2. When the adjustment is completed properly, the following message appears. Press the [ON/OFF] button until you hear a sound.

"Press and hold the [POWER] button until the power is turned OFF."

***47** ADJUST

Setting the Date and Time

1. Press the [ON/OFF] button.
2. Press the [USER FUNCTIONS] button.
3. Press [ADMIN] then [PASSWORD]. Key in [123456] (initial value) of the admin password and then press [OK].
4. Press [GENERAL], [CLOCK] and [DATE/TIME].
5. Enter the values for the year, month, date, hour and minute, and then press [OK].
6. Shut down the equipment by pressing the [ON/OFF] button until you hear a sound.
7. Turn the power OFF with the main power switch.

48 ADJUST

MR-3022

- Perform *34 to *36 in the Unpacking Instructions for MR-3022.

**Follow the procedure as outlined.
Do Not Skip Steps!**

MR-3022

***34** Adjustment of the gap

[Note]

1. Before adjusting MR-3022, check that the image has been correctly adjusted on the equipment. (See the chapter 3 of the Service Handbook.)
2. The adjustment of MR-3022 should be performed in the order according to this instruction.

MR-3022

*34 Adjustment of the gap

Adjustment of the gap (Image distortion adjustment)

Checking

1. Close the MR-3022.
2. Light the exposure lamp.
 - (1) Turn the power ON with the main power switch while pressing [0] and [3] simultaneously.
 - (2) [267] → [START] button. The exposure lamp is turned ON for a certain period of time.
3. Visually check the gap between the platen guide holder A and the upper surface of the original glass B from the direction of the paper exit. (Fig. 1)

* If the platen guide holders cannot be seen well from the front or rear gap, see and check them from the center of the gaps.

[Tolerance of the gap]

Rear side: Gap 0 - 0.5 mm

Front side: Gap 0 mm

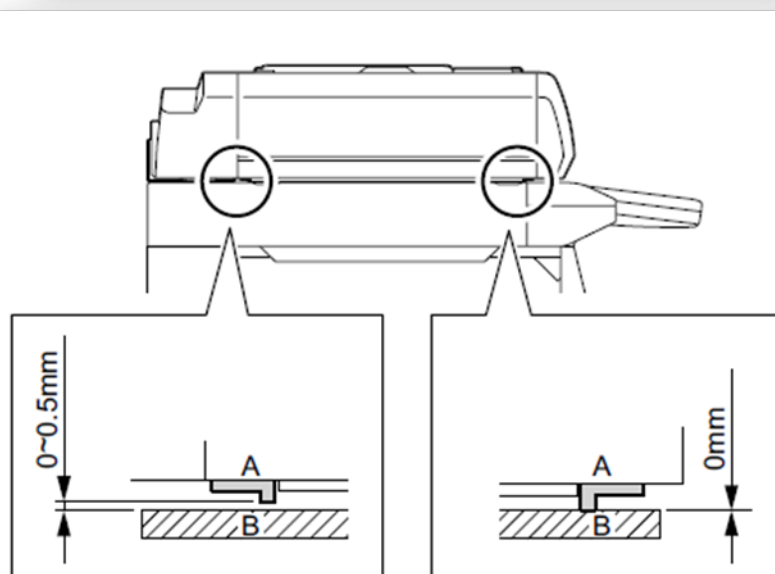


Fig. 1

MR-3022

*34 Adjustment of the gap

Adjustment

1. Close the MR-3022.
2. Adjust the height by turning the adjustment screws on the hinge.
 - A. Adjustment of the rear side gap (The height adjusting screw on the exit side hinge: Fig. 3)

Clockwise (to the right) the gap becomes larger.

Counterclockwise (to the left) the gap becomes smaller.
 - B. Adjustment of the front side gap (The height adjusting screw on the feed side hinge: Fig. 2)

Clockwise (to the right) the gap becomes smaller.

Counterclockwise (to the left) the gap becomes larger.

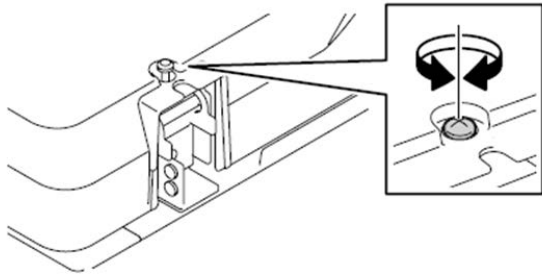


Fig. 2

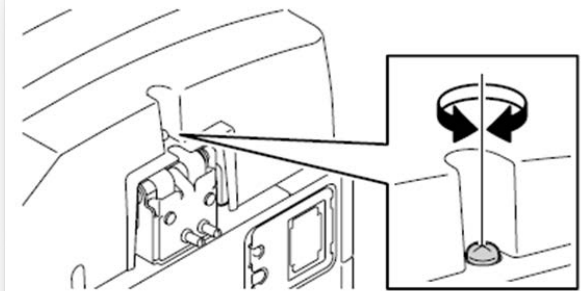


Fig. 3

MR-3022

***35** Image adjustment

Adjustment of Skew (Image inclination)

[Note]

The adjustment of skew should be performed in the order according to this instruction. Do not perform the Adjustment of the gap (using the height adjusting screw on the hinge) for the skew adjustment.

Checking

1. Make a test copy using the co-packed chart in the following procedures:
 - A. In the simplex mode
 - (1) Place the chart provided as an original with its face up on the original feeding tray of MR-3022.
 - (2) Select [1 Sided → 1 Sided] and press the [START] button.
 - B. In the duplex mode
 - (1) Place the chart provided as an original with its face down on the original feeding tray of MR-3022.
 - (2) Select [2 Sided → 2 Sided] and press the [START] button.
2. Superimpose the chart on the copy and check the inclination of the copied image.

MR-3022

*35 Image adjustment

Adjustment

- A. In the simplex mode
 In case of Fig. 6-D: Adjust the aligning plate to the “-” direction. (Fig. 7)
 In case of Fig. 5-C: Adjust the aligning plate to the “+” direction. (Fig. 7)
- B. In the duplex mode
 In case of Fig. 6-D: Adjust the aligning plate to the “+” direction. (Fig. 8)
 In case of Fig. 5-C: Adjust the aligning plate to the “-” direction. (Fig. 8)

← Paper feed direction

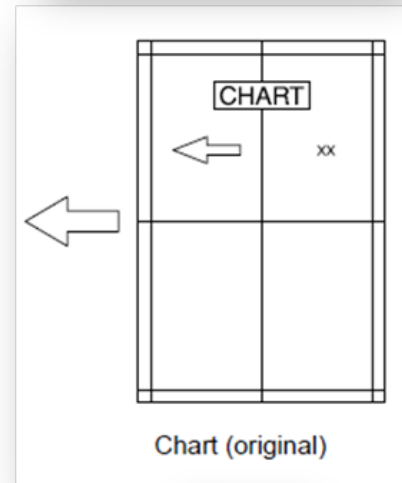


Chart (original)

Fig. 4

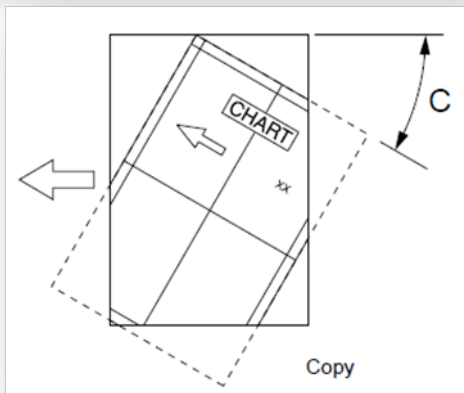


Fig. 5

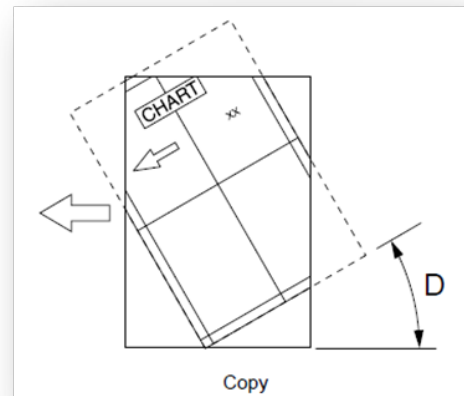


Fig. 6

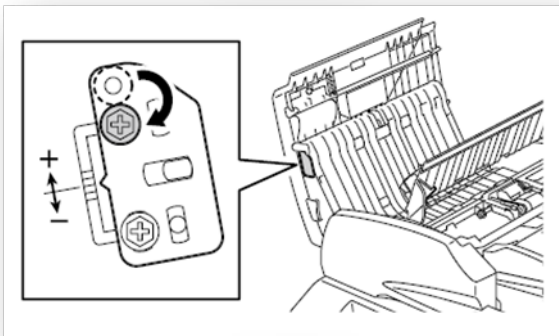


Fig. 7

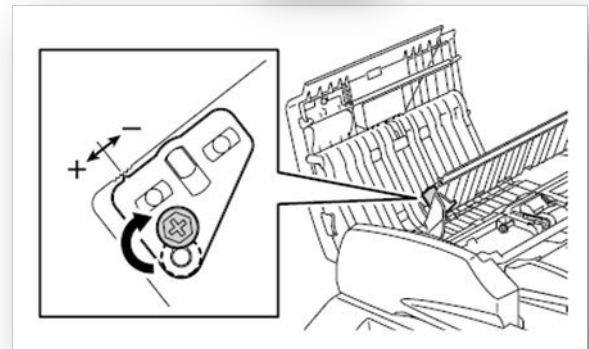


Fig. 8

MR-3022

*36 Image adjustment

Adjustment of the Leading Edge Position

Checking

1. Shut down the equipment by pressing the [ON/OFF] button until a sound is audible.
2. Turn the power OFF with the main power switch and then back ON.
3. Make a test copy using the co-packed chart in the following procedures:
 - A. In the simplex mode
 - (1) Place the chart provided as an original with its face up on the original feeding tray of MR-3022.
 - (2) Select [1 Sided → 1 Sided] and press the [START] button.
 - B. In the duplex mode
 - (1) Place the chart provided as an original with its face down on the original feeding tray of MR-3022 (Fig. 9).
 - (2) Select [2 Sided → 2 Sided] and press the [START] button.
4. Superimpose the chart on the copy and check the misalignment of the leading edge.

← Paper feed direction

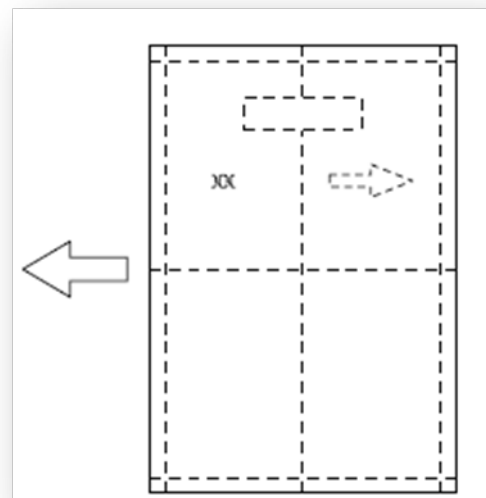


Chart (original)

Fig. 9

MR-3022

*36 Image adjustment

Adjustment

A. In the simplex mode

(1) Turn the power ON with the main power switch while pressing [0] and [5] simultaneously.

(2) [3044] → [START] button

If the leading edge margin of the copy image (Fig. 11-F) is larger than the margin of the chart (Fig. 10-E), enter a value smaller than the present one.

If the leading edge margin of the copy image (Fig. 11-F) is smaller than the margin of the chart (Fig. 10-E), enter a value larger than the present one.

(3) Press [ENTER].

B. In the duplex mode

(1) Turn the power ON with the main power switch while pressing [0] and [5] simultaneously.

(2) [3045] → [START] button

If the leading edge margin of the copy image (Fig. 11-F) is larger than the margin of the chart (Fig. 10-E), enter a value smaller than the present one.

If the leading edge margin of the copy image (Fig. 11-F) is smaller than the margin of the chart (Fig. 10-E), enter a value larger than the present one.

(3) Press [ENTER].

* 1 point value change = 0.2 mm

Chart (original)

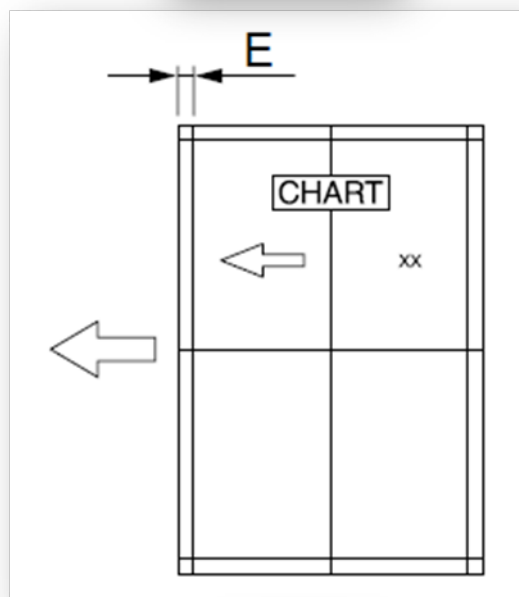


Fig. 10

Copy

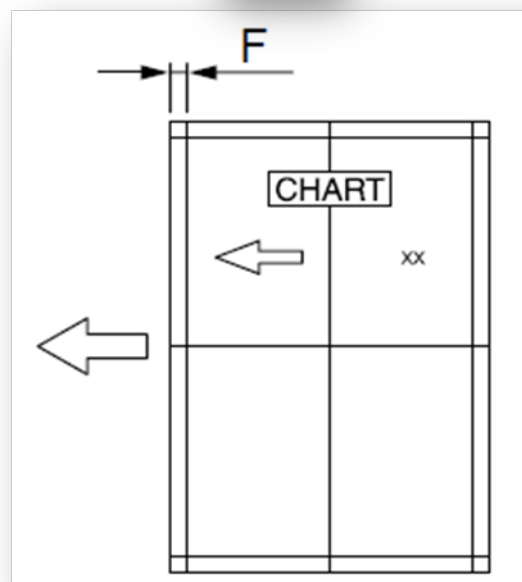


Fig. 11

MR-3022

*36 Image adjustment

Adjustment of Horizontal Position

Checking

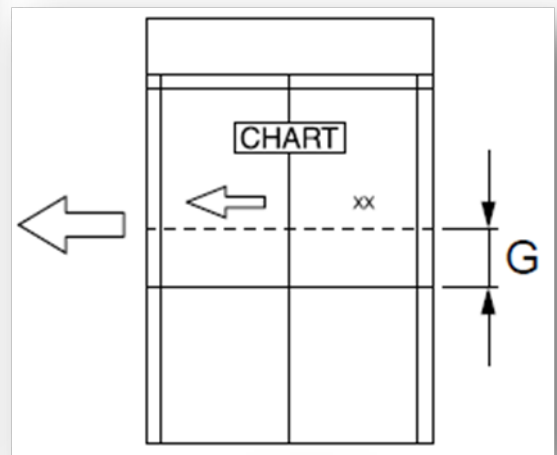
1. Shut down the equipment by pressing the [ON/OFF] button until a sound is audible.
2. Turn the power OFF with the main power switch and then back ON.
3. Make a test copy using the co-packed chart in the following procedures:
 - (1) Place the chart provided as an original with its face up on the original feeding tray of MR-3022.
 - (2) Press the [START] button.
4. Fold the copy in half and check if the center line is misaligned.

Adjustment

1. Turn the power ON with the main power switch while pressing [0] and [5] simultaneously.
2. [3043] → [START] button
 If the center line of the copy image is shifted to the front side of the equipment (Fig. 12-G), input a value larger than the present one.

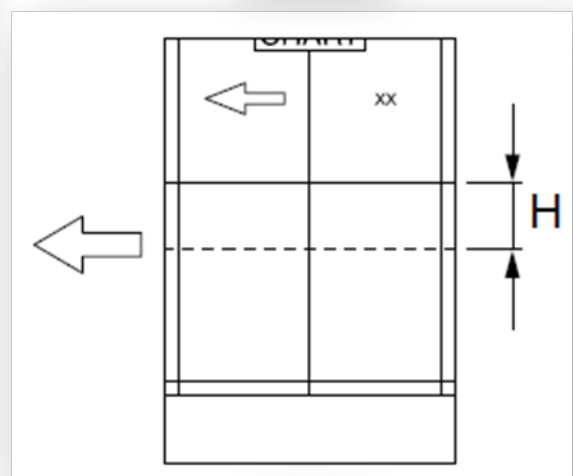
 If the center line of the copy image is shifted to the rear side of the equipment (Fig. 13-H), input a value smaller than the present one.
3. Press [ENTER].

* 1 point value change = 0.042mm



Copy

Fig. 12



Copy

Fig. 13

MR-3022

*36 Image adjustment

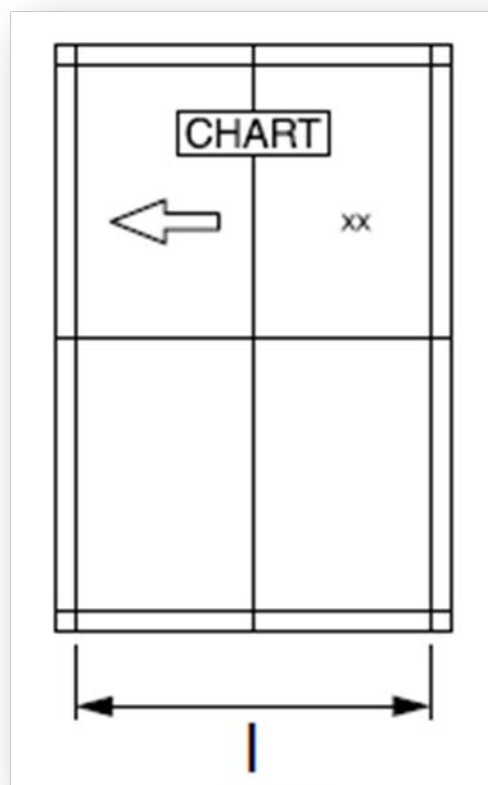
Adjustment of Copy Ratio

Checking

1. Shut down the equipment by pressing the [ON/OFF] button until a sound is audible.
2. Turn the power OFF with the main power switch and then back ON.
3. Make a test copy using the co-packed chart in the following procedures:
 - (1) Place the chart provided as an original with its face up on the original feeding tray of MR-3022.
 - (2) Press the [START] button.
4. Superimpose the chart on the copy and check the image dimension.

Adjustment

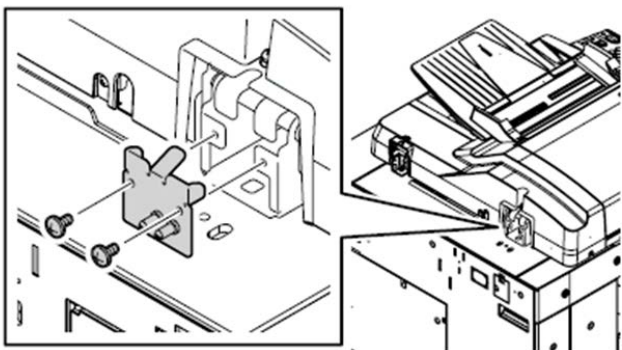
1. Turn the power ON with the main power switch while pressing [0] and [5] simultaneously.
2. [3042] → [START] button
Copy image dimension (Fig. 14-I) is larger than the chart dimension: Input a value smaller than the present one.
Copy image dimension (Fig. 14-I) is smaller than the chart (original) dimension: Input a value larger than the present one.
3. Press [ENTER].



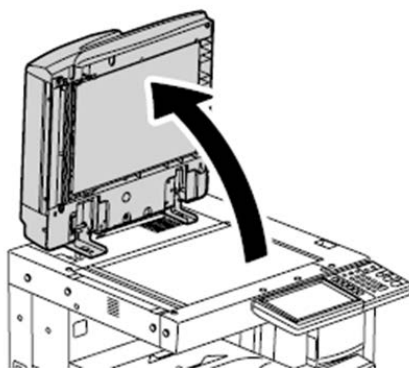
Copy

Fig. 14

49 REMOVE

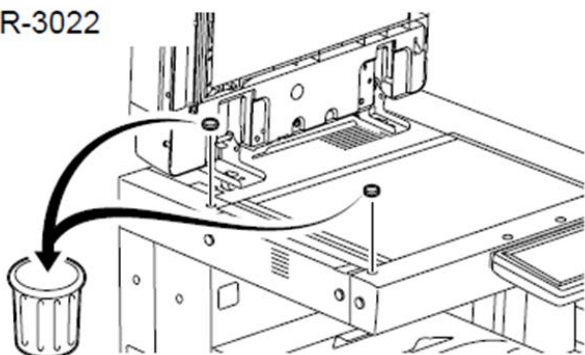


50 OPEN



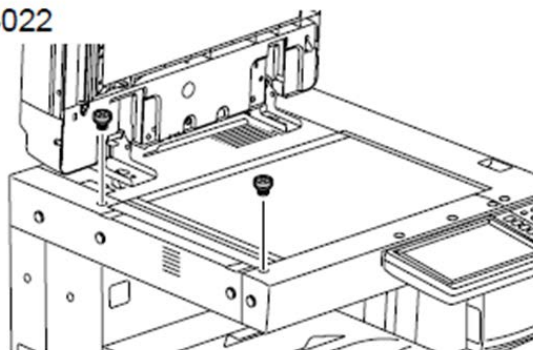
51 REMOVE

MR-3022



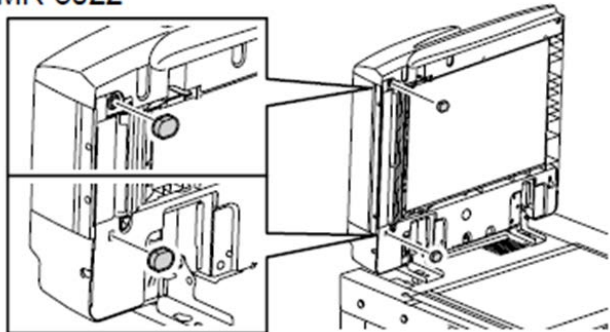
52 INSTALL

MR-3022

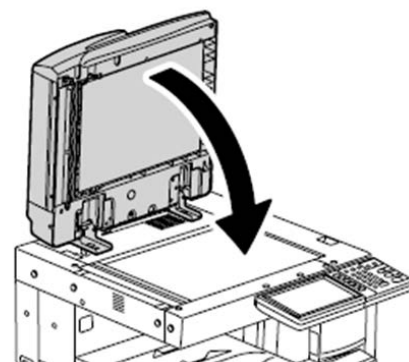


53 INSTALL

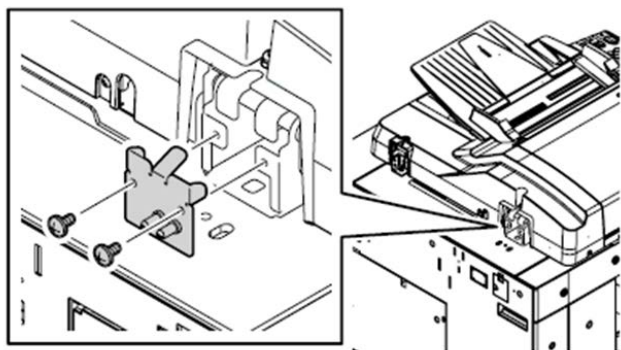
MR-3022



54 CLOSE



55 INSTALL



56

Except North America, Europe

- Only if customers want to use the damp heater, perform steps *56-1 to *56-15.

Not Used in the North American Market

57 END