

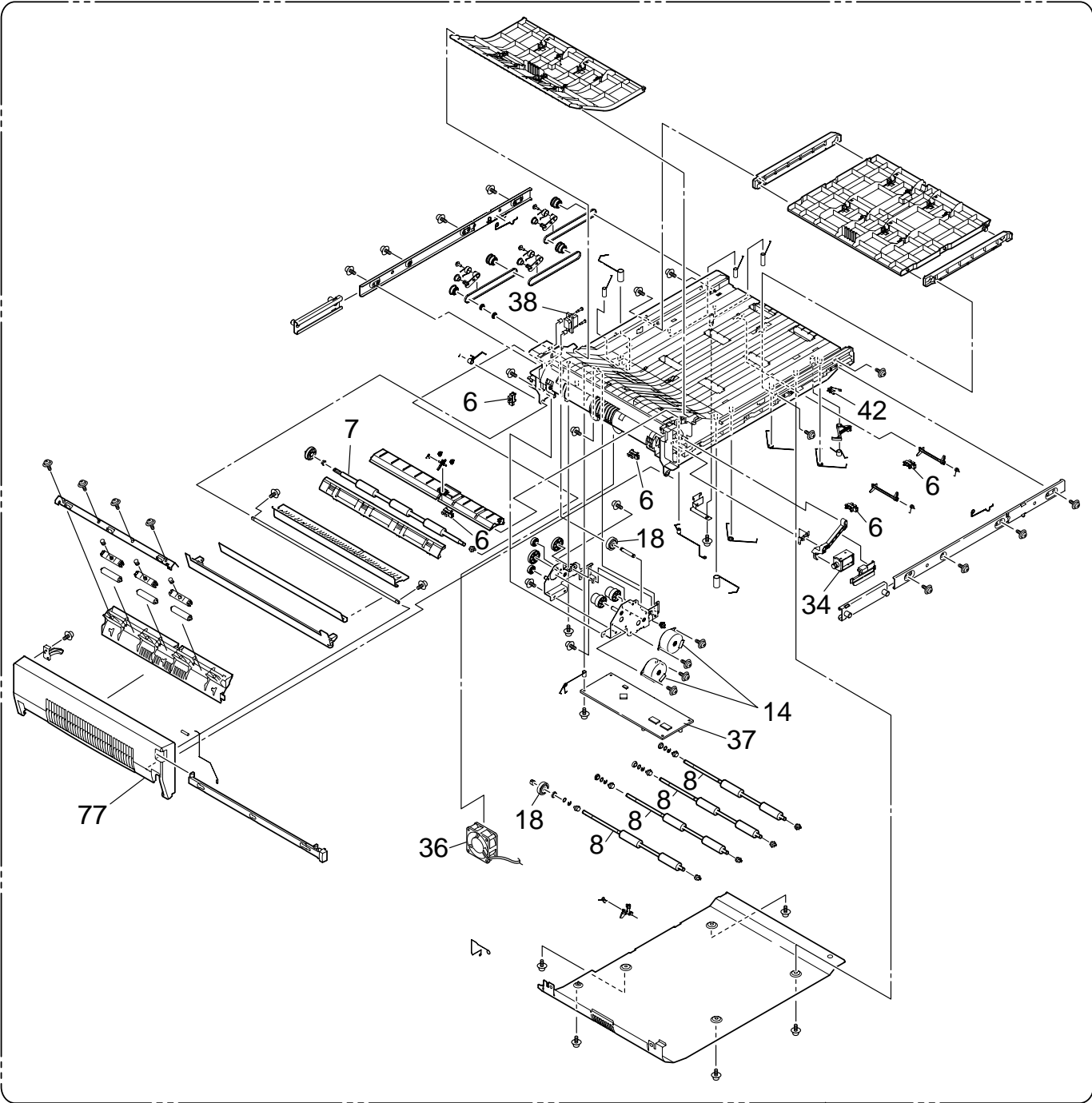
# C9600/C9800/ES3640

## Spare Parts

### Illustration Manual

083007A

Duplex Assy



No.	Parts No.	Name	Q'ty /Unit	Remarks
1		Frame-Assy-Upper-Left	1	
2		Frame-Assy-Upper-Right	1	
3		Frame-Lower	1	
4		Lever-Sensor(F/R)	2	
5		Spring-Sensor(F/R)	2	
6	40135301	Photo-Interrupter	5	
7	42798501	Roller-SwB	1	
8	42798601	Roller-Feed-Dup	4	
9		Bush	4	
10		Bearing-Feed	9	
11		Gear-Z40	1	
12		Stopper-Gear	1	
13		Motor-Assy-Dup	1	Assy(Include:No.14-26)
14	42058201	Motor-Resist	2	
15		Bracket-Motor-A-Caulking	1	
16		Bracket-Motor-B-Caulking	1	
17		Gear-Z46/32	2	
18	40845401	Gear-RE3	1	
19		Pulley-MXL(25)	1	
20		Collar-	1	
21		Shaft-Pulley	1	
22		Bush	1	
23		Bearing-Feed	1	
24		Cup_Screw (S Tight M3)	7	
25		Gear-Z26	2	
26		Gear-Z44	2	
27		Gear-RE3	1	
28		Guide-Assy-Reverse	1	Assy(Include:No.29-32)
29		Guide-Reverse	1	
30		Lever-Sns-Reverse	1	
31		Spring-Sns-Reverse	1	
32		Stopper-Sns-RV	2	
33		Plate-FG-Solenoid	1	
34		Solenoid	1	
35		Lever-Solenoid-Dup	1	
36	42800401	Motor-Fan	1	
37		OR-Board Assy.-V72-2	1	
38		IMSA-9714N-14Z03 Connector-SQR -	1	
39		CONN Cord-AMP14P-AMP7Px2	1	
40		CONN Cord-AMP10P-AMP3Px3	1	
41		CONN Cord-AMP6P-AMP3Px2	1	
42		CONN Cord-JST3P-SW	1	
43		CONN Cord-JST5P-JST4P	1	
44		CONN Cord-JST4P-JST4P	1	
45		Spring-FG-Board	1	
46		Pulley-MXL25(W)	3	
47		Belt-Mini Pitch(B151)	3	
48		Spring-FG-Base	2	
49		Spring-FG-Roller-Feed-F	3	
50		Spring-FG-Roller-Feed-R	3	

No.	Parts No.	Name	Q'ty /Unit	Remarks
51		Spring-FG-Roller-Feed-F2	1	
52		TappingScrew-B2 L=8	5	
53		Cup_Screw A	2	
54		Screw-Shoulder	2	
55		Ring	4	
56		Bush	1	
57		Holder-Tensioner	3	
58		Spring-Tensioner	3	
59		Pulley-Idle	3	
60		Spring-JIC	2	
61		Link-Inter-Lock	1	
62		Spring-Inter-Lock	1	
63		Guide-SwB	1	
64		Plate-FG-Base-R	1	
65		Cover-Solenoid	1	
66		Spacer-Coupling	4	
67		Spring-FG-Sns	1	
68		Cover-Reverse- Assy	1	Assy(Include:No.69,76)
69		Frame-Reverse-Assy	1	Assy(Include:No.70-75)
70		Frame-Reverse	1	
71		Roller-Pinch	3	
72		Holder-Roller-Pinch	3	
73		Spring-Pressure-Pinch	3	
74		Plate-Bracket-Spring	1	
75		TappingScrew-B2 L=8	4	
76		Cover-Outer-Assy	1	Assy(Include:No.77-82)
77		Cover-Reverse	1	
78		Lever-Lock-Reverse	1	
79		Spring-Lock-Reverse	1	
80		Spring-FG-Reverse	1	
81		Stopper-CR	1	
82		TappingScrew-B2 L=8	1	
83		Plate-Assy-Lower	1	Assy(Include:No.84-86)
84		Plate-Base-Lower	1	
85		Lever-Sns-Dup2	1	
86		Spring-SNS-Dup2	1	
87		Guide-Paper-Reverse	1	
88		Guide-Slide-F	1	
89		Guide-Slide-R	1	
90		Plate-Rail	2	
91		Spring-Rail-Lock	2	
92		Bracket-Guide-Slide-Caulking	2	
93		Lever-Lock-CR	1	
94		Plate-Lever-Lock	1	
95		Shaft-Lock	1	
96		Spring-Lock	1	
97		TappingScrew-B2 L=8	16	
98		Cup_Screw (S Tight M3)	1	
99		Screw (SW+2W)	2	