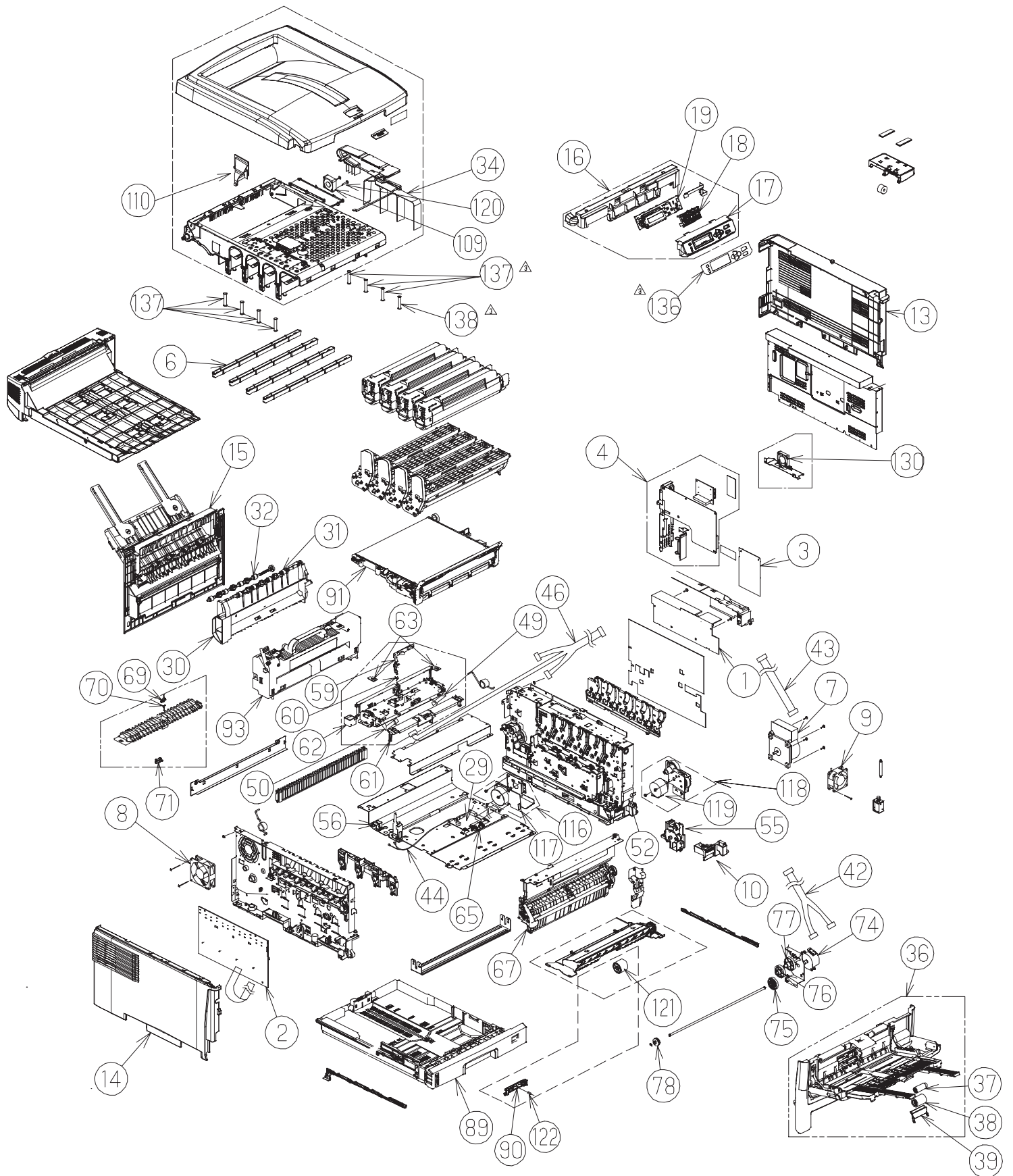


C8800

Spare Parts

Illustration Manual

081507B



Unit Name	No.	Part No.	Part Name	Remarks
Printer	1	42997802	PWR unit-ACDC Switch	120V - 230V
Printer	2	43031601	PWR unit-DCDC	HVPS
Printer	3	43696801	OR-PVX (PU Board)	
Printer	4	43556702	CU-Assy.Maintenance	
Printer	5		TW-VF/SMCD12-40-1.0	
Printer	6	43686801	LED Head Unit-53STA	
Printer	7	43241301	Motor-DC-ID	
Printer	8	43446501	Motor-Fan(80)	Fuser Fan
Printer	9	43191302	Motor-Fan(60)PowL	
Printer	10	43508301	Holder Assy-Switch	
Printer	11		Plate-Assy-Shield	
Board-Assy-CU	12		Plate-Shield-CU	
Printer	13	43270201	Cover-Assy-Side(R)	
Printer	14	43276501	Cover-Side(L)	
Printer	15	43182601	Cover-Assy-Rear	
Printer	16	43184301	Frame-Assy-OP(Panel)	
Cover Assy.- OP	17	43426301	Cover-OP(Panel)	
Cover Assy.- OP	18	42068202	Button-Key	
Cover Assy.- OP	19	43132501	Board-PRP	
Frame-Assy	20		Cover-Gear	
Printer	21		Duct-POW	
Printer	22		Insulator-POW	
Printer	23		Plate-Name	
Printer	24		Plate-Logo	
Printer	25		Label-Color K	
Printer	26		Label-Color Y	
Printer	27		Label-Color M	
Printer	28		Label-Color C	
Printer Unit	29	43438901	Board-P6Y	Relay Board
Printer Unit	30	43183601	Guide-Eject-Assy-Upper	
Guide-Eject-Assy-Upper	31	43183801	Shaft-Assy-Eject(FU)	
Guide-Eject-Assy-Upper	32	43184001	Shaft-Assy-Eject(FD)	
Printer Unit	33		Cover-Assy-Top	
Cover-Assy-Top	34	43311701	Cable-Assy-Head	
Cover-Assy-Top	35		Cover-Top	
Cover-Assy-Top			Cover-Top-Sub	
Cover-Assy-Top			Spring-Tortion(sub)	
Printer Unit	36	43179301	MPT-Assy	
Holder-Pickup-Assy	37	43417901	Roller-Assy-Pickup	
Cover-Front Assy.	38	43411001	Roller-Feed-(OW)	
Cover-Front Assy.	39	43418001	Frame-Assy-Separator	
Printer Unit	40		Spring-Torsion(L)	
Printer Unit	41		Spring-Torsion(R)	
Printer Unit	42	43359801	CONN Cord-AMP8P-AMP4P	
Printer Unit	43	43405001	CONN Cord-AMP11P	
Printer Unit	44	43360501	CONN Cord-AMP6P-AMP3P,AMP3P	
Printer Unit	46	43409601	CONN Cord-JST8P-AMP2P	
Frame-Assy.	47		TW-VF/SMCD13-740-1.0	FCC HVPS
Frame-Assy.	48		TW-VF/SMCD21-230-1.0	
Printer Unit	49	43629001	CONN-Regist-Cord(R_bend)	
Printer Unit	50	43628901	CONN-Regist-Cord(L_bend)	

Frame-Assy	51		Plate-Side-L-Assy	
Frame-Assy	52	43241201	Plate-Side-R-Assy	
Plate-Side-R-Assy	53		Guide-Side-R-Assy	
Frame-Assy	54		Frame-Assy-Hopping	
Frame-Assy	55	43246101	Gear-Holder-Assy	
Frame-Assy	56	43246401	Sensor-Assy-Fuser	
Frame-Assy	57		Frame-Assy-Contact	
Frame-Assy	58		Sensor-Assy-Regist	
Sensor-Assy-Fuser-A	59	43601701	Lever-Sensor-FUIN-Assy	
Sensor-Assy-Fuser-A	60	43334501	Spring-Torsion	
Sensor-Assy-Regist	61	43247201	Shutter-Assy	
Sensor-Assy-Regist	62		Solenoid	
Sensor-Assy-Regist	63	43132302	Board-PRC	
Sensor-Assy-Regist	64		Sensor-Density	
Frame-Assy	65	43247501	Fuse-Cut-Assy	
Frame-Assy	66		Beam-Fuser-Assy	
Frame-Assy	67	43248001	Regist-Roller-Assy	
Frame-Assy	68		Guide-Eject-Assy-Lower	
Guide-Eject-Assy-Lower	69	42063301	Lever-Exit-Sensor	
Guide-Eject-Assy-Lower	70	40386501	Spring-SNS(F/R)	
Guide-Eject-Assy-Lower	71	40135301	Photo-Inerrupter	
Frame-Assy	72		Solenoid	
Frame-Assy	73		Spring-Solenoid	
Frame-Assy	74	43252401	Motor-Z18(Spur)	
Frame-Assy	75	43251801	Gear-Reduction-L-Up	
Frame-Assy	76	43253501	Gear-Reduction-L-Up2	
Frame-Assy	77	43313101	Gear-Reduction-L-Up3	
Frame-Assy	78	43361001	Gear-Reduction-L-Up4	
Frame-Assy	79		TappingScrew-B2(L=8)	
Frame-Assy	80		TappingScrew-B2(L=10)	
Frame-Assy	81		Screw (SW+2W)(L=8)	
Frame-Assy	82		Cup-Screw (M3)(L=6)	
Frame-Assy	83		Screw (SW+2W)(L=14)	
Frame-Assy	84		Screw (SW+2W)(L=30)	
Frame-Assy	85		Screw (SW+W)(L=4)	
Frame-Assy	86		Screw (SW+2W)(L=6)	
Frame-Assy	87		Ring	
Frame-Assy	88		Ring	
Printer	89	43178207	Cassette-Assy	
Cassette-Assy	90	42088801	Frame-Separation-Assy	
Printer	91	43449704	Belt-Assy	
Printer	93	43529404	Fuser-Unit	120V
Printer		43529409	Fuser-Unit	230V
Consumable	107		RollerSet-Tray1	
Consumable	108		Roller-Set-MPT	
Cover-Assy-Top	109	43593501	Motor-Fan(40)	
Cover-Assy-Top	110	43590701	Duct-Fan-FU	
Printer	114		Conn-Cord-AC125V/15A	
Plate-Side-R-Assy	116	43242701	Motor-Assy-Fuser	
Motor-Assy-Fuser	117	43242801	Motor-DC-FU	
Plate-Side-R-Assy	118	43314401	Motor-Assy.-Belt	
Motor-Assy.-Belt	119	43242601	Motor-Z15(Helical)	
Cover-Assy-Top	120		Cup-Screw (M3)(L=20)	

Frame-Assy-Hopping	121	43334901	Roller-Assy.-Hopping	
Cassette-Assy	122	42089001	Spring-Separation	
Plate-Side-L-Assy	123		Rack-Lift-UP-L	
Plate-Side-R-Assy	124		Rack-Lift-UP-R	
Board-Assy-CU	128		SML2CD-32X72-BDXAUP	
Printer-NIP-PX736	129		Plate-Assy-Fan	
Plate-Assy-Fan	130	42861201	Moter-FAN(CU)	
Plate-Assy-Fan	131		Screw (SW+W)(L=12)	
Printer	132		Duplex-Unit	
Printer	133		Coar	
Option	134		Holder-Reader	
Option	135		Surface-Fastener	
Printer	136	43427203	Sheet-OP-Panel	
Printer	137	43618501	Spring-Head	
Printer	138	43637101	Spring-Head	