

C844dnw

Duplex unit Maintenance Manual

091418A

Copyright Information

Copyright © 2013 by Oki Data. All Rights Reserved

Disclaimer

Every effort has been made to ensure that the information in this document is complete, accurate, and up-to-date. The manufacturer assumes no responsibility for the results of errors beyond its control. The manufacturer also cannot guarantee that changes in software and equipment made by other manufacturers and referred to in this guide will not affect the applicability of the information in it. Mention of software products manufactured by other companies does not necessarily constitute endorsement by the manufacturer.

While all reasonable efforts have been made to make this document as accurate and helpful as possible, we make no warranty of any kind, expressed or implied, as to the accuracy or completeness of the information contained herein.

The most up-to-date drivers and manuals are available from the web site:
<http://www.okiprintingsolutions.com>

PREFACE

This manual describes the procedures for the maintenance of the Duplex unit attached in C824/C834/C844/ES8434 series of printers.

The document is produced for maintenance personnel use. For details on the procedures for handling C824/C834/C844/ES8434 series of printers, see its users manual.

- Note!**
- The descriptions in this manual are subject to change without prior notice.
 - In preparing the document, efforts have been made to ensure that the information in it is accurate. However, errors may be crept into the document. Oki Data assumes no responsibility for any damage resulting from, or claimed to be the results of, those repairs, adjustments or modifications to the printers which are made by users using the manual.
 - The parts used for the printers are sensitive and, if handled improperly, may be damaged. It is strongly recommended that the products are maintained by maintenance men registered with Oki Data.
 - The maintenance men should be discharged the static electricity before the starting maintenance.

1. PARTS REPLACEMENT

This section describes the procedures for removing and reassembling of assemblies and units in the field. The procedures provided this section are for parts replacement. Basically, assembly procedures are in reverse order from disassembly.

Part's Numbers (①, ②, ...etc) in this manual are not equal to Part's Numbers in the related drawing (for the Disassebly Drawing and the RSPL).

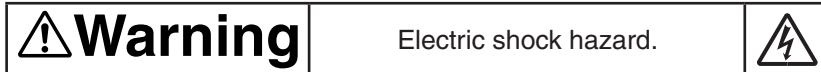
1.1 Notes for Replacing of Parts	5
1.2 Parts Replacement.....	7

1.1 Notes for Replacing of Parts

- 1) Before disassembling or reassembling the Duplex unit from / to the printers, turn off the printers in which they are attached, remove them. And before to replacing of parts, unplug the AC cord and all interface cables.

(a) Be sure to use the following procedure to unplug the AC Cord:

- 1 Keep pushing the Power Switch over 1min, and check the LED Lamp lights-out.
- 2 Pull out the AC Plug of the AC cord from the AC power source.
- 3 Unplug the AC cord and all interface cables.



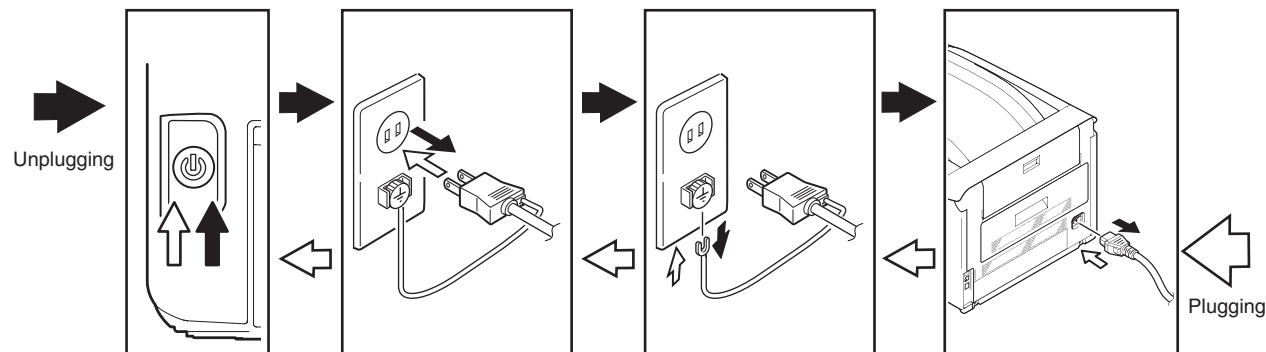
Pull out the AC cord from the printer. Because, in the case of the AC cable connected to the printer, some circuits are active even if the printer's status is 'Power-Off'.

When replacing the low-voltage power supply, due to potential electric shock. So, wear insulated gloves or be careful not to touch the conductors or terminals of the power supply directly.

After the AC cord is unplugged, the capacitor may take about one minute to discharge completely, or could not discharge due to PCB breakdown. Use caution about electric shock.

(b) Be sure to use the following procedure to reconnect the printer:



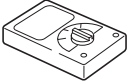
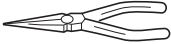
- 1 Connect the AC cord and the interface cable to the printer.
 - 2 Insert the AC plug into the AC power source.
 - 3 Turn on the printer (Push the power switch between about 1min.), and the LED Lamp lights.
- (2) Do not disassemble the Duplex unit so long as they operate properly.
 - (3) Determine the ranges of disassembly according to the purposes of the operations for which the disassembly is done, so as not to do more disassembly than is necessary.
 - (4) Use designated maintenance tools.
 - (5) Follow disassembly steps in the orders specified; damage to parts may result.
 - (6) It is advisable to place and fix temporarily small parts that tend to get lost, such as screws and collars, to their original positions.
 - (7) Do not use the gloves that be easily charged the static electricity in the case of to touch the micro processing unit, ROM, RAM, IC, circuit board, and etc.
 - (8) Do not put on the printer's mainbody, floor and etc directly for the printed board.



Maintenance Tools:

Table 1 shows the tools necessary to replace printed-circuit boards and units:

Table 1: Maintenance Tools

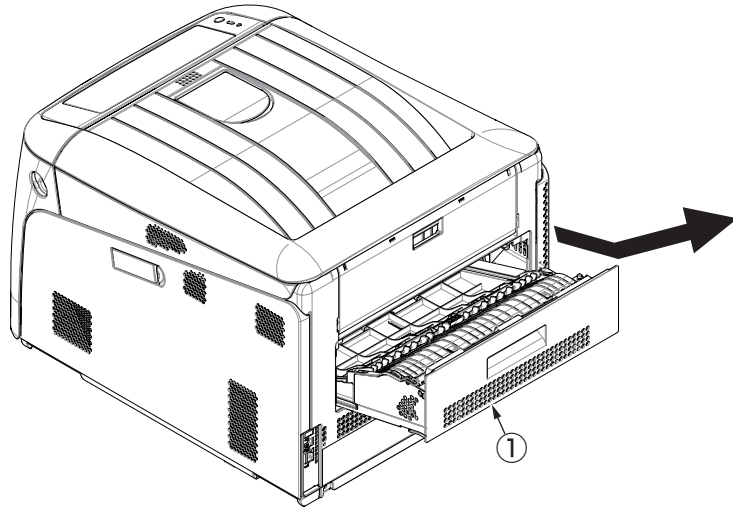
No.	Maintenance Tool	Q'ty	Use	Remarks
1	 No. 2-200 screwdriver with magnetic tip	1	3 to 5mm Screws	
2	 Screwdriver No. 3-100	1		
3	 Digital multimeter	1		
4	 Pliers	1		

1.2 Parts Replacement

This Section contains the parts replacement for parts and assemblies.

1.2.1 Duplex Unit

- (1) Slide out the Duplex unit ① from the Main body of Printer.



- (2) Turn over the Duplex unit.
 (3) Remove four screws(black) ② to detach the cover ③, and remove four screws(black) ④ to detach the plate ⑤.
 (4) Disconnect all connectors from the board ⑥, and remove two screws(silver) ⑦ to detach the board ⑥.
 (5) Remove a screw(silver) ⑧ to detach the solenoid ⑨.
 (6) Remove a screw(silver) ⑩ to detach the FAN ⑪.
 (7) Remove two springs ⑫ to detach the connector ⑬.

