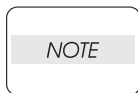


B710 / B720 / B730
MPS730b
Spare Parts
Illustration Manual

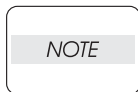
061213D

This Page Intentionally Left Blank

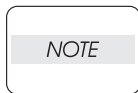
- ◆ "t" in the illustrations are attached to items indicating assembly parts in the illustrations.
- ◆ Encircled alphabetical figures in the illustrations indicate interrupted leader lines. Same characters in the illustrations represent lines to be connected.
- ◆ The mark "(with 2-5)" attached to assembly parts on the illustrations and lists represents that the items "2, 3, 4, and 5" of that plate are contained and the mark "(with 2-5, PL6.1.1)" represent that the item "2, 3, 4, and 5" of that plate and the item "1" of the plate "6.1" are contained.
- ◆ The mark "[Same PLX.Y.Z]" attached to parts in the illustrations and lists represents that the parts are the same as the parts of the item "Z" of the plate "X.Y".
- ◆ The mark "H" attached to the item in the list represents "recommended spare parts" which can be usually supplied. (Supply of other parts shall be examined separately.)
- ◆ The mark "[" attached to parts in the list represents "Note" or "Reference" about that parts is contained in the same page.
- ◆ "HIGH ASSY" in the list represent the high level assembly parts containing that parts.



For spare parts, refer to the Spare parts list which is issued separately.

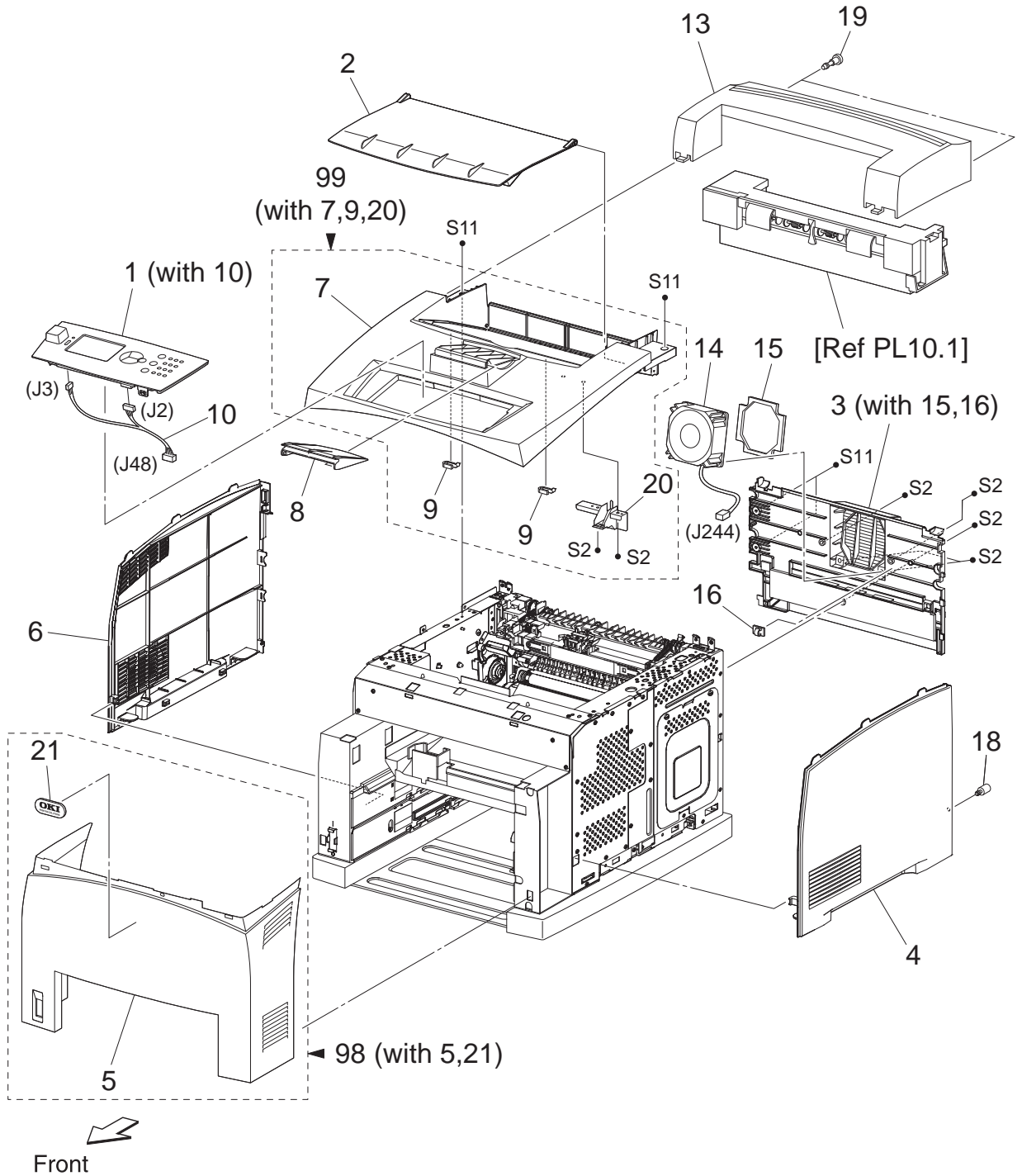


For the connector (P/J), parts such as harness, wire, etc. in the list, refer to "Chapter 9, Wiring Diagrams and Signal Information"



It should be noted that configuration of parts may be different or some parts are not used depending on specifications of OEM.

PL1.1 Cover [Illustration]

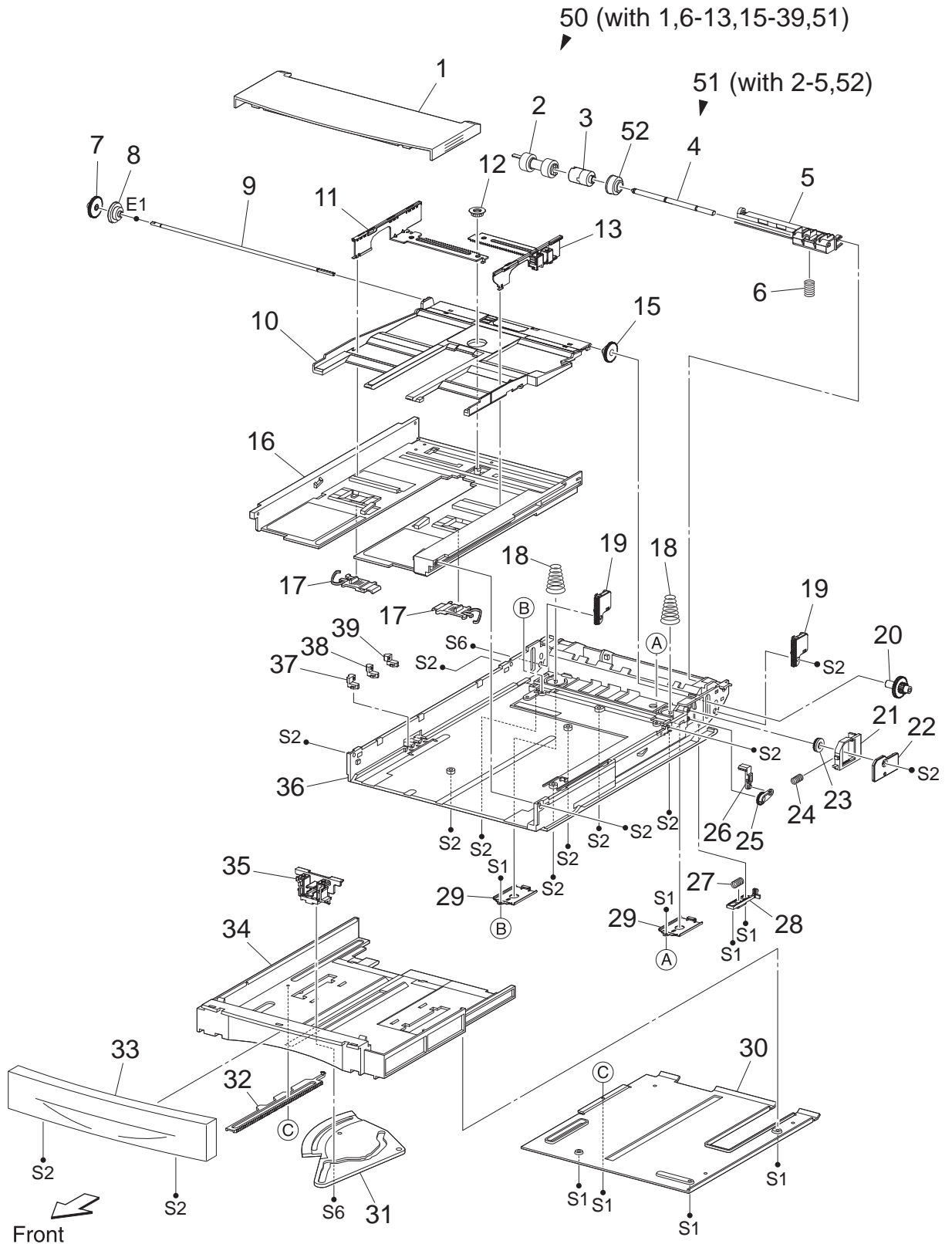


J35014OA

PL1.1 Cover [List]

Item	Parts name	
1	OPERATION PANEL (with 10)	50242701
2	COVER OPEN	53101701
3	COVER REAR (with 15,16)	53101501
4	COVER RIGHT	53101703
5	COVER FRONT	
6	COVER LEFT	
7	COVER TOP	
8	COVER STOPPER	53101704
9	STOPPER OPEN	
10	HARNES ASSY PANEL (J48-J2,J3)	
11	--	
12	--	
13	COVER EXIT 500	
14	FAN MAIN 80 (J244)	56521780
15	SEAL REAR FAN	
16	CLAMP	
17	--	
18	SCREW KNURLING	
19	THUMB SCREW EXIT	
20	BRACKET INTERLOCK SW	
21	BADGE LOGO OKI	
98	KIT FRONT COVER ASSY (with 5,21)	53101502
99	KIT TOP COVER (with 7,9,20)	B710-53101603, B720-53101602. B730-53101601

PL2.1 150 Paper Cassette [Illustration]



J35002OA

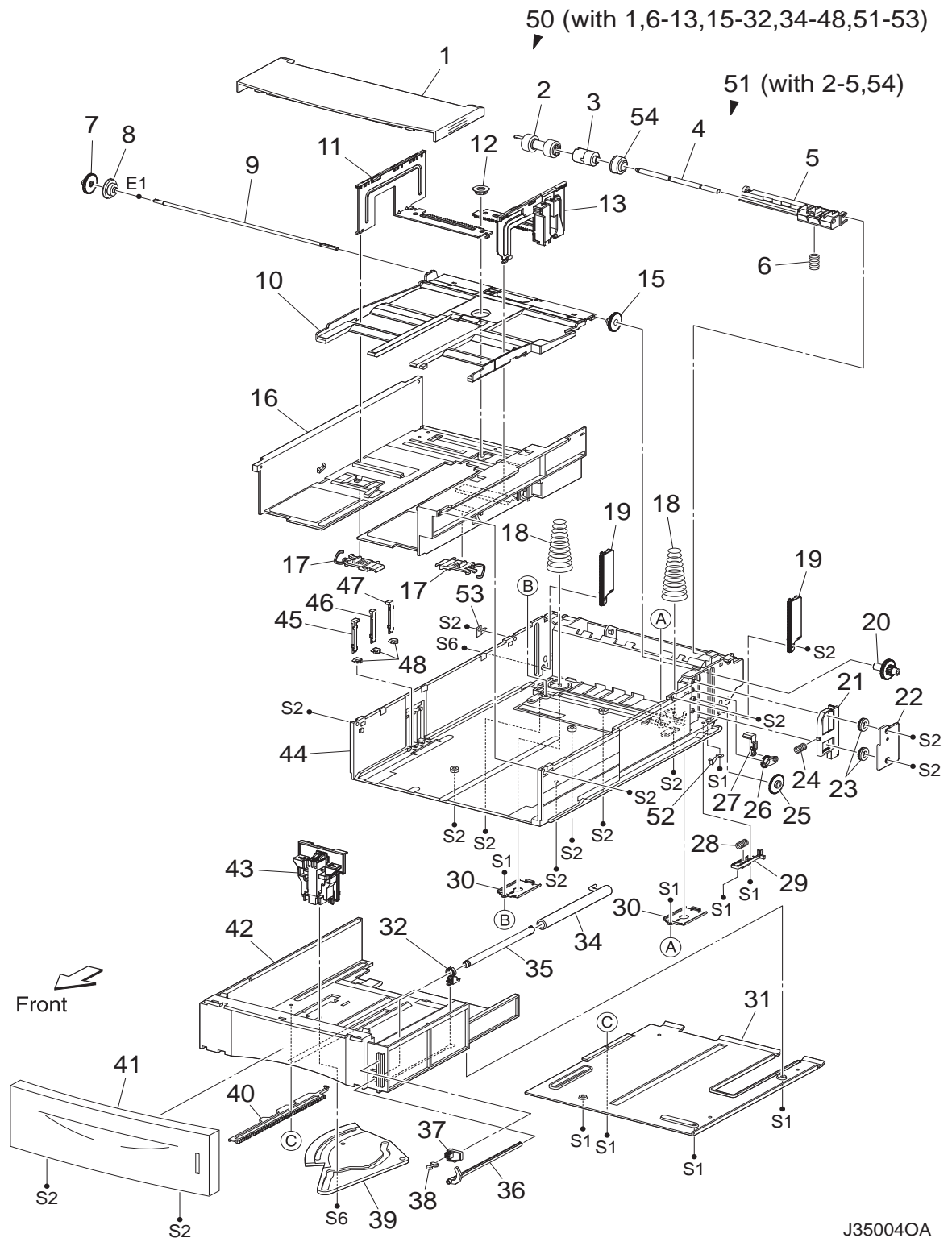
PL2.1 150 Paper Cassette [List]

Item	Parts name	
1	COVER CST	53087991
2	ROLL ASSY RETARD *1	53355691
3	FRICITION CLUTCH	
4	SHAFT RETARD	
5	HOLDER RETARD	
6	SPRING RETARD	50936501
7	GEAR PB L	
8	GEAR BTM DMP ONEWAY	
9	SHAFT PB	
10	PLATE ASSY BTM	
11	GUIDE ASSY SD L150	
12	GEAR PINION	
13	GUIDE ASSY SD R150	
14	--	
15	GEAR BTM LOCK ONEWAY	
16	HOUSING TOP 150	
17	LOCK EXTENSION	
18	SPRING BTM UP 150	
19	PLATE GEAR LOCK 150	
20	GEAR PB R	
21	RACK BTM LOCK 150	
22	COVER BTM UP	
23	GEAR BTM LOCK PINION	
24	SPRING BTM LOCK	
25	GEAR LEVER LOCK	
26	LEVER BTM LOCK	
27	SPRING STOPPER GEAR	
28	STOPPER GEAR	
29	PLATE SUPPORT BASE	
30	COVER EXTENSION	
31	GEAR SECTOR	
32	RACK SIZE	
33	HANDLE EXTENSION 150	53101801
34	HOUSING EXTENSION 150	
35	GUIDE ASSY END 150	51029783
36	HOUSING BASE 150	
37	LINK SW SIZE1-150	
38	LINK SW SIZE2-150	
39	LINK SW SIZE3-150	
40	--	
41	--	
42	--	

50 150 PAPER CASSETTE (with 1,6-13,15-39,51) 50242402
51 HOLDER ASSY RETARD (with 2-5,52)
52 COLLAR

*1: Periodical Replacement parts (per 200k print)
3 sets [1] of PL2.1.2, PL5.1.11, 44

PL4.1 550 Paper Cassette [Illustration]



J35004OA

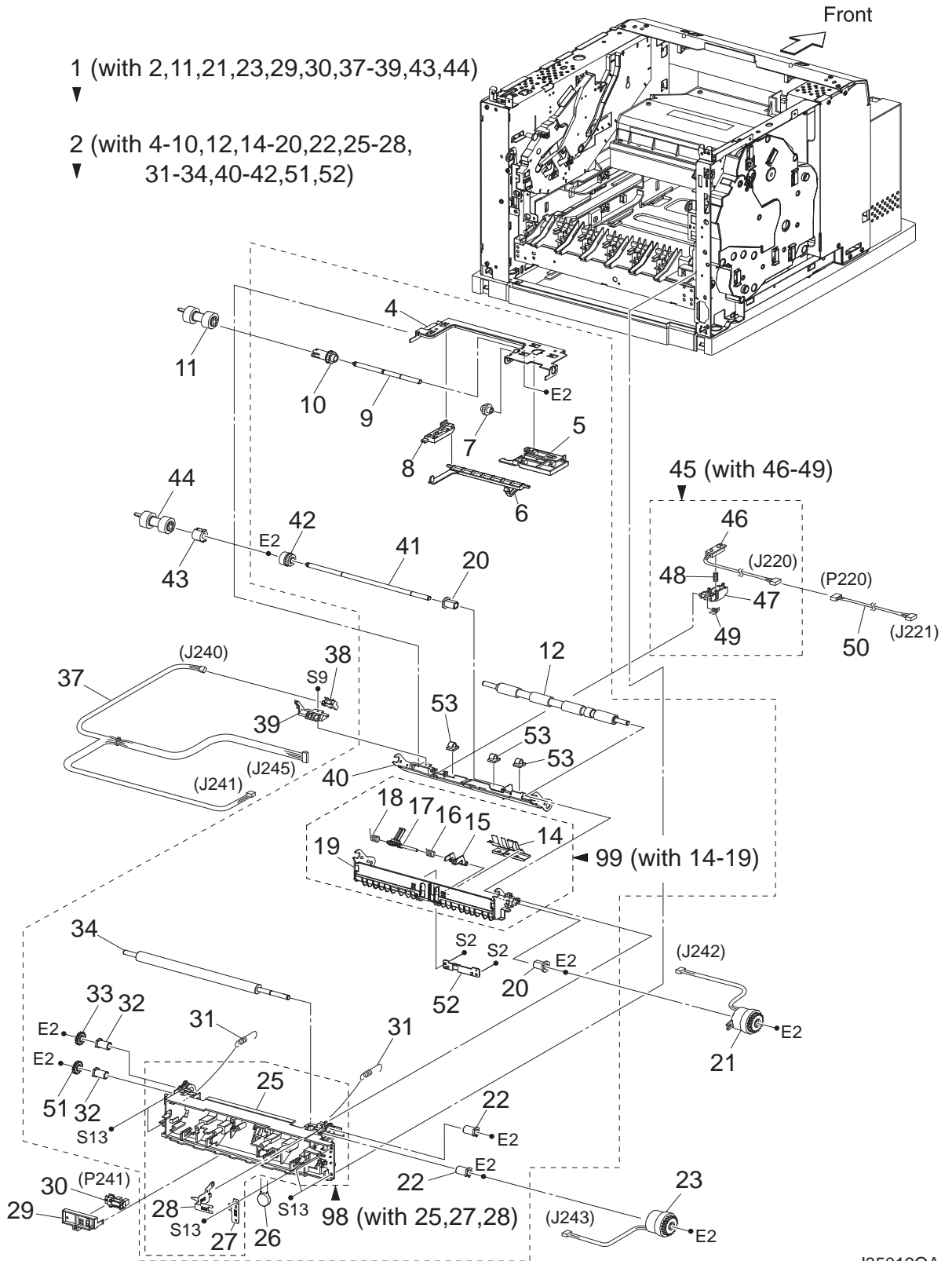
PL4.1 550 Paper Cassette [List]

Item	Parts name	
1	COVER CST	
2	ROLL ASSY RETARD *1	
3	FRICITION CLUTCH	
4	SHAFT RETARD	
5	HOLDER RETARD	
6	SPRING RETARD	
7	GEAR PB L	
8	GEAR BTM DMP ONEWAY	
9	SHAFT PB	
10	PLATE ASSY BTM	
11	GUIDE ASSY SD L550	
12	GEAR PINION	
13	GUIDE ASSY SD R550	
14	--	
15	GEAR BTM LOCK ONEWAY	
16	HOUSING TOP 550	
17	LOCK EXTENSION	
18	SPRING BTM UP 550	
19	PLATE GEAR LOCK 550	
20	GEAR PB R	
21	RACK BTM LOCK 550	
22	COVER BTM UP 550	
23	GEAR BTM LOCK PINION	
24	SPRING BTM LOCK	
25	GEAR BTM LOCK	
26	GEAR LEVER LOCK	
27	LEVER BTM LOCK	
28	SPRING STOPPER GEAR	
29	STOPPER GEAR	
30	PLATE SUPPORT	
31	COVER EXTENSION	
32	SUPPORT GUIDE IND	
33	--	
34	GUIDE INDICATOR 1	
35	GUIDE INDICATOR 2	
36	GUIDE INDICATOR 3	
37	LOW INDICATOR	
38	LOW IND FRONT	
39	GEAR SECTOR	
40	RACK SIZE	
41	HANDLE EXTENSION 550	
42	HOUSING EXTENSION 550	
43	GUIDE ASSY END 550	51030786
44	HOUSING BASE 550	
45	LINK SW SIZE1-550	
46	LINK SW SIZE2-550	
47	LINK SW SIZE3-550	
48	LINK SW SIZE LOW	
49	--	
50	550 PAPER CASSETTE (with 1,6-13,15-32,34-48,51-53)	50242401

51 HOLDER ASSY RETARD (with 2-5,54)
52 STOPPER BASE R
53 STOPPER BASE L
54 COLLAR

*1: Periodical Replacement parts (per 200k print)
3sets [1] of PL4.1.2, PL7.1.19, 29

PL5.1 150 Paper Feeder [Illustration]



J350190A

PL5.1 150 Paper Feeder [List]

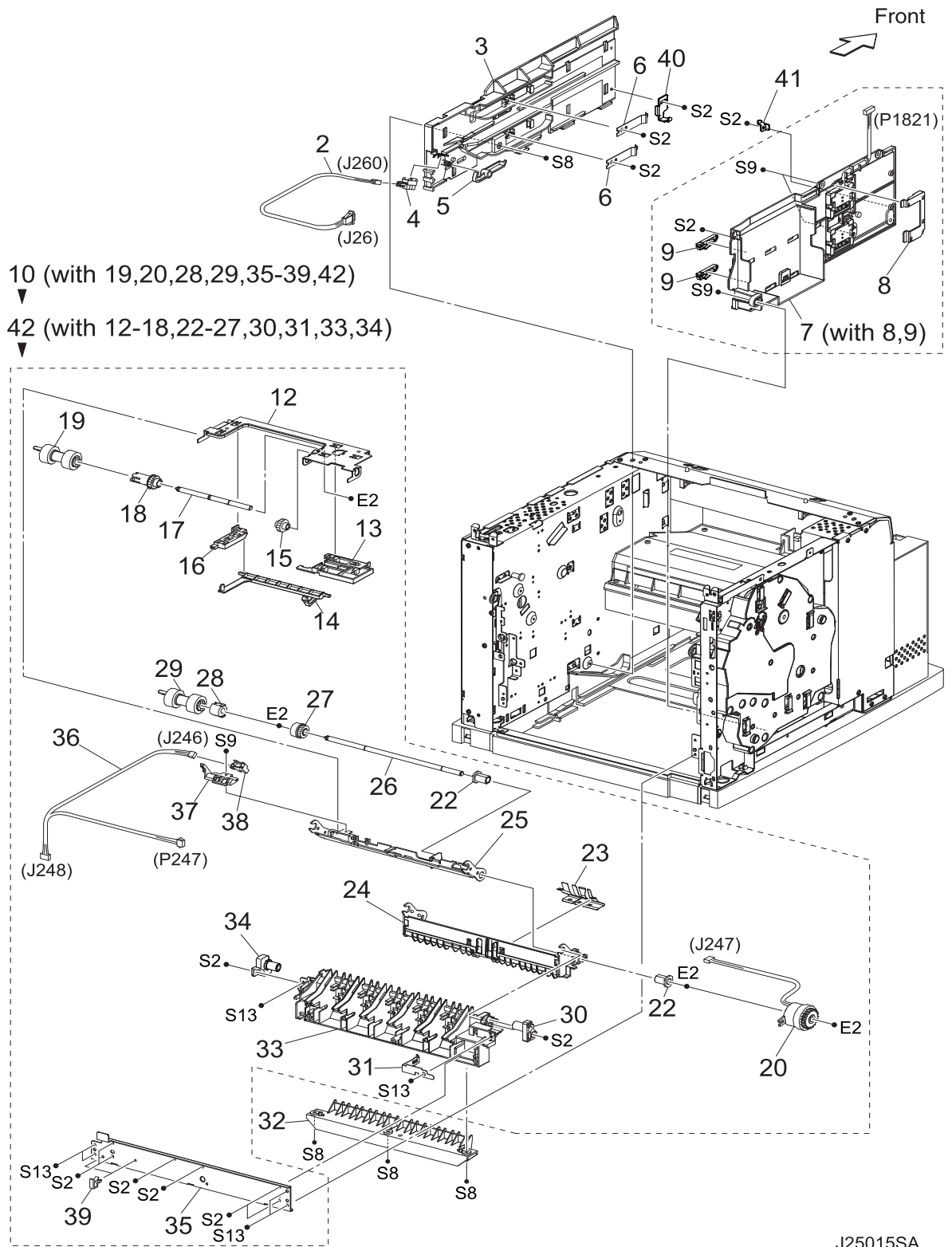
Item	Parts name	
1	150 FEEDER ASSY (with 2,11,21,23,29,30,37-39,43,44)	50242801
2	FDR1 AS SUB 150 A4 (with 4-10,12,14-20,22,25-28,31-34,40-42,51,52)	
3	--	
4	SUPPORT NUDGER	
5	HOLDER LEFT	
6	ACTUATOR NO PAPER	53355522
7	GEAR IDLER NUDGER	
8	HOLDER RIGHT	
9	SHAFT NUDGER	
10	GEAR NUDGER	
11	ROLL ASSY NUDGER *1	
12	ROLL REGI RUBBER 45	
13	--	
14	COVER ACTUATOR-A4	
15	ACTUATOR A	
16	SPRING REGI SNR B	
17	ACTUATOR B	
18	SPRING REGI SNR A	
19	CHUTE BTM ASSY	
20	BEARING NUDGER	
21	CLUTCH ASSY PH (J242)	51402211
22	BEARING REGI LEFT	
23	CLUTCH REGI (J243)	
24	--	
25	CHUTE REGI 45	
26	VARISTOR	
27	EARTH PLATE BASE	
28	EARTH PLATE MID	
29	COVER SENSOR	
30	SENSOR REGI (P241)	50422213
31	SPRING REGI	
32	BEARING REGI RIGHT	
33	GEAR REGI RUBBER BLUCK	
34	ROLL REGI METAL	
35	--	
36	--	
37	HARNES ASSY TRAY1 (J245-J240,J241)	
38	NO PAPER SENSOR (P240)	
39	HOLDER NO PAPER SENSOR	
40	CHUTE TOP ASSY	
41	SHAFT FEED	
42	CLUTCH ONEWAY NUDGER	51402151
43	CLUTCH ONEWAY FEED	51402141
44	ROLL ASSY FEED *1	
45	SENSOR ASSY TONER (with 46-49)	50421301
46	SENSOR TONER (J220)	
47	HOLDER-D	
48	SPRING TONER	
49	SPRING TONER BOX	
50	HARNES ASSY TONER 1 (P220-J221)	

51 GEAR REGI METAL WHITE
52 PLATE ACTUATOR A4
53 CLAMP

98 KIT CHUTE REGI (with 25,27,28)
99 KIT CHUTE BTM (with 14-19) 53362122

*1: Periodical Replacement parts (per 200k print)
3sets [1] of PL5.1.11, 44, PL2.1.2

PL7.1 550 Paper Feeder [Illustration]



J25015SA

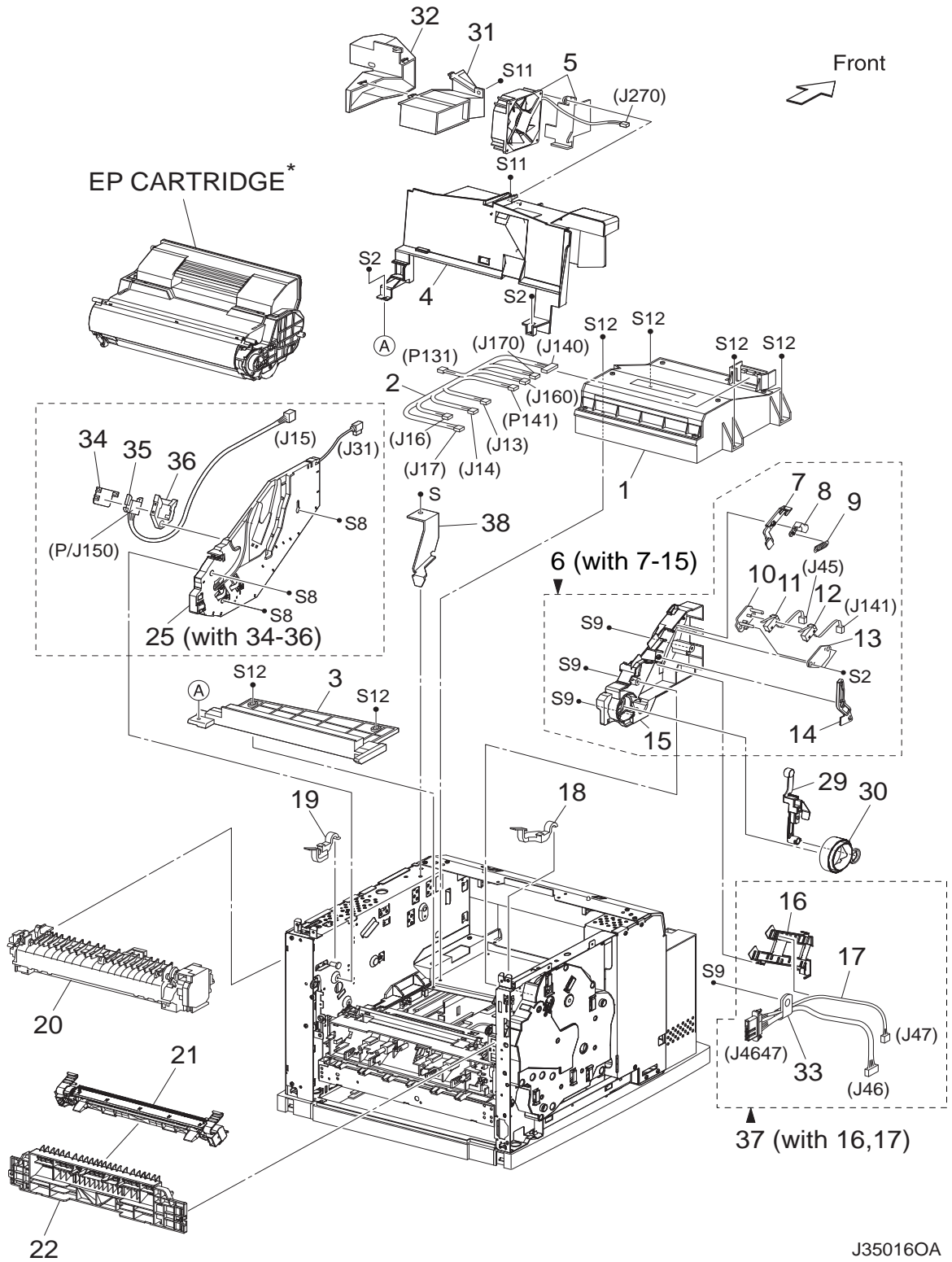
PL7.1 550 Paper Feeder [List]

Item	Parts name
1	--
2	HARNESS ASSY LOW1 (J26-J260)
3	GUIDE TRAY RIGHT
4	PAPER LOW SENSOR (P260)
5	ACTUATOR LOW PAPER
6	PLATE CST LOCK
7	GUIDE TRAY LEFT (with 8,9)
8	COVER HARNESS SIZE
9	LOCK CST L
10	550 FEEDER ASSY (with 19,20,28,29,35-39,42)
11	--
12	SUPPORT NUDGER
13	HOLDER LEFT
14	ACTUATOR NO PAPER
15	GEAR IDLER NUDGER
16	HOLDER RIGHT
17	SHAFT NUDGER
18	GEAR NUDGER
19	ROLL ASSY NUDGER *1
20	CLUTCH ASSY PH (J247)
21	--
22	BEARING NUDGER
23	COVER ACTUATOR
24	CHUTE BTM ASSY
25	CHUTE TOP ASSY
26	SHAFT FEED
27	CLUTCH ONEWAY NUDGER
28	CLUTCH ONEWAY FEED
29	ROLL ASSY FEED *1
30	HOLDER PIVOT LEFT
31	SPRING EARTH
32	CHUTE 550 LOWER 53362801
33	CHUTE OUT
34	HOLDER PIVOT RIGHT
35	PLATE TIE
36	HARNESS ASSY TRAY2 (J248-J246,P247)
37	HOLDER NO PAPER SENSOR
38	NO PAPER SENSOR (P246)
39	CLAMP-10V0
40	STOPPER TRAY R

- 41 STOPPER TRAY L
- 42 FDR2 ASSY SUB 250 A4 (with 12-18,22-27,30,31,33,34)

*1: Periodical Replacement parts (per 200k print)
3sets [1] of PL7.1.19, 29, PL4.1.2

PL8.1 Xero [Illustration]



J350160A

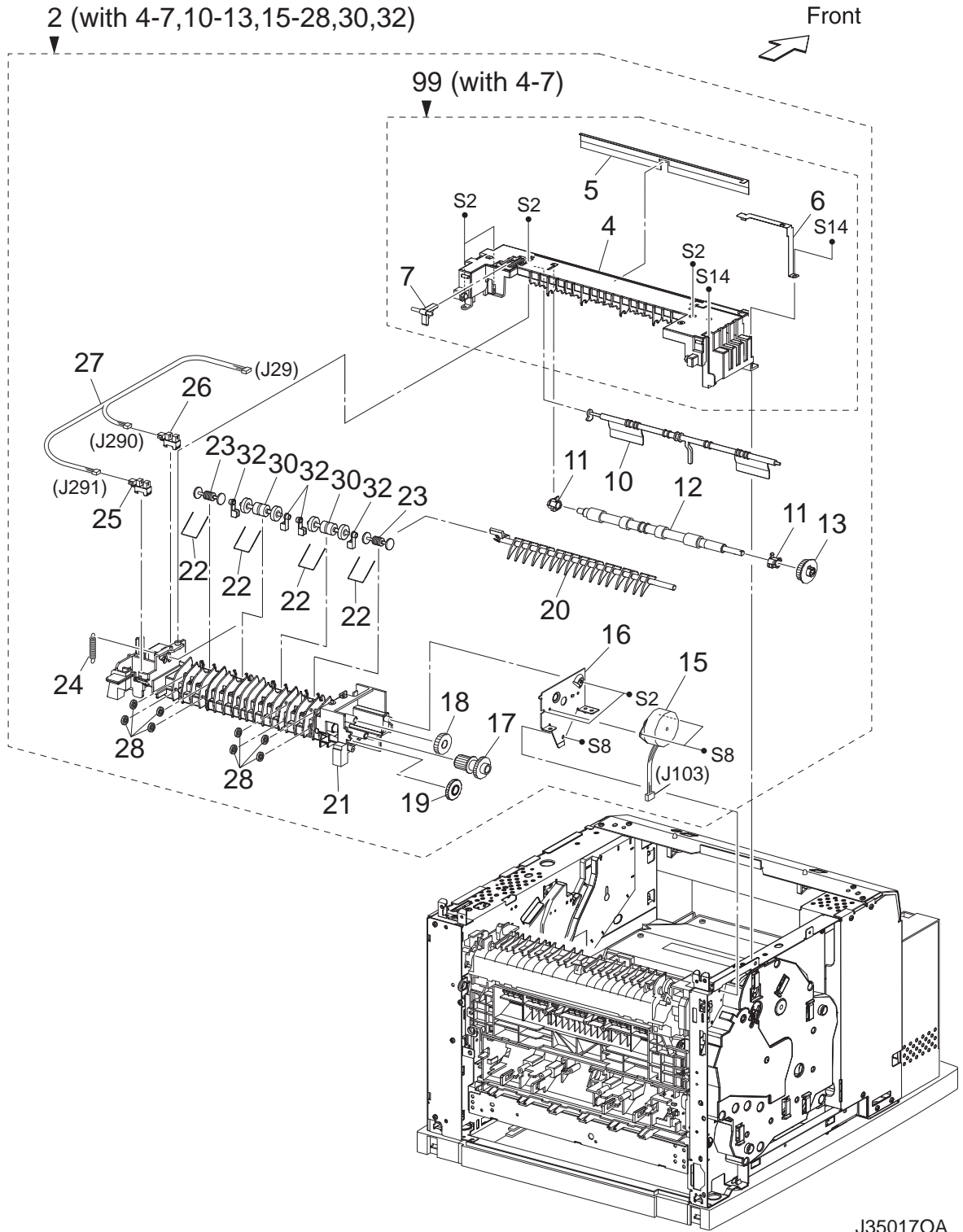
PL8.1 Xero [List]

Item	Parts name
1	ROS ASSY B710/B720-50242502, B730-50242501
2	HARNESS ASSY ROS
3	SHIELD PLATE ROS
4	DUCT FRONT
5	FAN SUB (J270) 56521461
6	GUIDE ASSY CRU L (with 7-15) 51035401
7	GUIDE SL
8	SPACER SS
9	SPRING SL
10	HOLDER I/L SW1
11	HARNESS ASSY INTERLOCK1 (J45)
12	HARNESS ASSY INTERLOCK3 (J141)
13	HOLDER I/L SW2
14	LEVER GUIDE
15	GUIDE CRU LEFT 51031901
16	COVER GUIDE CRU 53088084
17	HARNESS ASSY FUSER (J4647-J46,J47)
18	LEVER FUSER LH 50812662
19	LEVER CRU FUSER RH B710/B720-50813070 B730-50816701
20	FUSER ASSY *1
21	HOUSING ASSY BTR *2 51253920
22	CHUTE TRANSFER 53355242
23	PWBA ASSY ANT (P150) 55093484
24	HARNESS ASSY ANT (J15-J150) 56743932
25	GUIDE ASSY CRU R (J31) (with 34-36) 51035403
26	--
27	--
28	--
29	LEVER LINK 50813352
30	LINK GEAR 3 51255061
31	DUCT VACUUM L
32	DUCT VACUUM R
33	CLAMP
34	COVER CONN CRUM
35	HARNESS ASSY CRUM (J15-J150)
36	HOLDER CONN CRUM
37	COVER ASSY GUIDE (with 16,17)
38	BRACKET R

*1: Periodical Replacement parts (per 200k print)

*2: Periodical Replacement parts (per 200k print)

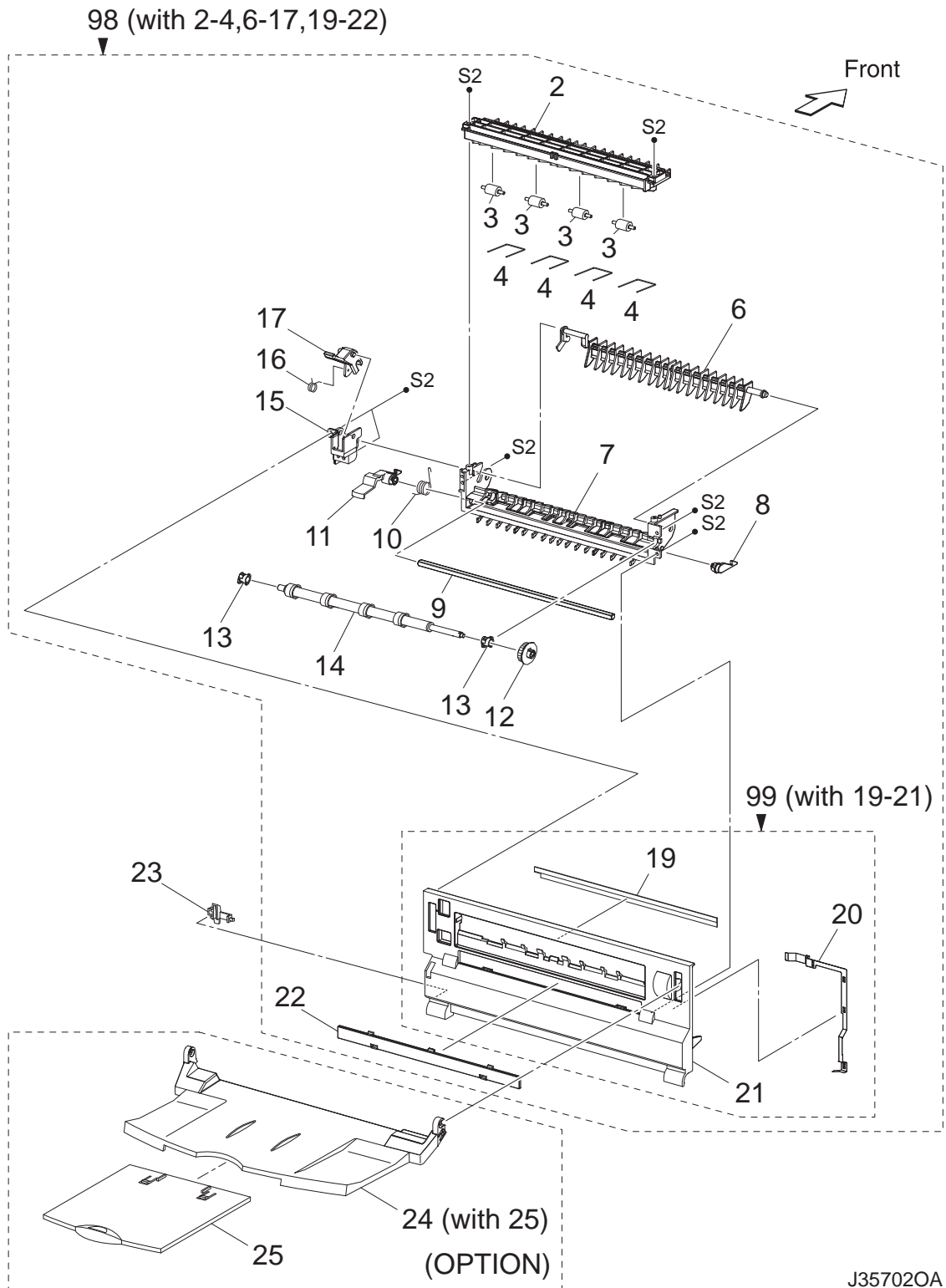
PL10.1 500 Paper Exit (1/2) [Illustration]



PL10.1 500 Paper Exit (1/2) [List]

Item	Parts name	
1	--	
2	500 EXIT ASSY (with 4-7,10-13,15-28,30,32)	53357350
3	--	
4	CHUTE UP EXIT	
5	ELIMINATOR EXIT	
6	EARTH PLATE EXIT	
7	LINK GATE OCT	
8	--	
9	--	
10	ACTUATOR FULL STACK	53357520
11	BEARING EXIT	
12	ROLL EXIT	
13	GEAR 21	
14	--	
15	MOTOR ASSY EXIT (J103)	
16	BRACKET MOTOR EXIT	
17	GEAR 16/49	
18	GEAR 25-2	
19	GEAR 25-1	
20	GATE OCT EXIT	
21	CHUTE LOW EXIT	
22	SPRING PINCH EXIT	
23	ROLL PINCH EXIT	
24	SPRING GATE OCT	
25	SENSOR FACE UP OPEN (P291)	
26	SENSOR FULL STACK (P290)	
27	HARNESS ASSY EXIT SNR (J29-J290,J291)	
28	ROLL EXIT 500	
29	--	
30	ROLL PINCH EXIT OCT	
31	--	
32	GUARD EXIT	
99	KIT CHUTE UP 500 (with 4-7)	

PL10.2 500 Paper Exit (2/2) & Face Up Tray (Option) [Illustration]

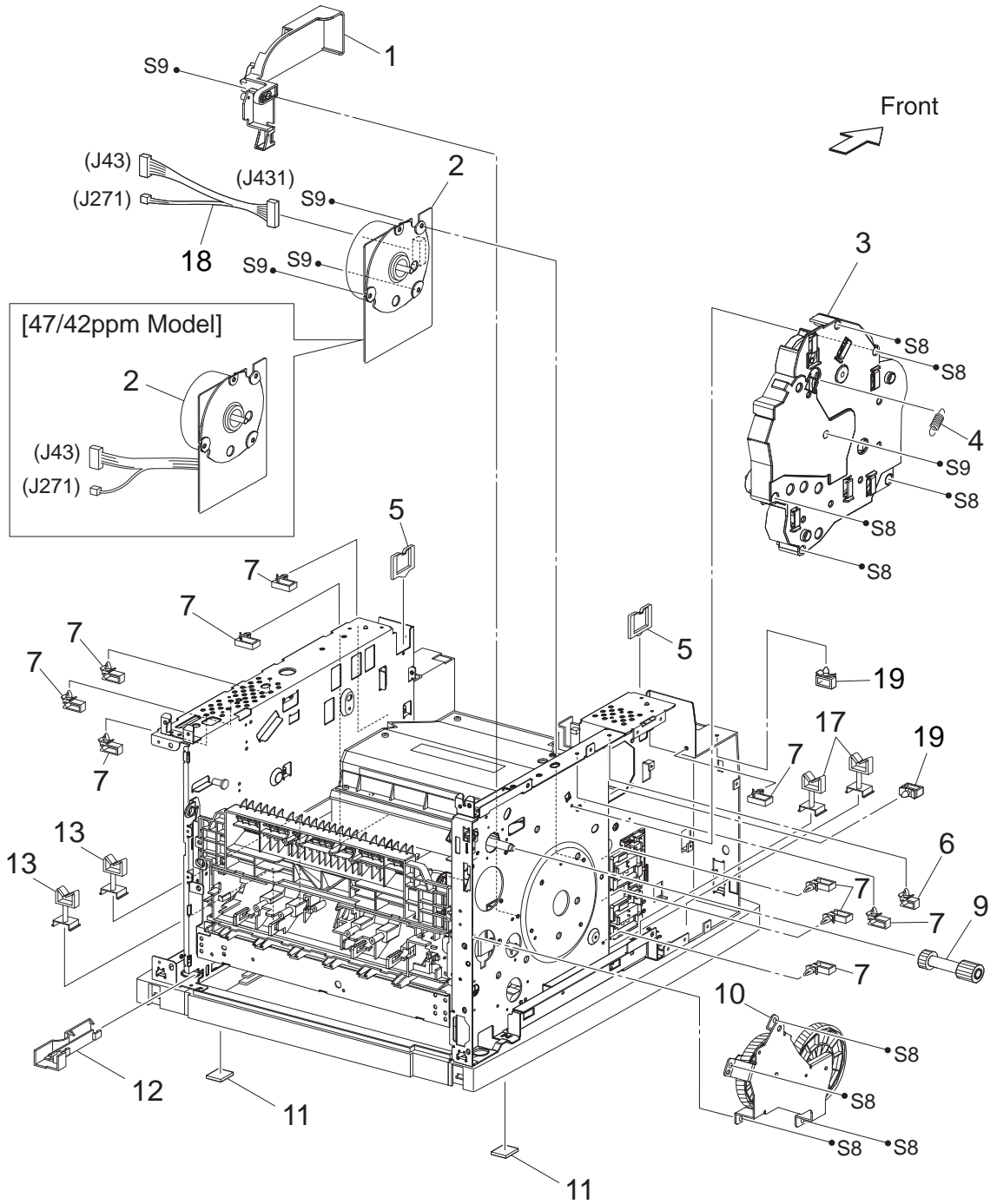


PL10.2 500 Paper Exit (2/2) & Face Up Tray (Option) [List]

Item	Parts name
1	--
2	CHUTE UP FU
3	ROLL PINCH FU
4	SPRING PINCH FU
5	--
6	GATE FU
7	CHUTE LOW FU
8	LEVER LATCH LEFT
9	PIPE LATCH FU
10	SPRING LATCH FU
11	LEVER LATCH RIGHT
12	GEAR 21
13	BEARING EXIT
14	ROLL FU
15	LEVER GATE HOLDER
16	SPRING LEVER GATE
17	LEVER GATE FU
18	--
19	ELIMINATOR EXIT FU
20	EARTH PLATE FU
21	COVER REAR 500
22	COVER DUP
23	STOPPER FSR
*24	TRAY FU A4 ASSY (with 25)
*25	TRAY FU SUB A4
26	--
27	--
28	--
98	COVER REAR 500 (with 2-4,6-17,19-22)
99	KIT COVER REAR 500H (with 19-21)

*NOTE: OKI model is standard.

PL11.1 Frame & Drive [Illustration]

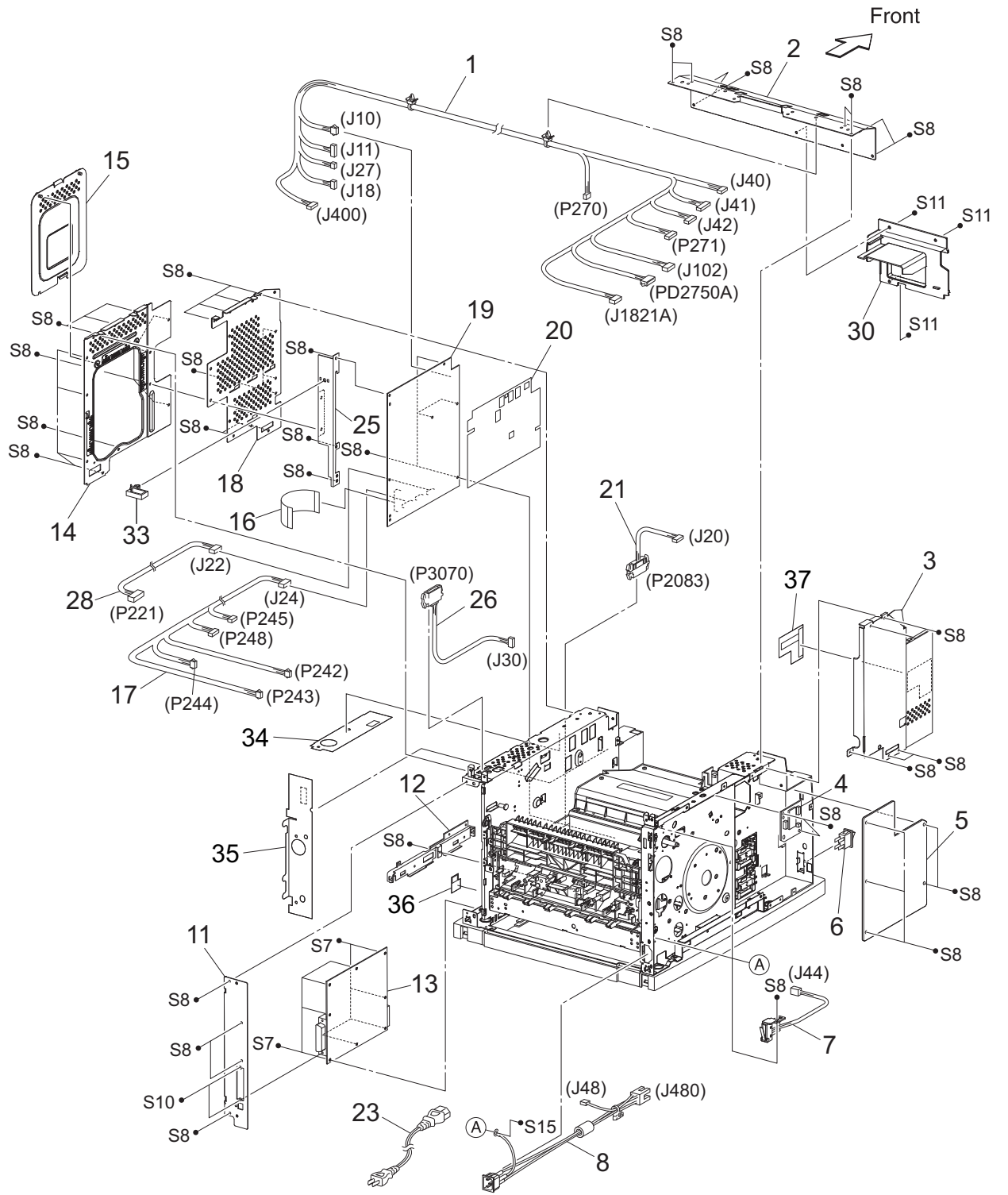


J350200A

PL11.1 Frame & Drive [List]

Item	Parts name
1	MOTOR COVER
2	MAIN MOTOR B730-56526401
3	GEAR ASSY HOUSING
4	SPRING RELEASE
5	CLAMP-EDGE
6	CLAMP-5V0
7	CLAMP-10V0
8	--
9	GEAR 9 51251353
10	GEAR ASSY PLATE
11	FOOT
12	GUIDE HARNESS R
13	CLAMP-RWSH
14	--
15	--
16	--
17	CLAMP
18	HARNESS ASSY MAIN MOTOR (J431-J43,J271) (52ppm Model Only)
19	CLAMP

PL12.1 Electrical [Illustration]



J350180A

PL12.1 Electrical [List]

Item	Parts name
1	HARNESS ASSY LVPS (J10,J11,J18,J27,J40,J41,J42,J102,P270,P271,J400,J1821A,PD2750A)
2	PLATE TIE FRONT
3	SHIELD PLATE LVPS
4	PWBA EXIT MOTOR
5	LVPS 120V-56422801, 230V-56422802
6	POWER SWITCH
7	INTERLOCK S/W REAR (J44)
8	HARNESS ASSY AC IN (J48,J480)
9	--
10	
11	PANEL REAR 50137550
12	BRACKET HANDLE R
13	PWBA ESS 55111402
13b	PWBA ESS – MPS730b 55120001
14	SHIELD ASSY ESS
15	SHIELD ASSY WINDOW
16	FFC ASSY ESS (P28-CNVD) 56640660
17	HARNESS ASSY CHUTE (J24-P242,P243,P244,P245,P248)
18	SHIELD PLATE HVPS
19	HVPS/MCU 120V B710-55111602, B720-55111601, B730-55111501 HVPS/MCU 220V B710-55111903, B720-55111902, B730-55111901
20	MAYLER HVPS
21	HARNESS ASSY FDR2 (J20-P2083)
22	--
23	POWER CORD
24	--
25	BRACKET SHIELD HVPS
26	HARNESS ASSY OCT 1 (J30-P3070)
27	--
28	HARNESS ASSY TONER 2 (J22-P221)
29	--
30	DUCT HIGH
31	--
32	--
33	CLAMP
34	FILM RH TOP
35	FILM RH FRONT
36	FILM RH REAR
37	INSULATOR FILM LVPS