

# B6500

# Spare Parts

# Illustration Manual

032907A

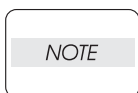
# Chapter 5 Parts List

## Engine

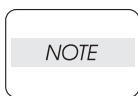
### Parts List

Caution when using parts list:

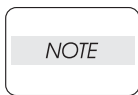
- ◆ The Item Numbers in the illustrations have the corresponding Item Numbers in the list.
- ◆ The notation of PL "X.Y.Z" is composed of the plate (PL), item "X.Y", and parts "Z".
- ◆ The alphabet characters in the illustrations represent screws and clips as follows:  
"S": screw, "E": E-ring, "KL": KL clip, "C": C-ring, and "N": nut
- ◆ "▼" mark in the illustrations are attached to items indicating assembly parts in the illustrations.
- ◆ Encircled alphabetical figures in the illustrations indicate interrupted leader lines. Same characters in the illustrations represent lines to be connected.
- ◆ The mark "(with 2-5)" attached to assembly parts on the illustrations and lists represents that the items "2, 3, 4, and 5" of that plate are contained and the mark "(with 2-5, PL6.1.1)" represent that the item "2, 3, 4, and 5" of that plate and the item "1" of the plate "6.1" are contained.
- ◆ The mark "[Same PLX.Y.Z]" attached to parts in the illustrations and lists represents that the parts is the same as the parts of the item "Z" of the plate "X.Y".
- ◆ The mark "★" attached to the item in the list represents "recommended spare parts" which can be usually supplied. (Supply of other parts shall be examined separately.)
- ◆ The mark "\*" attached to parts in the list represents "Note" or "Reference" about that parts is contained in the same page.
- ◆ "HIGH ASSY" in the list represent the high level assembly containing a specific part/s.



For spare parts, refer to the "Spare parts list" which is issued separately.



For the connector (P/J), parts such as harness, wire, etc. in the list, refer to "Chapter 7, Electric wiring"

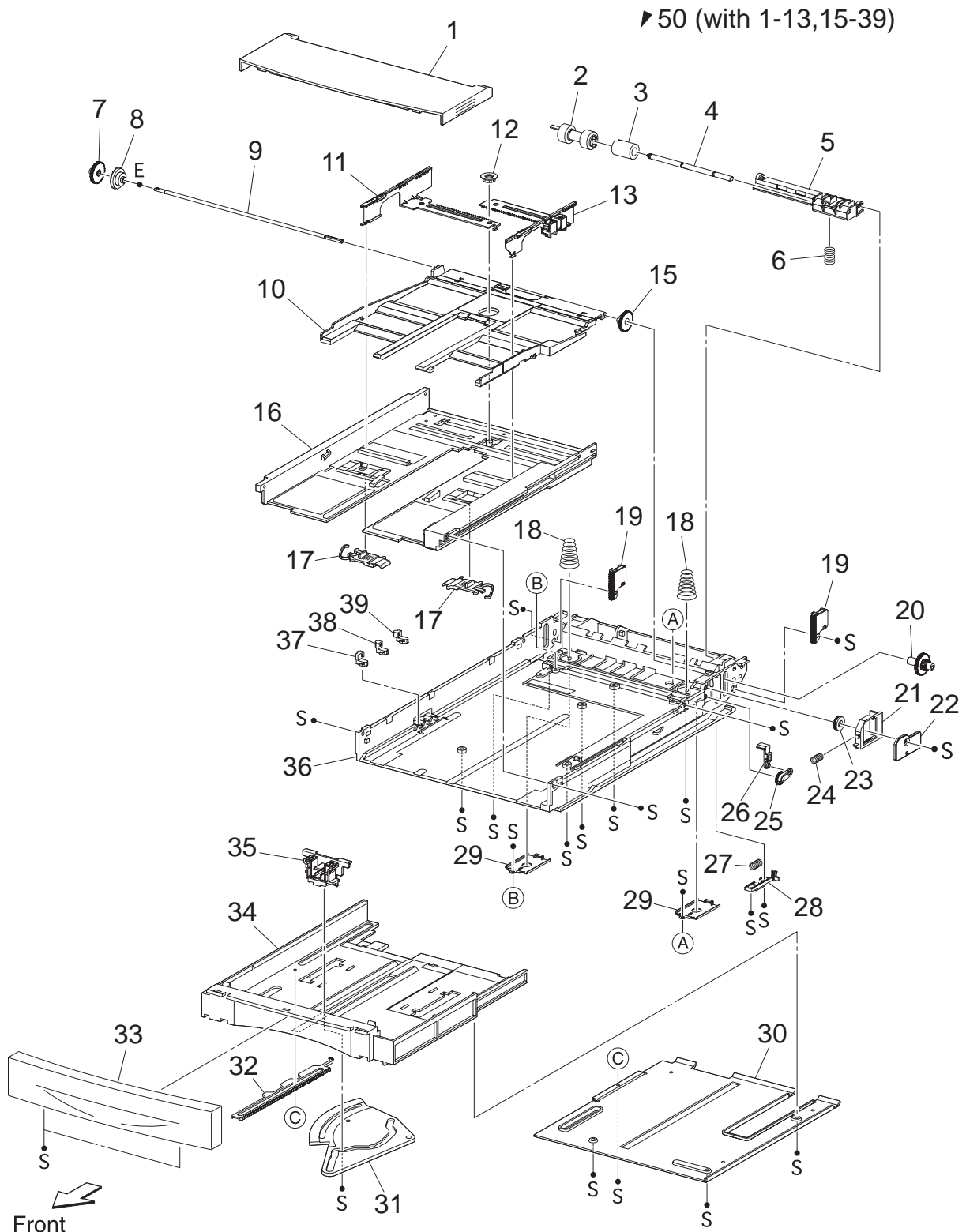


It should be noted that configuration of parts may be different or some parts are not used depending on specifications of OEM.



No.	Parts No.	Name	Remarks
1	50232110	OPERATION PANEL	(P1)
2	53086990	COVER OPEN	
3	53086630	COVER REAR	
4	53087220	COVER RIGHT	
5	53086870	COVER FRONT	
6	53087110	COVER LEFT	
7	58276040	COVER TOP	Kit Cover top (with 7 and 9)
8	53087000	COVER STOPPER	
9		STOPPER OPEN	included (with item 7)
10	56748780	HARNESS ASSY PANEL	
11		- -	
12		- -	
13	58276150	COVER EXIT 500	
14	56521780	FAN MAIN 80	(J244)
15		SEAL REAR FAN	
16		CLAMP	

# PL 2.1 150 PAPER CASSETTE [ILLUSTRATION]



No.	Parts No.	Name	Remarks
1	53087991	COVER CST	
2		ROLL ASSY RETARD *1	
3		FRICTION CLUTCH	
4		SHAFT RETARD	
5	53357001	HOLDER RETARD	Includes (Items 2,3,4)
6	50936501	SPRING RETARD	
7		GEAR PB L	
8		GEAR BTM DMP ONEWAY	
9		SHAFT PB	
10		PLATE ASSY BTM	
11		GUIDE ASSY SD L150	
12		GEAR PINION	
13		GUIDE ASSY SD R150	
14		--	
15		GEAR BTM LOCK ONEWAY	
16		HOUSING TOP 150	
17		LOCK EXTENSION	
18		SPRING BTM UP 150	
19		PLATE GEAR LOCK 150	
20		GEAR PB R	
21		RACK BTM LOCK 150	
22		COVER BTM UP	
23		GEAR BTM LOCK PINION	
24		SPRING BTM LOCK	
25		GEAR LEVER LOCK	
26		LEVER BTM LOCK	
27		SPRING STOPPER GEAR	
28		STOPPER GEAR	
29		PLATE SUPPORT BASE	
30		COVER EXTENSION	
31		GEAR SECTOR	
32		RACK SIZE	
33	53087370	HANDLE EXTENSION 150	
34		HOUSING EXTENSION 150	
35		GUIDE ASSY END 150	
36		HOUSING BASE 150	
37		LINK SW SIZE1-150	
38		LINK SW SIZE2-150	
39		LINK SW SIZE3-150	
40		--	
41		--	
42		--	
50	50231660	150 PAPER CASSETTE	(with 1-13,15-39)
51		--	

\*1: Periodical Replacement parts (per 200k print) 3 sets [1] of PL2.1.2, PL4.1.11, 44  
Kit Part number 53355691





No.	Parts No.	Name	Remarks
1	53087991	COVER CST	
2		ROLL ASSY RETARD *1	
3		FRICTION CLUTCH	
4		SHAFT RETARD	
5	53357001	HOLDER RETARD	Includes (items 2,3,4)
6	50936501	SPRING RETARD	
7		GEAR PB L	
8		GEAR BTM DMP ONEWAY	
9		SHAFT PB	
10		PLATE ASSY BTM	
11		GUIDE ASSY SD L550	
12		GEAR PINION	
13		GUIDE ASSY SD R550	
14		- -	
15		GEAR BTM LOCK ONEWAY	
16		HOUSING TOP 550	
17		LOCK EXTENSION	
18		SPRING BTM UP 550	
19		PLATE GEAR LOCK 550	
20		GEAR PB R	
21		RACK BTM LOCK 550	
22		COVER BTM UP 550	
23		GEAR BTM LOCK PINION	
24		SPRING BTM LOCK	
25		GEAR BTM LOCK	
26		GEAR LEVER LOCK	
27		LEVER BTM LOCK	
28		SPRING STOPPER GEAR	
29		STOPPER GEAR	
30		PLATE SUPPORT	
31		COVER EXTENSION	
32		SUPPORT GUIDE IND	
33		- -	
34		GUIDE INDICATOR 1	
35		GUIDE INDICATOR 2	
36		GUIDE INDICATOR 3	
37		LOW INDICATOR	
38		LOW IND FRONT	
39		GEAR SECTOR	
40		RACK SIZE	
41		HANDLE EXTENSION 550	
42		HOUSING EXTENSION 550	
43		GUIDE ASSY END 550	
44		HOUSING BASE 550	
45		LINK SW SIZE1-550	

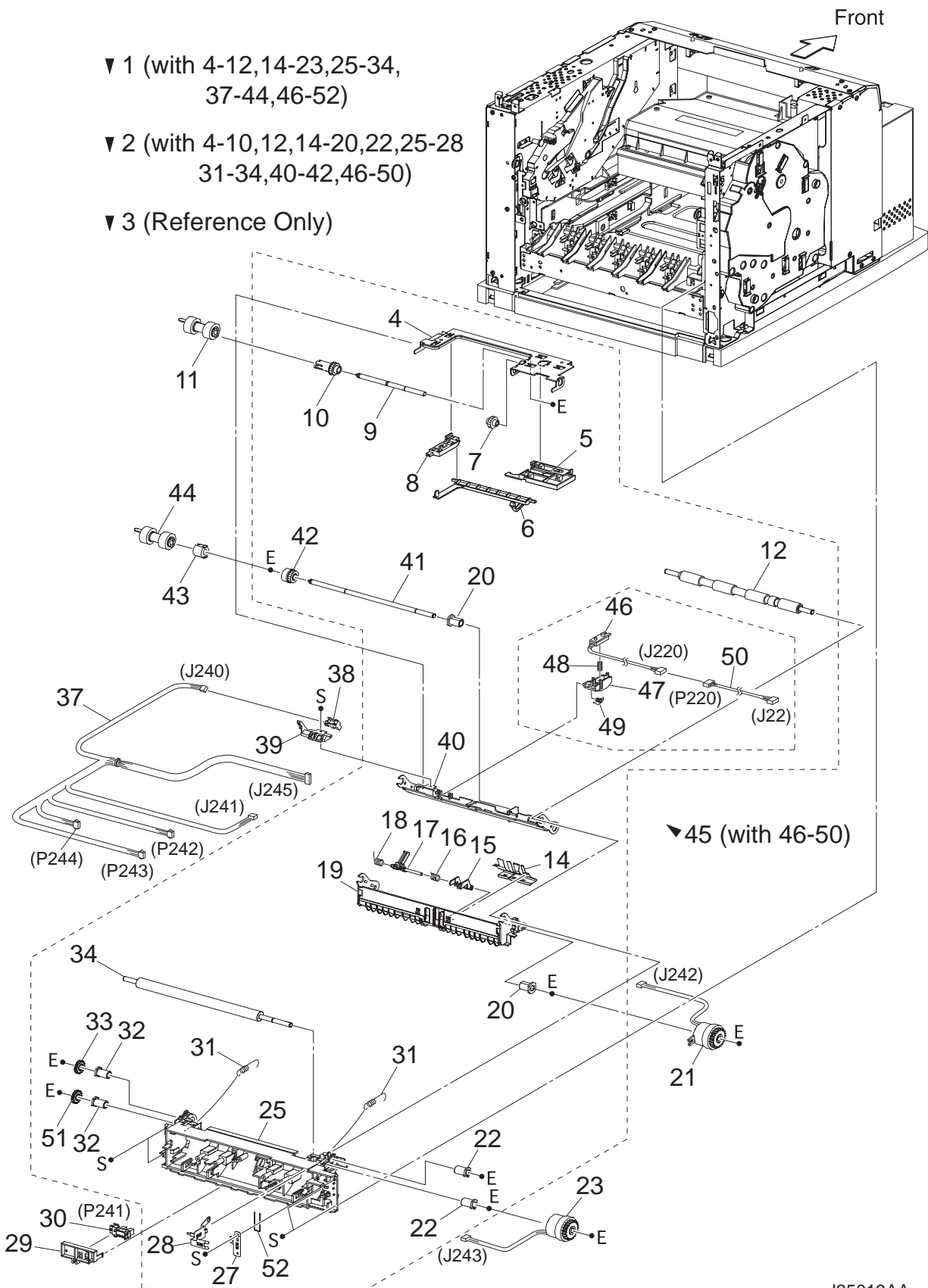
46		LINK SW SIZE2-550	
47		LINK SW SIZE3-550	
48		LINK SW SIZE LOW	
49		- -	
50	50231770	550 PAPER CASSETTE	(with 1-13,15-32,34-48,52,53)
51		- -	
52		STOPPER BASE R	
53		STOPPER BASE L	

\*1: Periodical Replacement parts (per 200k print)

3sets [1] of PL3.1.2, PL5.1.19, 29

Part number 53355691

# PL 4.1 150 PAPER FEEDER [ILLUSTRATION]



No.	Parts No.	Name	Remarks
1	58276500	150 FEEDER ASSY	(with 4-12,14-23,25-34,37-44,46-51)
2	58221310	FDR1 AS SUB 150 A4	(with 4-10,12,14-20,22,25-28,31-34,40-42,46-50)
3		CHUTE ASSY FDR1	(Reference Only) (with 4-10,14-20,40-42)
4		SUPPORT NUDGER	
5		HOLDER LEFT	
6	53355522	ACTUATOR NO PAPER	
7		GEAR IDLER NUDGER	
8		HOLDER RIGHT	
9		SHAFT NUDGER	
10	51251670	0 GEAR NUDGER	
11		ROLL ASSY NUDGER *1	
12	50421460	ROLL REGI RUBBER 45	
13		--	
14		COVER ACTUATOR-A4	
15	53355396	ACTUATOR A	
16		SPRING REGI SNR B	
17	53355405	ACTUATOR B	
18		SPRING REGI SNR A	
19		CHUTE BTM ASSY	
20		BEARING NUDGER	
21	51402211	CLUTCH ASSY PH	(J242)
22		BEARING REGI LEFT	
23		REGI (J243)	
25	58276260	CHUTE REGI 45	Includes des(items 25-28)
26		SPRING EARTH 45	
27		EARTH PLATE BASE	
28		EARTH PLATE MID	
29		COVER SENSOR	
30	50415001	SENSOR REG	(P241)
31		SPRING REGI	
32		BEARING REGI RIGHT	
33		GEAR REGI RUBBER BLACK	
34		ROLL REGI METAL	
35		--	
36		--	
37	56743590	HARNESS ASSY	(J245-J240,J241,P242,P243,P244)
38		SENSOR NO PAPER	(P240)
39		HOLDER NO PAPER SENSOR	
40		CHUTE TOP ASSY	
41		SHAFT FEED	
42	51402151	CLUTCH ONEWAY NUDGER	
43	51402141	CLUTCH ONEWAY FEED	

44		ROLL ASSY FEED *1	
45	50421303	SENSOR ASSY TONER	(with 46-50)
46	part of 45	SENSOR TONER	(J220)
47	part of 45	HOLDER-D	
48	part of 45	SPRING TONER	
49	part of 45	SPRING TONER BOX	
50	part of 45	HARNESS ASSY TONER 1	(J22-P220)
51		GEAR REGI METAL WHITE	

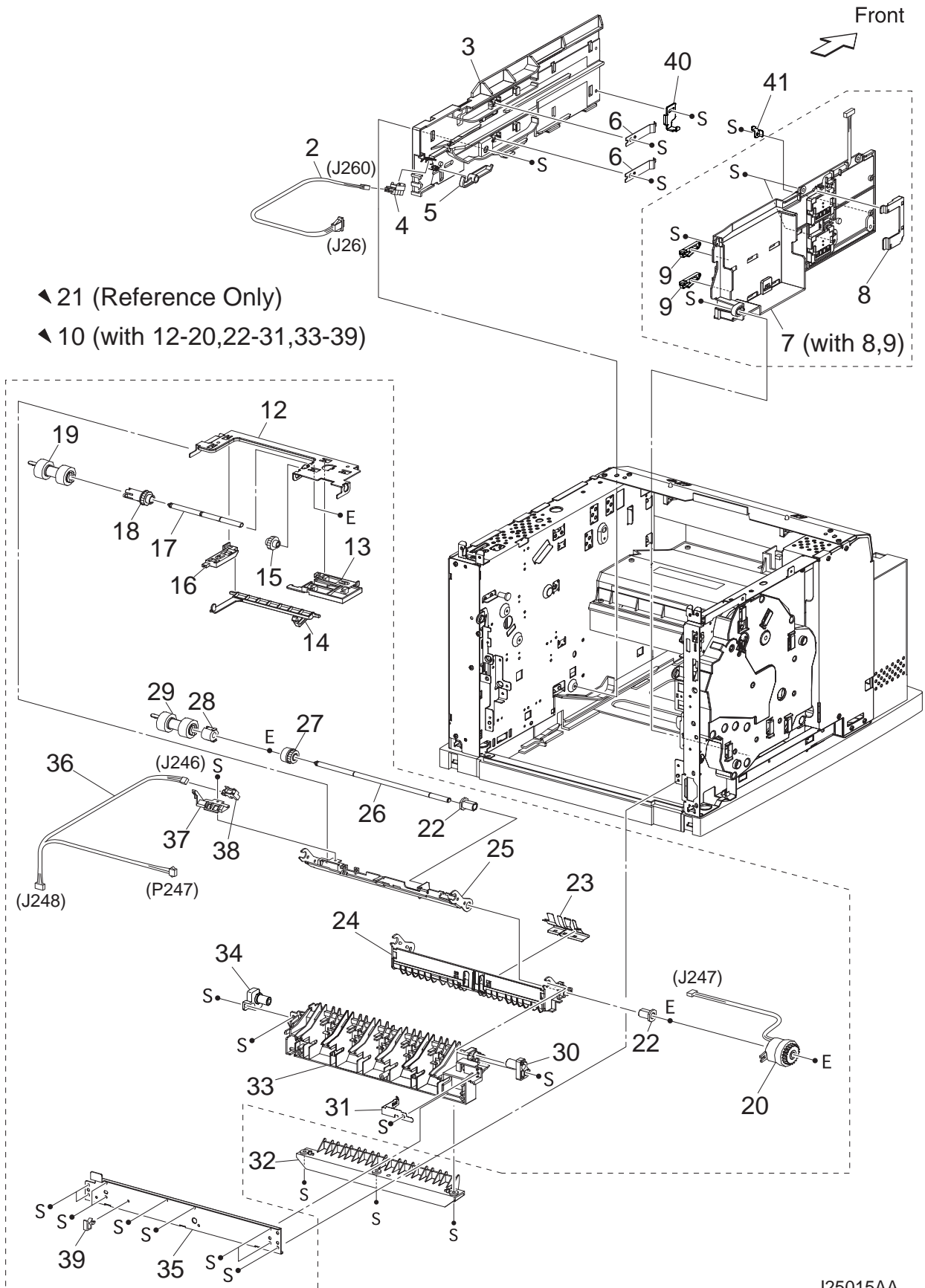
\*1: Periodical Replacement parts (per 200k print)

3sets [1] of PL4.1.11, 44, PL2.1.2

Part number

53355691

# PL 5.1 550 PAPER FEEDER [ILLUSTRATION]



- ◀ 21 (Reference Only)
- ◀ 10 (with 12-20,22-31,33-39)

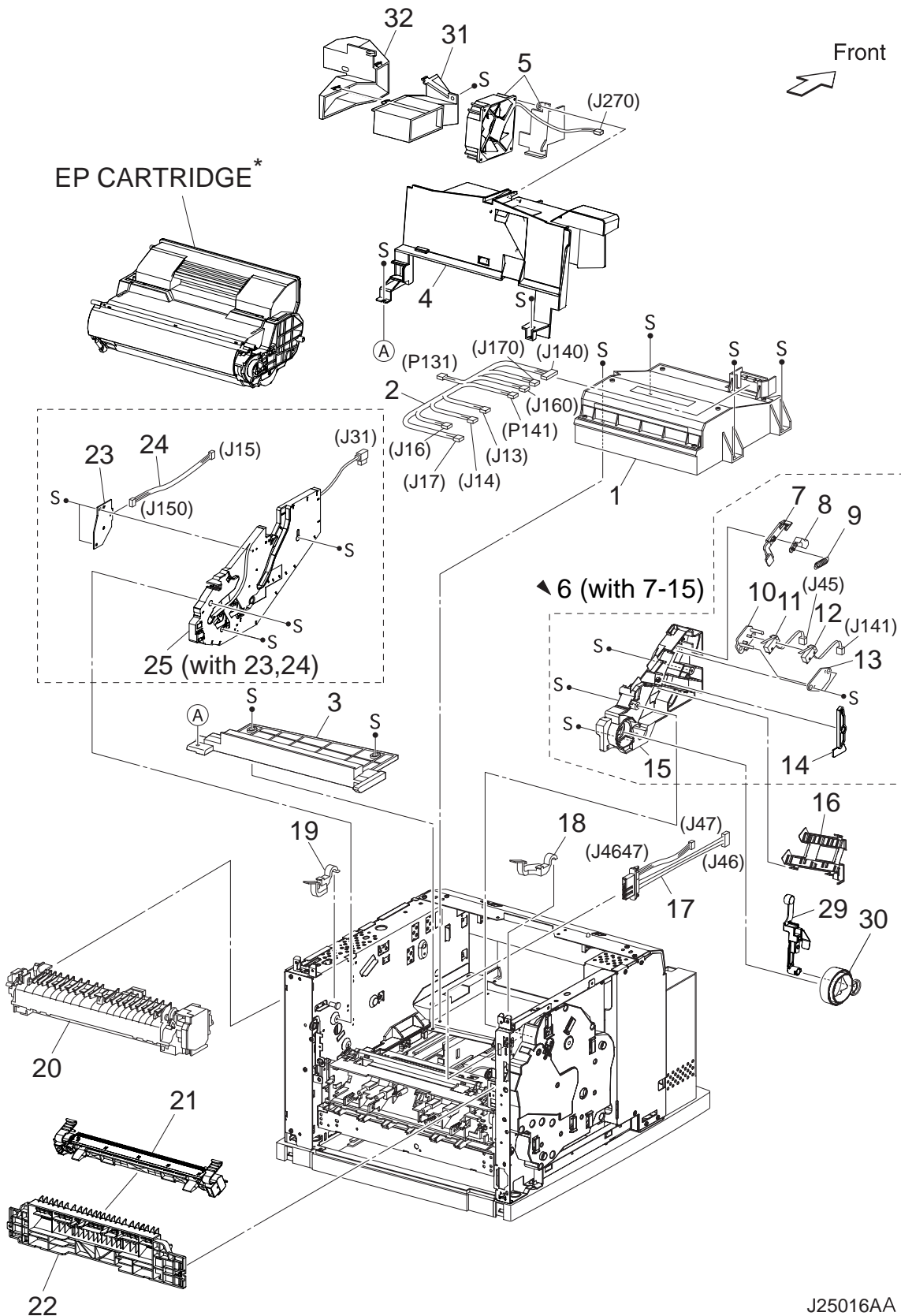
No.	Parts No	Name	Remarks
1		- -	
2		HARNESS ASSY LOW1	(J26-J260)
3	51030695	GUIDE TRAY RIGHT	
4		SENSOR LOW PAPER	(P260)
5		ACTUATOR LOW PAPER	
6		PLATE CST LOCK	
7	51030537	GUIDE TRAY LEFT	(with 8,9)
8		COVER HARNESS SIZE	
9		LOCK CST L	
10	50231400	550 FEEDER ASSY	(with 12-20,22-31,33-39)
11		- -	
12		SUPPORT NUDGER	
13		HOLDER LEFT	
14		ACTUATOR NO PAPER	
15		GEAR IDLER NUDGER	
16		HOLDER RIGHT	
17		SHAFT NUDGER	
18		GEAR NUDGER	
19		ROLL ASSY NUDGER *1	
20	51402211	CLUTCH ASSY PH	(J247)
21		CHUTE ASSY FDR2	(Reference Only) (with 12-18,22-27)
22		BEARING NUDGER	
23		COVER ACTUATOR	
24		CHUTE BTM ASSY	
25		CHUTE TOP ASSY	
26		SHAFT FEED	
27	51402151	CLUTCH ONEWAY NUDGER	
28	51402141	CLUTCH ONEWAY FEED	
29		ROLL ASSY FEED *1	
30		HOLDER PIVOT LEFT	
31		SPRING EARTH	
32		CHUTE 550 LOWER	
33		CHUTE OUT	
34		HOLDER PIVOT RIGHT	
35		PLATE TIE	
36		HARNESS ASSY TRAY2	(J248-J246,P247)
37		HOLDER NO PAPER SENSOR	
38		SENSOR NO PAPER	(P246)
39		CLAMP-10V0	
40		STOPPER TRAY R	
41		STOPPER TRAY L	

\*1: Periodical Replacement parts (per 200k print)

3sets [1] of PL5.1.19, 29, P

53355691

# PL 6.1 XERO [ILLUSTRATION]





No.	Parts No.	Name	Remarks
1	50231870	ROS ASSY 45-1200	(J131,P140,P160,P170)
2	56743841	HARNESS ASSY ROS	(J13,J14,J16,J17-P131,J140,P141,J160,J170)
3		SHIELD PLATE ROS	
4		DUCT FRONT	
5	56521462	FAN SUB (J270)	
6	50231570	GUIDE ASSY CRU L 45	(with 7-15)
7		GUIDE SL	included (with Item 6)
8		SPACER SS	included (with Item 6)
9		SPRING SL	included (with Item 6)
10		HOLDER I/L SW1	included (with Item 6)
11		HARNESS ASSY INTERLOCK1	included (with Item 6)
12		HARNESS ASSY INTERLOCK3	included (with Item 6)
13		HOLDER I/L SW2	included (with Item 6)
14		LEVER GUIDE	included (with Item 6)
15		GUIDE CRU LEFT	included (with Item 6)
16	53088084	COVER GUIDE CRU	
17	56743370	HARNESS ASSY FUSER	(J4647-J46,J47)
18	50812662	LEVER FUSER LH	
19	50813070	LEVER CRU FUSER RH J2	
20	50231970	FUSER ASSY *1	
21	51253920	HOUSING ASSY BTR J2 *2	
22	53355242	CHUTE TRANSFER	
23	55093484	PWBA ASSY ANT	(P150)
24	56743933	HARNESS ASSY ANT	(J15-J150)
25	51032001	GUIDE ASSY CRU R	(J31) (with 23,24)
26		- -	
27		- -	
28		- -	
29	50813352	LEVER LINK	
30		LINK GEAR 3	021E10561
31		DUCT VACUUM L	
32		DUCT VACUUM R	

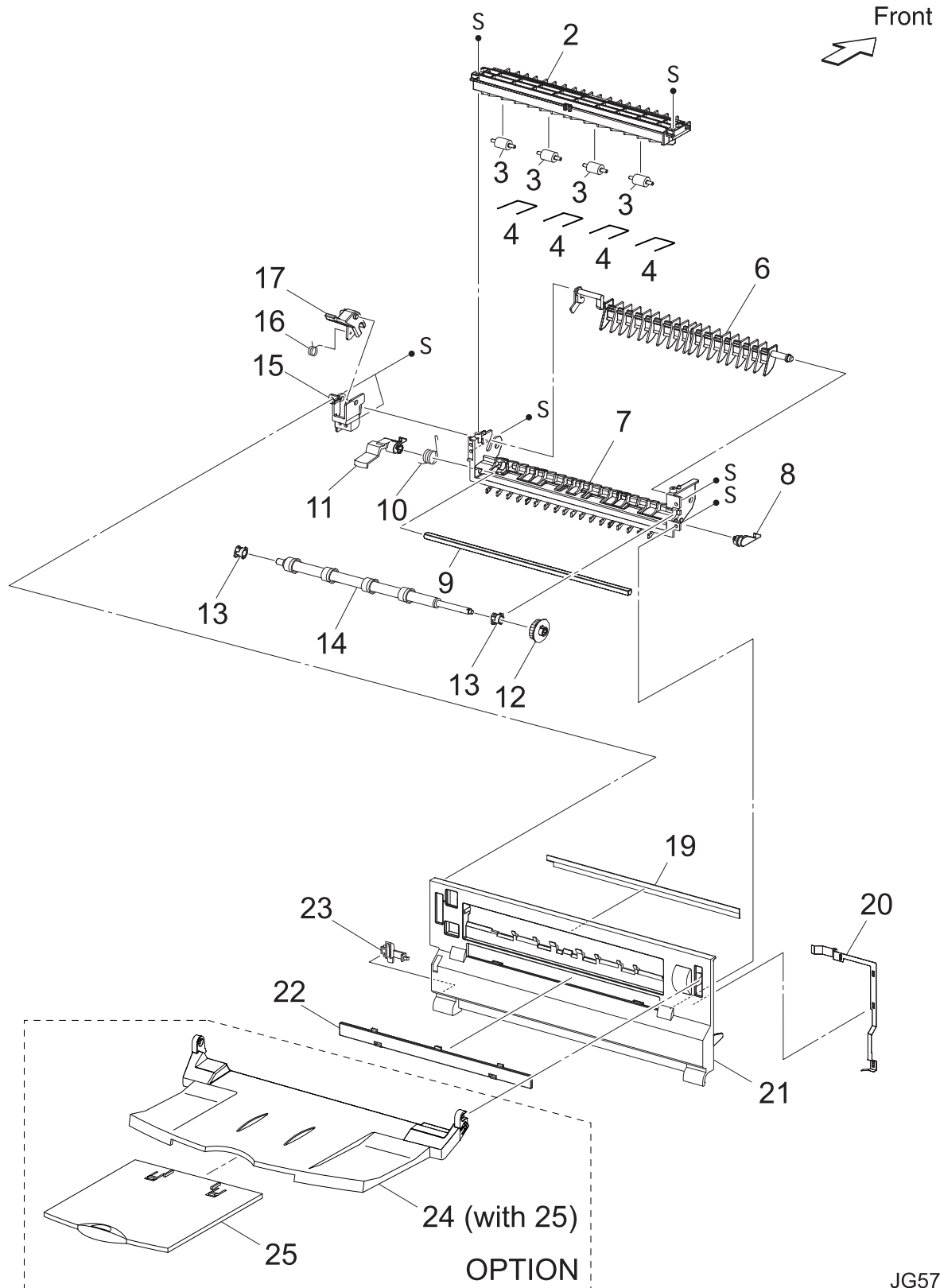
\*1: Periodical Replacement parts (per 200k print)

\*2: Periodical Replacement parts (per 200k print)



No.	Parts No.	Name	Remarks
1		--	
2	53358463	500 EXIT ASSY	(with 4-7,10-13,15-28,30)
3		--	
4	58276390	CHUTE UP EXIT	
5		ELIMINATOR EXIT	Included (with Item 4)
6		EARTH PLATE EXIT	Included (with Item 4)
7		LINK GATE OCT	Included (with Item 4)
8		--	
9		--	
10	53357520	ACTUATOR FULL STACK	
11		BEARING EXIT	
12	53358074	ROLL EXIT	
13		GEAR 21	
14		--	
15	56522020	MOTOR ASSY EXIT	(J103)
16		BRACKET MOTOR EXIT	
17		GEAR 16/49	
18		GEAR 25-2	
19		GEAR 25-1	
20		GATE OCT EXIT	
21		CHUTE LOW EXIT	
22		SPRING PINCH EXIT	
23	53358300	ROLL PINCH EXIT	
24	50232215	SPRING GATE OCT	
25		SENSOR FACE UP OPEN	(P291)
26		SENSOR FULL STACK	(P290)
27		HARNESS ASSY EXIT SNR	(J29-J290,J291)
28	53357930	ROLL EXIT 500	
29		--	
30		ROLL PINCH EXIT OCT	

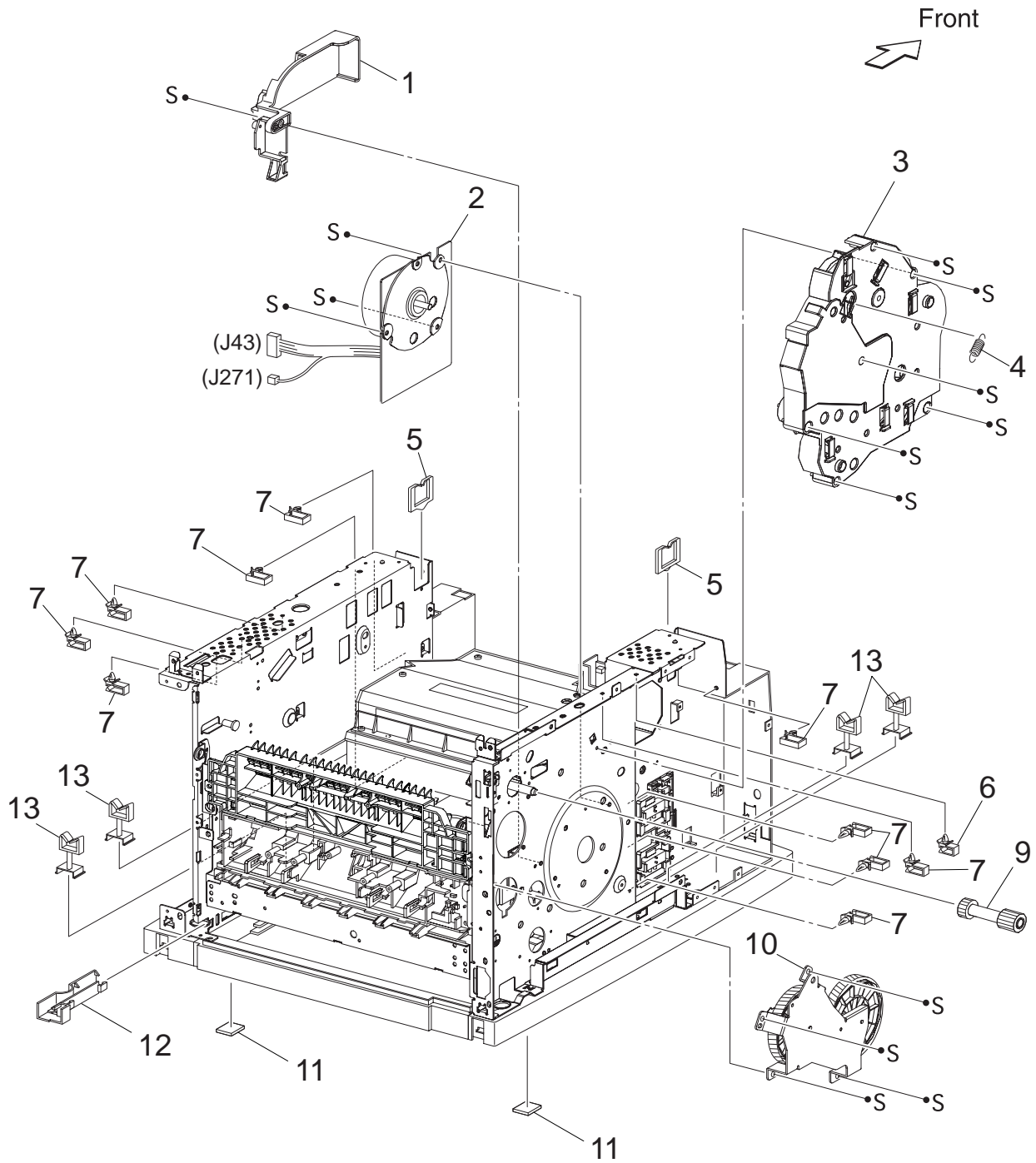
**PL 7.2 500 PAPER EXIT (2/2) & OPTION FACE UP TRAY [ILLUSTRATION]**



No.	Parts No.	Name	Remarks
1		--	
2		CHUTE UP FU	
3		ROLL PINCH FU	
4		SPRING PINCH FU	
5		--	
6		GATE FU	
7		CHUTE LOW FU	
8		LEVER LATCH LEFT	
9		PIPE LATCH FU	
10		SPRING LATCH FU	
11		LEVER LATCH RIGHT	
12		GEAR 21	
13		BEARING EXIT	
14		ROLL FU	
15		LEVER GATE HOLDER	
16		SPRING LEVER GATE	
17		LEVER GATE FU	
18		--	
19		ELIMINATOR EXIT FU	
20		EARTH PLATE FU	
21		COVER REAR 500	
22		COVER DUP	
23		STOPPER FSR	
*24		TRAY FU A4 ASSY (with 25)	
*25		TRAY FU SUB A4	

\*OPTION

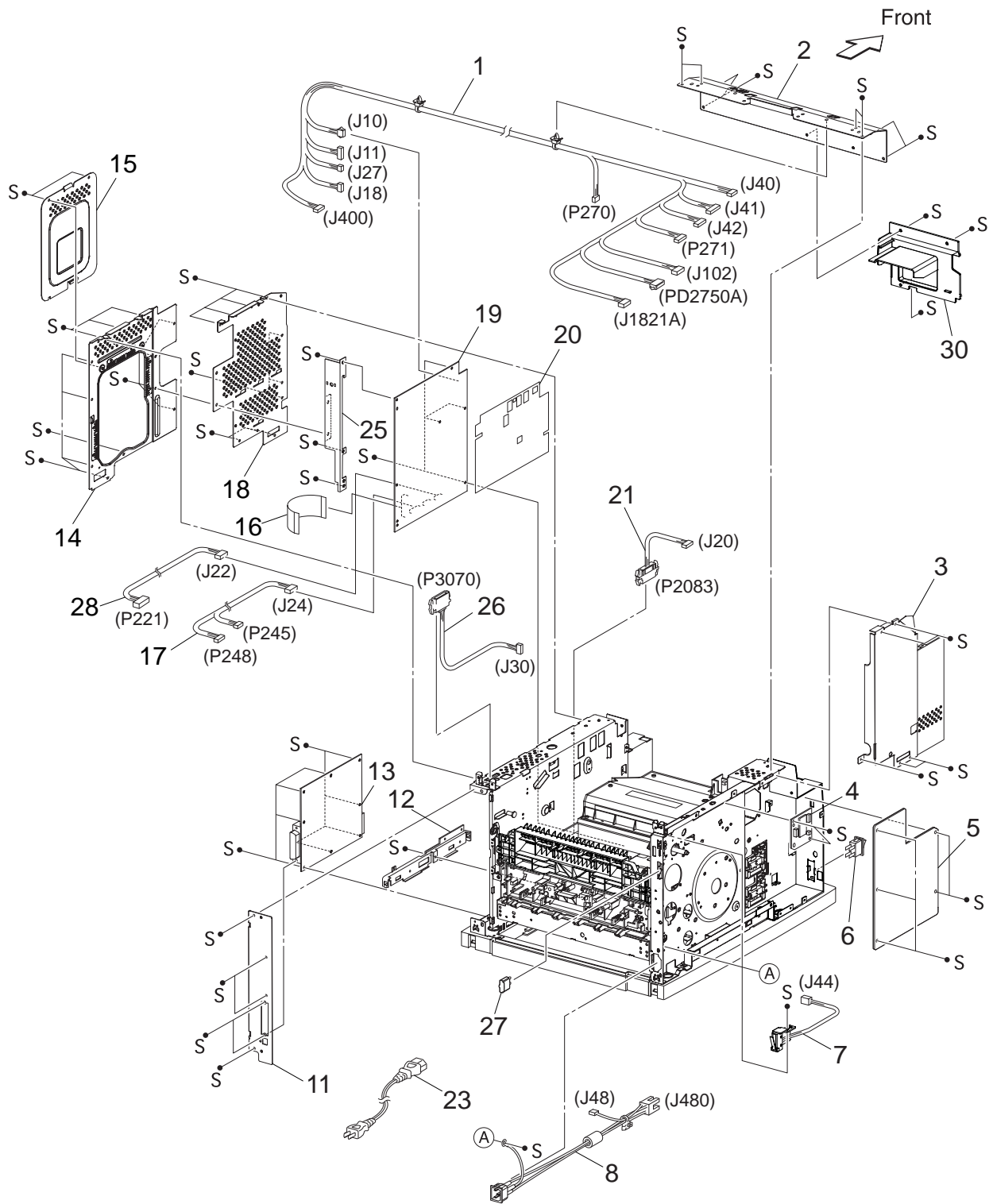
# PL 8.1 FRAME & DRIVE [ILLUSTRATION]



J25020AA

No.	Parts No.	Name	Remarks
1		MOTOR COVER	
2	56521930	MAIN MOTOR 45	(J43,J271)
3	53355263	GEAR ASSY HOUSING	
4		SPRING RELEASE	
5		CLAMP-EDGE	
6		CLAMP-5V0	
7		CLAMP-10V0	
8		--	
9	512541353	GEAR 9	
10	51254553	GEAR ASSY PLATE	
11	50813230	FOOT	
12		GUIDE HARNESS R	
13		CLAMP-RWSH	
14		--	
15		--	
16		--	

# PL 9.1 ELECTRICAL [ILLUSTRATION]



J25018AA



No.	Parts No.	Name	Remarks
1		HARNESS ASSY LVPS	(J10,J11,J18,J27,J40,J41,J42,J102,P270, P271,J400,J1821A,PD2750A
2		PLATE TIE FRONT	
3		SHIELD PLATE LV J2	
4		PWBA EXIT MOTOR	
5	56419280	LVPS	
6		POWER SWITCH	
7		INTERLOCK S/W REAR	(J44)
8		HARNESS ASSY AC IN	(48, J480)
9		--	
10		--	
11		PANEL REAR	
12		BRACKET HANDLE R	
13	55093300	PWBA ESS	NON NETWORK PCB
	55093200	PWBA ESS	NETWORK PCB (RJ45 CONNECTOR)
14		SHIELD ASSY ESS	
15		SHIELD ASSY WINDOW	
16	56640660	FFC ASSY ESS	(P28-CNVD)
17		HARNESS ASSY CHUTE	(P24-P245, P248)
18		SHIELD PLATE HVPS	
19	56419460	HVPS/MCU	
20		MAYLER HVPS	
21		HARNESS ASSY FDR1	(J20-P2083)
22		--	
23		POWER CORD	
24		--	
25		BRACKET SHIELD HVPS	
26		HARNESS ASSY OCT 1	(J30-P3070)
27		CAP CONNECTOR-DRAWER	
28		HARNESS ASSY TONER 2	(J22-P221)
29		--	
30		DUCT HIGH	
31		--	