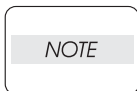


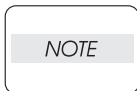
## 1. Parts List

### 1.1 Caution for use of parts list

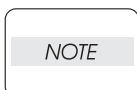
- ◆ The figures indicating the illustrations are the item No. in the list and present correspondence between the illustrations and parts.
- ◆ The notation of PL "X.Y.Z" is composed of the plate (PL), item "X.Y", and parts "Z".
- ◆ The alphabet characters in the illustrations represent screws and clips as follows:  
"S": screw, "E": E-ring, "KL": KL clip, "C": C-ring, and "N": nut
- ◆ "t" mark in the illustrations are attached to items indicating assembly parts in the illustrations.
- ◆ Encircled alphabetical figures in the illustrations indicate interrupted leader lines. Same characters in the illustrations represent lines to be connected.
- ◆ The mark "(with 2-5)" attached to assembly parts on the illustrations and lists represents that the items "2, 3, 4, and 5" of that plate are contained and the mark "(with 2-5, PL6.1.1.1)" represent that the item "2, 3, 4, and 5" of that plate and the item "1" of the plate "6.1" are contained.
- ◆ The mark "[Same PLX.Y.Z]" attached to parts in the illustrations and lists represents that the parts is the same as the parts of the item "Z" of the plate "X.Y".
- ◆ The mark "H" attached to the item in the list represents "recommended spare parts" which can be usually supplied. (Supply of other parts shall be examined separately.)
- ◆ The mark "I" attached to parts in the list represents "Note" or "Reference" about that parts is contained in the same page.
- ◆ "HIGH ASSY" in the list represent the high level assembly parts containing that parts.



**For spare parts, refer to the Spare parts list which is issued separately.**

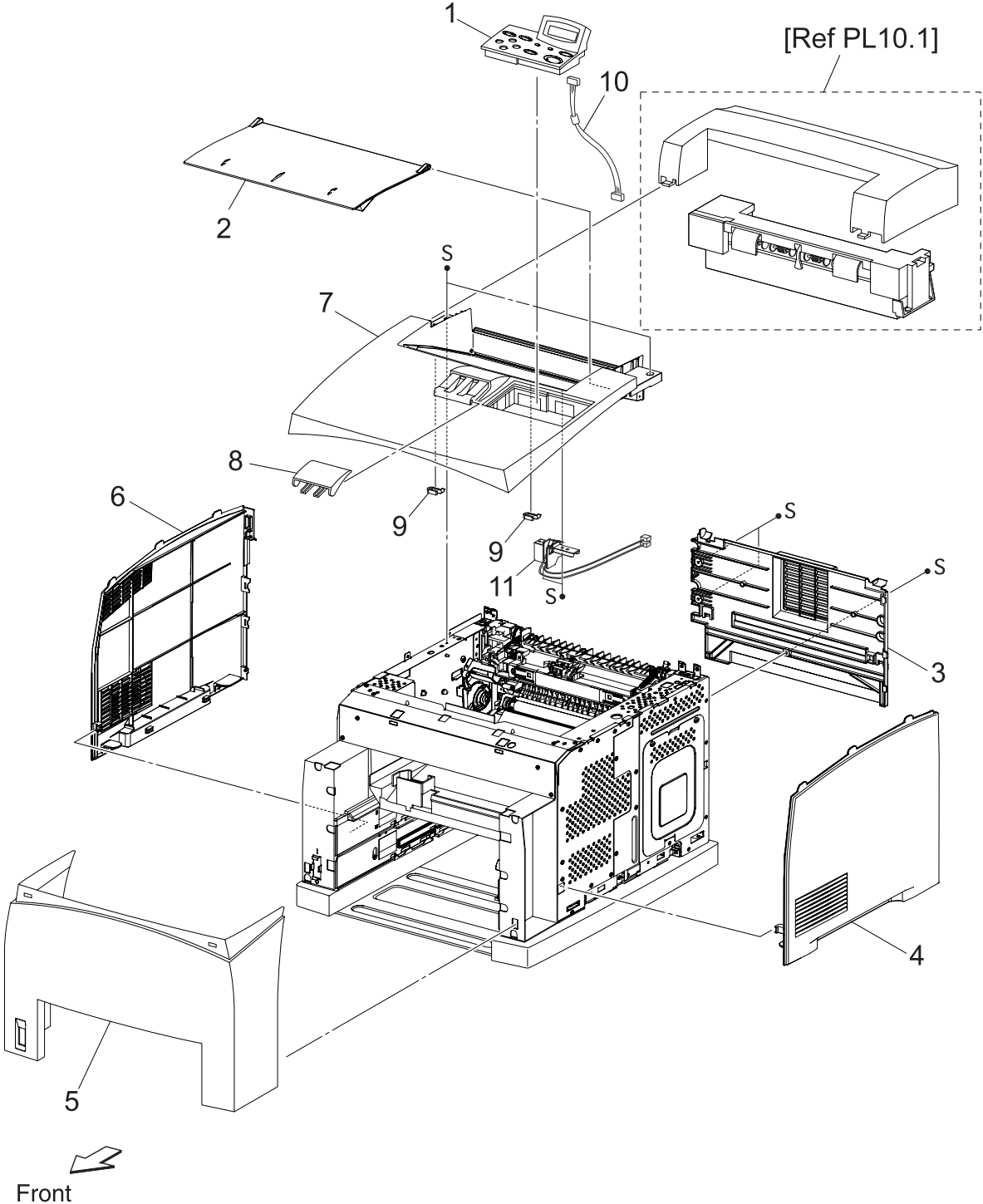


**For the connector (P/J), parts such as harness, wire, etc. in the list, refer to Chapter 6, Electric wiring**



**It should be noted that configuration of parts may be different or some parts are not used depending on specifications of OEM.**

PL1.1 Cover [Illustration]



PL1.1 Cover [List]

Item	Parts name .....	Part Number
1	OPERATION PANEL (P1)	
2	COVER OPEN	
3	COVER REAR.....	53085610
4	COVER RIGHT	
5	COVER FRONT	
6	COVER LEFT	
7	COVER TOP	
8	COVER STOPPER	
9	STOPPER OPEN	
10	HARNES ASSY PANEL	
11	SWITCH I/L ASSY (J144,J411)	
12	--	



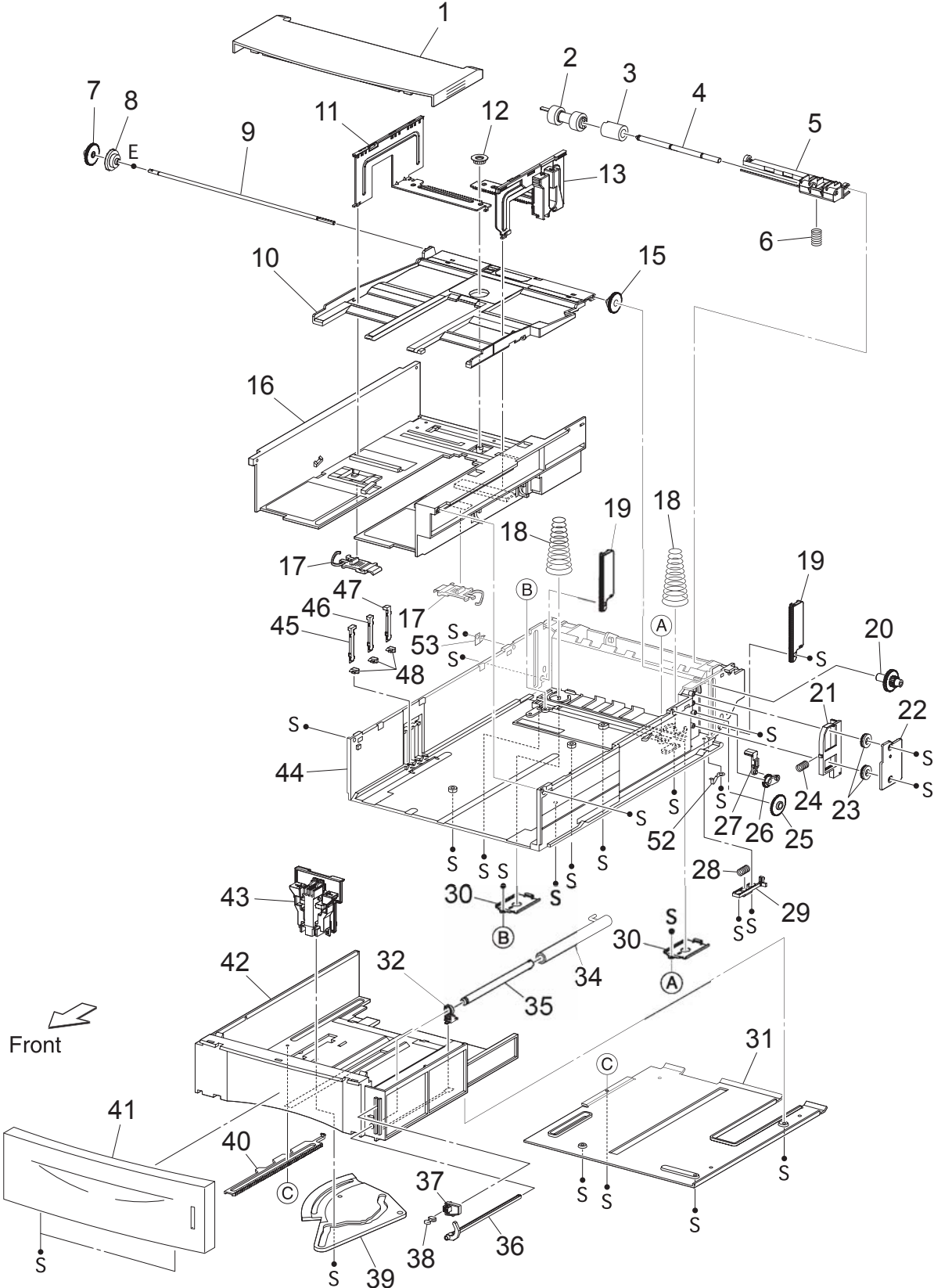
## PL2.1 150 Paper Cassette [List]

Item	Parts name .....	Part Number
1	COVER CST	
2	ROLL ASSY RETARD *1	
3	FRICITION CLUTCH	
4	SHAFT RETARD	
5	HOLDER RETARD	
6	SPRING RETARD	
7	GEAR PB L	
8	GEAR BTM DMP ONEWAY	
9	SHAFT PB	
10	PLATE ASSY BTM	
11	GUIDE ASSY SD L150	
12	GEAR PINION	
13	GUIDE ASSY SD R150	
14	--	
15	GEAR BTM LOCK ONEWAY	
16	HOUSING TOP 150	
17	LOCK EXTENSION	
18	SPRING BTM UP 150	
19	PLATE GEAR LOCK 150	
20	GEAR PB R	
21	RACK BTM LOCK 150	
22	COVER BTM UP	
23	GEAR BTM LOCK PINION	
24	SPRING BTM LOCK	
25	GEAR LEVER LOCK	
26	LEVER BTM LOCK	
27	SPRING STOPPER GEAR	
28	STOPPER GEAR	
29	PLATE SUPPORT BASE	
30	COVER EXTENSION	
31	GEAR SECTOR	
32	RACK SIZE	
33	HANDLE EXTENSION 150	
34	HOUSING EXTENSION 150	
35	GUIDE ASSY END 150	
36	HOUSING BASE 150	
37	LINK SW SIZE1-150	
38	LINK SW SIZE2-150	
39	LINK SW SIZE3-150	
40	--	
41	--	
42	--	
50	150 PAPER CASSETTE (with 1-13,15-39)	
51	--	

\*1: Periodical Replacement parts (per 200k print) Kit Roll Assembly ..... 53355691  
 3 sets [1] of PL2.1.2, PL5.1.11, 44

PL4.1 550 Paper Cassette [Illustration]

▼ 50 (with 1-13,15-32,34-48,52,53)

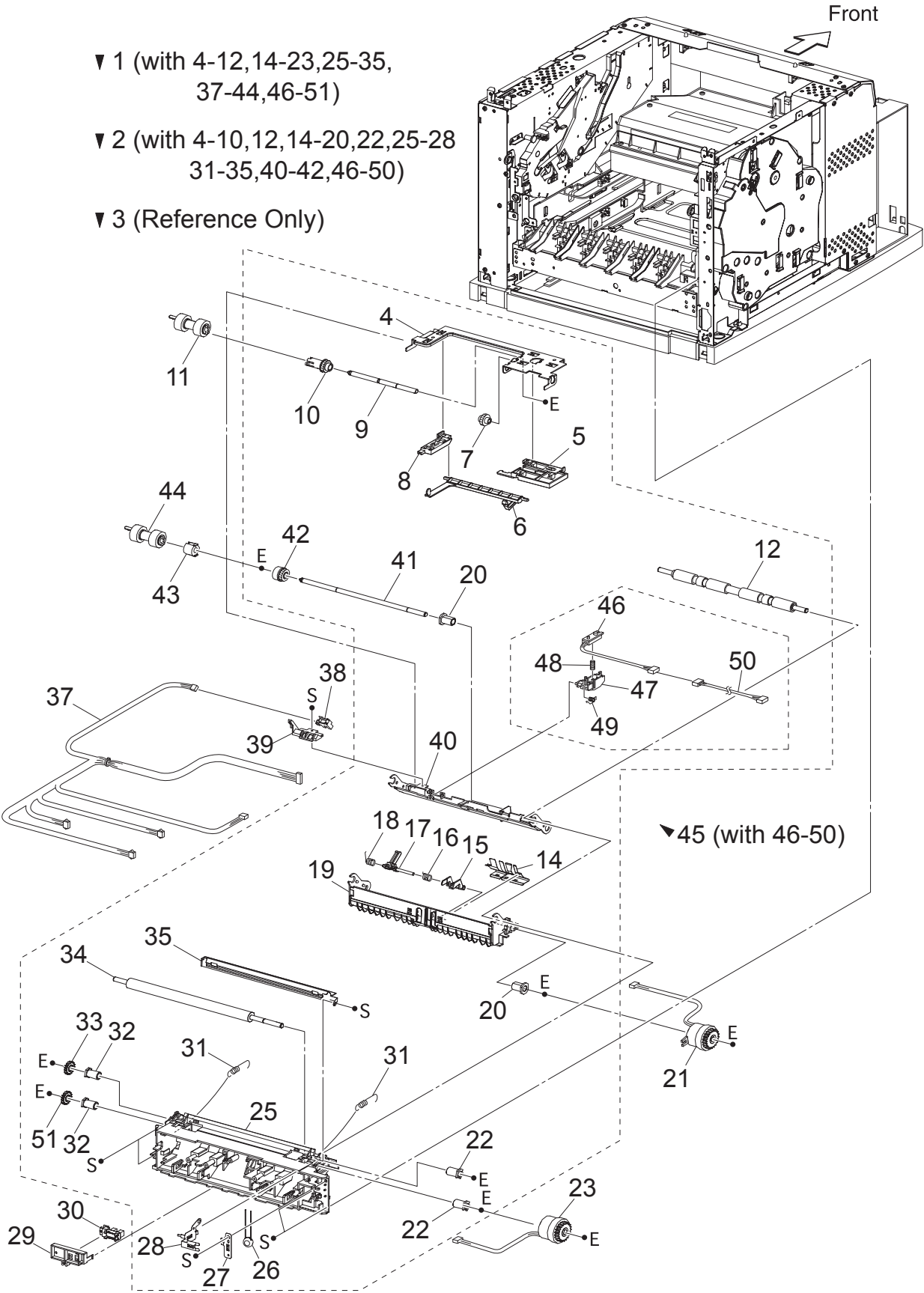


## PL4.1 550 Paper Cassette [List]

Item	Parts name .....	Part Number
1	COVER CST	
2	ROLL ASSY RETARD *1	
3	FRICTION CLUTCH	
4	SHAFT RETARD	
5	HOLDER RETARD	
6	SPRING RETARD	
7	GEAR PB L	
8	GEAR BTM DMP ONEWAY	
9	SHAFT PB	
10	PLATE ASSY BTM	
11	GUIDE ASSY SD L550	
12	GEAR PINION	
13	GUIDE ASSY SD R550	
14	--	
15	GEAR BTM LOCK ONEWAY	
16	HOUSING TOP 550	
17	LOCK EXTENSION	
18	SPRING BTM UP 550	
19	PLATE GEAR LOCK 550	
20	GEAR PB R	
21	RACK BTM LOCK 550	
22	COVER BTM UP 550	
23	GEAR BTM LOCK PINION	
24	SPRING BTM LOCK	
25	GEAR BTM LOCK	
26	GEAR LEVER LOCK	
27	LEVER BTM LOCK	
28	SPRING STOPPER GEAR	
29	STOPPER GEAR	
30	PLATE SUPPORT	
31	COVER EXTENSION	
32	SUPPORT GUIDE IND	
33	--	
34	GUIDE INDICATOR 1	
35	GUIDE INDICATOR 2	
36	GUIDE INDICATOR 3	
37	LOW INDICATOR	
38	LOW IND FRONT	
39	GEAR SECTOR	
40	RACK SIZE	
41	HANDLE EXTENSION 550	
42	HOUSING EXTENSION 550	
43	GUIDE ASSY END 550	
44	HOUSING BASE 550	
45	LINK SW SIZE1-550	
46	LINK SW SIZE2-550	
47	LINK SW SIZE3-550	
48	LINK SW SIZE LOW	
49	--	
50	550 PAPER CASSETTE (with 1-13,15-32,34-48,52,53)	
51	--	
52	STOPPER BASE R	
53	STOPPER BASE L	

\*1: Periodical Replacement parts (per 200k print) Kit Roll Assembly ..... 53355691  
 3sets [1] of PL4.1.2, PL7.1.19, 29

PL5.1 150 Paper Feeder [Illustration]





## PL5.1 150 Paper Feeder [List]

Item	Parts name .....	Part Number
1	150 FEEDER ASSY (with 4-12,14-23,25-35,37-44,46-51)	
2	FDR1 AS SUB 150 A4 (with 4-10,12,14-20,22,25-28,31-35,40-42,46-50)	
3	CHUTE ASSY FDR1 (Reference Only) (with 4-10,14-20,40-42)	
4	SUPPORT NUDGER	
5	HOLDER LEFT	
6	ACTUATOR NO PAPER .....	53355522
7	GEAR IDLER NUDGER	
8	HOLDER RIGHT	
9	SHAFT NUDGER	
10	GEAR NUDGER.....	51251670
11	ROLL ASSY NUDGER *1	
12	ROLL REGI RUBBER	
13	--	
14	COVER ACTUATOR-A4	
15	ACTUATOR A .....	53355396
16	SPRING REGI SNR B	
17	ACTUATOR B .....	53355405
18	SPRING REGI SNR A	
19	CHUTE BTM ASSY	
20	BEARING NUDGER	
21	CLUTCH ASSY PH (J242)	
22	BEARING REGI LEFT	
23	CLUTCH REGI (J243)	
24	--	
25	CHUTE REGI	
26	VARISTER	
27	EARTH PLATE BASE	
28	EARTH PLATE MID	
29	COVER SENSOR	
30	SENSOR REGI (J241)	
31	SPRING REGI	
32	BEARING REGI RIGHT	
33	GEAR REGI RUBBER BLUCK	
34	ROLL REGI METAL	
35	CHUTE EARTH REGI	
36	--	
37	HARNES ASSY TRAY1 (J245-J240,J241,J242,J243,J244)	
38	SENSOR NO PAPER (P240)	
39	HOLDER NO PAPER SENSOR	
40	CHUTE TOP ASSY	
41	SHAFT FEED	
42	CLUTCH ONEWAY NUDGER .....	51402151
43	CLUTCH ONEWAY FEED .....	51402141
44	ROLL ASSY FEED *1	
45	SENSOR ASSY TONER (with 46-50)	
46	SENSOR TONER (J220)	
47	HOLDER-D	
48	SPRING TONER	
49	SPRING TONER BOX	
50	HARNES ASSY TONER 1 (J220-P221)	
51	GEAR REGI METAL WHITE	

\*1: Periodical Replacement parts (per 200k print) Kit Roll Assembly ..... 53355691  
 3sets [1] of PL5.1.11, 44, PL2.1.2

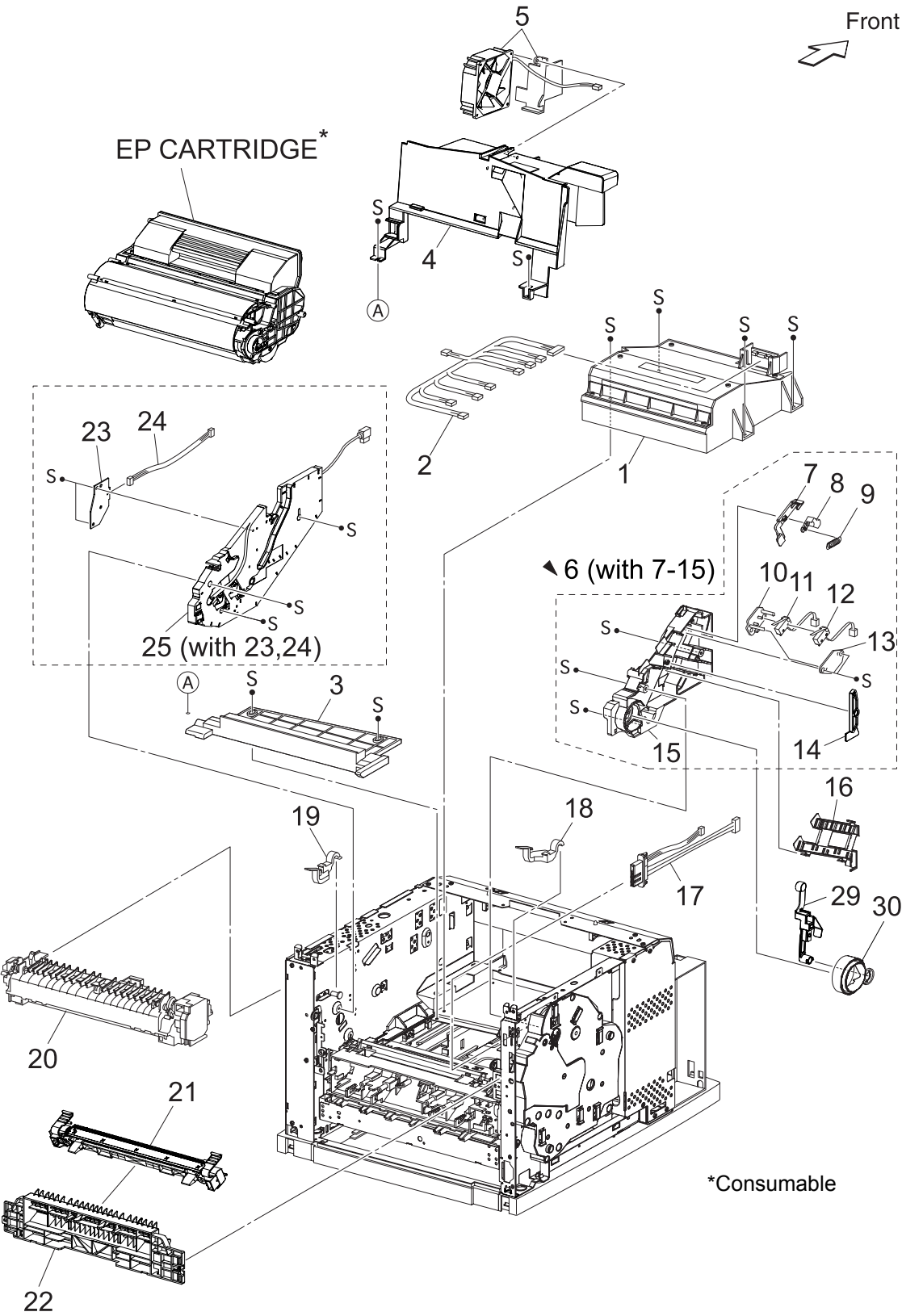


## PL7.1 550 Paper Feeder [List]

Item	Parts name .....	Part Number
1	--	
2	HARNES ASSY LOW1 (J26-P260)	
3	GUIDE TRAY RIGHT	
4	SENSOR LOW PAPER (J260)	
5	ACTUATOR LOW PAPER	
6	PLATE CST LOCK	
7	GUIDE TRAY LEFT (with 8,9)	
8	COVER HARNES SIZE	
9	LOCK CST L	
10	550 FEEDER ASSY (with12-20,22-31,33-39)	
11	--	
12	SUPPORT NUDGER	
13	HOLDER LEFT	
14	ACTUATOR NO PAPER	
15	GEAR IDLER NUDGER	
16	HOLDER RIGHT	
17	SHAFT NUDGER	
18	GEAR NUDGER	
19	ROLL ASSY NUDGER *1	
20	CLUTCH ASSY PH (J247)	
21	CHUTE ASSY FDR2 (Reference Only) (with 12-18,22-27)	
22	BEARING NUDGER	
23	COVER ACTUATOR	
24	CHUTE BTM ASSY	
25	CHUTE TOP ASSY	
26	SHAFT FEED	
27	CLUTCH ONEWAY NUDGER	
28	CLUTCH ONEWAY FEED	
29	ROLL ASSY FEED *1	
30	HOLDER PIVOT LEFT	
31	SPRING EARTH	
32	CHUTE 550 LOWER	
33	CHUTE OUT	
34	HOLDER PIVOT RIGHT	
35	PLATE TIE	
36	HARNES ASSY TRAY2 (J248-J246,P247)	
37	HOLDER NO PAPER SENSOR	
38	SENSOR NO PAPER (P246)	
39	CLAMP-10V0	
40	STOPPER TRAY R	
41	STOPPER TRAY L	

\*1: Periodical Replacement parts (per 200k print) Kit Roll Assembly ..... 53355691  
 3sets [1] of PL7.1.19, 29, PL4.1.2

PL8.1 [Illustration]



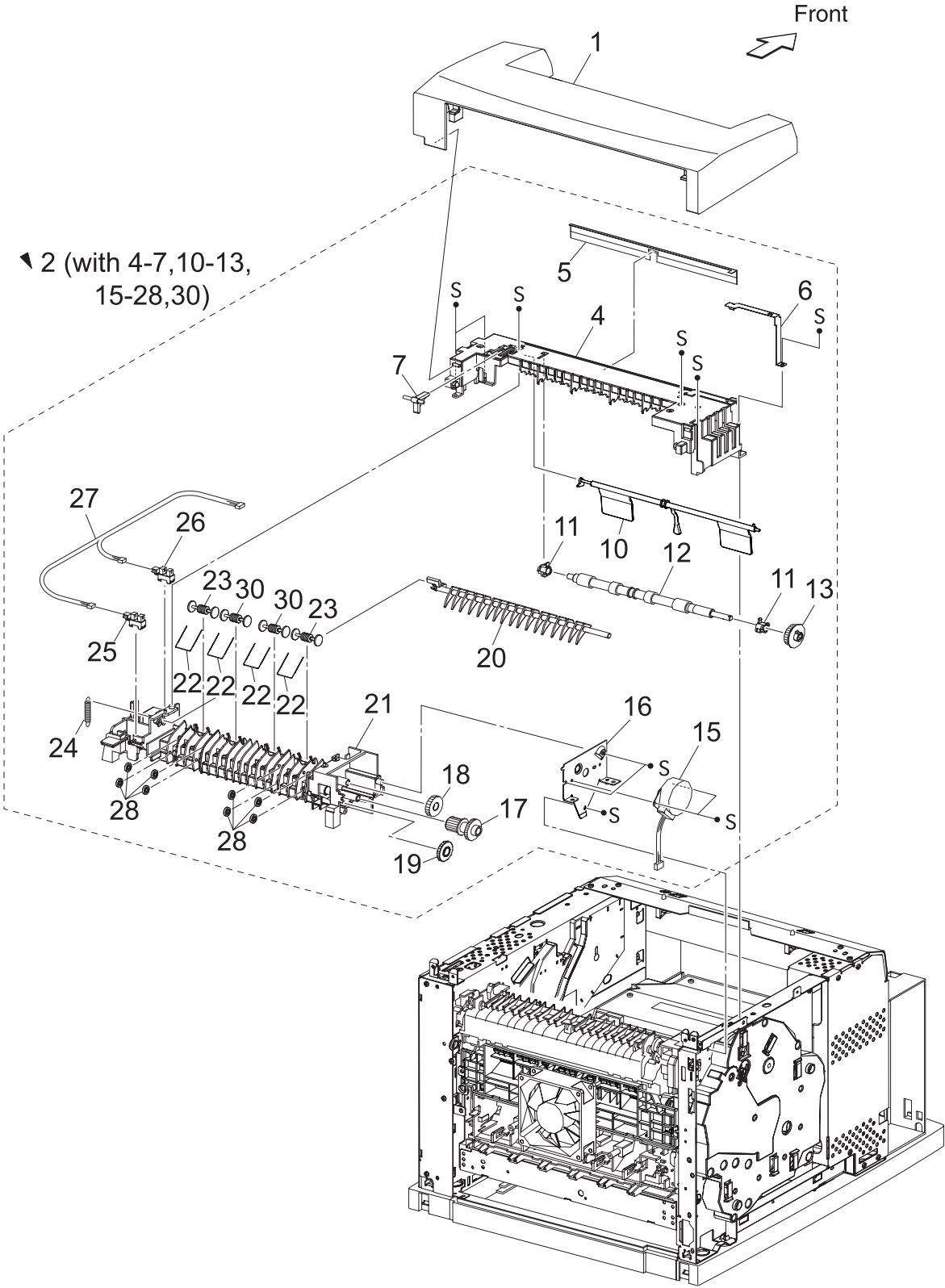
## PL8.1 [List]

Item	Parts name .....	Part Number
1	ROS ASSY (J131,J140,J160,J170) .....	50229750
2	HARNESS ASSY ROS (J13,J14,J16,J17-P131,P140,P141,P160,P170)	
3	SHIELD PLATE ROS	
4	DUCT FRONT	
5	FAN SUB (J270).....	56521461
6	GUIDE ASSY CRU L (with 7-15)	
7	GUIDE SL	
8	SPACER SS	
9	SPRING SL	
10	HOLDER I/L SW1	
11	INTERLOCK S/W 24V (J45)	
12	INTERLOCK S/W 5V	
13	HOLDER I/L SW2	
14	LEVER GUIDE	
15	GUIDE CRU LEFT	
16	COVER GUIDE CRU	
17	HARNESS ASSY FUSER (J4647-J46,J47)	
18	LEVER FUSER LH.....	50812662
19	LEVER FUSER RH .....	50812673
20	FUSER ASSY *1	
	120V .....	50230120
	220V .....	50230130
21	BTR ASSY *2 .....	51251745
22	CHUTE TRANSFER.....	53355242
23	PWBA ASSY ANT (P150)	
24	HARNESS ASSY ANT (J15-J150)	
25	GUIDE ASSY CRU R (J31) (with 23,24)	
26	--	
27	--	
28	--	
29	LEVER LINK	
30	LINK GEAR 3	

\*1: Periodical Replacement parts (per 200k print)

\*2: Periodical Replacement parts (per 200k print)

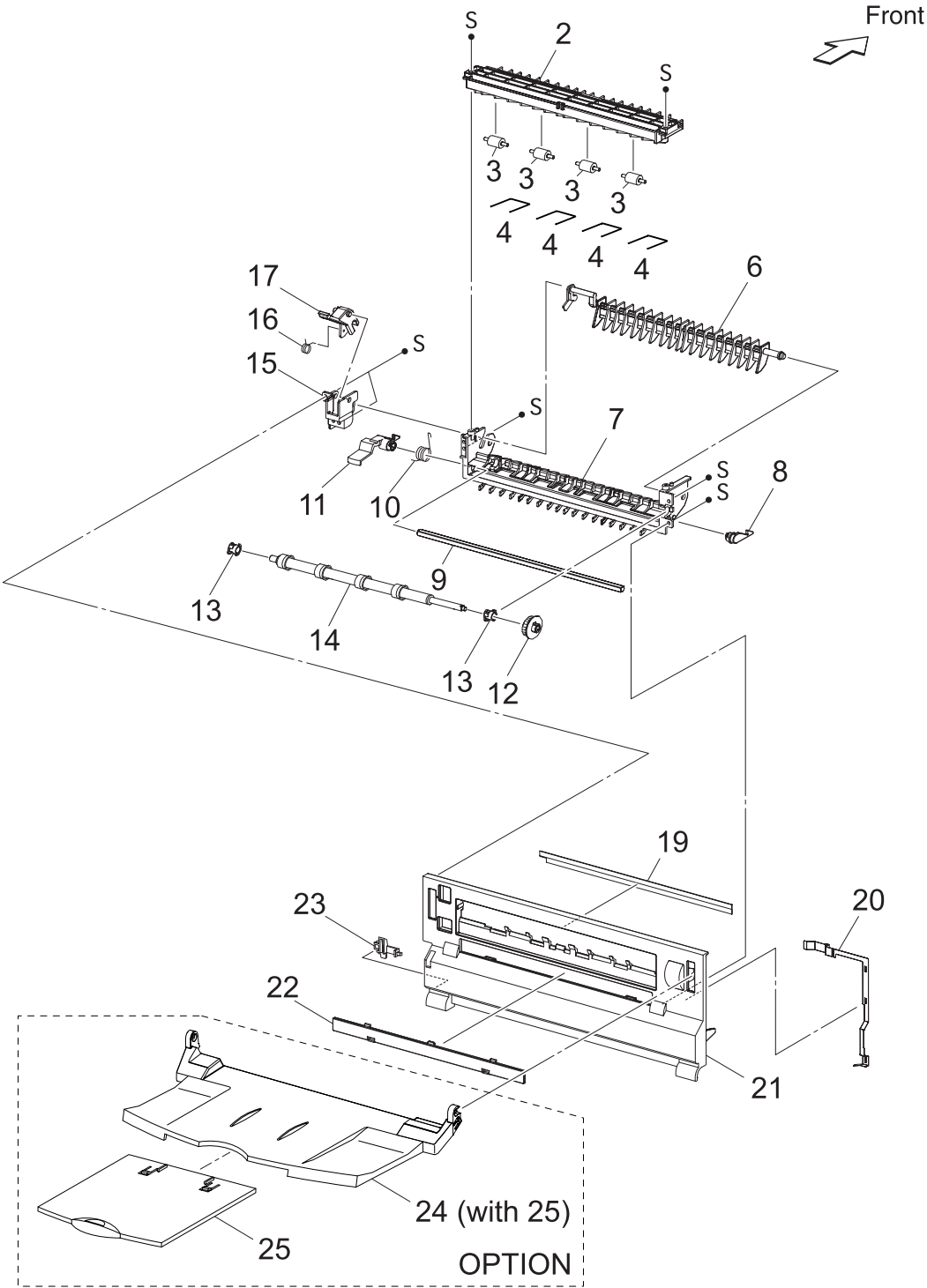
PL10.1 500 Paper Exit (1/2) [Illustration]



## PL10.1 500 Paper Exit (1/2) [List]

Item	Parts name .....	Part Number
1	COVER EXIT 500	
2	500 EXIT ASSY (with4-7,10-13,15-28,30)	
3	--	
4	CHUTE UP EXIT	
5	ELIMINATOR EXIT	
6	EARTH PLATE EXIT	
7	LINK GATE OCT	
8	--	
9	--	
10	ACTUATOR FULL STACK	
11	BEARING EXIT	
12	ROLL EXIT	
13	GEAR 21	
14	--	
15	MOTOR ASSY EXIT (J103)	
16	BRACKET MOTOR EXIT	
17	GEAR 16/49	
18	GEAR 25-2 .....	51251501
19	GEAR 25-1 .....	51251491
20	GATE OCT EXIT	
21	CHUTE LOW EXIT	
22	SPRING PINCH EXIT	
23	ROLL PINCH EXIT	
24	SPRING GATE OCT	
25	SENSOR FACE UP OPEN (P291)	
26	SENSOR FULL STACK (P290)	
27	HARNESS ASSY EXIT SNR (J29-J290,J291)	
28	ROLL EXIT 500	
29	--	
30	ROLL PINCH EXIT OCT	

PL10.2 500 Paper Exit (2/2) & Option Face Up Tray [Illustration]



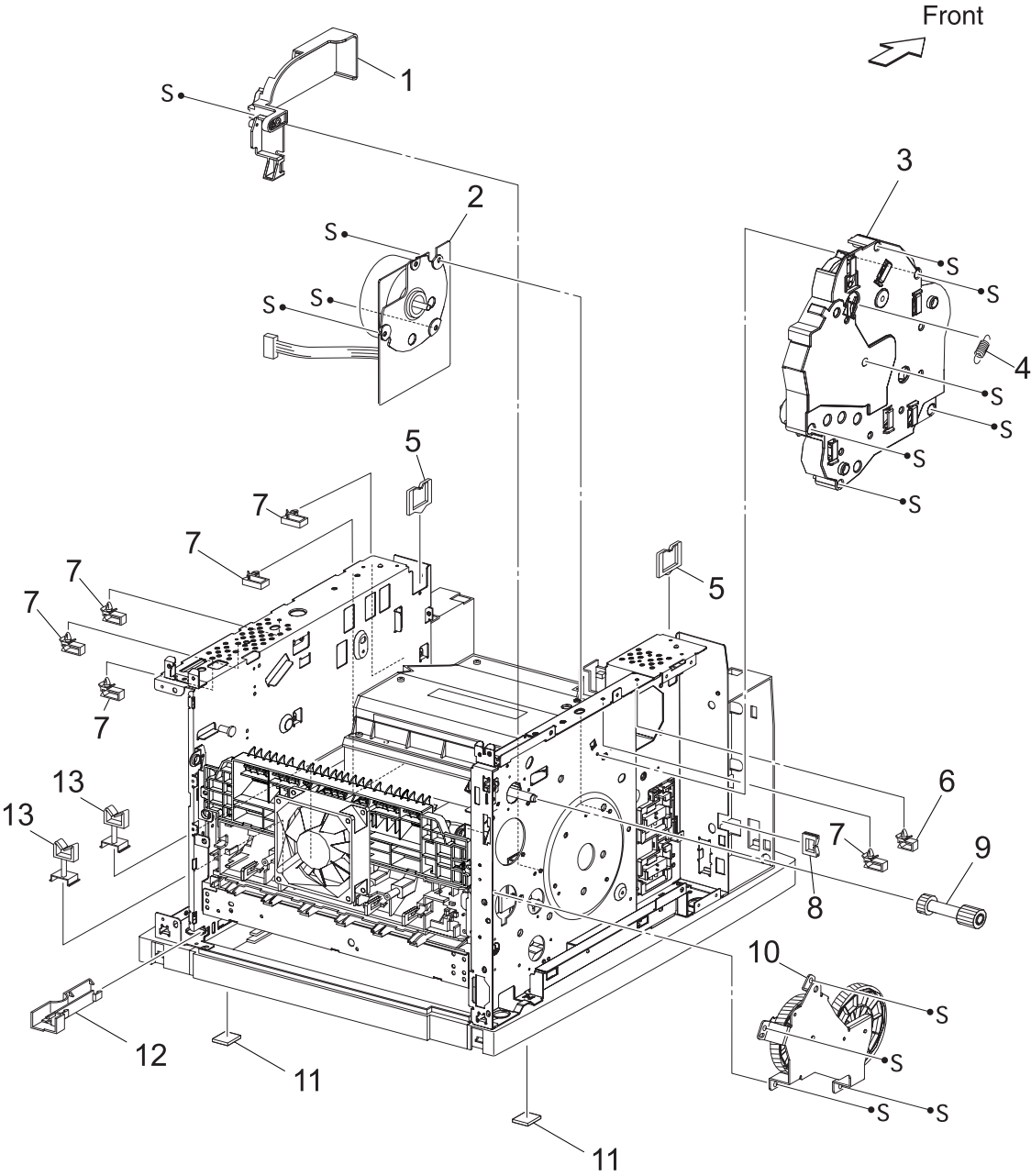


## PL10.2 500 Paper Exit (2/2) &amp; Option Face Up Tray [List]

Item	Parts name
1	--
2	CHUTE UP FU
3	ROLL PINCH FU
4	SPRING PINCH FU
5	--
6	GATE FU
7	CHUTE LOW FU
8	LEVER LATCH LEFT
9	PIPE LATCH FU
10	SPRING LATCH FU
11	LEVER LATCH RIGHT
12	GEAR 21
13	BEARING EXIT
14	ROLL FU
15	LEVER GATE HOLDER
16	SPRING LEVER GATE
17	LEVER GATE FU
18	--
19	ELIMINATOR EXIT FU
20	EARTH PLATE FU
21	COVER REAR 500
22	COVER DUP
23	STOPPER FSR
*24	TRAY FU A4 ASSY (with 25)
*25	TRAY FU SUB A4

\*OPTION

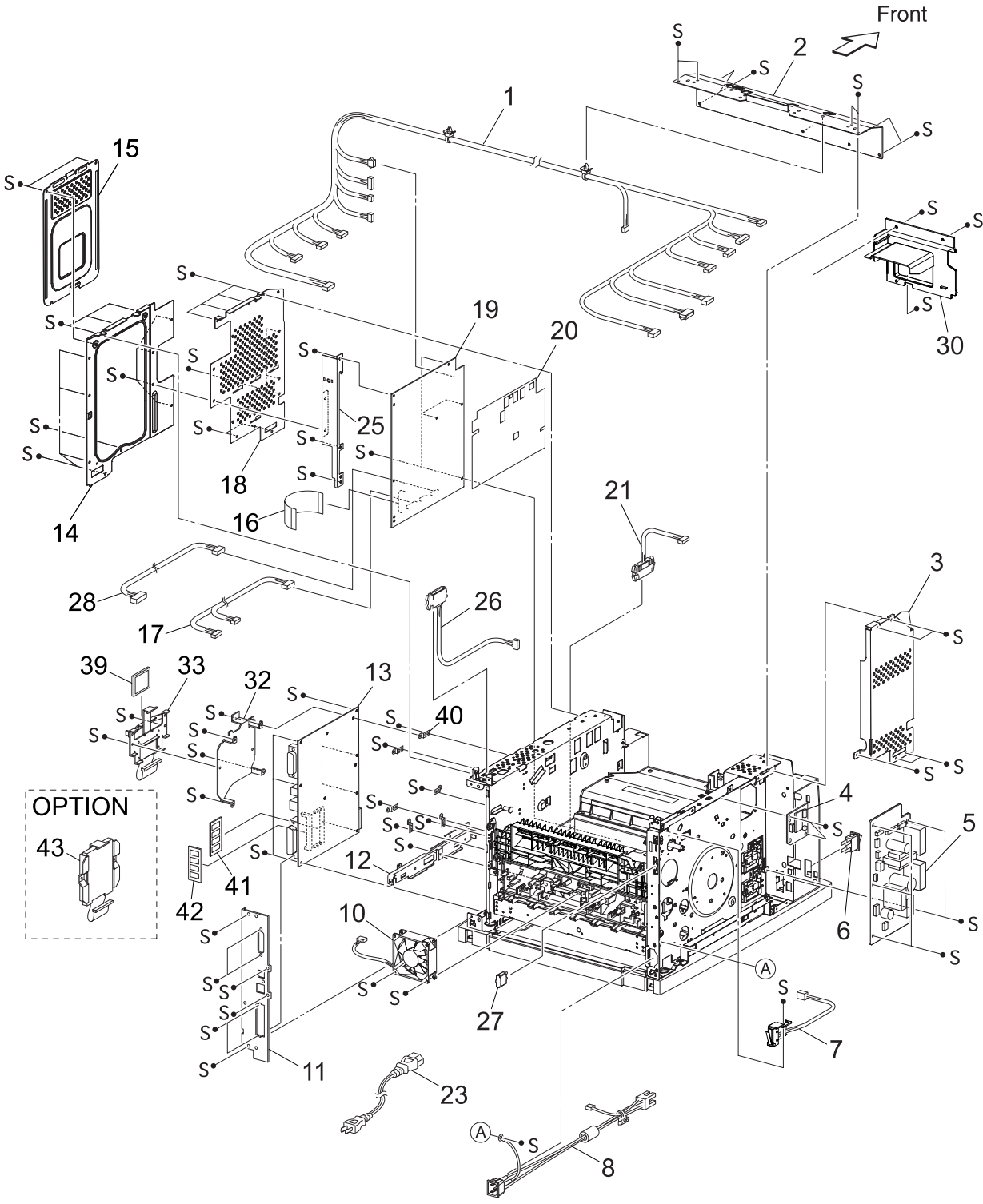
PL11.1 Frame & Drive [Illustration]



PL11.1 Frame & Drive [List]

Item	Parts name .....	Part Number
1	MOTOR COVER	
2	MAIN MOTOR (J43).....	56521622
3	GEAR ASSY HOUSING .....	53355763
4	SPRING RELEASE	
5	CLAMP-EDGE	
6	CLAMP-5V0	
7	CLAMP-10V0	
8	CLAMP-EDGE	
9	GEAR 9 .....	51251353
10	GEAR ASSY PLATE .....	53355753
11	FOOT	
12	GUIDE HARNESS R	
13	CLAMP-RWSH	
14	--	
15	--	
16	--	

PL12.1 Electrical [Illustration]



## PL12.1 Electrical [List]

Item	Parts name .....	Part Number
1	HARNESS ASSY LVPS (J10,J11,J18,J27,CNPOW,J141-J42,J41,J1821,P270,J102,P2750,J40,P142,P144,J411,J400)	
2	PLATE TIE FRONT	
3	SHIELD PLATE LVPS	
4	PWBA EXIT MOTOR	
5	LVPS	
	120V .....	56417720
	220V .....	56417863
6	POWER SWITCH	
7	INTERLOCK S/W REAR (J44)	
8	HARNESS ASSY AC100V/AC200V (J48,J480)	
10	FAN MAIN (J244) .....	56521510
11	PANEL REAR	
12	BRACKET HANDLE R	
13	PWBA ESS .....	55090302
14	SHIELD ASSY ESS	
15	SHIELD ASSY WINDOW	
16	FFC ASSY ESS (P28-CNVD) .....	51029783
17	HARNESS ASSY CHUTE (J24-P245,P248)	
	120V .....	56418230
	220V .....	56418080
18	SHIELD PLATE HVPS	
19	HVPS/MCU	
	120V .....	56418230
	220V .....	56418080
20	MAYLER HVPS	
21	HARNESS ASSY FDR1 (J20-P2083)	
23	POWER CORD	
25	BRACKET SHIELD HVPS	
26	HARNESS ASSY OCT 1 (J30-P3070)	
27	CAP CONNECTOR-DRAWER	
28	HARNESS ASSY TONER 2 (J22-P221)	
30	DUCT HIGH	
32	BRACKET-PWBA HDD	
33	BRACKET ASSY-FLASH	
34	--	
35	--	
36	--	
37	--	
38	--	
39	CF CARD	
40	BRACKET BOARD	
41	MEMORY OPTION	
42	NET OPTION	
43	HDD ASSY (OPTION) .....	70048701

## Chapter 6 Principle of Operation CONTENTS

---

1. Summary of Print Process.....	6 - 1
2. Flow of Print Data.....	6 - 5
3. Driving Force Transmission Path .....	6 - 6
3.1 MAIN MOTOR.....	6 - 6
3.2 MOTOR ASSY EXIT .....	6 - 6
3.3 Gear Layout .....	6 - 7
4. Paper Transport.....	6 - 10
4.1 Paper Transport Path.....	6 - 10
4.2 Layout of Paper Transport Path.....	6 - 11
5. Actions of Main Functional Components .....	6 - 12
5.1 Paper Cassette .....	6 - 12
5.2 Paper Feeder.....	6 - 15
5.3 .....	6 - 17
5.4 Fuser.....	6 - 21
5.5 500 Paper Exit & Option Face Up Tray / 250 Paper Exit.....	6 - 23
5.6 Drive.....	6 - 25
5.7 Electrical .....	6 - 27
6. Control .....	6 - 29
6.1 Control of Paper Size.....	6 - 29
6.1.1 Cassette Feeding (Paper Cassette).....	6 - 29
6.2 ROS Control.....	6 - 30
6.2.1 Rotation of Scanner Motor .....	6 - 30
6.2.2 Warm-up of ROS .....	6 - 30
6.2.3 ROS Reference Value .....	6 - 30
6.3 Fuser Control .....	6 - 31
6.3.1 Fuser Control .....	6 - 31
6.3.2 ON/OFF Control of Halogen Lamp .....	6 - 31
6.3.3 Warm-up of Fuser.....	6 - 31
6.3.4 Fuser Temperature in Ready State.....	6 - 31
6.3.5 Fuser Temperature when Abnormal Temperature (higher or lower) is Detected .....	6 - 31
7. Schematic Diagram of Safety System .....	6 - 32