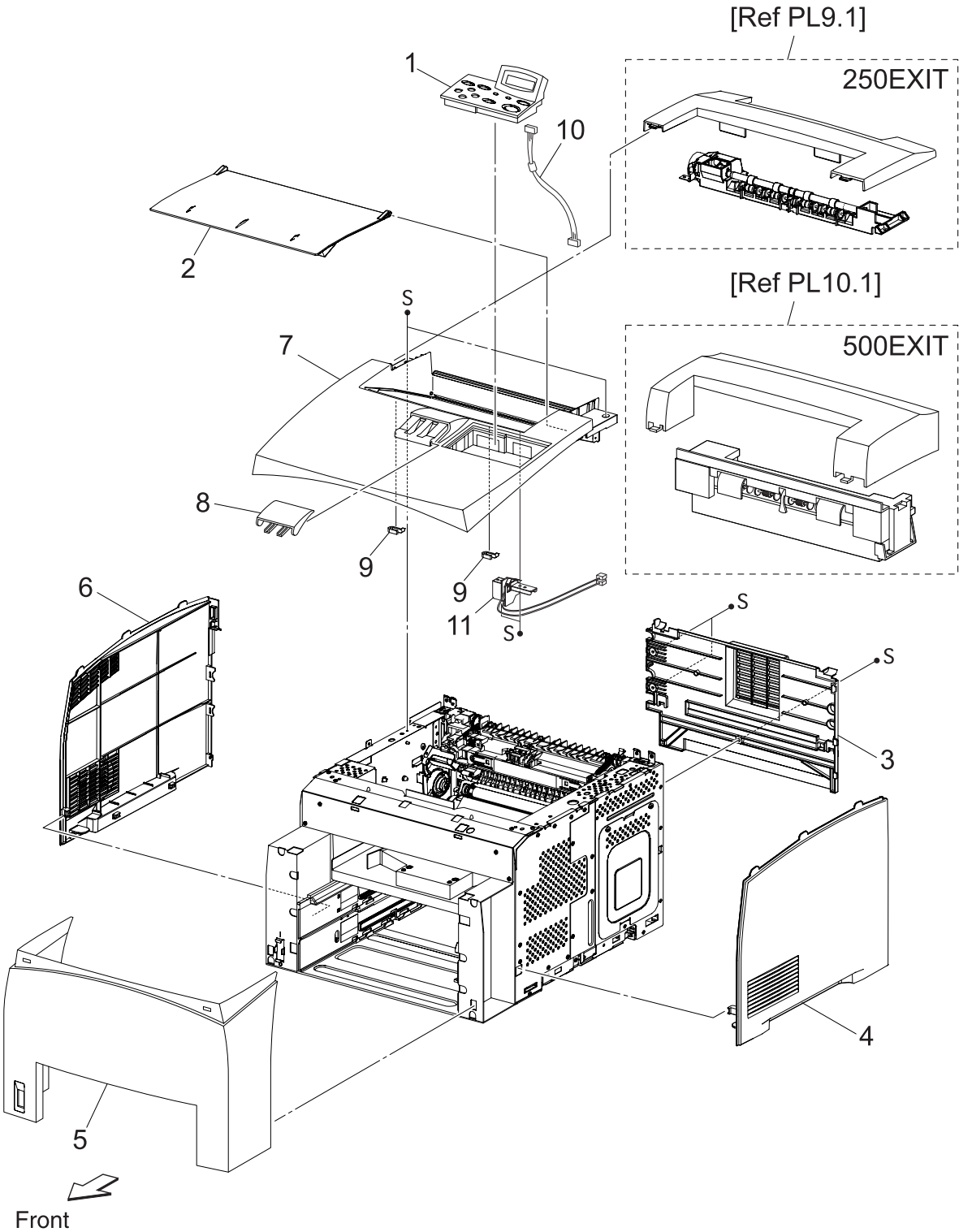


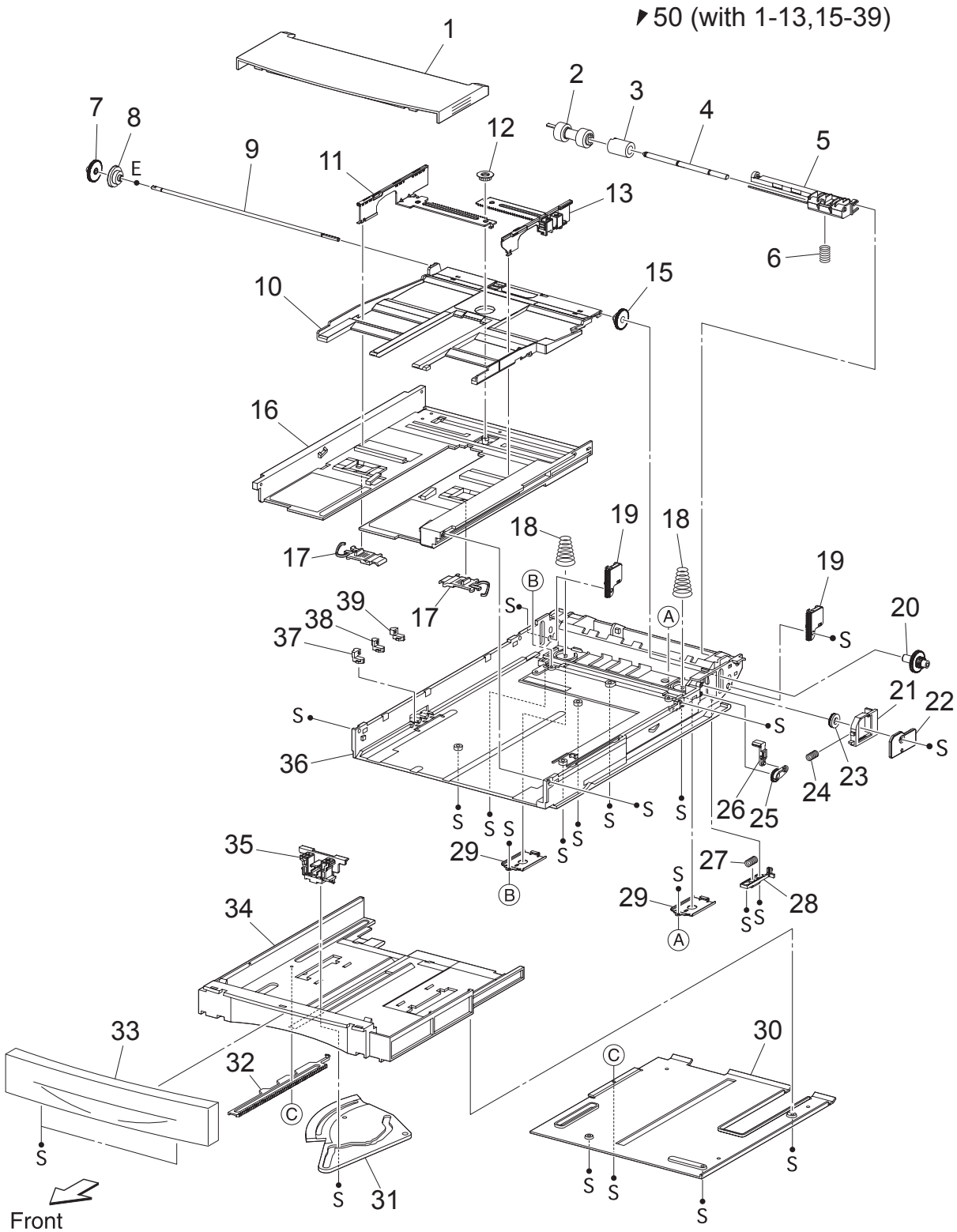
PL1.1 Cover [Illustration]



PL1.1 Cover [List]

Item	Parts name	Part Number
1	OPERATION PANEL (P1).....	50134493
2	COVER OPEN	
3	COVER REAR.....	53085601
4	COVER RIGHT	
5	COVER FRONT	
6	COVER LEFT	
7	COVER TOP	
8	COVER STOPPER	
9	STOPPER OPEN	
10	HARNES ASSY PANEL	
11	SWITCH I/L ASSY (J144,J411)	
12	--	

PL2.1 150 Paper Cassette [Illustration]



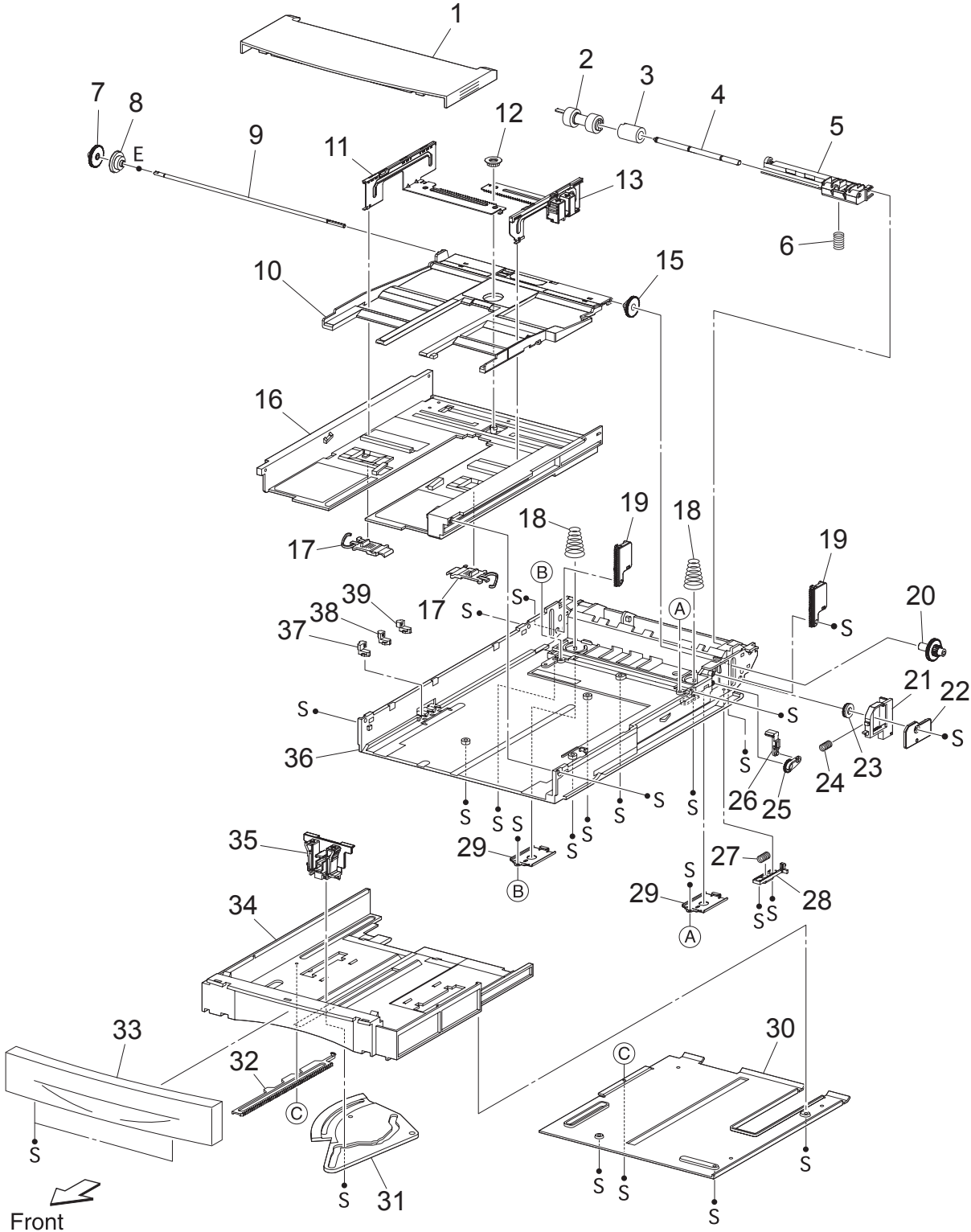
PL2.1 150 Paper Cassette [List]

Item	Parts name	Part Number
1	COVER CST	
2	ROLL ASSY RETARD *1	
3	FRICITION CLUTCH	
4	SHAFT RETARD	
5	HOLDER RETARD	
6	SPRING RETARD	
7	GEAR PB L	
8	GEAR BTM DMP ONEWAY	
9	SHAFT PB	
10	PLATE ASSY BTM	
11	GUIDE ASSY SD L150	
12	GEAR PINION	
13	GUIDE ASSY SD R150	
14	--	
15	GEAR BTM LOCK ONEWAY	
16	HOUSING TOP 150	
17	LOCK EXTENSION	
18	SPRING BTM UP 150	
19	PLATE GEAR LOCK 150	
20	GEAR PB R	
21	RACK BTM LOCK 150	
22	COVER BTM UP	
23	GEAR BTM LOCK PINION	
24	SPRING BTM LOCK	
25	GEAR LEVER LOCK	
26	LEVER BTM LOCK	
27	SPRING STOPPER GEAR	
28	STOPPER GEAR	
29	PLATE SUPPORT BASE	
30	COVER EXTENSION	
31	GEAR SECTOR	
32	RACK SIZE	
33	HANDLE EXTENSION 150	
34	HOUSING EXTENSION 150	
35	GUIDE ASSY END 150.....	51029783
36	HOUSING BASE 150	
37	LINK SW SIZE1-150	
38	LINK SW SIZE2-150	
39	LINK SW SIZE3-150	
40	--	
41	--	
42	--	
50	150 PAPER CASSETTE (<i>includes items 1-13,15-39</i>).....	50229870
51	--	

*1:Periodical Replacement parts (per 200k print) Kit Roll Assembly 53355691
 3 sets [1] of PL2.1.2, PL5.1.11, 44

PL3.1 250 Paper Cassette [Illustration]

▼ 50 (with 1-13,15-39,41,42)



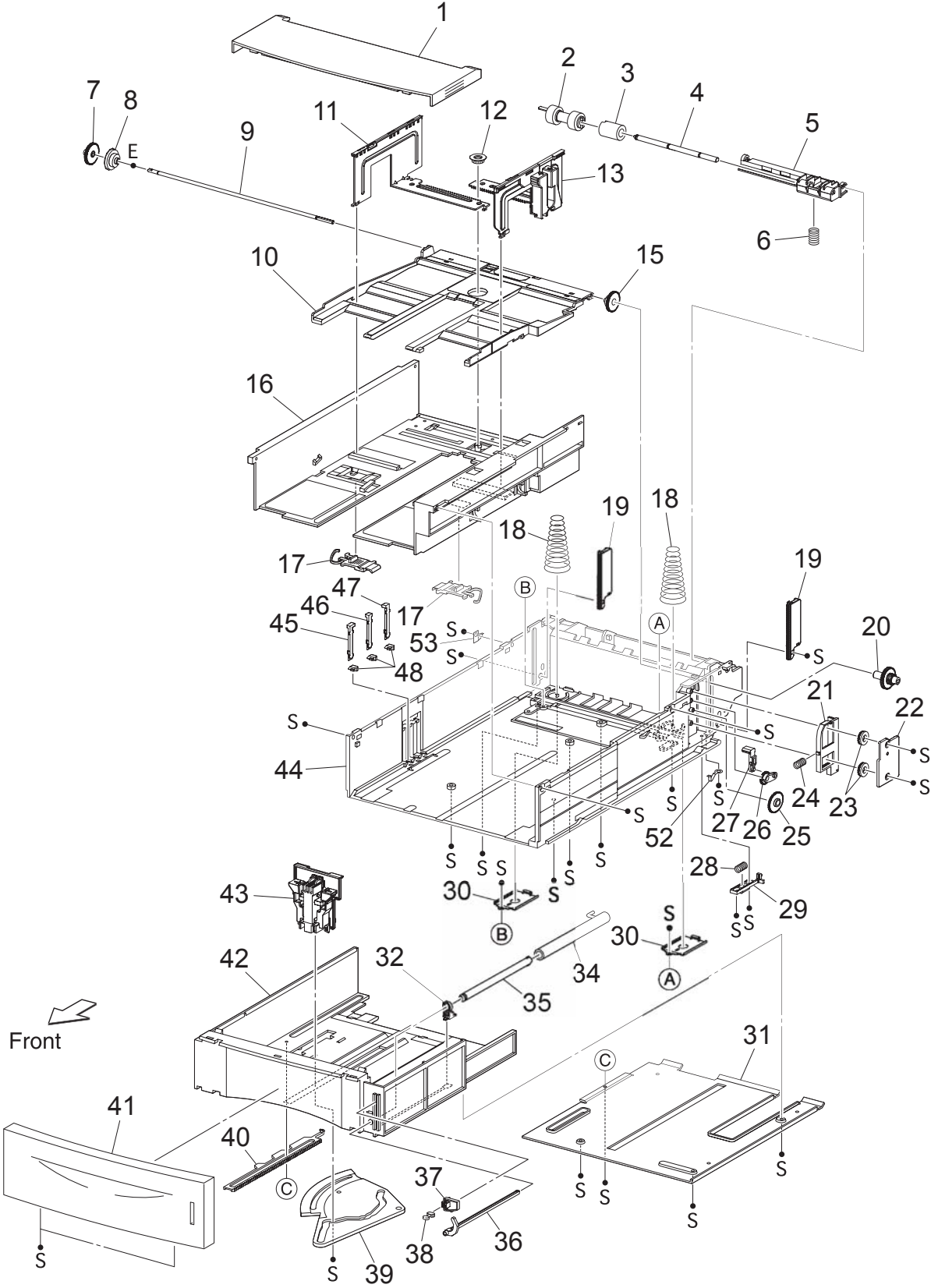
PL3.1 250 Paper Cassette [List]

Item	Parts name	Part Number
1	COVER CST	
2	ROLL ASSY RETARD *1	
3	FRICITION CLUTCH	
4	SHAFT RETARD	
5	HOLDER RETARD	
6	SPRING RETARD	
7	GEAR PB L	
8	GEAR BTM DMP ONEWAY	
9	SHAFT PB	
10	PLATE ASSY BTM	
11	GUIDE ASSY SD L250	
12	GEAR PINION	
13	GUIDE ASSY SD R250	
14	--	
15	GEAR BTM LOCK ONEWAY	
16	HOUSING TOP 250	
17	LOCK EXTENSION	
18	SPRING BTM UP 250	
19	PLATE GEAR LOCK 250	
20	GEAR PB R	
21	RACK BTM LOCK 250	
22	COVER BTM UP	
23	GEAR BTM LOCK PINION	
24	SPRING BTM LOCK	
25	GEAR LEVER LOCK	
26	LEVER BTM LOCK	
27	SPRING STOPPER GEAR	
28	STOPPER GEAR	
29	PLATE SUPPORT	
30	COVER EXTENSION	
31	GEAR SECTOR	
32	RACK SIZE	
33	HANDLE EXTENSION 250	
34	HOUSING EXTENSION 250	
35	GUIDE ASSY END 250	
36	HOUSING BASE 250	
37	LINK SW SIZE1-250	
38	LINK SW SIZE2-250	
39	LINK SW SIZE3-250	
40	--	
41	--	
42	--	
50	250 PAPER CASSETTE (includes items 1-13,15-39,41,42).	50229890
51	--	

*1: Periodical Replacement parts (per 200k print)Kit Roll Assembly 53355691
3 sets [1] of PL3.1.2, PL6.1.20,30

PL4.1 550 Paper Cassette [Illustration]

▼ 50 (with 1-13,15-32,34-48,52,53)

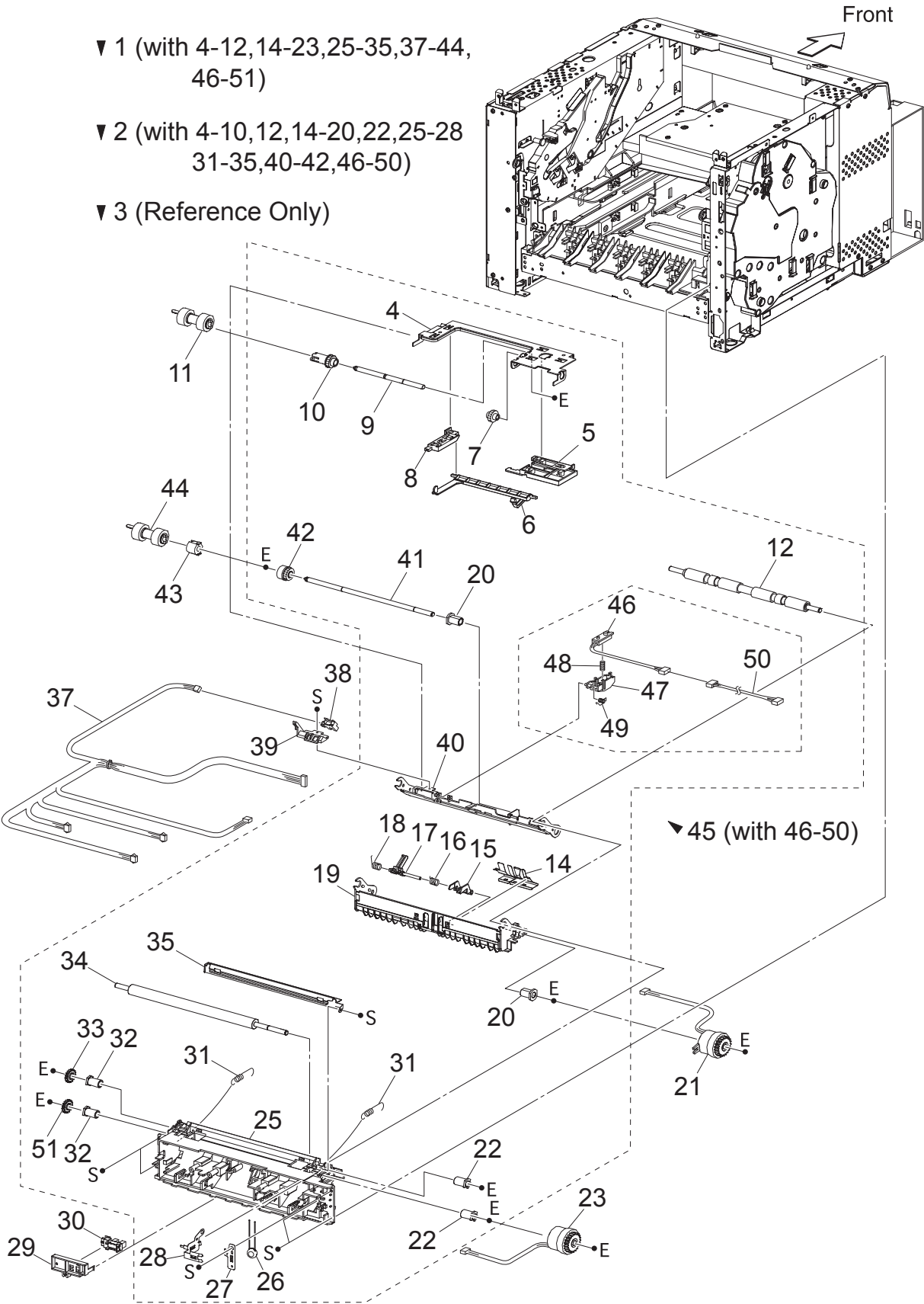


PL4.1 550 Paper Cassette [List]

Item	Parts name	Part Number
1	COVER CST	
2	ROLL ASSY RETARD *1	
3	FRICTION CLUTCH	
4	SHAFT RETARD	
5	HOLDER RETARD	
6	SPRING RETARD	
7	GEAR PB L	
8	GEAR BTM DMP ONEWAY	
9	SHAFT PB	
10	PLATE ASSY BTM	
11	GUIDE ASSY SD L550	
12	GEAR PINION	
13	GUIDE ASSY SD R550	
14	--	
15	GEAR BTM LOCK ONEWAY	
16	HOUSING TOP 550	
17	LOCK EXTENSION	
18	SPRING BTM UP 550	
19	PLATE GEAR LOCK 550	
20	GEAR PB R	
21	RACK BTM LOCK 550	
22	COVER BTM UP 550	
23	GEAR BTM LOCK PINION	
24	SPRING BTM LOCK	
25	GEAR BTM LOCK	
26	GEAR LEVER LOCK	
27	LEVER BTM LOCK	
28	SPRING STOPPER GEAR	
29	STOPPER GEAR	
30	PLATE SUPPORT	
31	COVER EXTENSION	
32	SUPPORT GUIDE IND	
33	--	
34	GUIDE INDICATOR 1	
35	GUIDE INDICATOR 2	
36	GUIDE INDICATOR 3	
37	LOW INDICATOR	
38	LOW IND FRONT	
39	GEAR SECTOR	
40	RACK SIZE	
41	HANDLE EXTENSION 550	
42	HOUSING EXTENSION 550	
43	GUIDE ASSY END 550	
44	HOUSING BASE 550	
45	LINK SW SIZE1-550	
46	LINK SW SIZE2-550	
47	LINK SW SIZE3-550	
48	LINK SW SIZE LOW	
49	--	
50	550 PAPER CASSETTE (items 1-13,15-32,34-48,52,53).....	50229930
51	--	
52	STOPPER BASE R	
53	STOPPER BASE L	

*1:Periodical Replacement parts (per 200k print)Kit Roll Assembly 53355691
3 sets [1] of PL4.1.2, PL7.1.19, 29

PL5.1 150 Paper Feeder [Illustration]

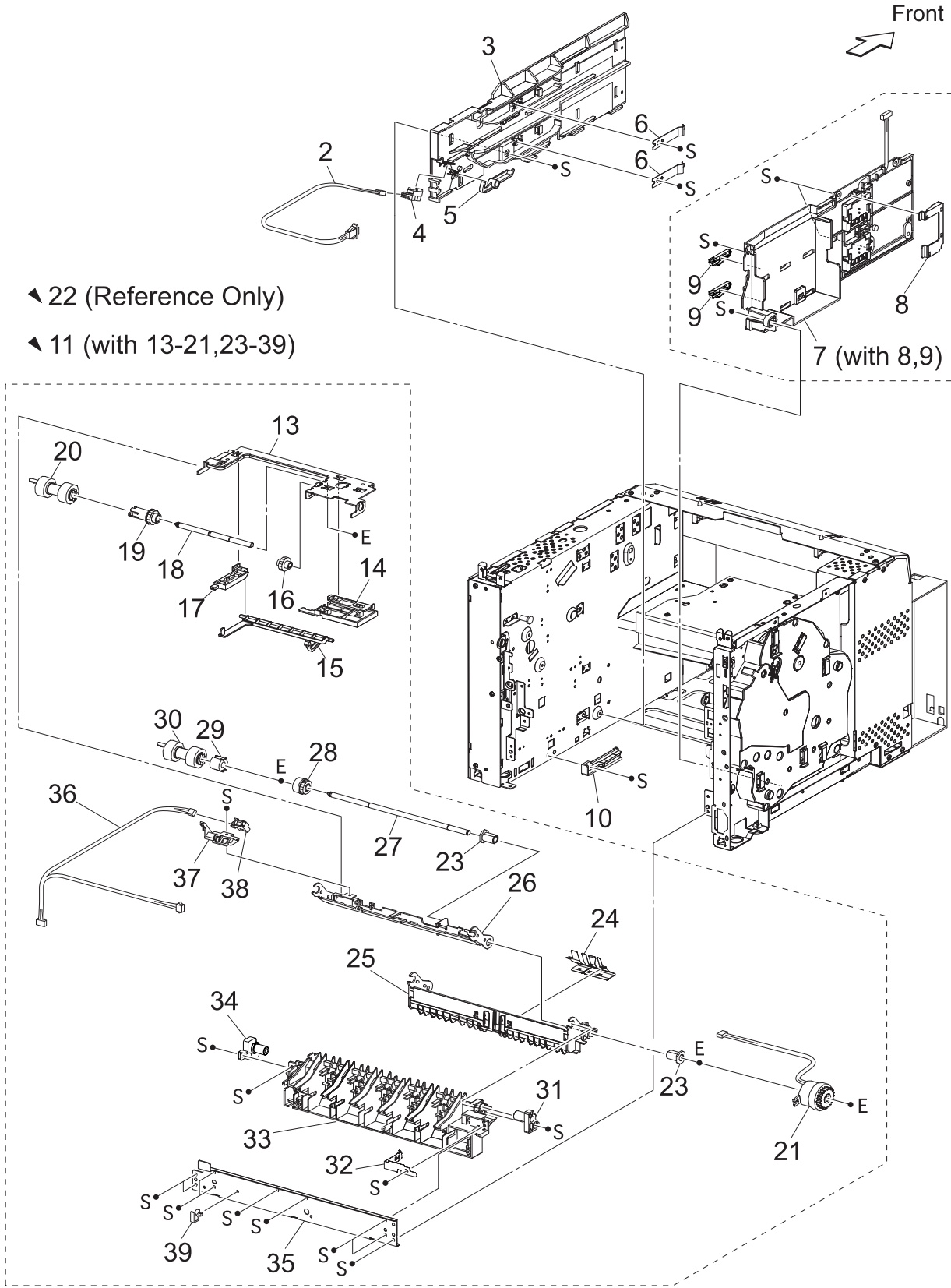


PL5.1 150 Paper Feeder [List]

Item	Parts name	Part Number
1	150 FEEDER ASSY (with 4-12,14-23,25-35,37-44,46-51)	50229585
2	FDR1 AS SUB 150 A4 (with 4-10,12,14-20,22,25-28,31-35,40-42,46-50)	
3	CHUTE ASSY FDR1 (Reference Only) (with 4-10,14-20,40-42)	
4	SUPPORT NUDGER	
5	HOLDER LEFT	
6	ACTUATOR NO PAPER	53355522
7	GEAR IDLER NUDGER	
8	HOLDER RIGHT	
9	SHAFT NUDGER	
10	GEAR NUDGER.....	51251670
11	ROLL ASSY NUDGER *1	
12	ROLL REGI RUBBER	
13	--	
14	COVER ACTUATOR-A4	
15	ACTUATOR A	53355396
16	SPRING REGI SNR B	
17	ACTUATOR B	53355405
18	SPRING REGI SNR A	
19	CHUTE BTM ASSY	
20	BEARING NUDGER	
21	CLUTCH ASSY PH (J242).....	51402211
22	BEARING REGI LEFT	
23	CLUTCH REGI (J243)	
24	--	
25	CHUTE REGI	
26	VARISTER	
27	EARTH PLATE BASE	
28	EARTH PLATE MID	
29	COVER SENSOR	
30	SENSOR REGI (J241)	
31	SPRING REGI	
32	BEARING REGI RIGHT	
33	GEAR REGI RUBBER BLACK	
34	ROLL REGI METAL	
35	CHUTE EARTH REGI	
36	--	
37	HARNES ASSY TRAY1 (J245-J240,J241,J242,J243,J244)	
38	SENSOR NO PAPER (P240)	
39	HOLDER NO PAPER SENSOR	
40	CHUTE TOP ASSY	
41	SHAFT FEED	
42	CLUTCH ONEWAY NUDGER	51402151
43	CLUTCH ONEWAY FEED	51402141
44	ROLL ASSY FEED *1	
45	SENSOR ASSY TONER (with 46-50)	
46	SENSOR TONER (J220)	
47	HOLDER-D	
48	SPRING TONER	
49	SPRING TONER BOX	
50	HARNES ASSY TONER 1 (J220-P221)	
51	GEAR REGI METAL WHITE	

*1: Periodical Replacement parts (per 200k print)Kit Roll Assembly 53355691
 3 sets [1] of PL5.1.11, 44, PL2.12

PL6.1 250 Paper Feeder [Illustration]

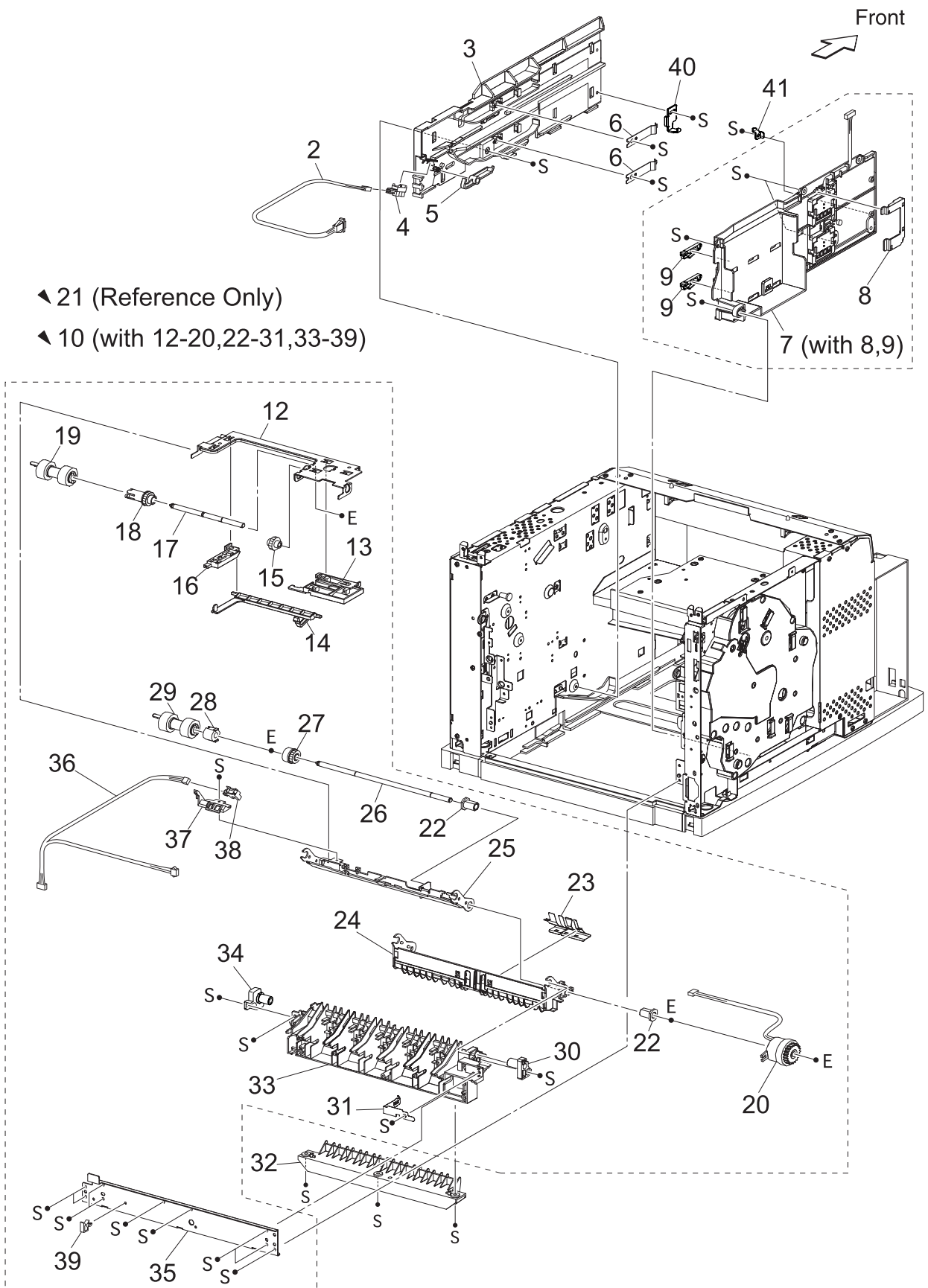


PL6.1 250 Paper Feeder [List]

Item	Parts name	Part Number
1	--	
2	HARNESS ASSY LOW1 (J26-P260)	
3	GUIDE TRAY RIGHT	
4	SENSOR LOW PAPER (J260)	
5	ACTUATOR LOW PAPER	
6	PLATE CST LOCK	
7	GUIDE TRAY LEFT (with 8,9)	
8	COVER HARNESS SIZE	
9	LOCK CST L	
10	GUIDE TRAY LOWER	
11	250 FEEDER ASSY (with13-21,23-39)	50229664
12	--	
13	SUPPORT NUDGER	
14	HOLDER LEFT	
15	ACTUATOR NO PAPER	
16	GEAR IDLER NUDGER	
17	HOLDER RIGHT	
18	SHAFT NUDGER	
19	GEAR NUDGER	
20	ROLL ASSY NUDGER *1	
21	CLUTCH ASSY PH (J247)	
22	CHUTE ASSY FDR2 (Reference Only) (with 13-19,23-28)	
23	BEARING NUDGER	
24	COVER ACTUATOR	
25	CHUTE BTM ASSY	
26	CHUTE TOP ASSY	
27	SHAFT FEED	
28	CLUTCH ONEWAY NUDGER	
29	CLUTCH ONEWAY FEED	
30	ROLL ASSY FEED *1	
31	HOLDER PIVOT LEFT	
32	SPRING EARTH	
33	CHUTE OUT	
34	HOLDER PIVOT RIGHT	
35	PLATE TIE	
36	HARNESS ASSY TRAY2 (J248-J246,P247)	
37	HOLDER NO PAPER SENSOR	
38	SENSOR NO PAPER (P246)	
39	CLAMP-10V0	
40	--	
41	--	

*1: Periodical Replacement parts (per 200k print) Kit Roll Assembly 53355691
 3sets [1] of PL6.1.20, 30, PL3.1.2

PL7.1 550 Paper Feeder [Illustration]

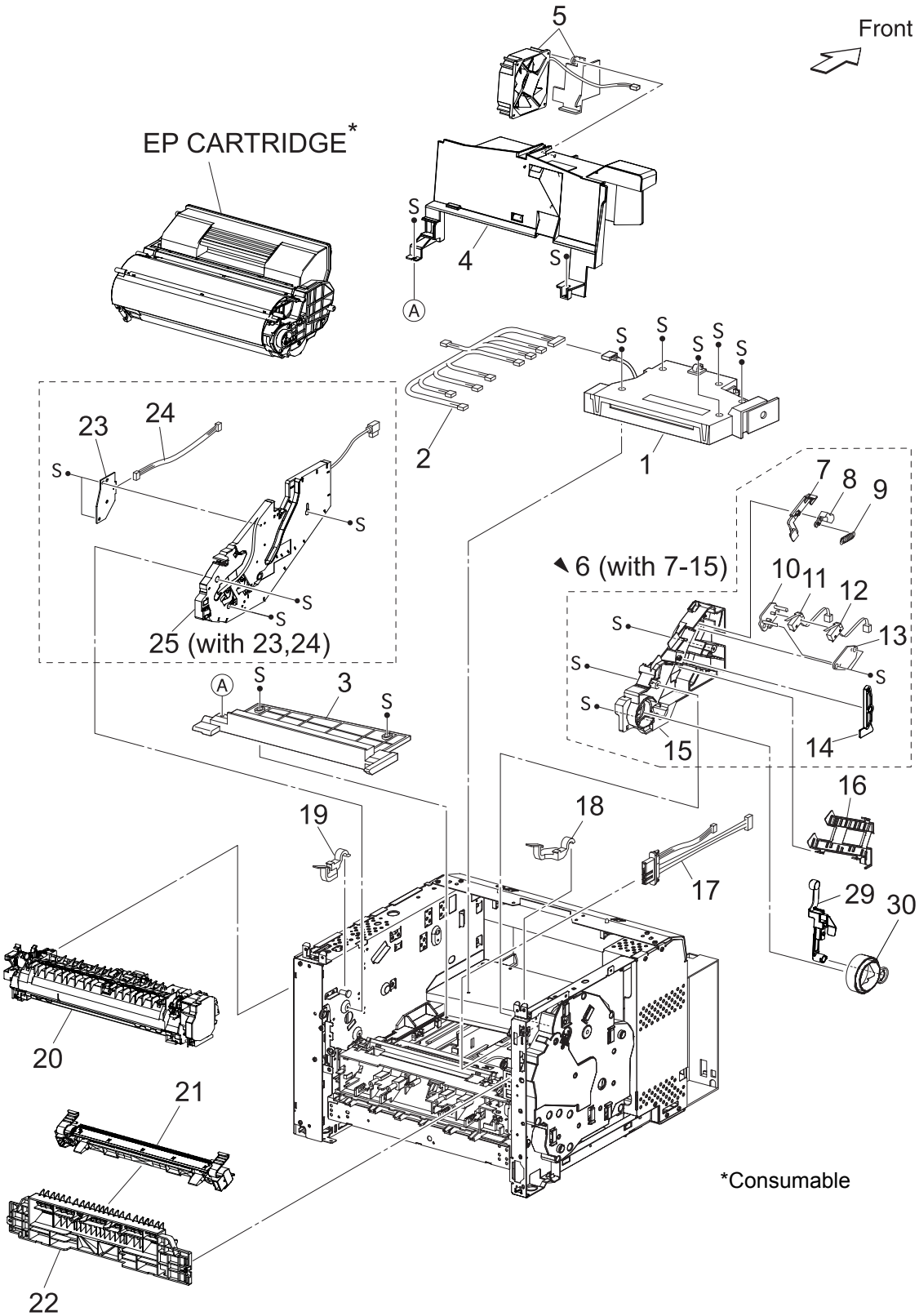


PL7.1 550 Paper Feeder [List]

Item	Parts name
1	--
2	HARNESS ASSY LOW1 (J26-P260)
3	GUIDE TRAY RIGHT
4	SENSOR LOW PAPER (J260)
5	ACTUATOR LOW PAPER
6	PLATE CST LOCK
7	GUIDE TRAY LEFT (with 8,9)
8	COVER HARNESS SIZE
9	LOCK CST L
10	550 FEEDER ASSY (with12-20,22-31,33-39)
11	--
12	SUPPORT NUDGER
13	HOLDER LEFT
14	ACTUATOR NO PAPER
15	GEAR IDLER NUDGER
16	HOLDER RIGHT
17	SHAFT NUDGER
18	GEAR NUDGER
19	ROLL ASSY NUDGER *1
20	CLUTCH ASSY PH (J247)
21	CHUTE ASSY FDR2 (Reference Only) (with 12-18,22-27)
22	BEARING NUDGER
23	COVER ACTUATOR
24	CHUTE BTM ASSY
25	CHUTE TOP ASSY
26	SHAFT FEED
27	CLUTCH ONEWAY NUDGER
28	CLUTCH ONEWAY FEED
29	ROLL ASSY FEED *1
30	HOLDER PIVOT LEFT
31	SPRING EARTH
32	CHUTE 550 LOWER
33	CHUTE OUT
34	HOLDER PIVOT RIGHT
35	PLATE TIE
36	HARNESS ASSY TRAY2 (J248-J246,P247)
37	HOLDER NO PAPER SENSOR
38	SENSOR NO PAPER (P246)
39	CLAMP-10V0
40	STOPPER TRAY R
41	STOPPER TRAY L

*1:Periodical Replacement parts (per 200k print) Kit Roll Assembly 53355691
 3 sets [1] of PL7.1.19, 29, PL4.1.2

PL8.1 [Illustration]



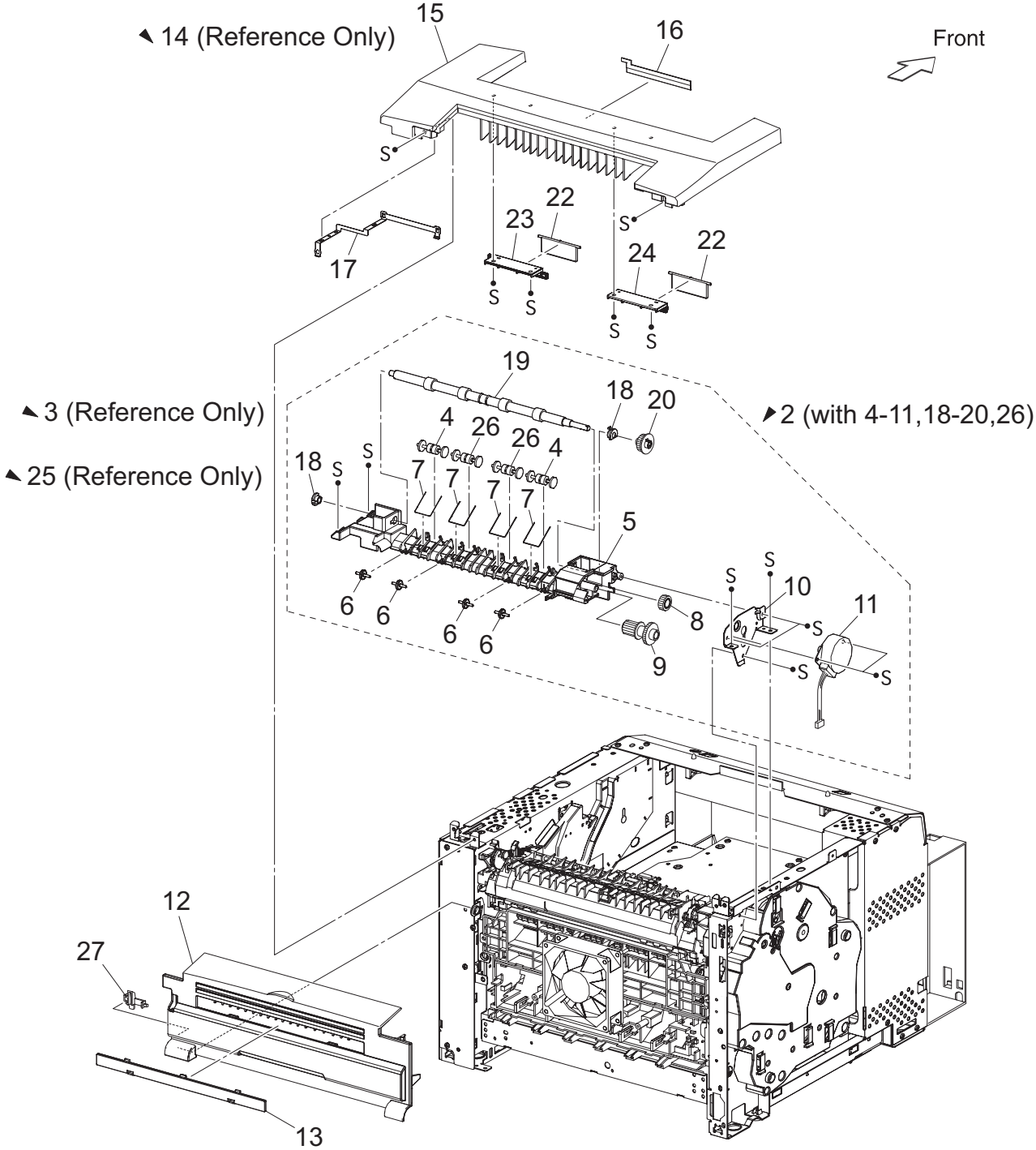
PL8.1 [List]

Item	Parts name	Part Number
1	ROS ASSY (J131,J140,J160,J170)	50229730
2	HARNESS ASSY ROS (J13,J14,J16,J17-P131,P140,P141,P160,P170)	
3	SHIELD PLATE ROS	
4	DUCT FRONT	
5	FAN SUB (J270).....	56521461
6	GUIDE ASSY CRU L (with 7-15)	
7	GUIDE SL	
8	SPACER SS	
9	SPRING SL	
10	HOLDER I/L SW1	
11	INTERLOCK S/W 24V (J45)	
12	INTERLOCK S/W 5V	
13	HOLDER I/L SW2	
14	LEVER GUIDE	
15	GUIDE CRU LEFT	
16	COVER GUIDE CRU	
17	HARNESS ASSY FUSER (J4647-J46,J47)	
18	LEVER FUSER LH.....	50812504
19	LEVER FUSER RH	50812515
20	FUSER ASSY *1	
	110V	50230060
	220V	50230120
21	BTR ASSY *2	51251745
22	CHUTE TRANSFER.....	53355232
23	PWBA ASSY ANT (P150)	
24	HARNESS ASSY ANT (J15-J150)	
25	GUIDE ASSY CRU R (J31) (with 23,24)	
26	--	
27	--	
28	--	
29	LEVER LINK	
30	LINK GEAR 3	

*1: Periodical Replacement parts (per 200k print)

*2: Periodical Replacement parts (per 200k print)

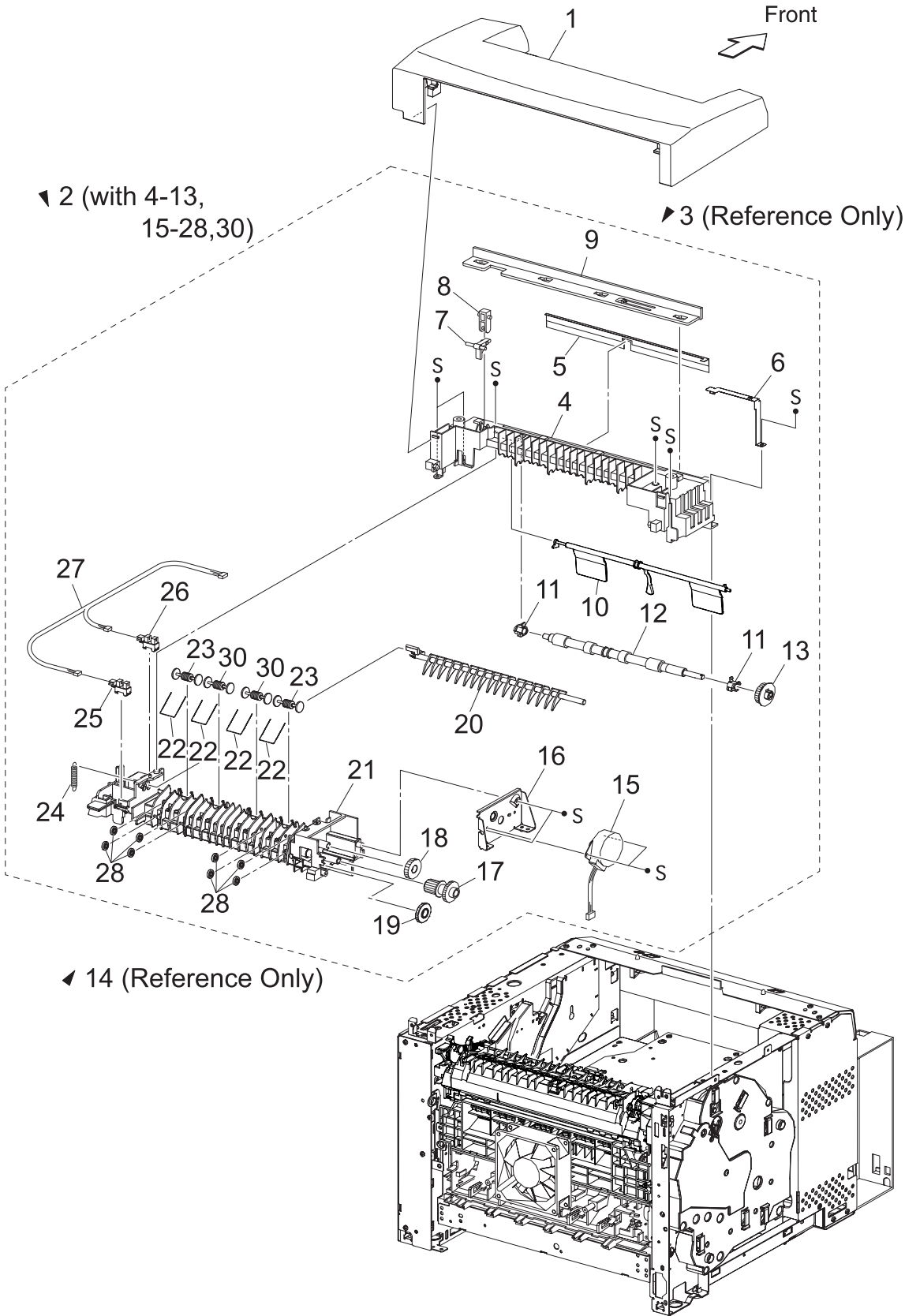
PL9.1 250 Paper Exit [Illustration]



PL9.1 250 Paper Exit [List]

Item	Parts name	Part Number
1	--	
2	CHUTE LW EXT2 ASSY (with 4-11,18-20,26).....	53355964
3	CHUTE ASSY LOW (Reference Only) (with 4-7)	
4	ROLL PINCH EXIT	
5	CHUTE LOWER EXIT 250	
6	ROLL EXIT MID	
7	SPRING PINCH EXIT	
8	GEAR 17	
9	GEAR 16/49	
10	BRACKET MOTOR	
11	MOTOR ASSY EXIT (J103)	
12	COVER REAR 250	
13	COVER DUP	
14	CHUTE ASSY EXIT 250 (Reference Only) (with 15-17,22-24)	
15	CHUTE UPPER EXIT 250	
16	ELIMINATOR EXIT	
17	EARTH PLATE EXIT	
18	BEARING EXIT	
19	ROLL EXIT	
20	GEAR 21	
21	--	
22	FLAPPER EXIT250 A4	
23	BRKT FLAPPER EX25R	
24	BRKT FLAPPER EX25L	
25	CHUTE EXIT ASSY (Reference Only) (with 4-11,26)	
26	ROLL PINCH EXIT OCT	
27	STOPPER FSR	

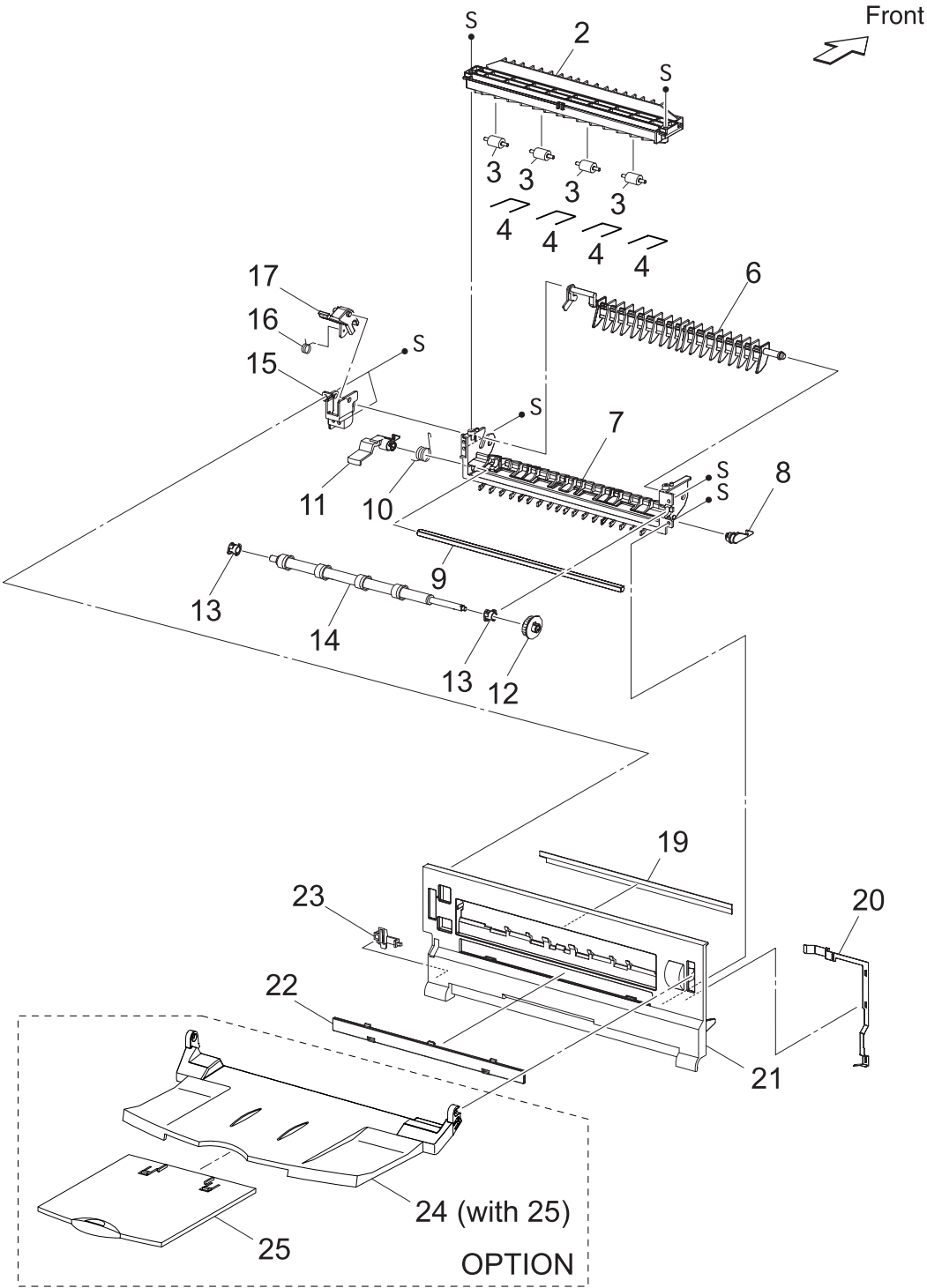
PL10.1 500 Paper Exit (1/2) [Illustration]



PL10.1 500 Paper Exit (1/2) [List]

Item	Parts name
1	COVER EXIT 500
2	500 EXIT ASSY (with4-13,15-28,30)
3	CHUTE ASSY EXIT 500 (Reference Only) (with4-9)
4	CHUTE UP EXIT
5	ELIMINATOR EXIT
6	EARTH PLATE EXIT
7	LINK GATE OCT
8	LINK GEAR OCT JOINT
9	COVER EXIT 500 L
10	ACTUATOR FULL STACK
11	BEARING EXIT
12	ROLL EXIT
13	GEAR 21
14	CHUTE LOW ASSY (Reference Only) (with15-28,30)
15	MOTOR ASSY EXIT (J103)
16	BRACKET MOTOR EXIT
17	GEAR 16/49
18	GEAR 25-2
19	GEAR 25-1
20	GATE OCT EXIT
21	CHUTE LOW EXIT
22	SPRING PINCH EXIT
23	ROLL PINCH EXIT
24	SPRING GATE OCT
25	SENSOR FACE UP OPEN (P291)
26	SENSOR FULL STACK (P290)
27	HARNES ASSY EXIT SNR (J29-J290,J291)
28	ROLL EXIT 500
29	--
30	ROLL PINCH EXIT OCT

PL10.2 500 Paper Exit (2/2) & Option Face Up Tray [Illustration]

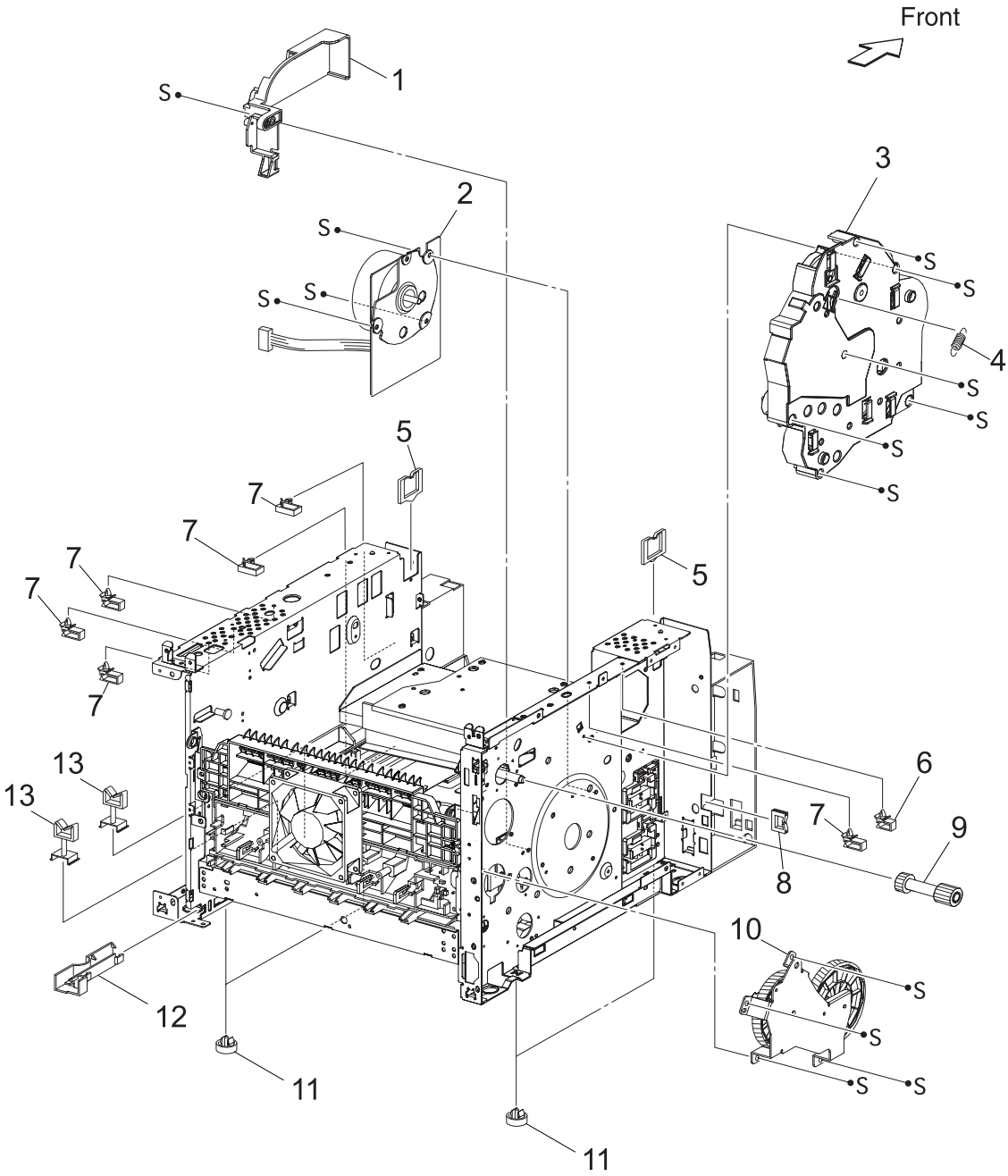


PL10.2 500 Paper Exit (2/2) & Option Face Up Tray [List]

Item	Parts name
1	--
2	CHUTE UP FU
3	ROLL PINCH FU
4	SPRING PINCH FU
5	--
6	GATE FU
7	CHUTE LOW FU
8	LEVER LATCH LEFT
9	PIPE LATCH FU
10	SPRING LATCH FU
11	LEVER LATCH RIGHT
12	GEAR 21
13	BEARING EXIT
14	ROLL FU
15	LEVER GATE HOLDER
16	SPRING LEVER GATE
17	LEVER GATE FU
18	--
19	ELIMINATOR EXIT FU
20	EARTH PLATE FU
21	COVER REAR 500
22	COVER DUP
23	STOPPER FSR
*24	TRAY FU A4 (with 25)
*25	TRAY FU SUB A4

*OPTION

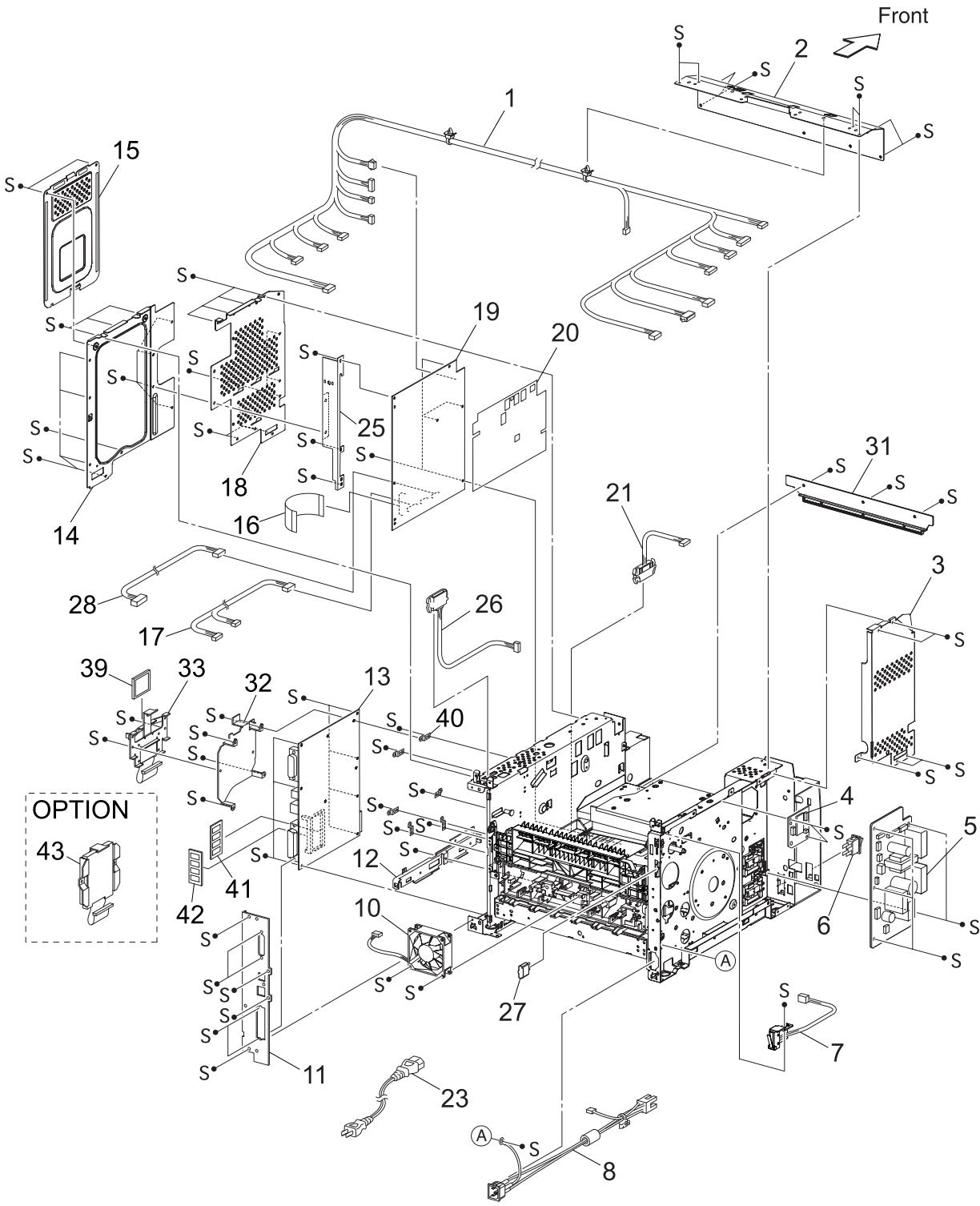
PL11.1 Frame & Drive [Illustration]



PL11.1 Frame & Drive [List]

Item	Parts name	Part Number
1	MOTOR COVER	
2	MAIN MOTOR (J43).....	56521612
3	GEAR ASSY HOUSING	56740540
4	SPRING RELEASE	
5	CLAMP-EDGE	
6	CLAMP-5V0	
7	CLAMP-10V0	
8	CLAMP-EDGE	
9	GEAR 9	51251353
10	GEAR ASSY PLATE	53355843
11	FOOT	
12	GUIDE HARNESS R	
13	CLAMP-RWSH	
14	--	
15	--	
16	--	

PL12.1 Electrical [Illustration]



PL12.1 Electrical [List]

Item	Parts name	Part Number
1	HARNESS ASSY LVPS (J10,J11,J18,J27,CNPOW,J141-J42,J41,J1821,P270,J102,P2750,J40,P142,P144,J411,J400)	
2	PLATE TIE FRONT	
3	SHIELD PLATE LVPS	
4	PWBA EXIT MOTOR	55090291
5	LVPS	
6	POWER SWITCH	
7	INTERLOCK S/W REAR (J44)	
8	HARNESS ASSY AC100V/AC200V (J48,J480)	
9	--	
10	FAN MAIN (J244).....	56521510
11	PANEL REAR	
12	BRACKET HANDLE R	
13	PWBA ESS.....	55090301
14	SHIELD ASSY ESS	
15	SHIELD ASSY WINDOW	
16	FFC ASSY ESS (P28-CNVD)	51029783
17	HARNESS ASSY CHUTE (J24-P245,P248)	
18	SHIELD PLATE HVPS	
19	HVPS/MCU: 120V	56418190
	220V	56417951
20	MAILER HVPS	
21	HARNESS ASSY FDR1 (J20-P2083)	
22	--	
23	POWER CORD	
24	--	
25	BRACKET SHIELD HVPS	
26	HARNESS ASSY OCT 1 (J30-P3070) *1	
27	CAP CONNECTOR-DRAWER	
28	HARNESS ASSY TONER 2 (J22-P221)	
29	--	
30	--	
31	DUCT MID	
32	BRACKET-PWBA HDD	
33	BRACKET ASSY-FLASH	
34	--	
35	--	
36	--	
37	--	
38	--	
39	CF CARD	
40	BRACKET BOARD	
41	MEMORY OPTION	
42	NET OPTION	
43	HDD ASSY (OPTION)	

*1: Only 500 Exit.