

User's Guide

Copyright Information

Copyright © 2010 by Oki Data. All Rights Reserved

B411, B431 User's Guide
P/N 59321901, Revision 1.1
March, 2010

Disclaimer

Every effort has been made to ensure that the information in this document is complete, accurate, and up-to-date. The manufacturer assumes no responsibility for the results of errors beyond its control. The manufacturer also cannot guarantee that changes in software and equipment made by other manufacturers and referred to in this guide will not affect the applicability of the information in it. Mention of software products manufactured by other companies does not necessarily constitute endorsement by the manufacturer .

While all reasonable efforts have been made to make this document as accurate and helpful as possible, we make no warranty of any kind, expressed or implied, as to the accuracy or completeness of the information contained herein.

The most up-to-date drivers and manuals are available from the web site: <http://www.okiprintingsolutions.com>

Trademark Information

Oki is a registered trademarks of Oki Electric Industry Company Ltd.

Apple, Macintosh, Mac and Mac OS are registered trademarks of Apple Computers Inc. Microsoft, MS-DOS, Windows, Windows Vista, Internet Explorer are either registered trademarks or trademarks of Microsoft Corporation in the United States and/or other countries. Adobe, Acrobat, Acrobat Reader, PostScript™ Adobe Systems, Inc. which may be registered in certain jurisdictions. Ethernet® Digital Equipment Corporation. Mozilla and Firefox®/™ Mozilla Foundation.

Other product names and brand names are registered trademarks or trademarks of their proprietors.

Contents

Introduction	7
Printer features	7
About This Manual	9
Abbreviations Used	9
Printer Components	10
Front View	10
Interior View	11
Rear View	12
Operator Panels	13
B411 Operator Panel	14
LED indicators	15
LCD	16
Online button	16
Changing language	17
Configuration Tool	17
Using the Configuration Tool	17
Menu functions	18
Printing menu settings	29
B431 Operator Panel	31
Panel Elements	31
Menu functions	33
Printing menu settings	44
Paper Recommendations	45
Paper and envelope types	45
Transparencies and adhesive labels	46
Postcards	46
Installing paper	47
Paper Tray	47
Automatic feed sequence	52
Multi purpose tray (B431)	53
Manual feed tray (B411)	57
Paper Exit Paths	59
Setting the Paper feed, size and media	61
B411	62
B431	63
Interfaces	66
Printer Drivers	67

Operation	68
Printer settings in Windows.	68
Printing preferences in Windows applications.	68
PCL emulation	69
PS emulation (B431)	72
Setting from Windows control panel	77
Printer settings in Macintosh	82
Auto versus Manual Duplex Printing.	83
Auto Duplexing: Models B411 and B431	83
Manual duplexing: Model B411	83
Manual duplexing: Model B431	84
Duplex printing	84
Overlays and Macros (Windows Only)	86
What are overlays and macros?.	86
Creating PostScript overlays	86
Creating the overlay image	87
Create and download the project	87
Test printing the overlay	88
Defining overlays	89
Printing with PostScript overlays	90
Creating PCL Overlays	91
Creating the overlay image	91
Create and download macros.	91
Test printing the macro.	93
Defining overlays	93
Printing with PCL overlays	94
Consumables and Maintenance	96
Consumable order details	96
Toner cartridge life	96
When to replace the toner cartridge.	96
Replacing the toner cartridge	97
Image drum life.	104
When to replace the image drum.	104
Replacing the image drum.	104
Generating a cleaning page.	111
B411	111
B431	112
Cleaning the LED array.	115
Troubleshooting	117
Status and error messages	117
Paper Jams	117
Input jam	119

Feed jam or exit jam119
Print quality problems128
Paper feed problems131
Software problems.133
Hardware problems133
Options 135
Options order numbers135
Installation procedure135
Specifications 136
General136

Notes, Cautions and Warnings

Note

A note provides additional information to supplement the main text.

CAUTION!

A caution provides additional information which, if ignored, may result in equipment malfunction or damage.

WARNING!

A warning provides additional information which, if ignored, may result in a risk of personal injury.

For the protection of your product, and in order to ensure that you benefit from its full functionality, this model has been designed to operate only with genuine original toner cartridges. Any other toner cartridge may not operate at all, even if it is described as "compatible", and if it does work, your product's performance and print quality may be degraded.

Specifications subject to change without notice. All trademarks acknowledged.

Introduction

Printer features

- Four different models to choose from: B411d, B411dn, B431d, B431dn (d denotes Duplex included and n denotes Network Interface Card included).
- Memory: 64 MB.
- High speed printing:
 - B411: 40 ppm for Letter and 38 ppm for A4.
 - B431: 35 ppm for Letter, 33 ppm for A4.
- Maximum Resolution:
 - B411: 2400 x 600 dpi
 - B431: 1200 x 1200 dpi.
- Paper handling: 250 sheets 20-lb. US Bond (75 g/m²).
- Emulations
 - B411: standard Printer Control Language PCL6, PCLXL, Epson FX, IBM ProPrinter
 - B431: PostScript 3, standard Printer Control Language PCL6, PCLXL, Epson FX, IBM ProPrinter.
- Barcodes: embedded for SIDM emulations.
- Flash DIMM: 1 MB for B411 and 4.5 MB for B431 to allow the storage of additional fonts or bar codes.
- USB 2.0 High speed and Parallel interfaces.
- 10/100 BASE-TX Network: B411dn and B431dn only.
- Multi Purpose tray for B431: to extend the range of media your printer can accommodate; can also be used for manual duplexing.
- Manual Feed tray for B411: to feed single sheets, heavy paper stocks, envelopes, other special media and can also be used as manual duplex.

Additionally, the following optional features are available:

- 64 and 256 MB RAM DIMM: to extend the main memory of your printer and speed up the processing of large files.
- Second paper tray: to increase your printer's paper handling capacity by 530 sheets (20-lb. US Bond, 75 g/m²).

About This Manual

This manual has been written using more than one printer as a model and the illustrations/screenshots reflect this. What you see will be appropriate to the model you are using.

Abbreviations Used

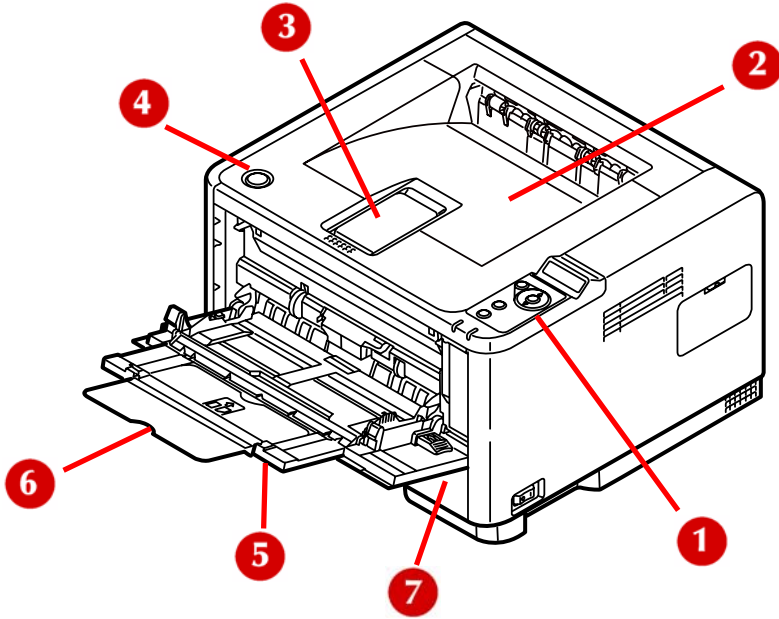
The following abbreviations are used in this manual:

ABBREVIATION	MEANING
Ctrl	Control
dpi	dots per inch
DIMM	Dual In-line Memory Module
d	duplex
n	network card installed
LED	Light Emitting Diode
NIC	Network Interface Card
PCL	Printer Control Language
PS	PostScript (emulation)
PSE	PostScript Emulation
RAM	Random Access Memory

Printer Components

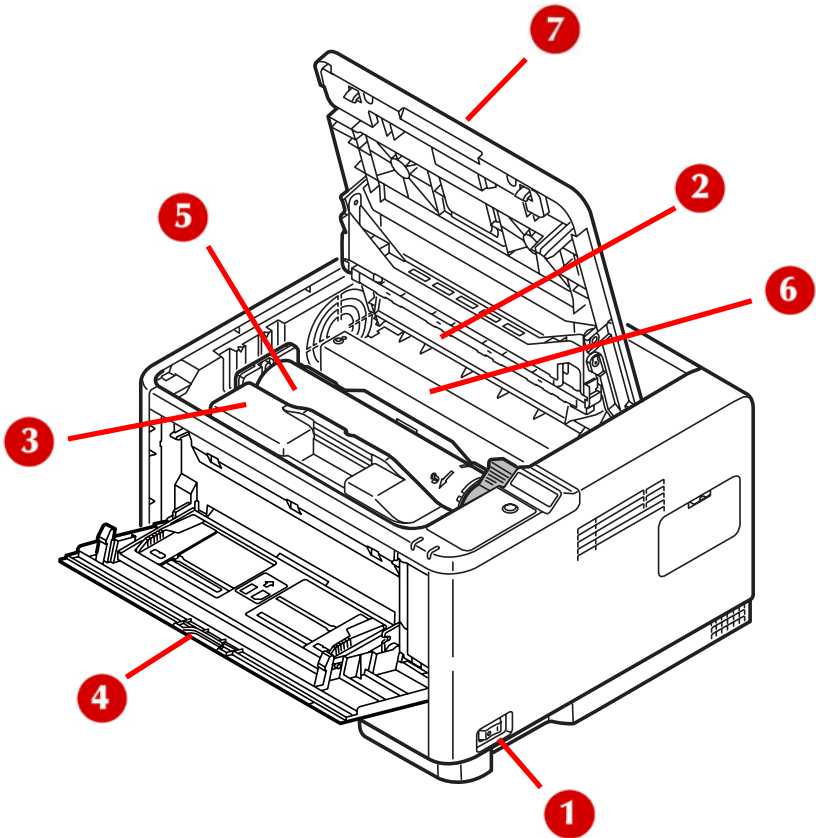
Apart from the Operator panels, which are described in the next chapter, the B411 and B431 printers look similar from the outside.

Front View



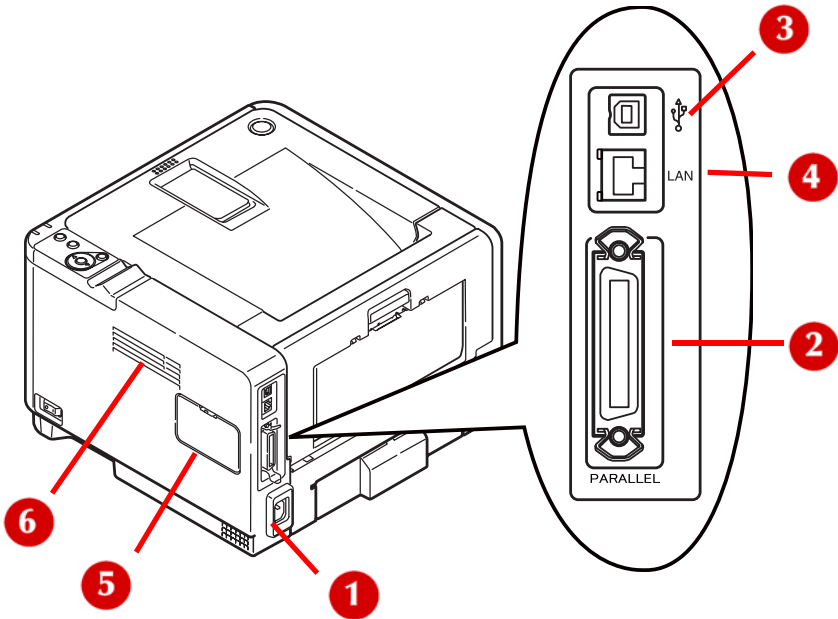
1. Operator panel (B431dn shown)
2. Output Stacker (150 sheets, face down)
3. Output Stacker extension
4. Top cover release button
5. Multi Purpose Tray (only for B431; 50 sheets), shown in open position
6. Multi Purpose Tray extension
7. Paper Tray (250 sheets)

Interior View



1. ON/OFF switch
2. LED array
3. Image drum
4. Manual Feed Tray (only for B411, single sheet feed), (shown in open position)
5. Toner cartridge
6. Fuser unit
7. Top cover

Rear View



1. Power cable connection
2. Parallel interface connection
3. USB interface connection
4. LAN interface connection (only for B411dn and B431dn)
5. Memory panel (to upgrade your printer's memory RAM DIMM)
6. Cooling fan

Operator Panels

This chapter describes the function of the operator panel on your printer. It is useful to describe the Configuration Tool at this point as it provides the B411 with the equivalent of the menu control panel on the B431.)

Note

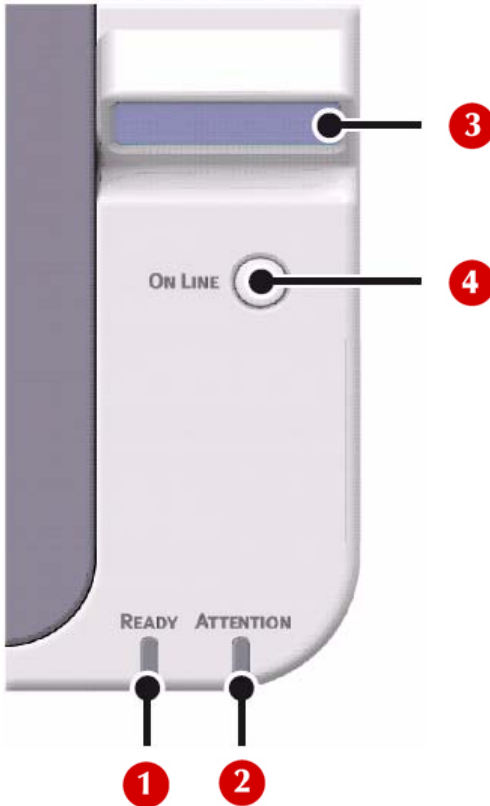
The Configuration Tool was installed as part of the software installation described in the Setup Guide supplied with your printer.

B411 Operator Panel

Note

For model B431, see page 31

The B411 operator panel consists of 2 indicating LEDs, an LCD (3) and an Online (4) button. The LEDs indicate Ready (1) and Attention (2).



LED indicators

The LED indicators show the status of the printer and have three operating conditions as follows:

- Indicator off
- Indicator on
- Flash

Both LED indicators come on momentarily when power is switched on using the main power switch.

Ready LED (green)

- Indicator on - the printer is on-line and ready to receive data.
- Indicator off - the printer is off-line and cannot receive data.

Attention LED (red)

- Indicator on - this indicates a warning, (e.g. low toner).
- Indicator off - this indicates normal condition.

The meaning of the indicator LEDs when they flash (x) is summarized as follows:

STATUS	READY LED	ATTENTION LED	MEANING
Flash	x		The printer is receiving and processing data during printing or the printer is resetting.
		x	There is a printing error, for example, a problem with paper, the cover is open or the paper tray is empty while a job is processing.
	x	x	There is a minor error with the printer, for example, toner is low and the image drum needs to be changed.

LCD

The LCD (3) has two rows of up to 16 alphanumeric digits, displaying print status and error messages.

Online button

The primary functions of the **Online** button (4) are activated by pressing the switch momentarily and releasing. The primary functions are as follows:

- Turning the printer off-line.
- Turning the printer on-line (ready).
- Resuming printing after page overflow.
- Interrupting data processing when the printer is receiving and processing data.
- Resuming data processing.

The secondary functions of the **Online** button are activated after turning the printer off line, then pressing and holding the switch for four seconds before releasing. The secondary functions are as follows:

- Printing the demo and menu pages.
-

Note

Demo and menu pages can also be printed using the printer's Configuration Tool.

- Printing any data held in the buffer after printing has been cancelled.

The other functions of the **Online** button are activated after turning the printer off line then pressing and holding the switch for seven seconds before releasing. The other functions are as follows:

- Printing a cleaning page.

- Resetting the printer and clearing the buffer after printing has been cancelled.
-

Note

*To reset the printer to the default settings of the manufacturer, the **Online** button is pressed and held down while the printer is switched on with the main power switch. The LED indicators blink when the printer has reset to the default settings.*

Changing language

The default language used by your printer for display messages and for report printing is English. If required, this can be changed to:

- Canadian French
 - Latin American Spanish
 - Brazilian Portuguese
-

Note

See the Setup Guide supplied with your printer for information on how to change the display language.

Configuration Tool

The Configuration Tool is used to control and change the various printer settings.

Using the Configuration Tool

Viewing or changing the printer settings are carried out as follows:

With the printer connected to your computer and plugged in:

1. Click **Start > All Programs > Okidata > Configuration Tool** and select the **Configuration Tool**.
2. Click **Tools > Register Device**.
3. Be sure the B411 printer is selected, then click **Register**. Click **Yes** to confirm.

The B411 appears in the left column.

4. Click the B411 icon in the left panel, then click the **Device Setup** tab.
5. Click the **Menu Setting** button.
6. Click **USER MENU** to pull down a list of the menu items.

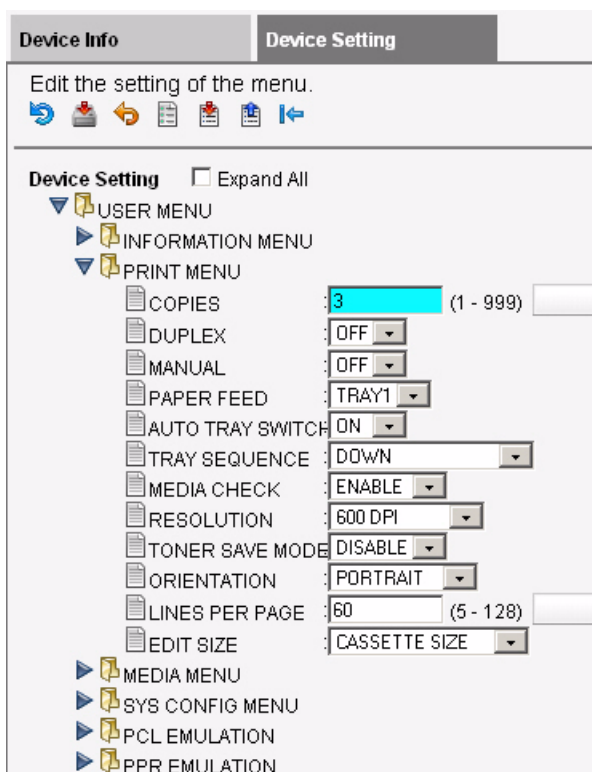
Menu functions

The B411 Printer Menu allows you to view and change the printer's internal settings. You can think of this as the software equivalent of the LCD operator panel.

The settings are grouped into categories or "menus" such as Information Menu or Print Menu.

Some of these settings are similar to those found in your printer driver or application software. The settings that you can change using this software act as the printer's defaults. These can be overridden by the settings in your printer driver or application.

For example, if you have set the number of copies in the Configuration Tool to one, this will be overridden if you select three copies of your document in the printer driver.



Information menu: B411 Configuration Tool

This menu provides a quick method of listing various items stored within the printer.

ITEM	ACTION	REMARKS
PRINT MENU MAP	EXECUTE	
NETWORK	EXECUTE	B411dn only
DEMO1	EXECUTE	
PRINT FILE LIST	EXECUTE	
PRINT PCL FONT	EXECUTE	
PRINT PPR FONT	EXECUTE	
PRINT FX FONT	EXECUTE	
PRINT ERROR LOG	EXECUTE	
USAGE REPORT	EXECUTE	Is displayed only when 'USAGE REPORT' is enabled in the Print Statistics Menu

Print menu: B411 Configuration Tool

This menu provides adjustment of various print job related functions.

ITEM	DEFAULT	REMARKS
COPIES	1	
DUPLEX	OFF	
MANUAL	OFF	
PAPER FEED	TRAY1	
AUTO TRAY SWITCH	ON	
TRAY SEQUENCE	DOWN	
MEDIA CHECK	ENABLE	
RESOLUTION	600DPI	
TONER SAVE MODE	DISABLE	
ORIENTATION	PORTRAIT	
LINES PER PAGE	64 LINES	
EDIT SIZE	CASSETTE SIZE	

Media menu: B411 Configuration Tool

This menu provides adjustment to suit a wide range of print media.

ITEM	DEFAULT	REMARKS
TRAY1 PAPERSIZE	LETTER	
TRAY1 MEDIATYPE	PLAIN	
TRAY1 MEDIAWEIGHT	MEDIUM	
TRAY2 PAPERSIZE	LETTER	When Tray2 is installed
TRAY2 MEDIATYPE	PLAIN	When Tray2 is installed
TRAY2 MEDIAWEIGHT	MEDIUM	When Tray2 is installed
MN PAPERSIZE	LETTER	
MN MEDIATYPE	PLAIN	
MN MEDIAWEIGHT	MEDIUM	
UNIT OF MEASURE	INCH	
X DIMENSION	8.5	
Y DIMENSION	11	

Syst config menu: B411 Configuration Tool

This menu adjusts general printer settings to suit the way you prefer to work.

ITEM	DEFAULT	REMARKS
POW SAVE TIME	1 MIN	
PERSONALITY	AUTO EMULATION	
CLRABLE WARNING	ONLINE	
AUTO CONTINUE	ON	
MANUAL TIMEOUT	60 SEC	
TIMEOUT INJOB	40 SEC	
TIMEOUT LOCAL	40 SEC	
TIMEOUT NET	90 SEC	B411dn only
LOW TONER	CONTINUE	
JAM RECOVERY	ON	
ERROR REPORT	OFF	

PCL Emulation: B411 Configuration Tool

This menu controls the printer's PCL emulation.

ITEM	DEFAULT	REMARKS
FONT SOURCE	RESIDENT	
FONT NO.	0	
FONT PITCH	10.00 CPI	
SYMBOL SET	PC-8	
A4 PRINT WIDTH	78 COLUMN	
WHITE PAGE SKIP	OFF	
CR FUNCTION	CR	
LF FUNCTION	LF	
PRINT MARGIN	NORMAL	
PEN WIDTH ADJUST	ON	
TRAY ID# PCL MNID PCL T0ID PCL T1ID PCL T2ID	2 4 1 5	When Tray2 is installed

PPR Emulation: B411 Configuration Tool

This menu controls the printer's PPR emulation.

ITEM	DEFAULT	REMARKS
CHARACTER PITCH	10 CPI	
FONT CONDENSE	12CPI TO 20CPI	
CHARACTER SET	SET-2	
SYMBOL SET	IBM-437	
LETTER O STYLE	DISABLE	
ZERO CHARACTER	NORMAL	
LINE PITCH	6 LPI	
WHITE PAGE SKIP	OFF	
CR FUNCTION	CR	
LF FUNCTION	LF	
LINE LENGTH	80 COLUMN	
FORM LENGTH	11: 7 INCH	
TOF POSITION	0.0 INCH	
LEFT MARGIN	0.0 INCH	
FIT TO LETTER	ENABLE	
TEXT HEIGHT	SAME	

FX Emulation: B411 Configuration Tool

This menu controls the printer's FX emulation.

ITEM	DEFAULT	REMARKS
CHARACTER PITCH	10 CPI	
CHARACTER SET	SET-2	
SYMBOL SET	IBM-437	
LETTER O STYLE	DISABLE	
ZERO CHARACTER	NORMAL	
LINE PITCH	6 LPI	
WHITE PAGE SKIP	OFF	
CR FUNCTION	CR	
LINE LENGTH	80 COLUMN	
FORM LENGTH	11: 7 INCH	
TOF POSITION	0.0 INCH	
LEFT MARGIN	0.0 INCH	
FIT TO LETTER	ENABLE	
TEXT HEIGHT	SAME	

Parallel menu: B411 Configuration Tool

This menu controls the operation of the printer's parallel data interface.

ITEM	DEFAULT	REMARKS
PARALLEL	ENABLE	
BI-DIRECTION	ENABLE	
ECP	ENABLE	
ACK WIDTH	NARROW	
ACK/BUSY TIMING	ACK IN BUSY	
I-PRIME	3 MICRO SEC	

USB menu: B411 Configuration Tool

This menu controls the operation of the printer's USB data interface.

ITEM	DEFAULT	REMARKS
USB	ENABLE	
SOFT RESET	ENABLE	
SPEED	480 Mbps	
SERIAL NUMBER	ENABLE	

Network menu: B411 Configuration Tool

This menu controls the operation of the printer's 10Base-T/100Base-TX network interface.

NOTE

This is applicable to the B411dn network model.

ITEM	DEFAULT	REMARKS
TCP/IP	ENABLE	
IP VERSION	IPv4	
NETBEUI	ENABLE	
NETWARE	ENABLE	
ETHERTALK	ENABLE	
FRAMETYPE	AUTO	
IP ADDRESS SET	AUTO	
IP ADDRESS	xxx.xxx.xxx.xxx	
SUBNET MASK	xxx.xxx.xxx.xxx	
GATEWAY ADDRESS	xxx.xxx.xxx.xxx	
WEB	ENABLE	
TELNET	DISABLE	
FTP	DISABLE	
SNMP	ENABLE	
NETWORK SCALE	NORMAL	
HUB LINK SETTING	AUTO NEGOTIATE	
FACTORY DEFAULTS	EXECUTE	

Maintenance menu: B411 Configuration Tool

This menu provides access to various printer maintenance functions.

ITEM	DEFAULT	REMARKS
POWER SAVE	ENABLE	
PAPER BLACK SET	0	
DARKNESS	0	
SMR SETTING	0	
BG SETTING	0	

Usage menu: B411 Configuration Tool

This menu is for information only, and provides an indication of total usage of the printer and the expected life left in its consumable items. This is particularly useful if you do not have a full set of replacement consumables to hand and you need to know how soon you will need them.

ITEM	DEFAULT	REMARKS
TRAY1 PAGE COUNT	###	
TRAY2 PAGE COUNT	333	
MN PAGE COUNT	###	
DRUM LIFE	REMAINING%	An indication of the remaining drum life.
TONER	REMAINING%	An indication of how much toner is left in the cartridge.

Printing menu settings

The menu settings can be printed as a menu map as follows.

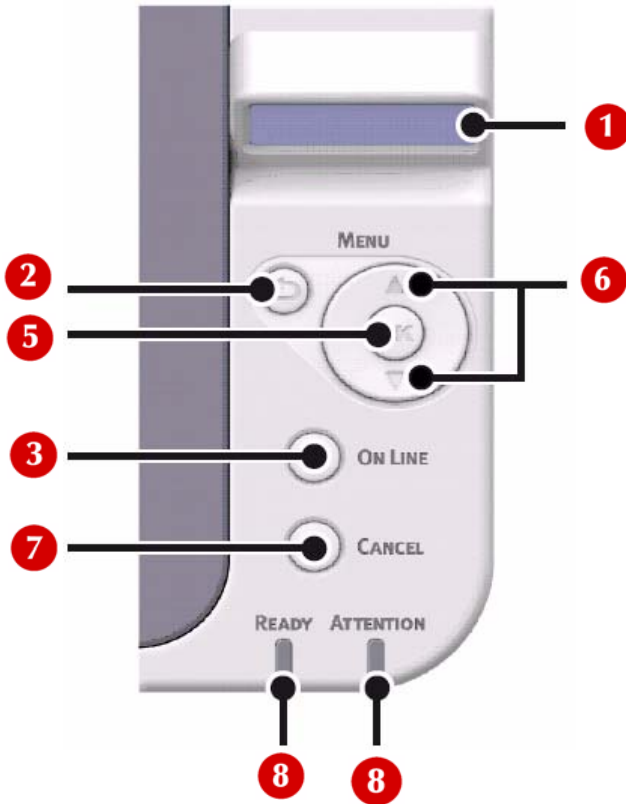
Using the Online button

1. Press the **Online** button to take the printer off-line.
2. Press and hold down the **Online** button for at least four seconds, but less than seven seconds.
3. The printer prints a list of the menu settings and a demo print page. See ["Online button" on page 16](#).

Using the Configuration Tool

1. Select **Start > All Programs > Okidata > Configuration Tool** and select the Configuration Tool.
1. Click the B411 icon in the left panel.
1. Click the **Device Setting** tab.
1. Click the **MENU SETTING** button.
1. Click **USER MENU**.
1. Click **INFORMATION MENU**.
1. Click the **EXECUTE** button beside **PRINT MENU MAP**.
The Menu Map prints.

B431 Operator Panel



The B431 operator panel consists of a menu driven control panel (2 through 6), an LCD display (1) and two LED indicators (7, 8).

Panel Elements

- 1. Liquid crystal display.** (LCD) panel. Two rows of up to 16 alphanumeric digits displaying print status, menu items in menu mode and error messages.
- 2. Menu Scroll Buttons.** Press briefly to enter the **MENU** mode. Press briefly again to select the next menu. Press for more than 2 seconds to scroll through the different menus.

3. **Back button.** Press briefly to return to the previous higher level menu item or exit the menu when in MENU mode.
 4. **OK button.** In the ONLINE or OFFLINE mode: press this briefly to enter the MENU mode. In the MENU mode: press this briefly to select the menu or setting indicated on the LCD.
-

Note

When pressed with DATA displayed (press and hold for five seconds), it forces the printer to print out the remaining data in the printer.

5. **Online button.** Press to switch between ONLINE and OFFLINE status.
Press to exit the menu and displays ONLINE, when in the MENU mode.
-

Note

When pressed in Menu mode, the Online button returns the printer to ONLINE status. Also when there is an error indicating wrong paper size, pressing the Online button forces the printer to print.

6. **Cancel button.** When printing press to cancel a print job. Press to exit the MENU mode and go ONLINE, when in the MENU mode.
7. **Ready indicator (green).** **ON** indicates ready to receive data. **FLASHING** indicates processing data. **OFF** indicates Offline.
8. **Attention indicator (red).** **ON** indicates a warning (e.g. low toner). **FLASHING** indicates an error, (e.g. toner empty). **OFF** indicates normal condition.

The meaning of the indicator LEDs when they flash (x) is summarized as follows:

STATUS	READY LED	ATTENTION LED	MEANING
Flash	x		The printer is receiving and processing data during printing or the printer is resetting.
		x	There is a printing error, for example, a problem with paper, the cover is open or the paper tray is empty while a job is processing.
	x	x	There is a minor error with the printer, for example, toner is low and the image drum needs to be changed.

Menu functions

The Printer Menu allows you to view and change the printer's internal settings.

The settings are grouped into categories or "menus" such as Information Menu or Print Menu.

Some of these settings are similar to those found in your printer driver or application software. The settings that you can change using this software act as the printer's defaults. These can be overridden by the settings in your printer driver or application.

For example, if you have set the number of copies in the printer menu settings to one, this will be overridden if you select three copies of your document in the printer driver.

Factory default settings are shown in the following tables.

Information menu: B431 Printer Menu

This menu provides a quick method of listing various items stored within the printer.

ITEM	ACTION	REMARKS
PRINT MENU MAP	EXECUTE	
NETWORK	EXECUTE	B431dn only
PRINT FILE LIST	EXECUTE	
PRINT PCL FONT	EXECUTE	
PRINT PSE FONT	EXECUTE	
PRINT PPR FONT	EXECUTE	
PRINT FX FONT	EXECUTE	
DEMO 1	EXECUTE	
PRINT ERROR LOG	EXECUTE	
USAGE REPORT	EXECUTE	Is displayed only when 'USAGE REPORT' is enabled in the Print Statistics Menu

Shutdown menu: B431 Printer Menu

This menu shuts down the printer.

ITEM	ACTION	REMARKS
SHUTDOWN START	EXECUTE	

Print menu: B431 Printer Menu

This menu provides adjustment of various print job related functions.

ITEM	DEFAULT	REMARKS
COPIES	1	
DUPLEX	OFF	
PAPER FEED	TRAY1	
AUTO TRAY SWITCH	ON	
TRAY SEQUENCE	DOWN	
MP TRAY USAGE	DO NOT USE	
MEDIA CHECK	ENABLE	
RESOLUTION	1200DPI	
TONER SAVE MODE	DISABLE	
ORIENTATION	PORTRAIT	
LINES PER PAGE	64 LINES	
EDIT SIZE	CASSETTE SIZE	

Media Menu: B431 Printer Menu

This menu provides adjustment to suit a wide range of print media.

ITEM	DEFAULT	REMARKS
TRAY 1 PAPERSIZE	LETTER	
TRAY 1 MEDIATYPE	PLAIN	
TRAY 1 MEDIAWEIGHT	MEDIUM	
TRAY2 PAPERSIZE	LETTER	When tray 2 is installed
TRAY2 MEDIATYPE	PLAIN	When tray 2 is installed
TRAY2 MEDIAWEIGHT	MEDIUM	When tray 2 is installed
MPT PAPERSIZE	LETTER	
MPT MEDIATYPE	PLAIN	
MPT MEDIAWEIGHT	MEDIUM	
UNIT OF MEASURE	INCHES	
X DIMENSION	8.5 INCHES	
Y DIMENSION	11 INCHES	

System configuration menu: B431 Printer Menu

This menu adjusts general printer settings to suit the way you prefer to work.

ITEM	DEFAULT	REMARKS
POW SAVE TIME	1 MIN	
PERSONALITY	AUTO EMULATION	
PARA PS-PROTOCOL	ASCII	
USB PS-PROTOCOL	RAW	
NET PS-PROTOCOL	RAW	B431dn only
CLRABLE WARNING	ONLINE	
AUTO CONTINUE	OFF	
MANUAL TIMEOUT	60 SEC	
TIMEOUT INJOB	40 SEC	
TIMEOUT LOCAL	40 SEC	
TIMEOUT NET	90 SEC	B431dn only
LOW TONER	CONTINUE	
JAM RECOVERY	ON	
ERROR REPORT	OFF	
START UP	OFF	

PCL emulation: B431 Printer Menu

This menu controls the printer's PCL emulation.

ITEM	DEFAULT	REMARKS
FONT SOURCE	RESIDENT	
FONT NO.	I0	
FONT PITCH	10.00 CPI	
SYMBOL SET	PC-8	
A4 PRINT WIDTH	78 COLUMN	
WHITE PAGE SKIP	OFF	
CR FUNCTION	CR	
LF FUNCTION	LF	
PRINT MARGIN	NORMAL	
PEN WIDTH ADJUST	ON	
TRAY ID# PCL T0ID PCL T1ID PCL T2ID	4 1 5	When Tray2 is installed

PPR Emulation: B431 Printer Menu

This menu controls the printer's PPR emulation.

ITEM	DEFAULT	REMARKS
CHARACTER PITCH	10 CPI	
FONT CONDENSE	12 CPI to 20 CPI	
CHARACTER SET	SET-2	
SYMBOL SET	IBM-437	
LETTER O STYLE	DISABLE	
ZERO CHARACTER	NORMAL	
LINE PITCH	6 LPI	
WHITE PAGE SKIP	OFF	
CR FUNCTION	CR	
LF FUNCTION	LF	
LINE LENGTH	80 COLUMN	
FORM LENGTH	11.7 INCH	
TOF POSITION	0.0 INCH	
LEFT MARGIN	0.0 INCH	
FIT TO LETTER	DISABLE	
TEXT HEIGHT	SAME	

FX Emulation: B431 Printer Menu

This menu controls the printer's FX emulation.

ITEM	DEFAULT	REMARKS
CHARACTER PITCH	10 CPI	
CHARACTER SET	SET-2	
SYMBOL SET	IBM-437	
LETTER O STYLE	DISABLE	
ZERO CHARACTER	NORMAL	
LINE PITCH	6 LPI	
WHITE PAGE SKIP	OFF	
CR FUNCTION	CR	
LINE LENGTH	80 COLUMN	
FORM LENGTH	11.7 INCH	
TOF POSITION	0.0 INCH	
LEFT MARGIN	0.0 INCH	
FIT TO LETTER	DISABLE	
TEXT HEIGHT	SAME	

Parallel menu: B431 Printer Menu

This menu controls the operation of the printer's parallel data interface.

ITEM	DEFAULT	REMARKS
PARALLEL	ENABLE	
BI-DIRECTION	ENABLE	
ECP	ENABLE	
ACK WIDTH	NARROW	
ACK/BUSY TIMING	ACK IN BUSY	
I-PRIME	DISABLE	
OFFLINE RECEIVE	DISABLE	

USB menu: B431 Printer Menu

This menu controls the operation of the printer's USB data interface.

ITEM	DEFAULT	REMARKS
USB	ENABLE	
SOFT RESET	DISABLE	
SPEED	480Mbps	
OFFLINE RECEIVE	DISABLE	
SERIAL NUMBER	ENABLE	

Network menu: B431dn Printer Menu

This menu controls the operation of the printer's 10Base-T/100Base-TX network interface.

Note

This applies only to the B431dn model.

ITEM	DEFAULT	REMARKS
TCP/IP	ENABLE	
IP VERSION	IPv4	
NETBEUI	ENABLE	
NETWARE	ENABLE	
ETHERTALK	ENABLE	
FRAMETYPE	AUTO	
IP ADDRESS SET	AUTO	
IP ADDRESS	xxx.xxx.xxx.xxx	
SUBNET MASK	xxx.xxx.xxx.xxx	
GATEWAY ADDRESS	xxx.xxx.xxx.xxx	
WEB	ENABLE	
TELNET	DISABLE	
FTP	DISABLE	
SNMP	ENABLE	
NETWORK SCALE	NORMAL	
HUB LINK SETTING	AUTO NEGOTIATE	
FACTORY DEFAULTS	EXECUTE	

Print Statistics menu: B431 Printer Menu

This menu provides information on the number of A4/Letter pages printed and allows you to reset the counter.

ITEM	DEFAULT	REMARKS
USAGE REPORT	ENABLE	
RESET COUNTER	EXECUTE	
GROUP COUNTER	DISABLE	
CHANGE PASSWORD		Enter the new password.

Maintenance menu: B431 Printer Menu

This menu provides access to various printer maintenance functions.

ITEM	DEFAULT	REMARKS
MENU RESET	EXECUTE	
SAVE MENU	EXECUTE	
POWER SAVE	ENABLE	
PAPER BLACK SET	0	
DARKNESS	0	
CLEANING	EXECUTE	
RESTORE MENU	EXECUTE	Displayed in Menu when Menu settings have been stored.

Usage menu: B431 Printer Menu

This menu is for information only, and provides an indication of total usage of the printer and the expected life left in its consumable items. This is particularly useful if you do not have a full set of replacement consumables to hand and you need to know how soon you will need them.

ITEM	DEFAULT	REMARKS
DRUM LIFE	REMAINING%	An indication of the remaining drum life.
TONER	REMAINING%	An indication of how much toner is left in the cartridge.

Printing menu settings

Current menu settings can be confirmed by printing a Menu Map, using the control panel.

1. Press the **Menu ▲** or **▼** button until the **INFORMATION MENU** is available, then press the **OK** button.
2. Press the **▲** or **▼** button until the display prompts you to print the menu map.
3. Press the **OK** button to print the menu map.
4. Press the **Cancel** or **Online** or the **Back** button repeatedly to exit the **MENU** mode.

Paper Recommendations

For guidance on the media you can use with your printer, which input tray and which ejection method to use, see the section entitled "Paper and tray information" in the "Specifications" chapter.

Note

The reference to Manual Feed Tray is for the B411 models and the Multi Purpose Tray is for the B431 models.

Paper and envelope types

The manufacturer of this printer recommends the following guidelines when selecting paper and envelopes for use in your printer:

- Paper and envelopes should be stored flat and away from moisture, direct sunlight and heat sources.
- Use a smooth finished paper such as copier or laser type paper with a Sheffield (smoothness) rating of 250 or less. If in doubt, please ask your paper supplier.
- Use paper and envelopes that are designed for use in laser type printers.
- The use of heavily laid or textured paper will seriously impact on the life of the image drum.
- Do not use very smooth, shiny/glossy paper.
- Do not use heavily embossed headed paper.
- Do not use specially treated papers such as carbon paper, non-carbon paper, thermal paper and impact paper.
- Avoid using paper with perforations, cut-outs and ragged edges.
- Do not use envelopes with windows or metal clasps.
- Do not use envelopes with self sealing flaps.
- Avoid using damaged or curled envelopes.

Transparencies and adhesive labels

The manufacturer of this printer recommends the following guidelines when selecting transparencies and adhesive labels for use in your printer:

- Always manually feed single sheets using a Manual Feed Tray or Multi Purpose Tray.
- Always use rear output.
- Media must be designed for use in laser printers or photocopiers and must be able to withstand 392°F (200°C) for 0.1 sec.
- Do not use media designed for use in color laser printers and photocopiers.
- Labels should cover entire carrier sheet.
- Carrier sheet or adhesive must not be exposed to any part of the printer.

Postcards

Use the following guidelines when selecting postcards for use in your printer:

- Always manually feed single postcards using the Manual Feed Tray or Multi Purpose Tray, depending on your printer model.
- Use unfolded double postcards.
- Use postcards designed for use in laser type printers
- Do not use postcards used for ink jet printers.
- Do not use stamped or picture postcards.

Installing paper

Paper Tray

Tray 1

- Paper sizes 4.1 inches x 5.8 inches (105 x 148 mm) to 8.5 inches x 12 inches (216 x 356 mm)
- Paper weight: 16-32 lb. US Bond (60-120 g/m²)

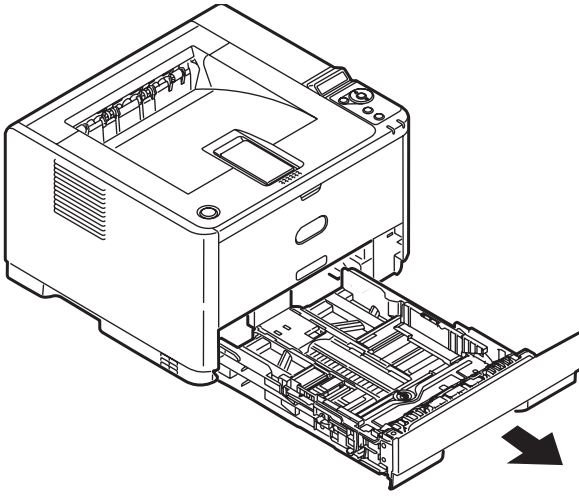
Optional Tray 2

- Paper sizes 5.8 x 8.3 inches (86 x 140 mm) to 8.5 inches x 12 inches (216 x 356 mm)
- Paper weight: 16-32 lb. US Bond (60 -120 g/m²)

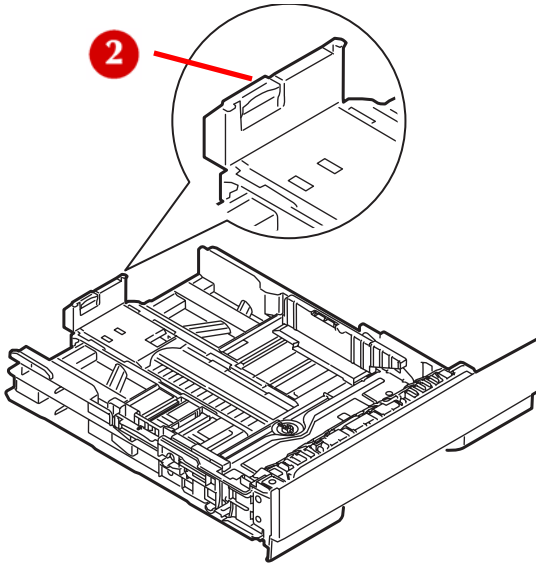
Note

If you are topping up the paper in a paper tray, it is recommended that you remove the remaining paper from the tray first then add the new paper stock followed by the paper you removed. This ensures that the oldest paper is used first to help prevent paper jams.

1. Remove the paper tray from the printer.



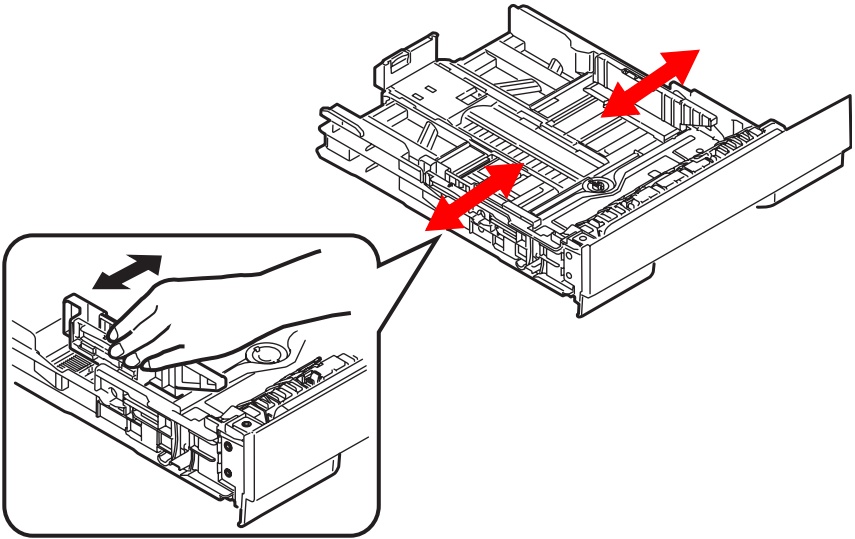
2. For loading A4 or Legal size paper, push the lever (2) in the arrow direction and extend the paper tray using the rear paper support.



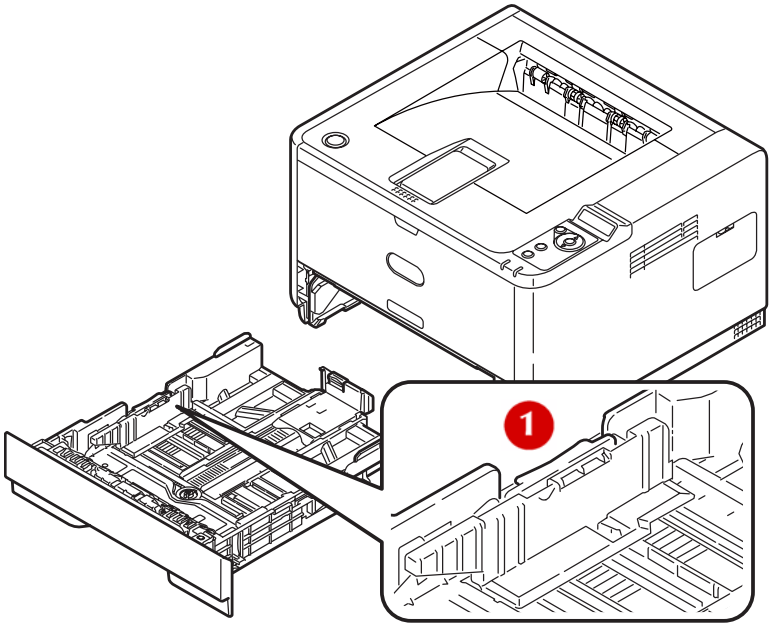
Note

Load letterhead paper face down and top edge towards the front of the paper tray.

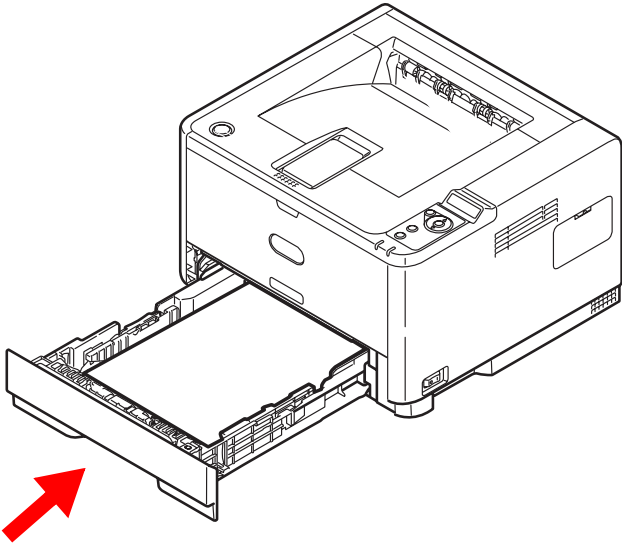
3. Adjust the side paper guides. It is important to adjust the paper guides correctly to ensure that the paper is not skewed in the print process. Paper jams may occur if this operation is not carried out correctly.



4. Place paper in the tray, keeping the level of the paper below the paper full guide arrowheads shown on the paper guides (1).



5. Replace the tray in the printer.



Note

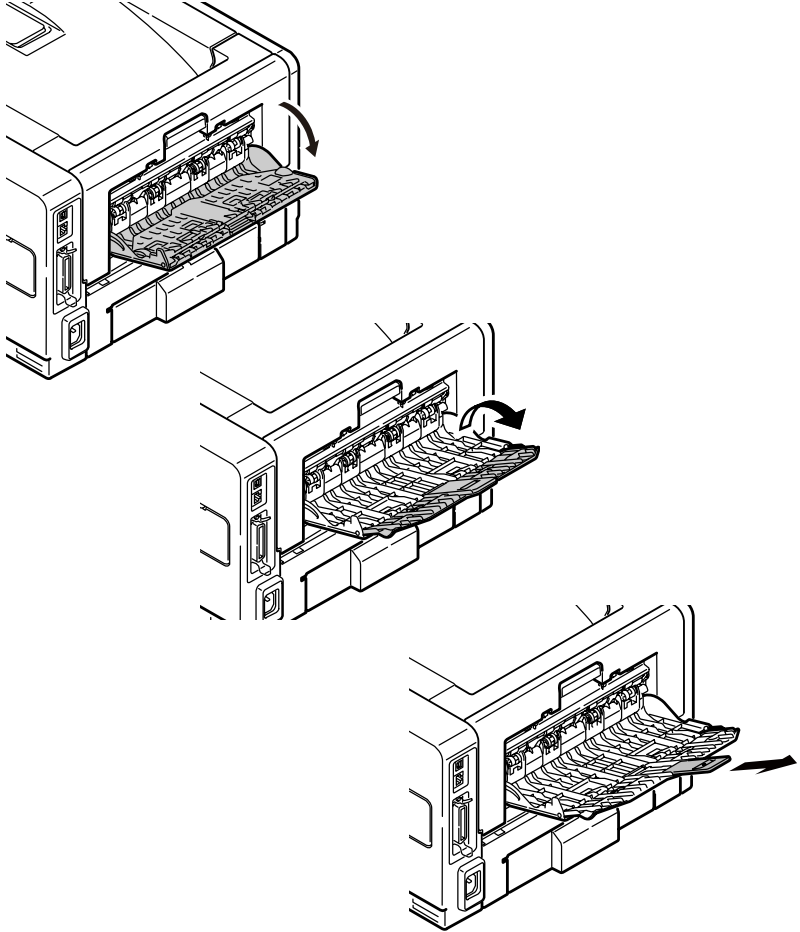
If you have the optional second paper tray (Tray 2) and you are printing from the first (upper) tray (Tray 1), you can pull out the second (lower) tray to reload it. However, if printing from the second (lower) tray, do not pull out the first (upper) tray as this will result in a paper jam.

Automatic feed sequence

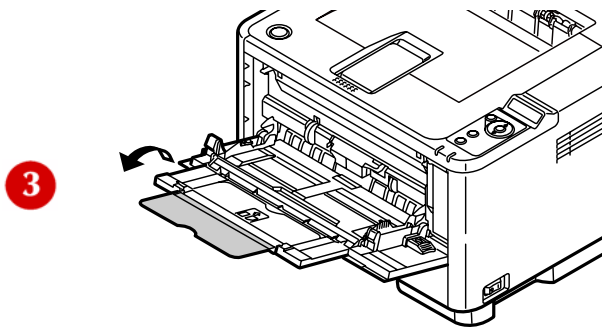
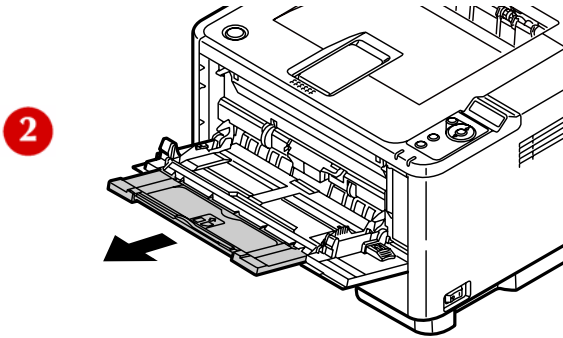
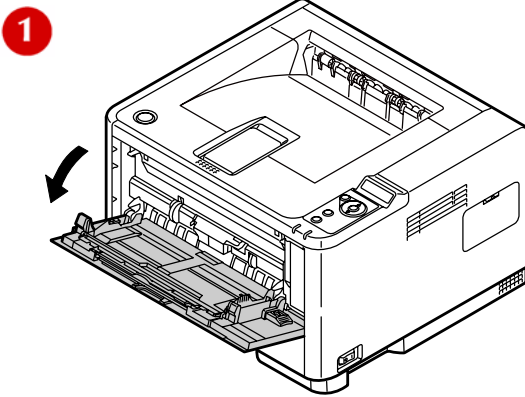
With no optional feed trays installed, the Autotray function in the Print Menu is set by default to ON and the Tray sequence function is set to DOWN. In this way, if a tray runs out of paper, automatic feed will take place in the order Tray 1, Tray 2 (if fitted), Multi Purpose Tray or the Manual Feed Tray, provided that these trays are set up for identical media. Also, configure the media size and media weight for the respective trays in the operator panel or Configuration Tool, depending on your printer model.

Multi purpose tray (B431)

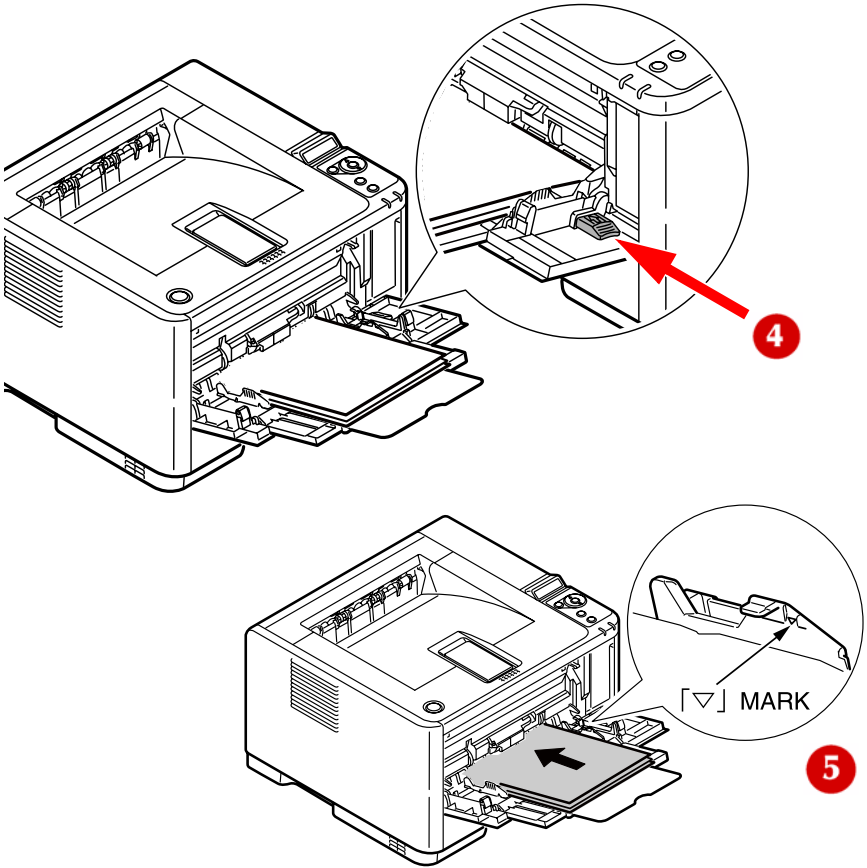
1. Open the rear exit path (see page 60).



2. Pull down the Multi Purpose Tray (1), slide out the paper support (2), and flip open the support extension.



3. Load the paper into the Multi Purpose Tray and push the set button (4). Ensure that the paper is loaded below the arrow level (5) to avoid paper jam.



Note

Do not exceed the paper capacity of approximately 50 sheets or 10 envelopes depending on the media weight.

- For single-sided printing on headed paper load the paper with the pre-printed side up and top edge into the printer.

- For two-sided (duplex) printing on headed paper, load the paper with the pre-printed side down and top edge into the printer.
 - Envelopes should be loaded flap down, face up with the top edge to the left and short edge into the printer.
-

Note

Do not select Duplex printing on envelopes.

- Load Transparencies face up and top edge into the printer.
 - For heavyweight paper or cardstock open the rear output cover to collect the printed output. This will give the paper a nearly straight path through the machine, avoiding paper jams and damage to the paper.
4. If required, set the media size and orientation in the media menu using the control panel, then issue the print command.

CAUTION!

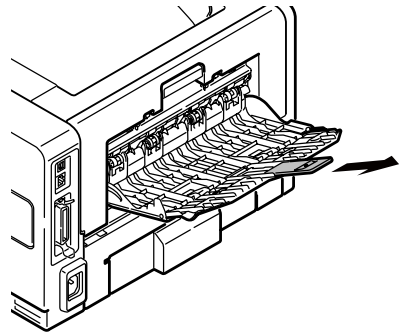
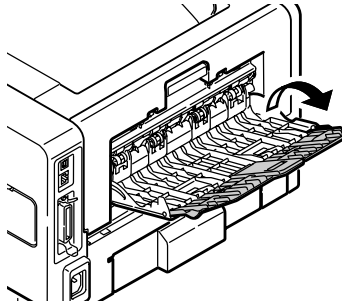
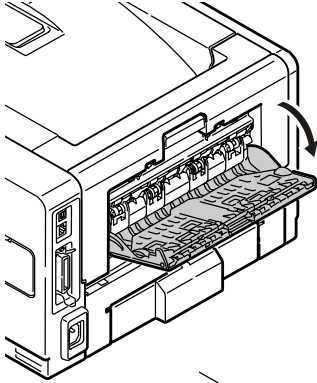
Damage to the printer may occur if the incorrect paper setting is used when printing on a different media.

Note

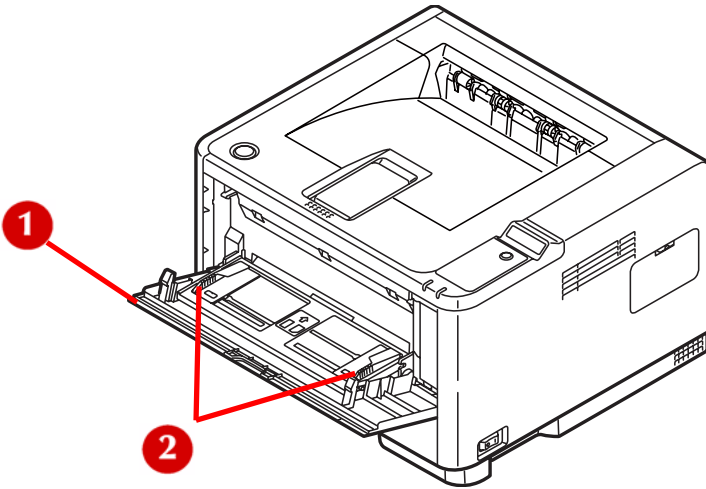
- > *You can also set the media type in your printer driver. However, the printer driver settings will override the settings on the control panel or Configuration Tool.*
 - > *Remember to reset the printer for normal paper after printing on a different media.*
-

Manual feed tray (B411)

1. Open the rear exit path (see page 60).



Pull down the Manual Feed Tray (1), and adjust the paper guides (2) to the width of the paper.



Load a single sheet into the Manual Feed Tray.

- For single-sided printing on letterhead paper, load the paper with the pre-printed side up and the top edge into the printer.
- For two-sided (duplex) printing on headed paper, load the paper with the pre-printed side down and top edge away from the printer.
- Envelopes should be loaded flap down, face up with the top edge to the left and short edge into the printer.

Note

Do not select Duplex printing on envelopes.

- Load Transparencies face up and top edge into the printer.

If required, set the media size and orientation in the Configuration tool, then issue the print command.

CAUTION!

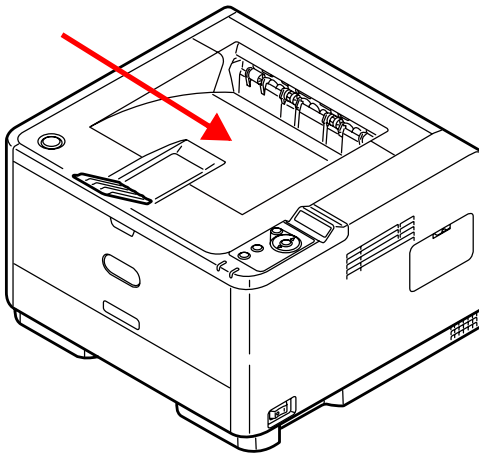
Damage to the printer may occur if the incorrect paper setting is used when printing on a different media.

Note

- > You can also set the media type in your printer driver. However, the printer driver settings will override the settings on the control panel or Configuration Tool.
- > Remember to reset the printer for normal paper after printing on a different media.

Paper Exit Paths

Face down exit (Default)



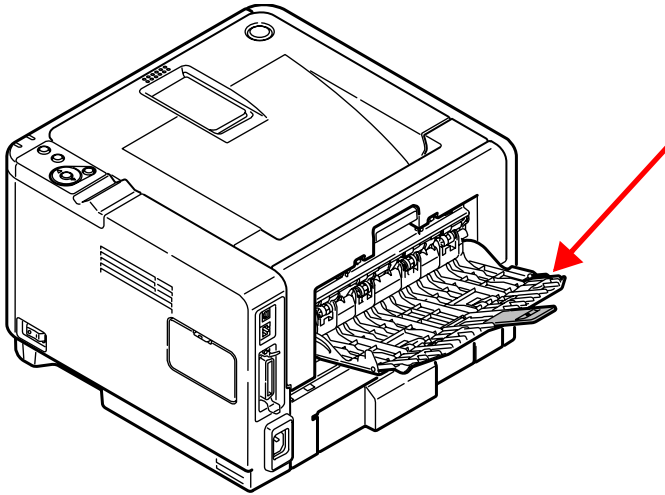
- The paper exits from the top of the printer.
- For use with paper less than 28 lb.US Bond (105 g/m²)
- Capacity 150 sheets 20 lb. US Bond (75 g/m²)

- Pages printed in reading order (page 1 first; last page on top, facing down).

Important!

Make sure the rear cover is closed.

Face up exit printing



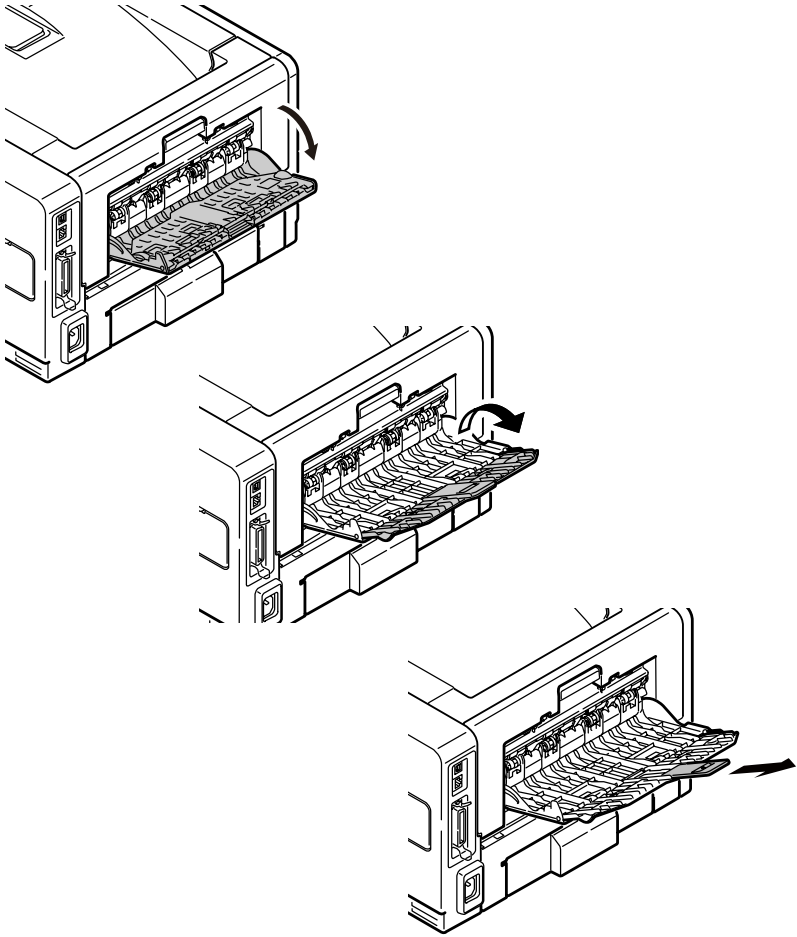
Important!

For face up printing, make sure the rear cover is open. In this condition, paper will exit via this path, regardless of driver settings.

Always use this tray in conjunction with the Manual Feed Tray, Multi Purpose Tray or for heavyweight stocks to reduce the possibility of paper jams.

- The paper exits from the rear of the printer.
- Provides straight-through paper path for heavyweight stock (28 to 32 lb. US Bond [105-120 g/m²]).
- Capacity 100 sheets 20 lb. US Bond (75 g/m²)
- Pages are printed face up in reverse order.

To open the rear exit:



Setting the Paper feed, size and media

The process used to fuse (fix) the printed image to the paper involves a mixture of pressure and heat. Too much heat will cause lightweight paper to crease or curl and corrugations in


transparencies. Too little heat will cause the image not to fuse fully into heavyweight paper.

Note

Although media properties can be set in the printer driver for particular jobs, when filling a tray with media it is recommended that you manually set the printer to match the media as described here.

B411

You can change the media size, type and weight as follows:

1. Start the Configuration Tool. (Click on **Start > All Programs > Okidata > Configuration Tool** and select the Configuration Tool.)
2. Click the B411 icon in the left panel
3. Click the **Device Settings** tab.
4. Click the **Menu Setting** button.
5. Click **USER MENU**.
6. Click **MEDIA MENU**.
7. Make your changes in the drop down boxes, then click the Save current details icon ().

B431

Using the control panel on your B431 printer, you can choose:

- which paper to use
 - the size of the paper you wish to use
 - the weight of the paper (thickness)
 - the type of paper
-

Note

- > *If the settings in the printer differ from those selected on your computer, the printer will not print and the LCD will display an error message.*
 - > *The following printer settings are given as a guide only. Some software applications require the paper feed, size and media settings to be selected from within the application (page setup).*
 - > *Although media properties can be set in the printer driver for particular jobs, it is recommended that when filling a tray with media you manually set the printer to match the media as described here.*
-

Paper feed selection

The paper feed, paper size, paper weight and media type can be set manually on the printer using the control panel as follows.

1. Press the **Menu** ▲ or ▼ button repeatedly until `PRINT MENU` is displayed, then press the **OK** button.
 2. Press the ▲ or ▼ button until the required paper feed is displayed.
 3. Press the **OK** button. An asterisk (*) appears next to the selected paper feed.
 4. Press the **Cancel** or **Online** or the **Back** button repeatedly to exit the `MENU` mode.
-

Note

When the `AUTO TRAY SWITCH` is set to `ON` and more than one paper tray is fitted, paper feed automatically switches to the next available paper tray, providing non-stop printing.

Paper size

Set the paper size as follows.

Note

- > When using paper trays, standard paper sizes are recognized automatically with CASSETTE SIZE (default setting) selected. Paper size need only be set for custom paper sizes.
 - > When using the Multi Purpose Tray, the paper size has to be selected.
-

1. Press the **Menu** ▲ or ▼ button until PRINT MENU is displayed, then press the **OK** button.
2. Press either the ▲ or ▼ button repeatedly until EDIT SIZE is displayed, then press **Enter** button.
3. Press either ▲ or ▼ button until the required paper size is displayed, then press the **OK** button. An asterisk (*) appears next to the selected paper size.
4. Press the **Cancel** or **Online** or the **Back** button repeatedly to exit the MENU mode.
5. Select the correct paper settings in the printer driver before printing the file.

Media type and weight

Set media type and weight as follows:

CAUTION!

If media type or media weight are not correctly set, print quality deteriorates and the fuser roller may be damaged.

1. Press the **Menu** ▲ or ▼ button until MEDIA MENU is displayed, then press the **OK** button.
2. Press the ▲ or ▼ button until MEDIA TYPE or MEDIA WEIGHT for the required tray is displayed, then press **OK** button.
3. Press the ▲ or ▼ button until the required paper type or weight is displayed, then press the **OK** button. An asterisk (*) appears next to the selected paper type or weight.

4. Press the **Cancel** or **Online** or the **Back** button repeatedly to exit the MENU mode.
5. Select the correct paper settings in the printer driver before printing the file.

Interfaces

Your printer is equipped with a selection of data interfaces:

1. **Parallel** – For direct connection to a PC. This port requires a bi-directional (IEEE 1284 compliant) parallel cable.
2. **USB** – For connection to a PC running Windows 2000 or later or Mac OS X or later. This port requires a cable conforming to USB version 2.0 or above.

The operation of a printer is not assured if a USB compatible device is connected concurrently with other USB-compatible machines.

When connecting multiple printers of the same type, they appear as ***** (1), ***** (2), ***** (3), etc. These numbers depend on the order of connecting or turning on each printer.

3. **LAN** – For network cable connection. This port is standard on the B411dn and B431dn.

Note

- > *It is not recommended that you connect serial/USB and parallel cables to the printer simultaneously.*
 - > *Interface cables are not supplied with your printer.*
-

If you are connecting your printer directly to a stand alone computer proceed to the chapter entitled "Printer Drivers".

If your printer is to be installed as a network printer, please refer to the relevant section in the User's Guide for the network interface card for further details on how to configure the network connection before installing the printer drivers.

Note

Administrator's authority is required when installing a network connection.

Printer Drivers

The printer drivers are all contained on the CD-ROM supplied with your printer.

See the Setup Guide for information on installing the drivers and utilities for your printer.

Please refer to the readme file on this CD for the latest information on printer driver installation.

Operation

This chapter provides a broad outline of how to operate your printer from either a Windows or a Macintosh environment. In the former, while PCL emulation is available on all printer models, PS emulation is available on the B431 models.

Printer settings in Windows

Note

The illustrations in this guide relate to Windows XP PCL and PS emulations – other operating system windows may appear slightly different but the principles are the same.

The operator panel controlled menus and Configuration Tool (described in the chapter entitled “Operator panels”) provide access to many options.

The Windows printer driver also contains settings for many of these items. Where items in the printer driver are the same as those in the operator panel and Configuration Tool menus, and you print documents from Windows, the settings in the Windows printer driver will override those settings in the operator panel and Configuration Tool menus.

Printing preferences in Windows applications

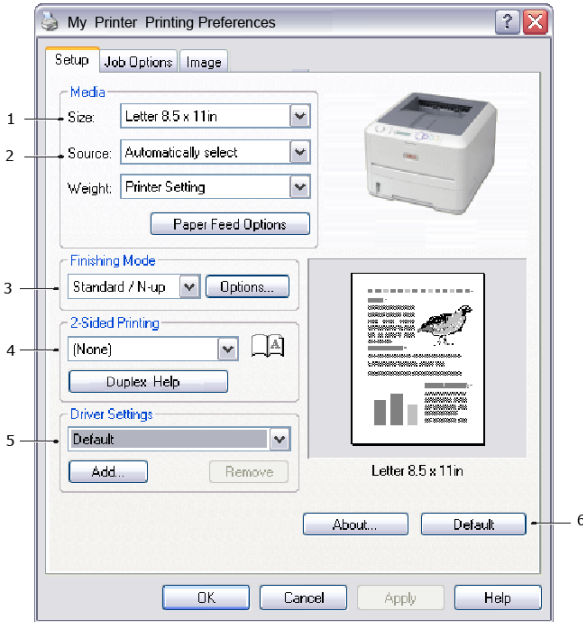
When you choose to print your document from a Windows application program a Print dialogue box appears. This dialogue usually specifies the name of the printer on which you will print your document. Next to the printer name is a **Properties** button.

When you click **Properties** a new window opens which contains a short list of the printer settings available in the driver, which you can choose for this document. The settings available from within your application are only those which you may want to change for specific applications or documents. Settings you change here will usually only last for as long as the particular application program is running.

PCL emulation

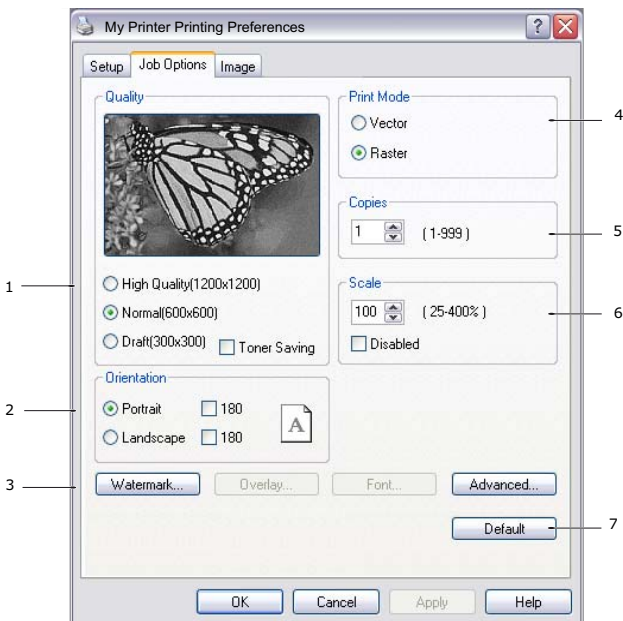
The tabs available are the **Setup Tab**, the **Job Options Tab** and the **Image Tab**.

Setup tab



1. Paper size should be the same as the page size of your document (unless you wish to scale the printout to fit another size), and should also be the same as the size of paper you will feed into the printer.
2. You can choose the source of the paper to feed, which may be Tray 1 (the standard paper tray), Manual Feed Tray (B411), Tray 2 (if you have the optional second paper tray installed) or the Multi Purpose Tray (B431). You can also click on the appropriate part of the screen graphic to select your preferred tray.
3. A variety of document finishing options can be selected, such as normal one page per sheet, or N-up (where N can be 2 or 4) for printing scaled down pages at more than one page per sheet.

4. Under 2-sided Printing, you can choose from auto (16-28 lb US Bond [60-105 g/m²]) or manual (up to 32 lb. US Bond [124 g/m²]). Under manual 2-sided Printing choose 2-sided printing (duplex printing) to carry out manual duplex printing. You must pass the paper through the printer twice. For more information, see ["2-Sided \(Duplex\) Printing" on page 83](#). The Duplex Help button also offers guidelines on how to carry out manual duplex printing.
5. If you have changed some printing preferences before and saved them as a set, you can recall them to avoid havin.



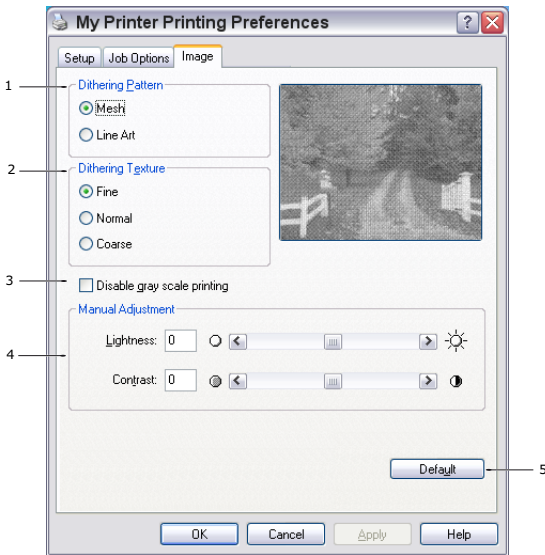
- The High Quality setting prints at 600 x 2400 dpi or 600 x 1200 dpi for the B411, and 1200 x 1200 dpi for the B431 and is the best option for printing vector objects such as graphics and text.
- The Normal setting prints at 600 x 600 dpi and is suitable for most printing jobs.
- The Draft setting prints at 300 x 300 dpi and is suitable for printing draft documents that contain mainly text.

- You can select Toner Saving to save toner for some print jobs.
6. Page orientation can be set to either portrait (tall) or landscape (wide). Both views can be rotated by 180 degrees.
 7. You can print watermark text behind the main page image. This is useful for marking documents as draft, confidential, etc.

If you would like to print on special stationery, such as forms and letterhead, but do not want to use pre-printed stationery, you can create your own using Overlays (for B431). For more information on Overlays and Macros refer to page 86. The Overlays button also offers guidelines on how to carry out manual duplex printing.

8. In Raster (bitmap) mode, processing of the page image is done in the computer leaving little processing for the printer to do, although the file size may be large. In Vector mode, file sizes may be smaller and so transmission over a network, for example, may be faster. These effects are more pronounced for graphics printing than for text printing.
9. You can select up to 999 copies to print consecutively, although you will need to top up the paper tray during such a long print run.
10. Your printed pages can be scaled to fit larger or smaller stationery, within a range of 25% to 400% of the original size.
11. A single on-screen button restores the default settings.

Image tab

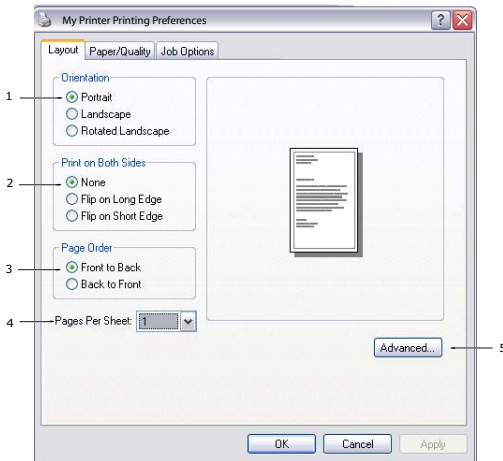


1. Dithering produces an intermediate greyscale by adjusting the combination of dots used in printing. Selecting a setting determines the degree of detail with which a graphics image will be printed. Mesh determines that a screen of dots is used for dithering while Line Art determines that an array of lines is used for dithering.
2. Select dithering texture by setting the size of dots used in the halftone screen.
3. Set this control to print greyscale effects in black without dithering. Select the check-box to disable greyscale printing or de-select the check-box to enable greyscale printing.
4. You can manually adjust lightness (the higher the setting the lighter the print) and contrast (the higher the setting the greater the contrast).
5. A single on-screen button restores the default settings.

PS emulation (B431)

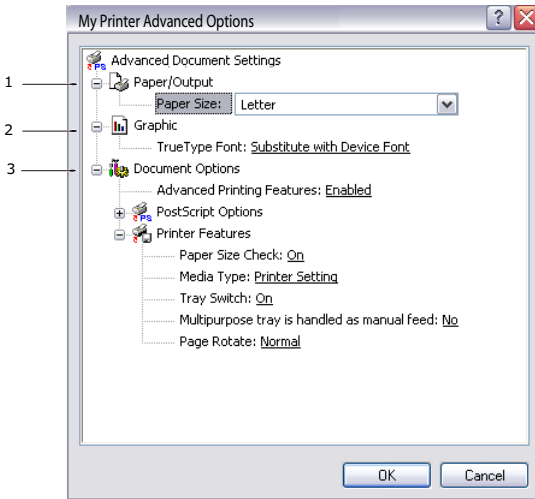
The tabs available are the **Layout Tab**, the **Paper/Quality Tab** and the **Job Options Tab**.

Layout tab



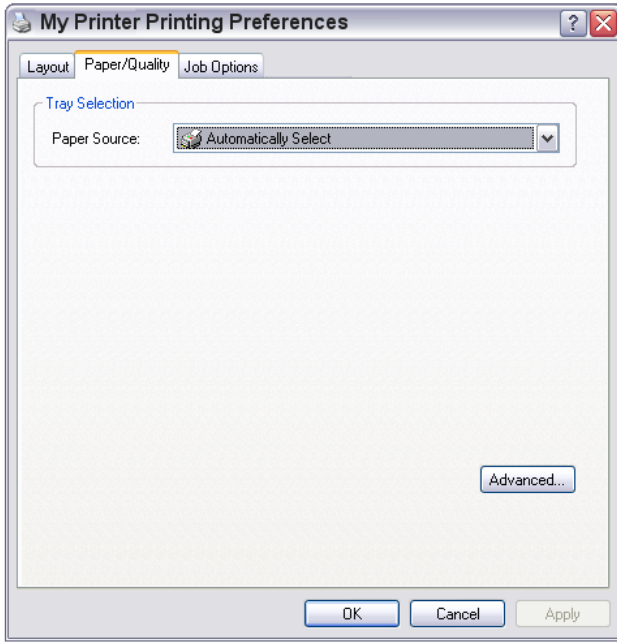
1. Page orientation can be set to portrait (tall), landscape (wide) or landscape rotated by 180 degrees.
2. Print on both sides (duplex printing) can be set to long edge or short edge of the document.
3. Printed page order can be set to front to back or back to front of the document.
4. Set the number of pages to be printed on a single sheet. You can also set it to print a booklet.

5. Click the **Advanced** button to be able to set further document options as follows:



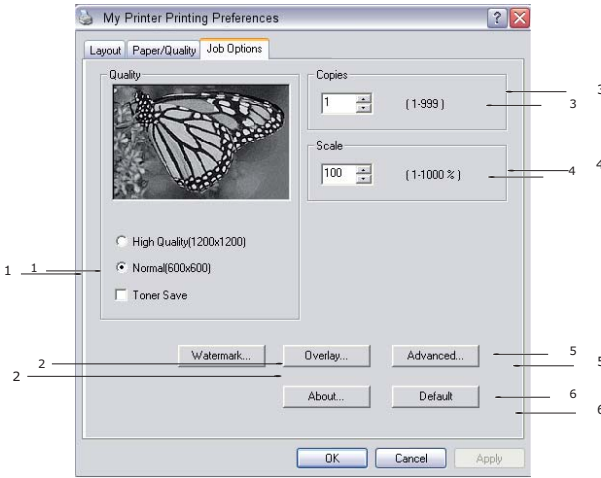
1. Select the required printed paper size.
2. You can substitute another font for TrueType Font.
3. You can set other document options as required, including PostScript options and printer features.

Paper/Quality tab



You can set the paper source or leave it as automatic selection and by using the **Advanced** button you have access to the same set of options as described above for the Layout Tab.

Job options tab



1. The output resolution of the printed page can be set as follows.
 - The High Quality setting prints at 600 x 2400 dpi or 600 x 1200 dpi for B411, and 1200 x 1200 dpi for B431 and is the best option for printing vector objects such as graphics and text.
 - The Normal setting prints at 600 x 600 dpi and is suitable for most printing jobs.
 - You can select Toner Saving to save toner for some print jobs.

2. You can print watermark text behind the main page image. This is useful for marking documents as draft, confidential, etc.

If you would like to print on special stationery, such as forms and letterhead, but do not want to use pre-printed stationery, you can create your own using Overlays (for B431). For more information see page 86. The Overlays button also offers guidelines on how to carry out manual duplex printing.

3. You can select up to 999 copies to print consecutively, although you will need to top up the paper tray during such a long print run.
4. Your printed pages can be scaled to fit larger or smaller stationery.
5. Using the **Advanced** button gives you access to the facility to set mirror image printing and negative image printing.
6. A single on-screen button restores the default settings.

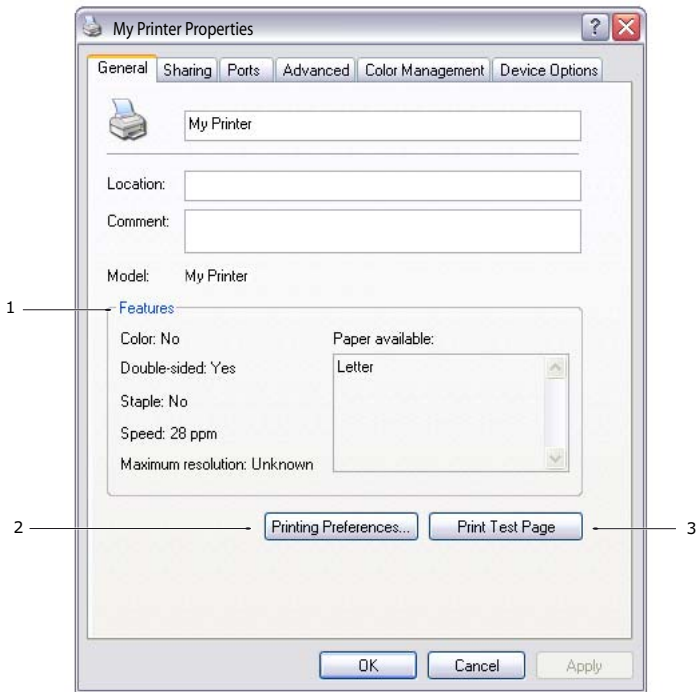
Setting from Windows control panel

When you open the driver properties window directly from Windows, rather than from within an application program, a somewhat more extensive range of settings is provided. Changes made here will generally affect all documents you print from Windows applications, and will be remembered from one Windows session to the next.

PCL emulation

The main tabs are the **General Tab**, **Advanced Tab** and **Device Options Tab**.

General tab

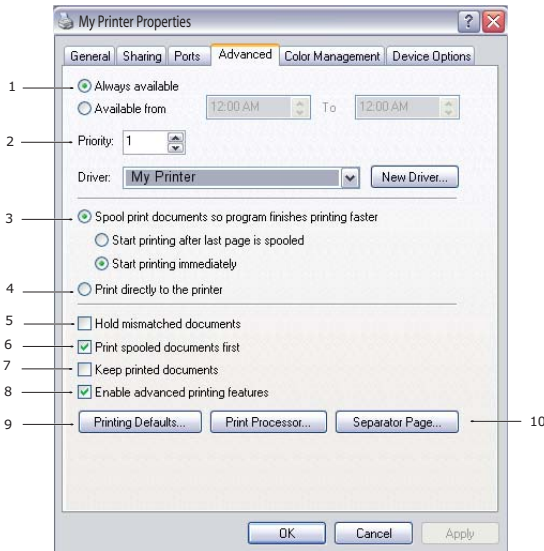


1. This area lists some of the main features of your printer, including optional items.
2. This button opens the same windows as described earlier for items which can be set from within application programs. Changes you make here, however, will become the new default settings for all Windows applications.
3. This button prints a test page to ensure that your printer is working.

Note

The above features are provided by the Windows XP operating system and will vary with other operating systems.

Advanced tab



1. You can specify which times of day your printer will be available.
2. Indicates current priority, from 1 (lowest) to 99 (highest). Highest priority documents will print first.
3. Specifies that documents should be spooled (stored in a special print file) before being printed. The document is then printed in the background, allowing your application program to become available more quickly. Options follow:

This specifies that printing should not start until the last page has been spooled. If your application program needs a lot of time for further computation in the middle of printing, causing the print job to pause for more than a short period, the printer could prematurely assume that the document has finished. Selecting this option would prevent that situation, but printing will be completed a little later, as the start is delayed.

This is the opposite choice to the one above. Printing starts as soon as possible after the document begins spooling.

4. This specifies that the document should not be spooled, but printed directly. Your application will not normally be ready for further use until the print job is complete. This

requires less disk space on your computer, since there is no spool file.

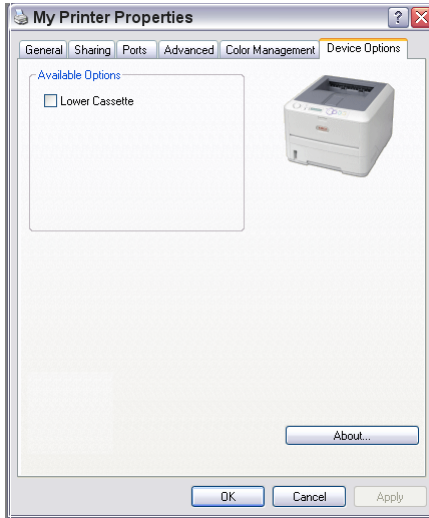
5. Directs the spooler to check the document setup and match it to the printer setup before sending the document to print. If a mismatch is detected, the document is held in the print queue and does not print until the printer setup is changed and the document restarted from the print queue. Mismatched documents in the queue will not prevent correctly matched documents from printing.
6. Specifies that the spooler should favour documents which have completed spooling when deciding which document to print next, even if completed documents are lower priority than documents which are still spooling. If no documents have completed spooling, the spooler will favour larger spooling documents over shorter ones. Use this option if you want to maximize printer efficiency. When this option is disabled the spooler chooses documents based only on their priority settings.
7. Specifies that the spooler should not delete documents after they are completed. This allows documents to be re submitted to the printer from the spooler instead of printing again from the application program. If you use this option frequently it will require large amounts of disk space on your computer.
8. Specifies whether advanced features, such as pages per sheet, are available, depending on your printer. For normal printing keep this option enabled. If compatibility problems occur you can disable the feature. However, these advanced options may then not be available, even though the hardware might support them.
9. This button provides access to the same setup windows as when printing from applications. Changes made via the Windows Control Panel become the Windows default settings.
10. You can design and specify a separator page that prints between documents. This is particularly useful on a shared

printer to help each user find their own documents in the output stack.

Note

The above features are provided by the Windows XP operating system and will vary with other operating systems.

Device options tab

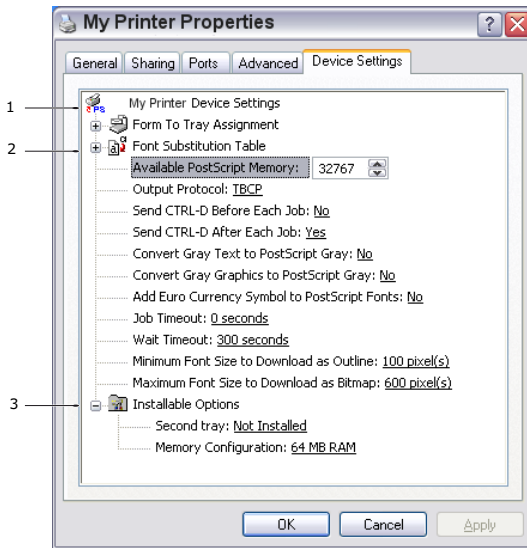


In this window you can select which optional upgrades are installed on your printer. See the chapter entitled “Installing options”.

PS emulation

The main tabs are the **General Tab**, **Advanced Tab** and **Device Settings Tab**. The General and Advanced tabs are the same as for PCL emulation described earlier.

Device settings tab



1. You can set the desired paper sizes in each of the available paper feed trays.
2. You can make a variety of font settings depending on your application.
3. You can set which optional upgrades are installed on your printer. See the chapter entitled “Installing options”.

Printer settings in Macintosh

Refer to the readme file on the driver CD and the online help provided in the driver software.

2-Sided (Duplex) Printing

The built-in duplex unit adds the function of two-sided printing, using less paper and making large documents easier to handle. It also enables booklet printing, which uses even less paper.

This printer has the option of Auto Duplex and Manual Duplex printing.

Note

The steps in the process relate to Windows XP PCL. Other operating system windows may appear slightly different, but the principles are the same.

Auto versus Manual Duplex Printing

Auto duplex printing uses the printer's built-in duplex unit to automatically print on both sides of a sheet of paper.

To carry out Manual Duplex Printing, you must pass paper through the printer twice.

Note

Manual Duplex printing is available only for the Windows PCL Driver.

Auto Duplexing: Models B411 and B431

- Use Tray 1 or optional Tray 2.
- Usable paper sizes: letter and A4.
- Usable paper weight: 16 to 28 lb. US Bond (60 to 104 g/m²).

Manual duplexing: Model B411

- Use Tray 1, optional Tray 2, Manual feed tray (one sheet at a time).

- Usable paper sizes:
 - letter, Executive, Legal 13, Legal 14, Statement (5.5 x 8.5")
 - A4, A5, B5, A6
 - Custom: width 3.5 to 8.5 inches (90 – 216 mm), length 5.8 to 14 inches (148 – 356 mm)
- Usable paper weight: 16 to 32 lb. US Bond (120 g/m²)

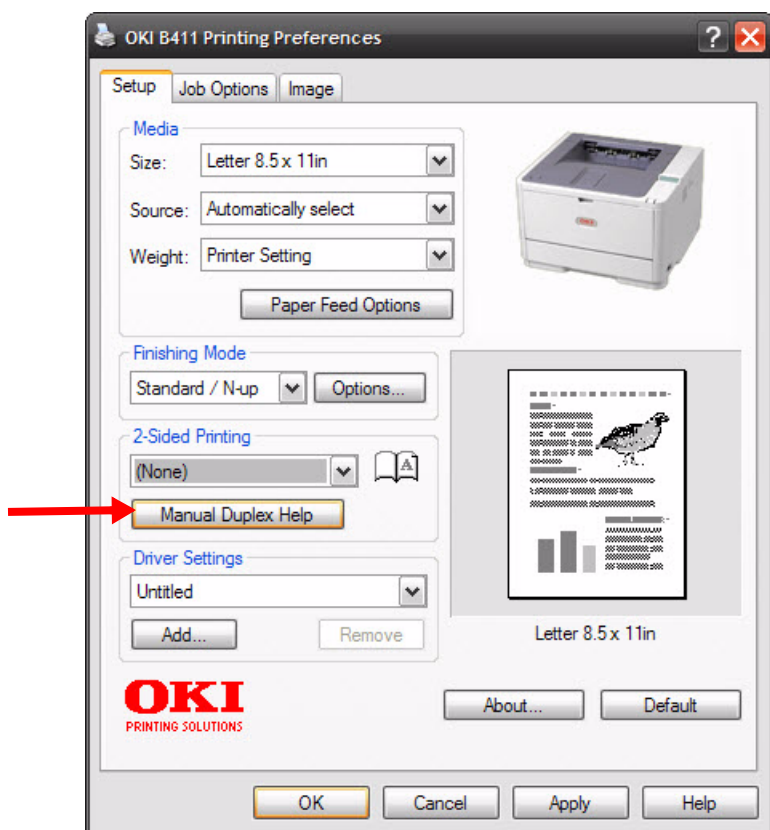
Manual duplexing: Model B431

- Use Tray 1, optional Tray 2, Multi-purpose tray (up to 100 sheets 20 lb. US Bond (75 g/m²)).
- Usable paper sizes:
 - letter, Executive, Legal 13, Legal 14, Statement (5.5 x 8.5")
 - A4, A5, B5, A6
 - Custom: width 3.5 to 8.5 inches (90 – 216 mm), length 5.8 to 14 inches (148 – 356 mm)
- Usable paper weight: 16 to 32 lb. US Bond (120 g/m²)

Duplex printing

1. Select **File > Print** and click the **Properties** button.
2. Select the input tray from the **Source** drop down.
3. In the **2-Sided Printing** drop down menu, select either **Long Edge (Auto)** or **Short Edge (Auto)** according to your printing preferences.

4. If you require further information, click the duplex help button.



5. Click the Print button.

Overlays and Macros (Windows Only)

What are overlays and macros?

If you would like to print on special stationery, such as forms and letterhead, but do not want to use pre-printed stationery, you can create your own using these advanced features.

You can use PostScript overlays to generate all your special stationery and store it in the printer for use whenever you need it. If you have chosen to install the PCL driver, macros perform a similar function.

You can create several overlays or macros, and combine them in any way you like to produce a variety of forms and other special stationery. Each image can be printed on just the first page of a document, on all pages, on alternate pages, or just the pages that you specify.

Creating PostScript overlays

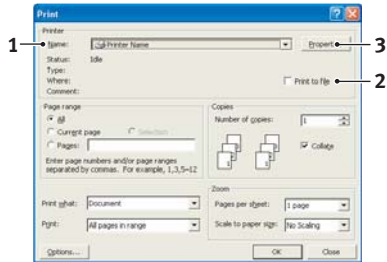
Three steps are required to create an overlay:

1. Create the form data using your own application software and print it to a printer (.PRN) file.
2. Use the Storage Device Manager utility software supplied on CD with your printer to create a "project file," import the .PRN file(s), and download the generated filter (.HST) file to the printer. The project file will contain one or more overlay images which are functionally related, such as the cover page and the continuation page images for business letters.
3. Use downloaded files to define your overlays ready for use when printing your documents.

When printing overlay files to disk, do not select any special features, such as two-sided printing or multiple copies. These are not appropriate to overlays, they apply only to your final documents.

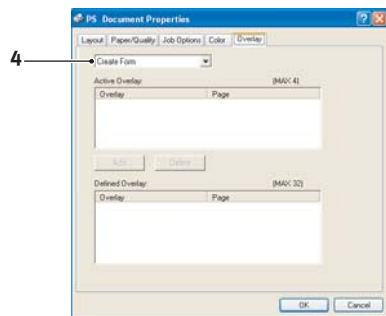
Creating the overlay image

1. Use your preferred application, perhaps a graphics program, to create the required overlay image and save it.
2. Open your application's **Print...** dialogue.
3. Make sure that the selected printer name (1) is that of your PostScript printer driver.



4. Select the **Print To File** (2) option.
5. Click the **Properties** button (3) to open the Document Properties window.

6. On the Overlay tab, choose **Create Form** from the drop-down list (4).



7. Click **OK** to close the Document Properties window.
8. Click **OK** again to close the Print dialogue.
9. When prompted for a print file name, enter a meaningful name with the extension.PRN.
10. Close your application.

Create and download the project

1. From the Windows **Start** menu, start **Storage Device Manager (SDM)** and allow SDM to discover the printer.
2. Choose **Projects**→**New Project**.
3. Choose **Projects** > **Add File to Project**.
4. Set the **Files of Type** drop-down list to **PRN Files(*.prn)**.

5. Navigate to the folder where the .PRN files are stored and select one or more of these to include in your overlay set.

You can have more than one printer (.PRN) file in a project. For example, one for top pages and another for continuation pages. Use standard Windows techniques (Shift or Ctrl keys) to select multiple files simultaneously if you need to.

6. Click **Open** to add these files to the current project.
7. When a message box appears confirming that a filter file has been created, click **OK** to clear the message.
8. The project window will display one .HST file for each printer file added. Make a careful note of each of these names. Ensure that you note them *exactly* as they appear, they are case sensitive, and you will need them later.
9. Choose **Projects > Save Project** and enter a meaningful name (e.g. "Letter Stationery") so that you can recognize it later if you want to modify it.
10. Choose **Projects > Send Project Files to Printer** to download the project to the printer.

If you have a hard disk in the printer, SDM will automatically download files to it. If not, SDM will download files to flash memory. If you have a hard disk but still prefer to download to flash memory, double-click the file name in the Project window and under **Volume**, type in **%Flash0%** and then click **OK**.

11. When the message "Command Issued" appears confirming that the download is complete, click **OK** to clear the message.

Test printing the overlay

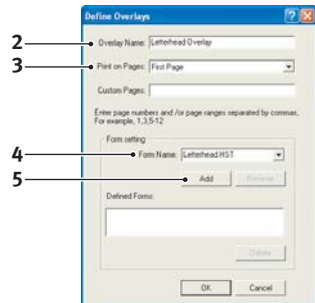
1. Click on the printer icon for the relevant printer and choose **Printers > Test Form**.
2. In the Test PostScript Form window, to test each overlay select it and click **OK**. There will be a short pause while the printer processes the form, and then it will print.

3. When each overlay has been tested, click **Exit**.
4. Click the standard Windows **Close (X)** button, or choose **Projects > Exit** to close Storage Device Manager.

Defining overlays

This is the final step before the new overlays are ready for use.

1. Open the Printers (called "Printers and Faxes" in Windows XP) window via the **Start** menu or the Windows Control Panel.
2. Right-click on the Relevant PostScript printer icon and choose **Printing Preferences** from the pop-up menu.
3. On the **Overlay** tab, click the **New** button.
4. In the **Define Overlays** window, enter a suitable name (2) for this overlay and choose which page(s) (3) of your documents will use this overlay.
5. Enter the name of the overlay file (4) *exactly* as it appeared in the Storage Device Manager project window. Remember that this name is case sensitive.



If you forgot to note the overlay names when you created them, you can find them using Storage Device Manager to view the project file, or the printer's Information Menu to print a file list and identify them from there.

6. Click **Add** (5) to add this overlay into the defined overlays list.
7. Click **OK** to close the Define Overlay window.

The new overlay now appears in the Defined Overlays list in the printer properties window.

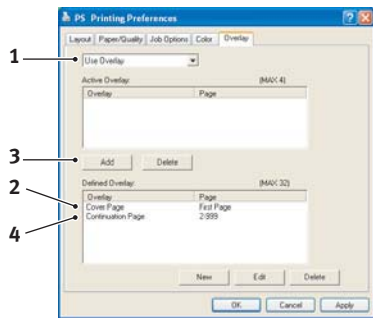
8. Repeat the above procedure if you wish to define more overlays.
9. When done, click **OK** to close the printer properties window.

Your new overlays are now ready and available to be used for any future documents you wish.

Printing with PostScript overlays

Once you have defined your overlays you are ready to use them for any documents you wish. The example illustrated here uses two overlays for business letters. The first prints on just the top page, and the second prints on any or all subsequent pages.

1. Prepare your document in the normal way using your own application software. Remember, if necessary, to format the document so that it will fit within the appropriate space.
2. Open your application's **Print...** dialogue and choose any options you will require, ensuring that the target printer is your PostScript printer driver in which the overlays have been defined.
3. Click the **Properties** button to open the Printing Preferences window.
4. On the Overlays tab, choose **Use Overlay** from the drop-down list (1).
5. Click on the first overlay (2) you wish to use. In this example it is the Cover Page overlay. Then click the **Add** button (3).
6. If you want to use another overlay, in this case it is the Continuation page, click the second overlay (4) and then click the **Add** button (3) again.
7. When you have selected all the overlays you want to use for this document, click **OK**.
8. Finally, in your application's print dialogue, click **OK** to begin printing.



Creating PCL Overlays

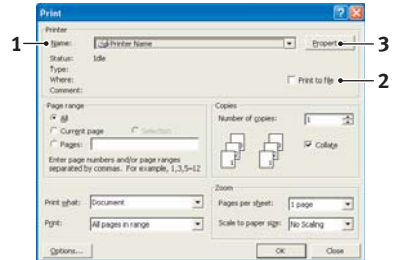
Three steps are required to create an overlay:

1. Create the form data using your own application software and print it to a printer (.PRN) file.
2. Use the Storage Device Manager utility software supplied on CD with your printer to create a "project file," import the .PRN file, and download the generated filter (.BIN) files to the printer.
3. Use downloaded files to define your overlay ready for use with any future document.

When printing files to disk, do not select any special features, such as two-sided printing or multiple copies. These are not appropriate to macros, they apply only to your final documents.

Creating the overlay image

1. Use your preferred application, perhaps a graphics program, to create the required image and save it.
2. Open your application's **Print...** dialogue.
3. Make sure that the selected printer name (1) is that of your PCL printer driver.
4. Select the **Print To File** (2) option.
5. When prompted for a print file name, enter a meaningful name with the extension .PRN .
6. Close your application.



Create and download macros

1. From the Windows **Start** menu, start **Storage Device Manager** (SDM) and allow SDM to discover the printer.
2. Choose **Projects > New Project** to start a new project.

3. Choose **Projects > Filter Macro File**. The Filter Printer Patterns dialogue box appears. Make any adjustments in the settings that you need and then click **OK**.

Example: If you create a black oval in MS Paint and leave all the color command filters checked, the black oval will print as a black rectangle when the overlay is used. To maintain the oval shape, turn off (deselect) the "Configure Image Data," "Palette ID" and "Palette Control" filters.

4. Set the **Files of Type** drop-down list to **PRN Files (*.prn)**.
5. Navigate to the folder where the overlay .PRN files are stored and select one or more of these to include in your overlay set.

You can have more than one macro file in a project. For example, one for top pages and another for continuation pages. Use standard Windows techniques (Shift or Ctrl keys) to select multiple files simultaneously if you need to.

6. Click **Open** to add these files to the current project. (You can also drag and drop files from Windows Explorer directly into the project window if you prefer.) When a message box appears confirming that a filter file has been created, click **OK** to clear the message.
7. The project window will display one .BIN file for each printer file added. Make a careful note of the name and ID number for each of the files. You will need them later.

If you wish to edit the names or ID numbers, double-click the file entry and edit the details.

Note that the names are case sensitive.

8. Choose **Projects > Save Project** and enter a meaningful name (e.g. "Letter Stationery") so that you can recognize it.
9. Choose **Projects > Send Project Files to Printer** to download the project to the printer.
10. When the message "Command Issued" appears confirming that the download is complete, click **OK** to clear the message.

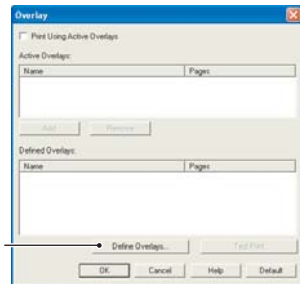
Test printing the macro

1. Choose **Printers > Test Macro**.
2. In the Test Macro window, enter its ID number and click **OK**. After a short pause the printer will print the macro.
3. When each macro has been tested, click **Exit**.
4. Click the standard Windows **Close (X)** button, or choose **Projects → > Exit** to close Storage Device Manager.

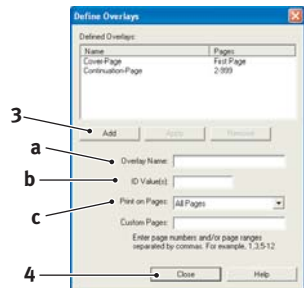
Defining overlays

This is the final step before the new overlays are ready for use.

1. Open the Printers (called "Printers and Faxes" in Windows XP) window via the **Start** menu or the Windows Control Panel.
2. Right-click on the Relevant PostScript printer icon and choose **Printing Preferences** from the pop-up menu.
3. On the Job Options tab, click the **Overlay** button.
4. In the Overlay window, Click the **Define Overlays button (1)**.



5. In the Define Overlays window, enter the **name** (a) and **ID** (b) of the required overlay, and define which **page(s)** (c) of your documents will use this overlay. Then click the **Add button (3)** to add this overlay to the list of defined overlays. Repeat for any other related overlays. When done, click the **Close button (4)** to close the window.



The example illustrated shows two overlays defined, one for a cover page and one for continuation pages.

Remember that names and IDs of overlay files must be entered *exactly* as they appeared in the Storage Device Manager project window. Remember also that names are case sensitive.

If you forgot to note the overlay name or ID when you created them, you can find them using Storage Device Manager to view the project file, or the printer's Information Menu to print a file list and identify them from there.

The new overlays will now appear in the Defined Overlays list in the printer properties window.

6. When done, click **OK** to close the printing preferences window.

Your new overlays are now ready and available to be used for any future documents you wish.

Printing with PCL overlays

Once you have defined your overlays you are ready to use them for any documents you wish. The example illustrated here uses two overlays for business letters. The first prints on just the top page, and the second prints on any or all subsequent pages.

1. Prepare your document in the normal way using your own application software. Remember, if necessary, to format the document so that it will fit nicely within the plain areas on your letterhead overlay.
2. Open your application's **Print...** dialogue and choose any options you will require, ensuring that the target printer is your PCL printer driver in which the overlays have been defined.
3. Click the **Properties** button to open the Printing Preferences window.

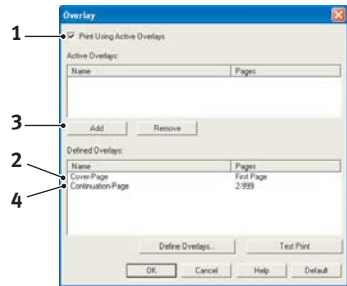
4. On the Overlay tab, check the **Use active overlays** checkbox (1).

5. In the Defined Overlays list, click on the first overlay (2) you wish to use, and click the **Add** button (3) to add it to the Active Overlays list. (If you want a reminder of how this overlay looks, click the **Test Print** button.)

6. If you want to use another overlay with this document, in this example it is the "Continuation Page" overlay, click this overlay (4) in the list of defined overlays, and then click the **Add** button (3) again to add the second overlay to the list of active overlays.

7. When the list of active overlays contains all the items you want to use, click **OK**.

8. Finally, click the **Print** button in your application's Print dialogue to begin printing your document.



Consumables and Maintenance

This section deals with the replacement of the toner cartridge and image drum and general maintenance.

Consumable order details

ITEM	FOR MODEL	ORDER NO.
Toner, 4K	B411, B431	44574701
Toner, 10K	B431	44574901
Image drum	B411, B431	44574301

Please always use genuine consumables.

Toner cartridge life

How long your toner cartridge lasts depends on the print density; at ISO/IEC 19752 print density print pattern, a standard toner cartridge will print an average of 4000 pages. Remember, this is only an average: actual results may vary.

The first toner cartridge installed in a new printer has to fill the image drum reservoir and saturate the developing roller with toner. The toner cartridge that is supplied with this printer normally produces about 1,500 pages after installation.

When to replace the toner cartridge

When the toner is running low, TONER LOW is displayed in the operator panel LCD. After Toner Low displays, the printer will print about 100 more pages then display Toner Empty and stop printing. Printing will resume after a new toner cartridge has been installed.

Replacing the toner cartridge

WARNING

- > **Never expose a toner cartridge to an open flame. It can cause an explosion and you can be burned.**
- > **Be sure to switch off and unplug the machine before accessing the interior of a machine for cleaning, maintenance or fault clearance. Access to a live machine's interior can cause electric shock.**

It is recommended that you clean the LED array at the same time as you change the toner cartridge.

The toner used in this printer is a very fine dry powder contained in the toner cartridge.

Have a sheet of paper handy so that you have somewhere to place the used cartridge while you install the new one.

Dispose of the old cartridge responsibly, inside the pack that the new one came in. Follow any regulations, recommendations, etc., which may be in force concerning waste recycling.

If you do spill any toner powder, lightly brush it off. If this is not enough, use a cool, damp cloth to remove any residue. *Do not use hot water, and never use solvents of any kind. They will make toner stains permanent.*

WARNING!

If you inhale any toner, go to fresh air and seek medical attention.

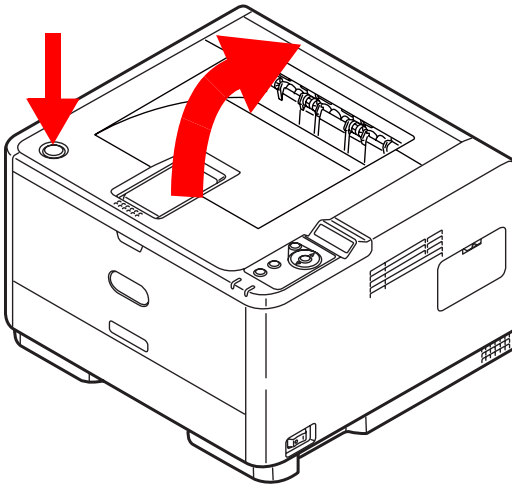
If you get toner in your eyes, bathe your eyes liberally in cold water. Seek medical attention immediately.

1. Switch off the printer and allow the fuser to cool for about 10 minutes before opening the top cover.

WARNING!

If the printer has been powered on, the fuser may be hot. This area is clearly labelled. Do not touch.

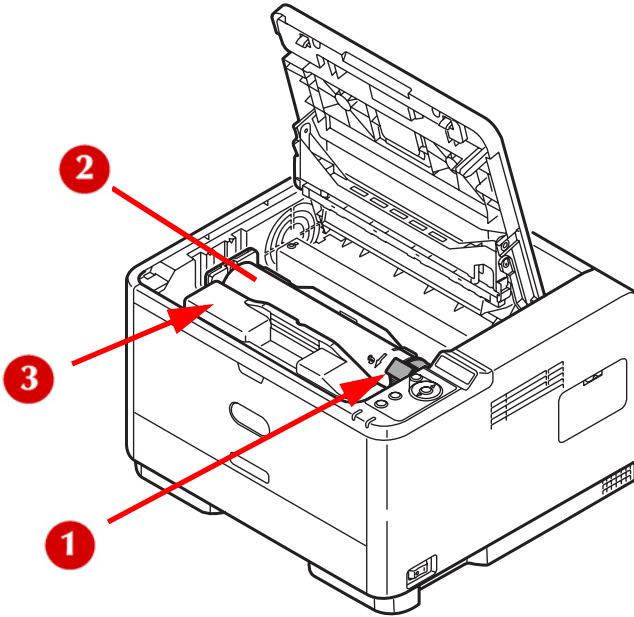
2. Press the top cover release button and open the printer's top cover fully.



Note

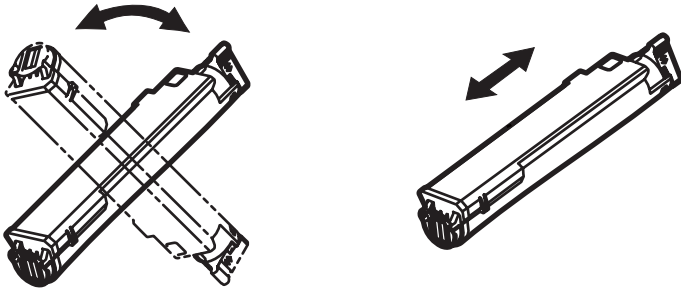
The **B431** model has been illustrated below. The principles are the same for the B411.

3. Pull the colored lever (1) on the right side of the toner cartridge towards the front of the printer to close the cartridge then remove the used toner cartridge (2).

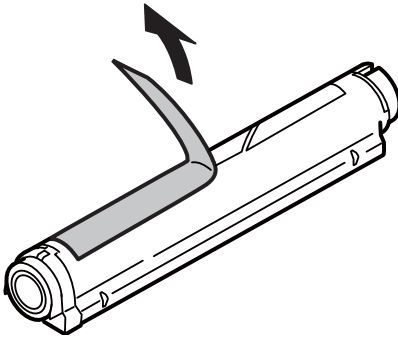


4. Clean the top of the ID unit (3) with a clean, lint free cloth.
5. Put the cartridge down gently onto a piece of paper to prevent toner from marking your furniture.
6. Remove the new cartridge from its box but leave its wrapping material in place for the moment.

7. Gently shake the cartridge from end to end several times to loosen and distribute the toner evenly inside the cartridge.

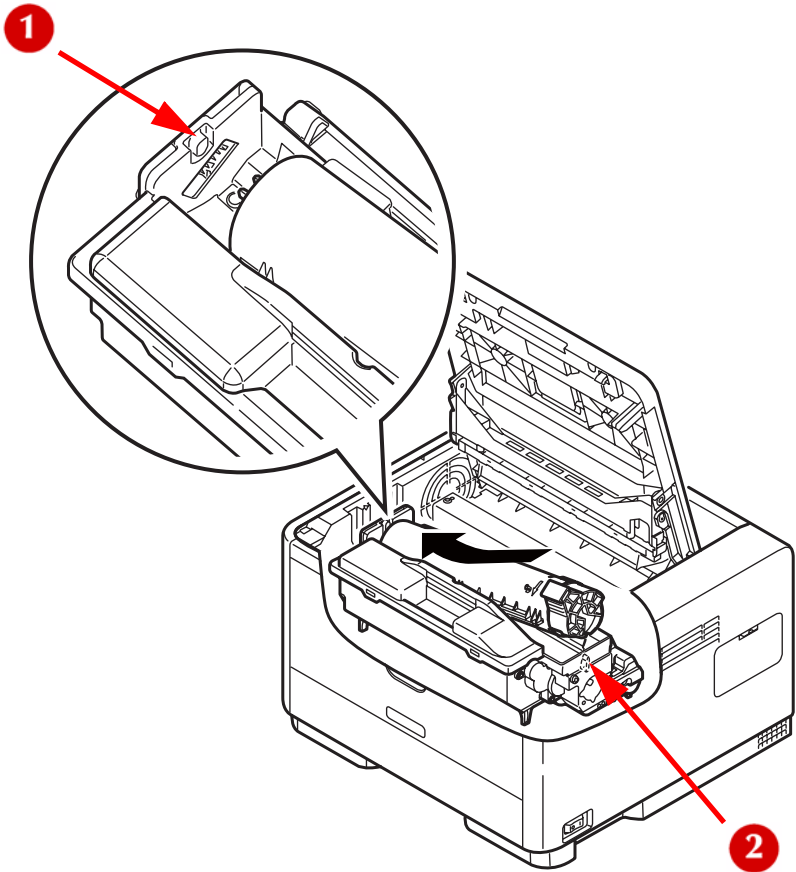


8. Remove the wrapping material and peel off the adhesive tape from the underside of the cartridge.

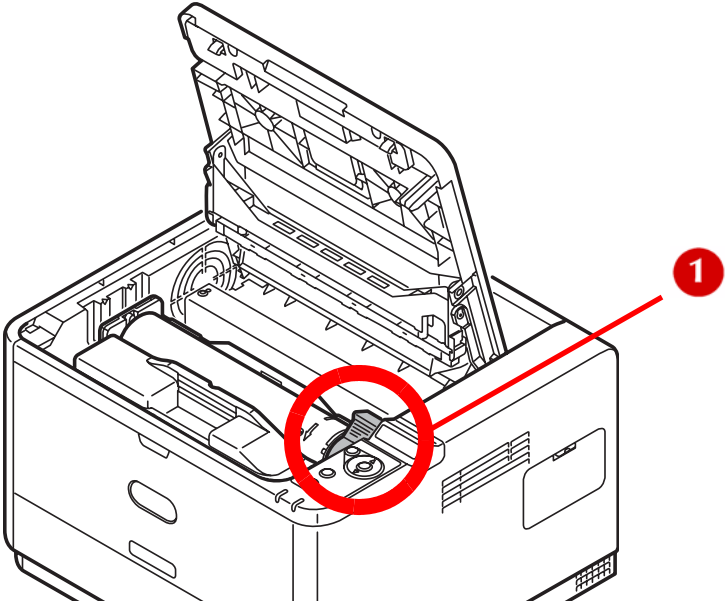


9. Holding the cartridge by its top center with the colored lever to the right, lower it into the printer over the image drum unit from which the old cartridge was removed.

- 10.** Insert the left end of the cartridge into the image drum unit. Align it against the pins (1) on the drum unit. Then lower the right end of the cartridge down into the image drum unit (2).



11. Pressing gently down on the cartridge to ensure that it is firmly seated, push the colored lever (1) towards the rear of the printer. This will lock the cartridge into place and release toner into the image drum unit.



12. Gently wipe the LED array surface with a soft tissue.



13. Lower the top cover and press it down to latch it closed.

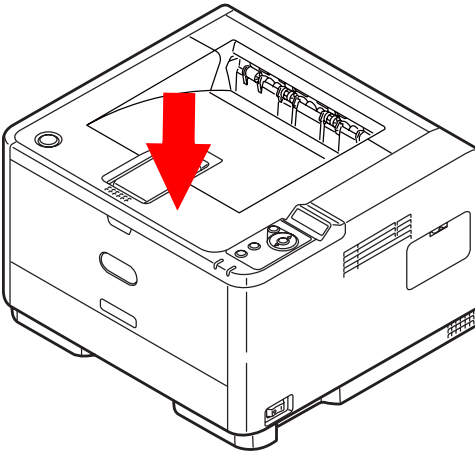


Image drum life

The life of an image drum depends on a number of factors, including temperature and humidity, the type of paper used, and the number of pages per job.

The image drum should last approximately 25,000 pages continuous printing. This number is approximate because different numbers of pages are printed each time and the environmental conditions and the paper type used may vary.

When to replace the image drum

When the drum reaches 90% of its life, a **CHANGE DRUM** message is displayed in the operator panel LCD. Change the image drum when the print becomes faint or begins to deteriorate.

Replacing the image drum.

WARNING

- > **Never expose the image drum to an open flame. It can cause an explosion and you can be burned.**
- > **Be sure to switch off and unplug the machine before accessing the interior of a machine for cleaning, maintenance or fault clearance. Access to a live machine's interior can cause electric shock.**

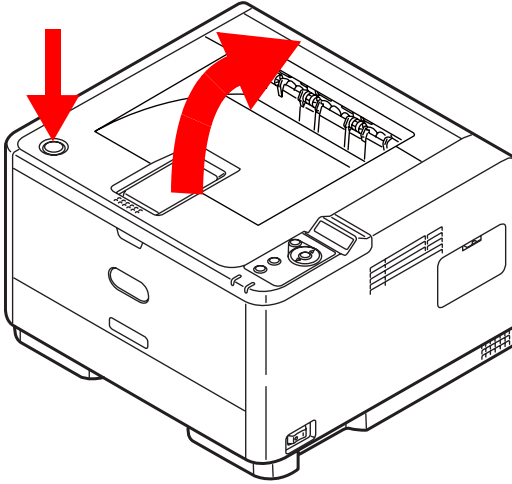
NOTE

- > *It is recommended that you change the toner cartridge and clean the LED array at the same time as you change the image drum.*
 - > *The B431 model has been illustrated below. The principles are the same for the B411 printer.*
-

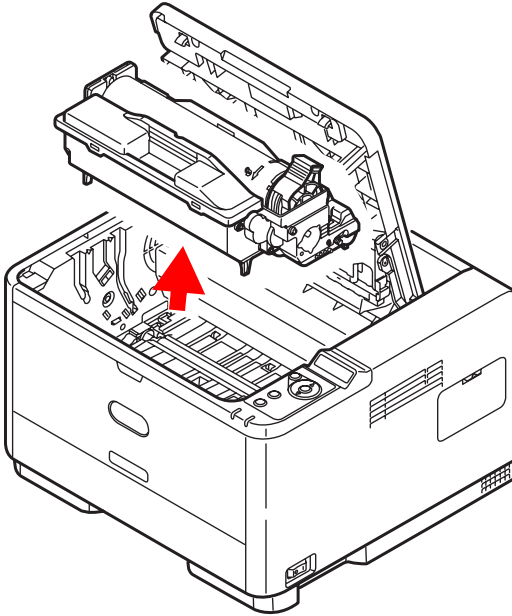
1. Press the cover release and open the printer's top cover fully.

WARNING!

If the printer has been powered on, the fuser may be hot. This area is clearly labelled. Do not touch.



2. Holding it by its top centre, remove the used image drum and toner cartridge, out of the printer.

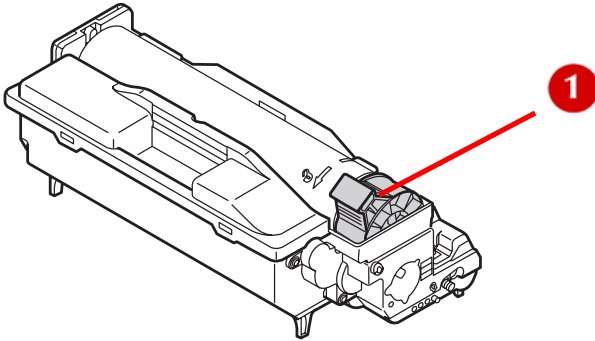


3. Put the assembly down gently onto a piece of paper to prevent toner from marking your furniture and to avoid damaging the green drum surface.

CAUTION!

The green image drum surface at the base of the ID unit is very delicate and light sensitive. Do not touch it and do not expose it to normal room light for more than 5 minutes. If the drum unit needs to be out of the printer for longer than this, please wrap the cartridge inside a black plastic bag to keep it away from light. Never expose the drum to direct sunlight or very bright room lighting.

4. With the colored toner release lever (1) to the right, pull the lever towards you. This will release the bond between the toner cartridge and the image drum unit.



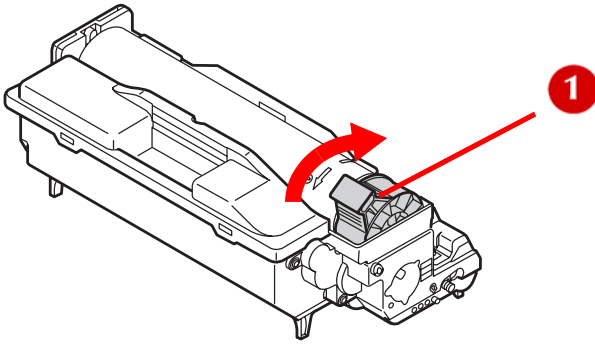
5. Lift the right-hand end of the toner cartridge and then draw the cartridge to the right to release the left-hand end, and withdraw the toner cartridge out of the image drum cartridge. Place the cartridge on a piece of paper to avoid marking your furniture.
6. Take the new image drum cartridge out of its packaging and place it on the piece of paper where the old cartridge was placed. Keep it the same way round as the old unit. Pack the old cartridge inside the packaging material for disposal.

Note

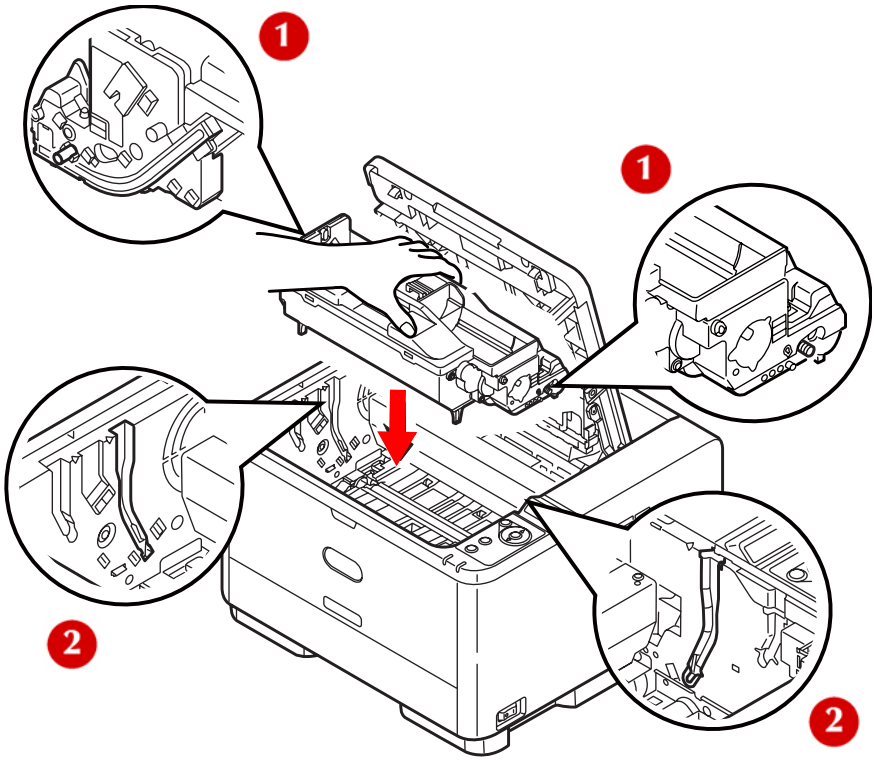
Follow instructions that come with the new image drum for additional information such as the removal of packaging material etc.

7. Place the toner cartridge onto the new image drum cartridge. Push the left end in first, and then lower the right end in.

- 8.** Push the colored release lever (1) away from you to lock the toner cartridge onto the new image drum unit and release toner into it.



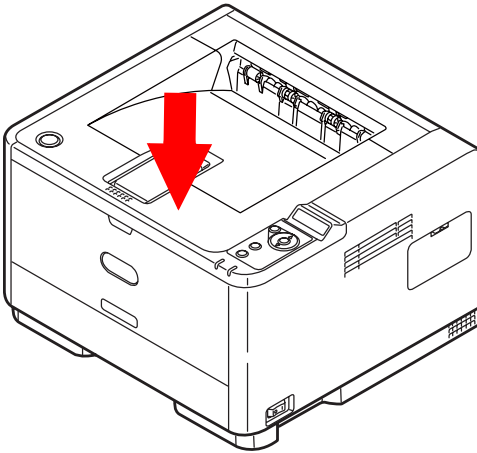
9. Holding the complete assembly by its top center, lower it into place in the printer locating the pegs (1) at each end into their slots in the sides of the printer cavity (2).



- 10.** Gently wipe the LED array surface with a soft tissue.



- 11.** Lower the top cover and press it down to latch it closed.

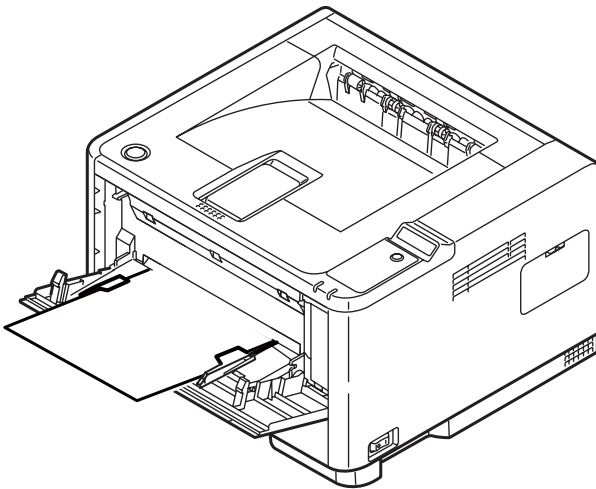


Generating a cleaning page

If the printed page shows signs of fading, streaking or erratic marks, the problem may be cleared by generating a drum cleaning page as follows.

B411

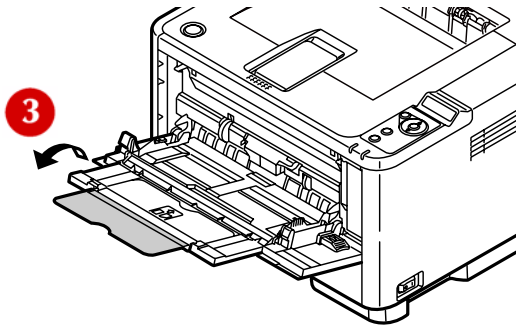
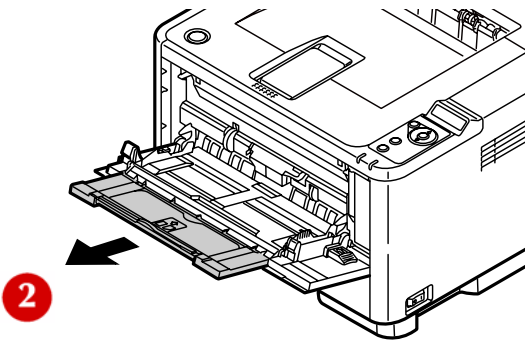
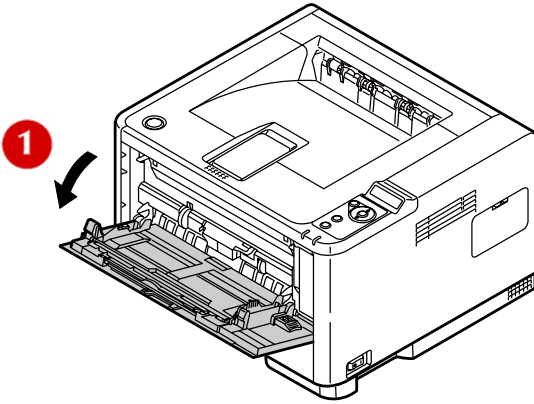
1. Press the **Online** button to take the printer OFF LINE.
2. Open the Manual Feed Tray and insert a sheet of Letter/A4 plain paper between the paper guides. For loading paper, see page 53.



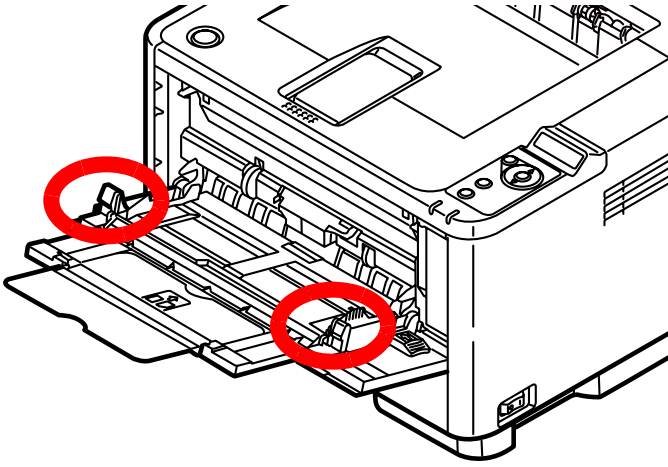
3. Press and hold down the **Online** button for at least seven seconds.
4. The printer prints a cleaning page.
5. Return the printer ONLINE by pressing the **Online** button.
6. If subsequent printing appears faded or uneven, try replacing the toner cartridge.

B431

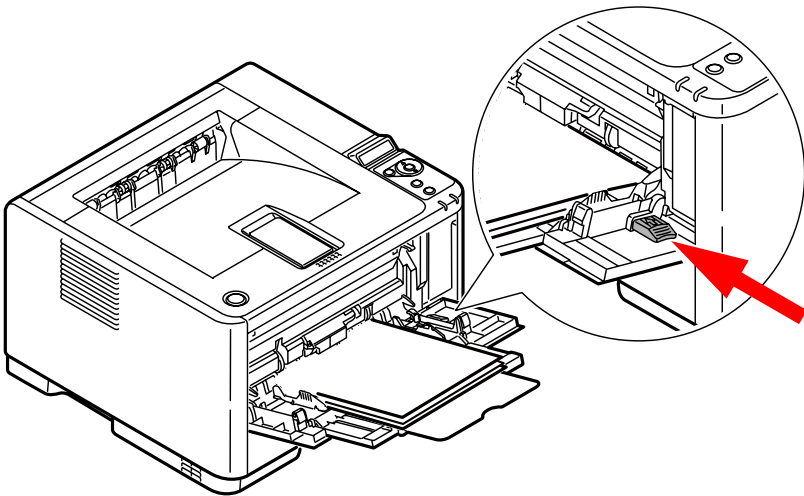
1. Pull down the Multi Purpose Tray (1), slide out the paper support (2), and flip open the support extension (3).



2. Adjust the paper guides to the width of the paper.



3. Insert a sheet of Letter/A4 plain paper between the paper guides and push the colored set button to engage the tray.



4. Press the **Menu** ▲ or ▼ button repeatedly until MAINTENANCE MENU is displayed, then press the **OK** button.

5. Press the ▲ or ▼ button until `CLEANING PRINT` is displayed.
6. Press the **OK** button.
7. The printer prints a cleaning page.
8. Press **Cancel** or **Online** or the **Back** button repeatedly to exit the Menu mode. The printer should now be `ON LINE`.
9. If subsequent printing appears faded or uneven, try replacing the toner cartridge.

Cleaning the LED array

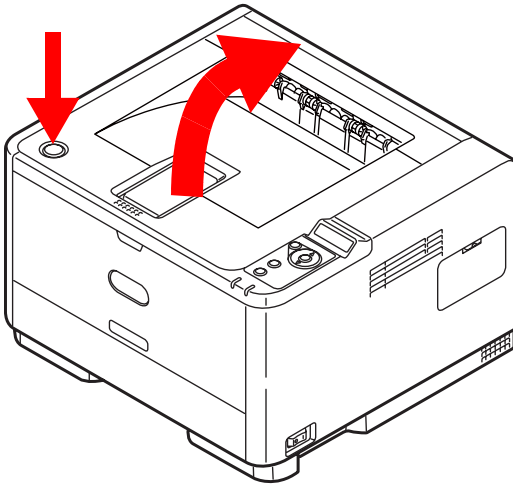
Clean the LED array whenever a new toner cartridge is installed or if there are faded vertical areas or light printing down a page.

1. Switch off the printer and allow the fuser to cool for about 10 minutes before opening the top cover.

WARNING!

If the printer has been powered on, the fuser may be hot. This area is clearly labelled. Do not touch.

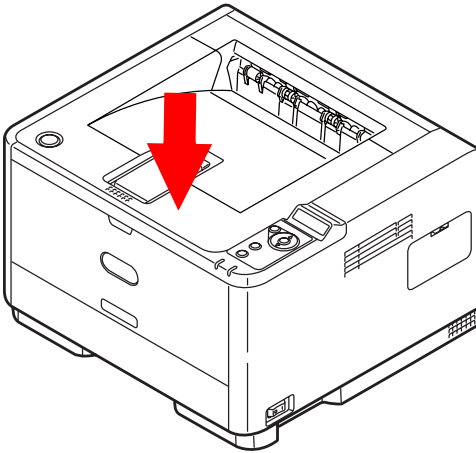
2. Press the top cover release button and open the printer's top cover fully.



3. Wipe the LED array gently with a soft tissue.



4. Lower the top cover and press it down to latch it closed.



Troubleshooting

Status and error messages

Your printer has been designed to give you helpful status feedback not only during normal operation but also if a printing problem occurs so that you can take appropriate corrective action.

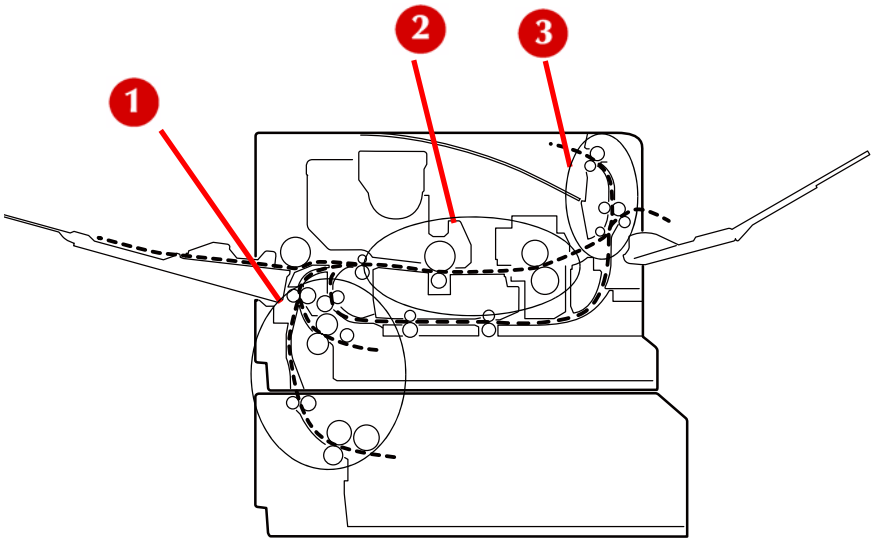
The LCD on the printer operator panel provides the self-explanatory status and error messages in your chosen language. Error messages are accompanied by the Ready indicator being extinguished.

Paper Jams

Provided that you follow the recommendations in this guide on use of print media, and you keep the media in good condition prior to use, your printer should give years of reliable service. However, paper jams occasionally do occur, and this section explains how to clear them quickly and simply.

Jams can occur due to paper mis feeding from a paper tray or at any point on the paper path through the printer. When a jam occurs, the printer immediately stops, and the operator panel informs you of the event. If printing multiple pages (or copies), do not assume that having cleared an obvious sheet that others will not also be stopped somewhere along the path. These must also be removed in order to clear the jam fully and restore normal operation.

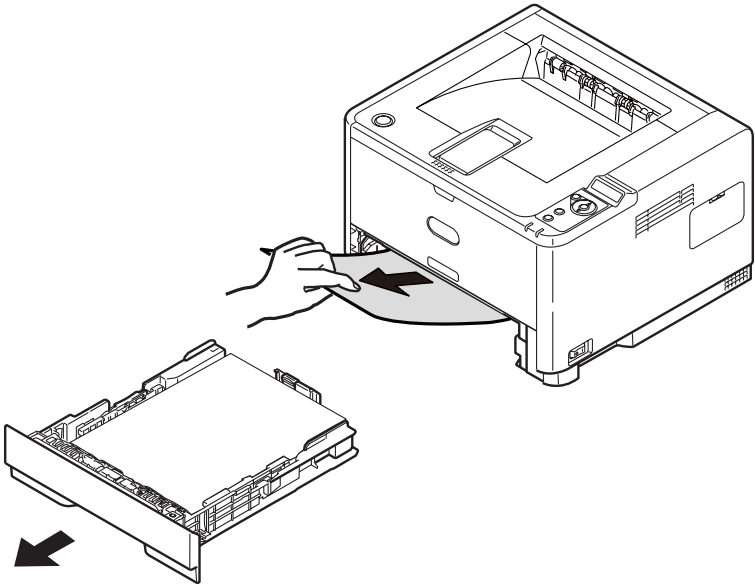
The printer may experience a paper jam in one of three areas.



- 1.** INPUT JAM - paper has failed to leave the selected feed tray and enter the internal paper path of the printer. A typical message indicates a paper jam and identifies the tray to check.
- 2.** FEED JAM - paper has entered the printer but failed to reach the exit. A typical message indicates a paper jam and advises you to open the top cover for access.
- 3.** EXIT JAM - paper has reached the exit but has failed to exit completely from the printer. A typical message indicates an exit jam and advises you to open the top cover for access.

Input jam

1. Remove the paper tray from the printer. Remove any crumpled or folded paper. remove any paper from the underside of the printer.



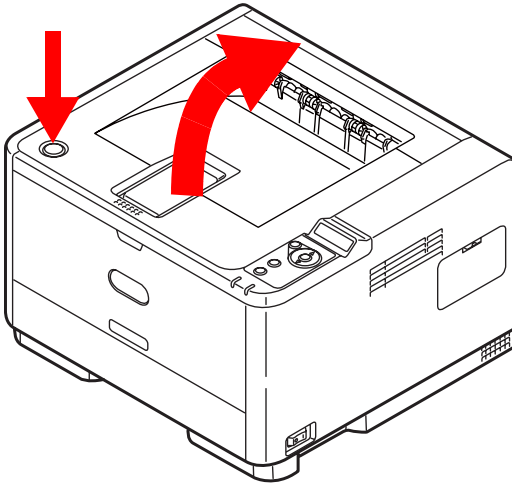
2. Replace the paper tray.

After successful removal of any damaged or misfed paper, the printer should continue printing.

Feed jam or exit jam

1. Remove the tray and clear any misfed sheets as given above.

2. Press the cover release and open the printer's top cover.



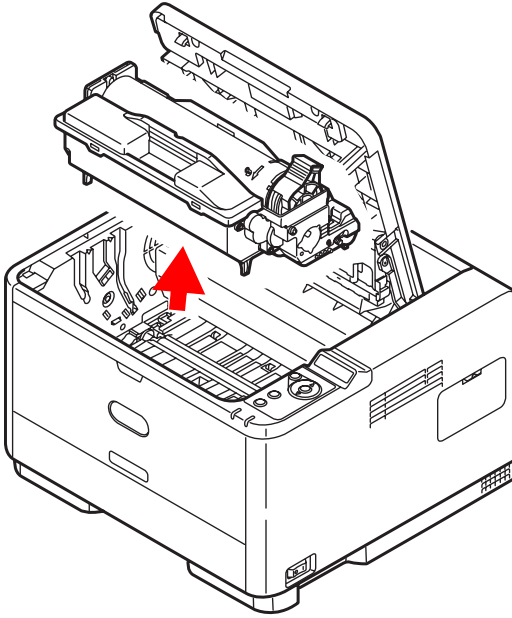
WARNING!

If the printer has been powered on, the fuser area will be hot. This area is clearly marked. Do not touch it.

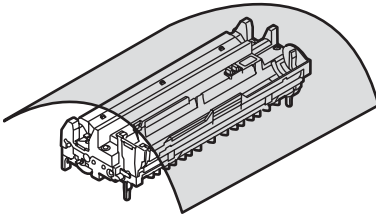
CAUTION!

Never expose the image drum unit to light for more than 5 minutes. Never expose the image drum unit to direct sunlight. Always hold the image drum unit by the ends or from the top. Never touch the surface of the green drum inside the image drum unit.

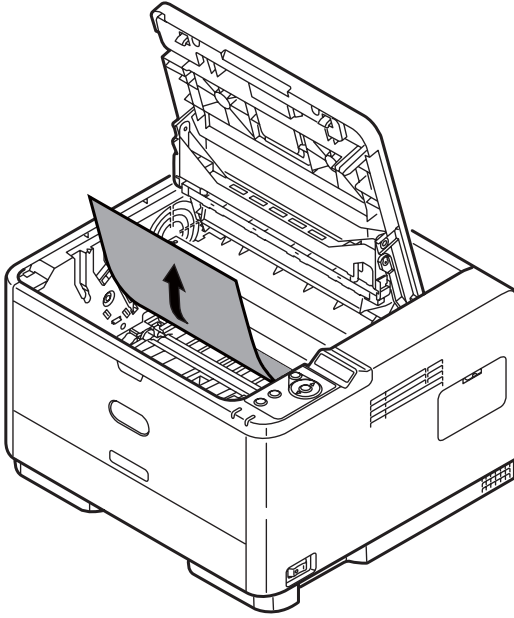
3. Carefully lift out the image drum, complete with the toner cartridge. Be careful not to touch or scratch the green drum surface.



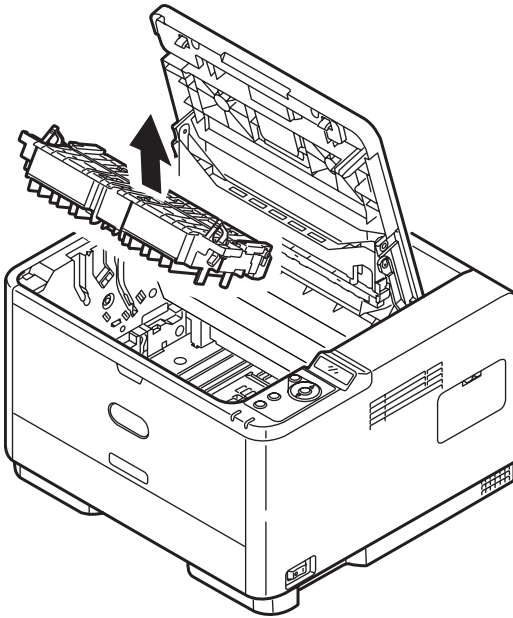
4. Put the assembly down gently onto a piece of paper to prevent toner from marking your furniture and to avoid damaging the green drum surface, and cover.



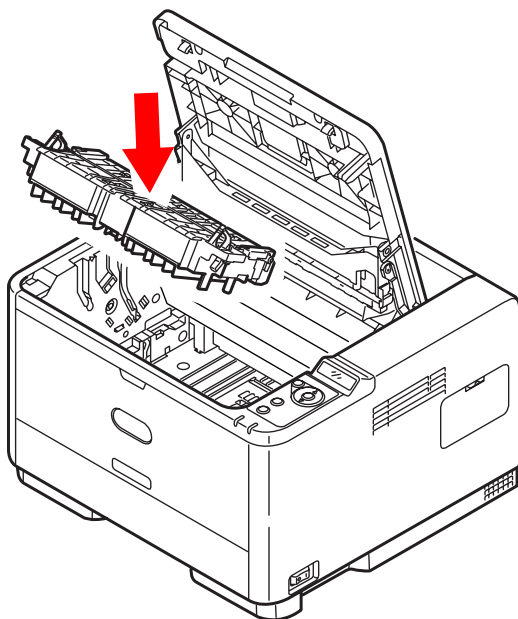
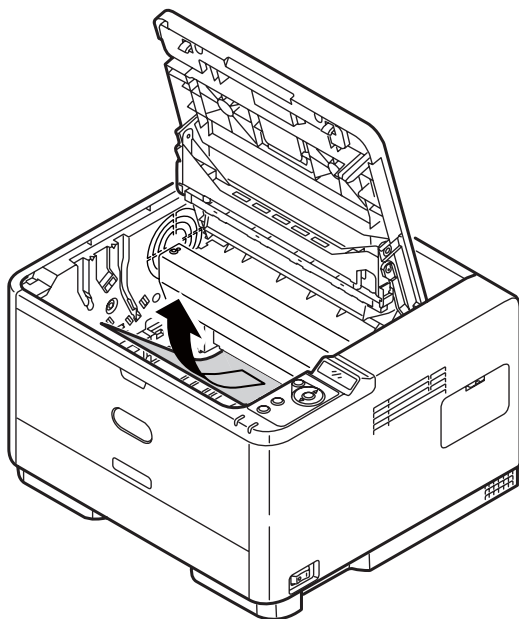
5. Remove any jammed sheets from the paper path.



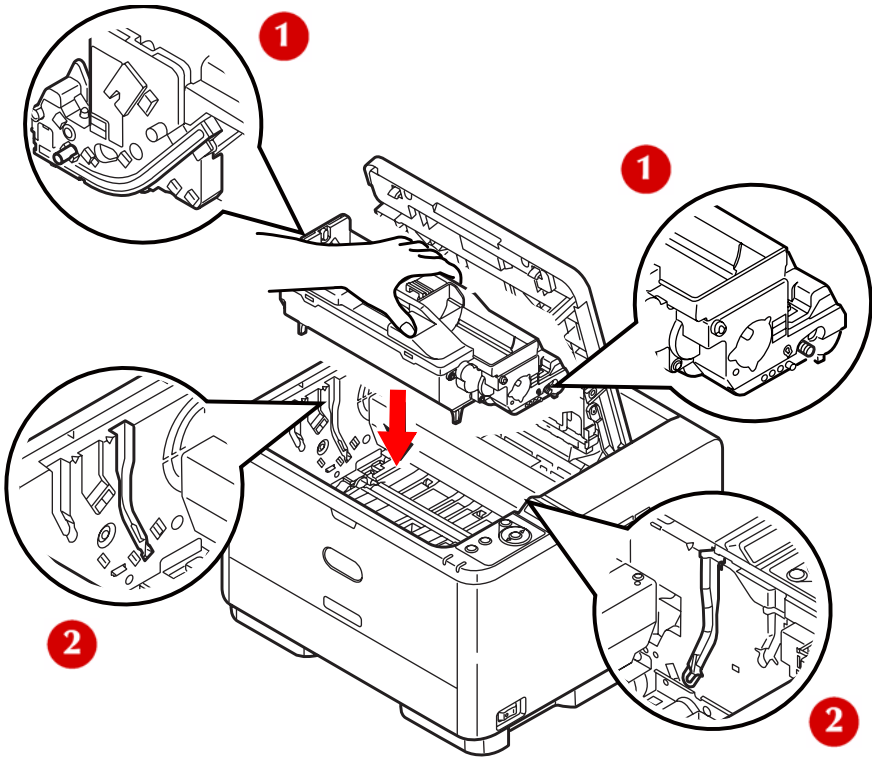
6. Remove the Duplex unit and check for any paper in this area.



7. Remove any paper and replace the duplex unit.

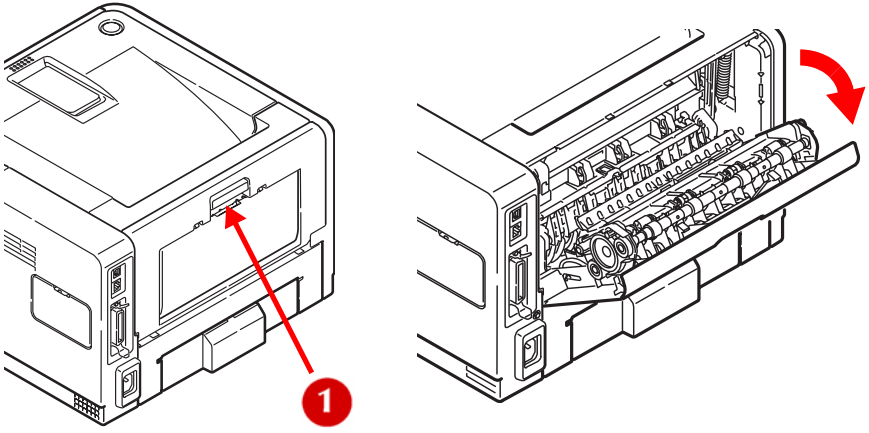


8. Re-install the image drum complete with toner cartridge, ensuring that the pegs (1) correctly locate into the slots on each side of the printer (2).

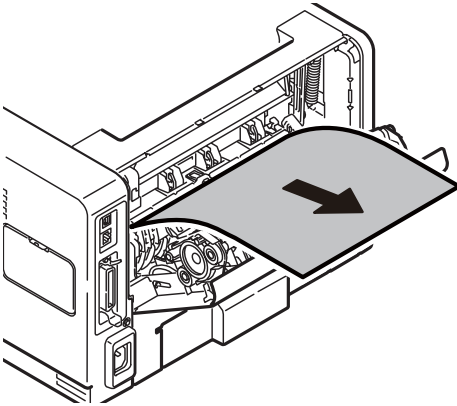


9. Lower the top cover but do not press down to latch it closed yet. This will protect the drum from excessive exposure to room lighting, while you check the remaining area for jammed sheets.

- 10.** Lift the rear cover latch (1), open the rear cover and check for paper in the rear path.

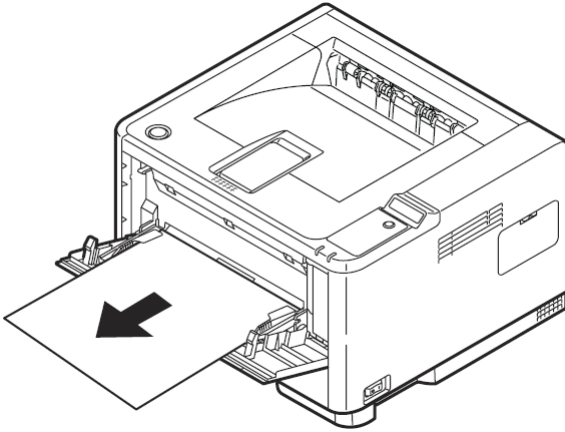


- Pull out any paper found in this area.

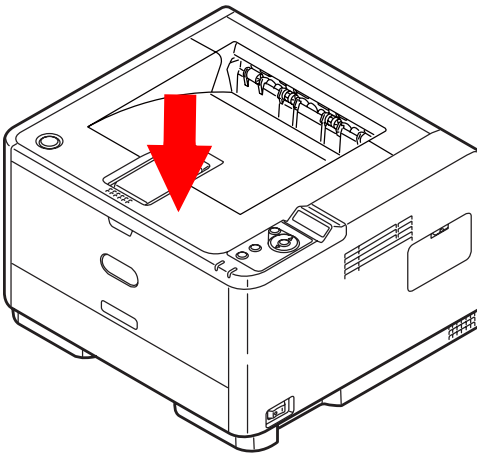


- If you are not using the rear cover, close it once the paper is removed from this area.

- 11.** B411: Open the Manual Feed Tray and remove any paper that you find.
B431: Open the Multi Purpose Tray and remove any paper that you find.



- 12.** Close the tray.
- 13.** Press down to latch the top cover closed.



14. The printer will warm up and commence printing when ready. The page lost through the jam will normally be reprinted.

Note

If the edge of the jammed paper protrudes (or can be seen) from the exit, reinstall the image drum, close the top cover and switch the printer on. Remove the jammed paper from the exit when the exit roller begins rotating after a few seconds after switching on. However, if the jammed paper cannot be removed, contact a service representative.

Print quality problems

Before consulting a service representative regarding a print quality problem, check the table below to see if there is a solution, or something you might have overlooked.

SYMPTOM	PROBLEM	SOLUTION
Blank sheets printed.	Image drum cartridge not properly installed.	Reinstall image drum cartridge.
	Empty or missing toner cartridge.	Install new toner cartridge.
Entire page prints faintly.	Empty toner cartridge. Pages get fainter when toner is used up.	Install new toner cartridge.
	LED array is dirty.	Clean LED array.
Page has grey background.	Static electricity, generally from dry environments, causes toner to stick to background.	Change paper to a smoother laser bond or use a humidifier.
Page prints all black.	Hardware problem.	Contact service.

SYMPTOM	PROBLEM	SOLUTION
Page has repetitive marks.	Damaged image drum cartridge causes repetitive marks every 1.6 inches (4.06 cm) due to surface nicks and scratches.	Generate a cleaning page, repetitive marks may be temporary.
Oblong area of faint print appears on each page.	Drop out caused by using paper exposed to high humidity.	Change paper stocks, check paper storage environment or use a dehumidifier; check toner level.
Vertical white streaking or faint areas on page.	Toner is low and does not distribute properly, or the drum is worn out.	Replace toner cartridge. Check drum and replace the drum, if necessary. Contact service.
	LED array is dirty.	Clean LED array.
Vertical black lines.	Hardware problem.	Contact service.
Fuzzy print.	LED array is dirty.	Clean LED array.
Distorted print.	Paper path, lamp assembly, or fusing unit problem.	Generate cleaning page. Contact service.
Smearred or blotched print.	Dirty rollers; toner dropped inside printer or image drum problem.	Replace image drum and toner. Contact service.
Printed page is light/ blurred.	Is toner low?	Replace toner cartridge.
	Is paper meant for laser printers?	Use recommended paper.
	LED array is dirty.	Clean LED array.
Bold characters and dark lines are smearred.	Toner is low.	Install new toner cartridge.

SYMPTOM	PROBLEM	SOLUTION
Print is darker than usual.	Darkness setting is too high.	Change darkness setting.
Pages curl excessively.	Printing on wrong side of paper.	Turn paper over in tray. (Note arrow on paper package). Install paper print side down in tray.
	Moisture in paper. Improper storage.	Avoid storing paper in areas of excessive temperature and humidity. Store paper in protective wrapping.
	High humidity.	Recommended operating humidity: 20-80%.

Paper feed problems

SYMPTOM	PROBLEM	SOLUTION
<p>Paper Jams occur frequently. Multiple sheets of paper are fed at the same time.</p>	<p>The printer is tilted.</p>	<p>Place the paper on a stable and flat surface.</p>
	<p>Paper is too thick or too thin. Paper is moist, folded, creased or warped.</p>	<p>Use paper suitable for the printer. Avoid storing paper in areas of excessive temperature and humidity. Store paper in protective wrapping</p>
	<p>Paper is not aligned.</p>	<p>Align the paper edges to the paper guides.</p>
	<p>Only one sheet of paper is loaded in the Paper tray or Manual Feed/Multi Purpose tray.</p>	<p>Load several sheets of paper.</p>
	<p>Sheets of paper is added to the existing paper stock in the Paper tray or Manual Feed/Multi Purpose tray.</p>	<p>Remove existing sheets of paper from the tray and add the new sheets to them, ensuring alignment and then load the tray.</p>
	<p>Postcards, envelopes, label sheets or transparencies are loaded in the Paper tray.</p> <p>Postcards or envelopes are placed in the wrong orientation.</p>	<p>You cannot print using the Paper tray. Load postcards, envelopes, label sheets or transparencies in the Manual Feed tray or Multi Purpose tray.</p> <p>Check and load in the correct orientation.</p>

SYMPTOM	PROBLEM	SOLUTION
Paper is not fed into the printer.	Improper setting is selected for Paper Source in the printer driver.	Select the correct paper source from the Source drop down menu.
	The printer menu setting is incorrect.	Set the size of the paper in the Setup Menu of the printer.
Printing does not resume after removing jammed paper.	Printing does not resume only by removing paper jam.	Open and close the top cover.

Software problems

Your software (operating environment, applications and printer drivers) controls the printing process. Make sure you have selected the right driver for use with your printer. See your software documentation for more information.

SYMPTOM	PROBLEM	SOLUTION
Printing is garbled.	Incorrect driver is installed.	Install an appropriate driver.
Printer's output is below rated speed.	Much of the printing delays will be caused by your application. Sometimes purely text documents will print slowly depending on the selected fonts and how they are transferred to the printer.	For maximum speed, use text in your document and use a printer resident font.
Size of top margin increases with each page printed.	Creeping text. Number of lines per page in software is not equal to number of lines per page of printer.	Many software packages assume 66 lines per page, but your printer's default is 64. Adjust software accordingly, or set LINES Per PAGE in the soft control panel to equal lines per page in your software.

Hardware problems

SYMPTOM	PROBLEM	SOLUTION
Graphic image prints partly on one page, partly on the next.	Insufficient printer memory for this image at this resolution.	Change the resolution, reduce the image size, or install more memory in your printer.

SYMPTOM	PROBLEM	SOLUTION
When you try to print nothing happens, but printer indicates it is ready to receive data.	Configuration error.	Check cable connection. If more than one printer is available, make sure your printer has been selected.
Garbage prints.	Incorrect cable configuration. Also, see Software Problems.	Check cable configuration, continuity, and length.
Printer freezes or displays error message when computer is rebooted.	Booting the computer while the printer is on can cause a communications error.	Turn printer off before rebooting computer.
Odors.	Gases are given off by forms or adhesives passing through the hot fusing unit.	Make sure the forms you use can withstand heating, and provide adequate ventilation.
Printer is on but must warm up before a job is printed.	Power Save mode is set on to conserve energy. The fuser must heat up before you can begin printing the next job.	To eliminate warm up delay, change Power Save setting.

Options

The following options are available to extend the performance of your printer:

- 64 and 256 MB RAM DIMM: to extend the main memory of your printer and speed up the processing of large files
- Second paper tray: to increase your printer's paper handling capacity by 530 sheets (75g/m²)

Options order numbers

64 MB RAM DIMM	70062801
256 MB RAM DIMM	70062901
Second Paper Tray (Tan)	44575701
Second Paper Tray (Black)	44575704

Installation procedure

To install any of the above options, follow the detailed installation sheet that accompanies the option.

Specifications

General

ITEM	SPECIFICATION
Dimensions, W x D x H	14.5 x 15.5 x 10.5 inches (369 mm x 395 mm x 268 mm)
Weight	22.7 lbs. (10.3 kg) approximately (without second tray)
Printing method	Electro-photographic printing using LEDs as light source
Print color	Monochrome
Print speed	Letter: 30 pages per minute maximum A4: 28 pages per minute maximum
Resolution	B411: 2400 x 600 dots per inch B431: 1200 x 1200 dots per inch
Operating platform	Windows 2000/XP/XP server 2003 x 64 bit edition/Vista/ Vista x 64 bit edition Mac OS X PowerPC (10.2.8 - 10.5) / OS X Intel (10.4.4 - 10.5) Unix/Linux
Emulations	B411: PCL5e, PCLXL, Epson FX, IBM ProPrinter B431: PCL5e, PCLXL, Epson FX, IBM ProPrinter, PS3
Interfaces	Parallel port in compliance with IEEE 1284- 1994 standard USB 2.0 High speed B411dn, B431dn: 100BASE-TX/10Base-T
Processor	297 MHz PowerPC
Memory	64 MB expandible to 320 MB
Printer/Fuser life	200,000 pages or 5 years

ITEM	SPECIFICATION
Toner life	Starter: 2,000 pages Replacement: (ISO/IEC19752) B411: 4,000 pages B431: up to 10,000 pages
Image drum life	Simplex printing 30,000 pages (continuous) 20,000 pages (3 pages per job) 12,000 pages (1 page per job) Duplex printing 15,000 pages (continuous) 13,000 pages (3 pages per job) 10,000 pages (1 page per job)
Paper sizes	A4, A5, A6, B5, Letter, Legal 13, Legal 14, Executive, Custom, C5, C6, Com-9, Com-10, DL, Monarch, Statement
Paper feed	B431: Automatic feeding via paper trays (including optional second tray and Multi Purpose Tray) B411: Automatic feeding via paper trays (including optional second tray) and Manual feeding of single sheets
Paper feed capacity at 20 lb. US Bond (75 g/m ²)	B411 and B431: Tray 1: 250 sheets Optional Tray 2: 530 sheets B431: Multi Purpose Tray: 50 sheets]: Manual Feed Tray: Single sheet
Paper output	Face up, face down depending on paper size, type and thickness
Power consumption	At 22°C Typical: 510W Idle: 70W Power save mode: 5W
Paper output capacity at 20 lb. US Bond (75 g/m ²)	Face down: 150 sheets Face up: 100 sheets

ITEM	SPECIFICATION
Monthly duty cycle	B411: 50,000 pages B431: 70,000 pages
Consumables	Toner cartridge, Image drum
Power cable	Approximately 1.8 m max. length
Noise level	Operation: 53 dB(A) Standby mode: 30 dB(A) Power saving mode: Background level
Environmental conditions	Operation: 50 to 89°F (10 - 32°C), 20% - 80% RH, Storage: 50 to 109°F (10-43°C), 10% - 90% RH When the printer is stored, it should be in its original packaging, with no moisture formation.